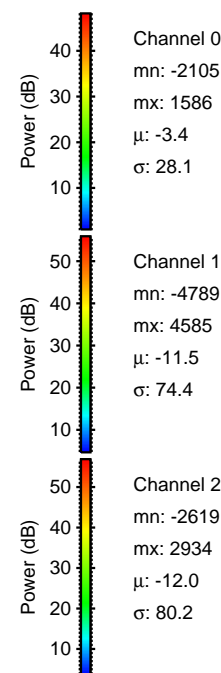
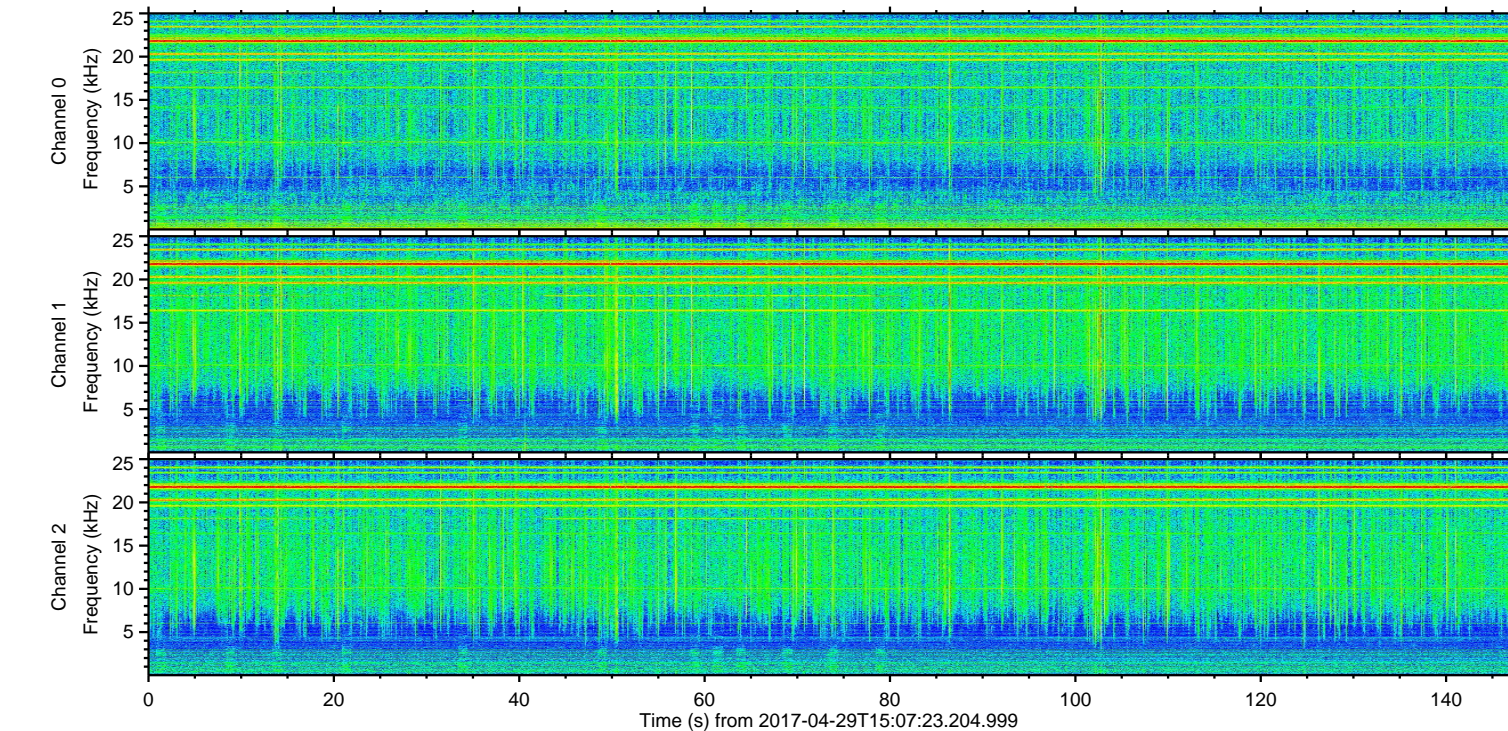
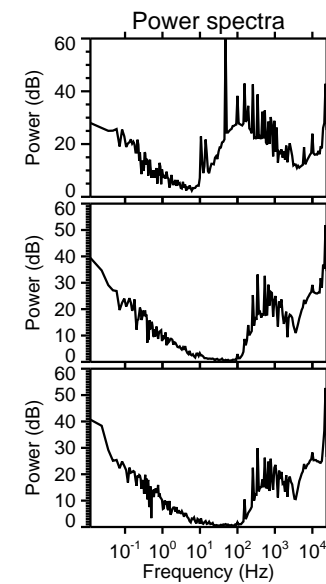
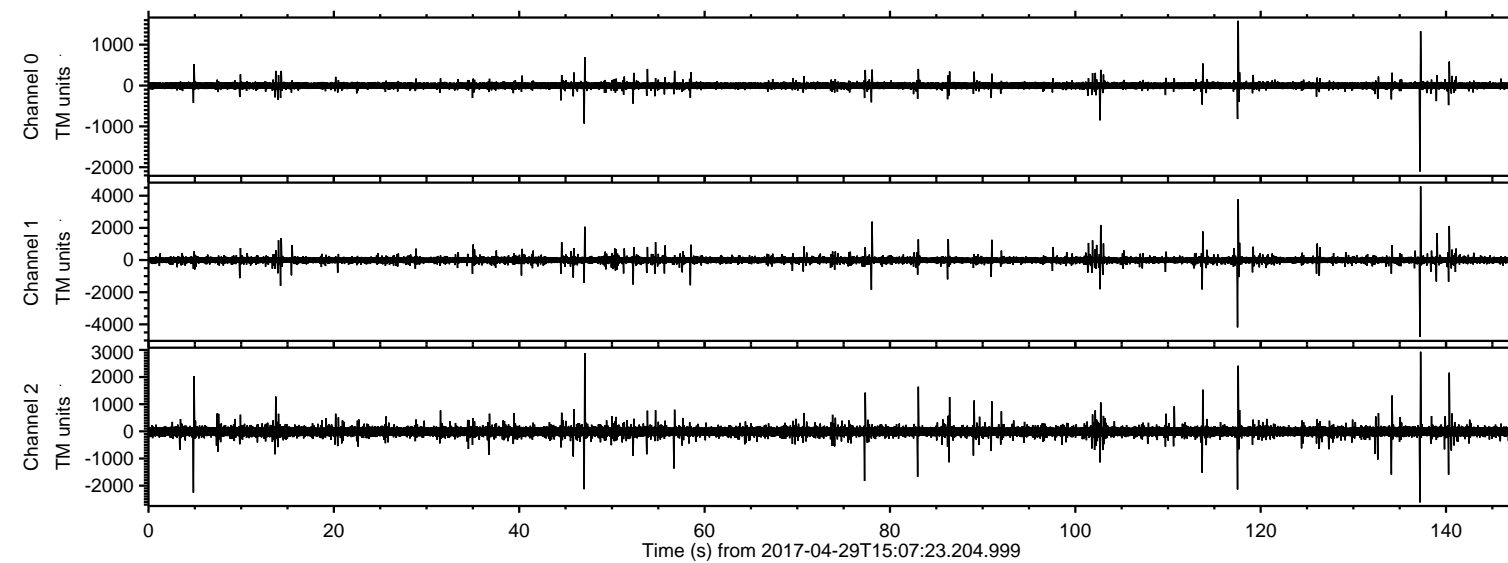


ELMAVAN 3D WAVEFORMS (Measured data sampled at 50 kHz) 51000 packets of 144 samples from 2017-04-29T15:07:23.204.999.

Processed Sat Apr 29 17:14:49 2017 by ELM ver.2012-10-06 from 001__elm20170429_150722__dat00.bin



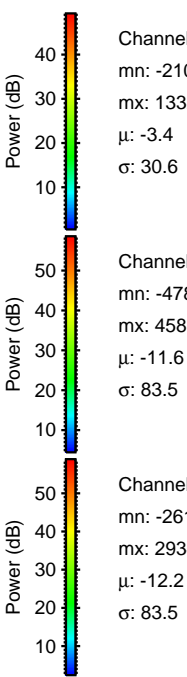
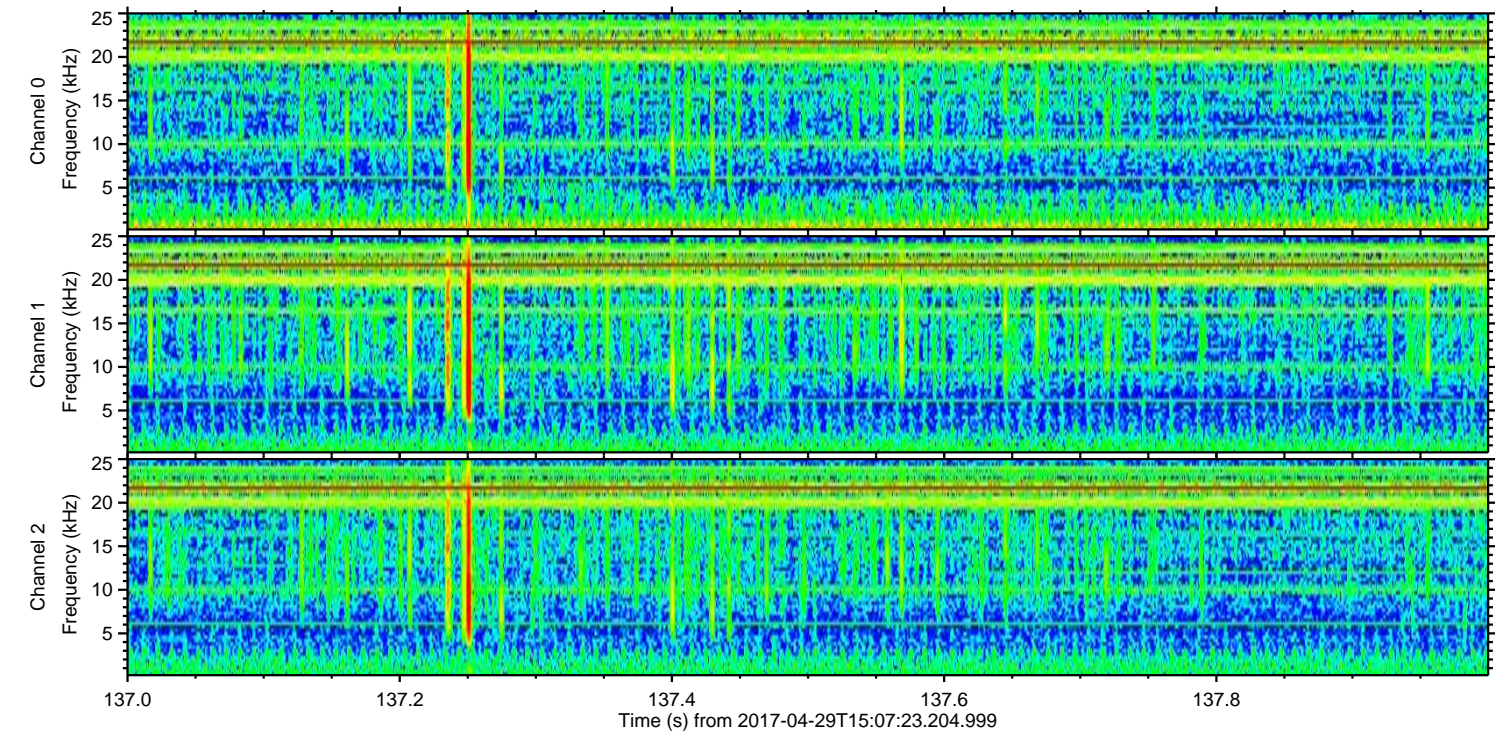
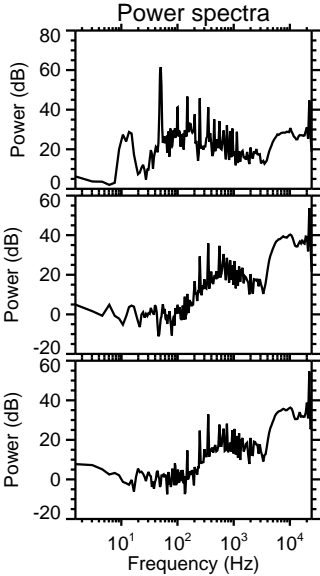
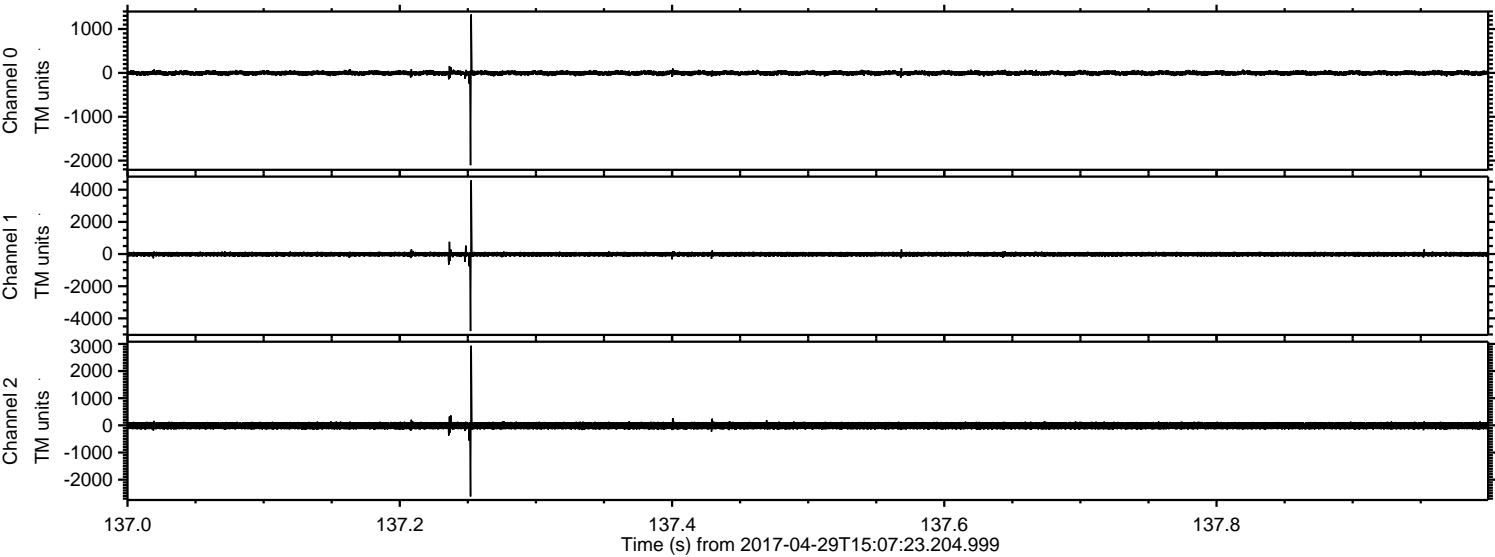
Channel 0
mn: -2105
mx: 1586
 μ : -3.4
 σ : 28.1

Channel 1
mn: -4789
mx: 4585
 μ : -11.5
 σ : 74.4

Channel 2
mn: -2619
mx: 2934
 μ : -12.0
 σ : 80.2

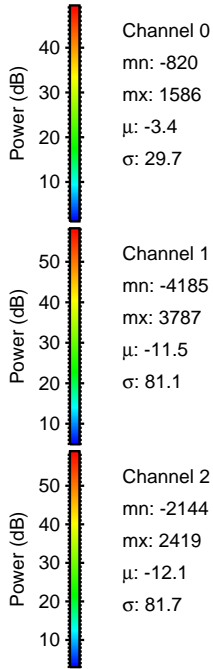
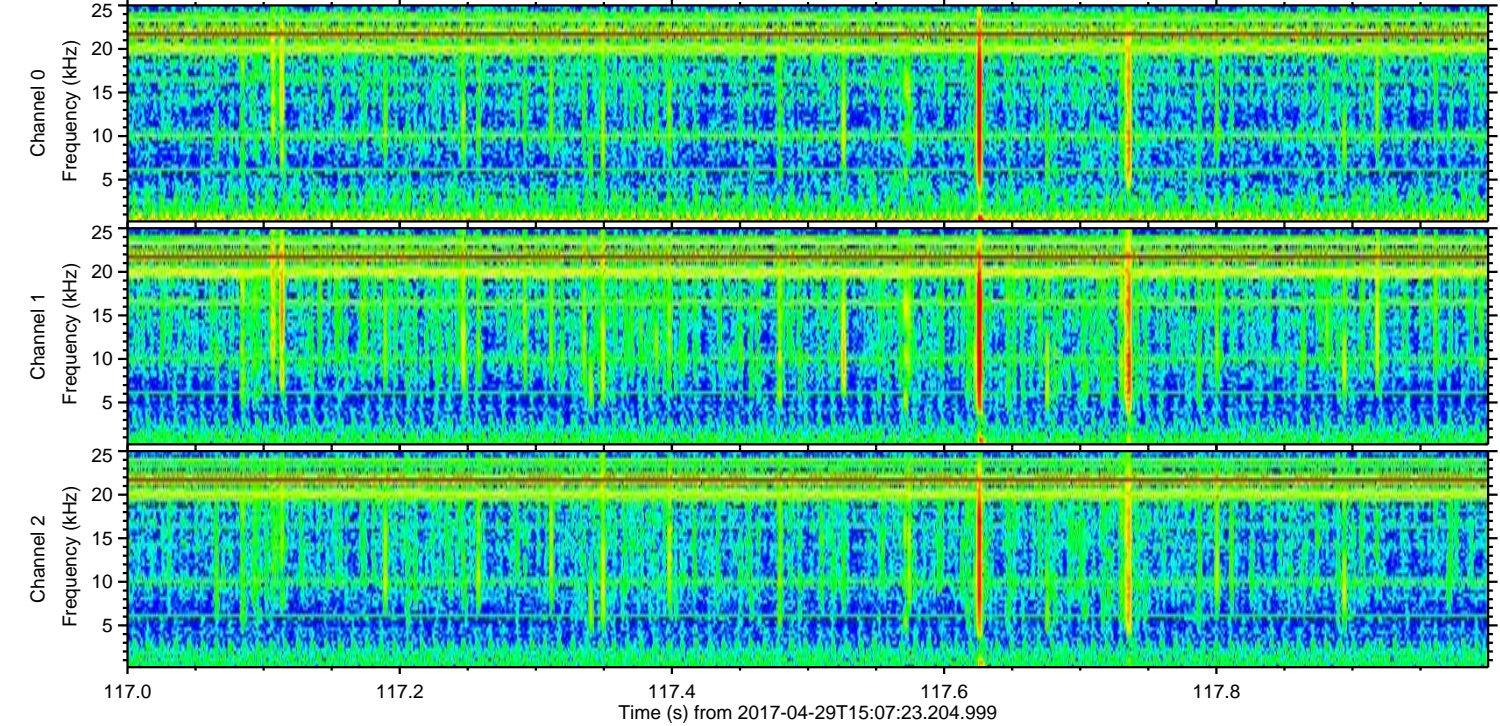
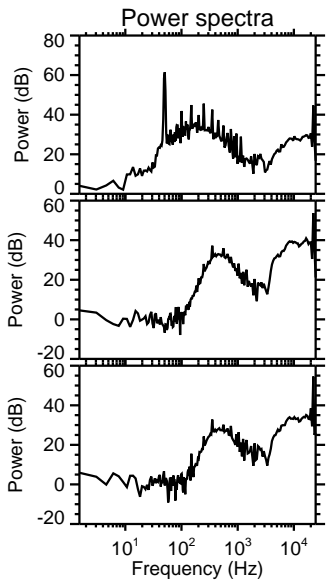
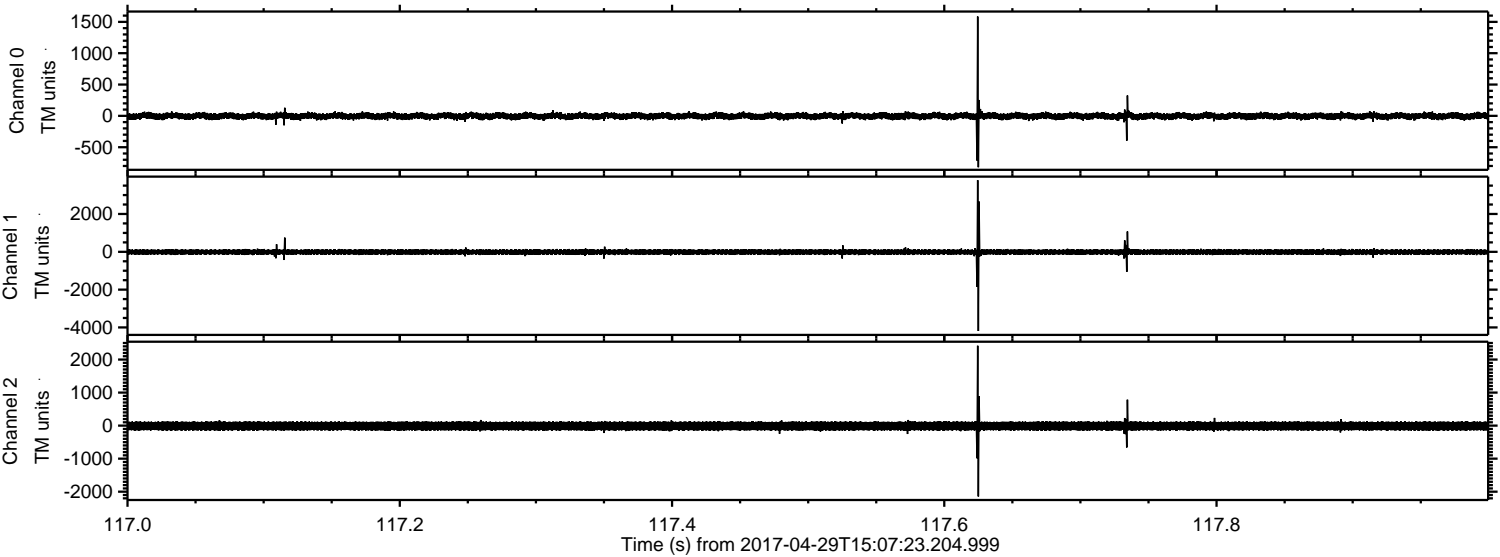
ELMAVAN 3D WAVEFORMS (Measured data sampled at 50 kHz) 51000 packets of 144 samples from 2017-04-29T15:07:23.204.999. Part 138/147

Processed Sat Apr 29 17:15:01 2017 by ELM ver.2012-10-06 from 001__elm20170429_150722__dat00.bin



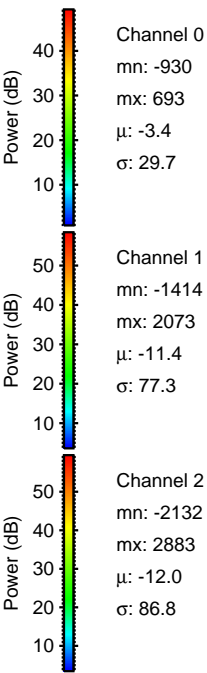
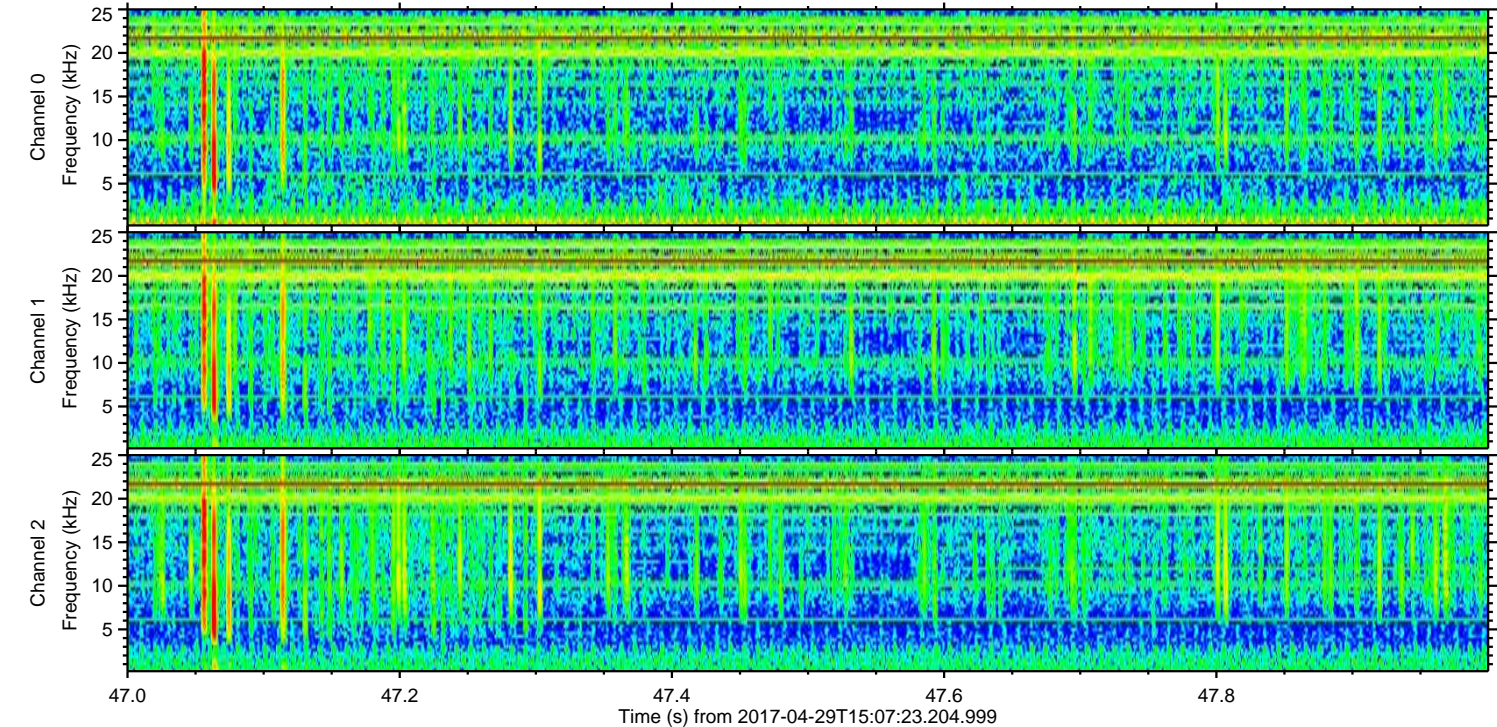
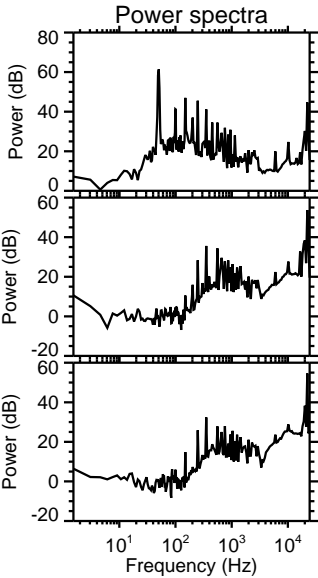
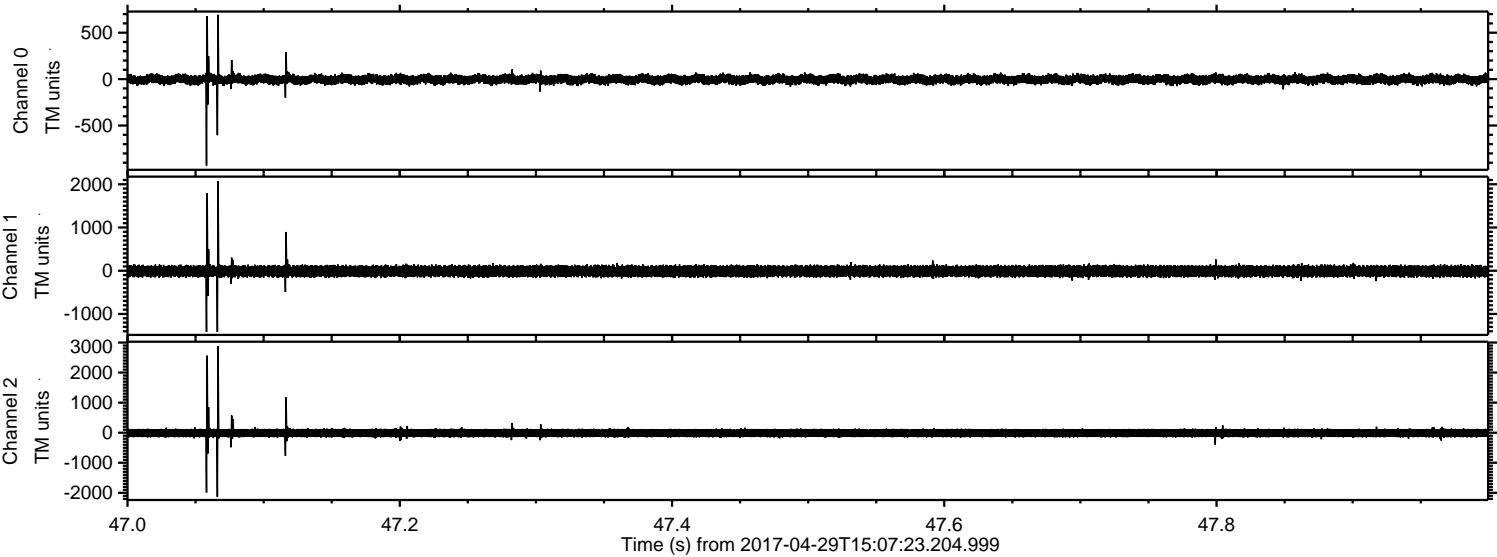
ELMAVAN 3D WAVEFORMS (Measured data sampled at 50 kHz) 51000 packets of 144 samples from 2017-04-29T15:07:23.204.999. Part 118/147

Processed Sat Apr 29 17:15:02 2017 by ELM ver.2012-10-06 from 001__elm20170429_150722__dat00.bin



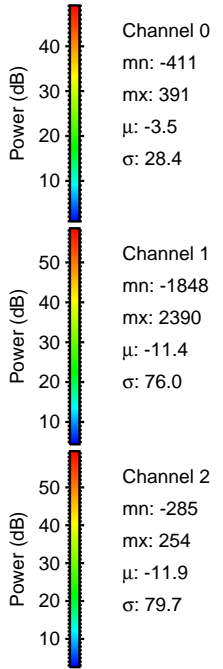
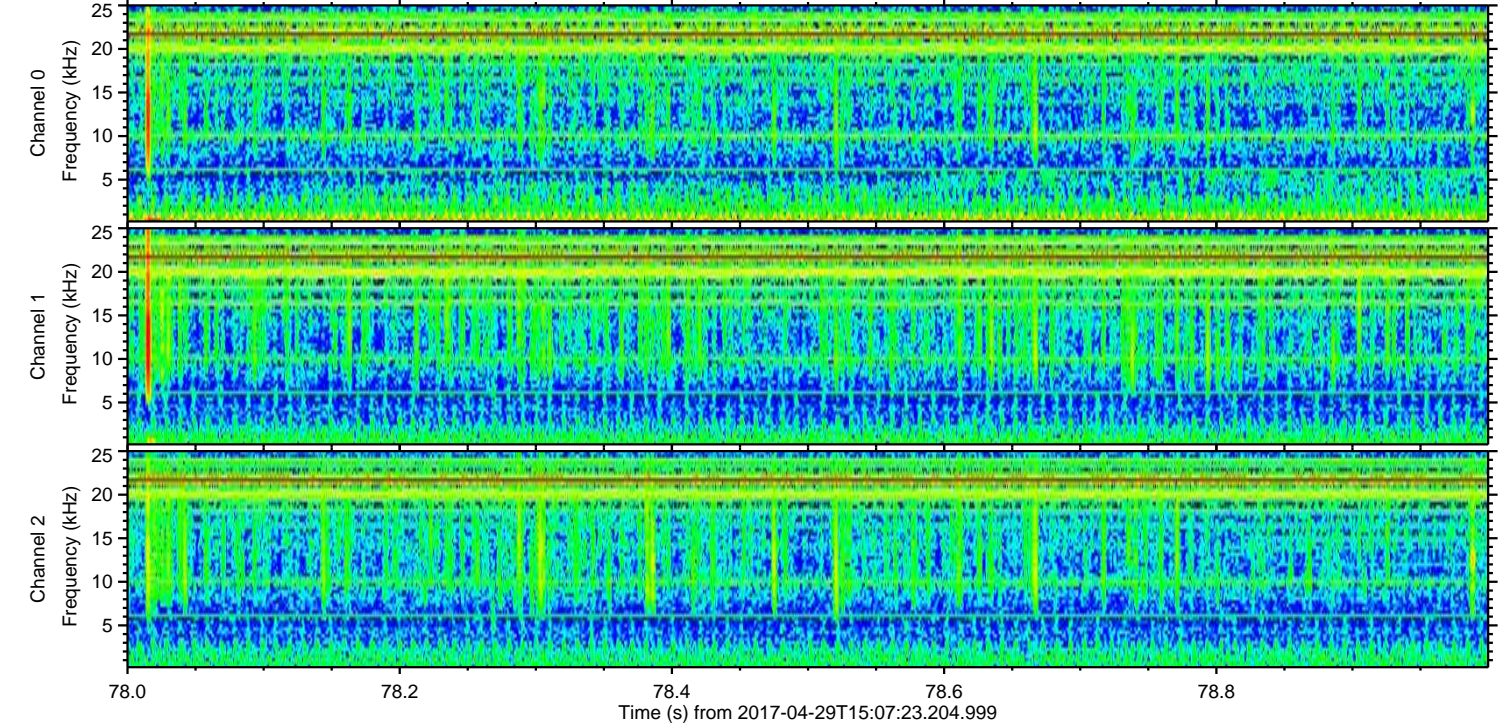
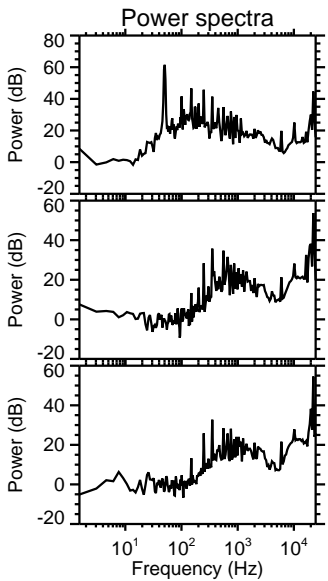
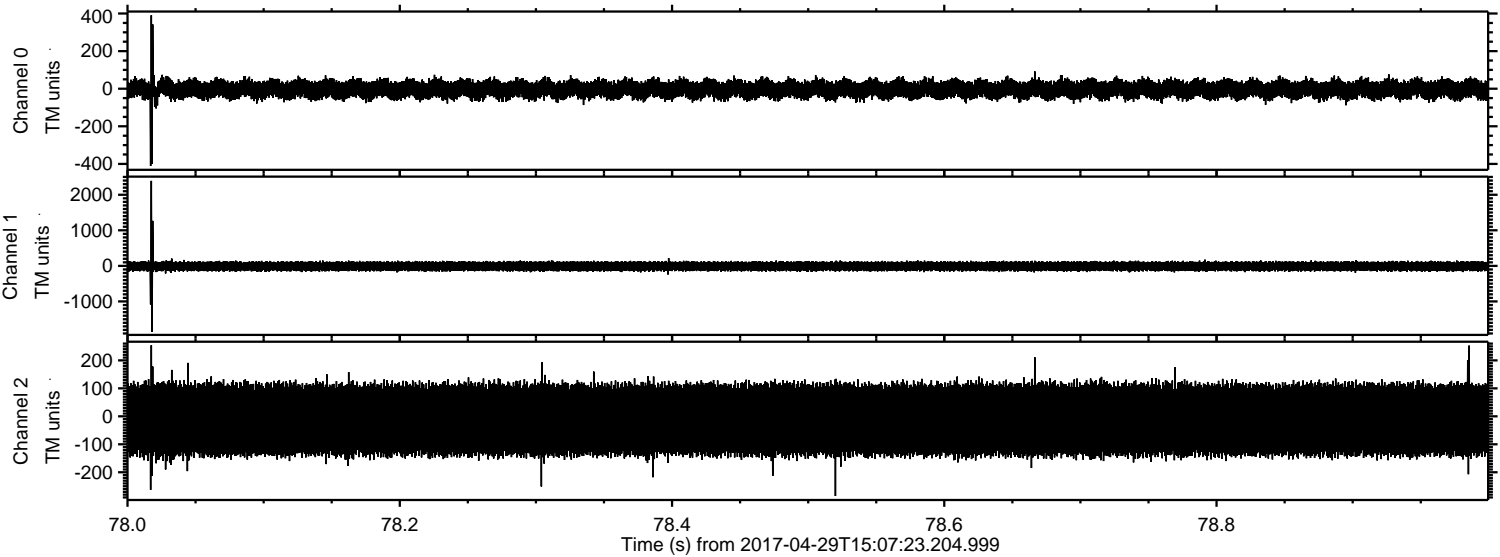
ELMAVAN 3D WAVEFORMS (Measured data sampled at 50 kHz) 51000 packets of 144 samples from 2017-04-29T15:07:23.204.999. Part 48/147

Processed Sat Apr 29 17:15:03 2017 by ELM ver.2012-10-06 from 001__elm20170429_150722__dat00.bin

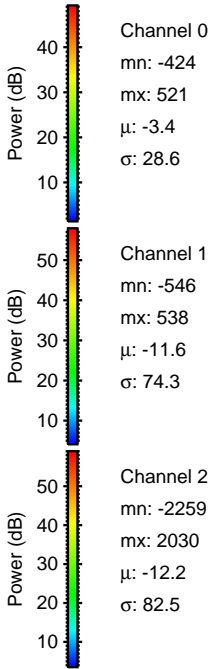
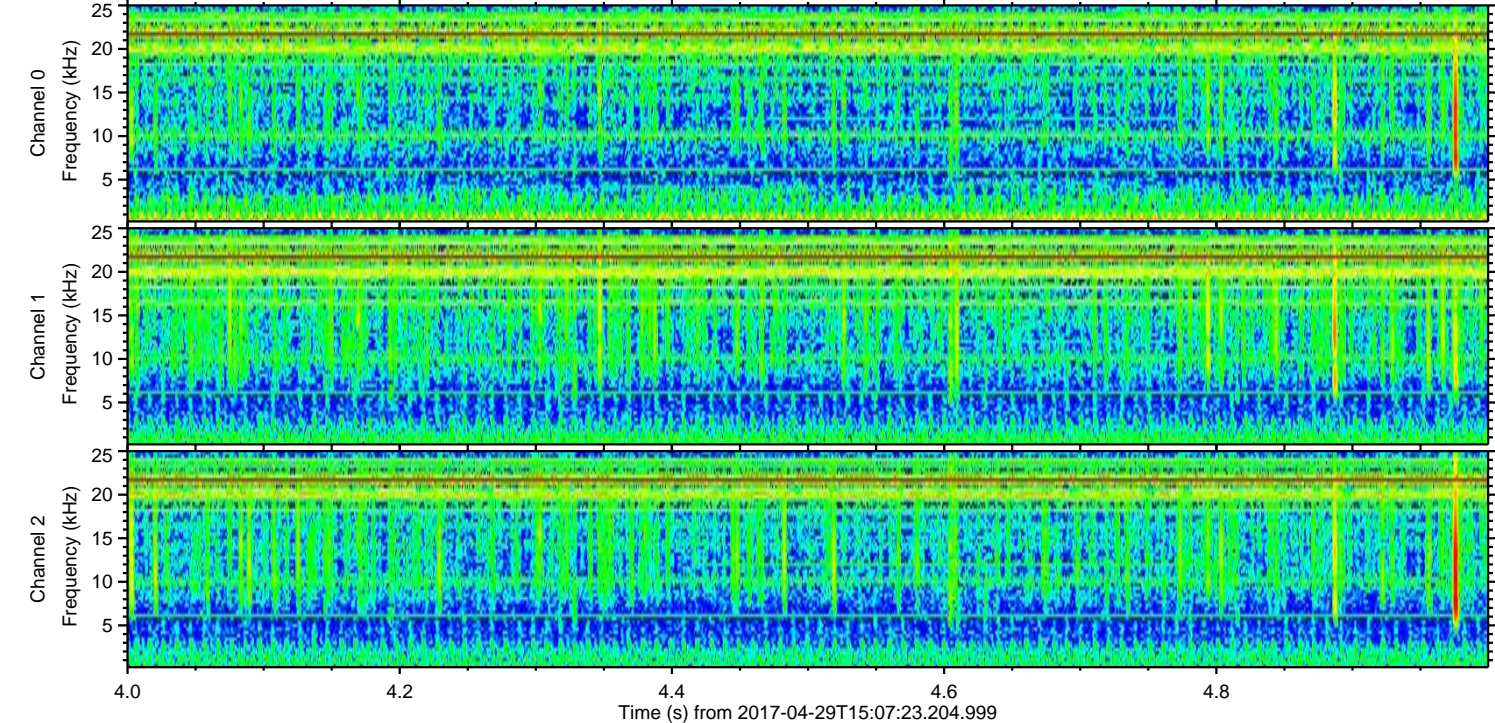
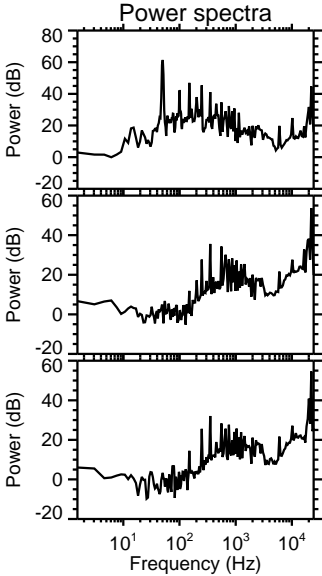
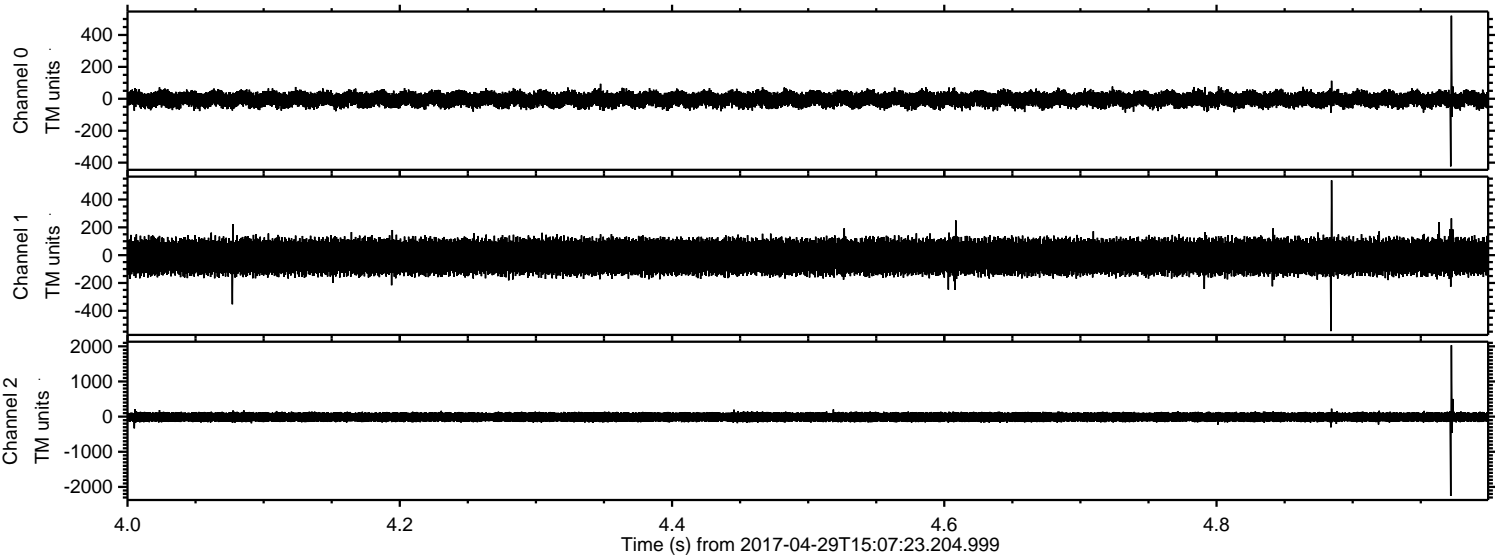


ELMAVAN 3D WAVEFORMS (Measured data sampled at 50 kHz) 51000 packets of 144 samples from 2017-04-29T15:07:23.204.999. Part 79/147

Processed Sat Apr 29 17:15:04 2017 by ELM ver.2012-10-06 from 001__elm20170429_150722__dat00.bin

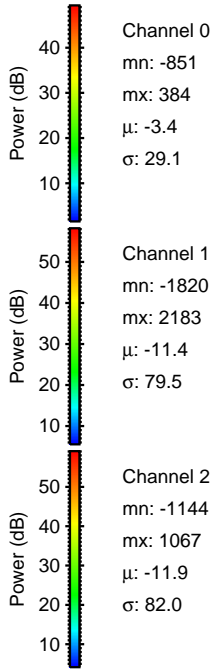
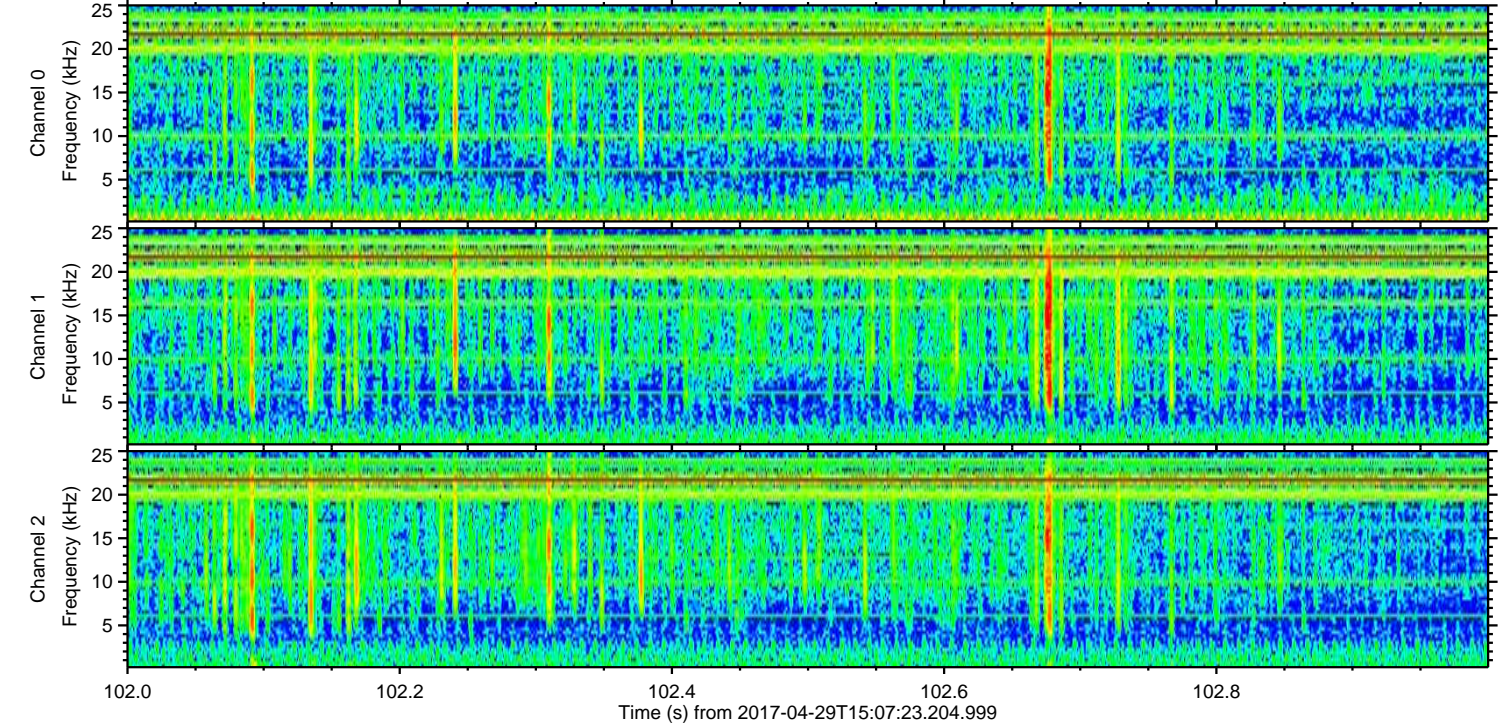
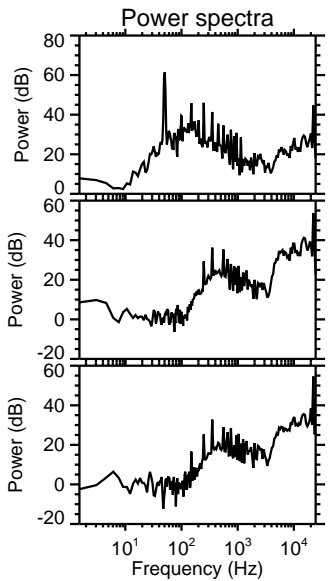
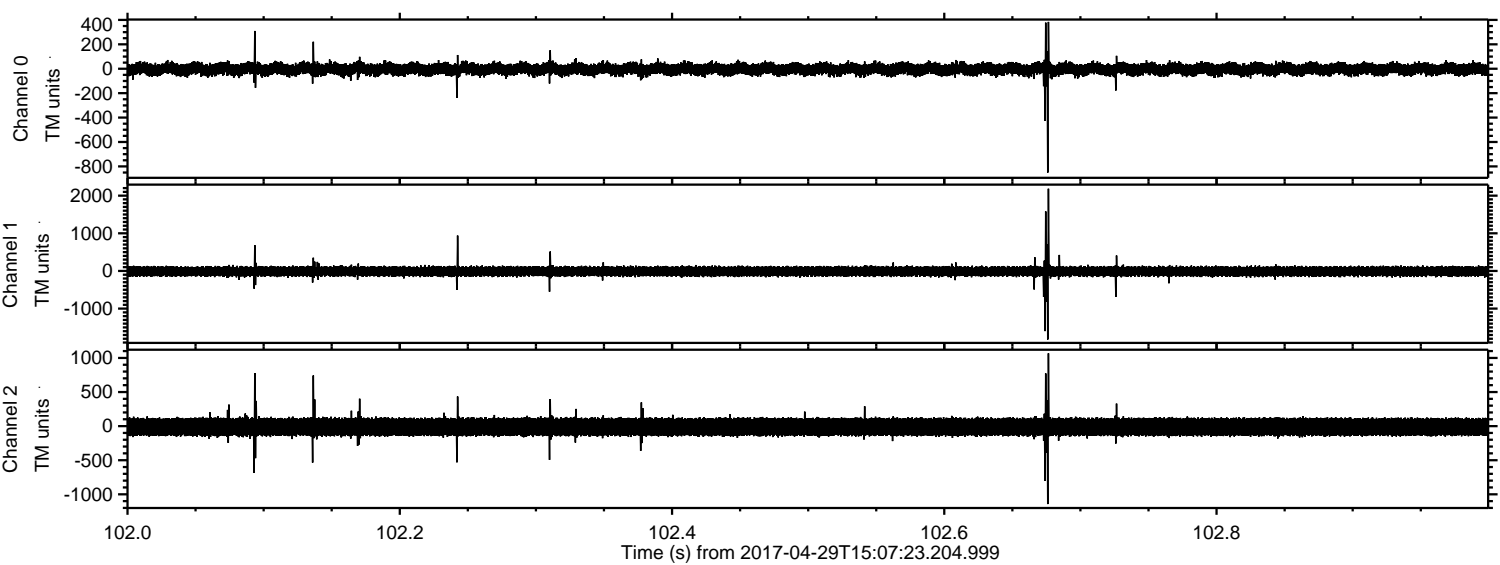


Processed Sat Apr 29 17:15:05 2017 by ELM ver.2012-10-06 from 001__elm20170429_150722__dat00.bin



ELMAVAN 3D WAVEFORMS (Measured data sampled at 50 kHz) 51000 packets of 144 samples from 2017-04-29T15:07:23.204.999. Part 103/147

Processed Sat Apr 29 17:15:06 2017 by ELM ver.2012-10-06 from 001__elm20170429_150722__dat00.bin



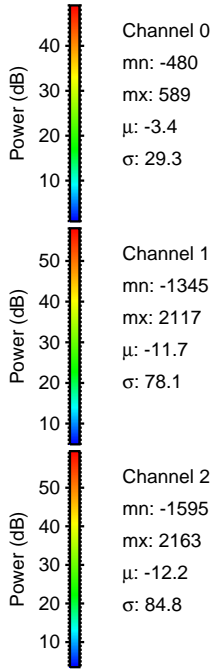
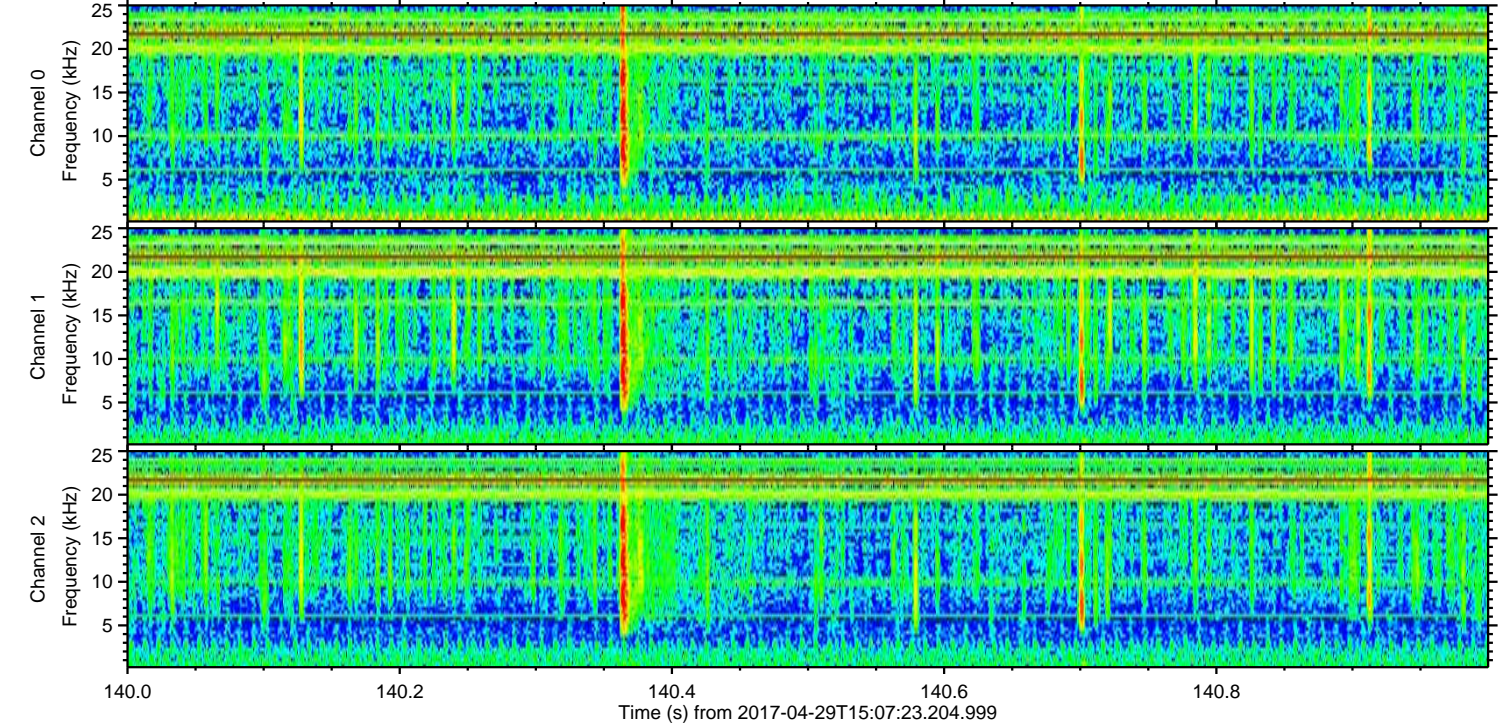
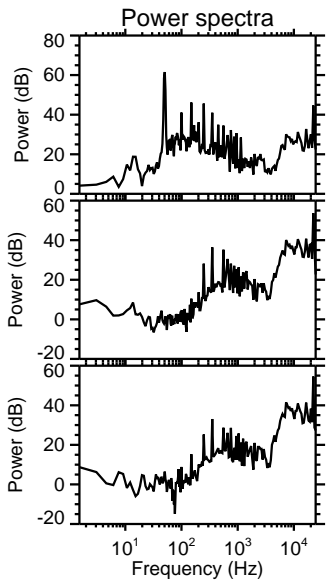
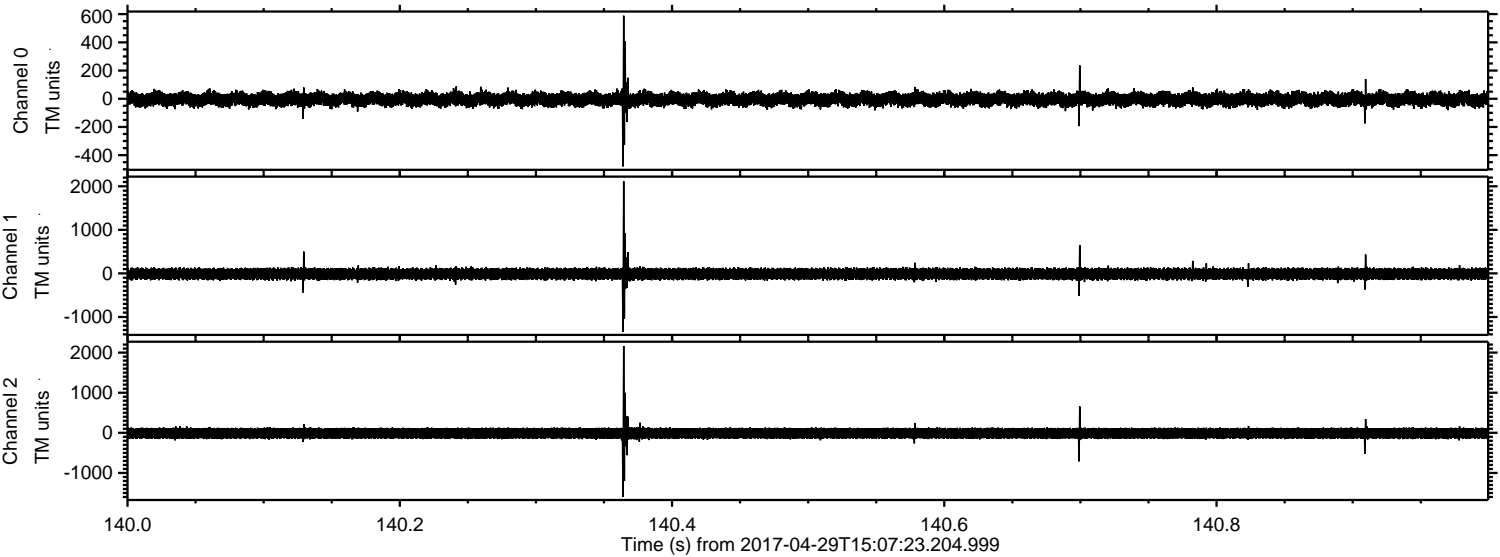
Channel 0
mn: -851
mx: 384
 μ : -3.4
 σ : 29.1

Channel 1
mn: -1820
mx: 2183
 μ : -11.4
 σ : 79.5

Channel 2
mn: -1144
mx: 1067
 μ : -11.9
 σ : 82.0

ELMAVAN 3D WAVEFORMS (Measured data sampled at 50 kHz) 51000 packets of 144 samples from 2017-04-29T15:07:23.204.999. Part 141/147

Processed Sat Apr 29 17:15:07 2017 by ELM ver.2012-10-06 from 001__elm20170429_150722__dat00.bin



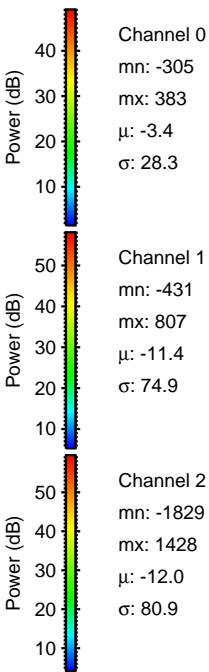
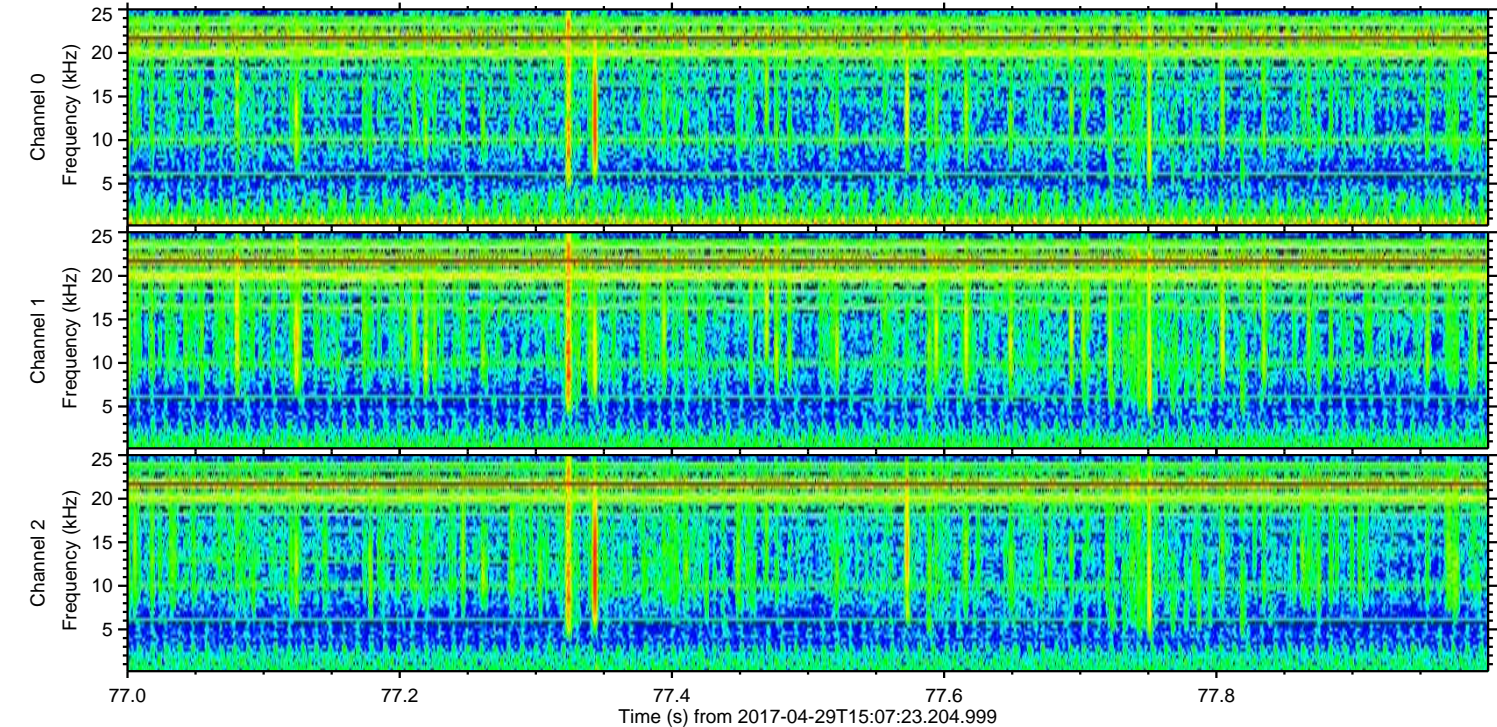
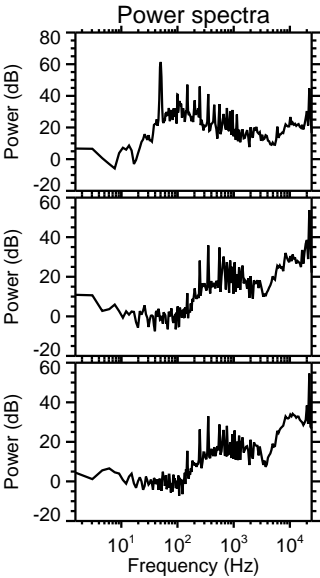
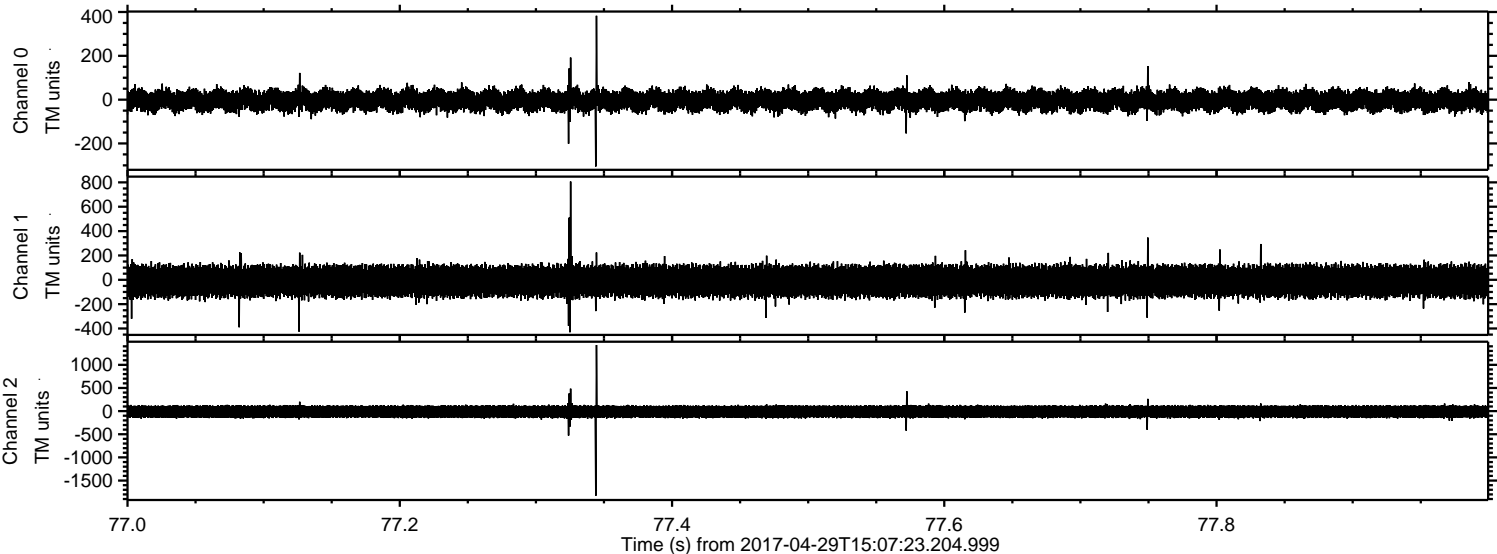
Channel 0
mn: -480
mx: 589
 μ : -3.4
 σ : 29.3

Channel 1
mn: -1345
mx: 2117
 μ : -11.7
 σ : 78.1

Channel 2
mn: -1595
mx: 2163
 μ : -12.2
 σ : 84.8

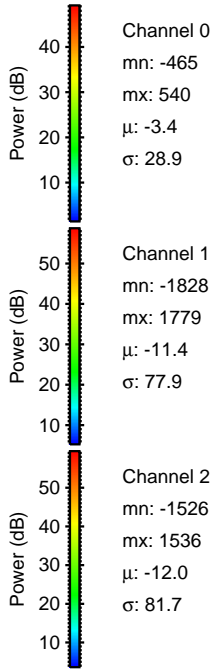
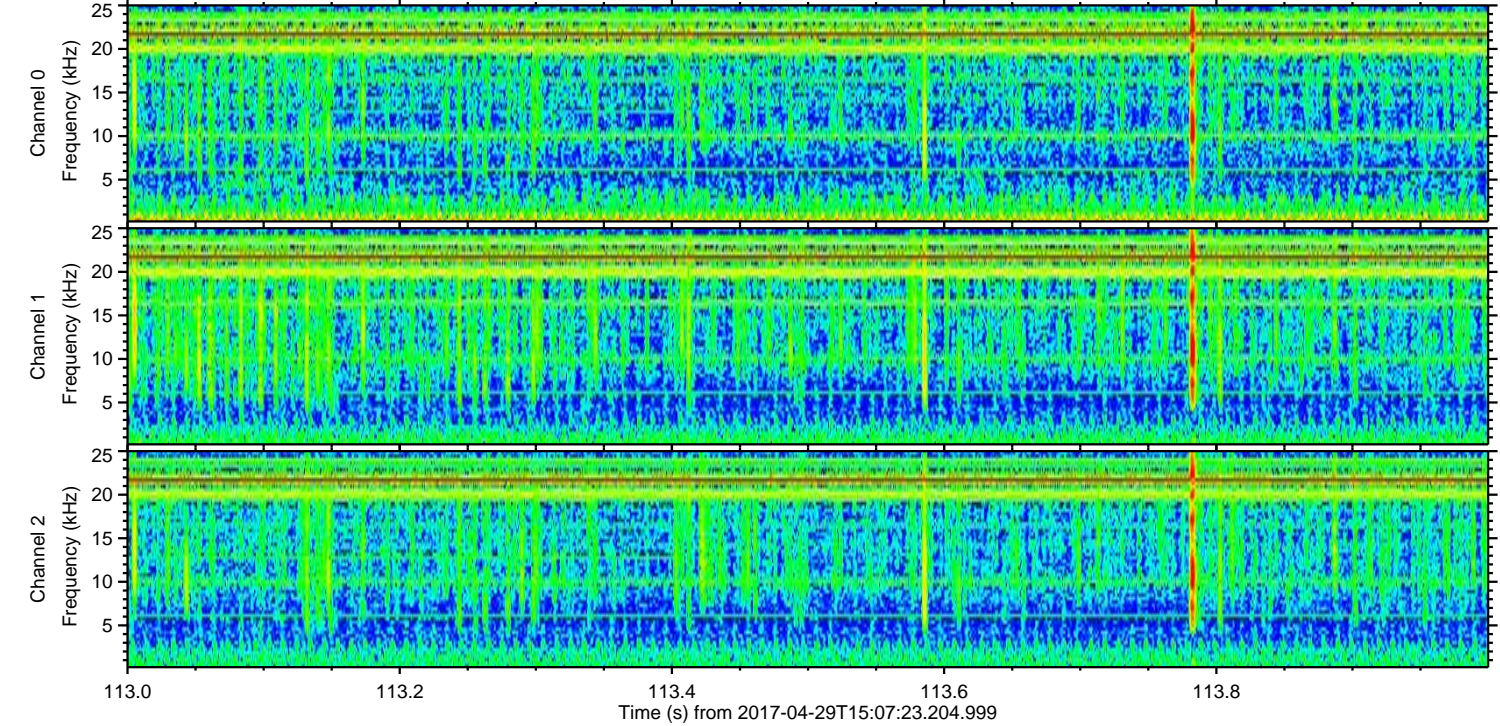
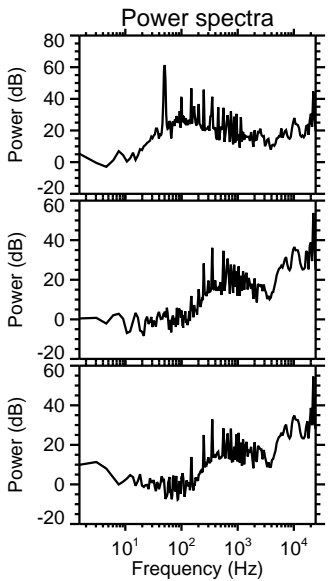
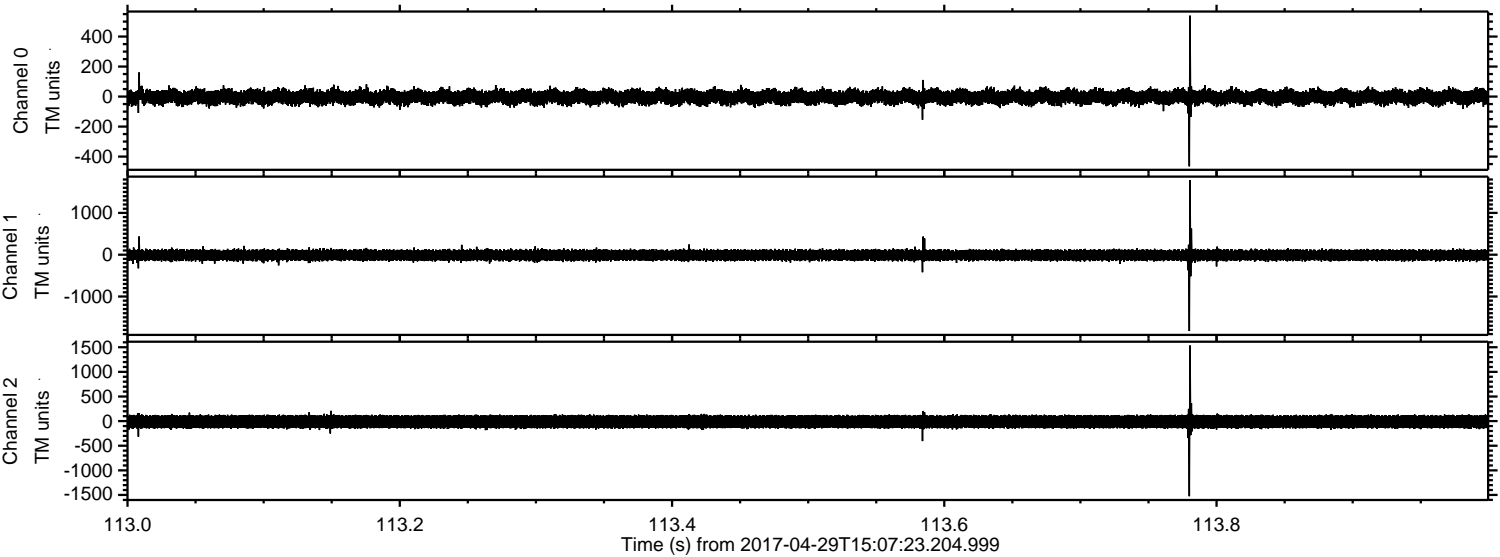
ELMAVAN 3D WAVEFORMS (Measured data sampled at 50 kHz) 51000 packets of 144 samples from 2017-04-29T15:07:23.204.999. Part 78/147

Processed Sat Apr 29 17:15:08 2017 by ELM ver.2012-10-06 from 001__elm20170429_150722__dat00.bin



ELMAVAN 3D WAVEFORMS (Measured data sampled at 50 kHz) 51000 packets of 144 samples from 2017-04-29T15:07:23.204.999. Part 114/147

Processed Sat Apr 29 17:15:09 2017 by ELM ver.2012-10-06 from 001__elm20170429_150722__dat00.bin



Channel 0
mn: -465
mx: 540
 μ : -3.4
 σ : 28.9

Channel 1
mn: -1828
mx: 1779
 μ : -11.4
 σ : 77.9

Channel 2
mn: -1526
mx: 1536
 μ : -12.0
 σ : 81.7

ELMAVAN 3D WAVEFORMS (Measured data sampled at 50 kHz) 51000 packets of 144 samples from 2017-04-29T15:07:23.204.999. Part 124/147

