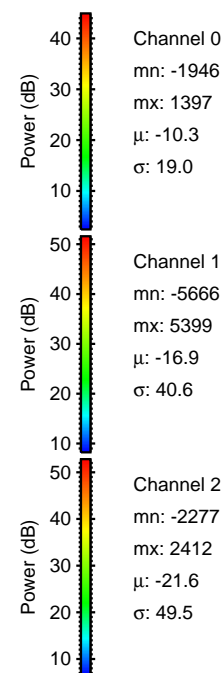
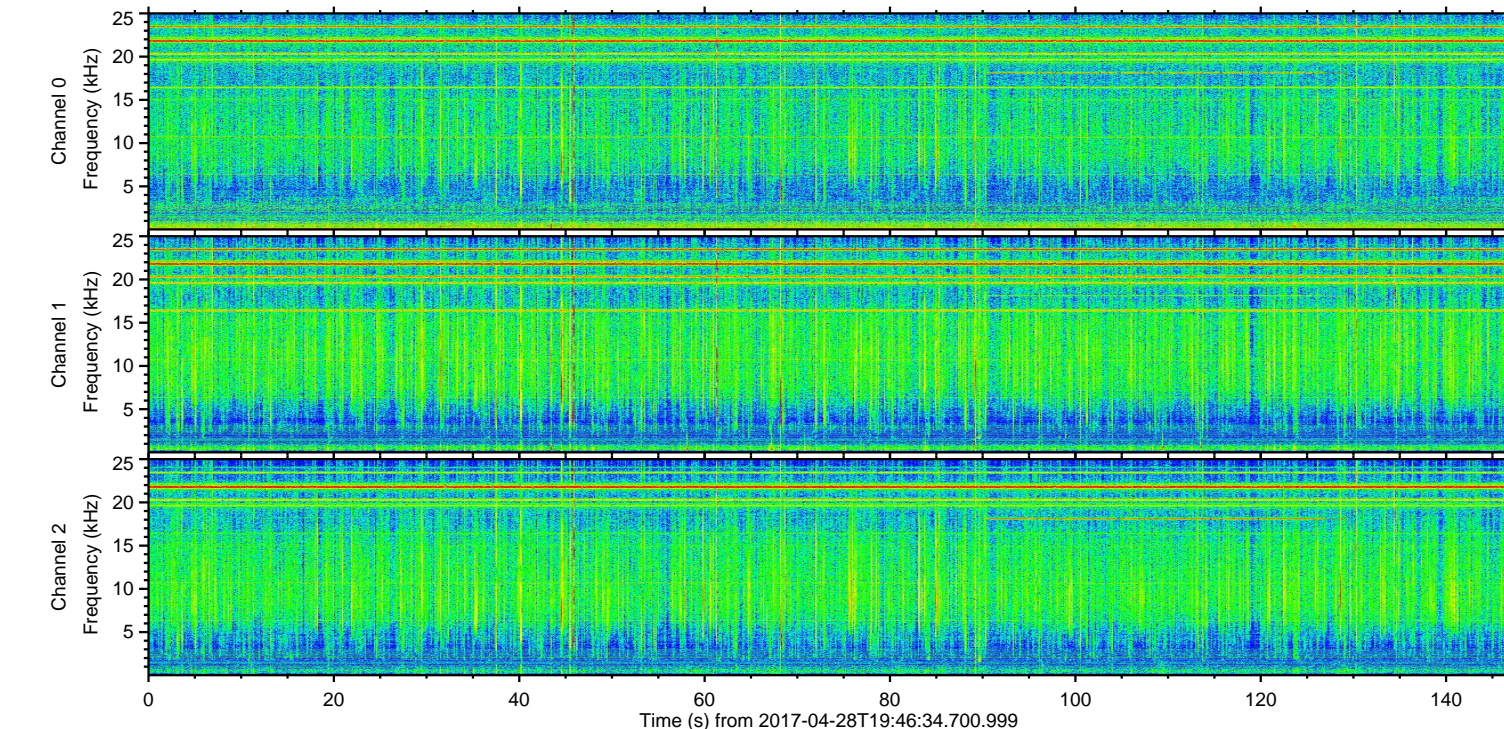
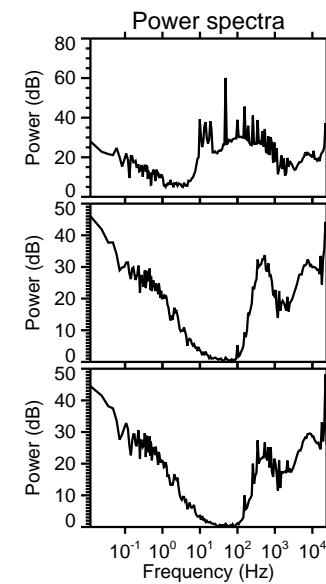
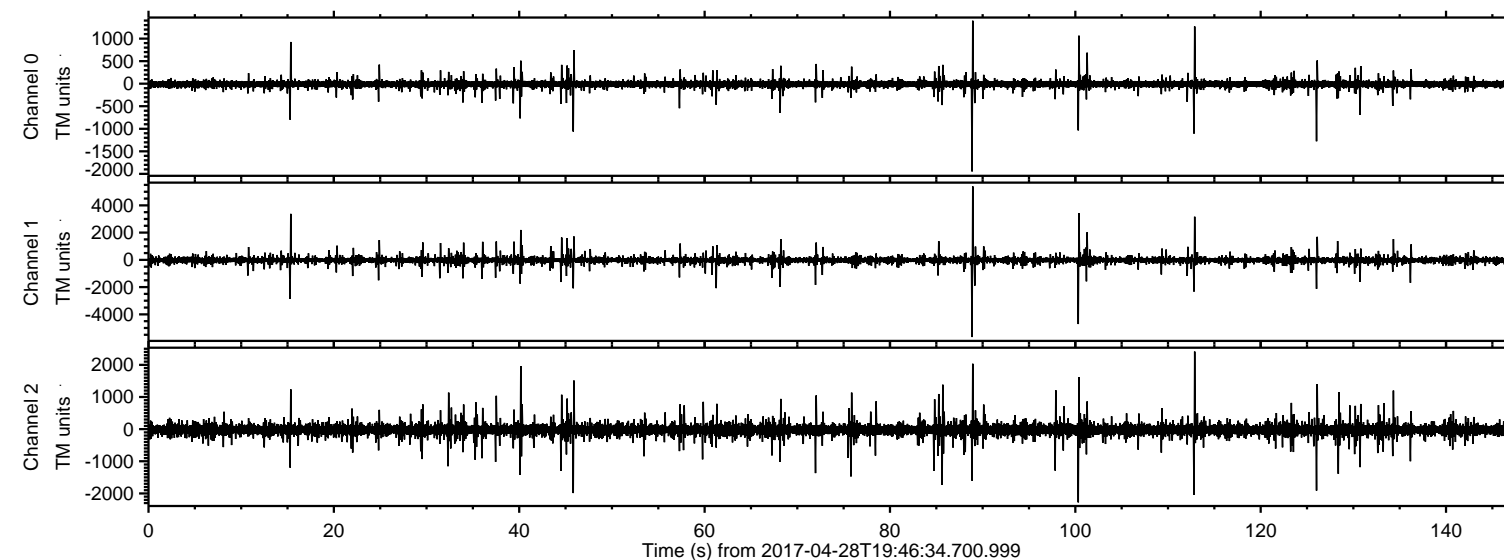
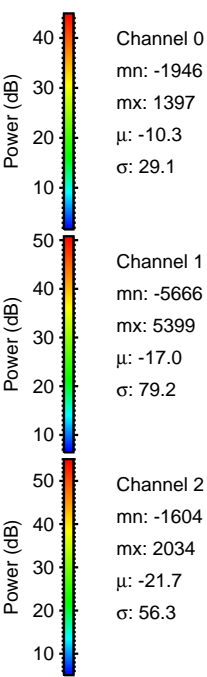
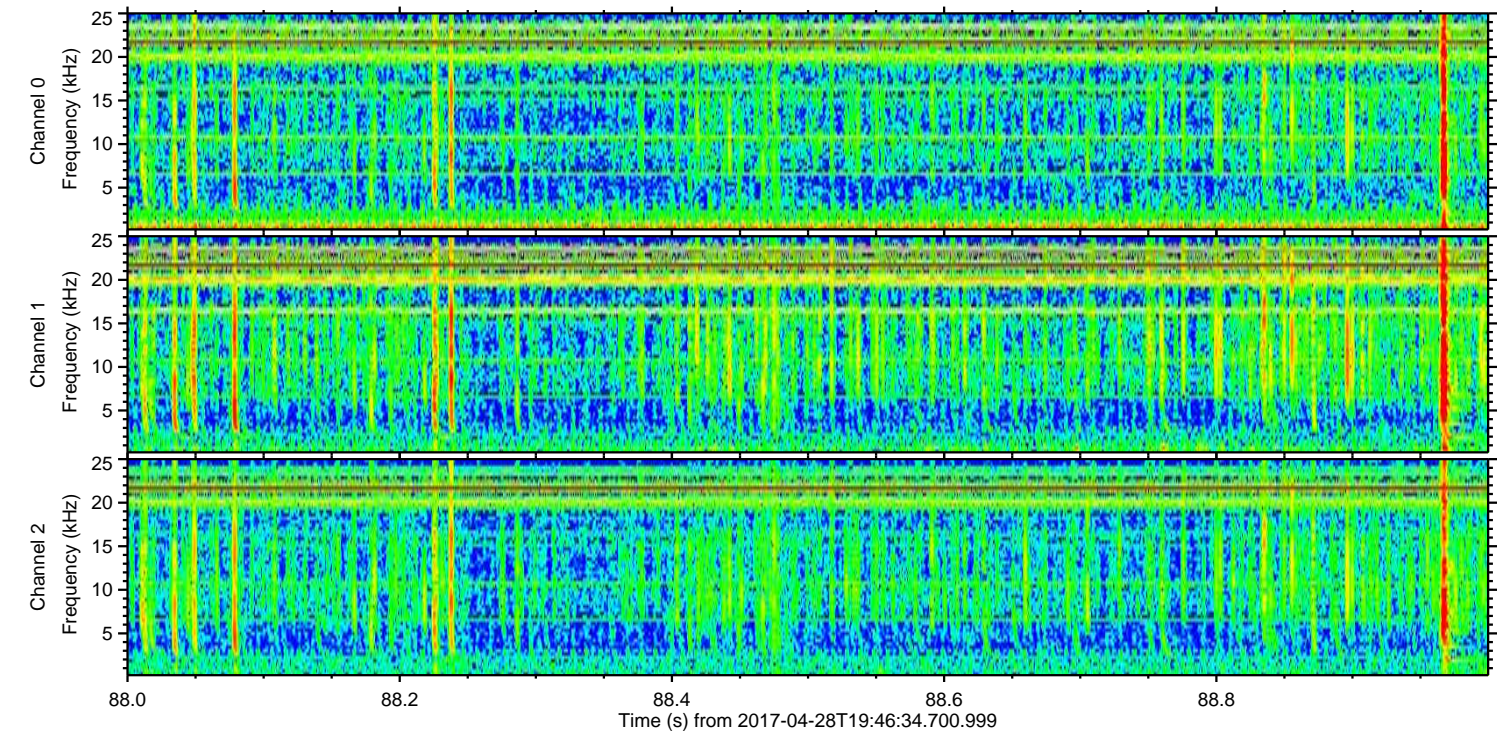
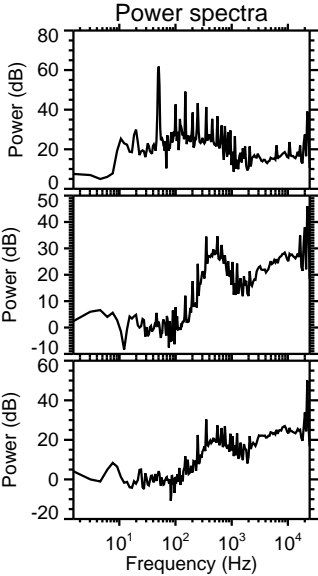
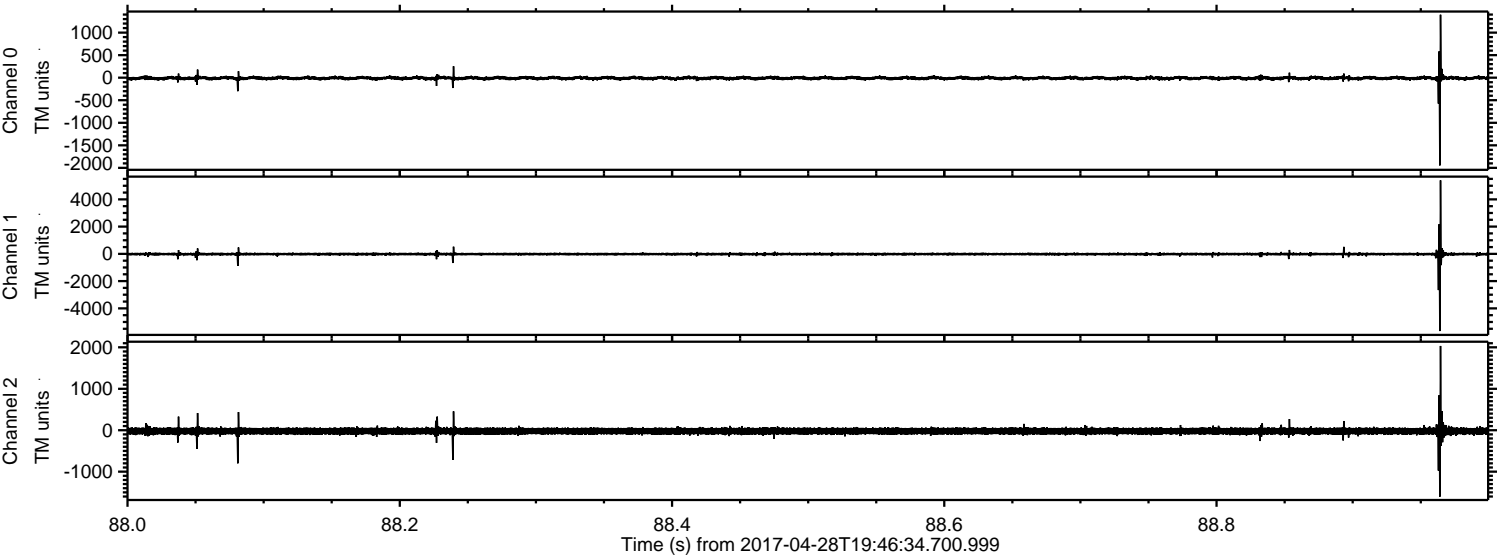


ELMAVAN 3D WAVEFORMS (Measured data sampled at 50 kHz) 51000 packets of 144 samples from 2017-04-28T19:46:34.700.999.

Processed Fri Apr 28 21:54:15 2017 by ELM ver.2012-10-06 from 001__elm20170428_194633__dat00.bin

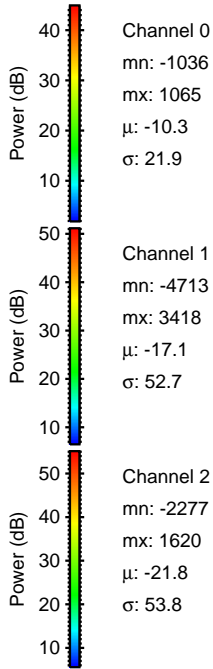
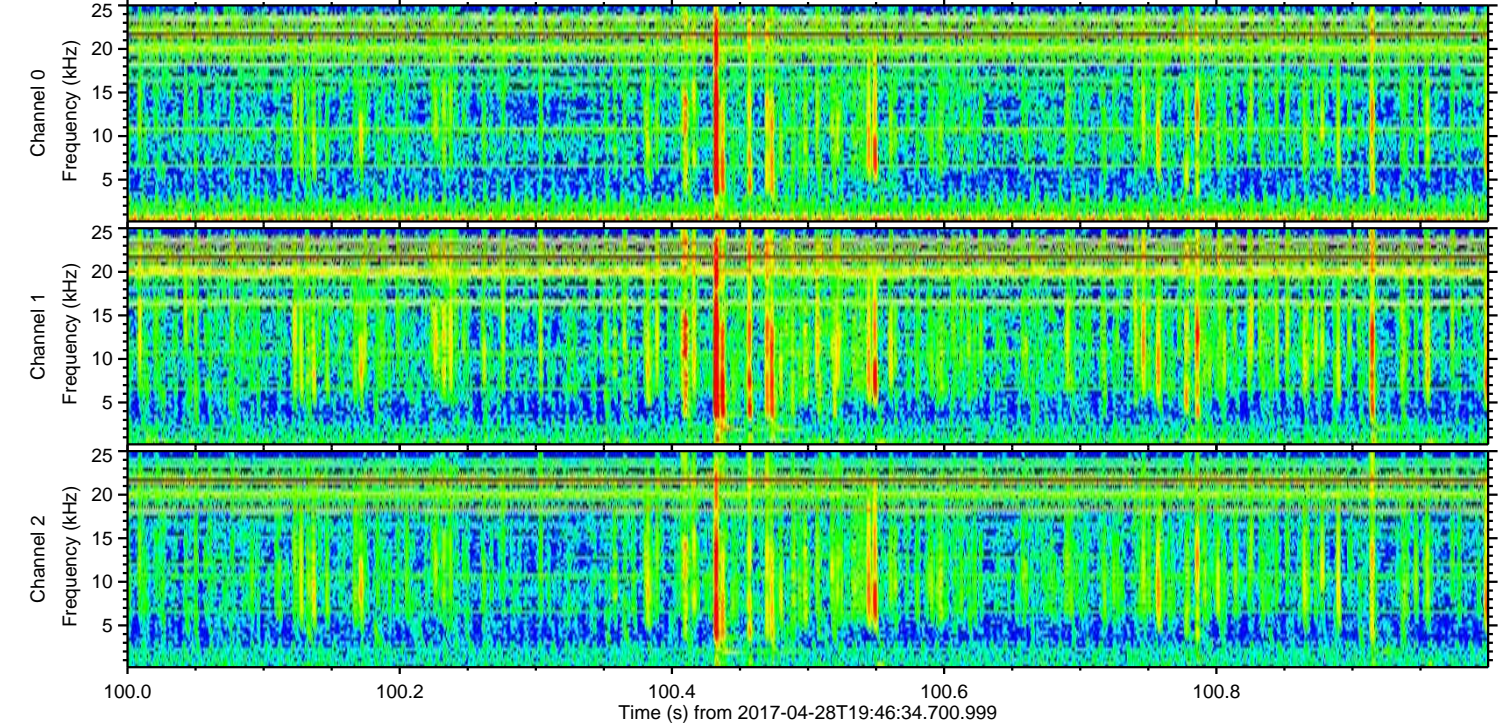
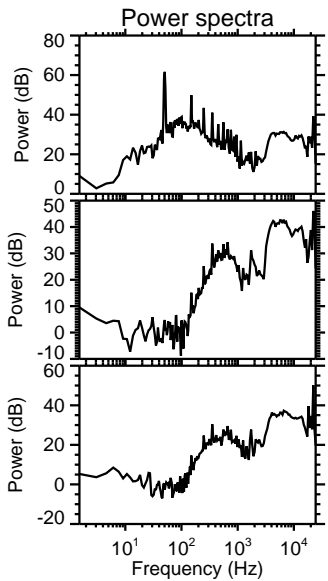
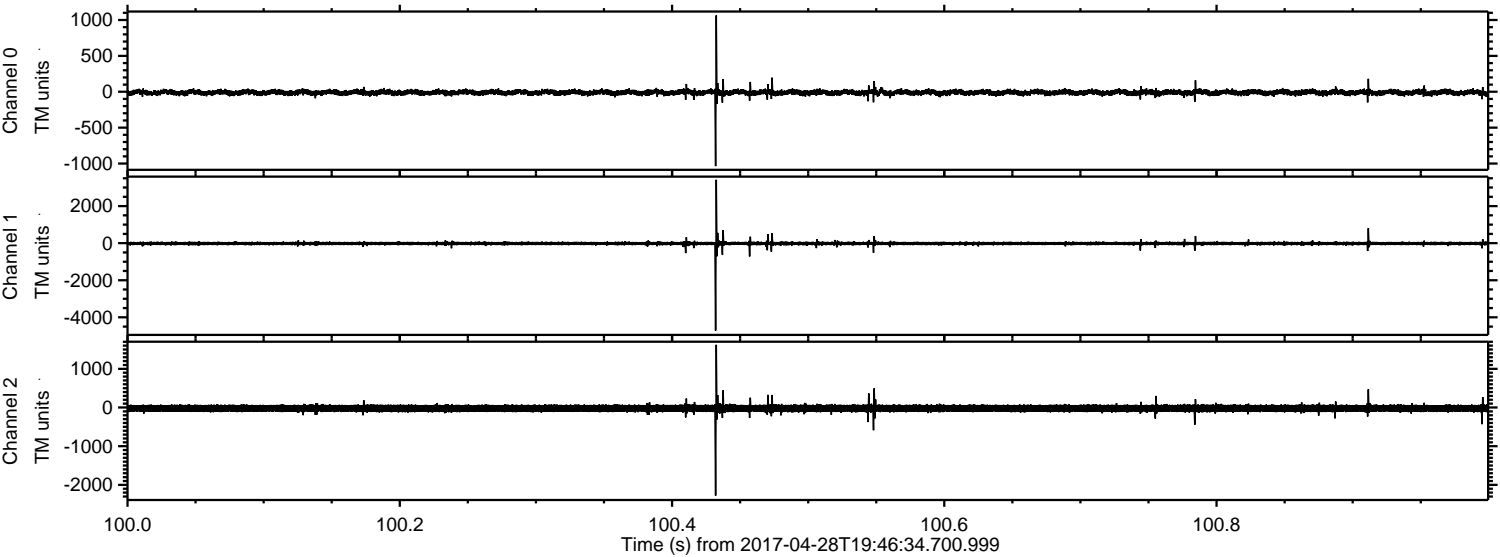


Processed Fri Apr 28 21:54:26 2017 by ELM ver.2012-10-06 from 001__elm20170428_194633__dat00.bin

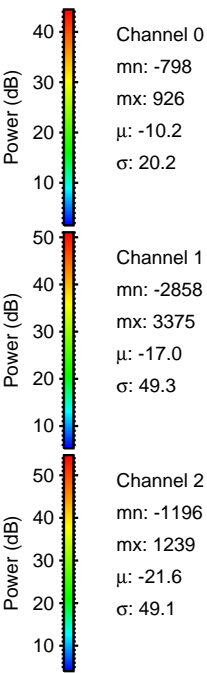
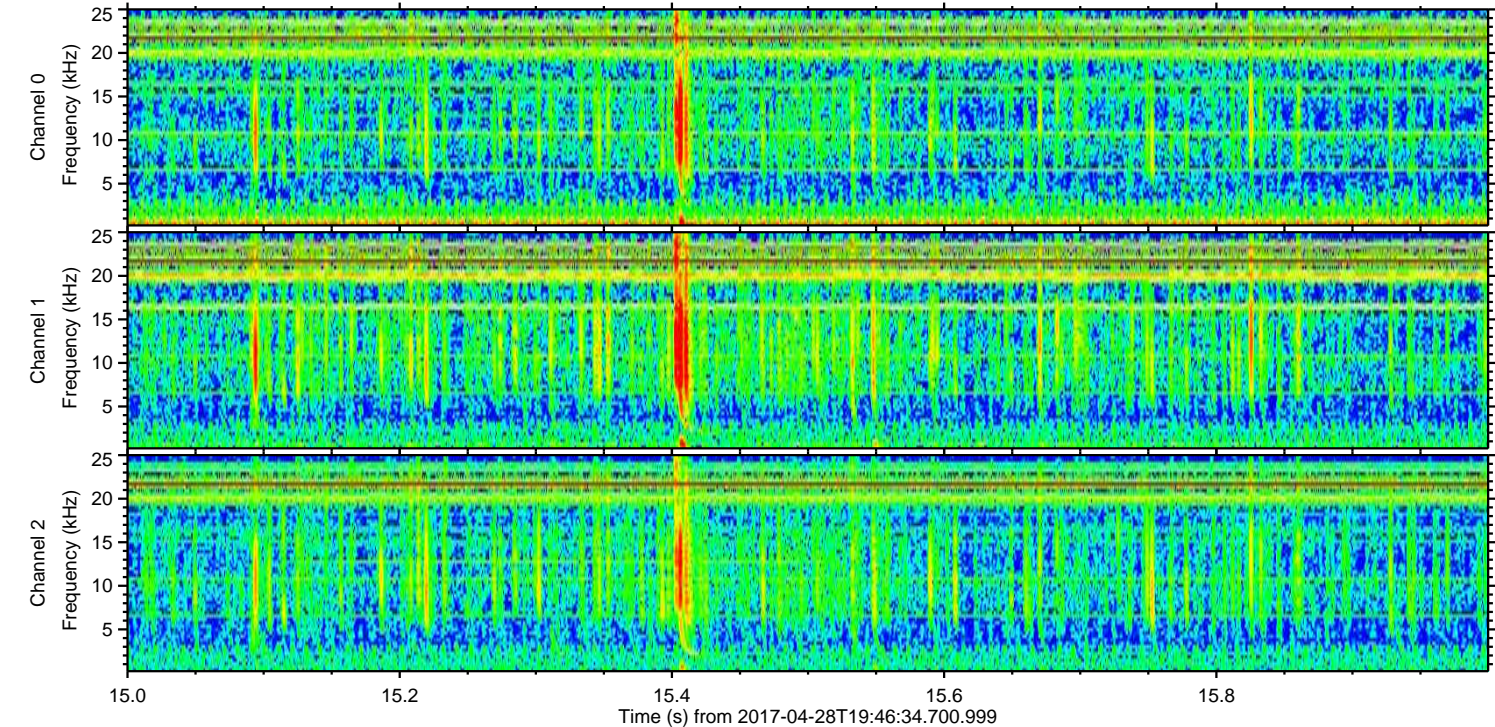
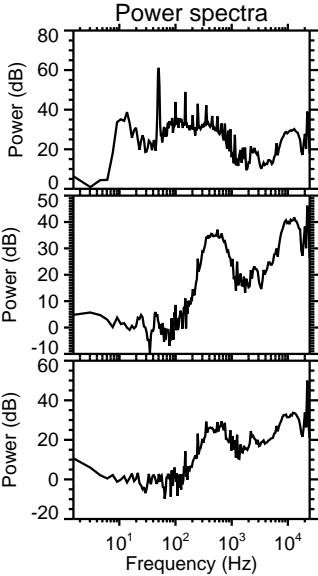
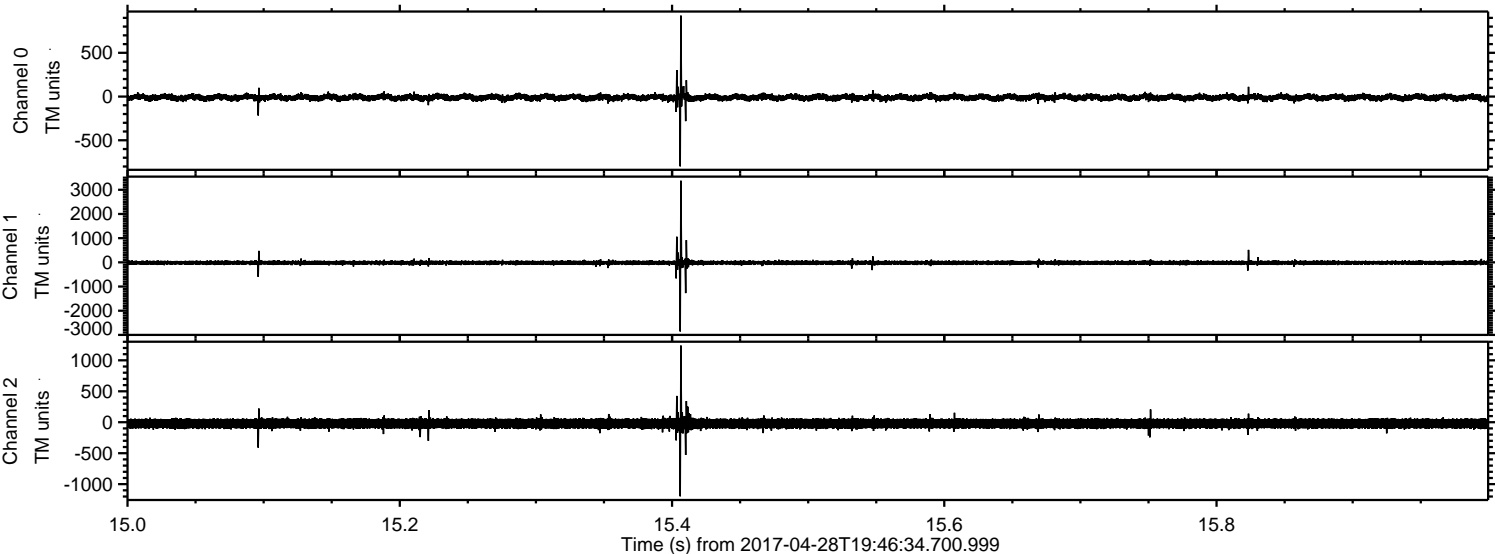


ELMAVAN 3D WAVEFORMS (Measured data sampled at 50 kHz) 51000 packets of 144 samples from 2017-04-28T19:46:34.700.999. Part 101/147

Processed Fri Apr 28 21:54:27 2017 by ELM ver.2012-10-06 from 001__elm20170428_194633__dat00.bin

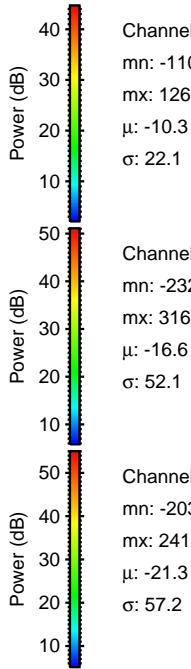
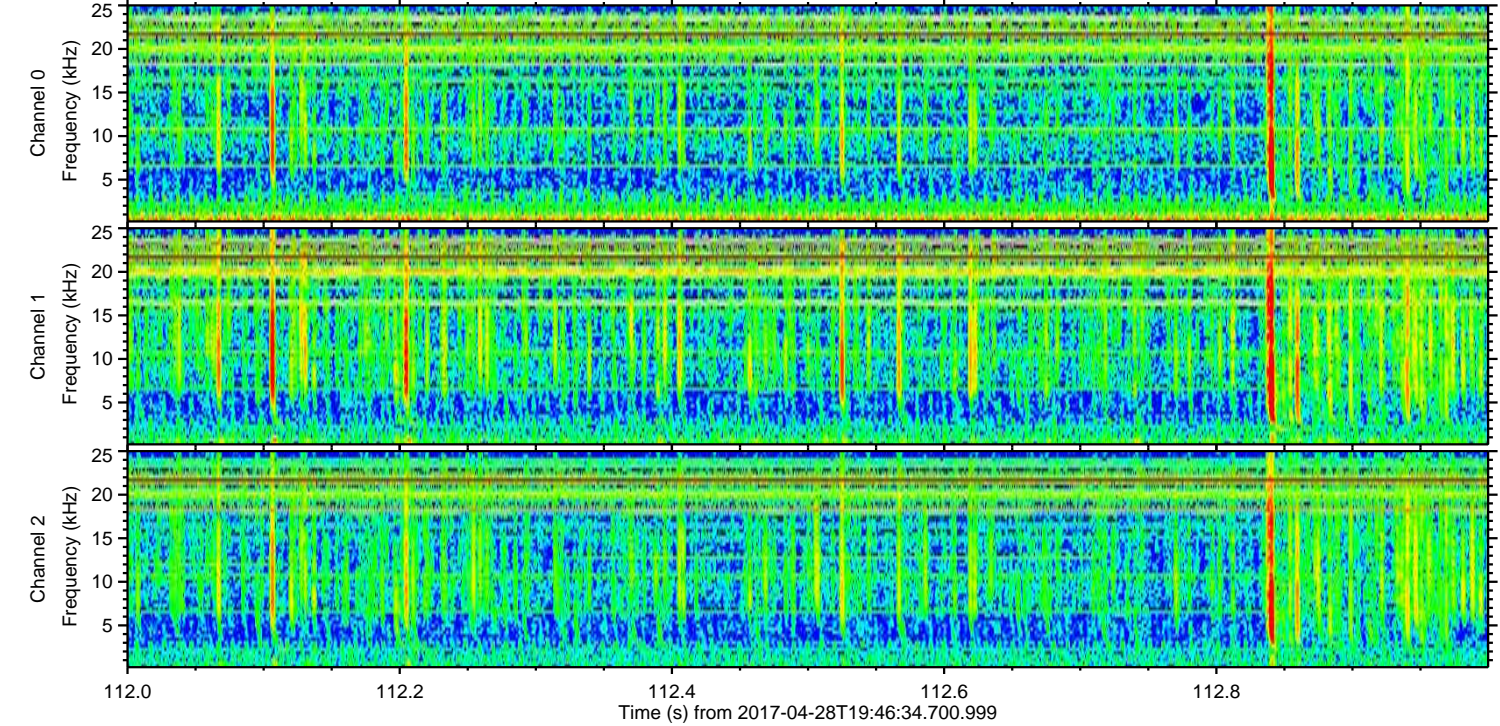
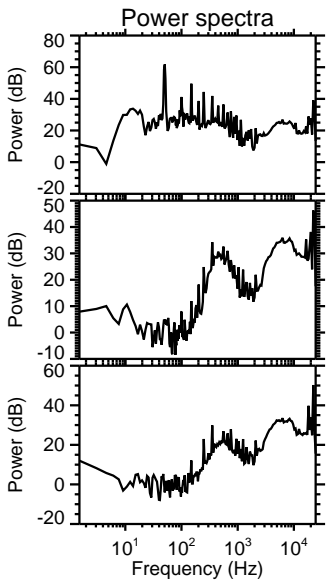
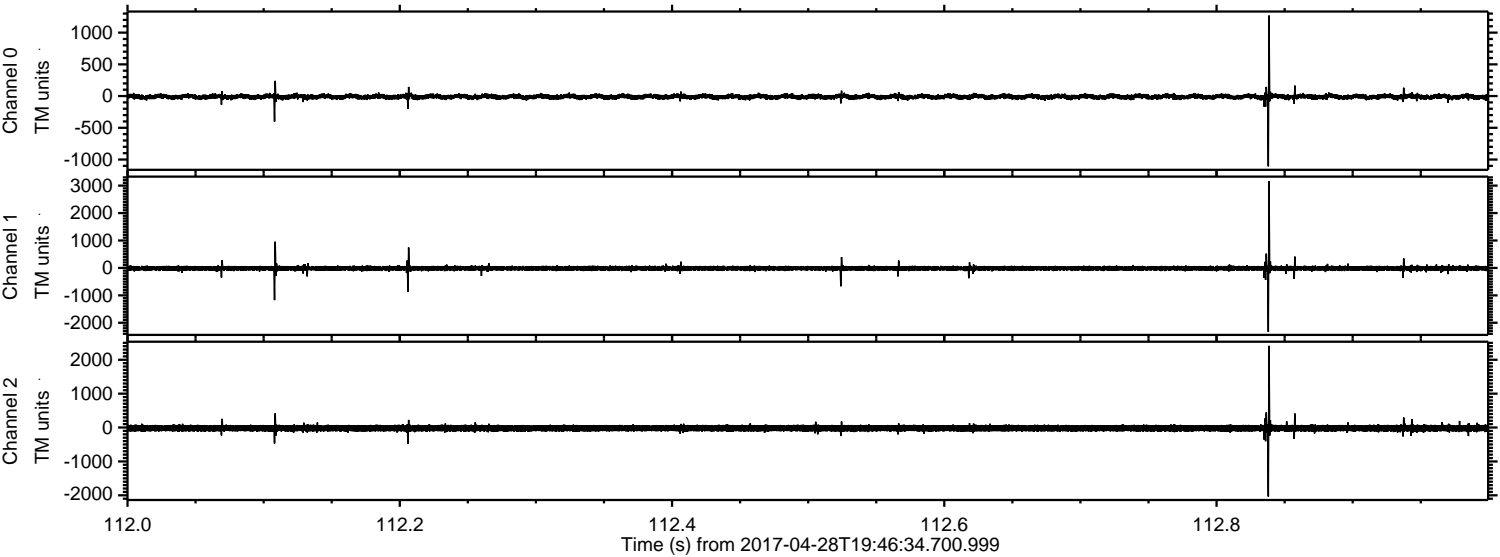


Processed Fri Apr 28 21:54:28 2017 by ELM ver.2012-10-06 from 001__elm20170428_194633__dat00.bin



ELMAVAN 3D WAVEFORMS (Measured data sampled at 50 kHz) 51000 packets of 144 samples from 2017-04-28T19:46:34.700.999. Part 113/147

Processed Fri Apr 28 21:54:29 2017 by ELM ver.2012-10-06 from 001__elm20170428_194633__dat00.bin

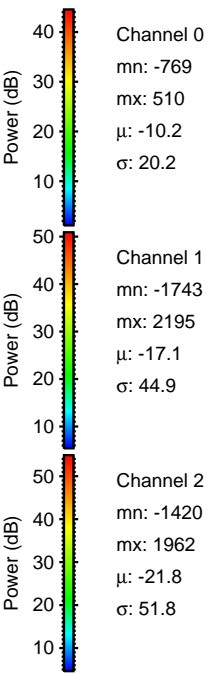
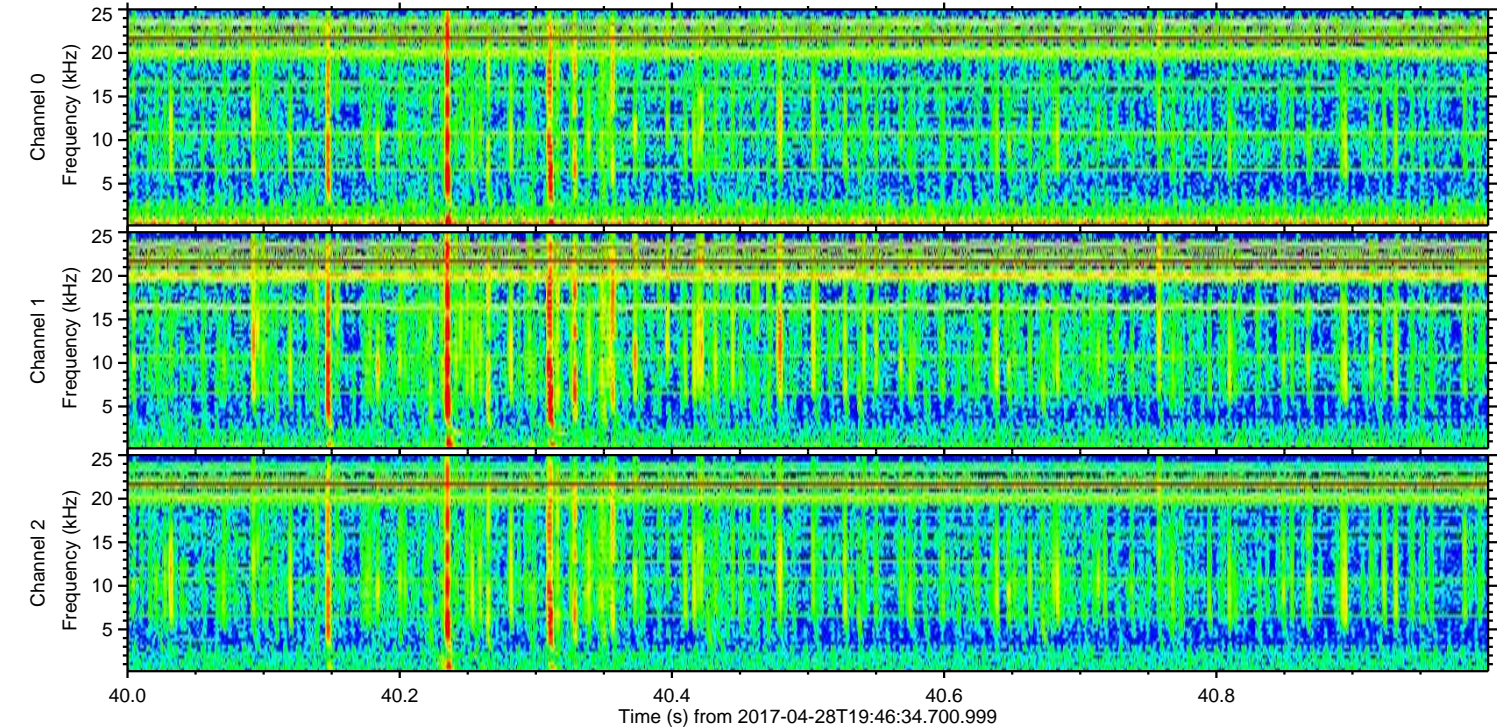
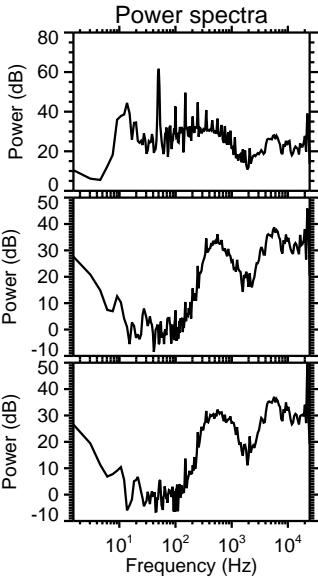
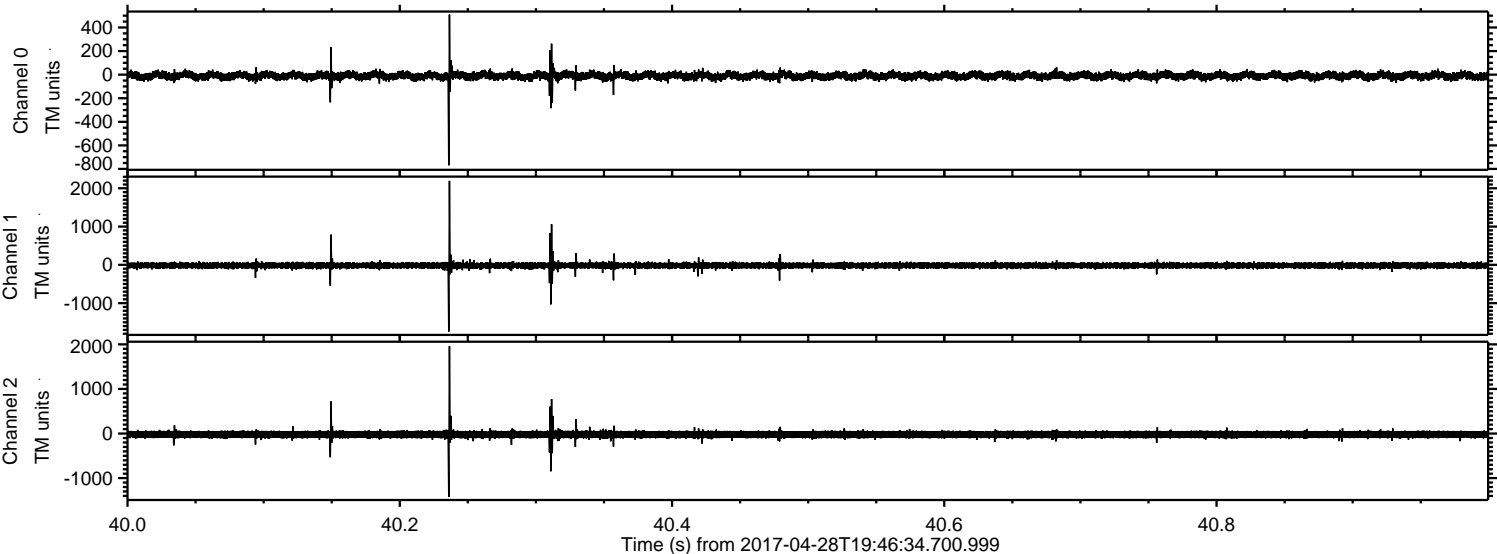


Channel 0
mn: -1107
mx: 1269
 μ : -10.3
 σ : 22.1

Channel 1
mn: -2326
mx: 3169
 μ : -16.6
 σ : 52.1

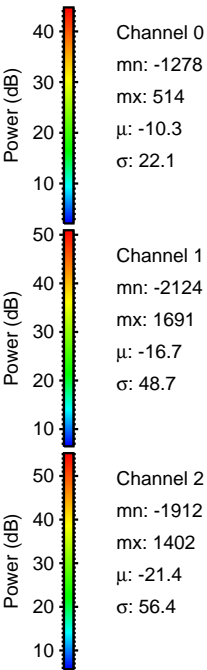
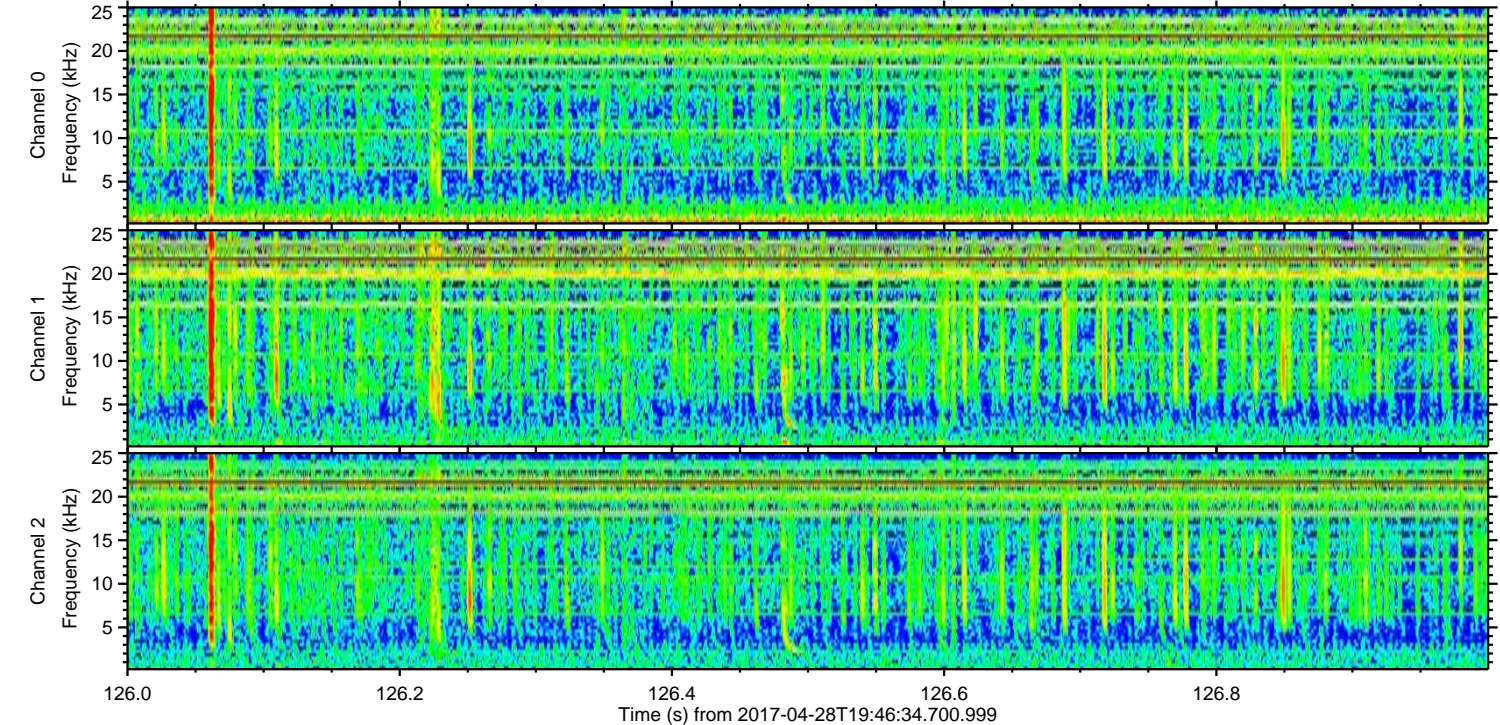
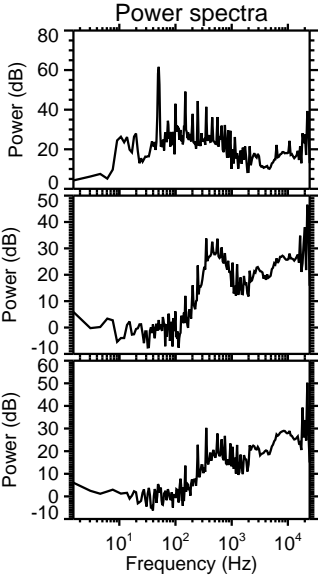
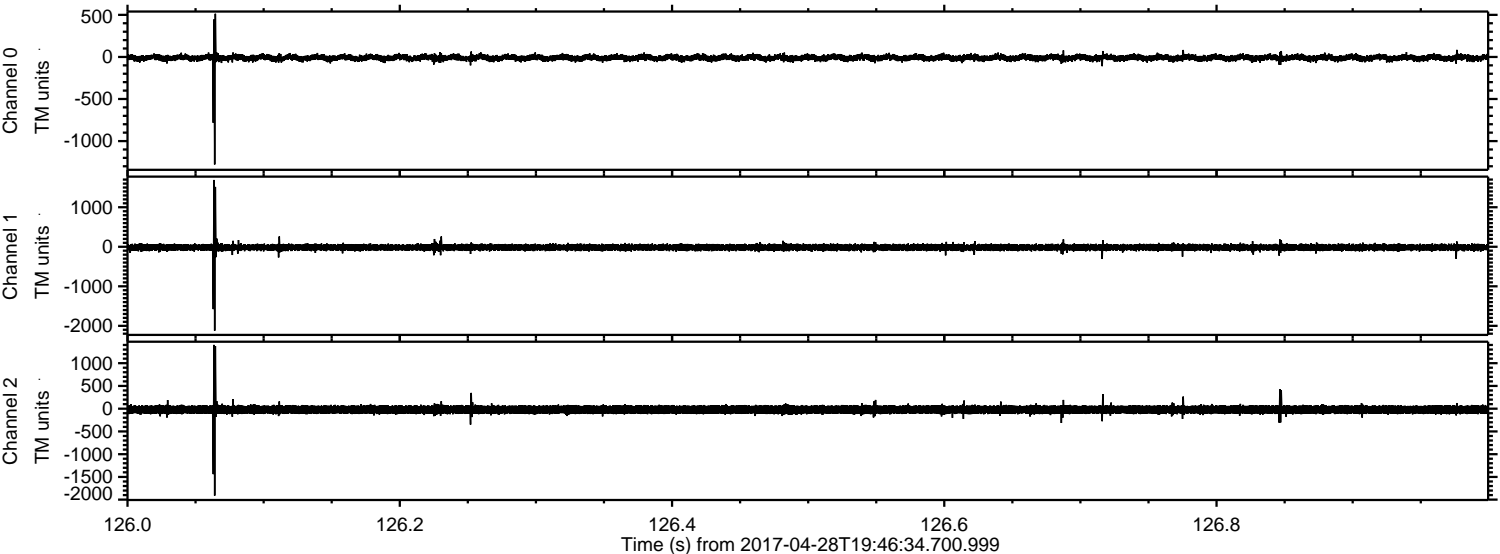
Channel 2
mn: -2037
mx: 2412
 μ : -21.3
 σ : 57.2

Processed Fri Apr 28 21:54:30 2017 by ELM ver.2012-10-06 from 001__elm20170428_194633__dat00.bin



ELMAVAN 3D WAVEFORMS (Measured data sampled at 50 kHz) 51000 packets of 144 samples from 2017-04-28T19:46:34.700.999. Part 127/147

Processed Fri Apr 28 21:54:31 2017 by ELM ver.2012-10-06 from 001__elm20170428_194633__dat00.bin

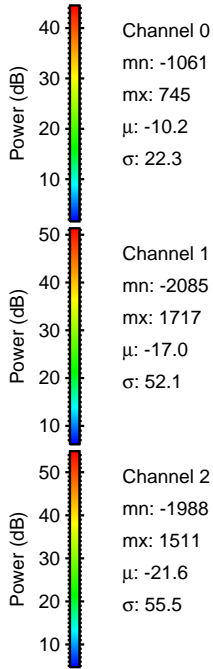
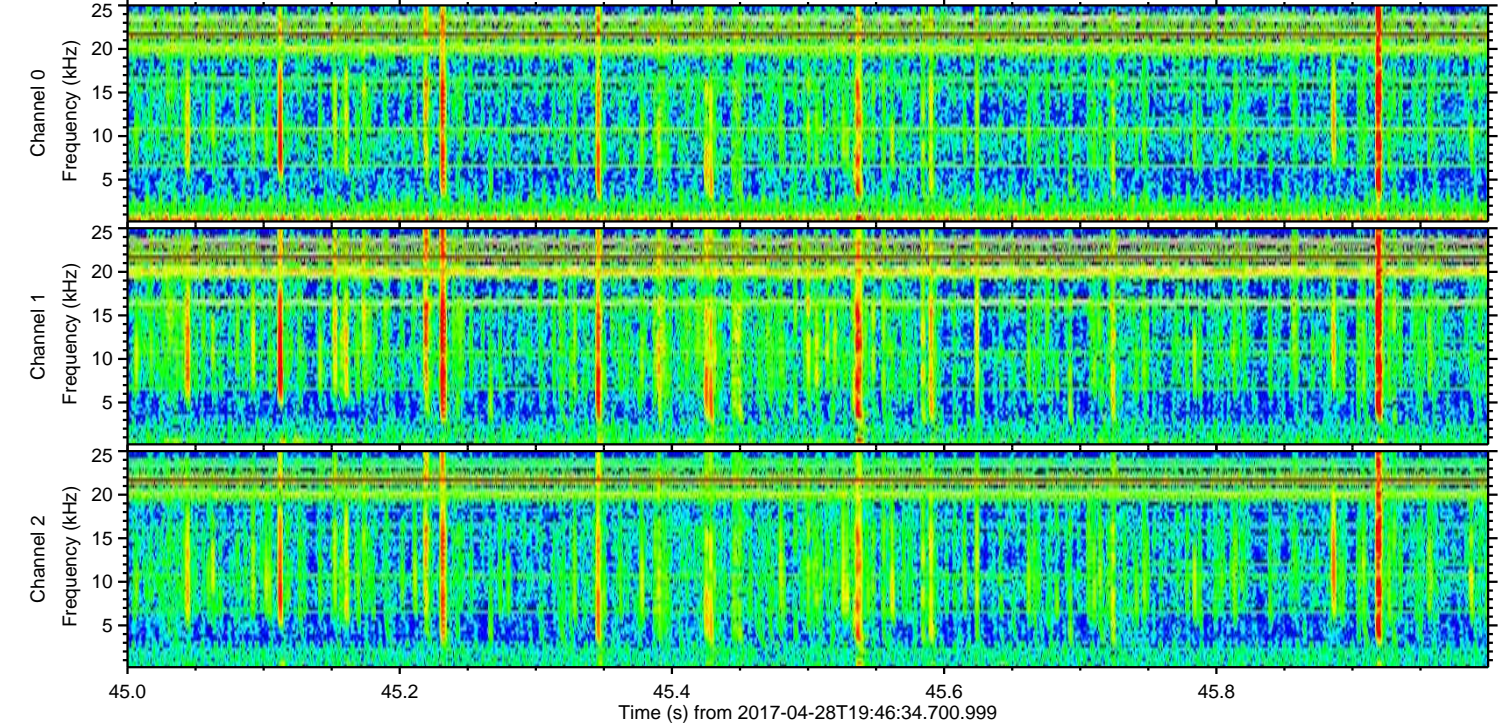
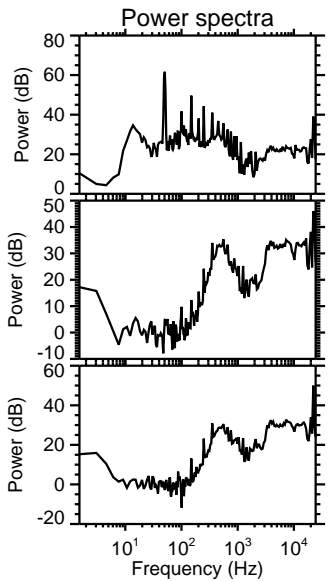
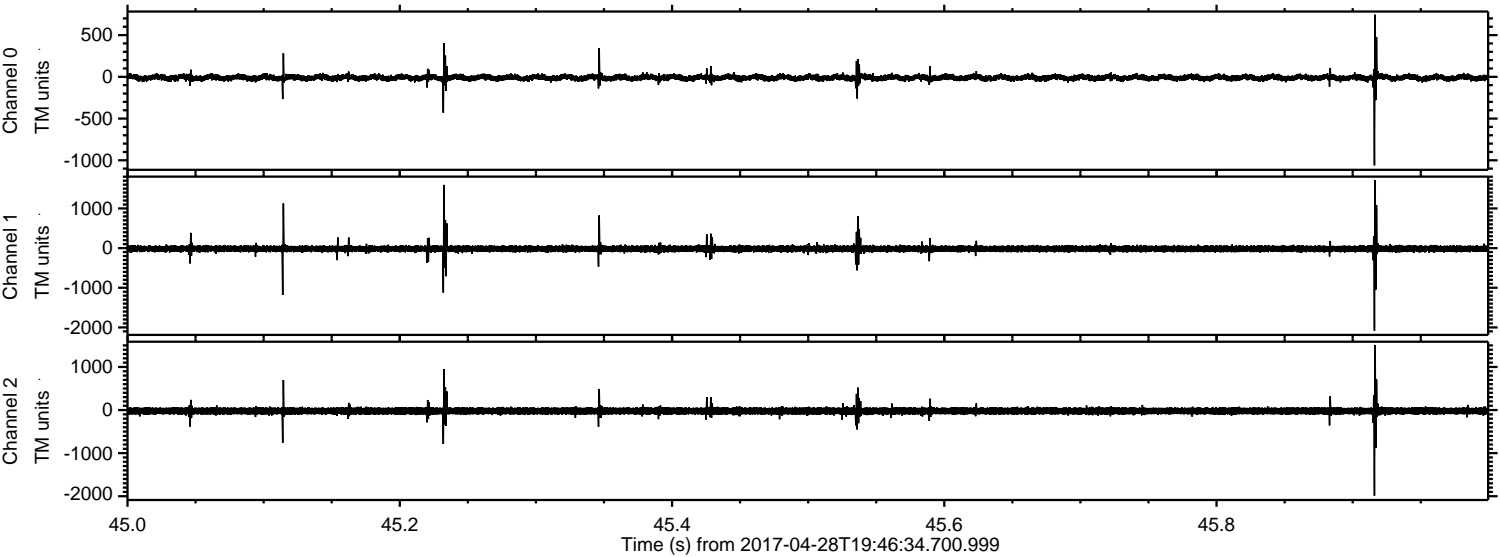


Channel 0
mn: -1278
mx: 514
 μ : -10.3
 σ : 22.1

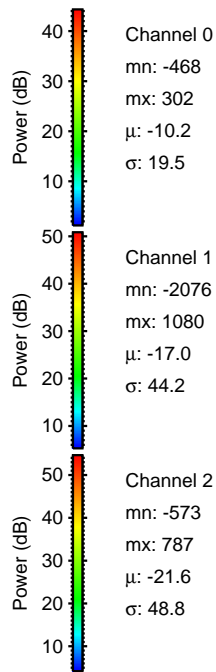
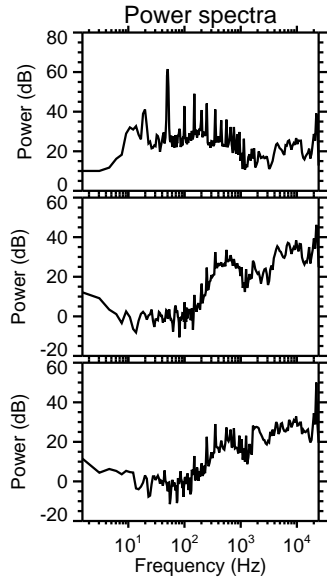
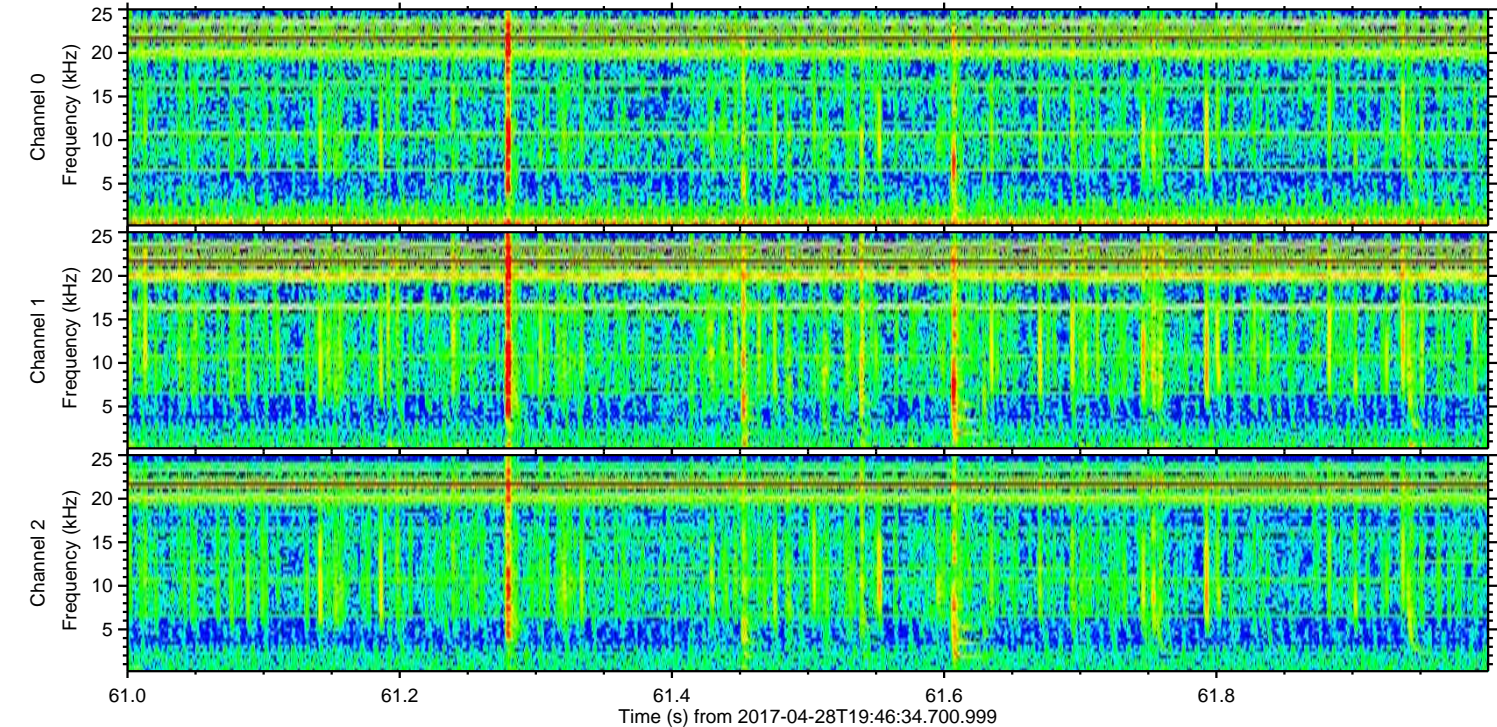
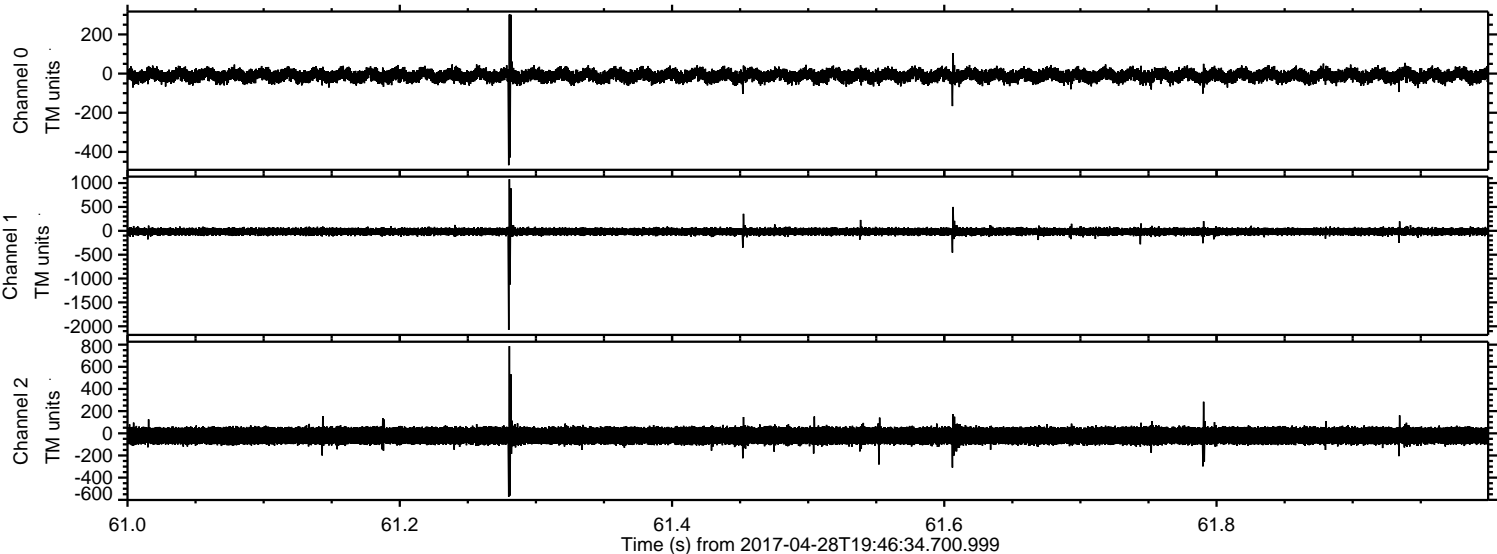
Channel 1
mn: -2124
mx: 1691
 μ : -16.7
 σ : 48.7

Channel 2
mn: -1912
mx: 1402
 μ : -21.4
 σ : 56.4

Processed Fri Apr 28 21:54:32 2017 by ELM ver.2012-10-06 from 001__elm20170428_194633__dat00.bin

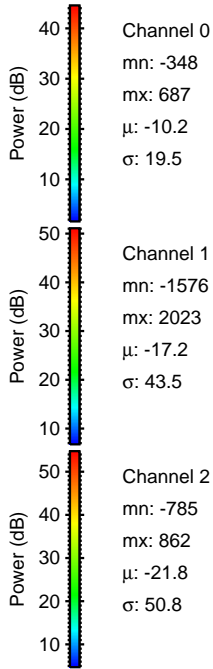
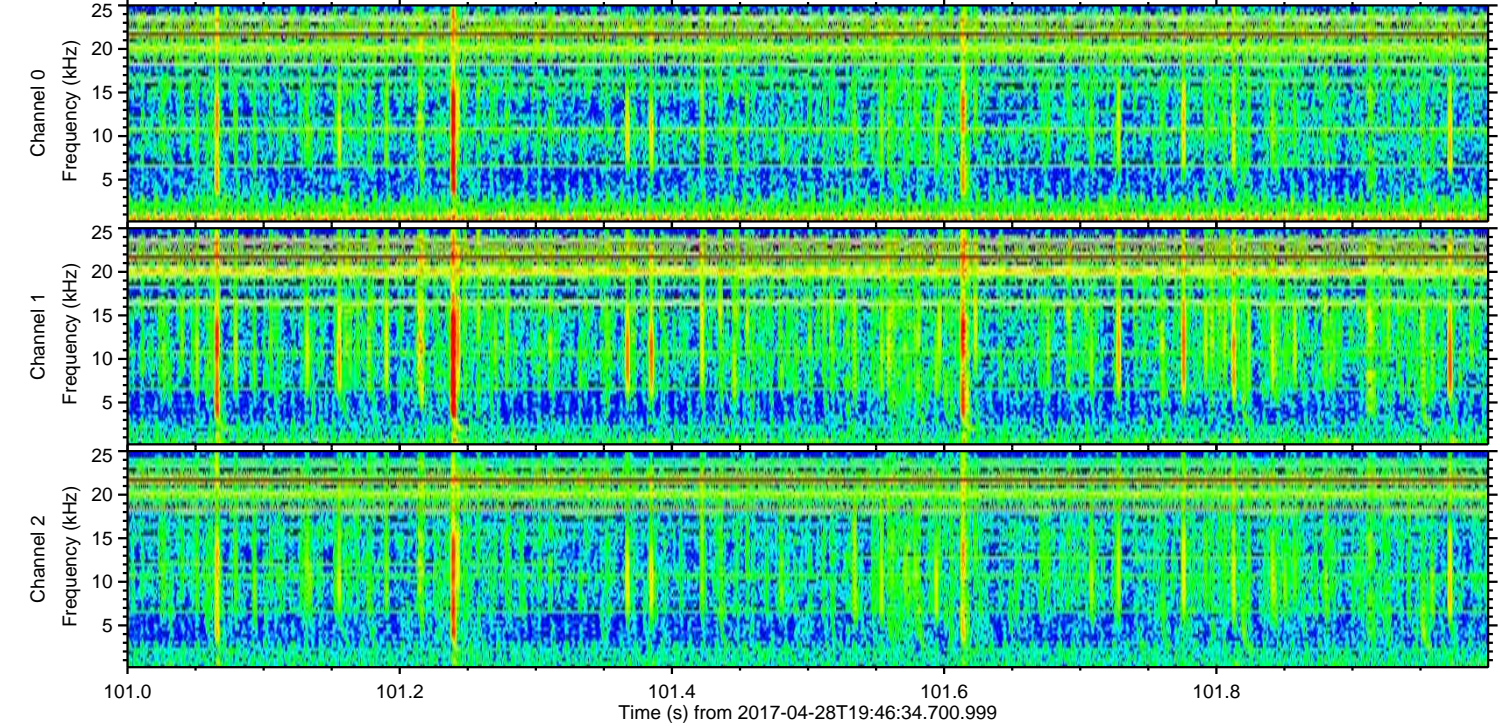
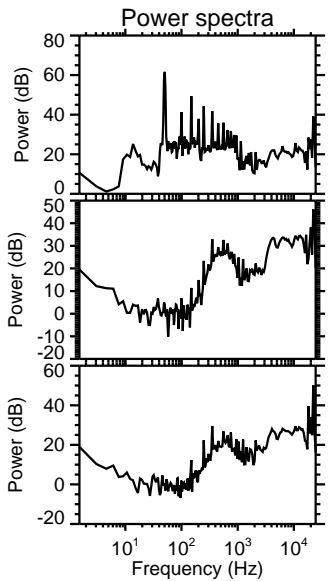
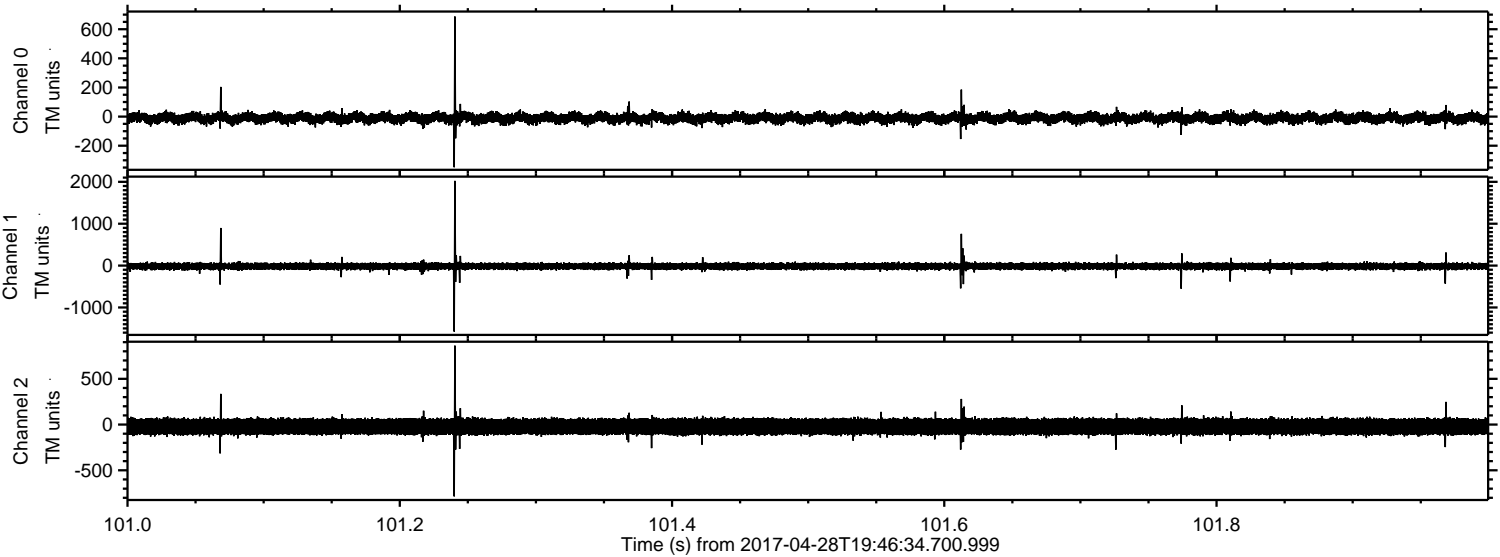


Processed Fri Apr 28 21:54:33 2017 by ELM ver.2012-10-06 from 001__elm20170428_194633__dat00.bin



ELMAVAN 3D WAVEFORMS (Measured data sampled at 50 kHz) 51000 packets of 144 samples from 2017-04-28T19:46:34.700.999. Part 102/147

Processed Fri Apr 28 21:54:33 2017 by ELM ver.2012-10-06 from 001__elm20170428_194633__dat00.bin



Channel 0
mn: -348
mx: 687
 μ : -10.2
 σ : 19.5

Channel 1
mn: -1576
mx: 2023
 μ : -17.2
 σ : 43.5

Channel 2
mn: -785
mx: 862
 μ : -21.8
 σ : 50.8

ELMAVAN 3D WAVEFORMS (Measured data sampled at 50 kHz) 51000 packets of 144 samples from 2017-04-28T19:46:34.700.999. Part 128/147

