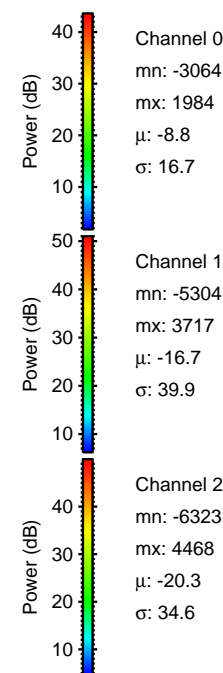
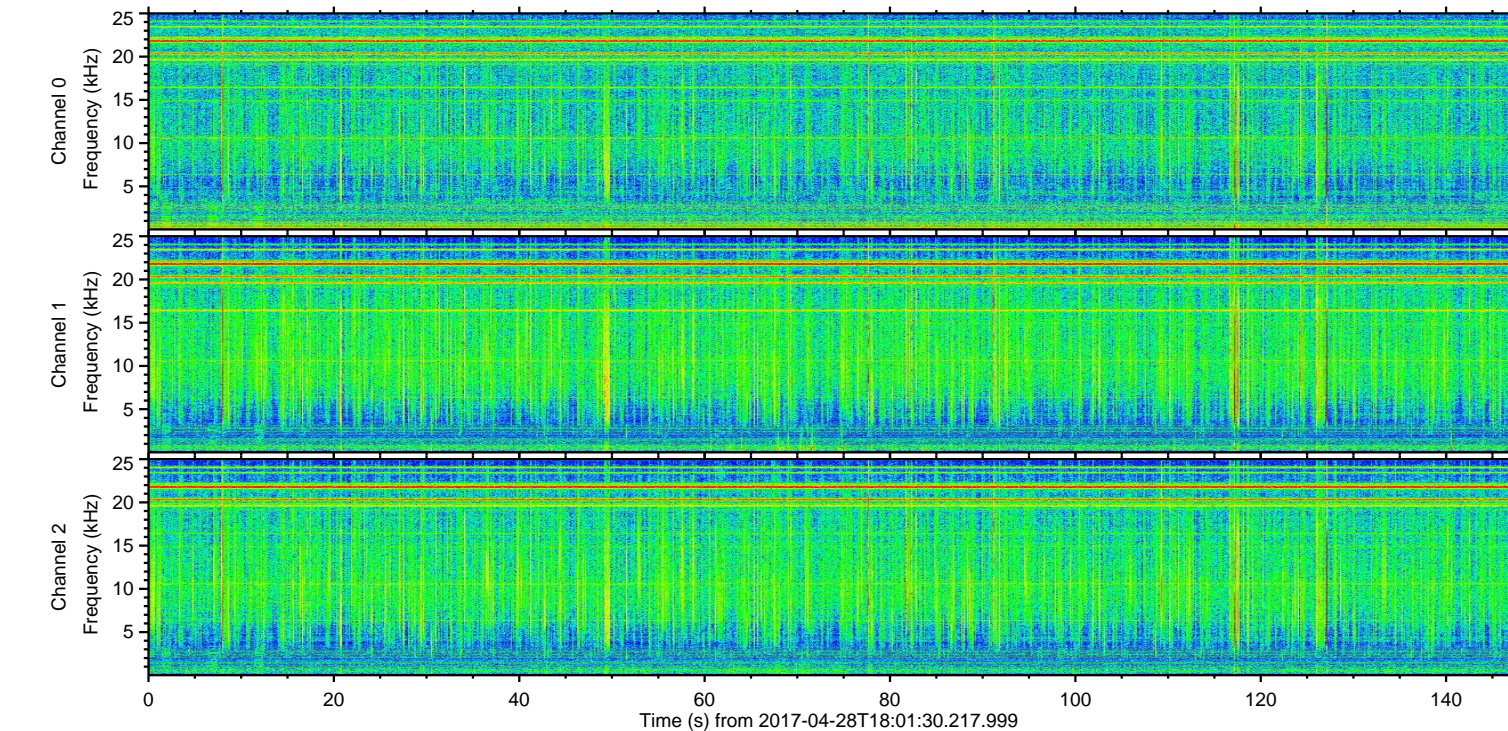
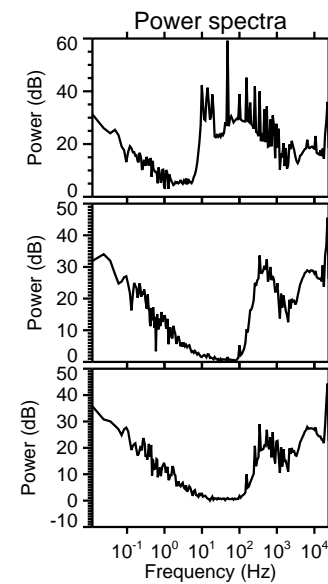
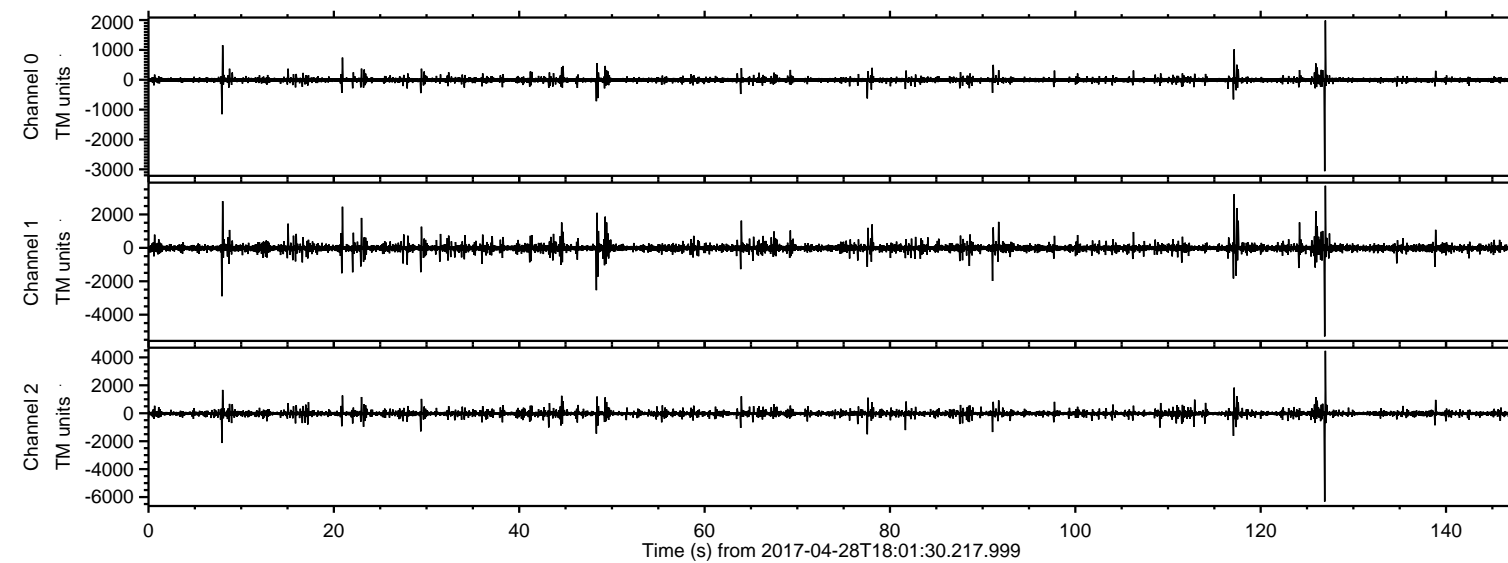


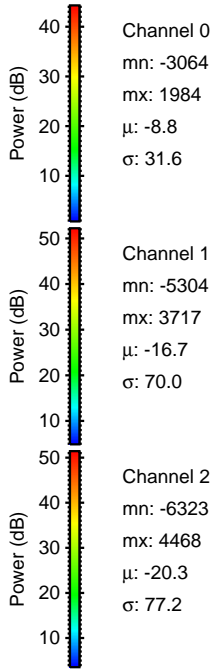
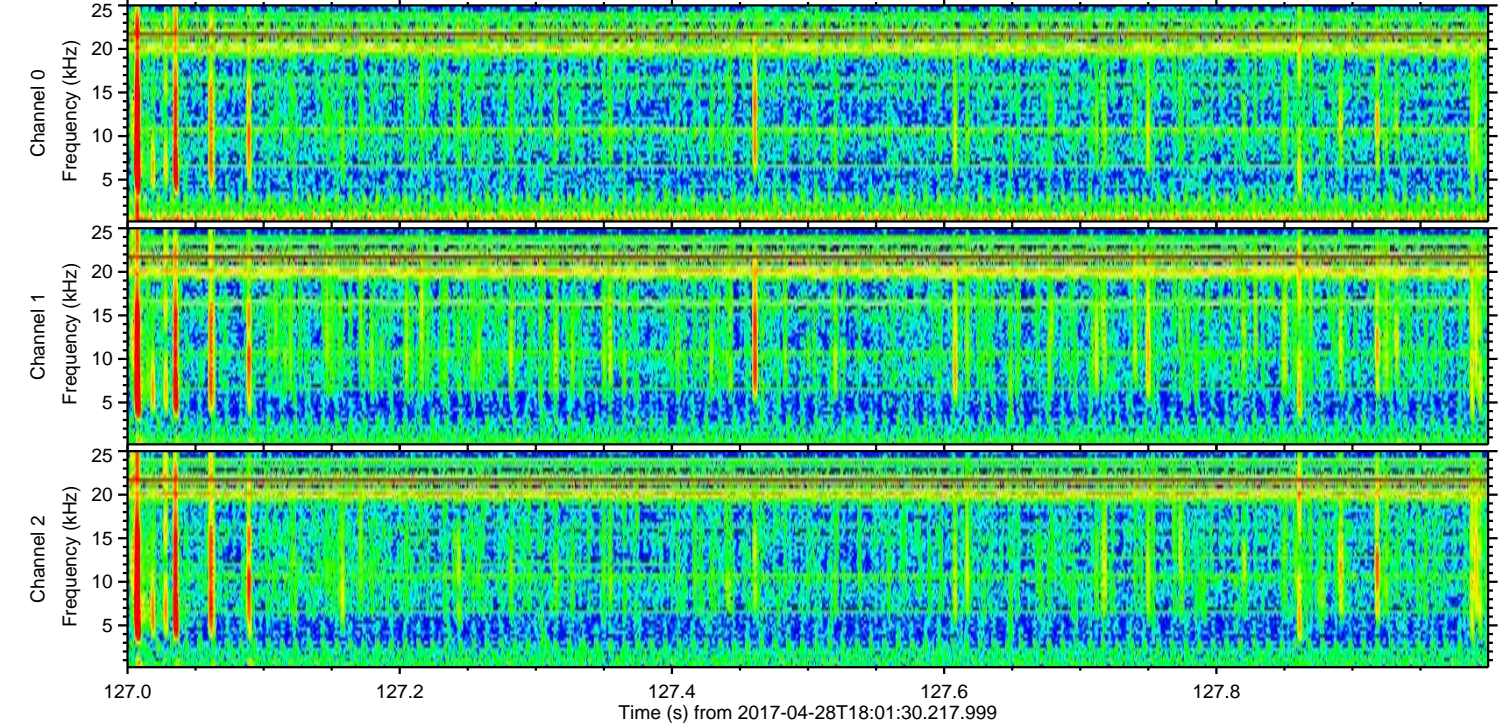
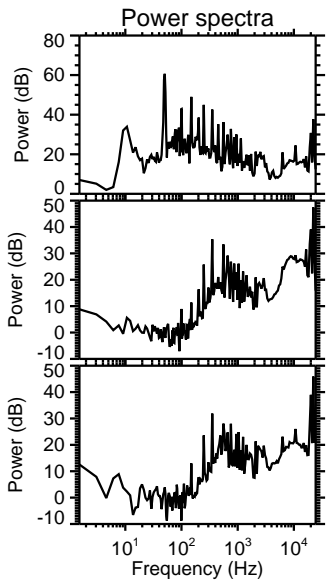
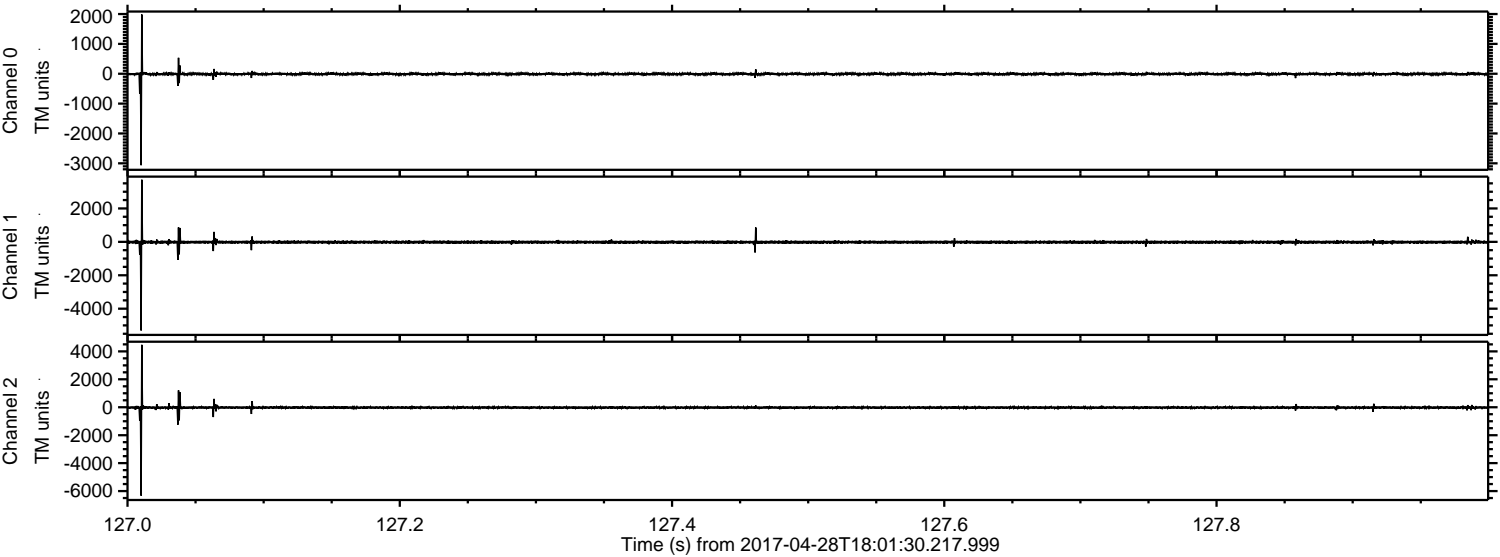
ELMAVAN 3D WAVEFORMS (Measured data sampled at 50 kHz) 51000 packets of 144 samples from 2017-04-28T18:01:30.217.999.

Processed Fri Apr 28 20:08:57 2017 by ELM ver.2012-10-06 from 001__elm20170428_180129__dat00.bin



ELMAVAN 3D WAVEFORMS (Measured data sampled at 50 kHz) 51000 packets of 144 samples from 2017-04-28T18:01:30.217.999. Part 128/147

Processed Fri Apr 28 20:09:13 2017 by ELM ver.2012-10-06 from 001__elm20170428_180129__dat00.bin



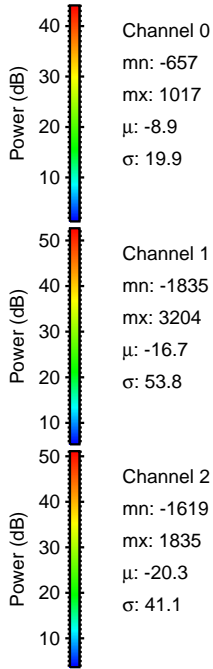
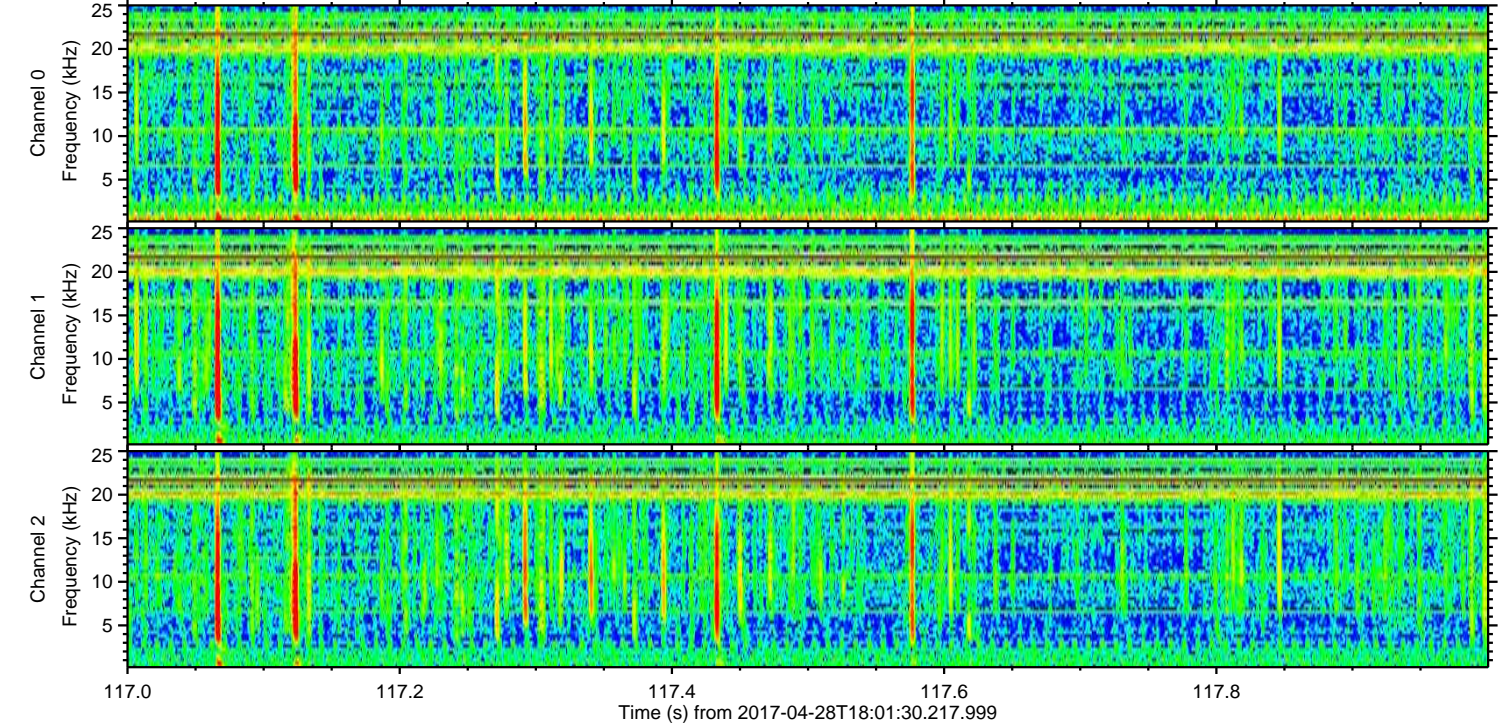
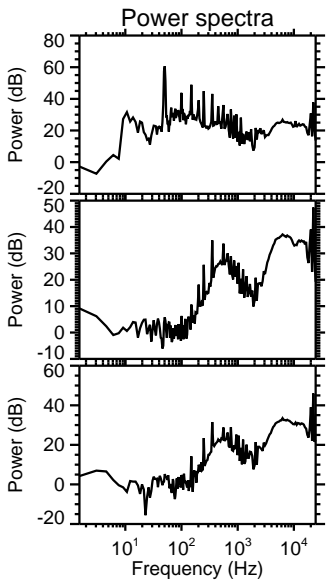
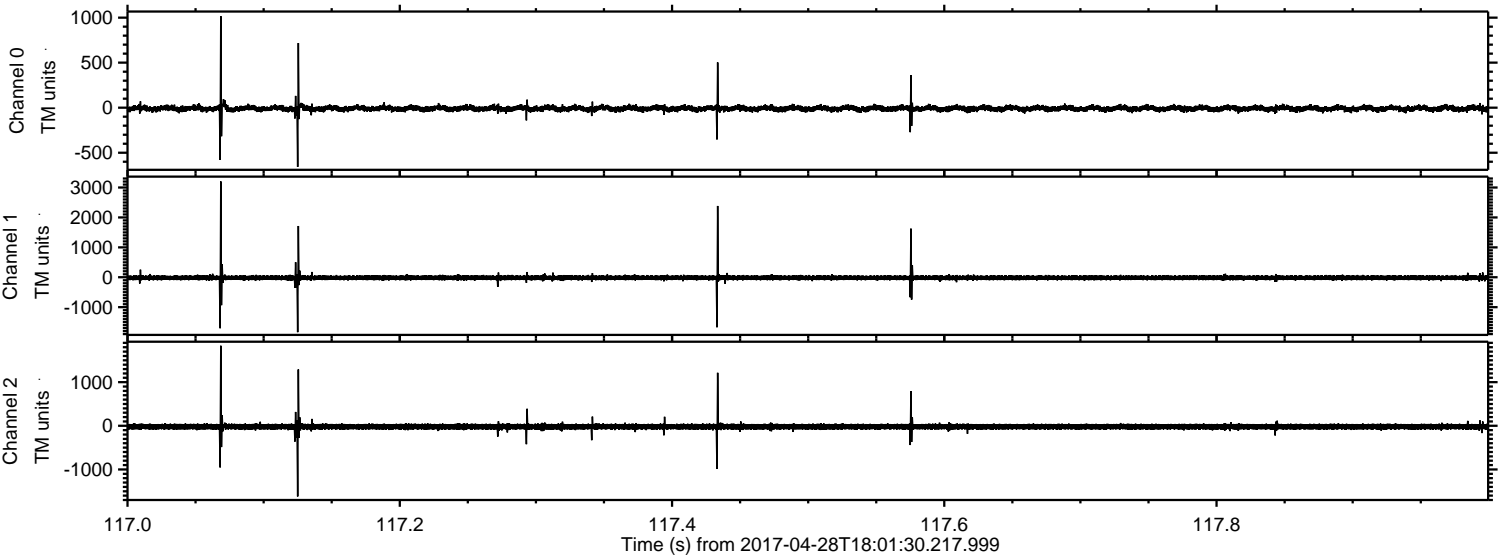
Channel 0
mn: -3064
mx: 1984
 μ : -8.8
 σ : 31.6

Channel 1
mn: -5304
mx: 3717
 μ : -16.7
 σ : 70.0

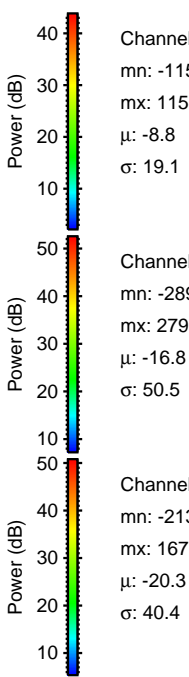
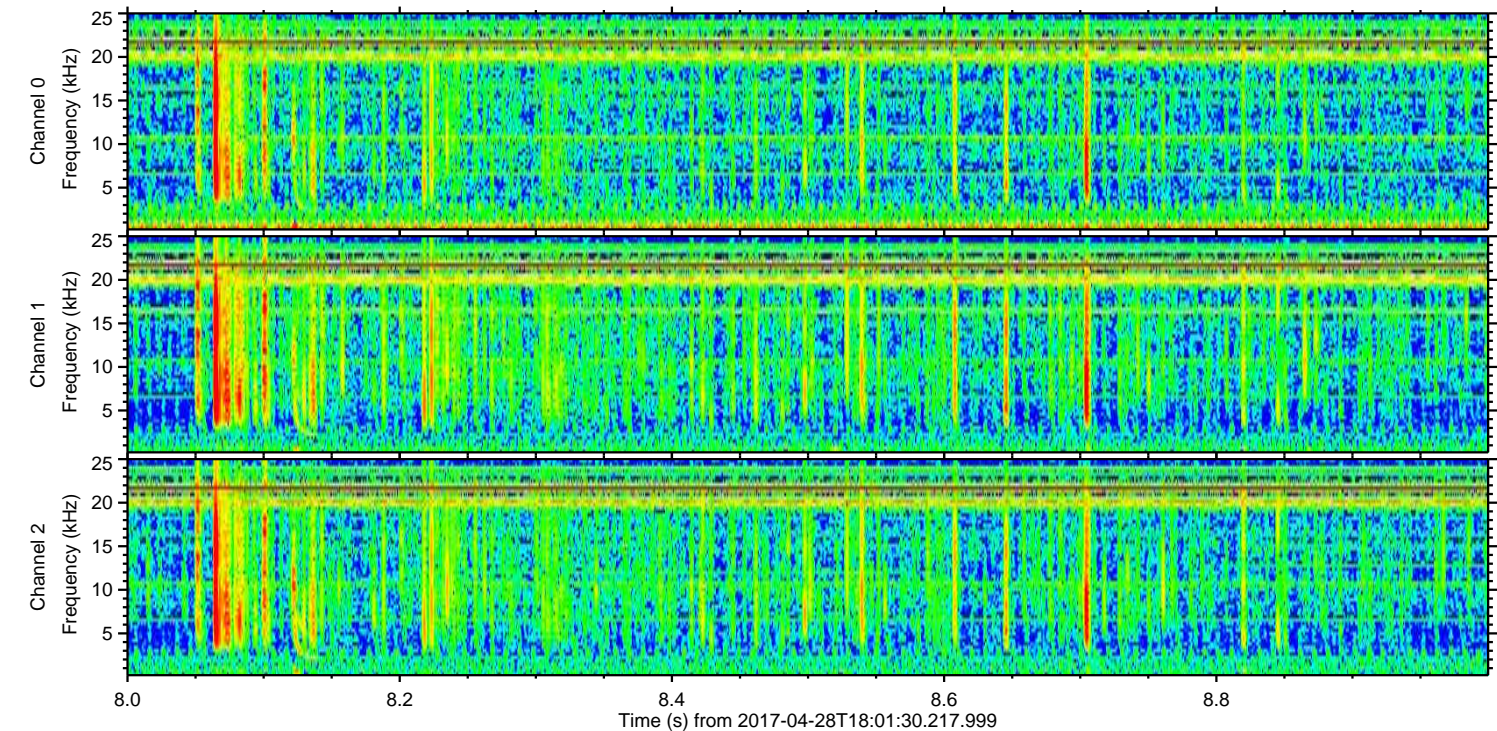
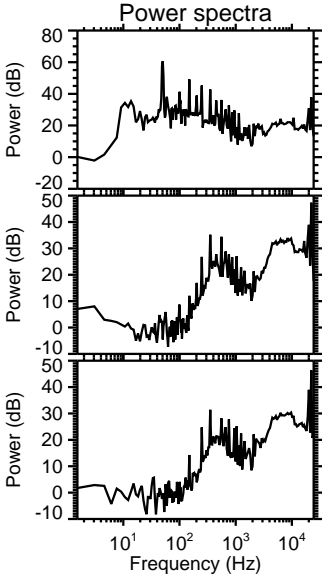
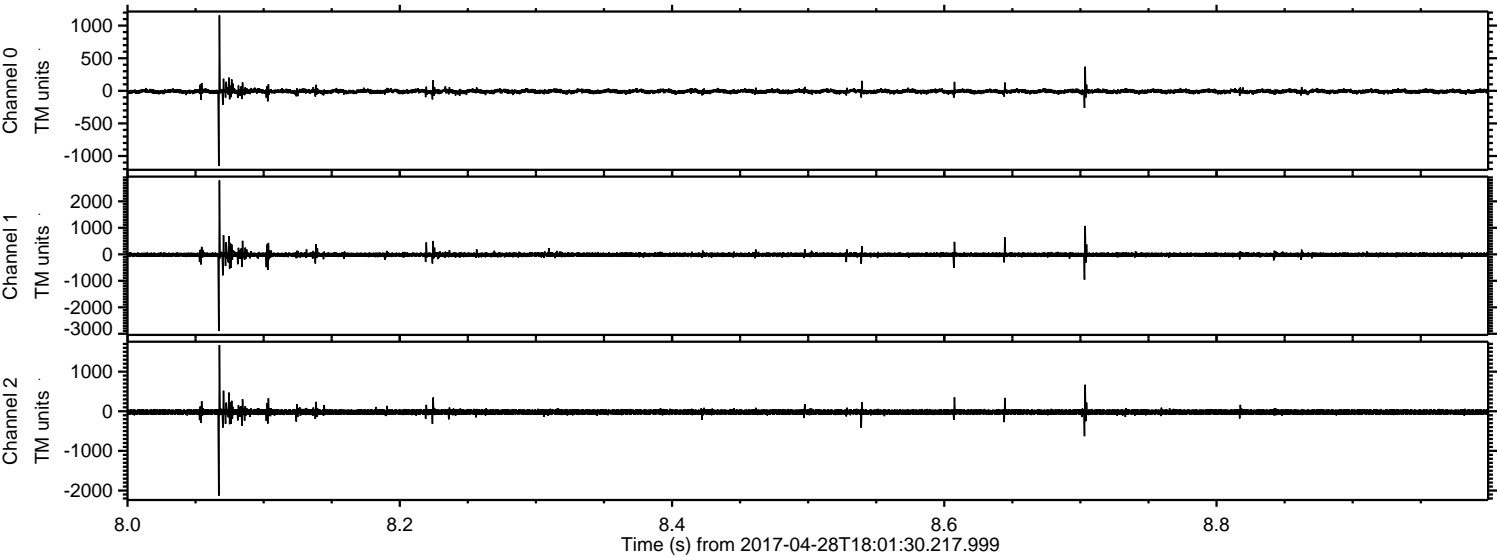
Channel 2
mn: -6323
mx: 4468
 μ : -20.3
 σ : 77.2

ELMAVAN 3D WAVEFORMS (Measured data sampled at 50 kHz) 51000 packets of 144 samples from 2017-04-28T18:01:30.217.999. Part 118/147

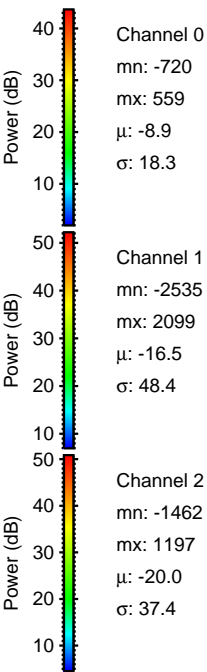
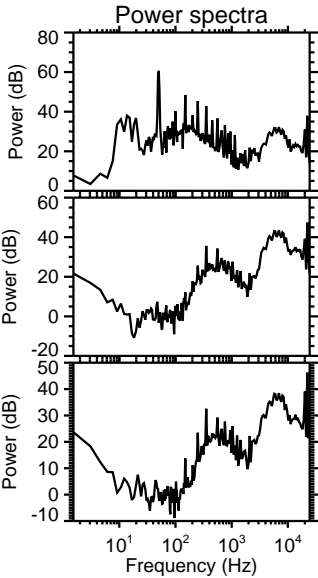
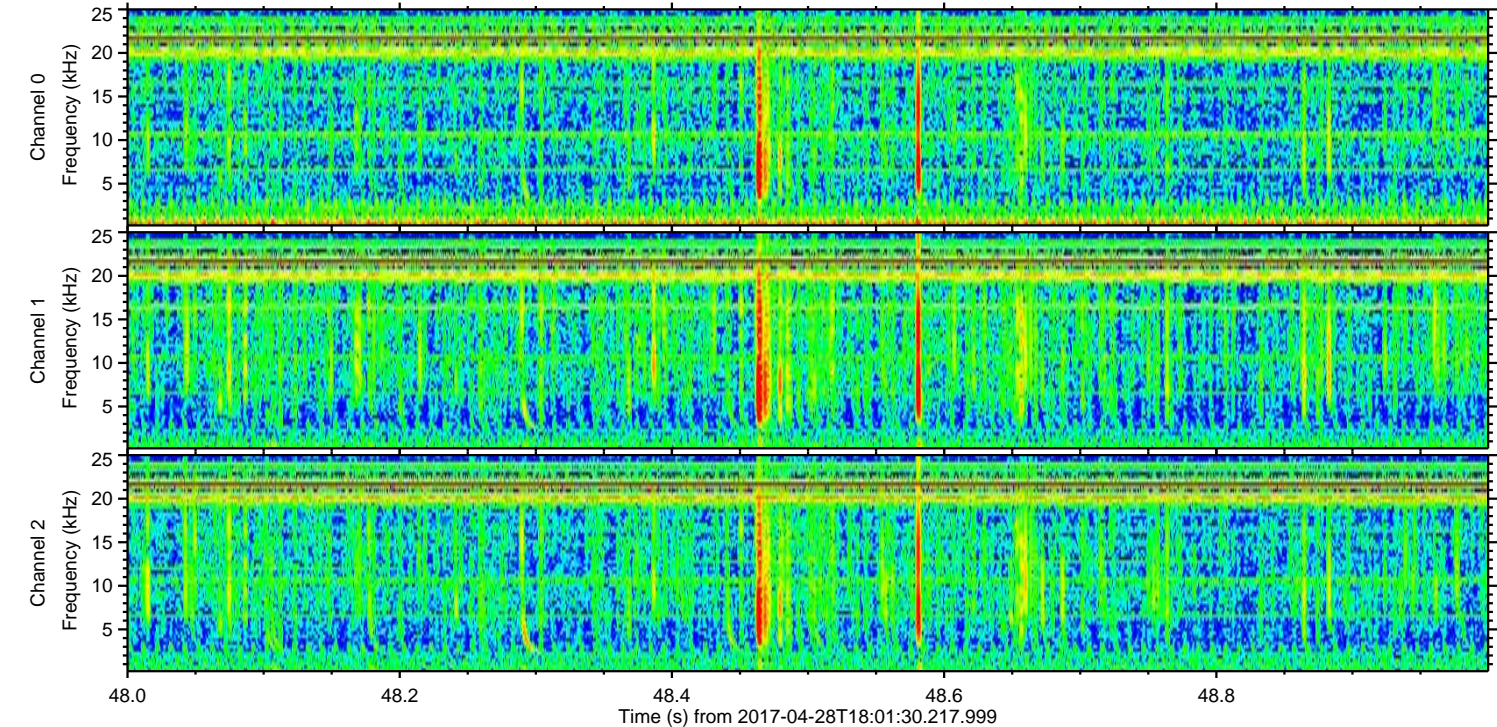
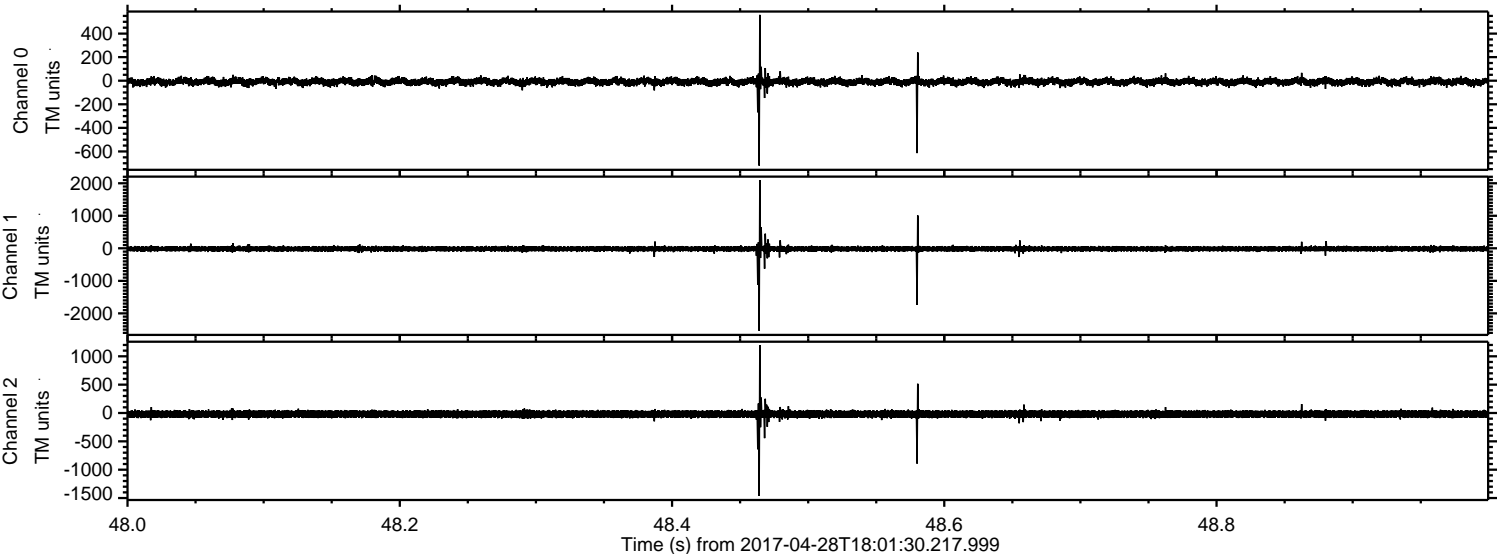
Processed Fri Apr 28 20:09:14 2017 by ELM ver.2012-10-06 from 001__elm20170428_180129__dat00.bin



Processed Fri Apr 28 20:09:15 2017 by ELM ver.2012-10-06 from 001__elm20170428_180129__dat00.bin

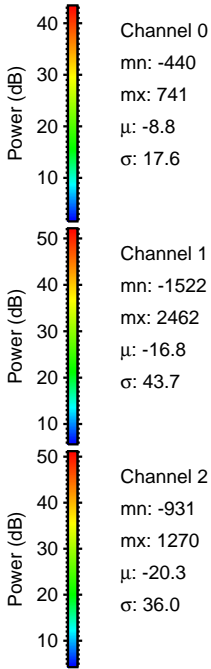
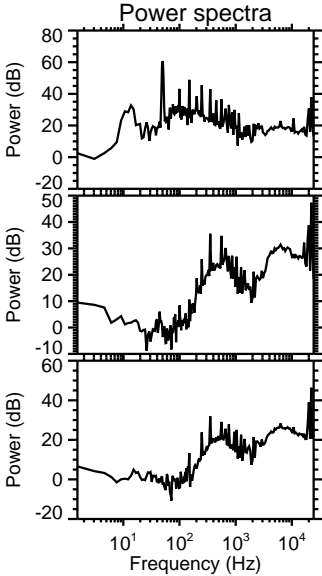
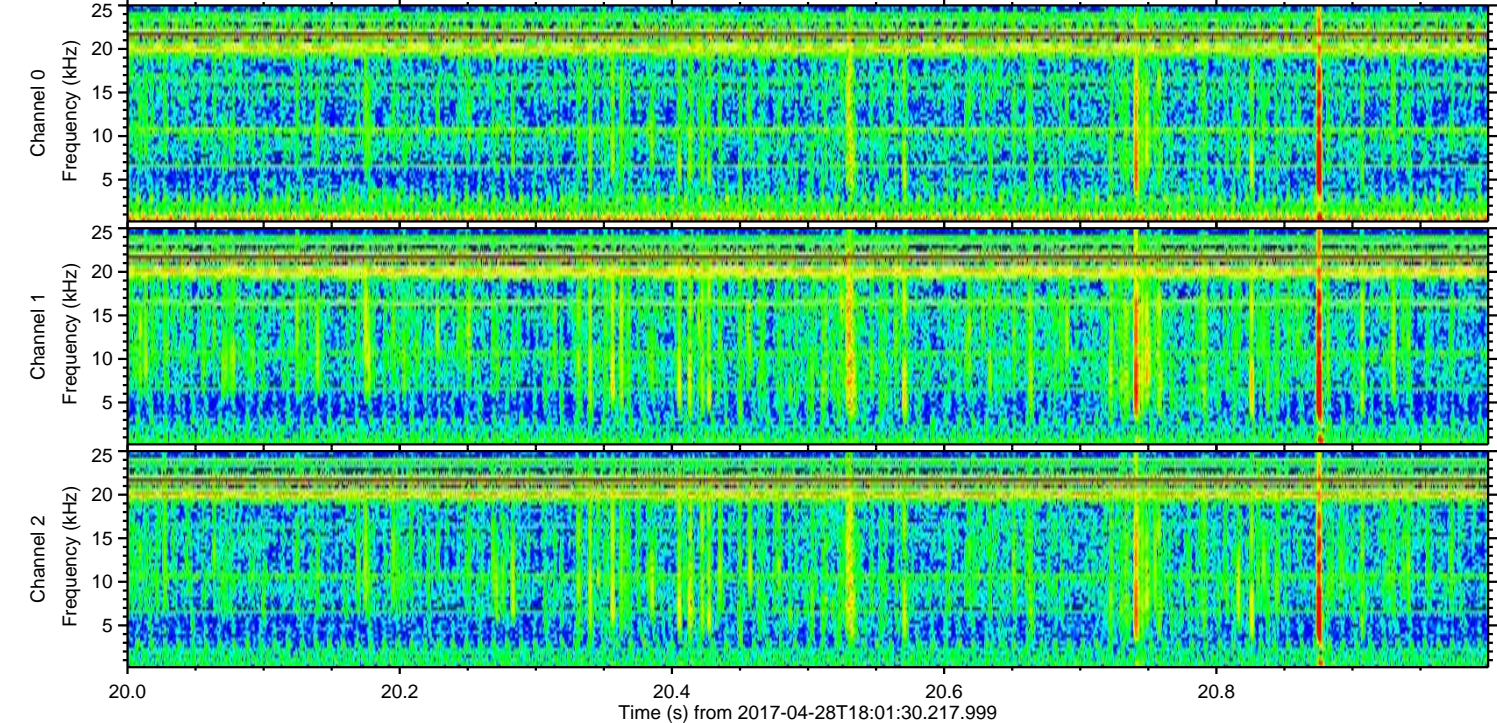
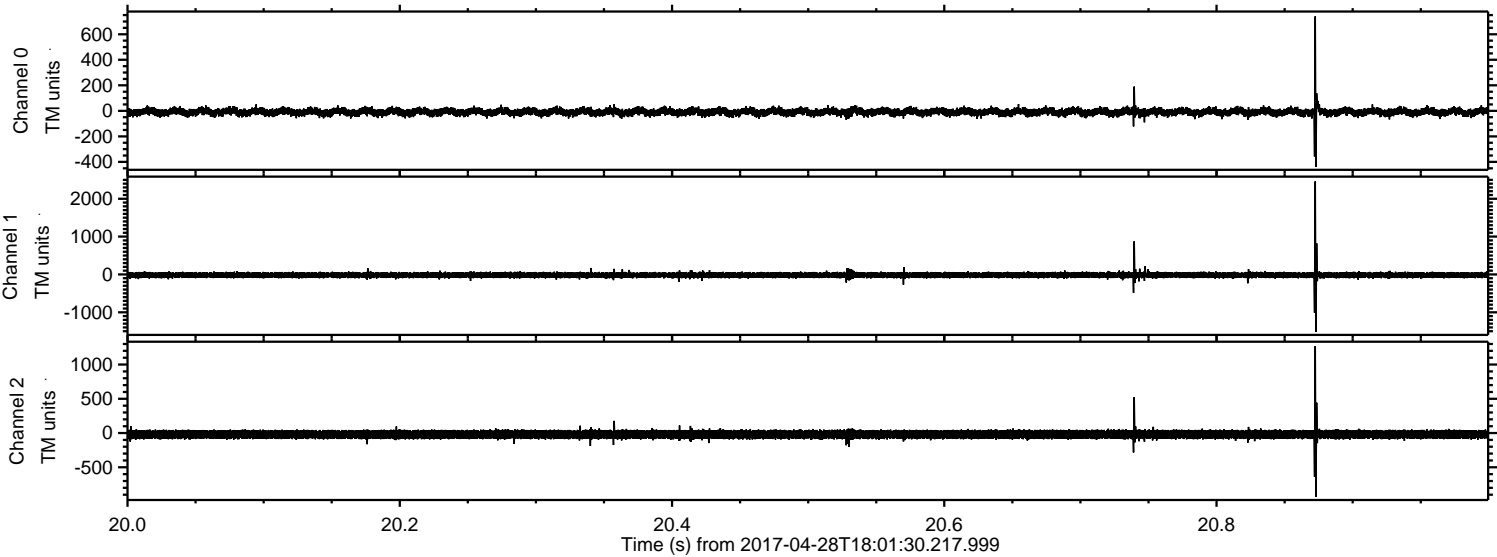


Processed Fri Apr 28 20:09:16 2017 by ELM ver.2012-10-06 from 001__elm20170428_180129__dat00.bin



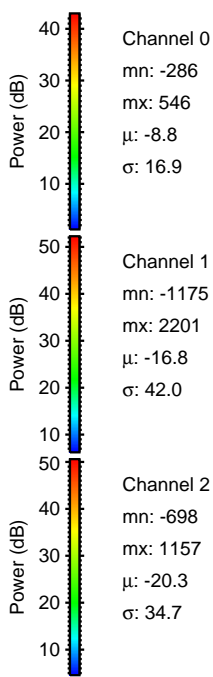
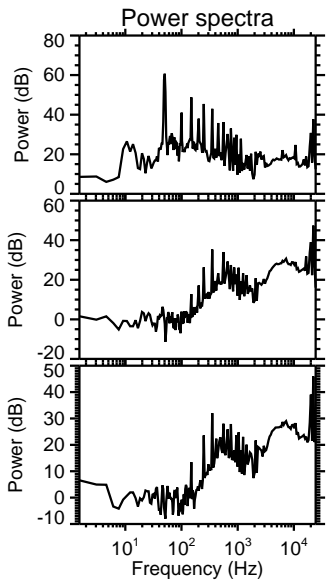
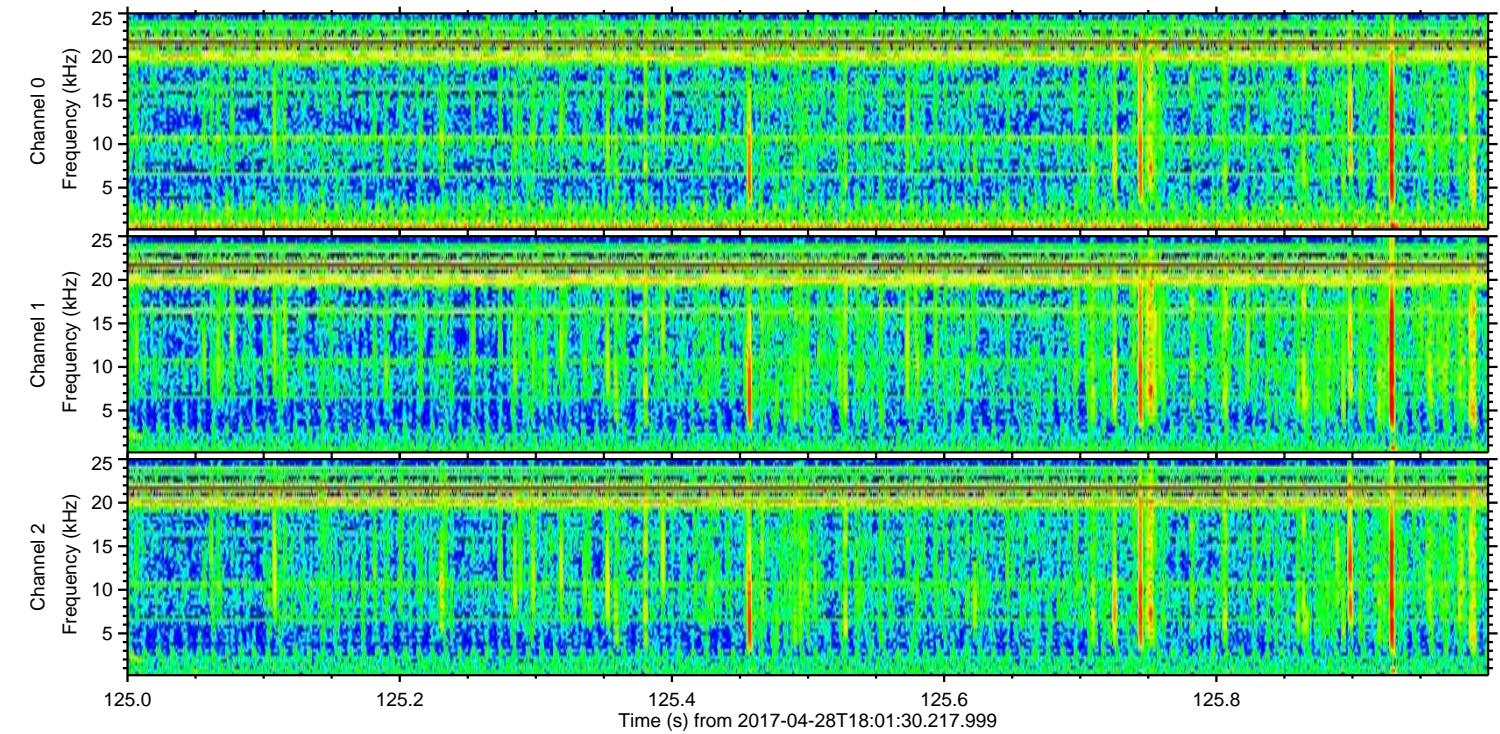
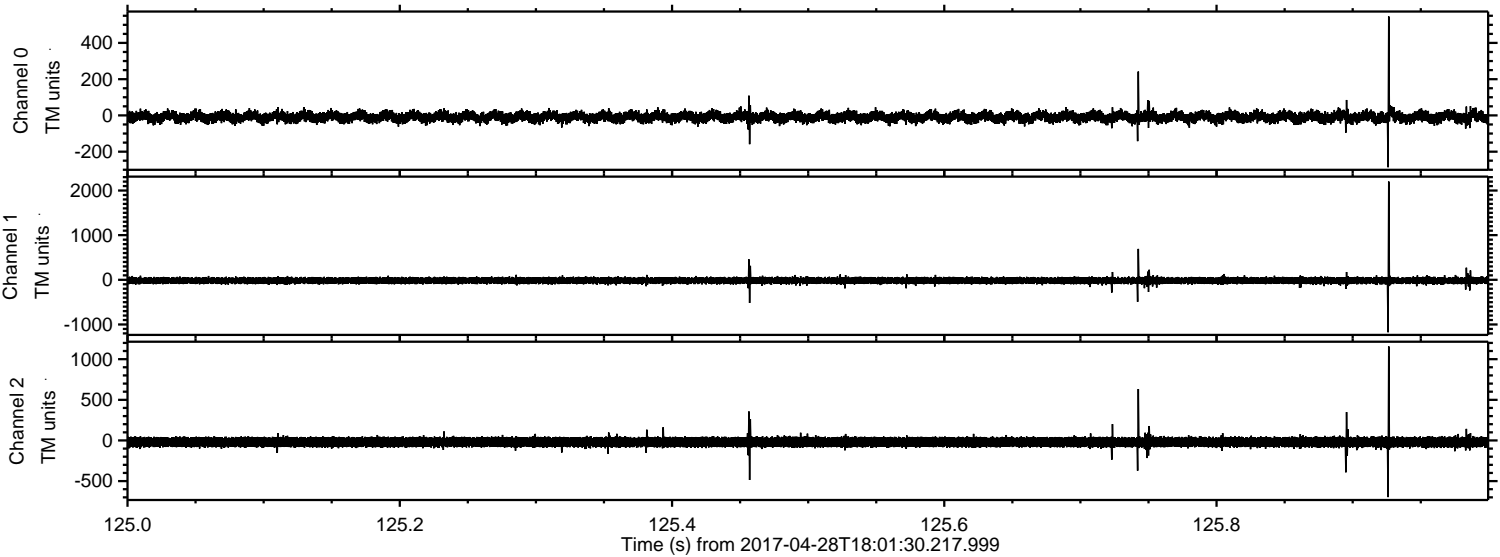
ELMAVAN 3D WAVEFORMS (Measured data sampled at 50 kHz) 51000 packets of 144 samples from 2017-04-28T18:01:30.217.999. Part 21/147

Processed Fri Apr 28 20:09:17 2017 by ELM ver.2012-10-06 from 001__elm20170428_180129__dat00.bin



ELMAVAN 3D WAVEFORMS (Measured data sampled at 50 kHz) 51000 packets of 144 samples from 2017-04-28T18:01:30.217.999. Part 126/147

Processed Fri Apr 28 20:09:18 2017 by ELM ver.2012-10-06 from 001__elm20170428_180129__dat00.bin

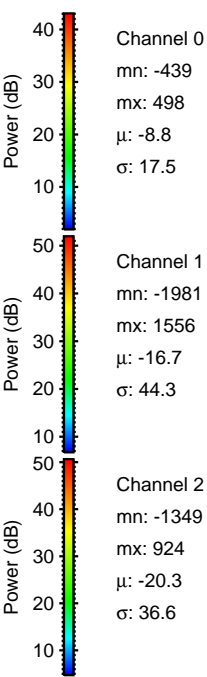
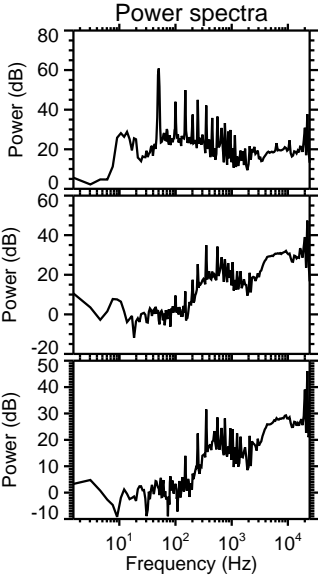
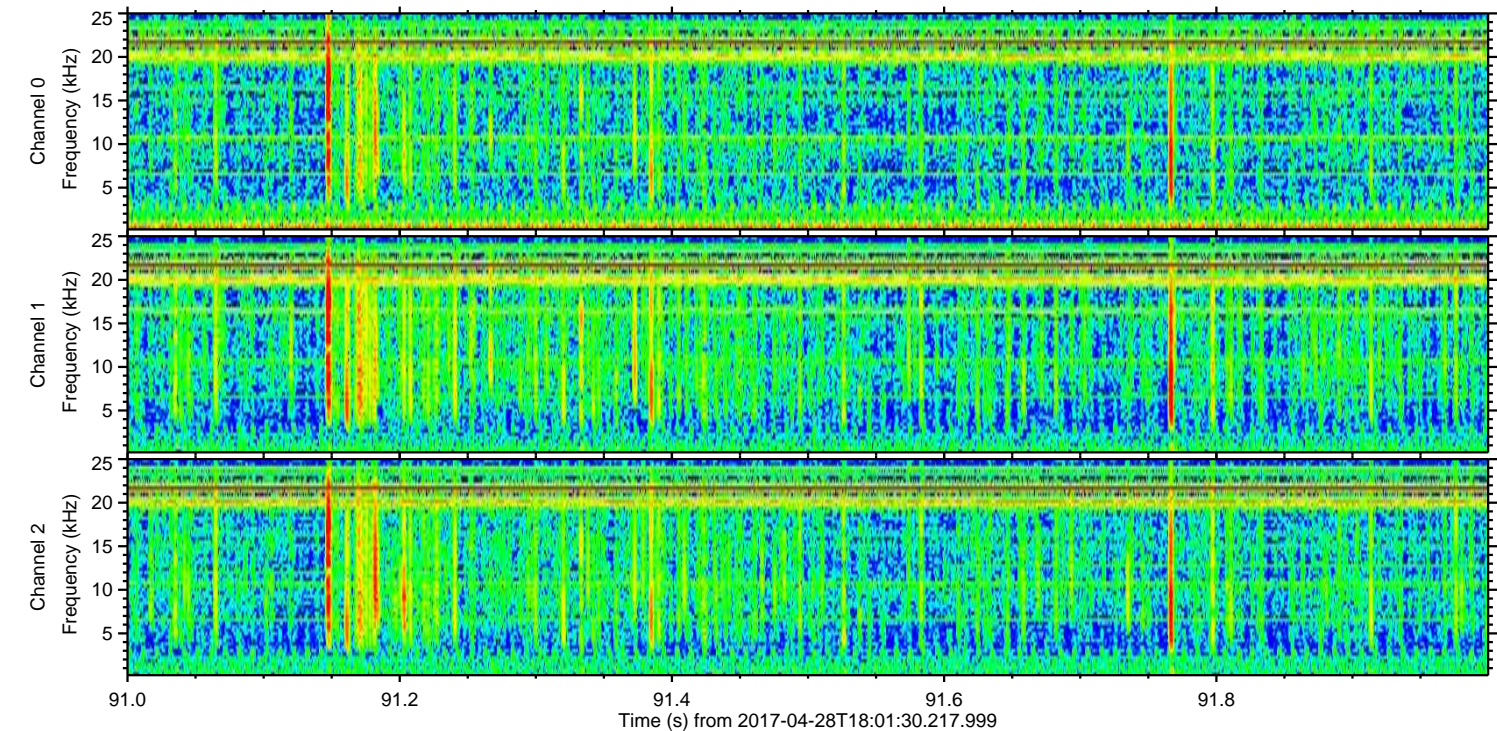
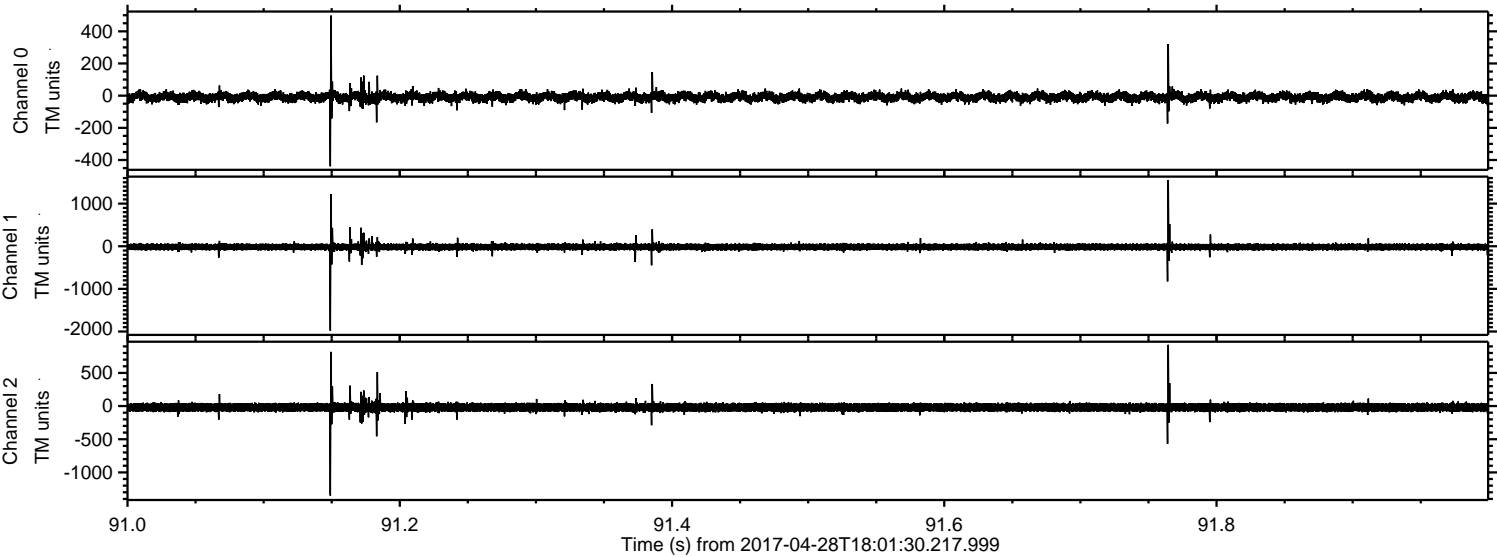


Channel 0
mn: -286
mx: 546
 μ : -8.8
 σ : 16.9

Channel 1
mn: -1175
mx: 2201
 μ : -16.8
 σ : 42.0

Channel 2
mn: -698
mx: 1157
 μ : -20.3
 σ : 34.7

Processed Fri Apr 28 20:09:19 2017 by ELM ver.2012-10-06 from 001__elm20170428_180129__dat00.bin

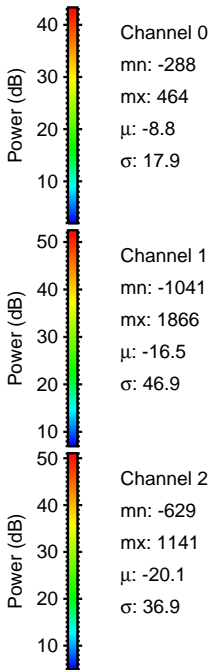
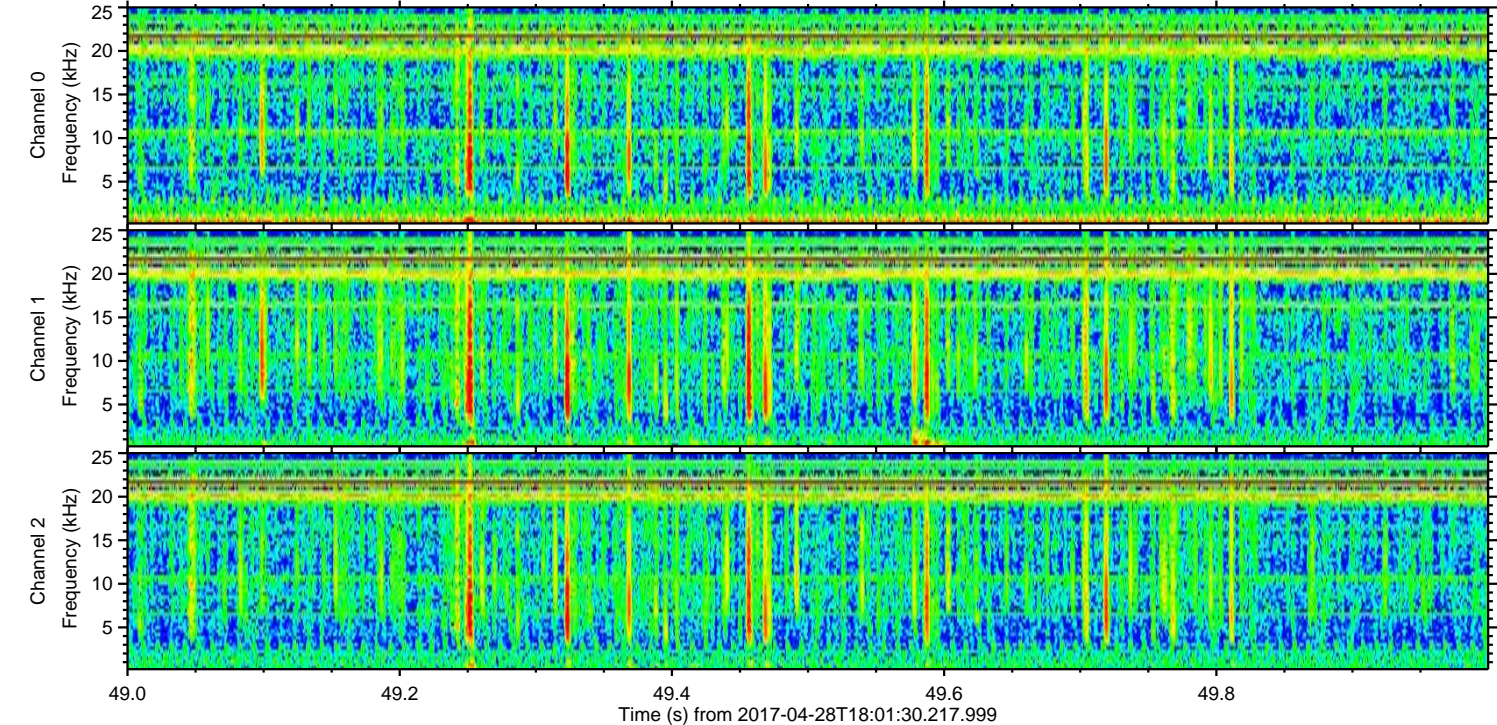
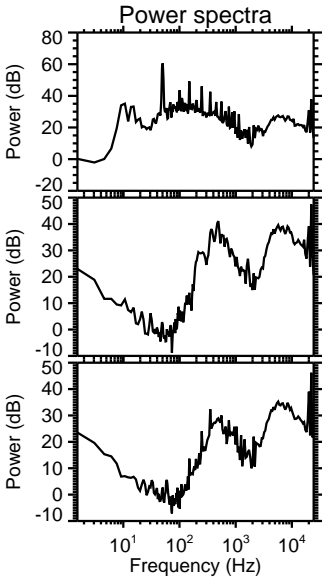
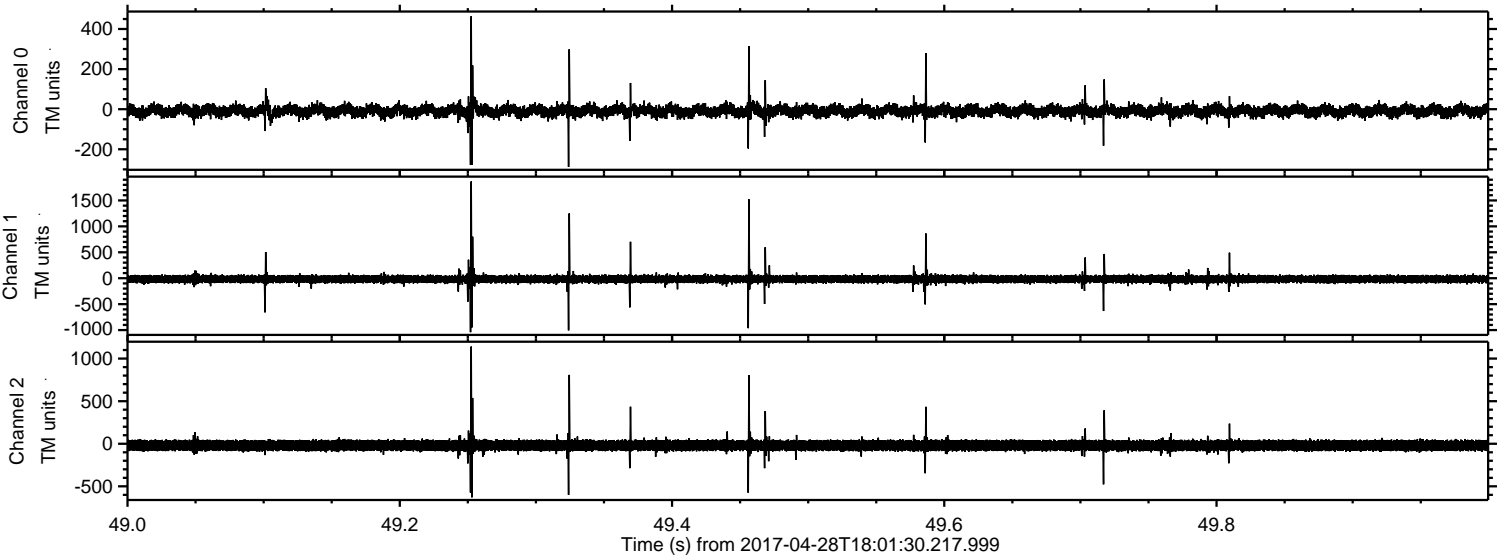


Channel 0
mn: -439
mx: 498
 μ : -8.8
 σ : 17.5

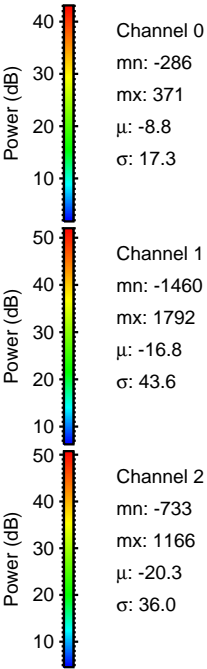
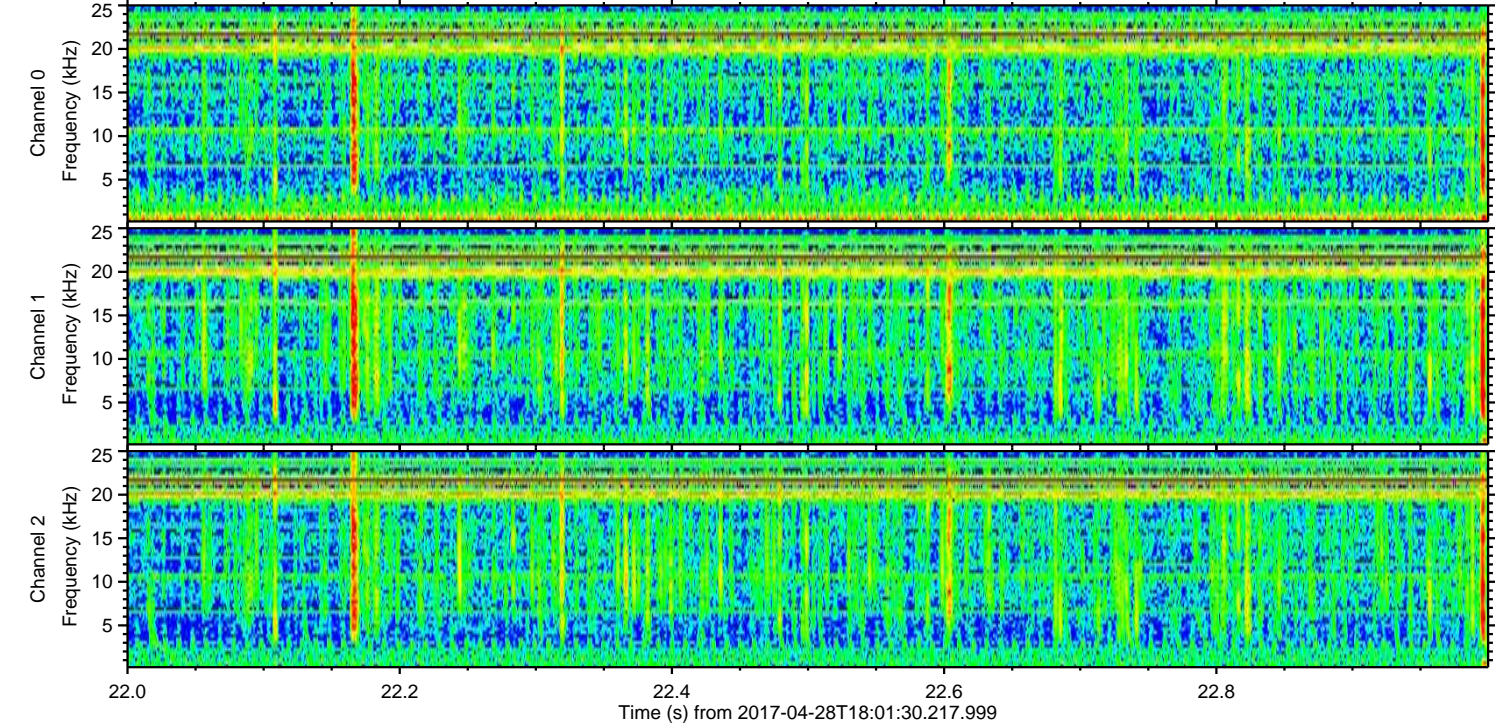
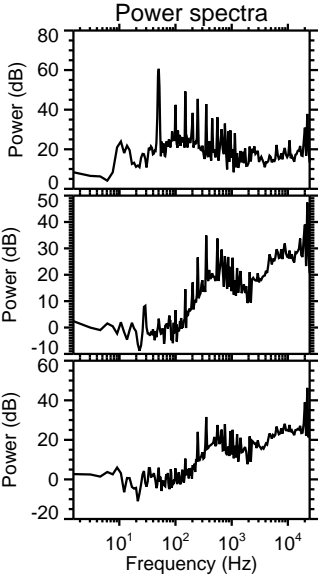
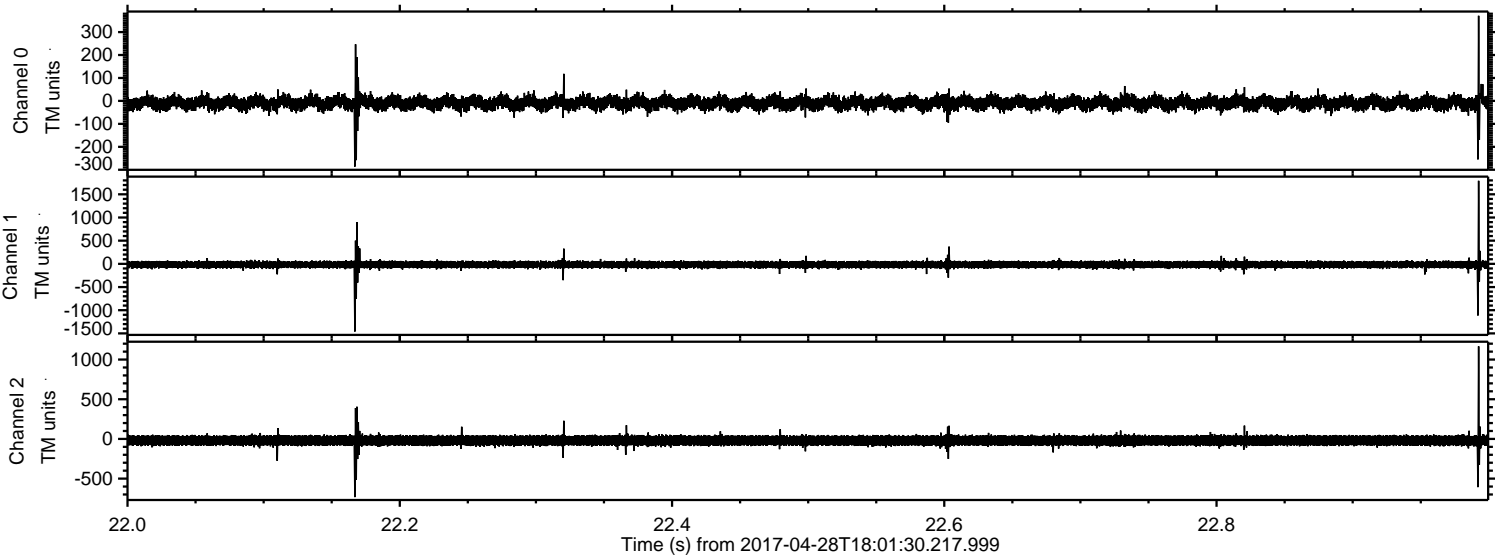
Channel 1
mn: -1981
mx: 1556
 μ : -16.7
 σ : 44.3

Channel 2
mn: -1349
mx: 924
 μ : -20.3
 σ : 36.6

Processed Fri Apr 28 20:09:21 2017 by ELM ver.2012-10-06 from 001__elm20170428_180129__dat00.bin

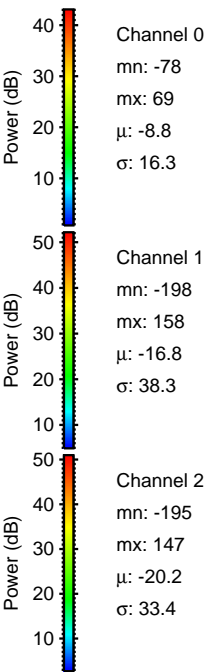
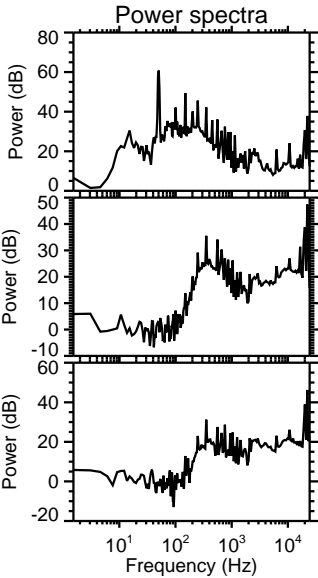
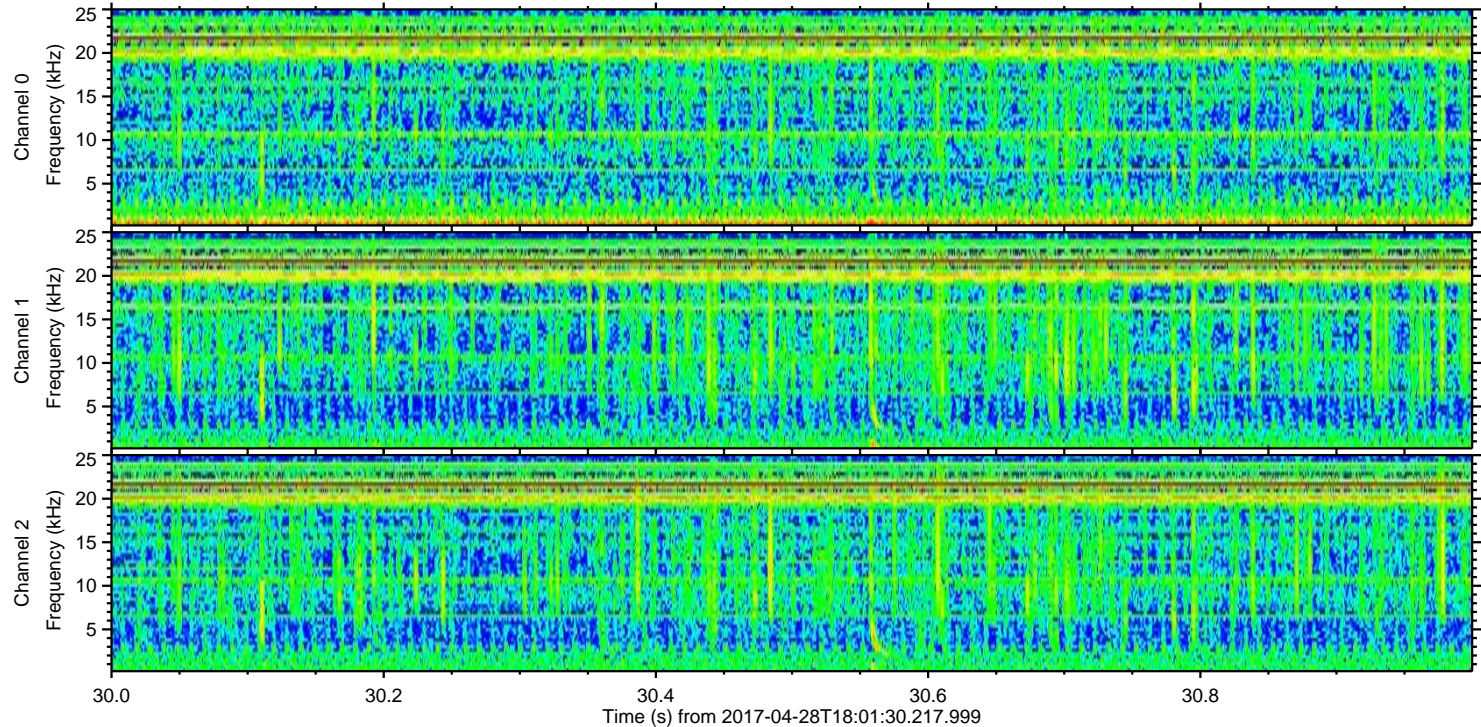
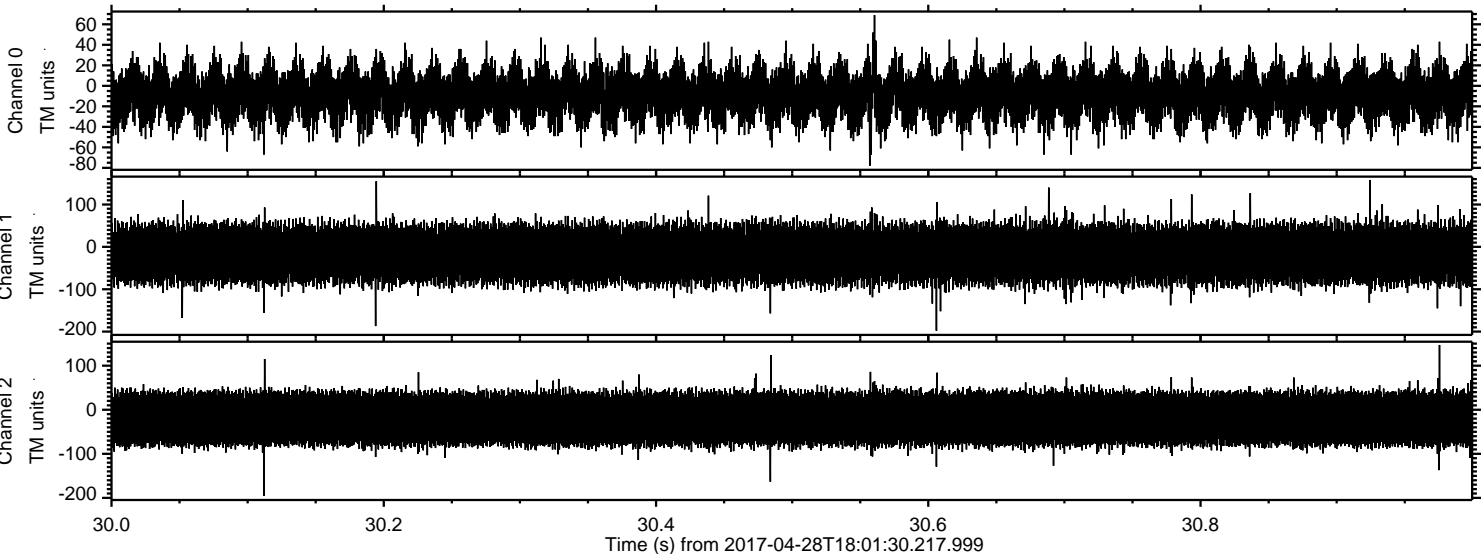


Processed Fri Apr 28 20:09:22 2017 by ELM ver.2012-10-06 from 001__elm20170428_180129__dat00.bin



ELMAVAN 3D WAVEFORMS (Measured data sampled at 50 kHz) 51000 packets of 144 samples from 2017-04-28T18:01:30.217.999. Part 31/147

Processed Fri Apr 28 20:09:24 2017 by ELM ver.2012-10-06 from 001__elm20170428_180129__dat00.bin



Channel 0
mn: -78
mx: 69
 μ : -8.8
 σ : 16.3

Channel 1
mn: -198
mx: 158
 μ : -16.8
 σ : 38.3

Channel 2
mn: -195
mx: 147
 μ : -20.2
 σ : 33.4