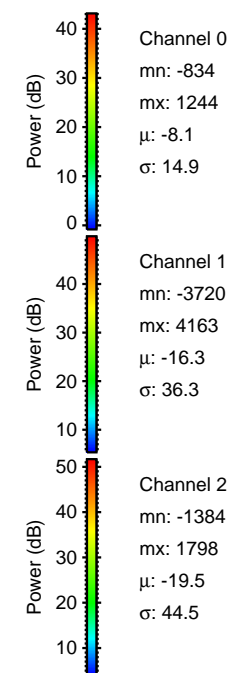
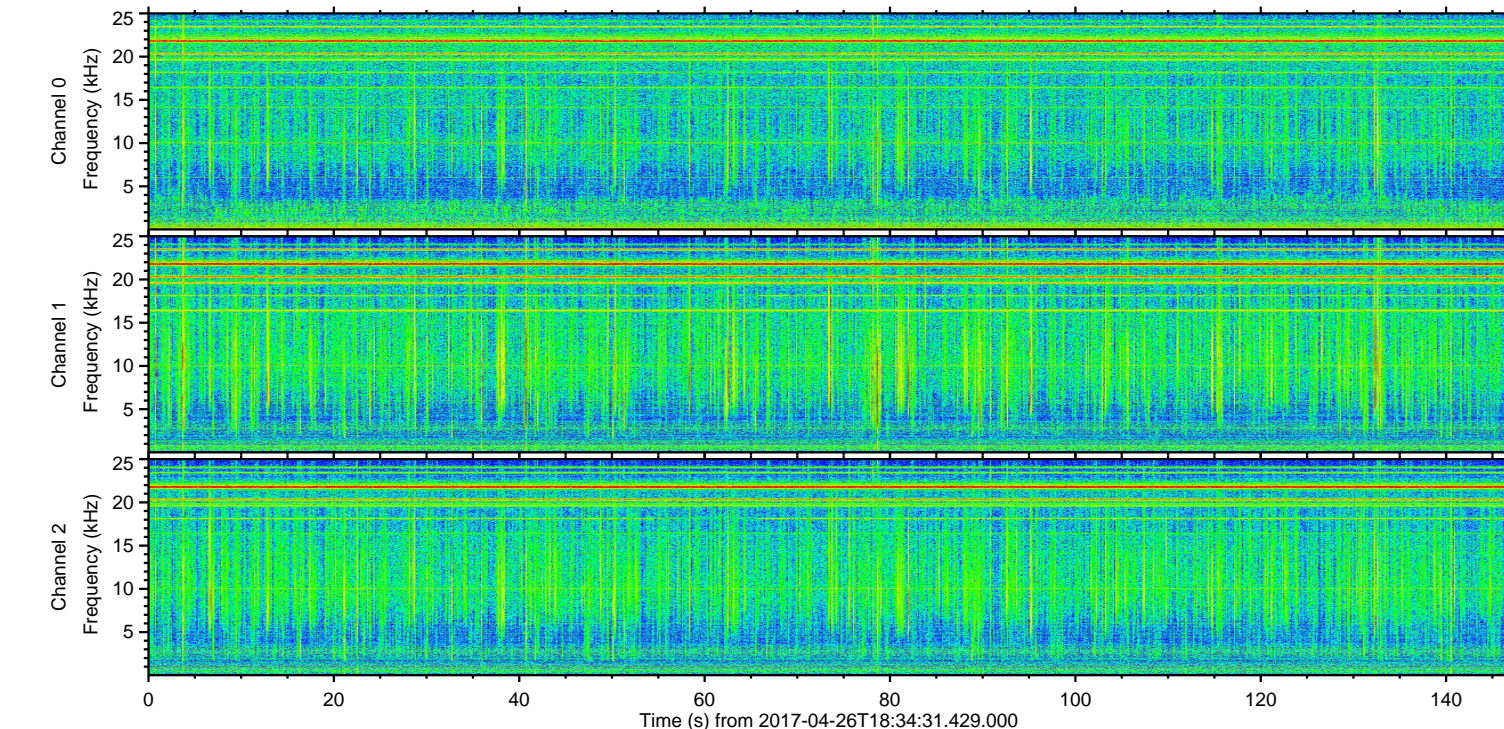
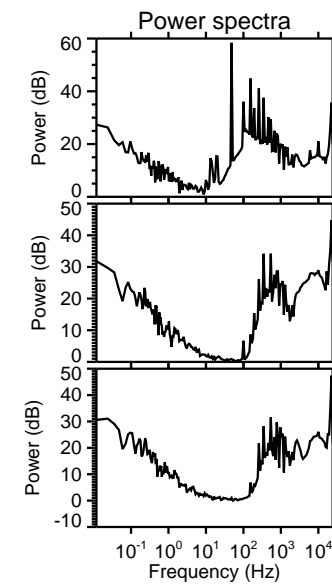
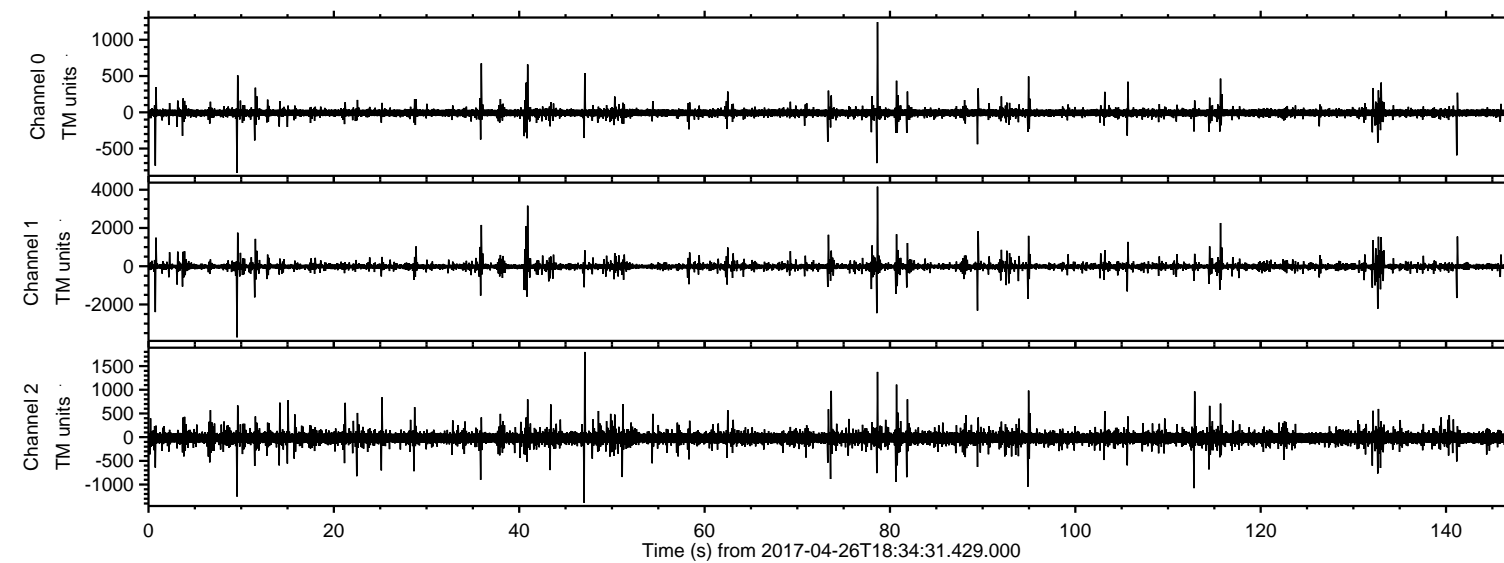


ELMAVAN 3D WAVEFORMS (Measured data sampled at 50 kHz) 51000 packets of 144 samples from 2017-04-26T18:34:31.429.000.

Processed Wed Apr 26 20:42:38 2017 by ELM ver.2012-10-06 from 001__elm20170426_183430__dat00.bin

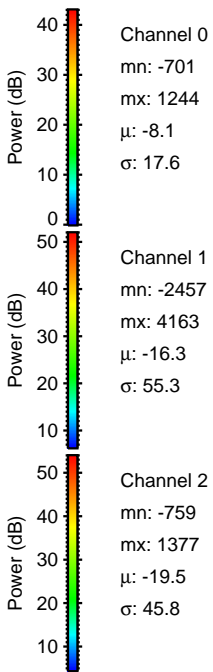
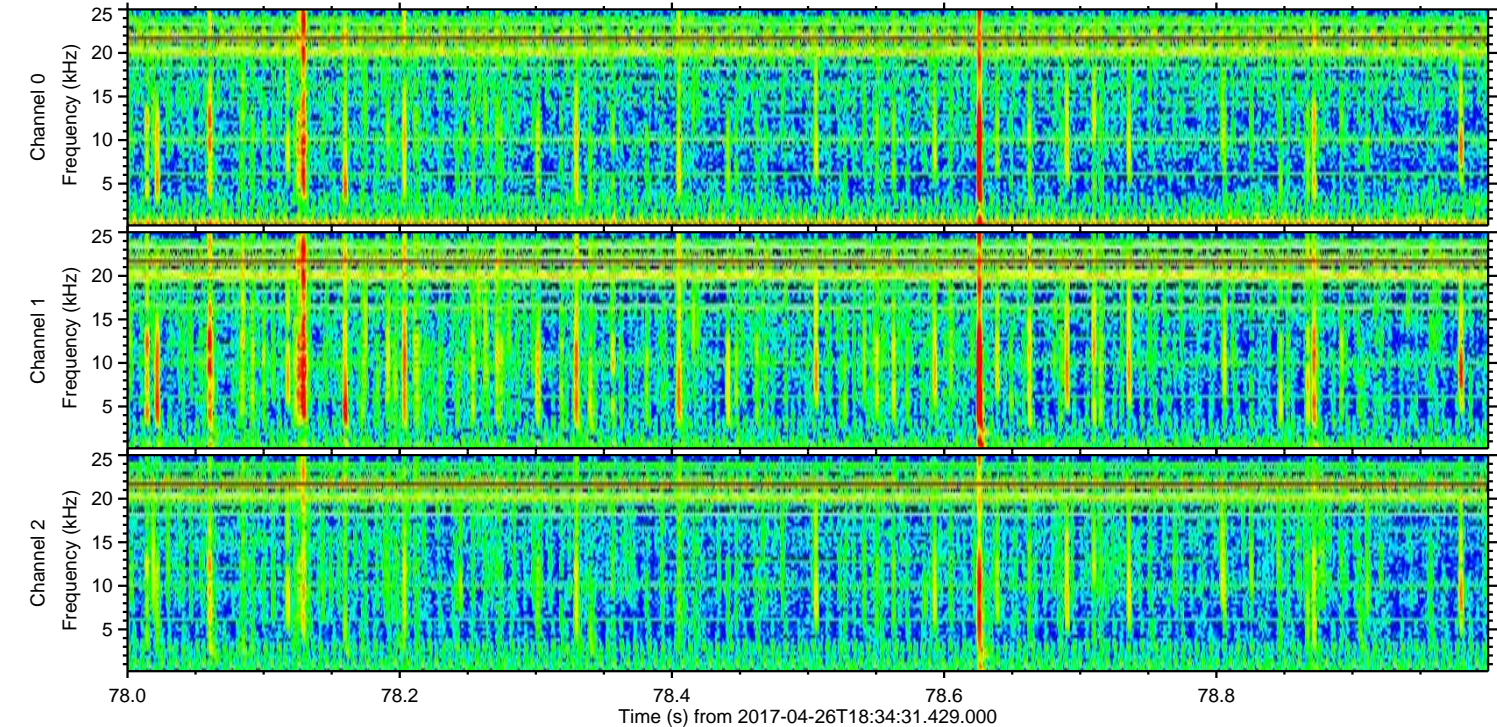
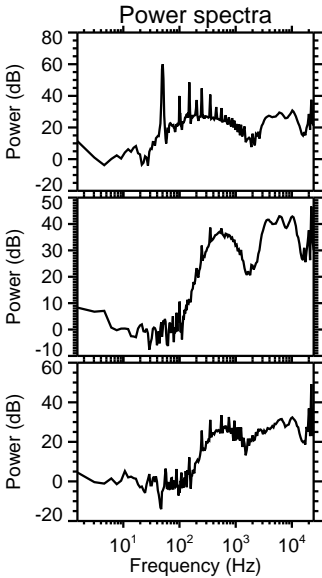
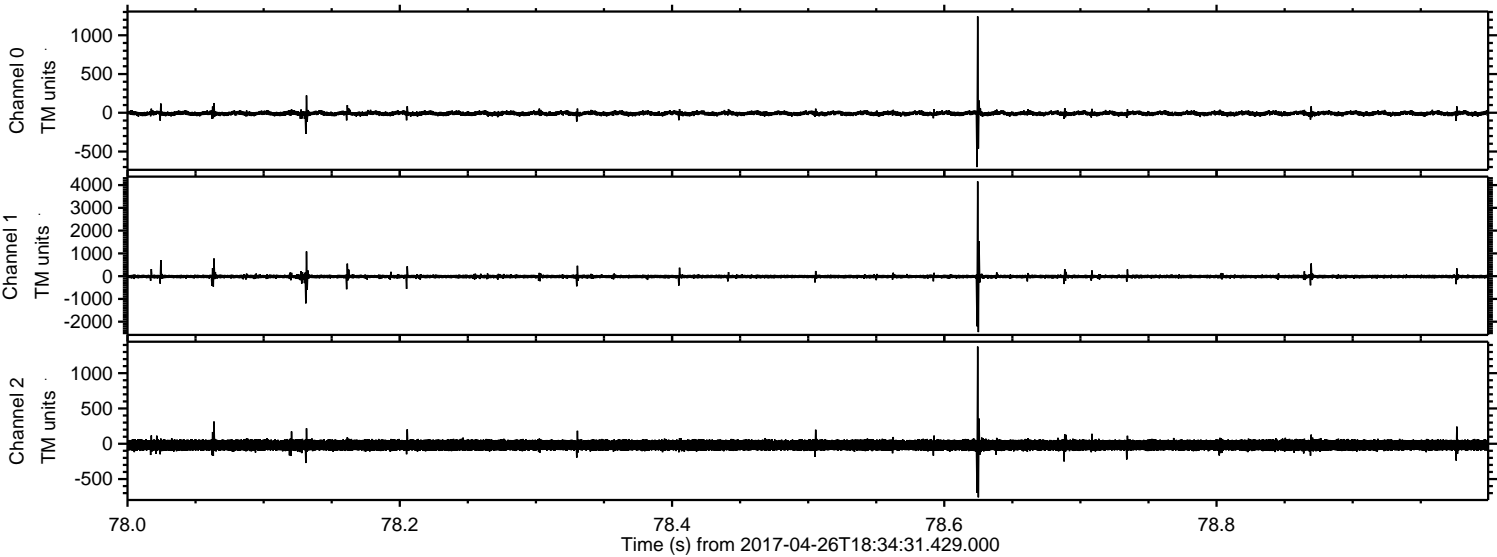


Channel 0
mn: -834
mx: 1244
 μ : -8.1
 σ : 14.9

Channel 1
mn: -3720
mx: 4163
 μ : -16.3
 σ : 36.3

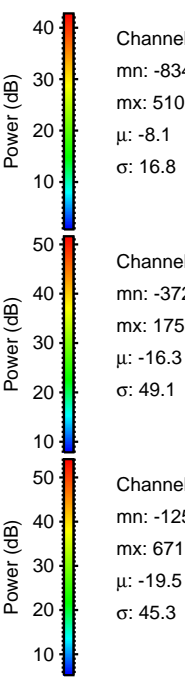
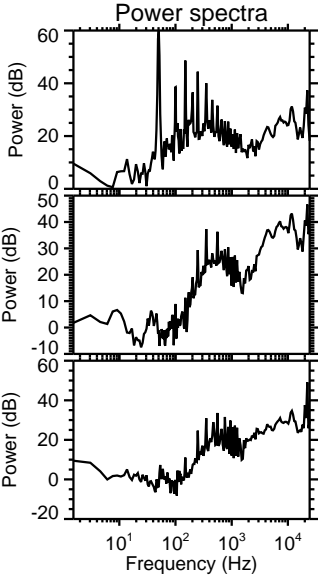
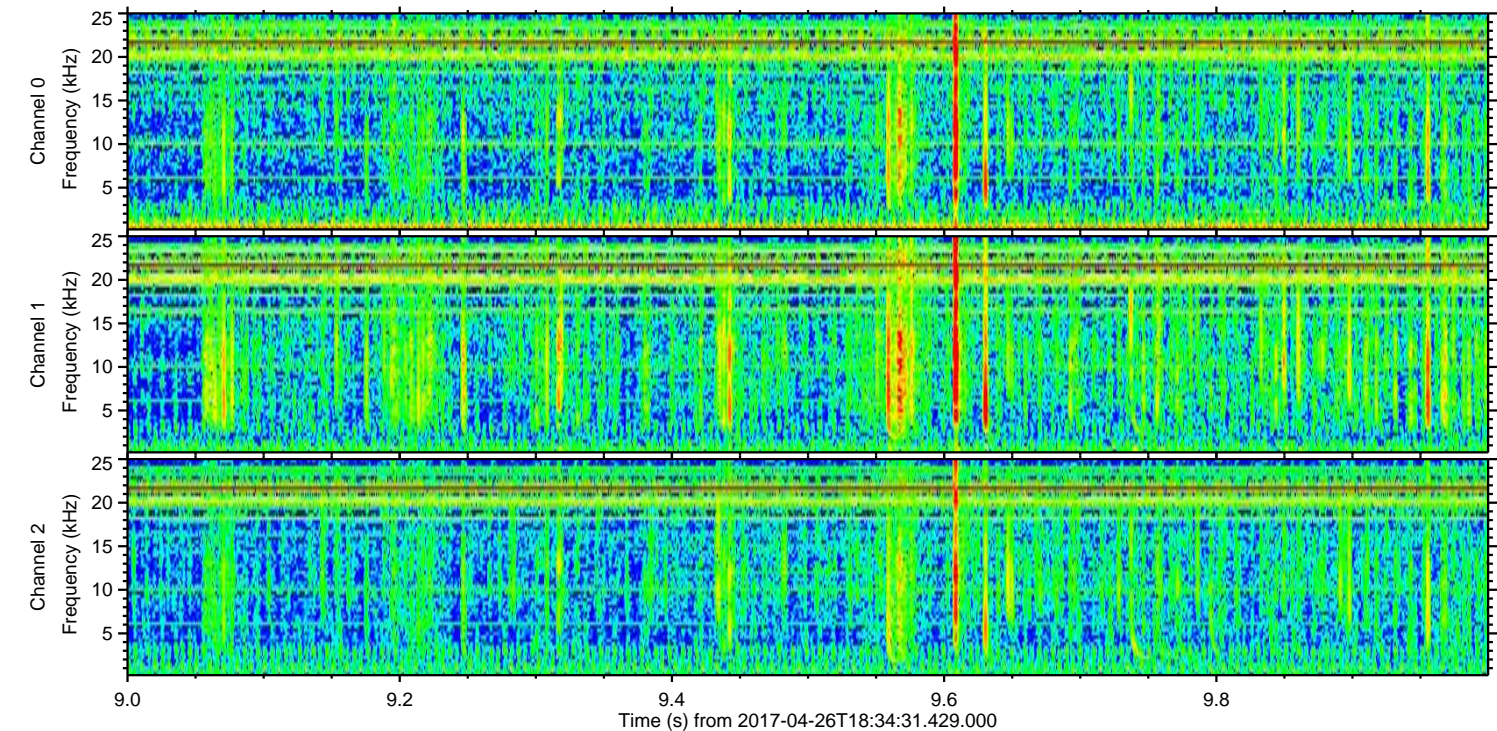
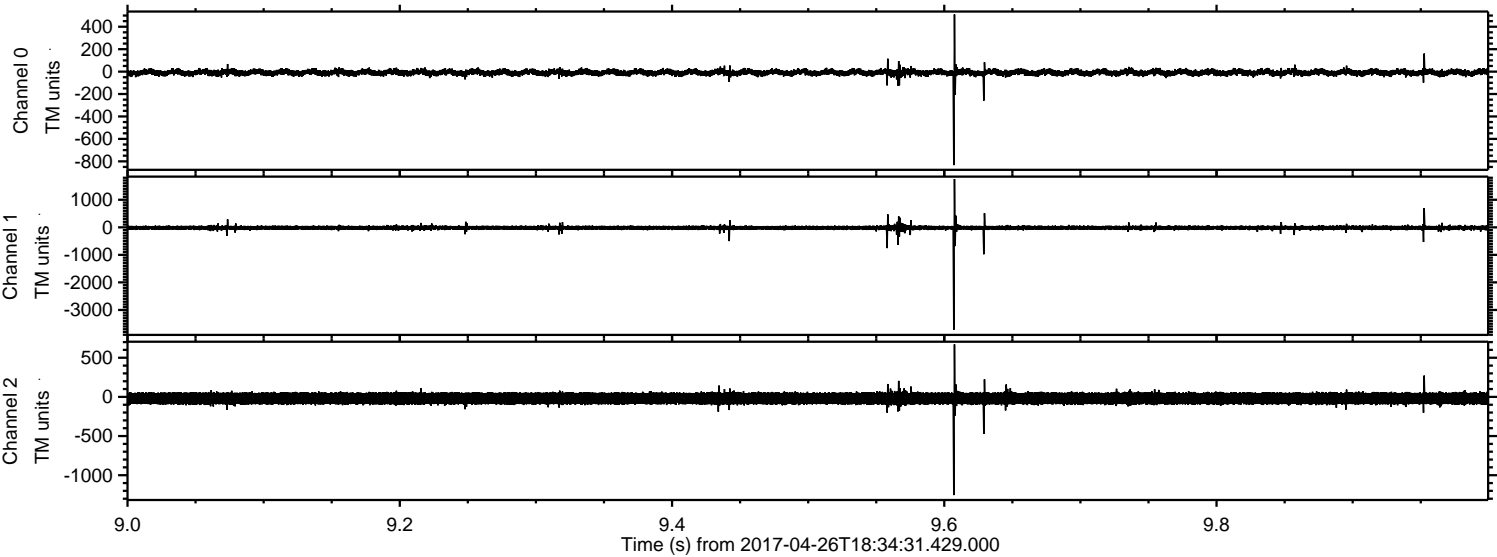
Channel 2
mn: -1384
mx: 1798
 μ : -19.5
 σ : 44.5

Processed Wed Apr 26 20:42:49 2017 by ELM ver.2012-10-06 from 001__elm20170426_183430__dat00.bin

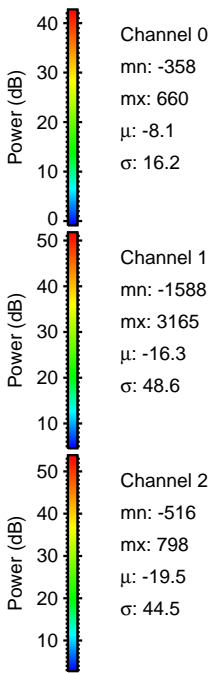
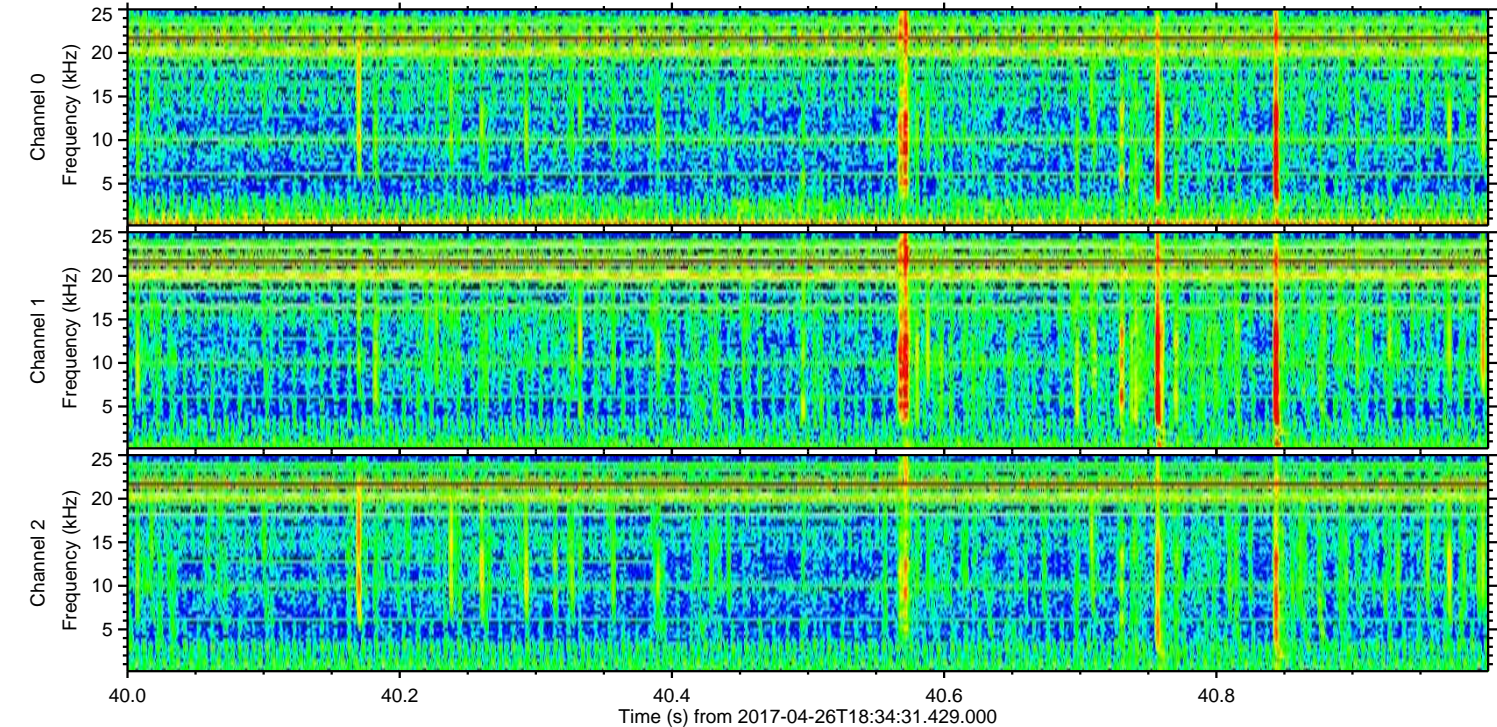
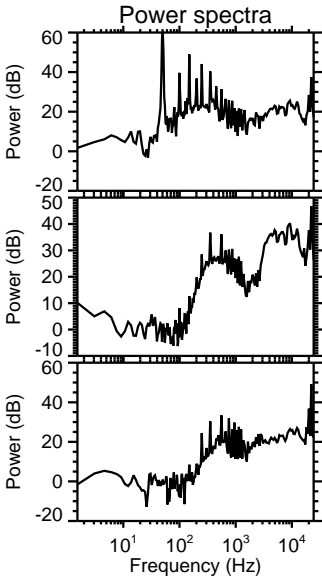
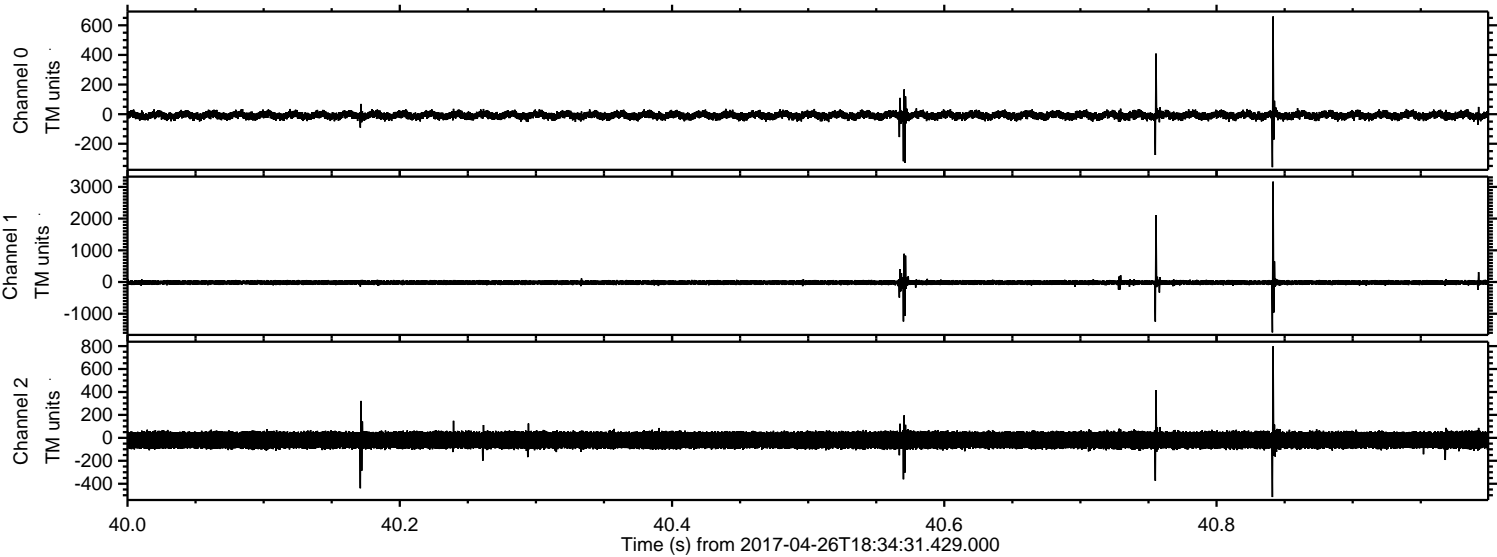


ELMAVAN 3D WAVEFORMS (Measured data sampled at 50 kHz) 51000 packets of 144 samples from 2017-04-26T18:34:31.429.000. Part 10/147

Processed Wed Apr 26 20:42:50 2017 by ELM ver.2012-10-06 from 001_elm20170426_183430__dat00.bin

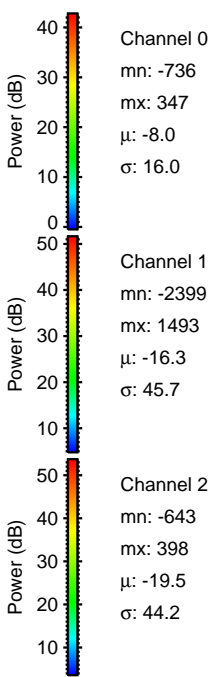
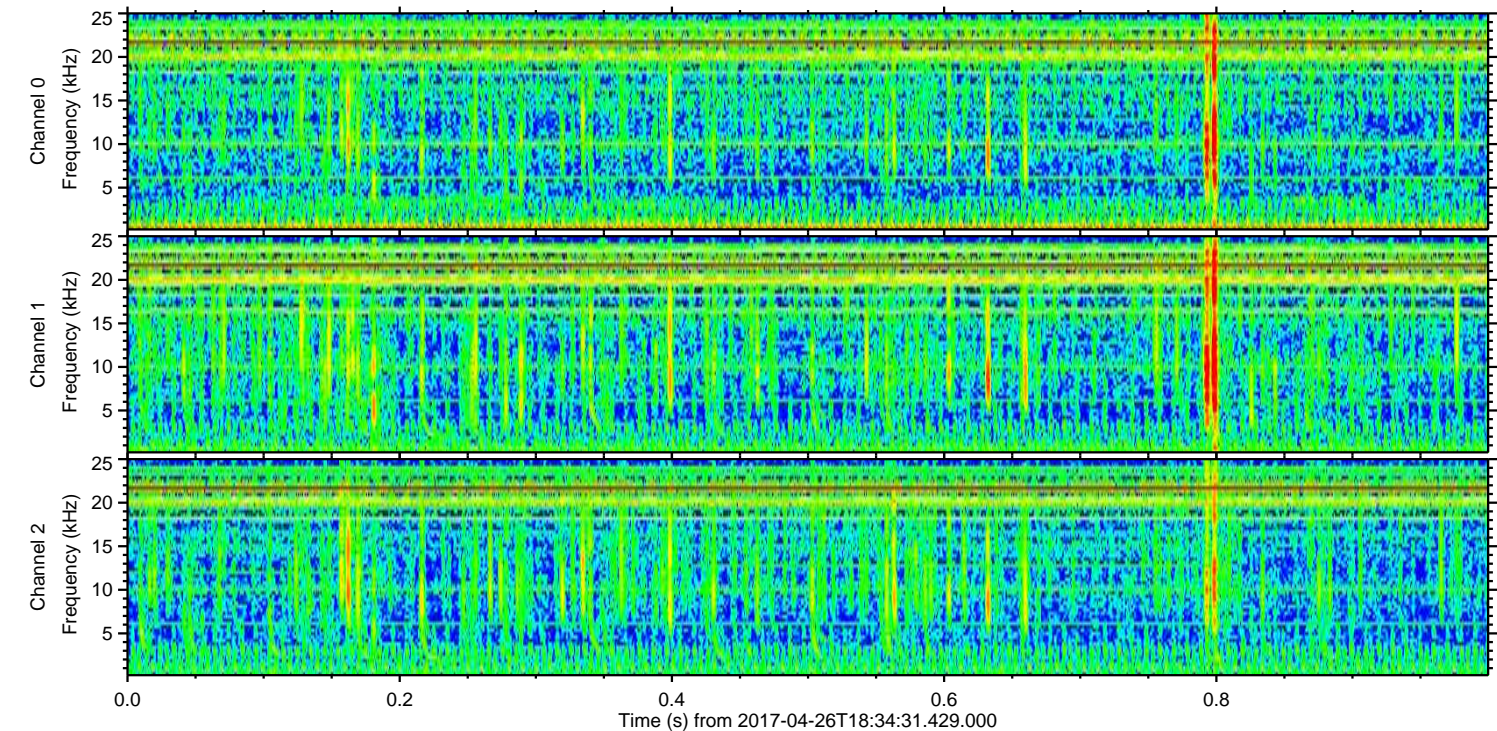
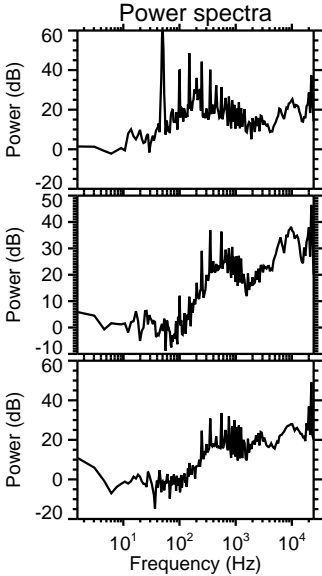
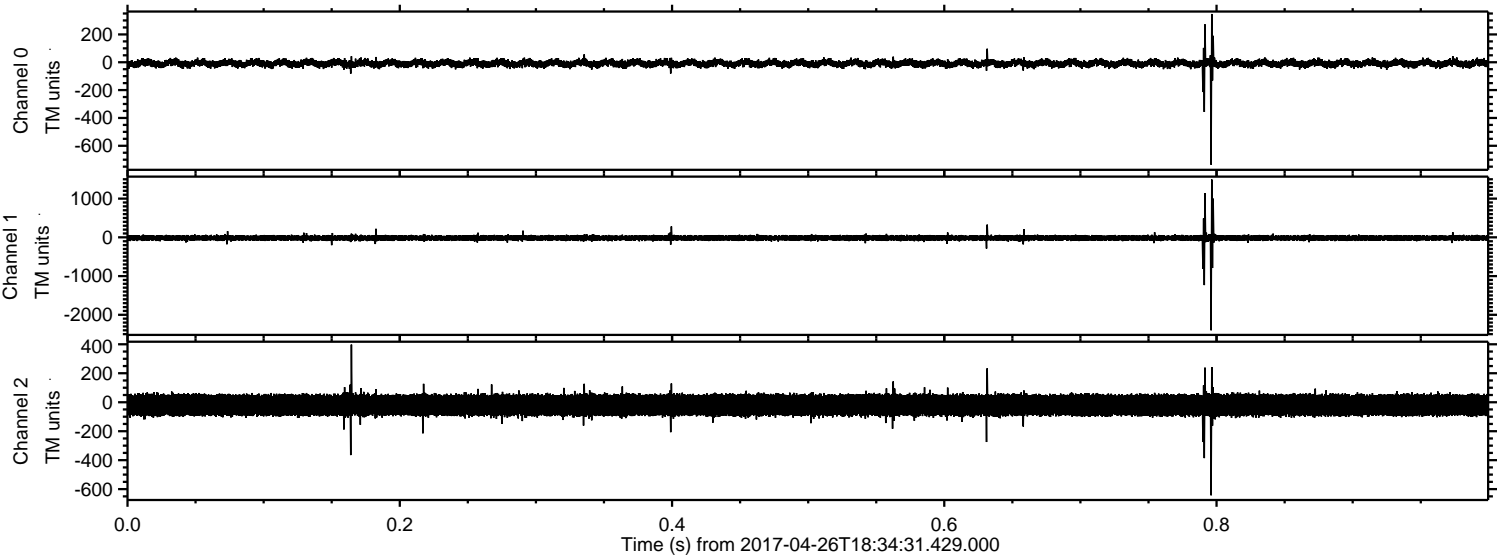


Processed Wed Apr 26 20:42:51 2017 by ELM ver.2012-10-06 from 001__elm20170426_183430__dat00.bin

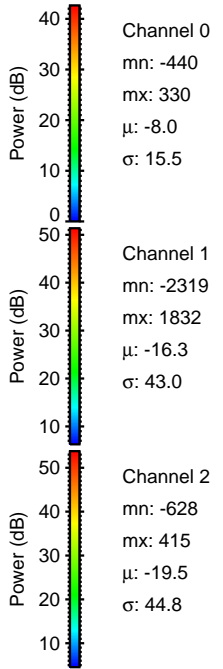
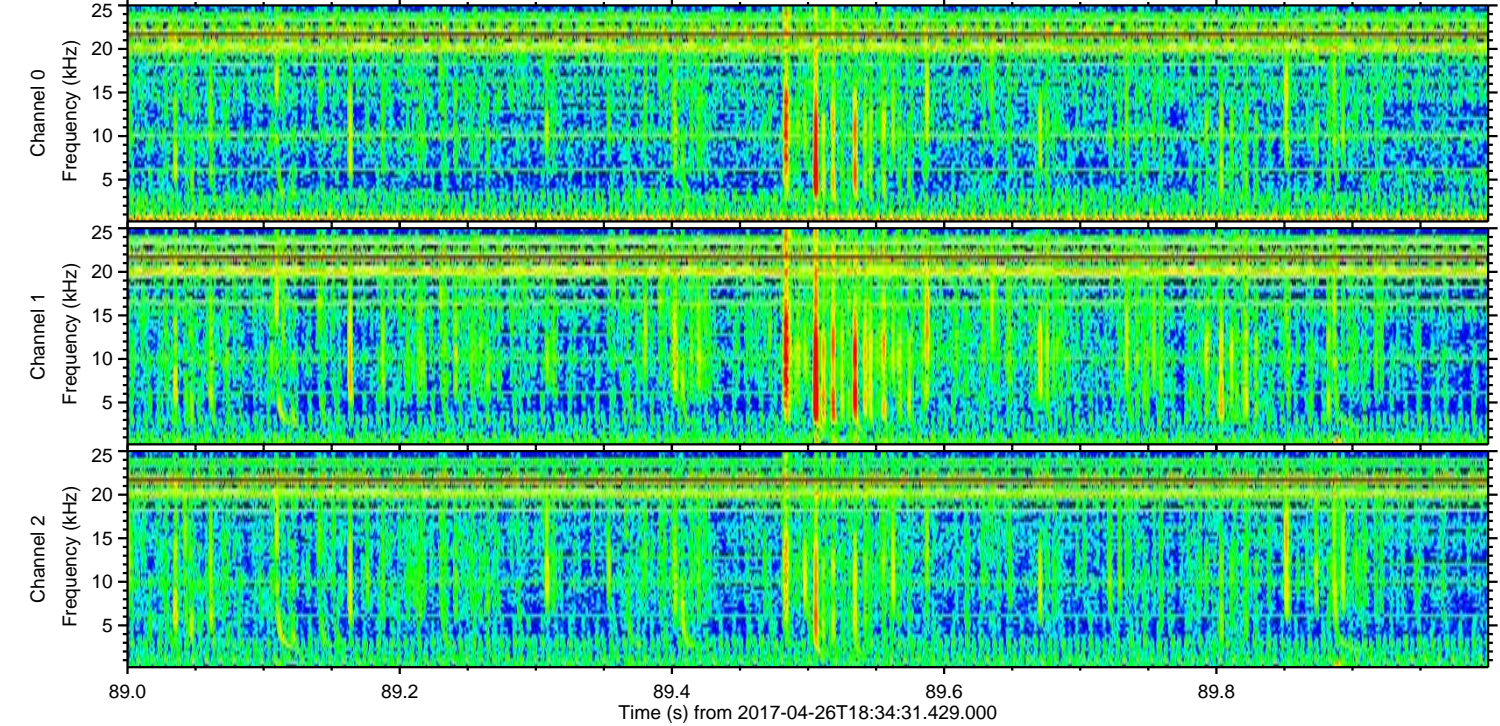
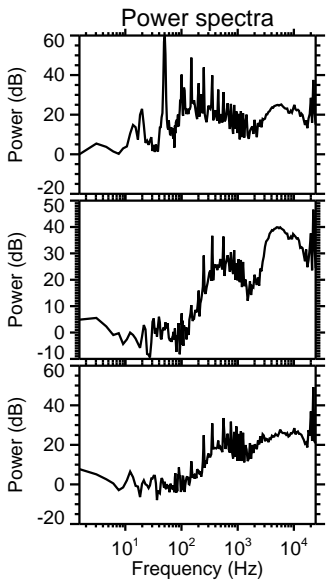
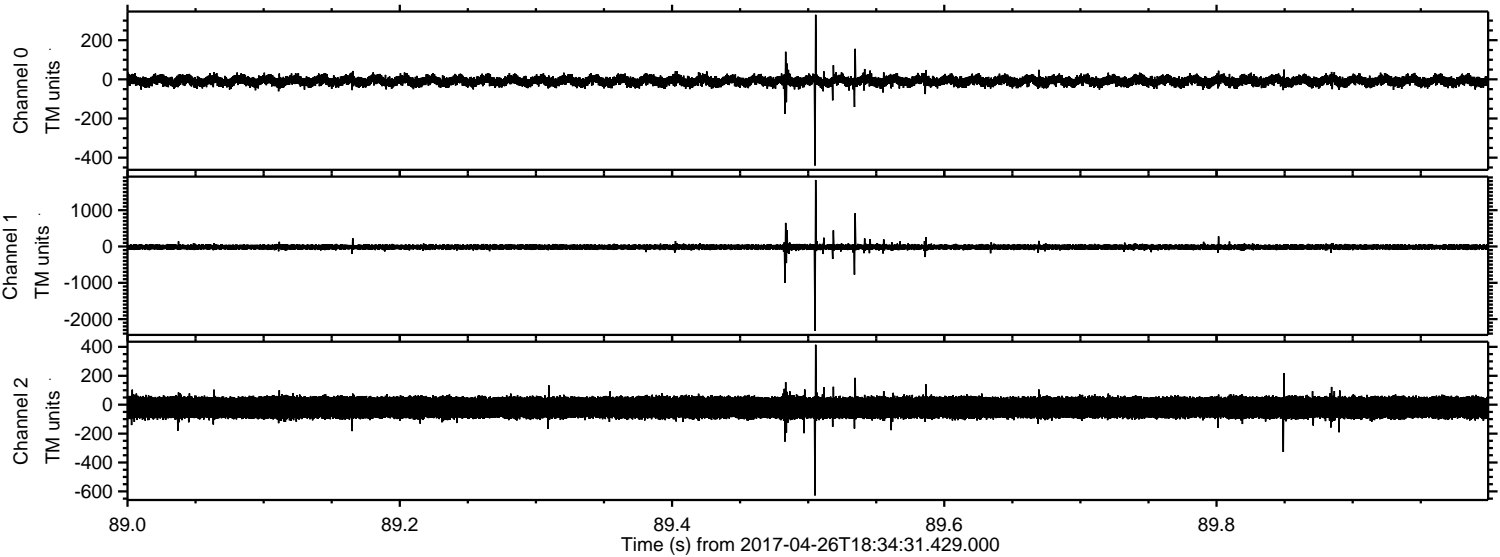


ELMAVAN 3D WAVEFORMS (Measured data sampled at 50 kHz) 51000 packets of 144 samples from 2017-04-26T18:34:31.429.000. Part 1/147

Processed Wed Apr 26 20:42:52 2017 by ELM ver.2012-10-06 from 001__elm20170426_183430__dat00.bin

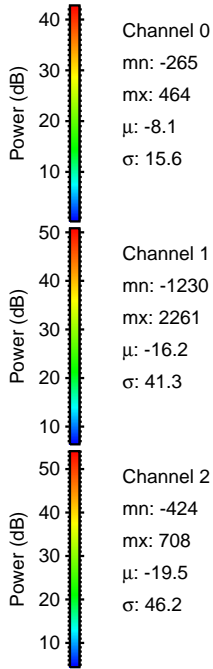
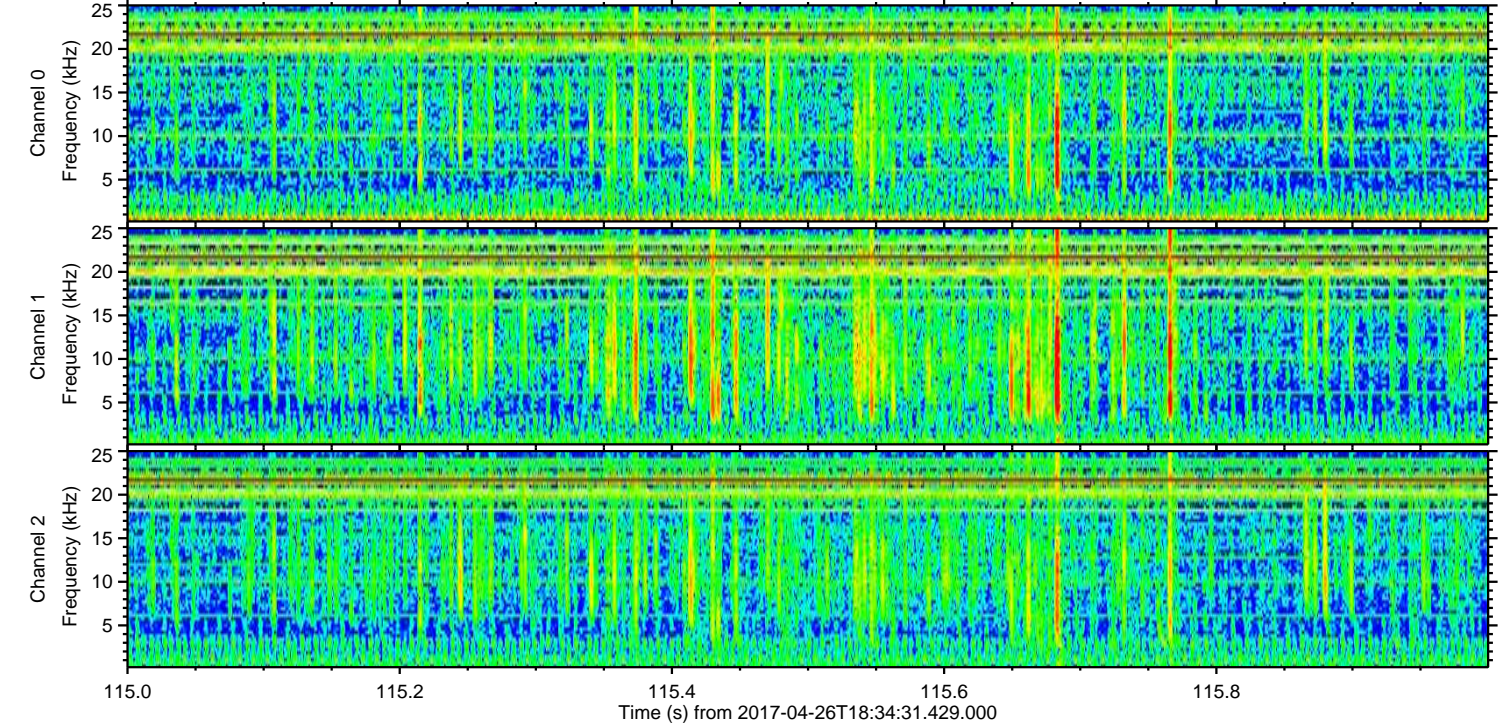
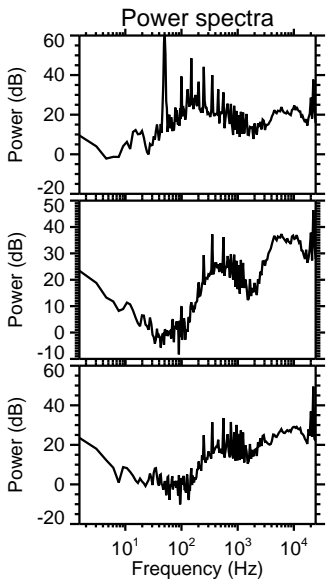
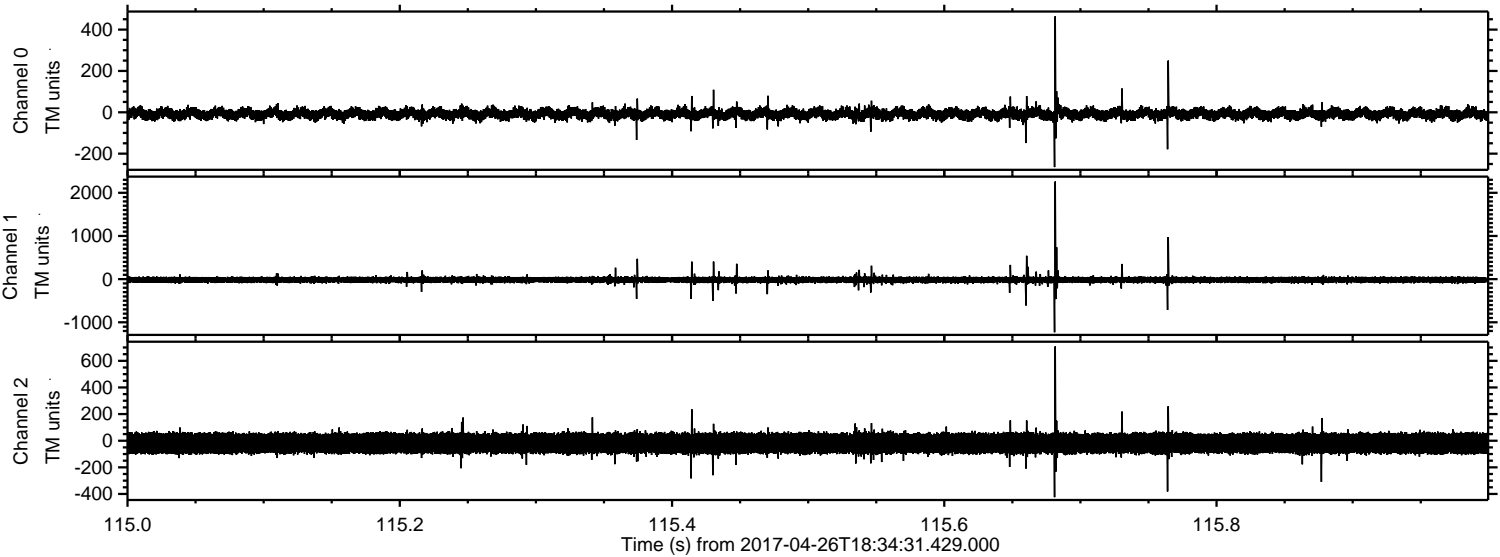


Processed Wed Apr 26 20:42:53 2017 by ELM ver.2012-10-06 from 001__elm20170426_183430__dat00.bin



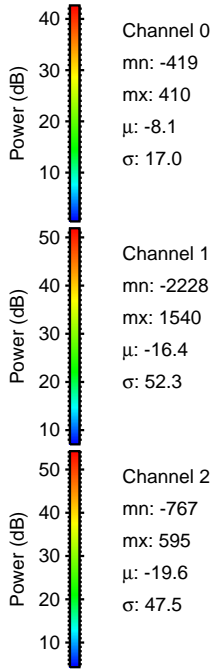
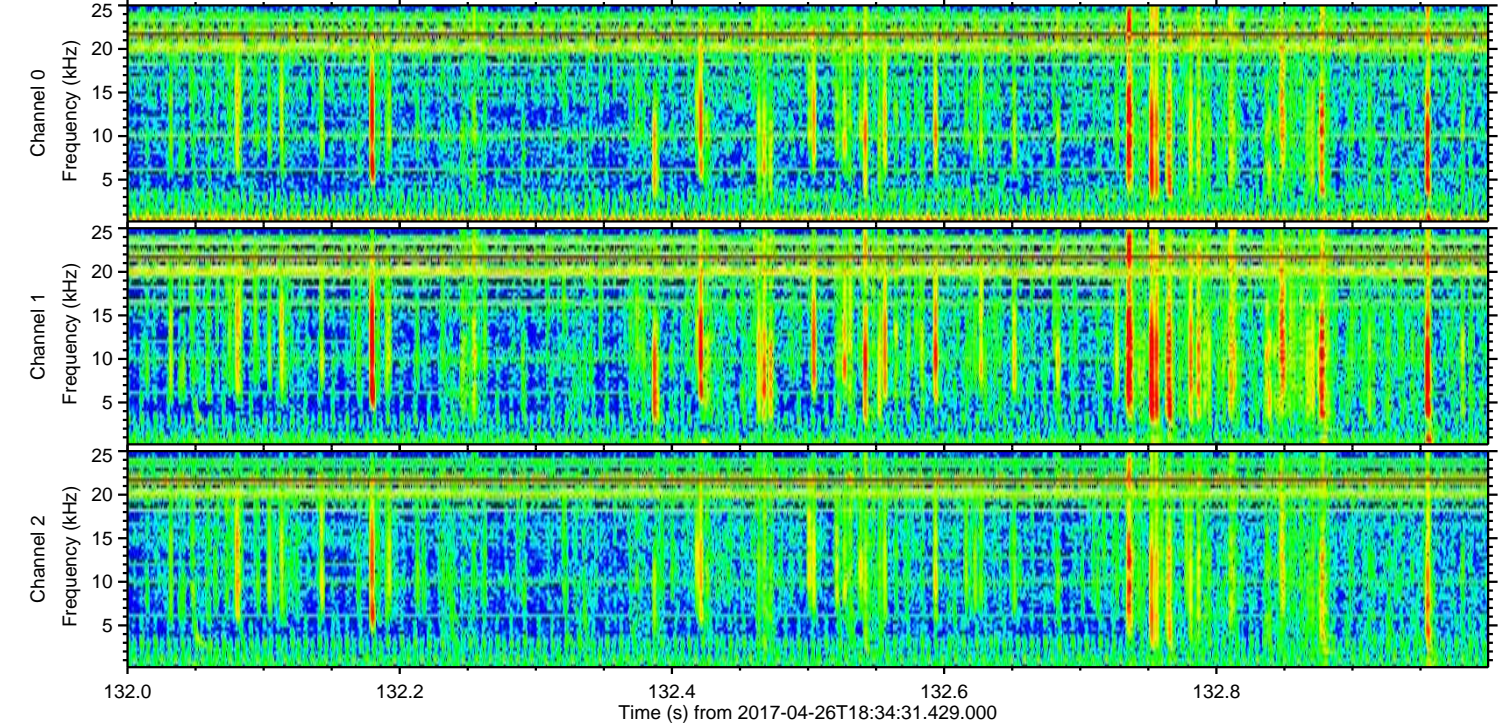
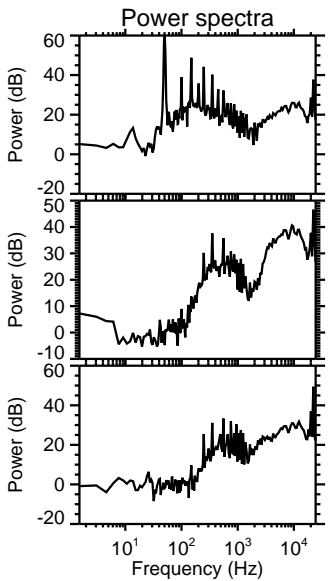
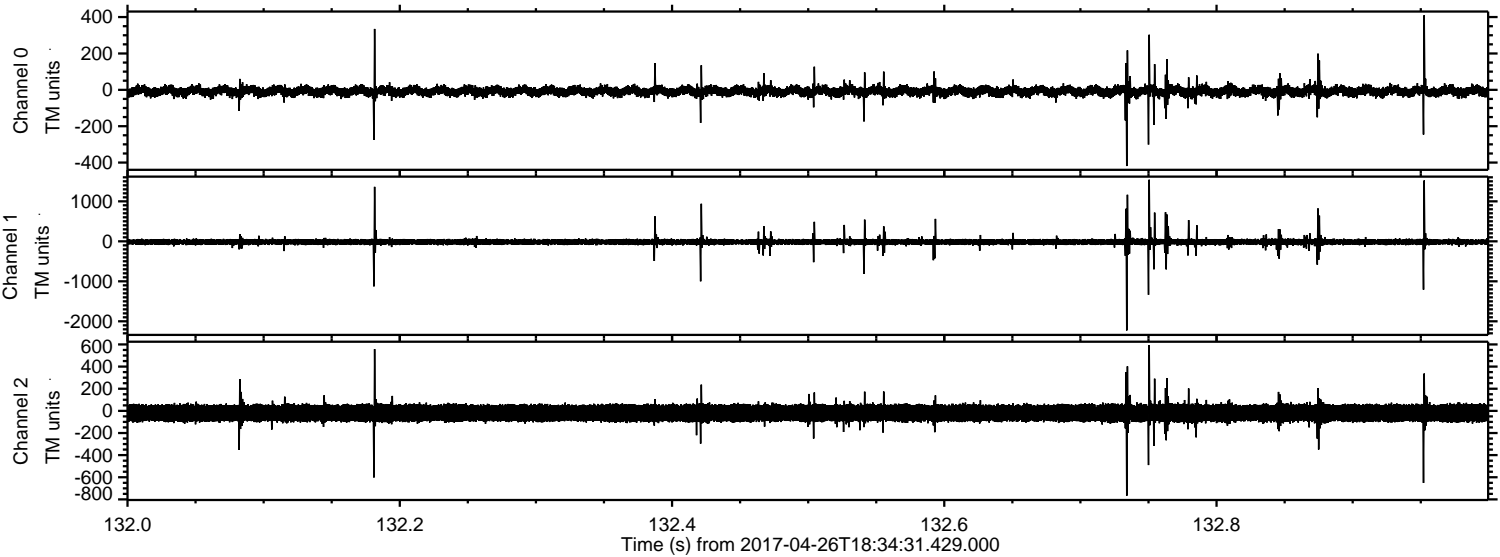
ELMAVAN 3D WAVEFORMS (Measured data sampled at 50 kHz) 51000 packets of 144 samples from 2017-04-26T18:34:31.429.000. Part 116/147

Processed Wed Apr 26 20:42:54 2017 by ELM ver.2012-10-06 from 001__elm20170426_183430__dat00.bin



ELMAVAN 3D WAVEFORMS (Measured data sampled at 50 kHz) 51000 packets of 144 samples from 2017-04-26T18:34:31.429.000. Part 133/147

Processed Wed Apr 26 20:42:55 2017 by ELM ver.2012-10-06 from 001__elm20170426_183430__dat00.bin

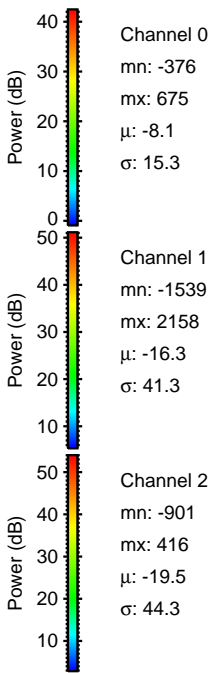
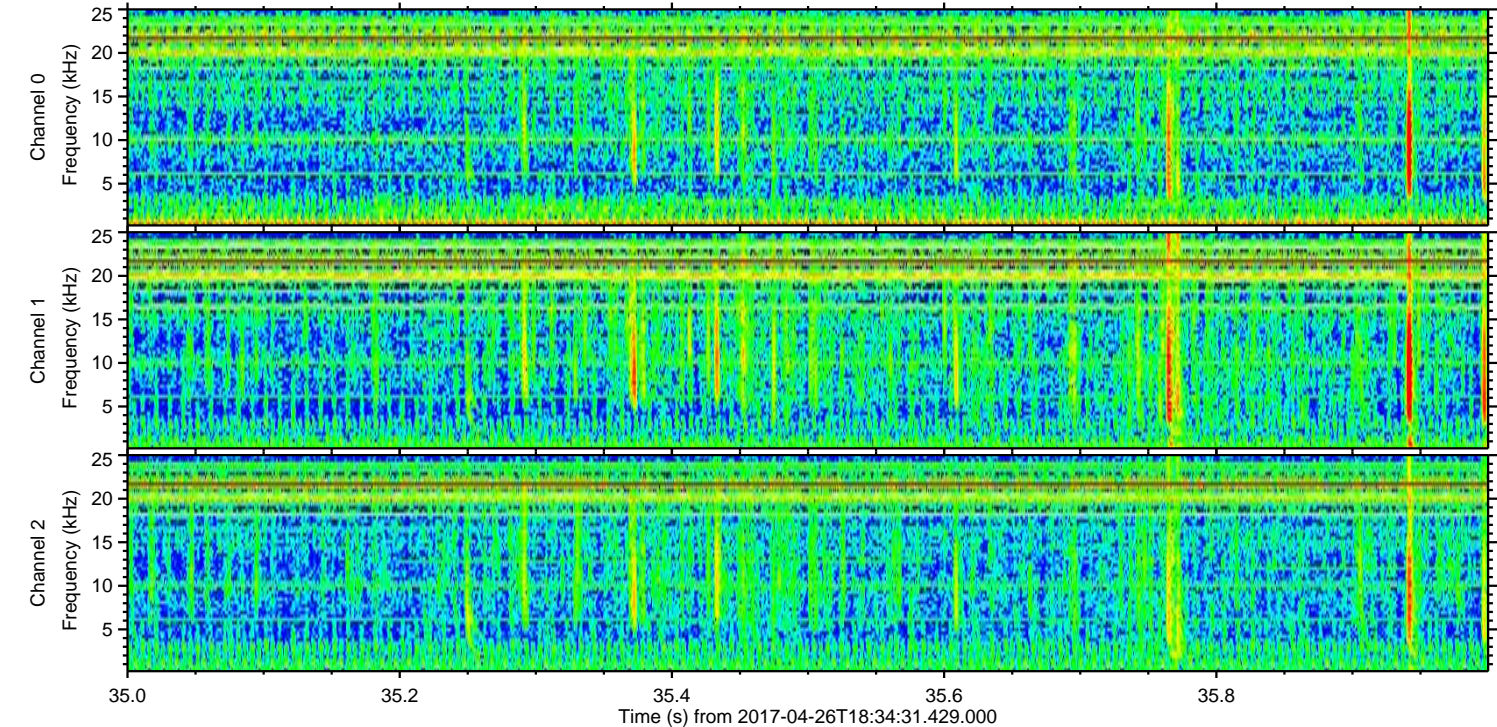
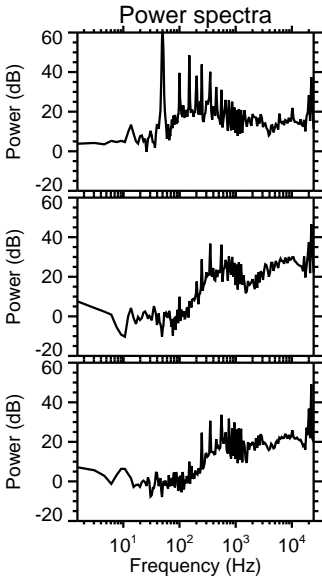
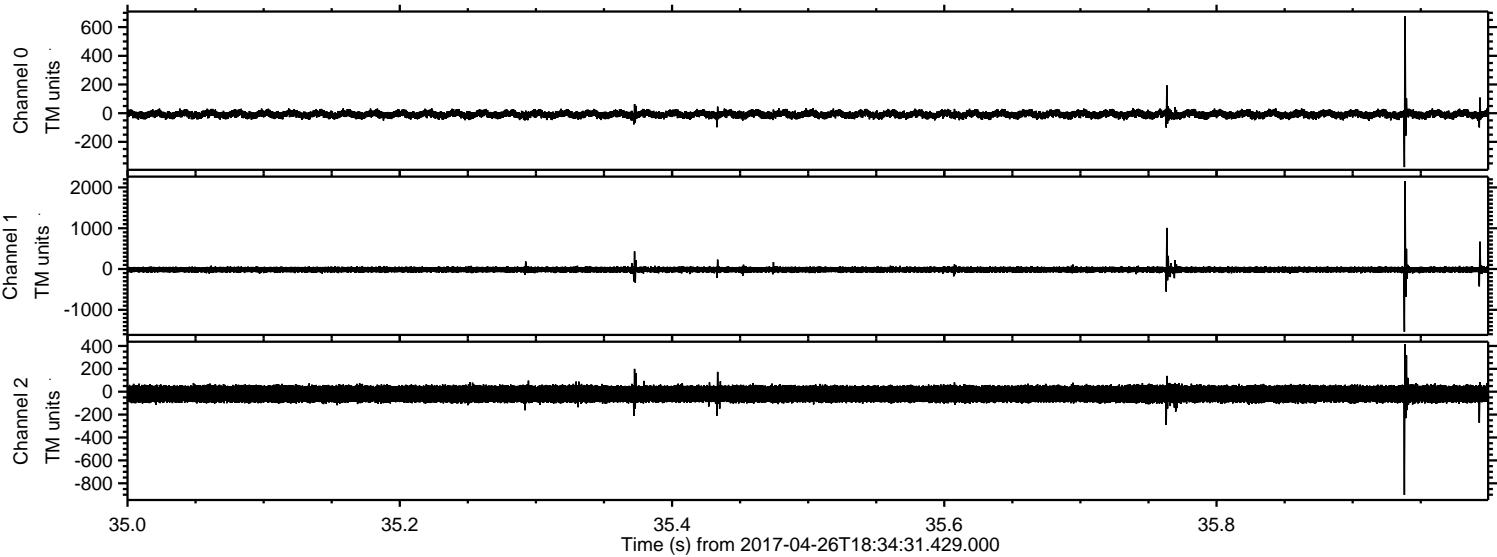


Channel 0
mn: -419
mx: 410
 μ : -8.1
 σ : 17.0

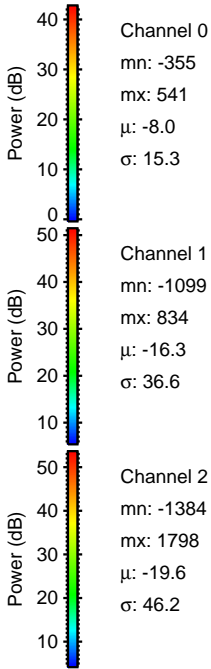
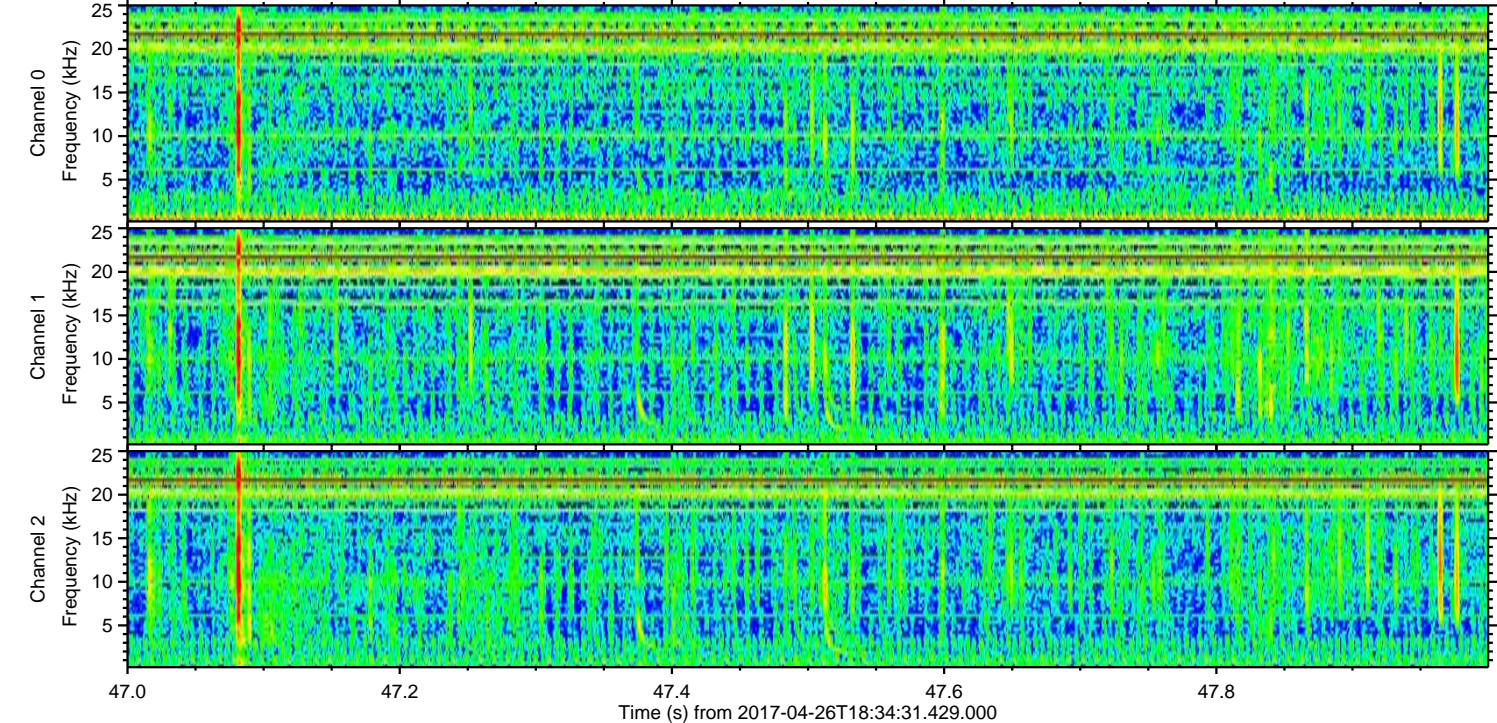
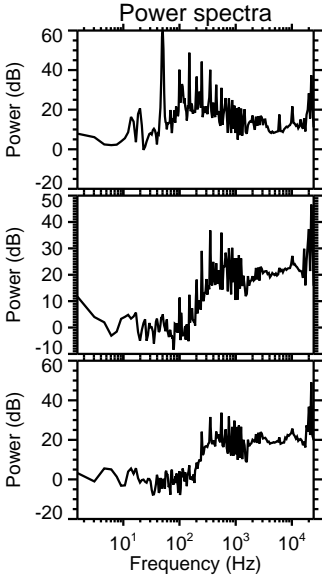
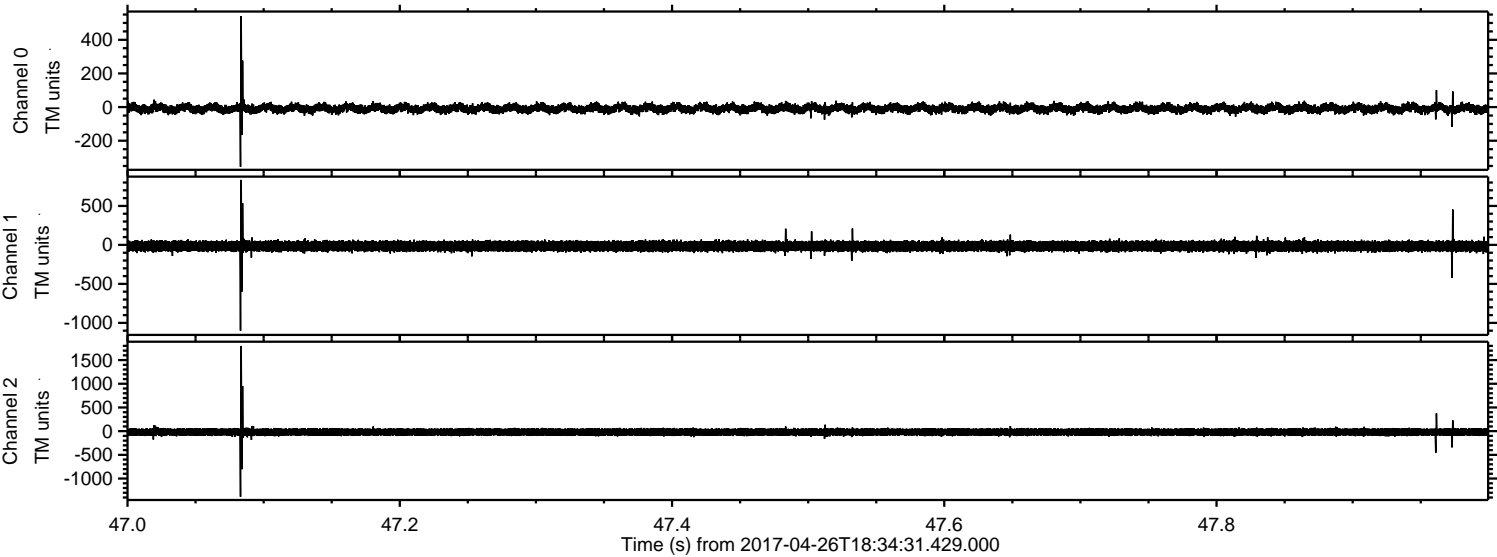
Channel 1
mn: -2228
mx: 1540
 μ : -16.4
 σ : 52.3

Channel 2
mn: -767
mx: 595
 μ : -19.6
 σ : 47.5

Processed Wed Apr 26 20:42:56 2017 by ELM ver.2012-10-06 from 001__elm20170426_183430__dat00.bin



Processed Wed Apr 26 20:42:57 2017 by ELM ver.2012-10-06 from 001__elm20170426_183430__dat00.bin



Processed Wed Apr 26 20:42:58 2017 by ELM ver.2012-10-06 from 001__elm20170426_183430__dat00.bin

