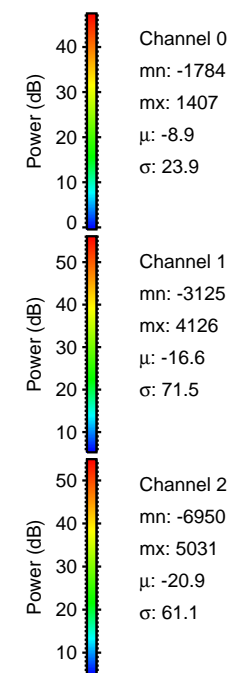
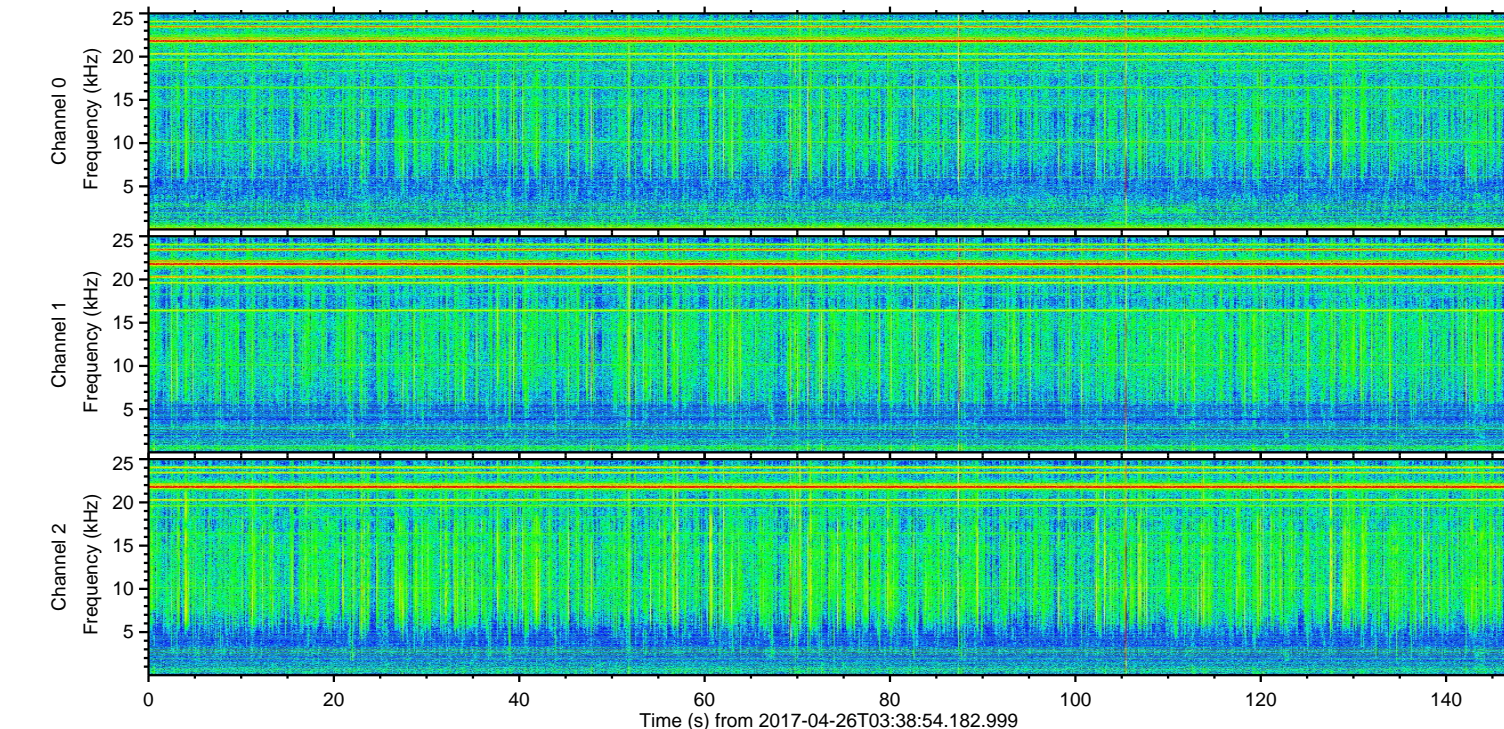
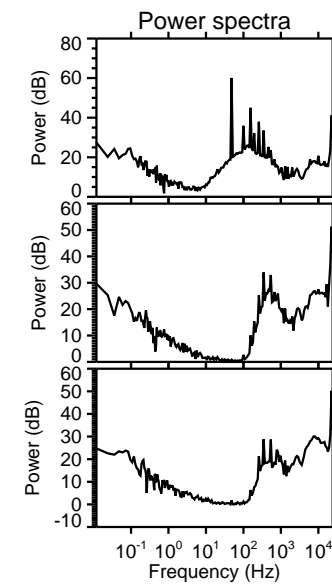
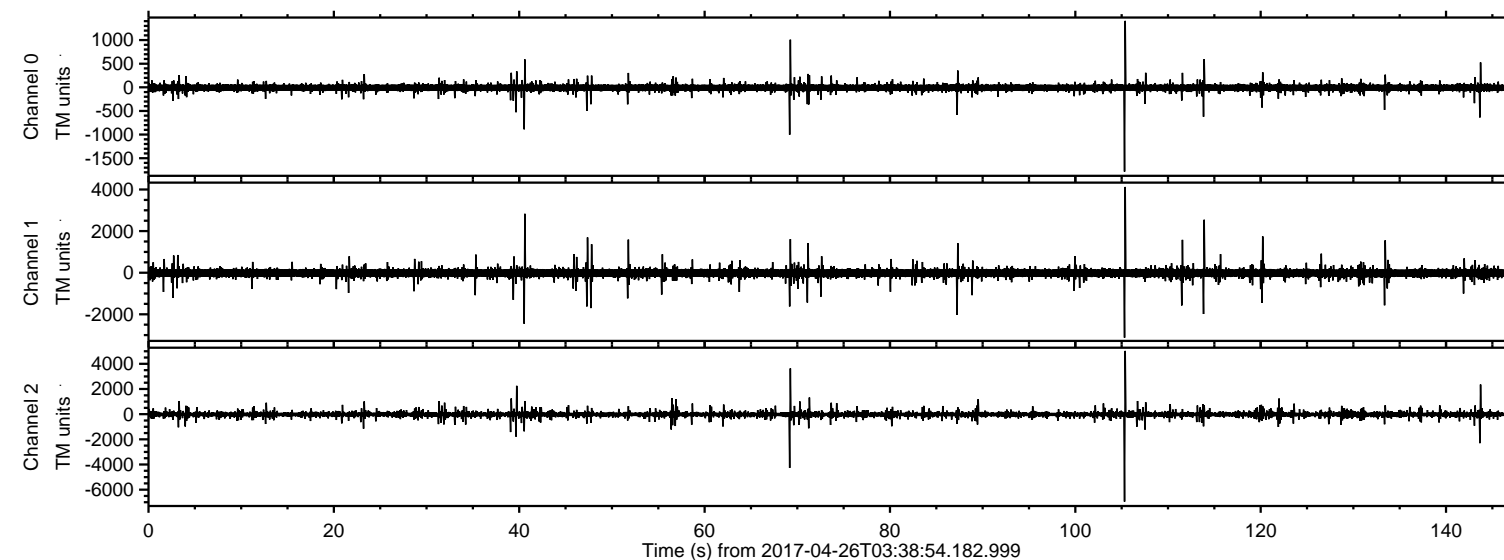


ELMAVAN 3D WAVEFORMS (Measured data sampled at 50 kHz) 51000 packets of 144 samples from 2017-04-26T03:38:54.182.999.

Processed Wed Apr 26 05:46:39 2017 by ELM ver.2012-10-06 from 001\_\_elm20170426\_033853\_\_dat00.bin



Channel 0  
mn: -1784  
mx: 1407  
 $\mu$ : -8.9  
 $\sigma$ : 23.9

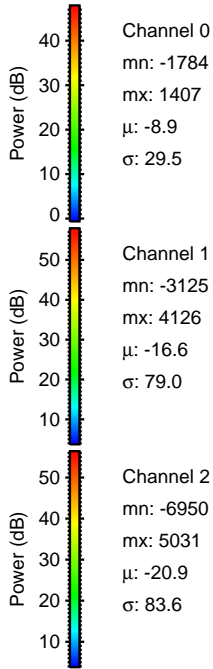
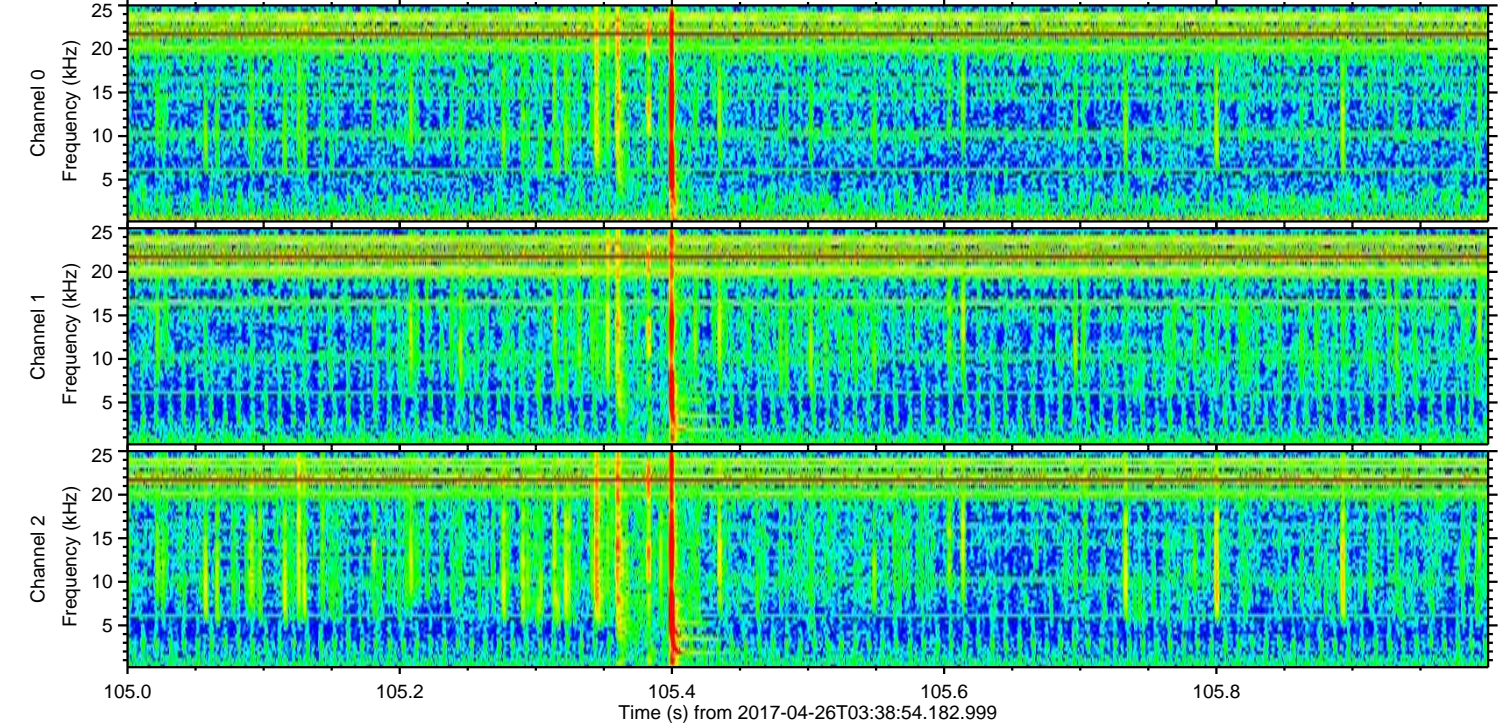
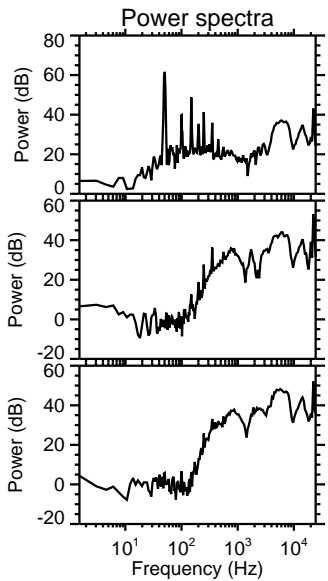
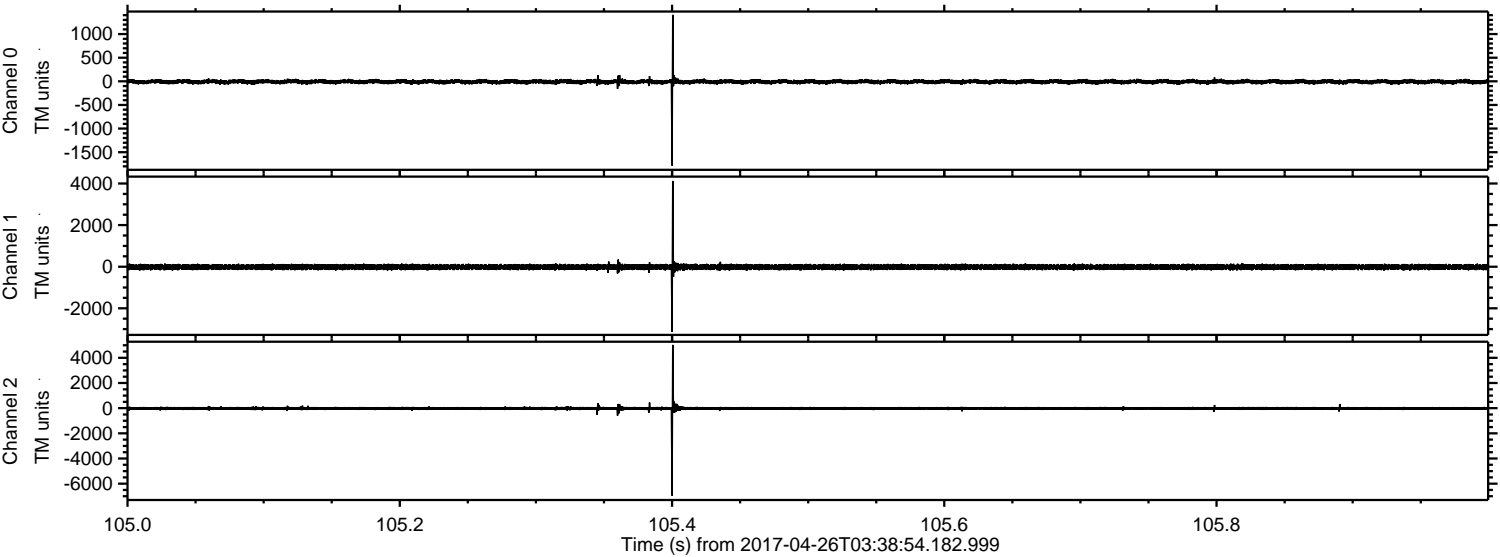
Channel 1  
mn: -3125  
mx: 4126  
 $\mu$ : -16.6  
 $\sigma$ : 71.5

Channel 2  
mn: -6950  
mx: 5031  
 $\mu$ : -20.9  
 $\sigma$ : 61.1



ELMAVAN 3D WAVEFORMS (Measured data sampled at 50 kHz) 51000 packets of 144 samples from 2017-04-26T03:38:54.182.999. Part 106/147

Processed Wed Apr 26 05:46:51 2017 by ELM ver.2012-10-06 from 001\_\_elm20170426\_033853\_\_dat00.bin



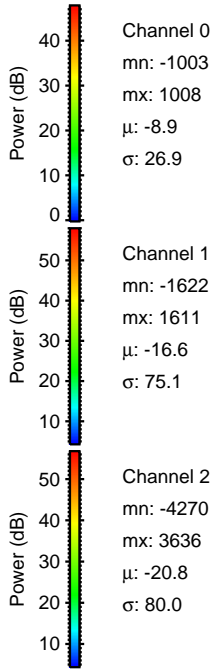
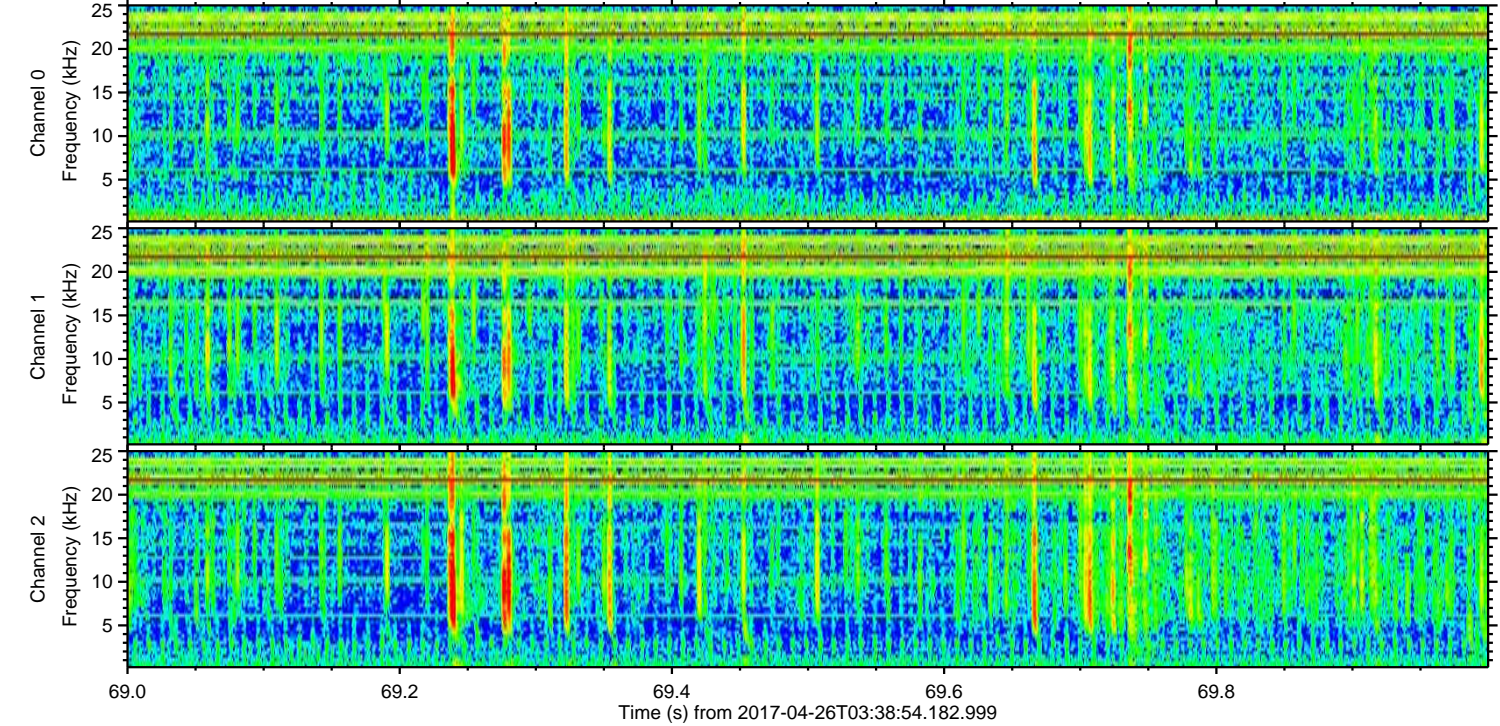
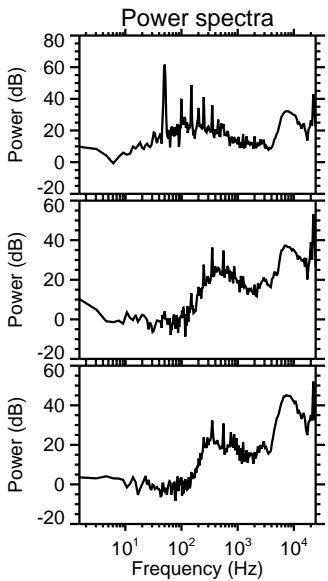
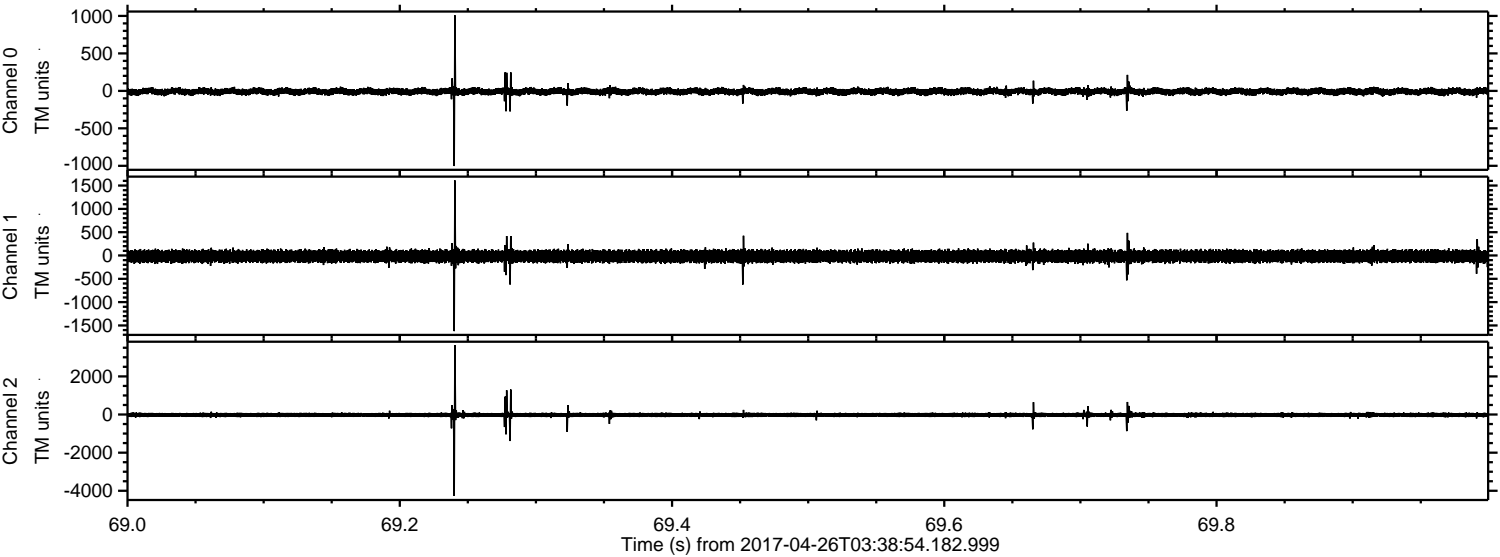
Channel 0  
mn: -1784  
mx: 1407  
 $\mu$ : -8.9  
 $\sigma$ : 29.5

Channel 1  
mn: -3125  
mx: 4126  
 $\mu$ : -16.6  
 $\sigma$ : 79.0

Channel 2  
mn: -6950  
mx: 5031  
 $\mu$ : -20.9  
 $\sigma$ : 83.6

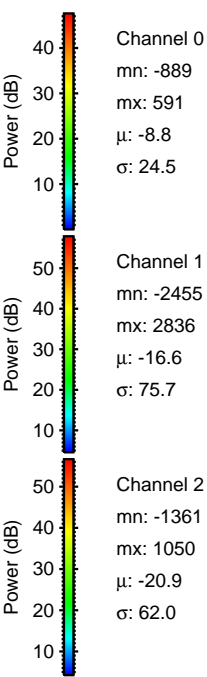
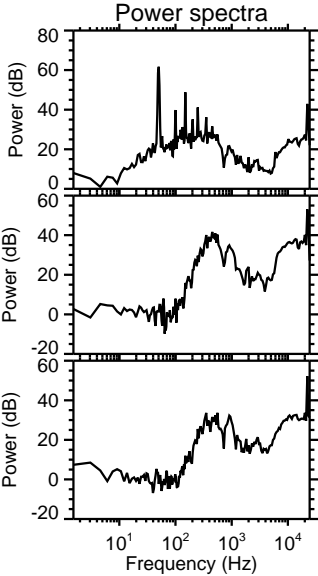
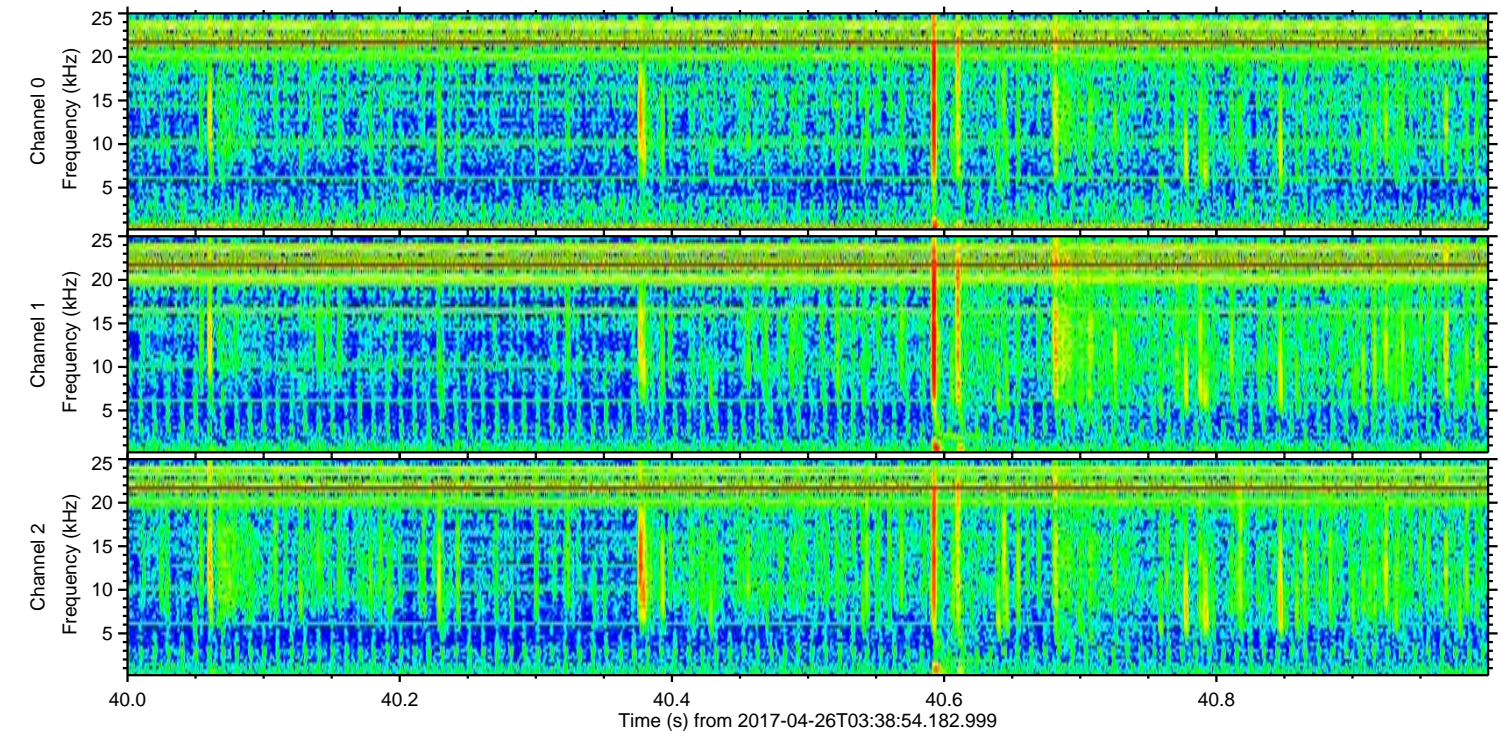
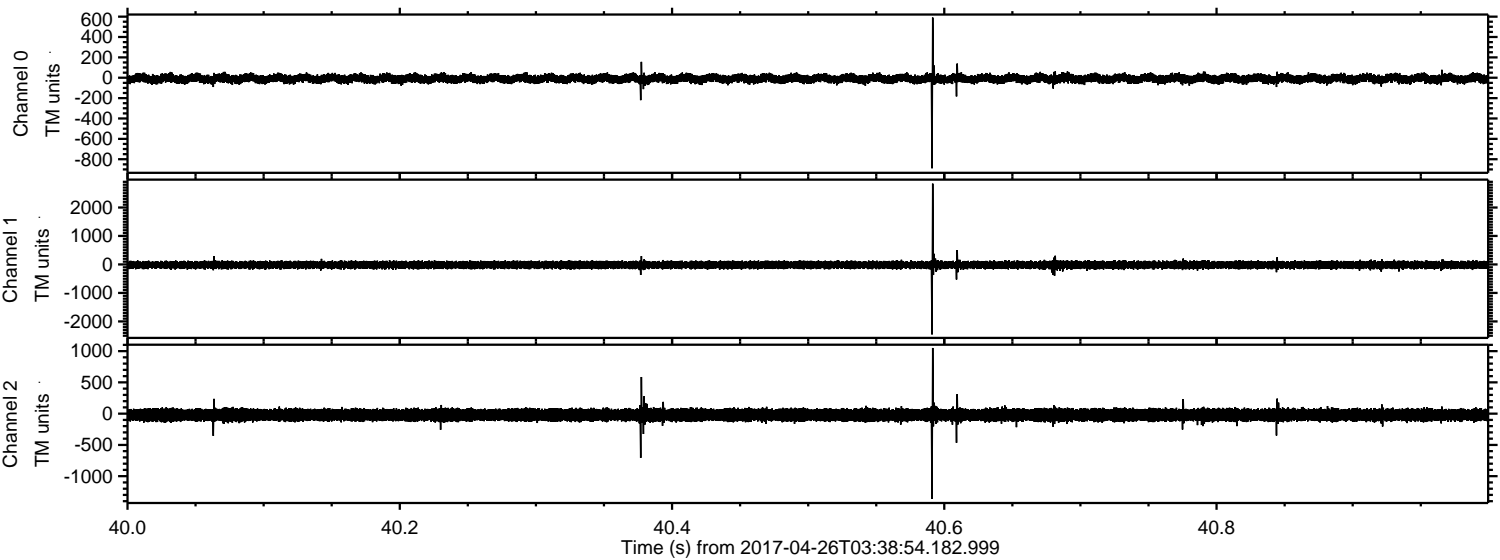


Processed Wed Apr 26 05:46:52 2017 by ELM ver.2012-10-06 from 001\_\_elm20170426\_033853\_\_dat00.bin





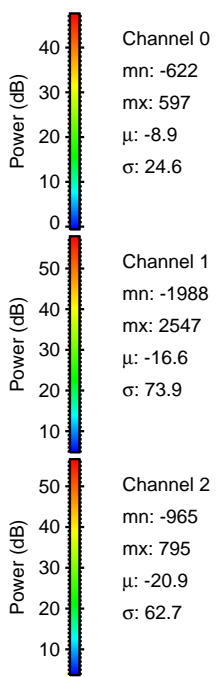
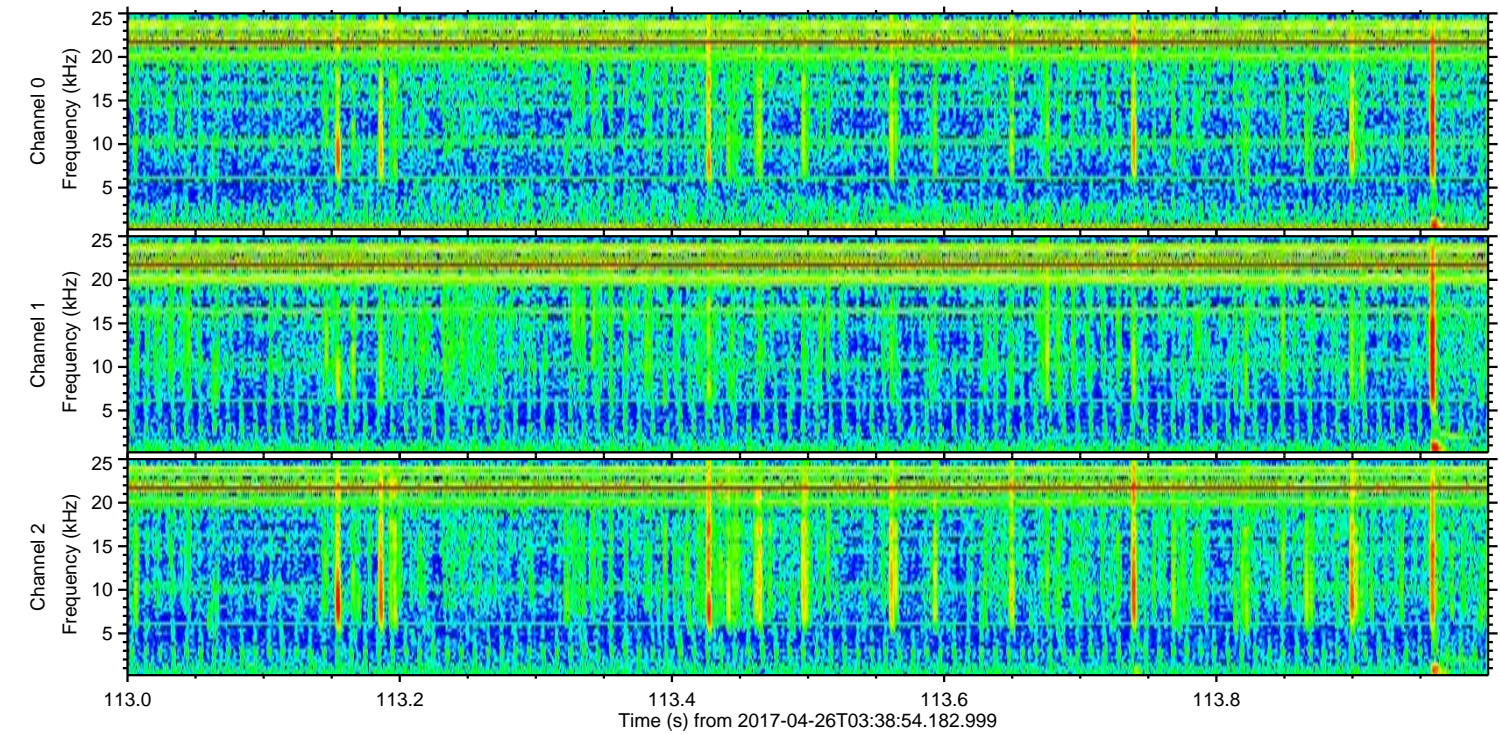
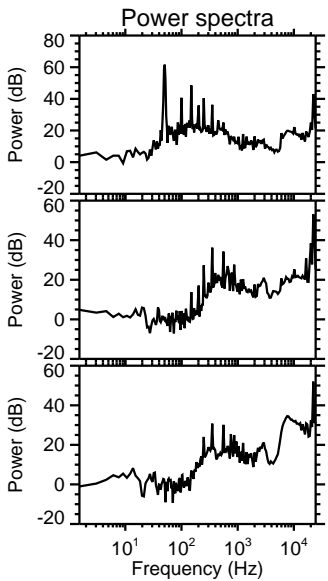
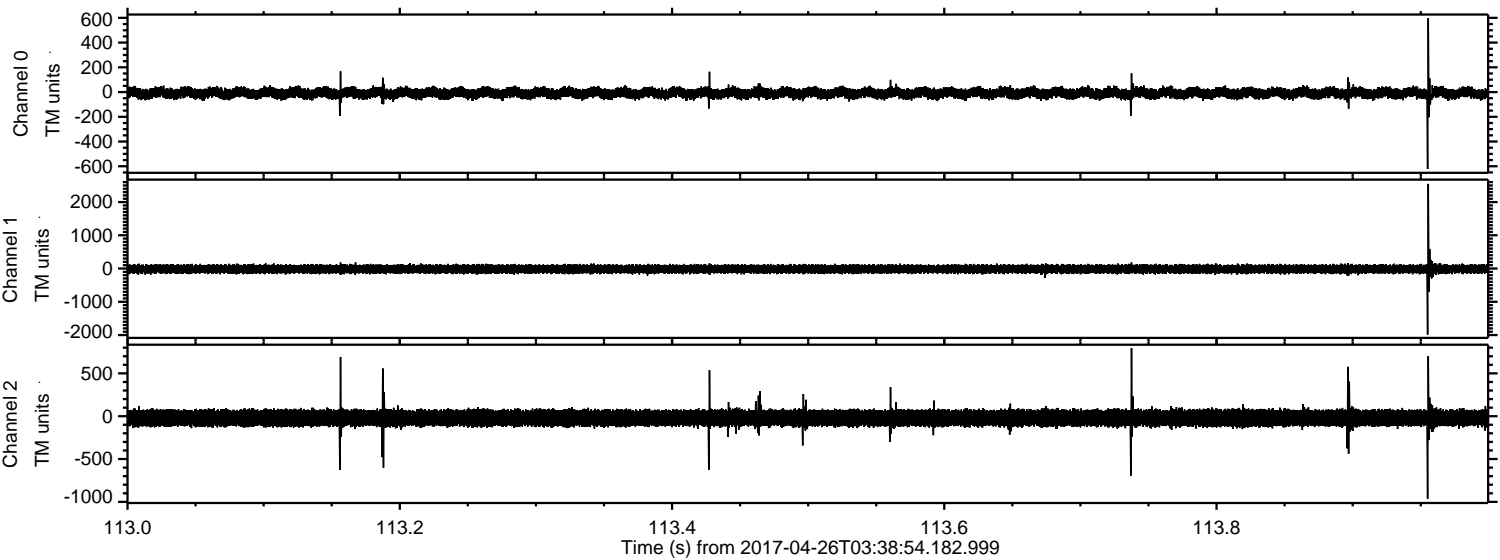
Processed Wed Apr 26 05:46:53 2017 by ELM ver.2012-10-06 from 001\_\_elm20170426\_033853\_\_dat00.bin





ELMAVAN 3D WAVEFORMS (Measured data sampled at 50 kHz) 51000 packets of 144 samples from 2017-04-26T03:38:54.182.999. Part 114/147

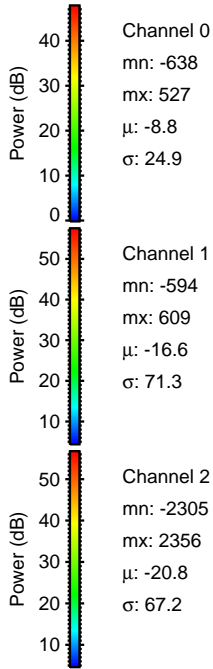
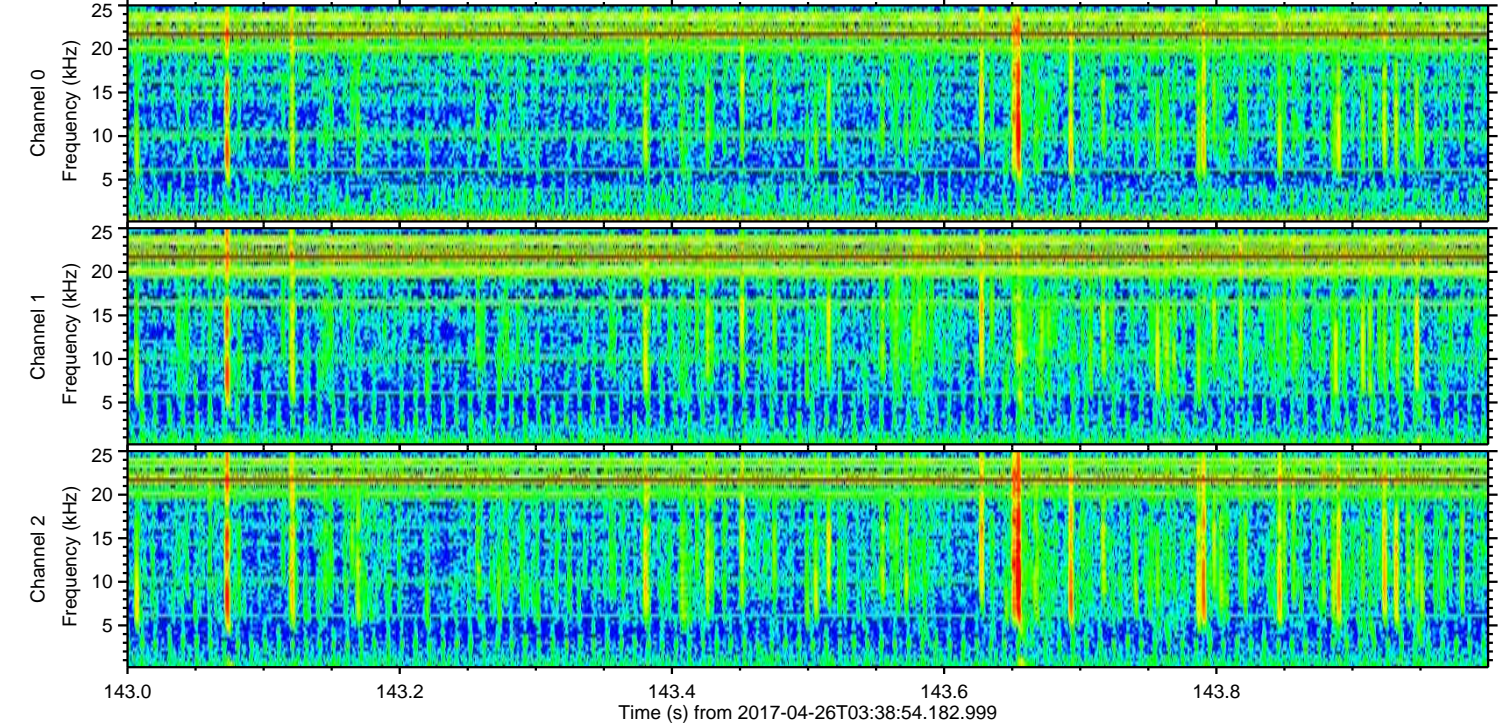
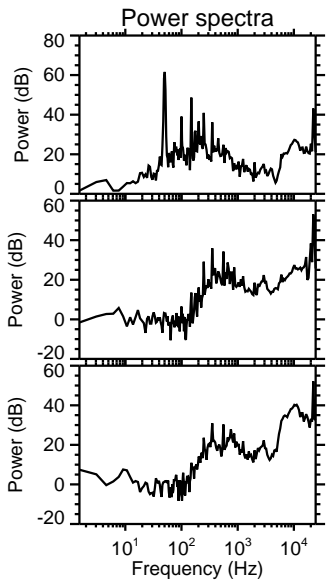
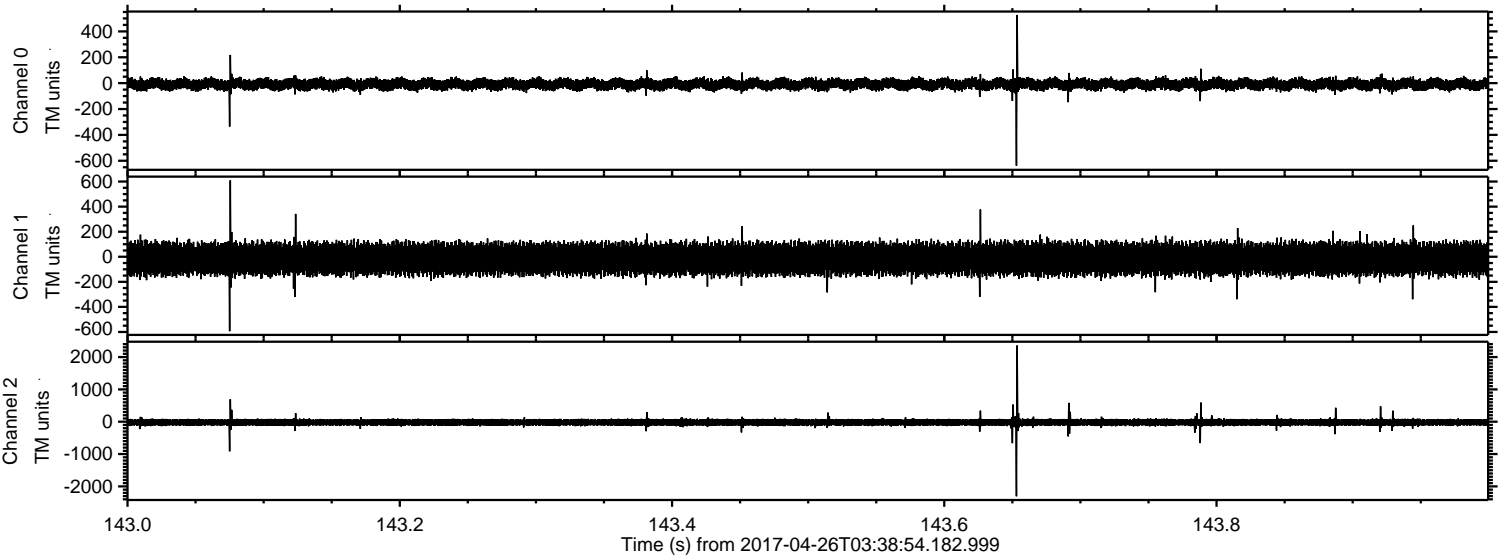
Processed Wed Apr 26 05:46:54 2017 by ELM ver.2012-10-06 from 001\_\_elm20170426\_033853\_\_dat00.bin





ELMAVAN 3D WAVEFORMS (Measured data sampled at 50 kHz) 51000 packets of 144 samples from 2017-04-26T03:38:54.182.999. Part 144/147

Processed Wed Apr 26 05:46:55 2017 by ELM ver.2012-10-06 from 001\_\_elm20170426\_033853\_\_dat00.bin



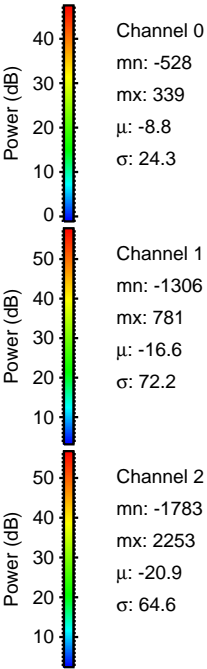
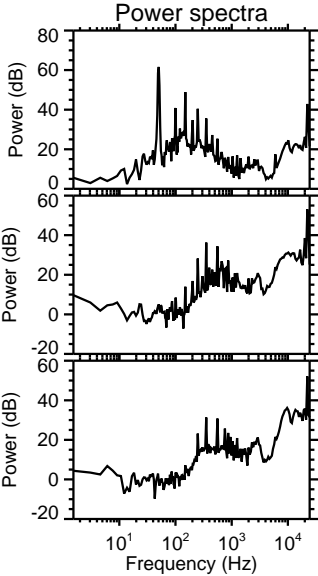
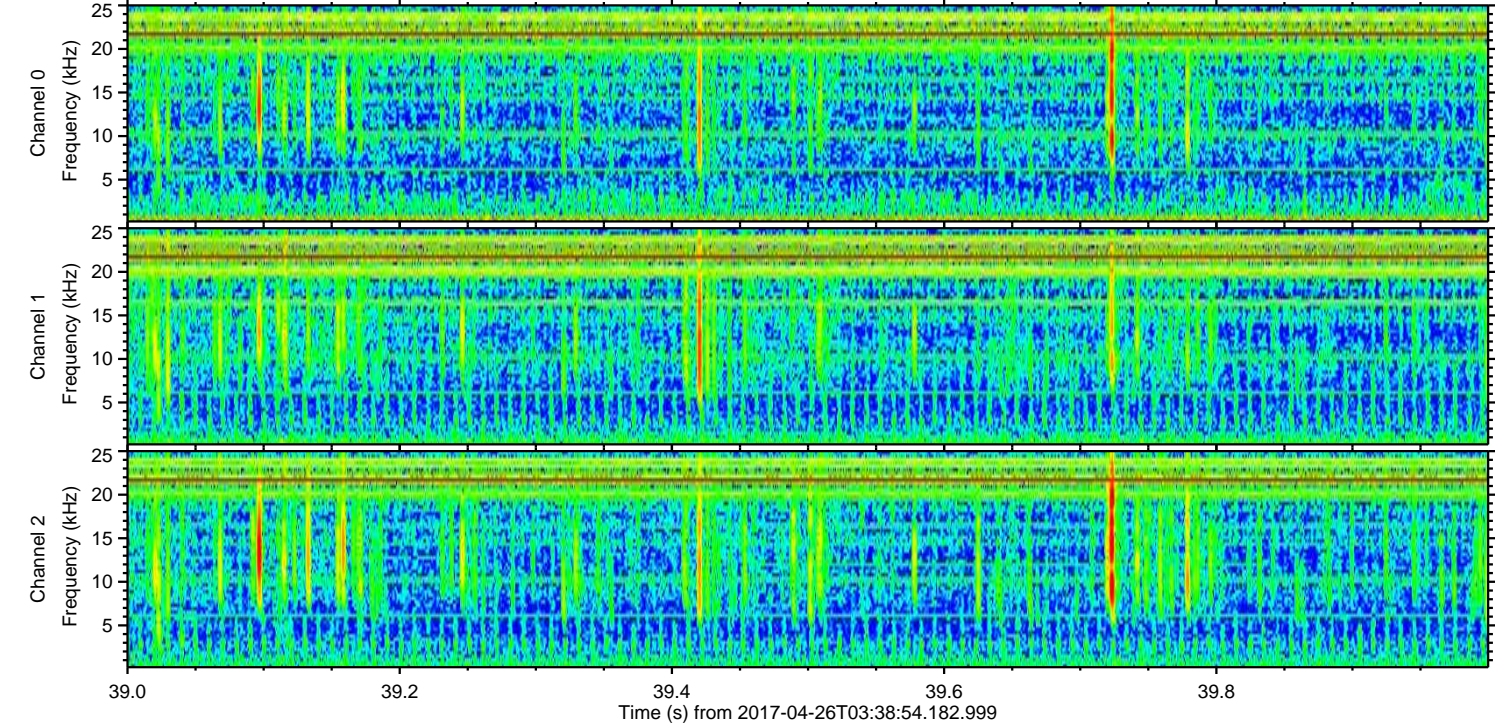
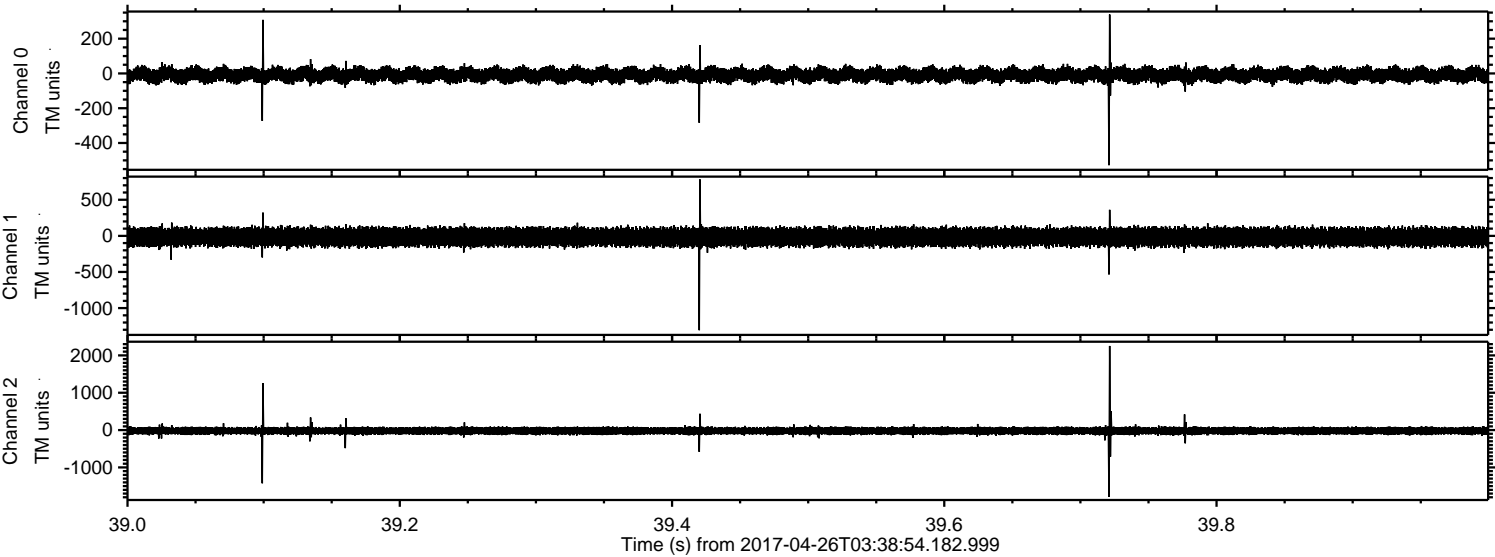
Channel 0  
mn: -638  
mx: 527  
 $\mu$ : -8.8  
 $\sigma$ : 24.9

Channel 1  
mn: -594  
mx: 609  
 $\mu$ : -16.6  
 $\sigma$ : 71.3

Channel 2  
mn: -2305  
mx: 2356  
 $\mu$ : -20.8  
 $\sigma$ : 67.2

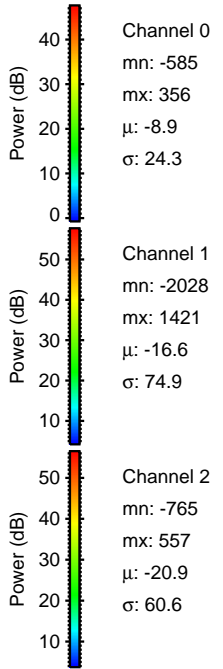
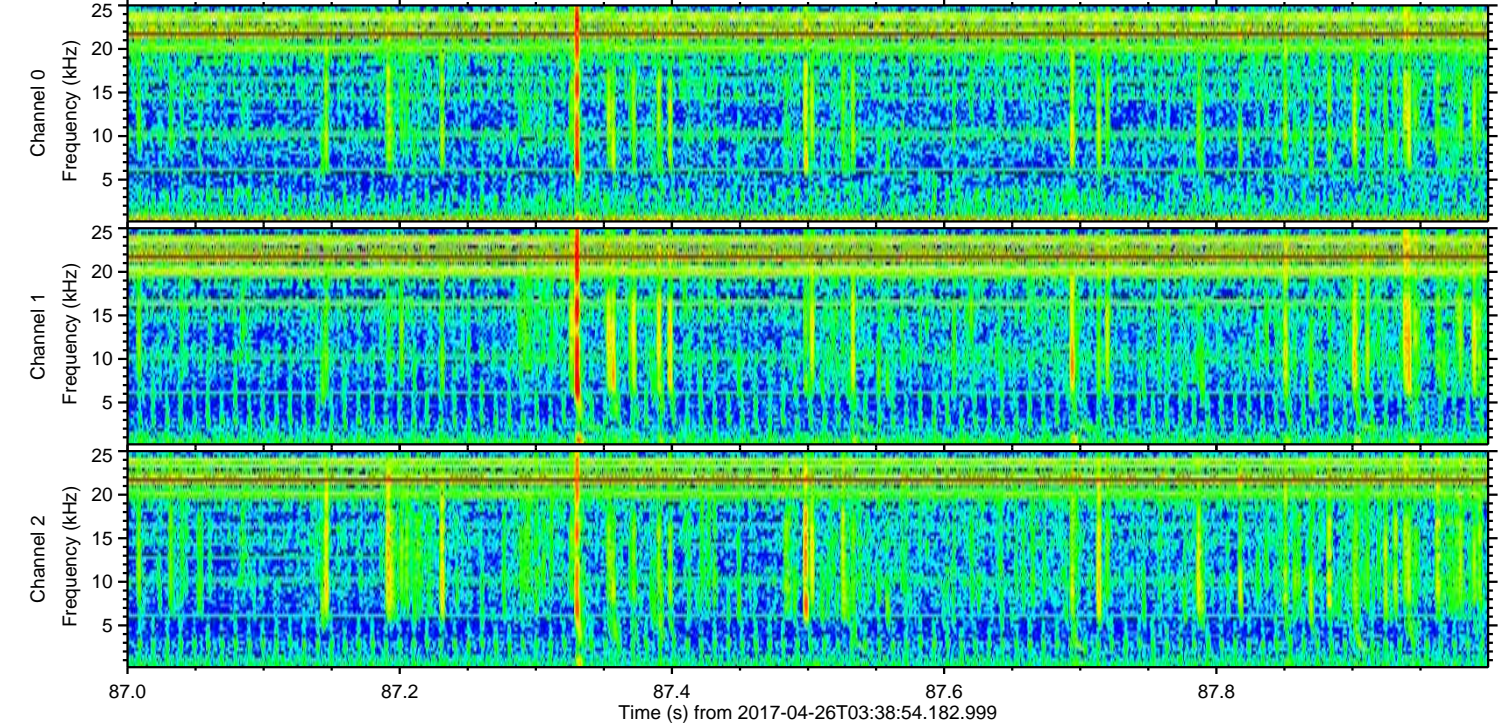
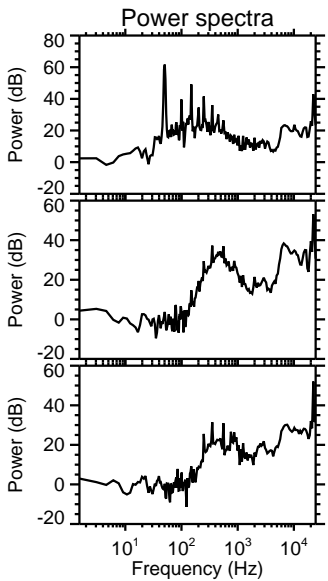
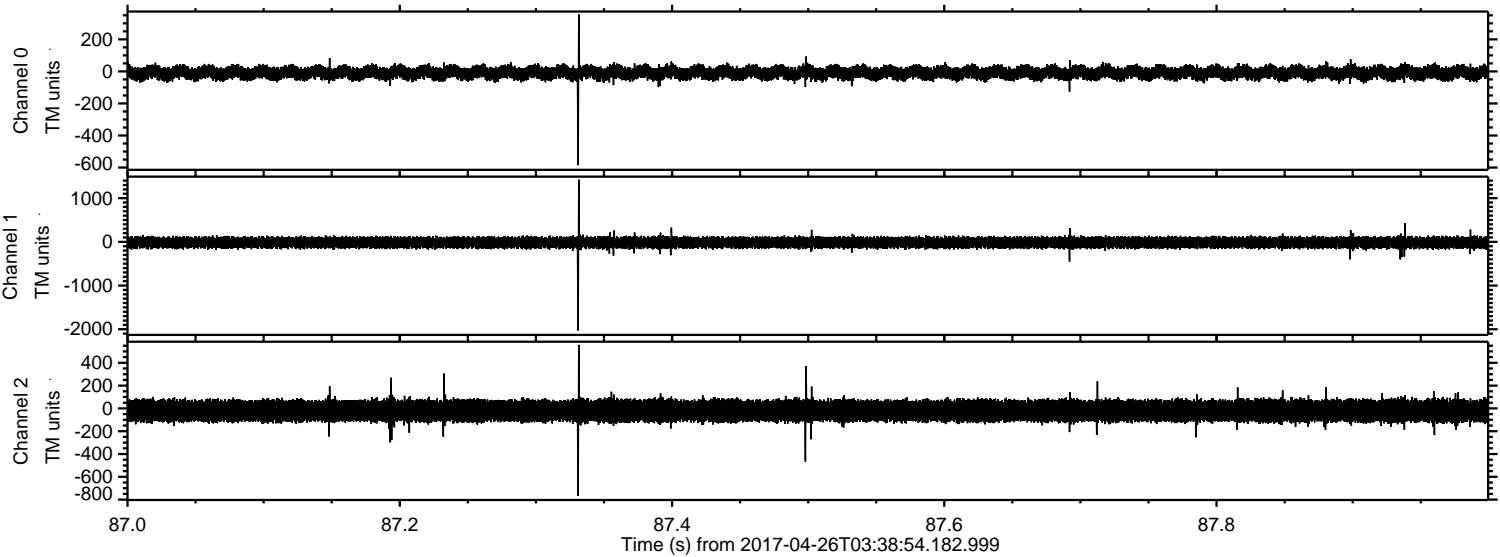


Processed Wed Apr 26 05:46:56 2017 by ELM ver.2012-10-06 from 001\_\_elm20170426\_033853\_\_dat00.bin





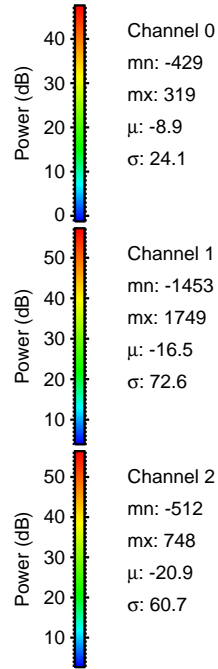
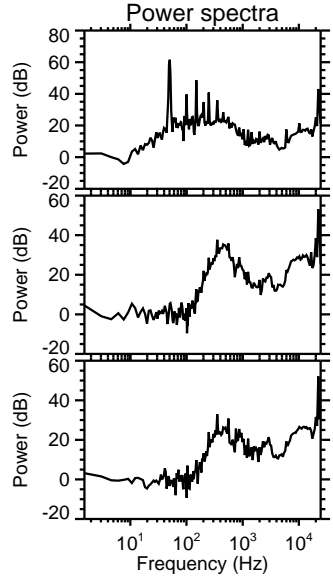
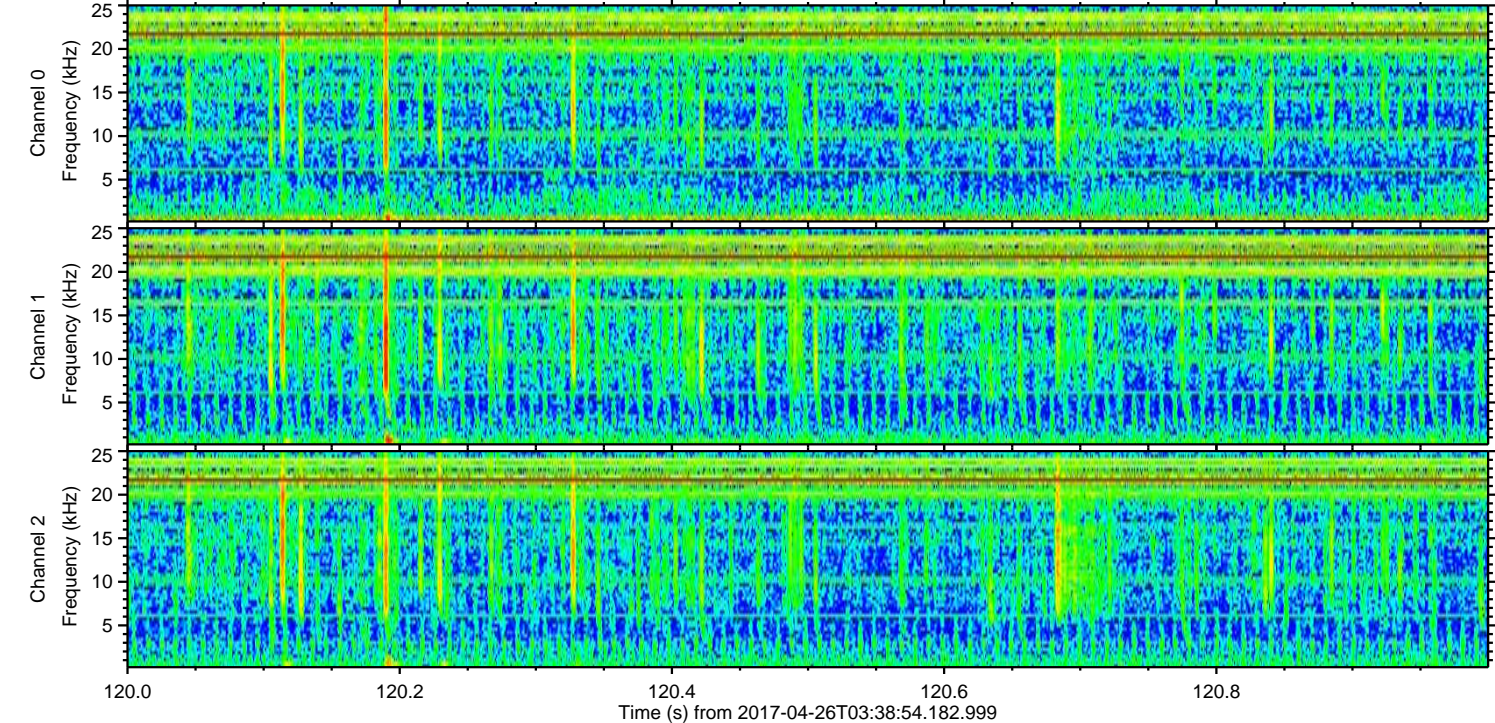
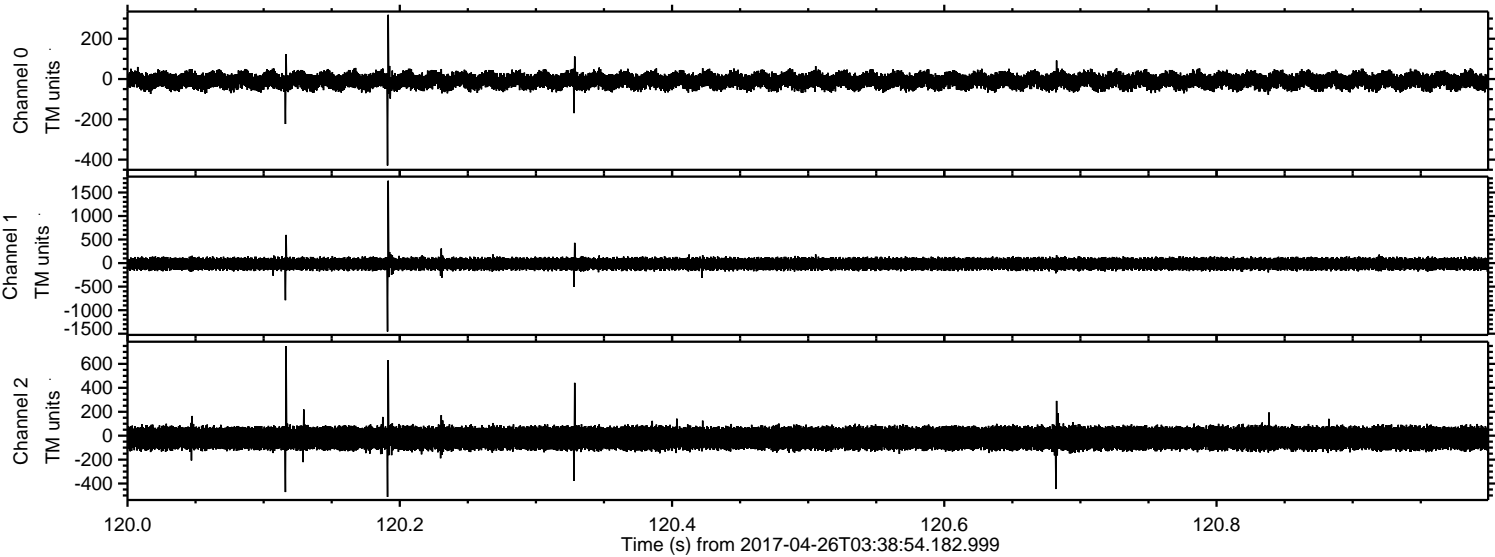
Processed Wed Apr 26 05:46:57 2017 by ELM ver.2012-10-06 from 001\_\_elm20170426\_033853\_\_dat00.bin





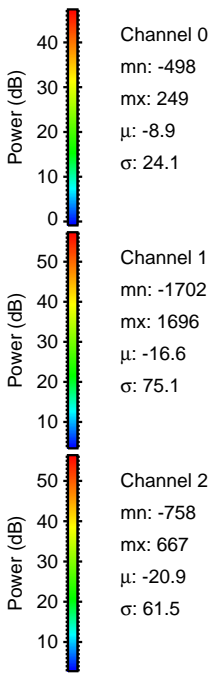
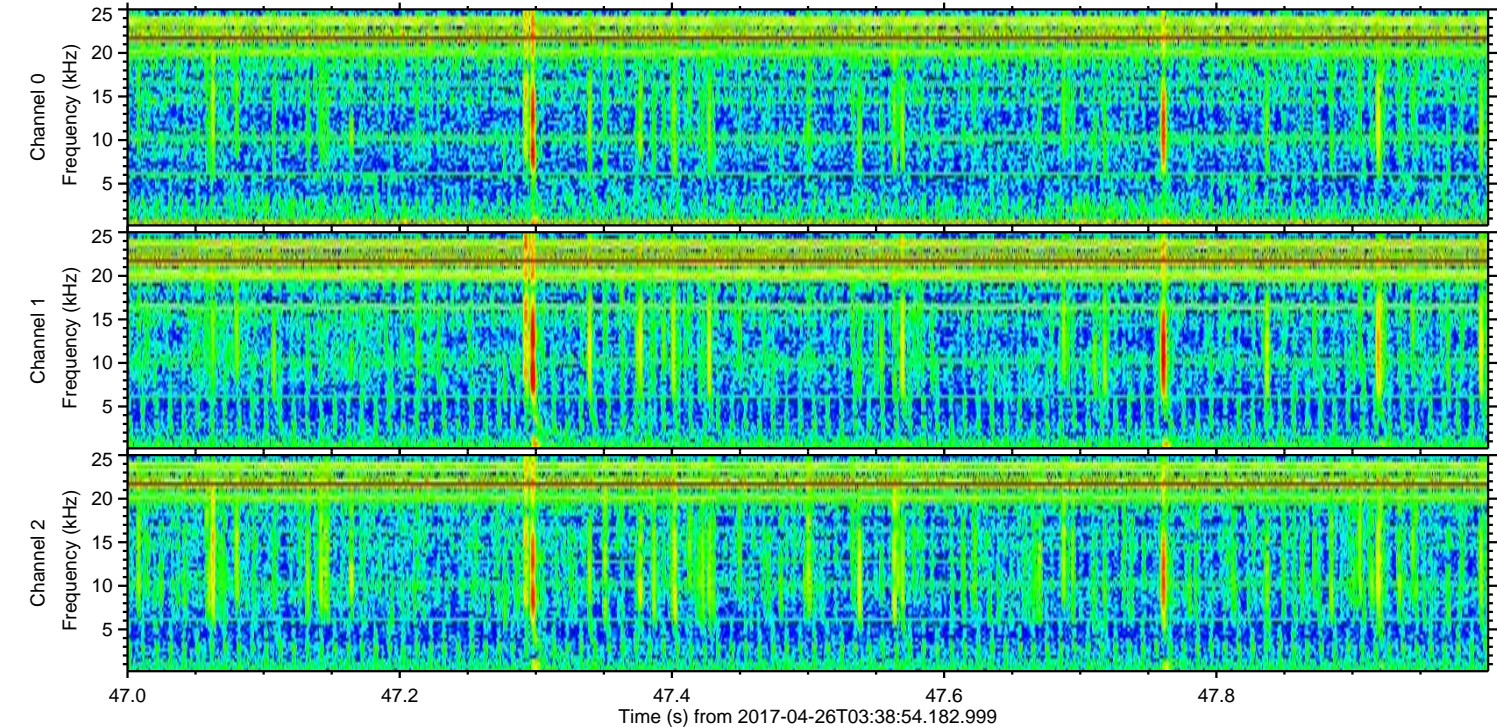
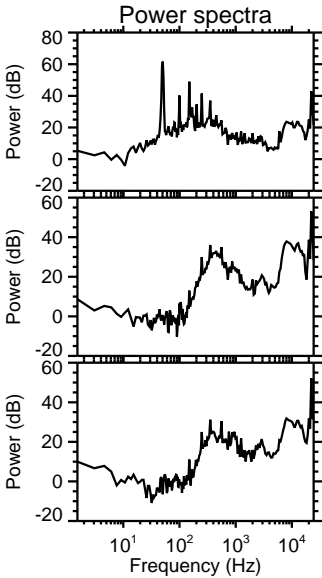
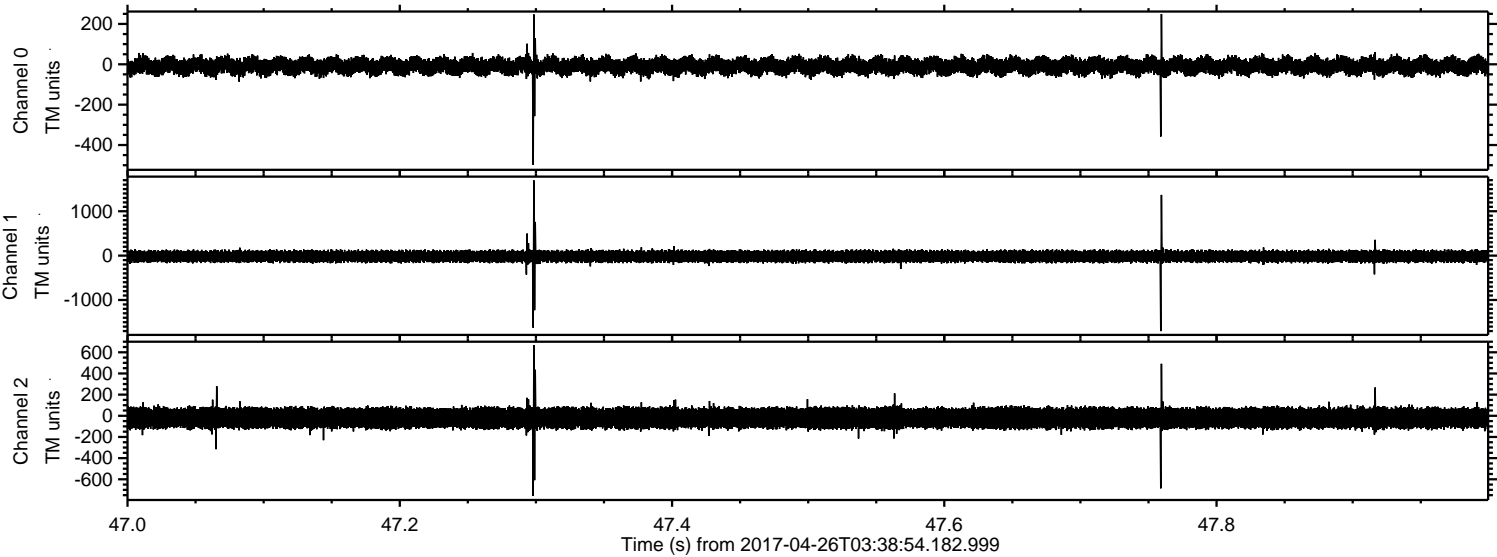
ELMAVAN 3D WAVEFORMS (Measured data sampled at 50 kHz) 51000 packets of 144 samples from 2017-04-26T03:38:54.182.999. Part 121/147

Processed Wed Apr 26 05:46:58 2017 by ELM ver.2012-10-06 from 001\_\_elm20170426\_033853\_\_dat00.bin





Processed Wed Apr 26 05:46:59 2017 by ELM ver.2012-10-06 from 001\_\_elm20170426\_033853\_\_dat00.bin





ELMAVAN 3D WAVEFORMS (Measured data sampled at 50 kHz) 51000 packets of 144 samples from 2017-04-26T03:38:54.182.999. Part 15/147

Processed Wed Apr 26 05:47:00 2017 by ELM ver.2012-10-06 from 001\_\_elm20170426\_033853\_\_dat00.bin

