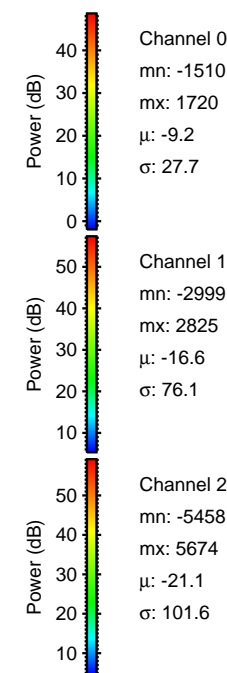
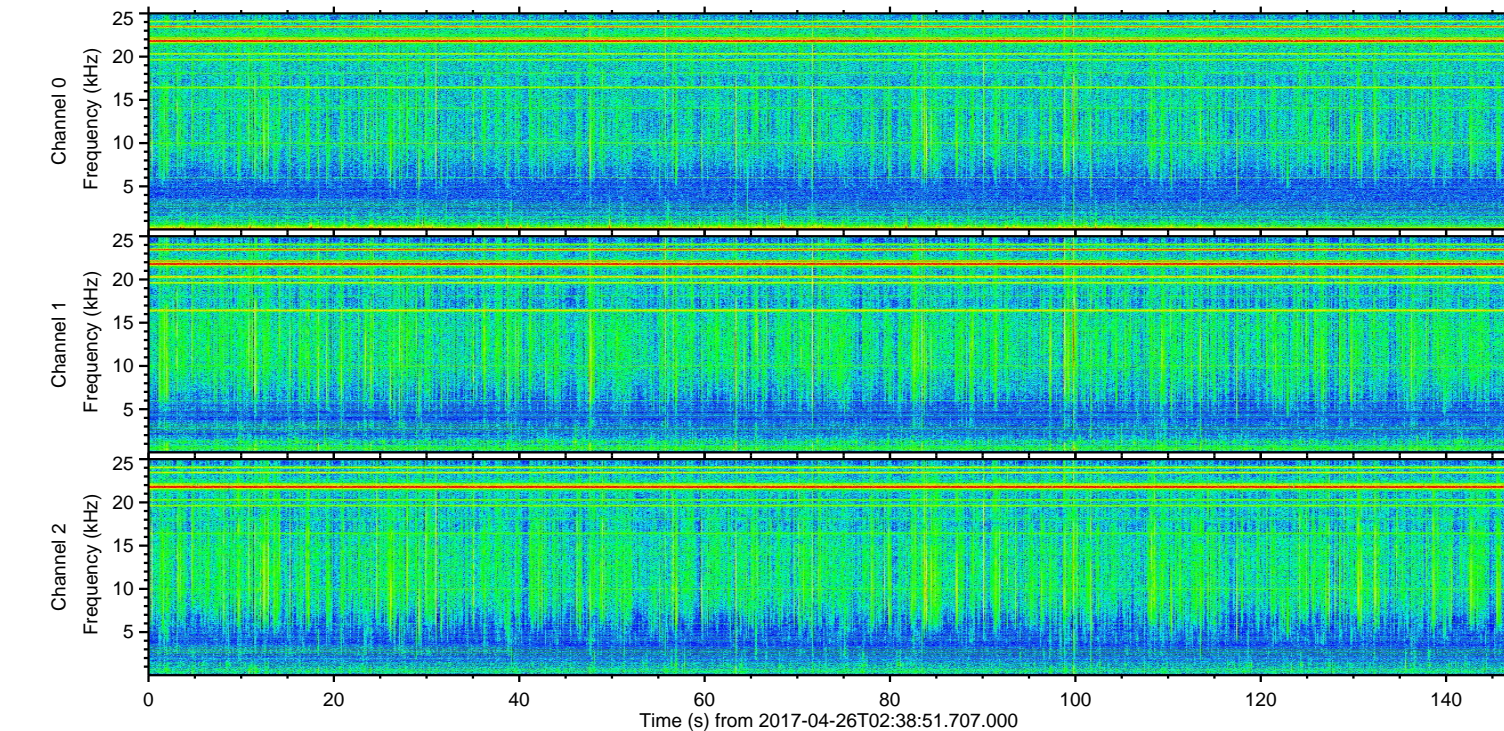
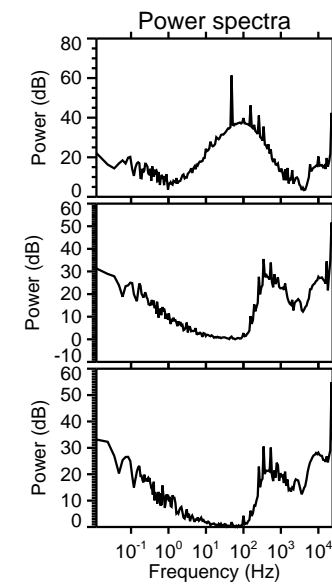
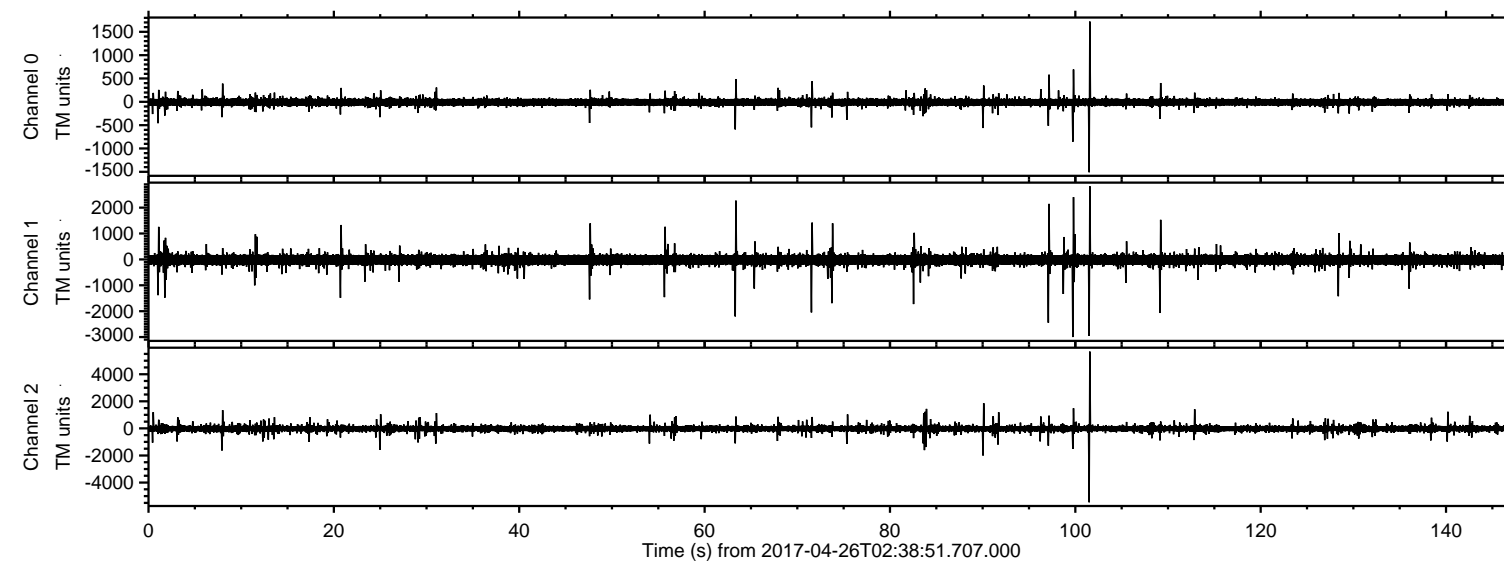


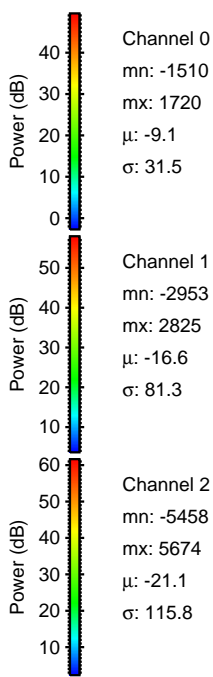
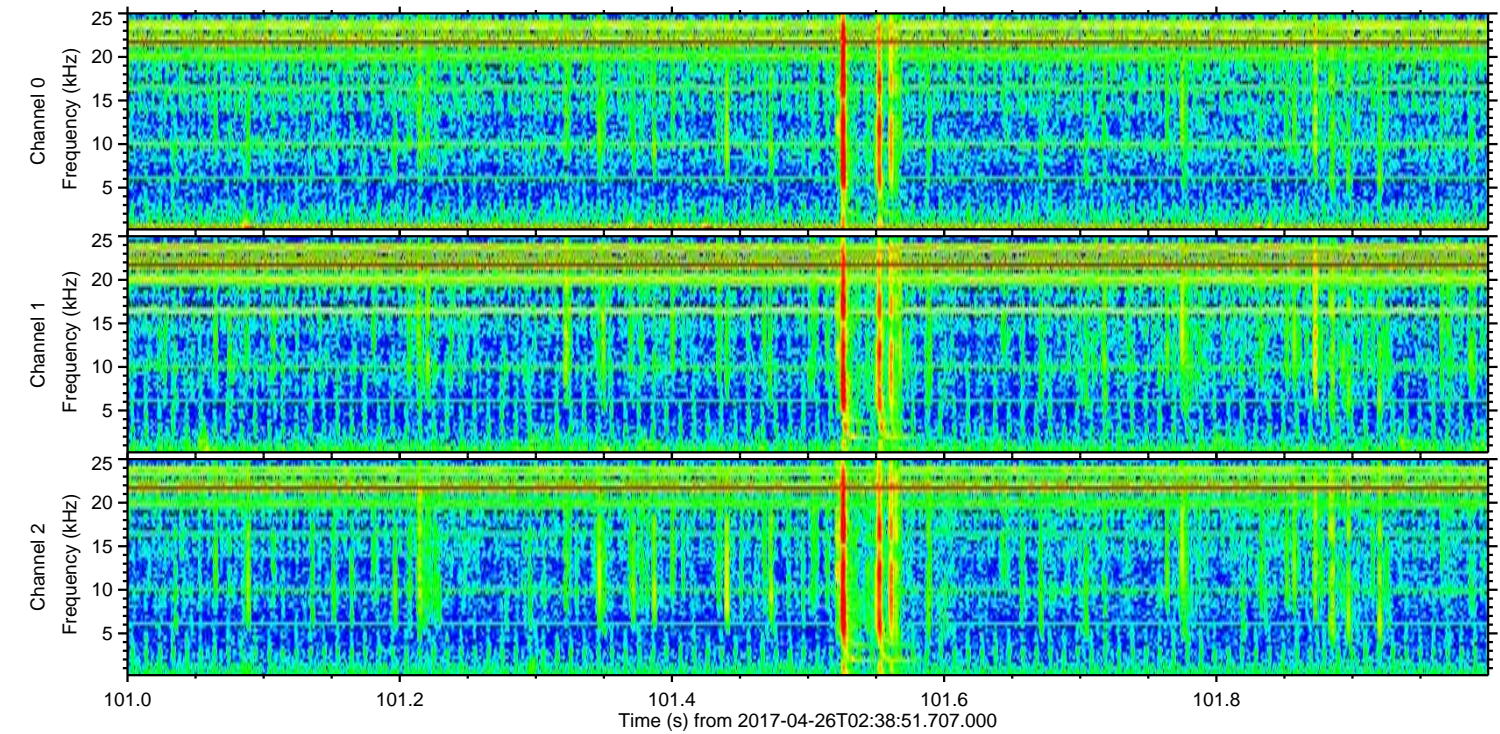
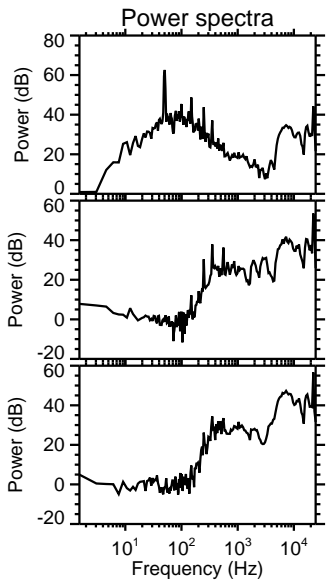
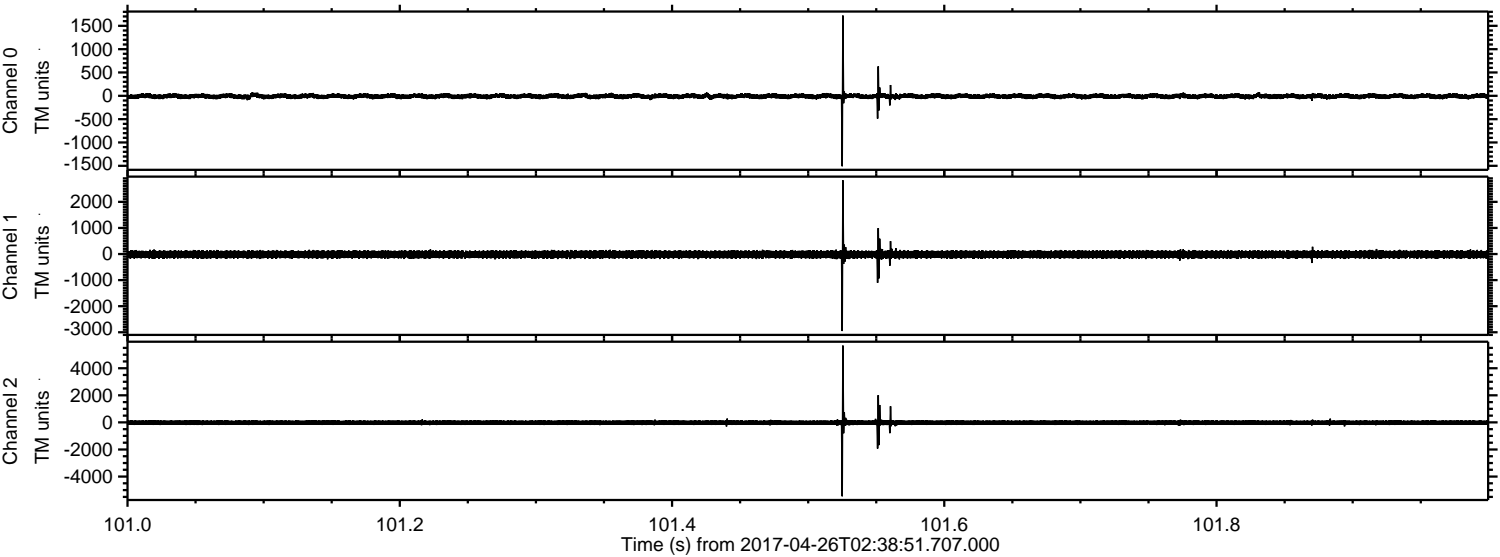
ELMAVAN 3D WAVEFORMS (Measured data sampled at 50 kHz) 51000 packets of 144 samples from 2017-04-26T02:38:51.707.000.

Processed Wed Apr 26 04:46:44 2017 by ELM ver.2012-10-06 from 001__elm20170426_023850__dat00.bin



ELMAVAN 3D WAVEFORMS (Measured data sampled at 50 kHz) 51000 packets of 144 samples from 2017-04-26T02:38:51.707.000. Part 102/147

Processed Wed Apr 26 04:46:56 2017 by ELM ver.2012-10-06 from 001__elm20170426_023850__dat00.bin



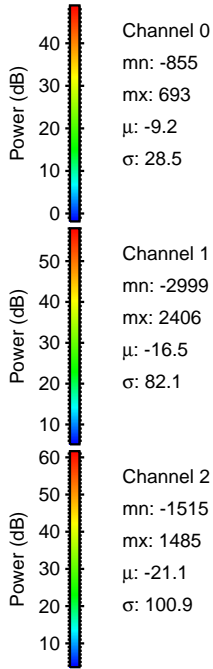
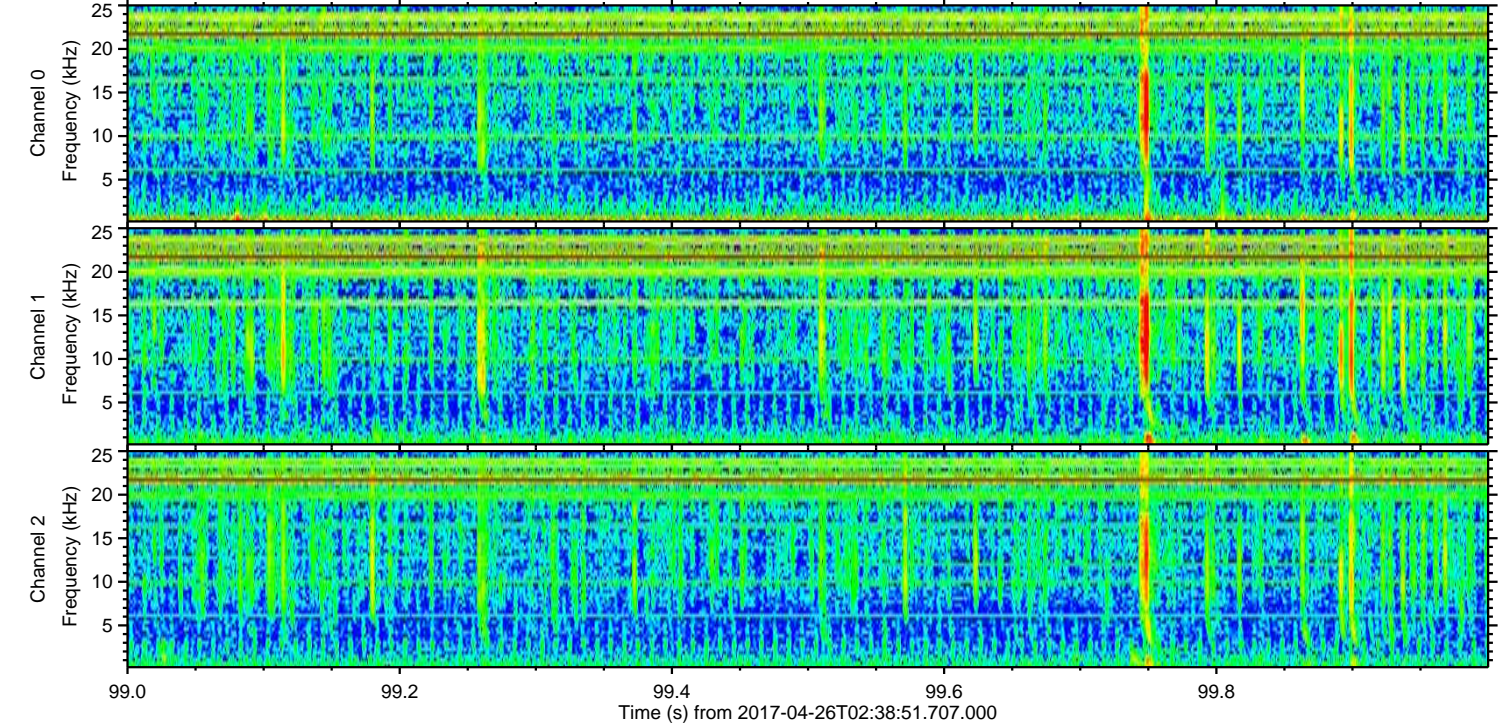
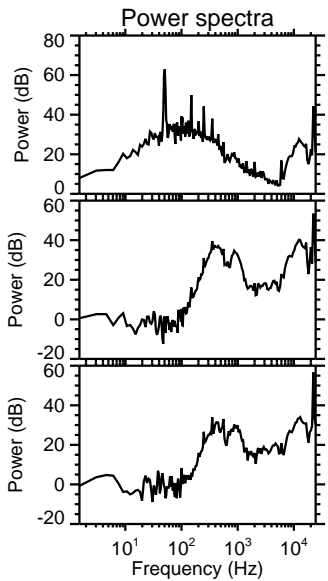
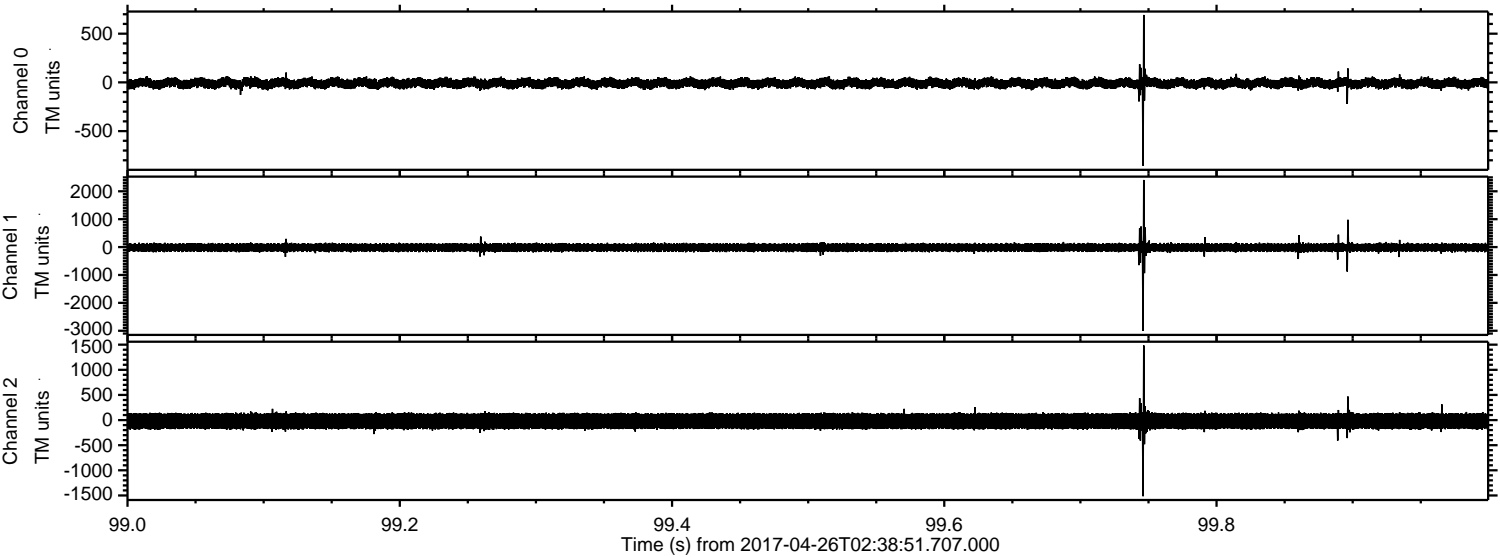
Channel 0
mn: -1510
mx: 1720
 μ : -9.1
 σ : 31.5

Channel 1
mn: -2953
mx: 2825
 μ : -16.6
 σ : 81.3

Channel 2
mn: -5458
mx: 5674
 μ : -21.1
 σ : 115.8

ELMAVAN 3D WAVEFORMS (Measured data sampled at 50 kHz) 51000 packets of 144 samples from 2017-04-26T02:38:51.707.000. Part 100/147

Processed Wed Apr 26 04:46:57 2017 by ELM ver.2012-10-06 from 001__elm20170426_023850__dat00.bin



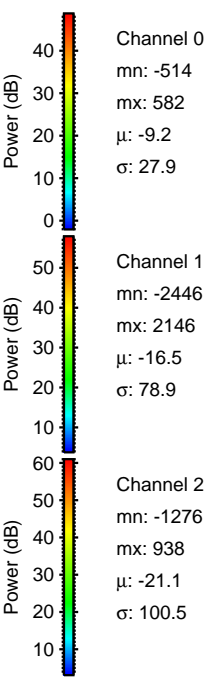
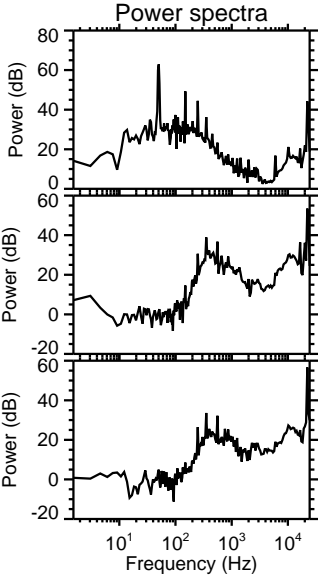
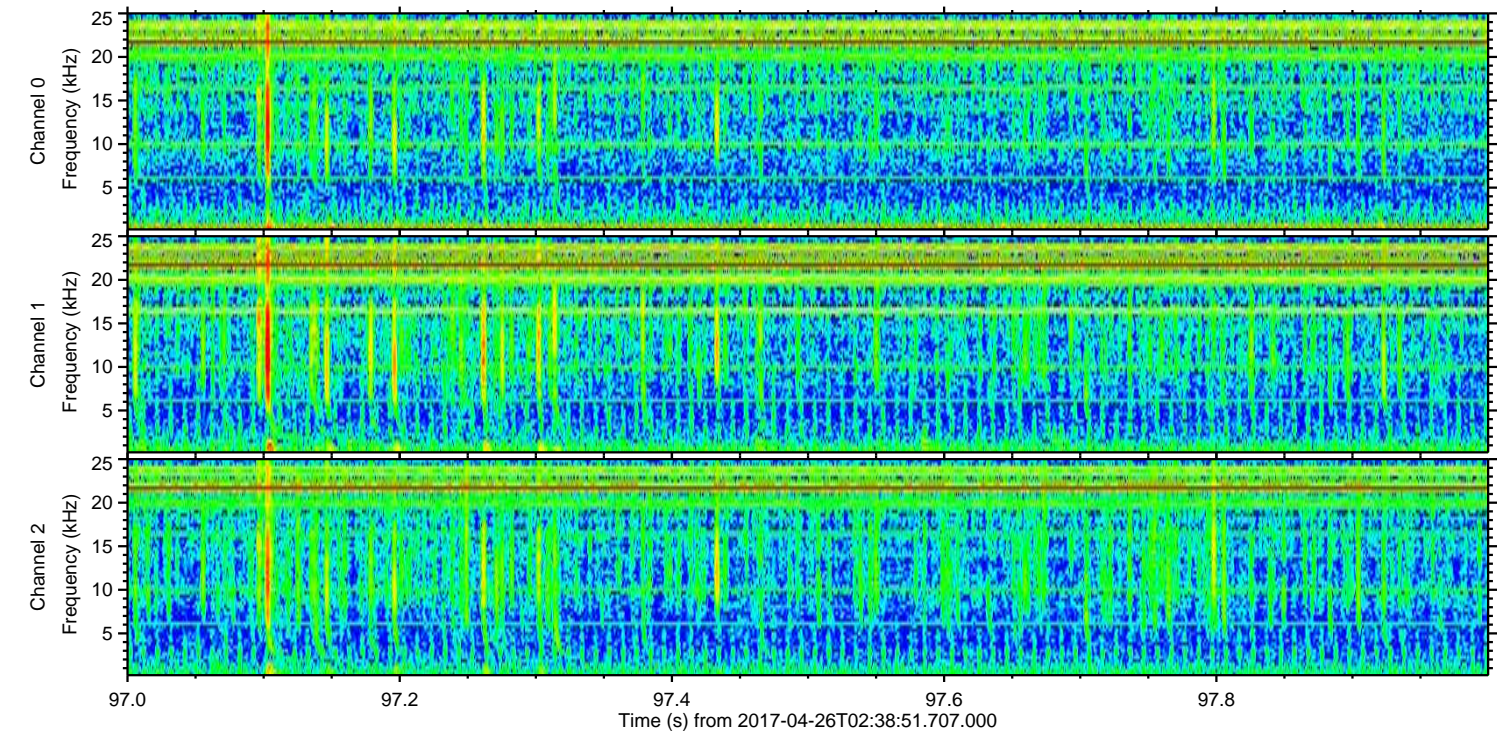
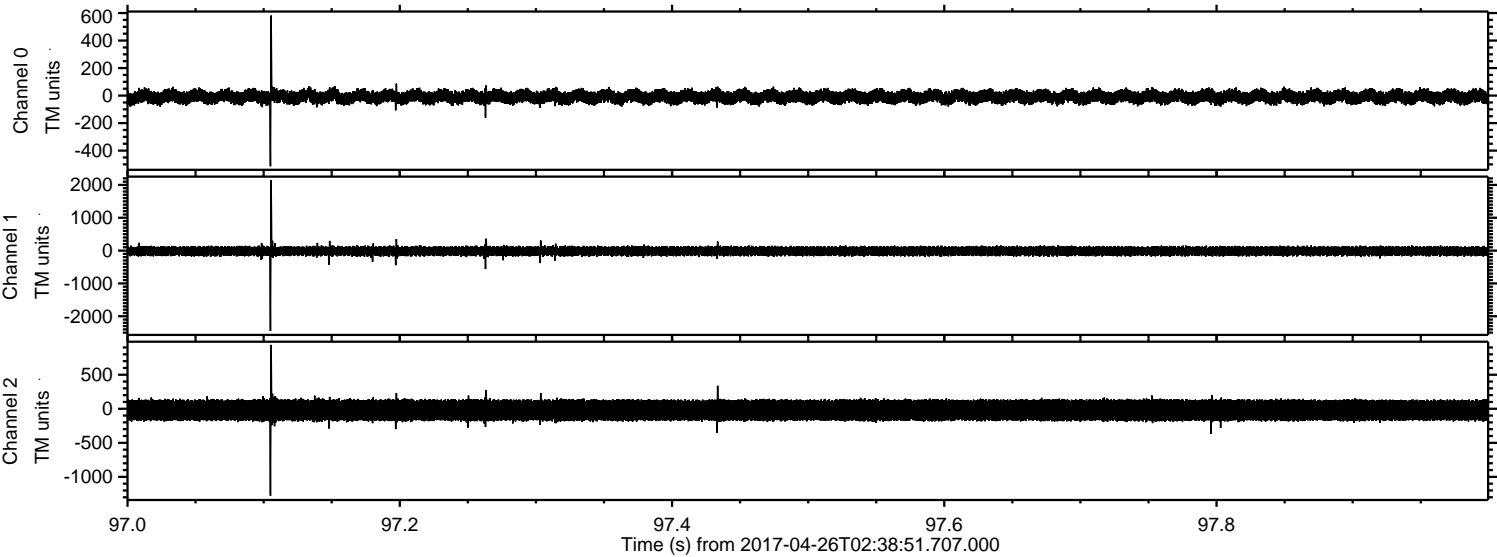
Channel 0
mn: -855
mx: 693
 μ : -9.2
 σ : 28.5

Channel 1
mn: -2999
mx: 2406
 μ : -16.5
 σ : 82.1

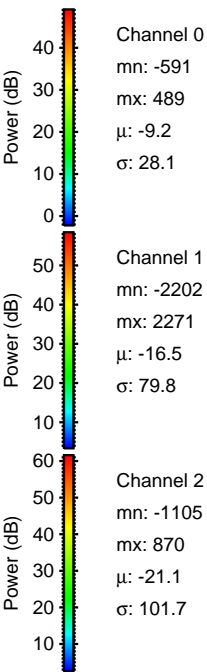
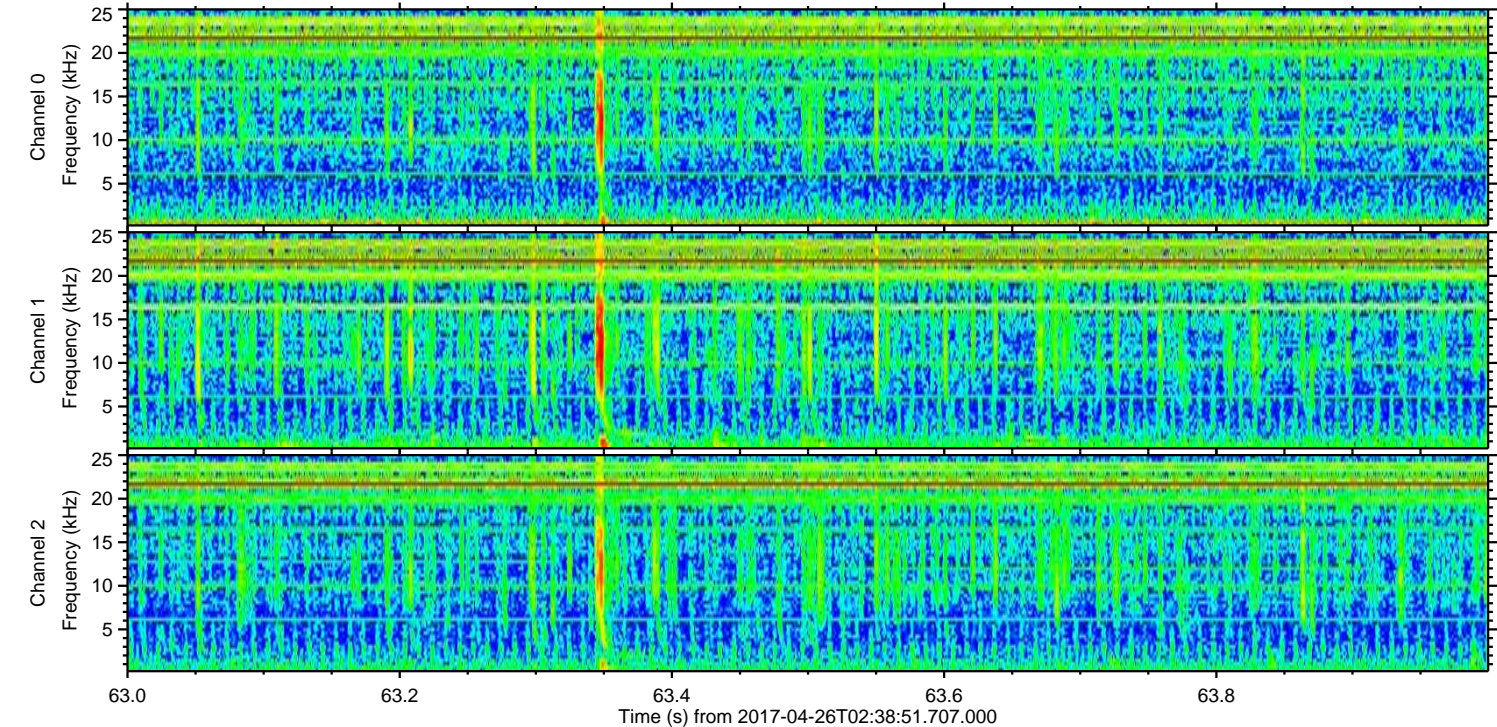
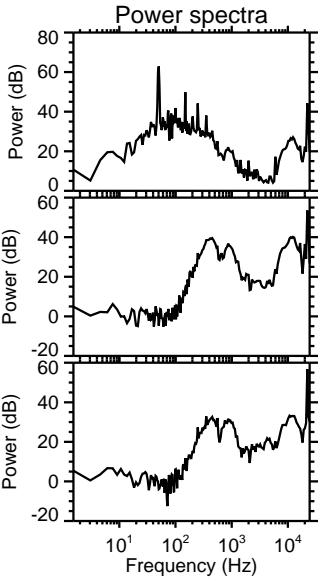
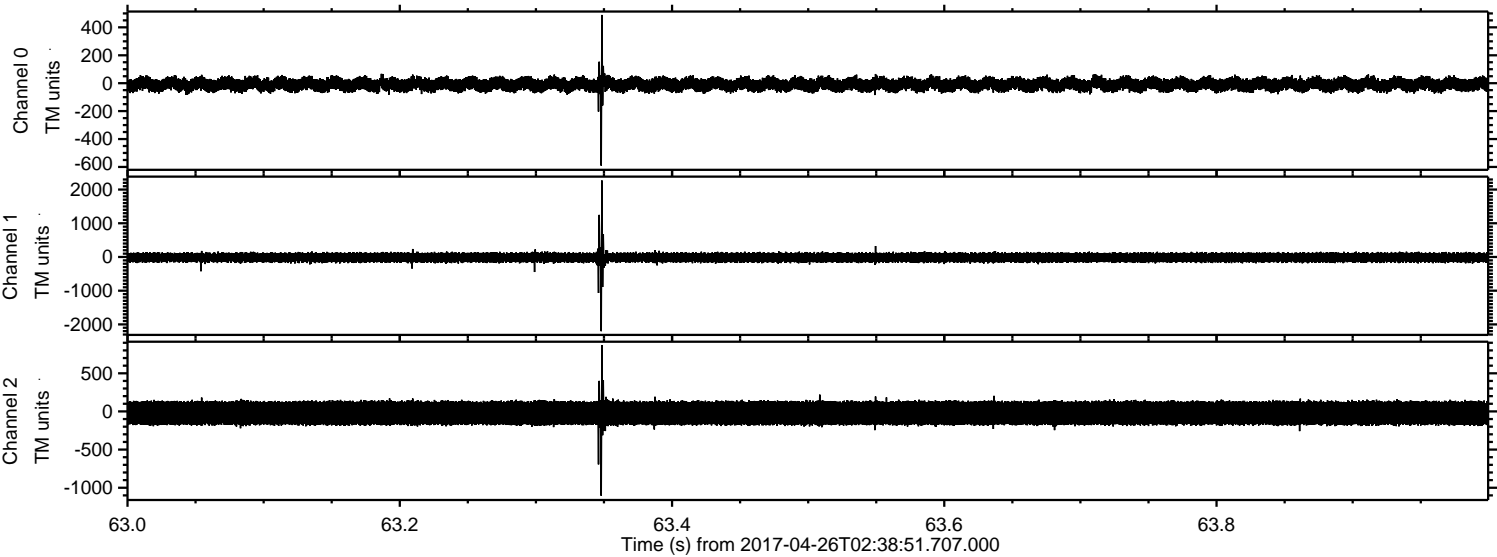
Channel 2
mn: -1515
mx: 1485
 μ : -21.1
 σ : 100.9

ELMAVAN 3D WAVEFORMS (Measured data sampled at 50 kHz) 51000 packets of 144 samples from 2017-04-26T02:38:51.707.000. Part 98/147

Processed Wed Apr 26 04:46:58 2017 by ELM ver.2012-10-06 from 001__elm20170426_023850__dat00.bin

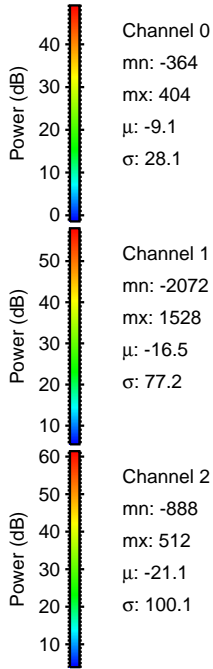
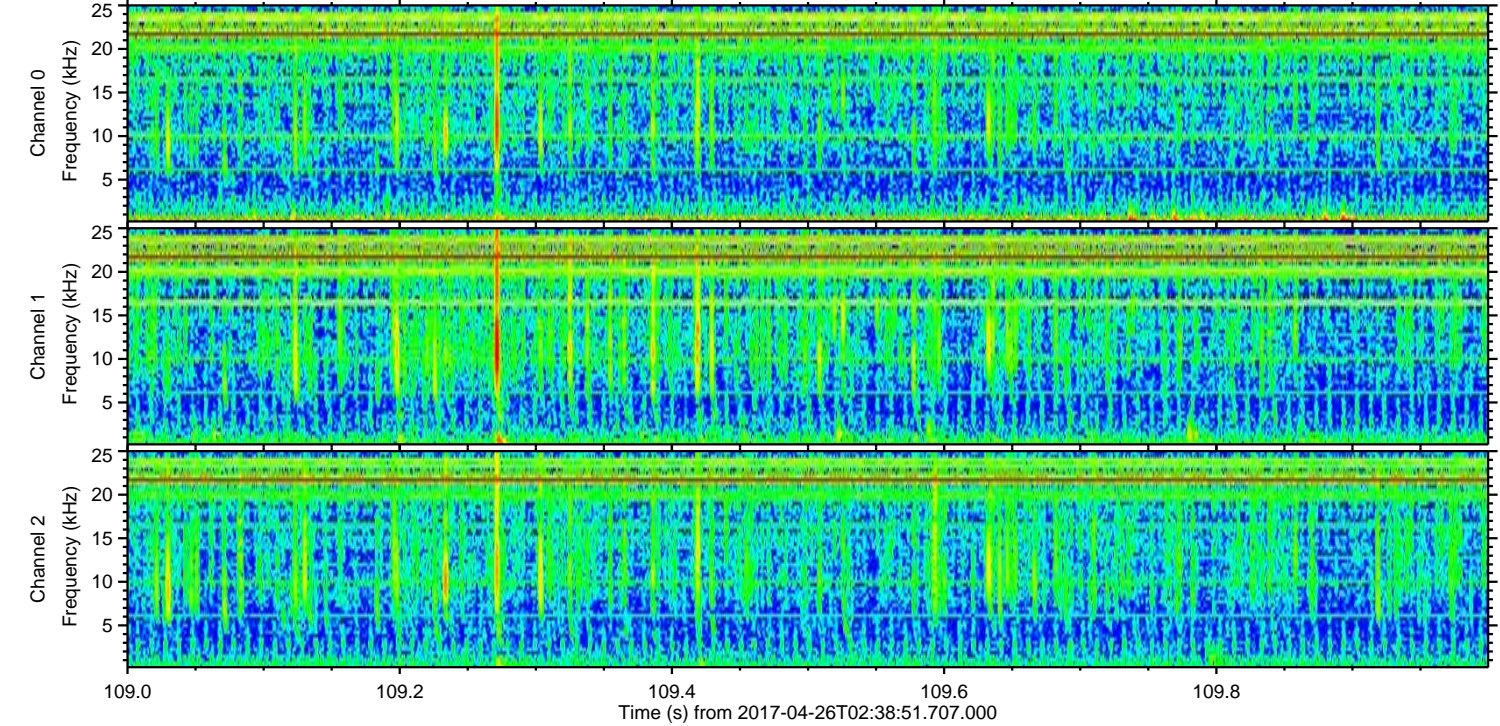
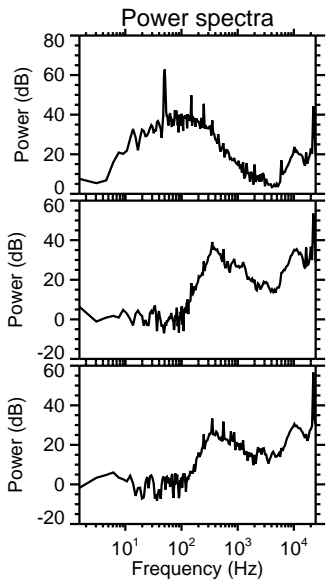
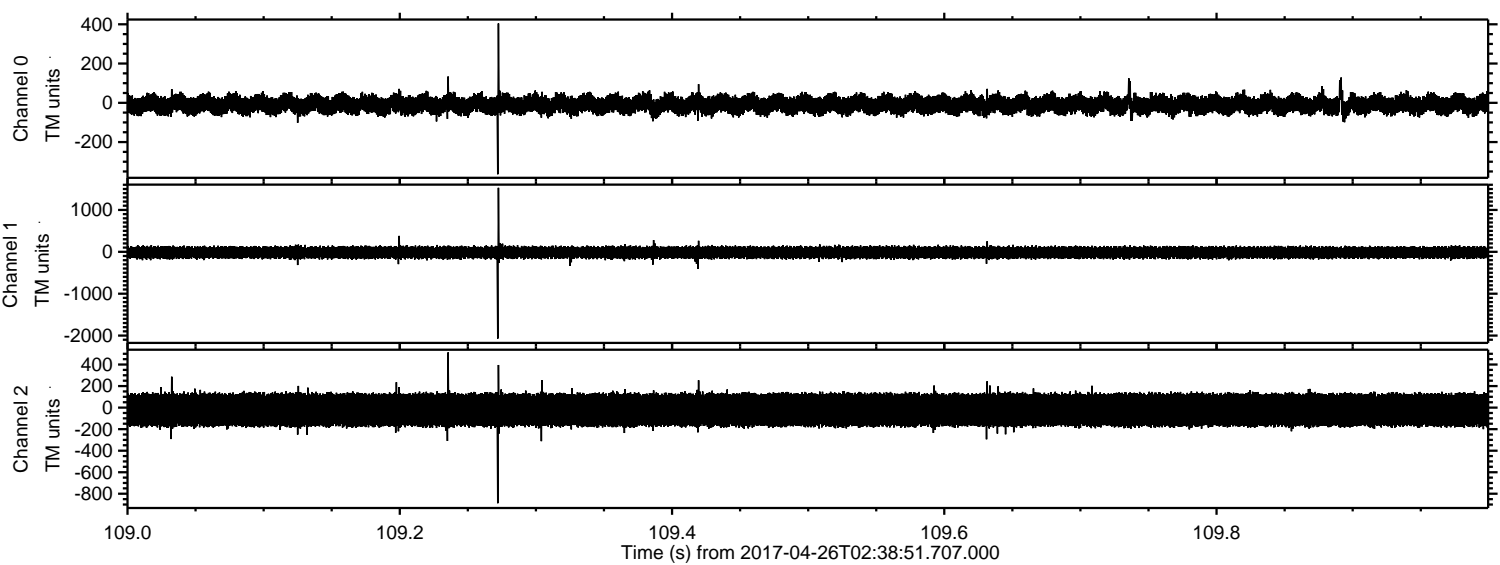


Processed Wed Apr 26 04:46:58 2017 by ELM ver.2012-10-06 from 001__elm20170426_023850__dat00.bin



ELMAVAN 3D WAVEFORMS (Measured data sampled at 50 kHz) 51000 packets of 144 samples from 2017-04-26T02:38:51.707.000. Part 110/147

Processed Wed Apr 26 04:46:59 2017 by ELM ver.2012-10-06 from 001__elm20170426_023850__dat00.bin

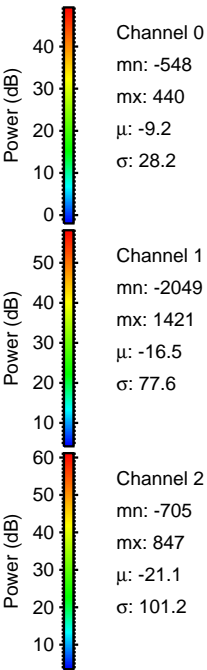
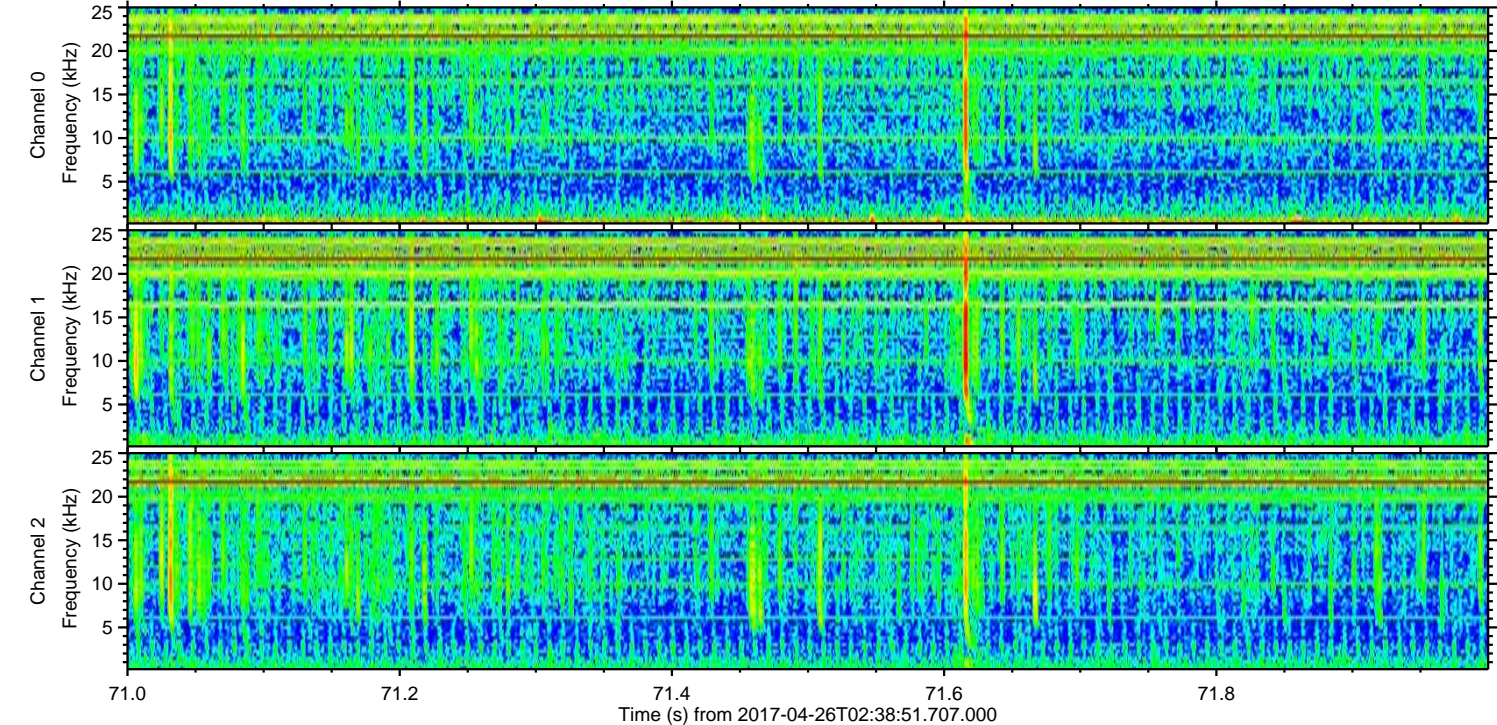
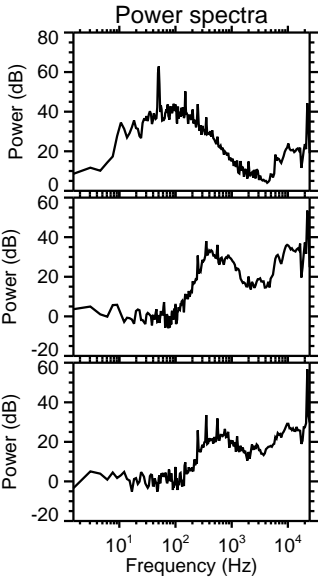
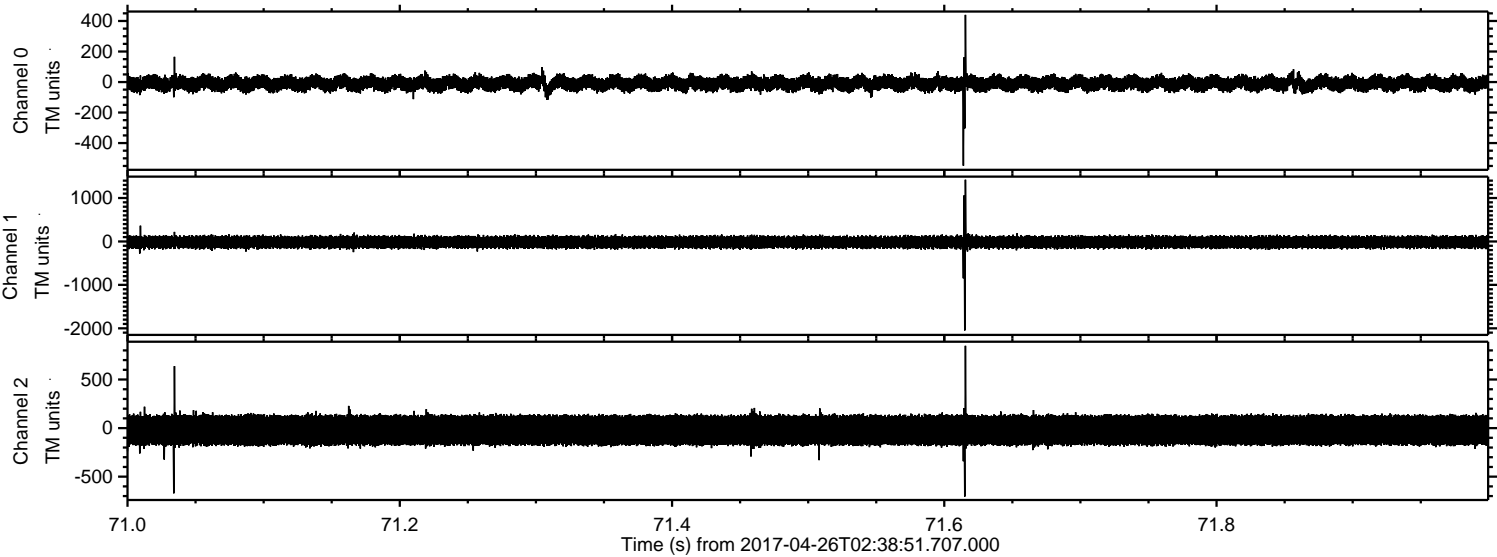


Channel 0
mn: -364
mx: 404
 μ : -9.1
 σ : 28.1

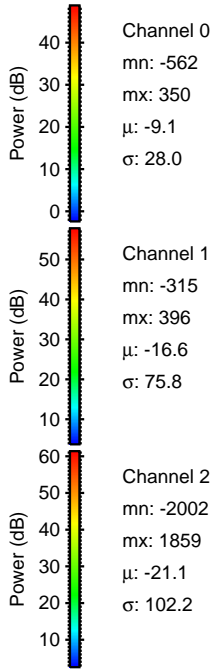
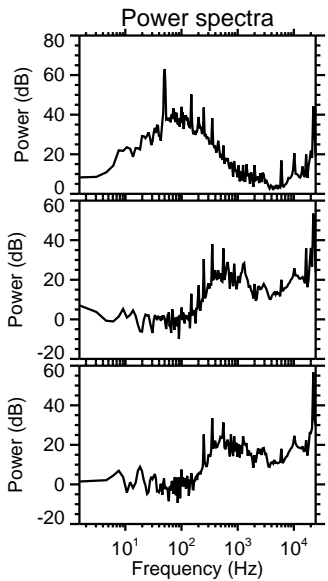
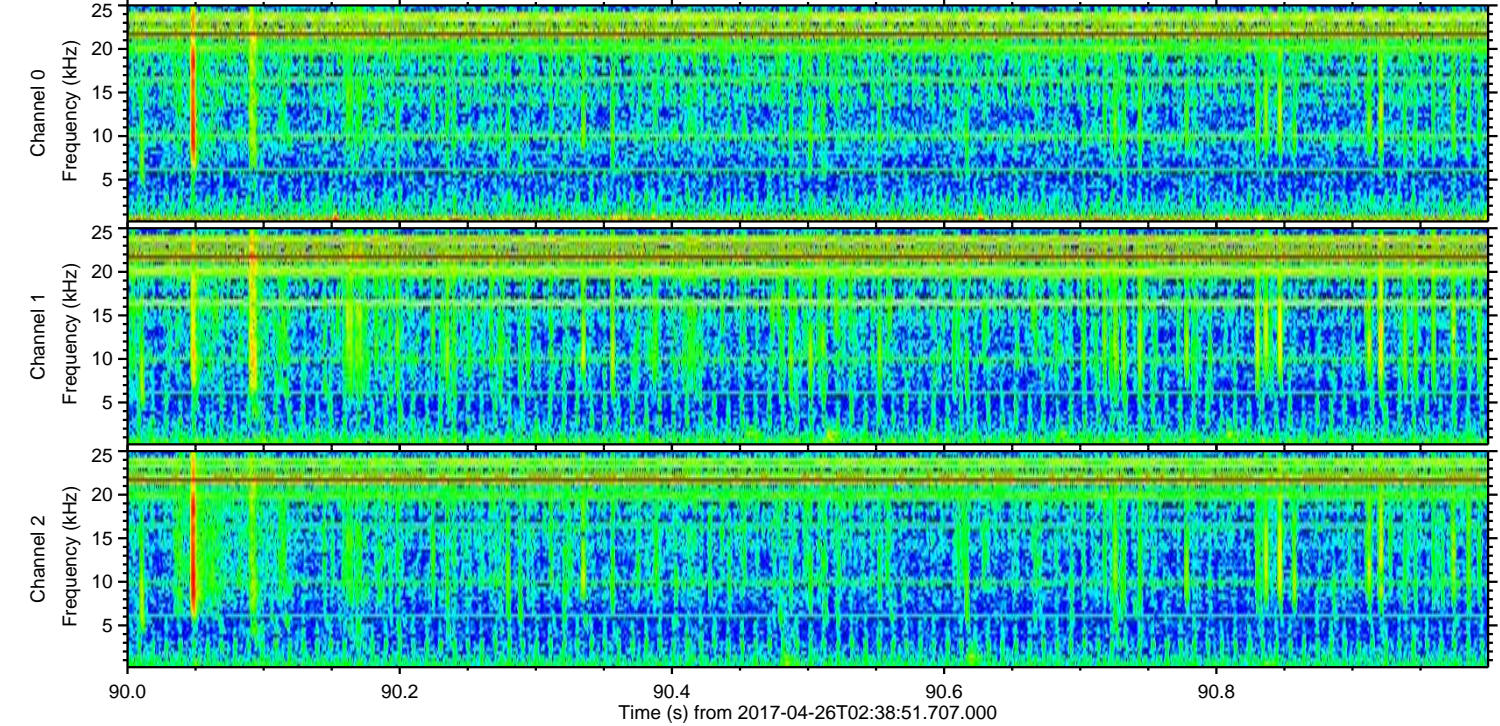
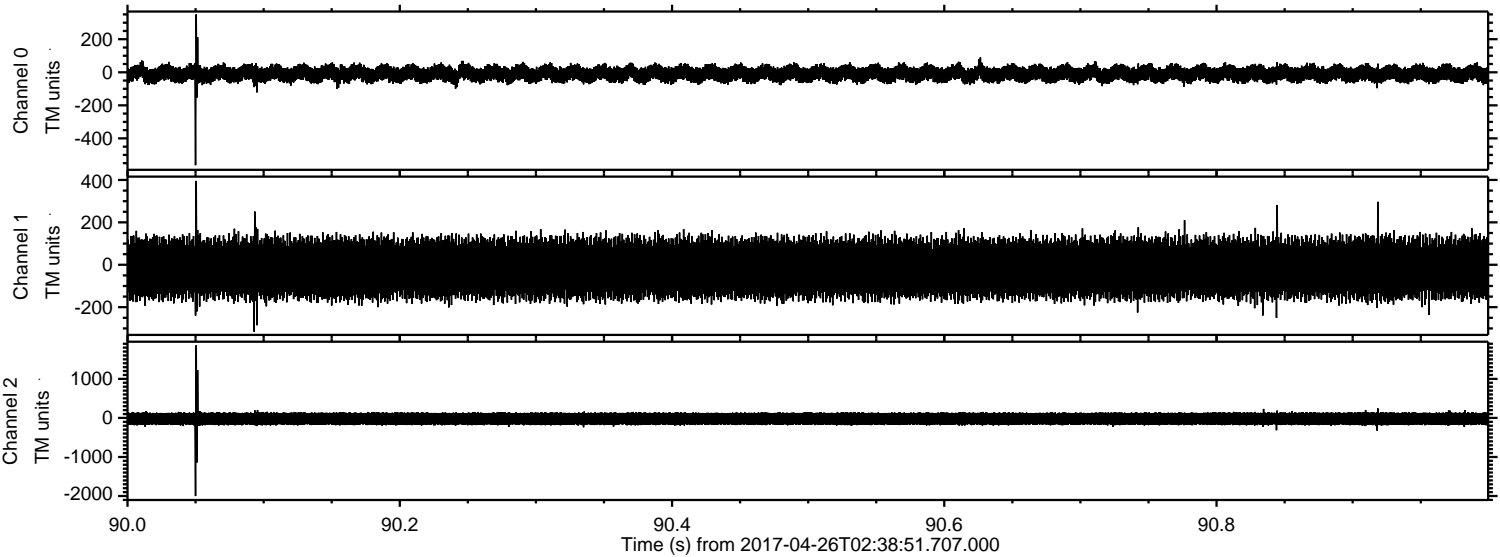
Channel 1
mn: -2072
mx: 1528
 μ : -16.5
 σ : 77.2

Channel 2
mn: -888
mx: 512
 μ : -21.1
 σ : 100.1

Processed Wed Apr 26 04:47:00 2017 by ELM ver.2012-10-06 from 001__elm20170426_023850__dat00.bin



Processed Wed Apr 26 04:47:01 2017 by ELM ver.2012-10-06 from 001__elm20170426_023850__dat00.bin

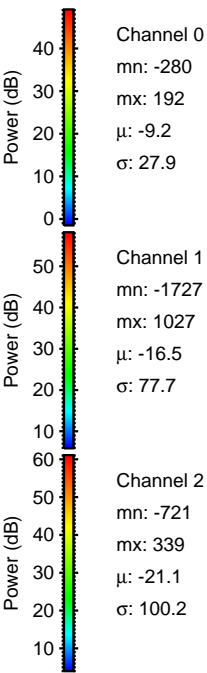
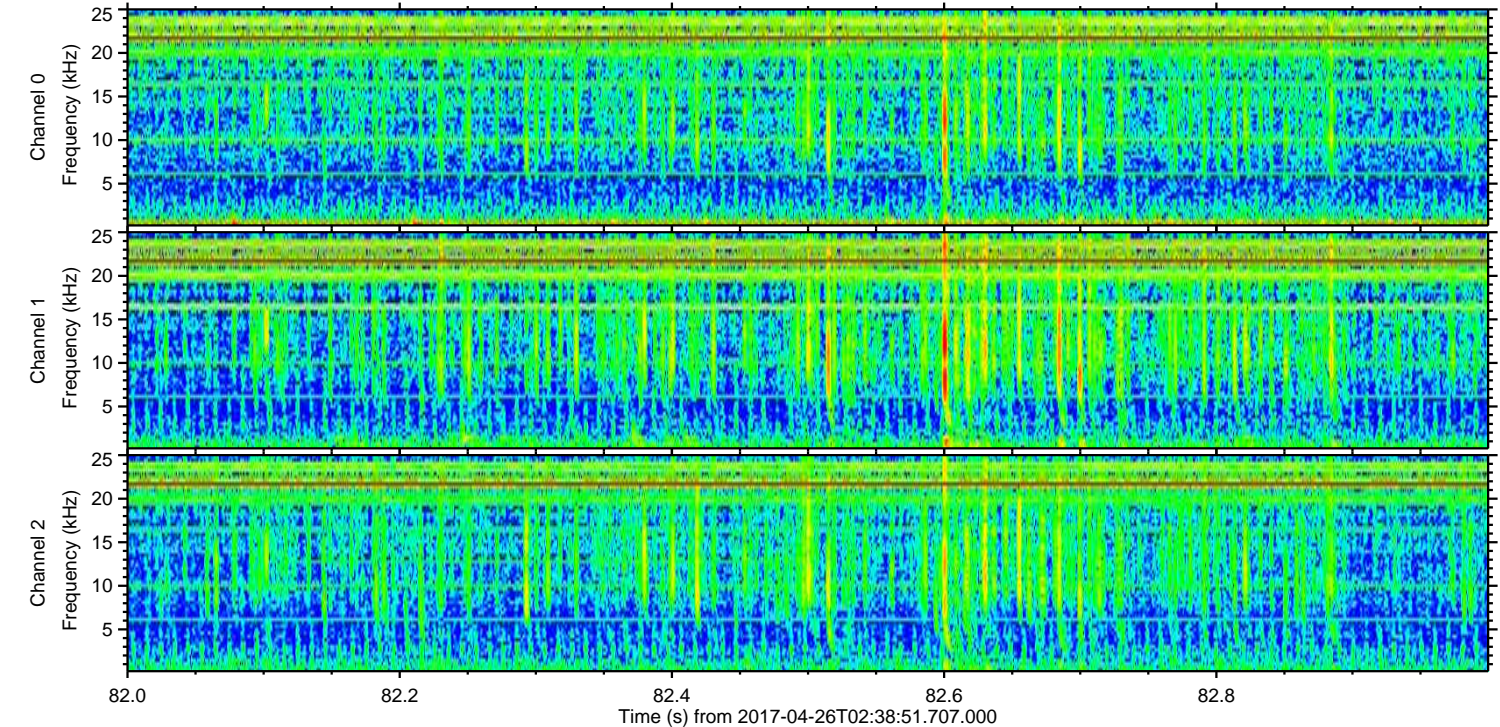
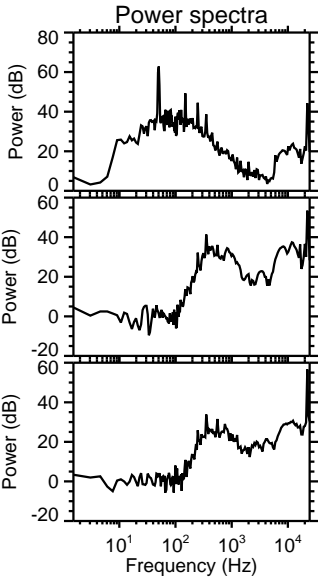
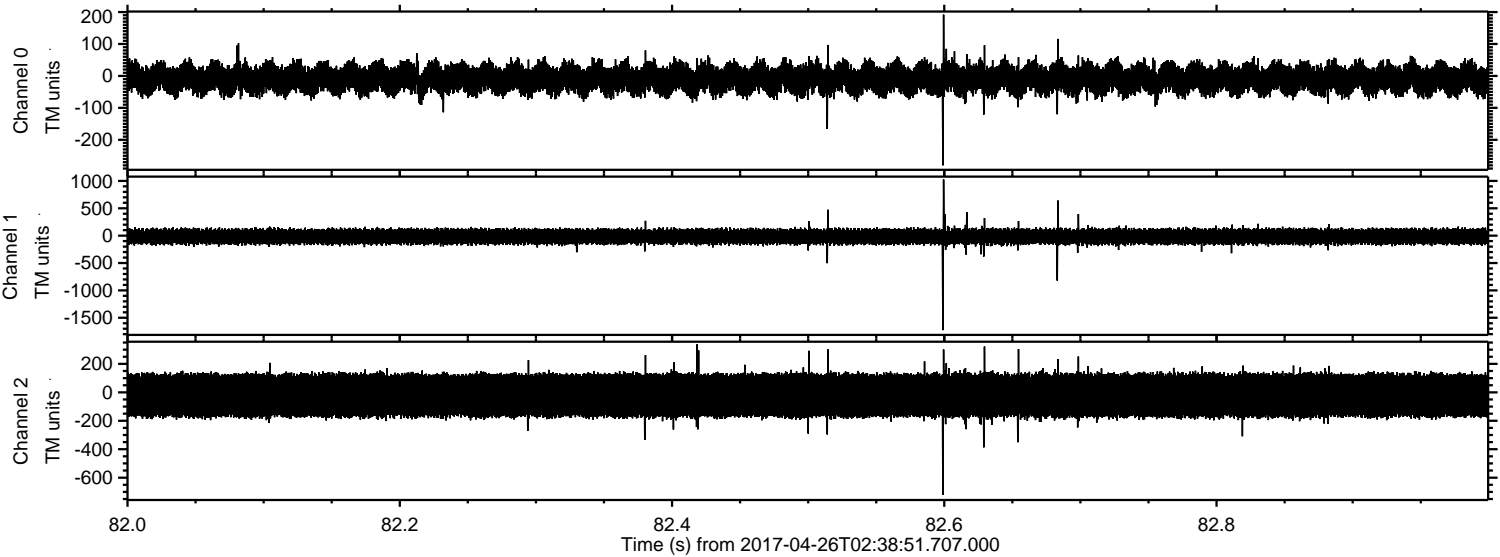


Channel 0
mn: -562
mx: 350
 μ : -9.1
 σ : 28.0

Channel 1
mn: -315
mx: 396
 μ : -16.6
 σ : 75.8

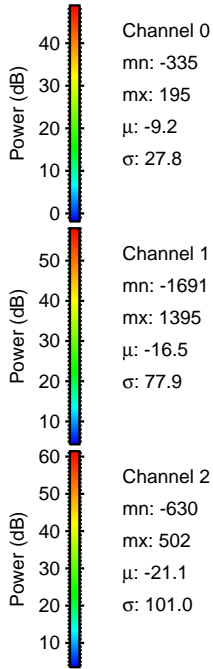
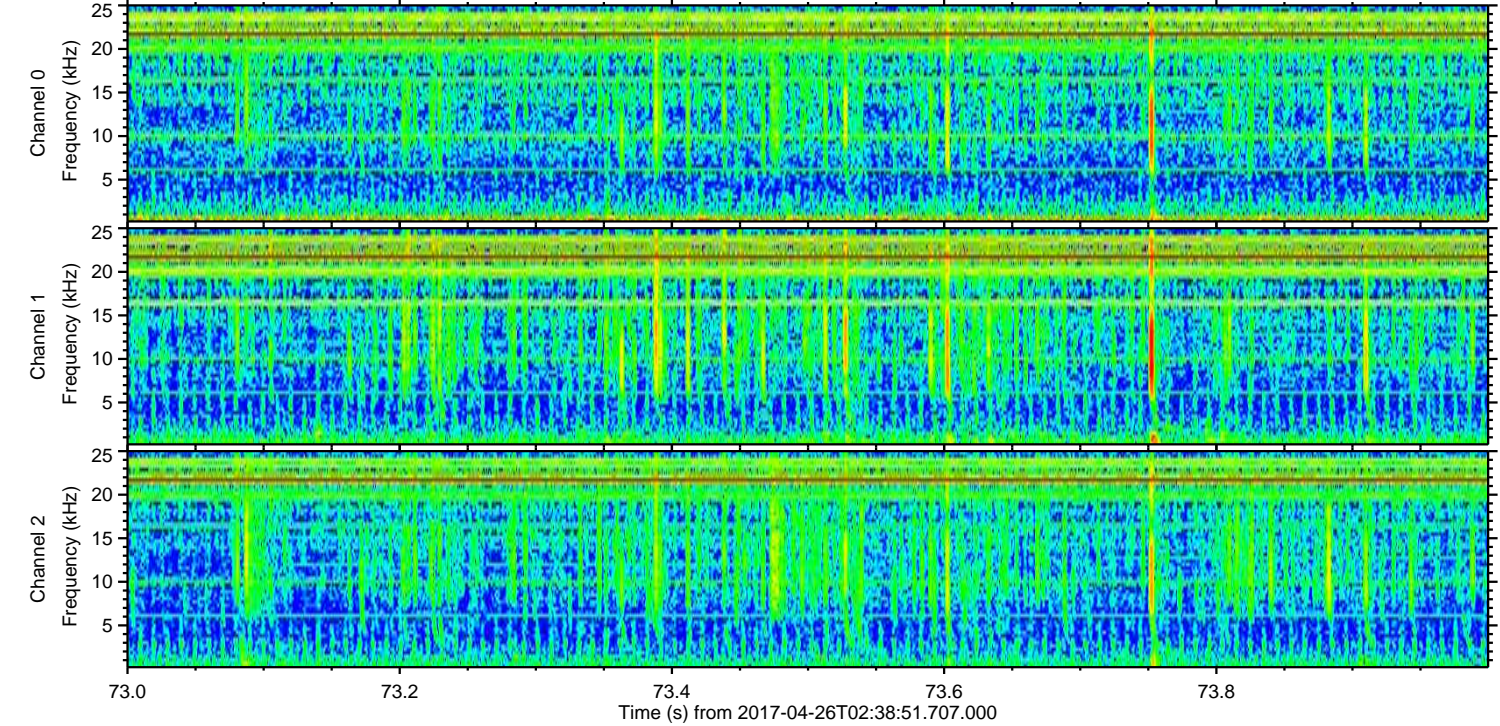
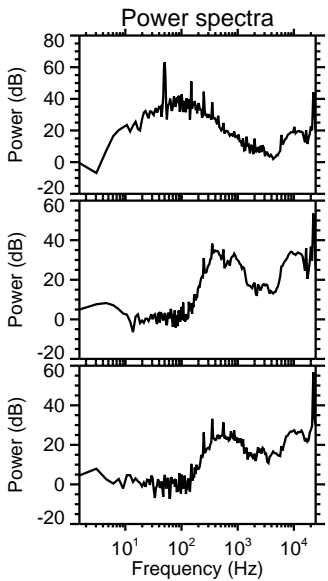
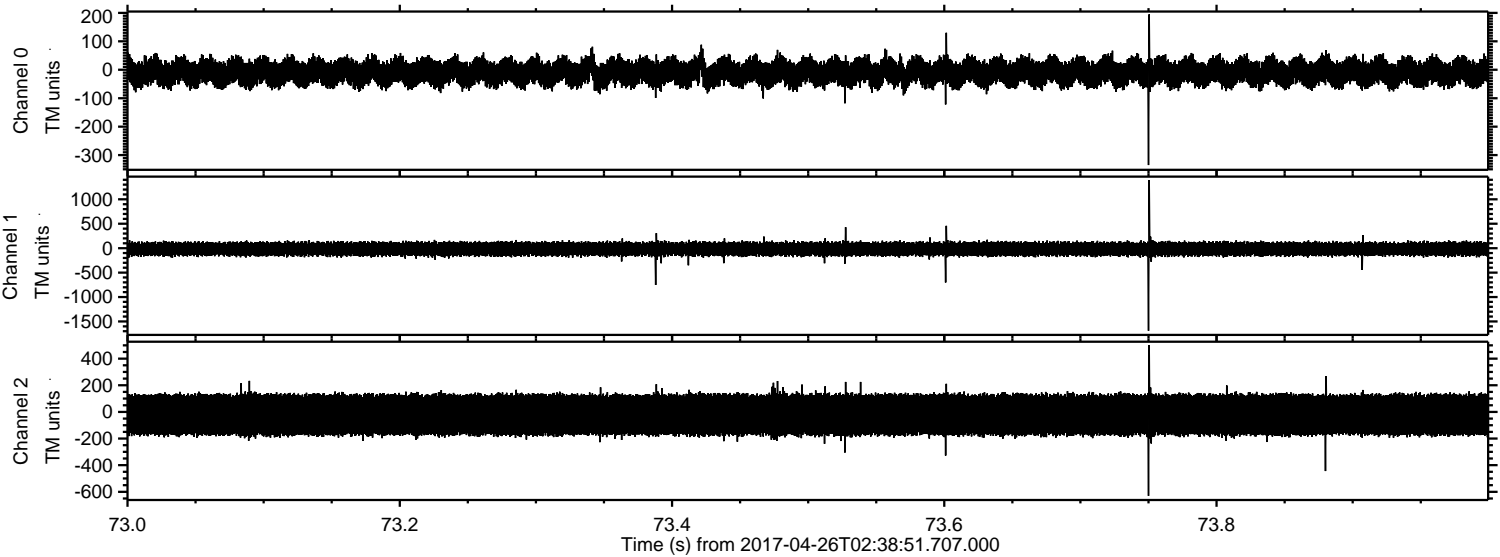
Channel 2
mn: -2002
mx: 1859
 μ : -21.1
 σ : 102.2

Processed Wed Apr 26 04:47:02 2017 by ELM ver.2012-10-06 from 001__elm20170426_023850__dat00.bin



ELMAVAN 3D WAVEFORMS (Measured data sampled at 50 kHz) 51000 packets of 144 samples from 2017-04-26T02:38:51.707.000. Part 74/147

Processed Wed Apr 26 04:47:03 2017 by ELM ver.2012-10-06 from 001__elm20170426_023850__dat00.bin



ELMAVAN 3D WAVEFORMS (Measured data sampled at 50 kHz) 51000 packets of 144 samples from 2017-04-26T02:38:51.707.000. Part 117/147

