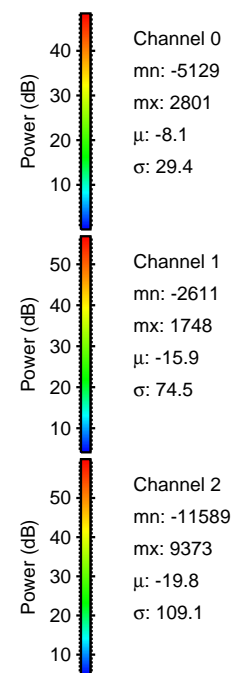
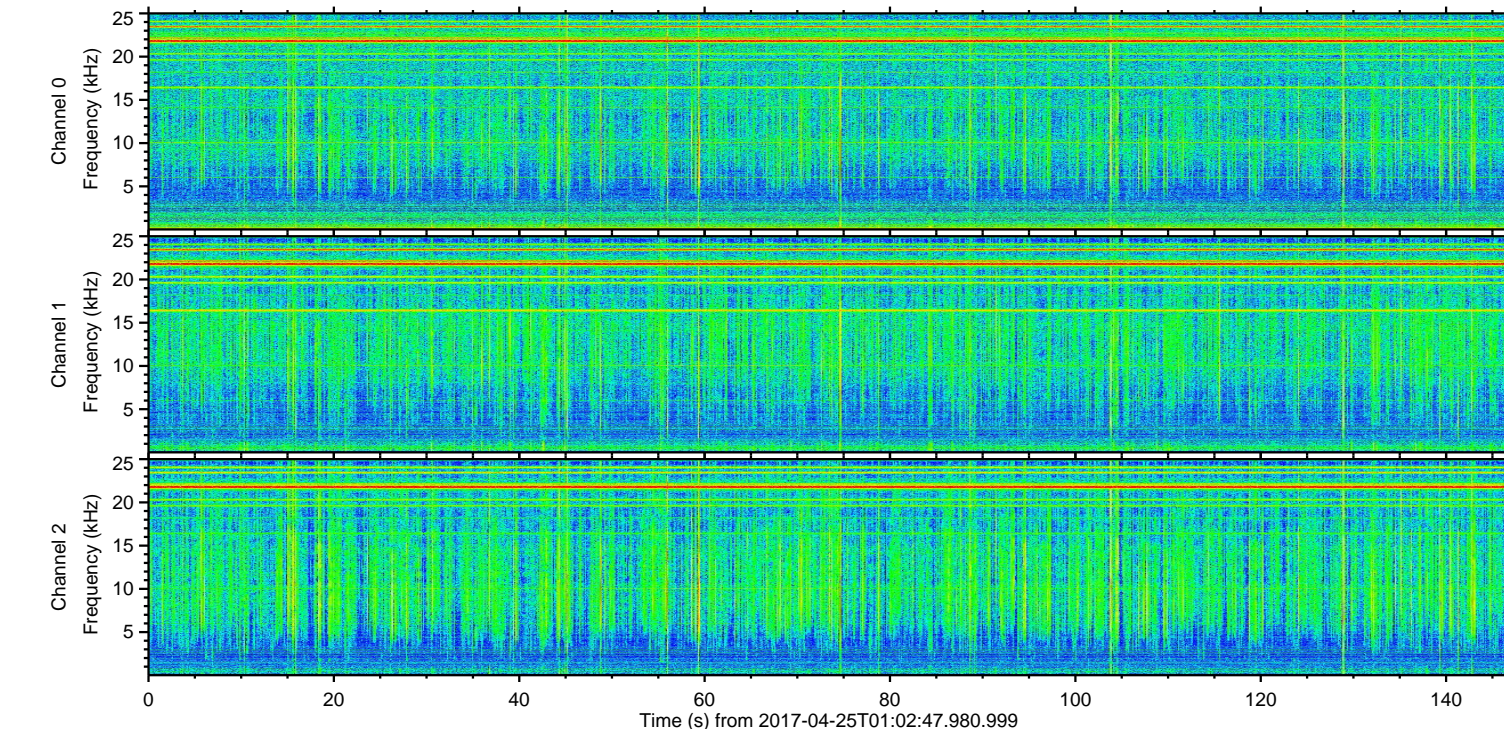
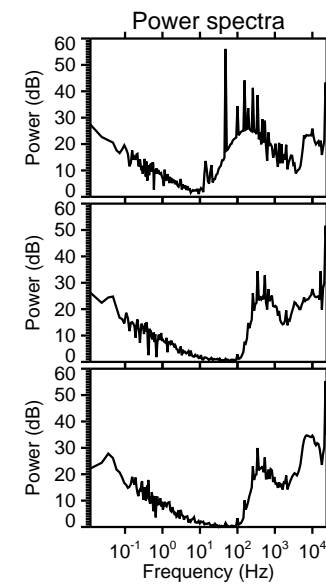
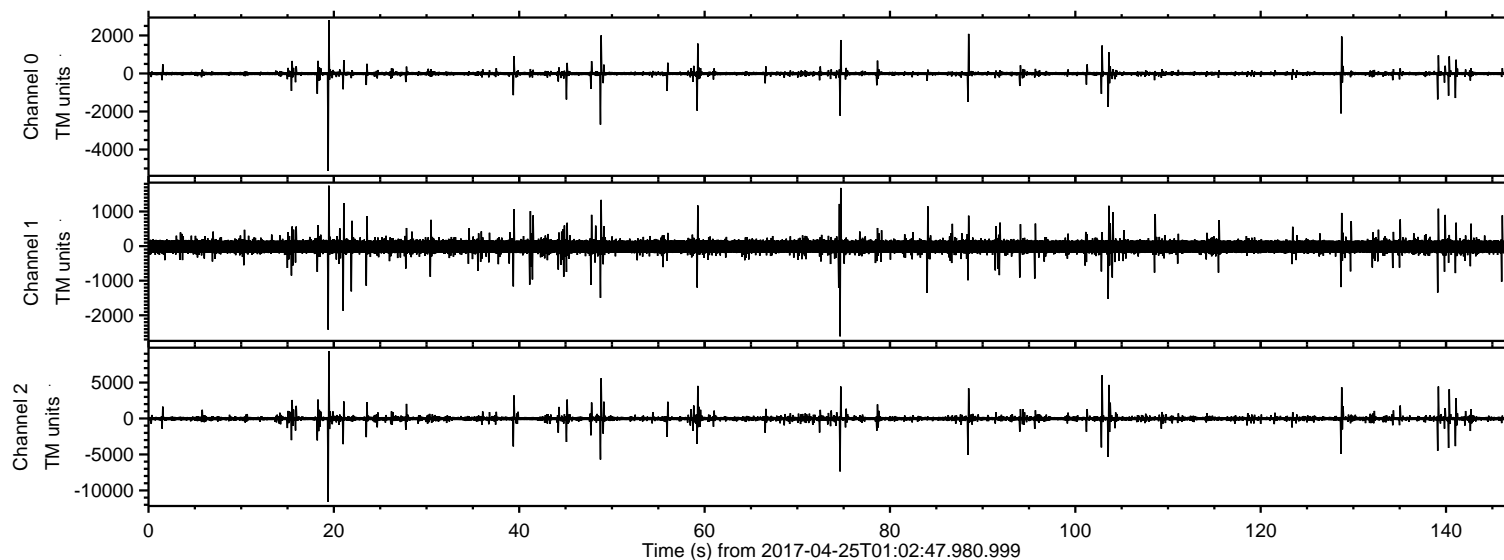


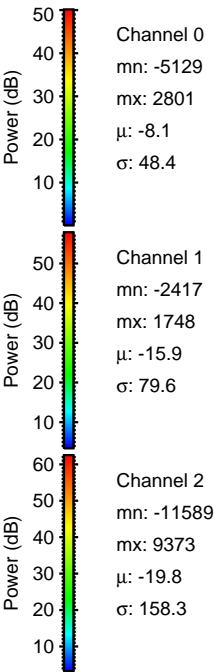
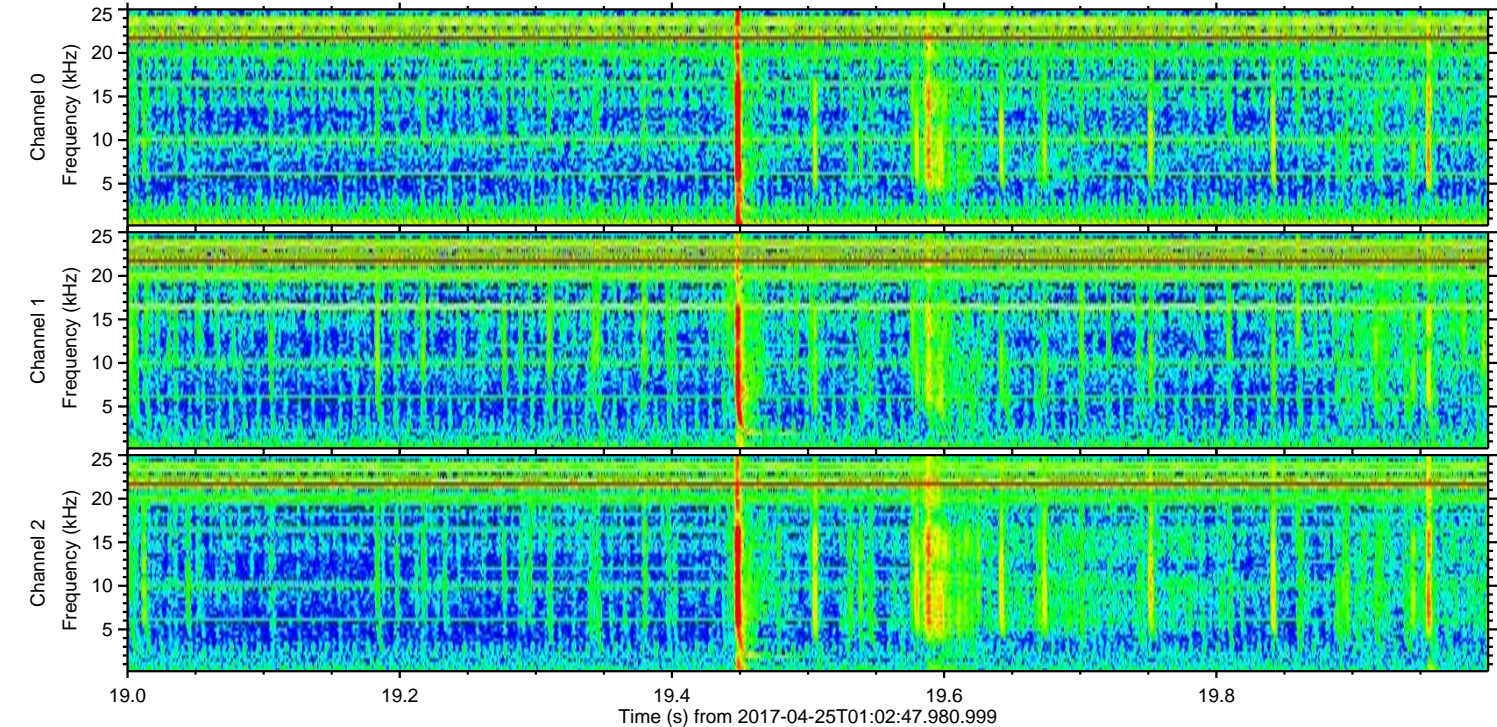
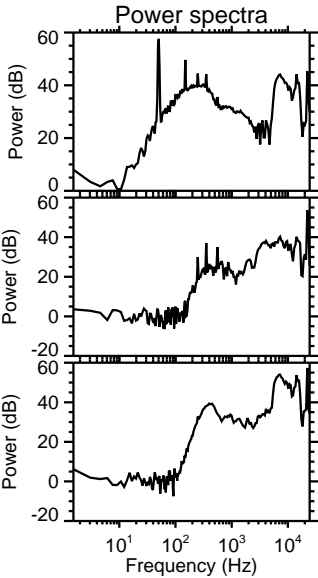
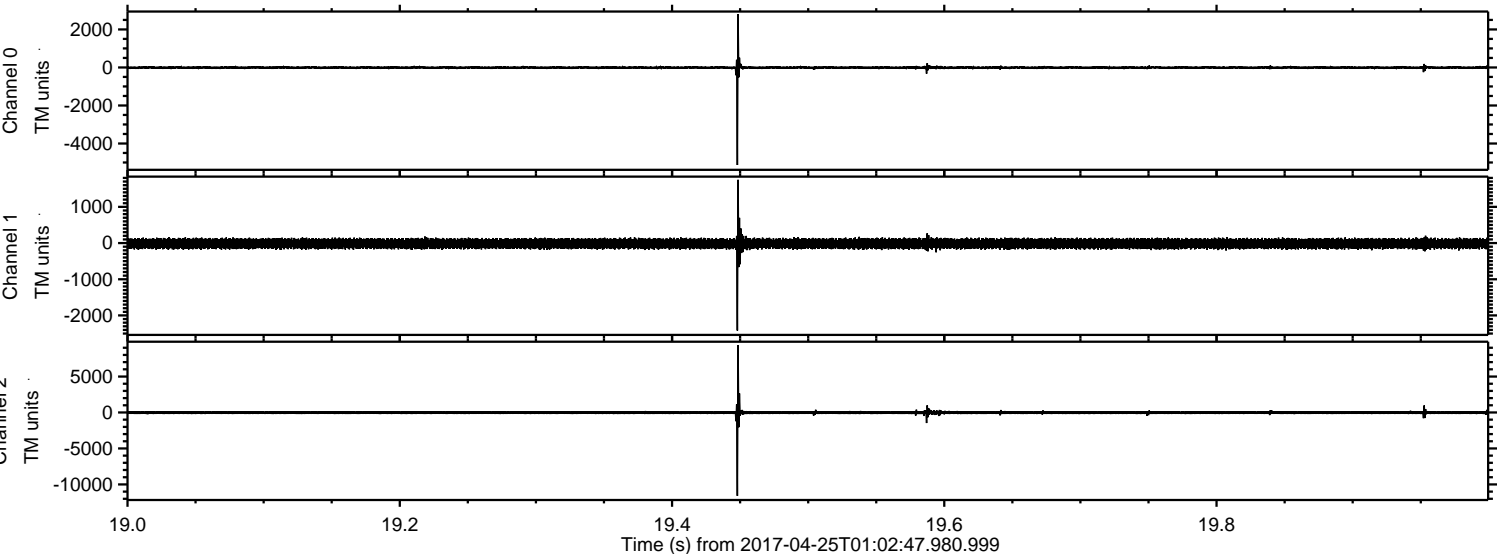
ELMAVAN 3D WAVEFORMS (Measured data sampled at 50 kHz) 51000 packets of 144 samples from 2017-04-25T01:02:47.980.999.

Processed Tue Apr 25 03:10:03 2017 by ELM ver.2012-10-06 from 001__elm20170425_010246__dat00.bin

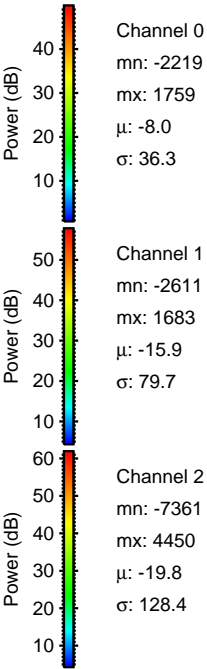
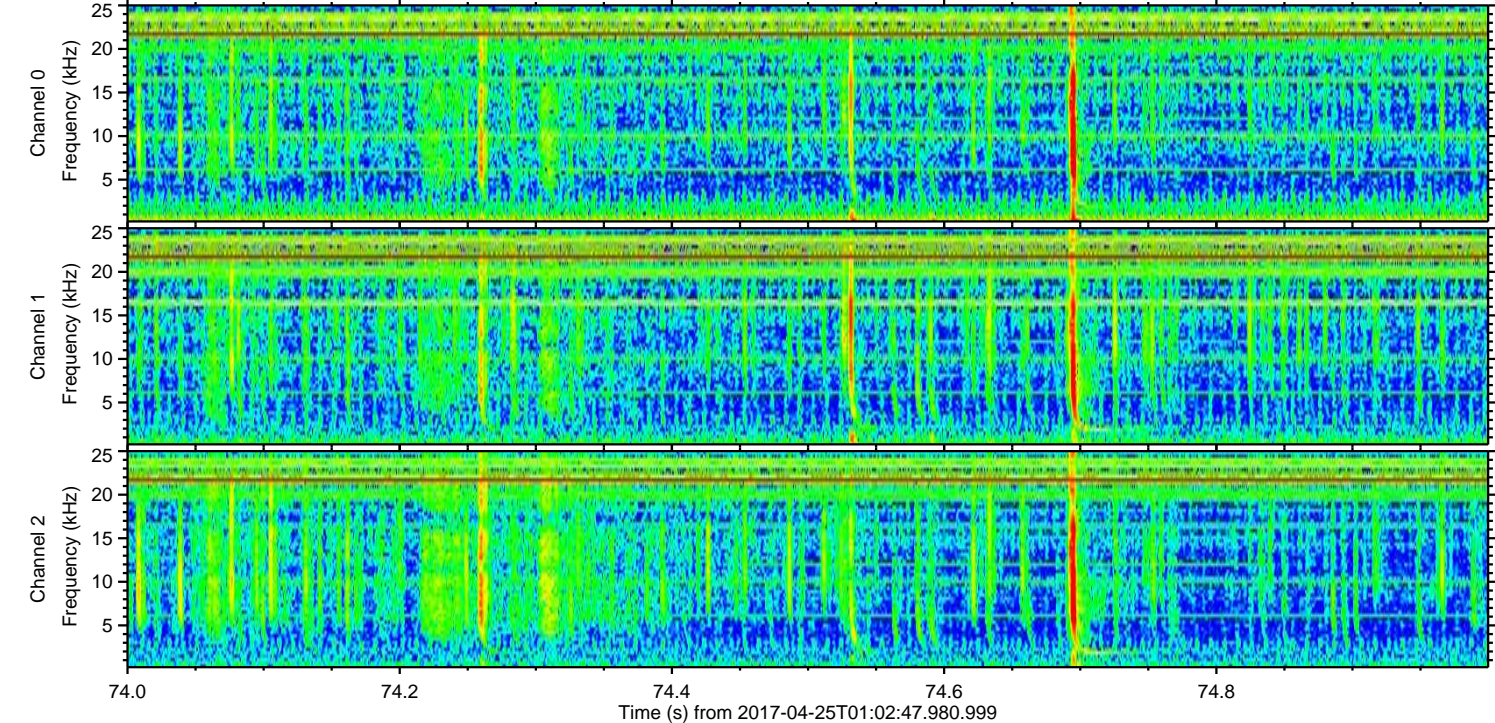
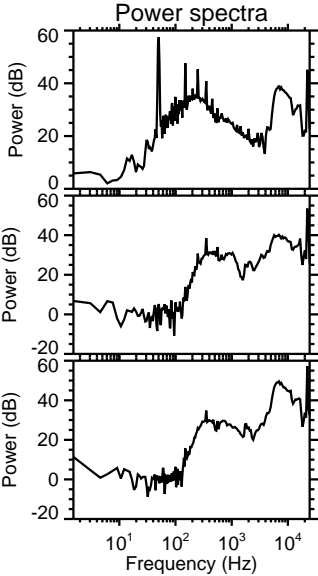
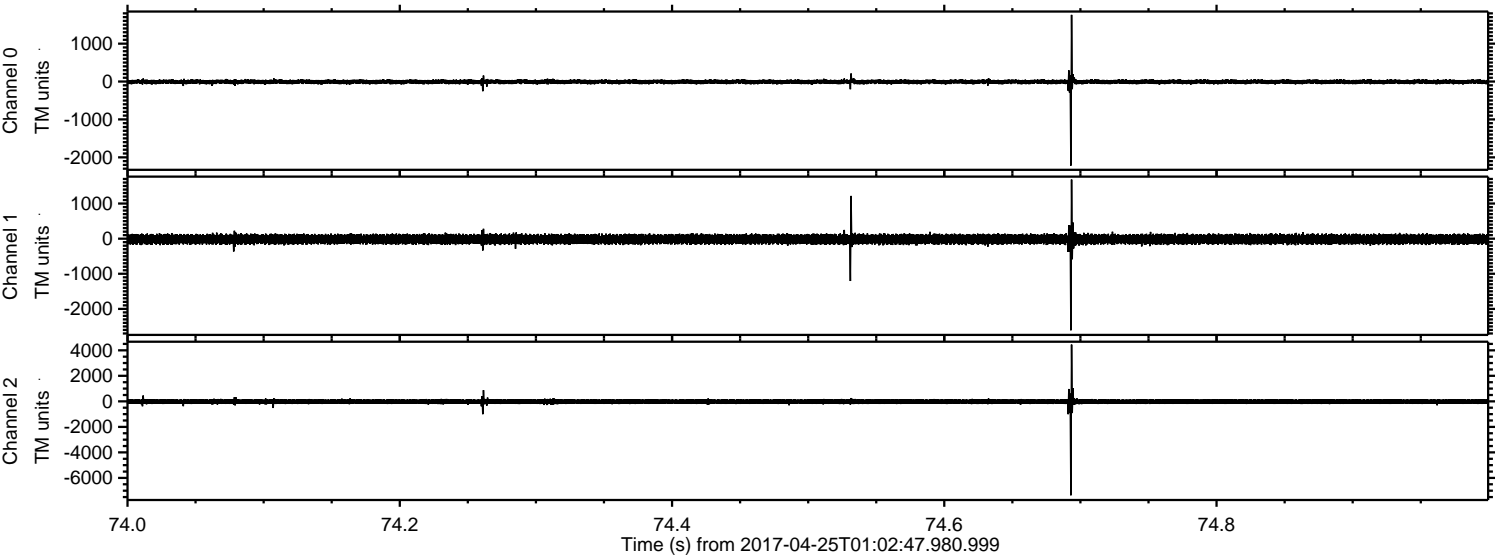


ELMAVAN 3D WAVEFORMS (Measured data sampled at 50 kHz) 51000 packets of 144 samples from 2017-04-25T01:02:47.980.999. Part 20/147

Processed Tue Apr 25 03:10:14 2017 by ELM ver.2012-10-06 from 001__elm20170425_010246__dat00.bin

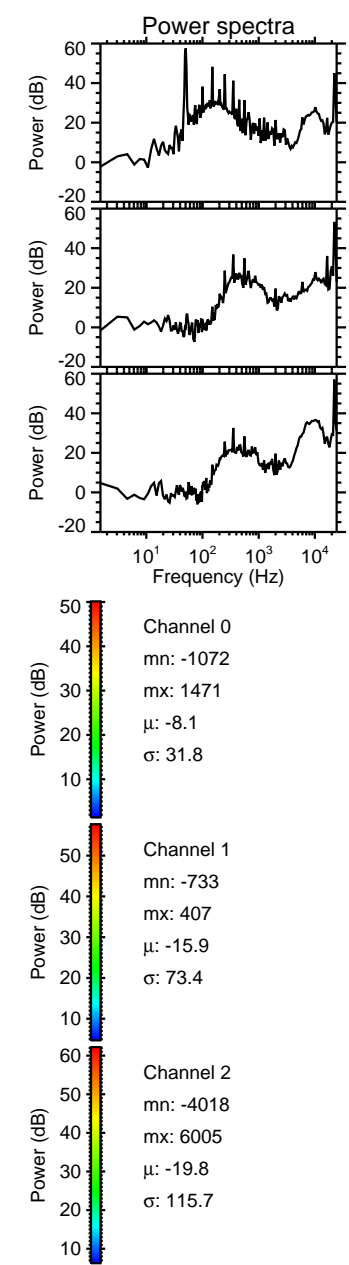
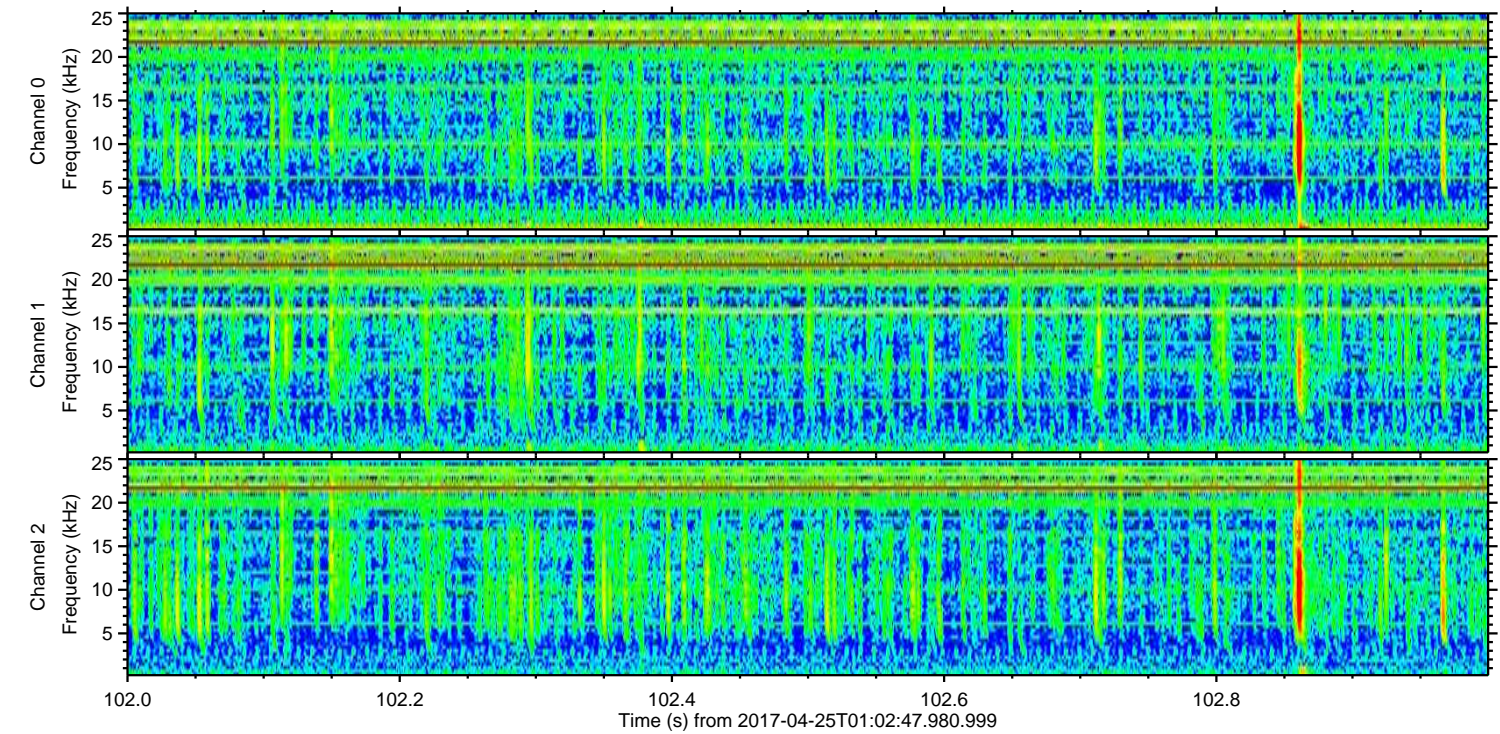
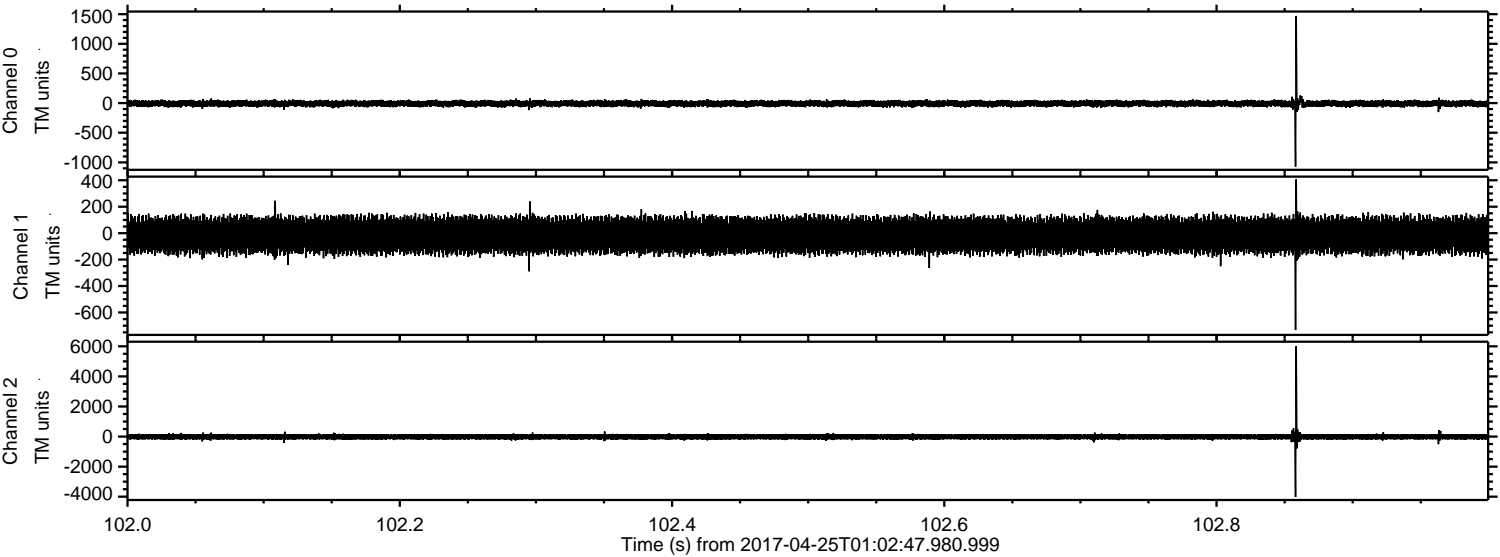


Processed Tue Apr 25 03:10:15 2017 by ELM ver.2012-10-06 from 001__elm20170425_010246__dat00.bin



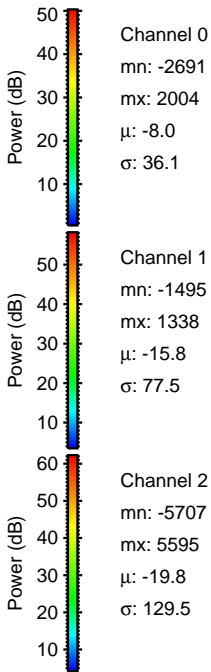
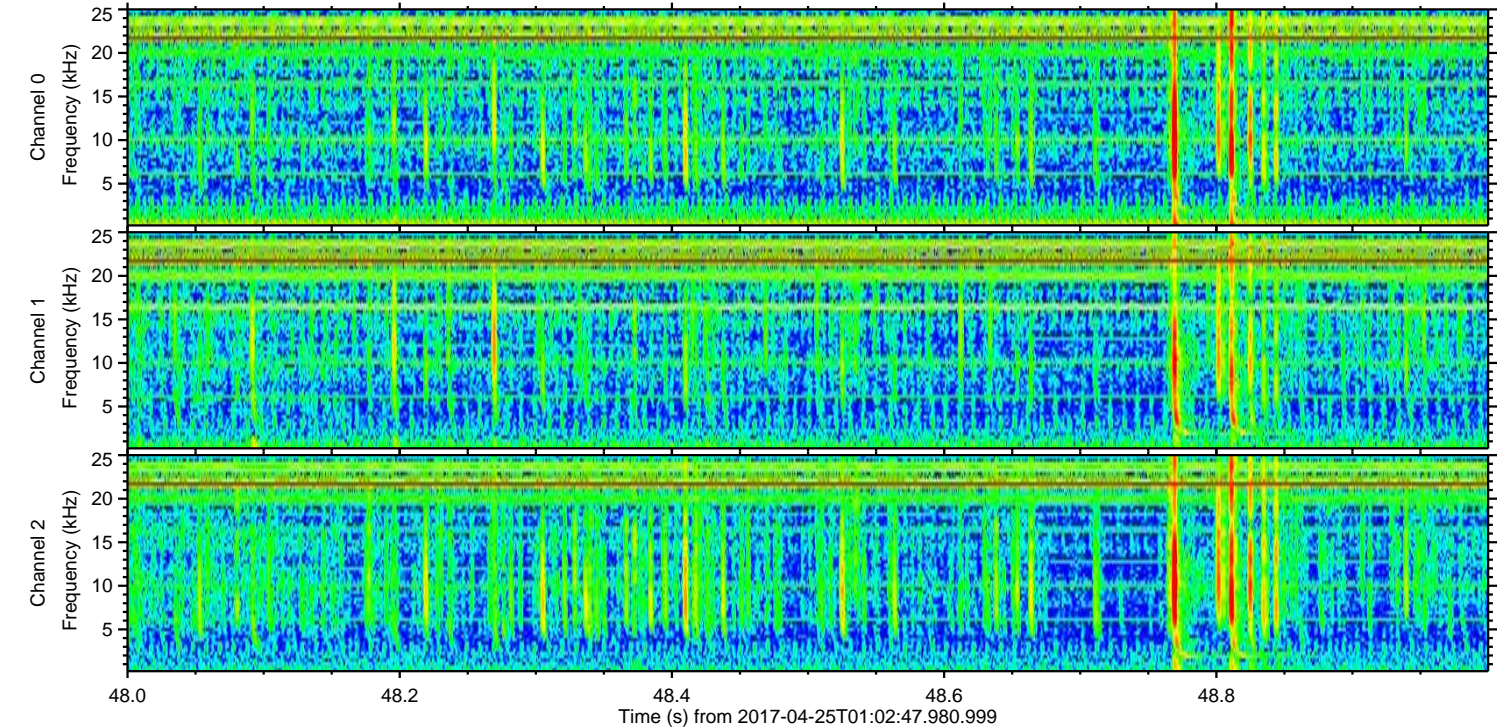
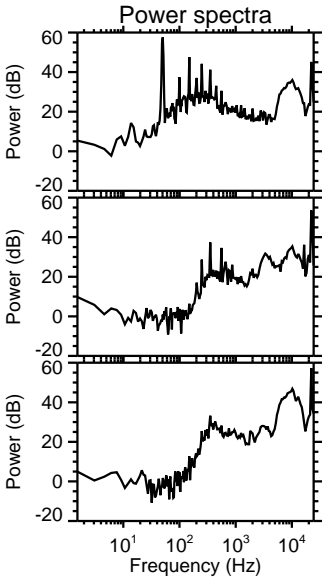
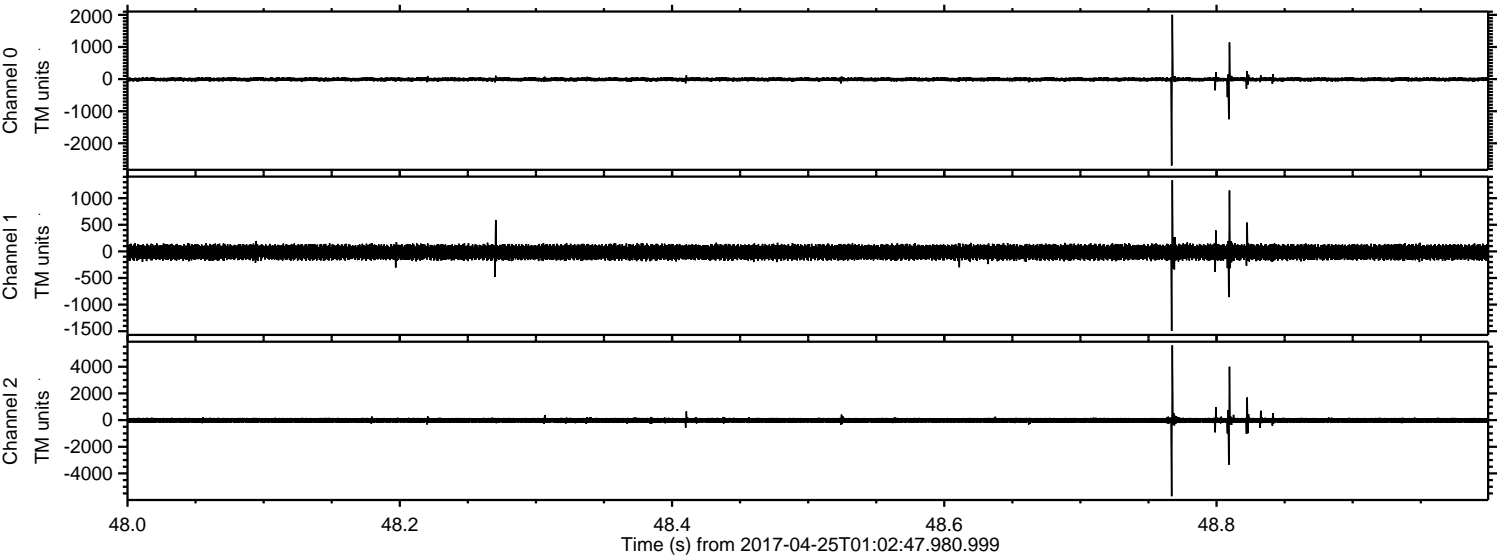
ELMAVAN 3D WAVEFORMS (Measured data sampled at 50 kHz) 51000 packets of 144 samples from 2017-04-25T01:02:47.980.999. Part 103/147

Processed Tue Apr 25 03:10:16 2017 by ELM ver.2012-10-06 from 001__elm20170425_010246__dat00.bin



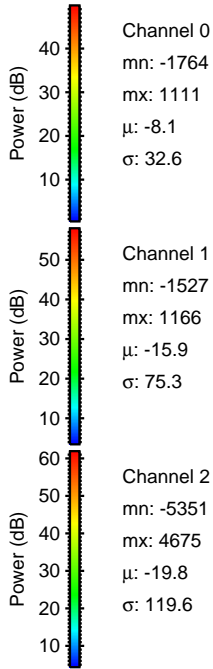
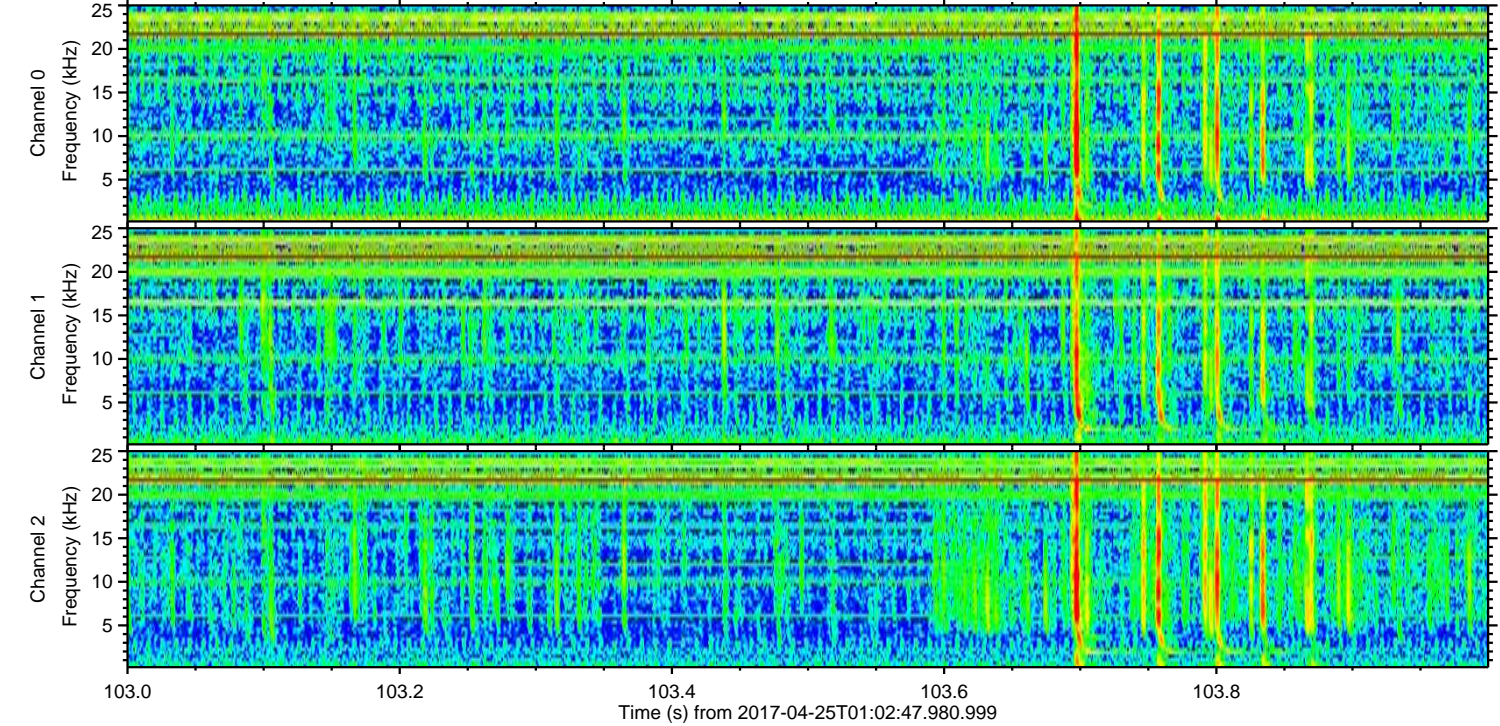
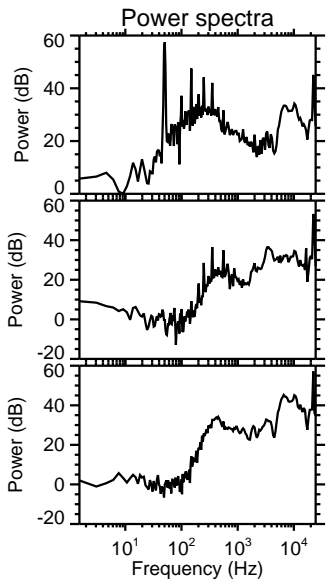
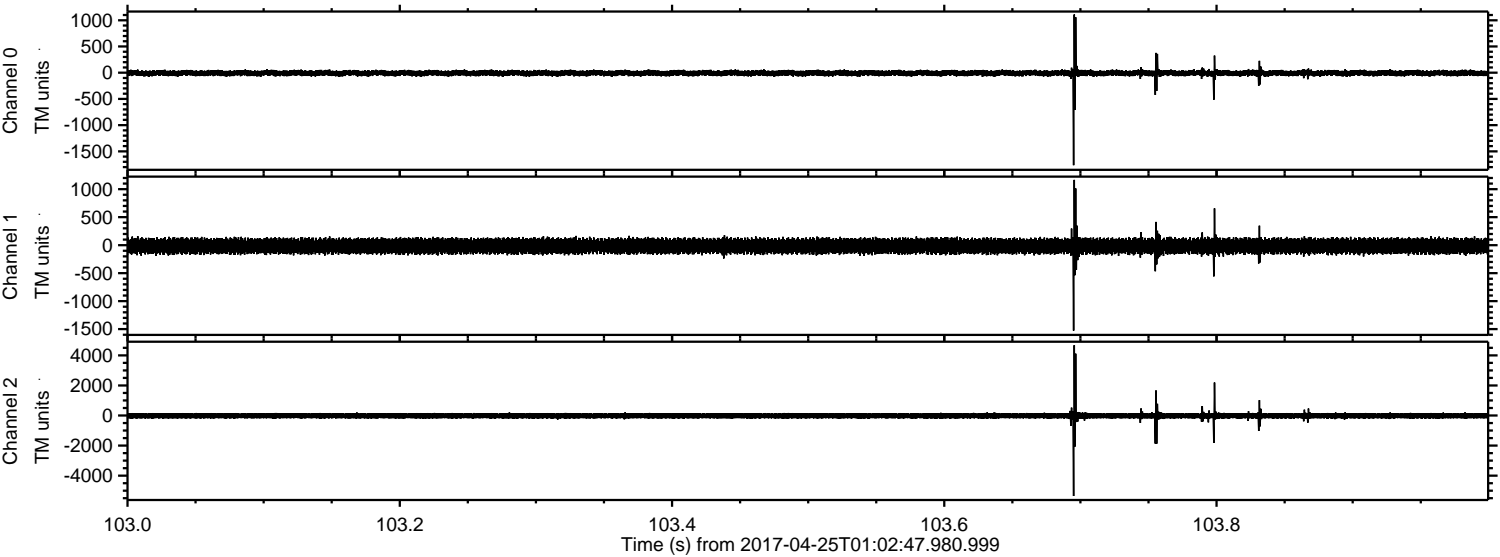
ELMAVAN 3D WAVEFORMS (Measured data sampled at 50 kHz) 51000 packets of 144 samples from 2017-04-25T01:02:47.980.999. Part 49/147

Processed Tue Apr 25 03:10:17 2017 by ELM ver.2012-10-06 from 001__elm20170425_010246__dat00.bin



ELMAVAN 3D WAVEFORMS (Measured data sampled at 50 kHz) 51000 packets of 144 samples from 2017-04-25T01:02:47.980.999. Part 104/147

Processed Tue Apr 25 03:10:18 2017 by ELM ver.2012-10-06 from 001__elm20170425_010246__dat00.bin



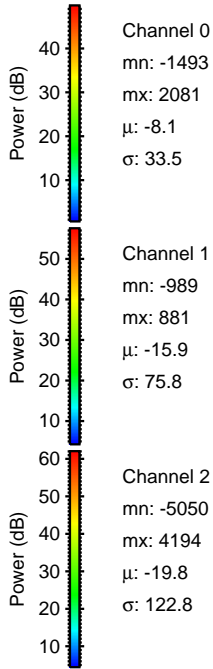
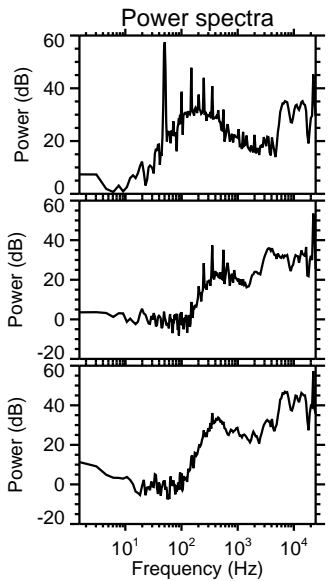
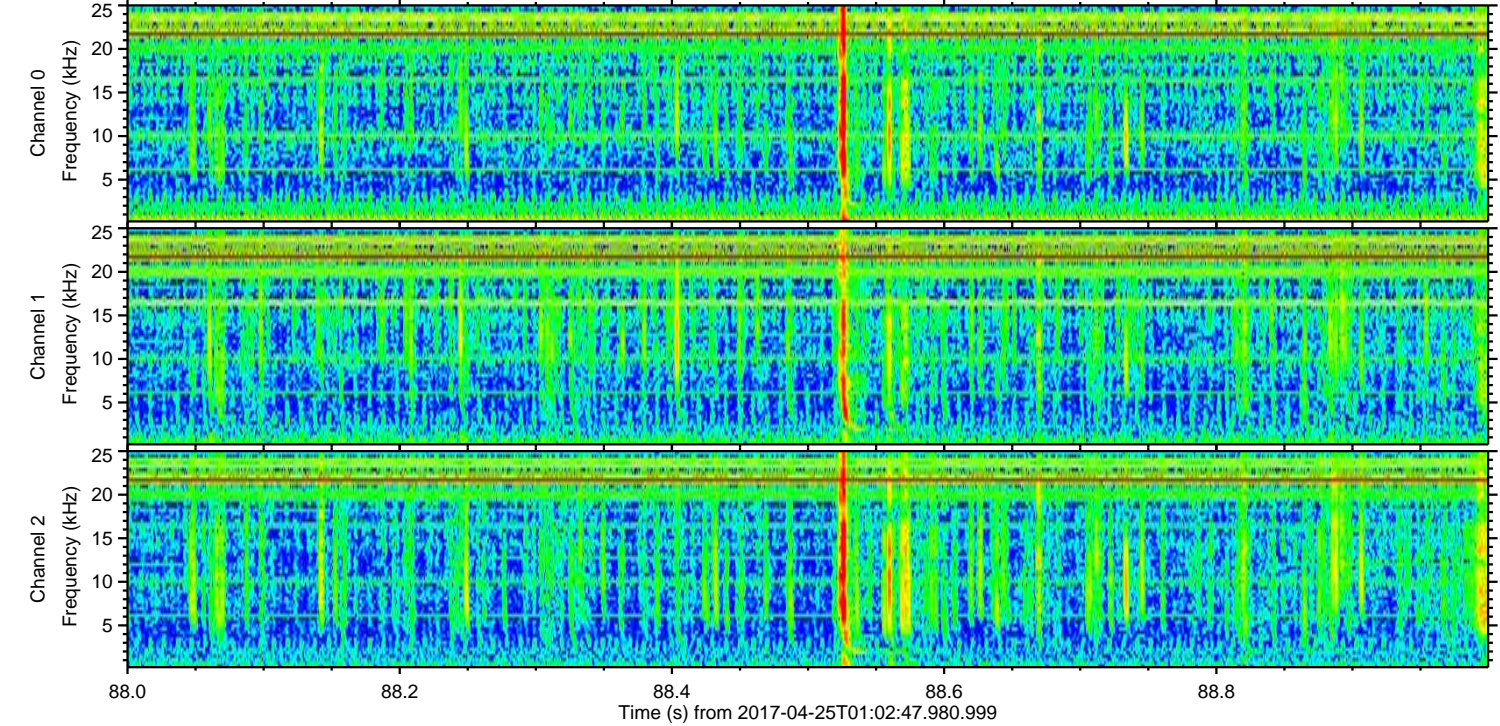
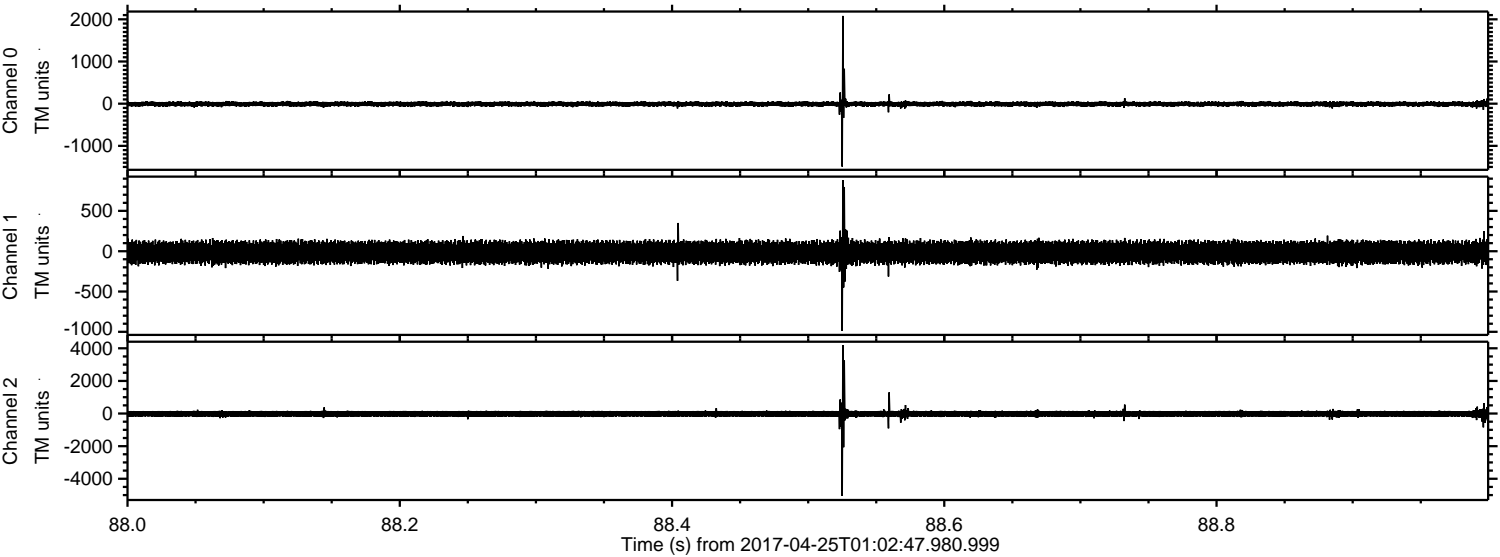
Channel 0
mn: -1764
mx: 1111
 μ : -8.1
 σ : 32.6

Channel 1
mn: -1527
mx: 1166
 μ : -15.9
 σ : 75.3

Channel 2
mn: -5351
mx: 4675
 μ : -19.8
 σ : 119.6

ELMAVAN 3D WAVEFORMS (Measured data sampled at 50 kHz) 51000 packets of 144 samples from 2017-04-25T01:02:47.980.999. Part 89/147

Processed Tue Apr 25 03:10:19 2017 by ELM ver.2012-10-06 from 001__elm20170425_010246__dat00.bin



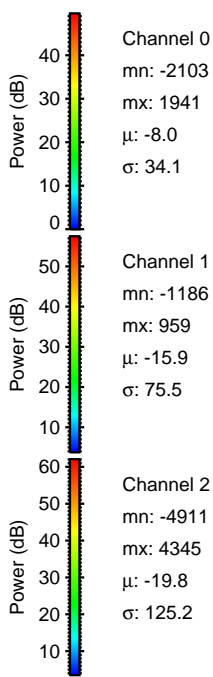
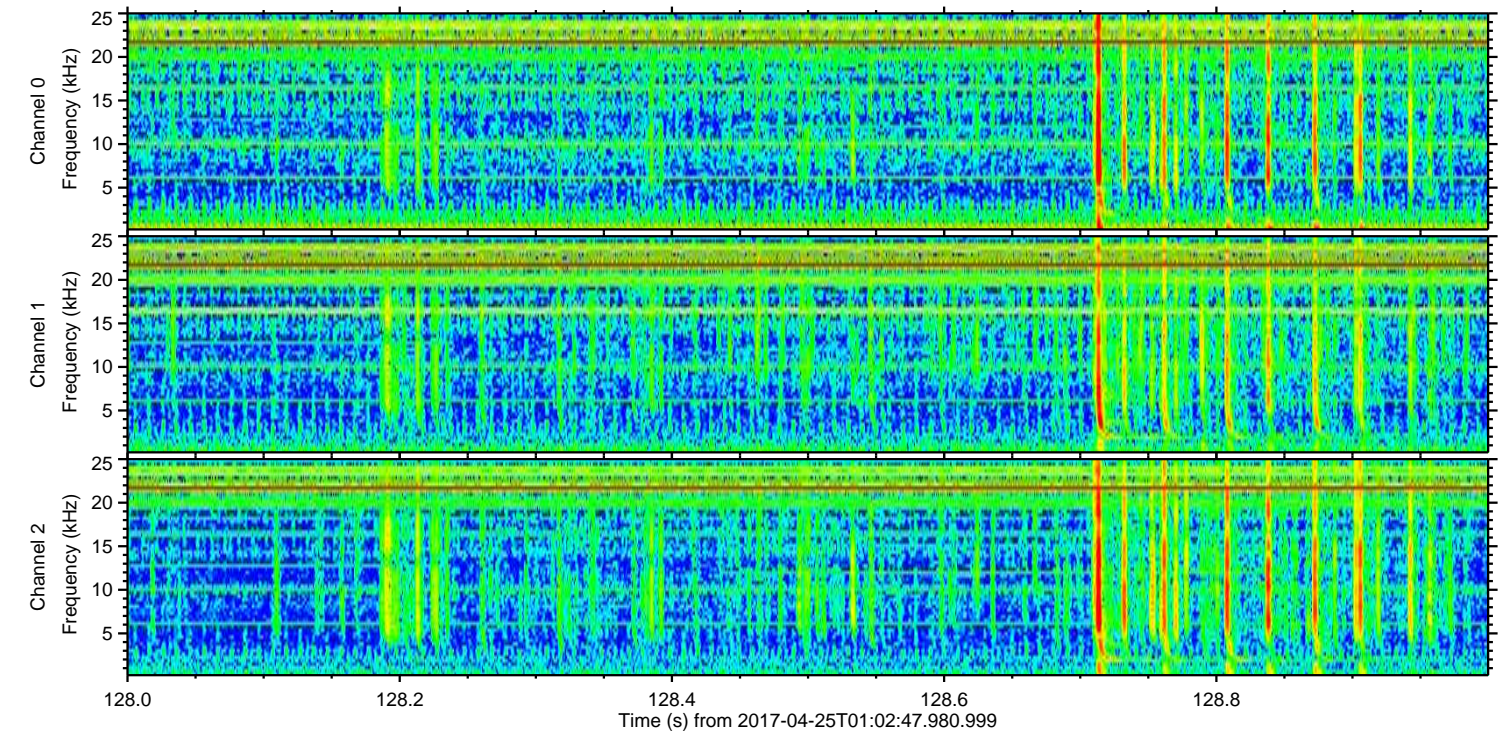
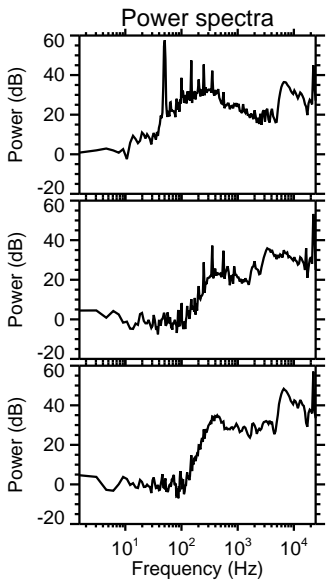
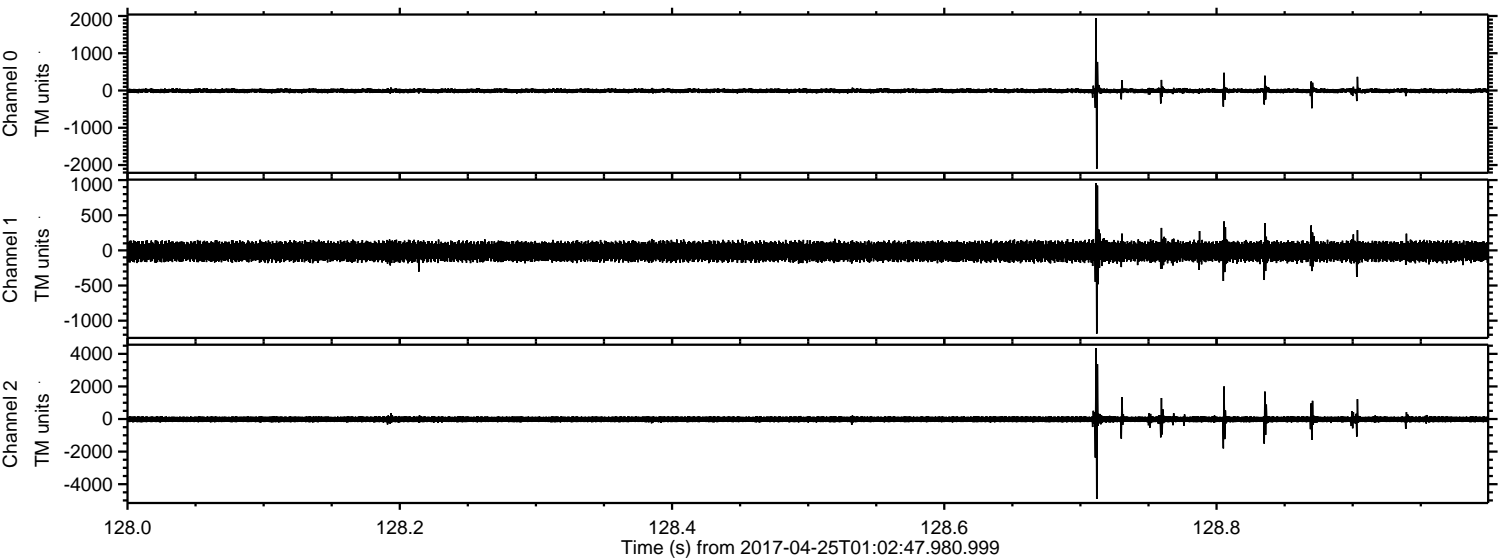
Channel 0
mn: -1493
mx: 2081
 μ : -8.1
 σ : 33.5

Channel 1
mn: -989
mx: 881
 μ : -15.9
 σ : 75.8

Channel 2
mn: -5050
mx: 4194
 μ : -19.8
 σ : 122.8

ELMAVAN 3D WAVEFORMS (Measured data sampled at 50 kHz) 51000 packets of 144 samples from 2017-04-25T01:02:47.980.999. Part 129/147

Processed Tue Apr 25 03:10:20 2017 by ELM ver.2012-10-06 from 001__elm20170425_010246__dat00.bin

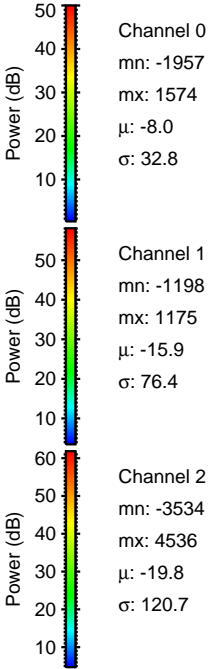
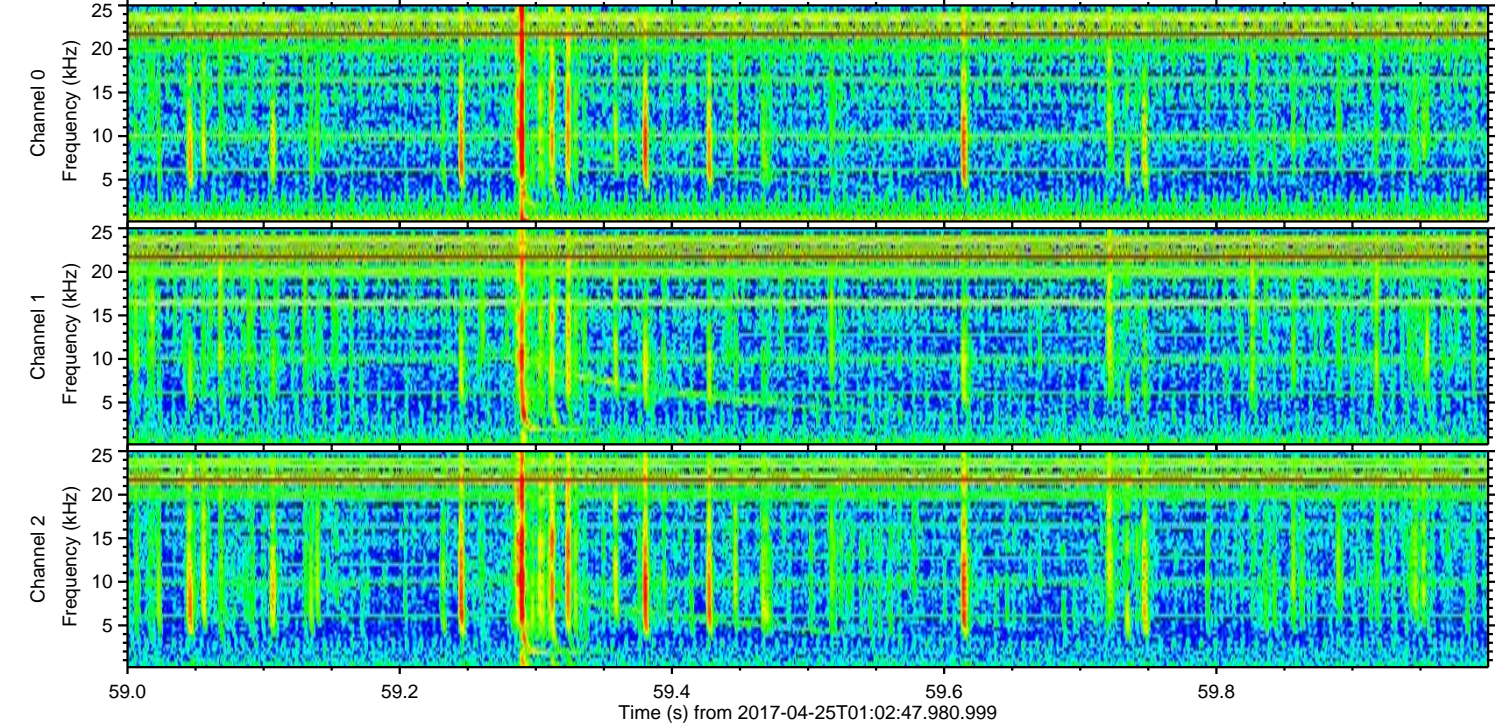
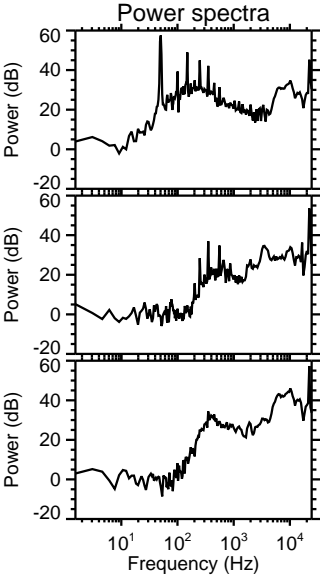
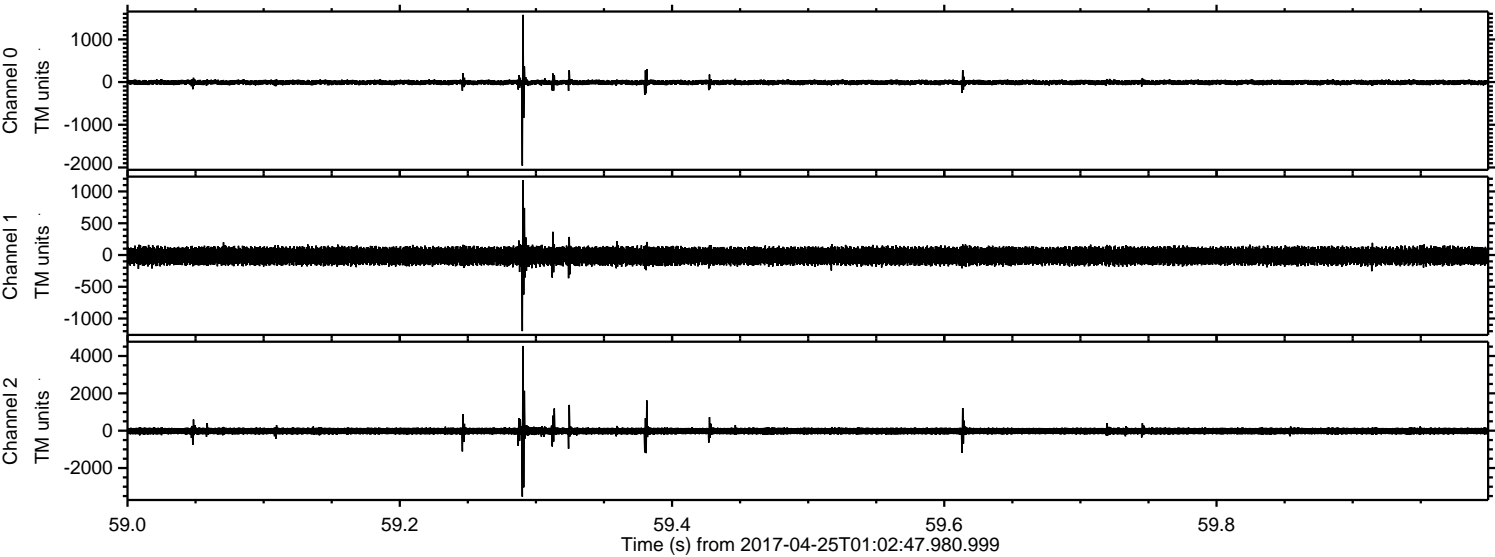


Channel 0
mn: -2103
mx: 1941
 μ : -8.0
 σ : 34.1

Channel 1
mn: -1186
mx: 959
 μ : -15.9
 σ : 75.5

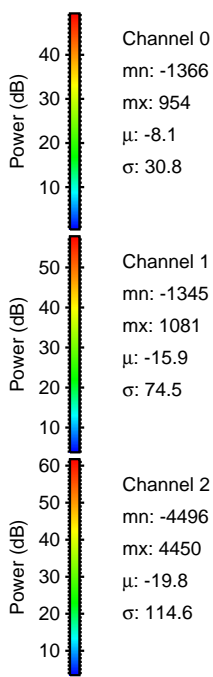
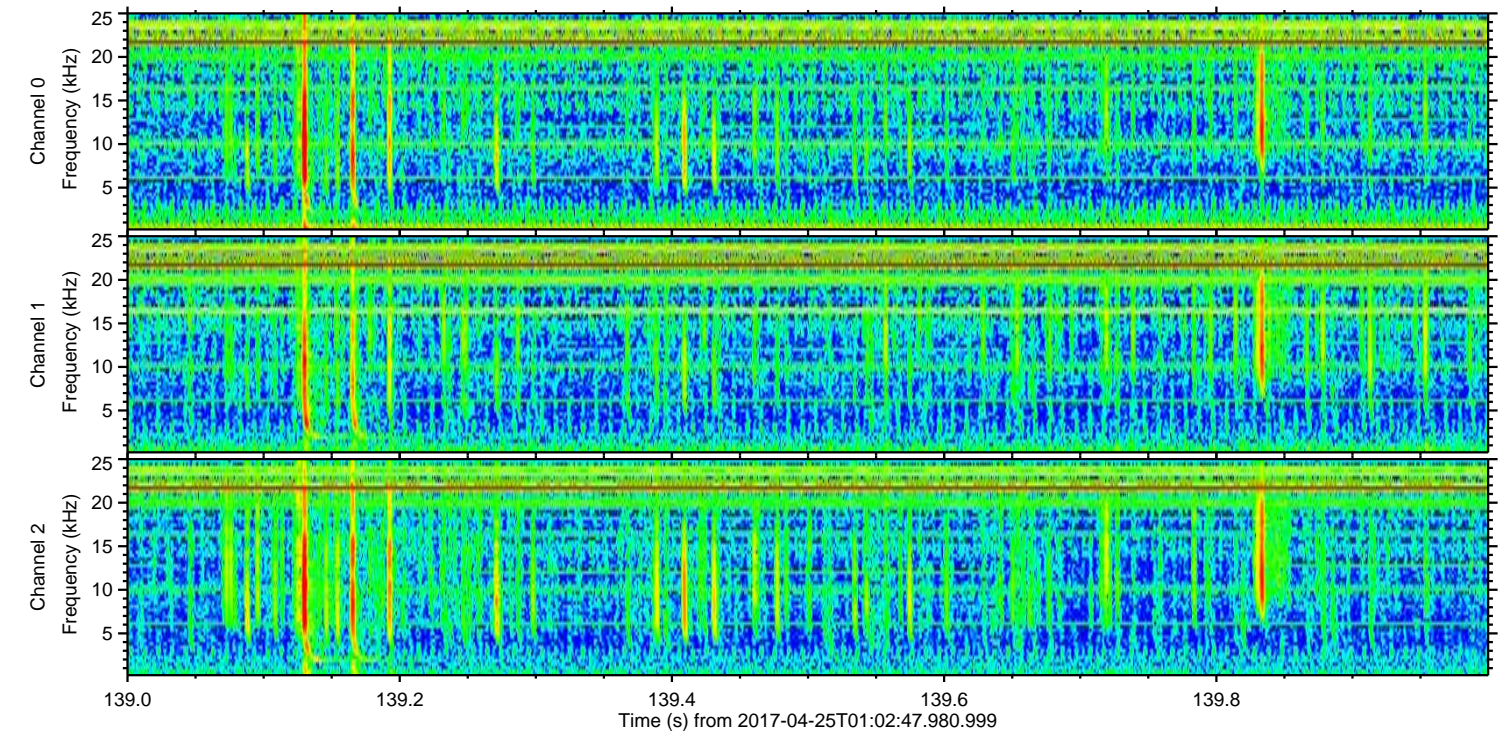
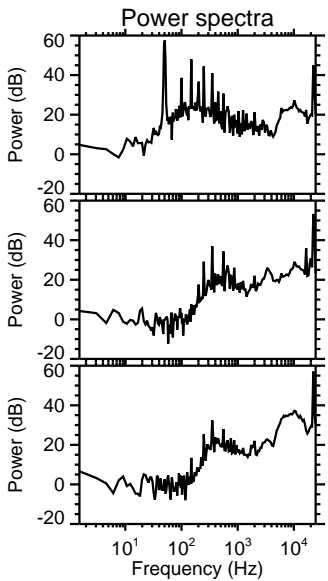
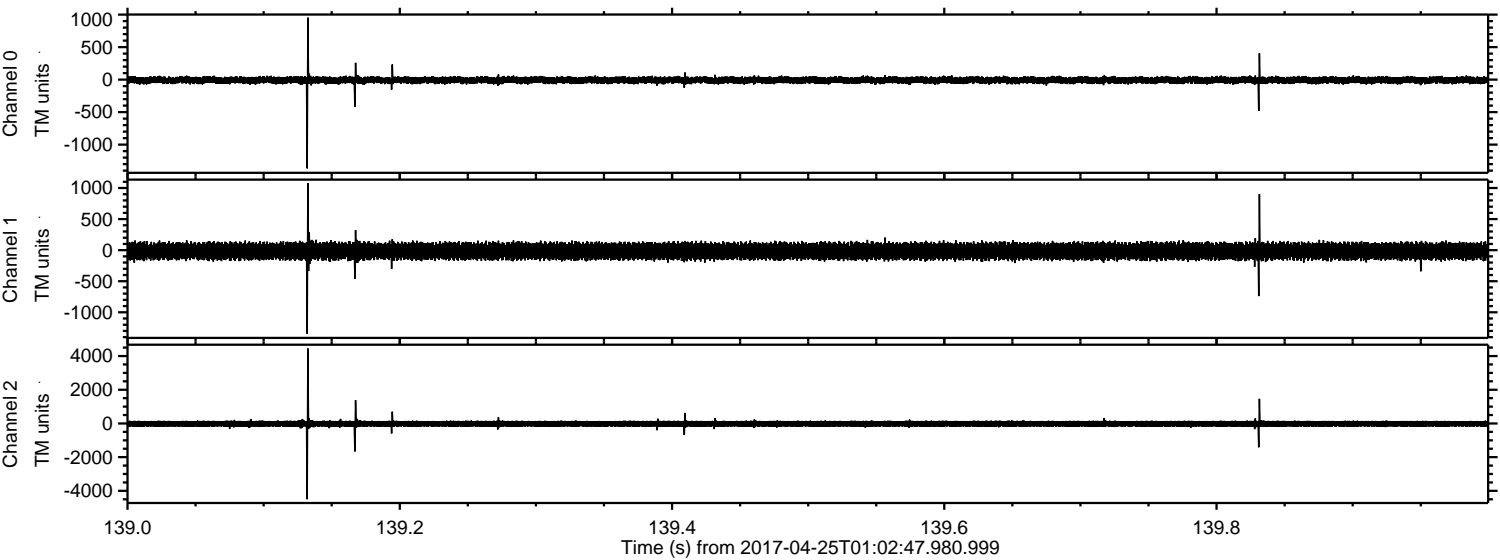
Channel 2
mn: -4911
mx: 4345
 μ : -19.8
 σ : 125.2

Processed Tue Apr 25 03:10:21 2017 by ELM ver.2012-10-06 from 001__elm20170425_010246__dat00.bin



ELMAVAN 3D WAVEFORMS (Measured data sampled at 50 kHz) 51000 packets of 144 samples from 2017-04-25T01:02:47.980.999. Part 140/147

Processed Tue Apr 25 03:10:22 2017 by ELM ver.2012-10-06 from 001__elm20170425_010246__dat00.bin



ELMAVAN 3D WAVEFORMS (Measured data sampled at 50 kHz) 51000 packets of 144 samples from 2017-04-25T01:02:47.980.999. Part 52/147

Processed Tue Apr 25 03:10:23 2017 by ELM ver.2012-10-06 from 001__elm20170425_010246__dat00.bin

