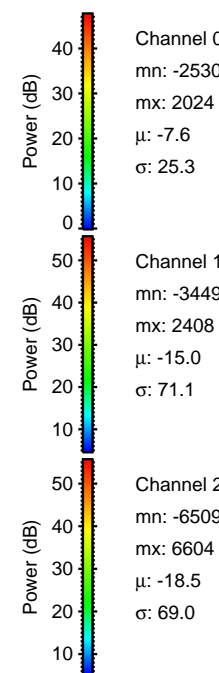
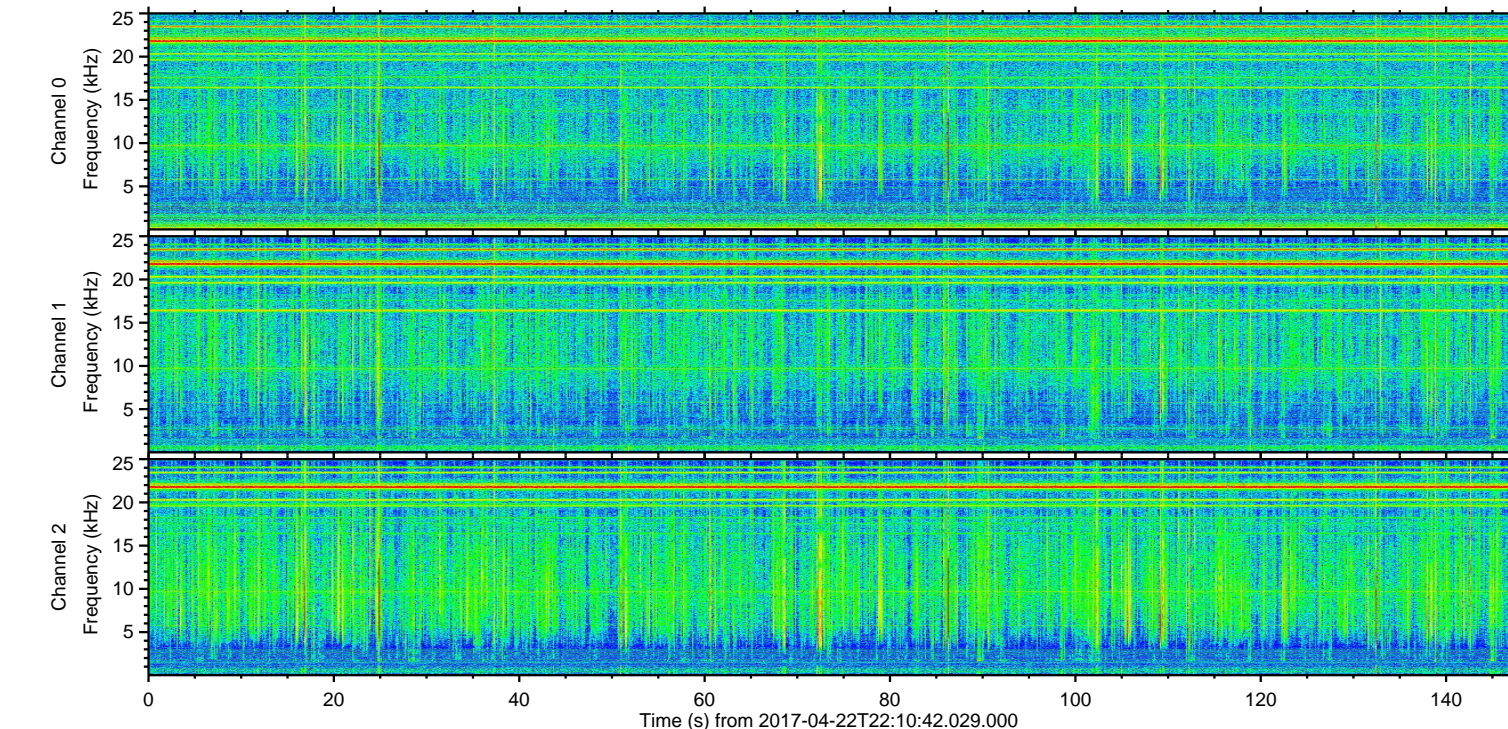
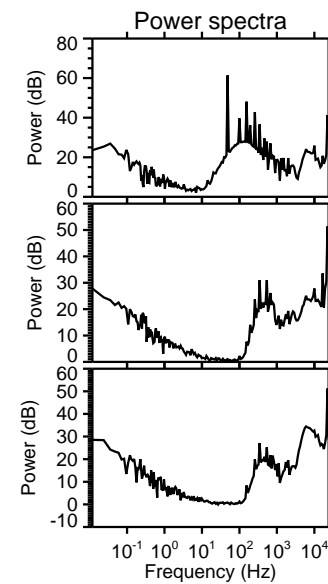
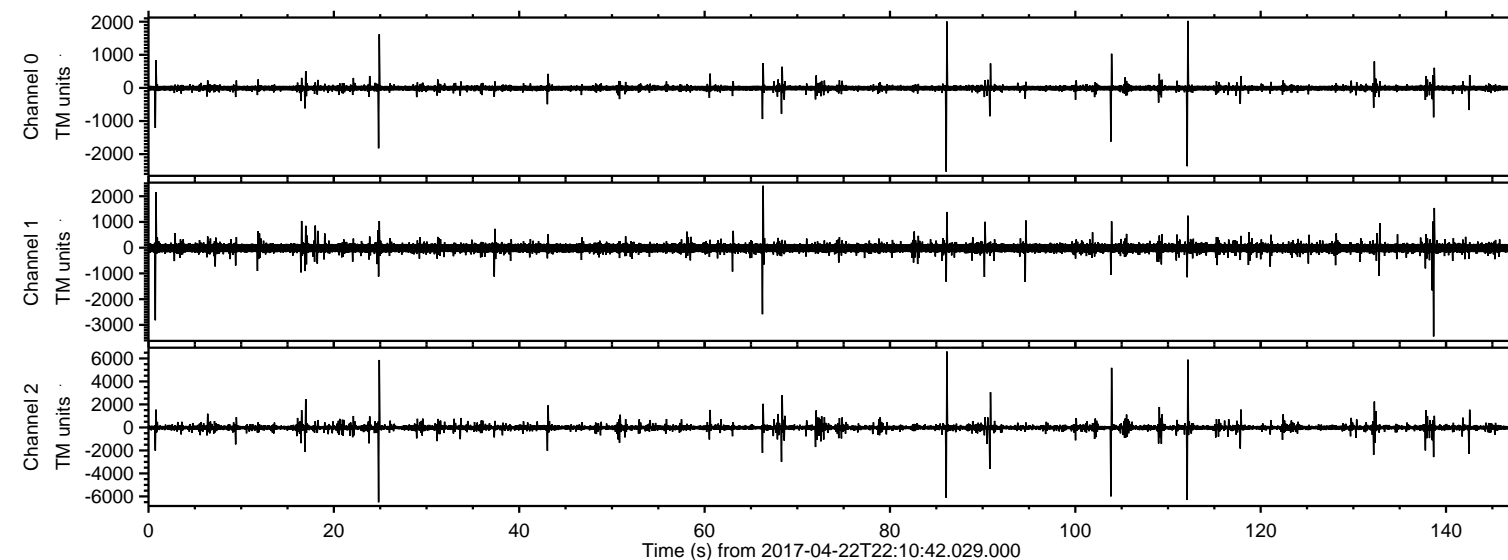


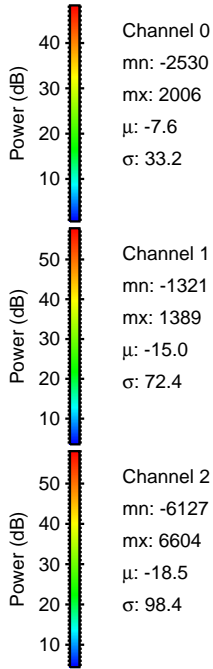
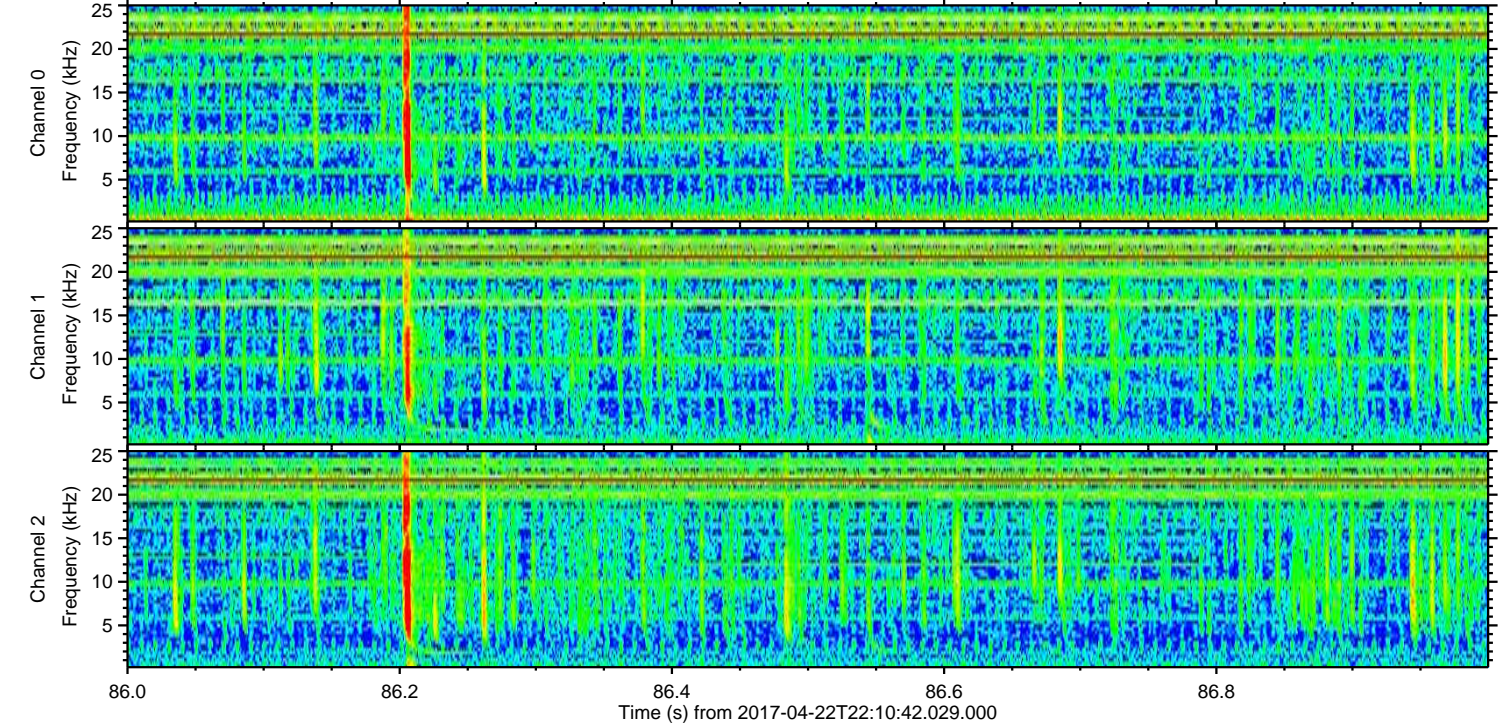
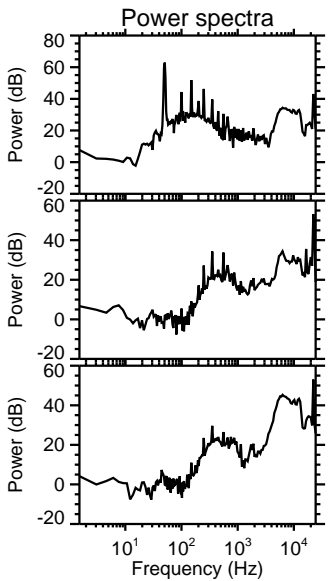
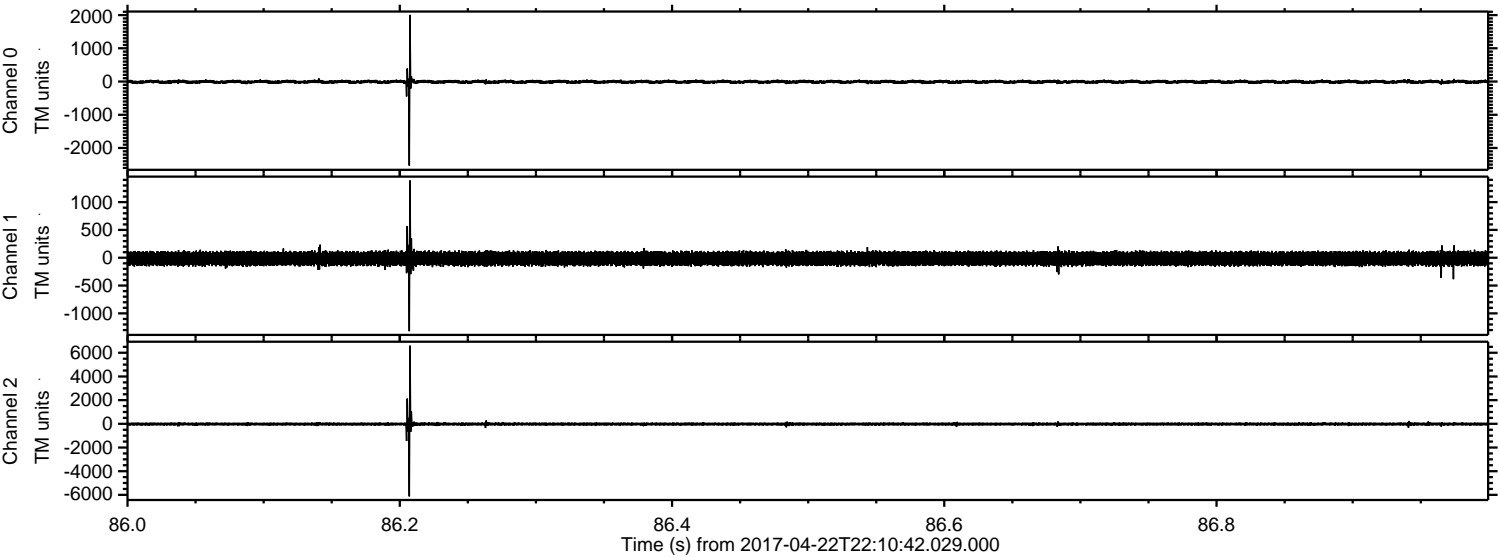
ELMAVAN 3D WAVEFORMS (Measured data sampled at 50 kHz) 51000 packets of 144 samples from 2017-04-22T22:10:42.029.000.

Processed Sun Apr 23 00:18:45 2017 by ELM ver.2012-10-06 from 001__elm20170422_221041__dat00.bin

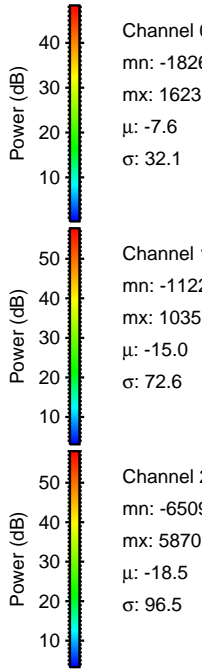
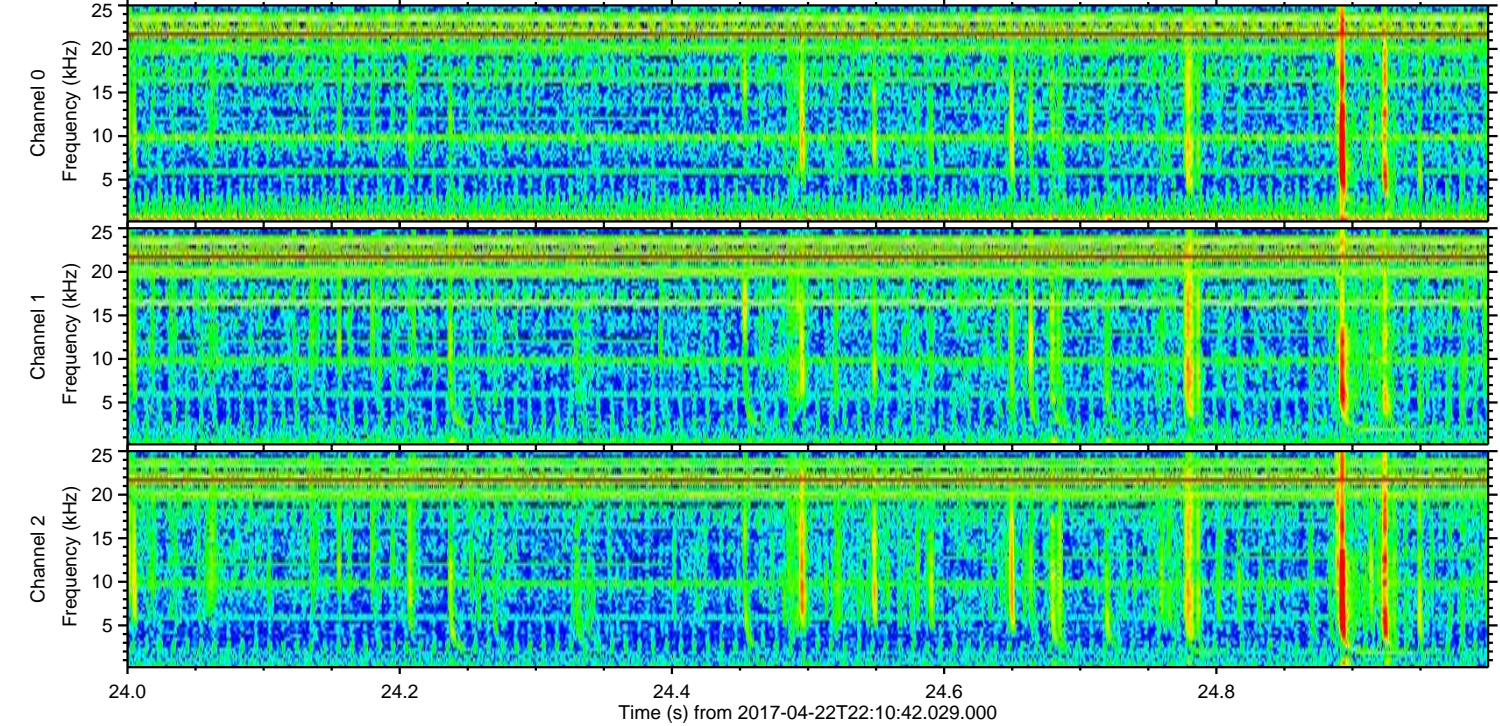
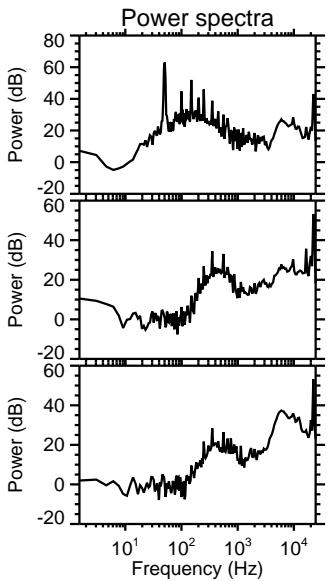
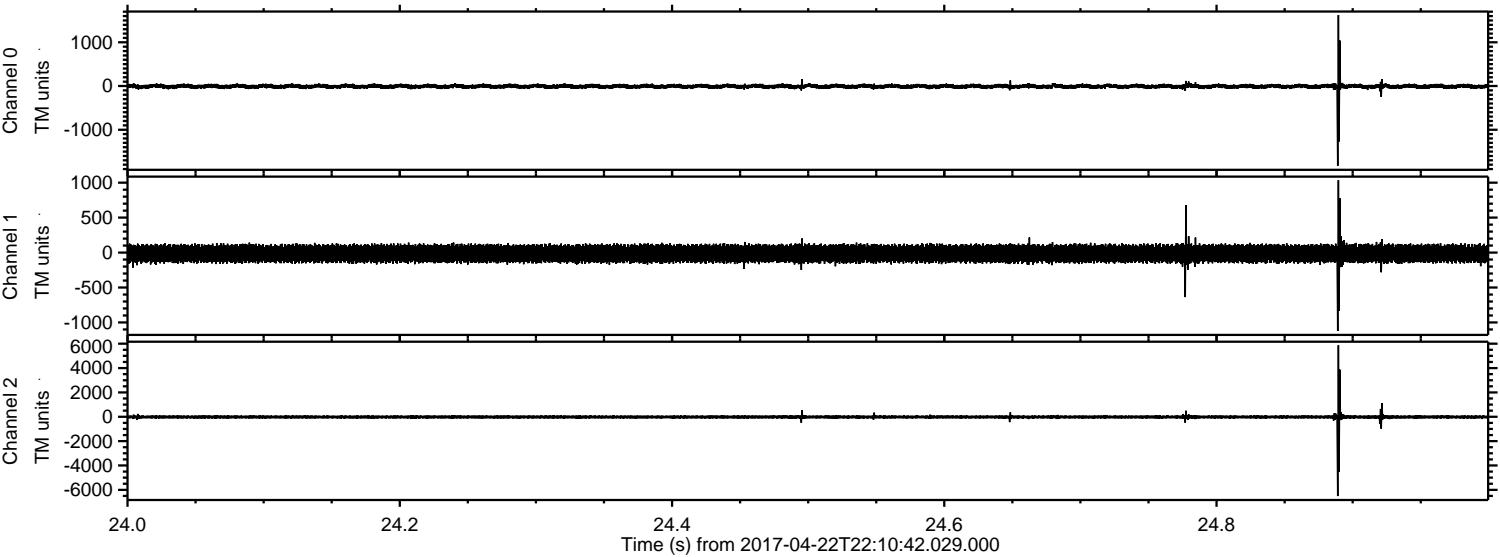


ELMAVAN 3D WAVEFORMS (Measured data sampled at 50 kHz) 51000 packets of 144 samples from 2017-04-22T22:10:42.029.000. Part 87/147

Processed Sun Apr 23 00:18:56 2017 by ELM ver.2012-10-06 from 001__elm20170422_221041__dat00.bin



Processed Sun Apr 23 00:18:57 2017 by ELM ver.2012-10-06 from 001__elm20170422_221041__dat00.bin



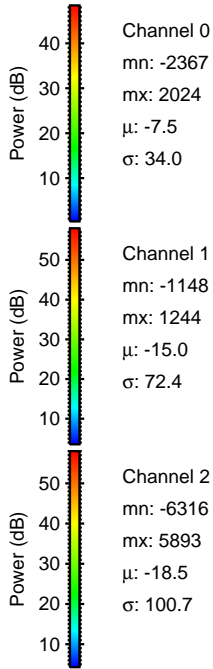
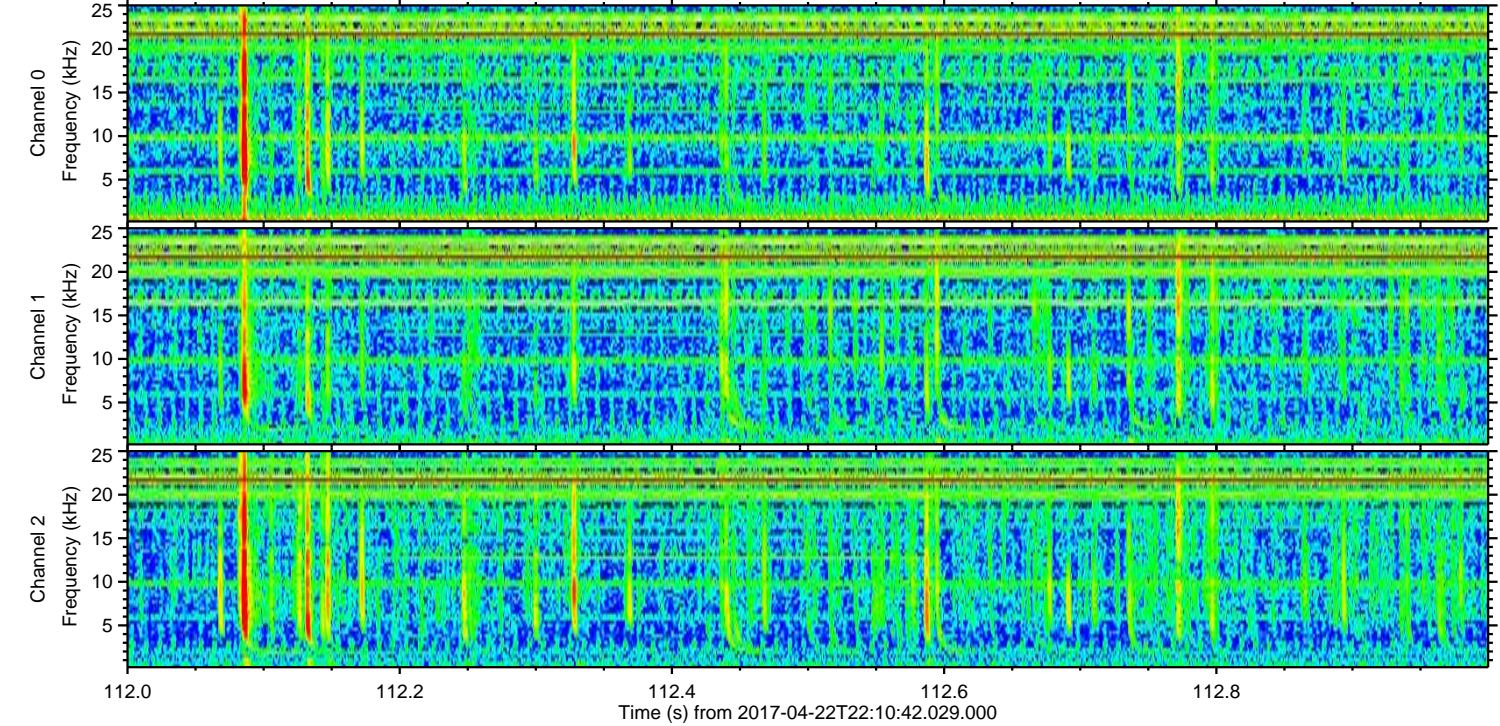
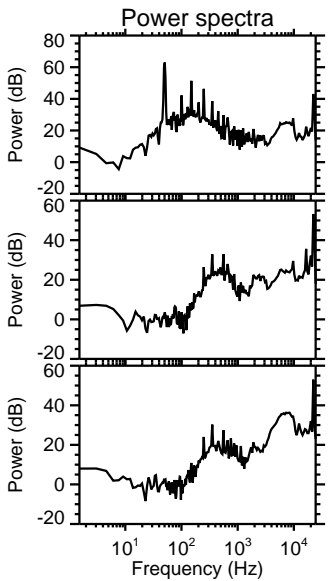
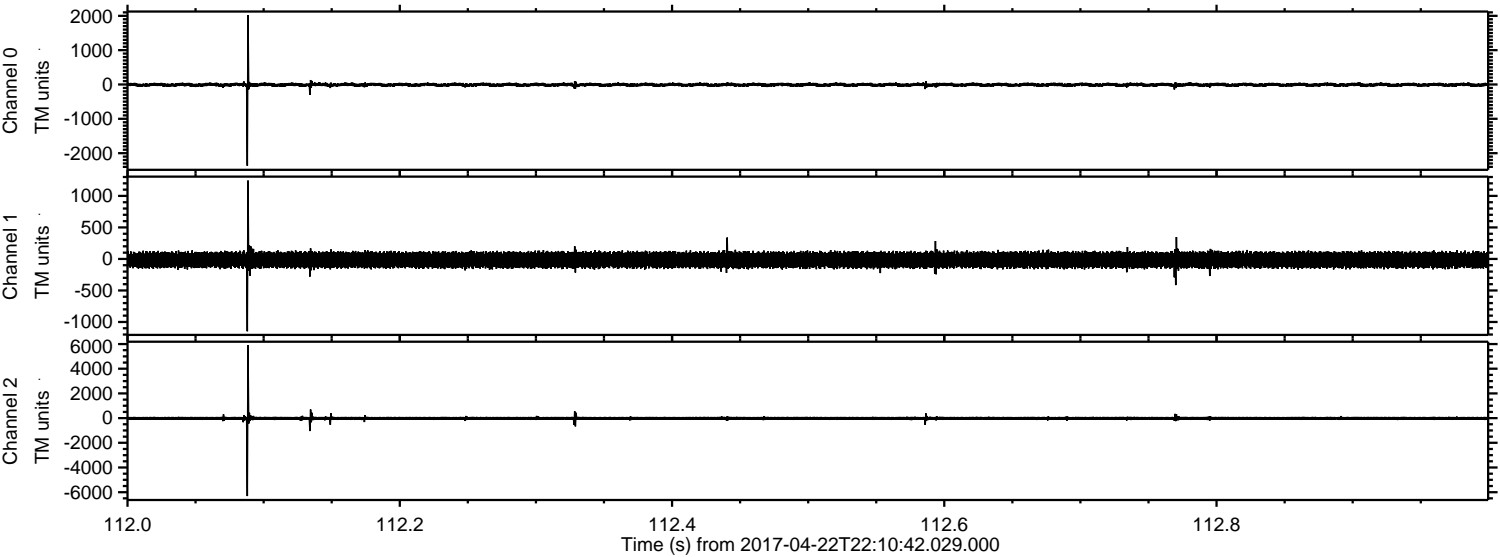
Channel 0
mn: -1826
mx: 1623
 μ : -7.6
 σ : 32.1

Channel 1
mn: -1122
mx: 1035
 μ : -15.0
 σ : 72.6

Channel 2
mn: -6509
mx: 5870
 μ : -18.5
 σ : 96.5

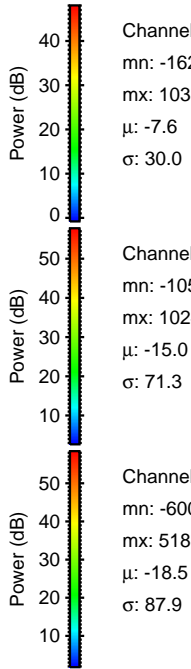
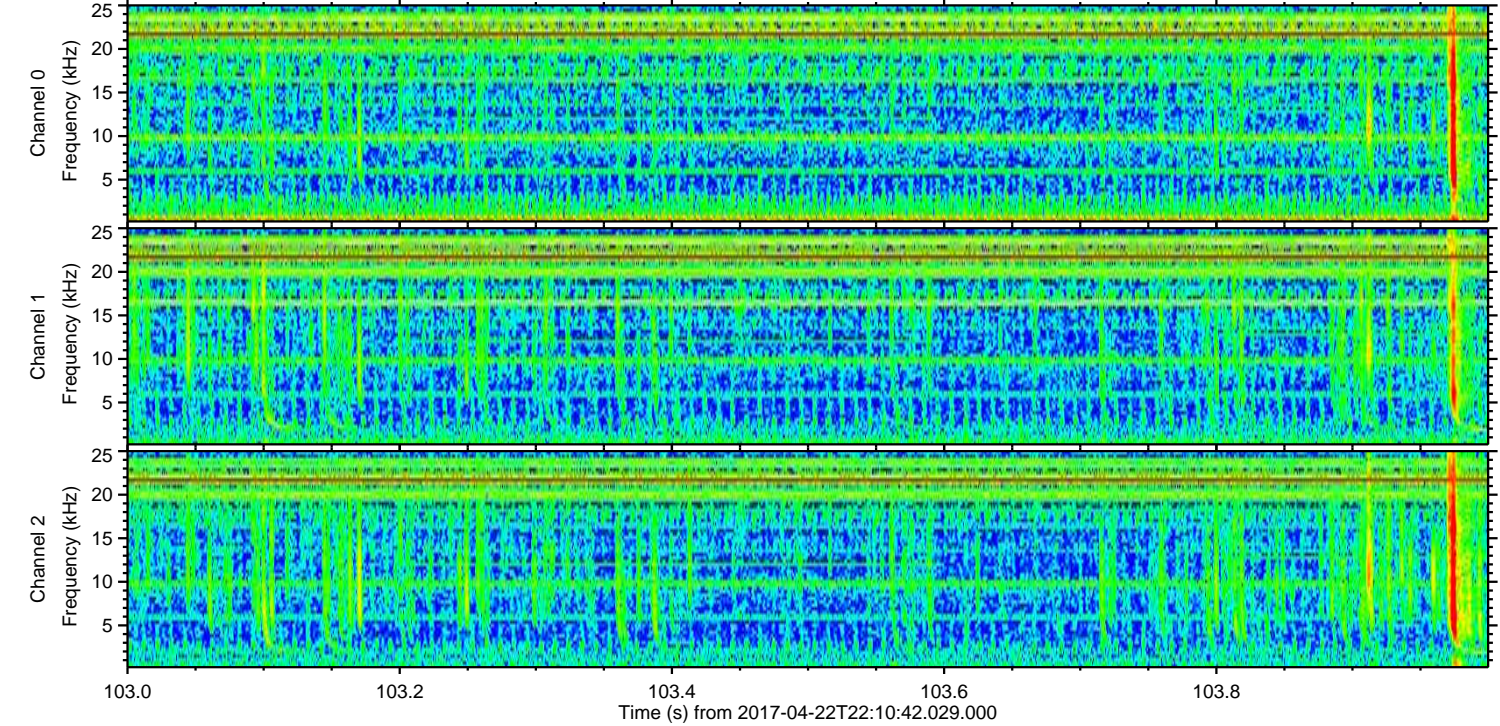
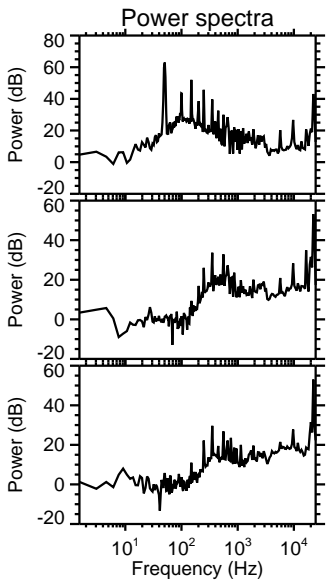
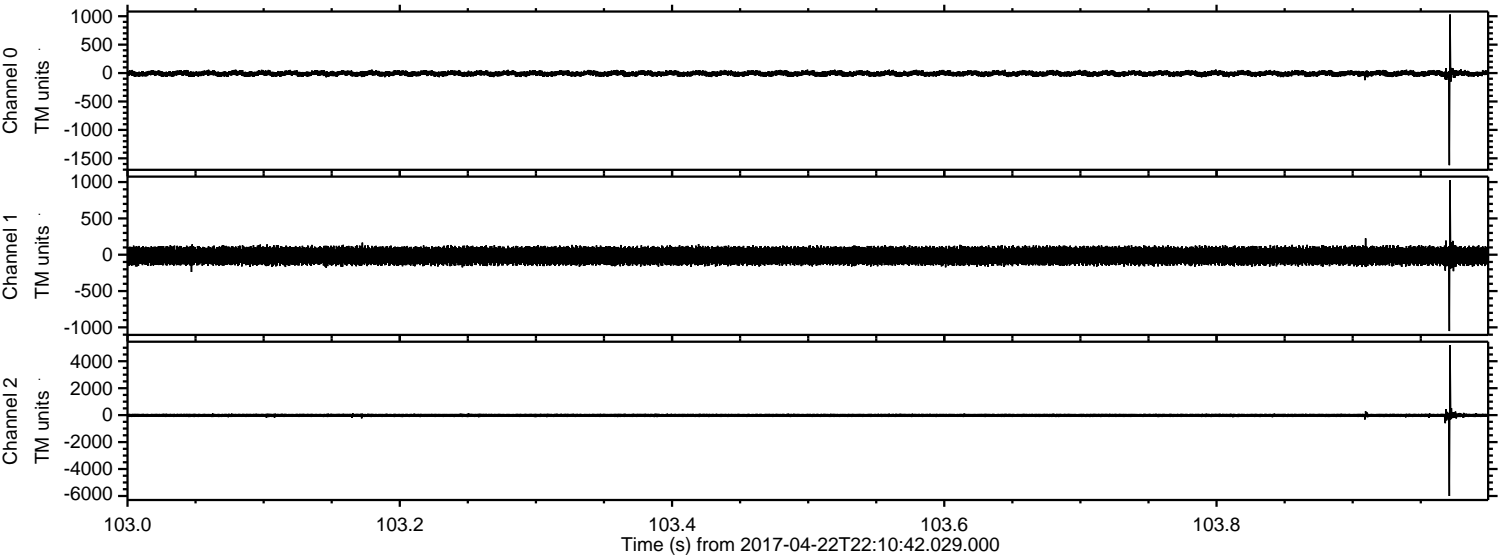
ELMAVAN 3D WAVEFORMS (Measured data sampled at 50 kHz) 51000 packets of 144 samples from 2017-04-22T22:10:42.029.000. Part 113/147

Processed Sun Apr 23 00:18:58 2017 by ELM ver.2012-10-06 from 001__elm20170422_221041__dat00.bin

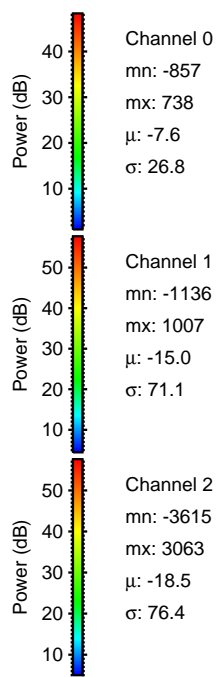
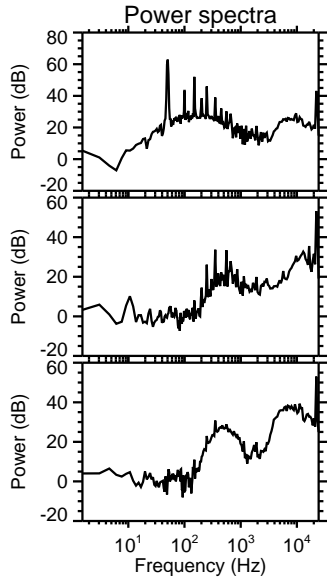
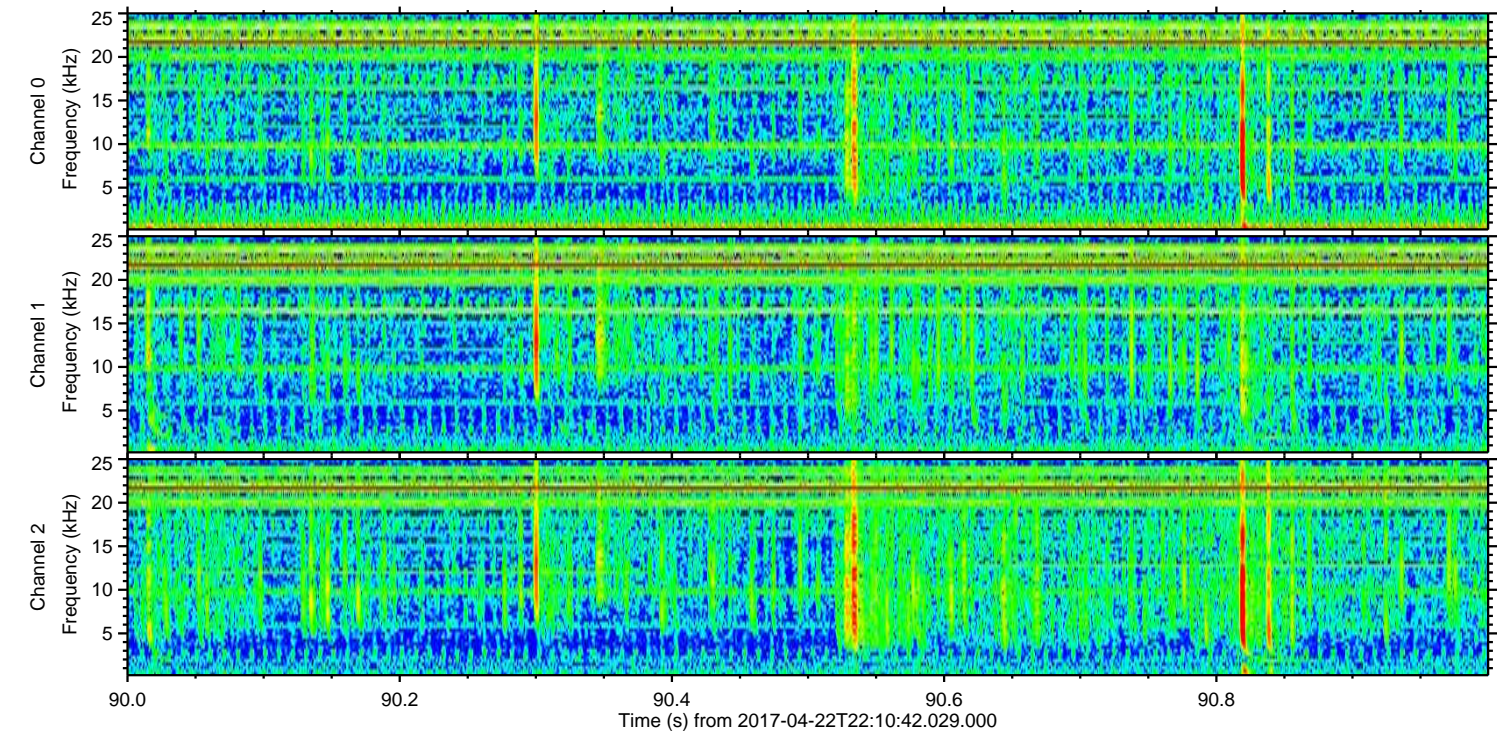
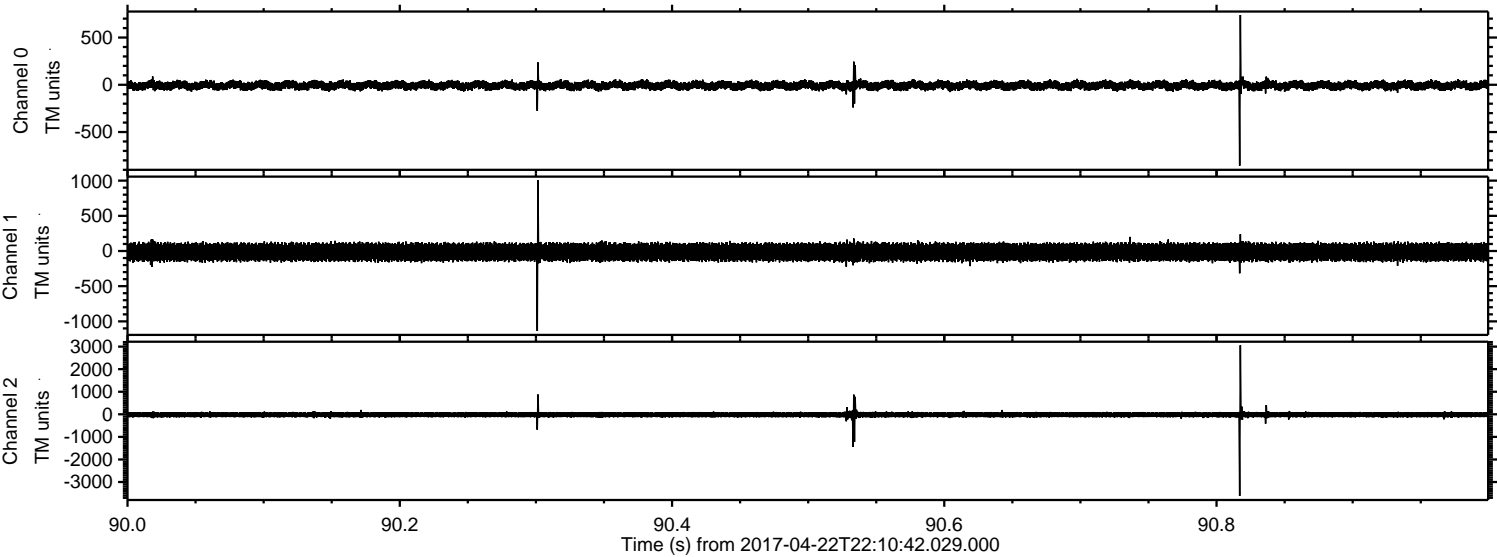


ELMAVAN 3D WAVEFORMS (Measured data sampled at 50 kHz) 51000 packets of 144 samples from 2017-04-22T22:10:42.029.000. Part 104/147

Processed Sun Apr 23 00:18:59 2017 by ELM ver.2012-10-06 from 001__elm20170422_221041__dat00.bin

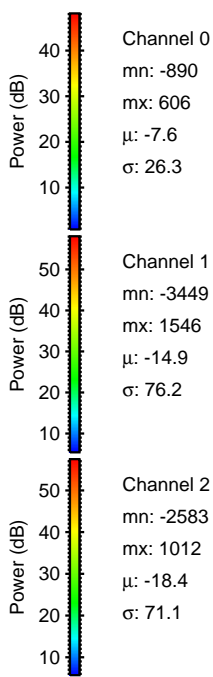
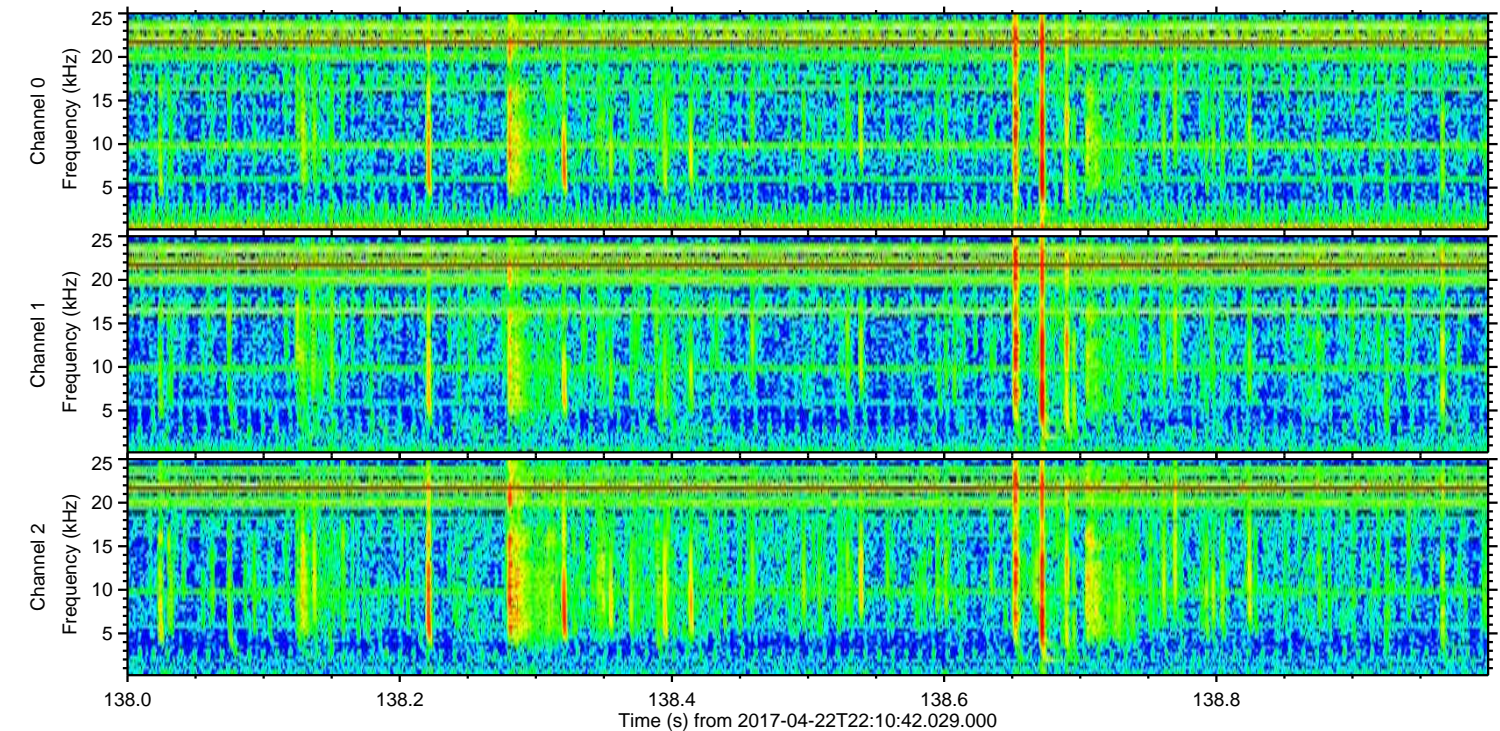
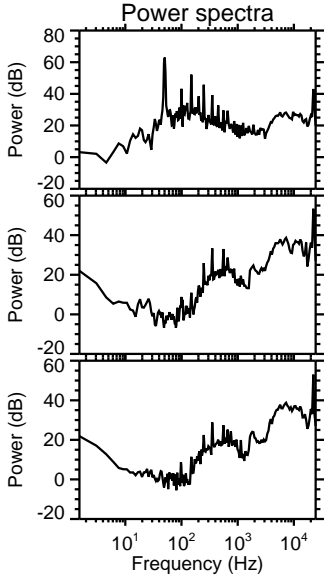
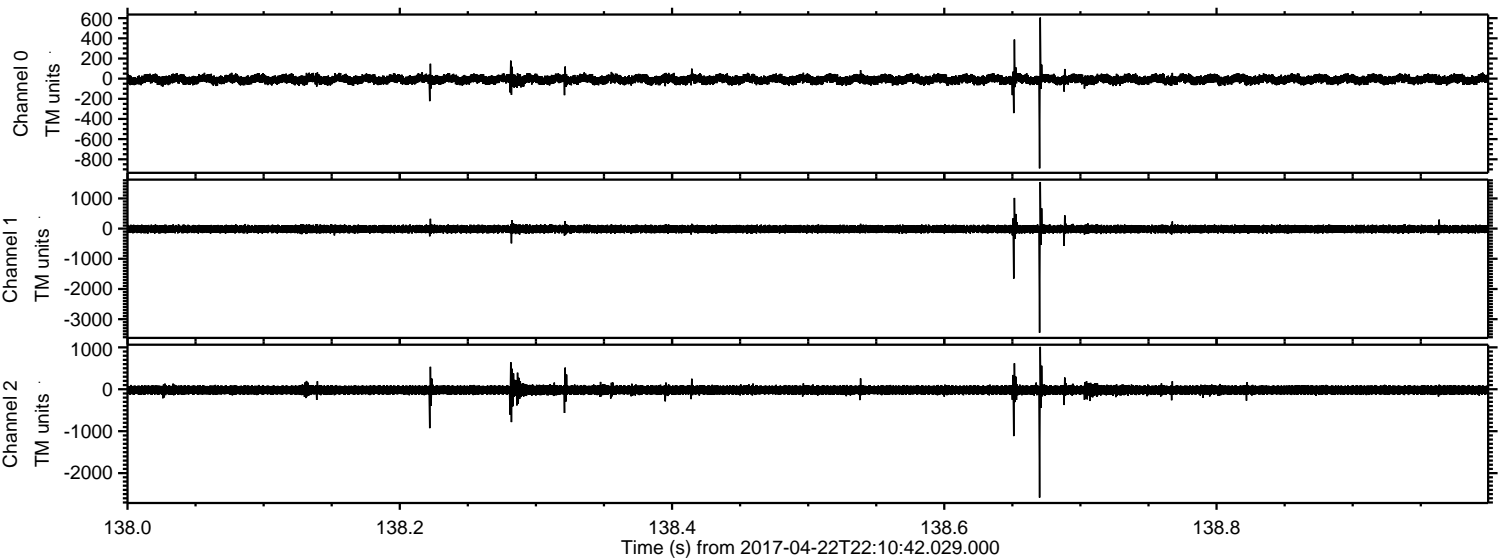


Processed Sun Apr 23 00:19:00 2017 by ELM ver.2012-10-06 from 001__elm20170422_221041__dat00.bin



ELMAVAN 3D WAVEFORMS (Measured data sampled at 50 kHz) 51000 packets of 144 samples from 2017-04-22T22:10:42.029.000. Part 139/147

Processed Sun Apr 23 00:19:01 2017 by ELM ver.2012-10-06 from 001__elm20170422_221041__dat00.bin

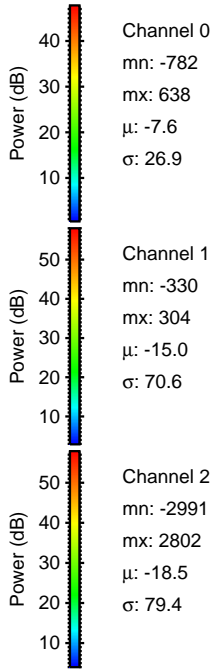
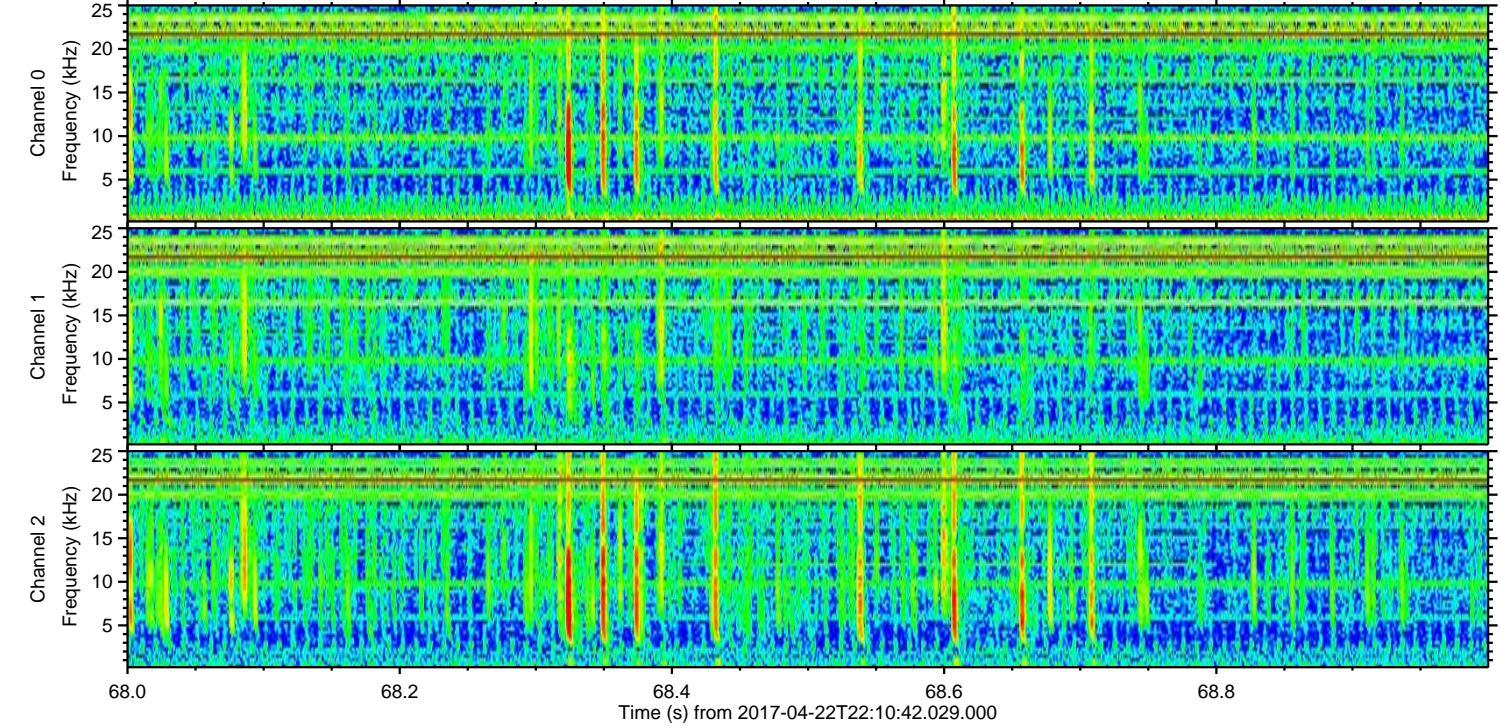
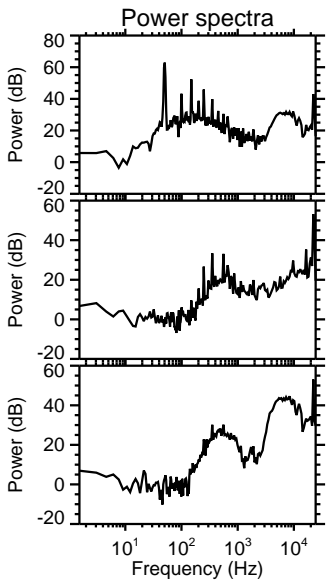
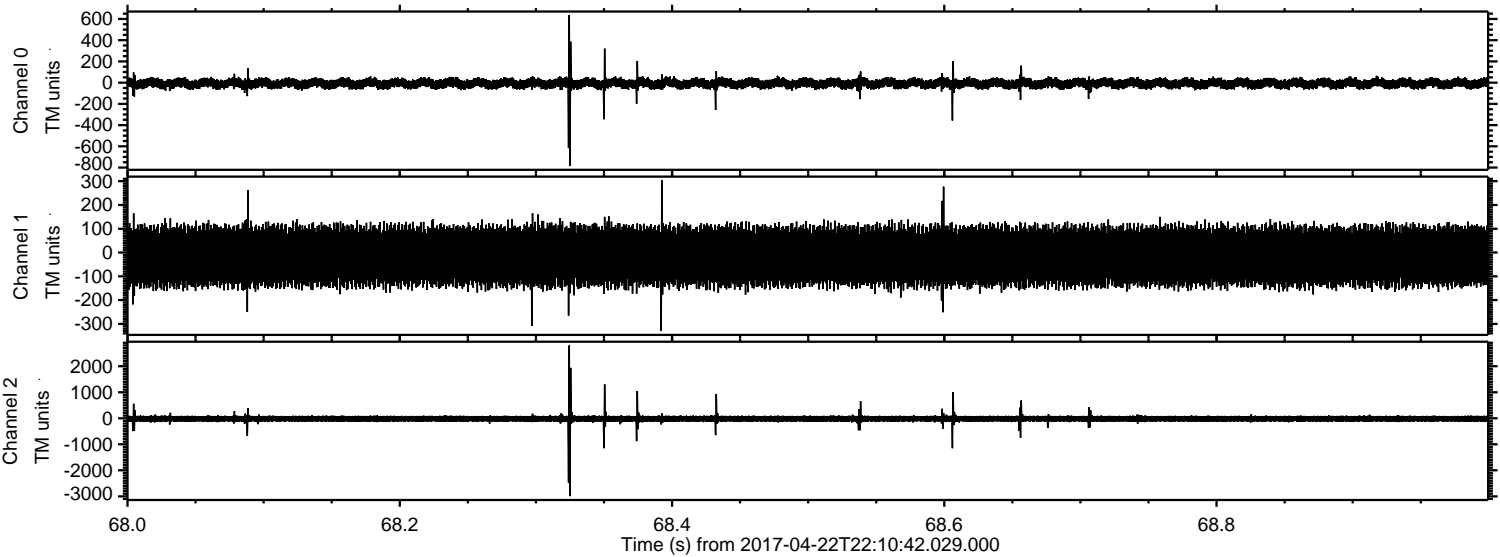


Channel 0
mn: -890
mx: 606
 μ : -7.6
 σ : 26.3

Channel 1
mn: -3449
mx: 1546
 μ : -14.9
 σ : 76.2

Channel 2
mn: -2583
mx: 1012
 μ : -18.4
 σ : 71.1

Processed Sun Apr 23 00:19:02 2017 by ELM ver.2012-10-06 from 001__elm20170422_221041__dat00.bin



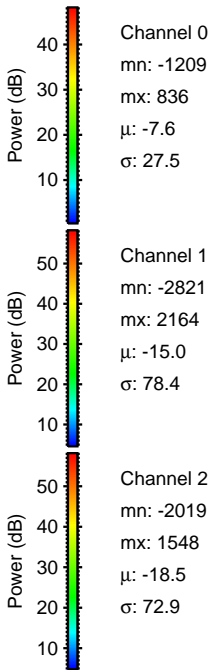
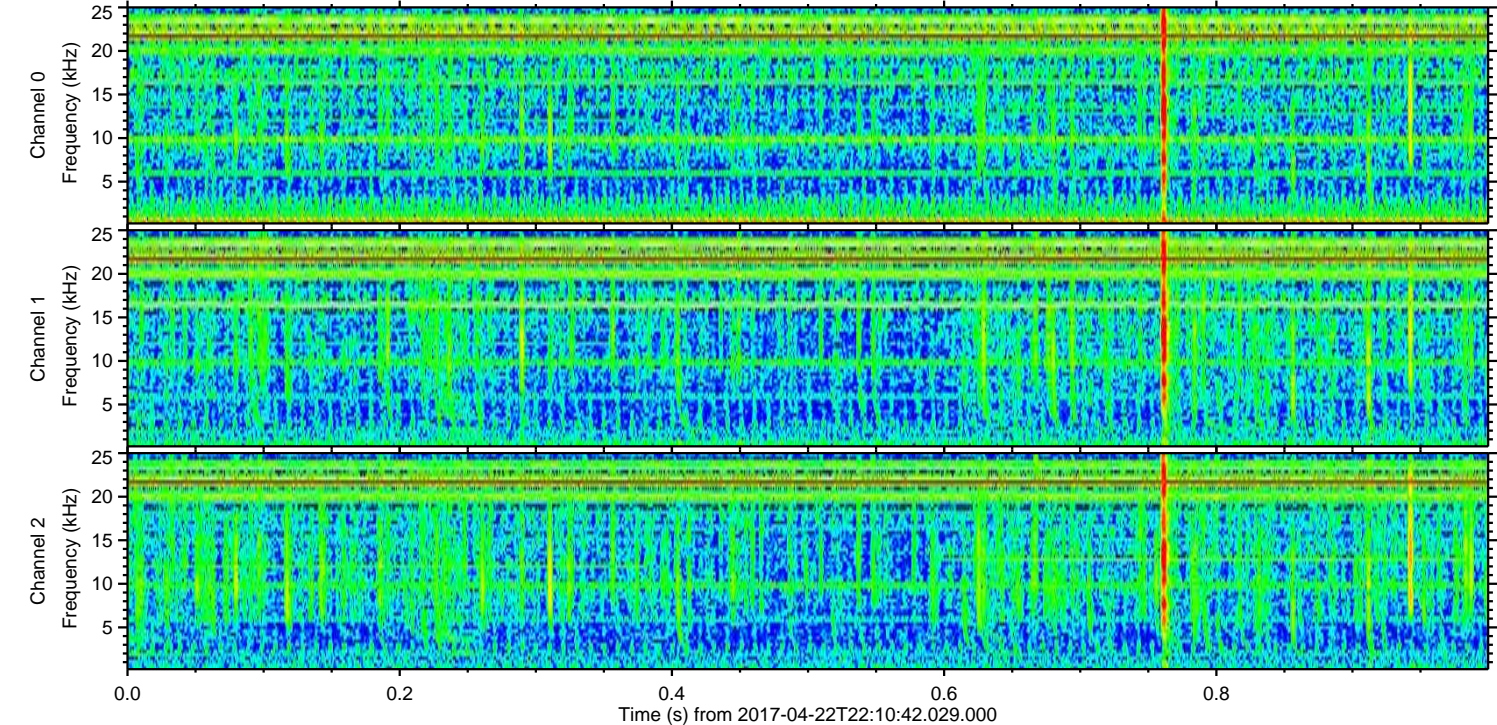
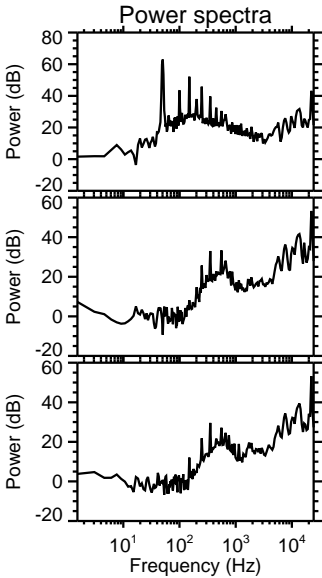
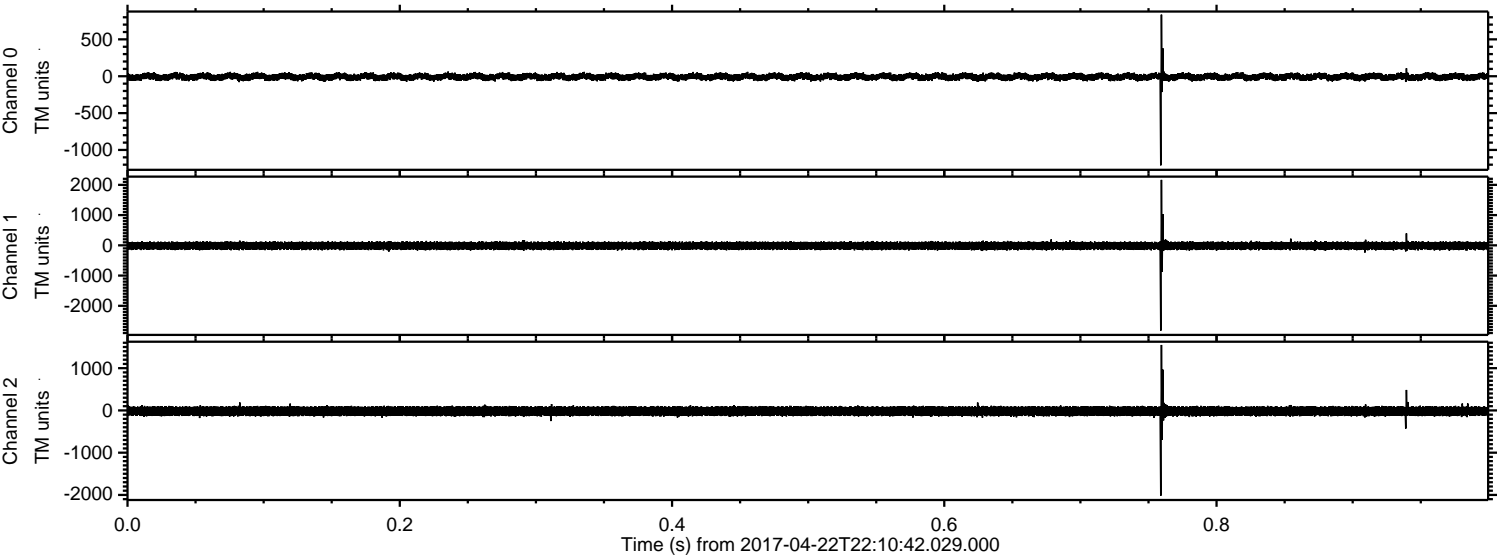
Channel 0
mn: -782
mx: 638
 μ : -7.6
 σ : 26.9

Channel 1
mn: -330
mx: 304
 μ : -15.0
 σ : 70.6

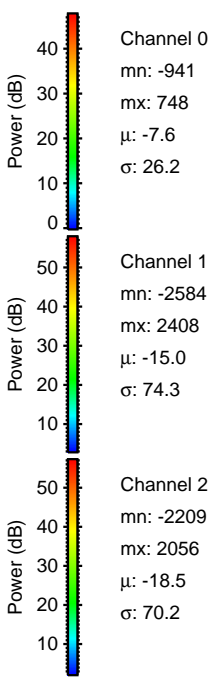
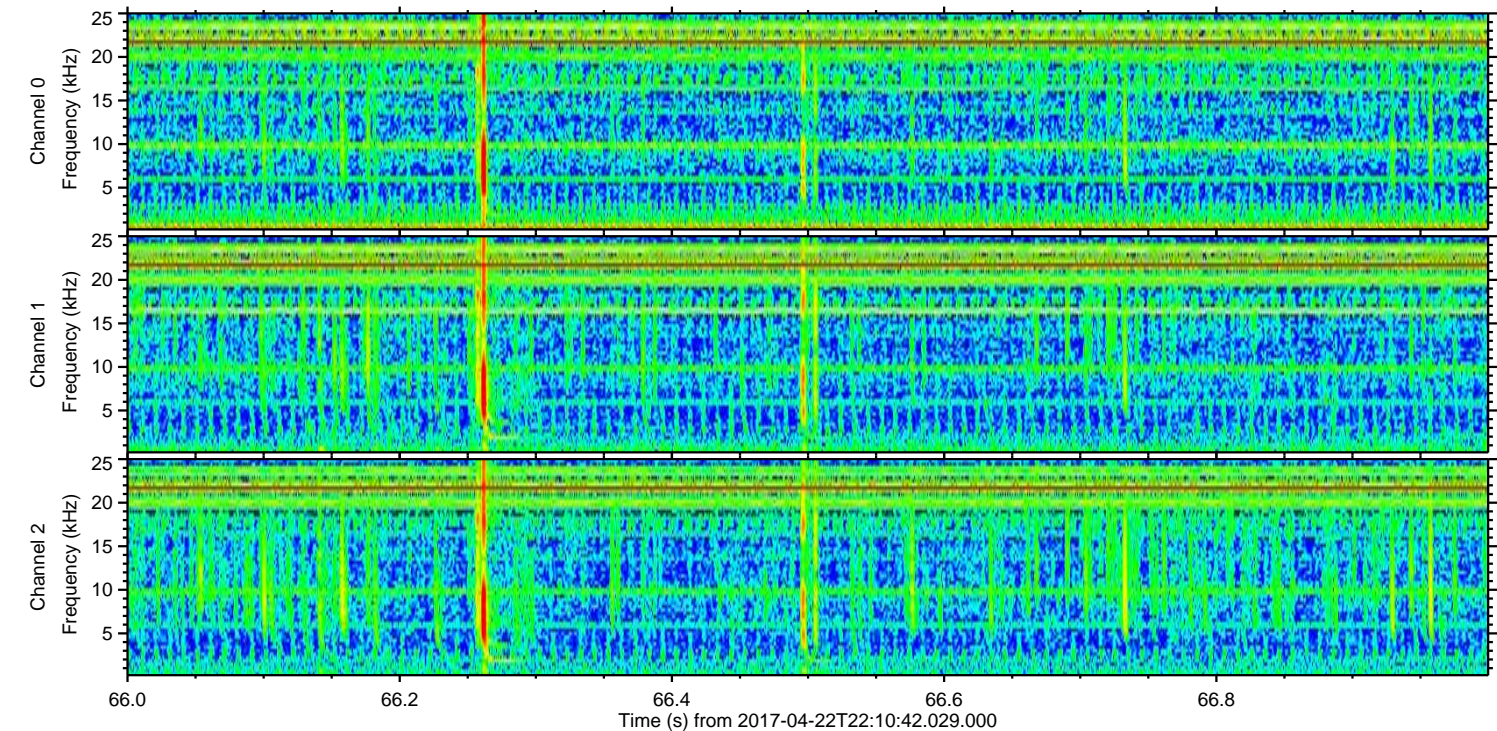
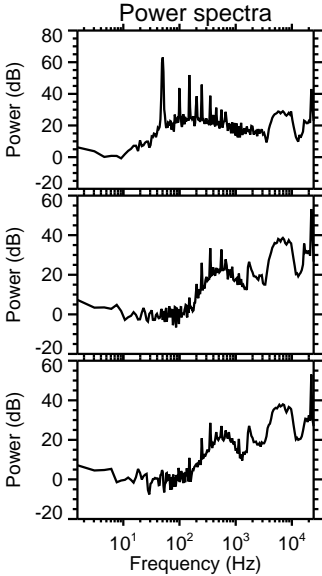
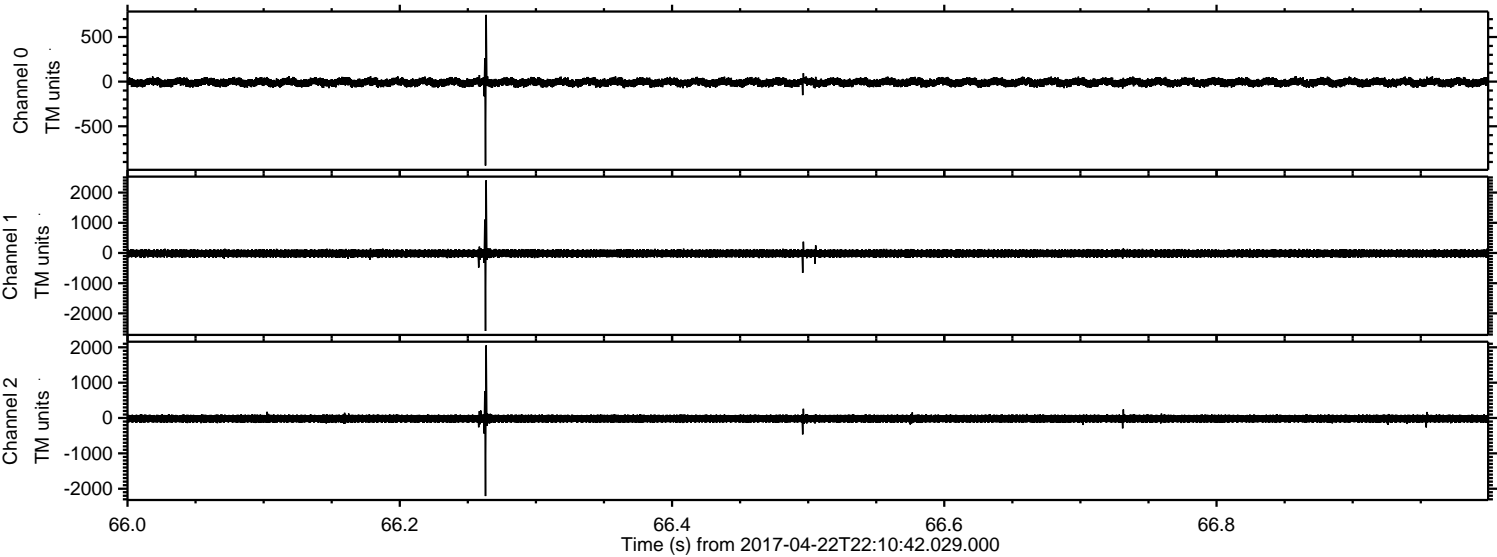
Channel 2
mn: -2991
mx: 2802
 μ : -18.5
 σ : 79.4

ELMAVAN 3D WAVEFORMS (Measured data sampled at 50 kHz) 51000 packets of 144 samples from 2017-04-22T22:10:42.029.000. Part 1/147

Processed Sun Apr 23 00:19:03 2017 by ELM ver.2012-10-06 from 001__elm20170422_221041__dat00.bin

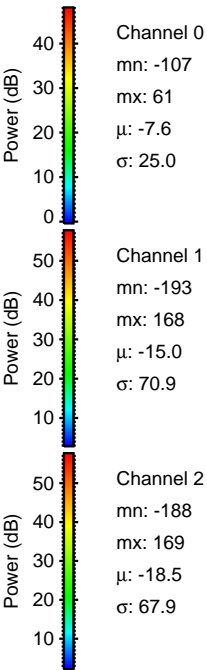
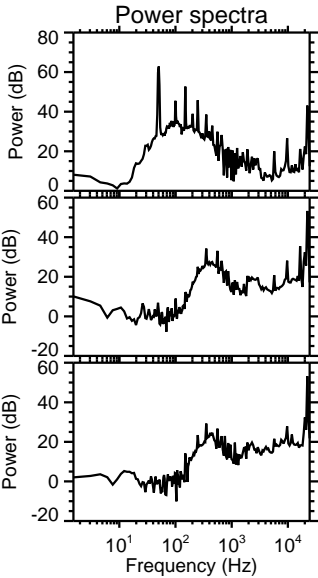
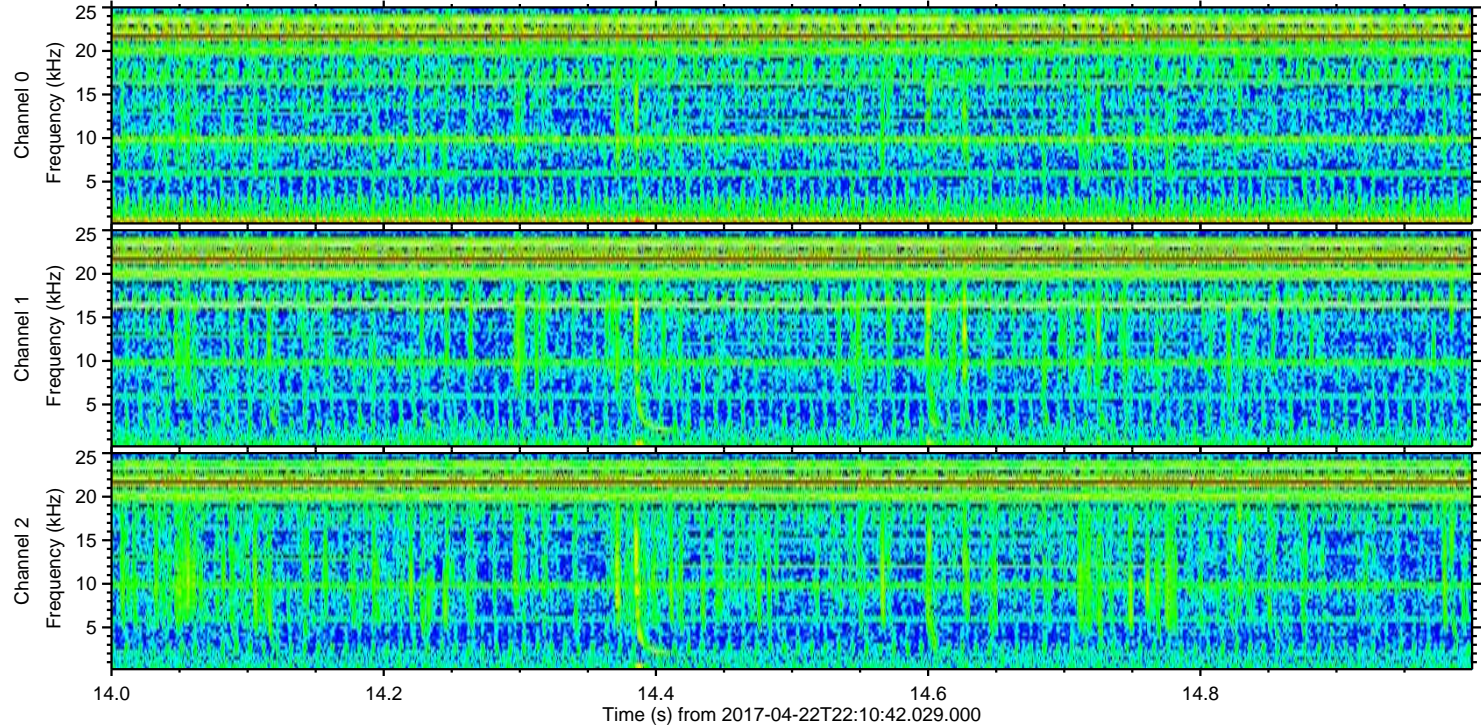
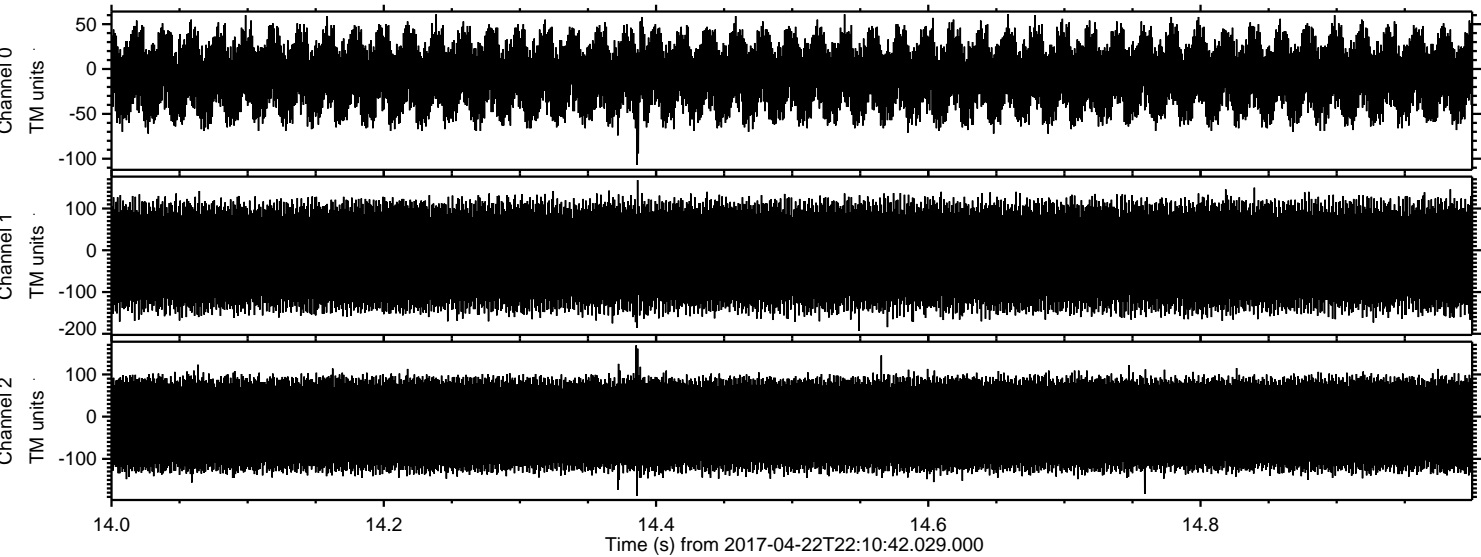


Processed Sun Apr 23 00:19:04 2017 by ELM ver.2012-10-06 from 001__elm20170422_221041__dat00.bin



ELMAVAN 3D WAVEFORMS (Measured data sampled at 50 kHz) 51000 packets of 144 samples from 2017-04-22T22:10:42.029.000. Part 15/147

Processed Sun Apr 23 00:19:05 2017 by ELM ver.2012-10-06 from 001__elm20170422_221041__dat00.bin



Channel 0
mn: -107
mx: 61
 μ : -7.6
 σ : 25.0

Channel 1
mn: -193
mx: 168
 μ : -15.0
 σ : 70.9

Channel 2
mn: -188
mx: 169
 μ : -18.5
 σ : 67.9