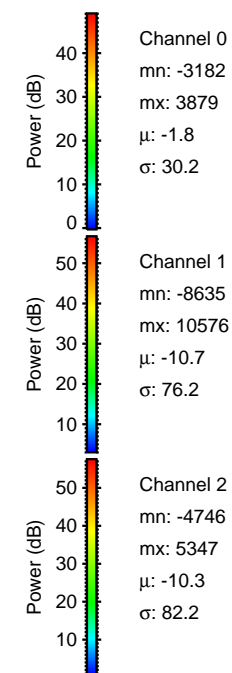
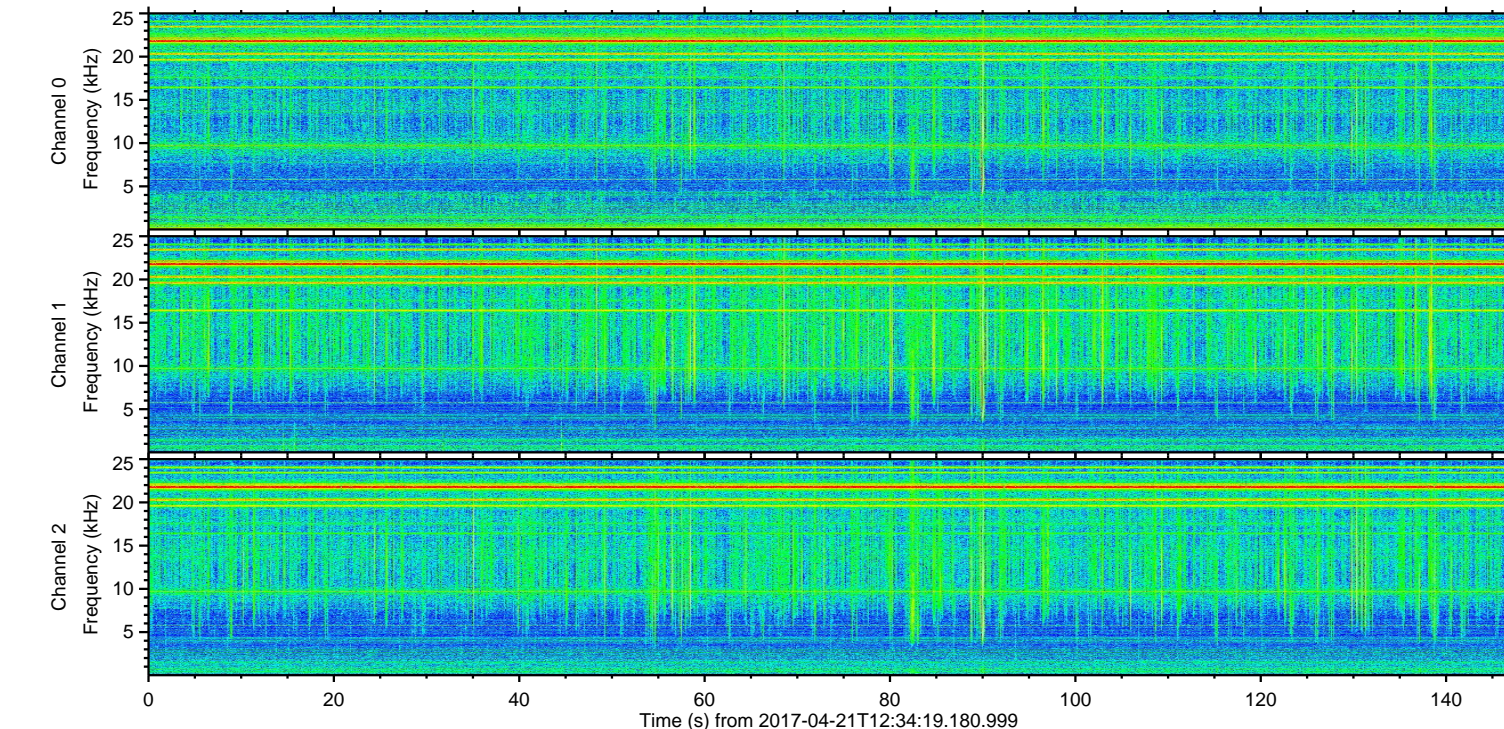
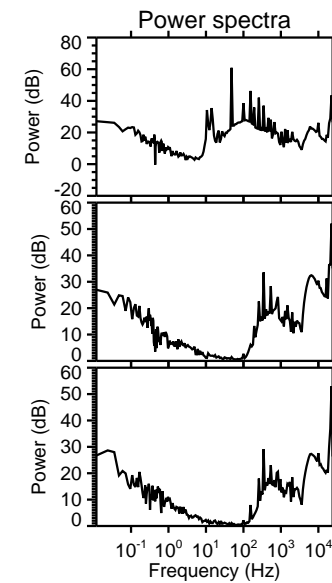
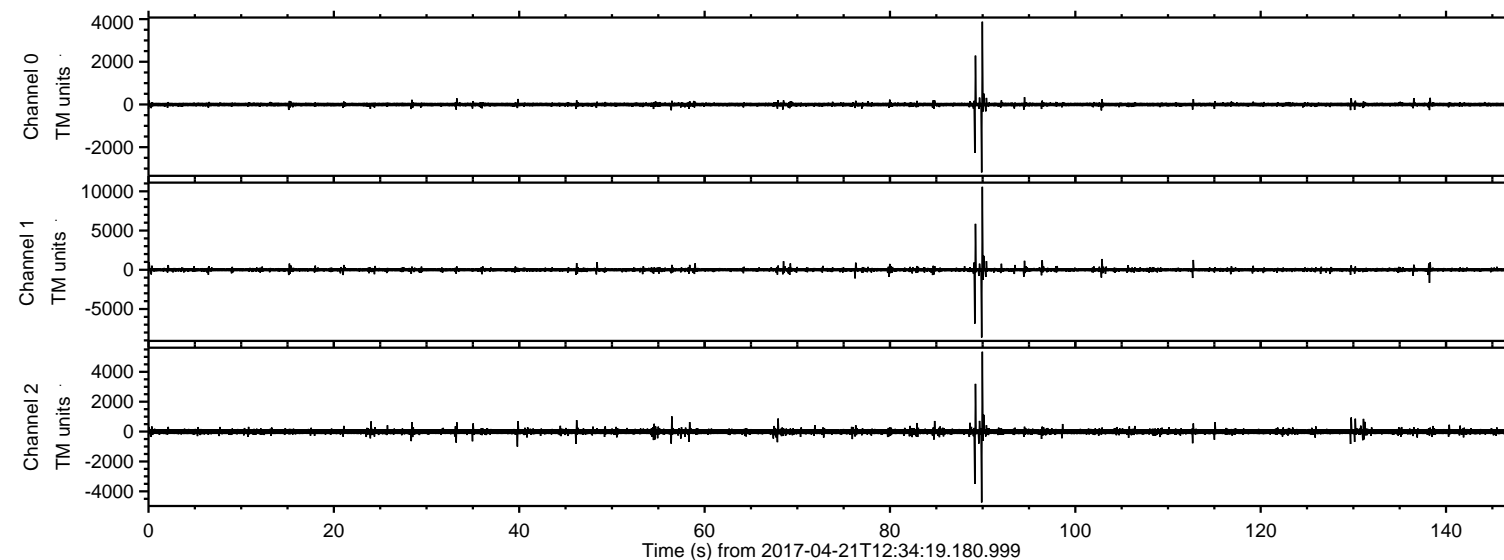
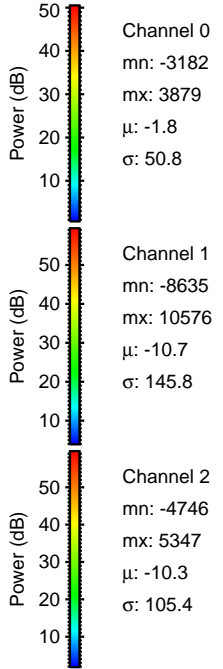
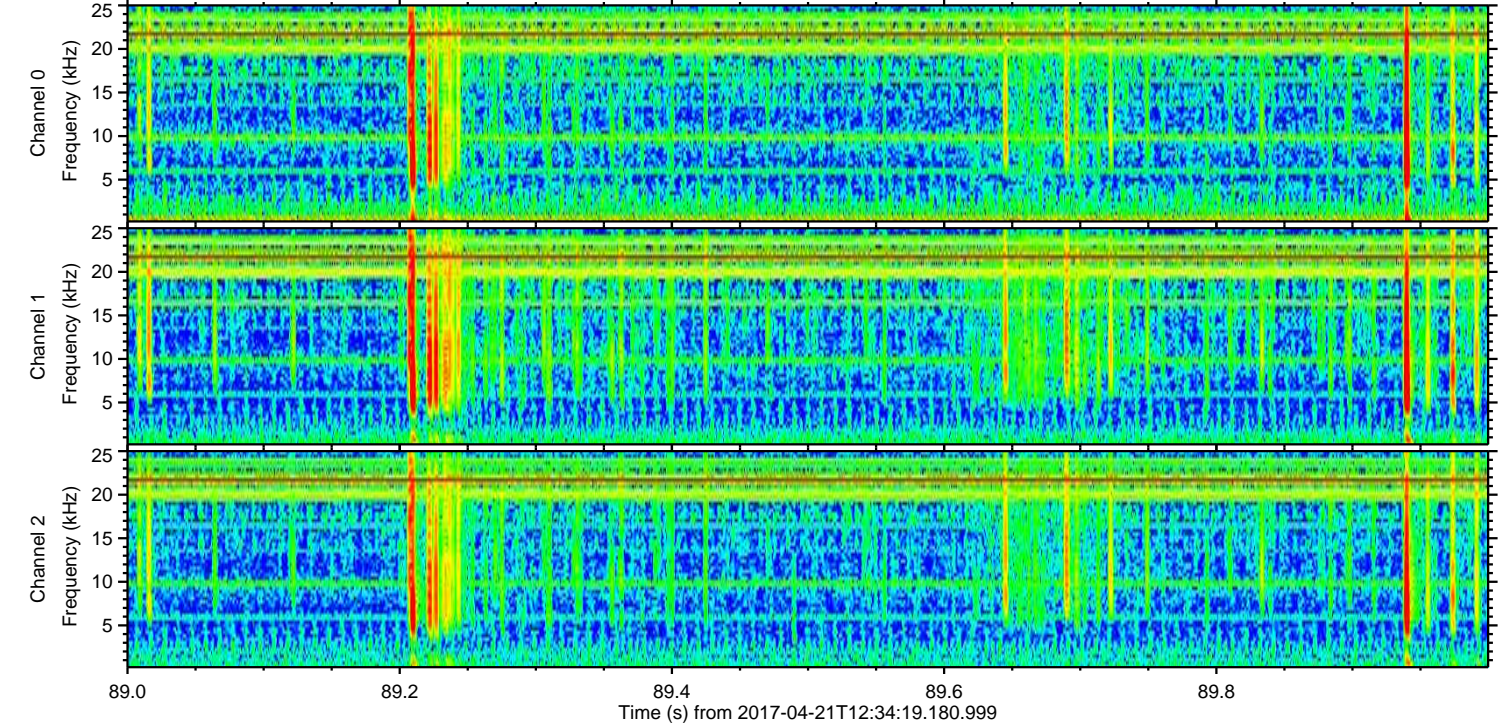
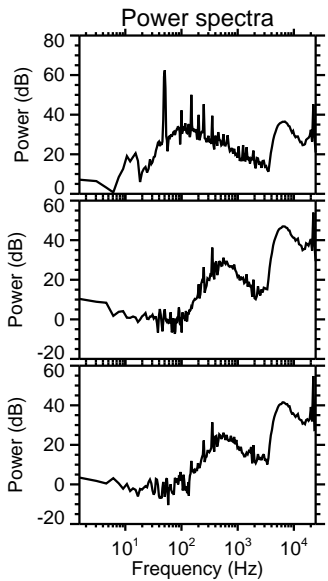
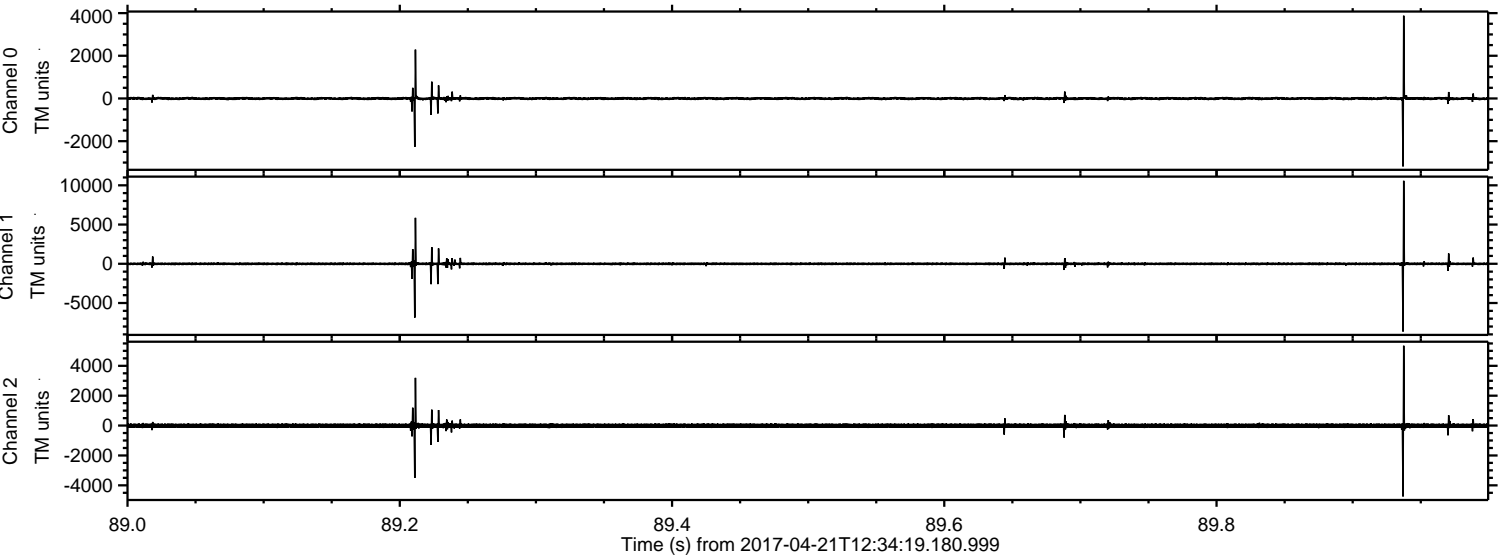


ELMAVAN 3D WAVEFORMS (Measured data sampled at 50 kHz) 51000 packets of 144 samples from 2017-04-21T12:34:19.180.999.

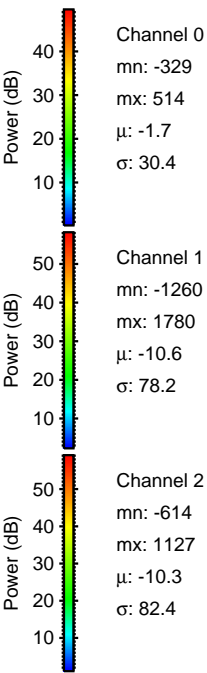
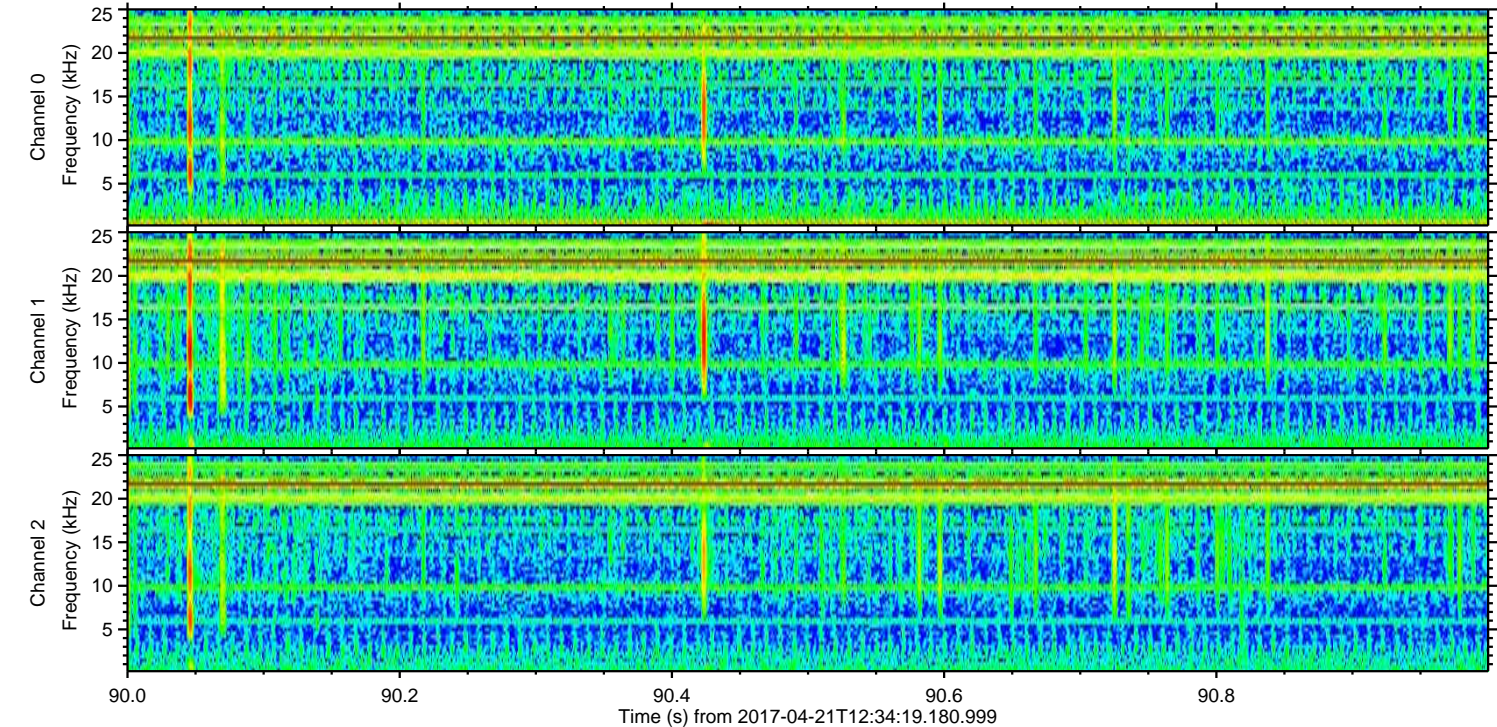
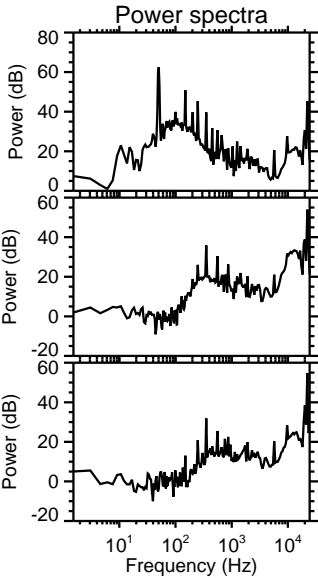
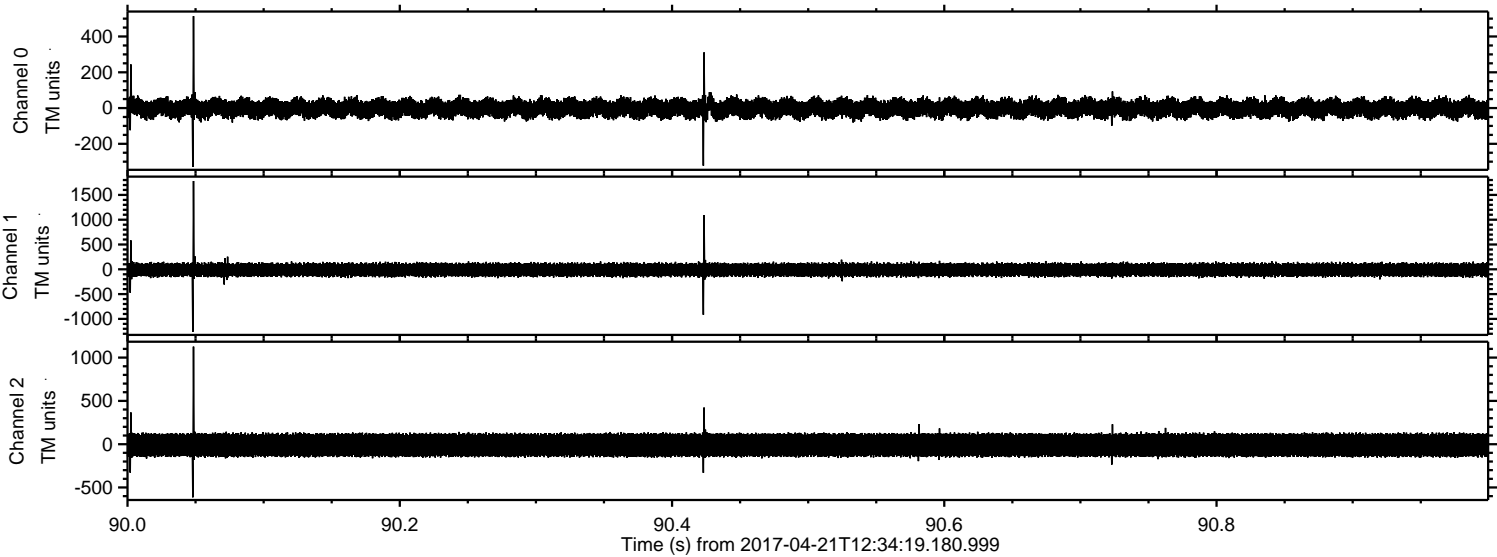
Processed Fri Apr 21 14:42:12 2017 by ELM ver.2012-10-06 from 001__elm20170421_123418__dat00.bin



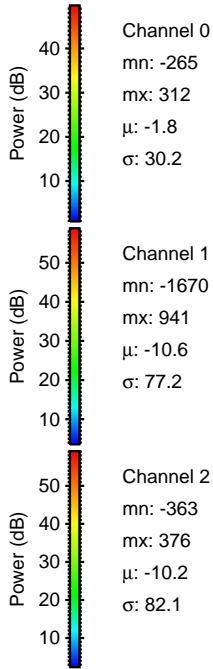
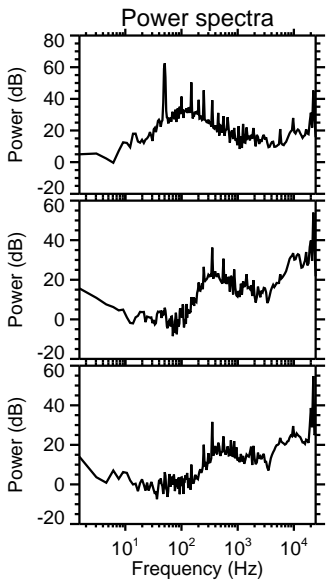
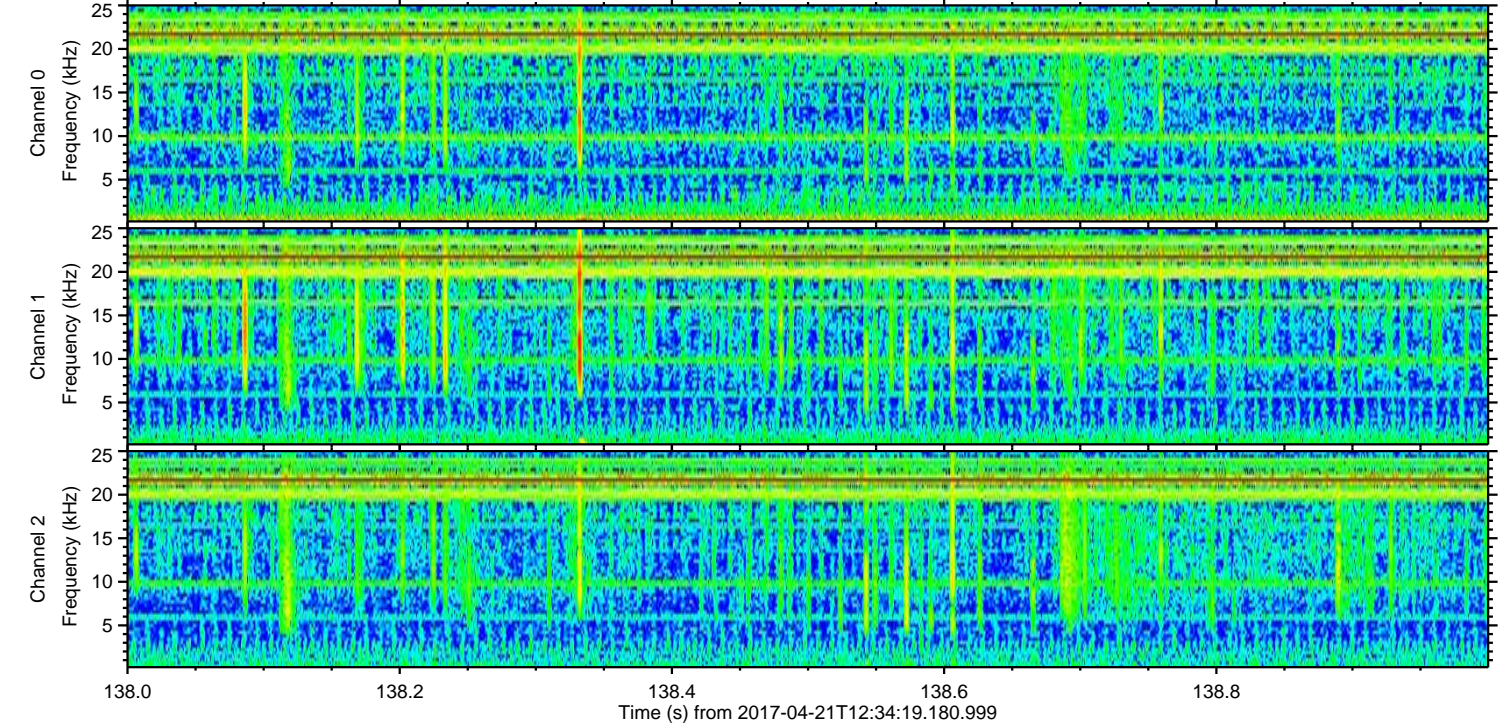
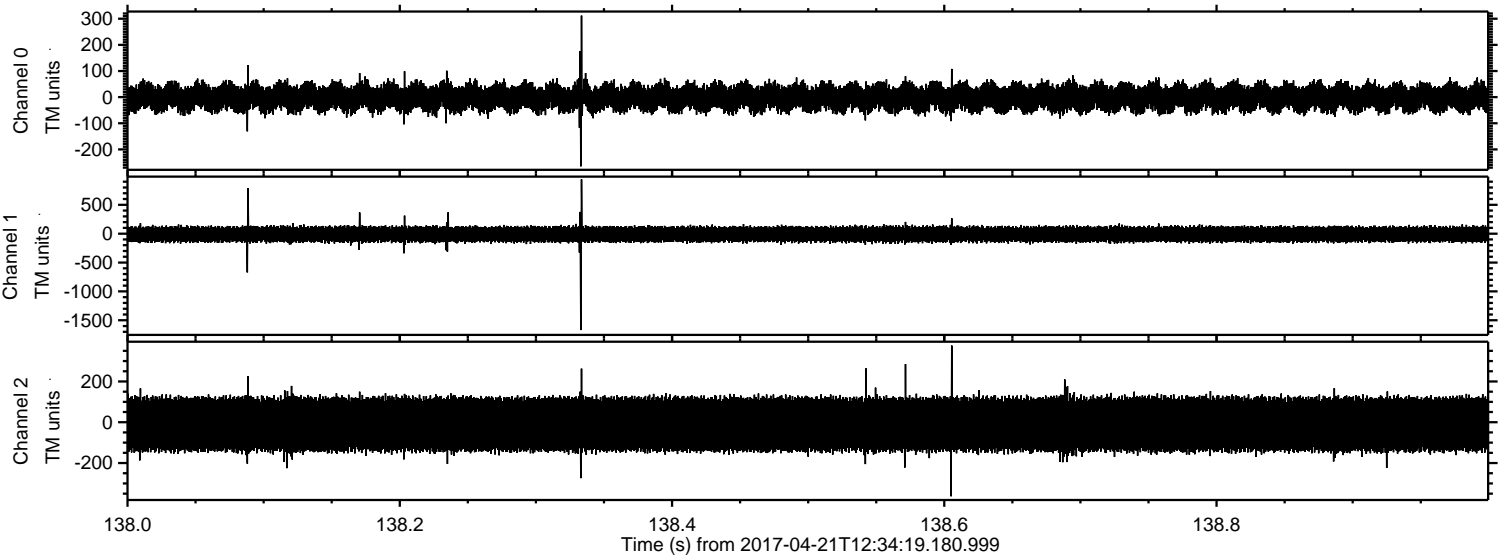
Processed Fri Apr 21 14:42:23 2017 by ELM ver.2012-10-06 from 001__elm20170421_123418__dat00.bin



Processed Fri Apr 21 14:42:24 2017 by ELM ver.2012-10-06 from 001__elm20170421_123418__dat00.bin

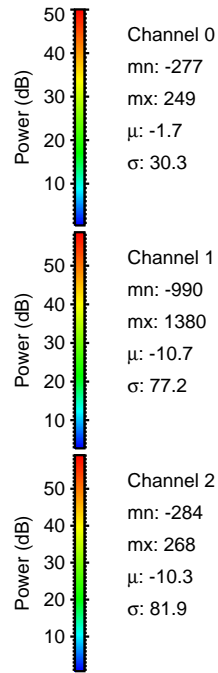
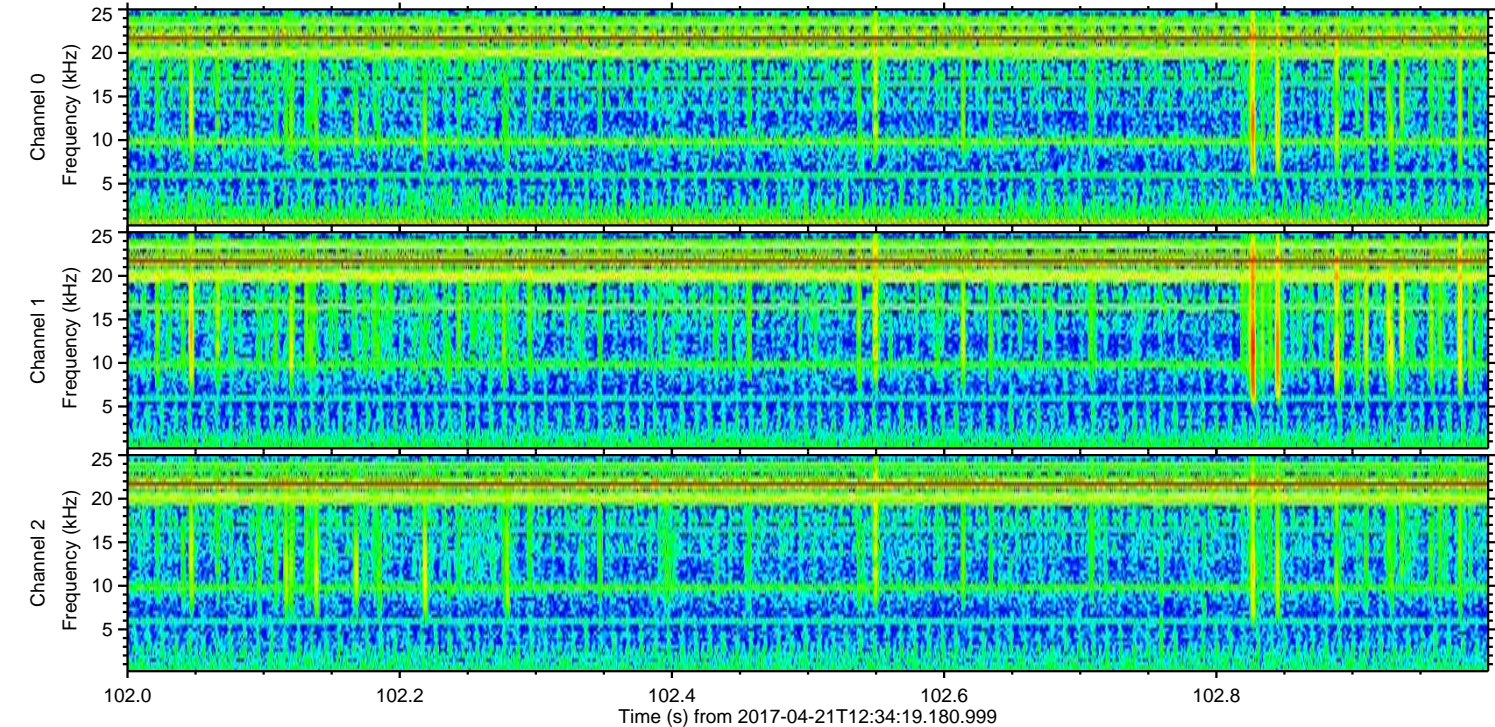
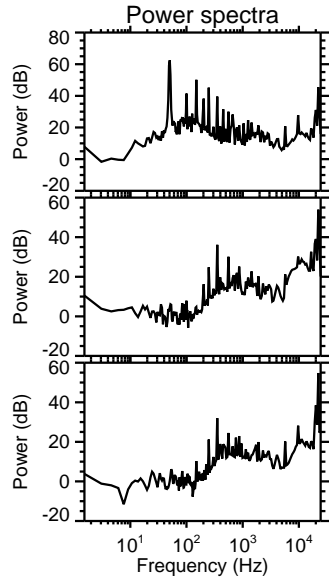
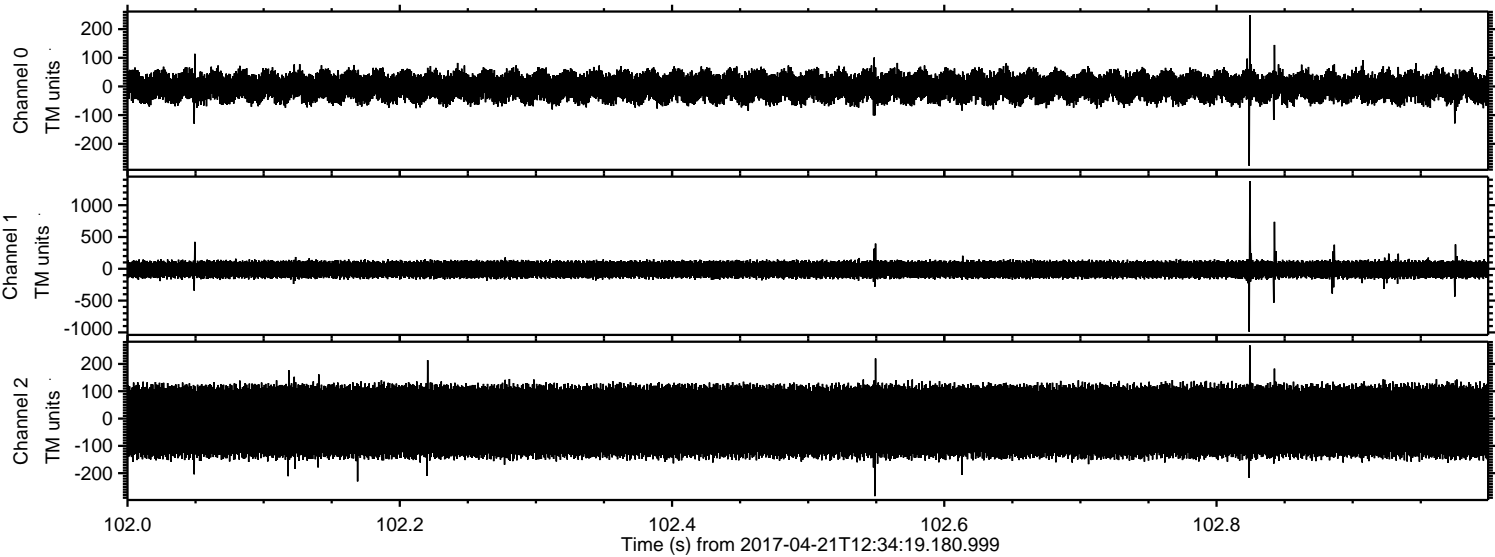


Processed Fri Apr 21 14:42:25 2017 by ELM ver.2012-10-06 from 001__elm20170421_123418__dat00.bin



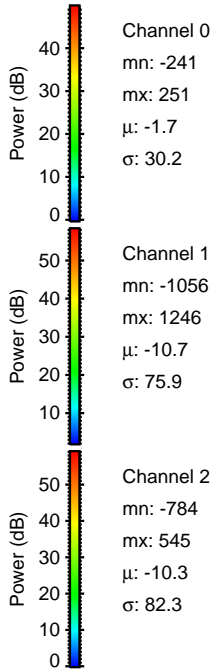
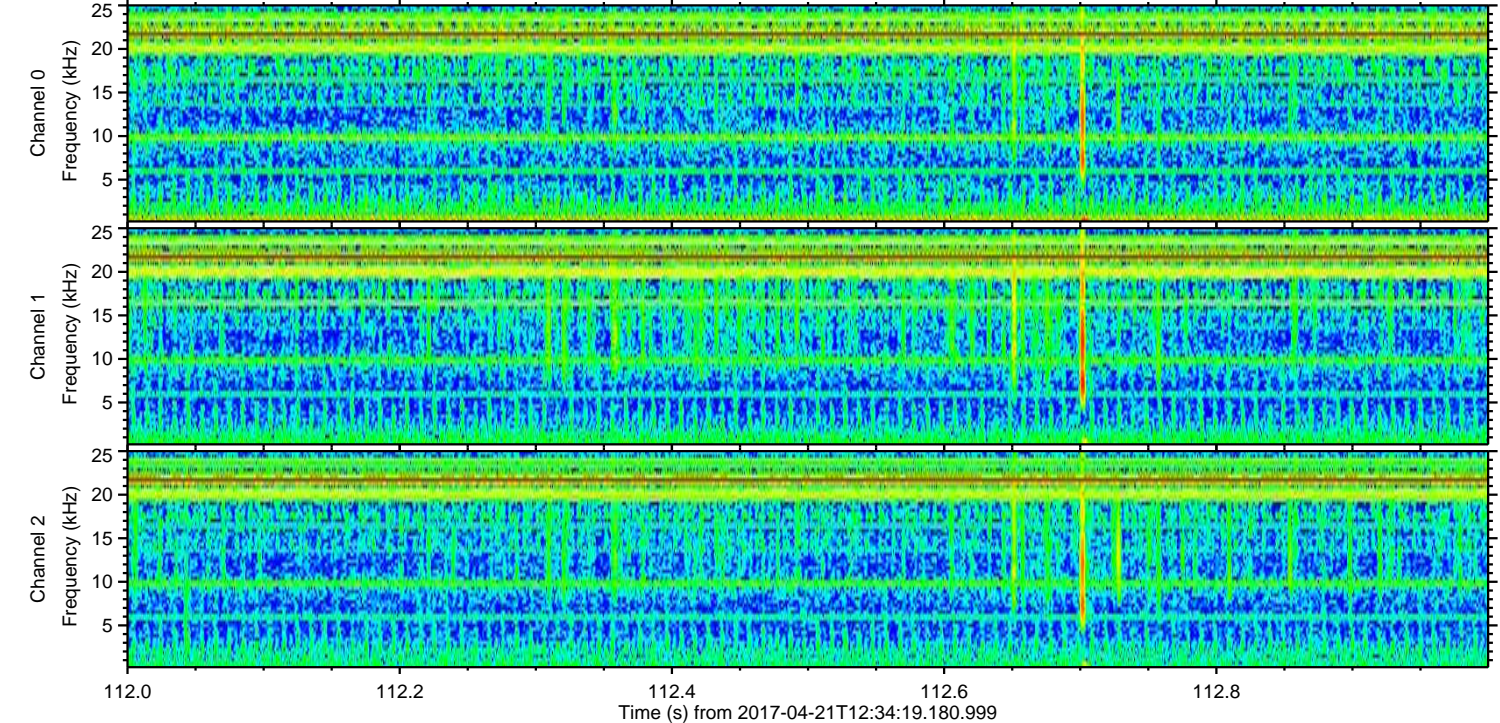
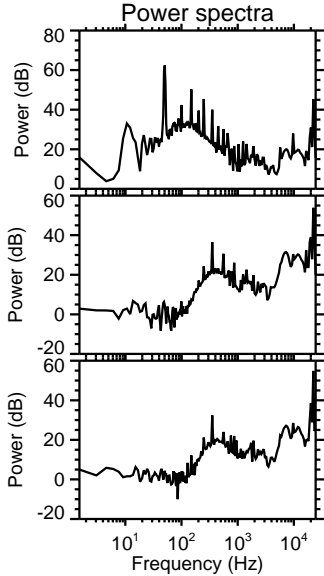
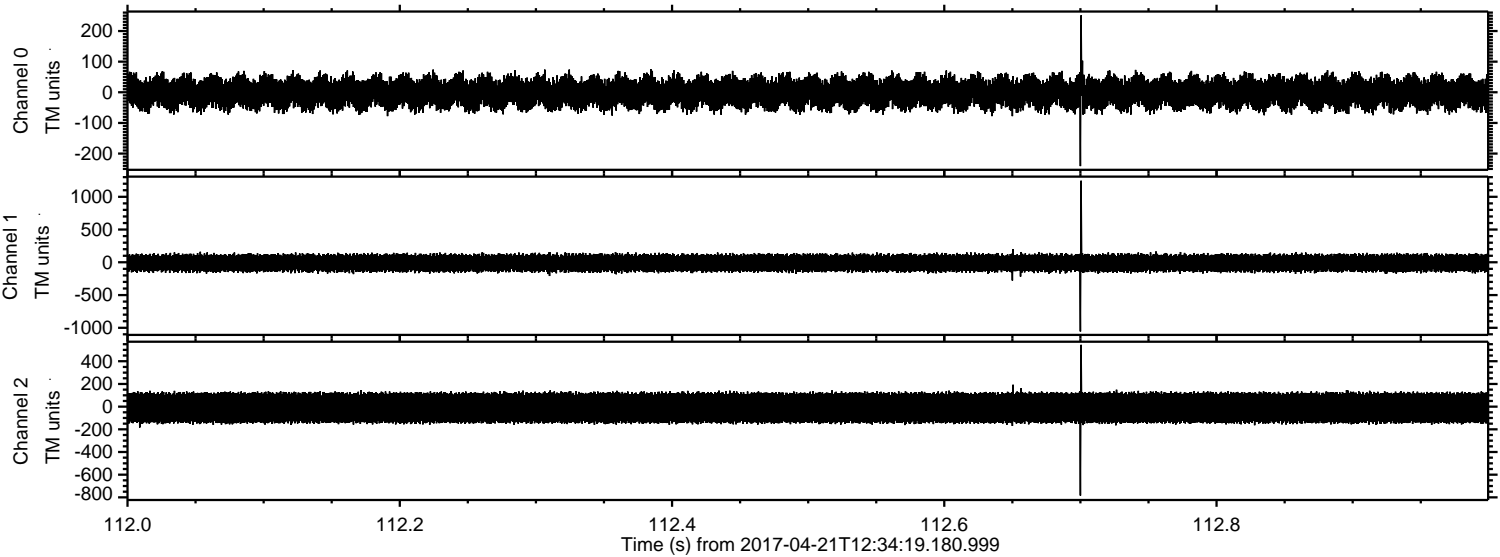
ELMAVAN 3D WAVEFORMS (Measured data sampled at 50 kHz) 51000 packets of 144 samples from 2017-04-21T12:34:19.180.999. Part 103/147

Processed Fri Apr 21 14:42:26 2017 by ELM ver.2012-10-06 from 001__elm20170421_123418__dat00.bin

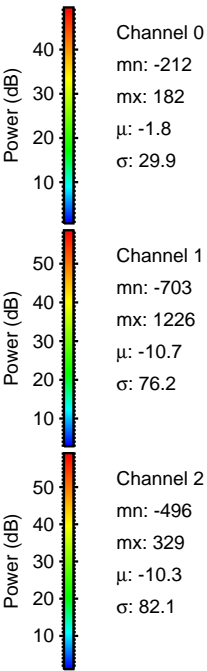
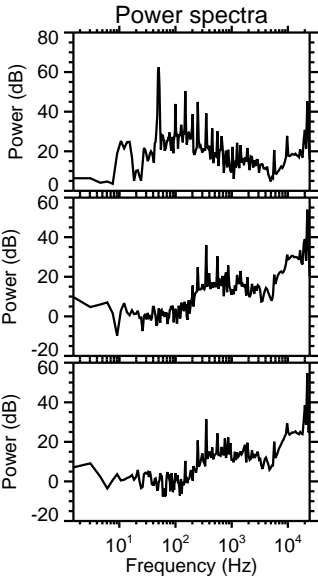
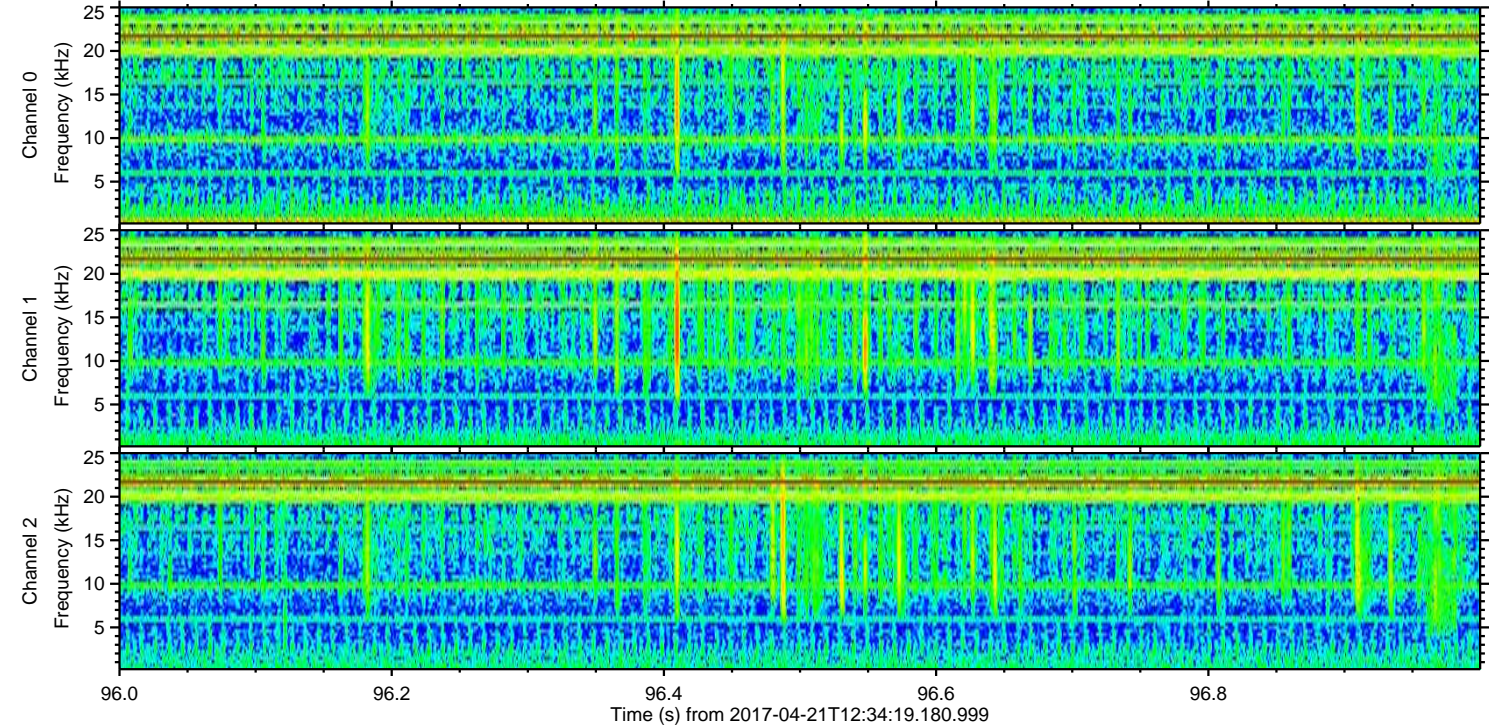
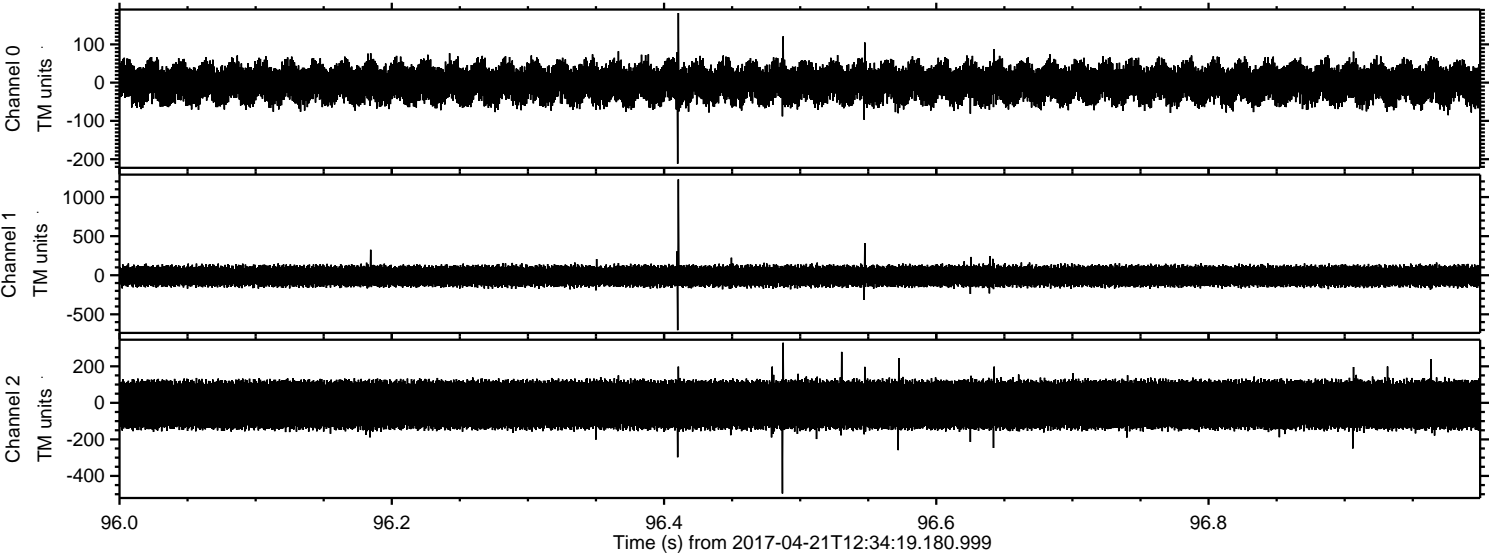


ELMAVAN 3D WAVEFORMS (Measured data sampled at 50 kHz) 51000 packets of 144 samples from 2017-04-21T12:34:19.180.999. Part 113/147

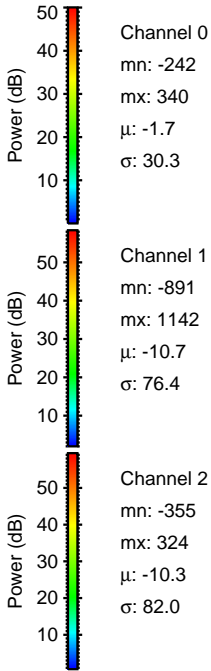
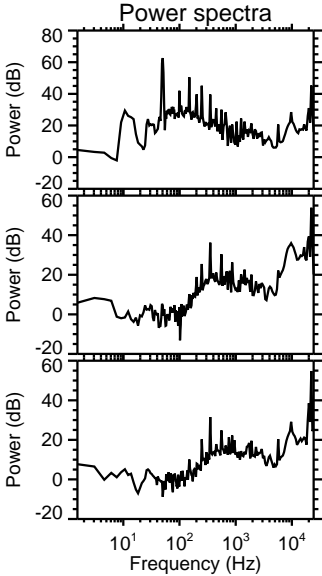
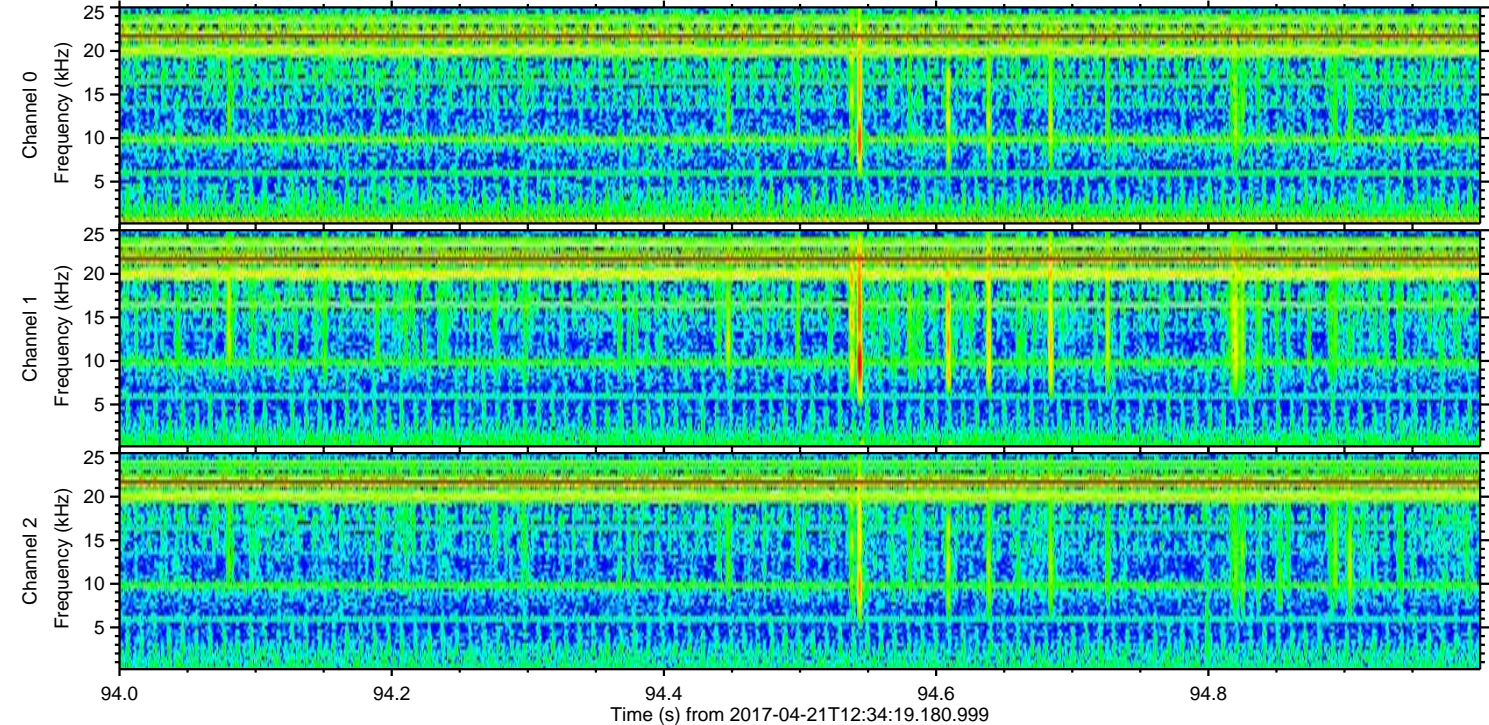
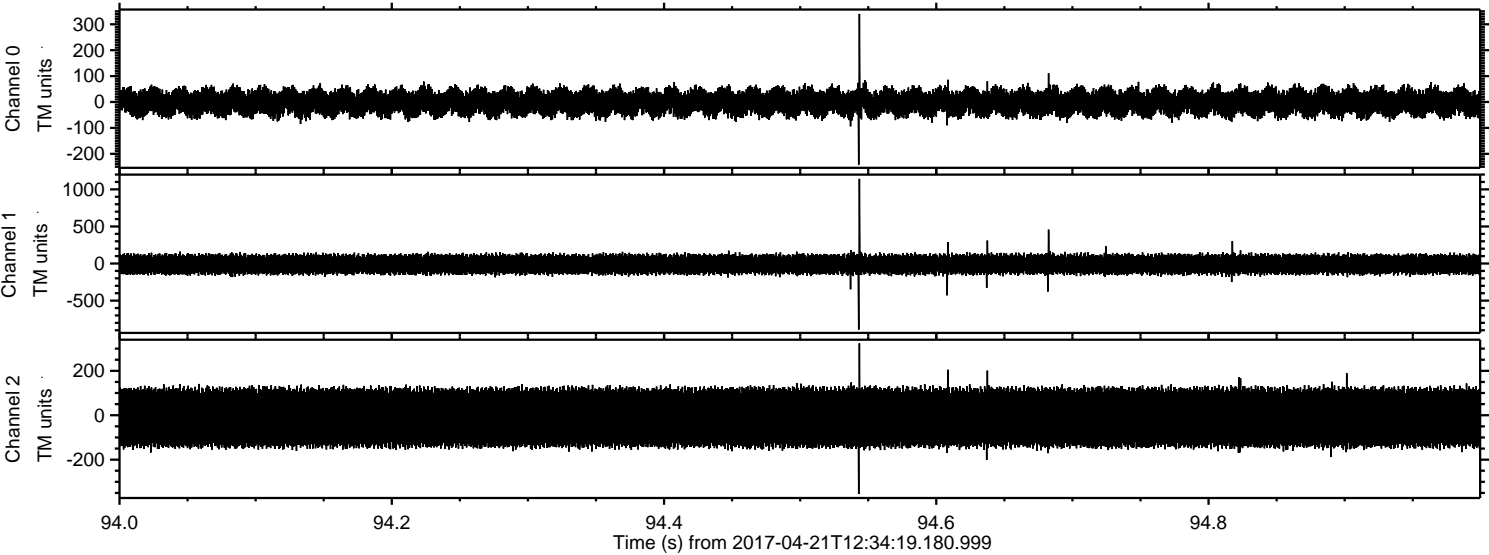
Processed Fri Apr 21 14:42:27 2017 by ELM ver.2012-10-06 from 001__elm20170421_123418__dat00.bin



Processed Fri Apr 21 14:42:28 2017 by ELM ver.2012-10-06 from 001__elm20170421_123418__dat00.bin

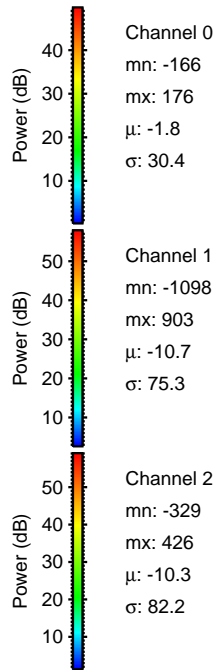
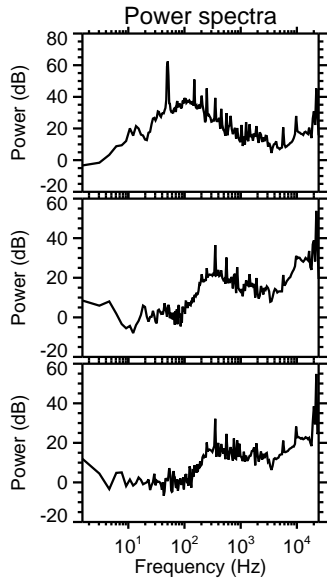
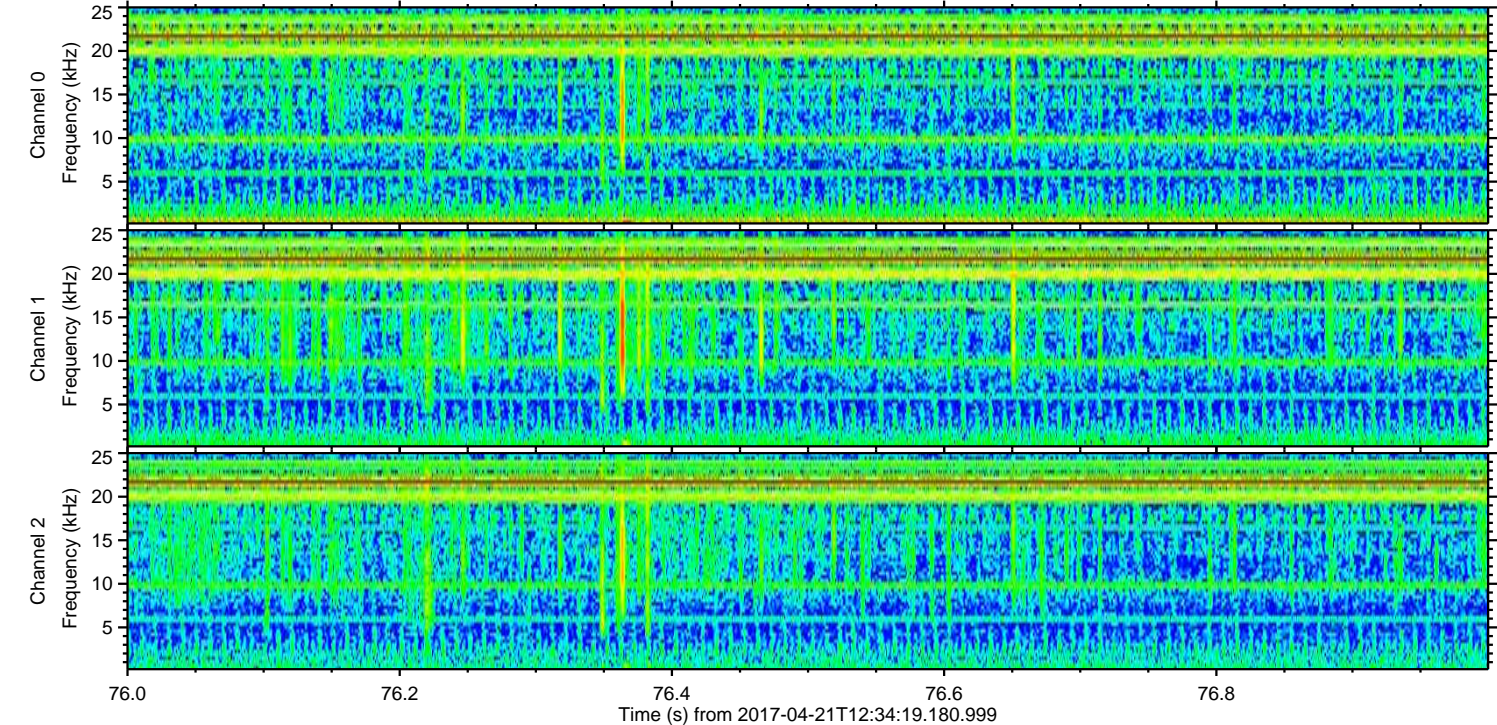
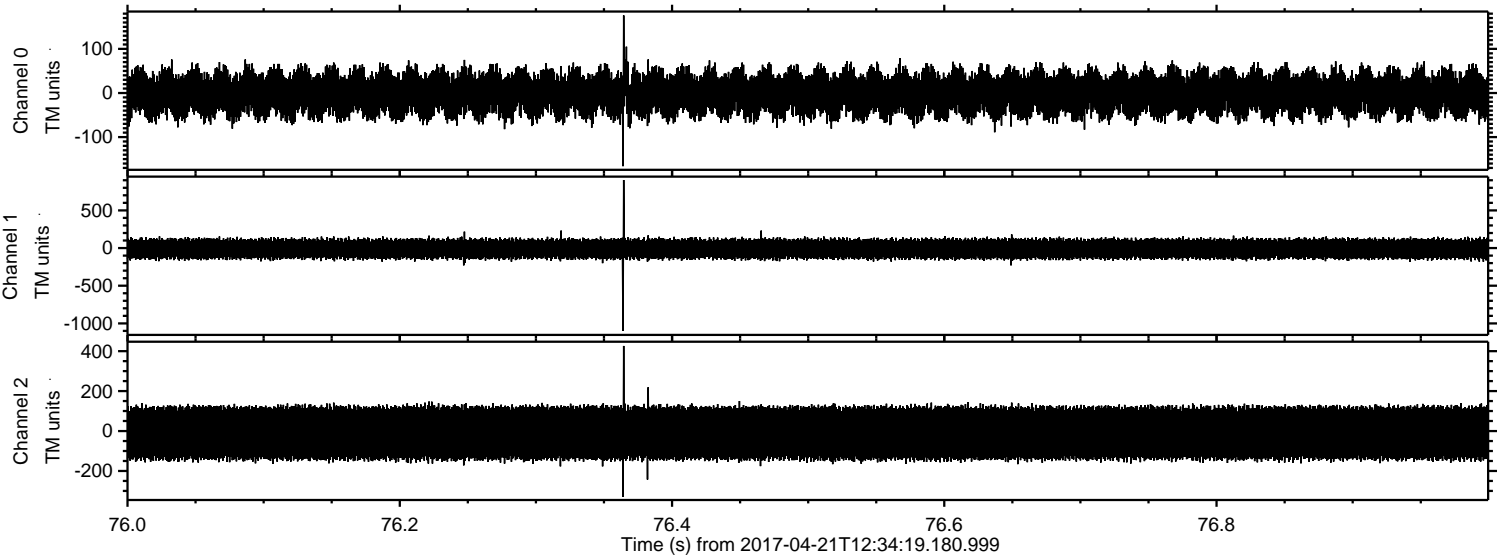


Processed Fri Apr 21 14:42:29 2017 by ELM ver.2012-10-06 from 001__elm20170421_123418__dat00.bin



ELMAVAN 3D WAVEFORMS (Measured data sampled at 50 kHz) 51000 packets of 144 samples from 2017-04-21T12:34:19.180.999. Part 77/147

Processed Fri Apr 21 14:42:30 2017 by ELM ver.2012-10-06 from 001__elm20170421_123418__dat00.bin



Power spectra

Channel 0
mn: -166
mx: 176
 μ : -1.8
 σ : 30.4

Channel 1
mn: -1098
mx: 903
 μ : -10.7
 σ : 75.3

Channel 2
mn: -329
mx: 426
 μ : -10.3
 σ : 82.2

Processed Fri Apr 21 14:42:31 2017 by ELM ver.2012-10-06 from 001__elm20170421_123418__dat00.bin

