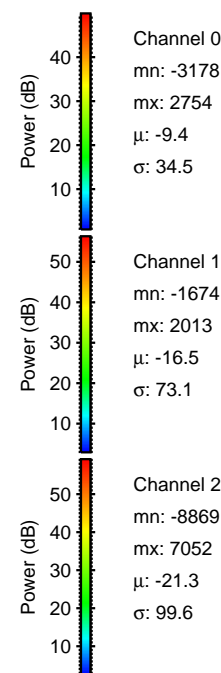
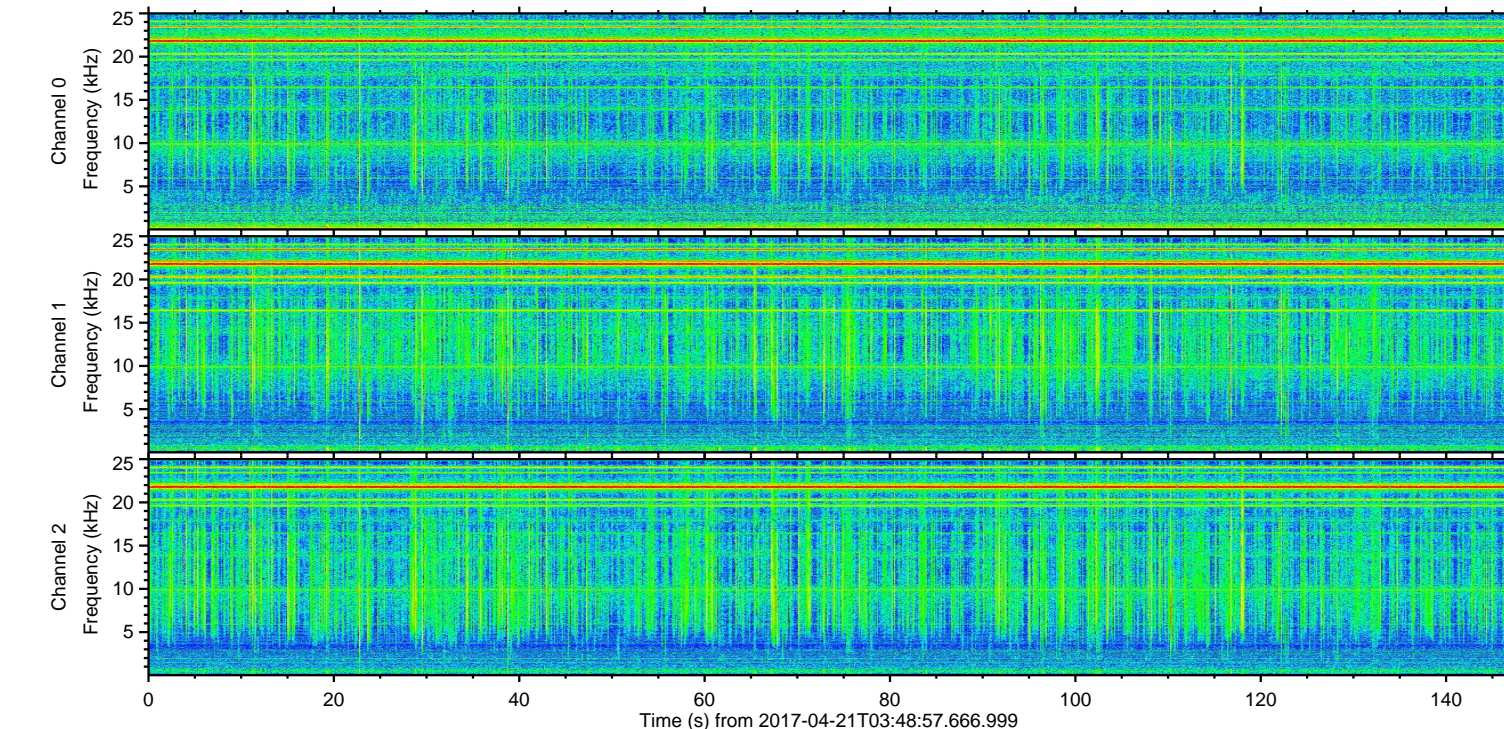
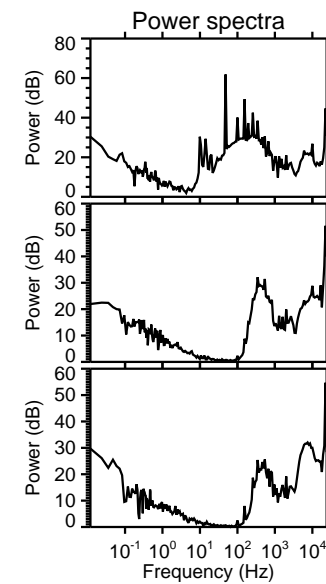
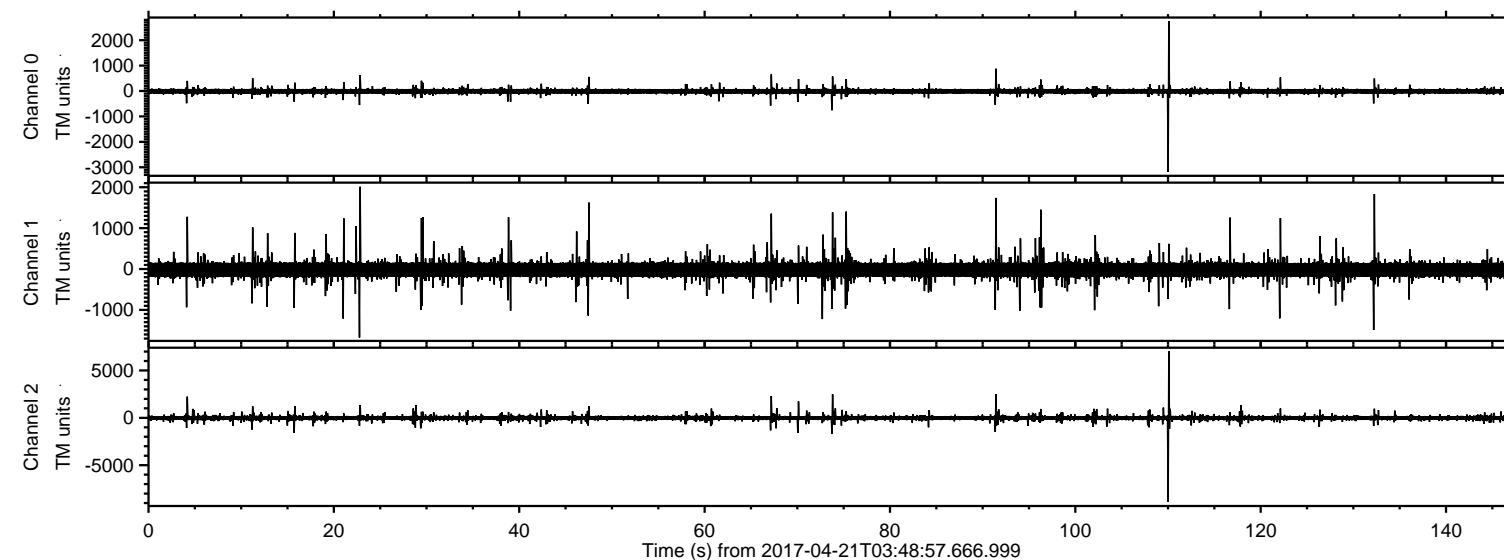


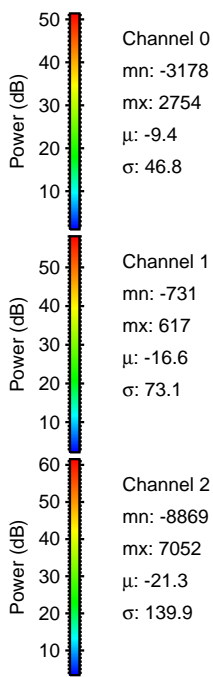
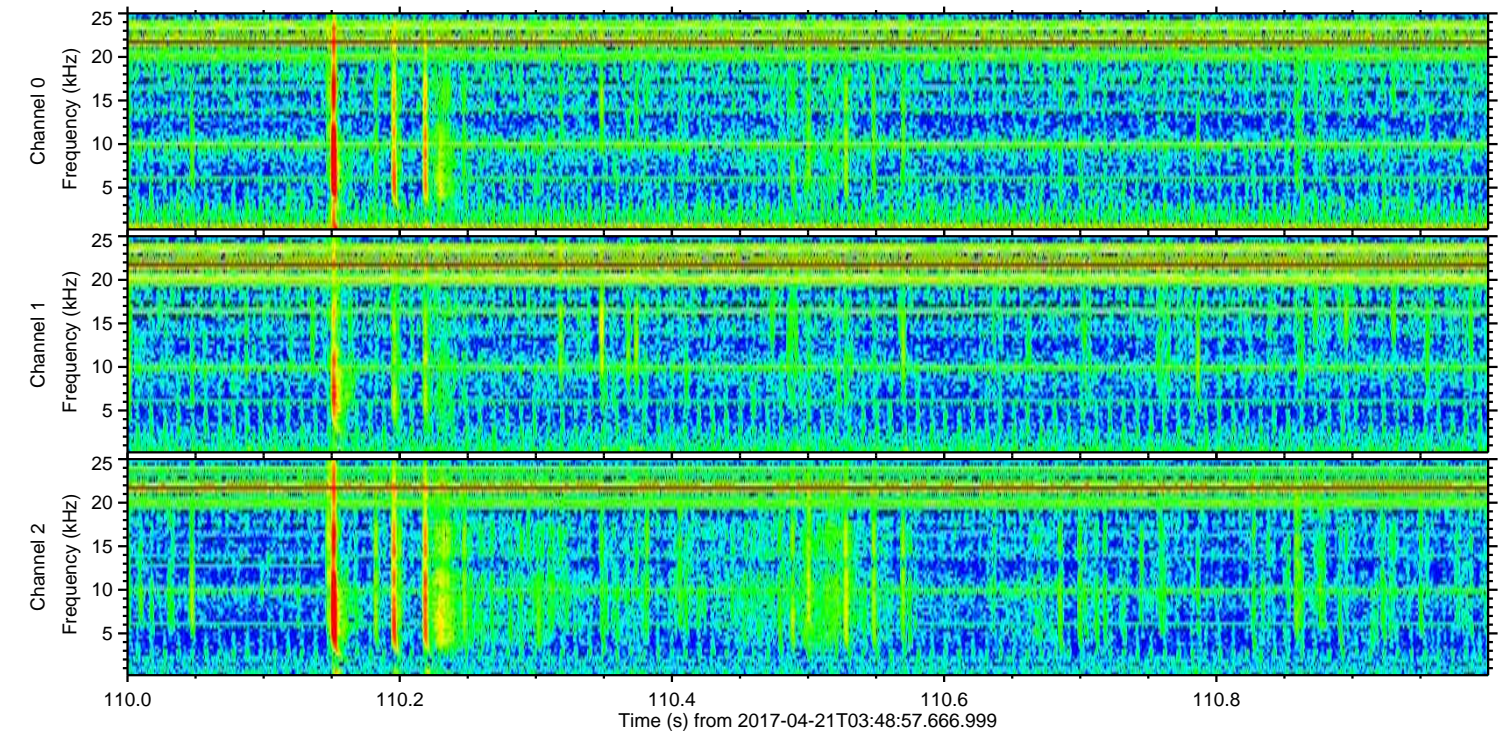
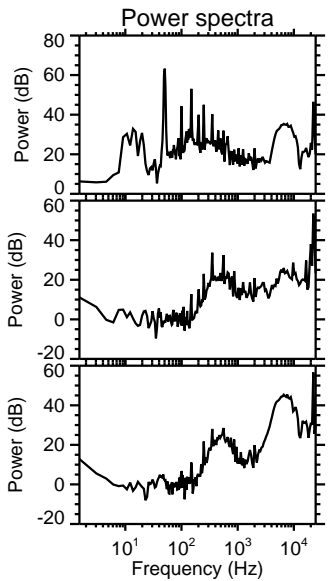
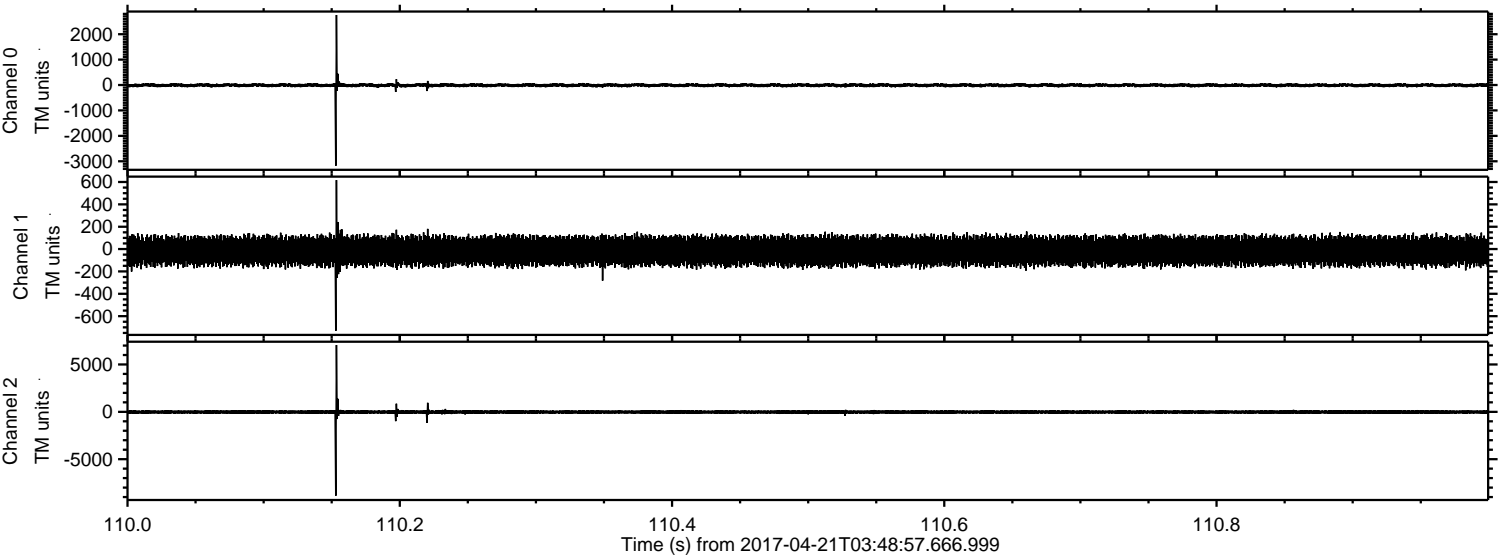
ELMAVAN 3D WAVEFORMS (Measured data sampled at 50 kHz) 51000 packets of 144 samples from 2017-04-21T03:48:57.666.999.

Processed Fri Apr 21 05:56:42 2017 by ELM ver.2012-10-06 from 001__elm20170421_034856__dat00.bin



ELMAVAN 3D WAVEFORMS (Measured data sampled at 50 kHz) 51000 packets of 144 samples from 2017-04-21T03:48:57.666.999. Part 111/147

Processed Fri Apr 21 05:56:53 2017 by ELM ver.2012-10-06 from 001__elm20170421_034856__dat00.bin



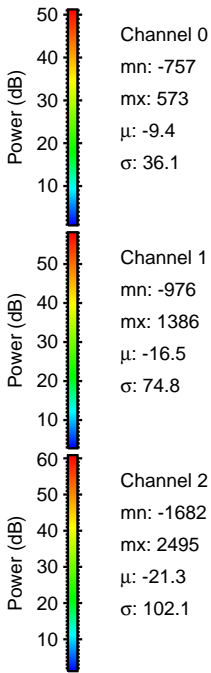
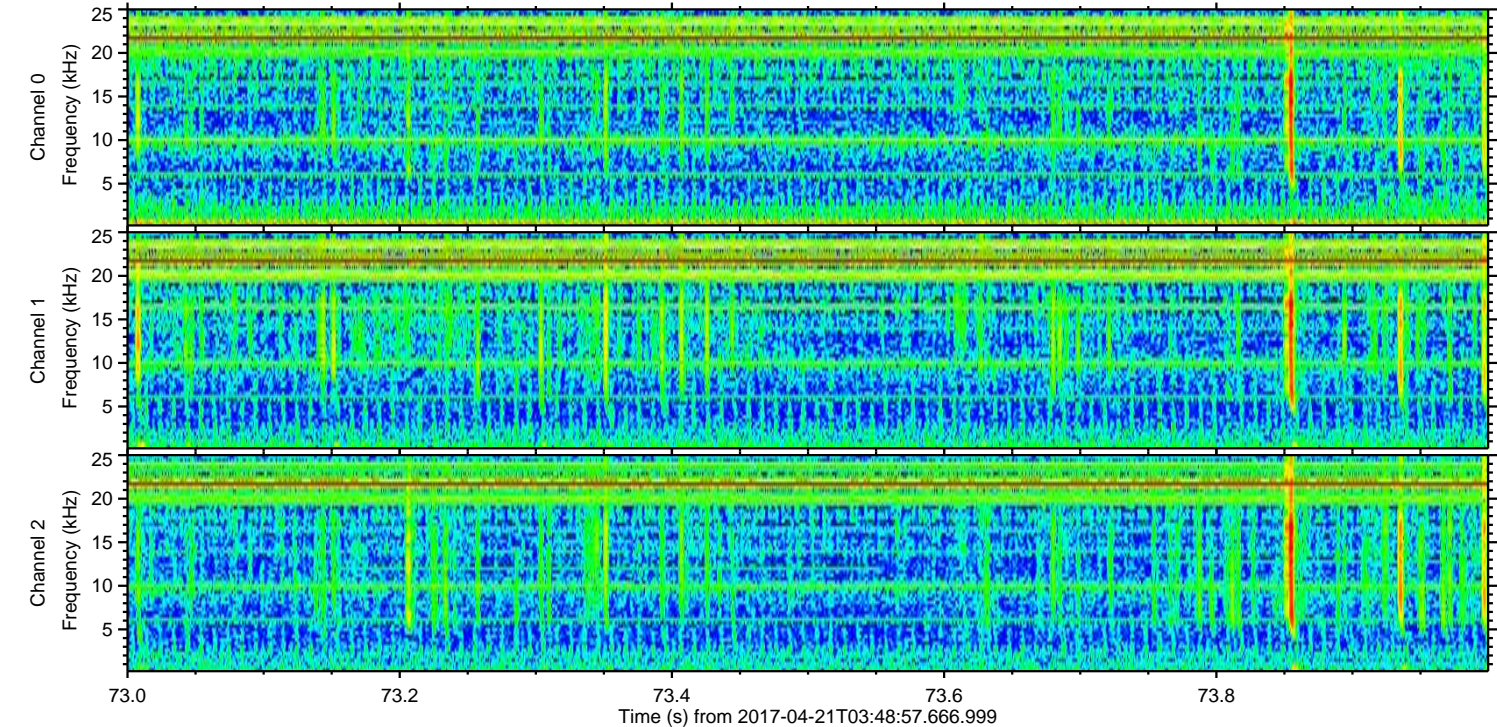
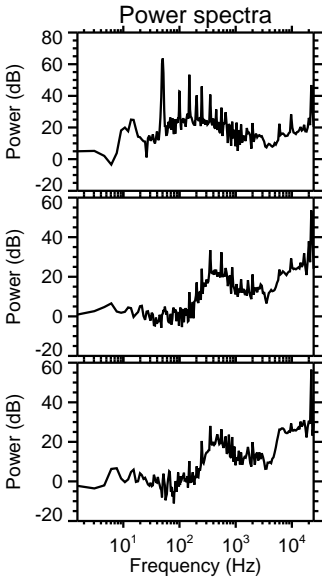
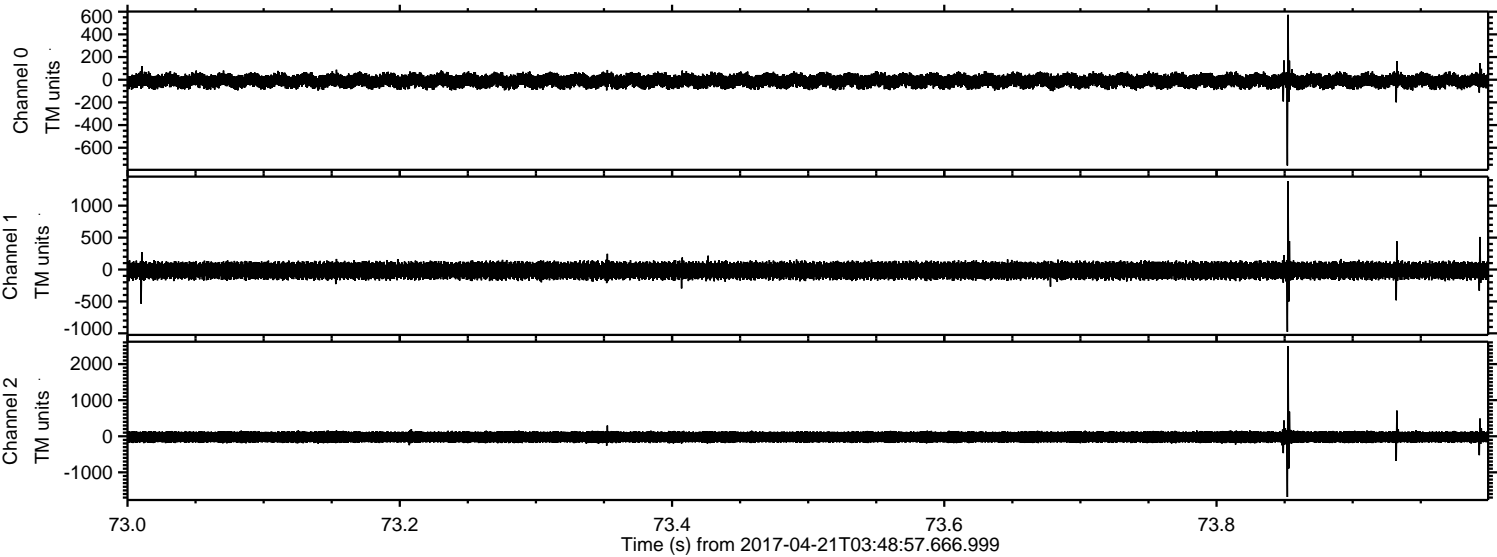
Channel 0
mn: -3178
mx: 2754
 μ : -9.4
 σ : 46.8

Channel 1
mn: -731
mx: 617
 μ : -16.6
 σ : 73.1

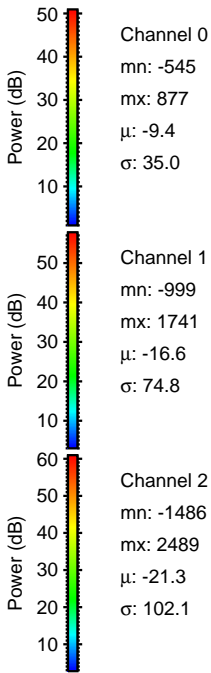
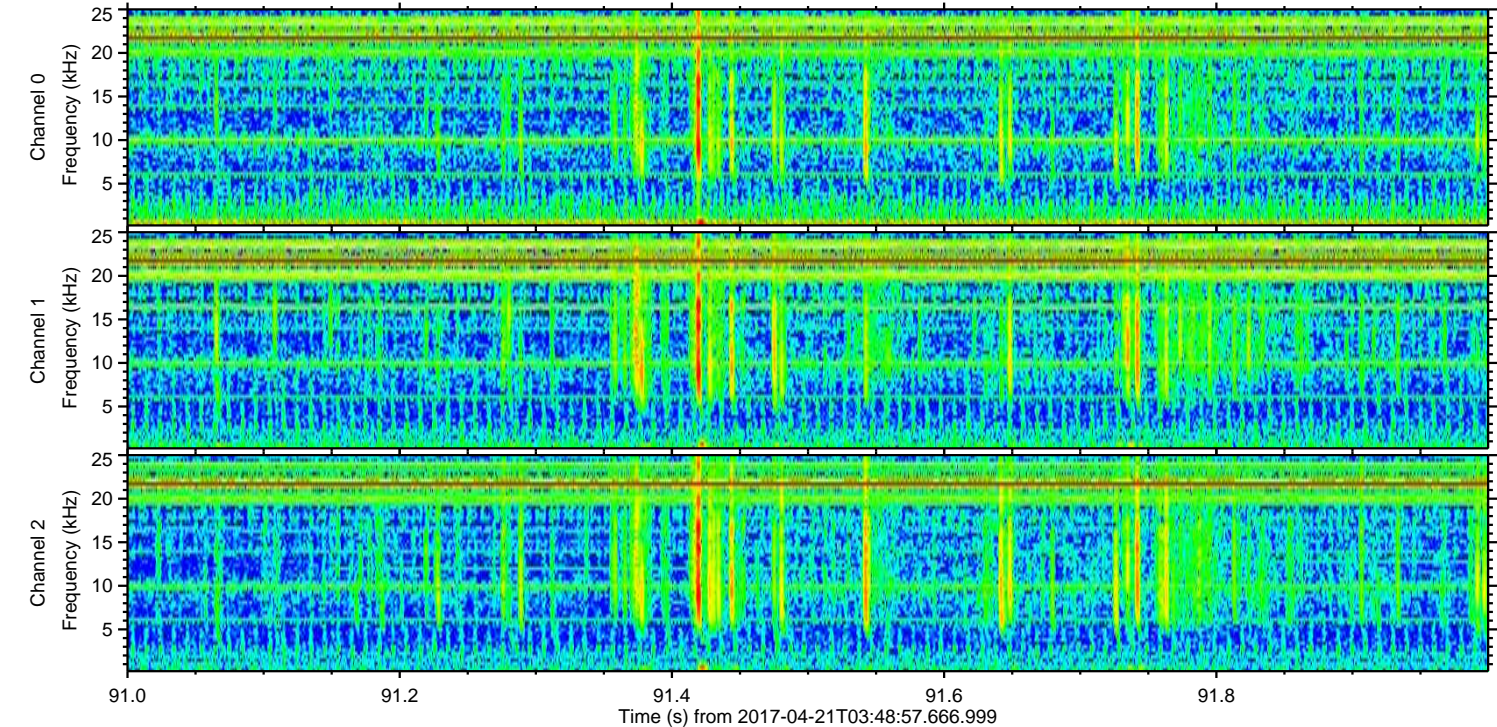
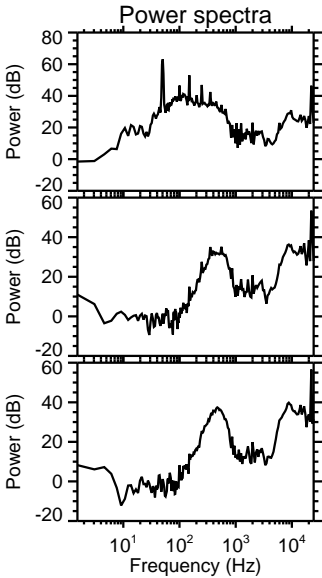
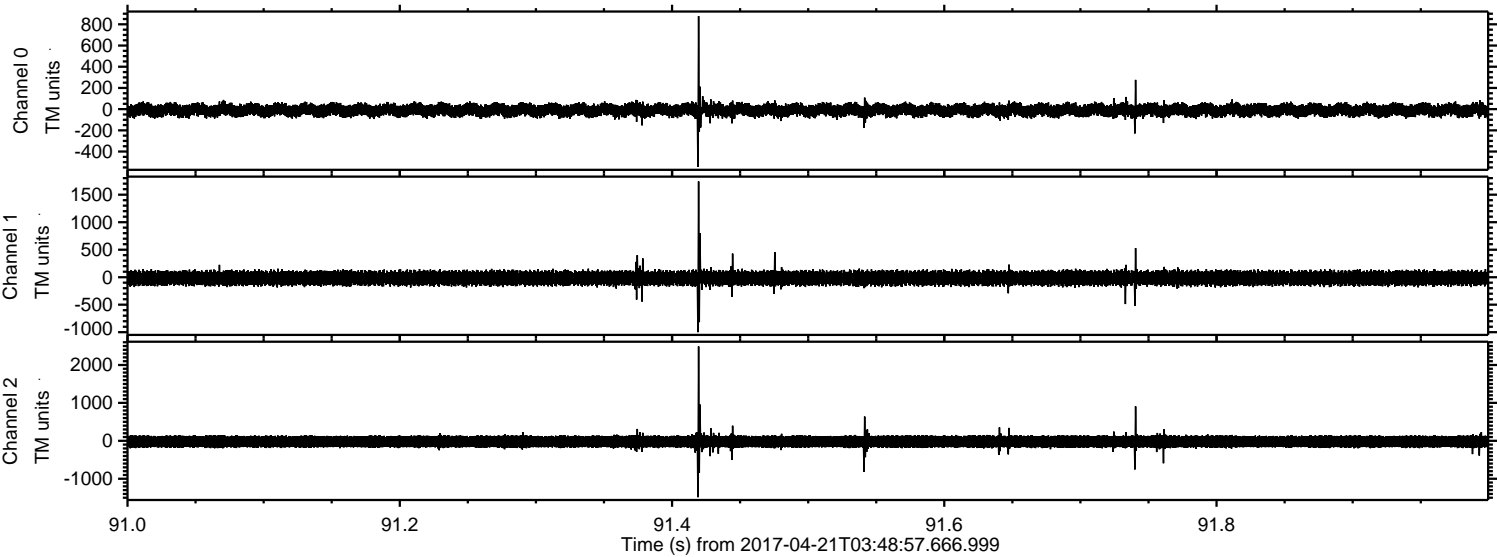
Channel 2
mn: -8869
mx: 7052
 μ : -21.3
 σ : 139.9

ELMAVAN 3D WAVEFORMS (Measured data sampled at 50 kHz) 51000 packets of 144 samples from 2017-04-21T03:48:57.666.999. Part 74/147

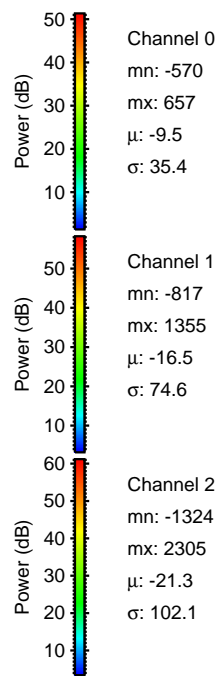
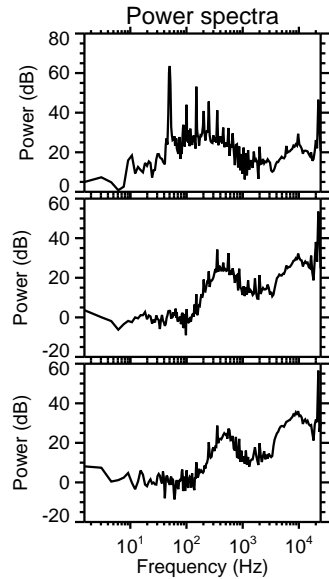
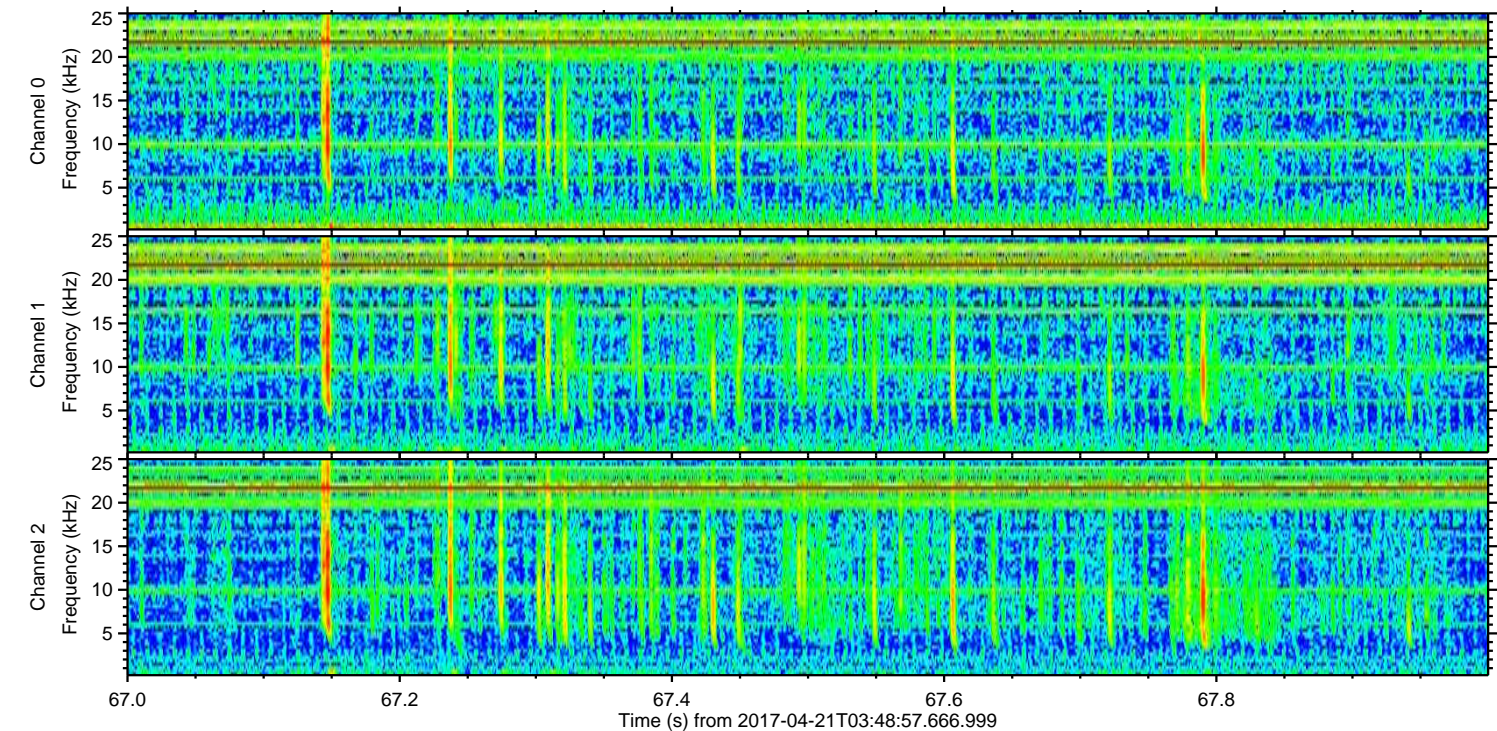
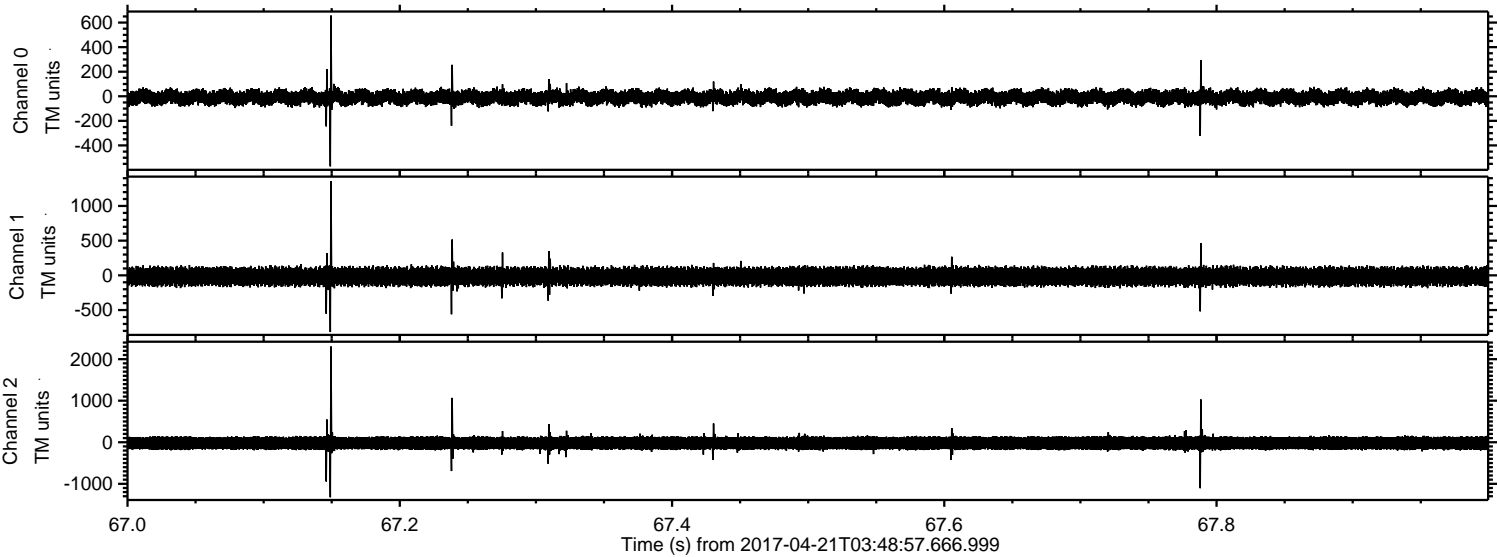
Processed Fri Apr 21 05:56:54 2017 by ELM ver.2012-10-06 from 001__elm20170421_034856__dat00.bin



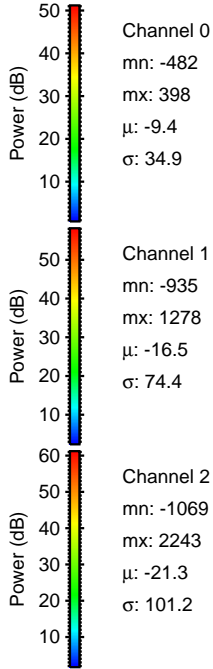
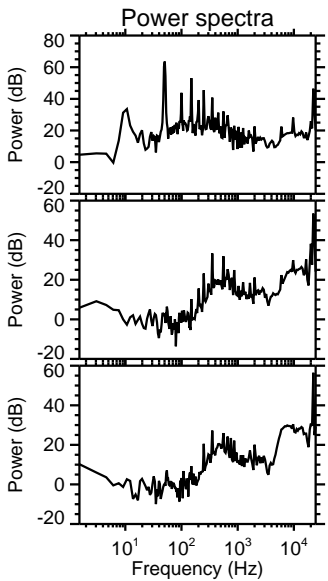
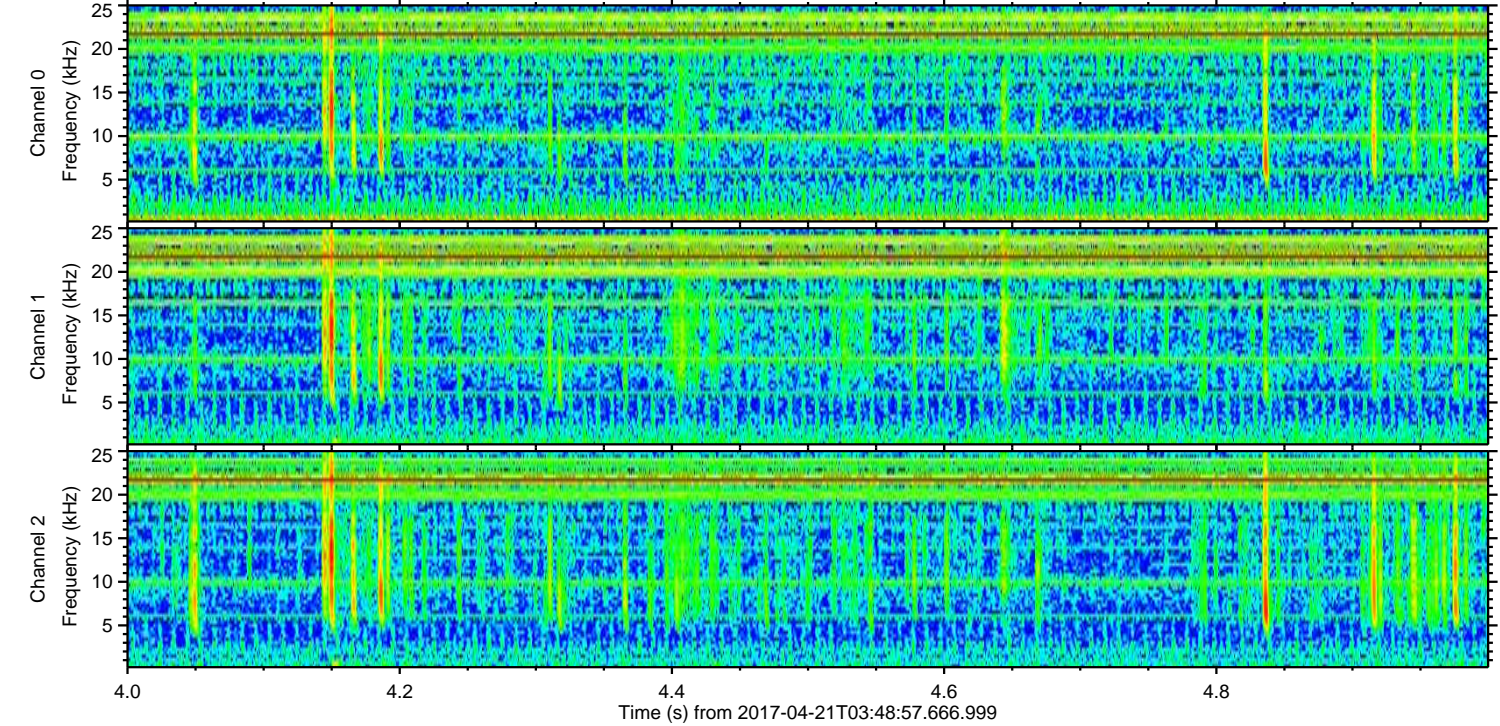
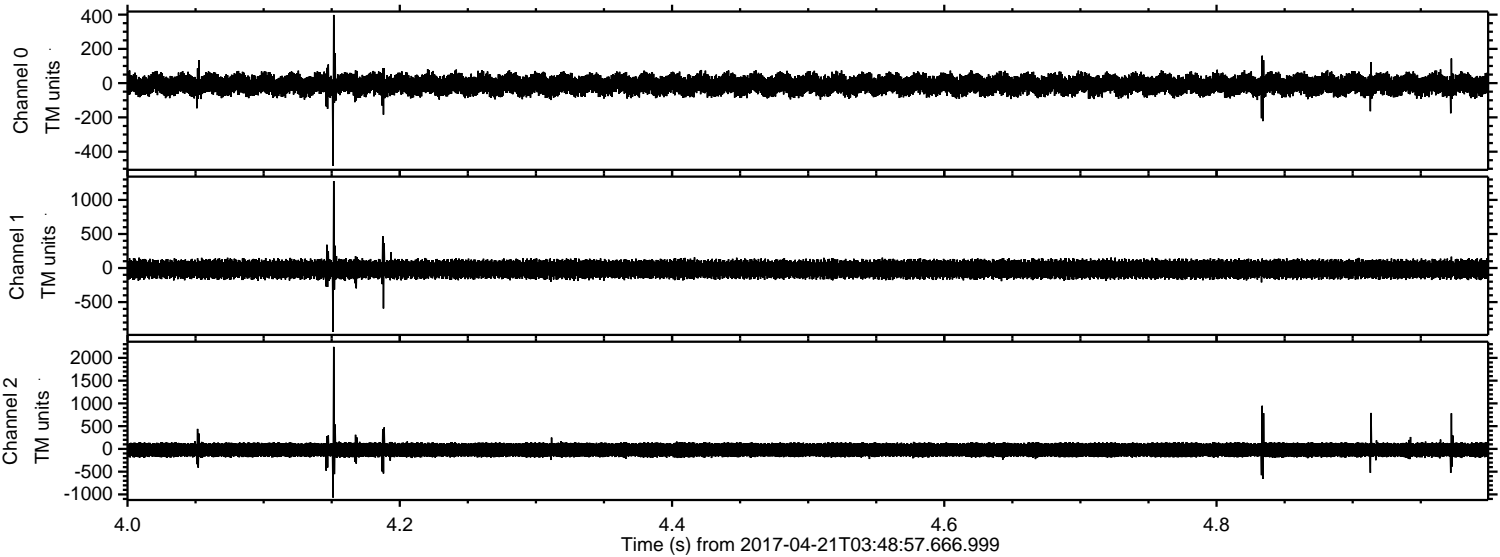
Processed Fri Apr 21 05:56:55 2017 by ELM ver.2012-10-06 from 001__elm20170421_034856__dat00.bin



Processed Fri Apr 21 05:56:56 2017 by ELM ver.2012-10-06 from 001__elm20170421_034856__dat00.bin

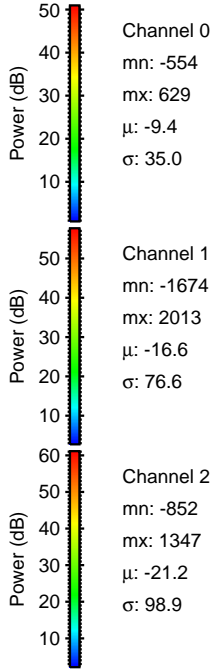
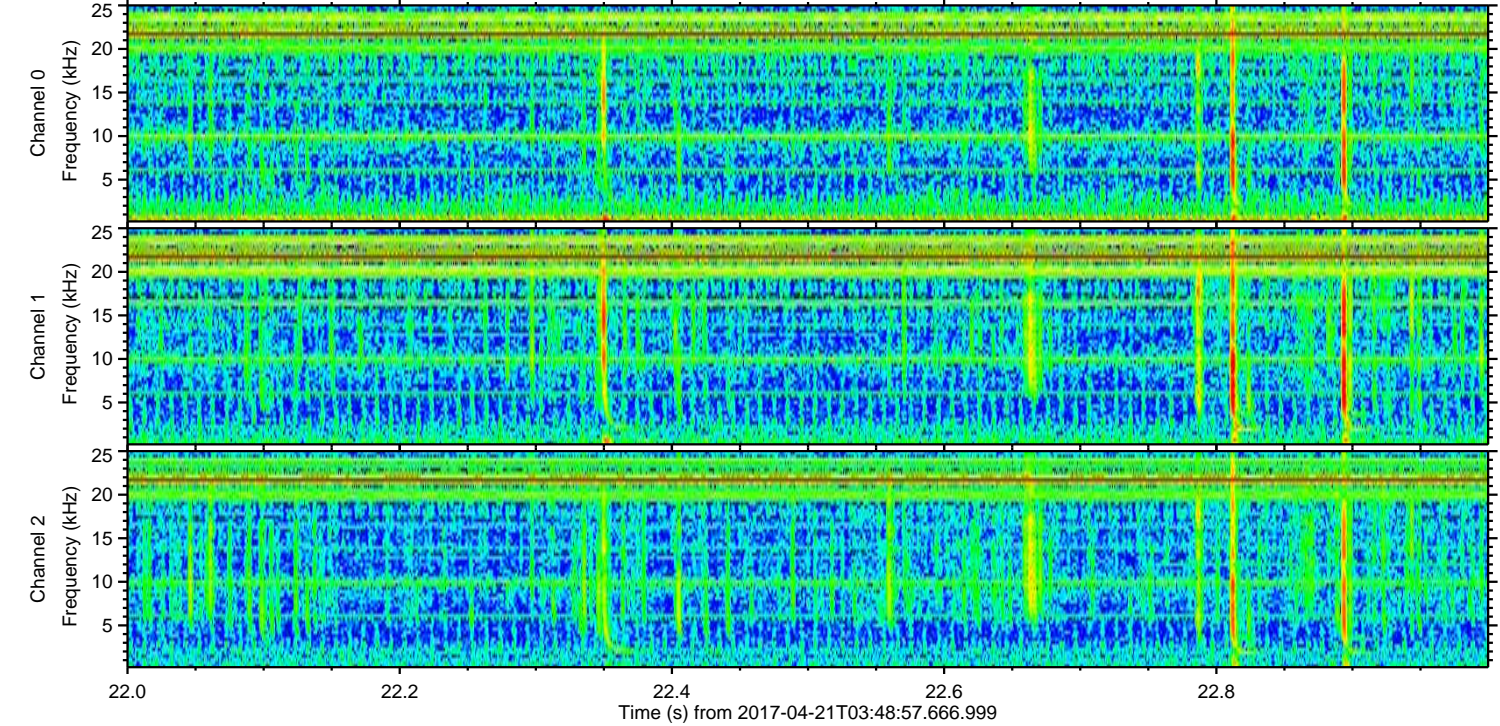
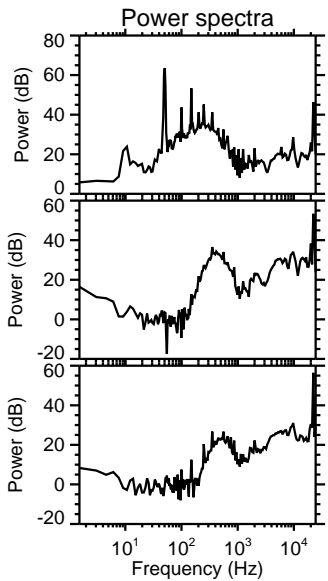
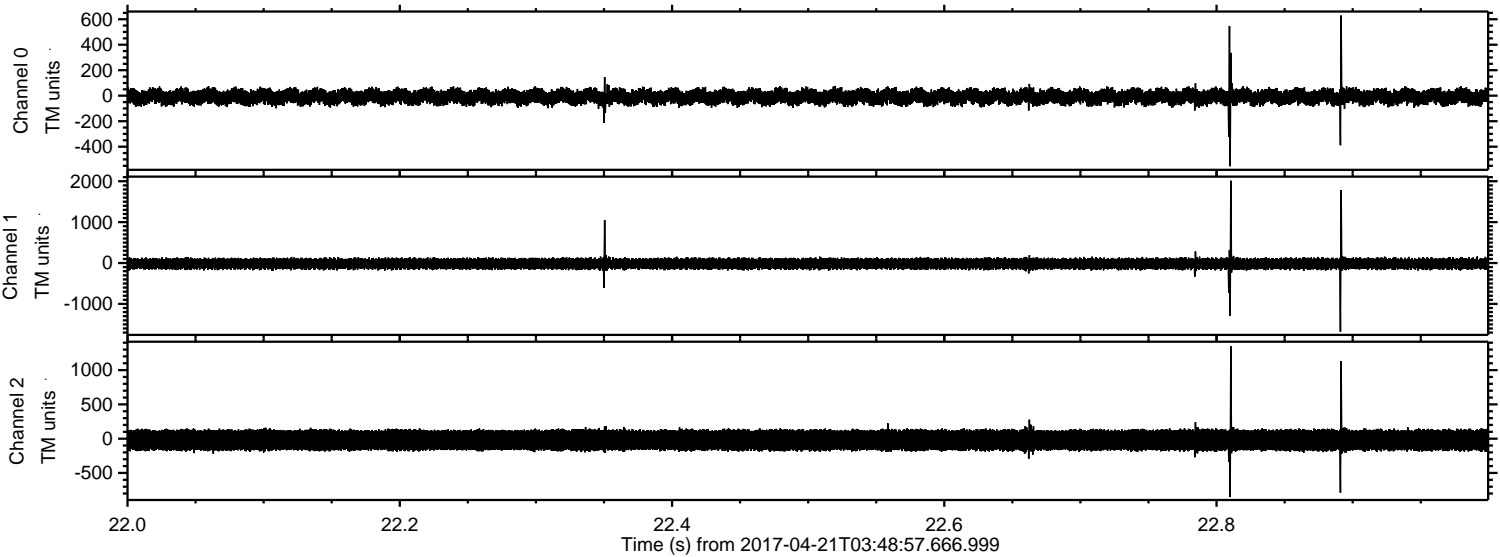


Processed Fri Apr 21 05:56:57 2017 by ELM ver.2012-10-06 from 001__elm20170421_034856__dat00.bin



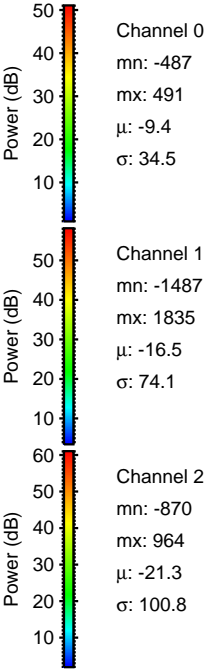
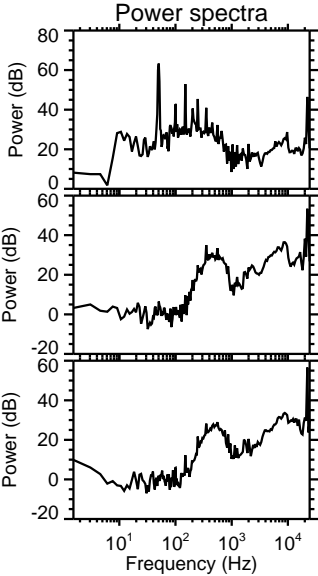
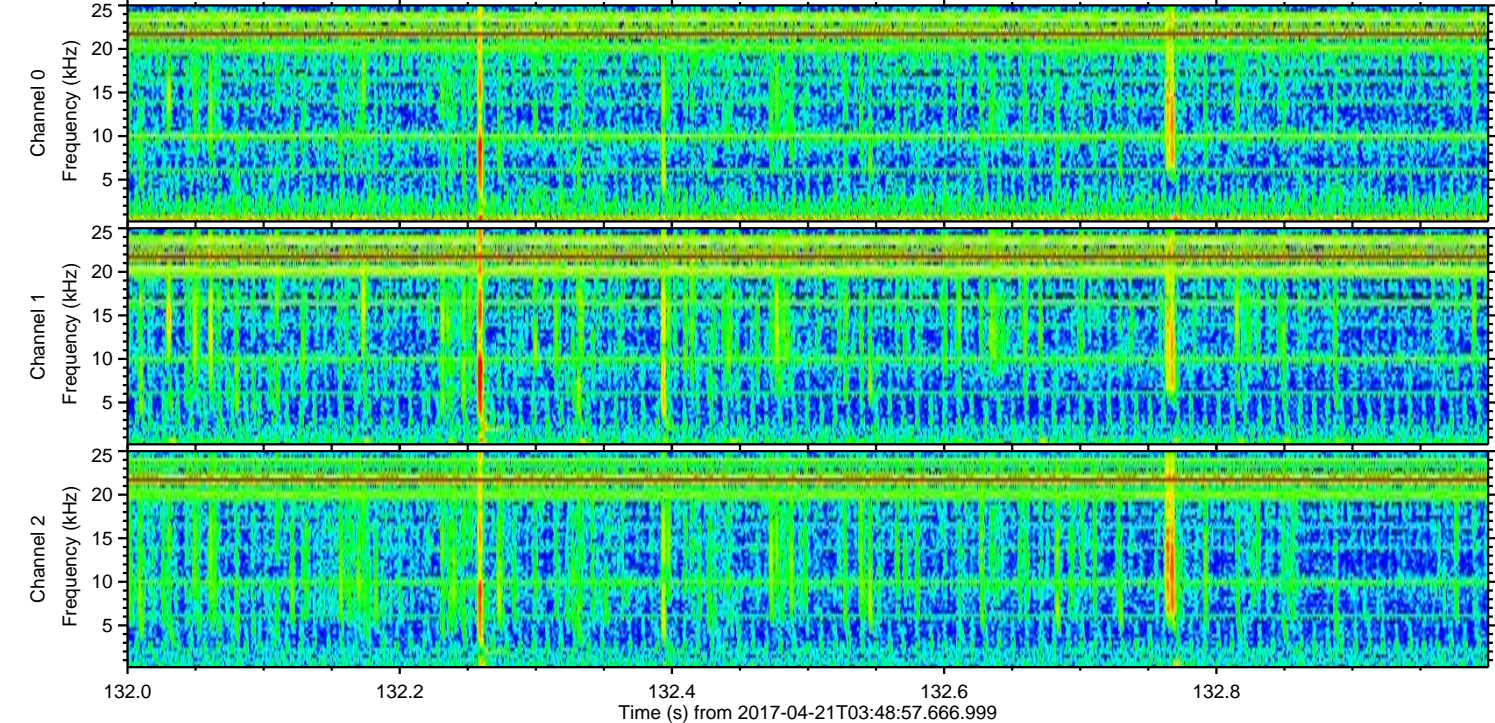
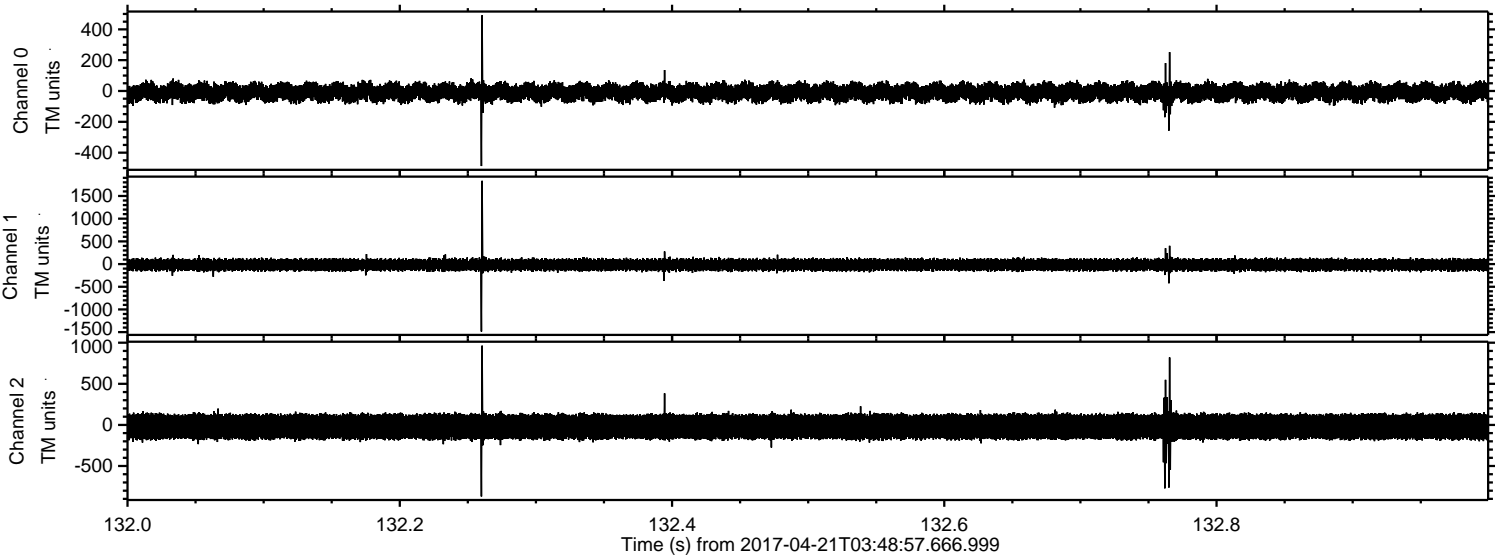
ELMAVAN 3D WAVEFORMS (Measured data sampled at 50 kHz) 51000 packets of 144 samples from 2017-04-21T03:48:57.666.999. Part 23/147

Processed Fri Apr 21 05:56:58 2017 by ELM ver.2012-10-06 from 001__elm20170421_034856__dat00.bin

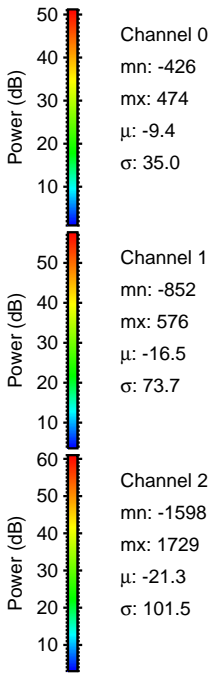
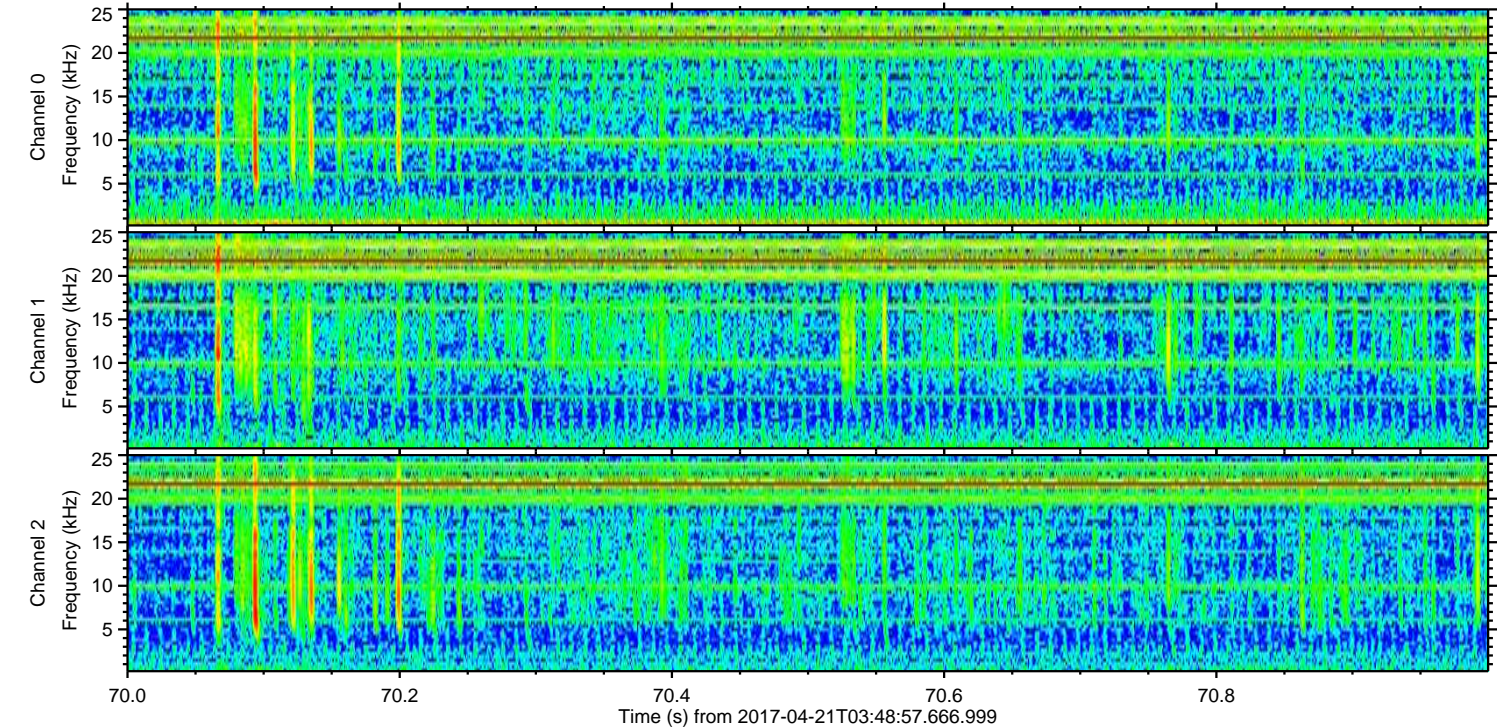
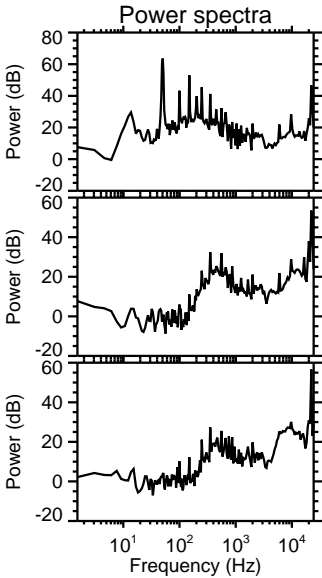
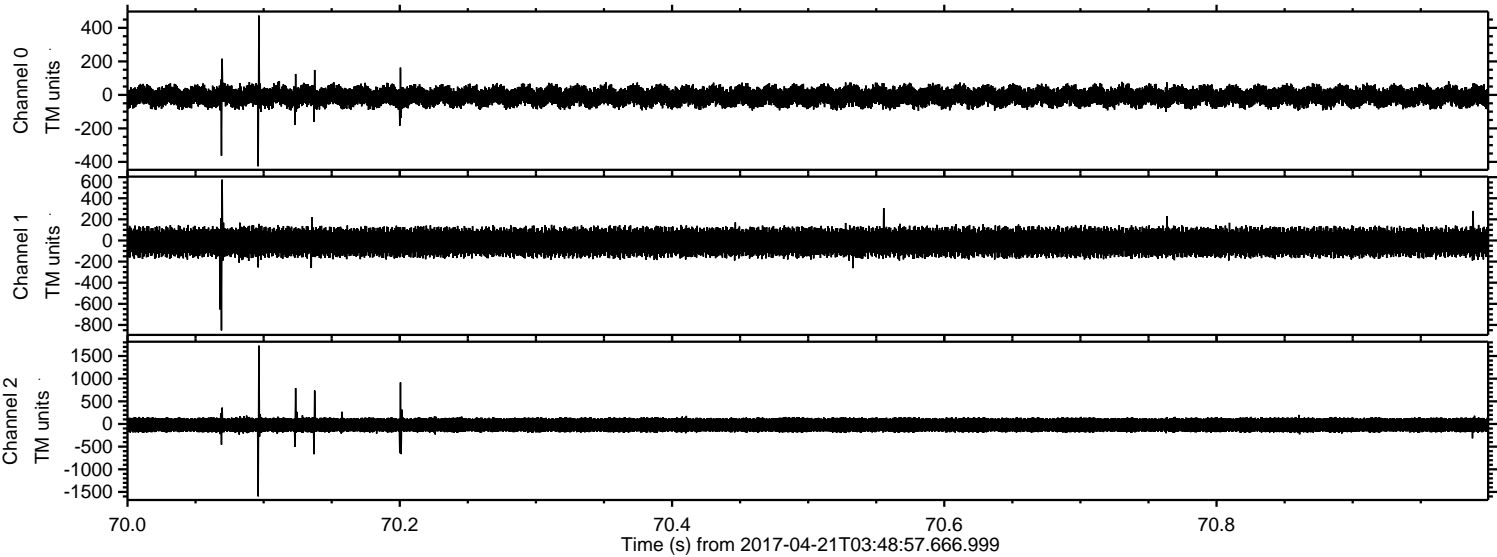


ELMAVAN 3D WAVEFORMS (Measured data sampled at 50 kHz) 51000 packets of 144 samples from 2017-04-21T03:48:57.666.999. Part 133/147

Processed Fri Apr 21 05:56:59 2017 by ELM ver.2012-10-06 from 001__elm20170421_034856__dat00.bin



Processed Fri Apr 21 05:57:00 2017 by ELM ver.2012-10-06 from 001__elm20170421_034856__dat00.bin

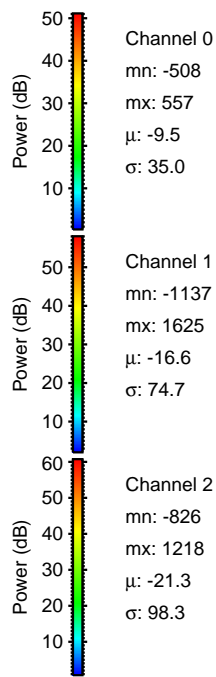
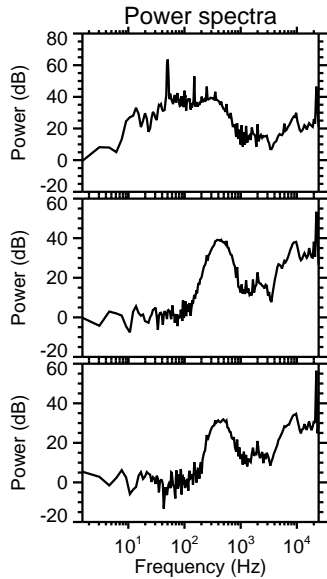
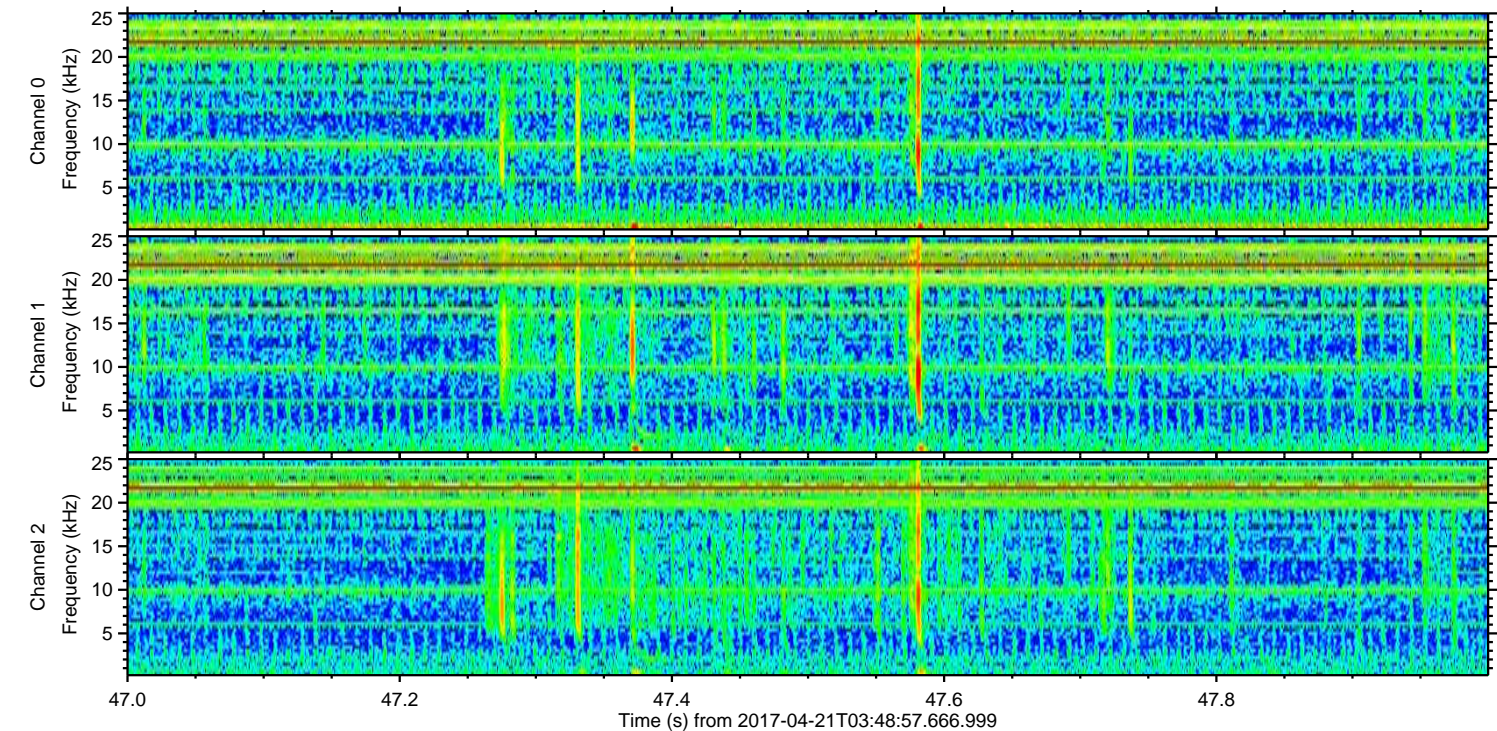
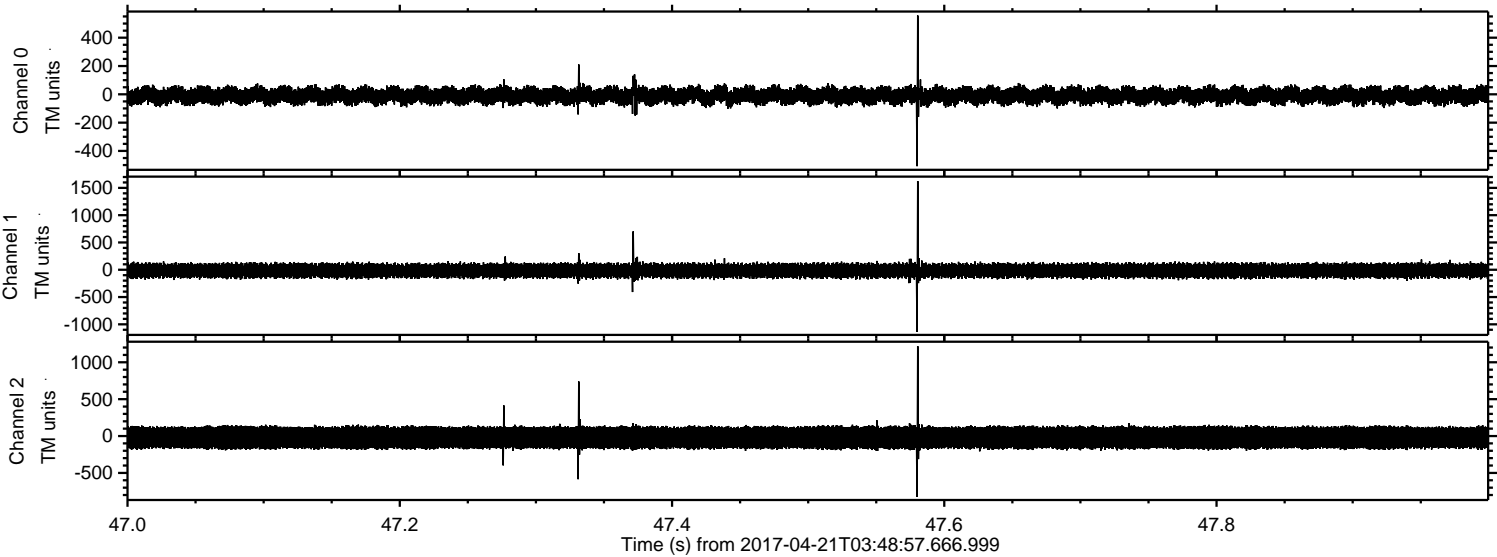


Channel 0
mn: -426
mx: 474
 μ : -9.4
 σ : 35.0

Channel 1
mn: -852
mx: 576
 μ : -16.5
 σ : 73.7

Channel 2
mn: -1598
mx: 1729
 μ : -21.3
 σ : 101.5

Processed Fri Apr 21 05:57:01 2017 by ELM ver.2012-10-06 from 001__elm20170421_034856__dat00.bin



Processed Fri Apr 21 05:57:02 2017 by ELM ver.2012-10-06 from 001__elm20170421_034856__dat00.bin

