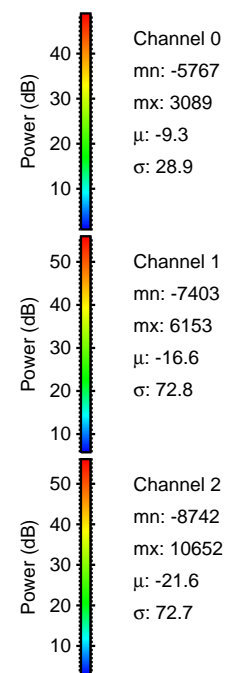
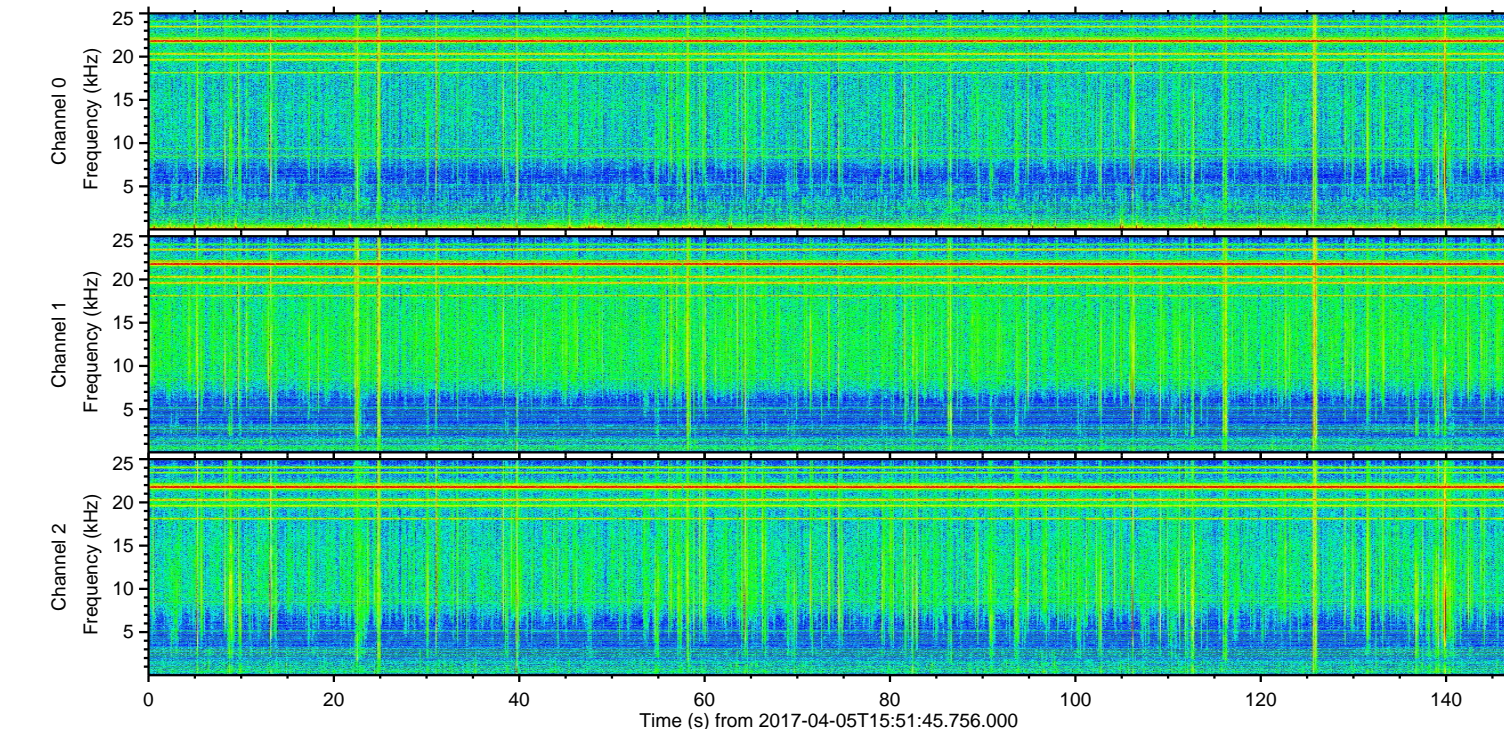
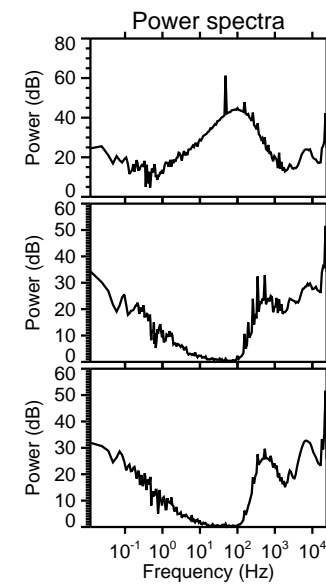
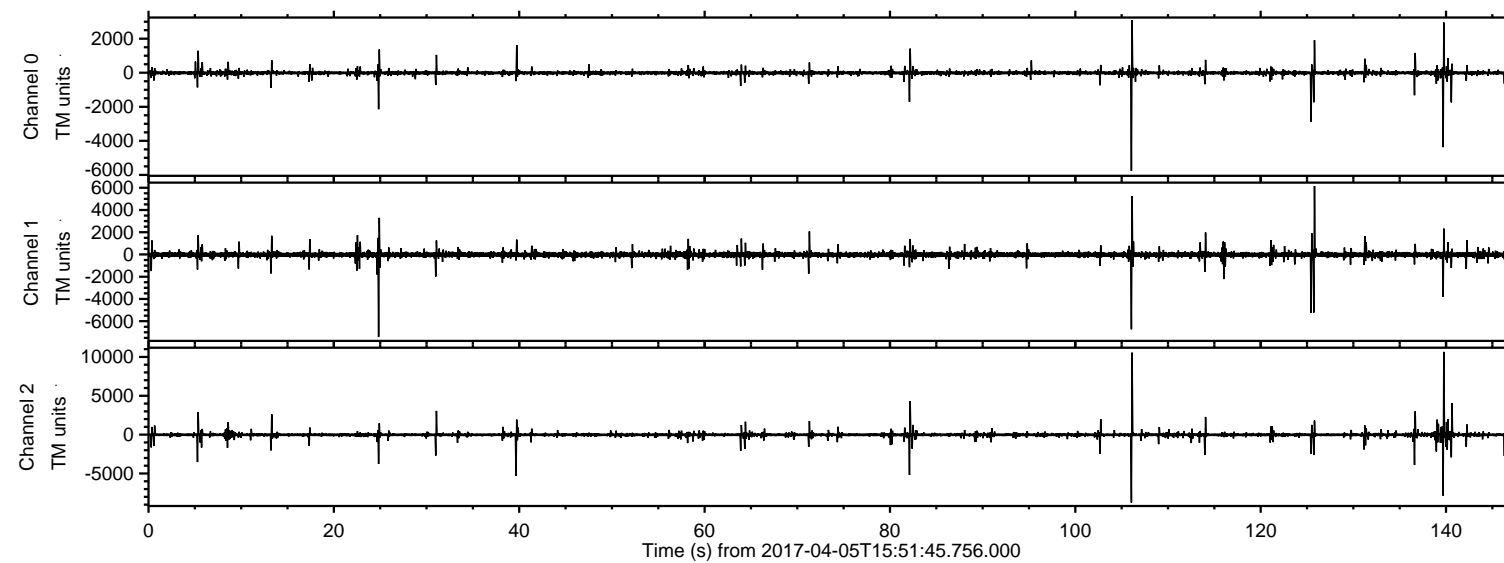


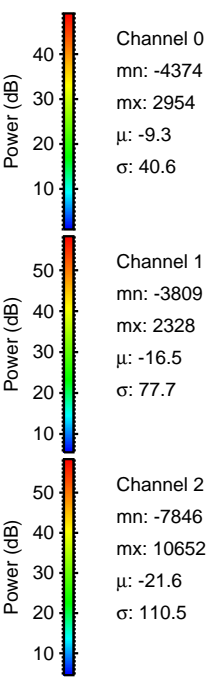
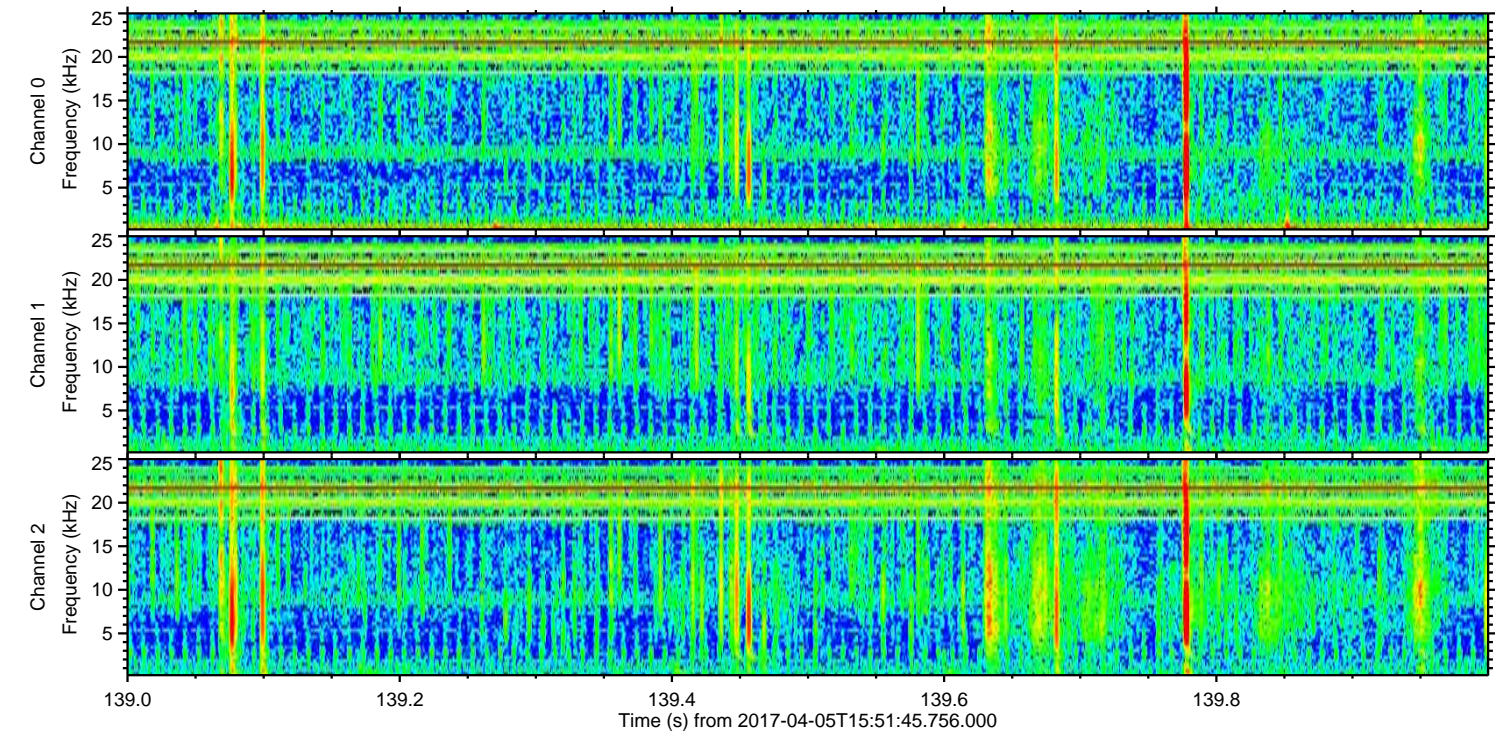
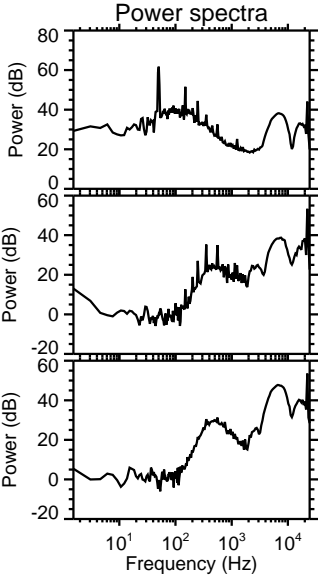
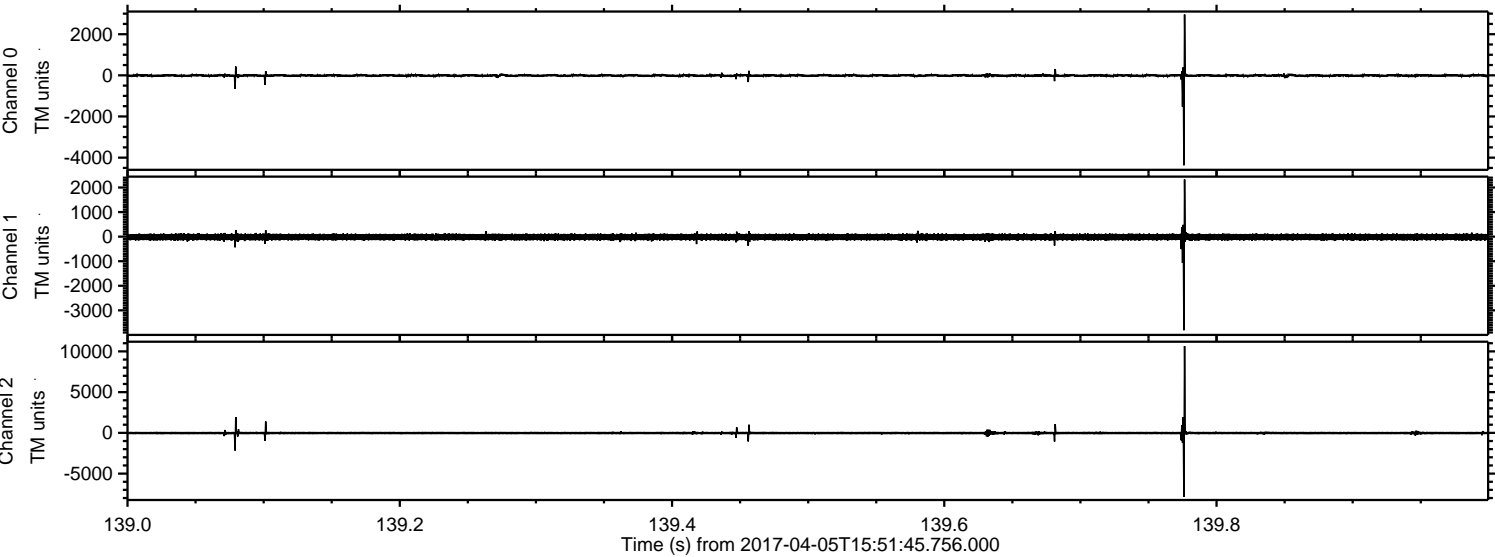
ELMAVAN 3D WAVEFORMS (Measured data sampled at 50 kHz) 51000 packets of 144 samples from 2017-04-05T15:51:45.756.000.

Processed Wed Apr 5 18:00:03 2017 by ELM ver.2012-10-06 from 001__elm20170405_155144__dat00.bin



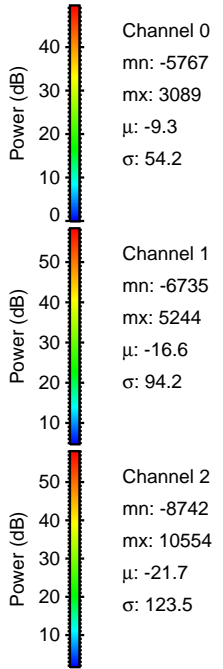
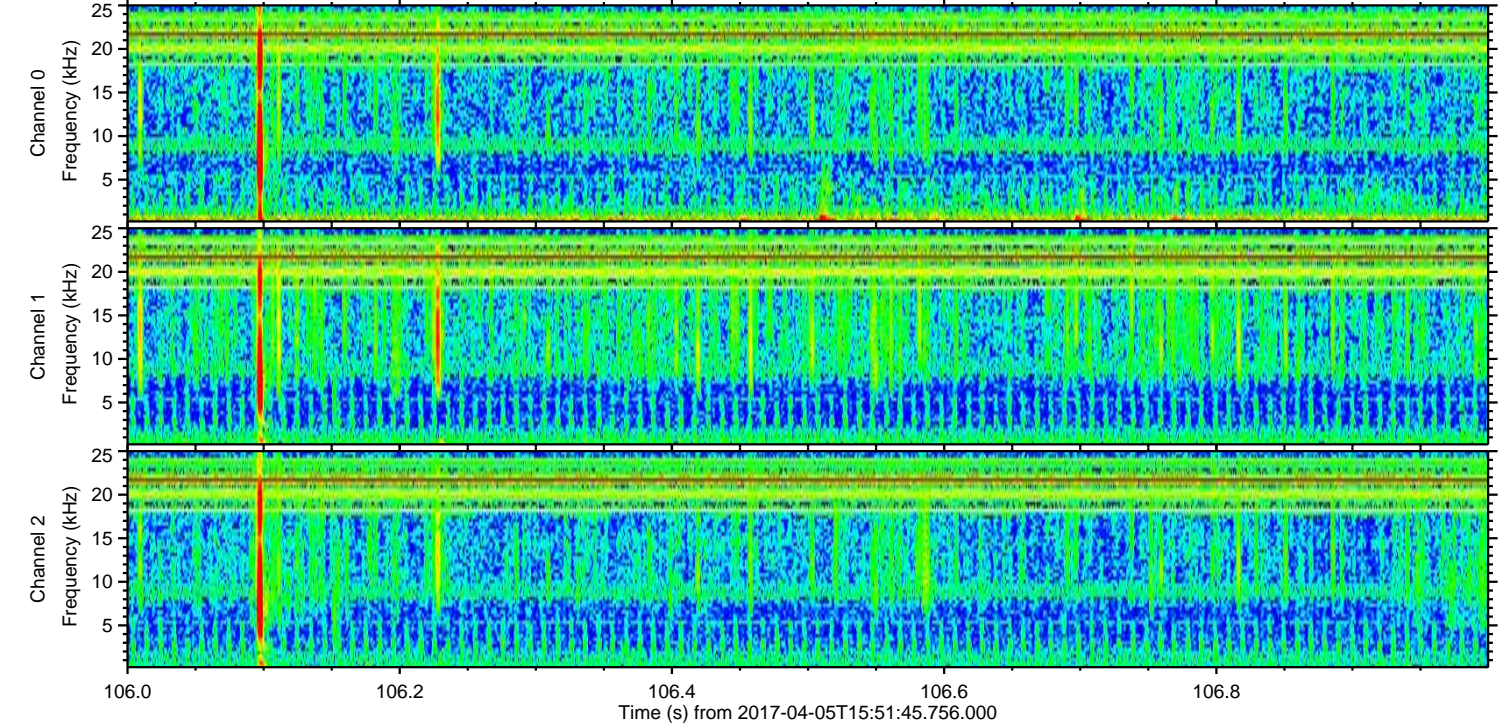
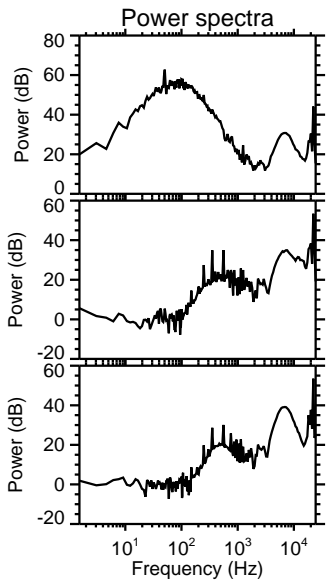
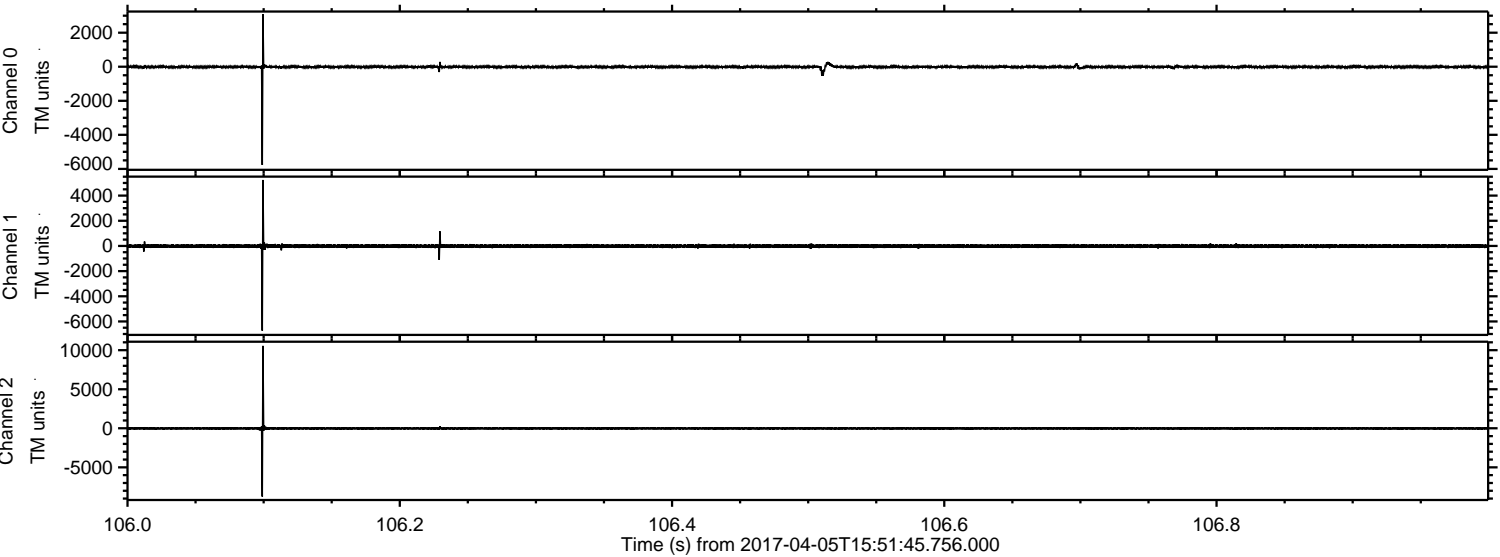
ELMAVAN 3D WAVEFORMS (Measured data sampled at 50 kHz) 51000 packets of 144 samples from 2017-04-05T15:51:45.756.000. Part 140/147

Processed Wed Apr 5 18:00:20 2017 by ELM ver.2012-10-06 from 001__elm20170405_155144__dat00.bin



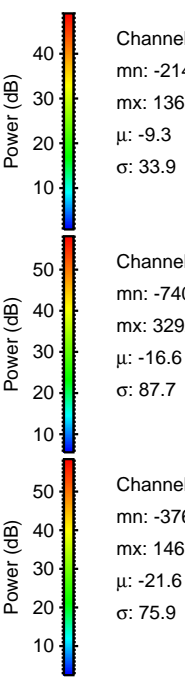
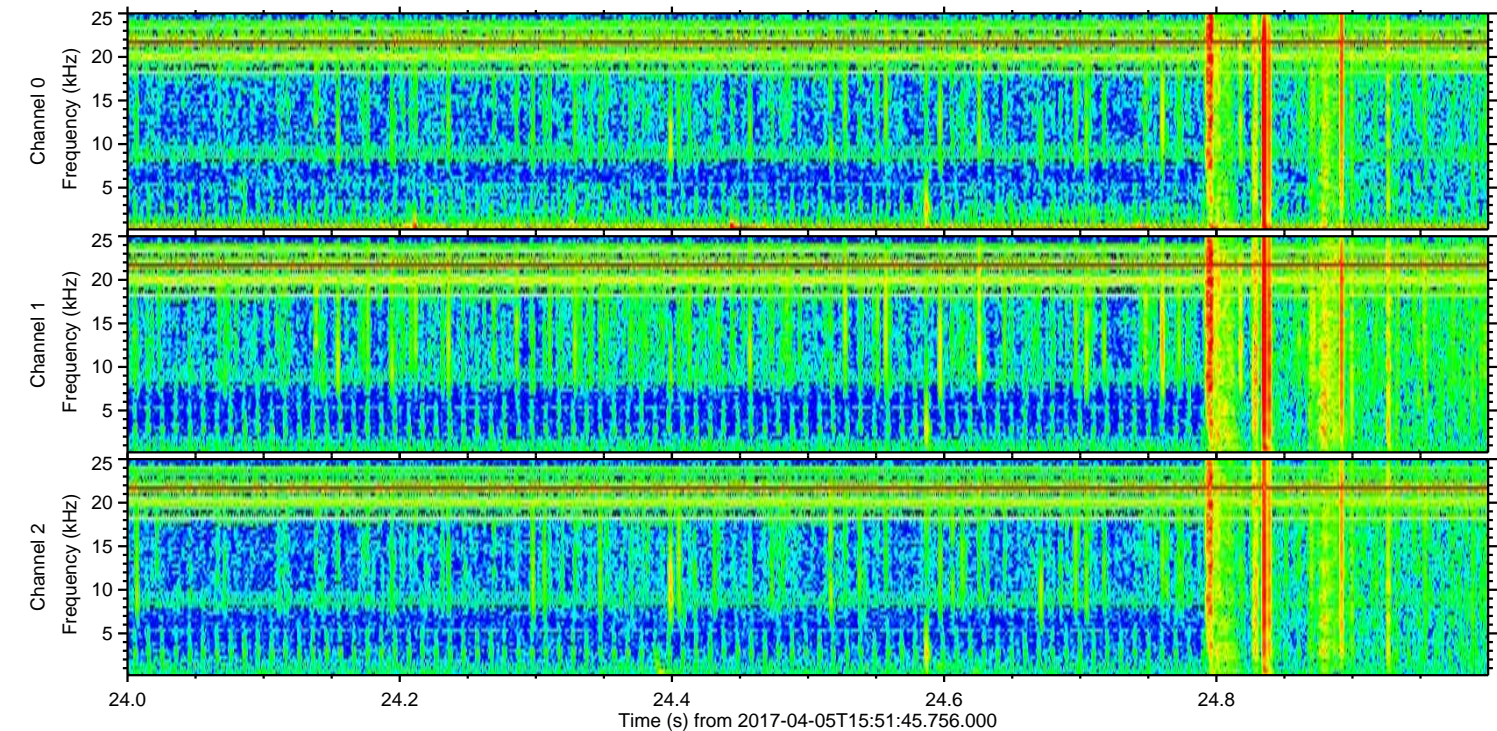
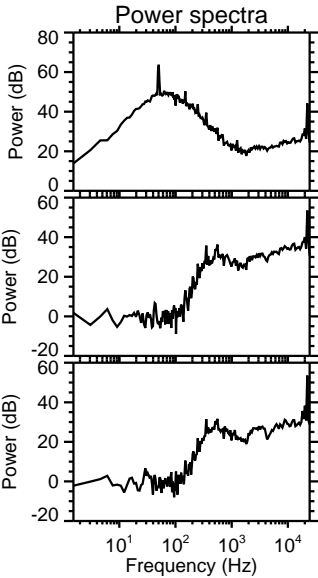
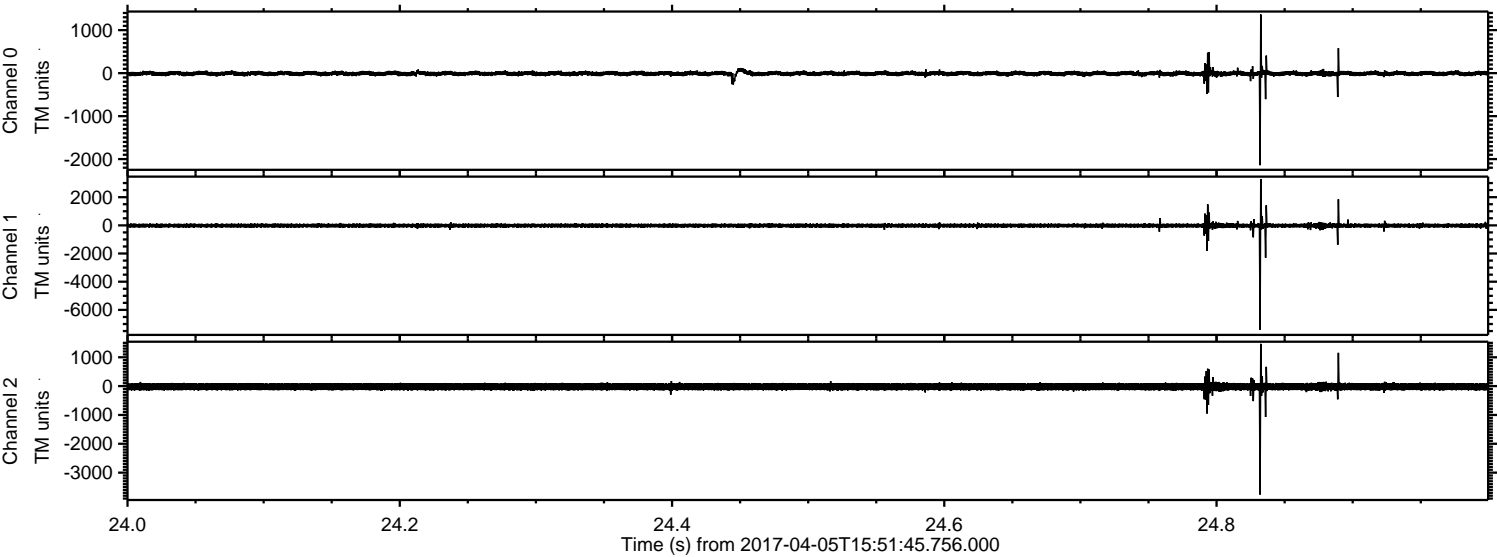
ELMAVAN 3D WAVEFORMS (Measured data sampled at 50 kHz) 51000 packets of 144 samples from 2017-04-05T15:51:45.756.000. Part 107/147

Processed Wed Apr 5 18:00:21 2017 by ELM ver.2012-10-06 from 001__elm20170405_155144__dat00.bin



ELMAVAN 3D WAVEFORMS (Measured data sampled at 50 kHz) 51000 packets of 144 samples from 2017-04-05T15:51:45.756.000. Part 25/147

Processed Wed Apr 5 18:00:22 2017 by ELM ver.2012-10-06 from 001__elm20170405_155144__dat00.bin



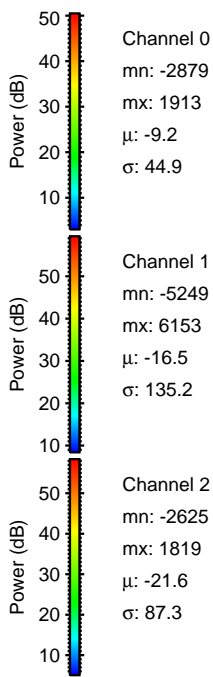
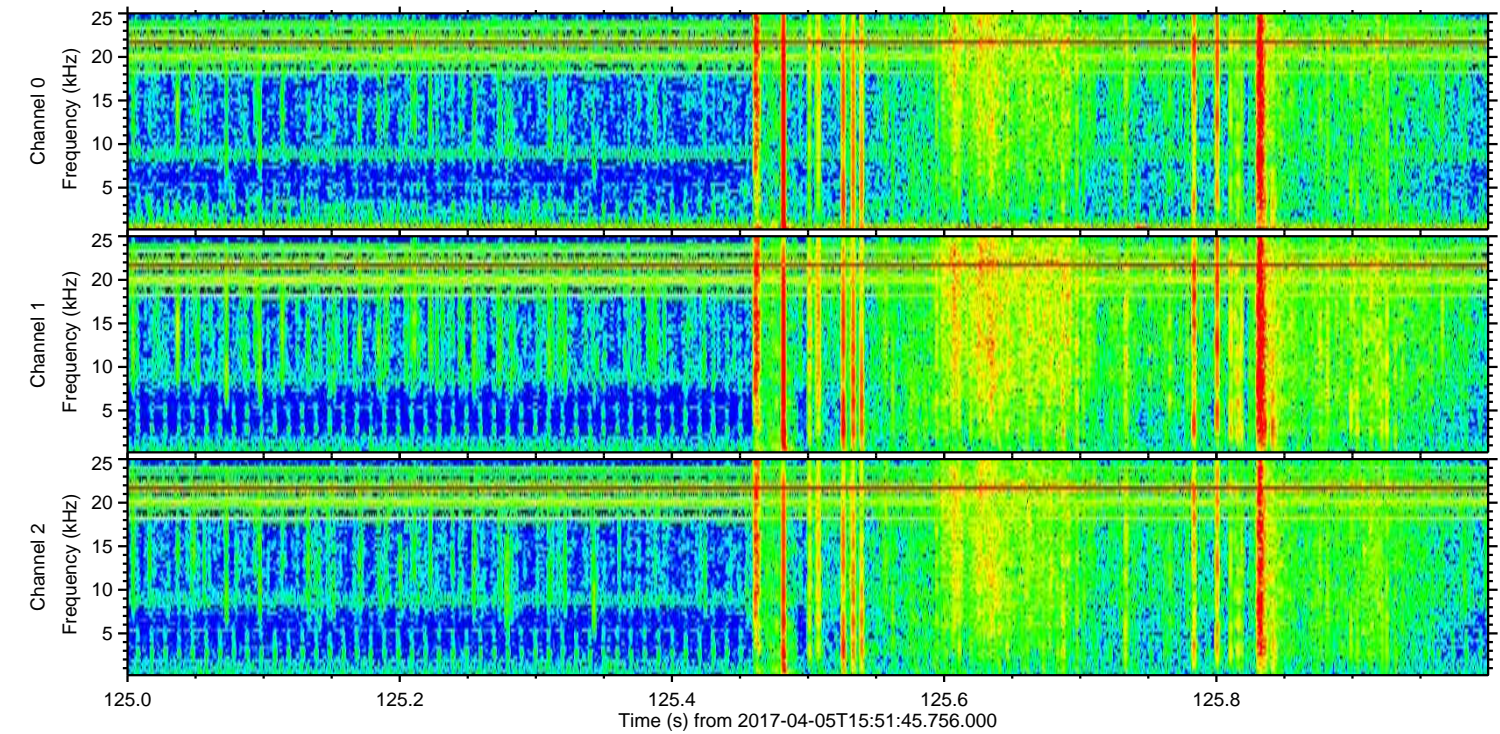
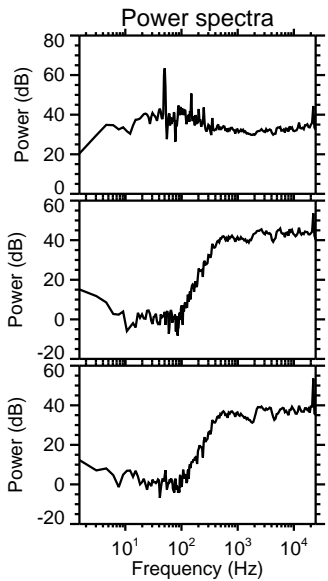
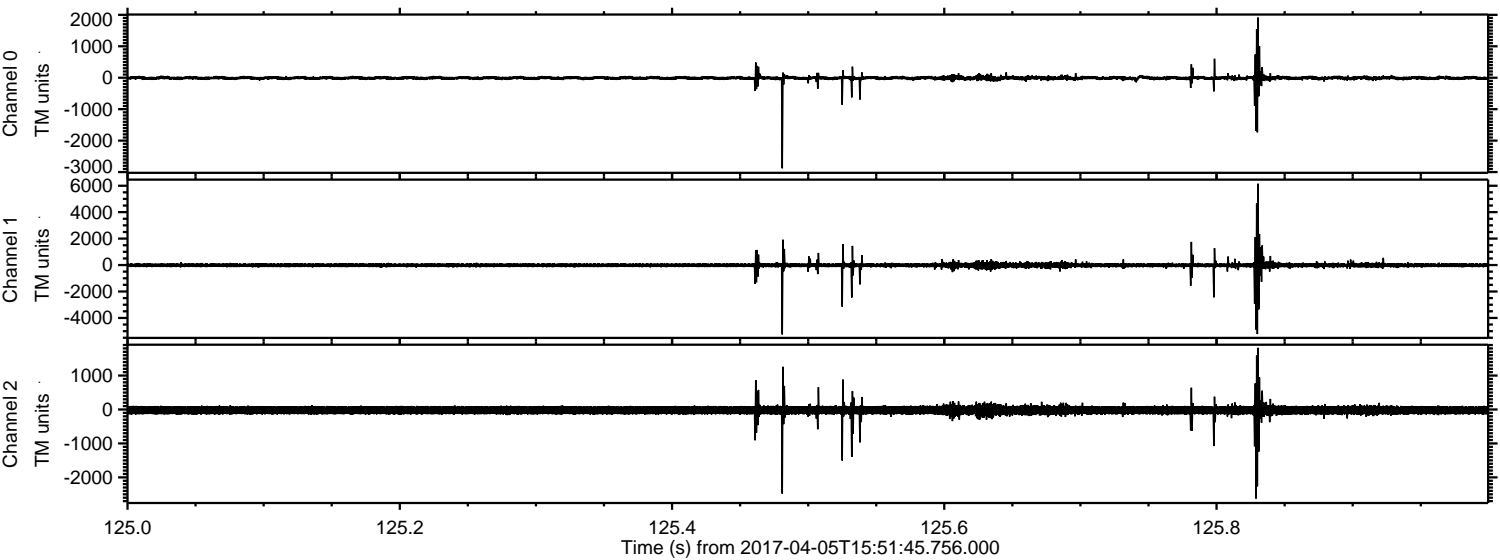
Channel 0
mn: -2142
mx: 1365
 μ : -9.3
 σ : 33.9

Channel 1
mn: -7403
mx: 3292
 μ : -16.6
 σ : 87.7

Channel 2
mn: -3761
mx: 1466
 μ : -21.6
 σ : 75.9

ELMAVAN 3D WAVEFORMS (Measured data sampled at 50 kHz) 51000 packets of 144 samples from 2017-04-05T15:51:45.756.000. Part 126/147

Processed Wed Apr 5 18:00:23 2017 by ELM ver.2012-10-06 from 001__elm20170405_155144__dat00.bin



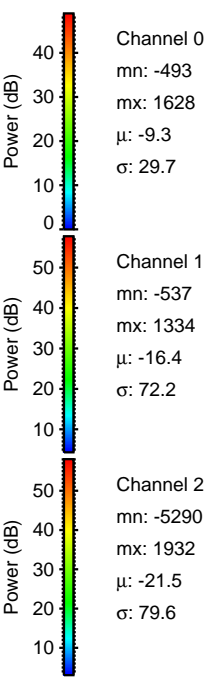
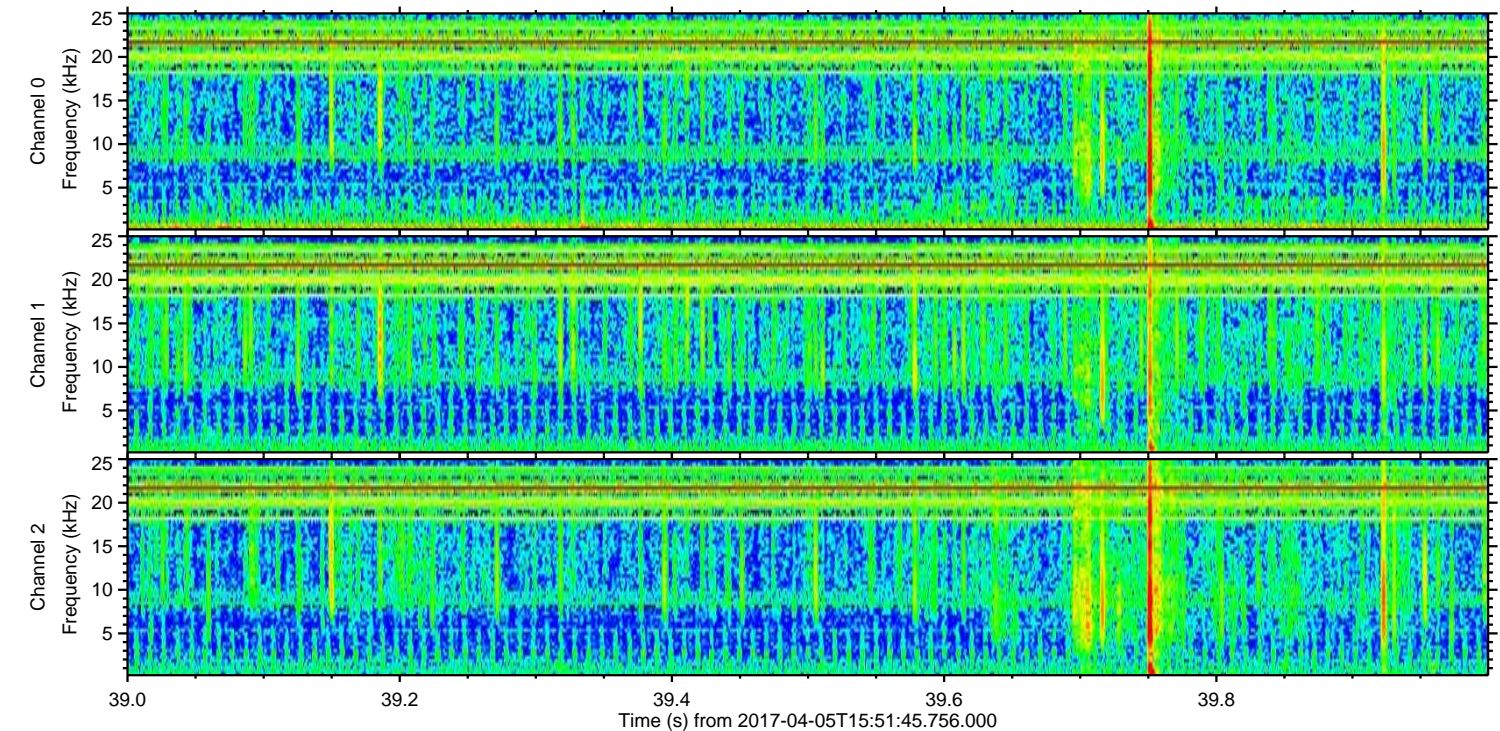
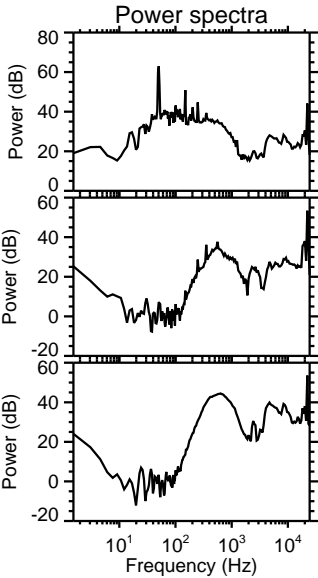
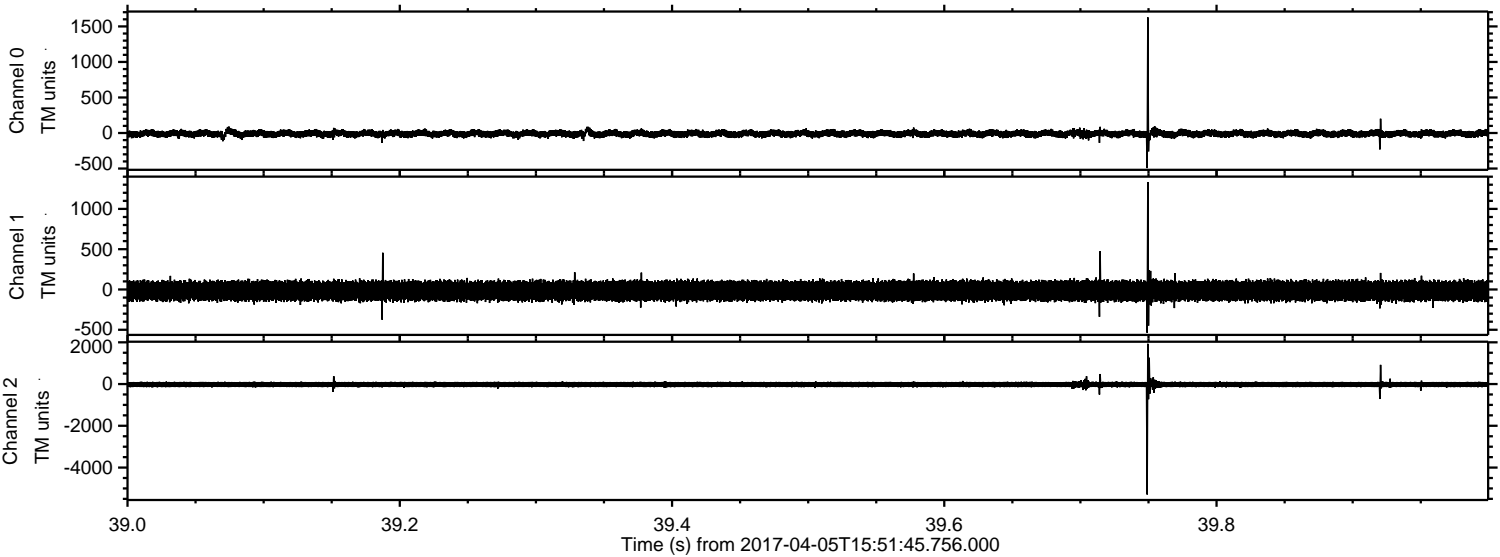
Channel 0
mn: -2879
mx: 1913
 μ : -9.2
 σ : 44.9

Channel 1
mn: -5249
mx: 6153
 μ : -16.5
 σ : 135.2

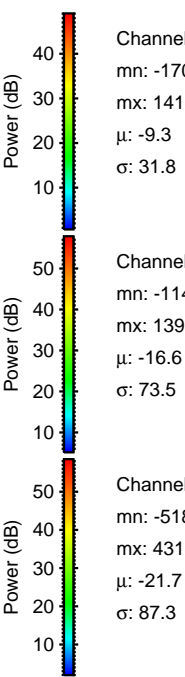
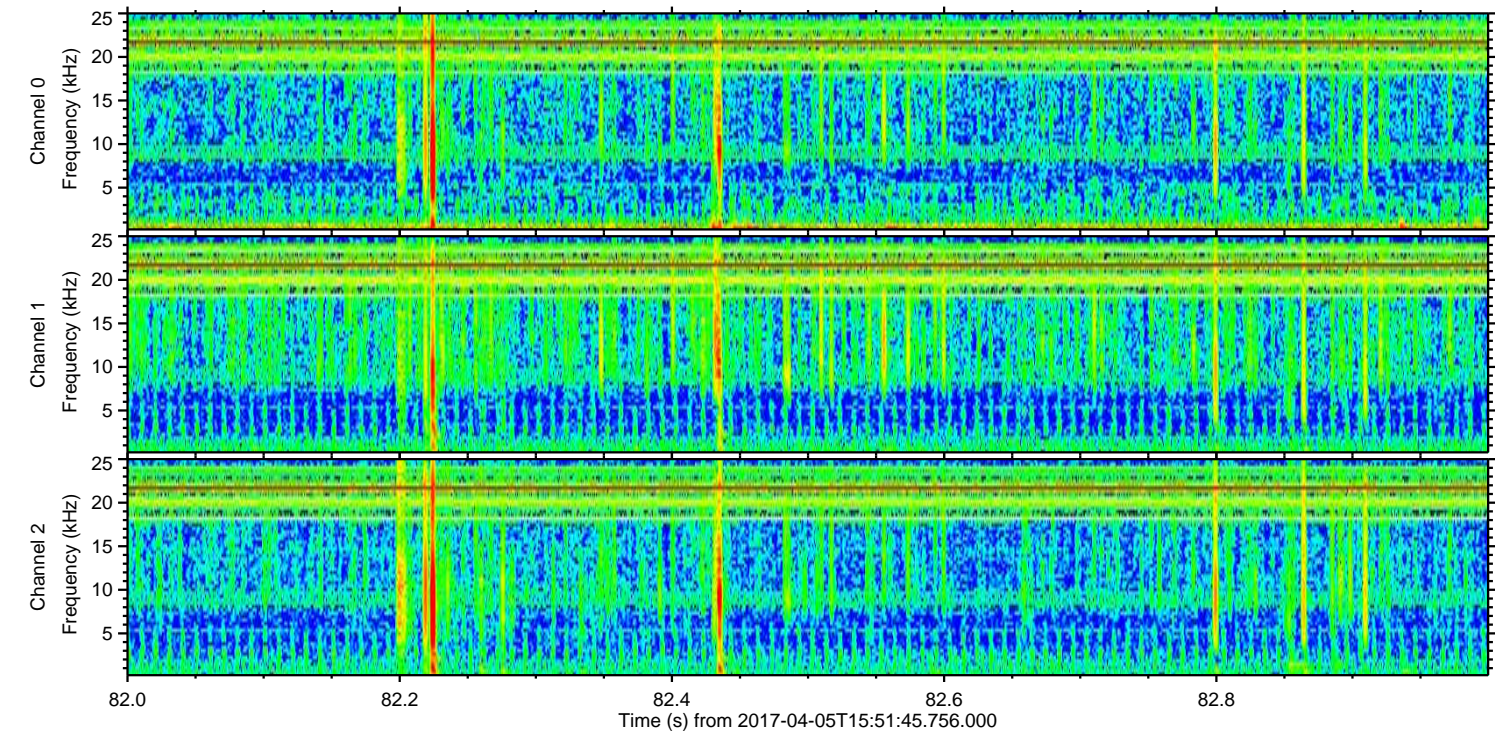
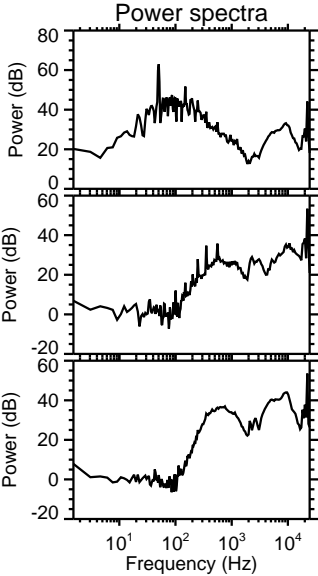
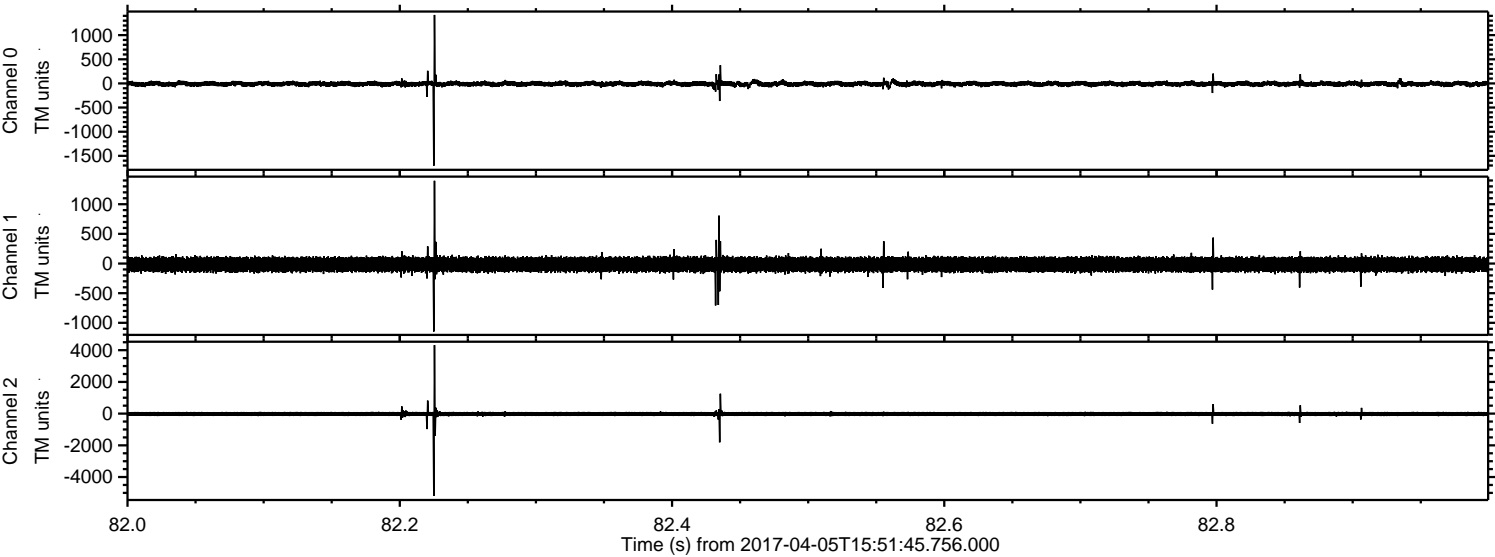
Channel 2
mn: -2625
mx: 1819
 μ : -21.6
 σ : 87.3

ELMAVAN 3D WAVEFORMS (Measured data sampled at 50 kHz) 51000 packets of 144 samples from 2017-04-05T15:51:45.756.000. Part 40/147

Processed Wed Apr 5 18:00:24 2017 by ELM ver.2012-10-06 from 001__elm20170405_155144__dat00.bin

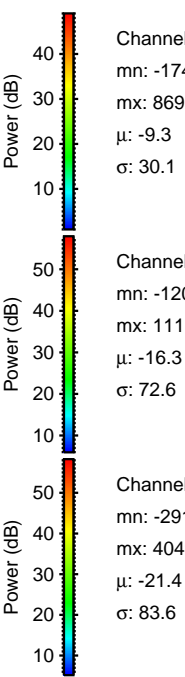
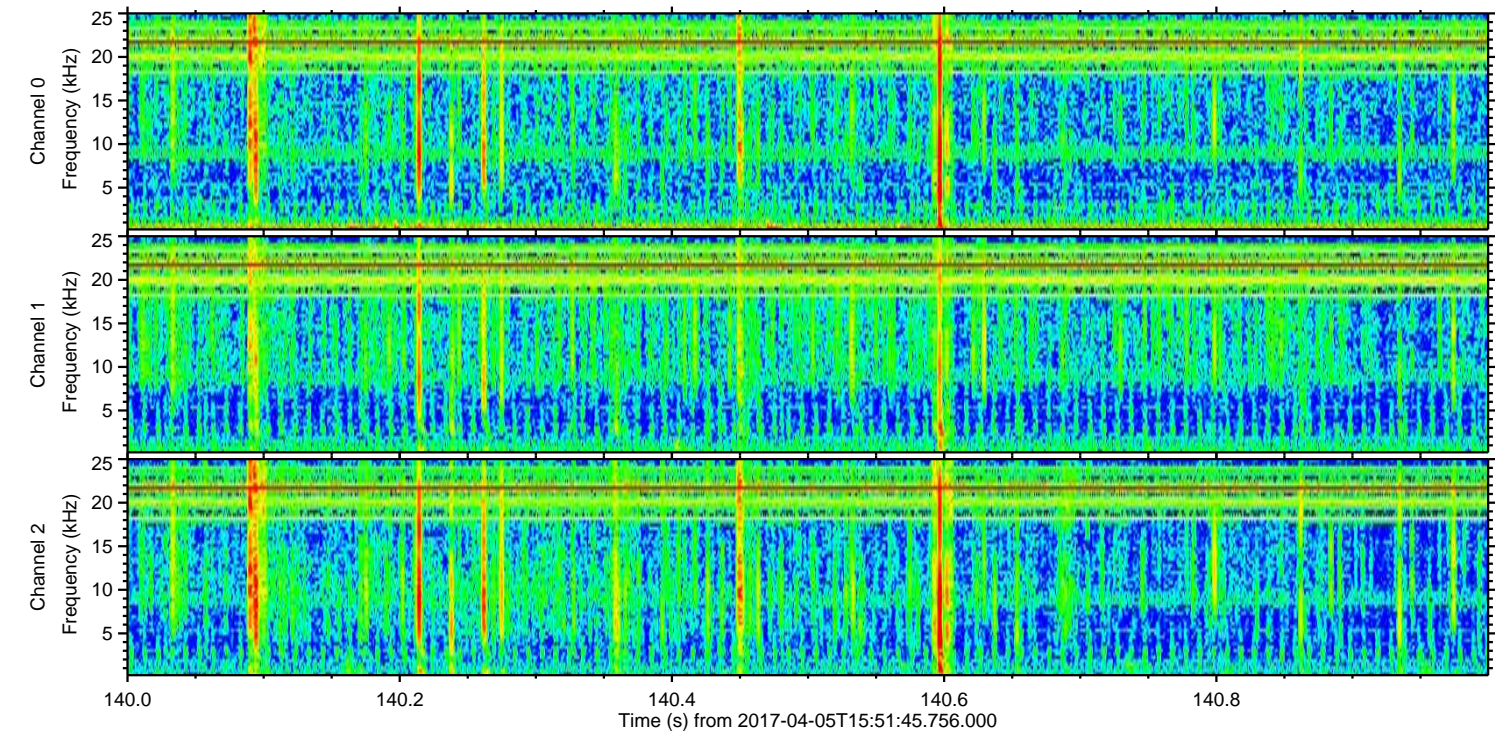
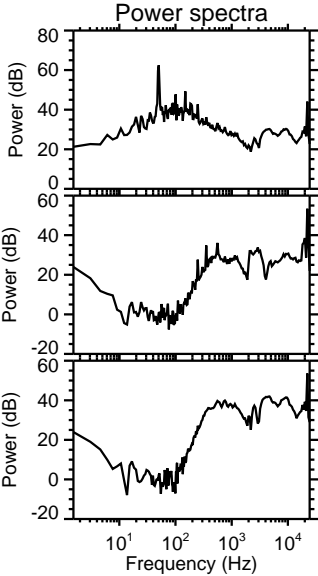
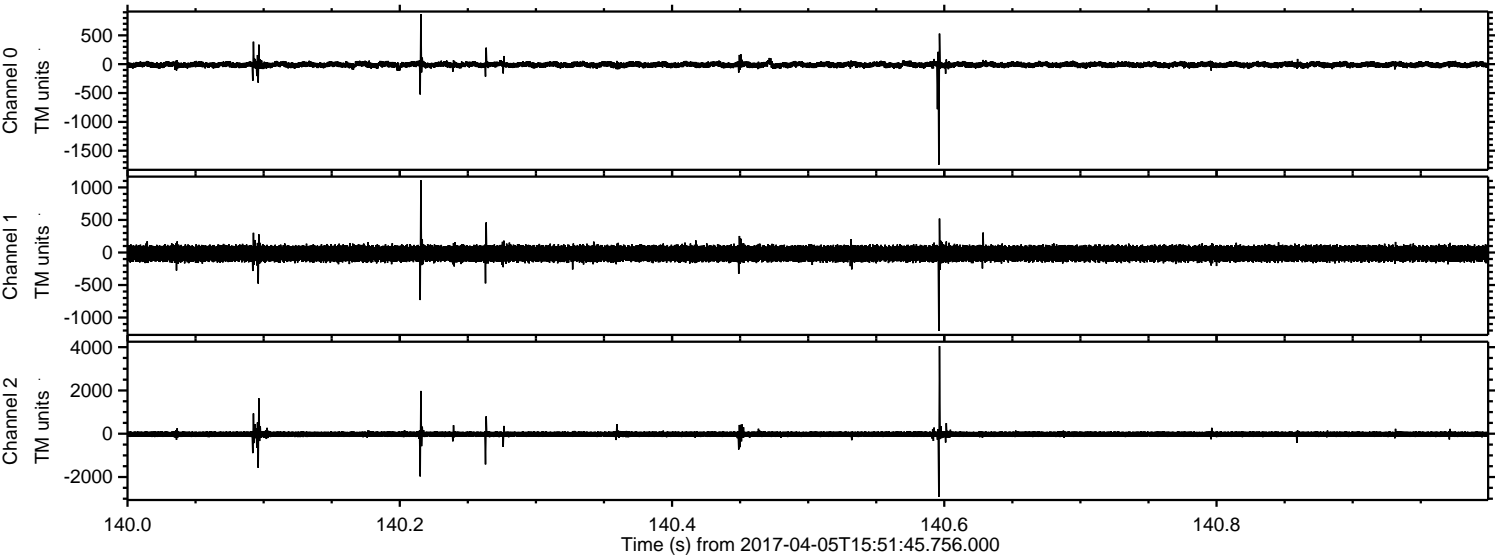


Processed Wed Apr 5 18:00:26 2017 by ELM ver.2012-10-06 from 001__elm20170405_155144__dat00.bin



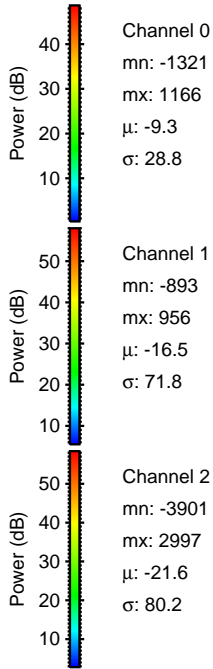
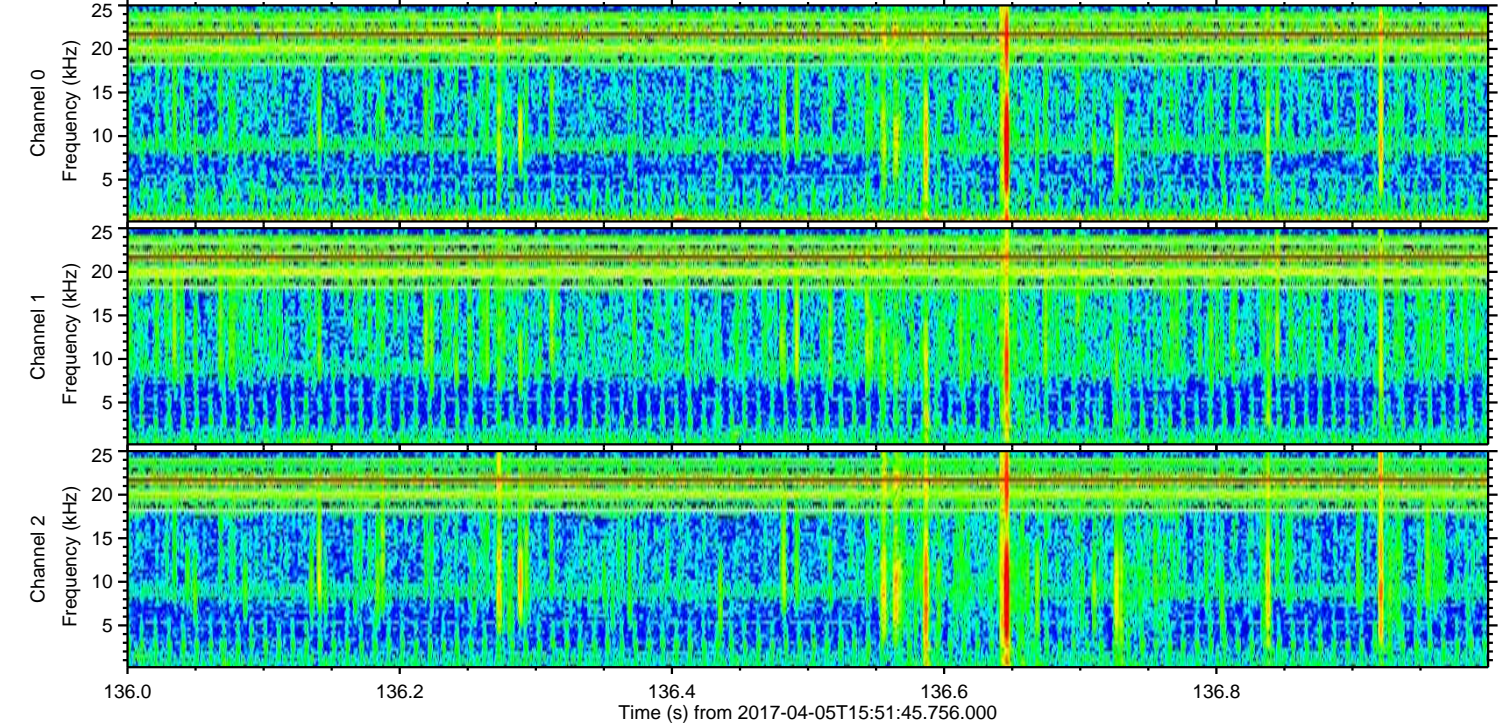
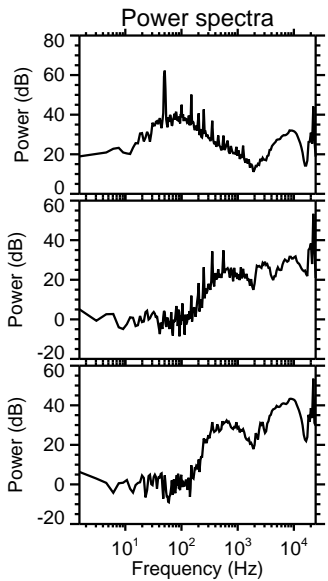
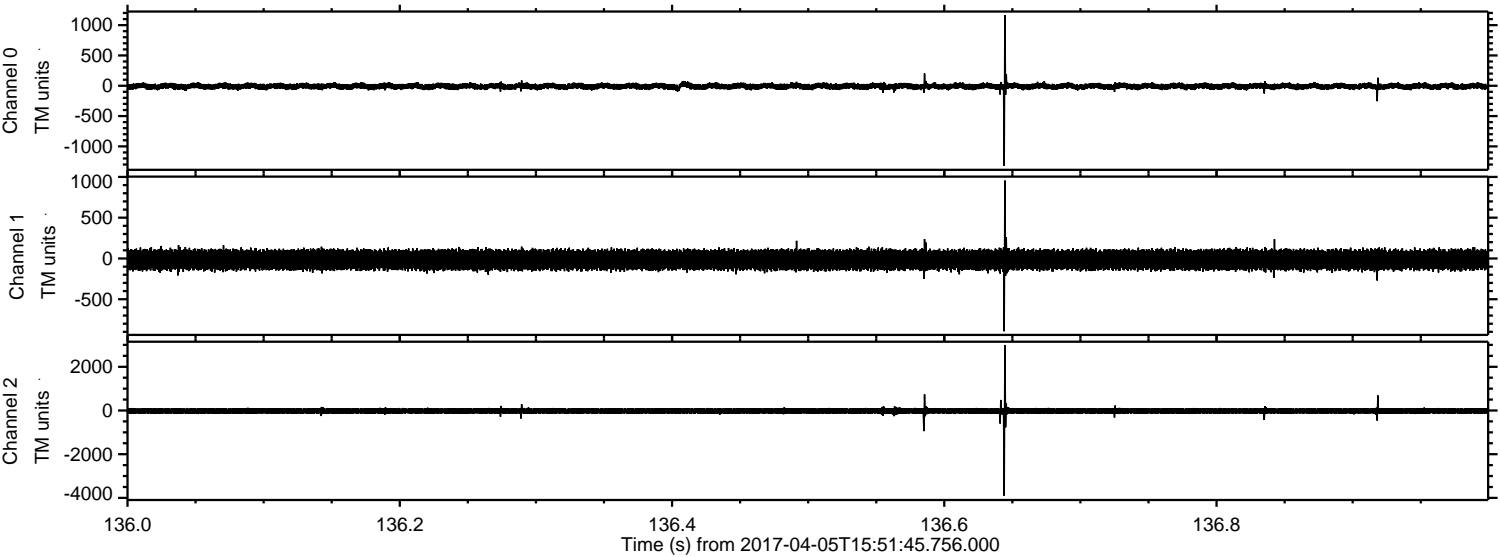
ELMAVAN 3D WAVEFORMS (Measured data sampled at 50 kHz) 51000 packets of 144 samples from 2017-04-05T15:51:45.756.000. Part 141/147

Processed Wed Apr 5 18:00:27 2017 by ELM ver.2012-10-06 from 001__elm20170405_155144__dat00.bin



ELMAVAN 3D WAVEFORMS (Measured data sampled at 50 kHz) 51000 packets of 144 samples from 2017-04-05T15:51:45.756.000. Part 137/147

Processed Wed Apr 5 18:00:28 2017 by ELM ver.2012-10-06 from 001__elm20170405_155144__dat00.bin

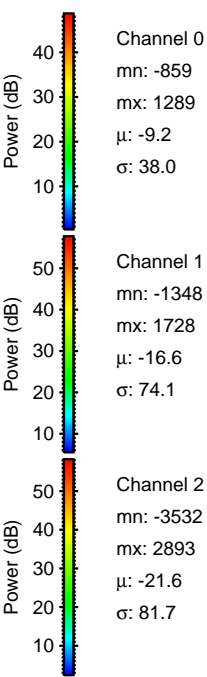
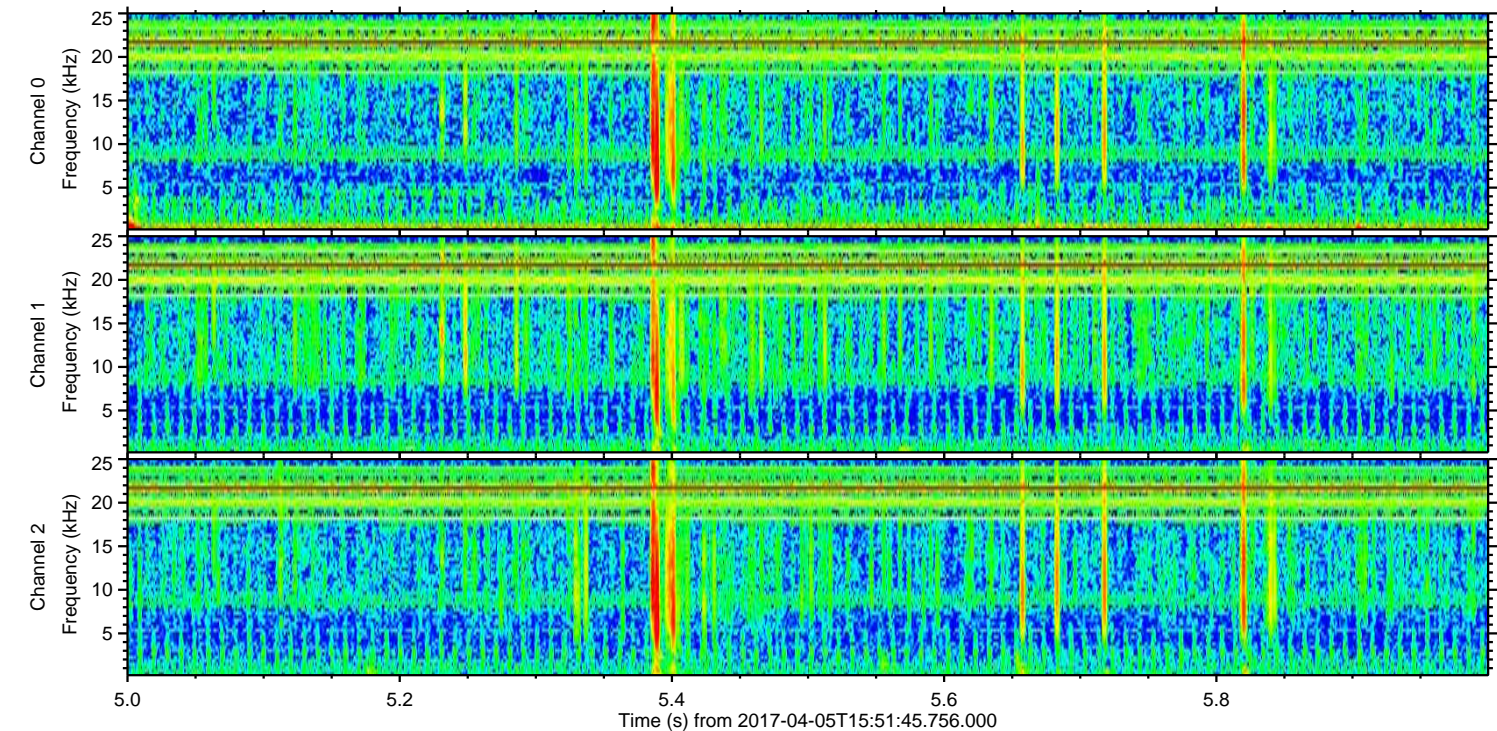
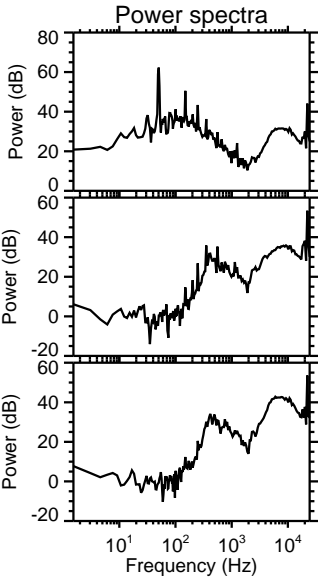
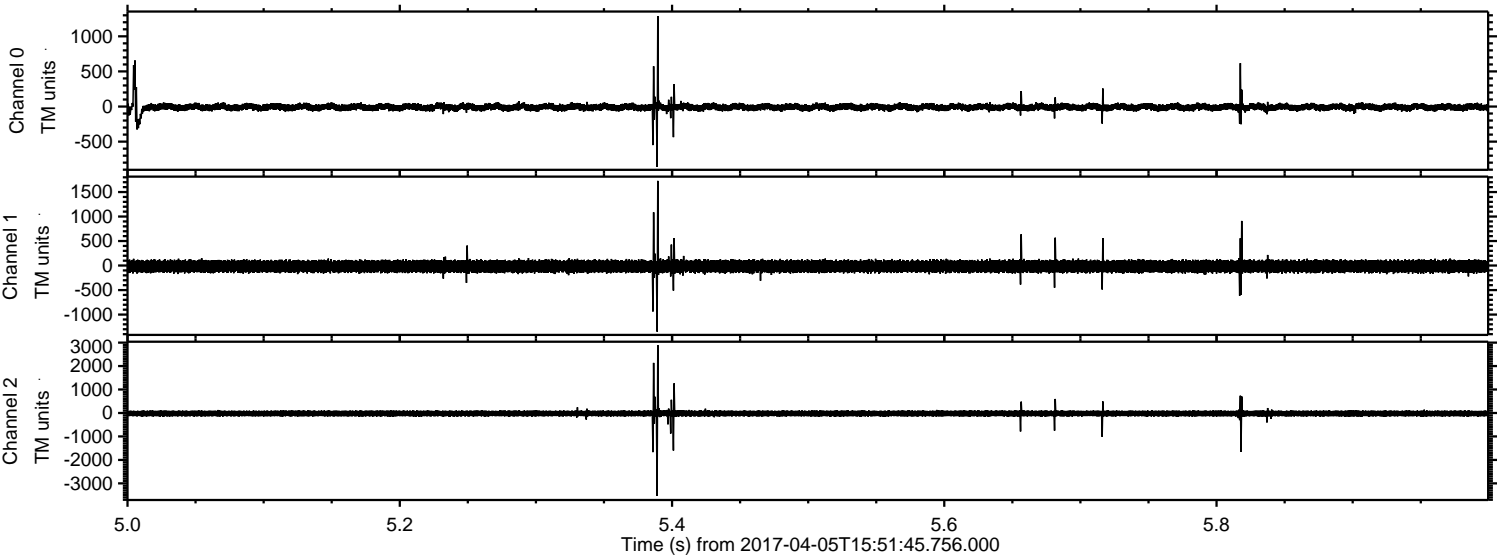


Channel 0
mn: -1321
mx: 1166
 μ : -9.3
 σ : 28.8

Channel 1
mn: -893
mx: 956
 μ : -16.5
 σ : 71.8

Channel 2
mn: -3901
mx: 2997
 μ : -21.6
 σ : 80.2

Processed Wed Apr 5 18:00:29 2017 by ELM ver.2012-10-06 from 001__elm20170405_155144__dat00.bin



Processed Wed Apr 5 18:00:30 2017 by ELM ver.2012-10-06 from 001__elm20170405_155144__dat00.bin

