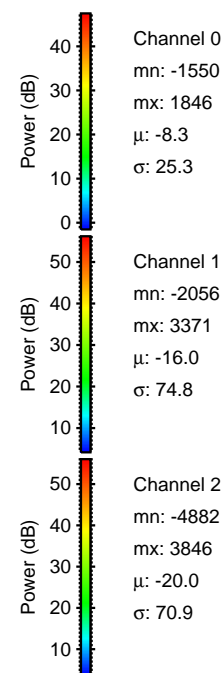
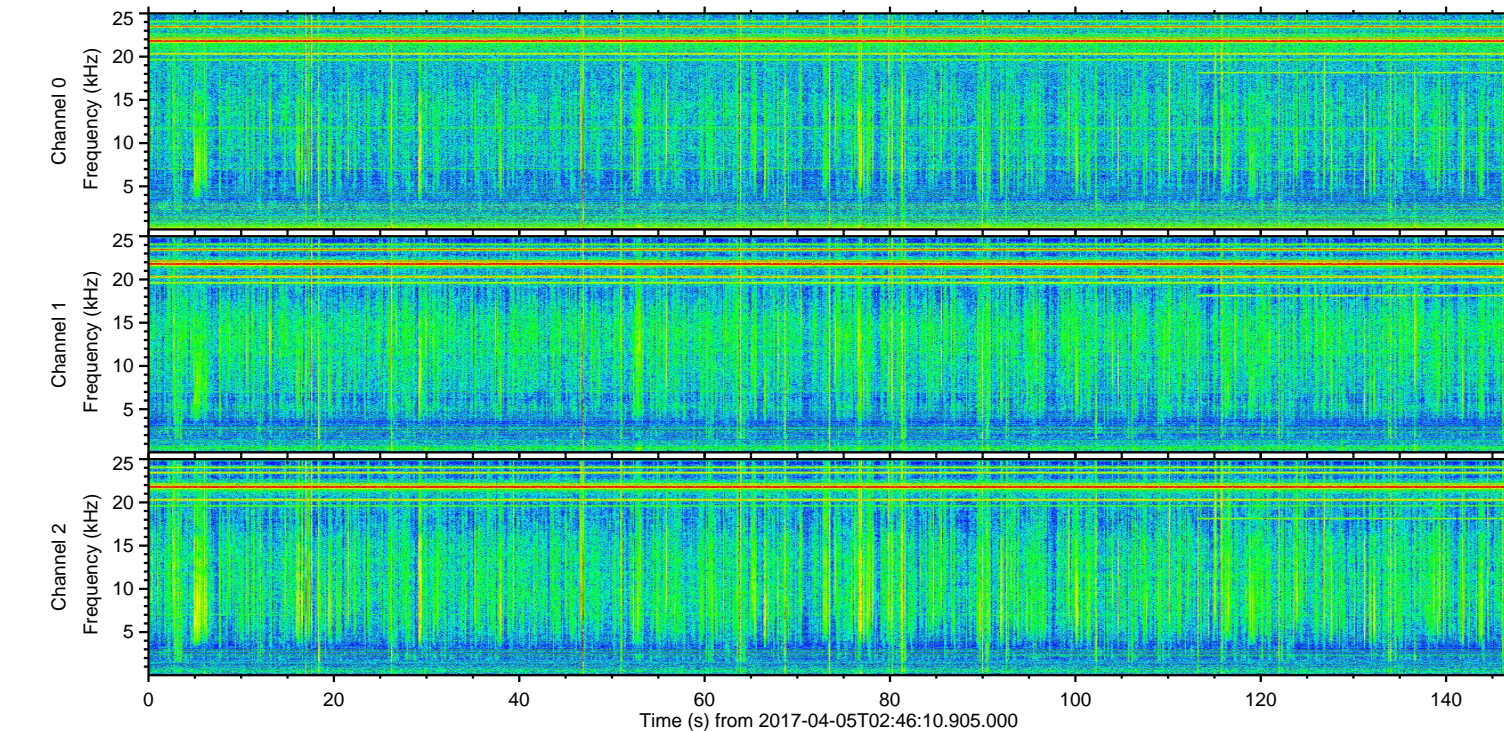
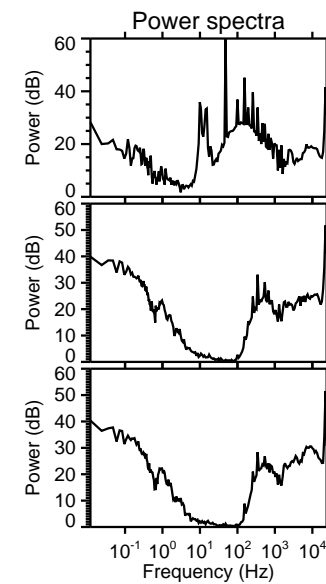
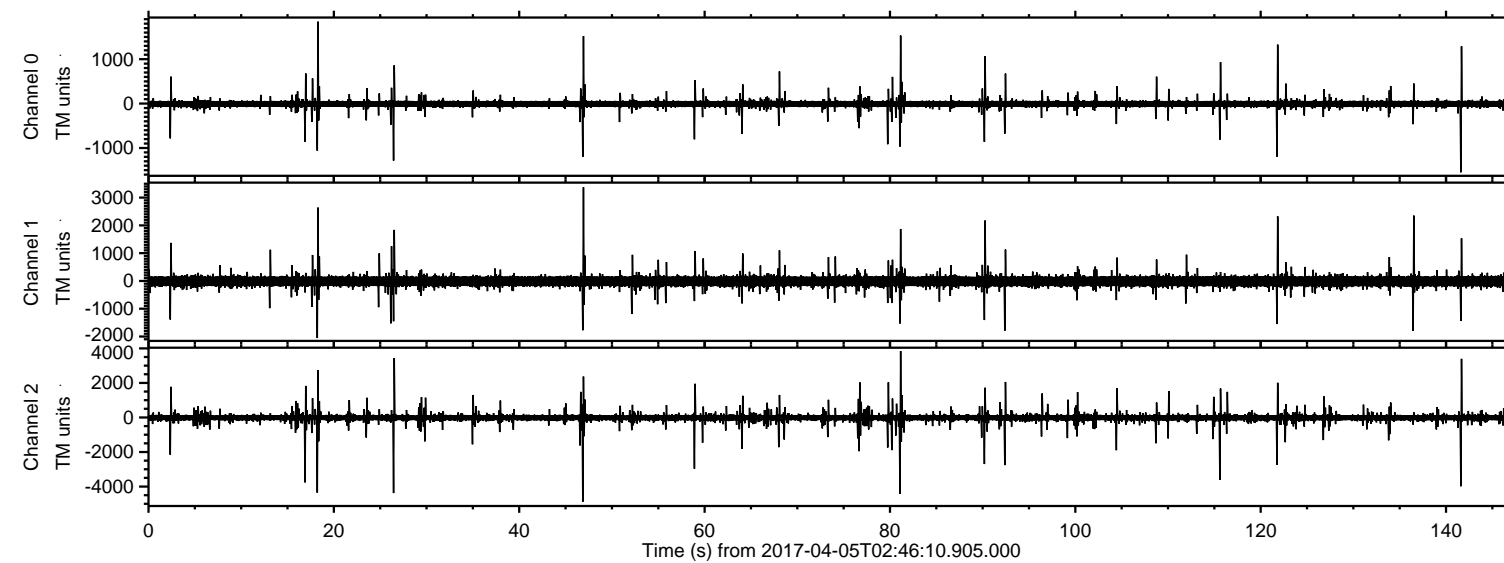


# ELMAVAN 3D WAVEFORMS (Measured data sampled at 50 kHz) 51000 packets of 144 samples from 2017-04-05T02:46:10.905.000.

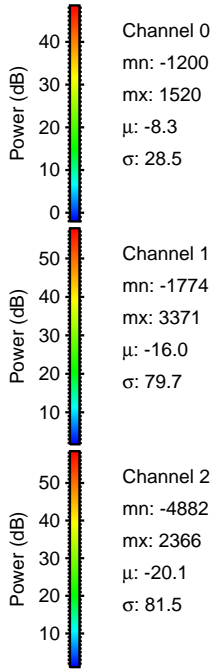
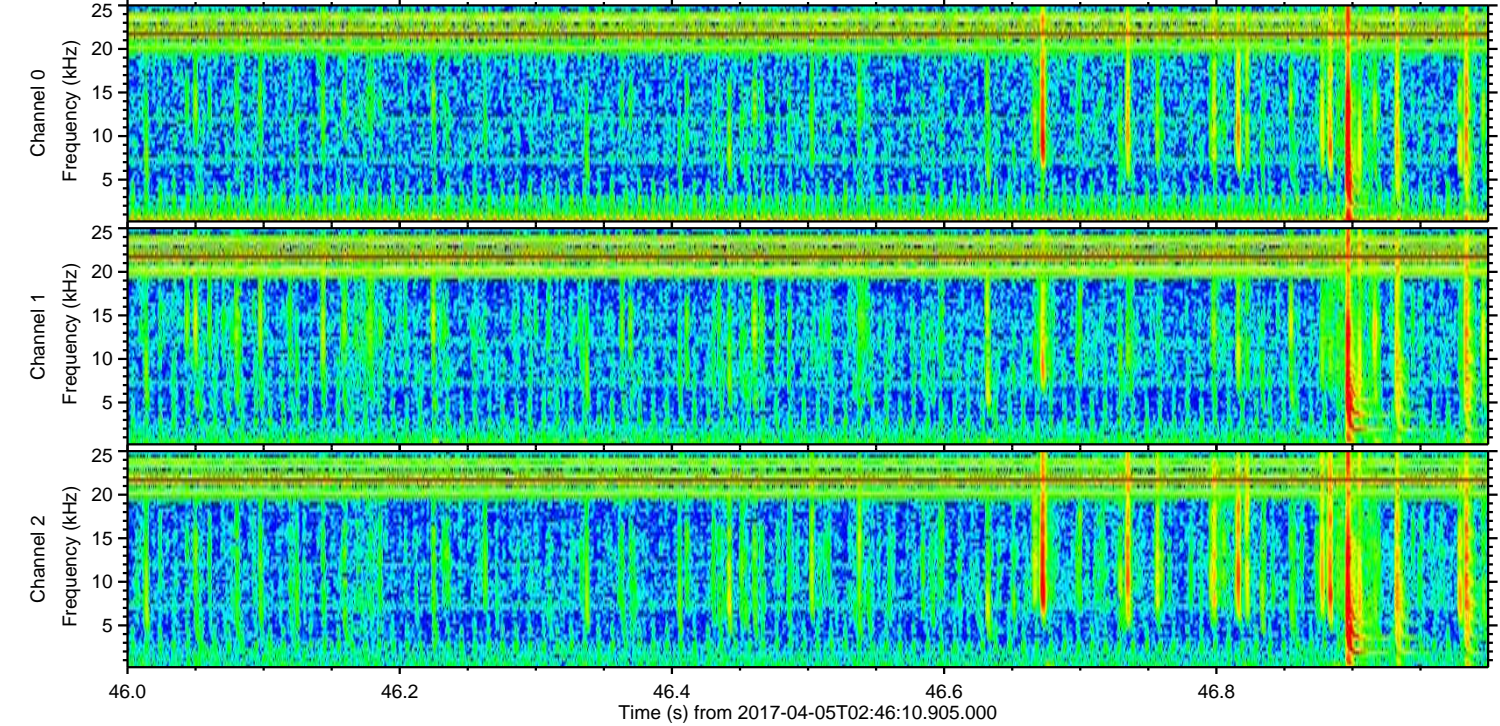
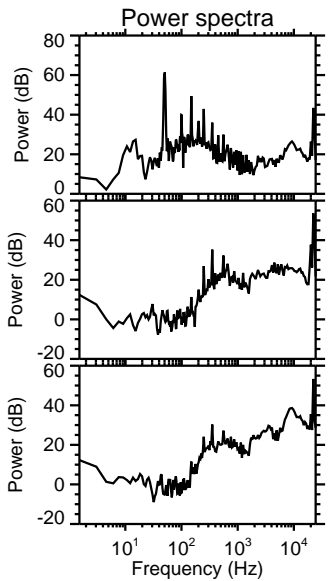
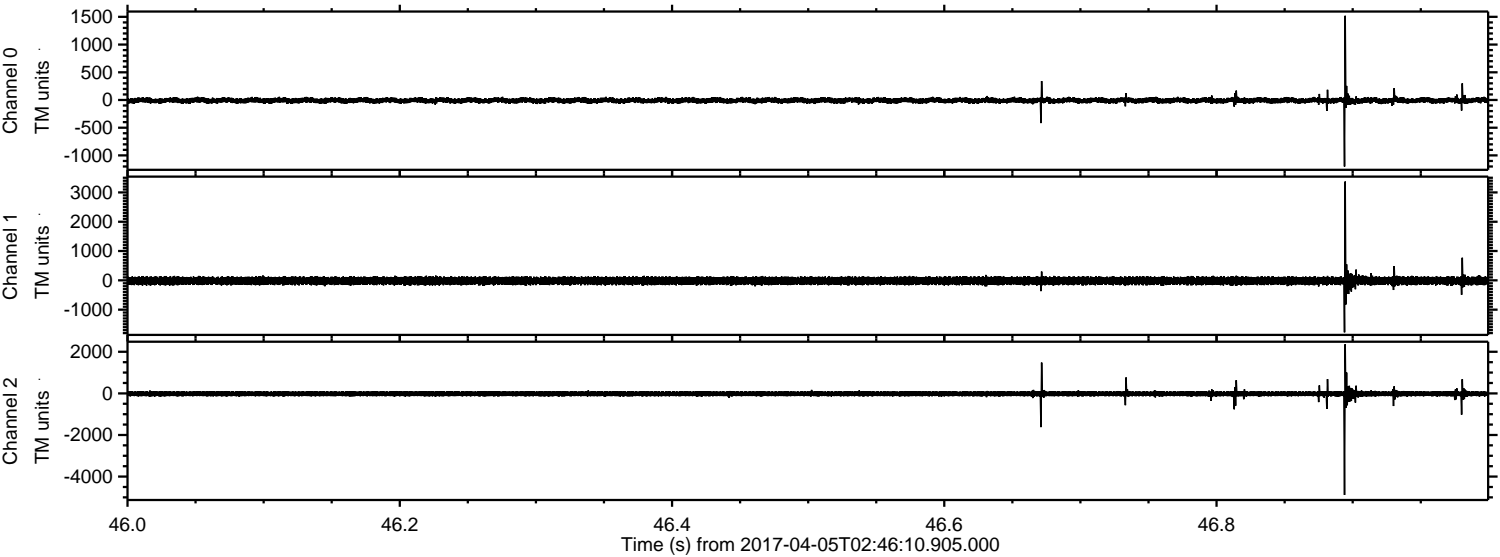
Processed Wed Apr 5 04:54:05 2017 by ELM ver.2012-10-06 from 001\_\_elm20170405\_024609\_\_dat00.bin





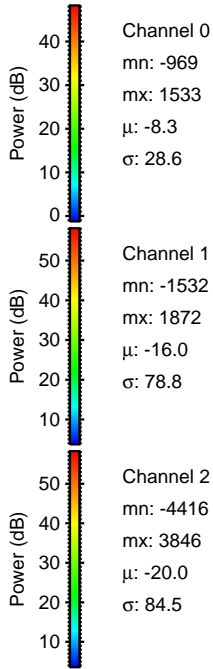
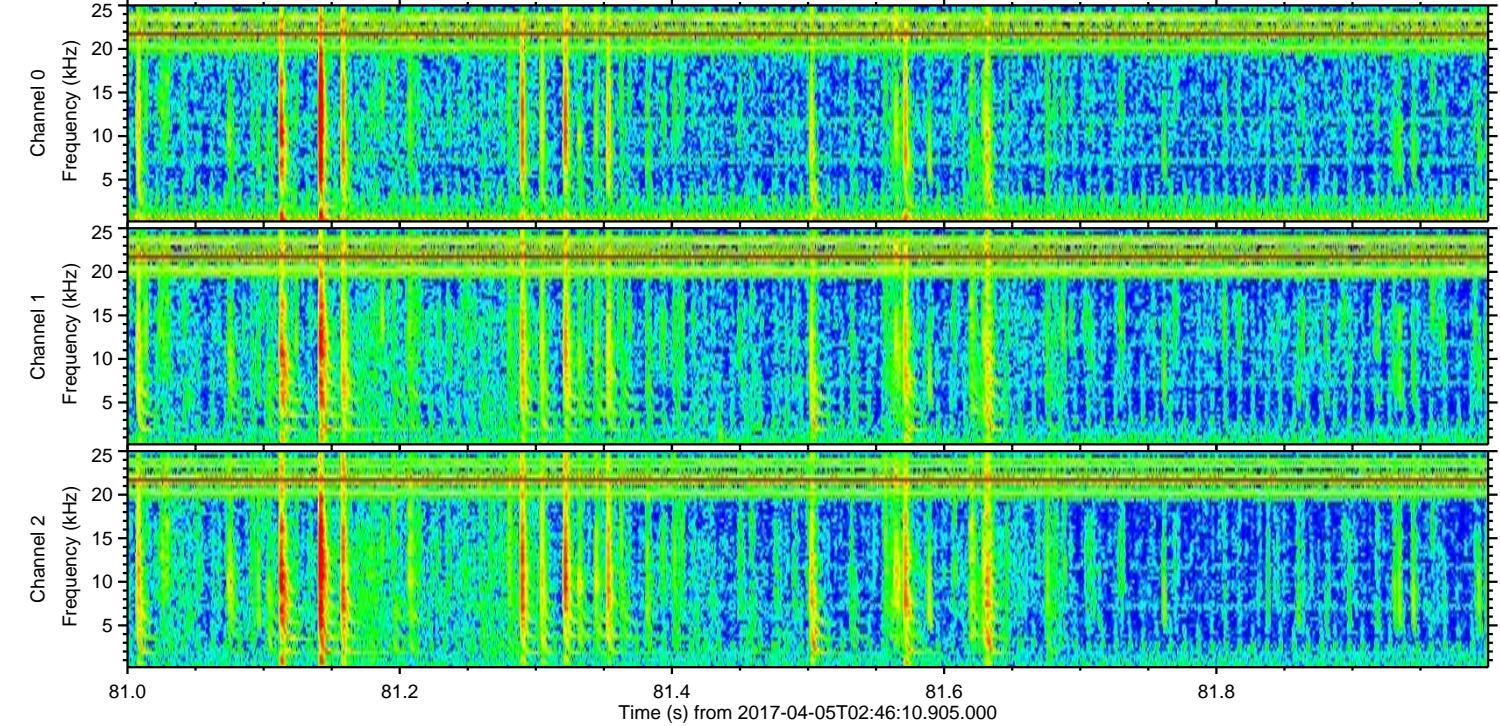
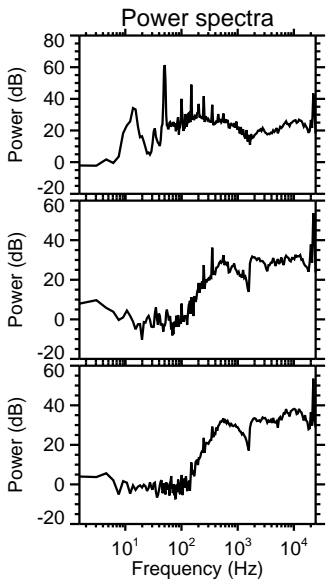
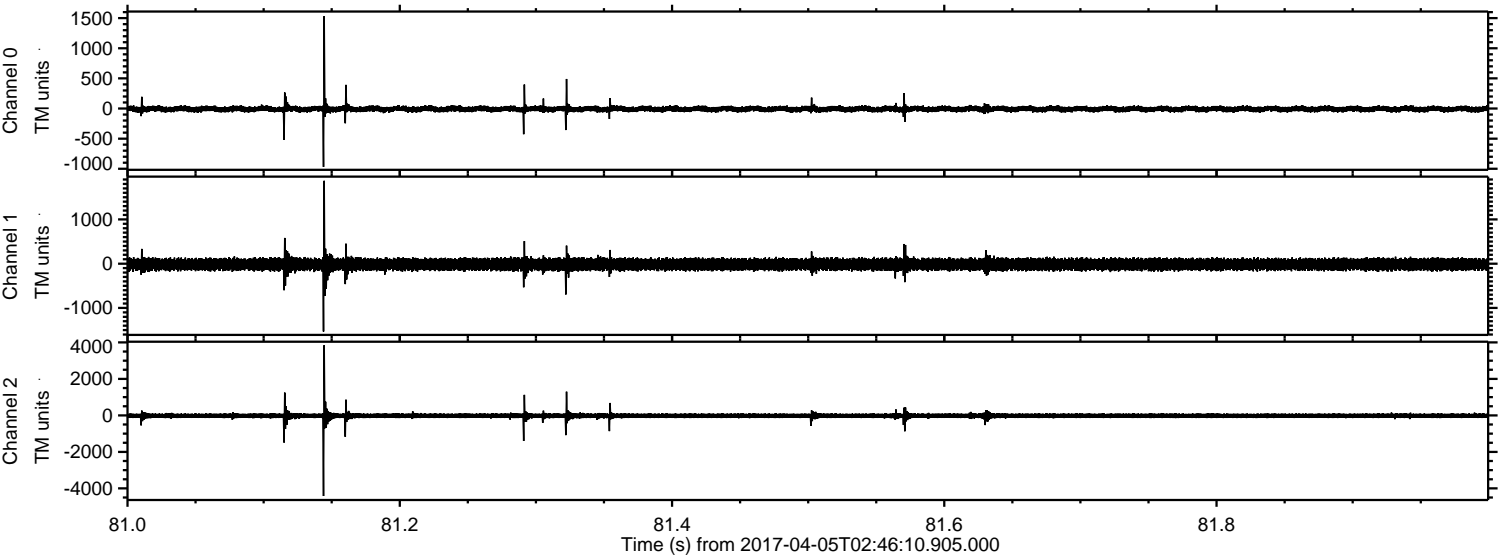
ELMAVAN 3D WAVEFORMS (Measured data sampled at 50 kHz) 51000 packets of 144 samples from 2017-04-05T02:46:10.905.000. Part 47/147

Processed Wed Apr 5 04:54:17 2017 by ELM ver.2012-10-06 from 001\_\_elm20170405\_024609\_\_dat00.bin





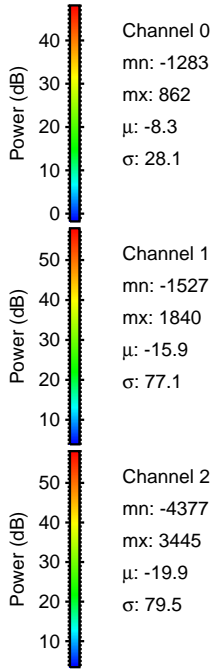
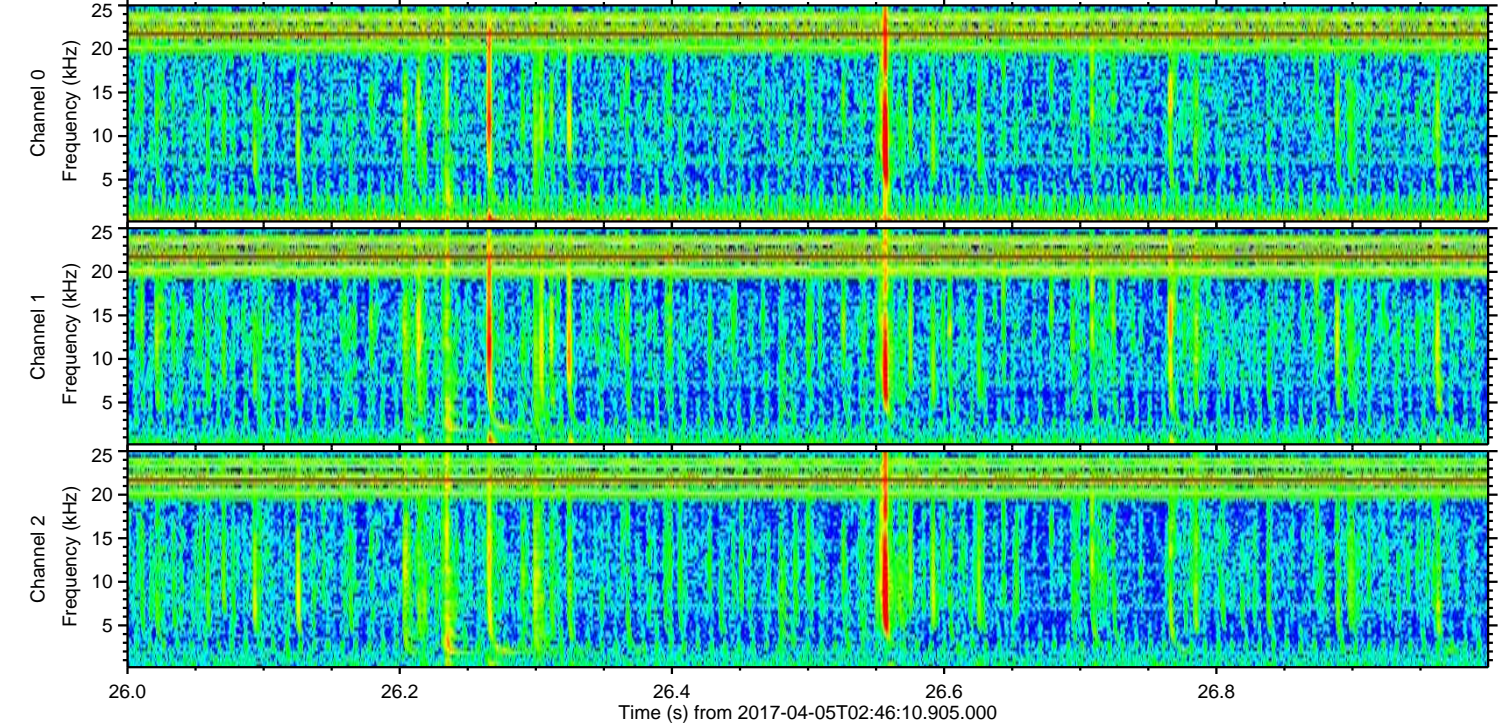
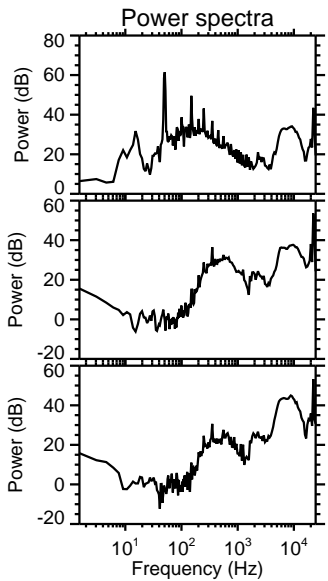
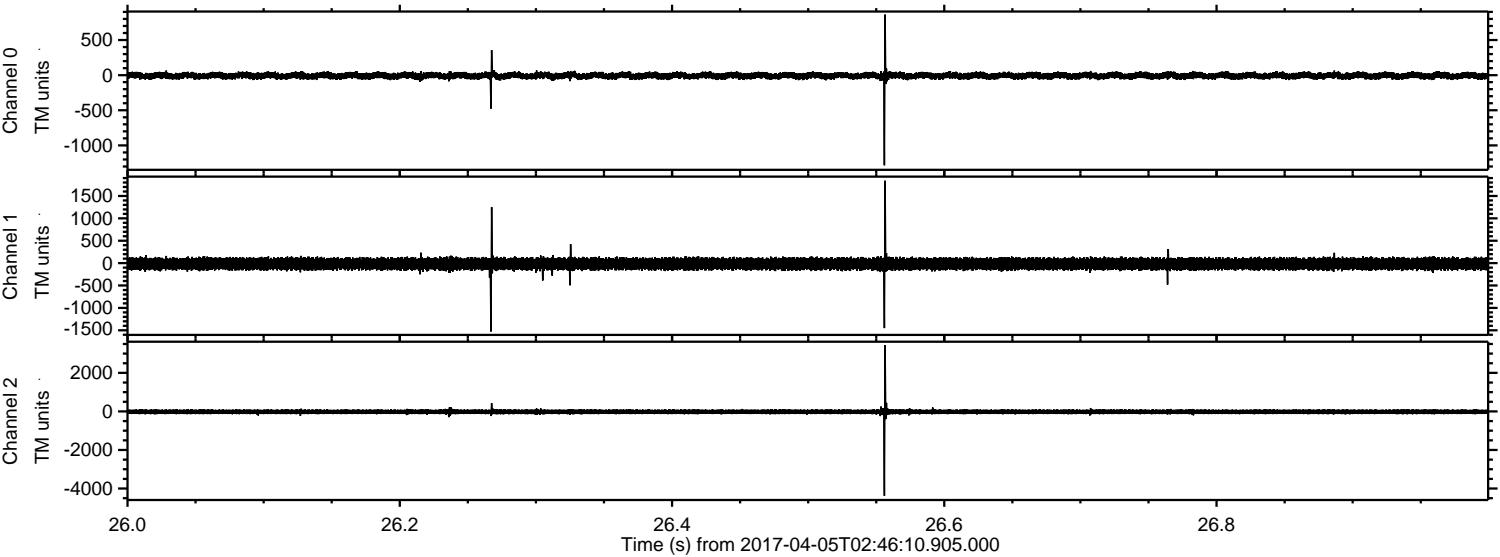
Processed Wed Apr 5 04:54:18 2017 by ELM ver.2012-10-06 from 001\_\_elm20170405\_024609\_\_dat00.bin





ELMAVAN 3D WAVEFORMS (Measured data sampled at 50 kHz) 51000 packets of 144 samples from 2017-04-05T02:46:10.905.000. Part 27/147

Processed Wed Apr 5 04:54:19 2017 by ELM ver.2012-10-06 from 001\_\_elm20170405\_024609\_\_dat00.bin



Channel 0  
mn: -1283  
mx: 862  
 $\mu$ : -8.3  
 $\sigma$ : 28.1

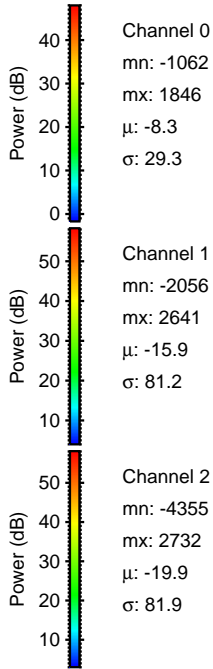
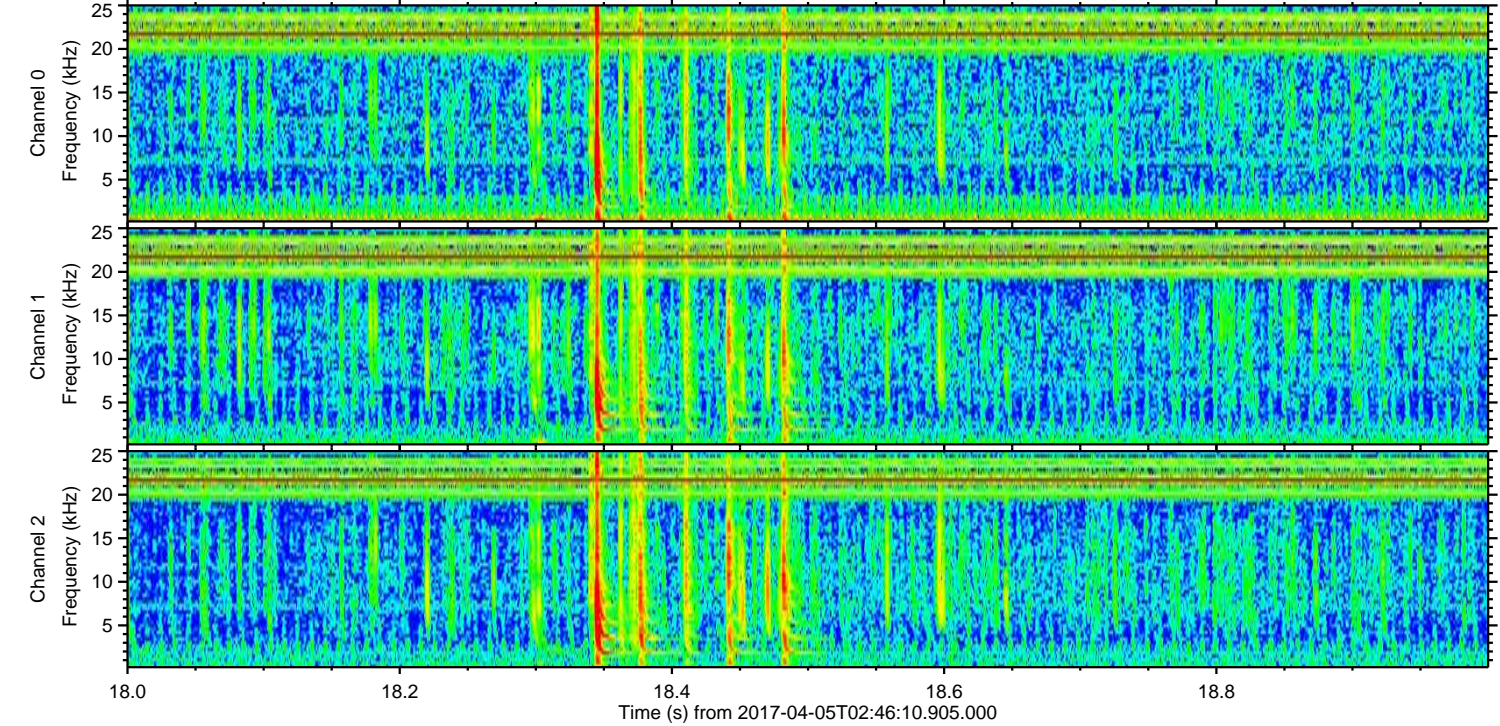
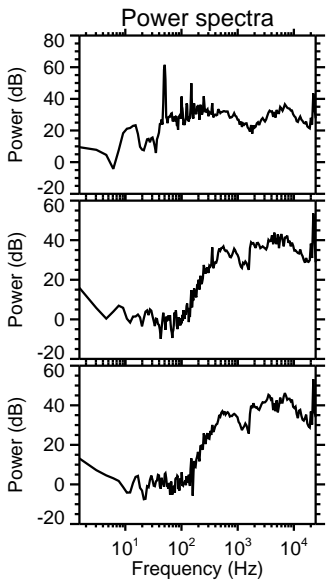
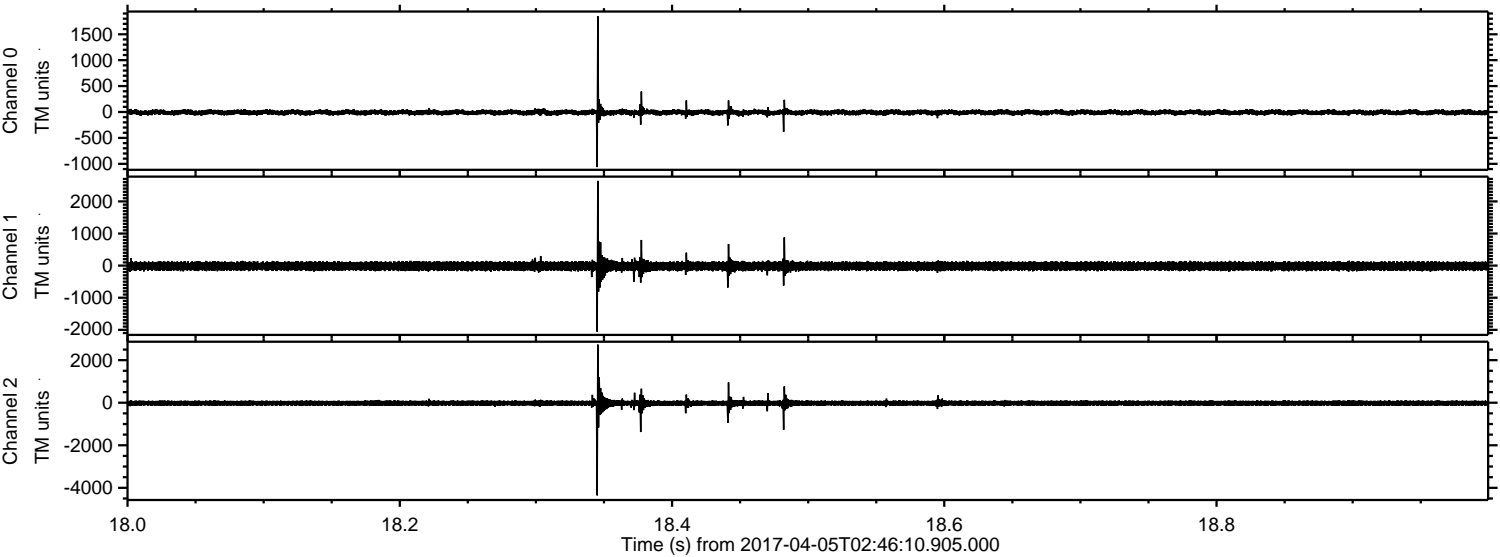
Channel 1  
mn: -1527  
mx: 1840  
 $\mu$ : -15.9  
 $\sigma$ : 77.1

Channel 2  
mn: -4377  
mx: 3445  
 $\mu$ : -19.9  
 $\sigma$ : 79.5



ELMAVAN 3D WAVEFORMS (Measured data sampled at 50 kHz) 51000 packets of 144 samples from 2017-04-05T02:46:10.905.000. Part 19/147

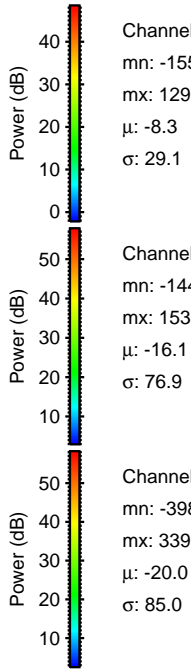
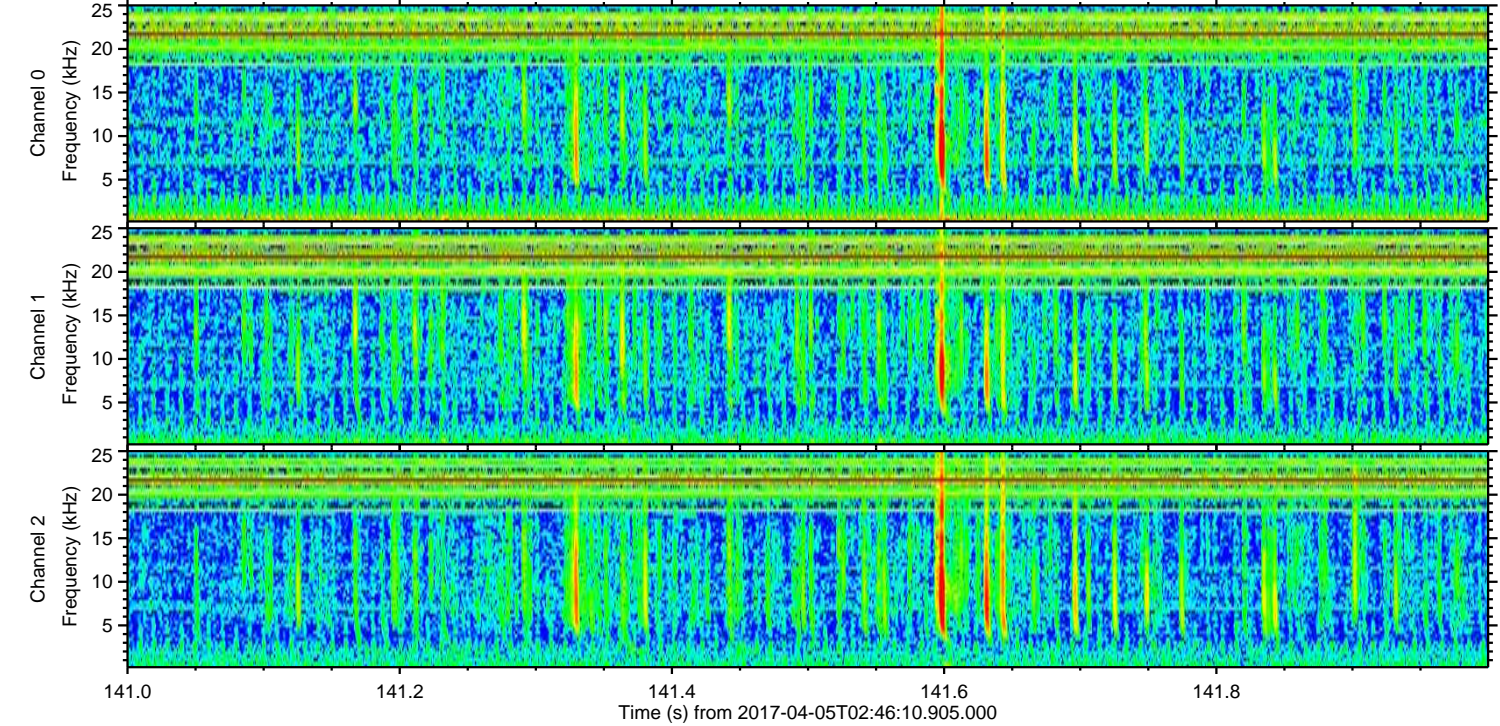
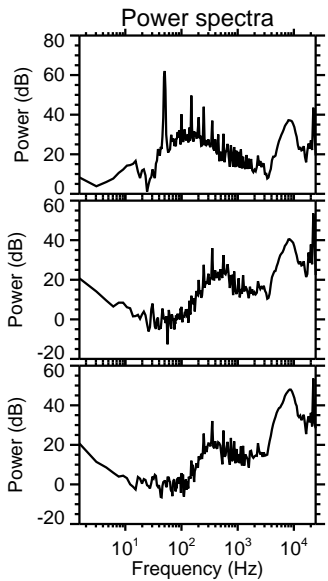
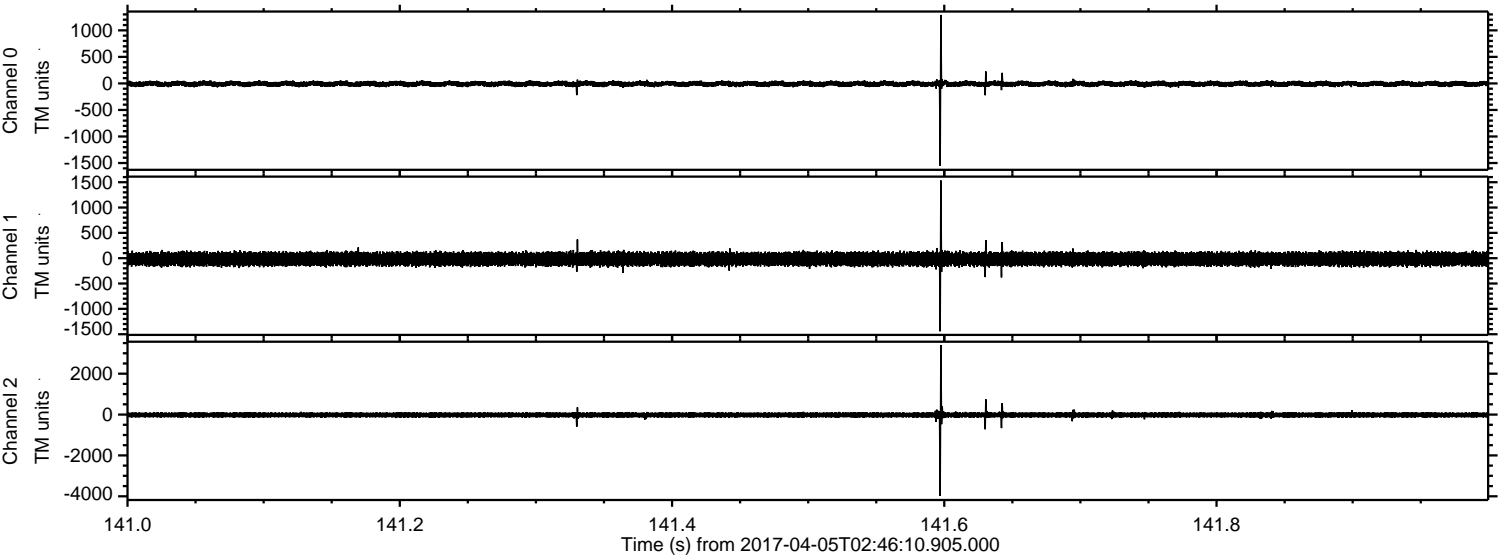
Processed Wed Apr 5 04:54:20 2017 by ELM ver.2012-10-06 from 001\_\_elm20170405\_024609\_\_dat00.bin





ELMAVAN 3D WAVEFORMS (Measured data sampled at 50 kHz) 51000 packets of 144 samples from 2017-04-05T02:46:10.905.000. Part 142/147

Processed Wed Apr 5 04:54:21 2017 by ELM ver.2012-10-06 from 001\_\_elm20170405\_024609\_\_dat00.bin



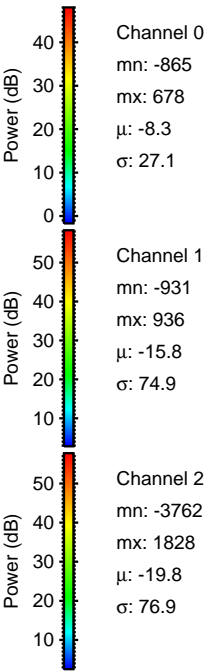
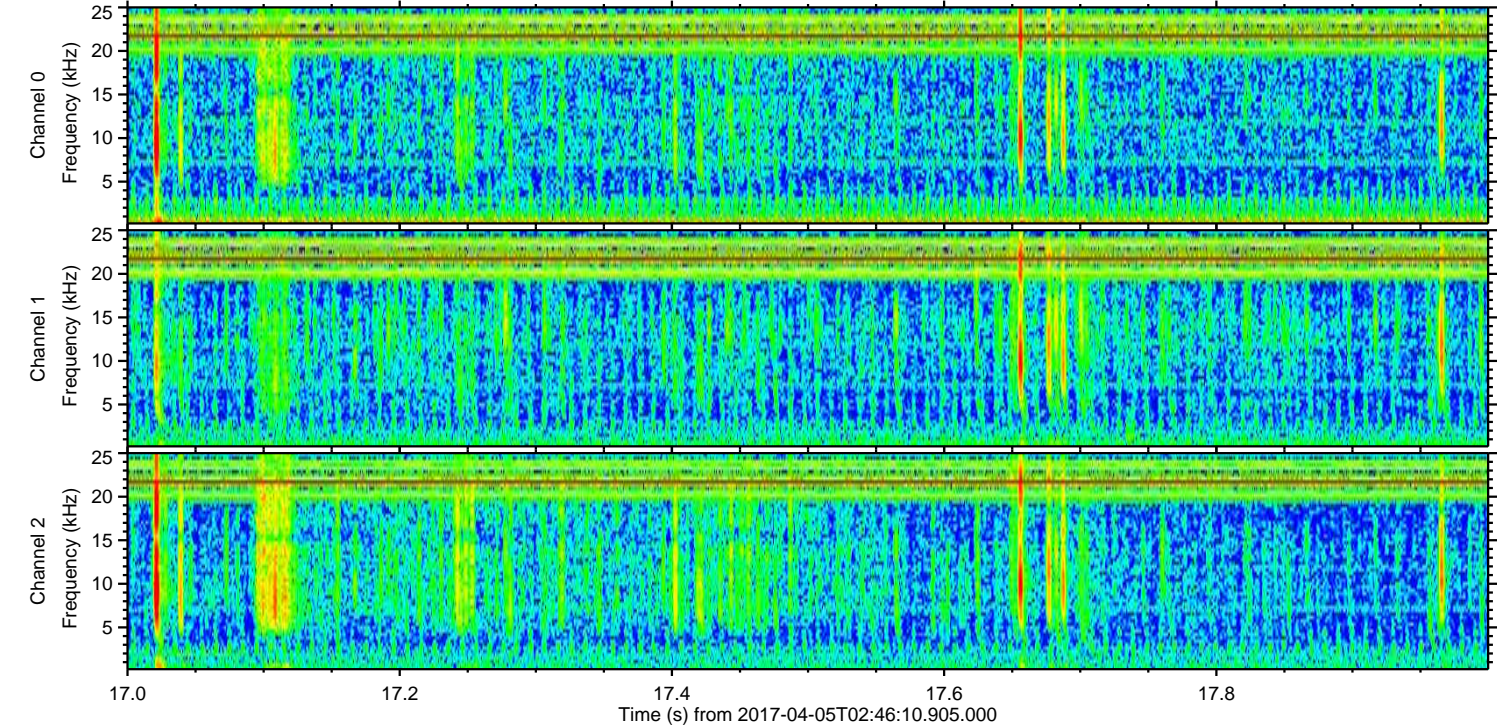
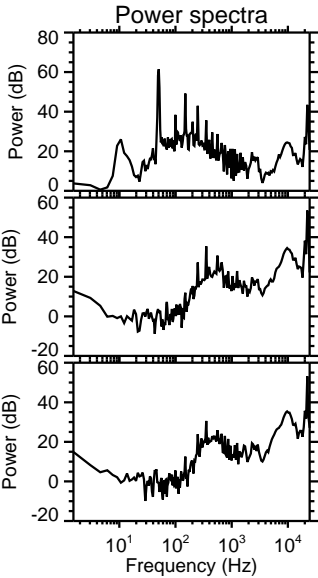
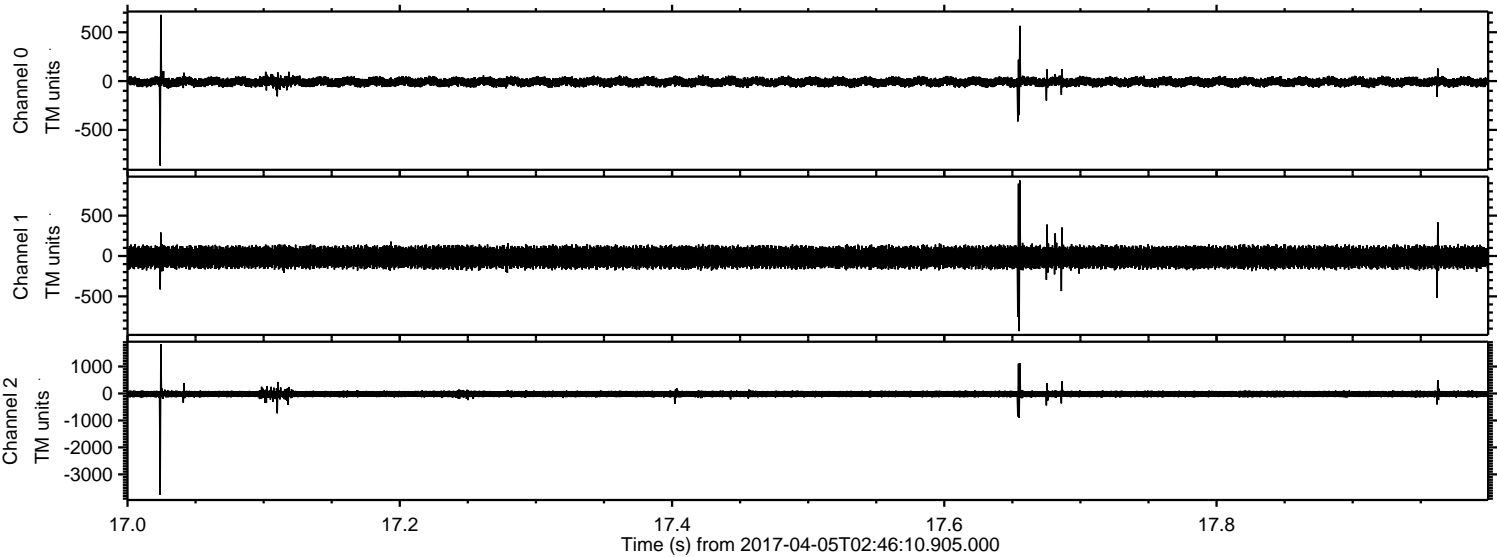
Channel 0  
mn: -1550  
mx: 1290  
 $\mu$ : -8.3  
 $\sigma$ : 29.1

Channel 1  
mn: -1442  
mx: 1533  
 $\mu$ : -16.1  
 $\sigma$ : 76.9

Channel 2  
mn: -3983  
mx: 3395  
 $\mu$ : -20.0  
 $\sigma$ : 85.0



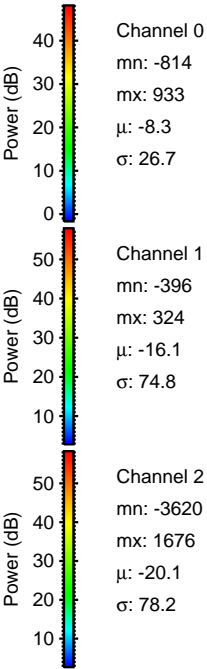
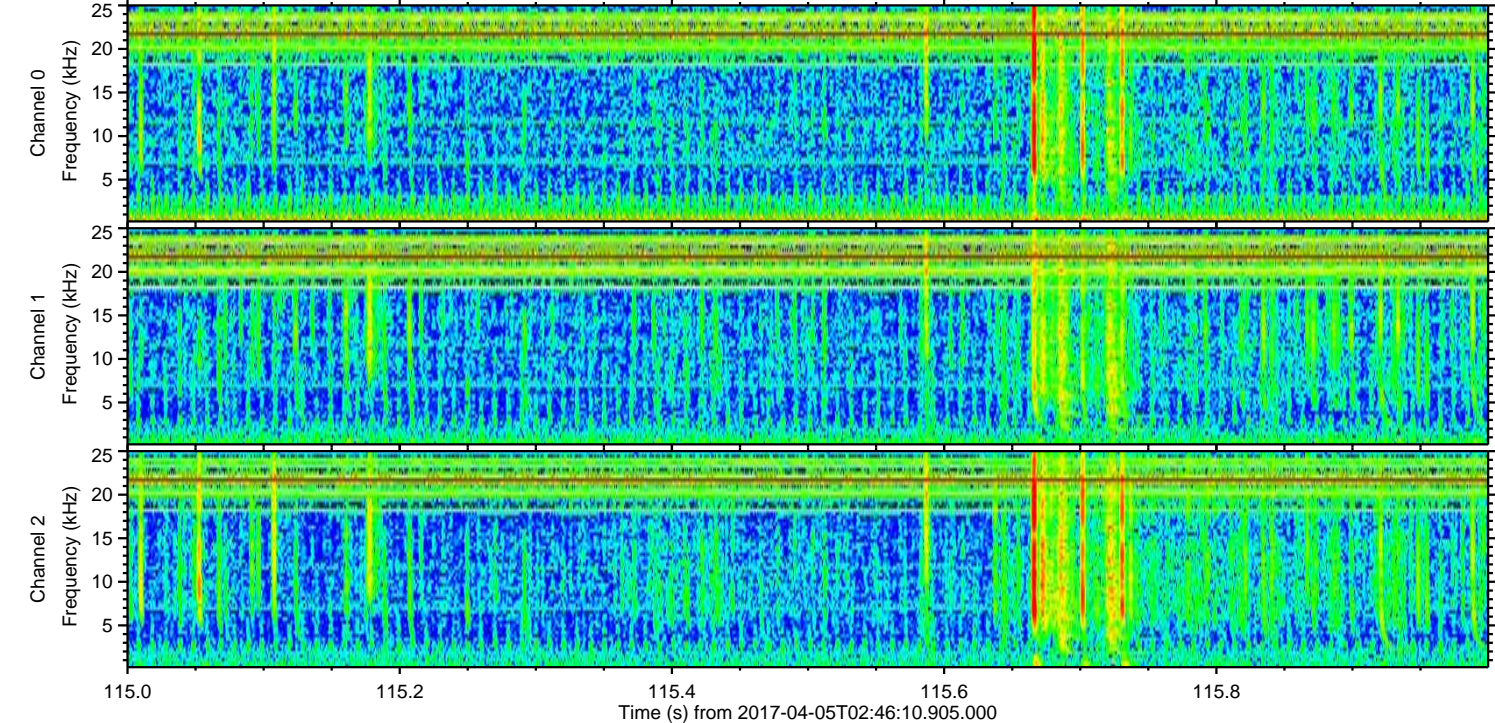
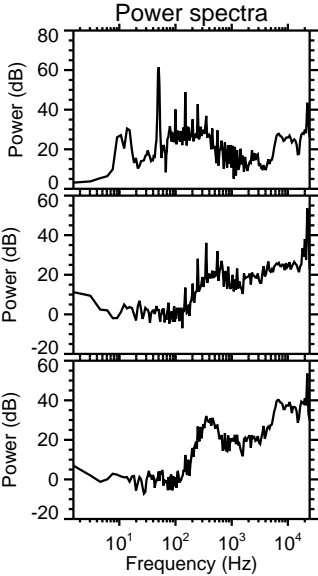
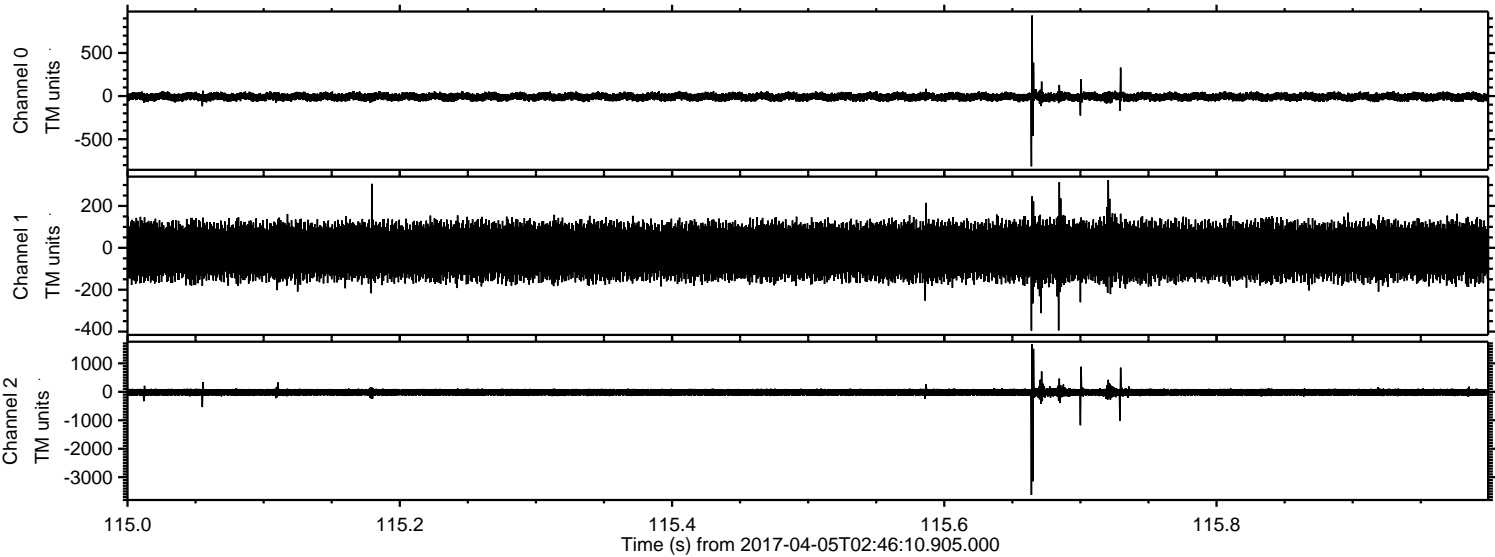
Processed Wed Apr 5 04:54:22 2017 by ELM ver.2012-10-06 from 001\_\_elm20170405\_024609\_\_dat00.bin





ELMAVAN 3D WAVEFORMS (Measured data sampled at 50 kHz) 51000 packets of 144 samples from 2017-04-05T02:46:10.905.000. Part 116/147

Processed Wed Apr 5 04:54:22 2017 by ELM ver.2012-10-06 from 001\_\_elm20170405\_024609\_\_dat00.bin



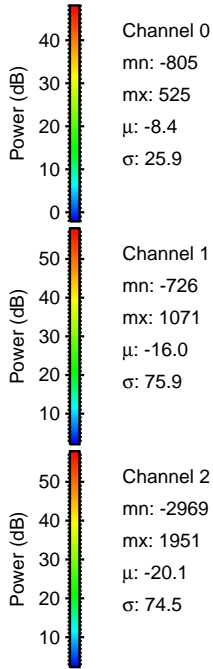
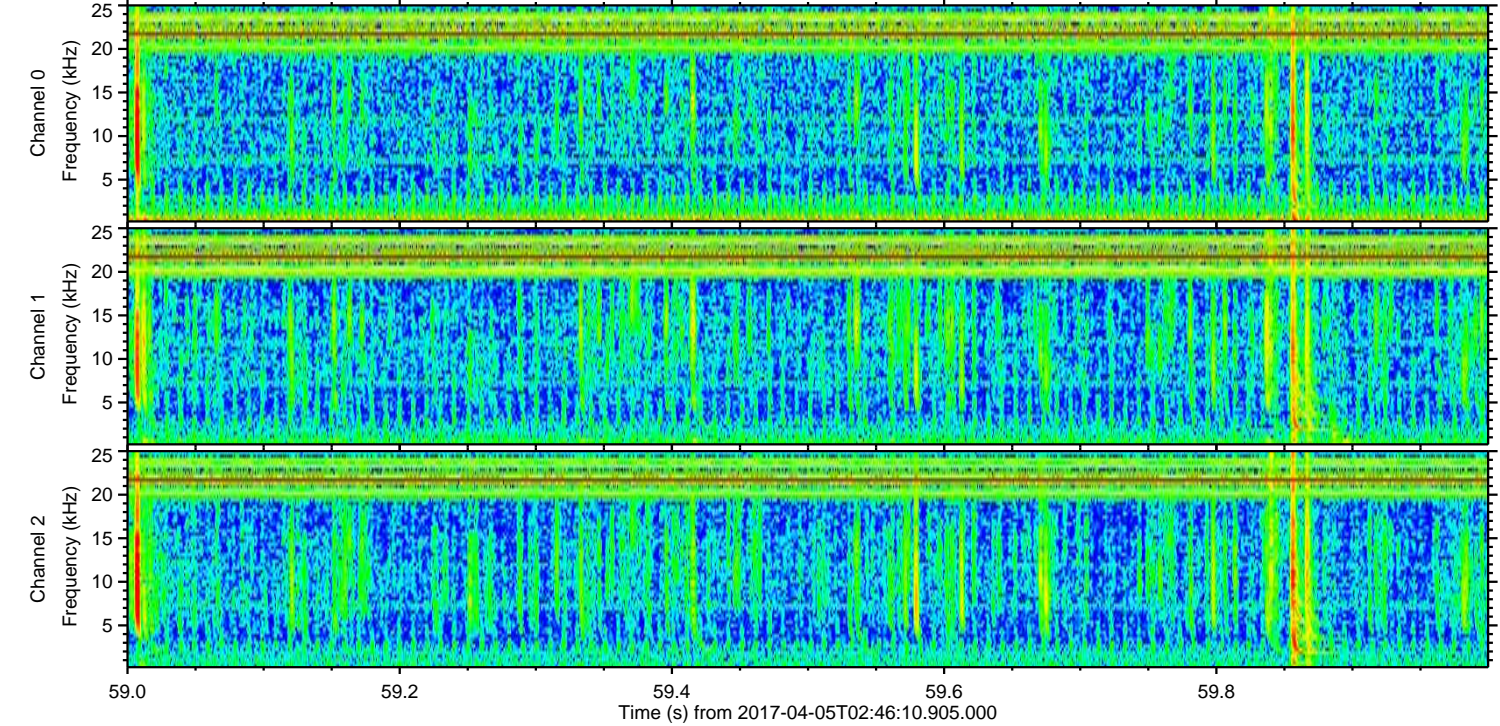
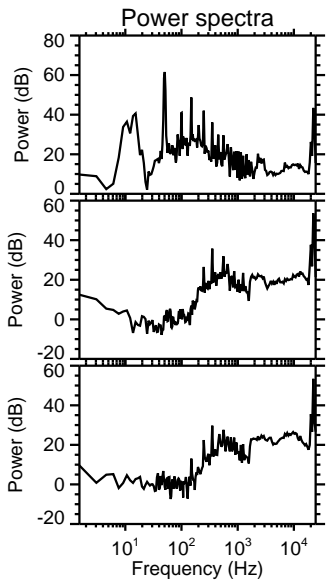
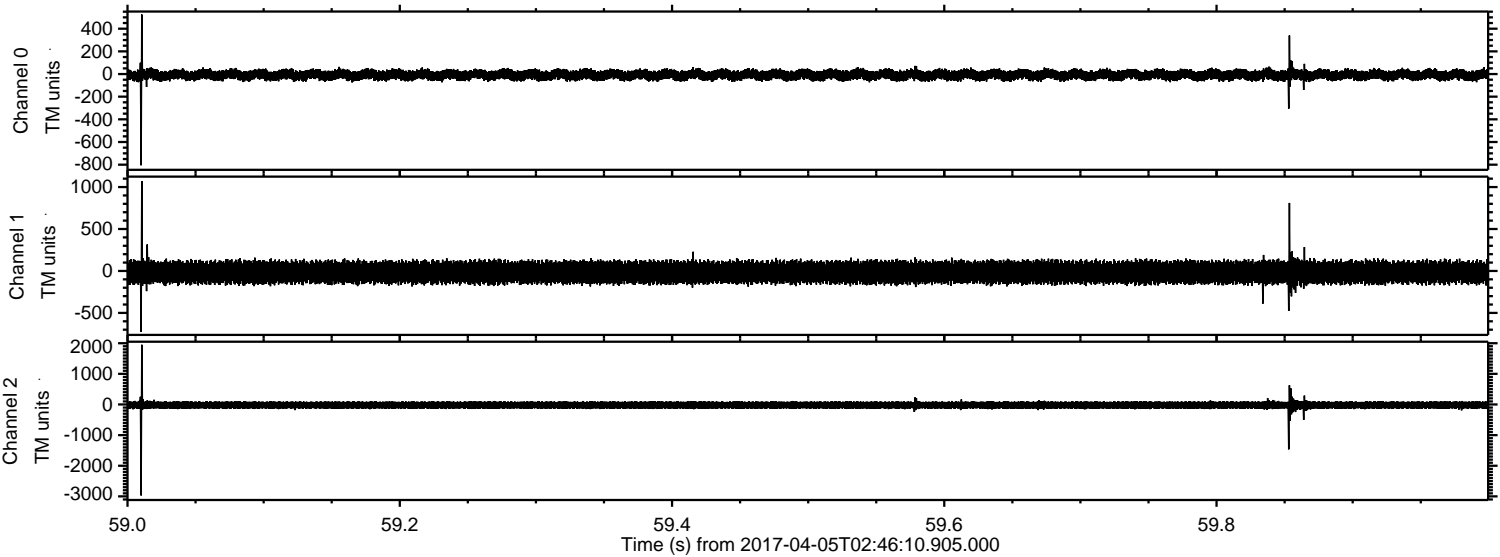
Channel 0  
mn: -814  
mx: 933  
 $\mu$ : -8.3  
 $\sigma$ : 26.7

Channel 1  
mn: -396  
mx: 324  
 $\mu$ : -16.1  
 $\sigma$ : 74.8

Channel 2  
mn: -3620  
mx: 1676  
 $\mu$ : -20.1  
 $\sigma$ : 78.2



Processed Wed Apr 5 04:54:23 2017 by ELM ver.2012-10-06 from 001\_\_elm20170405\_024609\_\_dat00.bin



Channel 0  
mn: -805  
mx: 525  
 $\mu$ : -8.4  
 $\sigma$ : 25.9

Channel 1  
mn: -726  
mx: 1071  
 $\mu$ : -16.0  
 $\sigma$ : 75.9

Channel 2  
mn: -2969  
mx: 1951  
 $\mu$ : -20.1  
 $\sigma$ : 74.5



Processed Wed Apr 5 04:54:24 2017 by ELM ver.2012-10-06 from 001\_\_elm20170405\_024609\_\_dat00.bin

