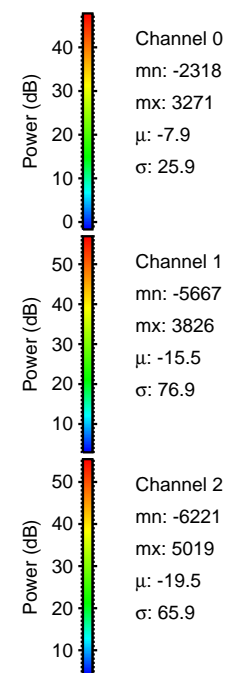
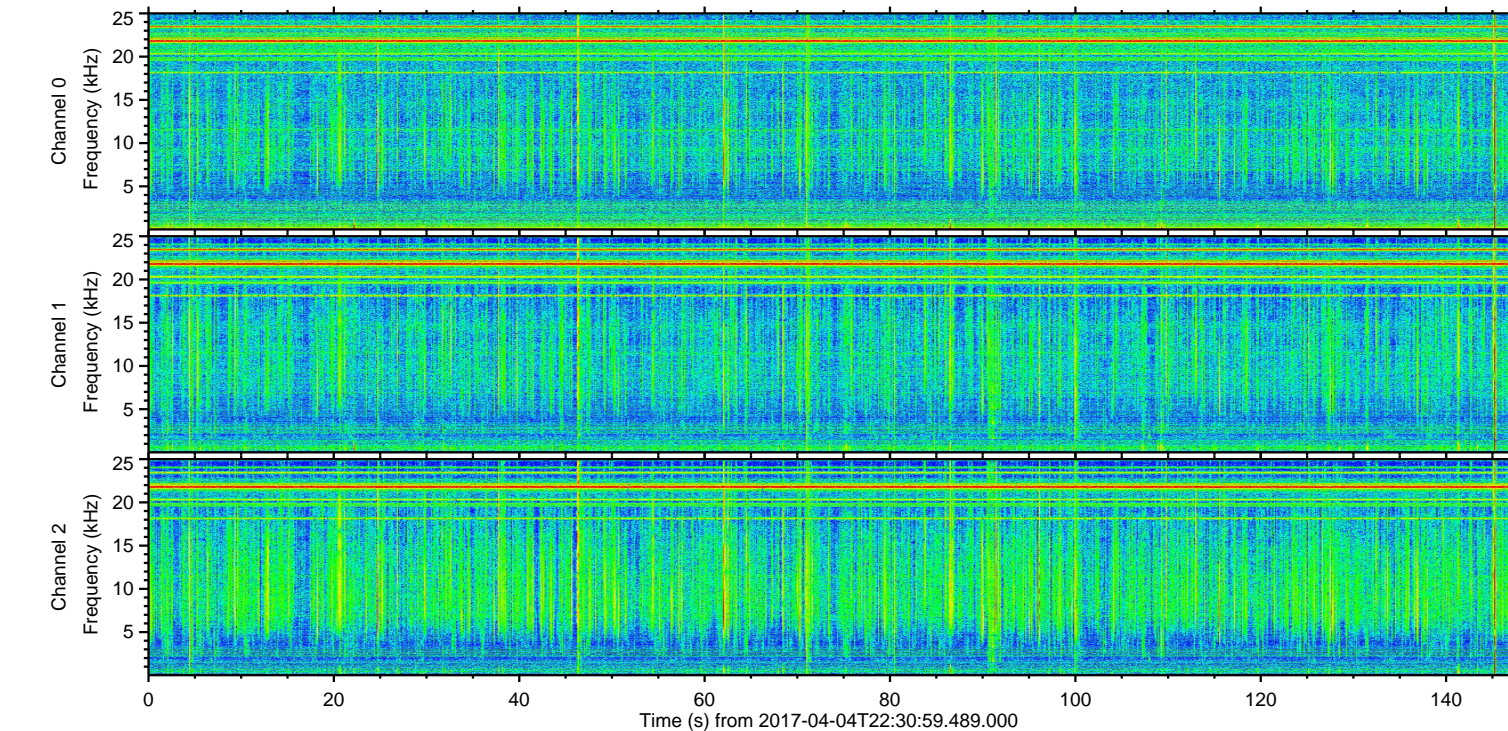
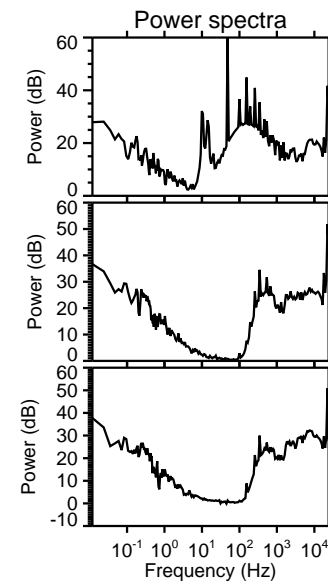
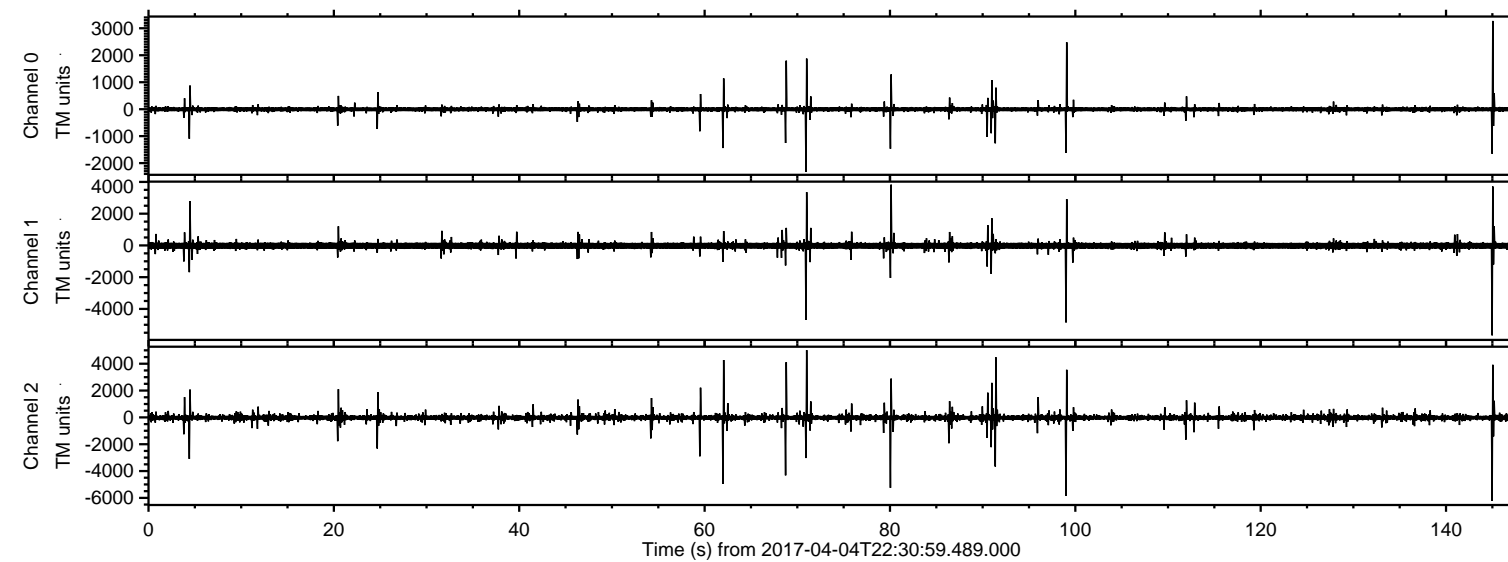


ELMAVAN 3D WAVEFORMS (Measured data sampled at 50 kHz) 51000 packets of 144 samples from 2017-04-04T22:30:59.489.000.

Processed Wed Apr 5 00:40:04 2017 by ELM ver.2012-10-06 from 001__elm20170404_223058__dat00.bin



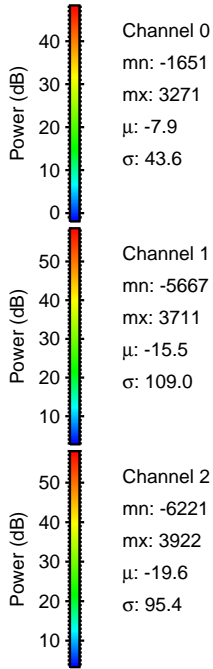
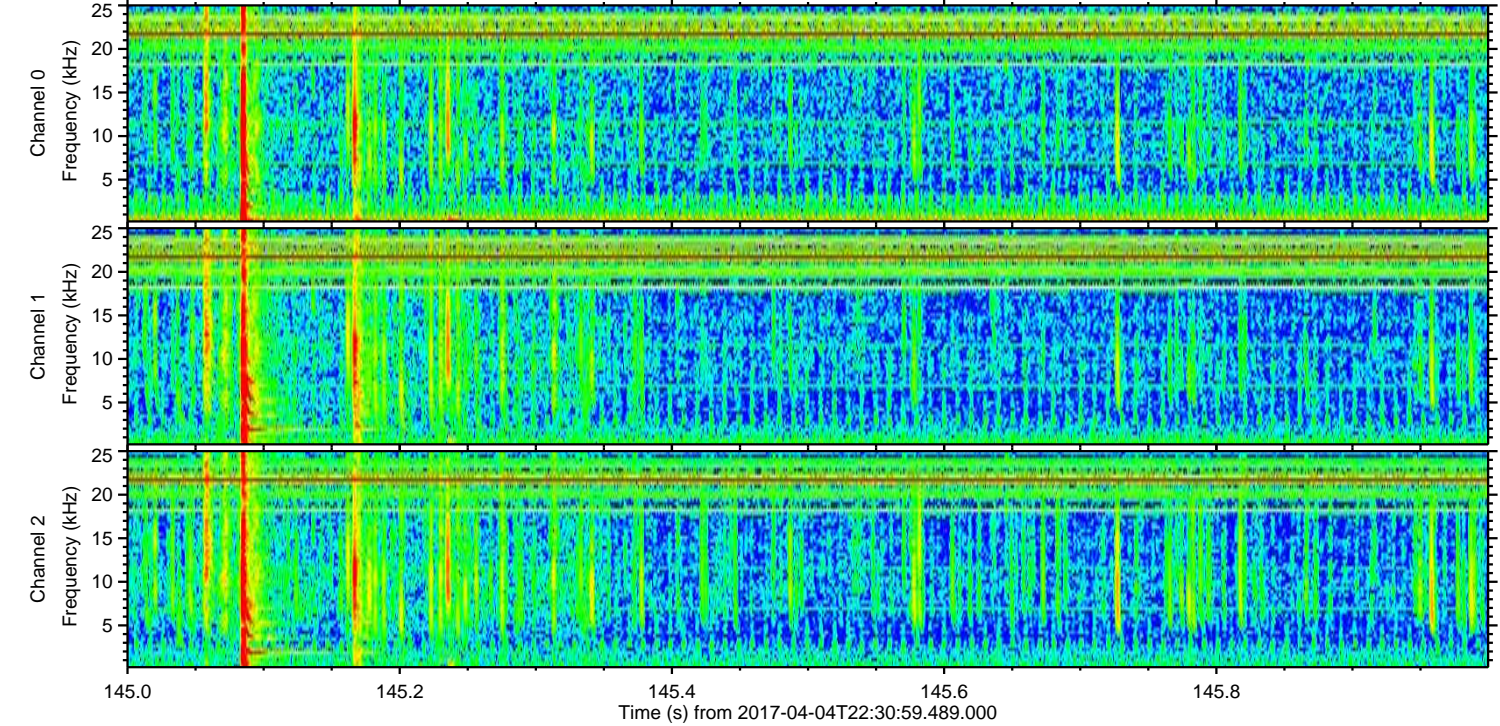
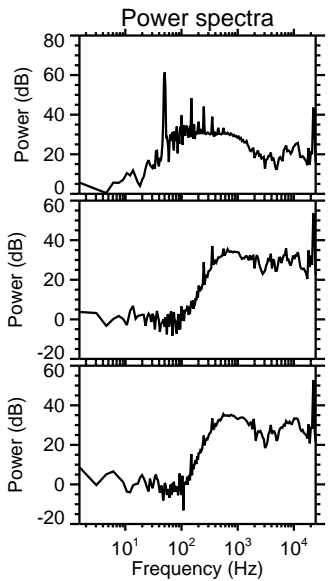
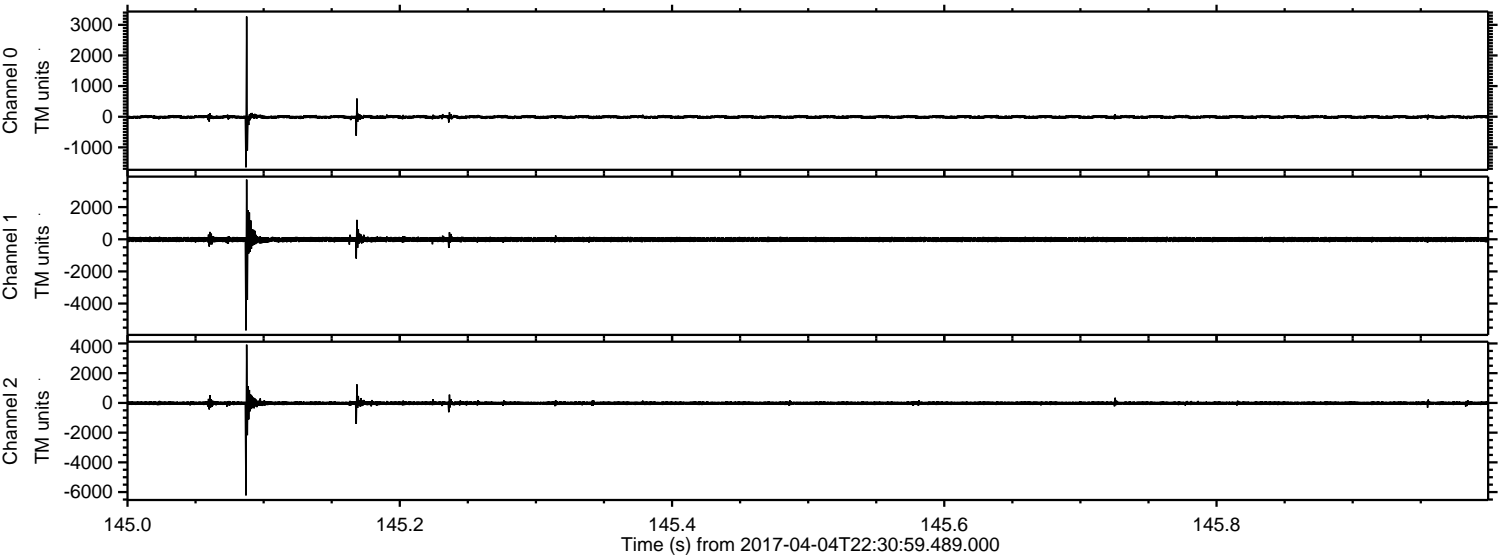
Channel 0
mn: -2318
mx: 3271
 μ : -7.9
 σ : 25.9

Channel 1
mn: -5667
mx: 3826
 μ : -15.5
 σ : 76.9

Channel 2
mn: -6221
mx: 5019
 μ : -19.5
 σ : 65.9

ELMAVAN 3D WAVEFORMS (Measured data sampled at 50 kHz) 51000 packets of 144 samples from 2017-04-04T22:30:59.489.000. Part 146/147

Processed Wed Apr 5 00:40:21 2017 by ELM ver.2012-10-06 from 001__elm20170404_223058__dat00.bin



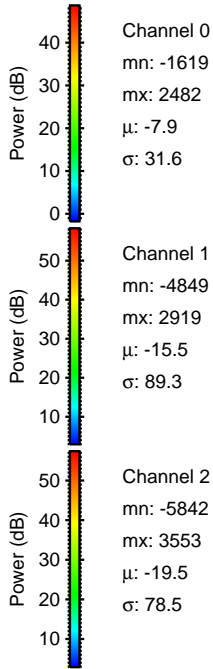
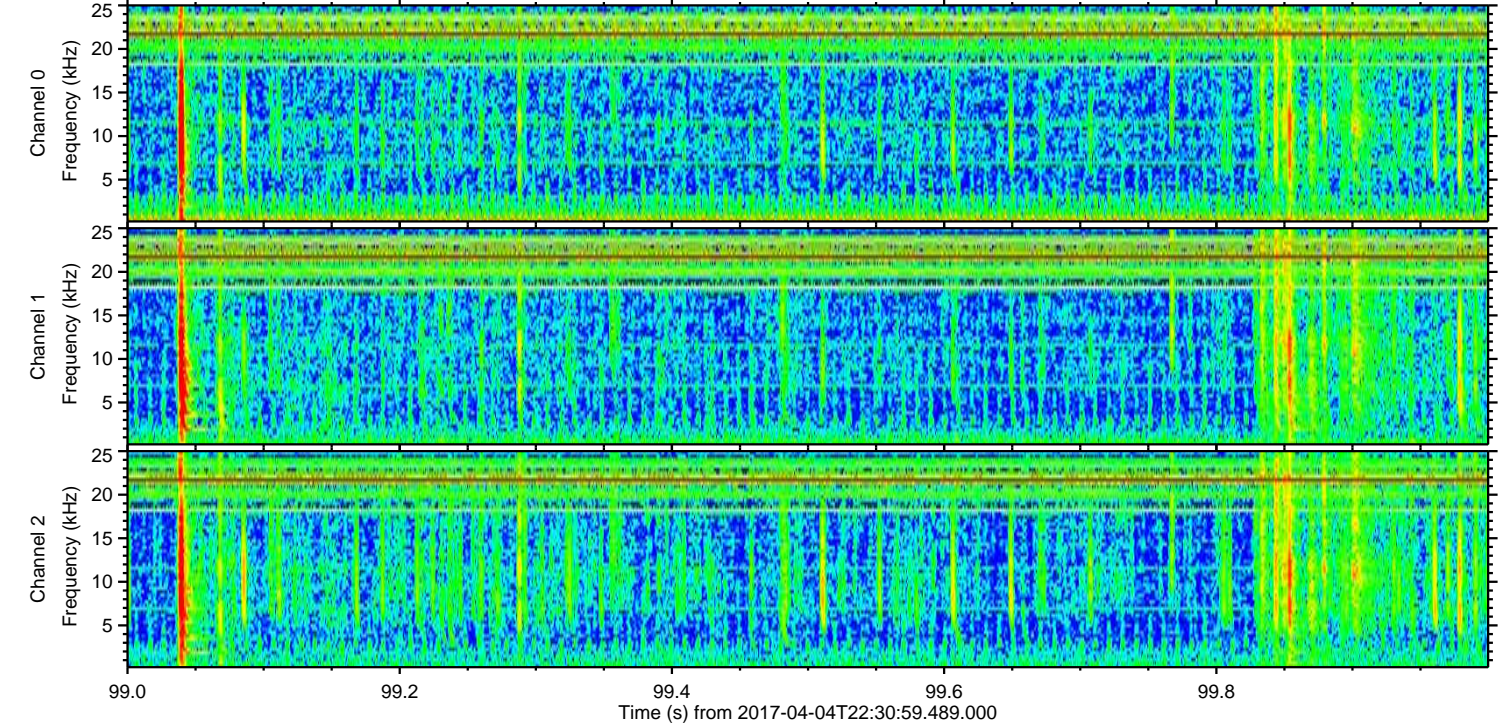
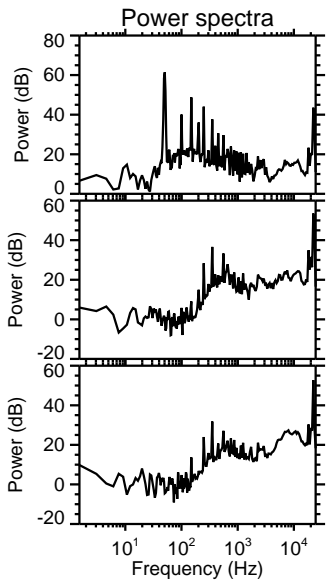
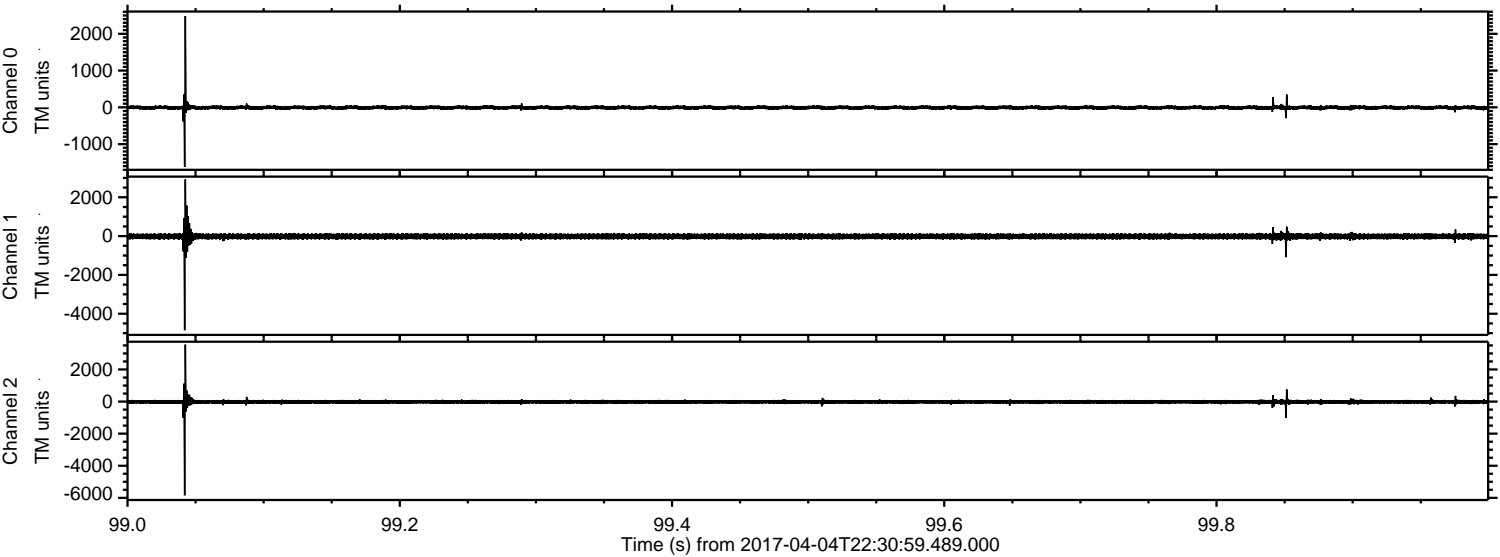
Channel 0
mn: -1651
mx: 3271
 μ : -7.9
 σ : 43.6

Channel 1
mn: -5667
mx: 3711
 μ : -15.5
 σ : 109.0

Channel 2
mn: -6221
mx: 3922
 μ : -19.6
 σ : 95.4

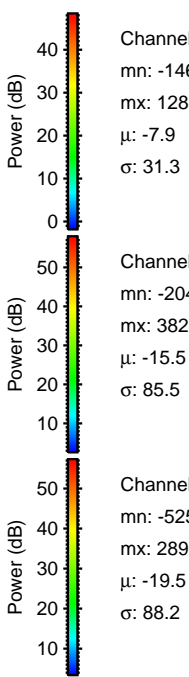
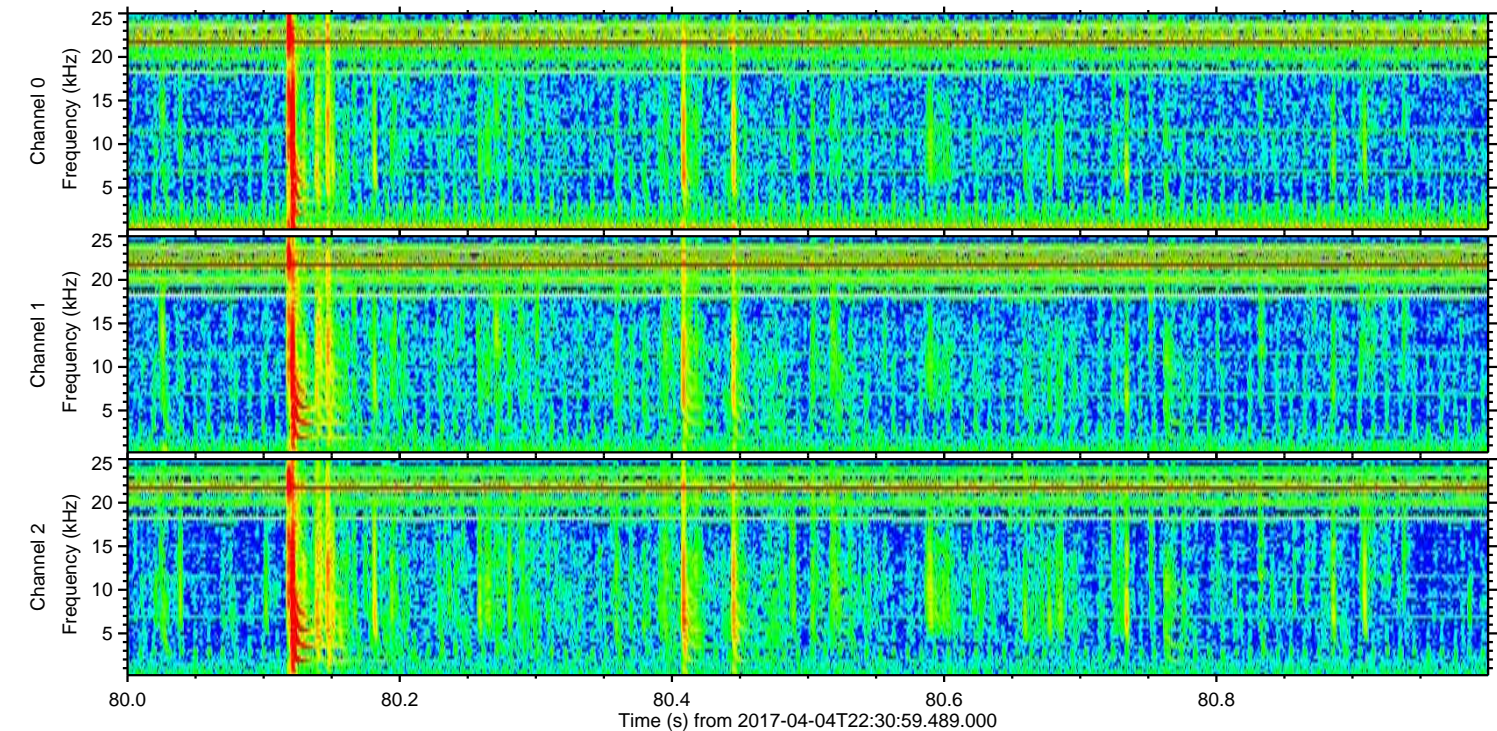
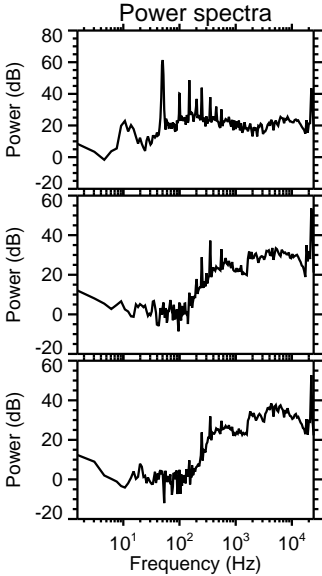
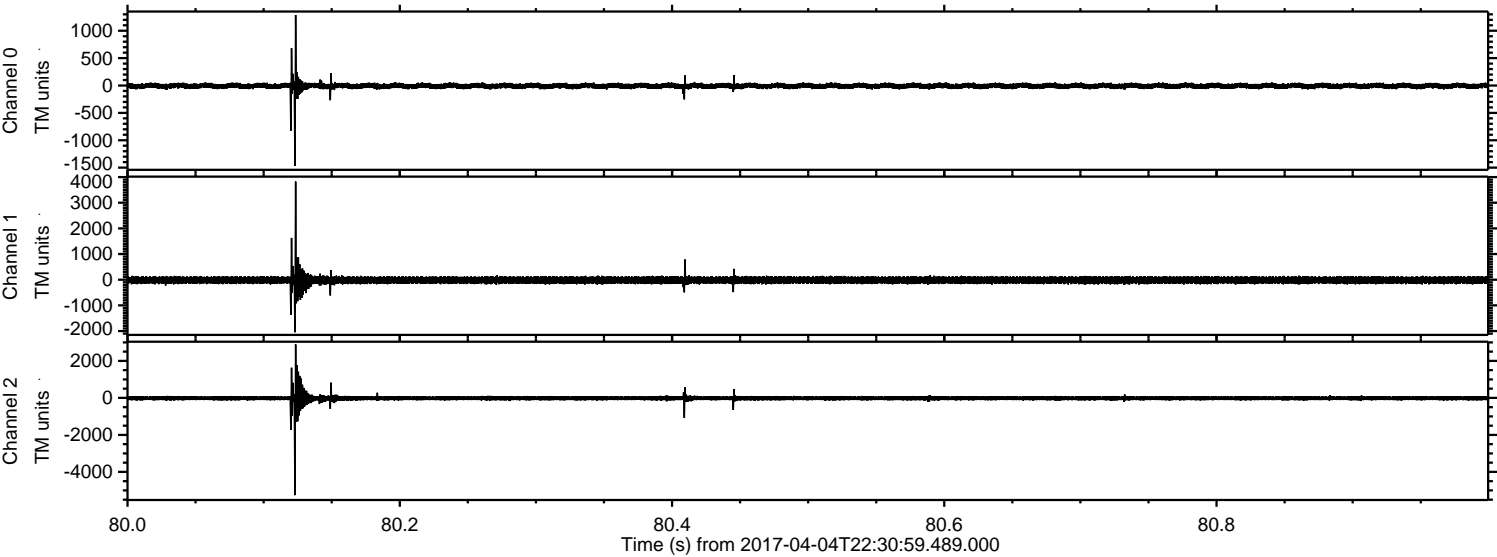
ELMAVAN 3D WAVEFORMS (Measured data sampled at 50 kHz) 51000 packets of 144 samples from 2017-04-04T22:30:59.489.000. Part 100/147

Processed Wed Apr 5 00:40:22 2017 by ELM ver.2012-10-06 from 001__elm20170404_223058__dat00.bin

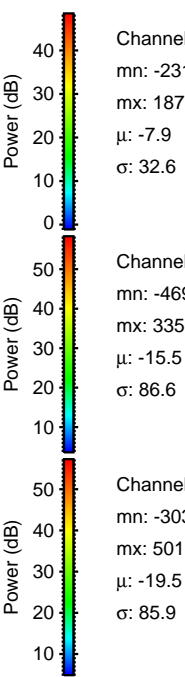
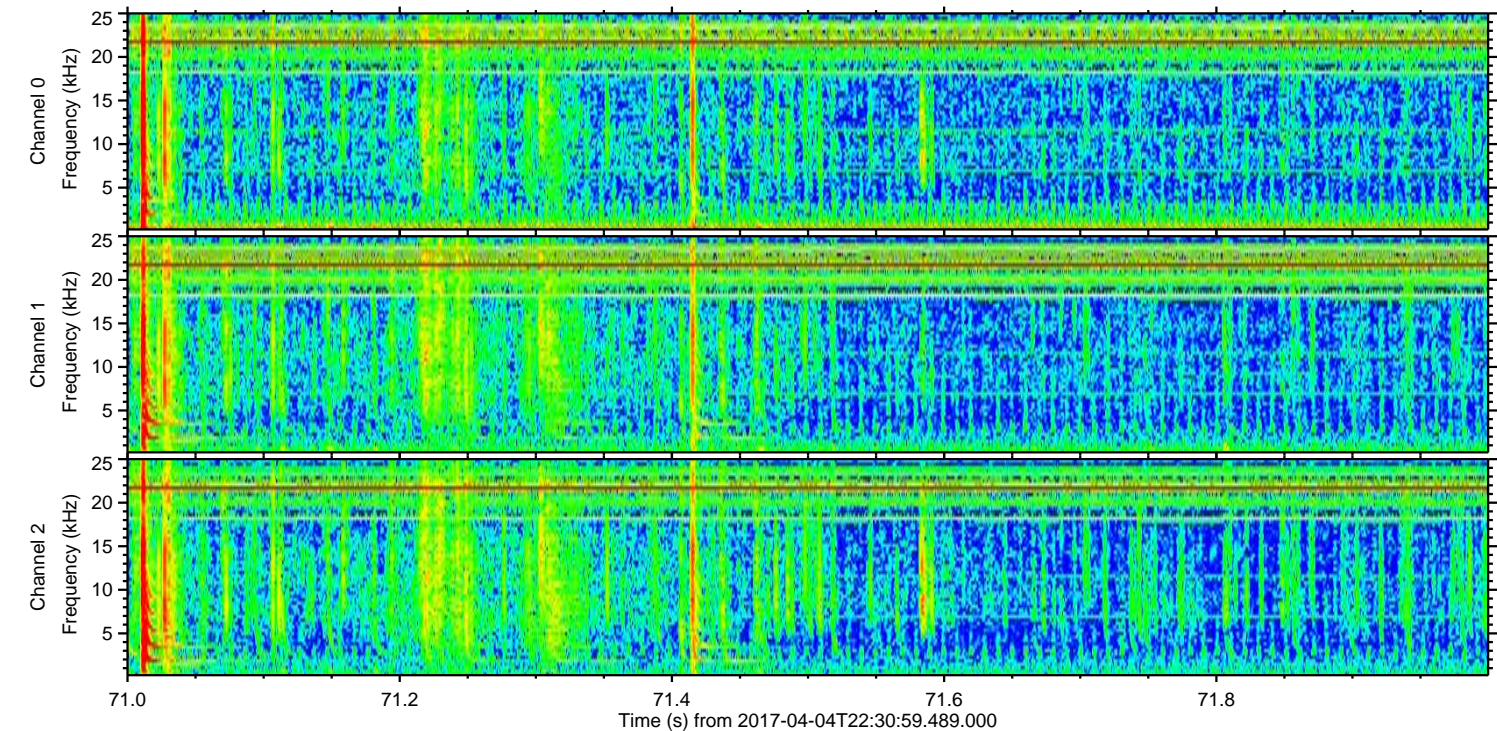
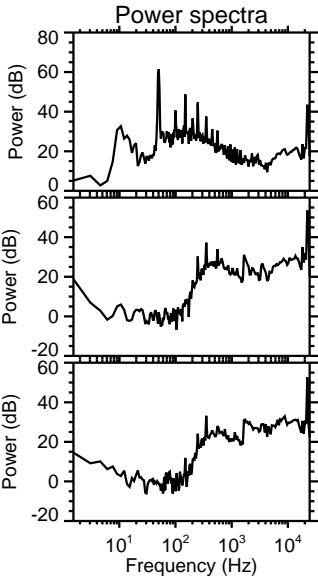
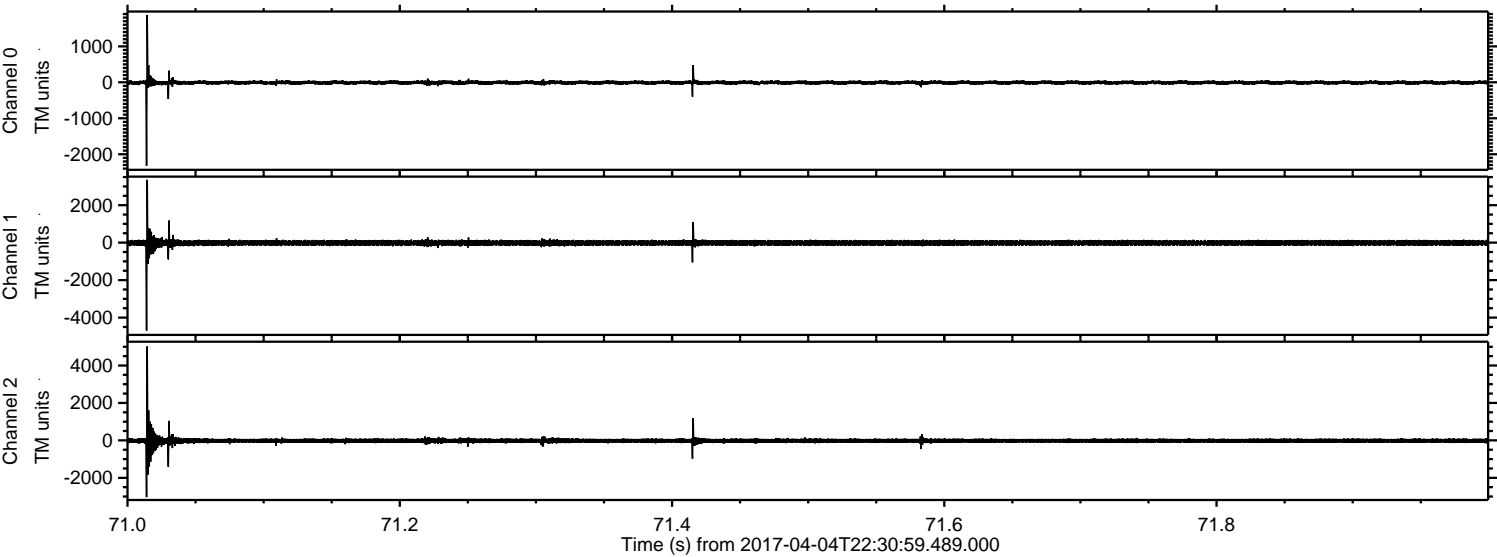


ELMAVAN 3D WAVEFORMS (Measured data sampled at 50 kHz) 51000 packets of 144 samples from 2017-04-04T22:30:59.489.000. Part 81/147

Processed Wed Apr 5 00:40:23 2017 by ELM ver.2012-10-06 from 001__elm20170404_223058__dat00.bin

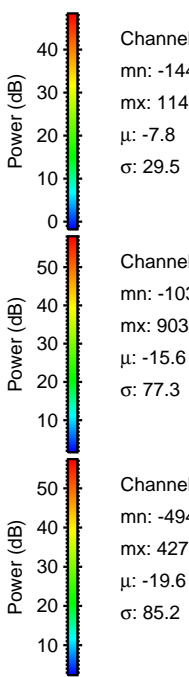
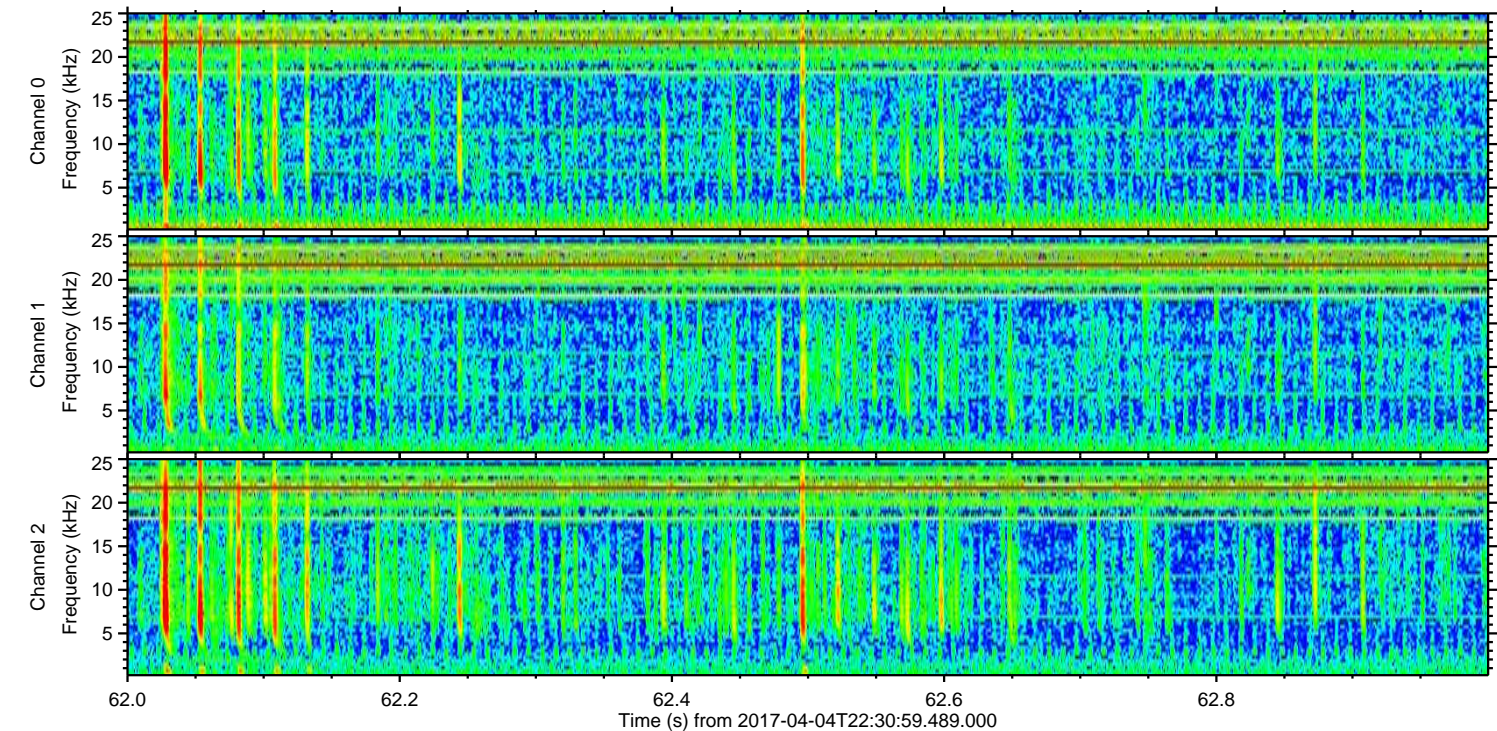
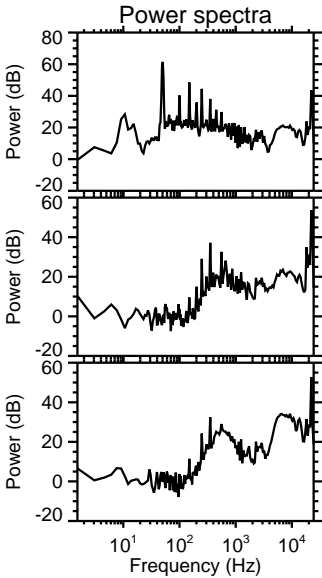
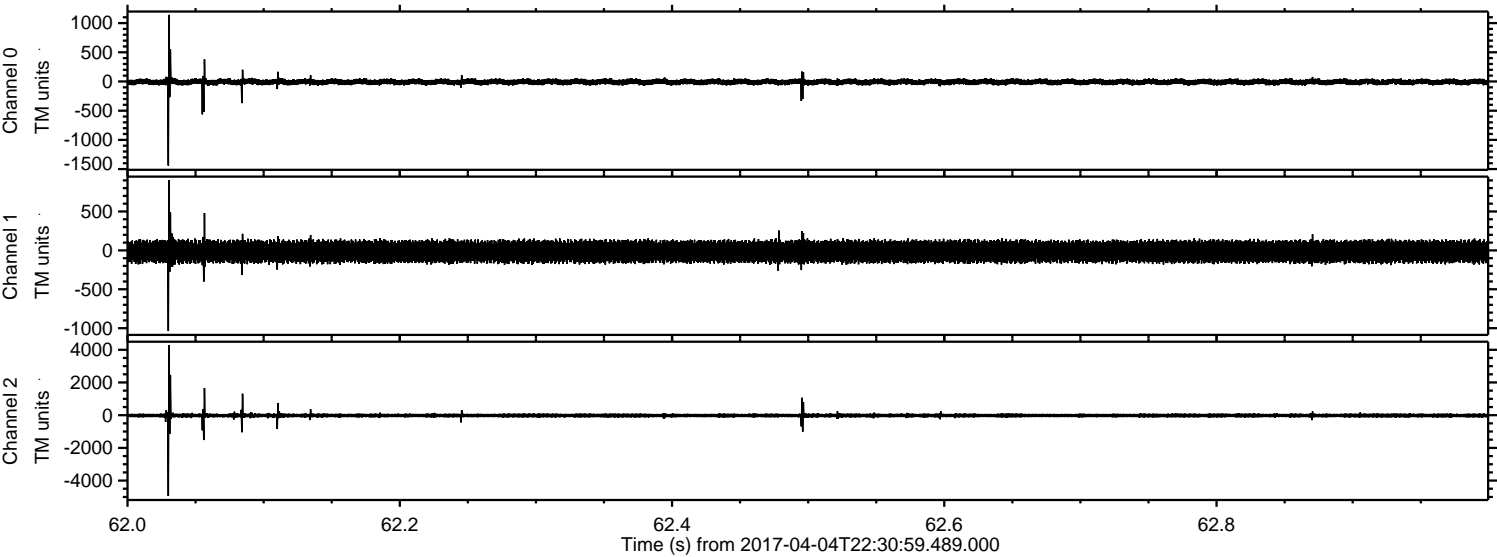


Processed Wed Apr 5 00:40:24 2017 by ELM ver.2012-10-06 from 001__elm20170404_223058__dat00.bin



ELMAVAN 3D WAVEFORMS (Measured data sampled at 50 kHz) 51000 packets of 144 samples from 2017-04-04T22:30:59.489.000. Part 63/147

Processed Wed Apr 5 00:40:25 2017 by ELM ver.2012-10-06 from 001__elm20170404_223058__dat00.bin

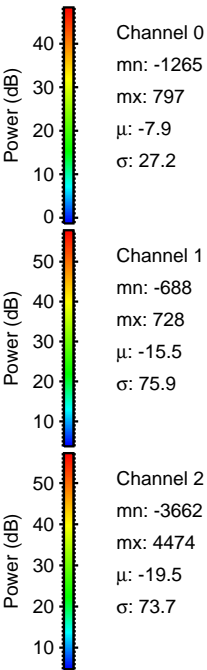
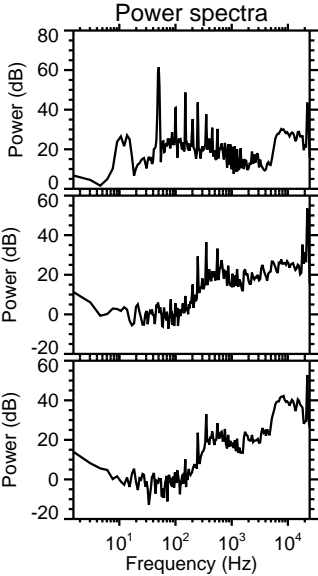
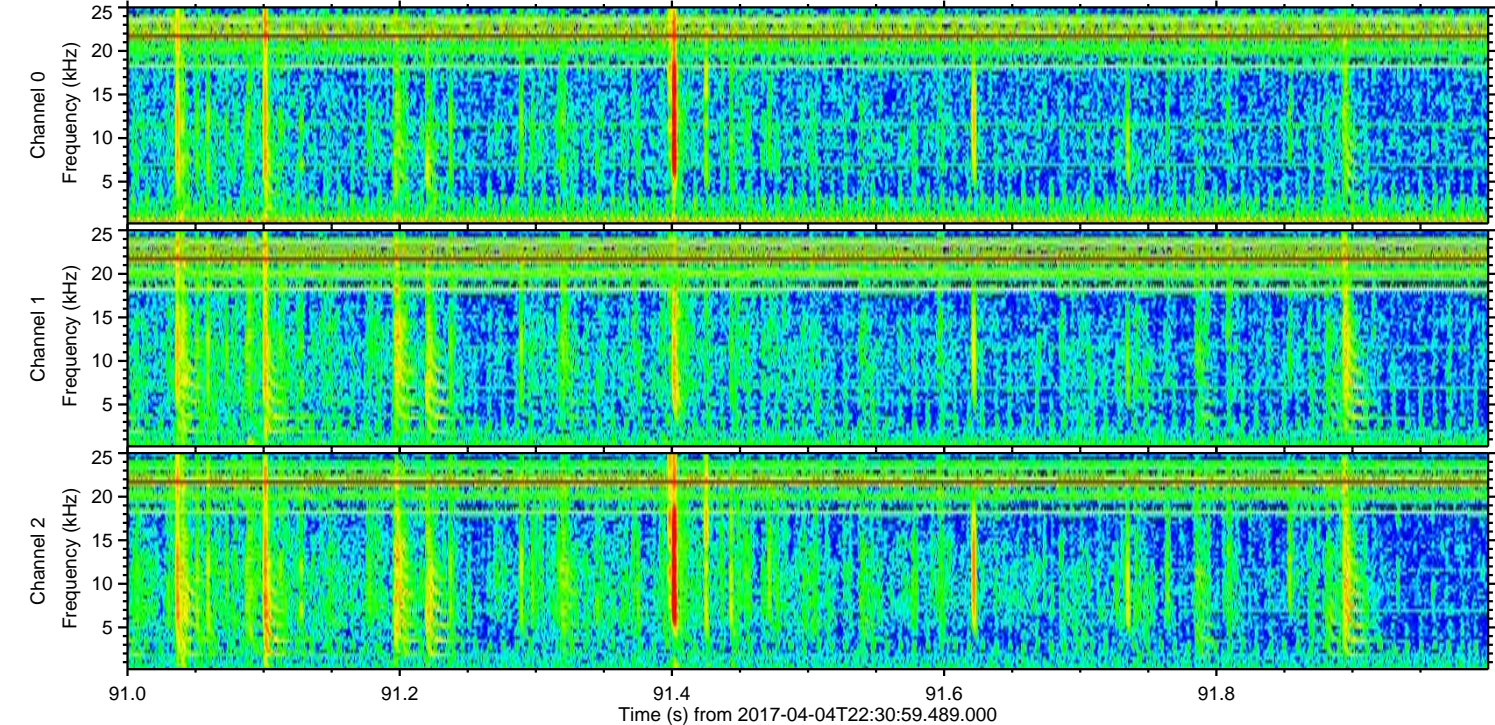
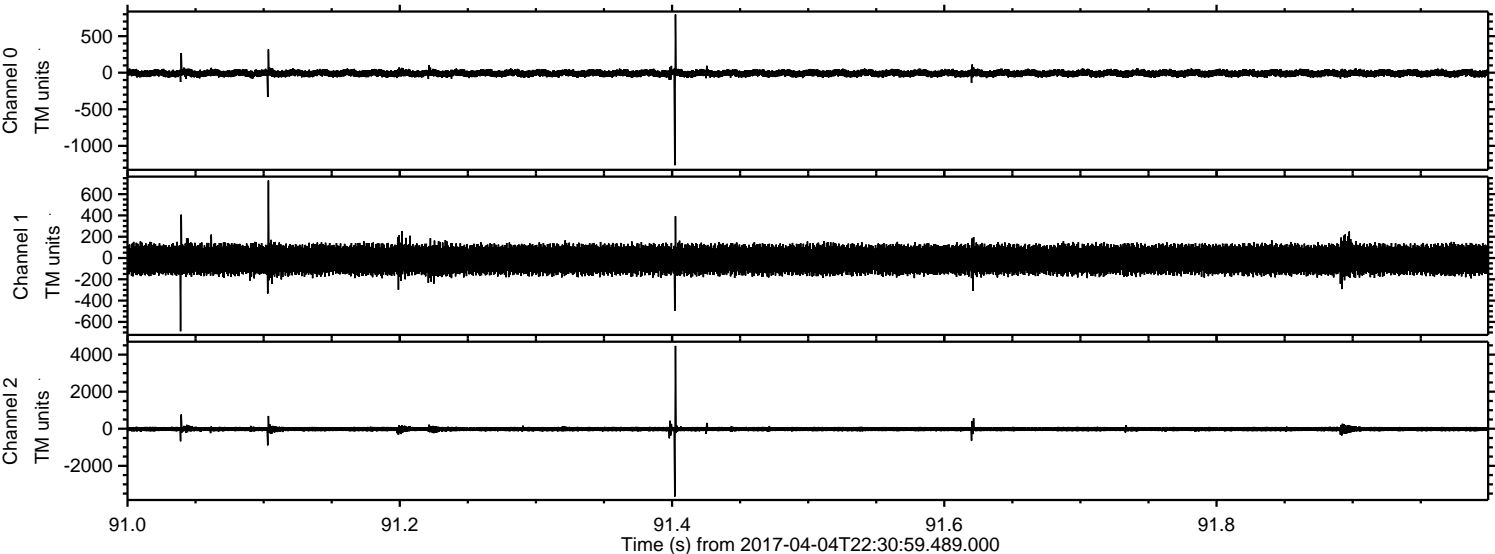


Channel 0
mn: -1441
mx: 1141
 μ : -7.8
 σ : 29.5

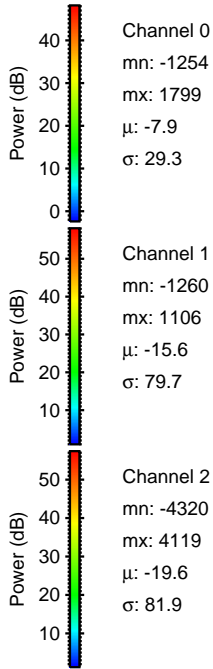
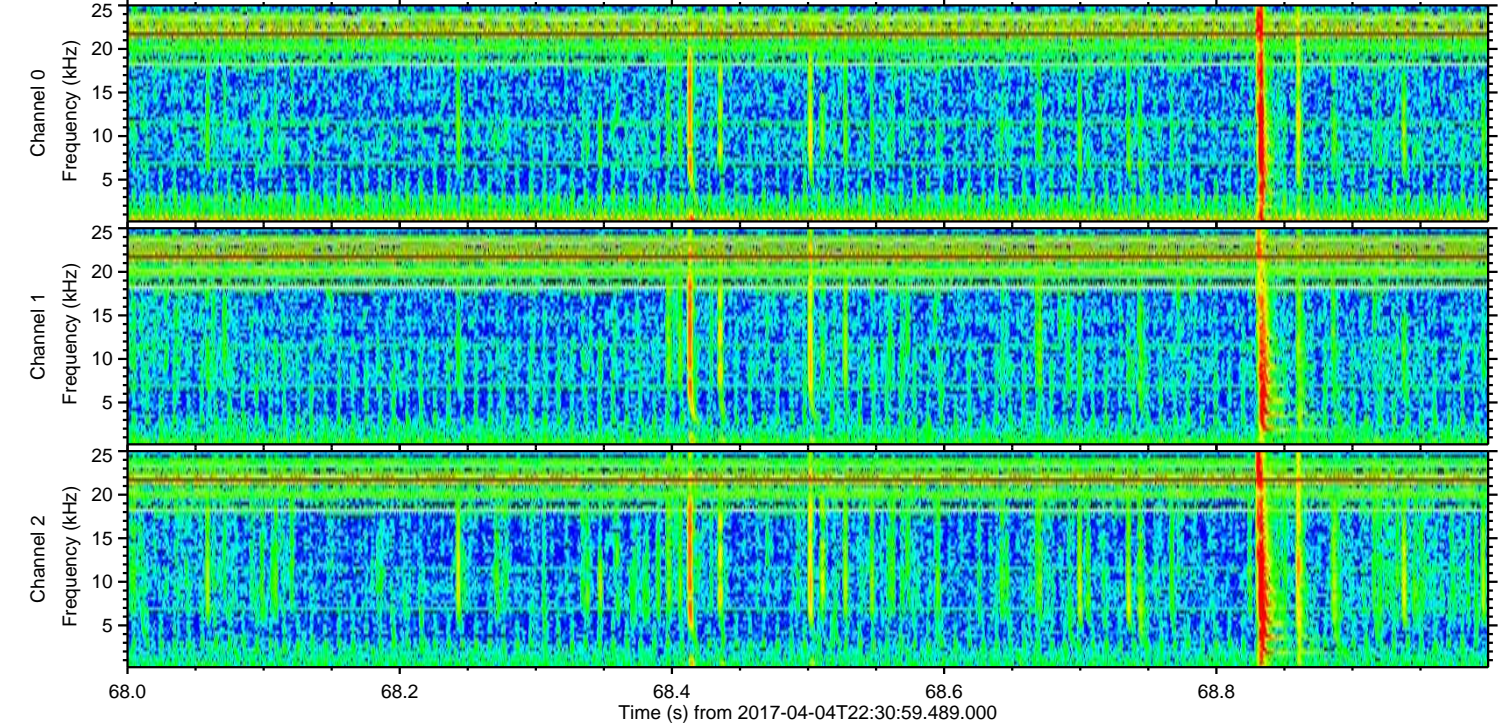
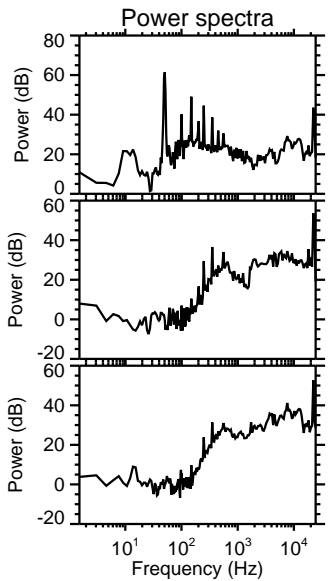
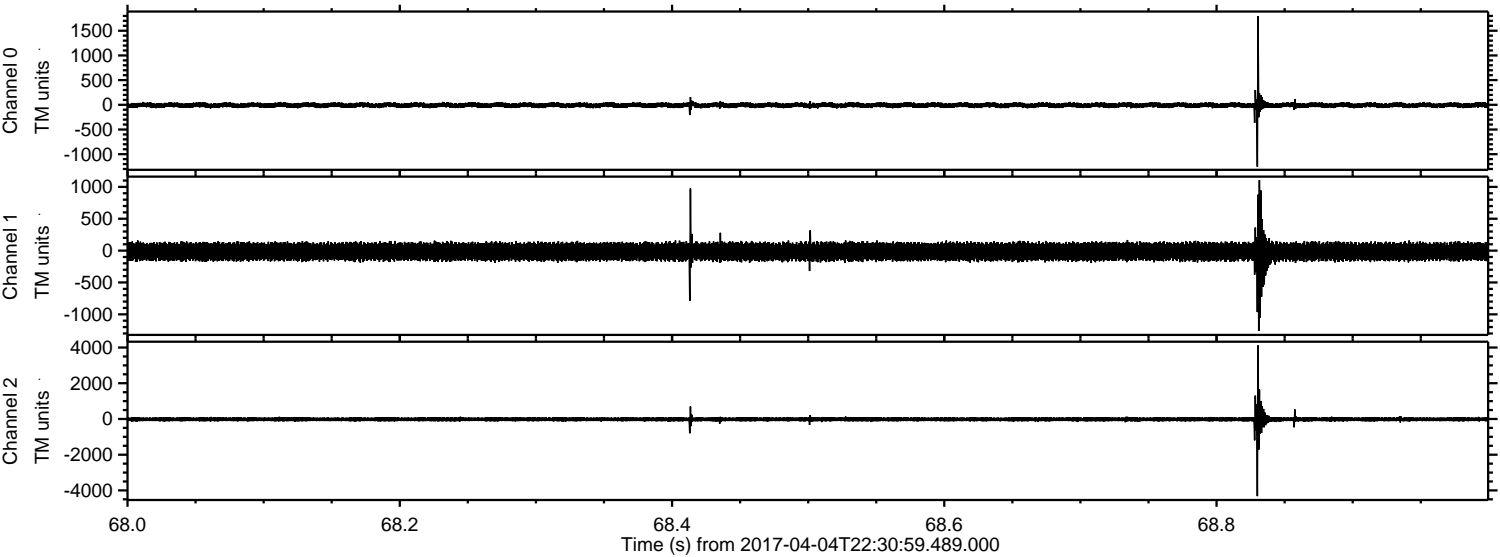
Channel 1
mn: -1035
mx: 903
 μ : -15.6
 σ : 77.3

Channel 2
mn: -4940
mx: 4279
 μ : -19.6
 σ : 85.2

Processed Wed Apr 5 00:40:26 2017 by ELM ver.2012-10-06 from 001__elm20170404_223058__dat00.bin



Processed Wed Apr 5 00:40:27 2017 by ELM ver.2012-10-06 from 001__elm20170404_223058__dat00.bin

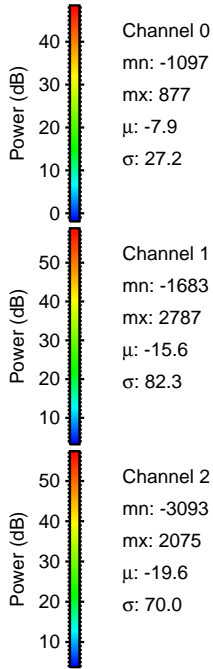
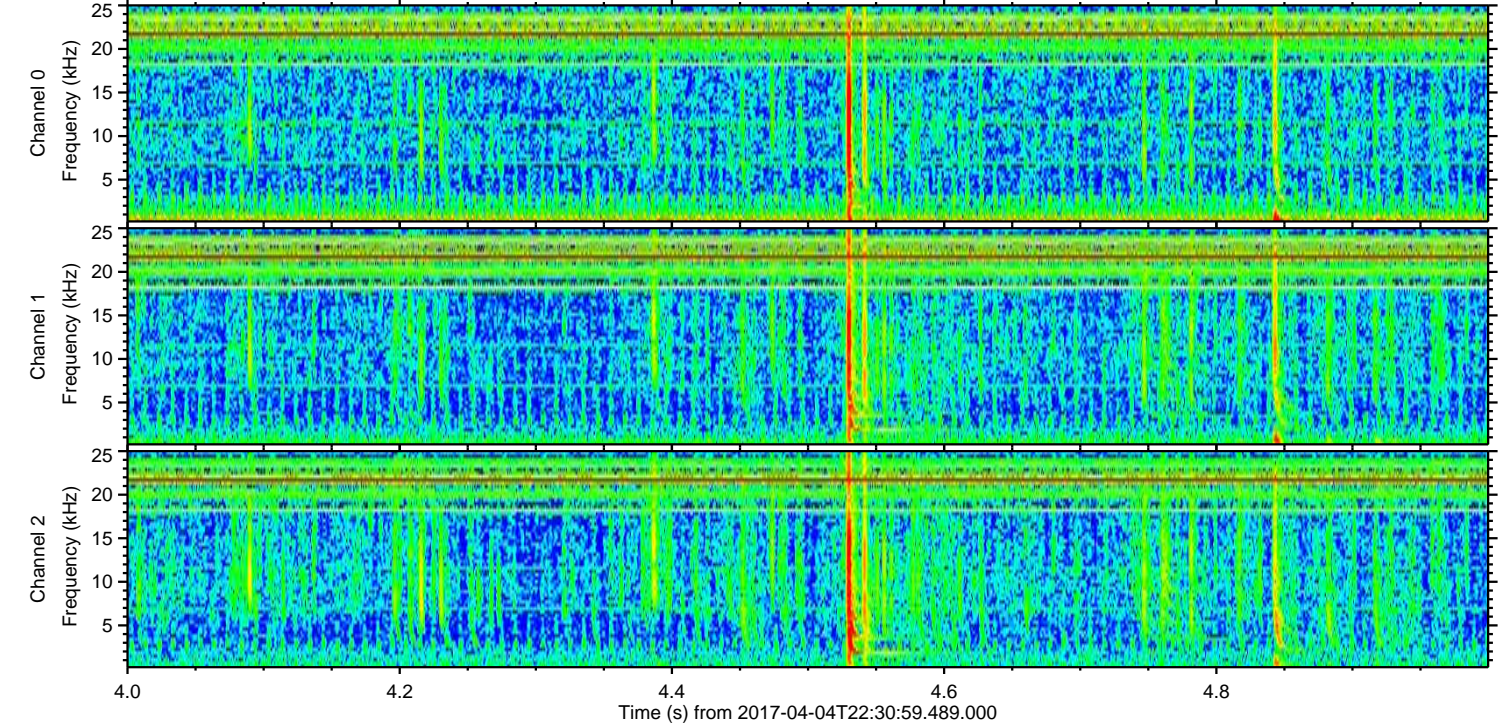
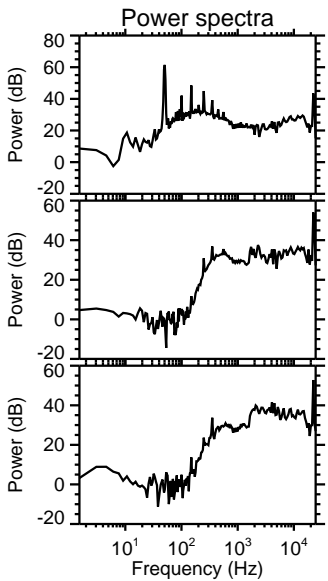
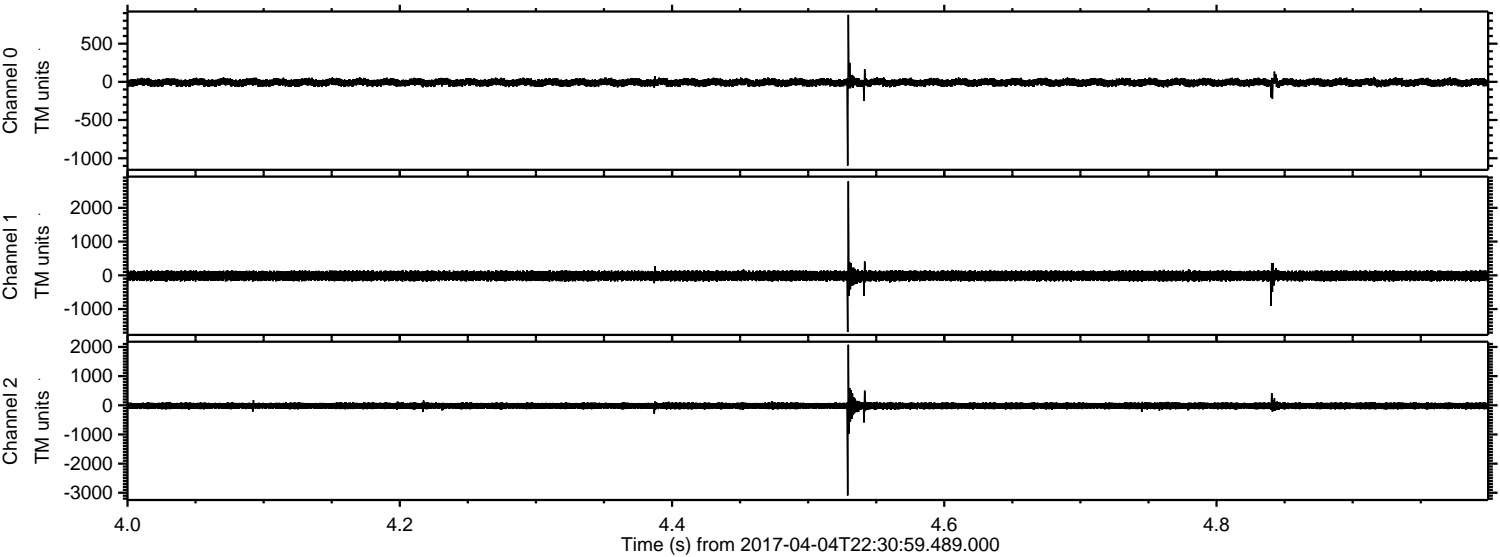


Channel 0
mn: -1254
mx: 1799
 μ : -7.9
 σ : 29.3

Channel 1
mn: -1260
mx: 1106
 μ : -15.6
 σ : 79.7

Channel 2
mn: -4320
mx: 4119
 μ : -19.6
 σ : 81.9

Processed Wed Apr 5 00:40:28 2017 by ELM ver.2012-10-06 from 001__elm20170404_223058__dat00.bin



Processed Wed Apr 5 00:40:29 2017 by ELM ver.2012-10-06 from 001__elm20170404_223058__dat00.bin

