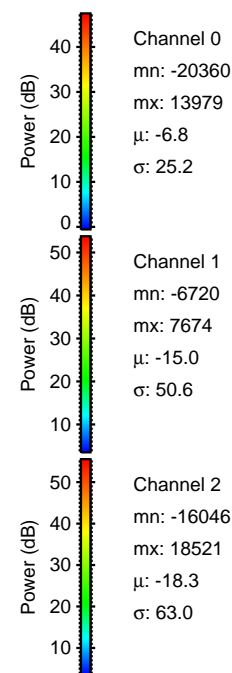
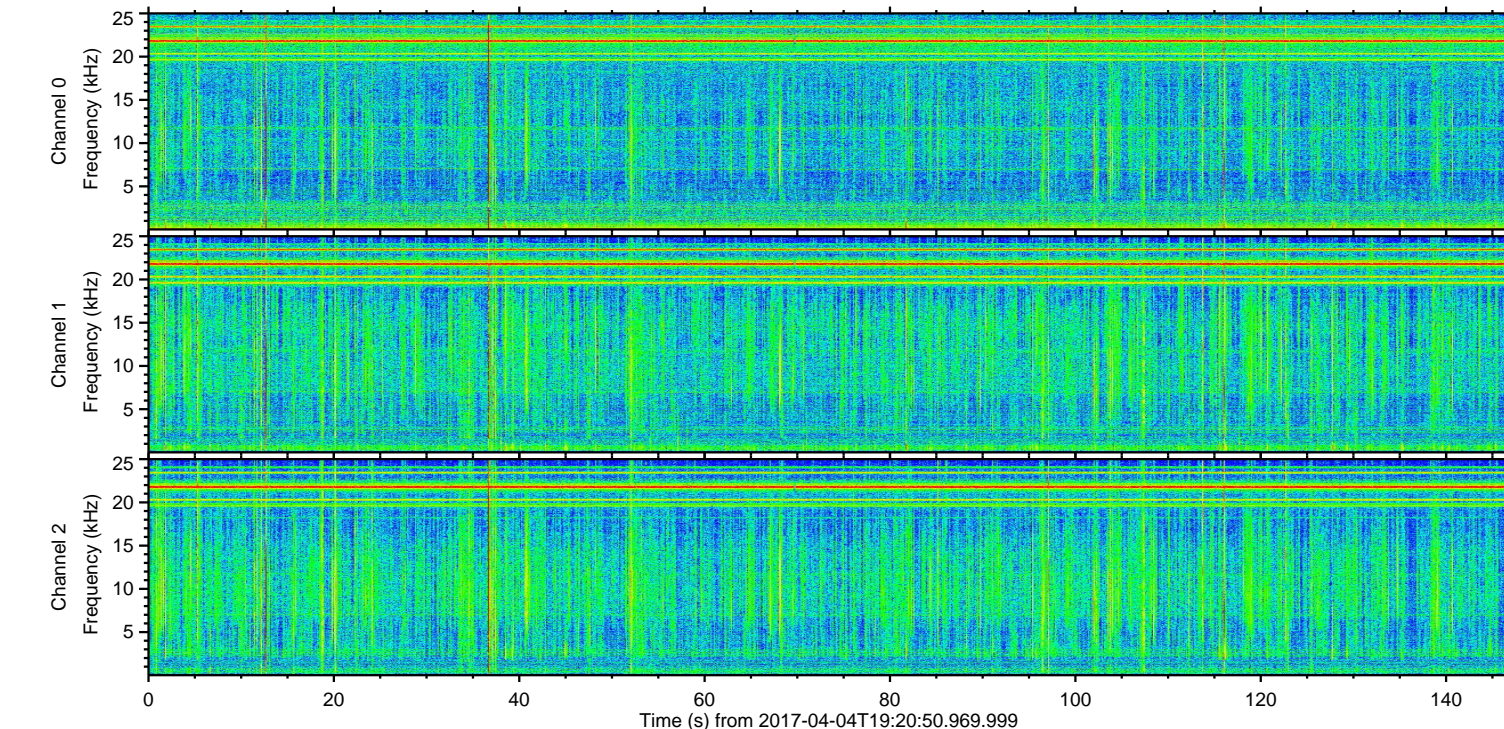
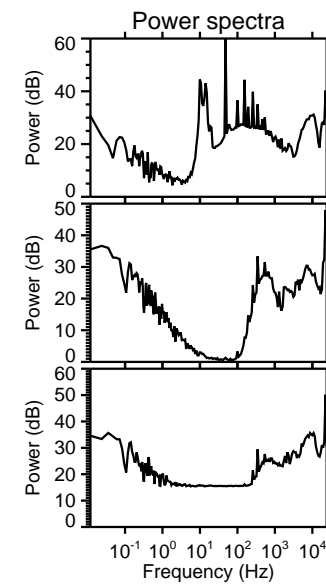
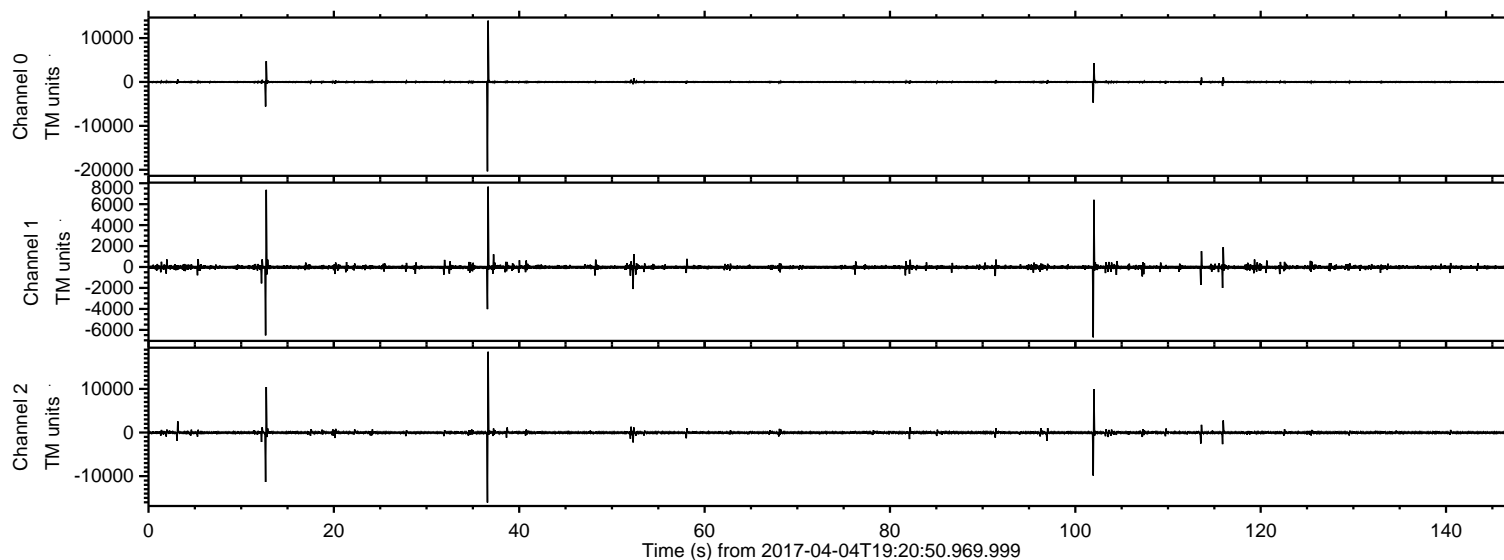
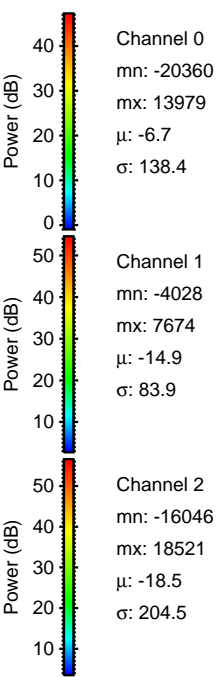
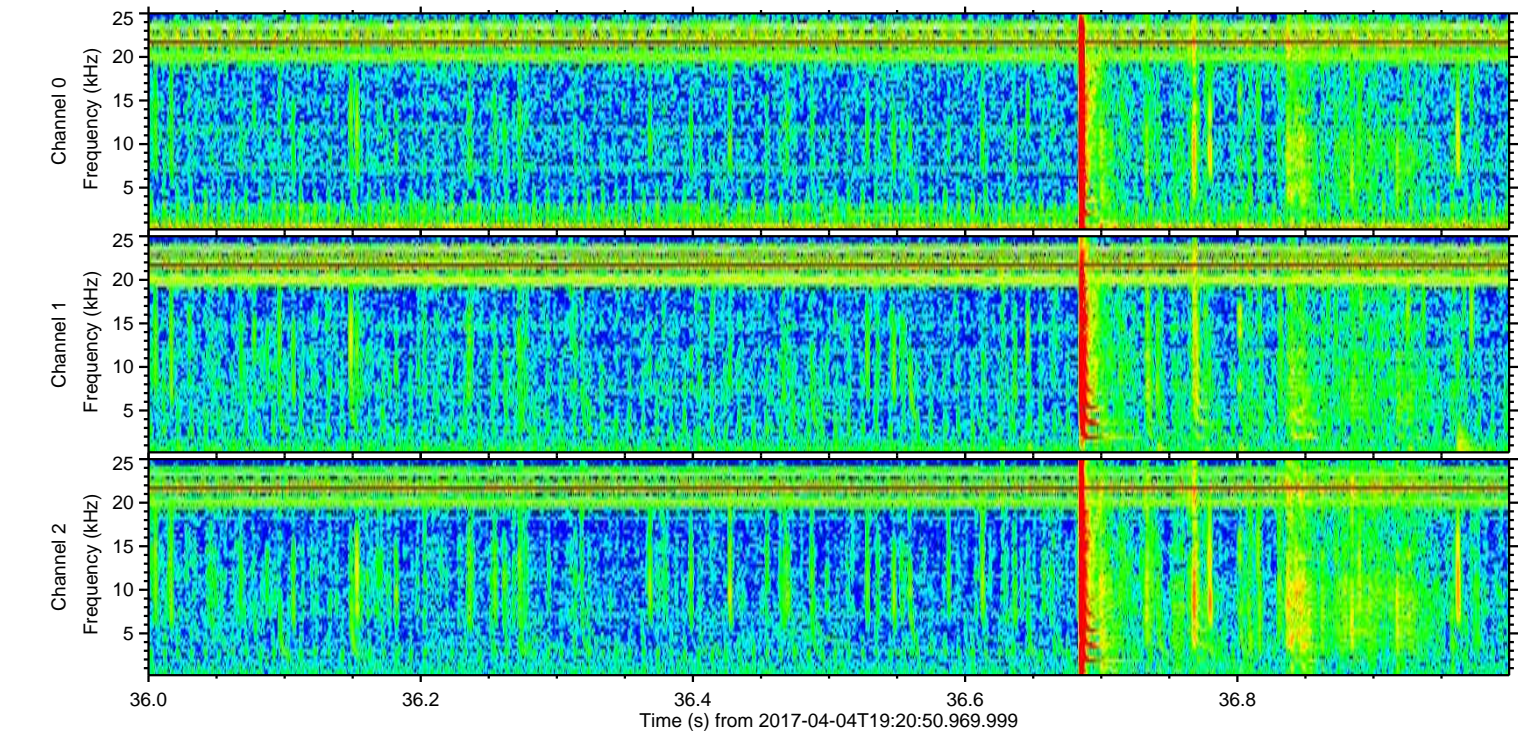
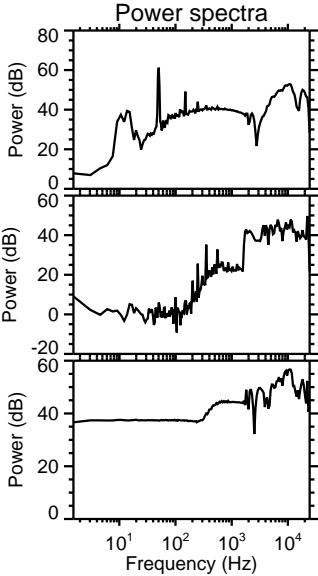
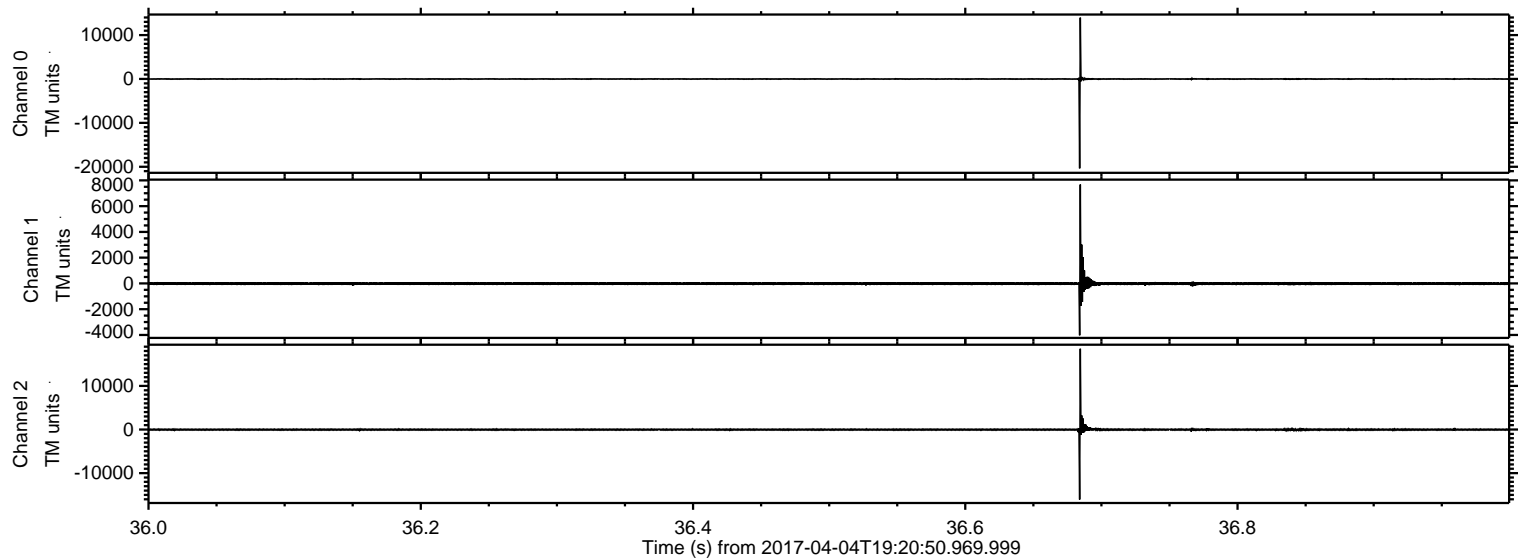


ELMAVAN 3D WAVEFORMS (Measured data sampled at 50 kHz) 51000 packets of 144 samples from 2017-04-04T19:20:50.969.999.

Processed Tue Apr 4 21:28:33 2017 by ELM ver.2012-10-06 from 001__elm20170404_192049__dat00.bin

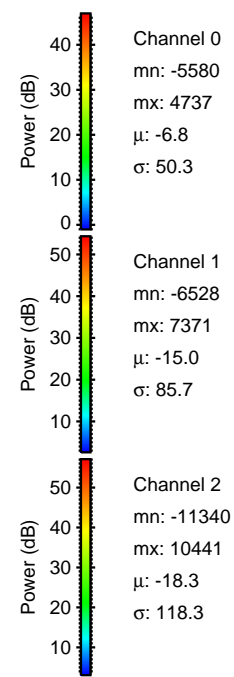
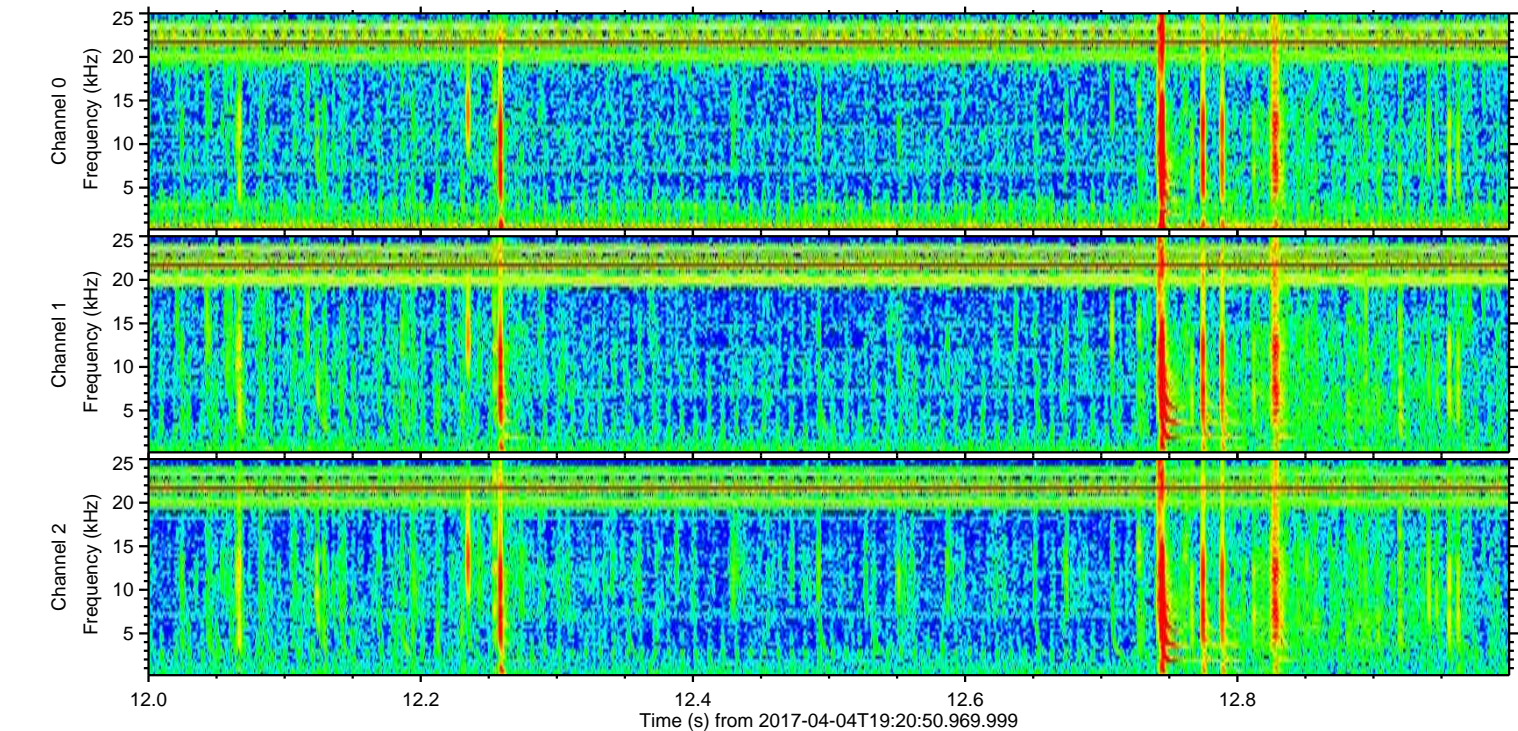
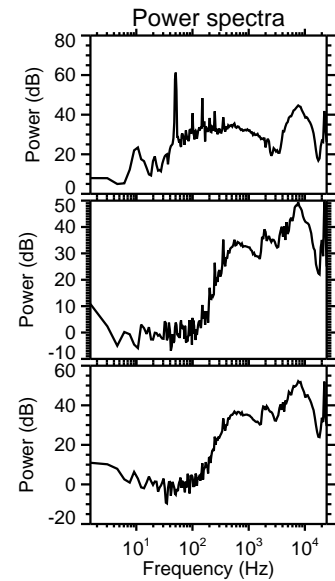
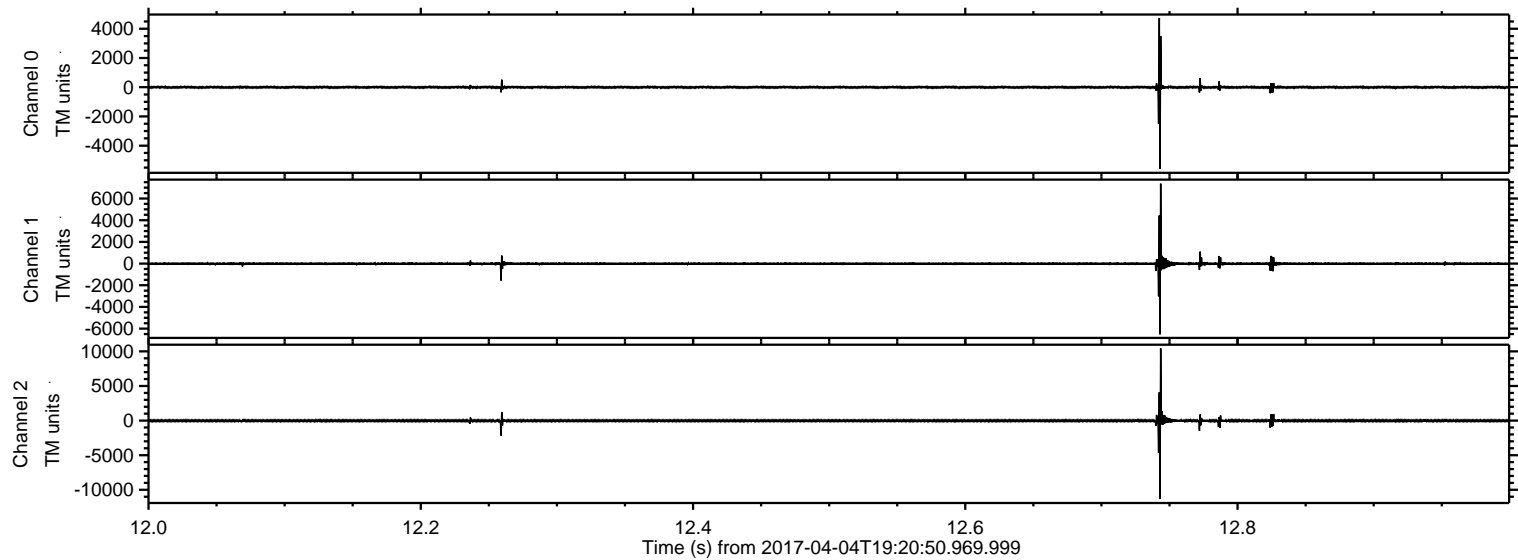


Processed Tue Apr 4 21:28:45 2017 by ELM ver.2012-10-06 from 001__elm20170404_192049__dat00.bin



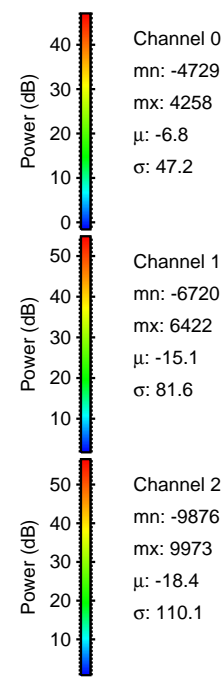
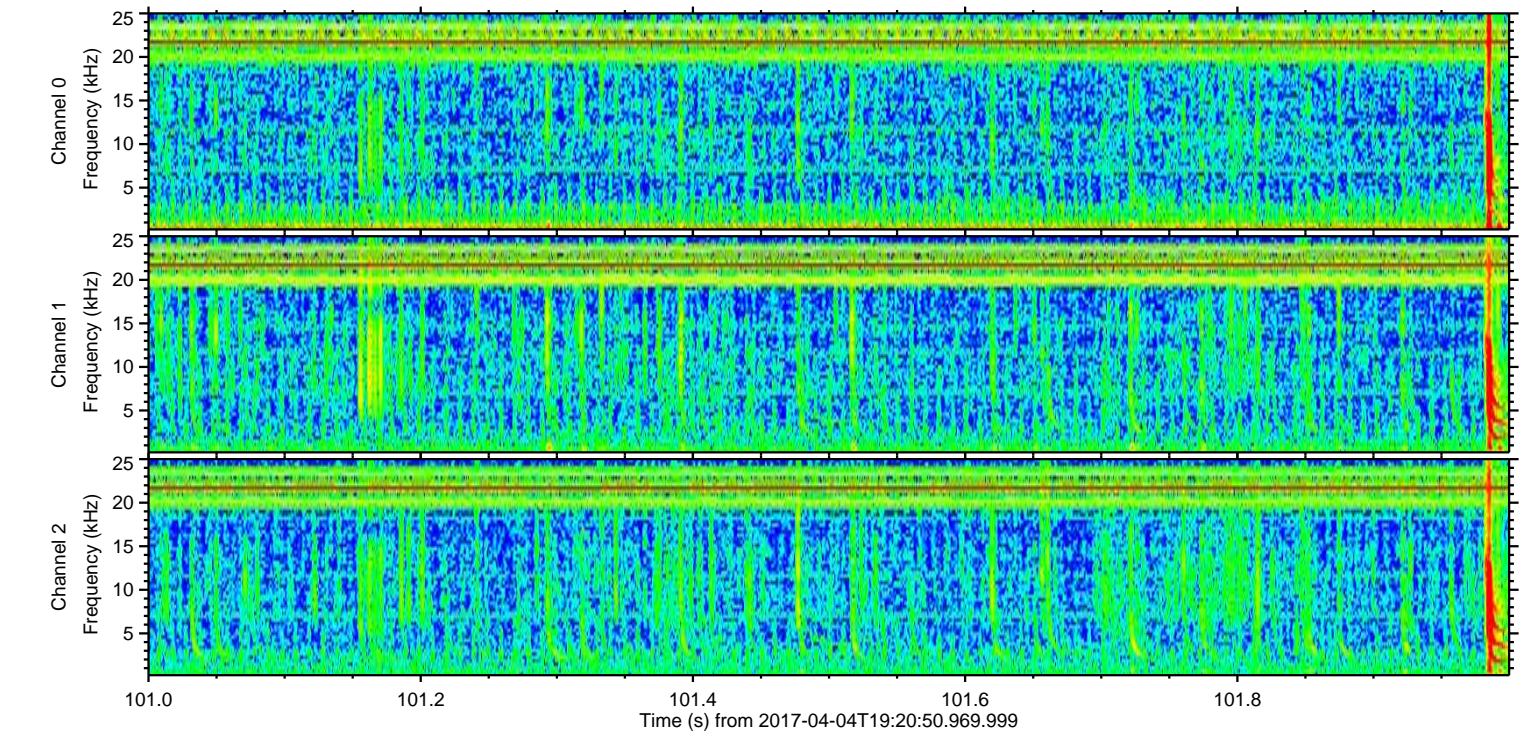
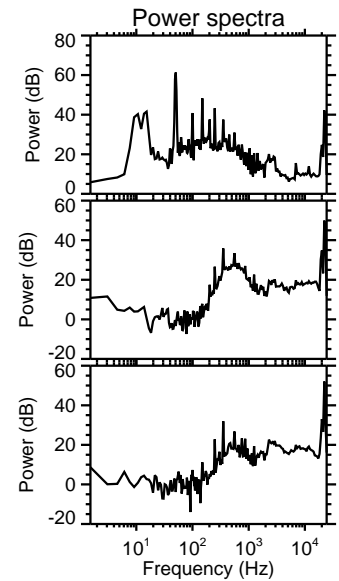
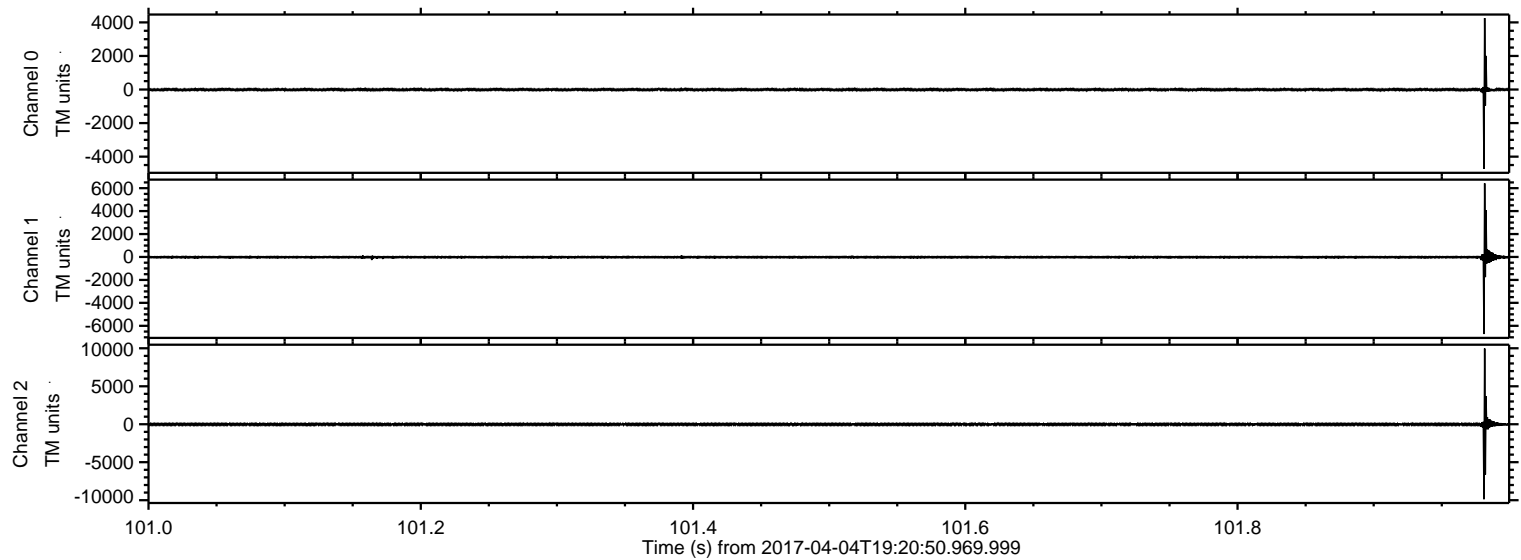
ELMAVAN 3D WAVEFORMS (Measured data sampled at 50 kHz) 51000 packets of 144 samples from 2017-04-04T19:20:50.969.999. Part 13/147

Processed Tue Apr 4 21:28:46 2017 by ELM ver.2012-10-06 from 001__elm20170404_192049__dat00.bin



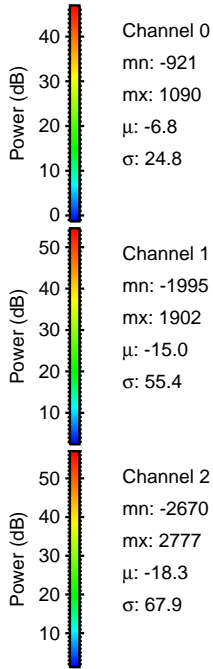
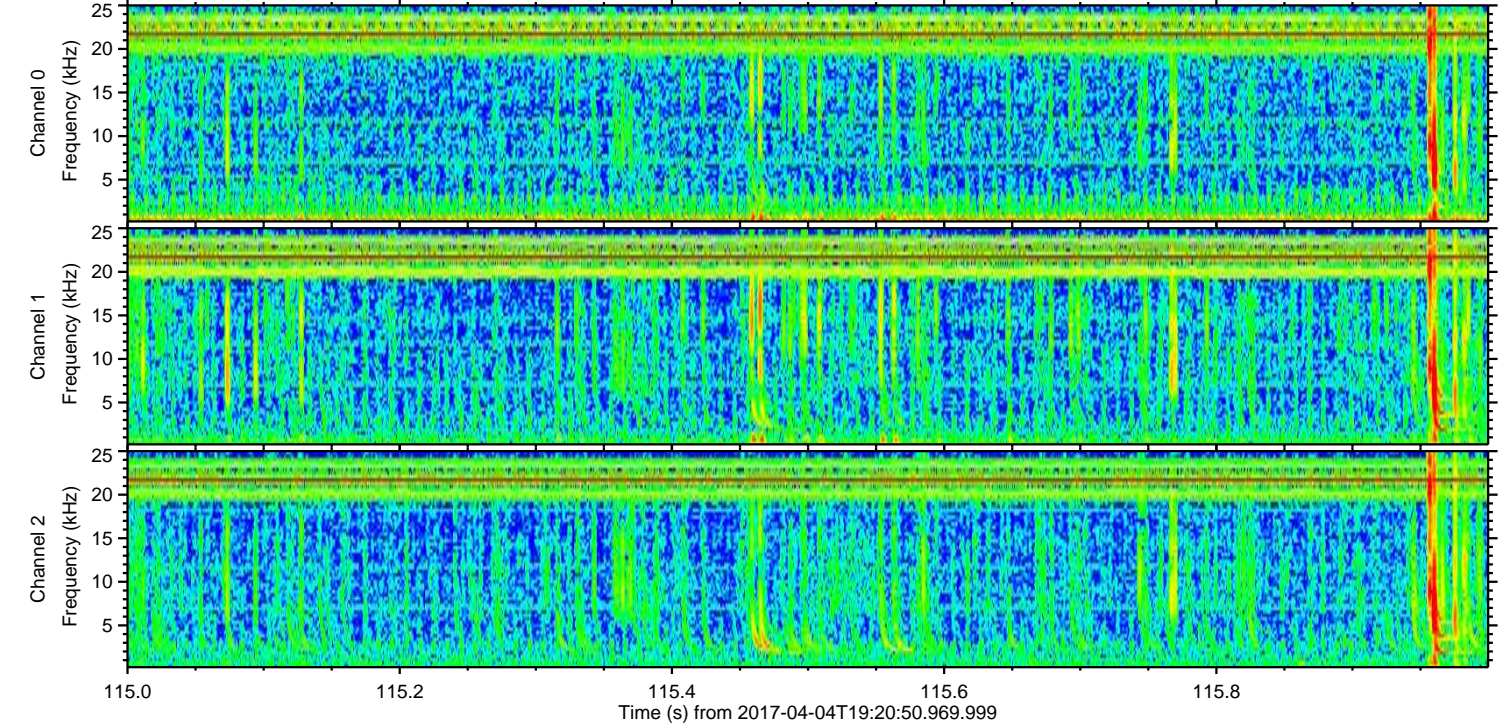
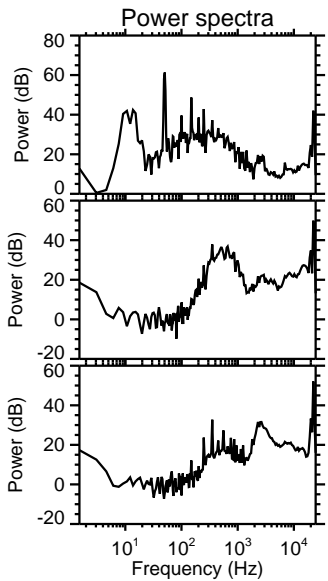
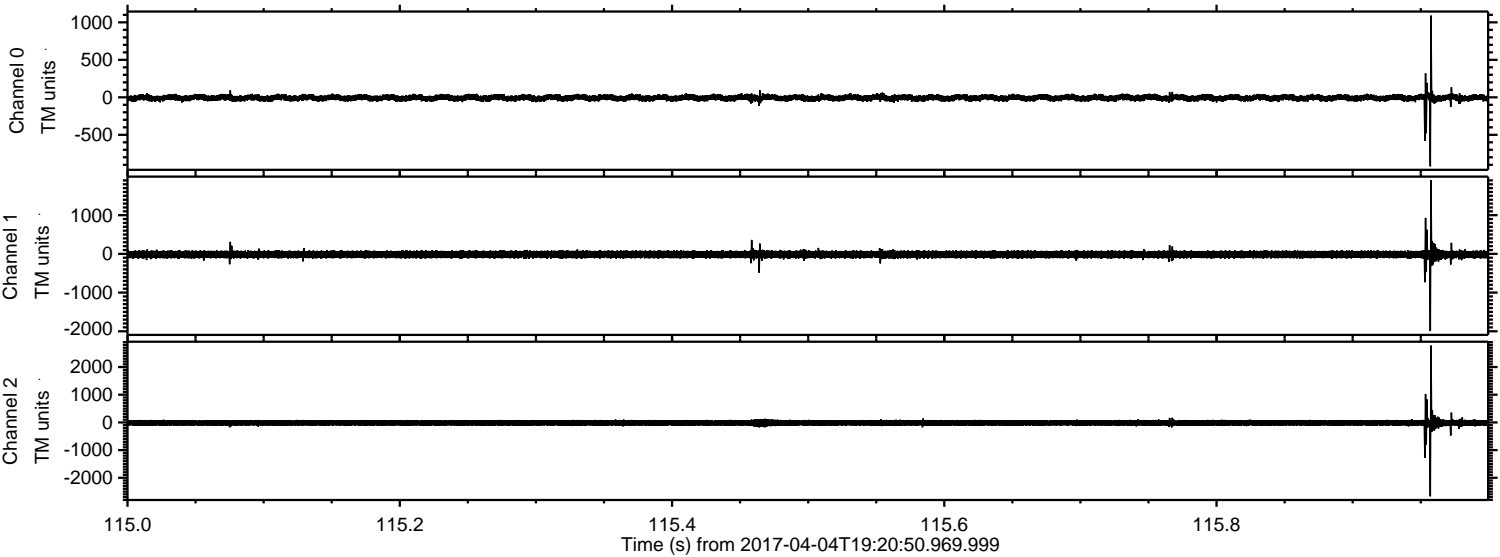
ELMAVAN 3D WAVEFORMS (Measured data sampled at 50 kHz) 51000 packets of 144 samples from 2017-04-04T19:20:50.969.999. Part 102/147

Processed Tue Apr 4 21:28:47 2017 by ELM ver.2012-10-06 from 001__elm20170404_192049__dat00.bin



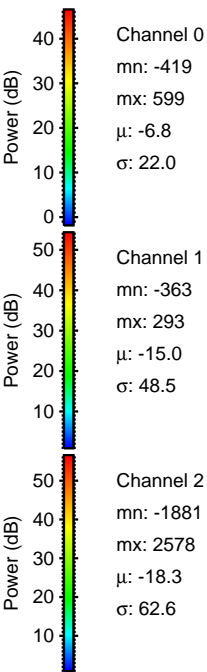
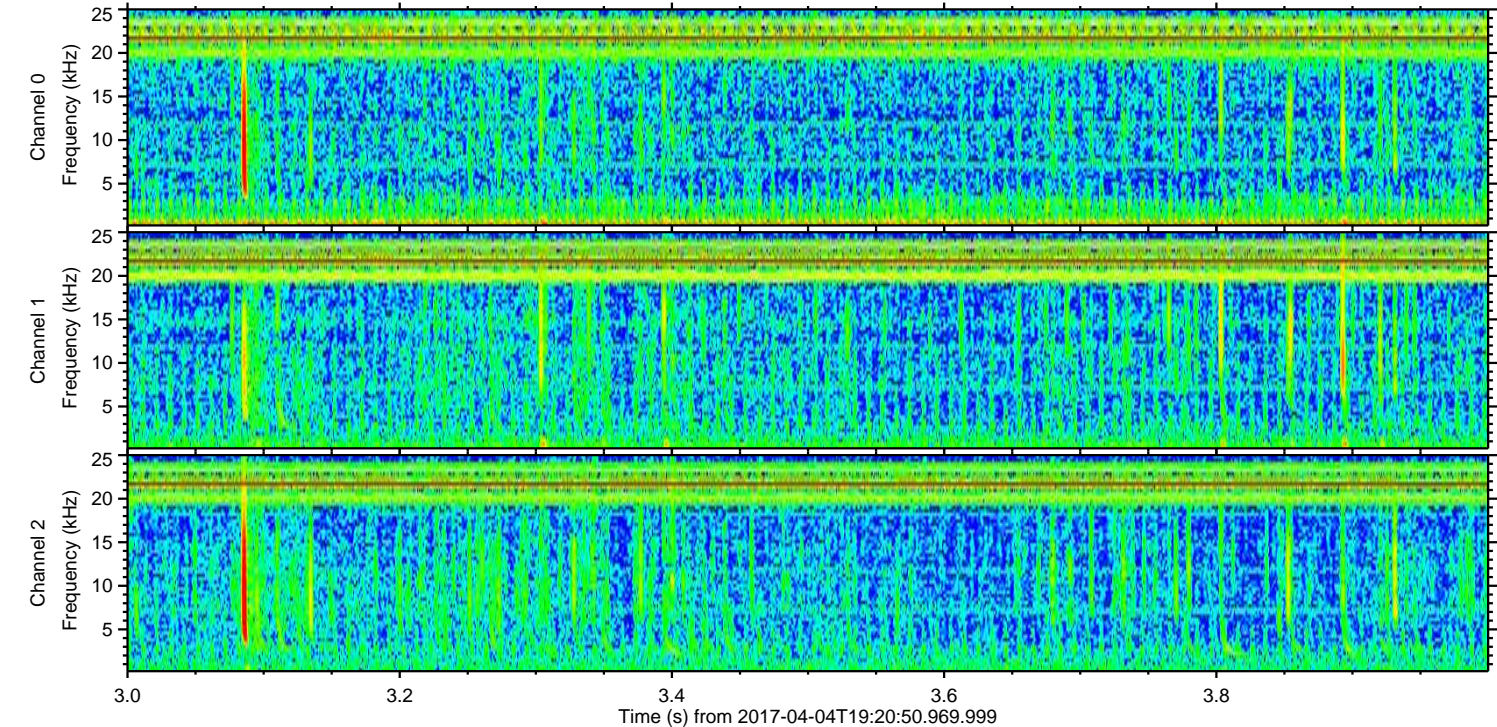
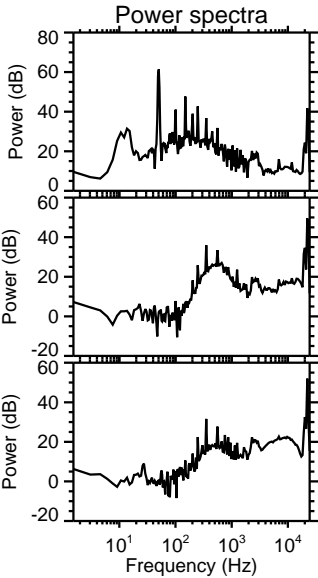
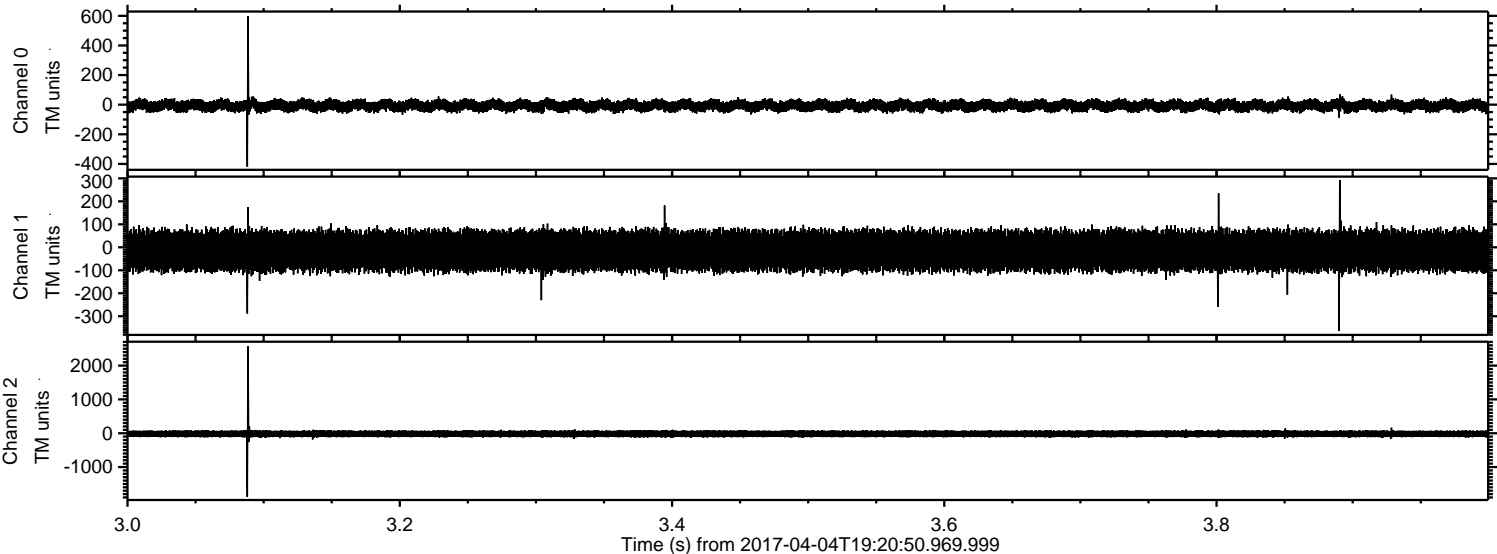
ELMAVAN 3D WAVEFORMS (Measured data sampled at 50 kHz) 51000 packets of 144 samples from 2017-04-04T19:20:50.969.999. Part 116/147

Processed Tue Apr 4 21:28:47 2017 by ELM ver.2012-10-06 from 001__elm20170404_192049__dat00.bin



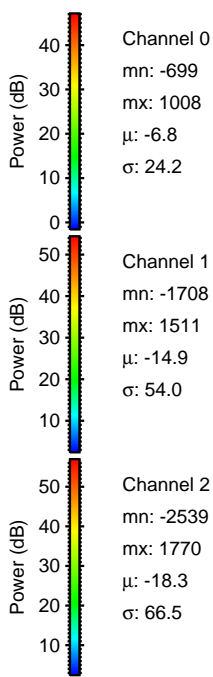
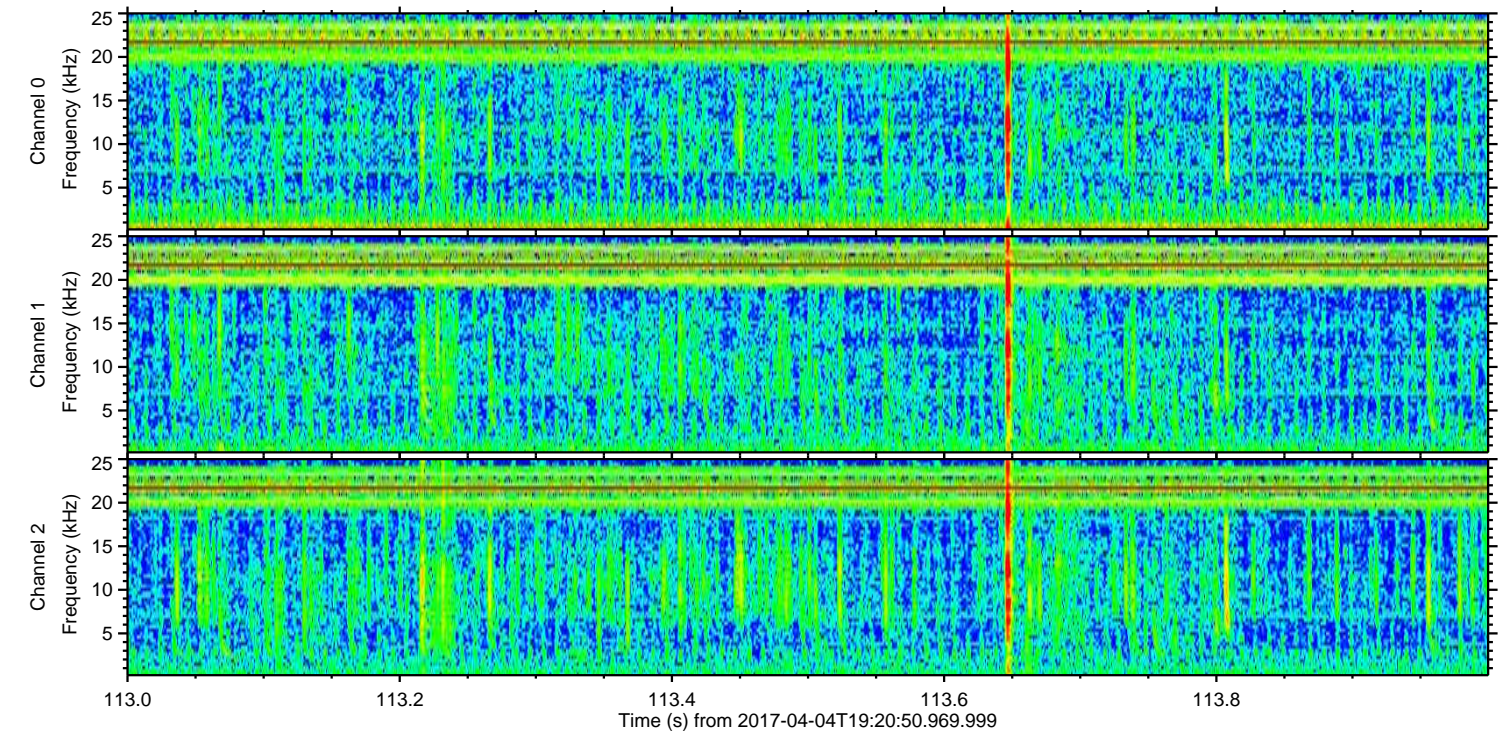
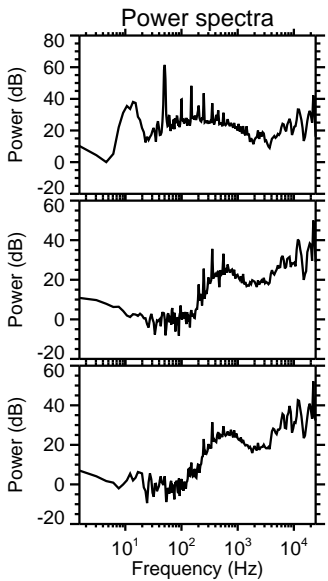
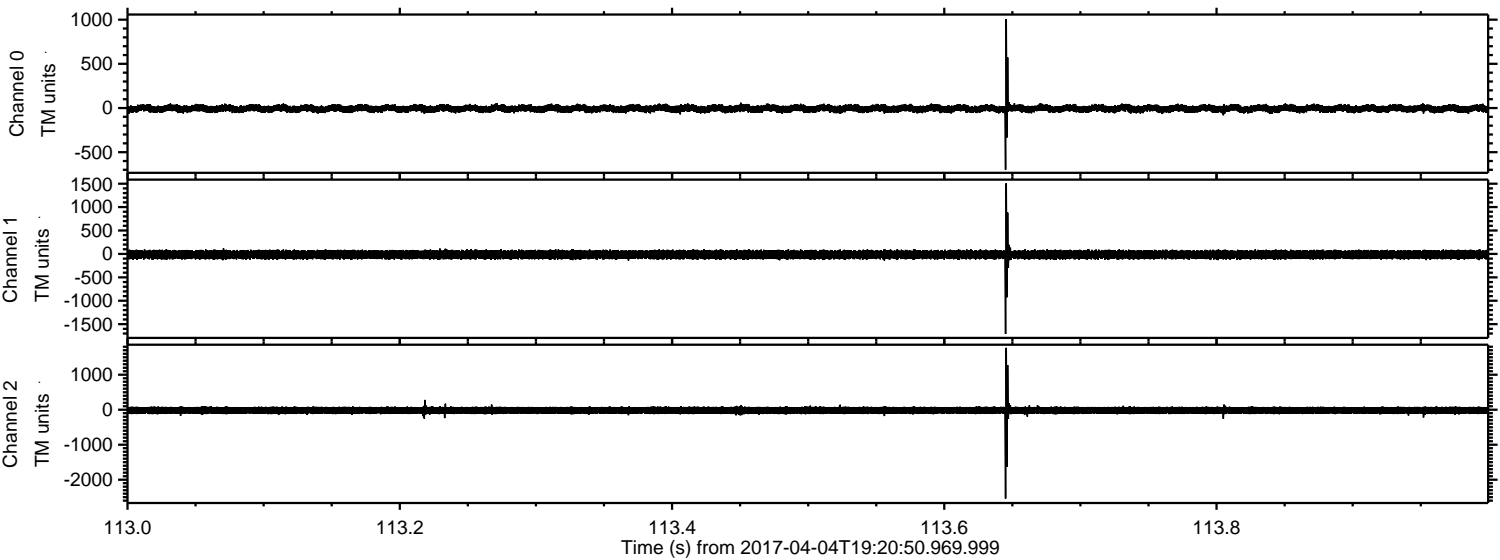
ELMAVAN 3D WAVEFORMS (Measured data sampled at 50 kHz) 51000 packets of 144 samples from 2017-04-04T19:20:50.969.999. Part 4/147

Processed Tue Apr 4 21:28:48 2017 by ELM ver.2012-10-06 from 001__elm20170404_192049__dat00.bin

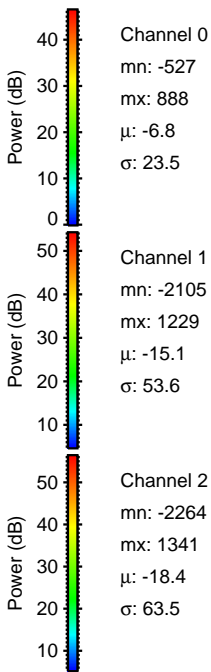
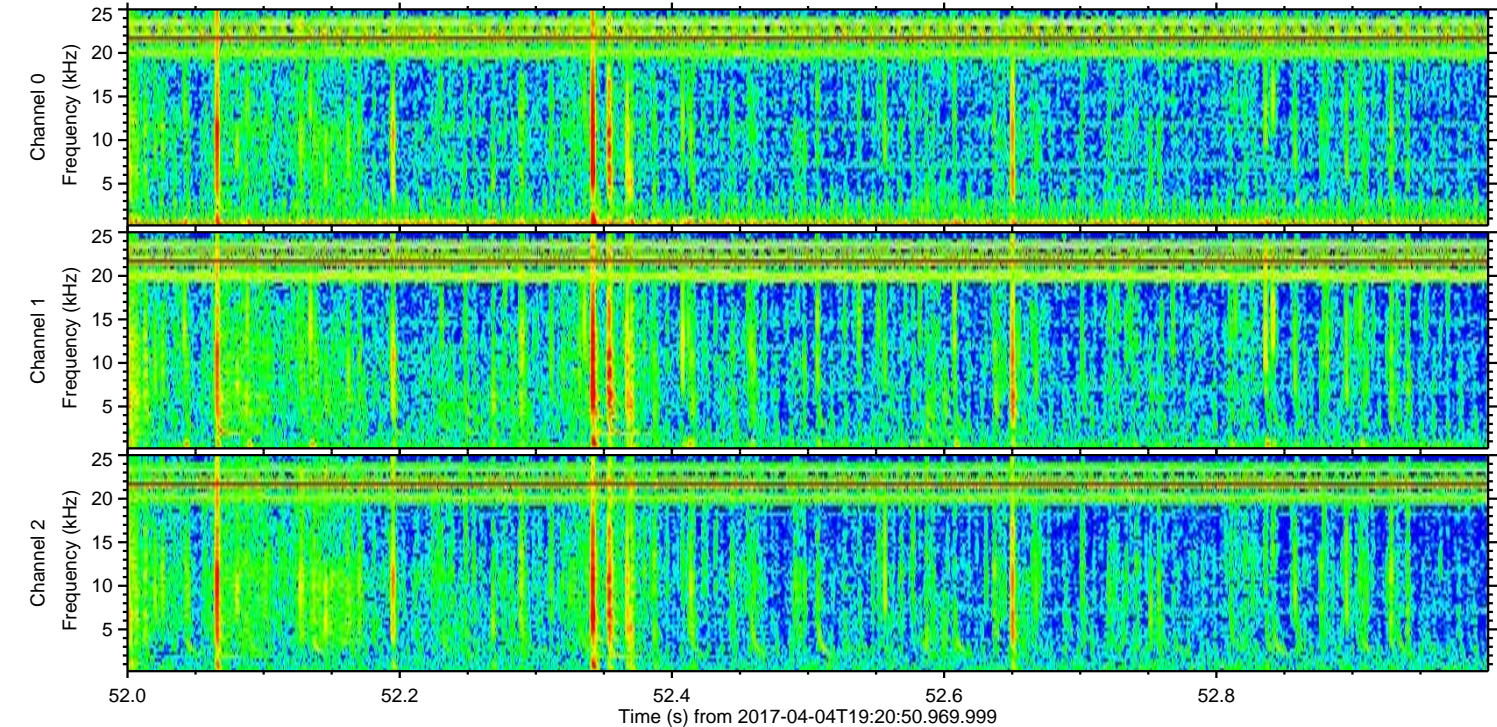
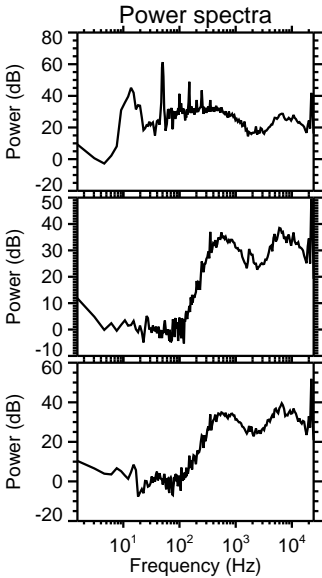
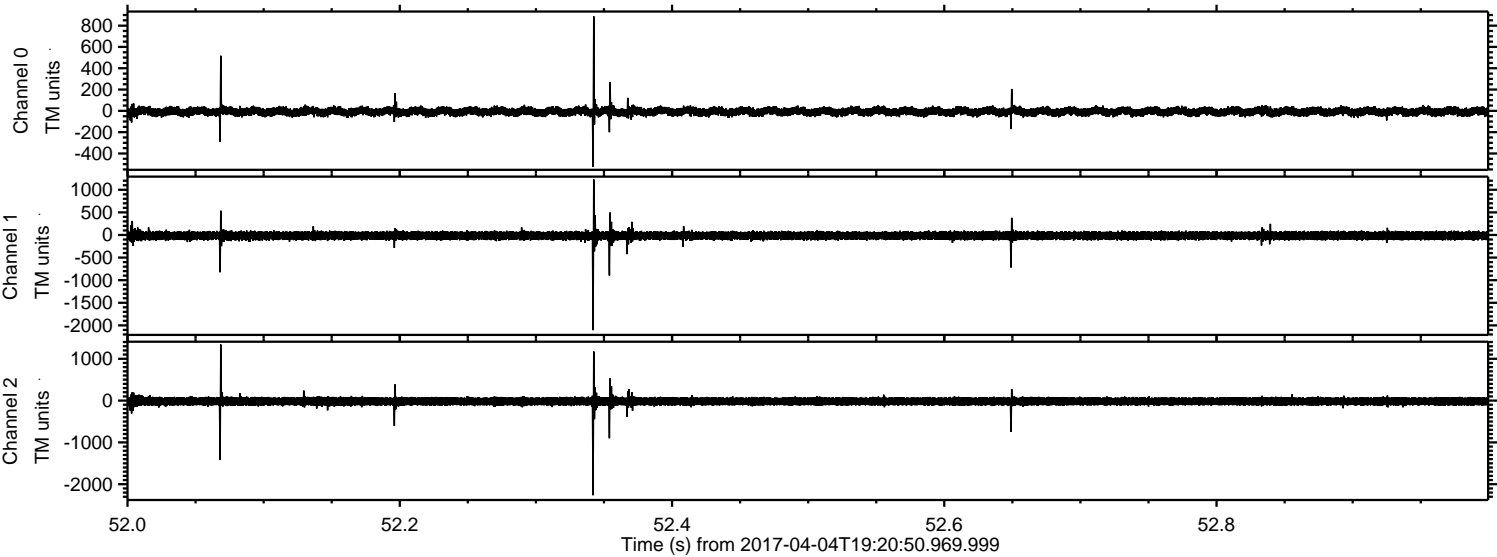


ELMAVAN 3D WAVEFORMS (Measured data sampled at 50 kHz) 51000 packets of 144 samples from 2017-04-04T19:20:50.969.999. Part 114/147

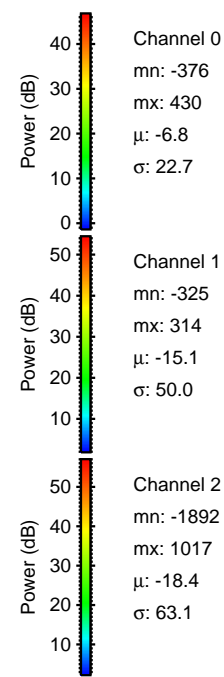
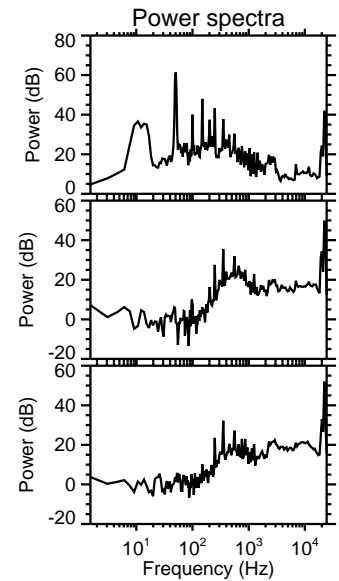
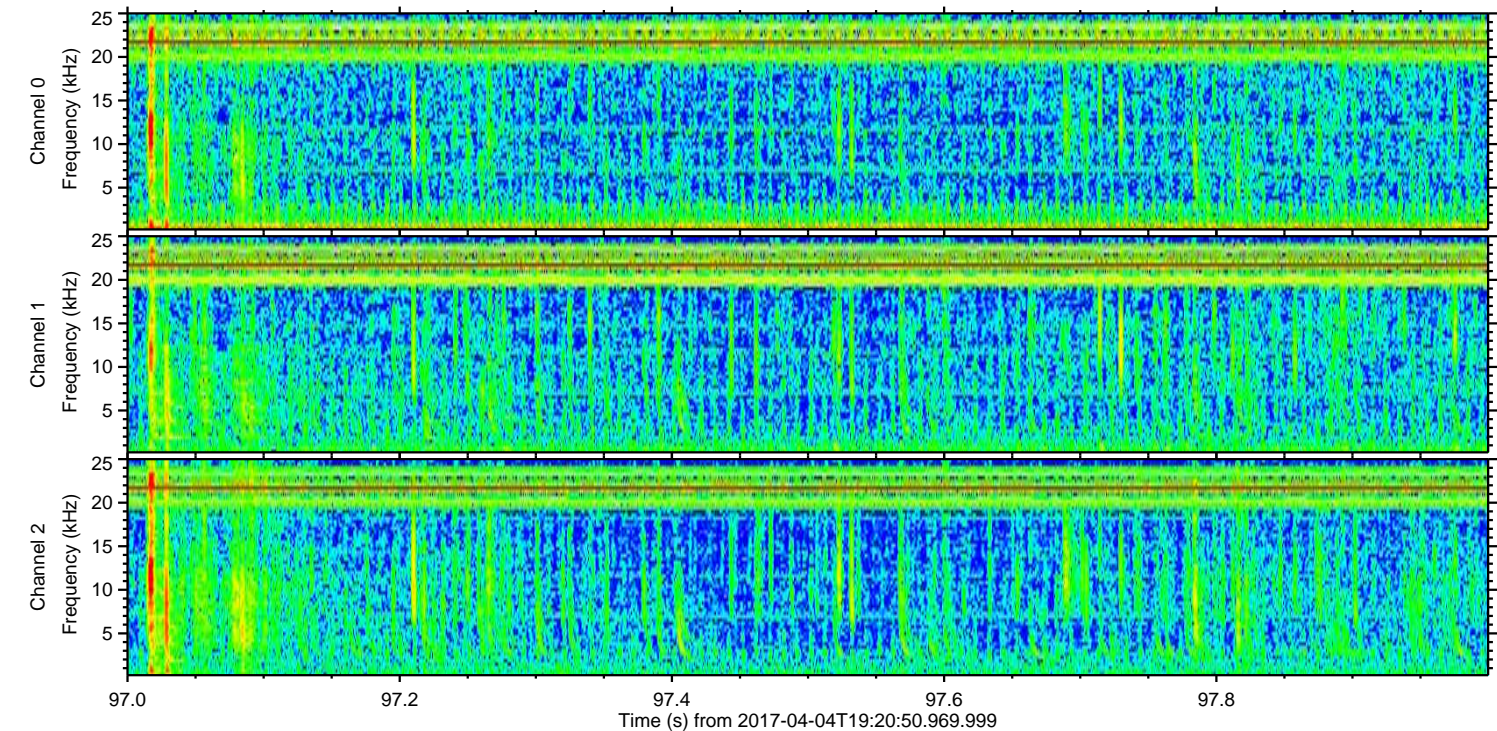
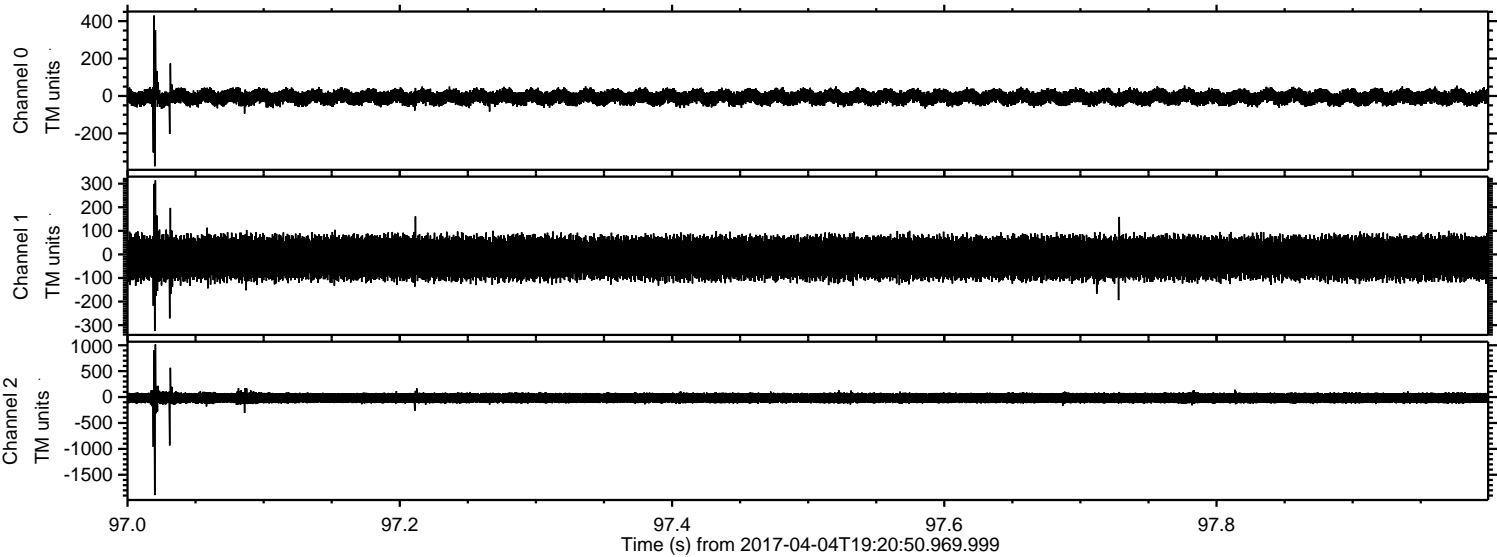
Processed Tue Apr 4 21:28:49 2017 by ELM ver.2012-10-06 from 001__elm20170404_192049__dat00.bin



Processed Tue Apr 4 21:28:50 2017 by ELM ver.2012-10-06 from 001__elm20170404_192049__dat00.bin



Processed Tue Apr 4 21:28:51 2017 by ELM ver.2012-10-06 from 001__elm20170404_192049__dat00.bin

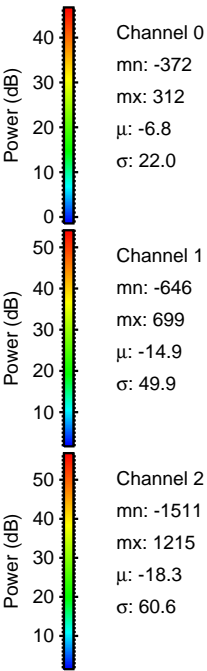
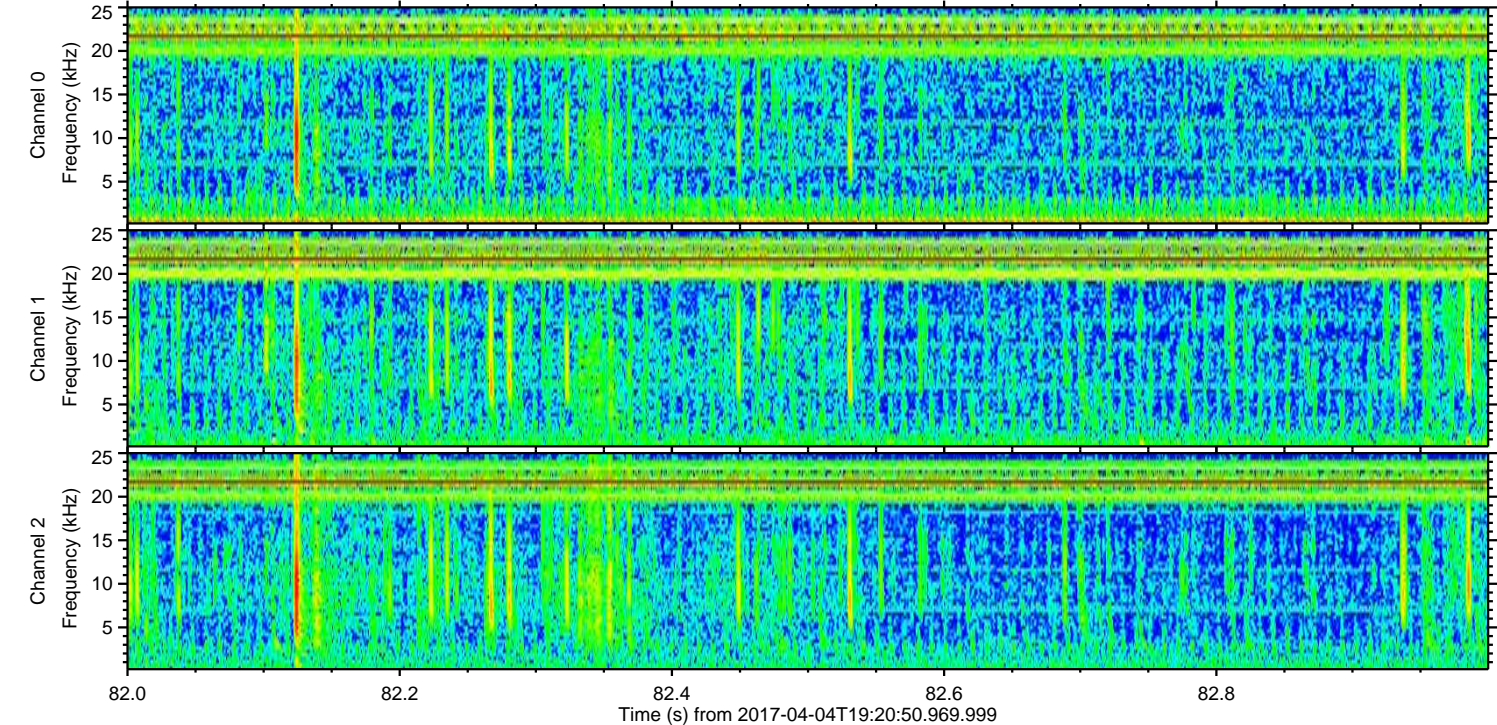
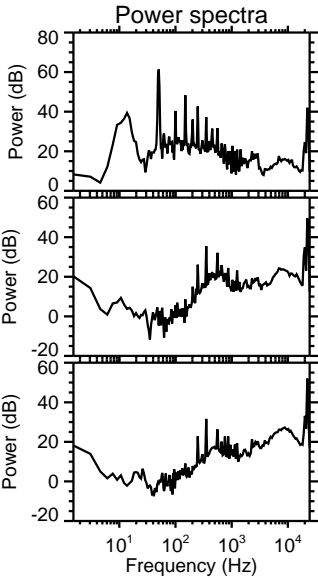
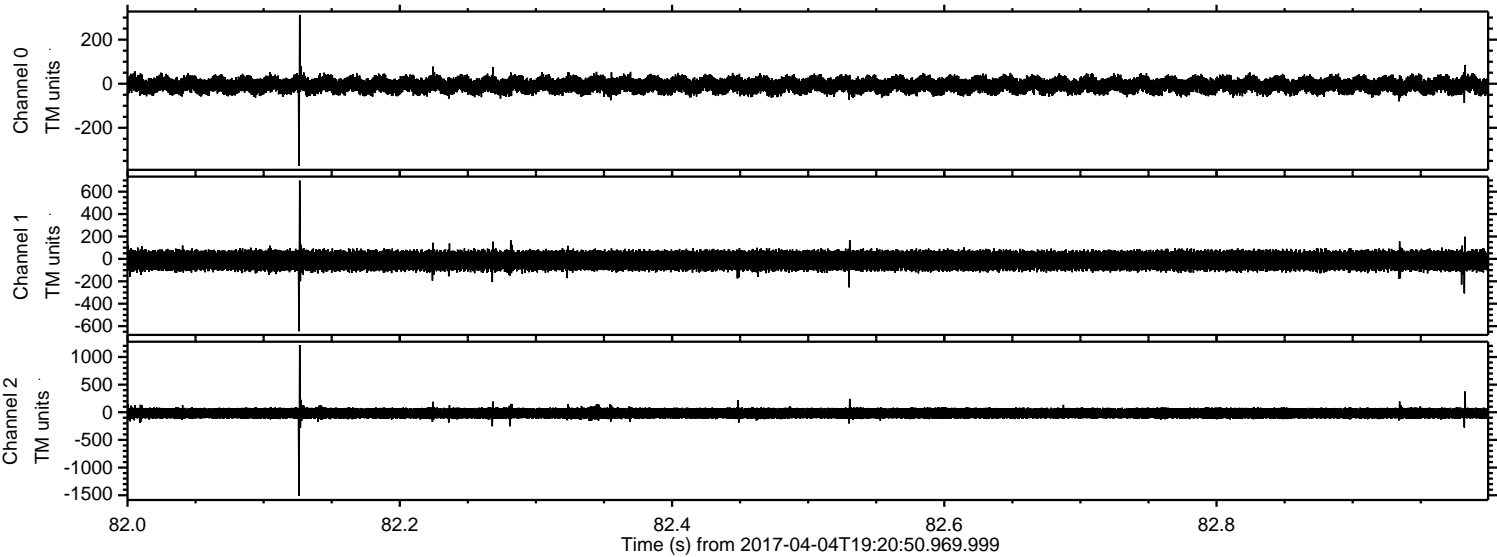


Channel 0
mn: -376
mx: 430
 μ : -6.8
 σ : 22.7

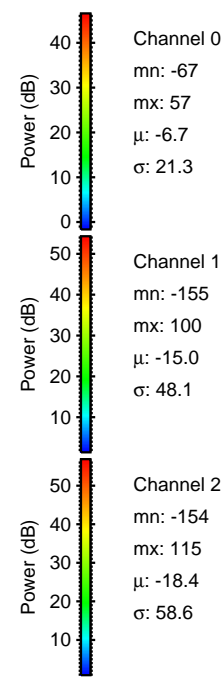
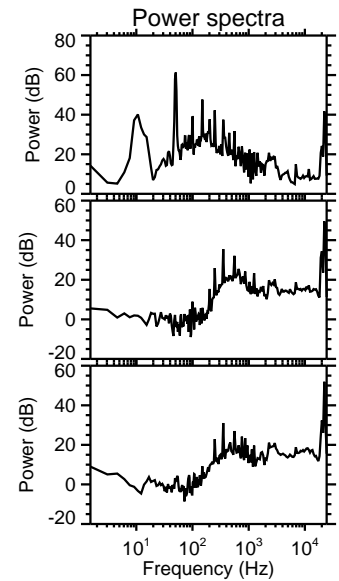
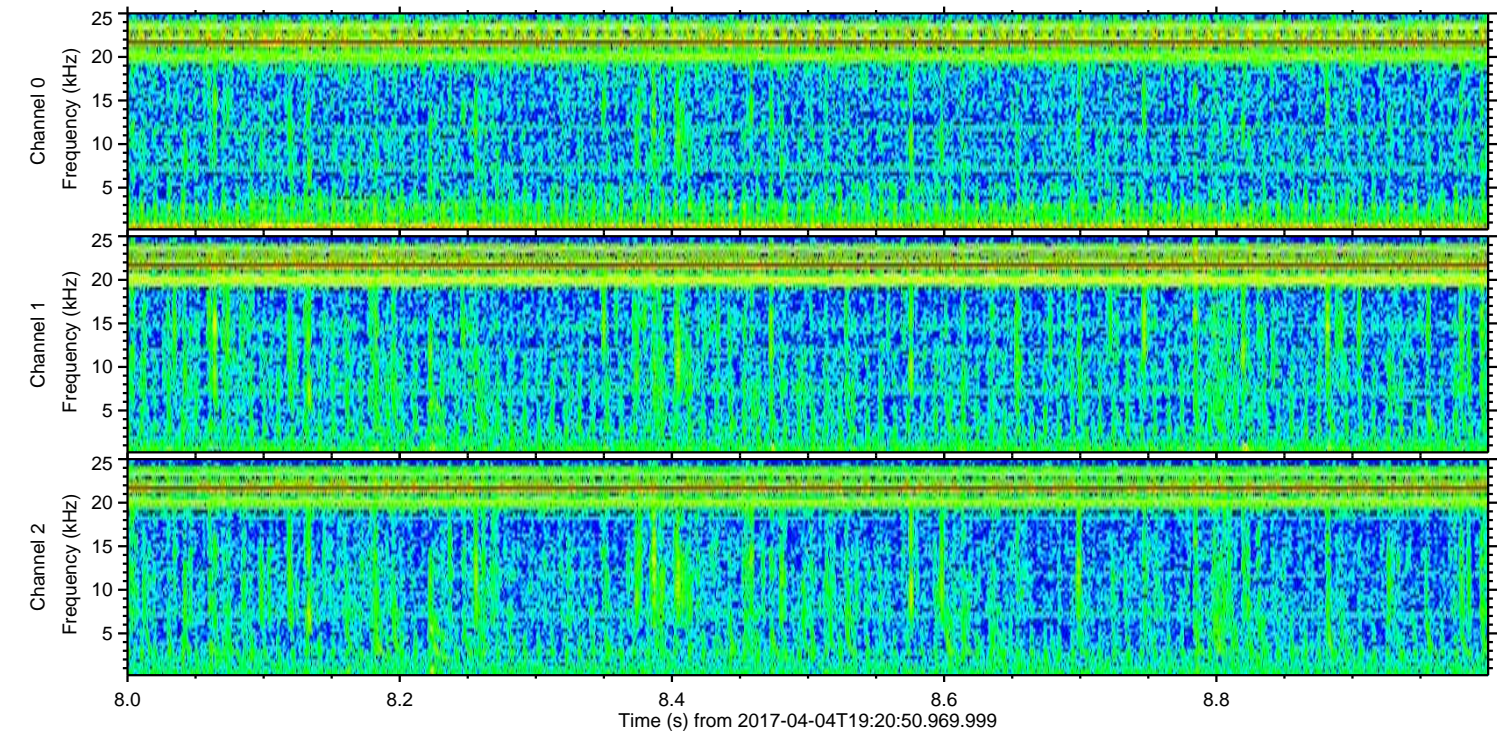
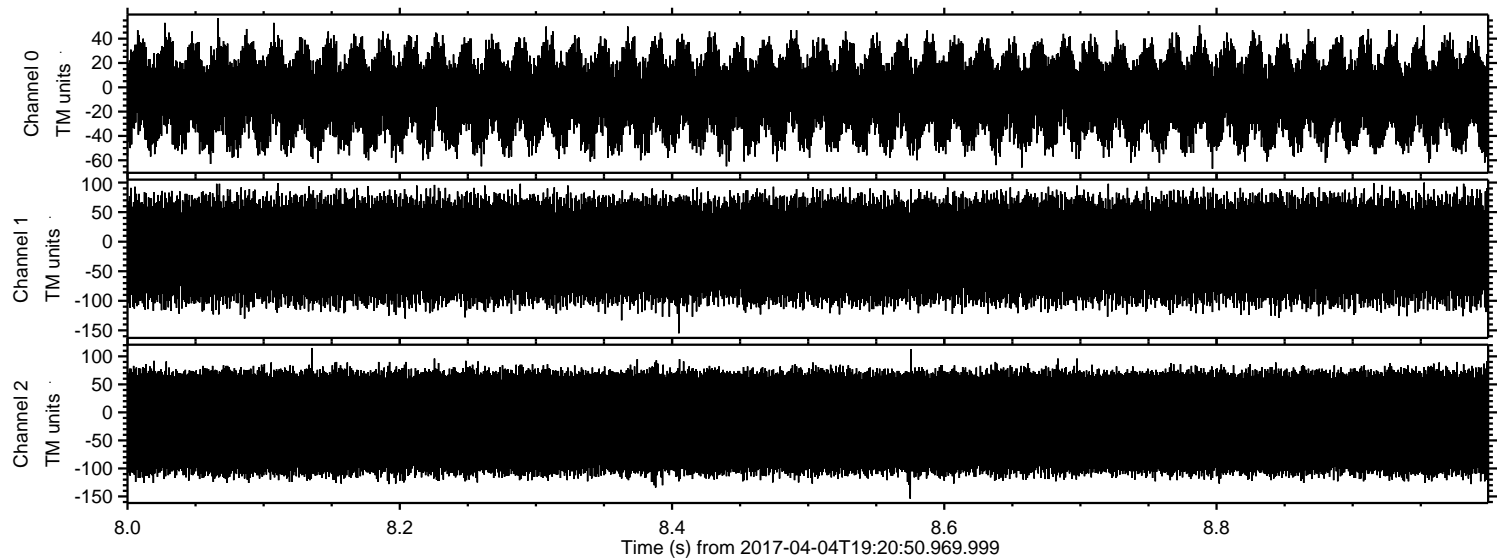
Channel 1
mn: -325
mx: 314
 μ : -15.1
 σ : 50.0

Channel 2
mn: -1892
mx: 1017
 μ : -18.4
 σ : 63.1

Processed Tue Apr 4 21:28:52 2017 by ELM ver.2012-10-06 from 001__elm20170404_192049__dat00.bin



Processed Tue Apr 4 21:28:53 2017 by ELM ver.2012-10-06 from 001__elm20170404_192049__dat00.bin



Power spectra

Channel 0
mn: -67
mx: 57
 μ : -6.7
 σ : 21.3

Channel 1
mn: -155
mx: 100
 μ : -15.0
 σ : 48.1

Channel 2
mn: -154
mx: 115
 μ : -18.4
 σ : 58.6