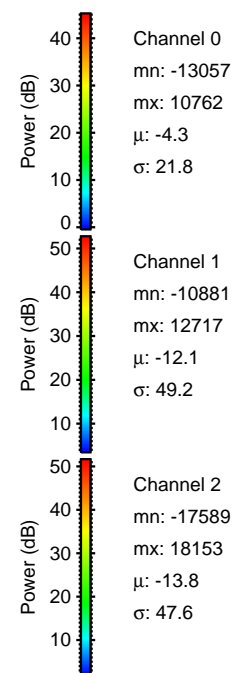
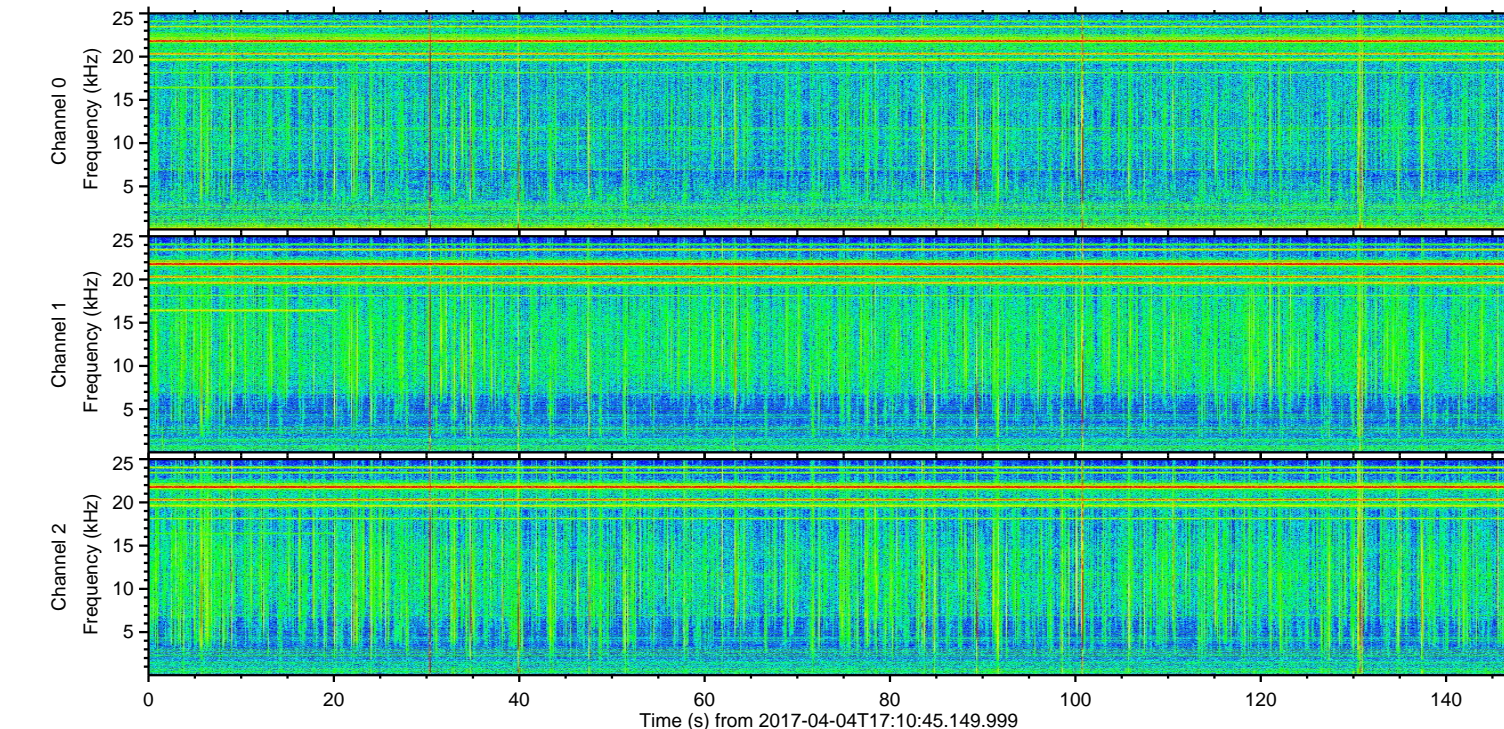
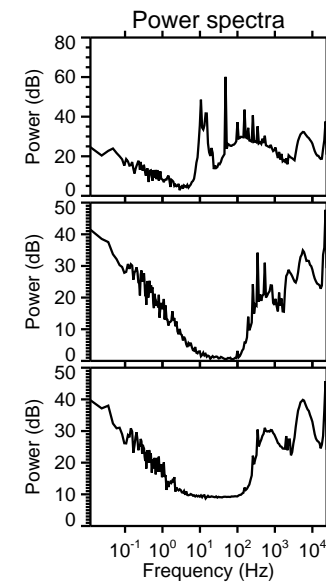
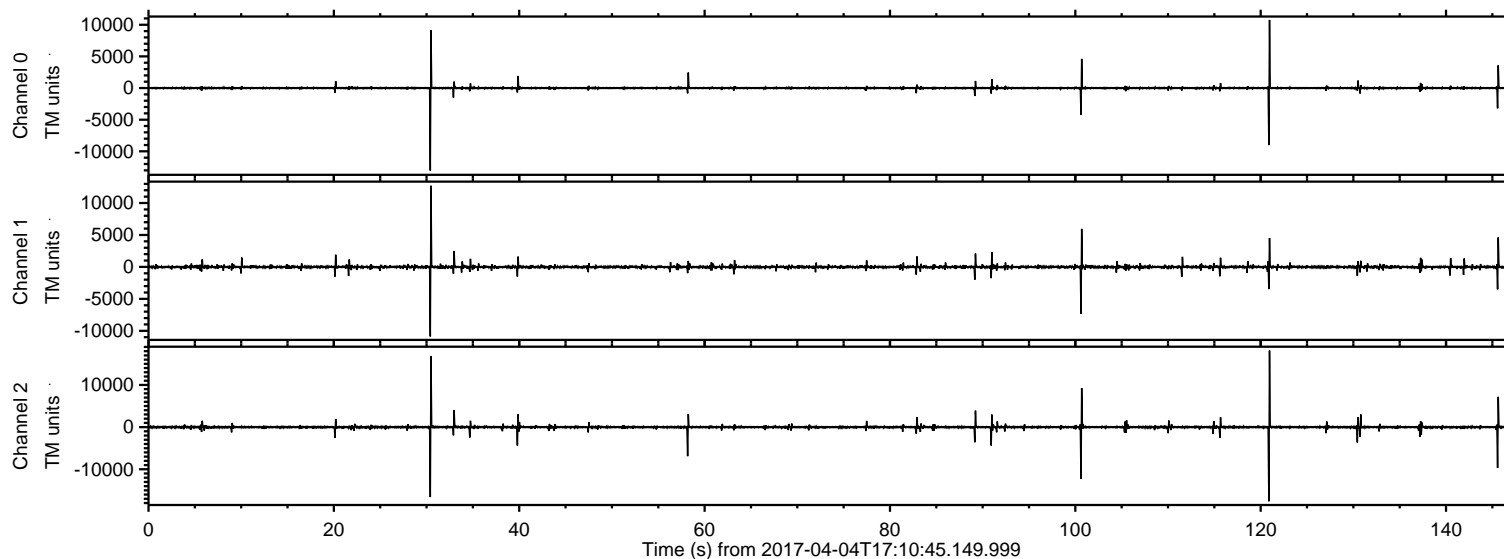


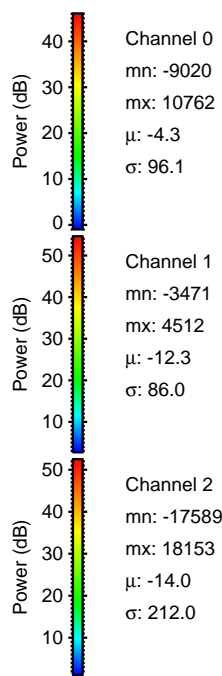
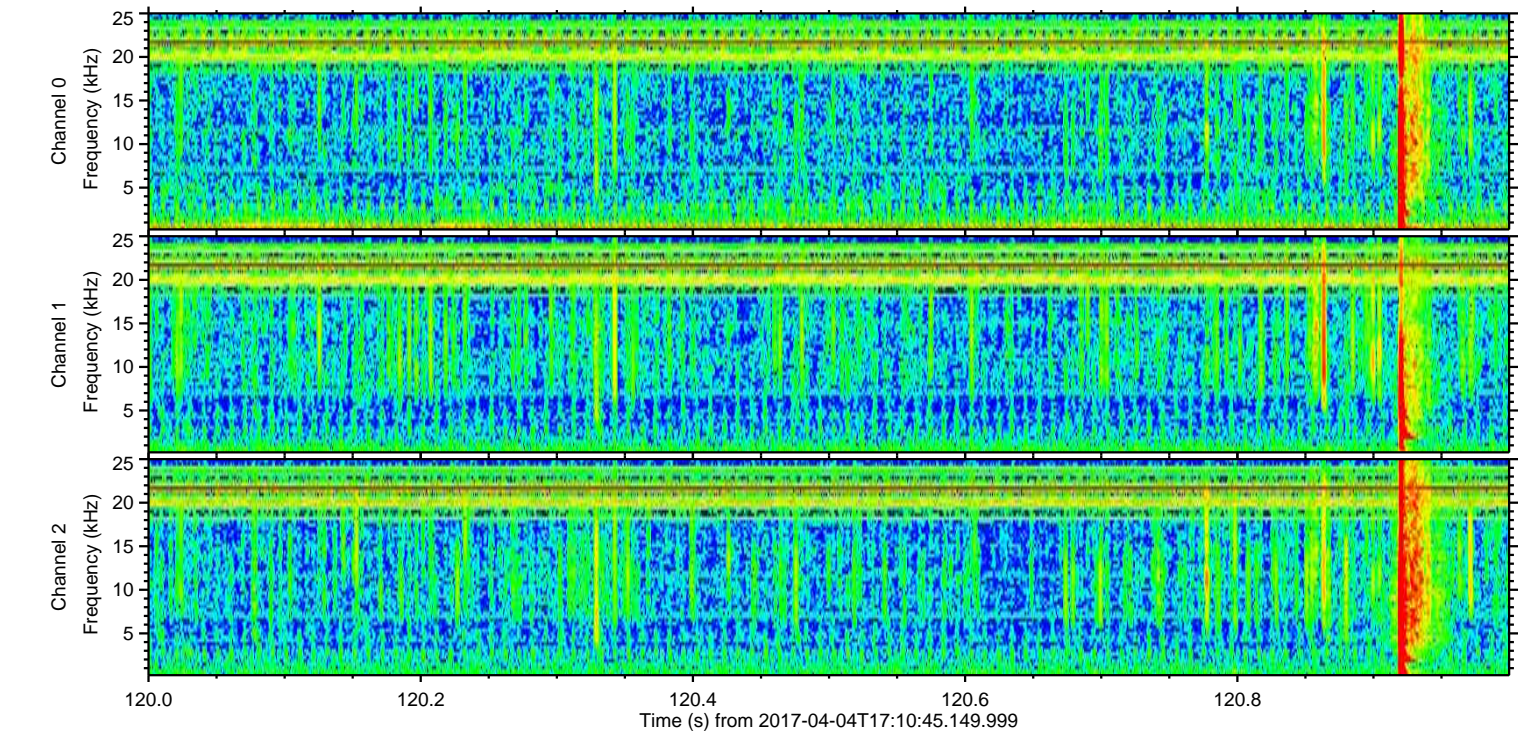
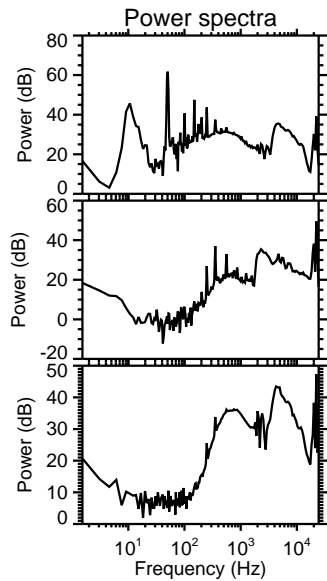
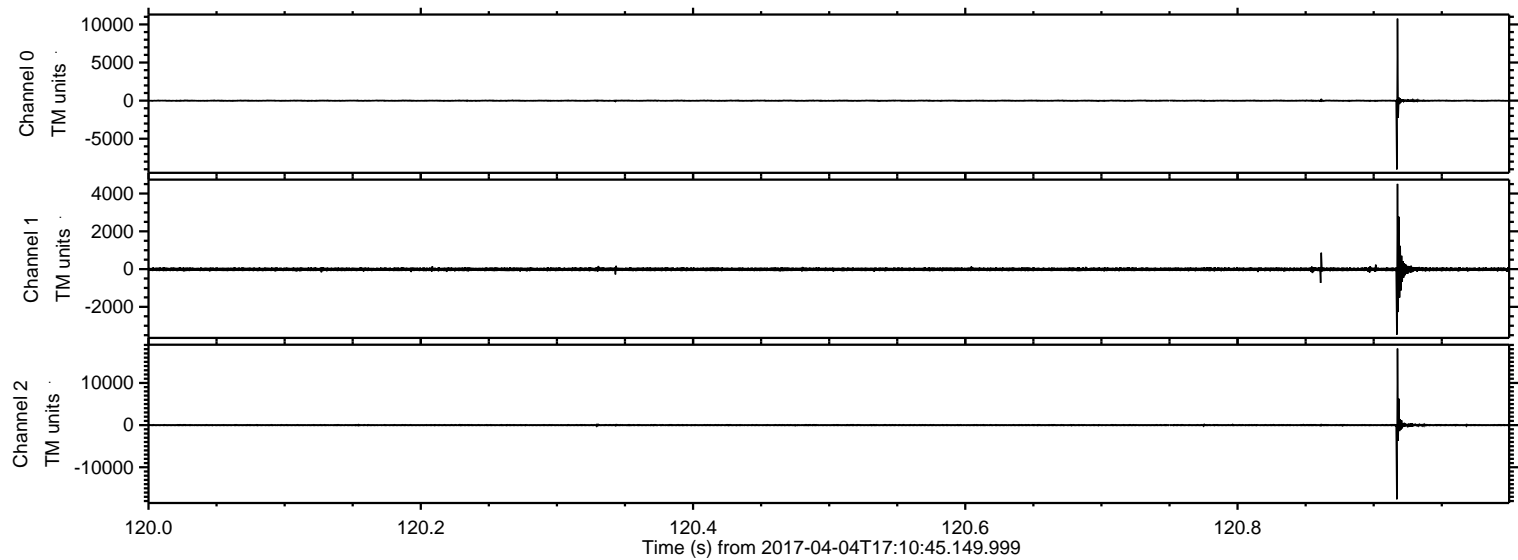
ELMAVAN 3D WAVEFORMS (Measured data sampled at 50 kHz) 51000 packets of 144 samples from 2017-04-04T17:10:45.149.999.

Processed Tue Apr 4 19:18:10 2017 by ELM ver.2012-10-06 from 001__elm20170404_171044__dat00.bin



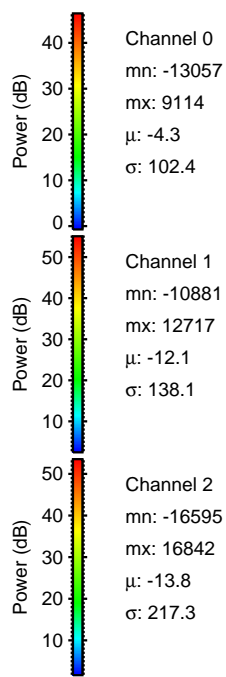
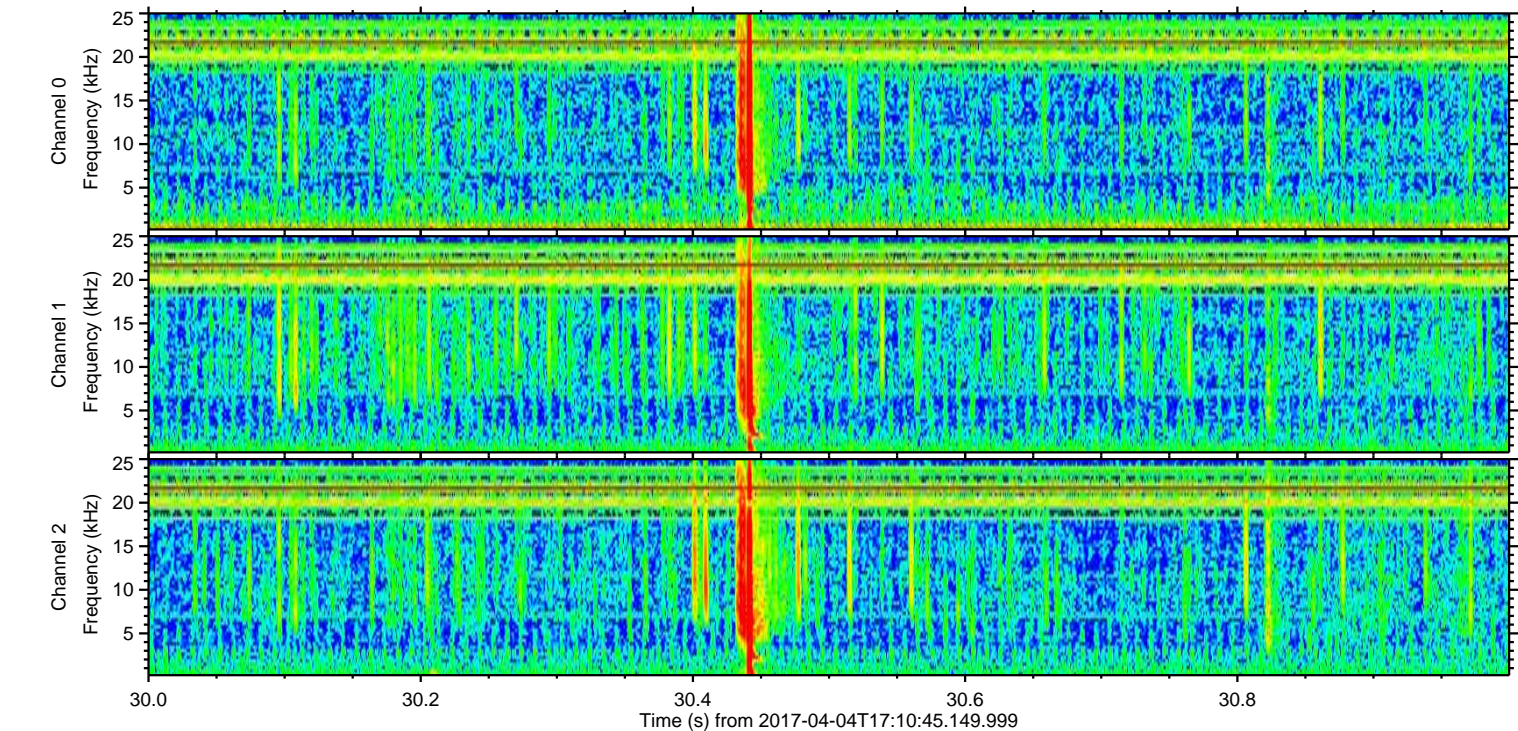
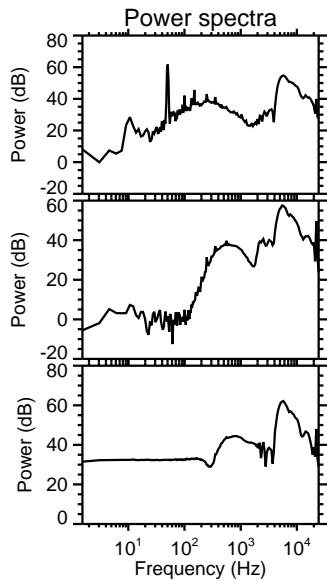
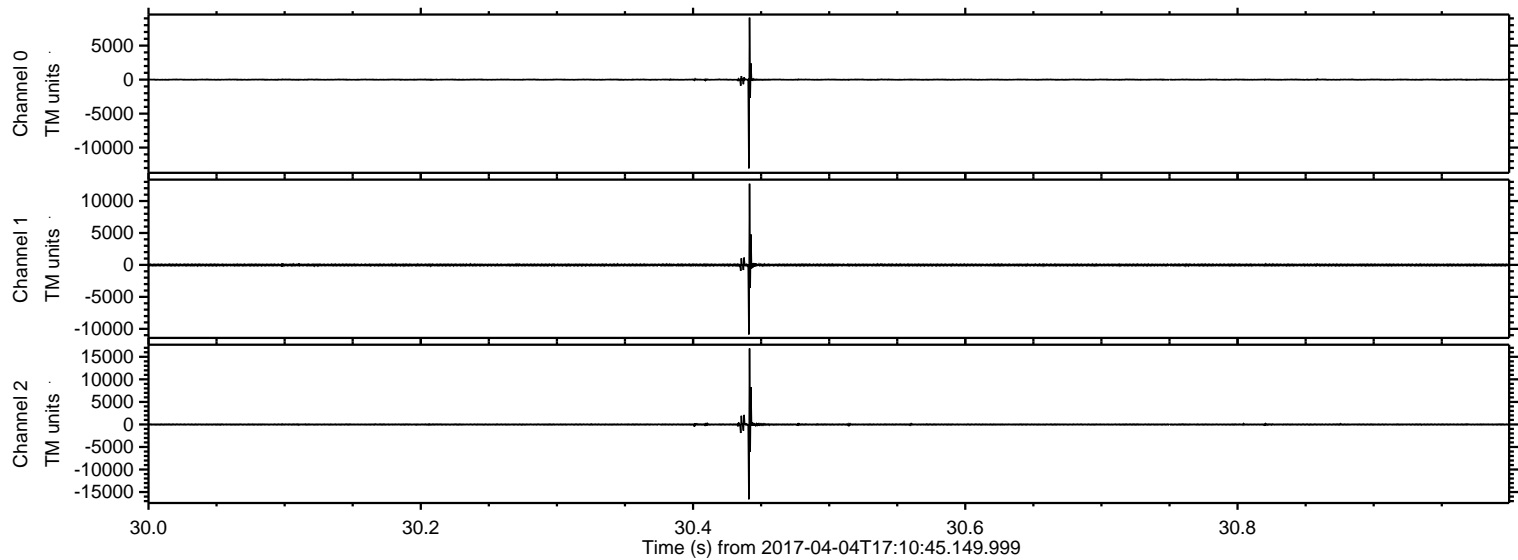
ELMAVAN 3D WAVEFORMS (Measured data sampled at 50 kHz) 51000 packets of 144 samples from 2017-04-04T17:10:45.149.999. Part 121/147

Processed Tue Apr 4 19:18:21 2017 by ELM ver.2012-10-06 from 001__elm20170404_171044__dat00.bin



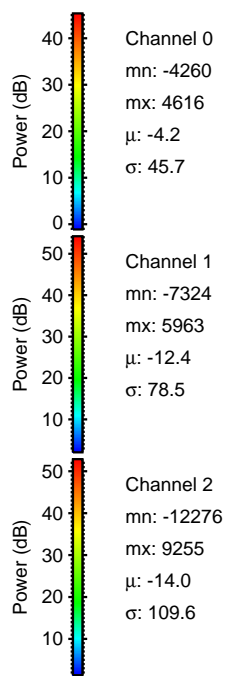
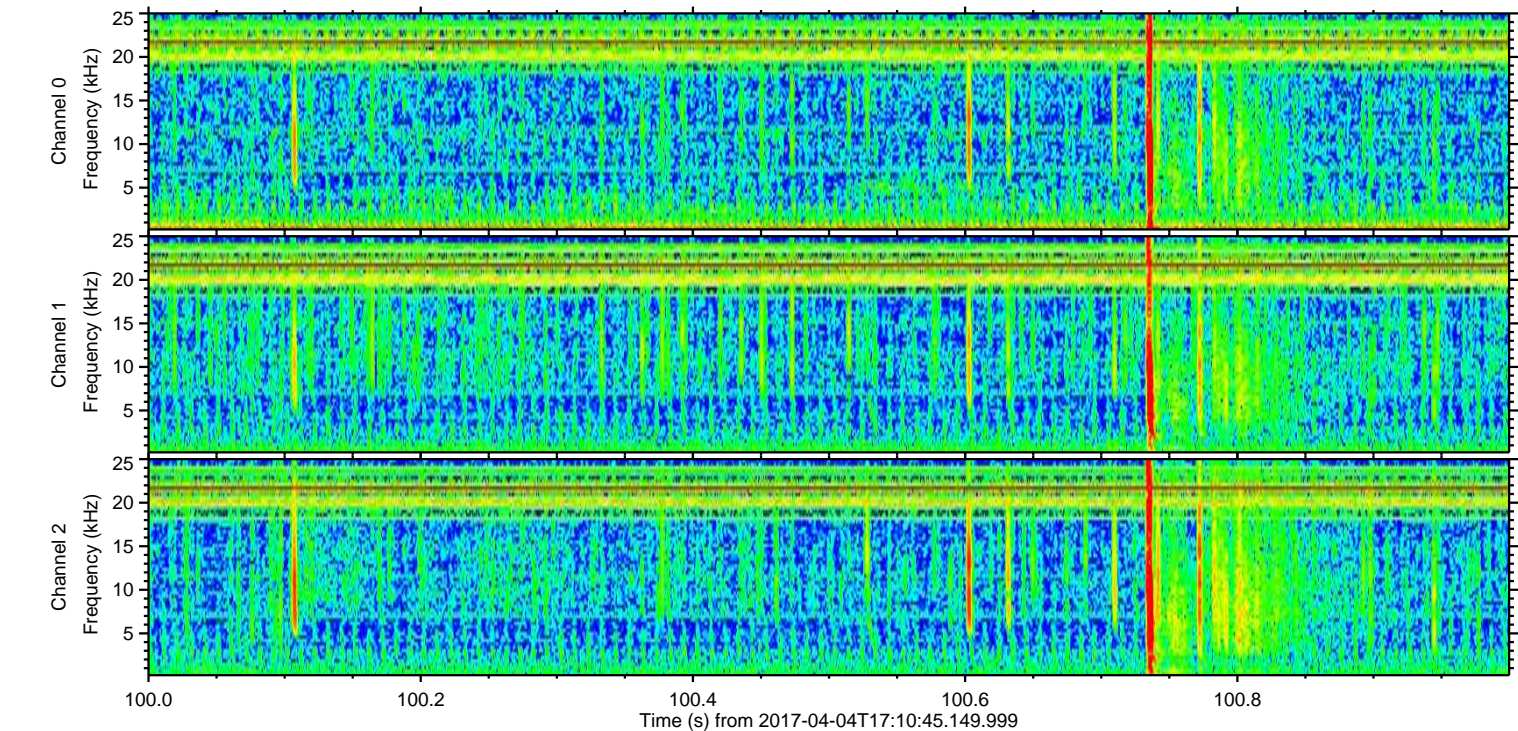
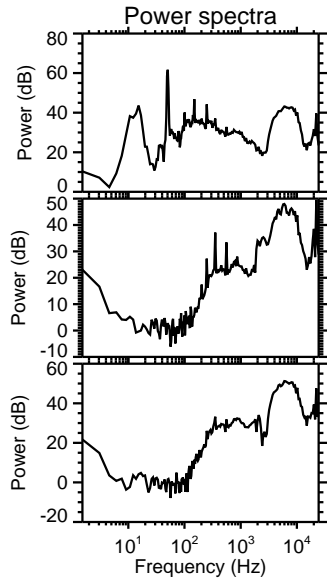
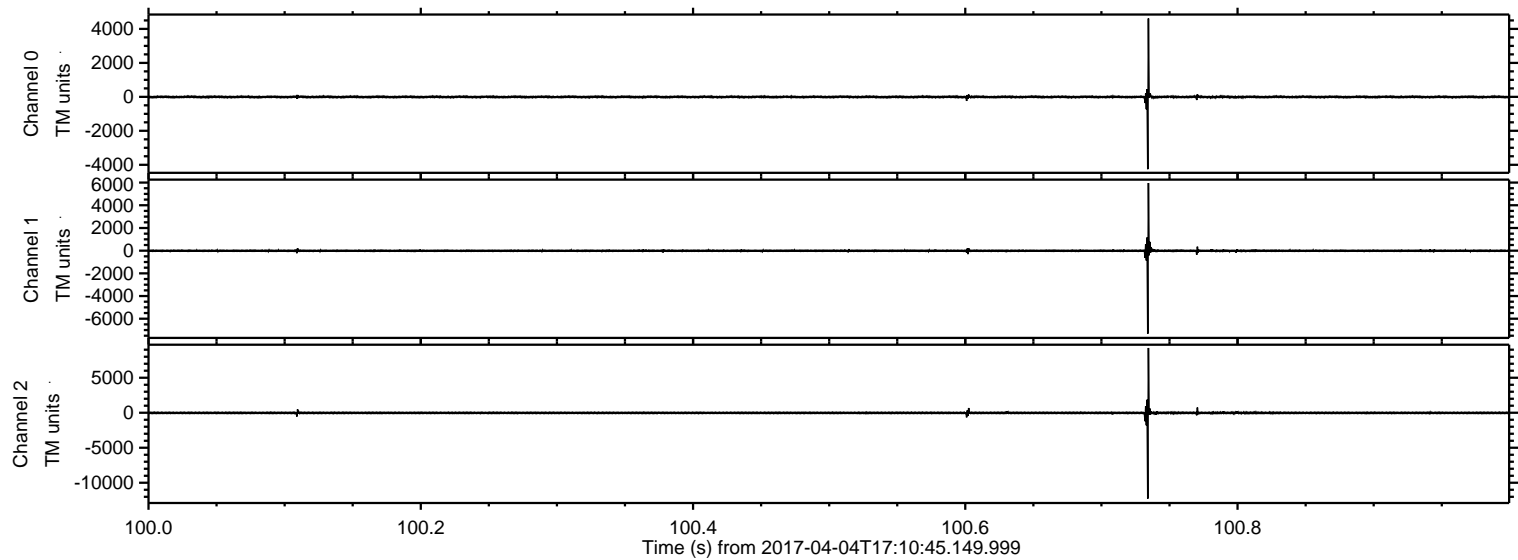
ELMAVAN 3D WAVEFORMS (Measured data sampled at 50 kHz) 51000 packets of 144 samples from 2017-04-04T17:10:45.149.999. Part 31/147

Processed Tue Apr 4 19:18:22 2017 by ELM ver.2012-10-06 from 001__elm20170404_171044__dat00.bin



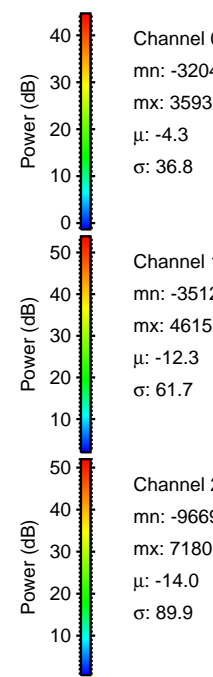
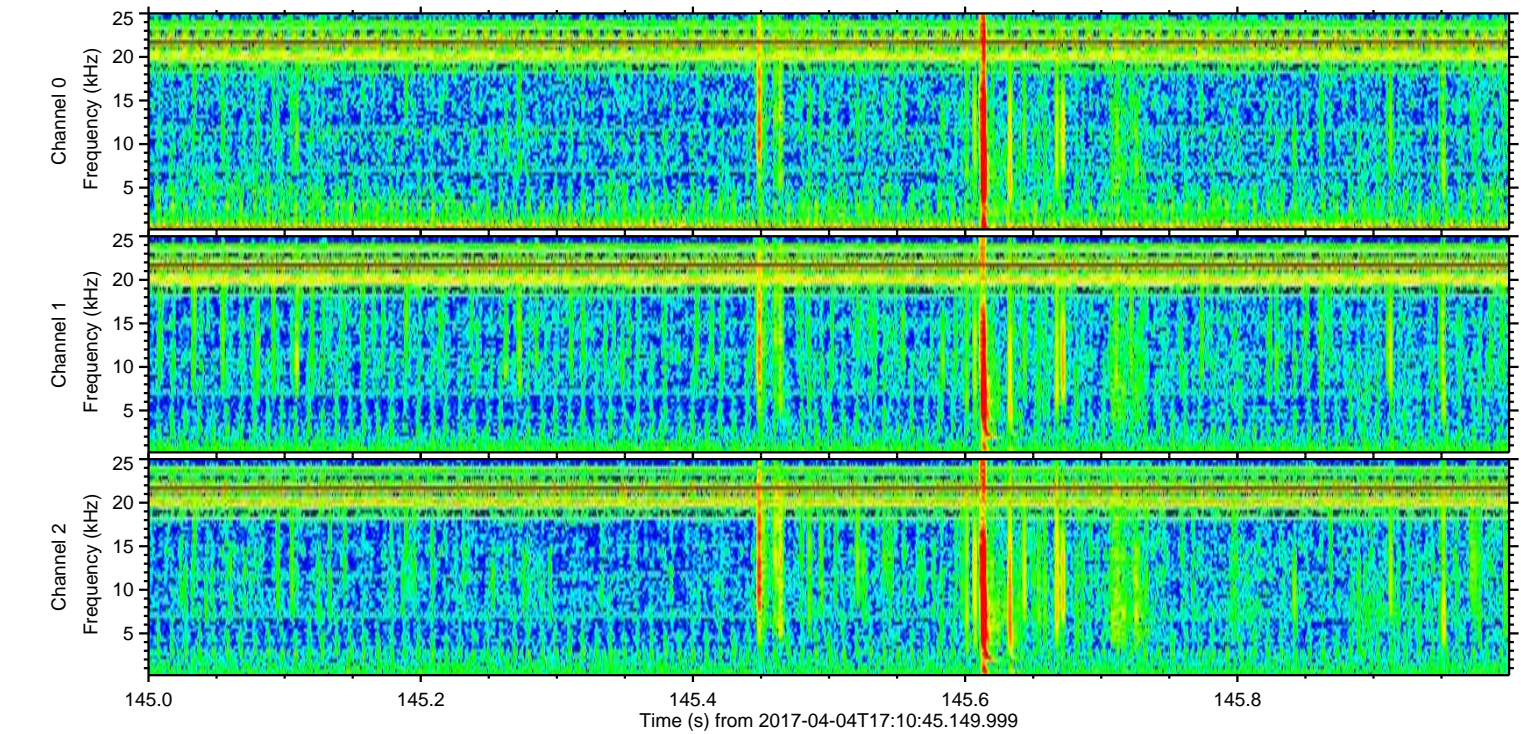
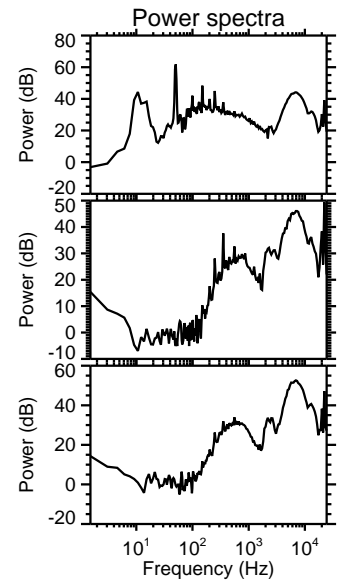
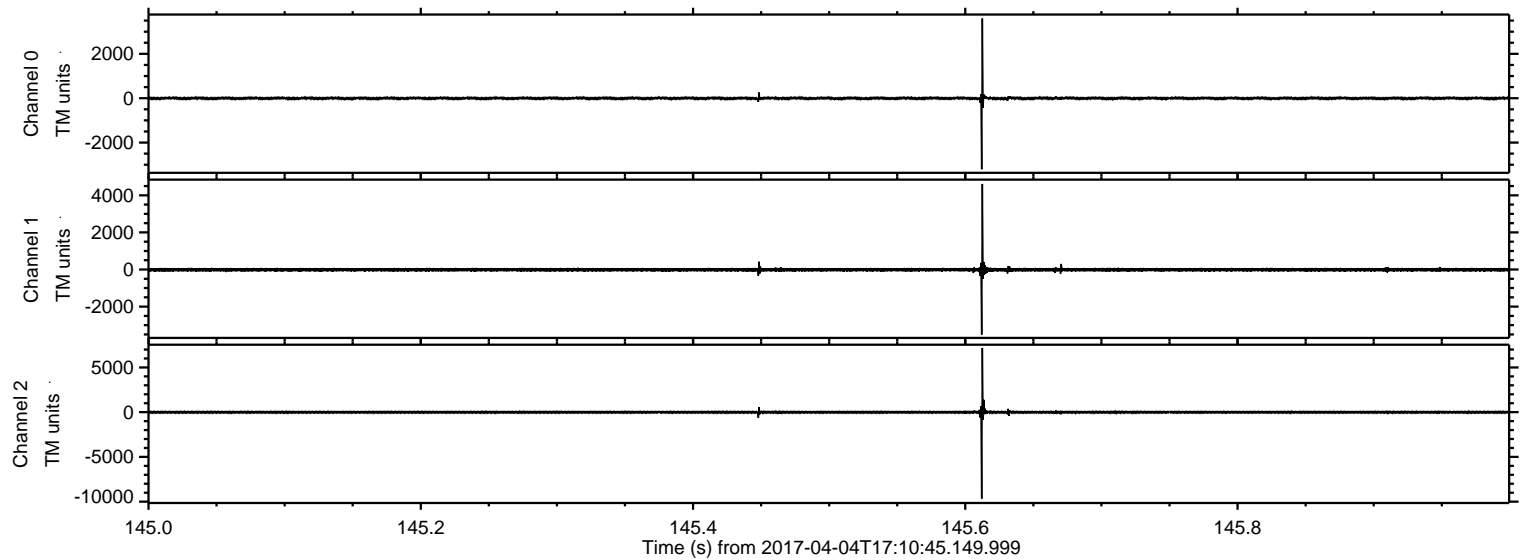
ELMAVAN 3D WAVEFORMS (Measured data sampled at 50 kHz) 51000 packets of 144 samples from 2017-04-04T17:10:45.149.999. Part 101/147

Processed Tue Apr 4 19:18:23 2017 by ELM ver.2012-10-06 from 001__elm20170404_171044__dat00.bin



ELMAVAN 3D WAVEFORMS (Measured data sampled at 50 kHz) 51000 packets of 144 samples from 2017-04-04T17:10:45.149.999. Part 146/147

Processed Tue Apr 4 19:18:24 2017 by ELM ver.2012-10-06 from 001__elm20170404_171044__dat00.bin

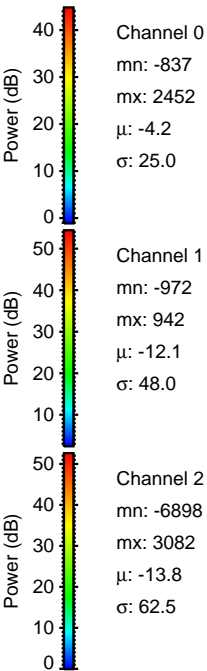
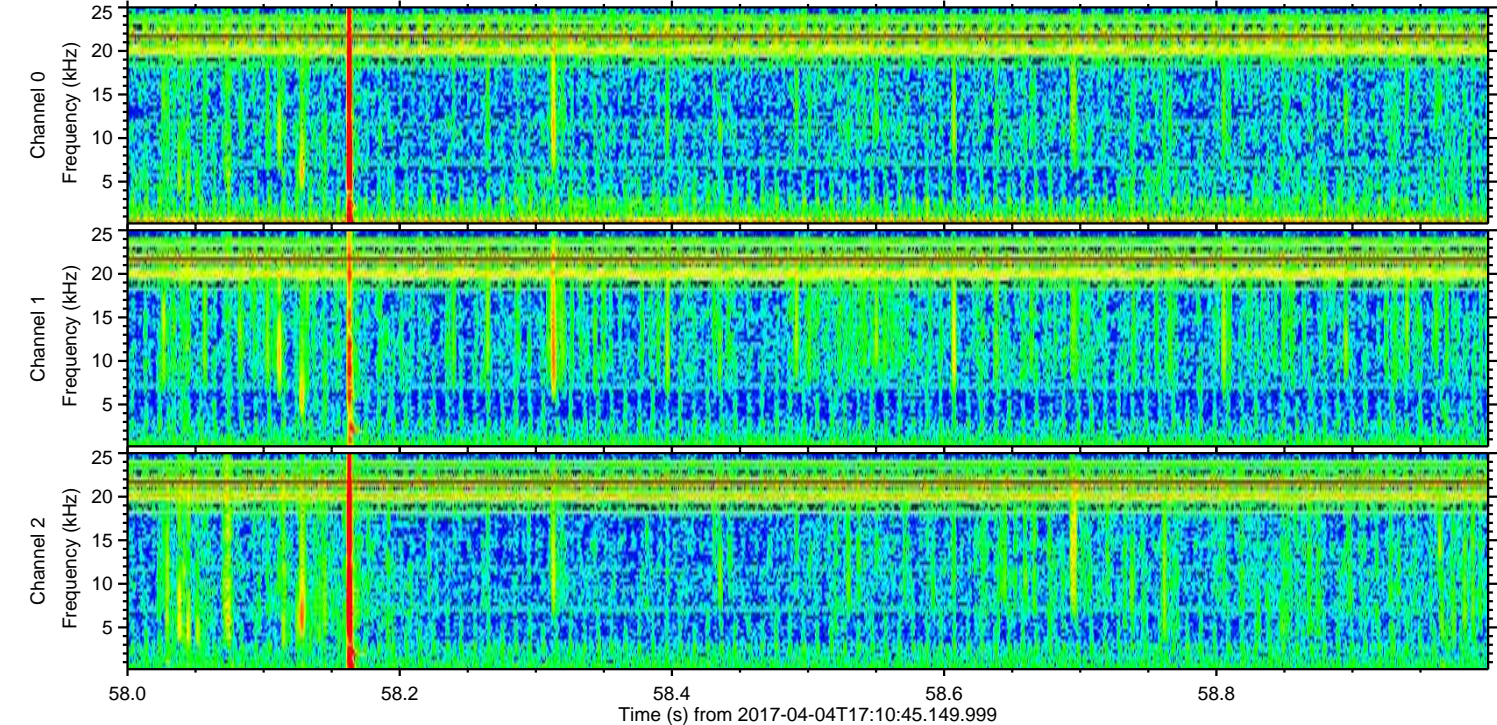
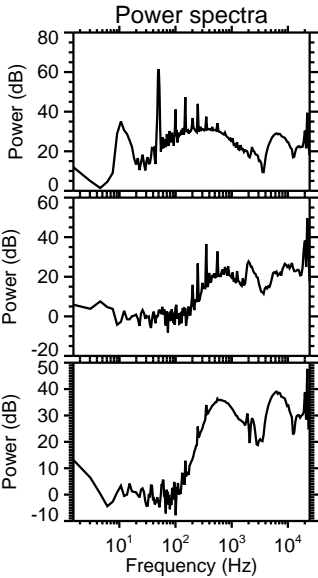
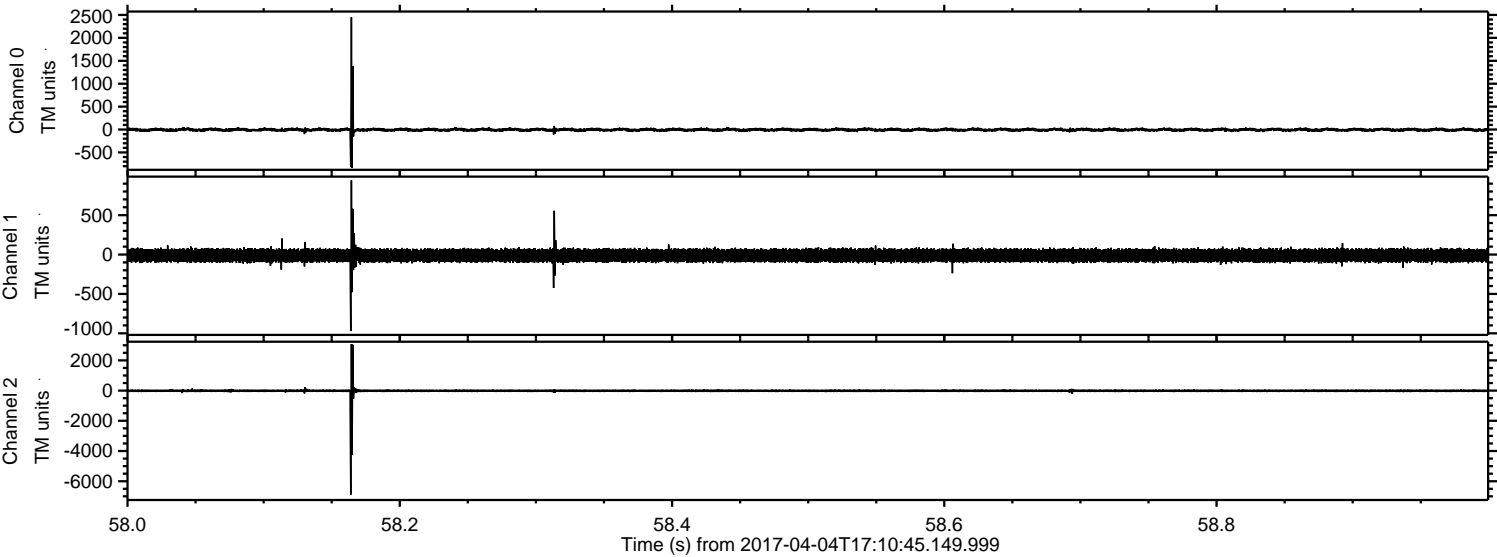


Channel 0
mn: -3204
mx: 3593
 μ : -4.3
 σ : 36.8

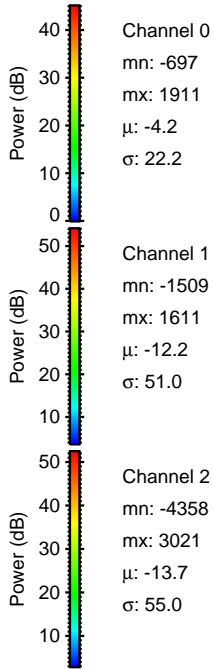
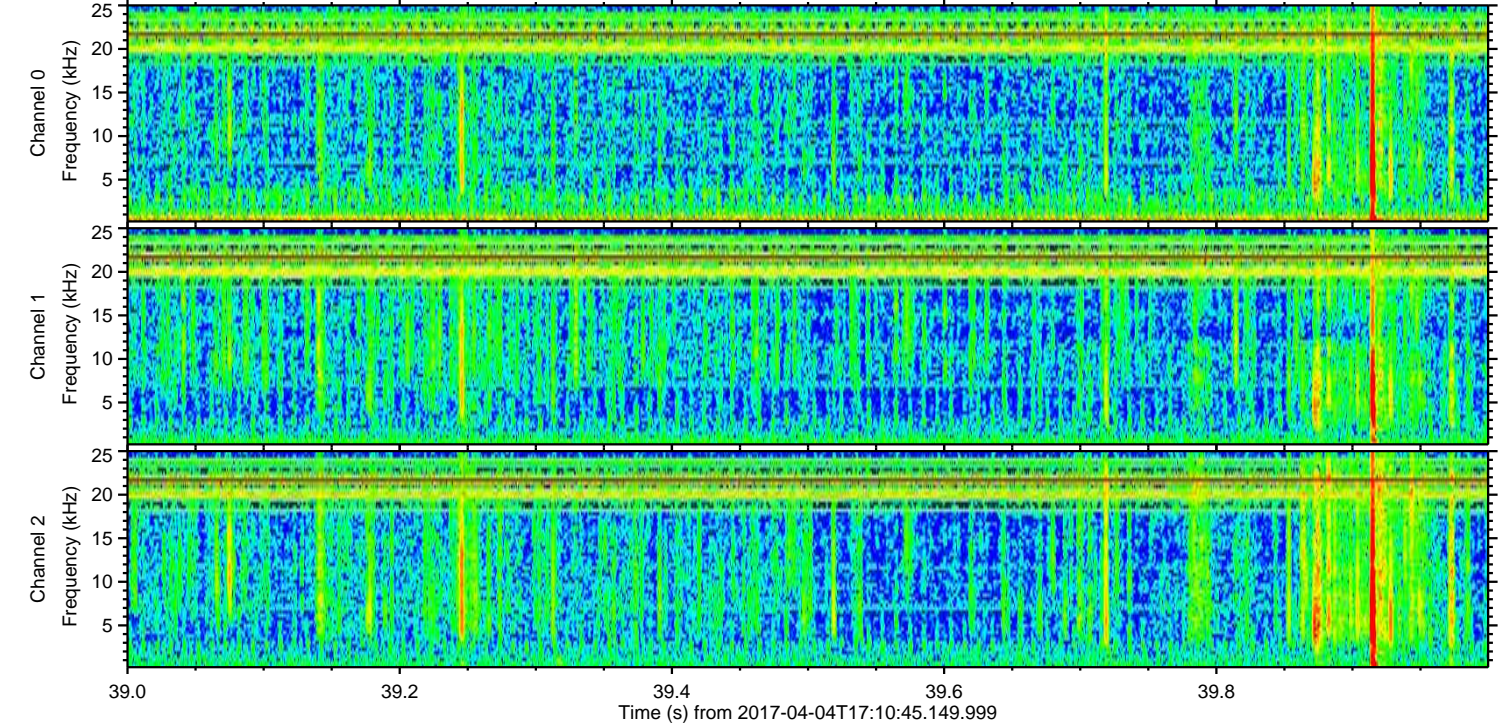
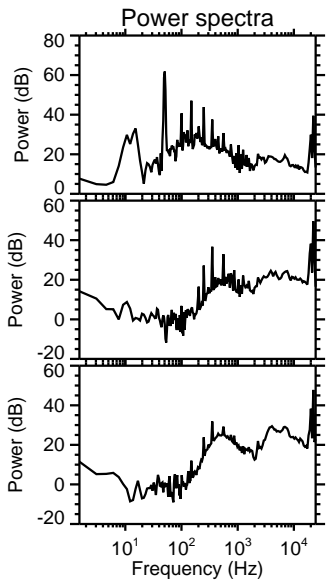
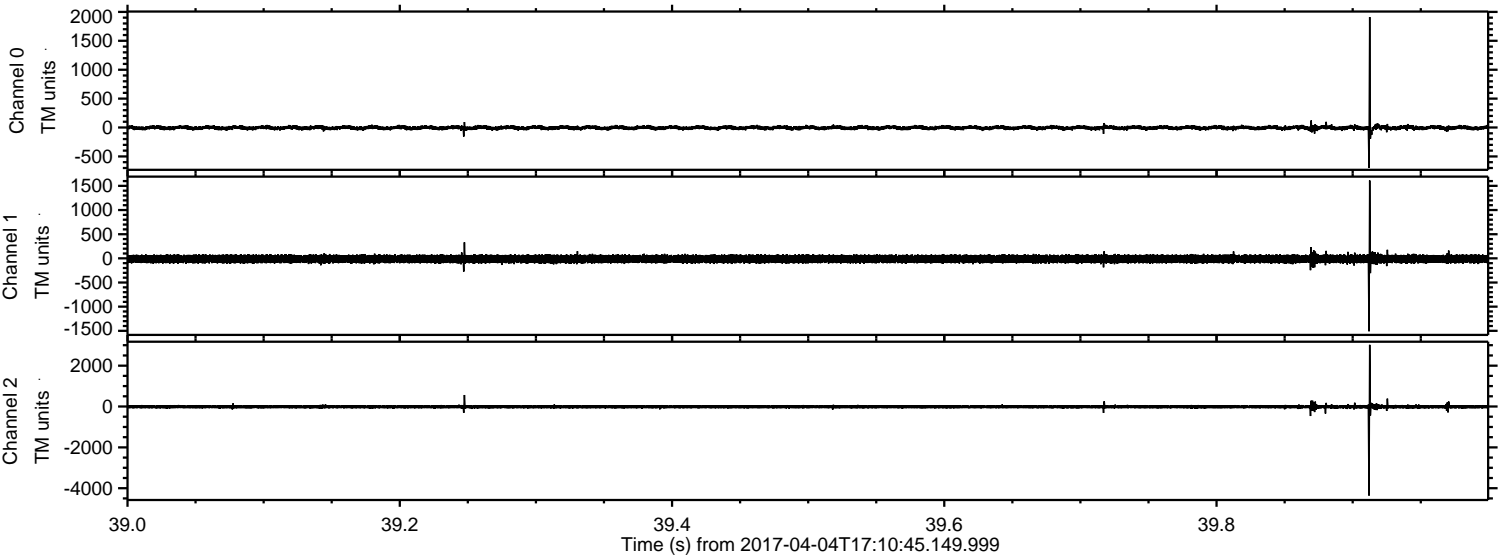
Channel 1
mn: -3512
mx: 4615
 μ : -12.3
 σ : 61.7

Channel 2
mn: -9669
mx: 7180
 μ : -14.0
 σ : 89.9

Processed Tue Apr 4 19:18:25 2017 by ELM ver.2012-10-06 from 001__elm20170404_171044__dat00.bin

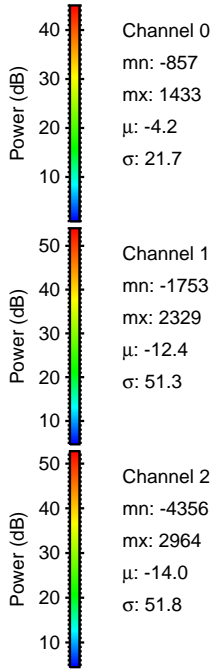
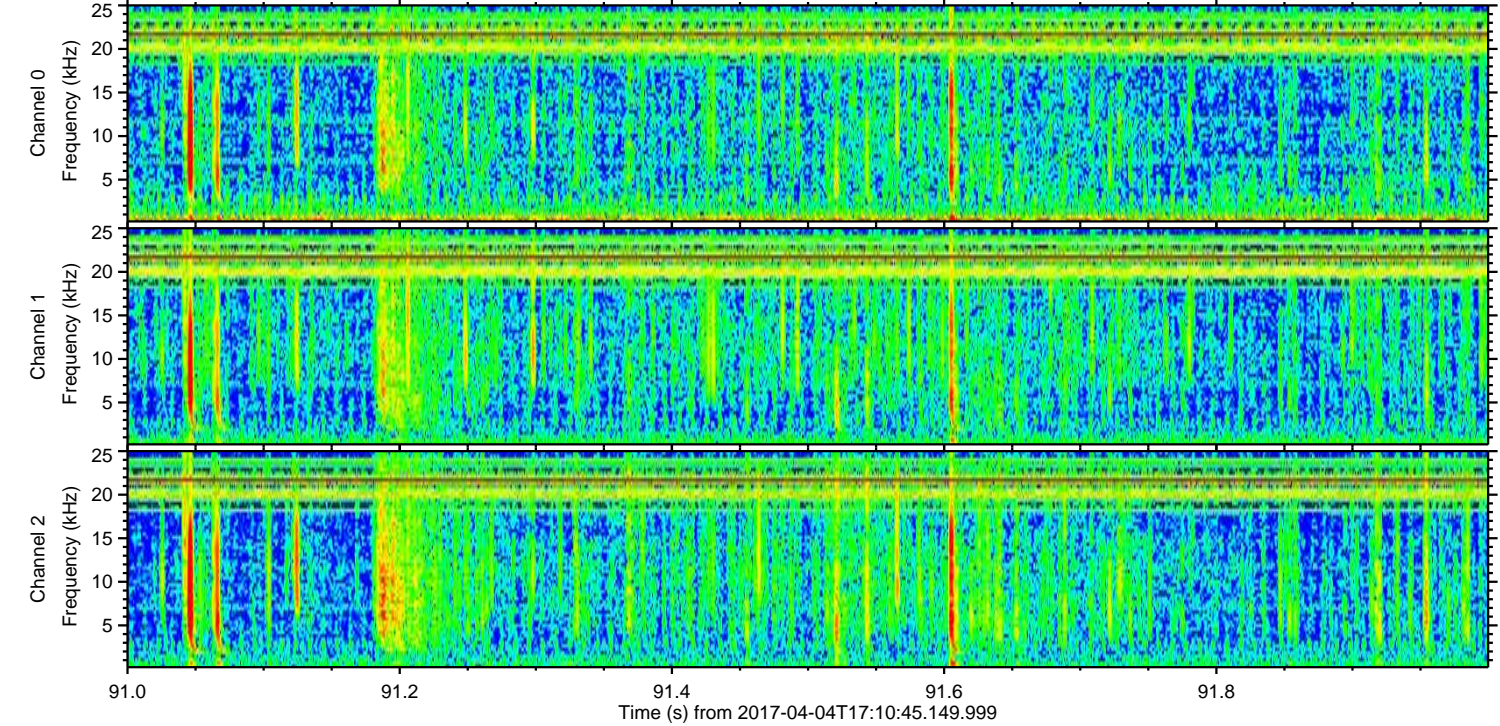
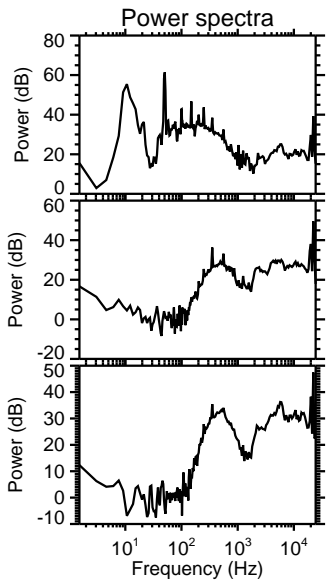
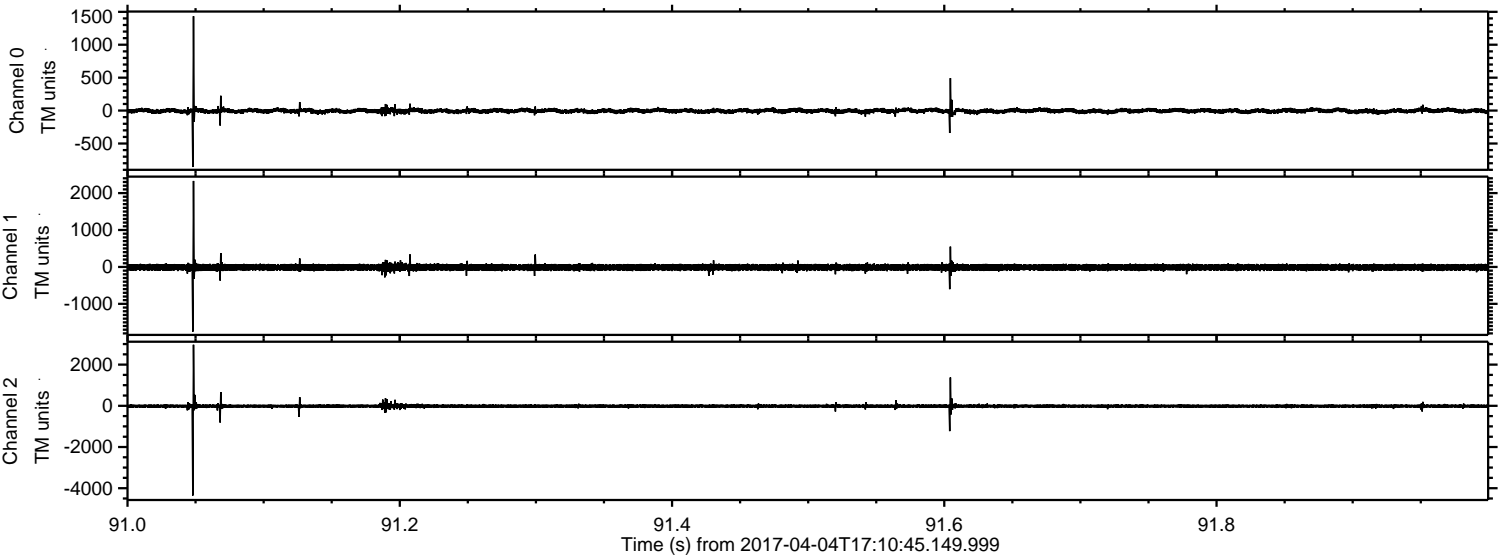


Processed Tue Apr 4 19:18:26 2017 by ELM ver.2012-10-06 from 001__elm20170404_171044__dat00.bin

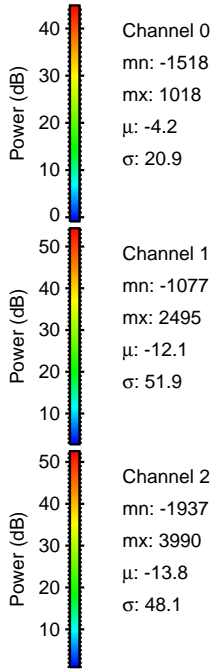
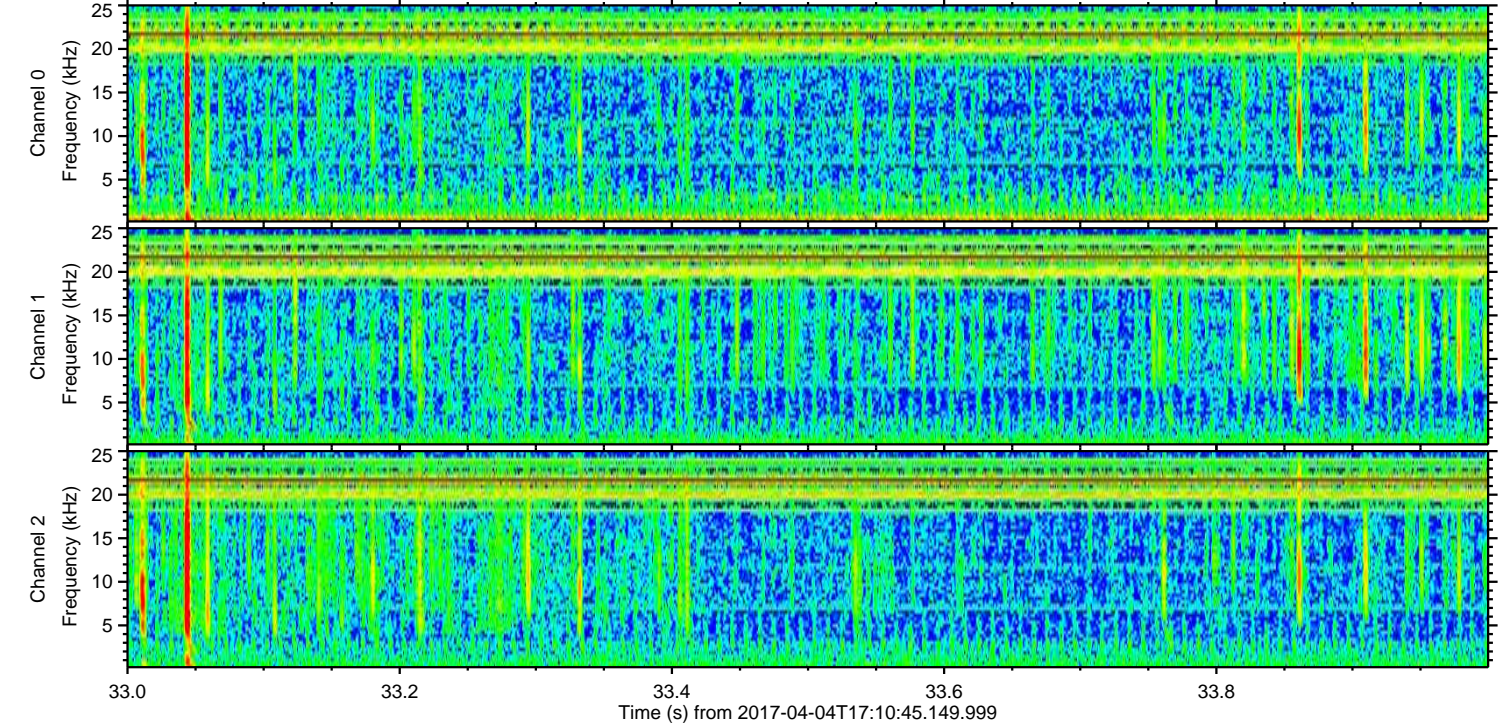
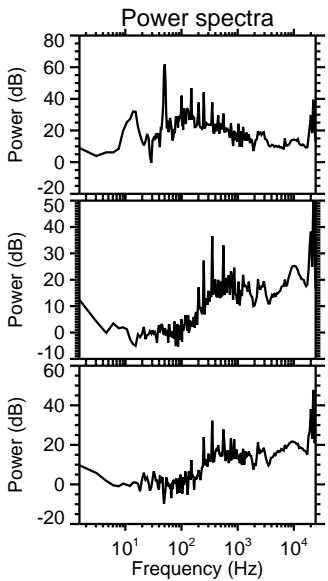
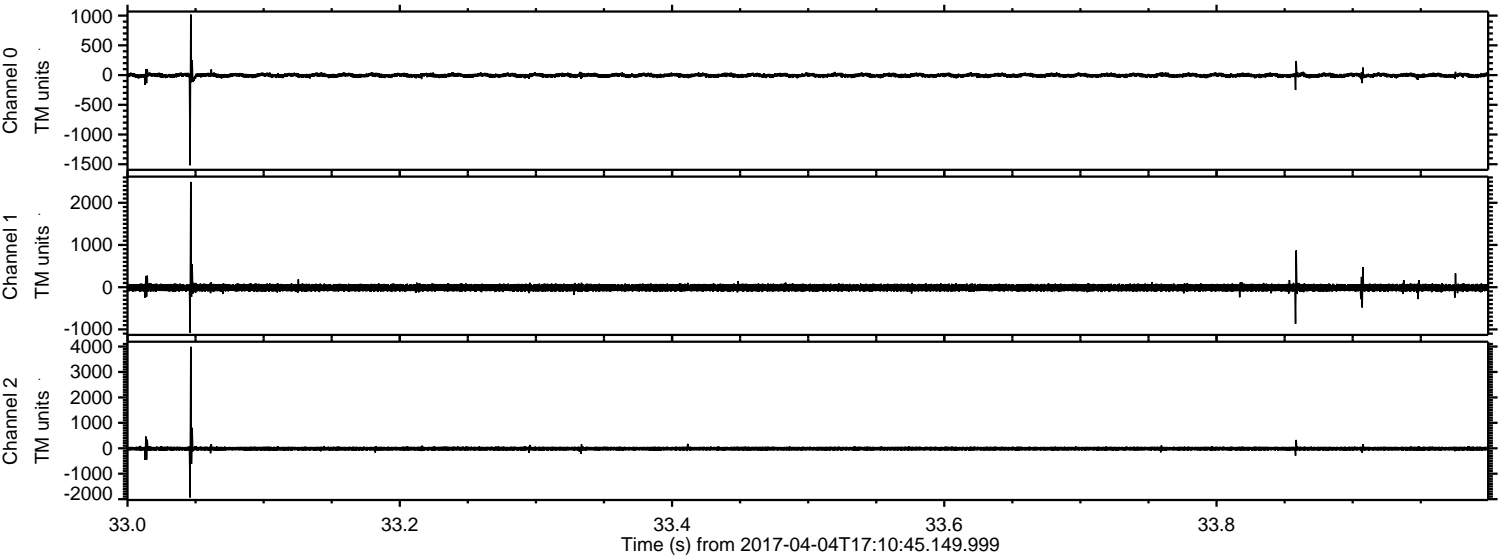


Power spectra

Processed Tue Apr 4 19:18:27 2017 by ELM ver.2012-10-06 from 001__elm20170404_171044__dat00.bin



Processed Tue Apr 4 19:18:28 2017 by ELM ver.2012-10-06 from 001__elm20170404_171044__dat00.bin



Processed Tue Apr 4 19:18:29 2017 by ELM ver.2012-10-06 from 001__elm20170404_171044__dat00.bin

