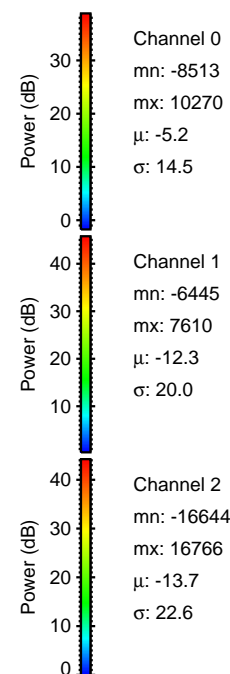
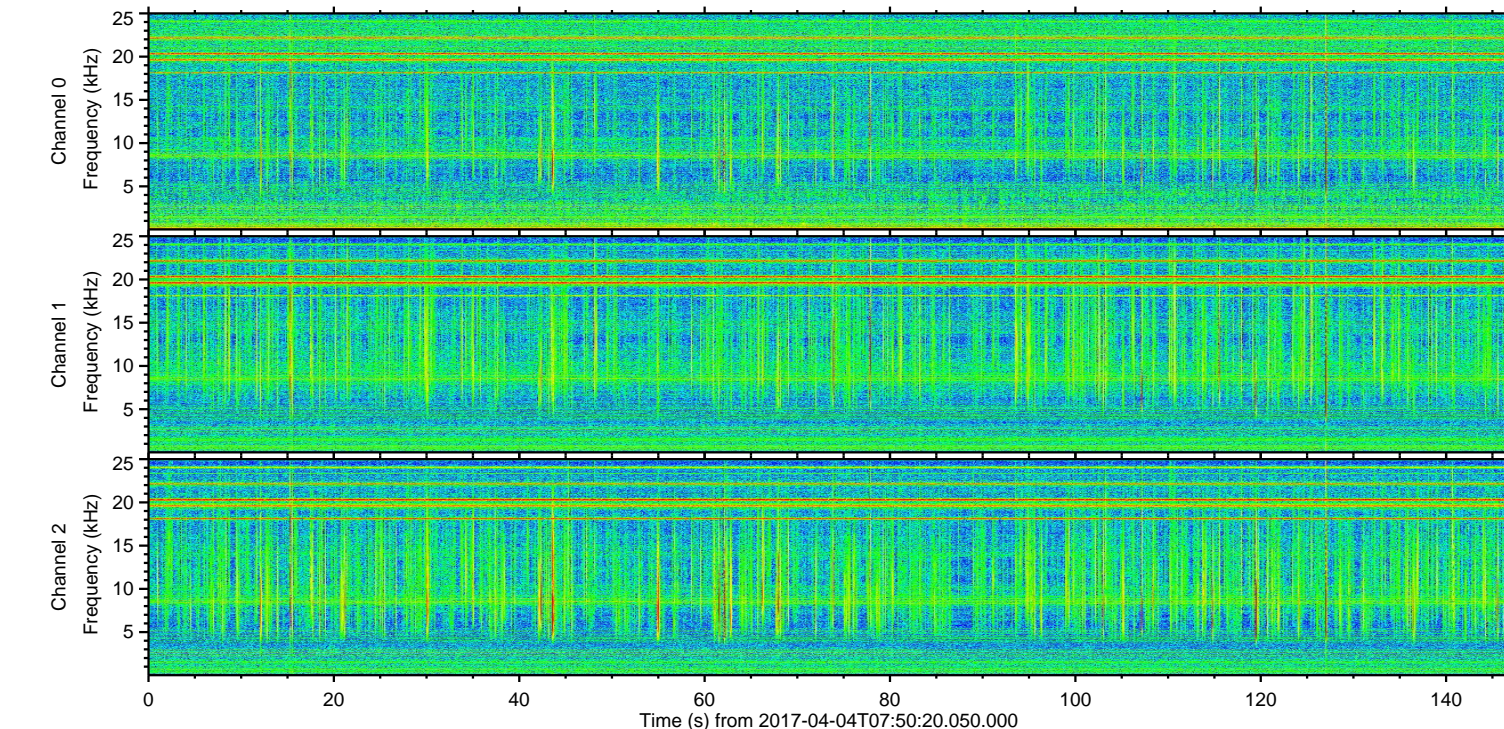
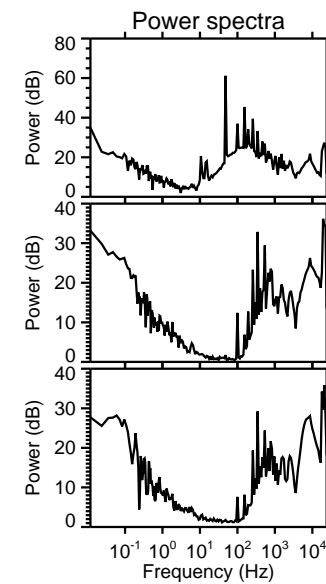
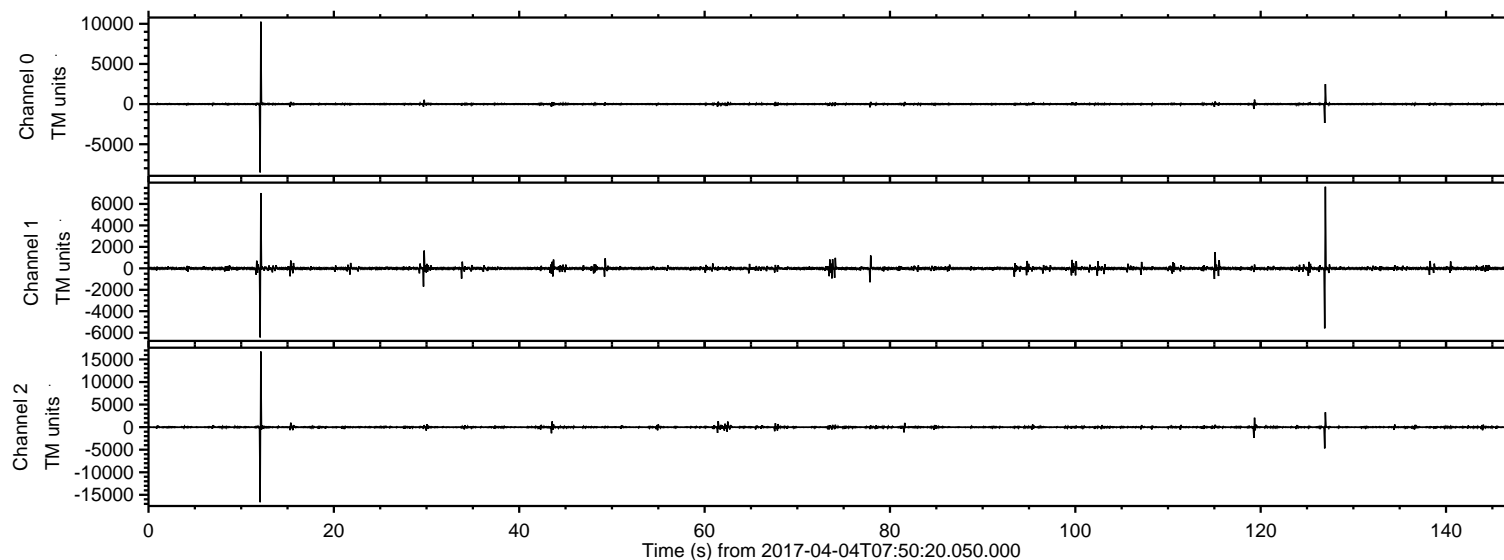


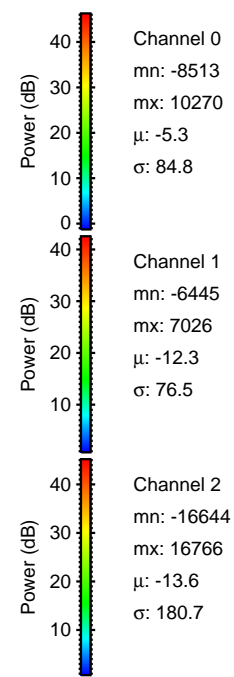
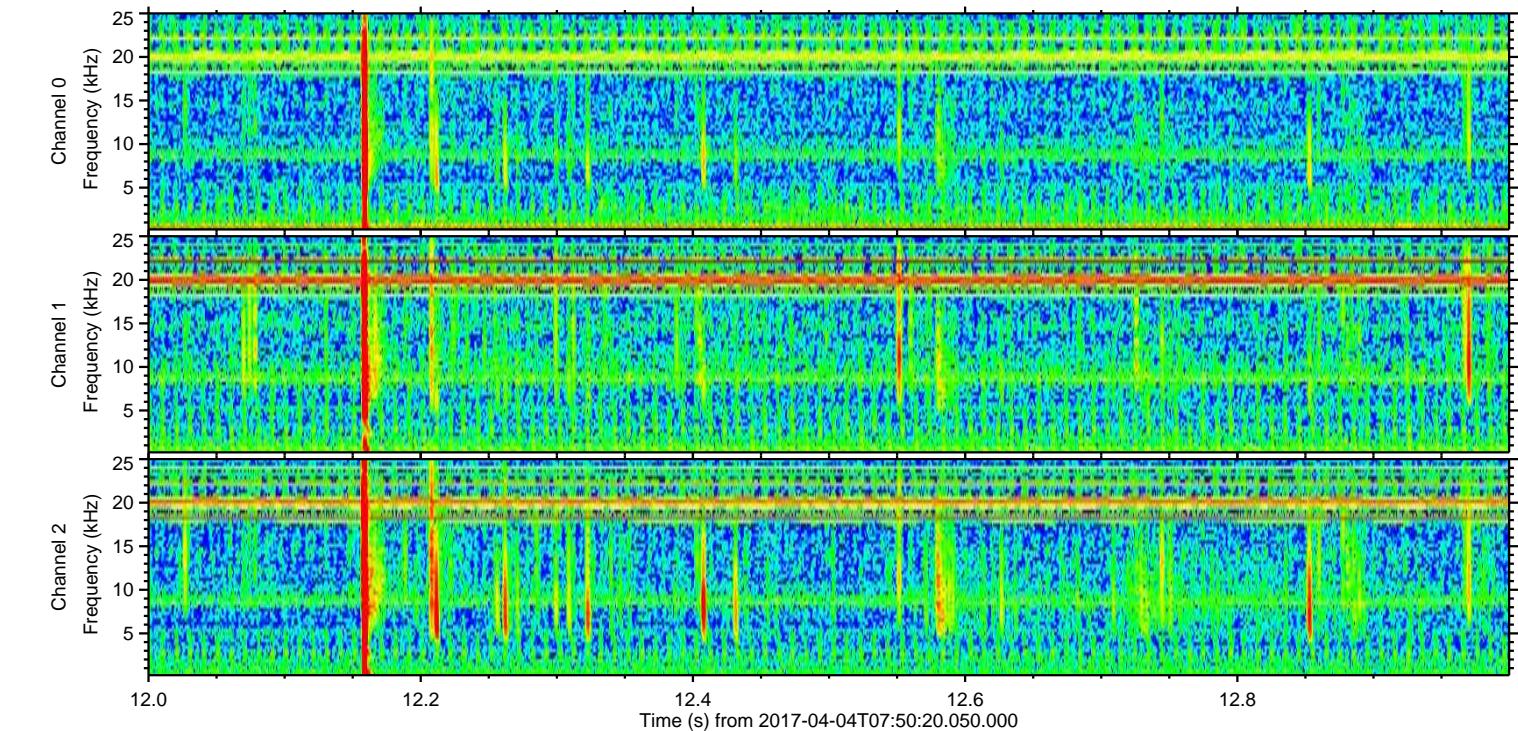
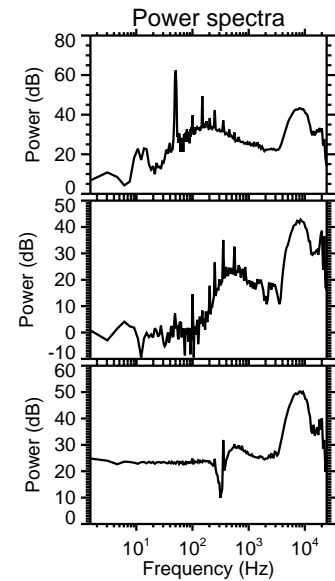
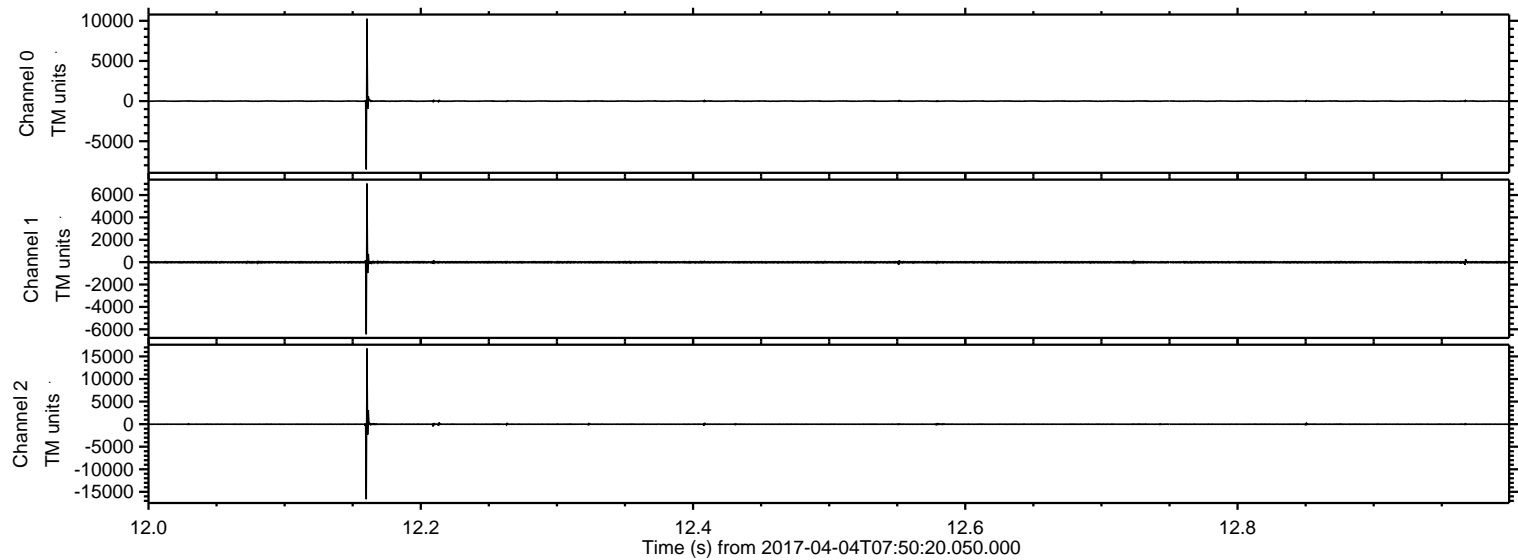
ELMAVAN 3D WAVEFORMS (Measured data sampled at 50 kHz) 51000 packets of 144 samples from 2017-04-04T07:50:20.050.000.

Processed Tue Apr 4 09:58:37 2017 by ELM ver.2012-10-06 from 001__elm20170404_075019__dat00.bin



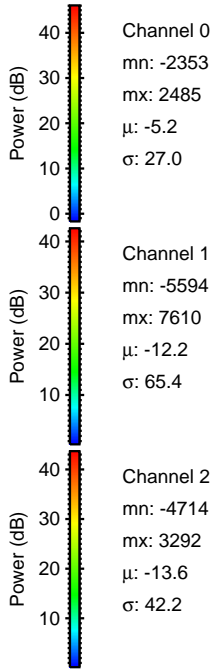
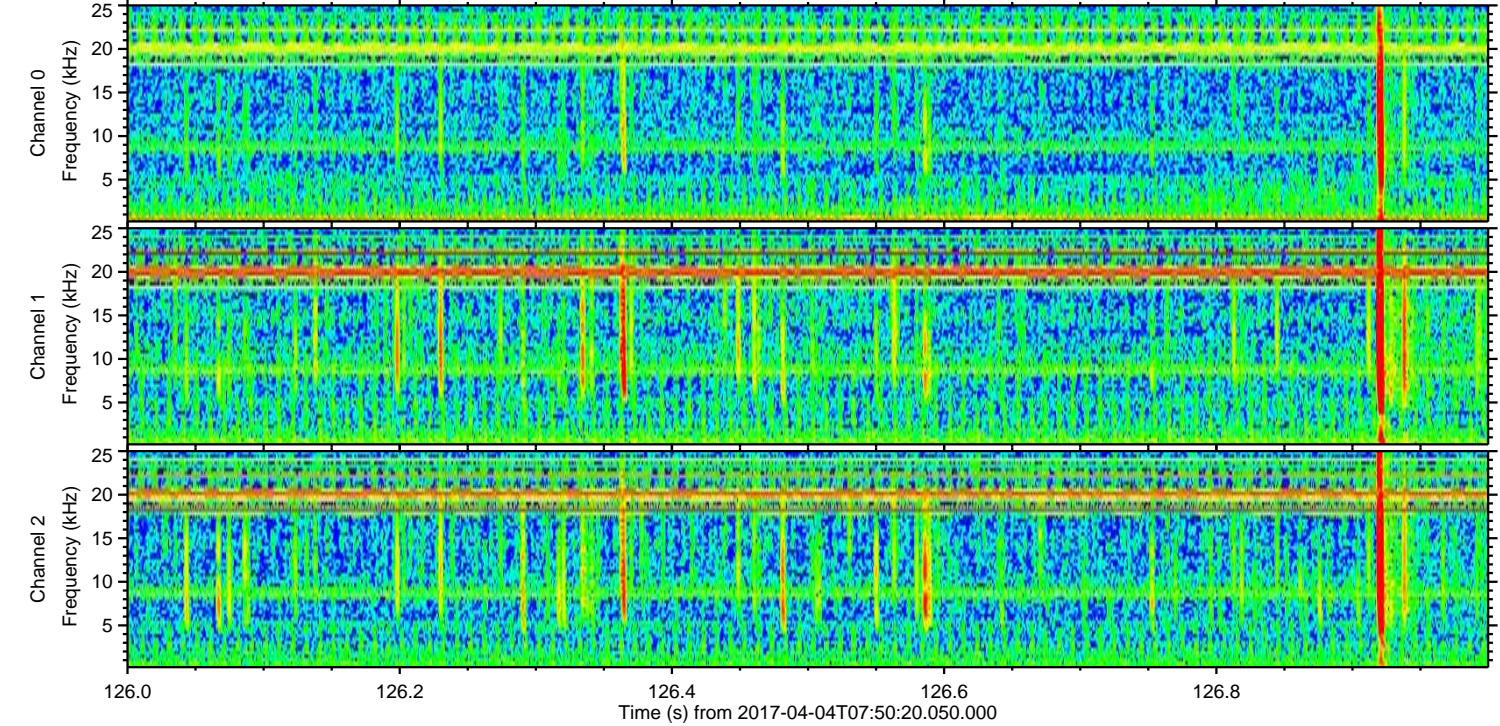
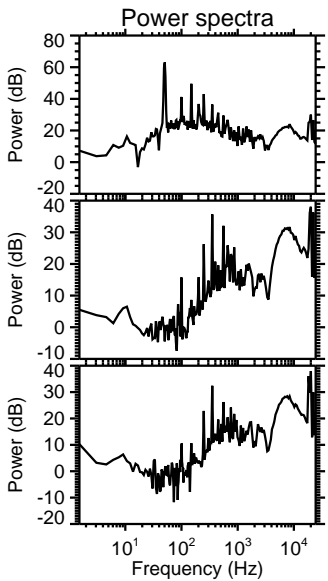
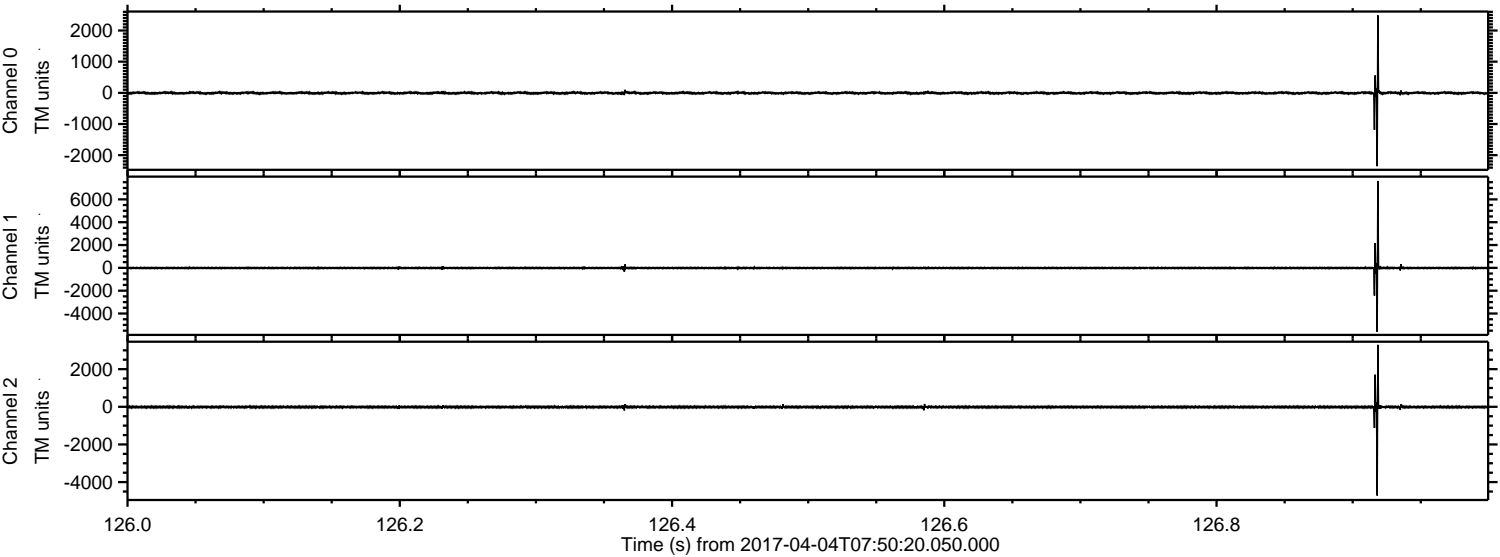
ELMAVAN 3D WAVEFORMS (Measured data sampled at 50 kHz) 51000 packets of 144 samples from 2017-04-04T07:50:20.050.000. Part 13/147

Processed Tue Apr 4 09:58:48 2017 by ELM ver.2012-10-06 from 001__elm20170404_075019__dat00.bin



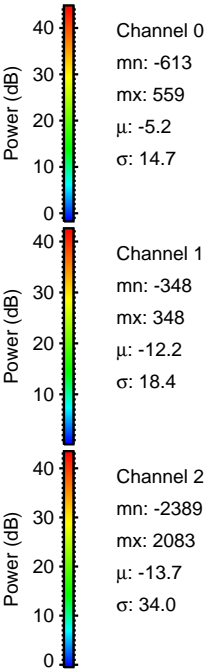
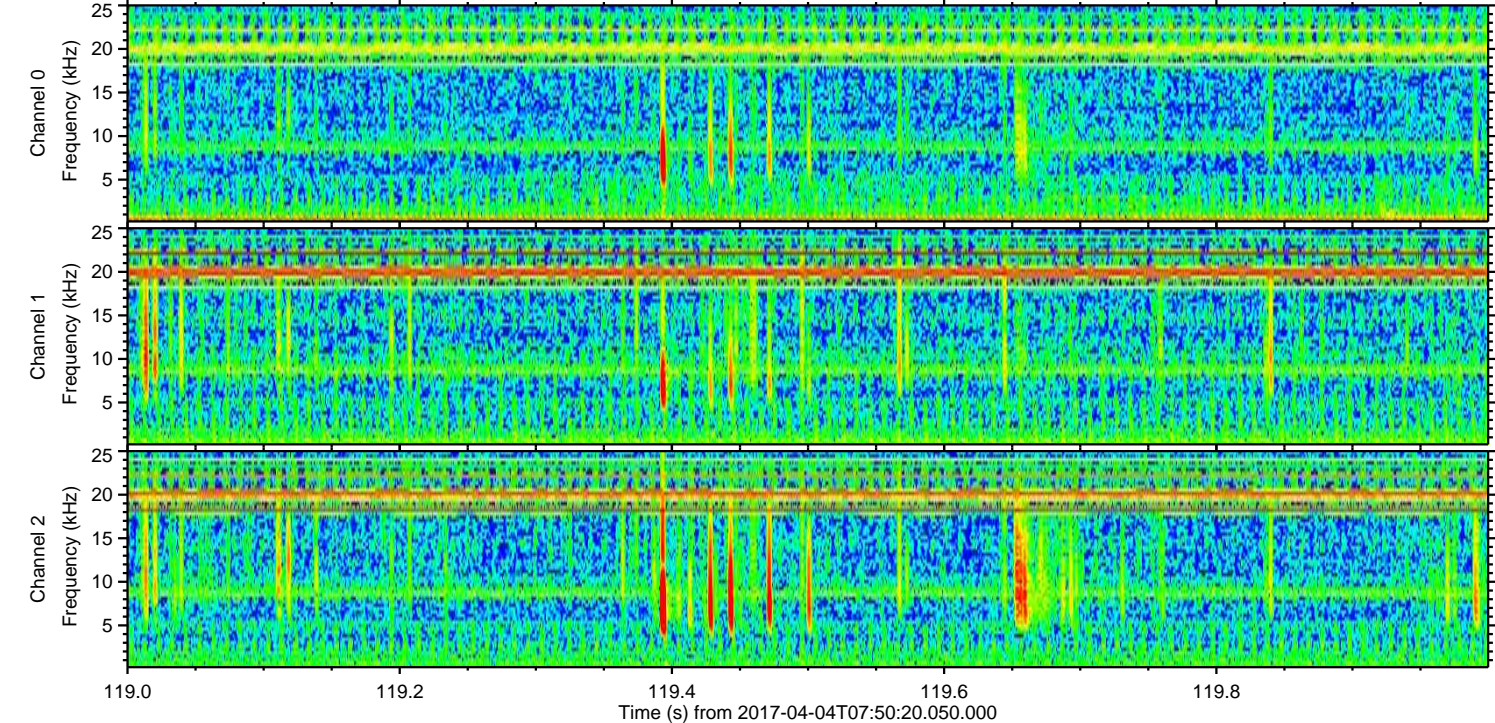
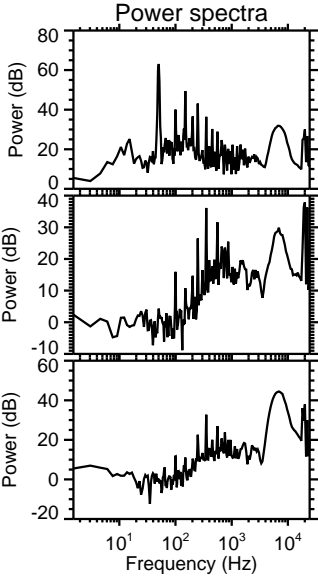
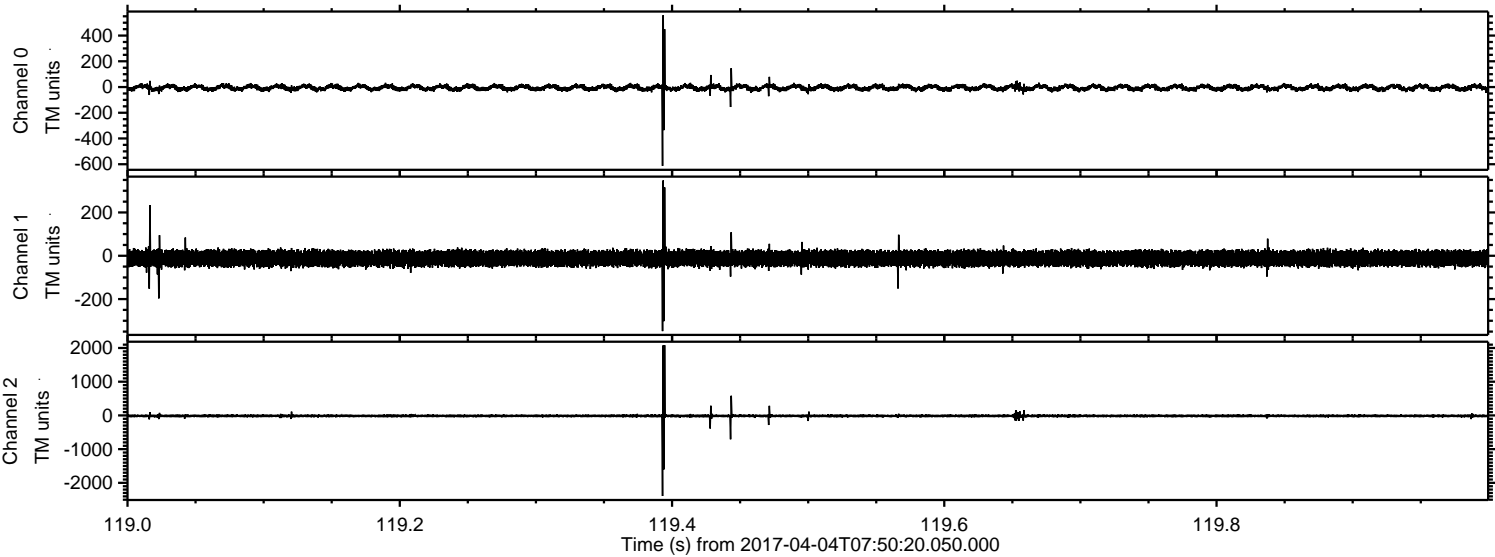
ELMAVAN 3D WAVEFORMS (Measured data sampled at 50 kHz) 51000 packets of 144 samples from 2017-04-04T07:50:20.050.000. Part 127/147

Processed Tue Apr 4 09:58:49 2017 by ELM ver.2012-10-06 from 001__elm20170404_075019__dat00.bin

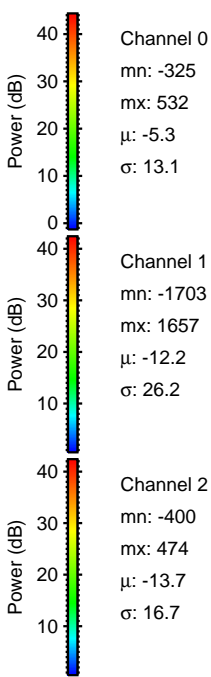
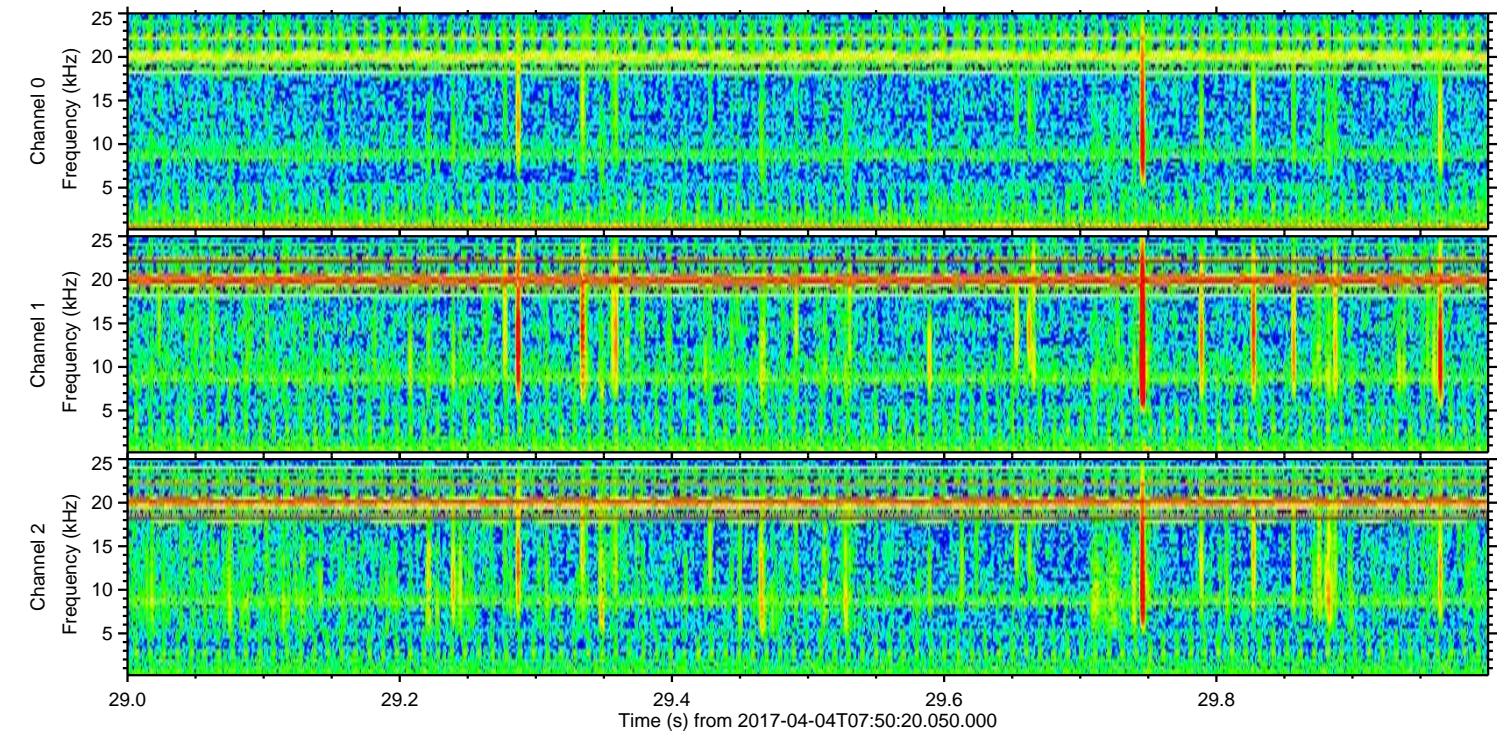
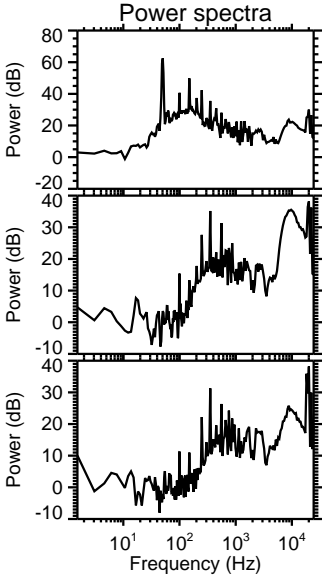
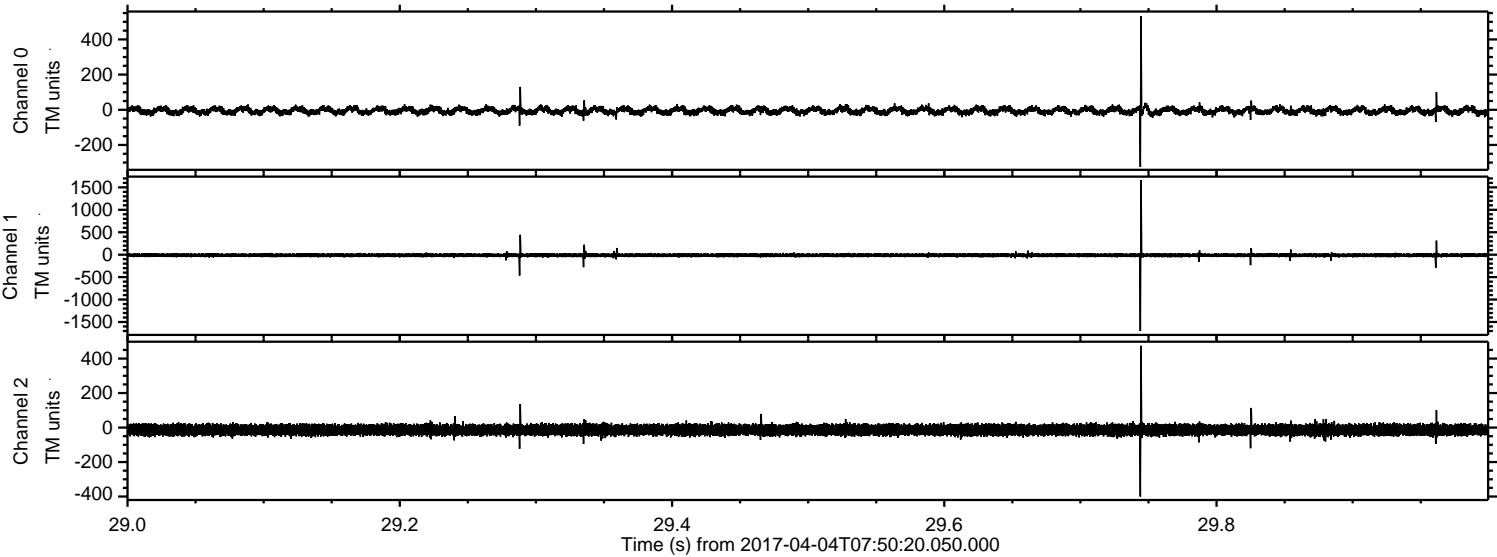


ELMAVAN 3D WAVEFORMS (Measured data sampled at 50 kHz) 51000 packets of 144 samples from 2017-04-04T07:50:20.050.000. Part 120/147

Processed Tue Apr 4 09:58:50 2017 by ELM ver.2012-10-06 from 001__elm20170404_075019__dat00.bin



Processed Tue Apr 4 09:58:51 2017 by ELM ver.2012-10-06 from 001__elm20170404_075019__dat00.bin



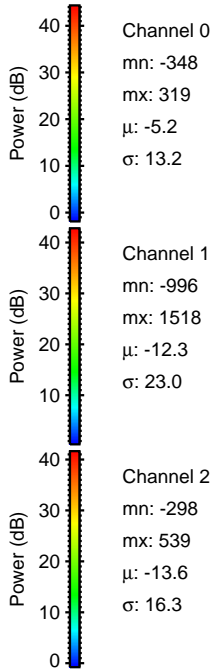
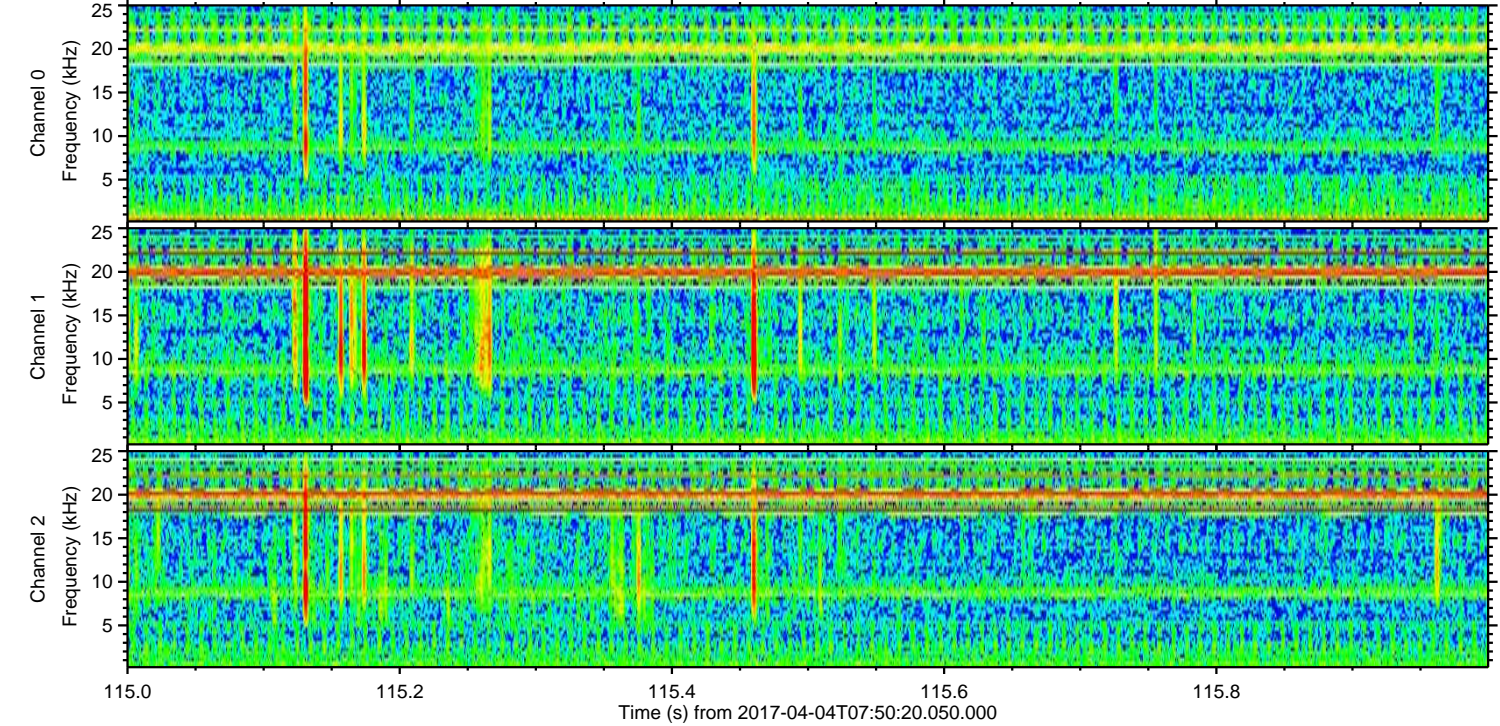
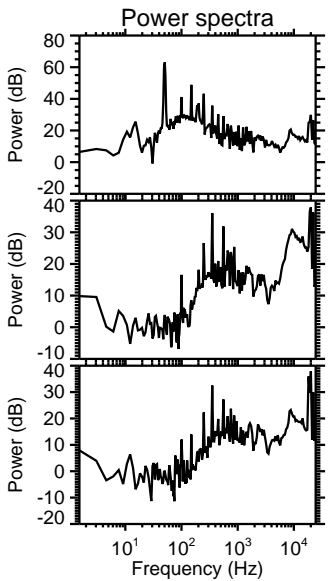
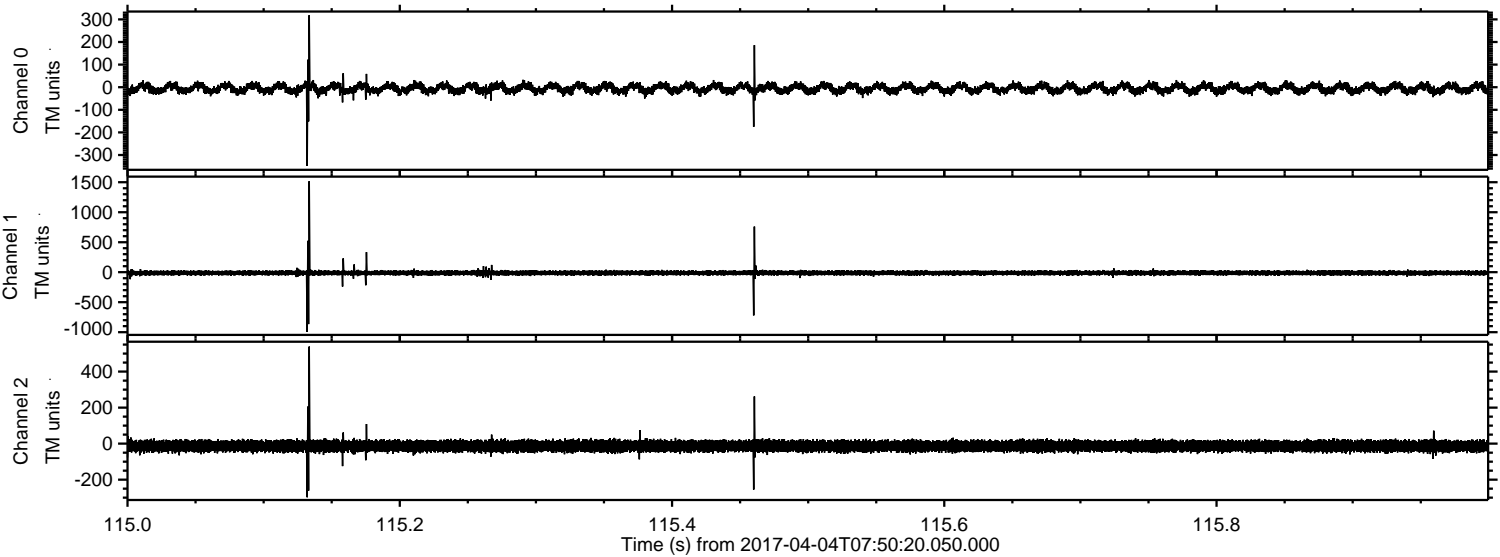
Channel 0
mn: -325
mx: 532
 μ : -5.3
 σ : 13.1

Channel 1
mn: -1703
mx: 1657
 μ : -12.2
 σ : 26.2

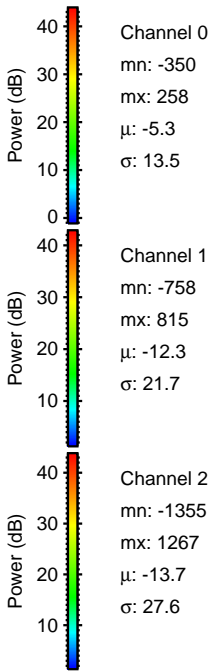
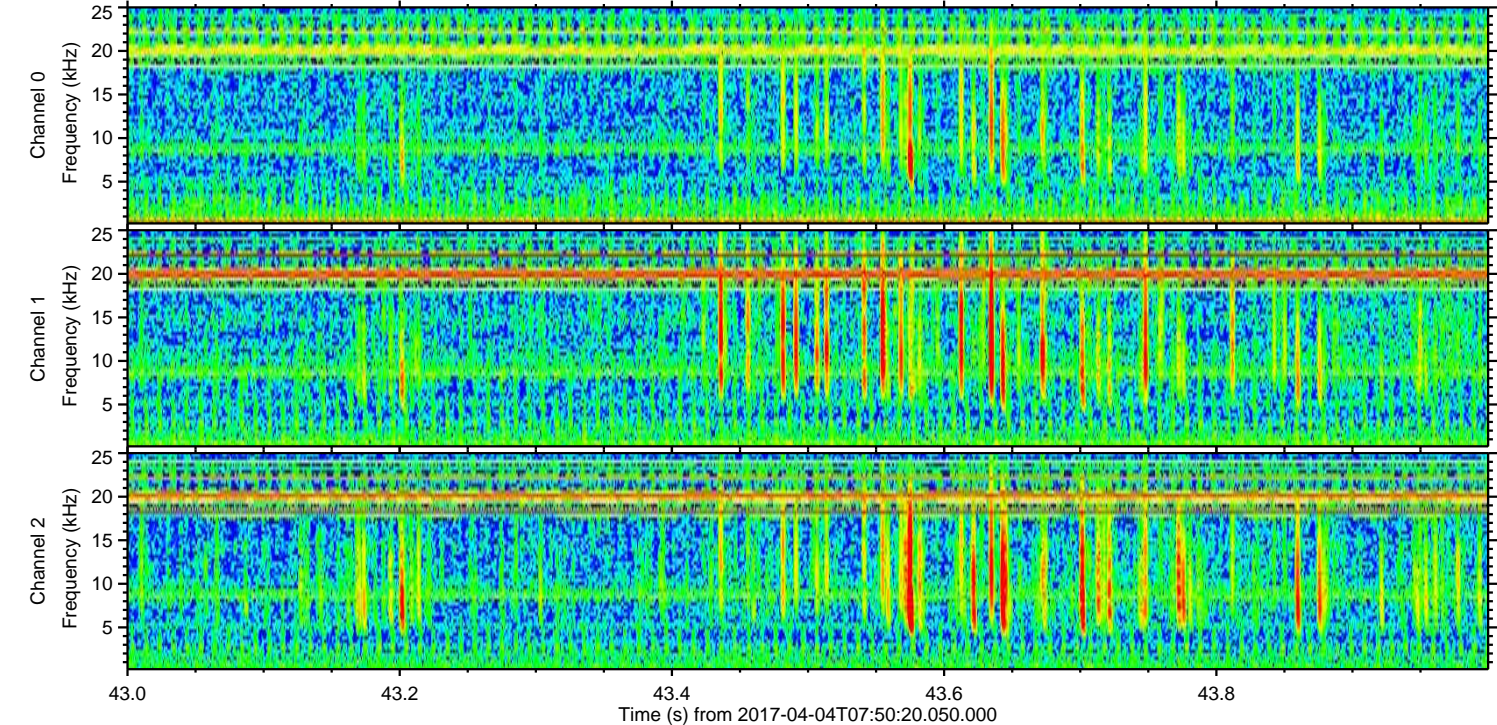
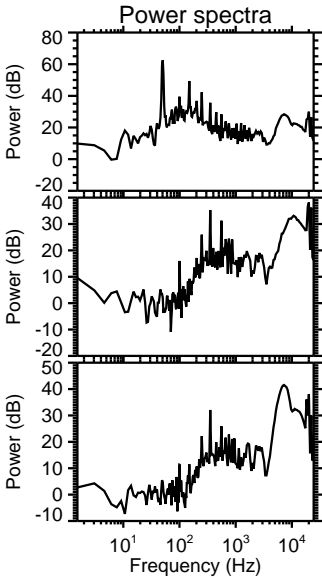
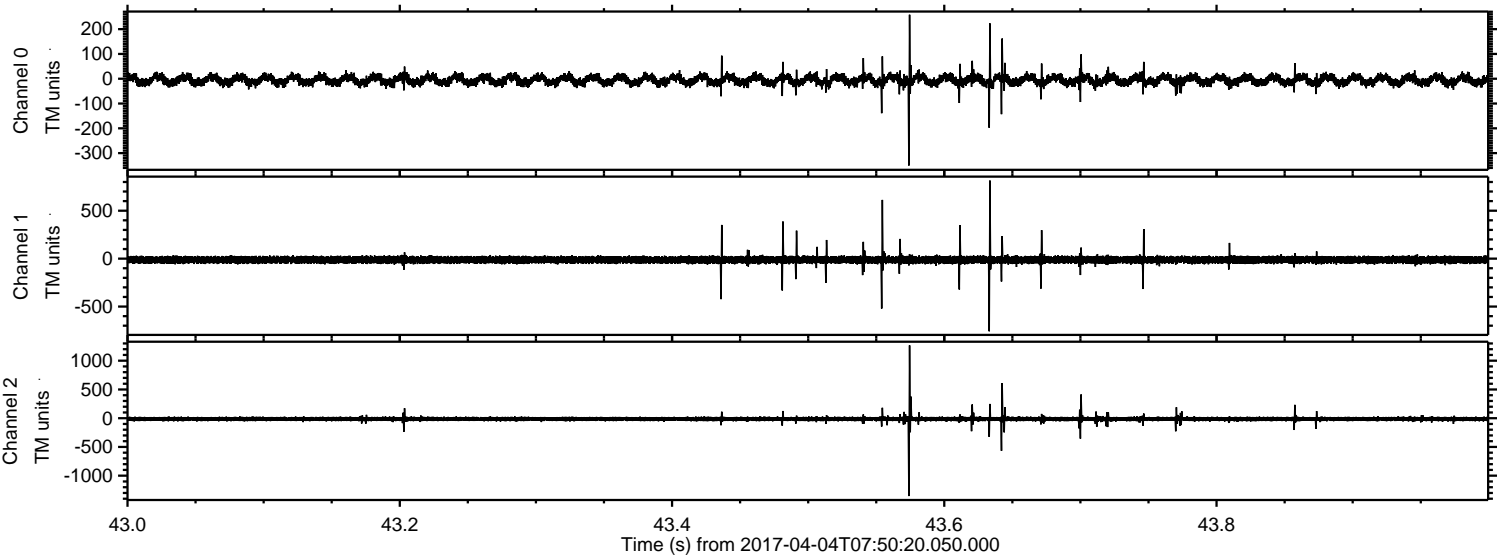
Channel 2
mn: -400
mx: 474
 μ : -13.7
 σ : 16.7

ELMAVAN 3D WAVEFORMS (Measured data sampled at 50 kHz) 51000 packets of 144 samples from 2017-04-04T07:50:20.050.000. Part 116/147

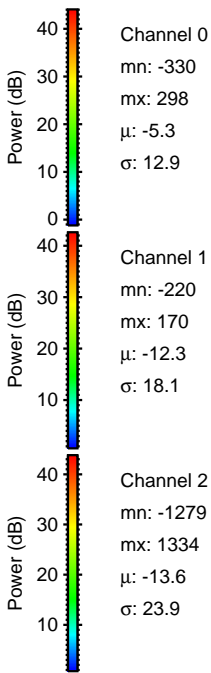
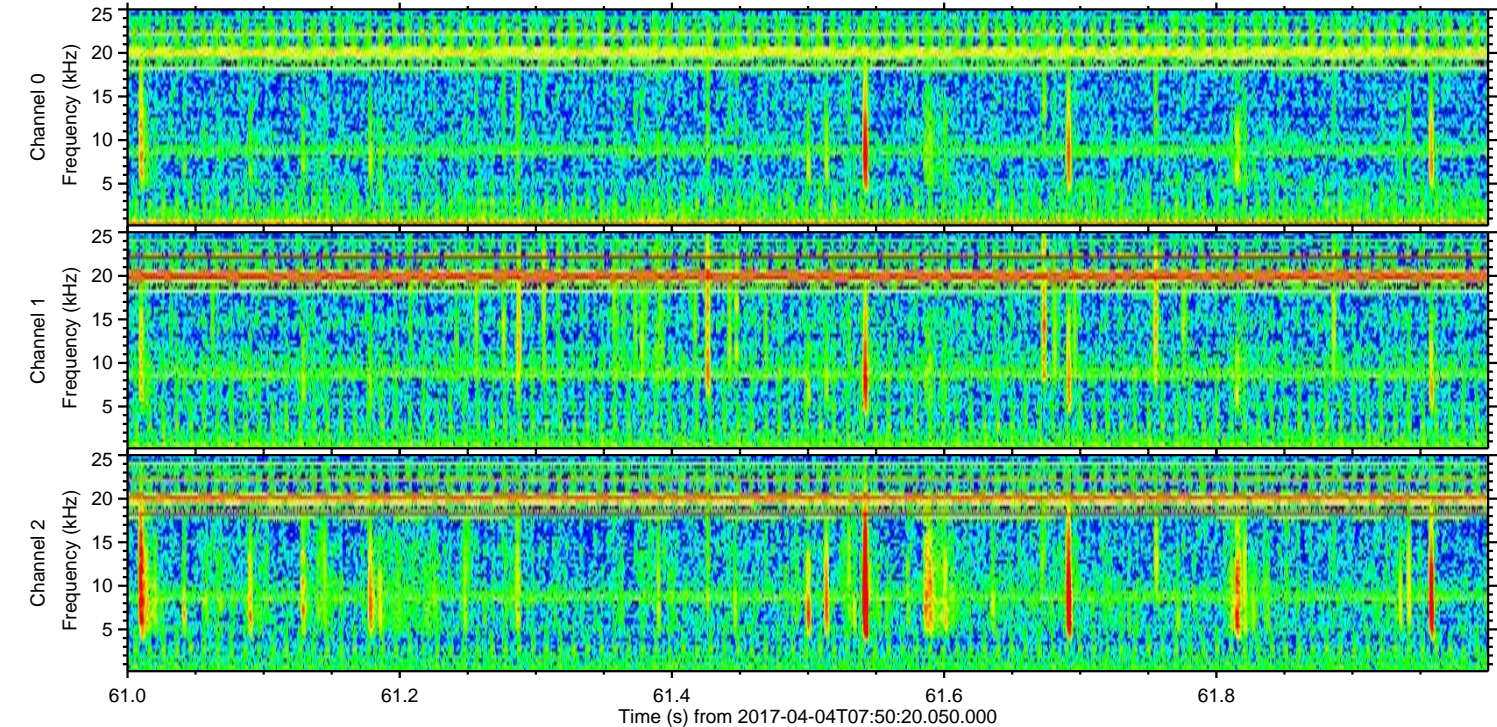
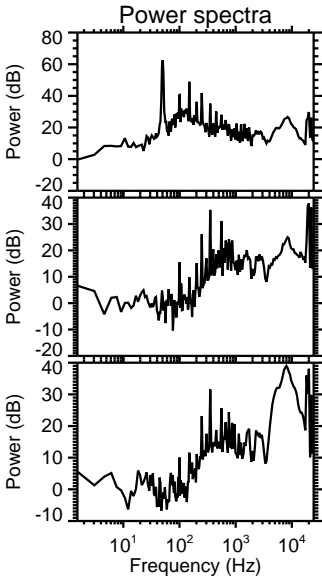
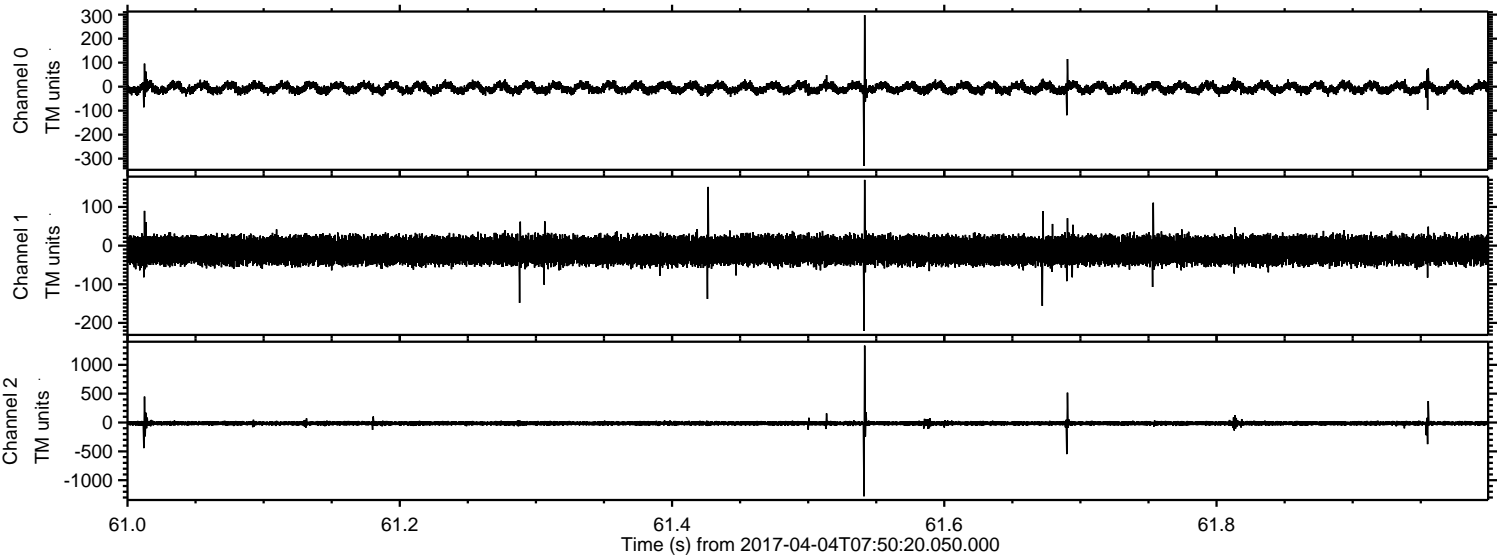
Processed Tue Apr 4 09:58:52 2017 by ELM ver.2012-10-06 from 001__elm20170404_075019__dat00.bin



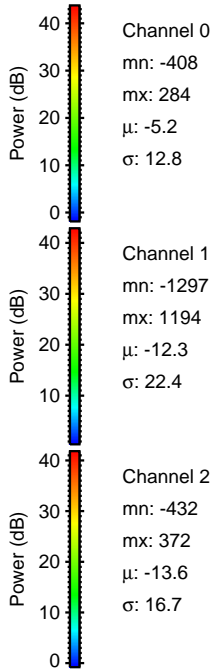
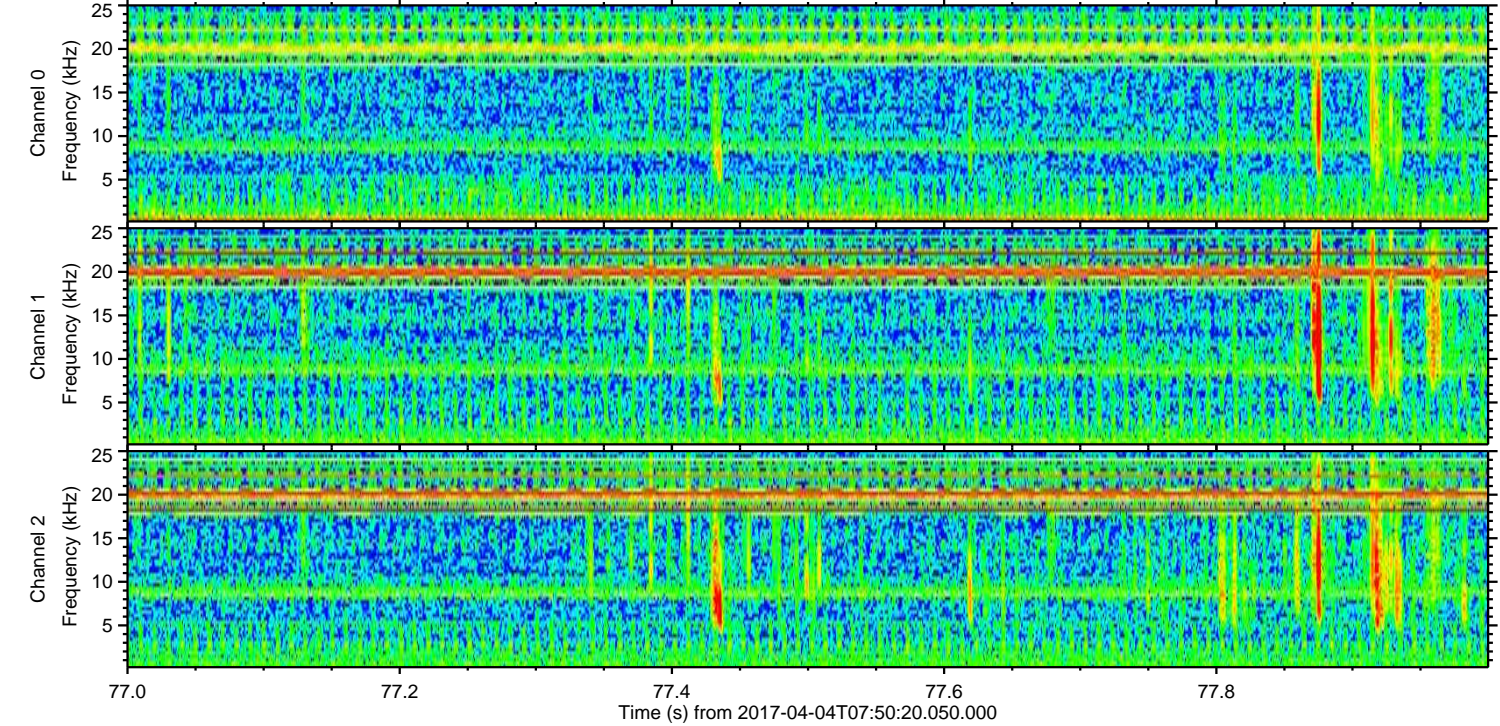
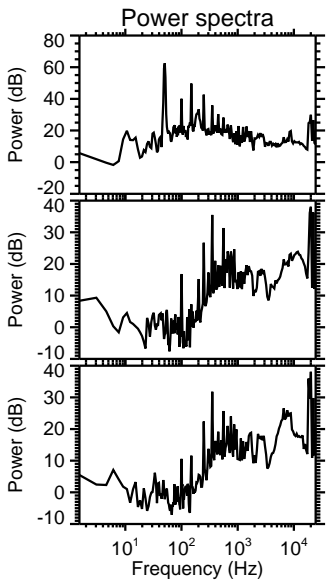
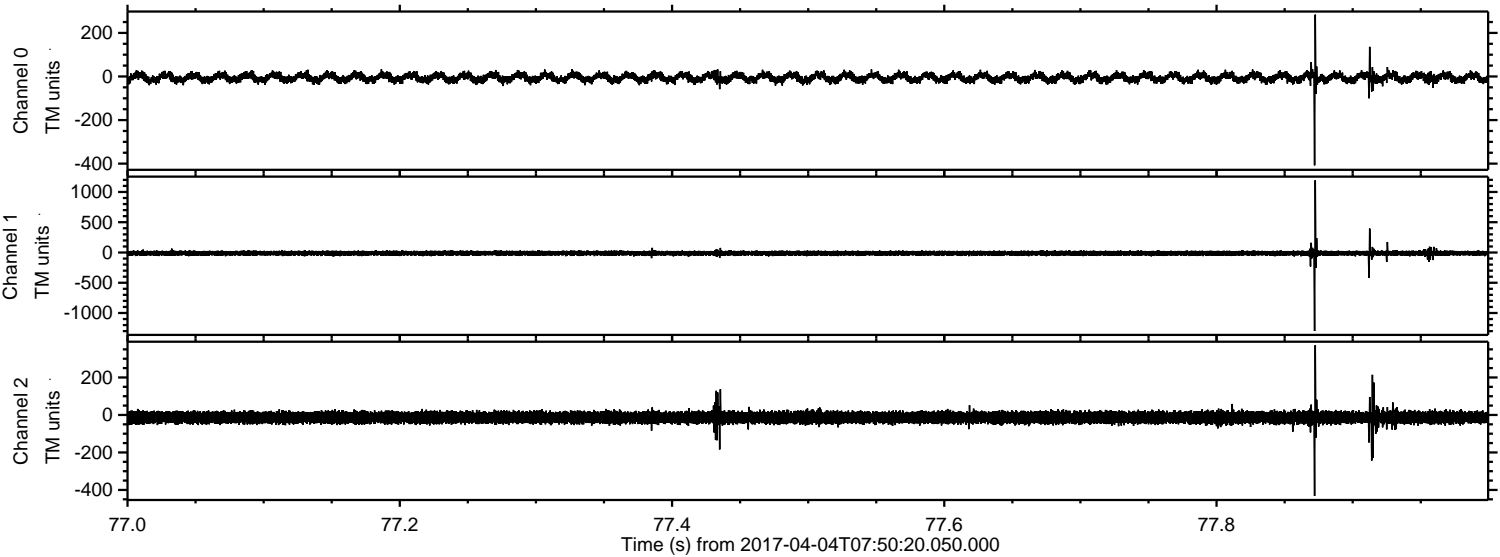
Processed Tue Apr 4 09:58:53 2017 by ELM ver.2012-10-06 from 001__elm20170404_075019__dat00.bin



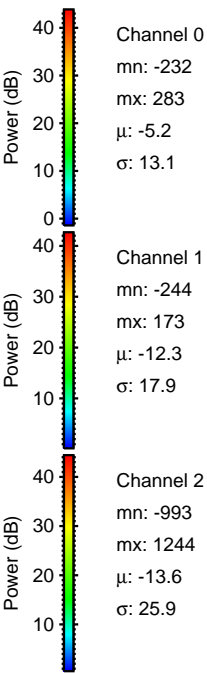
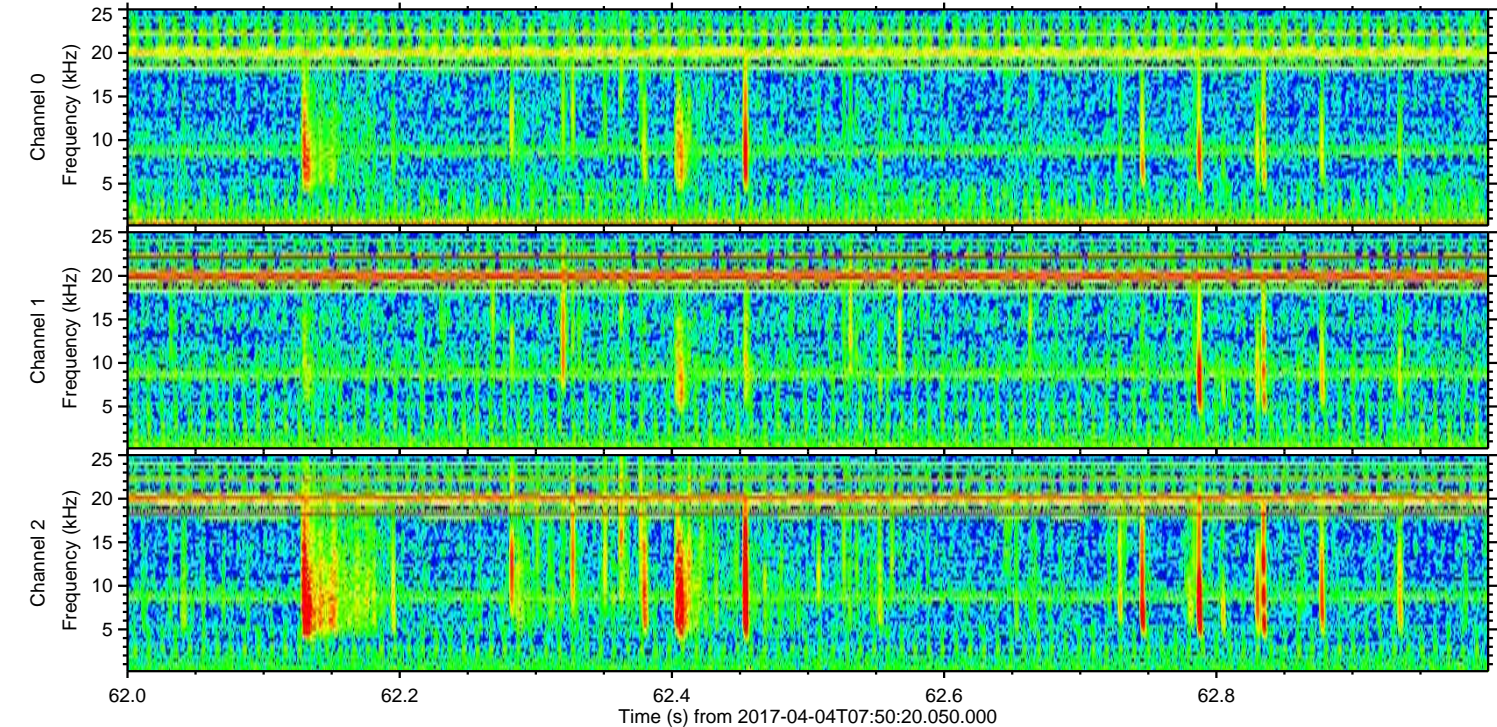
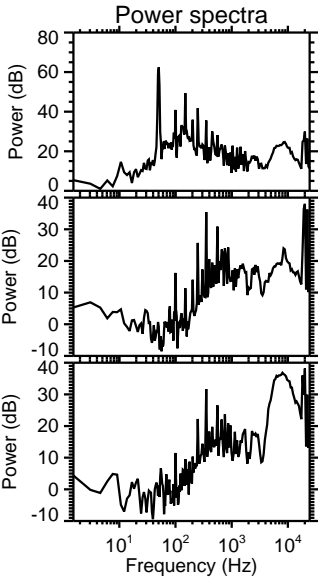
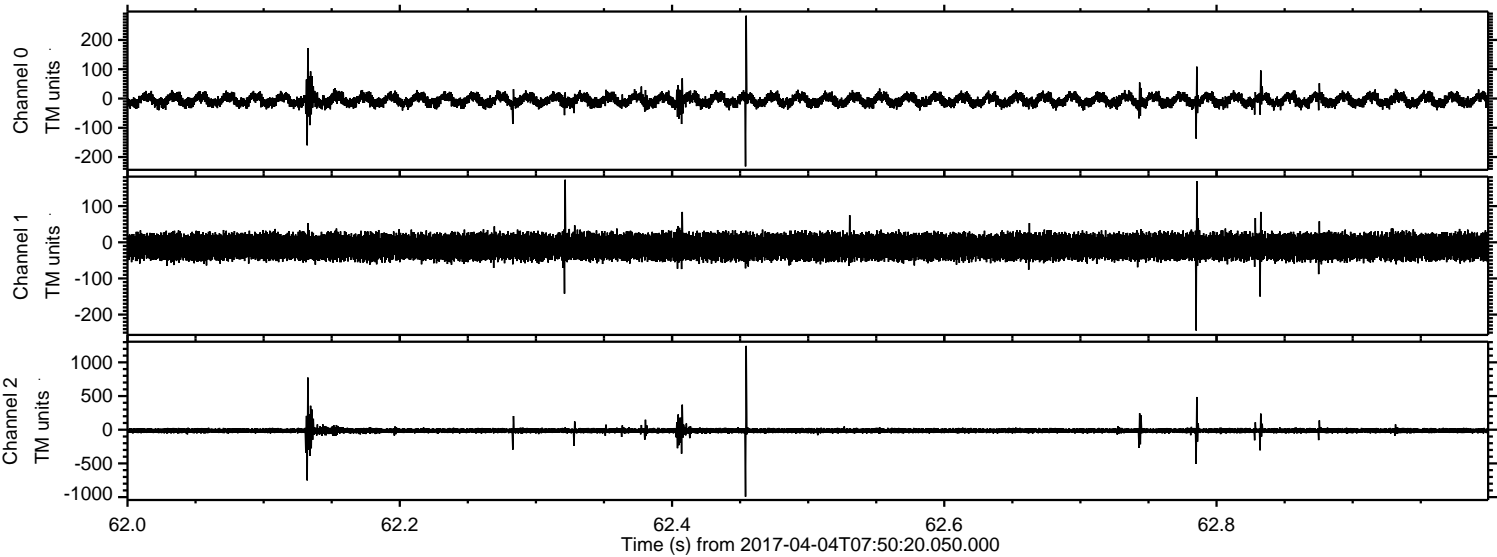
Processed Tue Apr 4 09:58:54 2017 by ELM ver.2012-10-06 from 001__elm20170404_075019__dat00.bin



Processed Tue Apr 4 09:58:55 2017 by ELM ver.2012-10-06 from 001__elm20170404_075019__dat00.bin



Processed Tue Apr 4 09:58:56 2017 by ELM ver.2012-10-06 from 001__elm20170404_075019__dat00.bin



Processed Tue Apr 4 09:58:57 2017 by ELM ver.2012-10-06 from 001__elm20170404_075019__dat00.bin

