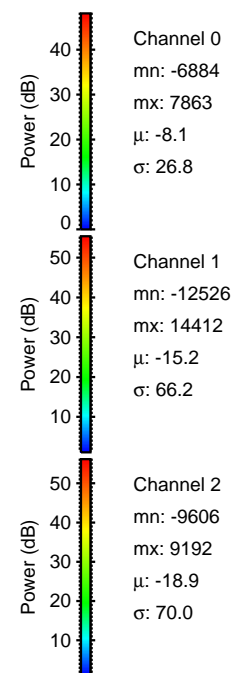
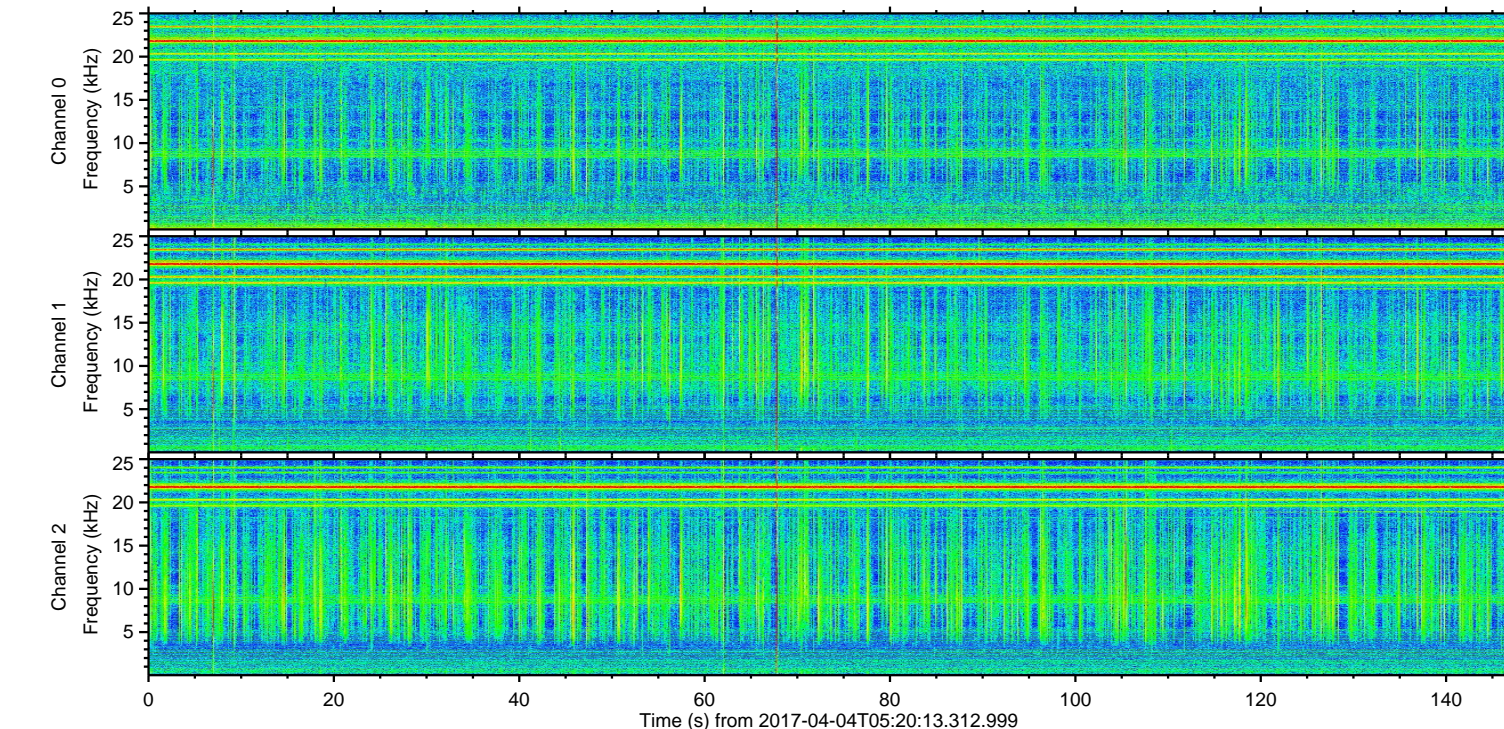
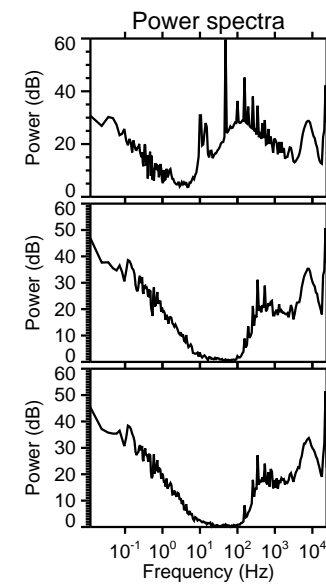
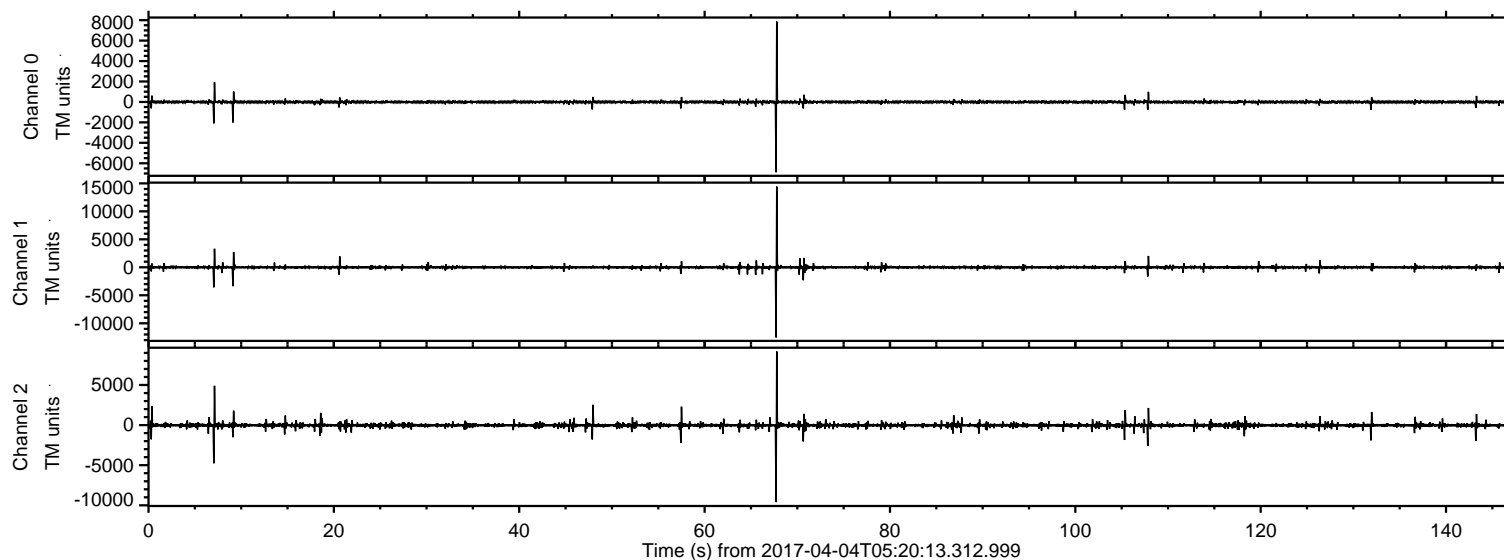


# ELMAVAN 3D WAVEFORMS (Measured data sampled at 50 kHz) 51000 packets of 144 samples from 2017-04-04T05:20:13.312.999.

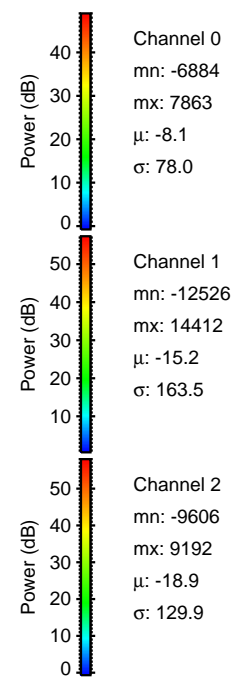
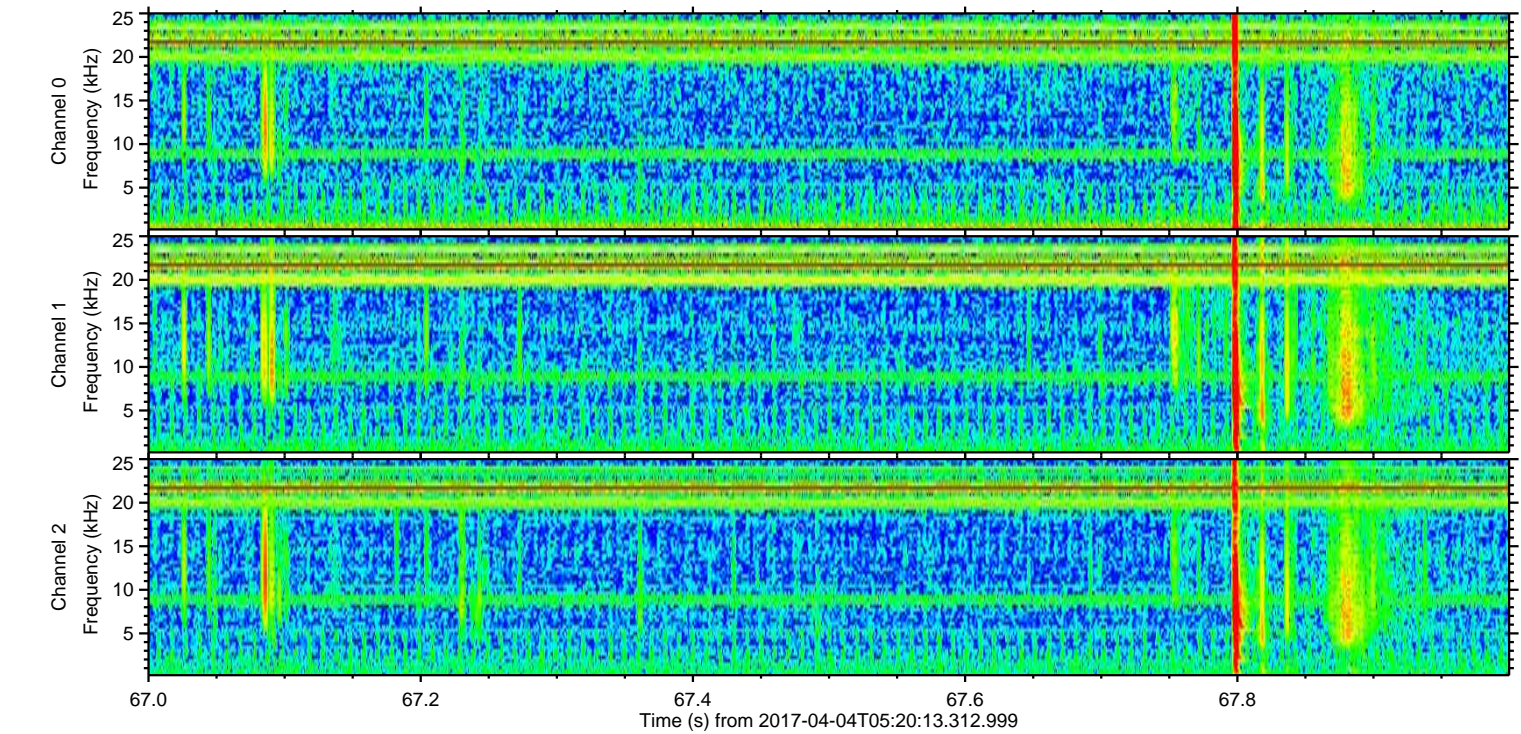
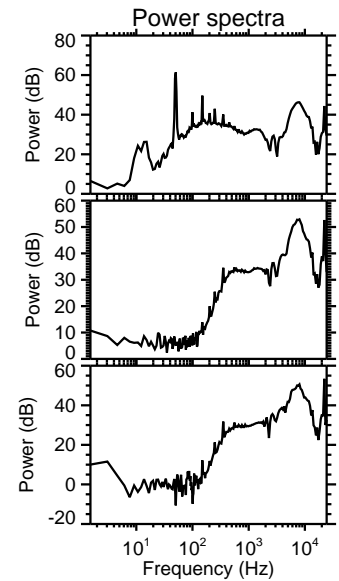
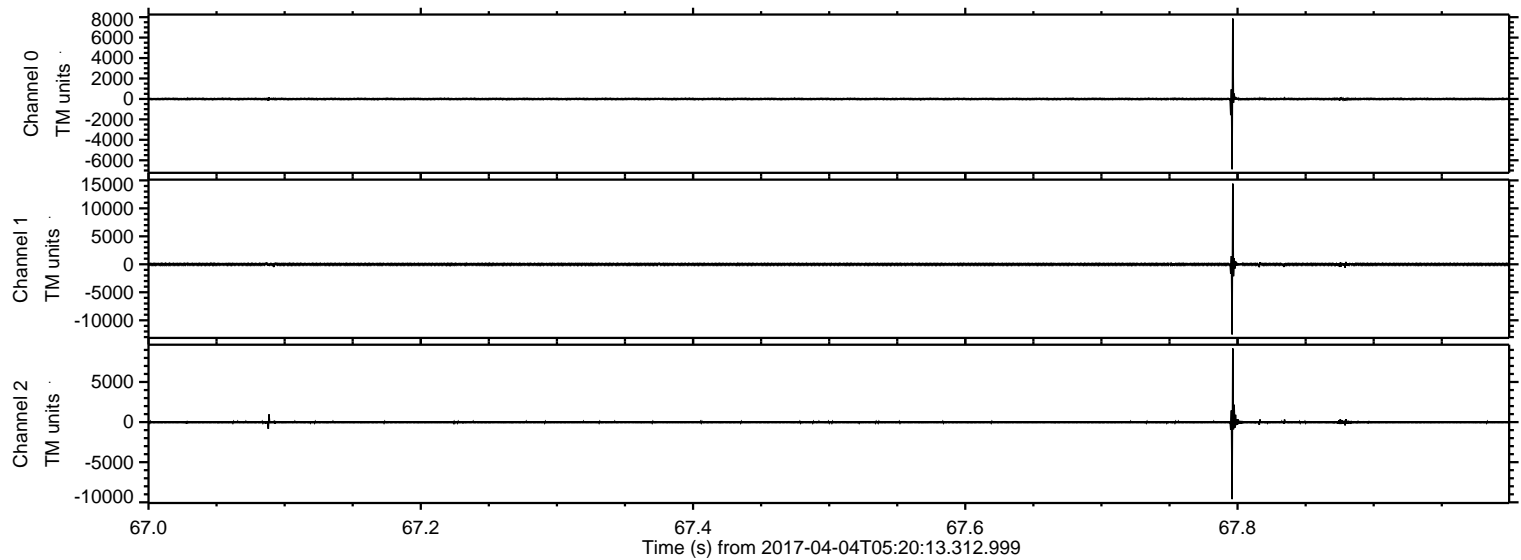
Processed Tue Apr 4 07:28:17 2017 by ELM ver.2012-10-06 from 001\_\_elm20170404\_052012\_\_dat00.bin





ELMAVAN 3D WAVEFORMS (Measured data sampled at 50 kHz) 51000 packets of 144 samples from 2017-04-04T05:20:13.312.999. Part 68/147

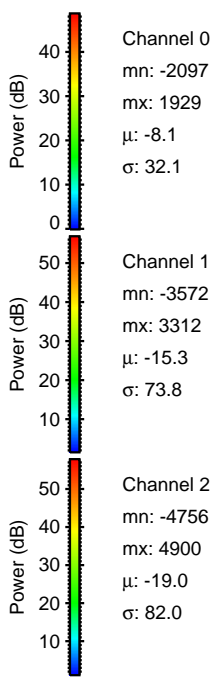
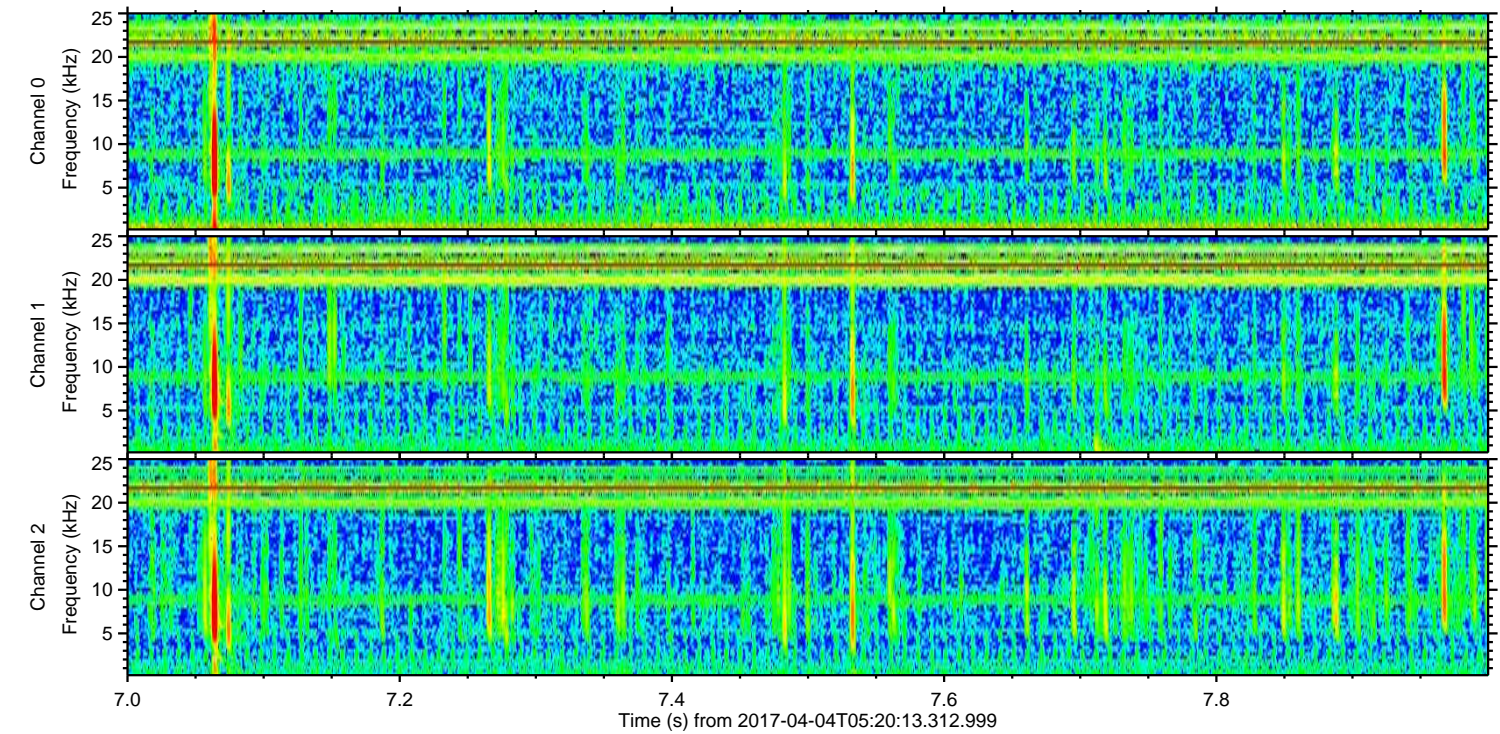
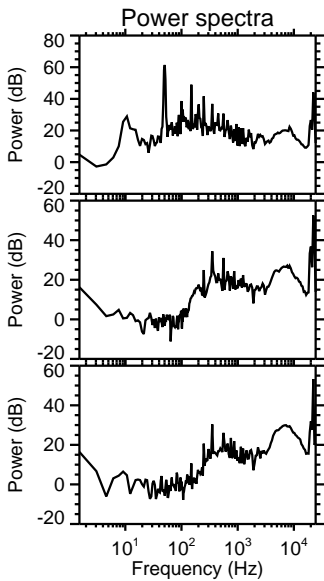
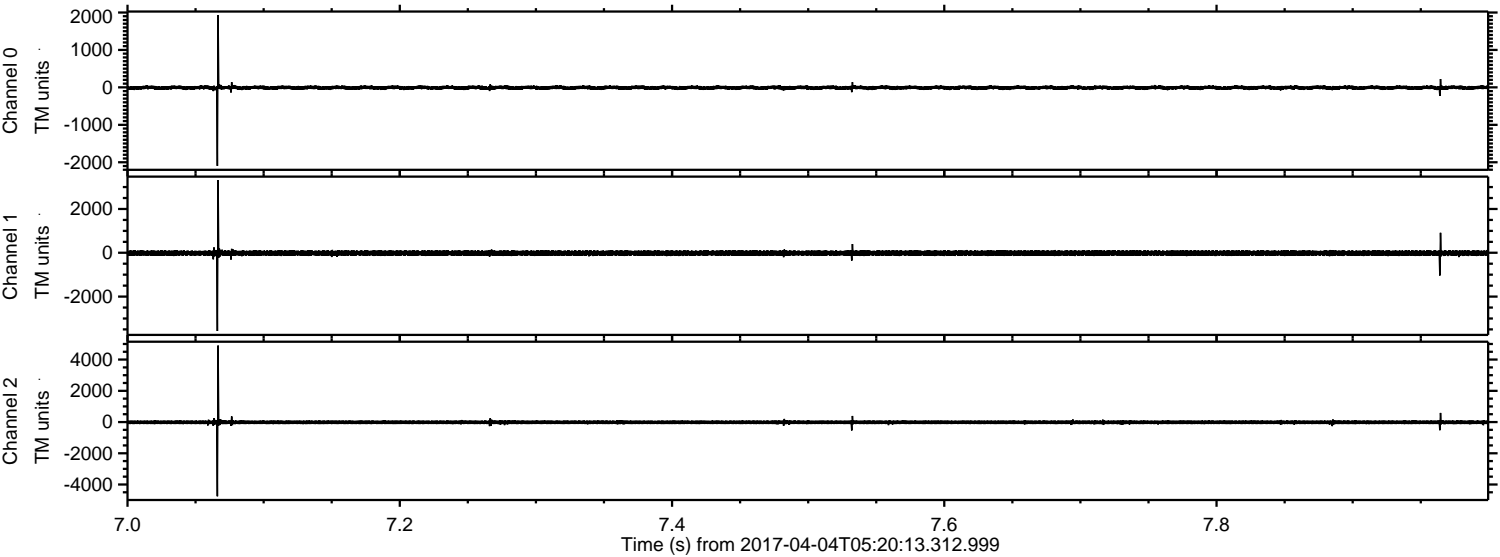
Processed Tue Apr 4 07:28:28 2017 by ELM ver.2012-10-06 from 001\_\_elm20170404\_052012\_\_dat00.bin





ELMAVAN 3D WAVEFORMS (Measured data sampled at 50 kHz) 51000 packets of 144 samples from 2017-04-04T05:20:13.312.999. Part 8/147

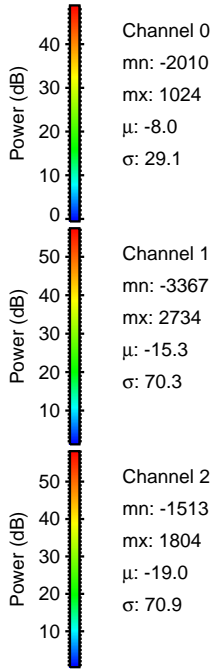
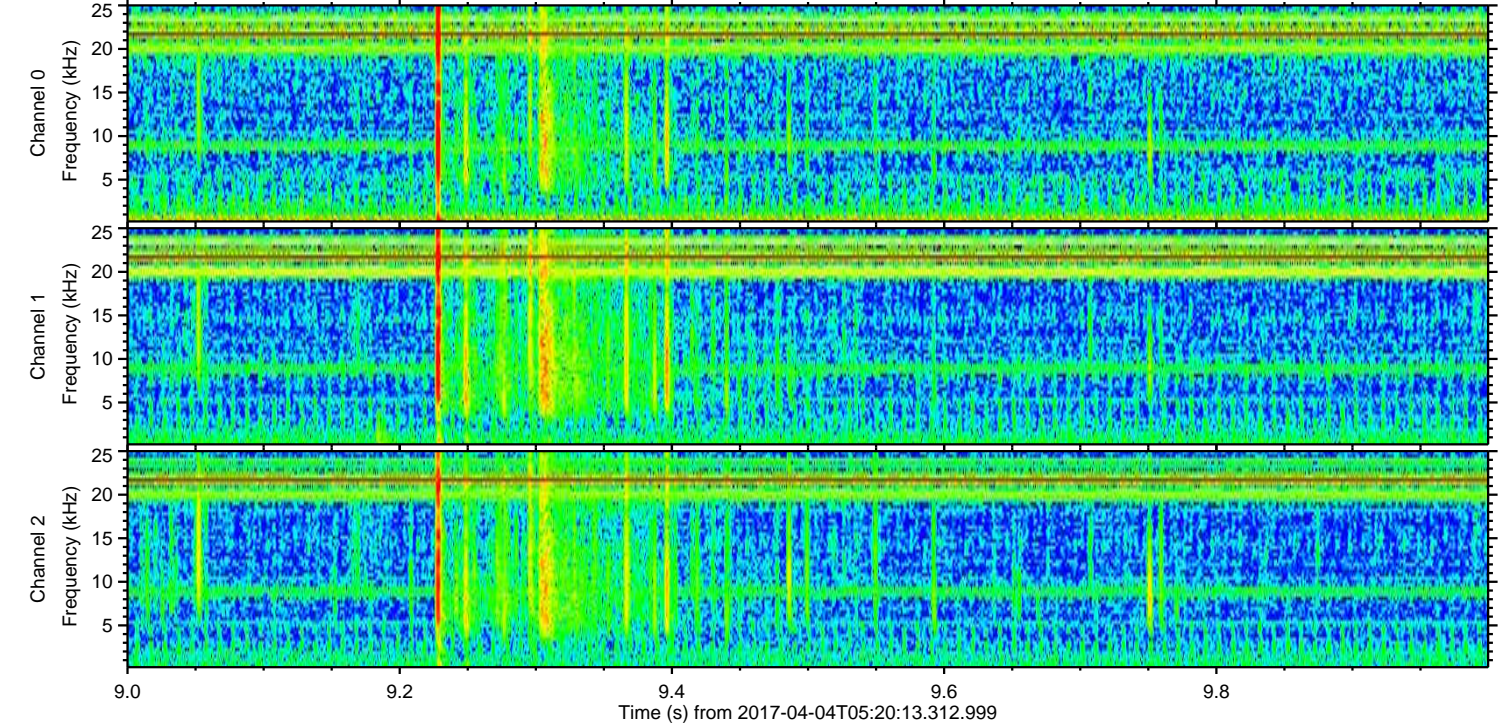
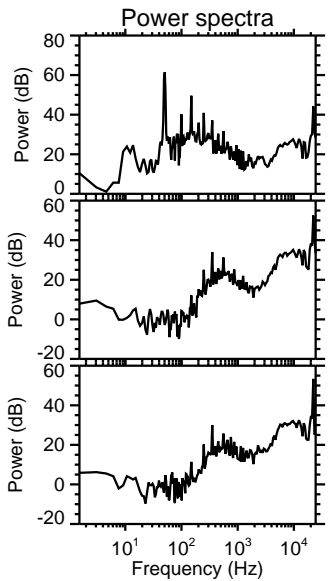
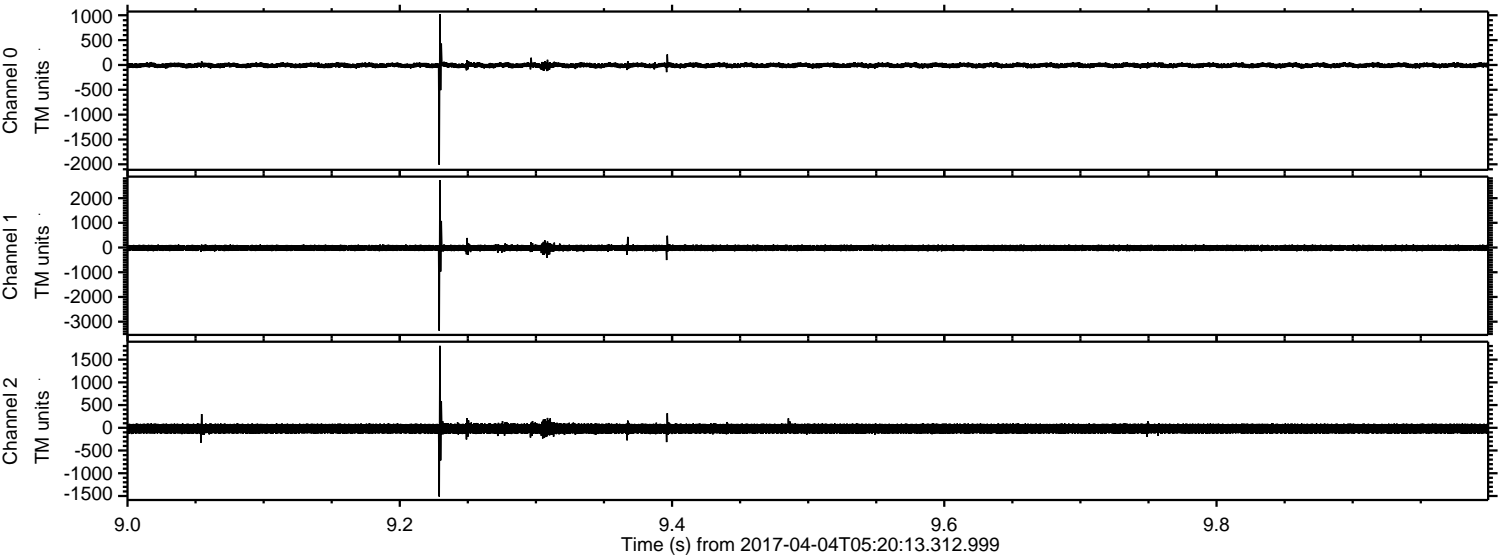
Processed Tue Apr 4 07:28:29 2017 by ELM ver.2012-10-06 from 001\_\_elm20170404\_052012\_\_dat00.bin





ELMAVAN 3D WAVEFORMS (Measured data sampled at 50 kHz) 51000 packets of 144 samples from 2017-04-04T05:20:13.312.999. Part 10/147

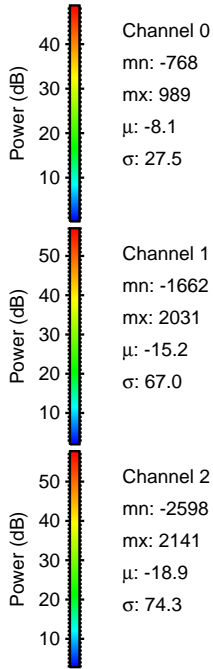
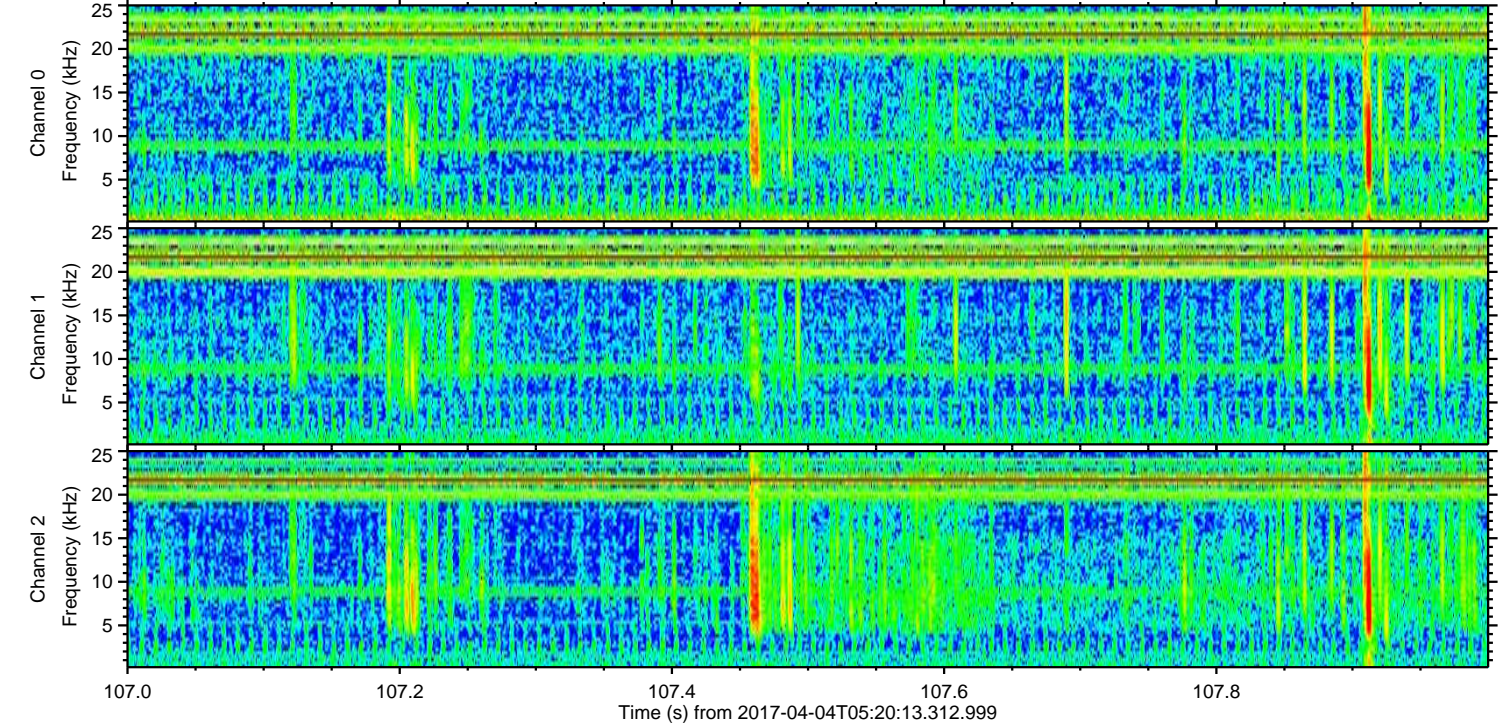
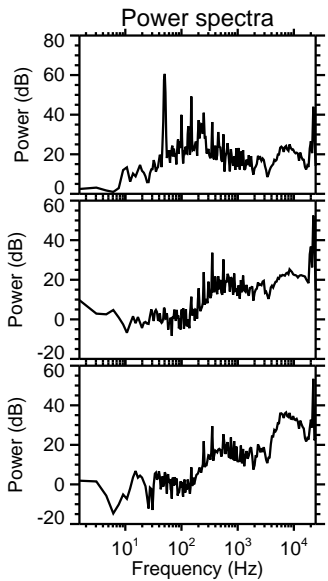
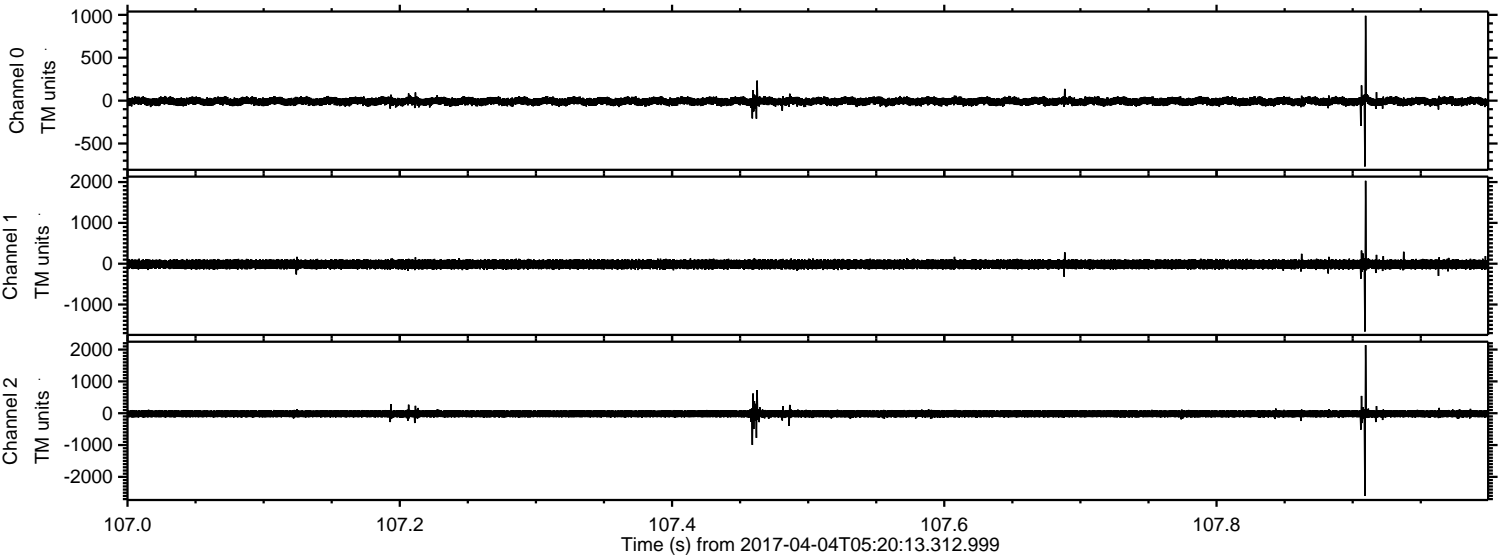
Processed Tue Apr 4 07:28:30 2017 by ELM ver.2012-10-06 from 001\_\_elm20170404\_052012\_\_dat00.bin





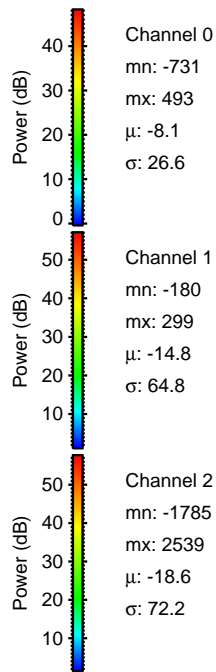
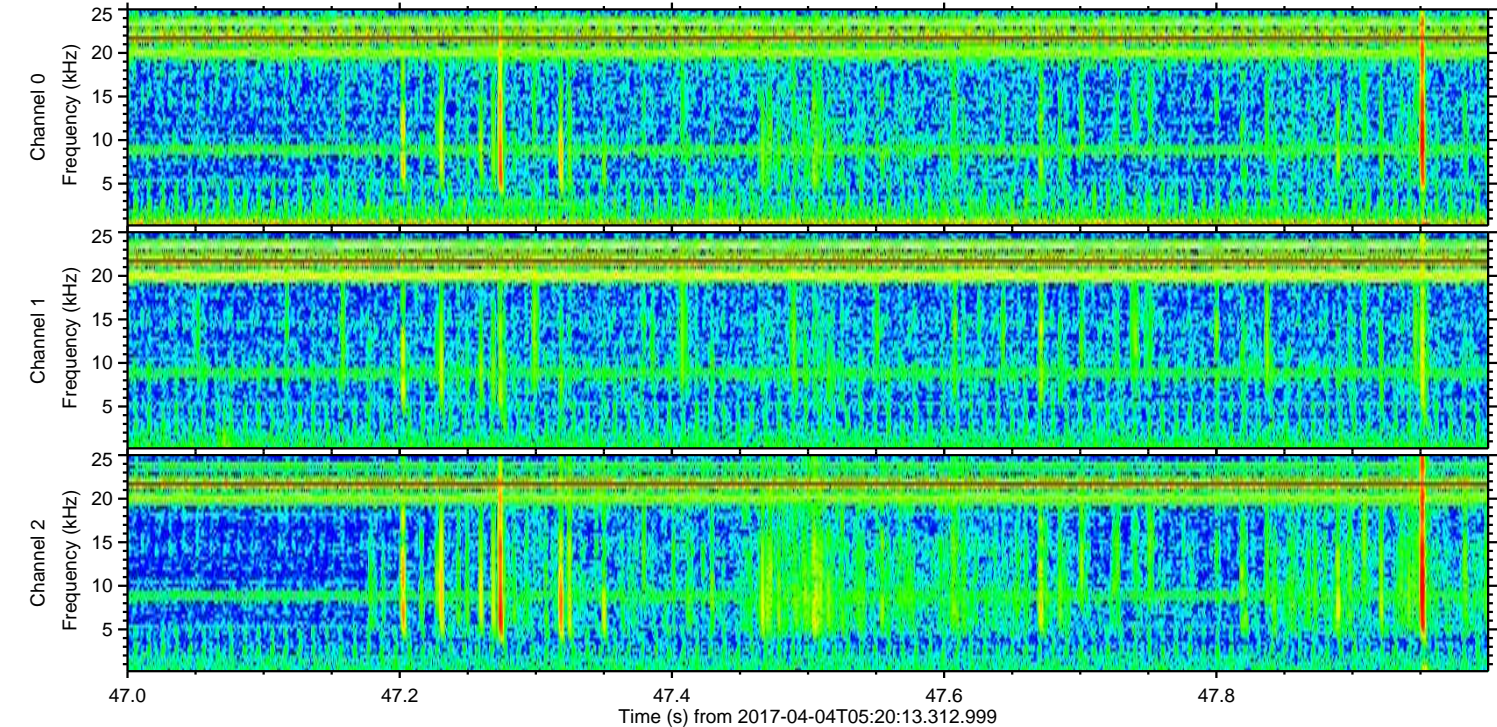
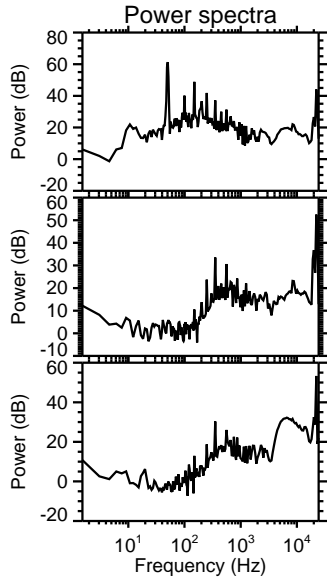
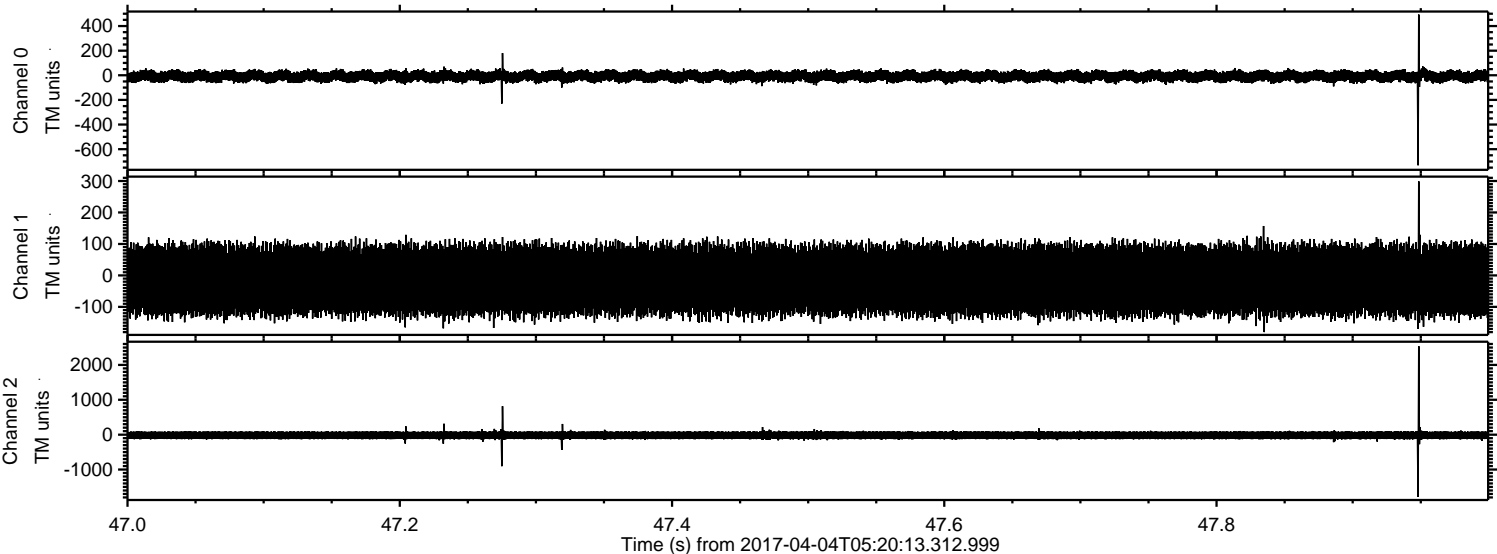
ELMAVAN 3D WAVEFORMS (Measured data sampled at 50 kHz) 51000 packets of 144 samples from 2017-04-04T05:20:13.312.999. Part 108/147

Processed Tue Apr 4 07:28:31 2017 by ELM ver.2012-10-06 from 001\_\_elm20170404\_052012\_\_dat00.bin



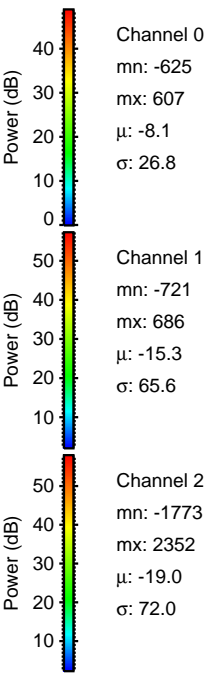
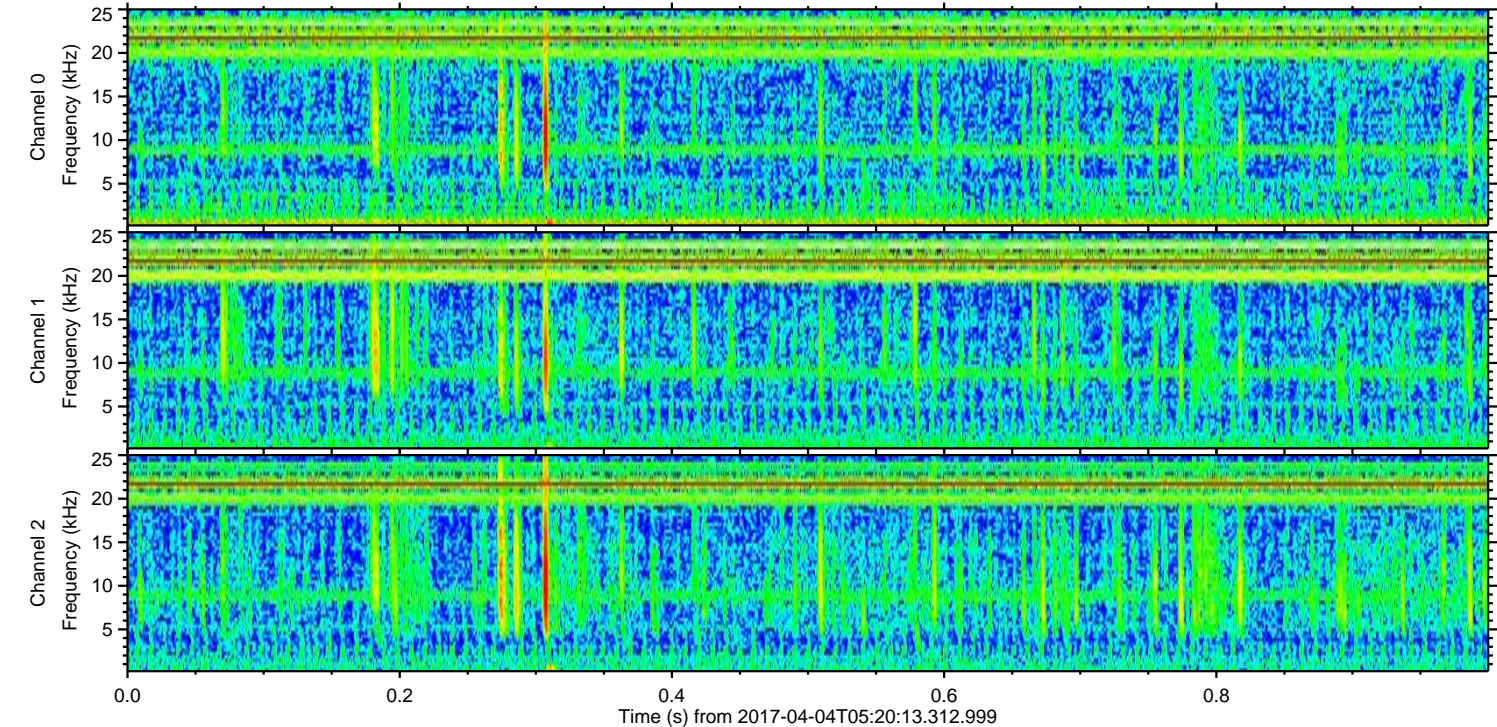
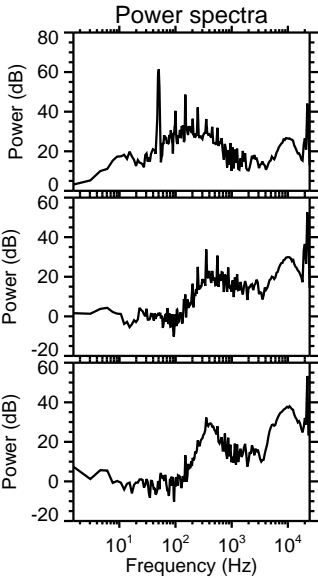
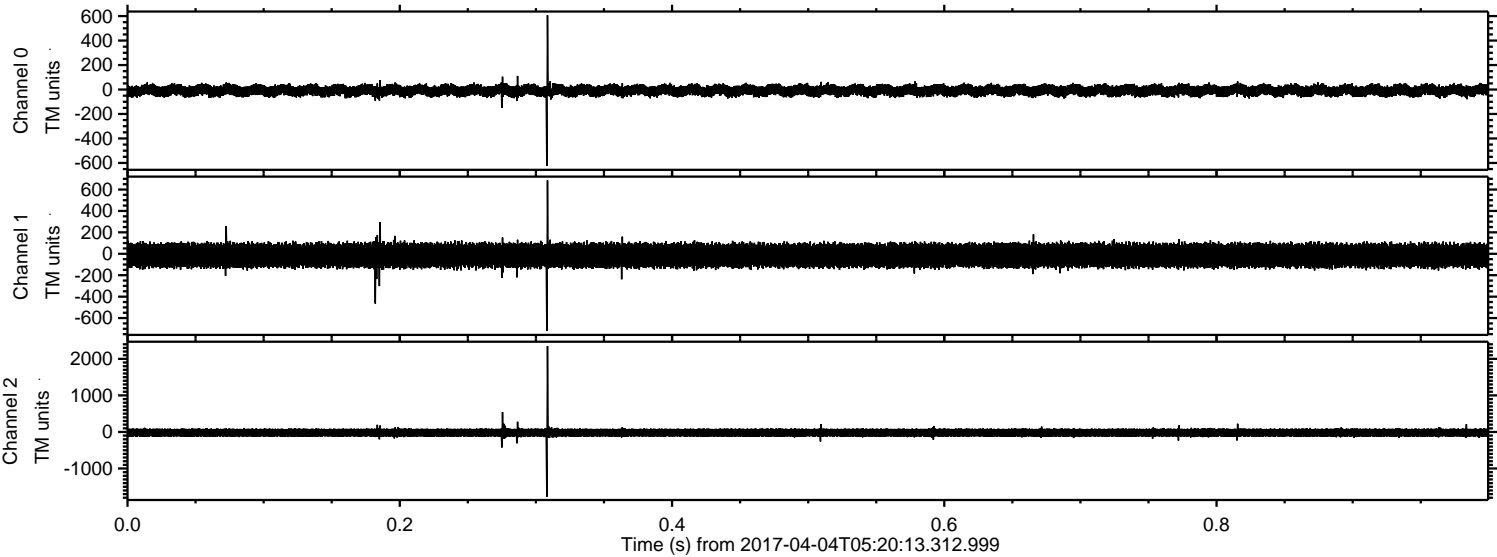


Processed Tue Apr 4 07:28:32 2017 by ELM ver.2012-10-06 from 001\_\_elm20170404\_052012\_\_dat00.bin



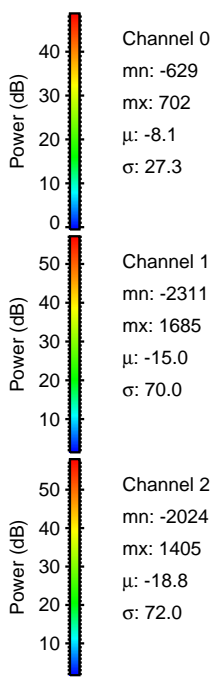
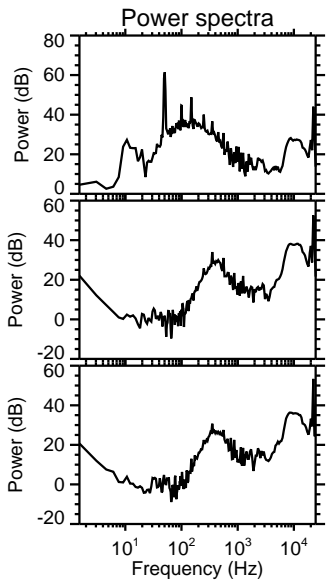
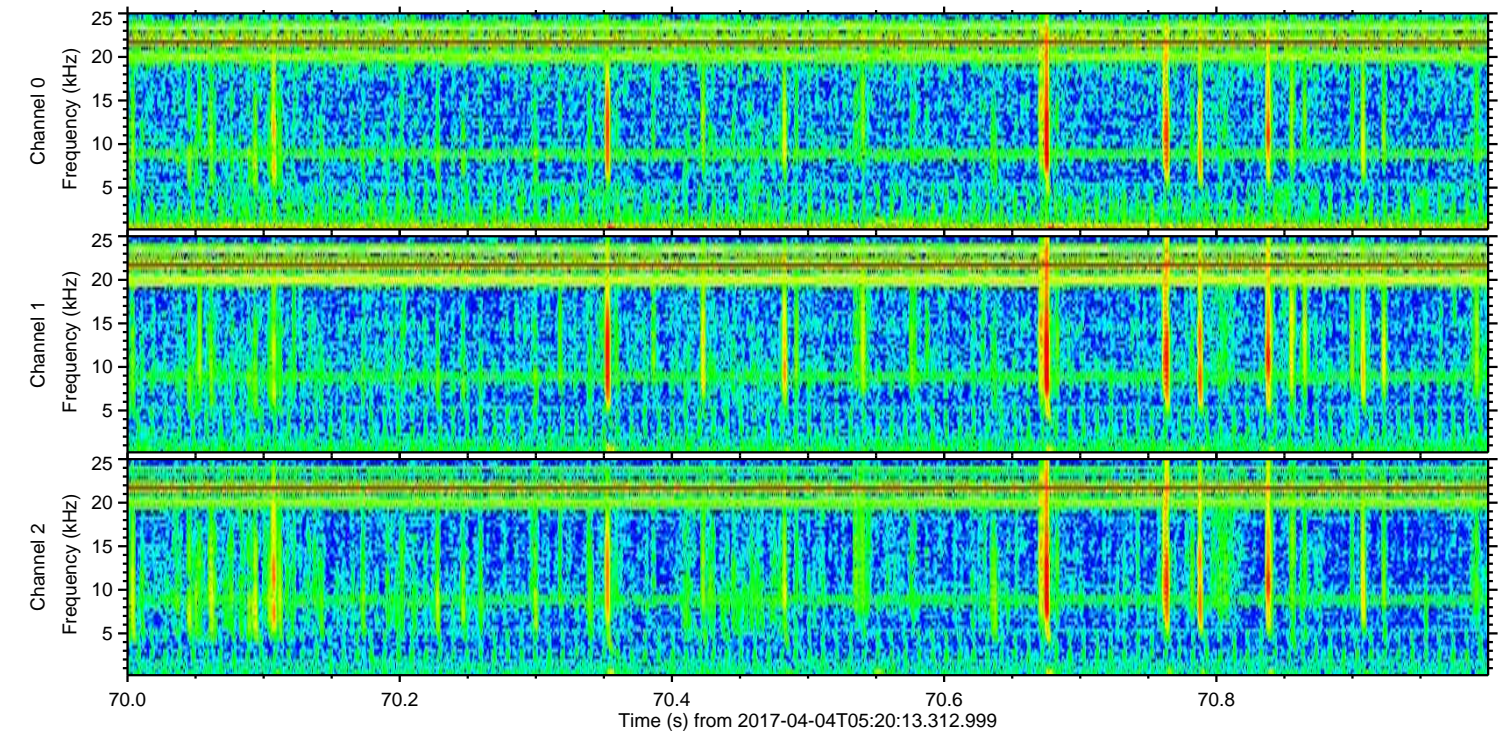
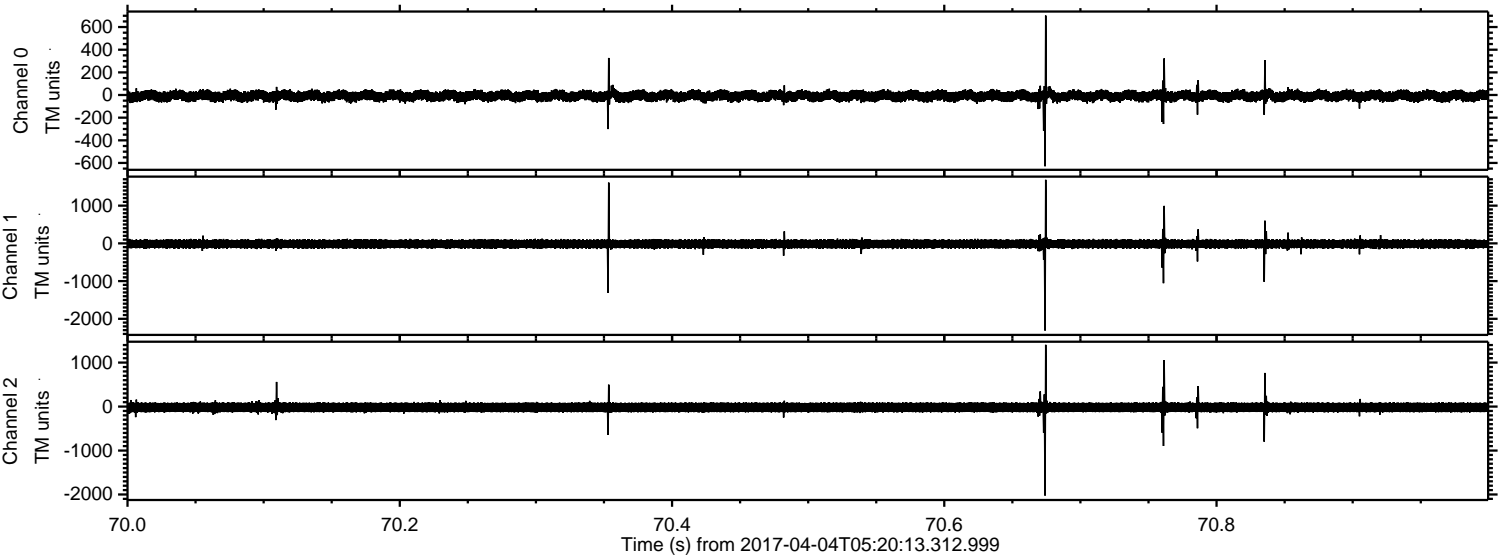


Processed Tue Apr 4 07:28:33 2017 by ELM ver.2012-10-06 from 001\_\_elm20170404\_052012\_\_dat00.bin



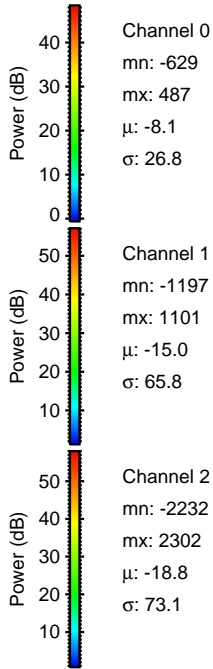
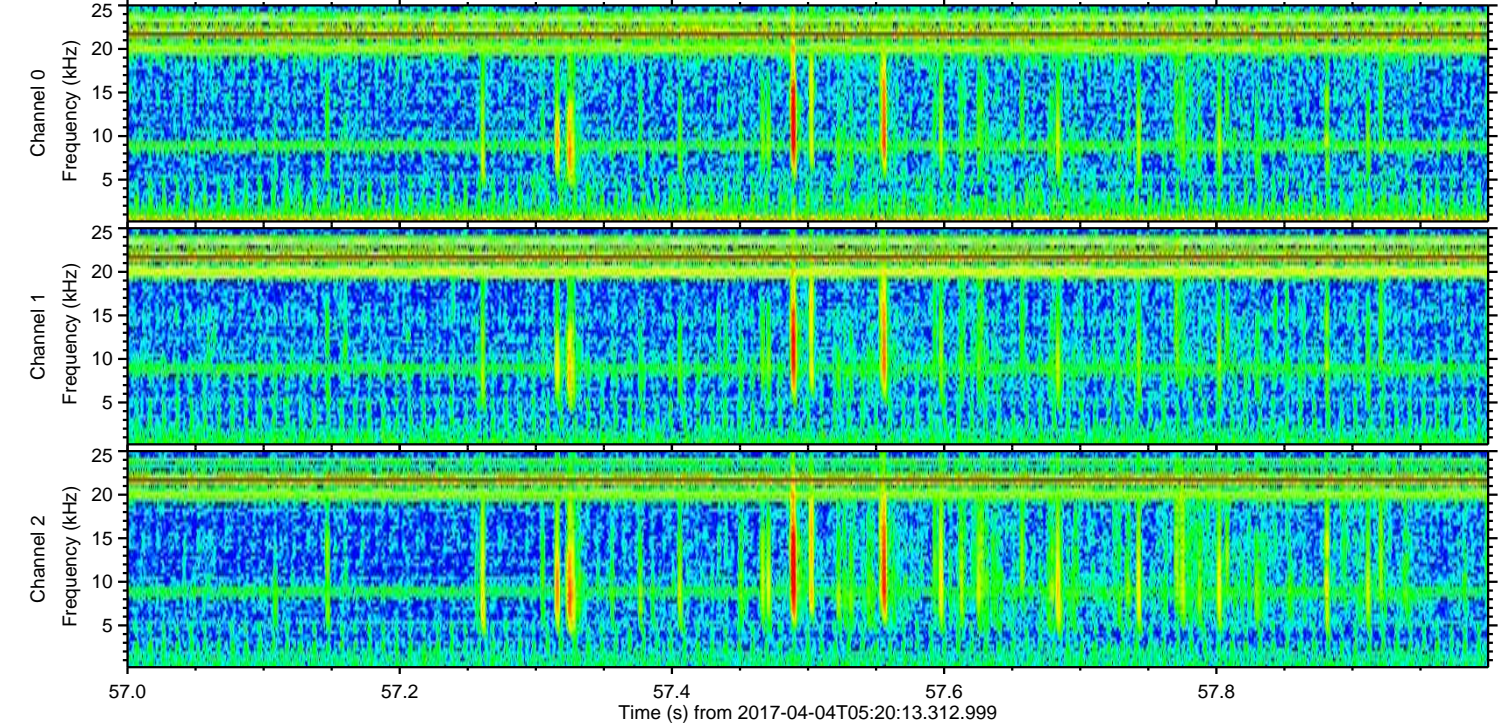
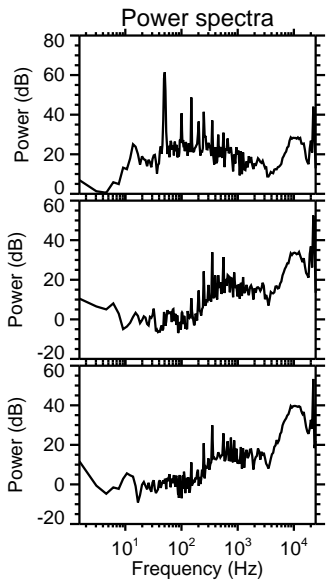
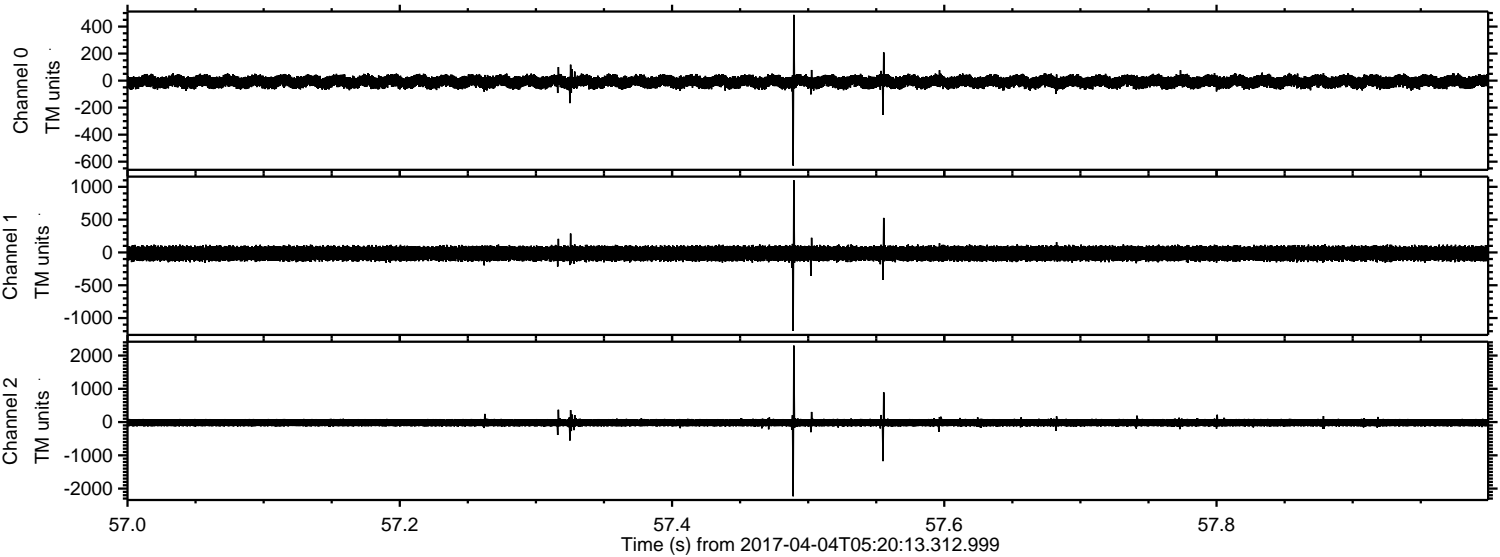


Processed Tue Apr 4 07:28:34 2017 by ELM ver.2012-10-06 from 001\_\_elm20170404\_052012\_\_dat00.bin





Processed Tue Apr 4 07:28:35 2017 by ELM ver.2012-10-06 from 001\_\_elm20170404\_052012\_\_dat00.bin



Channel 0  
mn: -629  
mx: 487  
 $\mu$ : -8.1  
 $\sigma$ : 26.8

Channel 1  
mn: -1197  
mx: 1101  
 $\mu$ : -15.0  
 $\sigma$ : 65.8

Channel 2  
mn: -2232  
mx: 2302  
 $\mu$ : -18.8  
 $\sigma$ : 73.1



Processed Tue Apr 4 07:28:36 2017 by ELM ver.2012-10-06 from 001\_\_elm20170404\_052012\_\_dat00.bin

