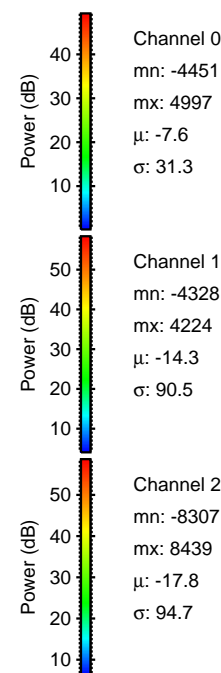
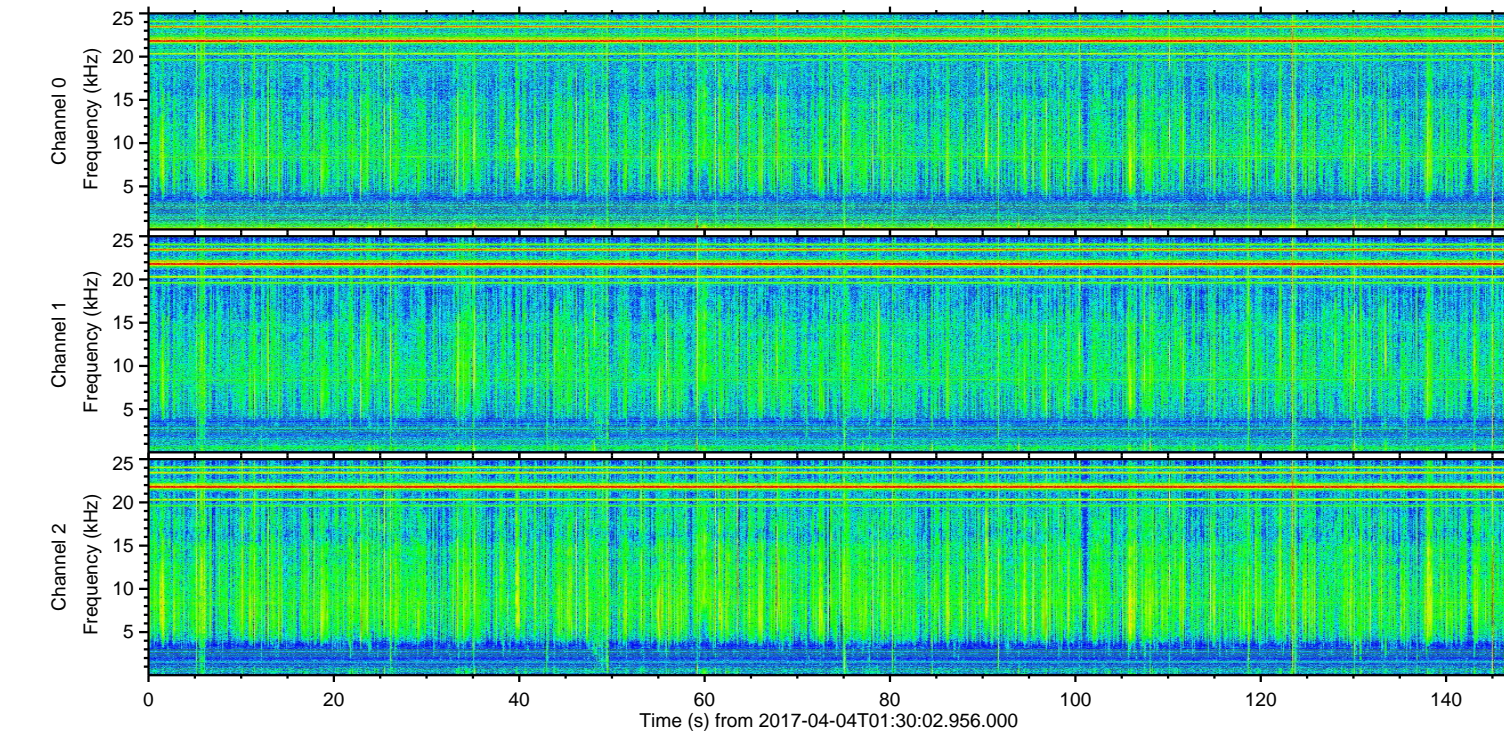
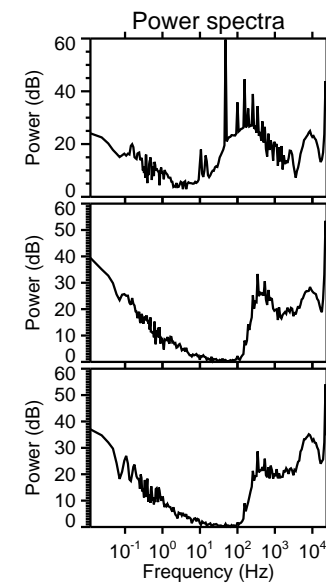
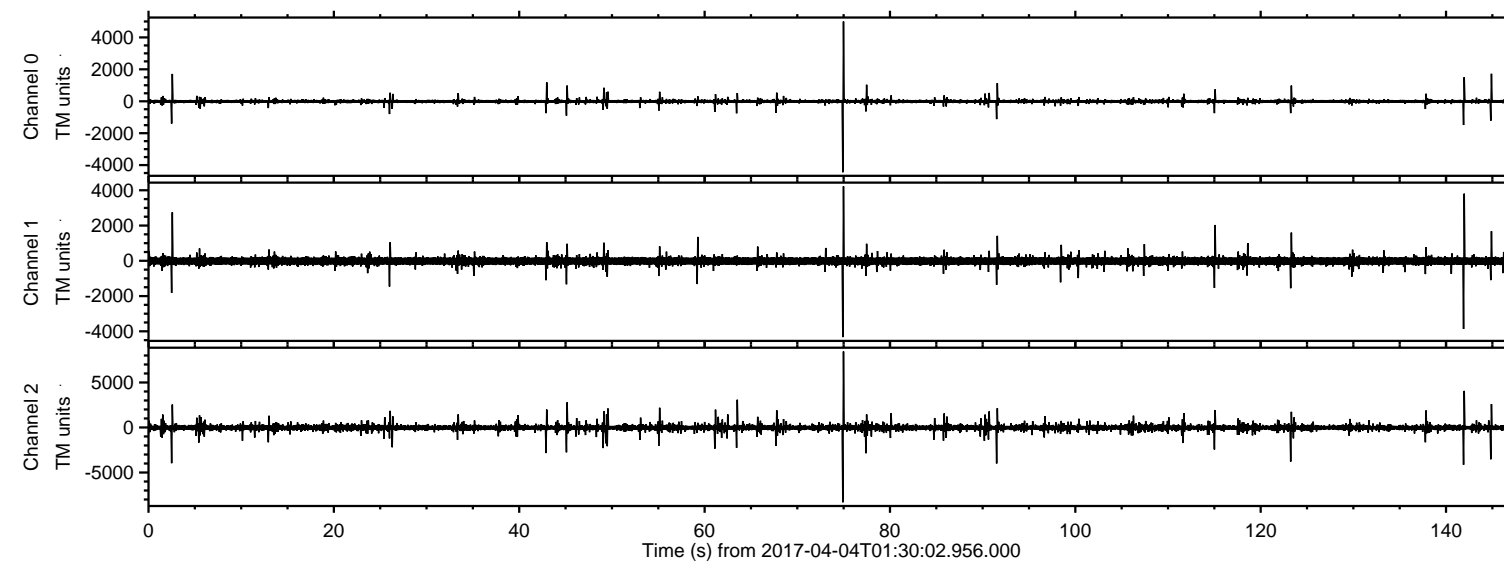


ELMAVAN 3D WAVEFORMS (Measured data sampled at 50 kHz) 51000 packets of 144 samples from 2017-04-04T01:30:02.956.000.

Processed Tue Apr 4 03:37:23 2017 by ELM ver.2012-10-06 from 001__elm20170404_013001__dat00.bin



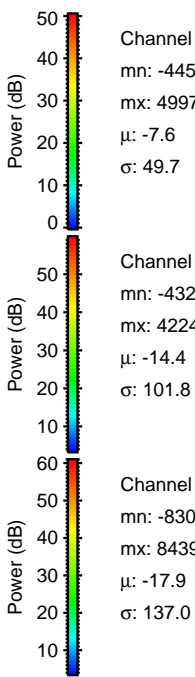
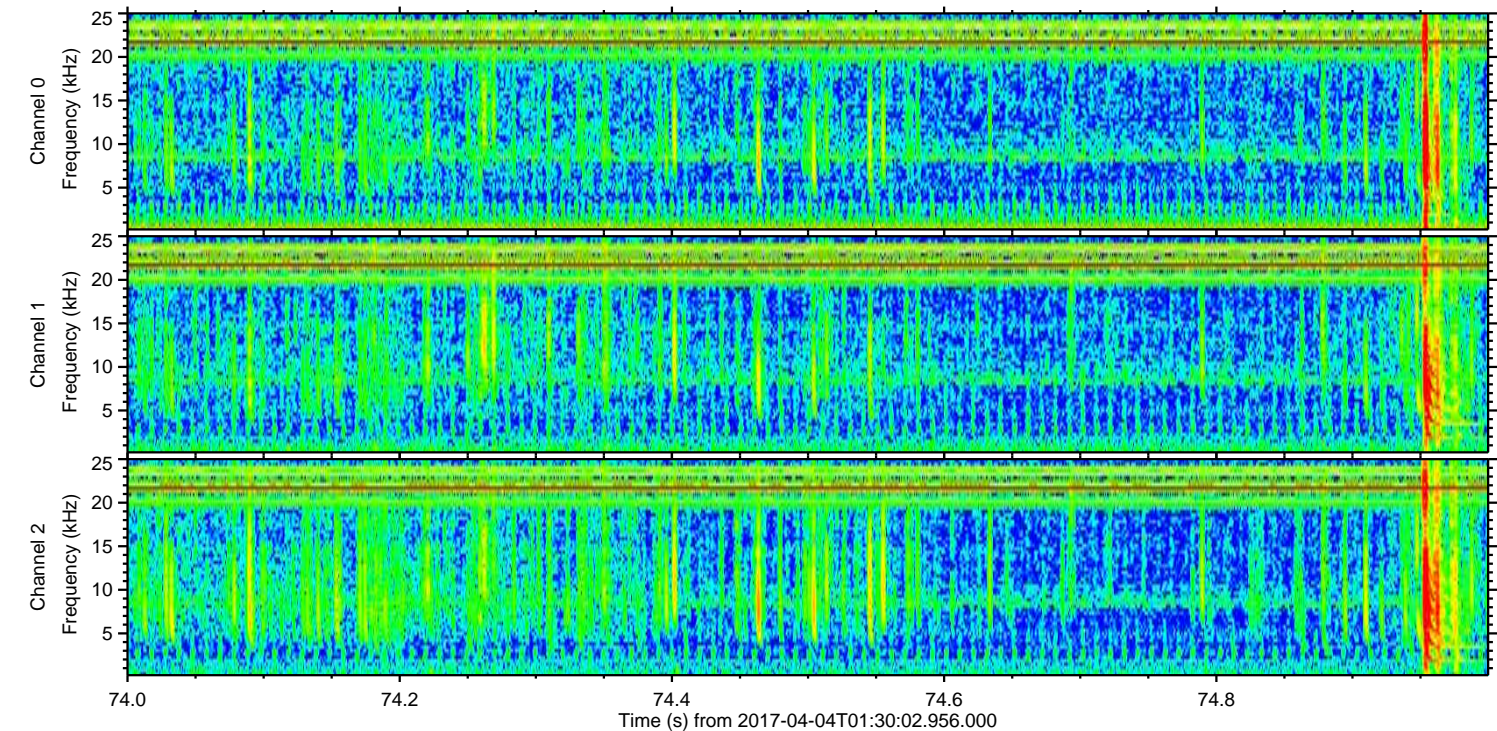
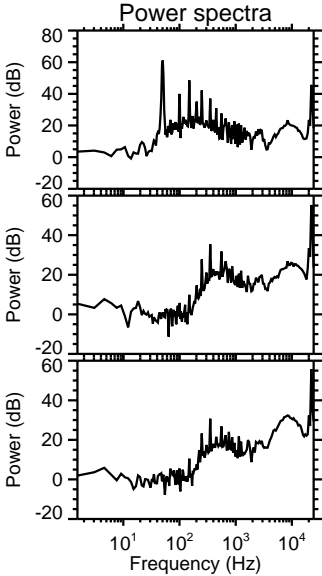
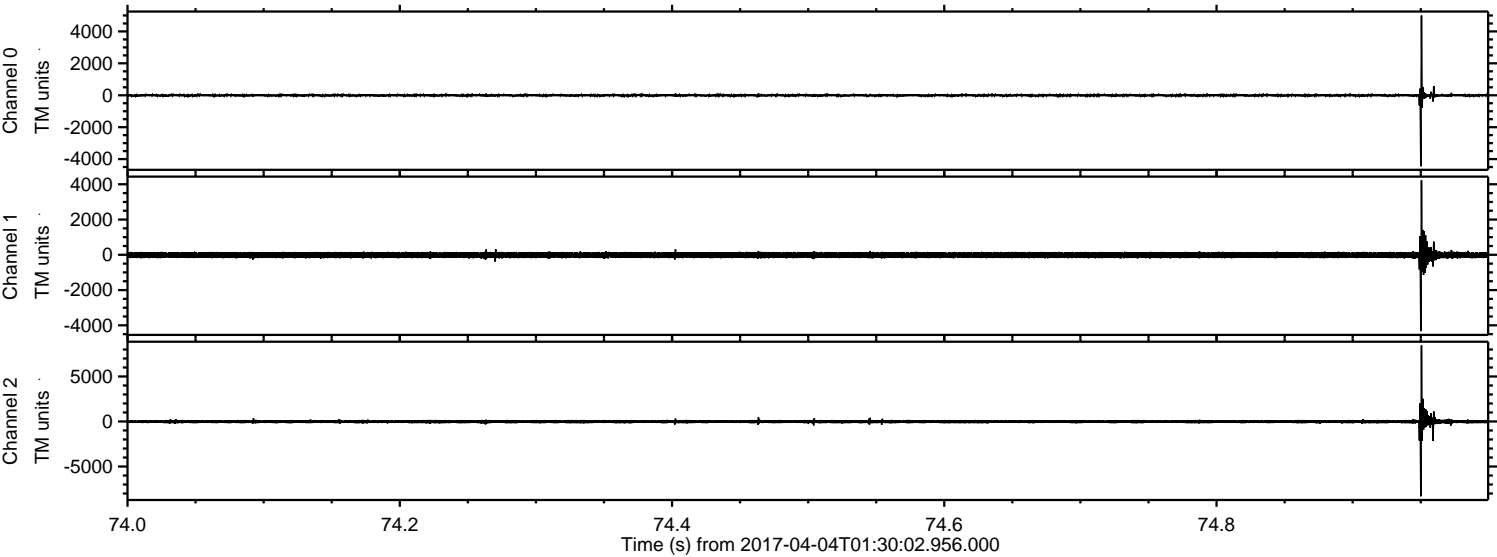
Channel 0
mn: -4451
mx: 4997
 μ : -7.6
 σ : 31.3

Channel 1
mn: -4328
mx: 4224
 μ : -14.3
 σ : 90.5

Channel 2
mn: -8307
mx: 8439
 μ : -17.8
 σ : 94.7

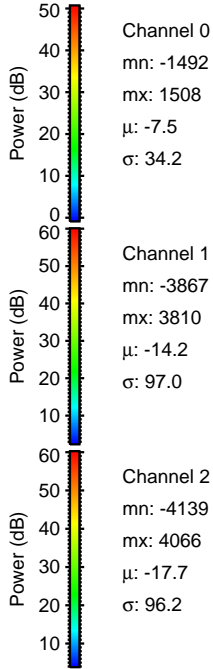
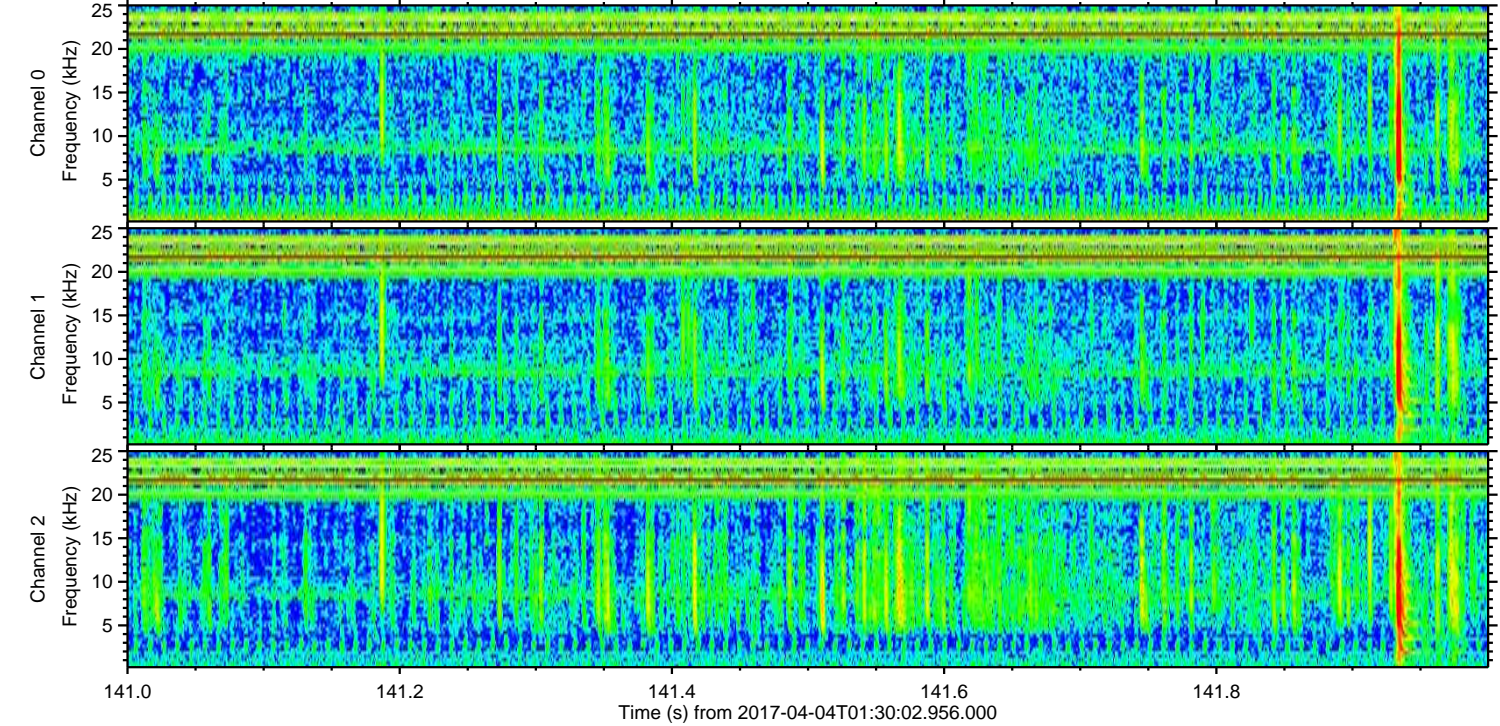
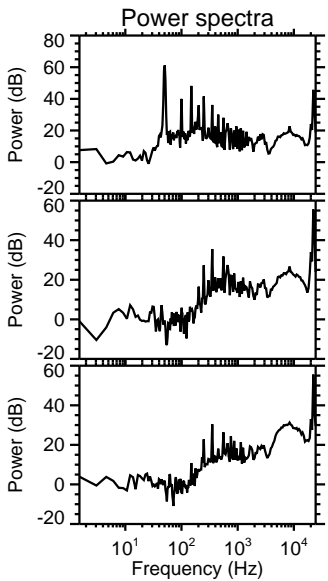
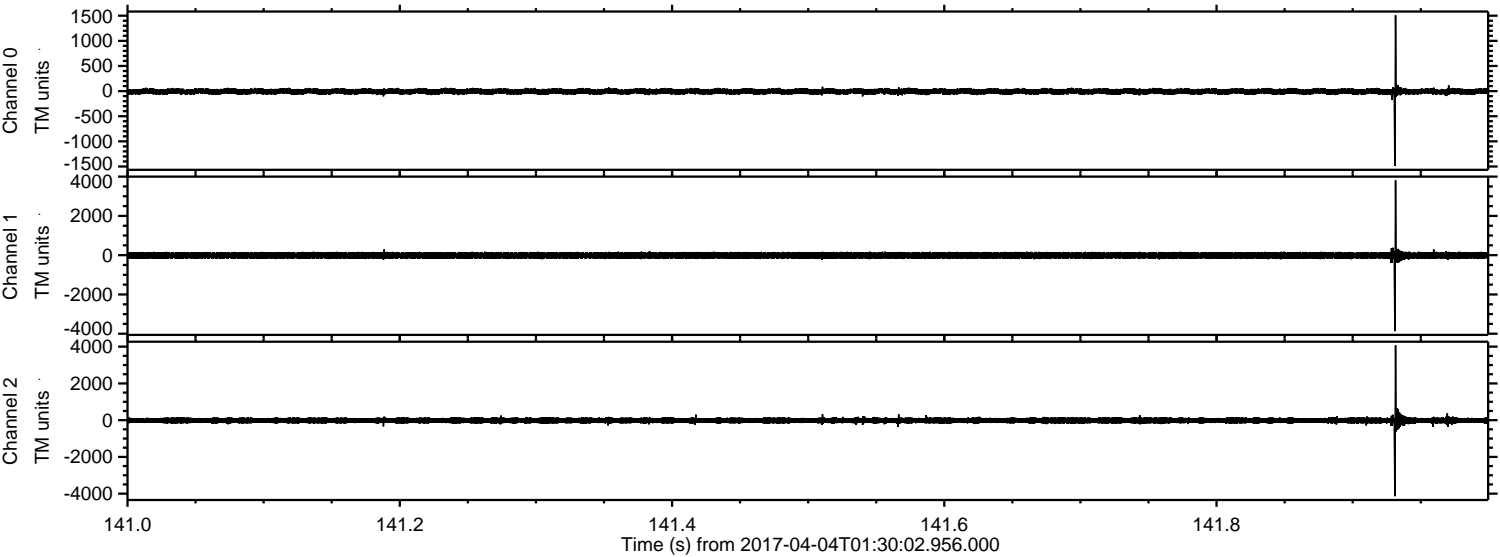
ELMAVAN 3D WAVEFORMS (Measured data sampled at 50 kHz) 51000 packets of 144 samples from 2017-04-04T01:30:02.956.000. Part 75/147

Processed Tue Apr 4 03:37:35 2017 by ELM ver.2012-10-06 from 001__elm20170404_013001__dat00.bin



ELMAVAN 3D WAVEFORMS (Measured data sampled at 50 kHz) 51000 packets of 144 samples from 2017-04-04T01:30:02.956.000. Part 142/147

Processed Tue Apr 4 03:37:36 2017 by ELM ver.2012-10-06 from 001__elm20170404_013001__dat00.bin

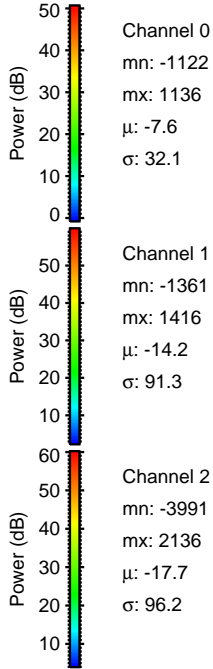
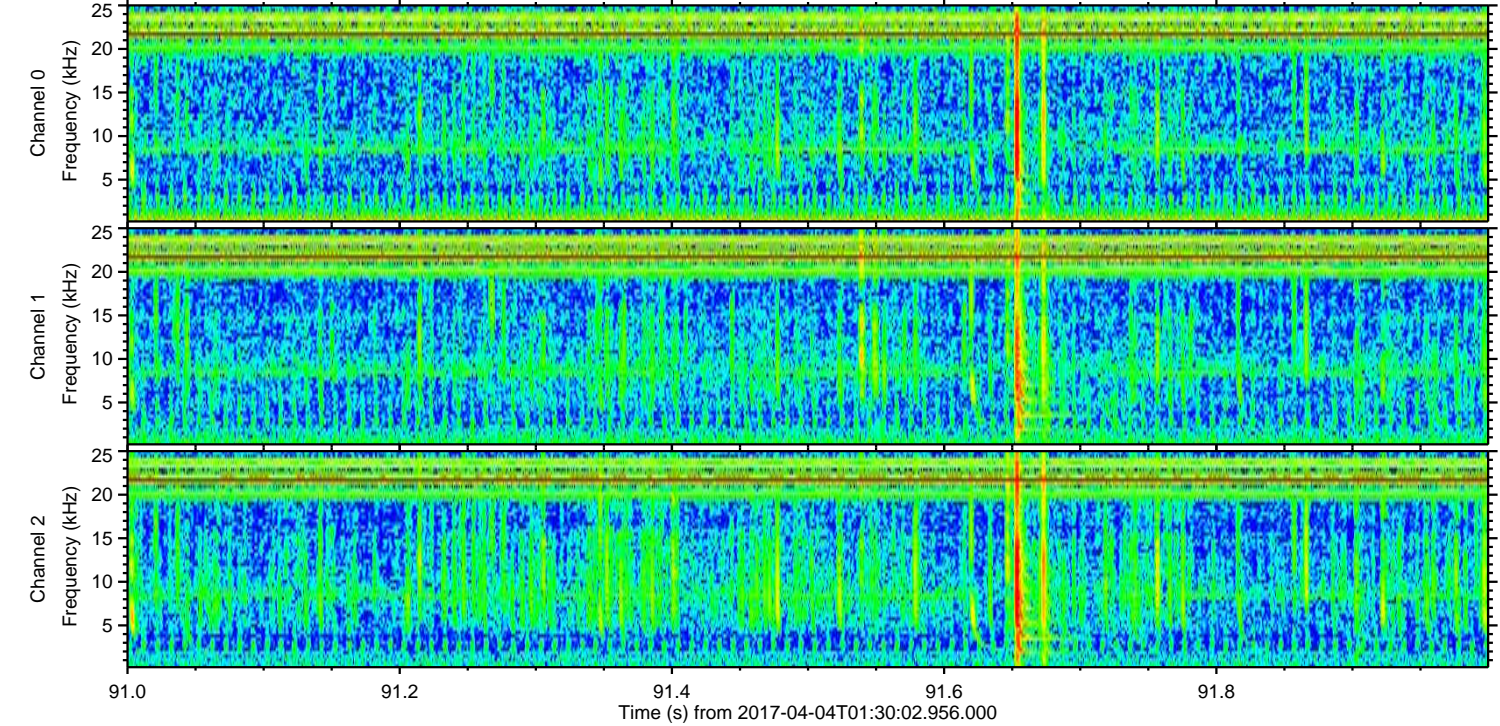
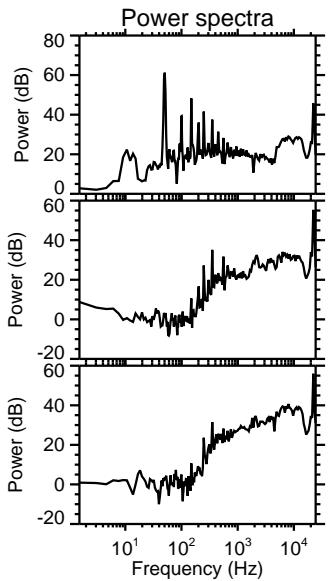
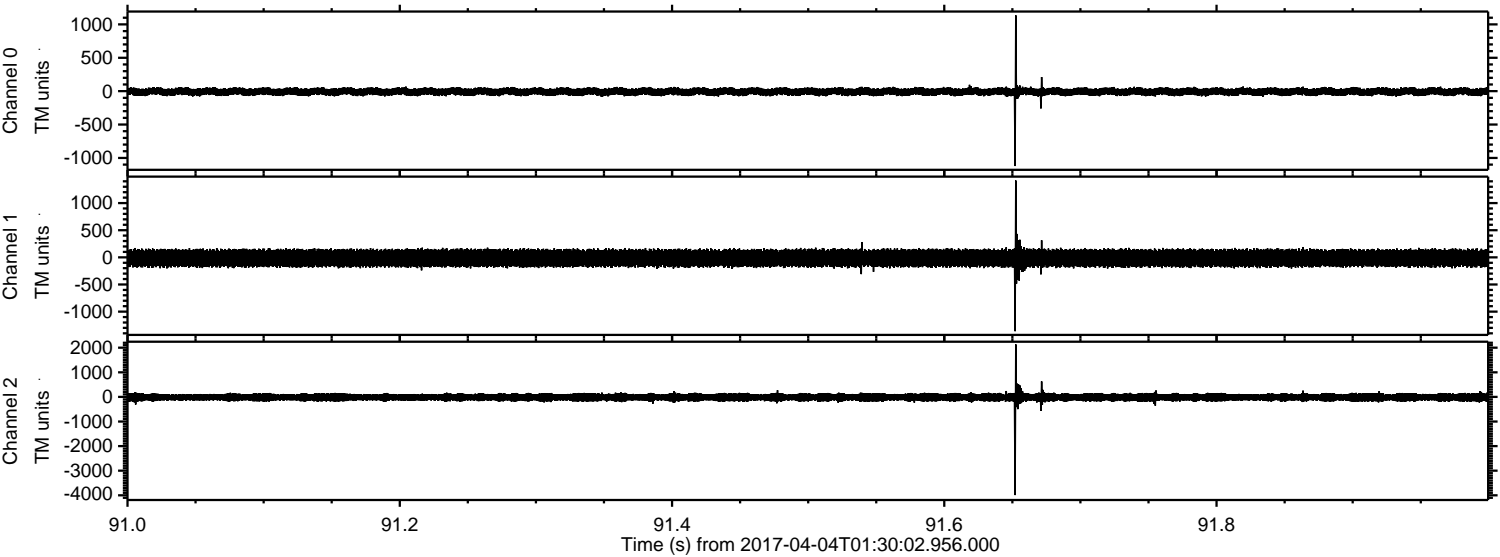


Channel 0
mn: -1492
mx: 1508
 μ : -7.5
 σ : 34.2

Channel 1
mn: -3867
mx: 3810
 μ : -14.2
 σ : 97.0

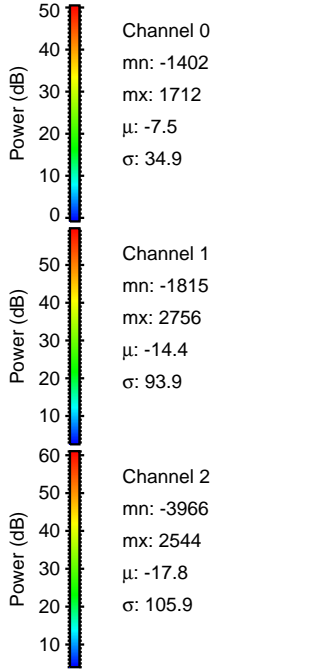
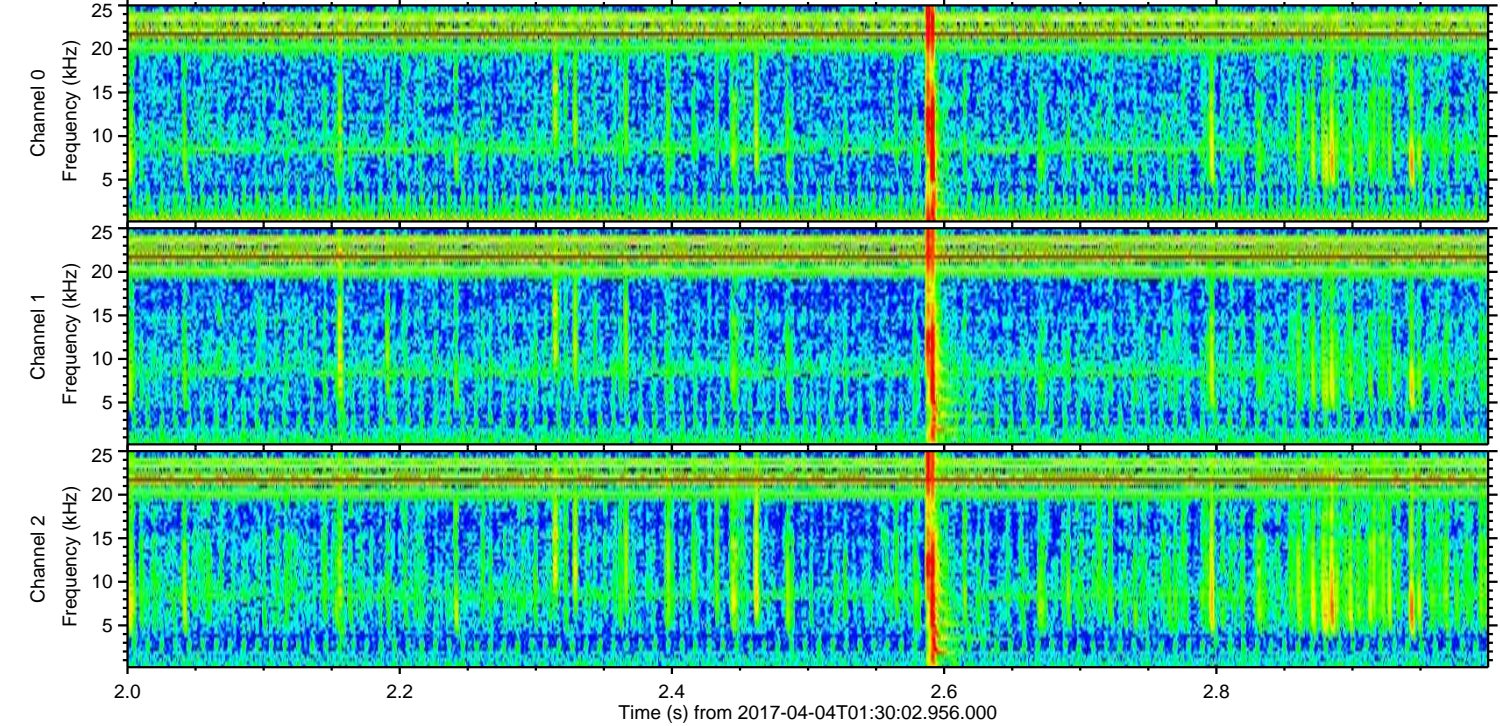
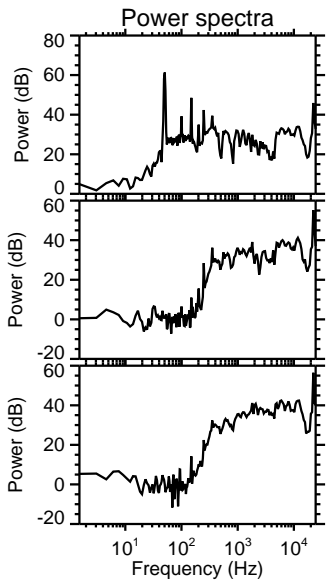
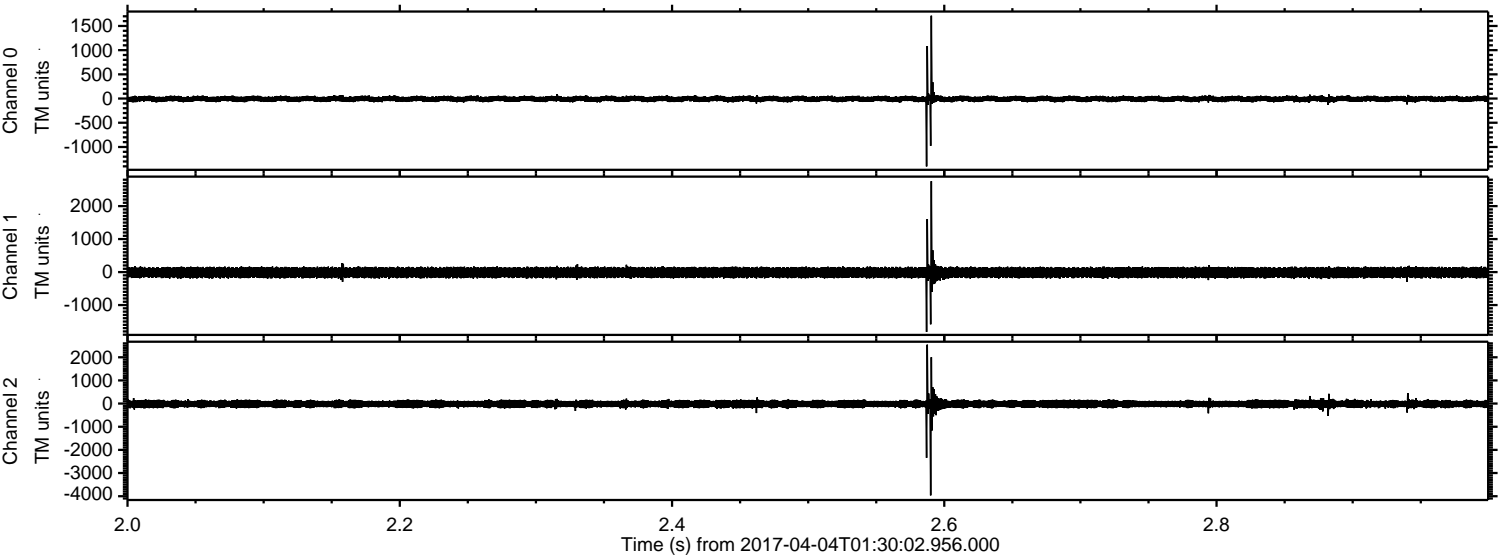
Channel 2
mn: -4139
mx: 4066
 μ : -17.7
 σ : 96.2

Processed Tue Apr 4 03:37:37 2017 by ELM ver.2012-10-06 from 001__elm20170404_013001__dat00.bin



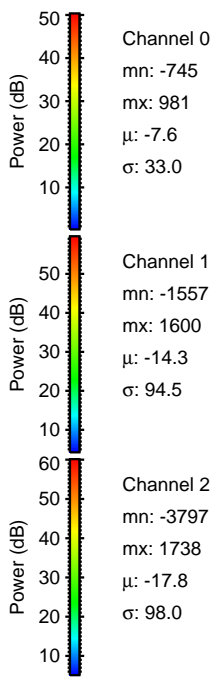
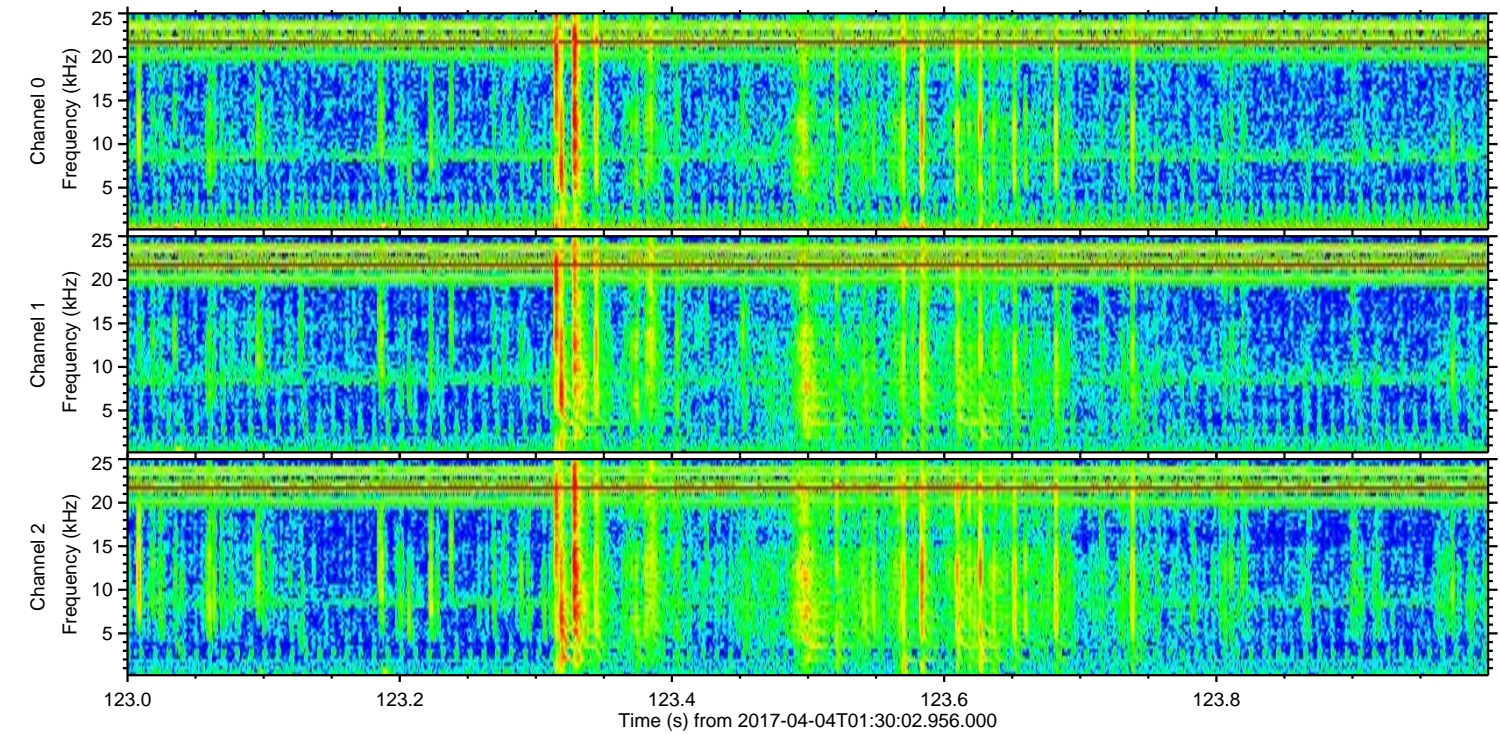
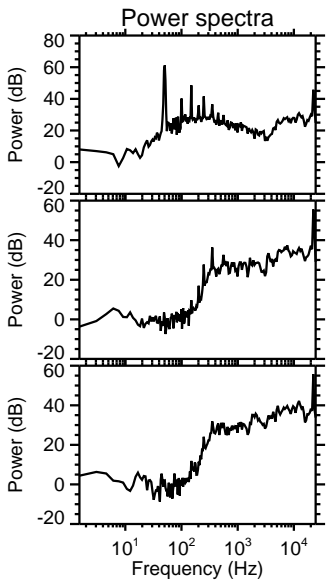
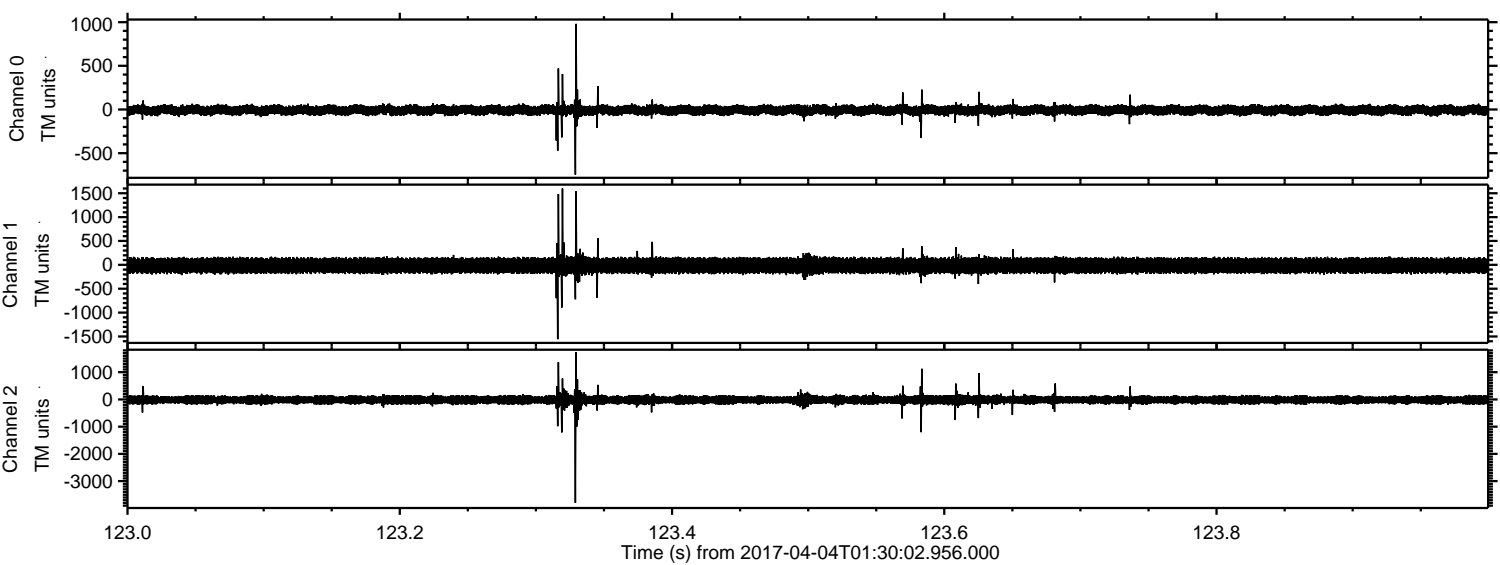
ELMAVAN 3D WAVEFORMS (Measured data sampled at 50 kHz) 51000 packets of 144 samples from 2017-04-04T01:30:02.956.000. Part 3/147

Processed Tue Apr 4 03:37:37 2017 by ELM ver.2012-10-06 from 001__elm20170404_013001__dat00.bin



ELMAVAN 3D WAVEFORMS (Measured data sampled at 50 kHz) 51000 packets of 144 samples from 2017-04-04T01:30:02.956.000. Part 124/147

Processed Tue Apr 4 03:37:38 2017 by ELM ver.2012-10-06 from 001__elm20170404_013001__dat00.bin



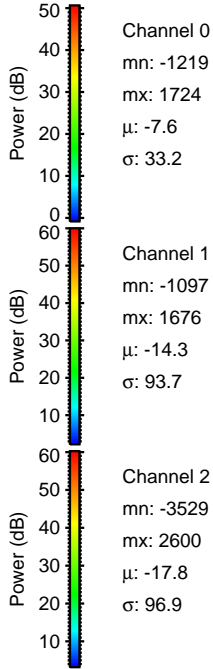
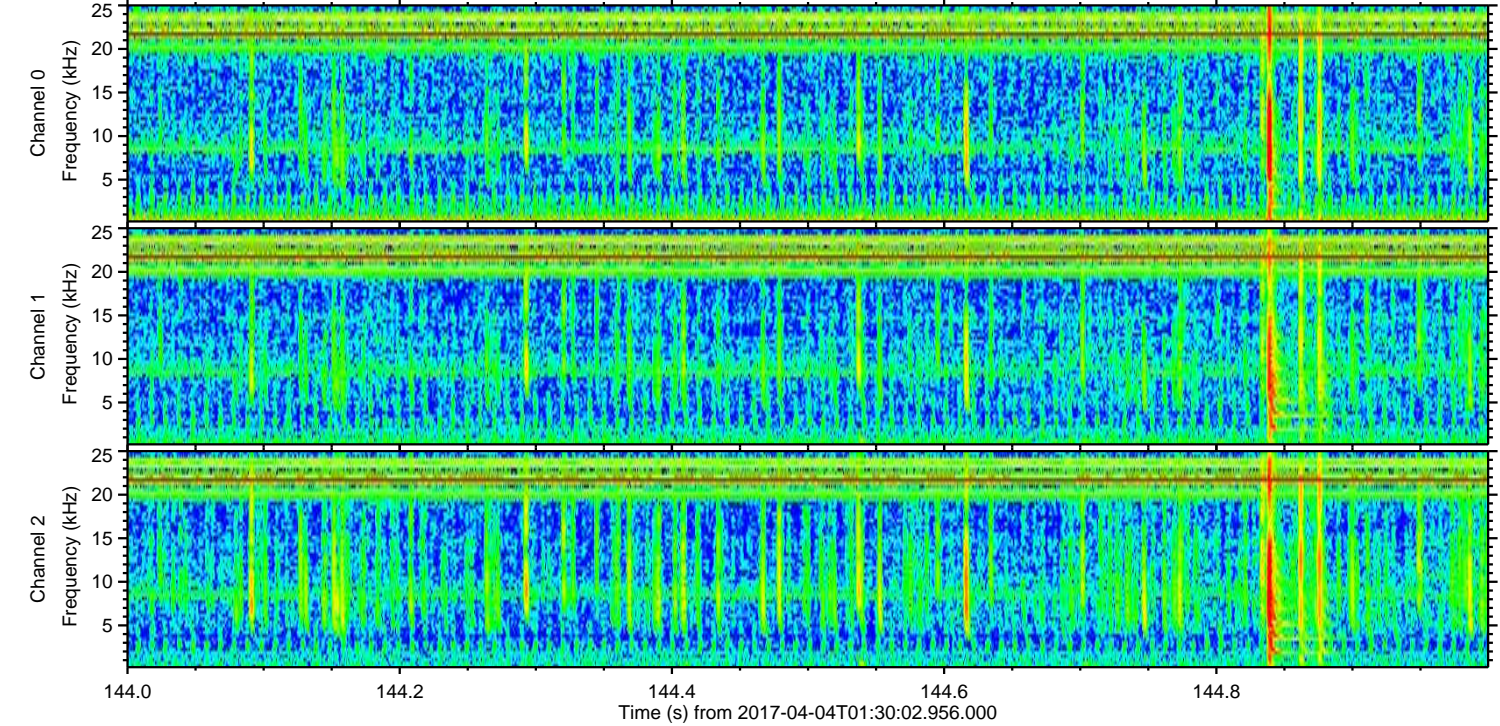
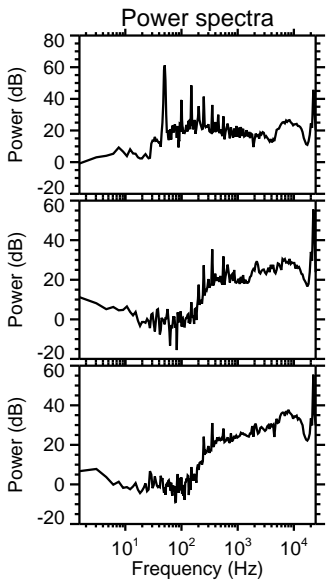
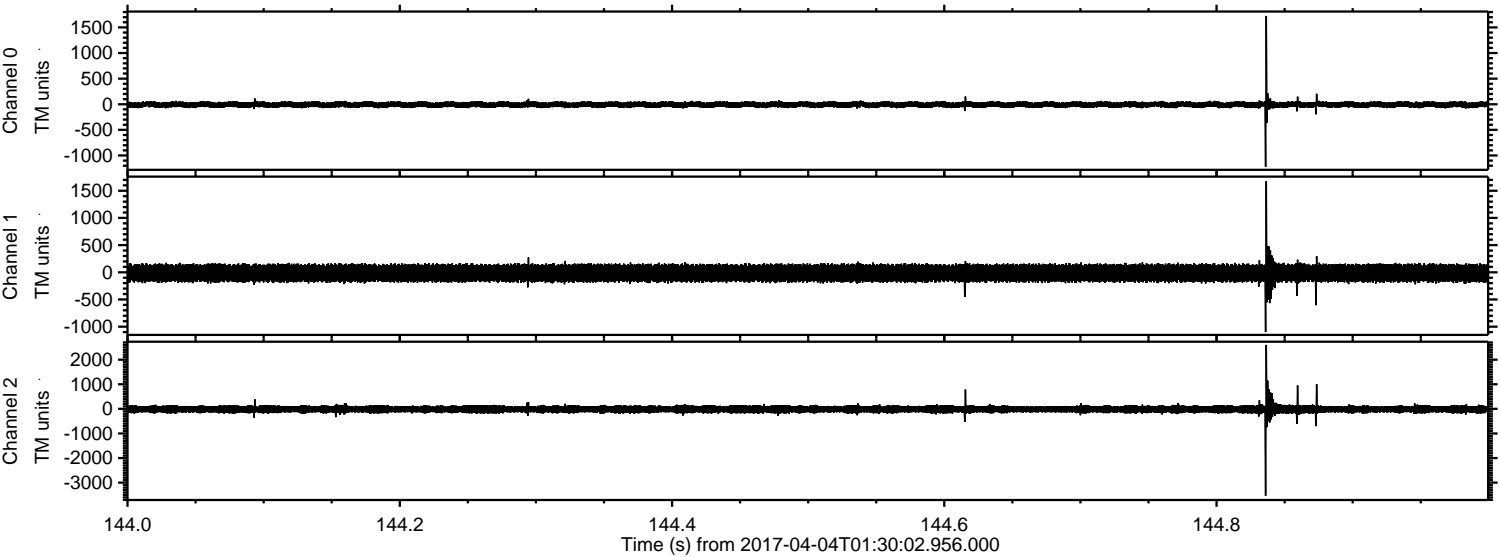
Channel 0
mn: -745
mx: 981
 μ : -7.6
 σ : 33.0

Channel 1
mn: -1557
mx: 1600
 μ : -14.3
 σ : 94.5

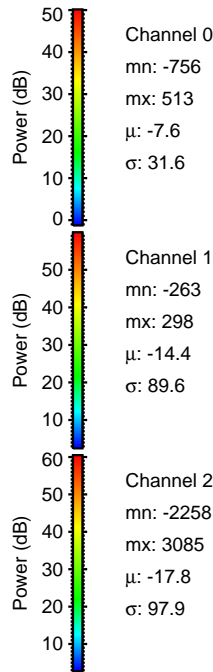
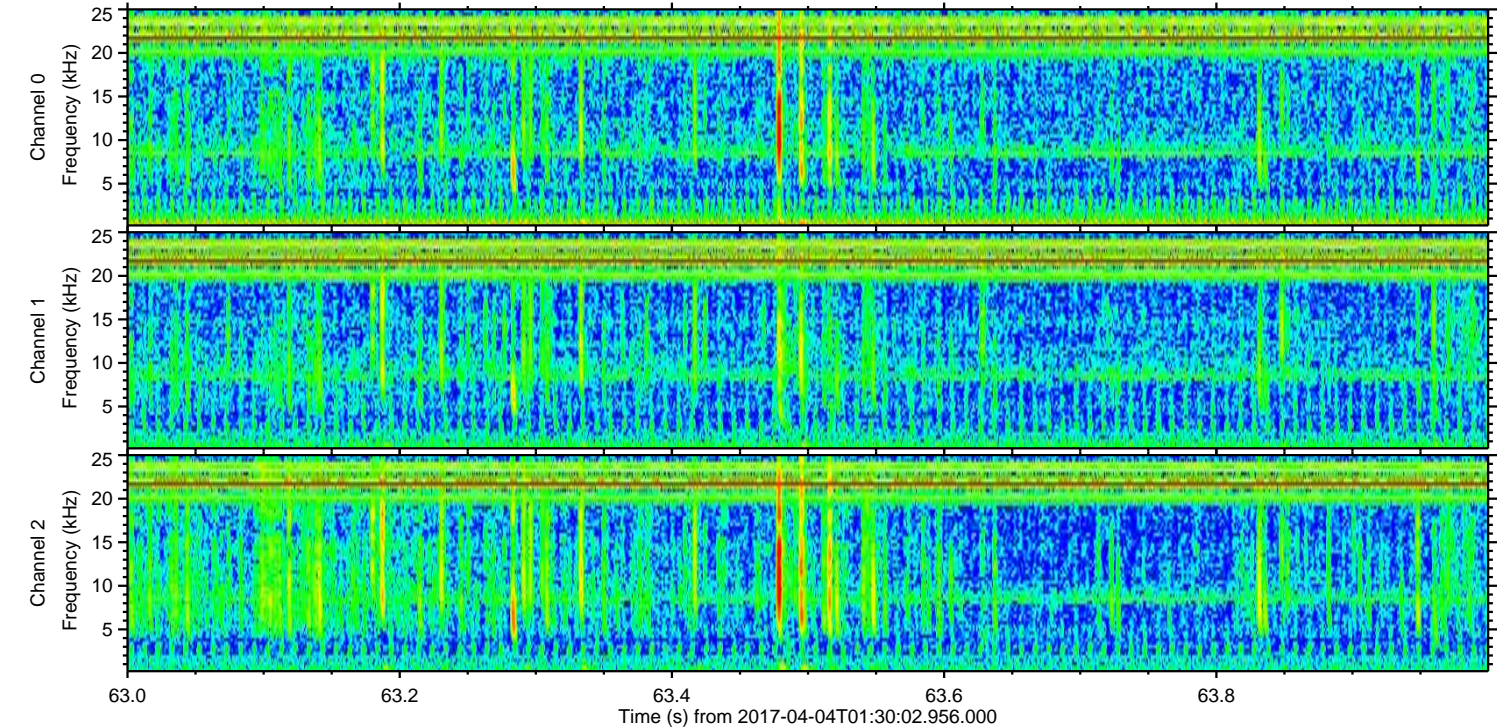
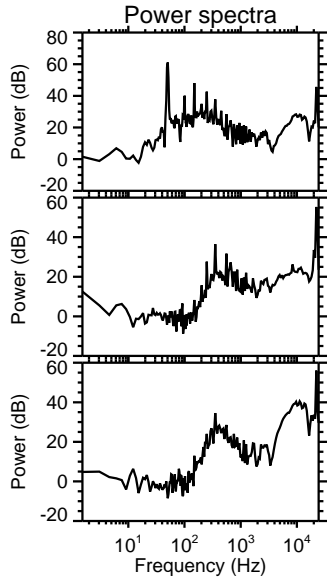
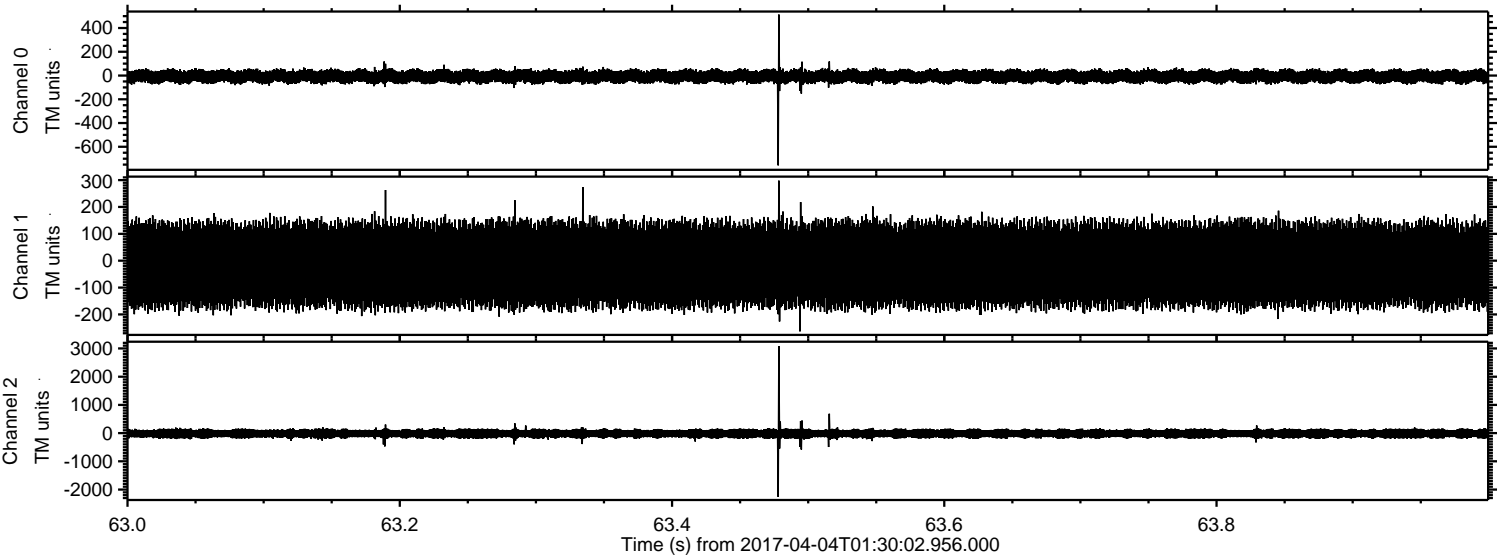
Channel 2
mn: -3797
mx: 1738
 μ : -17.8
 σ : 98.0

ELMAVAN 3D WAVEFORMS (Measured data sampled at 50 kHz) 51000 packets of 144 samples from 2017-04-04T01:30:02.956.000. Part 145/147

Processed Tue Apr 4 03:37:39 2017 by ELM ver.2012-10-06 from 001__elm20170404_013001__dat00.bin

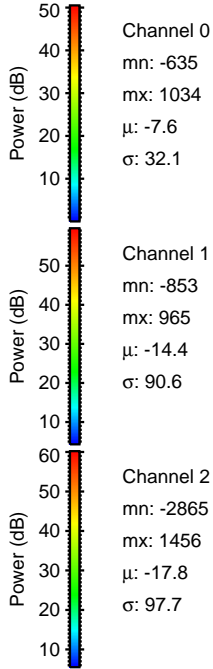
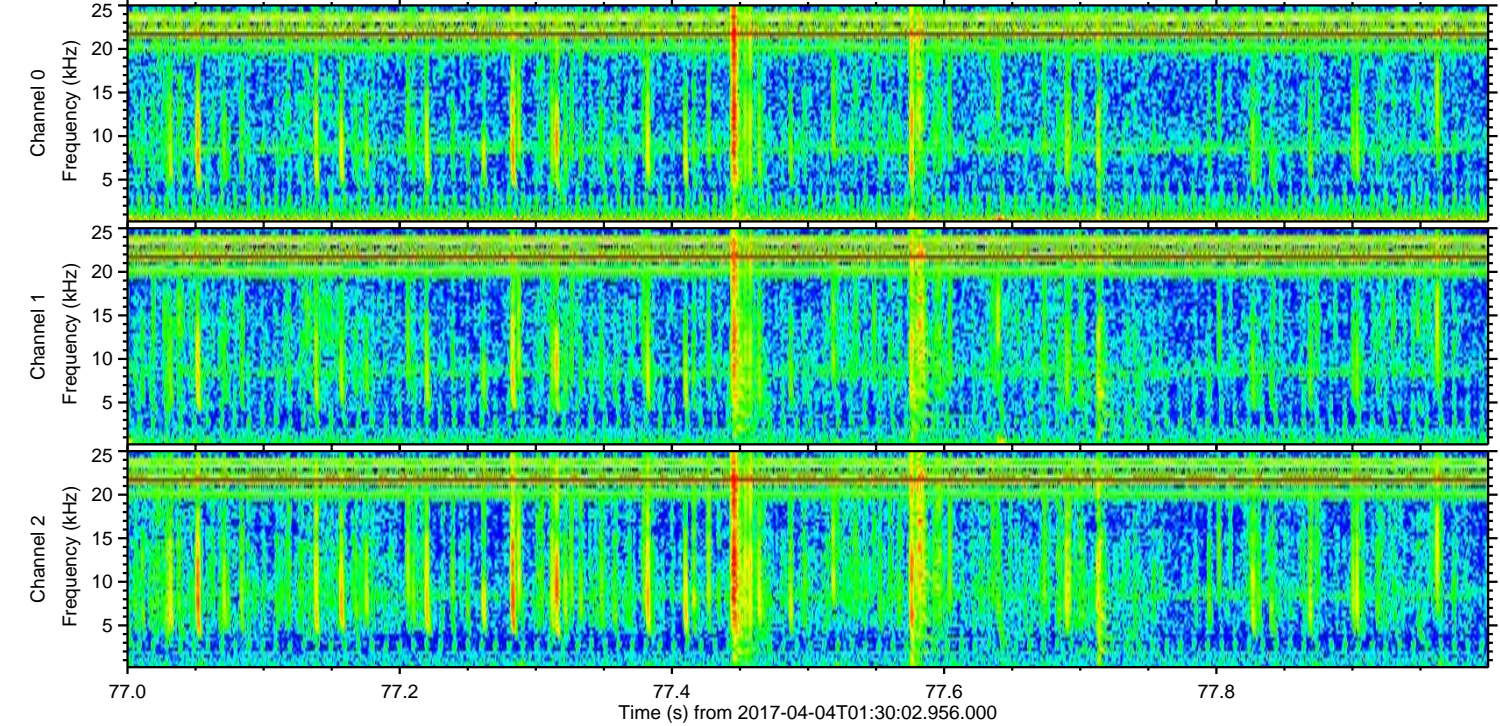
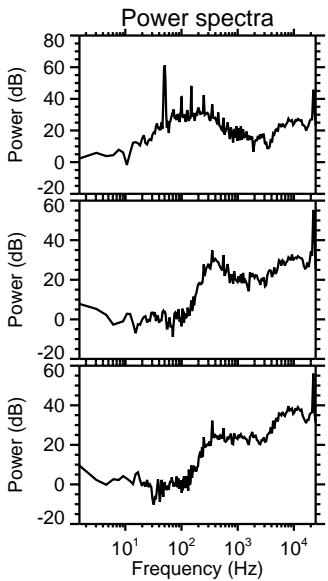
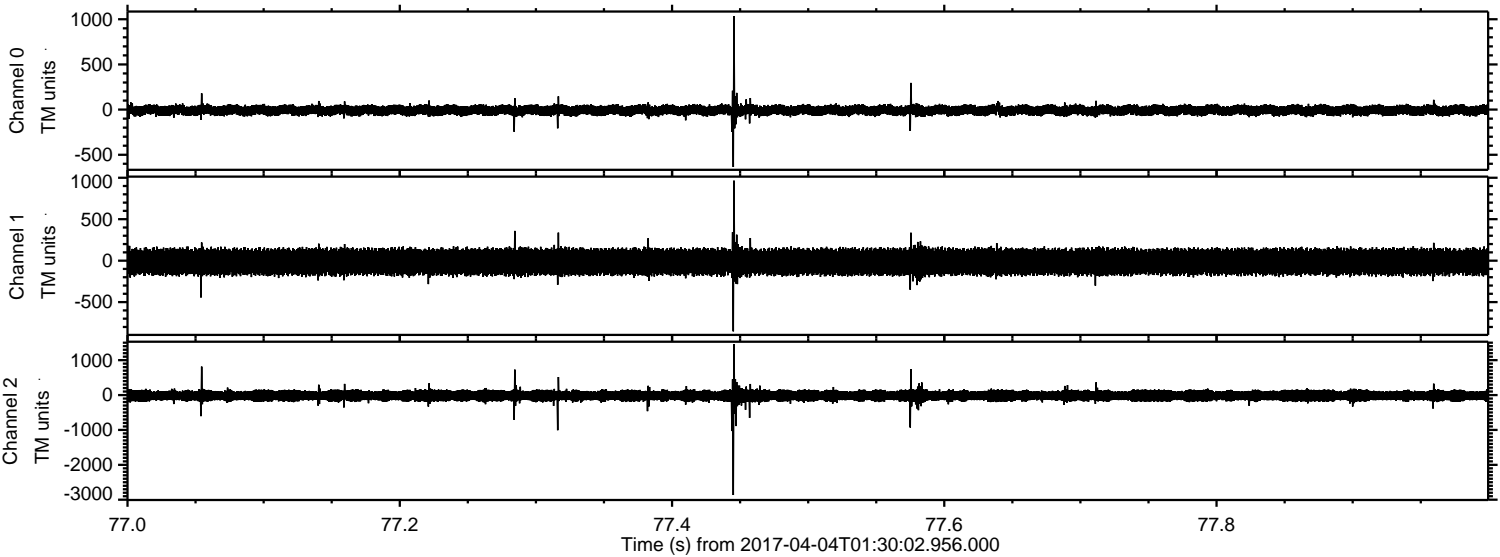


Processed Tue Apr 4 03:37:40 2017 by ELM ver.2012-10-06 from 001__elm20170404_013001__dat00.bin

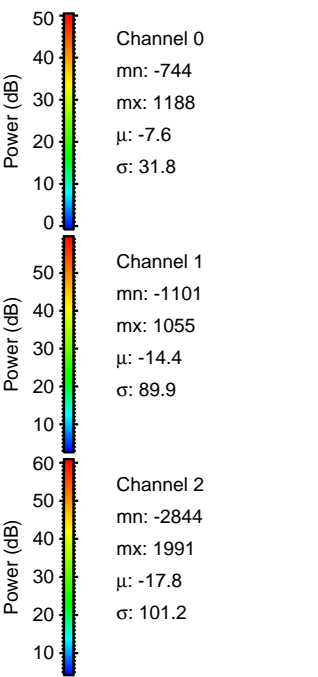
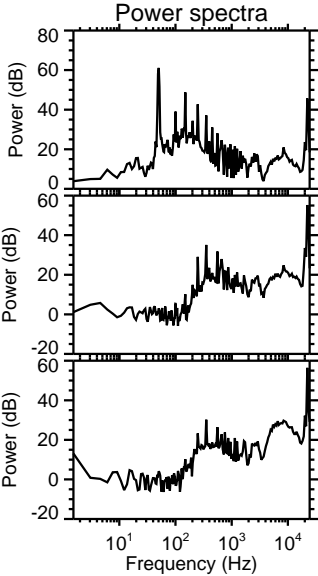
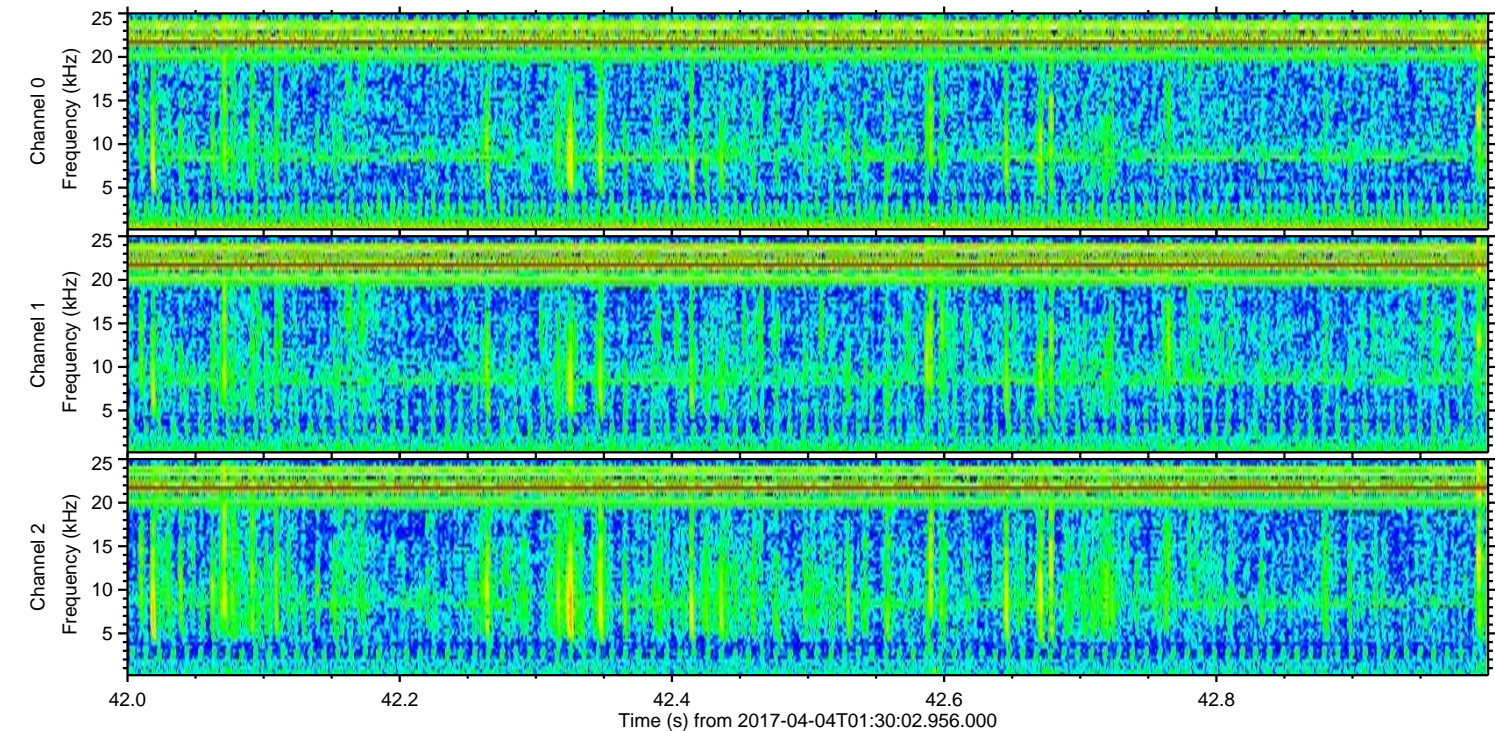
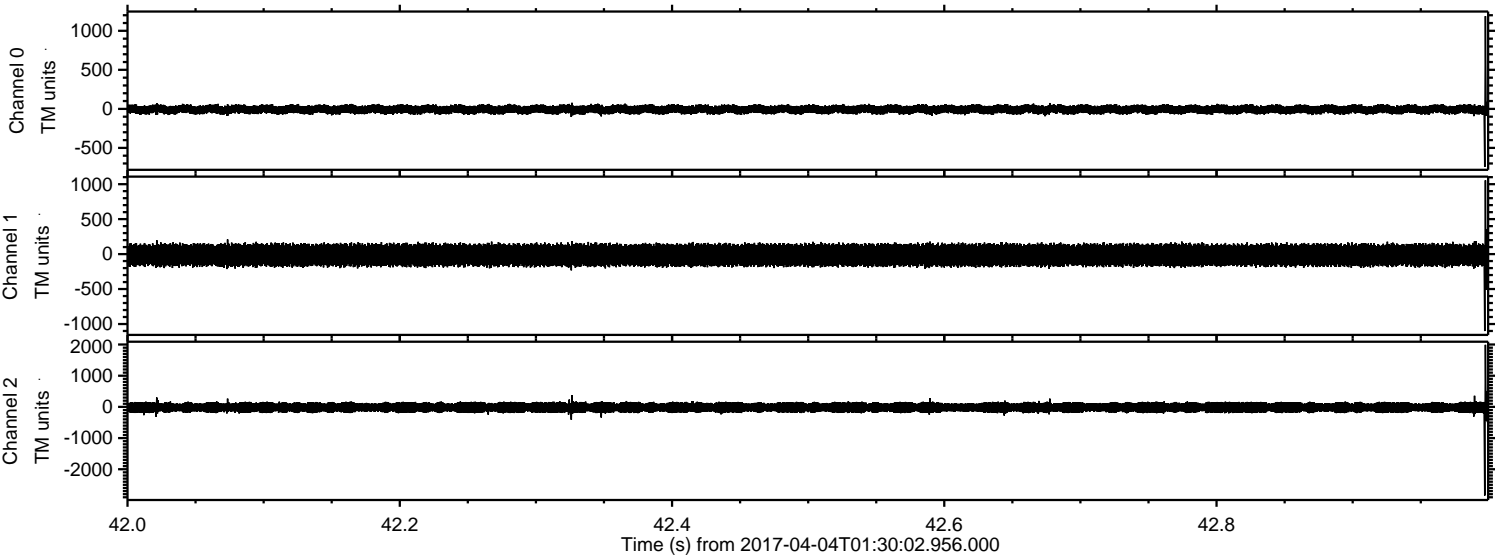


ELMAVAN 3D WAVEFORMS (Measured data sampled at 50 kHz) 51000 packets of 144 samples from 2017-04-04T01:30:02.956.000. Part 78/147

Processed Tue Apr 4 03:37:41 2017 by ELM ver.2012-10-06 from 001__elm20170404_013001__dat00.bin



Processed Tue Apr 4 03:37:42 2017 by ELM ver.2012-10-06 from 001__elm20170404_013001__dat00.bin



ELMAVAN 3D WAVEFORMS (Measured data sampled at 50 kHz) 51000 packets of 144 samples from 2017-04-04T01:30:02.956.000. Part 121/147

