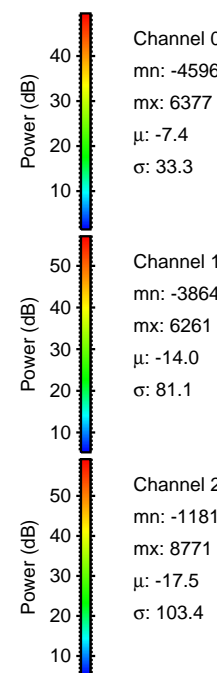
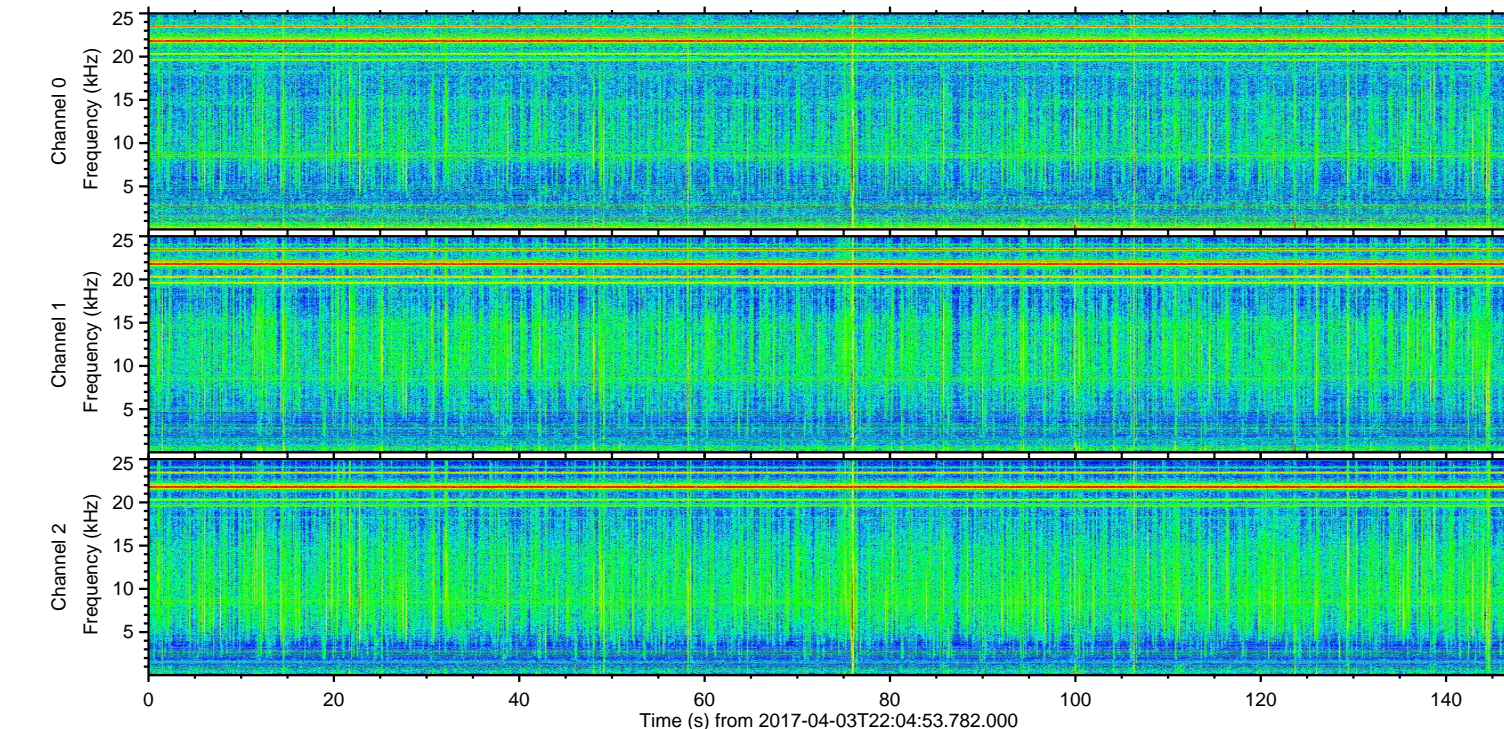
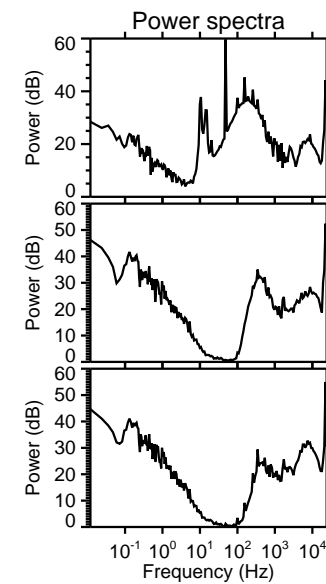
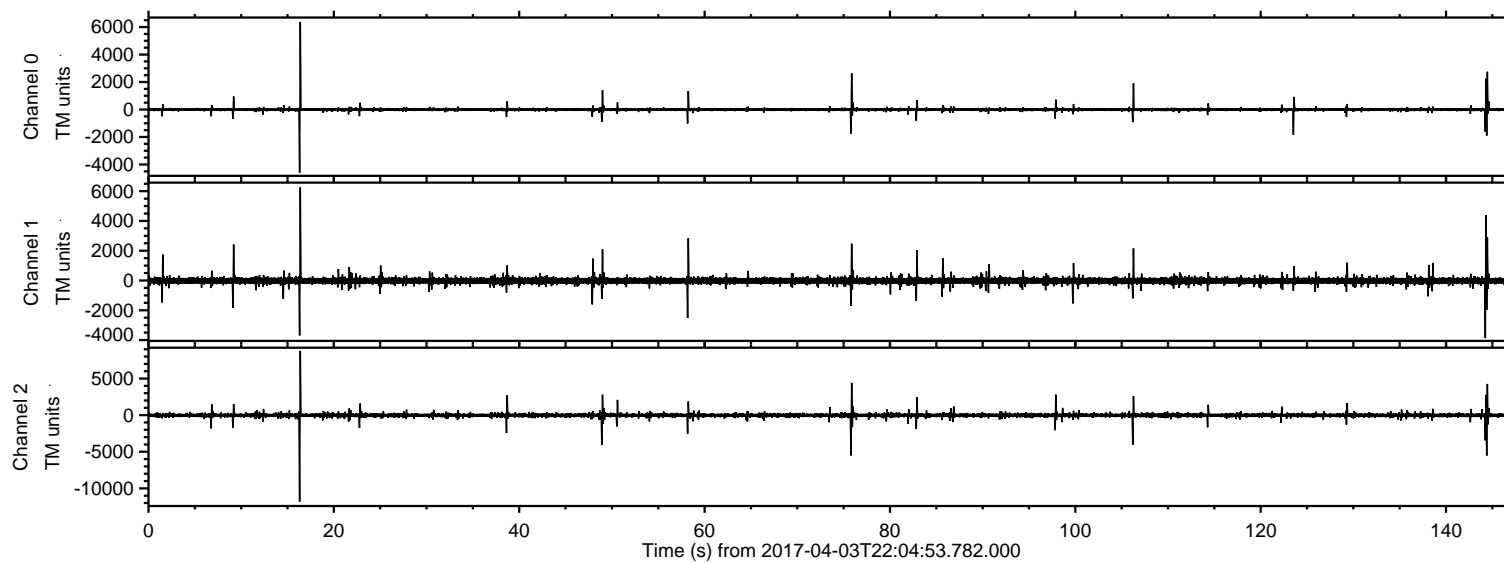


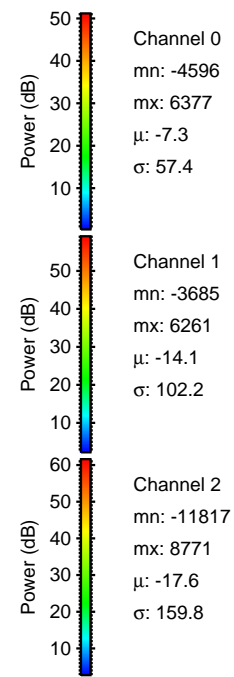
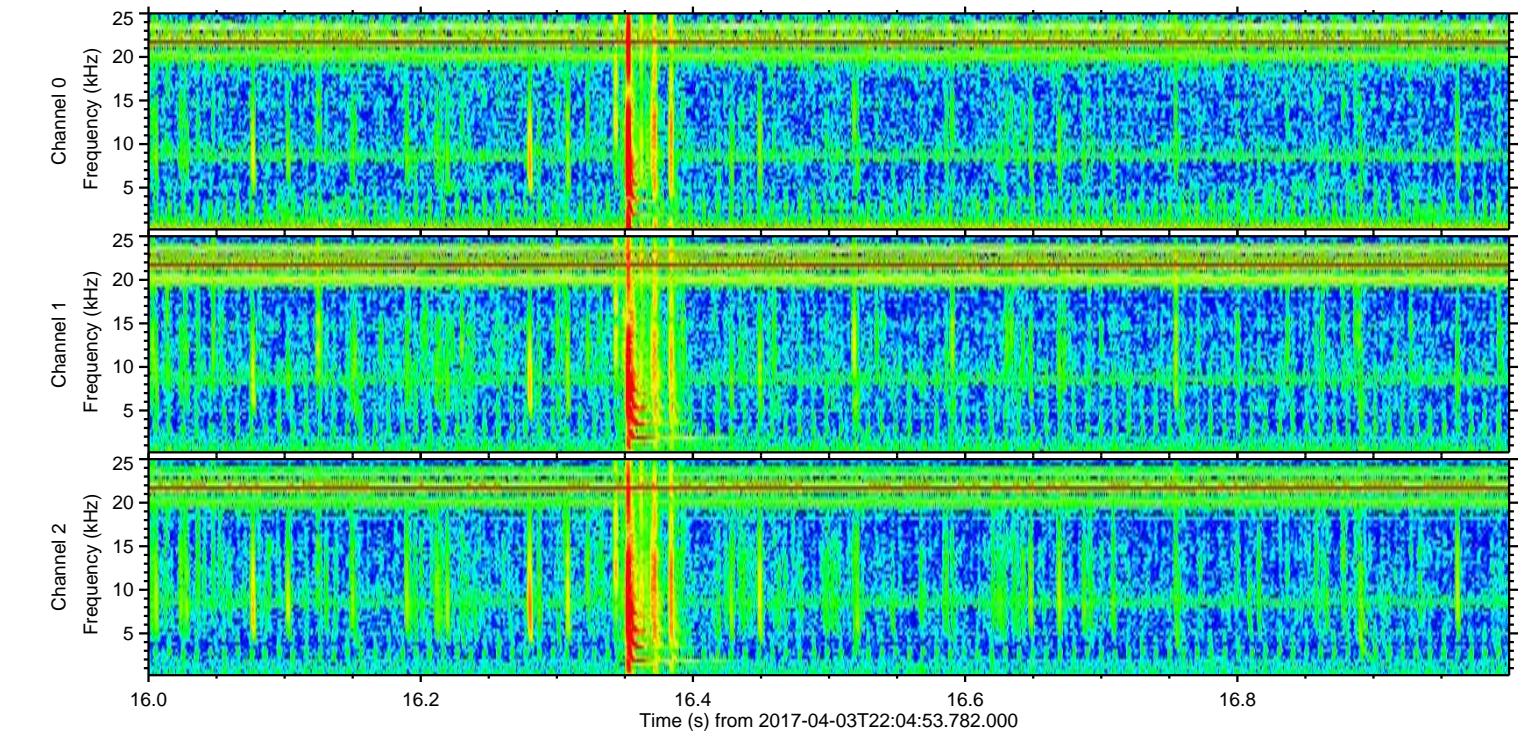
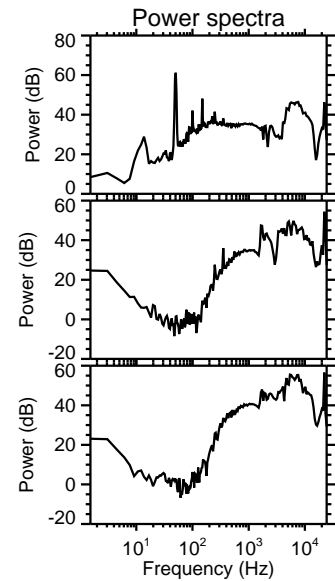
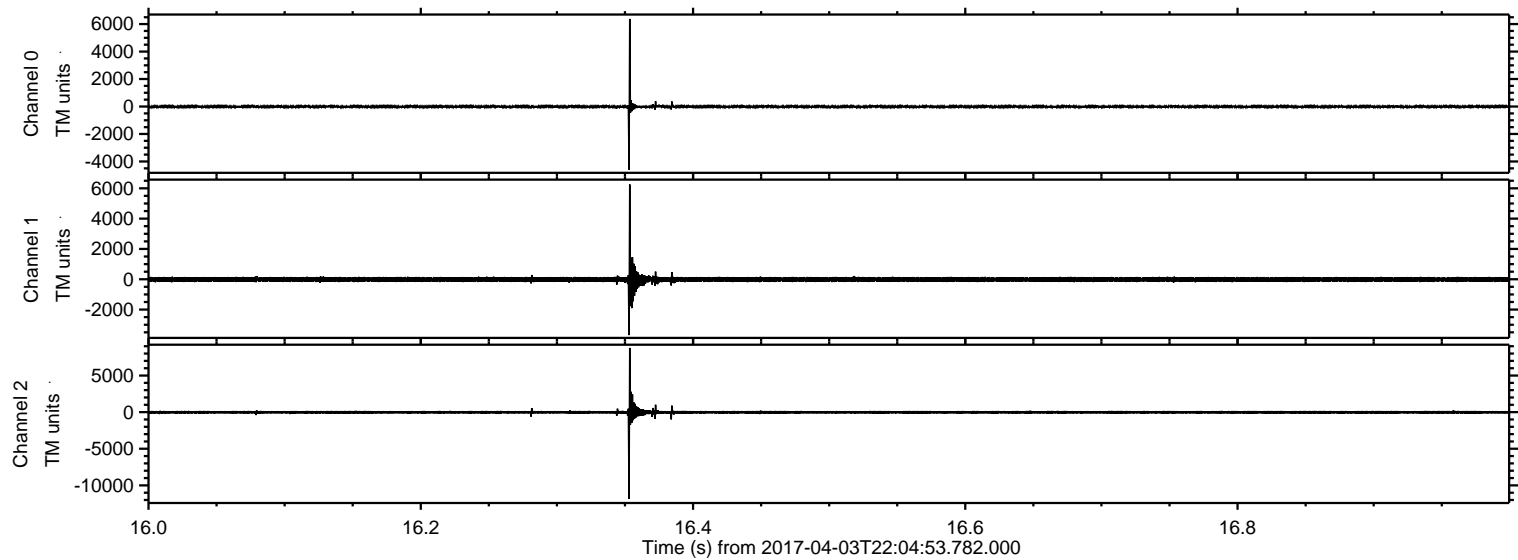
ELMAVAN 3D WAVEFORMS (Measured data sampled at 50 kHz) 51000 packets of 144 samples from 2017-04-03T22:04:53.782.000.

Processed Tue Apr 4 00:12:13 2017 by ELM ver.2012-10-06 from 001__elm20170403_220452__dat00.bin



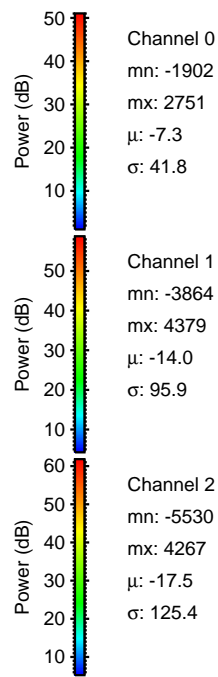
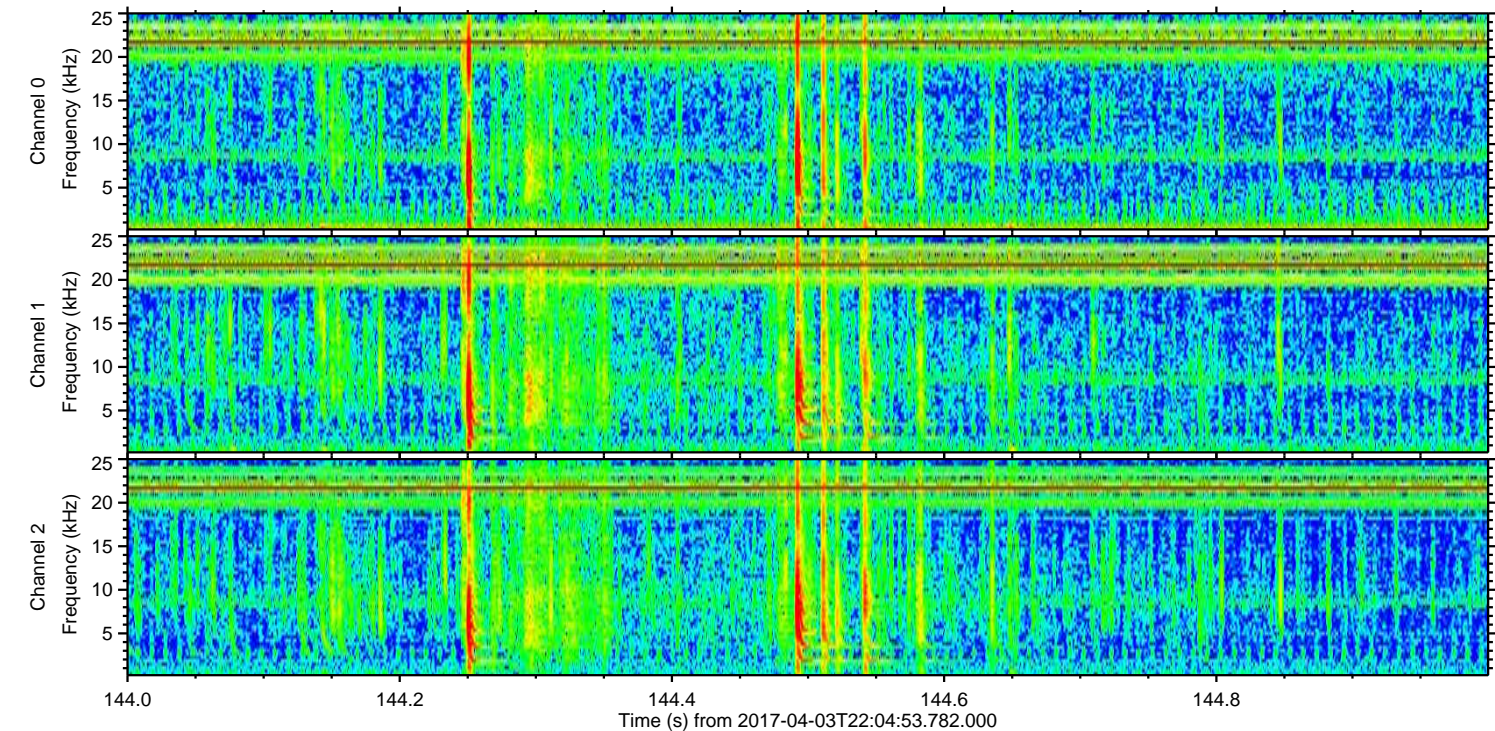
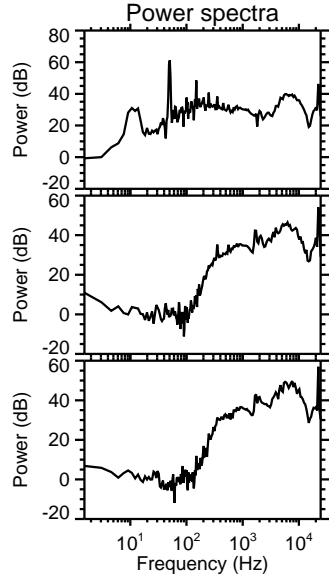
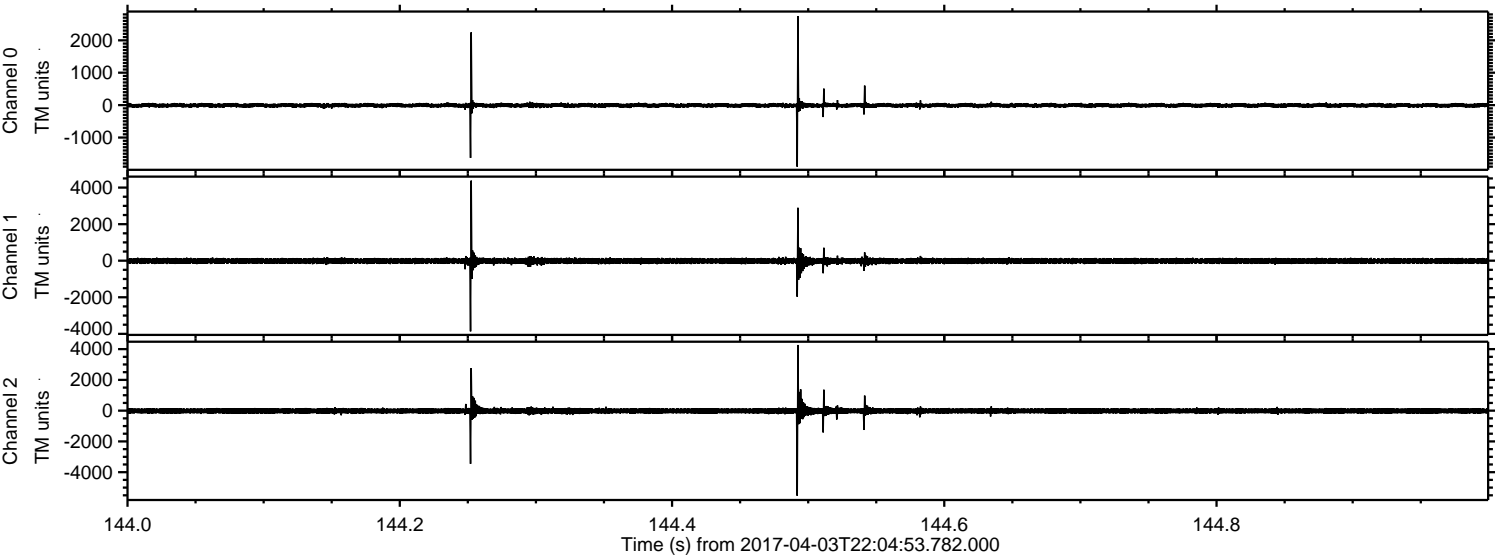
ELMAVAN 3D WAVEFORMS (Measured data sampled at 50 kHz) 51000 packets of 144 samples from 2017-04-03T22:04:53.782.000. Part 17/147

Processed Tue Apr 4 00:12:25 2017 by ELM ver.2012-10-06 from 001__elm20170403_220452__dat00.bin

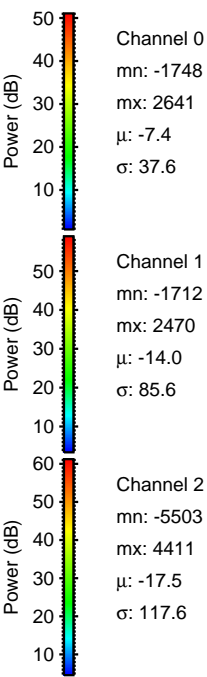
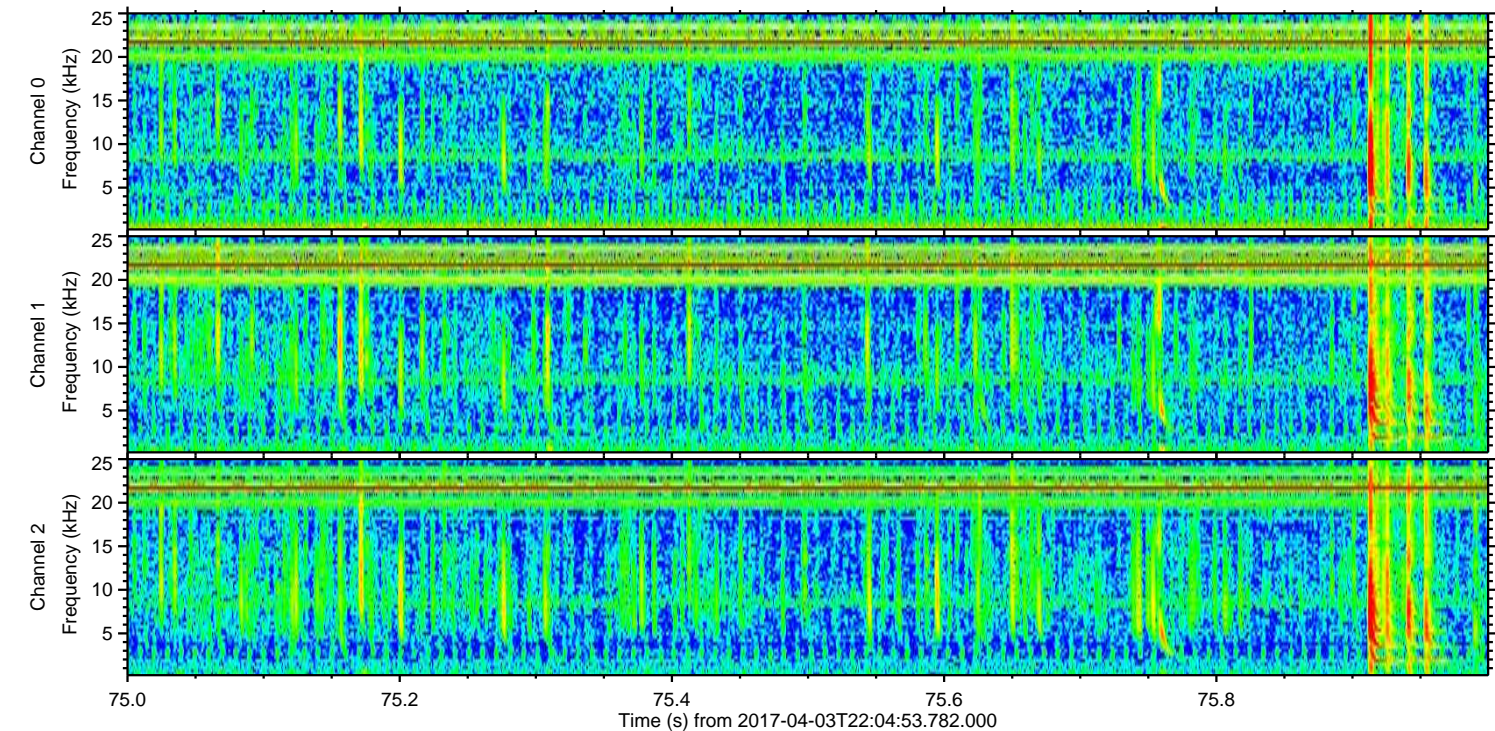
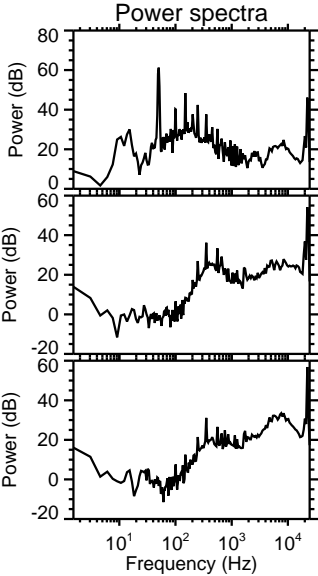
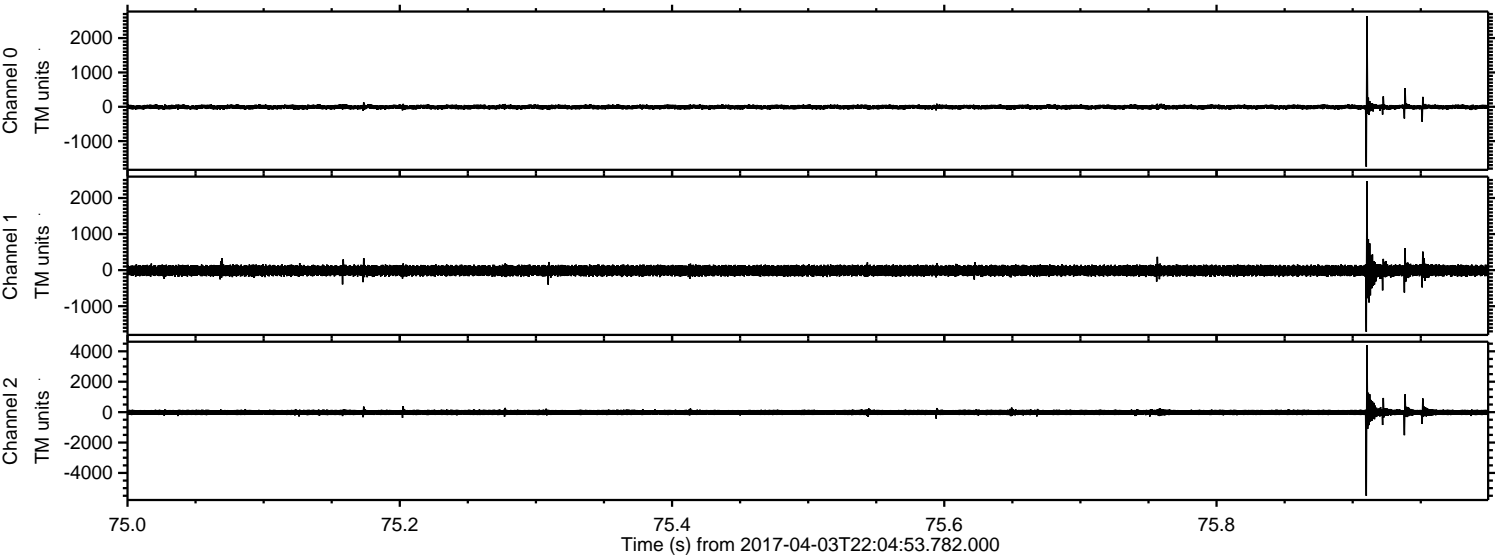


ELMAVAN 3D WAVEFORMS (Measured data sampled at 50 kHz) 51000 packets of 144 samples from 2017-04-03T22:04:53.782.000. Part 145/147

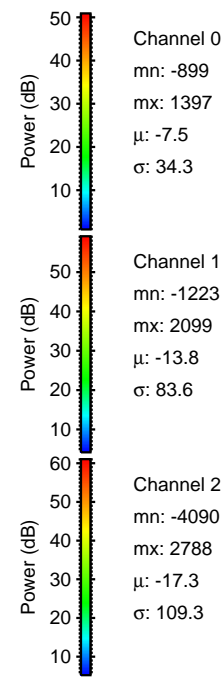
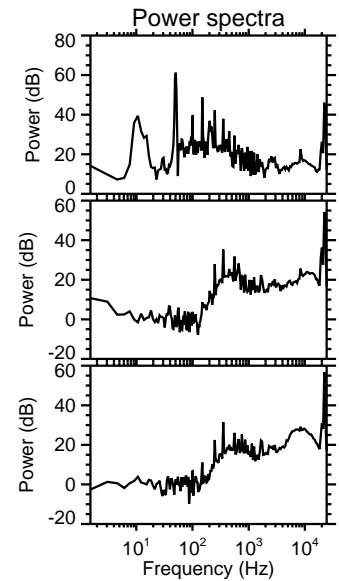
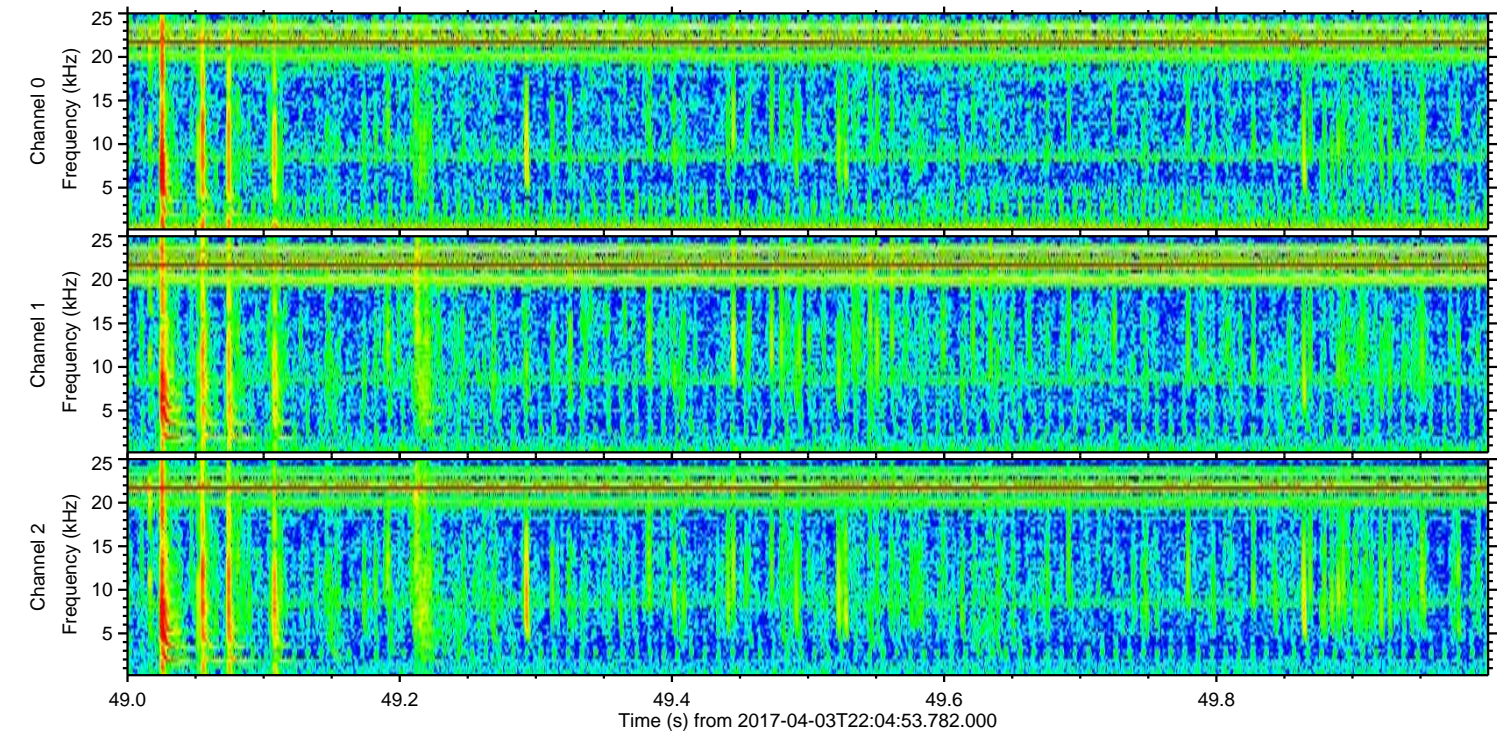
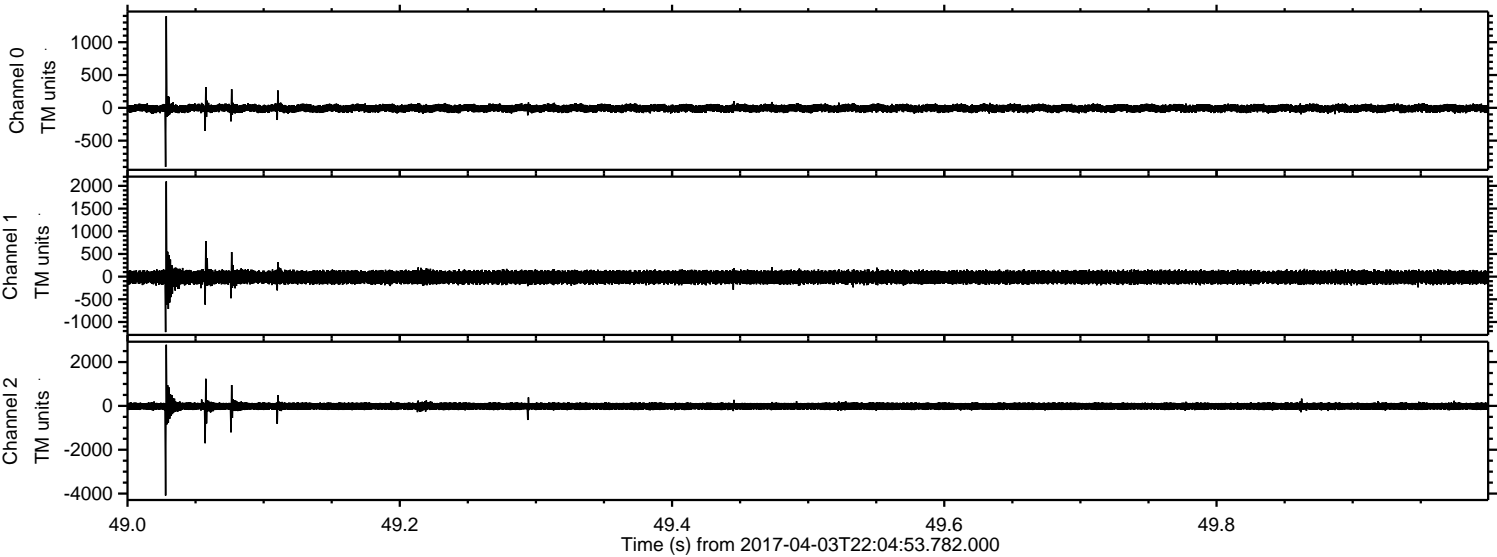
Processed Tue Apr 4 00:12:26 2017 by ELM ver.2012-10-06 from 001__elm20170403_220452__dat00.bin



Processed Tue Apr 4 00:12:26 2017 by ELM ver.2012-10-06 from 001__elm20170403_220452__dat00.bin

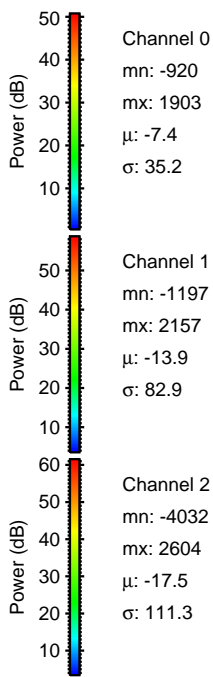
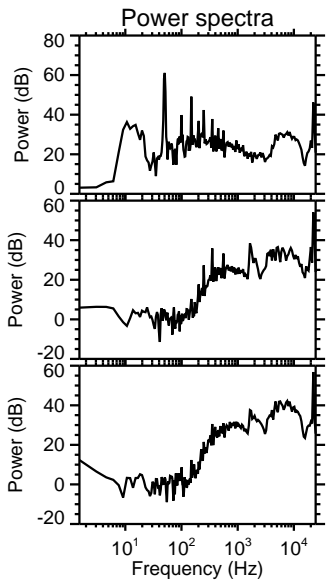
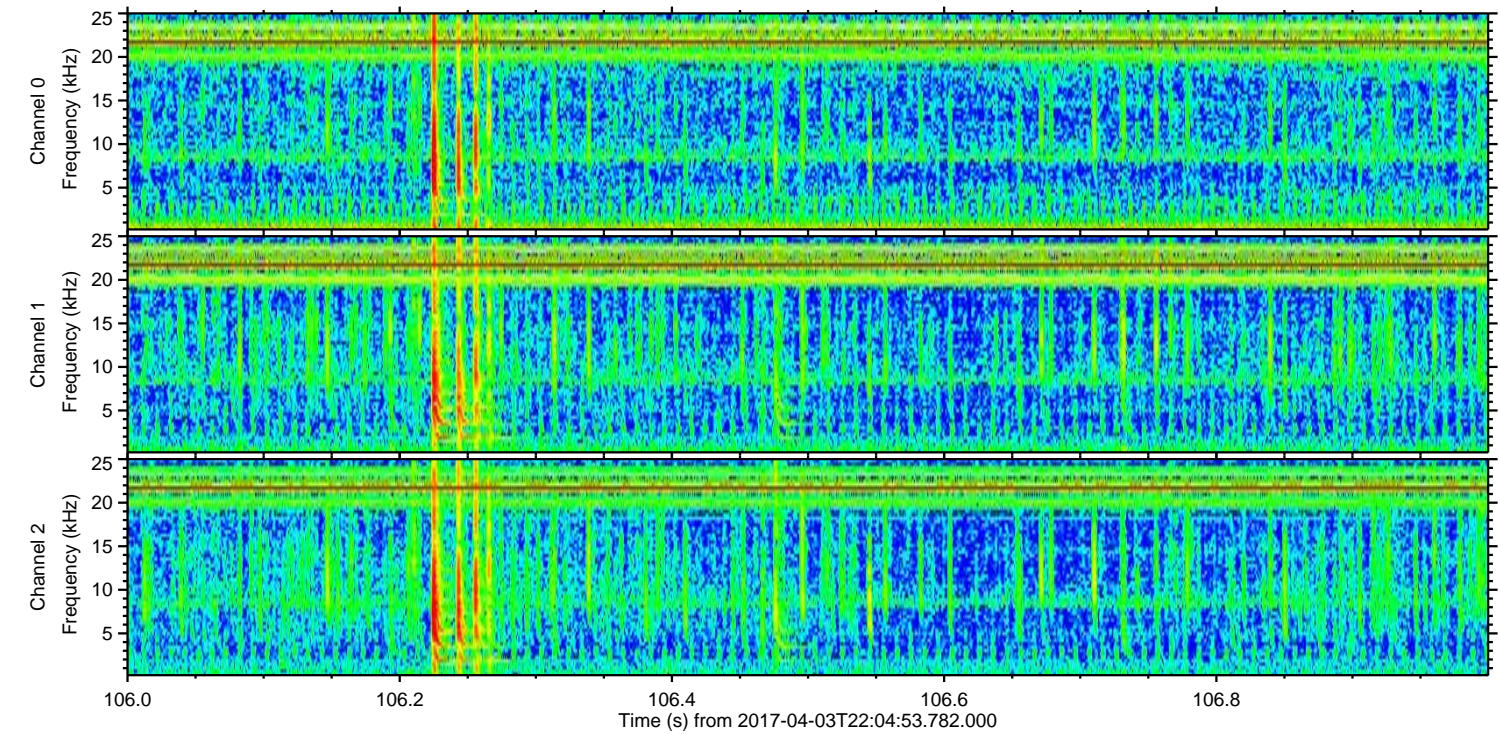
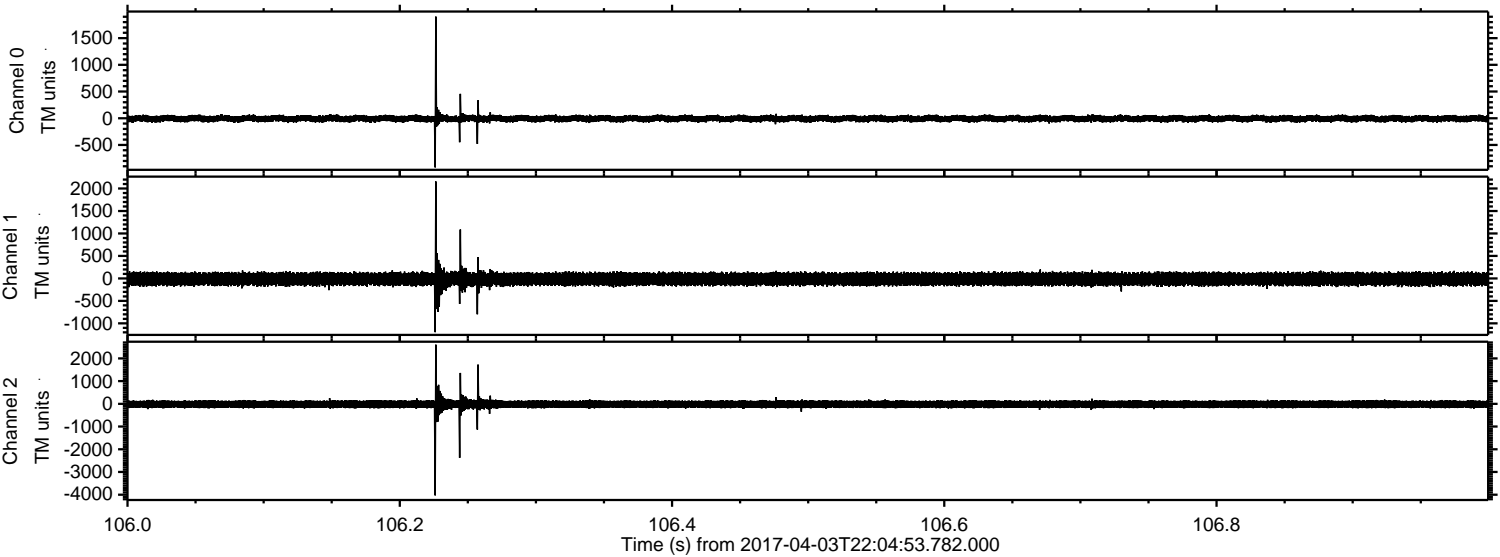


Processed Tue Apr 4 00:12:27 2017 by ELM ver.2012-10-06 from 001__elm20170403_220452__dat00.bin

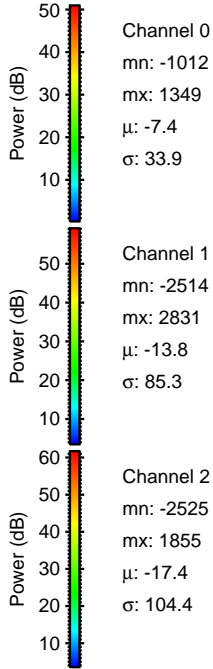
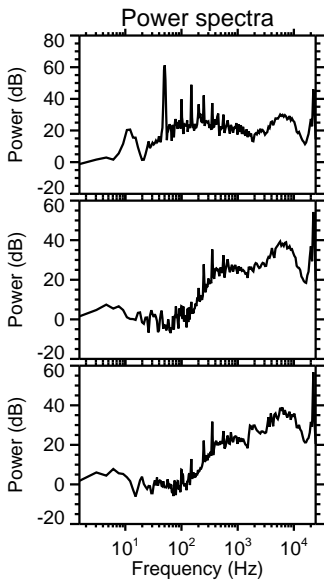
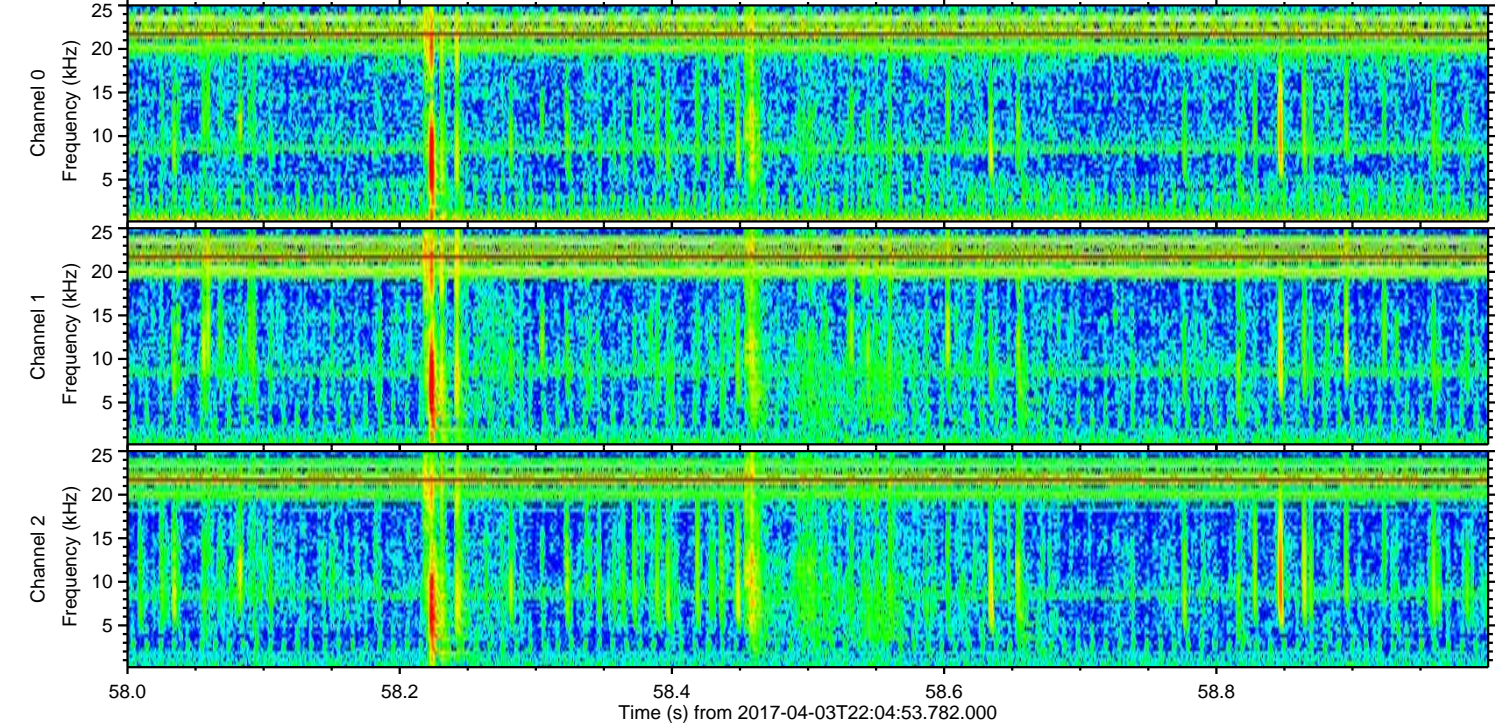
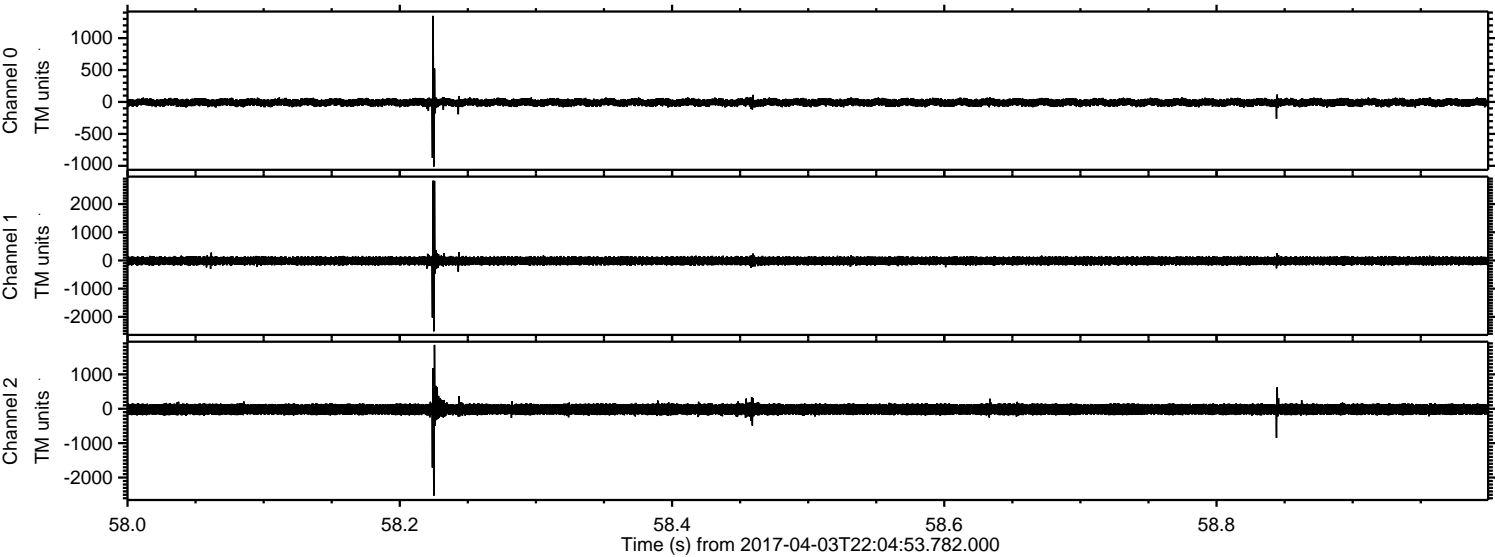


ELMAVAN 3D WAVEFORMS (Measured data sampled at 50 kHz) 51000 packets of 144 samples from 2017-04-03T22:04:53.782.000. Part 107/147

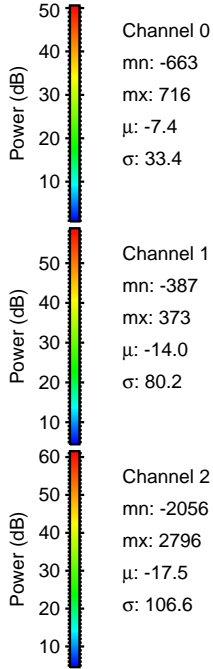
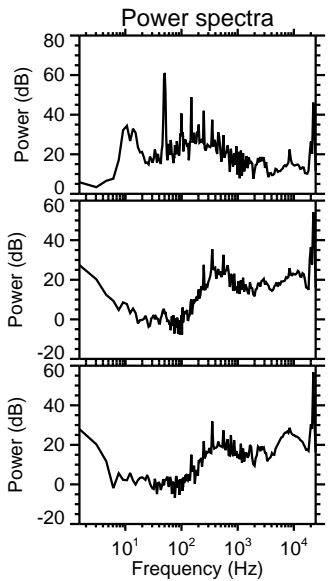
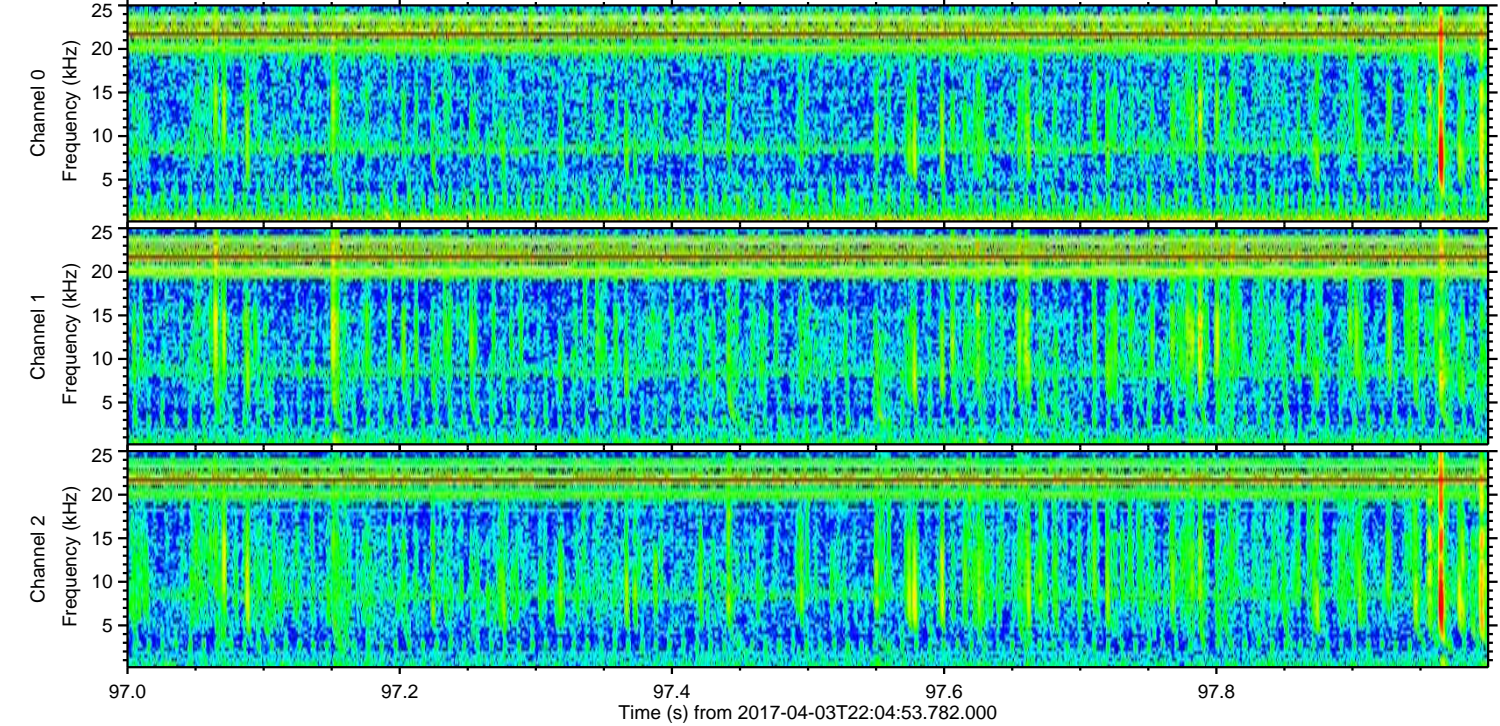
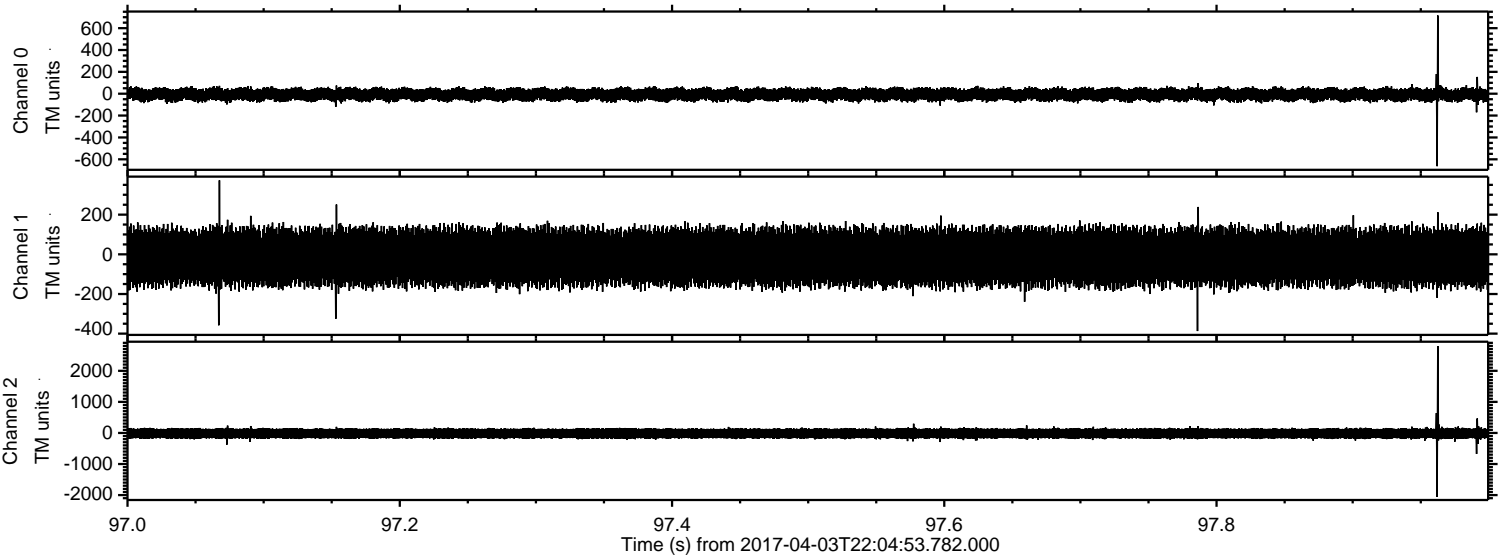
Processed Tue Apr 4 00:12:28 2017 by ELM ver.2012-10-06 from 001__elm20170403_220452__dat00.bin



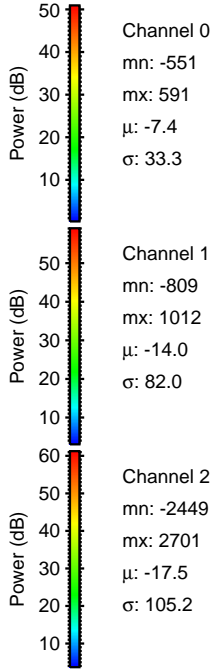
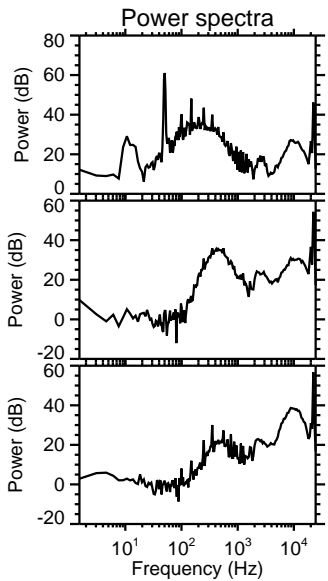
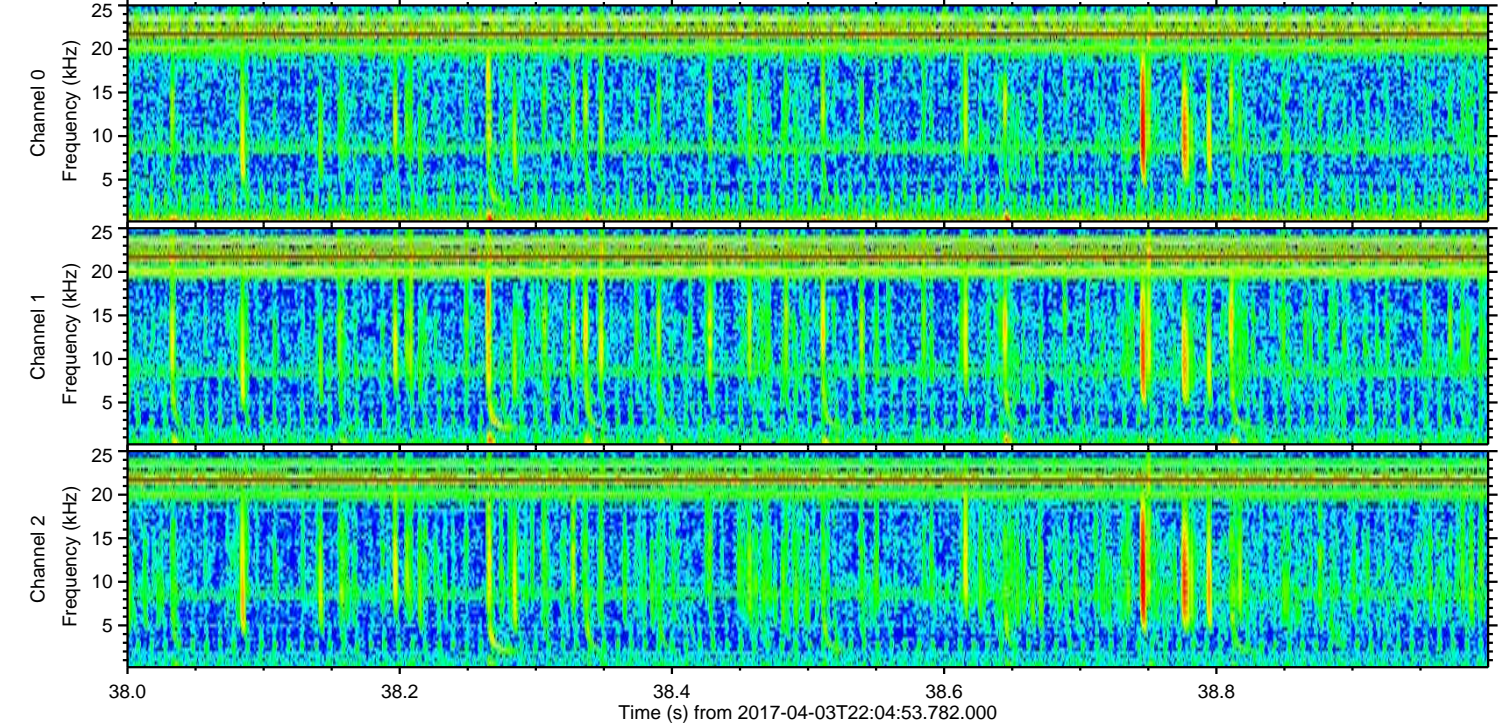
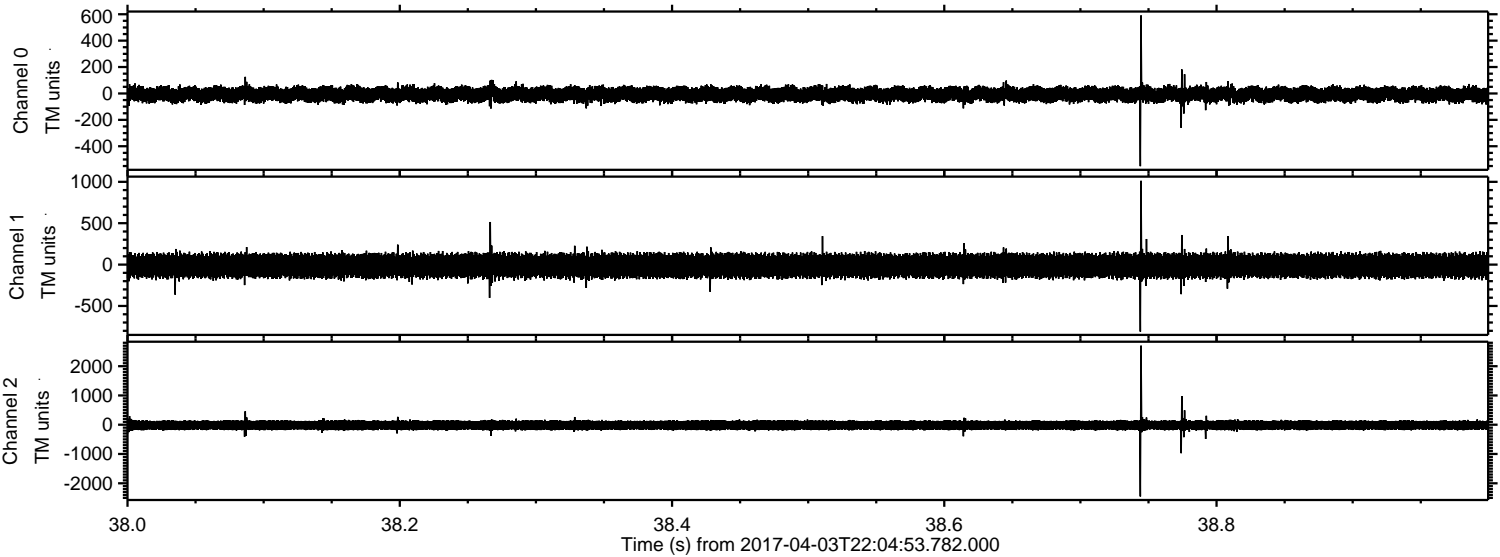
Processed Tue Apr 4 00:12:29 2017 by ELM ver.2012-10-06 from 001__elm20170403_220452__dat00.bin



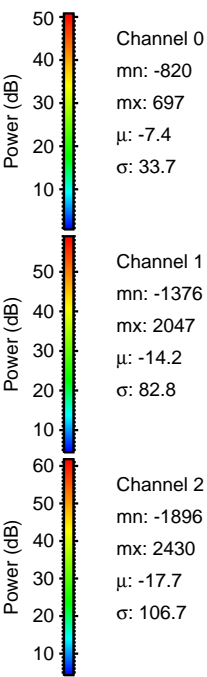
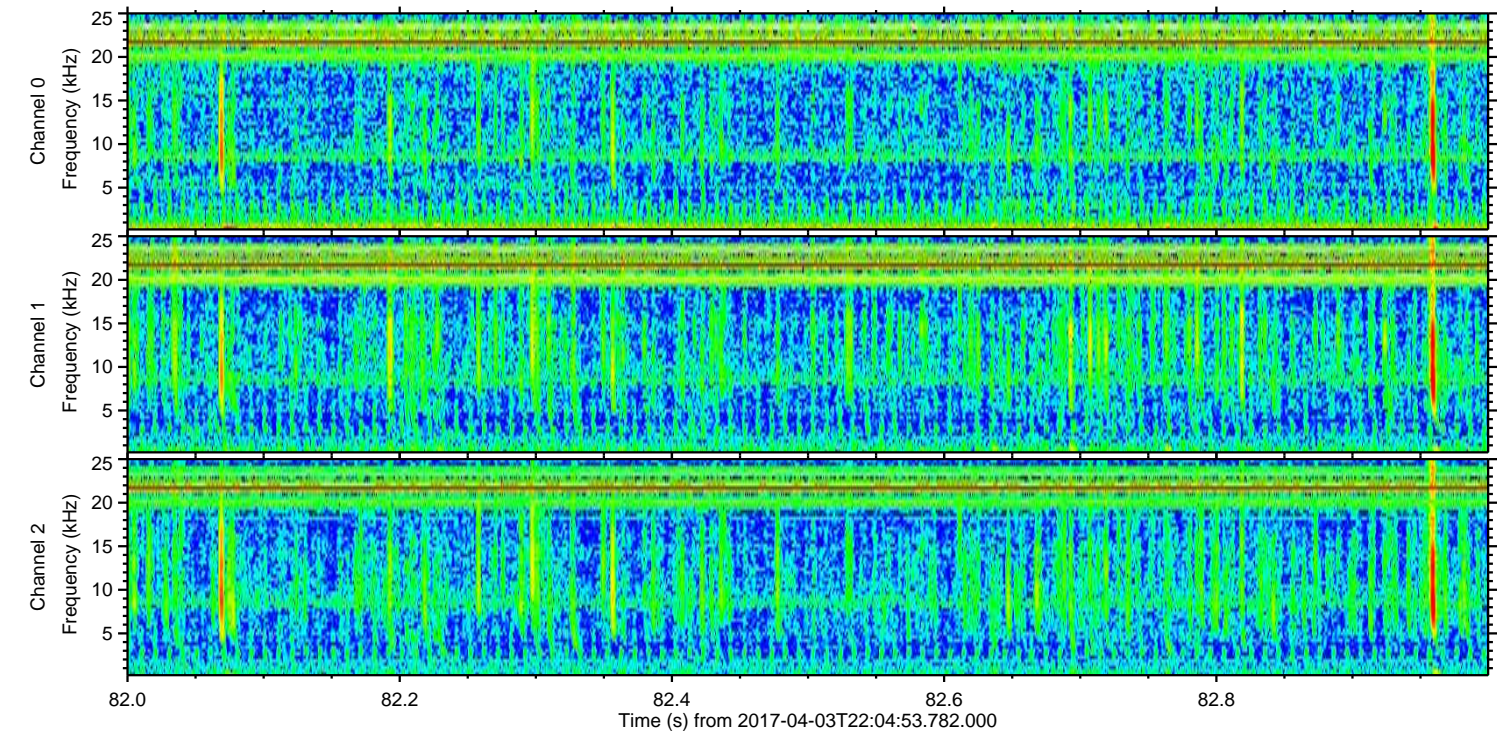
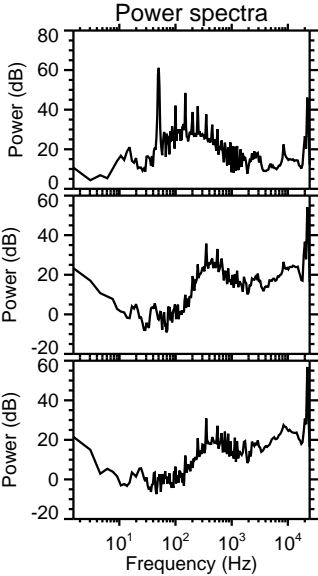
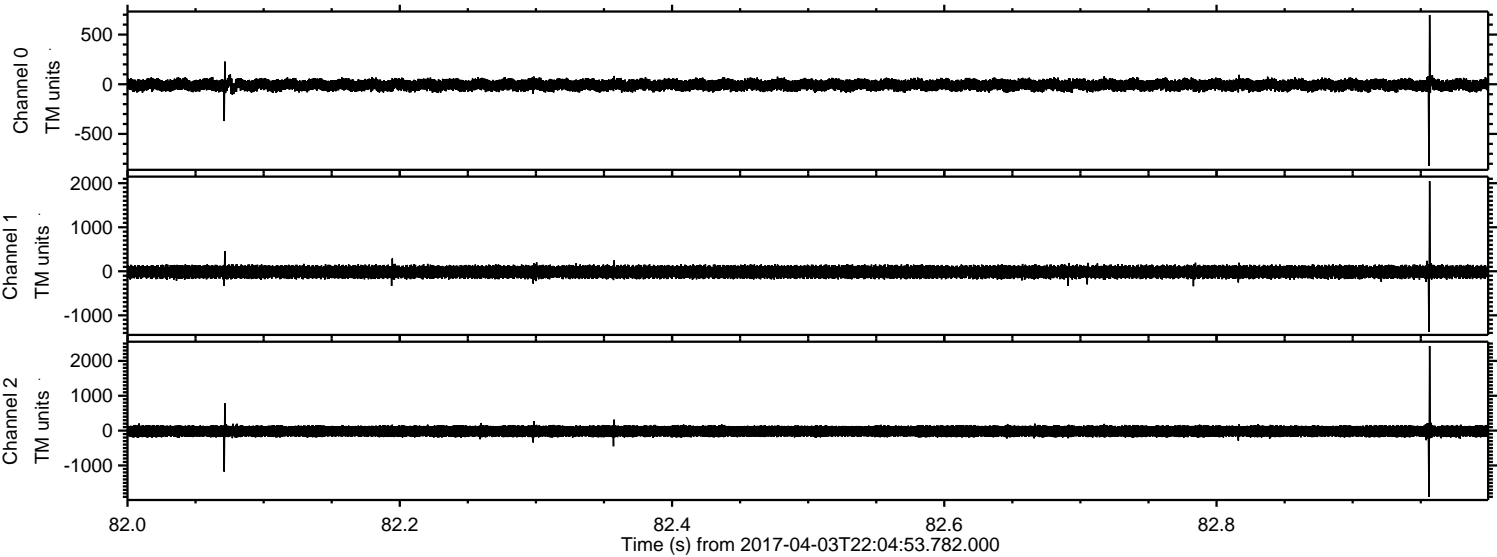
Processed Tue Apr 4 00:12:30 2017 by ELM ver.2012-10-06 from 001__elm20170403_220452__dat00.bin



Processed Tue Apr 4 00:12:31 2017 by ELM ver.2012-10-06 from 001__elm20170403_220452__dat00.bin



Processed Tue Apr 4 00:12:32 2017 by ELM ver.2012-10-06 from 001__elm20170403_220452__dat00.bin



Channel 0
mn: -820
mx: 697
 μ : -7.4
 σ : 33.7

Channel 1
mn: -1376
mx: 2047
 μ : -14.2
 σ : 82.8

Channel 2
mn: -1896
mx: 2430
 μ : -17.7
 σ : 106.7

Processed Tue Apr 4 00:12:33 2017 by ELM ver.2012-10-06 from 001__elm20170403_220452__dat00.bin

