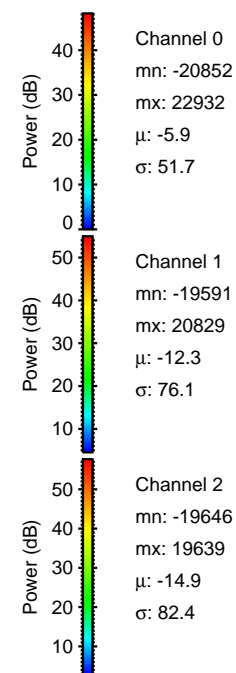
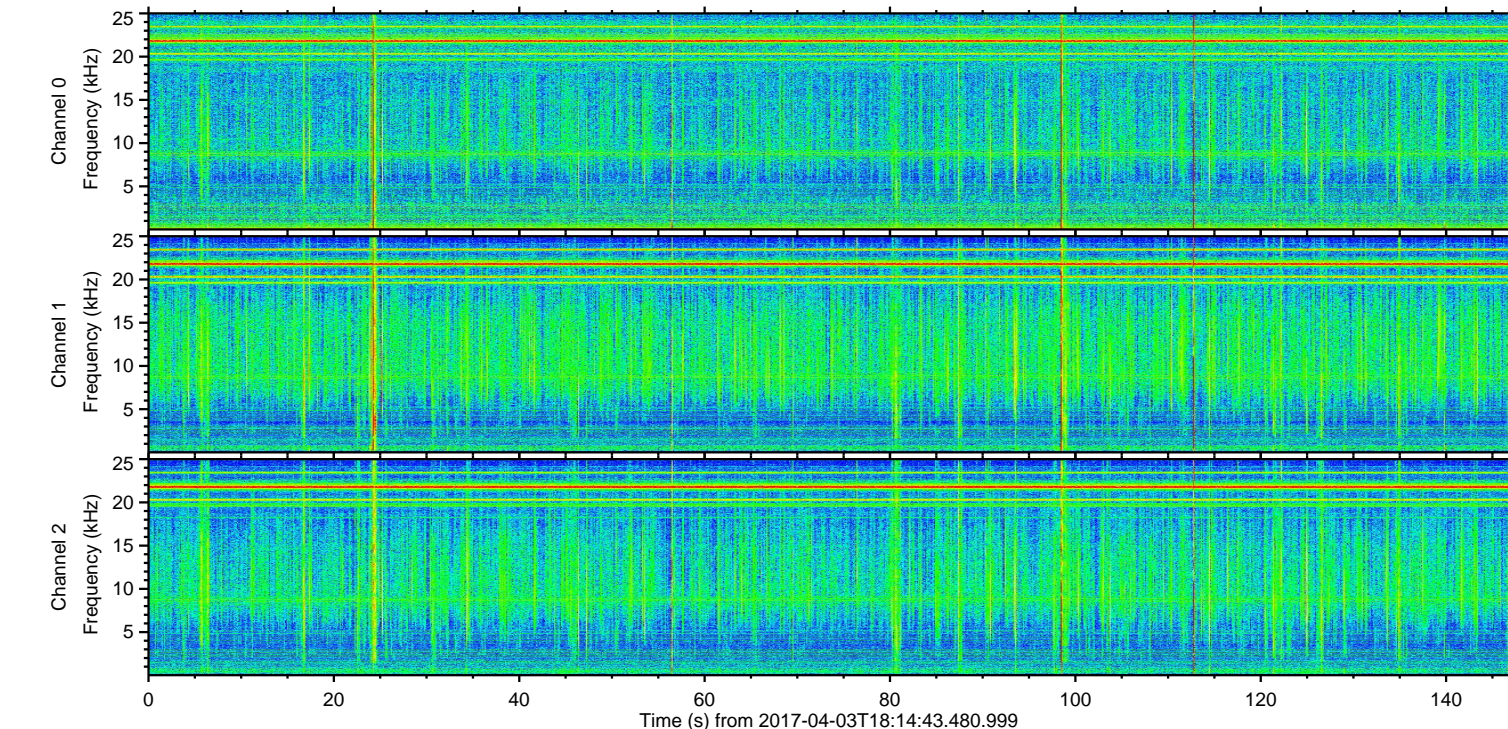
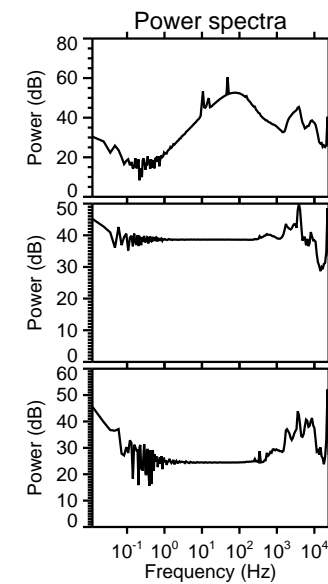
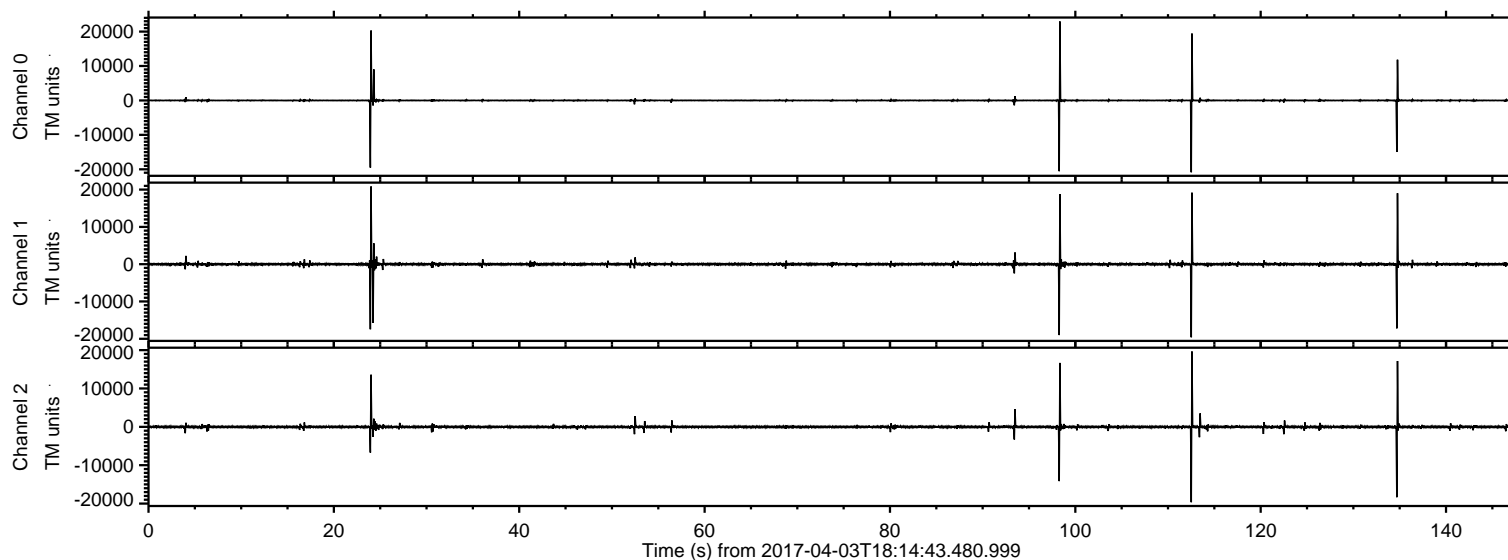
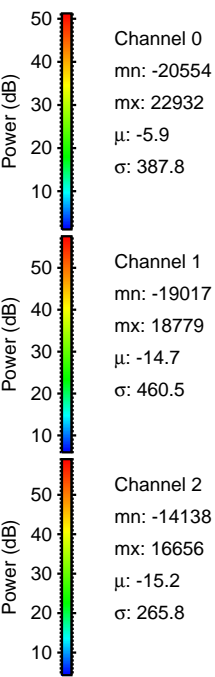
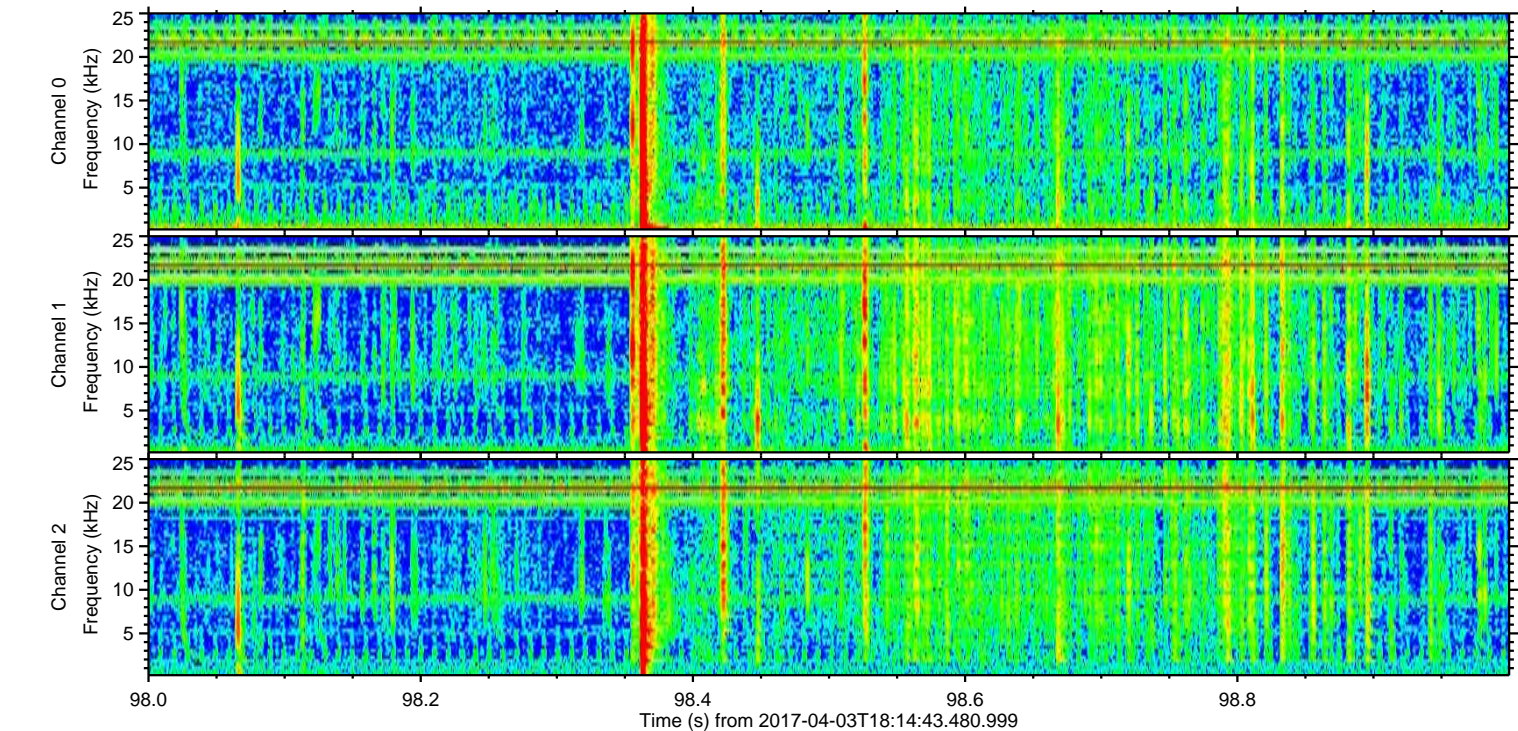
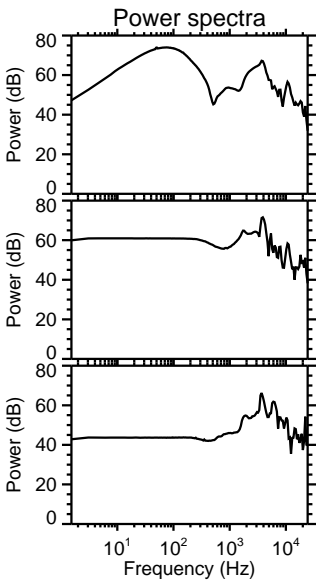
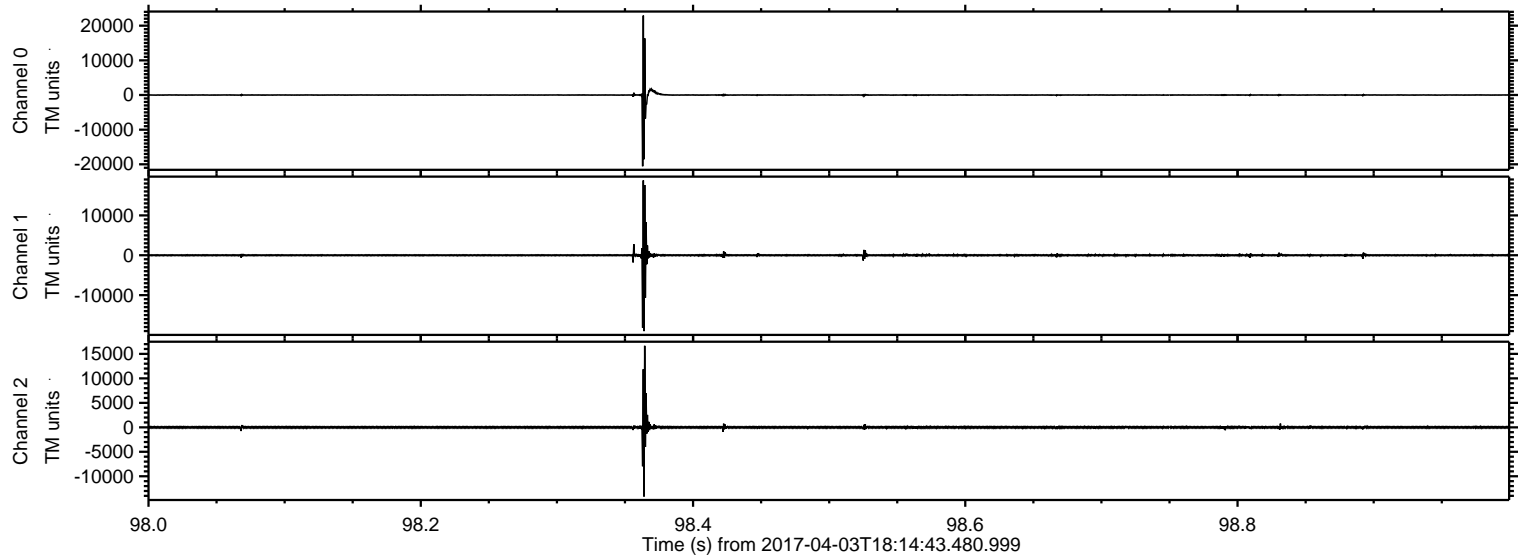


ELMAVAN 3D WAVEFORMS (Measured data sampled at 50 kHz) 51000 packets of 144 samples from 2017-04-03T18:14:43.480.999.

Processed Mon Apr 3 20:22:09 2017 by ELM ver.2012-10-06 from 001__elm20170403_181442__dat00.bin

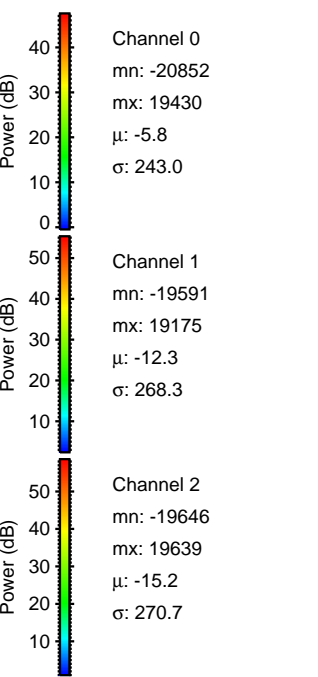
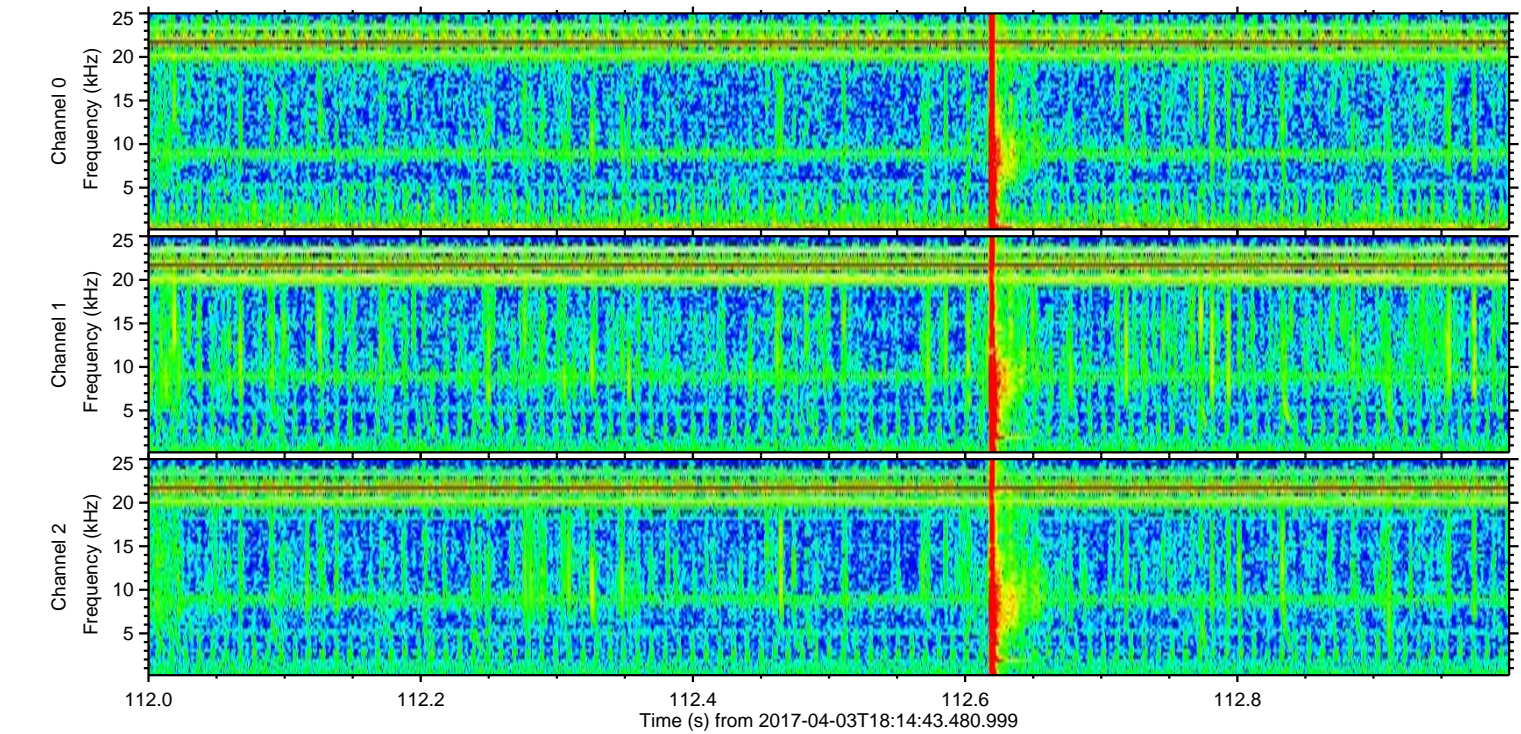
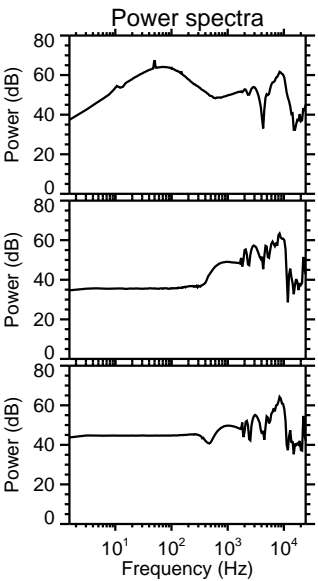
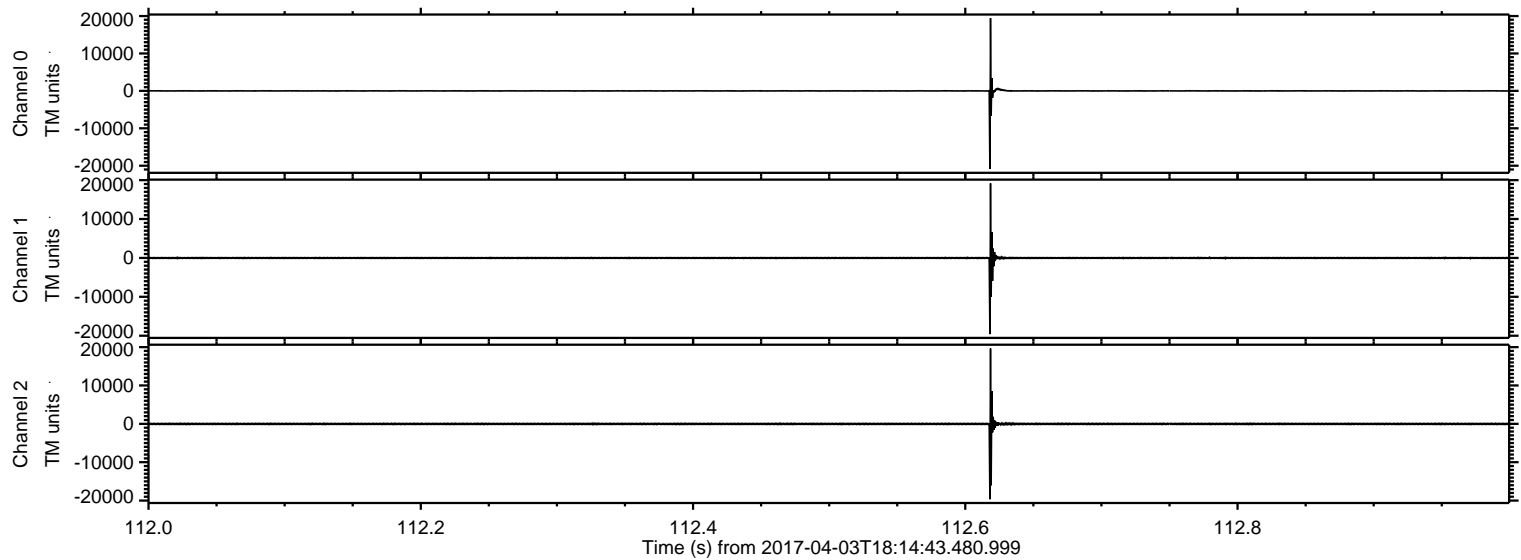


Processed Mon Apr 3 20:22:20 2017 by ELM ver.2012-10-06 from 001__elm20170403_181442__dat00.bin



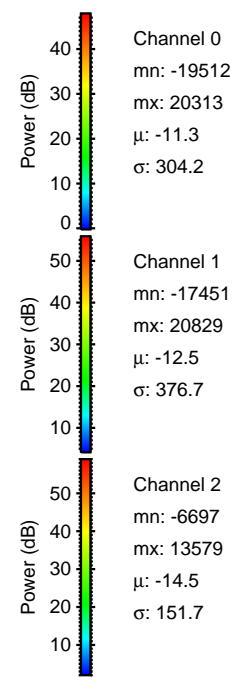
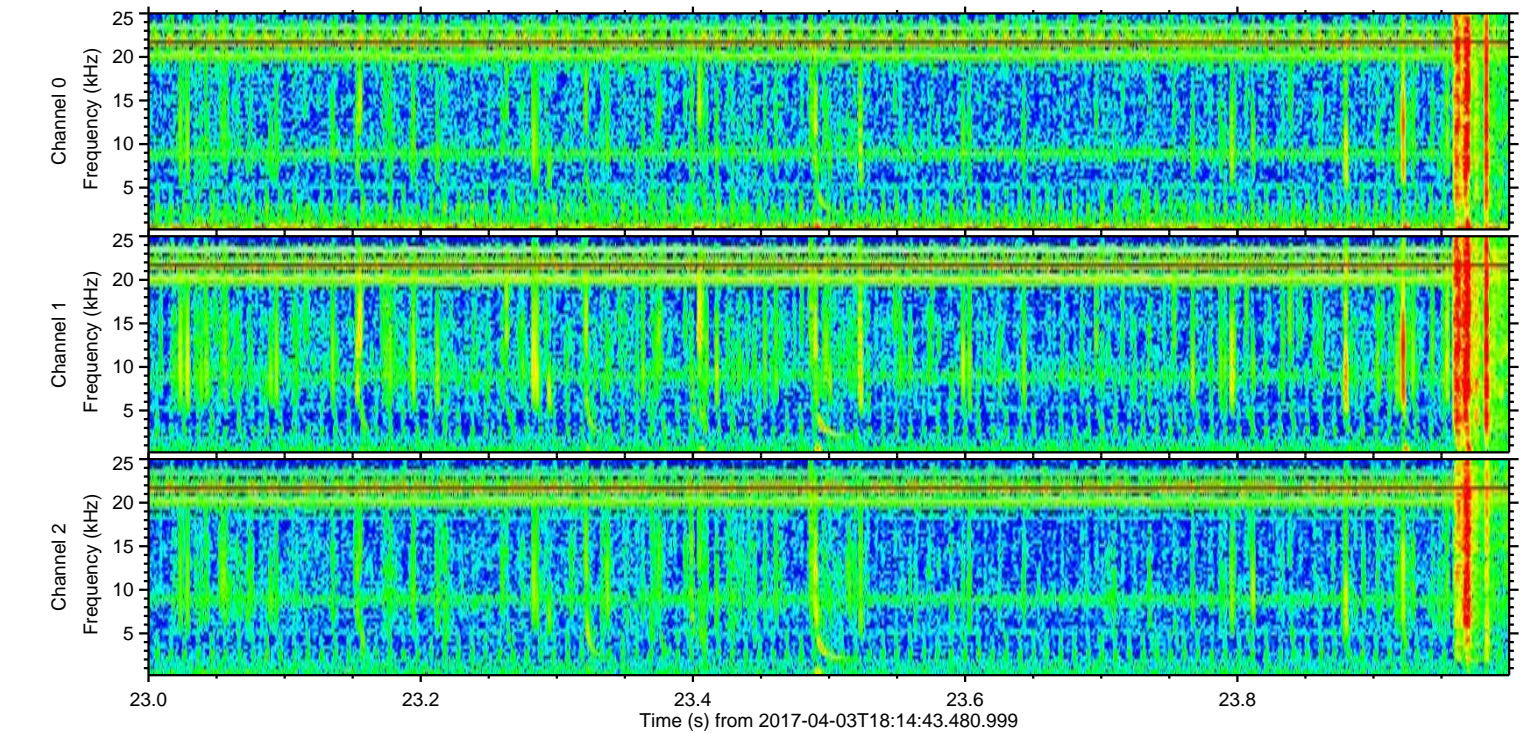
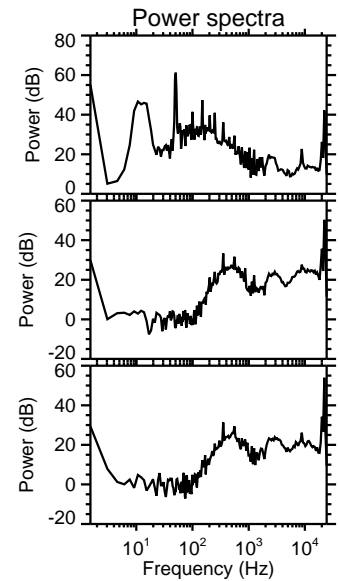
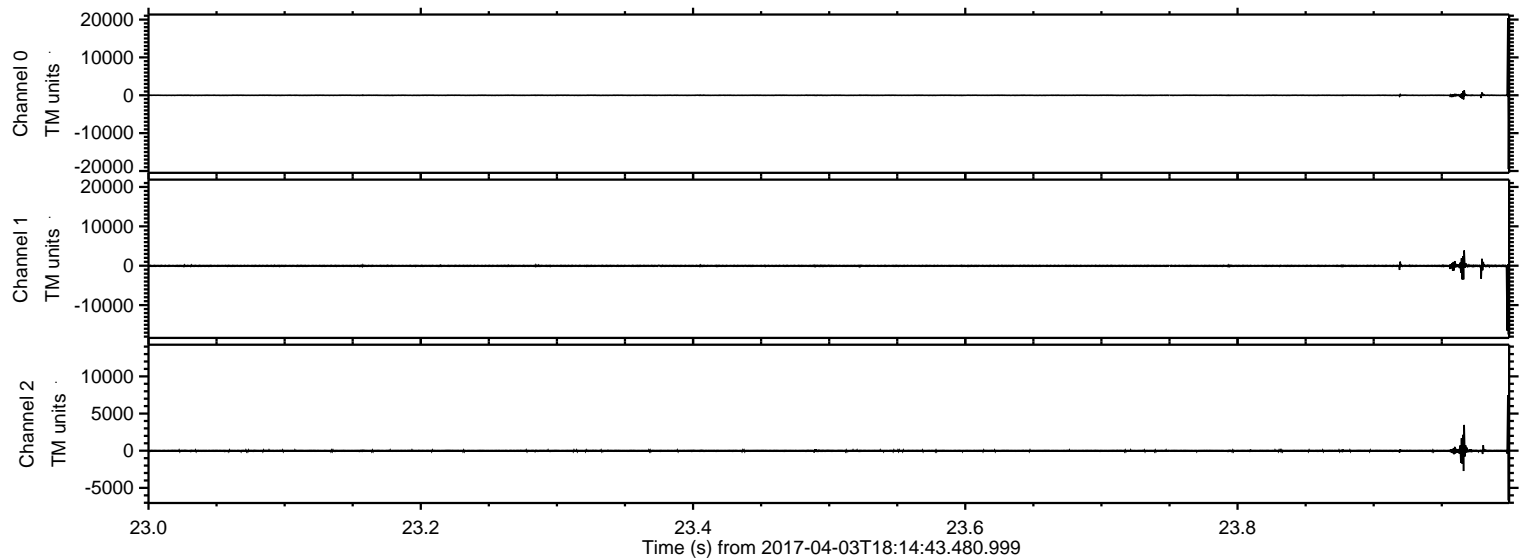
ELMAVAN 3D WAVEFORMS (Measured data sampled at 50 kHz) 51000 packets of 144 samples from 2017-04-03T18:14:43.480.999. Part 113/147

Processed Mon Apr 3 20:22:21 2017 by ELM ver.2012-10-06 from 001__elm20170403_181442__dat00.bin



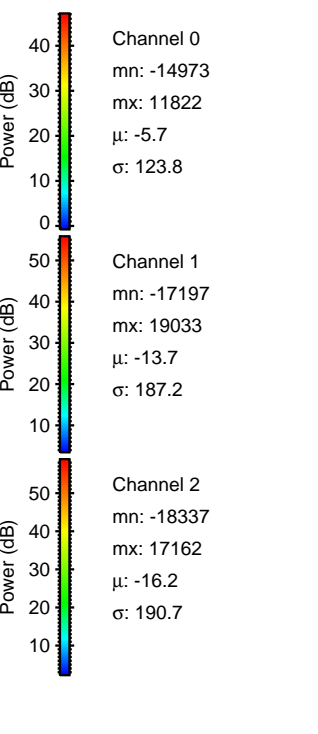
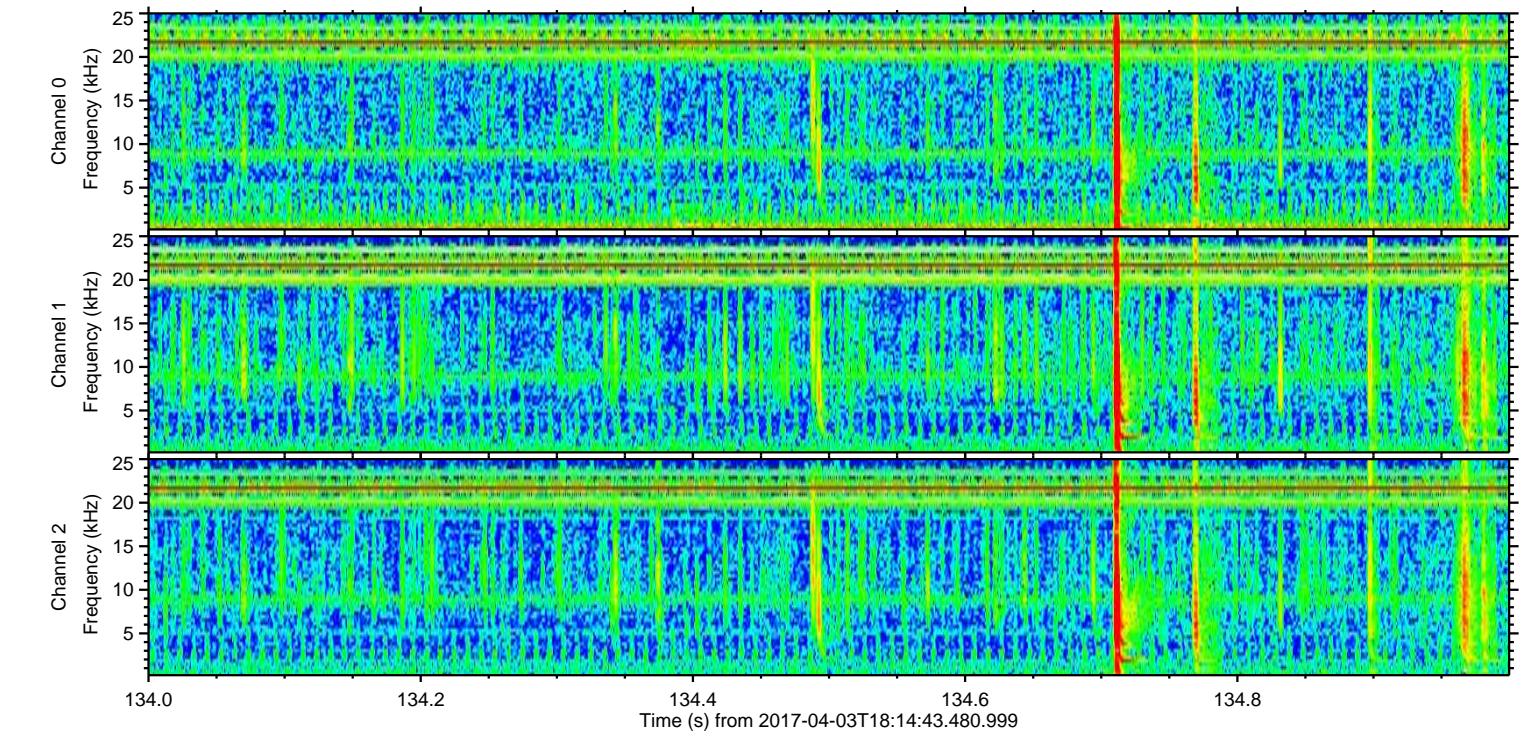
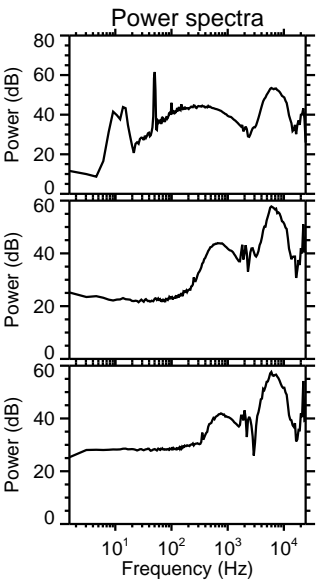
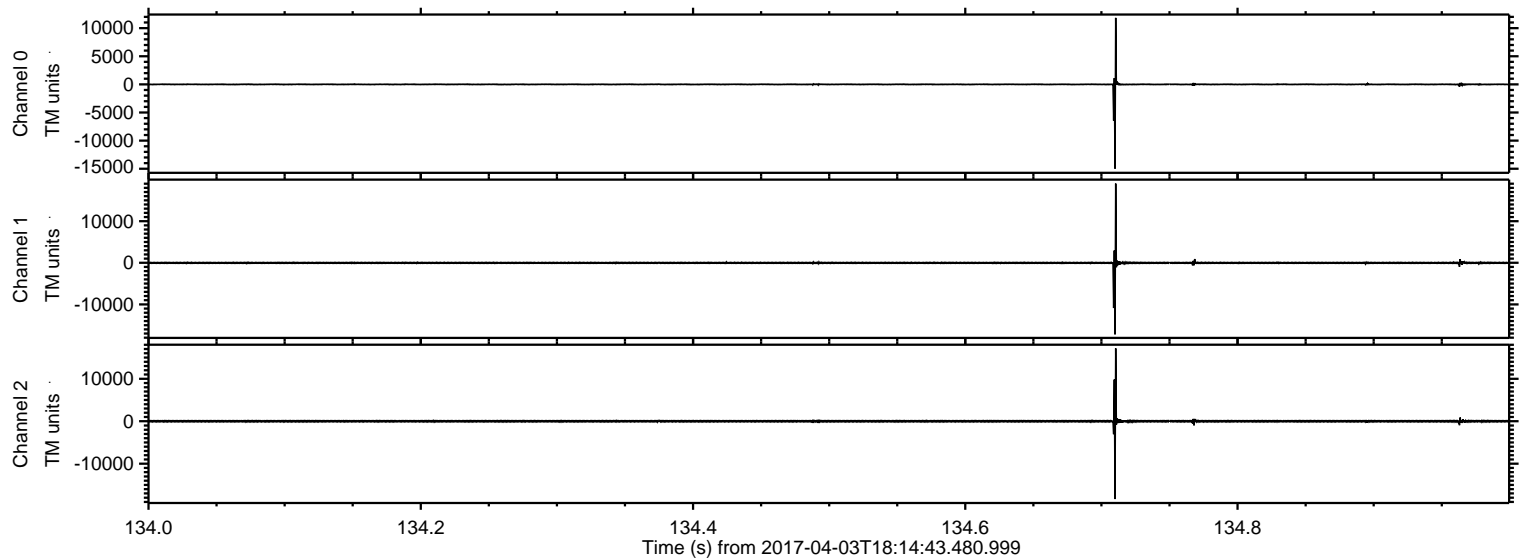
ELMAVAN 3D WAVEFORMS (Measured data sampled at 50 kHz) 51000 packets of 144 samples from 2017-04-03T18:14:43.480.999. Part 24/147

Processed Mon Apr 3 20:22:22 2017 by ELM ver.2012-10-06 from 001__elm20170403_181442__dat00.bin

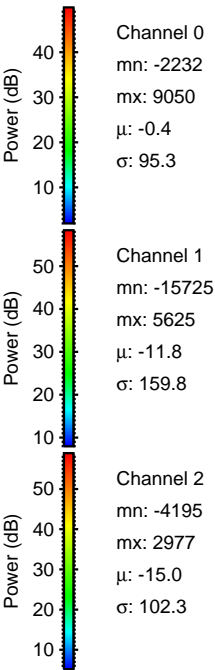
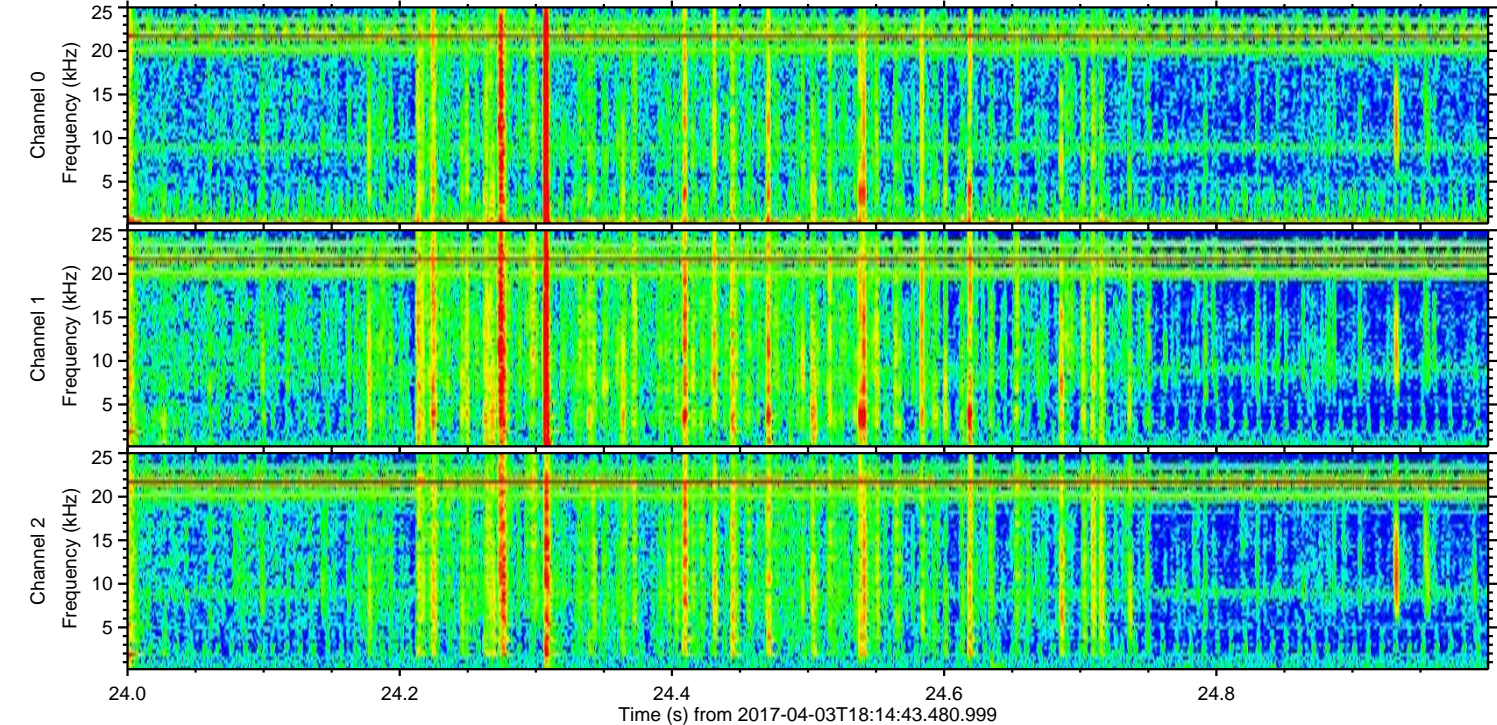
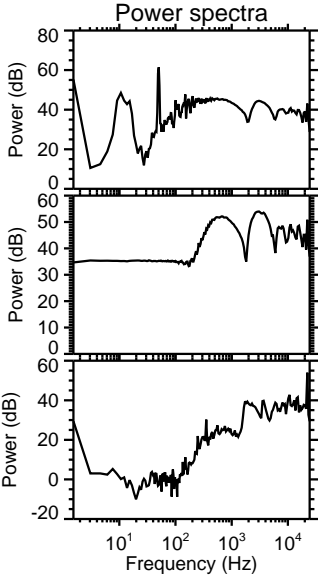
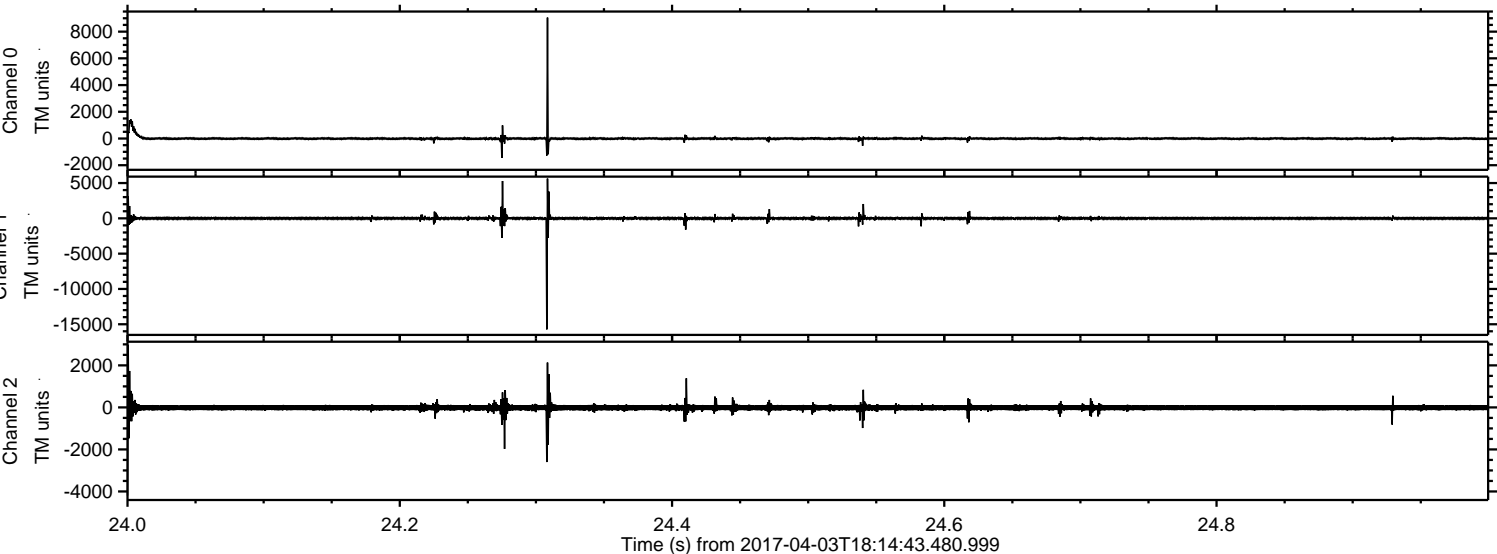


ELMAVAN 3D WAVEFORMS (Measured data sampled at 50 kHz) 51000 packets of 144 samples from 2017-04-03T18:14:43.480.999. Part 135/147

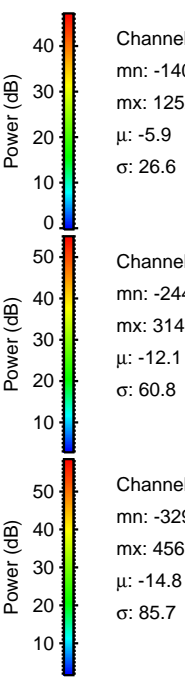
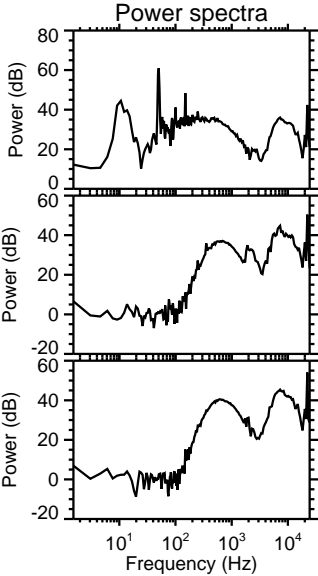
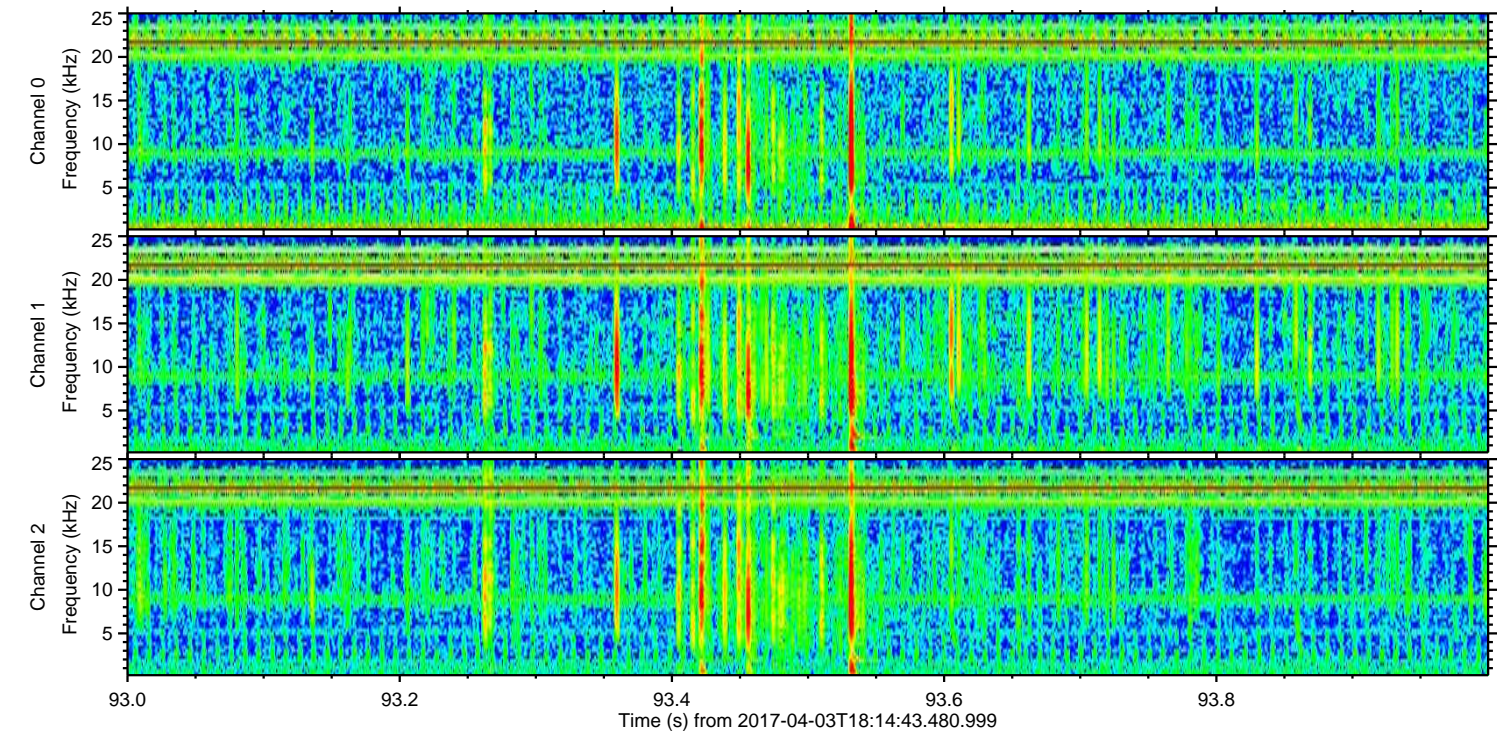
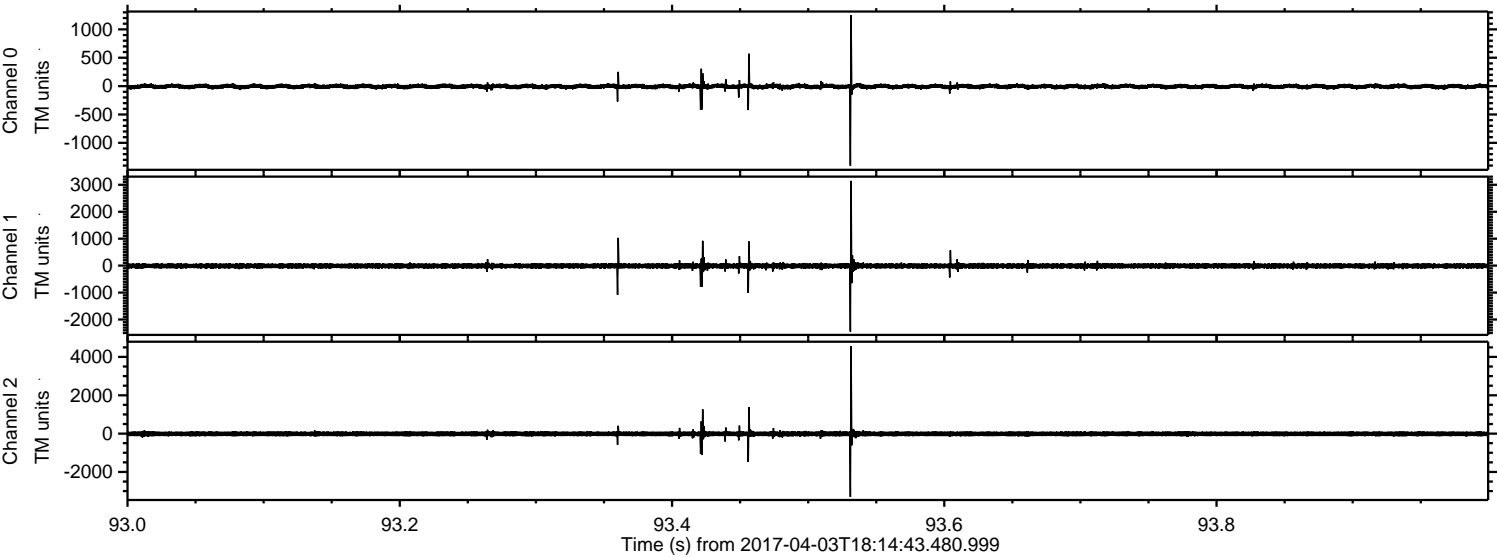
Processed Mon Apr 3 20:22:23 2017 by ELM ver.2012-10-06 from 001__elm20170403_181442__dat00.bin



Processed Mon Apr 3 20:22:24 2017 by ELM ver.2012-10-06 from 001__elm20170403_181442__dat00.bin

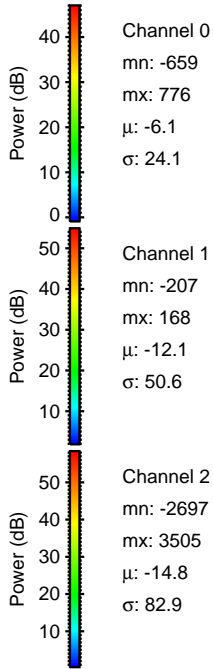
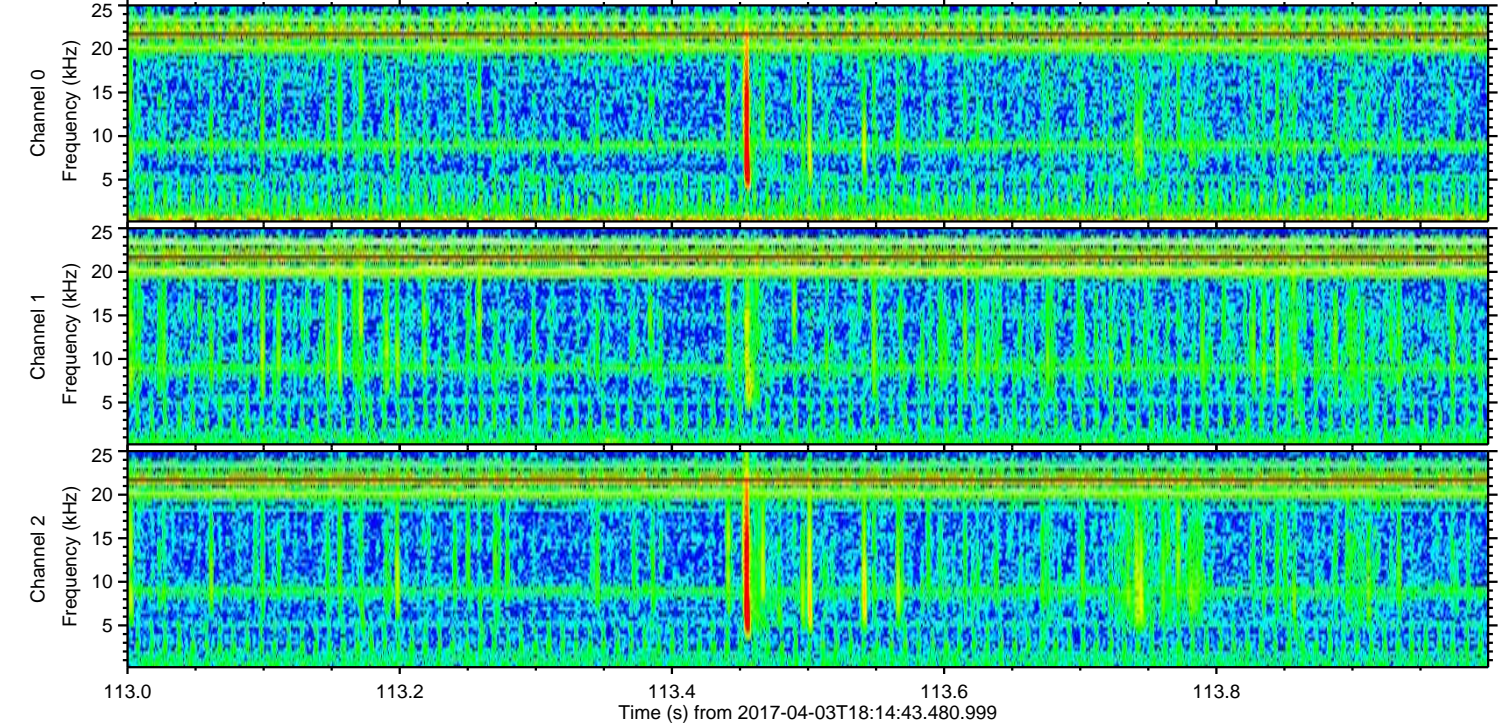
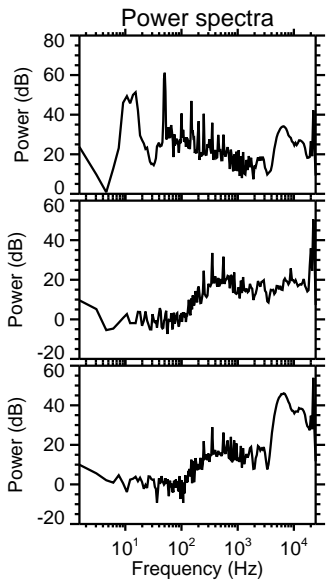
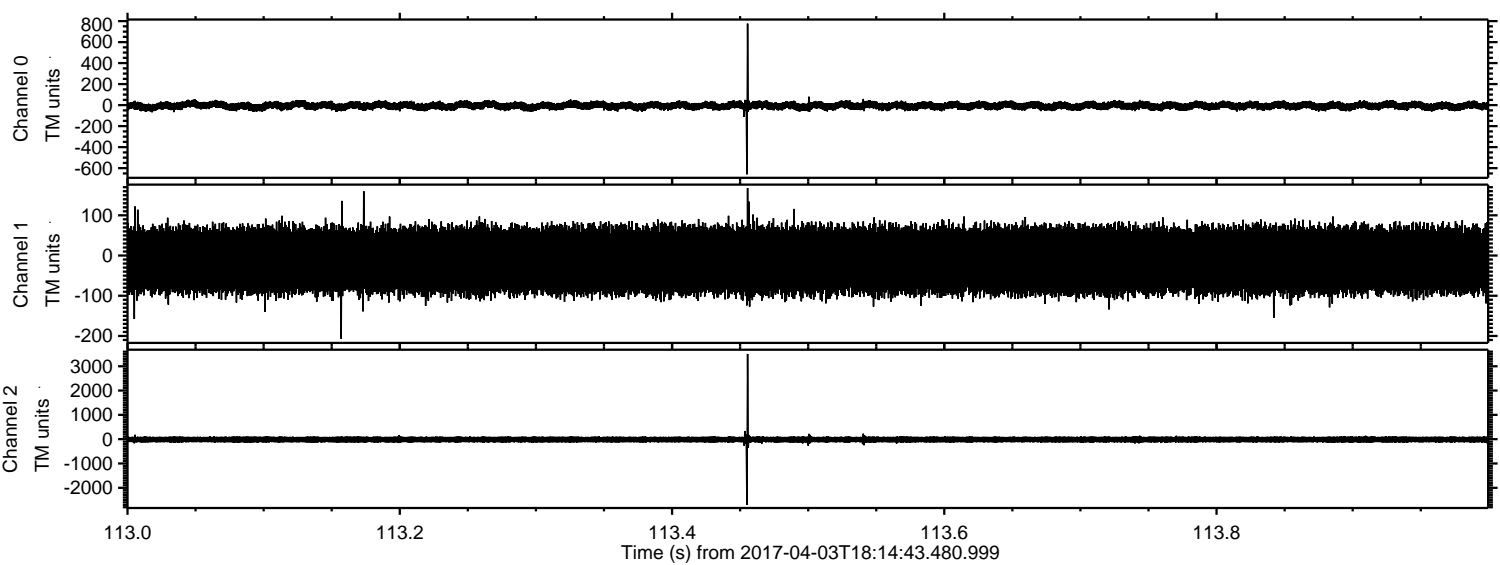


Processed Mon Apr 3 20:22:25 2017 by ELM ver.2012-10-06 from 001__elm20170403_181442__dat00.bin

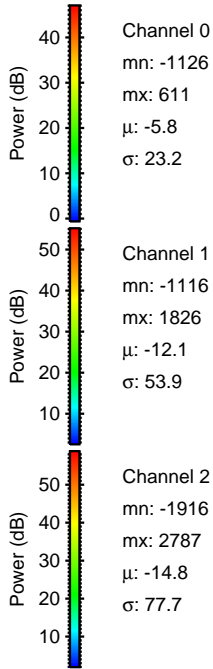
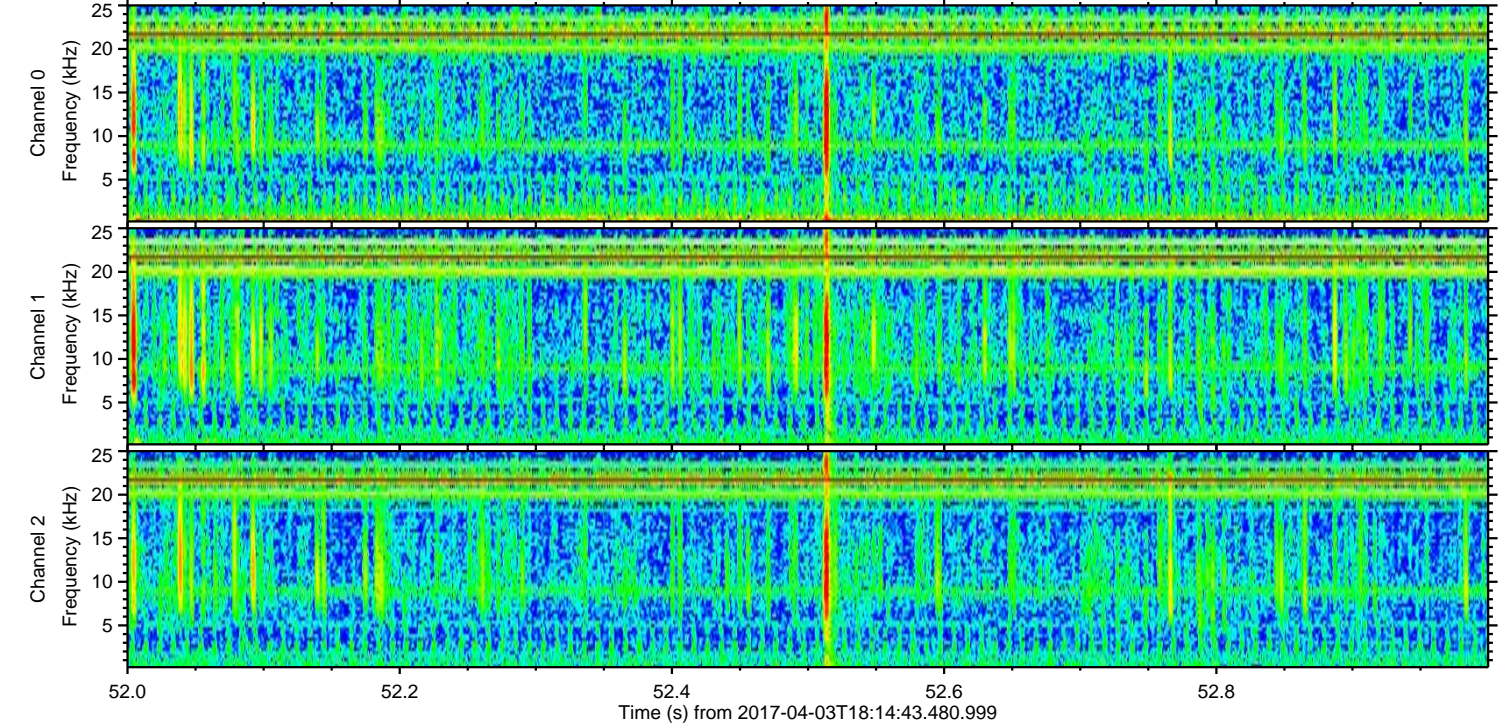
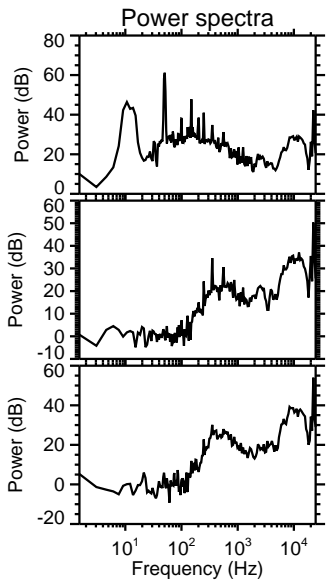
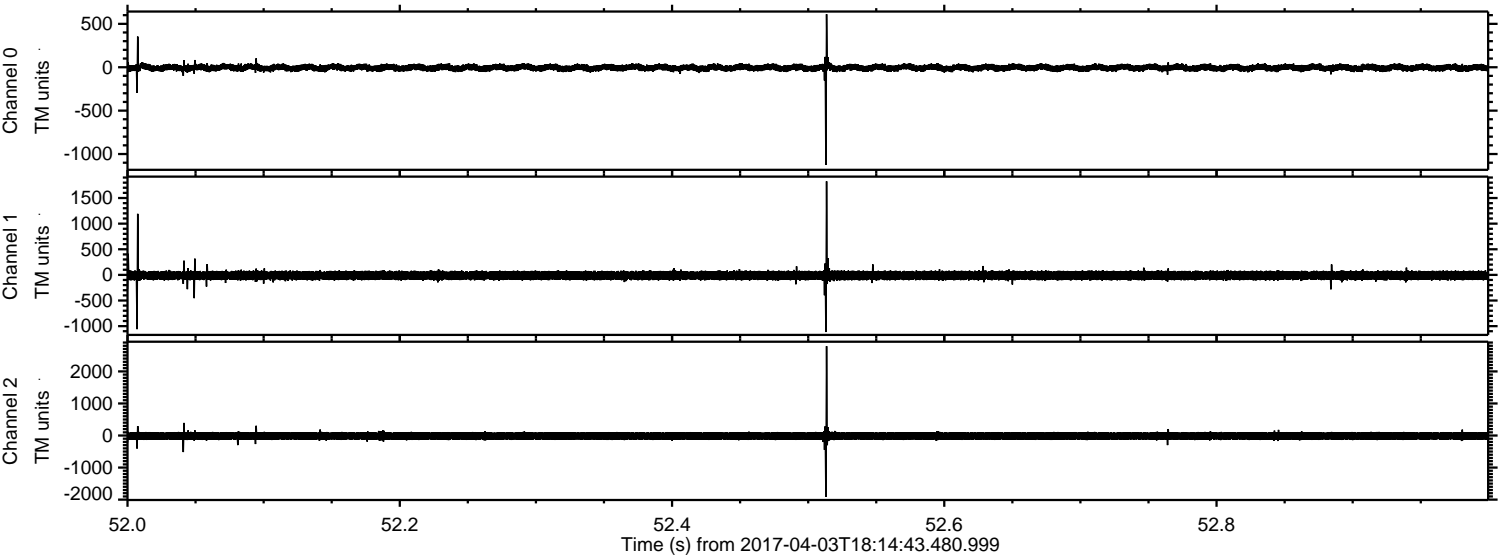


ELMAVAN 3D WAVEFORMS (Measured data sampled at 50 kHz) 51000 packets of 144 samples from 2017-04-03T18:14:43.480.999. Part 114/147

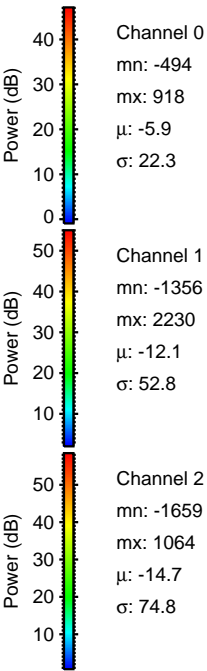
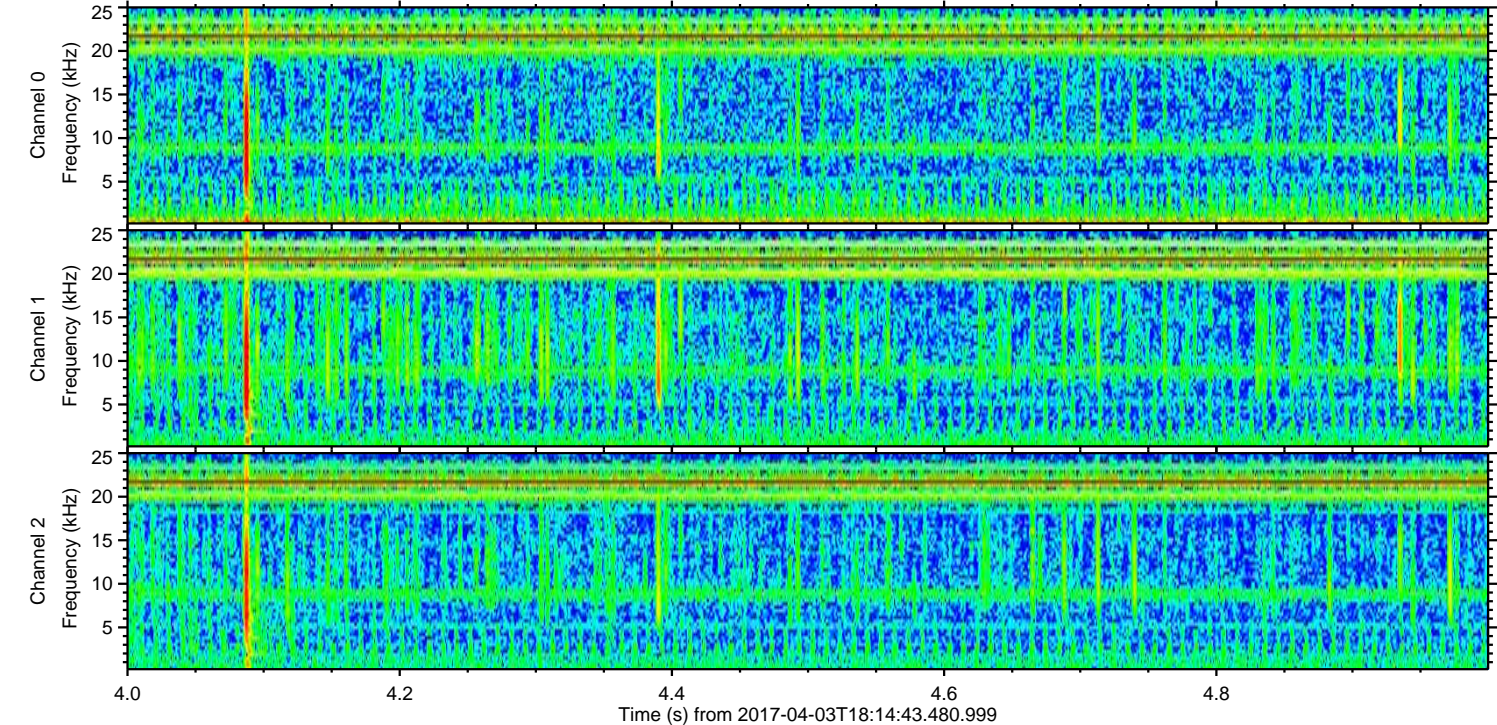
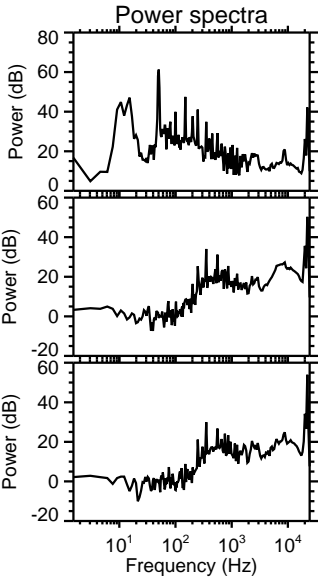
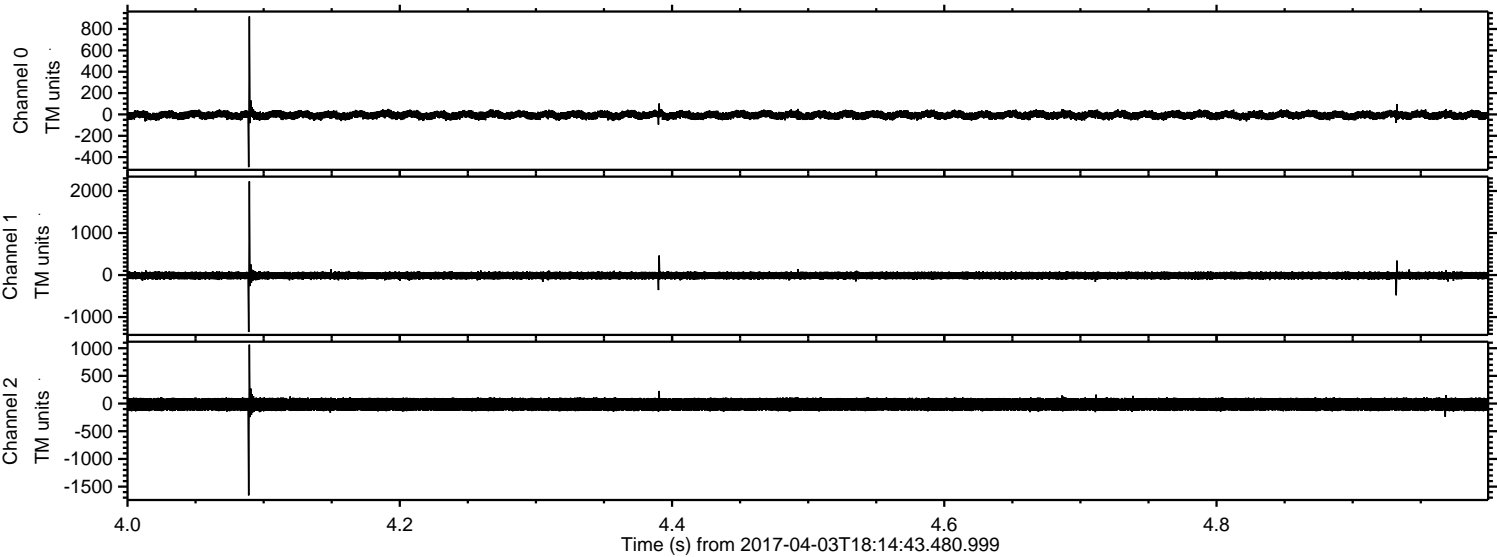
Processed Mon Apr 3 20:22:26 2017 by ELM ver.2012-10-06 from 001__elm20170403_181442__dat00.bin



Processed Mon Apr 3 20:22:27 2017 by ELM ver.2012-10-06 from 001__elm20170403_181442__dat00.bin



Processed Mon Apr 3 20:22:28 2017 by ELM ver.2012-10-06 from 001__elm20170403_181442__dat00.bin



Channel 0
mn: -494
mx: 918
 μ : -5.9
 σ : 22.3

Channel 1
mn: -1356
mx: 2230
 μ : -12.1
 σ : 52.8

Channel 2
mn: -1659
mx: 1064
 μ : -14.7
 σ : 74.8

Processed Mon Apr 3 20:22:29 2017 by ELM ver.2012-10-06 from 001__elm20170403_181442__dat00.bin

