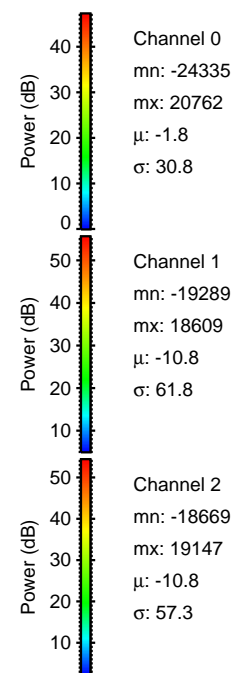
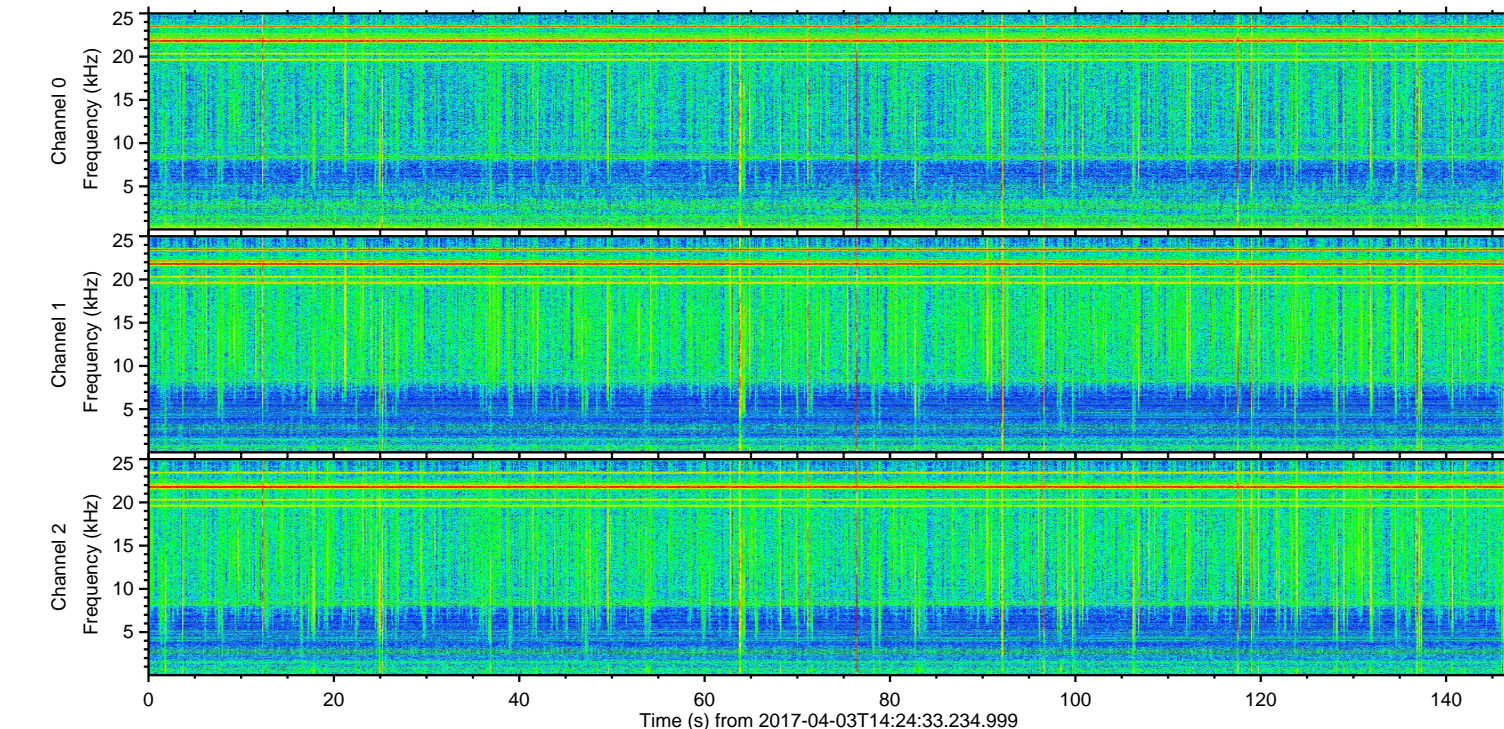
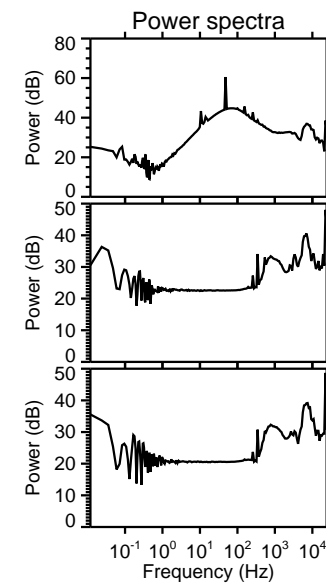
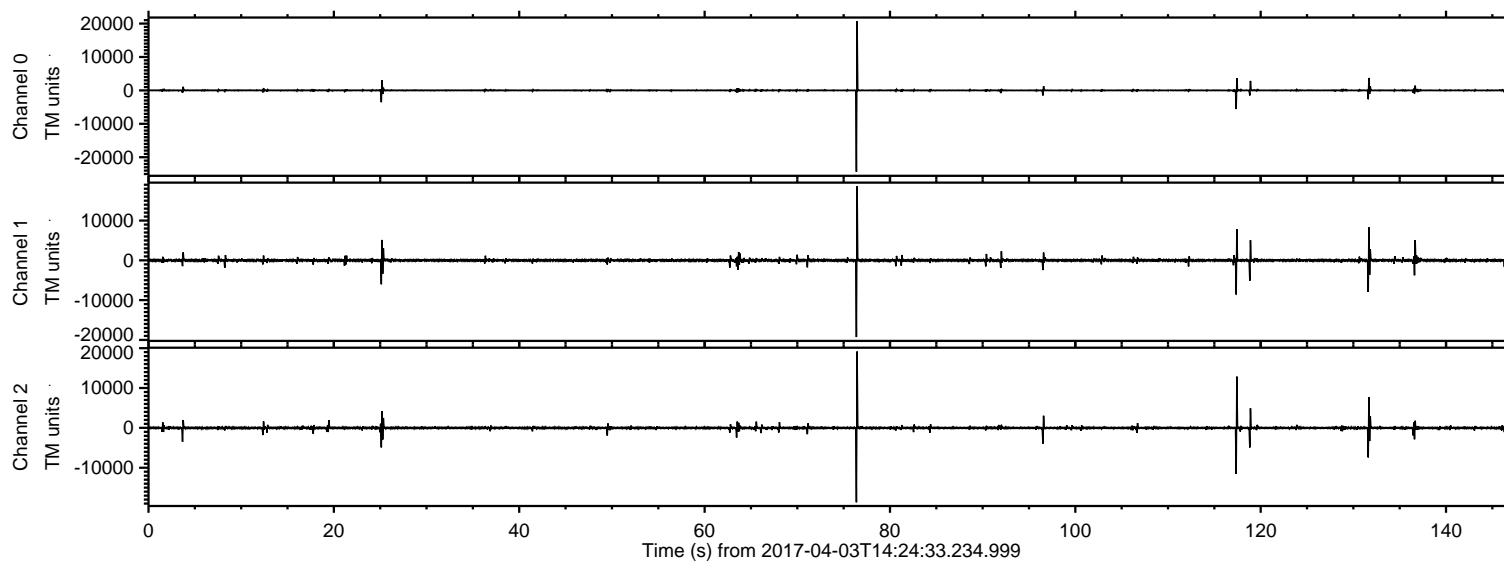
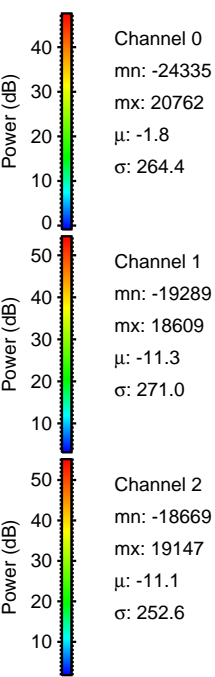
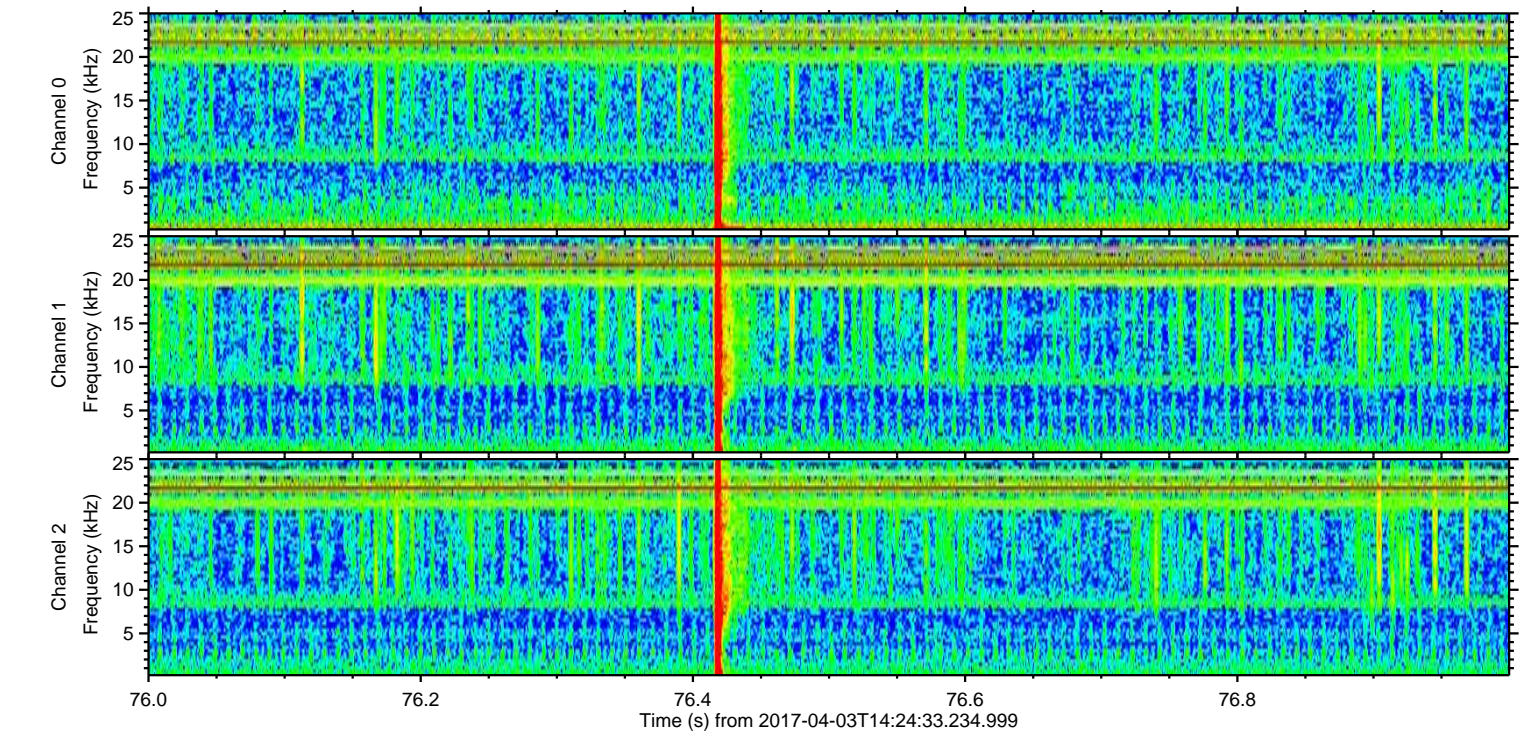
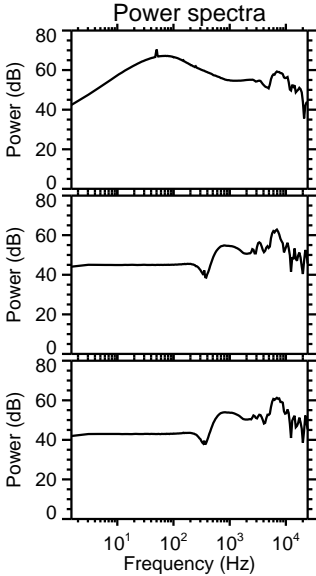
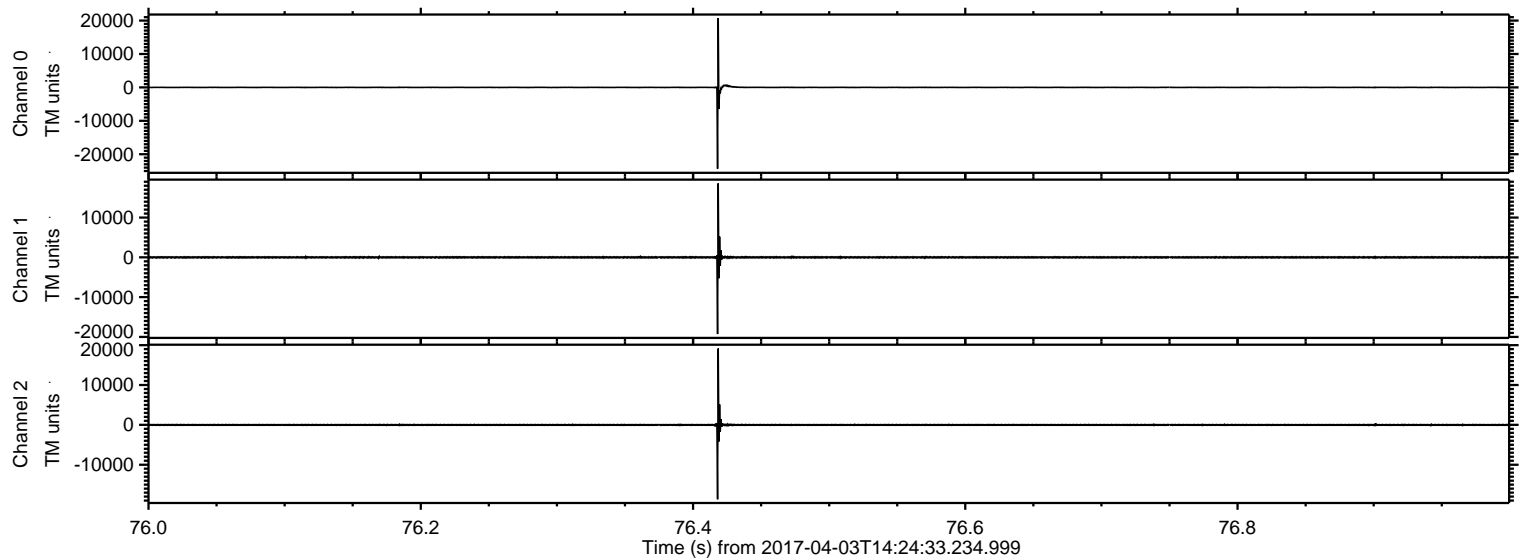


ELMAVAN 3D WAVEFORMS (Measured data sampled at 50 kHz) 51000 packets of 144 samples from 2017-04-03T14:24:33.234.999.

Processed Mon Apr 3 16:32:50 2017 by ELM ver.2012-10-06 from 001__elm20170403_142432__dat00.bin

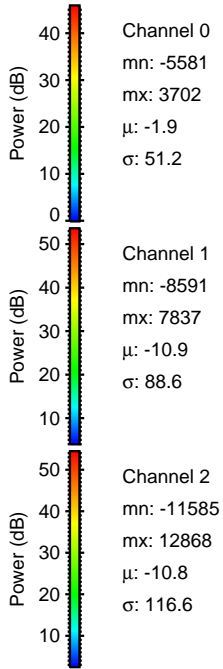
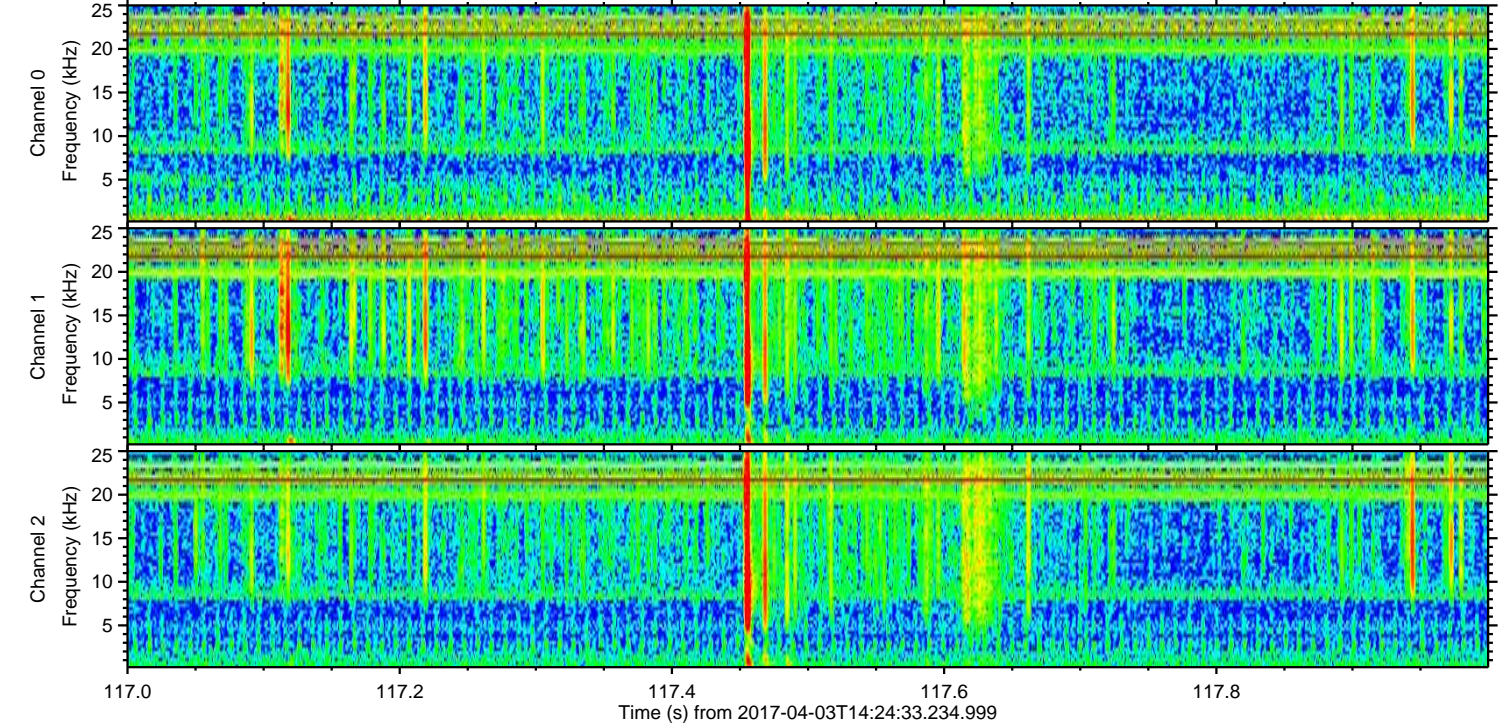
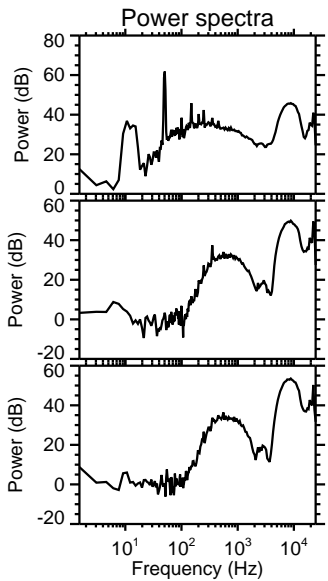
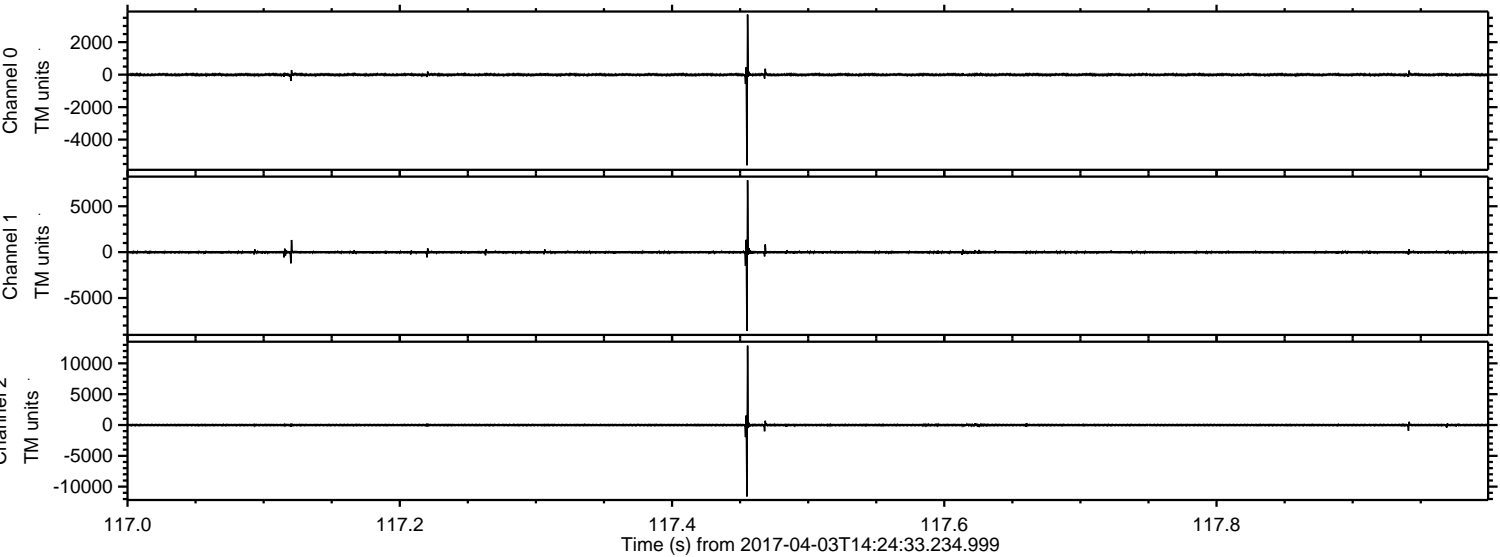


Processed Mon Apr 3 16:33:01 2017 by ELM ver.2012-10-06 from 001__elm20170403_142432__dat00.bin



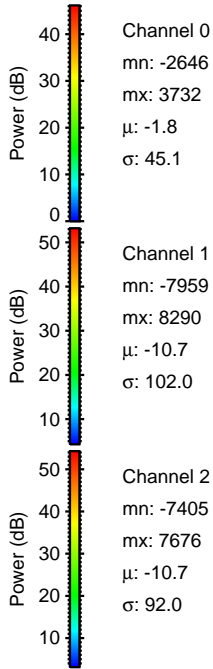
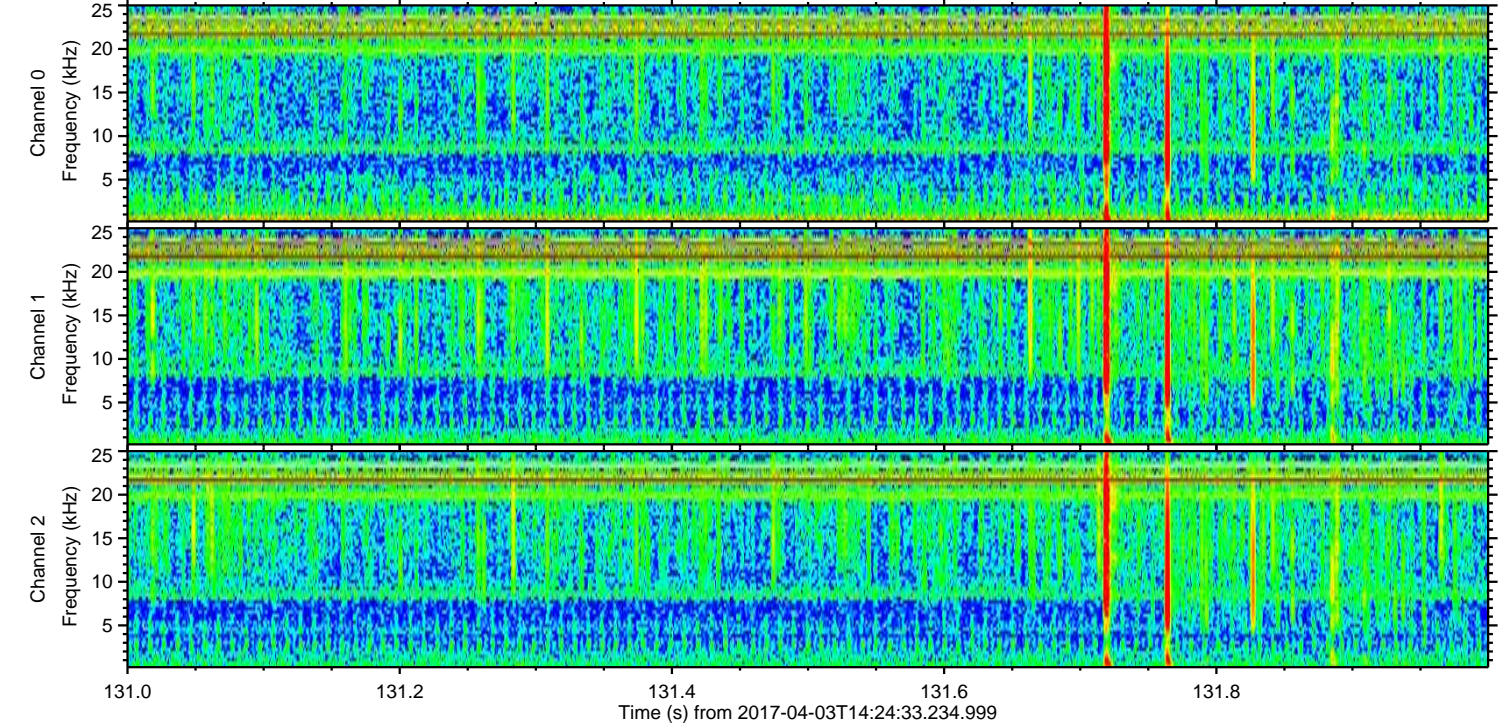
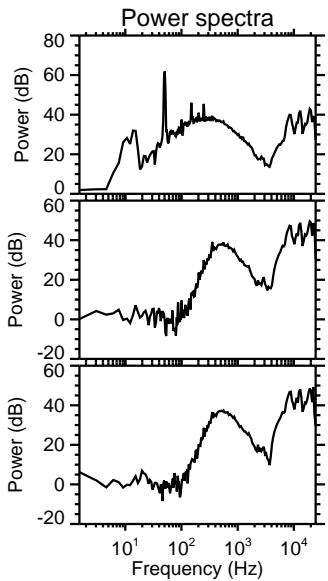
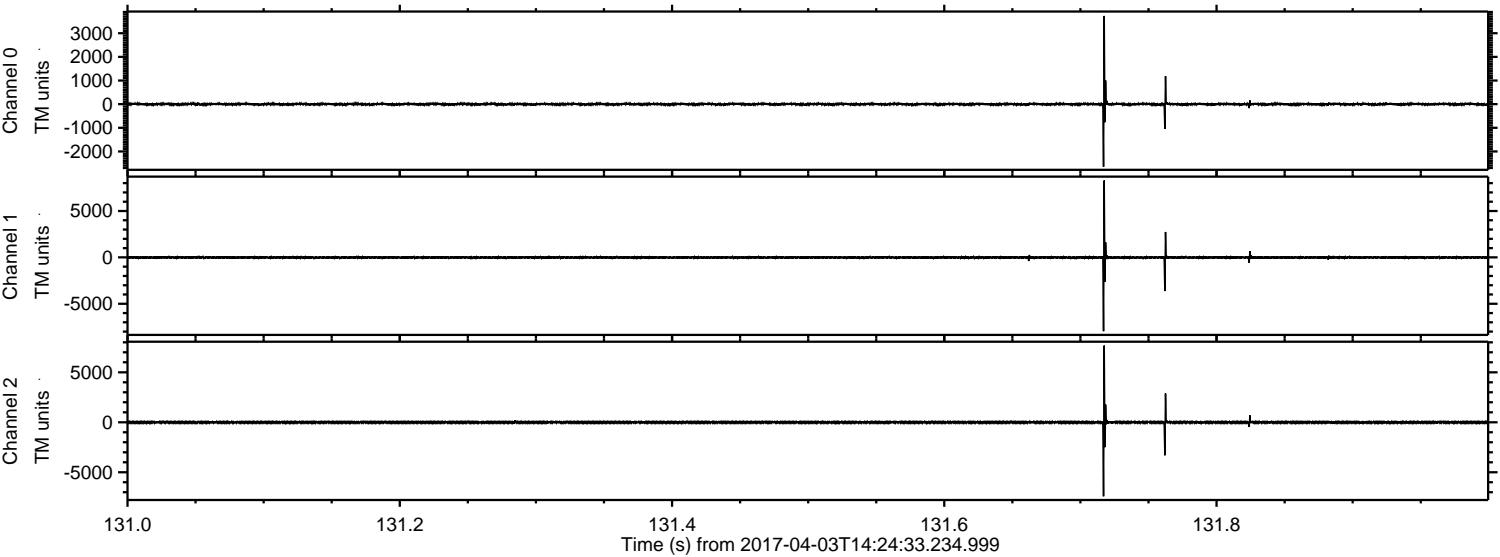
ELMAVAN 3D WAVEFORMS (Measured data sampled at 50 kHz) 51000 packets of 144 samples from 2017-04-03T14:24:33.234.999. Part 118/147

Processed Mon Apr 3 16:33:02 2017 by ELM ver.2012-10-06 from 001__elm20170403_142432__dat00.bin

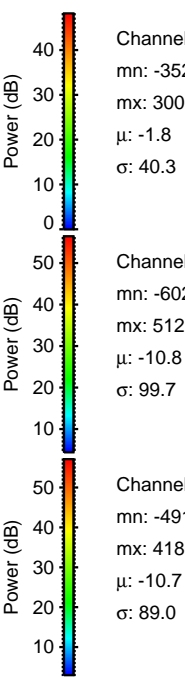
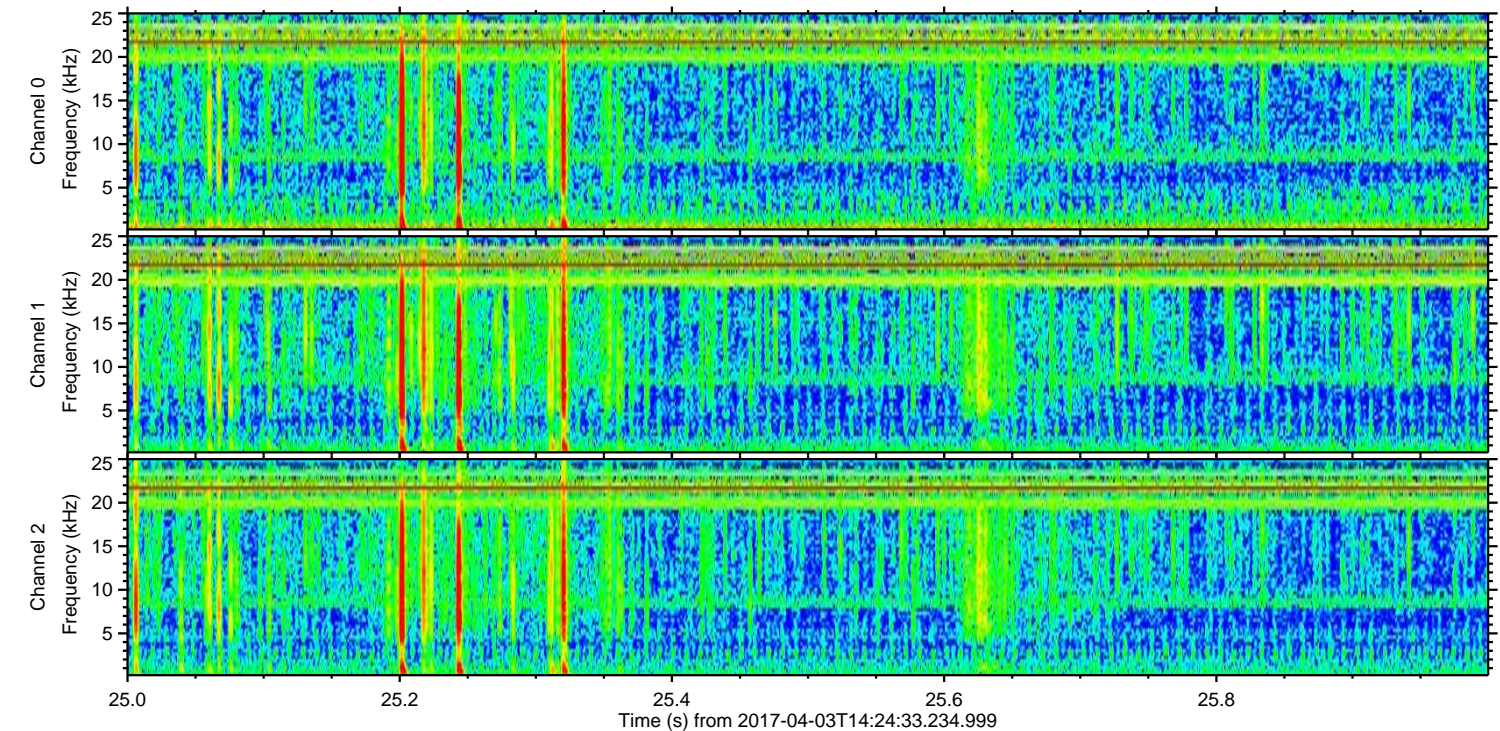
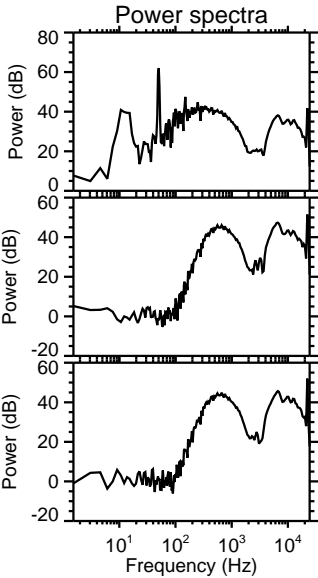
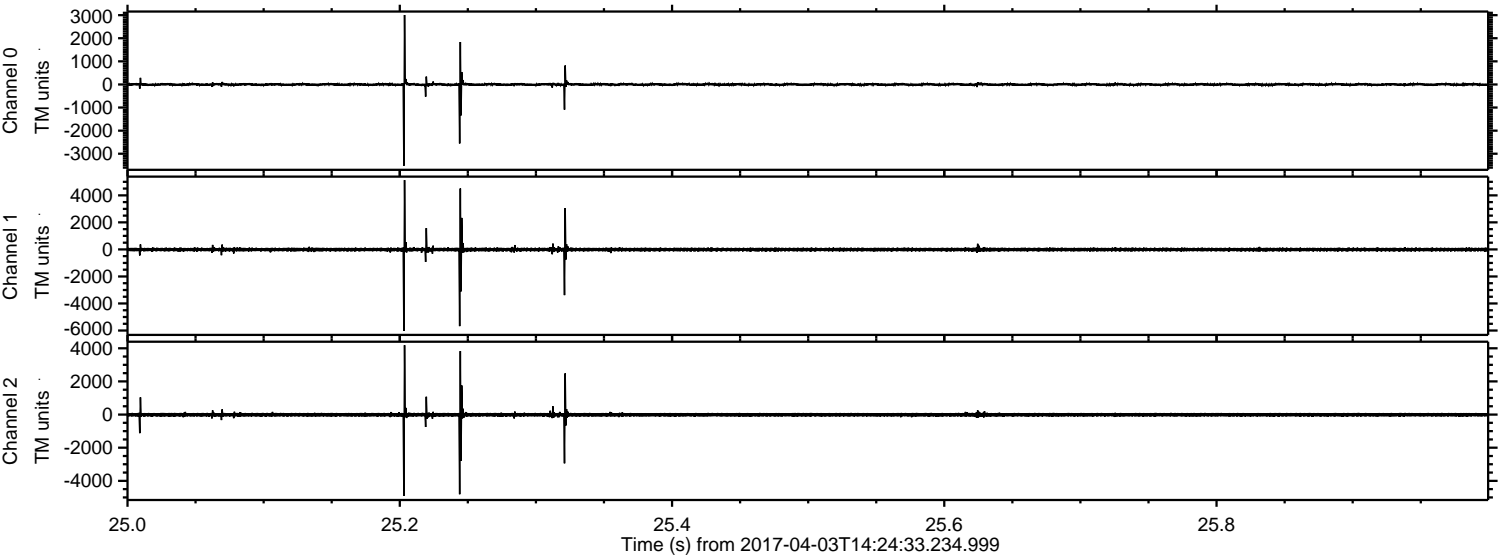


ELMAVAN 3D WAVEFORMS (Measured data sampled at 50 kHz) 51000 packets of 144 samples from 2017-04-03T14:24:33.234.999. Part 132/147

Processed Mon Apr 3 16:33:03 2017 by ELM ver.2012-10-06 from 001__elm20170403_142432__dat00.bin



Processed Mon Apr 3 16:33:04 2017 by ELM ver.2012-10-06 from 001__elm20170403_142432__dat00.bin



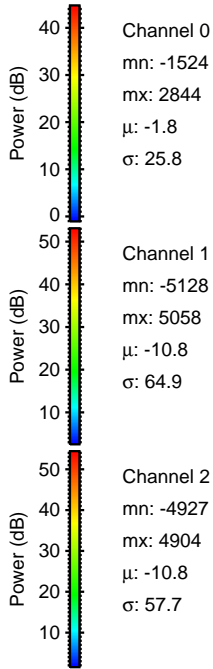
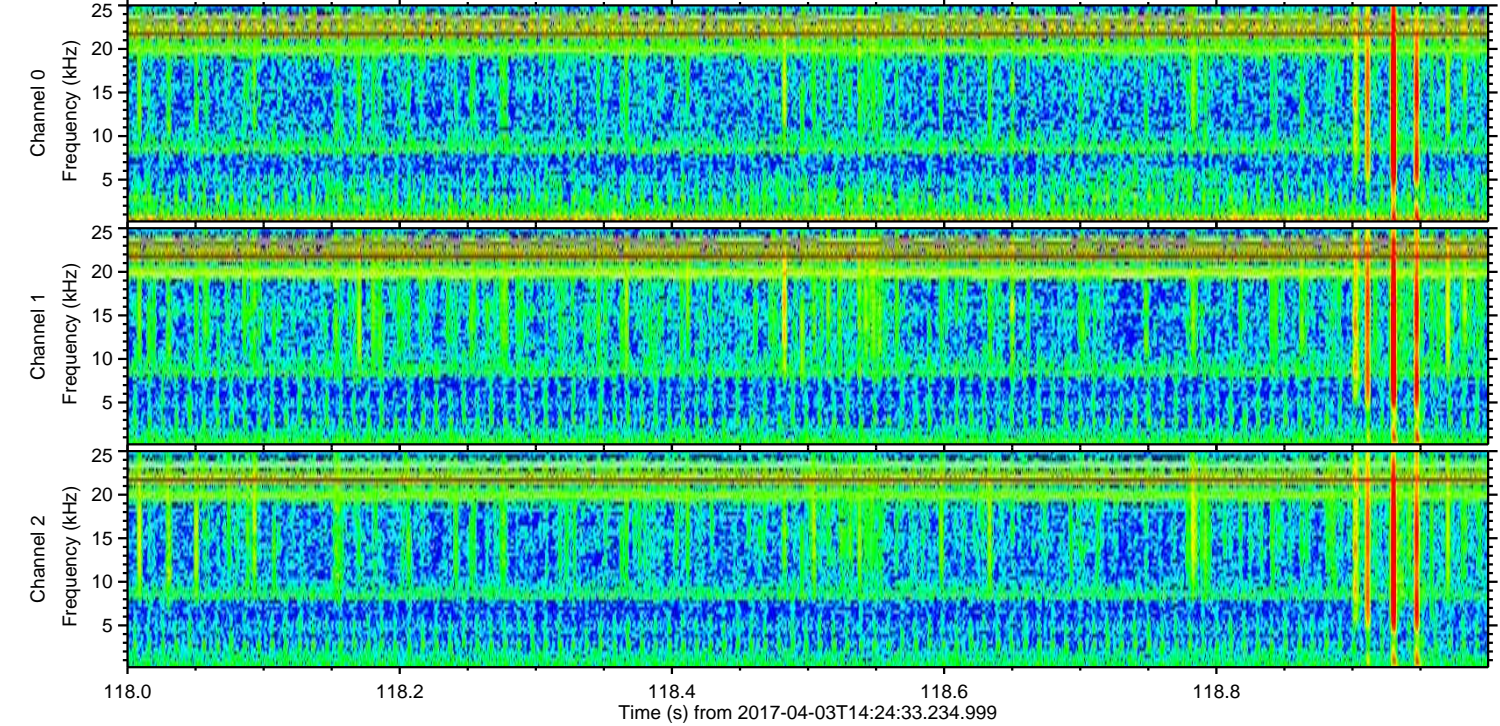
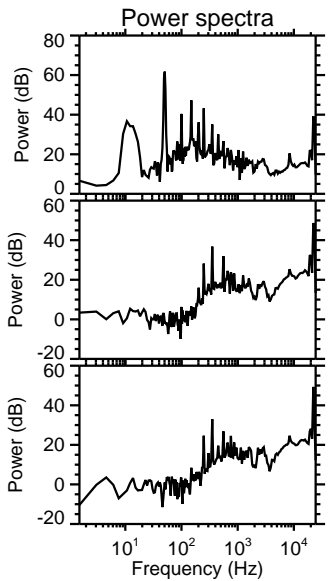
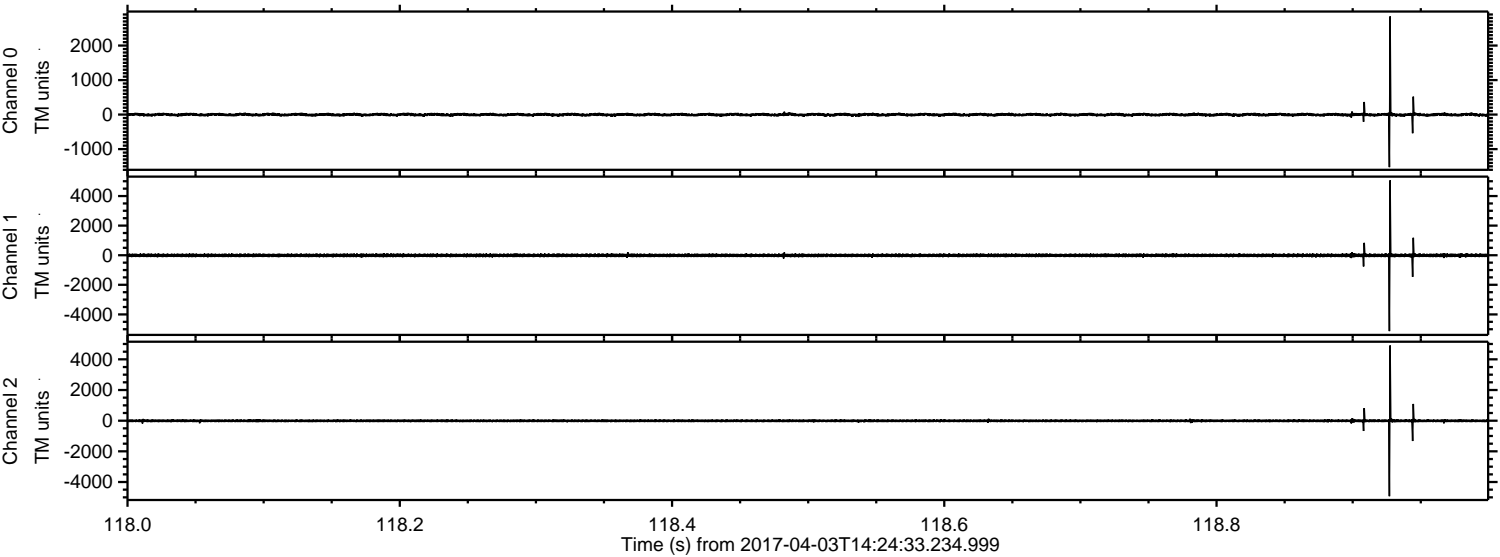
Channel 0
mn: -3520
mx: 3006
 μ : -1.8
 σ : 40.3

Channel 1
mn: -6023
mx: 5129
 μ : -10.8
 σ : 99.7

Channel 2
mn: -4910
mx: 4186
 μ : -10.7
 σ : 89.0

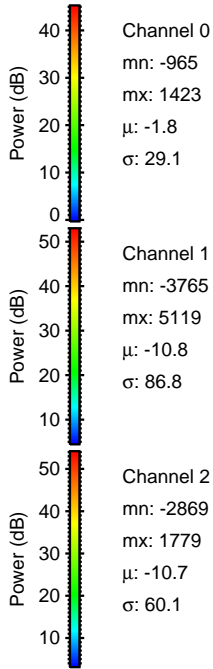
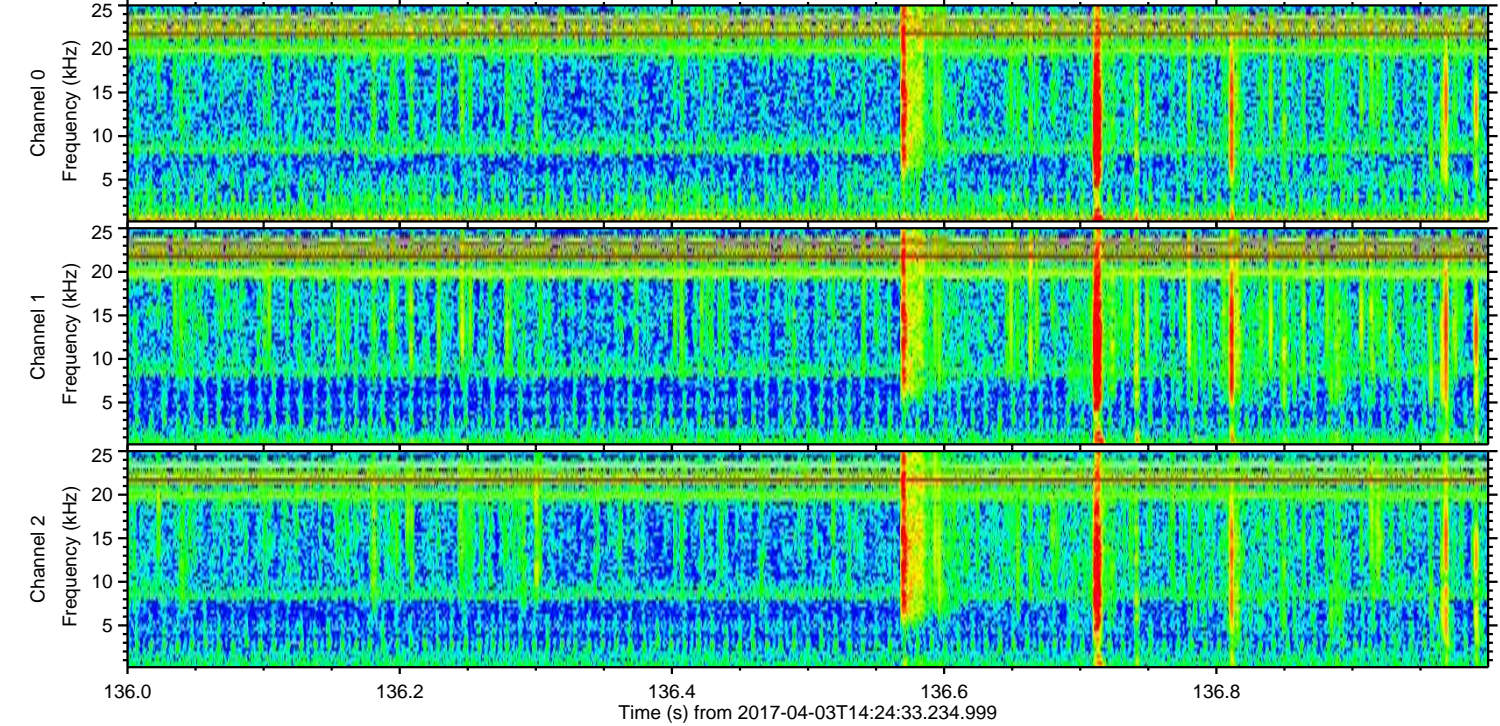
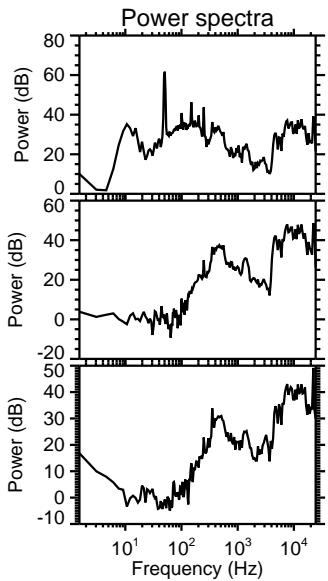
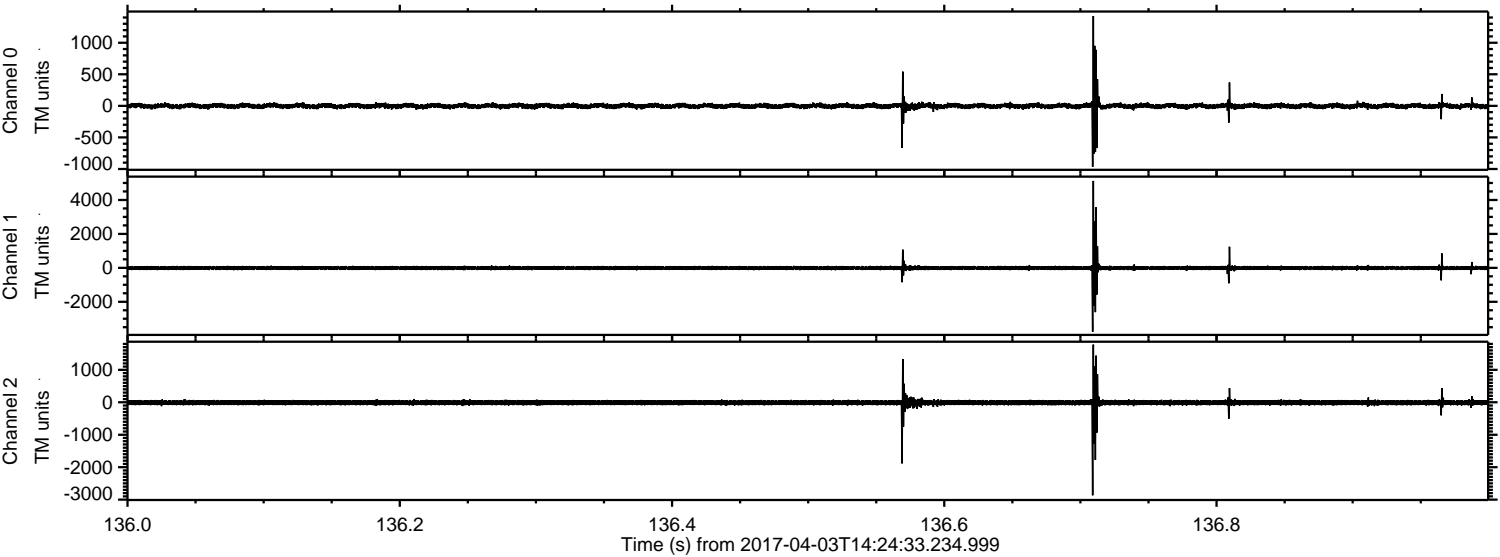
ELMAVAN 3D WAVEFORMS (Measured data sampled at 50 kHz) 51000 packets of 144 samples from 2017-04-03T14:24:33.234.999. Part 119/147

Processed Mon Apr 3 16:33:05 2017 by ELM ver.2012-10-06 from 001__elm20170403_142432__dat00.bin

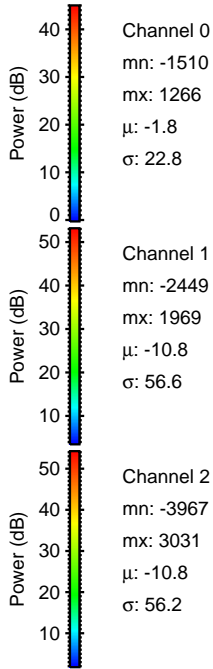
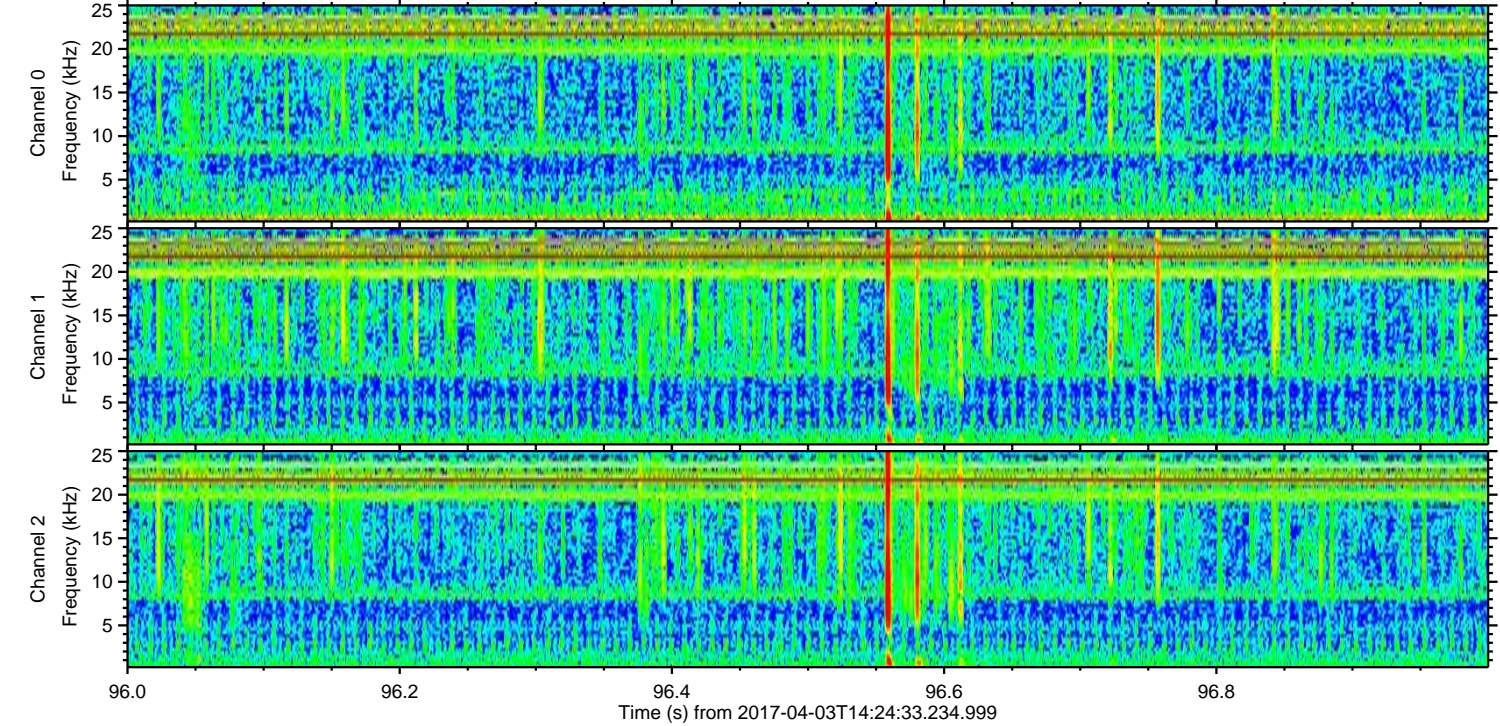
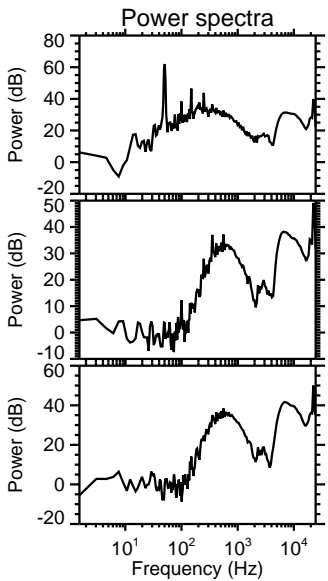
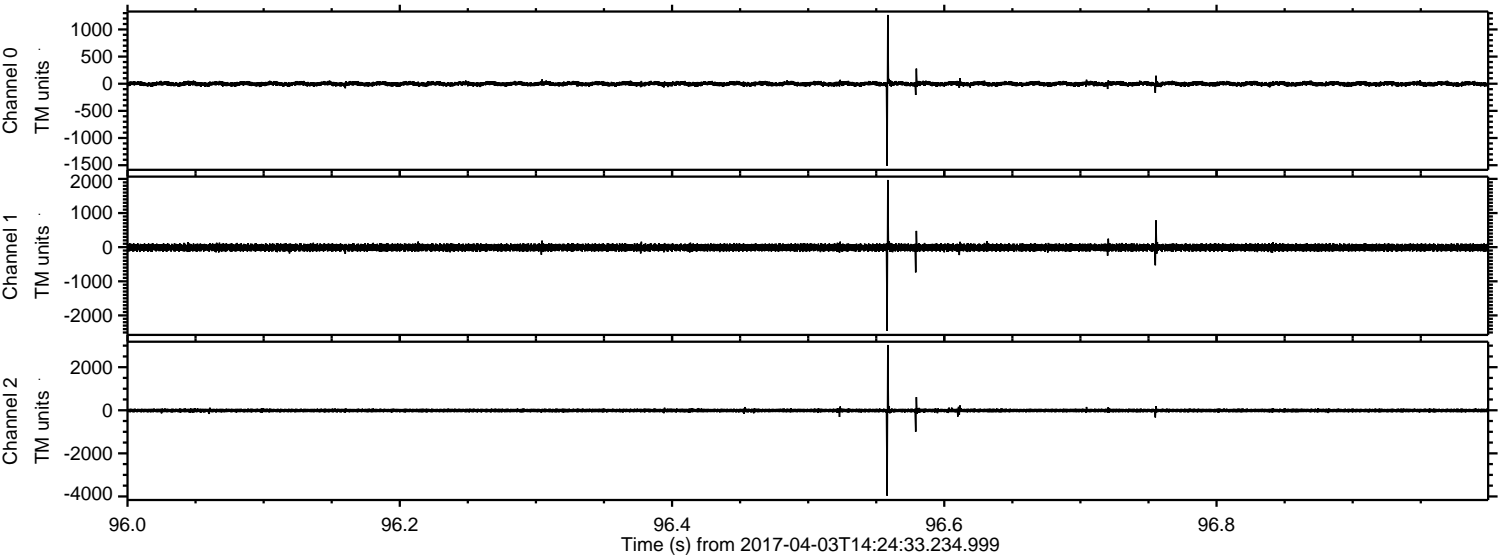


ELMAVAN 3D WAVEFORMS (Measured data sampled at 50 kHz) 51000 packets of 144 samples from 2017-04-03T14:24:33.234.999. Part 137/147

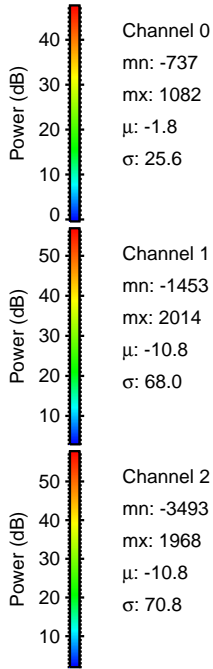
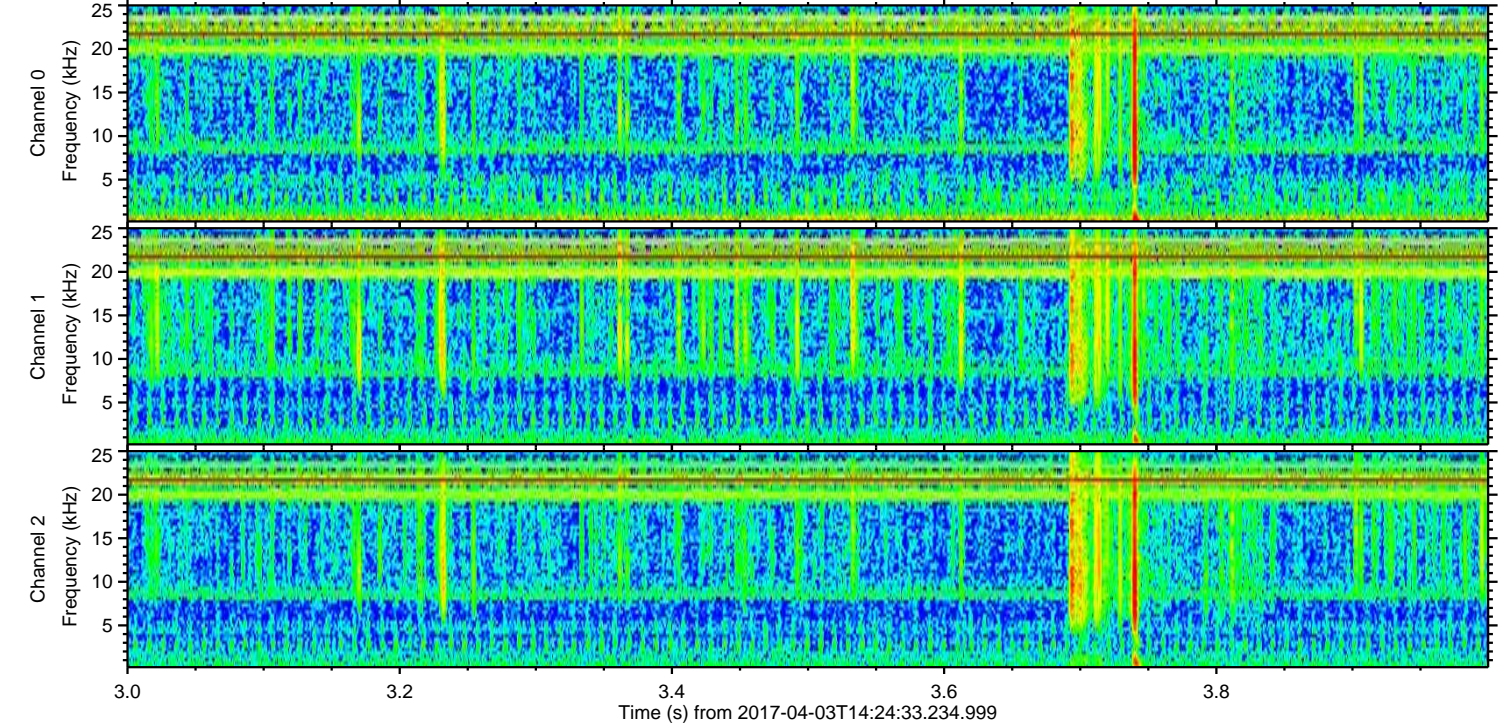
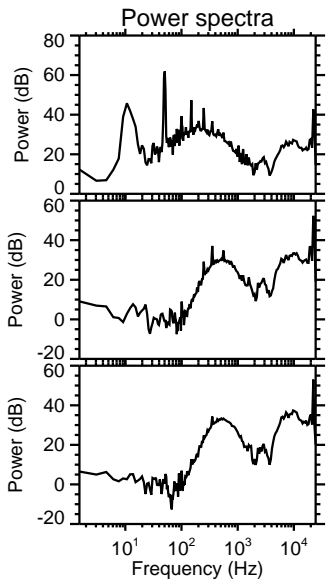
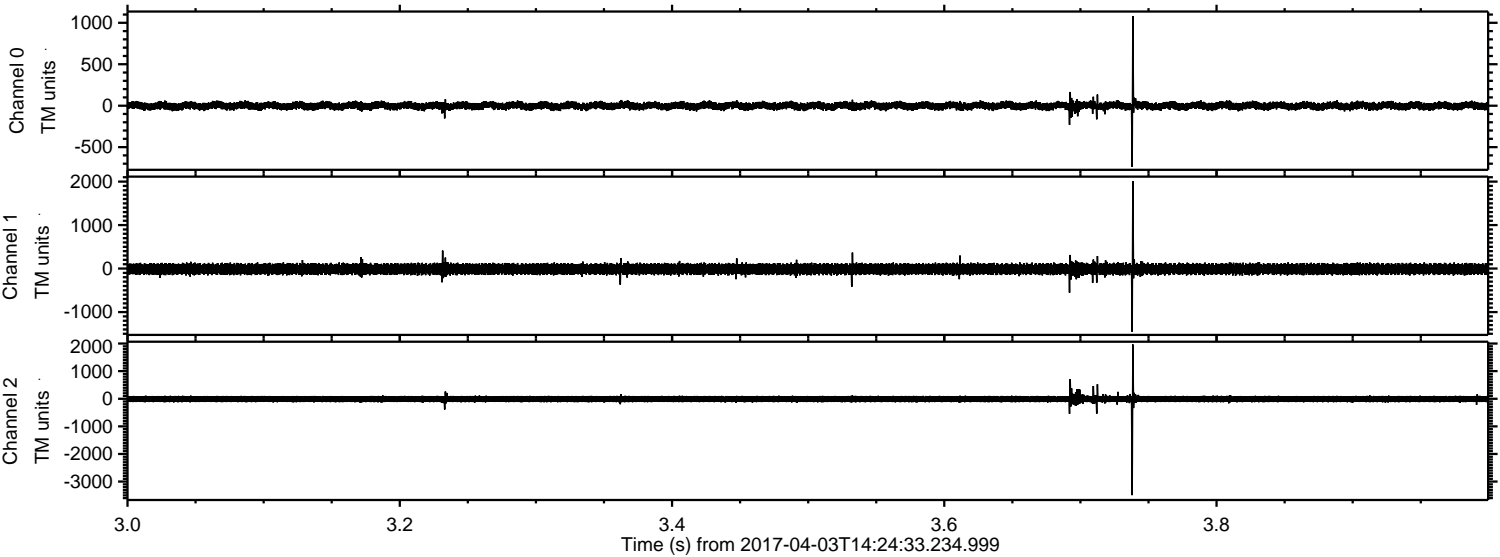
Processed Mon Apr 3 16:33:06 2017 by ELM ver.2012-10-06 from 001__elm20170403_142432__dat00.bin



Processed Mon Apr 3 16:33:07 2017 by ELM ver.2012-10-06 from 001__elm20170403_142432__dat00.bin



Processed Mon Apr 3 16:33:07 2017 by ELM ver.2012-10-06 from 001__elm20170403_142432__dat00.bin



Channel 0
mn: -737
mx: 1082
 μ : -1.8
 σ : 25.6

Channel 1
mn: -1453
mx: 2014
 μ : -10.8
 σ : 68.0

Channel 2
mn: -3493
mx: 1968
 μ : -10.8
 σ : 70.8

Processed Mon Apr 3 16:33:08 2017 by ELM ver.2012-10-06 from 001__elm20170403_142432__dat00.bin

