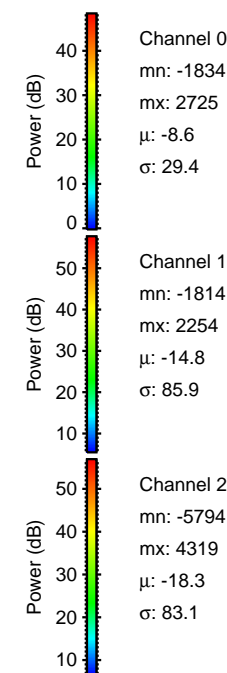
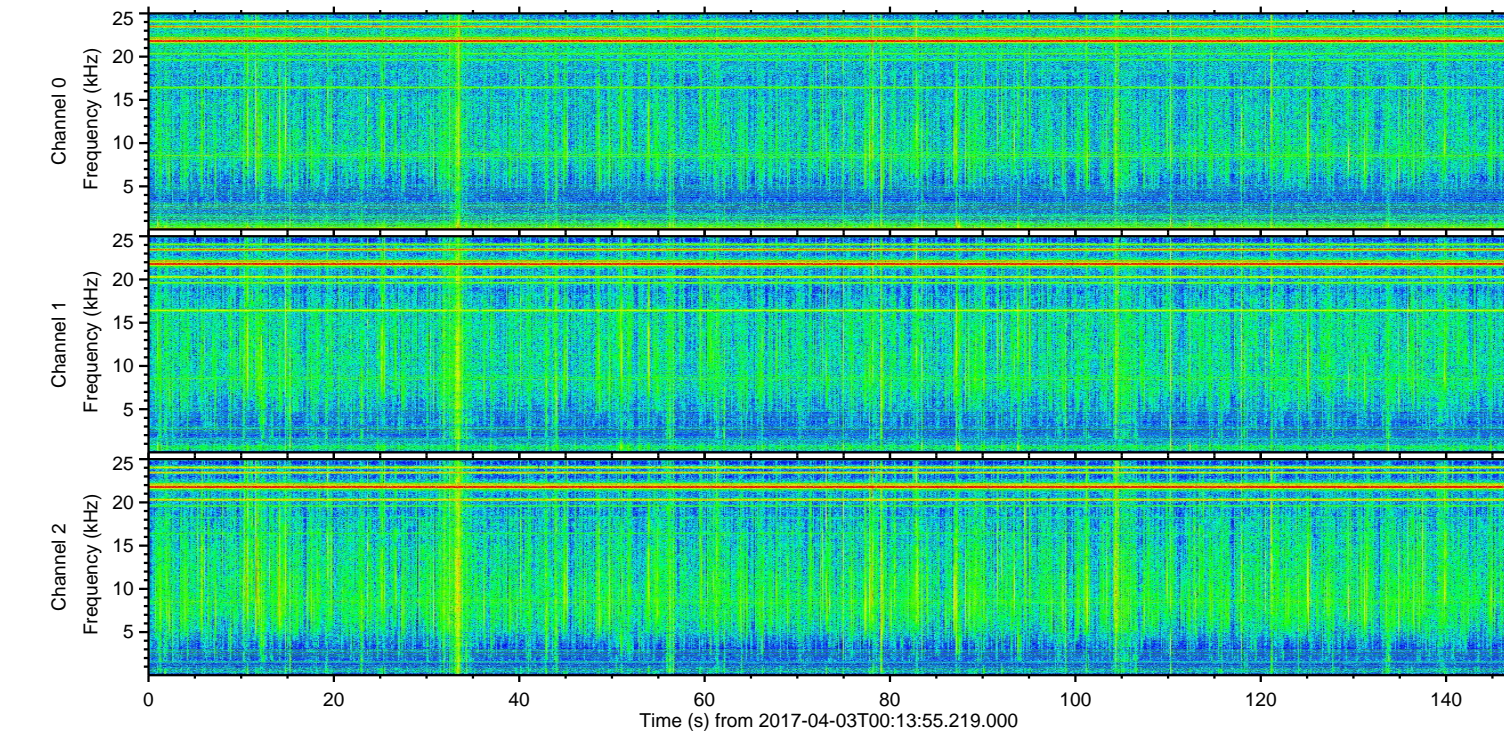
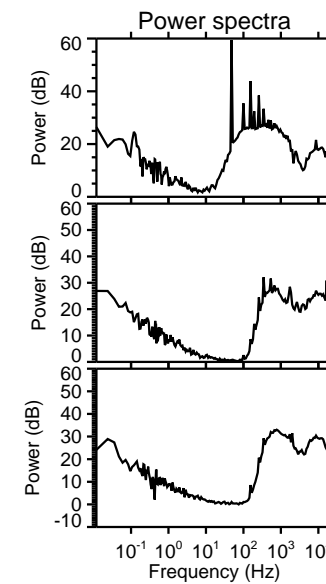
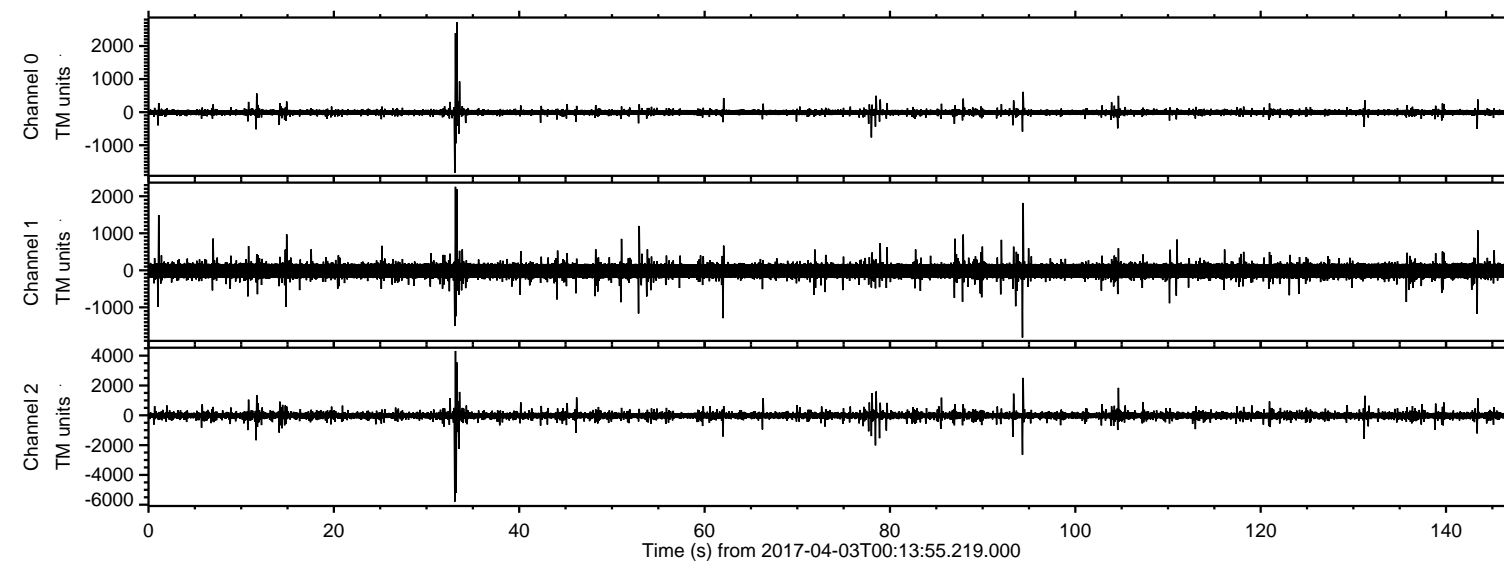


ELMAVAN 3D WAVEFORMS (Measured data sampled at 50 kHz) 51000 packets of 144 samples from 2017-04-03T00:13:55.219.000.

Processed Mon Apr 3 02:21:21 2017 by ELM ver.2012-10-06 from 001__elm20170403_001354__dat00.bin

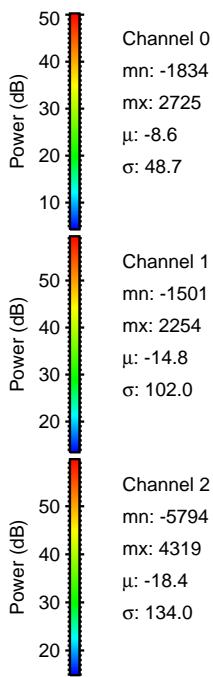
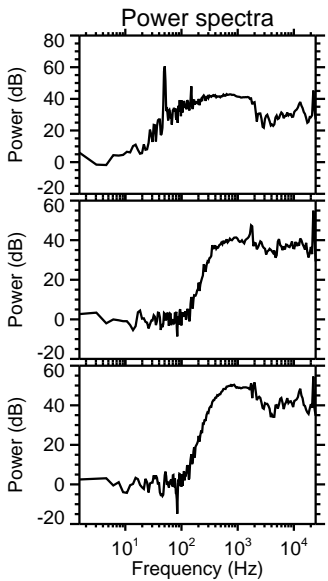
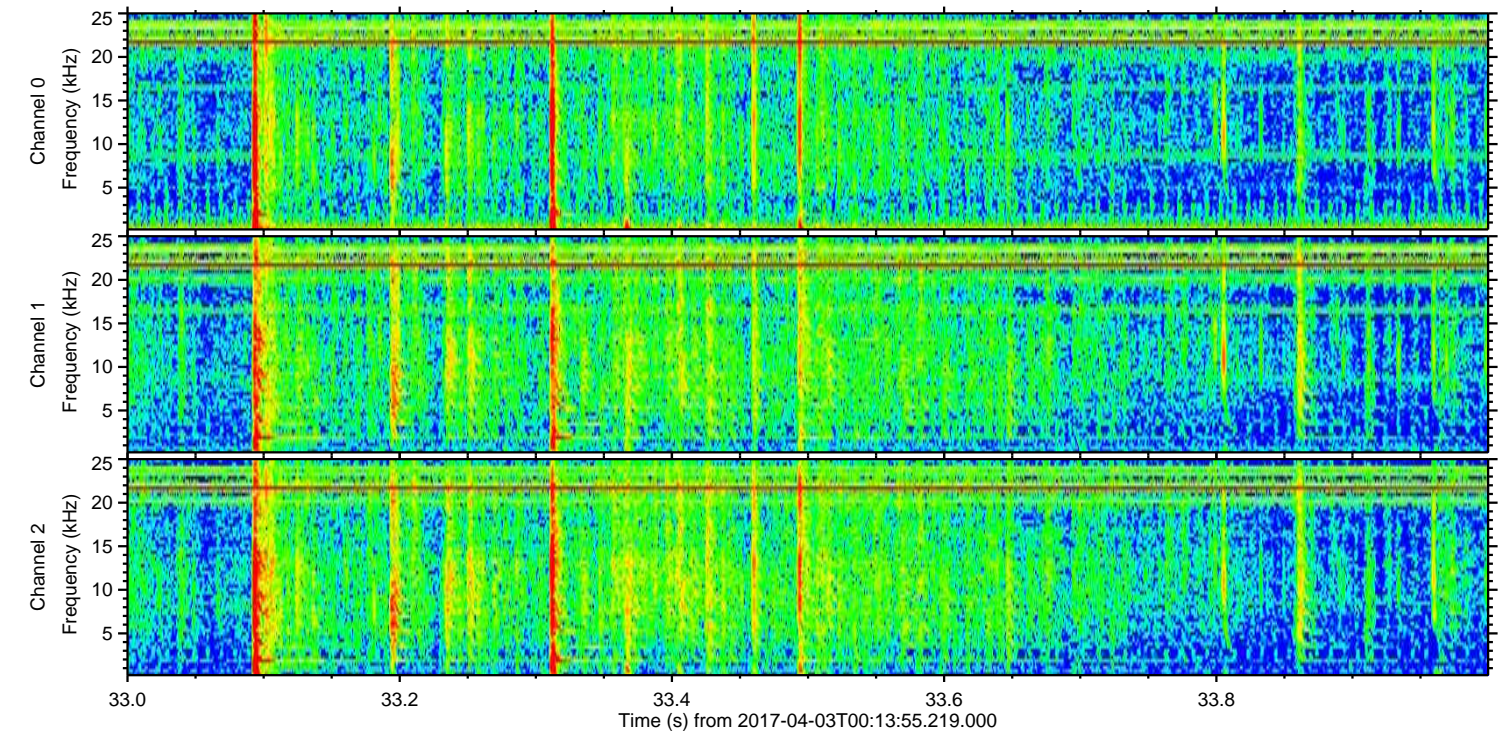
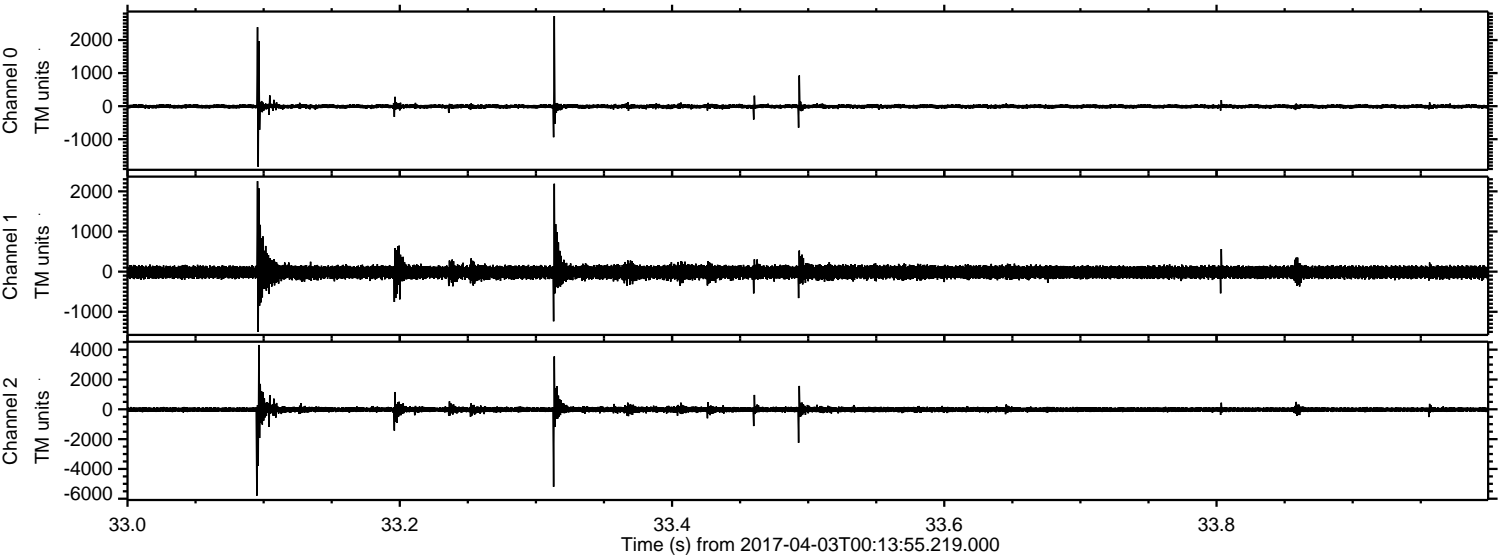


Channel 0
mn: -1834
mx: 2725
 μ : -8.6
 σ : 29.4

Channel 1
mn: -1814
mx: 2254
 μ : -14.8
 σ : 85.9

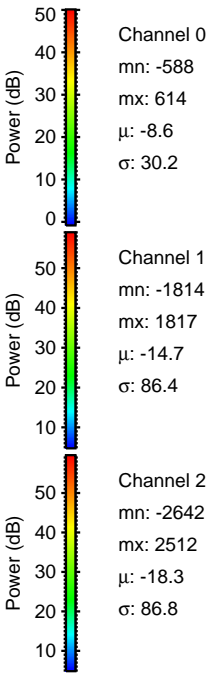
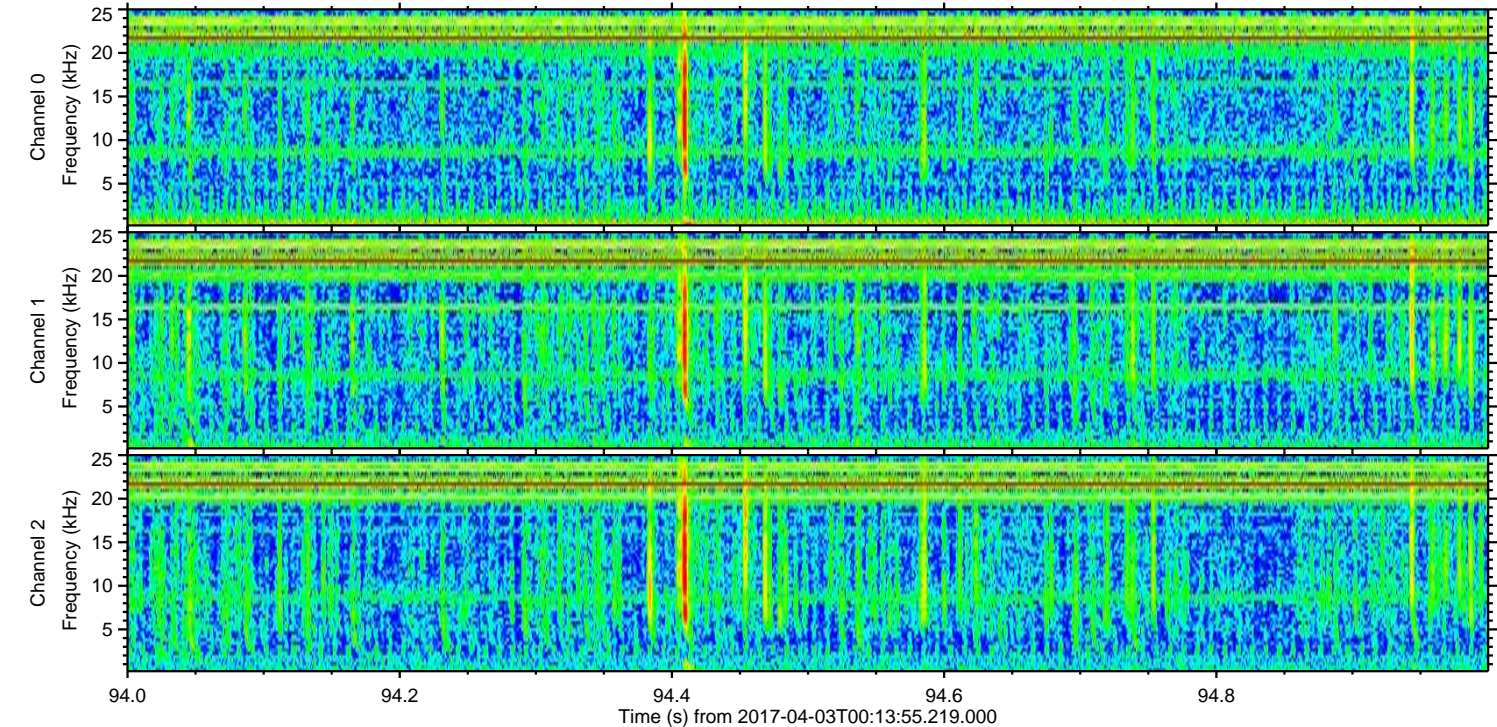
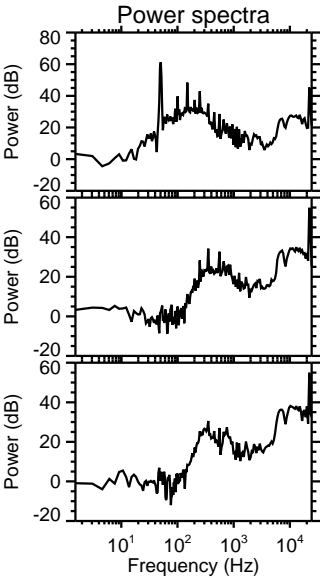
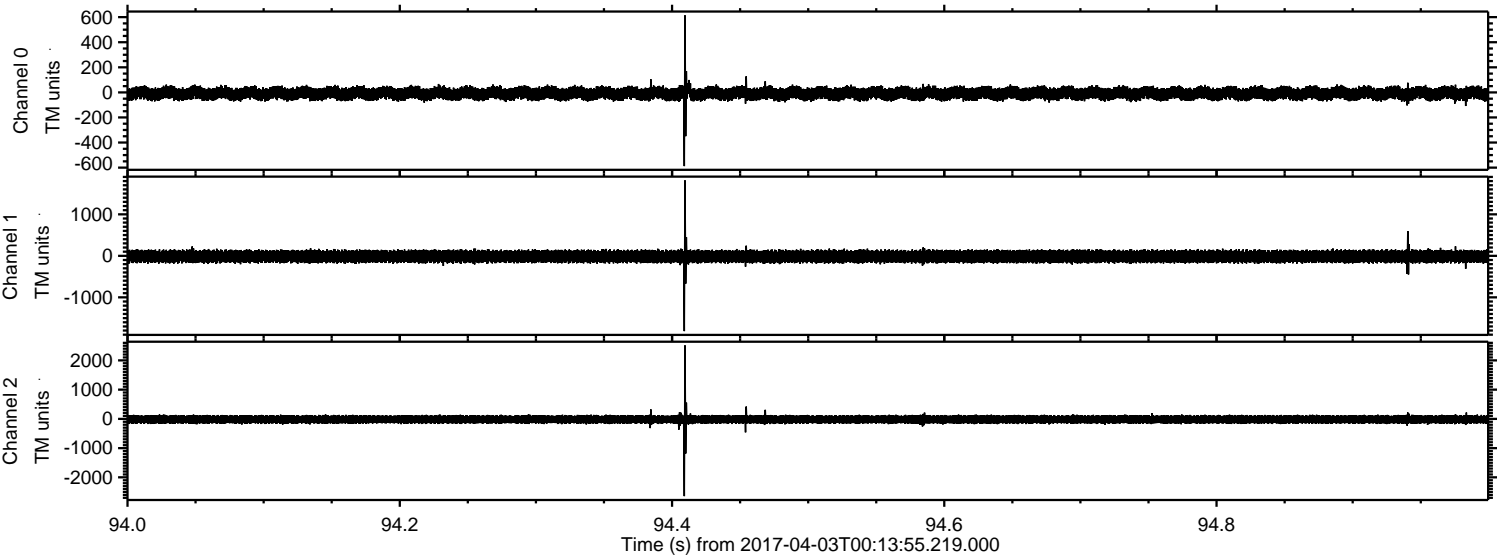
Channel 2
mn: -5794
mx: 4319
 μ : -18.3
 σ : 83.1

Processed Mon Apr 3 02:21:32 2017 by ELM ver.2012-10-06 from 001__elm20170403_001354__dat00.bin

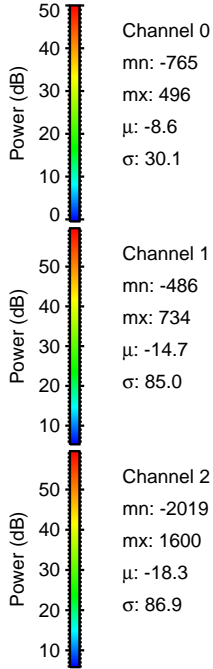
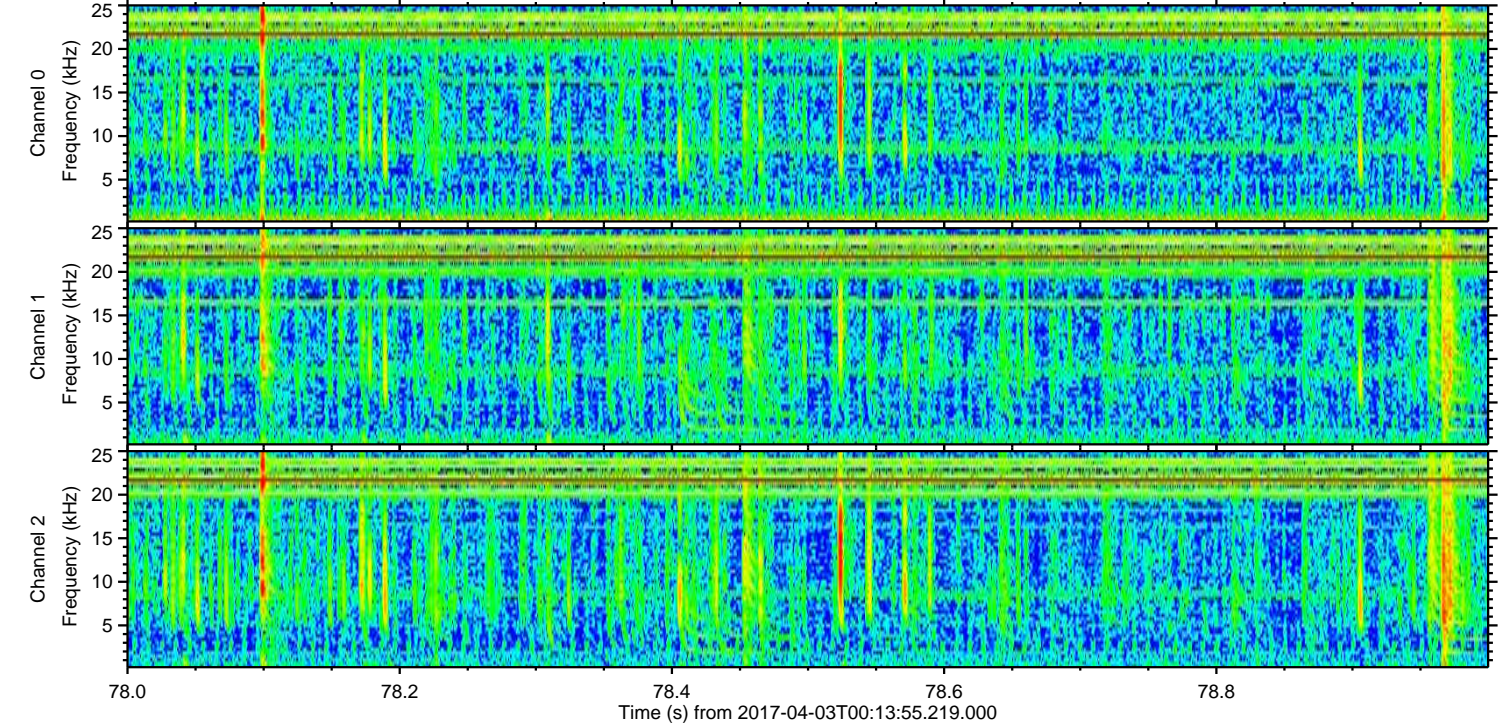
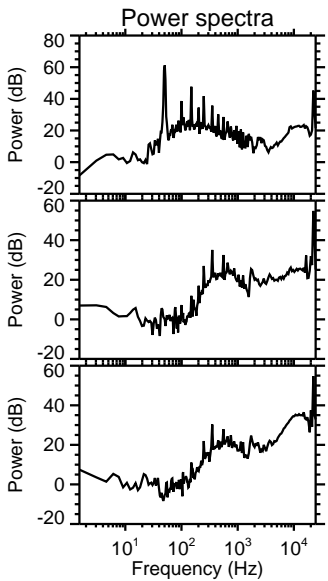
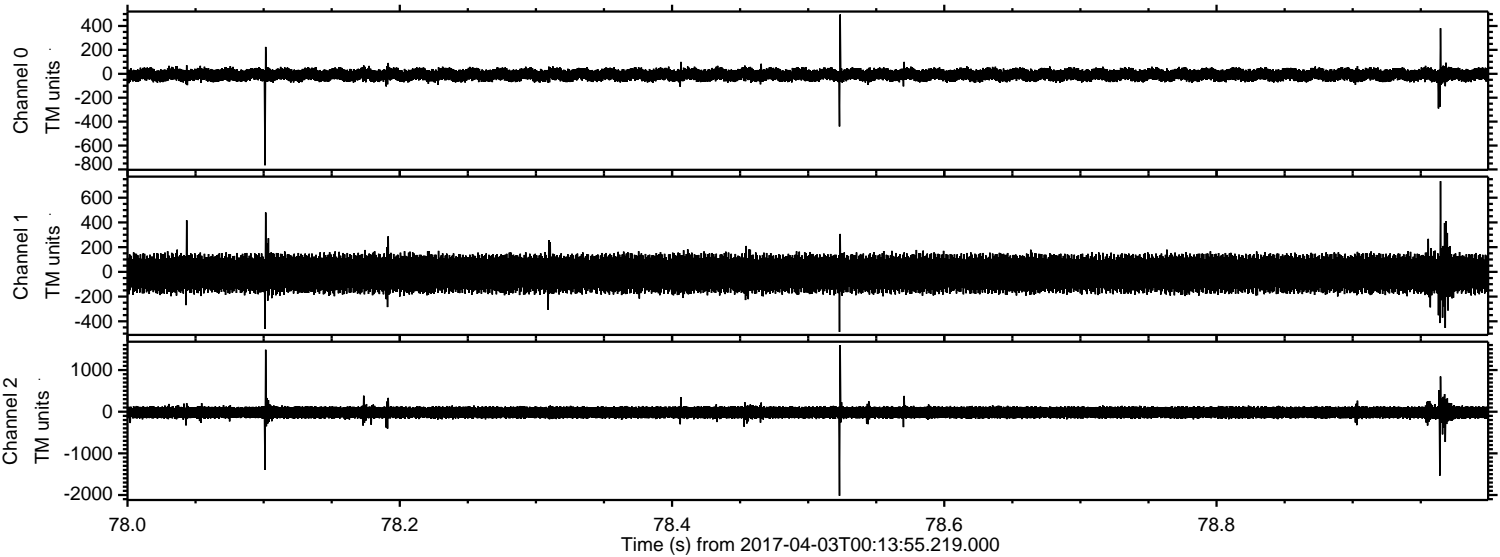


ELMAVAN 3D WAVEFORMS (Measured data sampled at 50 kHz) 51000 packets of 144 samples from 2017-04-03T00:13:55.219.000. Part 95/147

Processed Mon Apr 3 02:21:33 2017 by ELM ver.2012-10-06 from 001__elm20170403_001354__dat00.bin

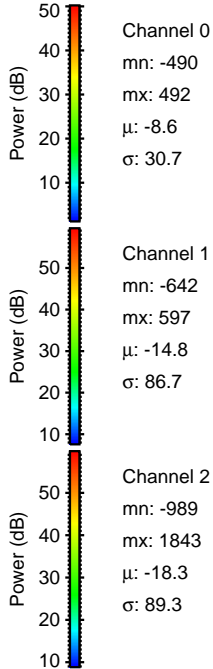
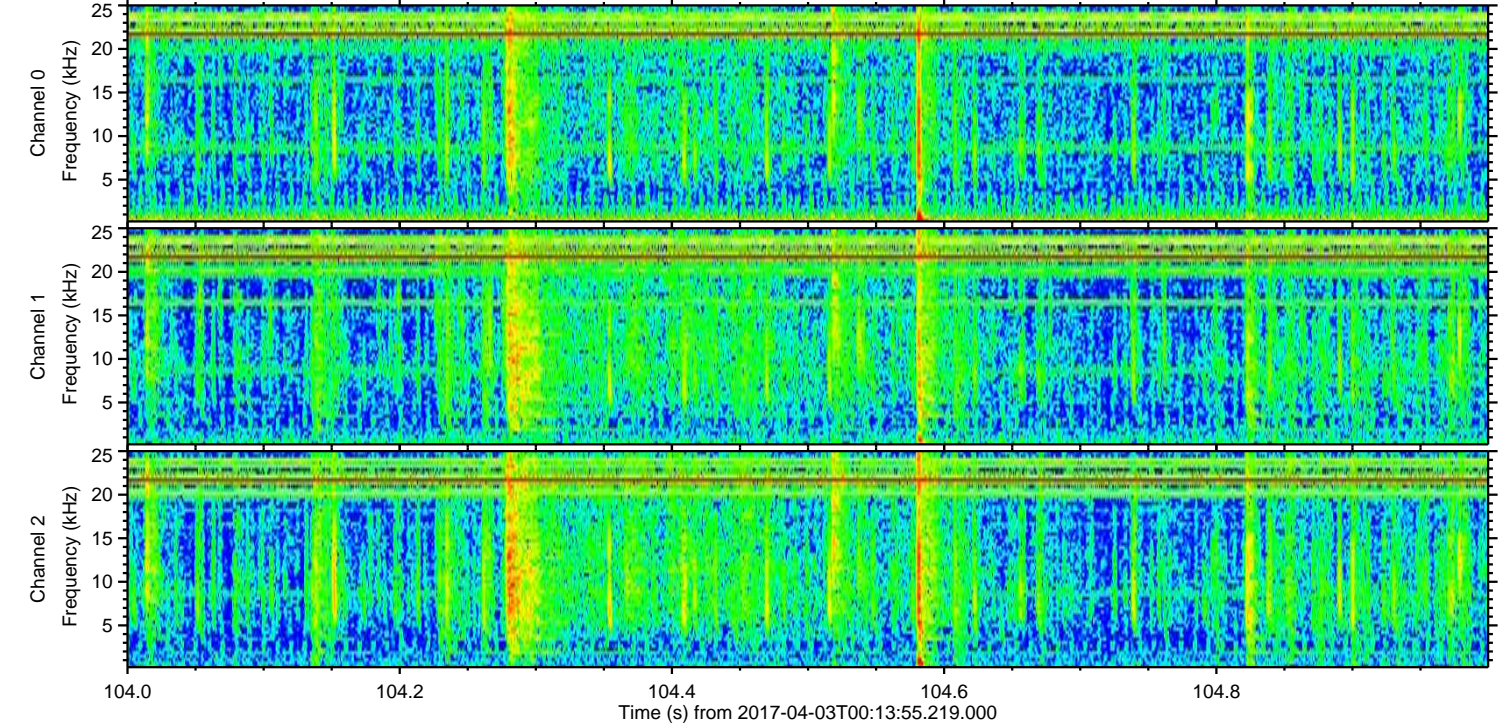
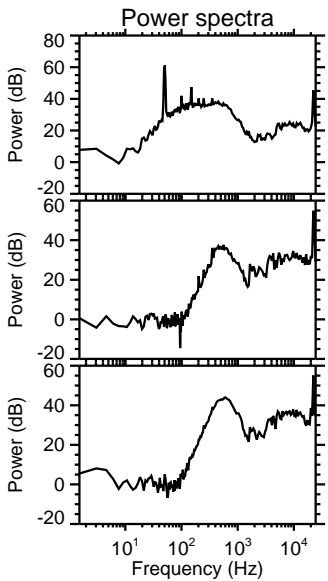
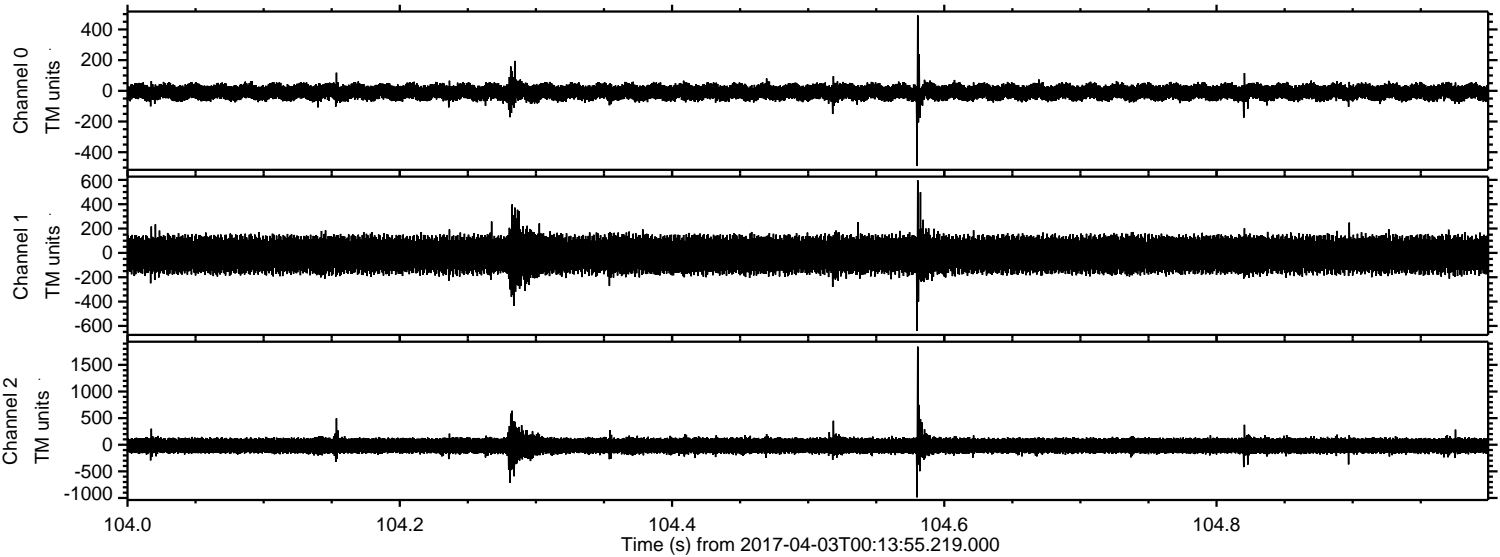


Processed Mon Apr 3 02:21:34 2017 by ELM ver.2012-10-06 from 001__elm20170403_001354__dat00.bin

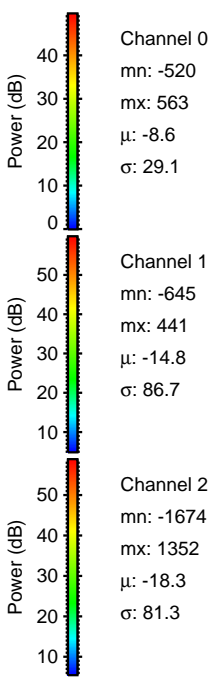
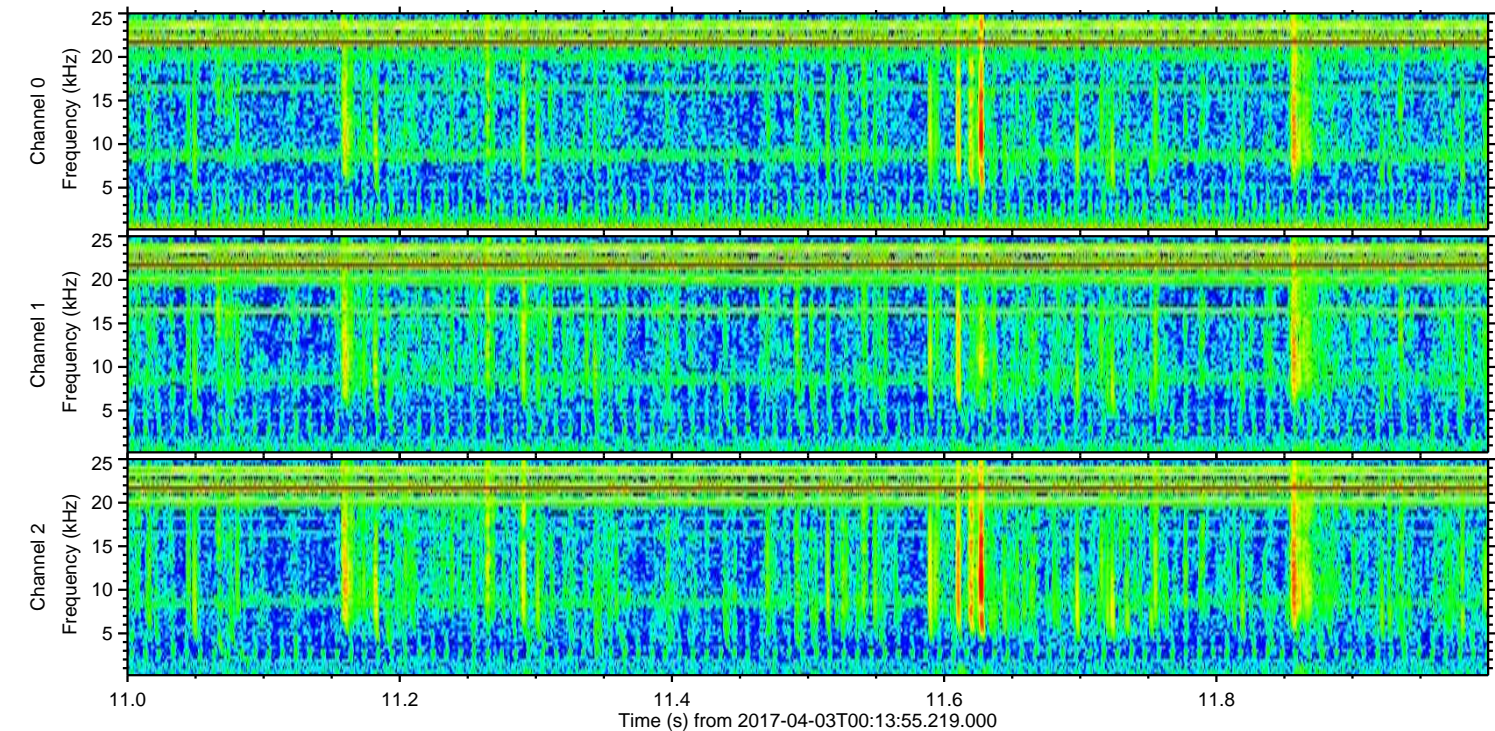
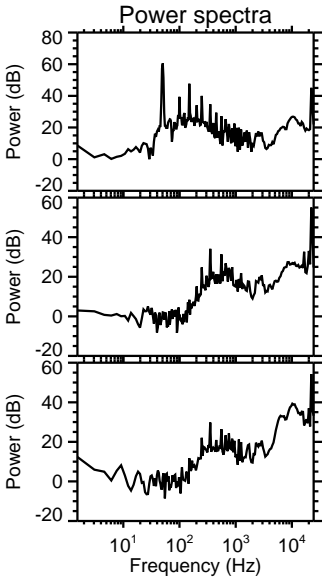
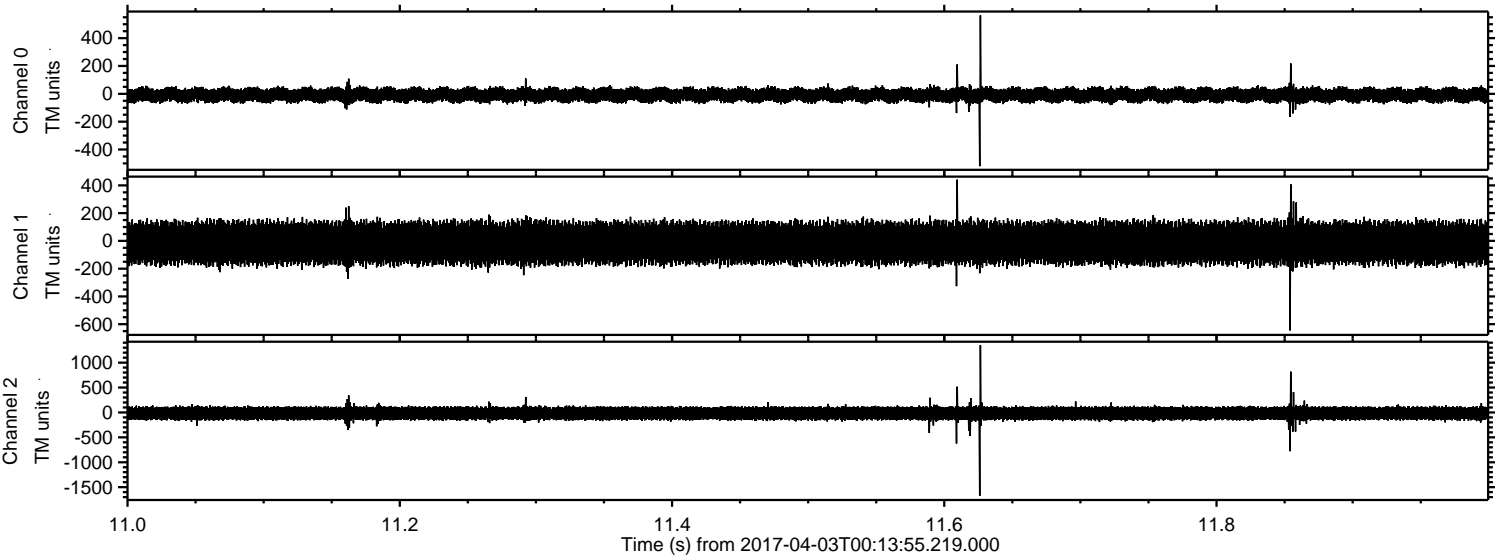


ELMAVAN 3D WAVEFORMS (Measured data sampled at 50 kHz) 51000 packets of 144 samples from 2017-04-03T00:13:55.219.000. Part 105/147

Processed Mon Apr 3 02:21:35 2017 by ELM ver.2012-10-06 from 001__elm20170403_001354__dat00.bin

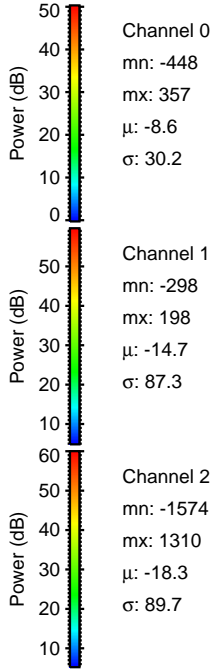
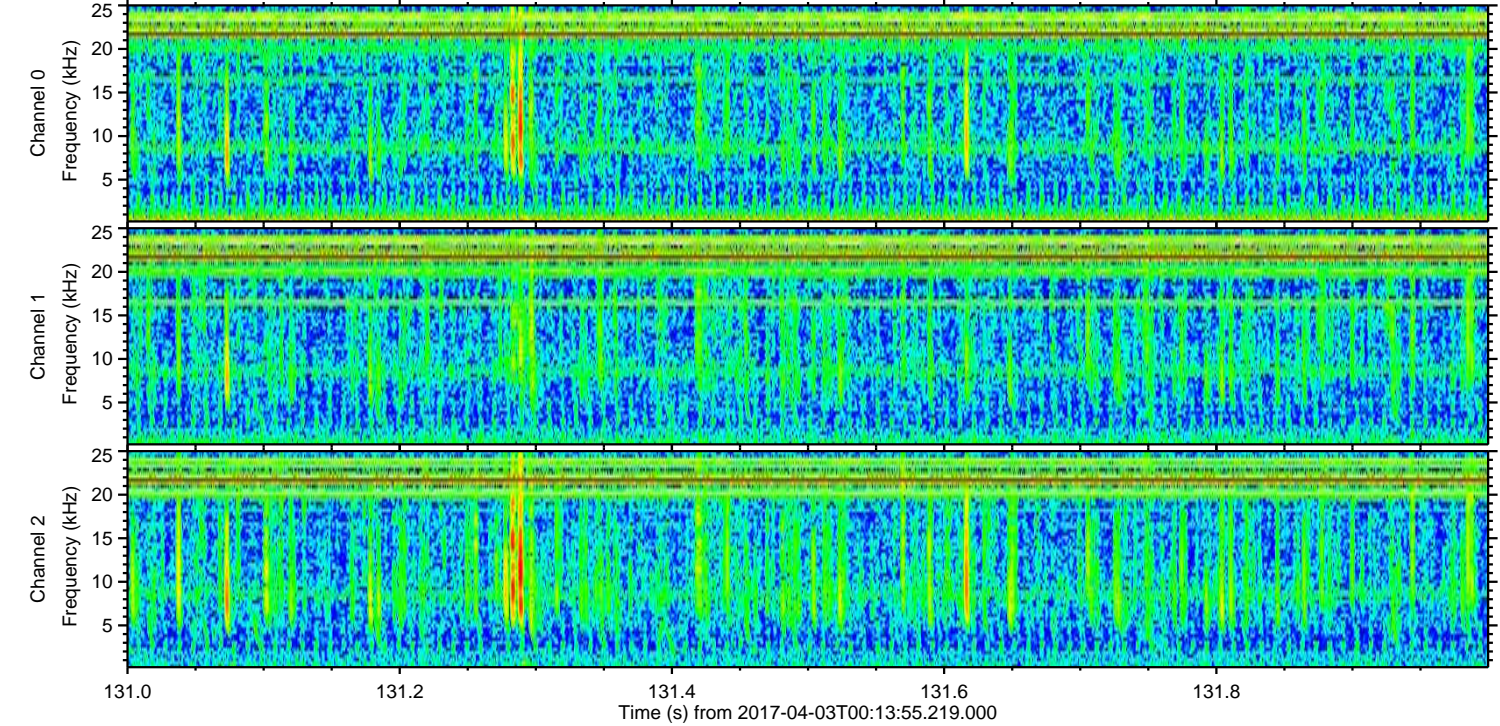
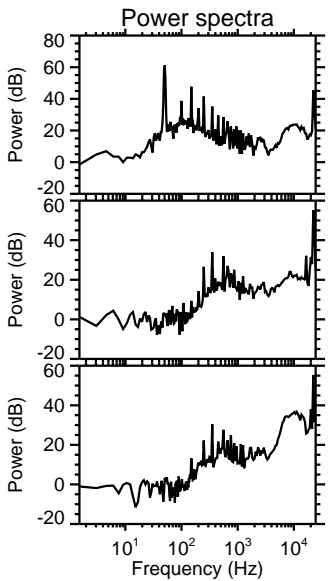
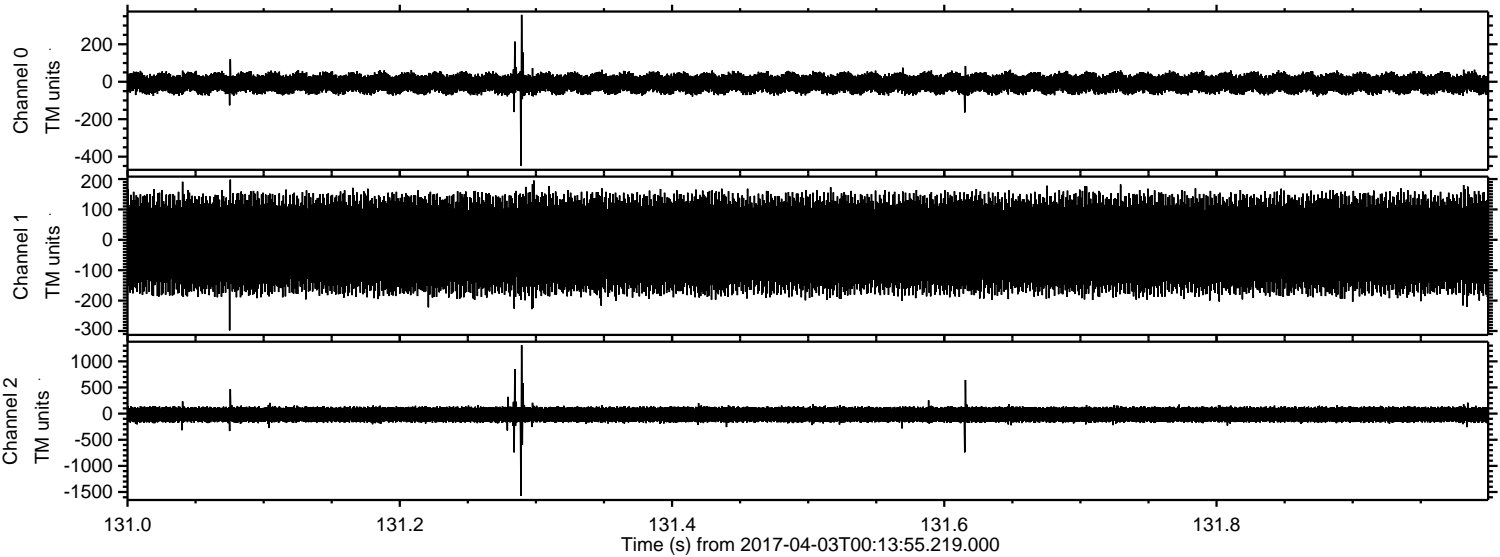


Processed Mon Apr 3 02:21:36 2017 by ELM ver.2012-10-06 from 001__elm20170403_001354__dat00.bin



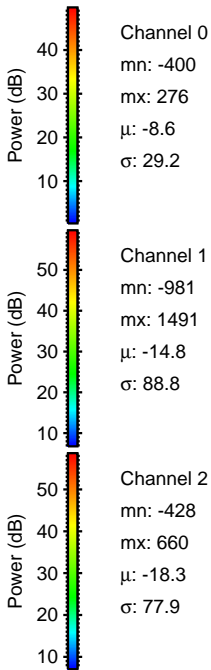
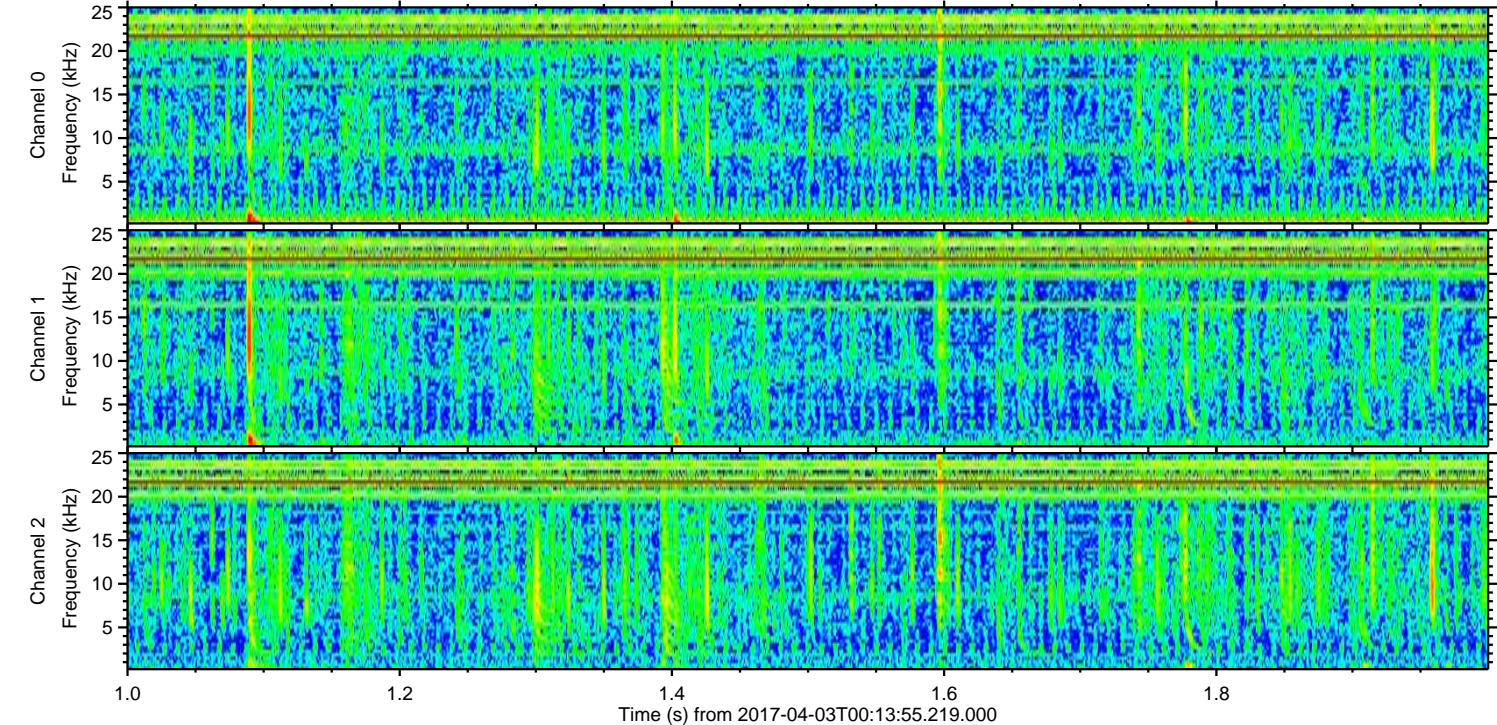
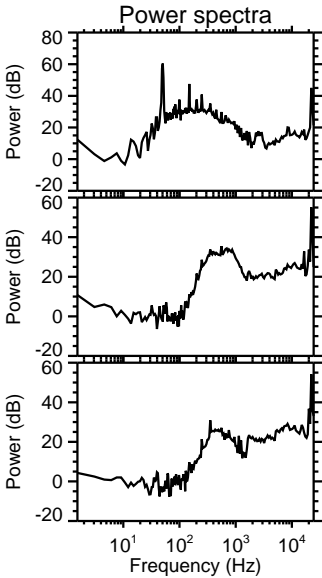
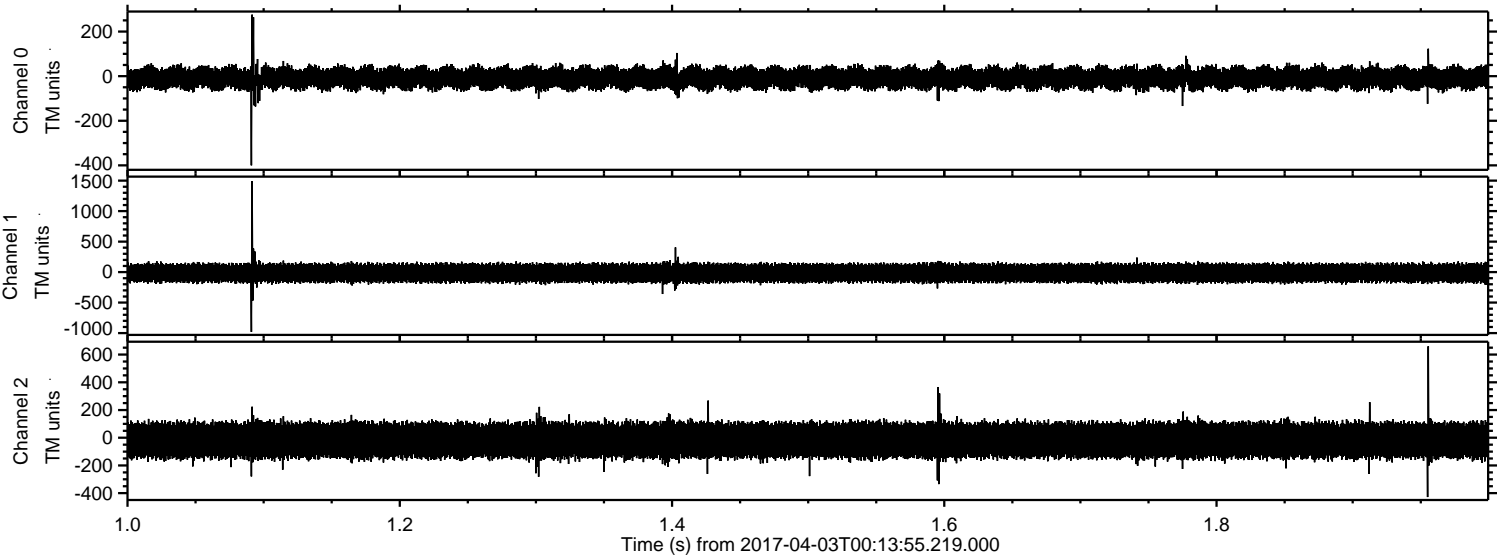
ELMAVAN 3D WAVEFORMS (Measured data sampled at 50 kHz) 51000 packets of 144 samples from 2017-04-03T00:13:55.219.000. Part 132/147

Processed Mon Apr 3 02:21:37 2017 by ELM ver.2012-10-06 from 001__elm20170403_001354__dat00.bin

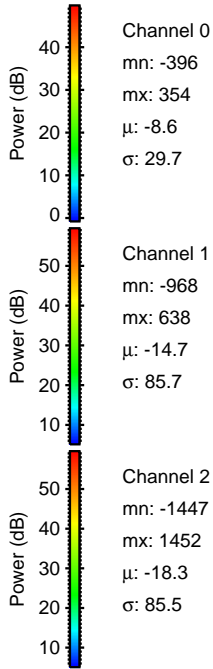
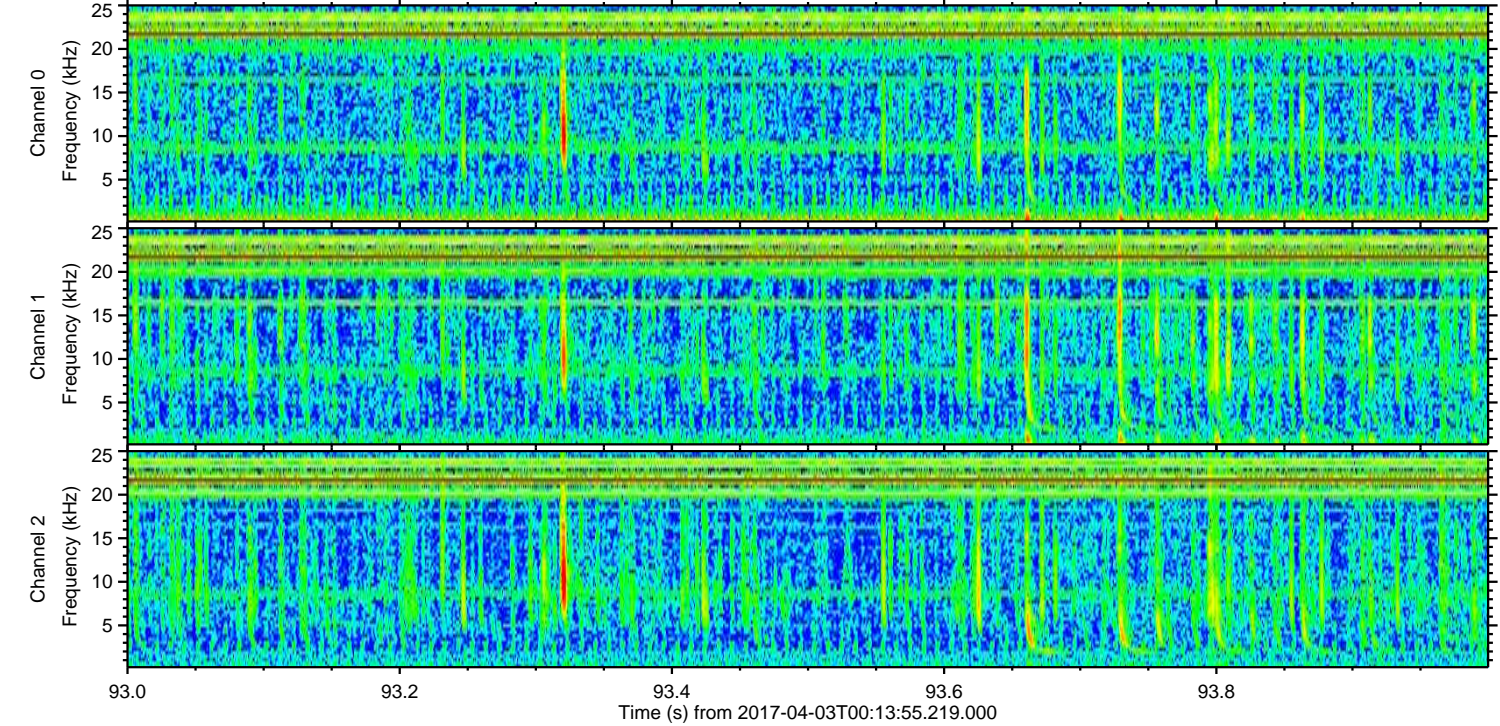
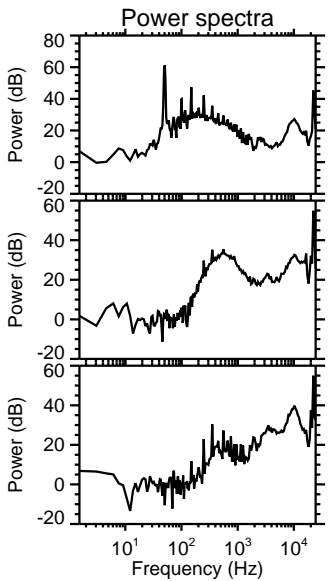
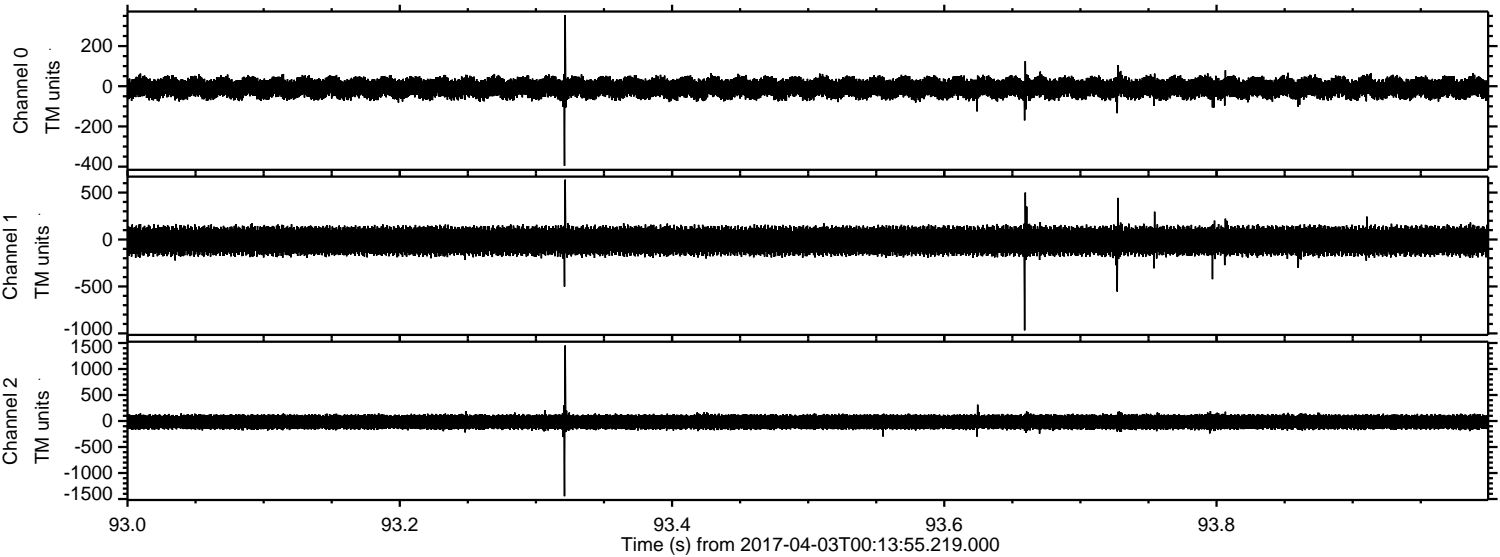


ELMAVAN 3D WAVEFORMS (Measured data sampled at 50 kHz) 51000 packets of 144 samples from 2017-04-03T00:13:55.219.000. Part 2/147

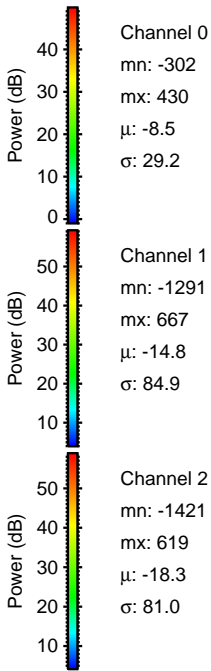
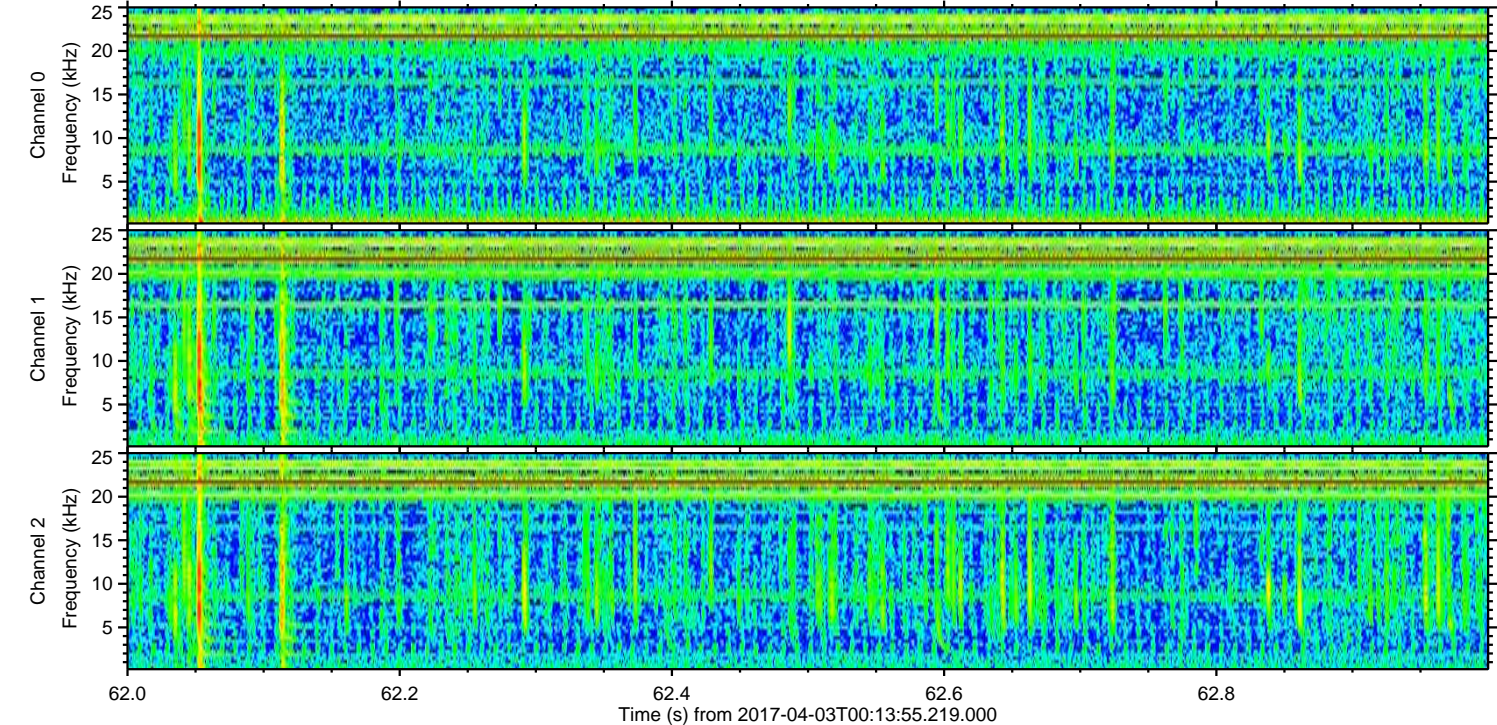
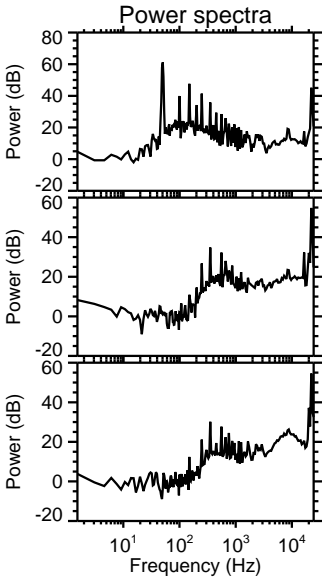
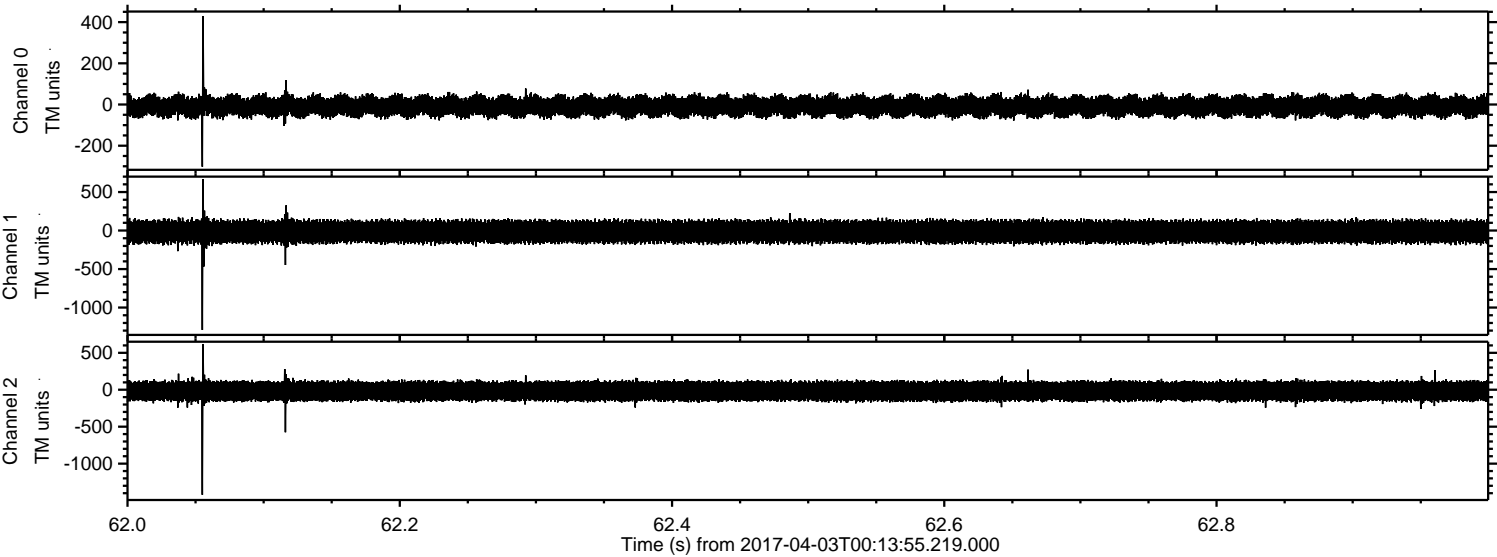
Processed Mon Apr 3 02:21:38 2017 by ELM ver.2012-10-06 from 001__elm20170403_001354__dat00.bin



Processed Mon Apr 3 02:21:39 2017 by ELM ver.2012-10-06 from 001__elm20170403_001354__dat00.bin



Processed Mon Apr 3 02:21:39 2017 by ELM ver.2012-10-06 from 001__elm20170403_001354__dat00.bin



Channel 0
mn: -302
mx: 430
 μ : -8.5
 σ : 29.2

Channel 1
mn: -1291
mx: 667
 μ : -14.8
 σ : 84.9

Channel 2
mn: -1421
mx: 619
 μ : -18.3
 σ : 81.0

Processed Mon Apr 3 02:21:40 2017 by ELM ver.2012-10-06 from 001__elm20170403_001354__dat00.bin

