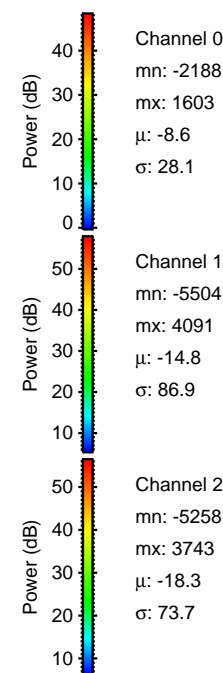
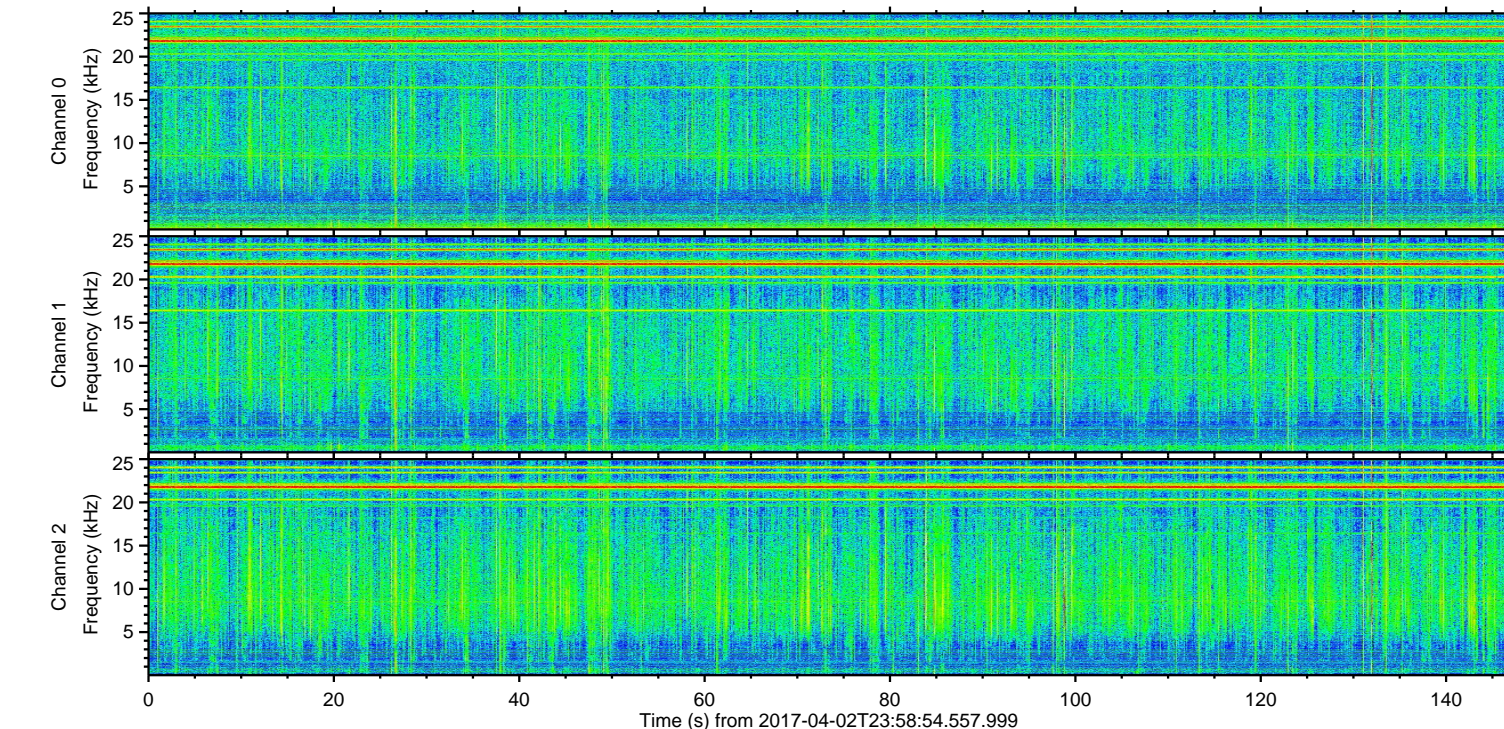
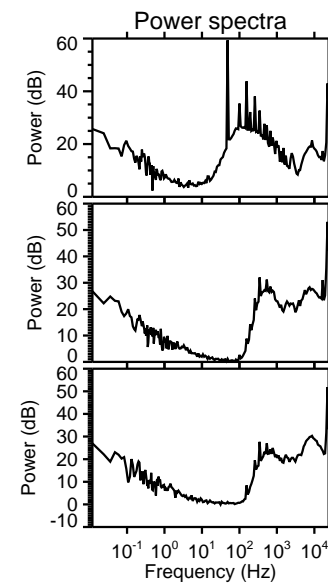
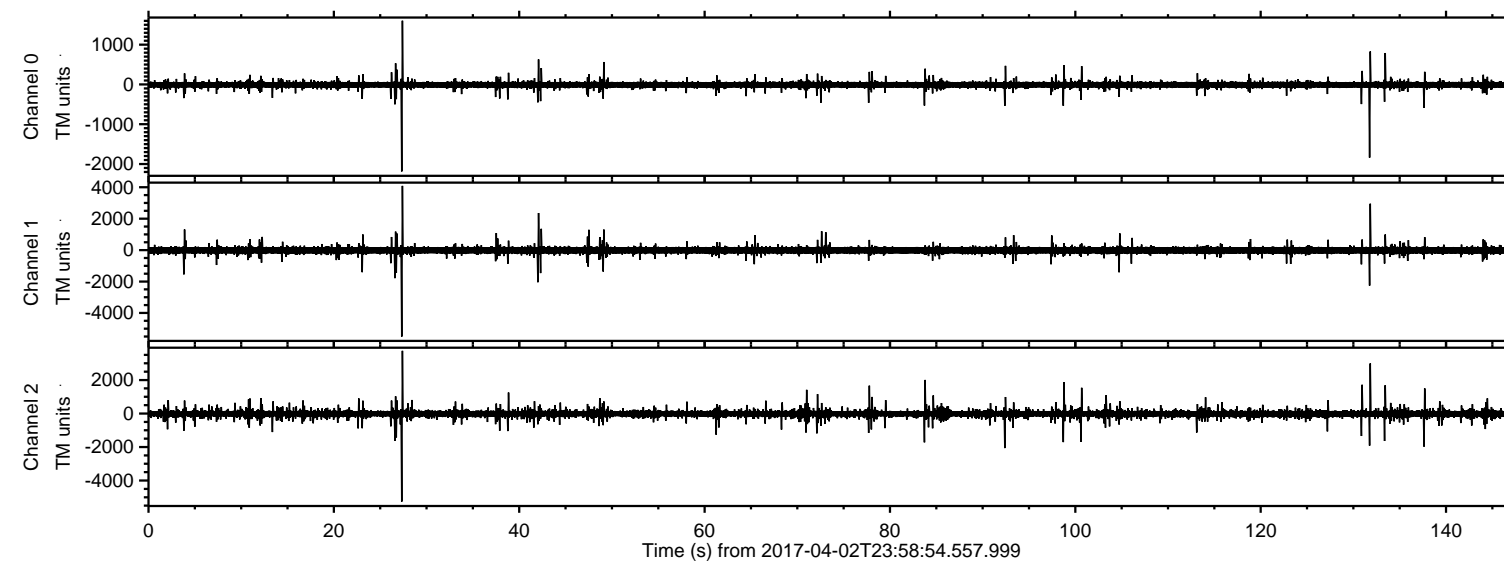


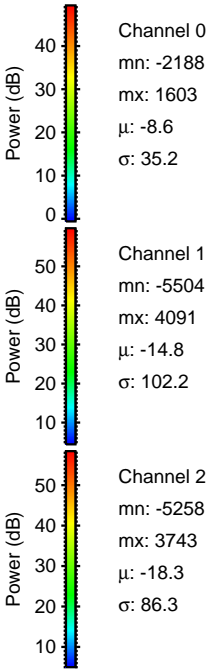
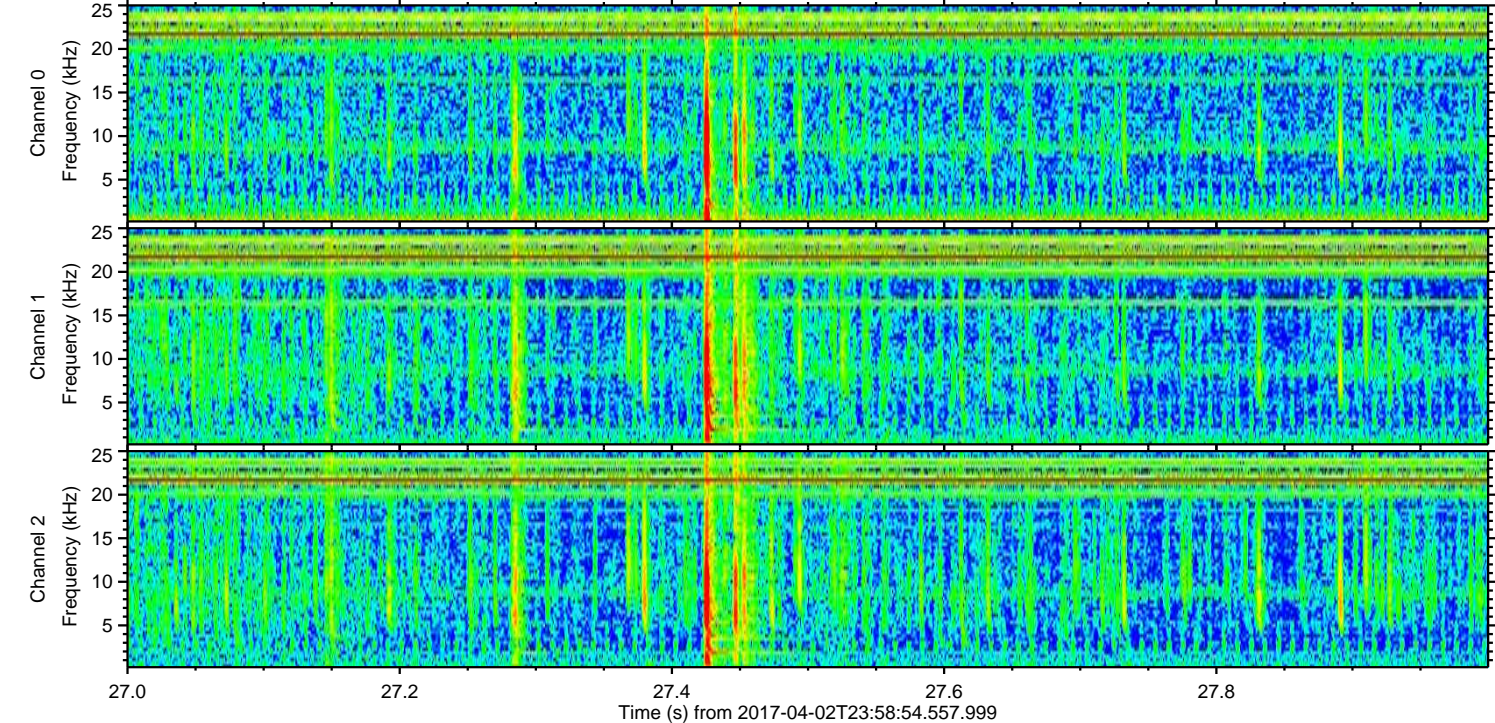
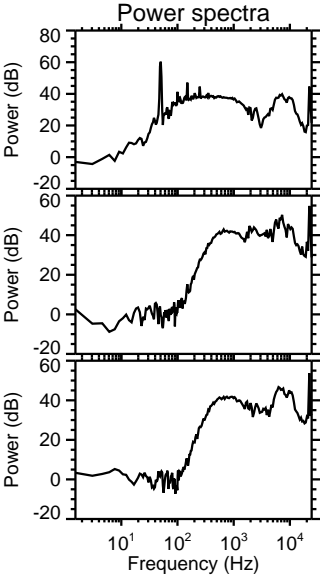
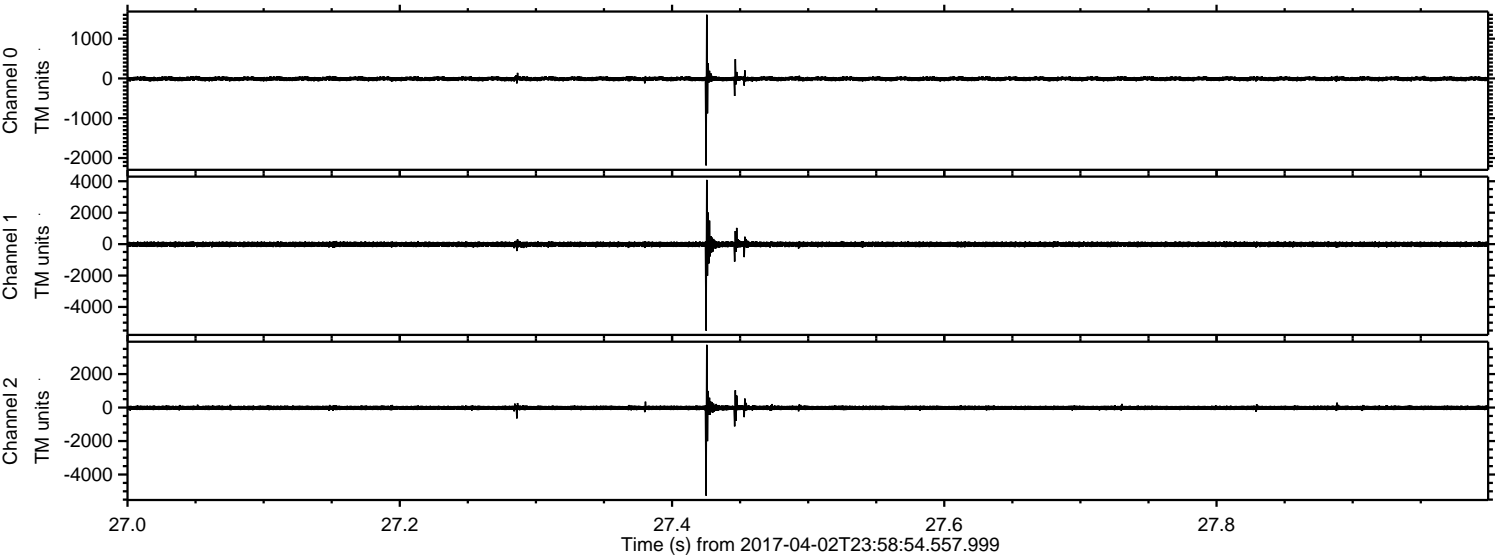
ELMAVAN 3D WAVEFORMS (Measured data sampled at 50 kHz) 51000 packets of 144 samples from 2017-04-02T23:58:54.557.999.

Processed Mon Apr 3 02:06:24 2017 by ELM ver.2012-10-06 from 001__elm20170402_235853__dat00.bin



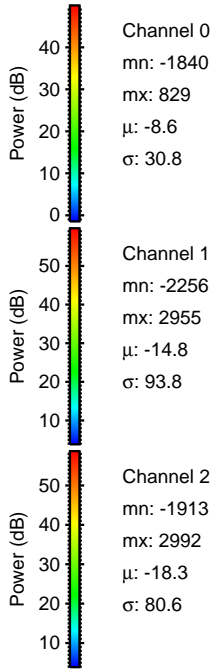
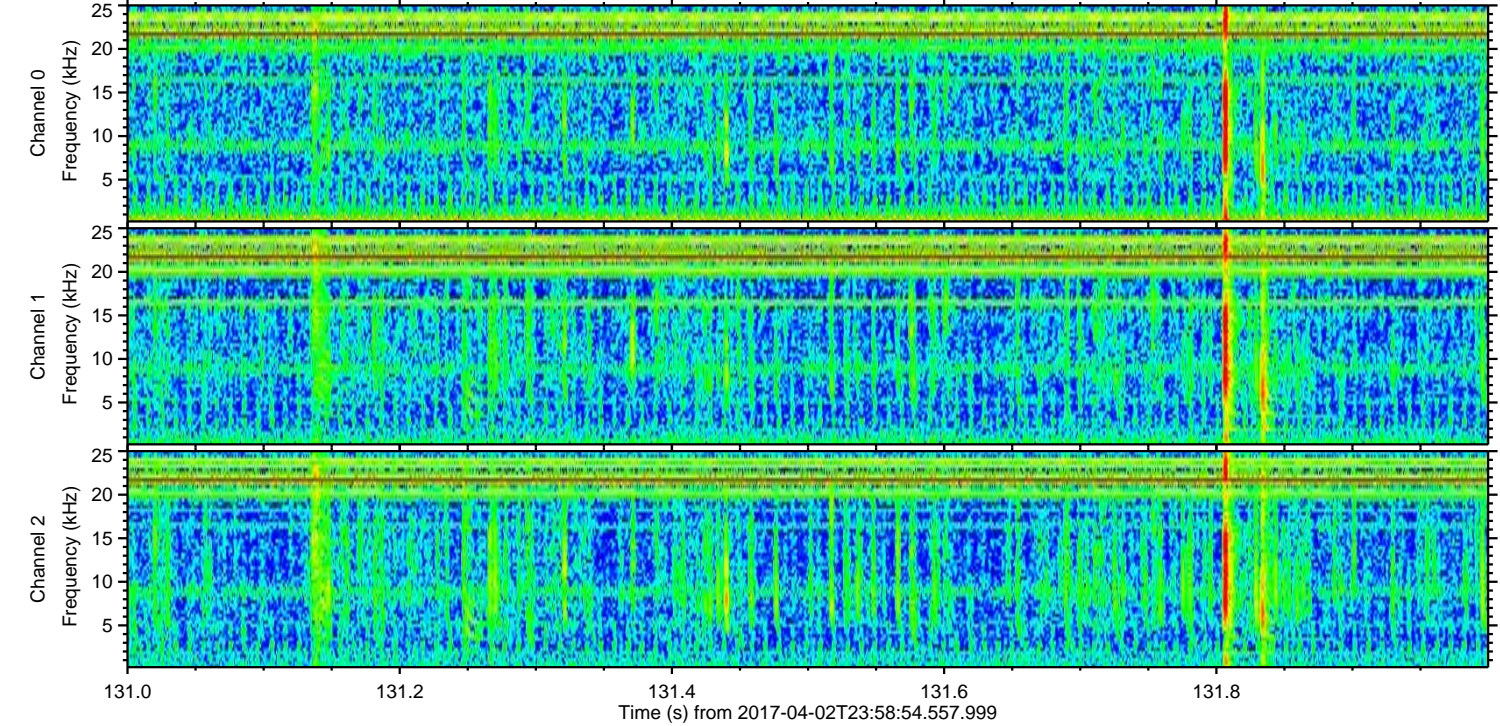
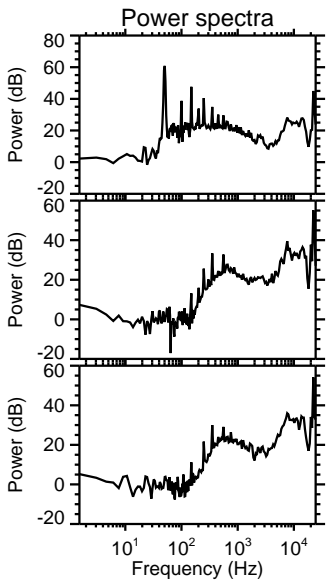
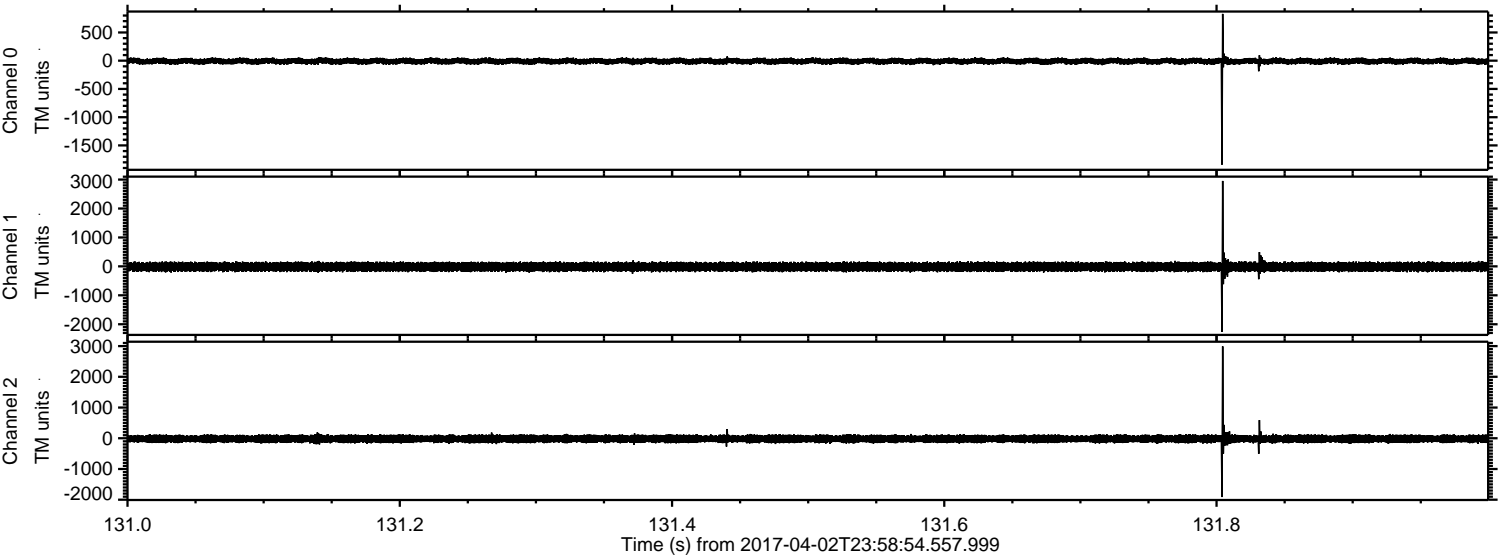
ELMAVAN 3D WAVEFORMS (Measured data sampled at 50 kHz) 51000 packets of 144 samples from 2017-04-02T23:58:54.557.999. Part 28/147

Processed Mon Apr 3 02:06:35 2017 by ELM ver.2012-10-06 from 001__elm20170402_235853__dat00.bin

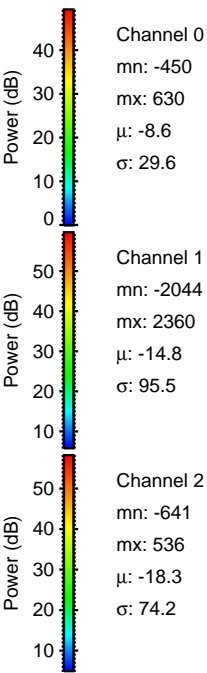
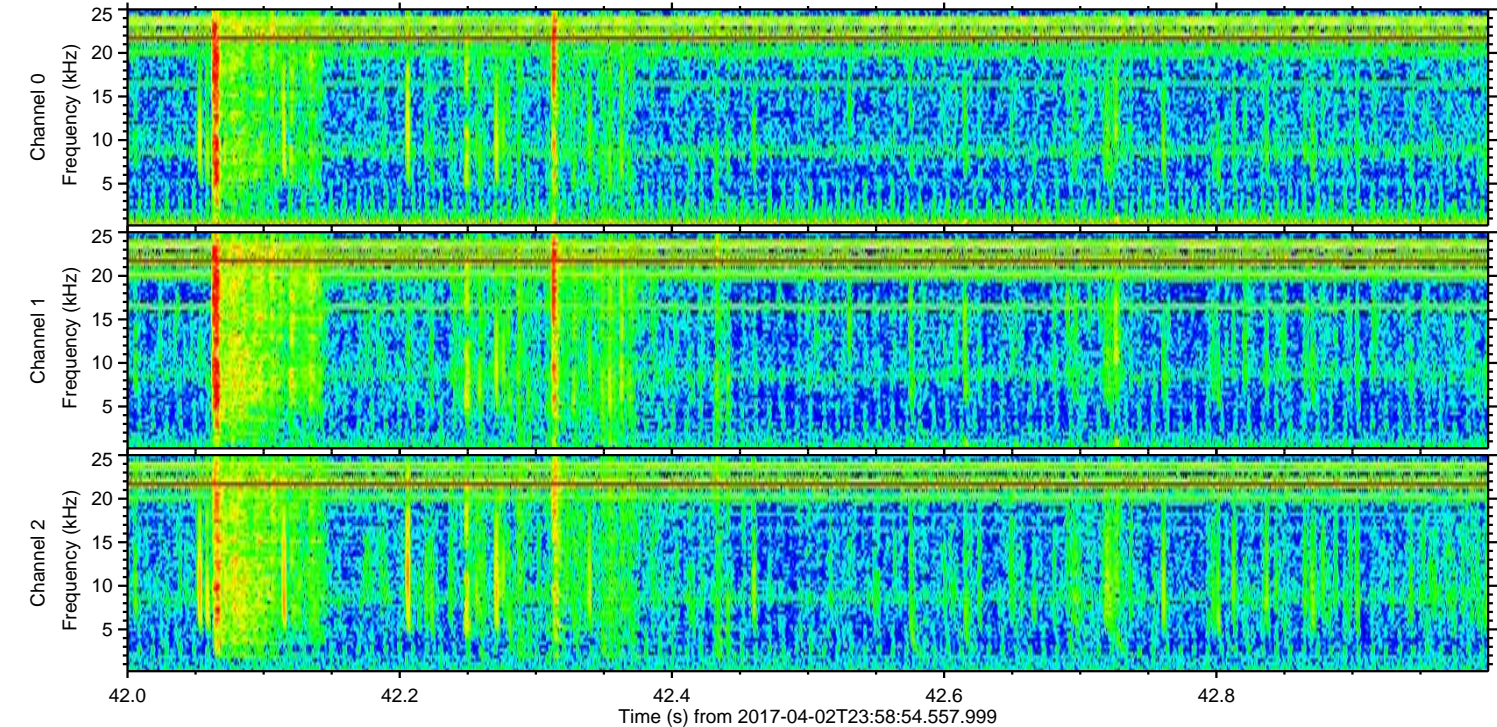
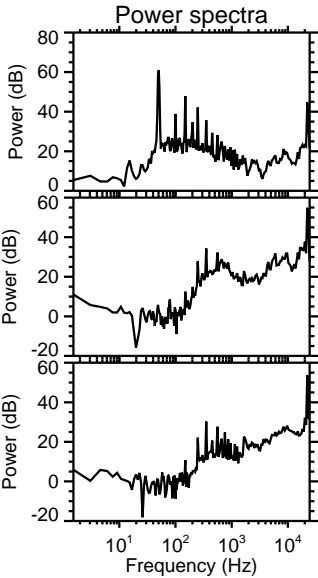
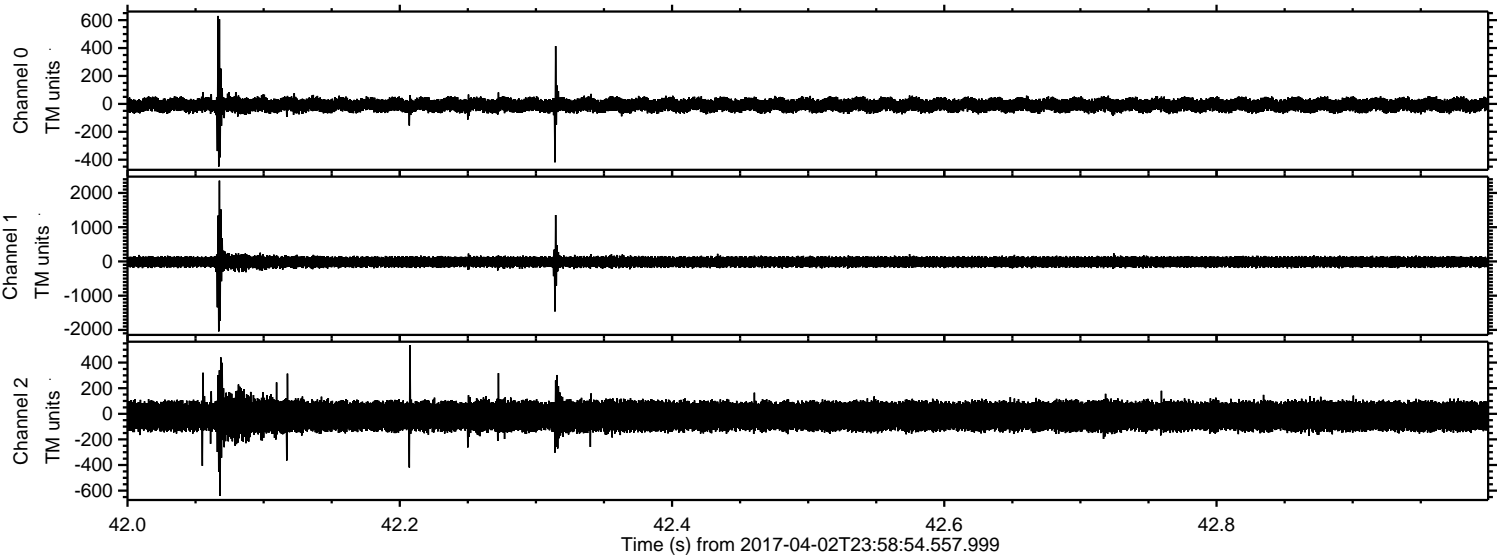


ELMAVAN 3D WAVEFORMS (Measured data sampled at 50 kHz) 51000 packets of 144 samples from 2017-04-02T23:58:54.557.999. Part 132/147

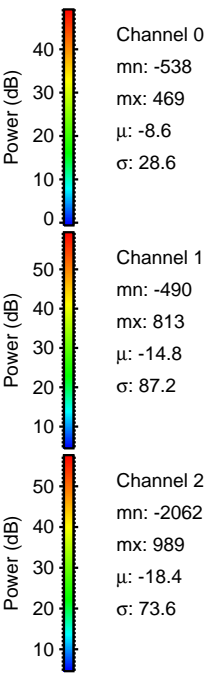
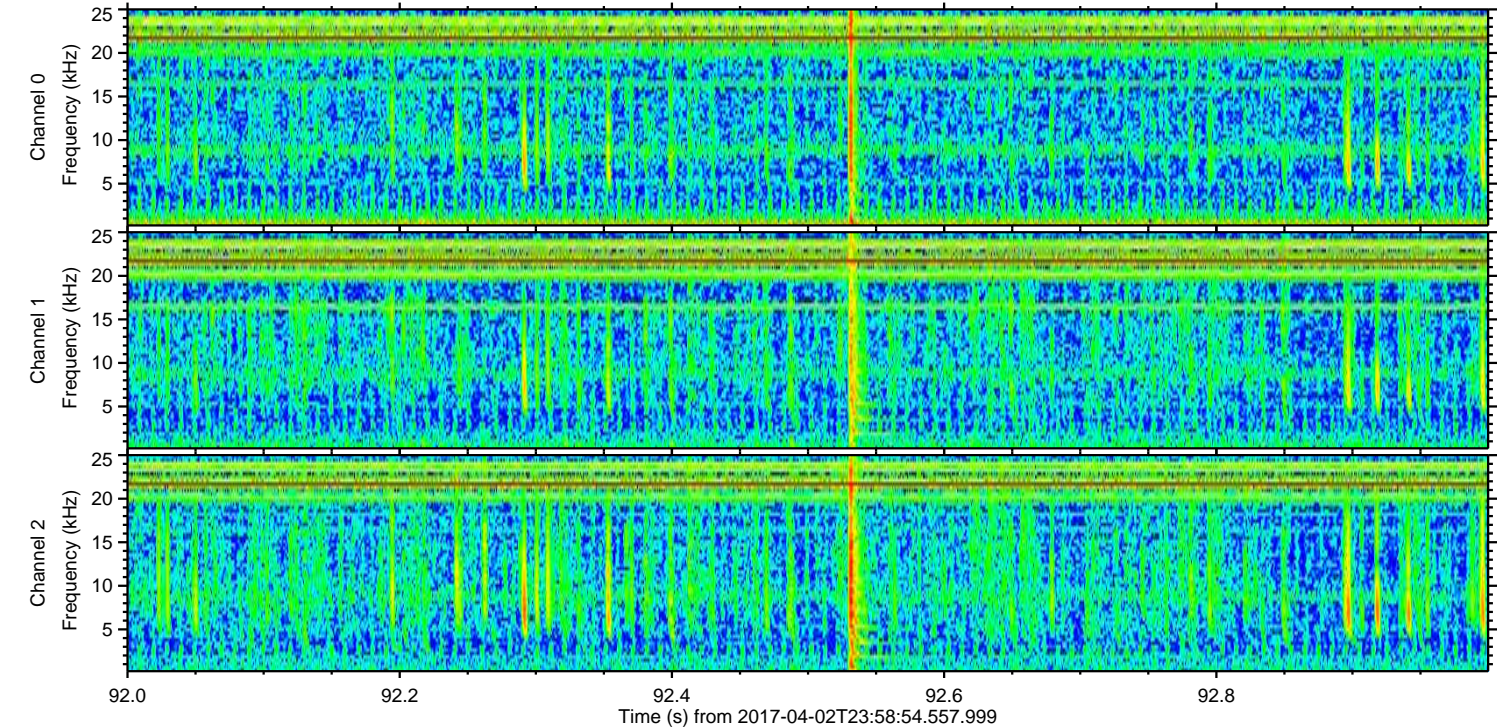
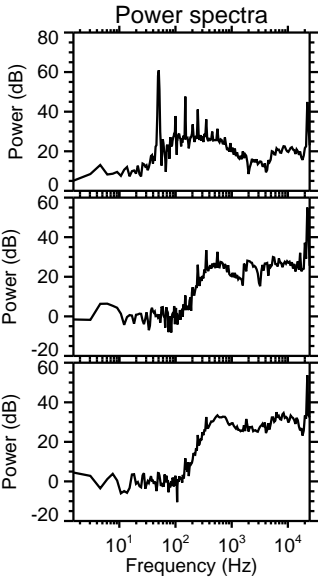
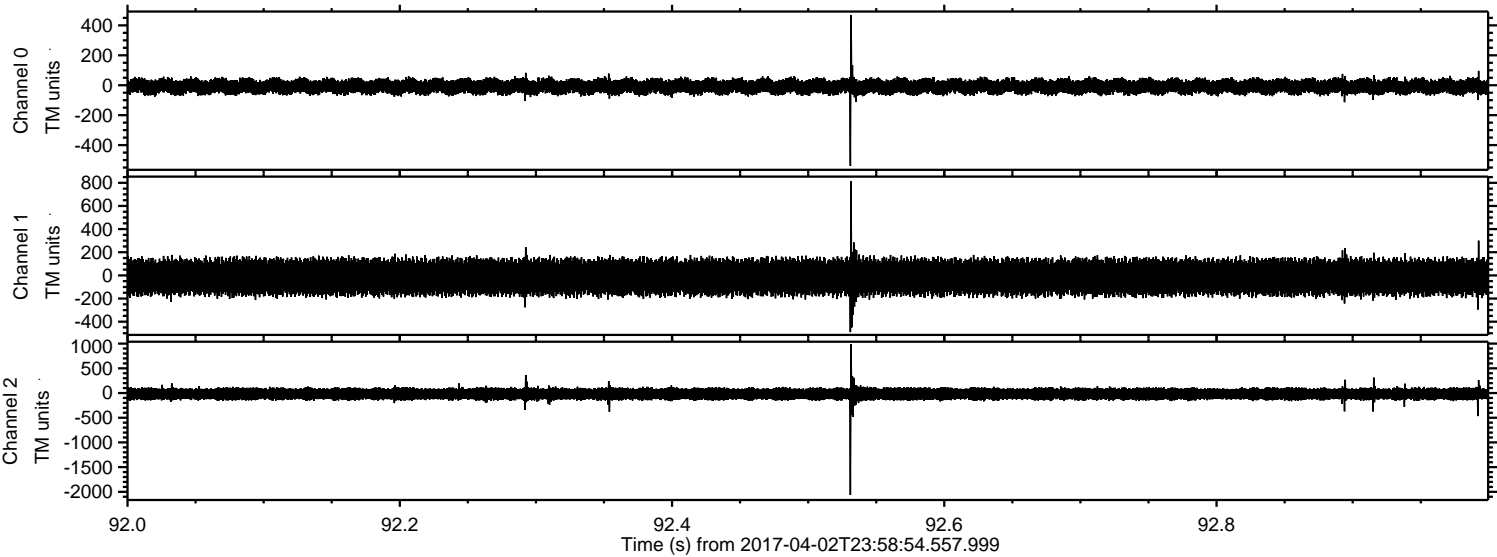
Processed Mon Apr 3 02:06:36 2017 by ELM ver.2012-10-06 from 001__elm20170402_235853__dat00.bin



Processed Mon Apr 3 02:06:37 2017 by ELM ver.2012-10-06 from 001__elm20170402_235853__dat00.bin

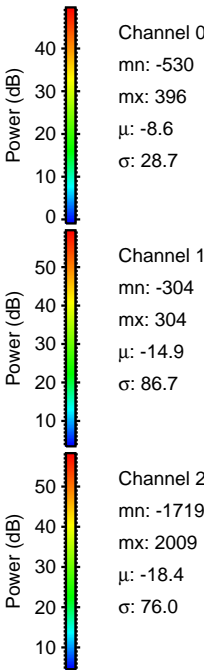
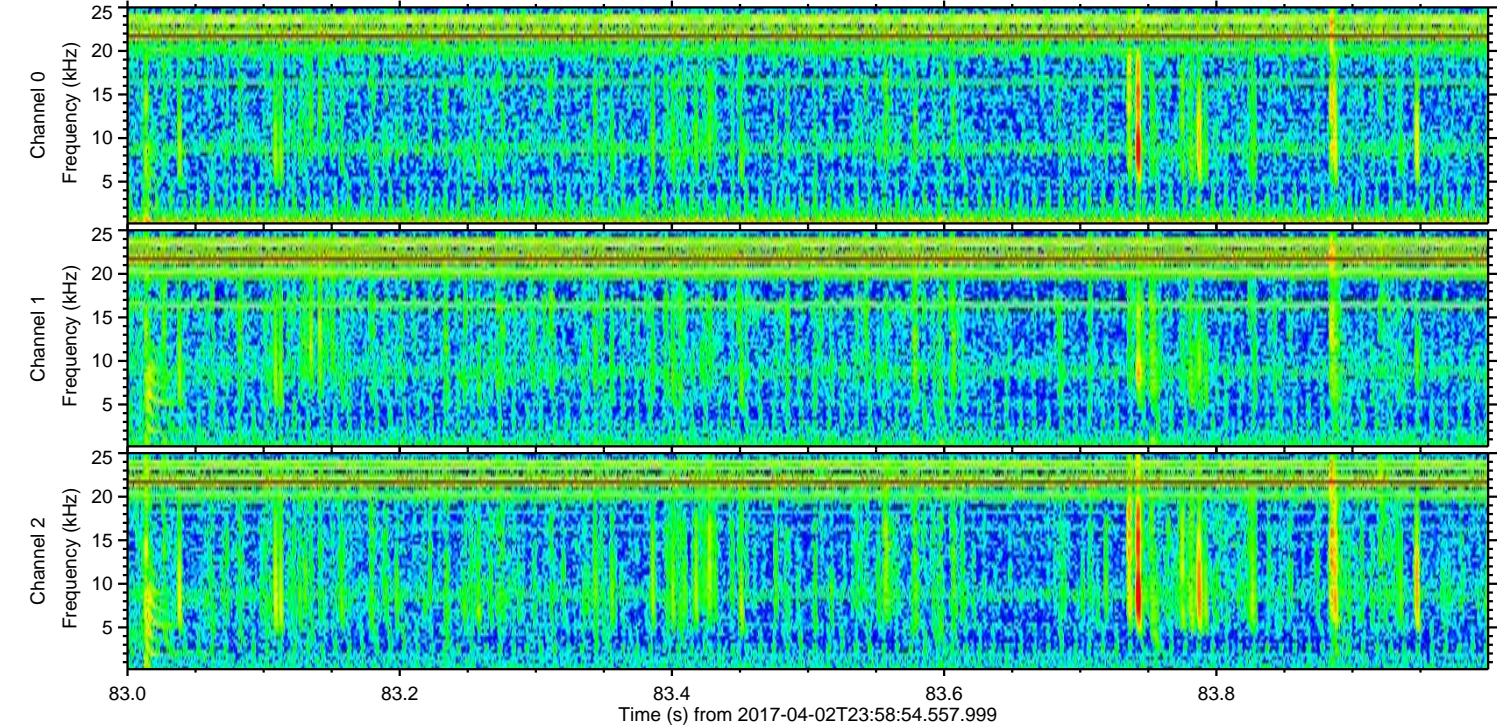
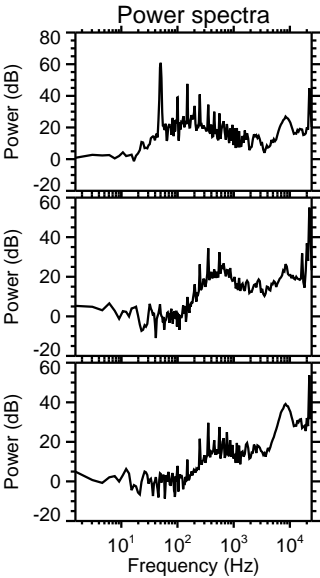
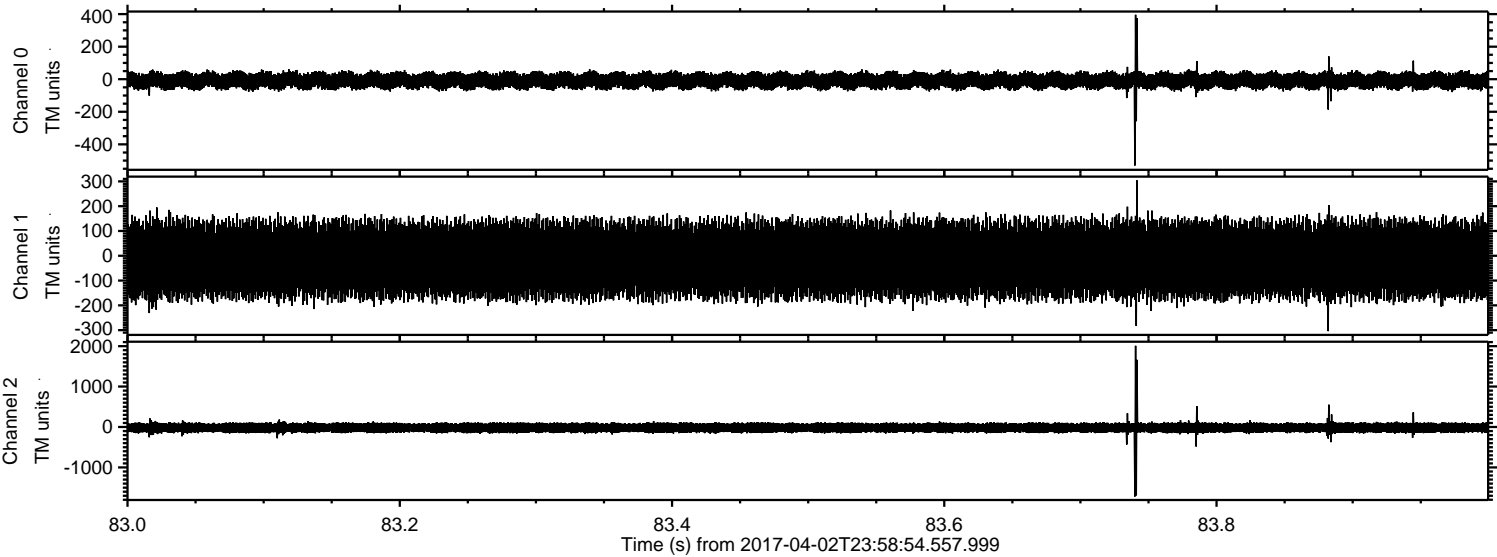


Processed Mon Apr 3 02:06:38 2017 by ELM ver.2012-10-06 from 001__elm20170402_235853__dat00.bin



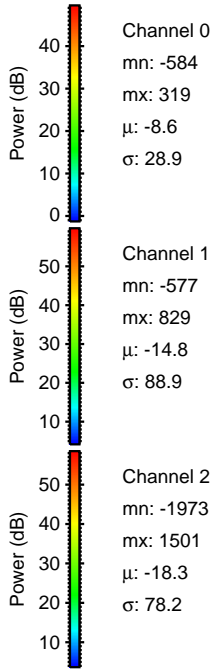
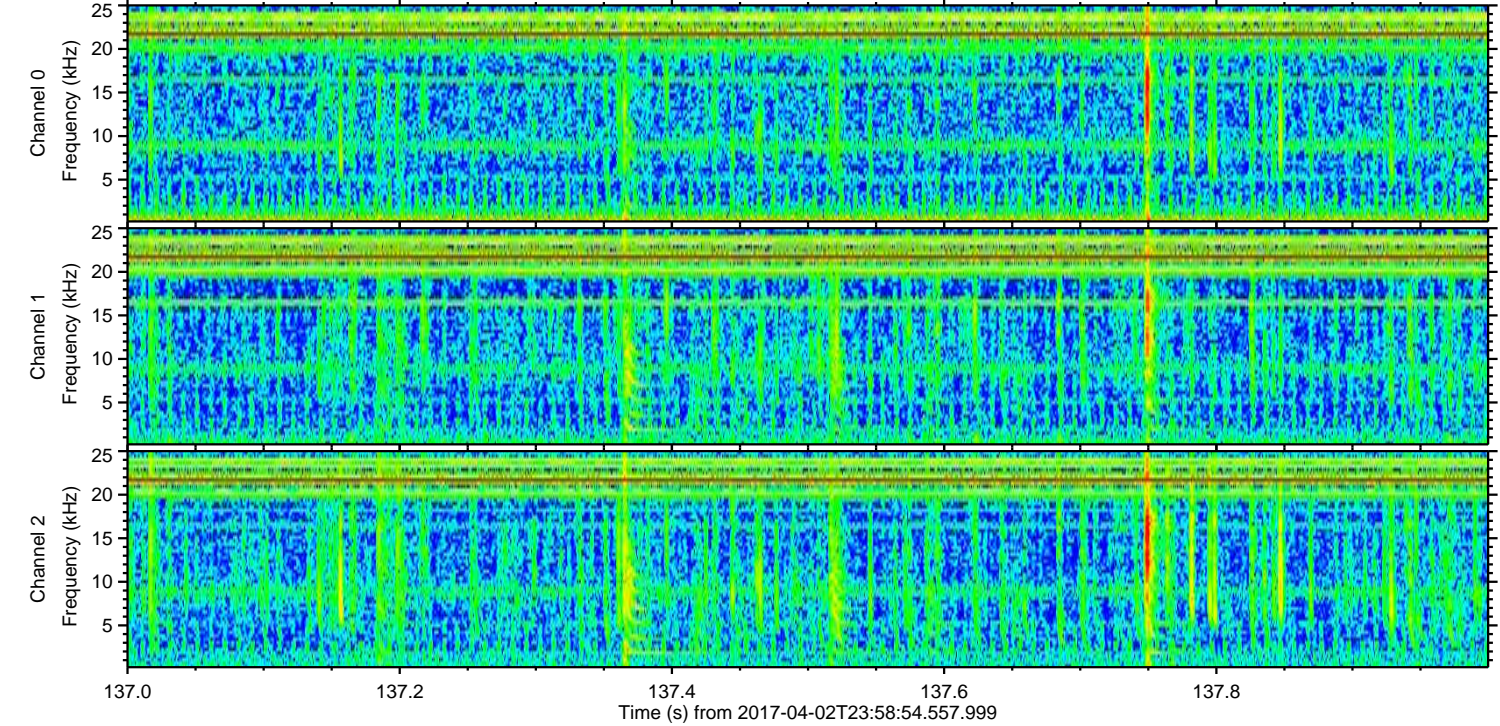
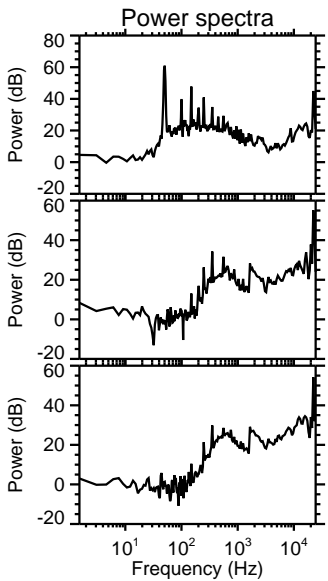
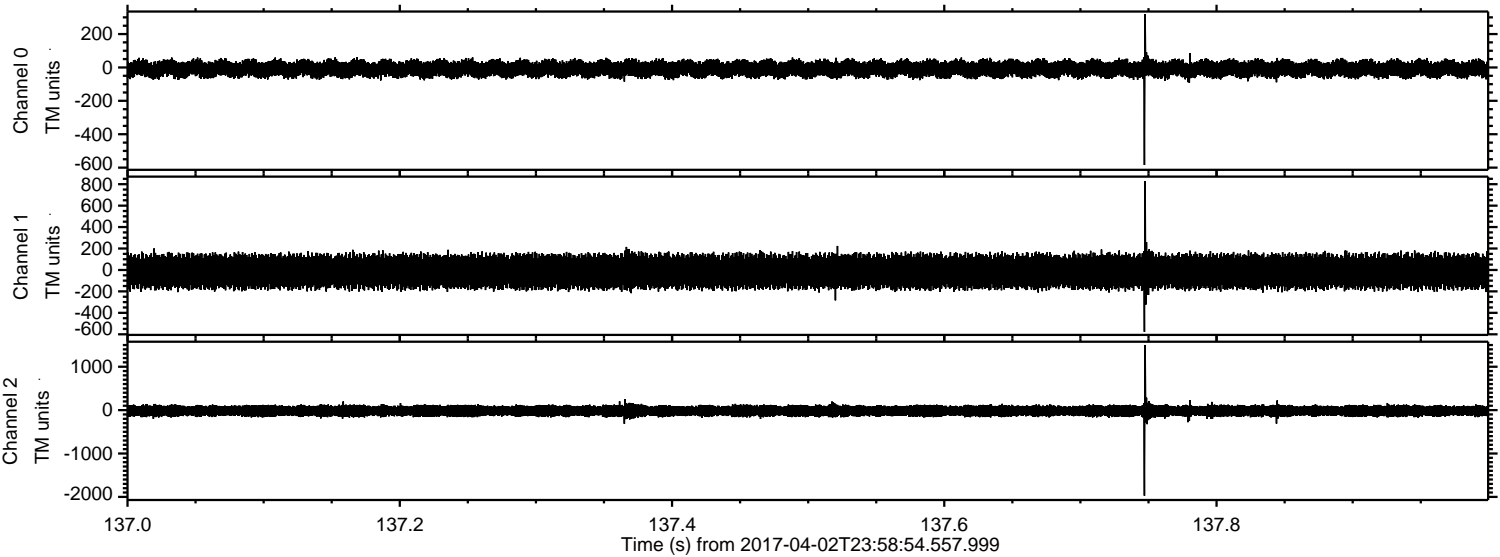
ELMAVAN 3D WAVEFORMS (Measured data sampled at 50 kHz) 51000 packets of 144 samples from 2017-04-02T23:58:54.557.999. Part 84/147

Processed Mon Apr 3 02:06:39 2017 by ELM ver.2012-10-06 from 001__elm20170402_235853__dat00.bin



ELMAVAN 3D WAVEFORMS (Measured data sampled at 50 kHz) 51000 packets of 144 samples from 2017-04-02T23:58:54.557.999. Part 138/147

Processed Mon Apr 3 02:06:40 2017 by ELM ver.2012-10-06 from 001__elm20170402_235853__dat00.bin

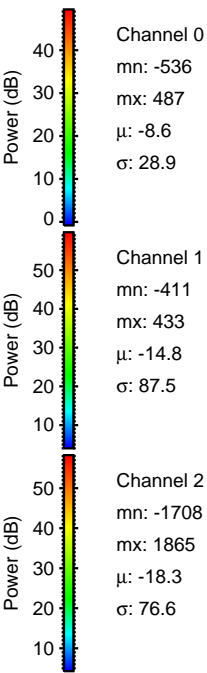
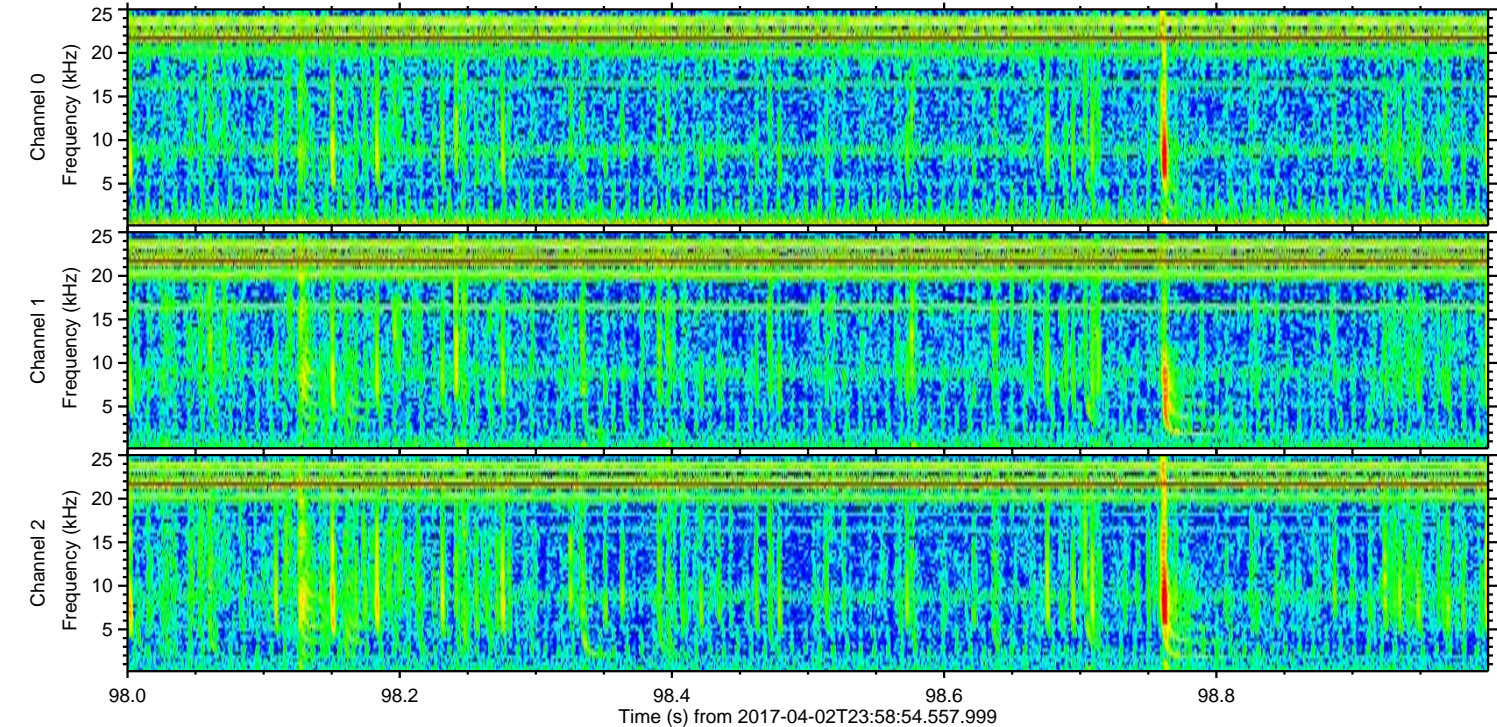
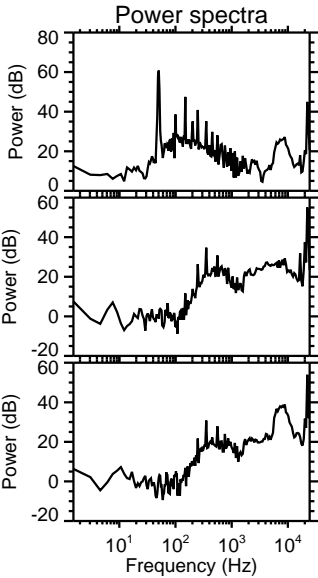
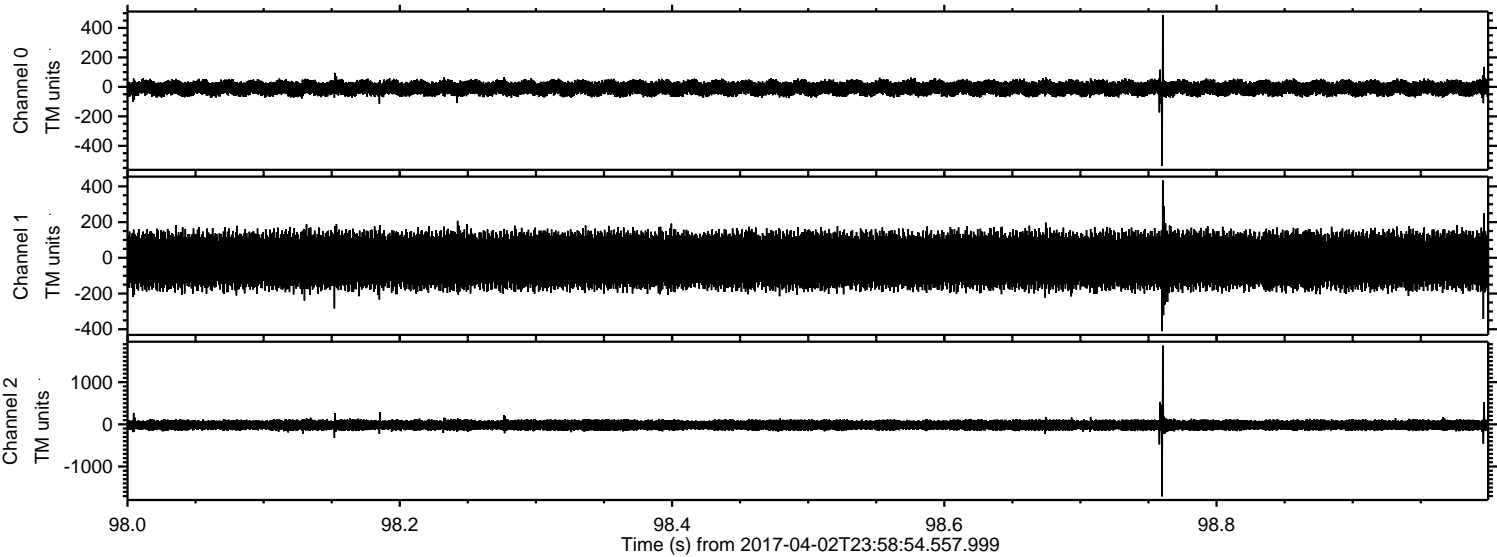


Channel 0
mn: -584
mx: 319
 μ : -8.6
 σ : 28.9

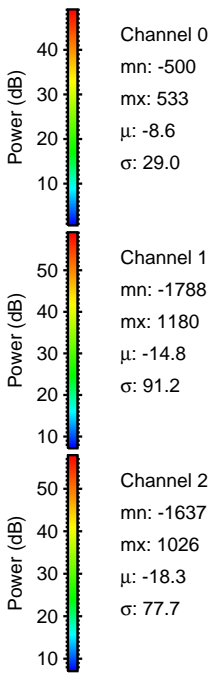
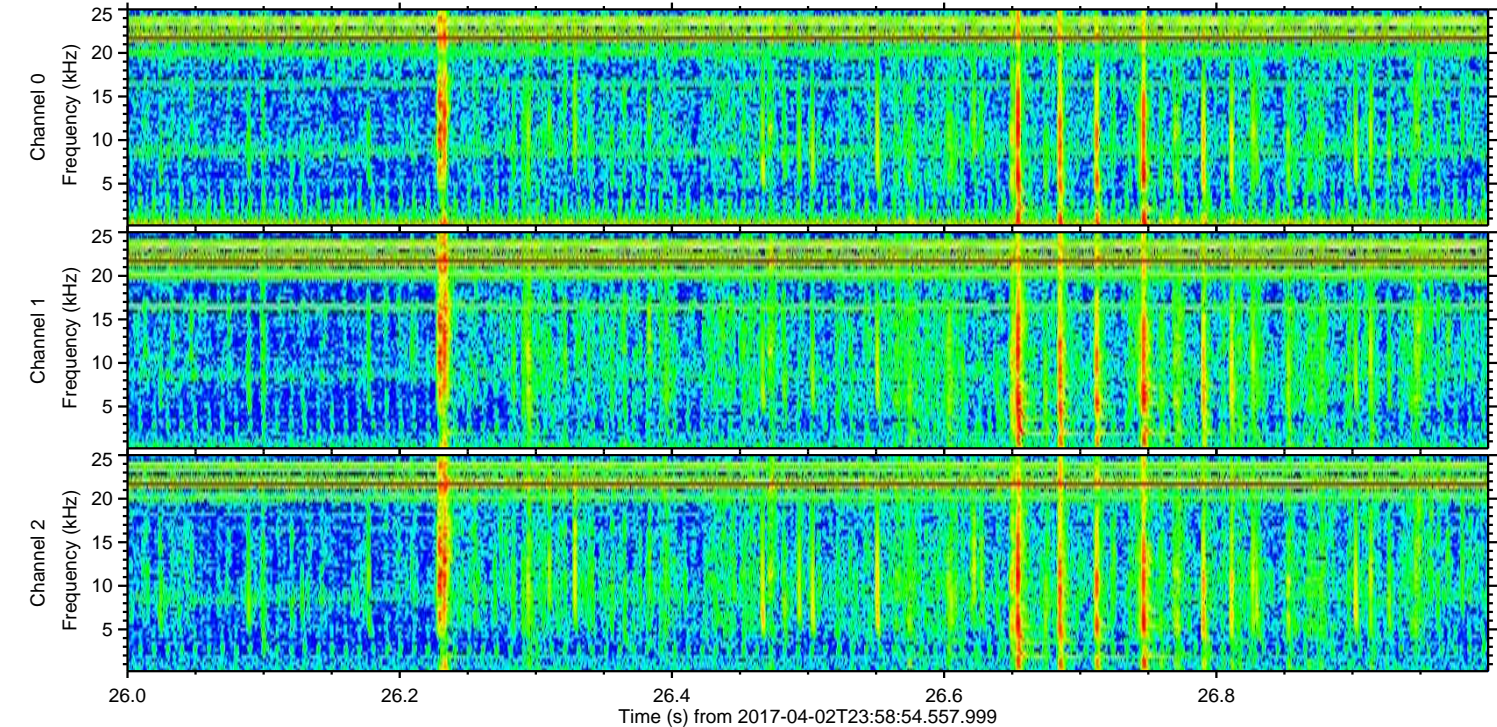
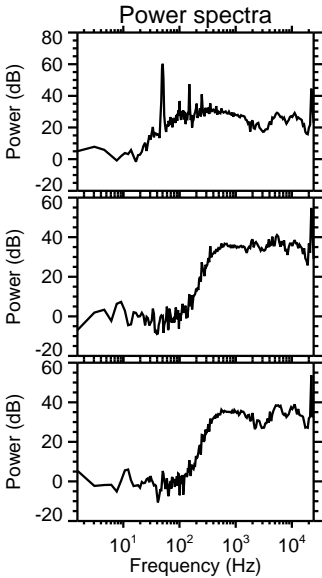
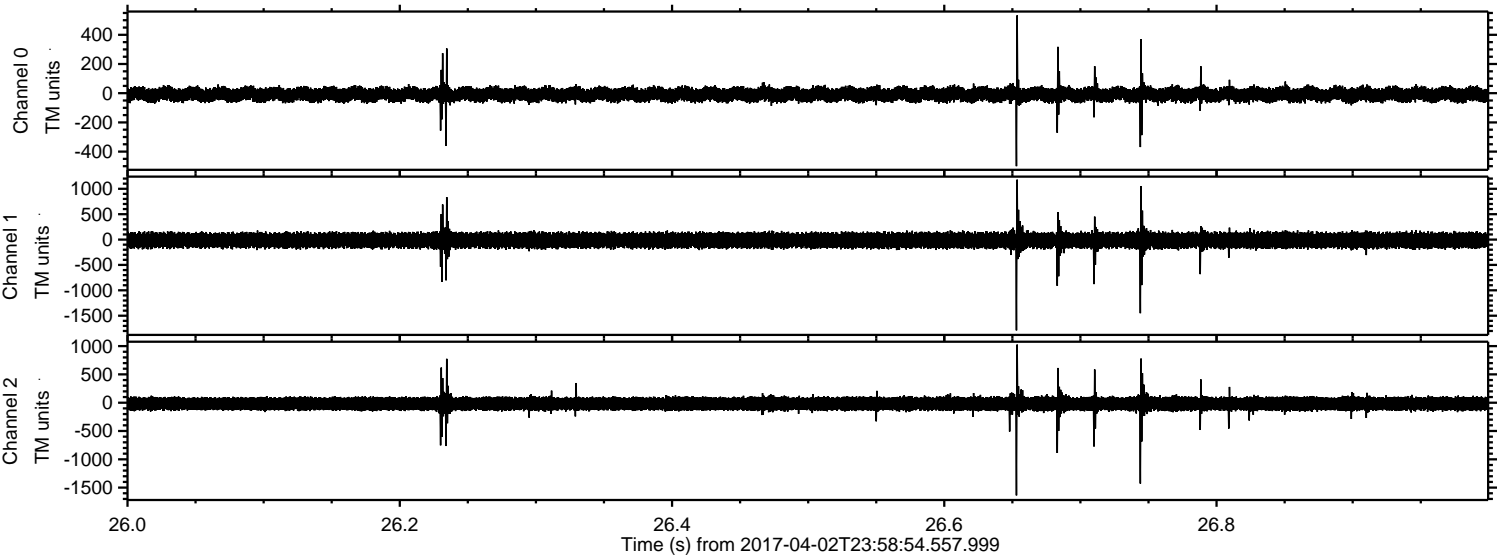
Channel 1
mn: -577
mx: 829
 μ : -14.8
 σ : 88.9

Channel 2
mn: -1973
mx: 1501
 μ : -18.3
 σ : 78.2

Processed Mon Apr 3 02:06:41 2017 by ELM ver.2012-10-06 from 001__elm20170402_235853__dat00.bin

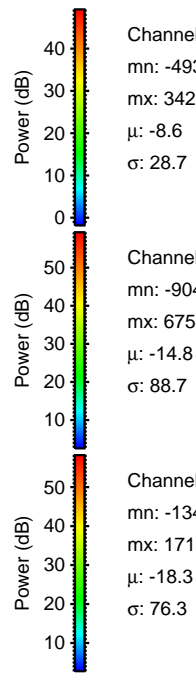
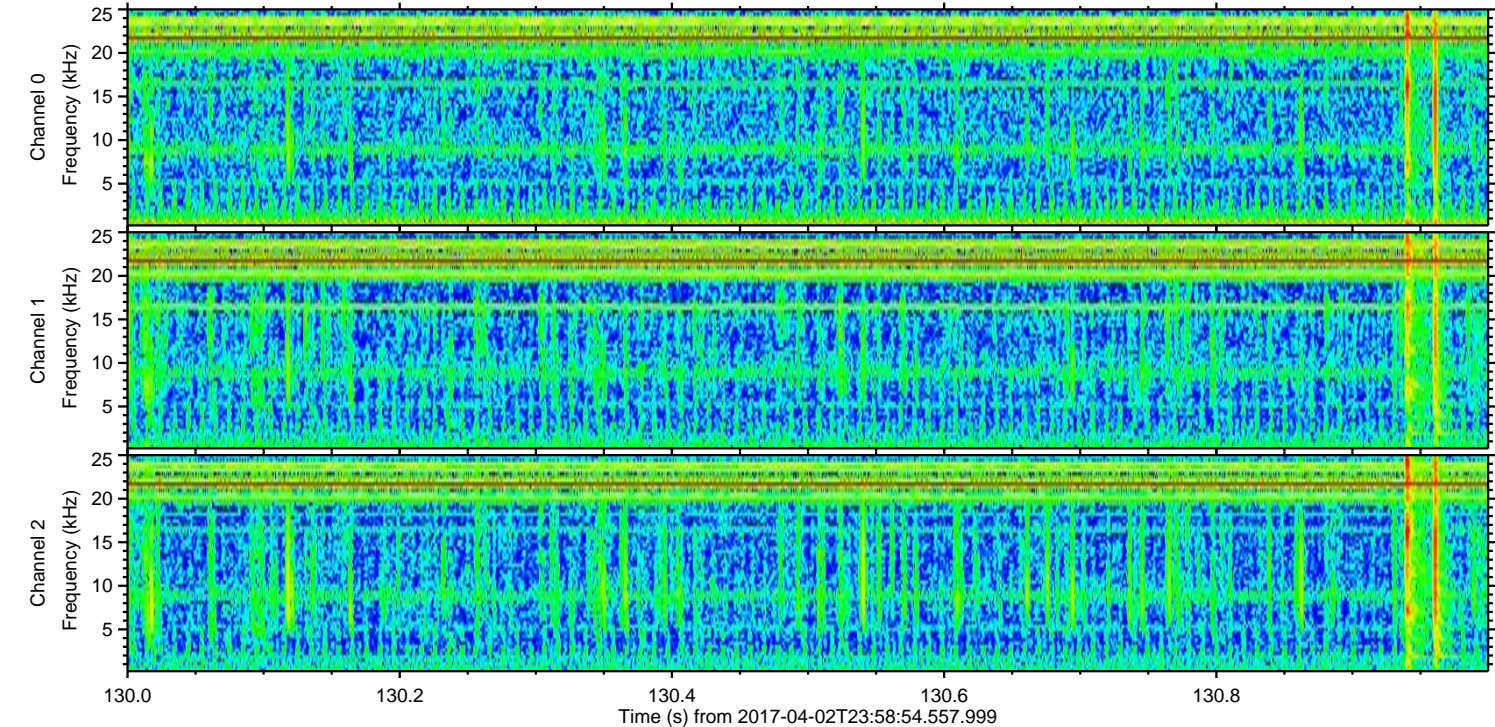
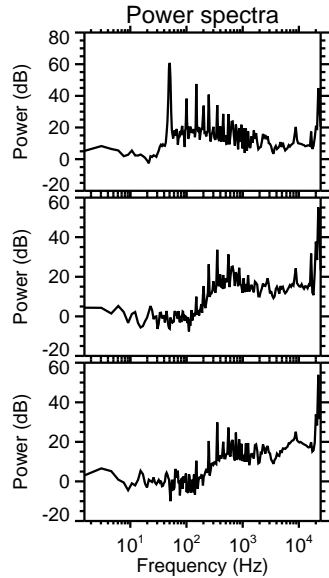
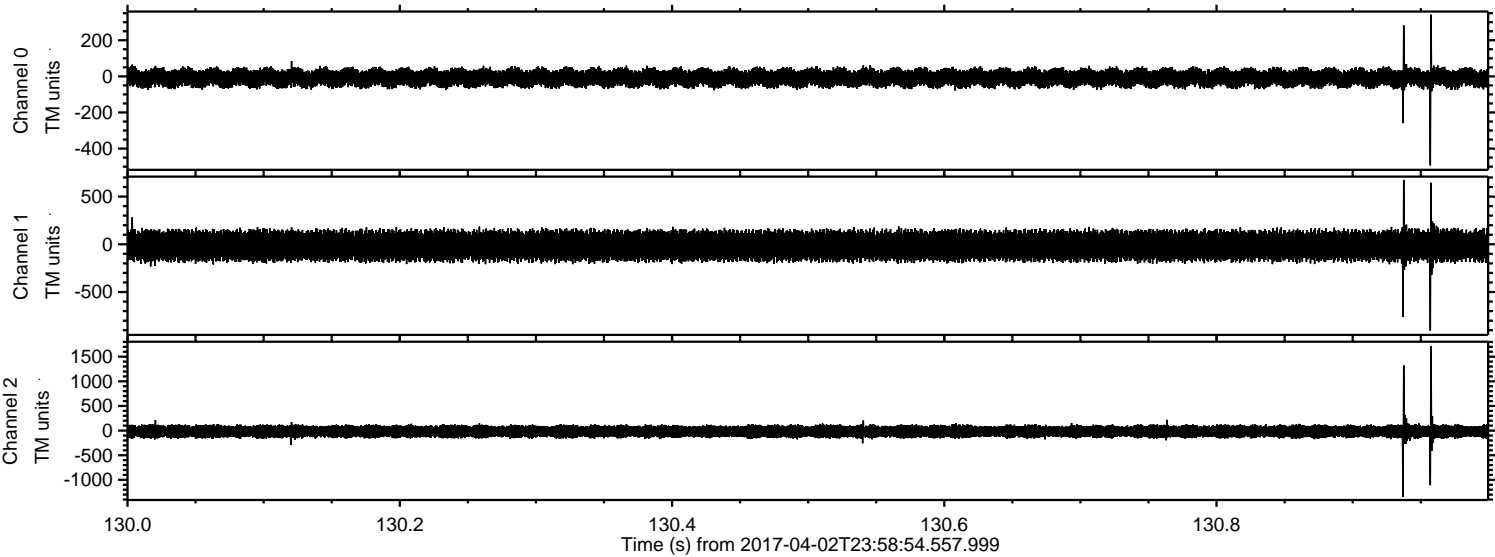


Processed Mon Apr 3 02:06:42 2017 by ELM ver.2012-10-06 from 001__elm20170402_235853__dat00.bin



ELMAVAN 3D WAVEFORMS (Measured data sampled at 50 kHz) 51000 packets of 144 samples from 2017-04-02T23:58:54.557.999. Part 131/147

Processed Mon Apr 3 02:06:42 2017 by ELM ver.2012-10-06 from 001__elm20170402_235853__dat00.bin



Channel 0
mn: -493
mx: 342
 μ : -8.6
 σ : 28.7

Channel 1
mn: -904
mx: 675
 μ : -14.8
 σ : 88.7

Channel 2
mn: -1342
mx: 1718
 μ : -18.3
 σ : 76.3

