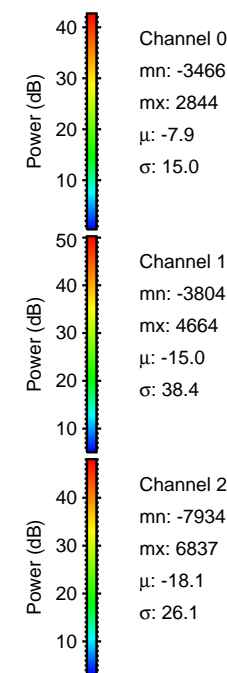
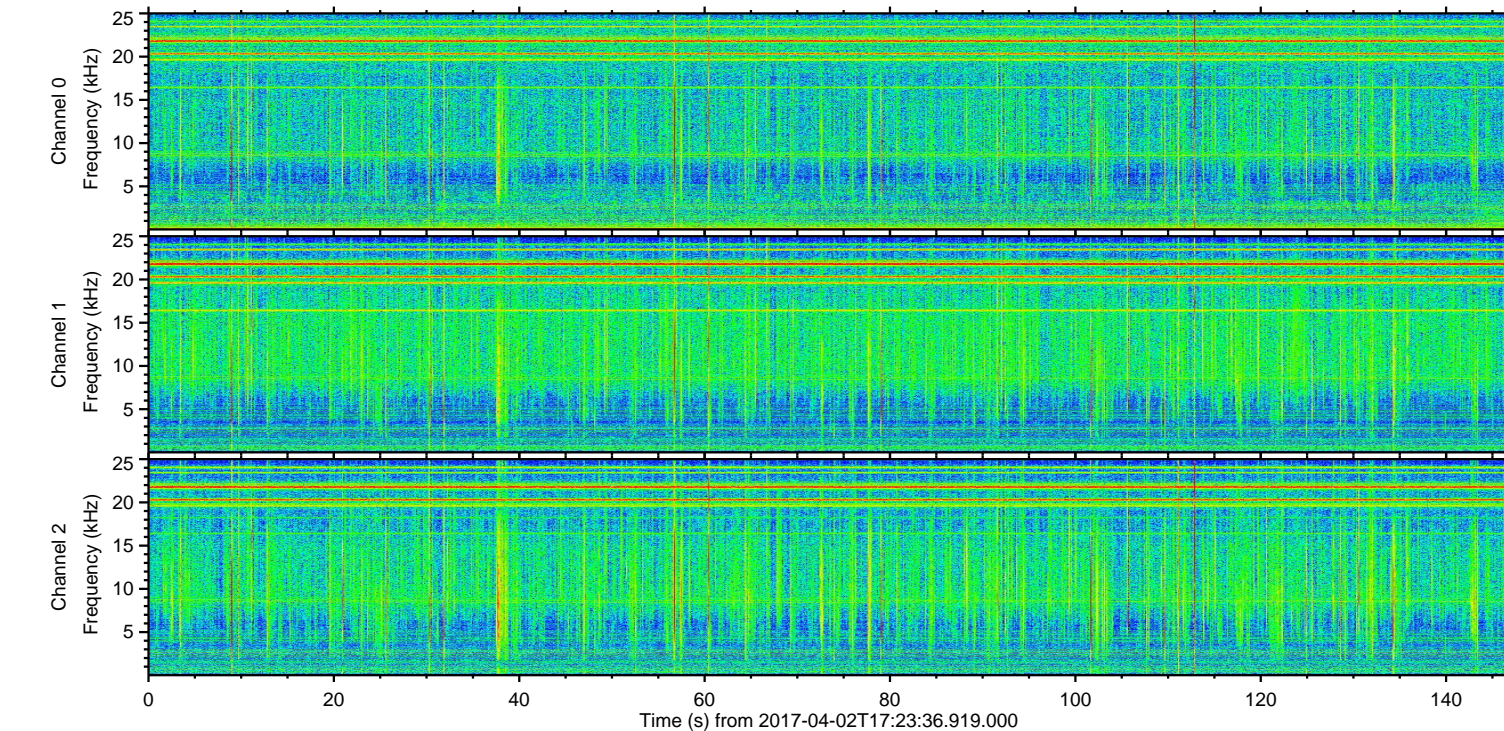
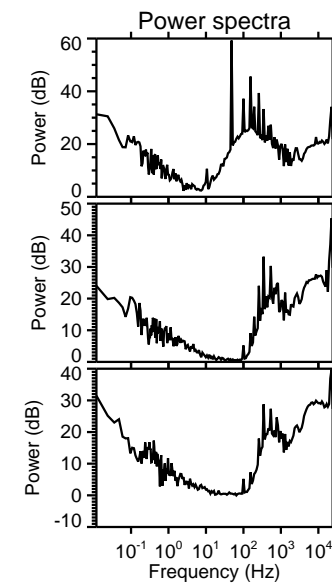
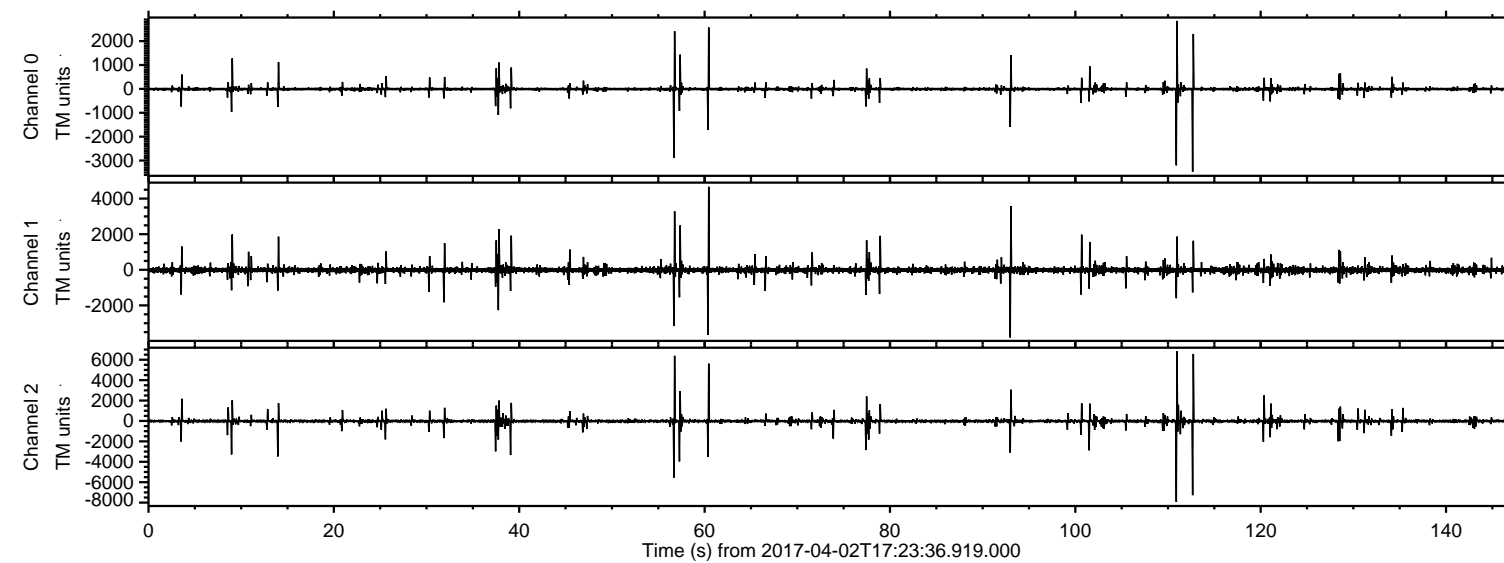


# ELMAVAN 3D WAVEFORMS (Measured data sampled at 50 kHz) 51000 packets of 144 samples from 2017-04-02T17:23:36.919.000.

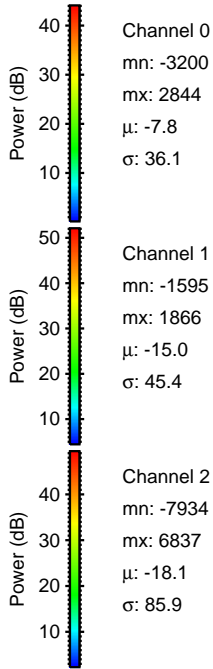
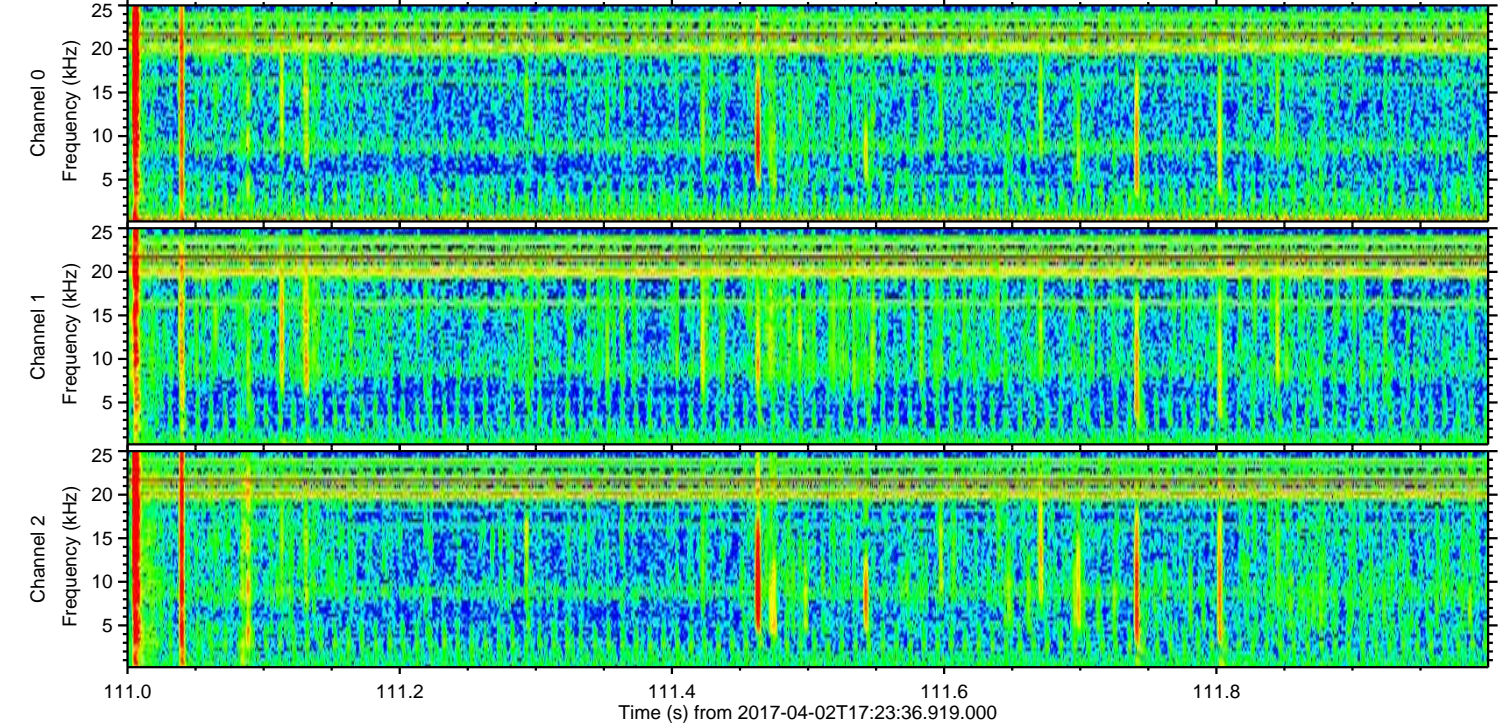
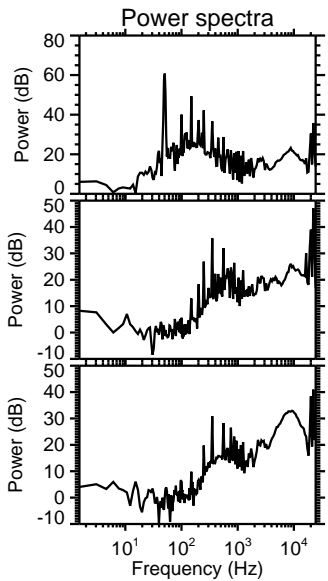
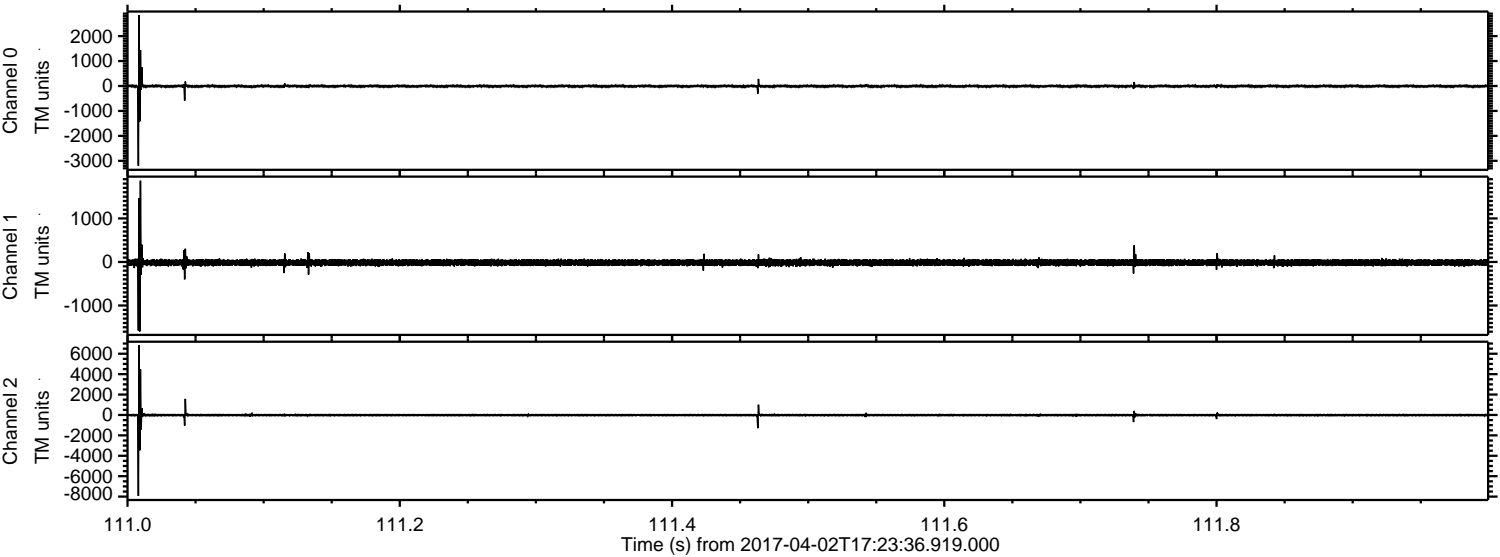
Processed Sun Apr 2 19:31:26 2017 by ELM ver.2012-10-06 from 001\_\_elm20170402\_172335\_\_dat00.bin





ELMAVAN 3D WAVEFORMS (Measured data sampled at 50 kHz) 51000 packets of 144 samples from 2017-04-02T17:23:36.919.000. Part 112/147

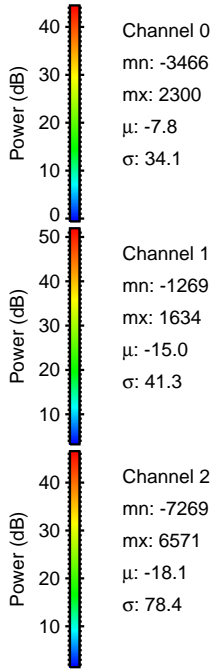
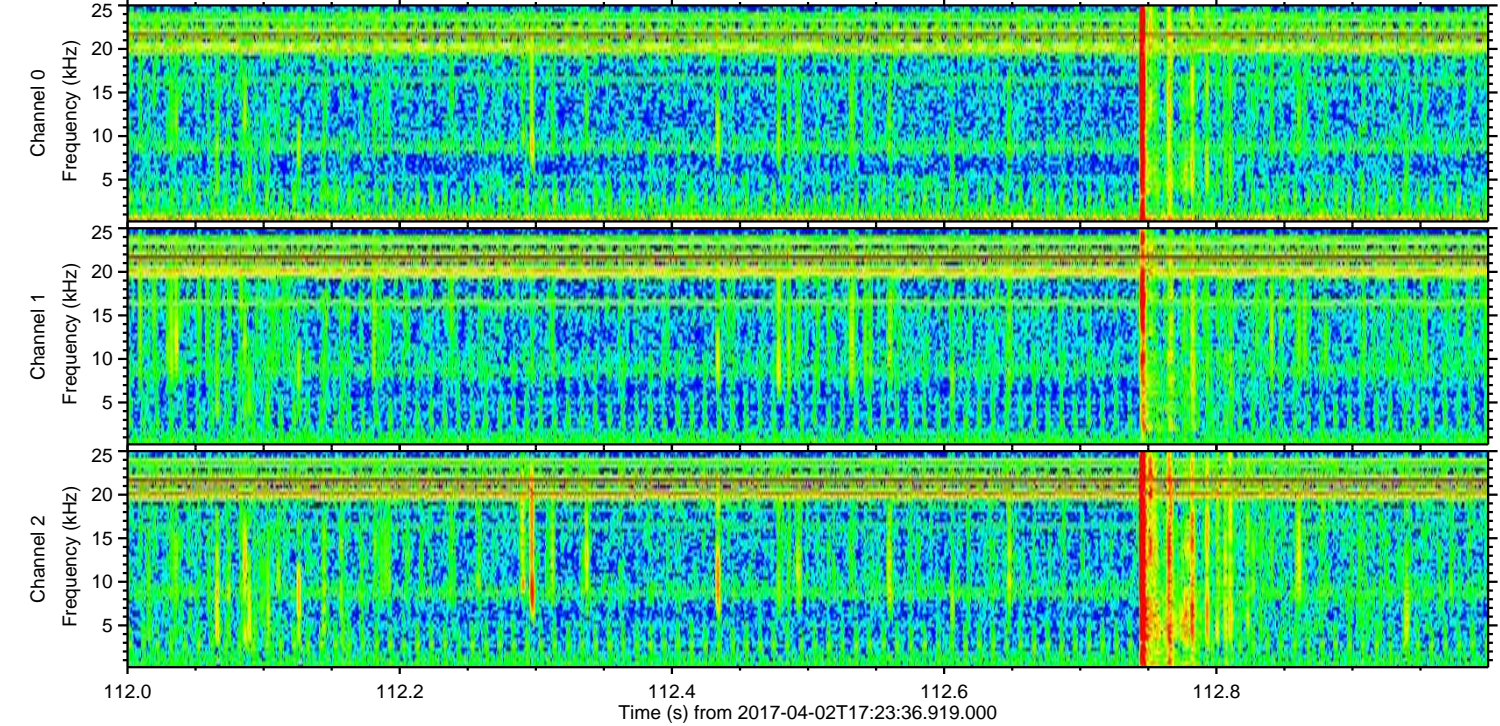
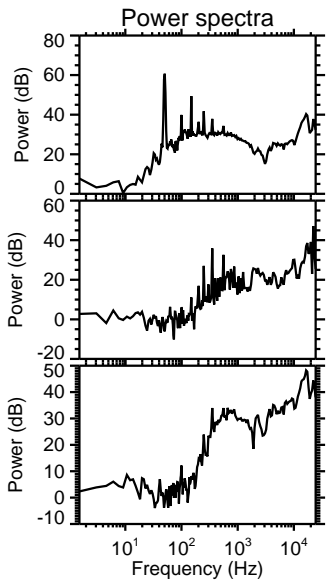
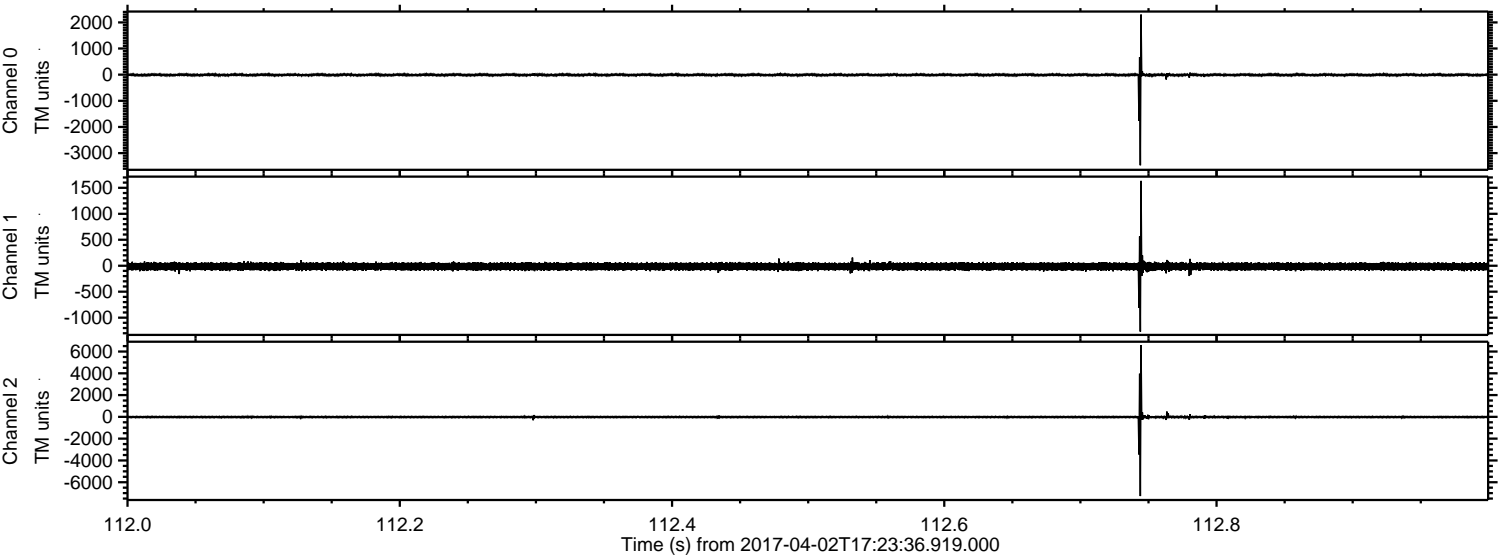
Processed Sun Apr 2 19:31:43 2017 by ELM ver.2012-10-06 from 001\_\_elm20170402\_172335\_\_dat00.bin





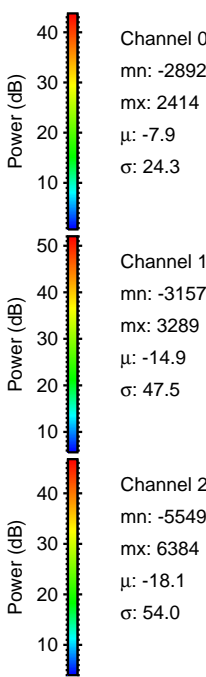
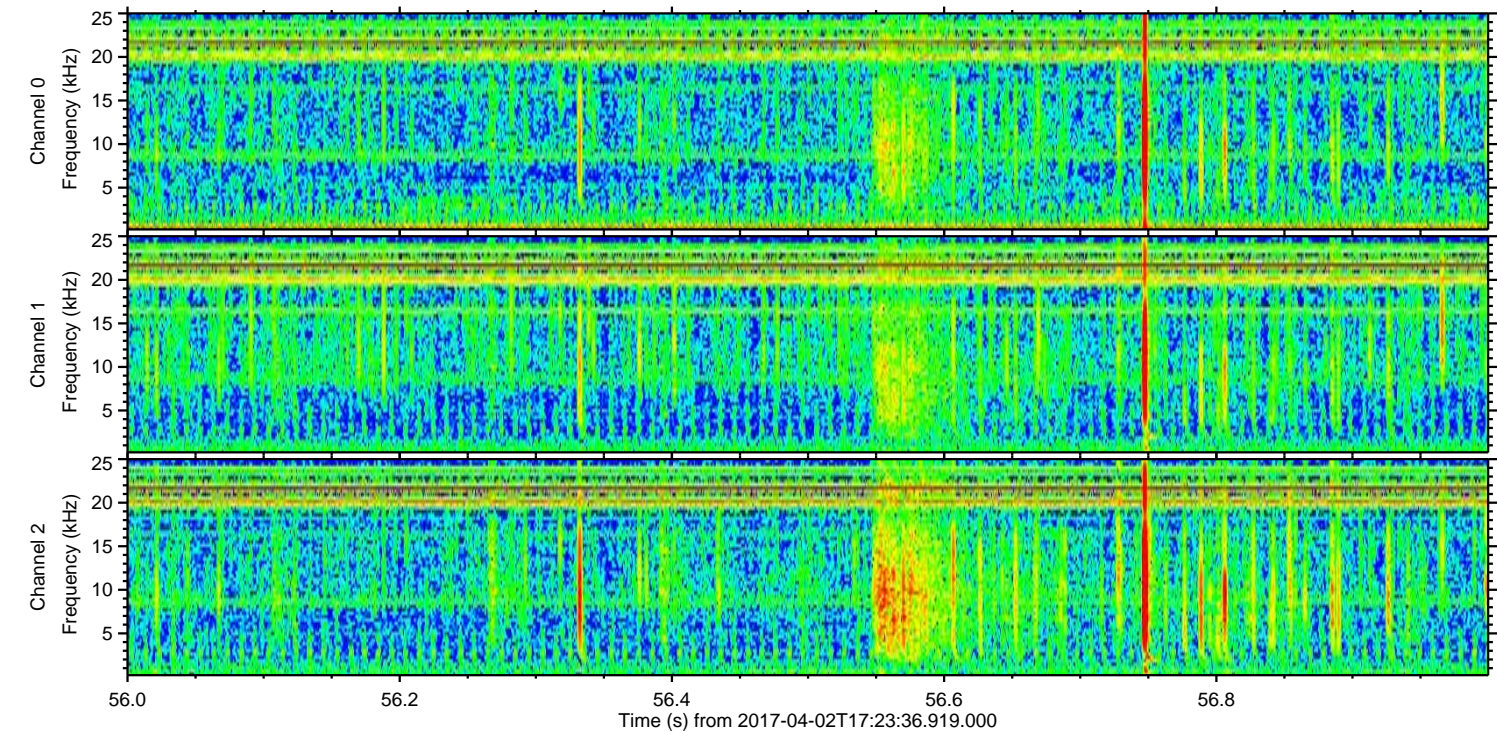
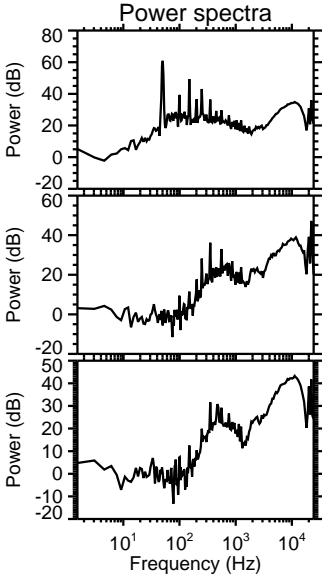
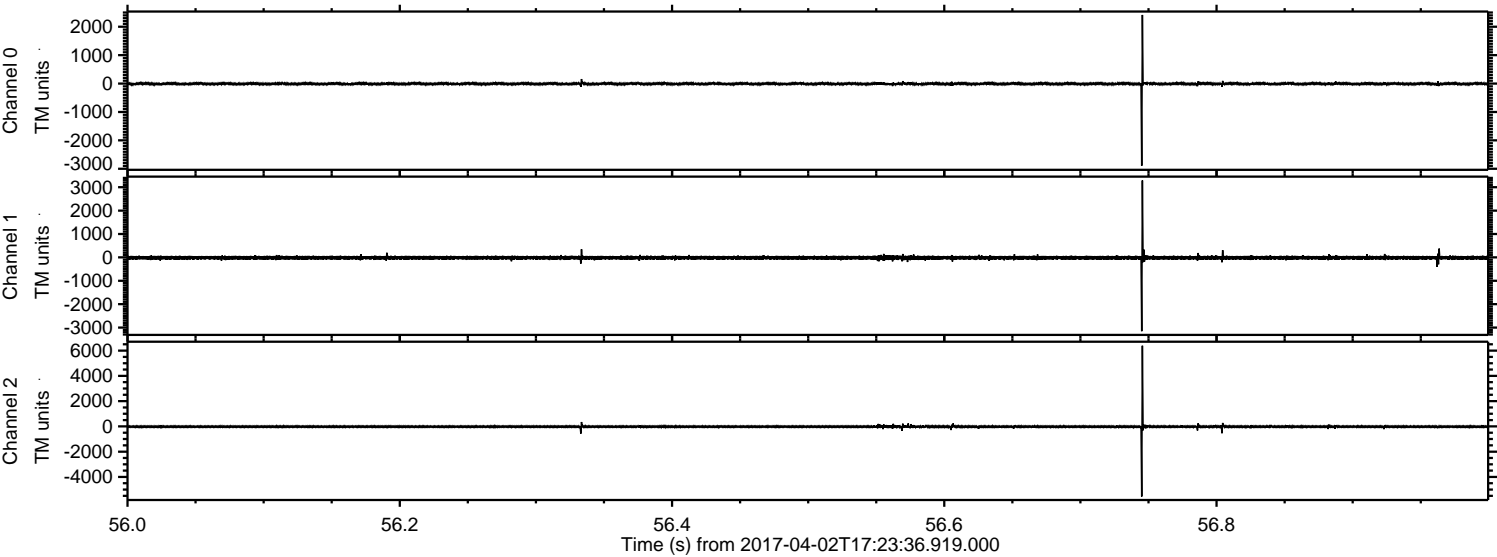
ELMAVAN 3D WAVEFORMS (Measured data sampled at 50 kHz) 51000 packets of 144 samples from 2017-04-02T17:23:36.919.000. Part 113/147

Processed Sun Apr 2 19:31:44 2017 by ELM ver.2012-10-06 from 001\_\_elm20170402\_172335\_\_dat00.bin



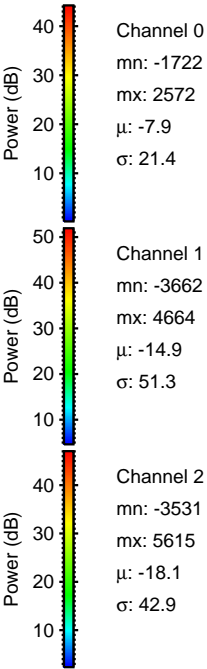
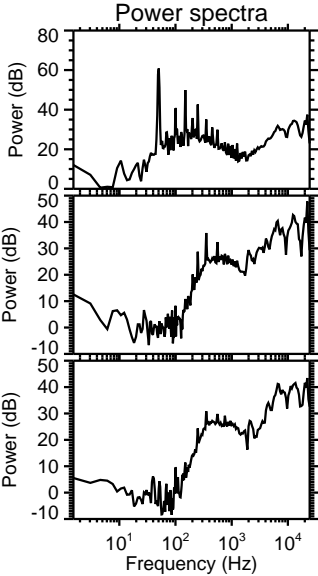
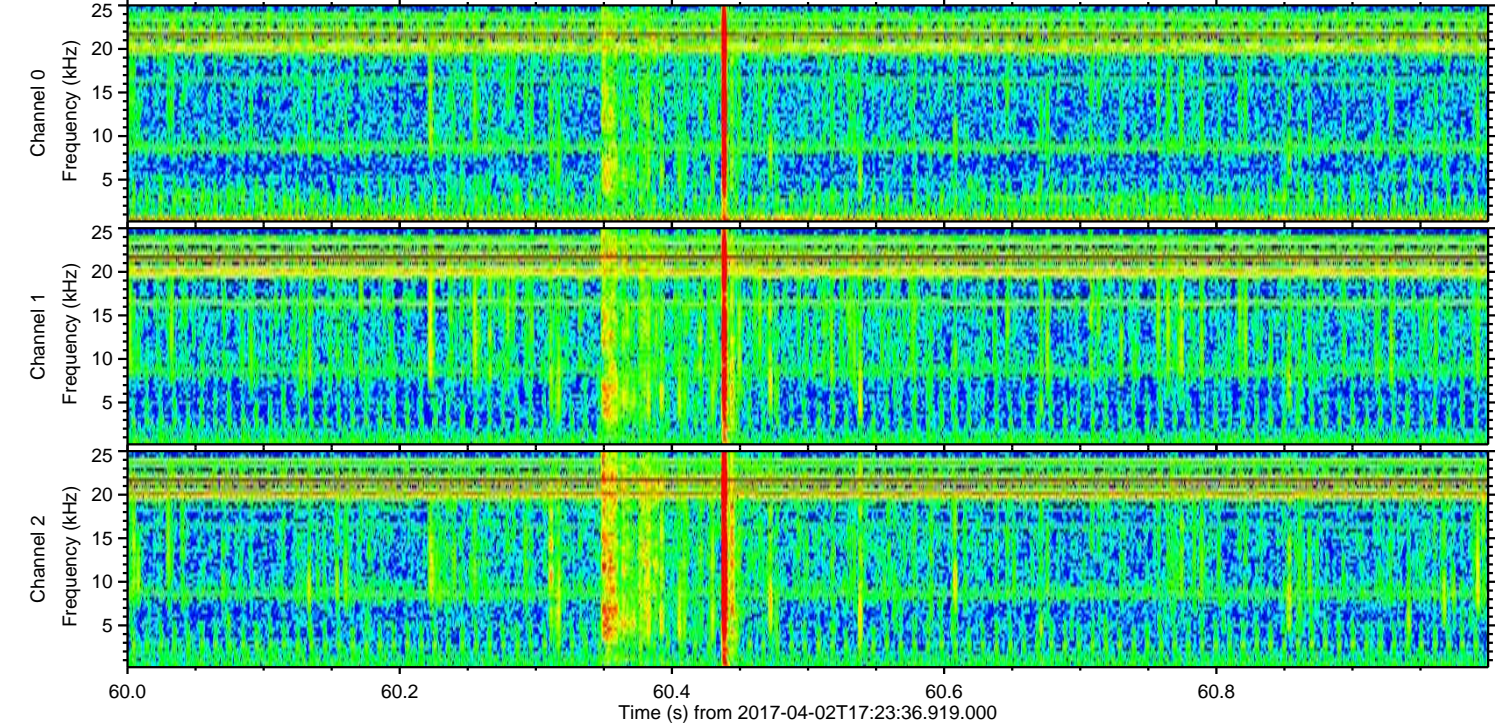
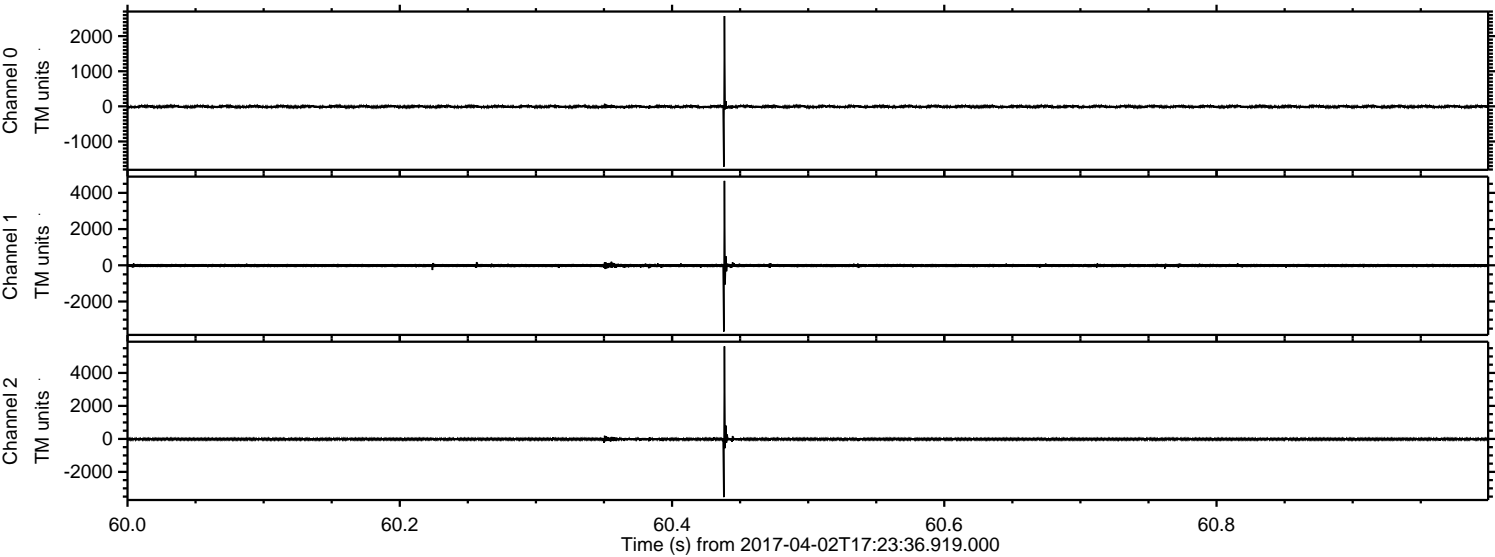


Processed Sun Apr 2 19:31:46 2017 by ELM ver.2012-10-06 from 001\_\_elm20170402\_172335\_\_dat00.bin



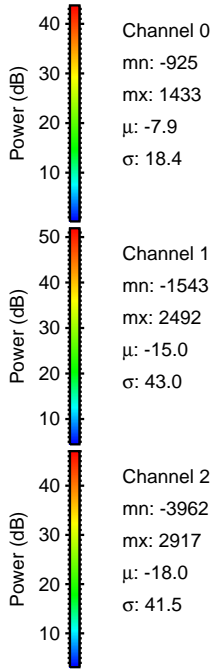
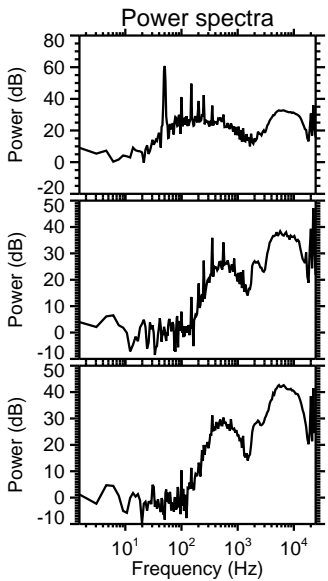
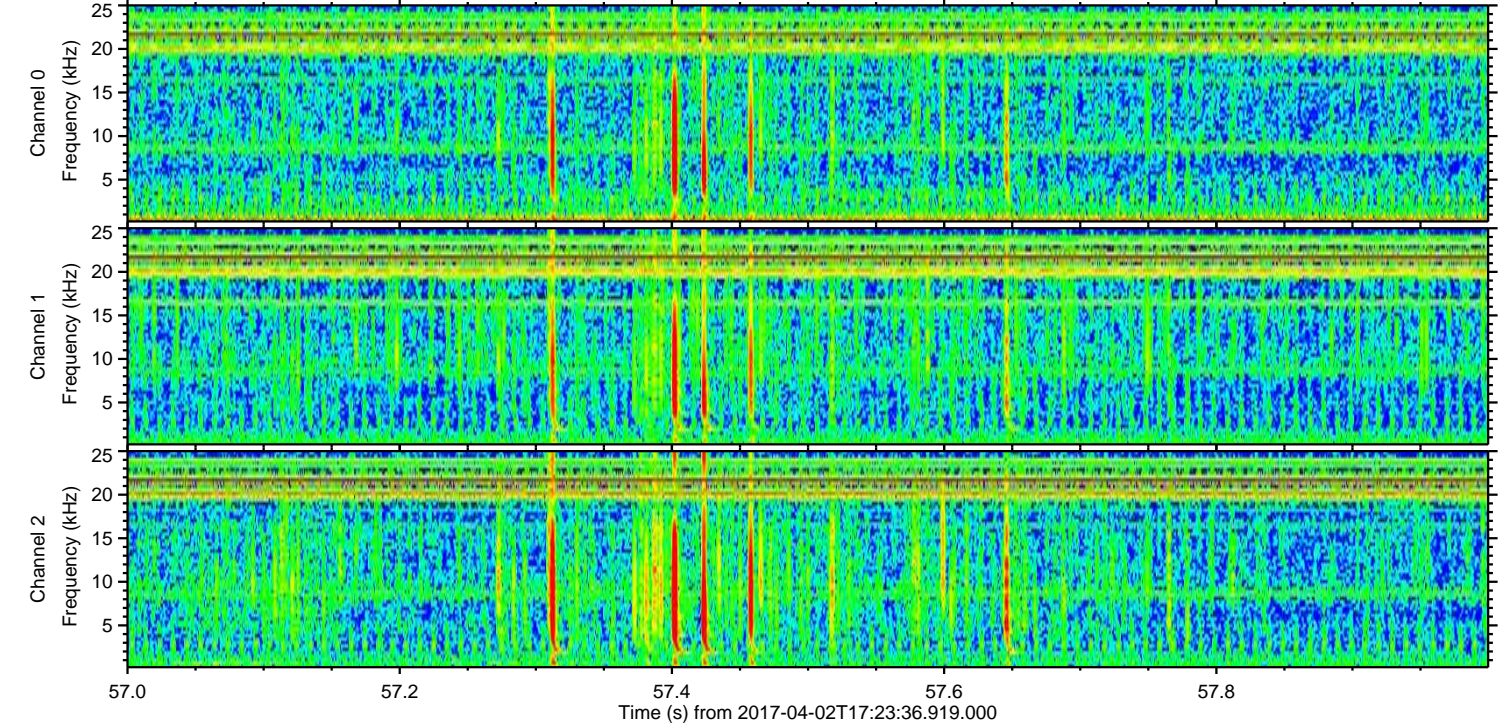
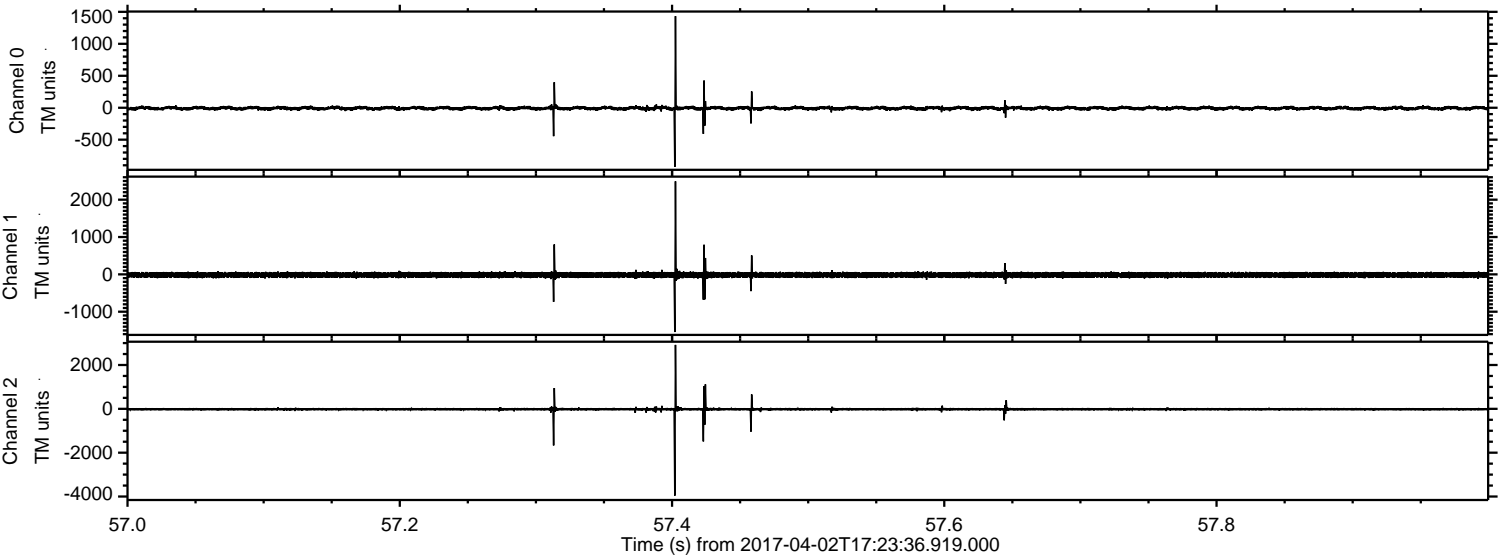


Processed Sun Apr 2 19:31:47 2017 by ELM ver.2012-10-06 from 001\_\_elm20170402\_172335\_\_dat00.bin



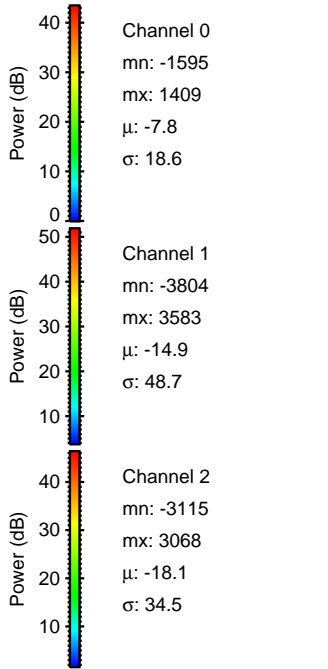
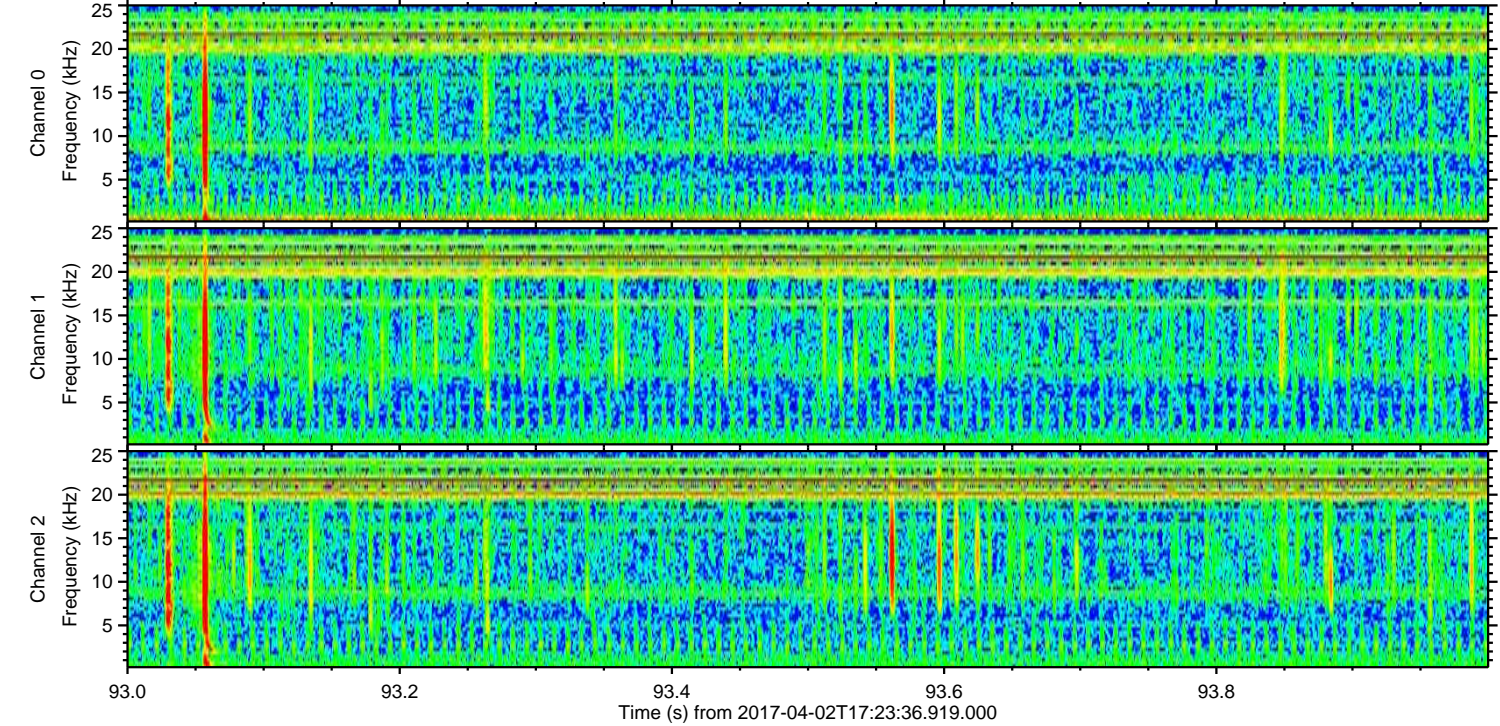
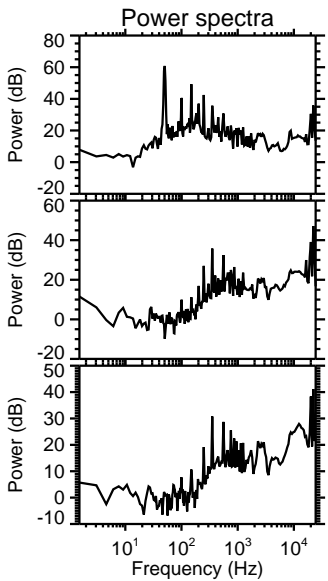
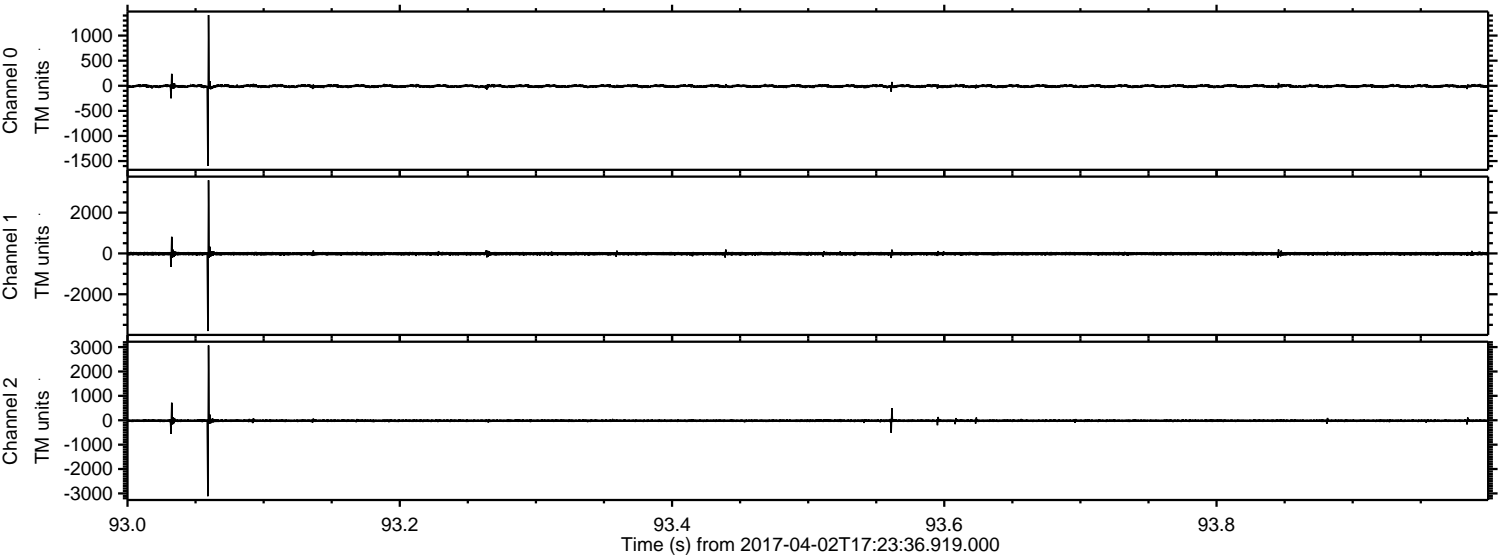


Processed Sun Apr 2 19:31:48 2017 by ELM ver.2012-10-06 from 001\_\_elm20170402\_172335\_\_dat00.bin



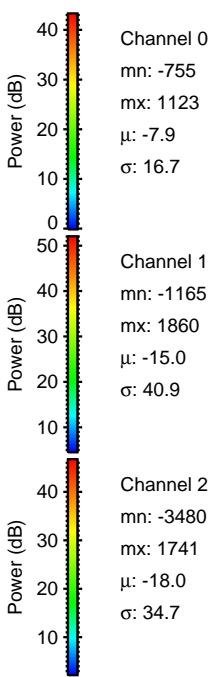
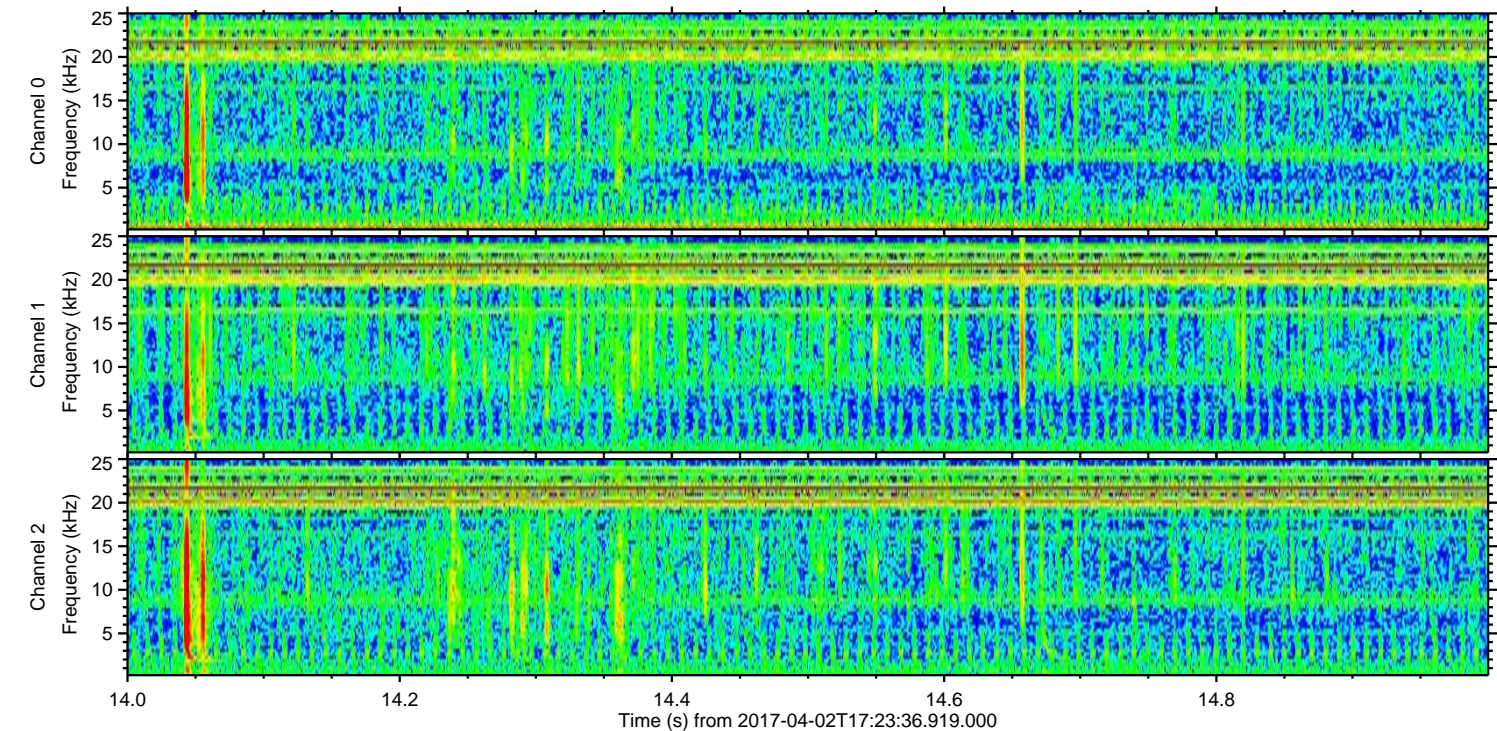
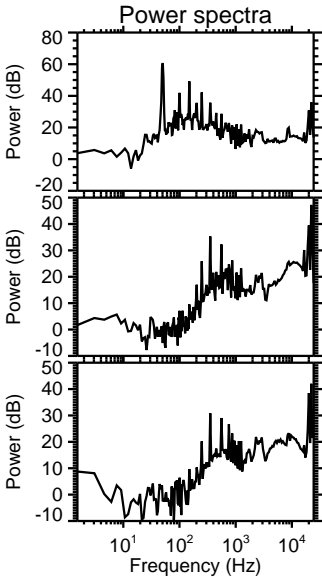
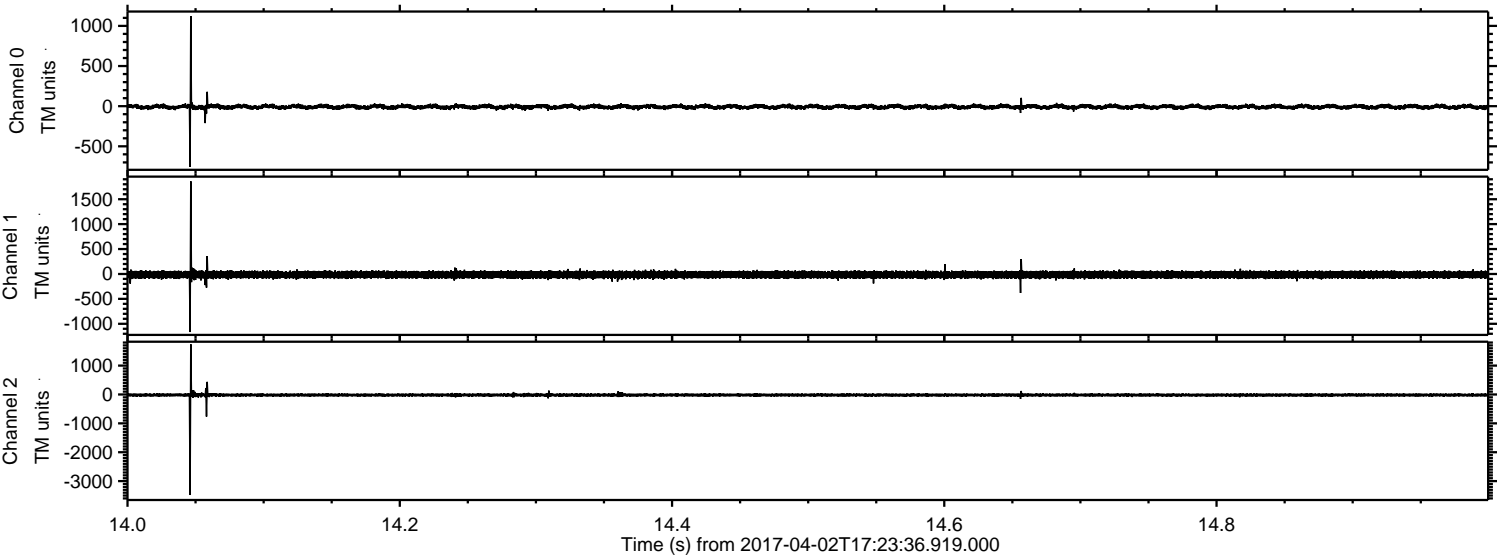


Processed Sun Apr 2 19:31:49 2017 by ELM ver.2012-10-06 from 001\_\_elm20170402\_172335\_\_dat00.bin



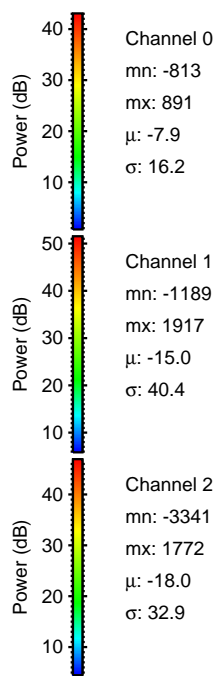
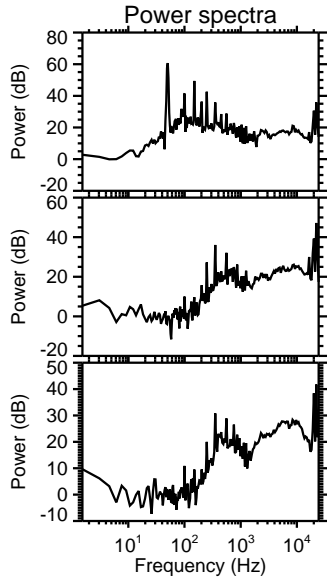
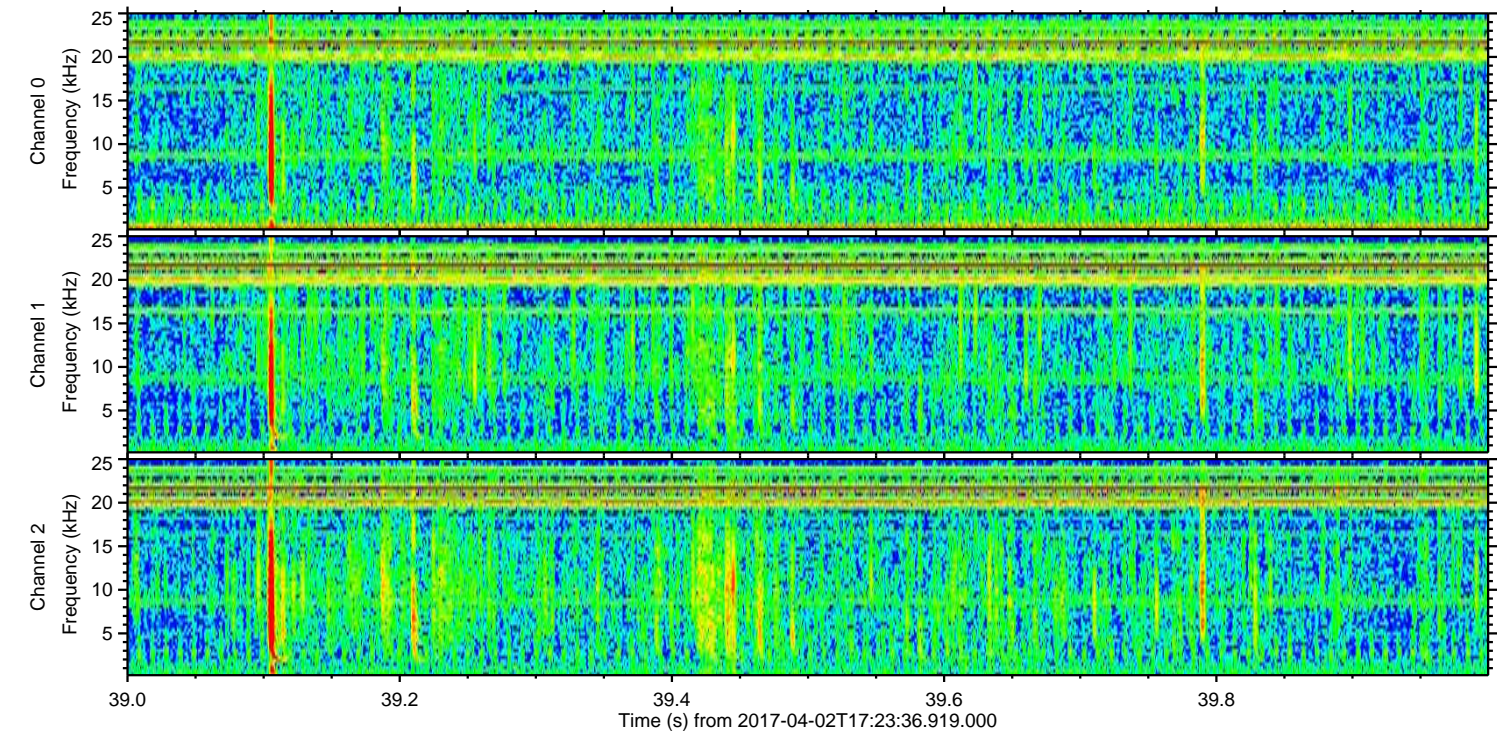
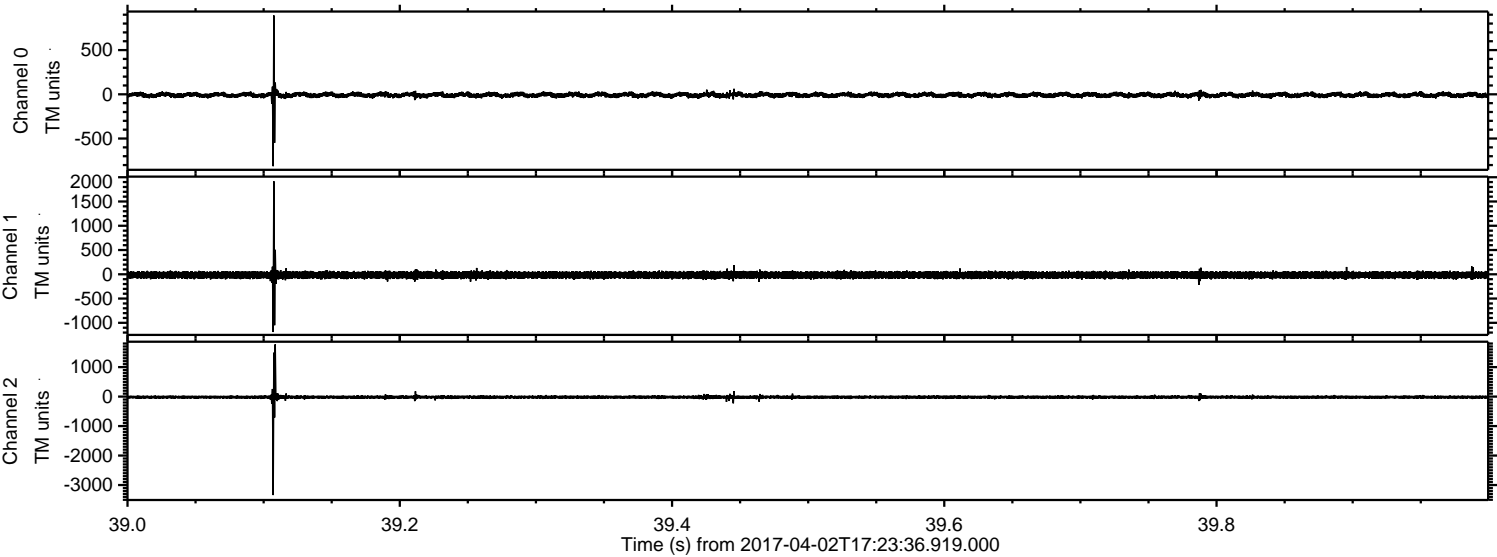


Processed Sun Apr 2 19:31:50 2017 by ELM ver.2012-10-06 from 001\_\_elm20170402\_172335\_\_dat00.bin





Processed Sun Apr 2 19:31:51 2017 by ELM ver.2012-10-06 from 001\_\_elm20170402\_172335\_\_dat00.bin





Processed Sun Apr 2 19:31:52 2017 by ELM ver.2012-10-06 from 001\_\_elm20170402\_172335\_\_dat00.bin

