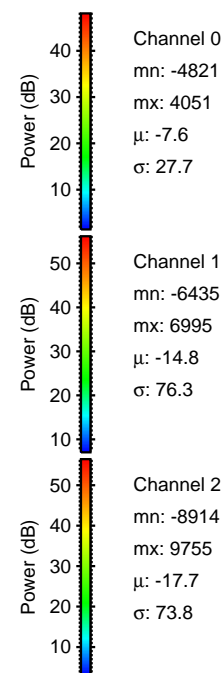
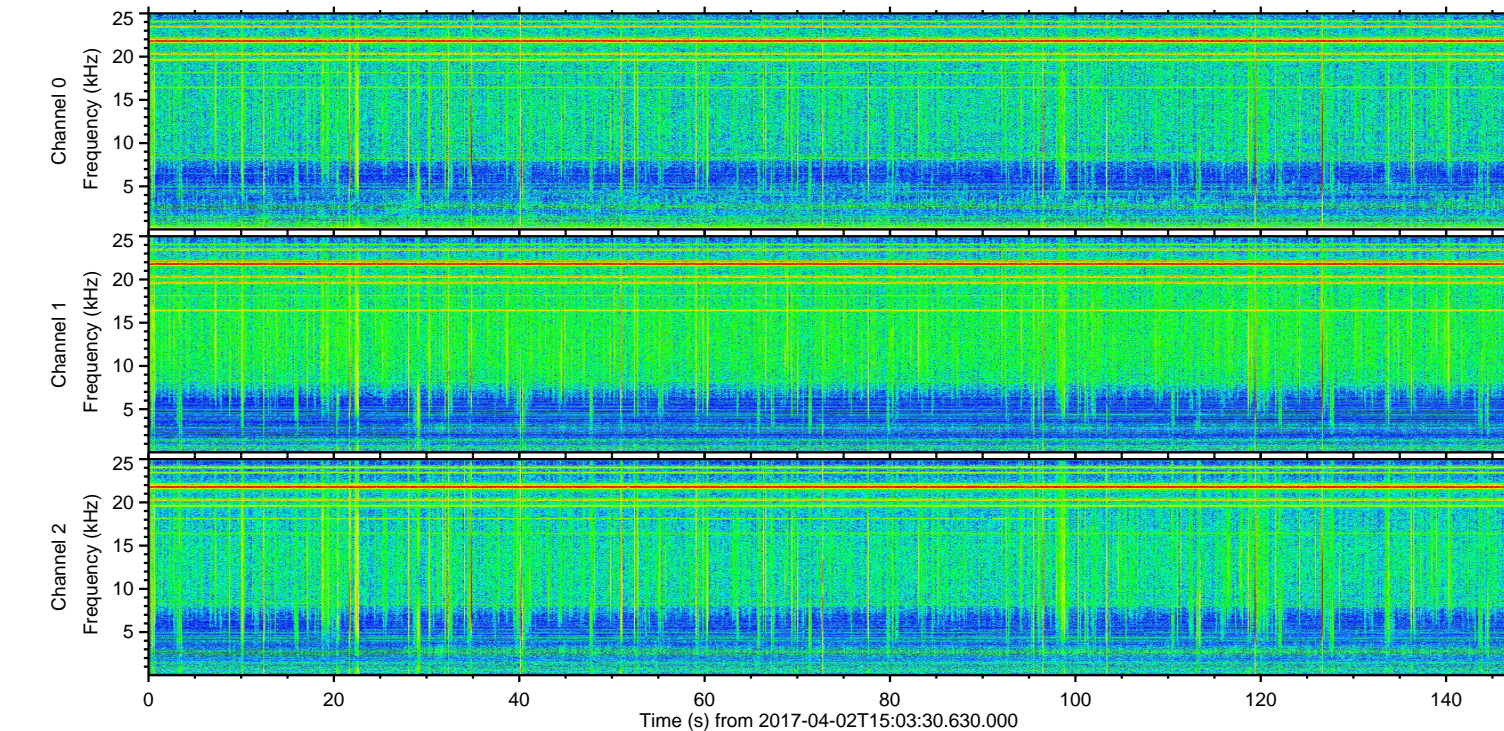
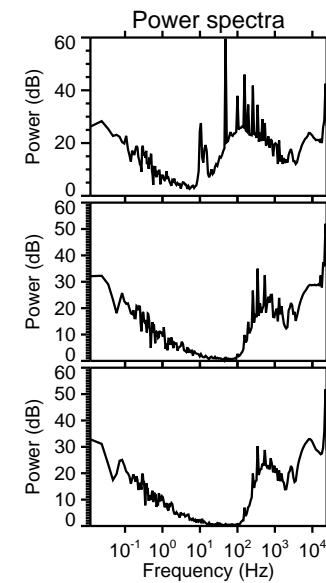
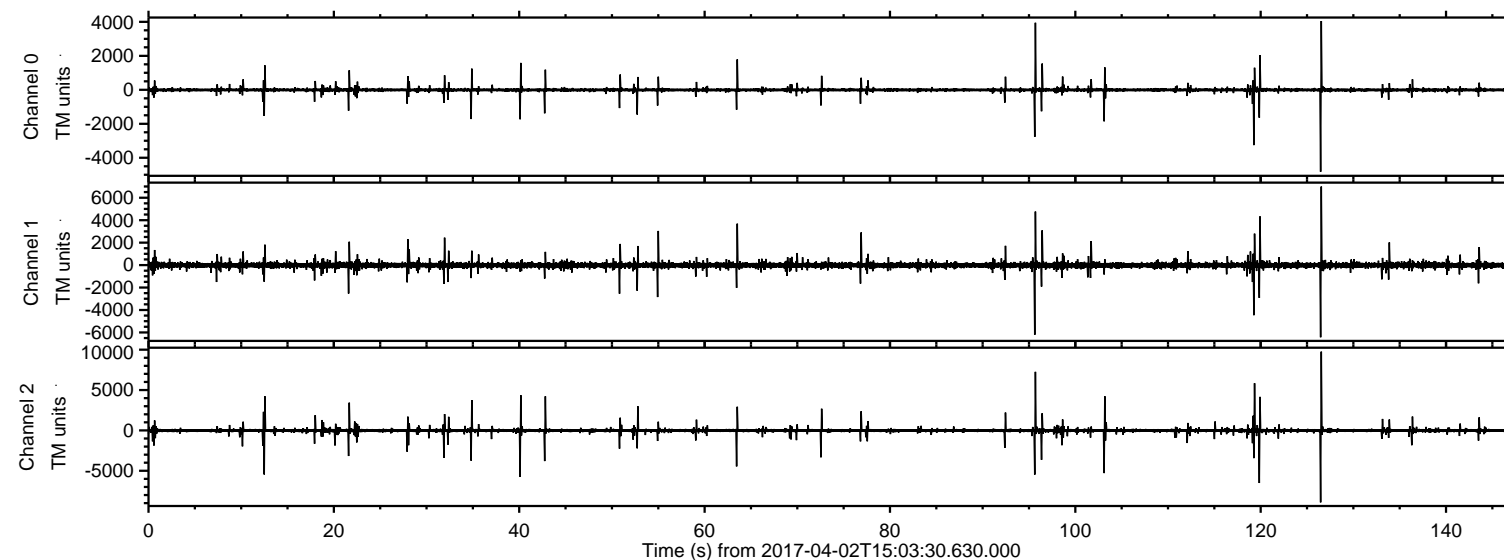


ELMAVAN 3D WAVEFORMS (Measured data sampled at 50 kHz) 51000 packets of 144 samples from 2017-04-02T15:03:30.630.000.

Processed Sun Apr 2 17:11:27 2017 by ELM ver.2012-10-06 from 001__elm20170402_150329__dat00.bin



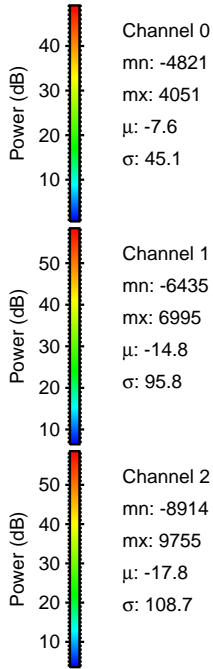
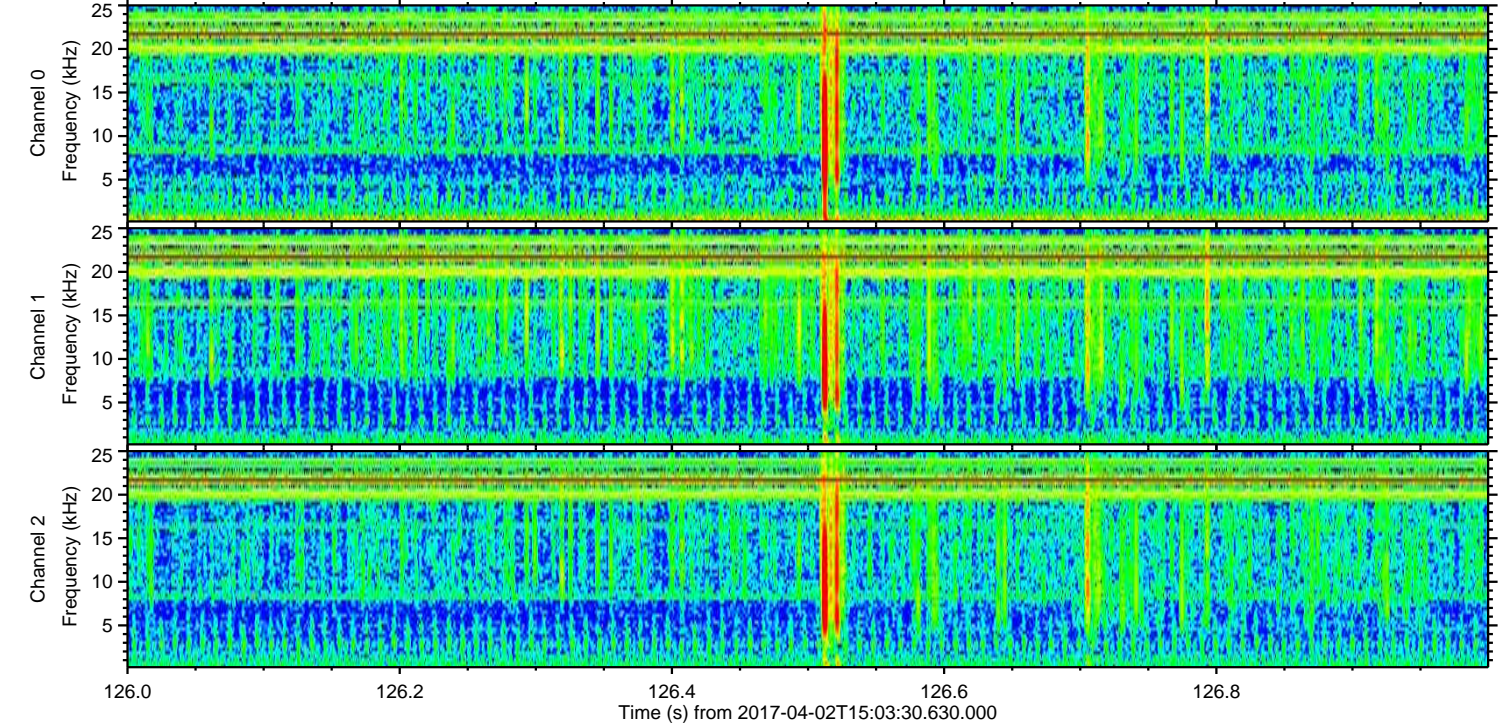
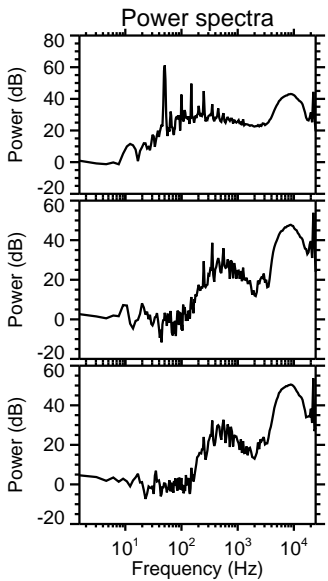
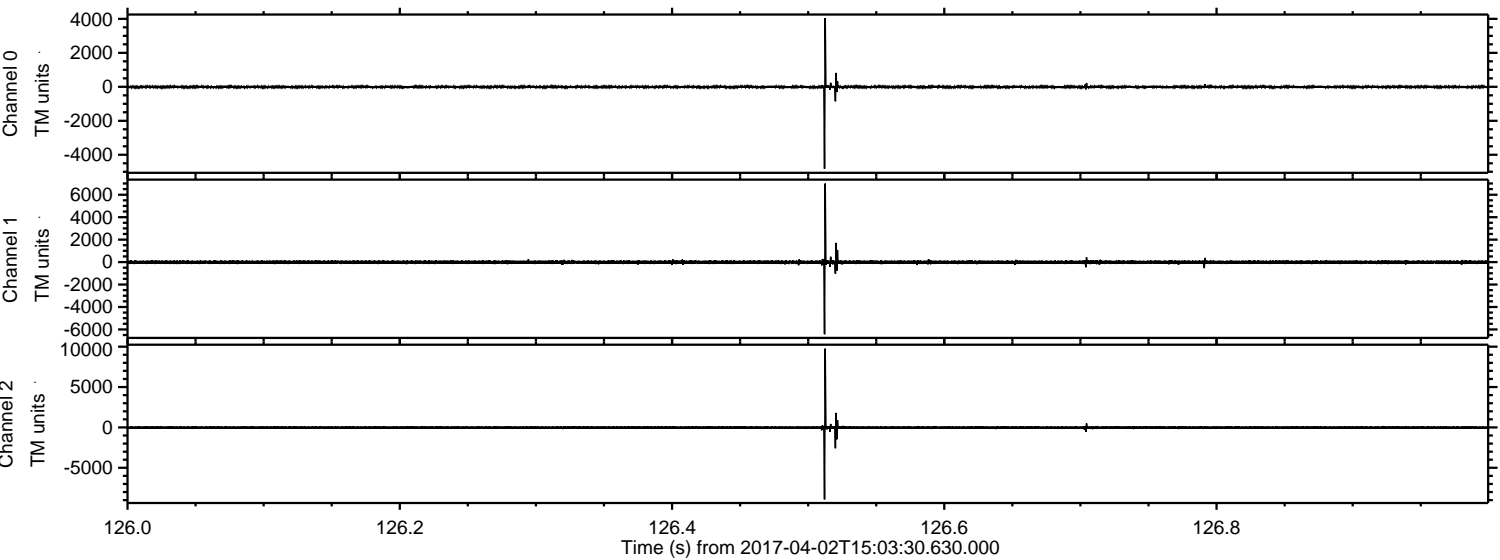
Channel 0
mn: -4821
mx: 4051
 μ : -7.6
 σ : 27.7

Channel 1
mn: -6435
mx: 6995
 μ : -14.8
 σ : 76.3

Channel 2
mn: -8914
mx: 9755
 μ : -17.7
 σ : 73.8

ELMAVAN 3D WAVEFORMS (Measured data sampled at 50 kHz) 51000 packets of 144 samples from 2017-04-02T15:03:30.630.000. Part 127/147

Processed Sun Apr 2 17:11:39 2017 by ELM ver.2012-10-06 from 001__elm20170402_150329__dat00.bin

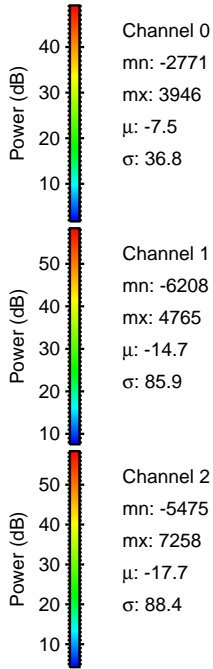
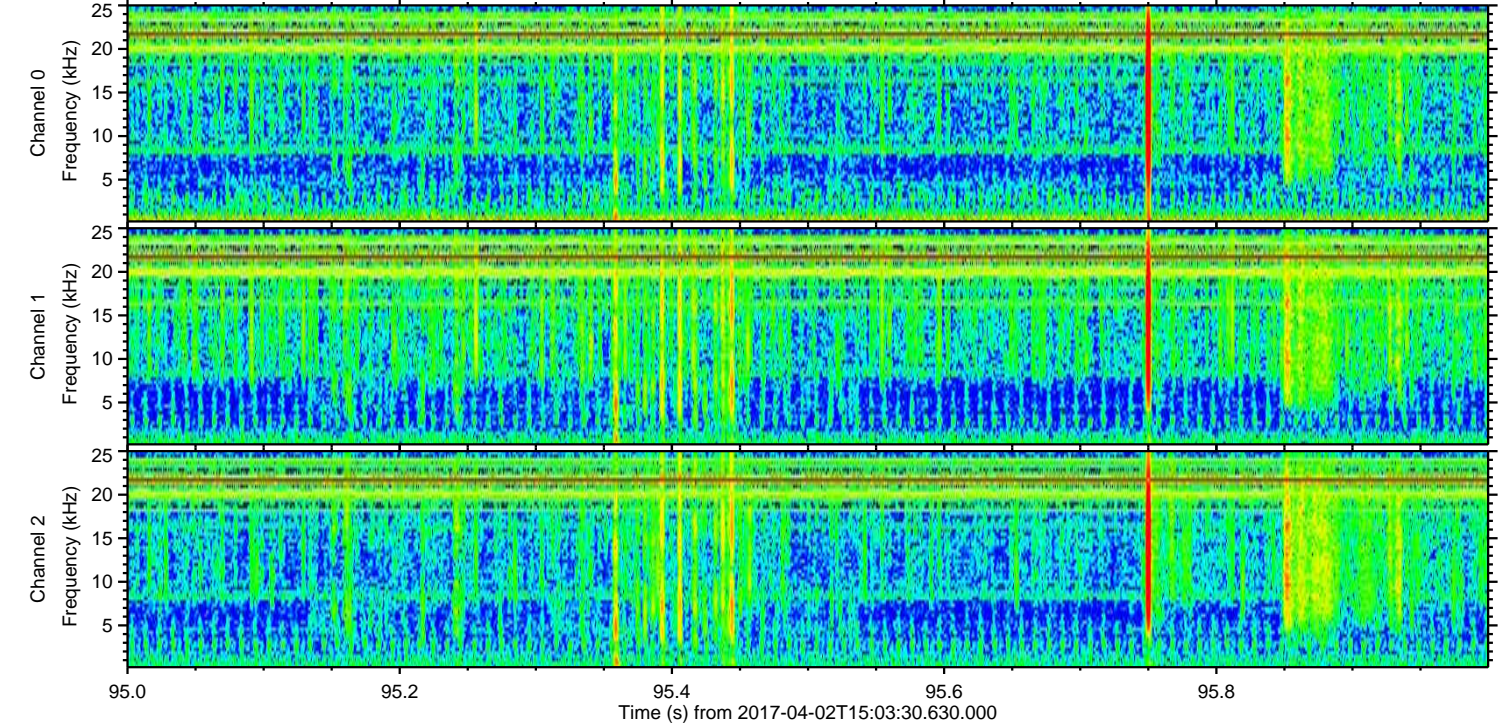
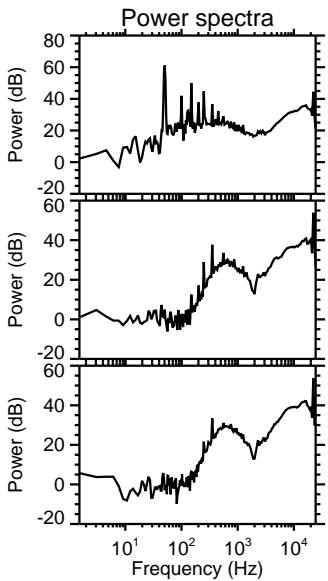
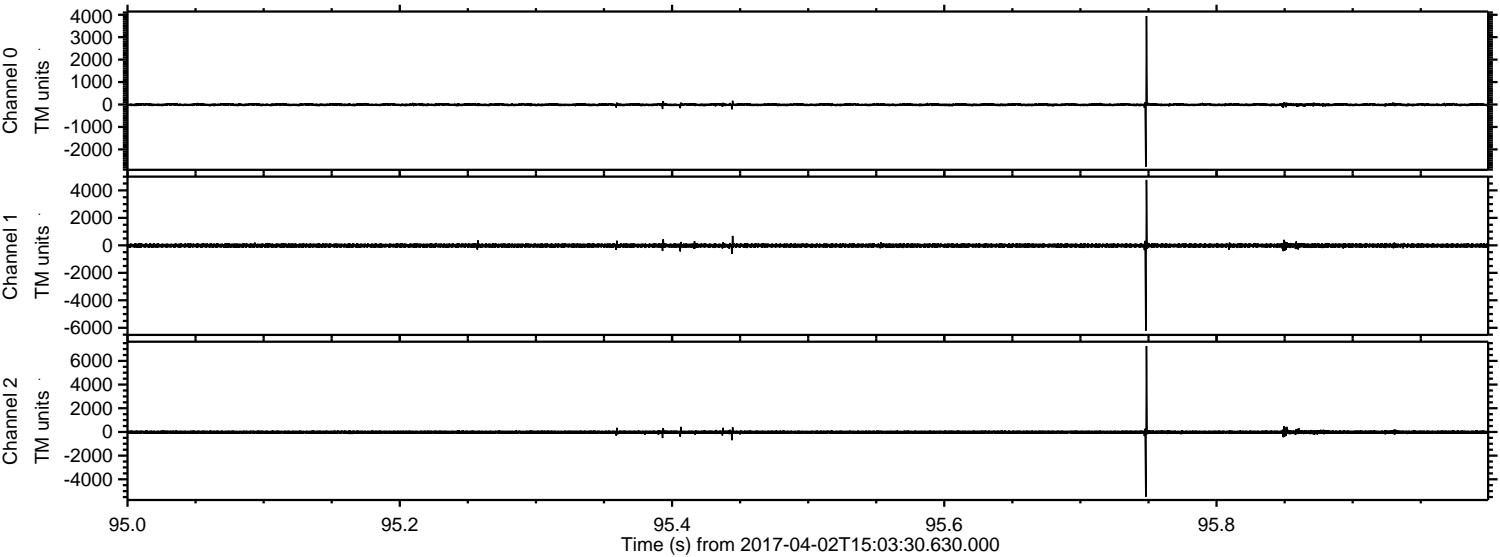


Channel 0
mn: -4821
mx: 4051
 μ : -7.6
 σ : 45.1

Channel 1
mn: -6435
mx: 6995
 μ : -14.8
 σ : 95.8

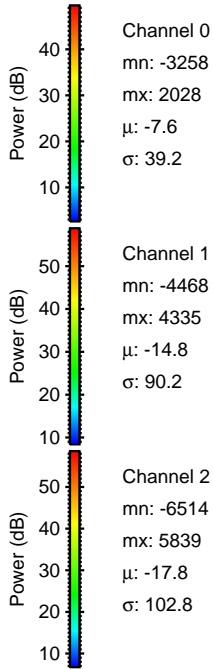
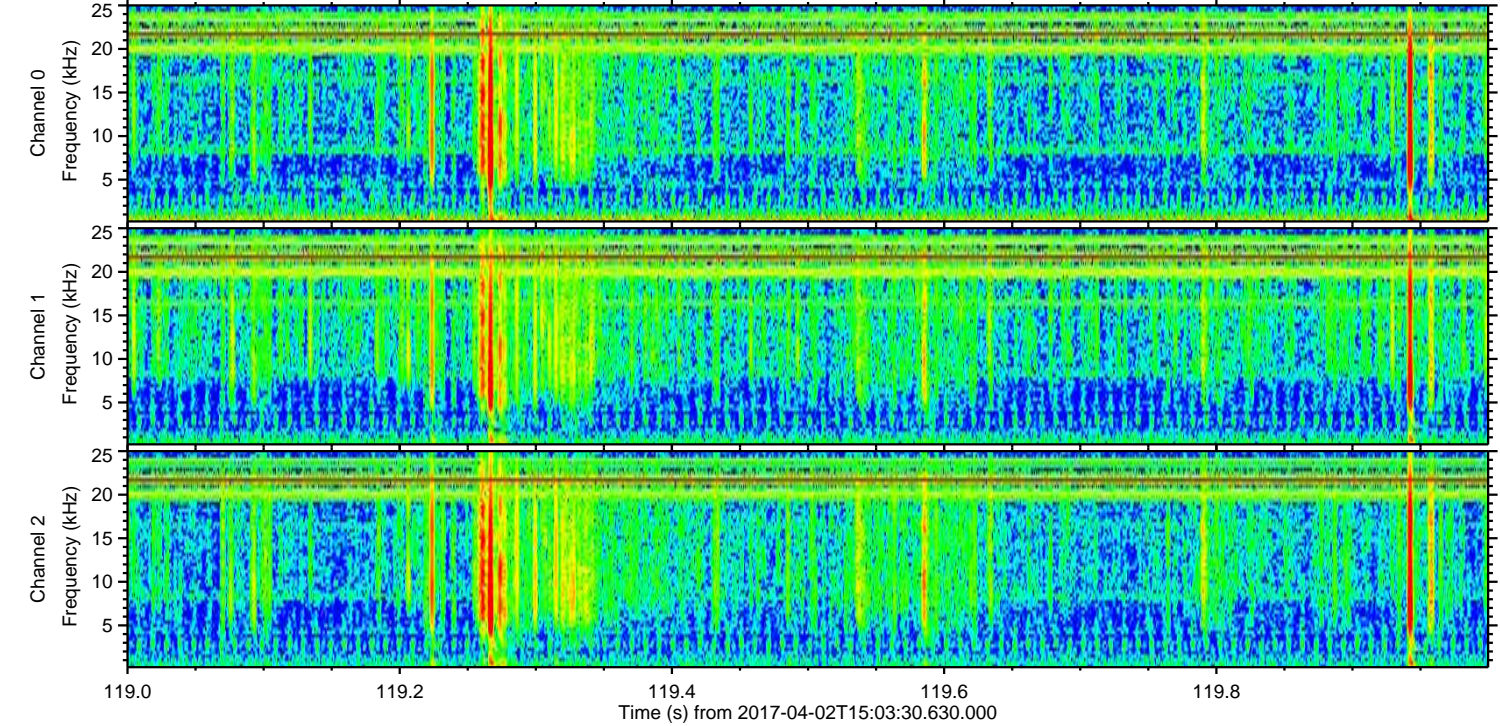
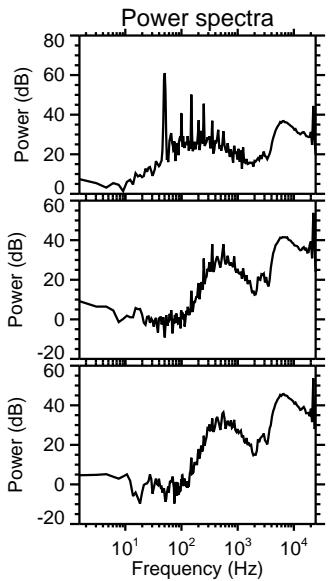
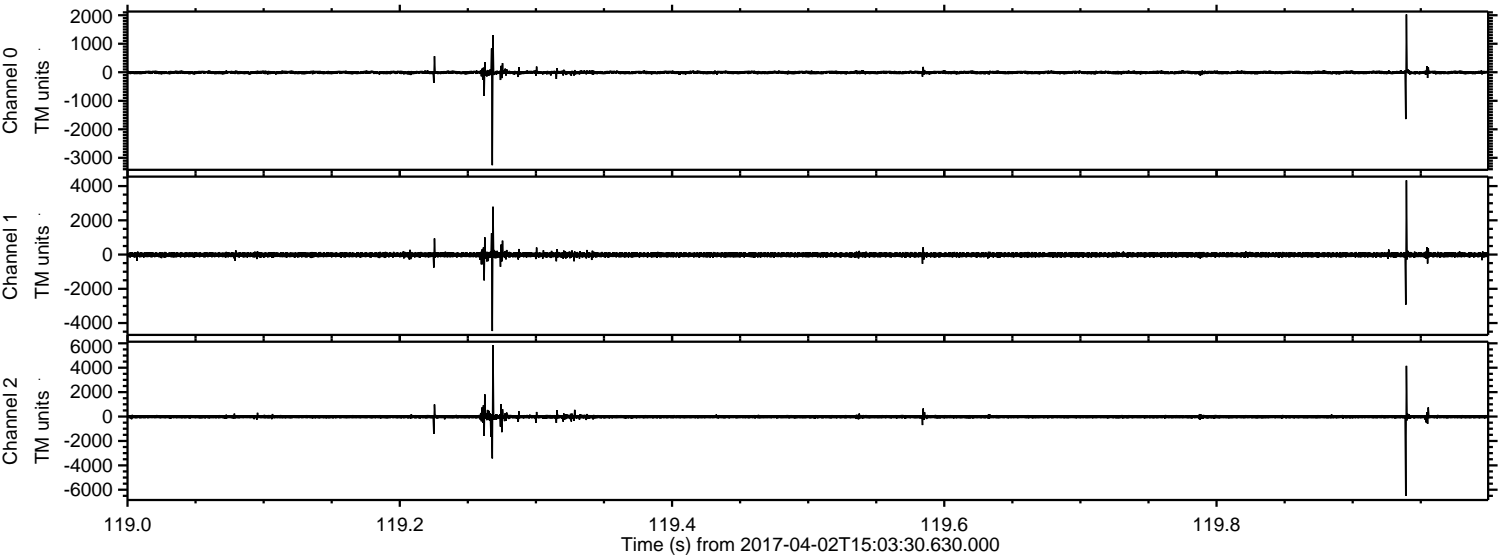
Channel 2
mn: -8914
mx: 9755
 μ : -17.8
 σ : 108.7

Processed Sun Apr 2 17:11:40 2017 by ELM ver.2012-10-06 from 001__elm20170402_150329__dat00.bin

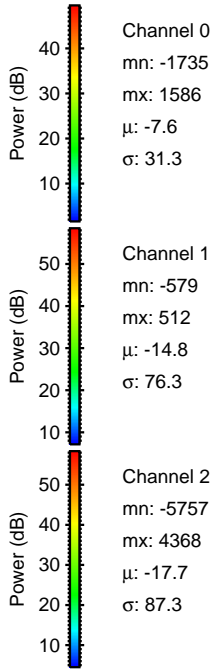
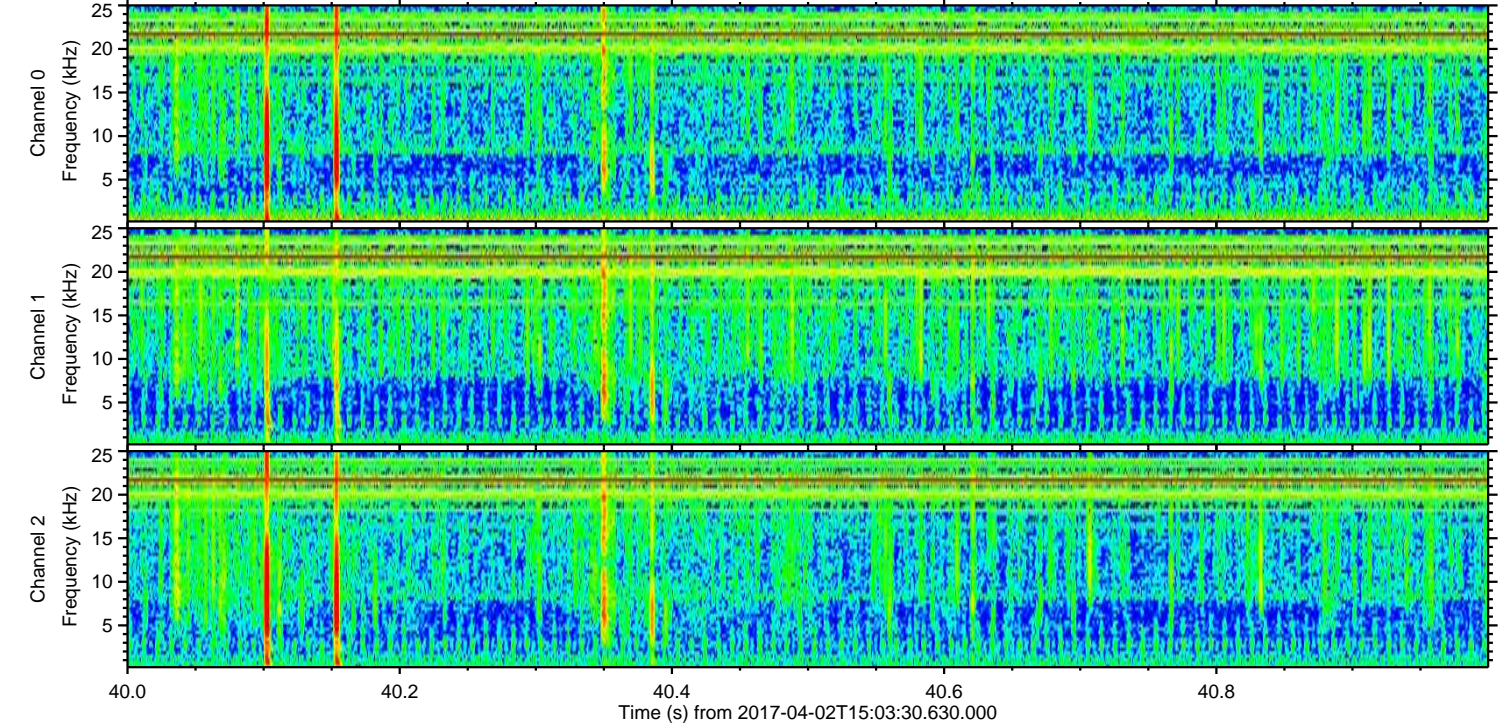
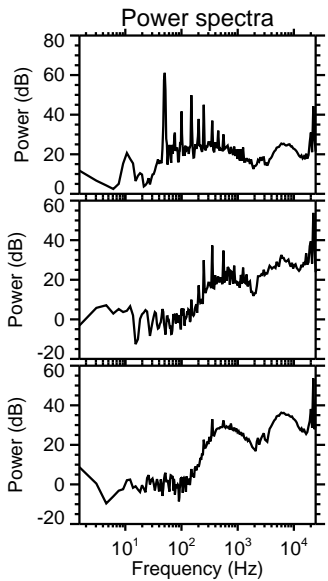
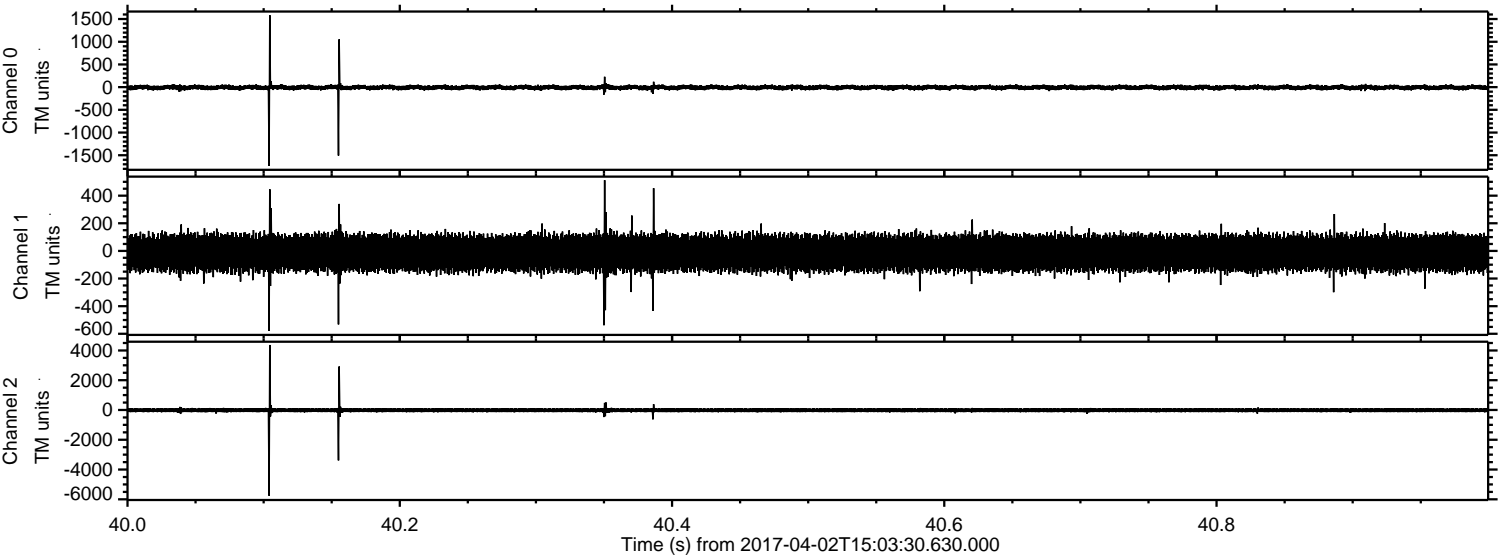


ELMAVAN 3D WAVEFORMS (Measured data sampled at 50 kHz) 51000 packets of 144 samples from 2017-04-02T15:03:30.630.000. Part 120/147

Processed Sun Apr 2 17:11:41 2017 by ELM ver.2012-10-06 from 001__elm20170402_150329__dat00.bin

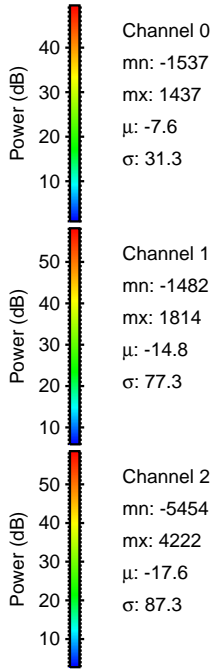
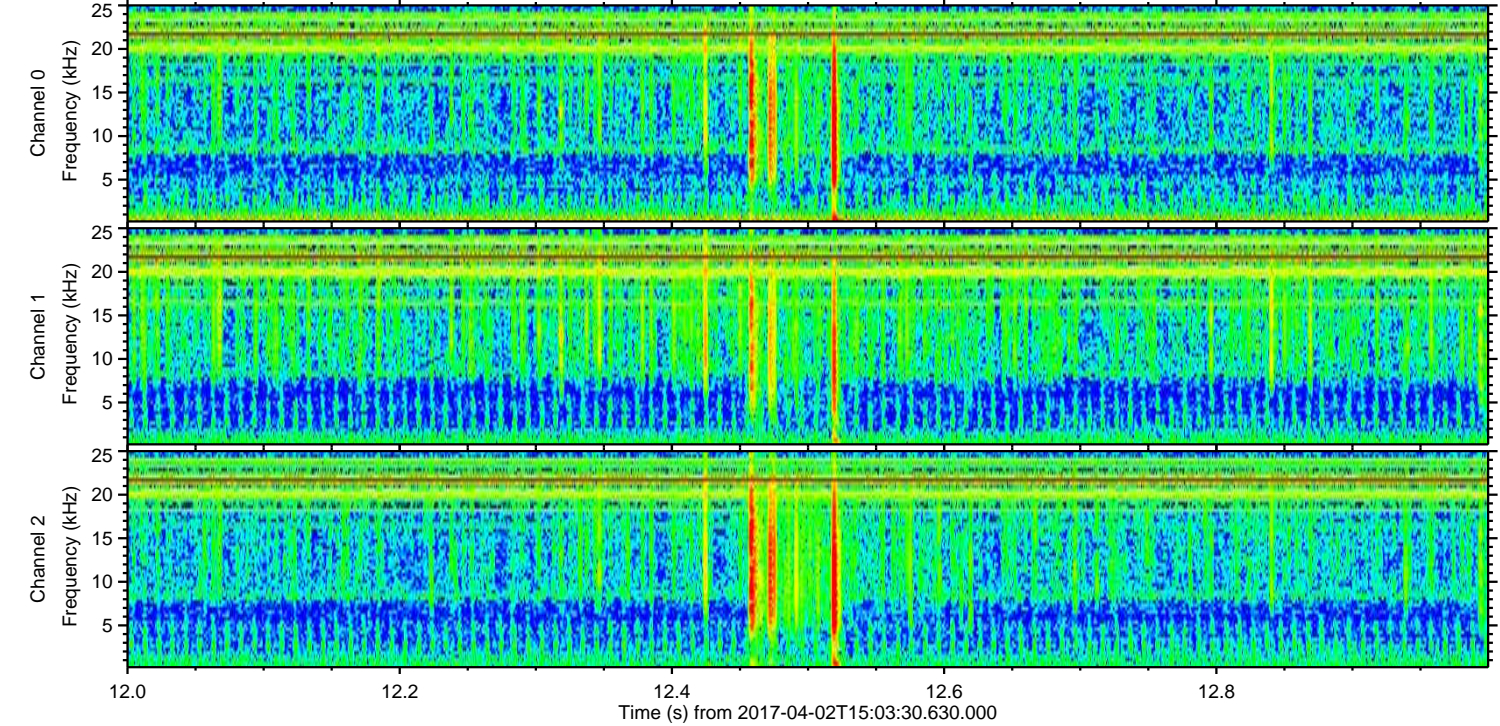
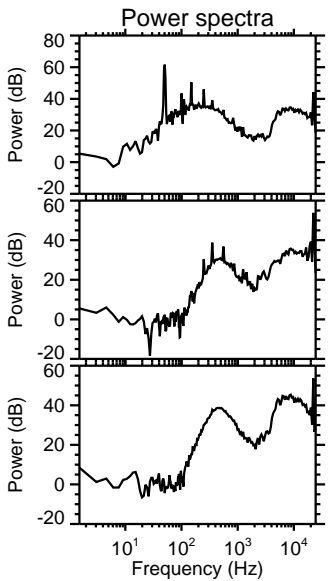
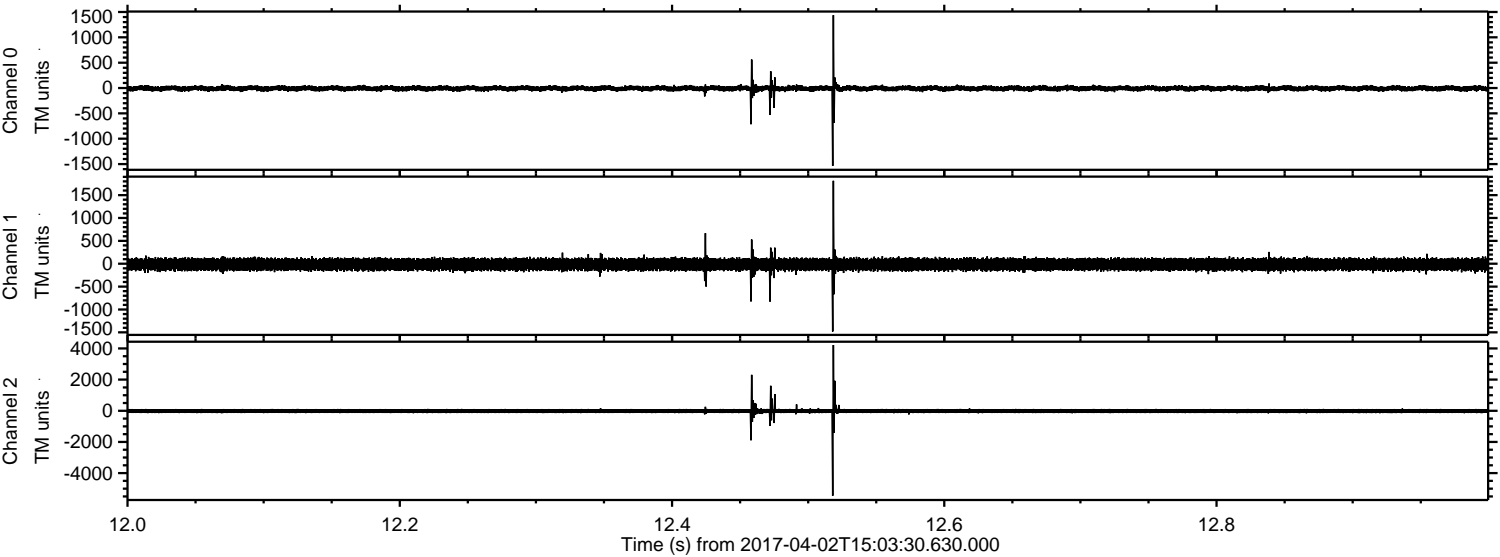


Processed Sun Apr 2 17:11:42 2017 by ELM ver.2012-10-06 from 001__elm20170402_150329__dat00.bin



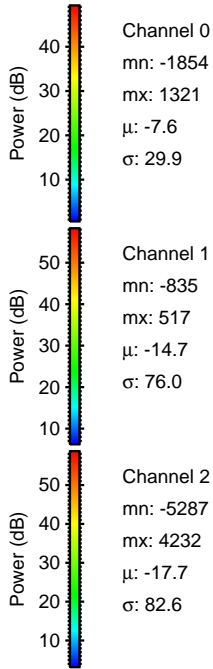
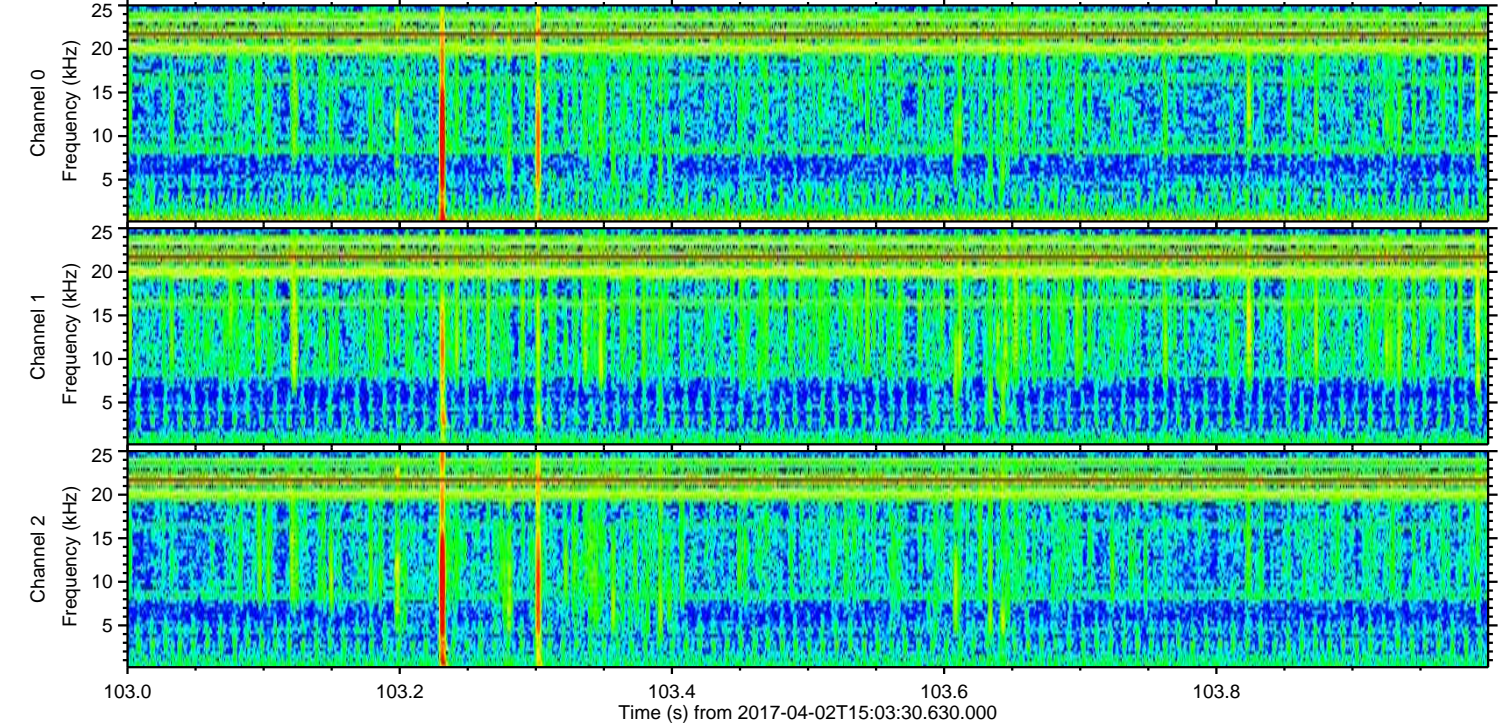
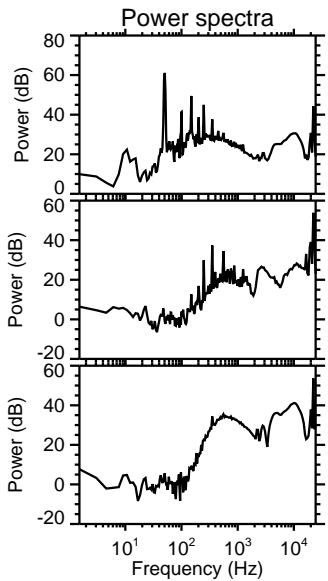
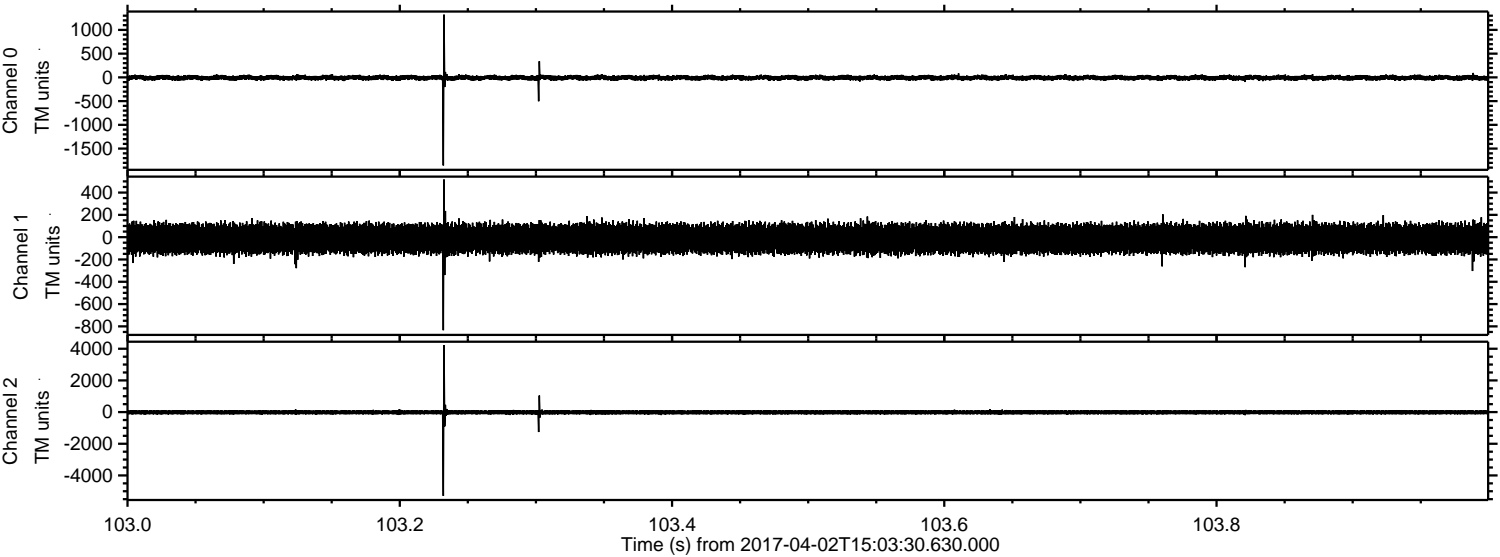
ELMAVAN 3D WAVEFORMS (Measured data sampled at 50 kHz) 51000 packets of 144 samples from 2017-04-02T15:03:30.630.000. Part 13/147

Processed Sun Apr 2 17:11:42 2017 by ELM ver.2012-10-06 from 001__elm20170402_150329__dat00.bin

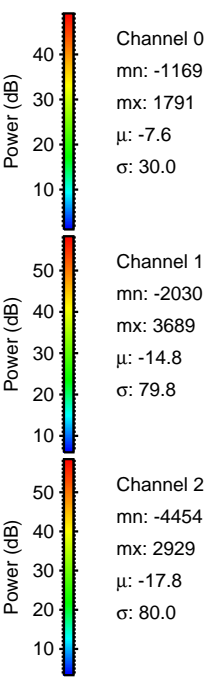
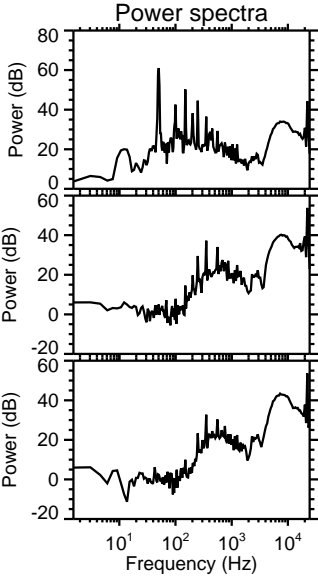
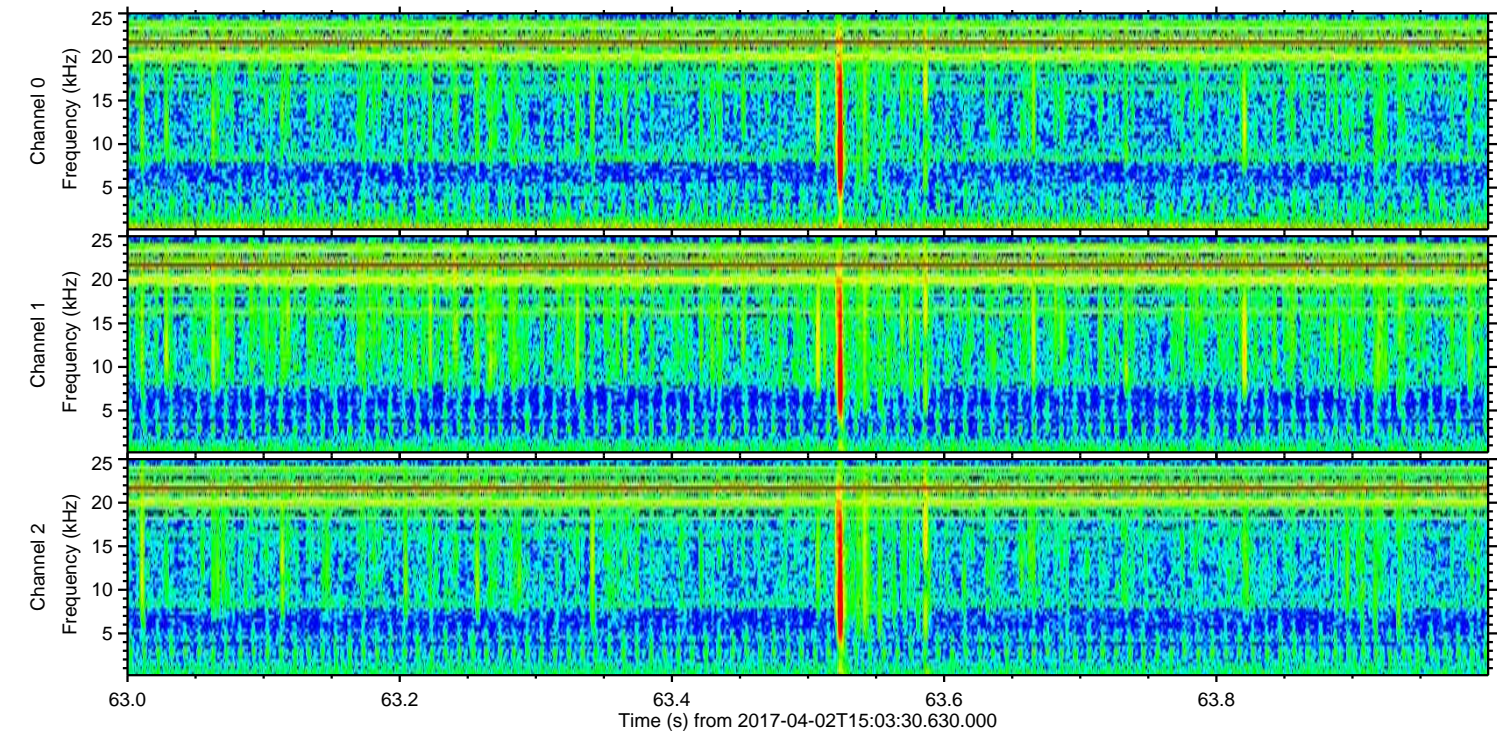
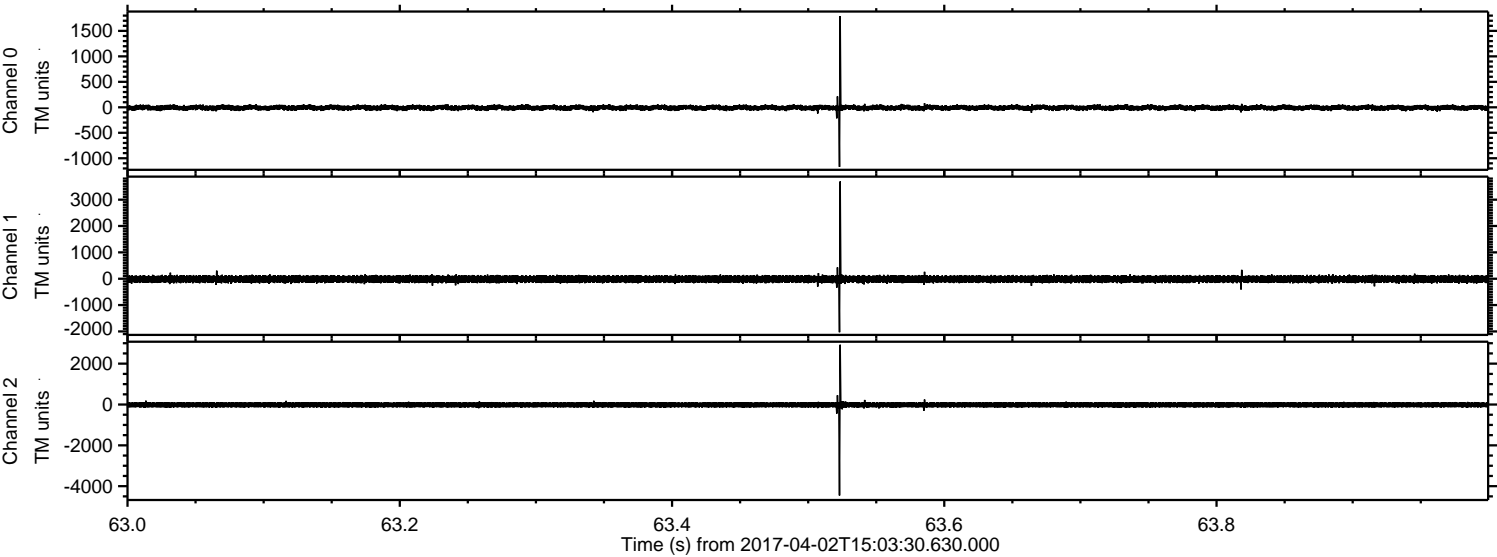


ELMAVAN 3D WAVEFORMS (Measured data sampled at 50 kHz) 51000 packets of 144 samples from 2017-04-02T15:03:30.630.000. Part 104/147

Processed Sun Apr 2 17:11:43 2017 by ELM ver.2012-10-06 from 001__elm20170402_150329__dat00.bin

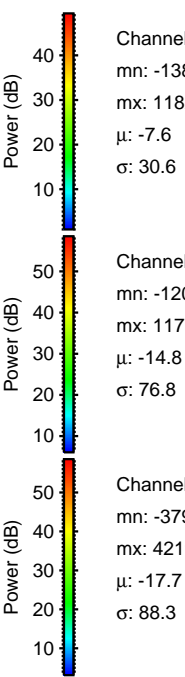
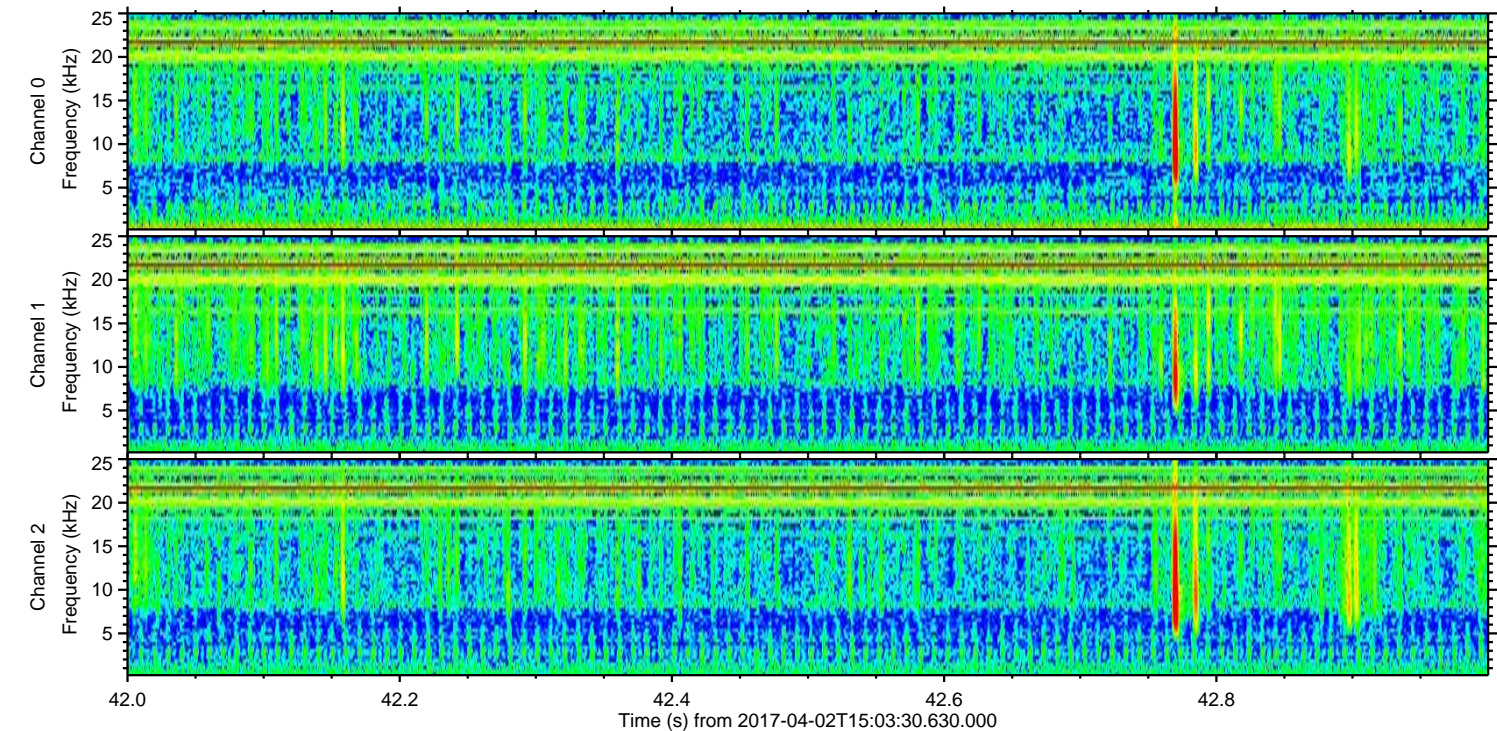
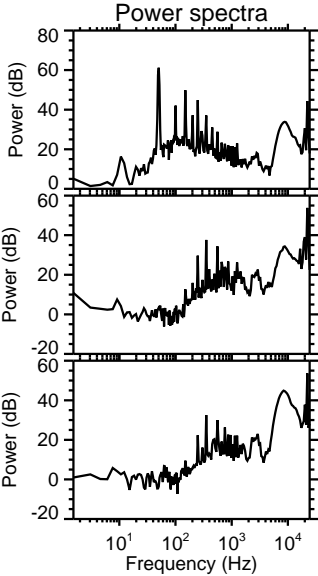
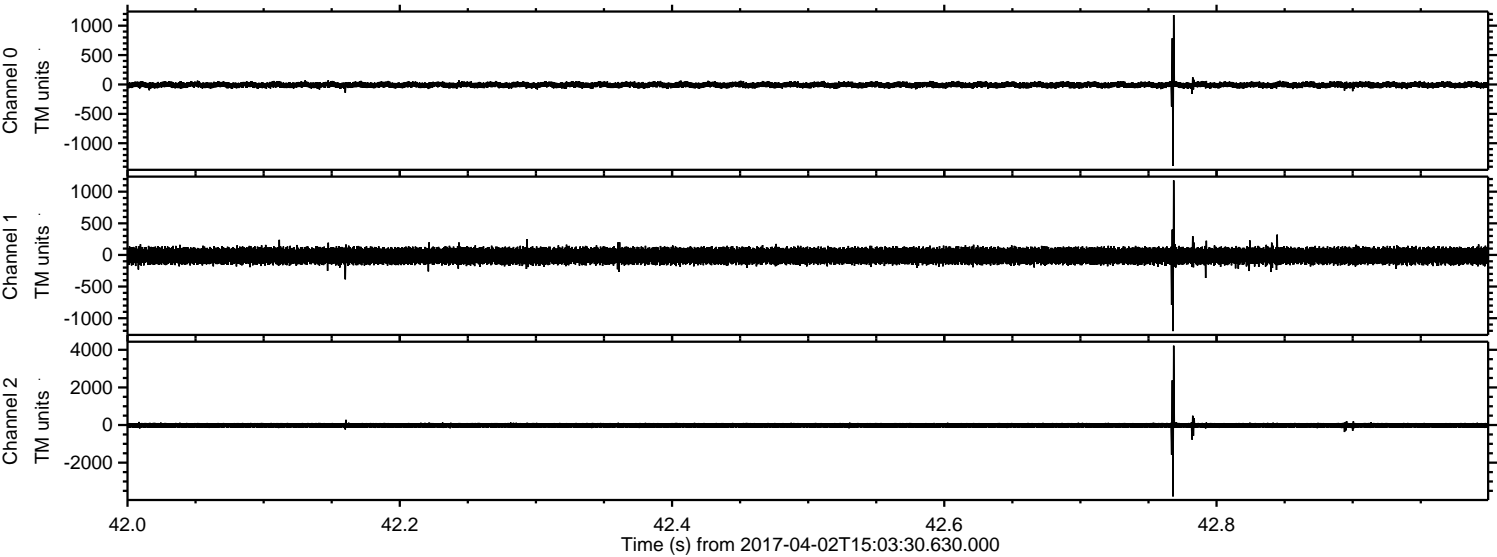


Processed Sun Apr 2 17:11:44 2017 by ELM ver.2012-10-06 from 001__elm20170402_150329__dat00.bin



ELMAVAN 3D WAVEFORMS (Measured data sampled at 50 kHz) 51000 packets of 144 samples from 2017-04-02T15:03:30.630.000. Part 43/147

Processed Sun Apr 2 17:11:45 2017 by ELM ver.2012-10-06 from 001__elm20170402_150329__dat00.bin



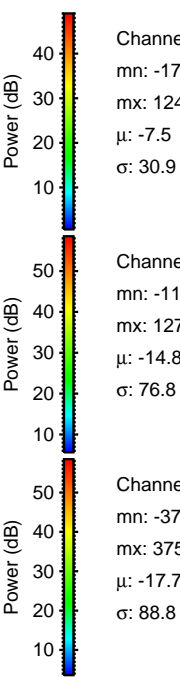
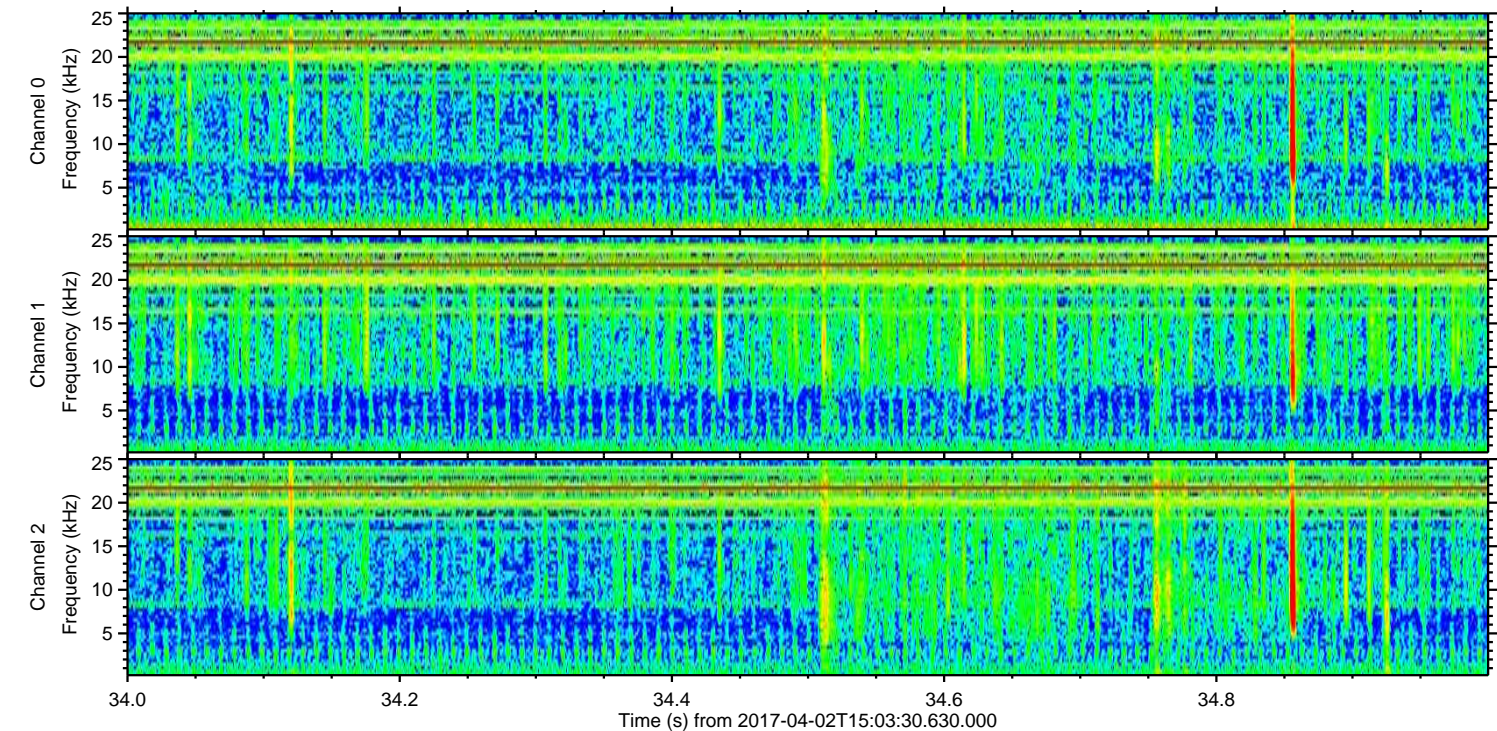
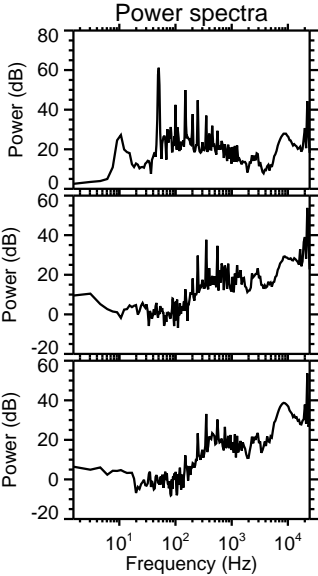
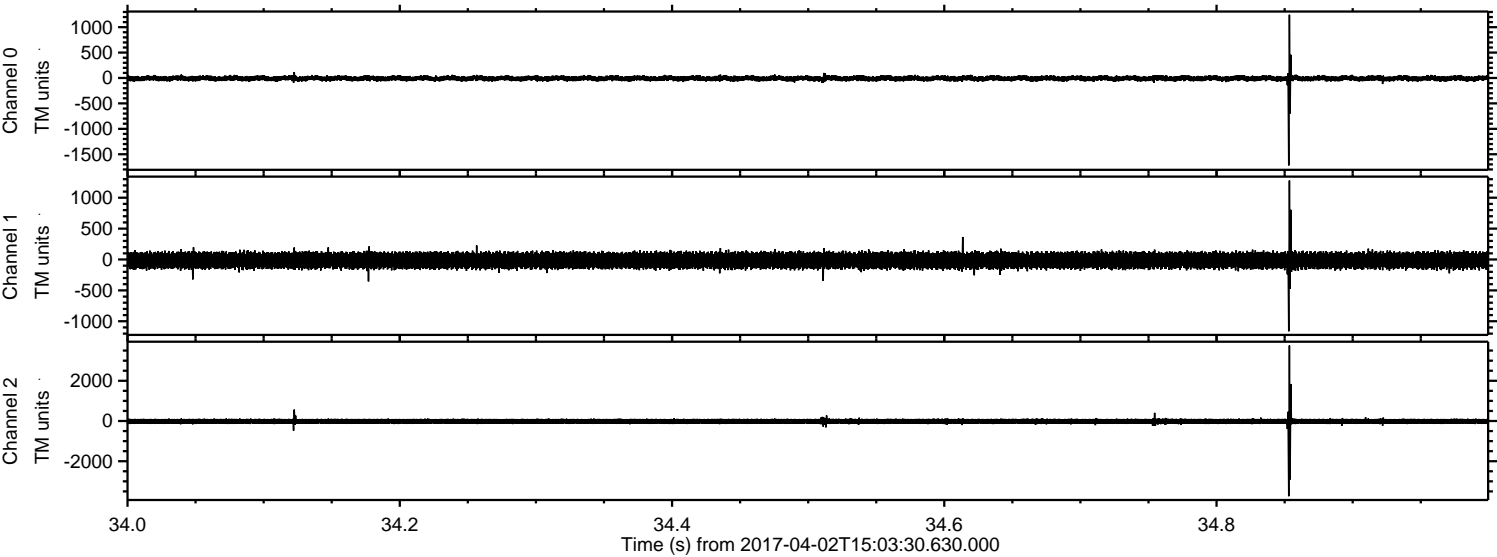
Channel 0
mn: -1383
mx: 1182
 μ : -7.6
 σ : 30.6

Channel 1
mn: -1204
mx: 1179
 μ : -14.8
 σ : 76.8

Channel 2
mn: -3795
mx: 4219
 μ : -17.7
 σ : 88.3

ELMAVAN 3D WAVEFORMS (Measured data sampled at 50 kHz) 51000 packets of 144 samples from 2017-04-02T15:03:30.630.000. Part 35/147

Processed Sun Apr 2 17:11:46 2017 by ELM ver.2012-10-06 from 001__elm20170402_150329__dat00.bin



Processed Sun Apr 2 17:11:47 2017 by ELM ver.2012-10-06 from 001__elm20170402_150329__dat00.bin

