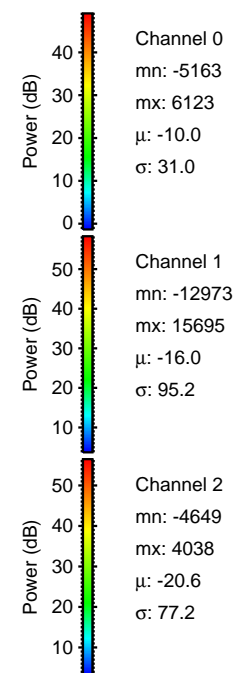
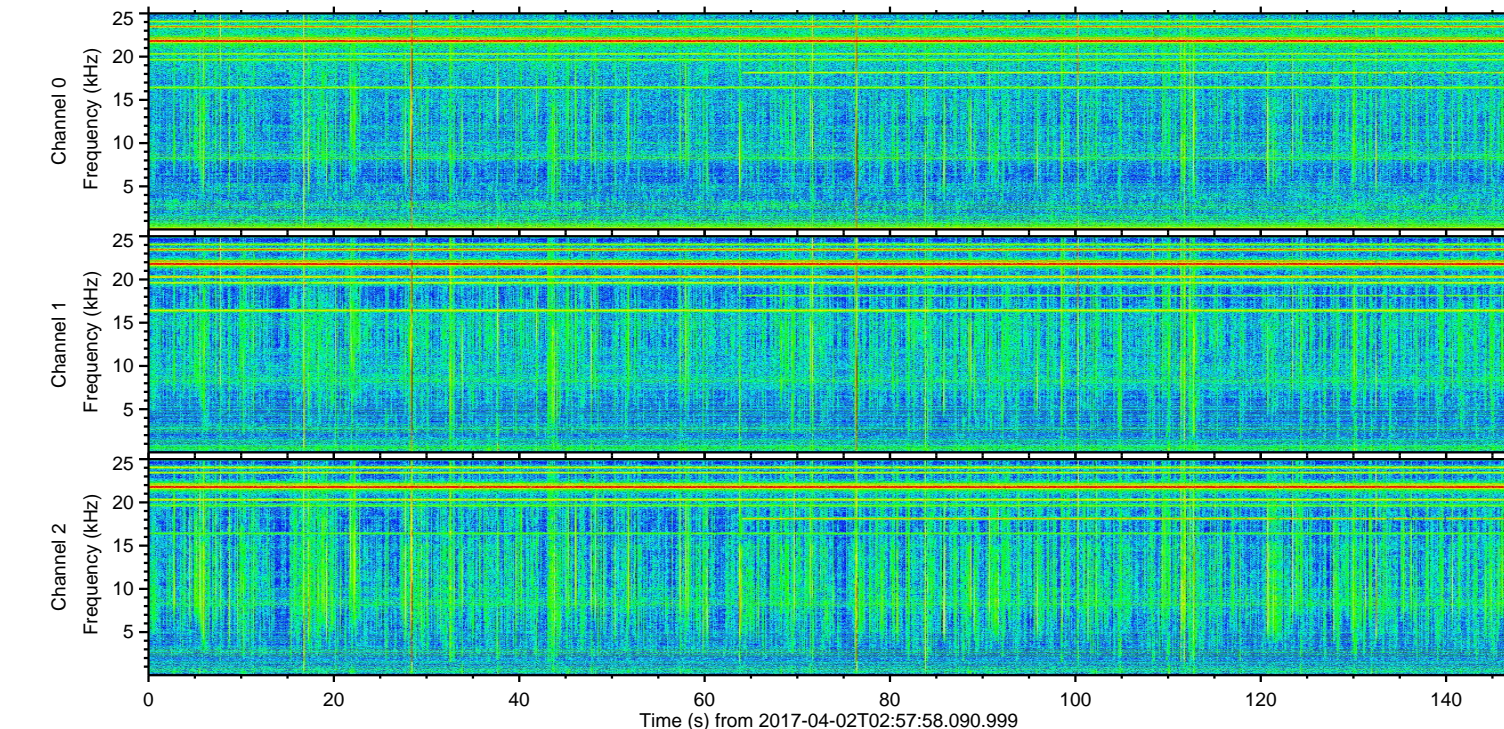
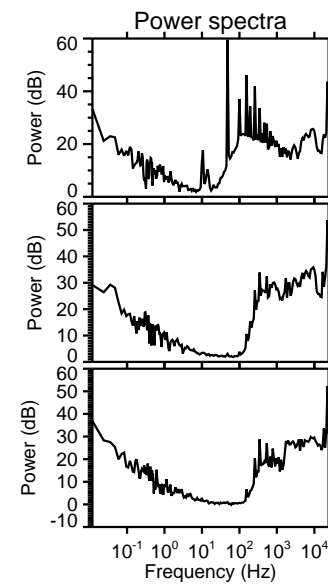
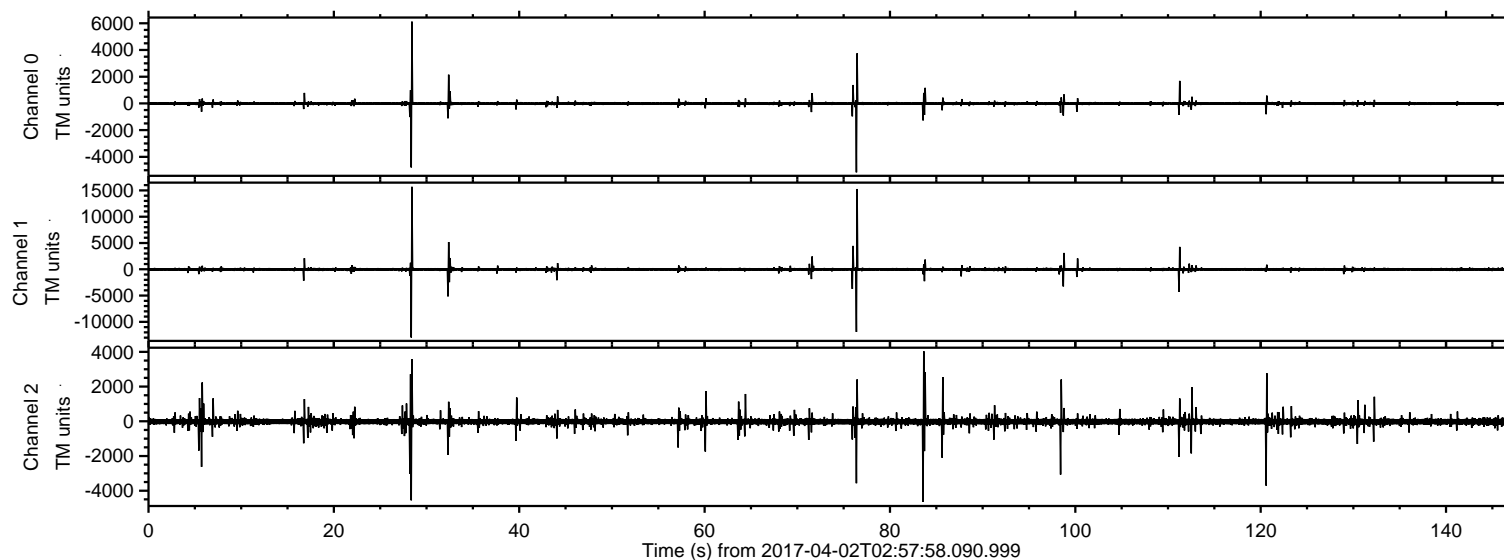


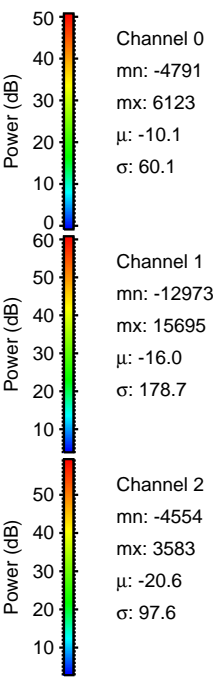
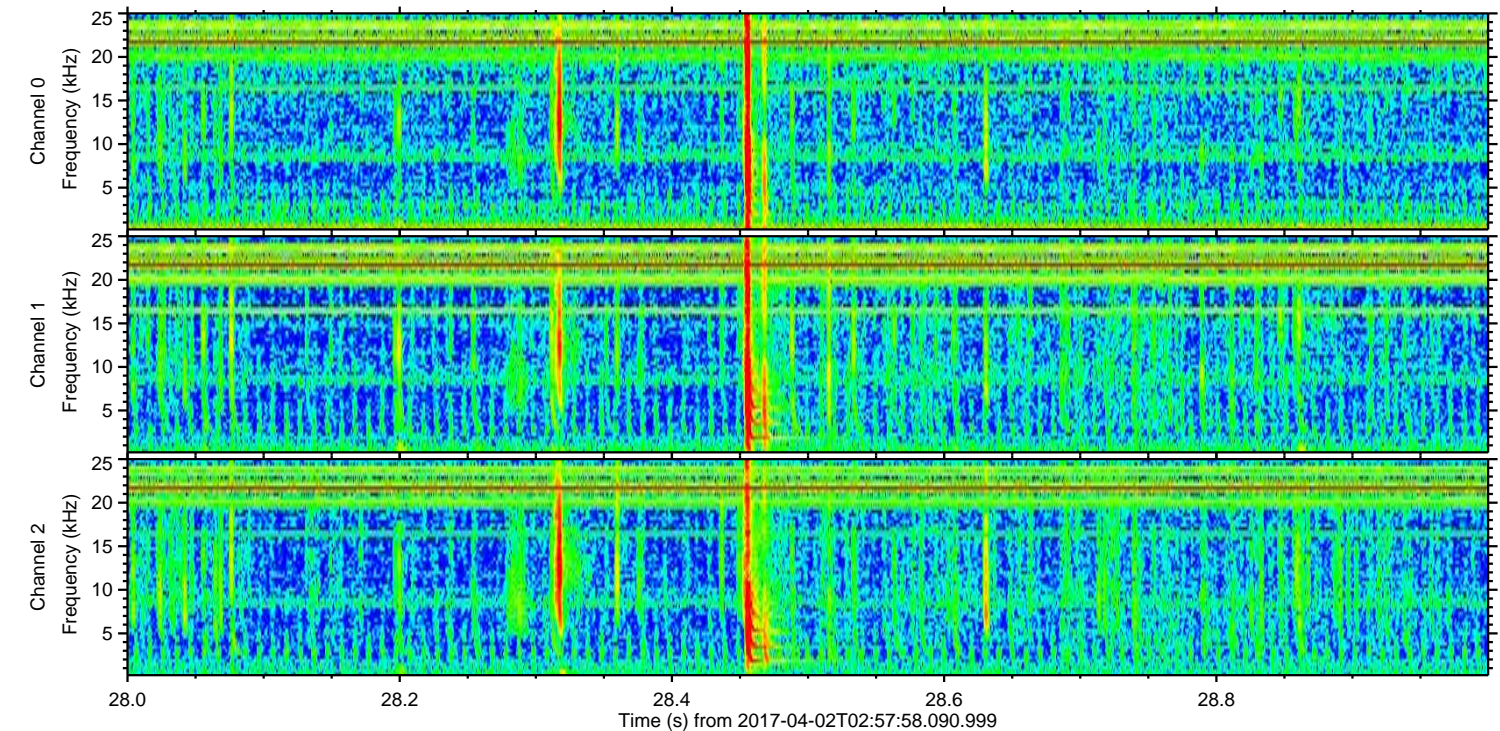
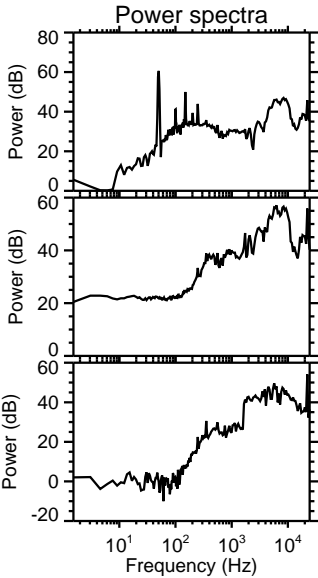
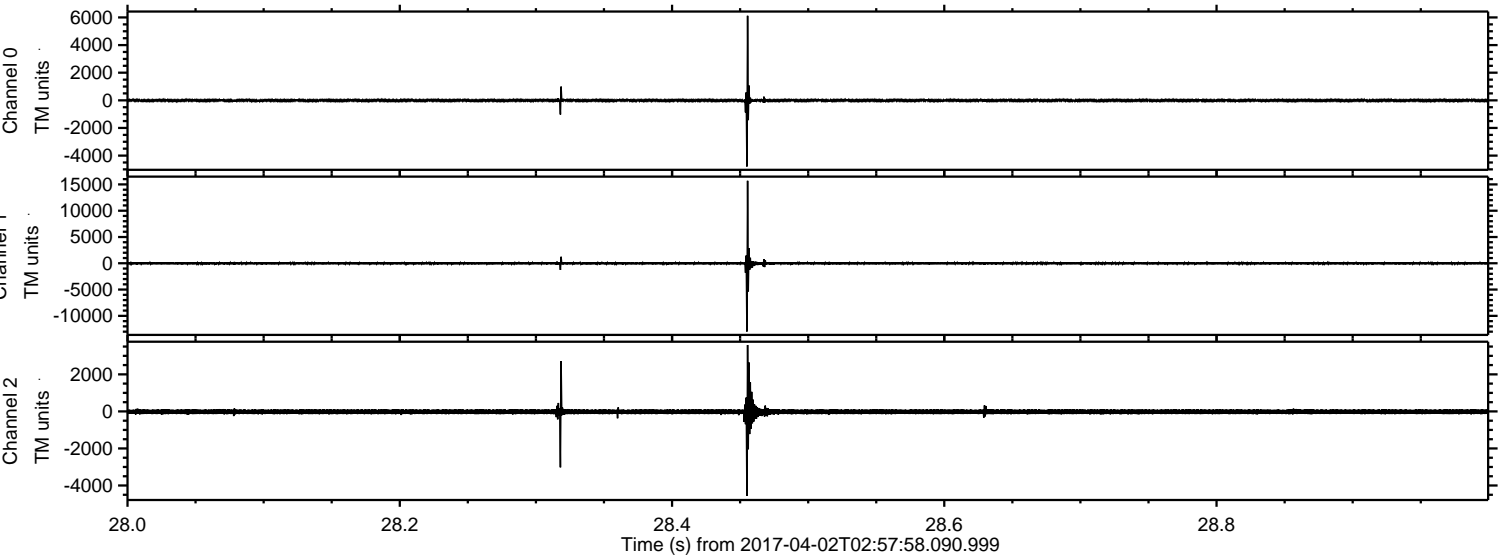
# ELMAVAN 3D WAVEFORMS (Measured data sampled at 50 kHz) 51000 packets of 144 samples from 2017-04-02T02:57:58.090.999.

Processed Sun Apr 2 05:05:48 2017 by ELM ver.2012-10-06 from 001\_\_elm20170402\_025757\_\_dat00.bin





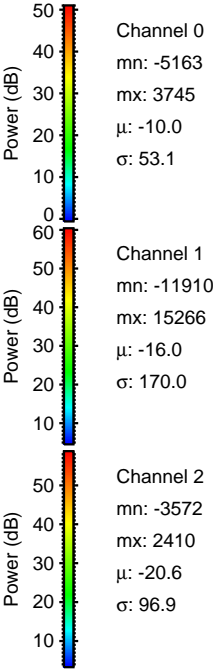
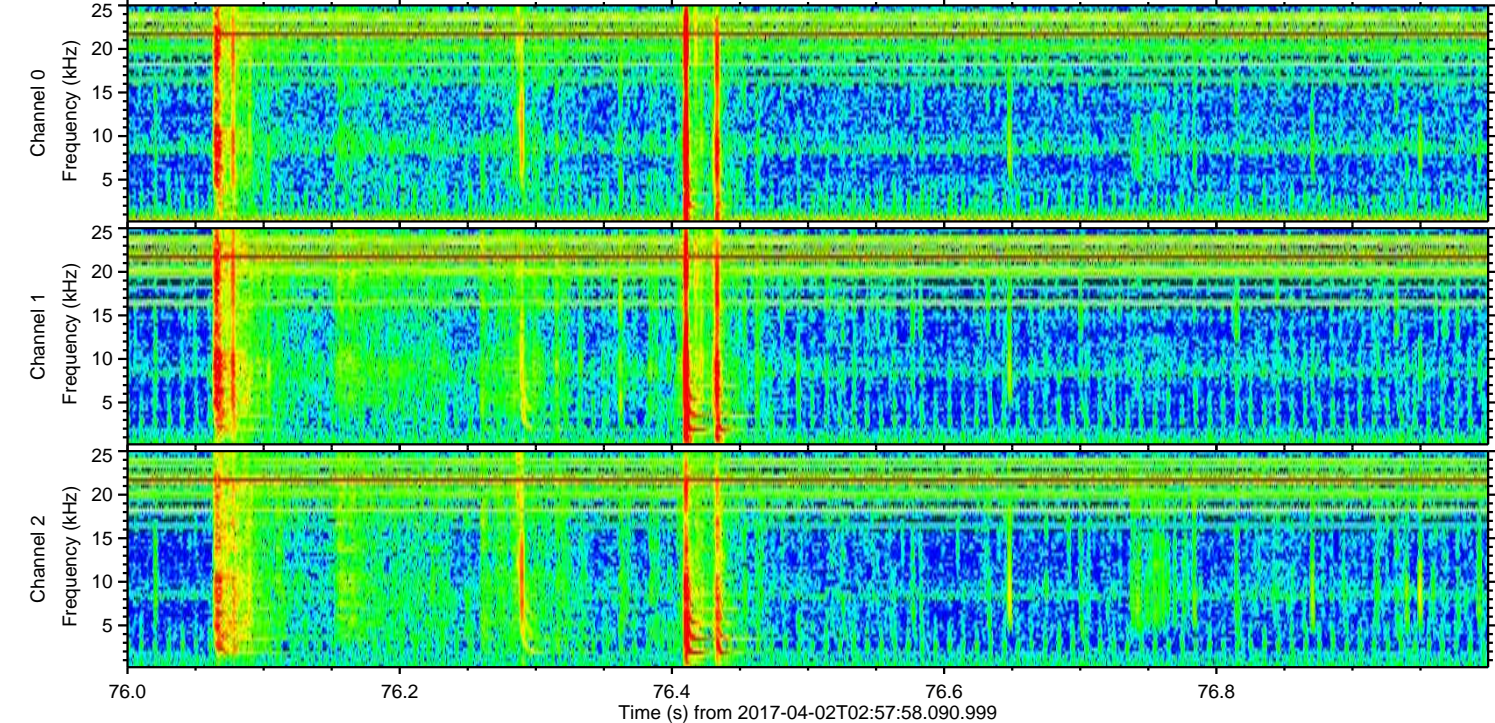
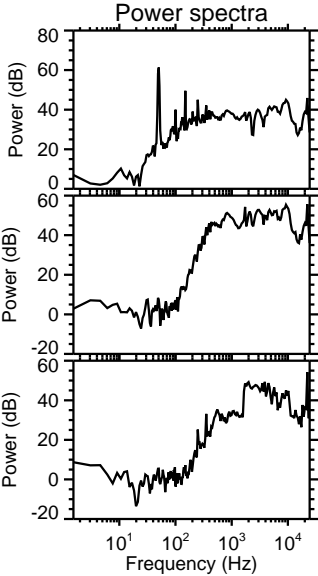
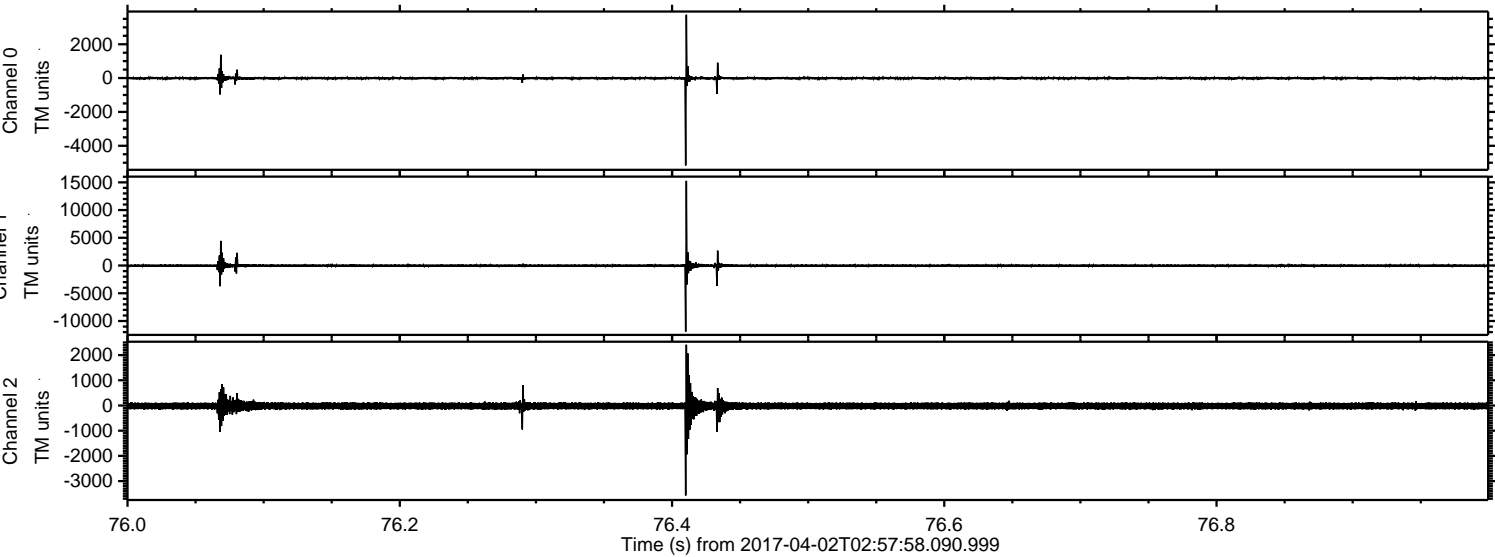
Processed Sun Apr 2 05:06:00 2017 by ELM ver.2012-10-06 from 001\_\_elm20170402\_025757\_\_dat00.bin





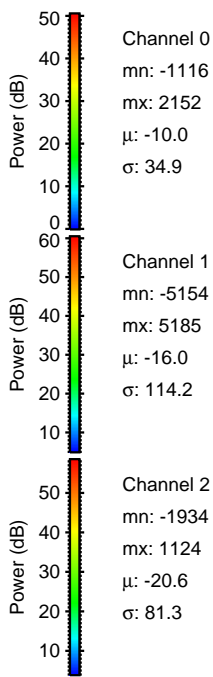
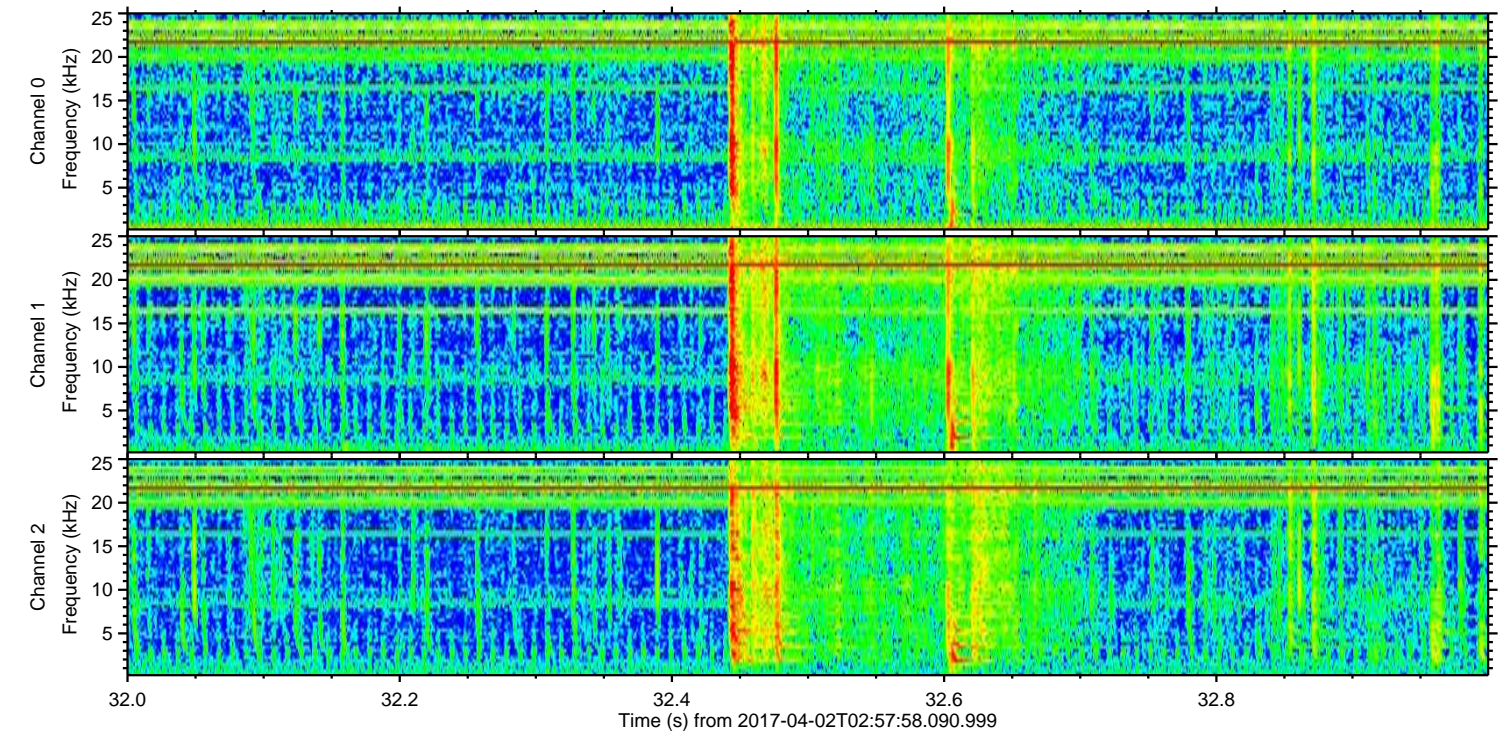
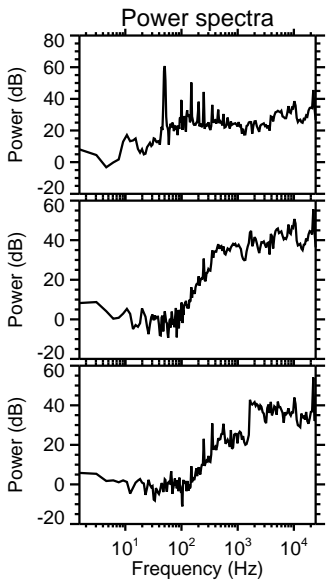
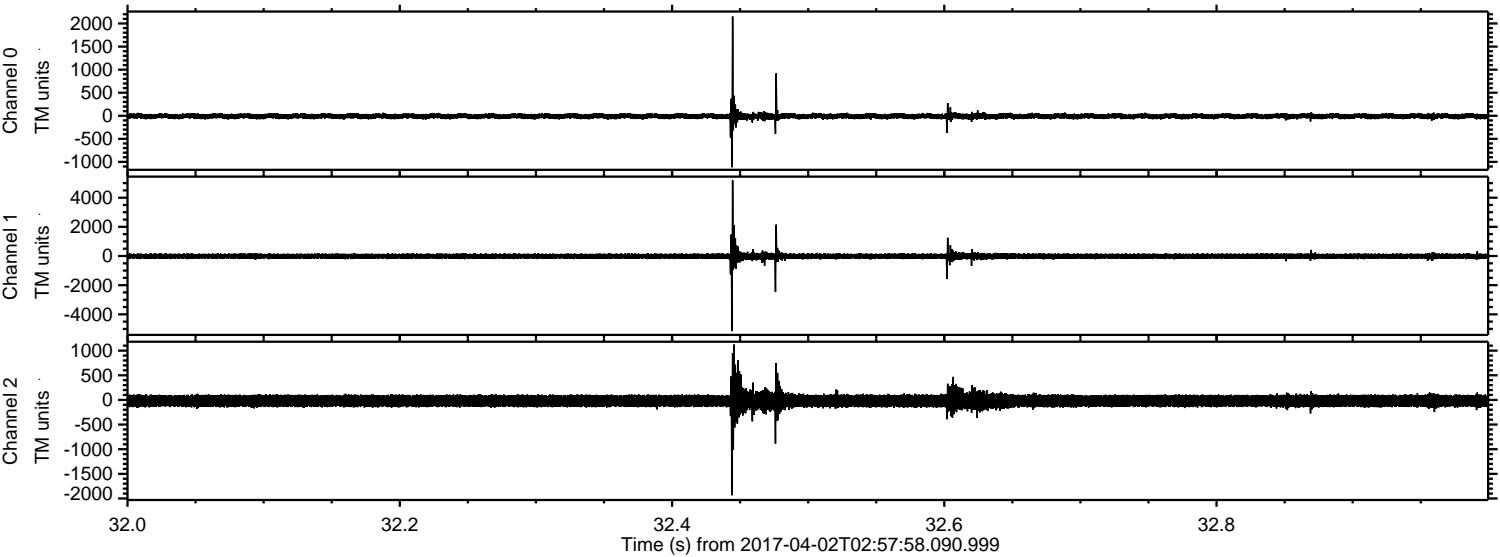
ELMAVAN 3D WAVEFORMS (Measured data sampled at 50 kHz) 51000 packets of 144 samples from 2017-04-02T02:57:58.090.999. Part 77/147

Processed Sun Apr 2 05:06:01 2017 by ELM ver.2012-10-06 from 001\_\_elm20170402\_025757\_\_dat00.bin





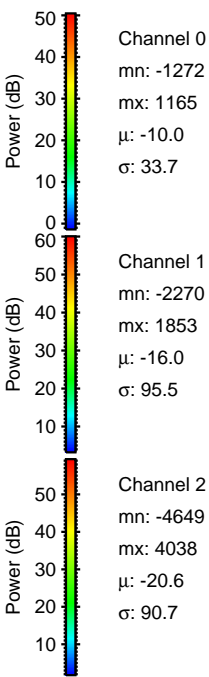
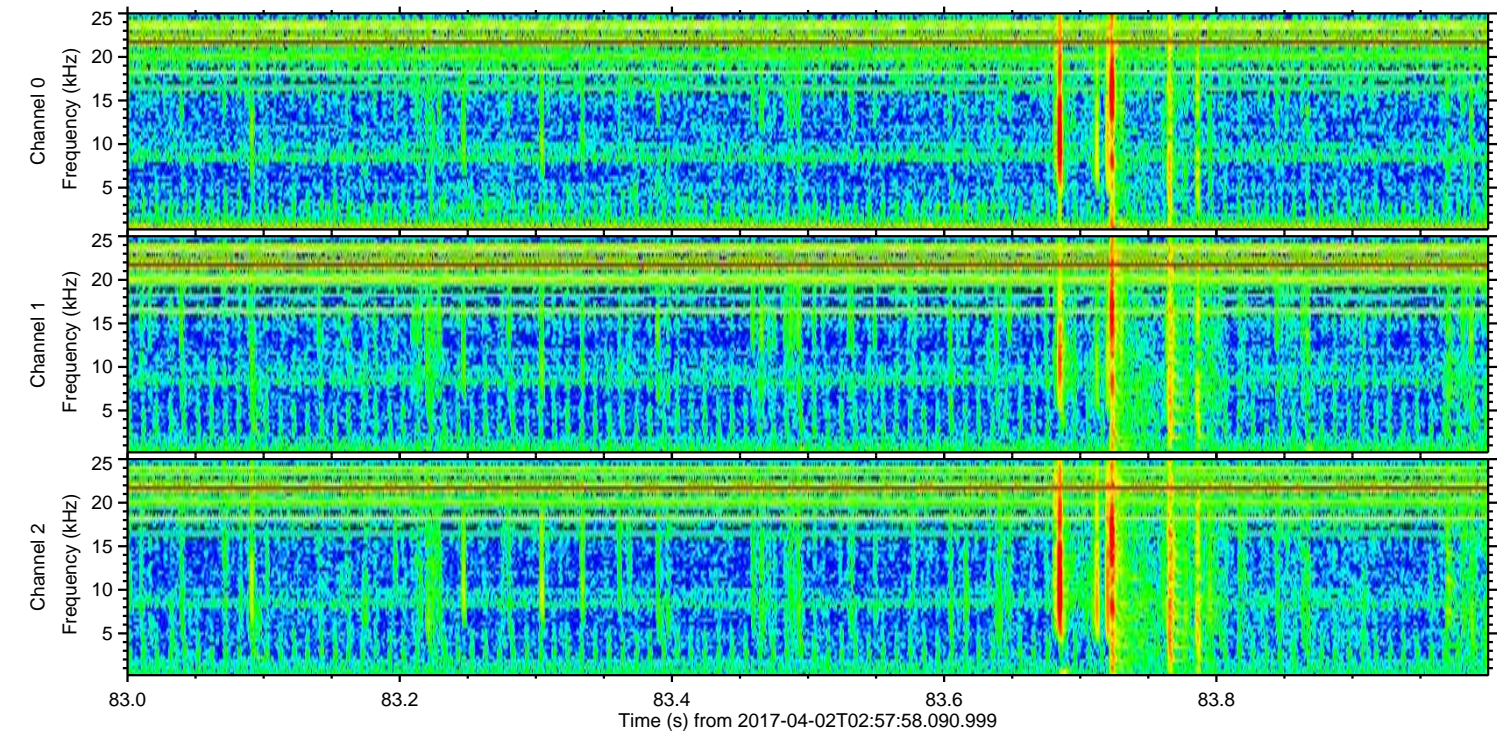
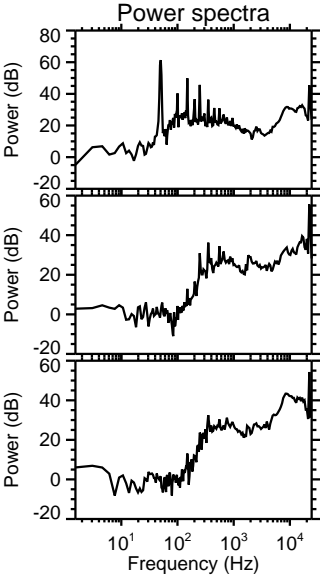
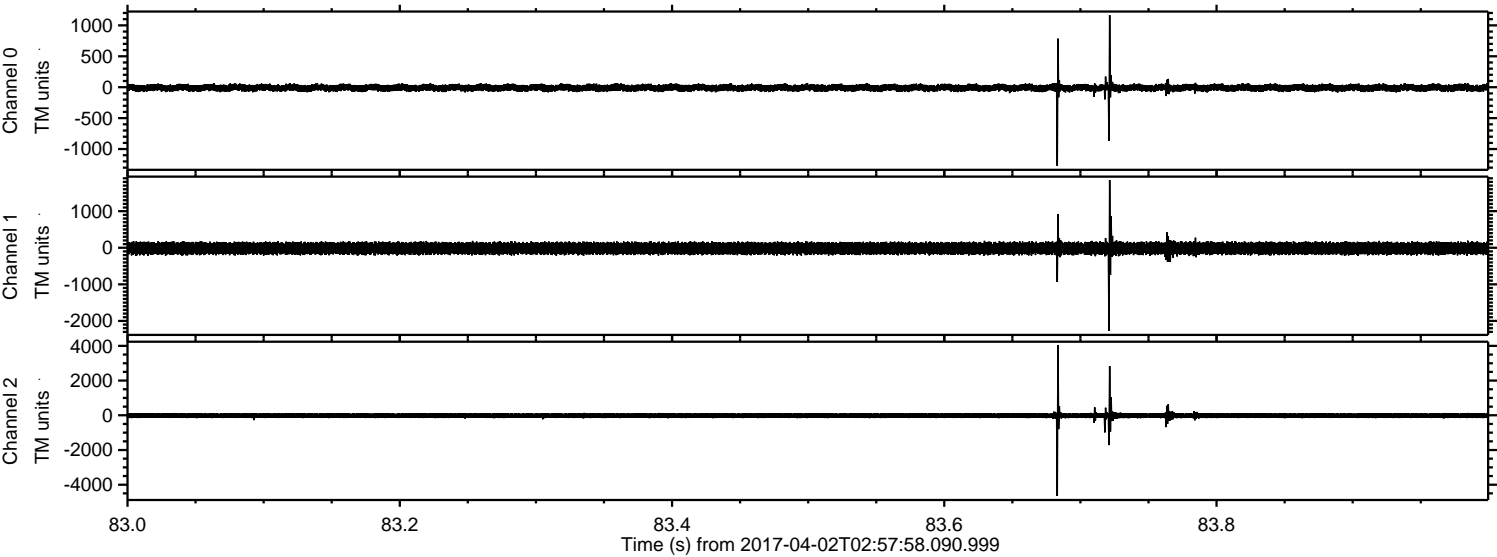
Processed Sun Apr 2 05:06:02 2017 by ELM ver.2012-10-06 from 001\_\_elm20170402\_025757\_\_dat00.bin





ELMAVAN 3D WAVEFORMS (Measured data sampled at 50 kHz) 51000 packets of 144 samples from 2017-04-02T02:57:58.090.999. Part 84/147

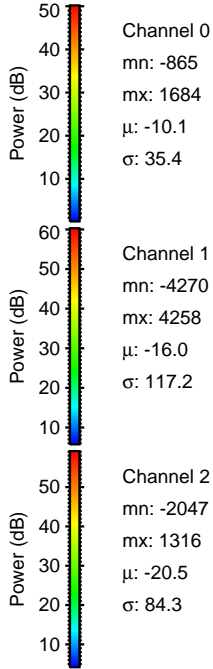
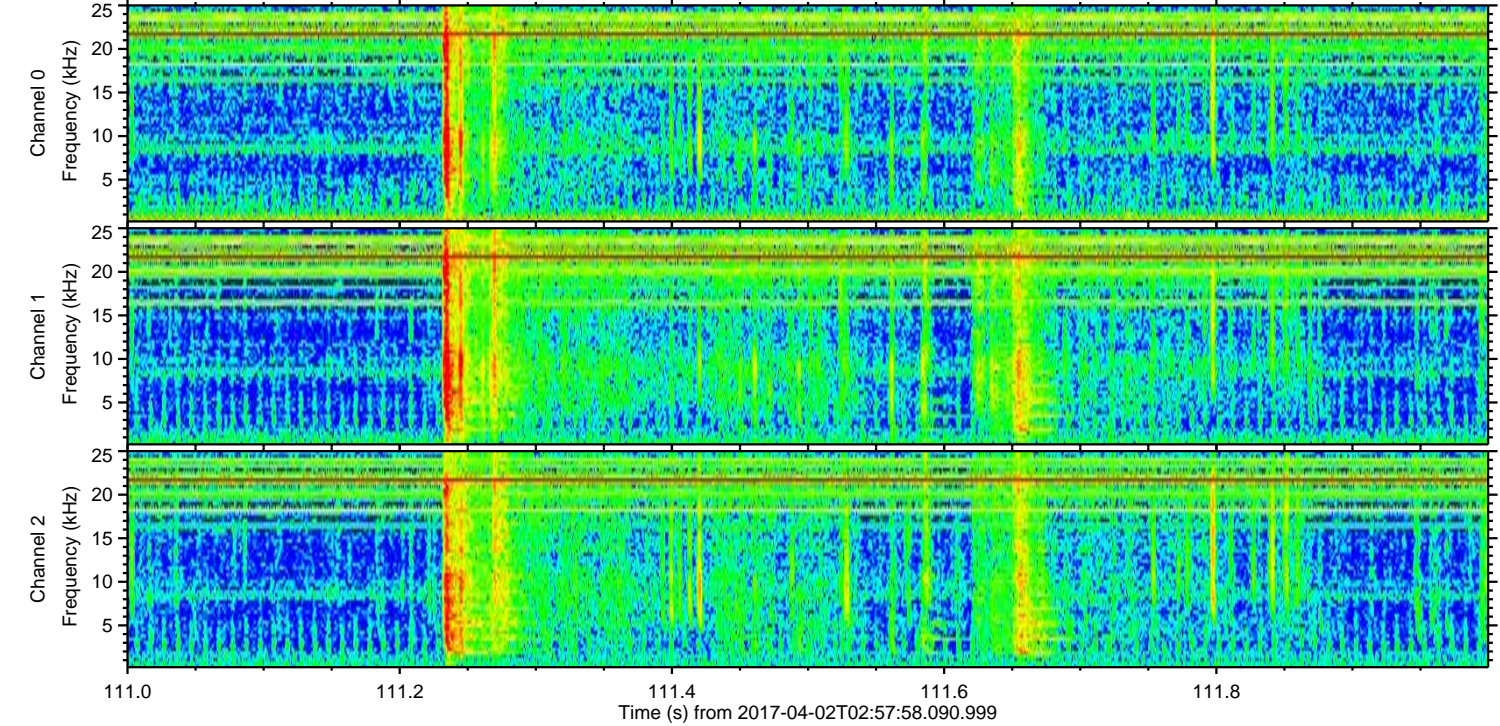
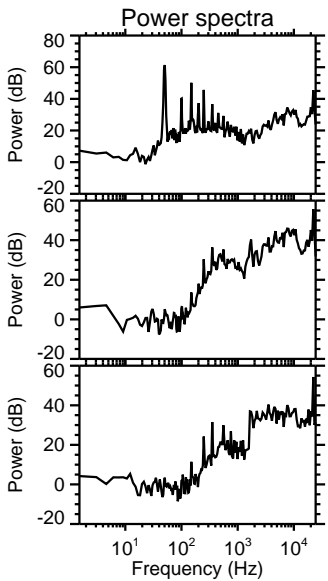
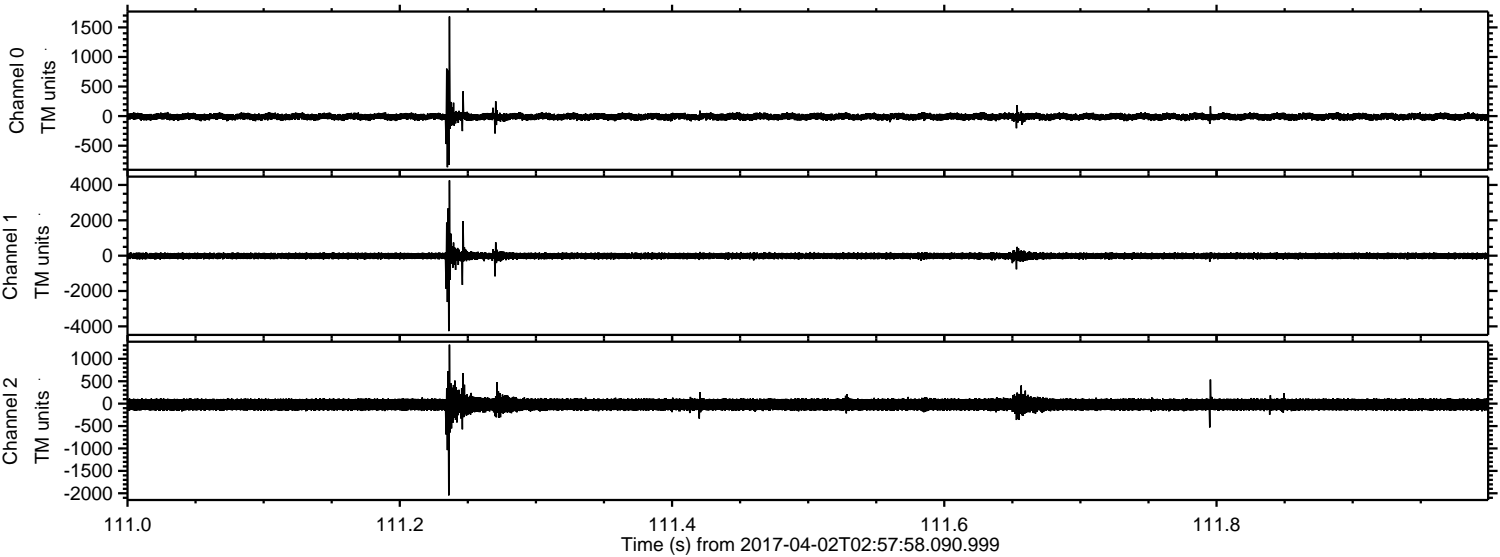
Processed Sun Apr 2 05:06:03 2017 by ELM ver.2012-10-06 from 001\_\_elm20170402\_025757\_\_dat00.bin





ELMAVAN 3D WAVEFORMS (Measured data sampled at 50 kHz) 51000 packets of 144 samples from 2017-04-02T02:57:58.090.999. Part 112/147

Processed Sun Apr 2 05:06:04 2017 by ELM ver.2012-10-06 from 001\_\_elm20170402\_025757\_\_dat00.bin



Channel 0  
mn: -865  
mx: 1684  
 $\mu$ : -10.1  
 $\sigma$ : 35.4

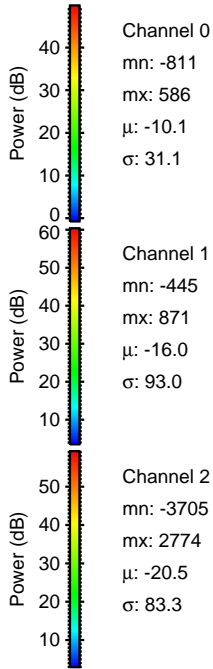
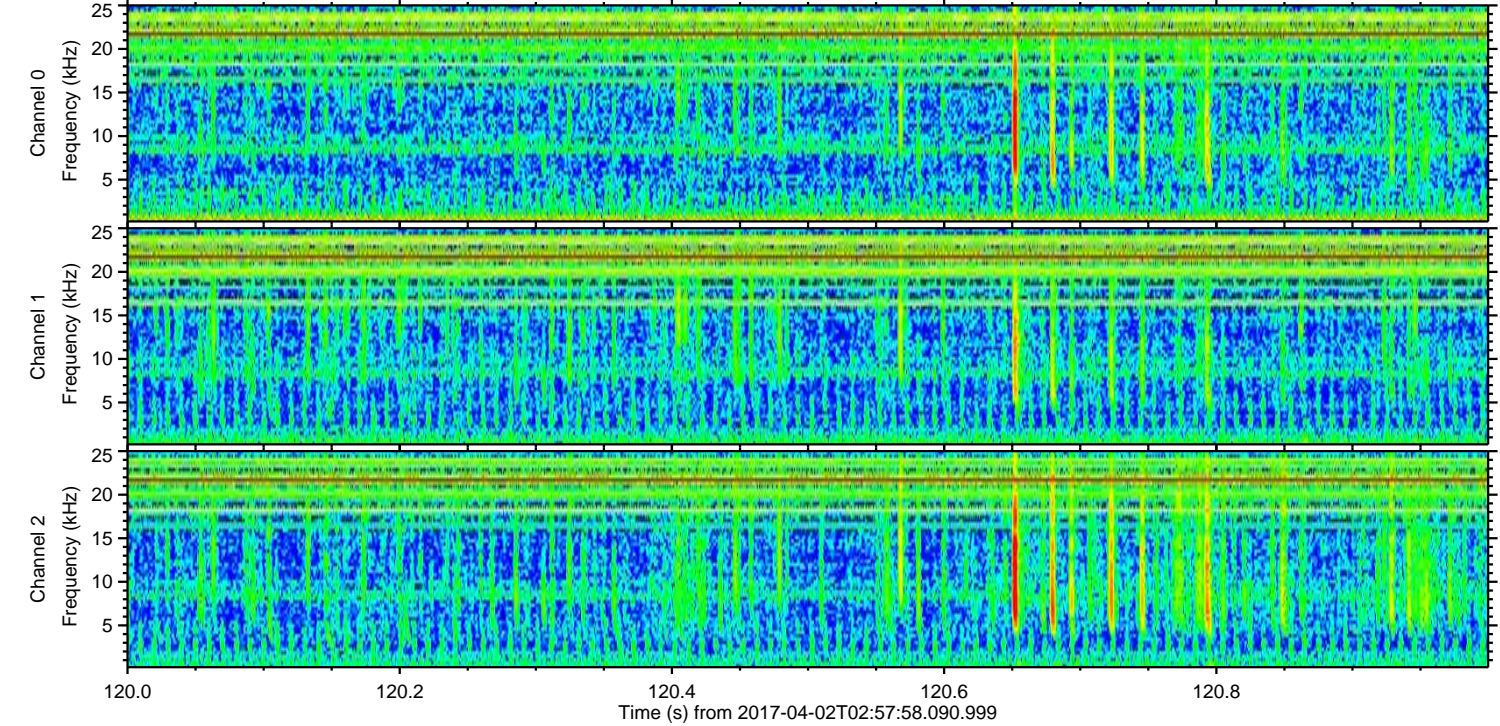
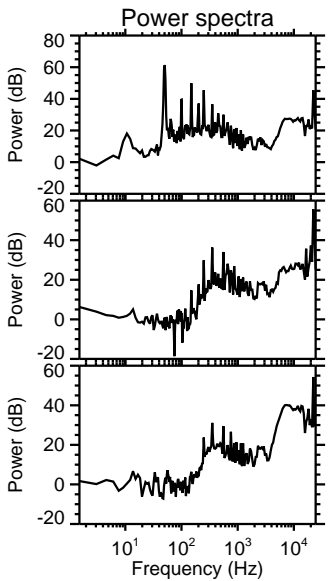
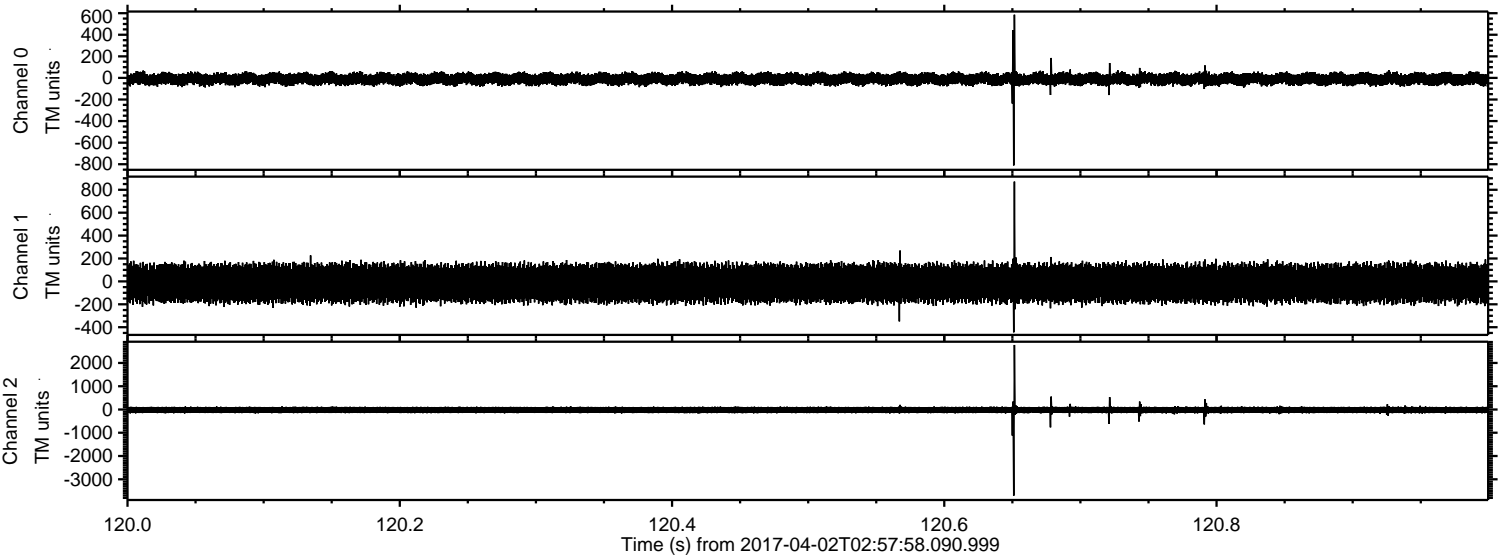
Channel 1  
mn: -4270  
mx: 4258  
 $\mu$ : -16.0  
 $\sigma$ : 117.2

Channel 2  
mn: -2047  
mx: 1316  
 $\mu$ : -20.5  
 $\sigma$ : 84.3



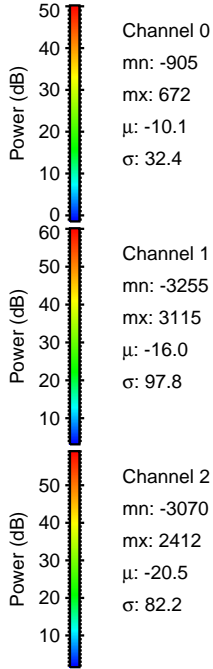
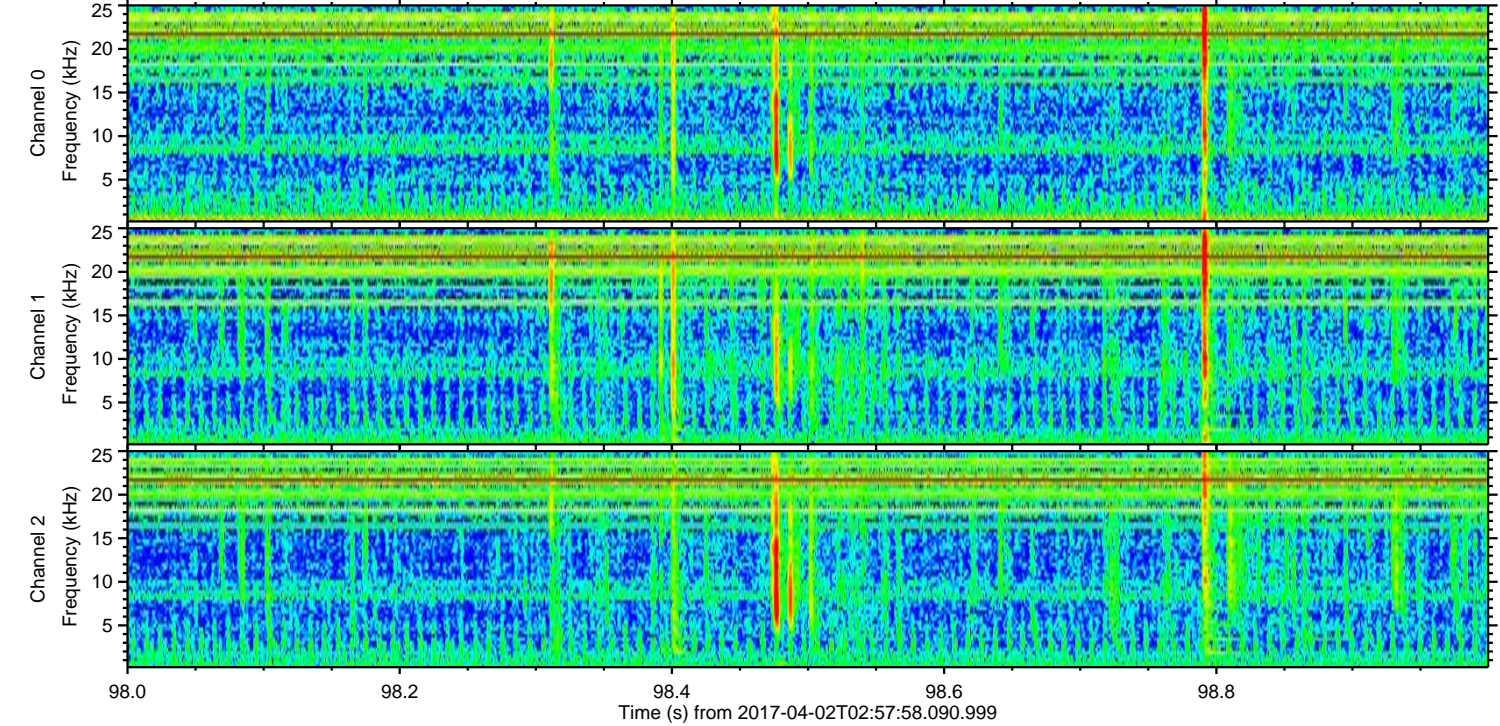
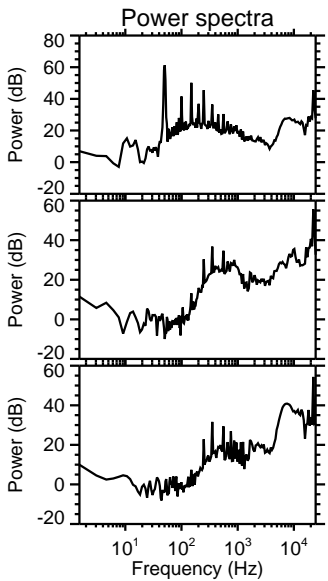
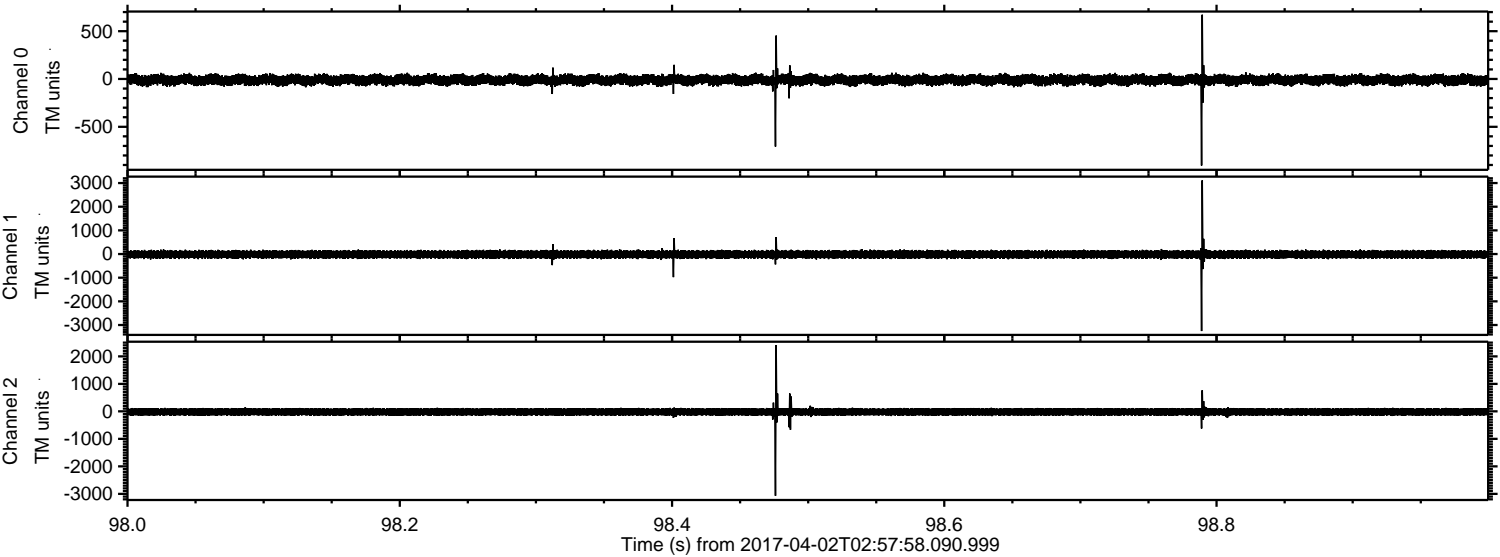
ELMAVAN 3D WAVEFORMS (Measured data sampled at 50 kHz) 51000 packets of 144 samples from 2017-04-02T02:57:58.090.999. Part 121/147

Processed Sun Apr 2 05:06:04 2017 by ELM ver.2012-10-06 from 001\_\_elm20170402\_025757\_\_dat00.bin





Processed Sun Apr 2 05:06:05 2017 by ELM ver.2012-10-06 from 001\_\_elm20170402\_025757\_\_dat00.bin



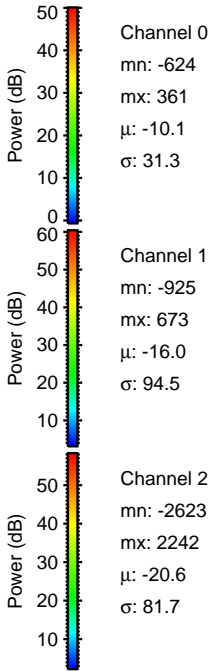
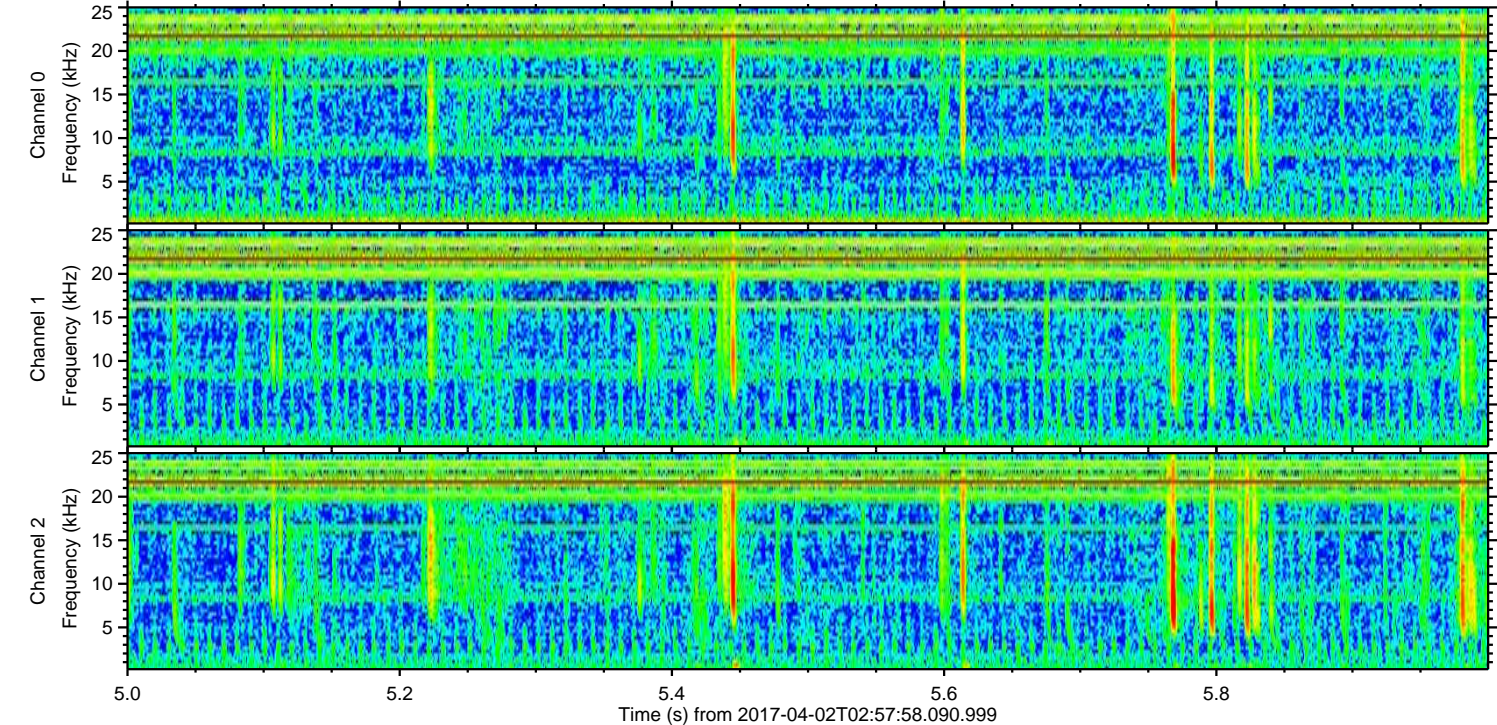
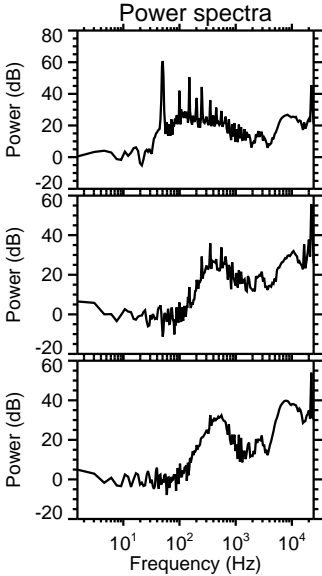
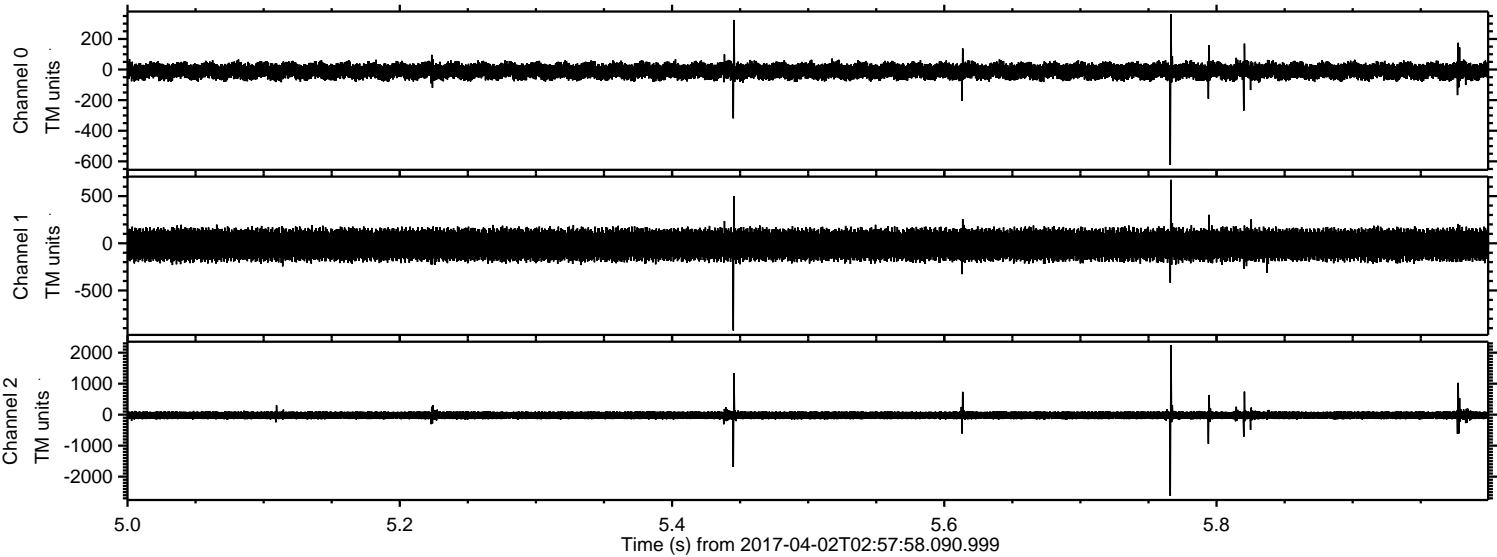
Channel 0  
mn: -905  
mx: 672  
 $\mu$ : -10.1  
 $\sigma$ : 32.4

Channel 1  
mn: -3255  
mx: 3115  
 $\mu$ : -16.0  
 $\sigma$ : 97.8

Channel 2  
mn: -3070  
mx: 2412  
 $\mu$ : -20.5  
 $\sigma$ : 82.2



Processed Sun Apr 2 05:06:06 2017 by ELM ver.2012-10-06 from 001\_\_elm20170402\_025757\_\_dat00.bin





Processed Sun Apr 2 05:06:07 2017 by ELM ver.2012-10-06 from 001\_\_elm20170402\_025757\_\_dat00.bin

