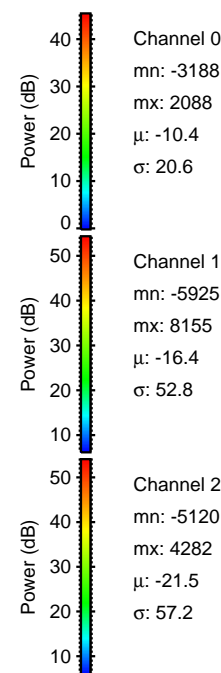
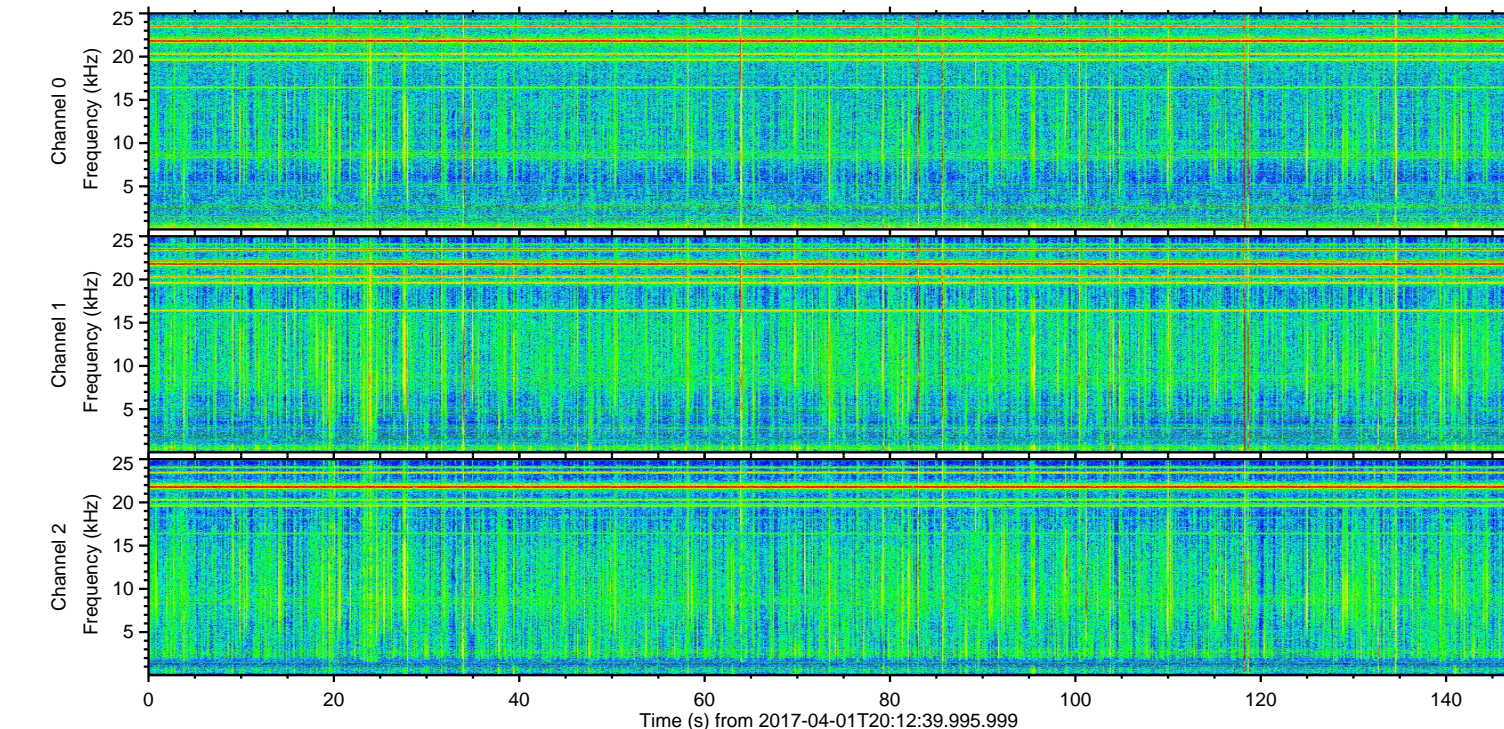
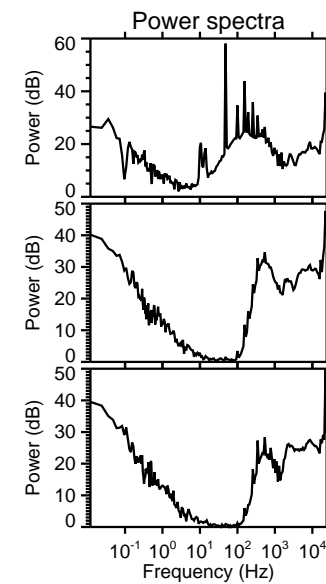
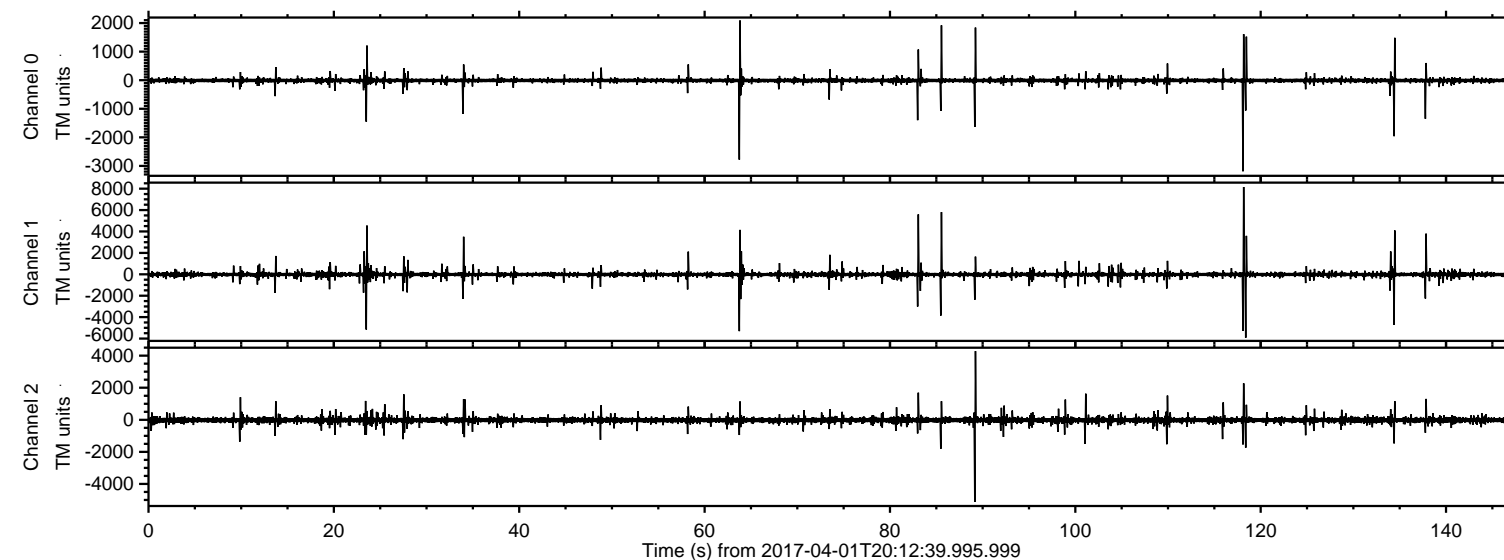


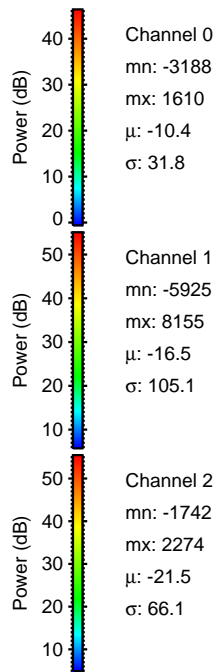
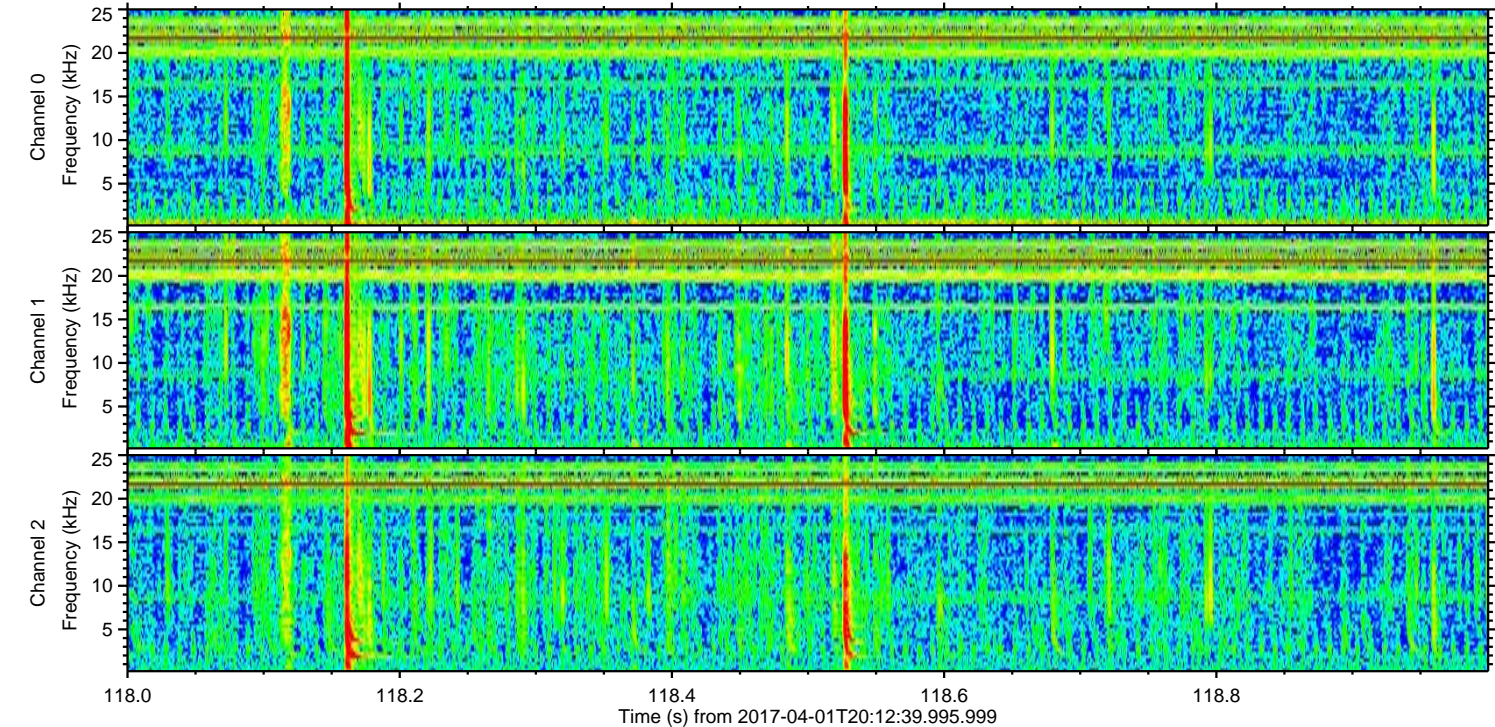
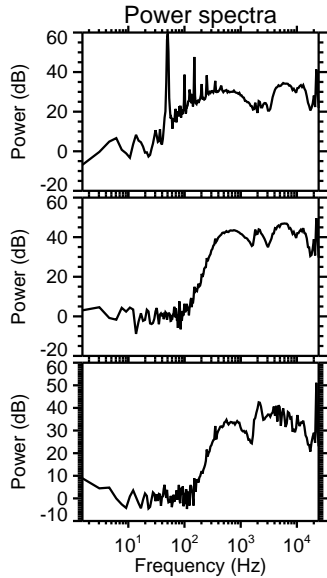
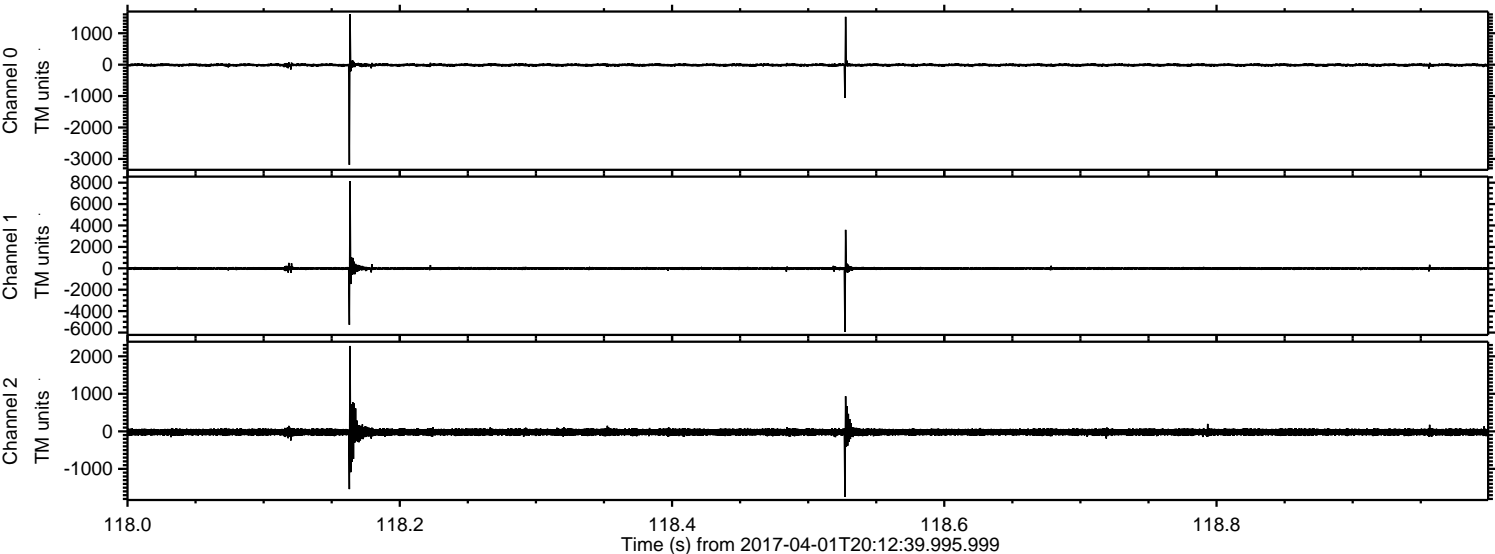
ELMAVAN 3D WAVEFORMS (Measured data sampled at 50 kHz) 51000 packets of 144 samples from 2017-04-01T20:12:39.995.999.

Processed Sat Apr 1 22:20:27 2017 by ELM ver.2012-10-06 from 001__elm20170401_201238__dat00.bin



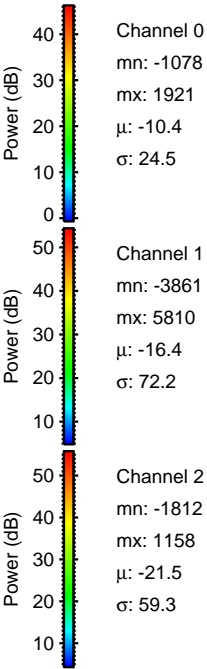
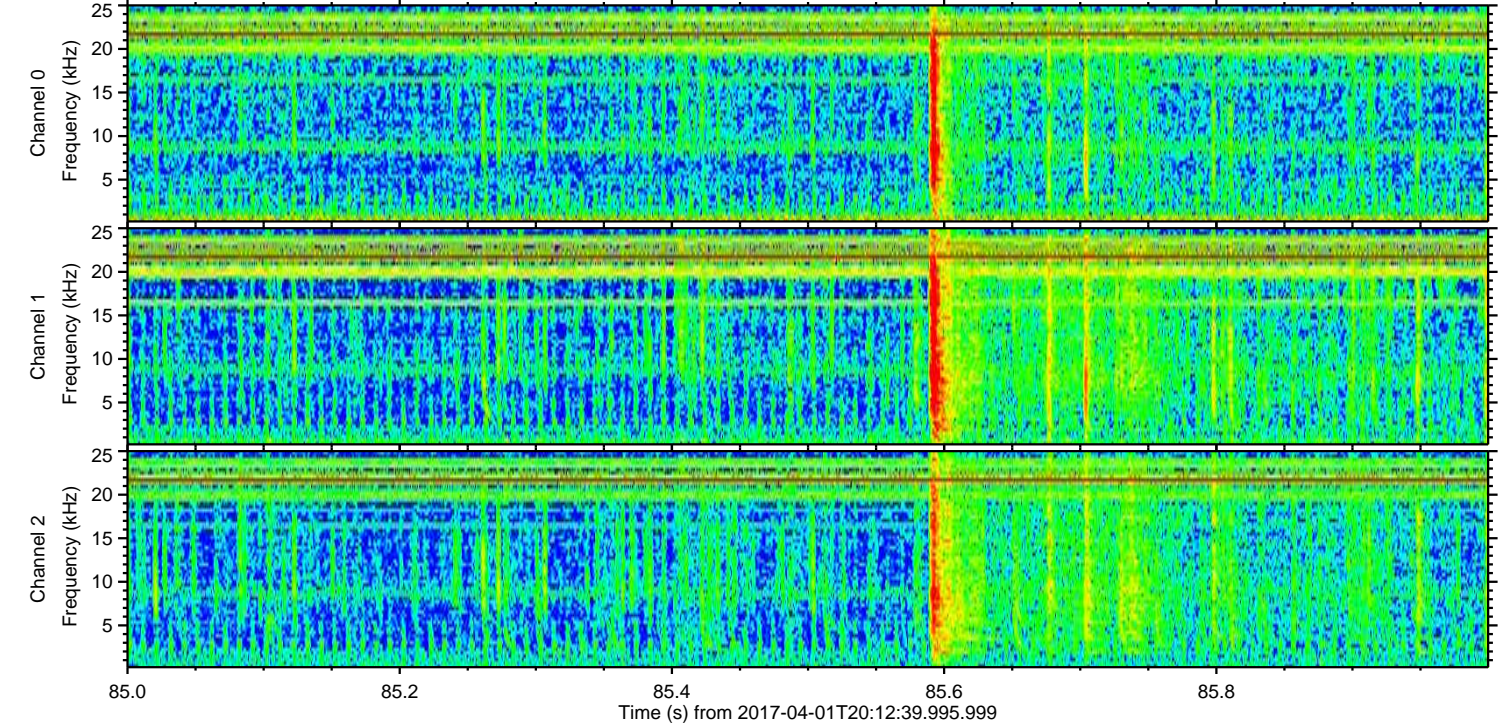
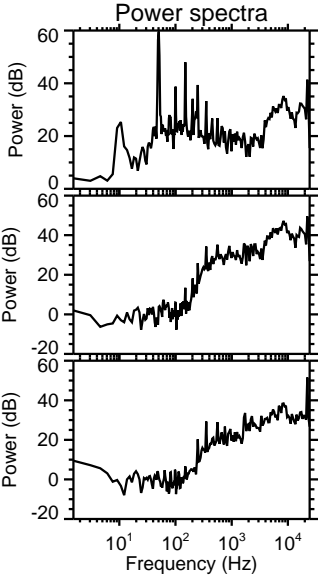
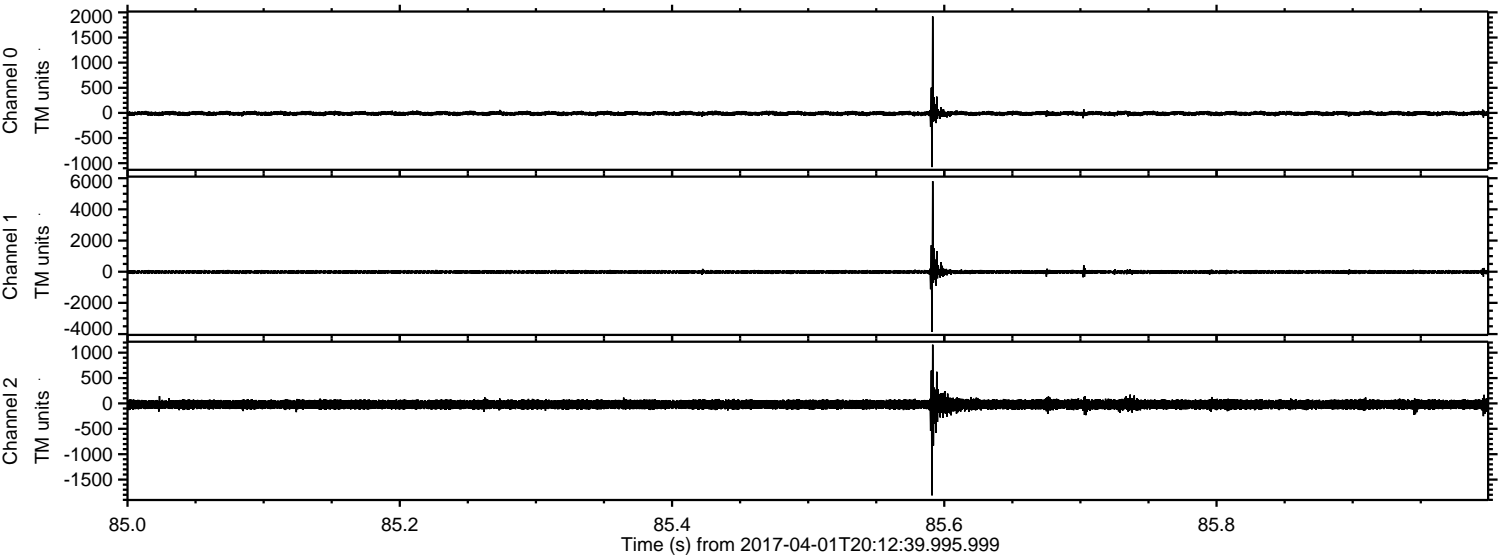
ELMAVAN 3D WAVEFORMS (Measured data sampled at 50 kHz) 51000 packets of 144 samples from 2017-04-01T20:12:39.995.999. Part 119/147

Processed Sat Apr 1 22:20:39 2017 by ELM ver.2012-10-06 from 001__elm20170401_201238__dat00.bin

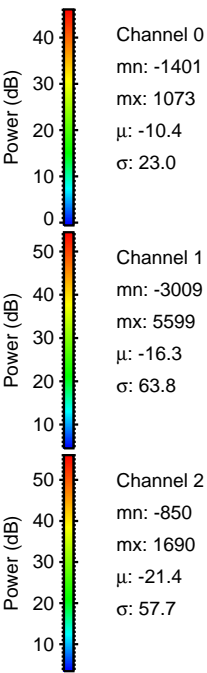
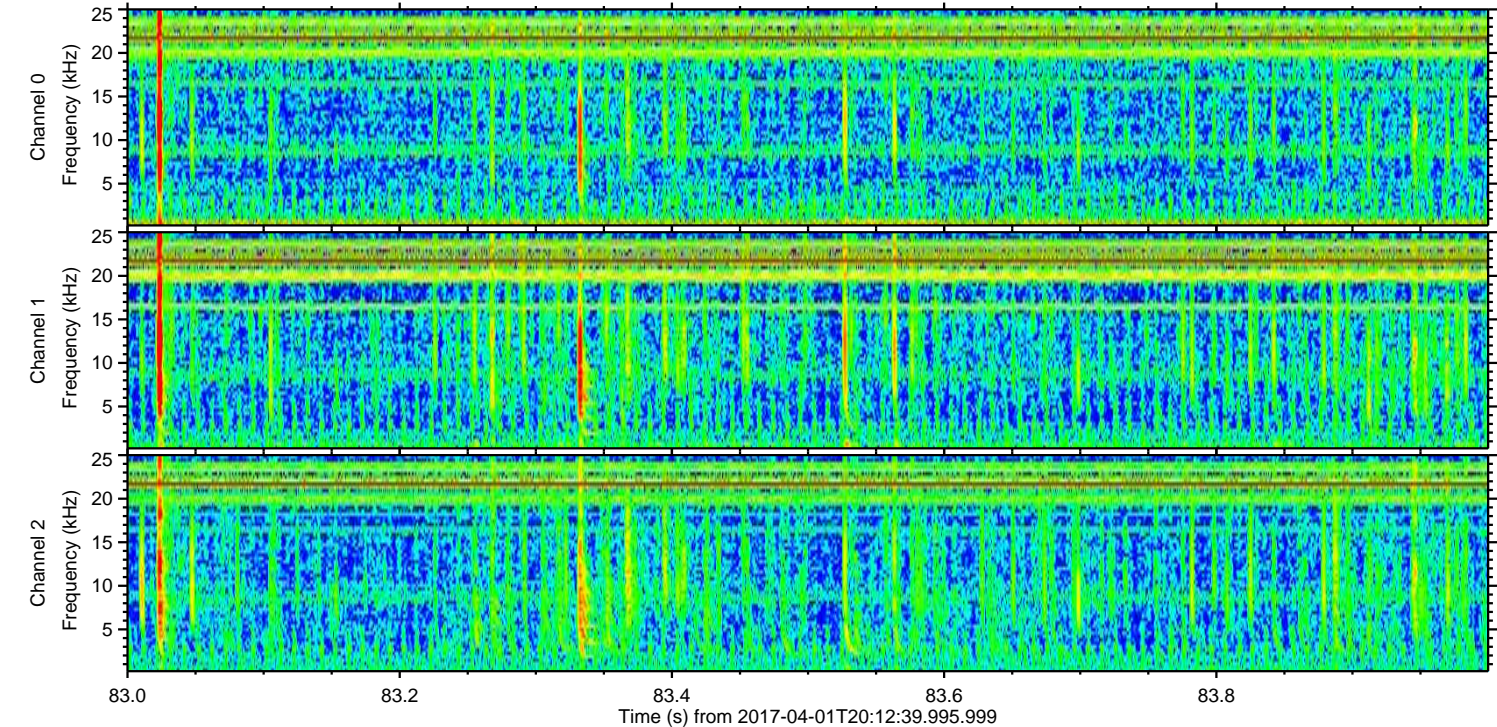
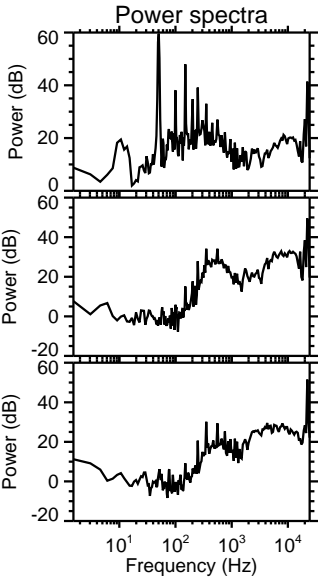
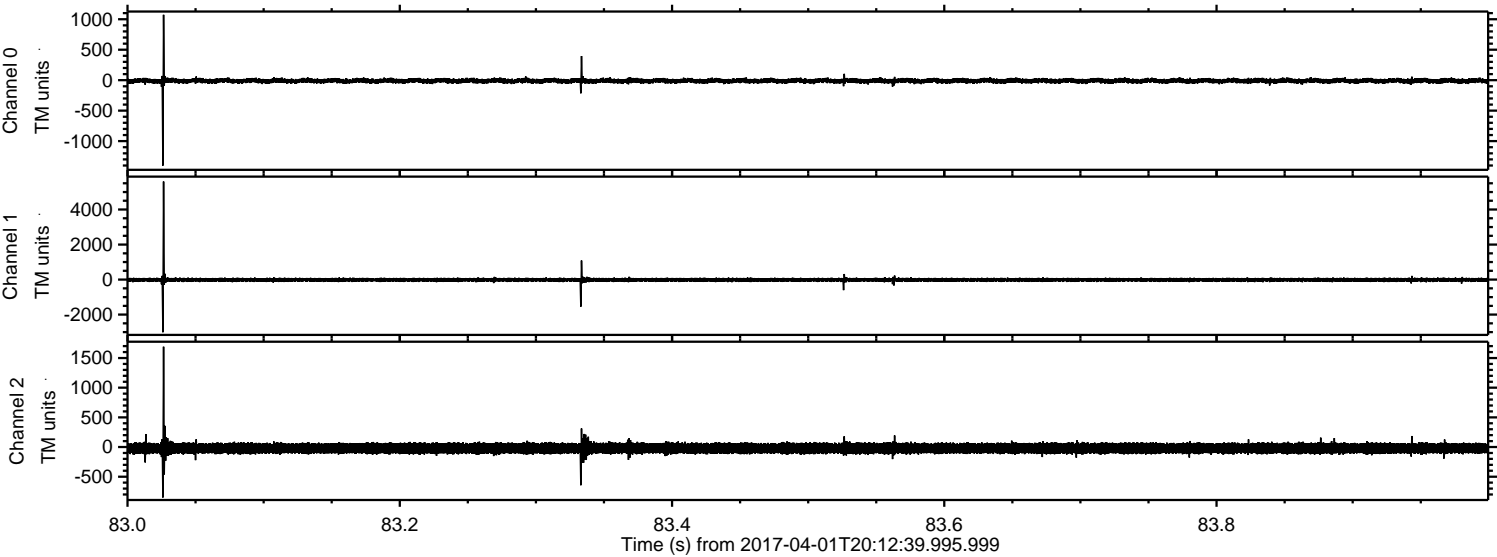


ELMAVAN 3D WAVEFORMS (Measured data sampled at 50 kHz) 51000 packets of 144 samples from 2017-04-01T20:12:39.995.999. Part 86/147

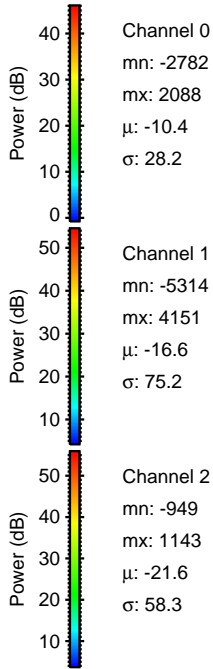
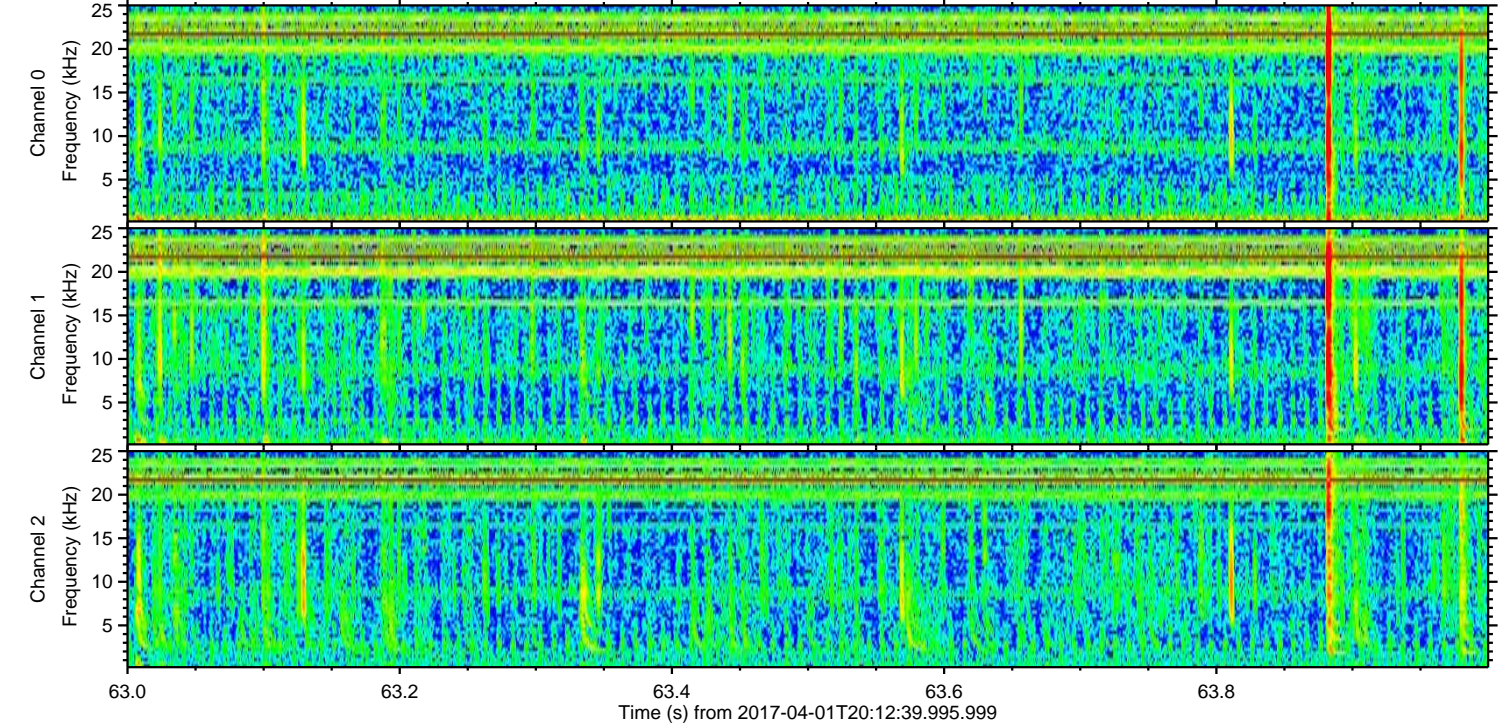
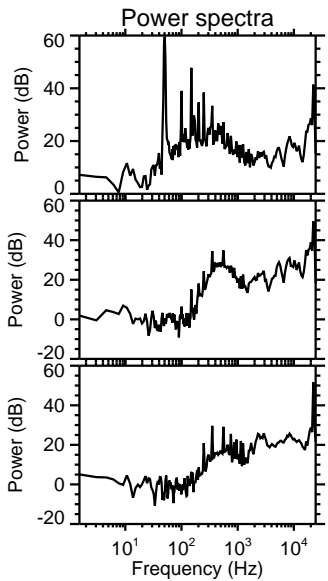
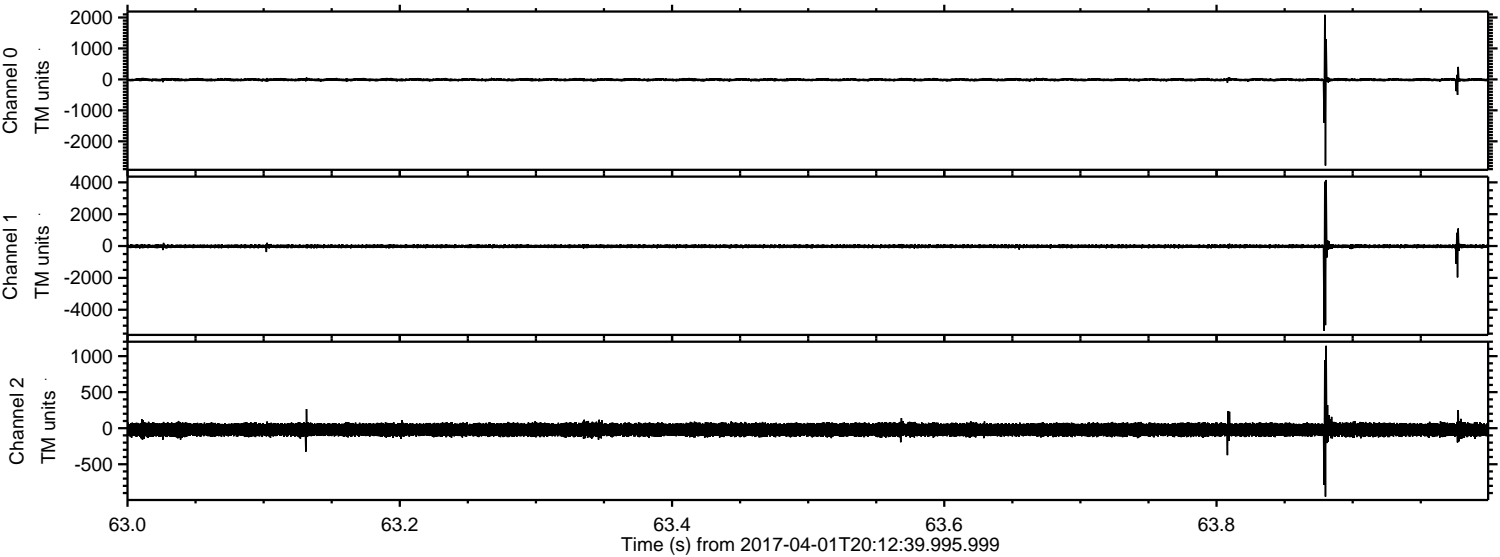
Processed Sat Apr 1 22:20:39 2017 by ELM ver.2012-10-06 from 001__elm20170401_201238__dat00.bin



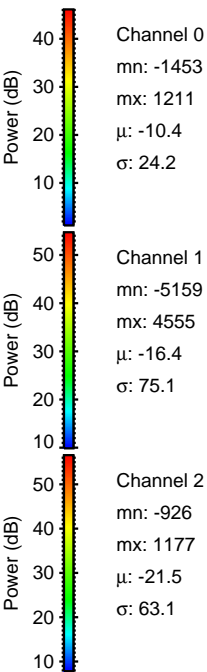
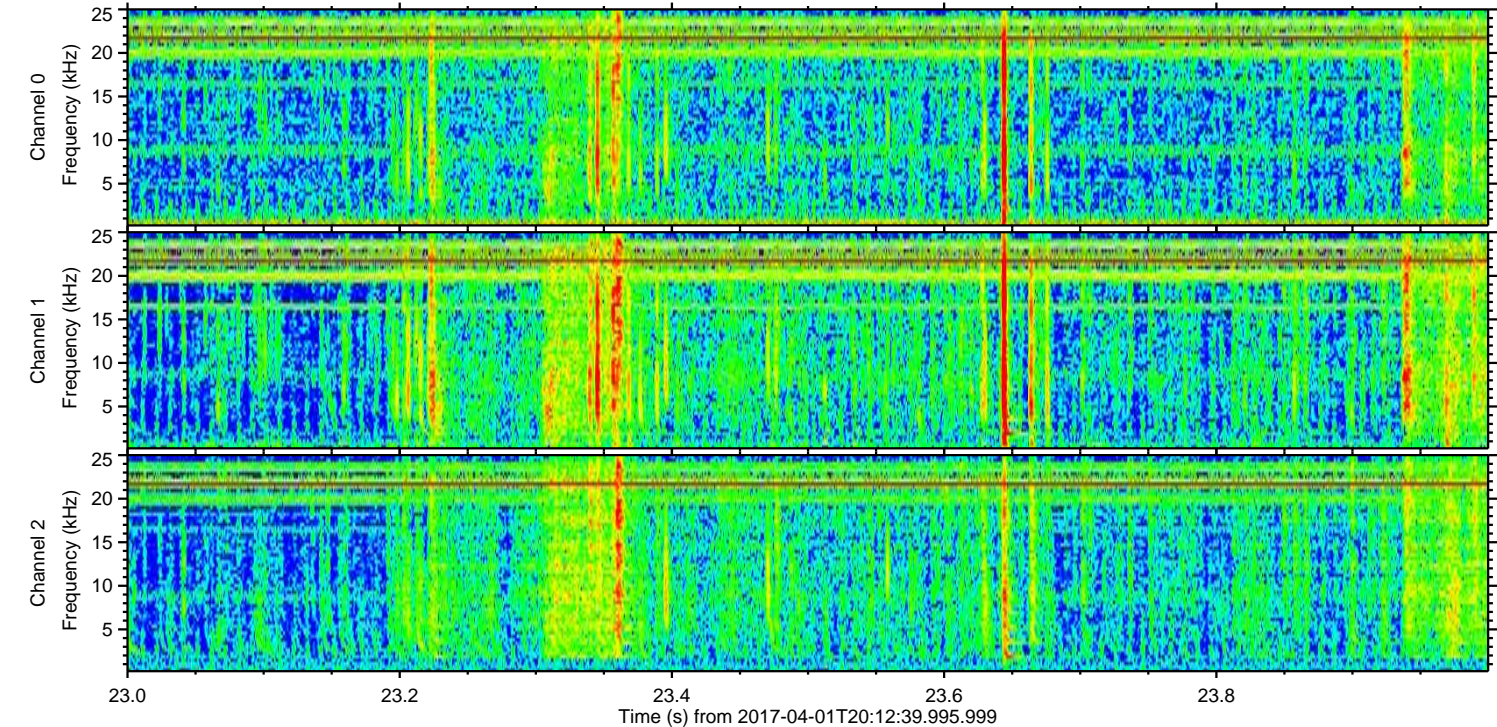
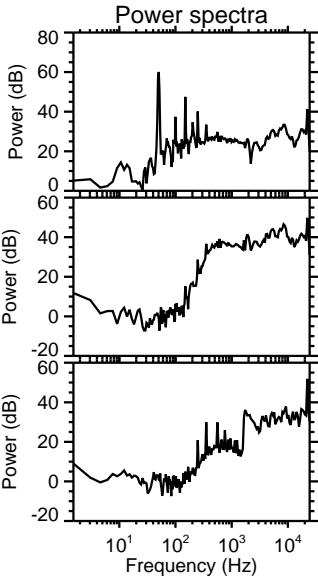
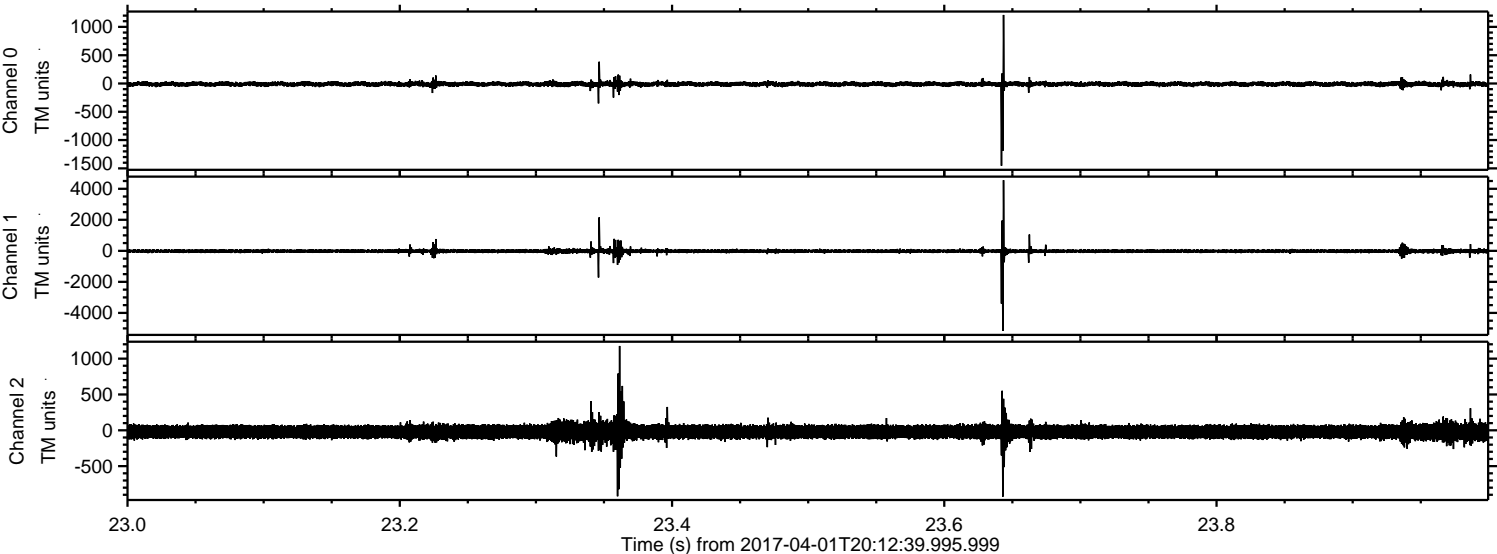
Processed Sat Apr 1 22:20:40 2017 by ELM ver.2012-10-06 from 001__elm20170401_201238__dat00.bin



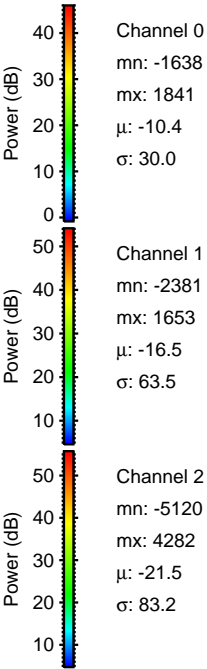
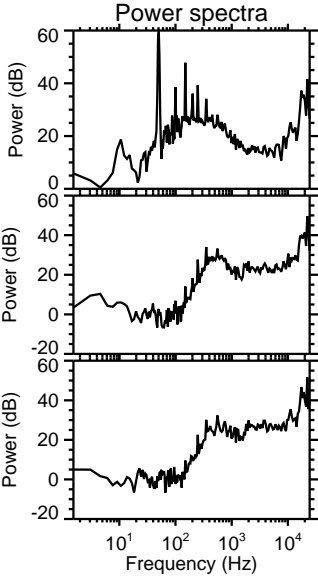
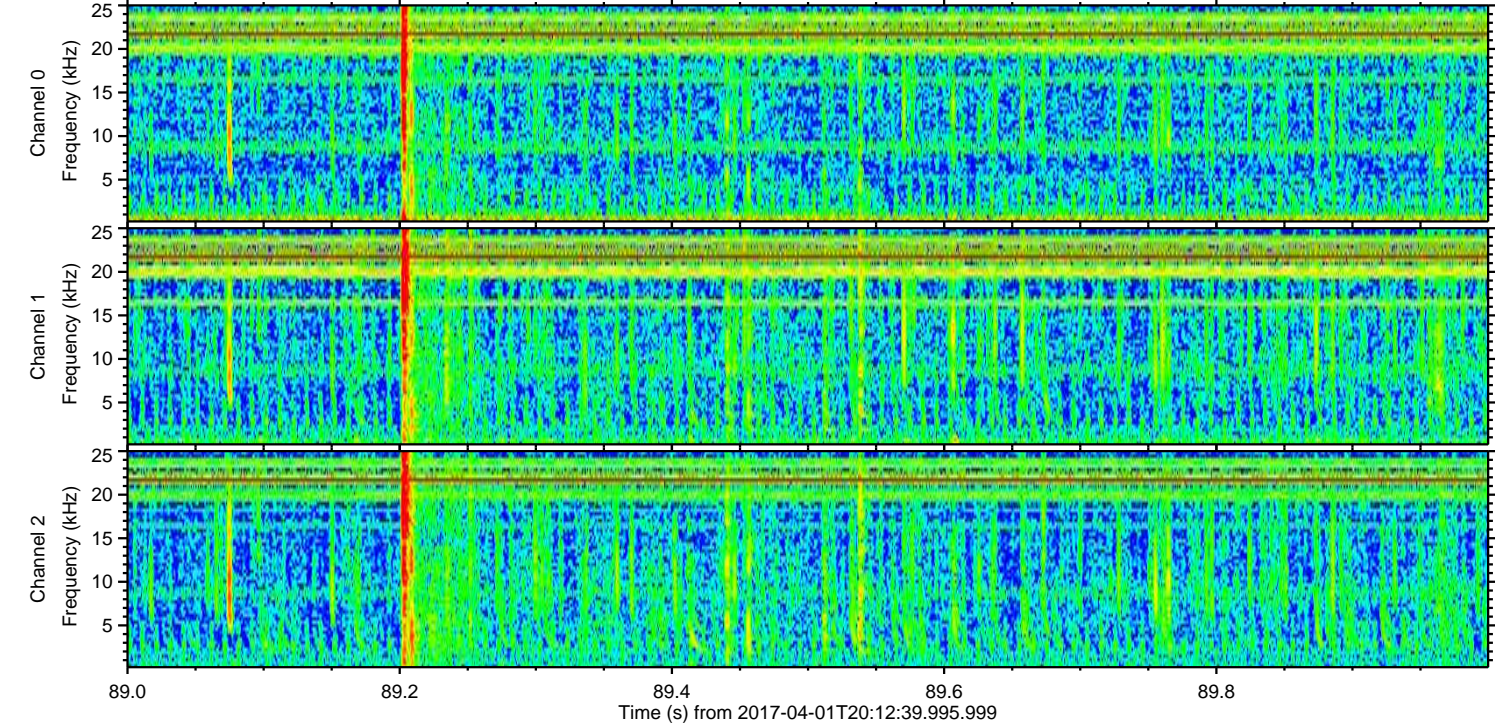
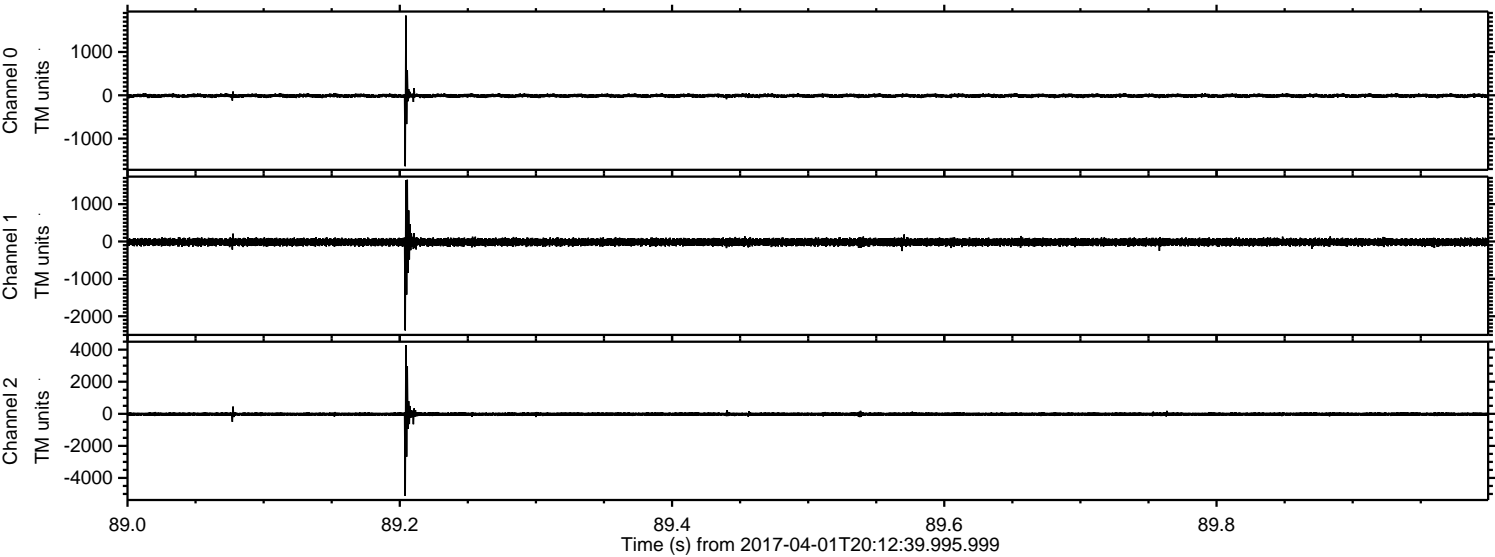
Processed Sat Apr 1 22:20:41 2017 by ELM ver.2012-10-06 from 001__elm20170401_201238__dat00.bin



Processed Sat Apr 1 22:20:42 2017 by ELM ver.2012-10-06 from 001__elm20170401_201238__dat00.bin

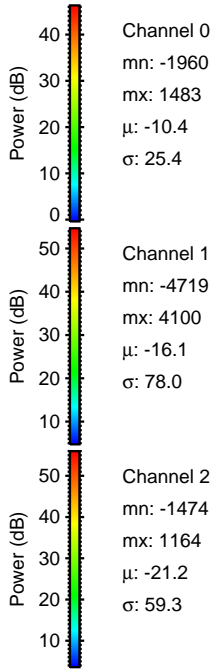
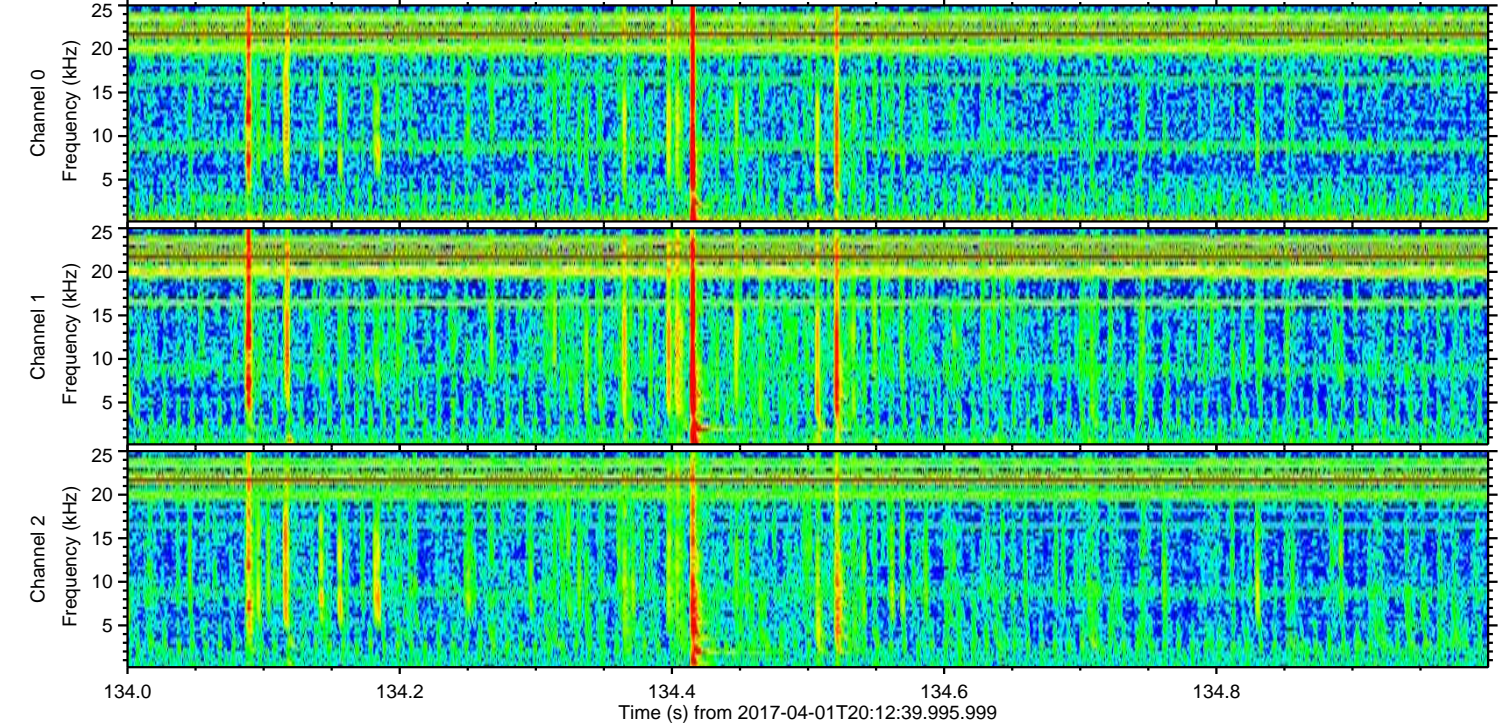
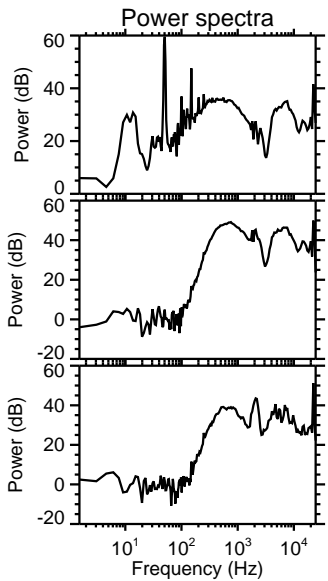
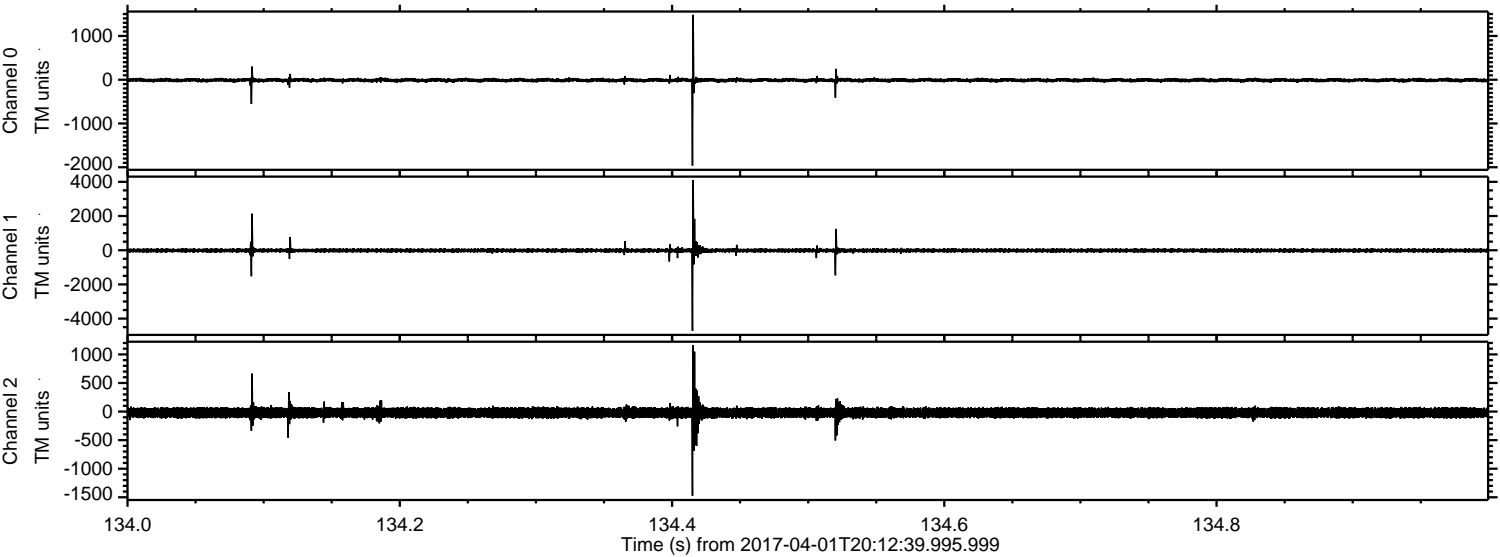


Processed Sat Apr 1 22:20:43 2017 by ELM ver.2012-10-06 from 001__elm20170401_201238__dat00.bin



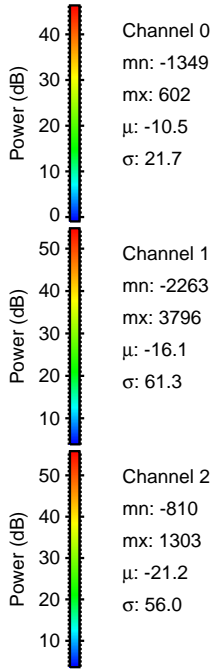
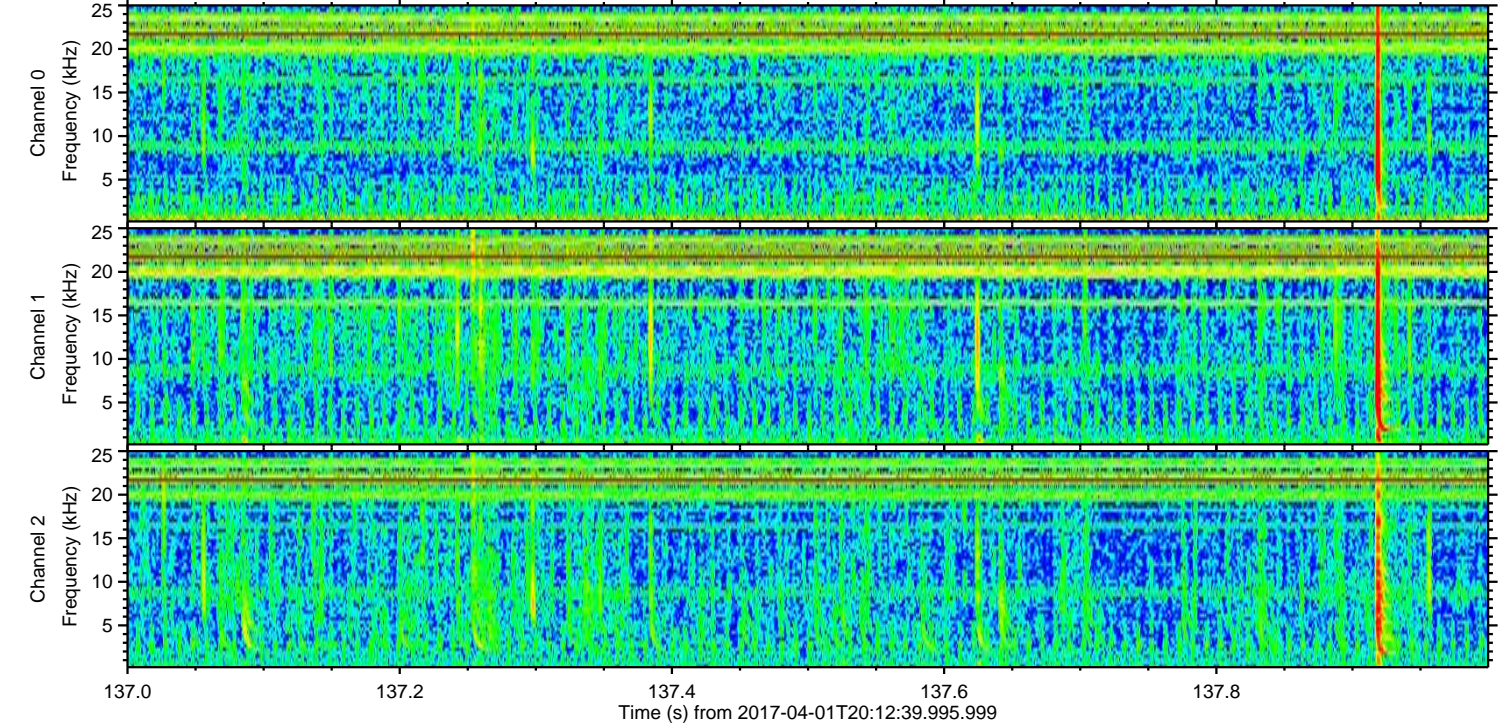
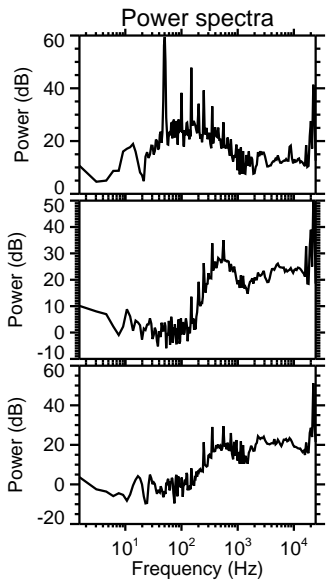
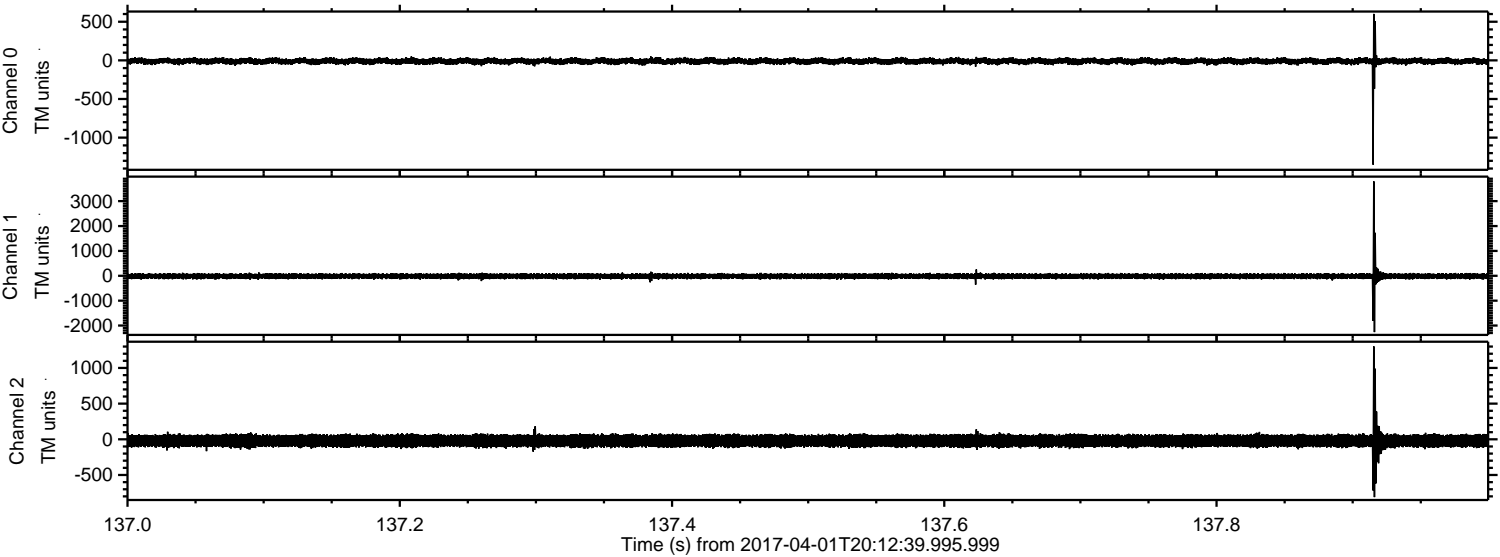
ELMAVAN 3D WAVEFORMS (Measured data sampled at 50 kHz) 51000 packets of 144 samples from 2017-04-01T20:12:39.995.999. Part 135/147

Processed Sat Apr 1 22:20:44 2017 by ELM ver.2012-10-06 from 001__elm20170401_201238__dat00.bin



ELMAVAN 3D WAVEFORMS (Measured data sampled at 50 kHz) 51000 packets of 144 samples from 2017-04-01T20:12:39.995.999. Part 138/147

Processed Sat Apr 1 22:20:45 2017 by ELM ver.2012-10-06 from 001__elm20170401_201238__dat00.bin



Channel 0
mn: -1349
mx: 602
 μ : -10.5
 σ : 21.7

Channel 1
mn: -2263
mx: 3796
 μ : -16.1
 σ : 61.3

Channel 2
mn: -810
mx: 1303
 μ : -21.2
 σ : 56.0

Processed Sat Apr 1 22:20:46 2017 by ELM ver.2012-10-06 from 001__elm20170401_201238__dat00.bin

