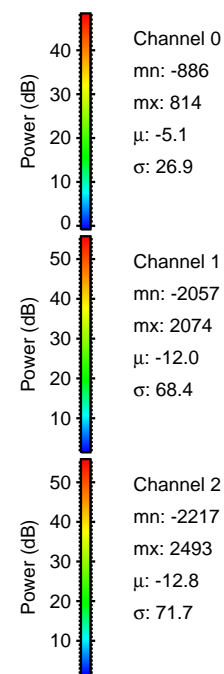
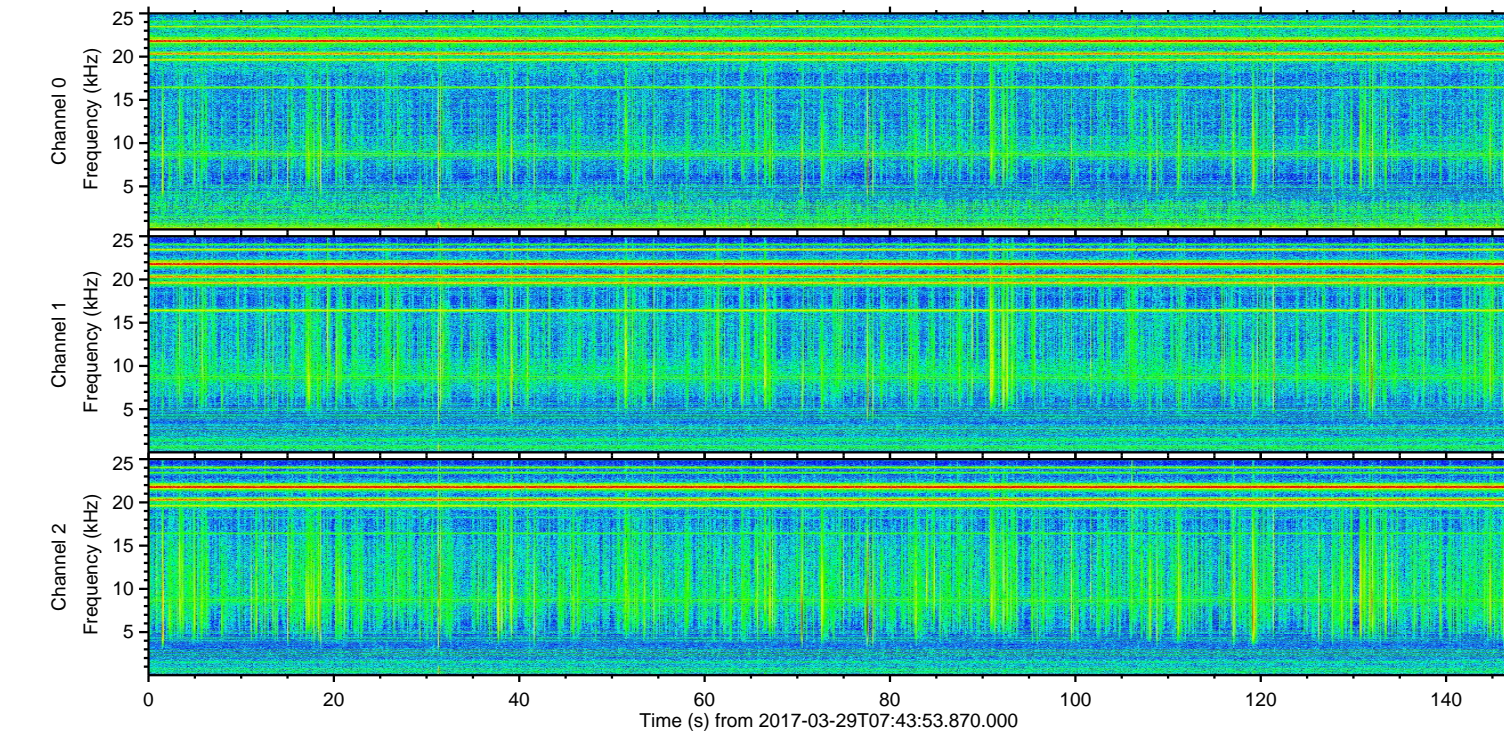
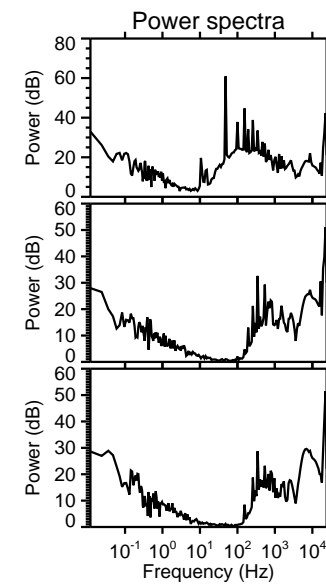
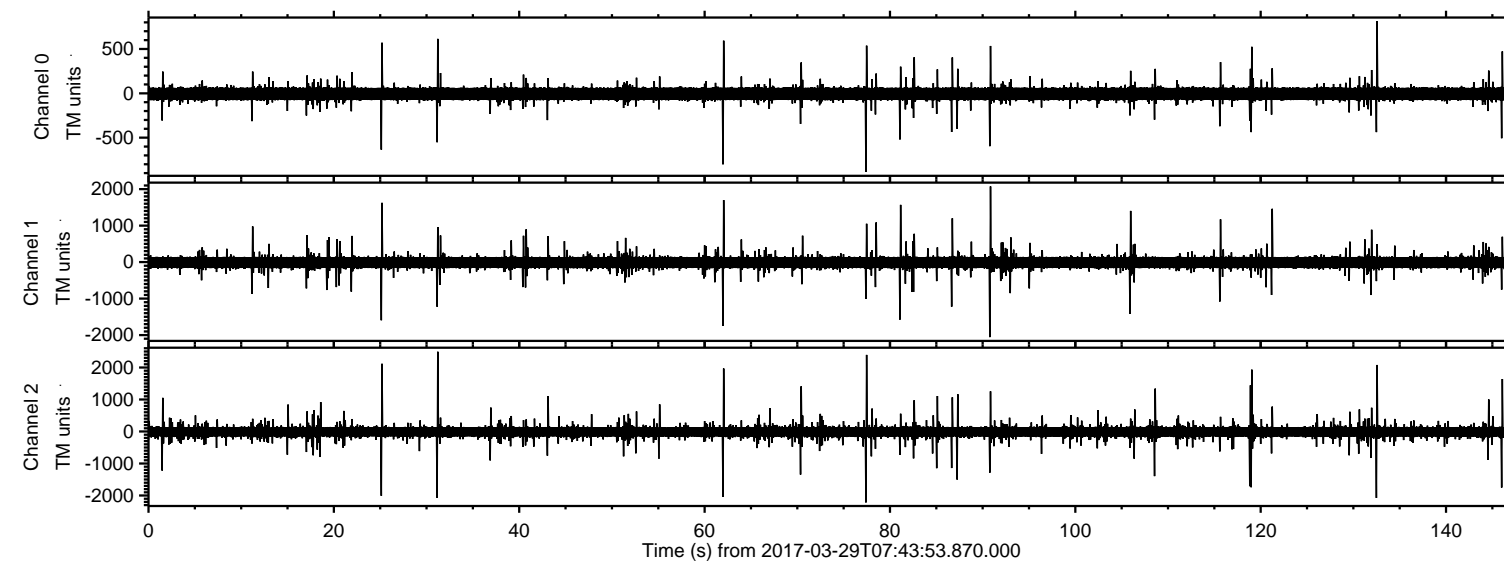
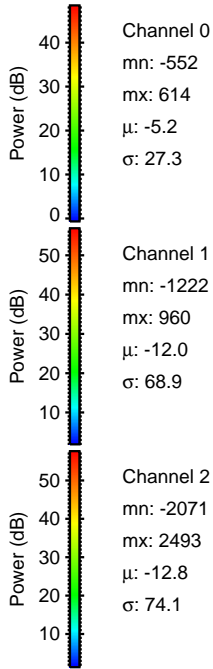
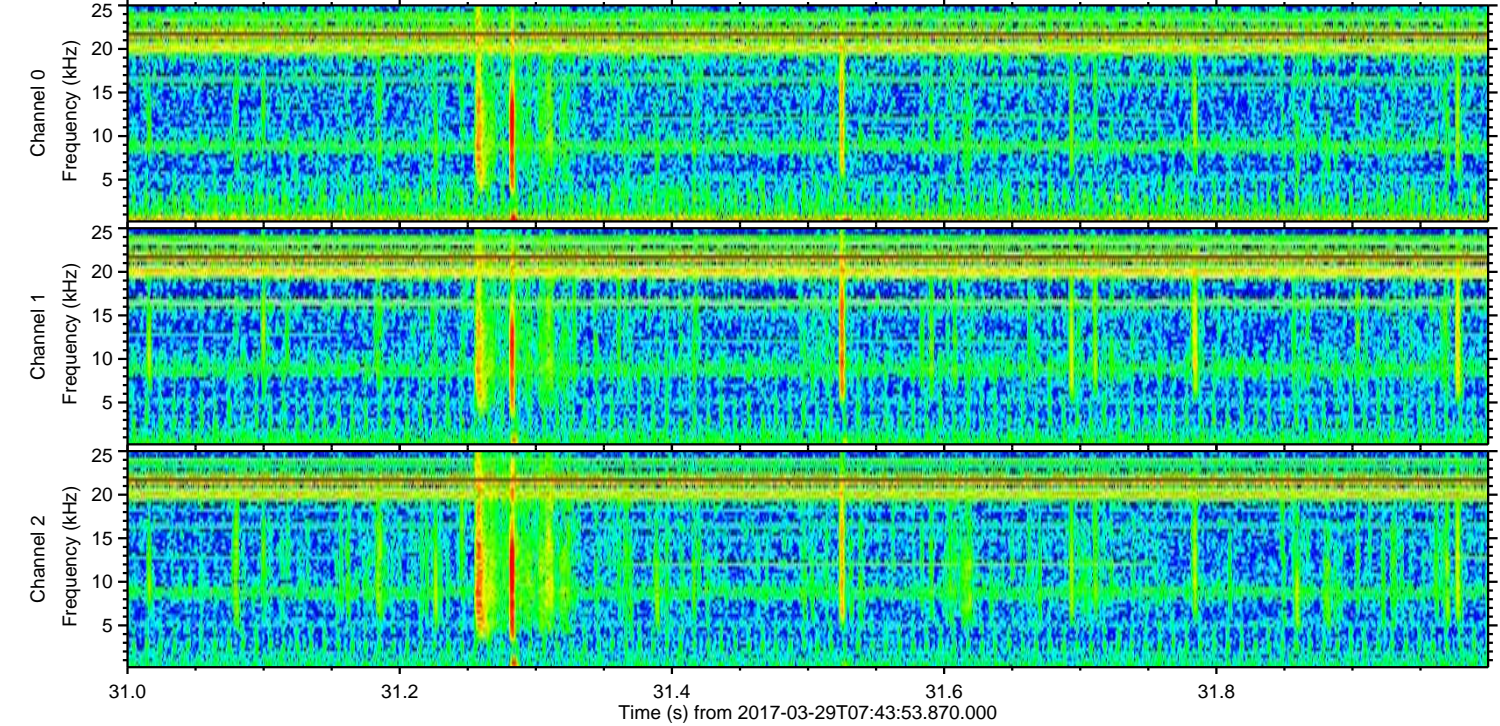
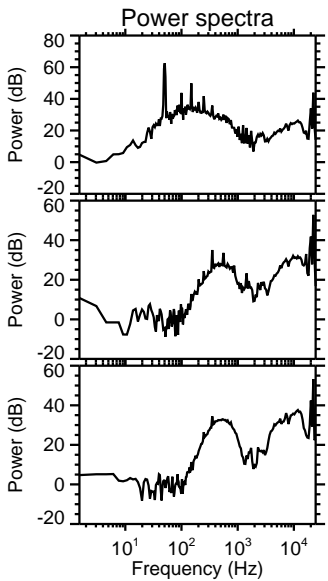
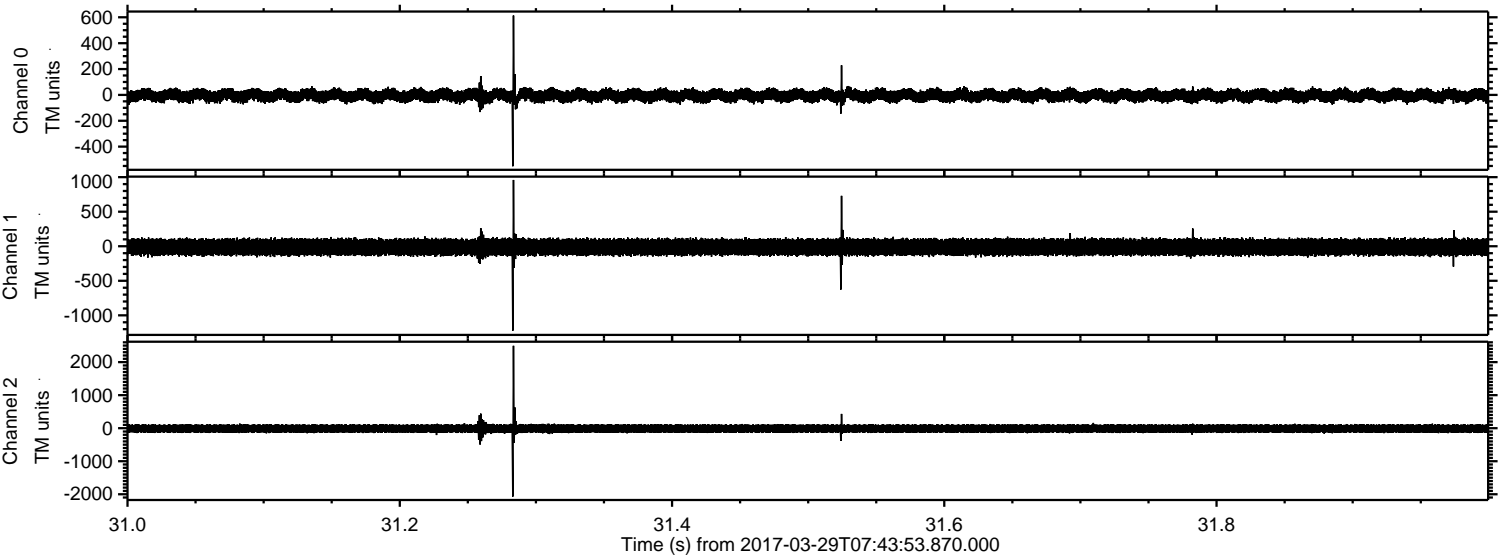


ELMAVAN 3D WAVEFORMS (Measured data sampled at 50 kHz) 51000 packets of 144 samples from 2017-03-29T07:43:53.870.000.

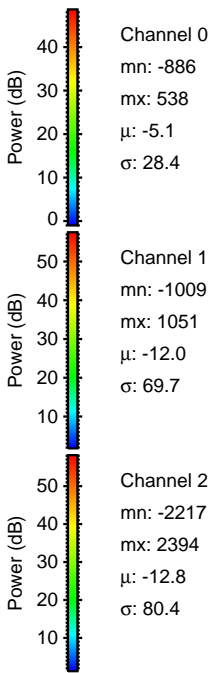
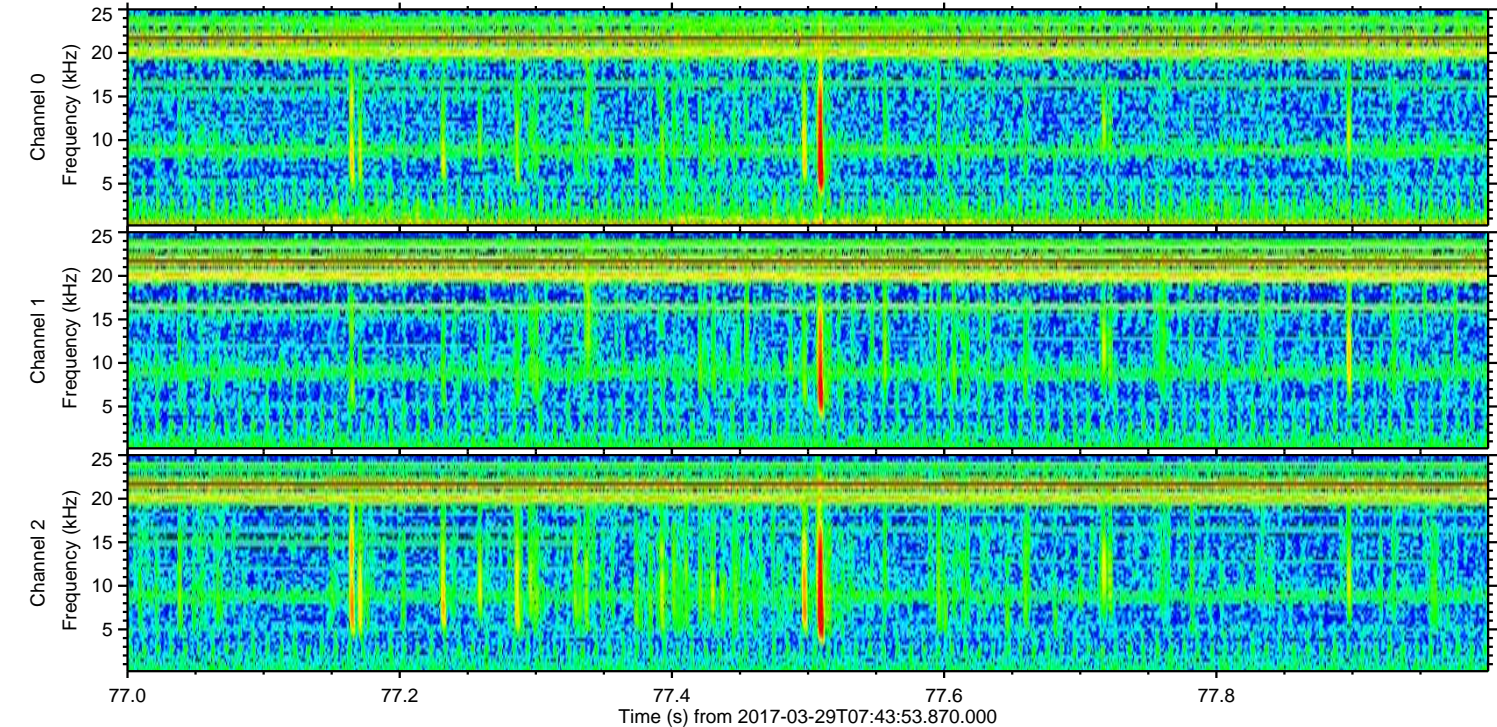
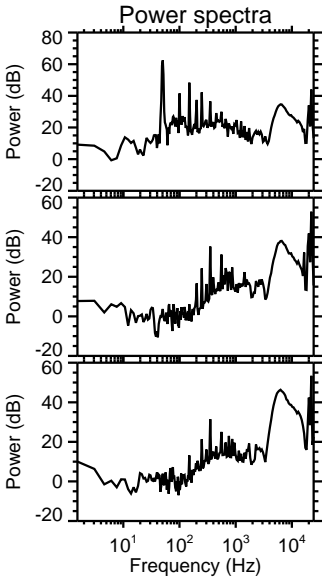
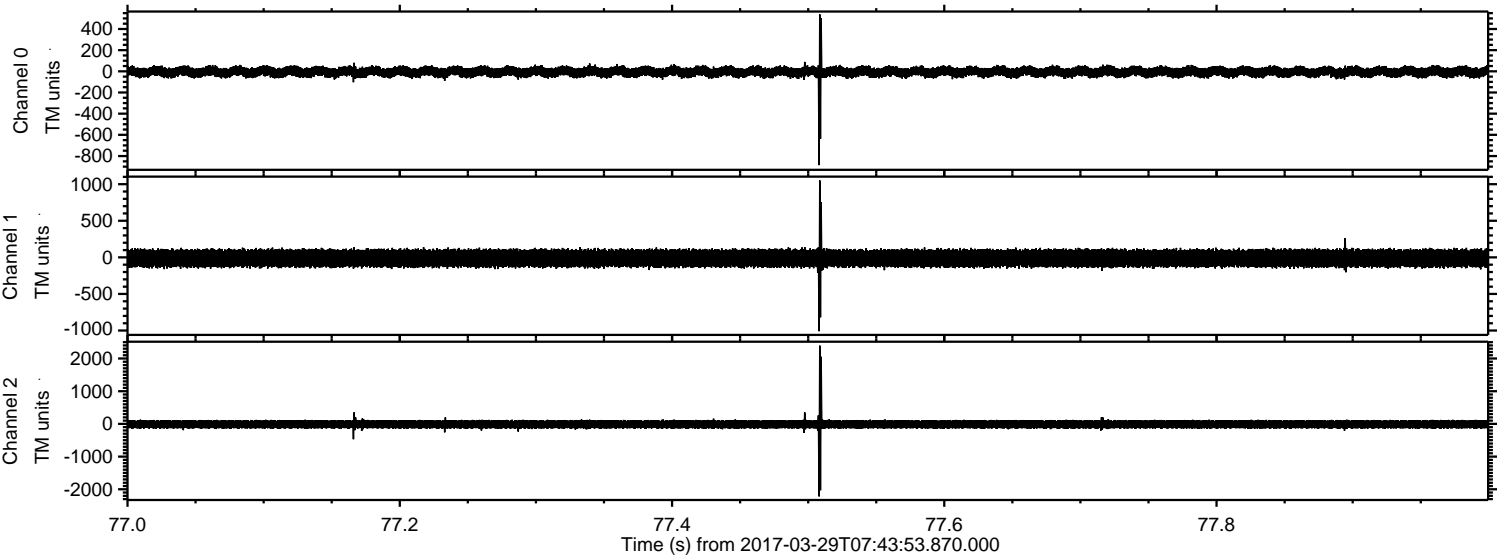
Processed Wed Mar 29 09:51:57 2017 by ELM ver.2012-10-06 from 001__elm20170329_074352__dat00.bin



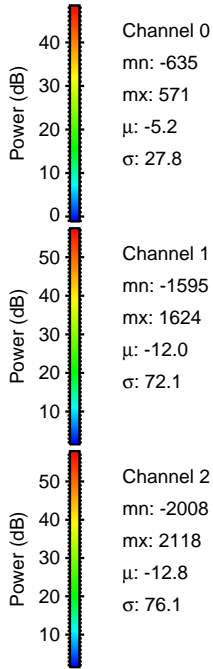
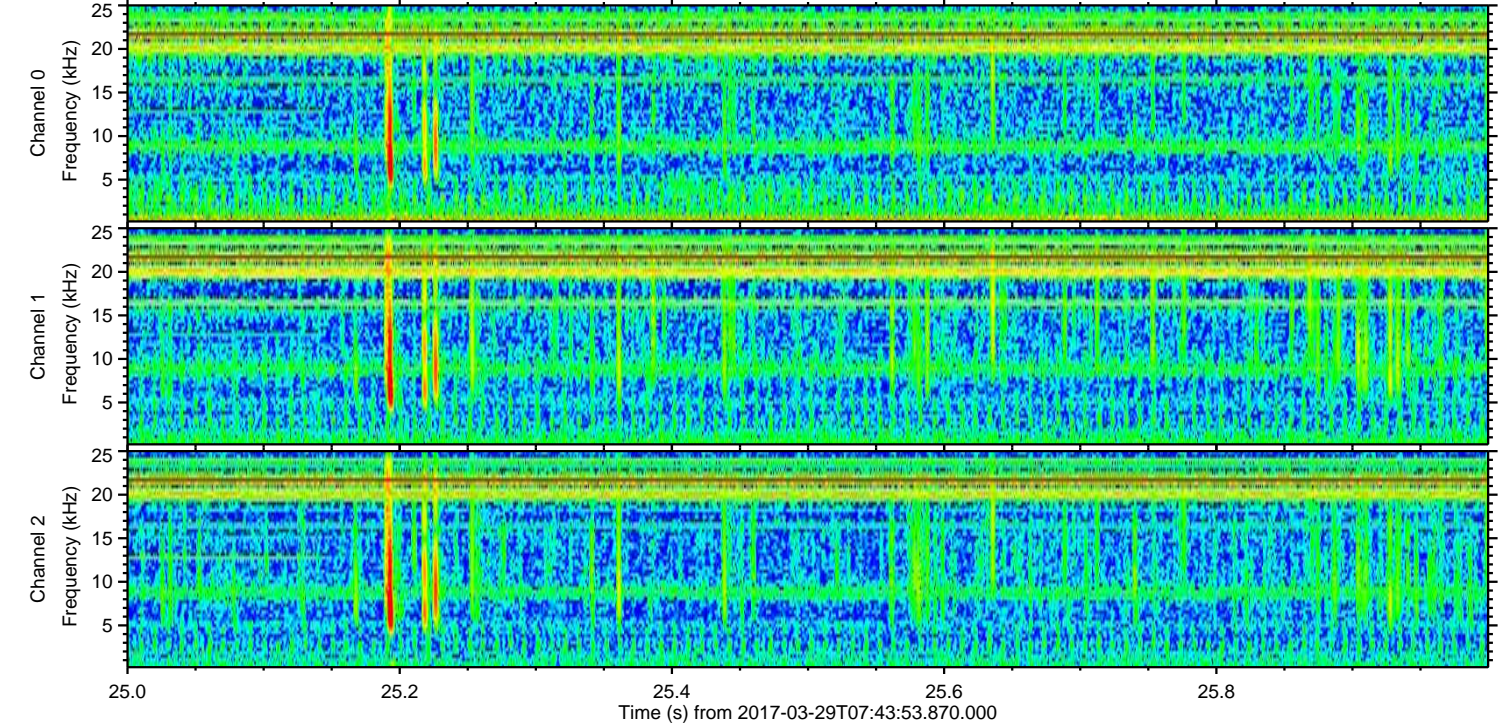
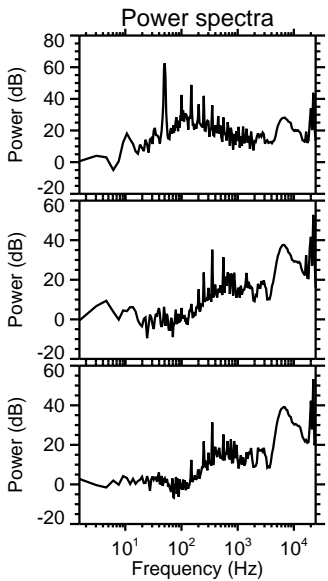
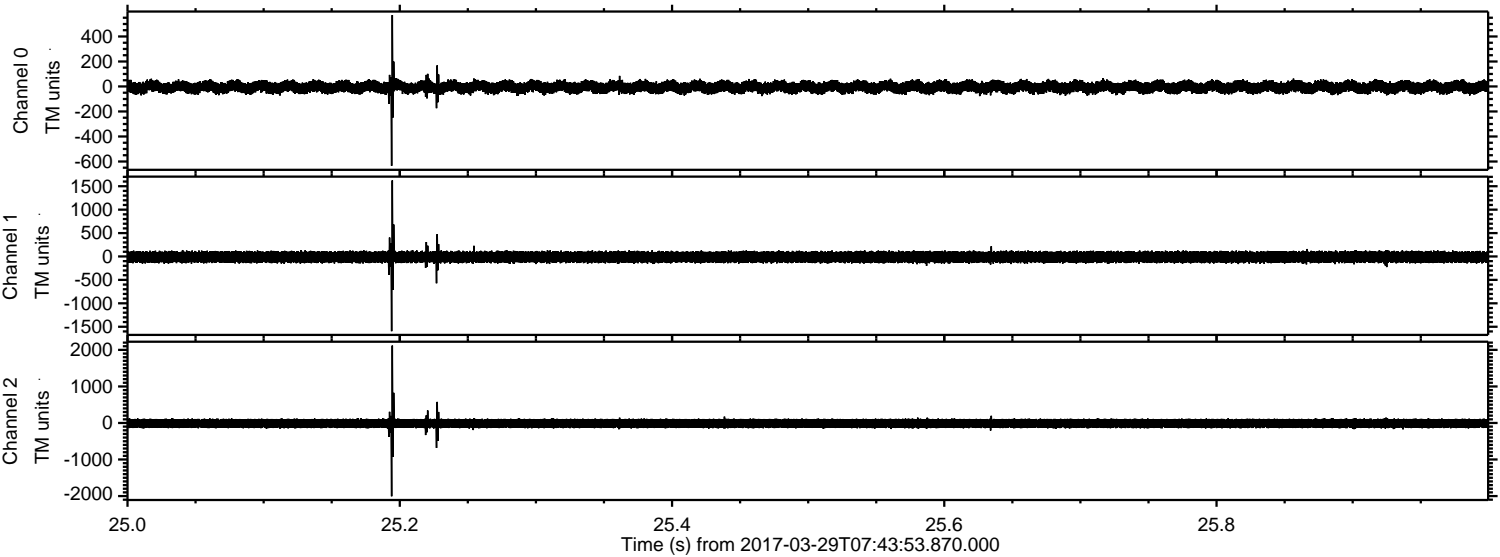
Processed Wed Mar 29 09:52:09 2017 by ELM ver.2012-10-06 from 001__elm20170329_074352__dat00.bin



Processed Wed Mar 29 09:52:10 2017 by ELM ver.2012-10-06 from 001__elm20170329_074352__dat00.bin

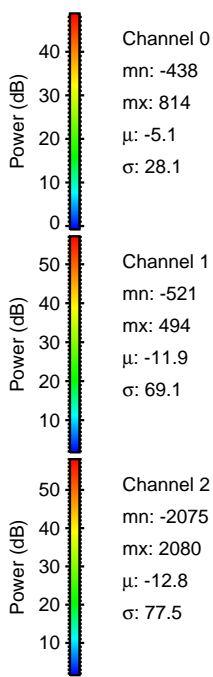
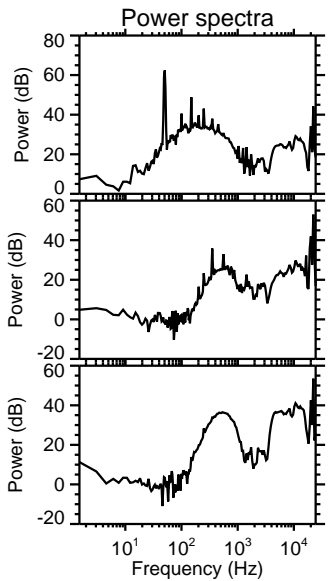
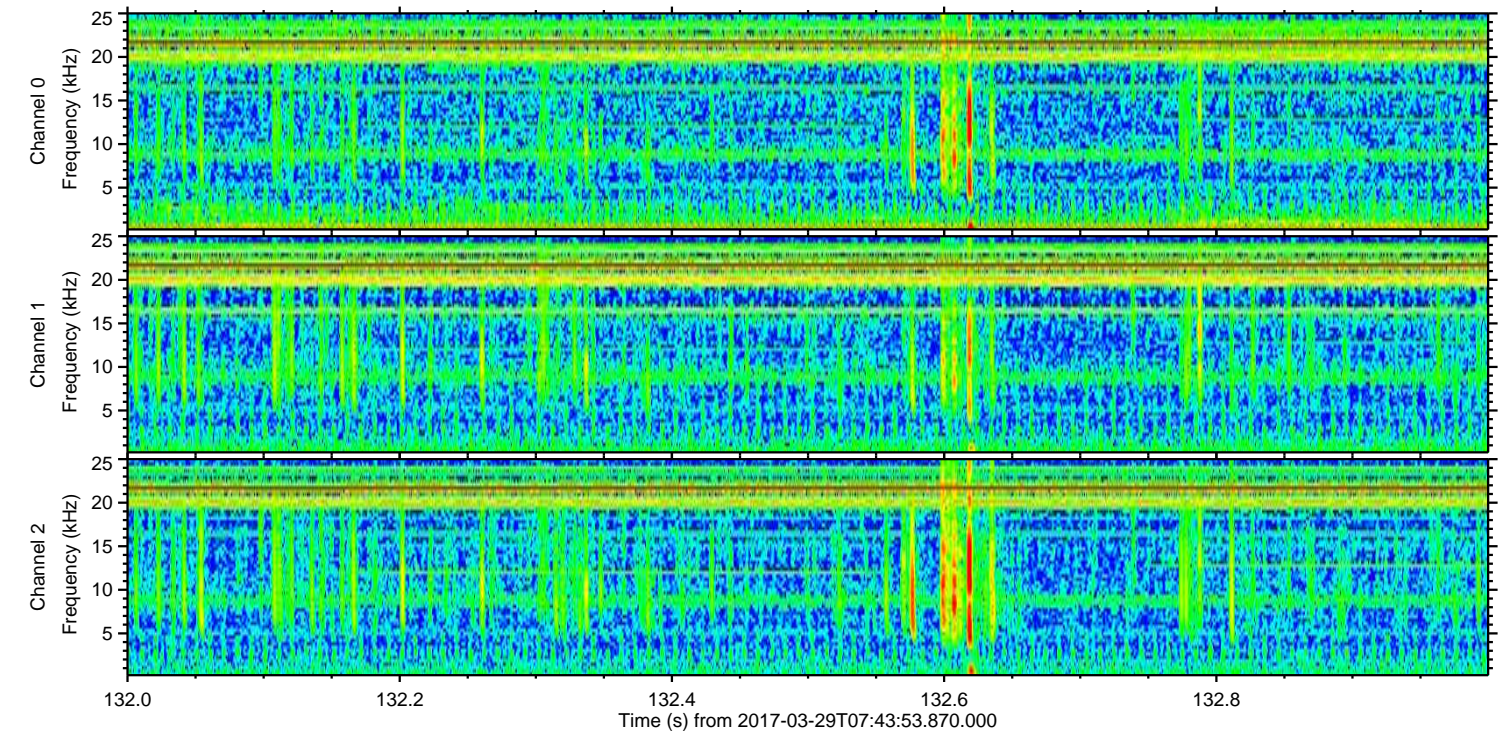
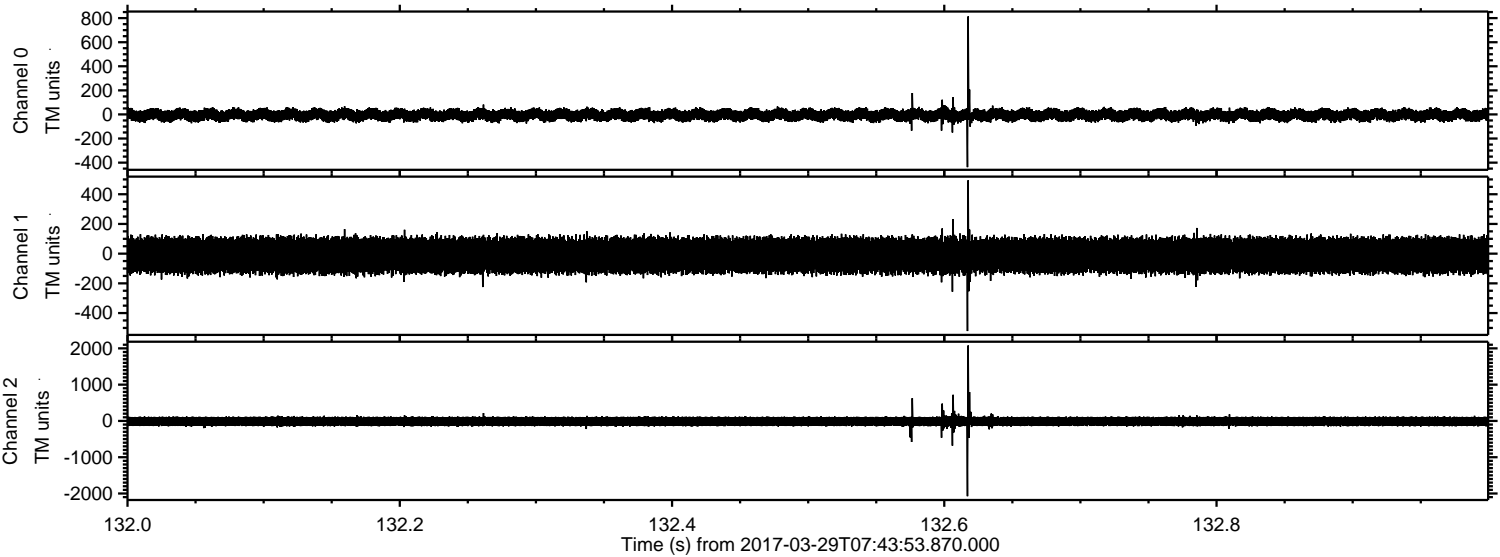


Processed Wed Mar 29 09:52:11 2017 by ELM ver.2012-10-06 from 001__elm20170329_074352__dat00.bin

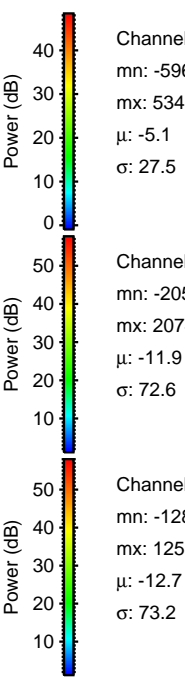
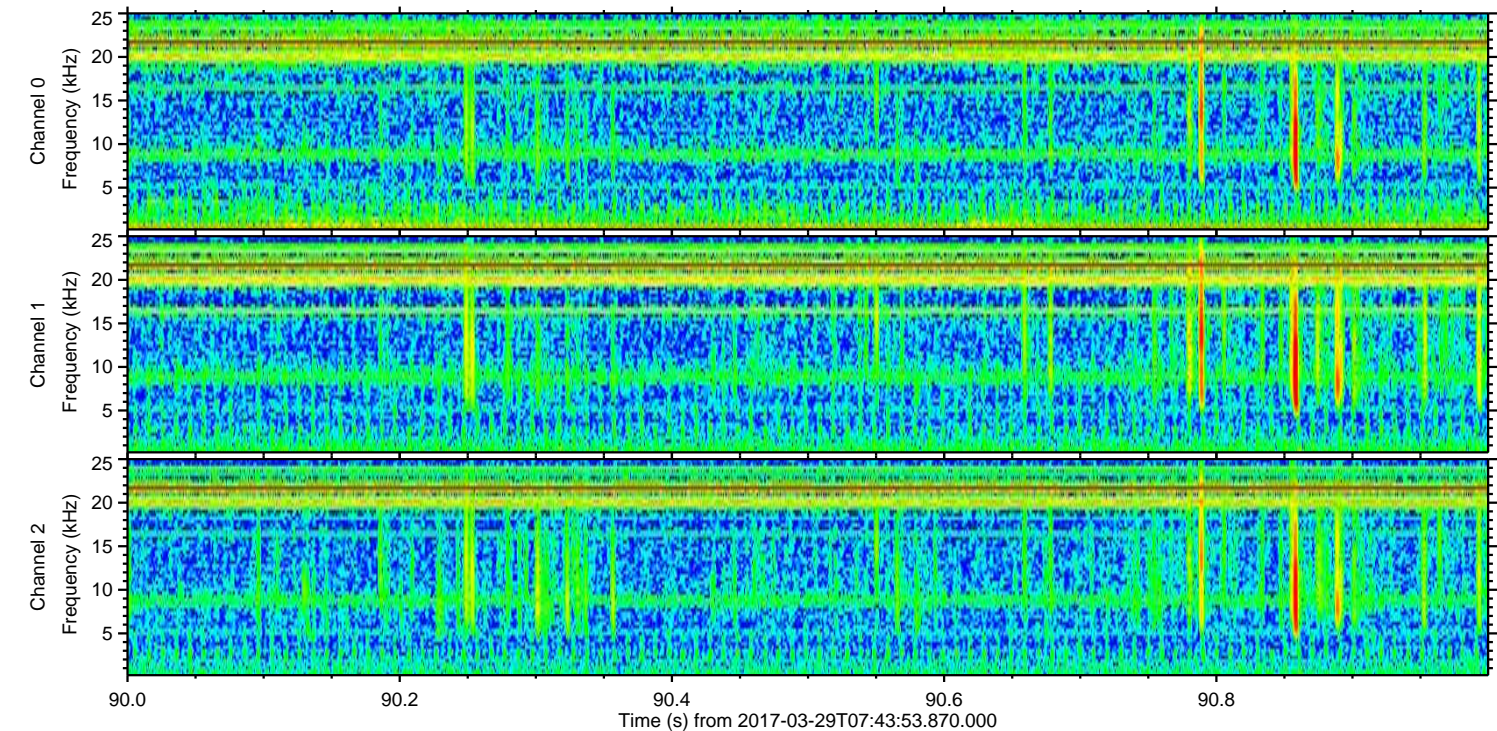
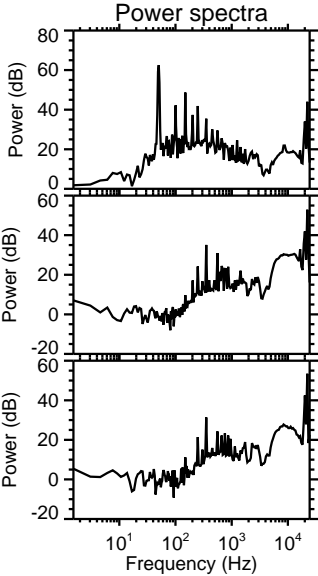
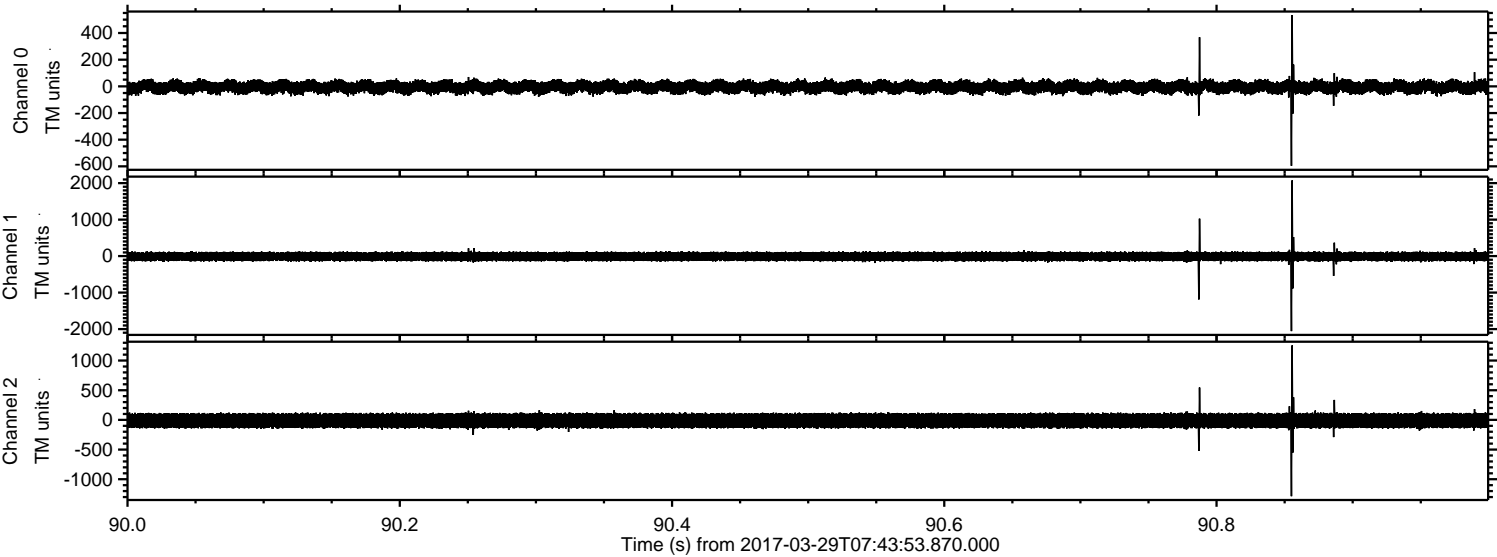


ELMAVAN 3D WAVEFORMS (Measured data sampled at 50 kHz) 51000 packets of 144 samples from 2017-03-29T07:43:53.870.000. Part 133/147

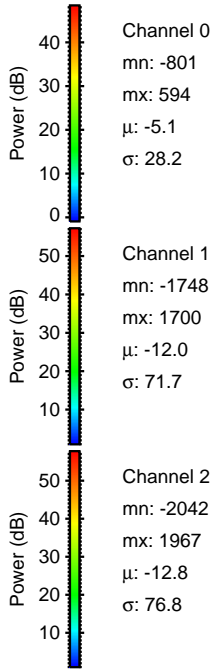
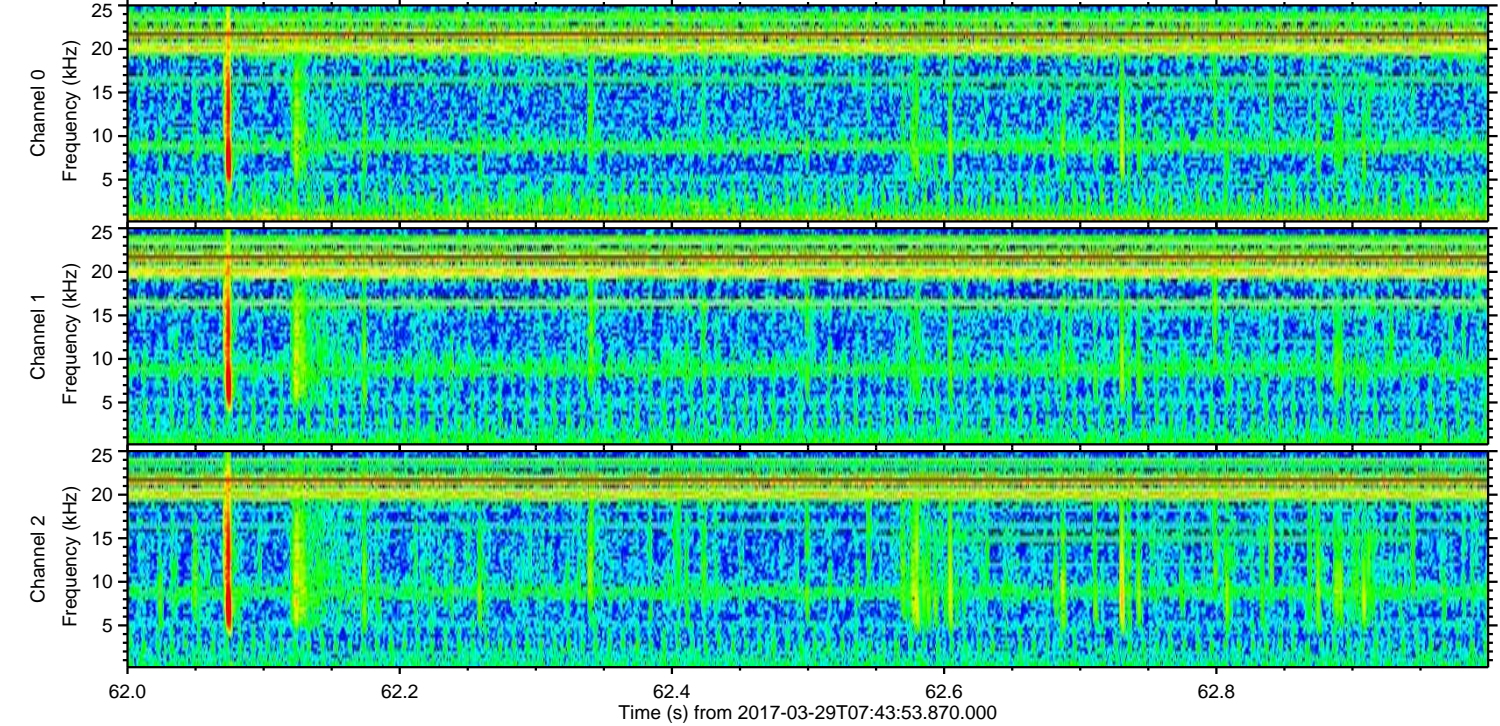
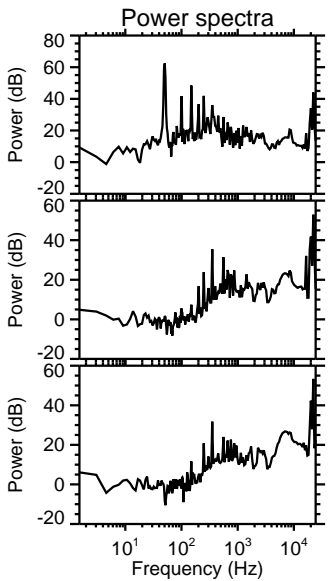
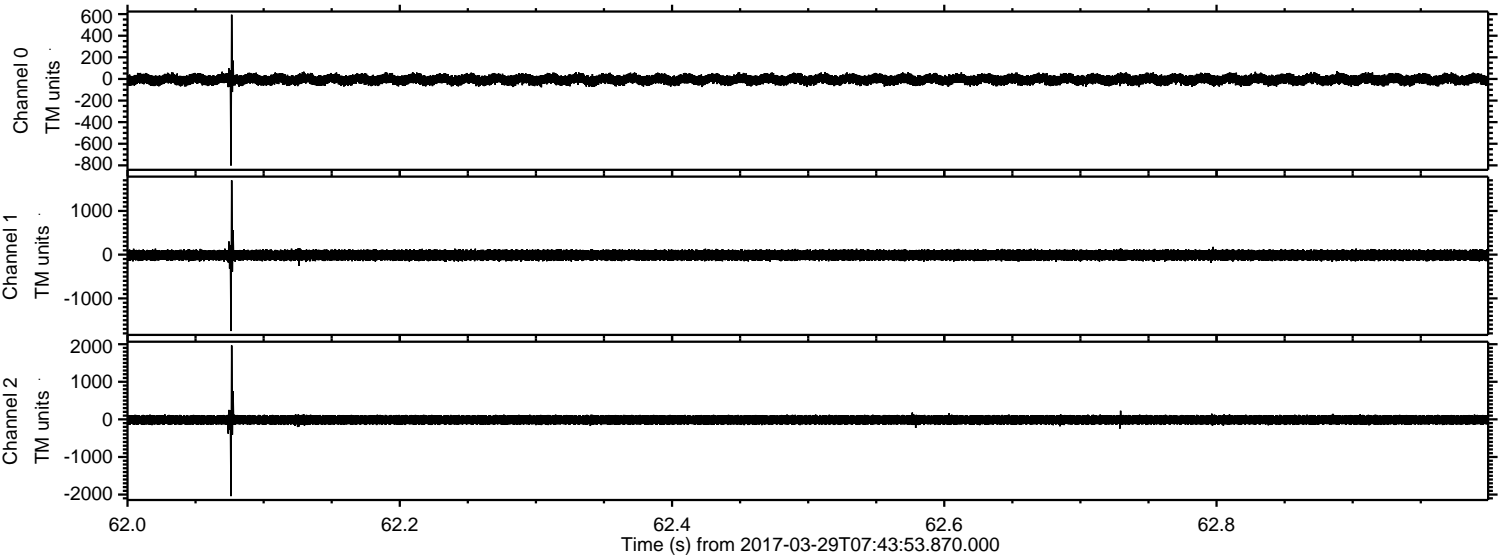
Processed Wed Mar 29 09:52:12 2017 by ELM ver.2012-10-06 from 001__elm20170329_074352__dat00.bin



Processed Wed Mar 29 09:52:13 2017 by ELM ver.2012-10-06 from 001__elm20170329_074352__dat00.bin

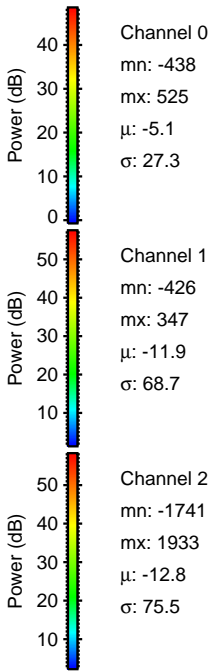
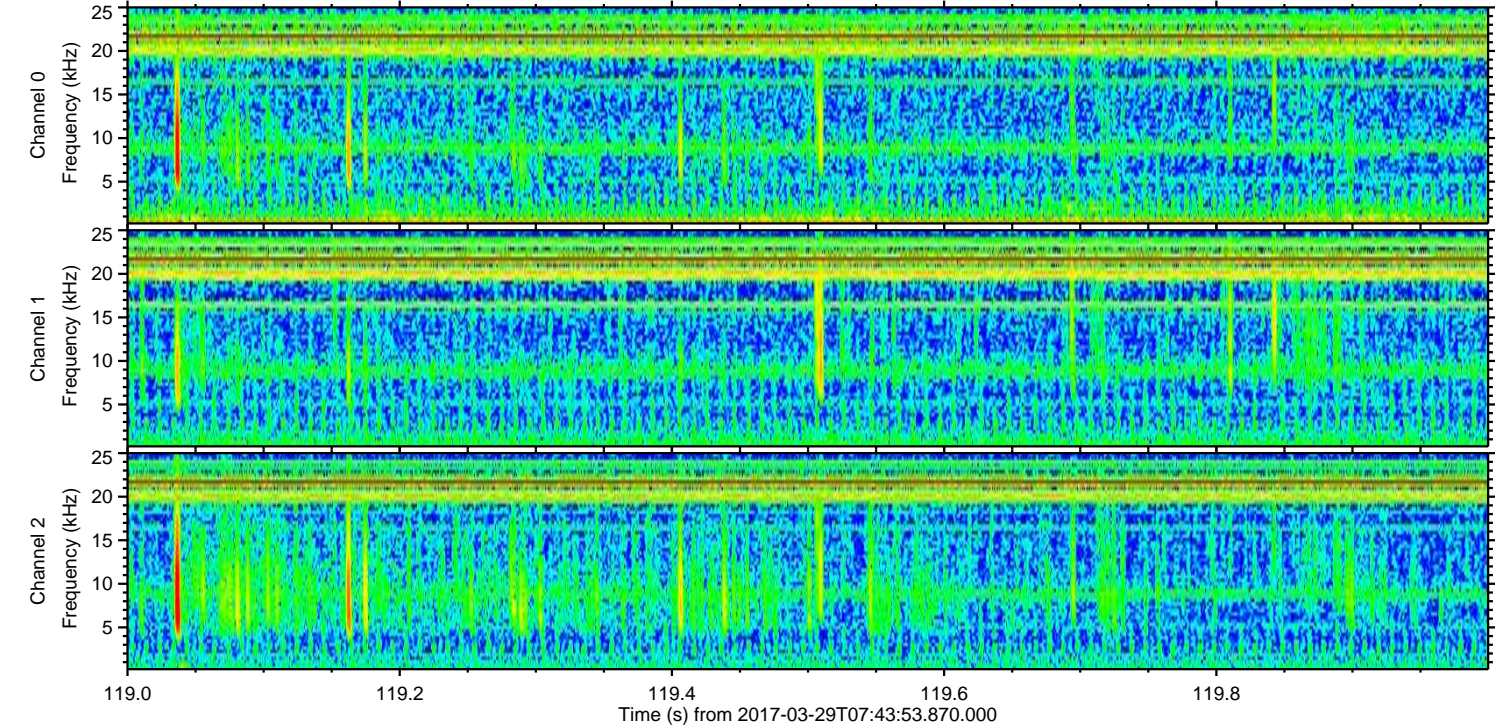
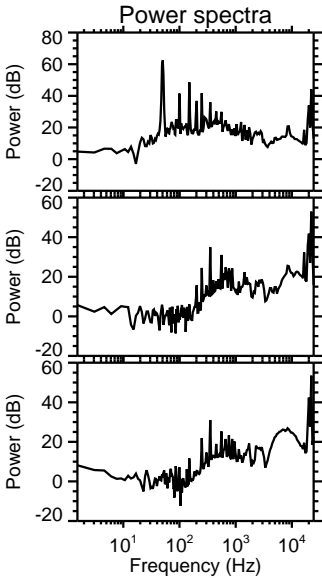
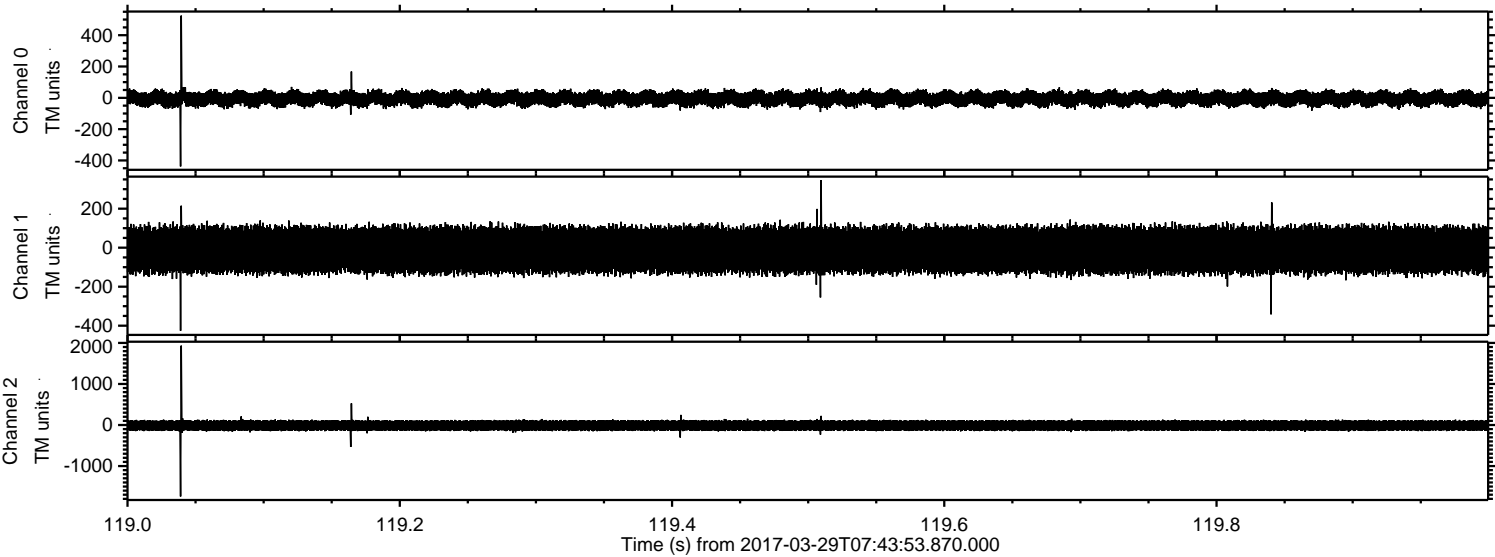


Processed Wed Mar 29 09:52:14 2017 by ELM ver.2012-10-06 from 001__elm20170329_074352__dat00.bin



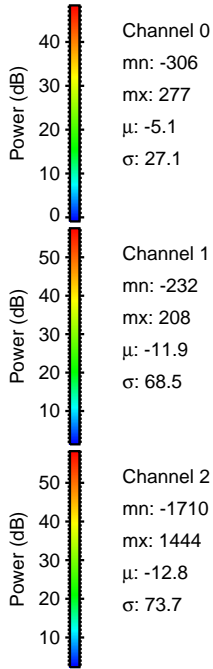
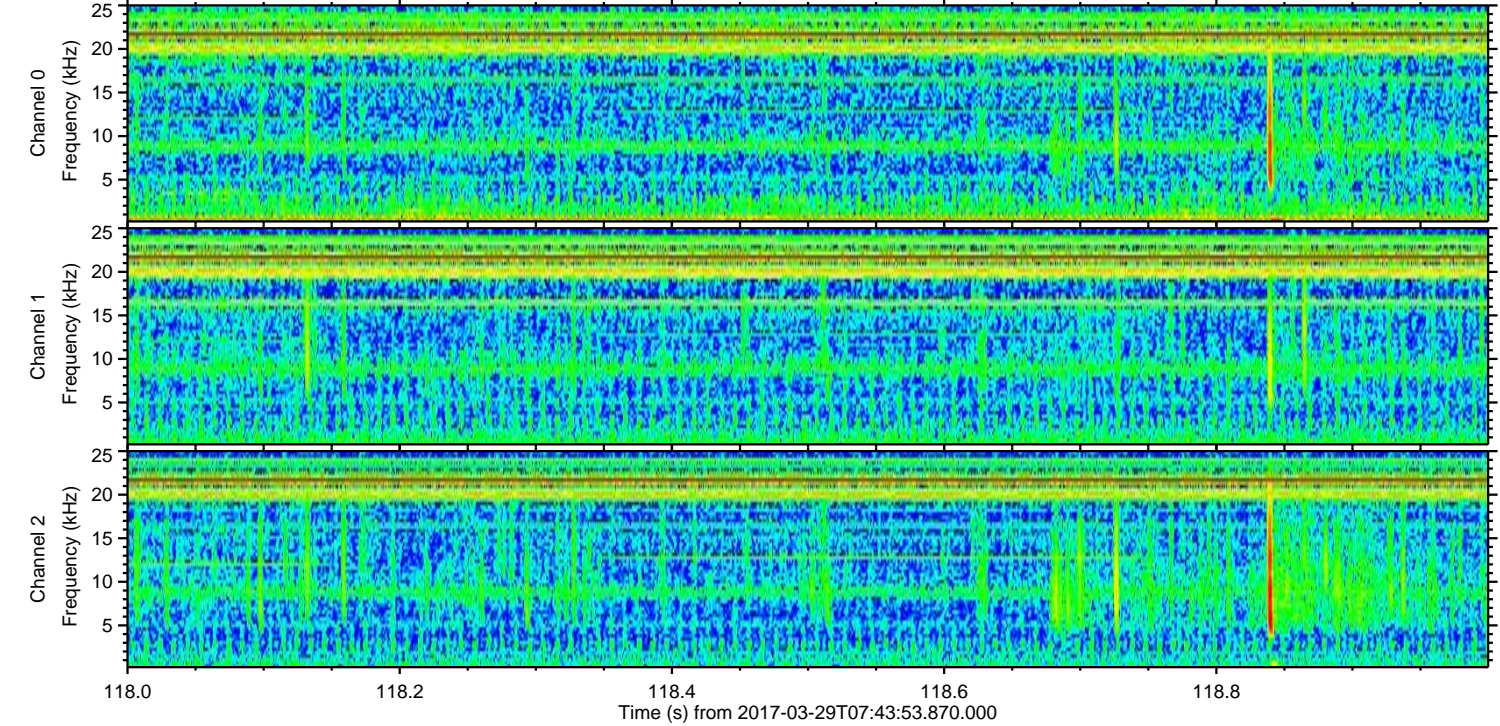
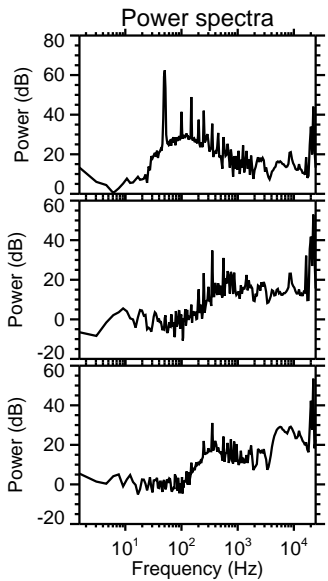
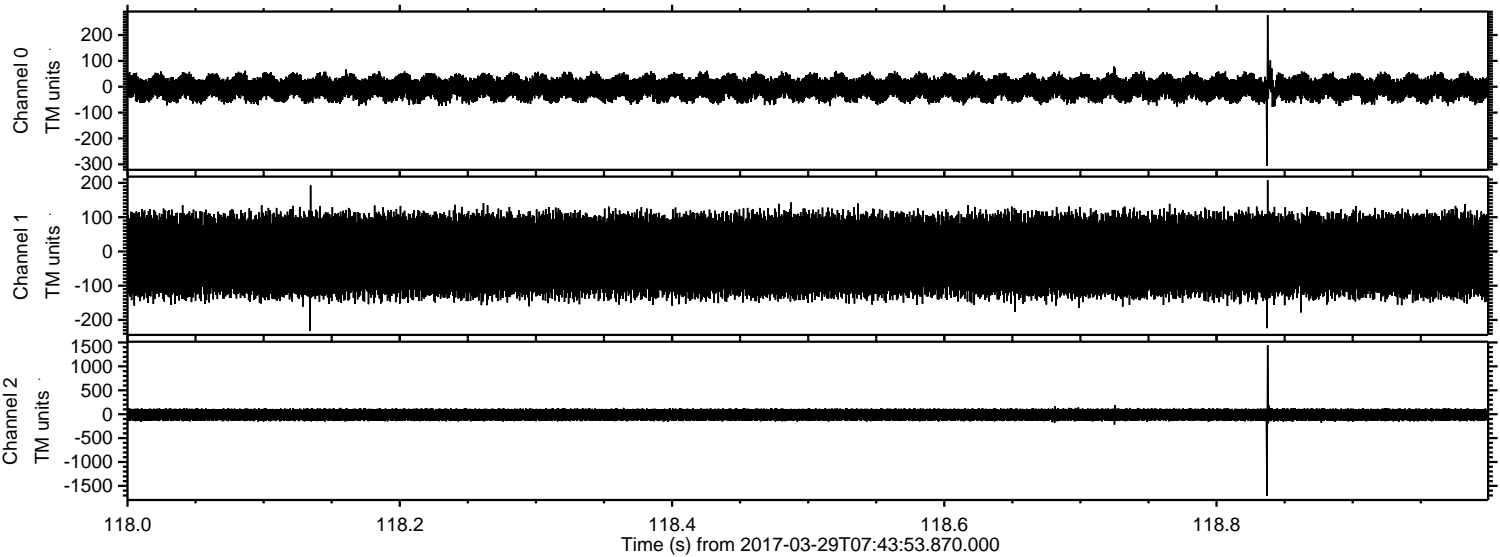
ELMAVAN 3D WAVEFORMS (Measured data sampled at 50 kHz) 51000 packets of 144 samples from 2017-03-29T07:43:53.870.000. Part 120/147

Processed Wed Mar 29 09:52:15 2017 by ELM ver.2012-10-06 from 001__elm20170329_074352__dat00.bin



ELMAVAN 3D WAVEFORMS (Measured data sampled at 50 kHz) 51000 packets of 144 samples from 2017-03-29T07:43:53.870.000. Part 119/147

Processed Wed Mar 29 09:52:16 2017 by ELM ver.2012-10-06 from 001__elm20170329_074352__dat00.bin



Channel 0
mn: -306
mx: 277
 μ : -5.1
 σ : 27.1

Channel 1
mn: -232
mx: 208
 μ : -11.9
 σ : 68.5

Channel 2
mn: -1710
mx: 1444
 μ : -12.8
 σ : 73.7

Processed Wed Mar 29 09:52:17 2017 by ELM ver.2012-10-06 from 001__elm20170329_074352__dat00.bin

