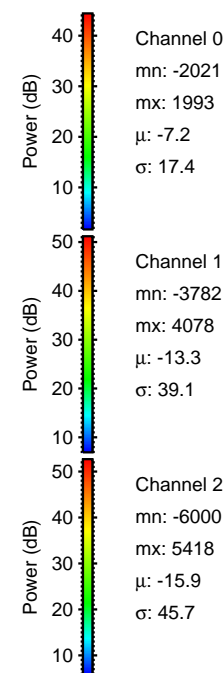
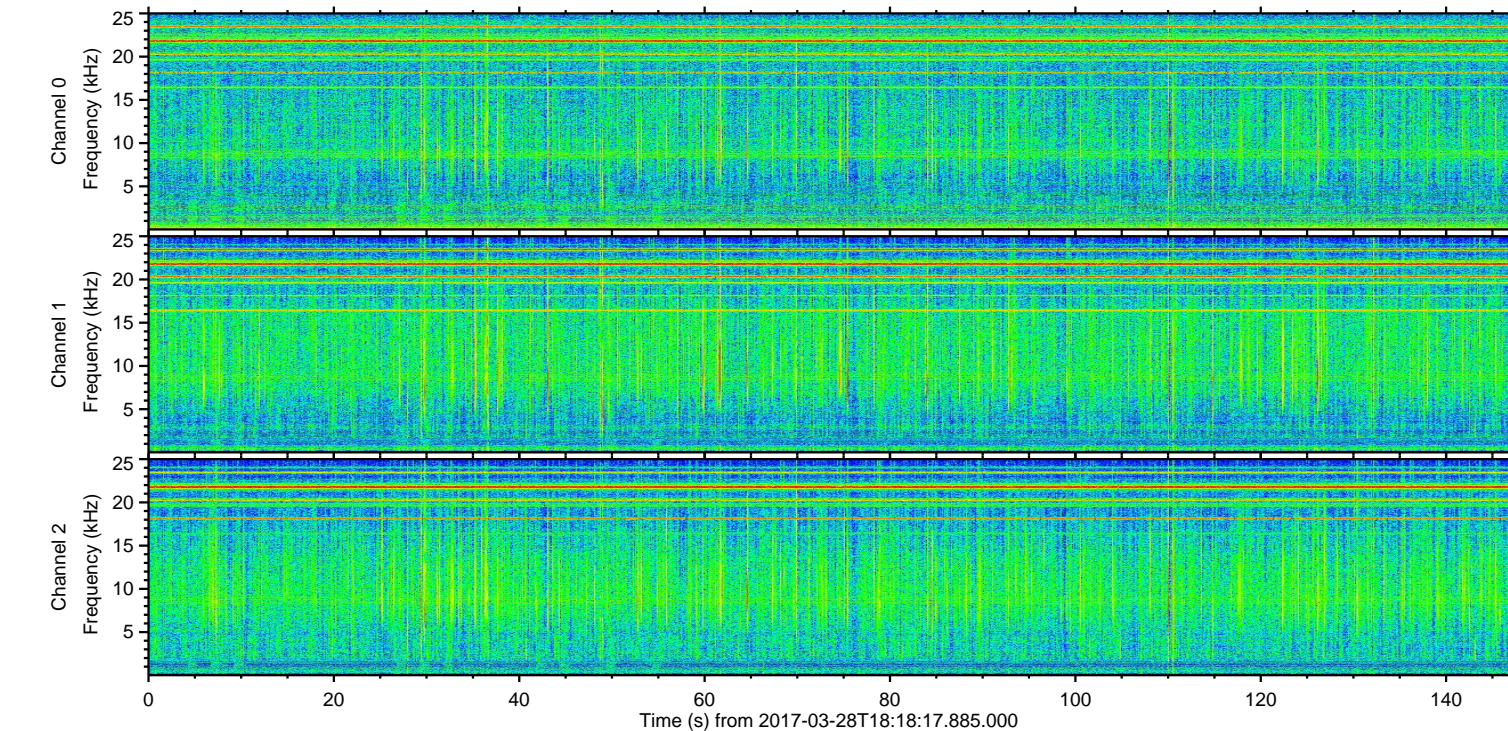
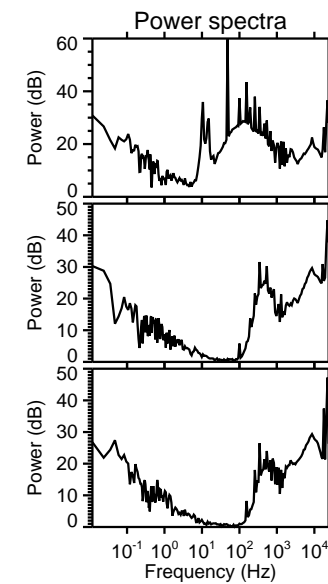
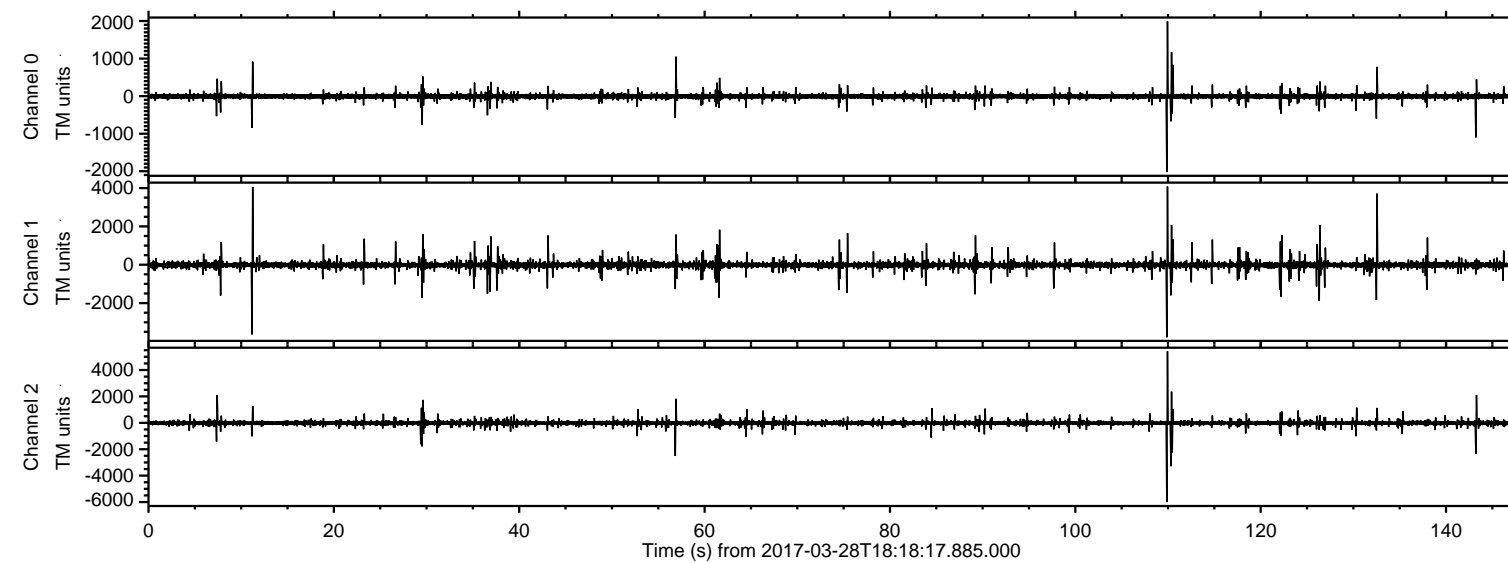


ELMAVAN 3D WAVEFORMS (Measured data sampled at 50 kHz) 51000 packets of 144 samples from 2017-03-28T18:18:17.885.000.

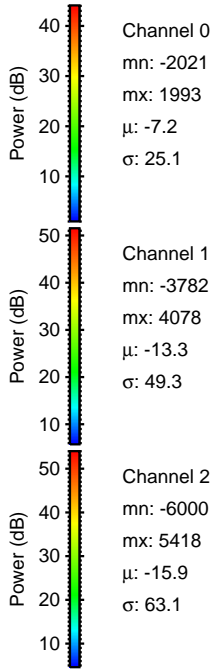
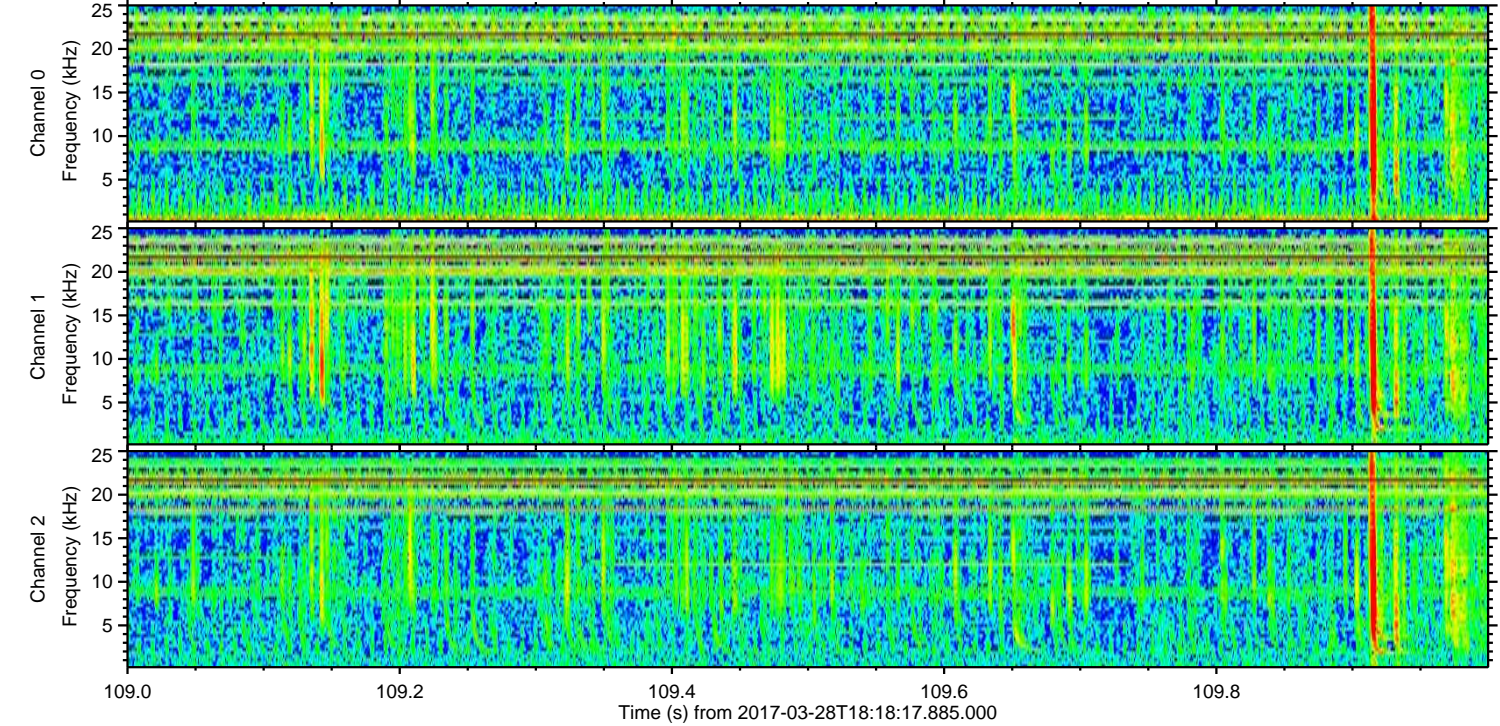
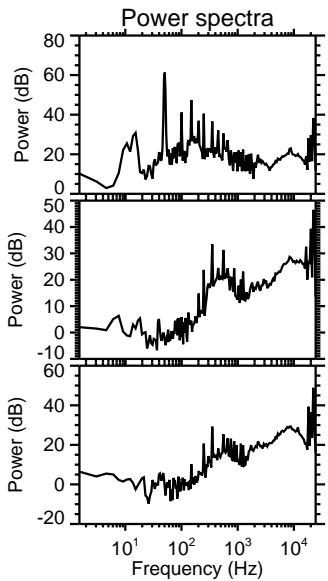
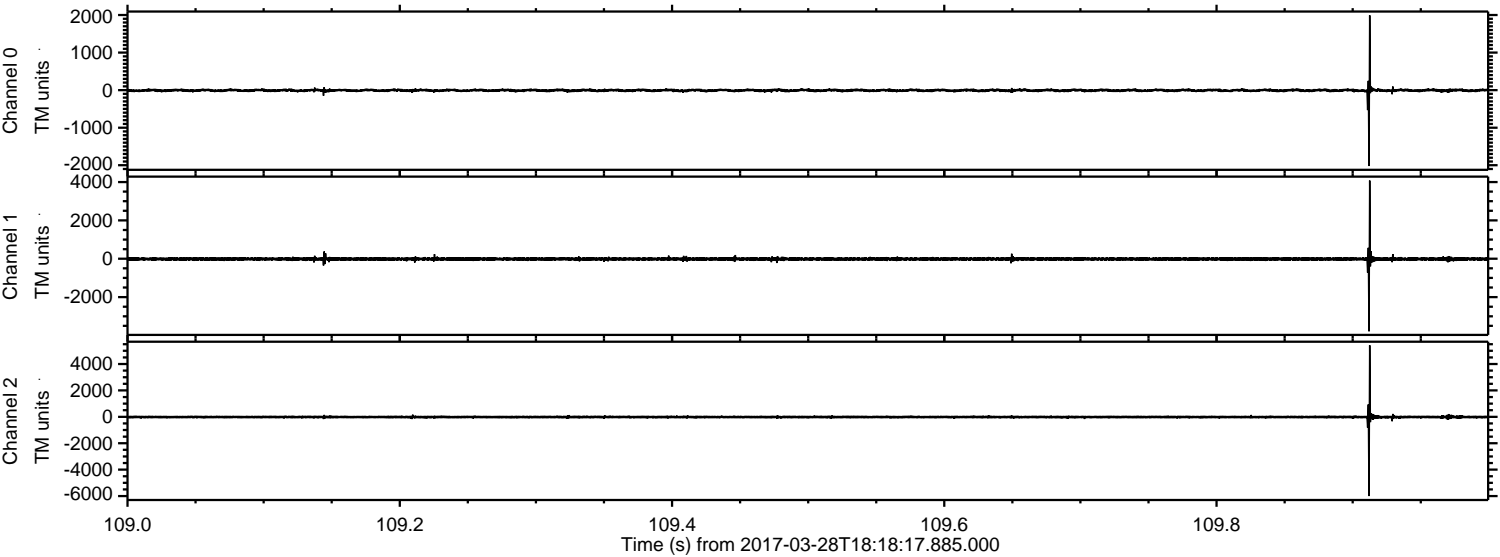
Processed Tue Mar 28 20:26:33 2017 by ELM ver.2012-10-06 from 001\_\_elm20170328\_181816\_\_dat00.bin





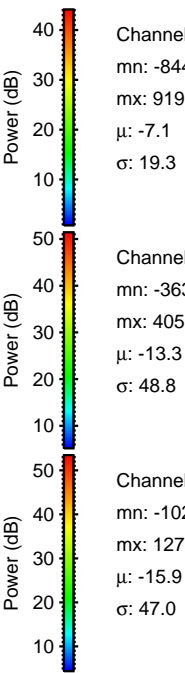
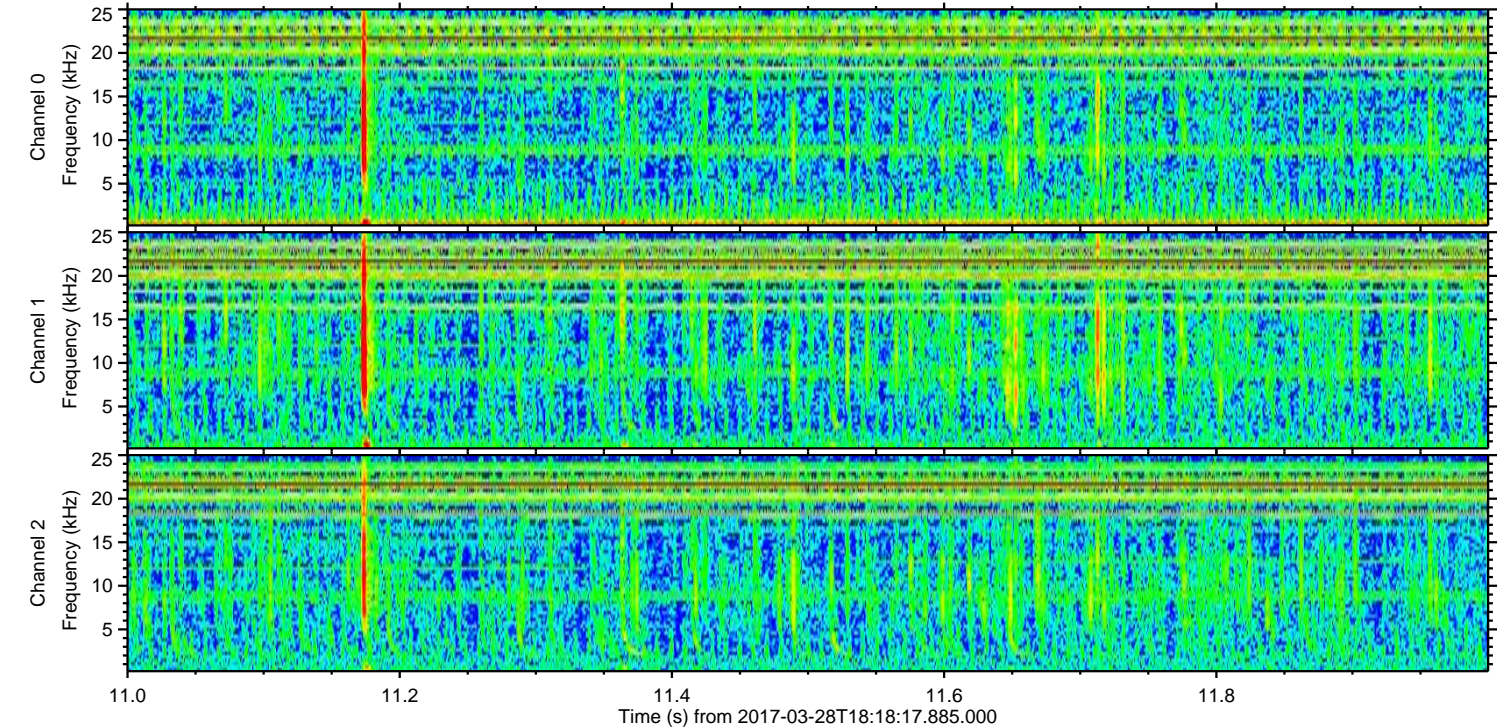
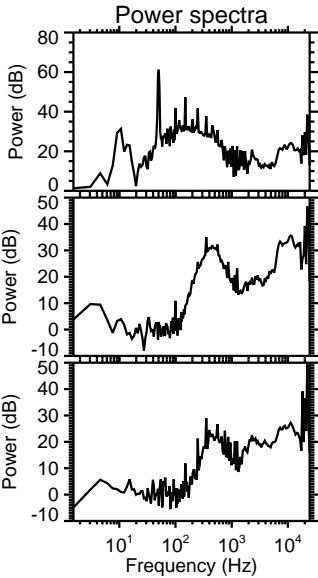
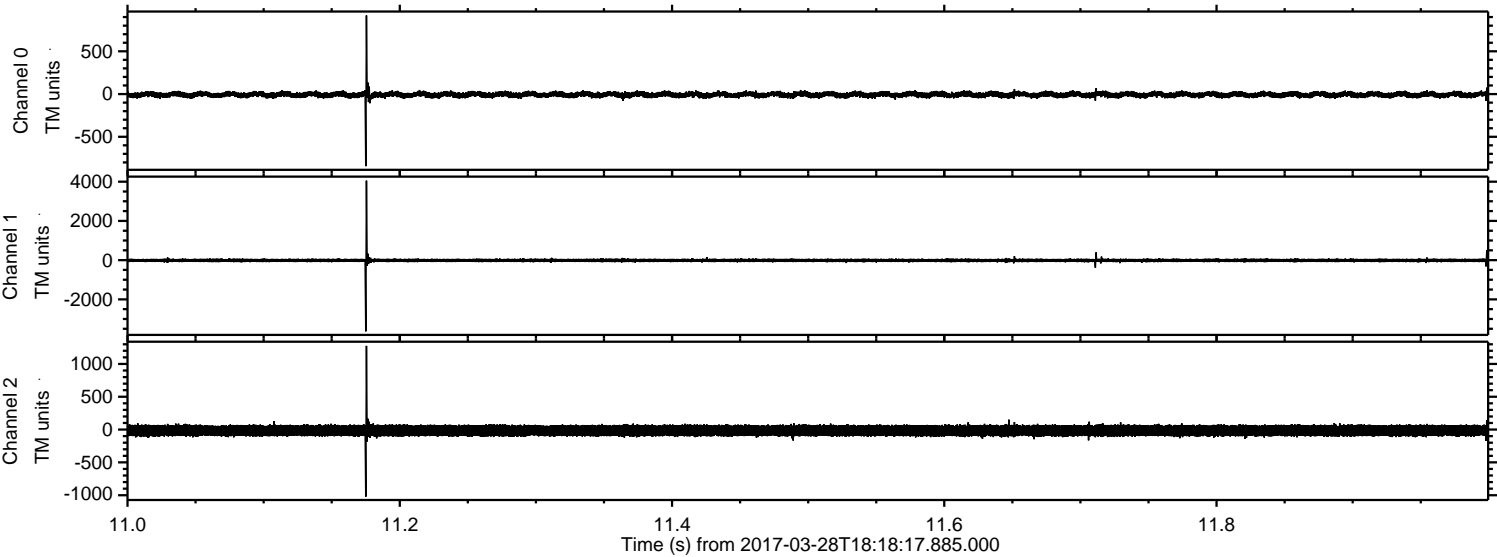
ELMAVAN 3D WAVEFORMS (Measured data sampled at 50 kHz) 51000 packets of 144 samples from 2017-03-28T18:18:17.885.000. Part 110/147

Processed Tue Mar 28 20:26:47 2017 by ELM ver.2012-10-06 from 001\_\_elm20170328\_181816\_\_dat00.bin





Processed Tue Mar 28 20:26:48 2017 by ELM ver.2012-10-06 from 001\_\_elm20170328\_181816\_\_dat00.bin



Channel 0  
mn: -844  
mx: 919  
μ: -7.1  
σ: 19.3

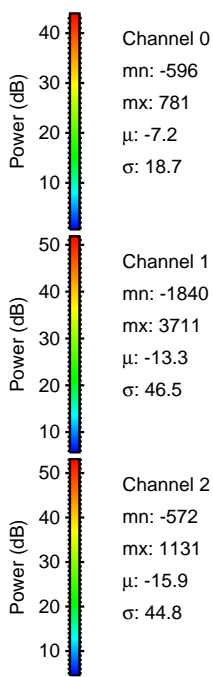
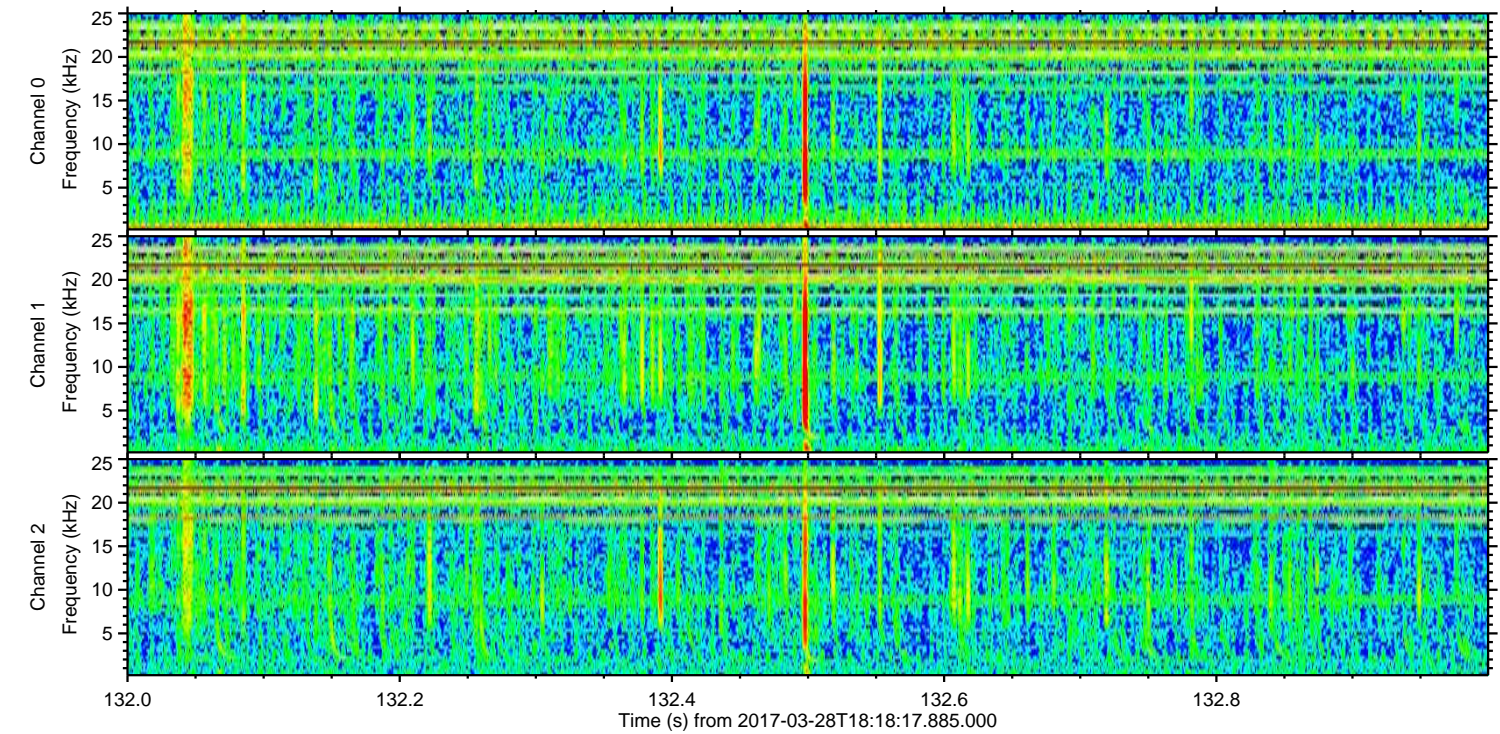
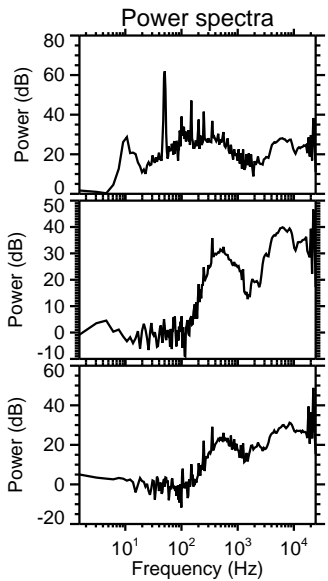
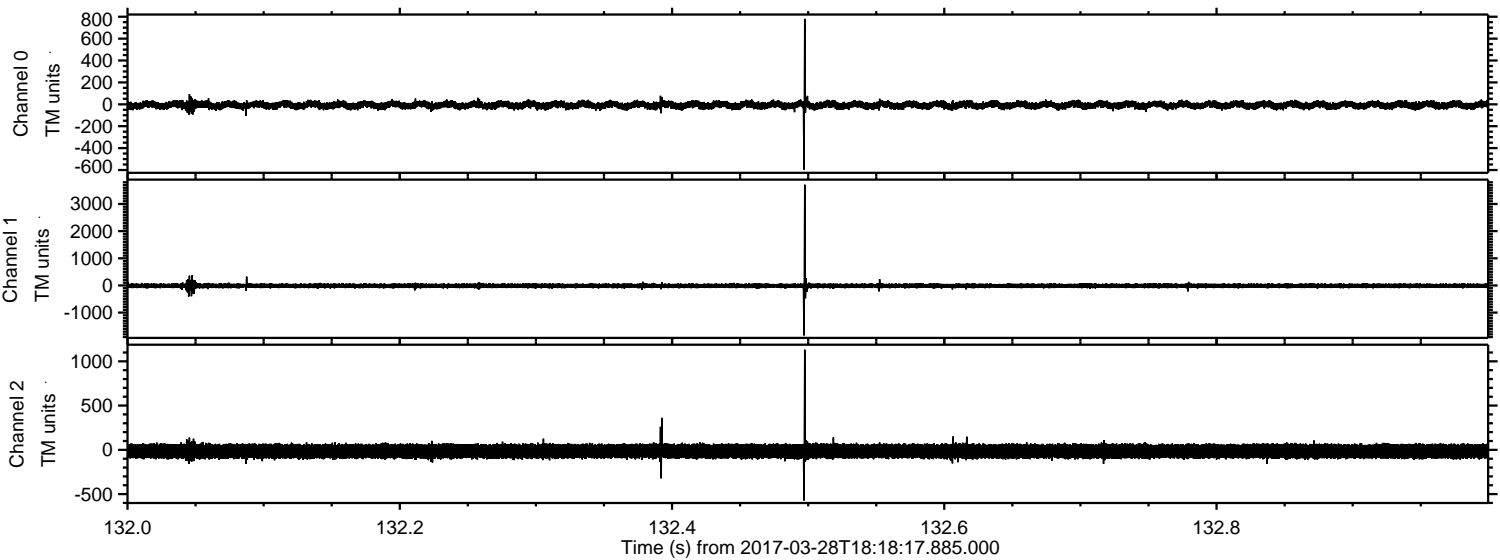
Channel 1  
mn: -3631  
mx: 4055  
μ: -13.3  
σ: 48.8

Channel 2  
mn: -1022  
mx: 1275  
μ: -15.9  
σ: 47.0



ELMAVAN 3D WAVEFORMS (Measured data sampled at 50 kHz) 51000 packets of 144 samples from 2017-03-28T18:17:885.000. Part 133/147

Processed Tue Mar 28 20:26:49 2017 by ELM ver.2012-10-06 from 001\_\_elm20170328\_181816\_\_dat00.bin



Channel 0  
mn: -596  
mx: 781  
 $\mu$ : -7.2  
 $\sigma$ : 18.7

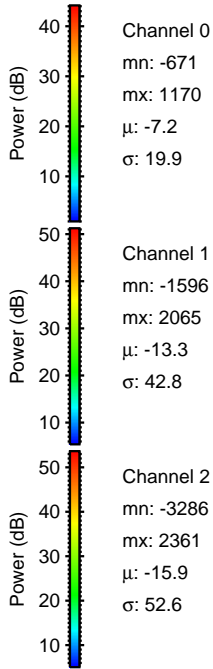
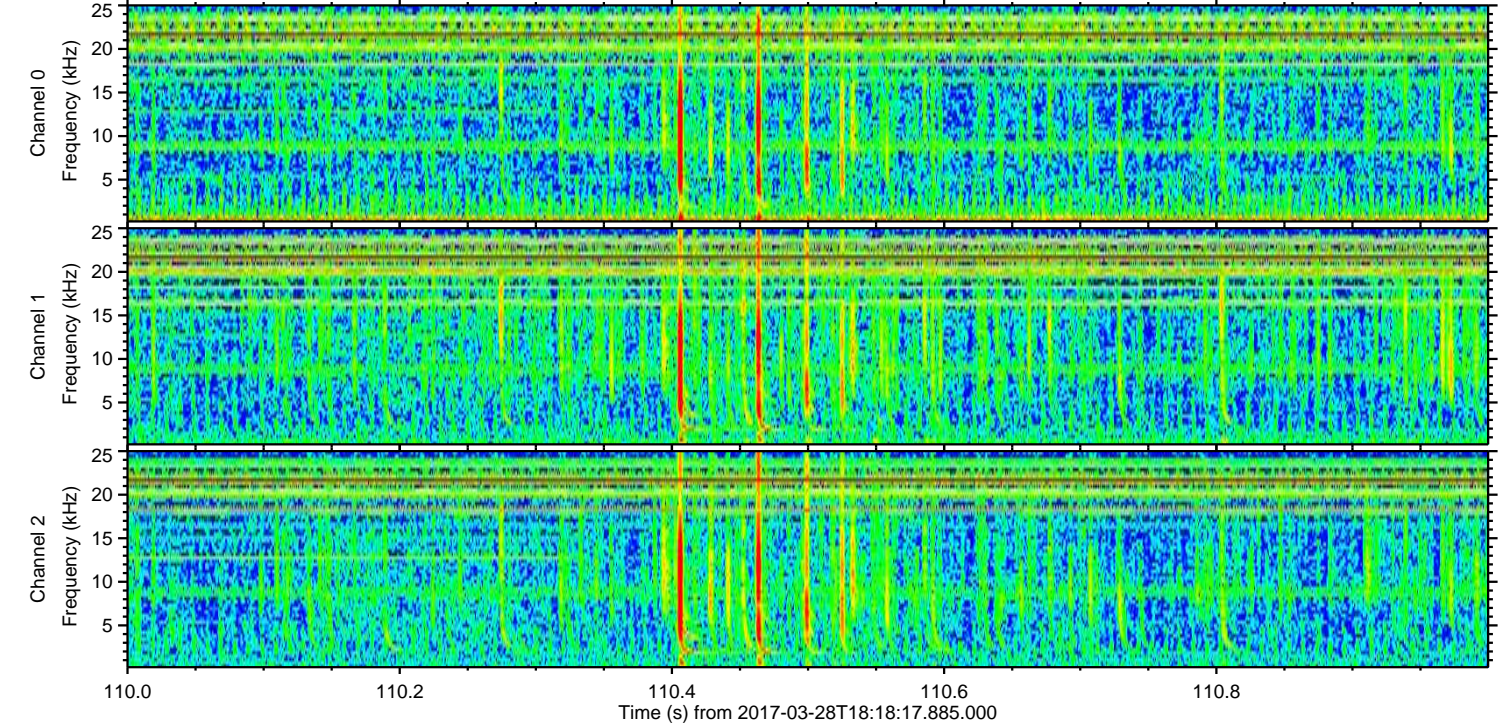
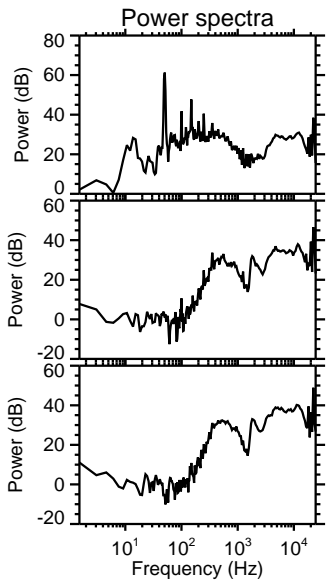
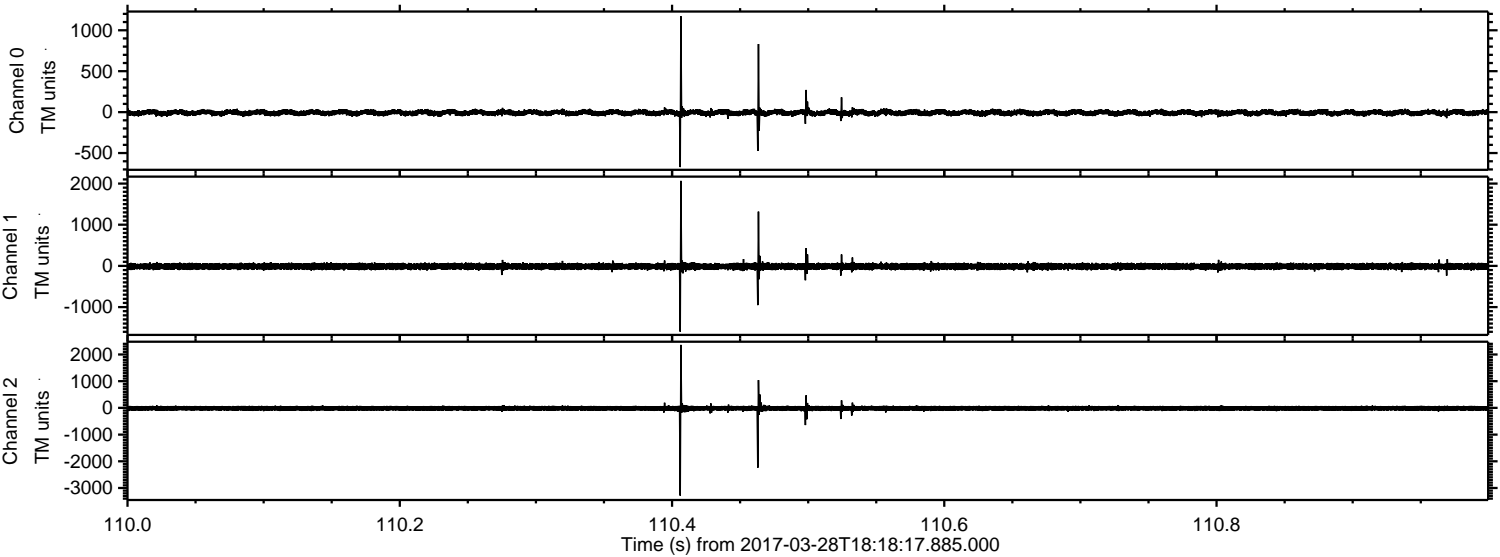
Channel 1  
mn: -1840  
mx: 3711  
 $\mu$ : -13.3  
 $\sigma$ : 46.5

Channel 2  
mn: -572  
mx: 1131  
 $\mu$ : -15.9  
 $\sigma$ : 44.8



ELMAVAN 3D WAVEFORMS (Measured data sampled at 50 kHz) 51000 packets of 144 samples from 2017-03-28T18:18:17.885.000. Part 111/147

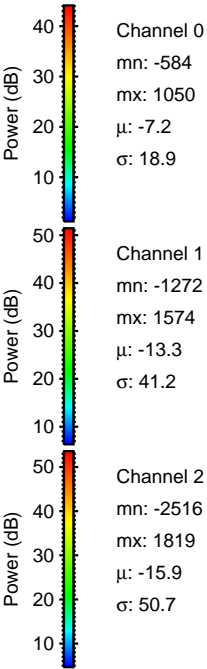
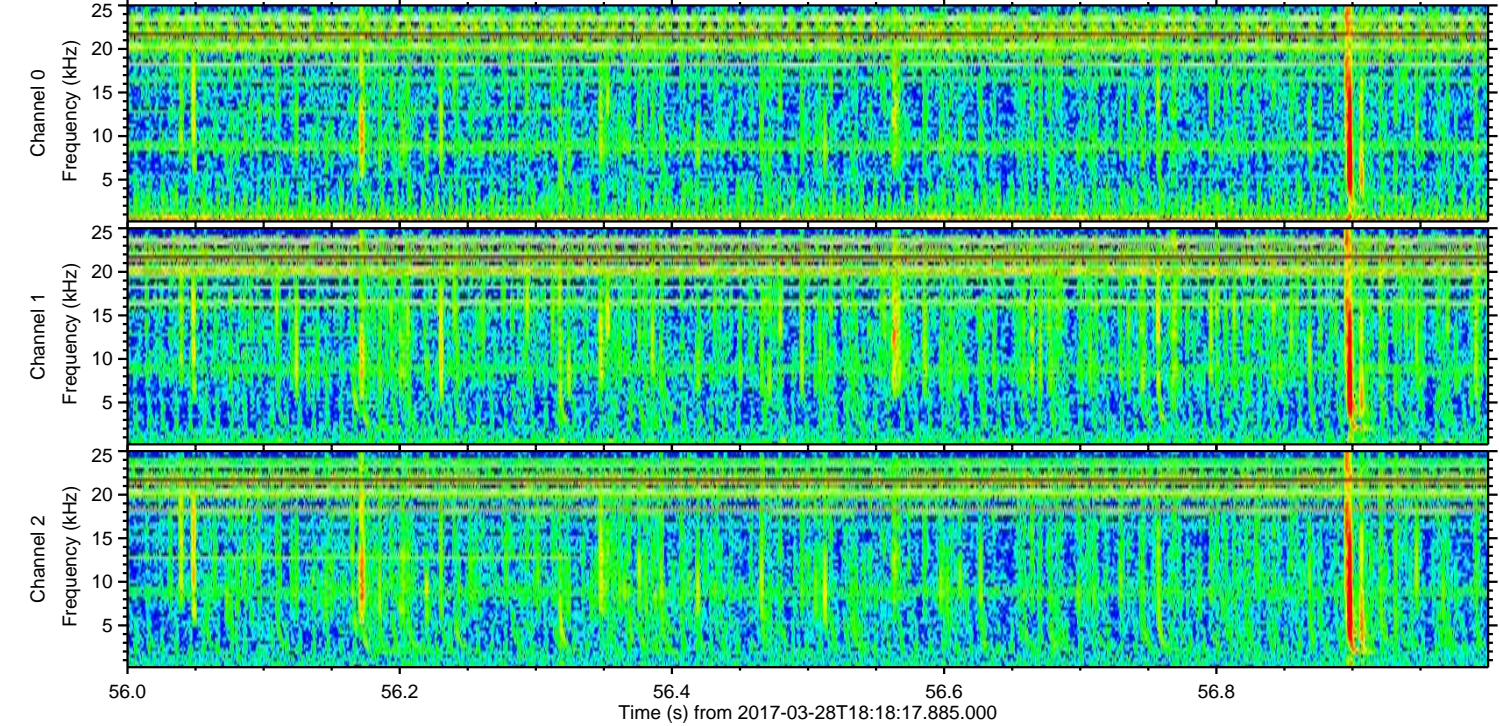
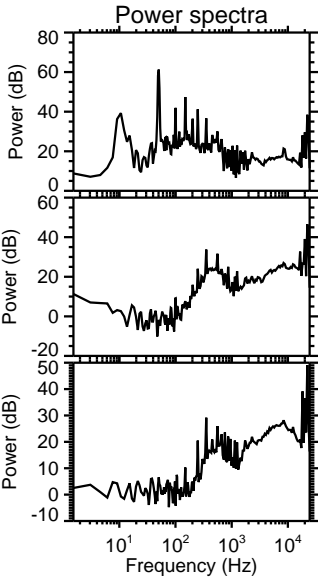
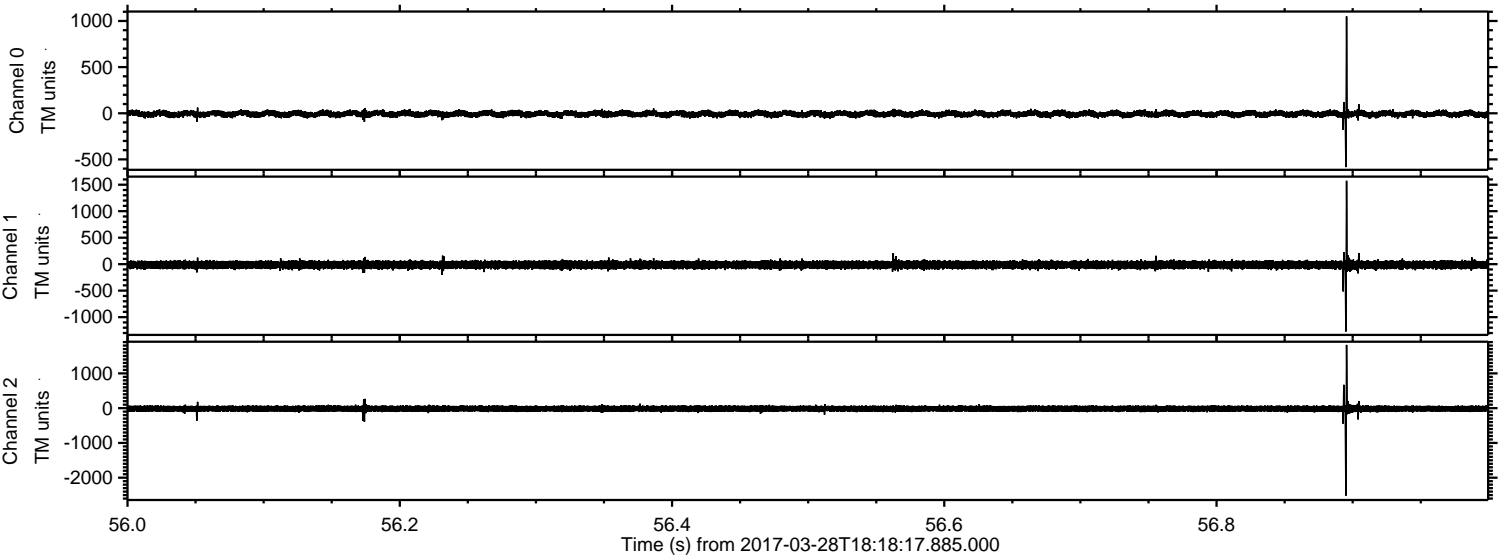
Processed Tue Mar 28 20:26:49 2017 by ELM ver.2012-10-06 from 001\_\_elm20170328\_181816\_\_dat00.bin





ELMAVAN 3D WAVEFORMS (Measured data sampled at 50 kHz) 51000 packets of 144 samples from 2017-03-28T18:18:17.885.000. Part 57/147

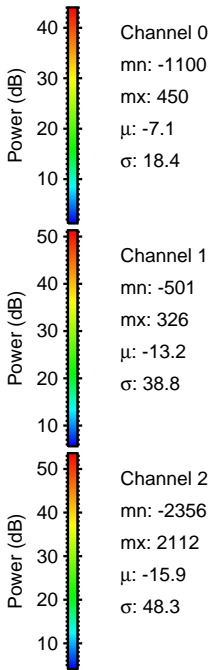
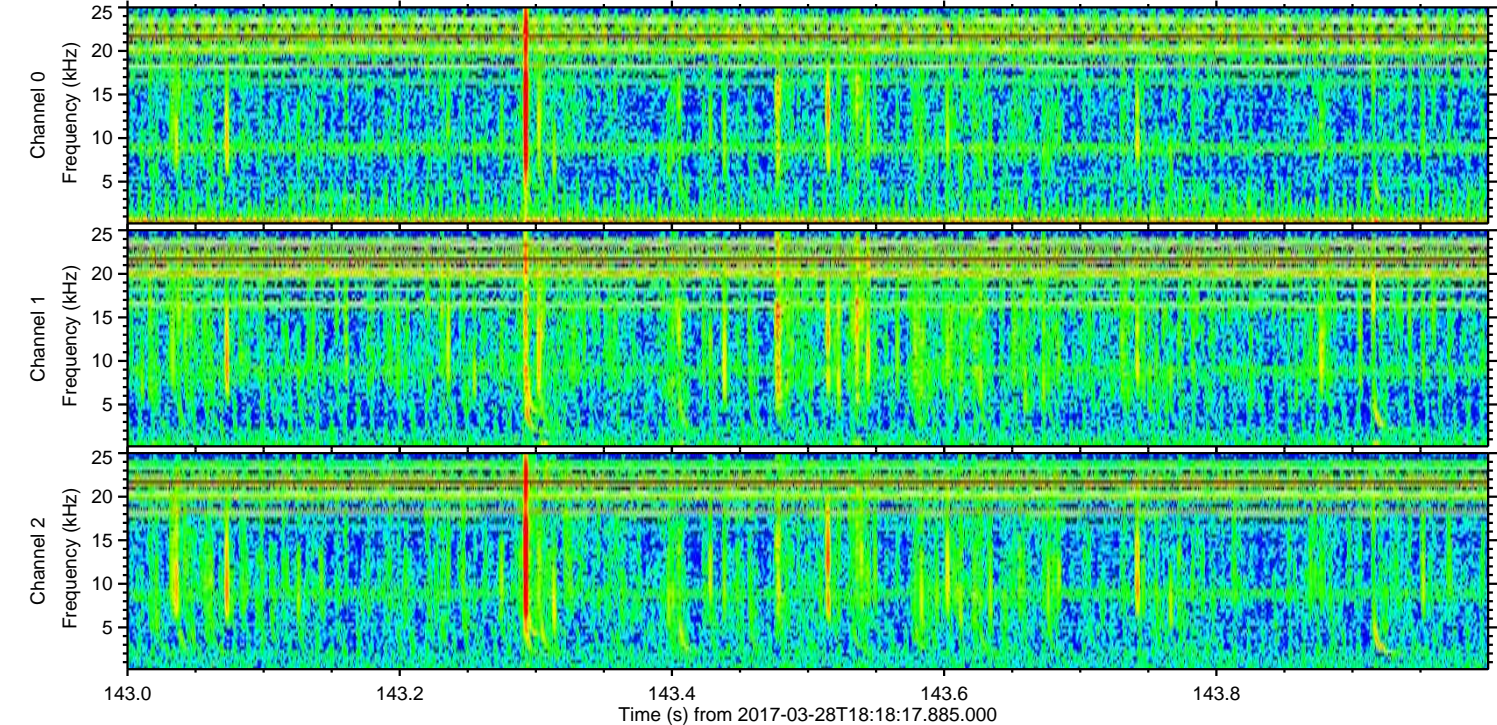
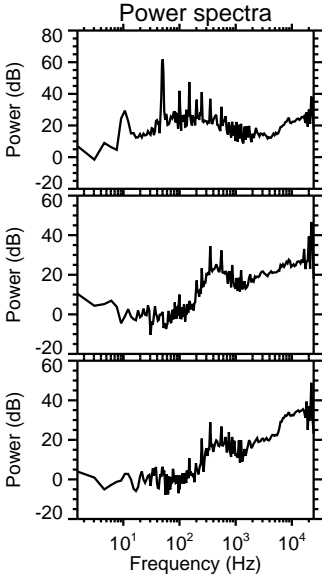
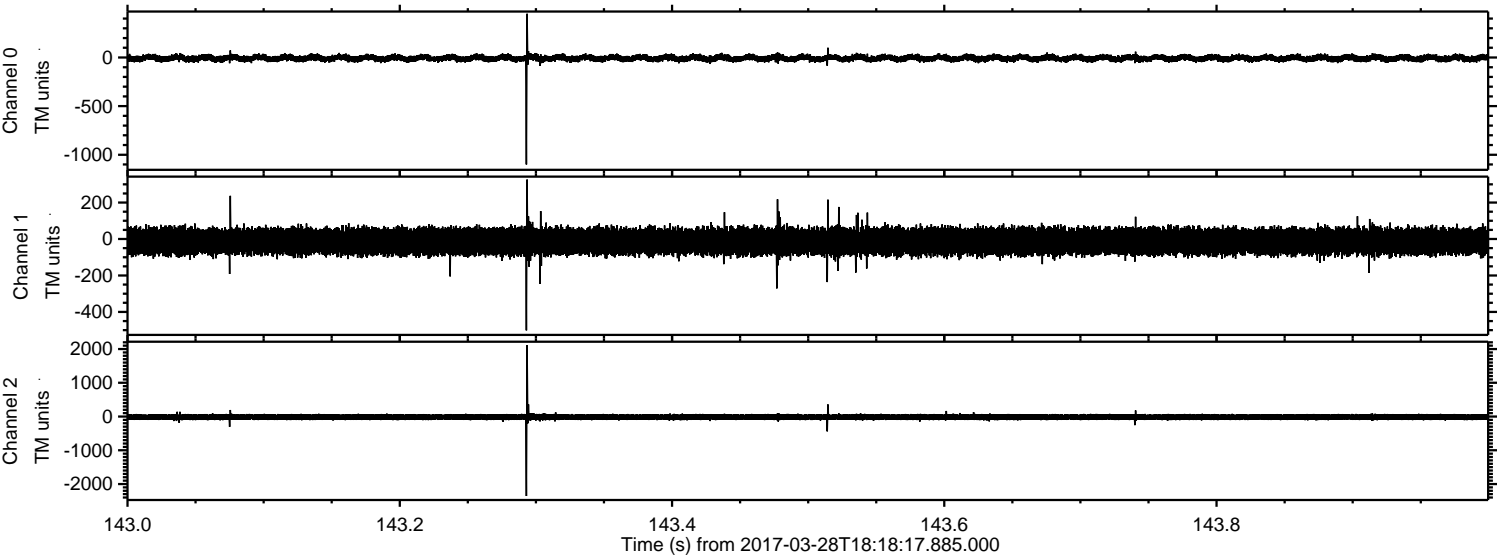
Processed Tue Mar 28 20:26:50 2017 by ELM ver.2012-10-06 from 001\_\_elm20170328\_181816\_\_dat00.bin





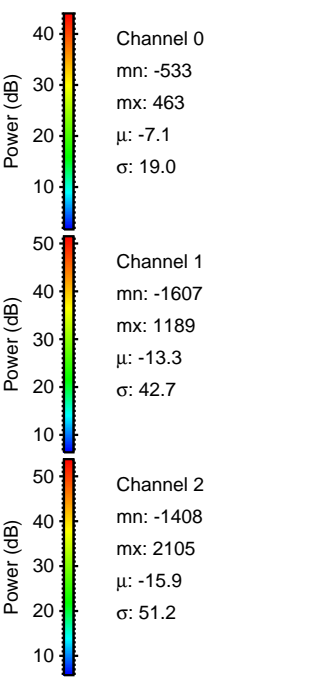
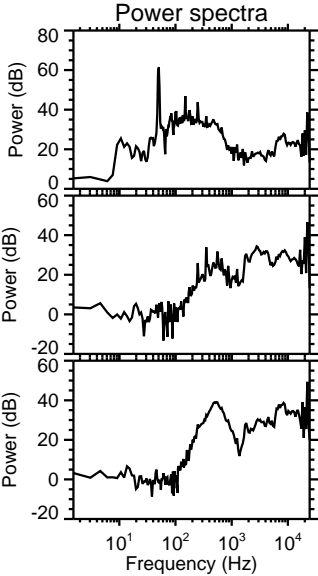
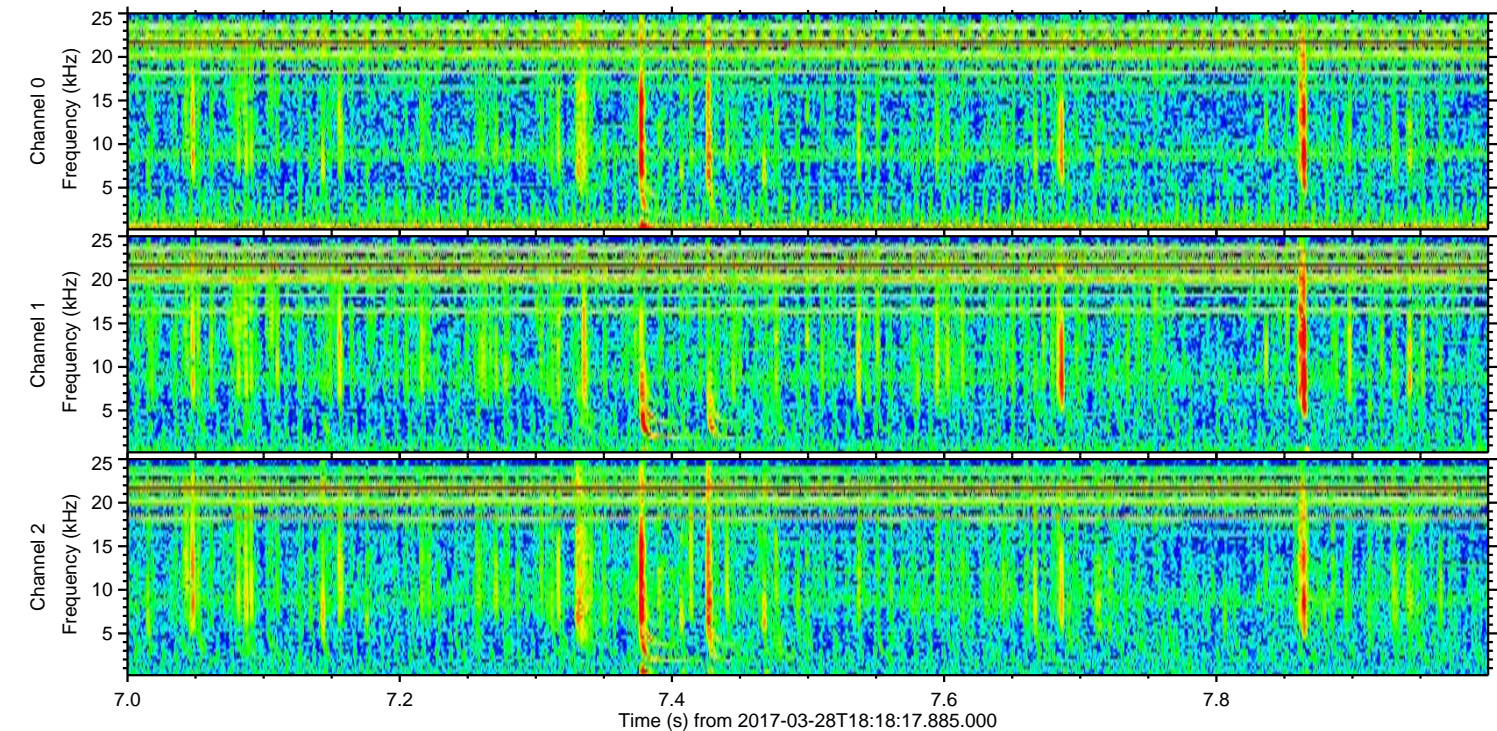
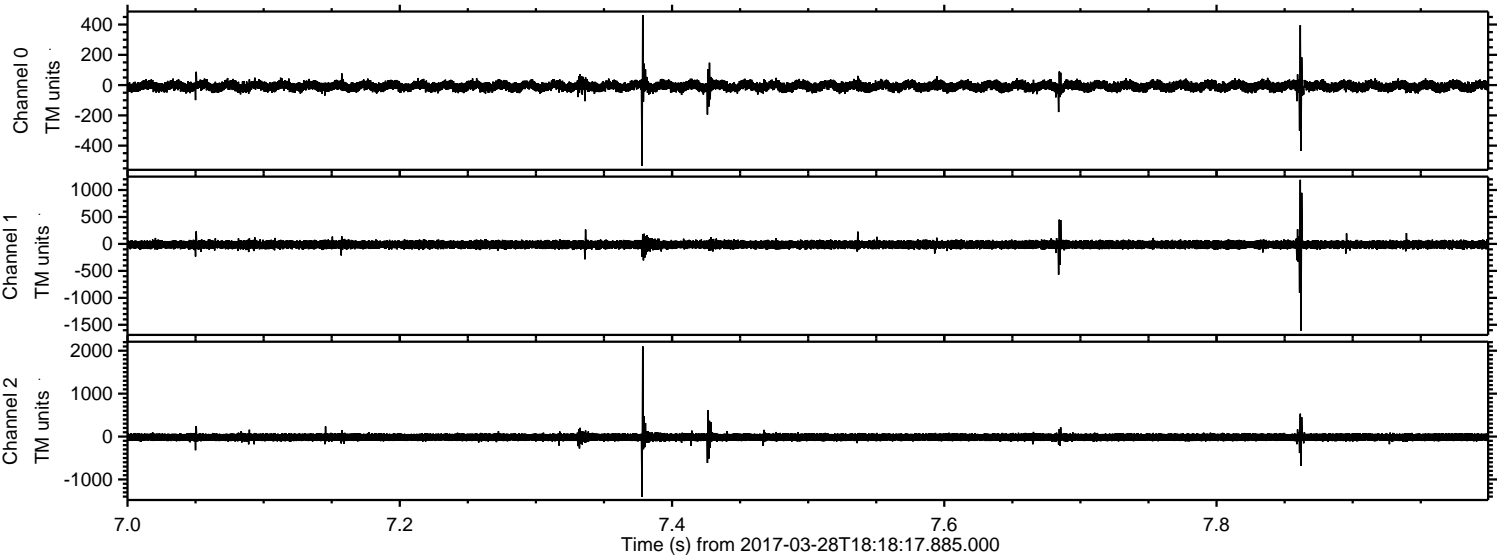
ELMAVAN 3D WAVEFORMS (Measured data sampled at 50 kHz) 51000 packets of 144 samples from 2017-03-28T18:18:17.885.000. Part 144/147

Processed Tue Mar 28 20:26:51 2017 by ELM ver.2012-10-06 from 001\_\_elm20170328\_181816\_\_dat00.bin





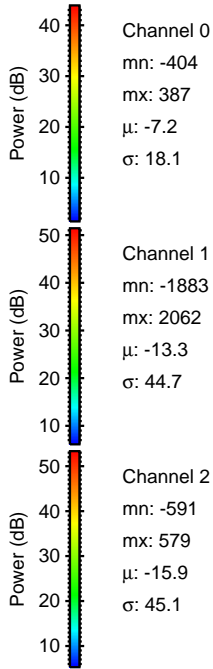
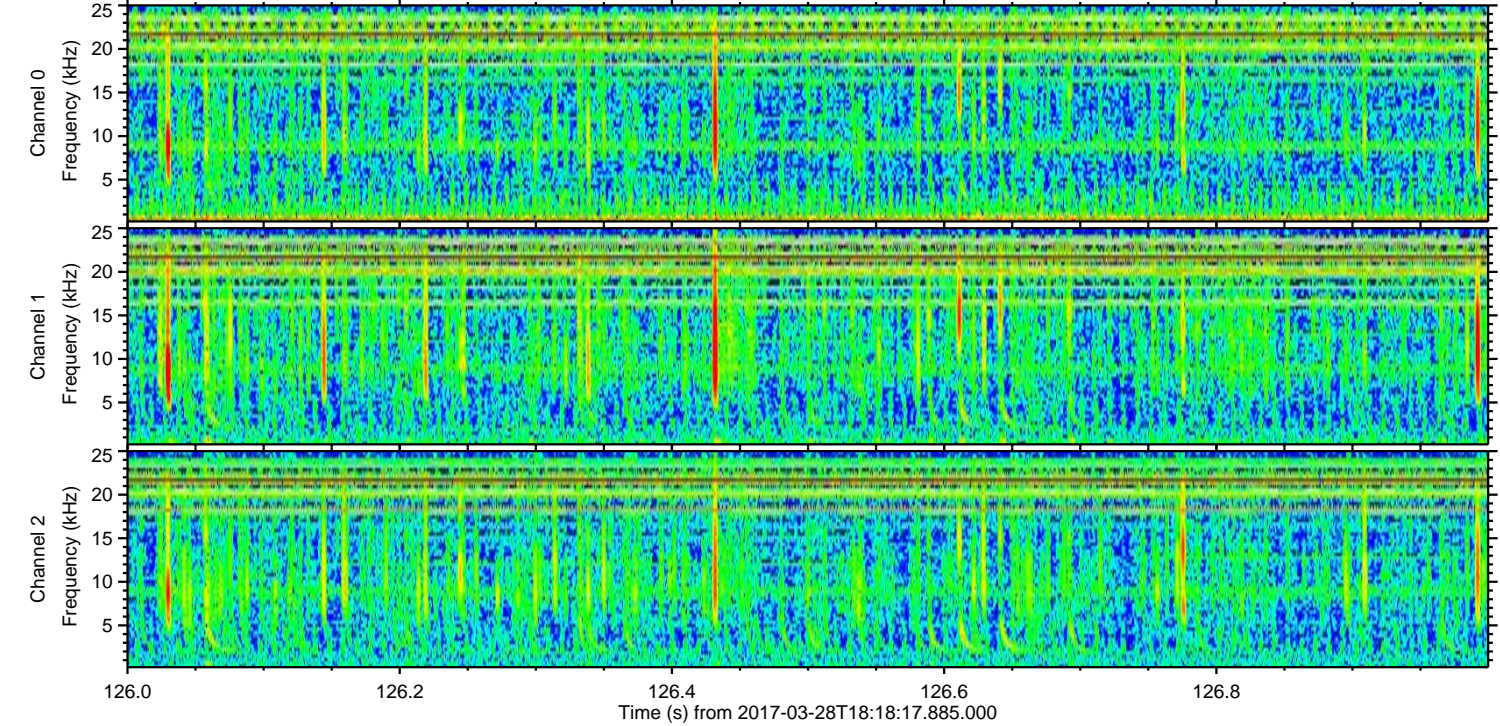
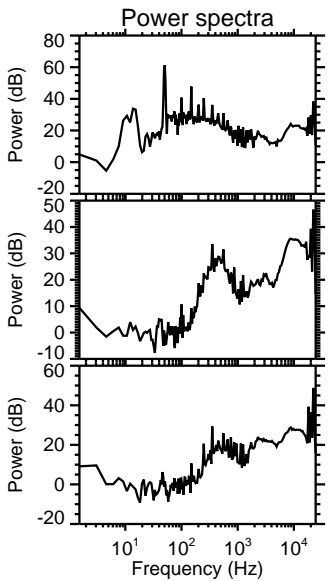
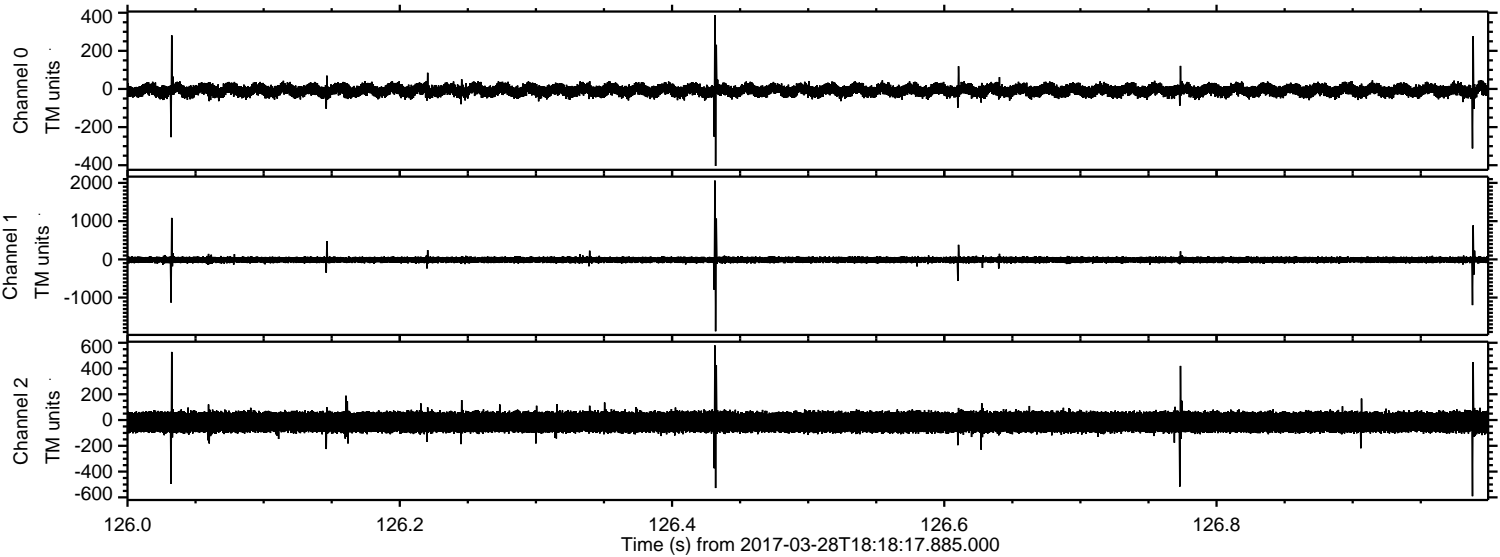
Processed Tue Mar 28 20:26:52 2017 by ELM ver.2012-10-06 from 001\_\_elm20170328\_181816\_\_dat00.bin





ELMAVAN 3D WAVEFORMS (Measured data sampled at 50 kHz) 51000 packets of 144 samples from 2017-03-28T18:18:17.885.000. Part 127/147

Processed Tue Mar 28 20:26:53 2017 by ELM ver.2012-10-06 from 001\_\_elm20170328\_181816\_\_dat00.bin



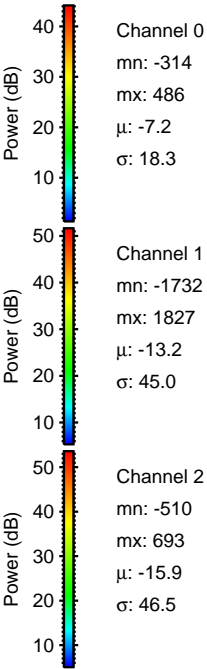
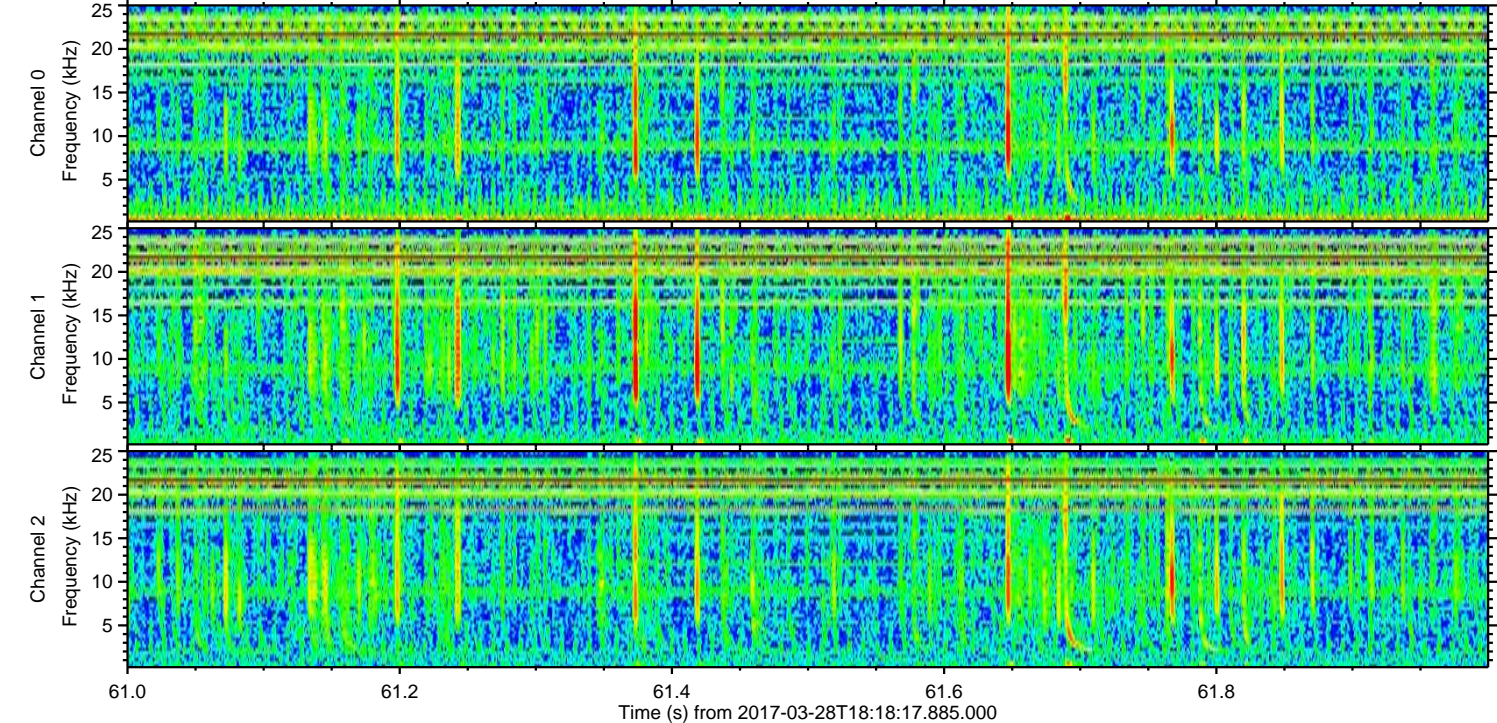
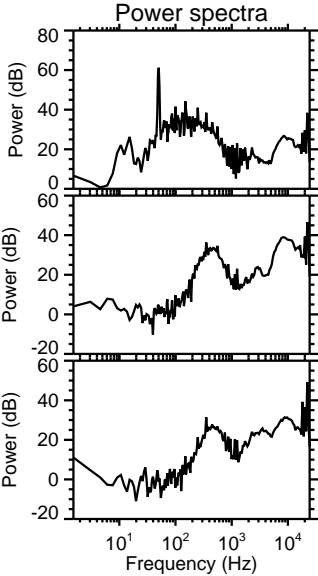
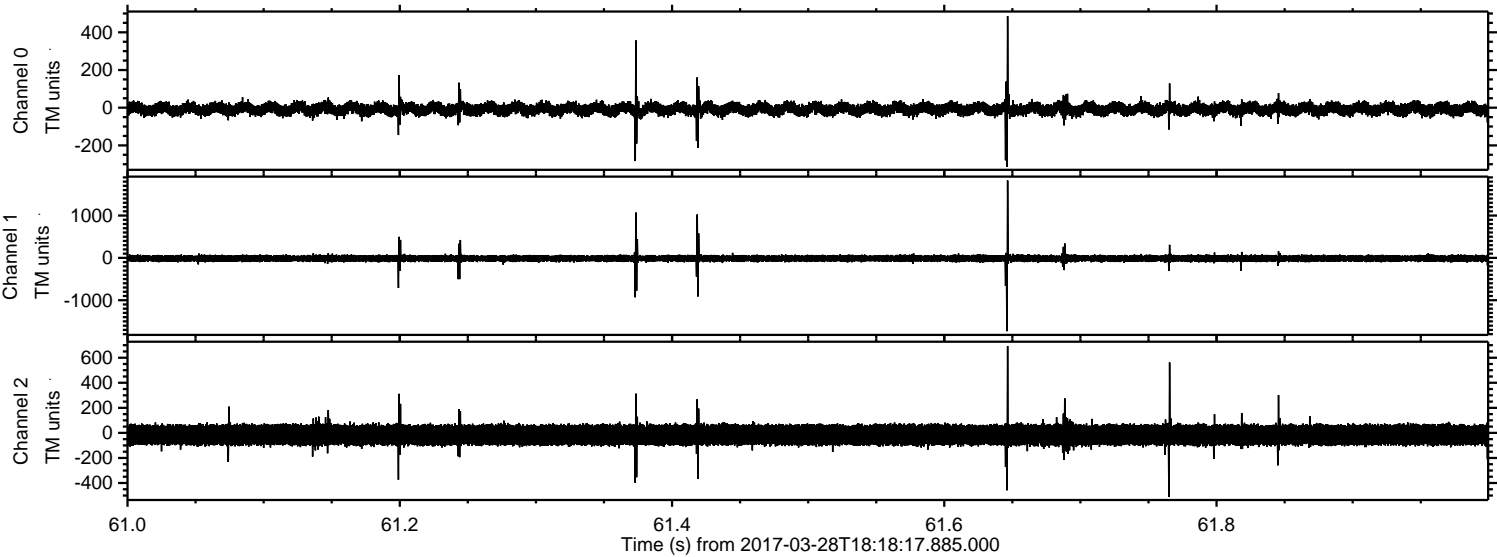
Channel 0  
mn: -404  
mx: 387  
 $\mu$ : -7.2  
 $\sigma$ : 18.1

Channel 1  
mn: -1883  
mx: 2062  
 $\mu$ : -13.3  
 $\sigma$ : 44.7

Channel 2  
mn: -591  
mx: 579  
 $\mu$ : -15.9  
 $\sigma$ : 45.1



Processed Tue Mar 28 20:26:54 2017 by ELM ver.2012-10-06 from 001\_\_elm20170328\_181816\_\_dat00.bin



Channel 0  
mn: -314  
mx: 486  
 $\mu$ : -7.2  
 $\sigma$ : 18.3

Channel 1  
mn: -1732  
mx: 1827  
 $\mu$ : -13.2  
 $\sigma$ : 45.0

Channel 2  
mn: -510  
mx: 693  
 $\mu$ : -15.9  
 $\sigma$ : 46.5



ELMAVAN 3D WAVEFORMS (Measured data sampled at 50 kHz) 51000 packets of 144 samples from 2017-03-28T18:18:17.885.000. Part 14/147

Processed Tue Mar 28 20:26:55 2017 by ELM ver.2012-10-06 from 001\_\_elm20170328\_181816\_\_dat00.bin

