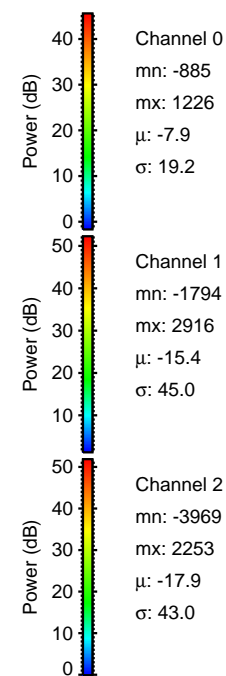
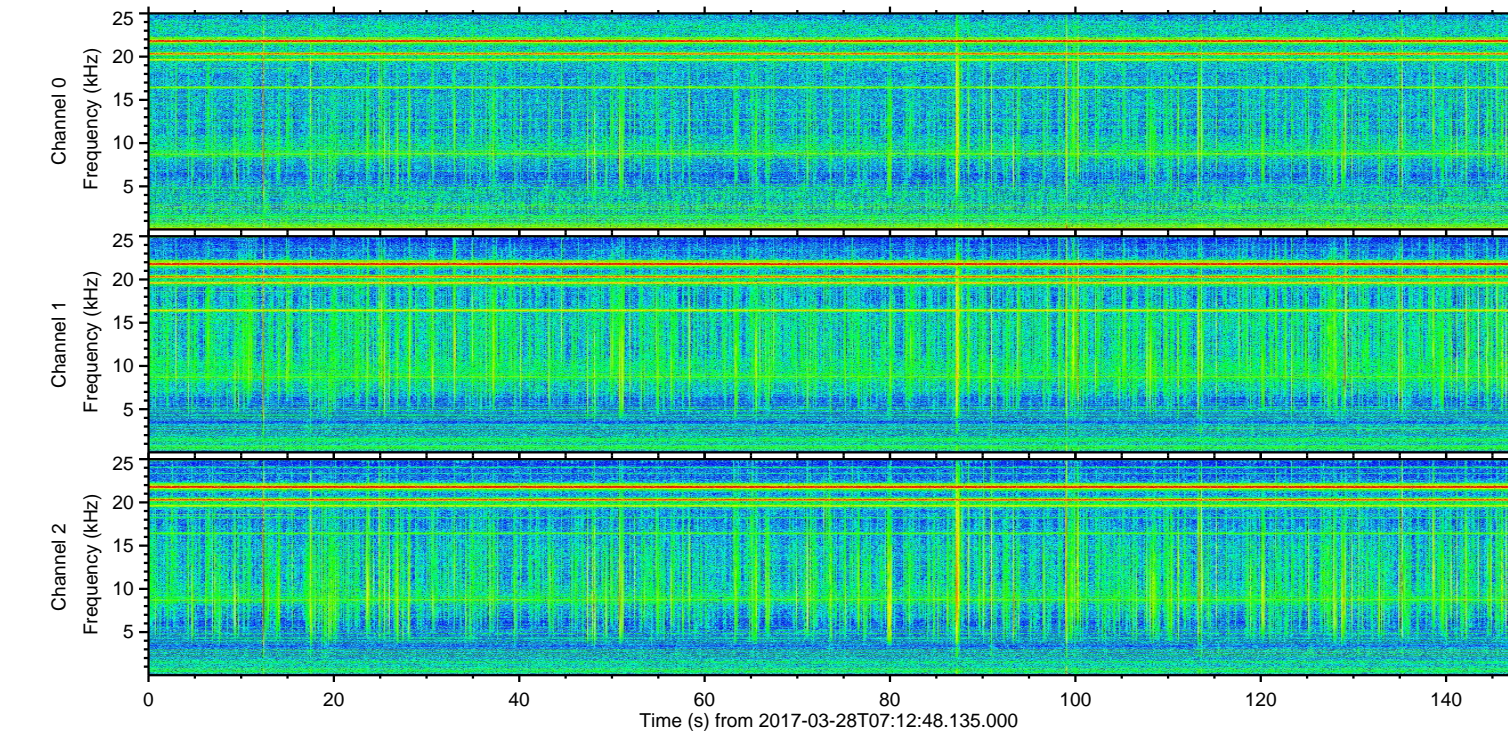
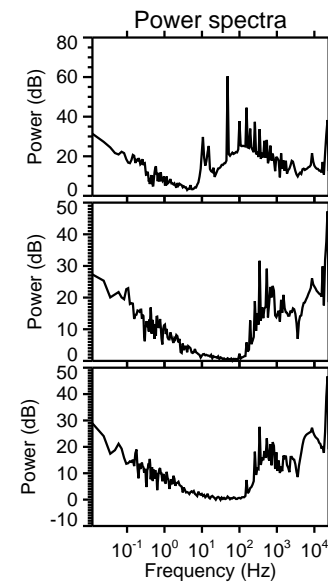
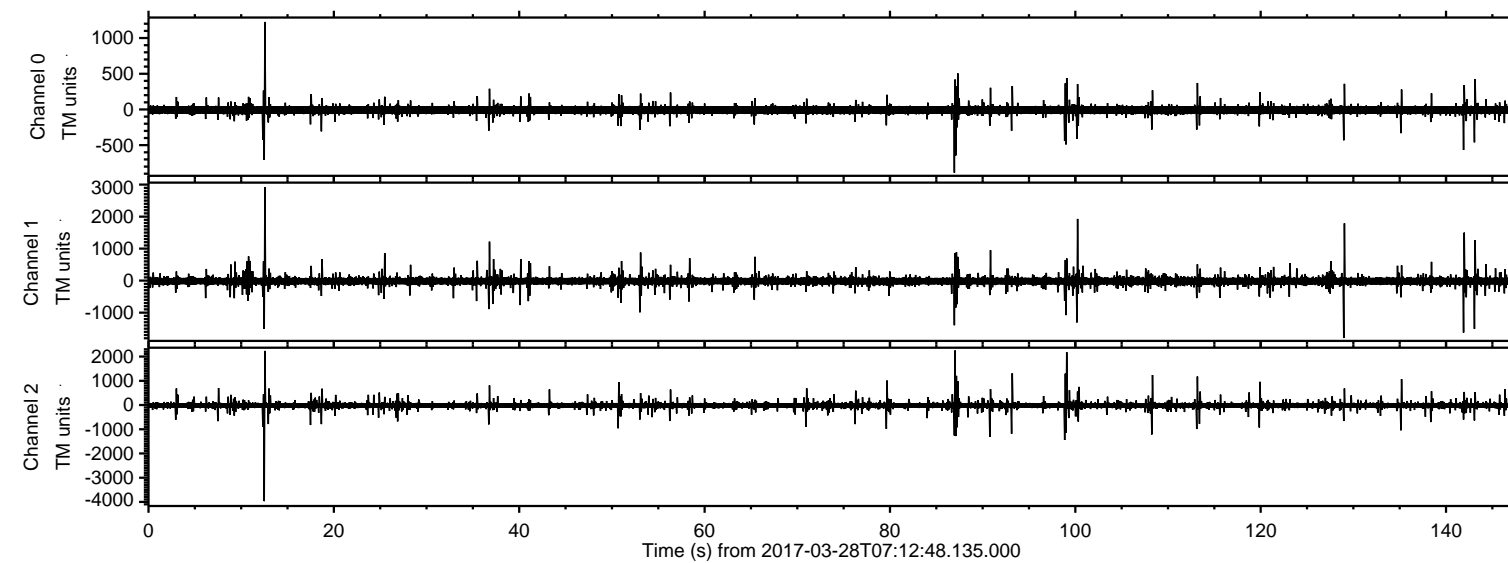


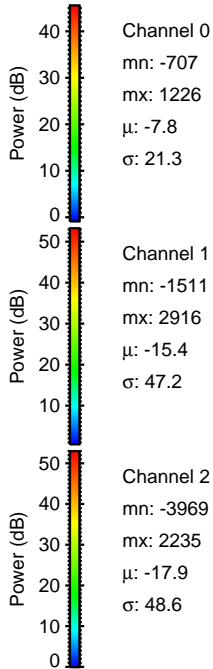
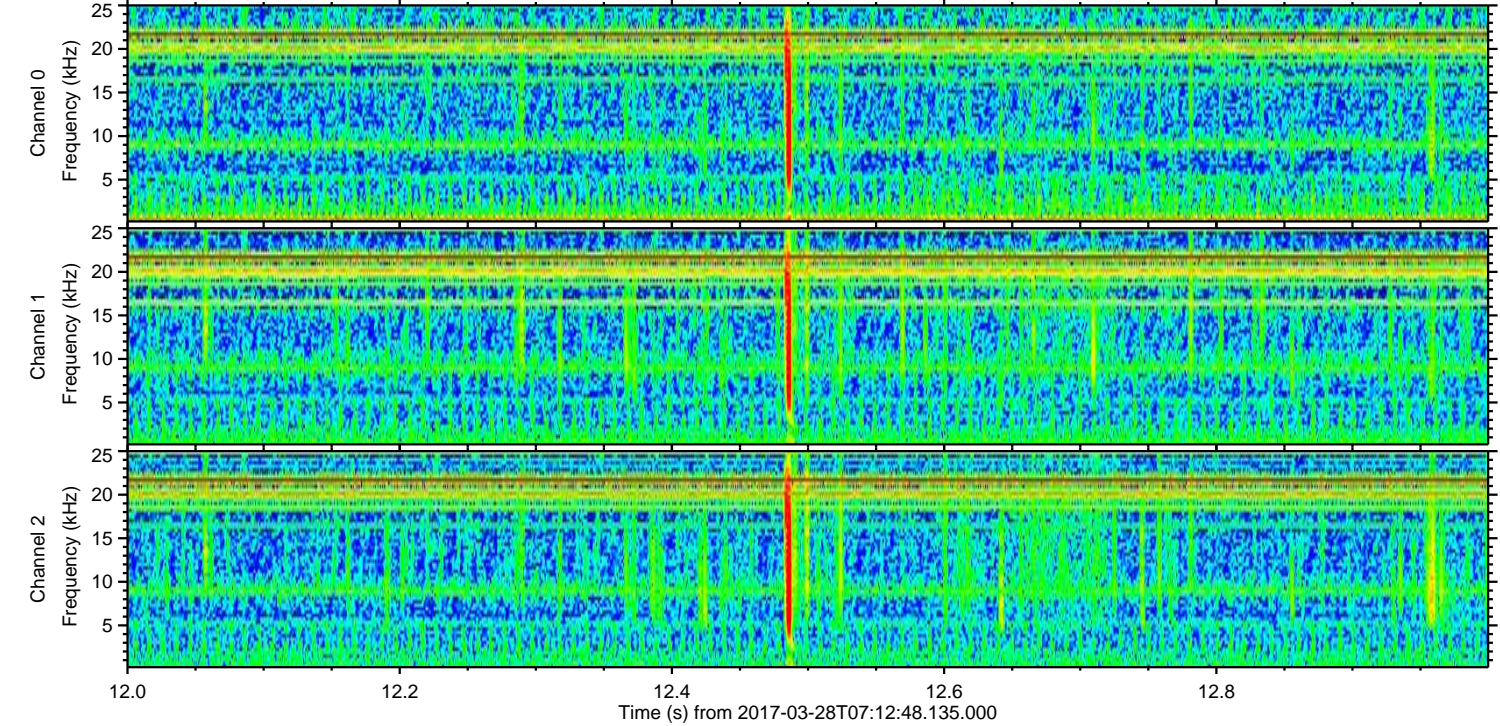
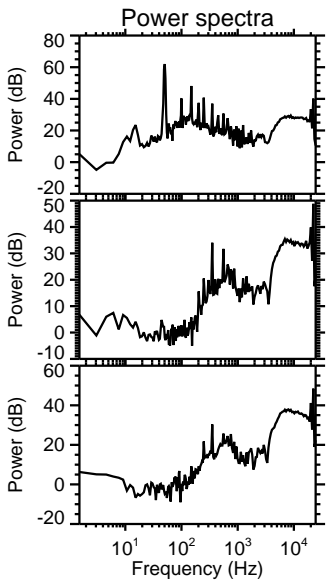
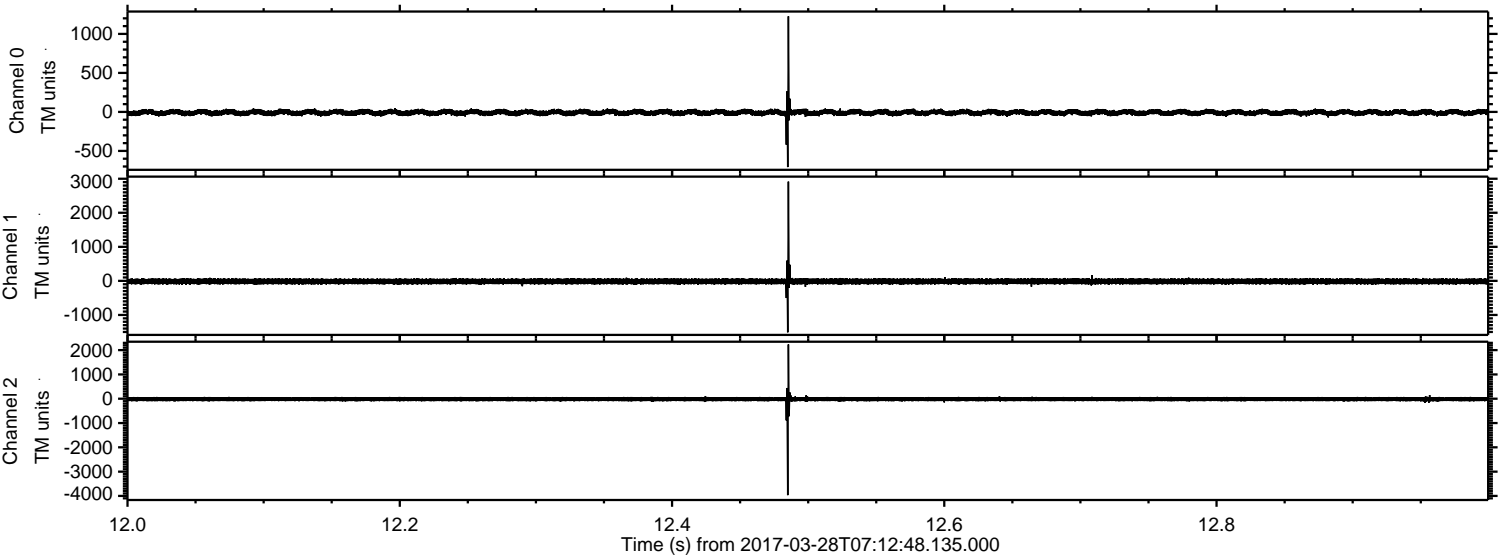
ELMAVAN 3D WAVEFORMS (Measured data sampled at 50 kHz) 51000 packets of 144 samples from 2017-03-28T07:12:48.135.000.

Processed Tue Mar 28 09:20:56 2017 by ELM ver.2012-10-06 from 001__elm20170328_071247__dat00.bin

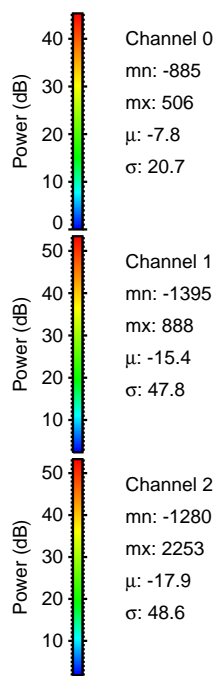
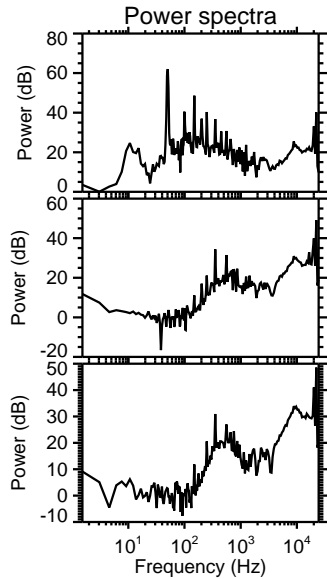
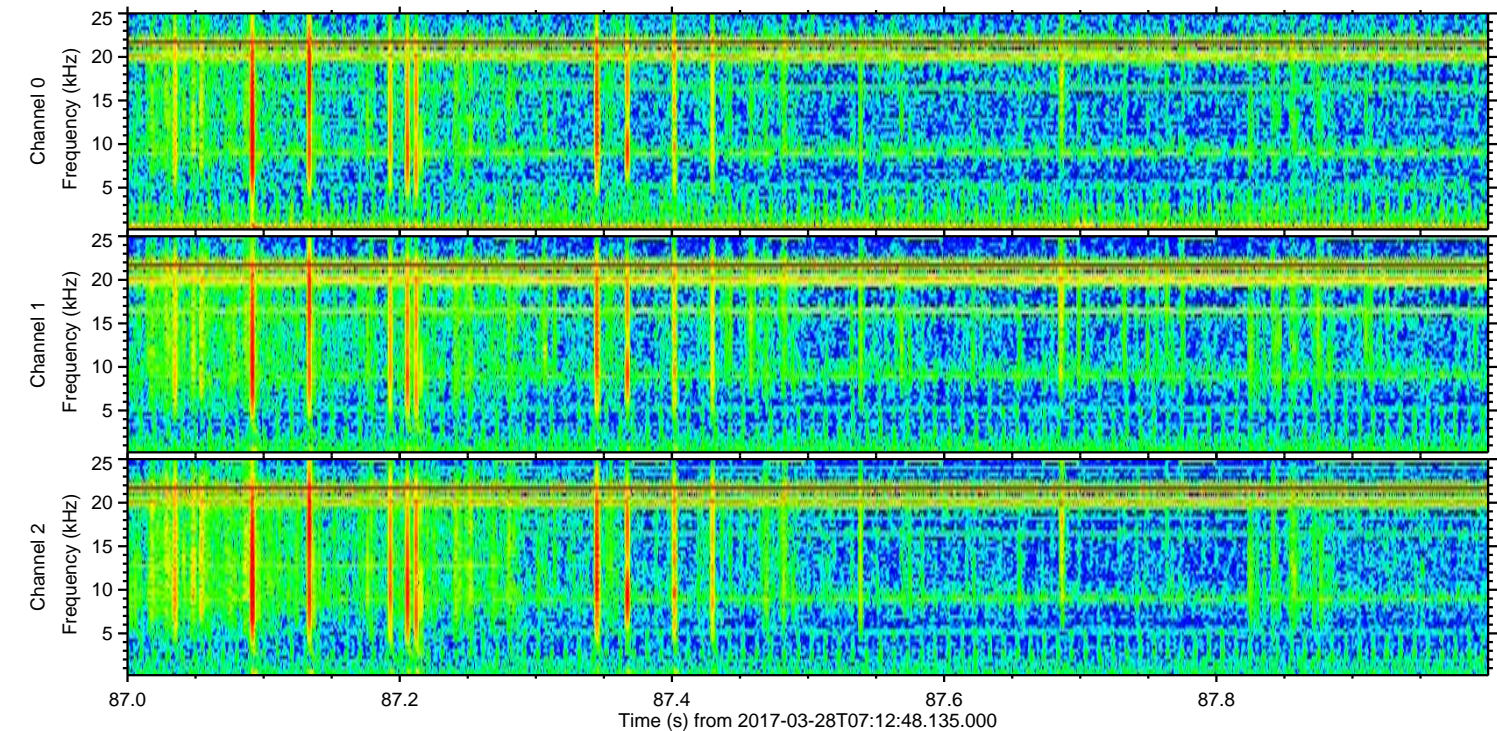
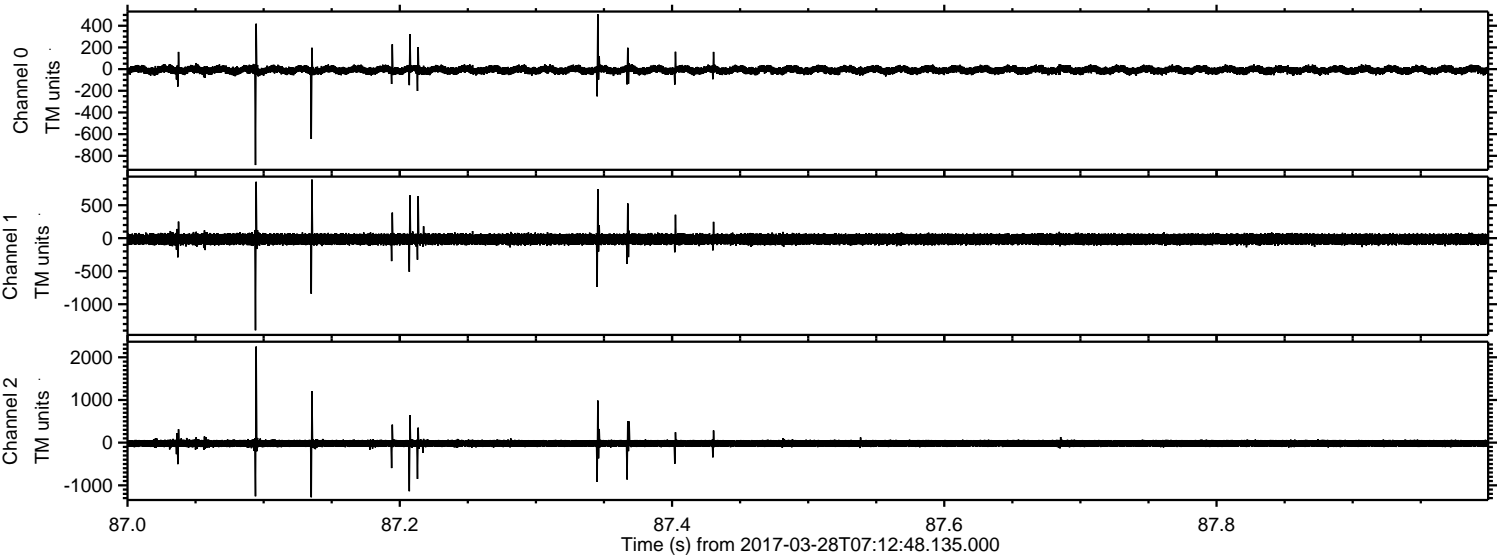


ELMAVAN 3D WAVEFORMS (Measured data sampled at 50 kHz) 51000 packets of 144 samples from 2017-03-28T07:12:48.135.000. Part 13/147

Processed Tue Mar 28 09:21:16 2017 by ELM ver.2012-10-06 from 001__elm20170328_071247__dat00.bin



Processed Tue Mar 28 09:21:17 2017 by ELM ver.2012-10-06 from 001__elm20170328_071247__dat00.bin



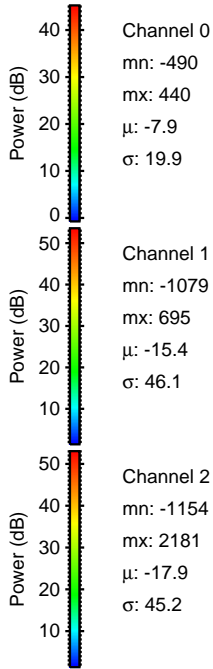
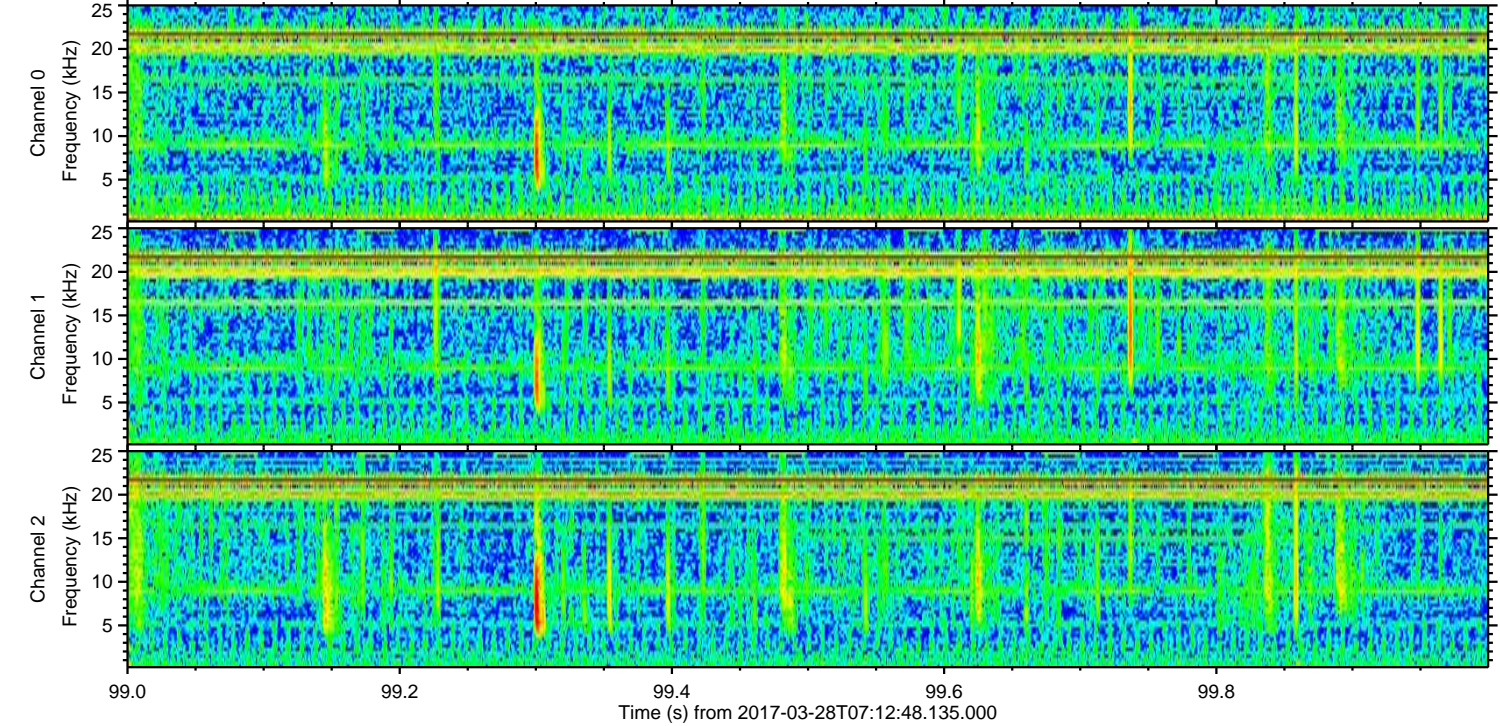
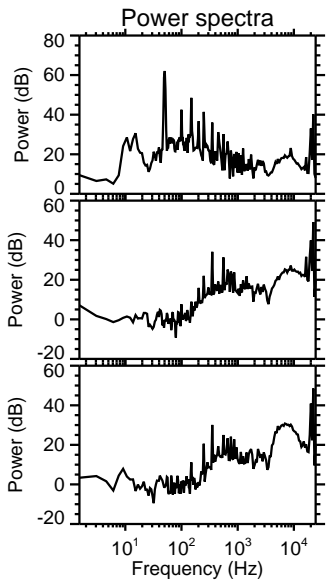
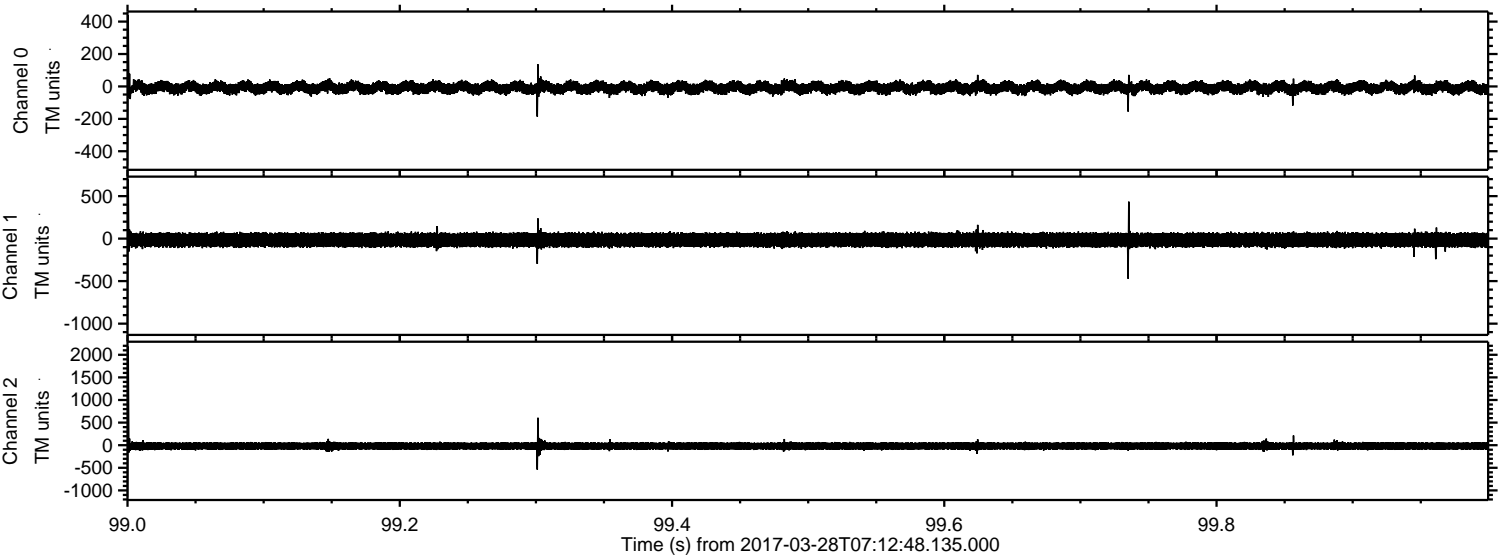
Channel 0
mn: -885
mx: 506
 μ : -7.8
 σ : 20.7

Channel 1
mn: -1395
mx: 888
 μ : -15.4
 σ : 47.8

Channel 2
mn: -1280
mx: 2253
 μ : -17.9
 σ : 48.6

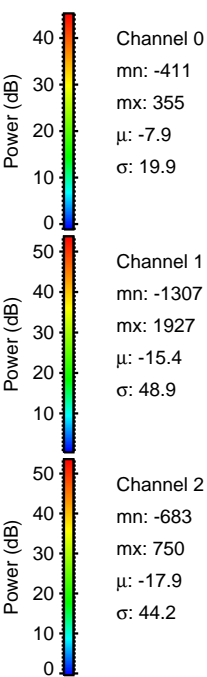
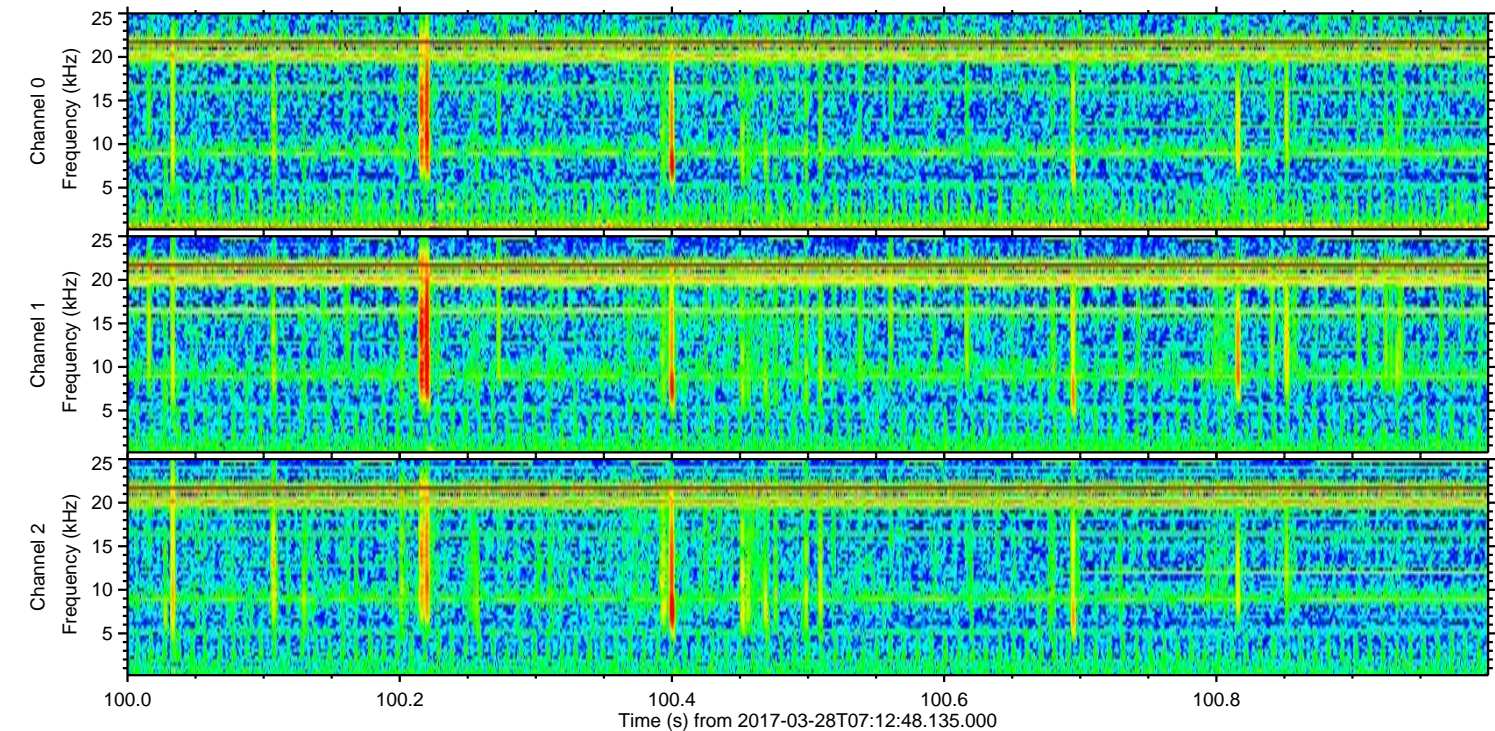
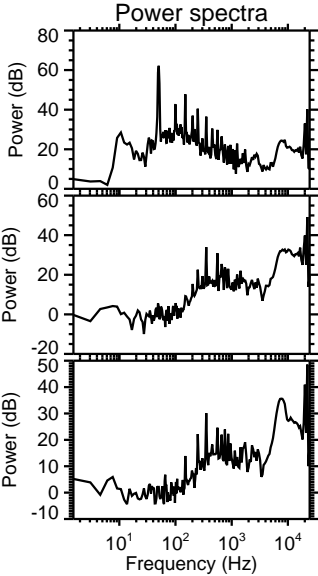
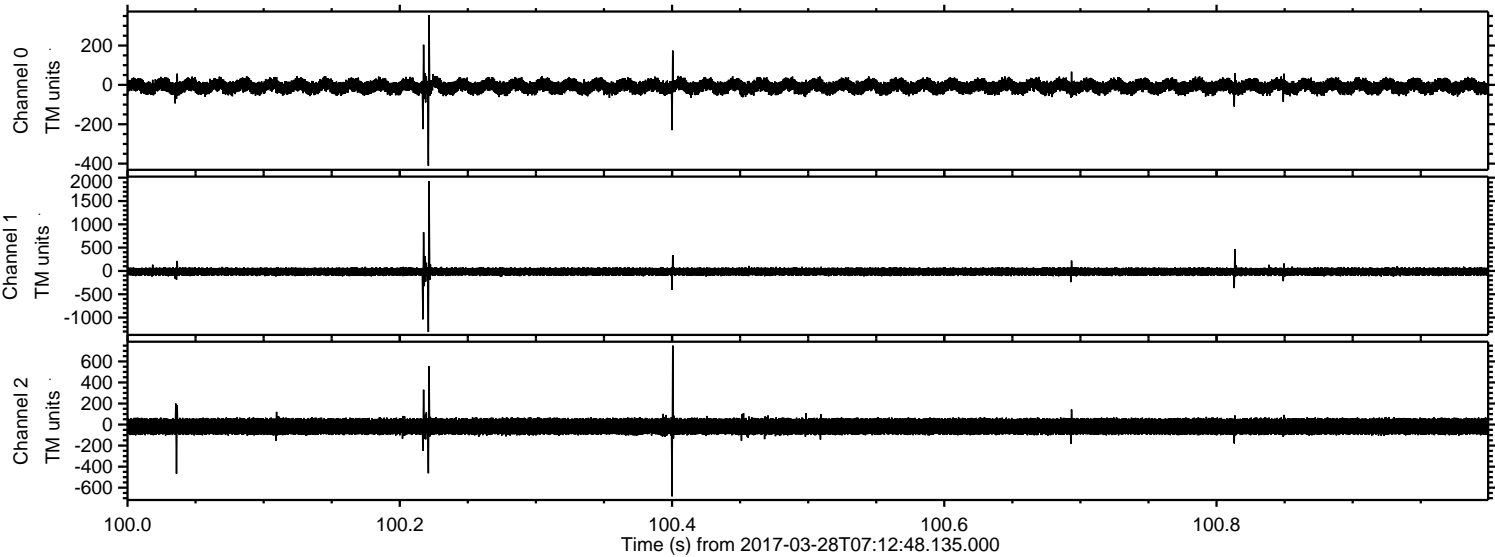
ELMAVAN 3D WAVEFORMS (Measured data sampled at 50 kHz) 51000 packets of 144 samples from 2017-03-28T07:12:48.135.000. Part 100/147

Processed Tue Mar 28 09:21:19 2017 by ELM ver.2012-10-06 from 001__elm20170328_071247__dat00.bin



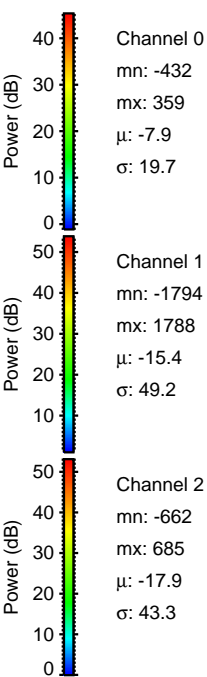
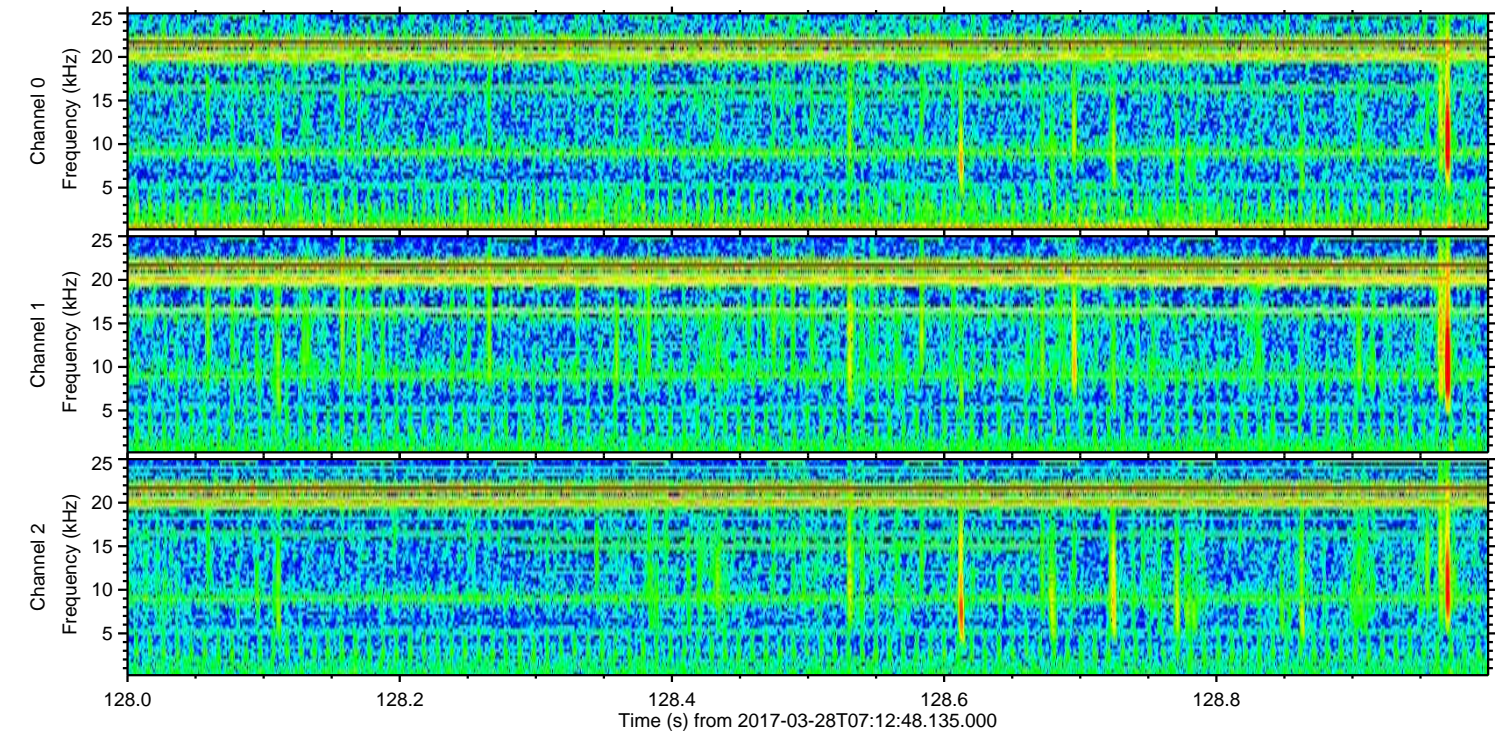
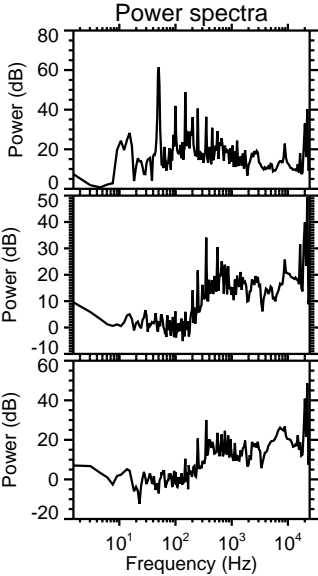
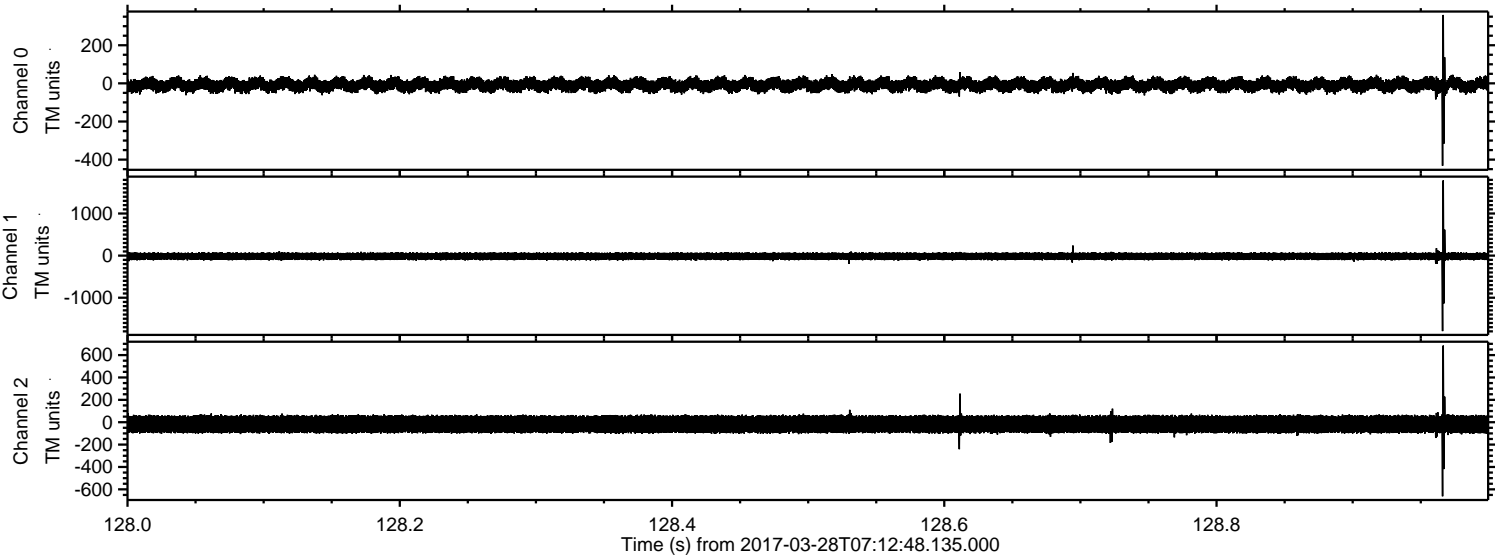
ELMAVAN 3D WAVEFORMS (Measured data sampled at 50 kHz) 51000 packets of 144 samples from 2017-03-28T07:12:48.135.000. Part 101/147

Processed Tue Mar 28 09:21:21 2017 by ELM ver.2012-10-06 from 001__elm20170328_071247__dat00.bin



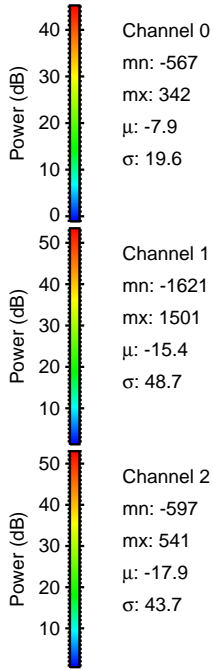
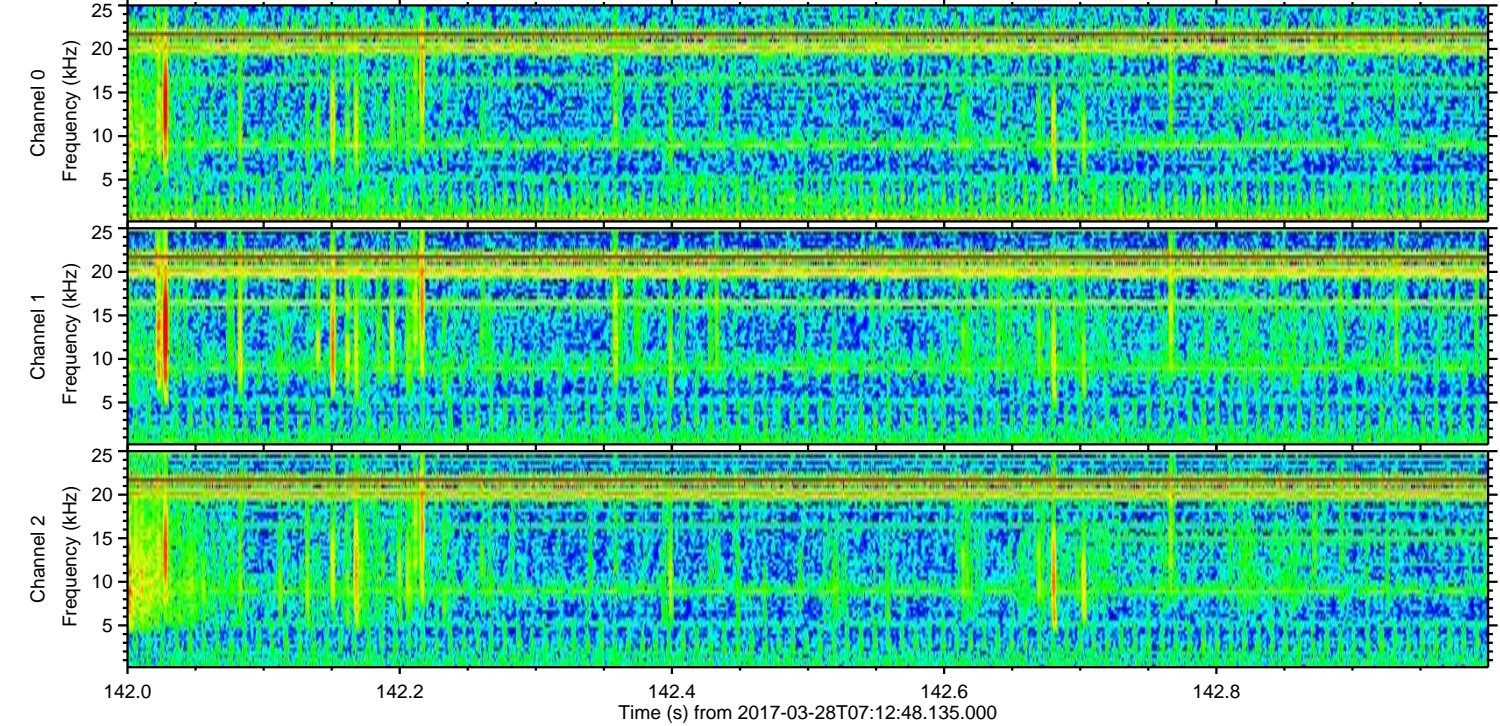
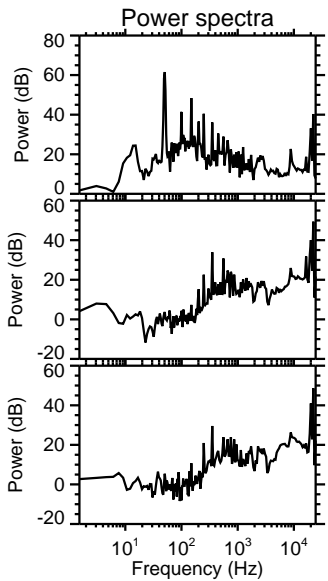
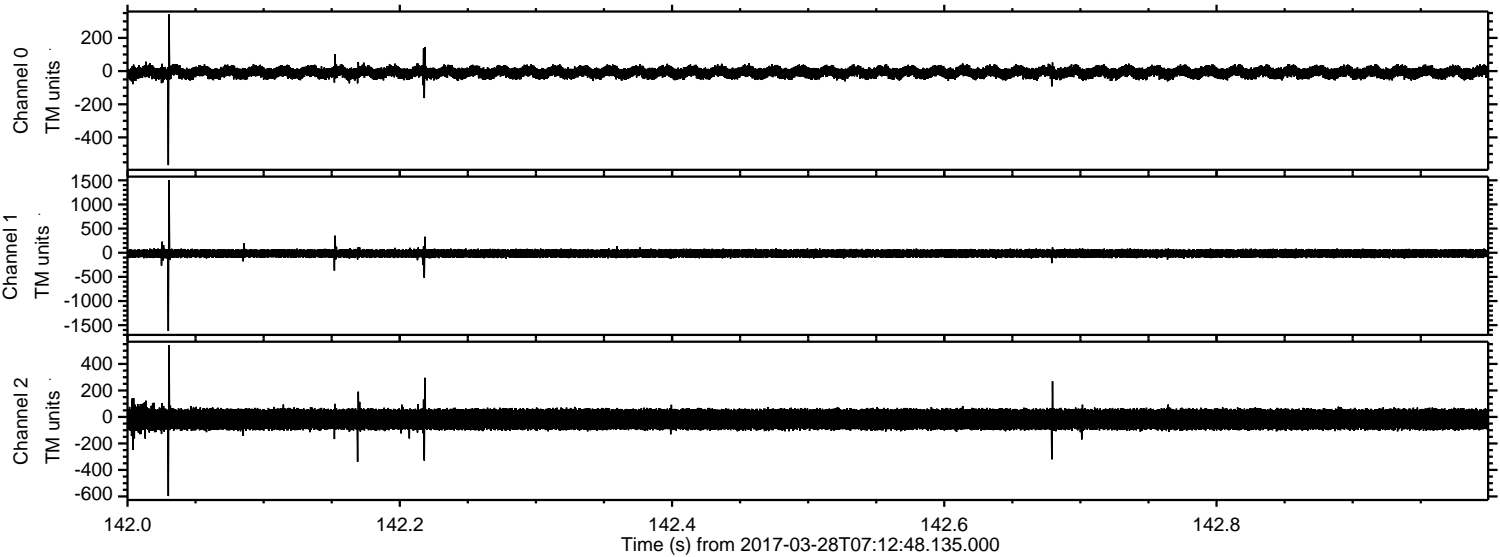
ELMAVAN 3D WAVEFORMS (Measured data sampled at 50 kHz) 51000 packets of 144 samples from 2017-03-28T07:12:48.135.000. Part 129/147

Processed Tue Mar 28 09:21:22 2017 by ELM ver.2012-10-06 from 001__elm20170328_071247__dat00.bin



ELMAVAN 3D WAVEFORMS (Measured data sampled at 50 kHz) 51000 packets of 144 samples from 2017-03-28T07:12:48.135.000. Part 143/147

Processed Tue Mar 28 09:21:24 2017 by ELM ver.2012-10-06 from 001__elm20170328_071247__dat00.bin



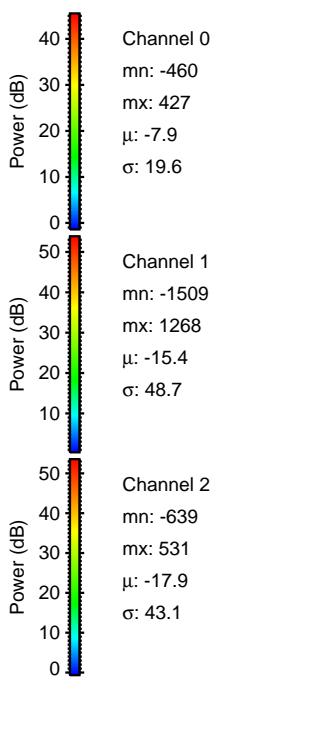
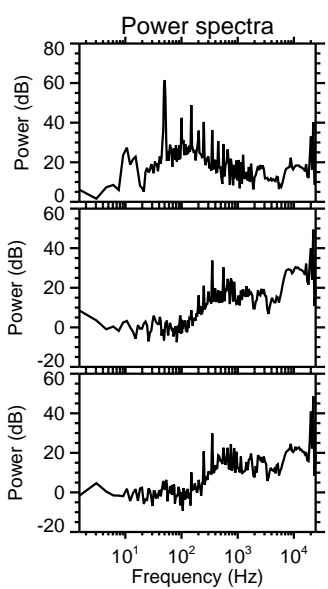
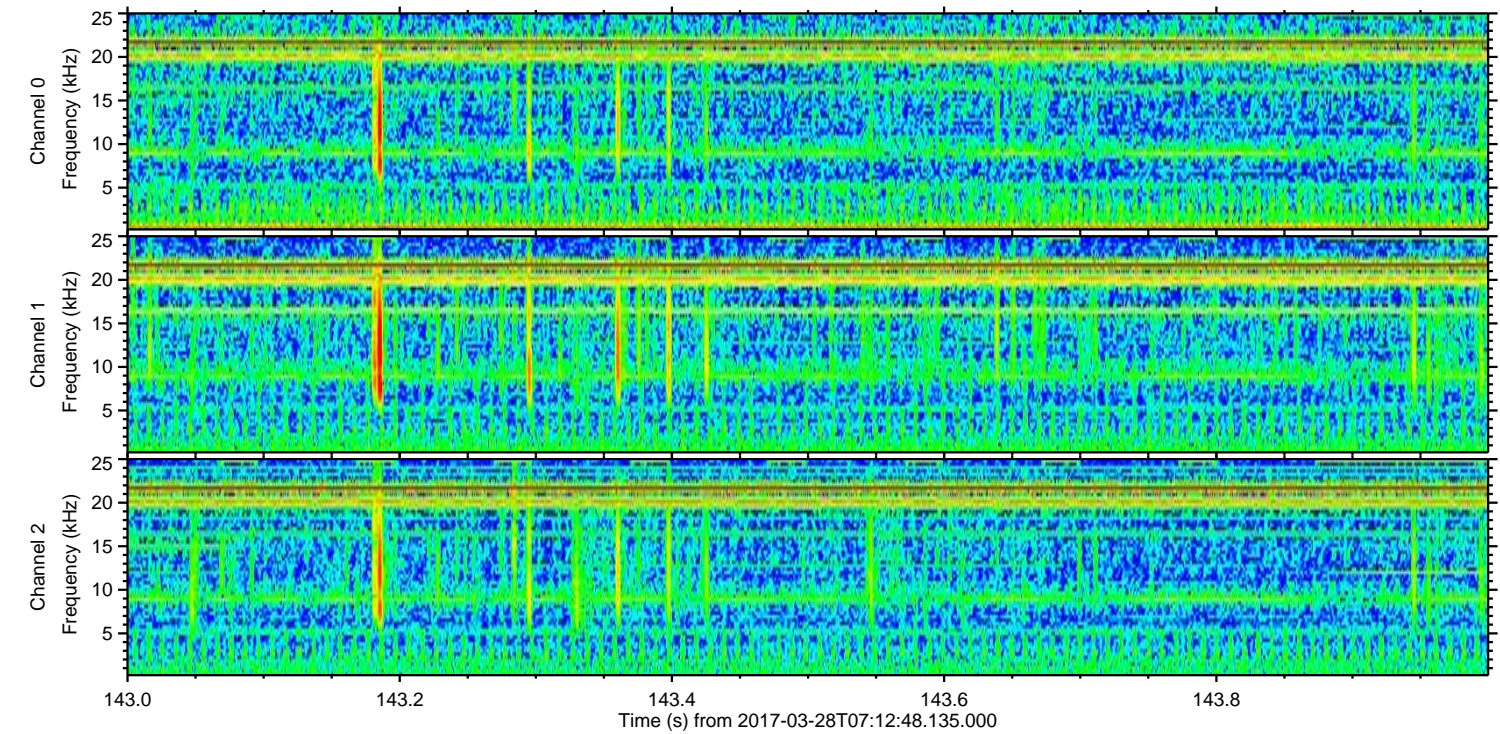
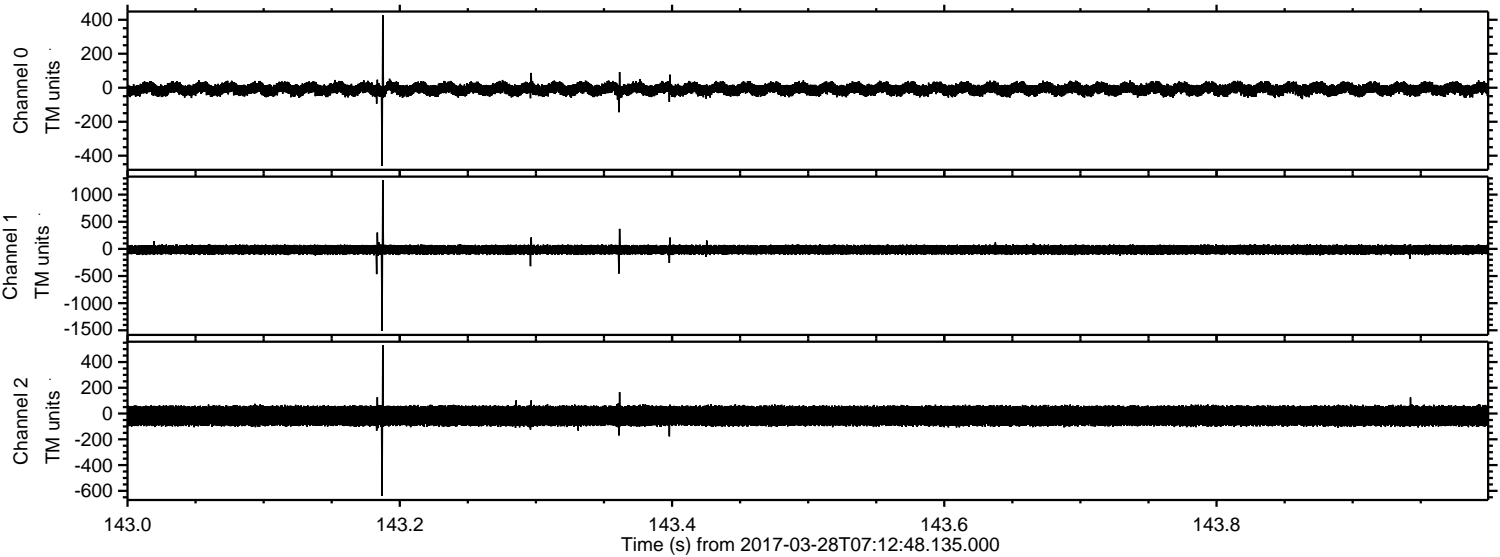
Channel 0
mn: -567
mx: 342
 μ : -7.9
 σ : 19.6

Channel 1
mn: -1621
mx: 1501
 μ : -15.4
 σ : 48.7

Channel 2
mn: -597
mx: 541
 μ : -17.9
 σ : 43.7

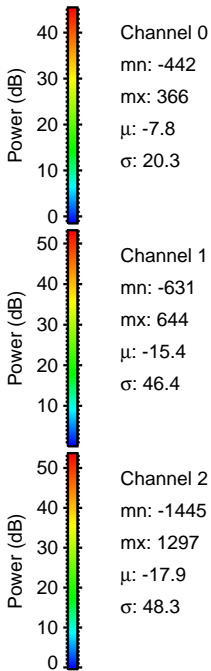
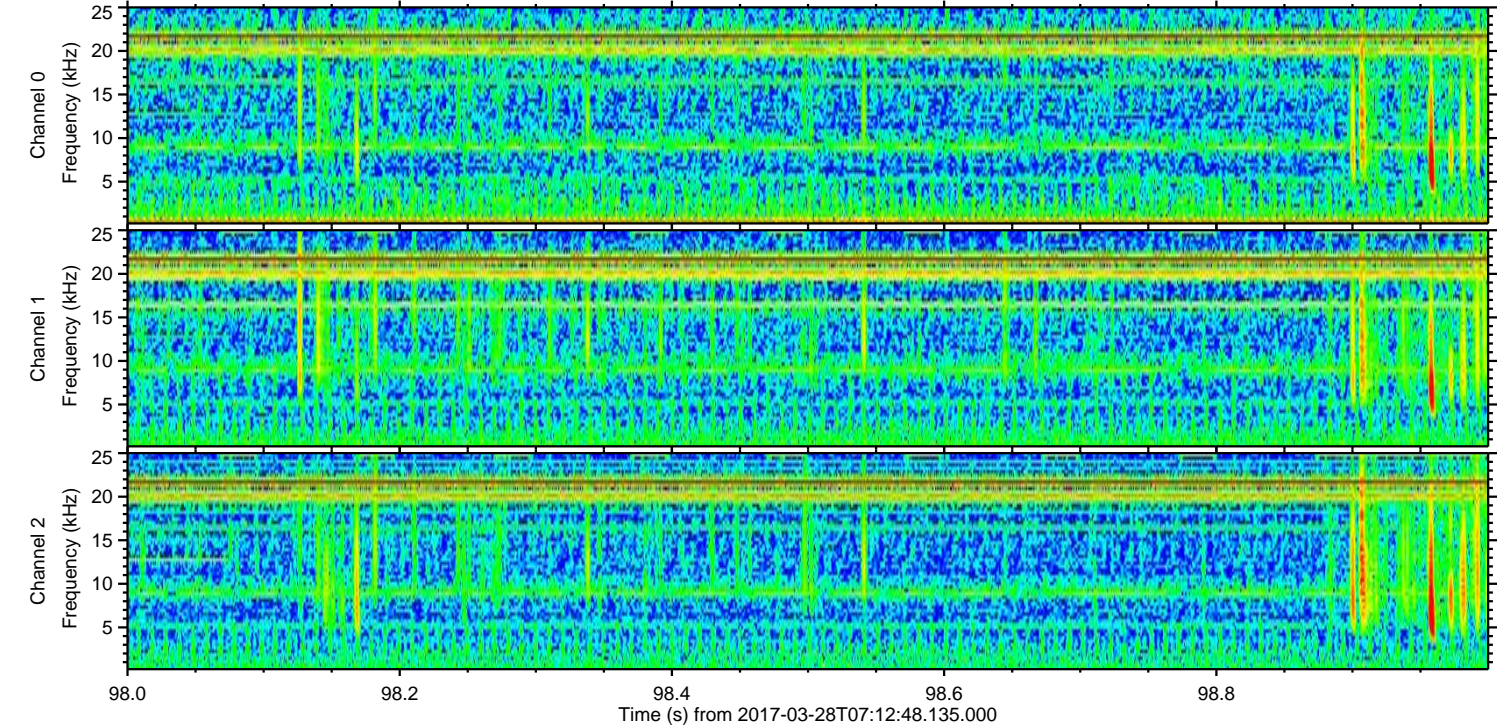
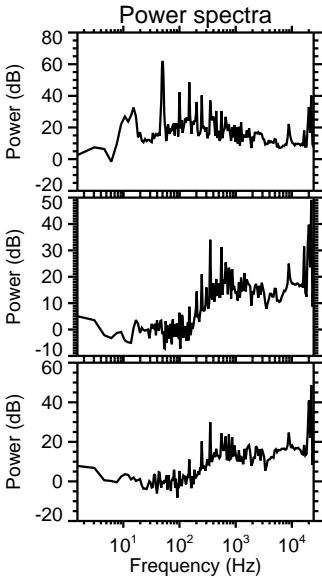
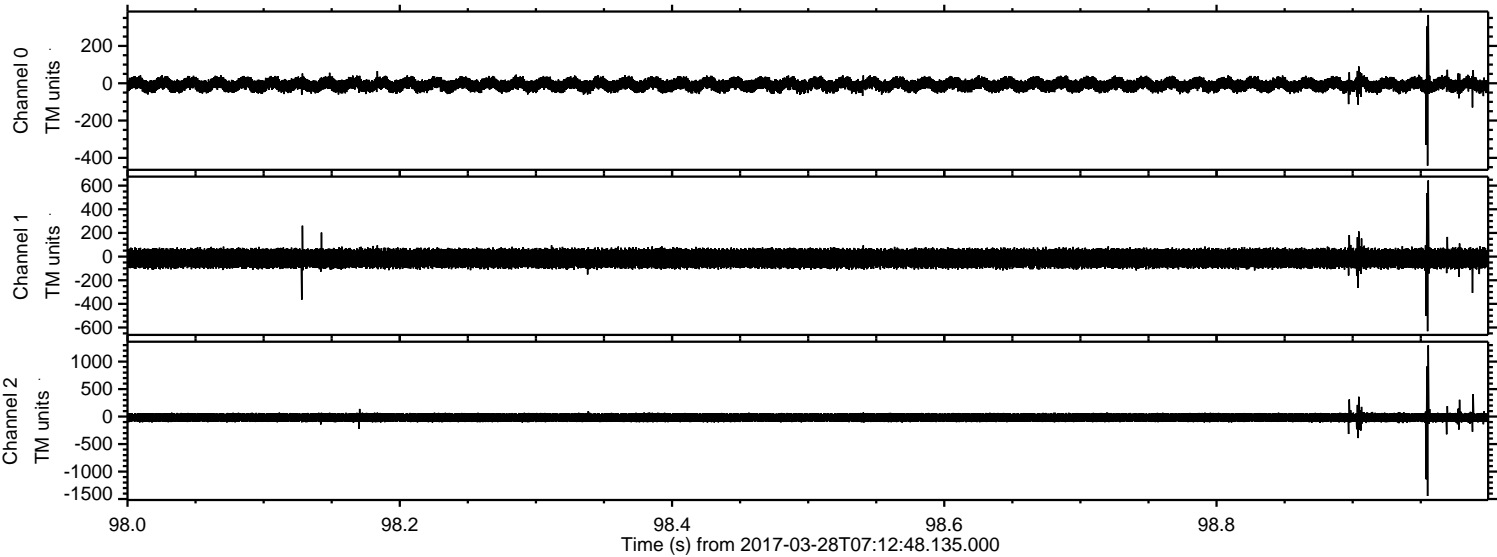
ELMAVAN 3D WAVEFORMS (Measured data sampled at 50 kHz) 51000 packets of 144 samples from 2017-03-28T07:12:48.135.000. Part 144/147

Processed Tue Mar 28 09:21:25 2017 by ELM ver.2012-10-06 from 001__elm20170328_071247__dat00.bin



ELMAVAN 3D WAVEFORMS (Measured data sampled at 50 kHz) 51000 packets of 144 samples from 2017-03-28T07:12:48.135.000. Part 99/147

Processed Tue Mar 28 09:21:27 2017 by ELM ver.2012-10-06 from 001__elm20170328_071247__dat00.bin



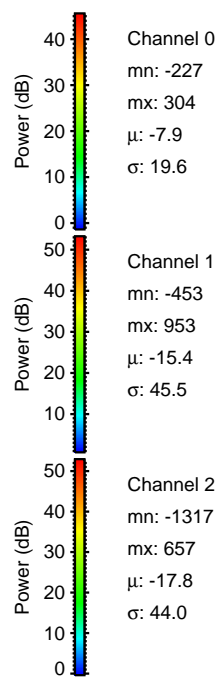
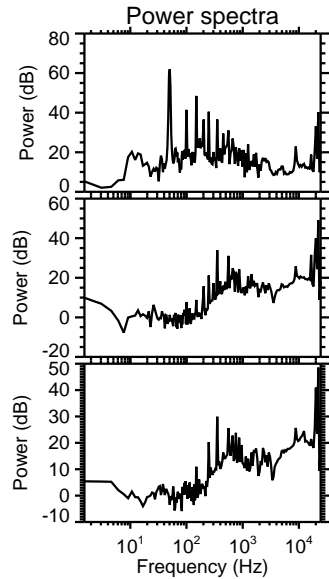
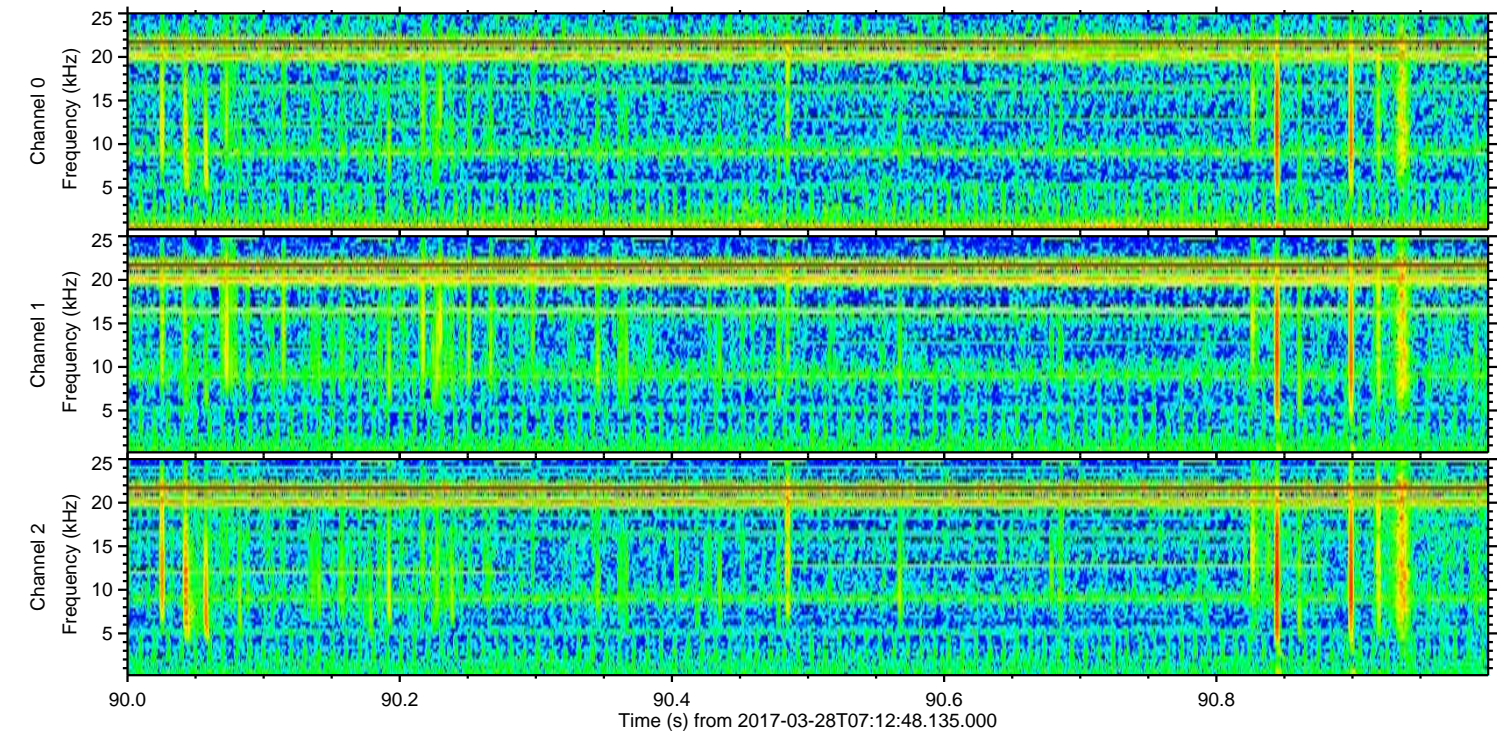
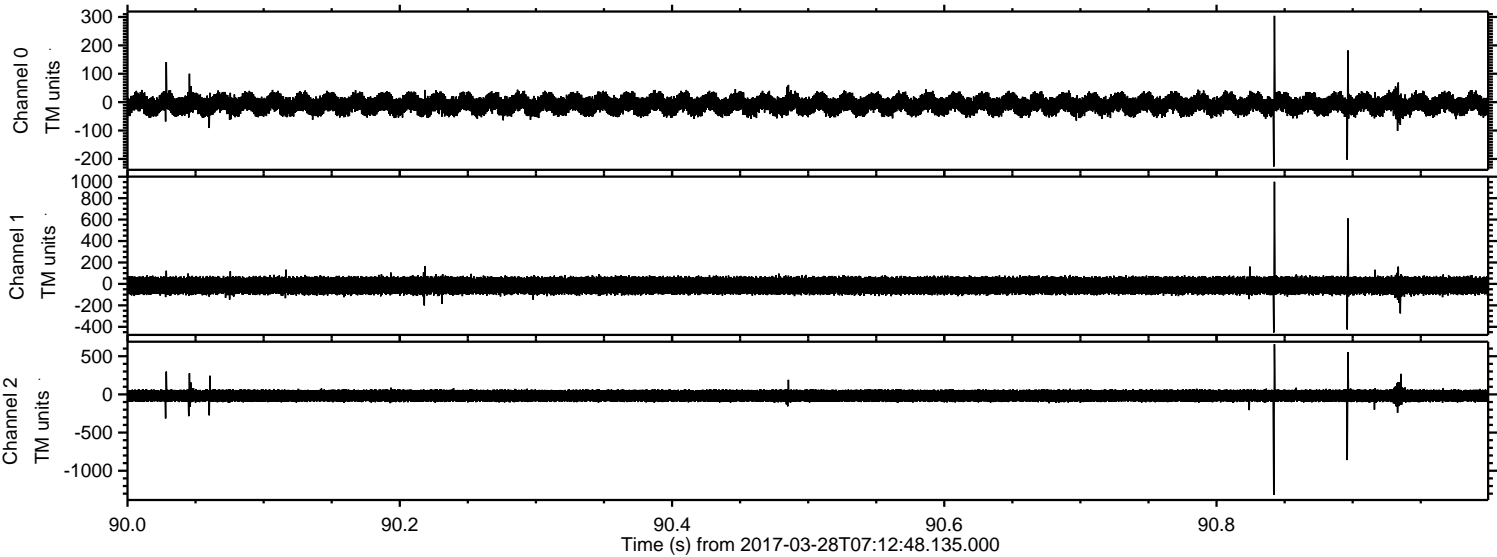
Channel 0
mn: -442
mx: 366
 μ : -7.8
 σ : 20.3

Channel 1
mn: -631
mx: 644
 μ : -15.4
 σ : 46.4

Channel 2
mn: -1445
mx: 1297
 μ : -17.9
 σ : 48.3

ELMAVAN 3D WAVEFORMS (Measured data sampled at 50 kHz) 51000 packets of 144 samples from 2017-03-28T07:12:48.135.000. Part 91/147

Processed Tue Mar 28 09:21:28 2017 by ELM ver.2012-10-06 from 001__elm20170328_071247__dat00.bin



Channel 0
mn: -227
mx: 304
 μ : -7.9
 σ : 19.6

Channel 1
mn: -453
mx: 953
 μ : -15.4
 σ : 45.5

Channel 2
mn: -1317
mx: 657
 μ : -17.8
 σ : 44.0

Processed Tue Mar 28 09:21:30 2017 by ELM ver.2012-10-06 from 001__elm20170328_071247__dat00.bin

