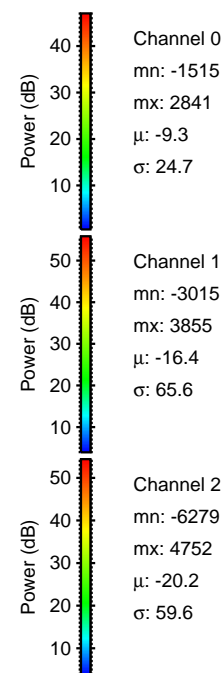
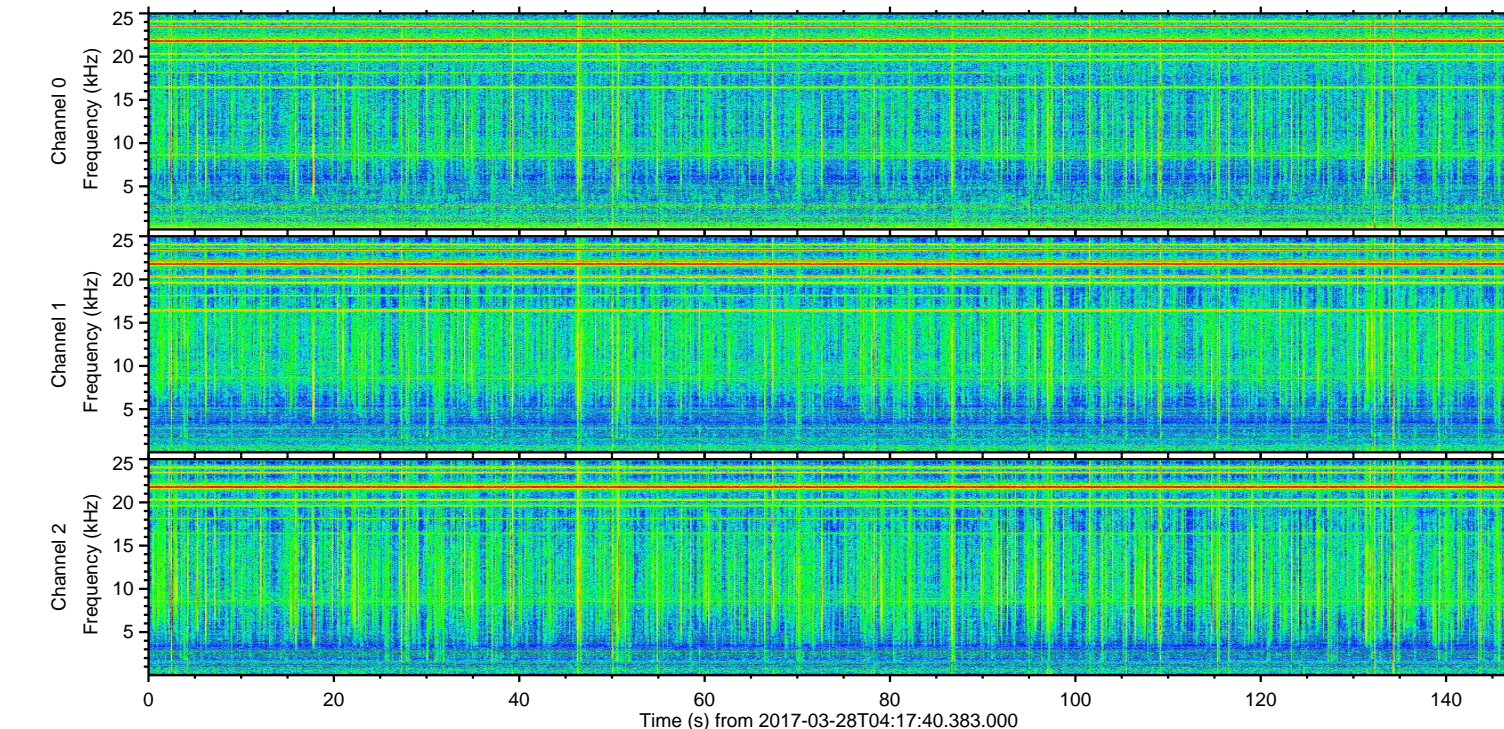
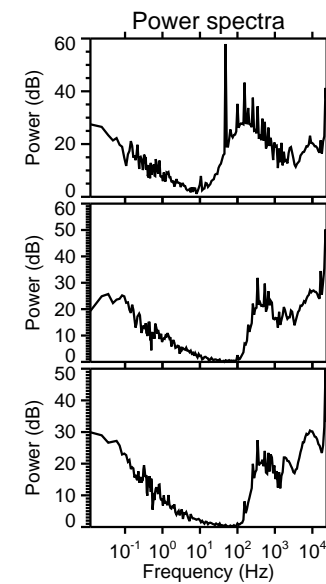
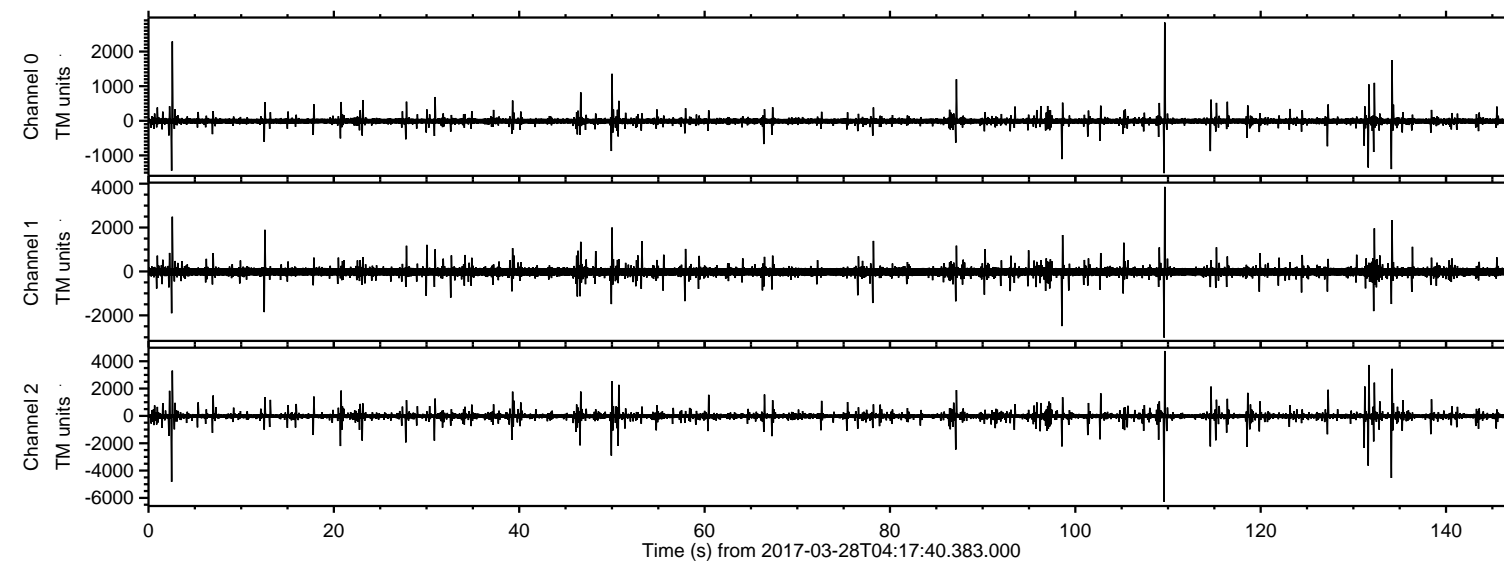


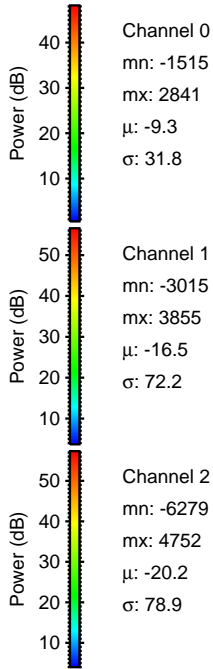
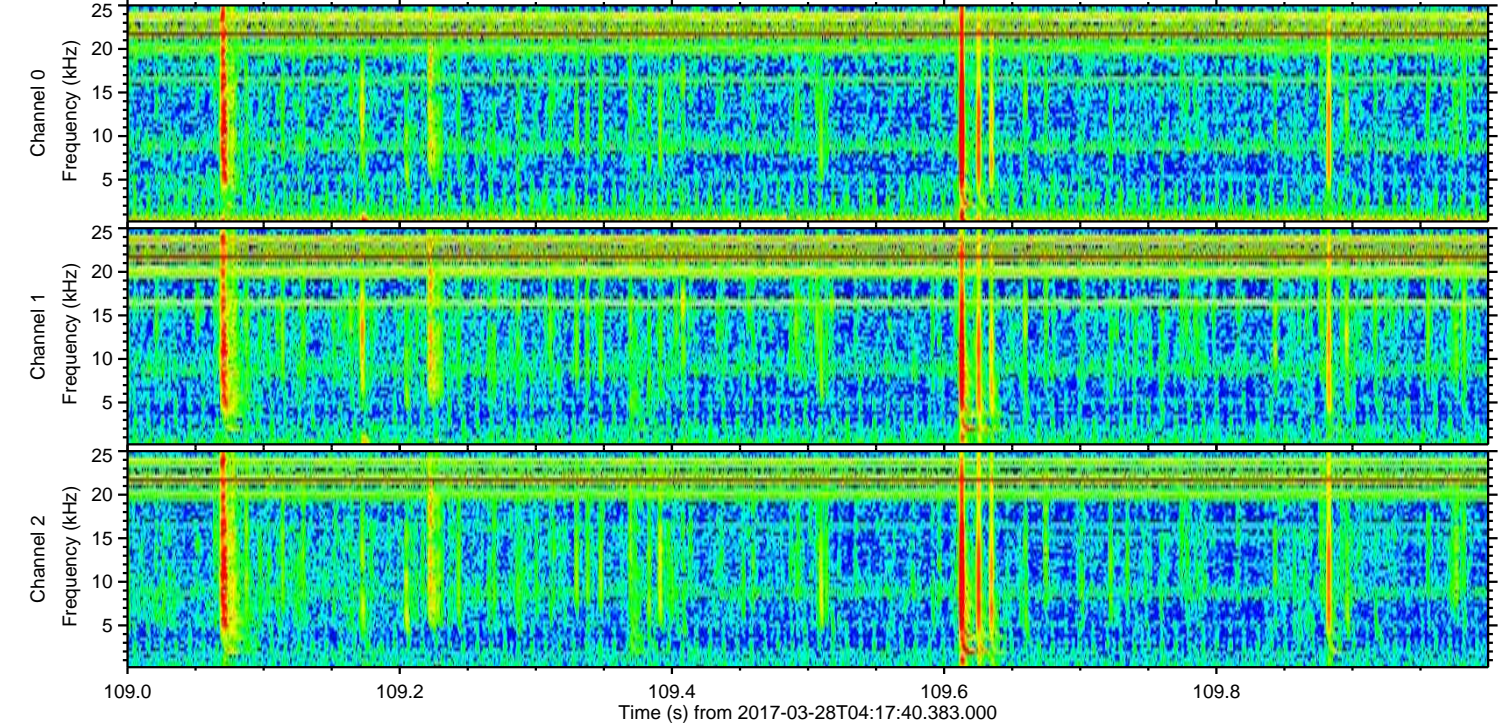
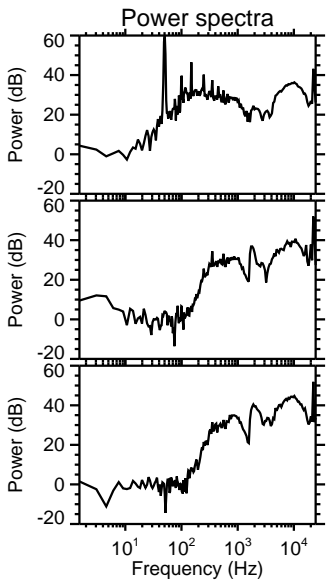
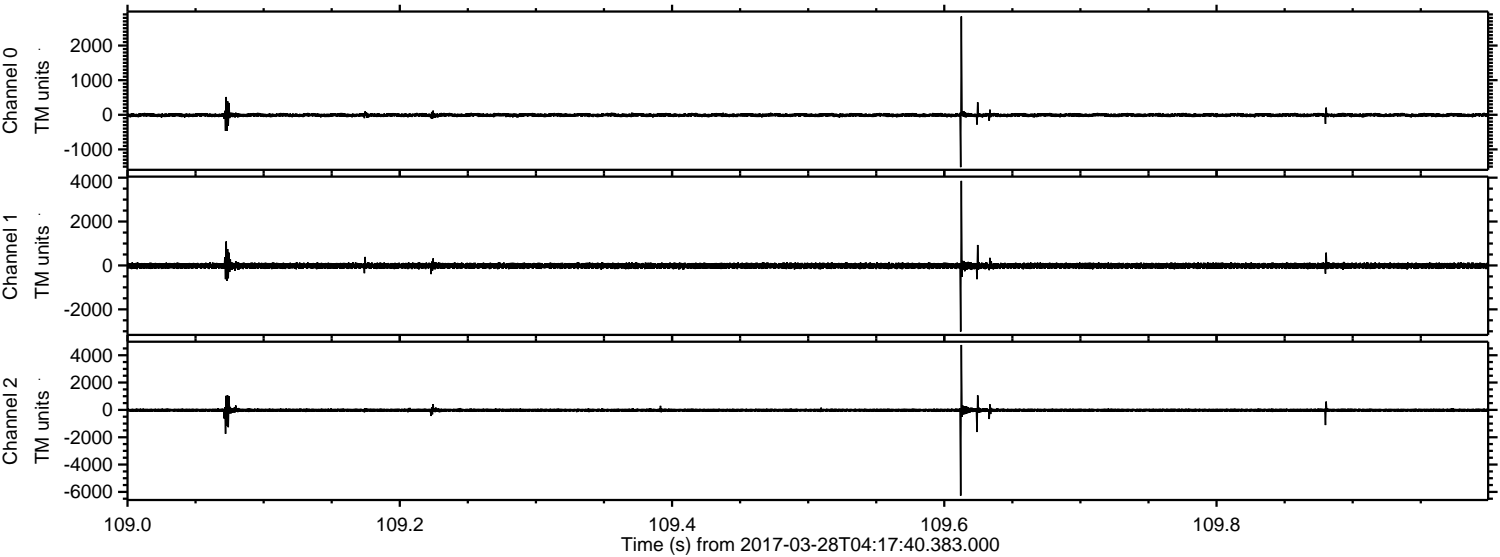
ELMAVAN 3D WAVEFORMS (Measured data sampled at 50 kHz) 51000 packets of 144 samples from 2017-03-28T04:17:40.383.000.

Processed Tue Mar 28 06:25:21 2017 by ELM ver.2012-10-06 from 001__elm20170328_041739__dat00.bin



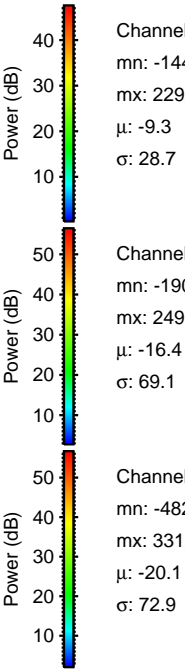
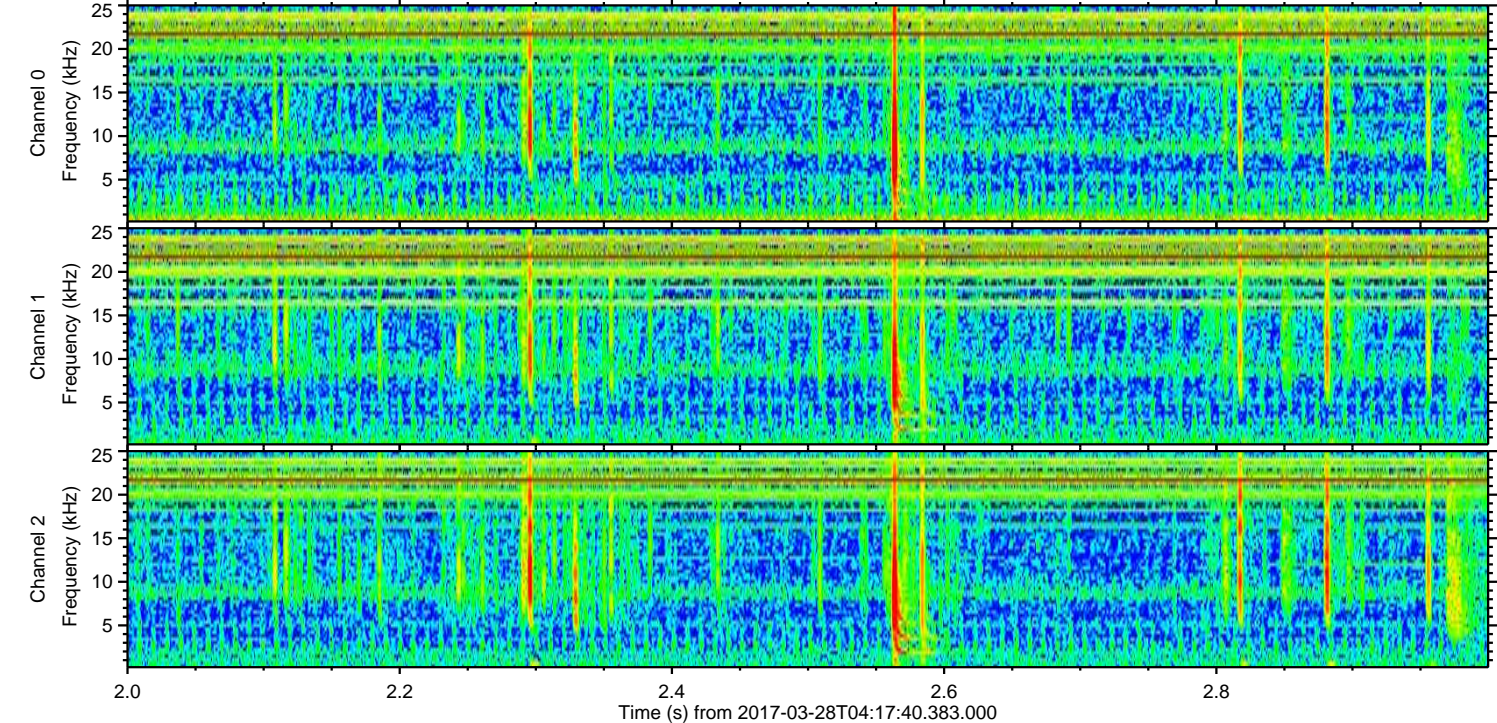
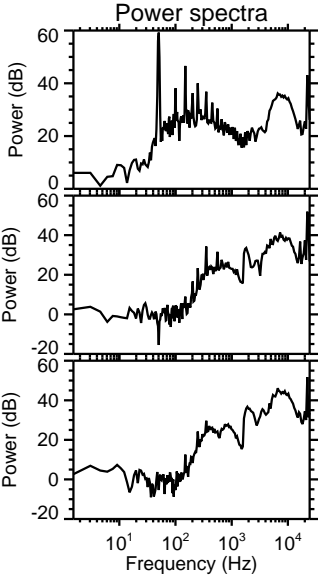
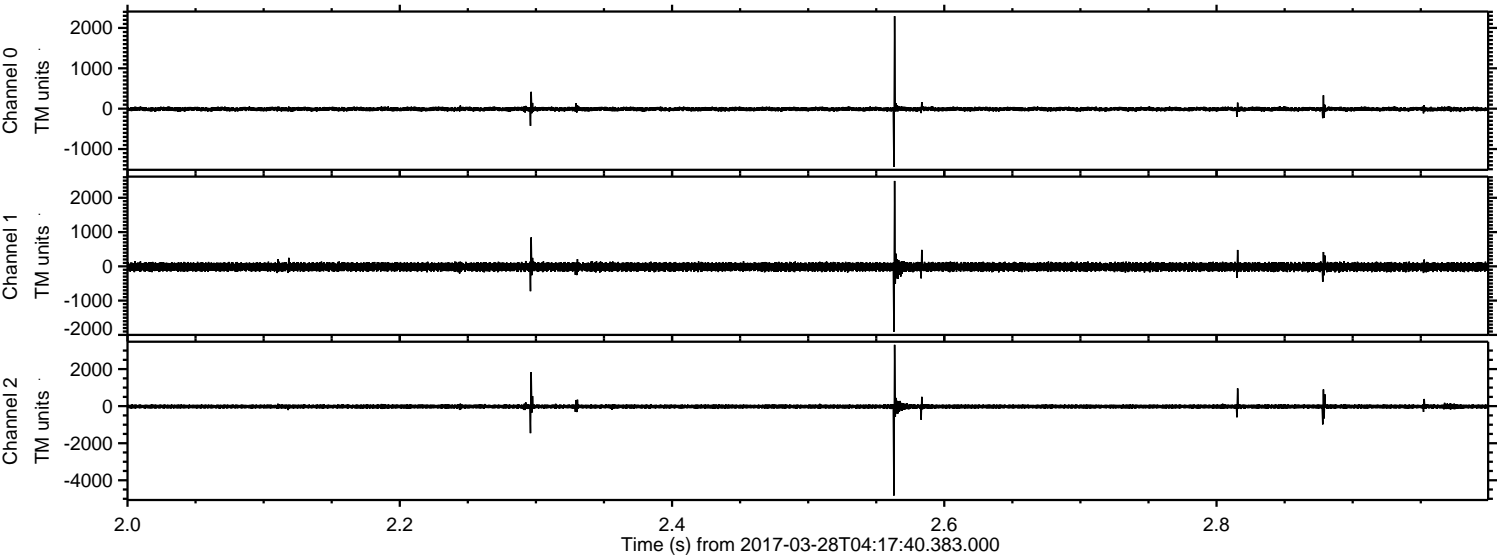
ELMAVAN 3D WAVEFORMS (Measured data sampled at 50 kHz) 51000 packets of 144 samples from 2017-03-28T04:17:40.383.000. Part 110/147

Processed Tue Mar 28 06:25:35 2017 by ELM ver.2012-10-06 from 001__elm20170328_041739__dat00.bin



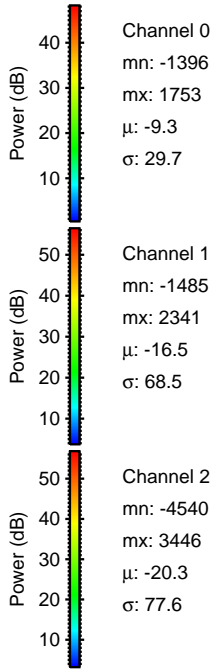
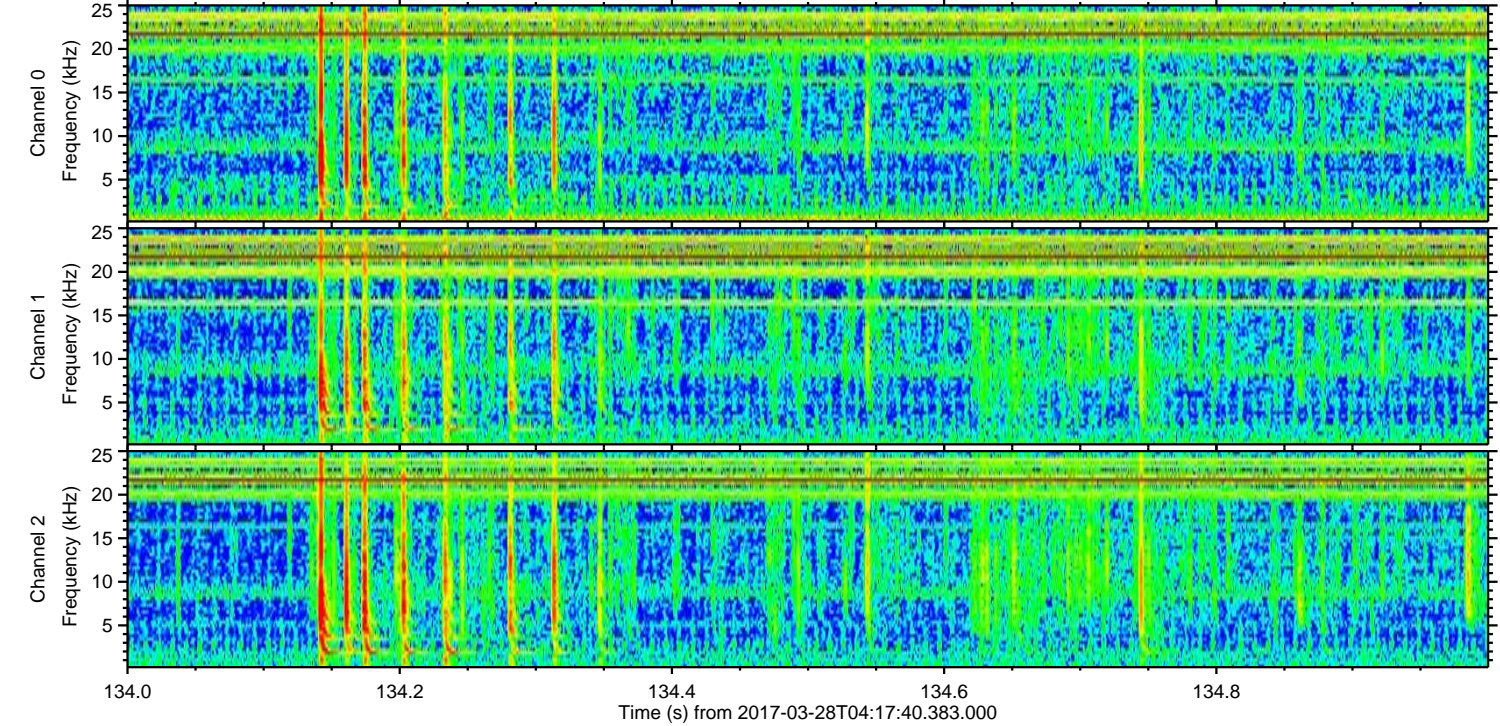
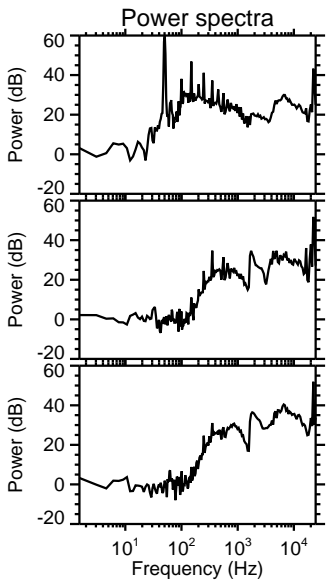
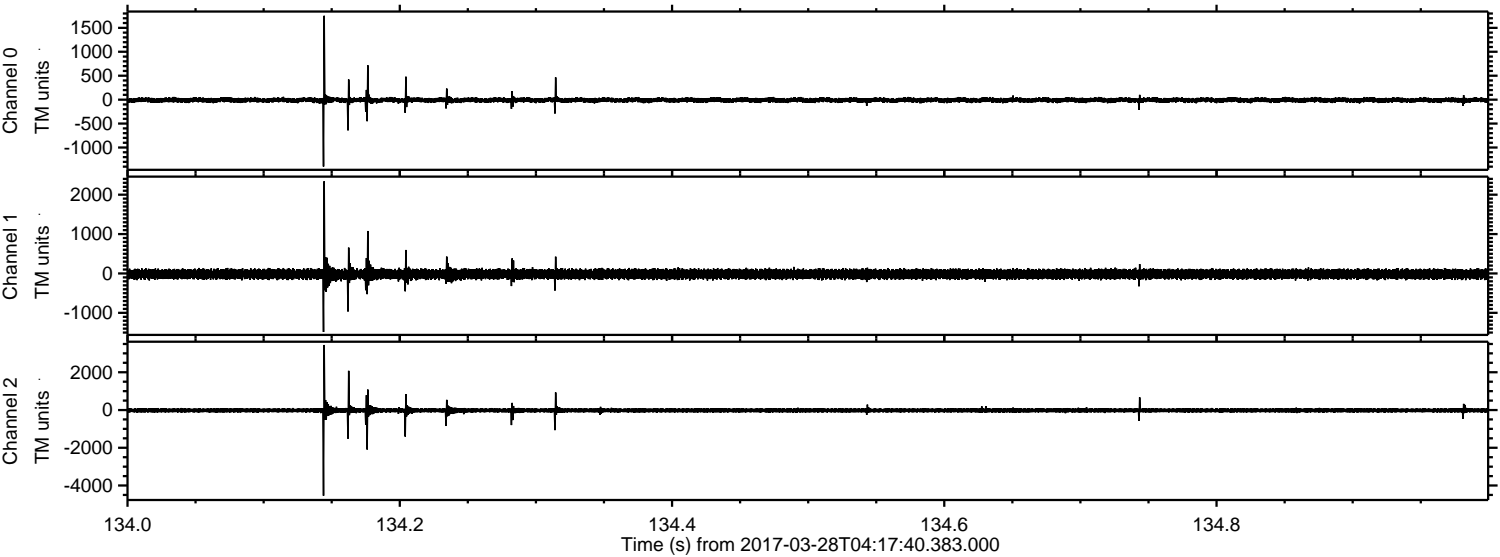
ELMAVAN 3D WAVEFORMS (Measured data sampled at 50 kHz) 51000 packets of 144 samples from 2017-03-28T04:17:40.383.000. Part 3/147

Processed Tue Mar 28 06:25:36 2017 by ELM ver.2012-10-06 from 001__elm20170328_041739__dat00.bin



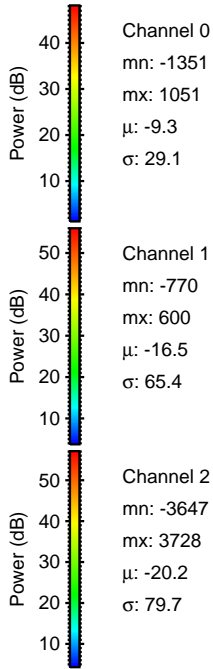
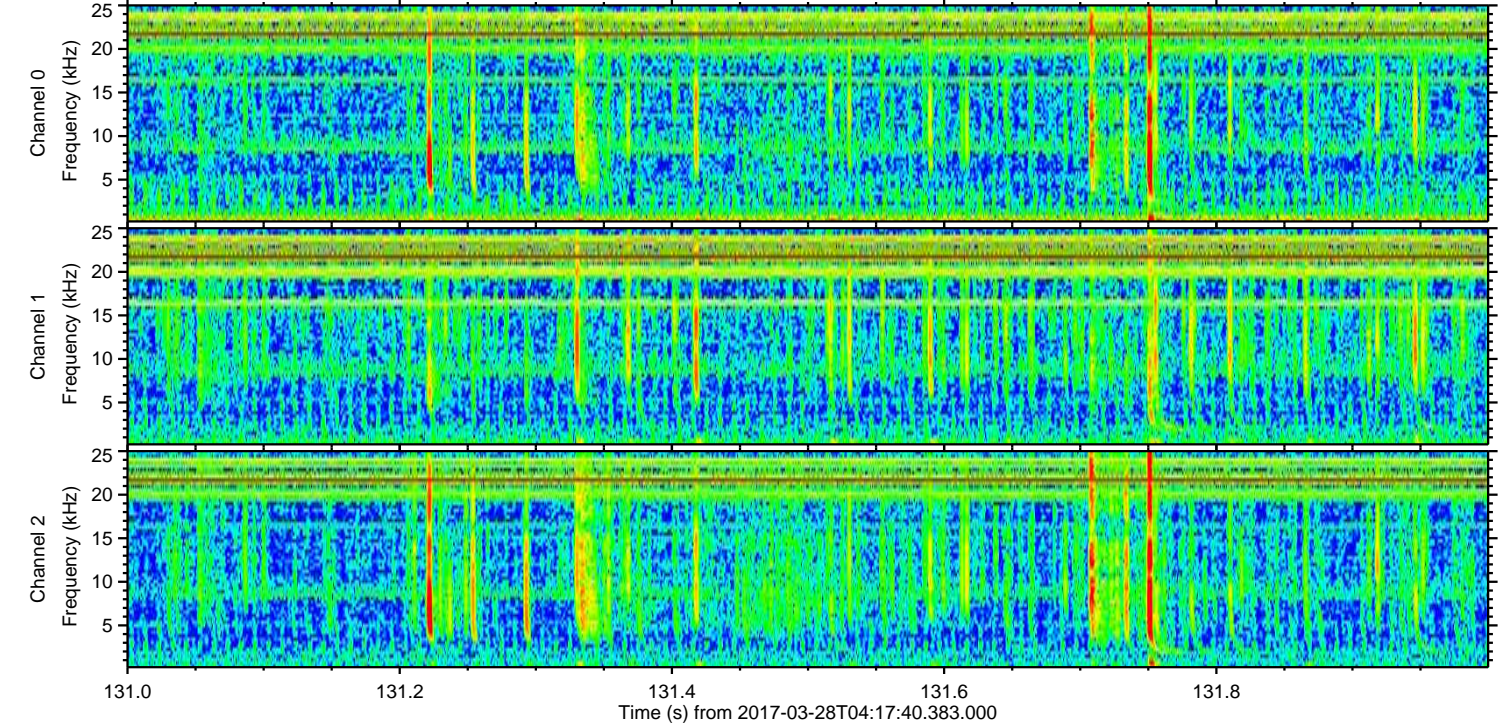
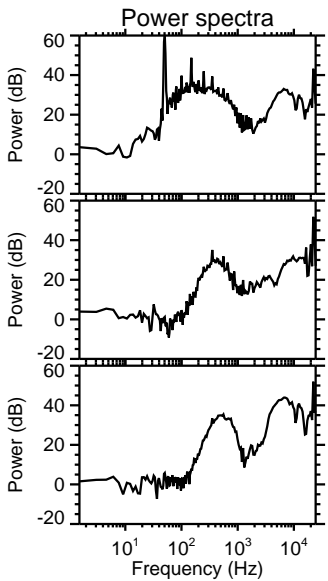
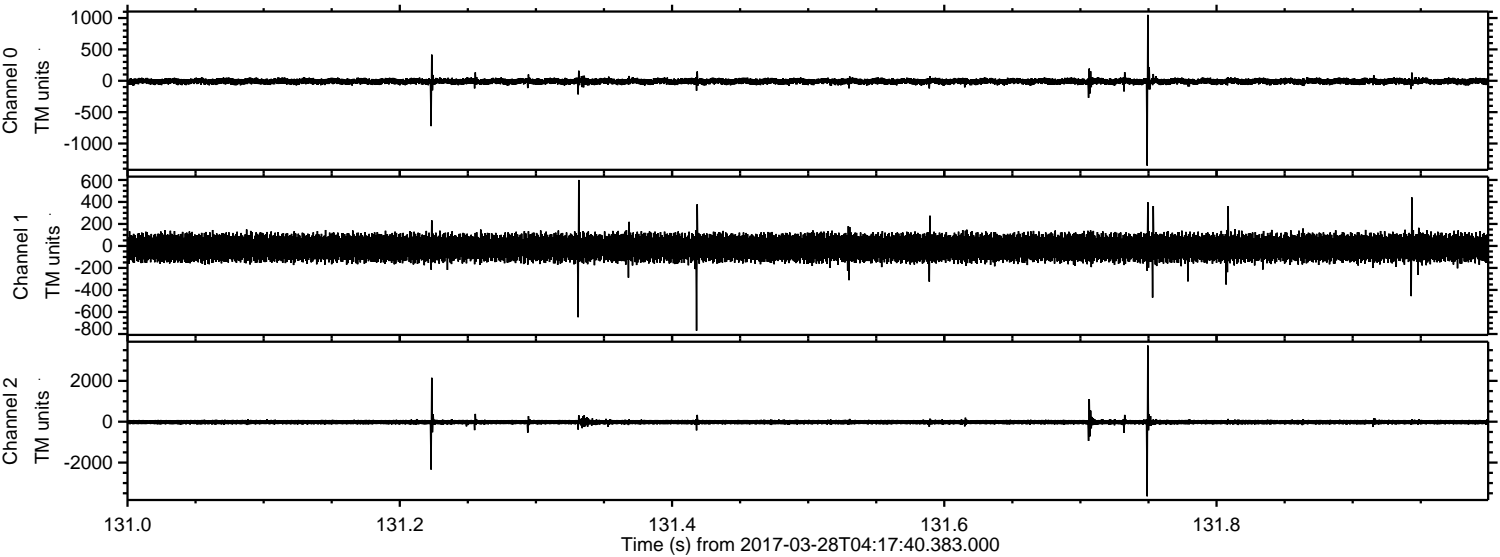
ELMAVAN 3D WAVEFORMS (Measured data sampled at 50 kHz) 51000 packets of 144 samples from 2017-03-28T04:17:40.383.000. Part 135/147

Processed Tue Mar 28 06:25:37 2017 by ELM ver.2012-10-06 from 001__elm20170328_041739__dat00.bin



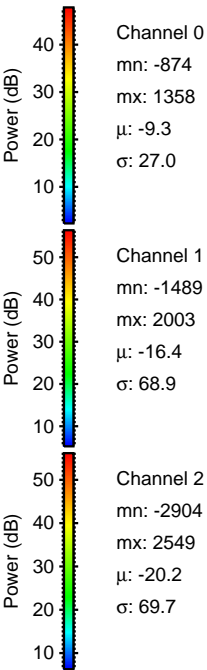
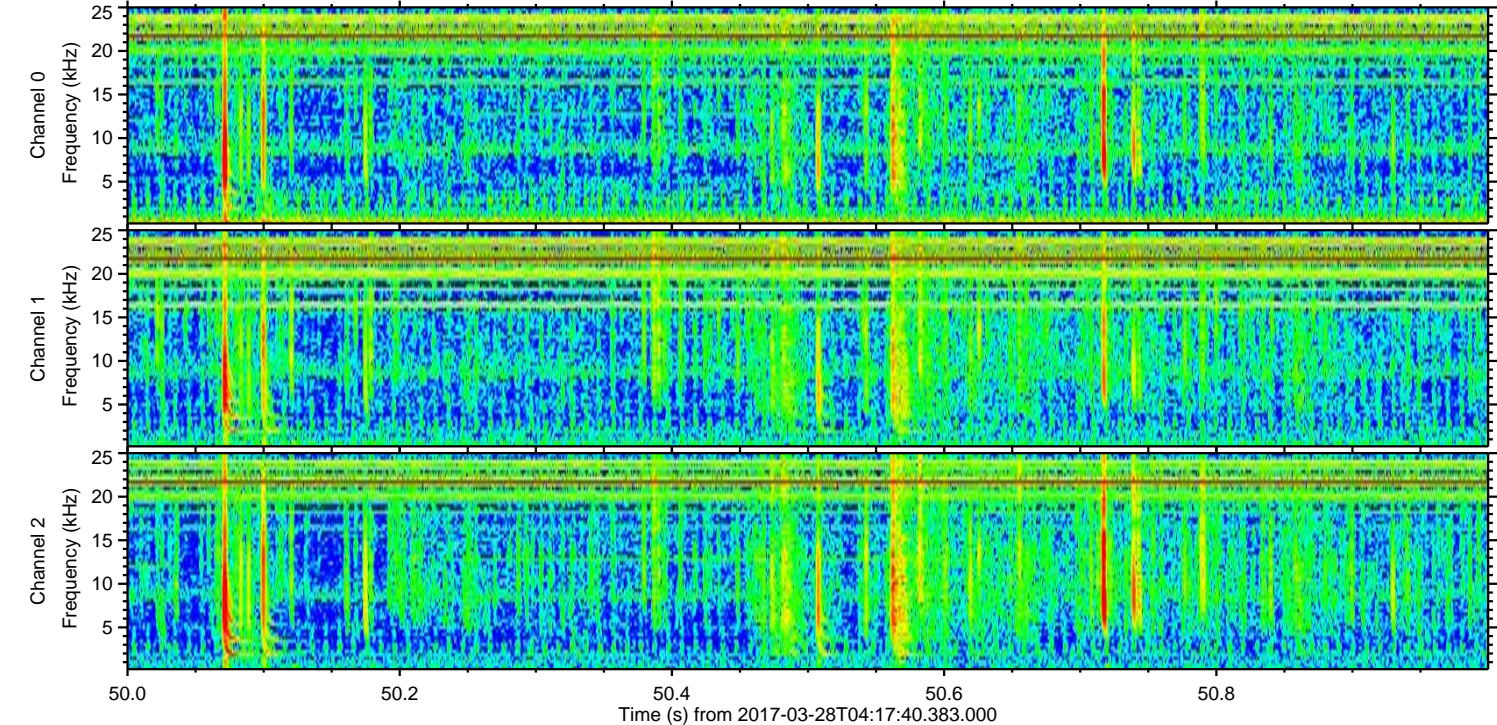
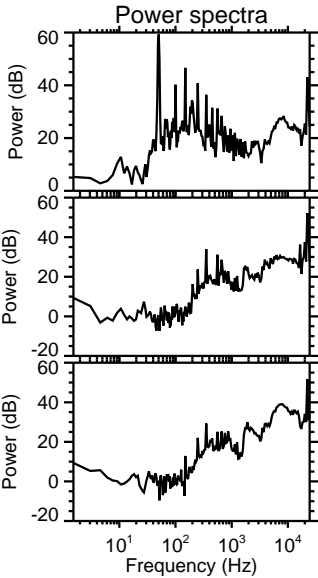
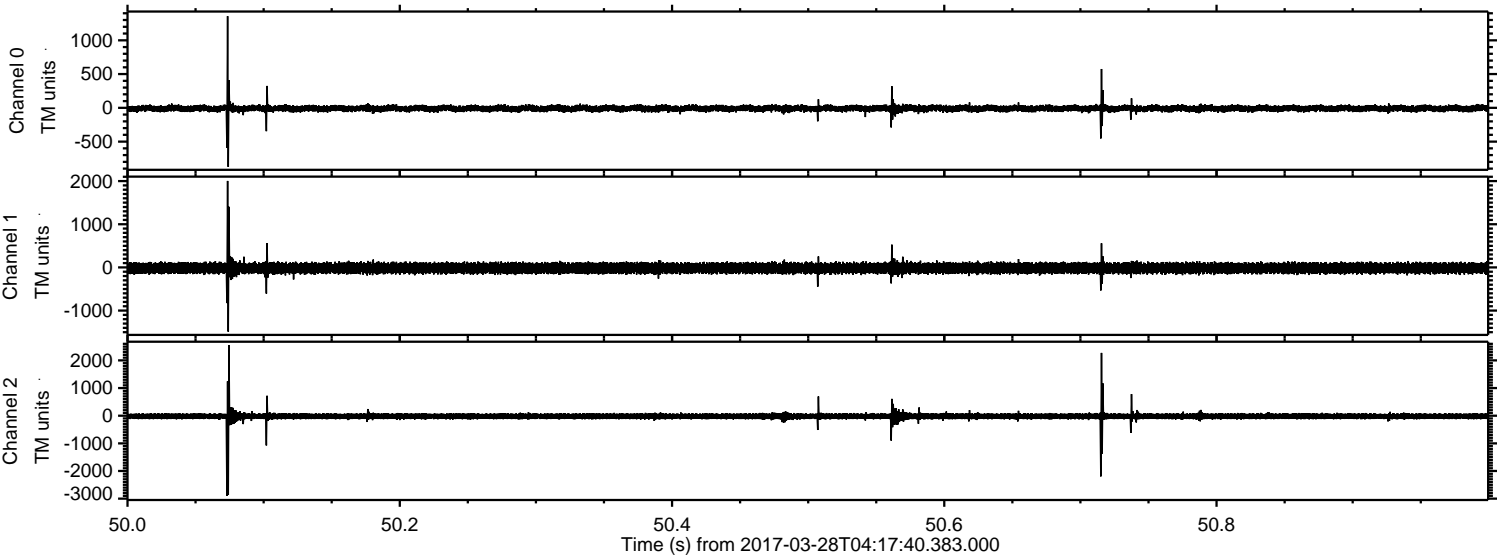
ELMAVAN 3D WAVEFORMS (Measured data sampled at 50 kHz) 51000 packets of 144 samples from 2017-03-28T04:17:40.383.000. Part 132/147

Processed Tue Mar 28 06:25:38 2017 by ELM ver.2012-10-06 from 001__elm20170328_041739__dat00.bin

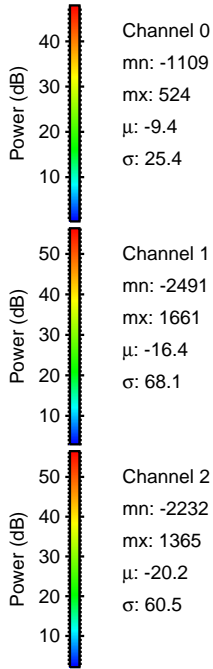
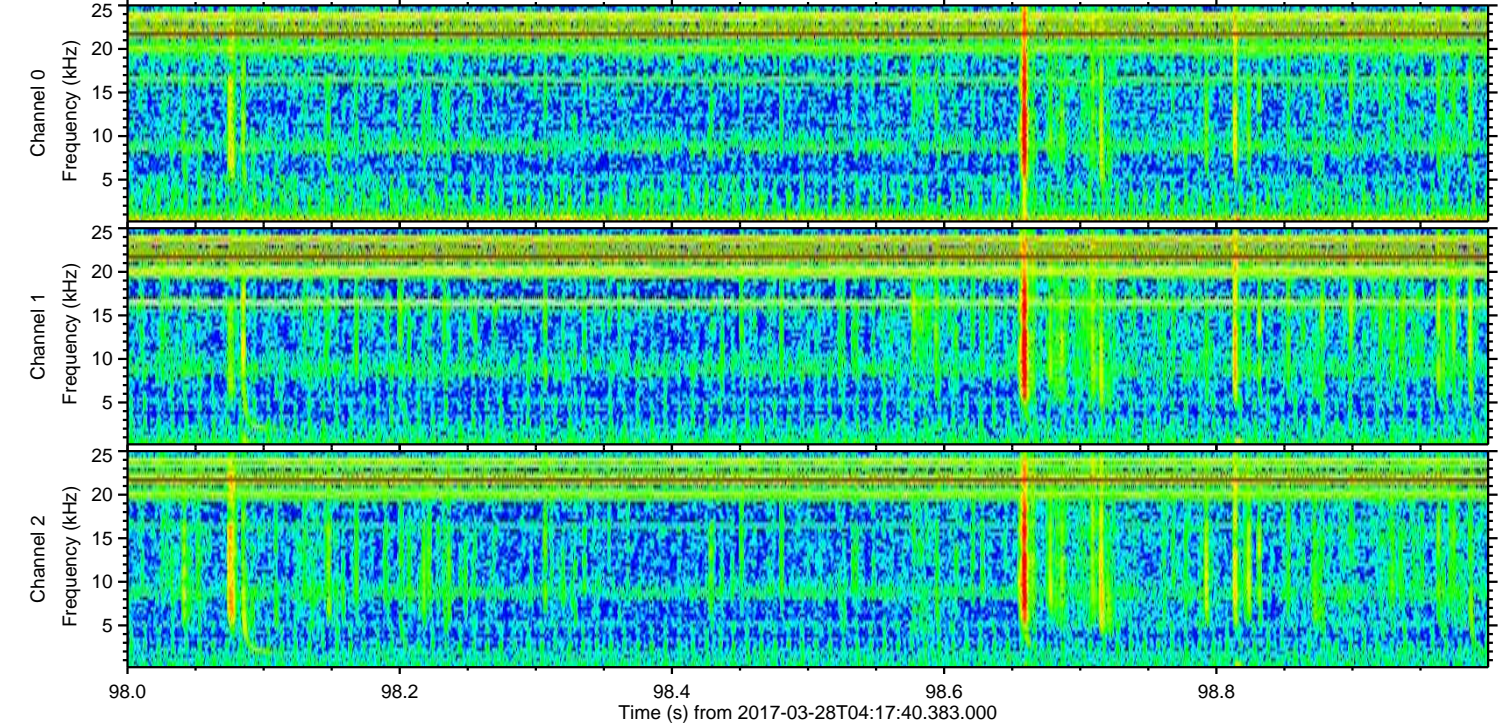
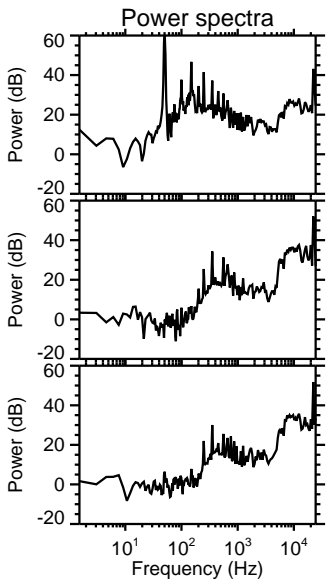
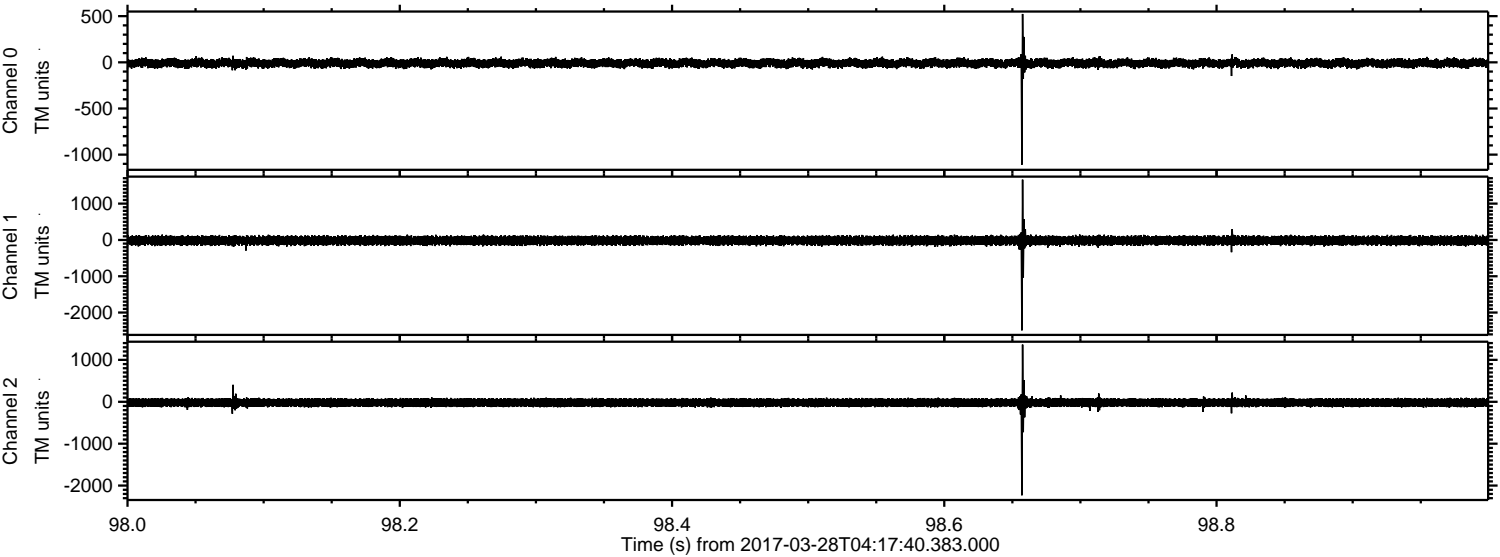


ELMAVAN 3D WAVEFORMS (Measured data sampled at 50 kHz) 51000 packets of 144 samples from 2017-03-28T04:17:40.383.000. Part 51/147

Processed Tue Mar 28 06:25:39 2017 by ELM ver.2012-10-06 from 001__elm20170328_041739__dat00.bin



Processed Tue Mar 28 06:25:40 2017 by ELM ver.2012-10-06 from 001__elm20170328_041739__dat00.bin

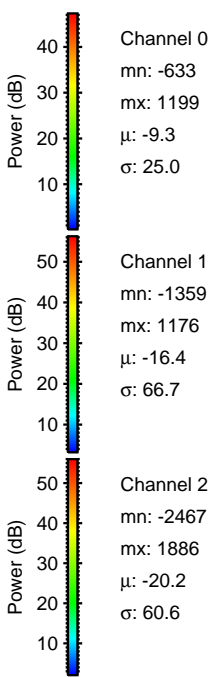
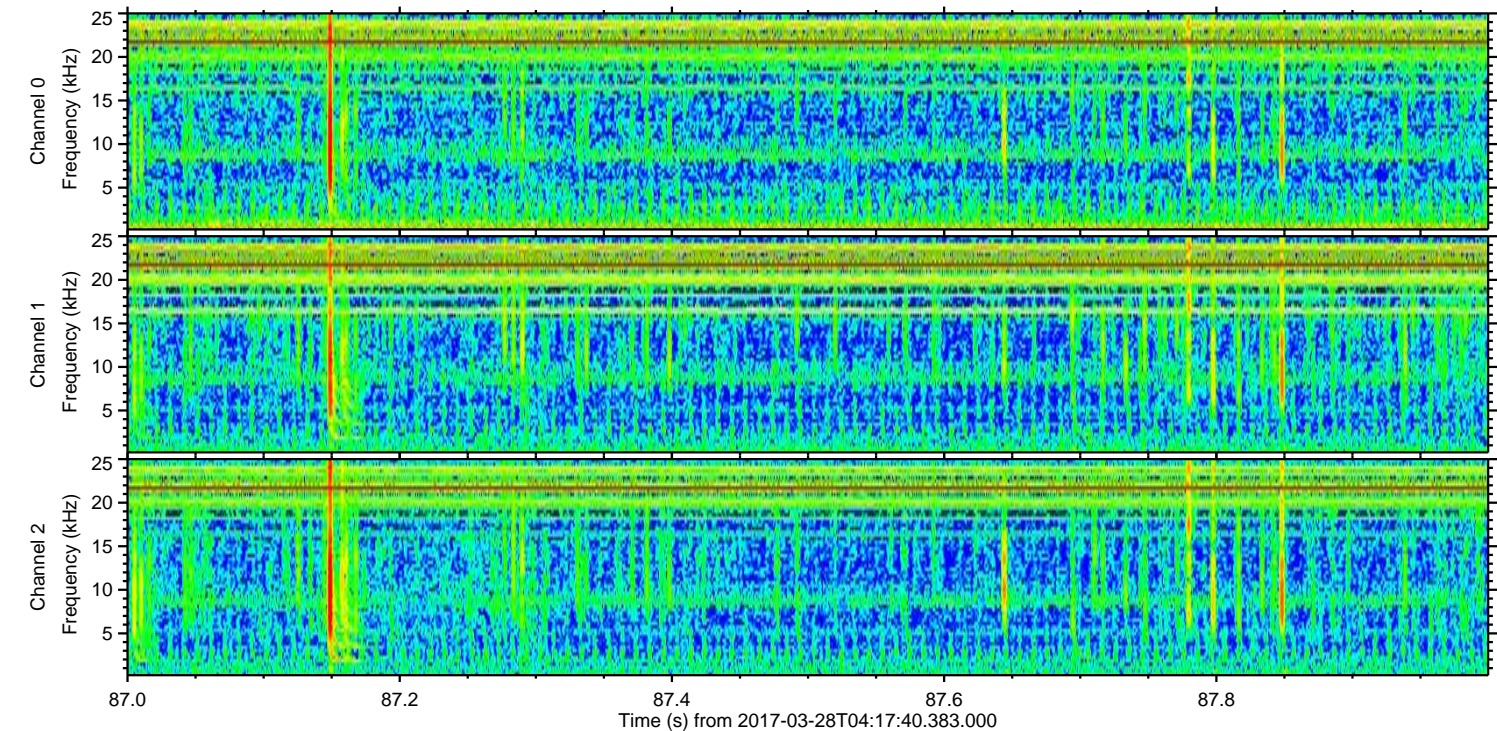
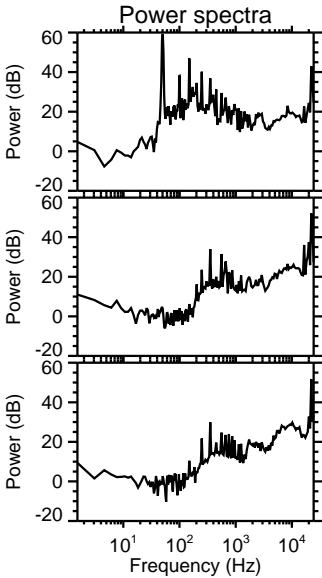
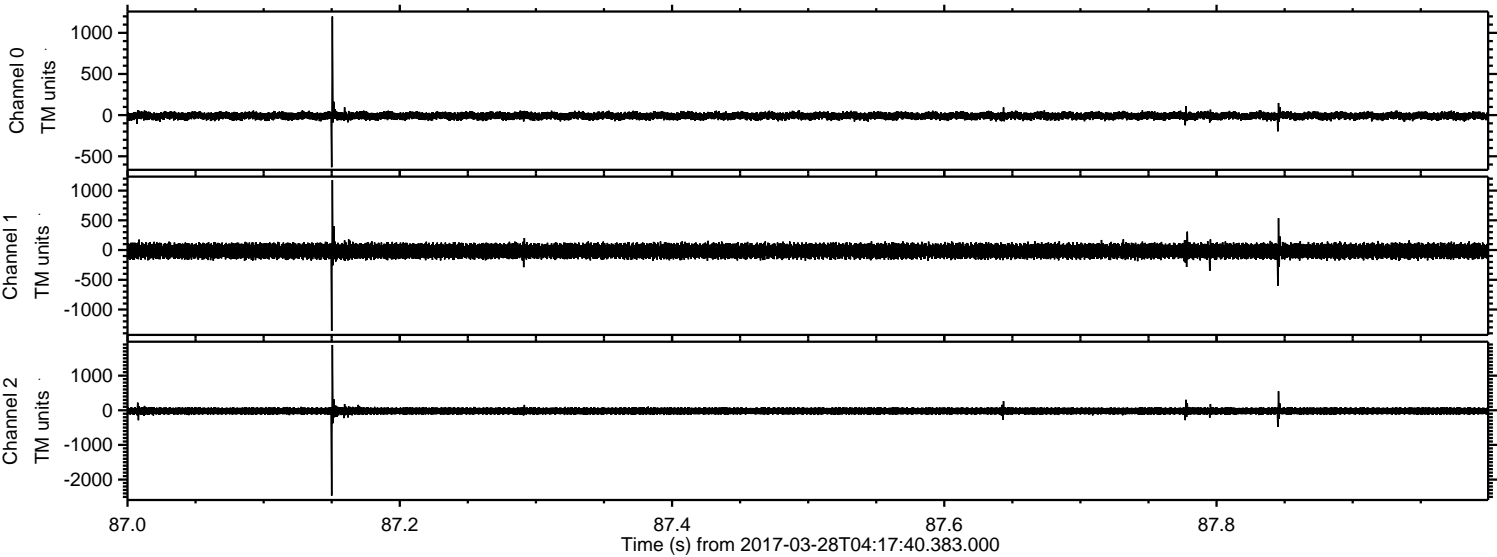


Channel 0
mn: -1109
mx: 524
 μ : -9.4
 σ : 25.4

Channel 1
mn: -2491
mx: 1661
 μ : -16.4
 σ : 68.1

Channel 2
mn: -2232
mx: 1365
 μ : -20.2
 σ : 60.5

Processed Tue Mar 28 06:25:41 2017 by ELM ver.2012-10-06 from 001__elm20170328_041739__dat00.bin



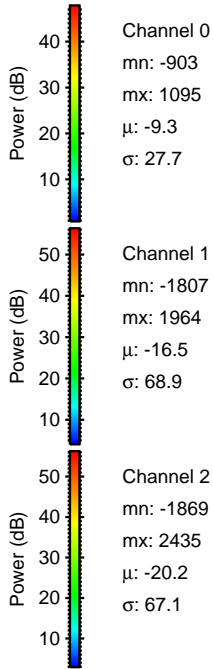
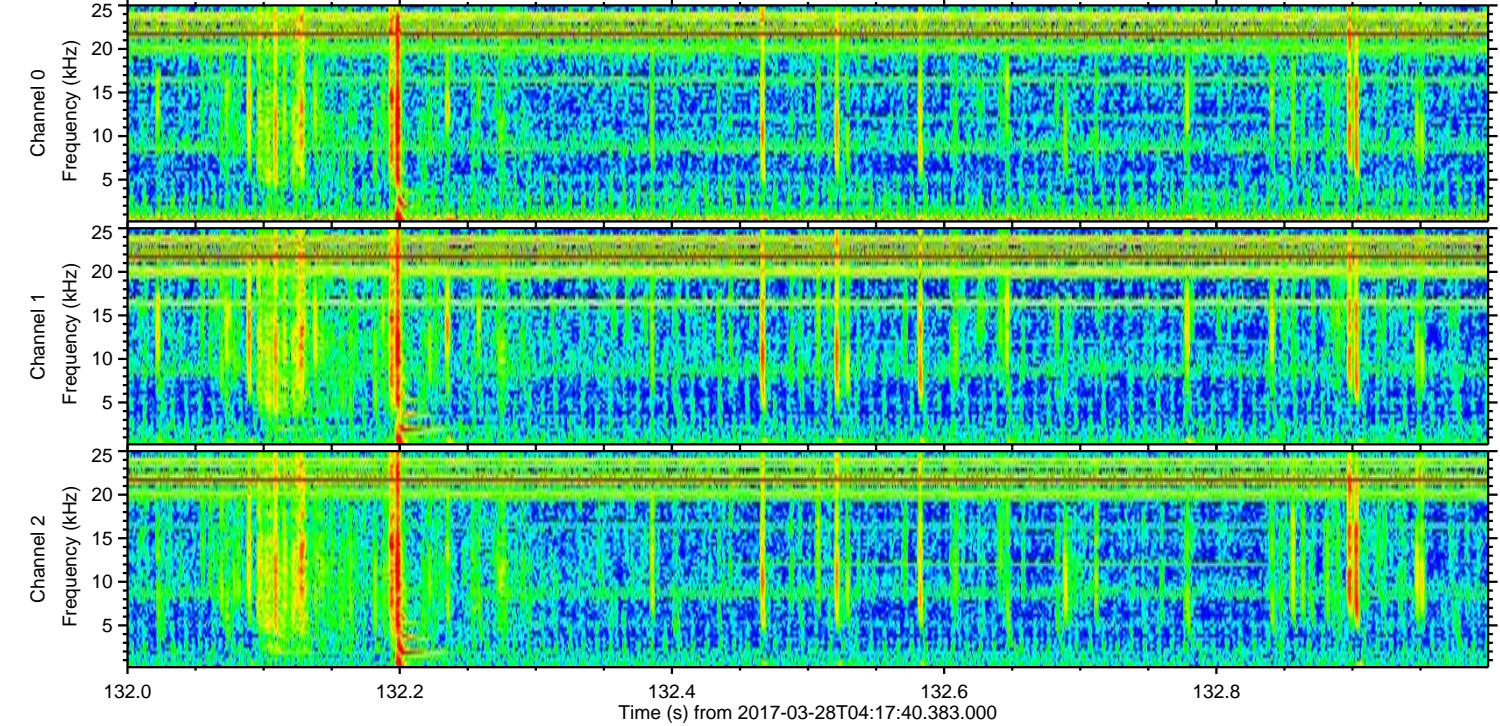
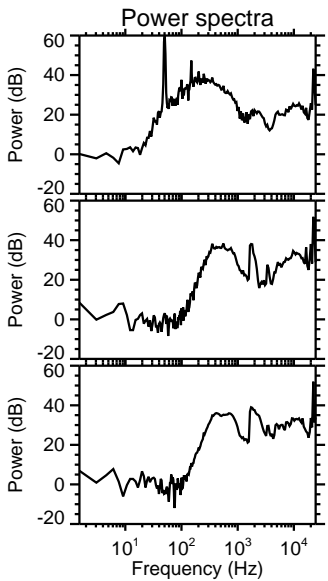
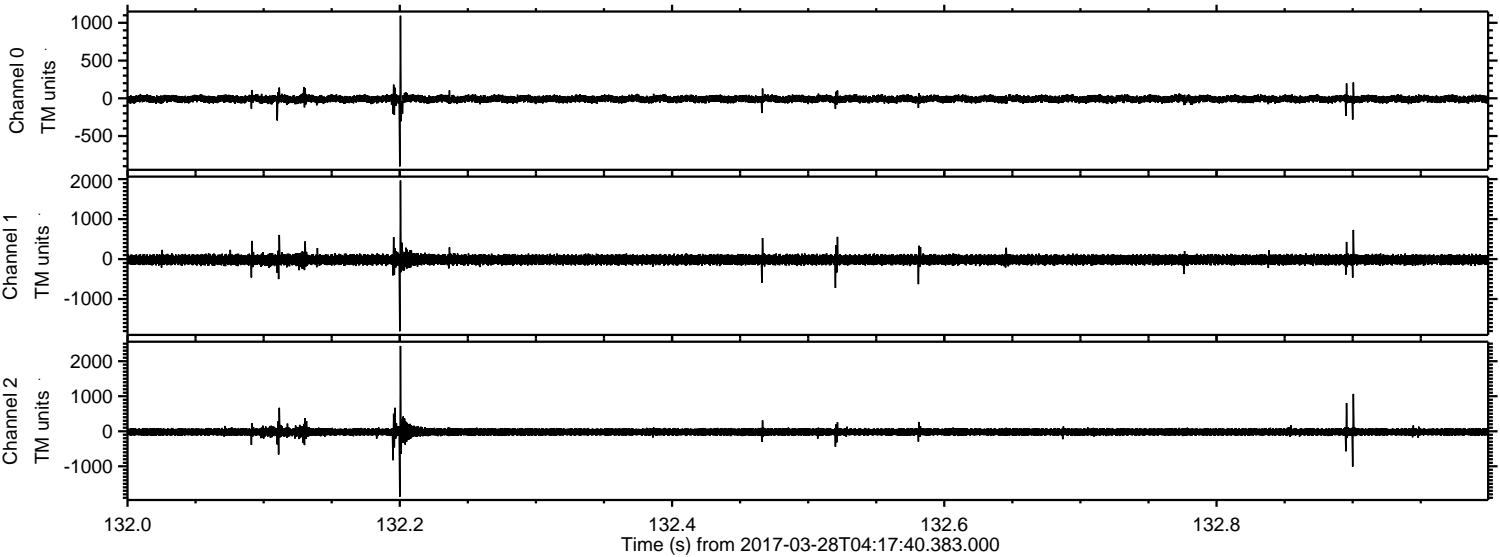
Channel 0
mn: -633
mx: 1199
 μ : -9.3
 σ : 25.0

Channel 1
mn: -1359
mx: 1176
 μ : -16.4
 σ : 66.7

Channel 2
mn: -2467
mx: 1886
 μ : -20.2
 σ : 60.6

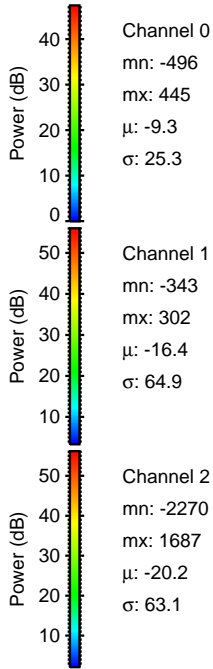
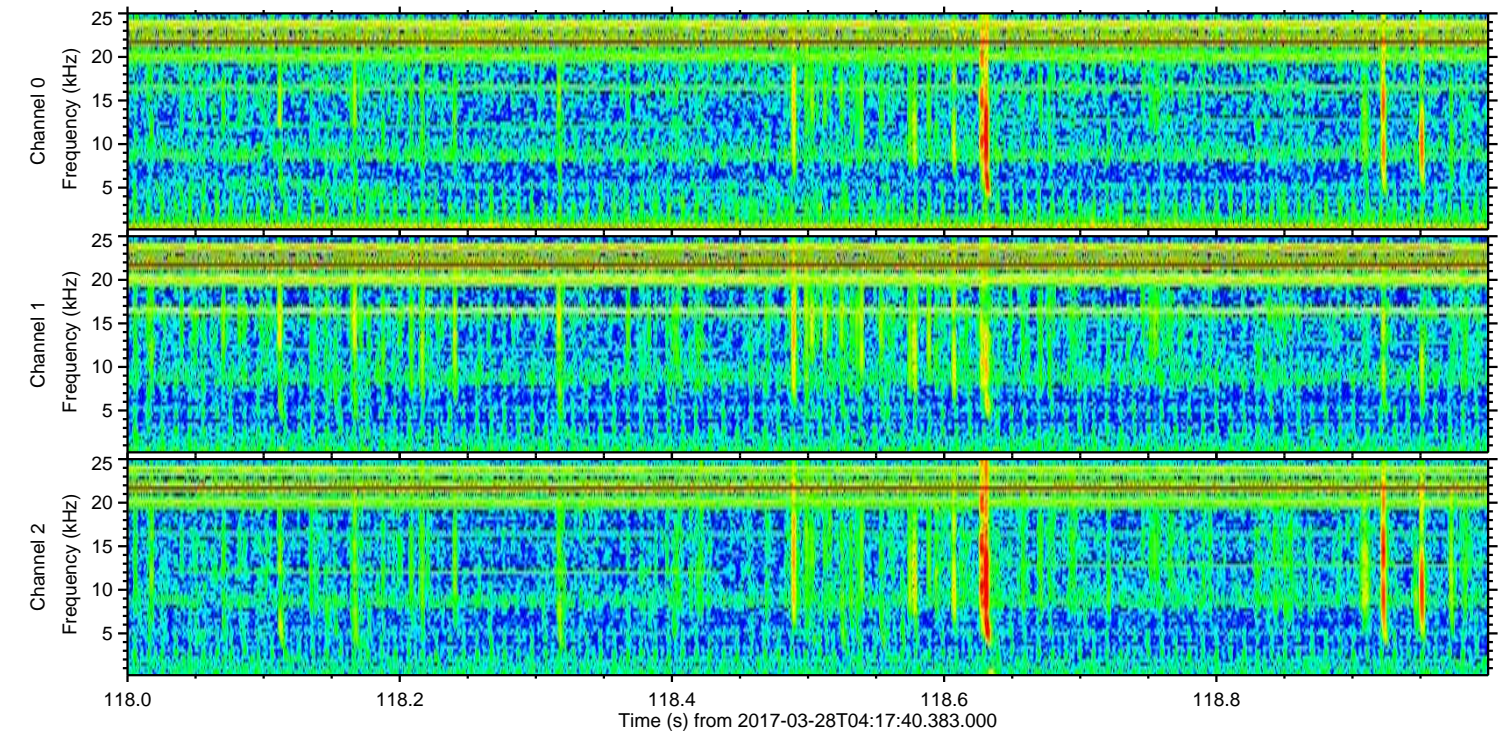
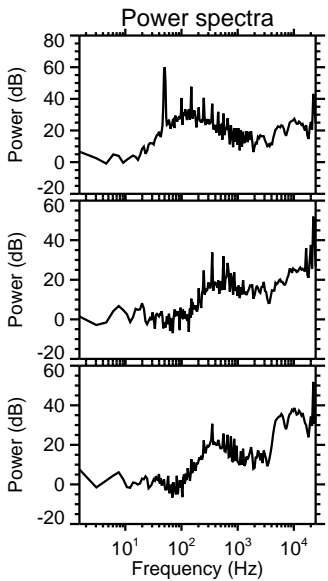
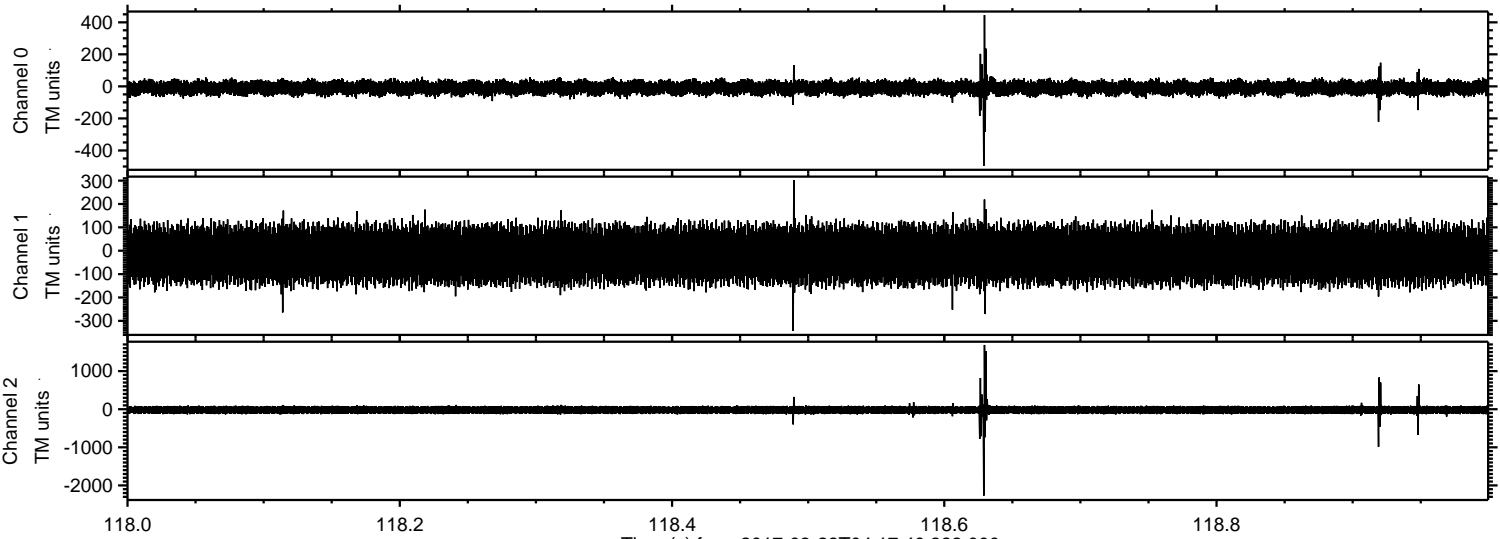
ELMAVAN 3D WAVEFORMS (Measured data sampled at 50 kHz) 51000 packets of 144 samples from 2017-03-28T04:17:40.383.000. Part 133/147

Processed Tue Mar 28 06:25:41 2017 by ELM ver.2012-10-06 from 001__elm20170328_041739__dat00.bin



ELMAVAN 3D WAVEFORMS (Measured data sampled at 50 kHz) 51000 packets of 144 samples from 2017-03-28T04:17:40.383.000. Part 119/147

Processed Tue Mar 28 06:25:42 2017 by ELM ver.2012-10-06 from 001__elm20170328_041739__dat00.bin



ELMAVAN 3D WAVEFORMS (Measured data sampled at 50 kHz) 51000 packets of 144 samples from 2017-03-28T04:17:40.383.000. Part 101/147

