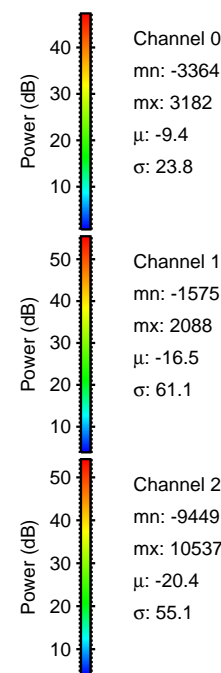
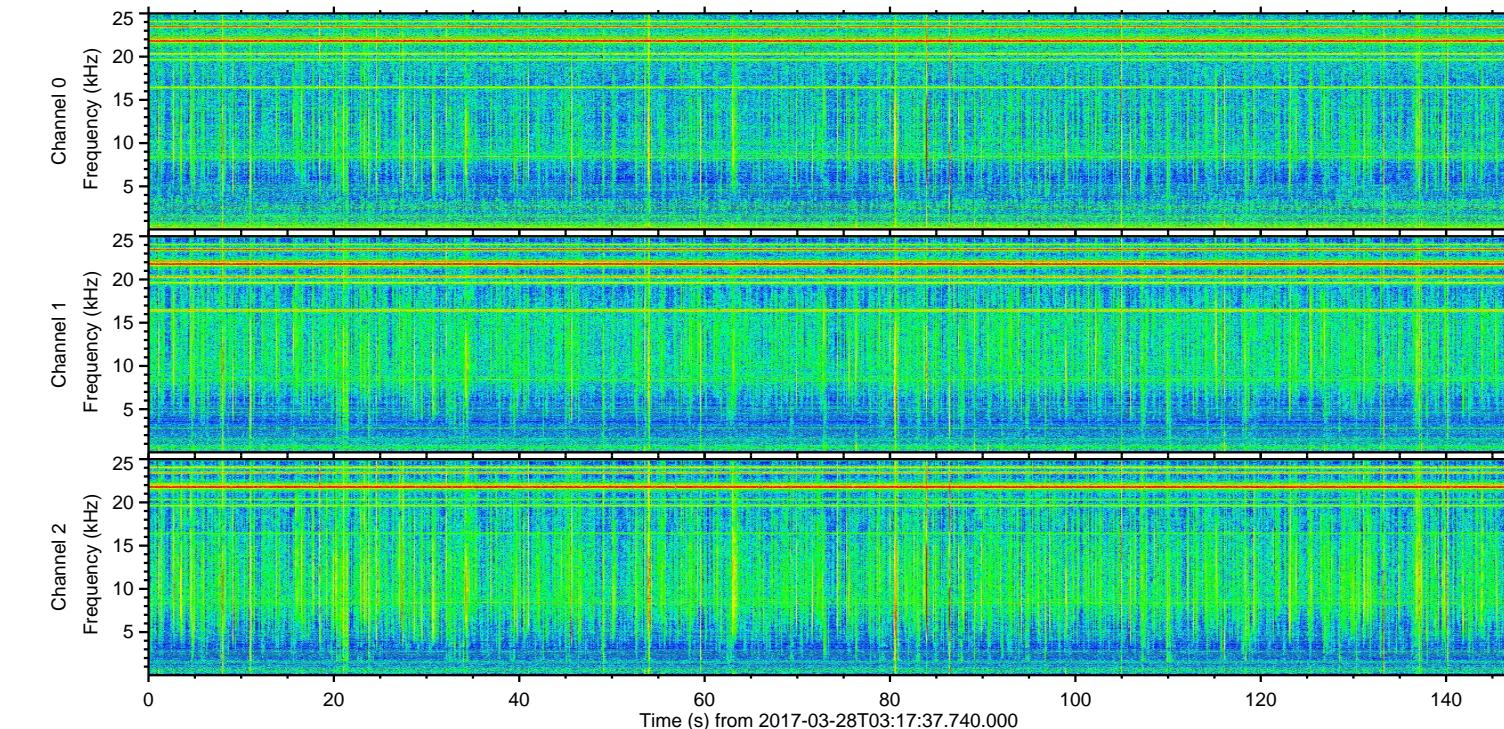
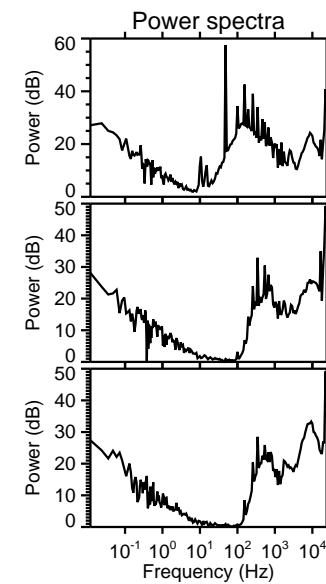
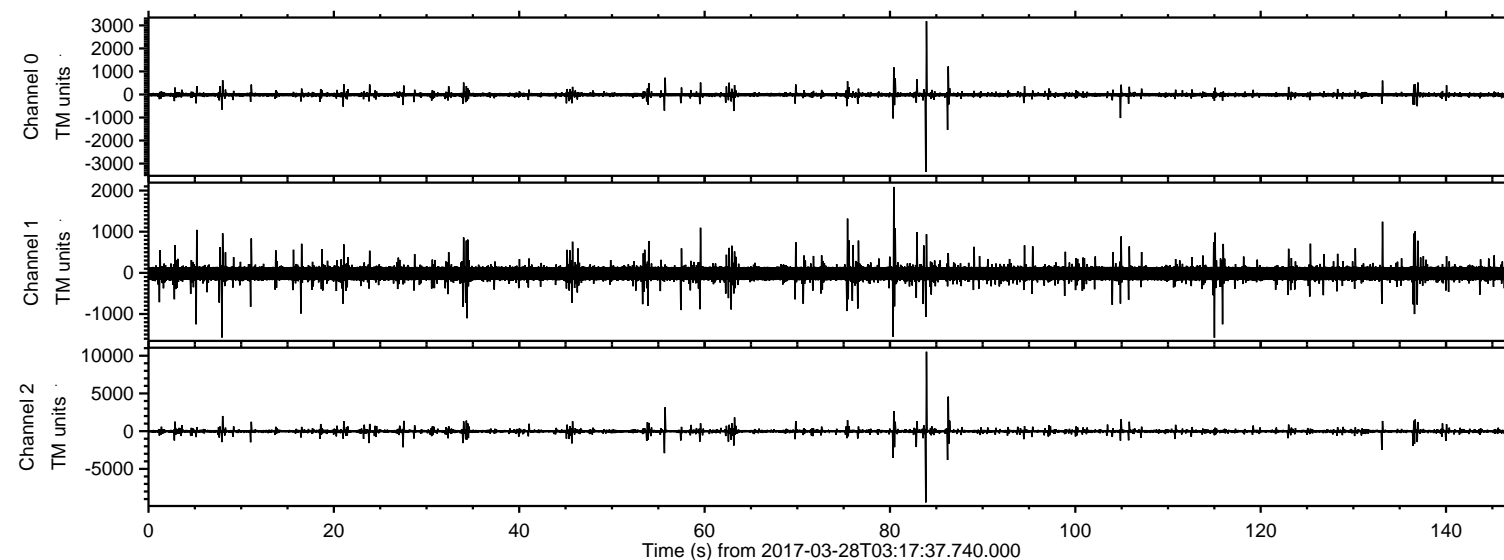


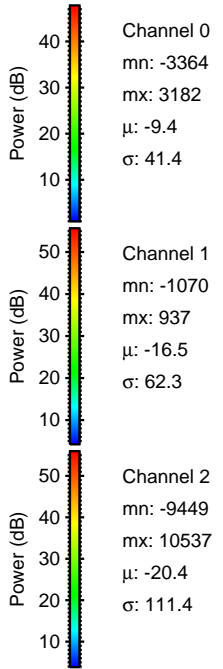
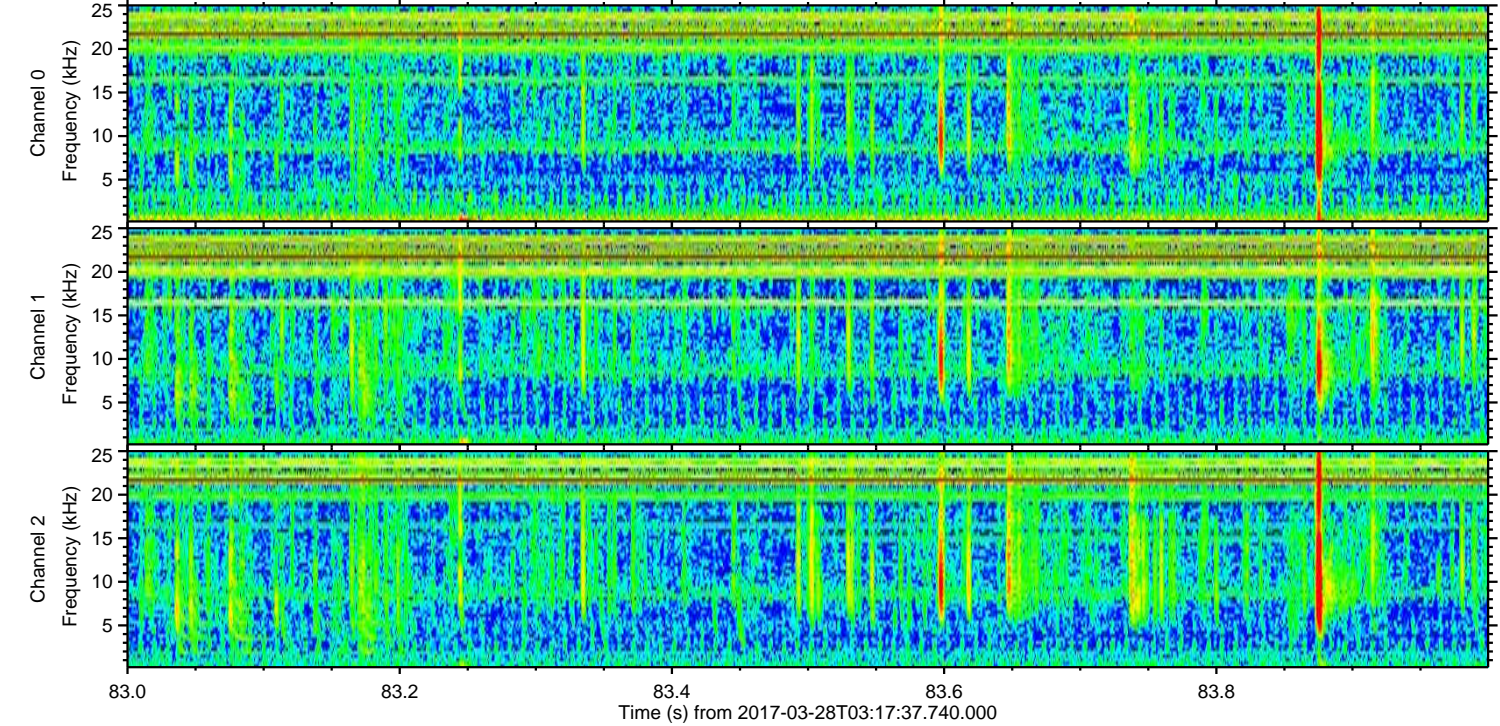
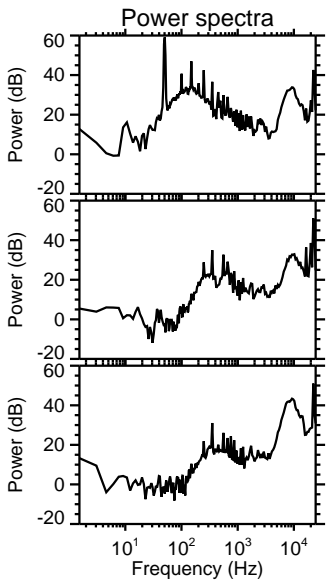
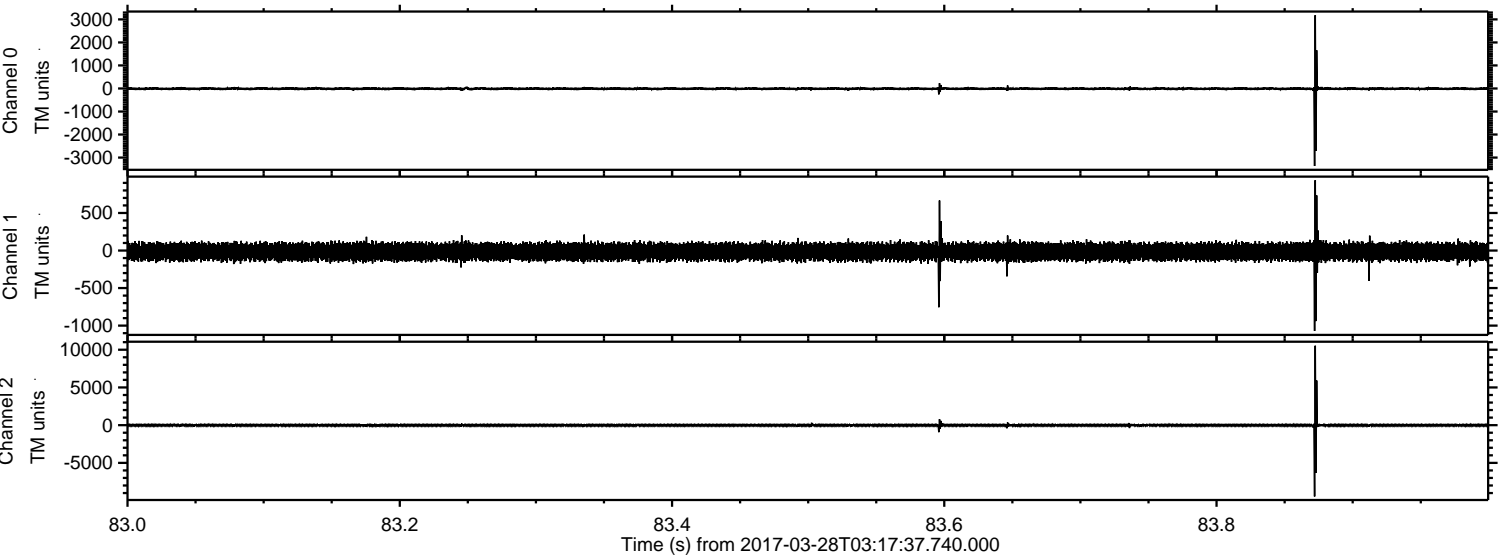
# ELMAVAN 3D WAVEFORMS (Measured data sampled at 50 kHz) 51000 packets of 144 samples from 2017-03-28T03:17:37.740.000.

Processed Tue Mar 28 05:25:00 2017 by ELM ver.2012-10-06 from 001\_\_elm20170328\_031736\_\_dat00.bin





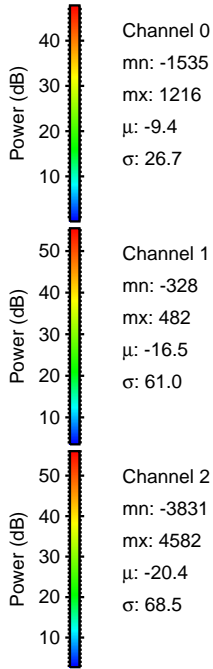
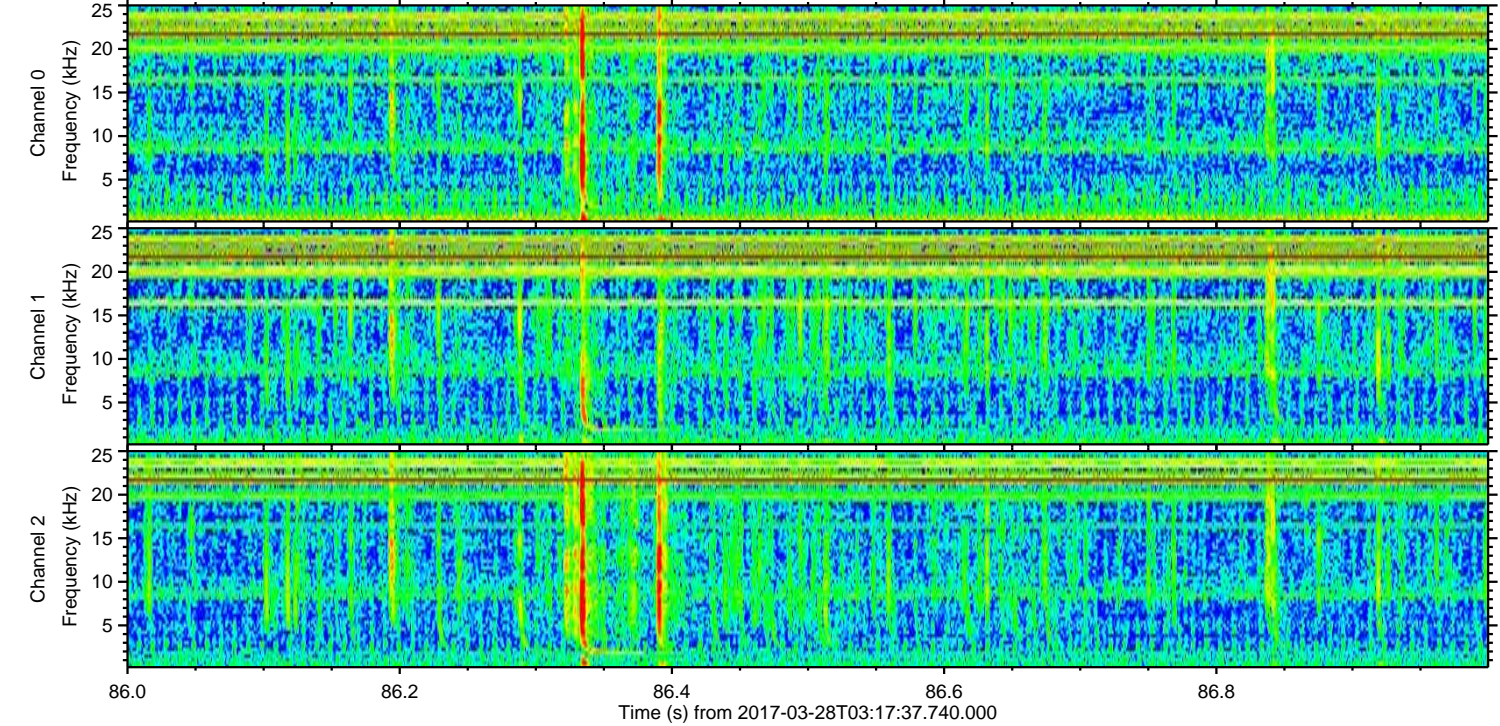
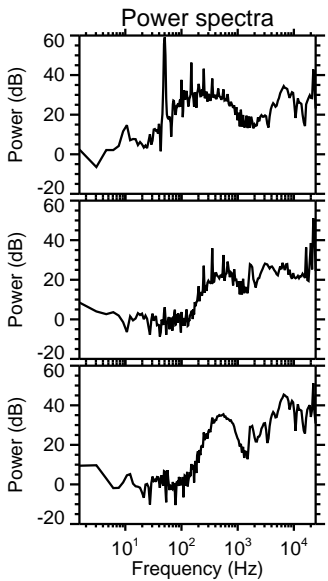
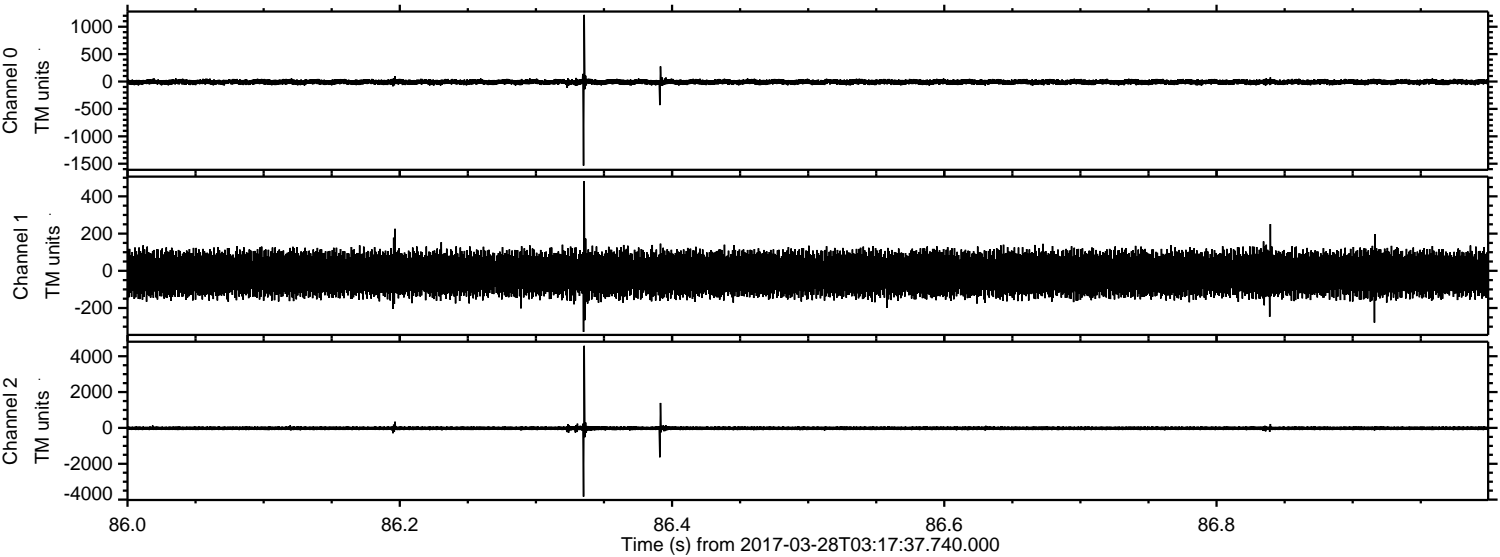
Processed Tue Mar 28 05:25:13 2017 by ELM ver.2012-10-06 from 001\_\_elm20170328\_031736\_\_dat00.bin





ELMAVAN 3D WAVEFORMS (Measured data sampled at 50 kHz) 51000 packets of 144 samples from 2017-03-28T03:17:37.740.000. Part 87/147

Processed Tue Mar 28 05:25:14 2017 by ELM ver.2012-10-06 from 001\_\_elm20170328\_031736\_\_dat00.bin



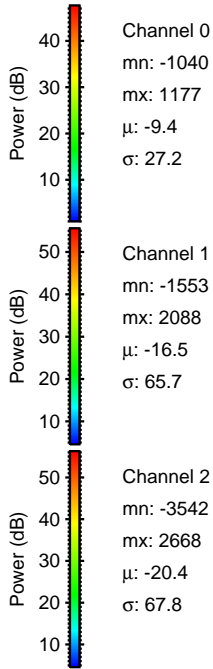
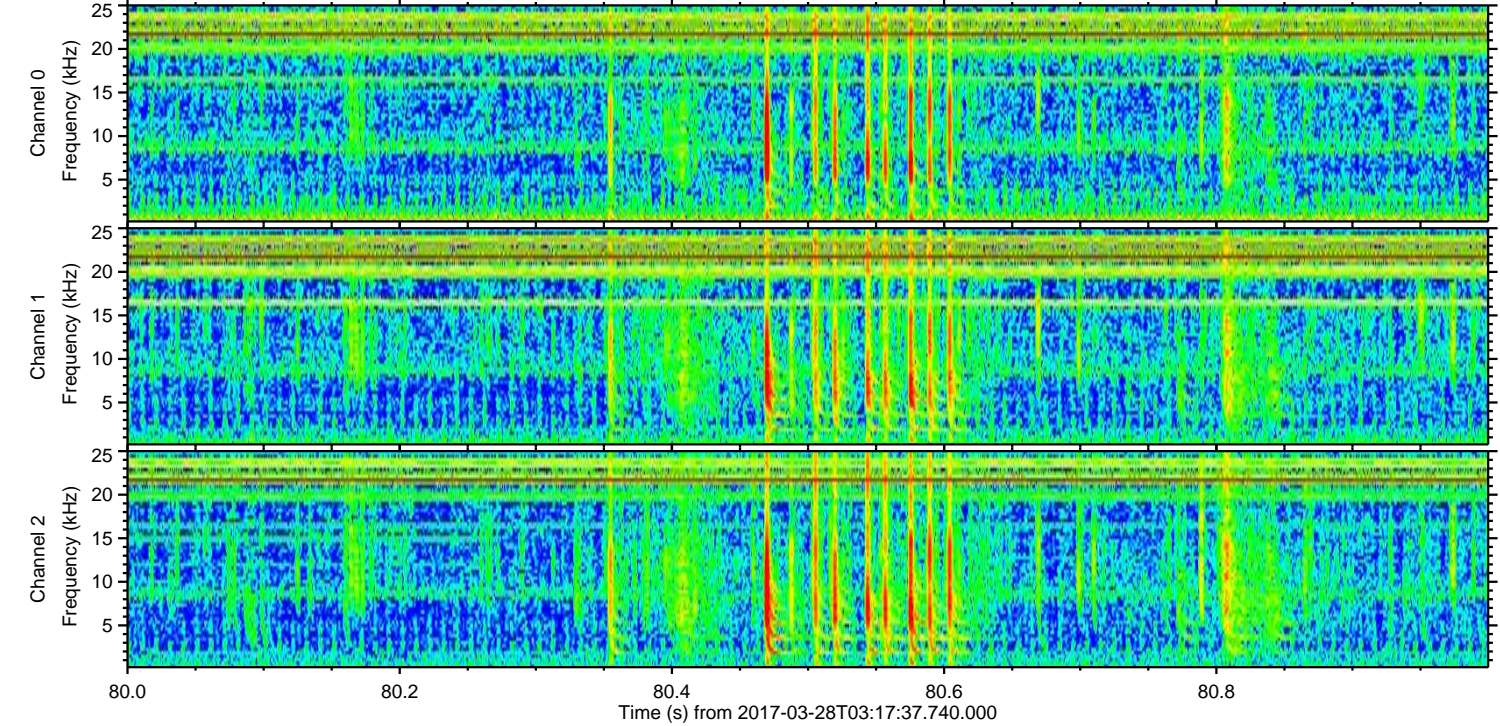
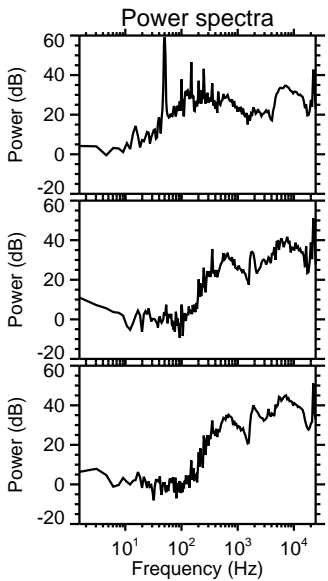
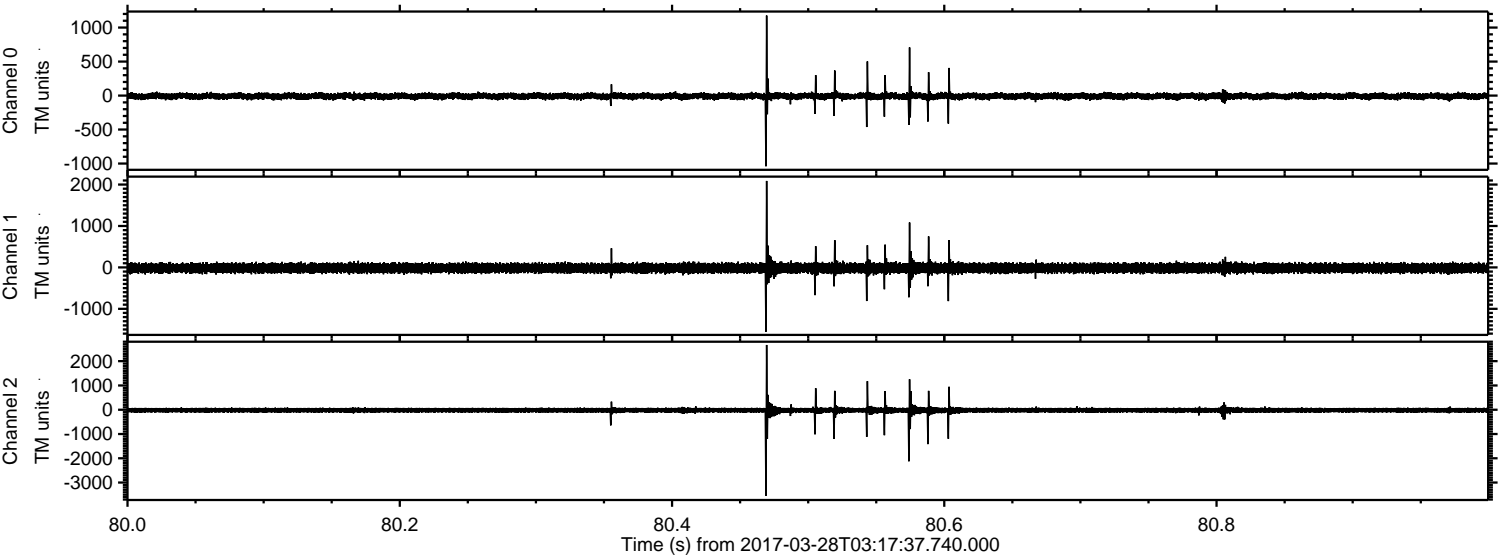
Channel 0  
mn: -1535  
mx: 1216  
 $\mu$ : -9.4  
 $\sigma$ : 26.7

Channel 1  
mn: -328  
mx: 482  
 $\mu$ : -16.5  
 $\sigma$ : 61.0

Channel 2  
mn: -3831  
mx: 4582  
 $\mu$ : -20.4  
 $\sigma$ : 68.5

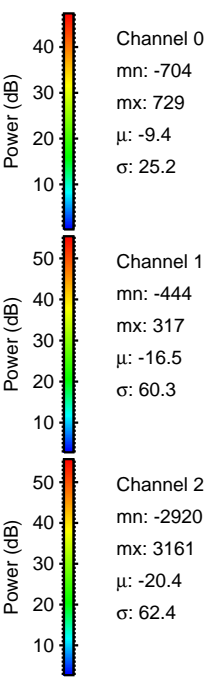
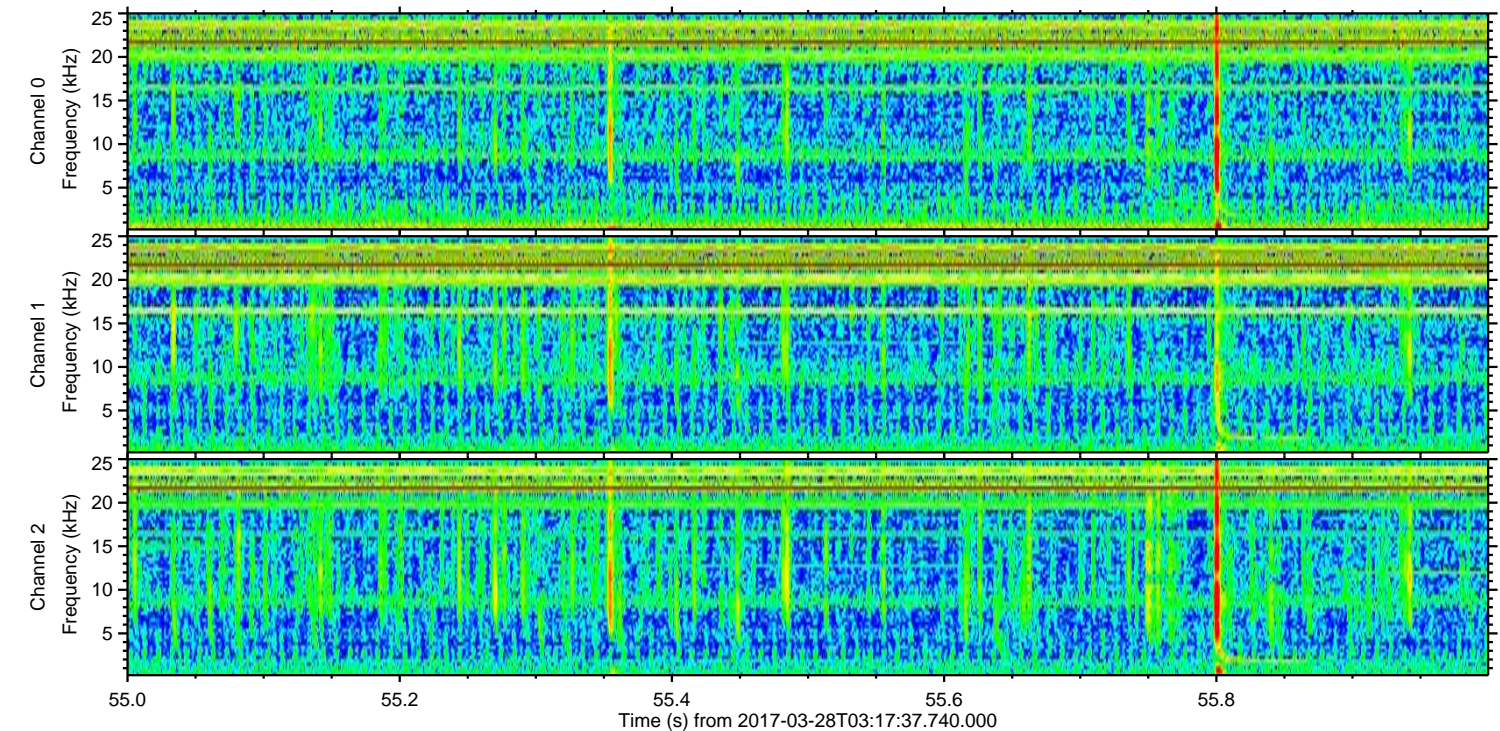
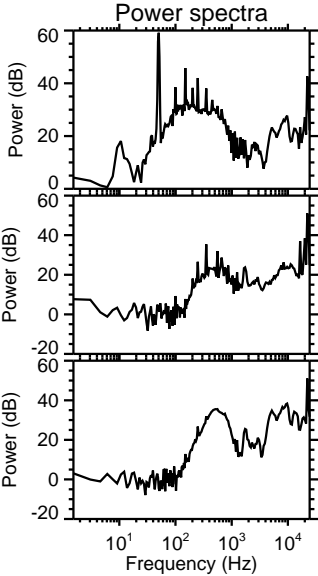
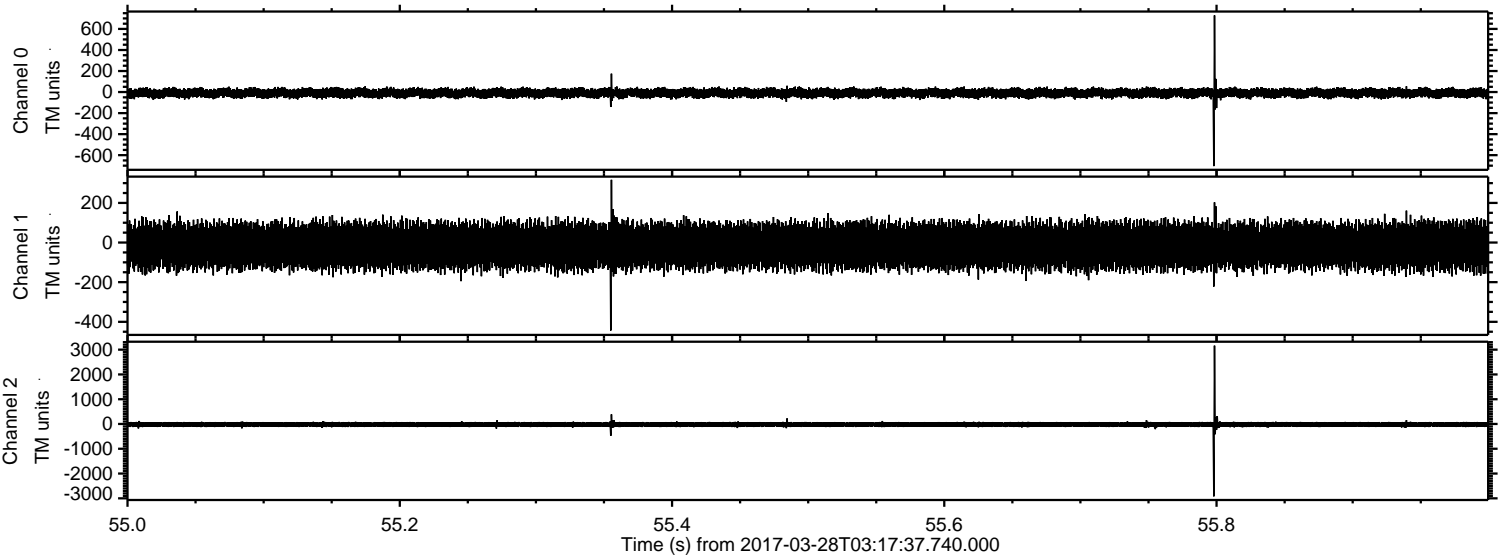


Processed Tue Mar 28 05:25:15 2017 by ELM ver.2012-10-06 from 001\_\_elm20170328\_031736\_\_dat00.bin





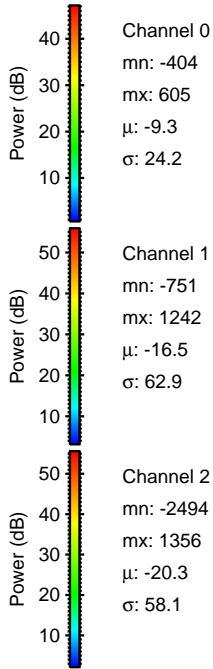
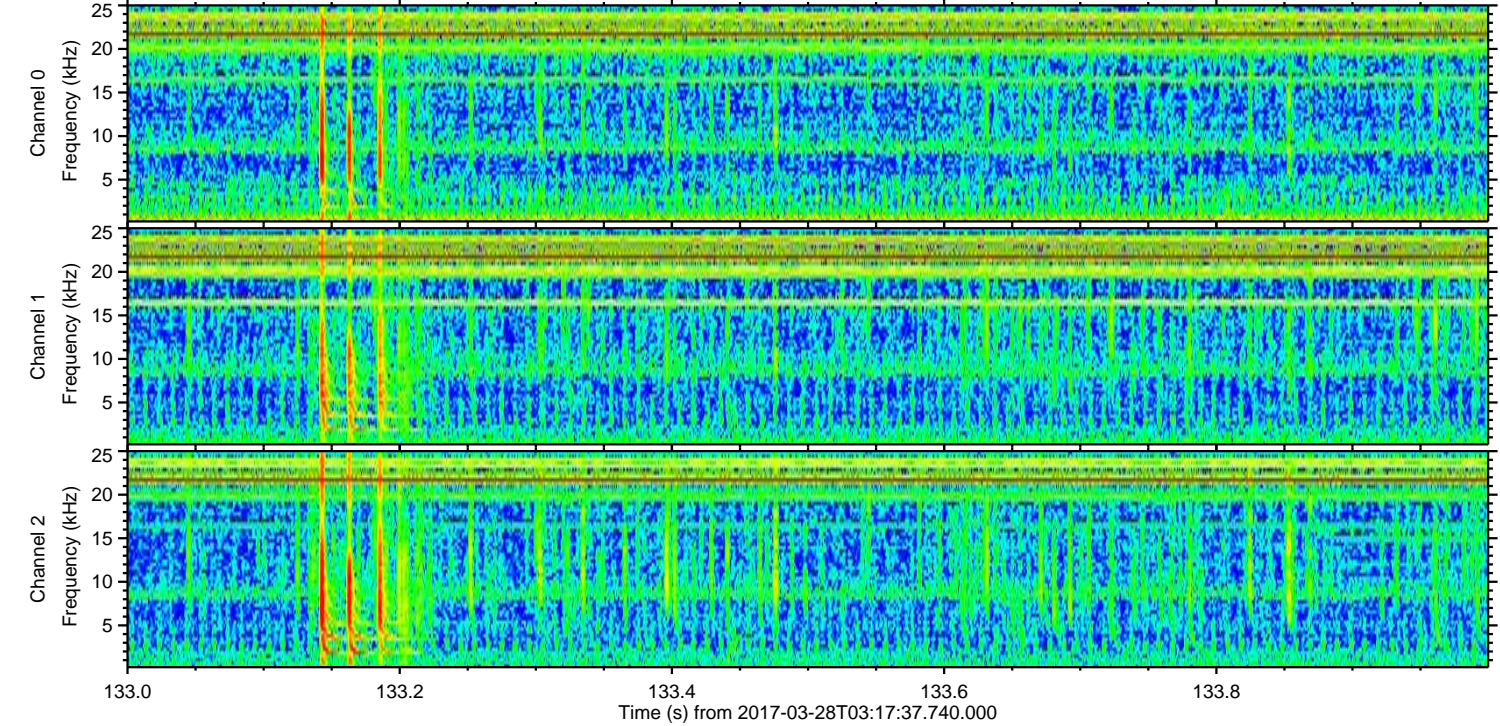
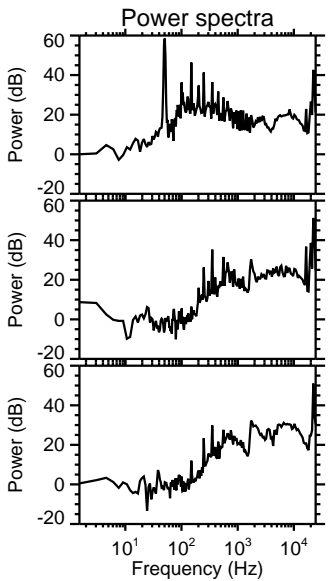
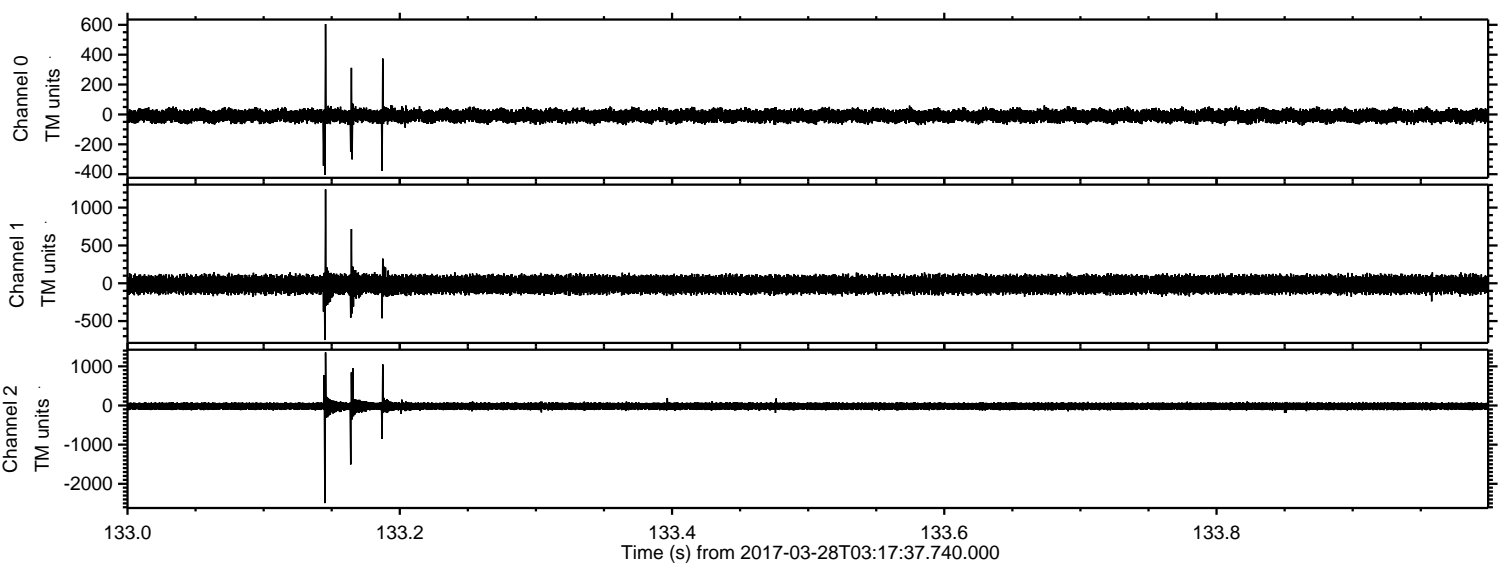
Processed Tue Mar 28 05:25:16 2017 by ELM ver.2012-10-06 from 001\_\_elm20170328\_031736\_\_dat00.bin





ELMAVAN 3D WAVEFORMS (Measured data sampled at 50 kHz) 51000 packets of 144 samples from 2017-03-28T03:17:37.740.000. Part 134/147

Processed Tue Mar 28 05:25:17 2017 by ELM ver.2012-10-06 from 001\_\_elm20170328\_031736\_\_dat00.bin



Channel 0  
mn: -404  
mx: 605  
 $\mu$ : -9.3  
 $\sigma$ : 24.2

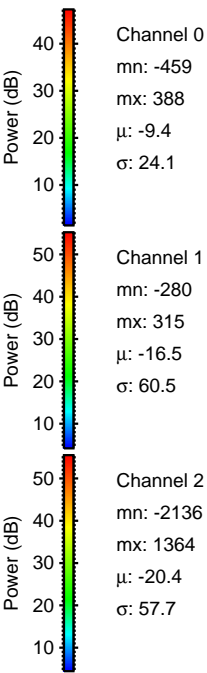
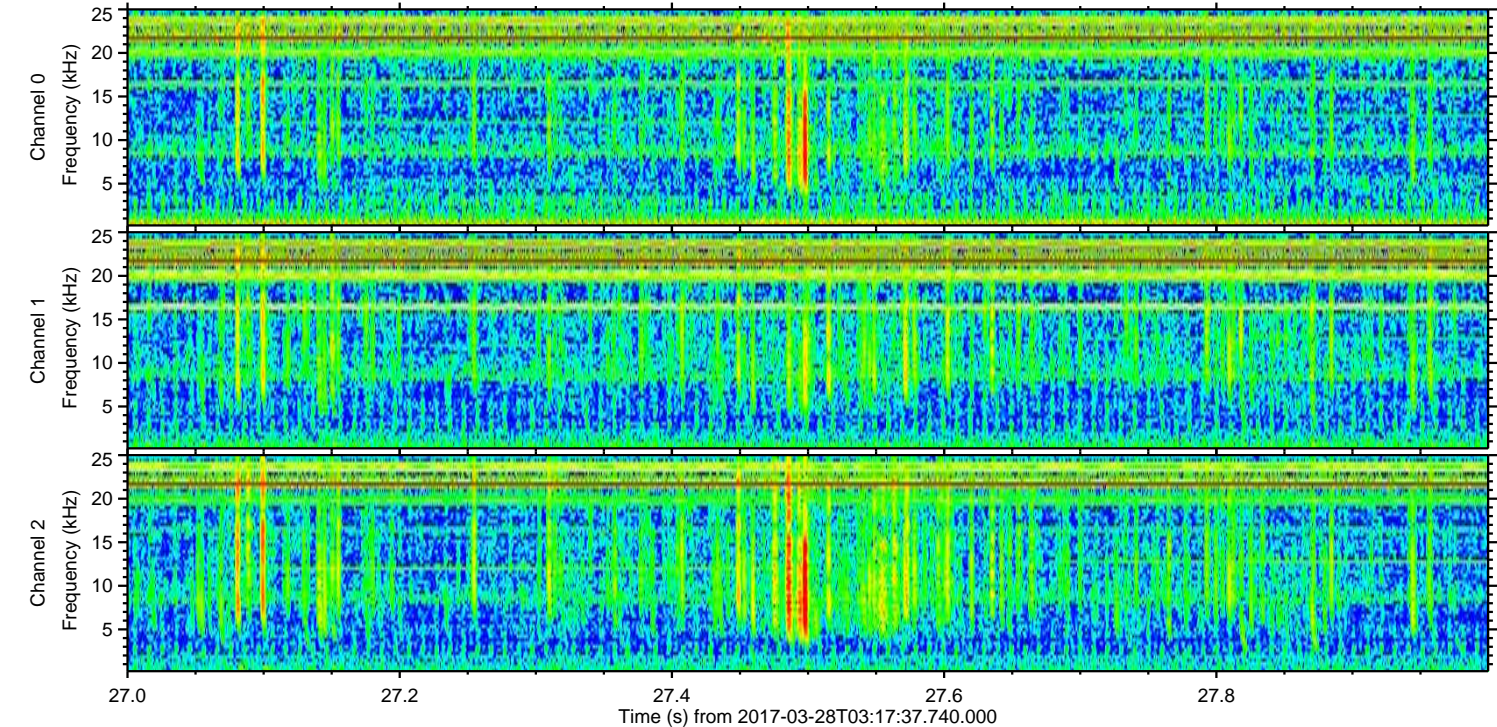
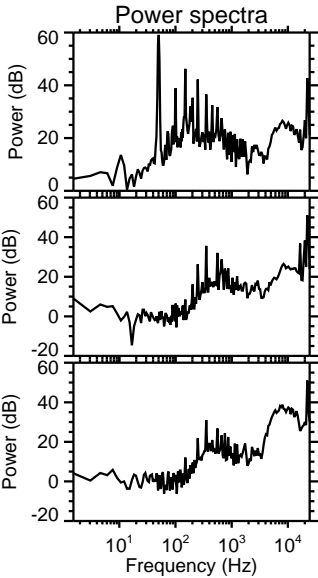
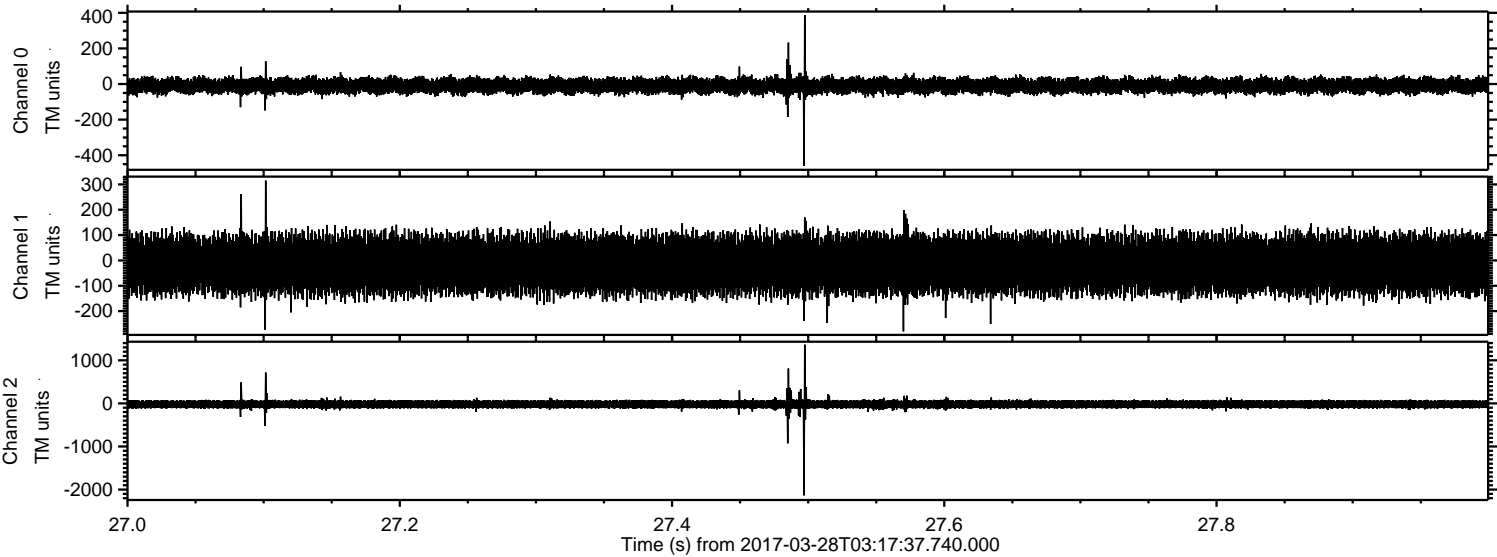
Channel 1  
mn: -751  
mx: 1242  
 $\mu$ : -16.5  
 $\sigma$ : 62.9

Channel 2  
mn: -2494  
mx: 1356  
 $\mu$ : -20.3  
 $\sigma$ : 58.1



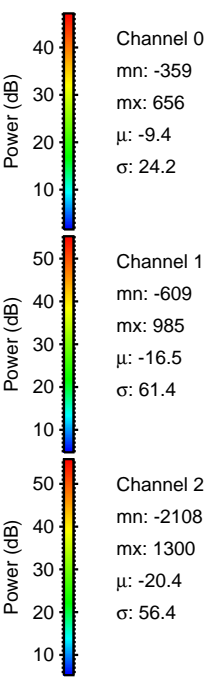
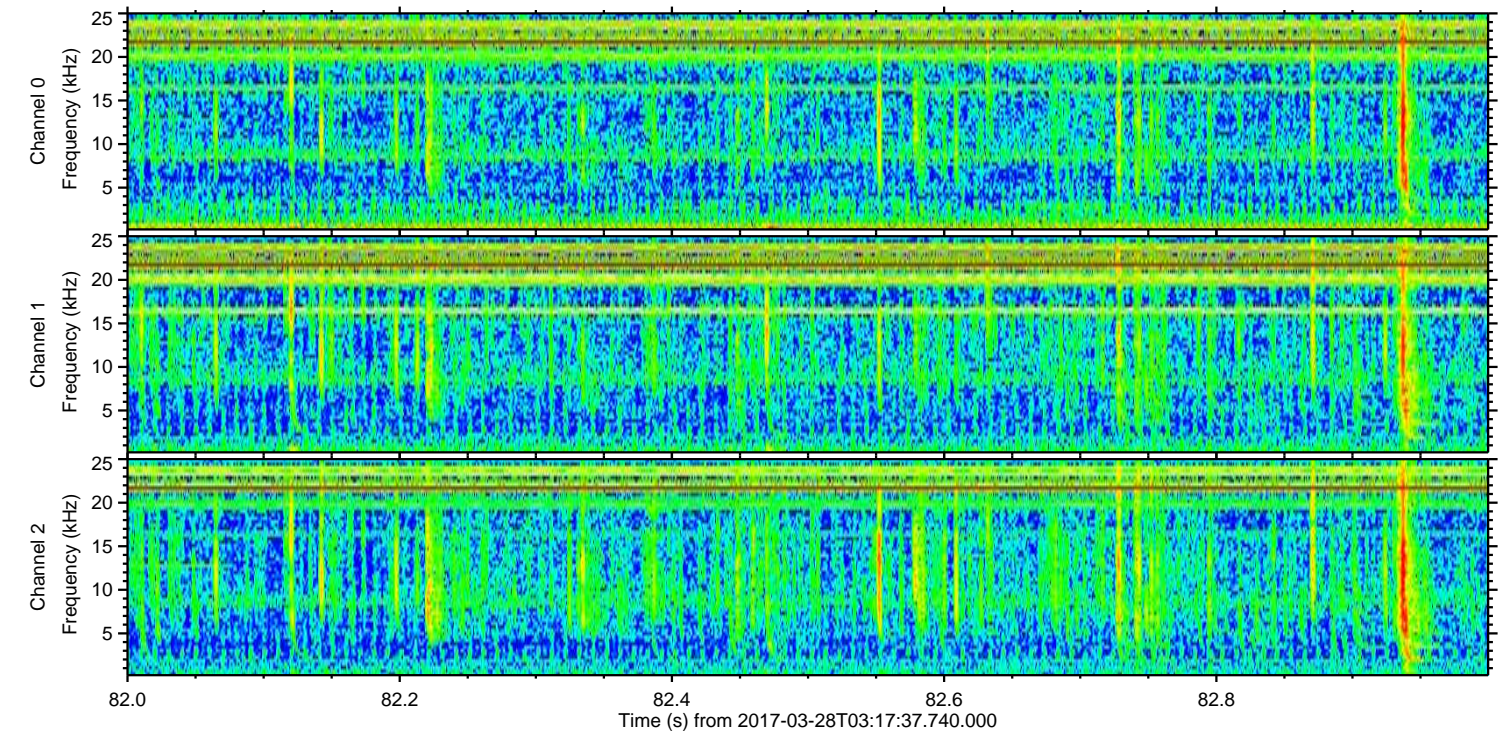
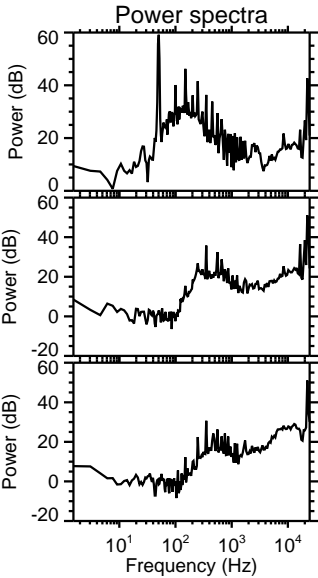
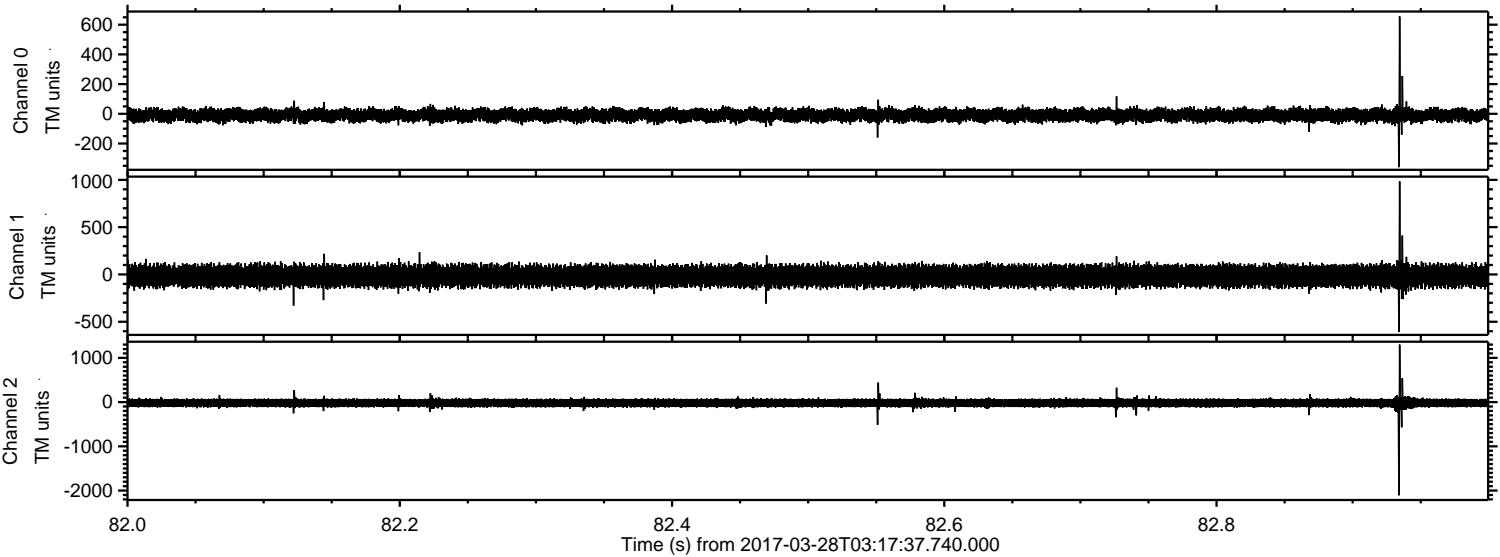
ELMAVAN 3D WAVEFORMS (Measured data sampled at 50 kHz) 51000 packets of 144 samples from 2017-03-28T03:17:37.740.000. Part 28/147

Processed Tue Mar 28 05:25:18 2017 by ELM ver.2012-10-06 from 001\_\_elm20170328\_031736\_\_dat00.bin





Processed Tue Mar 28 05:25:19 2017 by ELM ver.2012-10-06 from 001\_\_elm20170328\_031736\_\_dat00.bin



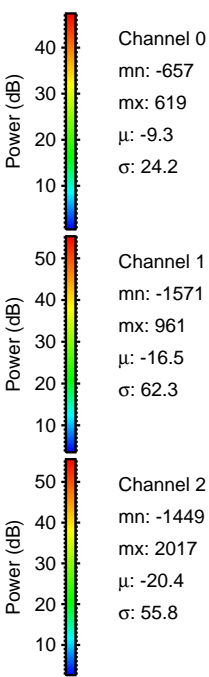
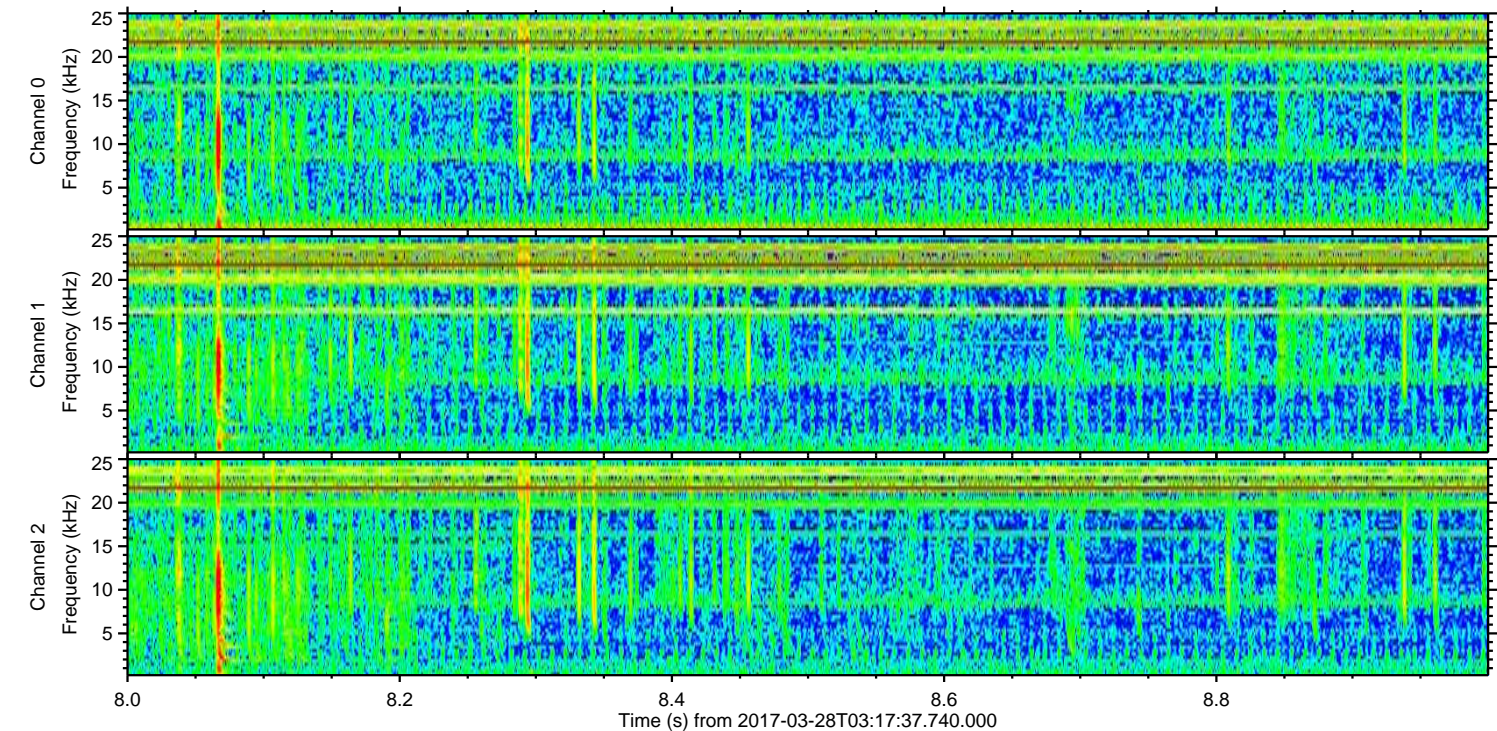
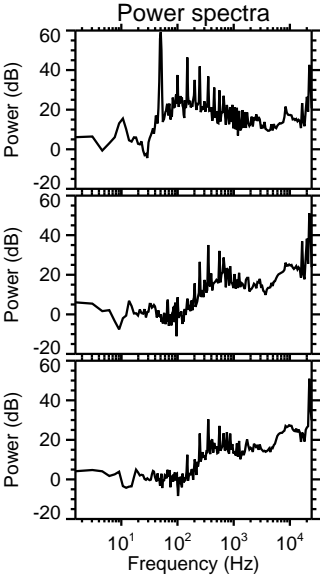
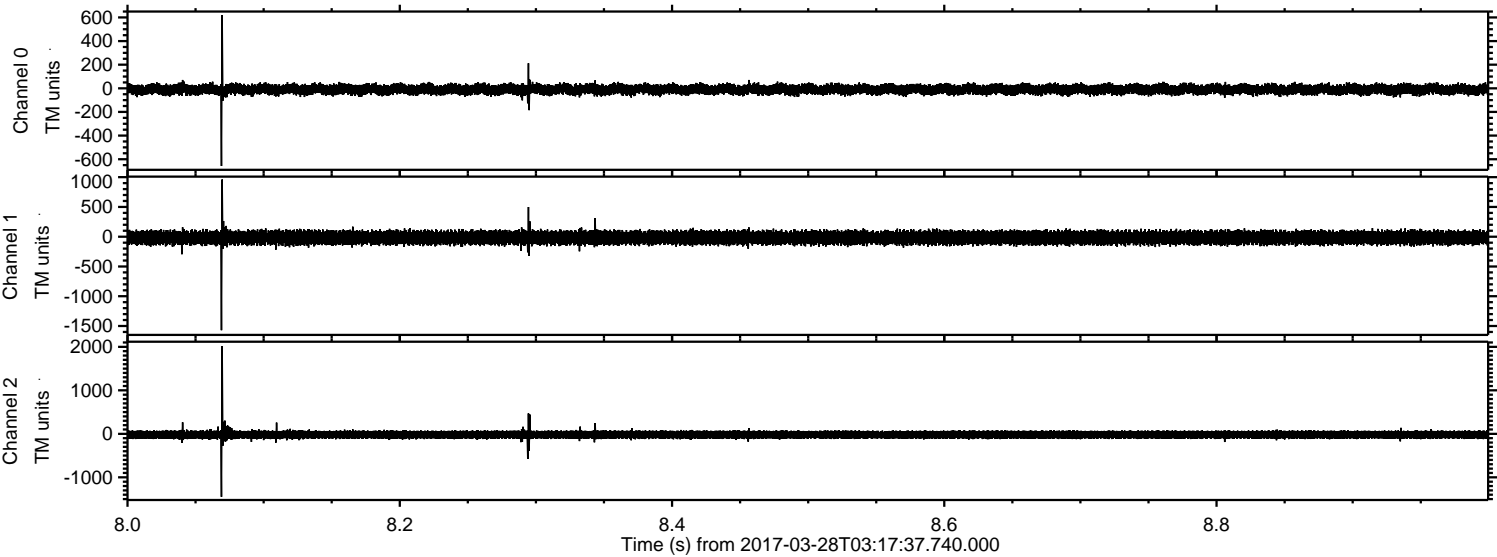
Channel 0  
mn: -359  
mx: 656  
 $\mu$ : -9.4  
 $\sigma$ : 24.2

Channel 1  
mn: -609  
mx: 985  
 $\mu$ : -16.5  
 $\sigma$ : 61.4

Channel 2  
mn: -2108  
mx: 1300  
 $\mu$ : -20.4  
 $\sigma$ : 56.4



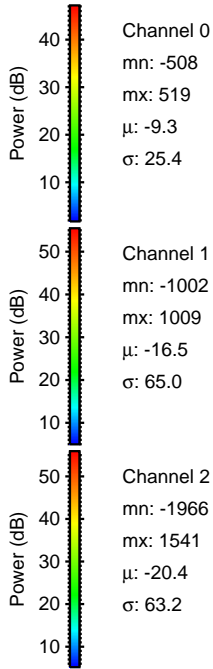
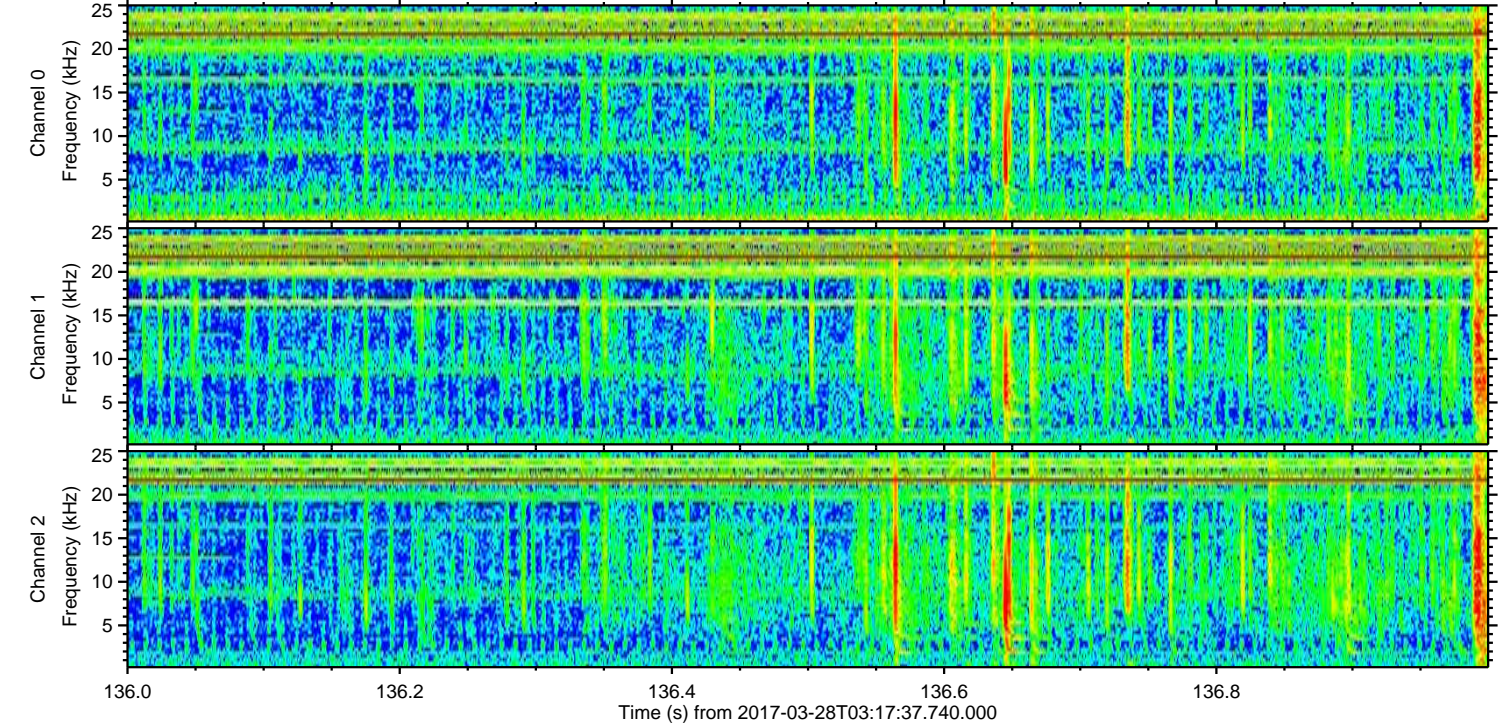
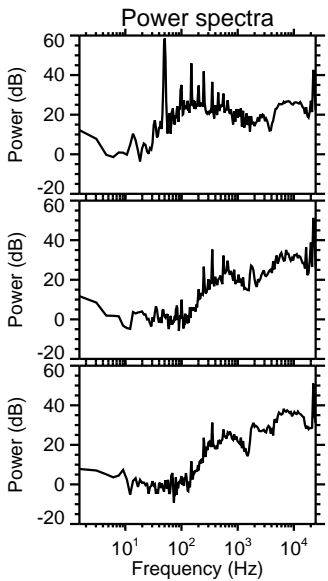
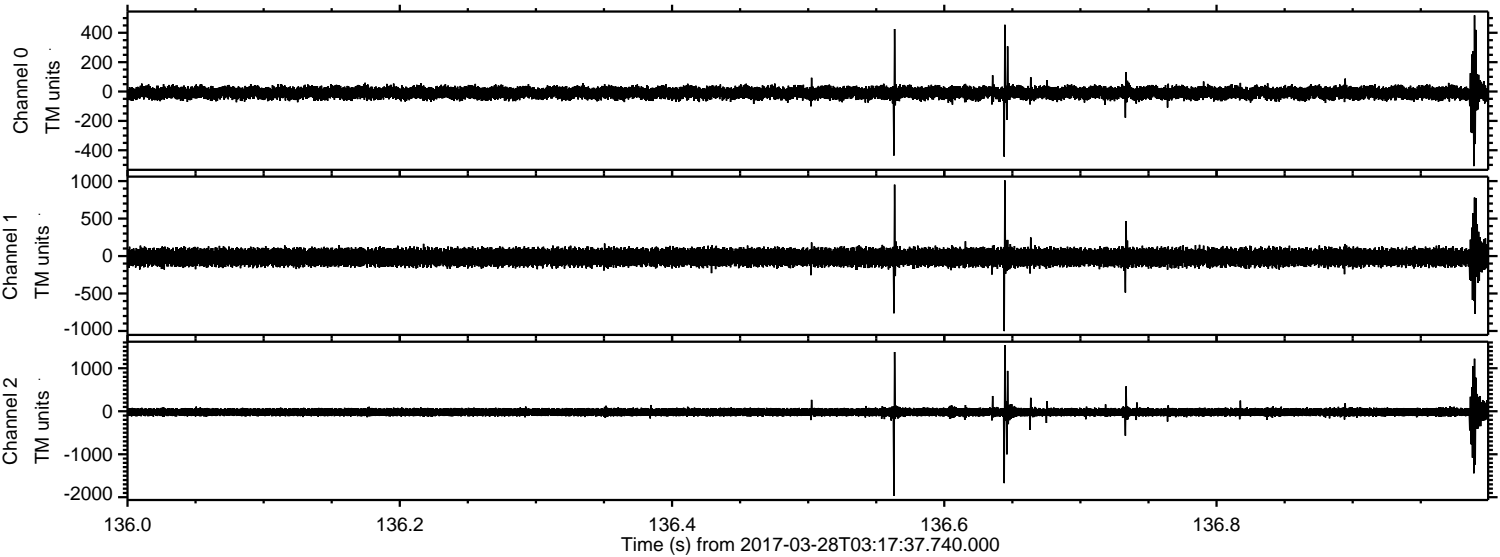
Processed Tue Mar 28 05:25:20 2017 by ELM ver.2012-10-06 from 001\_\_elm20170328\_031736\_\_dat00.bin





ELMAVAN 3D WAVEFORMS (Measured data sampled at 50 kHz) 51000 packets of 144 samples from 2017-03-28T03:17:37.740.000. Part 137/147

Processed Tue Mar 28 05:25:21 2017 by ELM ver.2012-10-06 from 001\_\_elm20170328\_031736\_\_dat00.bin





ELMAVAN 3D WAVEFORMS (Measured data sampled at 50 kHz) 51000 packets of 144 samples from 2017-03-28T03:17:37.740.000. Part 125/147

