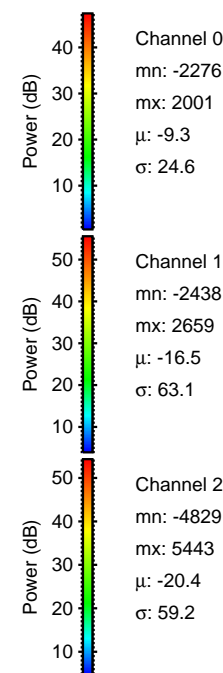
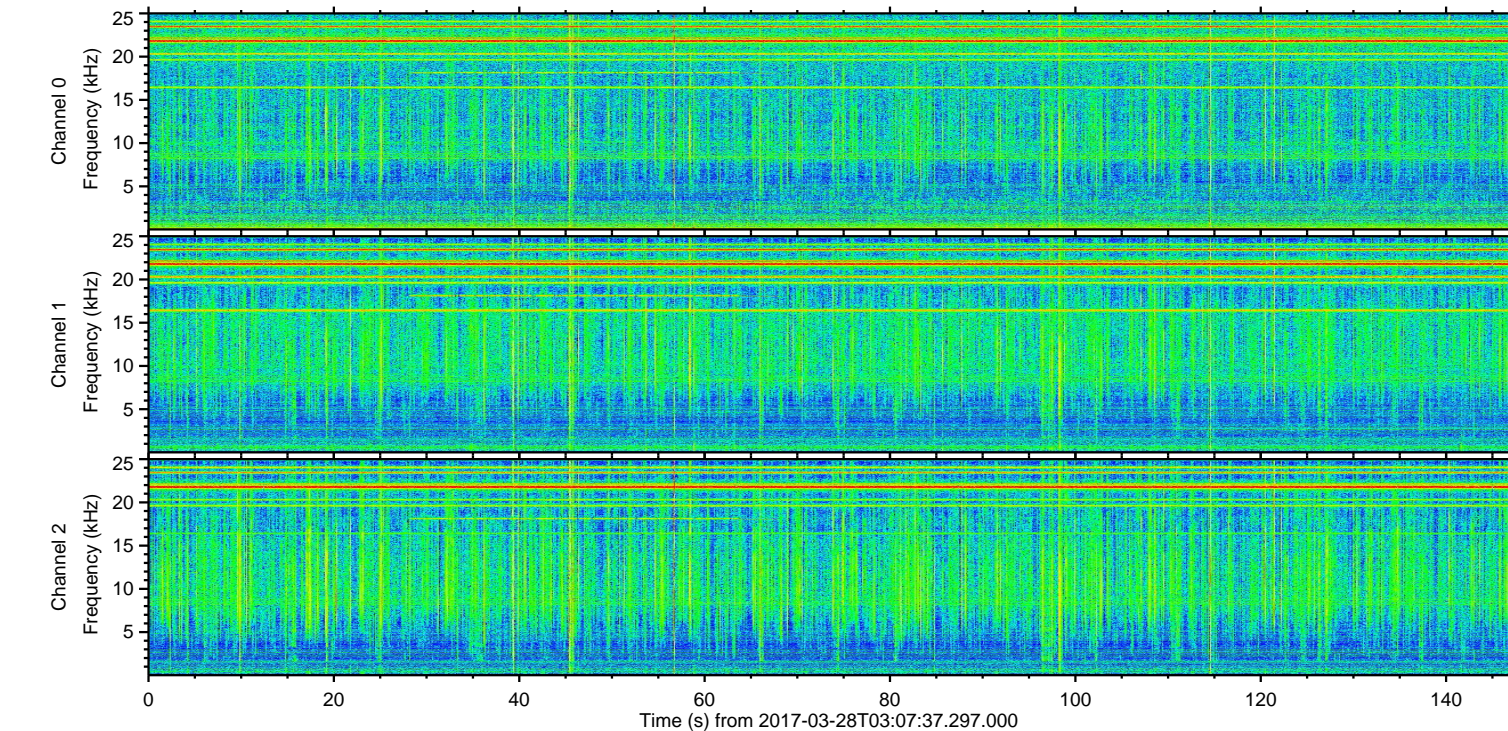
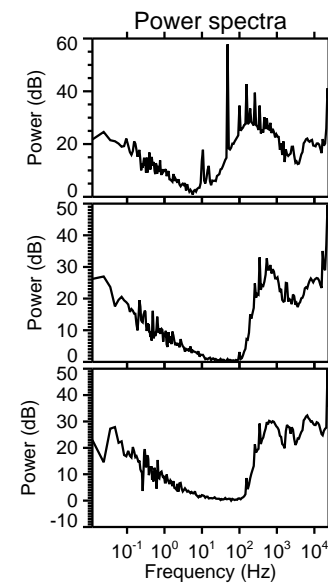
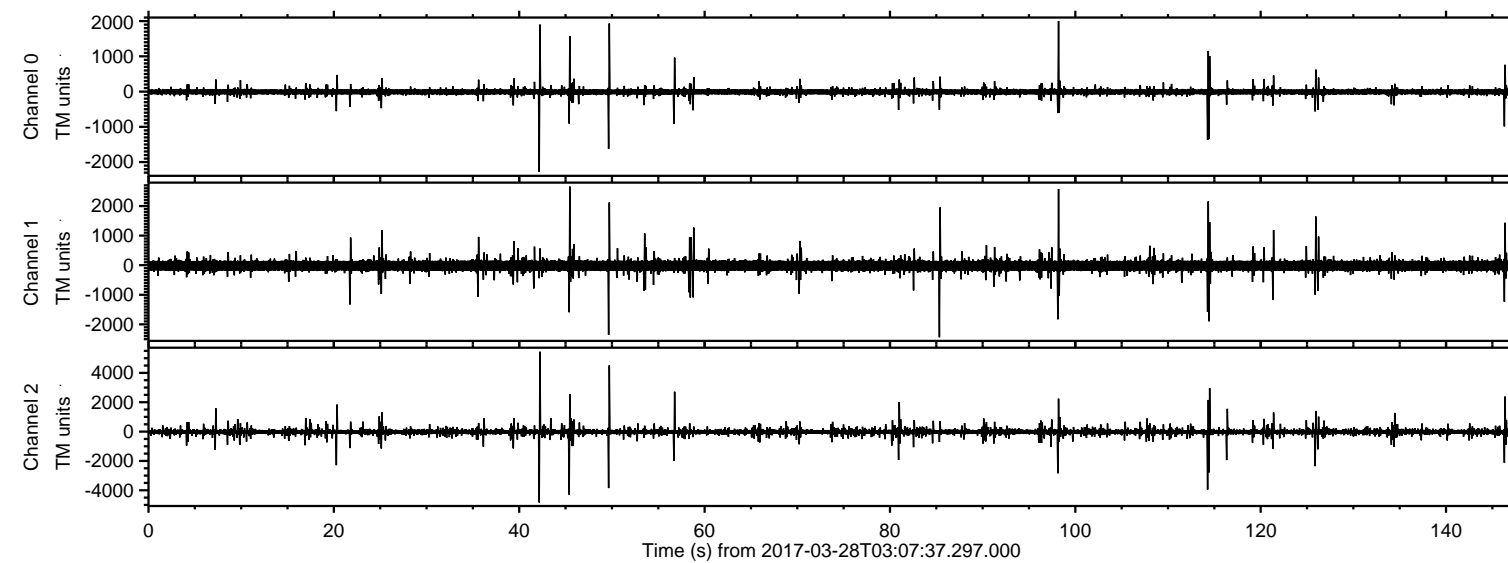
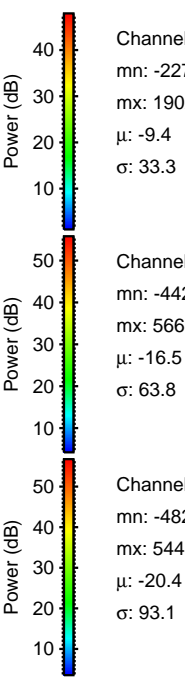
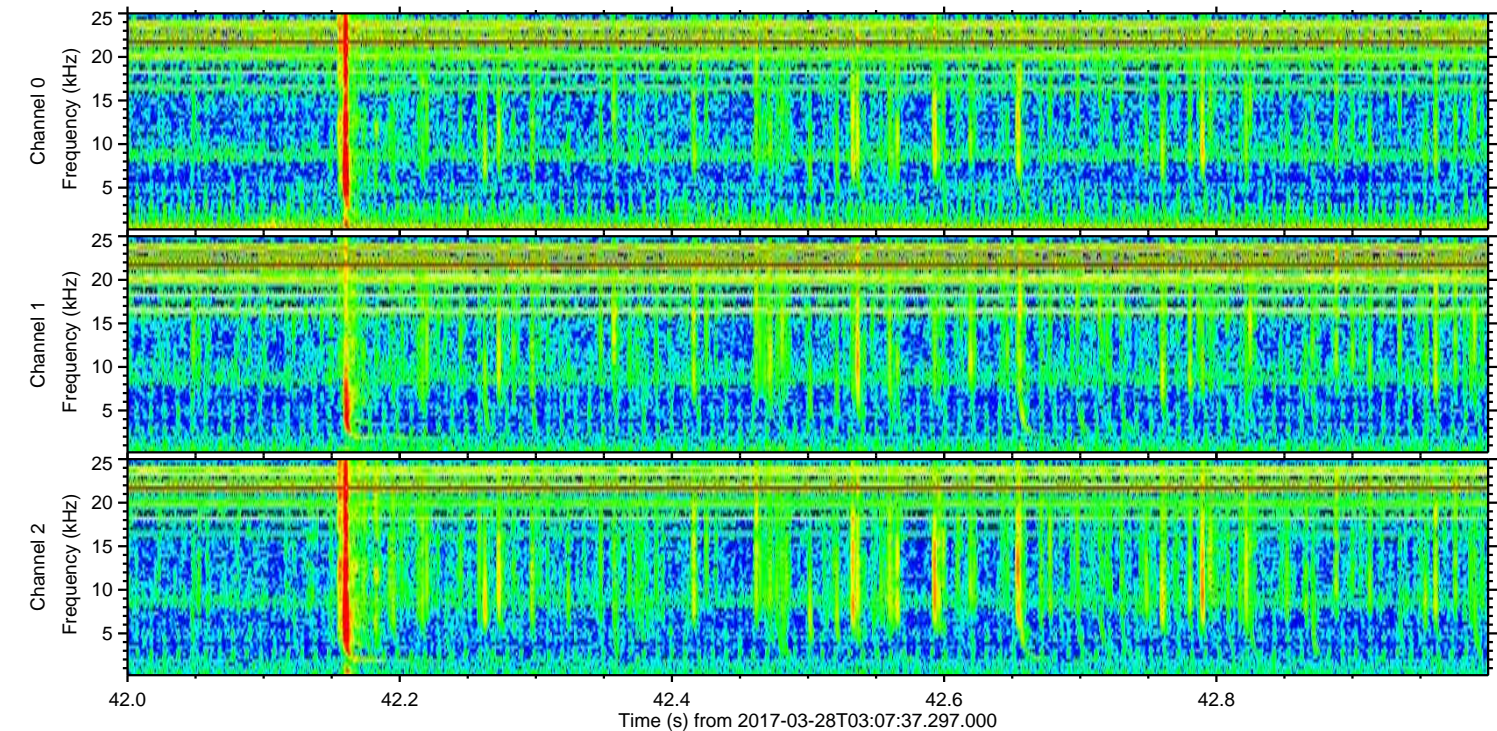
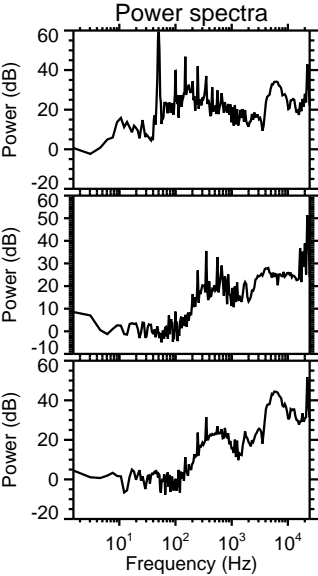
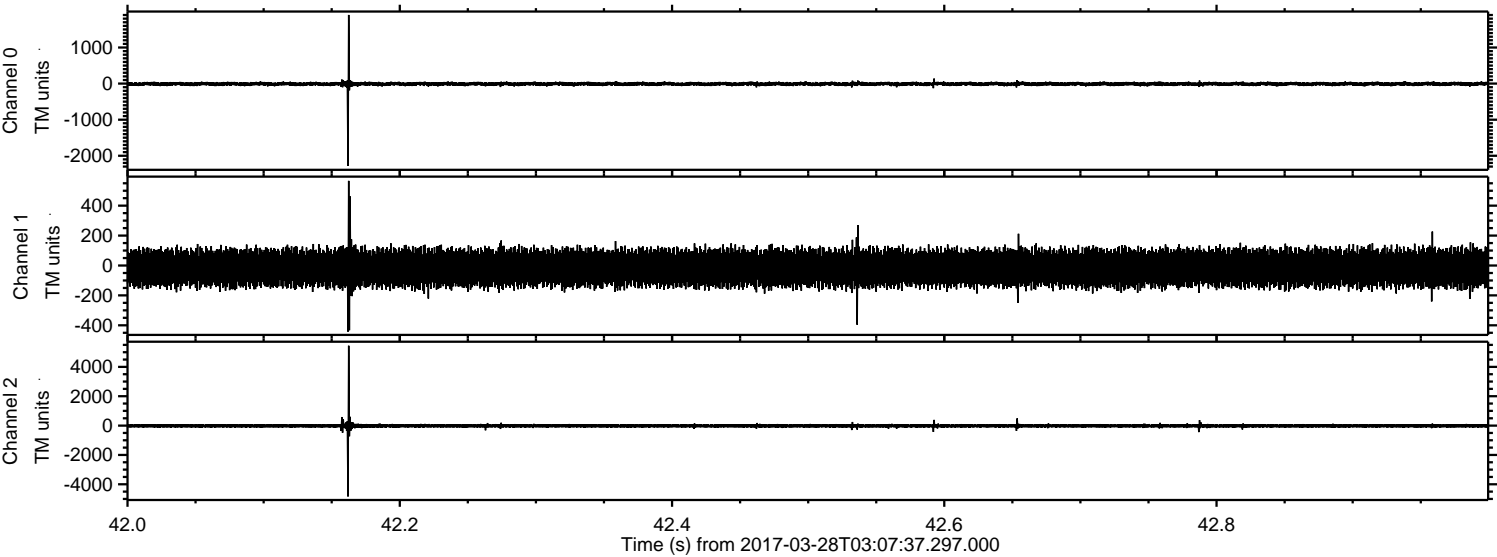


ELMAVAN 3D WAVEFORMS (Measured data sampled at 50 kHz) 51000 packets of 144 samples from 2017-03-28T03:07:37.297.000.

Processed Tue Mar 28 05:15:24 2017 by ELM ver.2012-10-06 from 001__elm20170328_030736__dat00.bin



Processed Tue Mar 28 05:15:38 2017 by ELM ver.2012-10-06 from 001__elm20170328_030736__dat00.bin



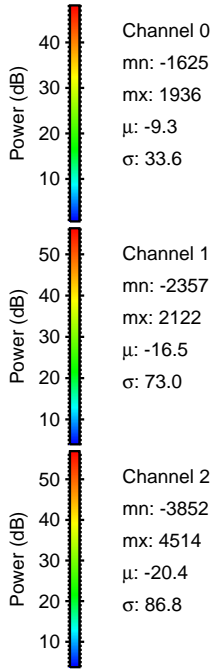
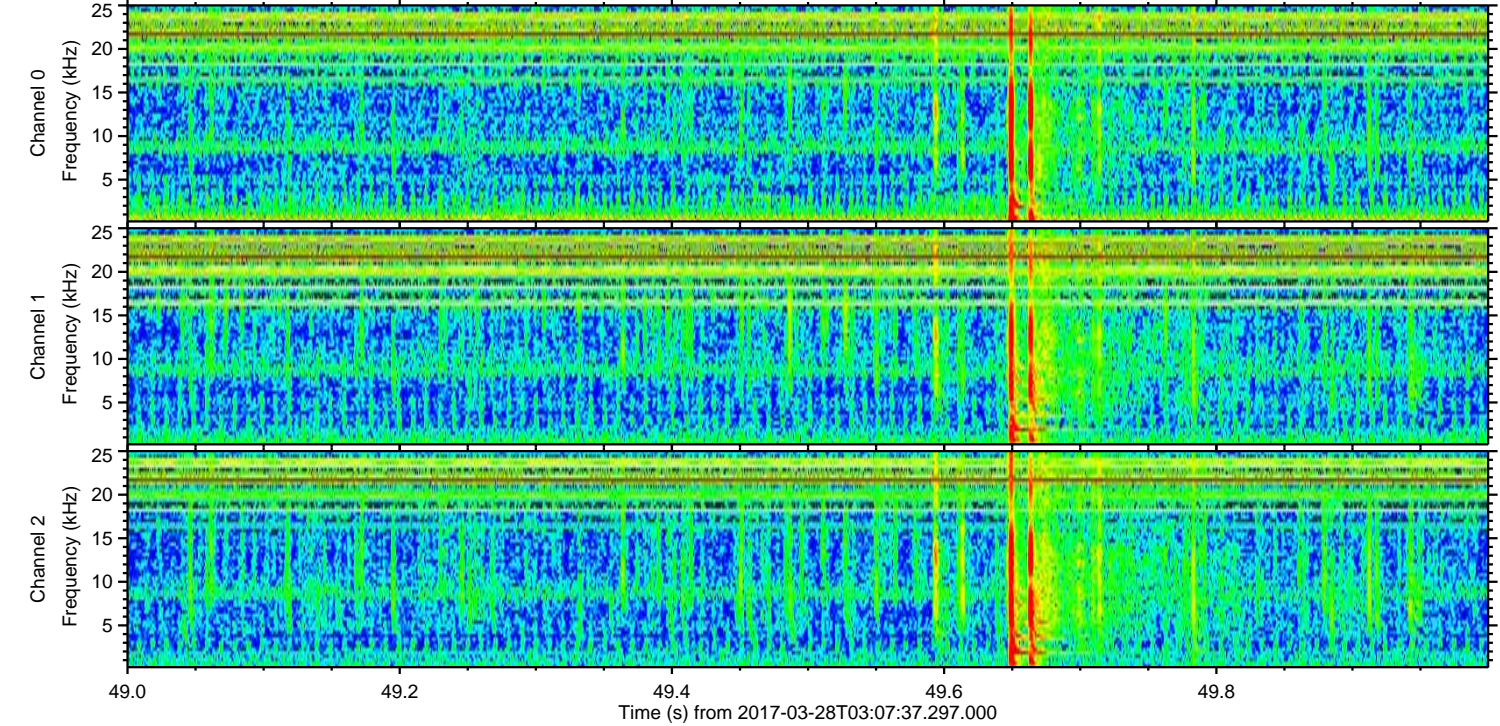
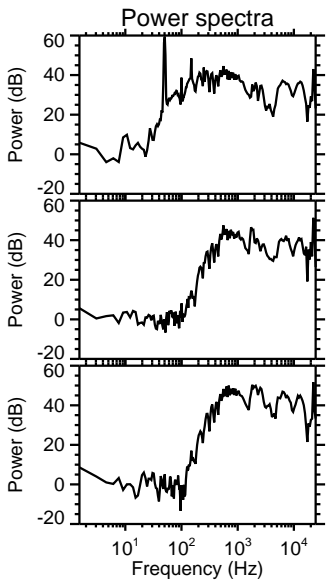
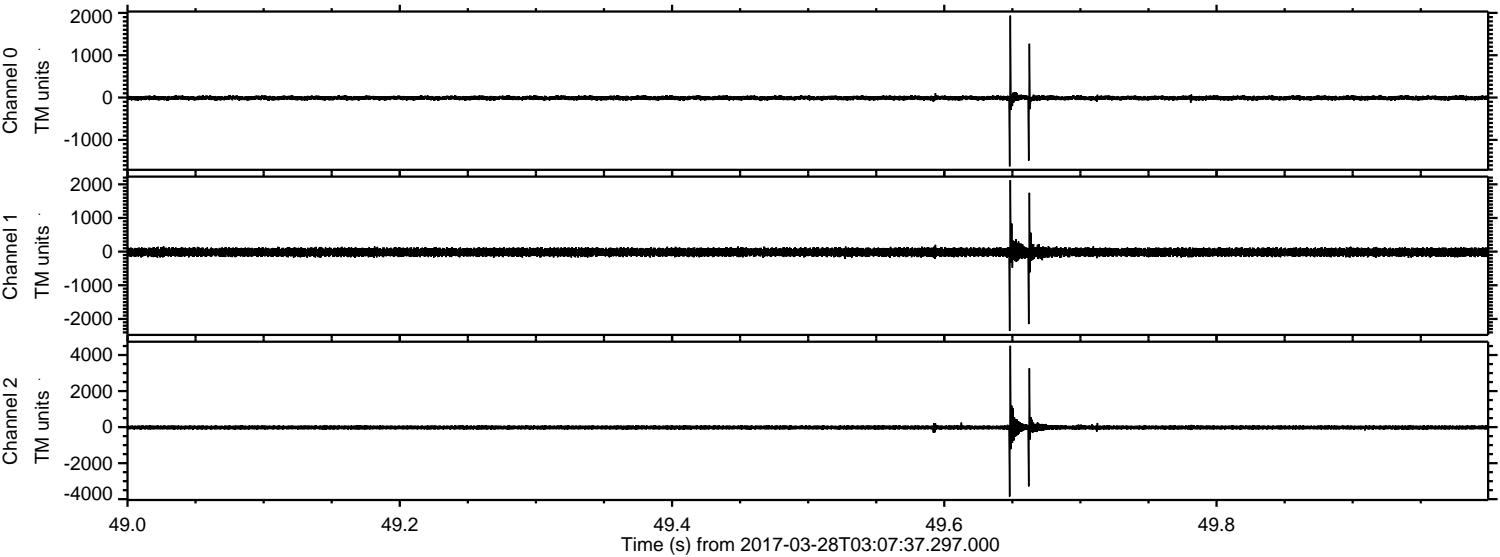
Channel 0
mn: -2276
mx: 1902
 μ : -9.4
 σ : 33.3

Channel 1
mn: -442
mx: 566
 μ : -16.5
 σ : 63.8

Channel 2
mn: -4829
mx: 5443
 μ : -20.4
 σ : 93.1

ELMAVAN 3D WAVEFORMS (Measured data sampled at 50 kHz) 51000 packets of 144 samples from 2017-03-28T03:07:37.297.000. Part 50/147

Processed Tue Mar 28 05:15:39 2017 by ELM ver.2012-10-06 from 001__elm20170328_030736__dat00.bin



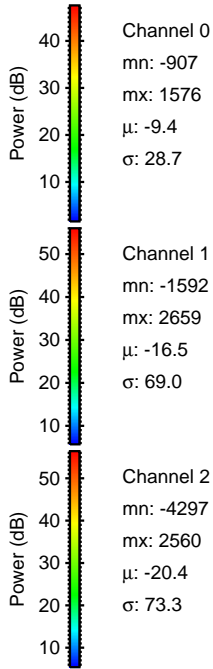
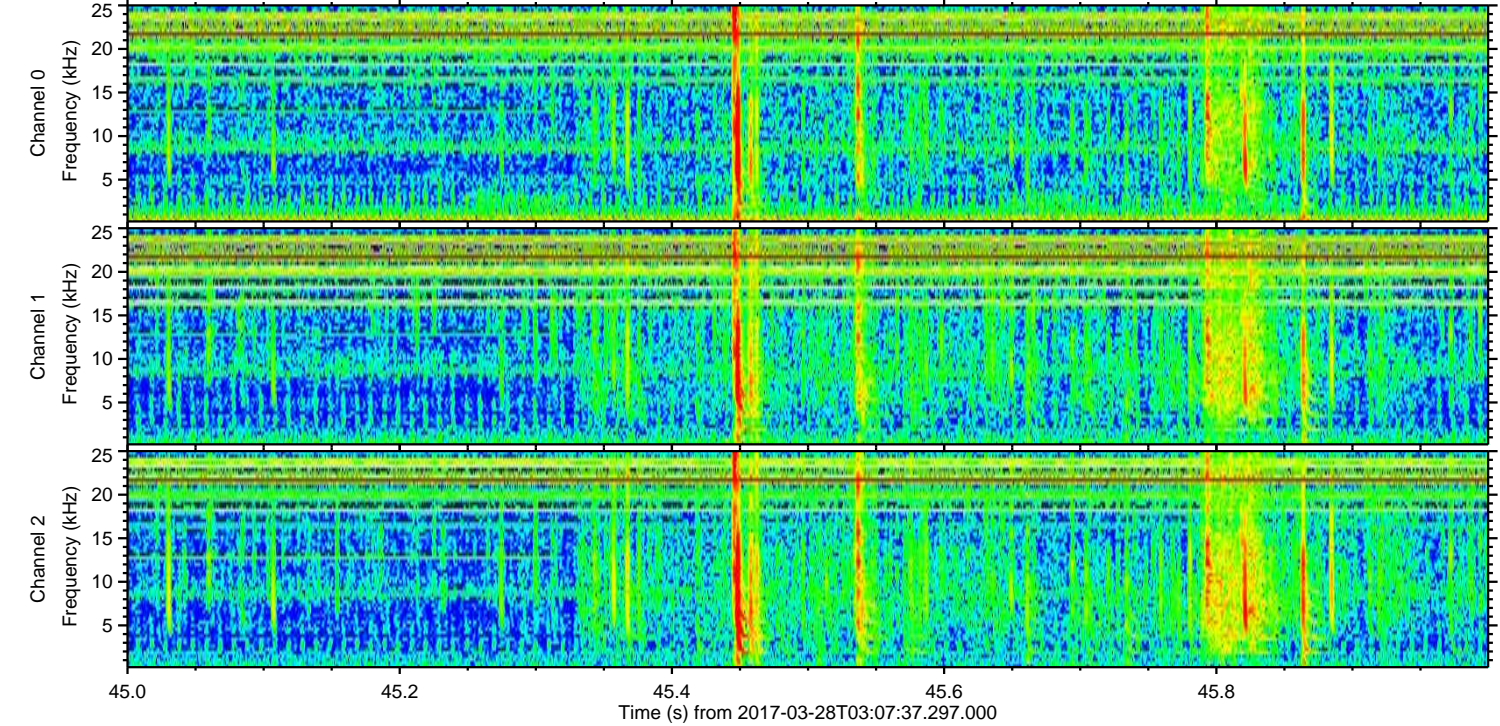
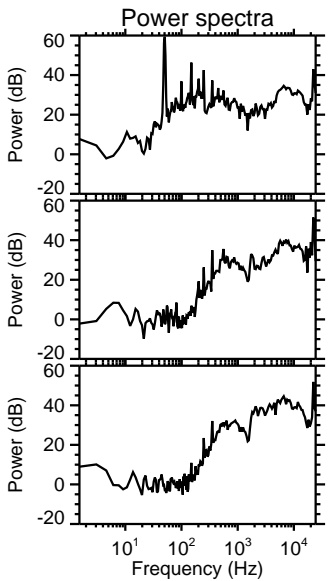
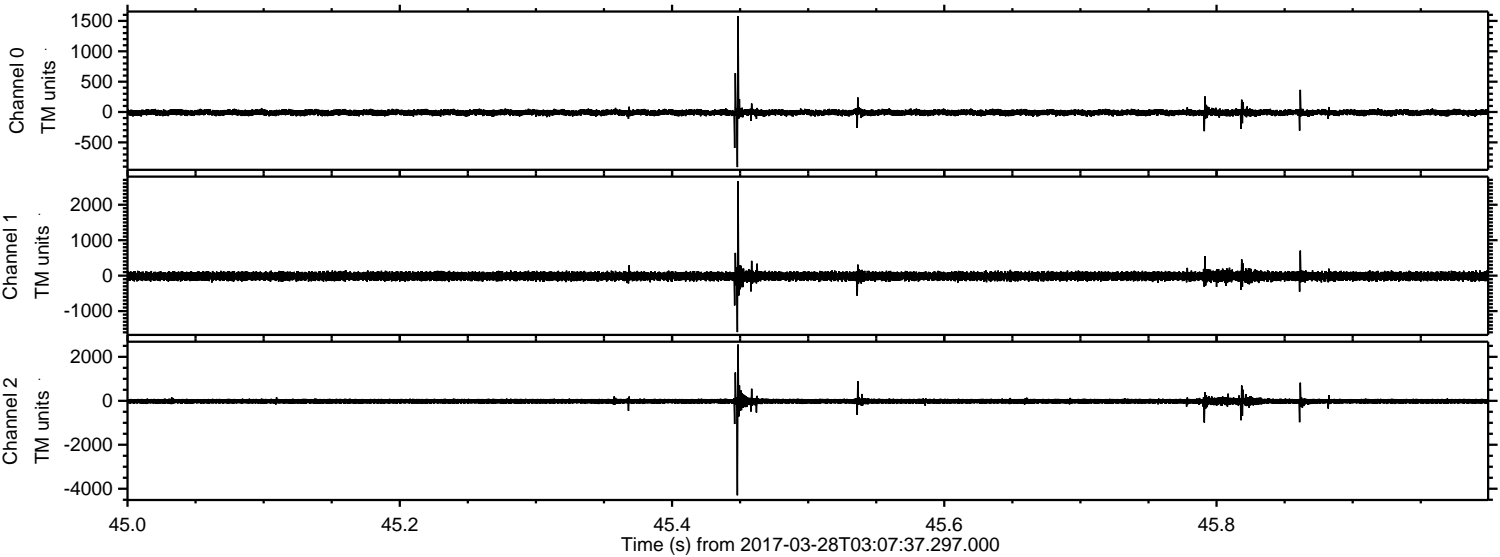
Channel 0
mn: -1625
mx: 1936
 μ : -9.3
 σ : 33.6

Channel 1
mn: -2357
mx: 2122
 μ : -16.5
 σ : 73.0

Channel 2
mn: -3852
mx: 4514
 μ : -20.4
 σ : 86.8

ELMAVAN 3D WAVEFORMS (Measured data sampled at 50 kHz) 51000 packets of 144 samples from 2017-03-28T03:07:37.297.000. Part 46/147

Processed Tue Mar 28 05:15:40 2017 by ELM ver.2012-10-06 from 001__elm20170328_030736__dat00.bin



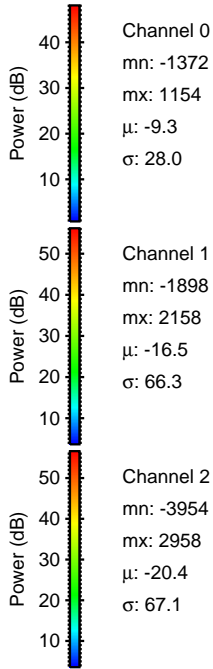
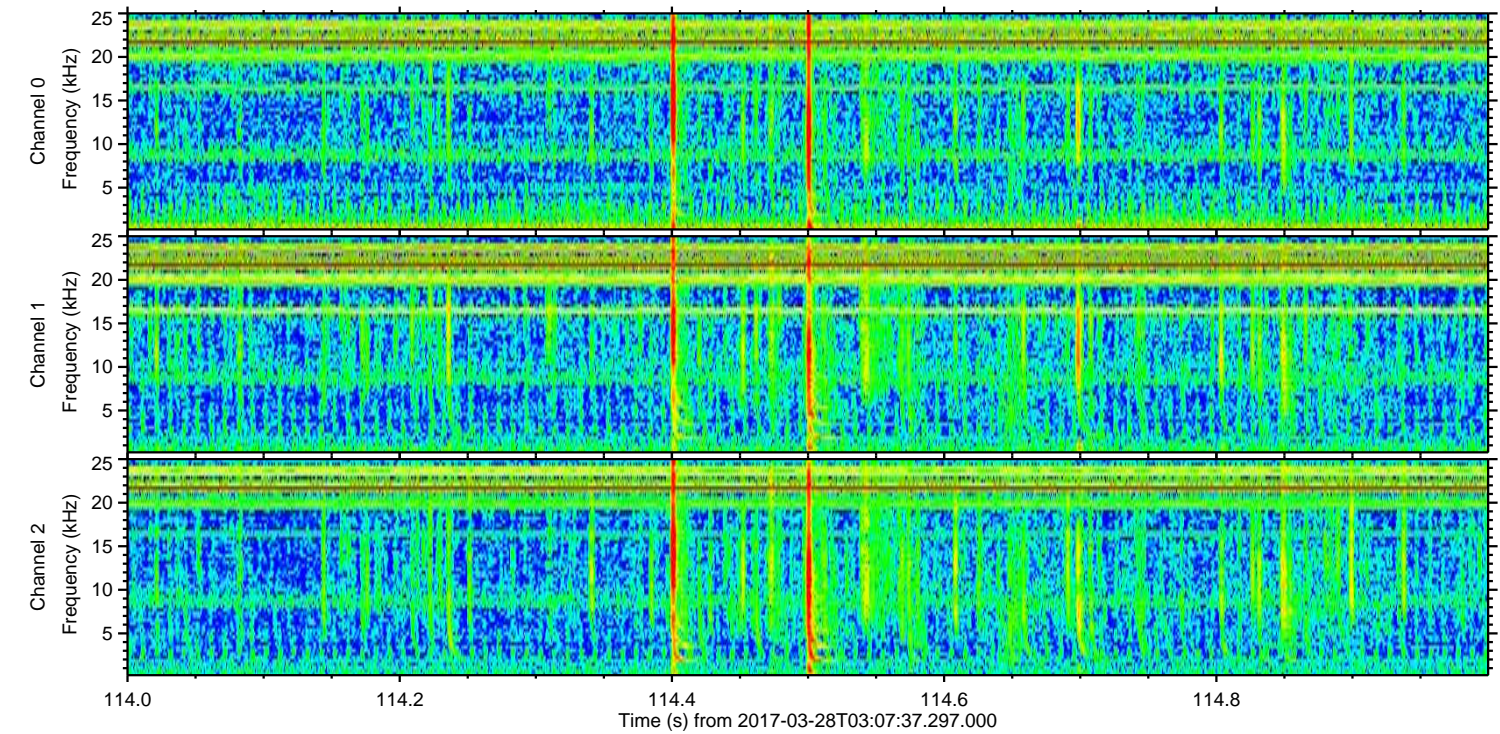
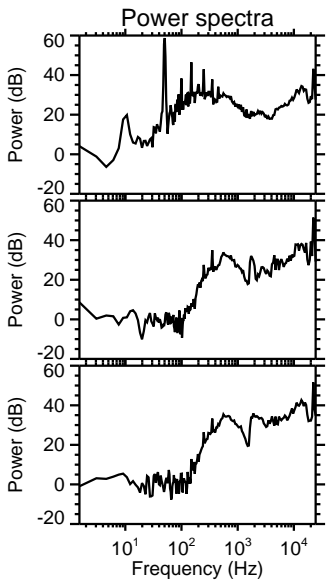
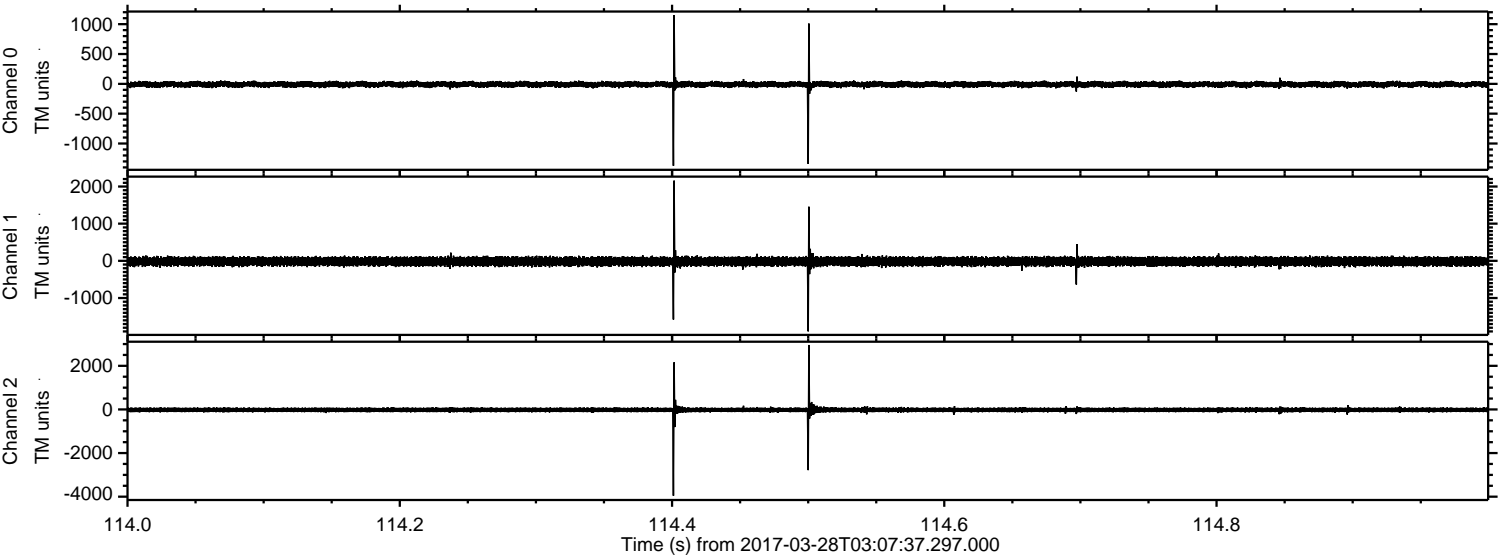
Channel 0
mn: -907
mx: 1576
 μ : -9.4
 σ : 28.7

Channel 1
mn: -1592
mx: 2659
 μ : -16.5
 σ : 69.0

Channel 2
mn: -4297
mx: 2560
 μ : -20.4
 σ : 73.3

ELMAVAN 3D WAVEFORMS (Measured data sampled at 50 kHz) 51000 packets of 144 samples from 2017-03-28T03:07:37.297.000. Part 115/147

Processed Tue Mar 28 05:15:41 2017 by ELM ver.2012-10-06 from 001__elm20170328_030736__dat00.bin

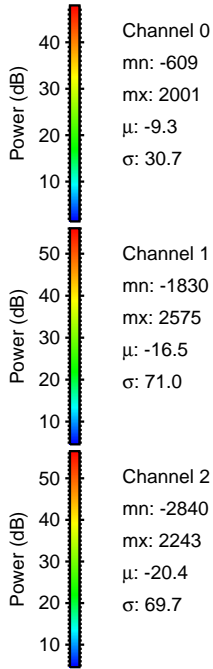
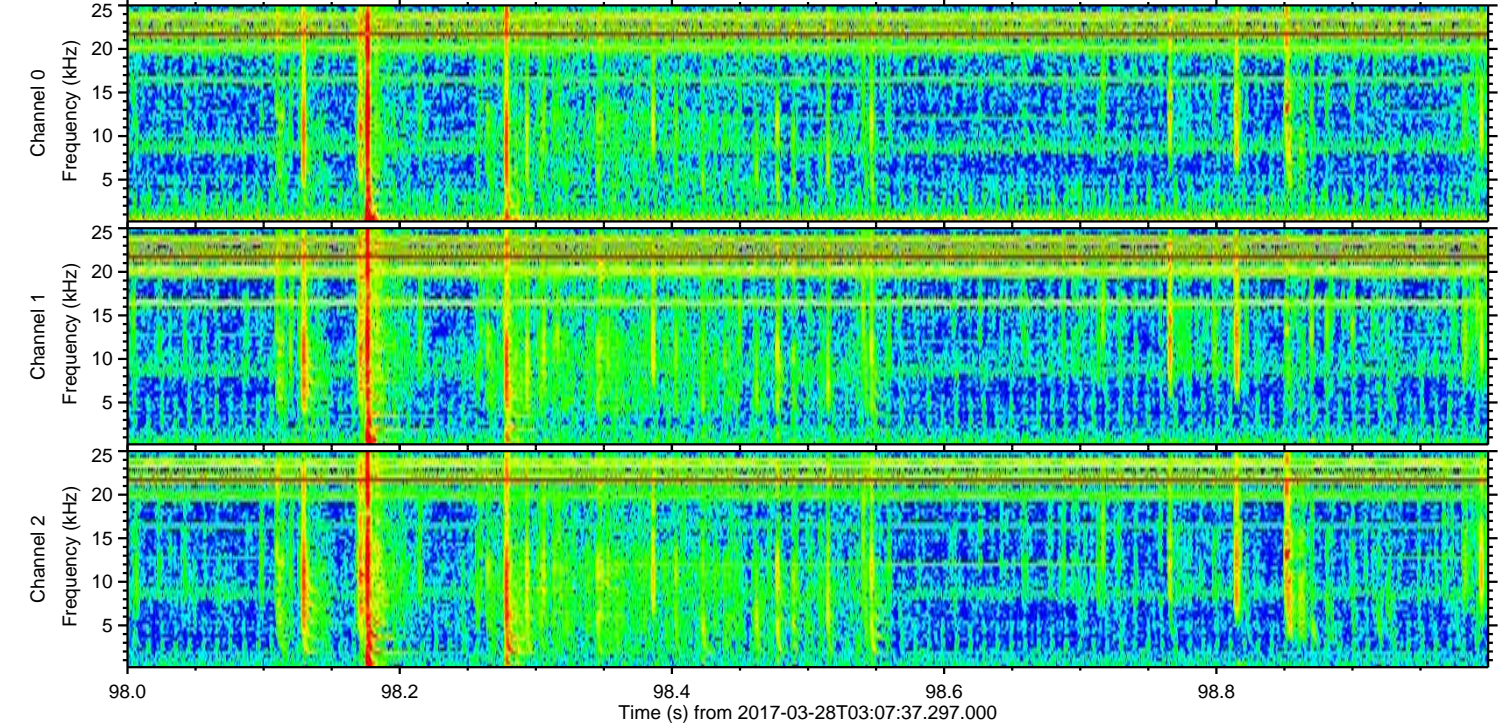
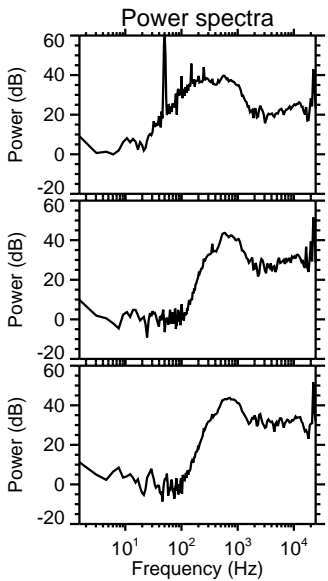
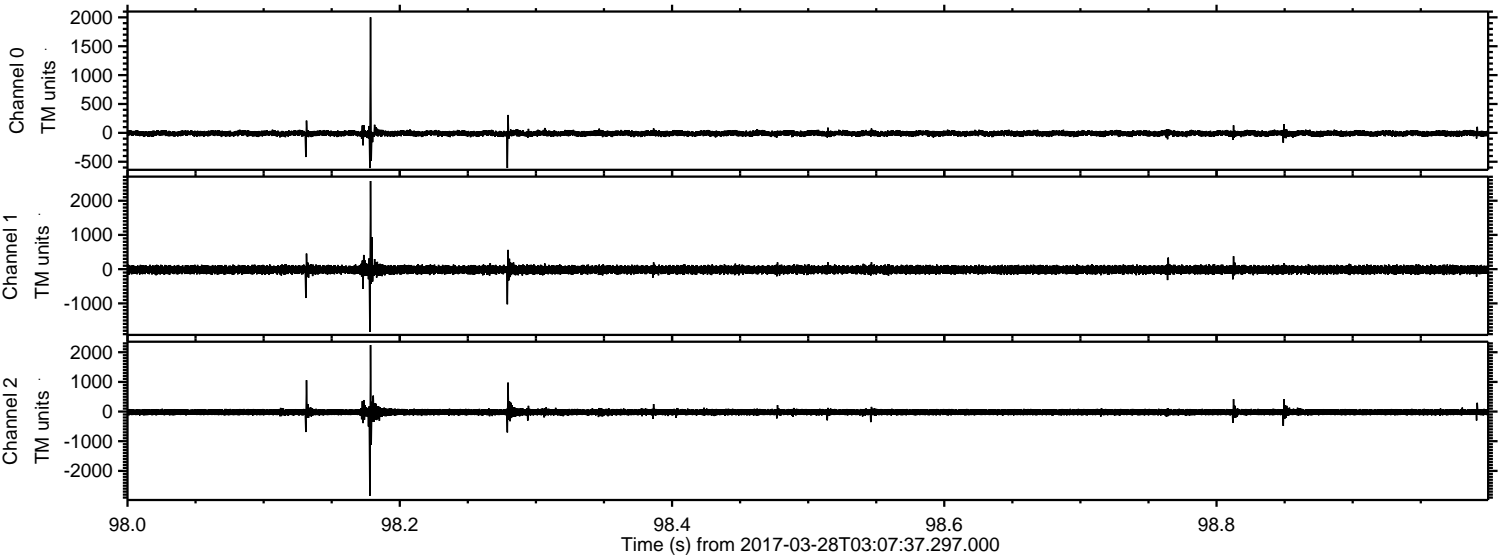


Channel 0
mn: -1372
mx: 1154
 μ : -9.3
 σ : 28.0

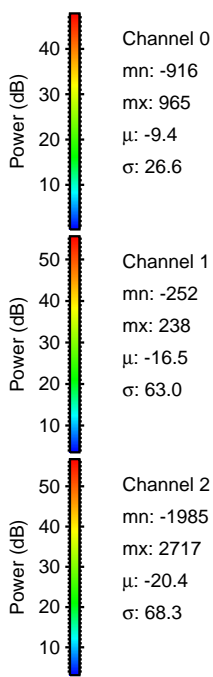
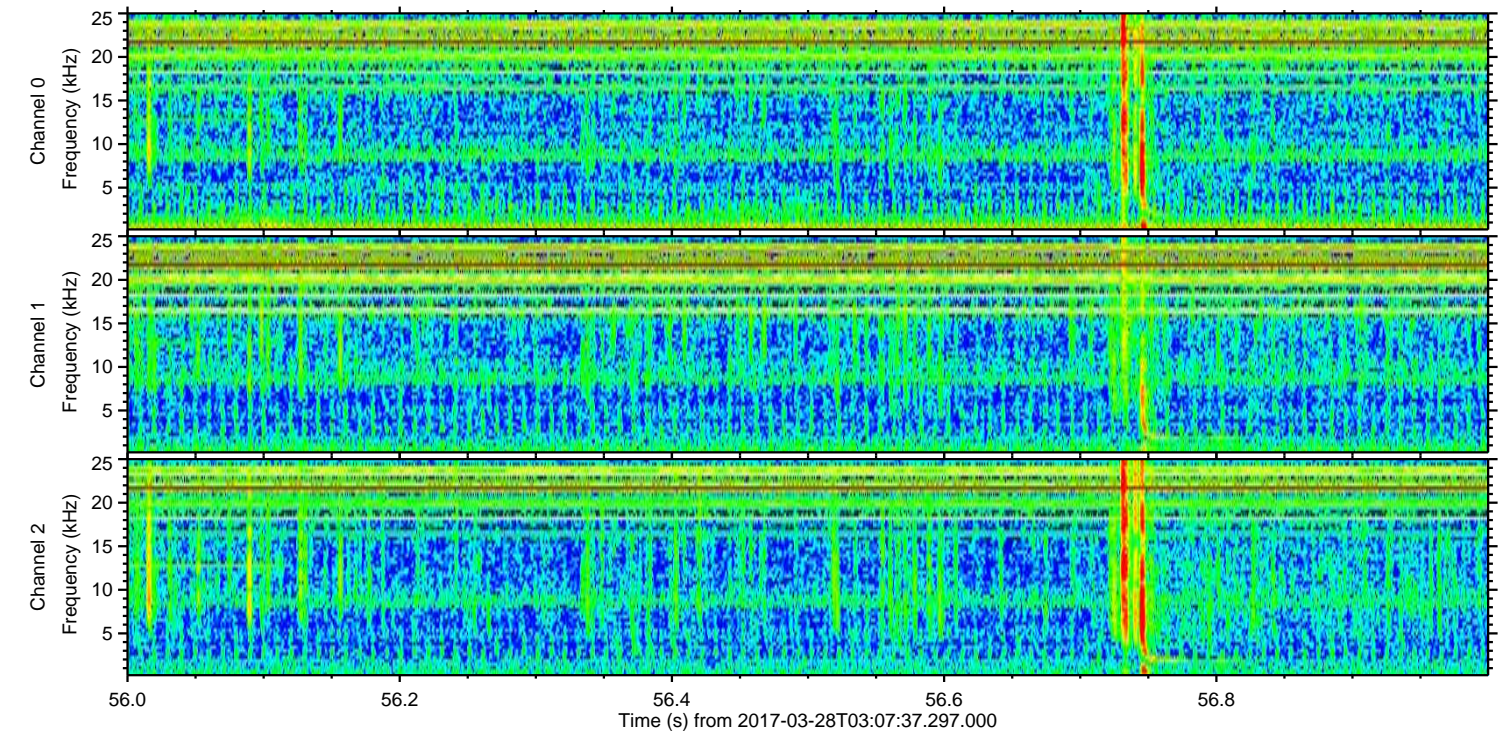
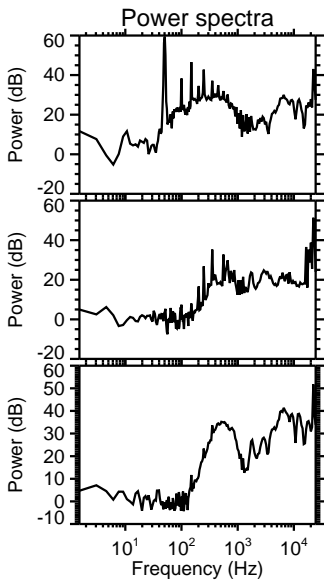
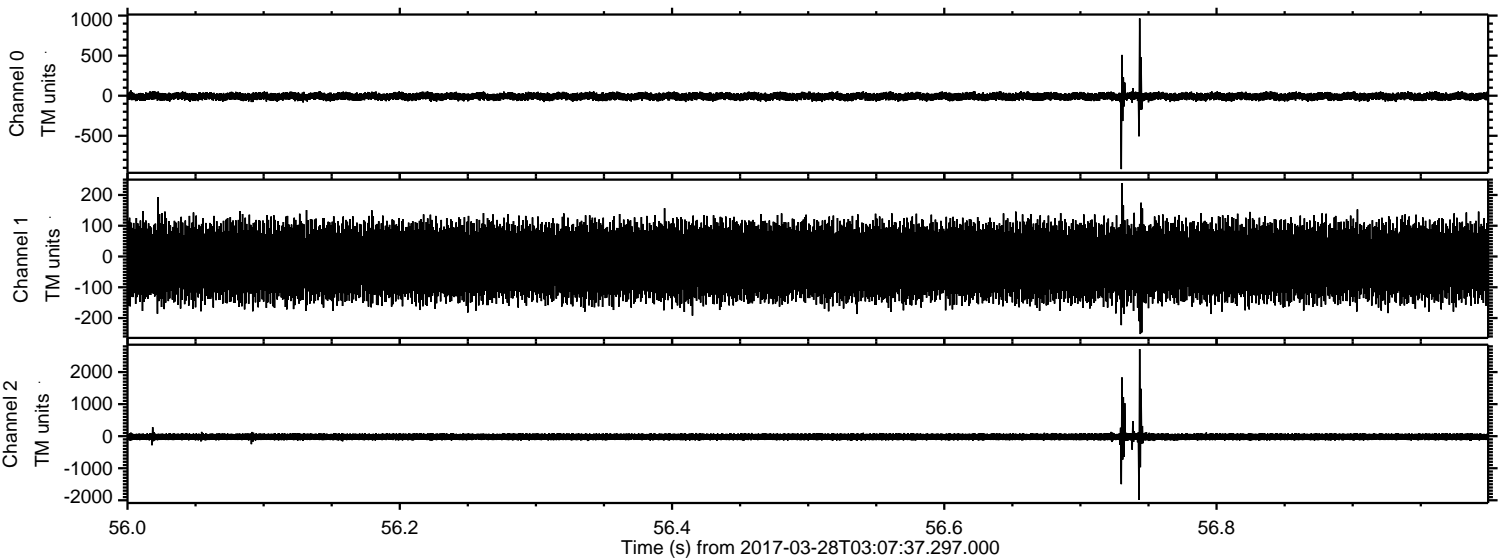
Channel 1
mn: -1898
mx: 2158
 μ : -16.5
 σ : 66.3

Channel 2
mn: -3954
mx: 2958
 μ : -20.4
 σ : 67.1

Processed Tue Mar 28 05:15:42 2017 by ELM ver.2012-10-06 from 001__elm20170328_030736__dat00.bin



Processed Tue Mar 28 05:15:43 2017 by ELM ver.2012-10-06 from 001__elm20170328_030736__dat00.bin

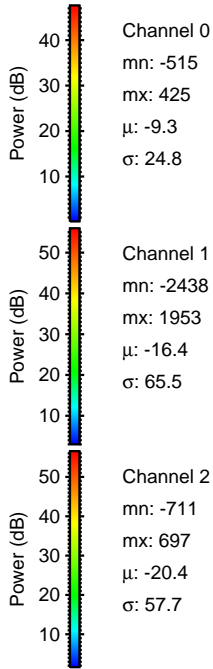
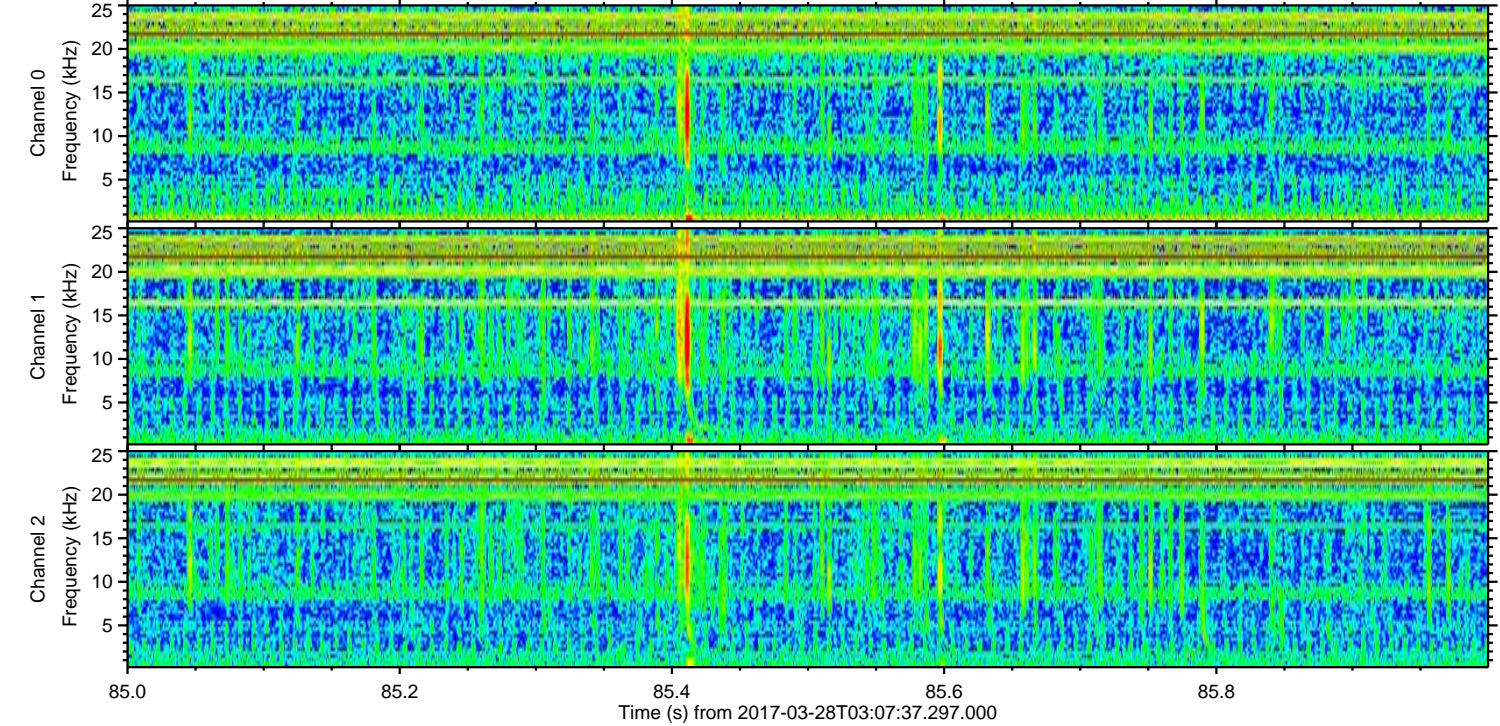
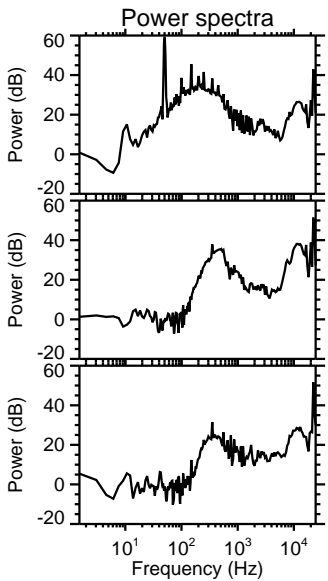
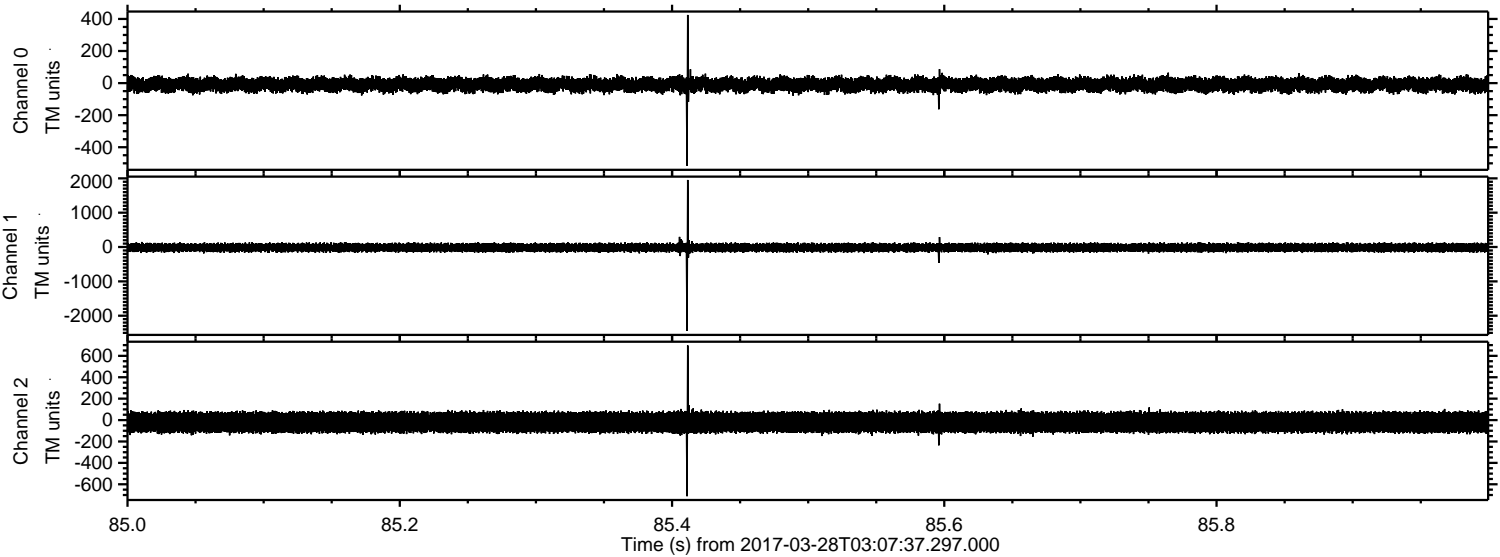


Channel 0
mn: -916
mx: 965
 μ : -9.4
 σ : 26.6

Channel 1
mn: -252
mx: 238
 μ : -16.5
 σ : 63.0

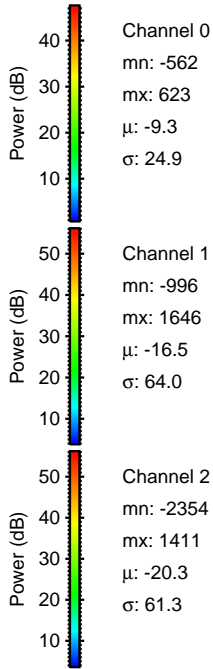
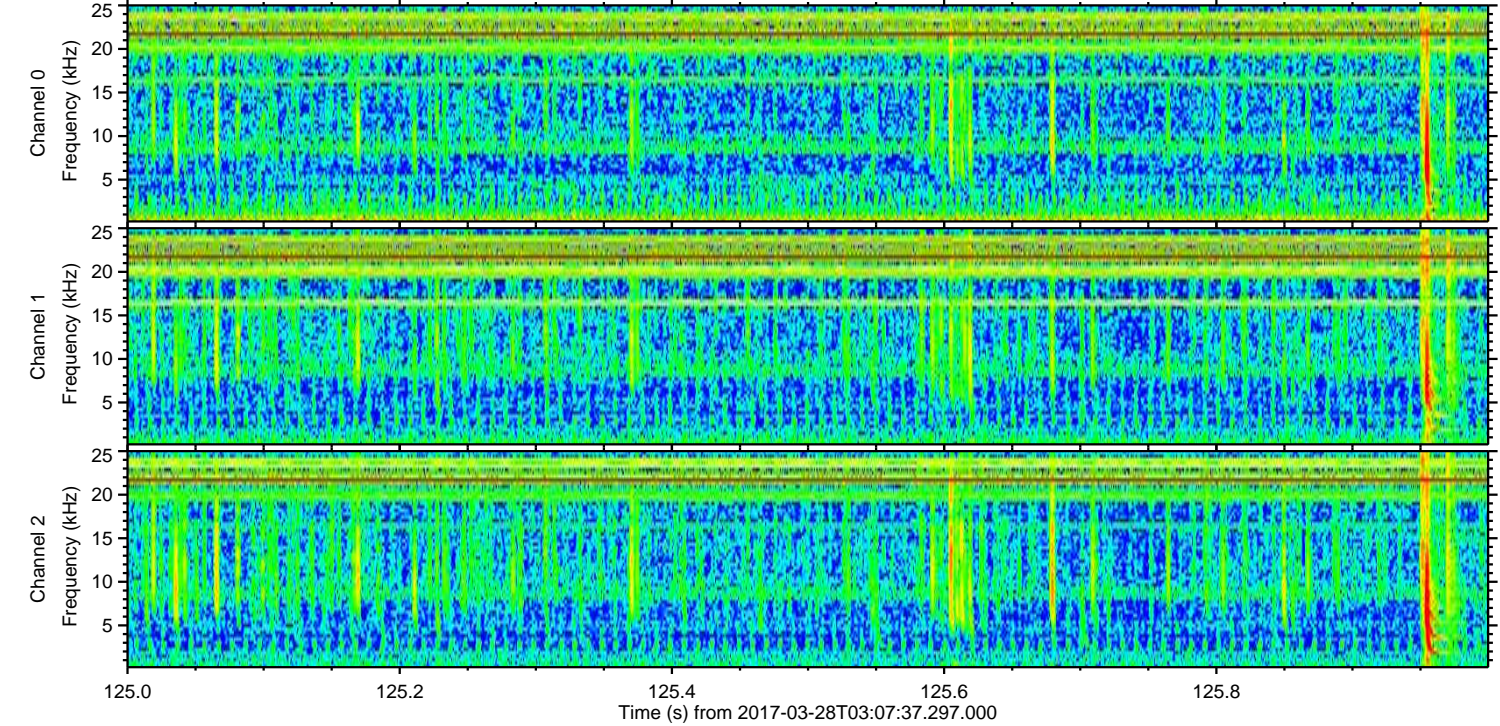
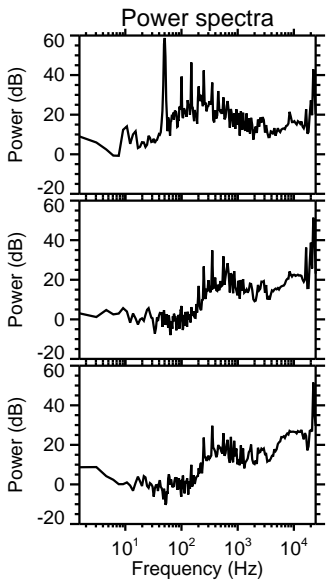
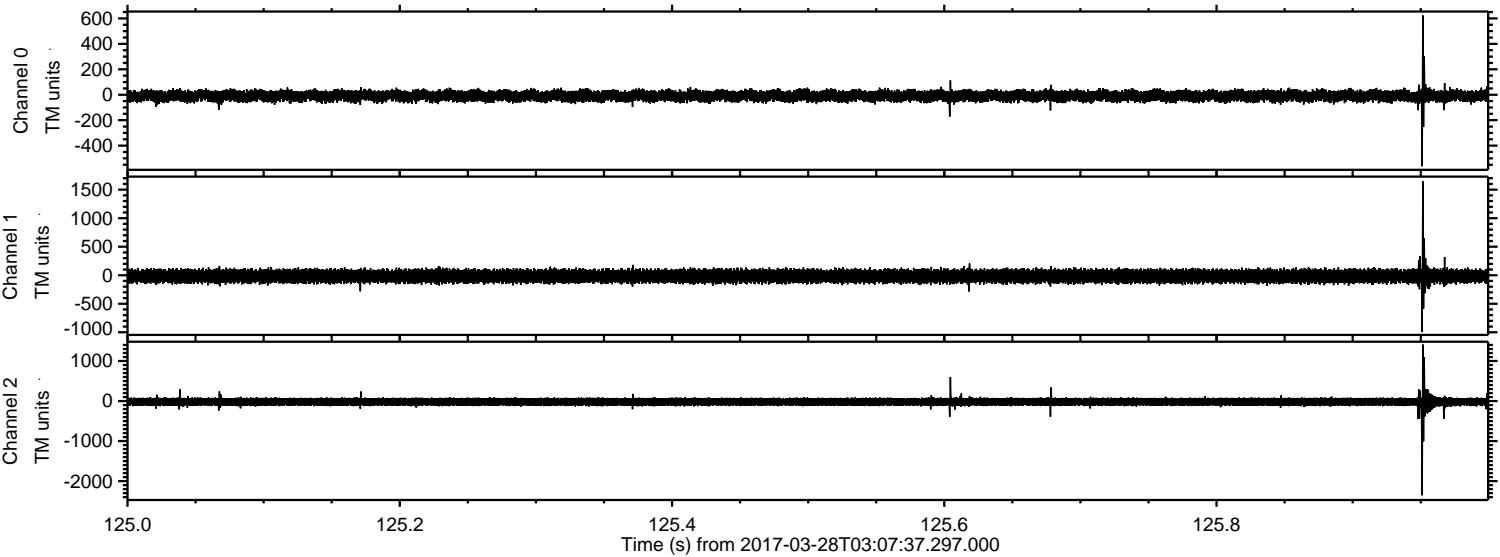
Channel 2
mn: -1985
mx: 2717
 μ : -20.4
 σ : 68.3

Processed Tue Mar 28 05:15:44 2017 by ELM ver.2012-10-06 from 001__elm20170328_030736__dat00.bin



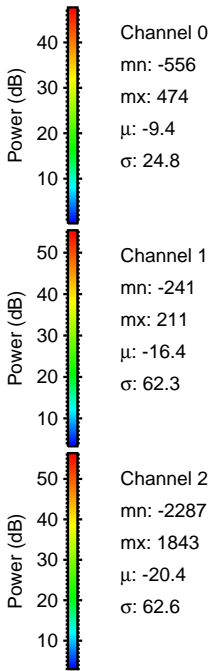
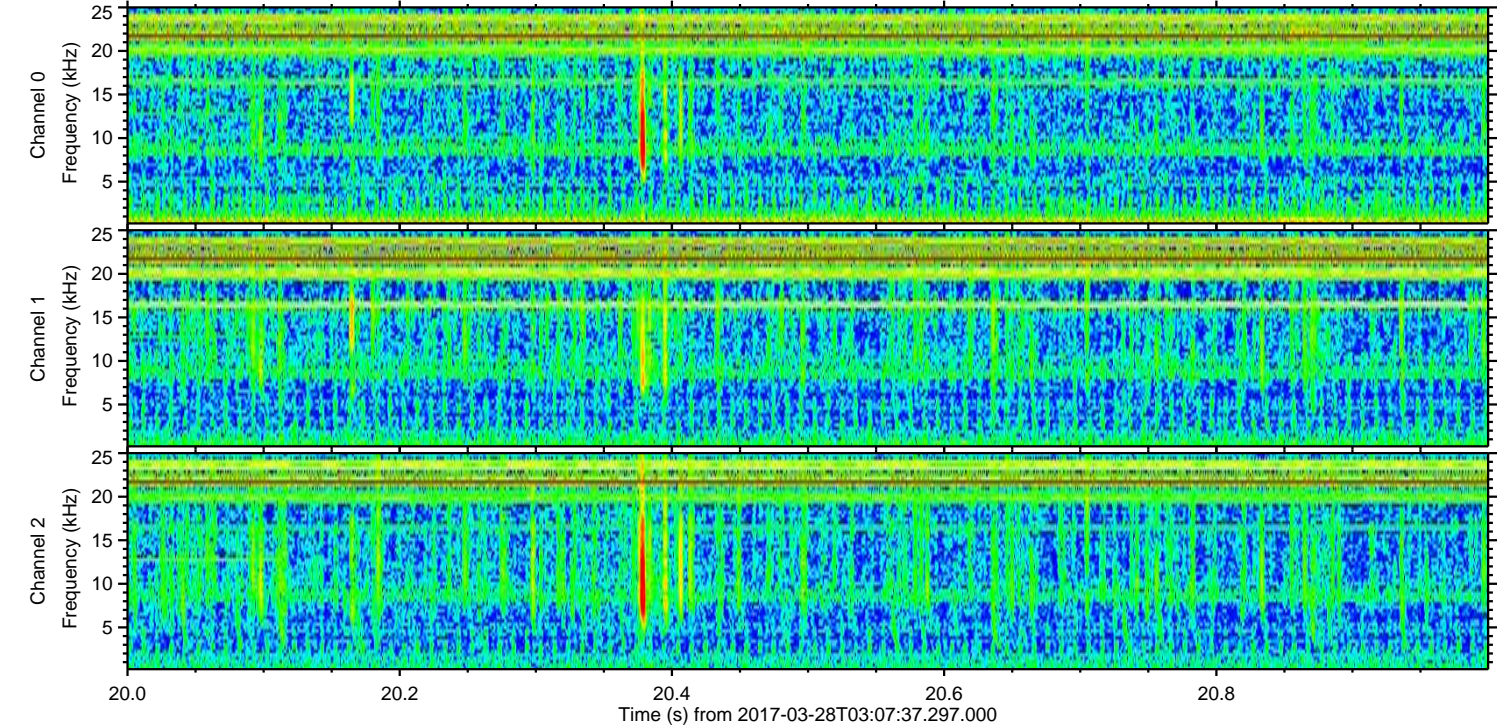
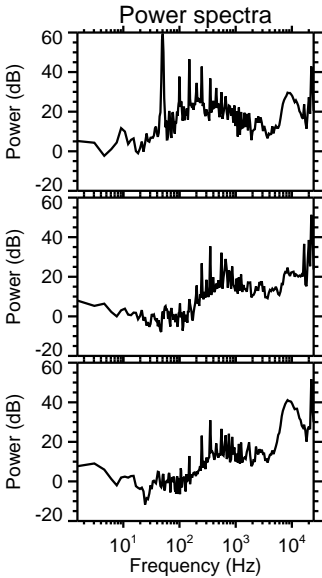
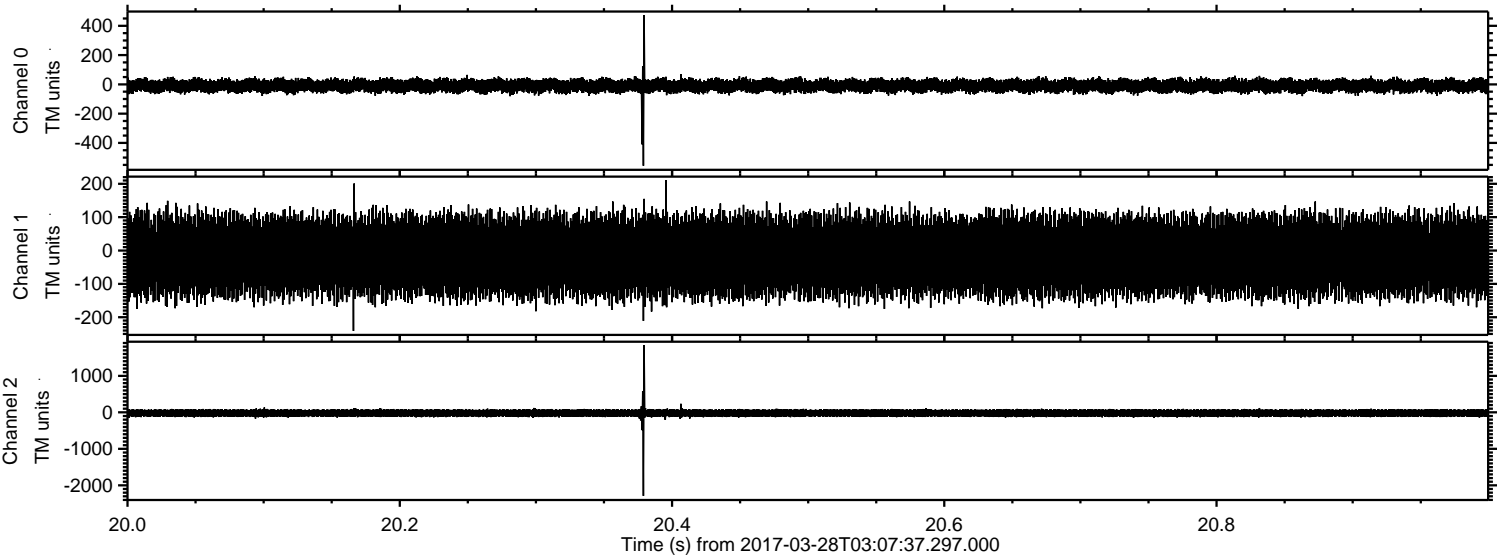
ELMAVAN 3D WAVEFORMS (Measured data sampled at 50 kHz) 51000 packets of 144 samples from 2017-03-28T03:07:37.297.000. Part 126/147

Processed Tue Mar 28 05:15:44 2017 by ELM ver.2012-10-06 from 001__elm20170328_030736__dat00.bin



ELMAVAN 3D WAVEFORMS (Measured data sampled at 50 kHz) 51000 packets of 144 samples from 2017-03-28T03:07:37.297.000. Part 21/147

Processed Tue Mar 28 05:15:45 2017 by ELM ver.2012-10-06 from 001__elm20170328_030736__dat00.bin



ELMAVAN 3D WAVEFORMS (Measured data sampled at 50 kHz) 51000 packets of 144 samples from 2017-03-28T03:07:37.297.000. Part 105/147

