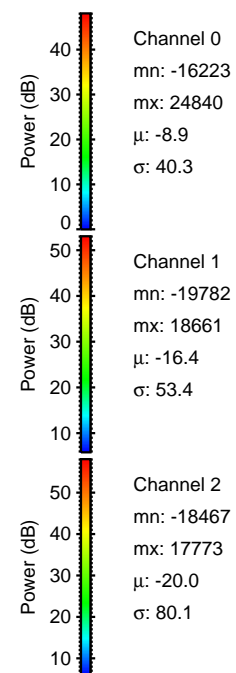
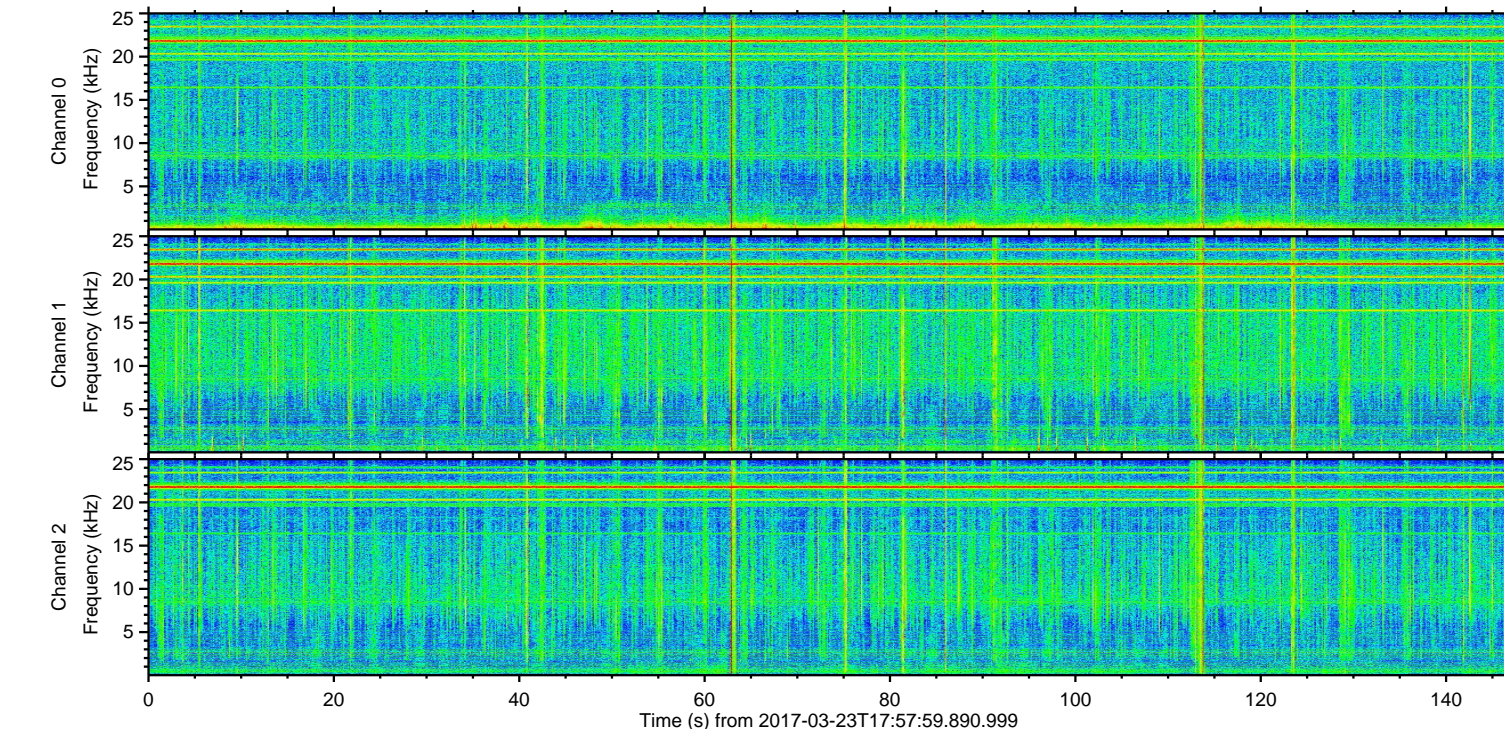
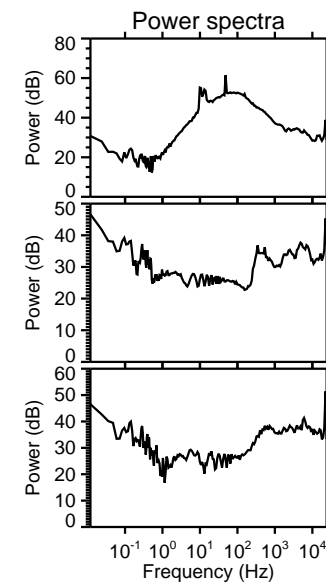
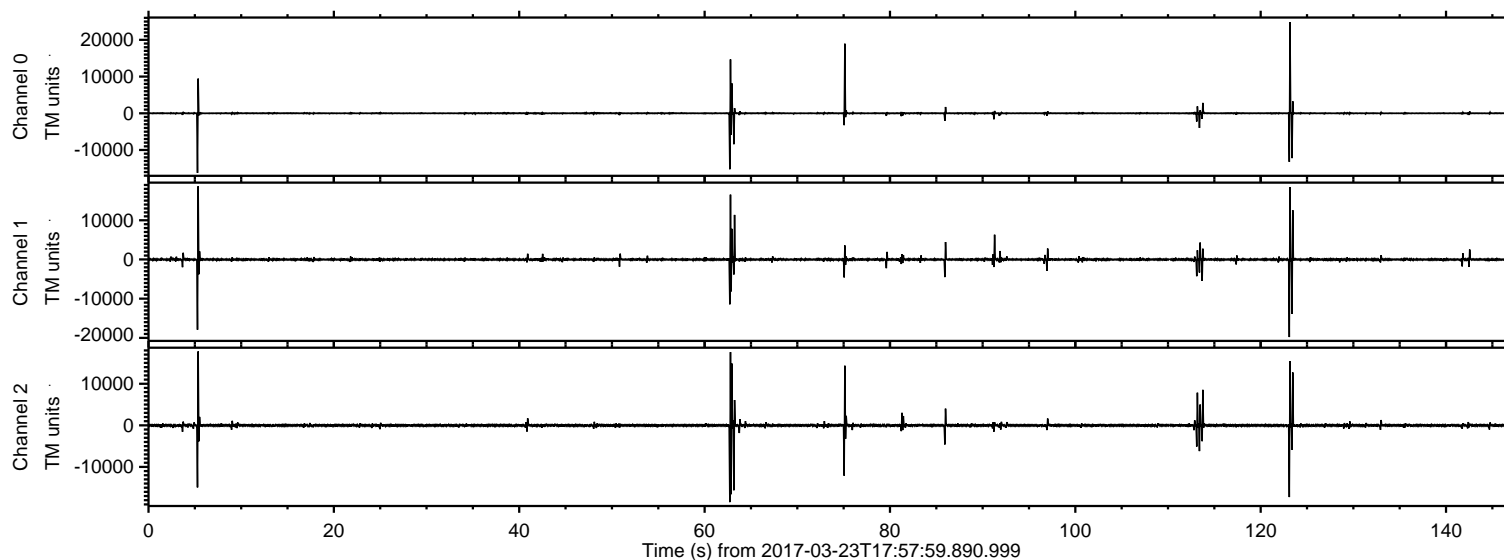


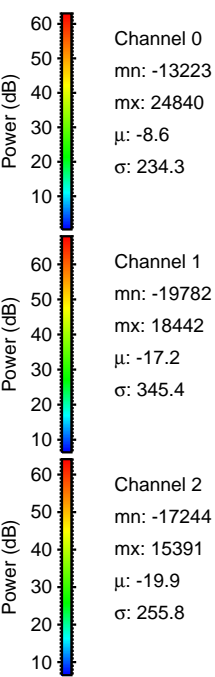
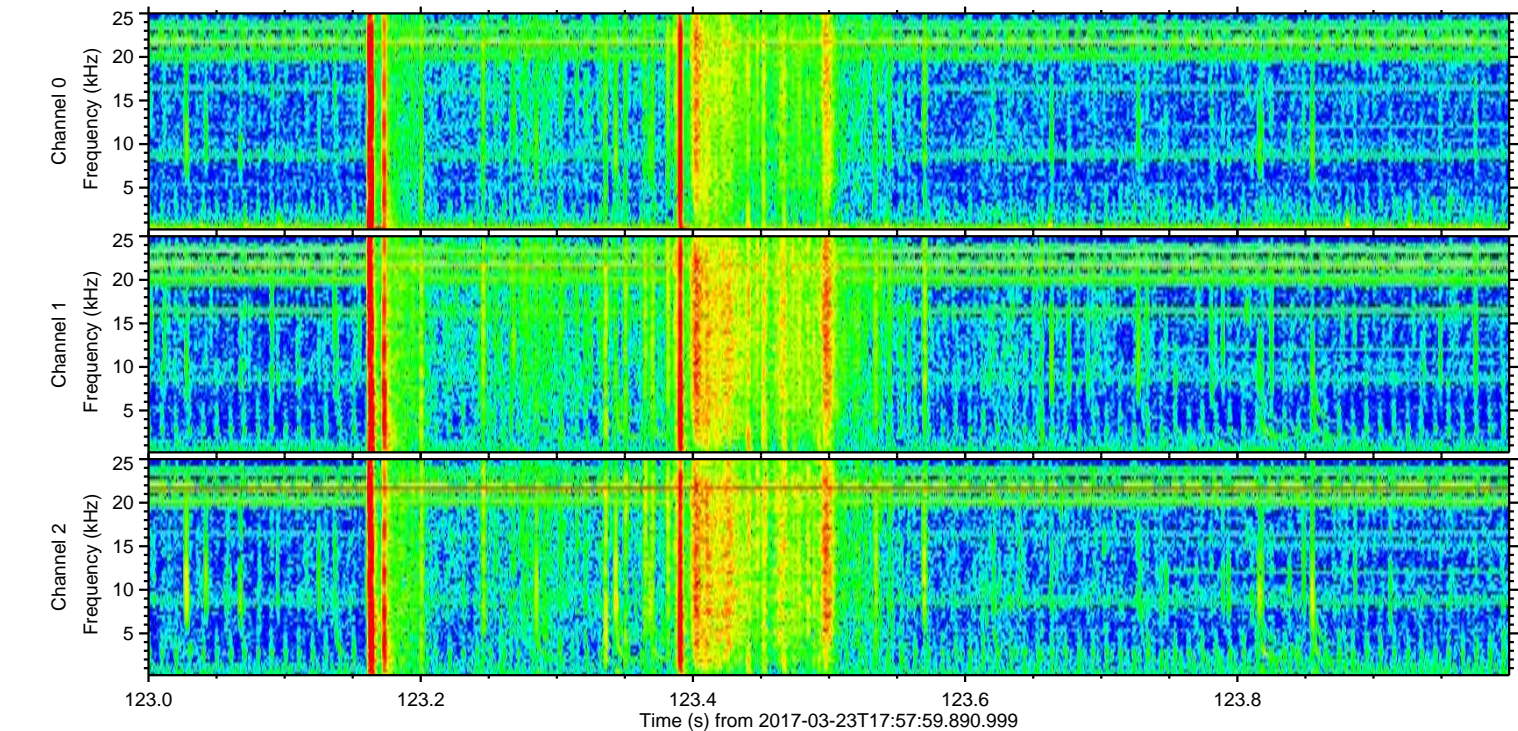
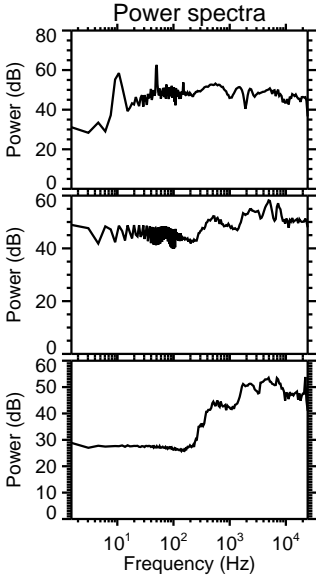
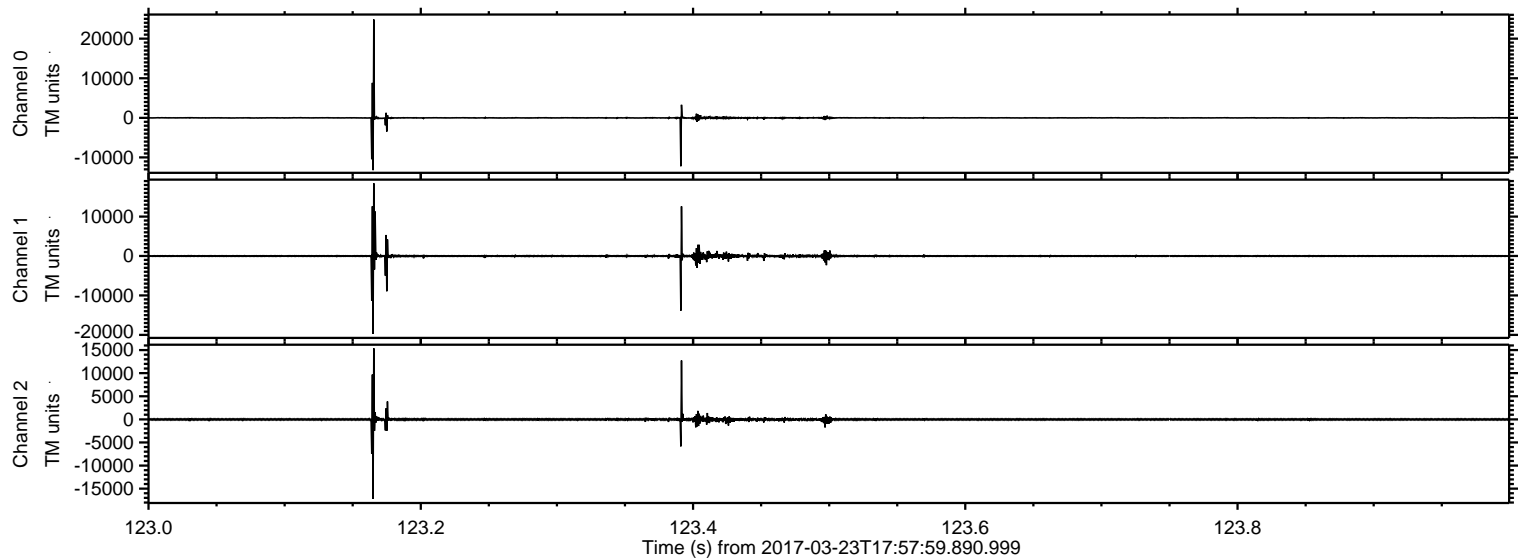
ELMAVAN 3D WAVEFORMS (Measured data sampled at 50 kHz) 51000 packets of 144 samples from 2017-03-23T17:57:59.890.999.

Processed Thu Mar 23 19:05:50 2017 by ELM ver.2012-10-06 from 001__elm20170323_175758__dat00.bin

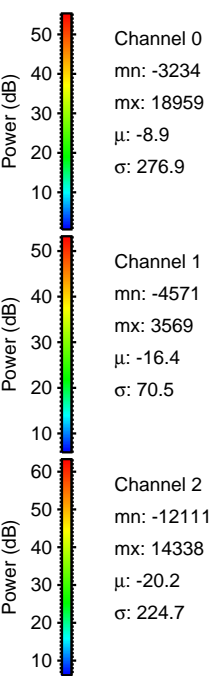
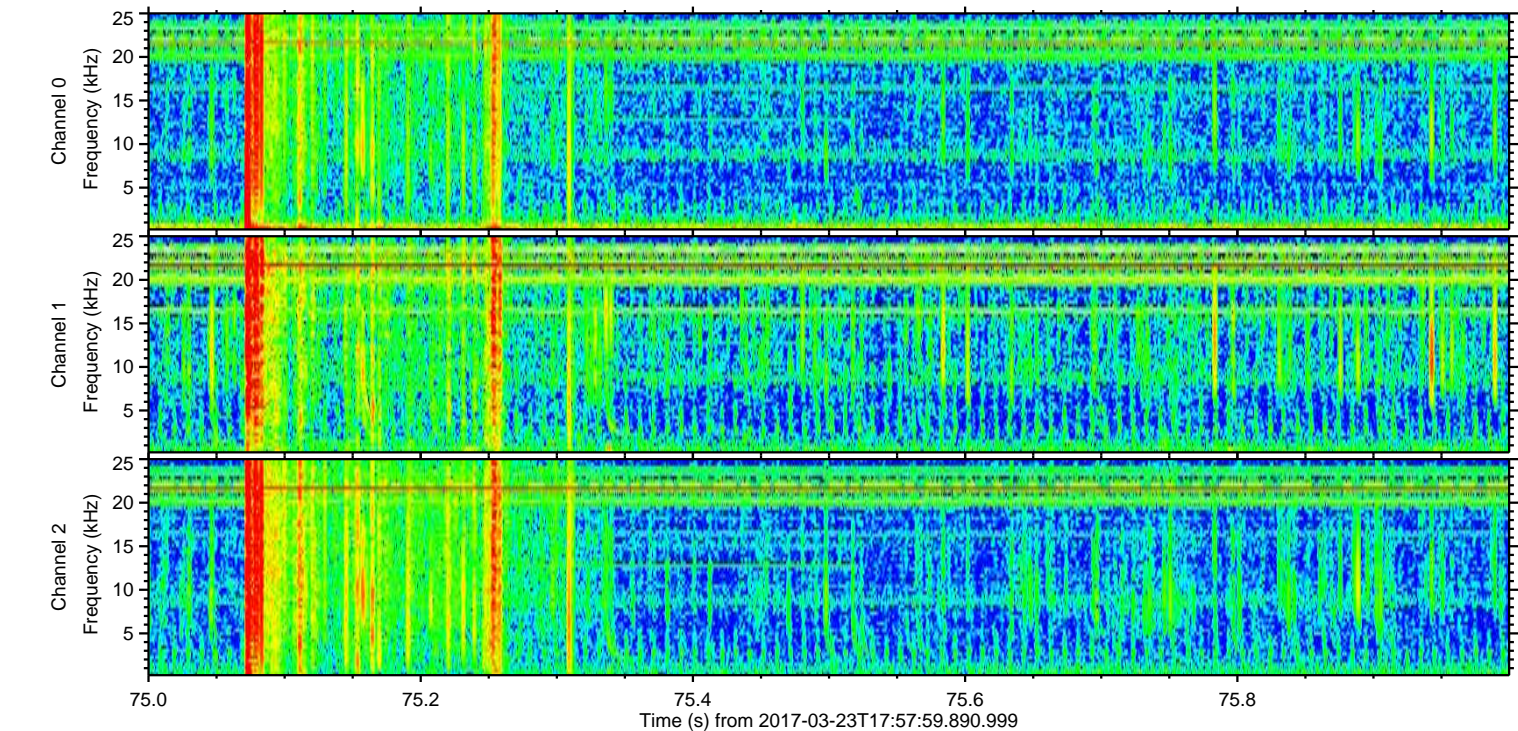
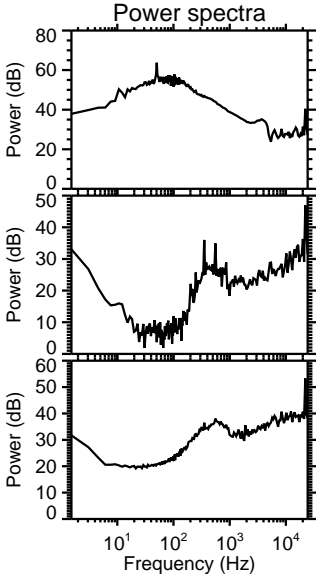
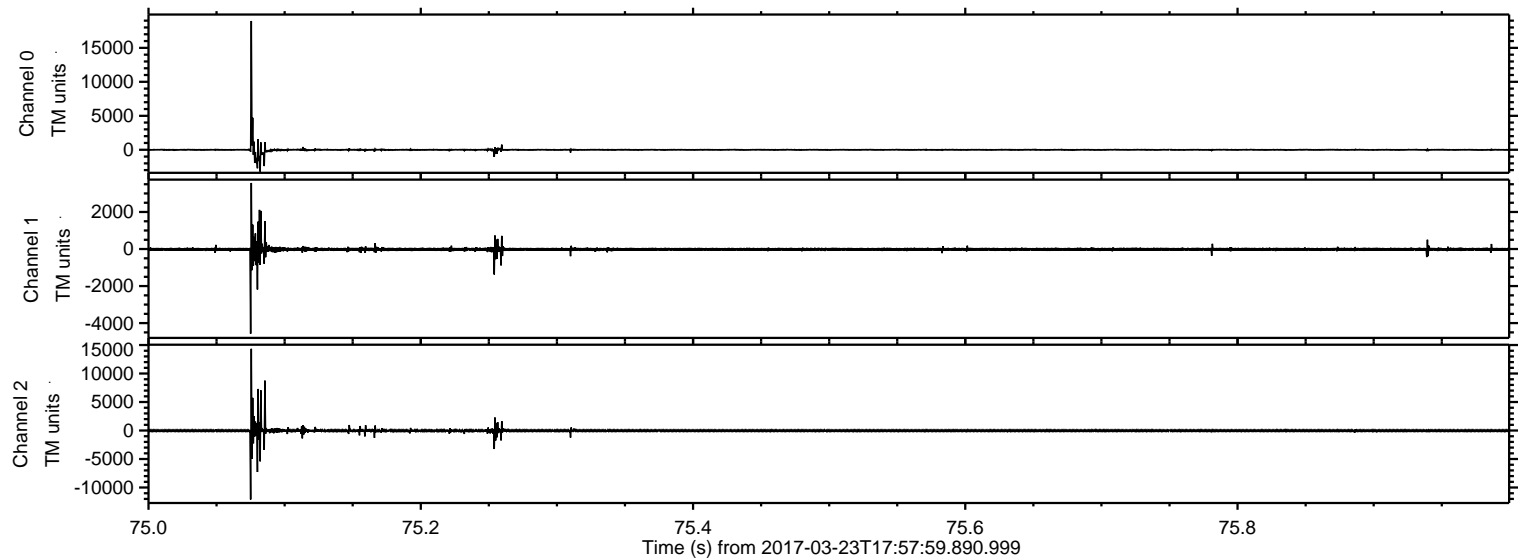


ELMAVAN 3D WAVEFORMS (Measured data sampled at 50 kHz) 51000 packets of 144 samples from 2017-03-23T17:57:59.890.999. Part 124/147

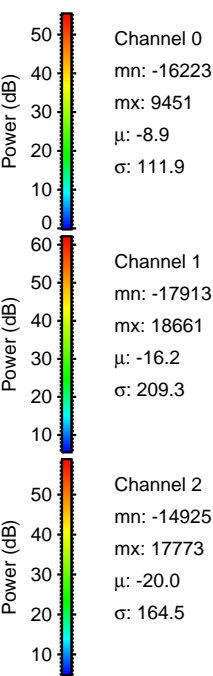
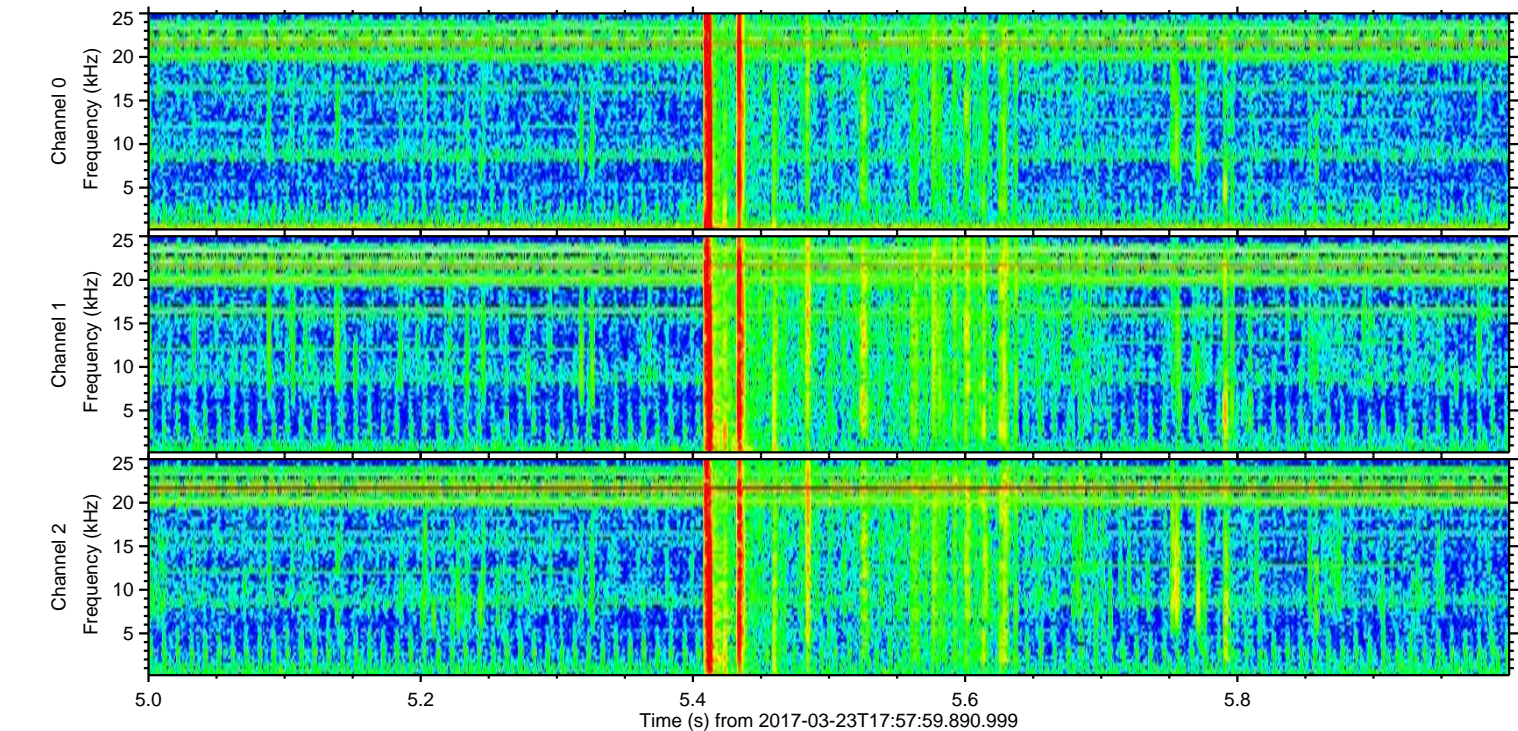
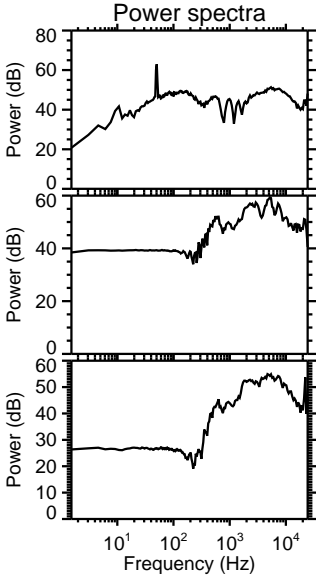
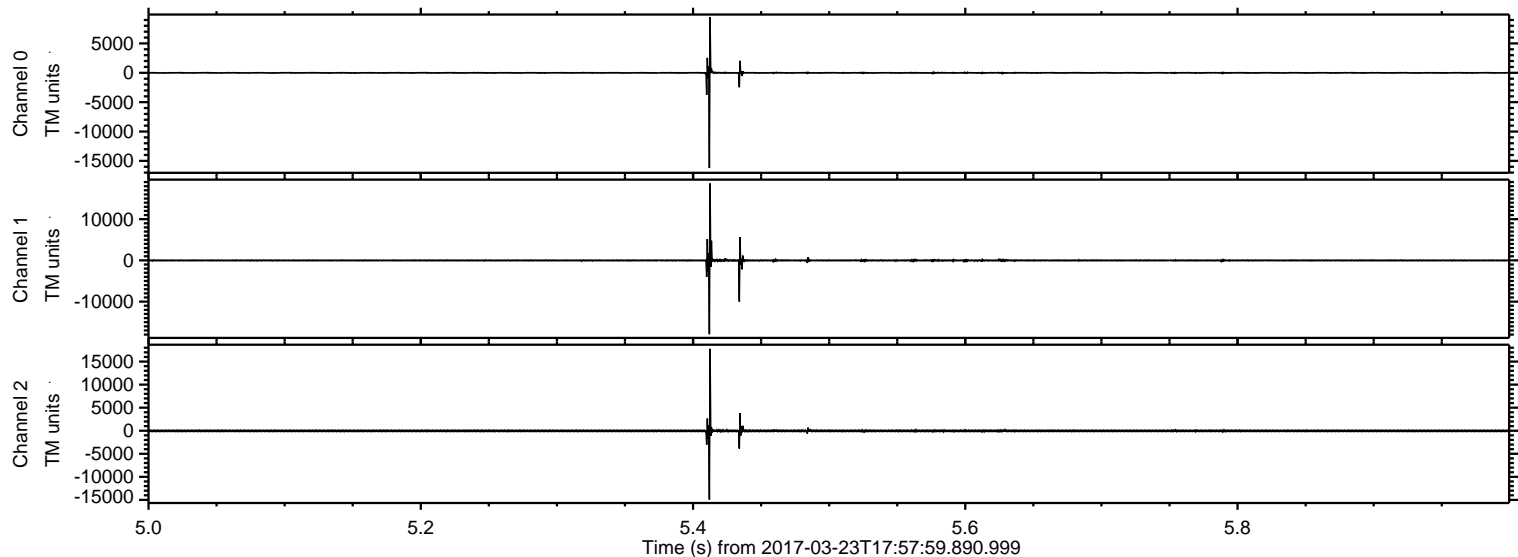
Processed Thu Mar 23 19:06:01 2017 by ELM ver.2012-10-06 from 001__elm20170323_175758__dat00.bin



Processed Thu Mar 23 19:06:02 2017 by ELM ver.2012-10-06 from 001__elm20170323_175758__dat00.bin

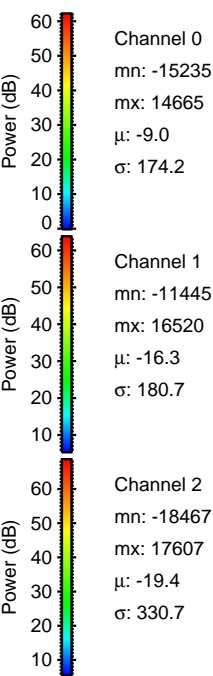
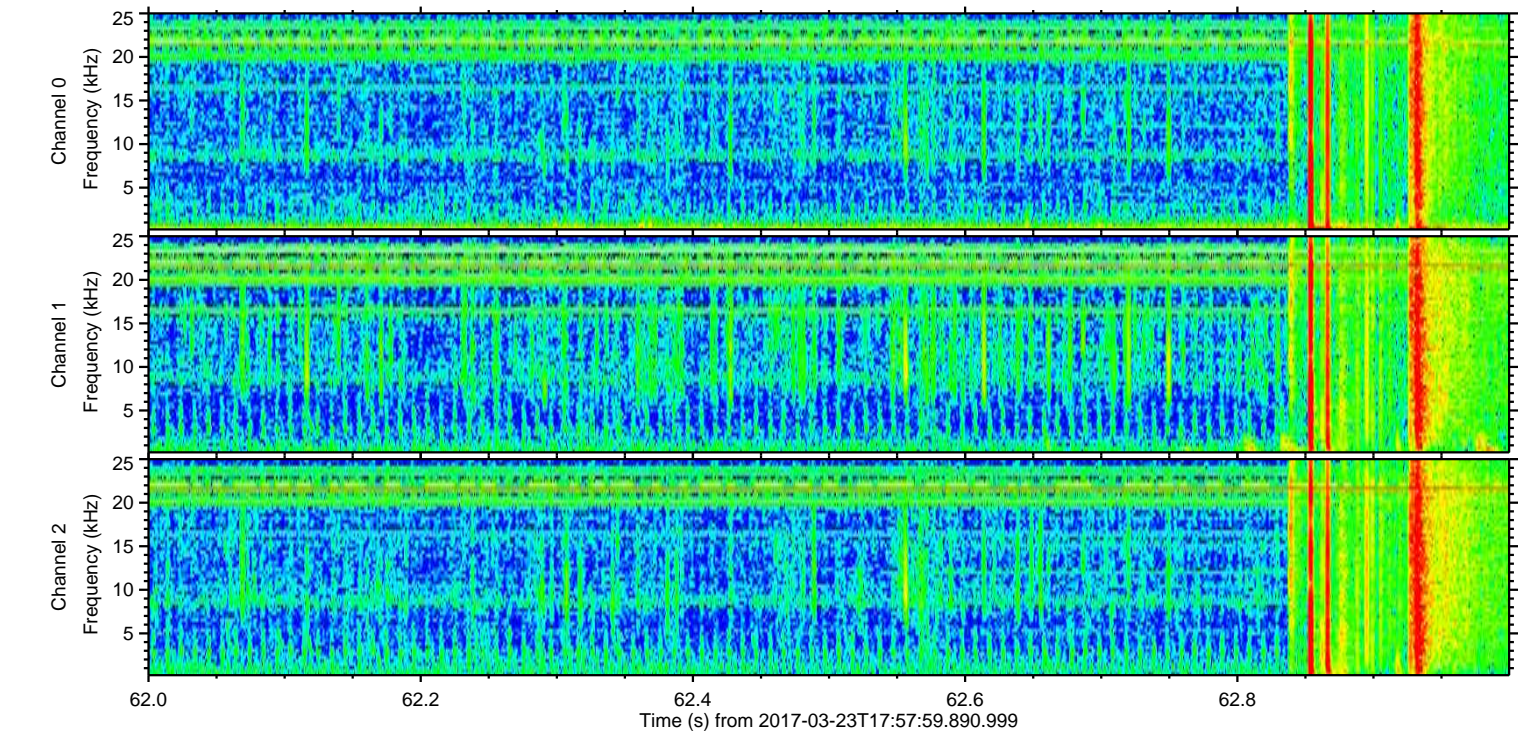
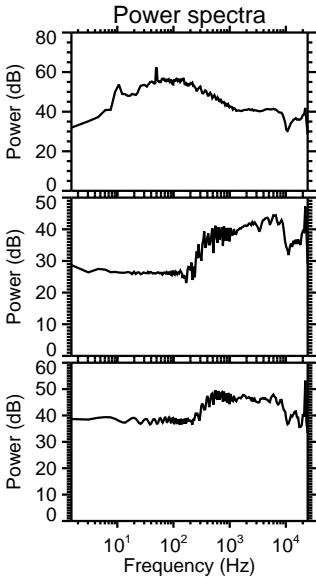
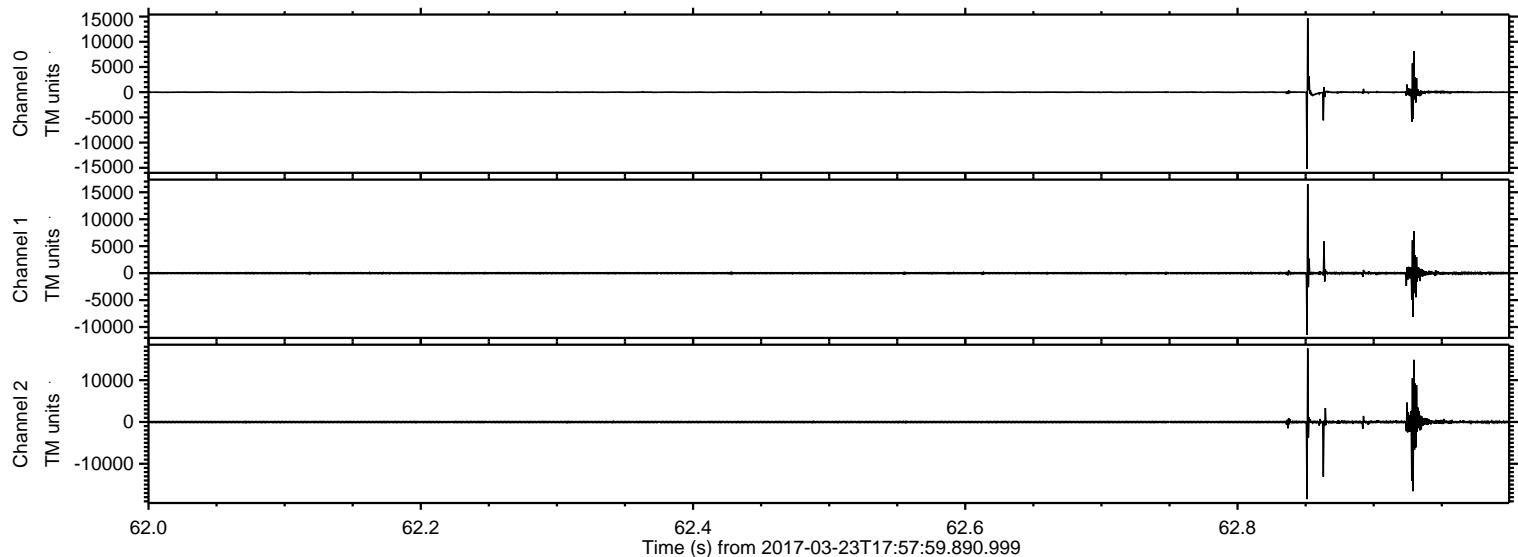


Processed Thu Mar 23 19:06:03 2017 by ELM ver.2012-10-06 from 001__elm20170323_175758__dat00.bin

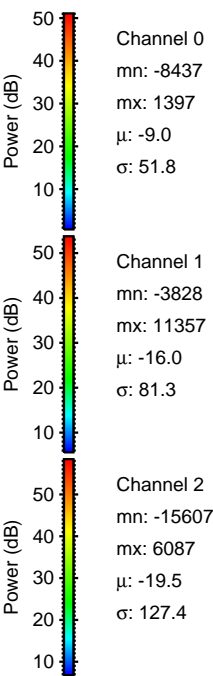
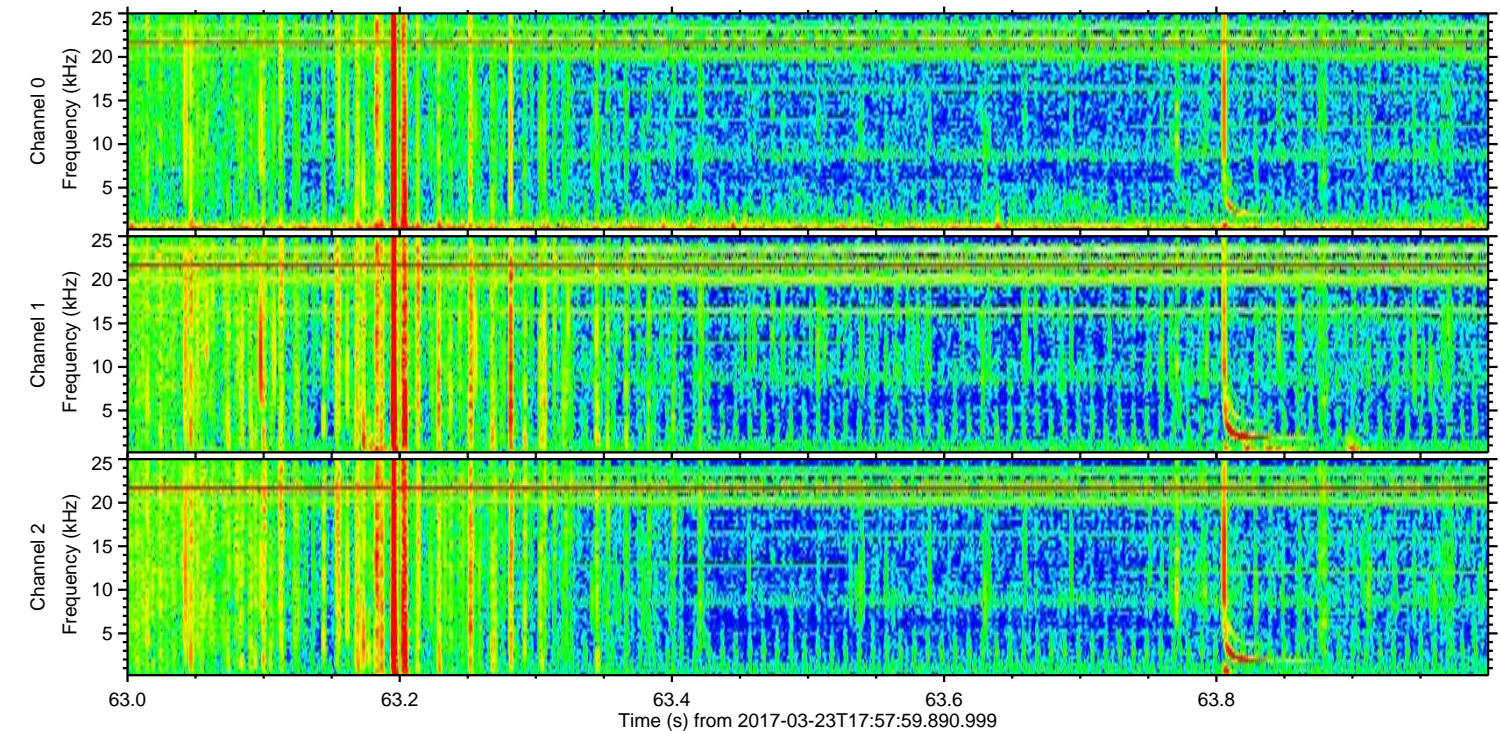
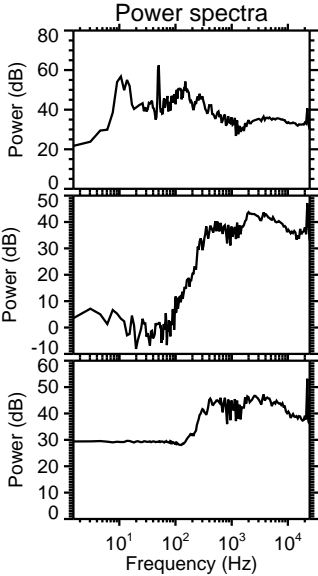
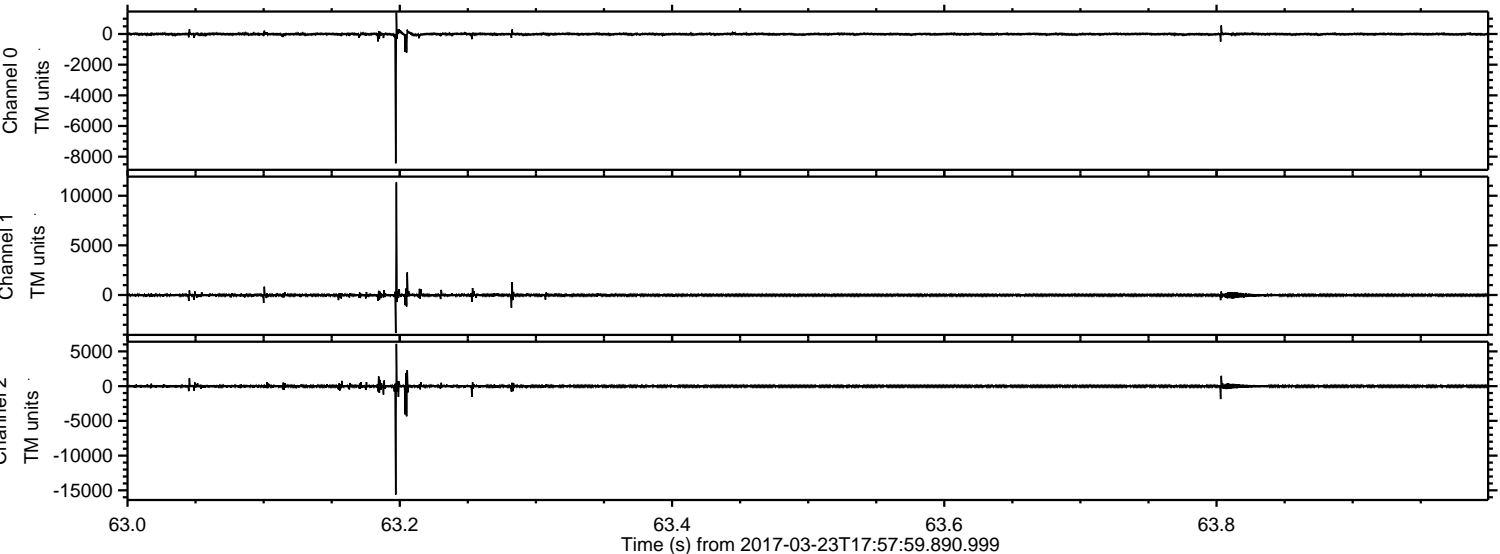


ELMAVAN 3D WAVEFORMS (Measured data sampled at 50 kHz) 51000 packets of 144 samples from 2017-03-23T17:57:59.890.999. Part 63/147

Processed Thu Mar 23 19:06:04 2017 by ELM ver.2012-10-06 from 001__elm20170323_175758__dat00.bin

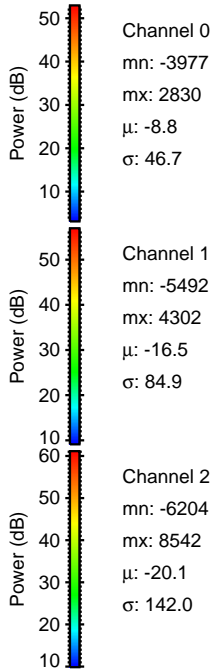
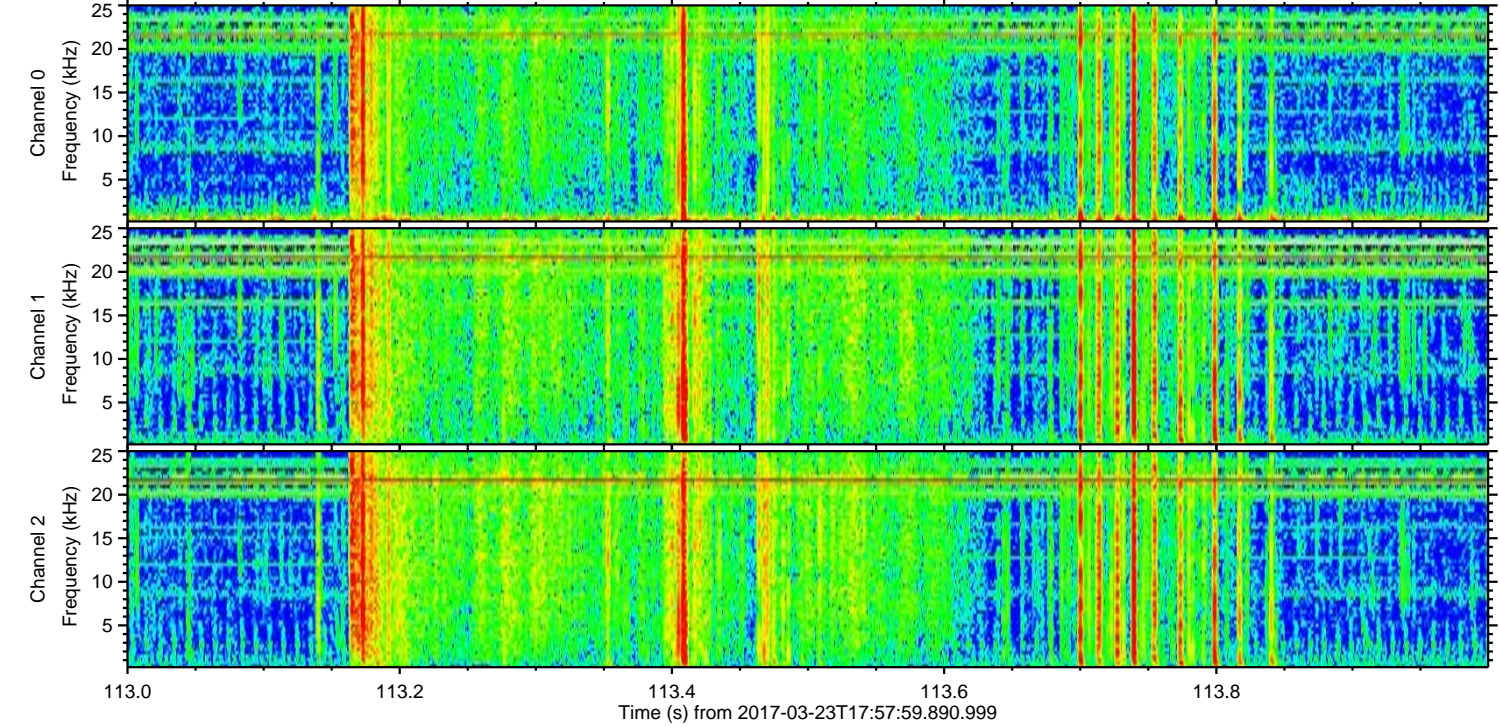
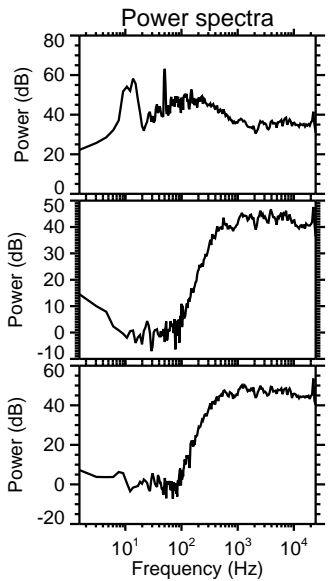
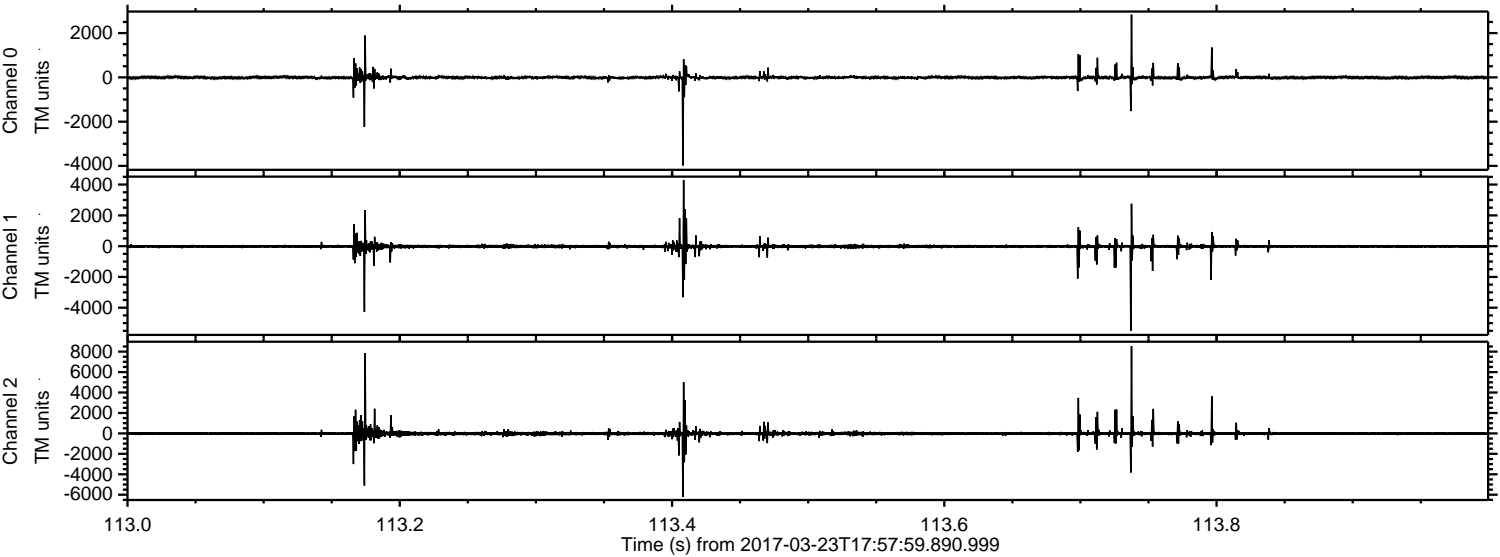


Processed Thu Mar 23 19:06:05 2017 by ELM ver.2012-10-06 from 001__elm20170323_175758__dat00.bin

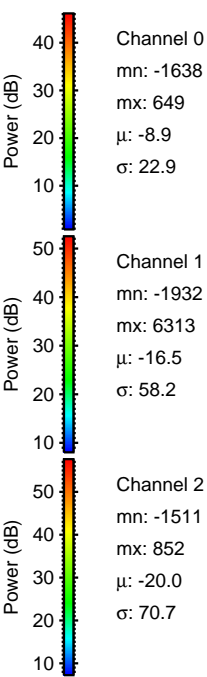
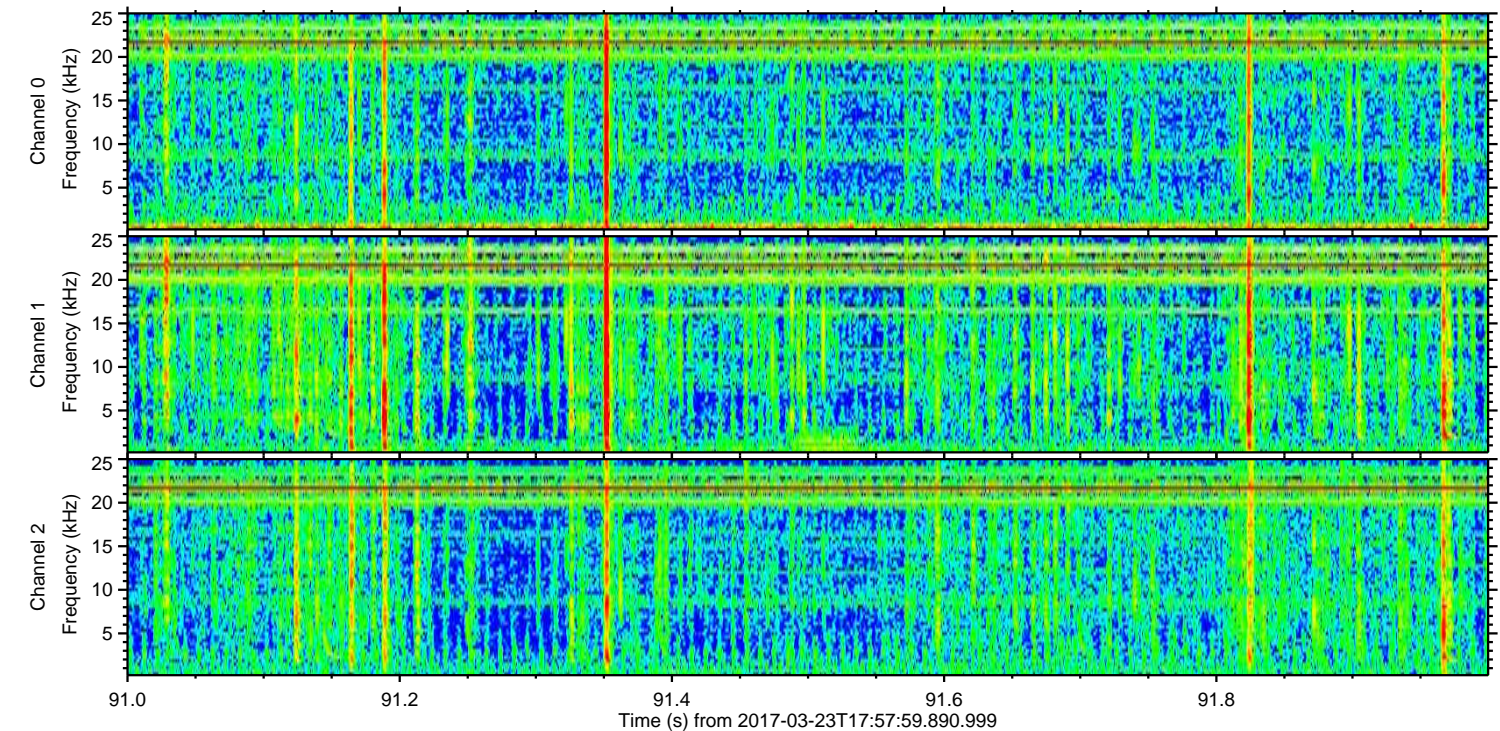
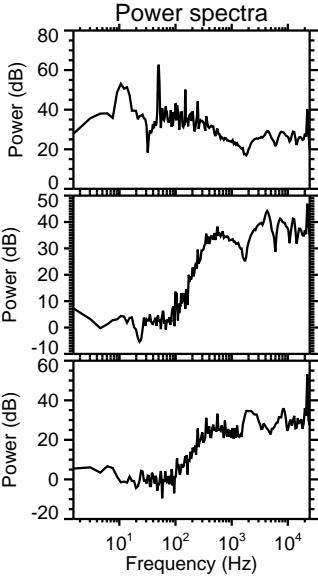
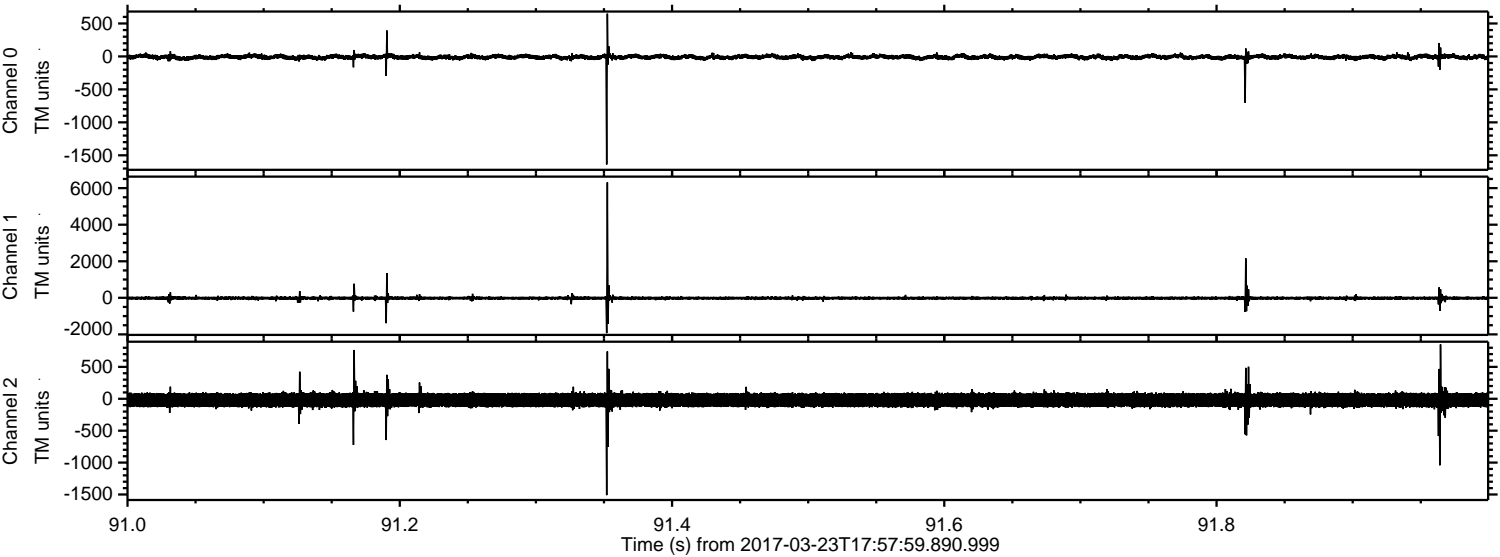


ELMAVAN 3D WAVEFORMS (Measured data sampled at 50 kHz) 51000 packets of 144 samples from 2017-03-23T17:57:59.890.999. Part 114/147

Processed Thu Mar 23 19:06:06 2017 by ELM ver.2012-10-06 from 001__elm20170323_175758__dat00.bin



Processed Thu Mar 23 19:06:07 2017 by ELM ver.2012-10-06 from 001__elm20170323_175758__dat00.bin

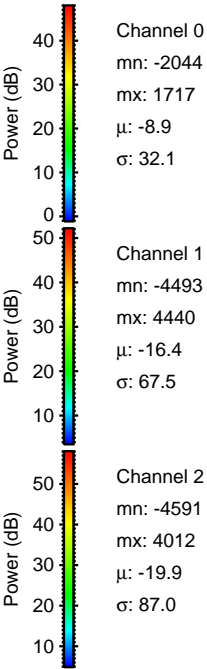
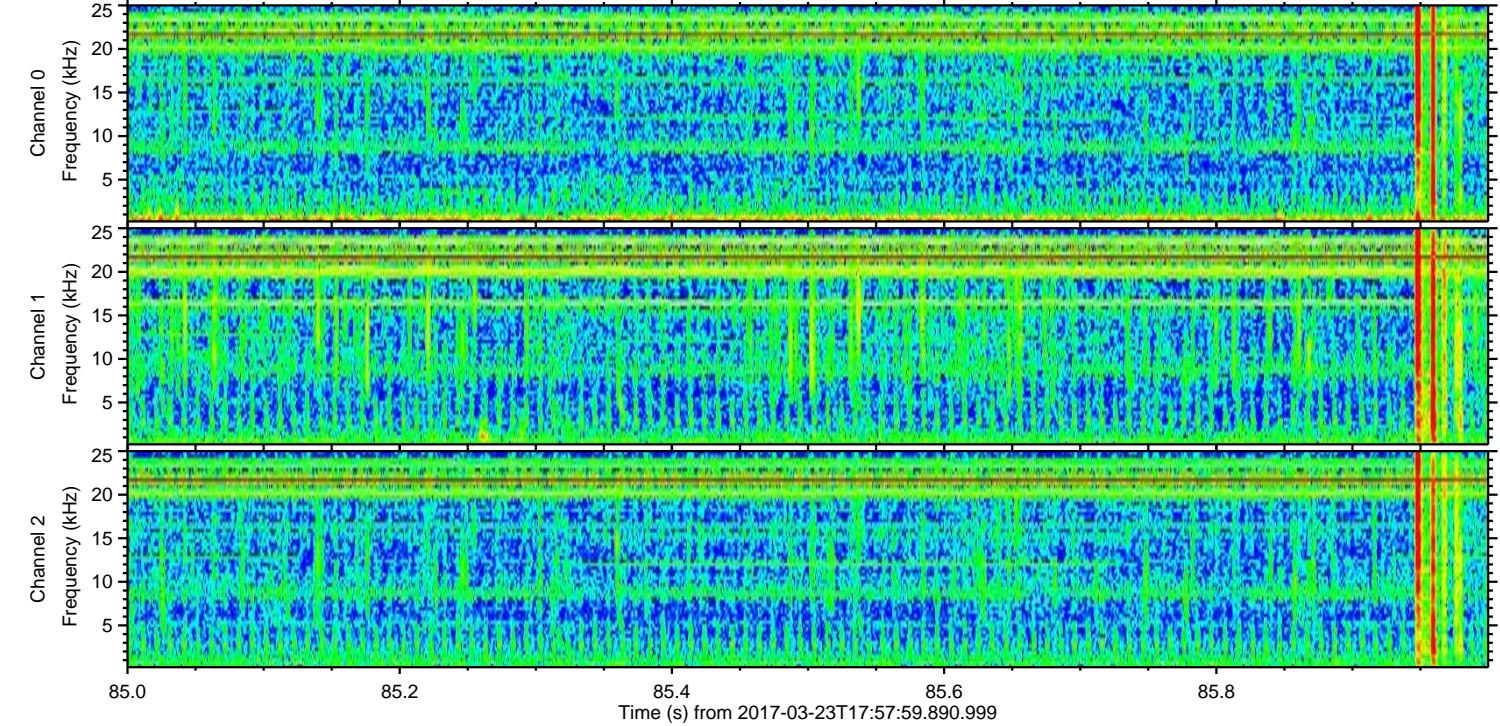
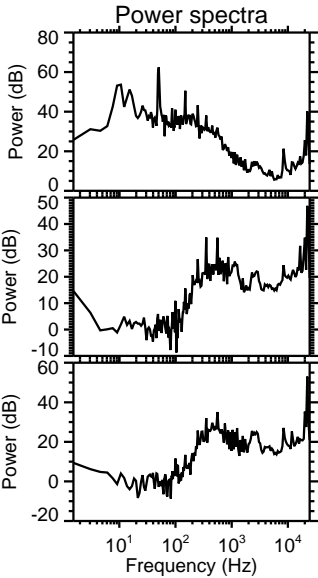
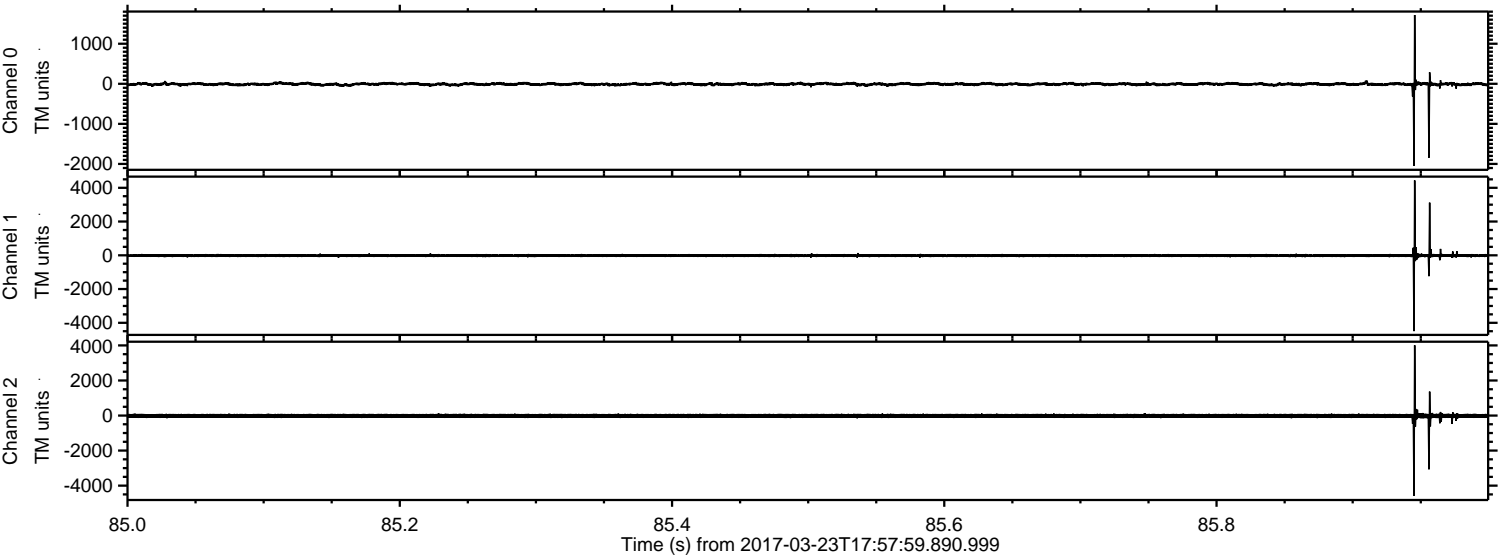


Channel 0
mn: -1638
mx: 649
 μ : -8.9
 σ : 22.9

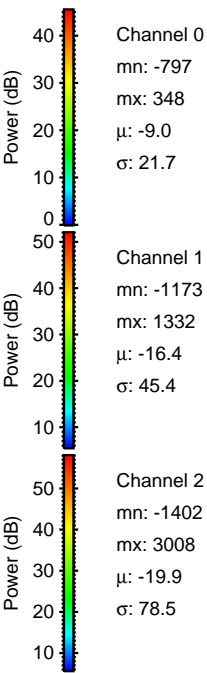
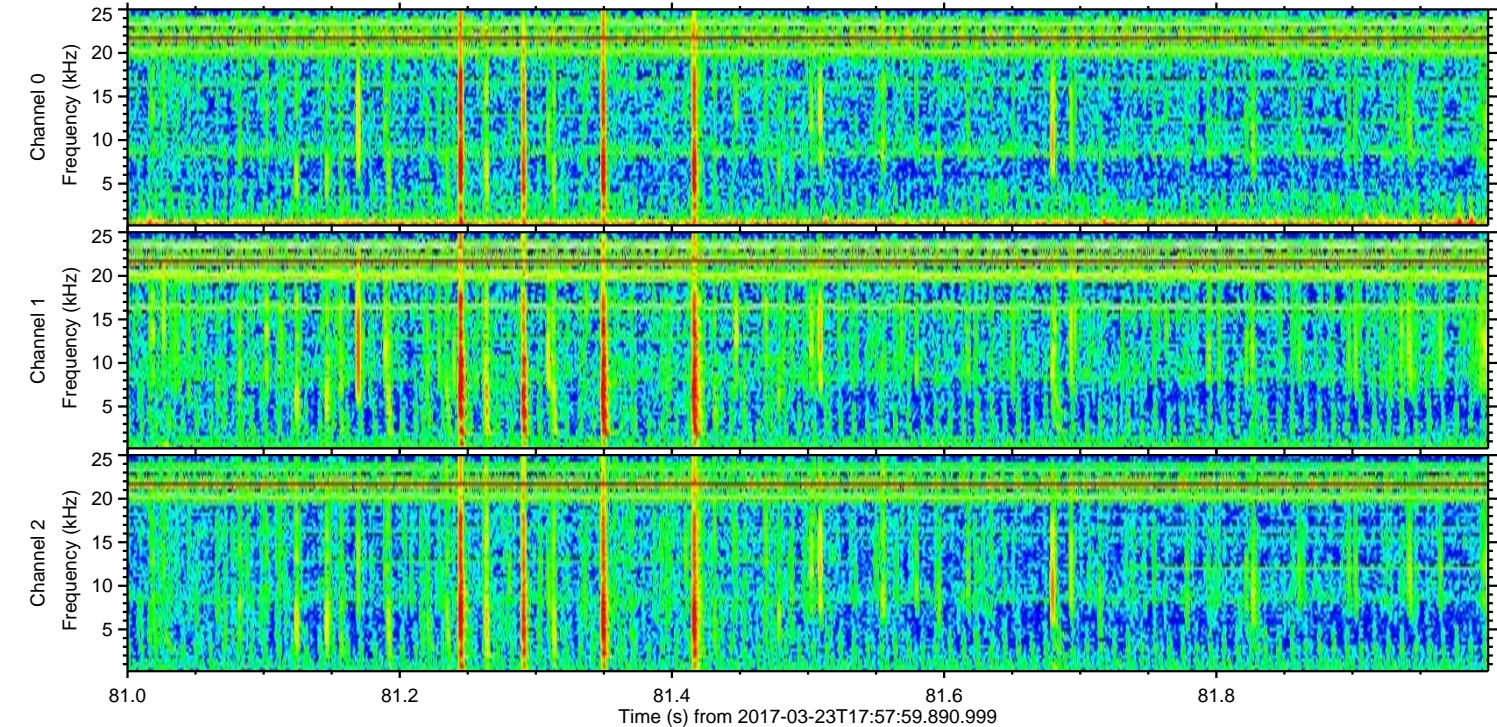
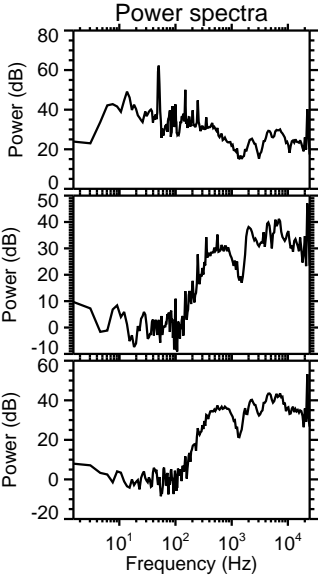
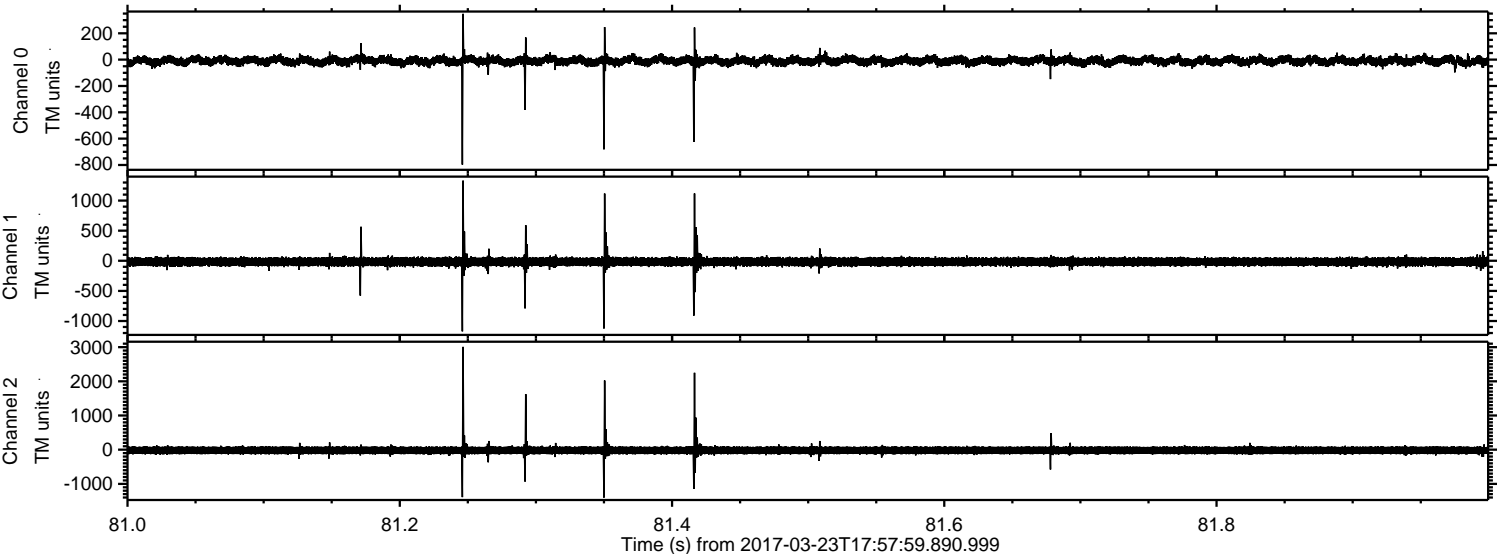
Channel 1
mn: -1932
mx: 6313
 μ : -16.5
 σ : 58.2

Channel 2
mn: -1511
mx: 852
 μ : -20.0
 σ : 70.7

Processed Thu Mar 23 19:06:08 2017 by ELM ver.2012-10-06 from 001__elm20170323_175758__dat00.bin



Processed Thu Mar 23 19:06:08 2017 by ELM ver.2012-10-06 from 001__elm20170323_175758__dat00.bin



Processed Thu Mar 23 19:06:09 2017 by ELM ver.2012-10-06 from 001__elm20170323_175758__dat00.bin

