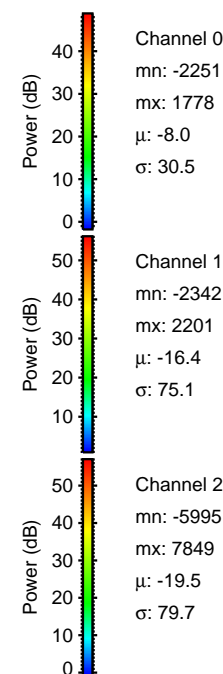
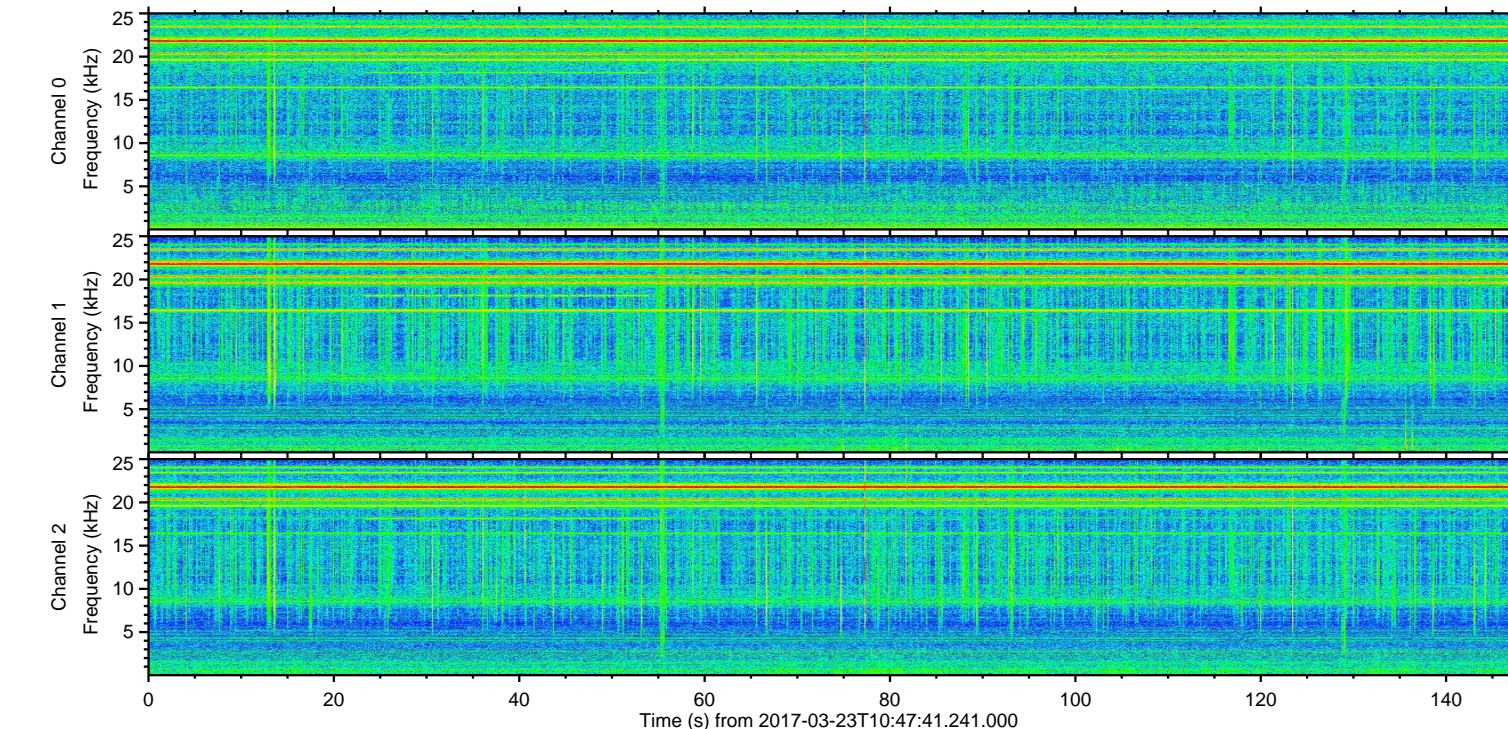
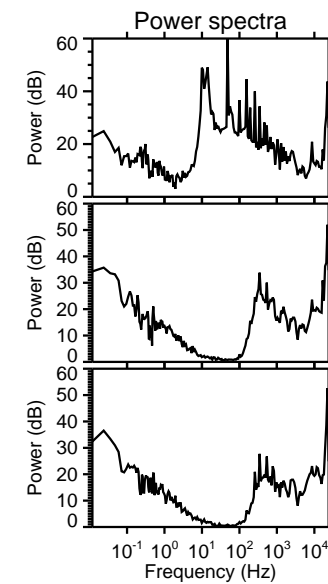
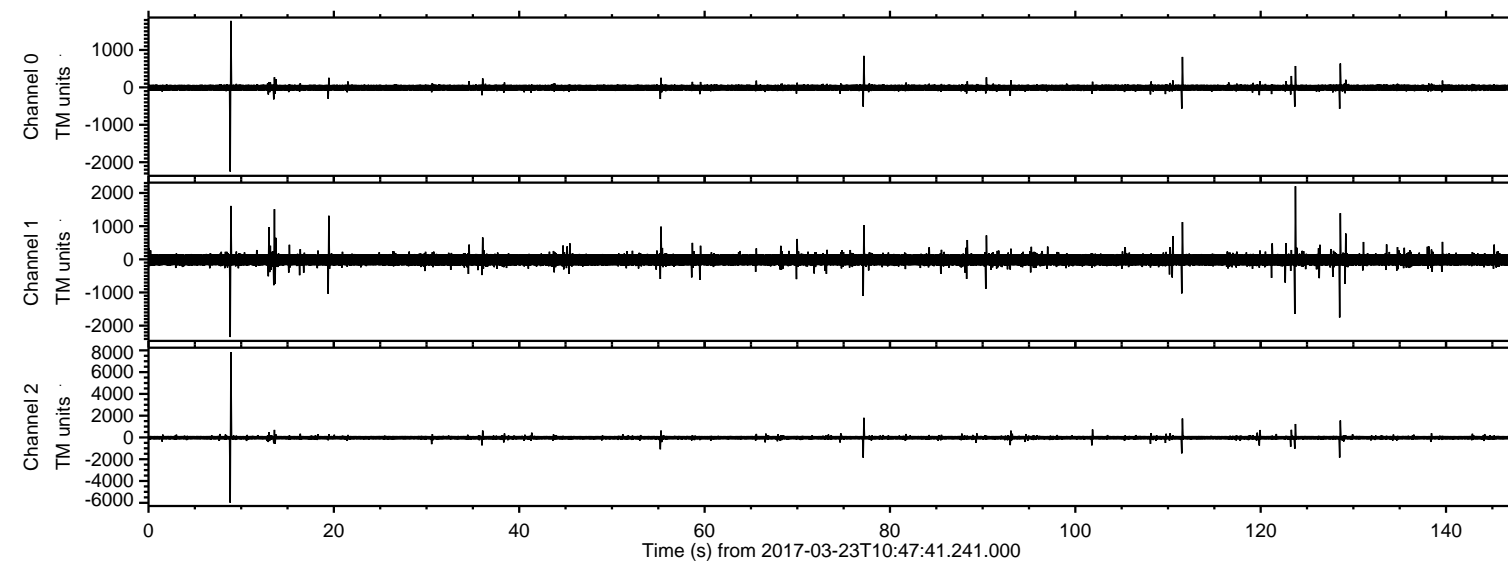


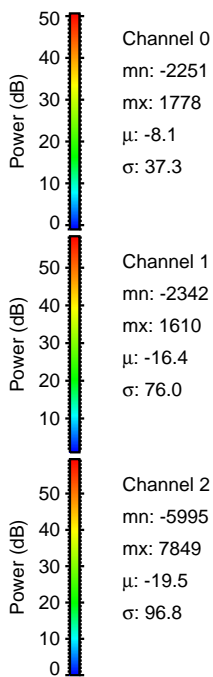
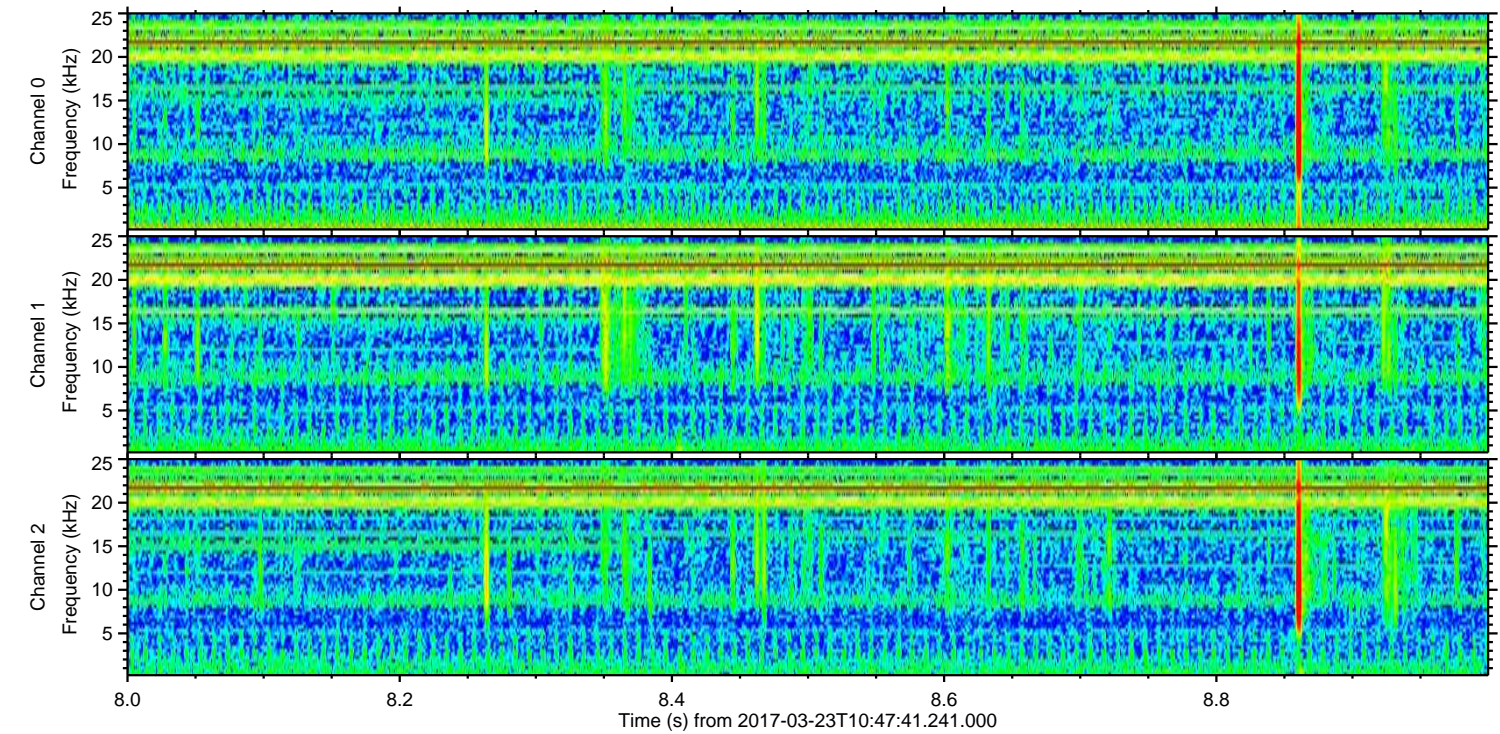
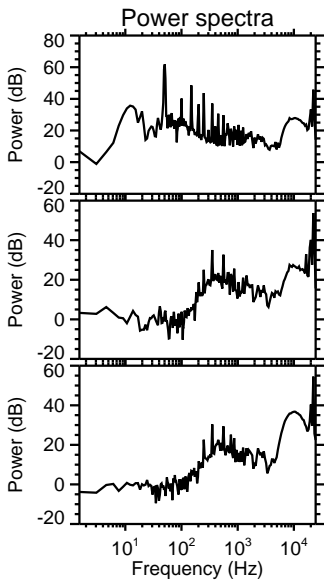
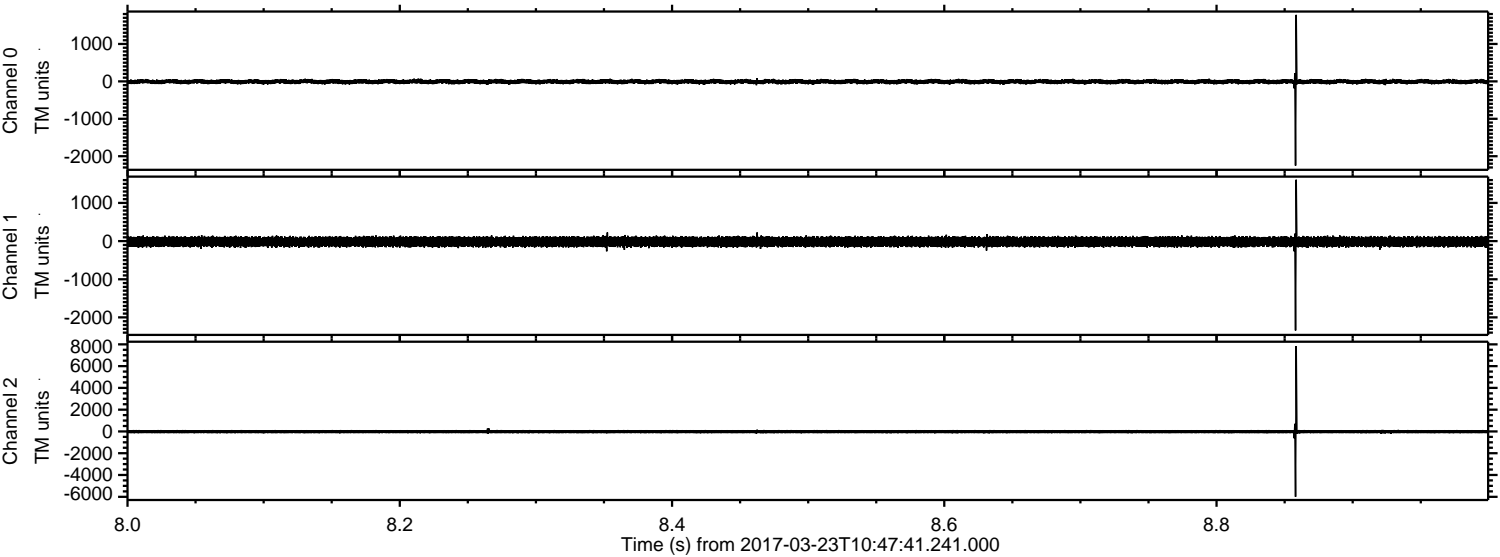
# ELMAVAN 3D WAVEFORMS (Measured data sampled at 50 kHz) 51000 packets of 144 samples from 2017-03-23T10:47:41.241.000.

Processed Thu Mar 23 11:55:44 2017 by ELM ver.2012-10-06 from 001\_\_elm20170323\_104740\_\_dat00.bin





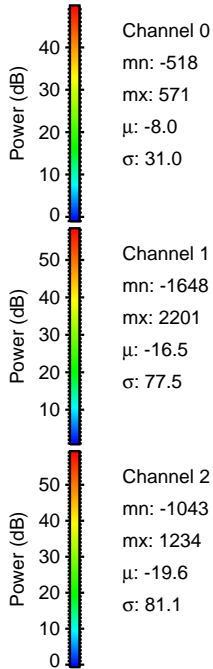
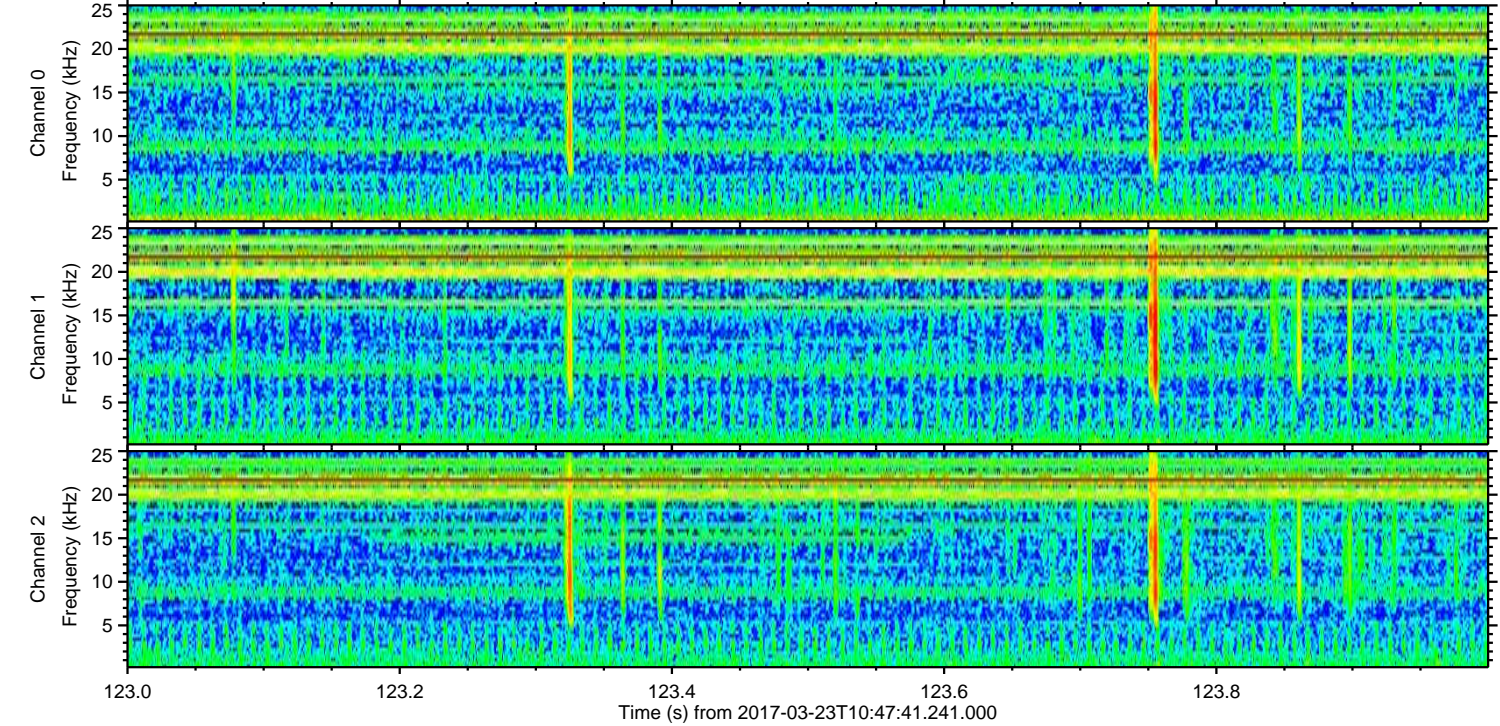
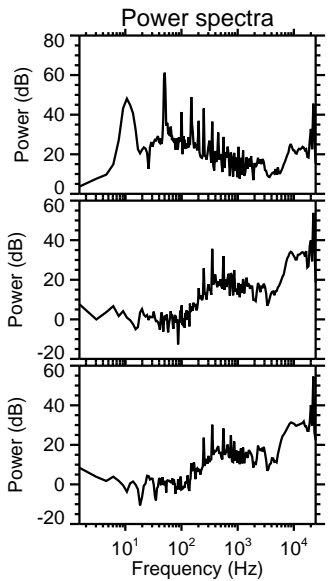
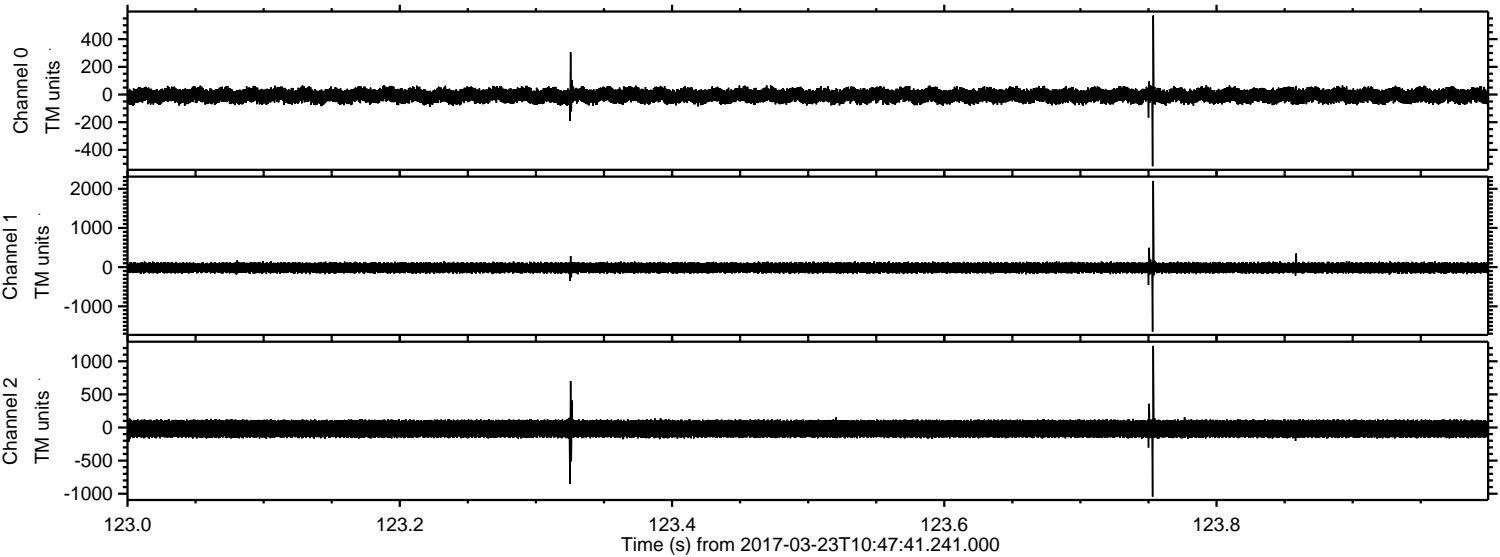
Processed Thu Mar 23 11:56:00 2017 by ELM ver.2012-10-06 from 001\_\_elm20170323\_104740\_\_dat00.bin





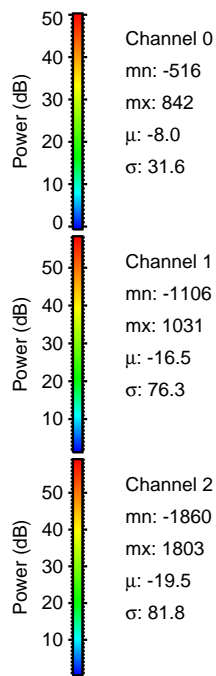
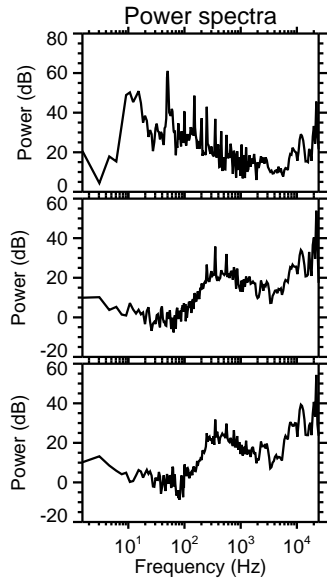
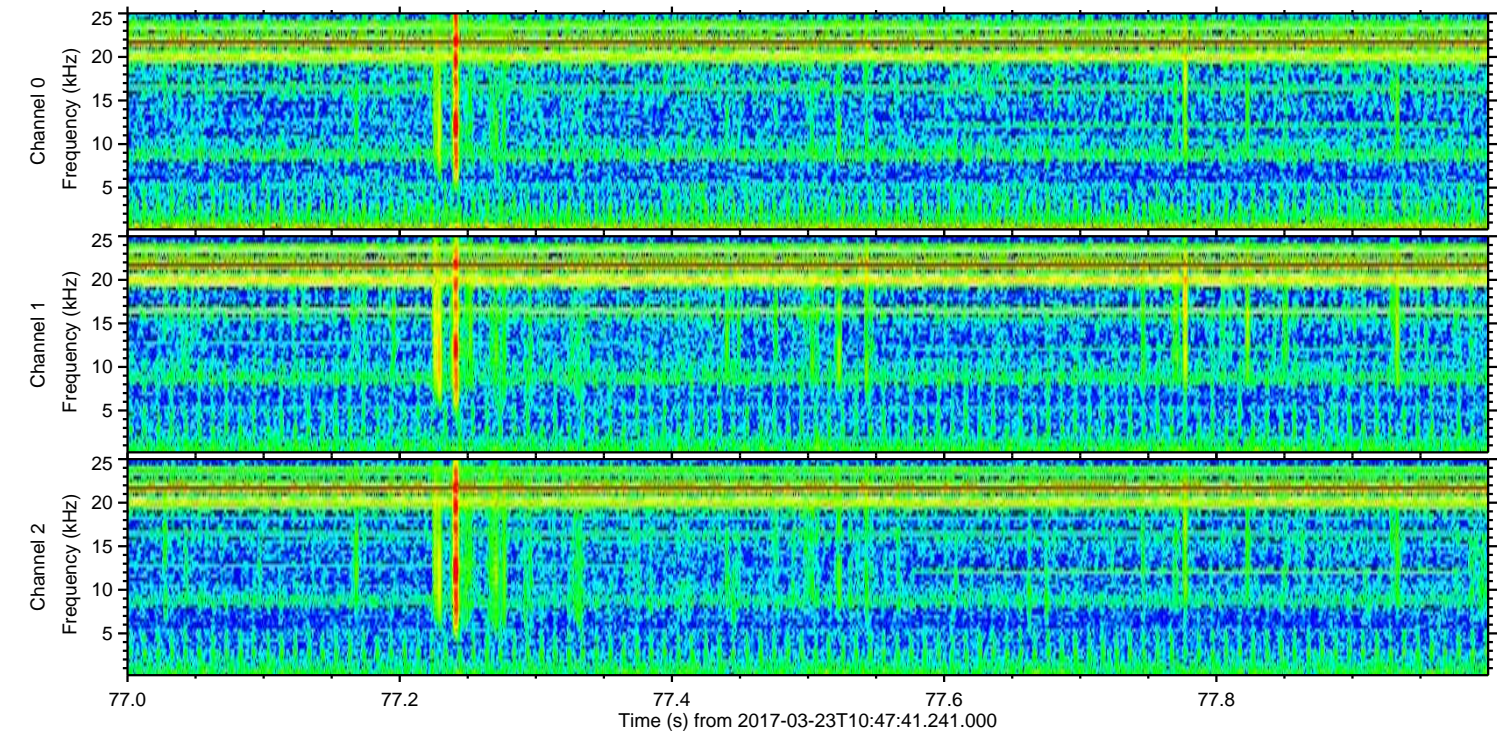
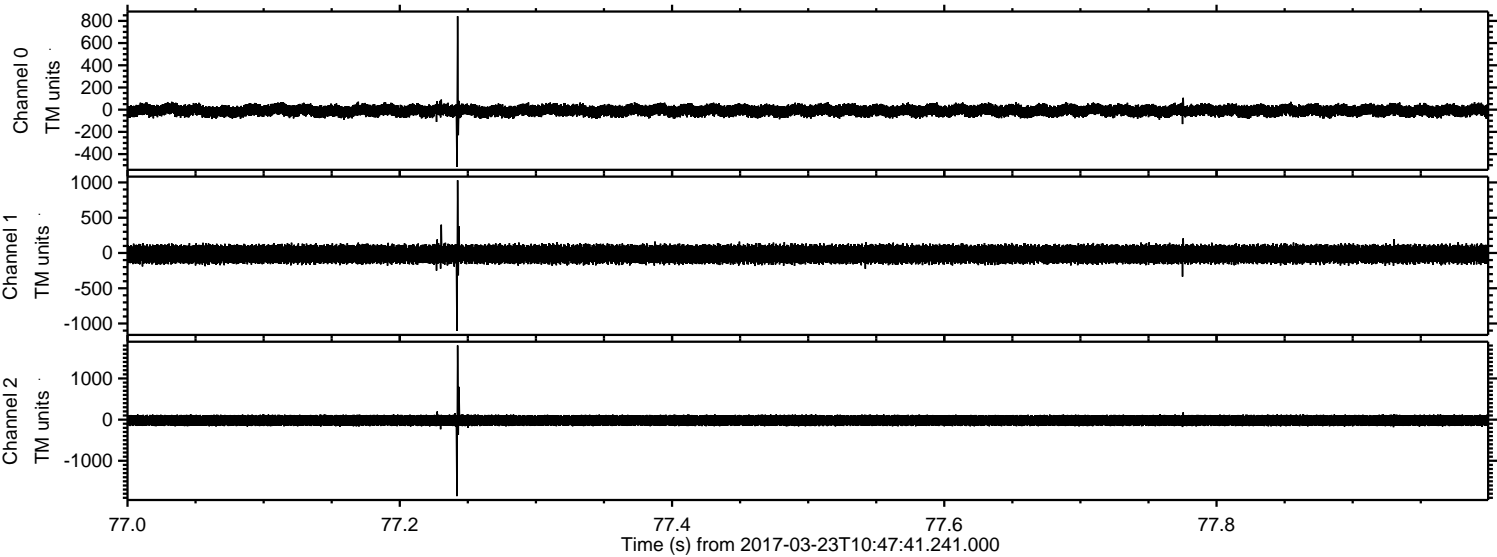
ELMAVAN 3D WAVEFORMS (Measured data sampled at 50 kHz) 51000 packets of 144 samples from 2017-03-23T10:47:41.241.000. Part 124/147

Processed Thu Mar 23 11:56:01 2017 by ELM ver.2012-10-06 from 001\_\_elm20170323\_104740\_\_dat00.bin





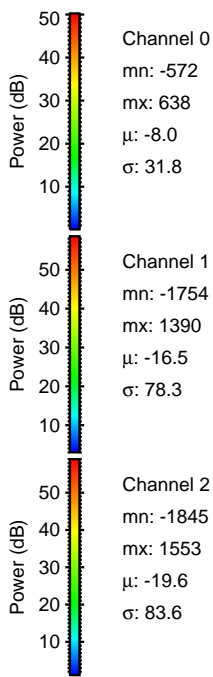
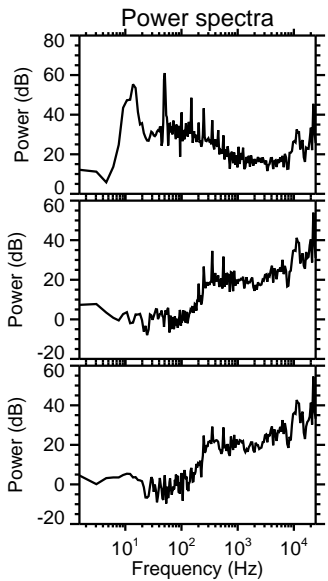
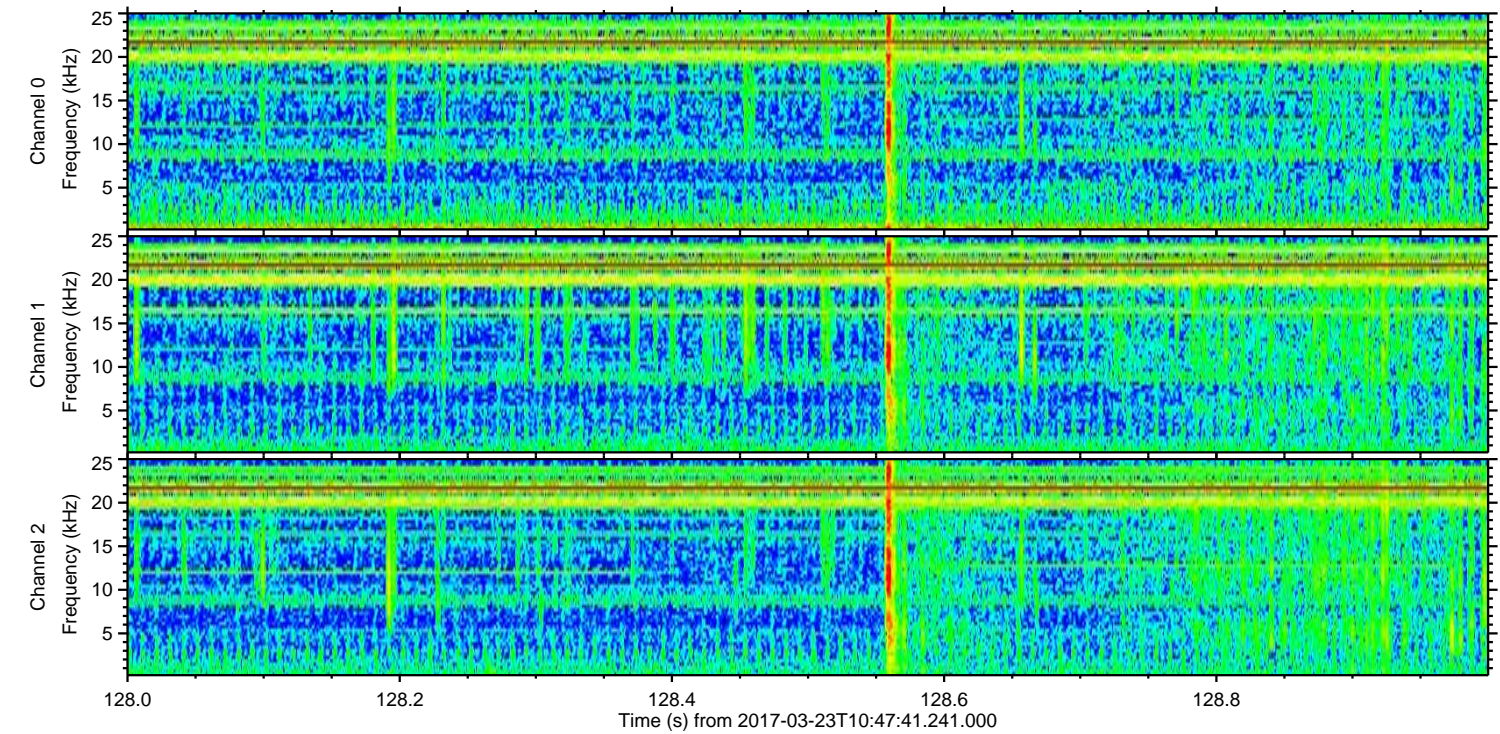
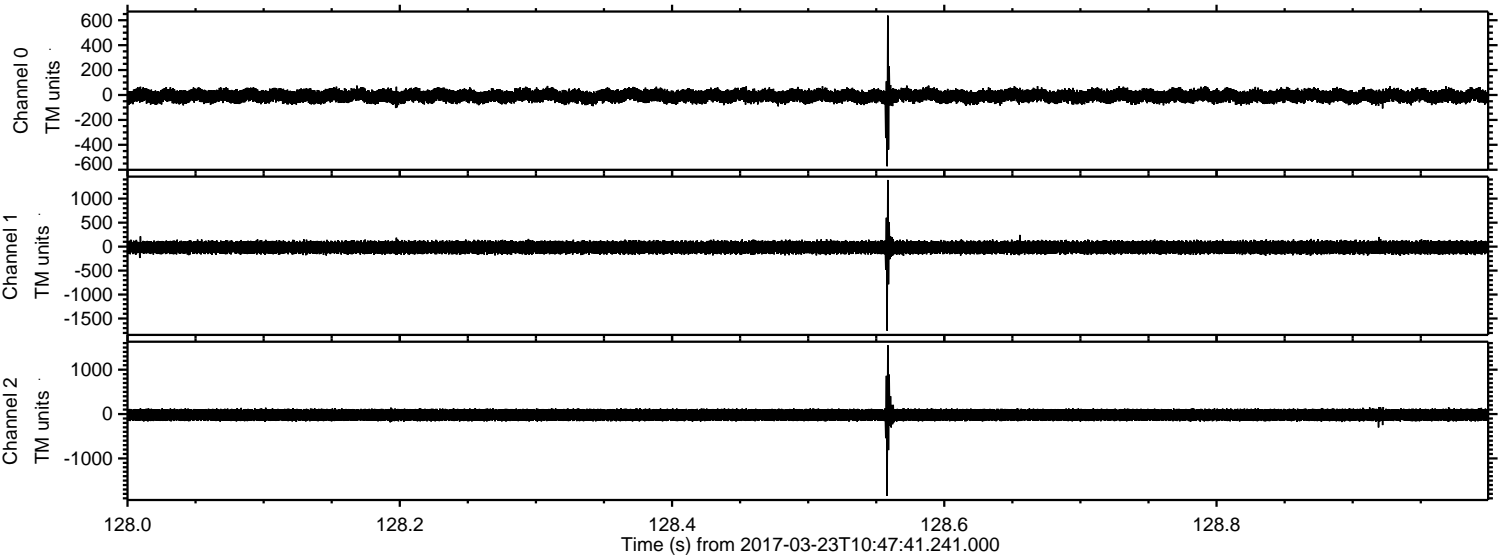
Processed Thu Mar 23 11:56:02 2017 by ELM ver.2012-10-06 from 001\_\_elm20170323\_104740\_\_dat00.bin





ELMAVAN 3D WAVEFORMS (Measured data sampled at 50 kHz) 51000 packets of 144 samples from 2017-03-23T10:47:41.241.000. Part 129/147

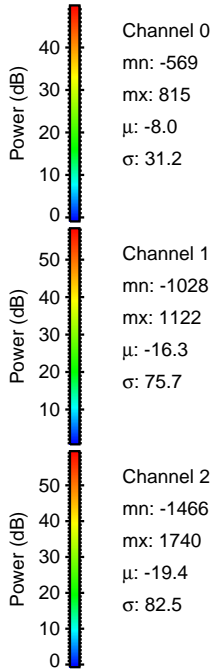
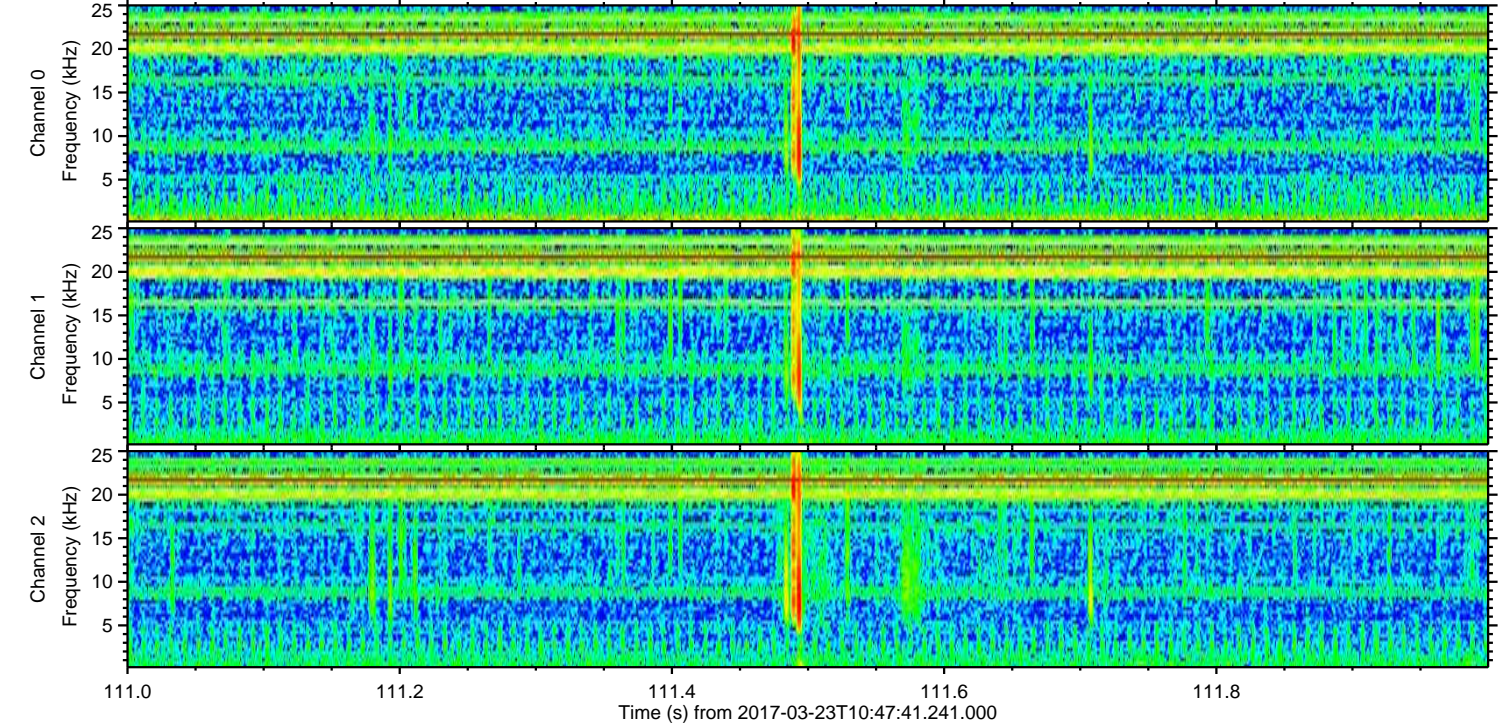
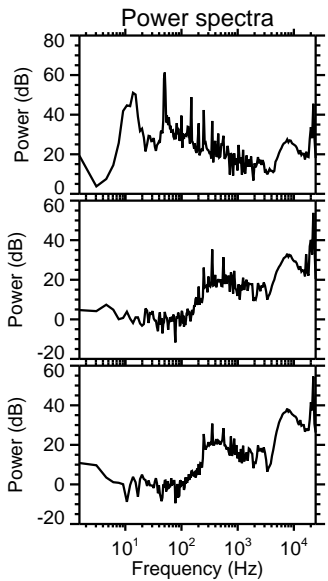
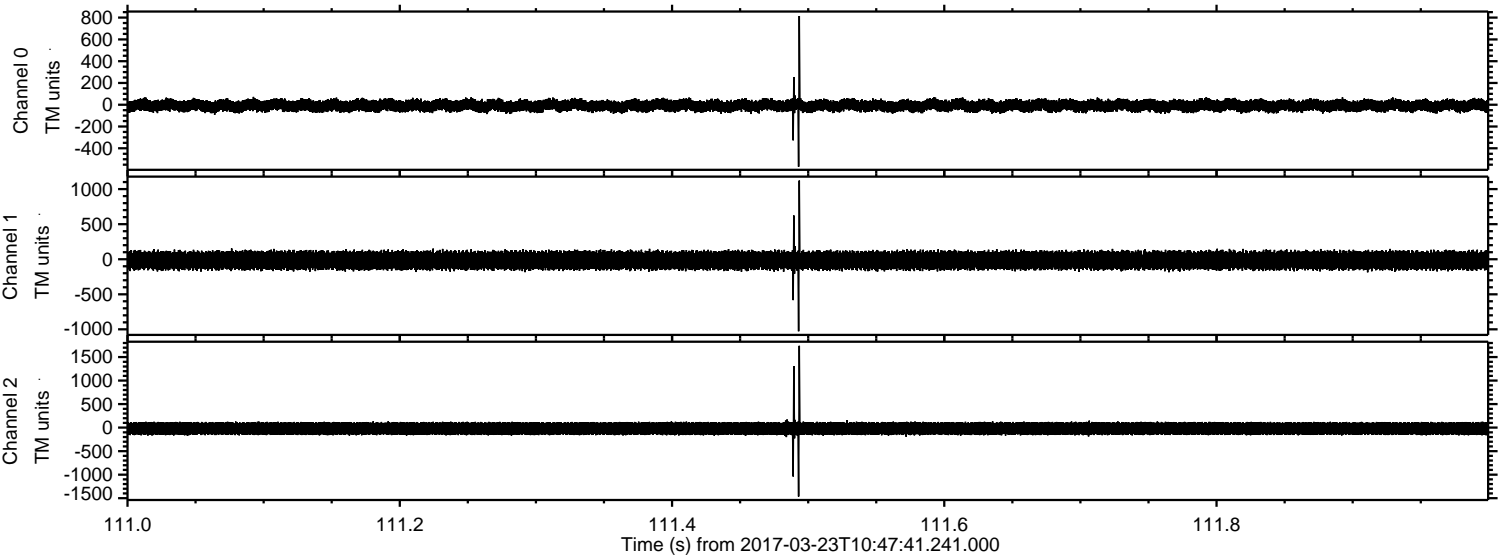
Processed Thu Mar 23 11:56:03 2017 by ELM ver.2012-10-06 from 001\_\_elm20170323\_104740\_\_dat00.bin





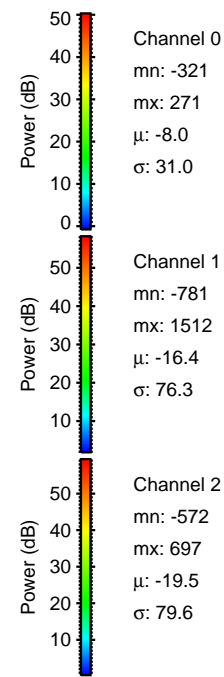
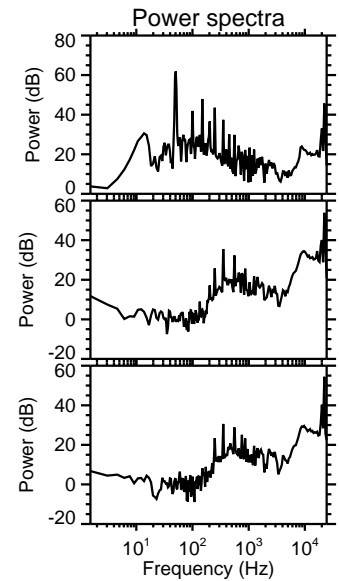
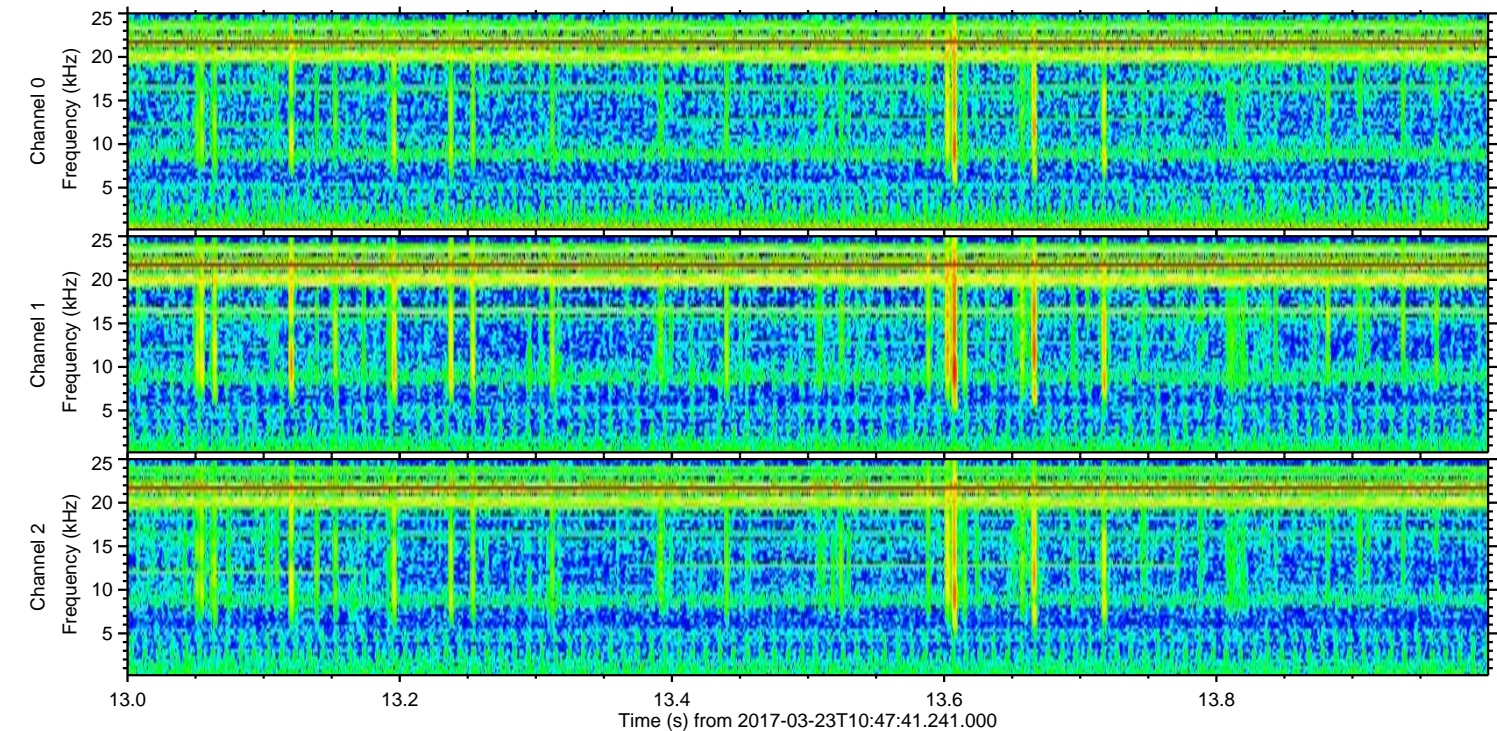
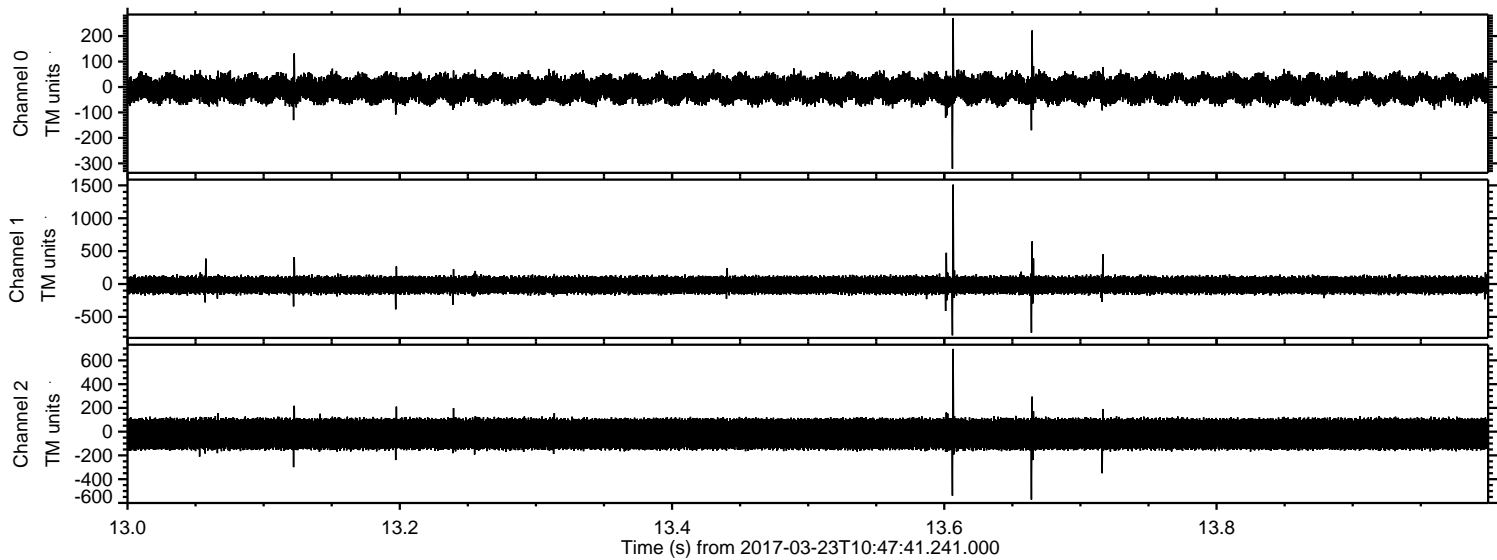
ELMAVAN 3D WAVEFORMS (Measured data sampled at 50 kHz) 51000 packets of 144 samples from 2017-03-23T10:47:41.241.000. Part 112/147

Processed Thu Mar 23 11:56:04 2017 by ELM ver.2012-10-06 from 001\_\_elm20170323\_104740\_\_dat00.bin



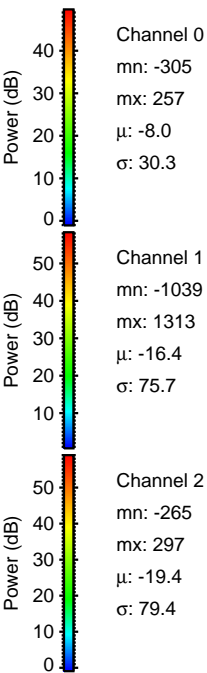
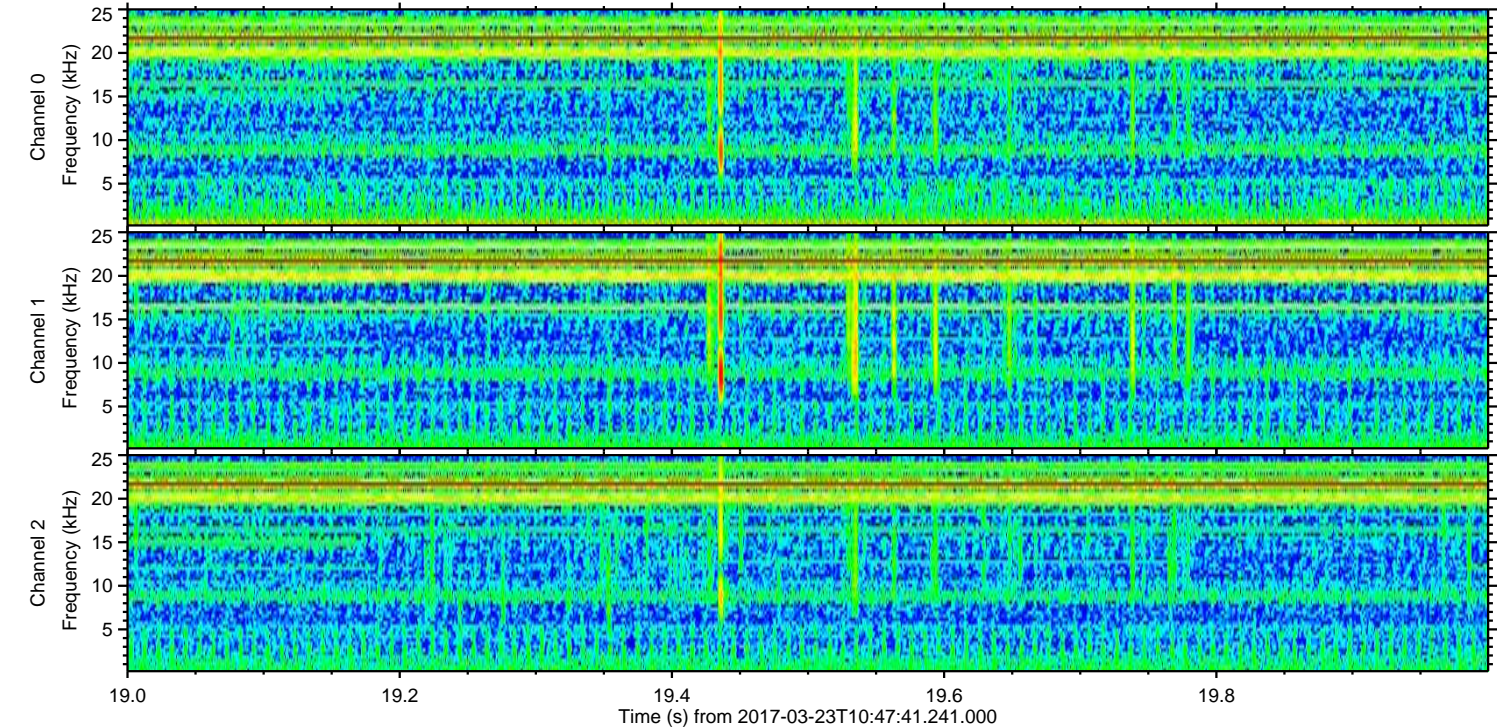
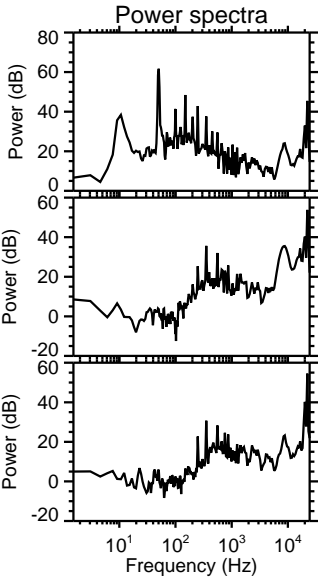
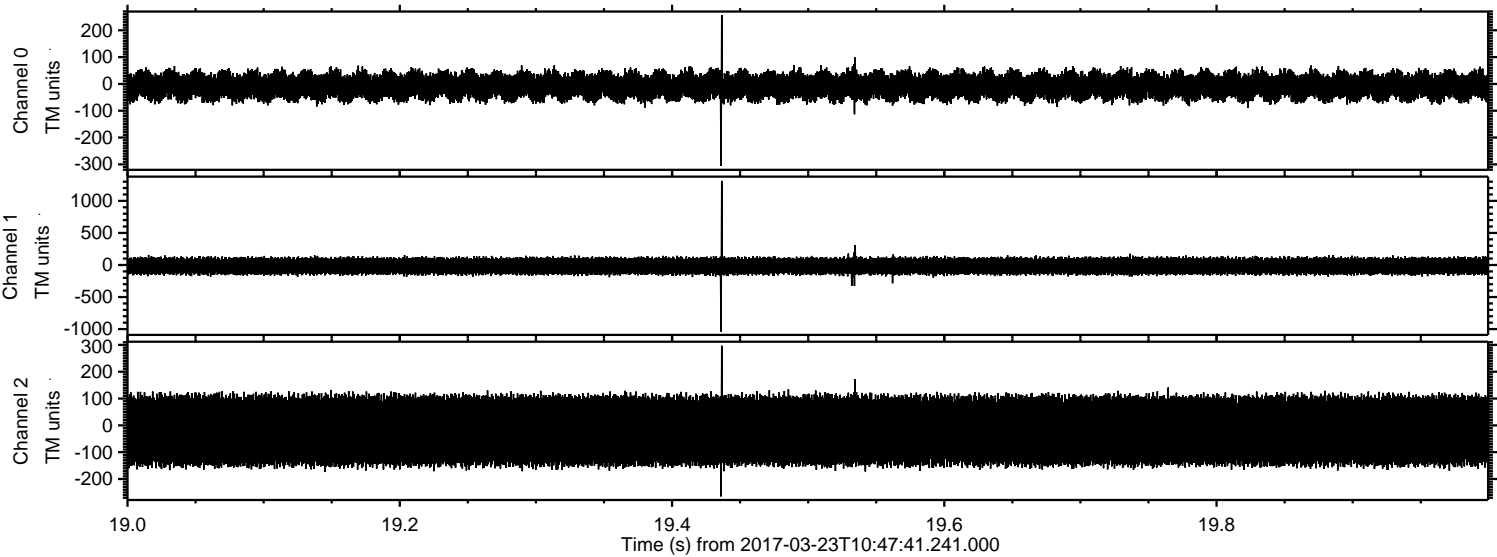


Processed Thu Mar 23 11:56:05 2017 by ELM ver.2012-10-06 from 001\_\_elm20170323\_104740\_\_dat00.bin





Processed Thu Mar 23 11:56:06 2017 by ELM ver.2012-10-06 from 001\_\_elm20170323\_104740\_\_dat00.bin



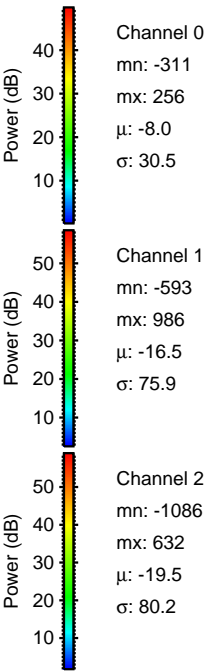
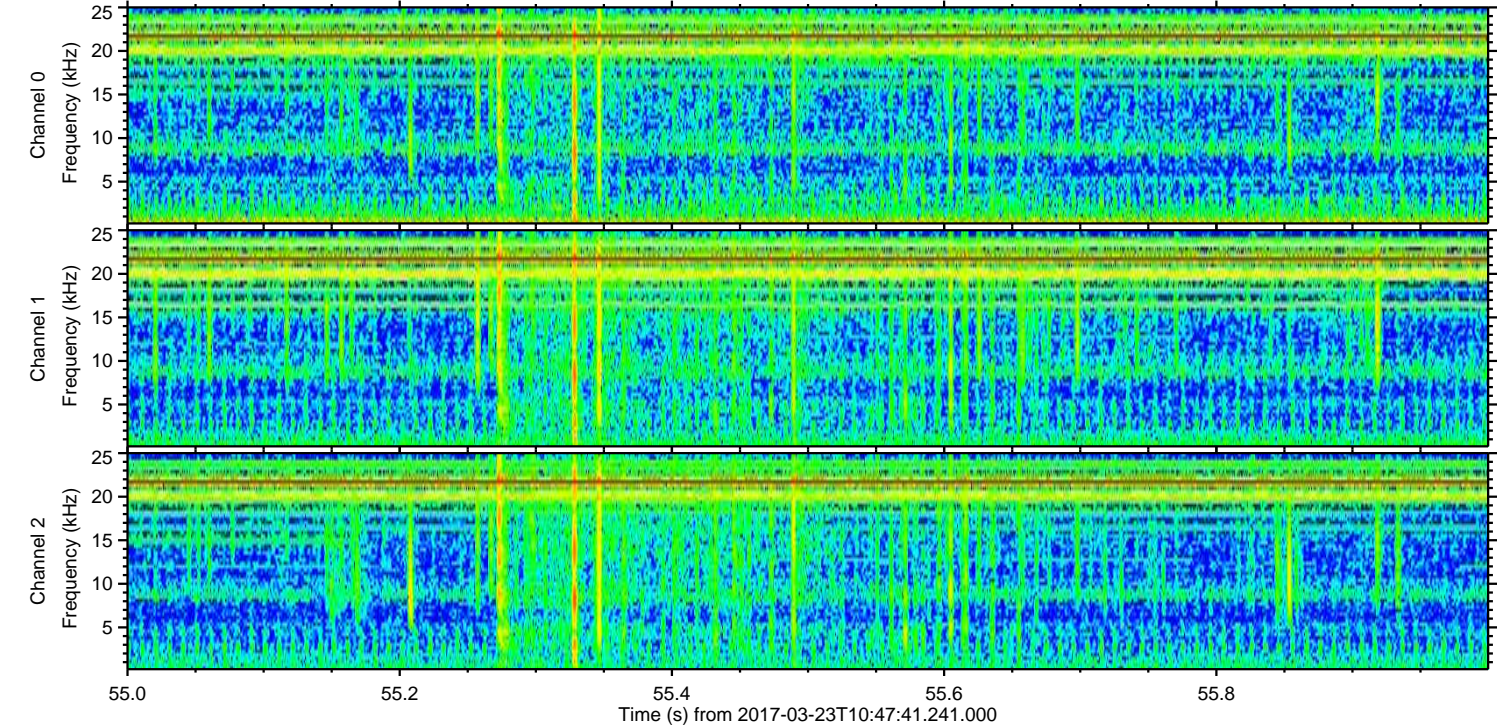
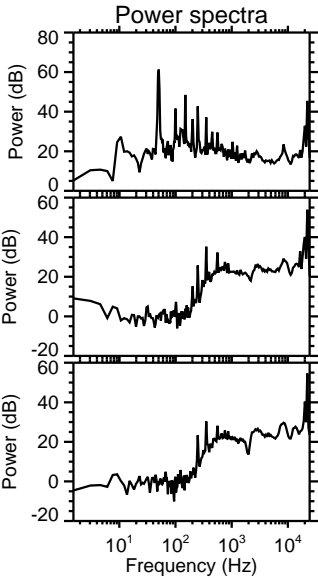
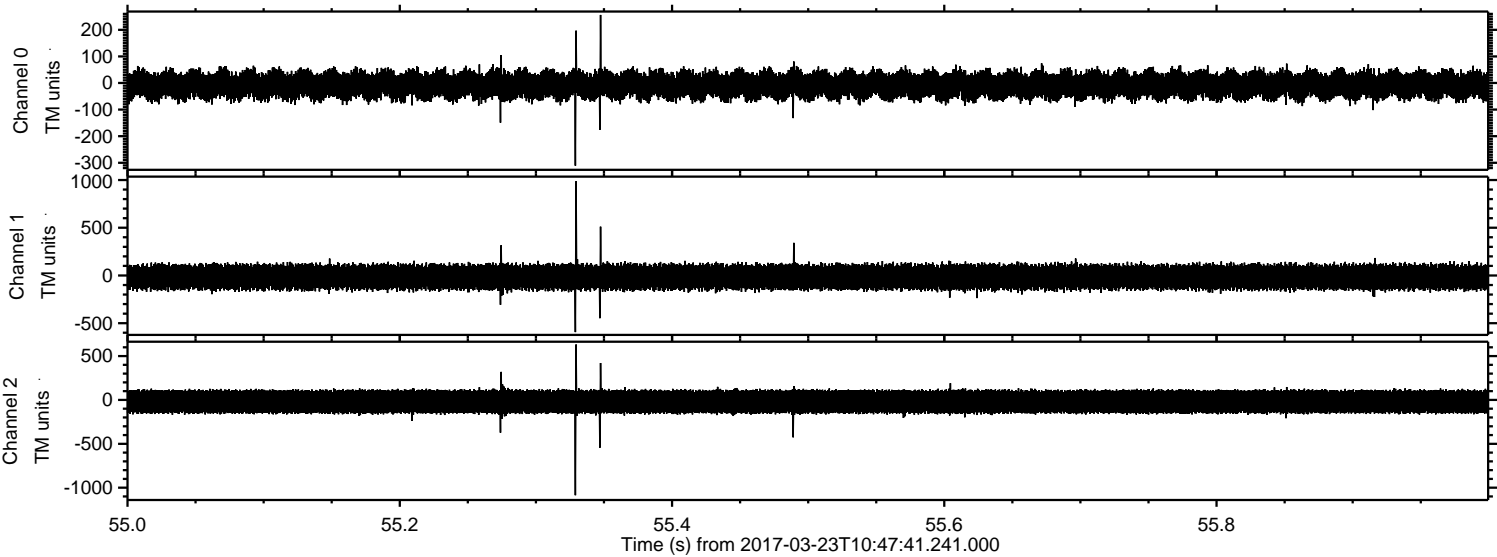
Channel 0  
mn: -305  
mx: 257  
 $\mu$ : -8.0  
 $\sigma$ : 30.3

Channel 1  
mn: -1039  
mx: 1313  
 $\mu$ : -16.4  
 $\sigma$ : 75.7

Channel 2  
mn: -265  
mx: 297  
 $\mu$ : -19.4  
 $\sigma$ : 79.4

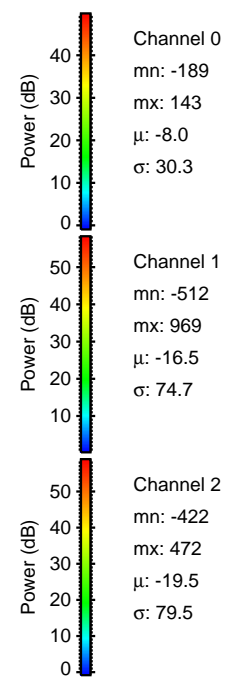
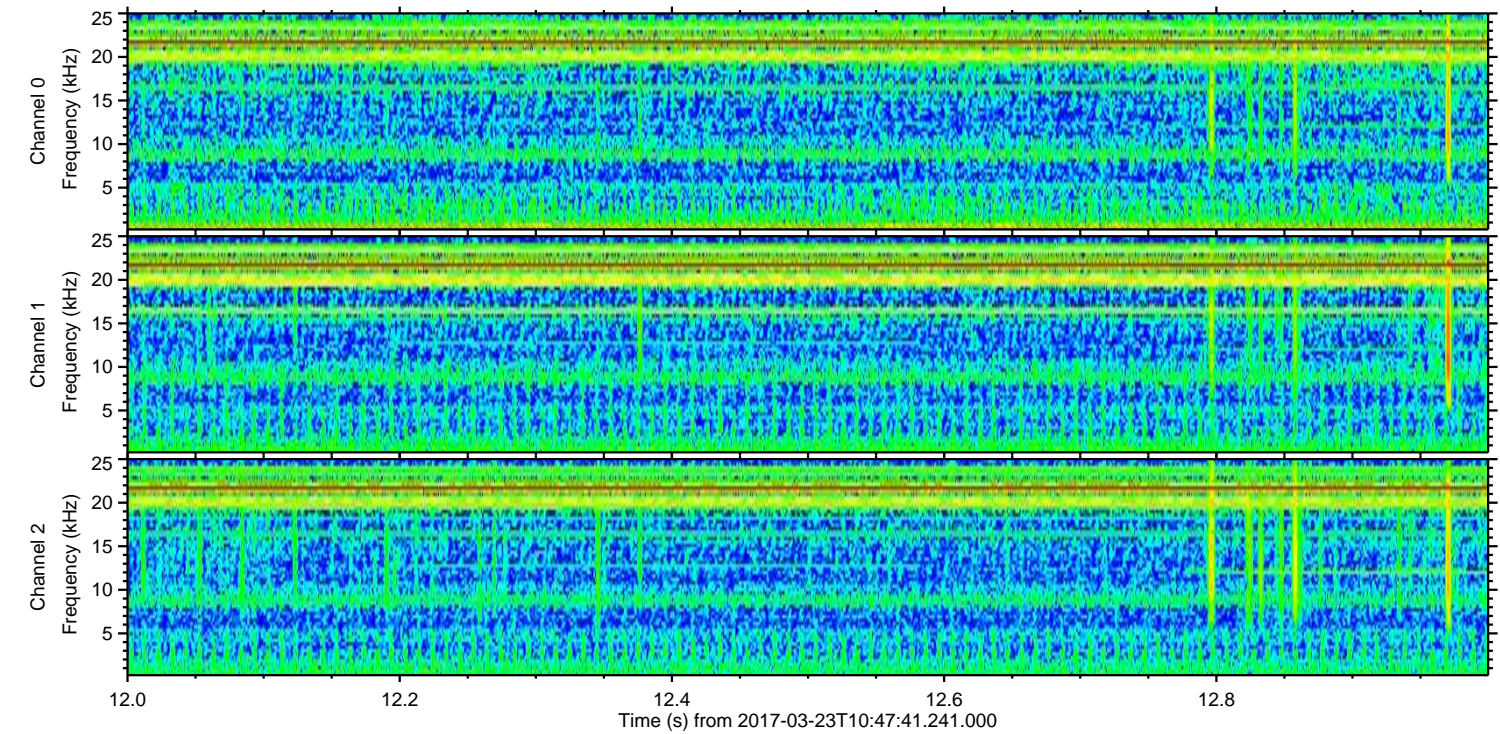
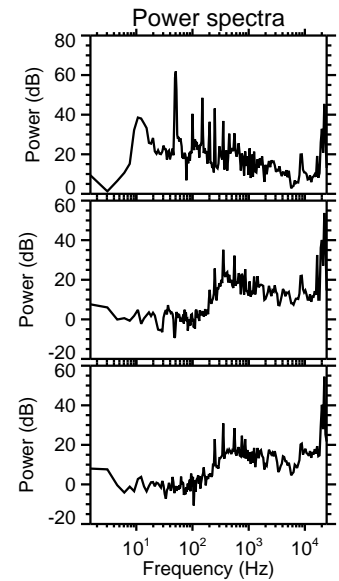
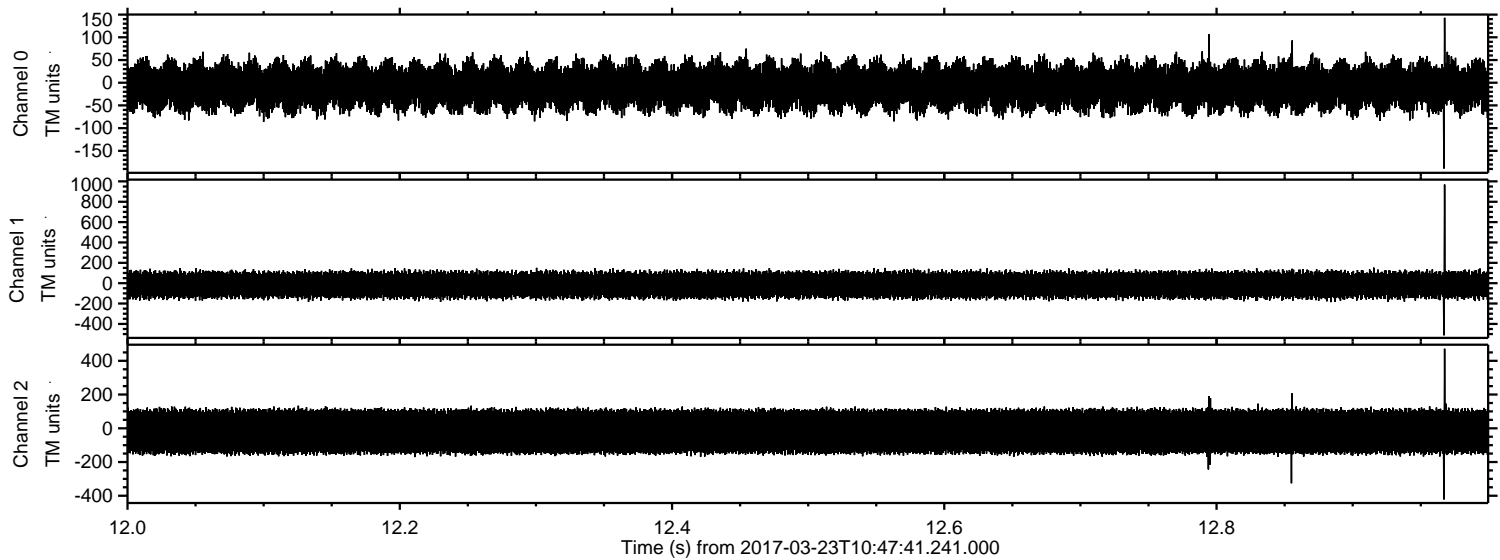


Processed Thu Mar 23 11:56:07 2017 by ELM ver.2012-10-06 from 001\_\_elm20170323\_104740\_\_dat00.bin





Processed Thu Mar 23 11:56:08 2017 by ELM ver.2012-10-06 from 001\_\_elm20170323\_104740\_\_dat00.bin



Channel 0  
mn: -189  
mx: 143  
 $\mu$ : -8.0  
 $\sigma$ : 30.3

Channel 1  
mn: -512  
mx: 969  
 $\mu$ : -16.5  
 $\sigma$ : 74.7

Channel 2  
mn: -422  
mx: 472  
 $\mu$ : -19.5  
 $\sigma$ : 79.5



Processed Thu Mar 23 11:56:10 2017 by ELM ver.2012-10-06 from 001\_\_elm20170323\_104740\_\_dat00.bin

