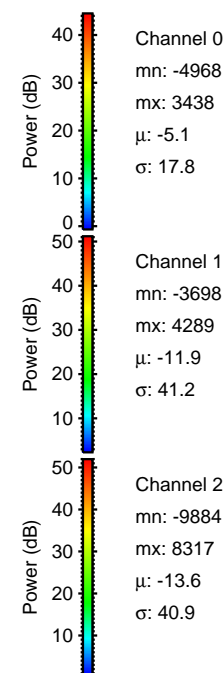
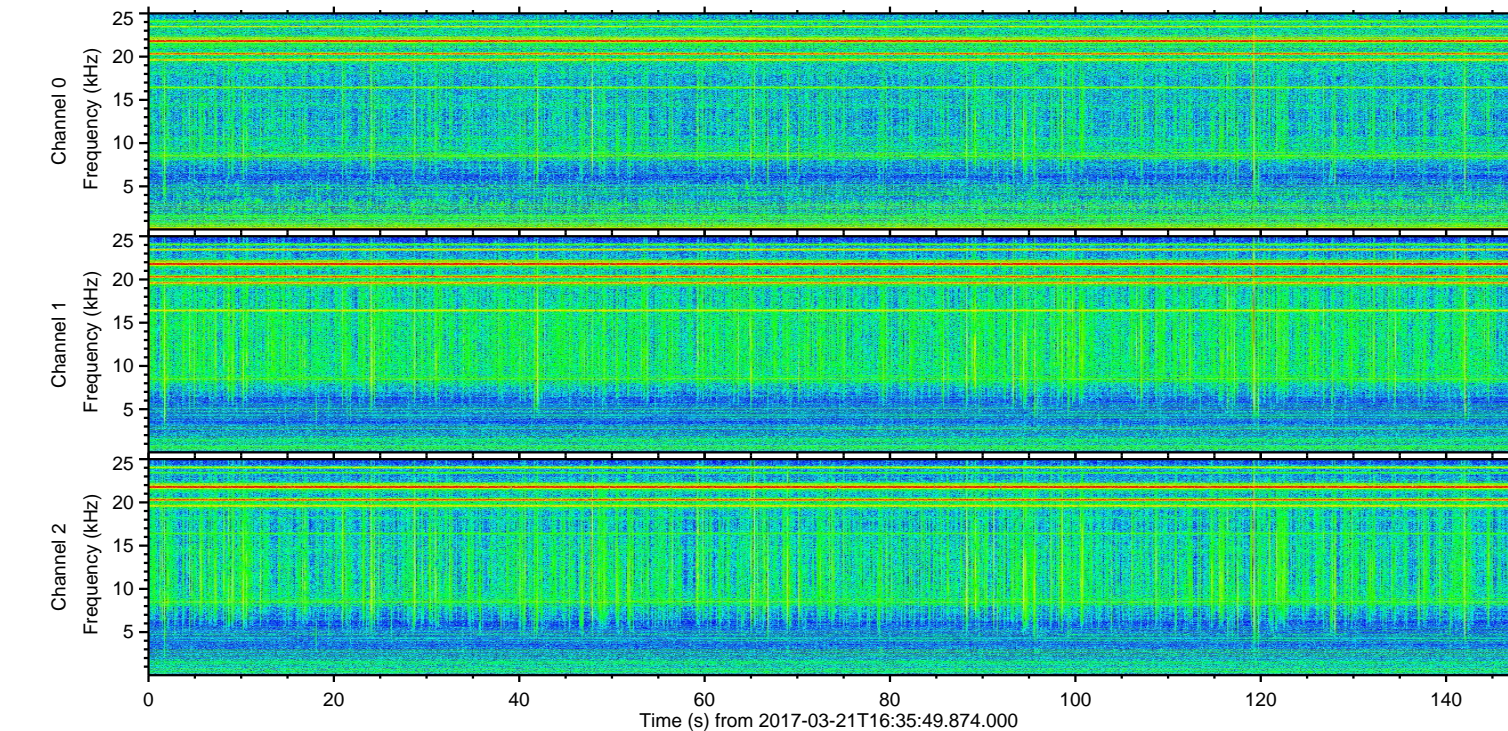
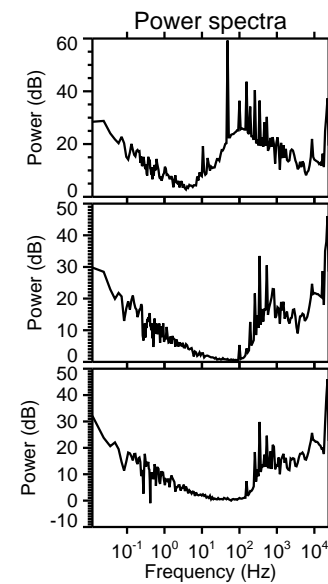
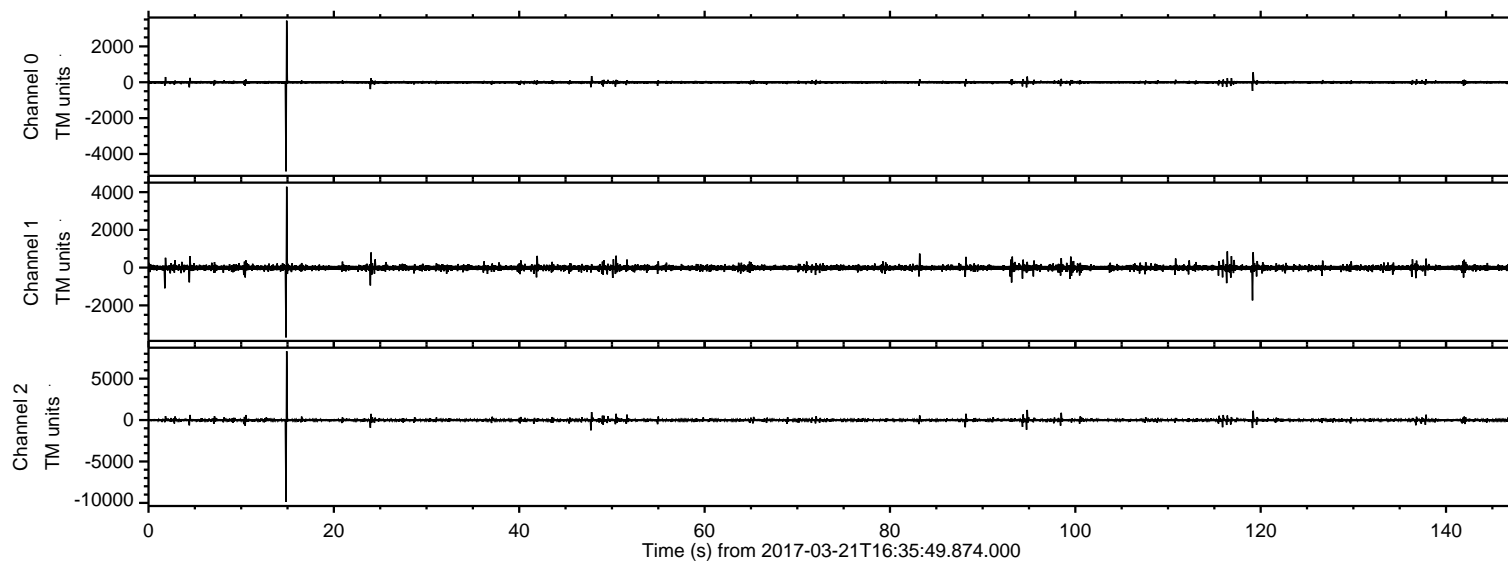
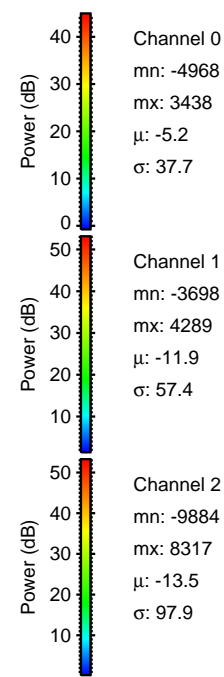
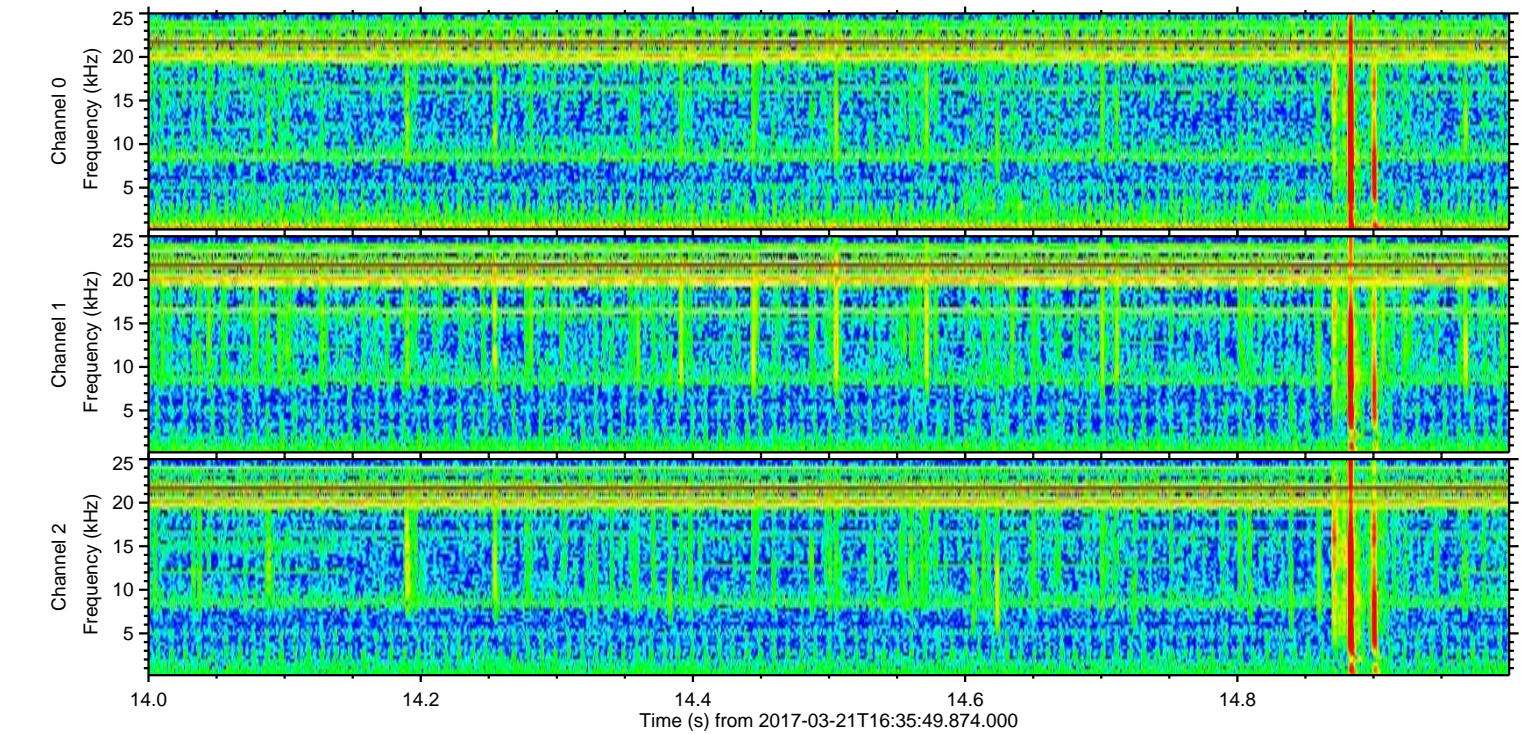
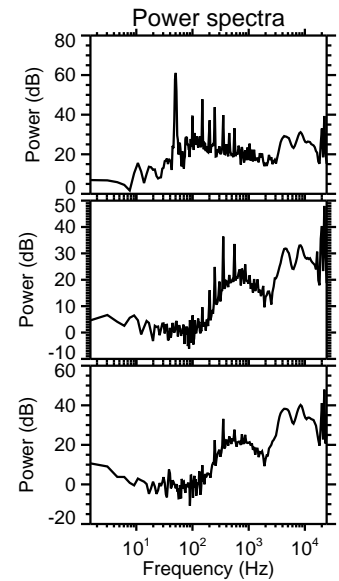
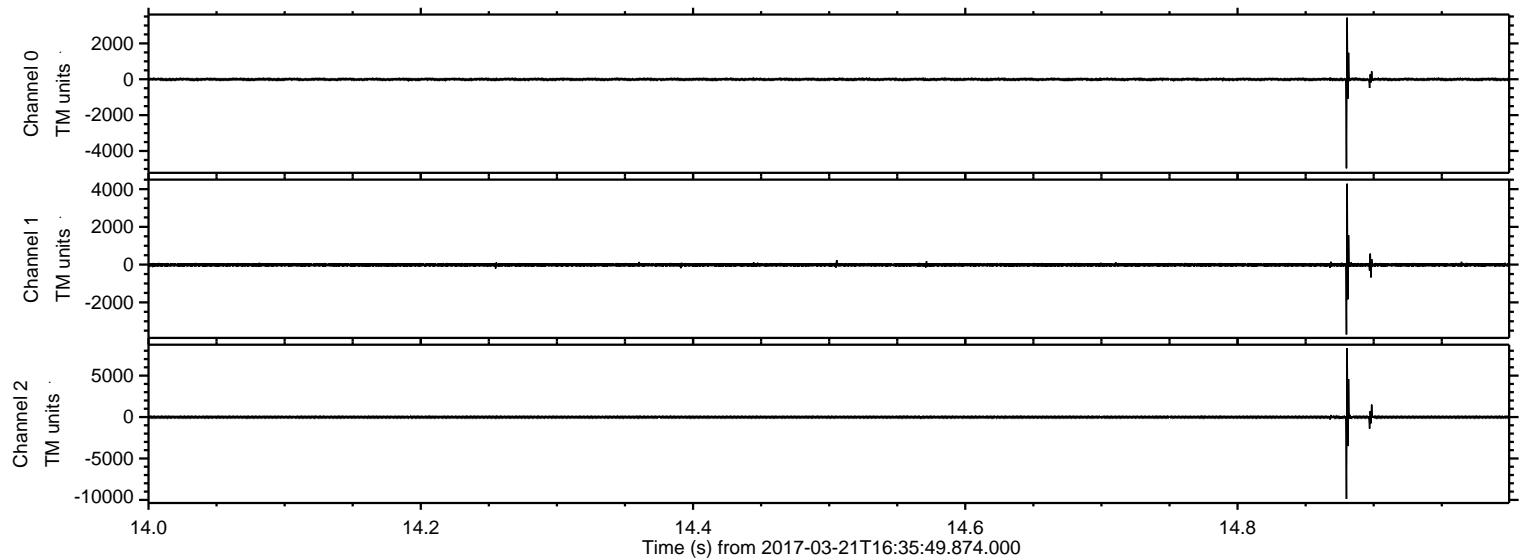


ELMAVAN 3D WAVEFORMS (Measured data sampled at 50 kHz) 51000 packets of 144 samples from 2017-03-21T16:35:49.874.000.

Processed Tue Mar 21 17:43:55 2017 by ELM ver.2012-10-06 from 001__elm20170321_163548__dat00.bin

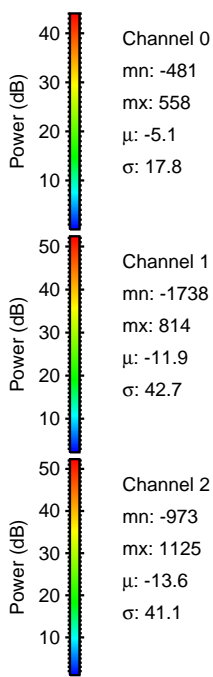
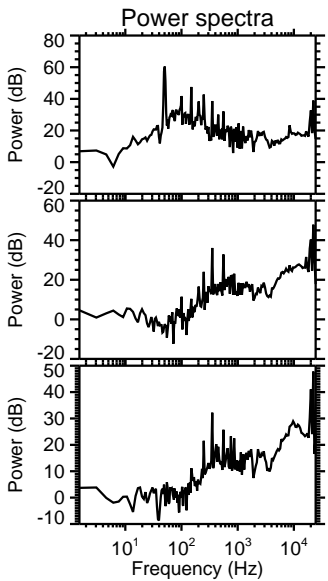
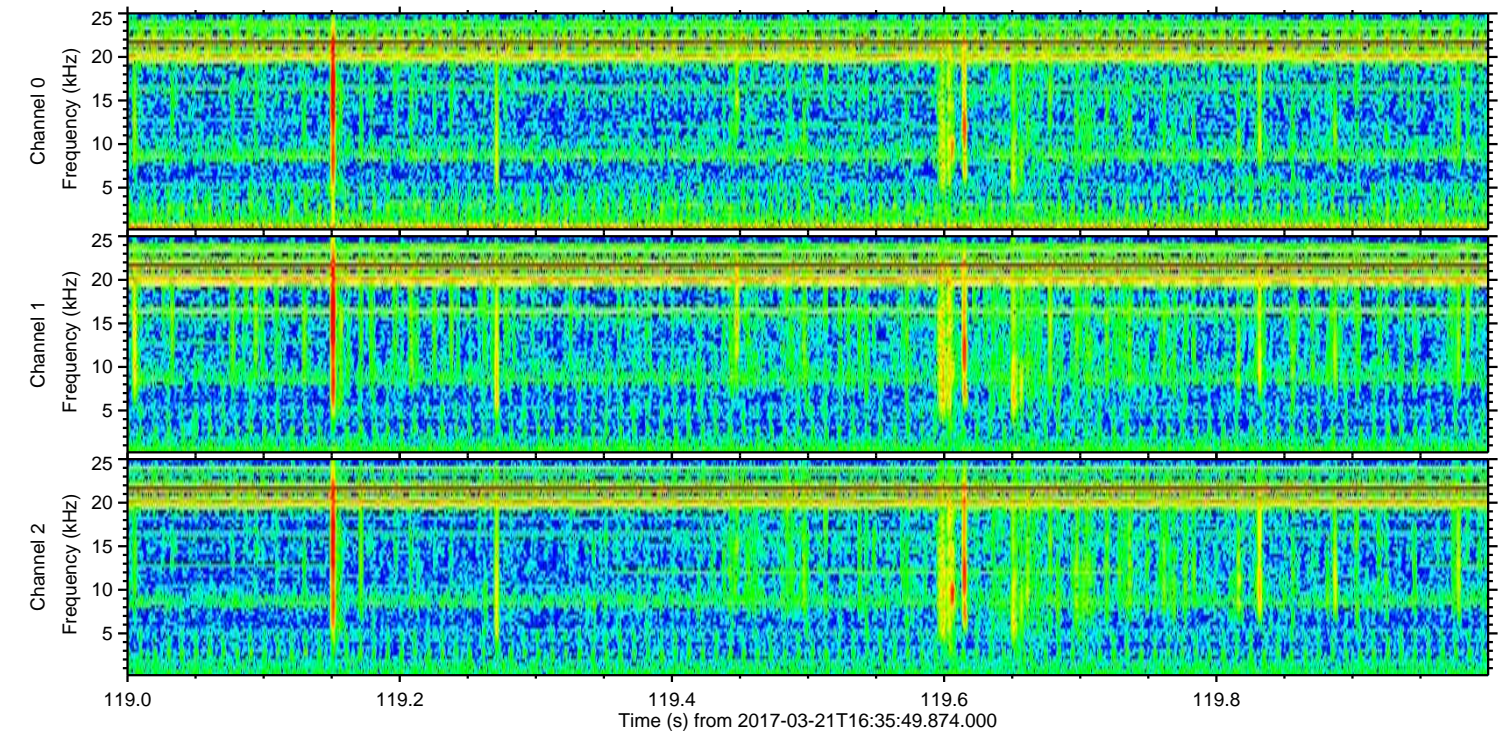
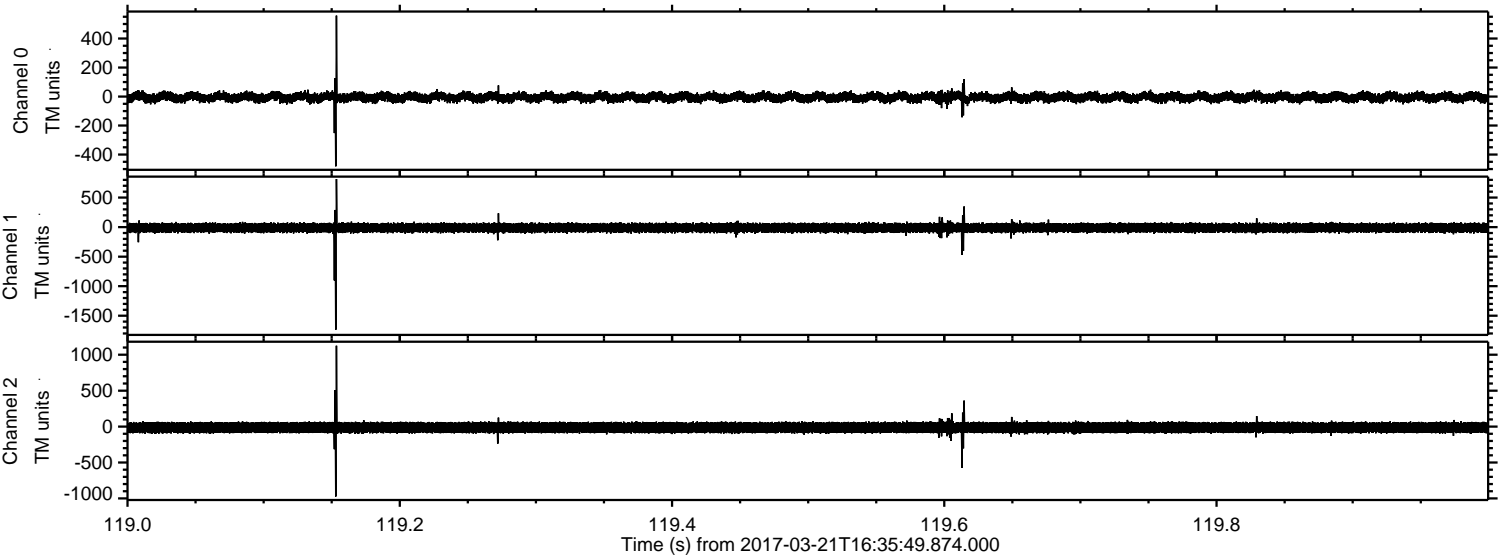


Processed Tue Mar 21 17:44:07 2017 by ELM ver.2012-10-06 from 001__elm20170321_163548__dat00.bin

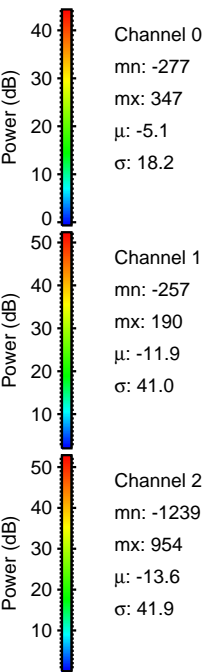
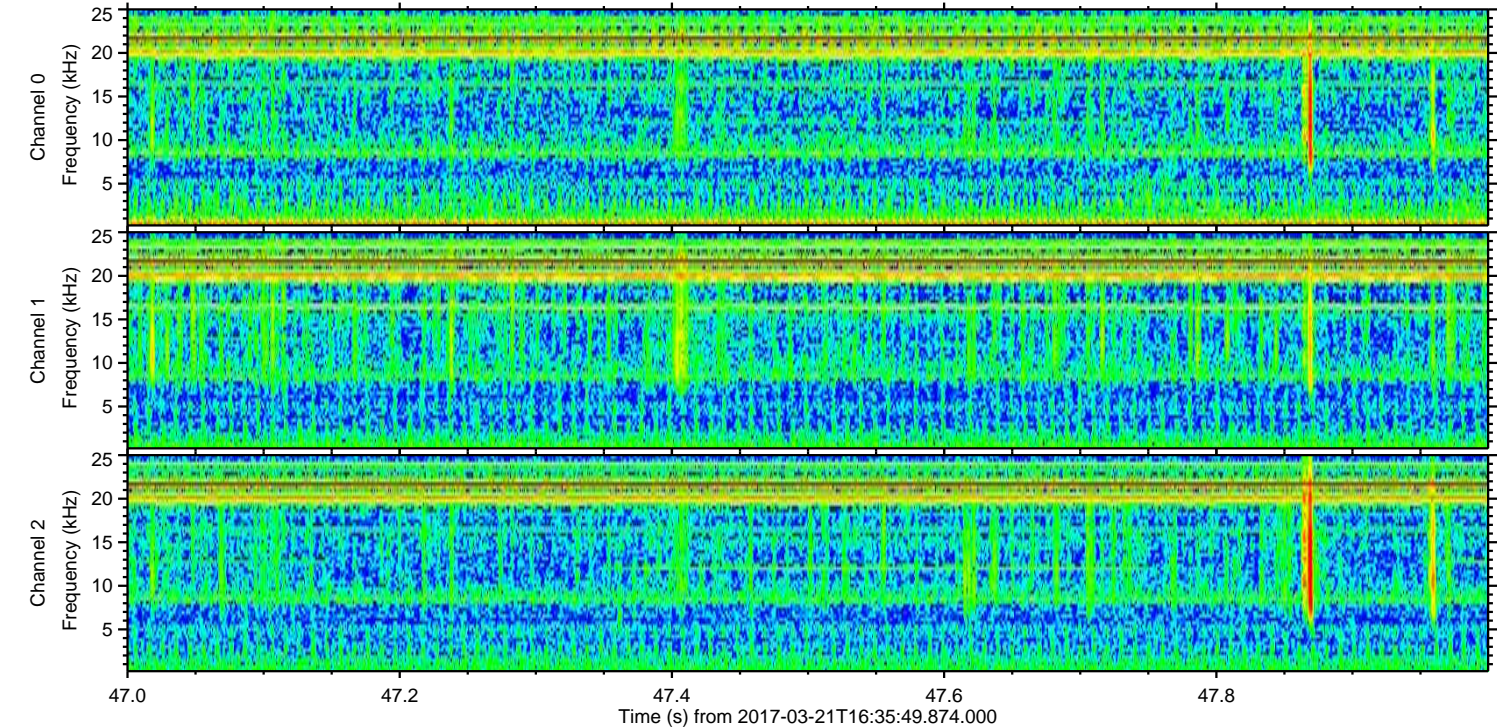
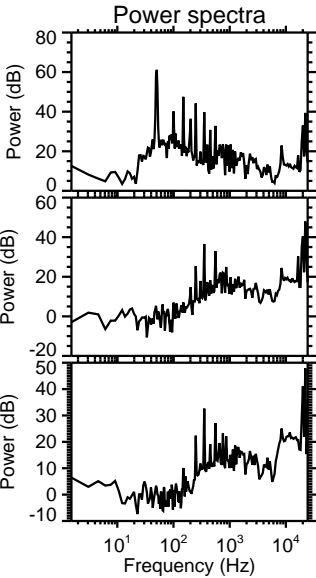
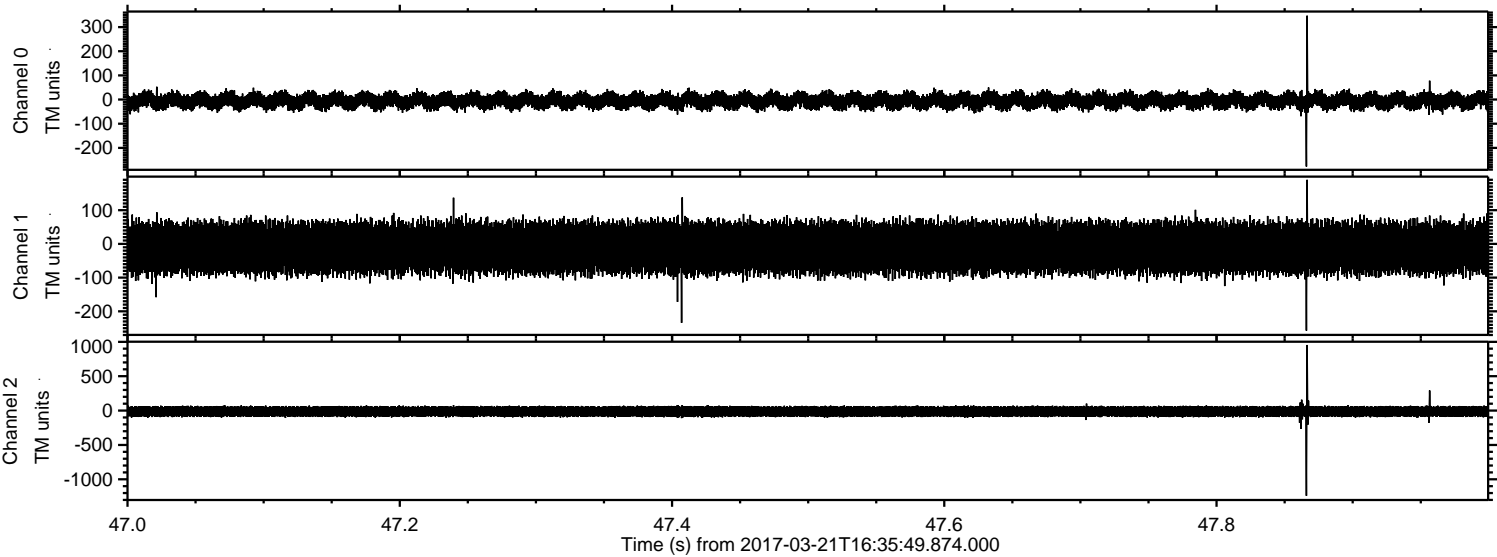


ELMAVAN 3D WAVEFORMS (Measured data sampled at 50 kHz) 51000 packets of 144 samples from 2017-03-21T16:35:49.874.000. Part 120/147

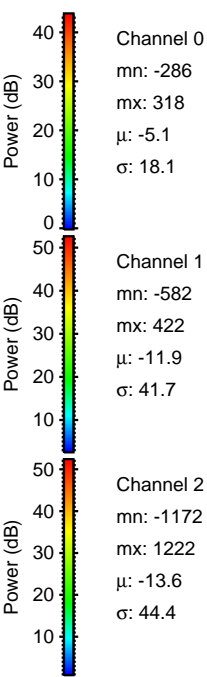
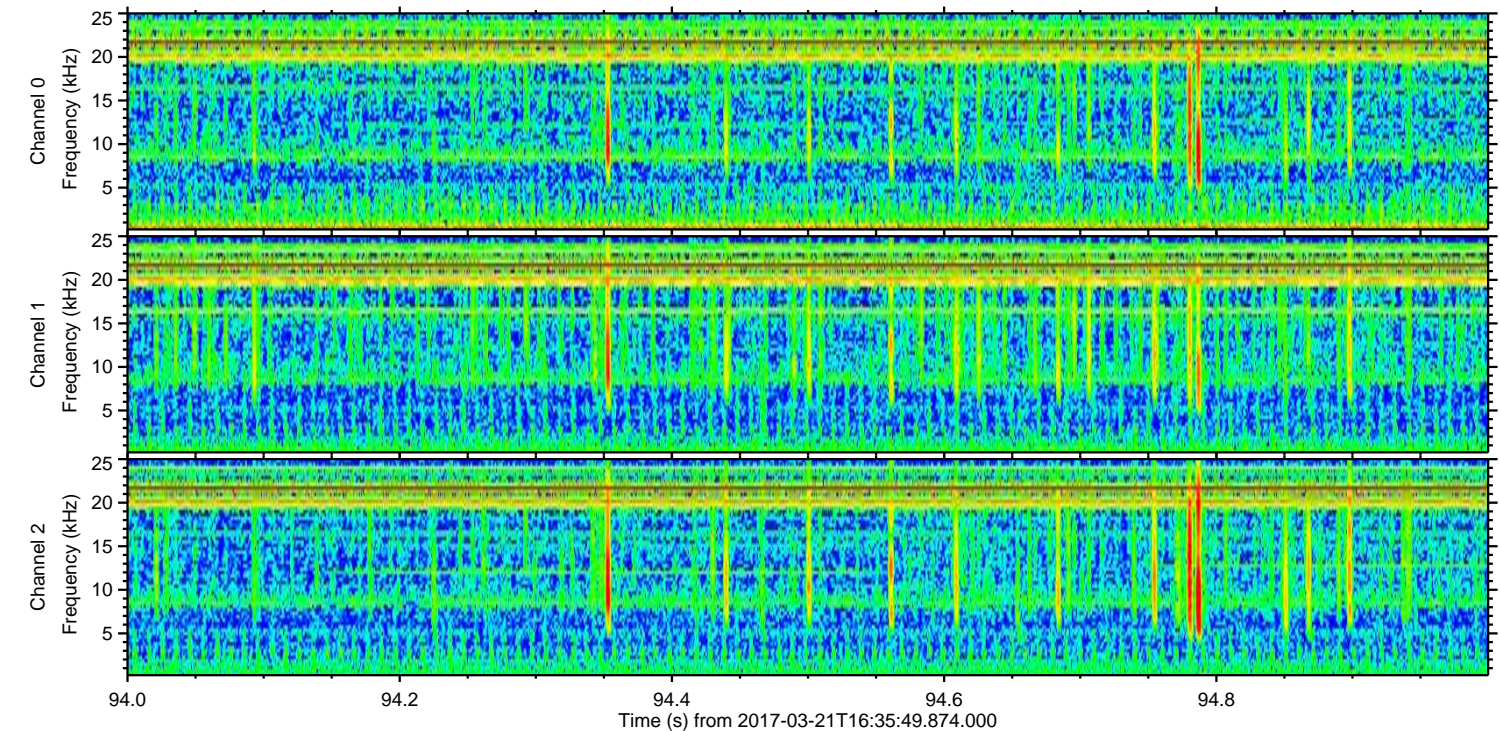
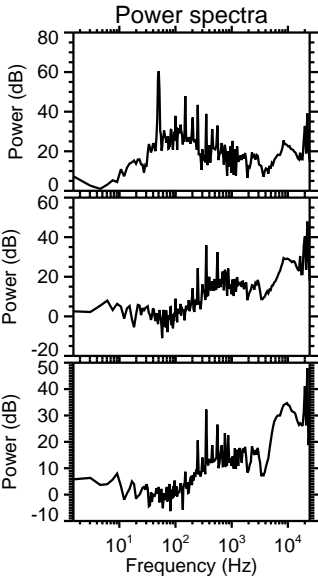
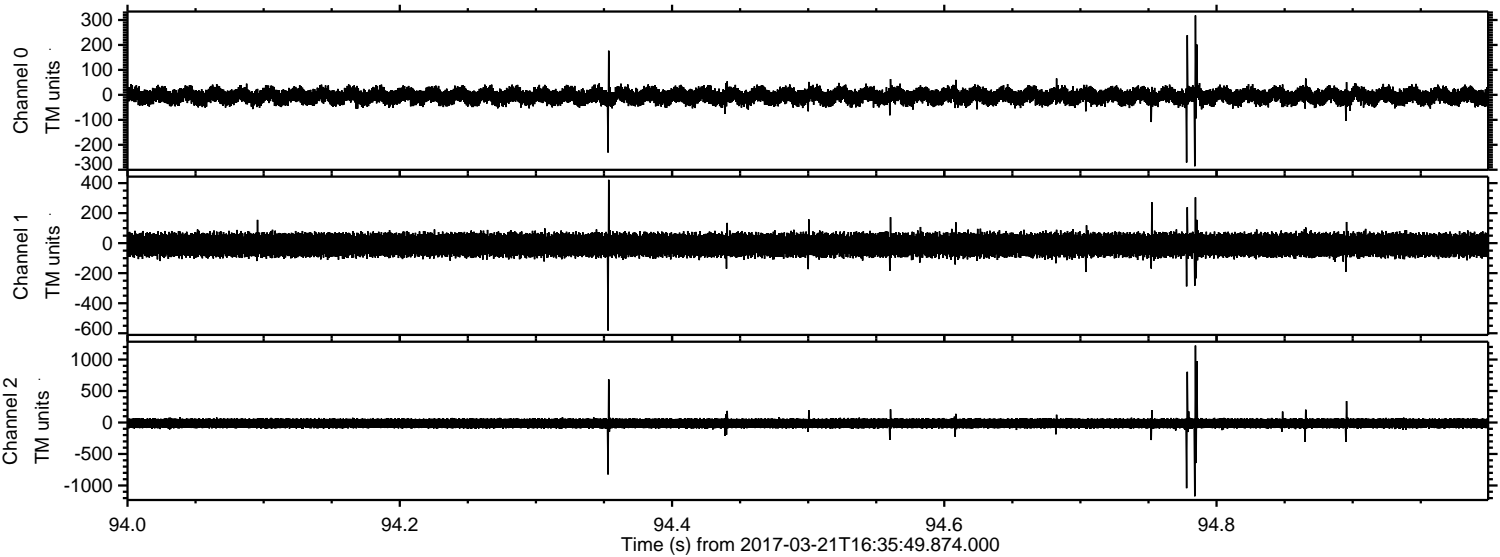
Processed Tue Mar 21 17:44:08 2017 by ELM ver.2012-10-06 from 001__elm20170321_163548__dat00.bin



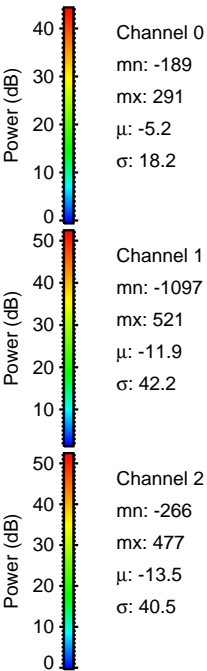
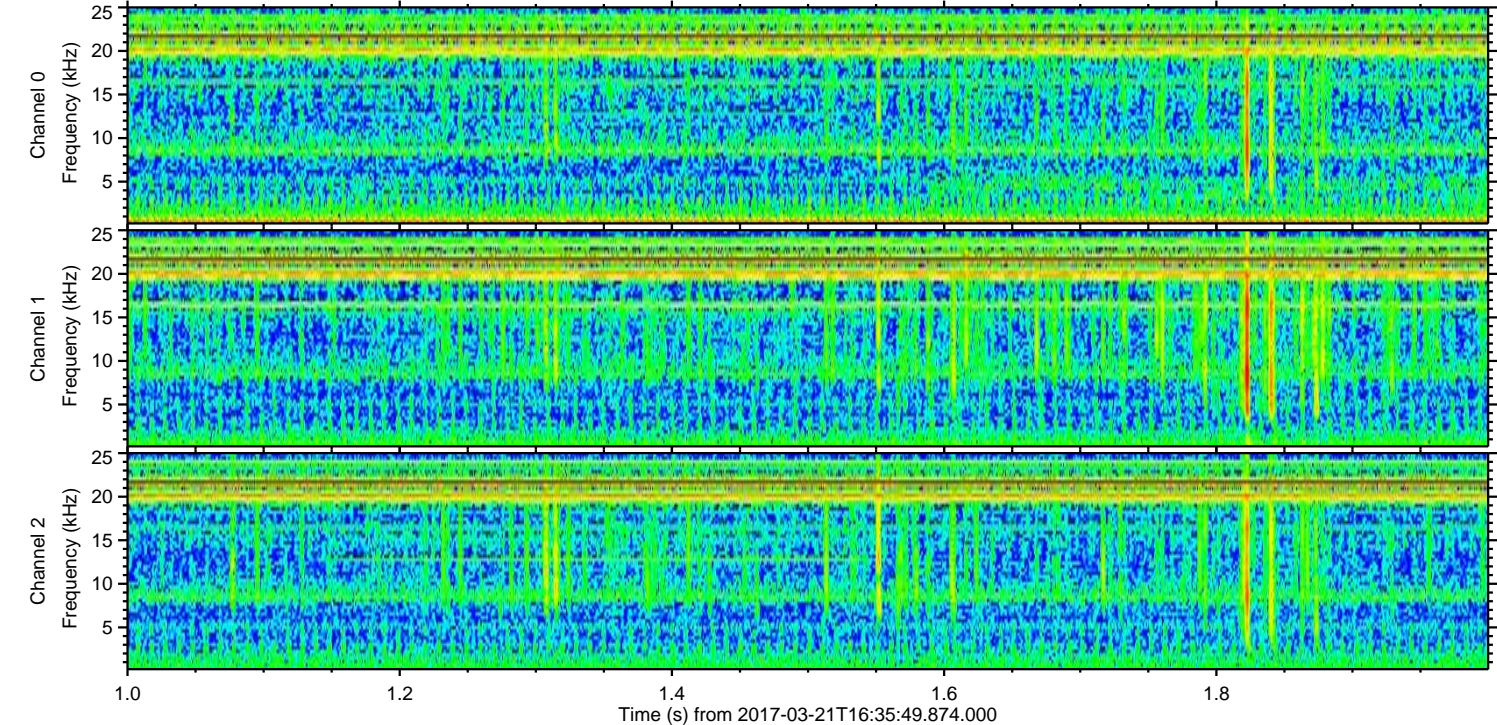
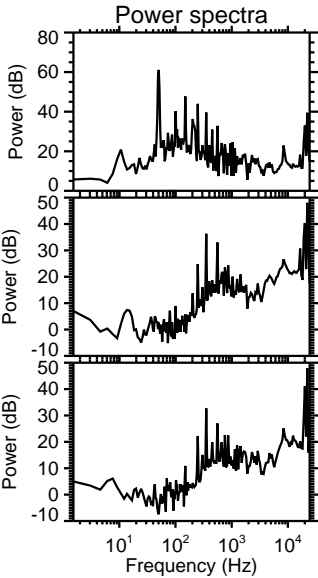
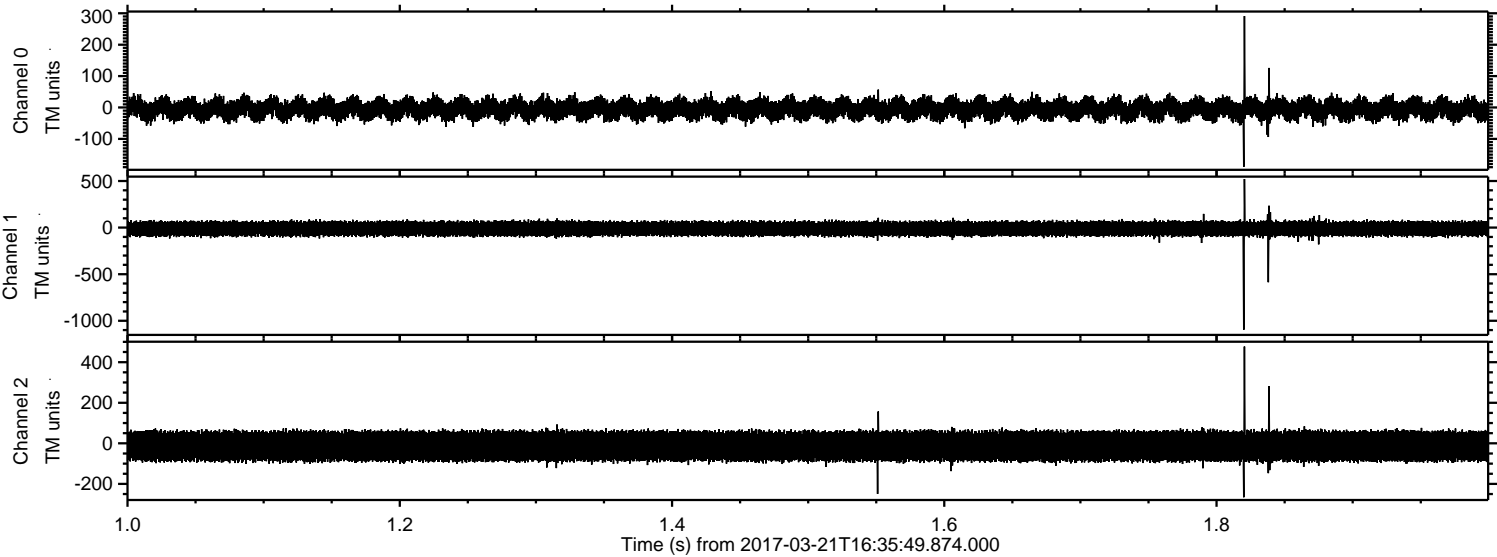
Processed Tue Mar 21 17:44:09 2017 by ELM ver.2012-10-06 from 001__elm20170321_163548__dat00.bin



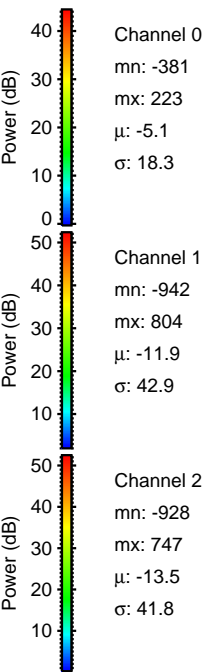
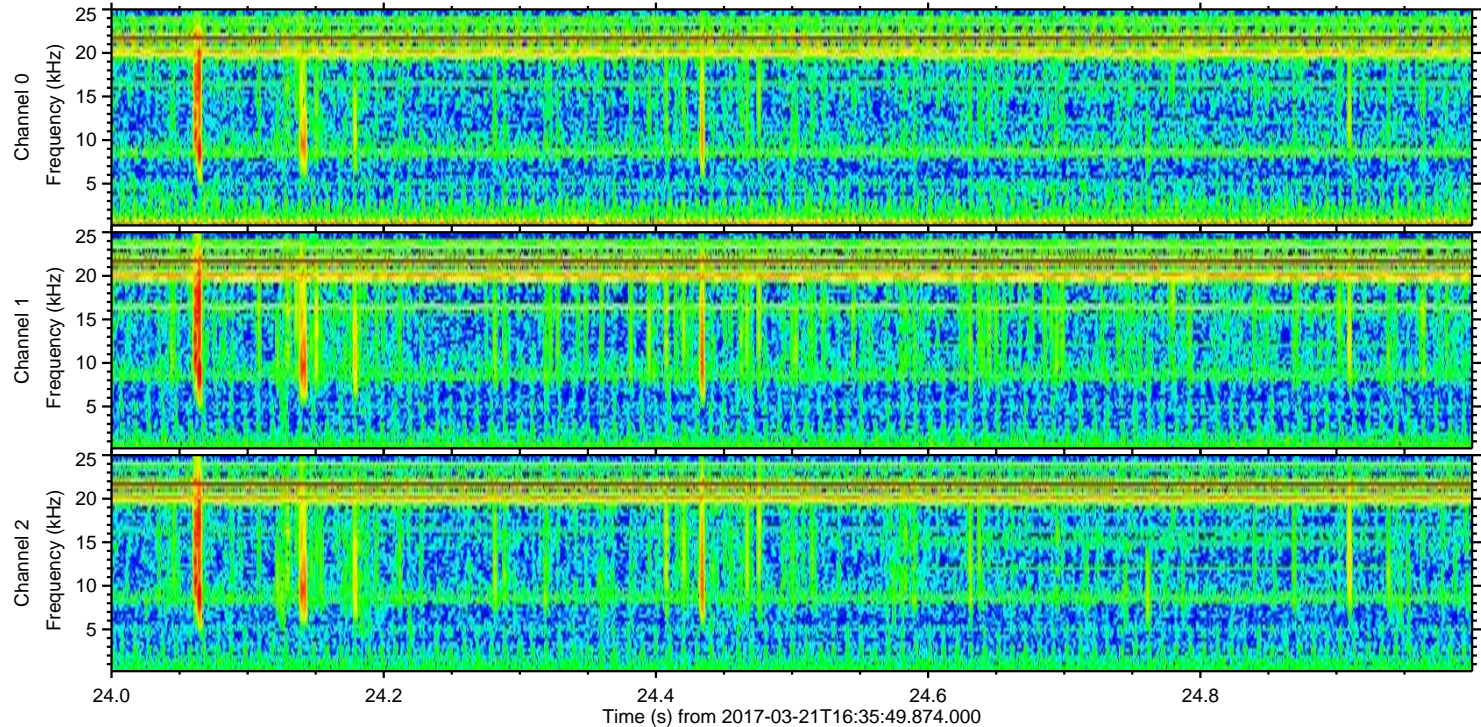
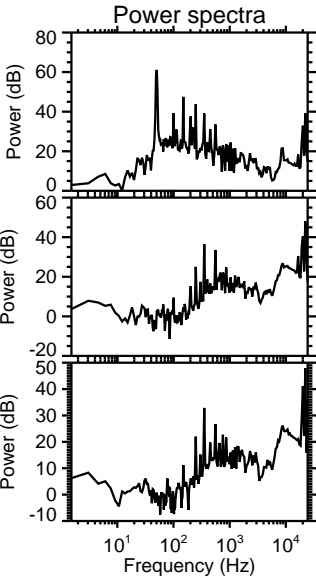
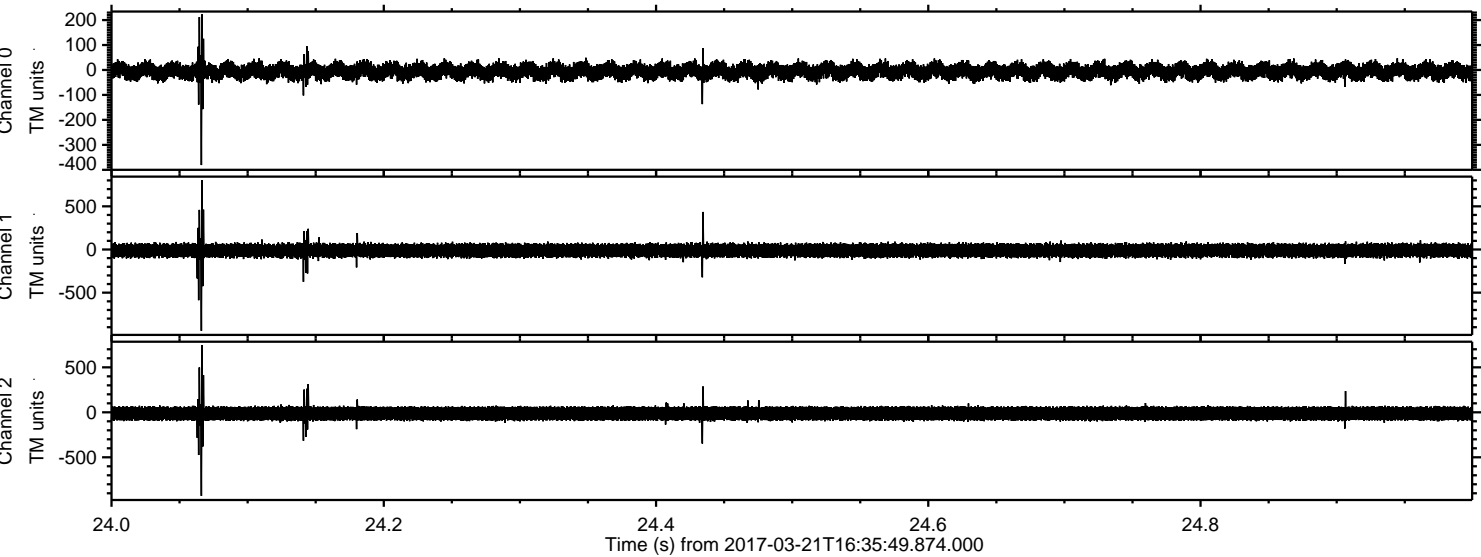
Processed Tue Mar 21 17:44:10 2017 by ELM ver.2012-10-06 from 001__elm20170321_163548__dat00.bin



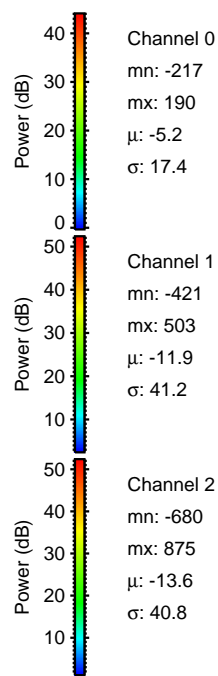
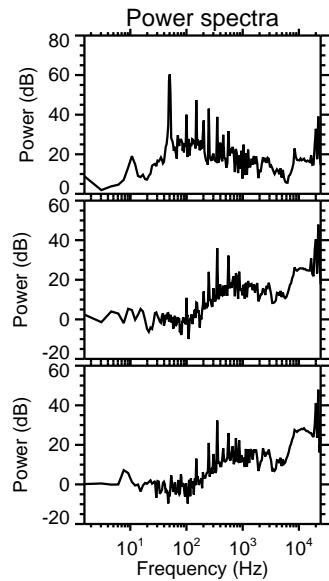
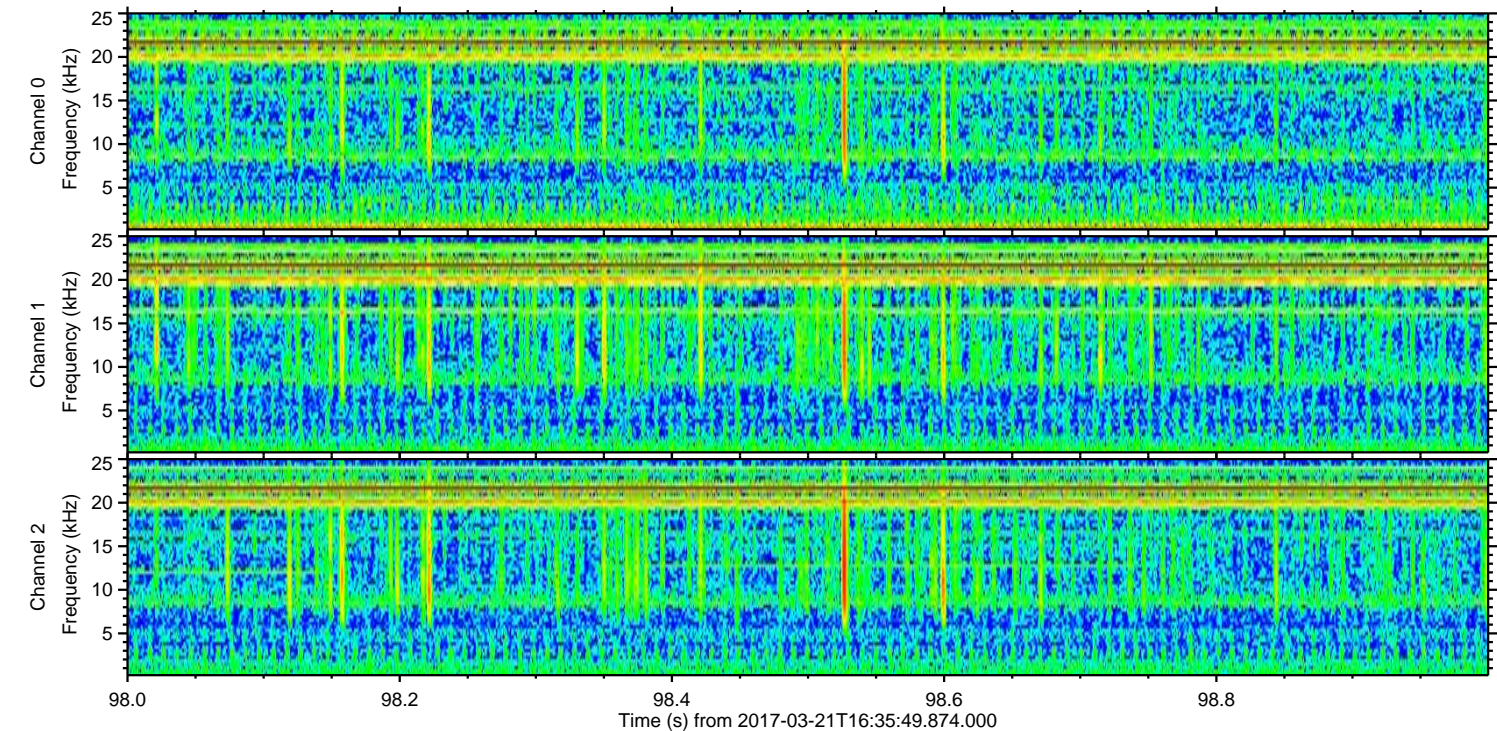
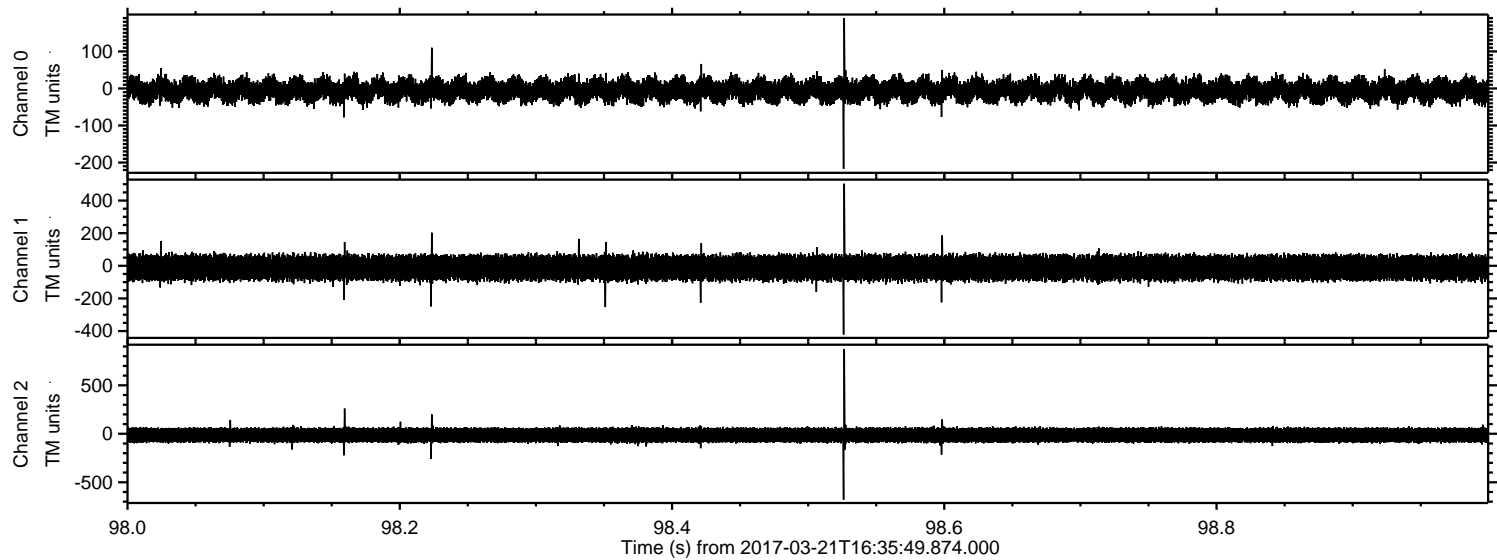
Processed Tue Mar 21 17:44:11 2017 by ELM ver.2012-10-06 from 001__elm20170321_163548__dat00.bin



Processed Tue Mar 21 17:44:12 2017 by ELM ver.2012-10-06 from 001__elm20170321_163548__dat00.bin

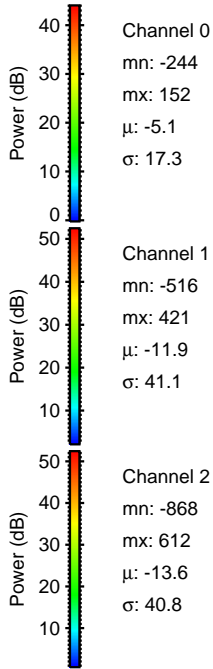
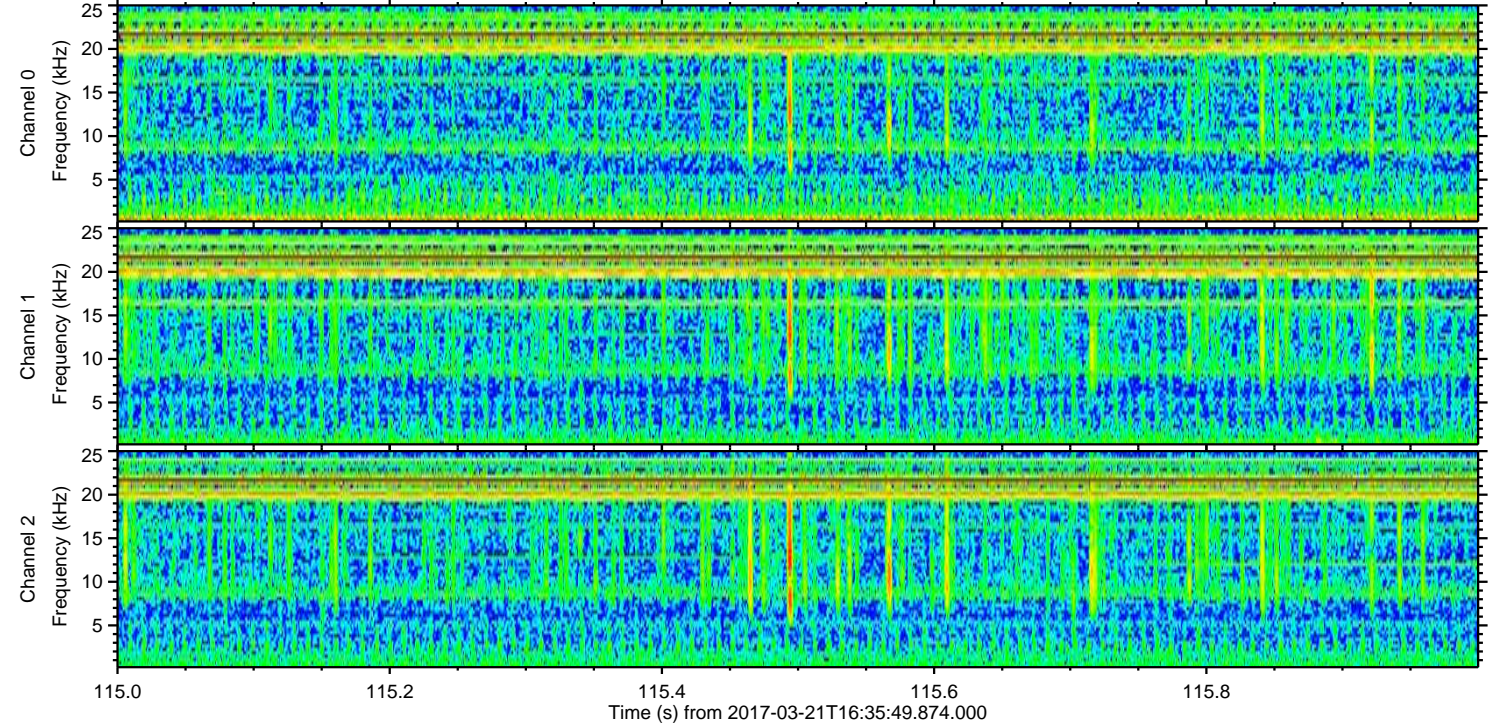
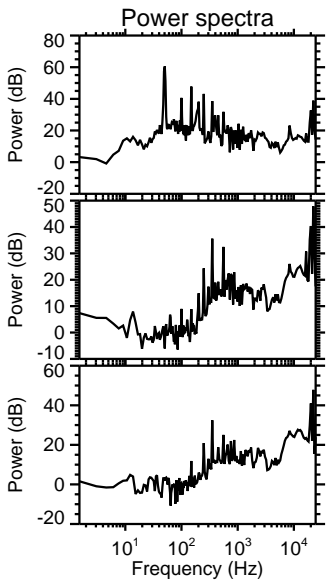
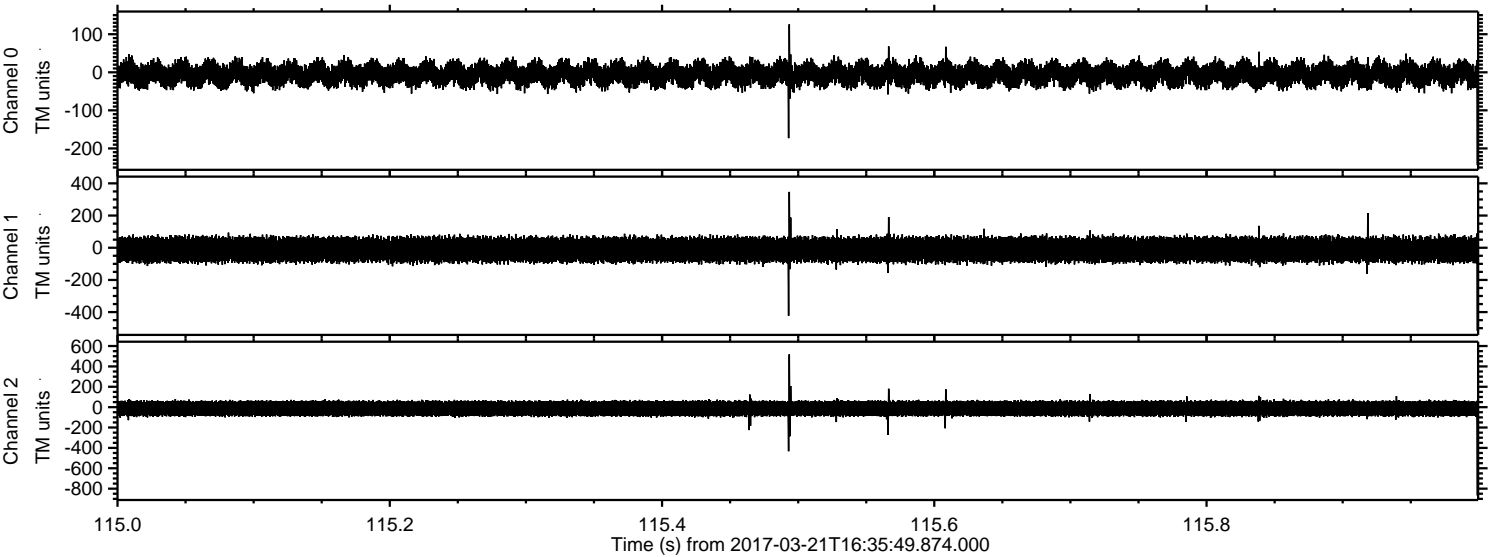


Processed Tue Mar 21 17:44:13 2017 by ELM ver.2012-10-06 from 001__elm20170321_163548__dat00.bin

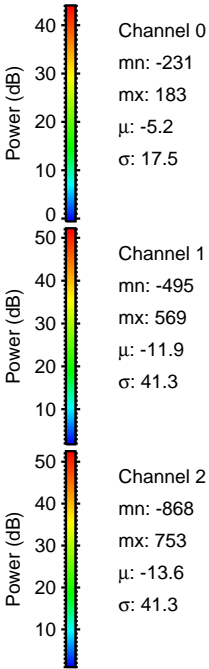
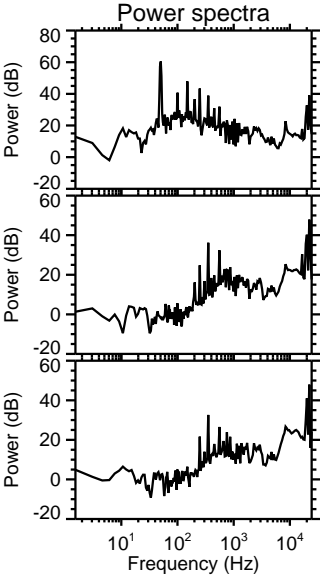
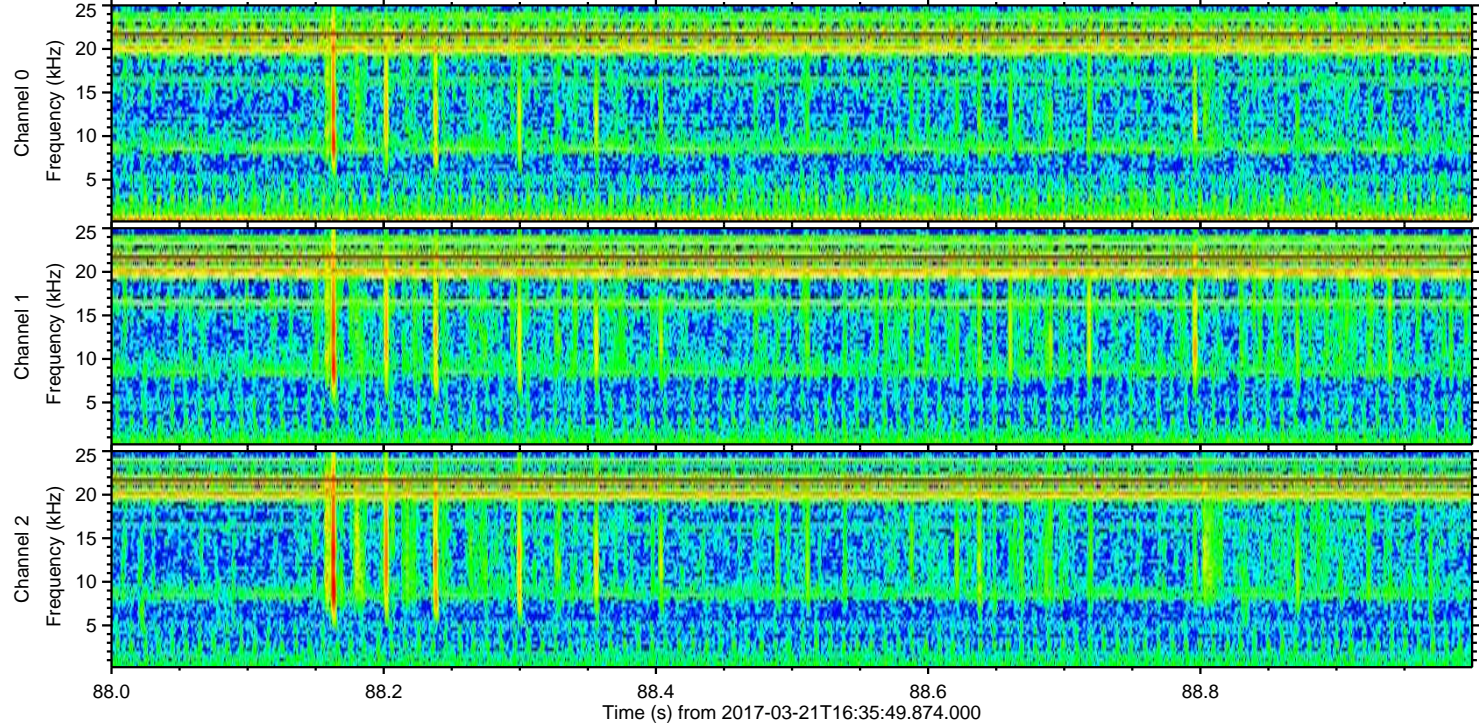
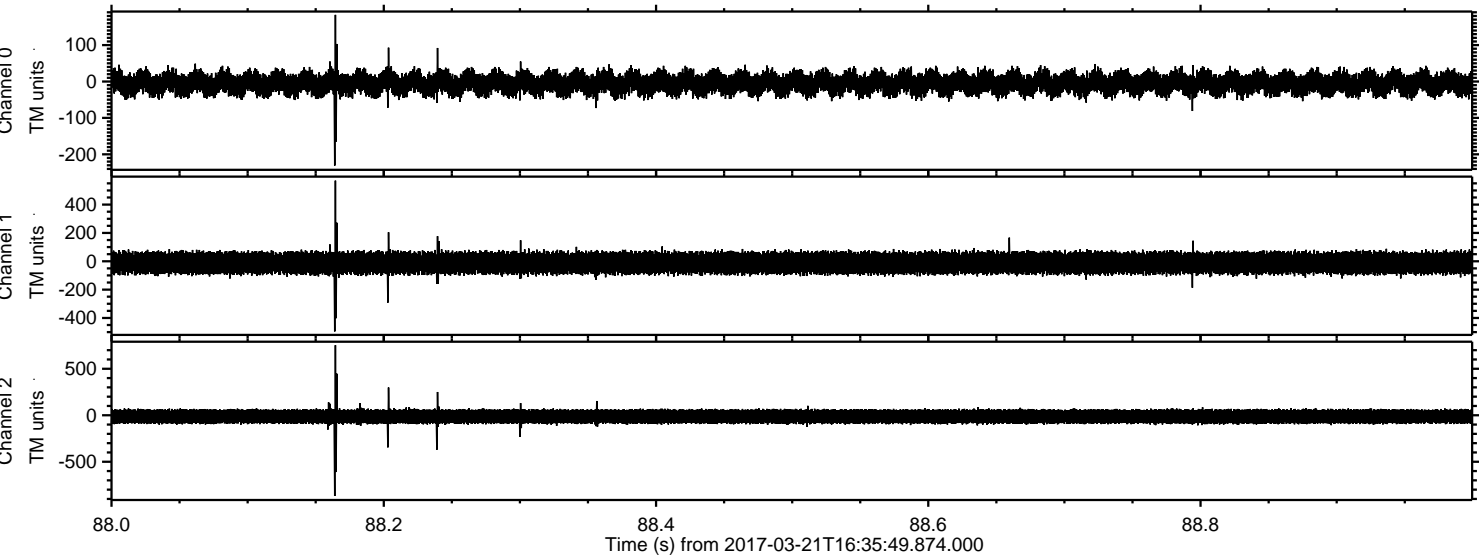


ELMAVAN 3D WAVEFORMS (Measured data sampled at 50 kHz) 51000 packets of 144 samples from 2017-03-21T16:35:49.874.000. Part 116/147

Processed Tue Mar 21 17:44:14 2017 by ELM ver.2012-10-06 from 001__elm20170321_163548__dat00.bin



Processed Tue Mar 21 17:44:15 2017 by ELM ver.2012-10-06 from 001__elm20170321_163548__dat00.bin



Channel 0
mn: -231
mx: 183
 μ : -5.2
 σ : 17.5

Channel 1
mn: -495
mx: 569
 μ : -11.9
 σ : 41.3

Channel 2
mn: -868
mx: 753
 μ : -13.6
 σ : 41.3

