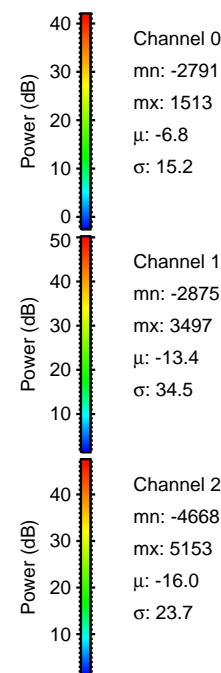
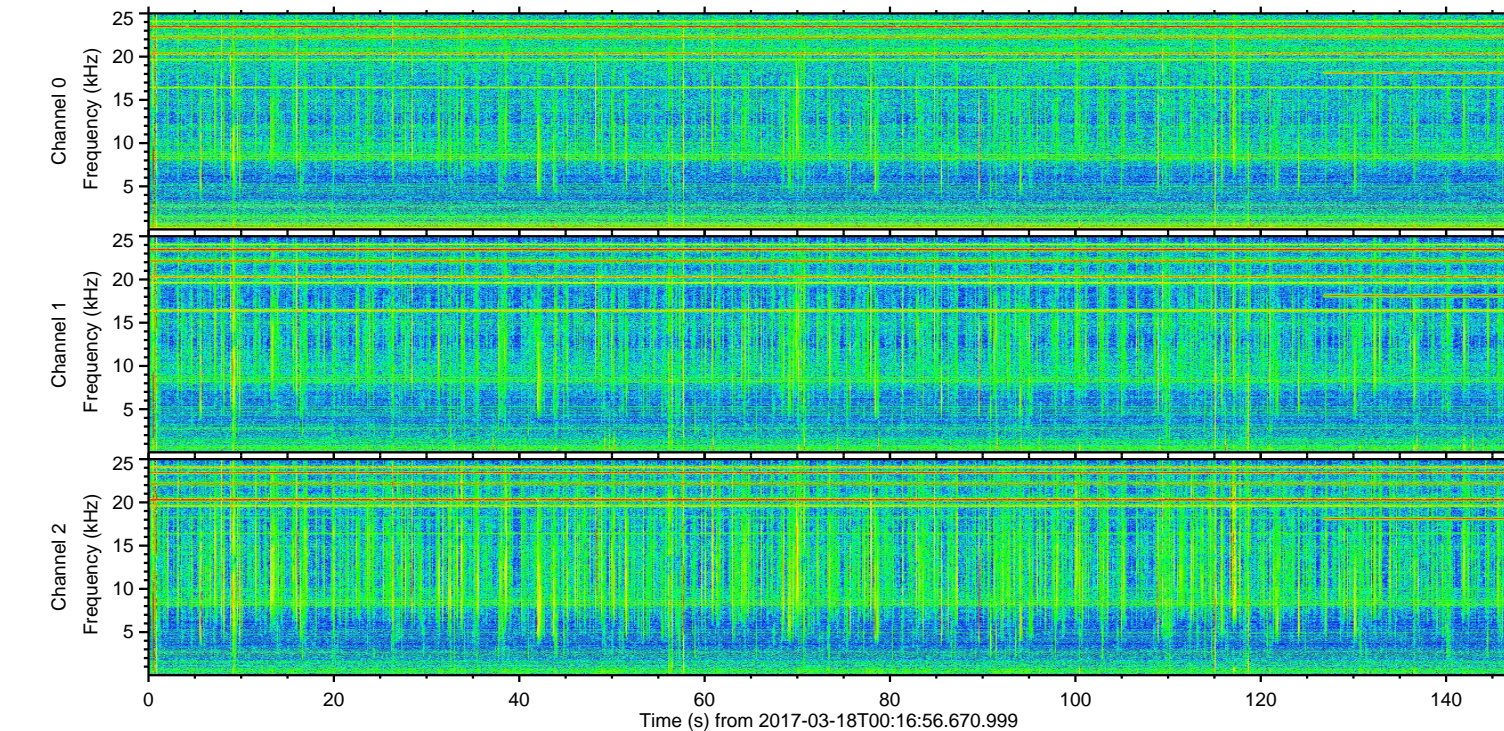
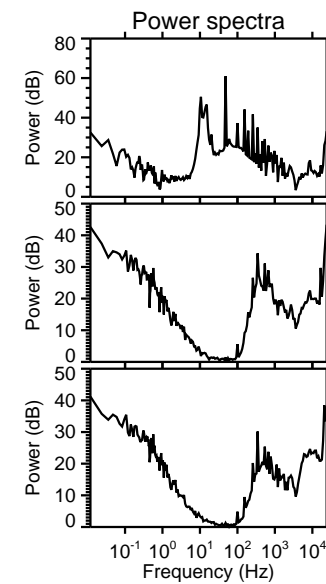
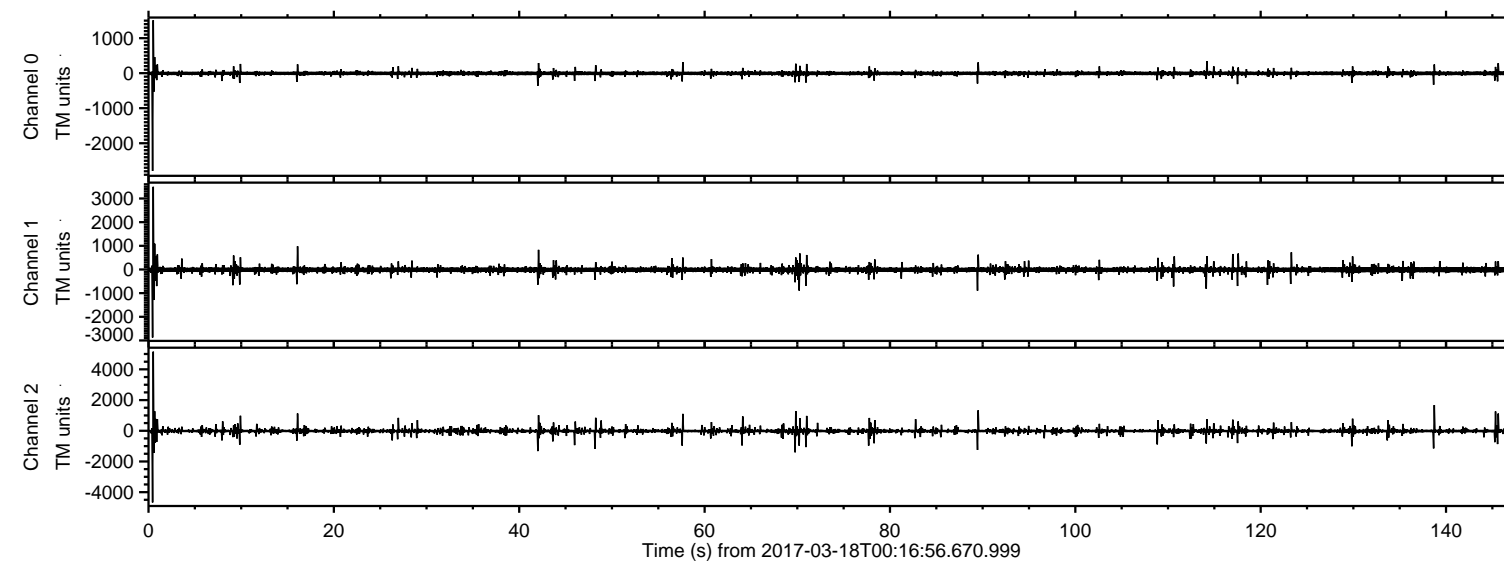


# ELMAVAN 3D WAVEFORMS (Measured data sampled at 50 kHz) 51000 packets of 144 samples from 2017-03-18T00:16:56.670.999.

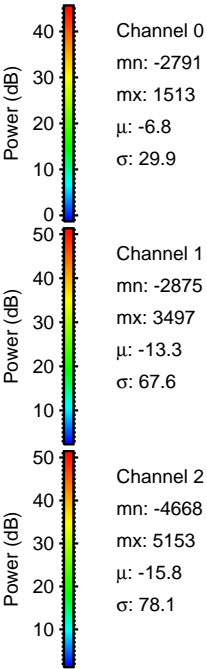
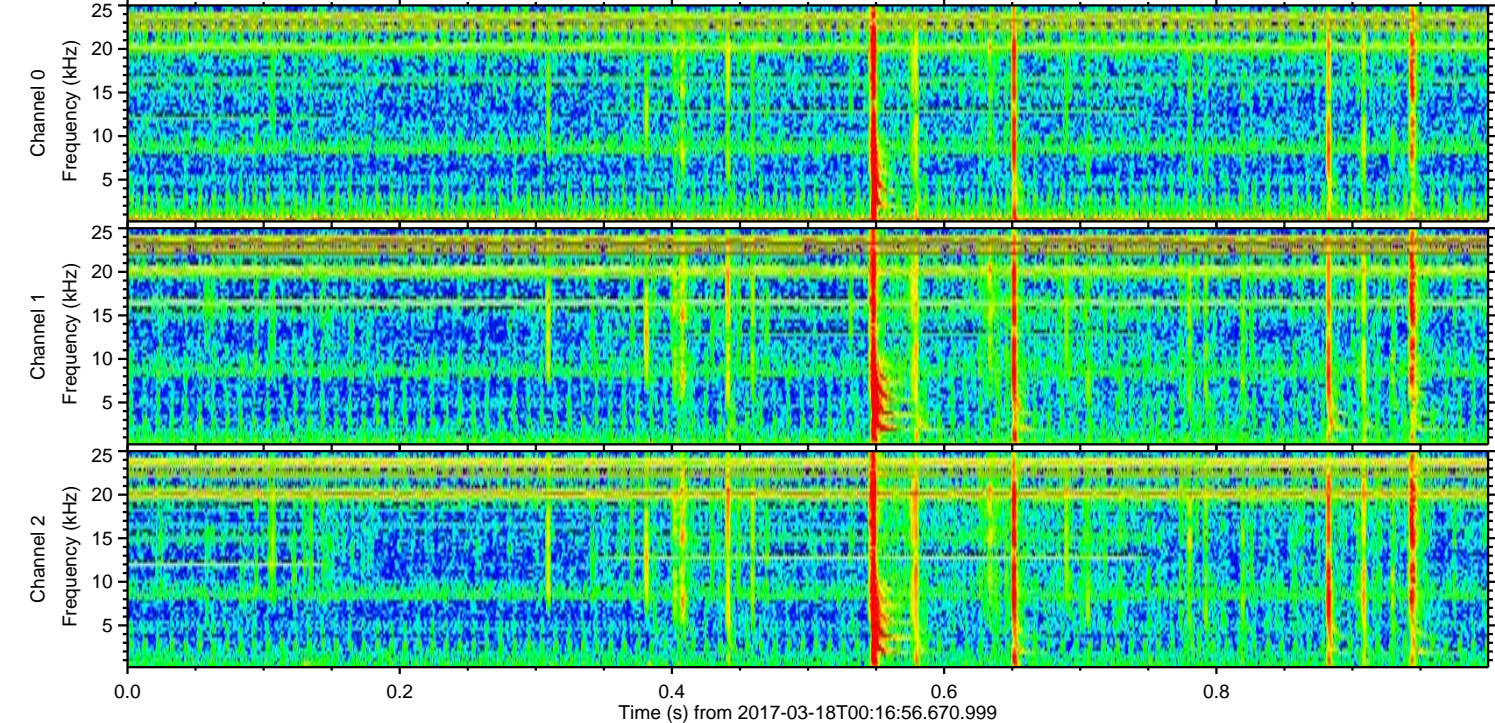
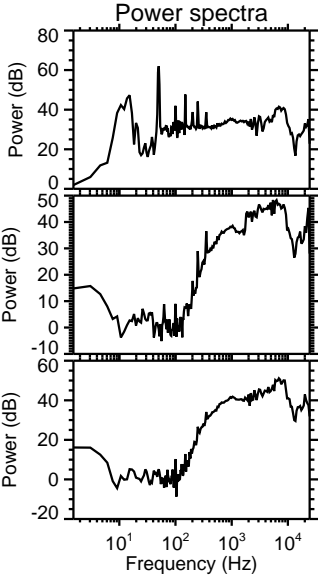
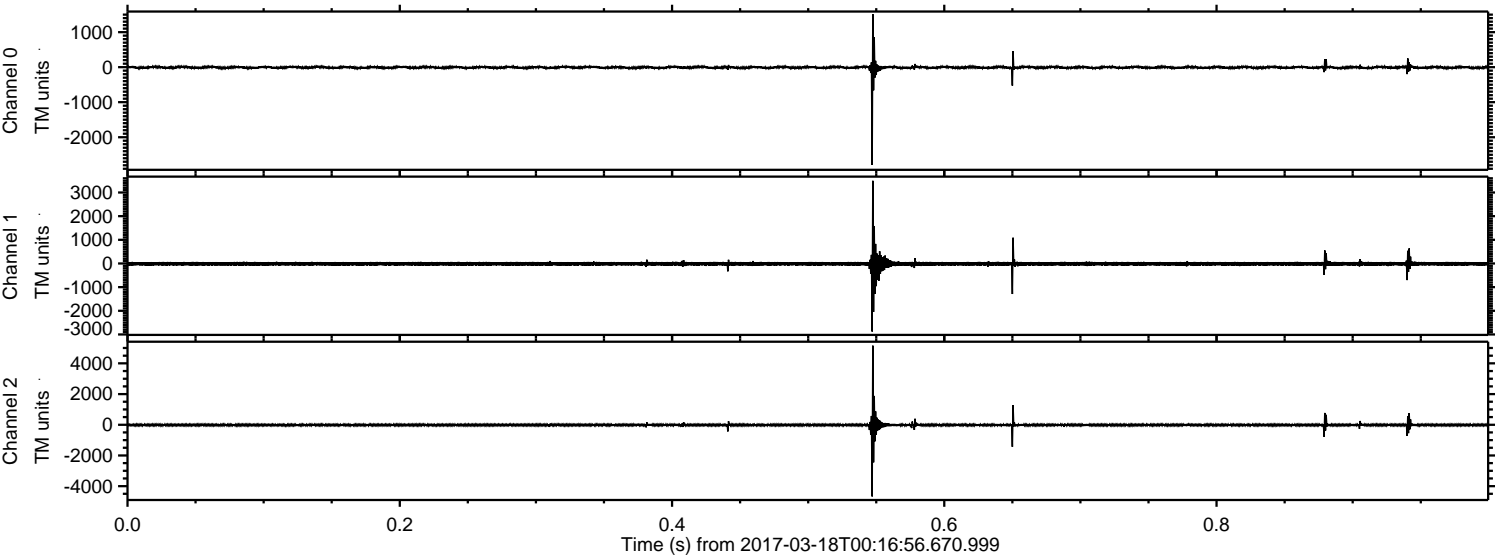
Processed Sat Mar 18 01:25:00 2017 by ELM ver.2012-10-06 from 001\_\_elm20170318\_001655\_\_dat00.bin





ELMAVAN 3D WAVEFORMS (Measured data sampled at 50 kHz) 51000 packets of 144 samples from 2017-03-18T00:16:56.670.999. Part 1/147

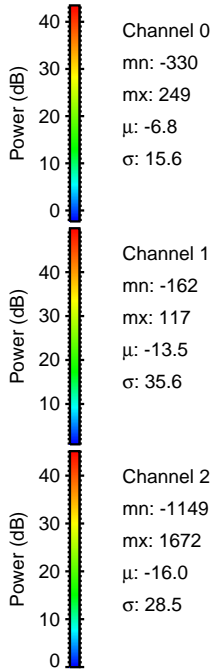
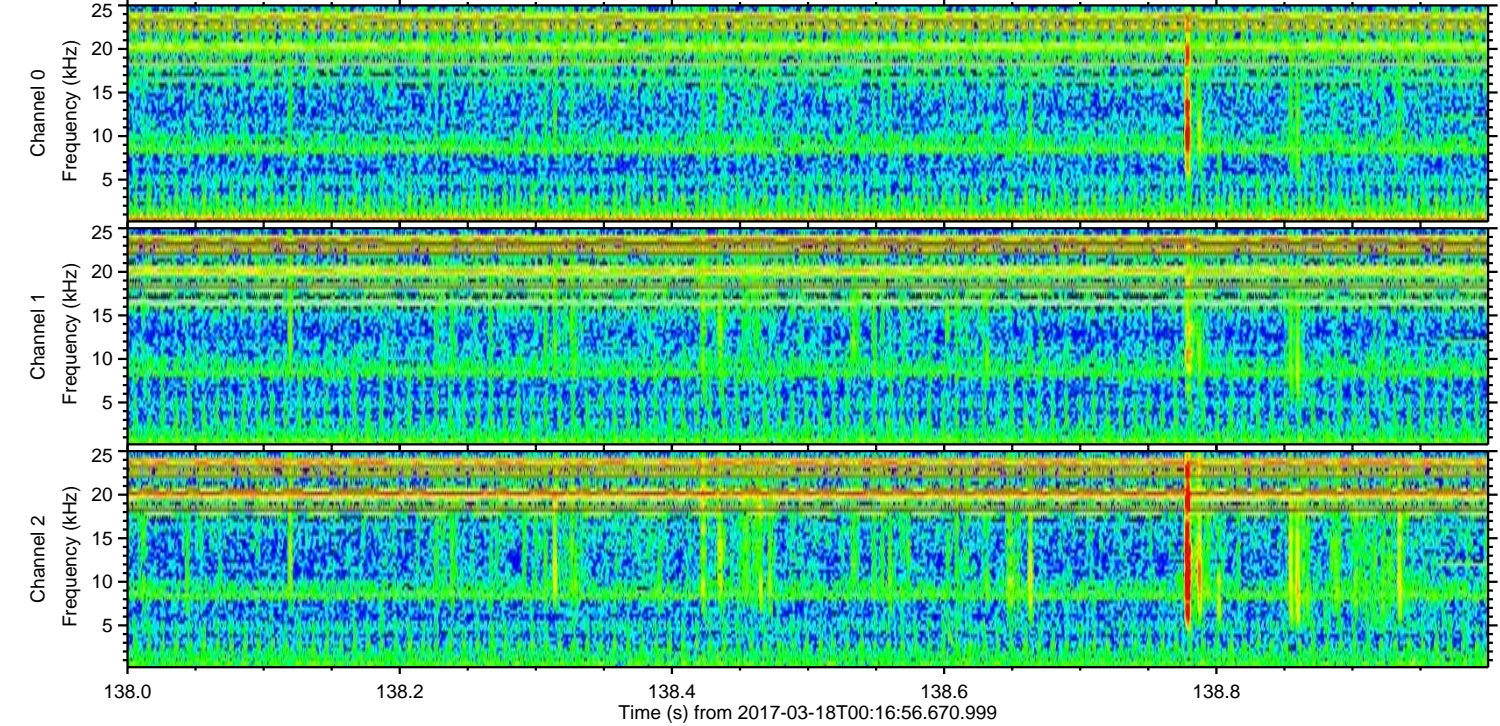
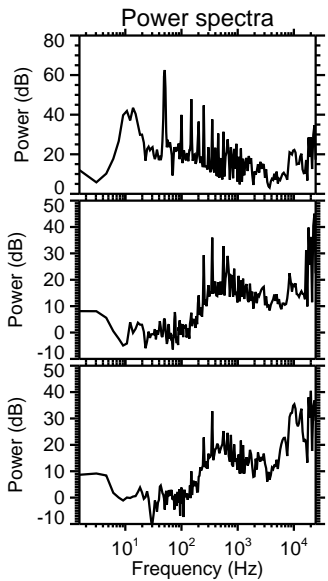
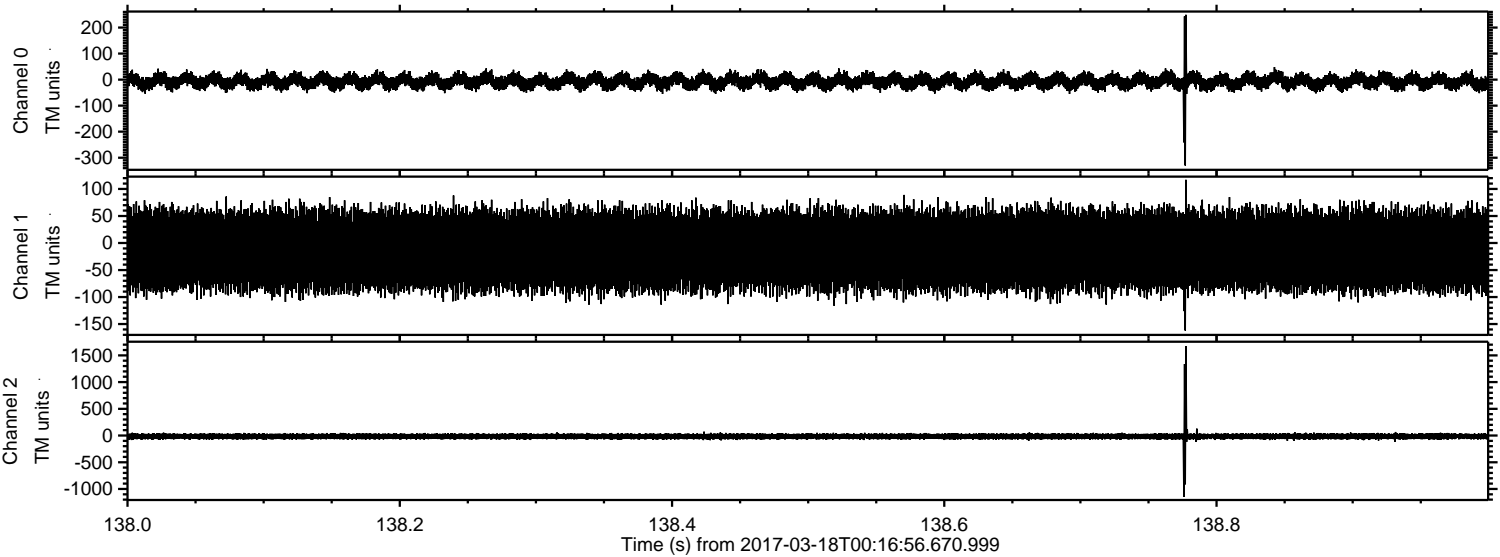
Processed Sat Mar 18 01:25:17 2017 by ELM ver.2012-10-06 from 001\_\_elm20170318\_001655\_\_dat00.bin





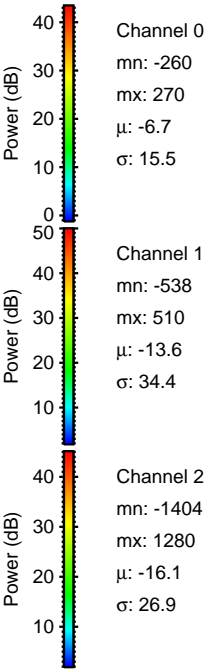
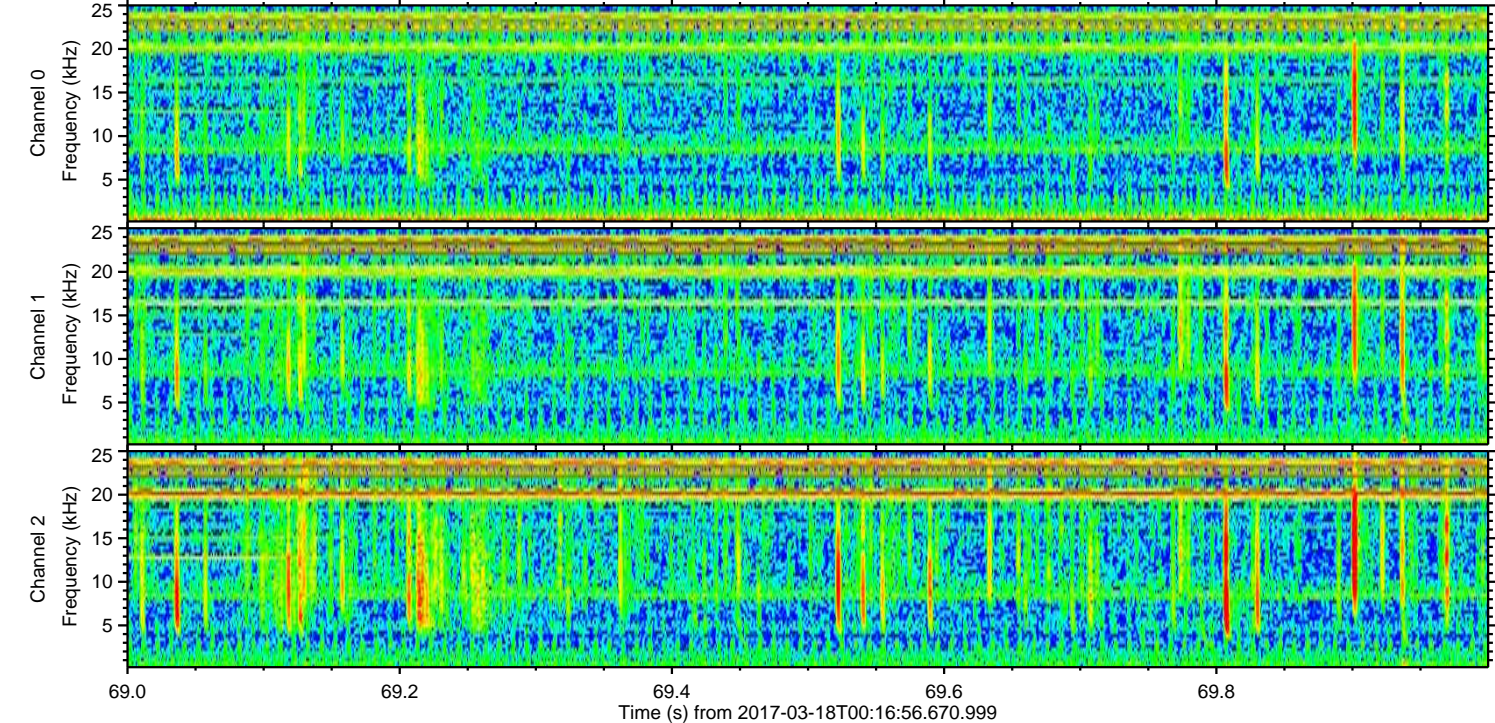
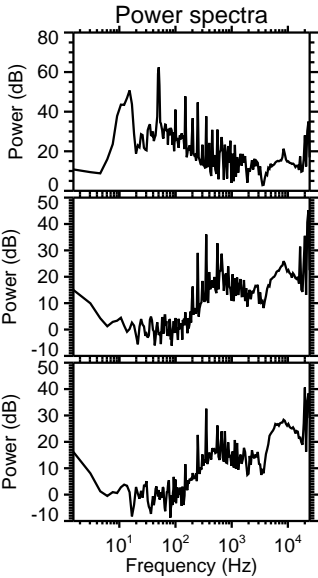
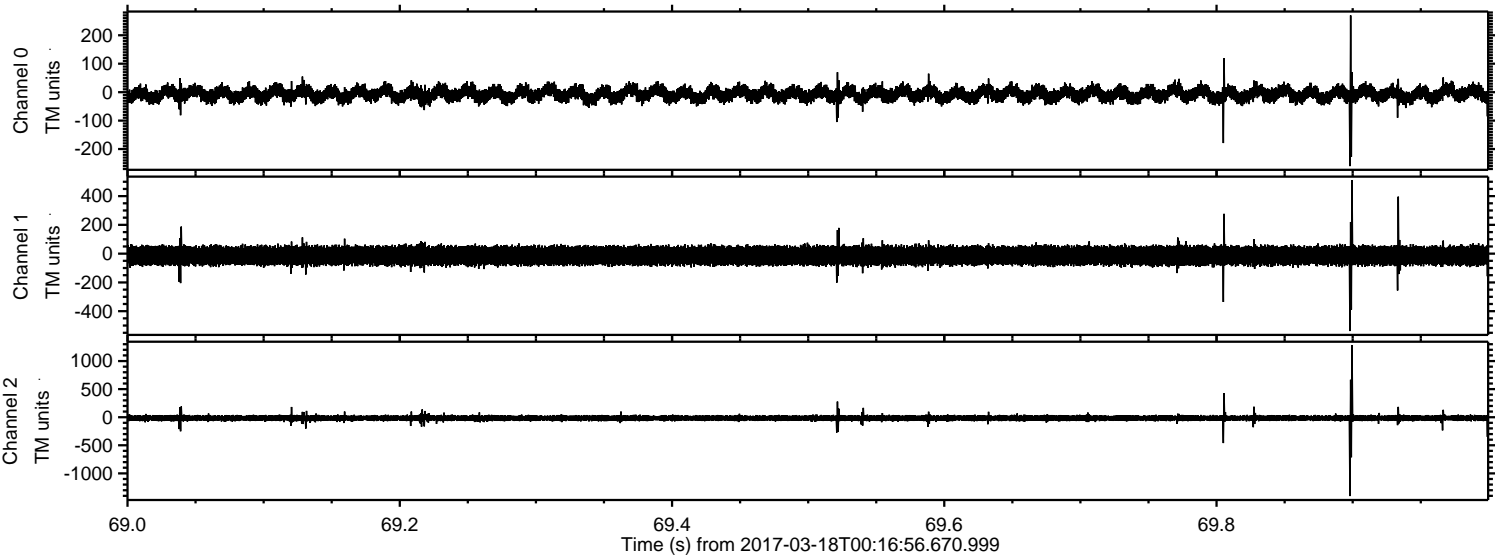
ELMAVAN 3D WAVEFORMS (Measured data sampled at 50 kHz) 51000 packets of 144 samples from 2017-03-18T00:16:56.670.999. Part 139/147

Processed Sat Mar 18 01:25:18 2017 by ELM ver.2012-10-06 from 001\_\_elm20170318\_001655\_\_dat00.bin



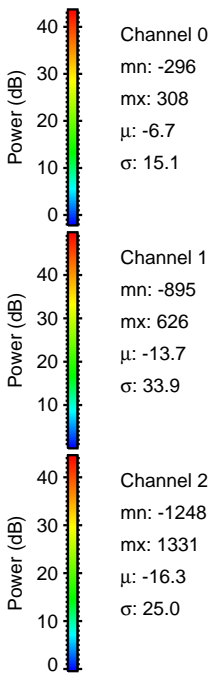
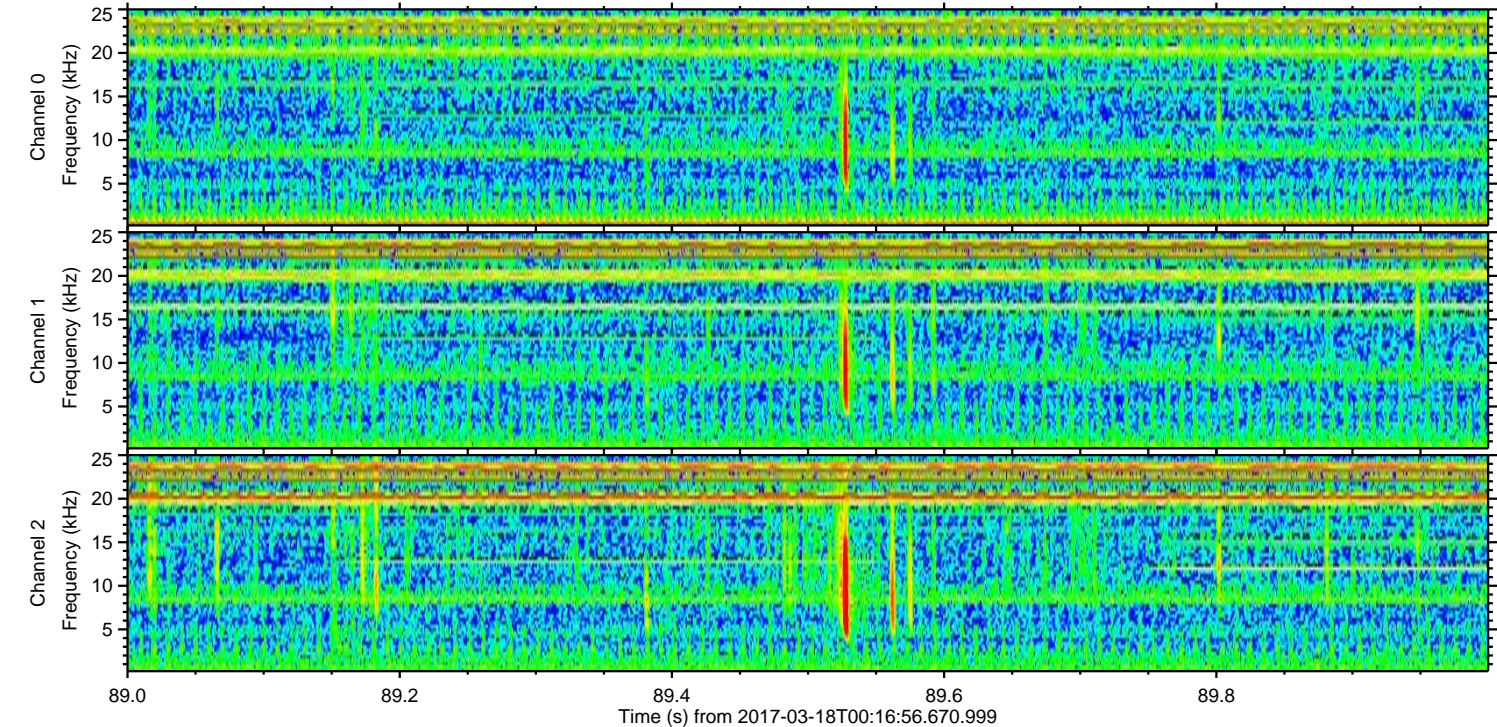
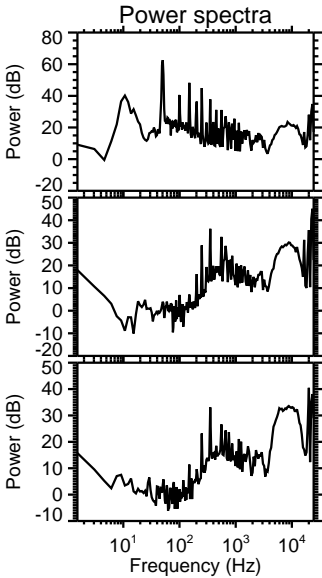
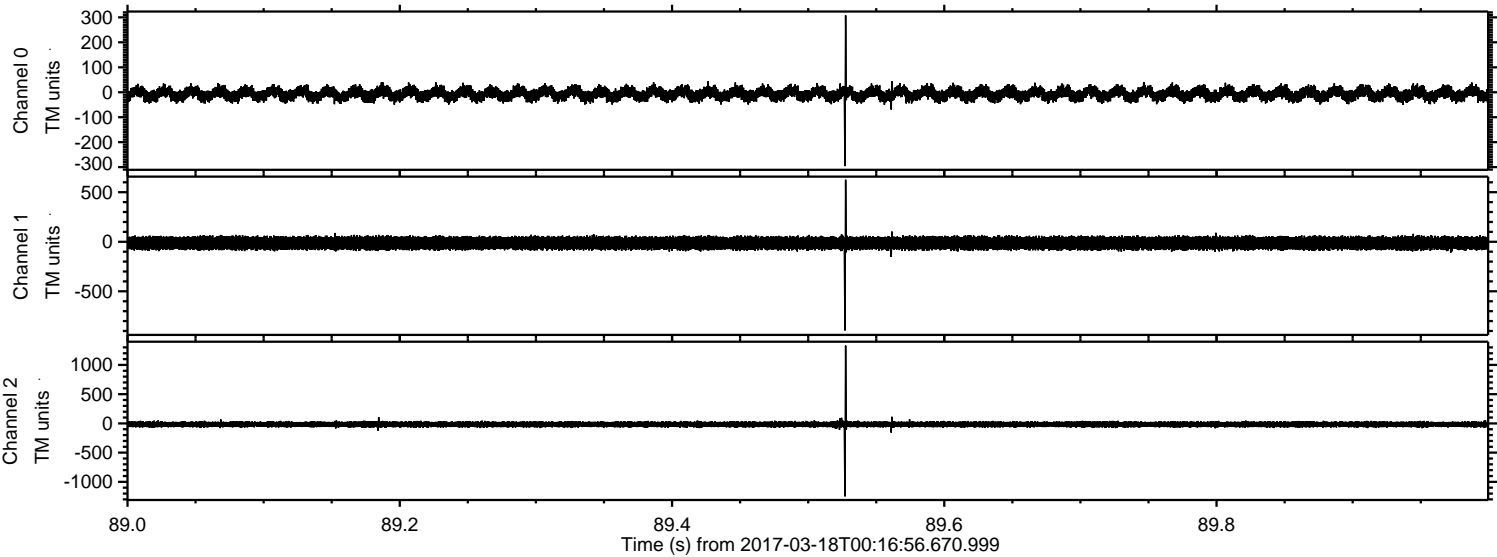


Processed Sat Mar 18 01:25:19 2017 by ELM ver.2012-10-06 from 001\_\_elm20170318\_001655\_\_dat00.bin



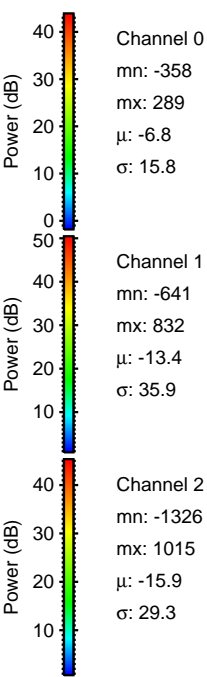
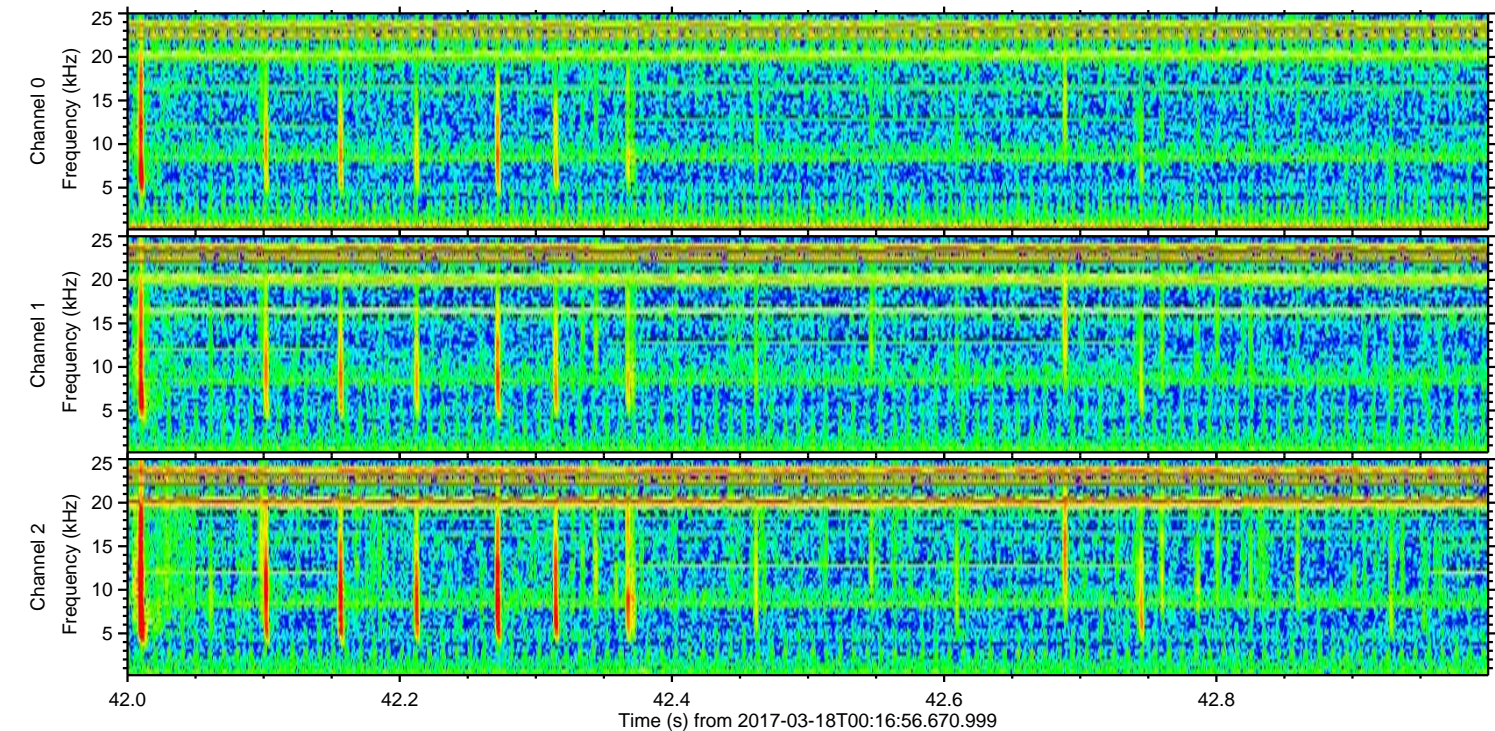
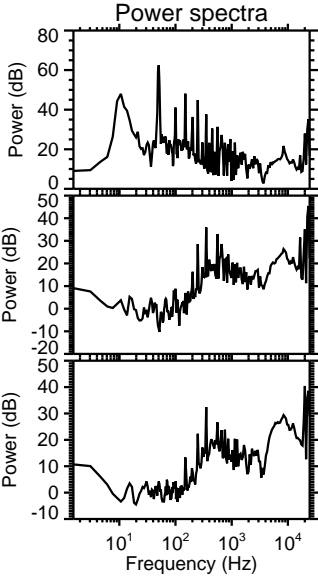
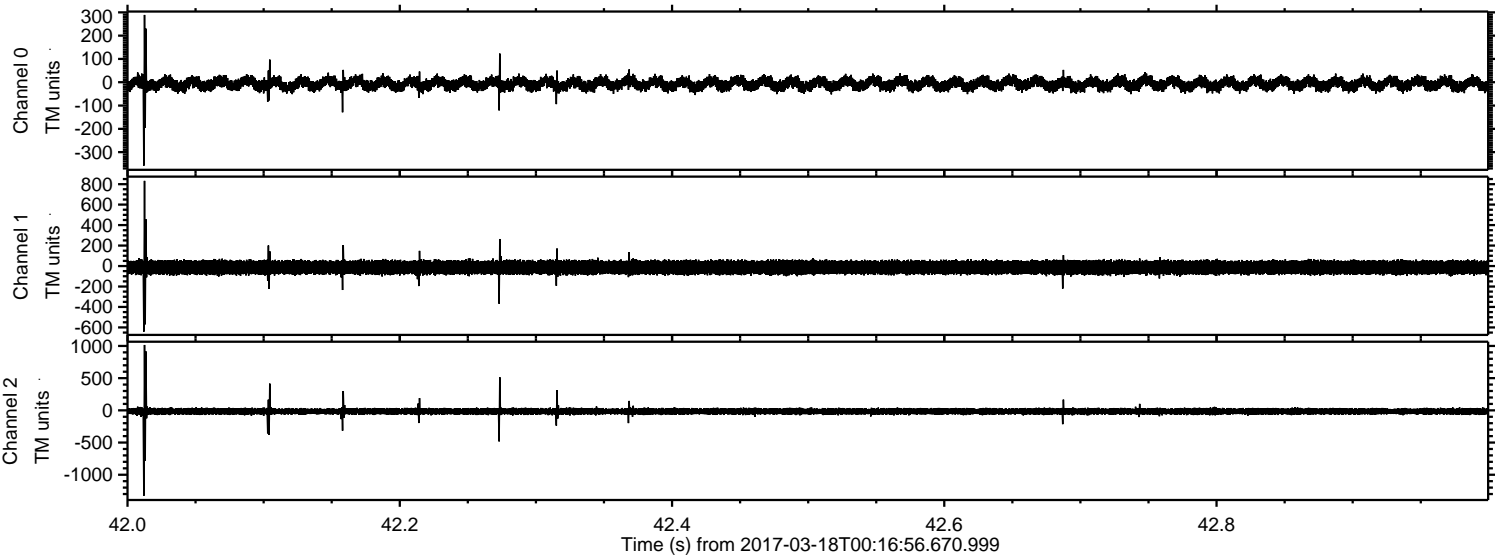


Processed Sat Mar 18 01:25:20 2017 by ELM ver.2012-10-06 from 001\_\_elm20170318\_001655\_\_dat00.bin



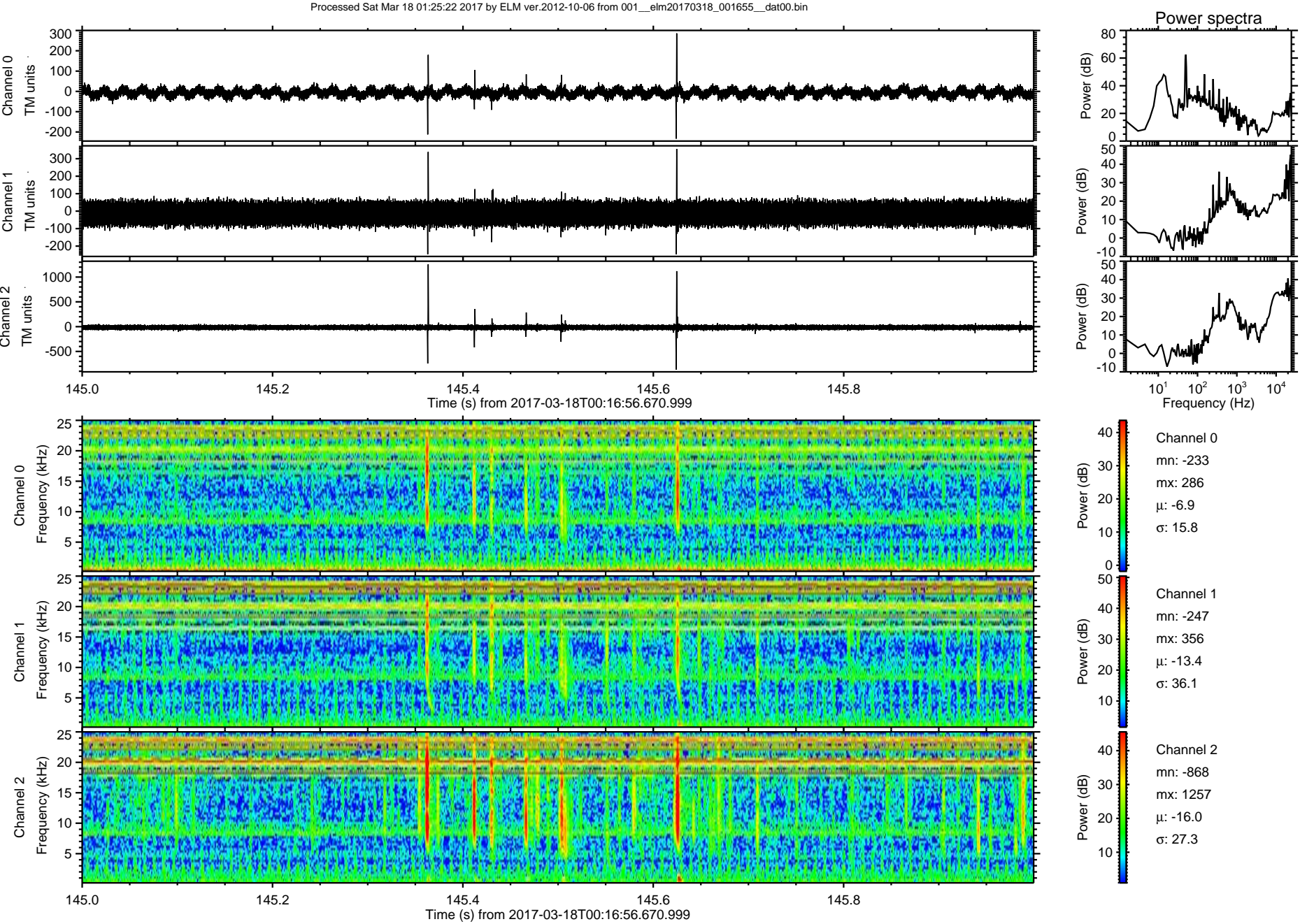


Processed Sat Mar 18 01:25:21 2017 by ELM ver.2012-10-06 from 001\_\_elm20170318\_001655\_\_dat00.bin



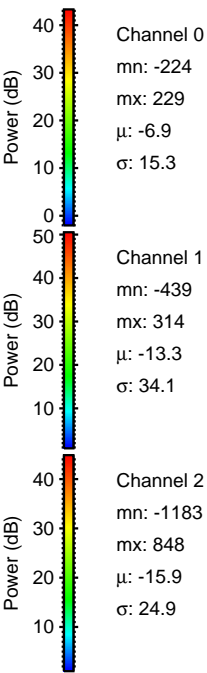
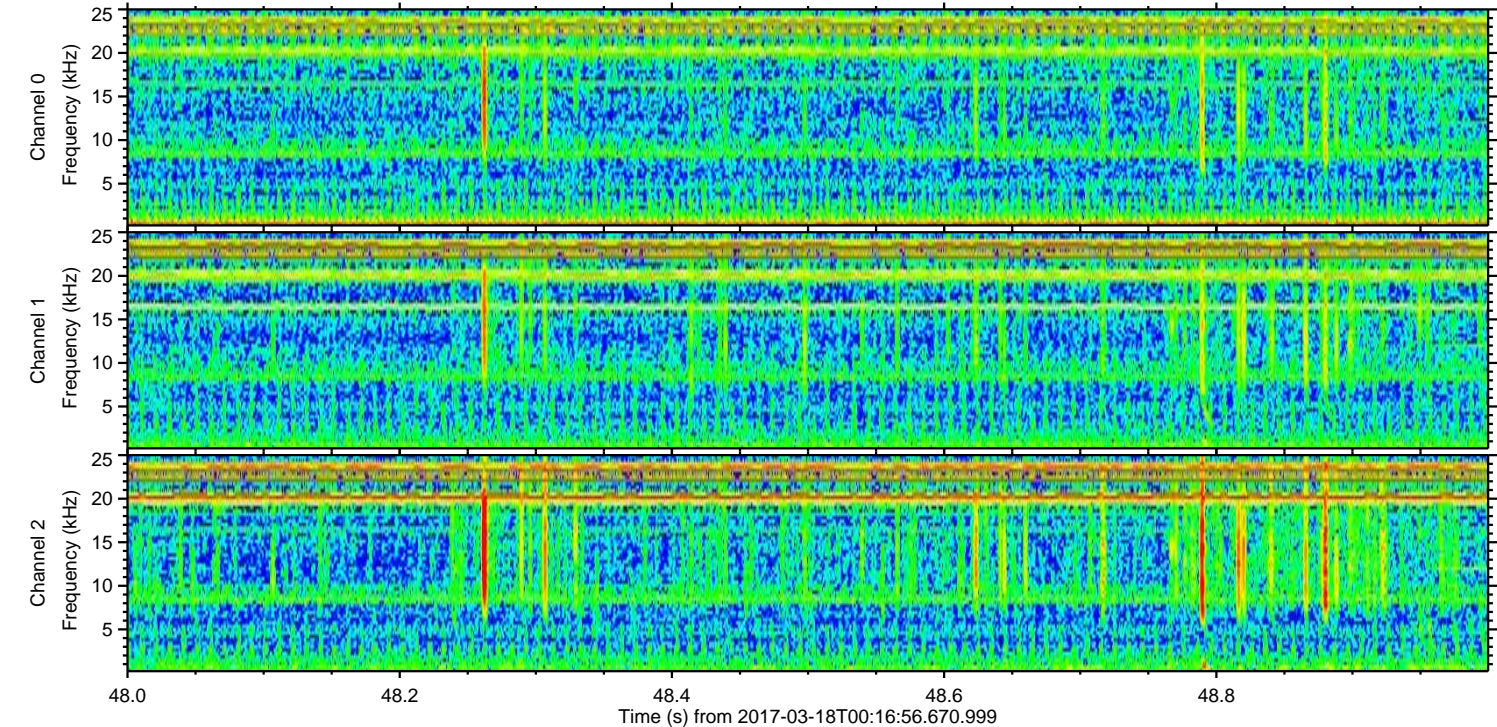
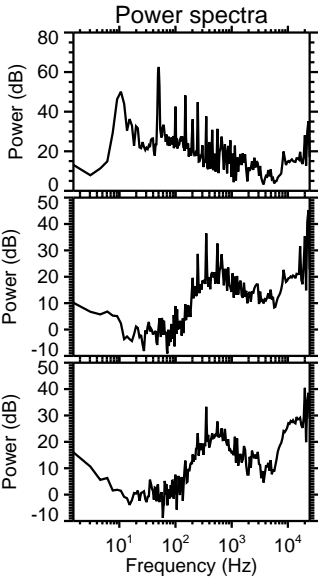
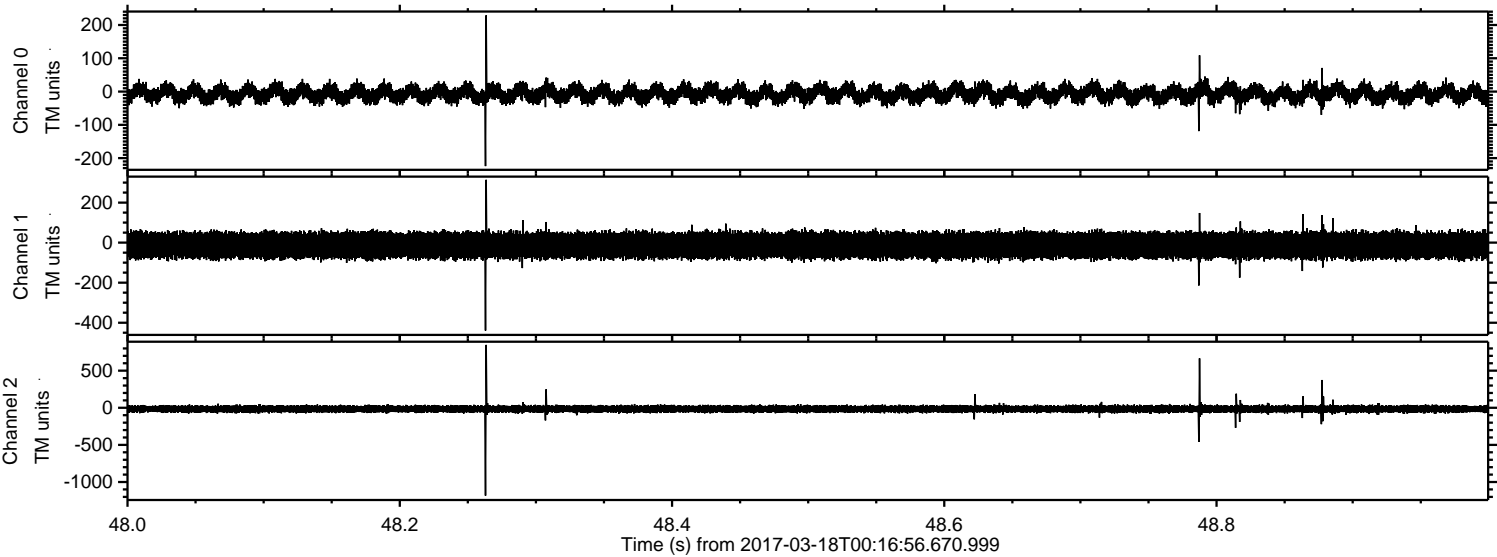


ELMAVAN 3D WAVEFORMS (Measured data sampled at 50 kHz) 51000 packets of 144 samples from 2017-03-18T00:16:56.670.999. Part 146/147



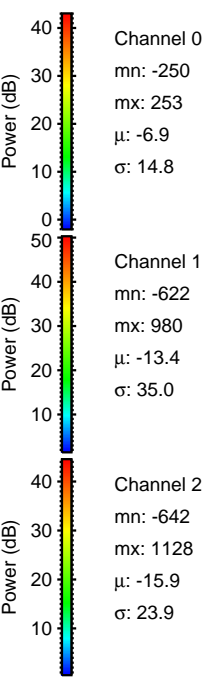
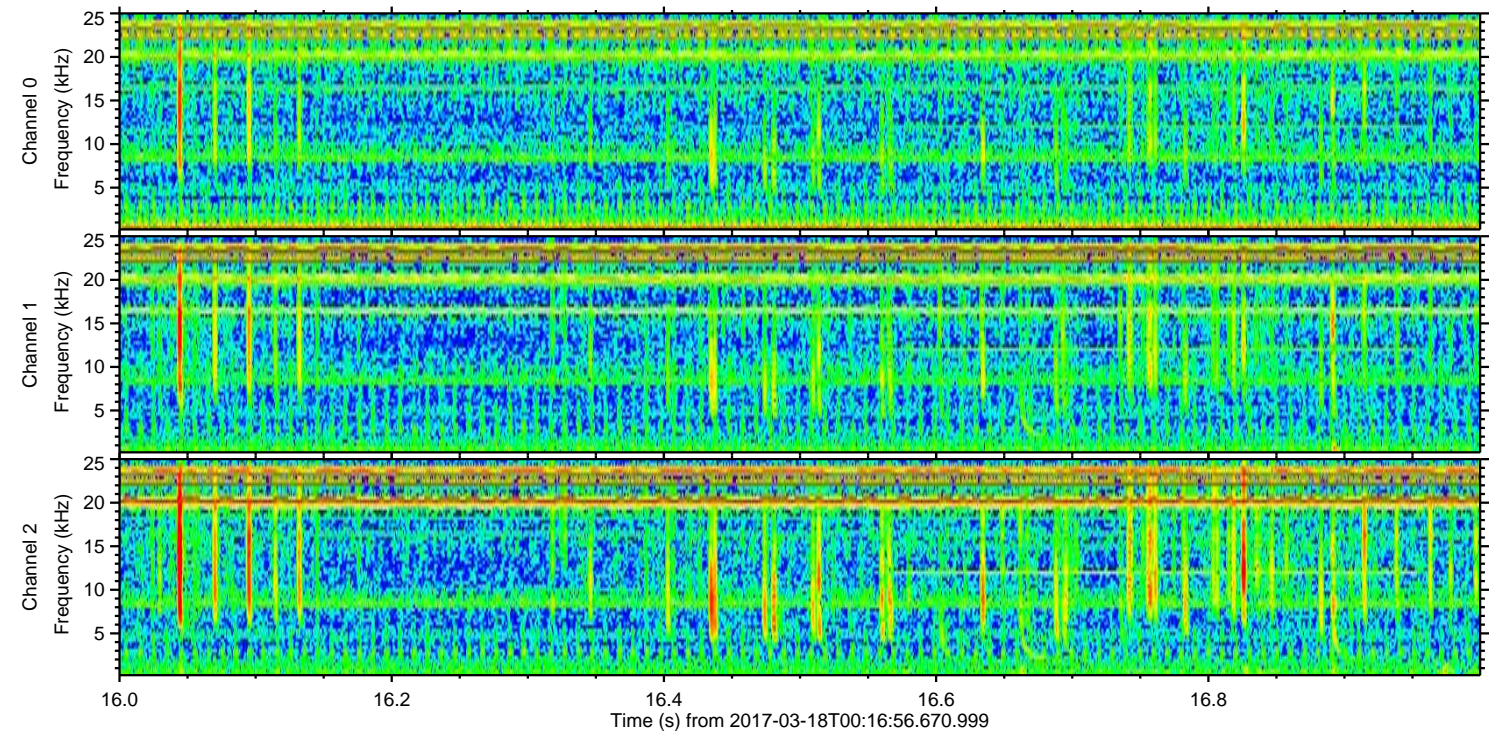
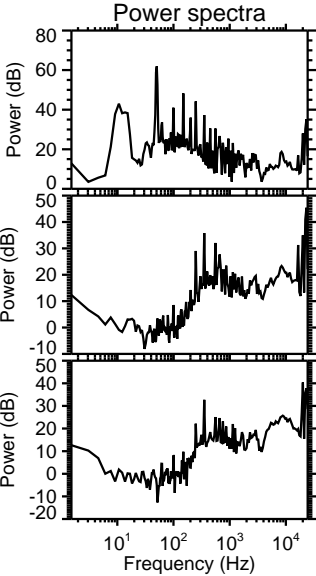
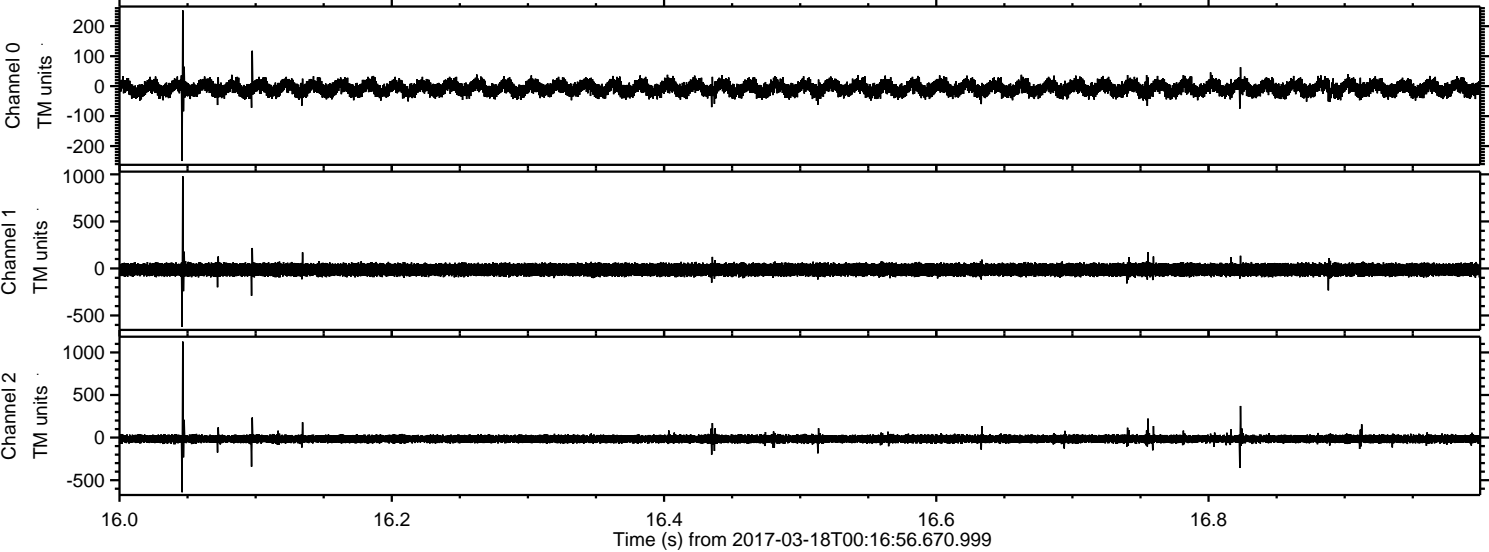


Processed Sat Mar 18 01:25:23 2017 by ELM ver.2012-10-06 from 001\_\_elm20170318\_001655\_\_dat00.bin





Processed Sat Mar 18 01:25:24 2017 by ELM ver.2012-10-06 from 001\_\_elm20170318\_001655\_\_dat00.bin





Processed Sat Mar 18 01:25:24 2017 by ELM ver.2012-10-06 from 001\_\_elm20170318\_001655\_\_dat00.bin

