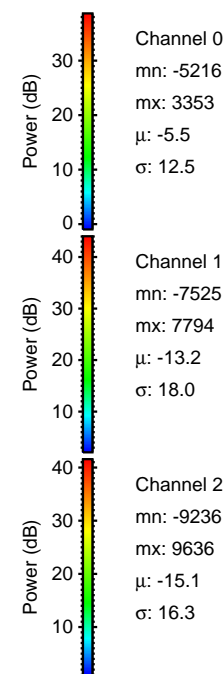
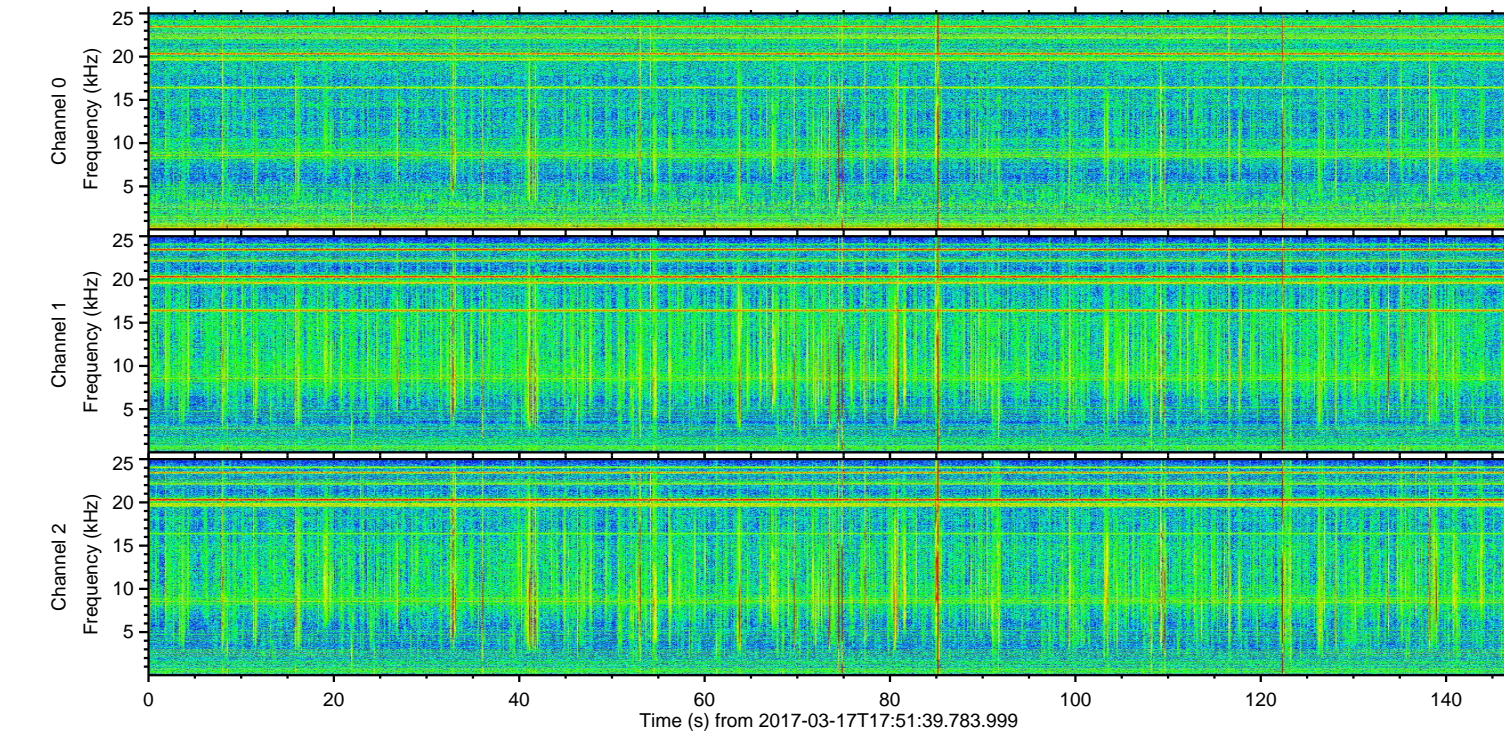
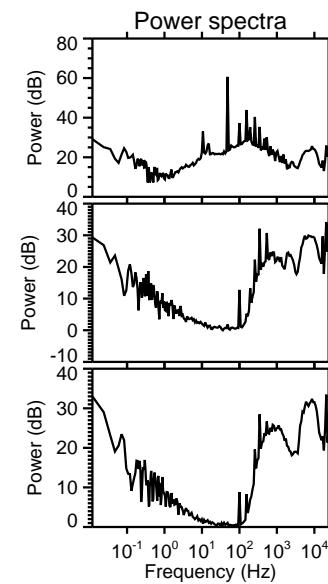
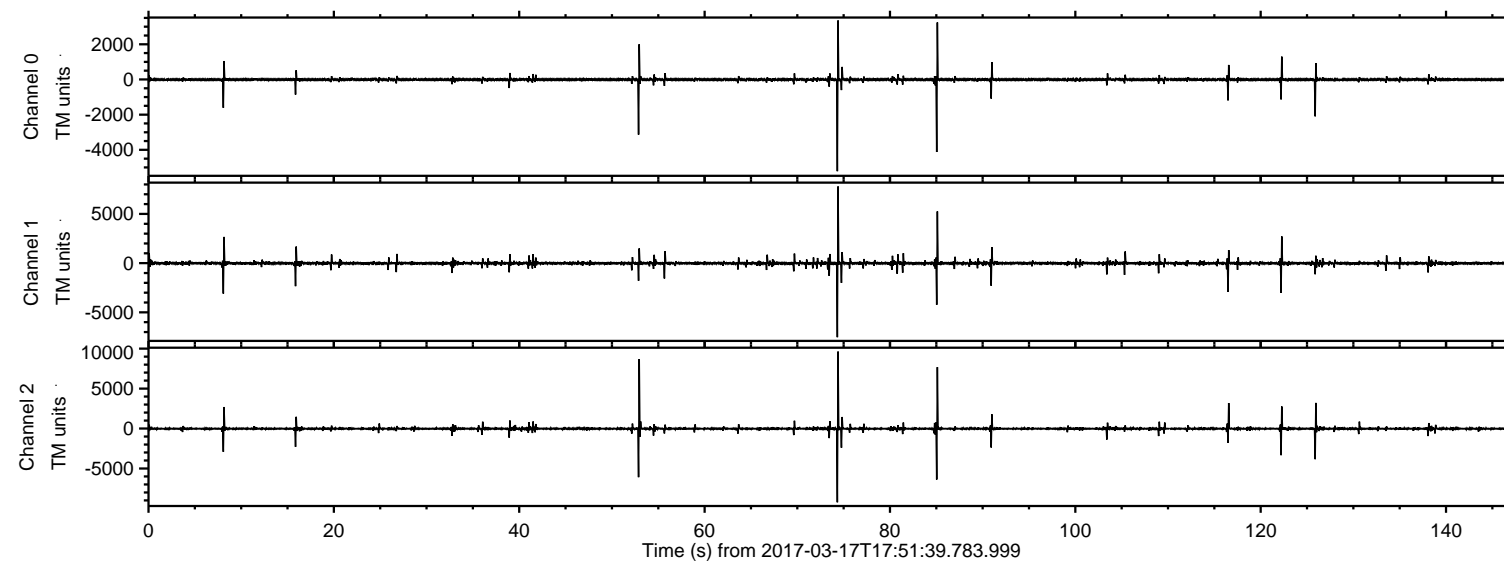


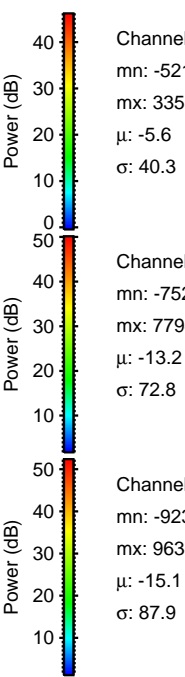
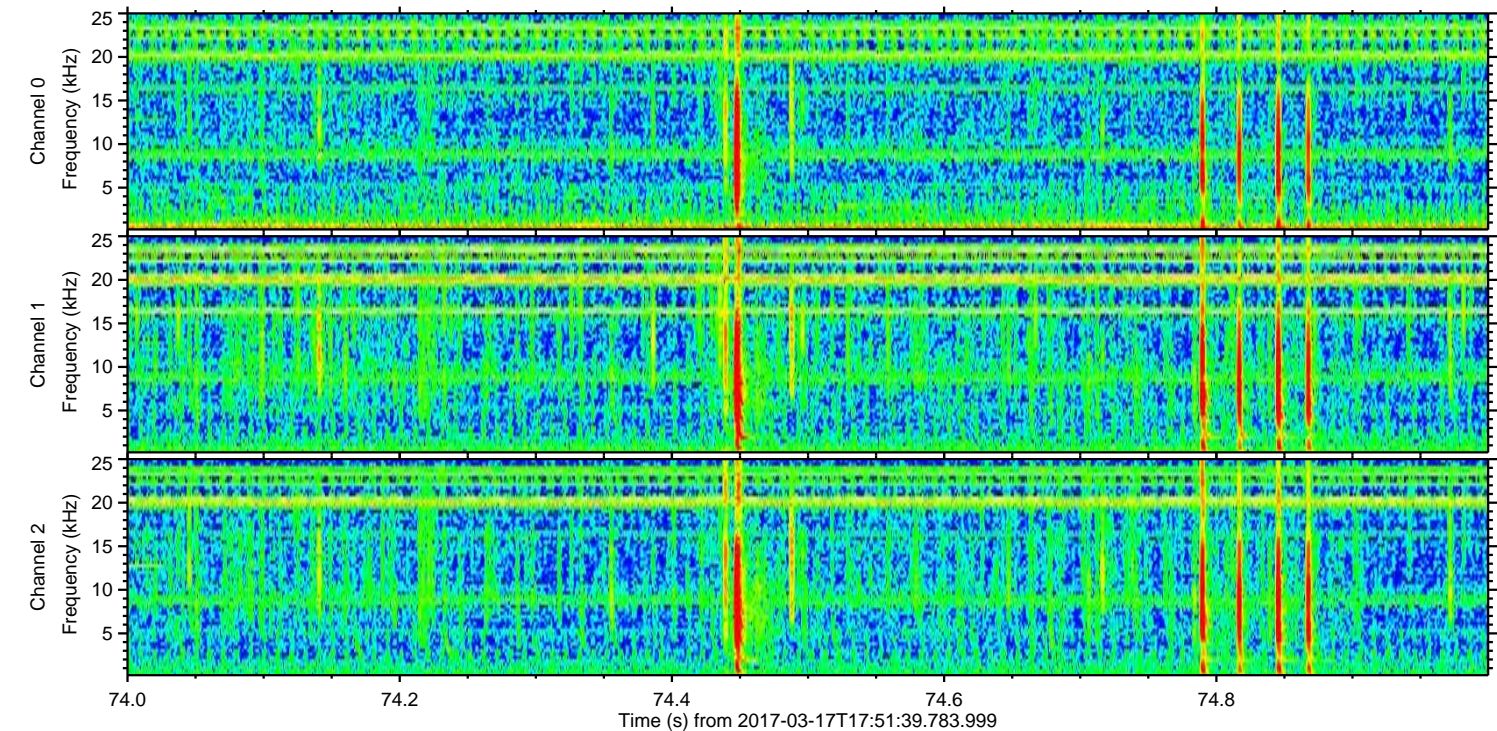
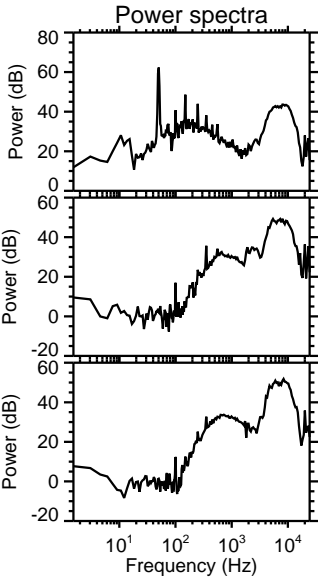
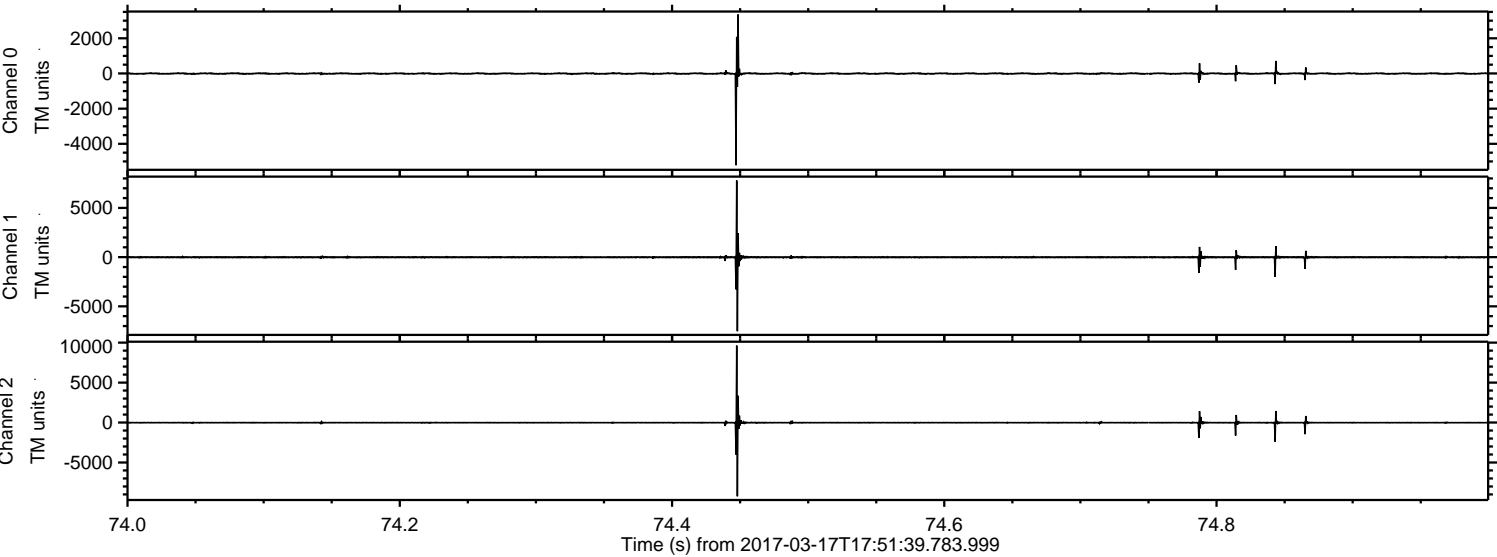
ELMAVAN 3D WAVEFORMS (Measured data sampled at 50 kHz) 51000 packets of 144 samples from 2017-03-17T17:51:39.783.999.

Processed Fri Mar 17 18:59:42 2017 by ELM ver.2012-10-06 from 001__elm20170317_175138__dat00.bin

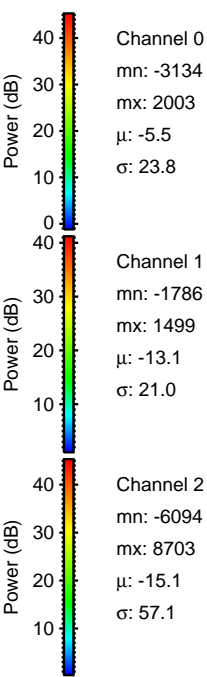
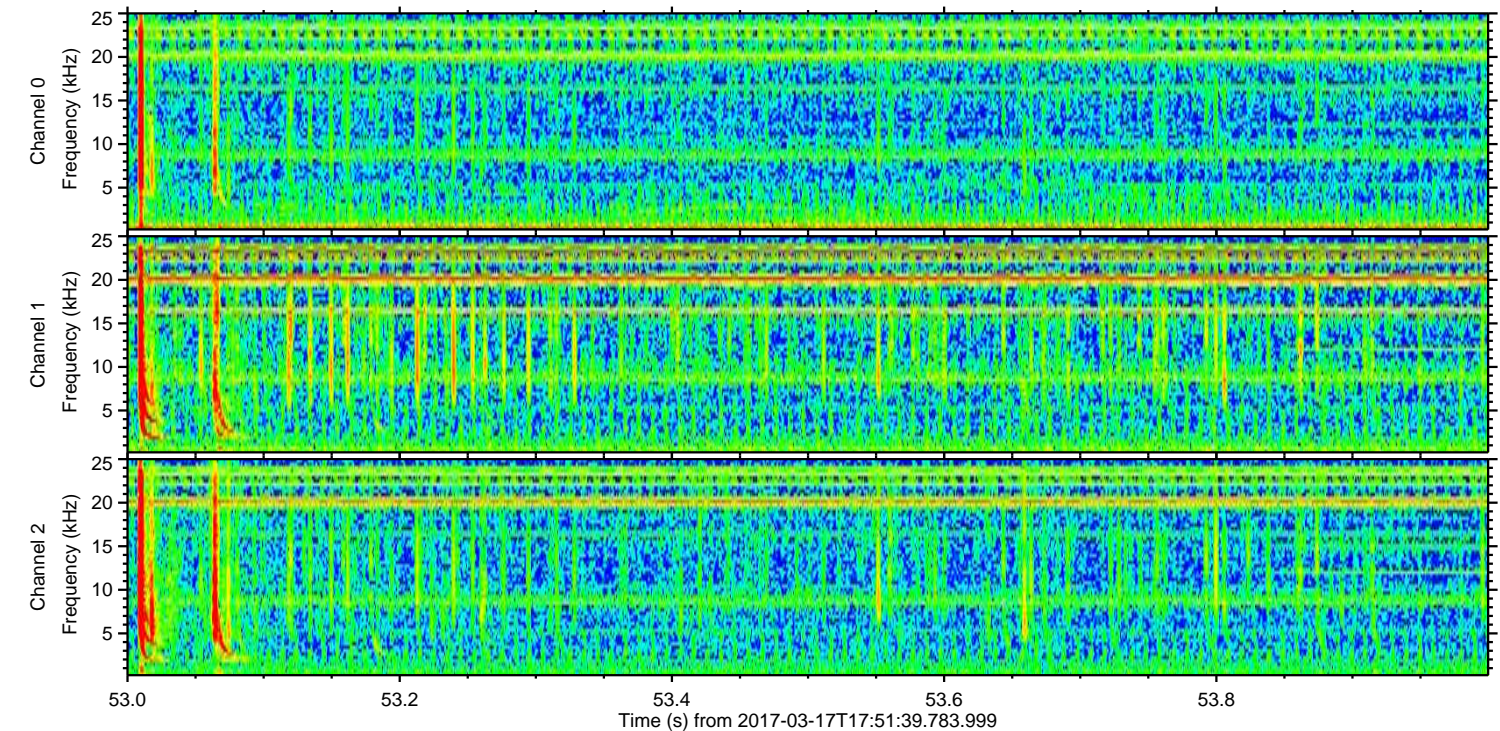
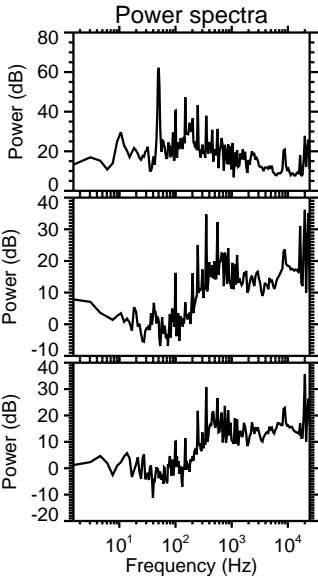
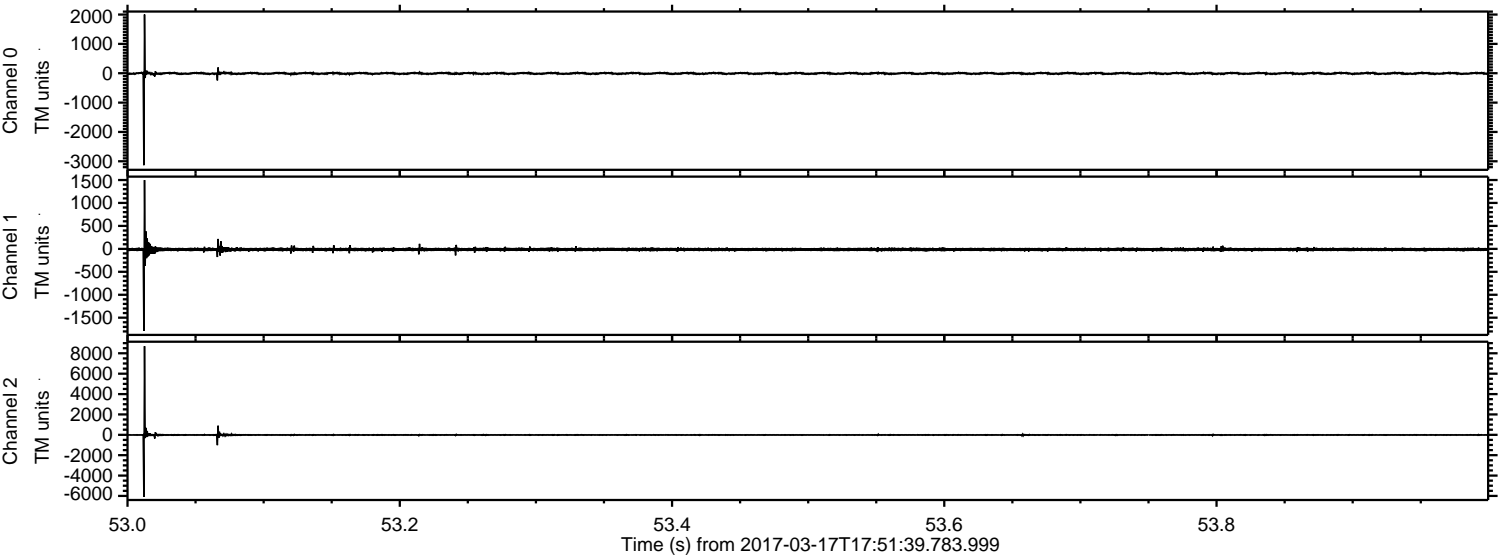


ELMAVAN 3D WAVEFORMS (Measured data sampled at 50 kHz) 51000 packets of 144 samples from 2017-03-17T17:51:39.783.999. Part 75/147

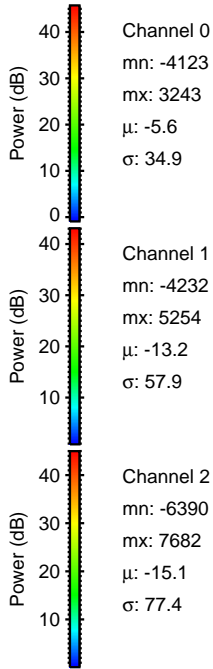
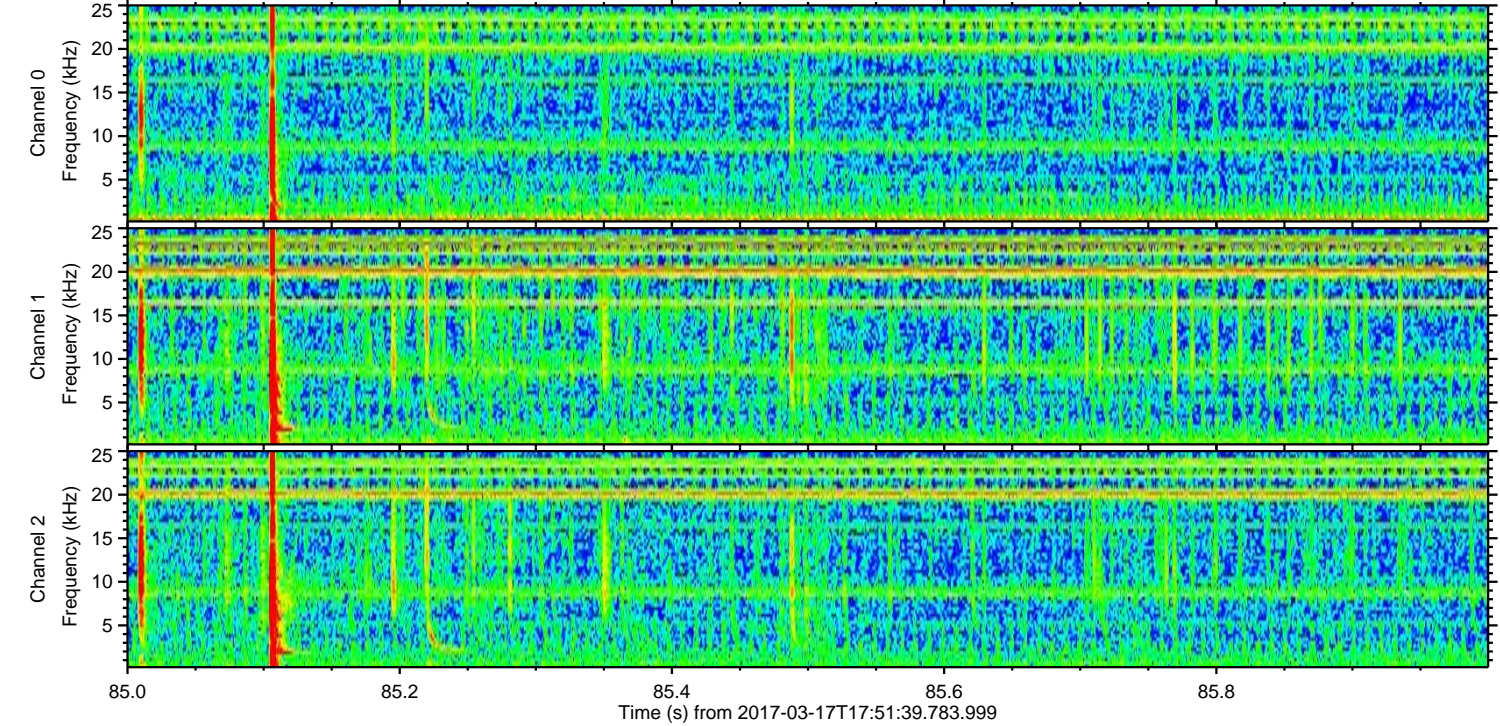
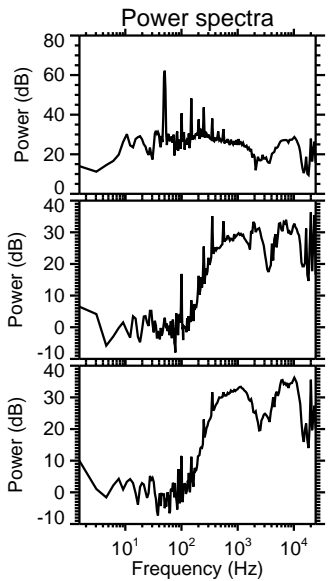
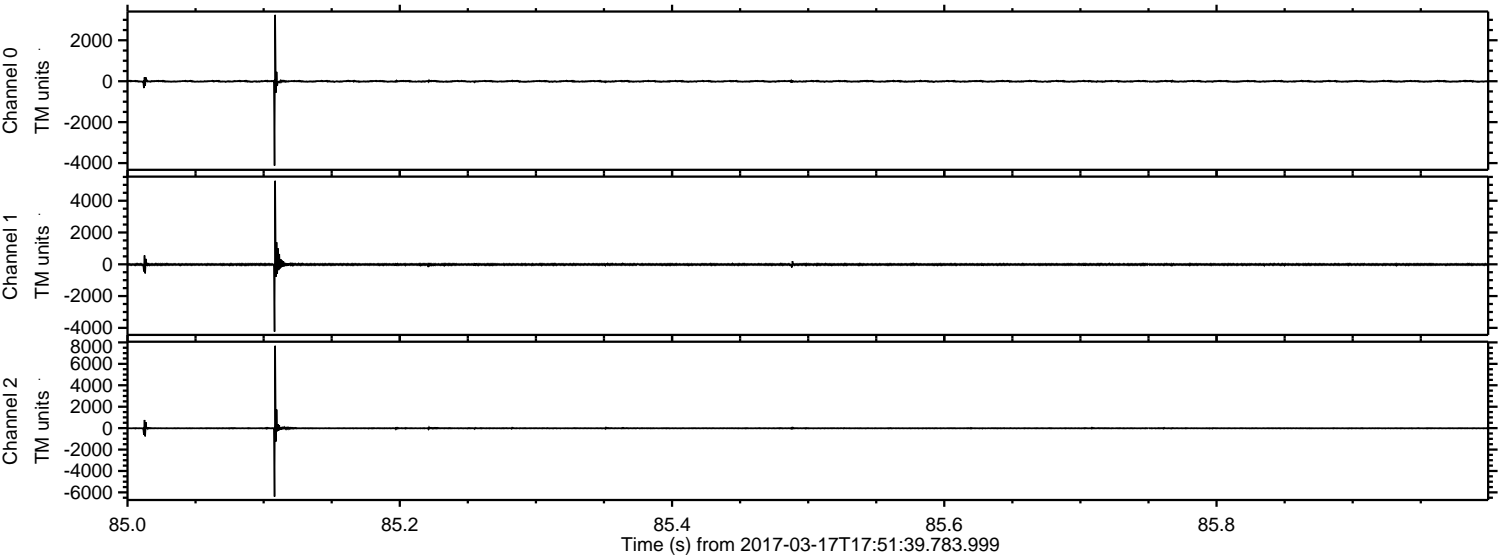
Processed Fri Mar 17 18:59:53 2017 by ELM ver.2012-10-06 from 001__elm20170317_175138__dat00.bin



Processed Fri Mar 17 18:59:54 2017 by ELM ver.2012-10-06 from 001__elm20170317_175138__dat00.bin

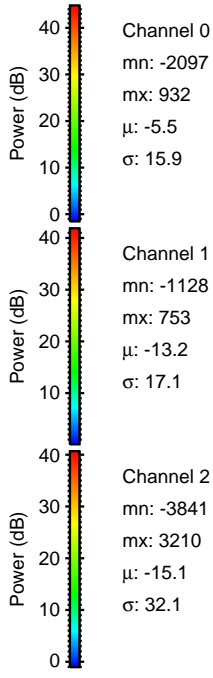
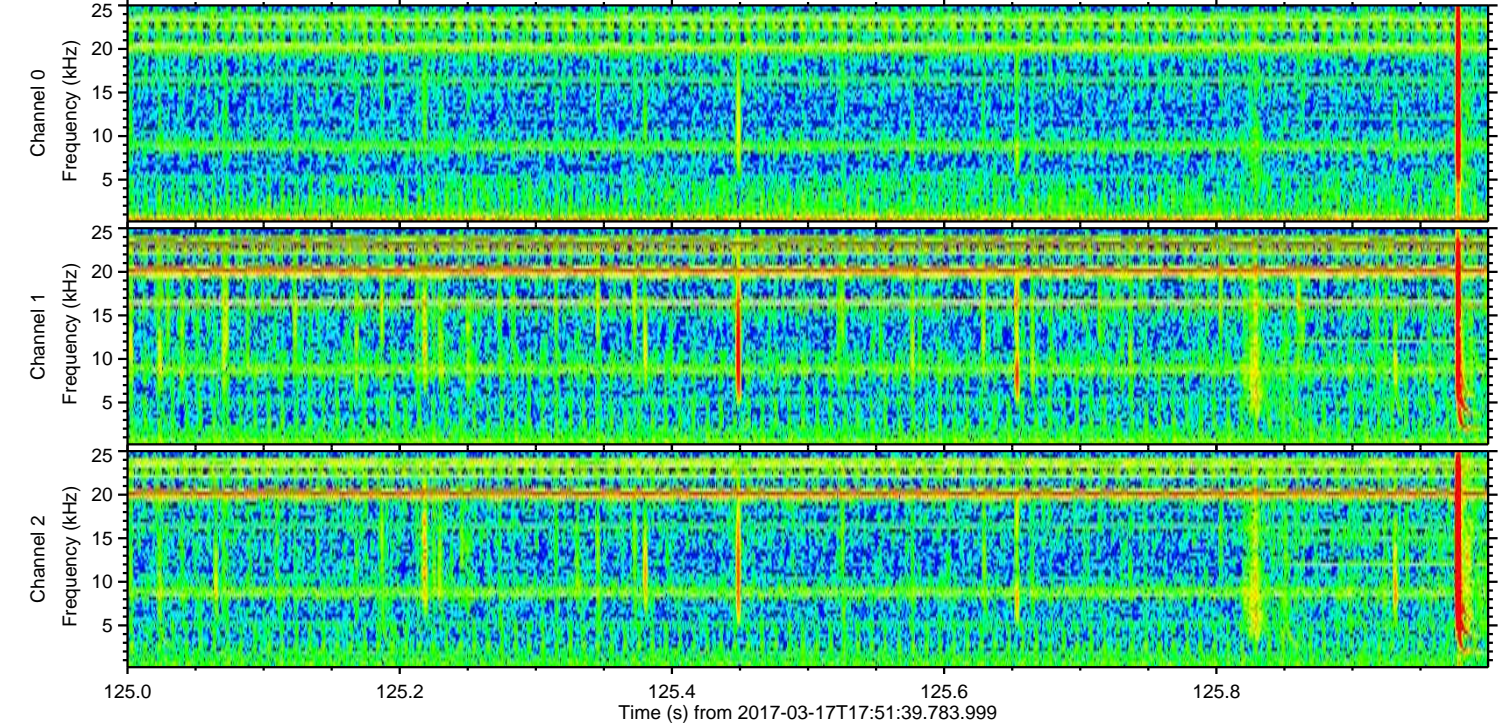
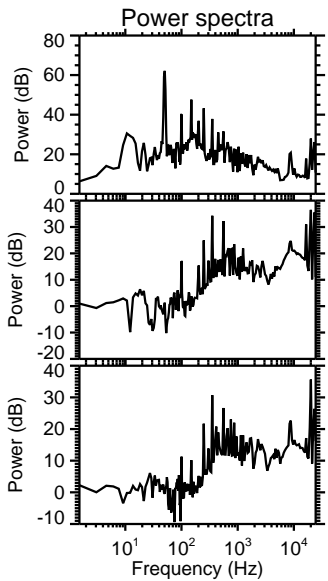
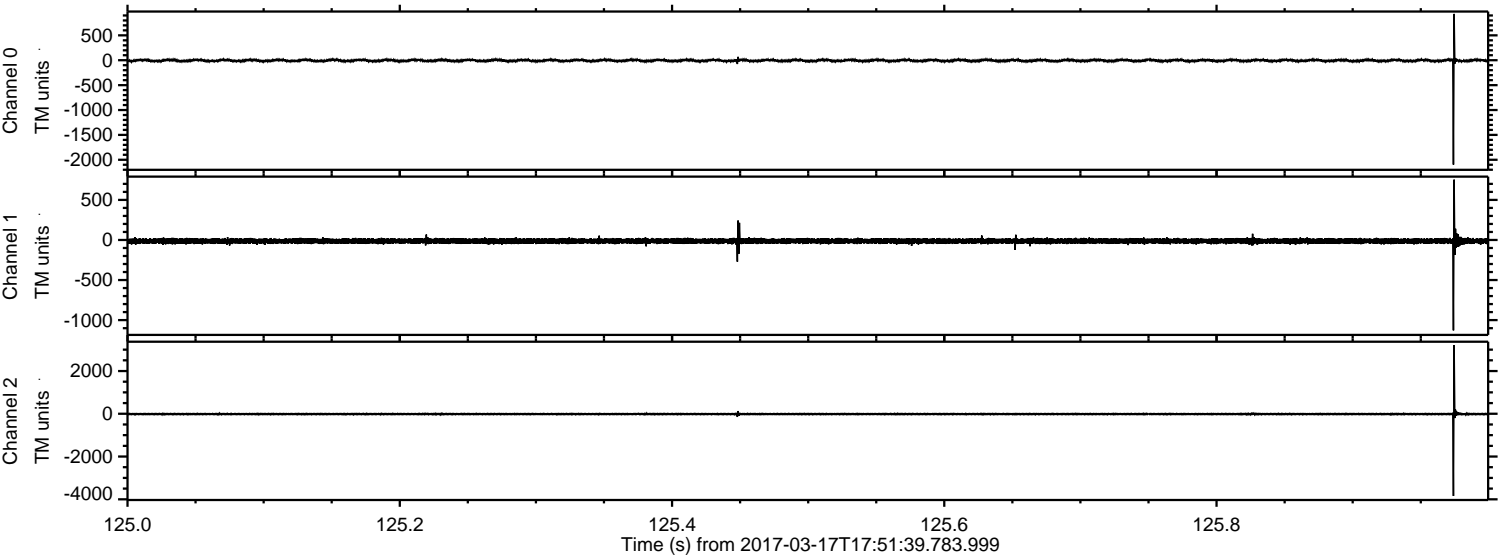


Processed Fri Mar 17 18:59:55 2017 by ELM ver.2012-10-06 from 001__elm20170317_175138__dat00.bin



ELMAVAN 3D WAVEFORMS (Measured data sampled at 50 kHz) 51000 packets of 144 samples from 2017-03-17T17:51:39.783.999. Part 126/147

Processed Fri Mar 17 18:59:56 2017 by ELM ver.2012-10-06 from 001__elm20170317_175138__dat00.bin



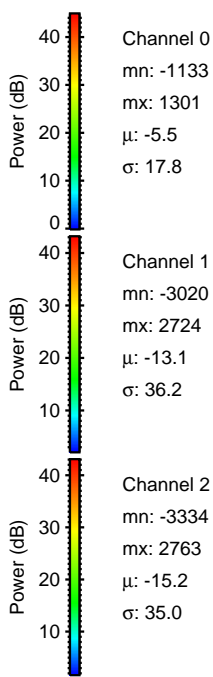
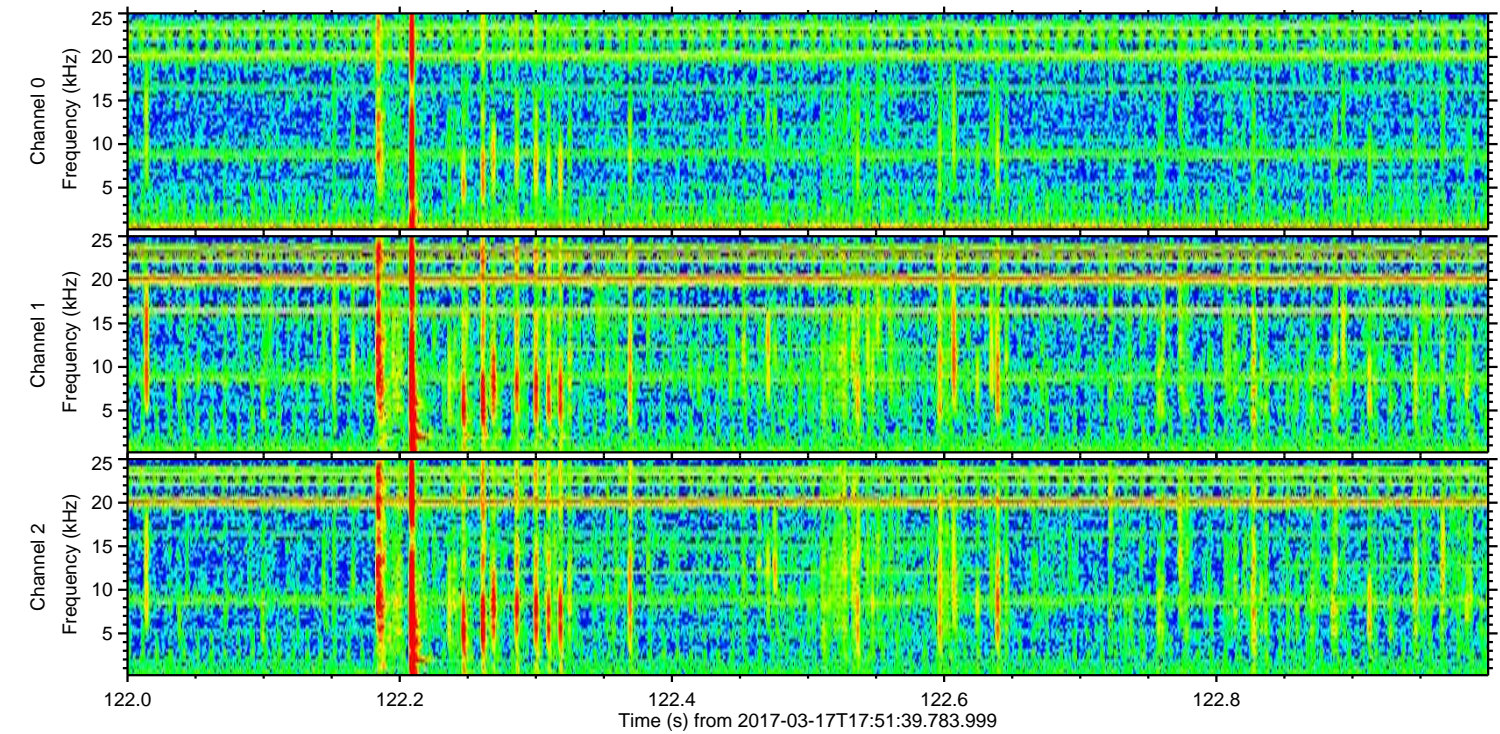
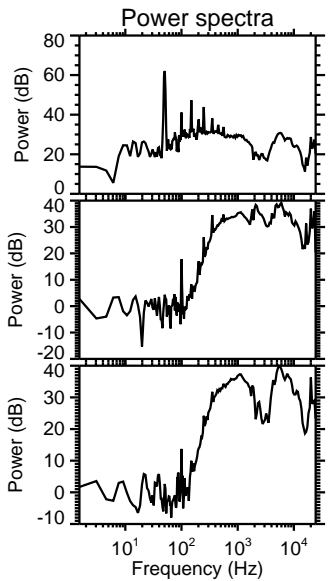
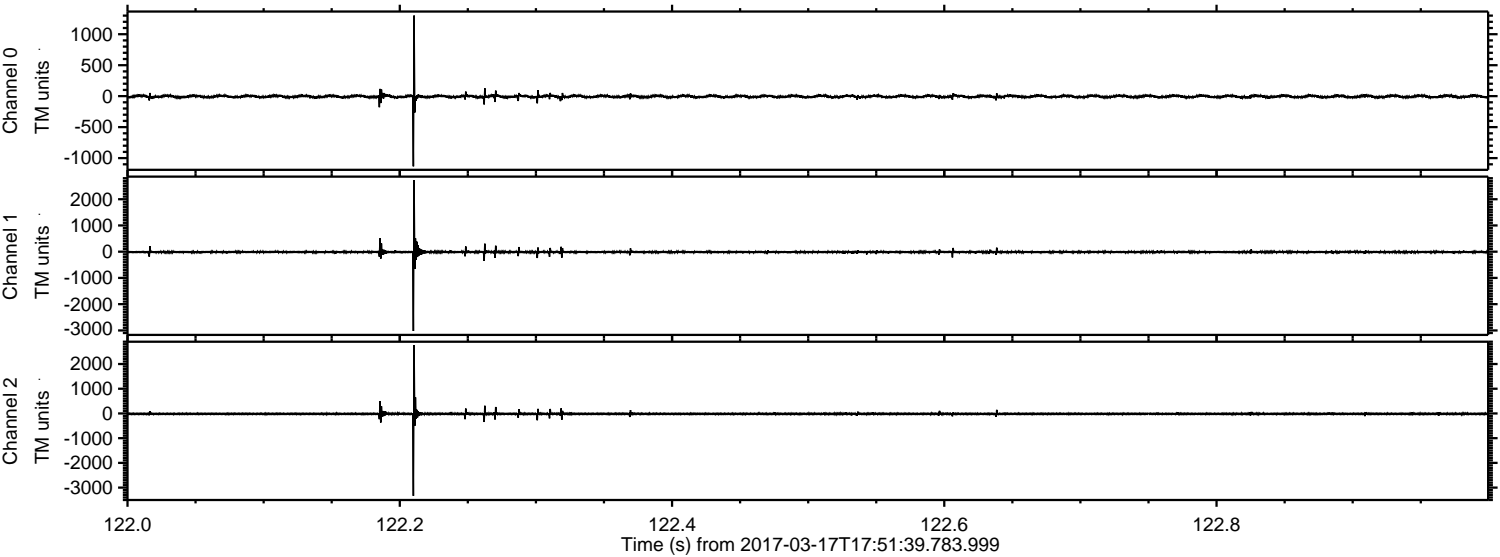
Channel 0
mn: -2097
mx: 932
 μ : -5.5
 σ : 15.9

Channel 1
mn: -1128
mx: 753
 μ : -13.2
 σ : 17.1

Channel 2
mn: -3841
mx: 3210
 μ : -15.1
 σ : 32.1

ELMAVAN 3D WAVEFORMS (Measured data sampled at 50 kHz) 51000 packets of 144 samples from 2017-03-17T17:51:39.783.999. Part 123/147

Processed Fri Mar 17 18:59:57 2017 by ELM ver.2012-10-06 from 001__elm20170317_175138__dat00.bin



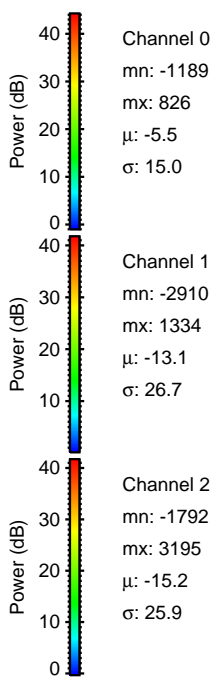
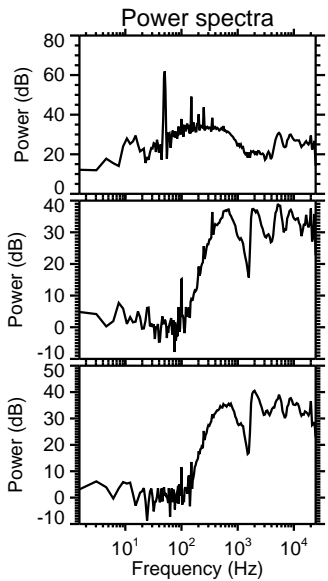
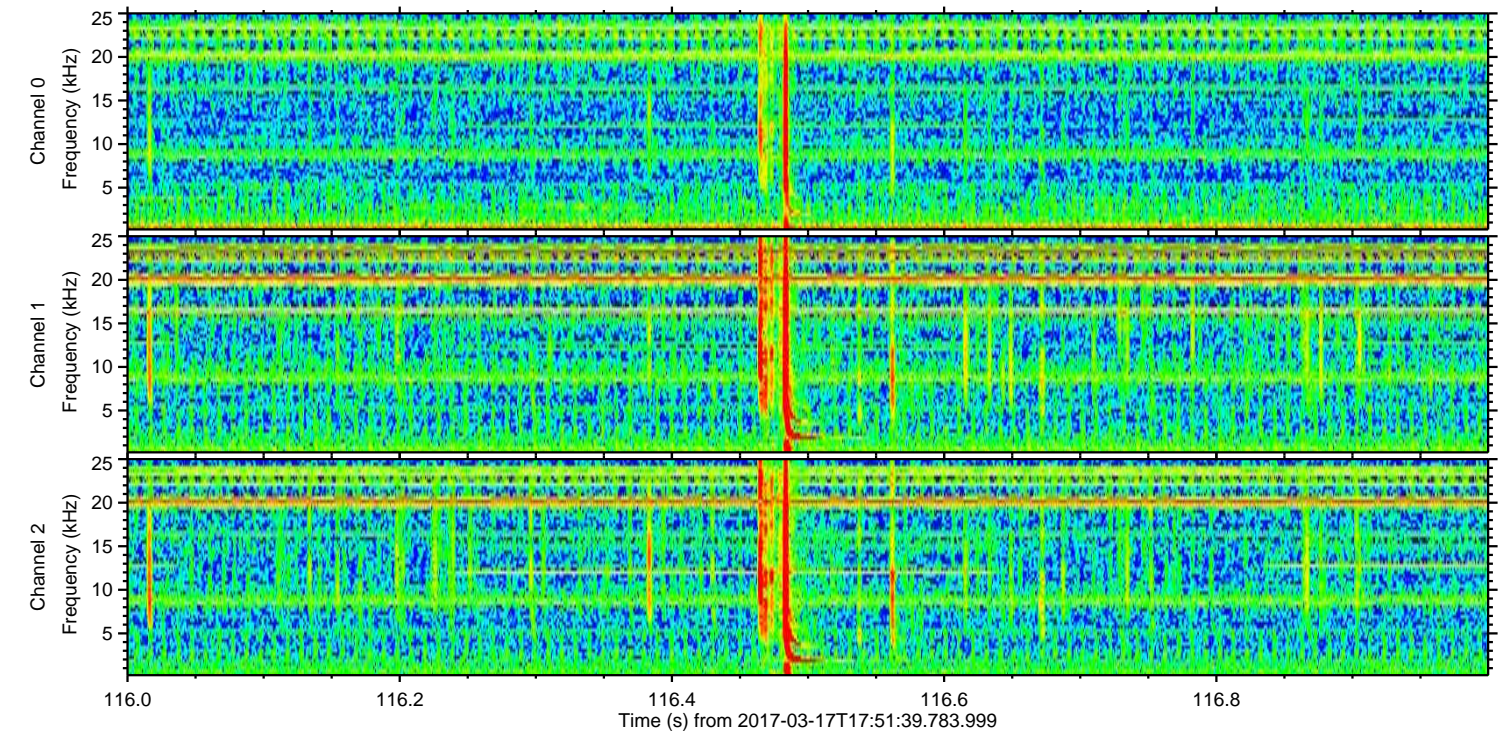
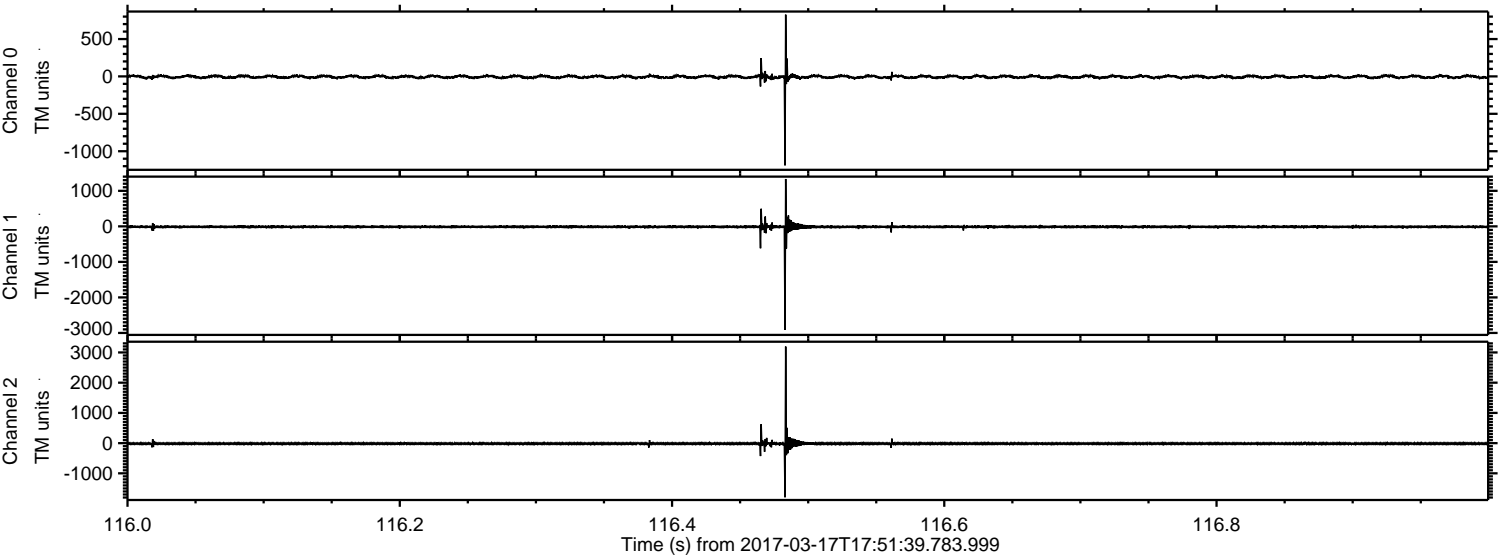
Channel 0
mn: -1133
mx: 1301
 μ : -5.5
 σ : 17.8

Channel 1
mn: -3020
mx: 2724
 μ : -13.1
 σ : 36.2

Channel 2
mn: -3334
mx: 2763
 μ : -15.2
 σ : 35.0

ELMAVAN 3D WAVEFORMS (Measured data sampled at 50 kHz) 51000 packets of 144 samples from 2017-03-17T17:51:39.783.999. Part 117/147

Processed Fri Mar 17 18:59:58 2017 by ELM ver.2012-10-06 from 001__elm20170317_175138__dat00.bin

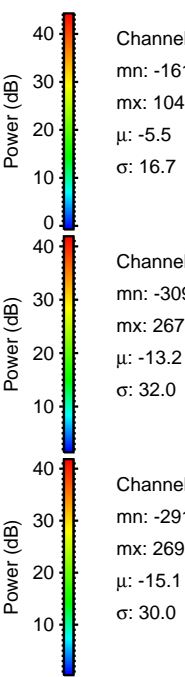
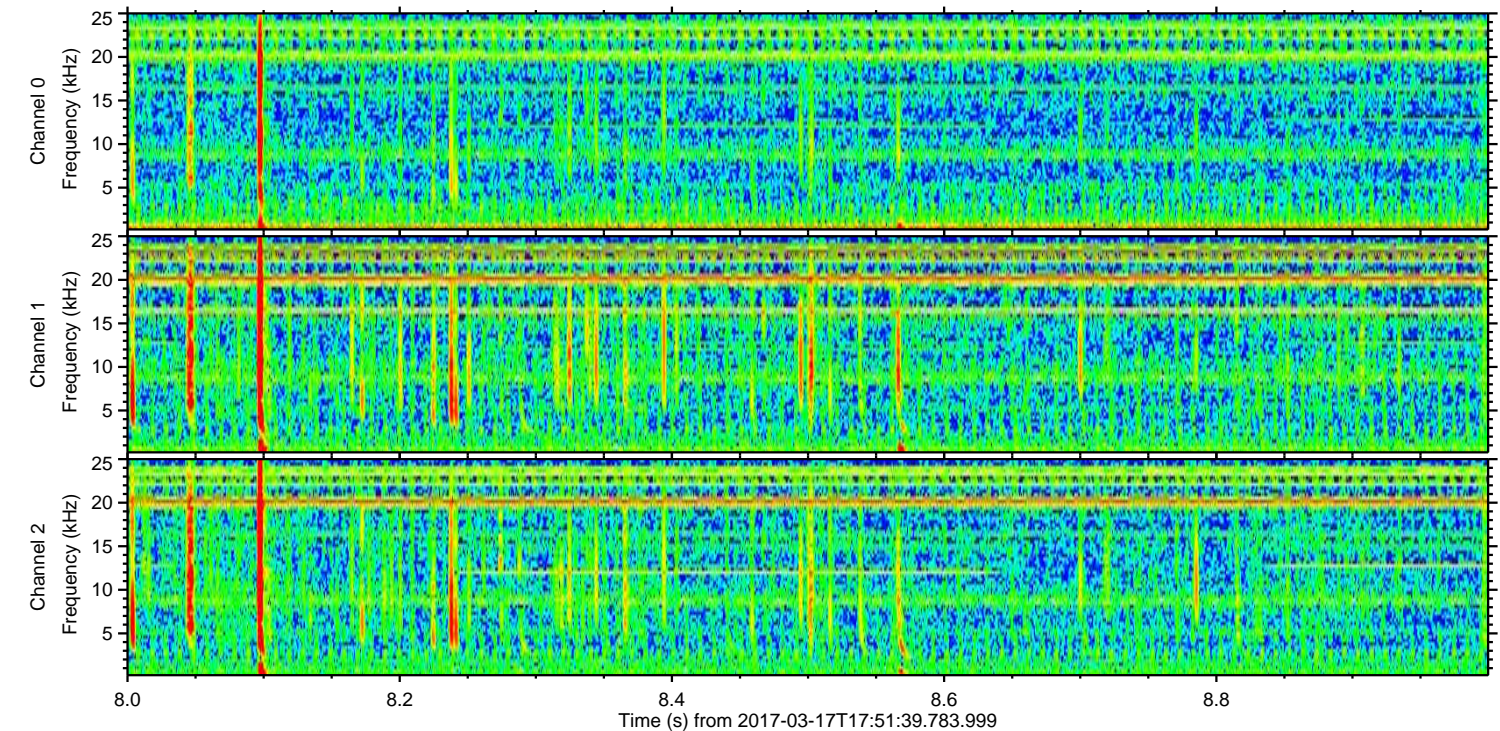
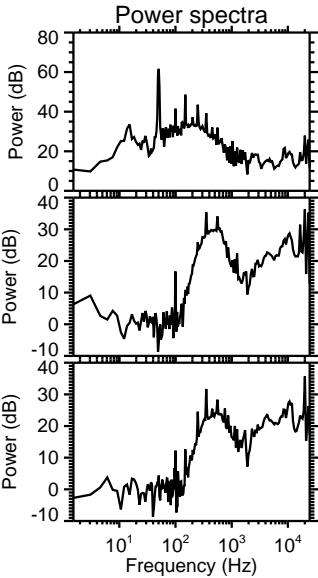
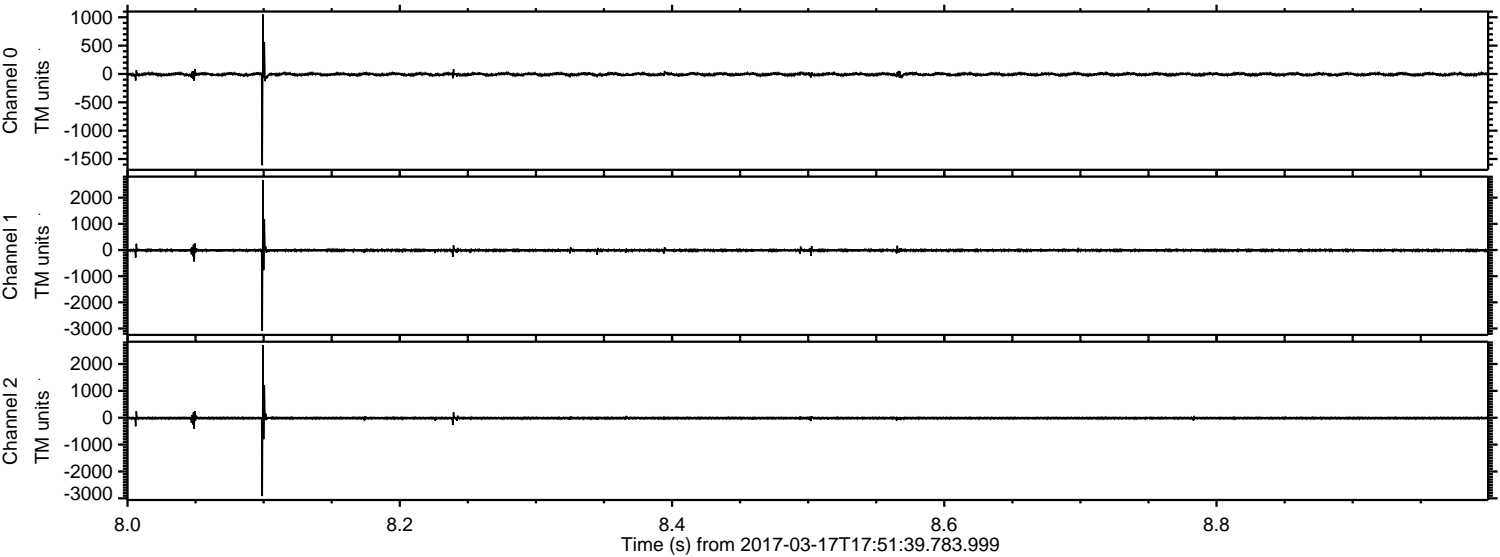


Channel 0
mn: -1189
mx: 826
 μ : -5.5
 σ : 15.0

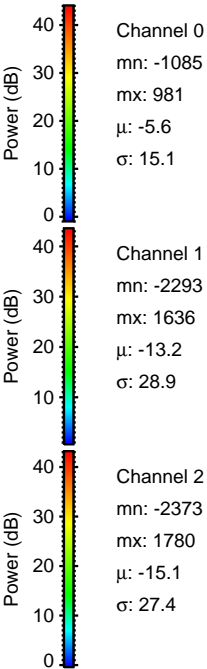
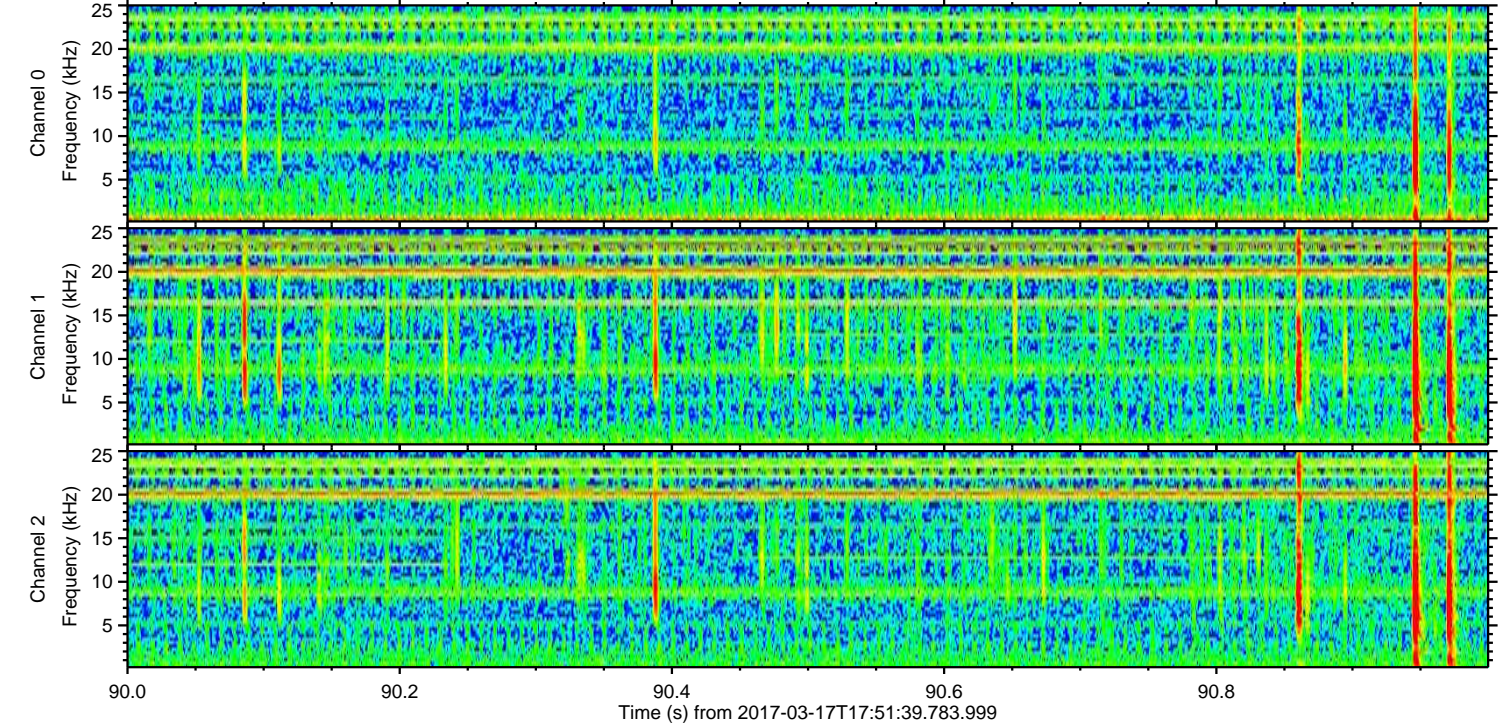
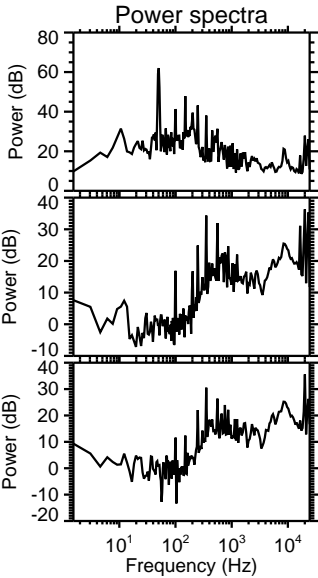
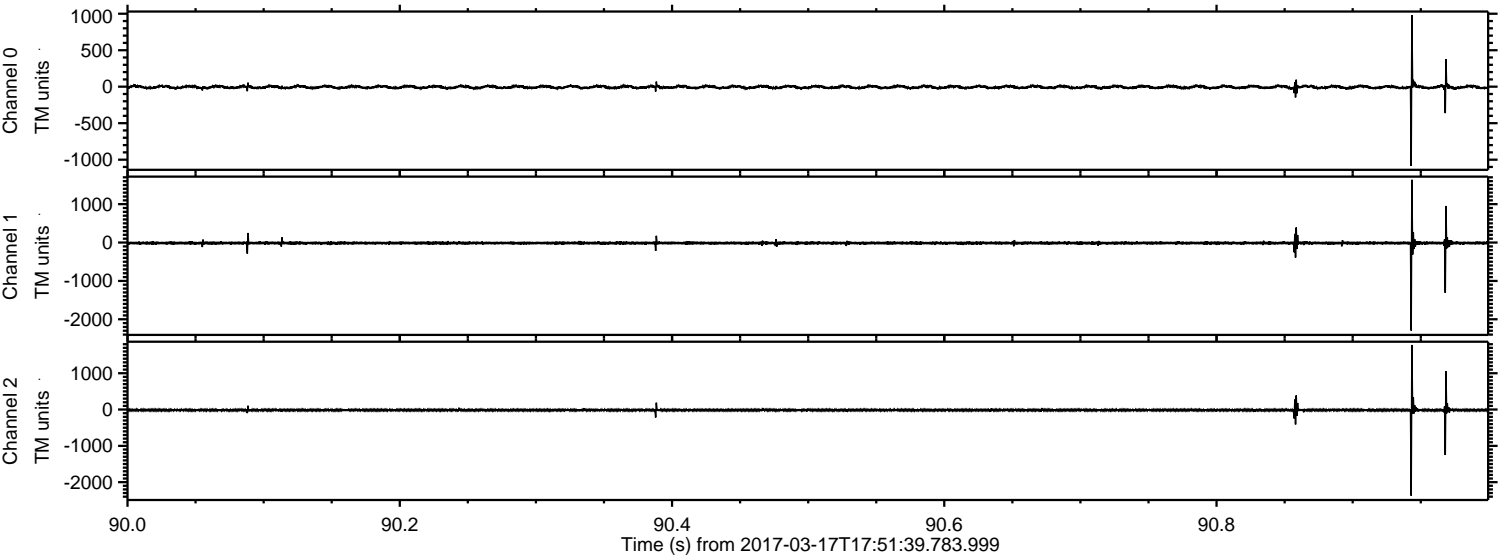
Channel 1
mn: -2910
mx: 1334
 μ : -13.1
 σ : 26.7

Channel 2
mn: -1792
mx: 3195
 μ : -15.2
 σ : 25.9

Processed Fri Mar 17 18:59:59 2017 by ELM ver.2012-10-06 from 001__elm20170317_175138__dat00.bin



Processed Fri Mar 17 19:00:00 2017 by ELM ver.2012-10-06 from 001__elm20170317_175138__dat00.bin

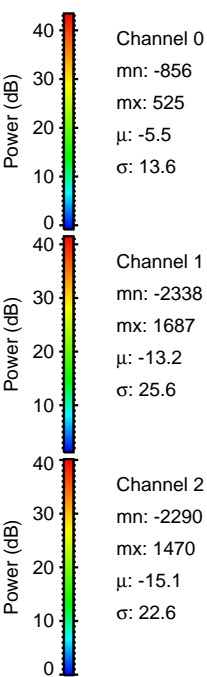
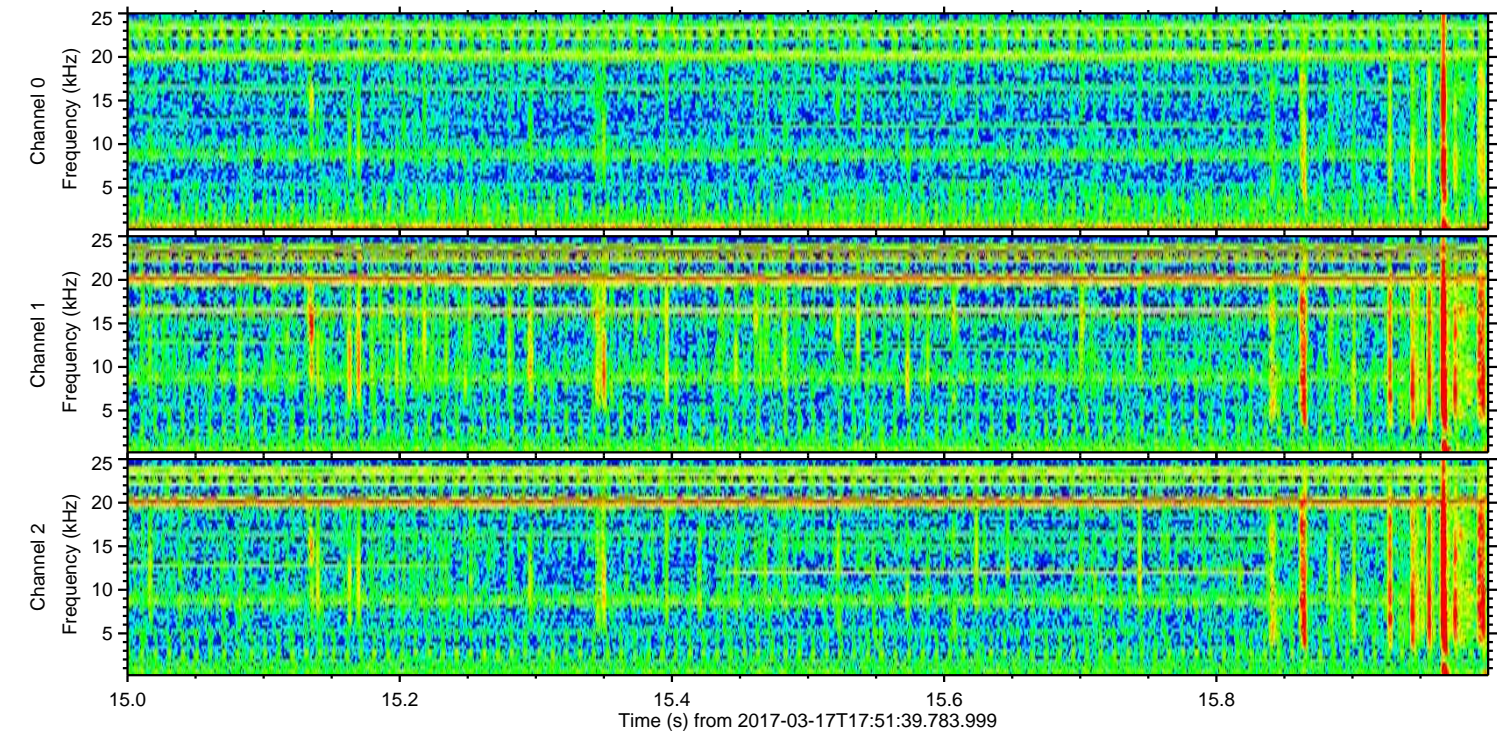
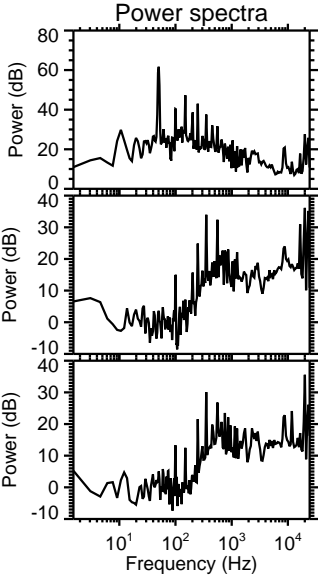
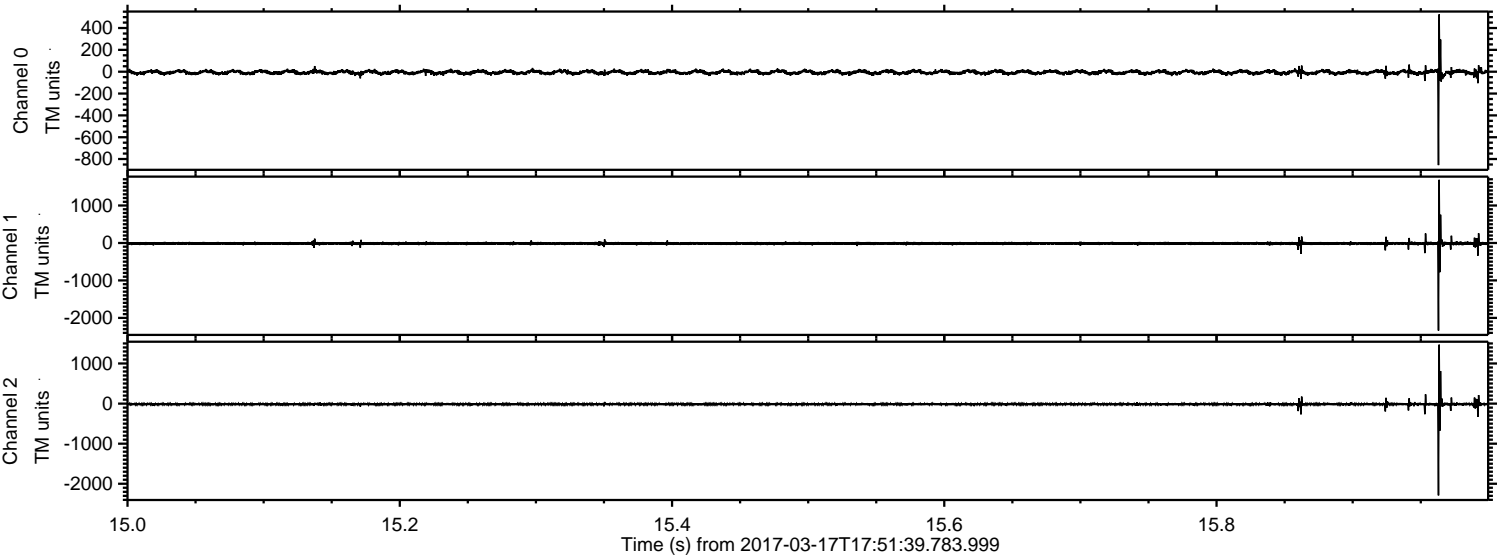


Channel 0
mn: -1085
mx: 981
 μ : -5.6
 σ : 15.1

Channel 1
mn: -2293
mx: 1636
 μ : -13.2
 σ : 28.9

Channel 2
mn: -2373
mx: 1780
 μ : -15.1
 σ : 27.4

Processed Fri Mar 17 19:00:01 2017 by ELM ver.2012-10-06 from 001__elm20170317_175138__dat00.bin



Processed Fri Mar 17 19:00:02 2017 by ELM ver.2012-10-06 from 001__elm20170317_175138__dat00.bin

