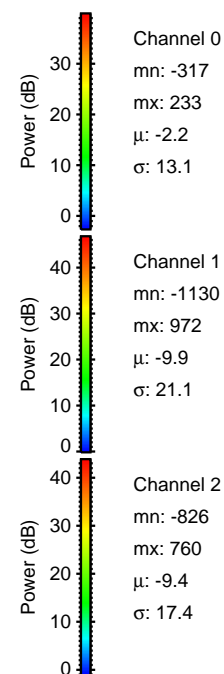
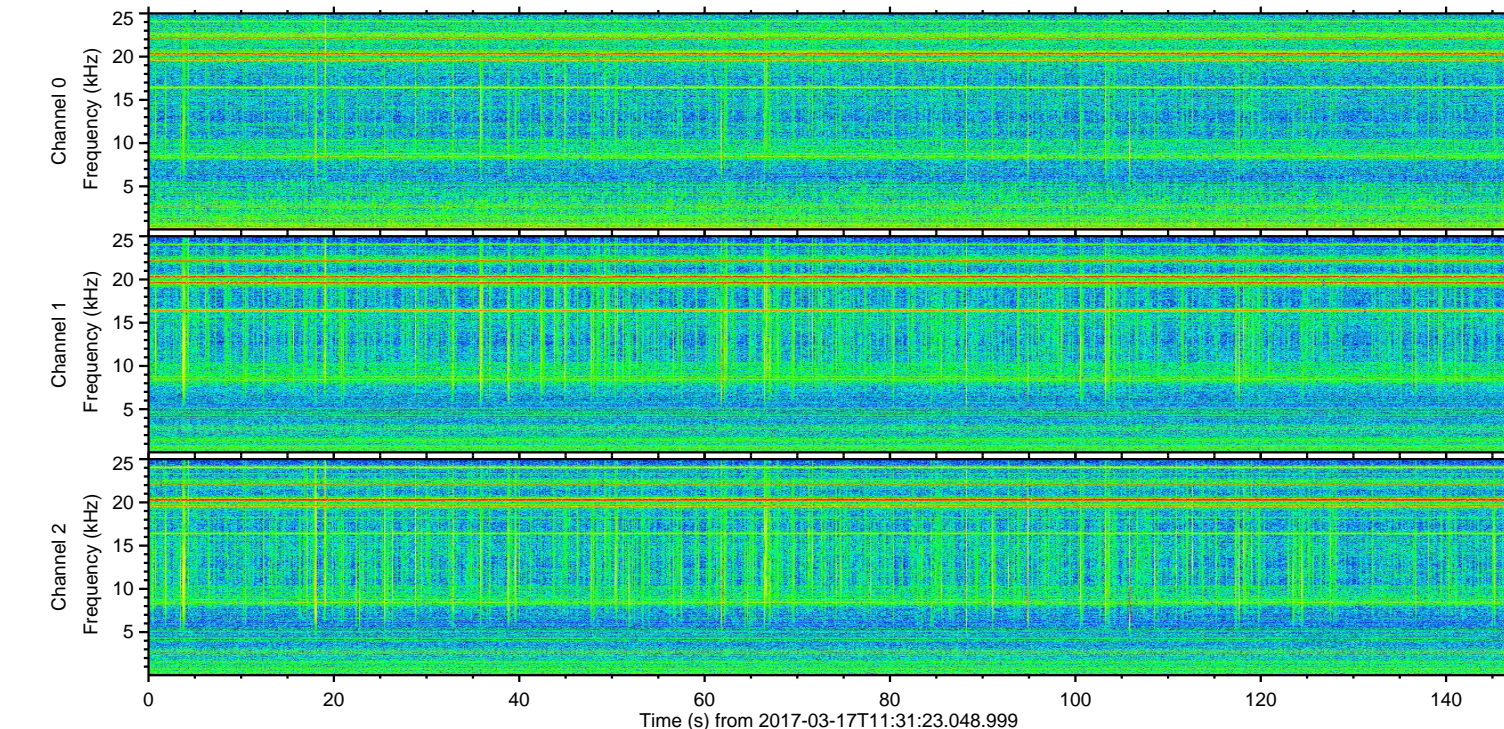
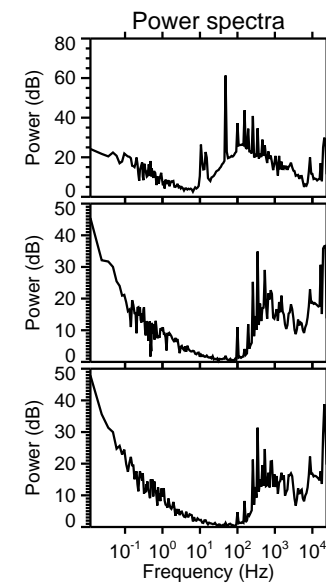
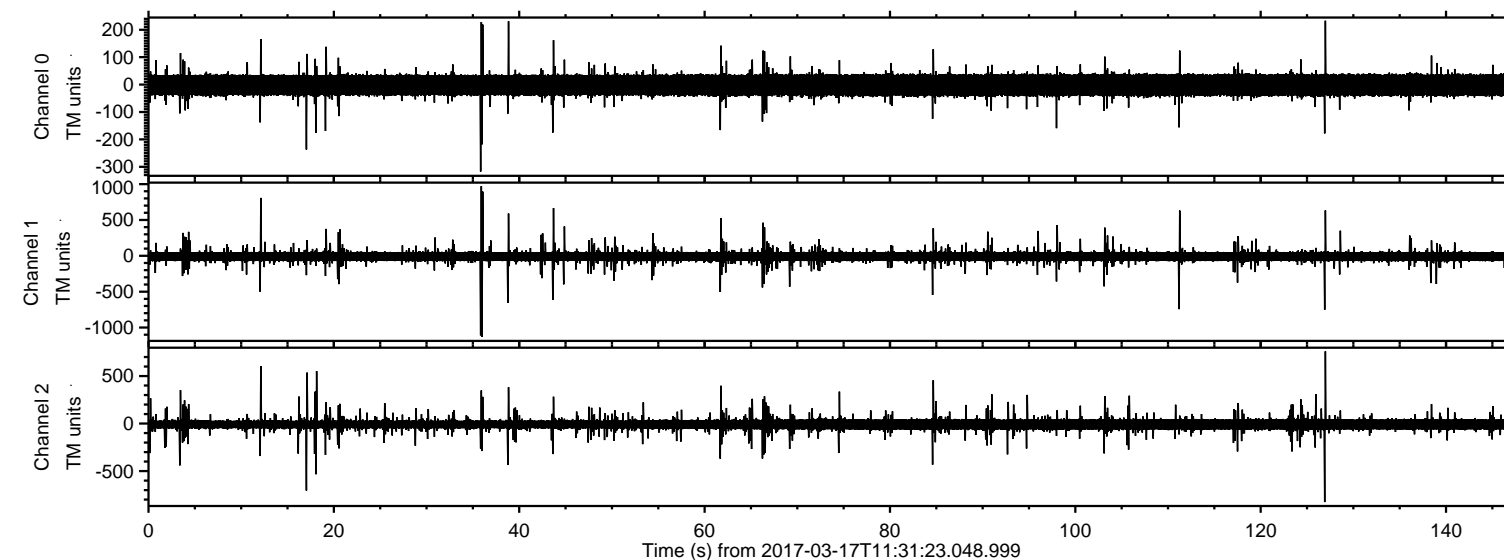
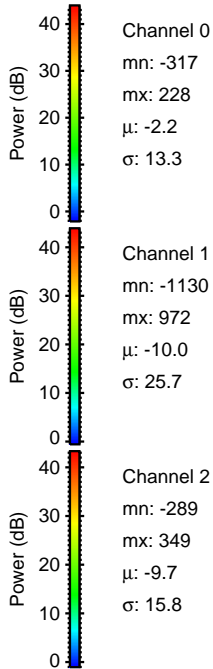
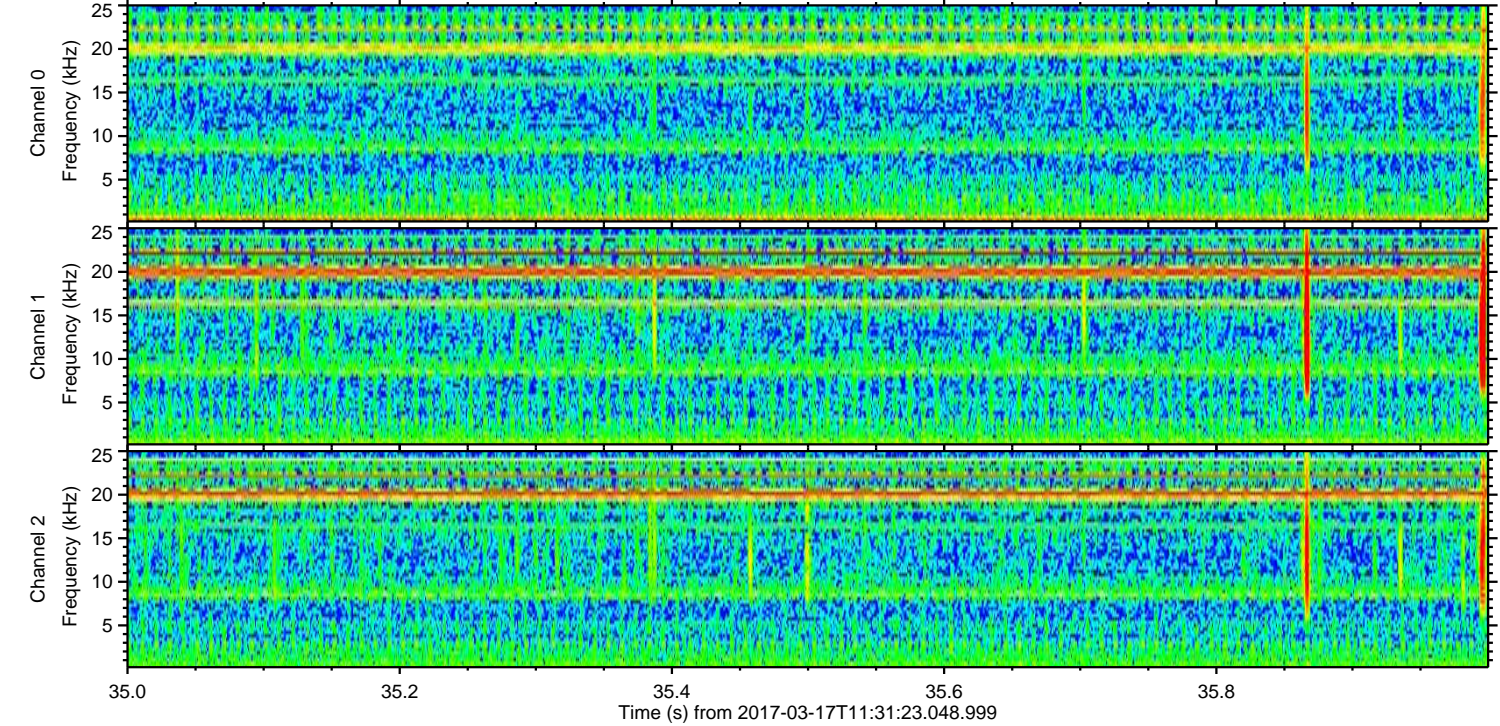
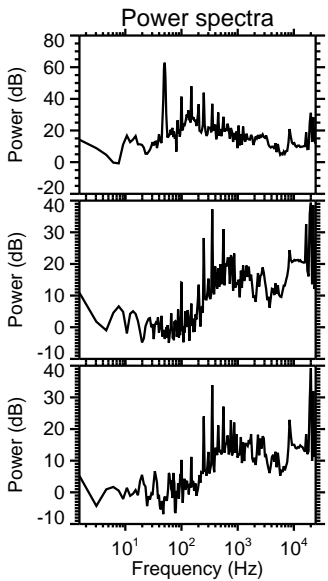
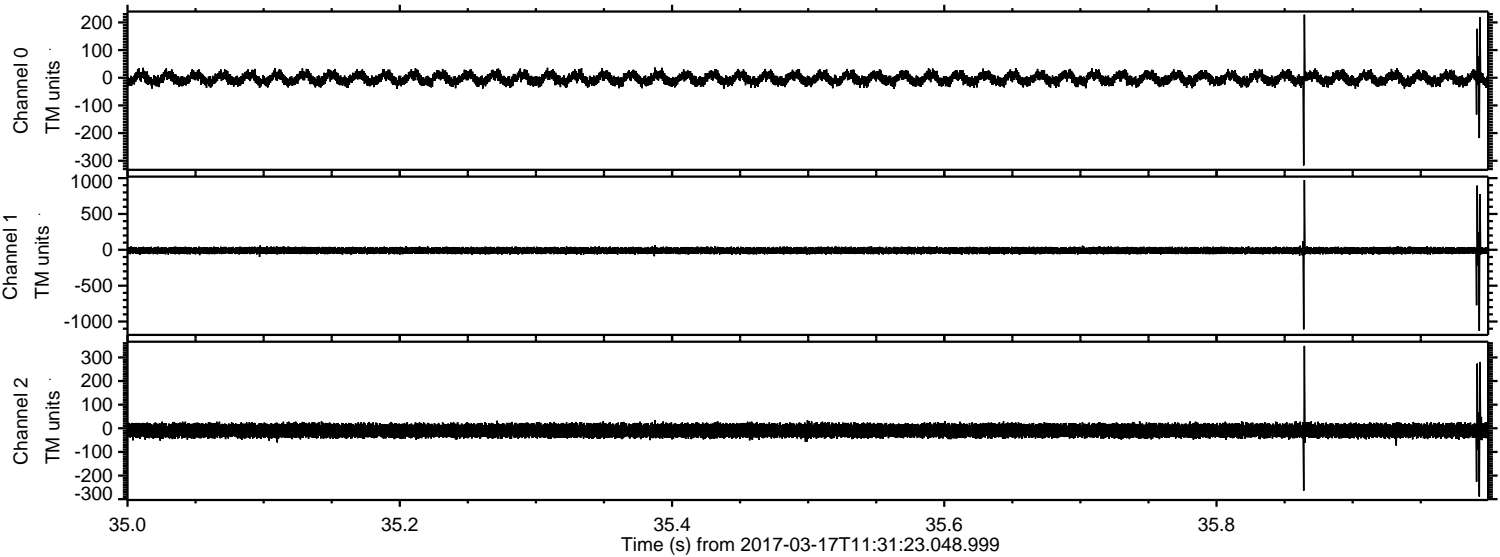


ELMAVAN 3D WAVEFORMS (Measured data sampled at 50 kHz) 51000 packets of 144 samples from 2017-03-17T11:31:23.048.999.

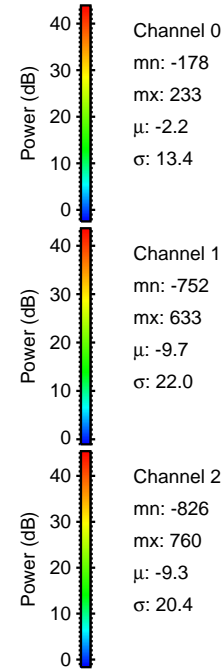
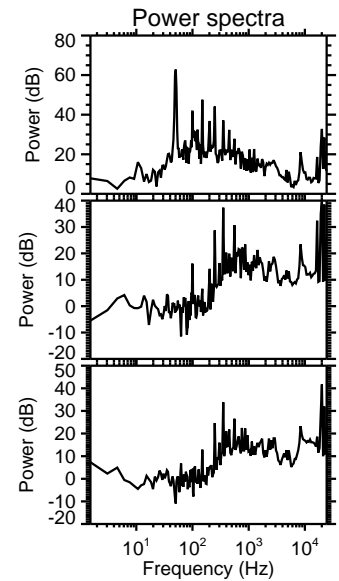
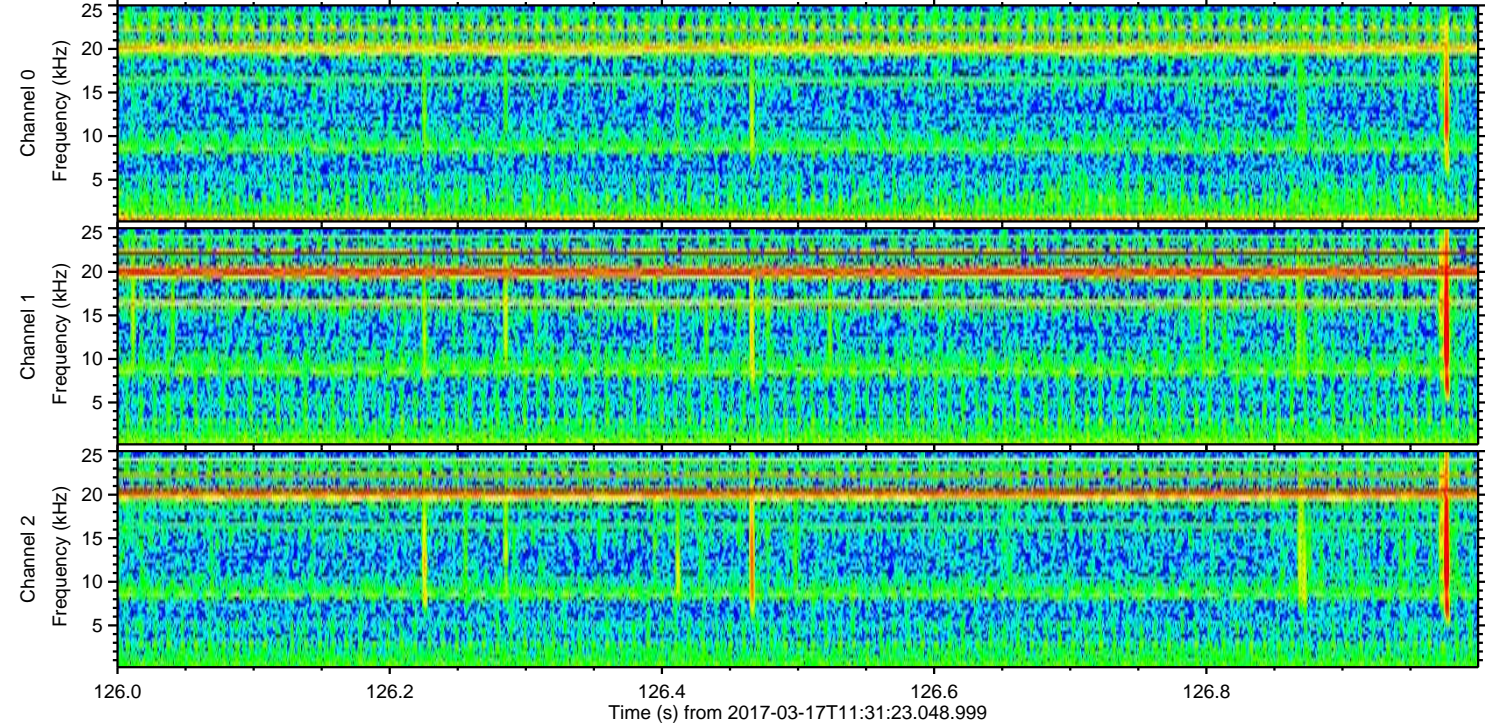
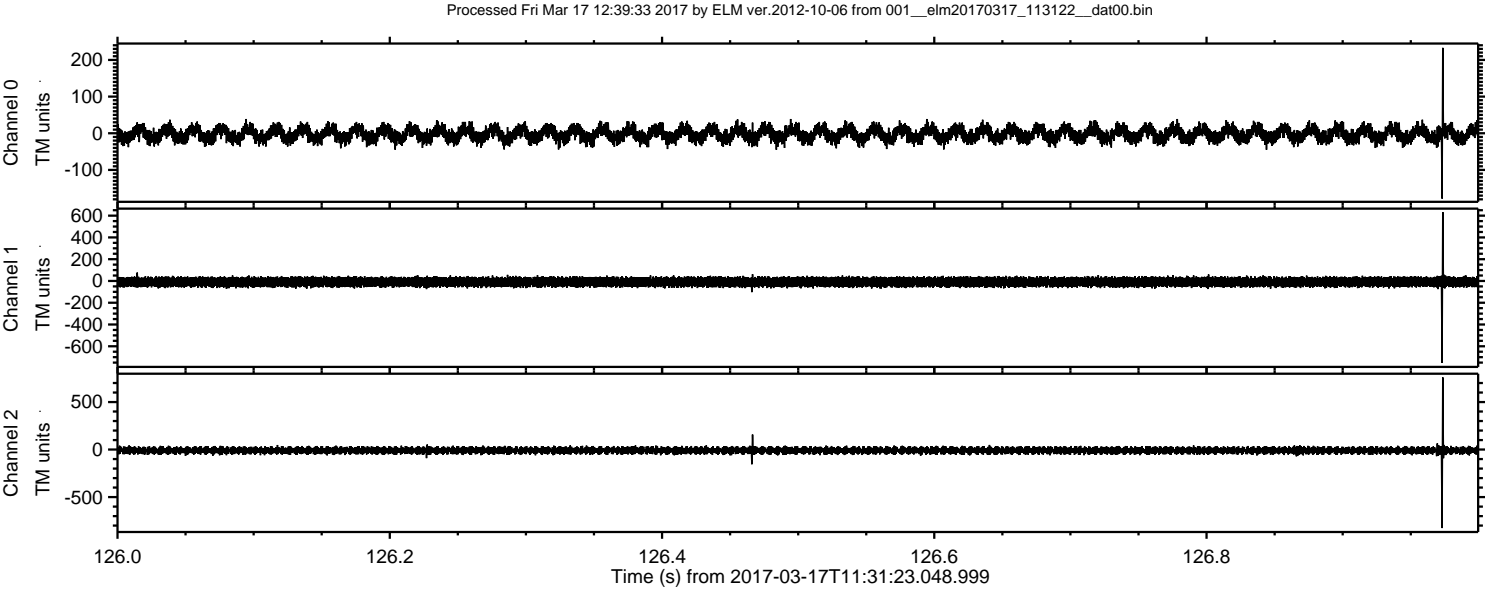
Processed Fri Mar 17 12:39:21 2017 by ELM ver.2012-10-06 from 001__elm20170317_113122__dat00.bin



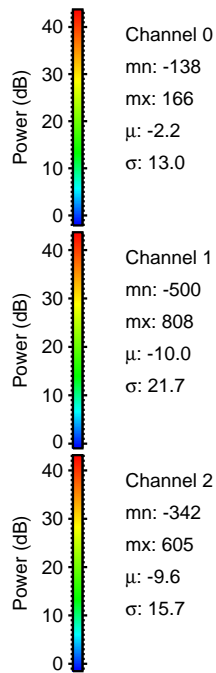
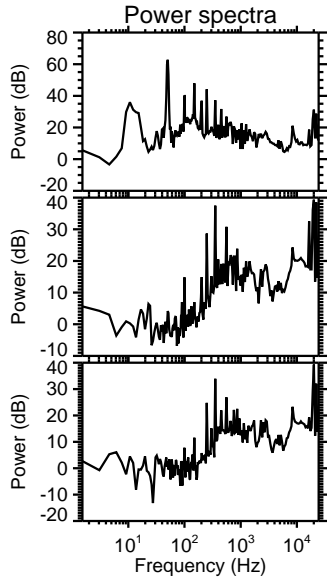
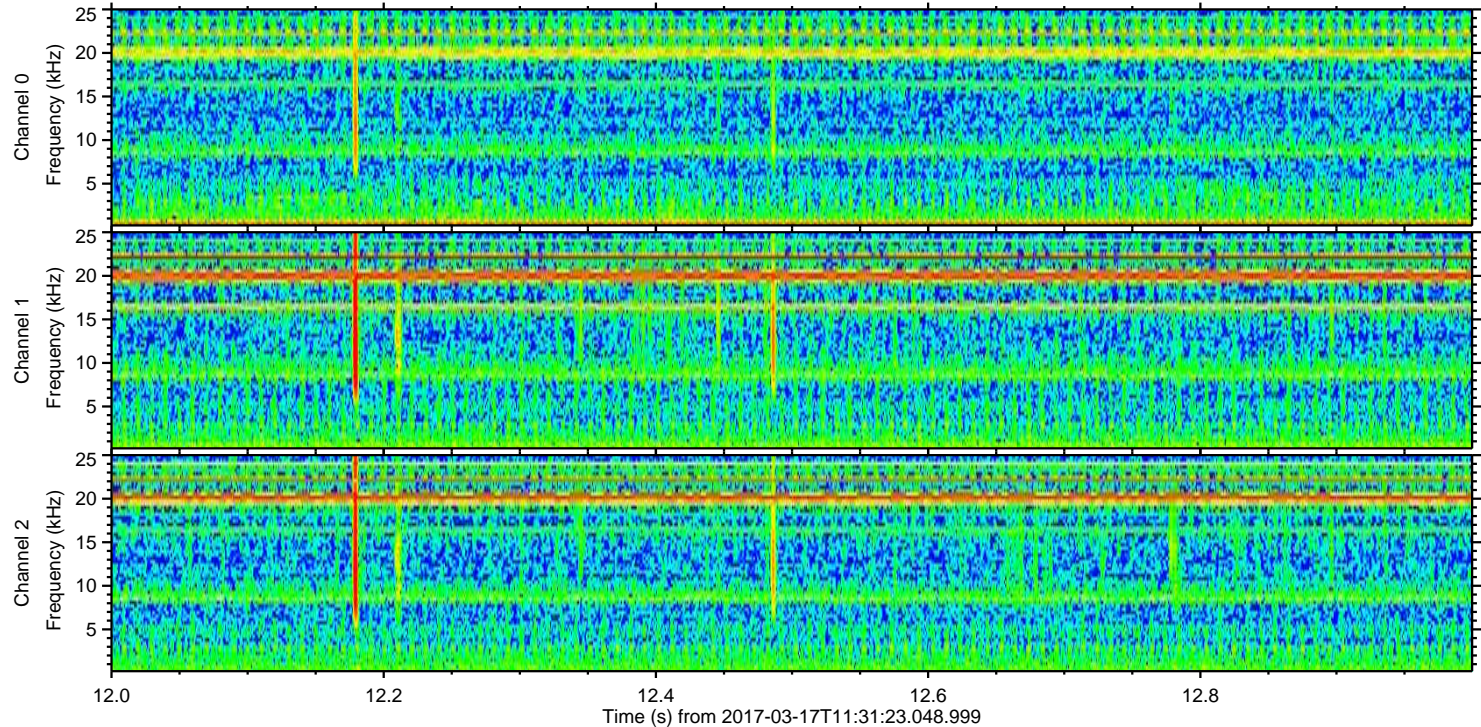
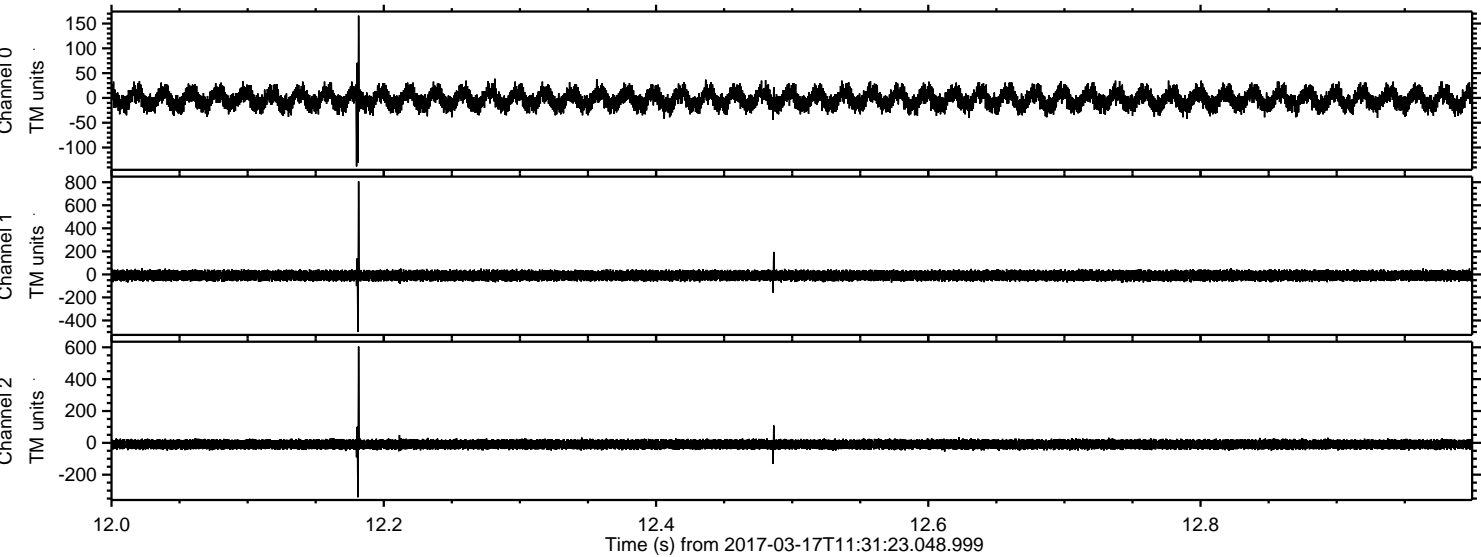
Processed Fri Mar 17 12:39:32 2017 by ELM ver.2012-10-06 from 001__elm20170317_113122__dat00.bin



ELMAVAN 3D WAVEFORMS (Measured data sampled at 50 kHz) 51000 packets of 144 samples from 2017-03-17T11:31:23.048.999. Part 127/147



Processed Fri Mar 17 12:39:34 2017 by ELM ver.2012-10-06 from 001__elm20170317_113122__dat00.bin



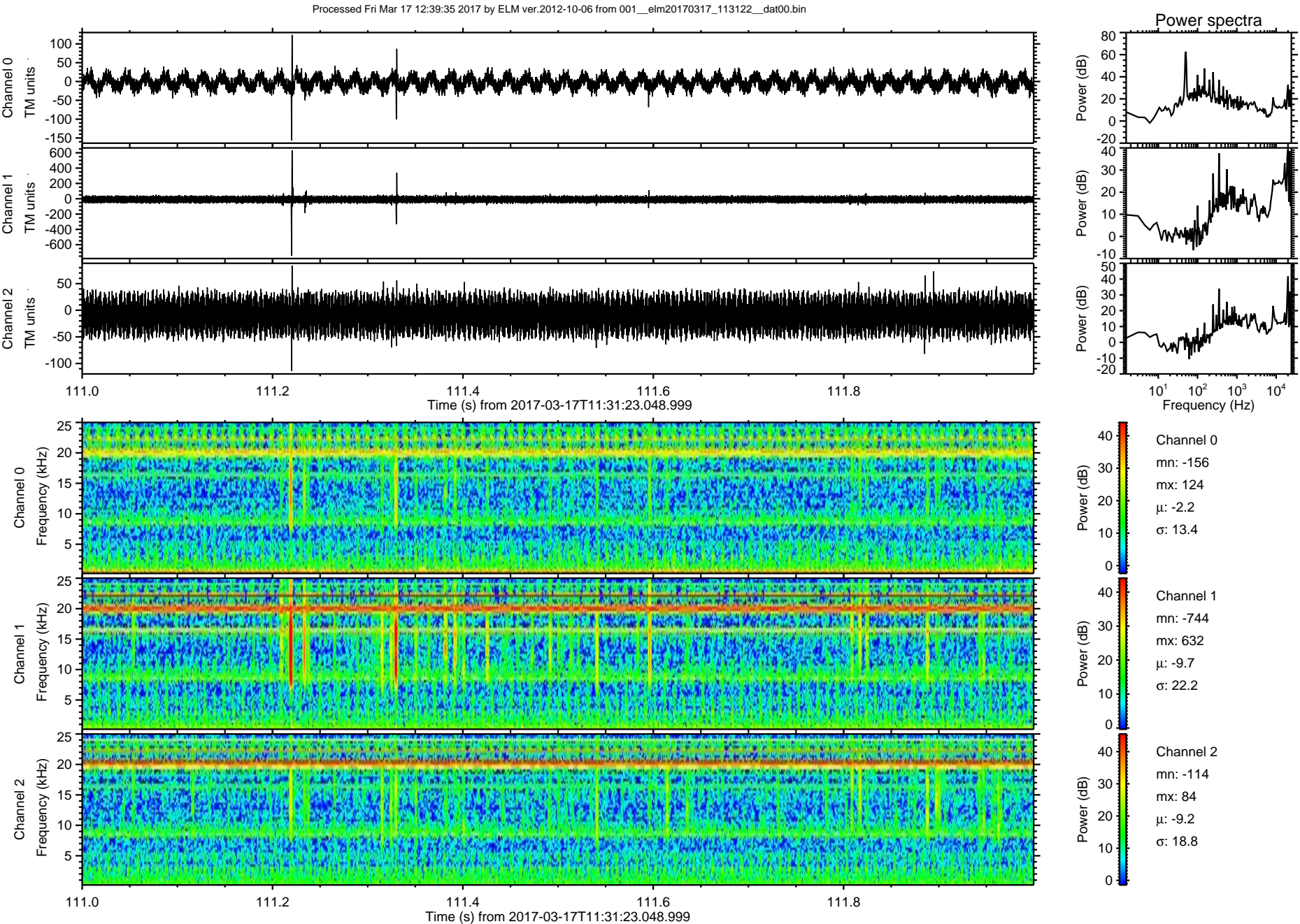
Power spectra

Channel 0
mn: -138
mx: 166
 μ : -2.2
 σ : 13.0

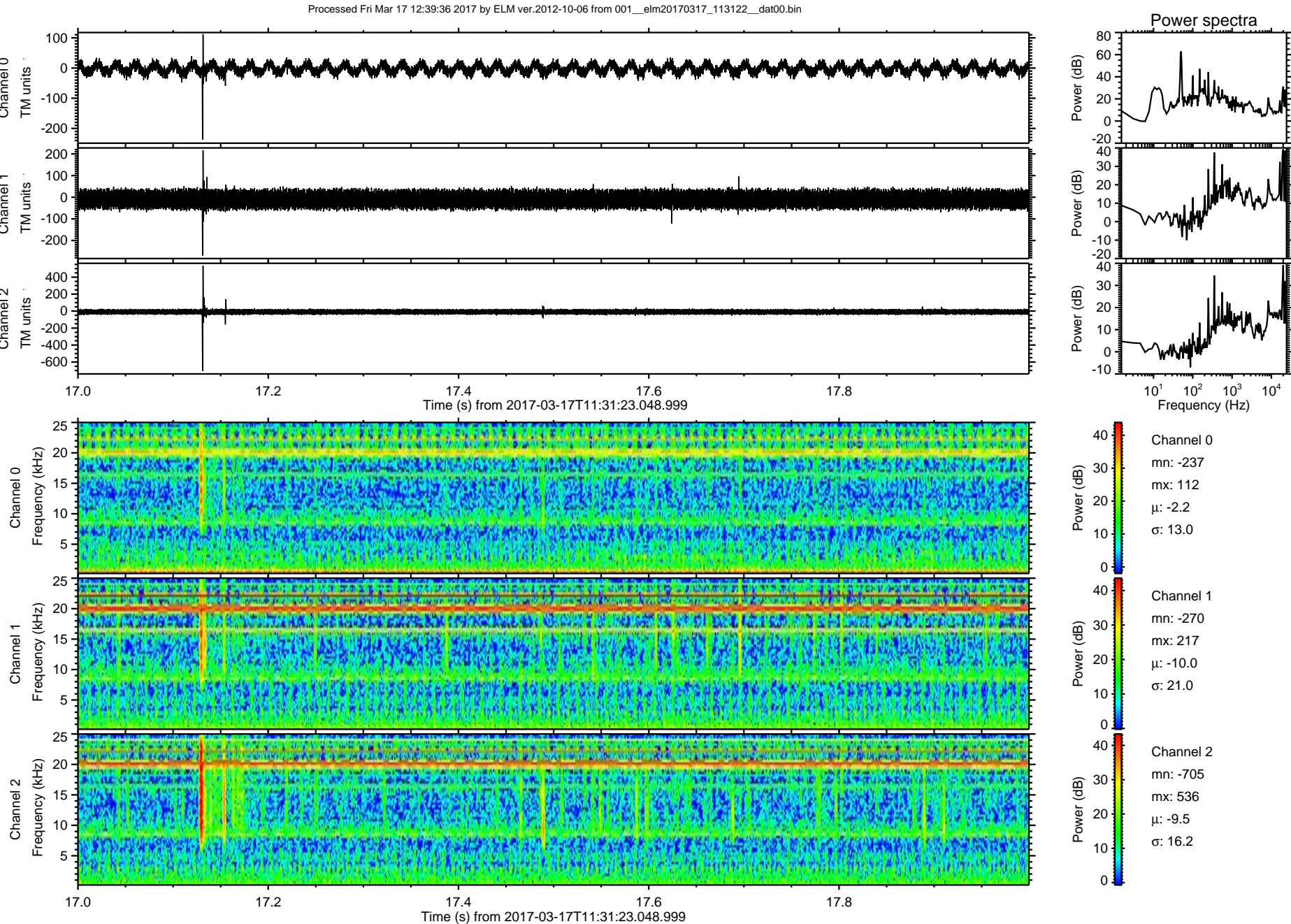
Channel 1
mn: -500
mx: 808
 μ : -10.0
 σ : 21.7

Channel 2
mn: -342
mx: 605
 μ : -9.6
 σ : 15.7

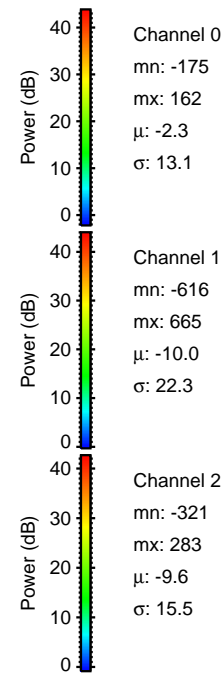
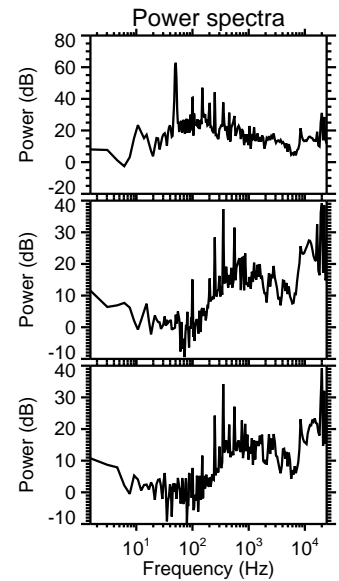
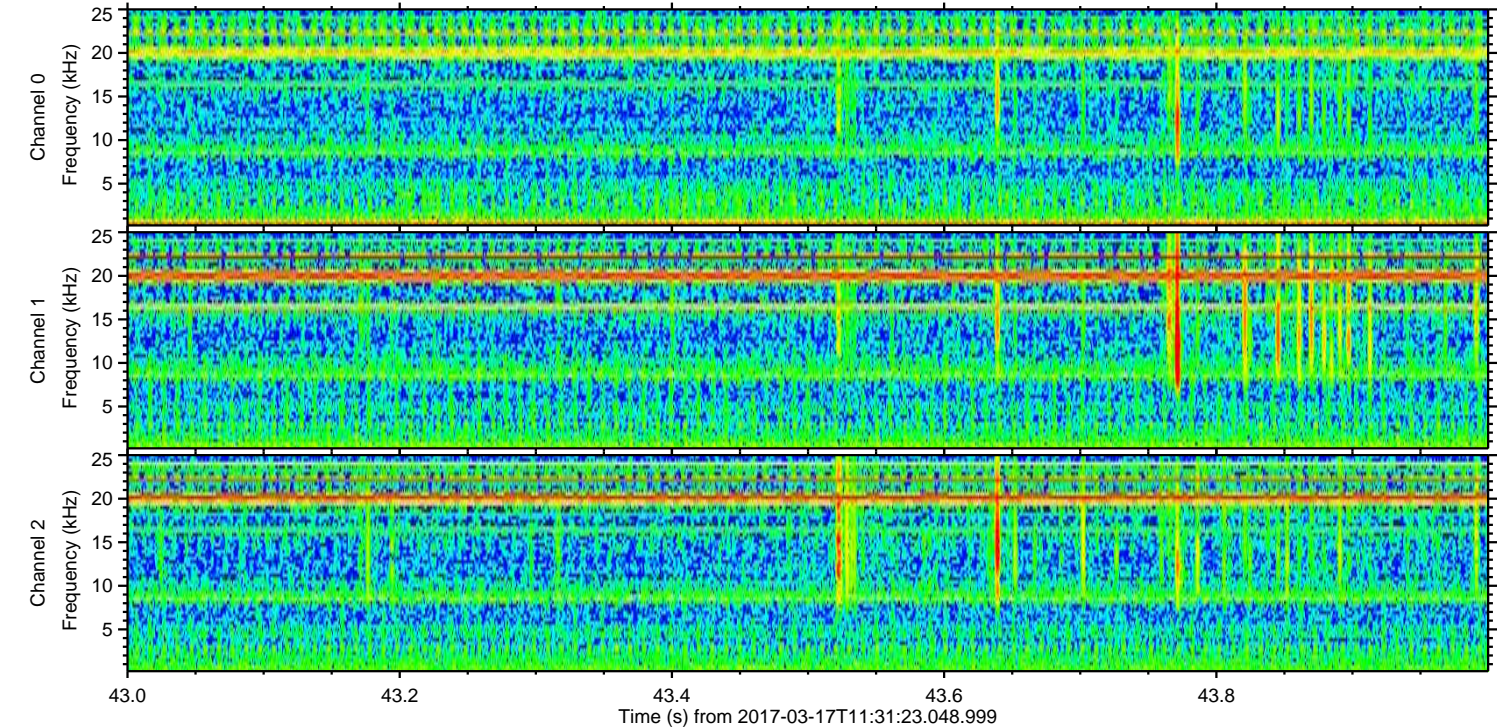
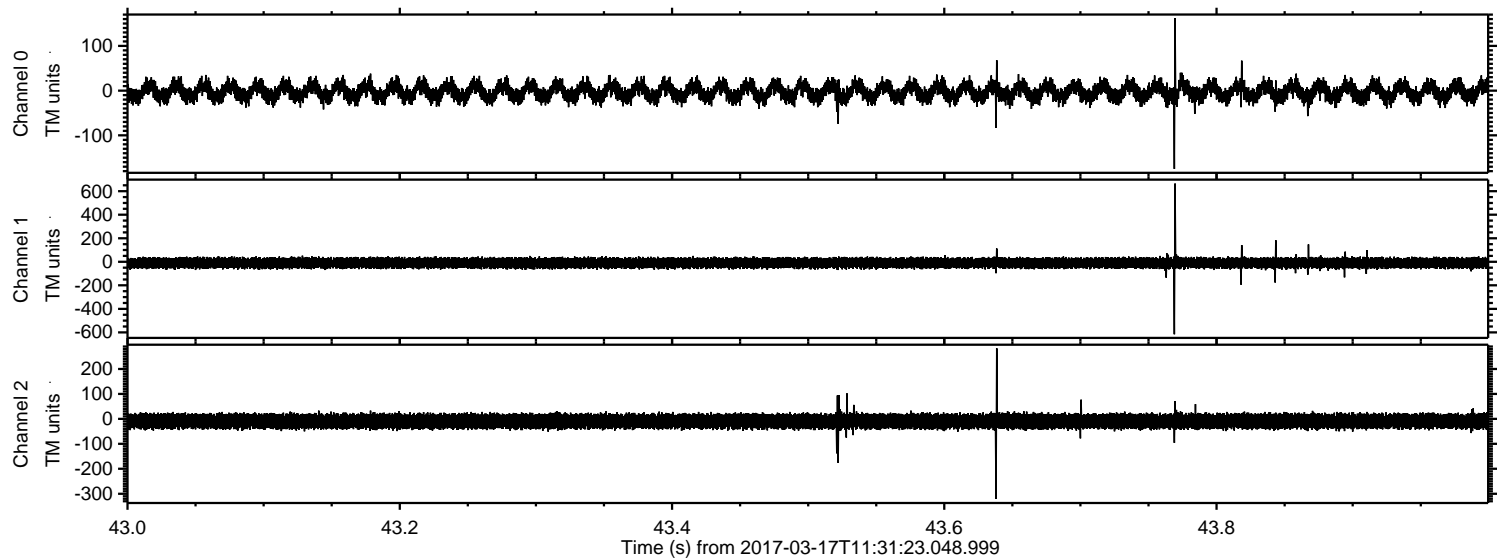
ELMAVAN 3D WAVEFORMS (Measured data sampled at 50 kHz) 51000 packets of 144 samples from 2017-03-17T11:31:23.048.999. Part 112/147



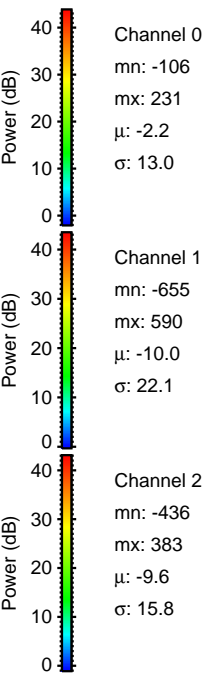
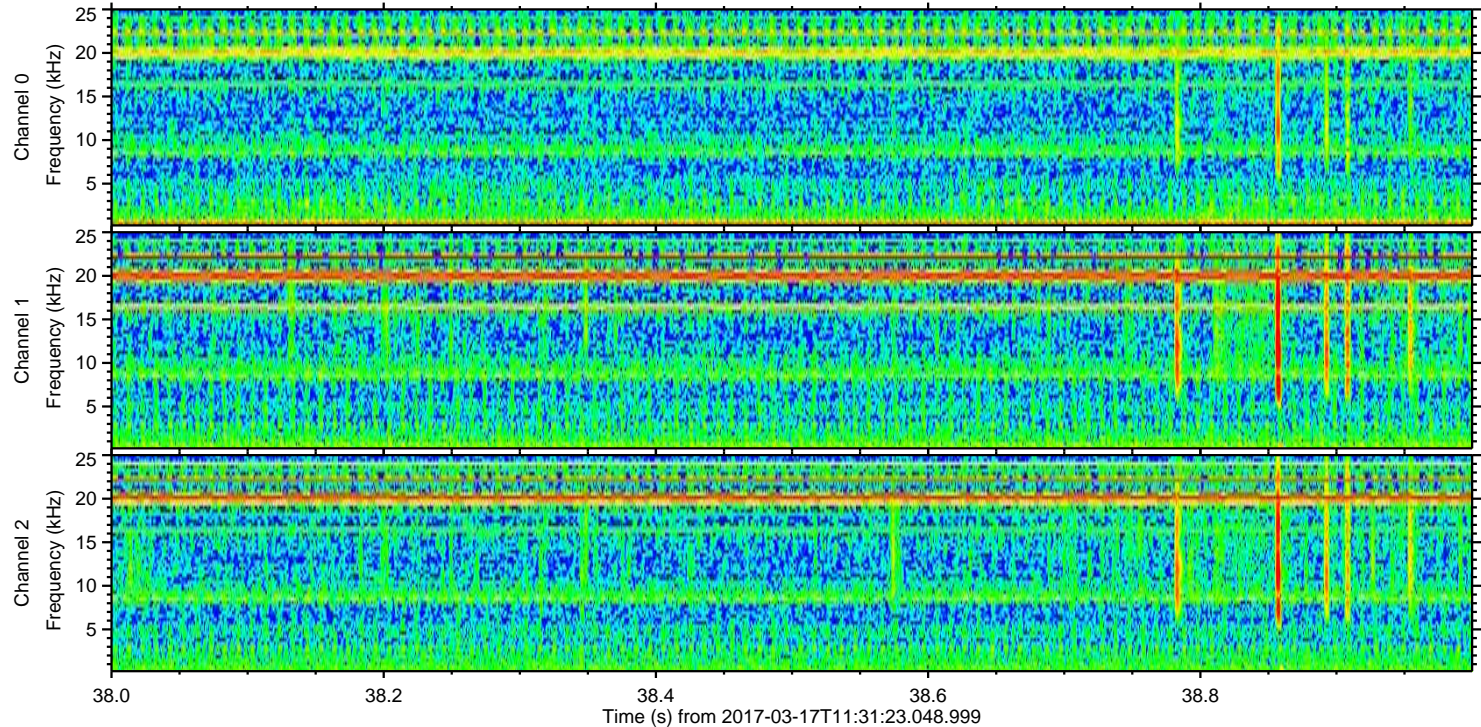
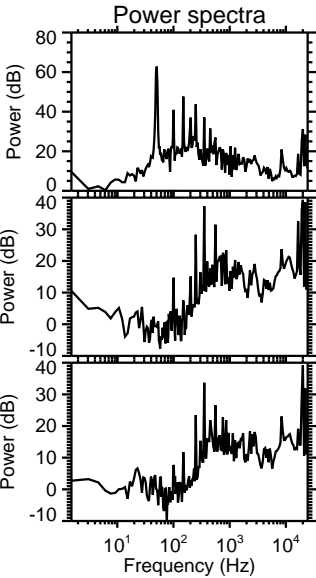
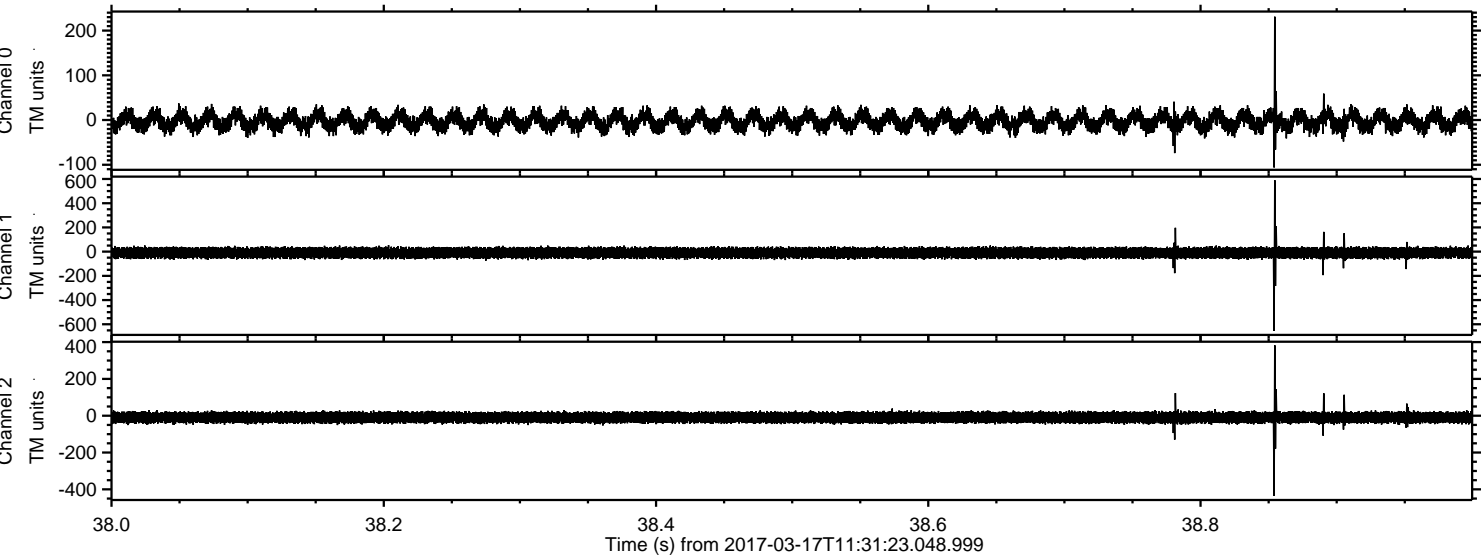
ELMAVAN 3D WAVEFORMS (Measured data sampled at 50 kHz) 51000 packets of 144 samples from 2017-03-17T11:31:23.048.999. Part 18/147



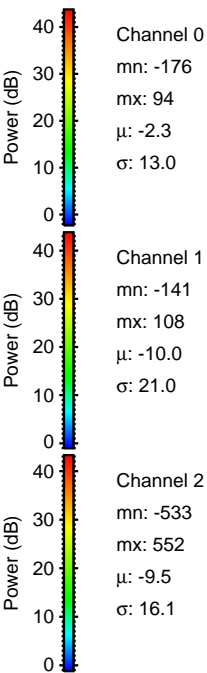
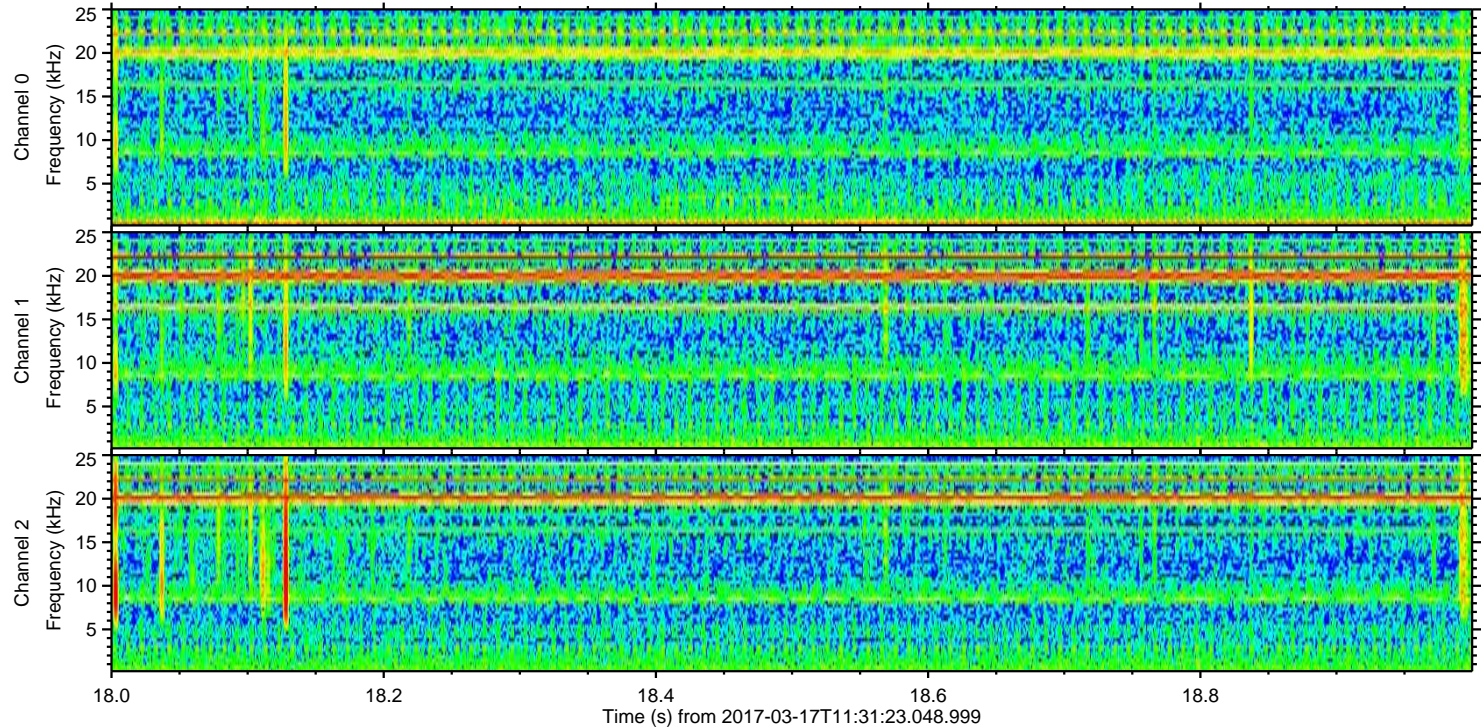
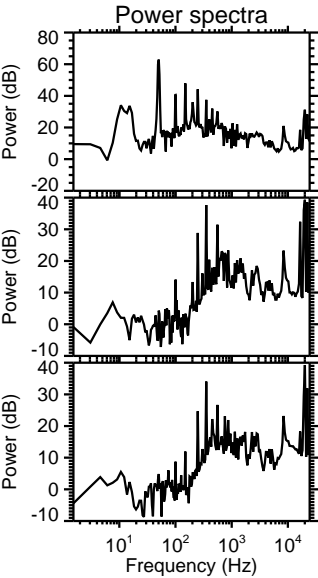
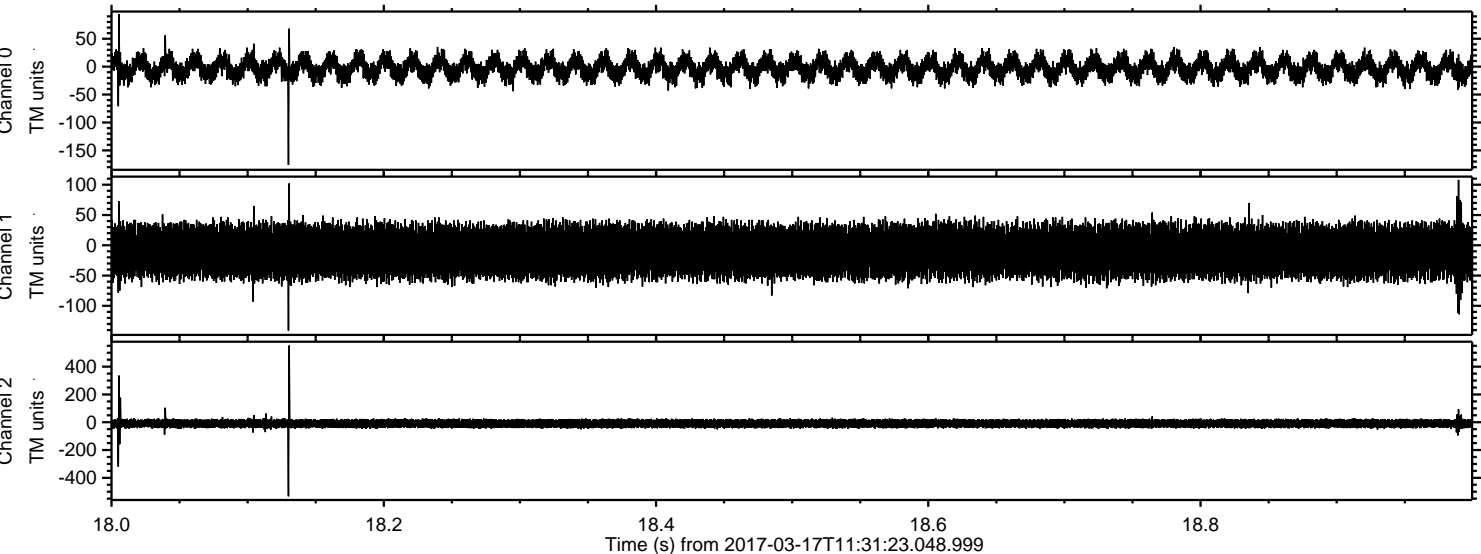
Processed Fri Mar 17 12:39:37 2017 by ELM ver.2012-10-06 from 001__elm20170317_113122__dat00.bin



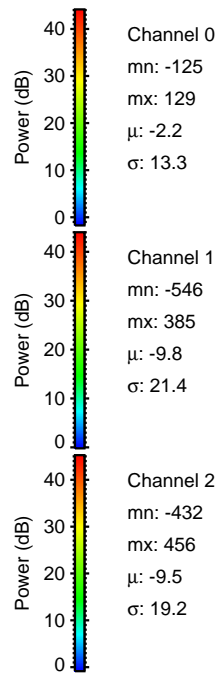
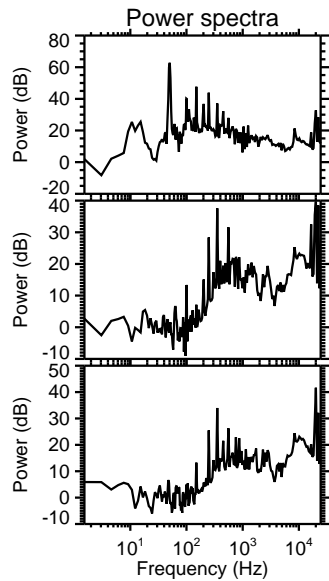
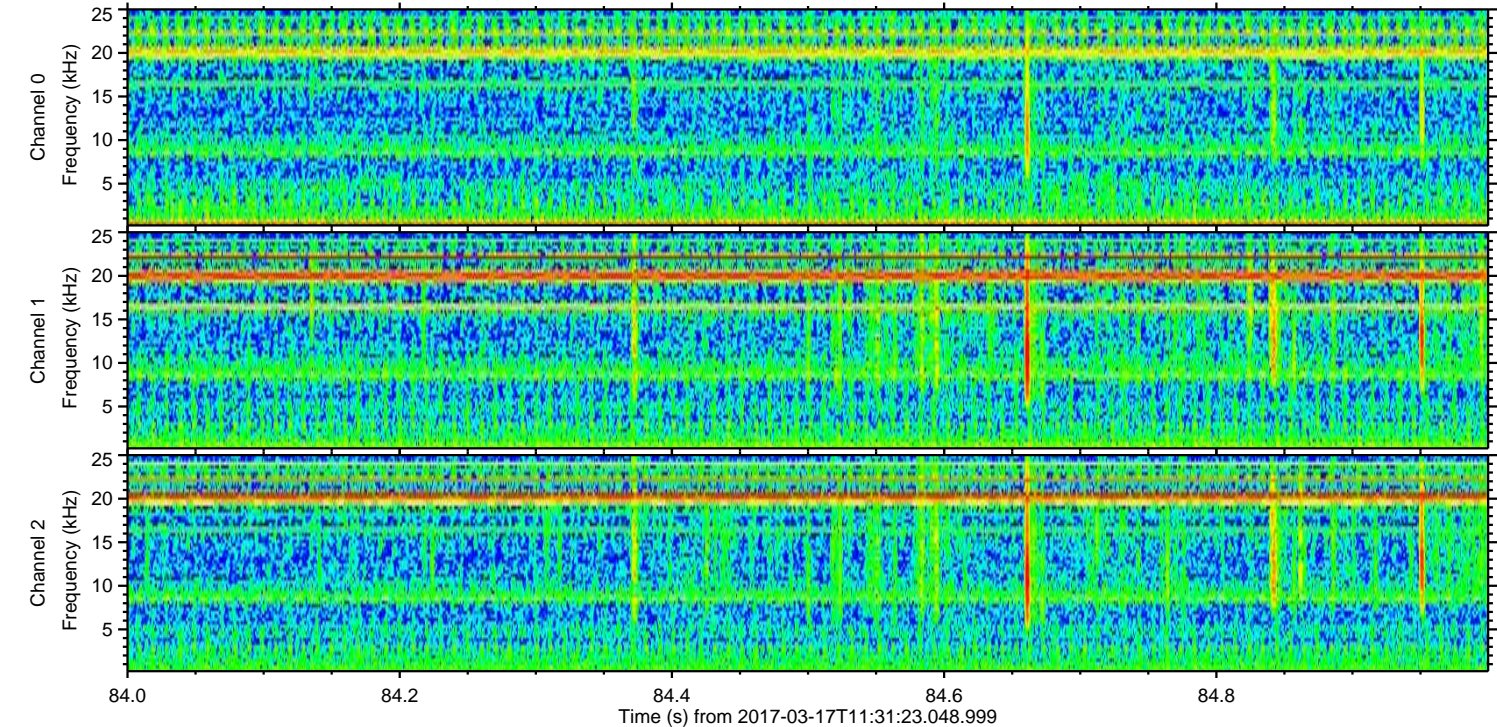
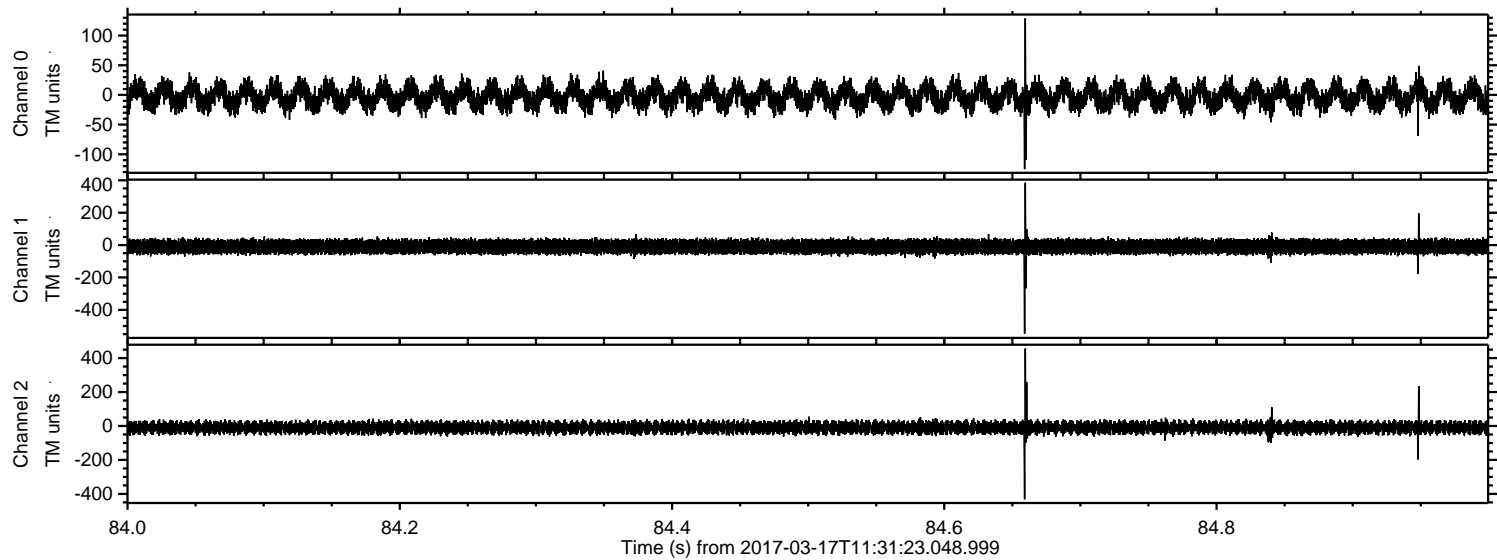
Processed Fri Mar 17 12:39:38 2017 by ELM ver.2012-10-06 from 001__elm20170317_113122__dat00.bin



Processed Fri Mar 17 12:39:39 2017 by ELM ver.2012-10-06 from 001__elm20170317_113122__dat00.bin



Processed Fri Mar 17 12:39:40 2017 by ELM ver.2012-10-06 from 001__elm20170317_113122__dat00.bin



Processed Fri Mar 17 12:39:41 2017 by ELM ver.2012-10-06 from 001__elm20170317_113122__dat00.bin

