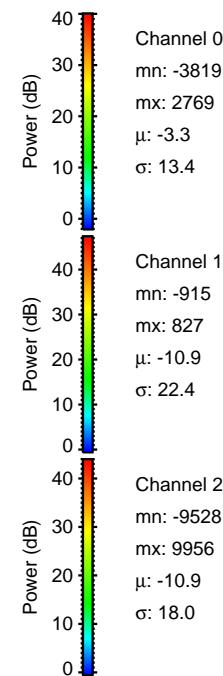
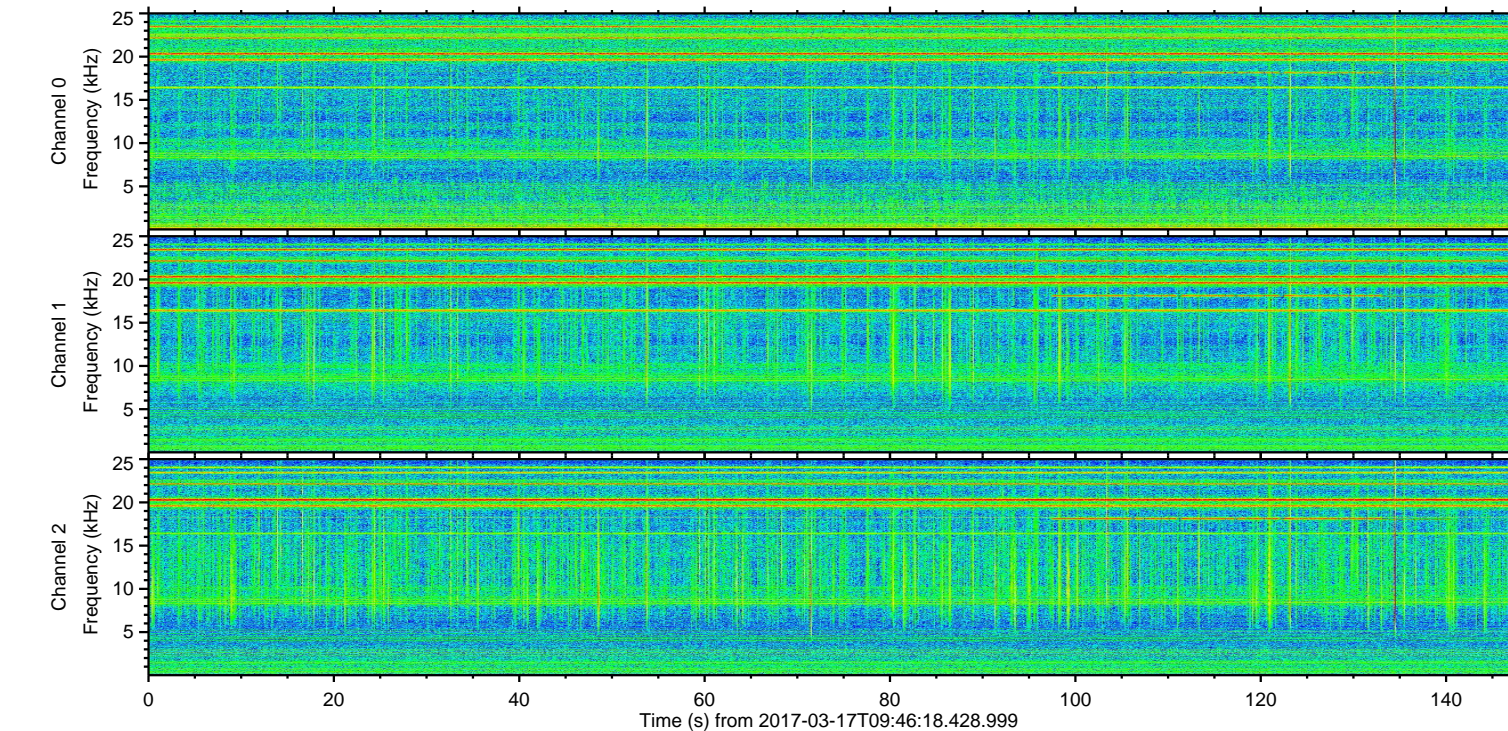
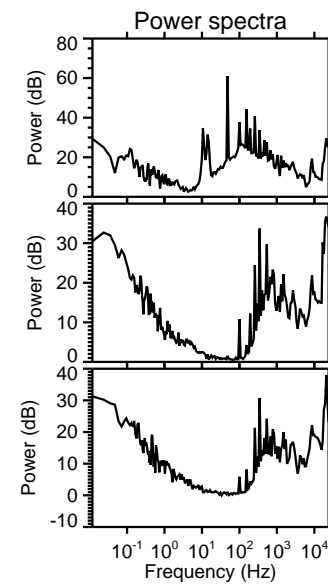
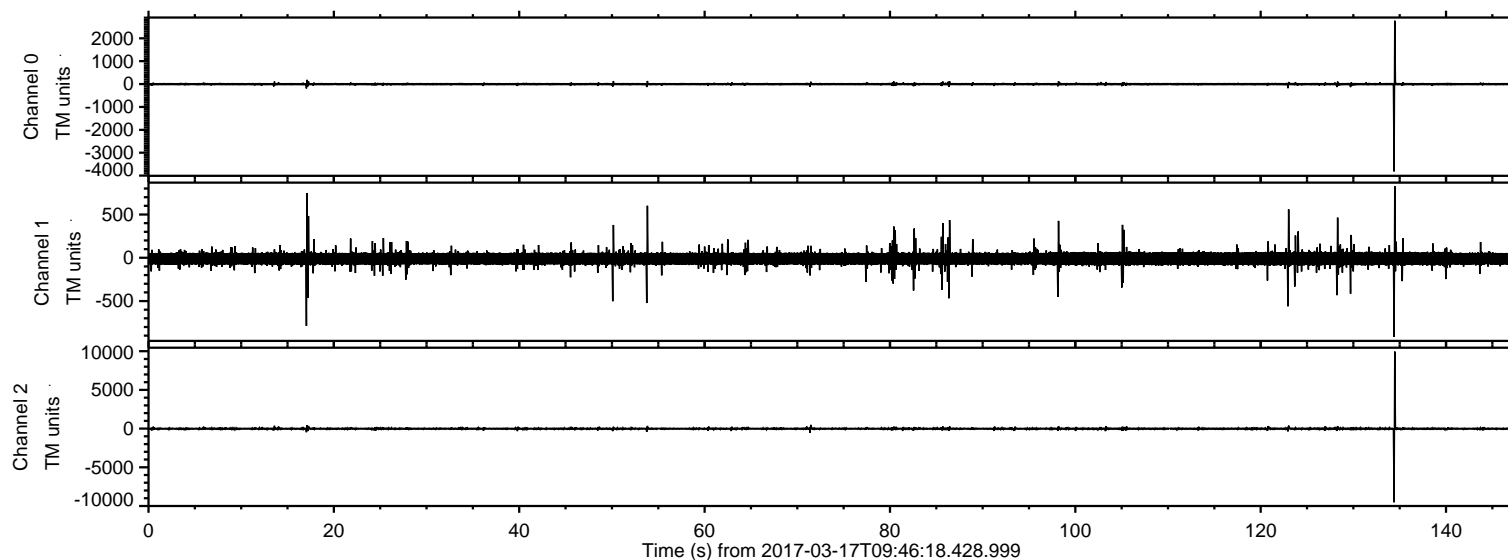


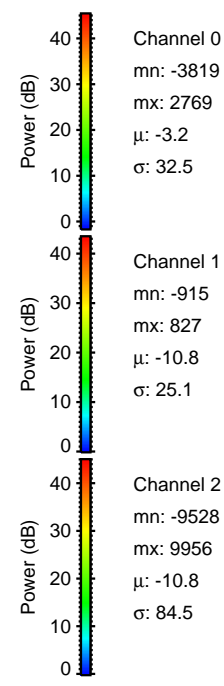
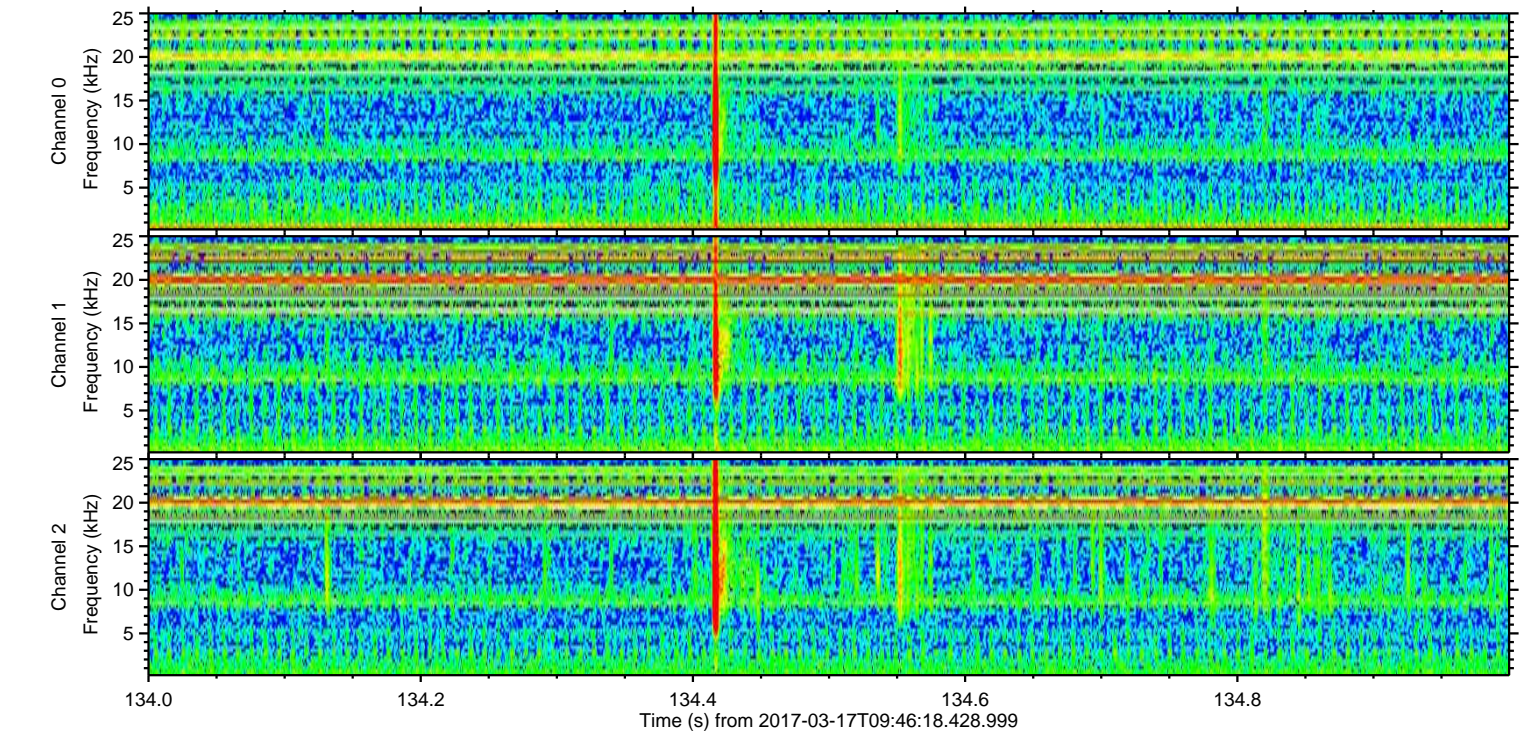
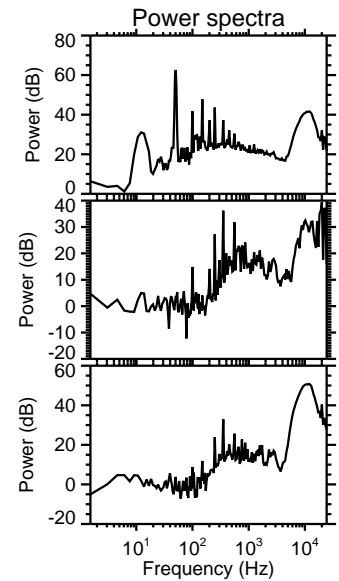
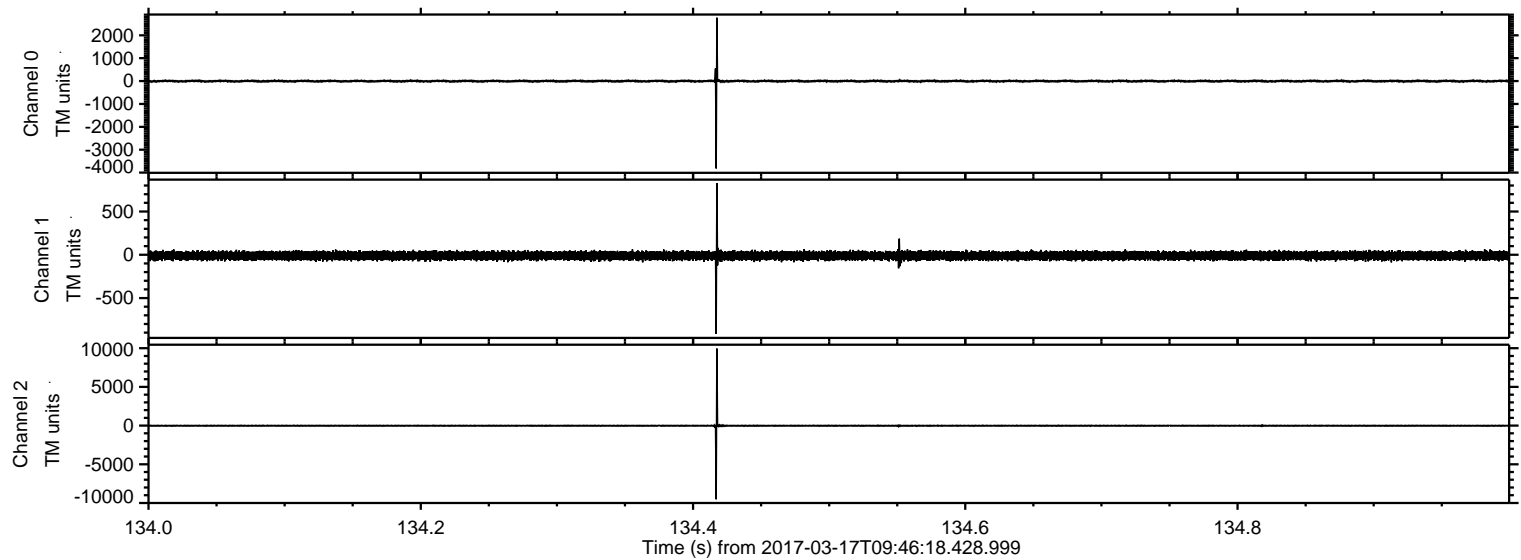
ELMAVAN 3D WAVEFORMS (Measured data sampled at 50 kHz) 51000 packets of 144 samples from 2017-03-17T09:46:18.428.999.

Processed Fri Mar 17 10:54:11 2017 by ELM ver.2012-10-06 from 001__elm20170317_094617__dat00.bin

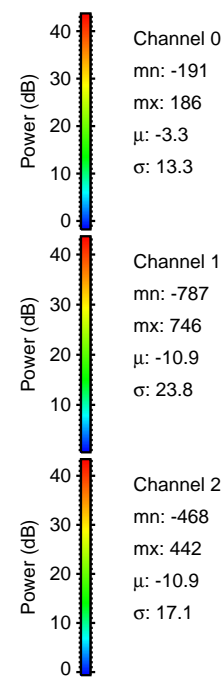
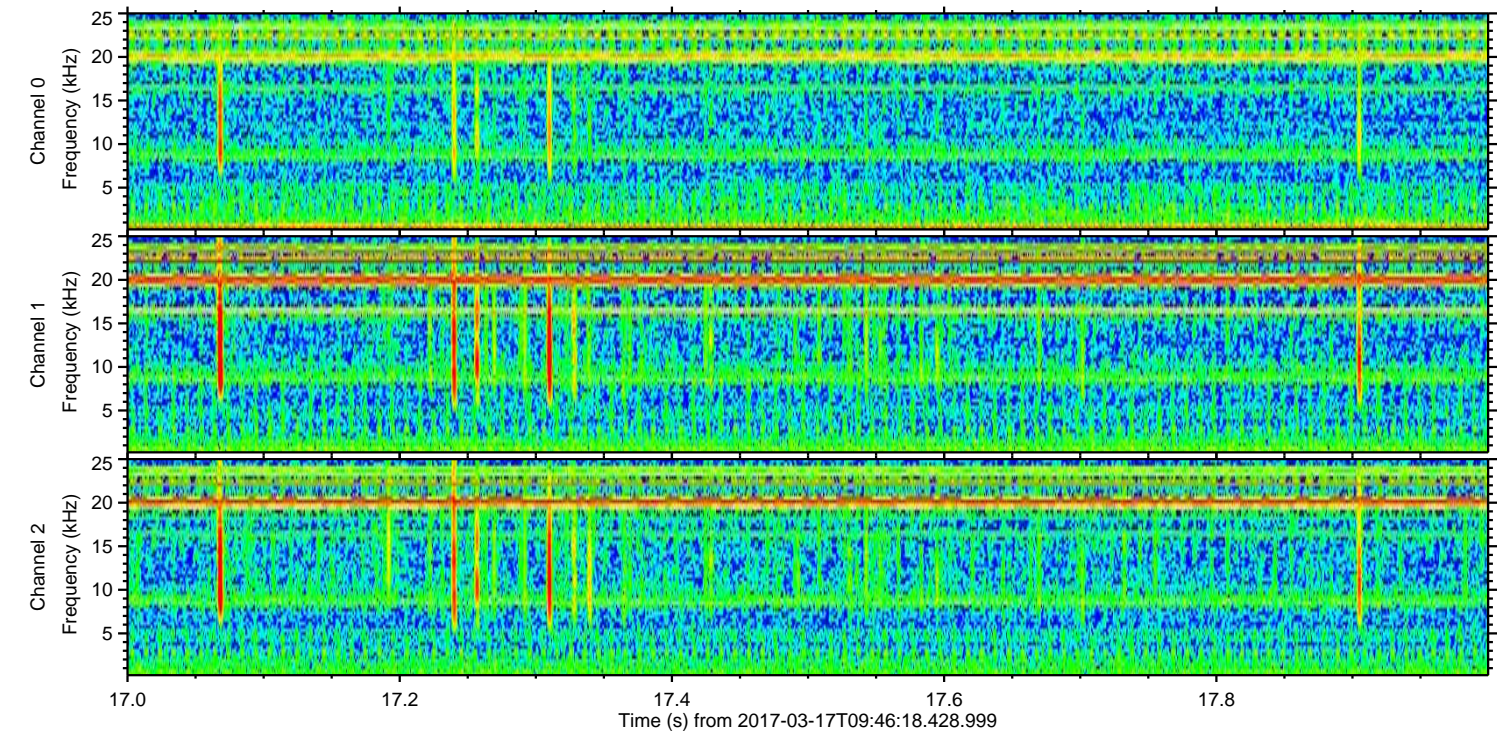
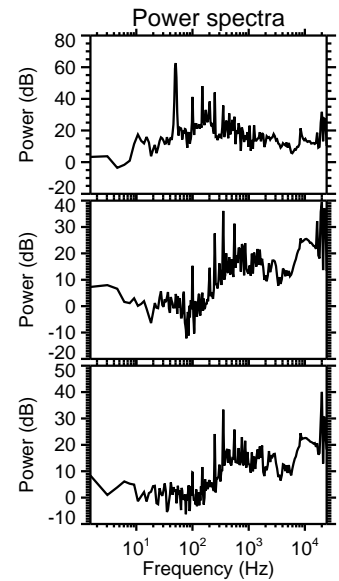
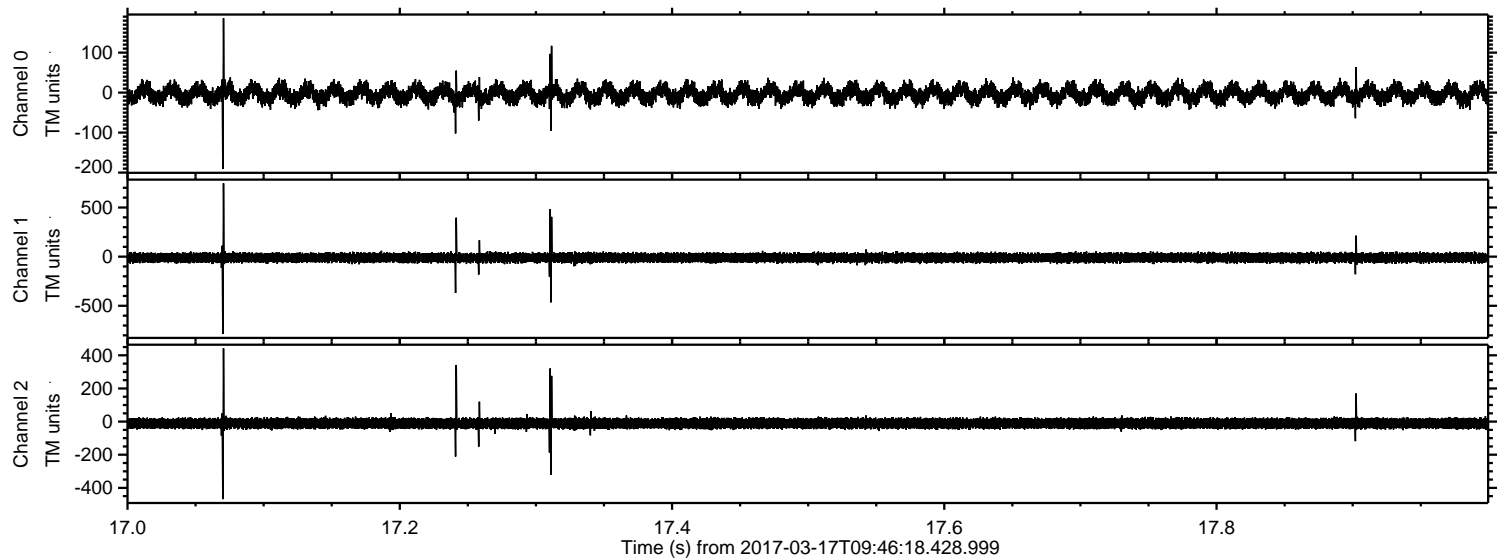


ELMAVAN 3D WAVEFORMS (Measured data sampled at 50 kHz) 51000 packets of 144 samples from 2017-03-17T09:46:18.428.999. Part 135/147

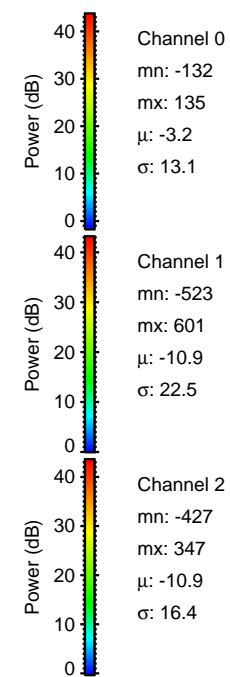
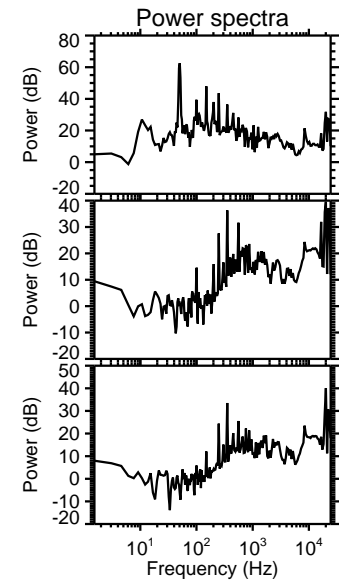
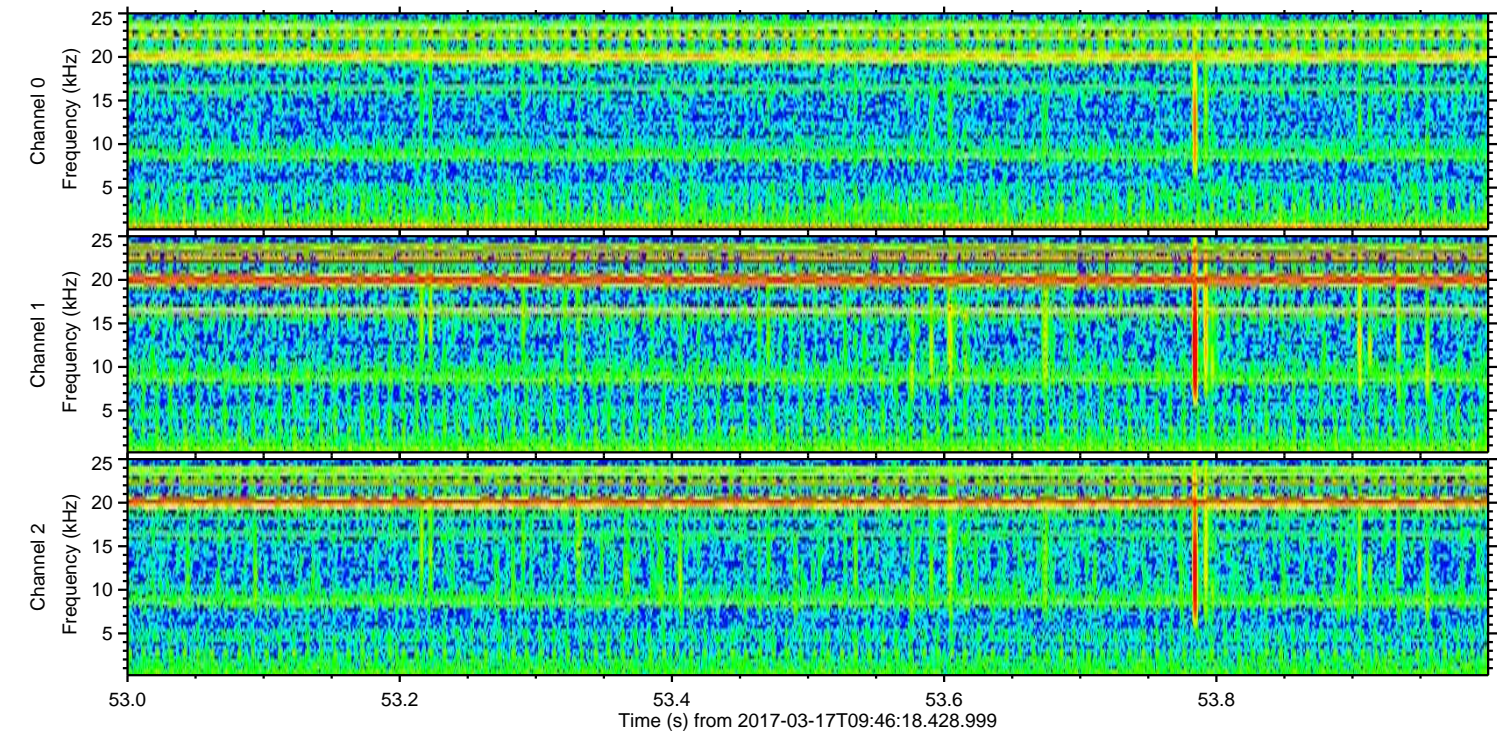
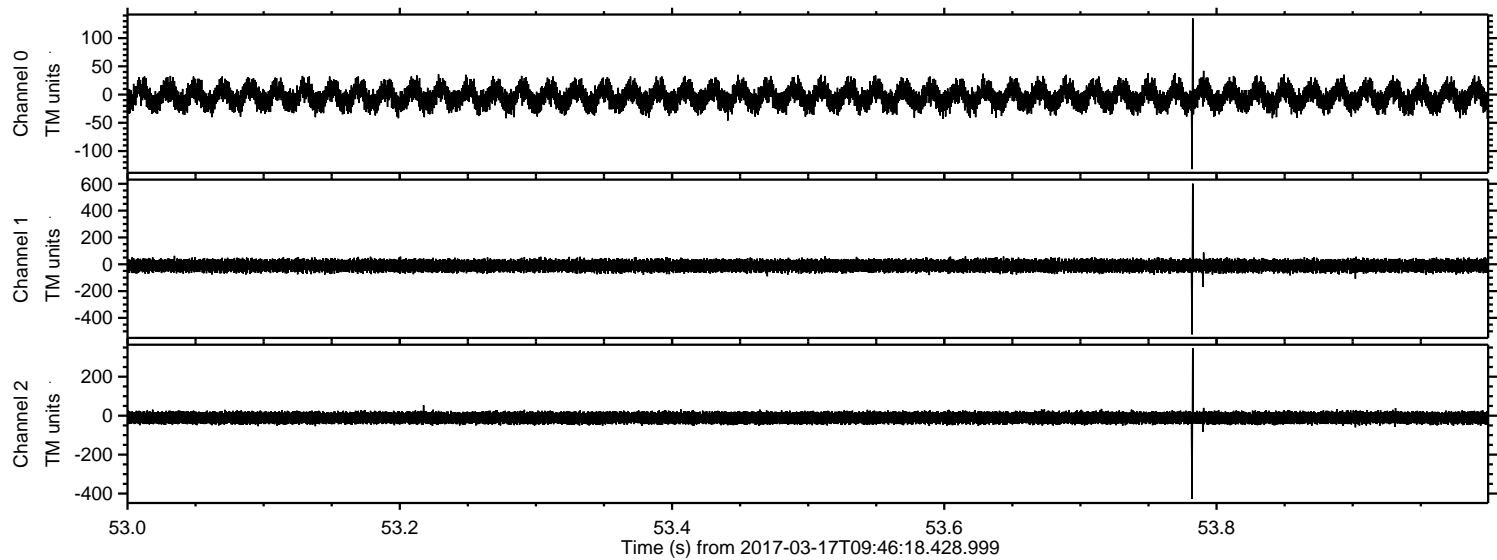
Processed Fri Mar 17 10:54:22 2017 by ELM ver.2012-10-06 from 001__elm20170317_094617__dat00.bin



Processed Fri Mar 17 10:54:23 2017 by ELM ver.2012-10-06 from 001__elm20170317_094617__dat00.bin

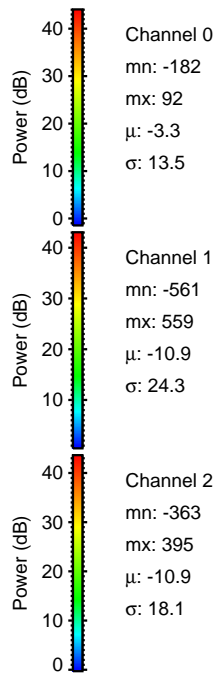
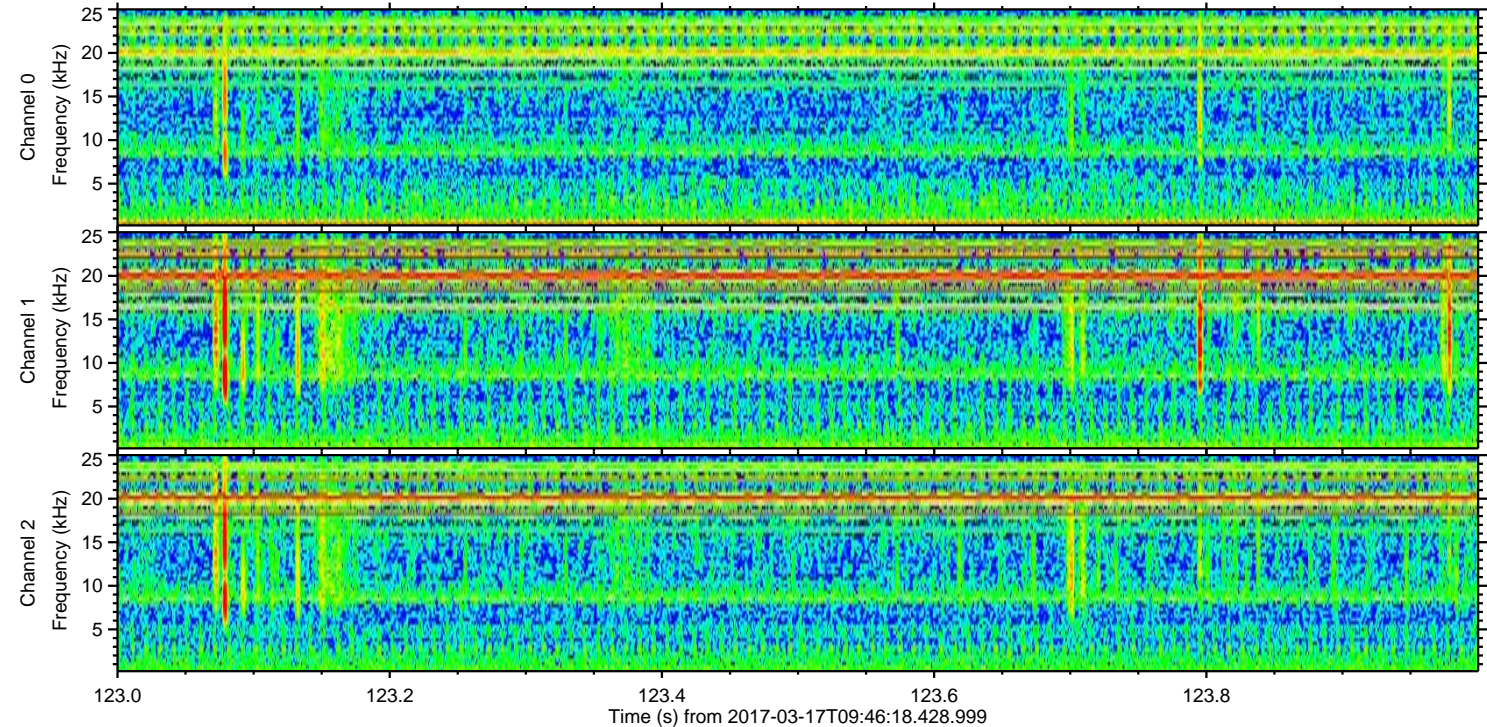
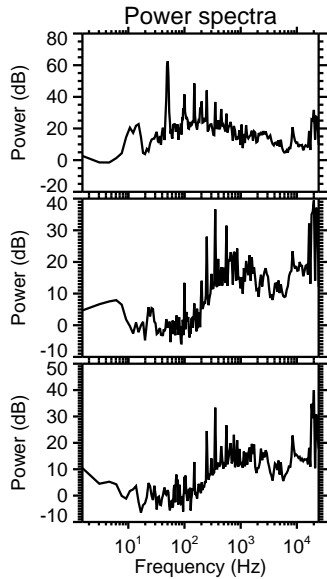
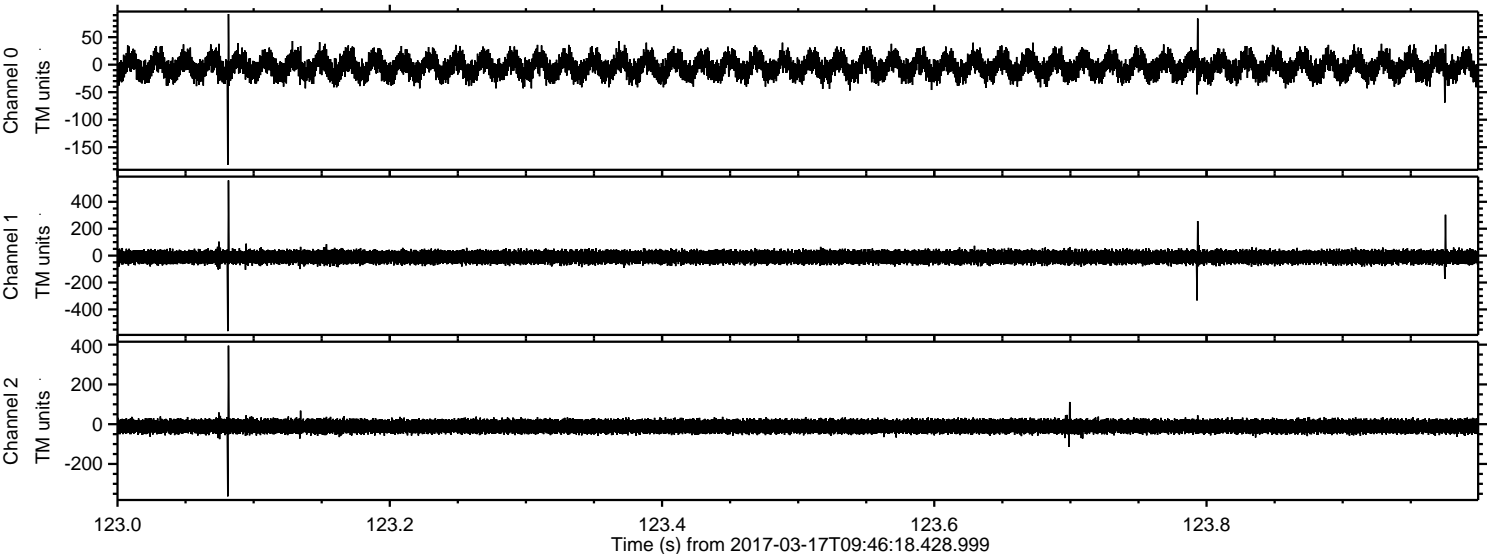


Processed Fri Mar 17 10:54:24 2017 by ELM ver.2012-10-06 from 001__elm20170317_094617__dat00.bin

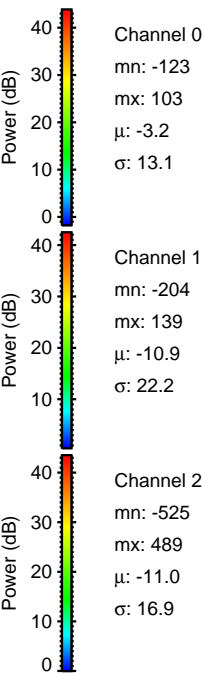
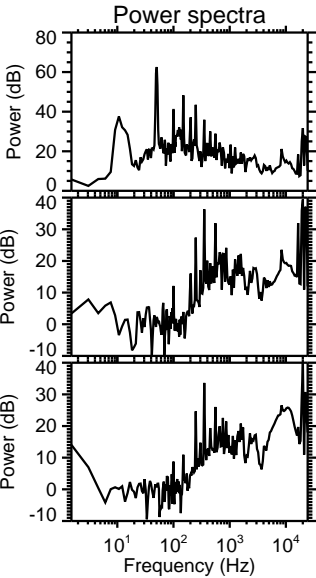
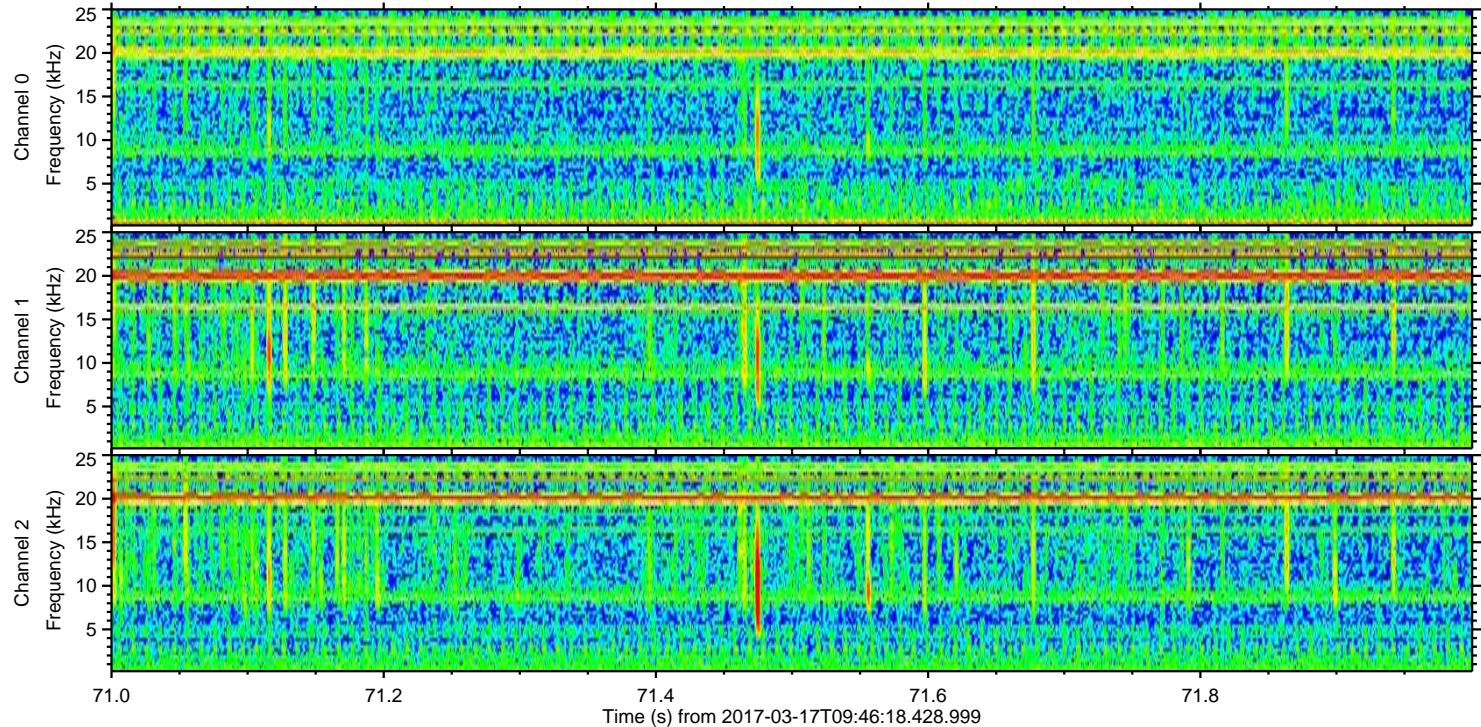
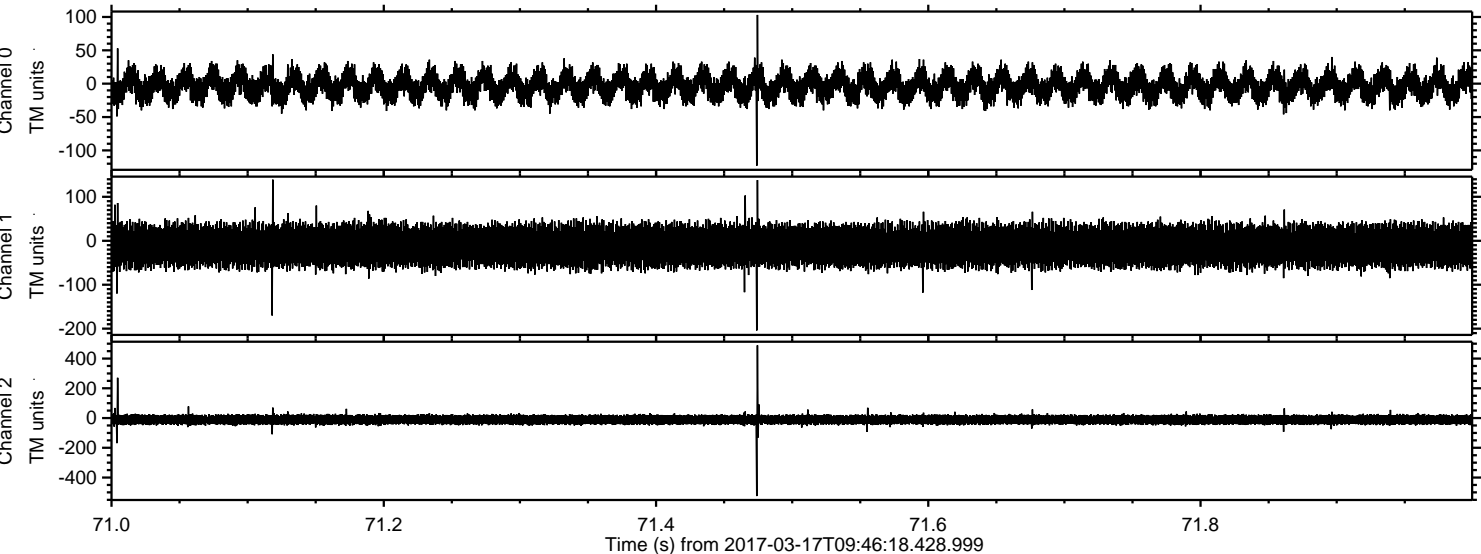


ELMAVAN 3D WAVEFORMS (Measured data sampled at 50 kHz) 51000 packets of 144 samples from 2017-03-17T09:46:18.428.999. Part 124/147

Processed Fri Mar 17 10:54:25 2017 by ELM ver.2012-10-06 from 001__elm20170317_094617__dat00.bin



Processed Fri Mar 17 10:54:26 2017 by ELM ver.2012-10-06 from 001__elm20170317_094617__dat00.bin



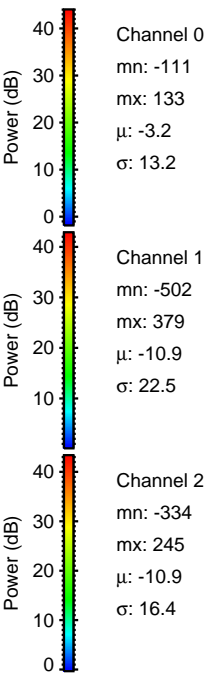
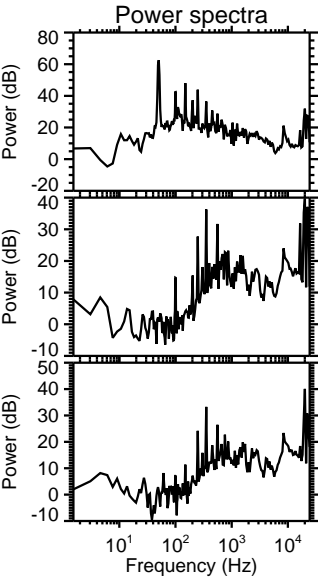
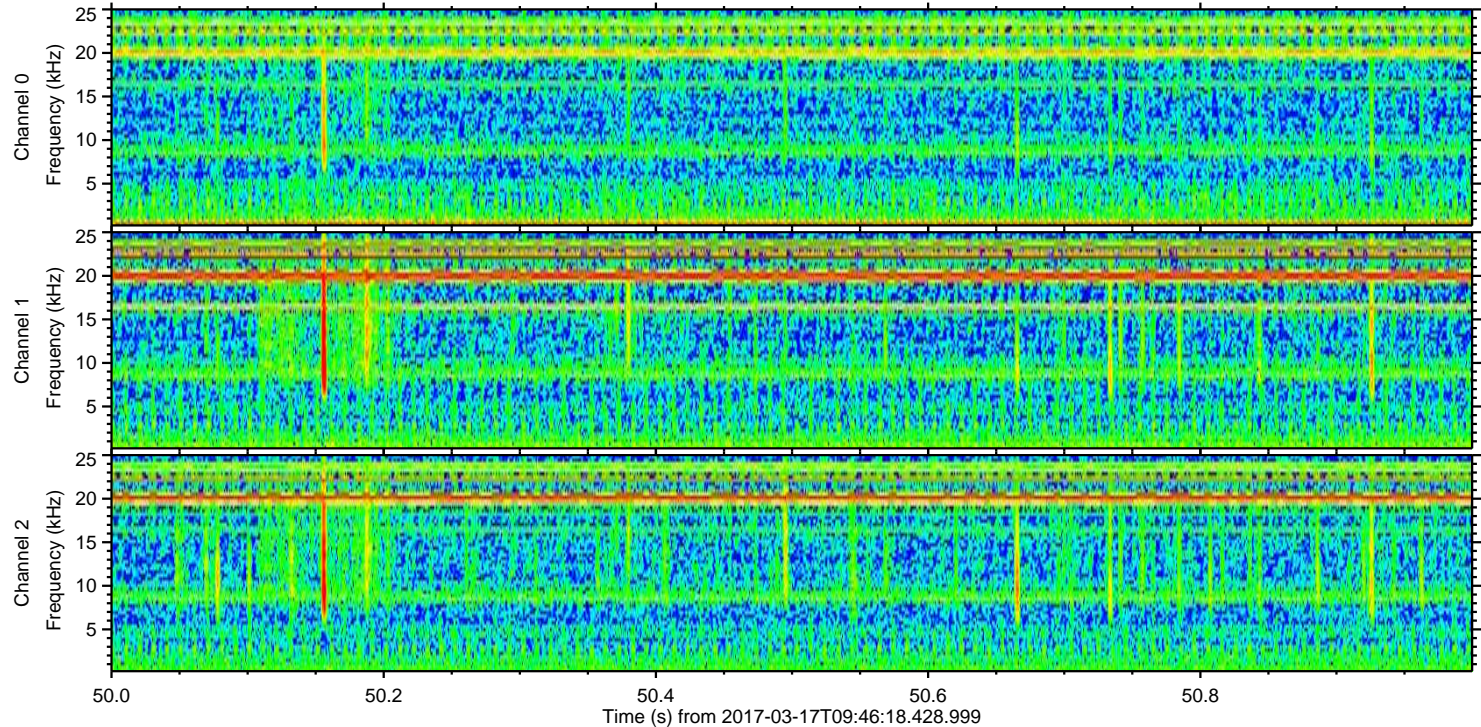
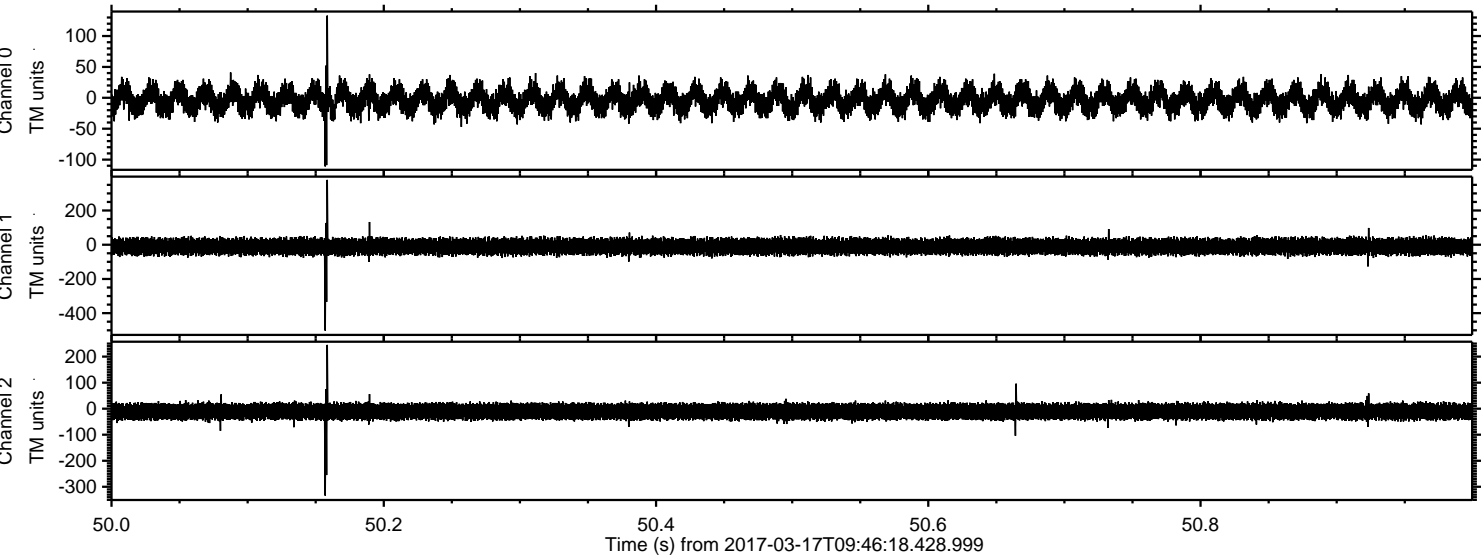
Power spectra

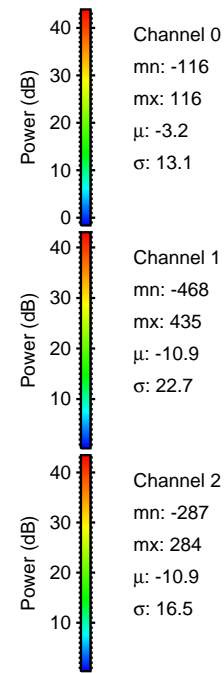
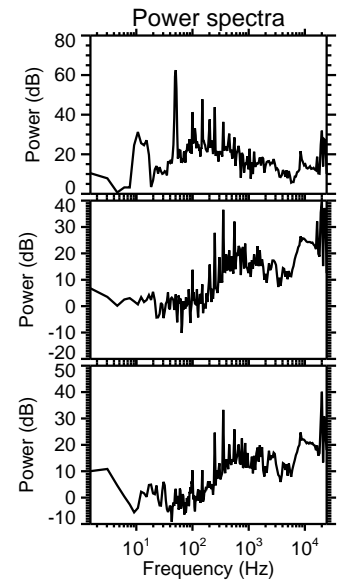
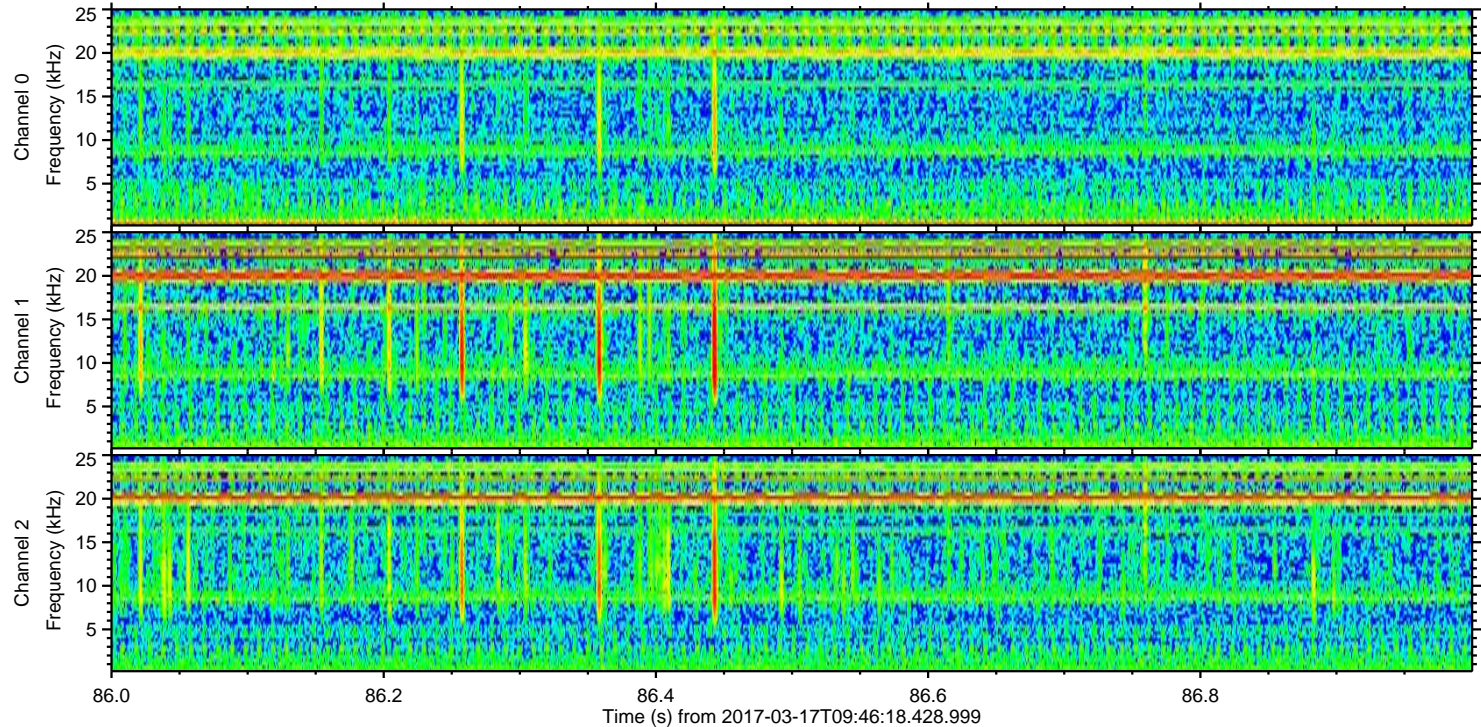
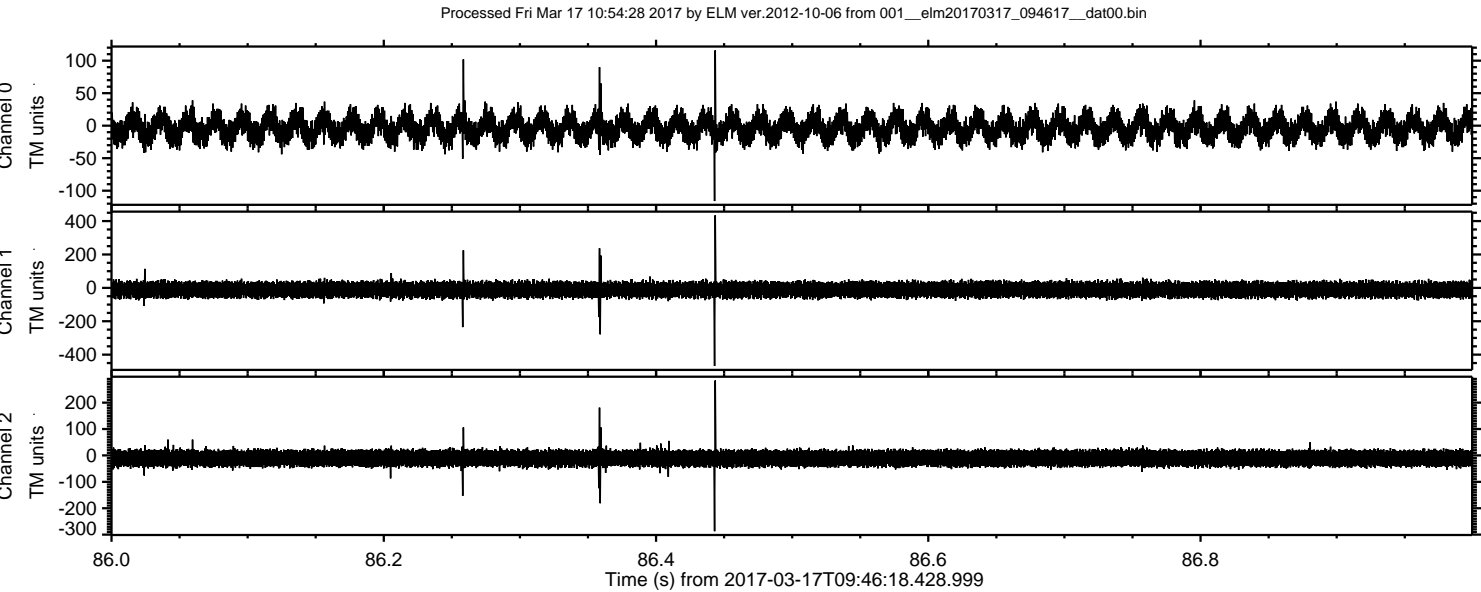
Channel 0
mn: -123
mx: 103
 μ : -3.2
 σ : 13.1

Channel 1
mn: -204
mx: 139
 μ : -10.9
 σ : 22.2

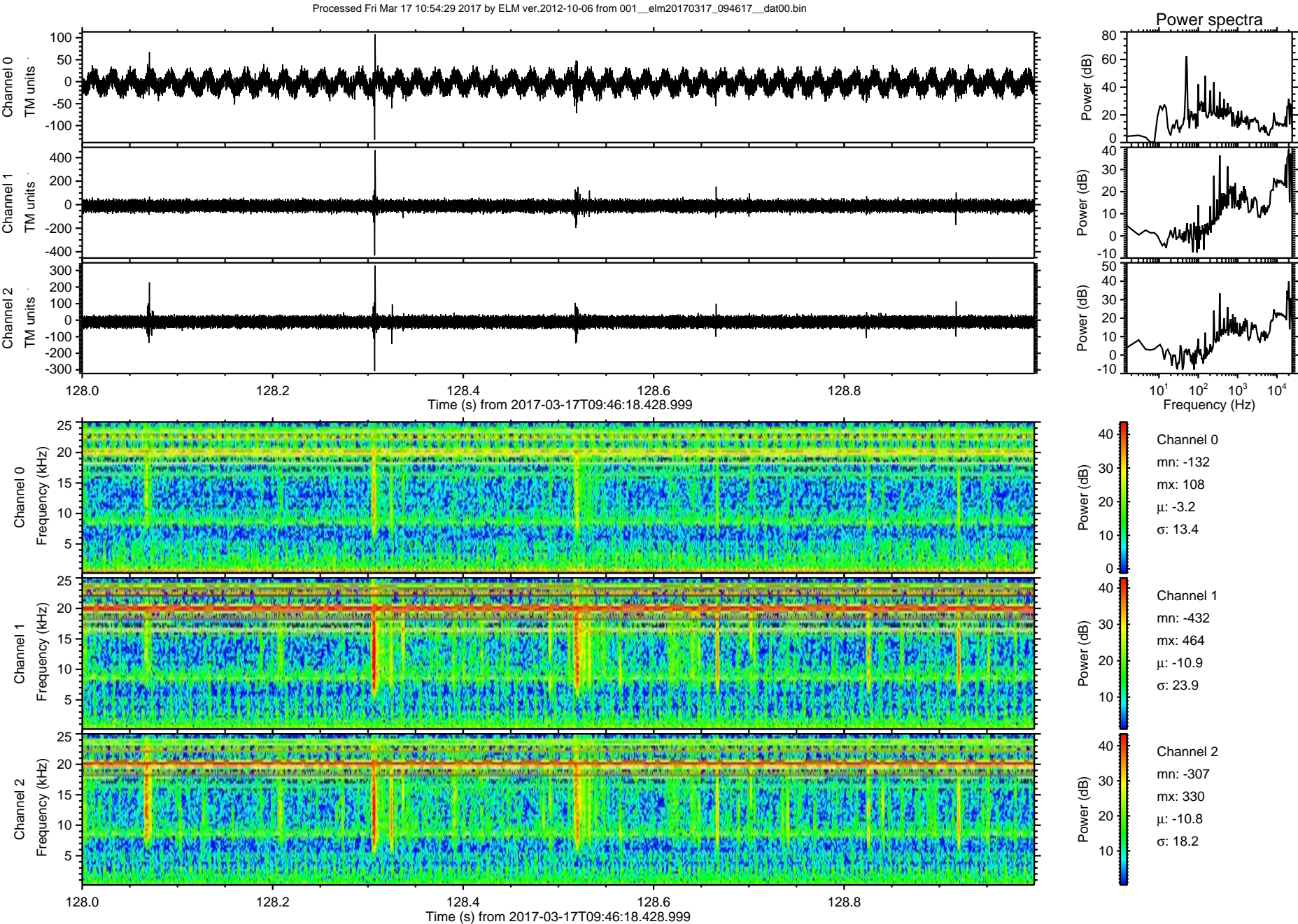
Channel 2
mn: -525
mx: 489
 μ : -11.0
 σ : 16.9

Processed Fri Mar 17 10:54:27 2017 by ELM ver.2012-10-06 from 001__elm20170317_094617__dat00.bin





ELMAVAN 3D WAVEFORMS (Measured data sampled at 50 kHz) 51000 packets of 144 samples from 2017-03-17T09:46:18.428.999. Part 129/147



Processed Fri Mar 17 10:54:30 2017 by ELM ver.2012-10-06 from 001__elm20170317_094617__dat00.bin

