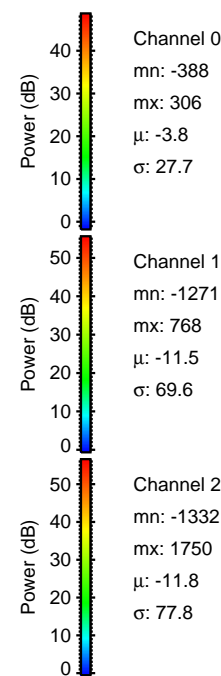
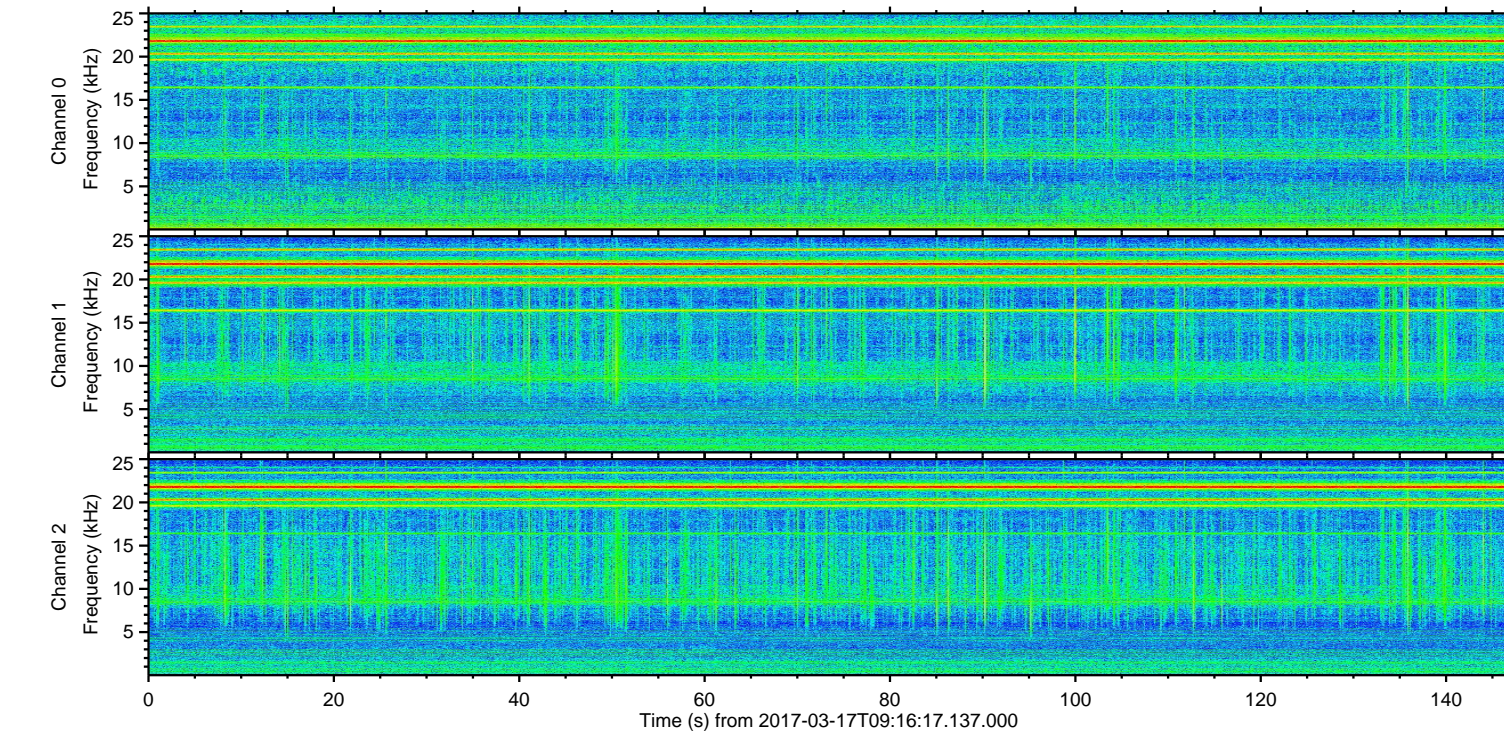
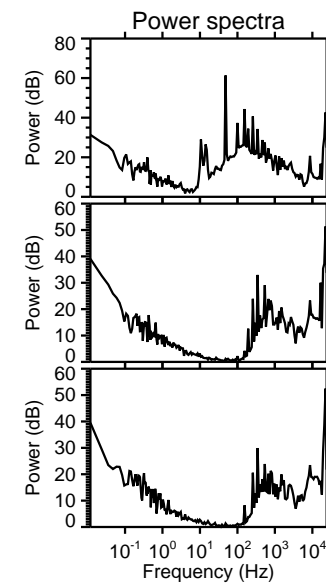
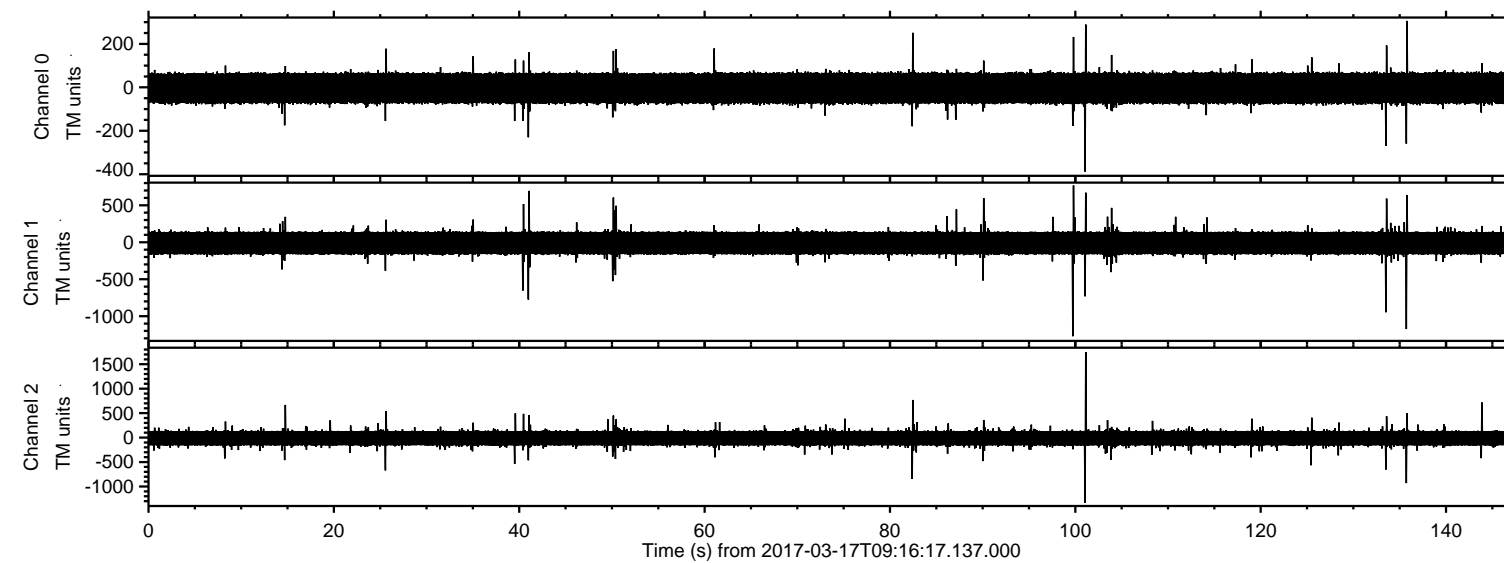


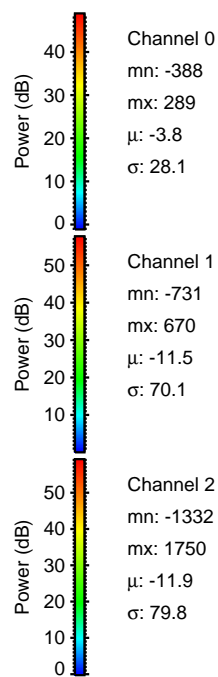
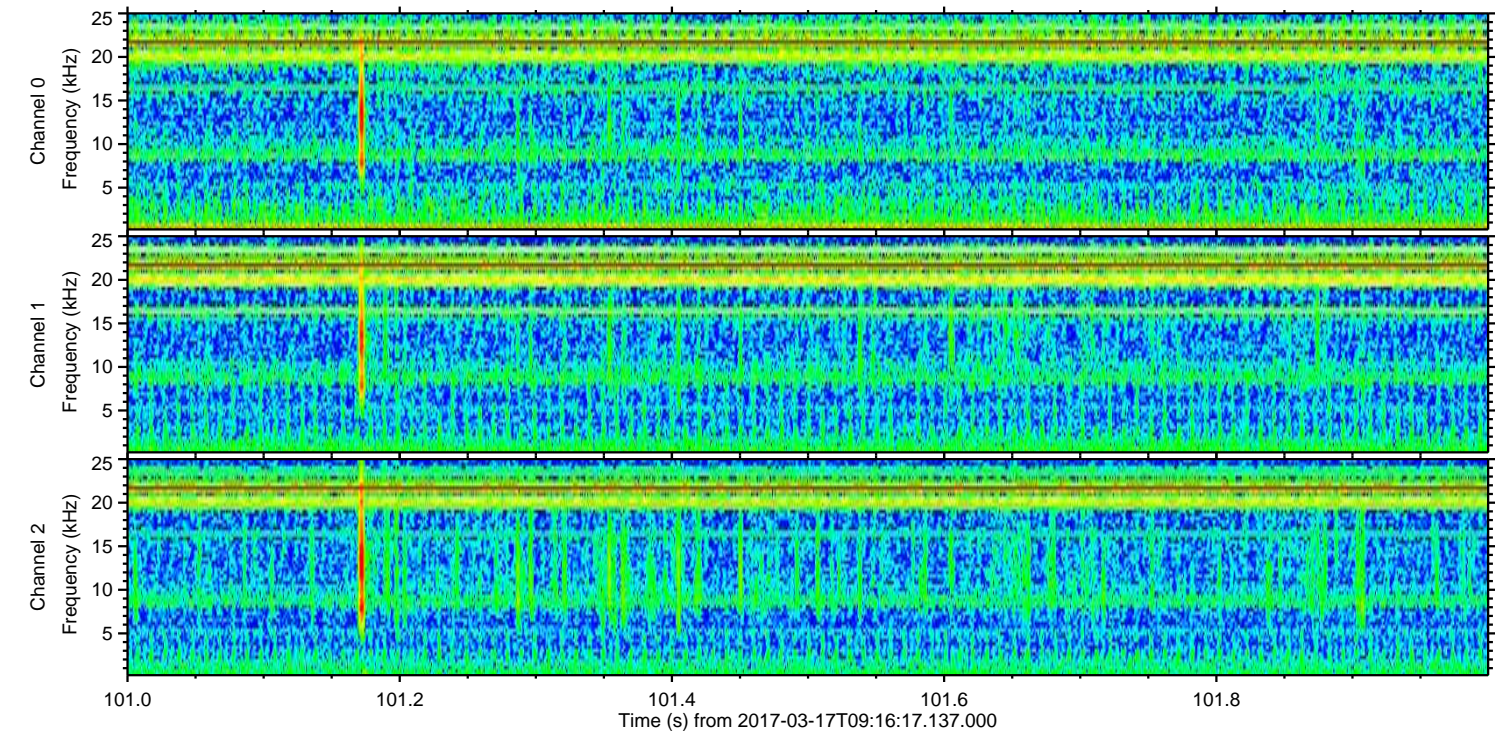
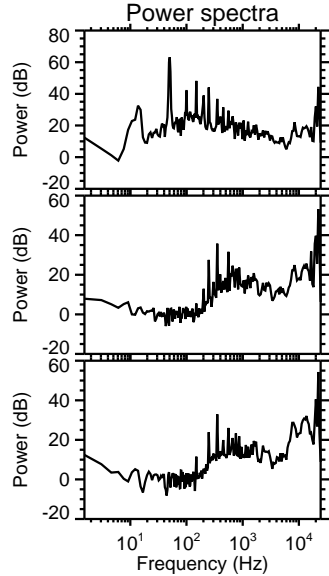
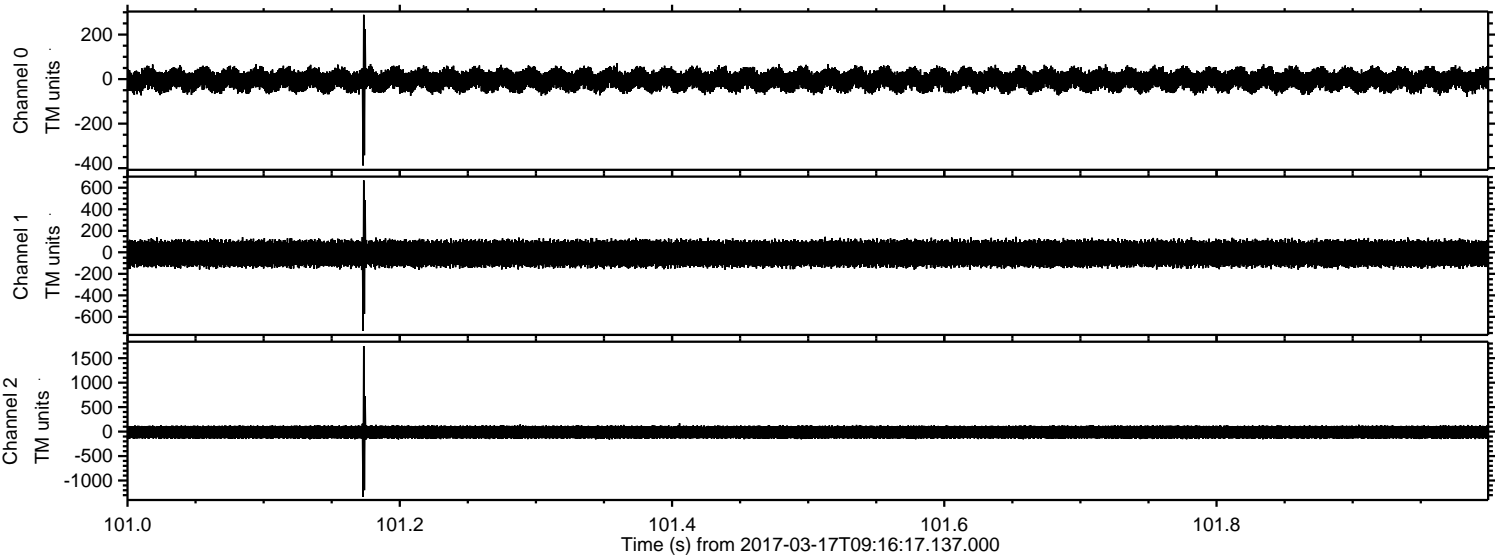
ELMAVAN 3D WAVEFORMS (Measured data sampled at 50 kHz) 51000 packets of 144 samples from 2017-03-17T09:16:17.137.000.

Processed Fri Mar 17 10:24:39 2017 by ELM ver.2012-10-06 from 001__elm20170317_091616__dat00.bin



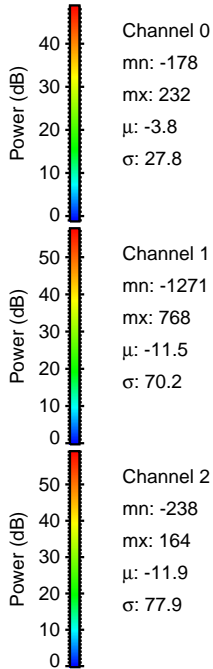
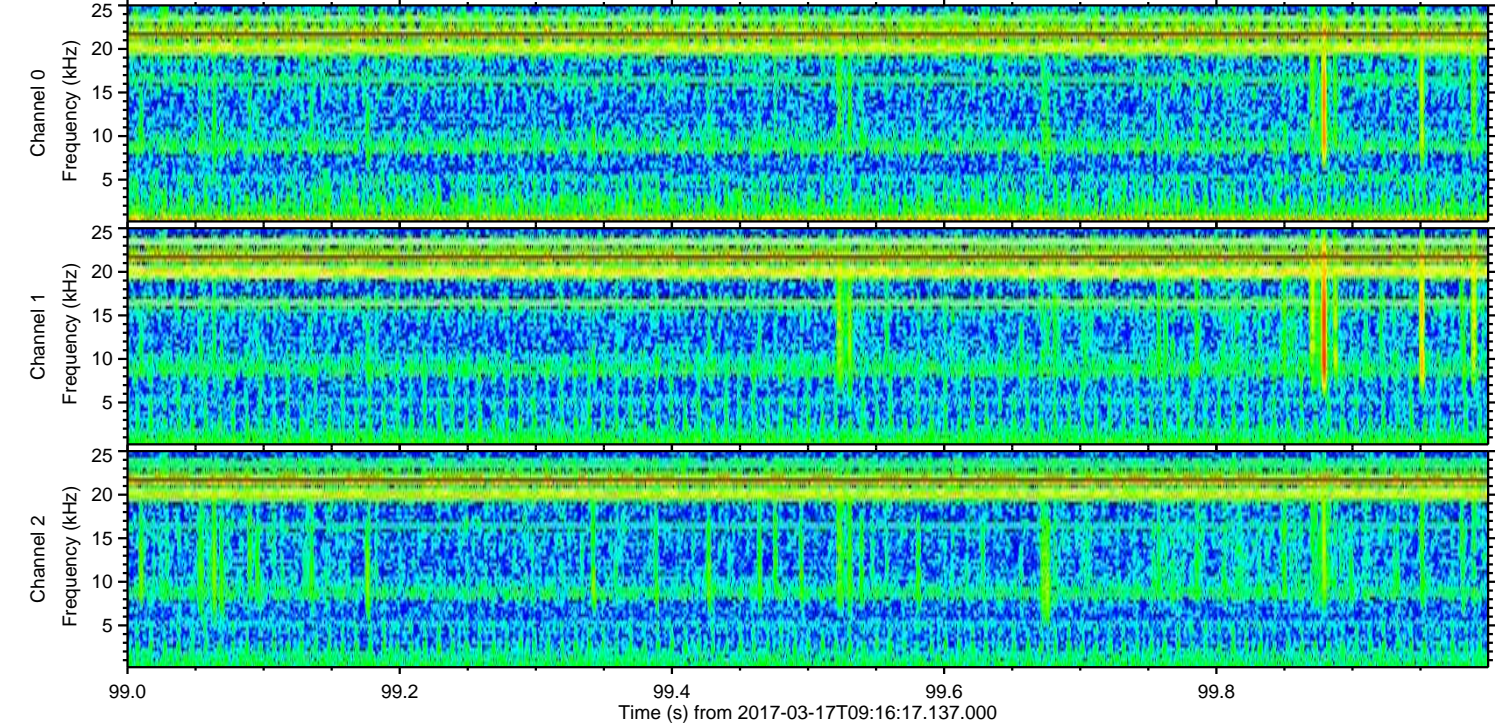
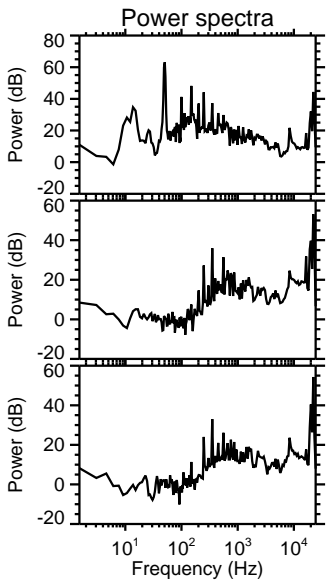
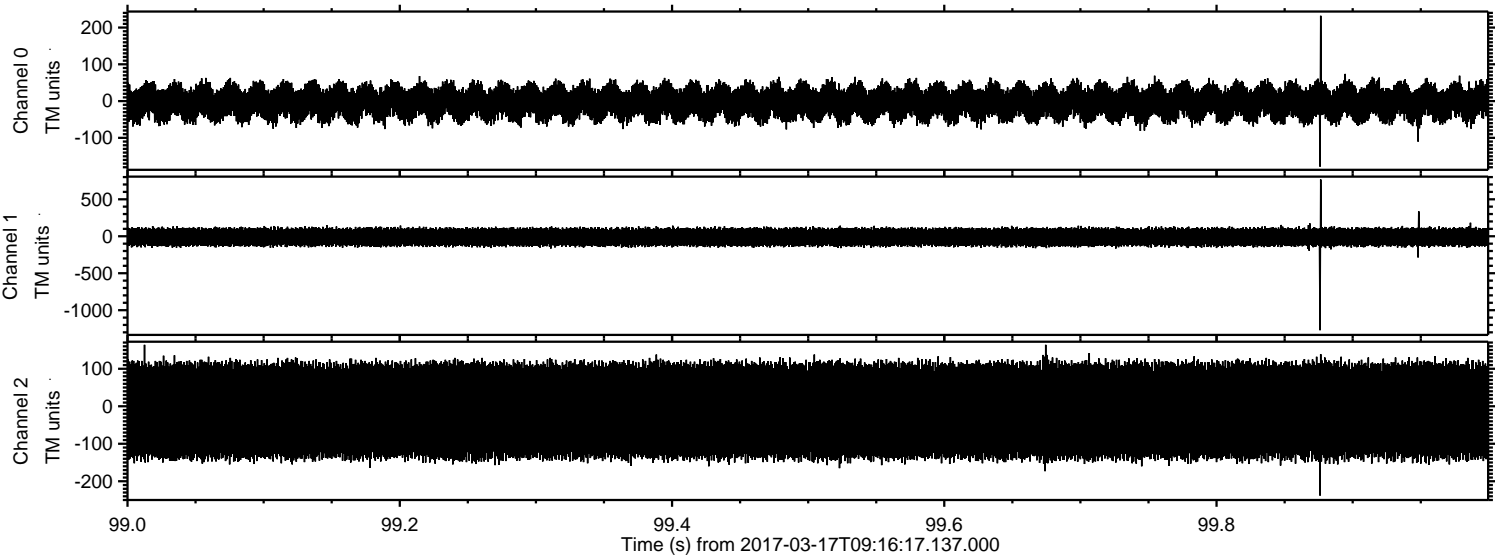
ELMAVAN 3D WAVEFORMS (Measured data sampled at 50 kHz) 51000 packets of 144 samples from 2017-03-17T09:16:17.137.000. Part 102/147

Processed Fri Mar 17 10:24:51 2017 by ELM ver.2012-10-06 from 001__elm20170317_091616__dat00.bin



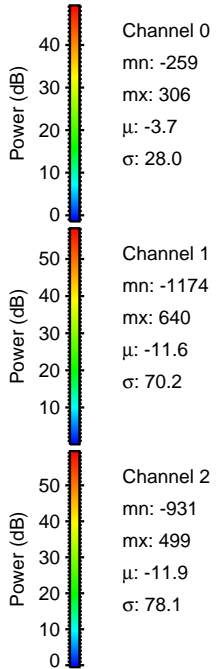
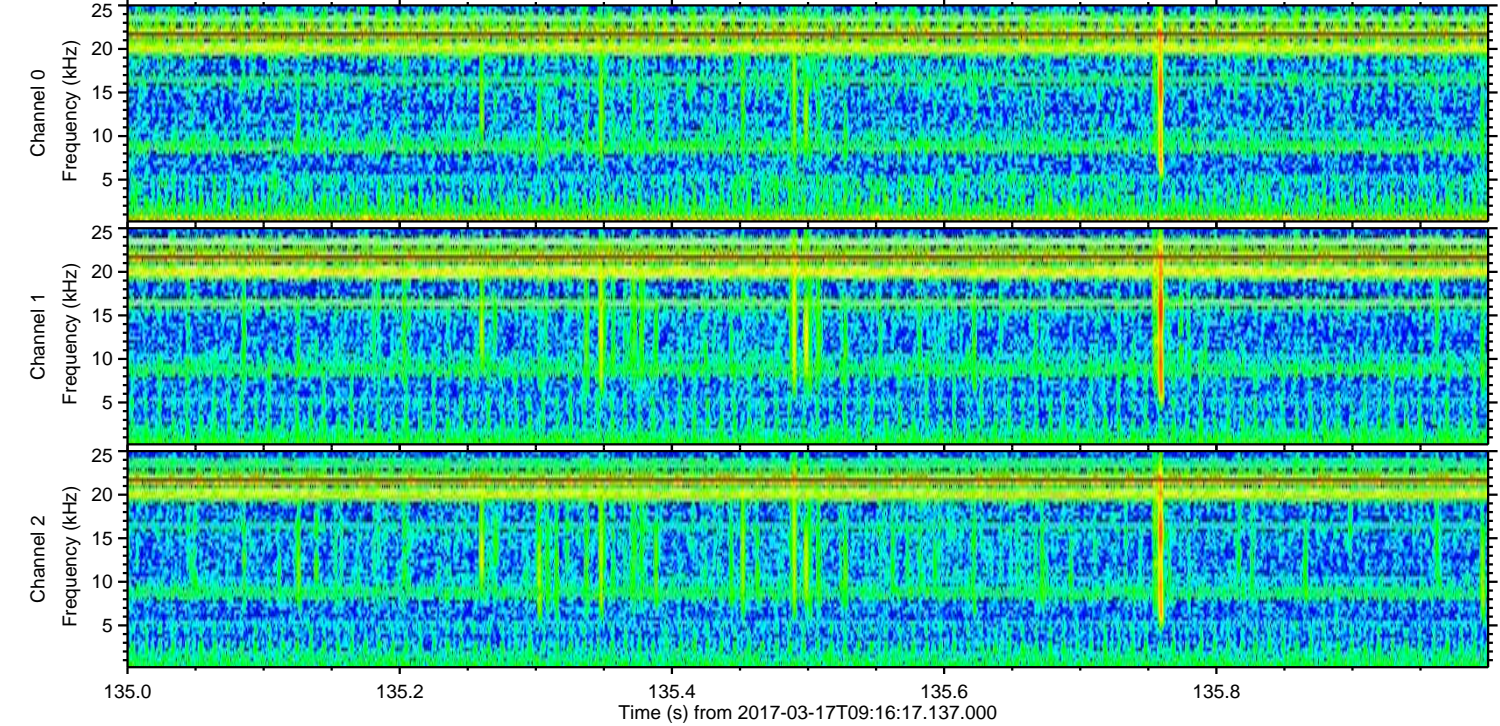
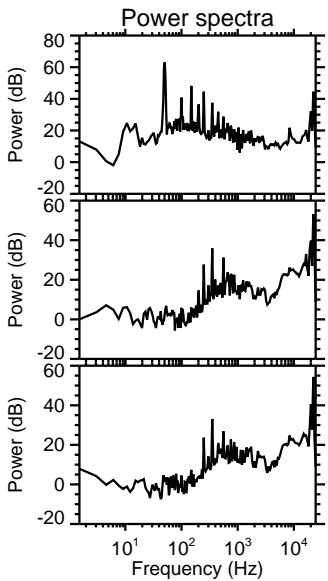
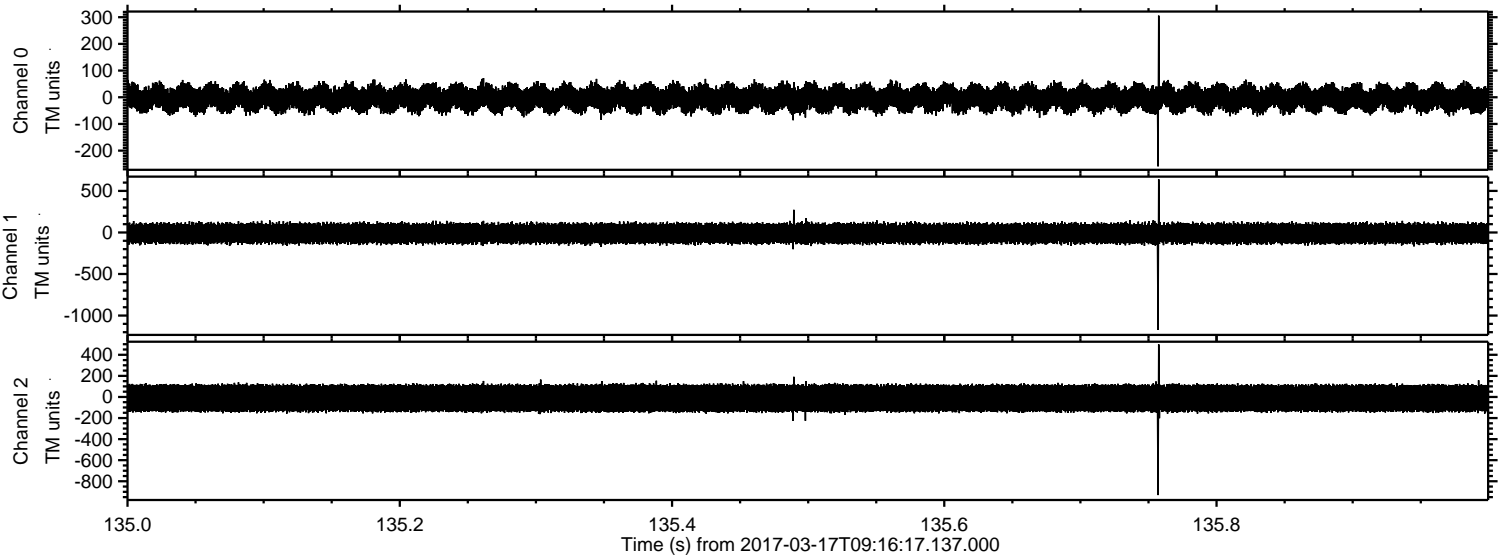
ELMAVAN 3D WAVEFORMS (Measured data sampled at 50 kHz) 51000 packets of 144 samples from 2017-03-17T09:16:17.137.000. Part 100/147

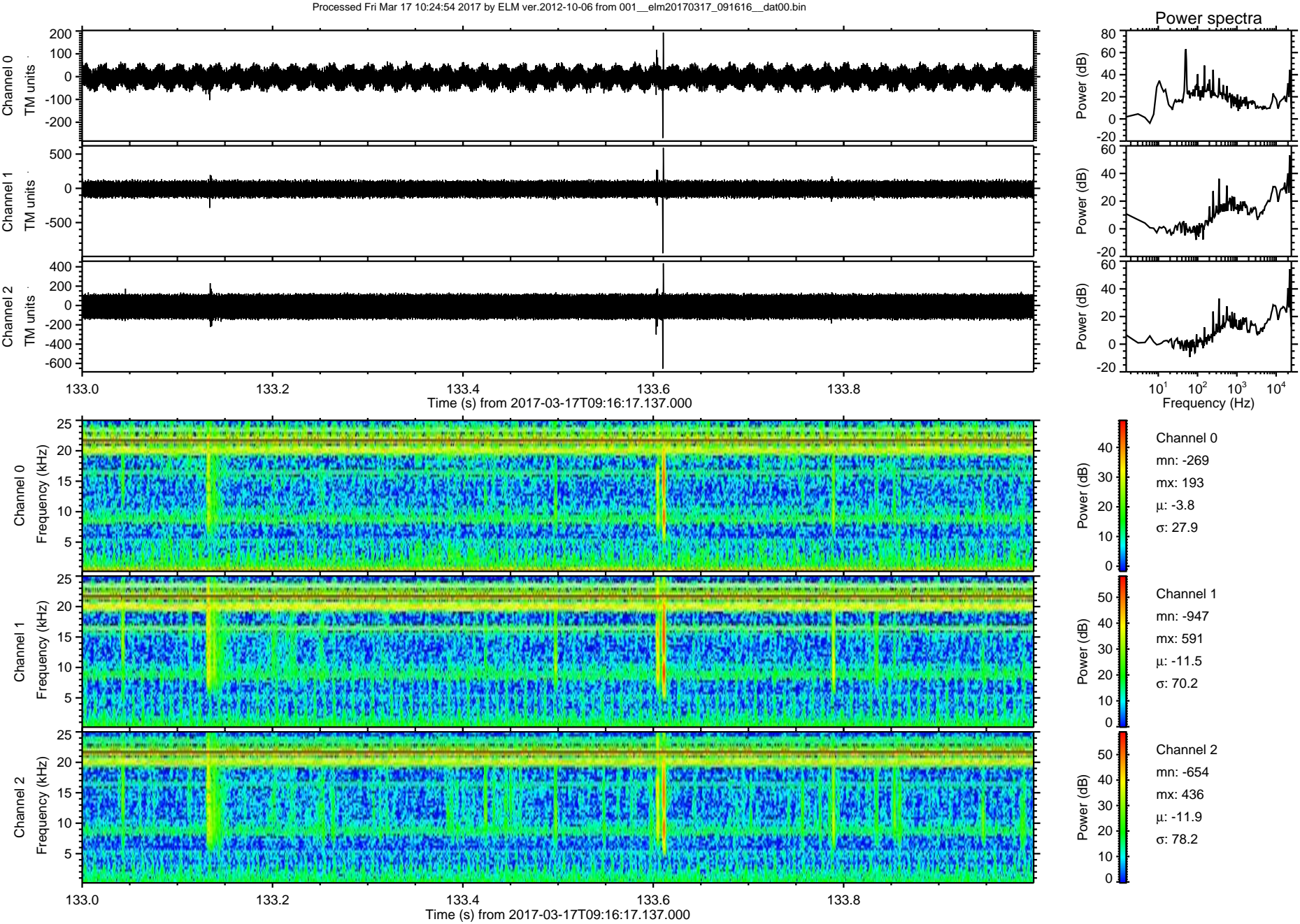
Processed Fri Mar 17 10:24:52 2017 by ELM ver.2012-10-06 from 001__elm20170317_091616__dat00.bin



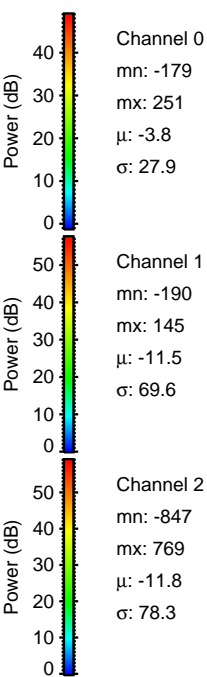
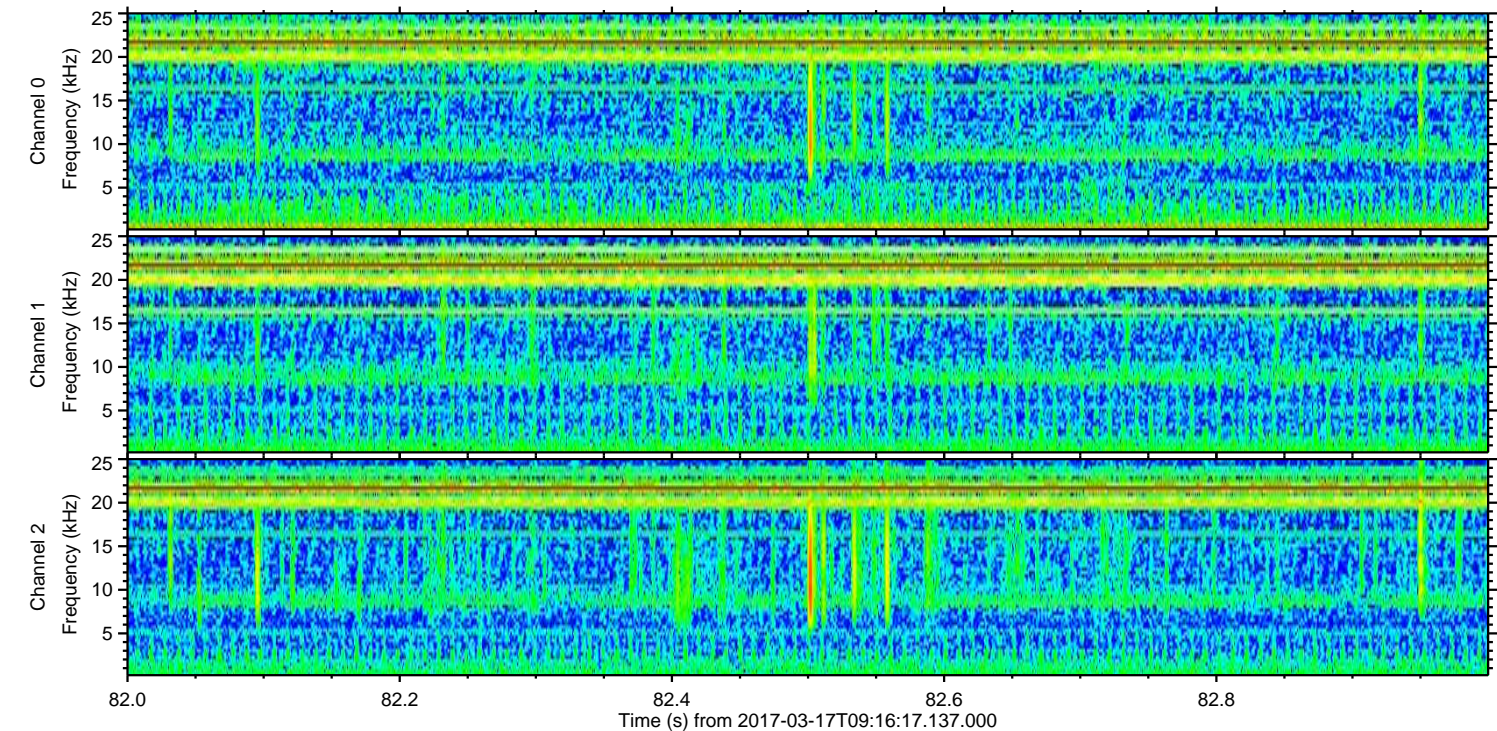
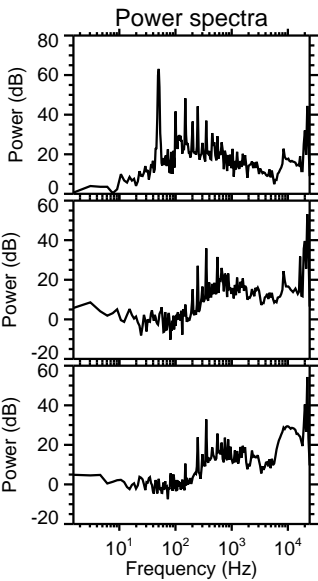
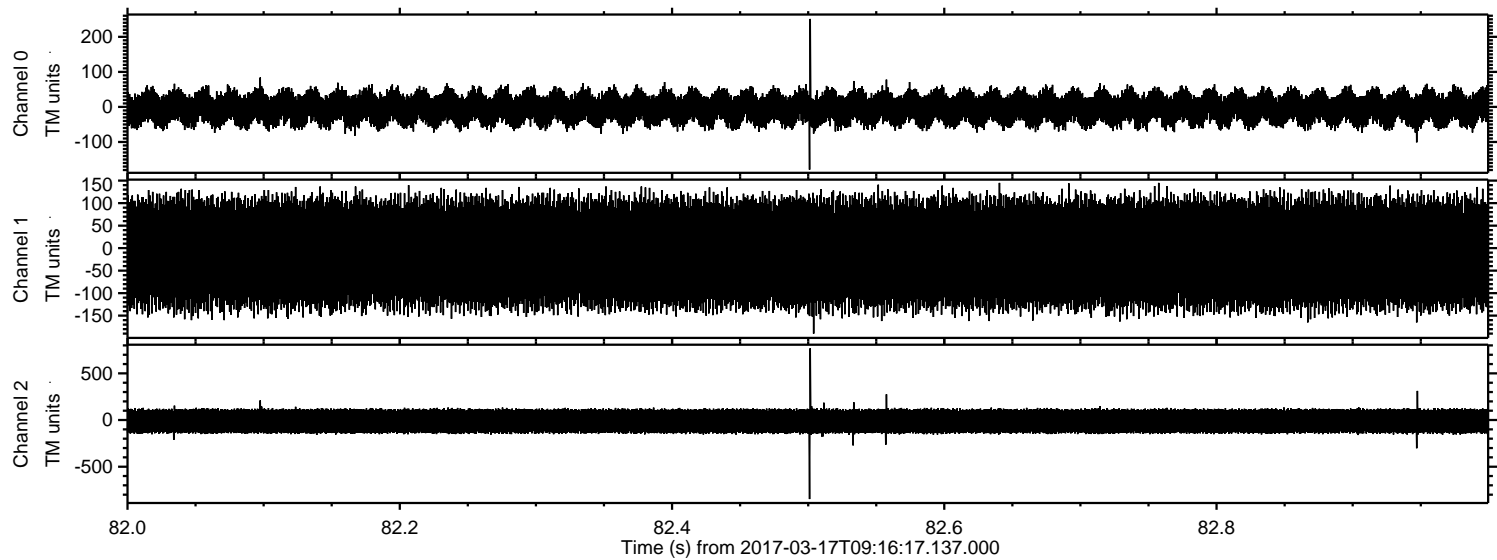
ELMAVAN 3D WAVEFORMS (Measured data sampled at 50 kHz) 51000 packets of 144 samples from 2017-03-17T09:16:17.137.000. Part 136/147

Processed Fri Mar 17 10:24:53 2017 by ELM ver.2012-10-06 from 001__elm20170317_091616__dat00.bin

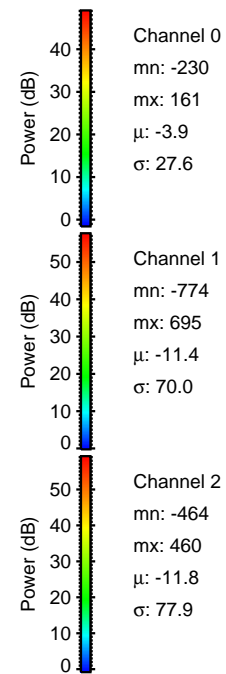
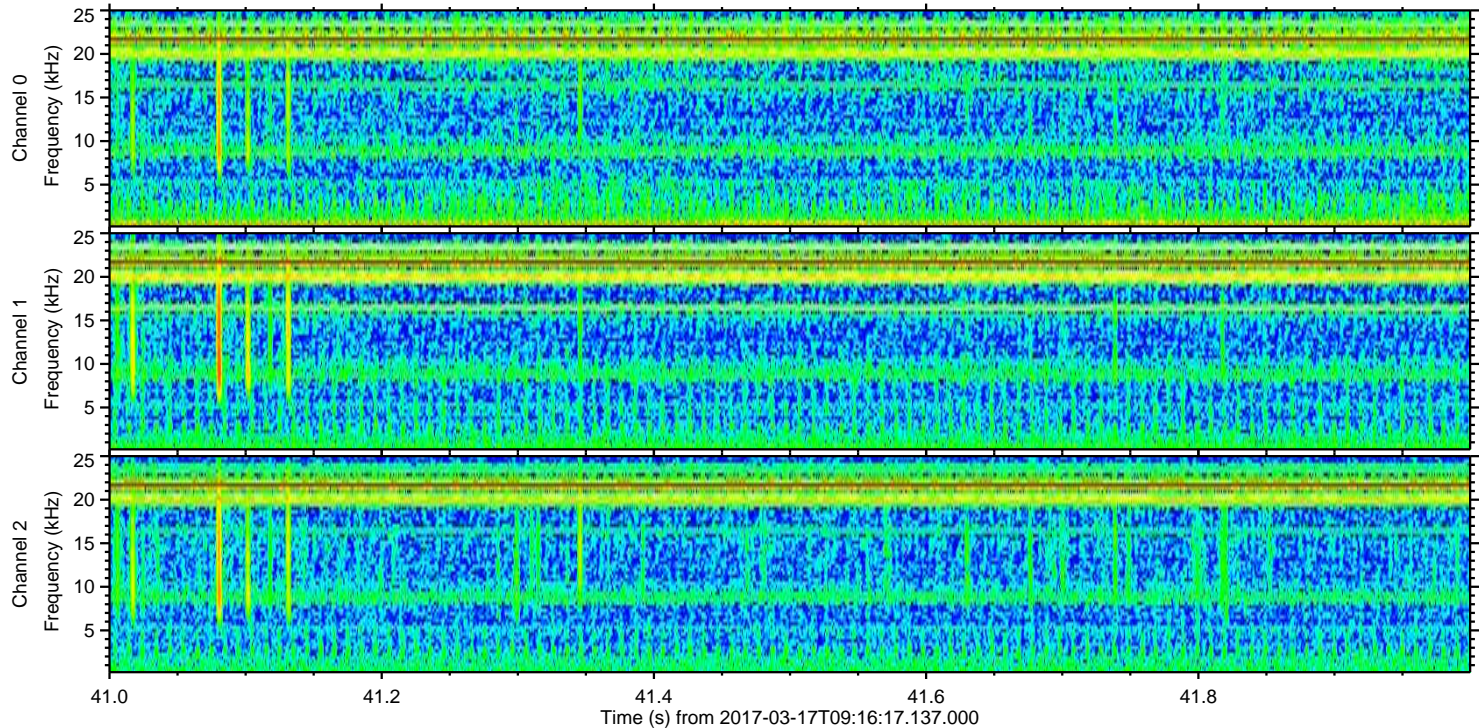
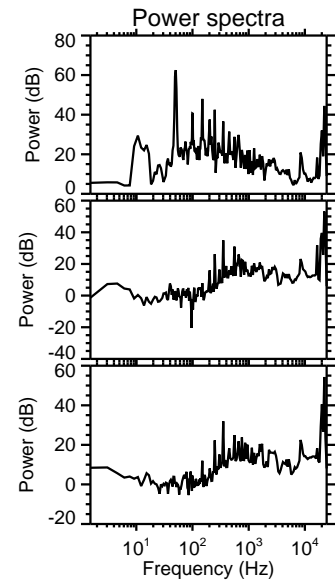
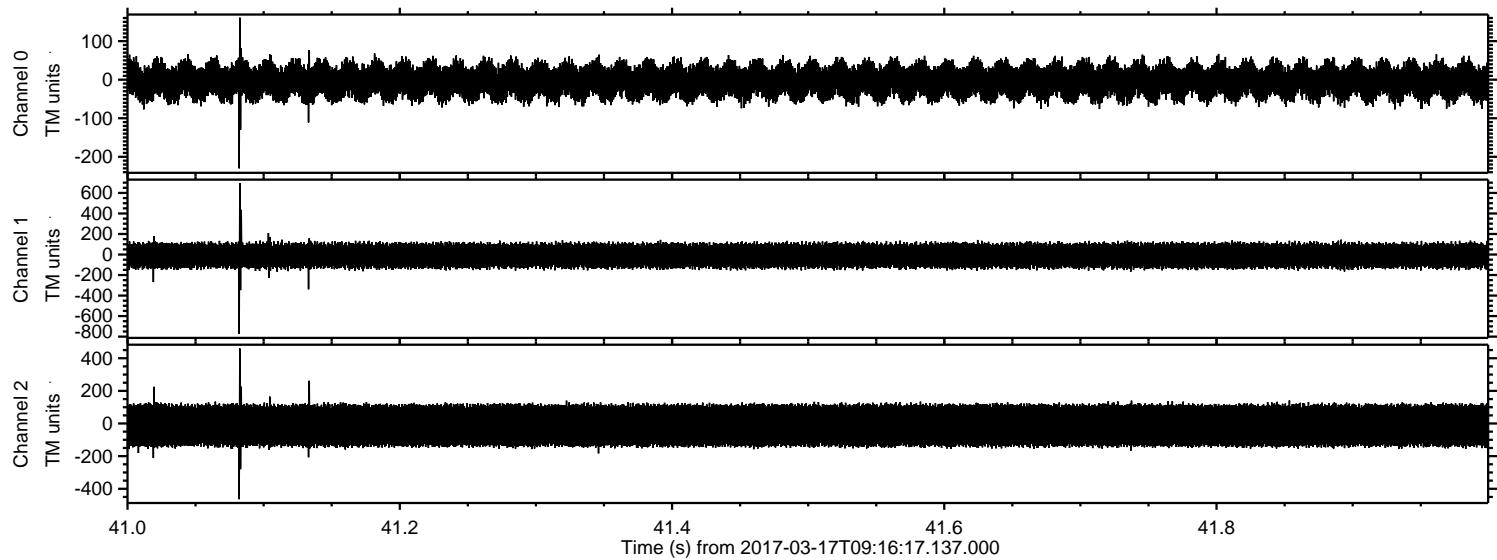




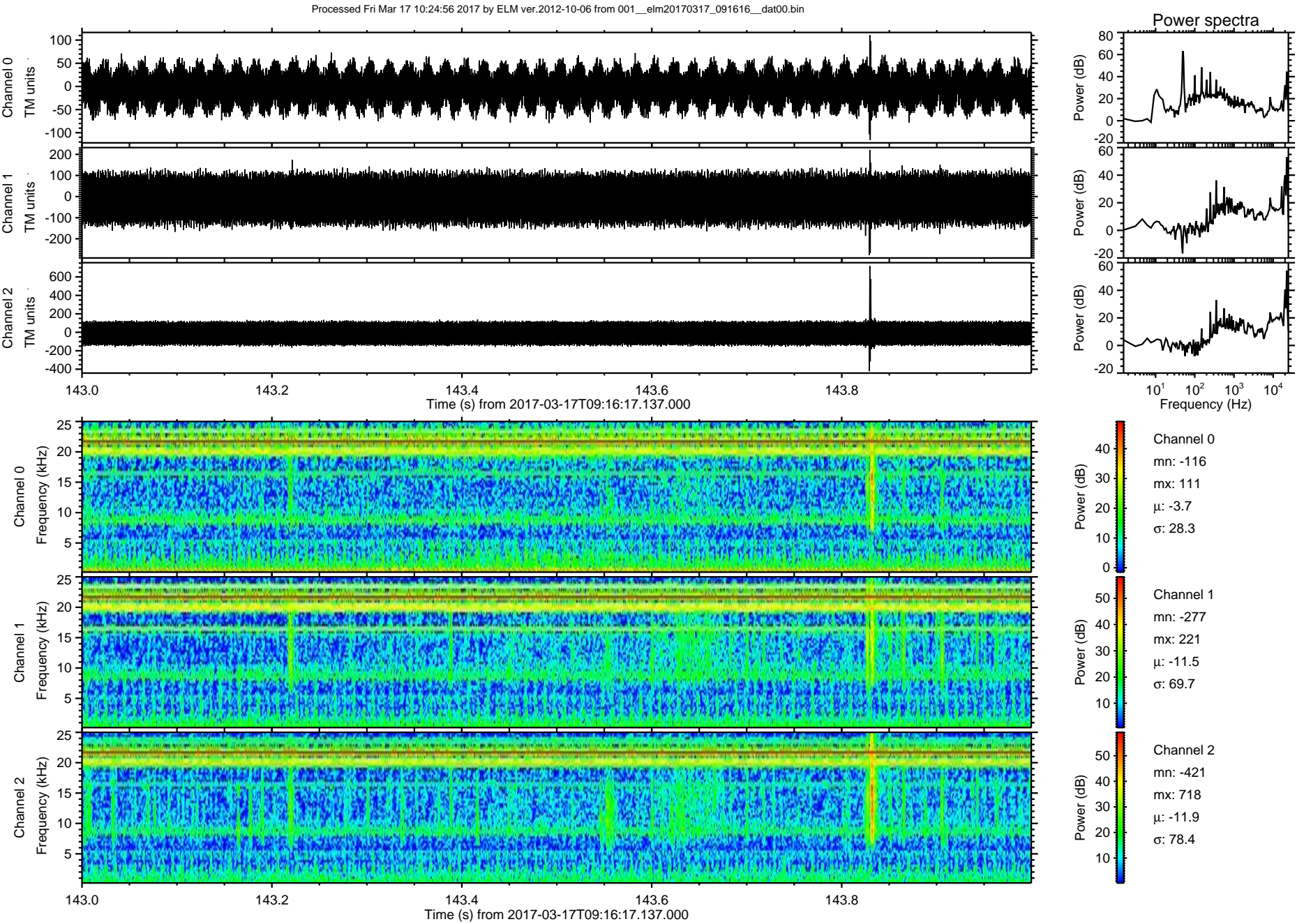
Processed Fri Mar 17 10:24:55 2017 by ELM ver.2012-10-06 from 001__elm20170317_091616__dat00.bin



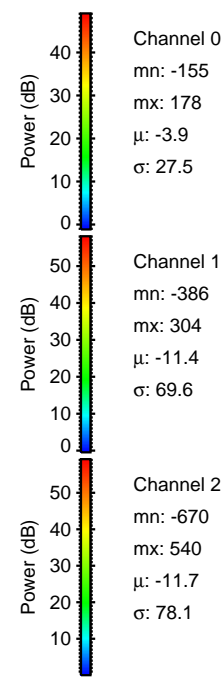
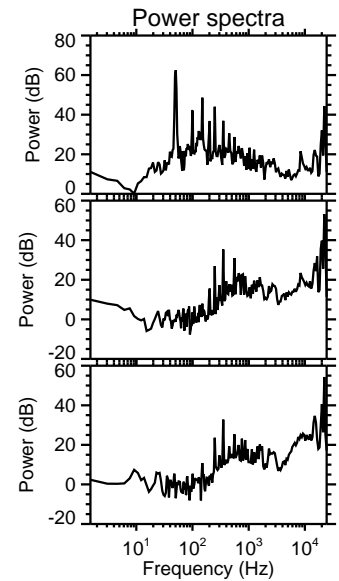
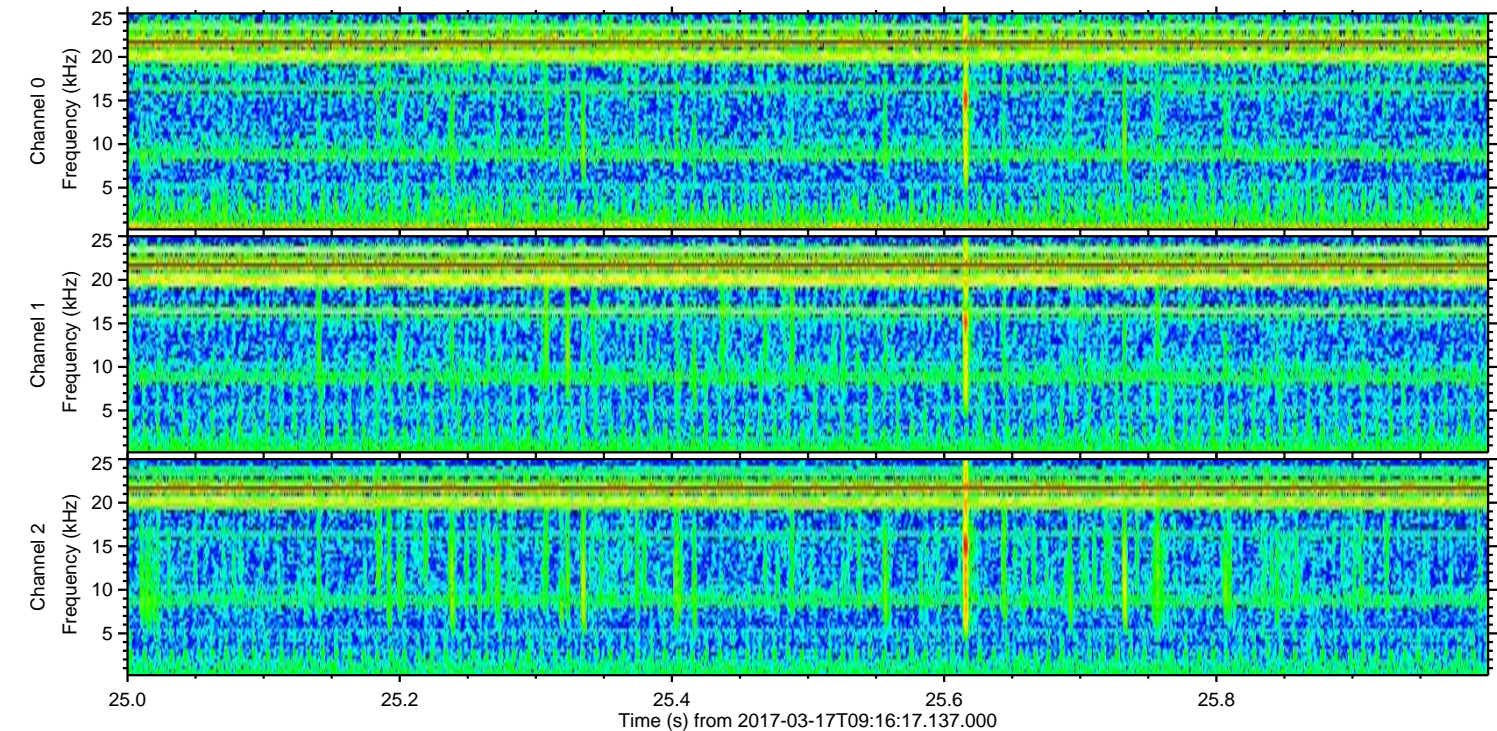
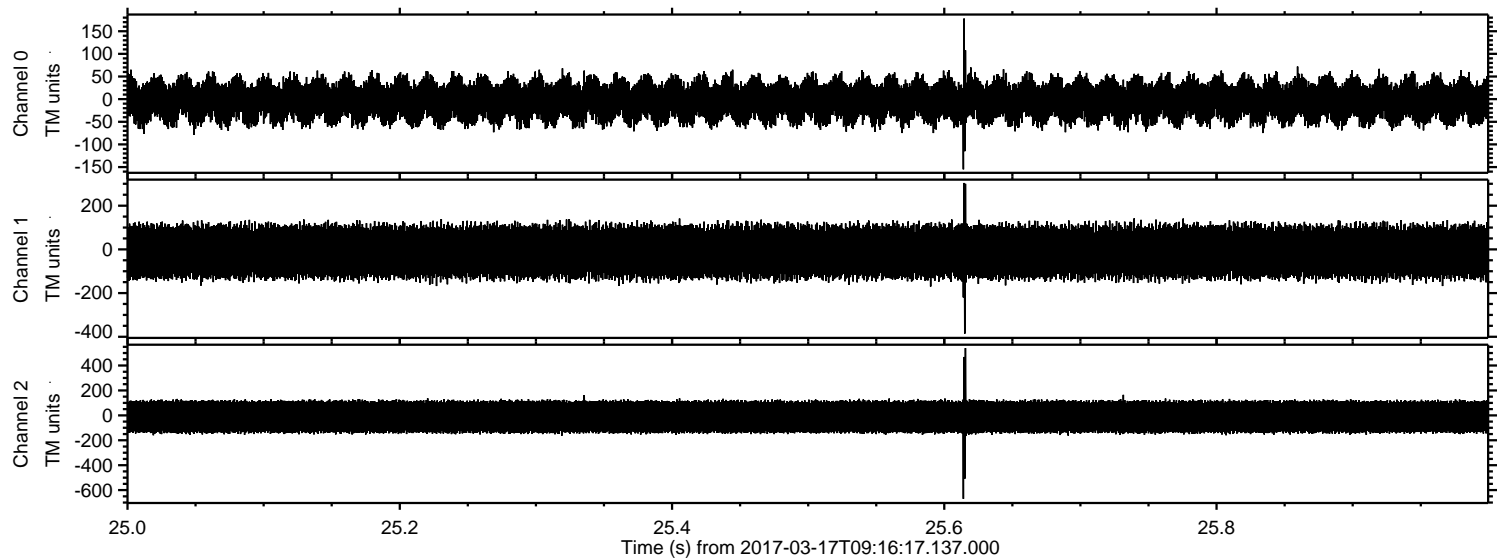
Processed Fri Mar 17 10:24:56 2017 by ELM ver.2012-10-06 from 001__elm20170317_091616__dat00.bin



ELMAVAN 3D WAVEFORMS (Measured data sampled at 50 kHz) 51000 packets of 144 samples from 2017-03-17T09:16:17.137.000. Part 144/147

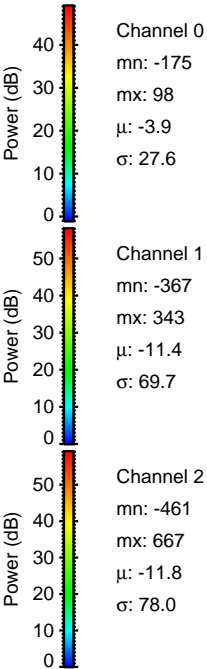
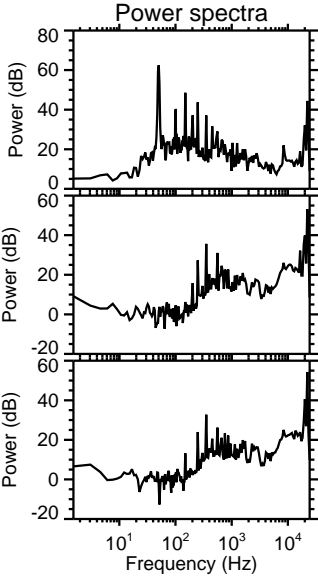
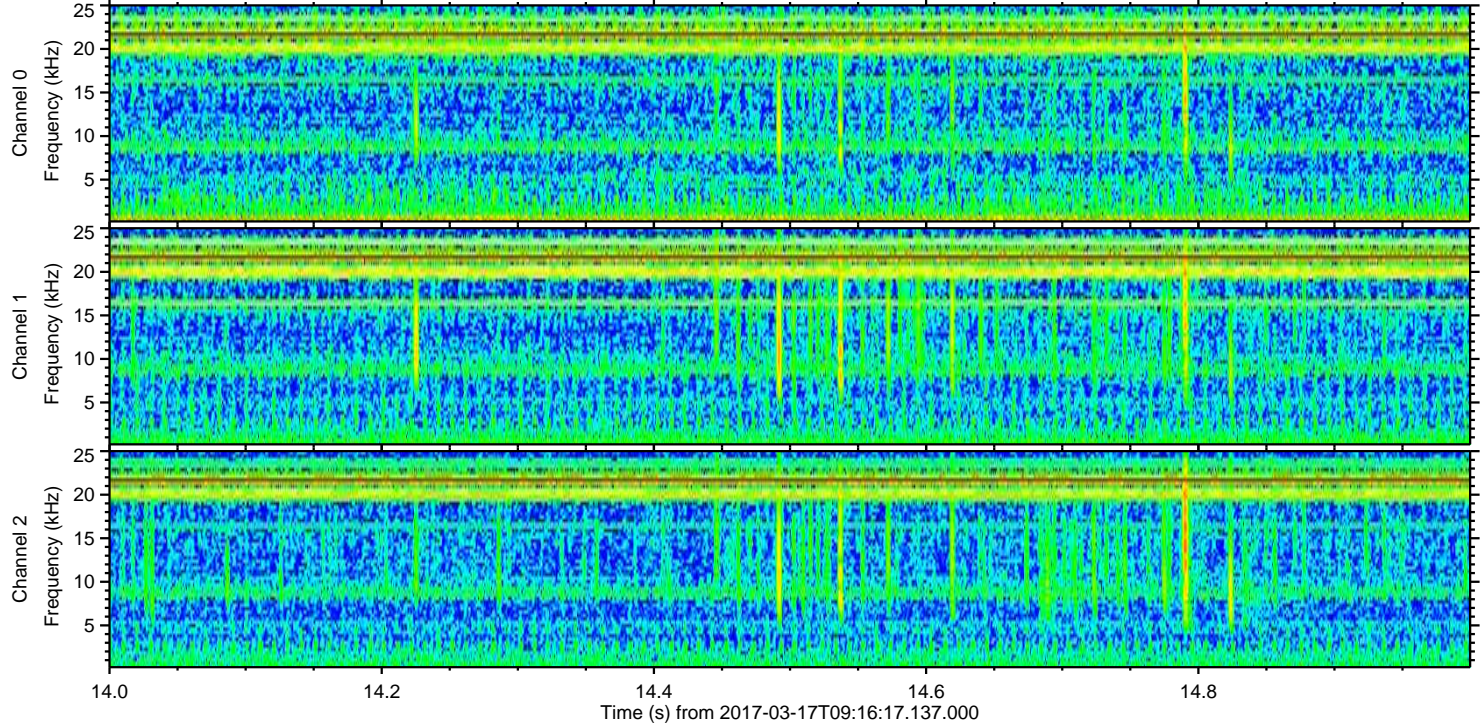
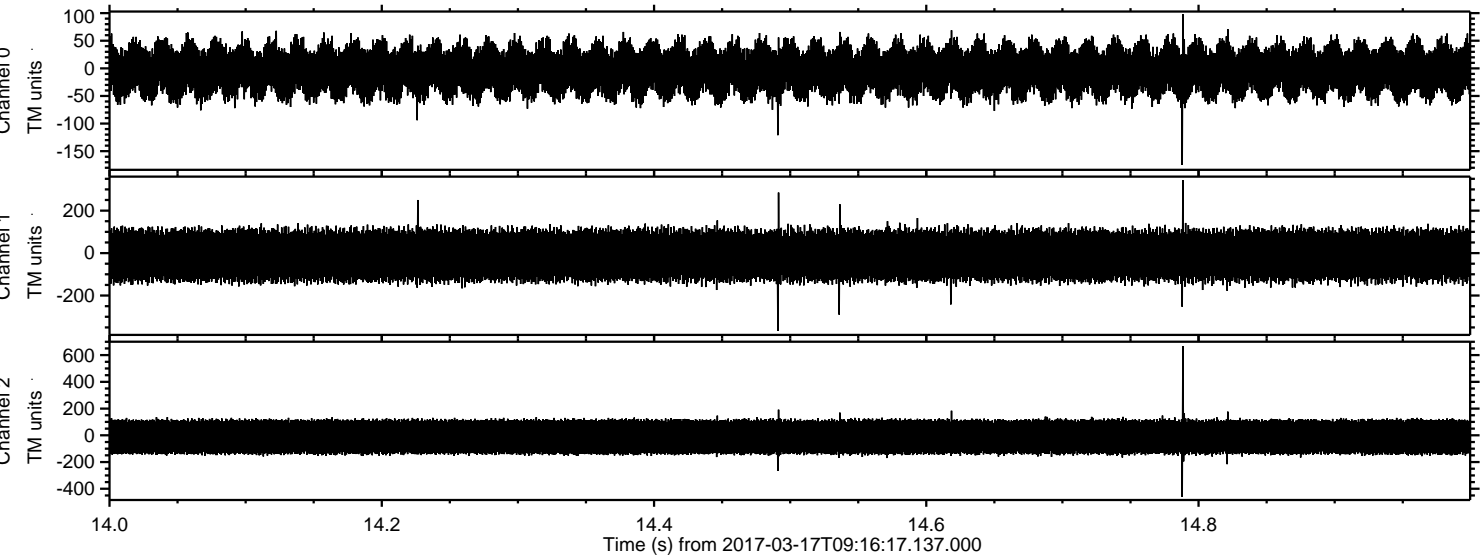


Processed Fri Mar 17 10:24:57 2017 by ELM ver.2012-10-06 from 001__elm20170317_091616__dat00.bin



ELMAVAN 3D WAVEFORMS (Measured data sampled at 50 kHz) 51000 packets of 144 samples from 2017-03-17T09:16:17.137.000. Part 15/147

Processed Fri Mar 17 10:24:58 2017 by ELM ver.2012-10-06 from 001__elm20170317_091616__dat00.bin



Channel 0
mn: -175
mx: 98
 μ : -3.9
 σ : 27.6

Channel 1
mn: -367
mx: 343
 μ : -11.4
 σ : 69.7

Channel 2
mn: -461
mx: 667
 μ : -11.8
 σ : 78.0

Processed Fri Mar 17 10:24:59 2017 by ELM ver.2012-10-06 from 001__elm20170317_091616__dat00.bin

