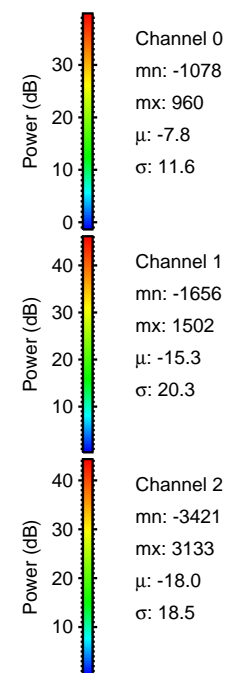
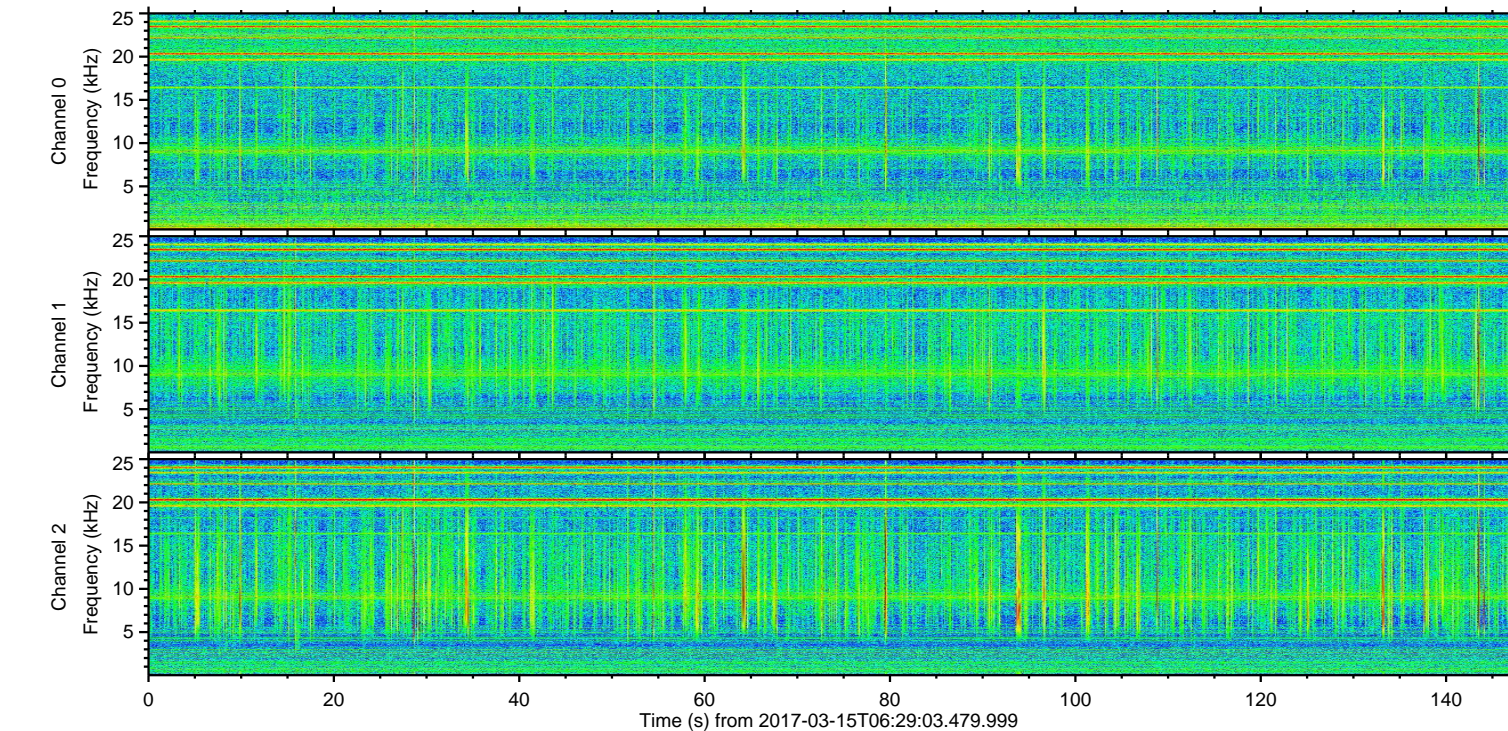
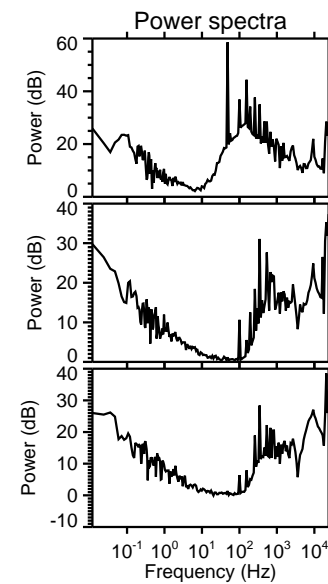
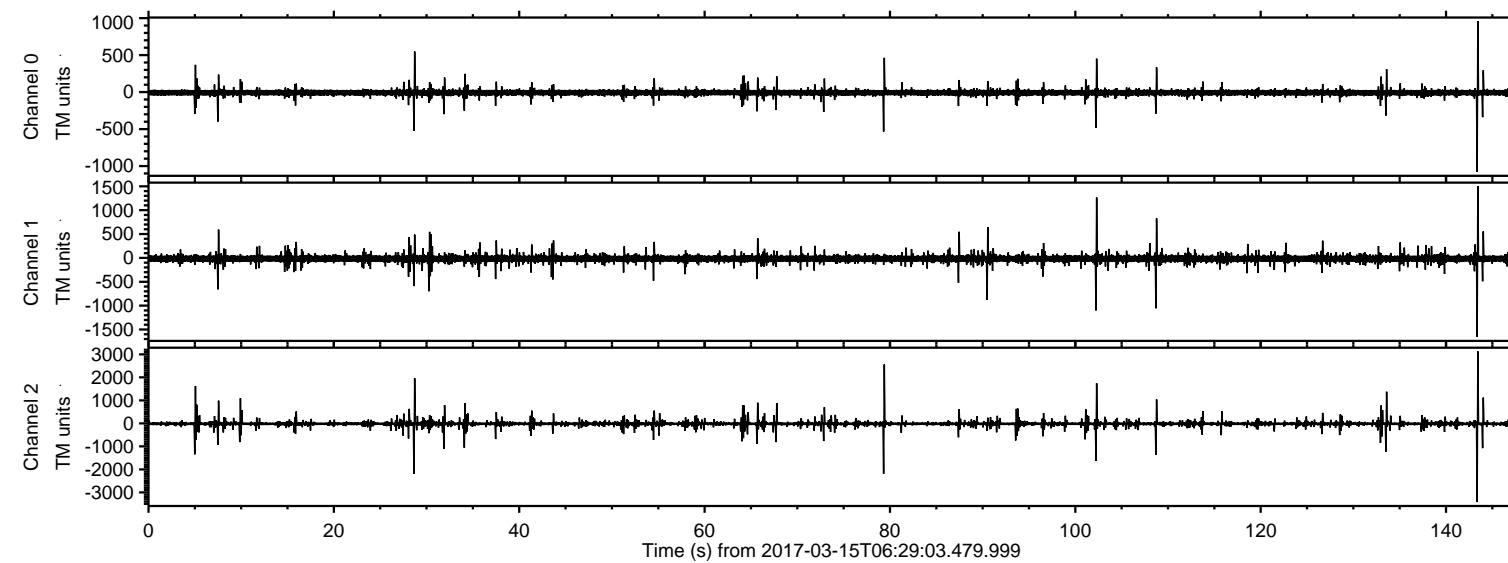


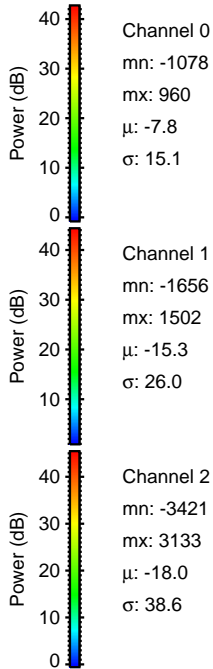
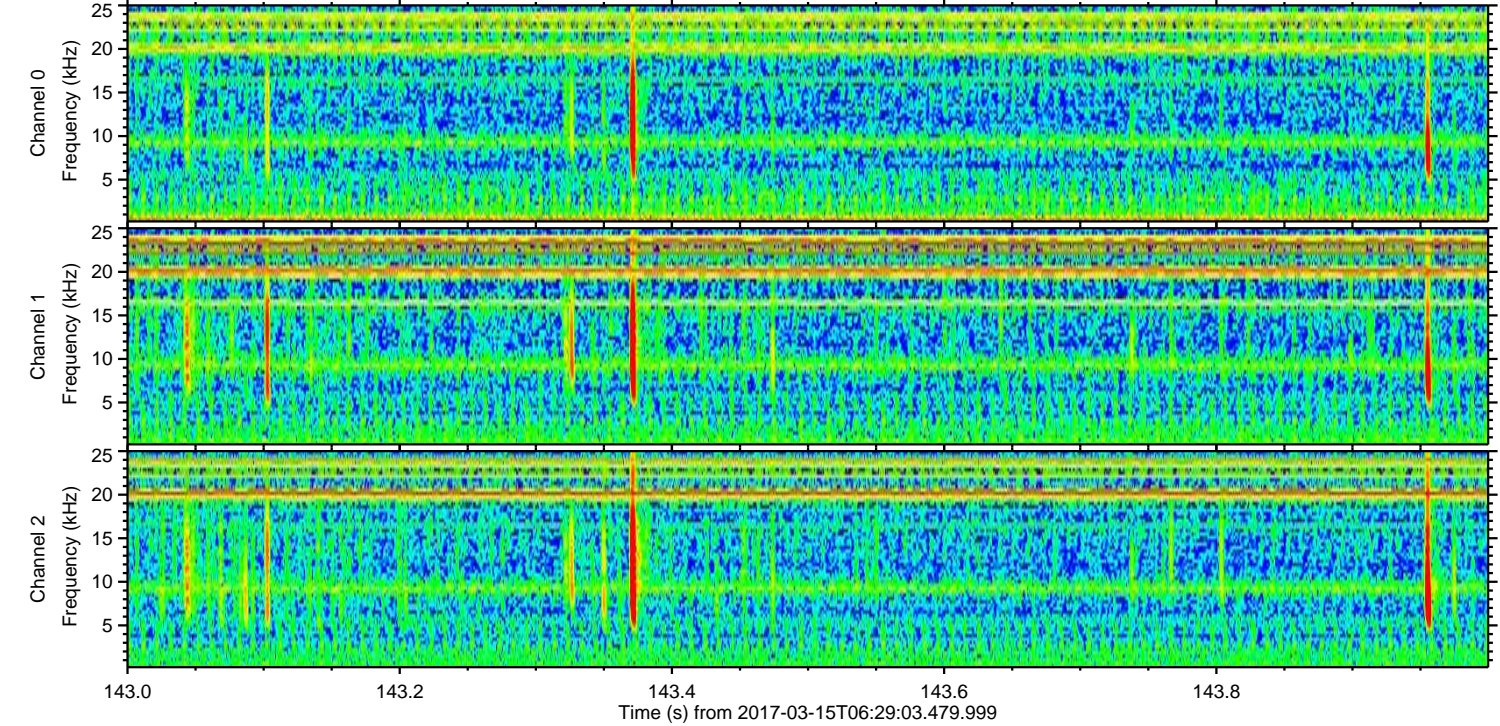
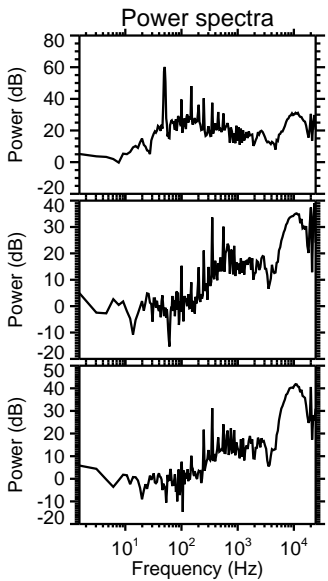
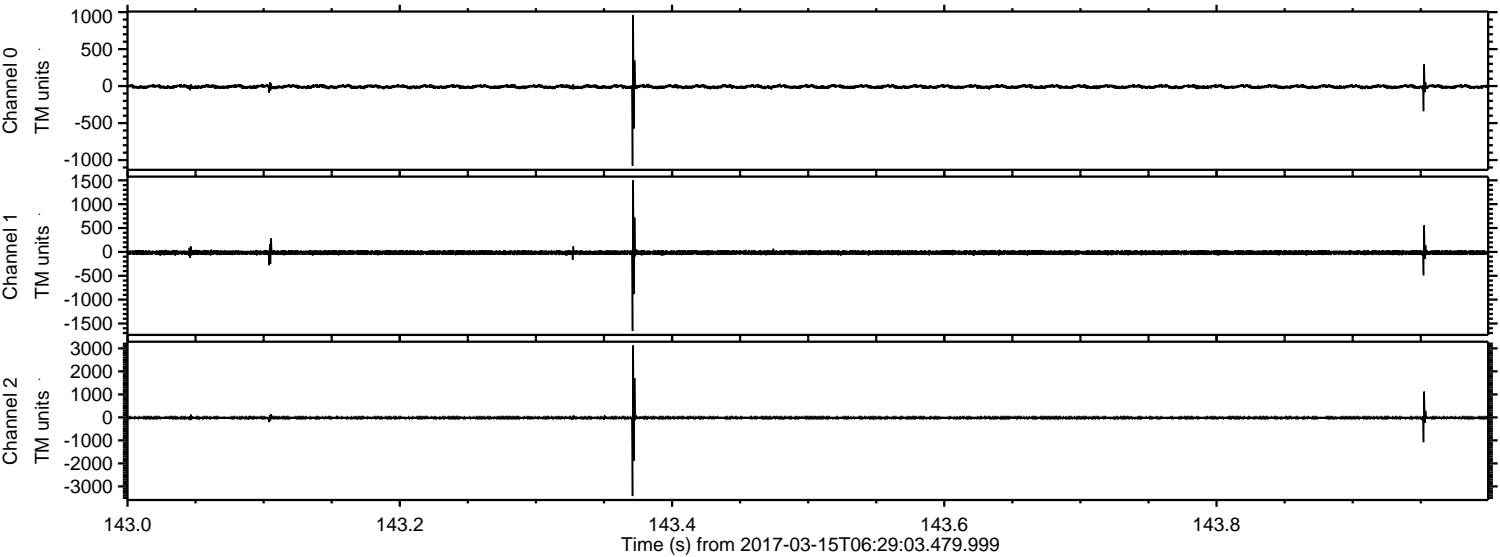
ELMAVAN 3D WAVEFORMS (Measured data sampled at 50 kHz) 51000 packets of 144 samples from 2017-03-15T06:29:03.479.999.

Processed Wed Mar 15 07:36:41 2017 by ELM ver.2012-10-06 from 001__elm20170315_062902__dat00.bin



ELMAVAN 3D WAVEFORMS (Measured data sampled at 50 kHz) 51000 packets of 144 samples from 2017-03-15T06:29:03.479.999. Part 144/147

Processed Wed Mar 15 07:36:52 2017 by ELM ver.2012-10-06 from 001__elm20170315_062902__dat00.bin

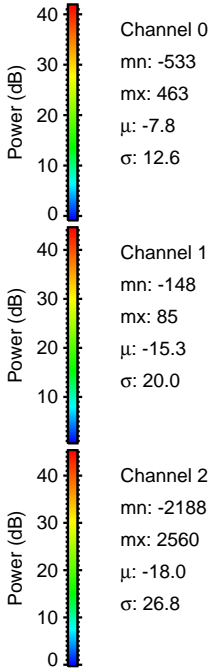
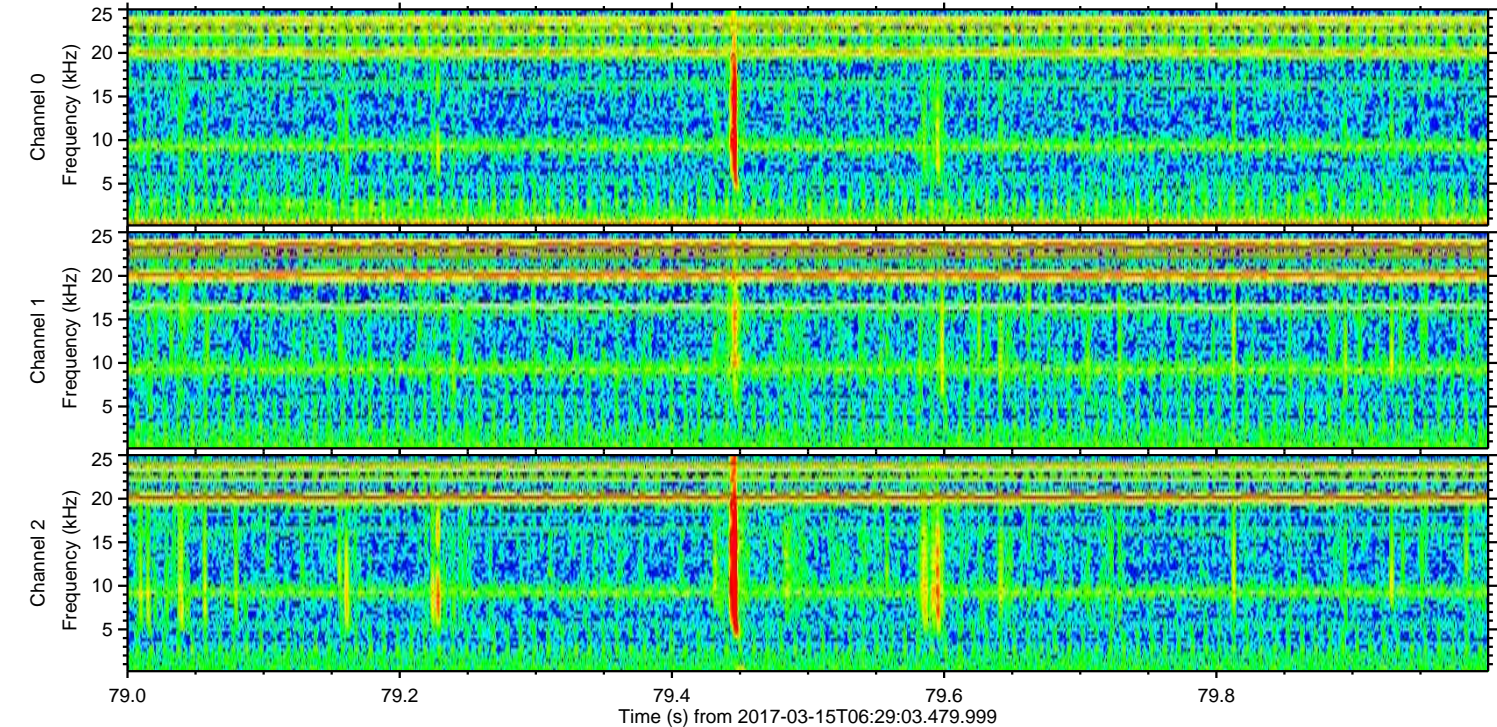
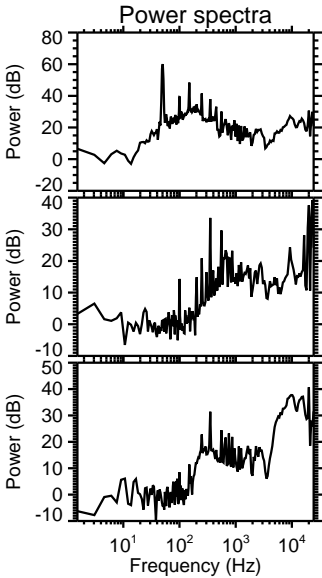
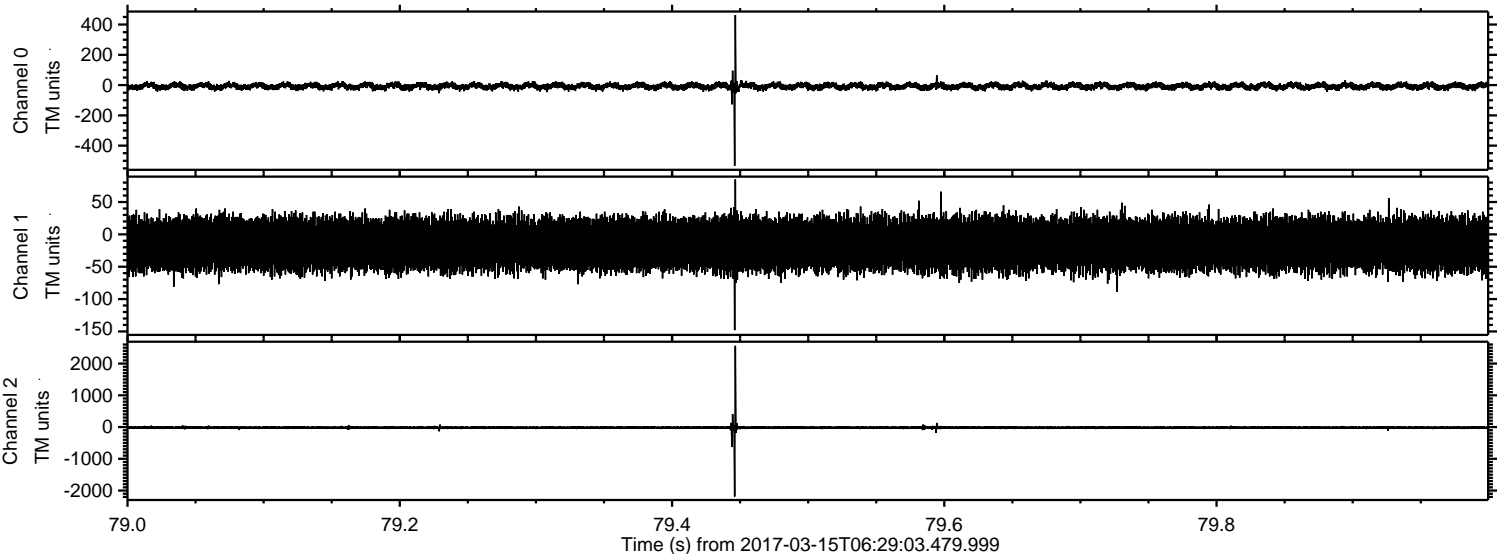


Channel 0
mn: -1078
mx: 960
 μ : -7.8
 σ : 15.1

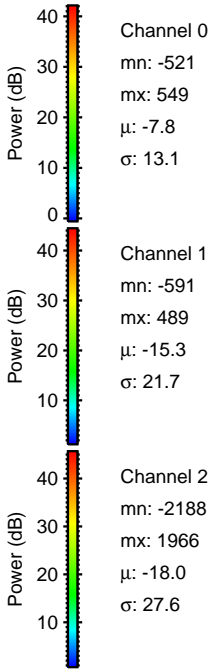
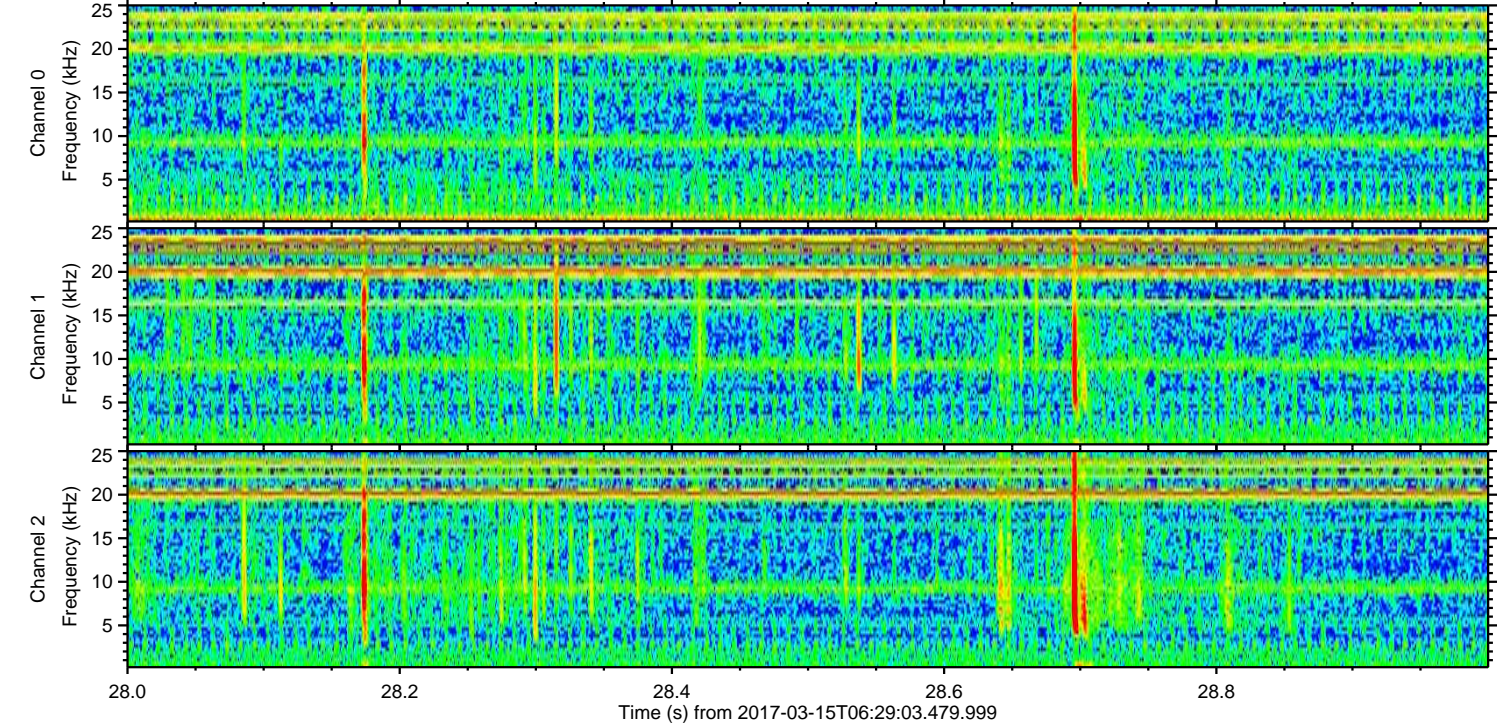
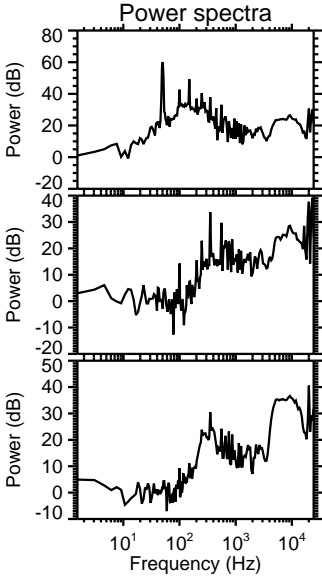
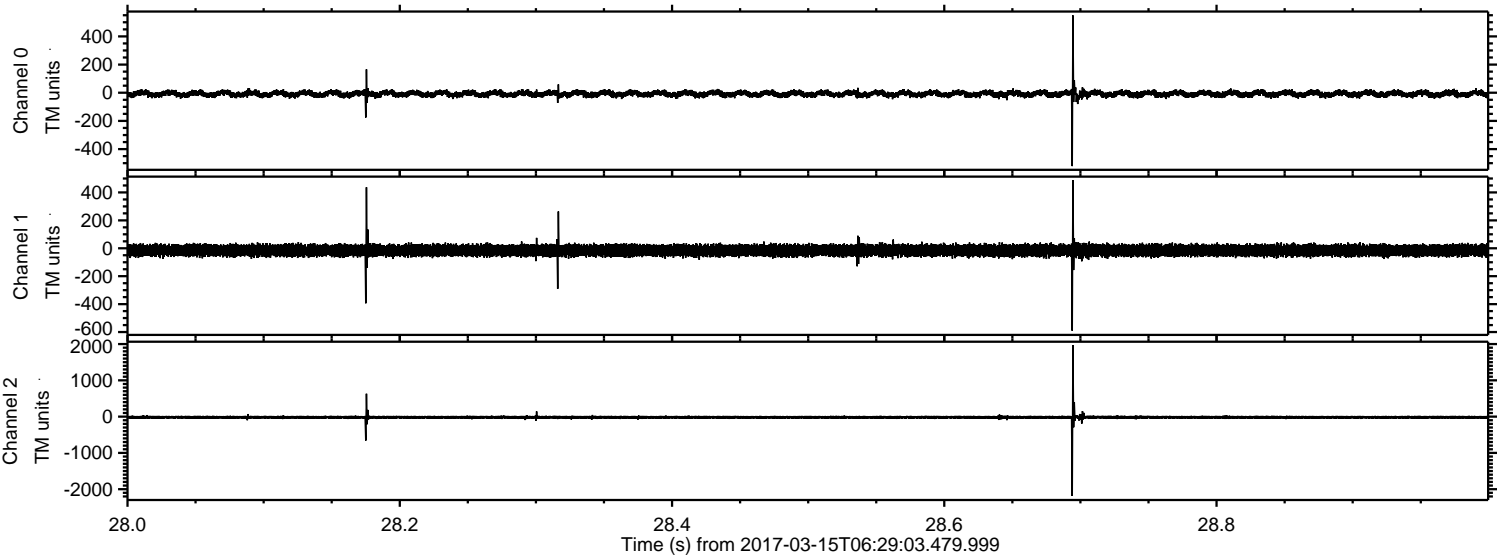
Channel 1
mn: -1656
mx: 1502
 μ : -15.3
 σ : 26.0

Channel 2
mn: -3421
mx: 3133
 μ : -18.0
 σ : 38.6

Processed Wed Mar 15 07:36:53 2017 by ELM ver.2012-10-06 from 001__elm20170315_062902__dat00.bin

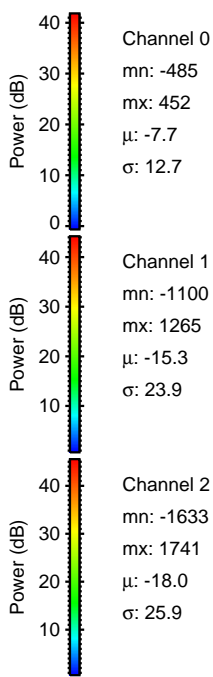
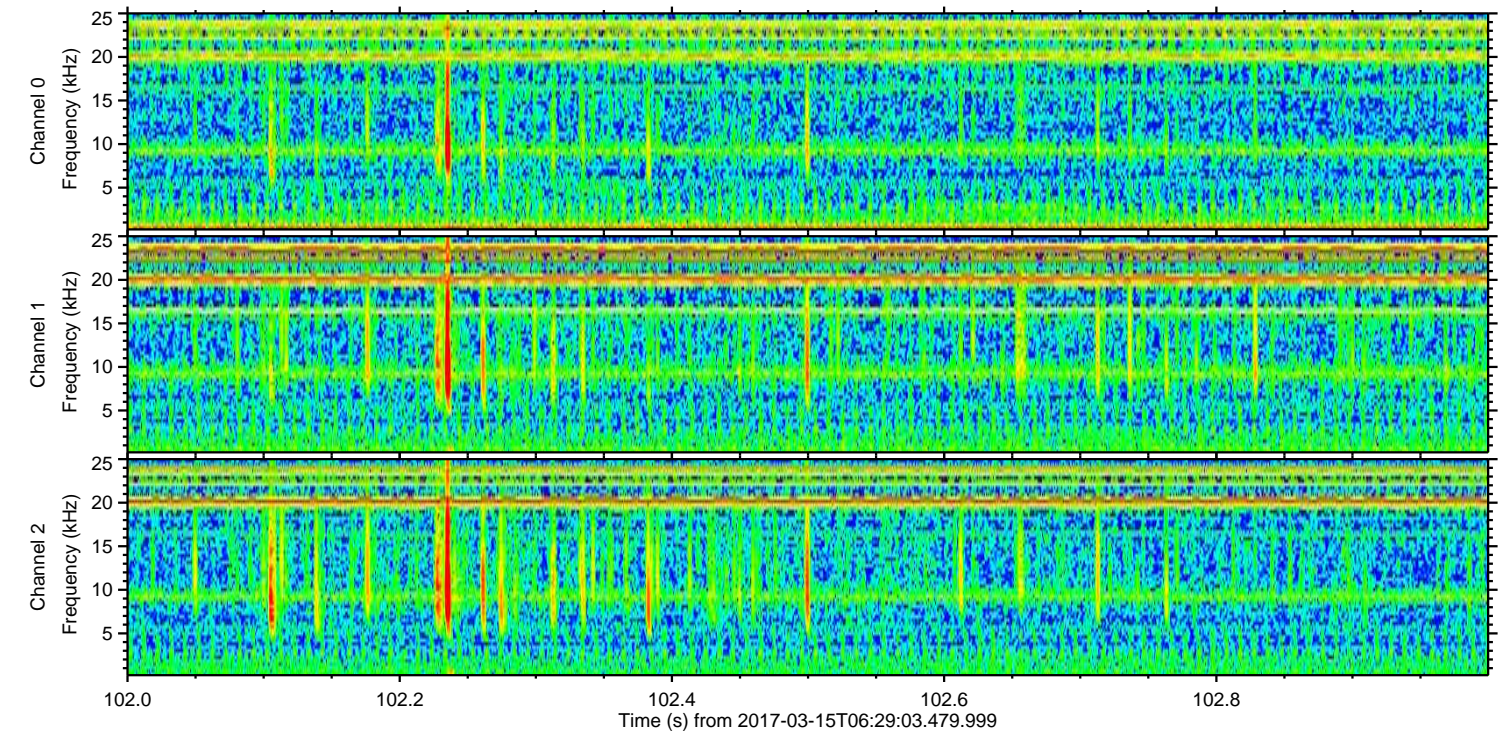
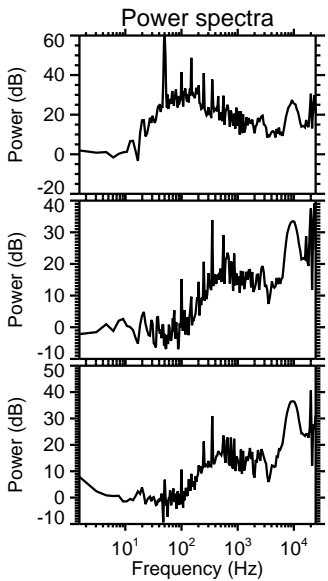
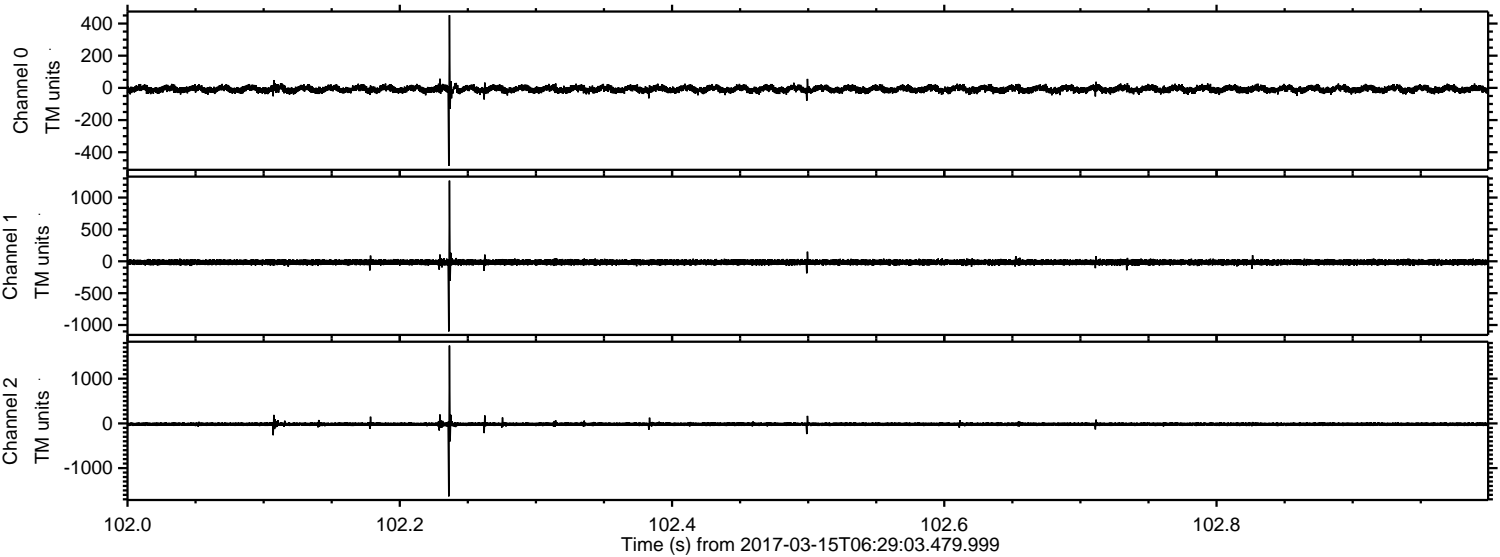


Processed Wed Mar 15 07:36:54 2017 by ELM ver.2012-10-06 from 001__elm20170315_062902__dat00.bin

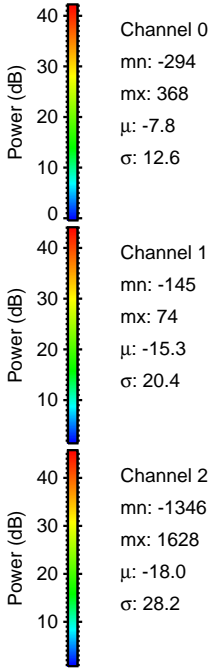
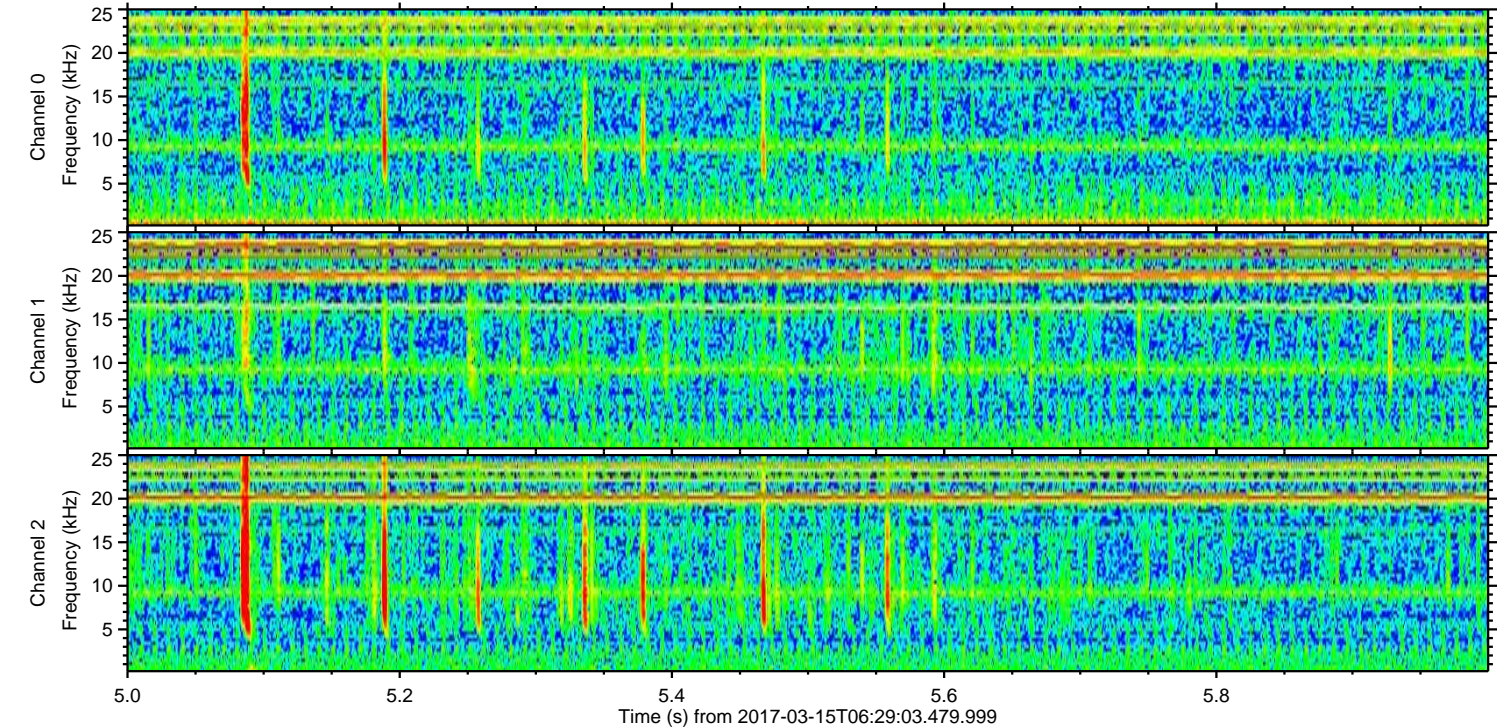
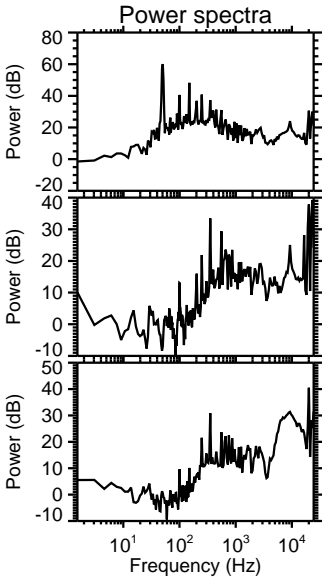
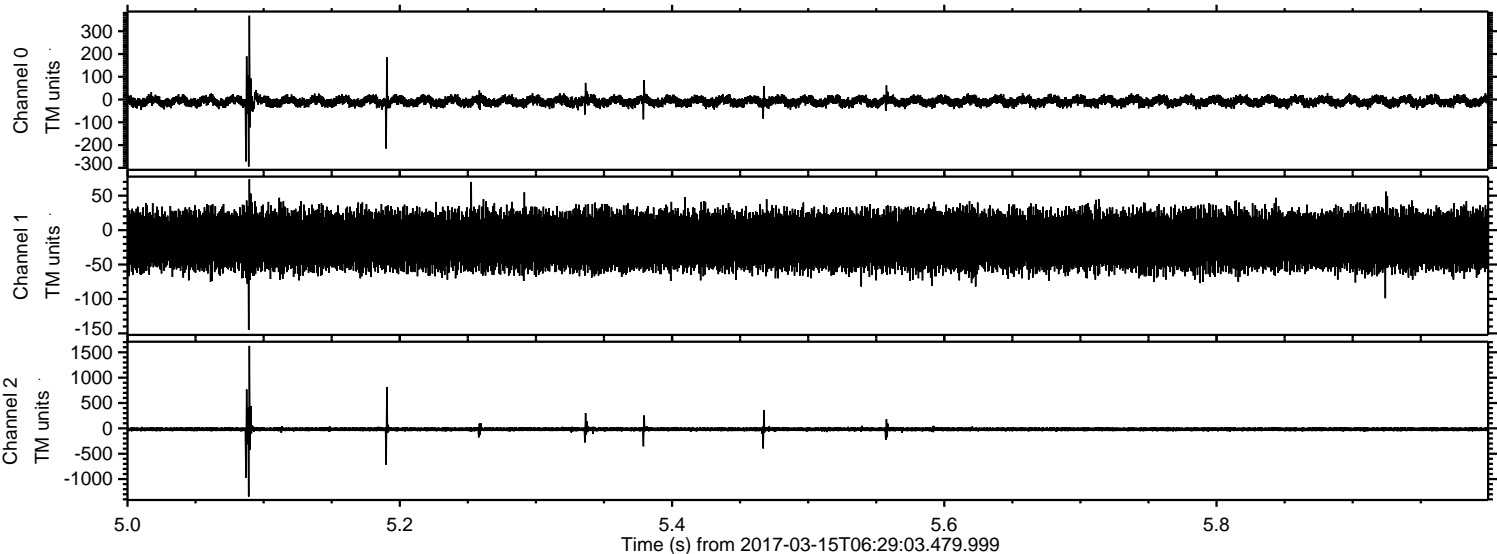


ELMAVAN 3D WAVEFORMS (Measured data sampled at 50 kHz) 51000 packets of 144 samples from 2017-03-15T06:29:03.479.999. Part 103/147

Processed Wed Mar 15 07:36:55 2017 by ELM ver.2012-10-06 from 001__elm20170315_062902__dat00.bin

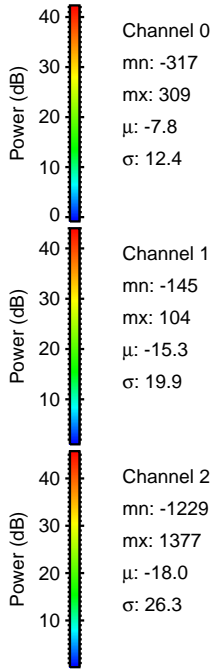
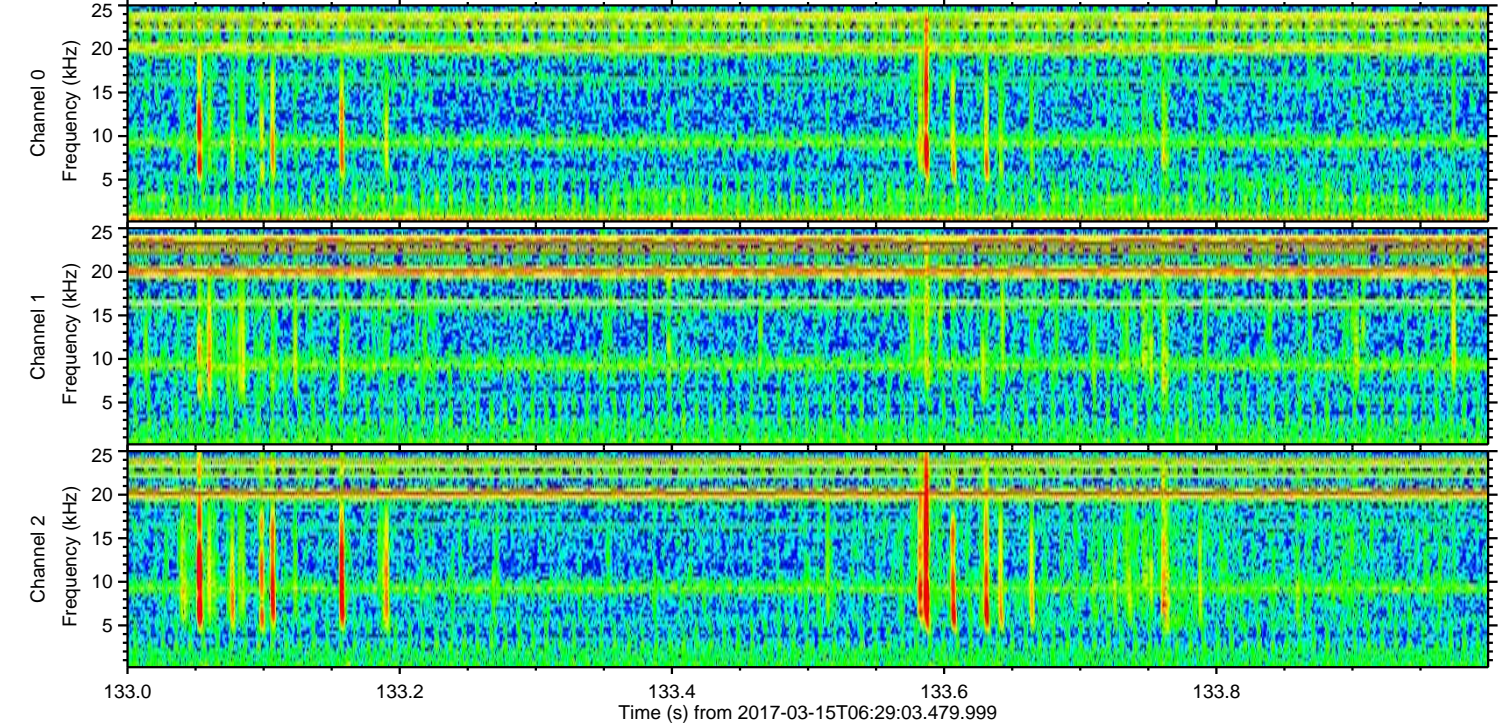
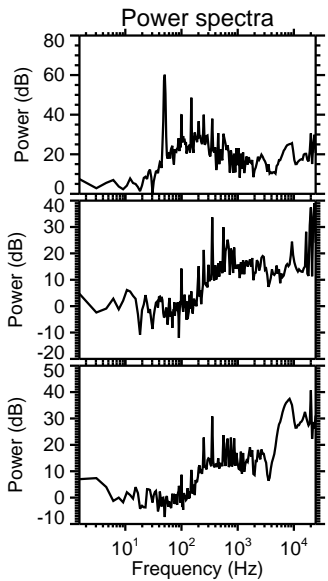
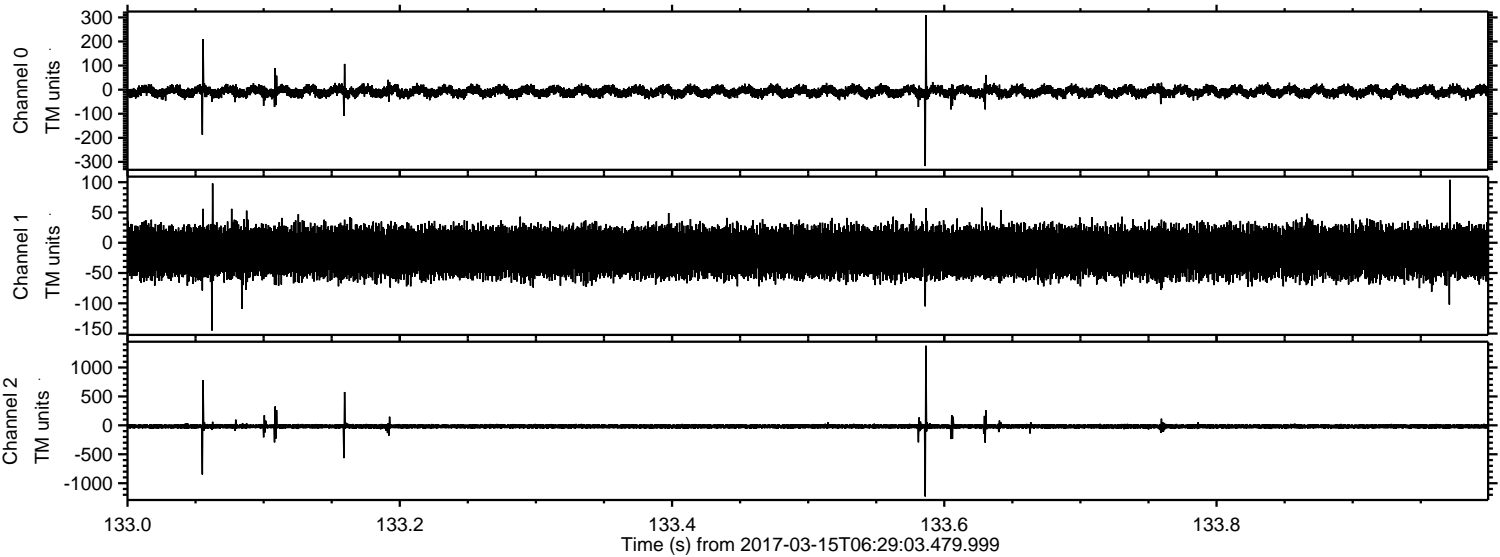


Processed Wed Mar 15 07:36:56 2017 by ELM ver.2012-10-06 from 001__elm20170315_062902__dat00.bin

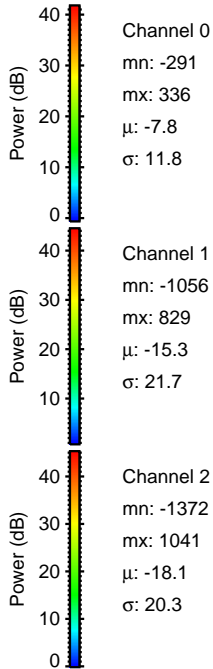
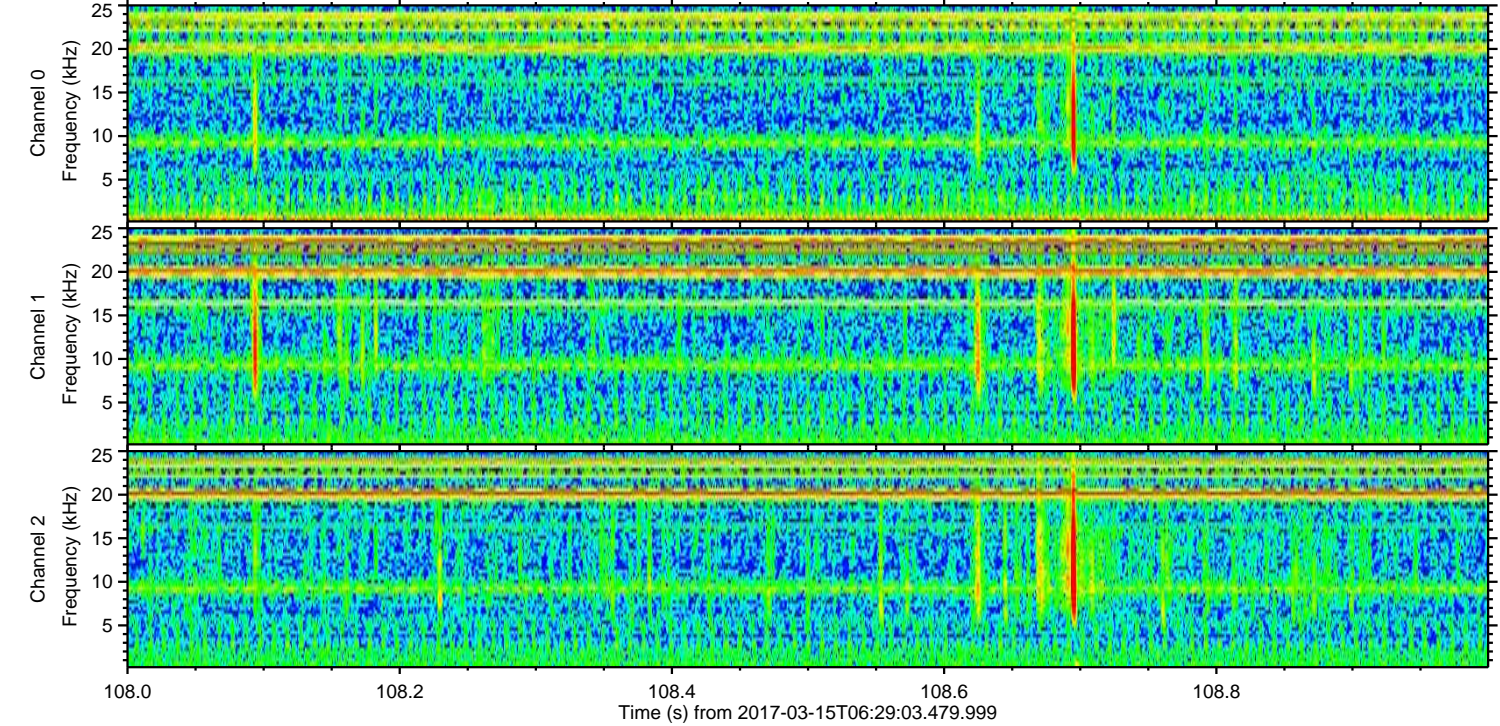
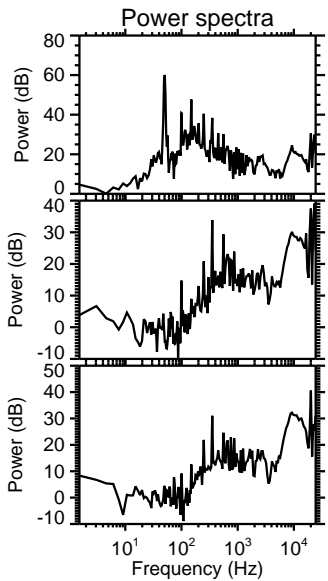
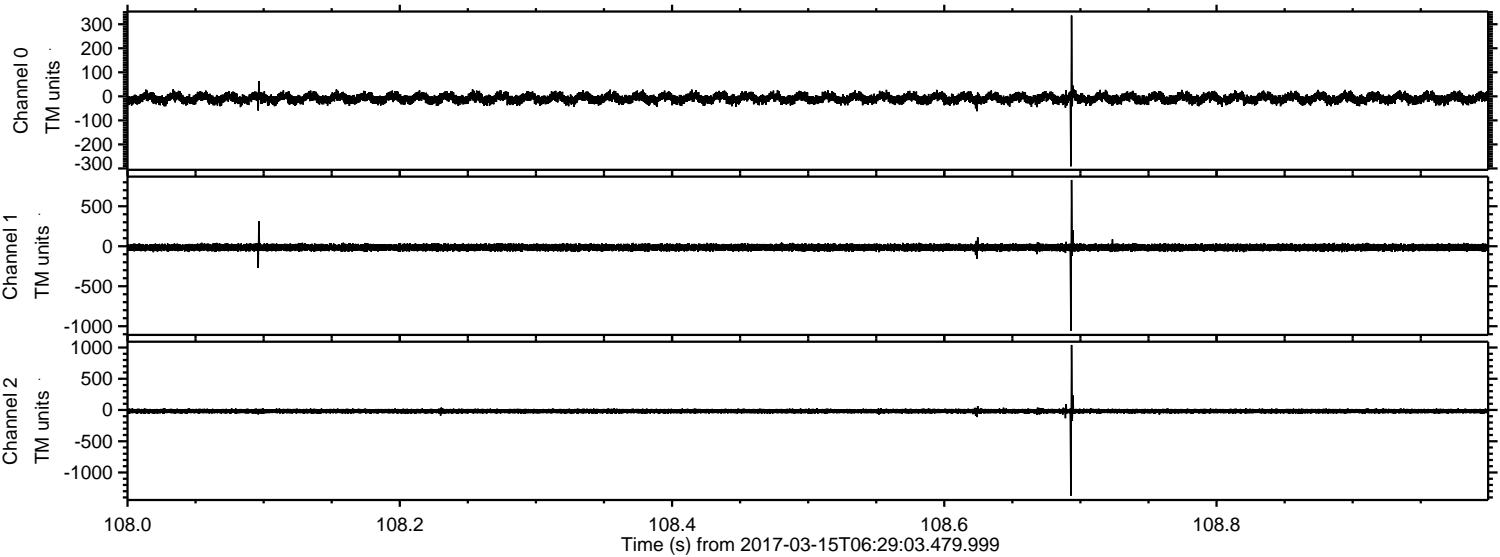


ELMAVAN 3D WAVEFORMS (Measured data sampled at 50 kHz) 51000 packets of 144 samples from 2017-03-15T06:29:03.479.999. Part 134/147

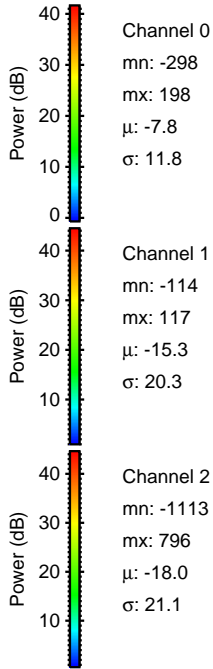
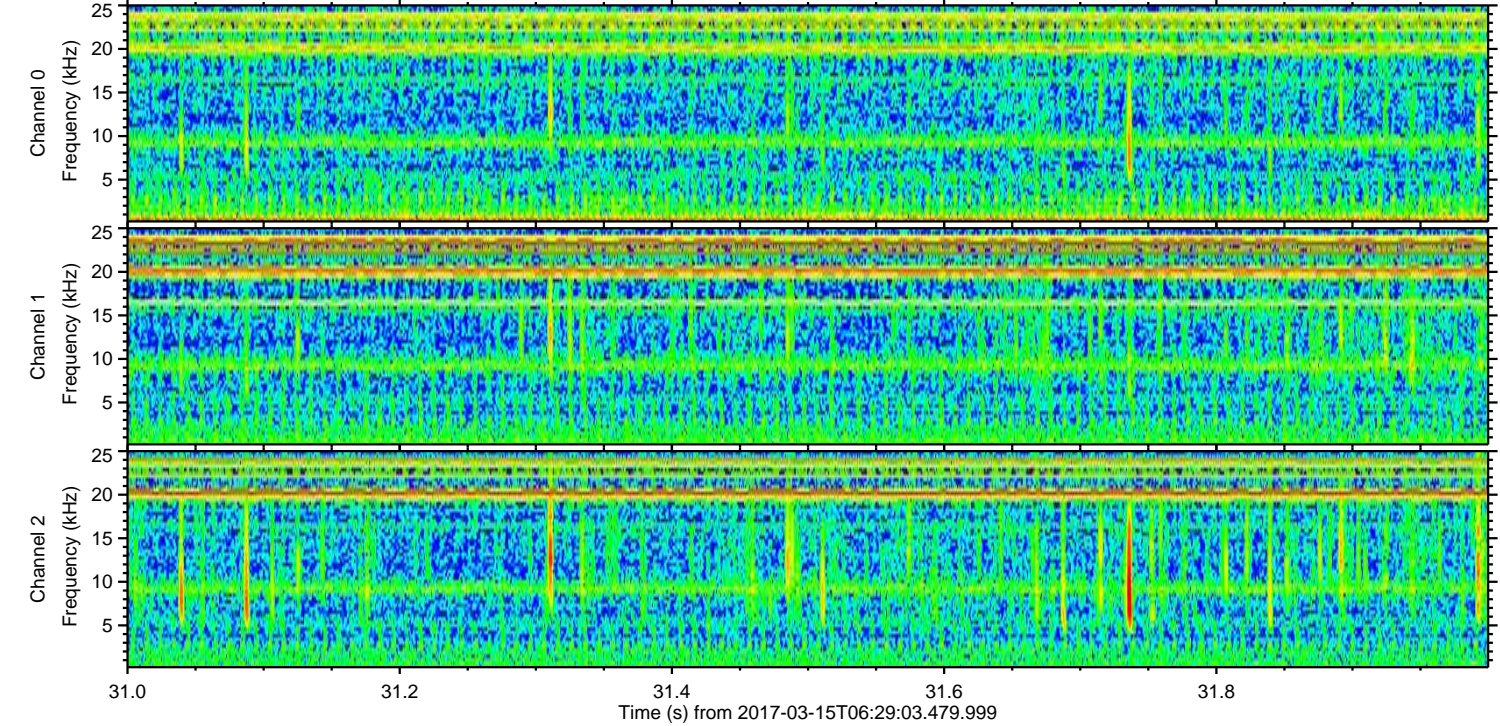
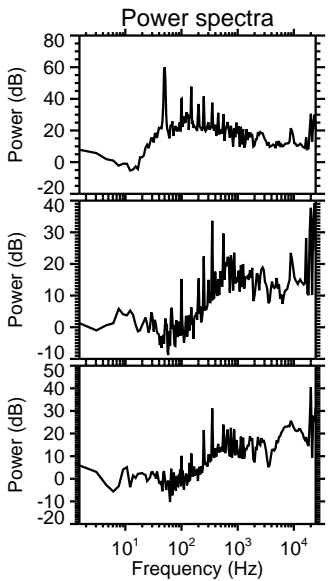
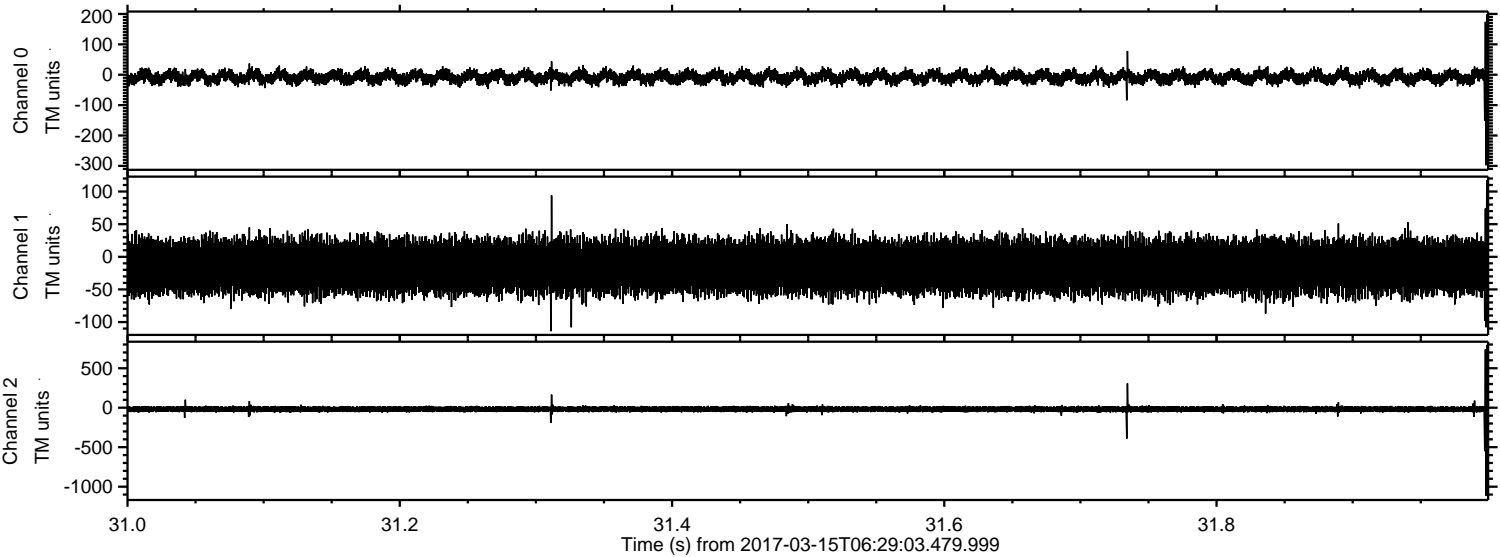
Processed Wed Mar 15 07:36:57 2017 by ELM ver.2012-10-06 from 001__elm20170315_062902__dat00.bin



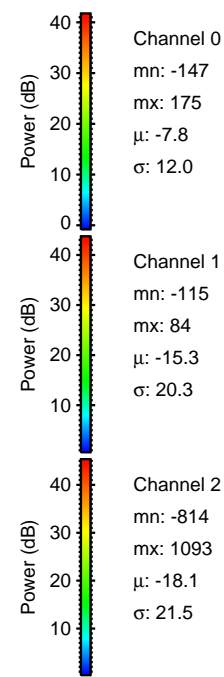
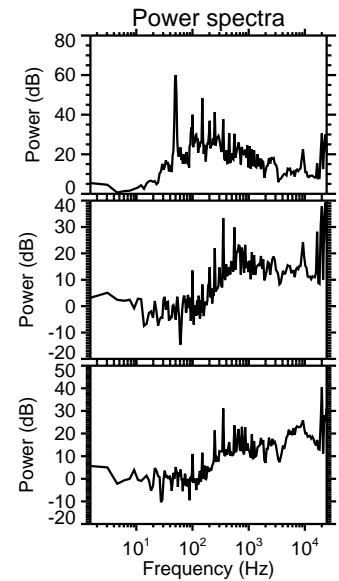
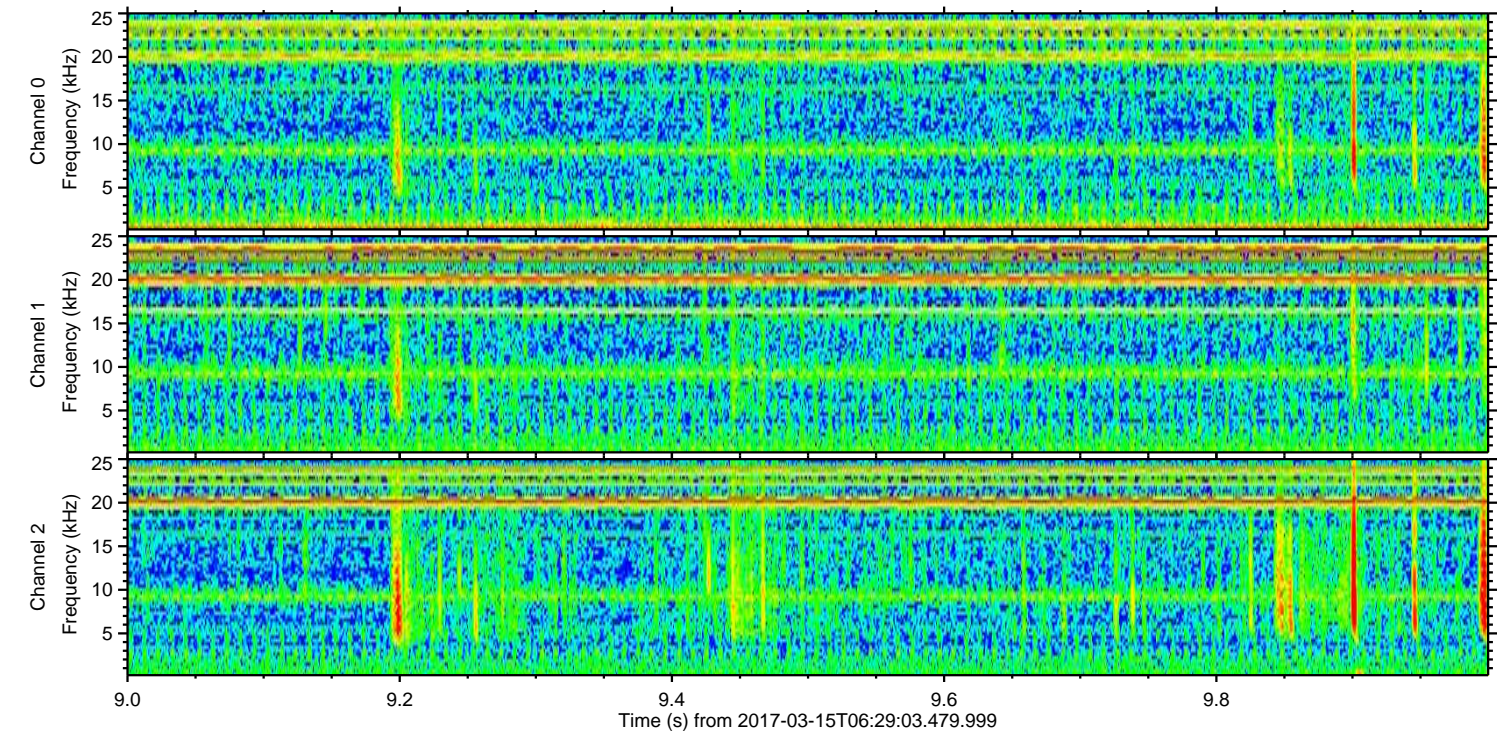
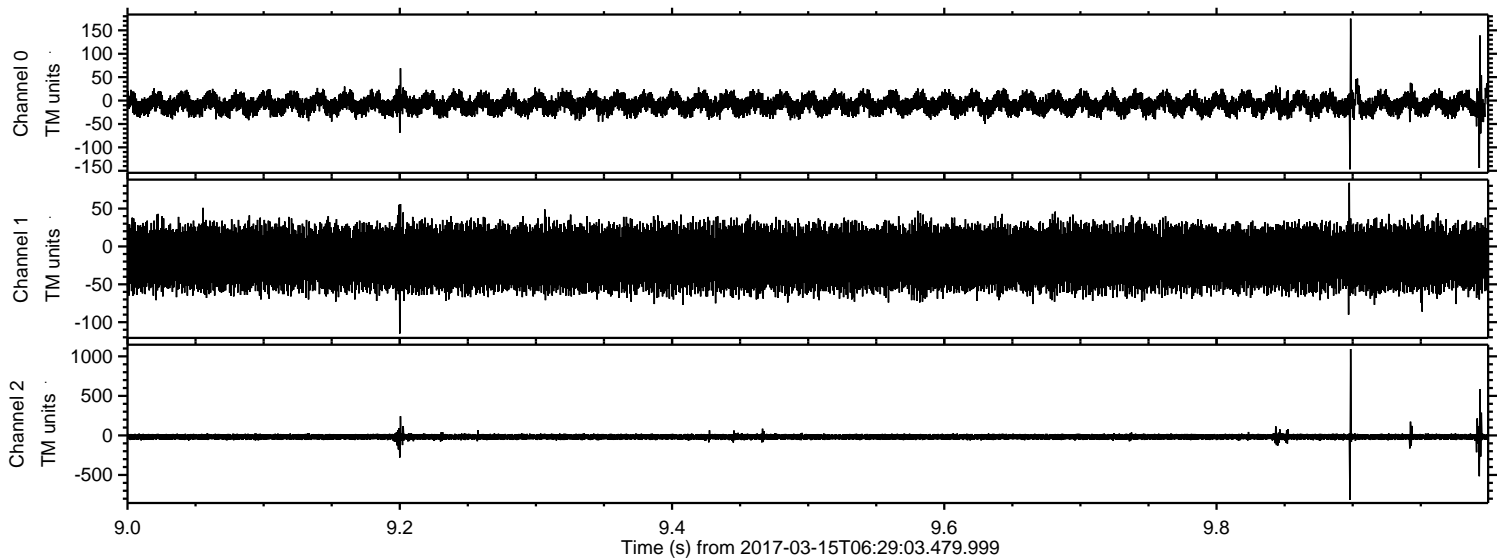
Processed Wed Mar 15 07:36:58 2017 by ELM ver.2012-10-06 from 001__elm20170315_062902__dat00.bin



Processed Wed Mar 15 07:36:59 2017 by ELM ver.2012-10-06 from 001__elm20170315_062902__dat00.bin



Processed Wed Mar 15 07:36:59 2017 by ELM ver.2012-10-06 from 001__elm20170315_062902__dat00.bin



Channel 0
mn: -147
mx: 175
 μ : -7.8
 σ : 12.0

Channel 1
mn: -115
mx: 84
 μ : -15.3
 σ : 20.3

Channel 2
mn: -814
mx: 1093
 μ : -18.1
 σ : 21.5

Processed Wed Mar 15 07:37:00 2017 by ELM ver.2012-10-06 from 001__elm20170315_062902__dat00.bin

