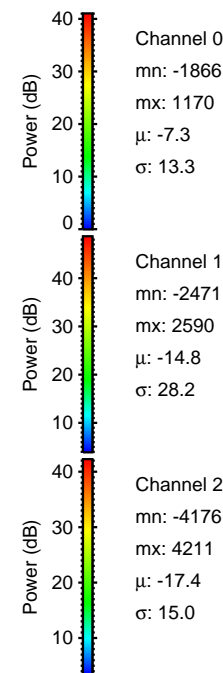
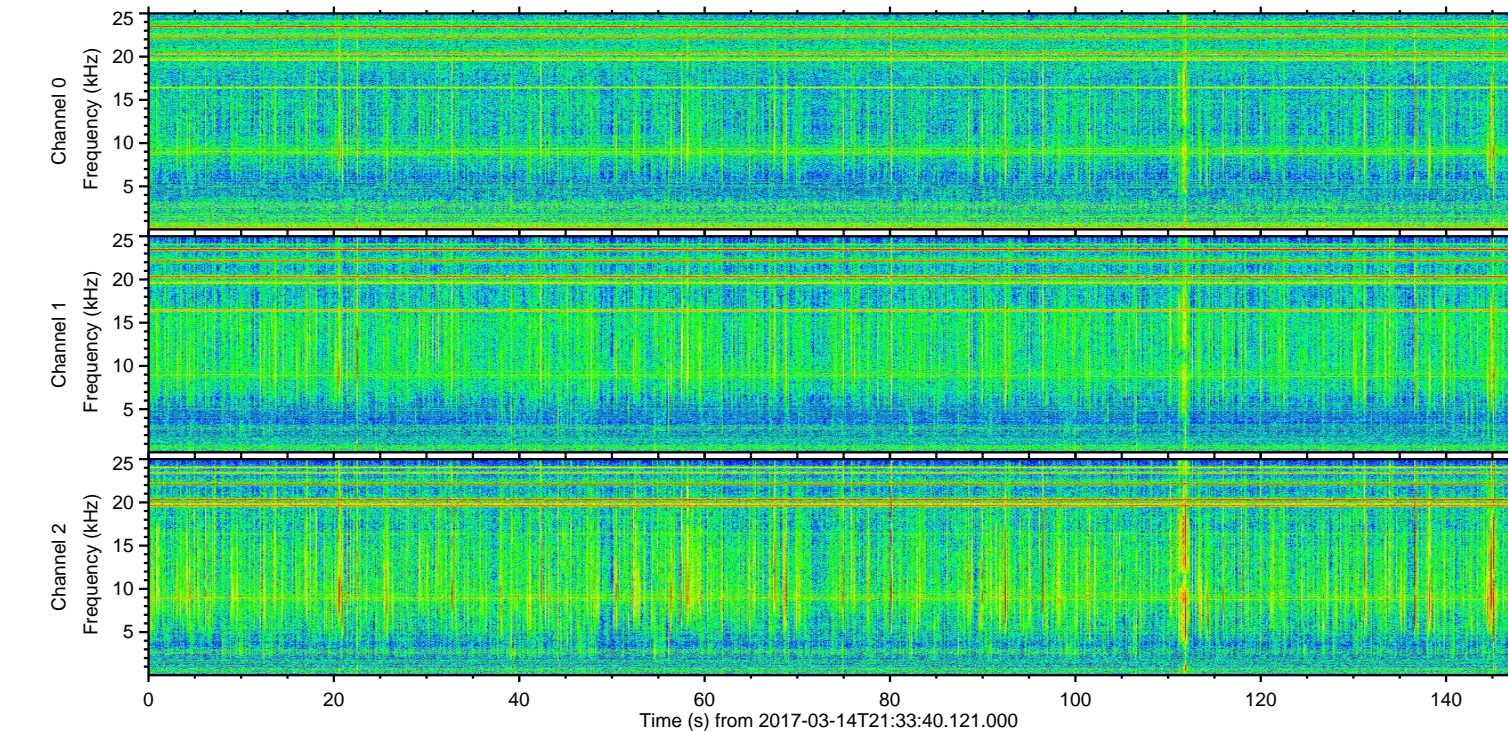
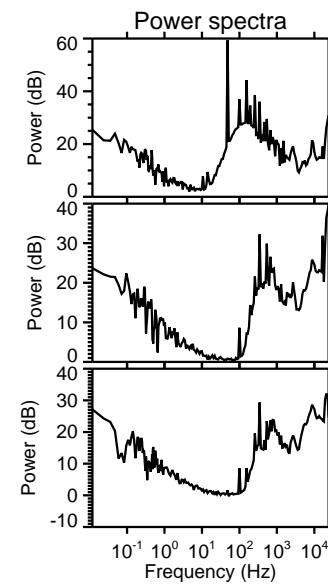
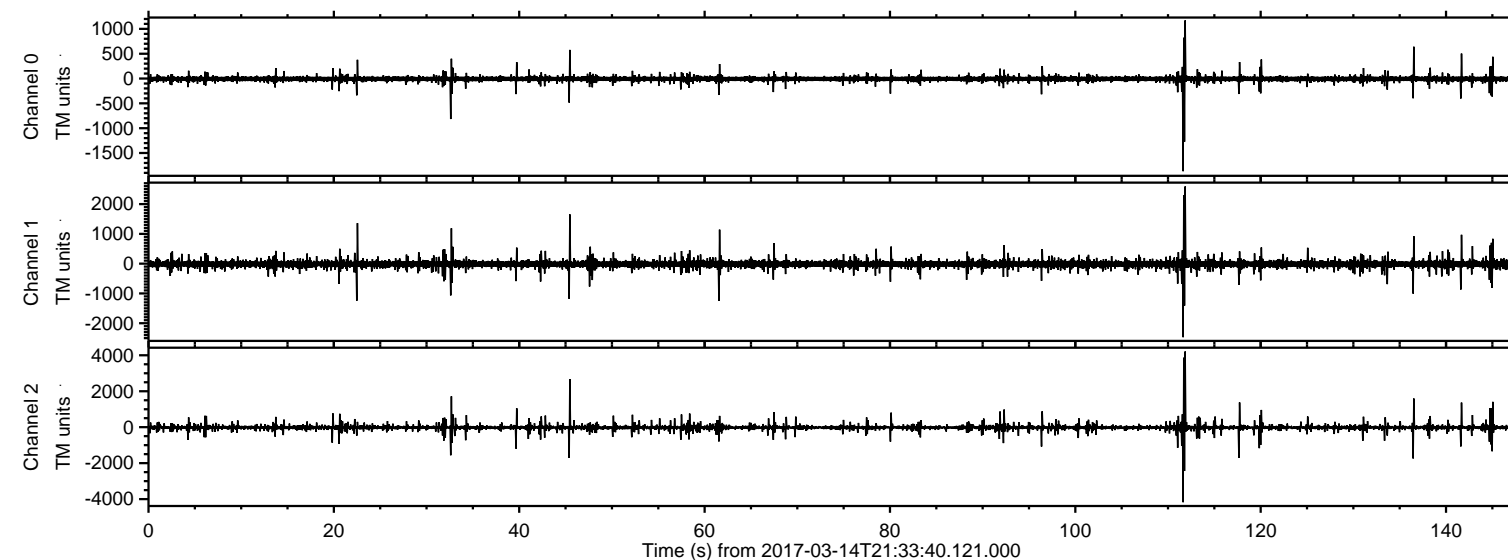


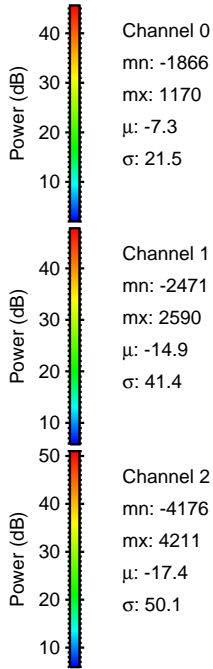
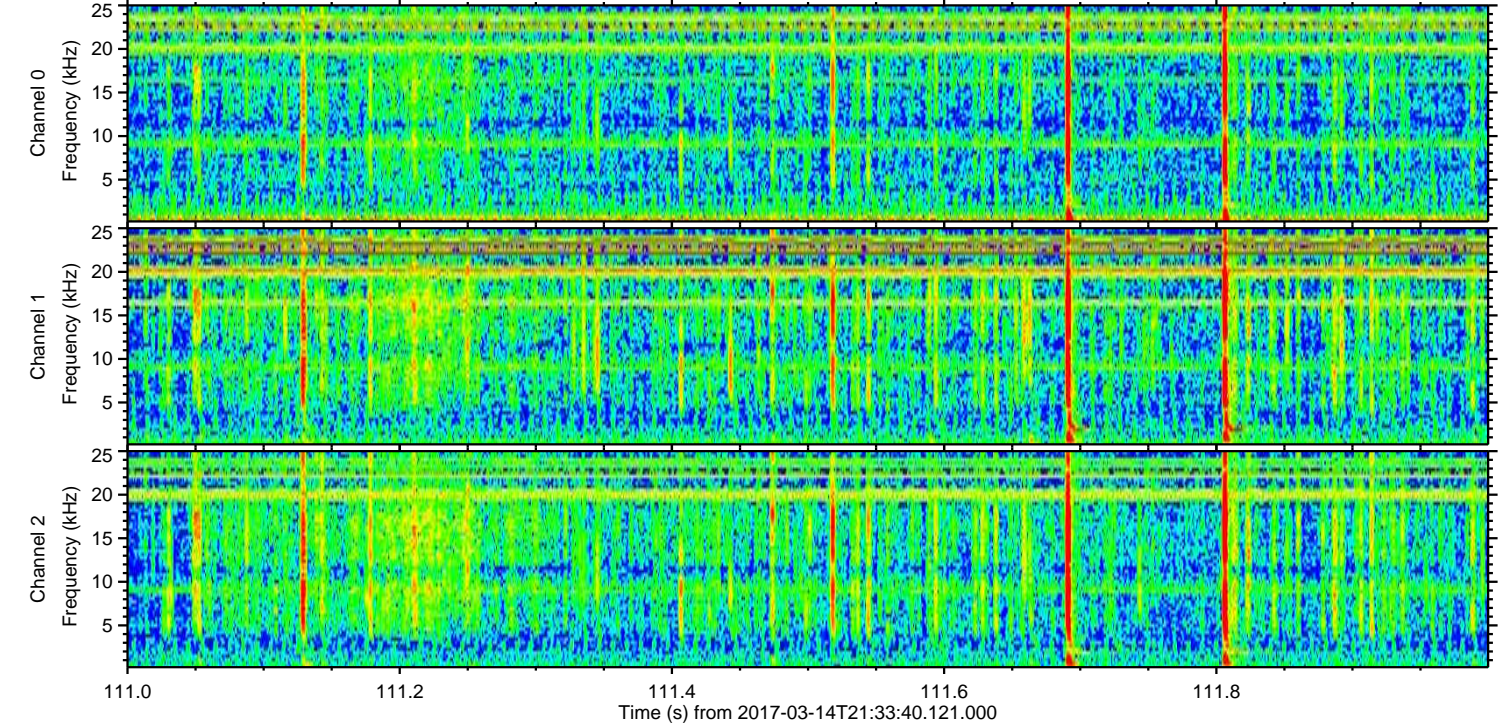
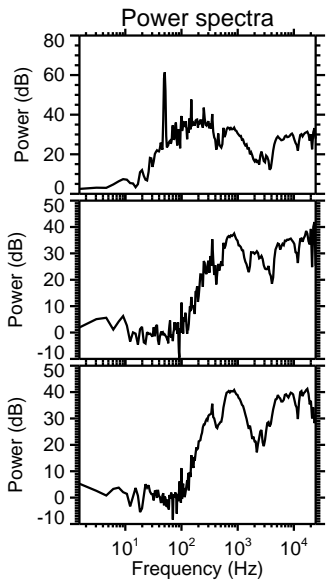
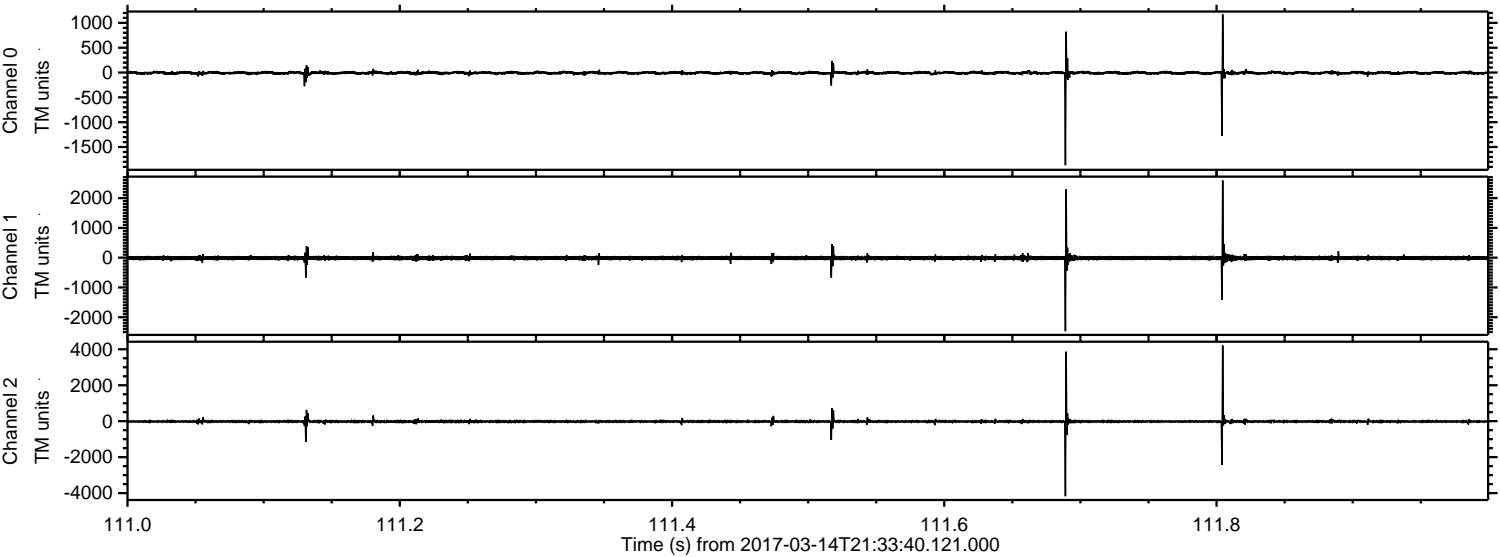
ELMAVAN 3D WAVEFORMS (Measured data sampled at 50 kHz) 51000 packets of 144 samples from 2017-03-14T21:33:40.121.000.

Processed Tue Mar 14 22:41:46 2017 by ELM ver.2012-10-06 from 001__elm20170314_213339__dat00.bin

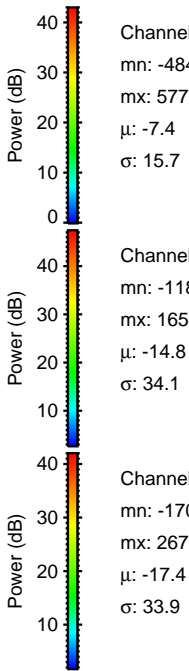
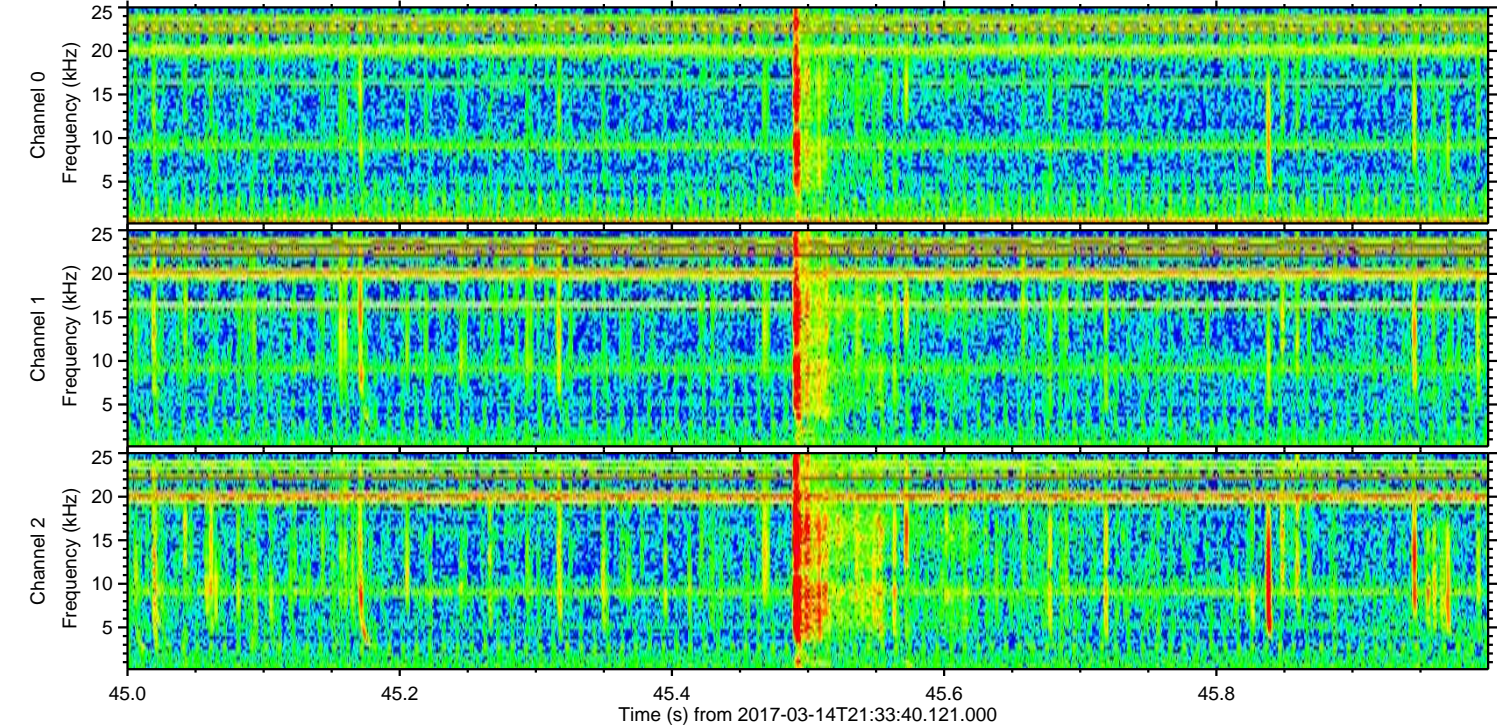
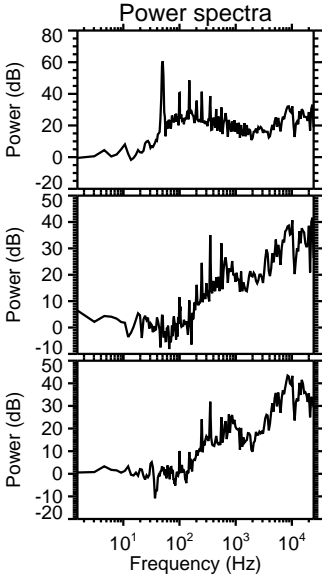
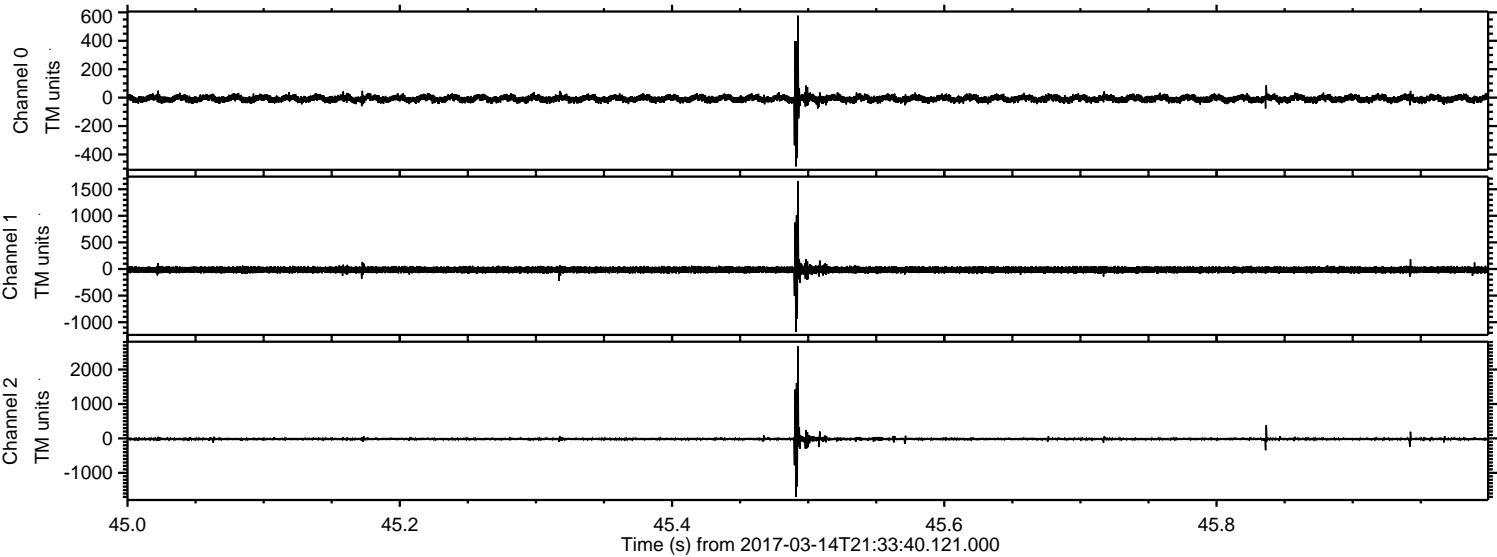


ELMAVAN 3D WAVEFORMS (Measured data sampled at 50 kHz) 51000 packets of 144 samples from 2017-03-14T21:33:40.121.000. Part 112/147

Processed Tue Mar 14 22:41:58 2017 by ELM ver.2012-10-06 from 001__elm20170314_213339__dat00.bin



Processed Tue Mar 14 22:41:59 2017 by ELM ver.2012-10-06 from 001__elm20170314_213339__dat00.bin



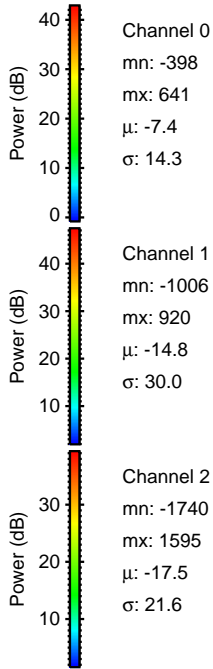
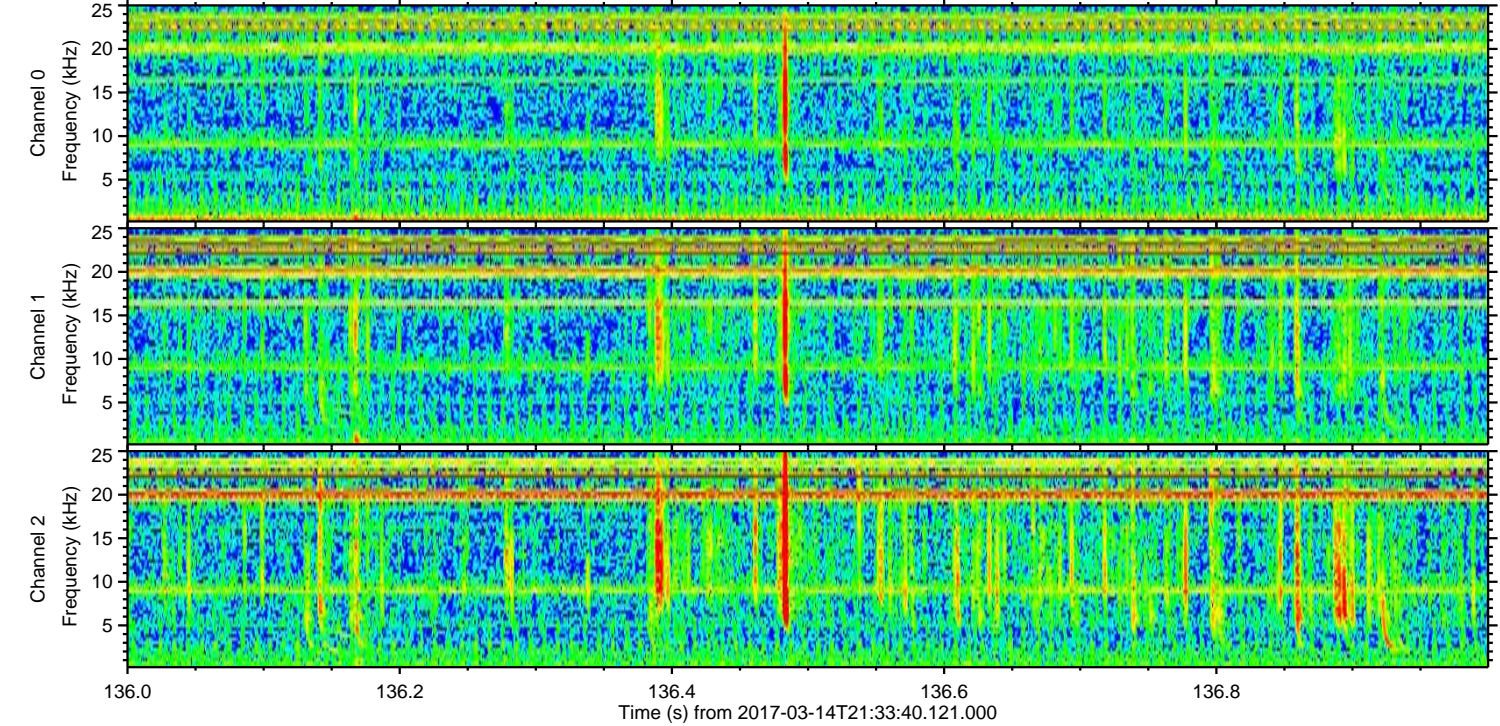
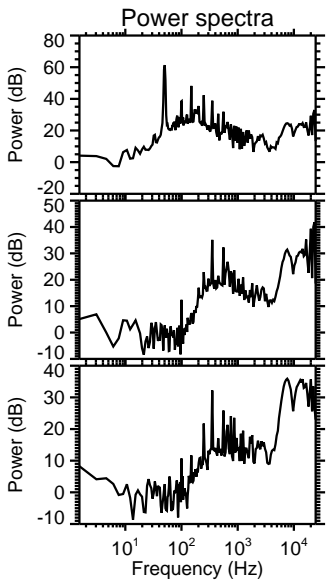
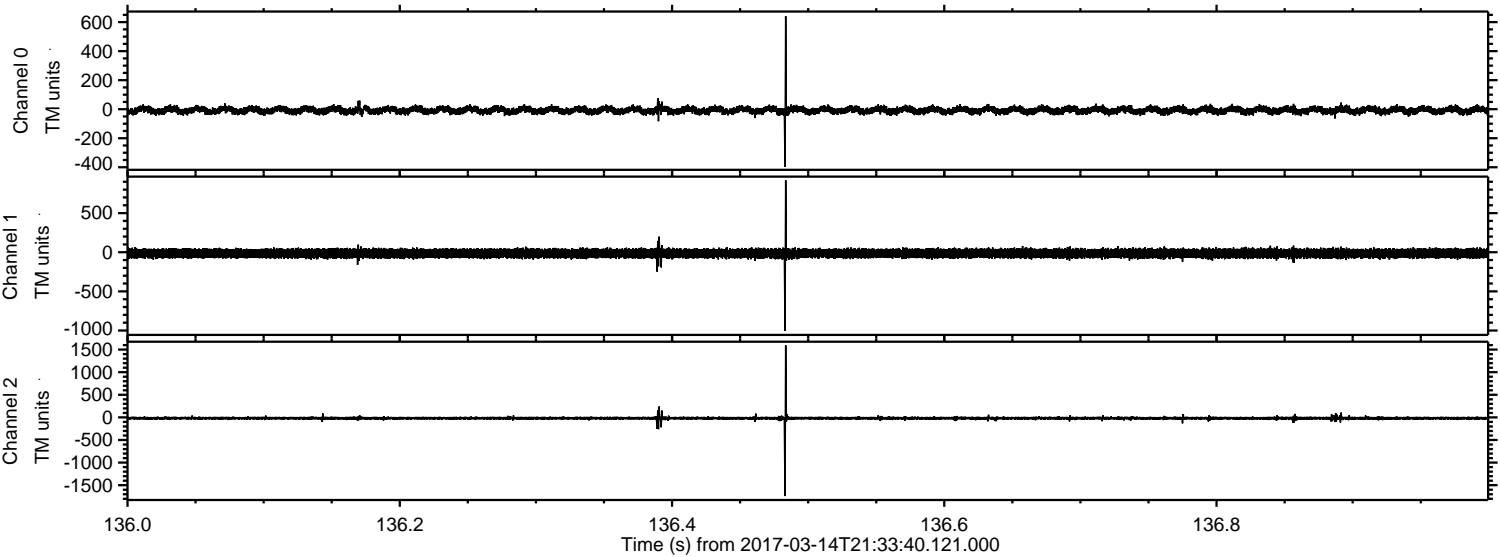
Channel 0
mn: -484
mx: 577
 μ : -7.4
 σ : 15.7

Channel 1
mn: -1180
mx: 1654
 μ : -14.8
 σ : 34.1

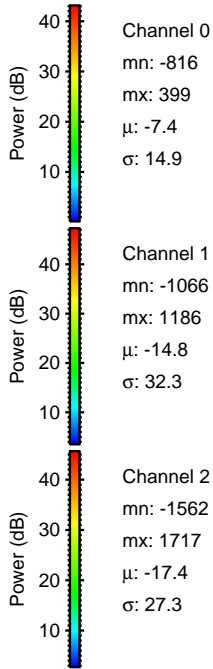
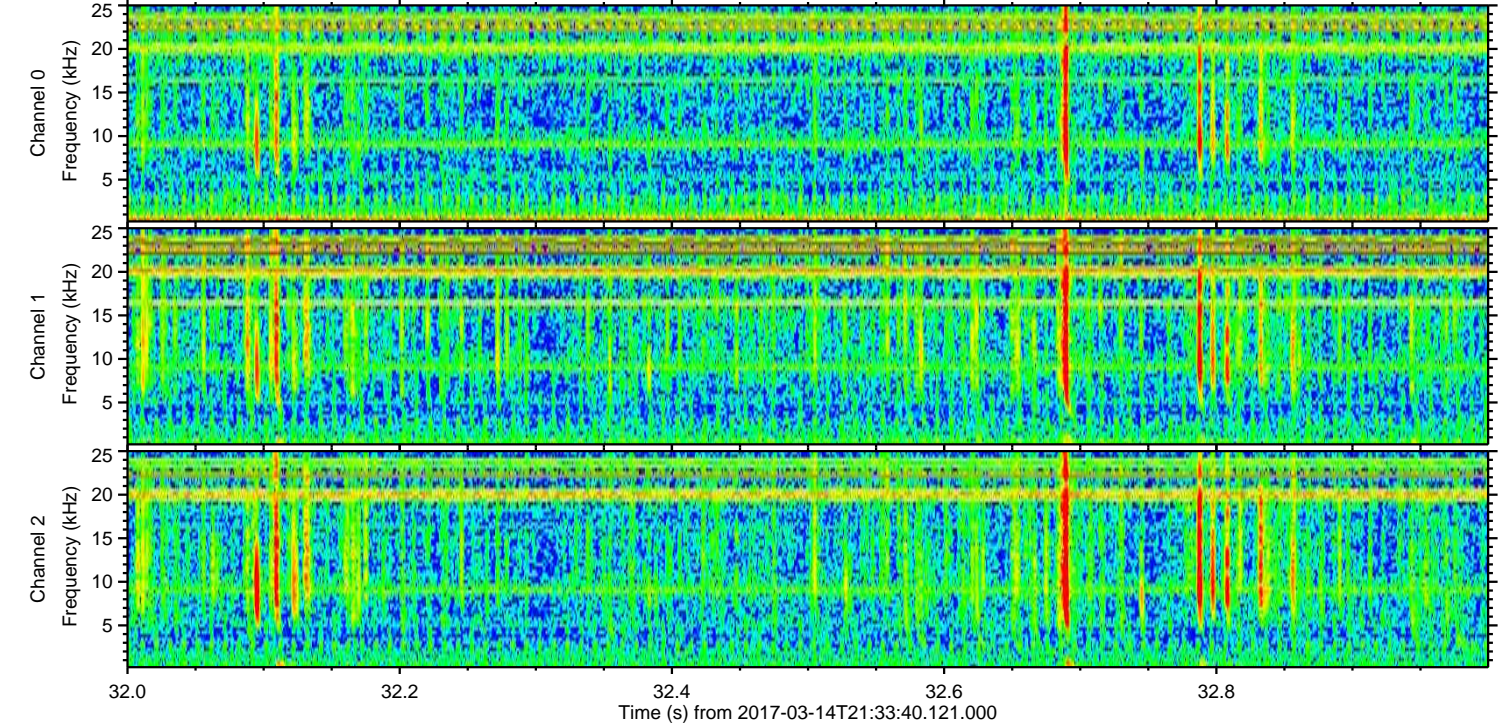
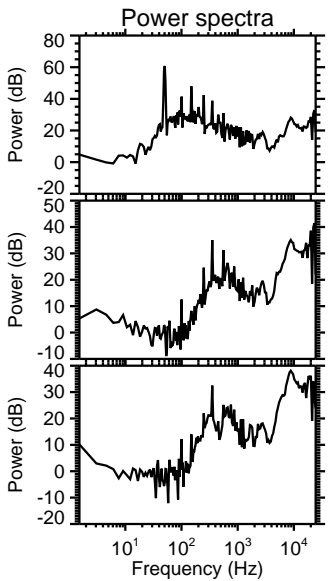
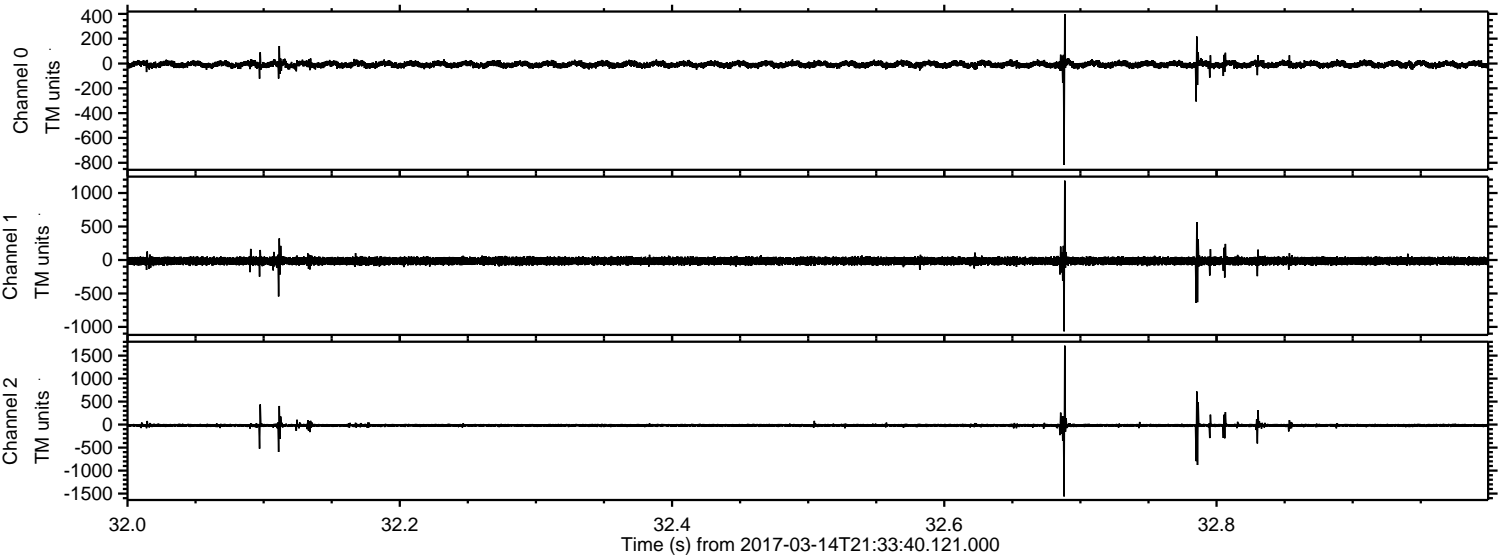
Channel 2
mn: -1704
mx: 2675
 μ : -17.4
 σ : 33.9

ELMAVAN 3D WAVEFORMS (Measured data sampled at 50 kHz) 51000 packets of 144 samples from 2017-03-14T21:33:40.121.000. Part 137/147

Processed Tue Mar 14 22:42:00 2017 by ELM ver.2012-10-06 from 001__elm20170314_213339__dat00.bin

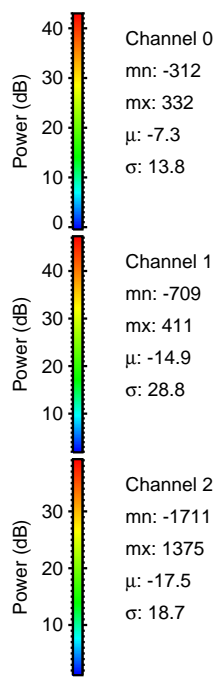
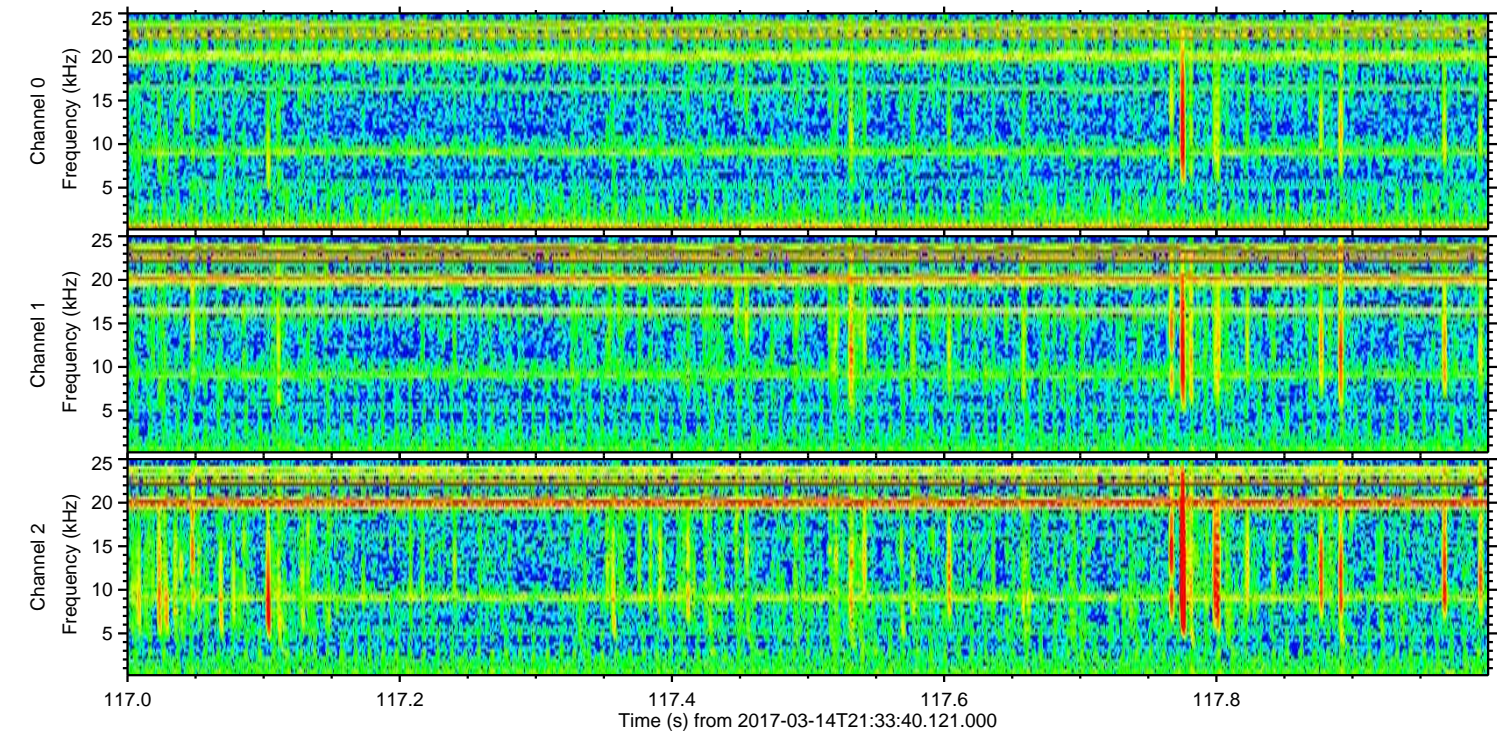
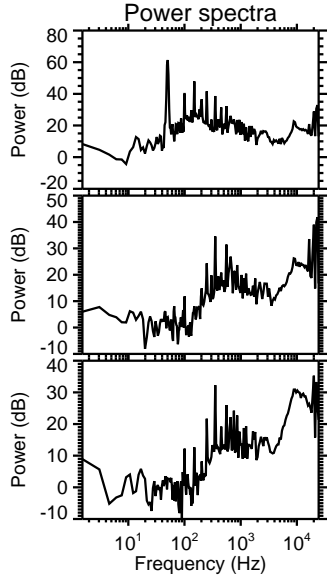
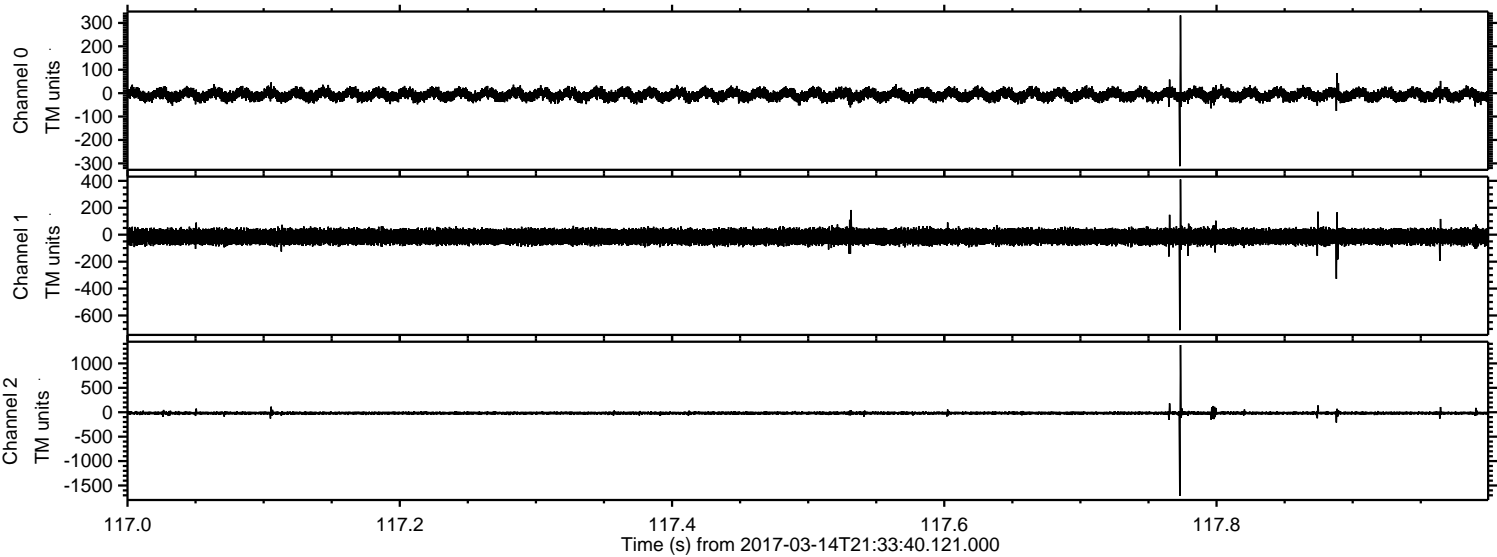


Processed Tue Mar 14 22:42:01 2017 by ELM ver.2012-10-06 from 001__elm20170314_213339__dat00.bin



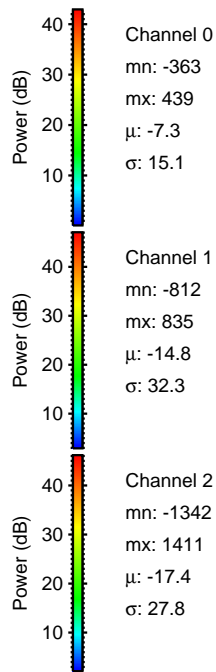
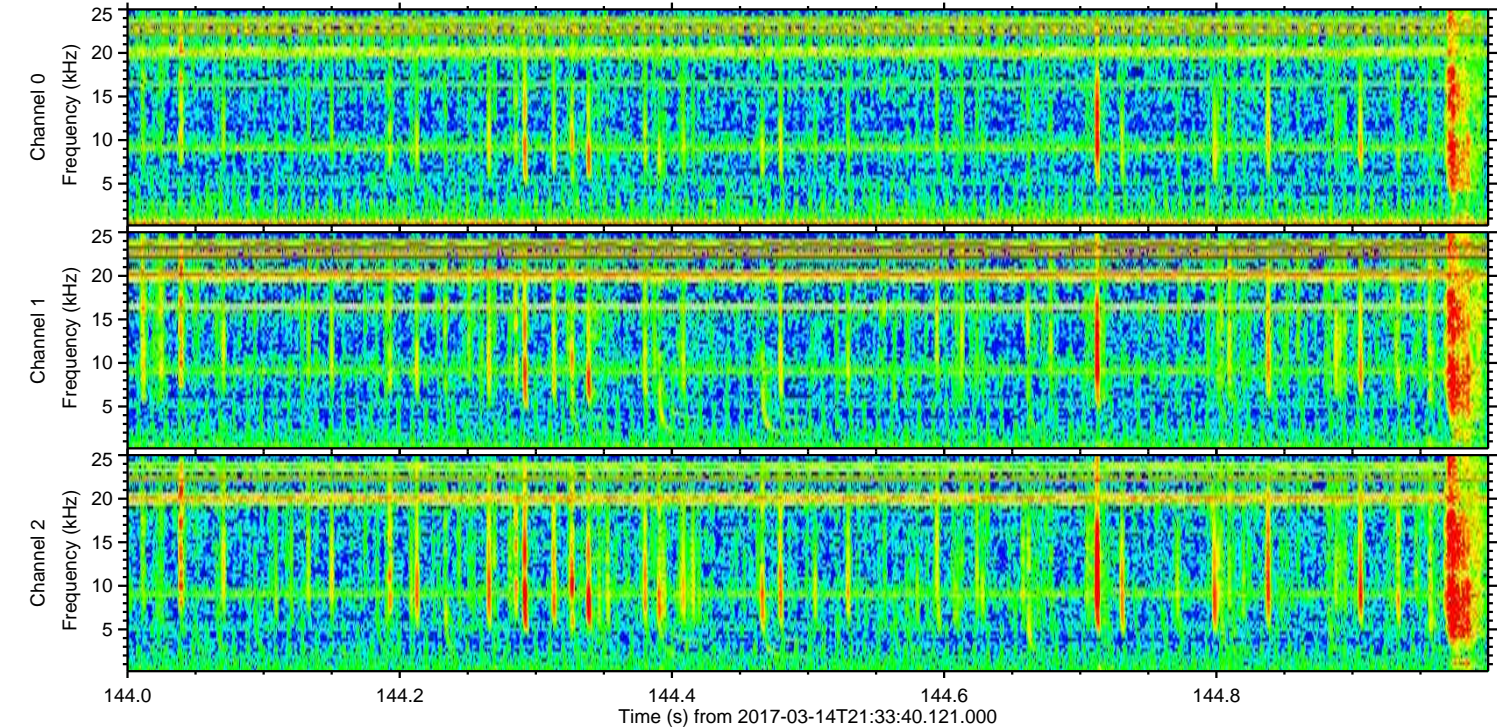
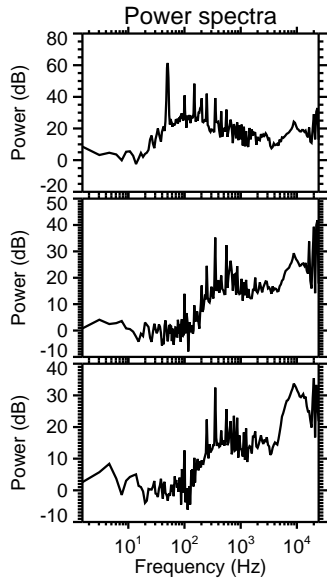
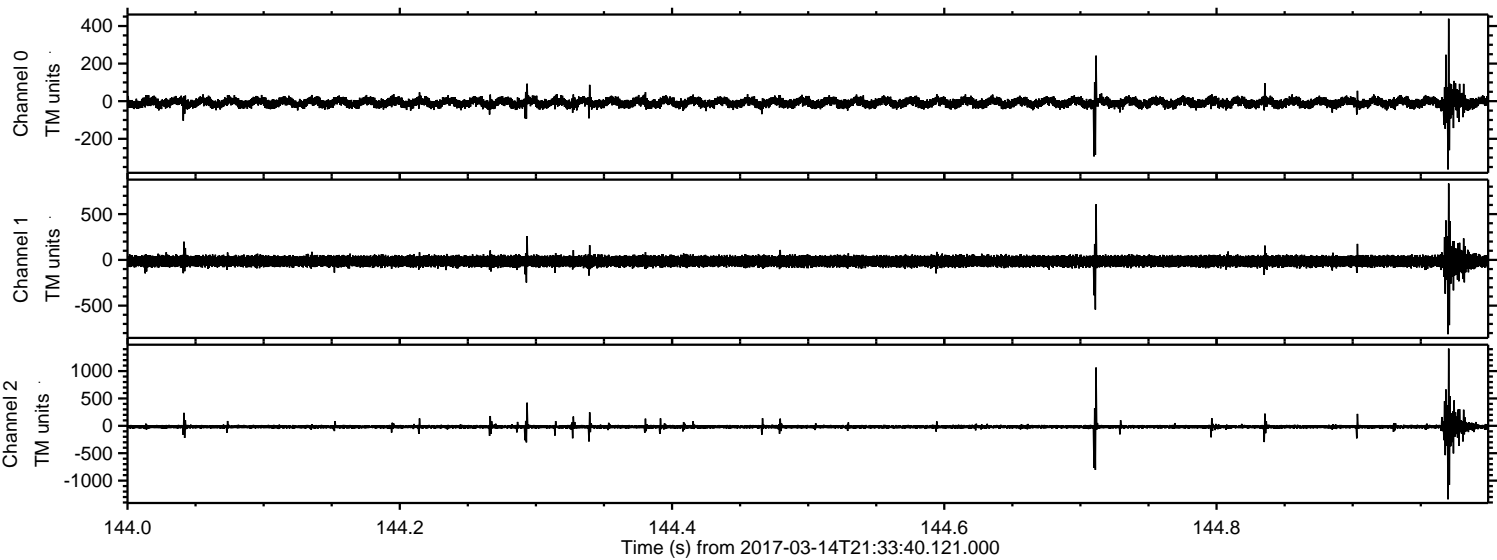
ELMAVAN 3D WAVEFORMS (Measured data sampled at 50 kHz) 51000 packets of 144 samples from 2017-03-14T21:33:40.121.000. Part 118/147

Processed Tue Mar 14 22:42:02 2017 by ELM ver.2012-10-06 from 001__elm20170314_213339__dat00.bin



ELMAVAN 3D WAVEFORMS (Measured data sampled at 50 kHz) 51000 packets of 144 samples from 2017-03-14T21:33:40.121.000. Part 145/147

Processed Tue Mar 14 22:42:03 2017 by ELM ver.2012-10-06 from 001__elm20170314_213339__dat00.bin



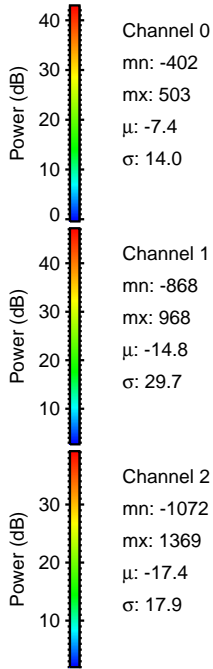
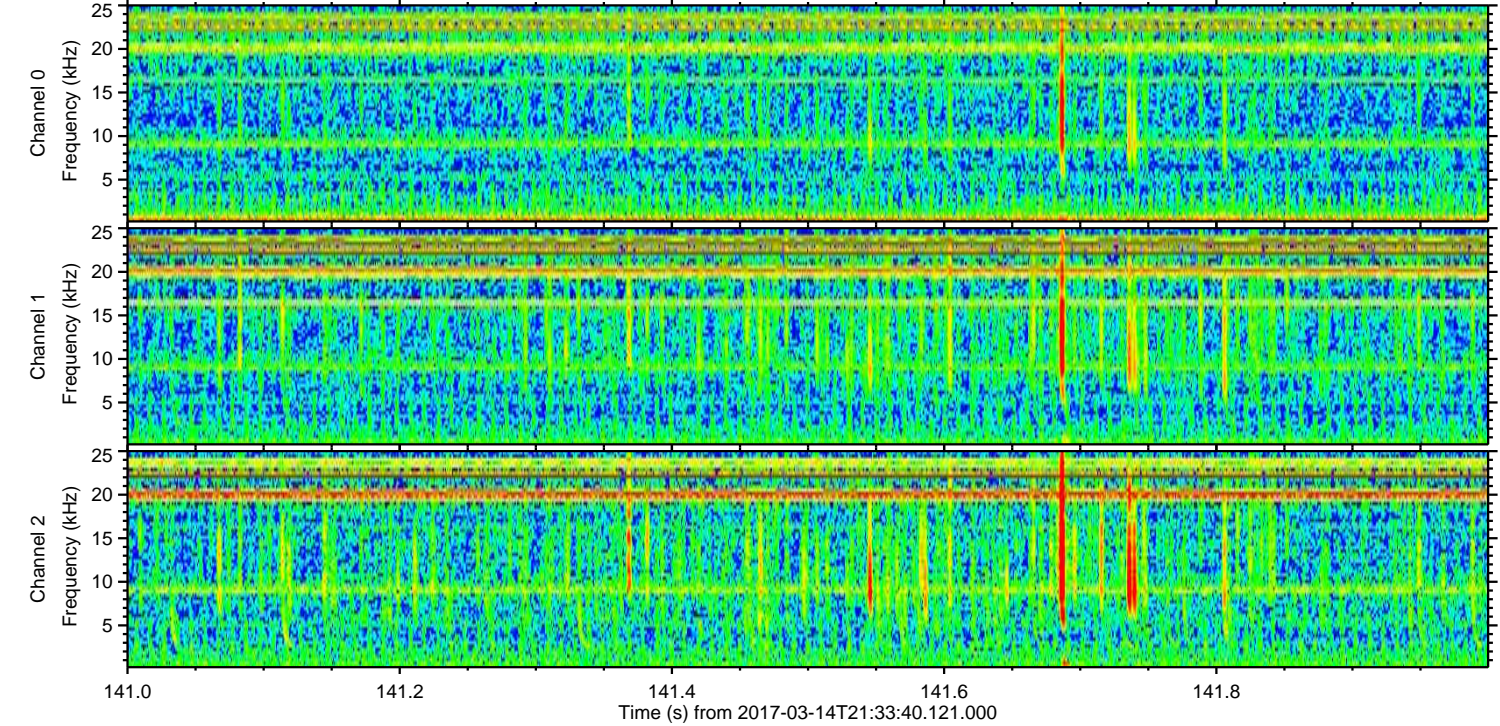
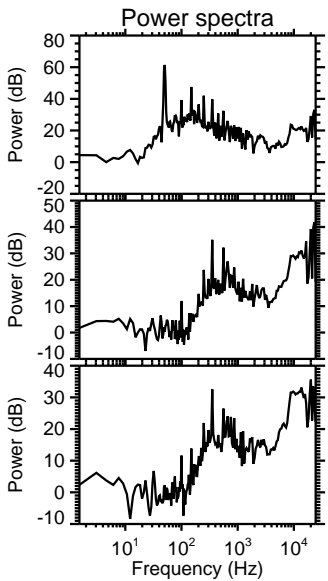
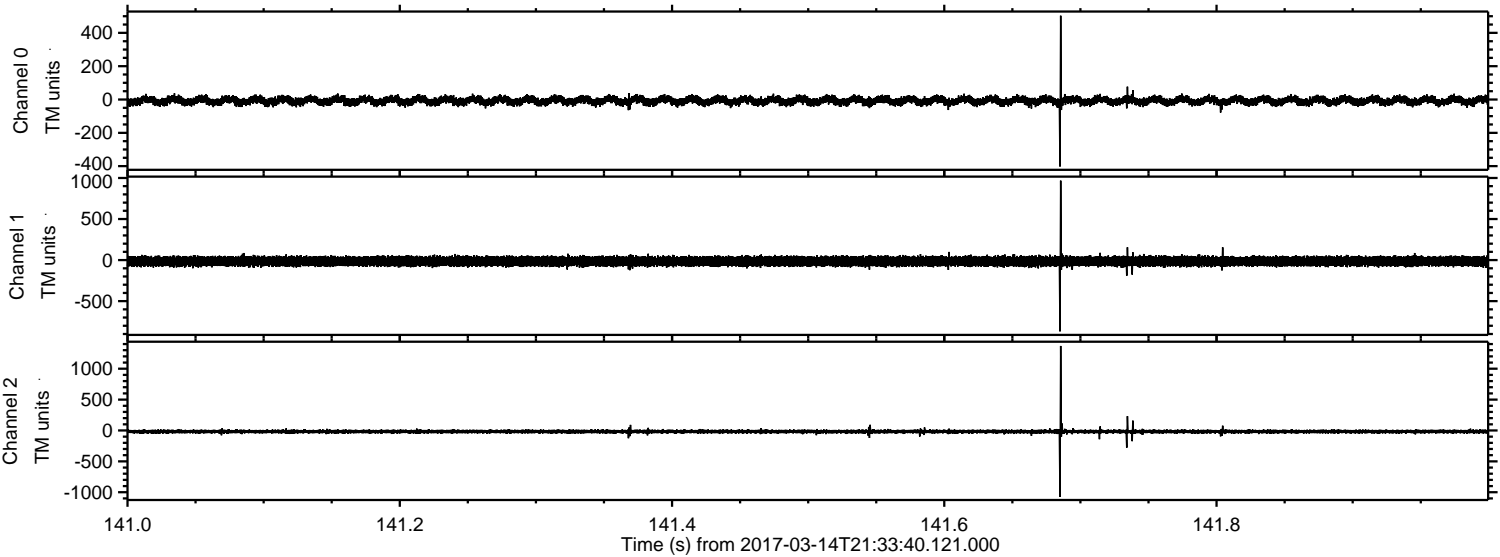
Channel 0
mn: -363
mx: 439
 μ : -7.3
 σ : 15.1

Channel 1
mn: -812
mx: 835
 μ : -14.8
 σ : 32.3

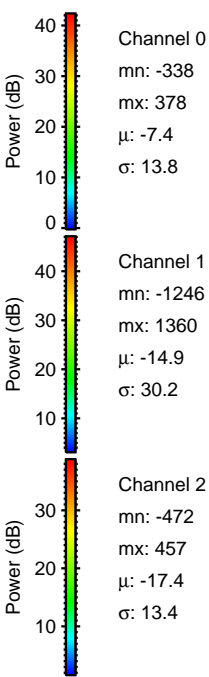
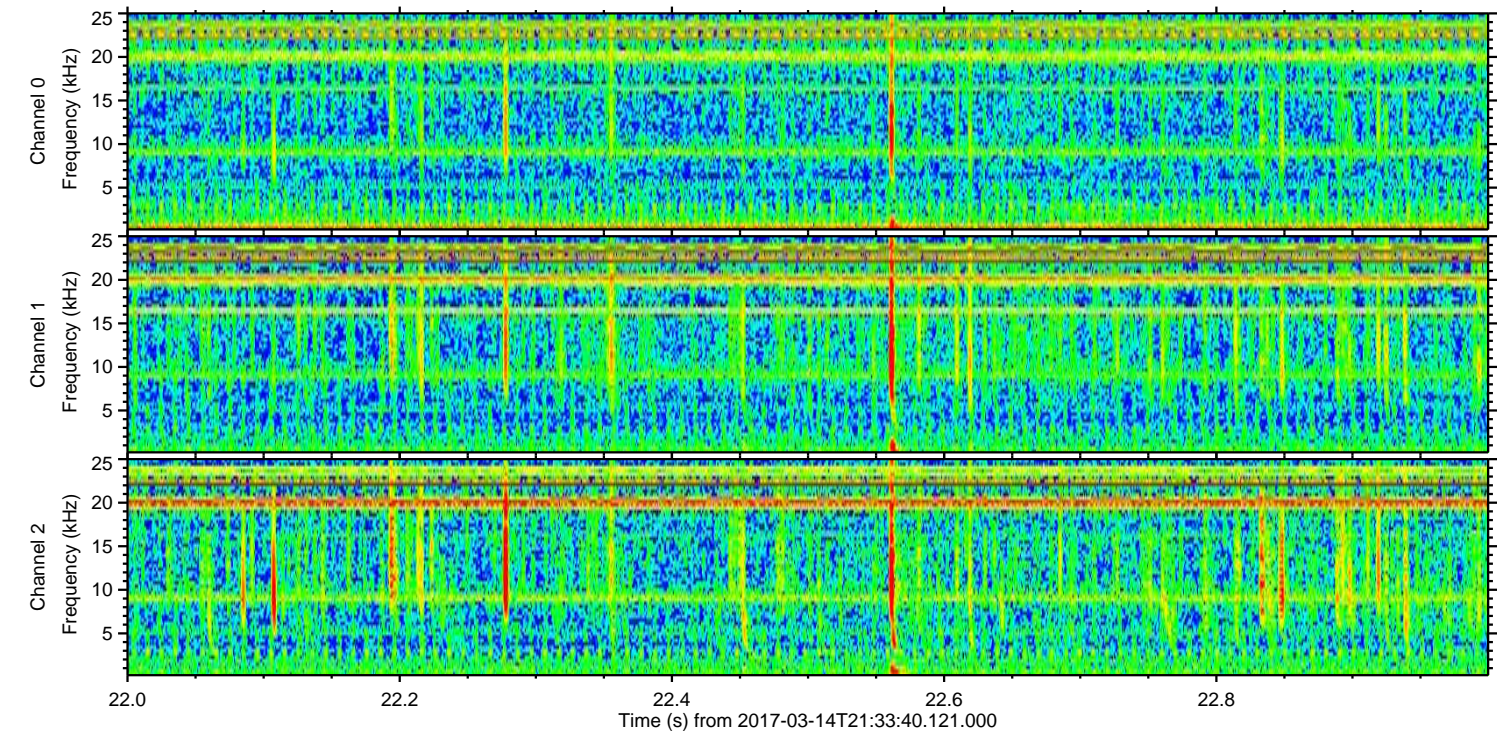
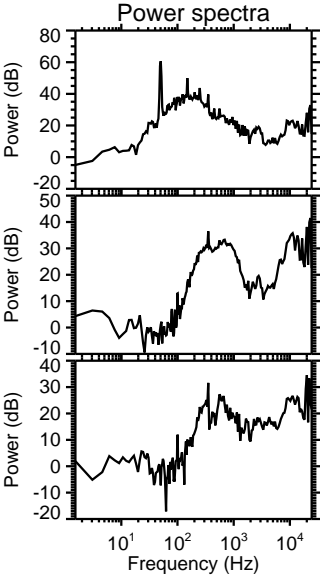
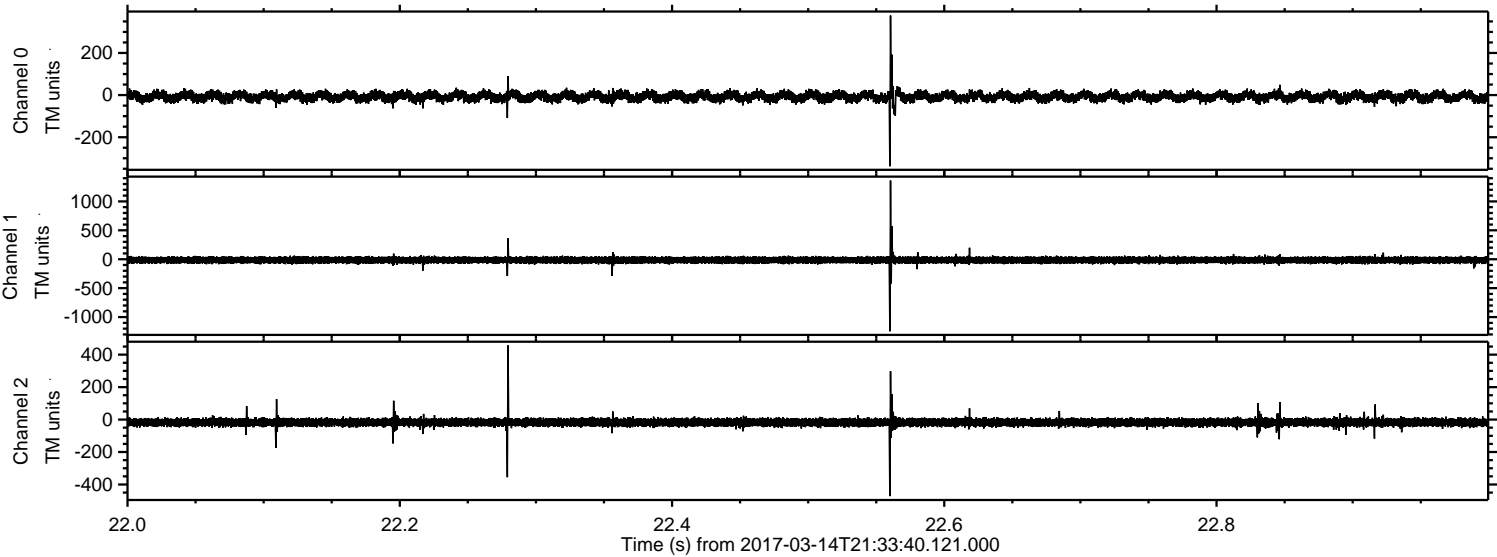
Channel 2
mn: -1342
mx: 1411
 μ : -17.4
 σ : 27.8

ELMAVAN 3D WAVEFORMS (Measured data sampled at 50 kHz) 51000 packets of 144 samples from 2017-03-14T21:33:40.121.000. Part 142/147

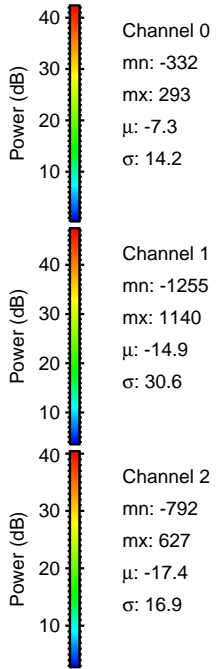
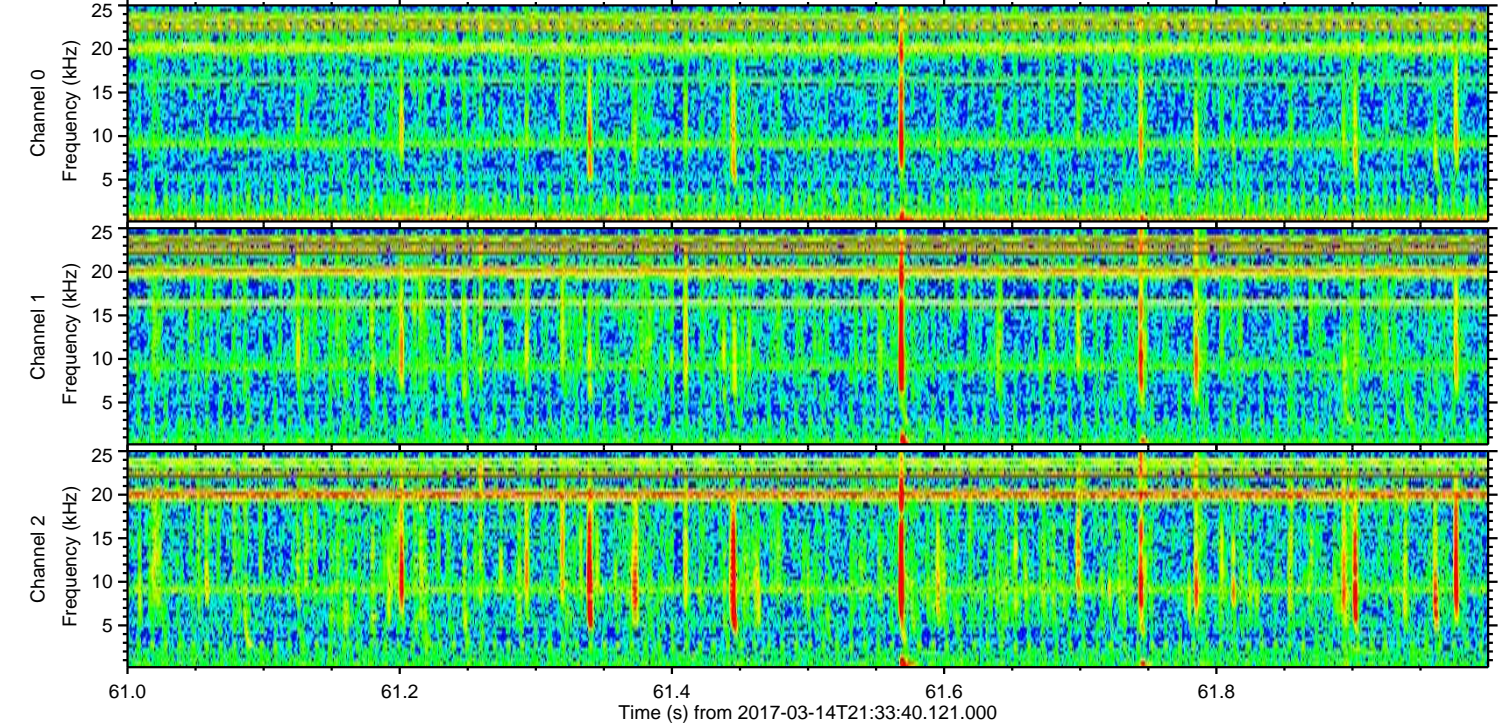
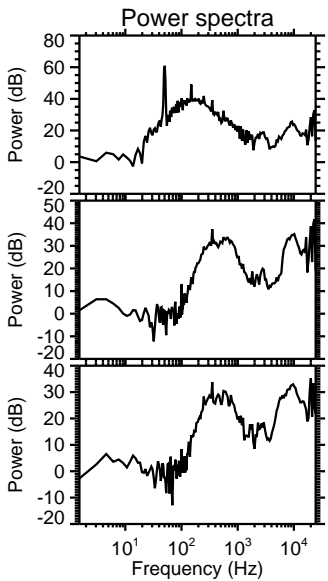
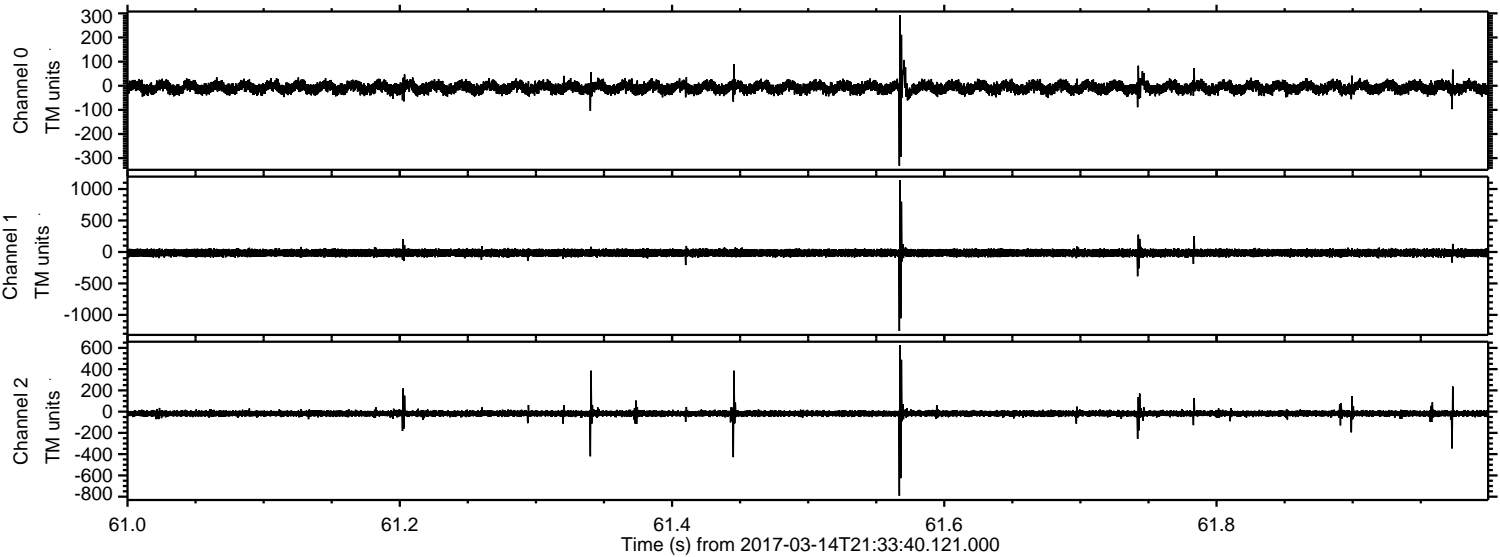
Processed Tue Mar 14 22:42:04 2017 by ELM ver.2012-10-06 from 001__elm20170314_213339__dat00.bin



Processed Tue Mar 14 22:42:04 2017 by ELM ver.2012-10-06 from 001__elm20170314_213339__dat00.bin



Processed Tue Mar 14 22:42:05 2017 by ELM ver.2012-10-06 from 001__elm20170314_213339__dat00.bin



ELMAVAN 3D WAVEFORMS (Measured data sampled at 50 kHz) 51000 packets of 144 samples from 2017-03-14T21:33:40.121.000. Part 124/147

