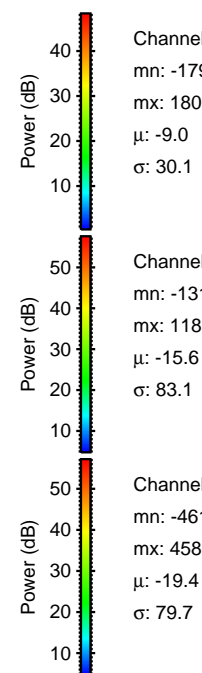
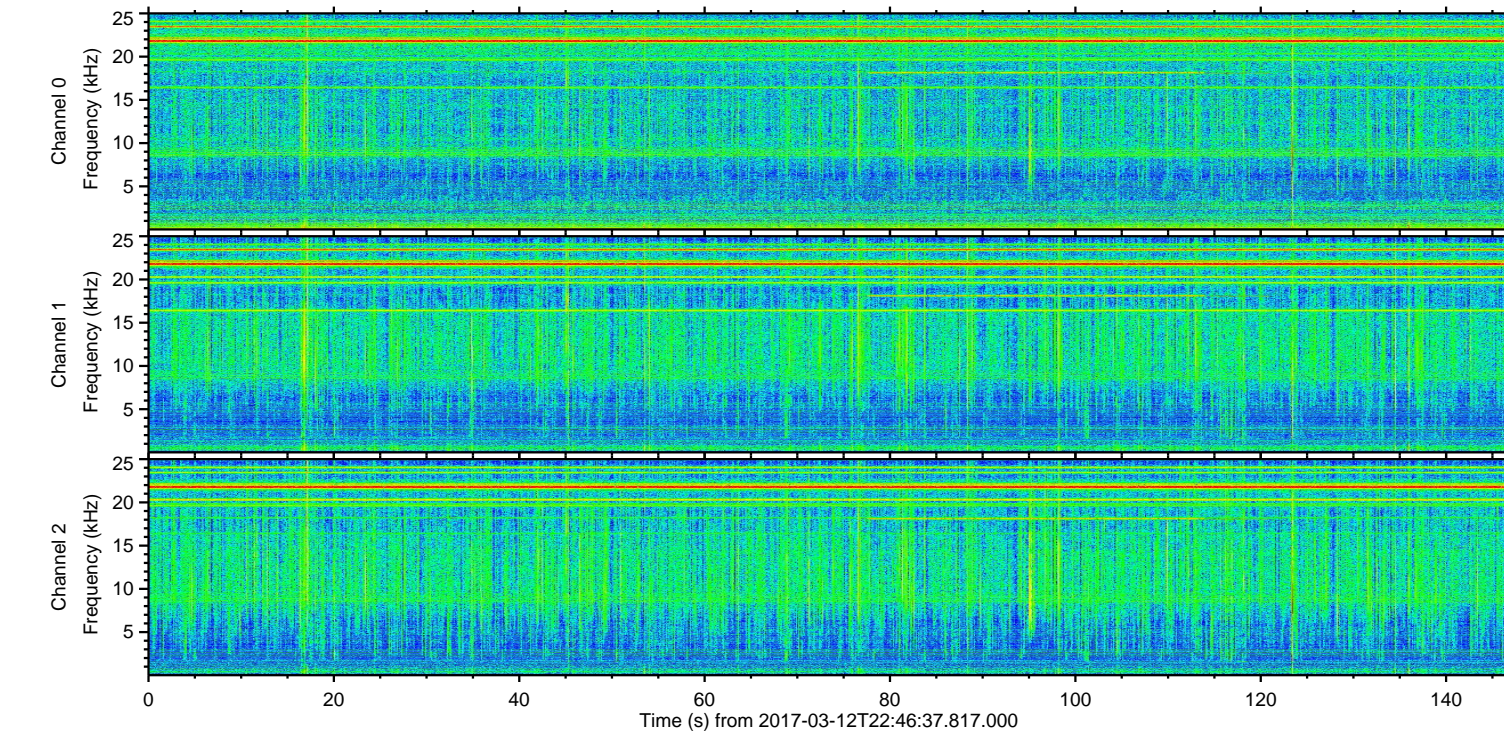
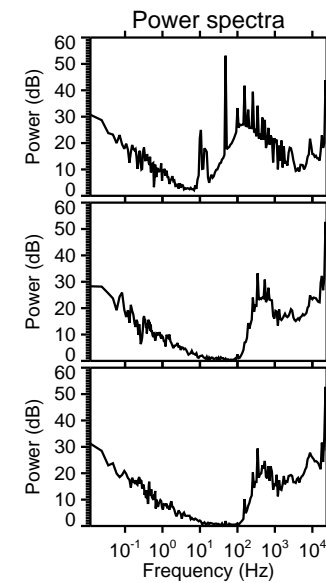
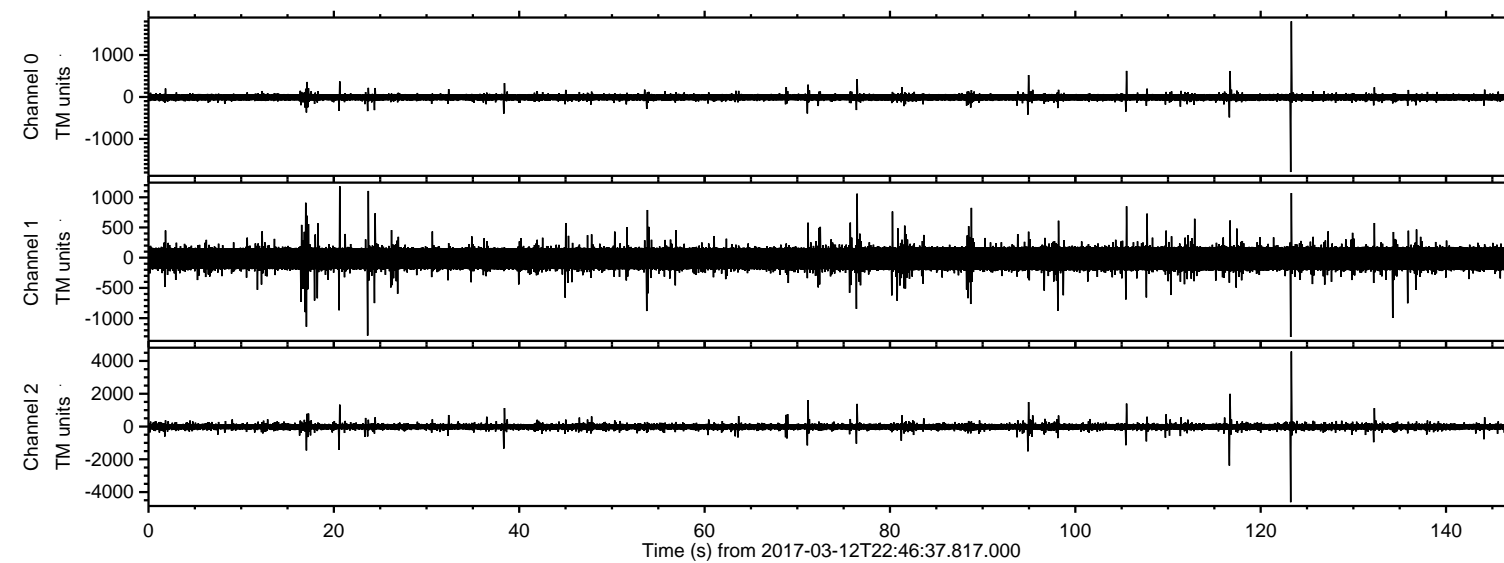


ELMAVAN 3D WAVEFORMS (Measured data sampled at 50 kHz) 51000 packets of 144 samples from 2017-03-12T22:46:37.817.000.

Processed Sun Mar 12 23:54:05 2017 by ELM ver.2012-10-06 from 001__elm20170312_224636__dat00.bin



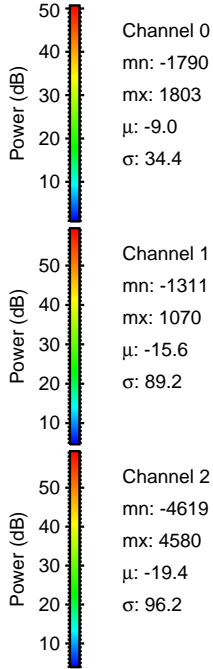
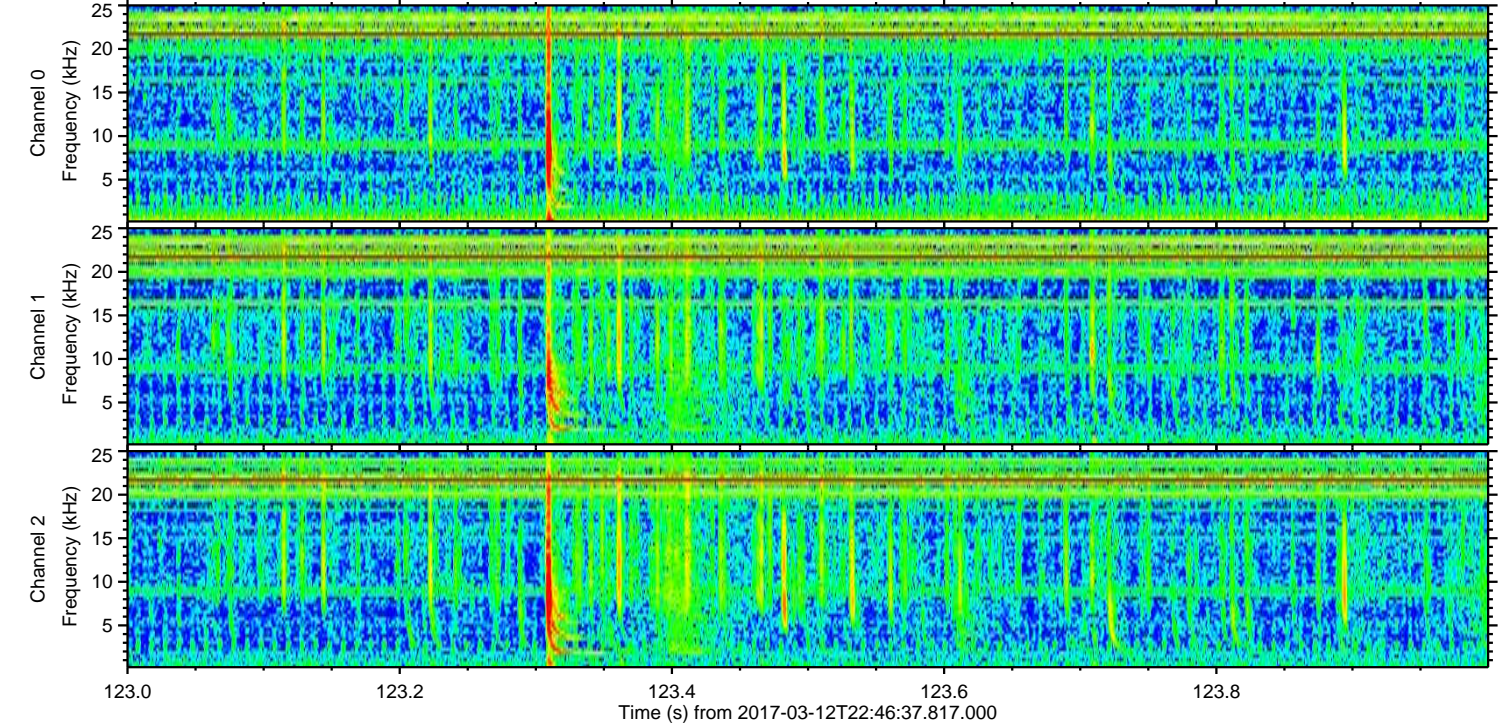
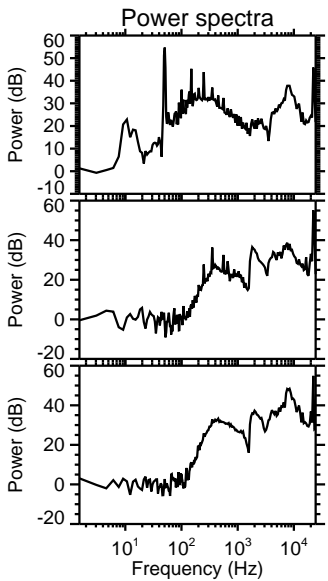
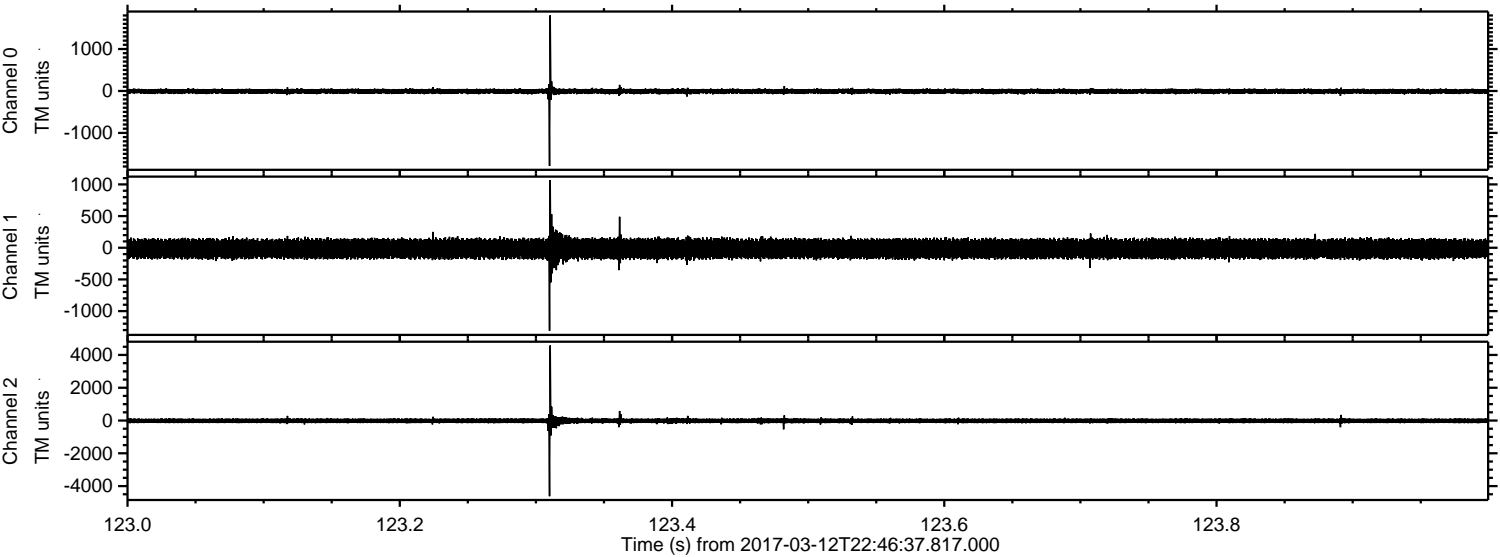
Channel 0
mn: -1790
mx: 1803
 μ : -9.0
 σ : 30.1

Channel 1
mn: -1311
mx: 1183
 μ : -15.6
 σ : 83.1

Channel 2
mn: -4619
mx: 4580
 μ : -19.4
 σ : 79.7

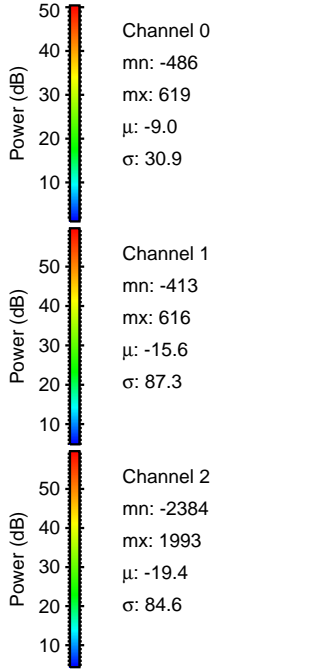
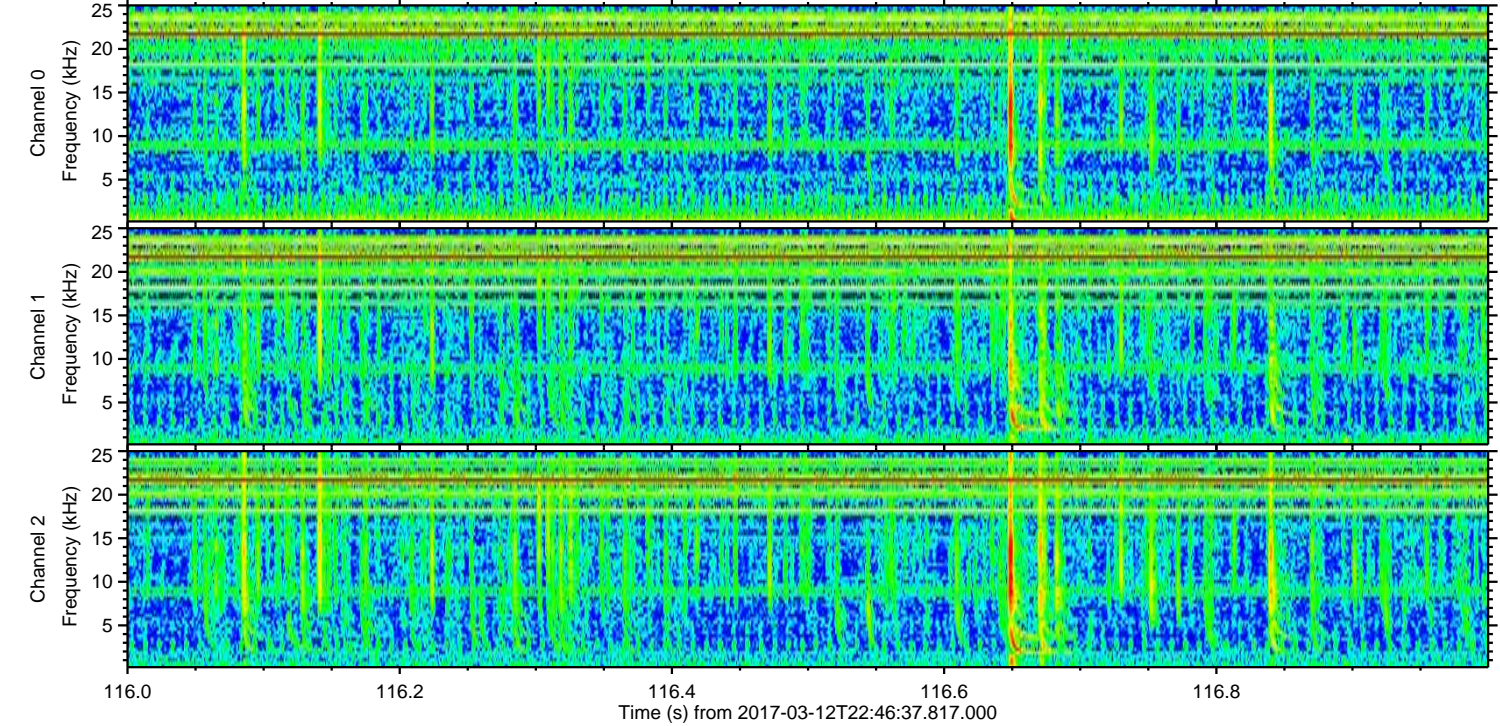
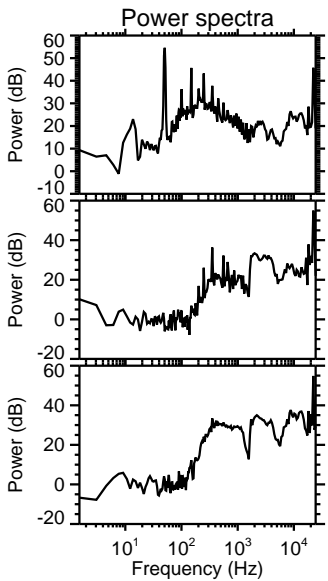
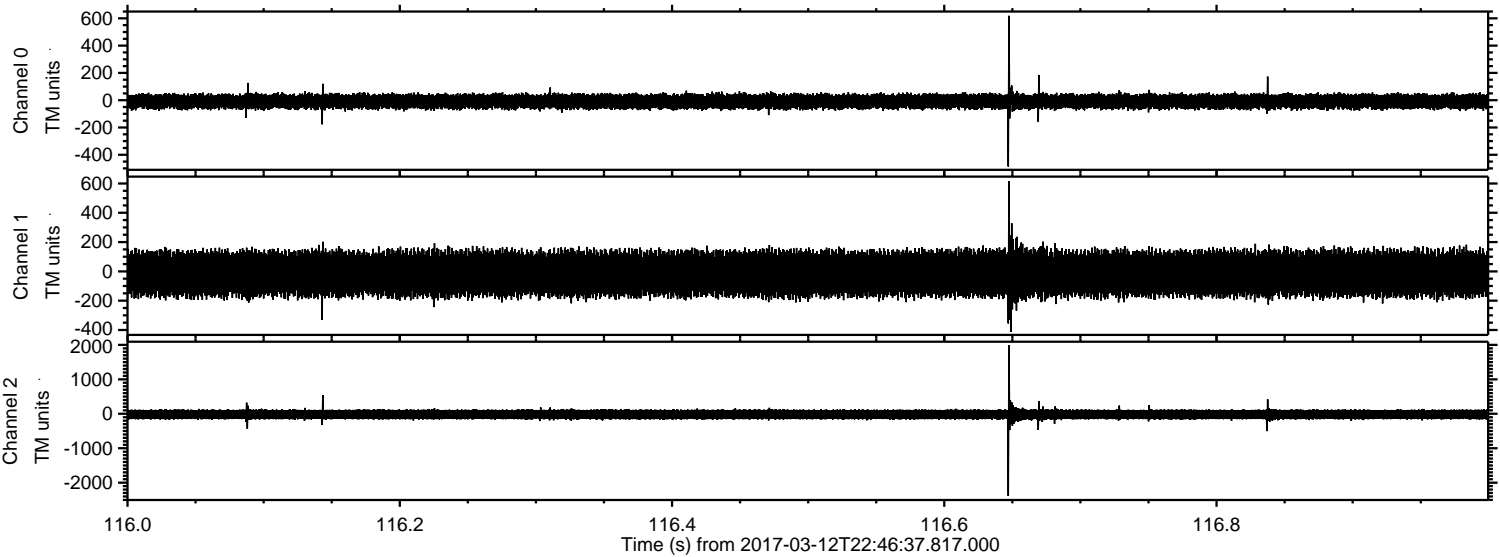
ELMAVAN 3D WAVEFORMS (Measured data sampled at 50 kHz) 51000 packets of 144 samples from 2017-03-12T22:46:37.817.000. Part 124/147

Processed Sun Mar 12 23:54:20 2017 by ELM ver.2012-10-06 from 001__elm20170312_224636__dat00.bin

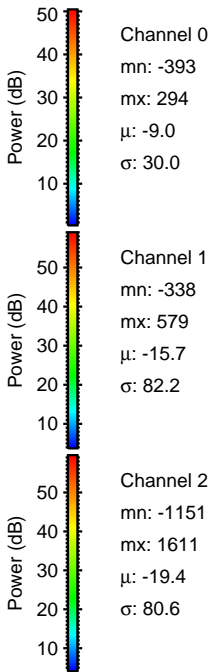
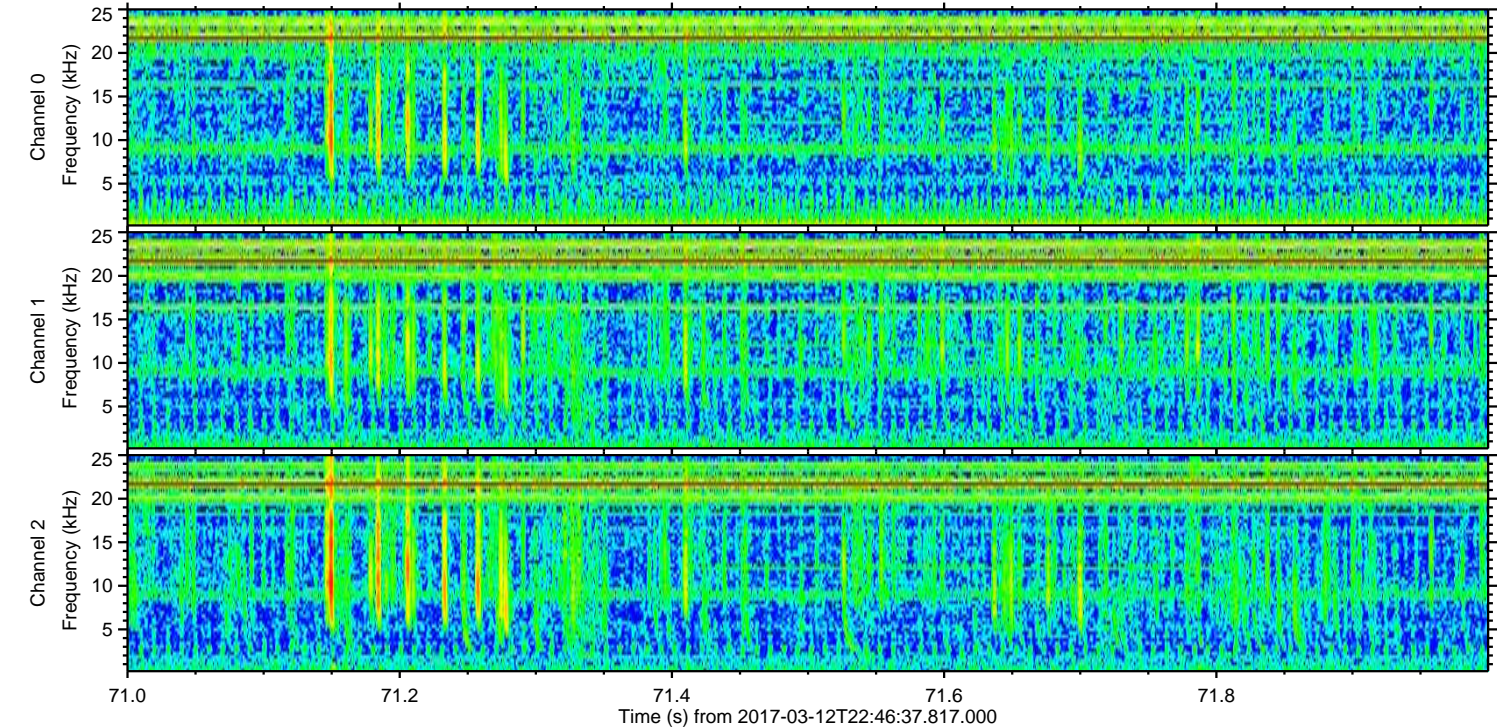
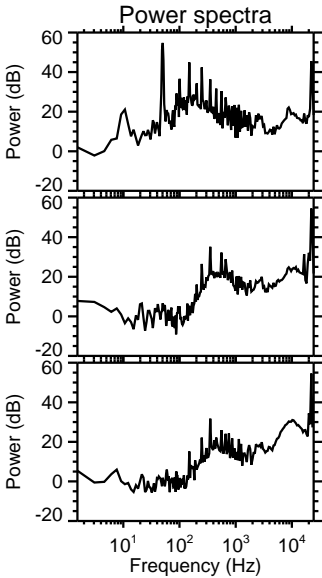
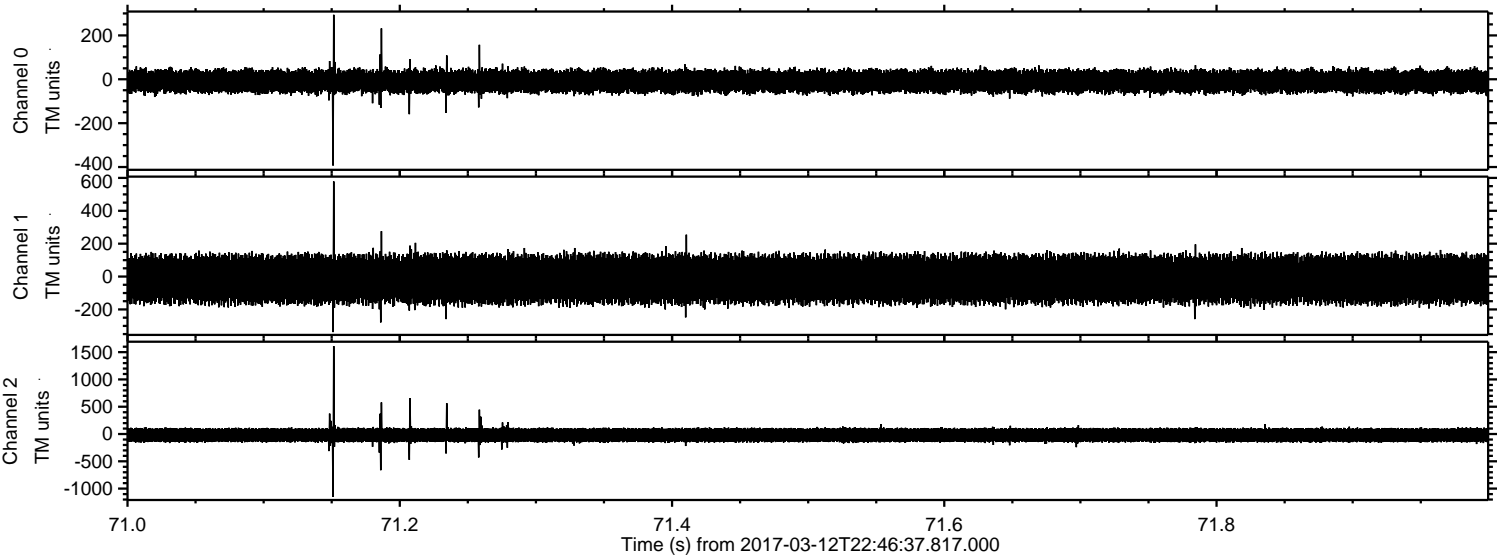


ELMAVAN 3D WAVEFORMS (Measured data sampled at 50 kHz) 51000 packets of 144 samples from 2017-03-12T22:46:37.817.000. Part 117/147

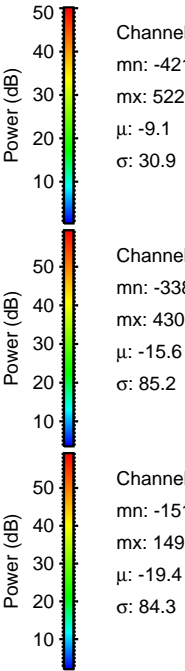
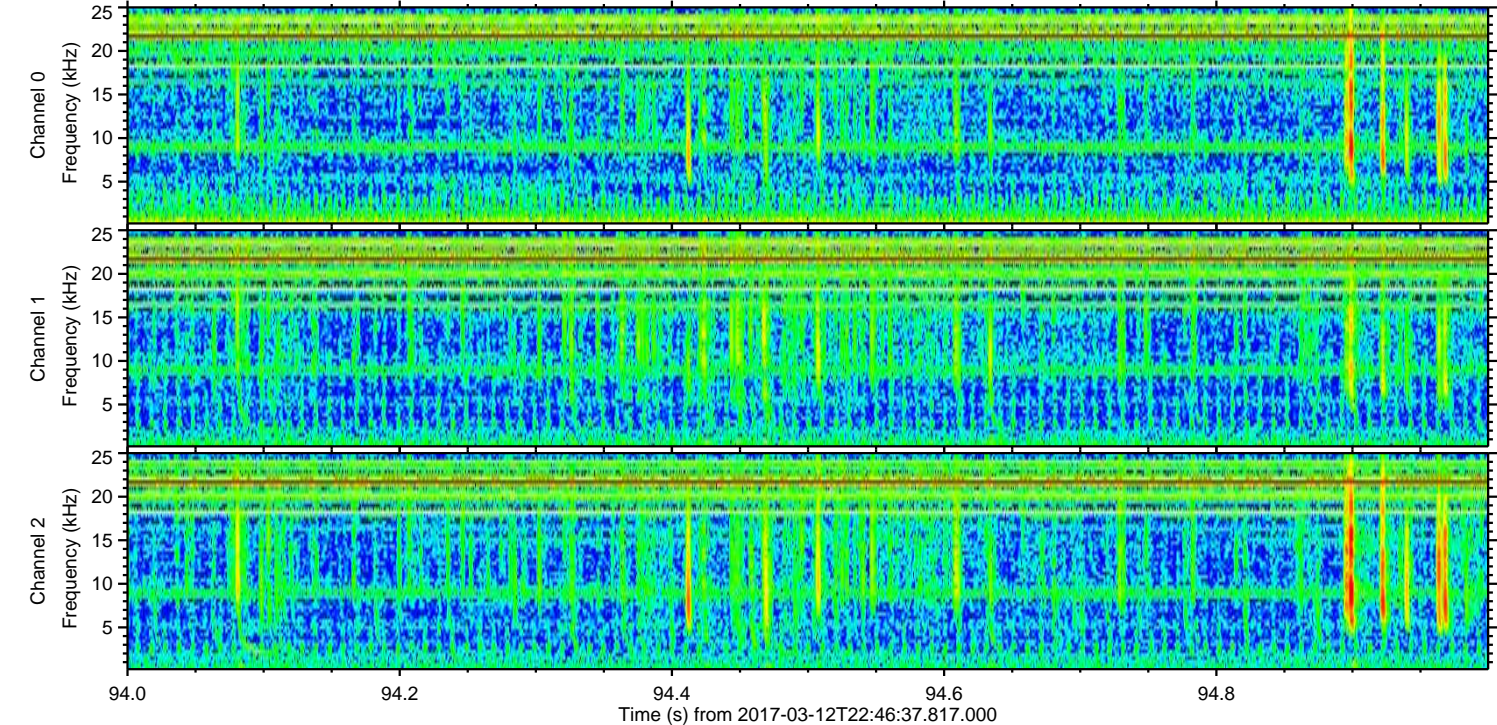
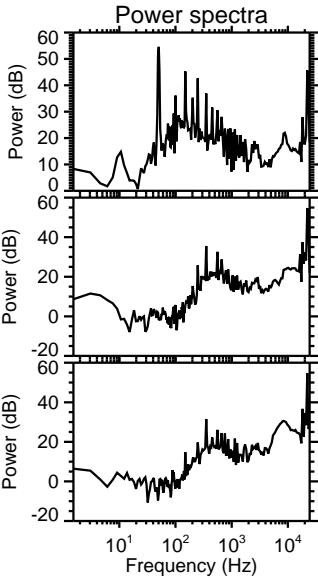
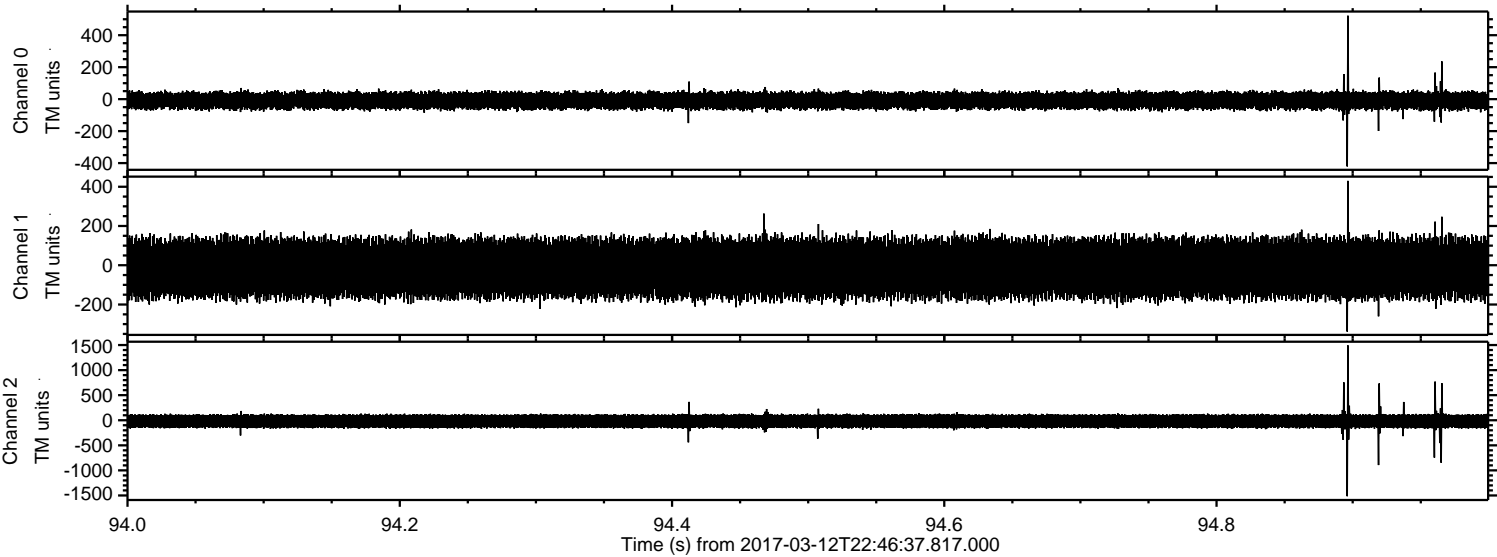
Processed Sun Mar 12 23:54:21 2017 by ELM ver.2012-10-06 from 001__elm20170312_224636__dat00.bin



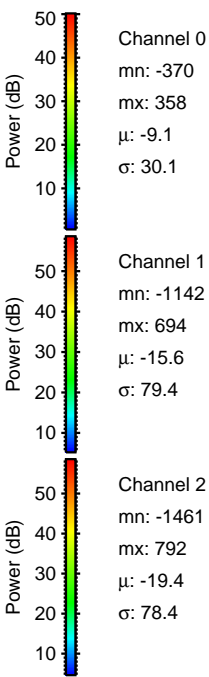
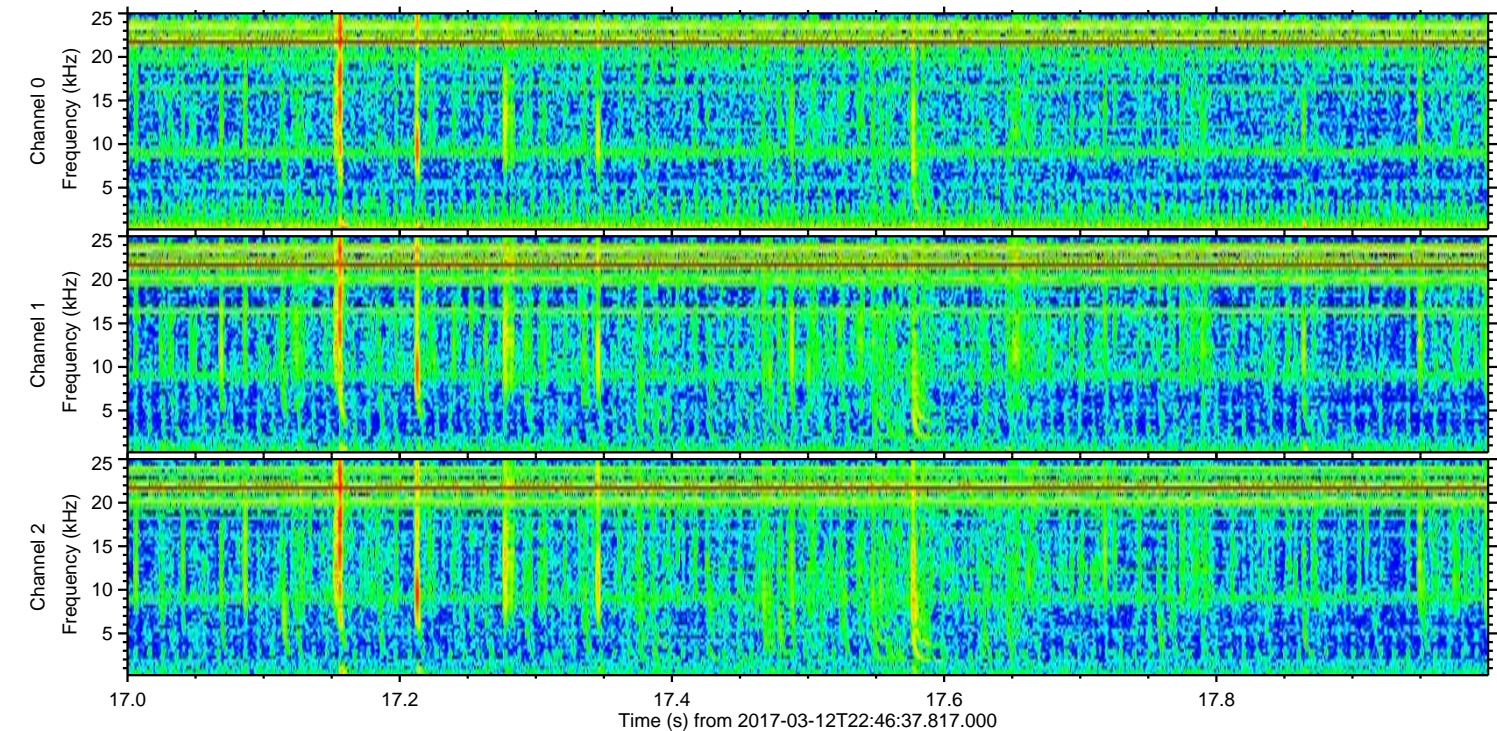
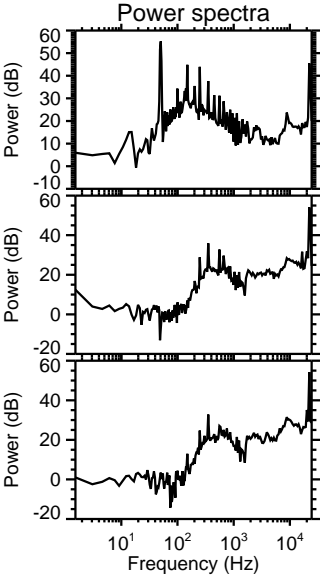
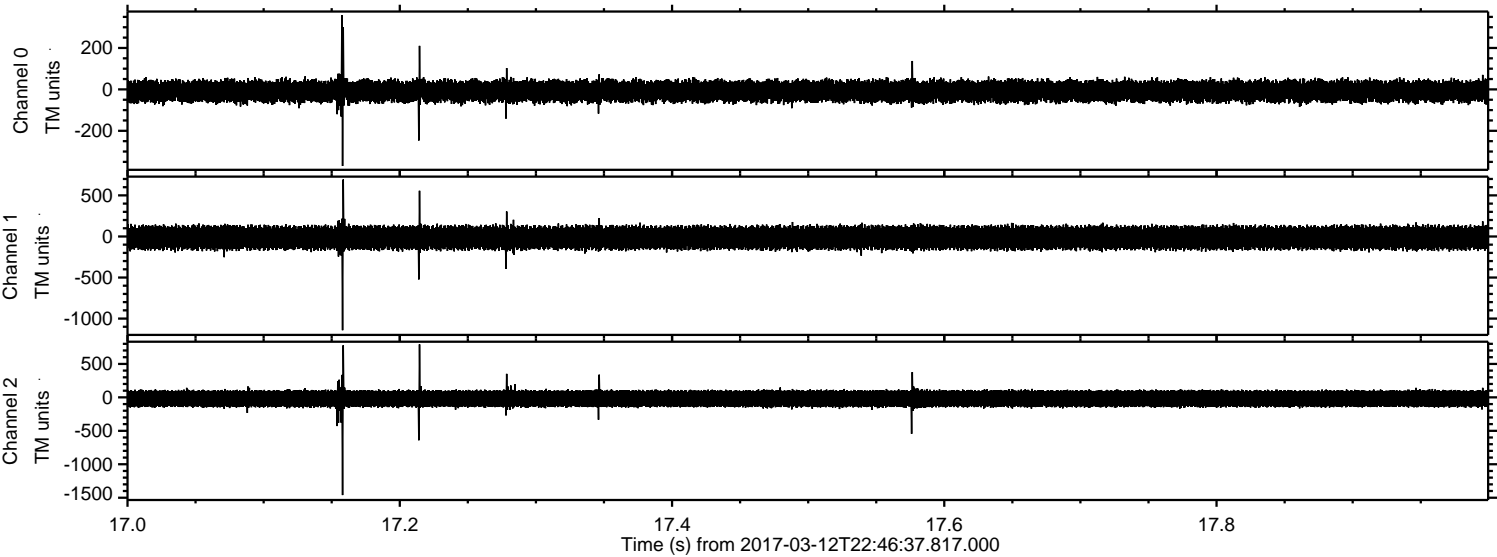
Processed Sun Mar 12 23:54:22 2017 by ELM ver.2012-10-06 from 001__elm20170312_224636__dat00.bin



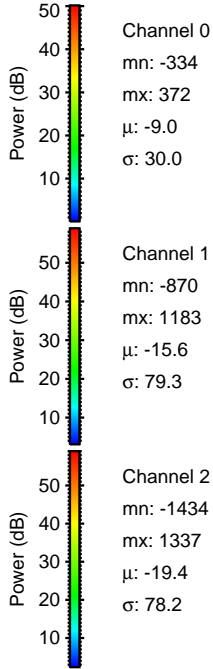
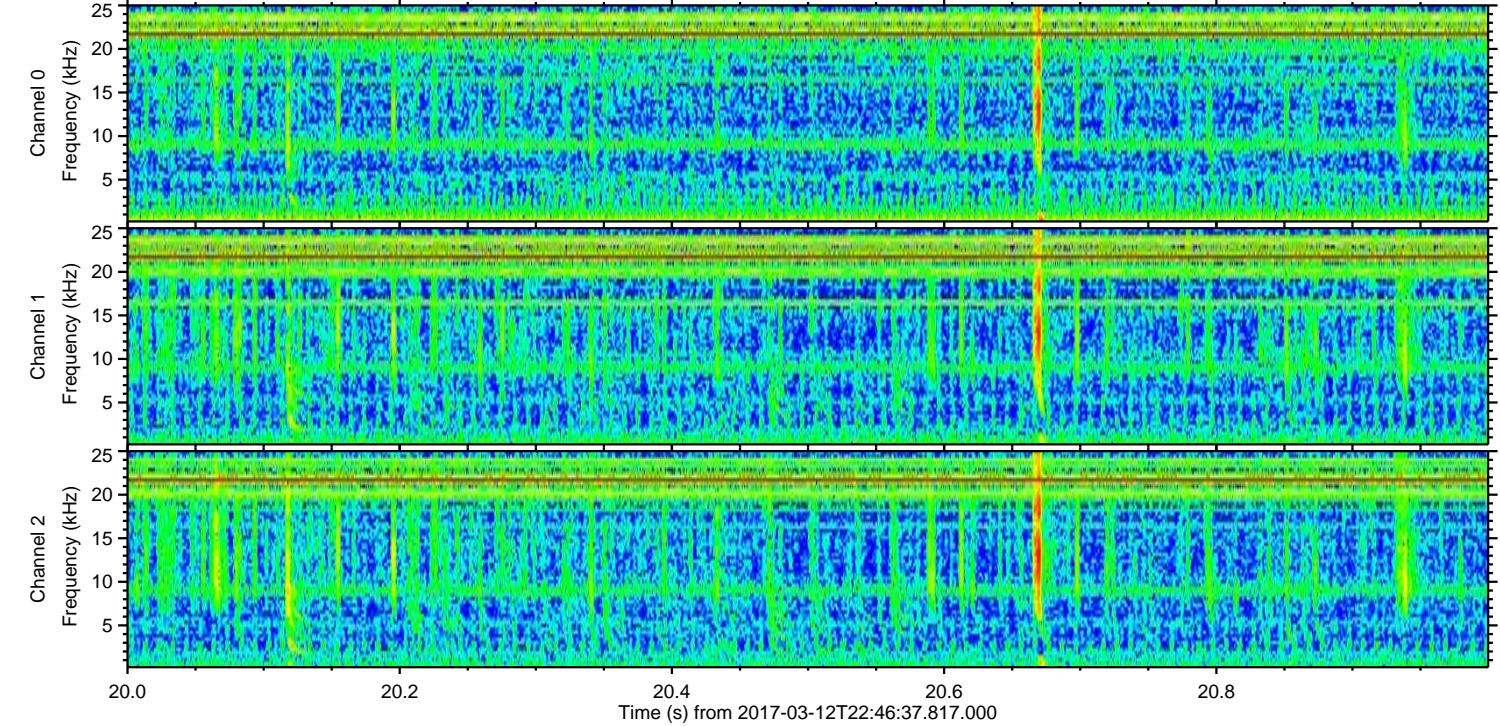
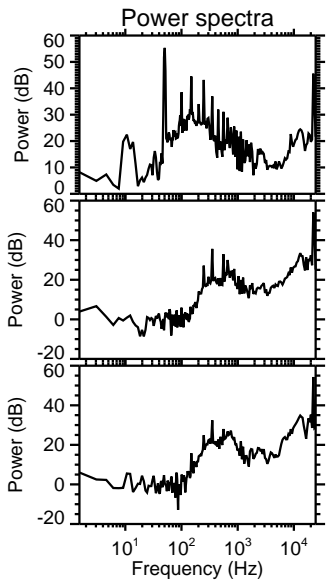
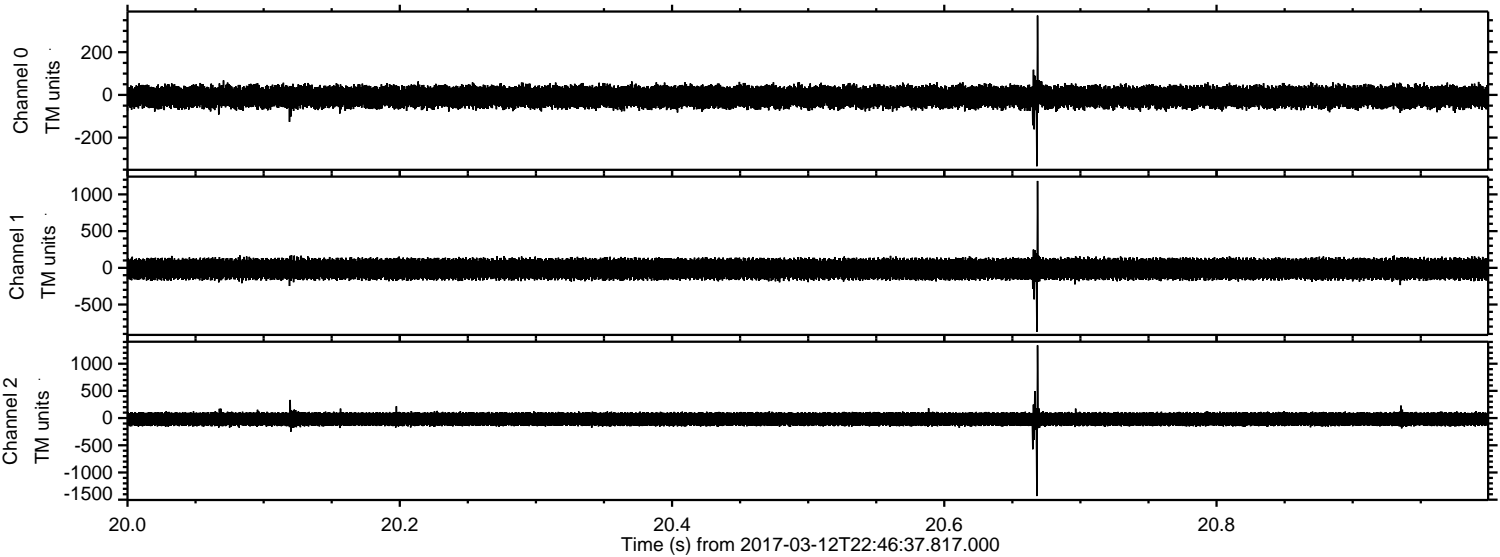
Processed Sun Mar 12 23:54:23 2017 by ELM ver.2012-10-06 from 001__elm20170312_224636__dat00.bin



Processed Sun Mar 12 23:54:24 2017 by ELM ver.2012-10-06 from 001__elm20170312_224636__dat00.bin

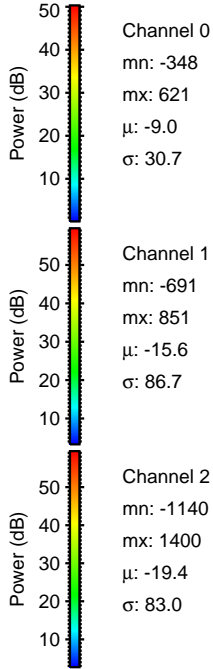
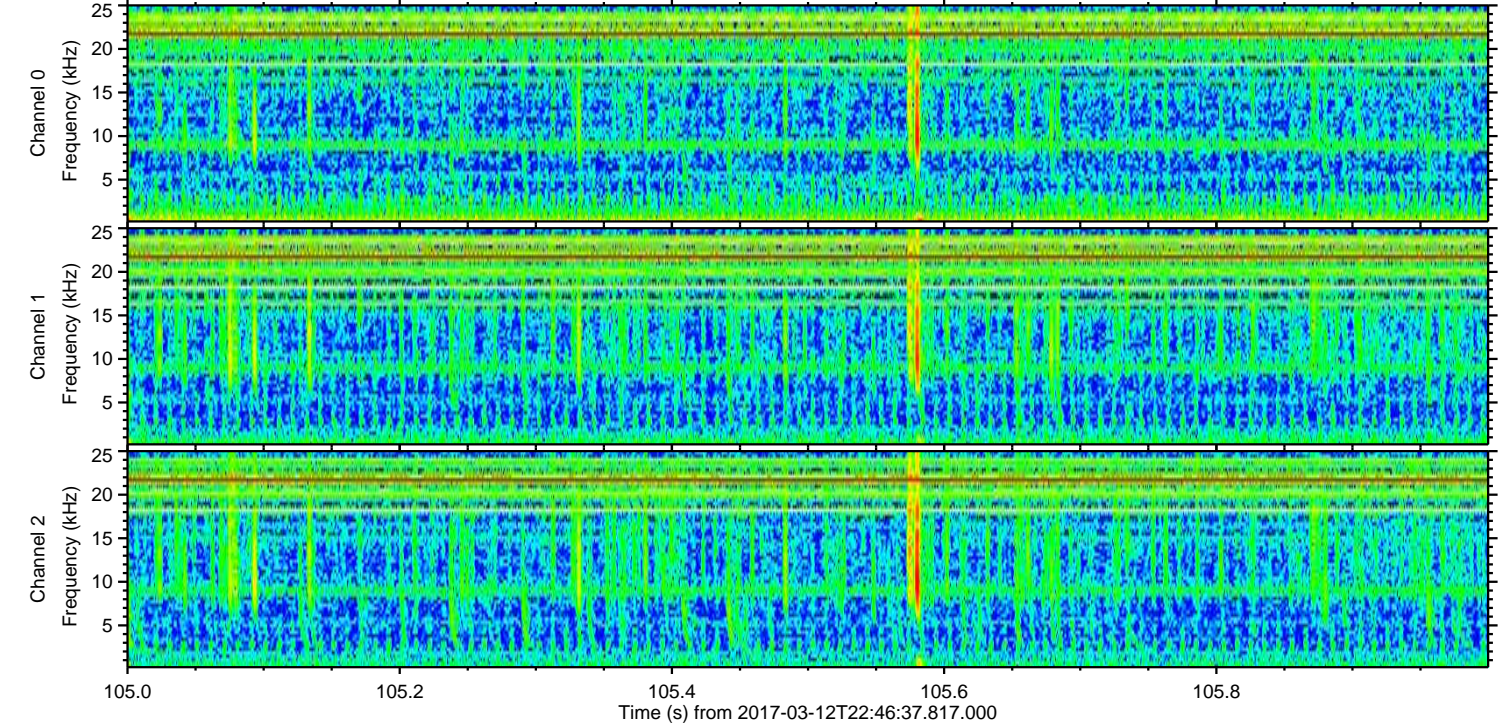
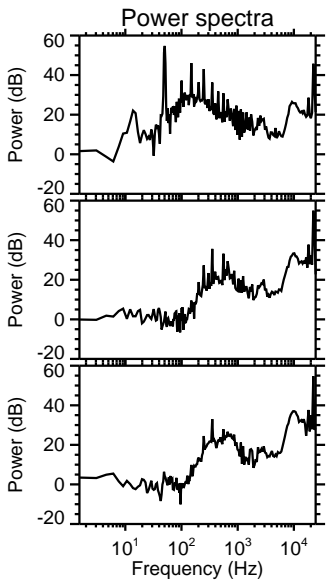
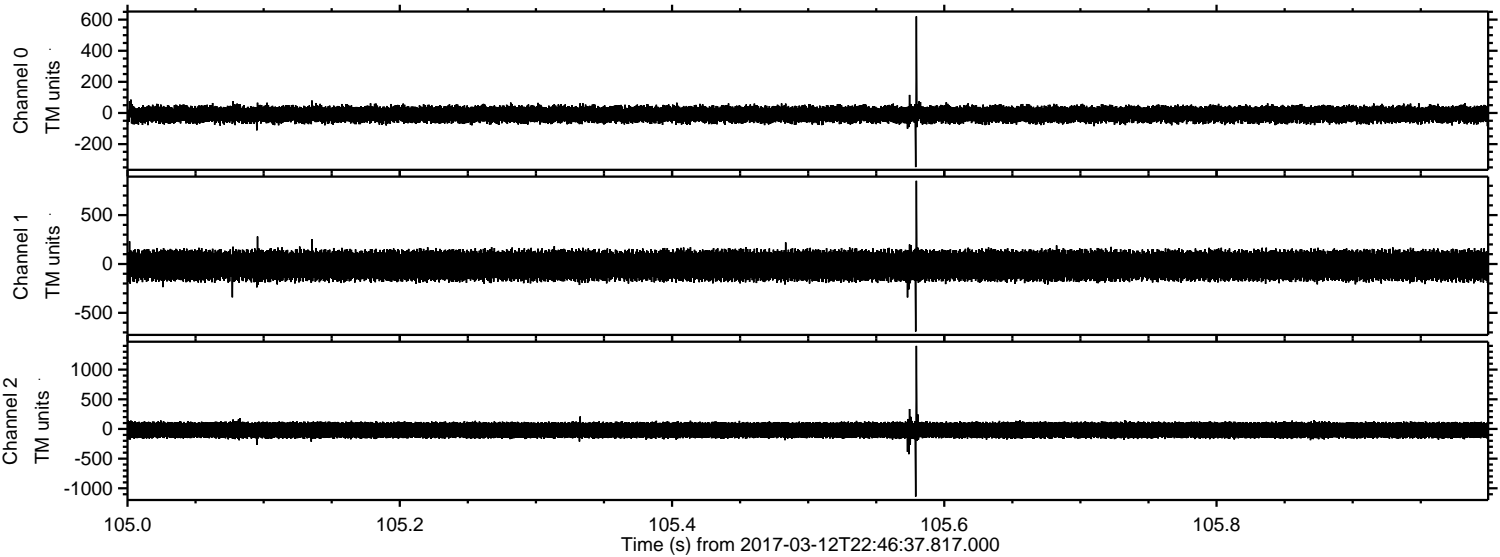


Processed Sun Mar 12 23:54:25 2017 by ELM ver.2012-10-06 from 001__elm20170312_224636__dat00.bin



ELMAVAN 3D WAVEFORMS (Measured data sampled at 50 kHz) 51000 packets of 144 samples from 2017-03-12T22:46:37.817.000. Part 106/147

Processed Sun Mar 12 23:54:27 2017 by ELM ver.2012-10-06 from 001__elm20170312_224636__dat00.bin

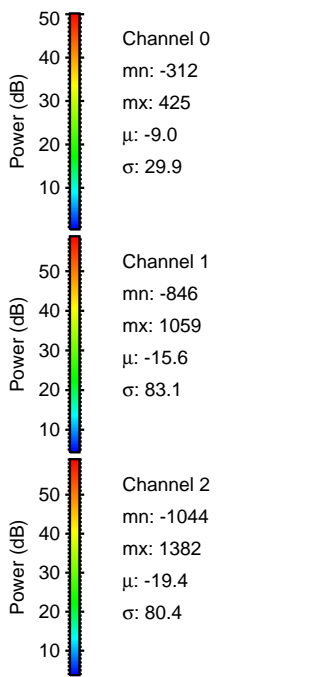
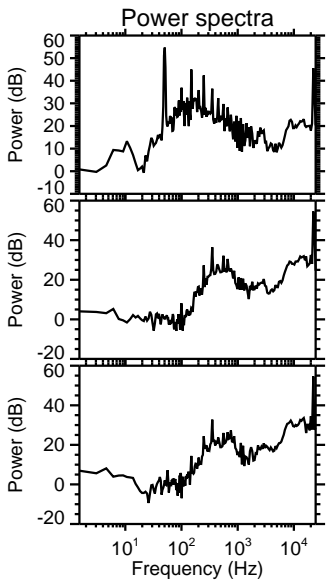
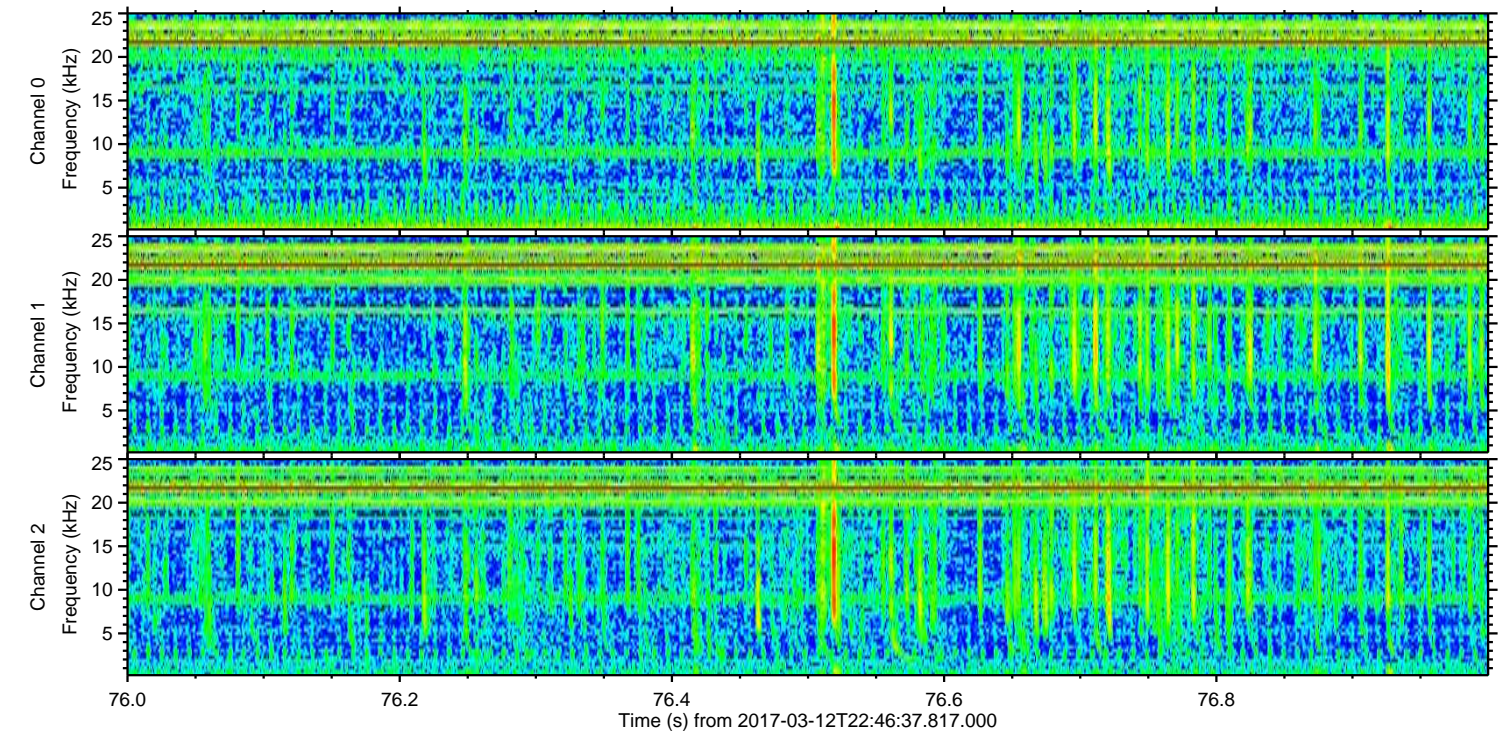
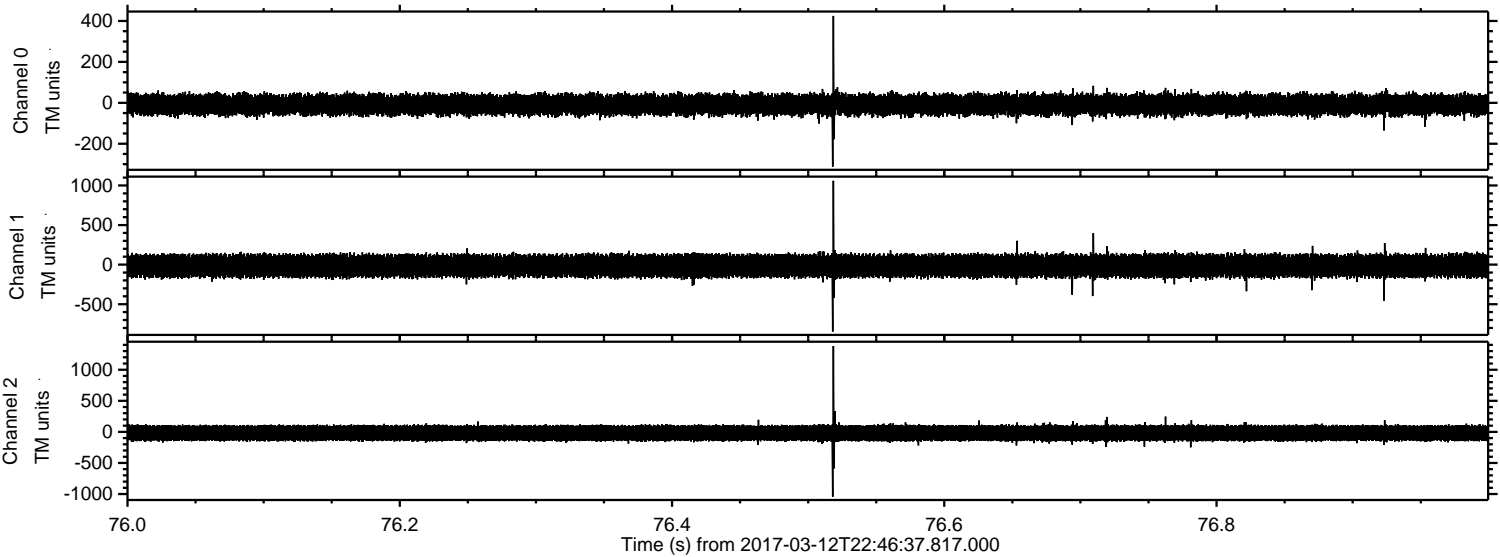


Channel 0
mn: -348
mx: 621
 μ : -9.0
 σ : 30.7

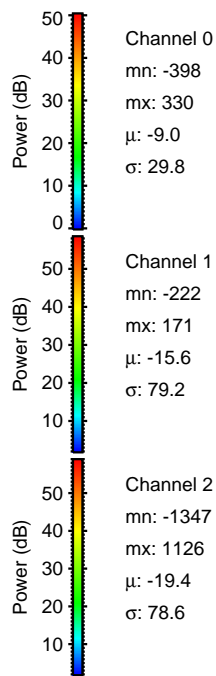
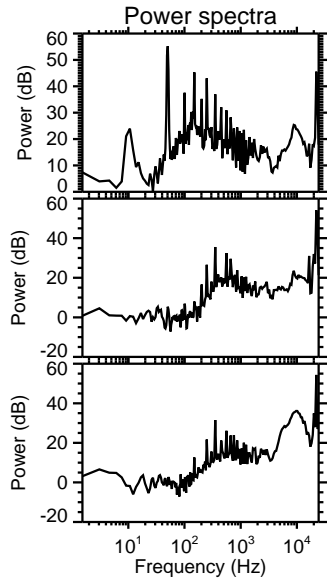
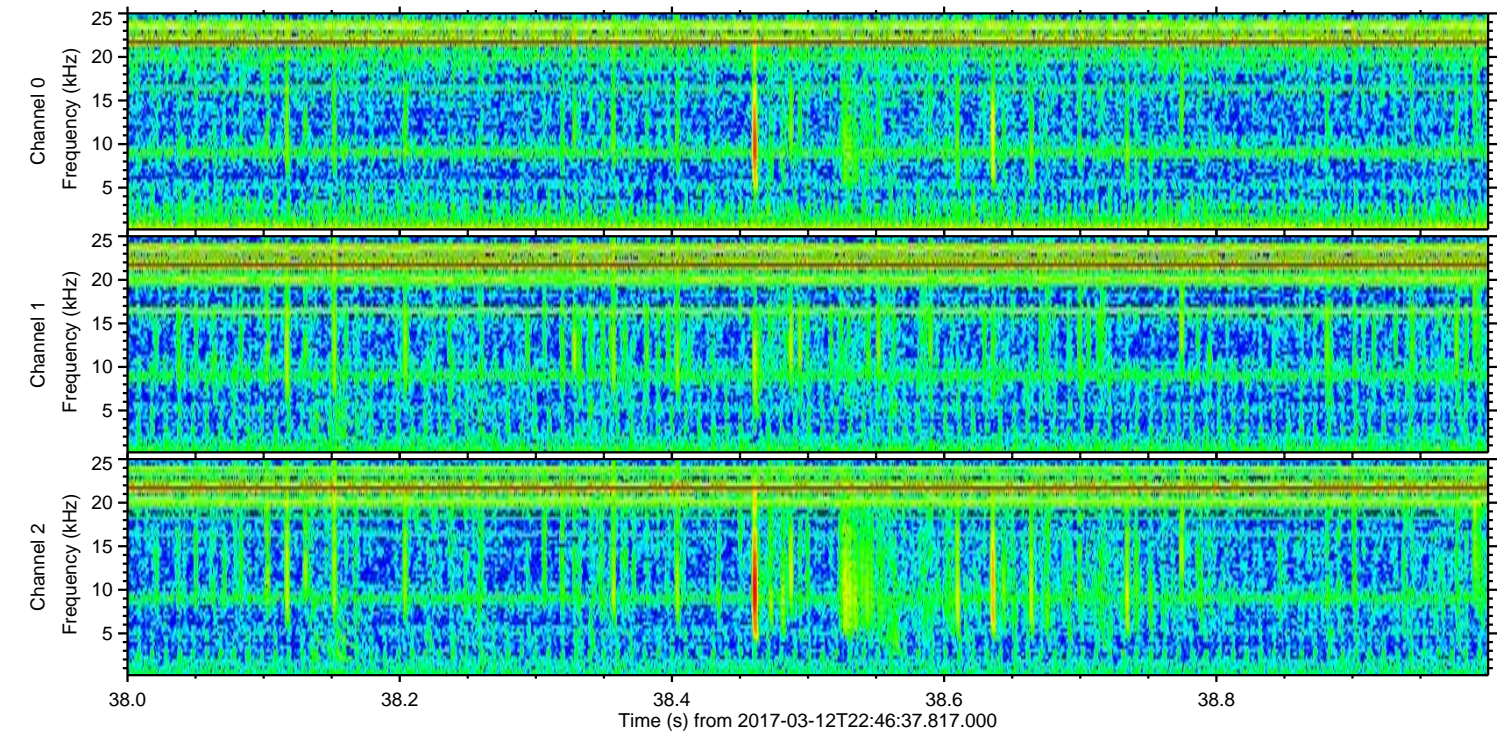
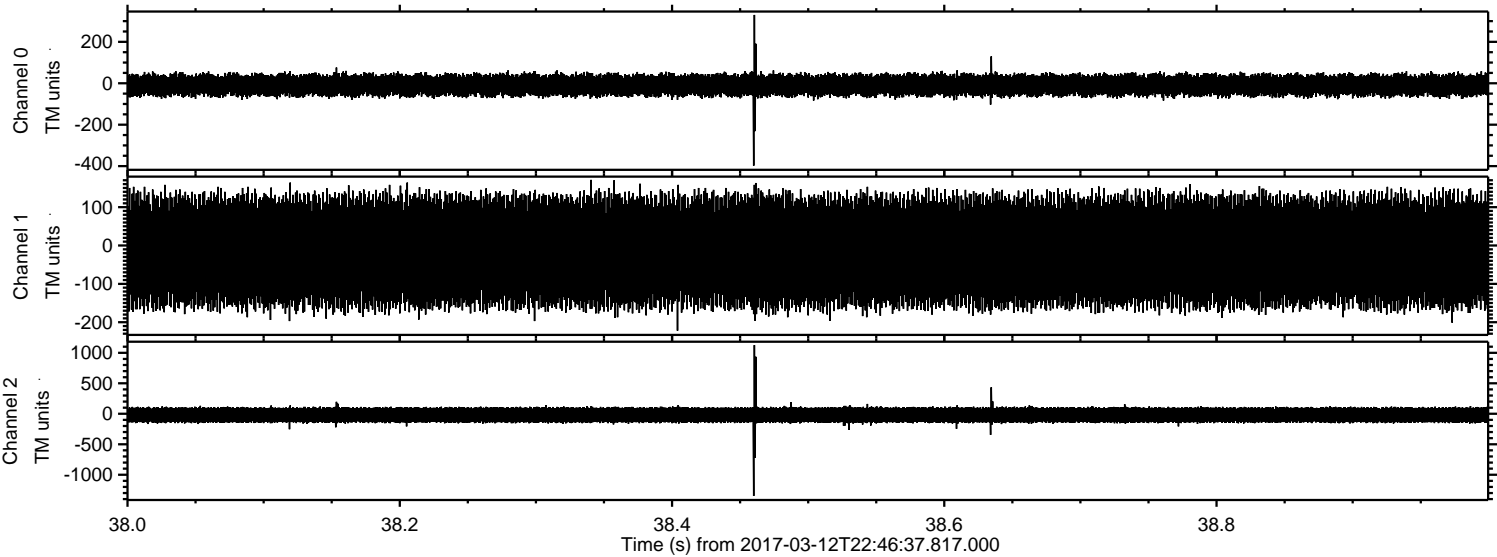
Channel 1
mn: -691
mx: 851
 μ : -15.6
 σ : 86.7

Channel 2
mn: -1140
mx: 1400
 μ : -19.4
 σ : 83.0

Processed Sun Mar 12 23:54:28 2017 by ELM ver.2012-10-06 from 001__elm20170312_224636__dat00.bin



Processed Sun Mar 12 23:54:29 2017 by ELM ver.2012-10-06 from 001__elm20170312_224636__dat00.bin



Processed Sun Mar 12 23:54:30 2017 by ELM ver.2012-10-06 from 001__elm20170312_224636__dat00.bin

