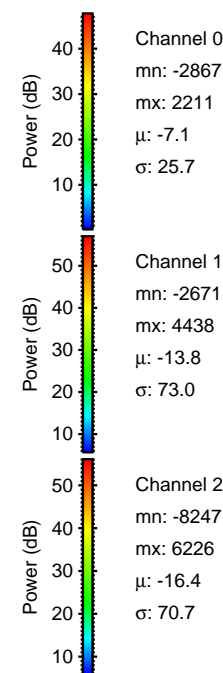
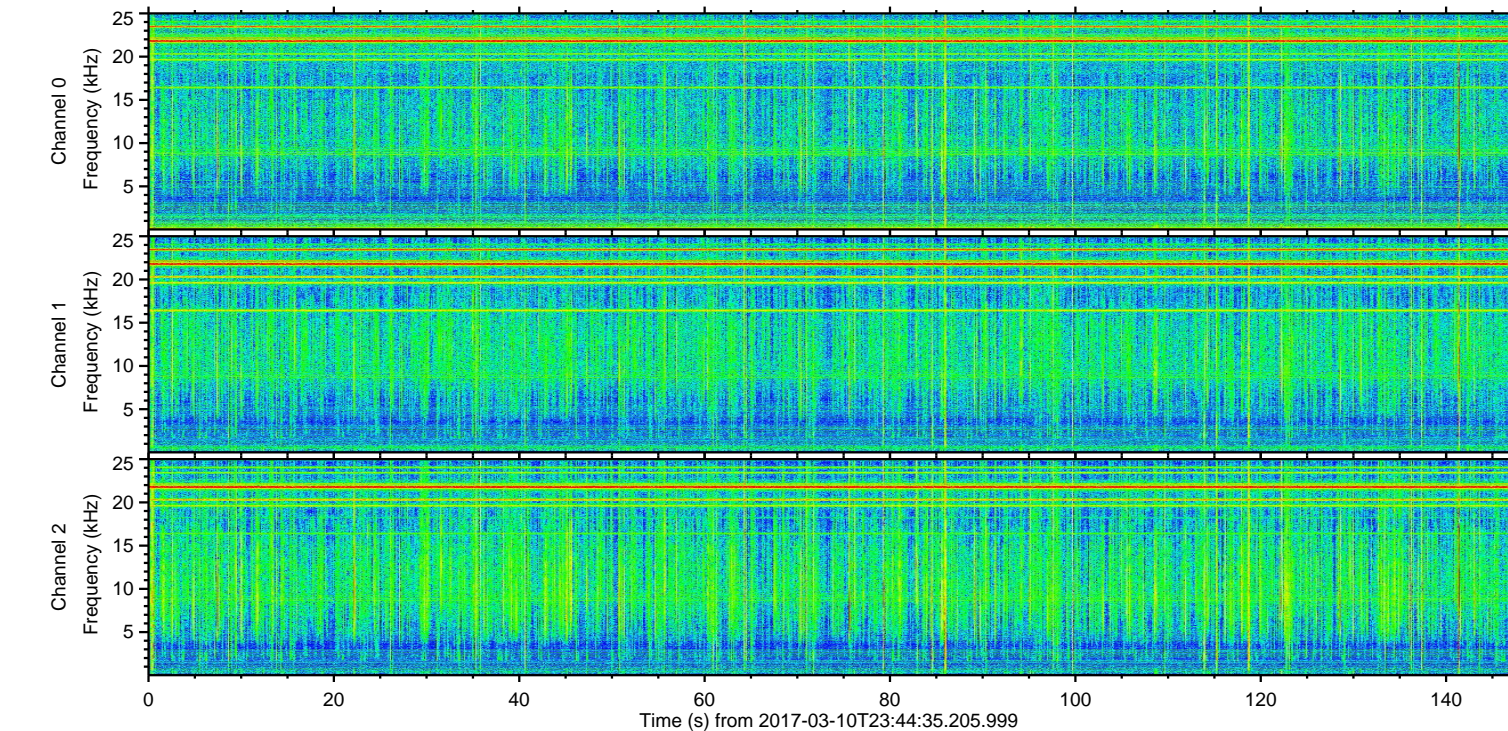
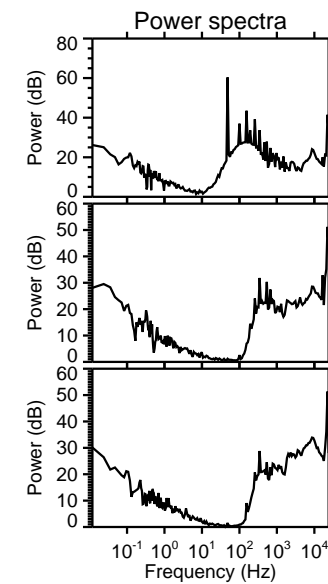
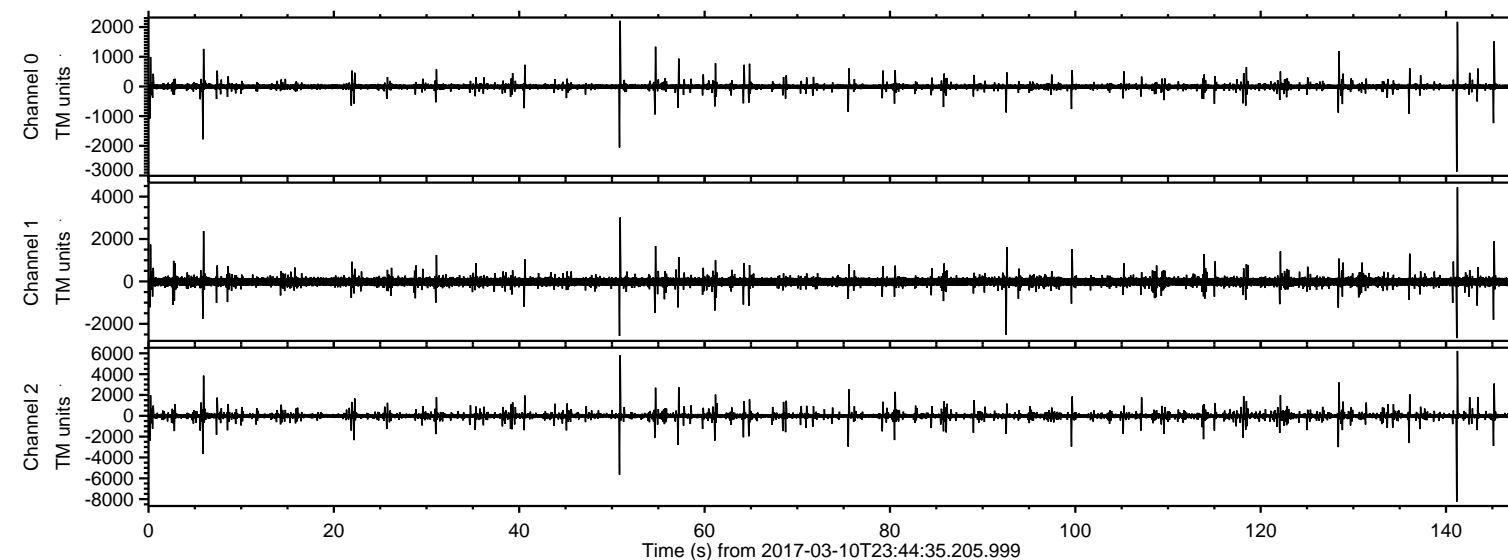


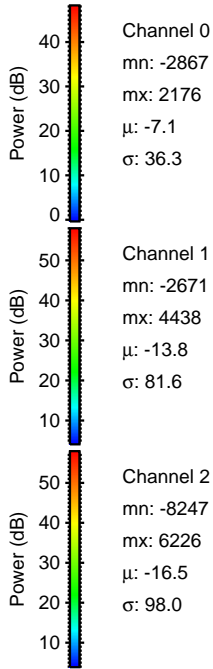
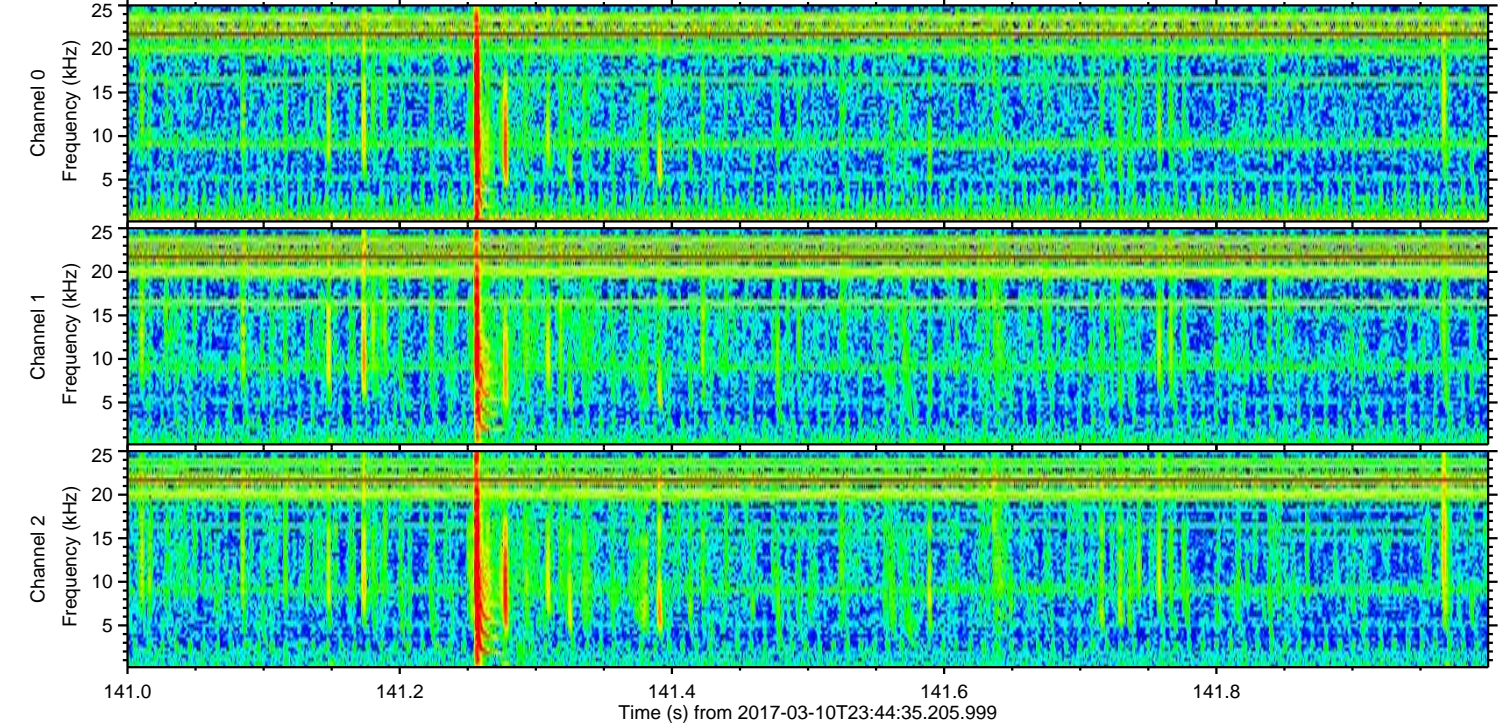
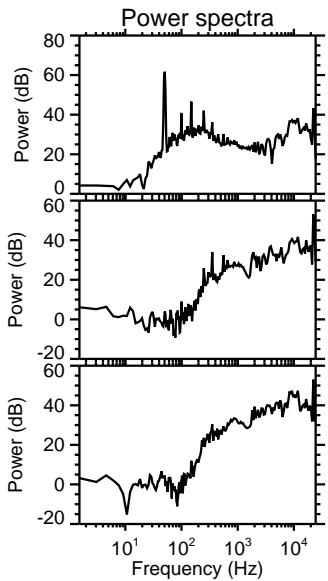
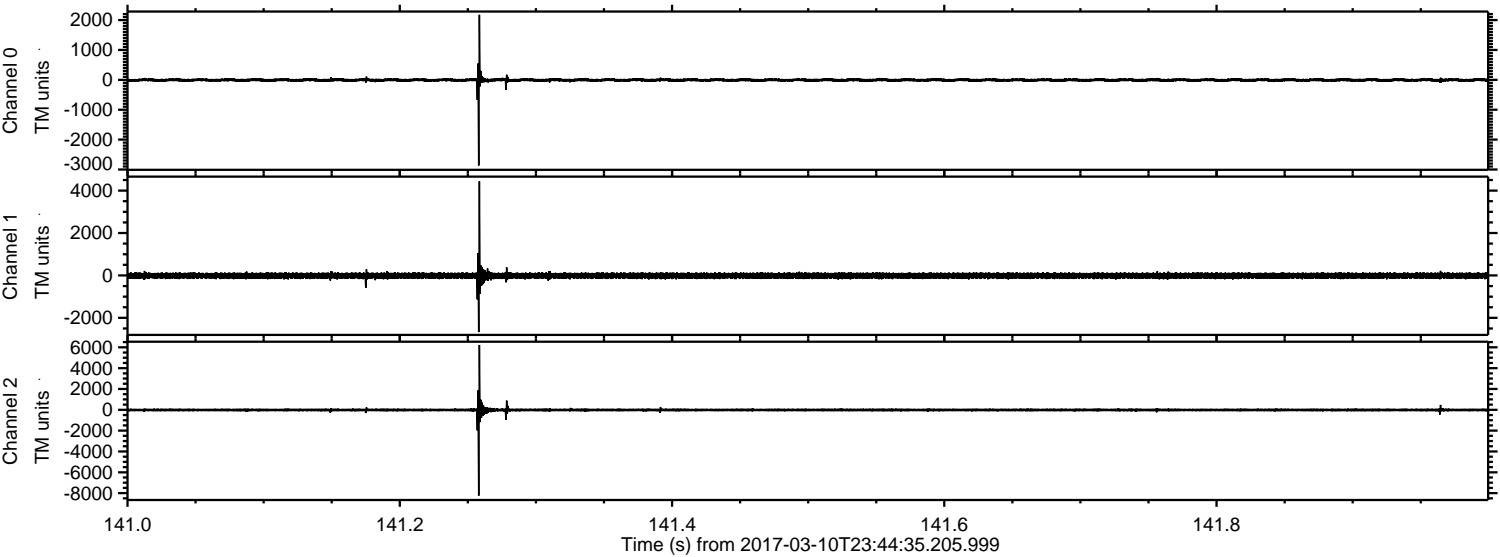
ELMAVAN 3D WAVEFORMS (Measured data sampled at 50 kHz) 51000 packets of 144 samples from 2017-03-10T23:44:35.205.999.

Processed Sat Mar 11 00:52:09 2017 by ELM ver.2012-10-06 from 001__elm20170310_234434__dat00.bin



ELMAVAN 3D WAVEFORMS (Measured data sampled at 50 kHz) 51000 packets of 144 samples from 2017-03-10T23:44:35.205.999. Part 142/147

Processed Sat Mar 11 00:52:21 2017 by ELM ver.2012-10-06 from 001__elm20170310_234434__dat00.bin



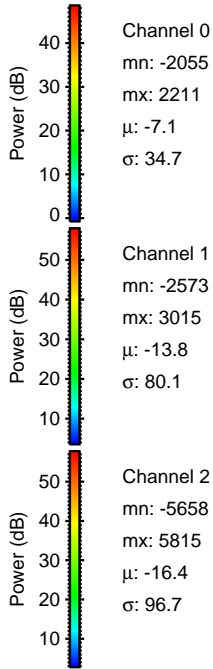
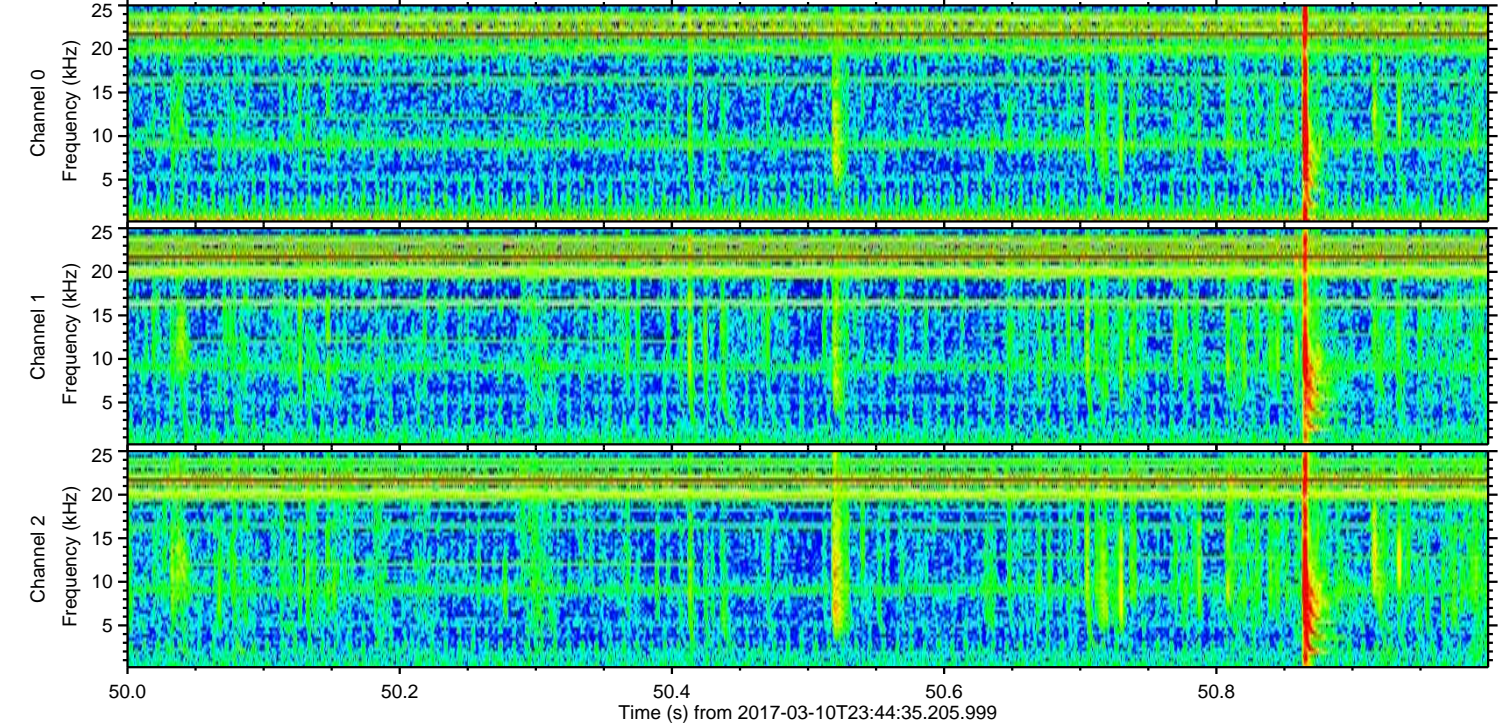
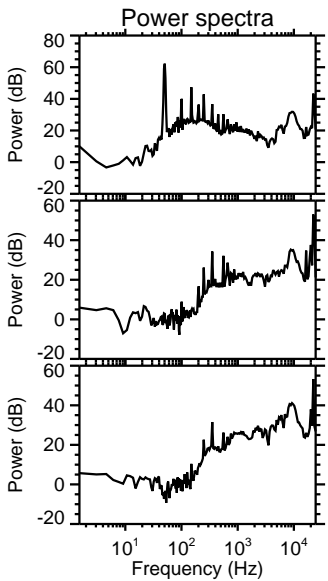
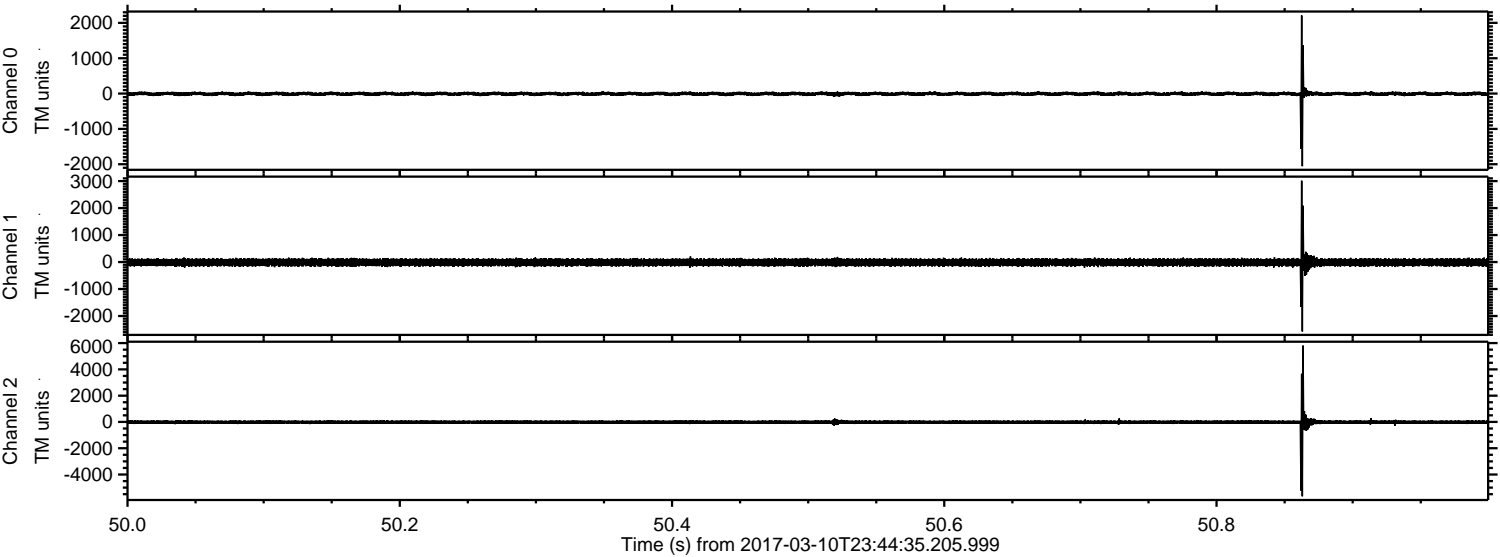
Channel 0
mn: -2867
mx: 2176
 μ : -7.1
 σ : 36.3

Channel 1
mn: -2671
mx: 4438
 μ : -13.8
 σ : 81.6

Channel 2
mn: -8247
mx: 6226
 μ : -16.5
 σ : 98.0

ELMAVAN 3D WAVEFORMS (Measured data sampled at 50 kHz) 51000 packets of 144 samples from 2017-03-10T23:44:35.205.999. Part 51/147

Processed Sat Mar 11 00:52:22 2017 by ELM ver.2012-10-06 from 001__elm20170310_234434__dat00.bin



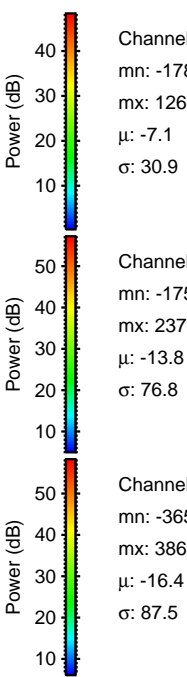
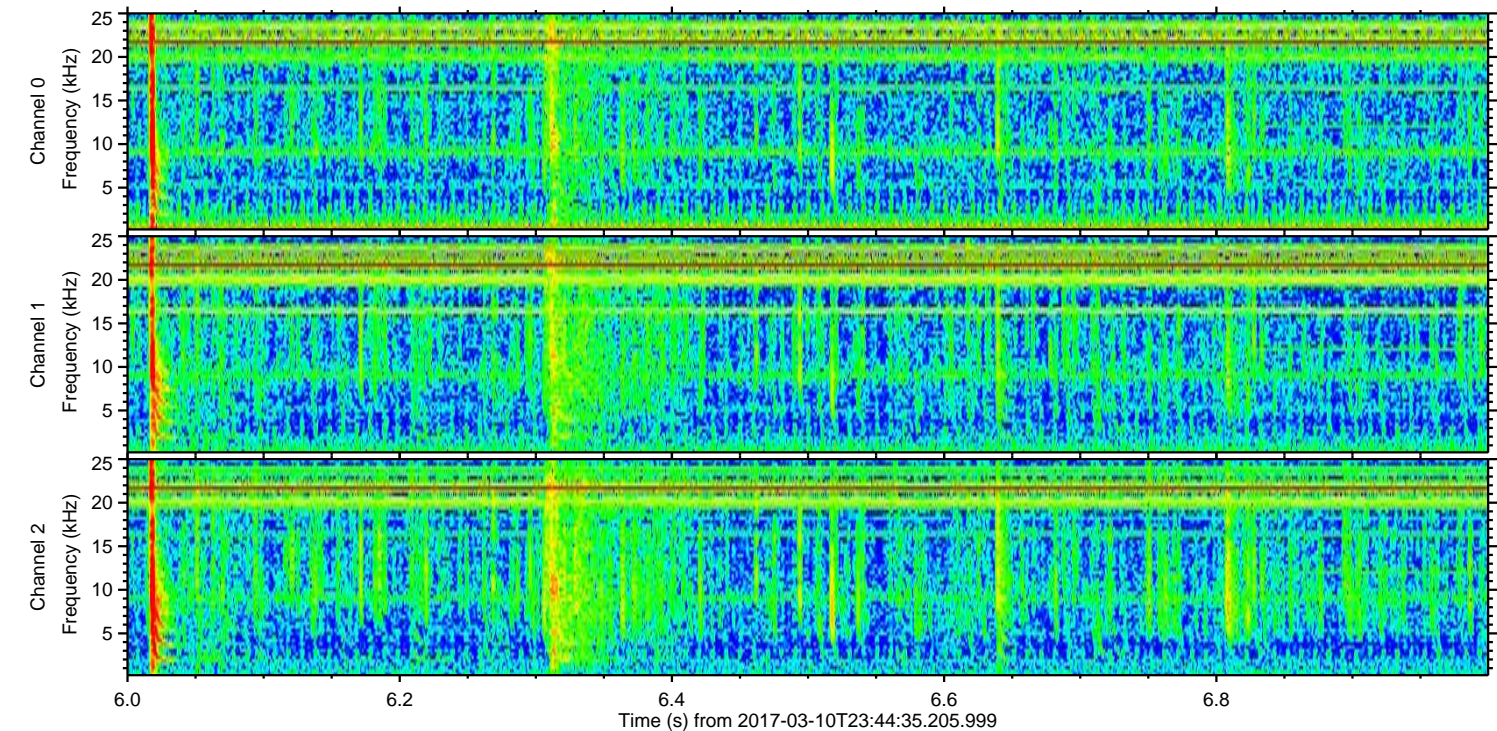
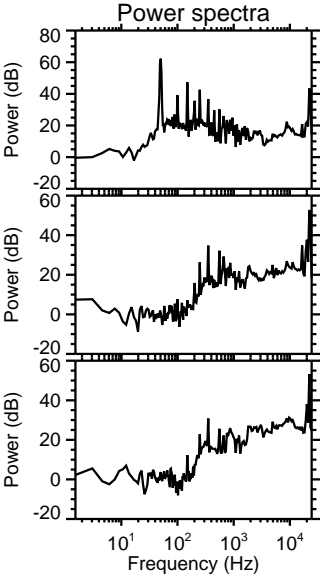
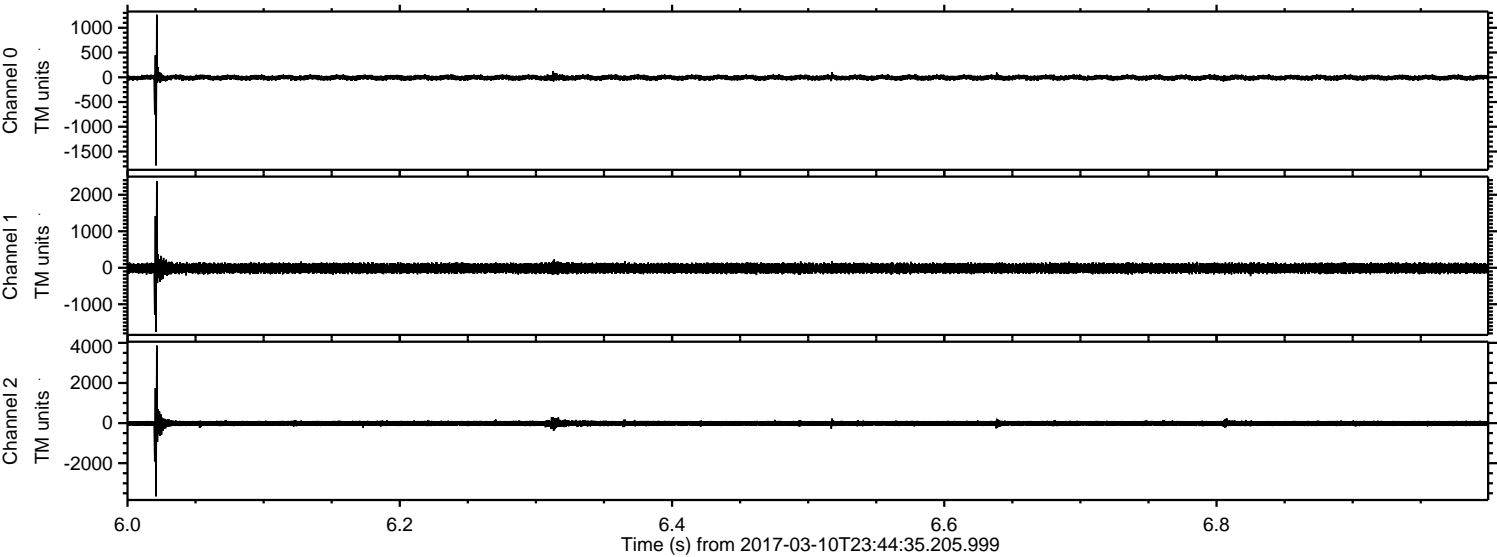
Channel 0
mn: -2055
mx: 2211
 μ : -7.1
 σ : 34.7

Channel 1
mn: -2573
mx: 3015
 μ : -13.8
 σ : 80.1

Channel 2
mn: -5658
mx: 5815
 μ : -16.4
 σ : 96.7

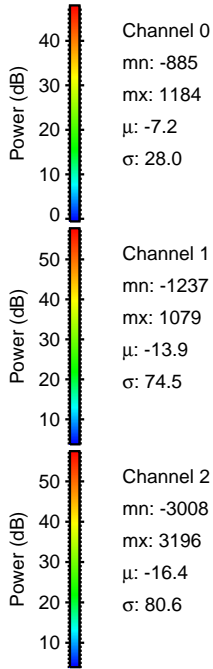
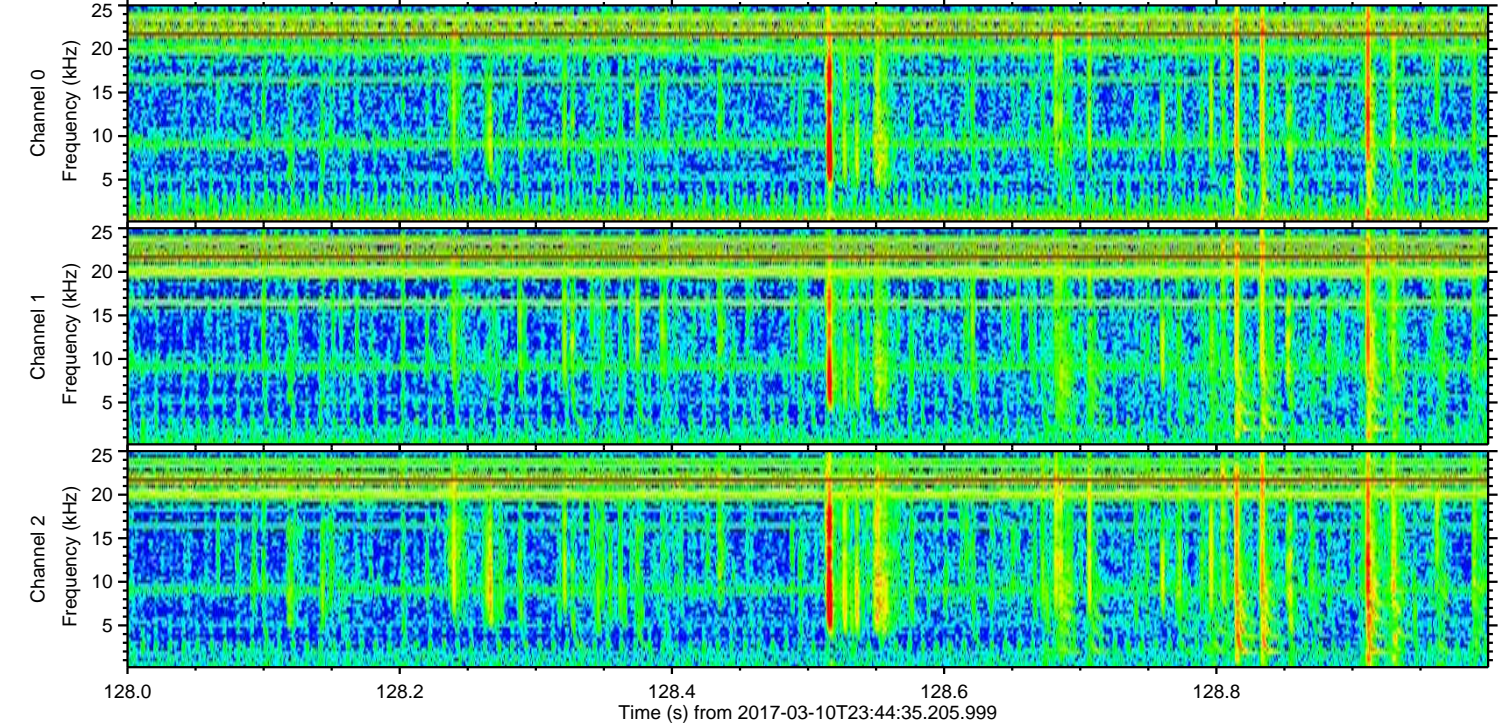
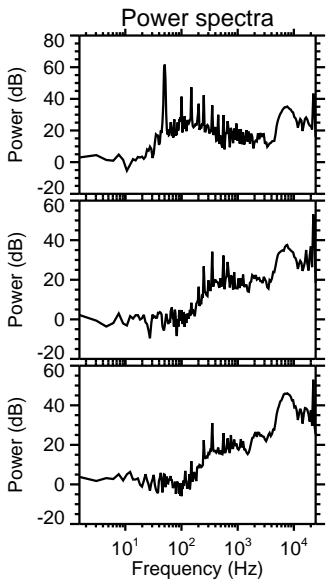
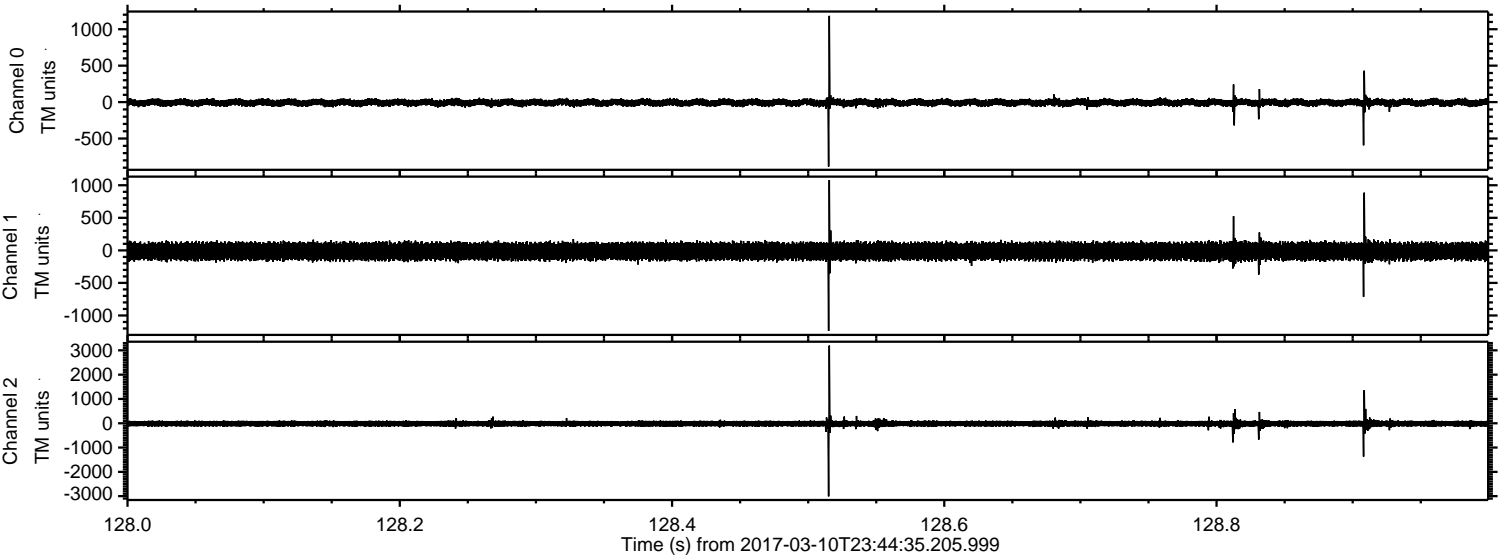
ELMAVAN 3D WAVEFORMS (Measured data sampled at 50 kHz) 51000 packets of 144 samples from 2017-03-10T23:44:35.205.999. Part 7/147

Processed Sat Mar 11 00:52:23 2017 by ELM ver.2012-10-06 from 001__elm20170310_234434__dat00.bin



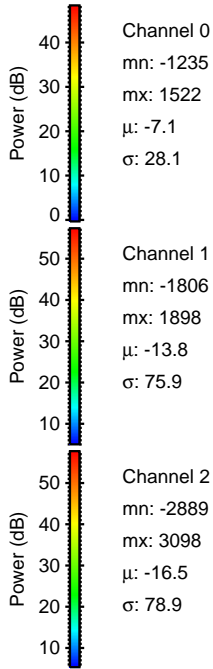
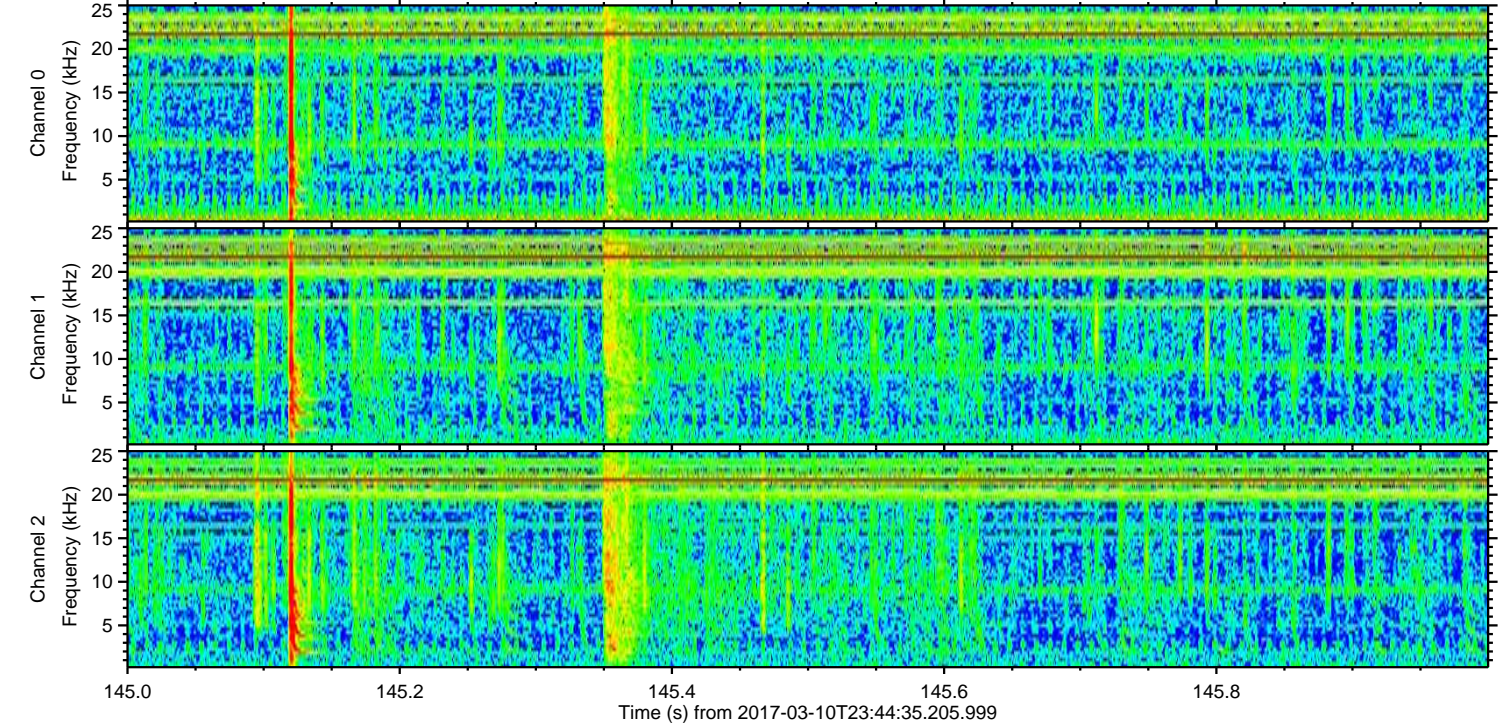
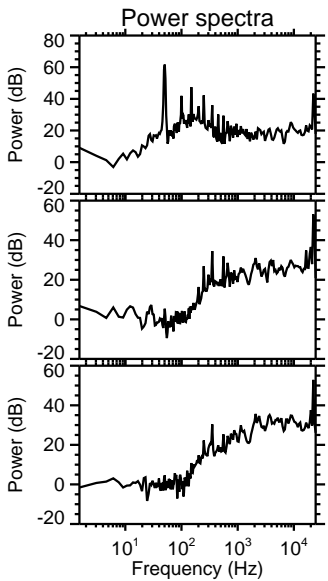
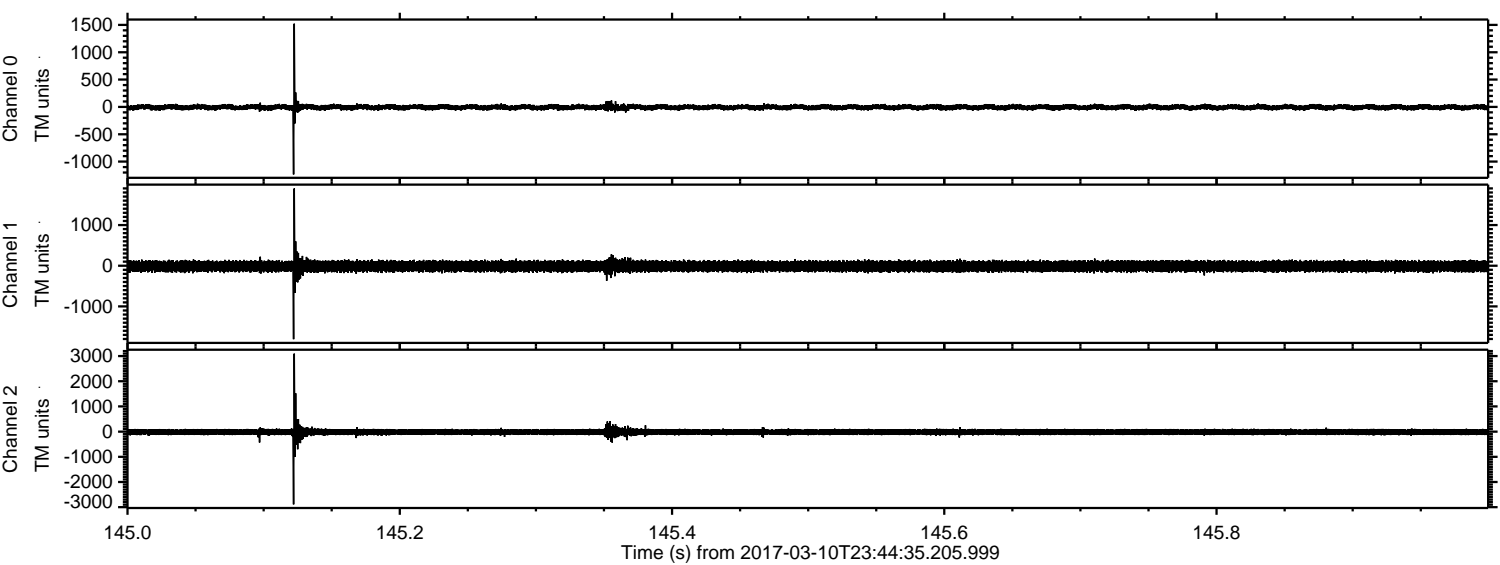
ELMAVAN 3D WAVEFORMS (Measured data sampled at 50 kHz) 51000 packets of 144 samples from 2017-03-10T23:44:35.205.999. Part 129/147

Processed Sat Mar 11 00:52:24 2017 by ELM ver.2012-10-06 from 001__elm20170310_234434__dat00.bin

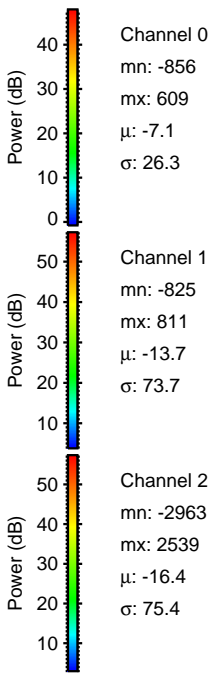
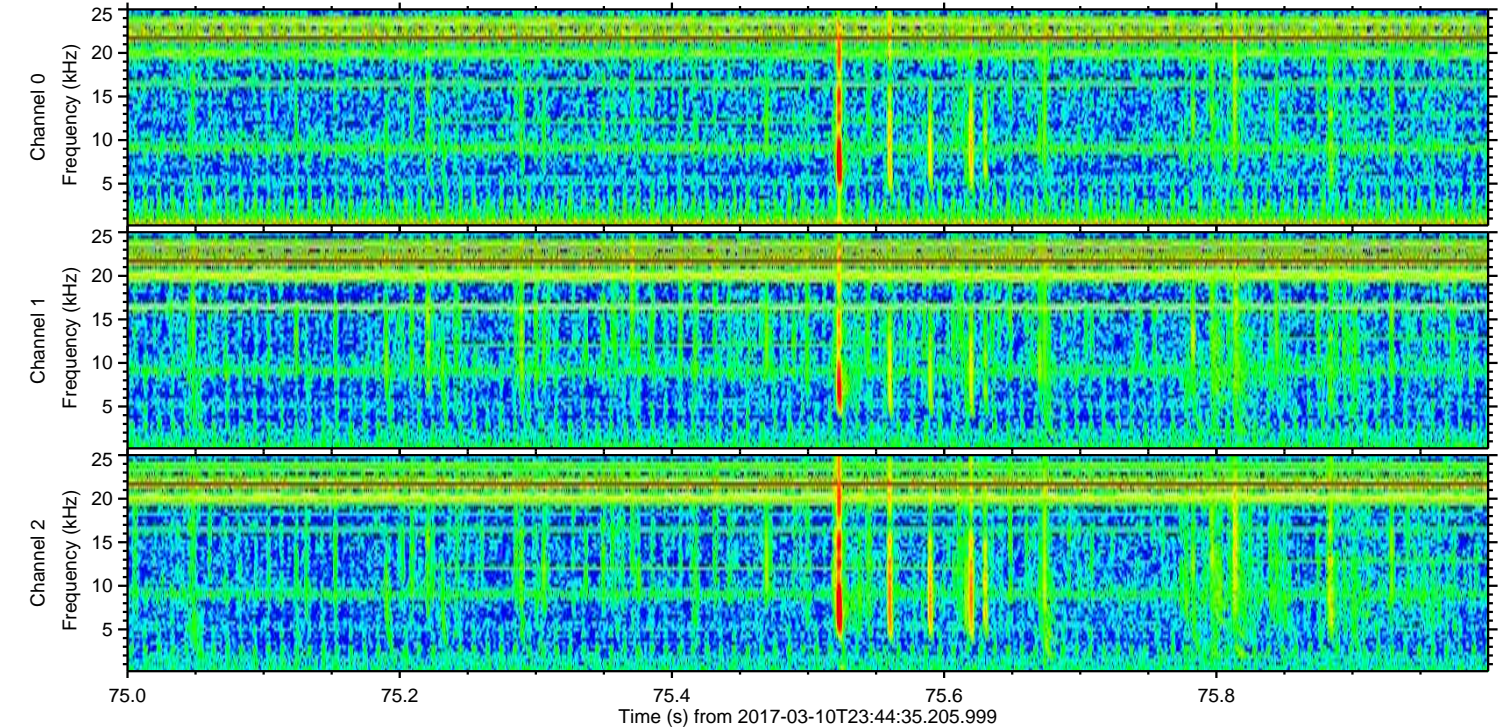
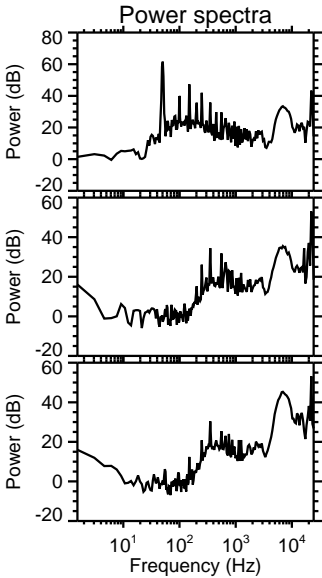
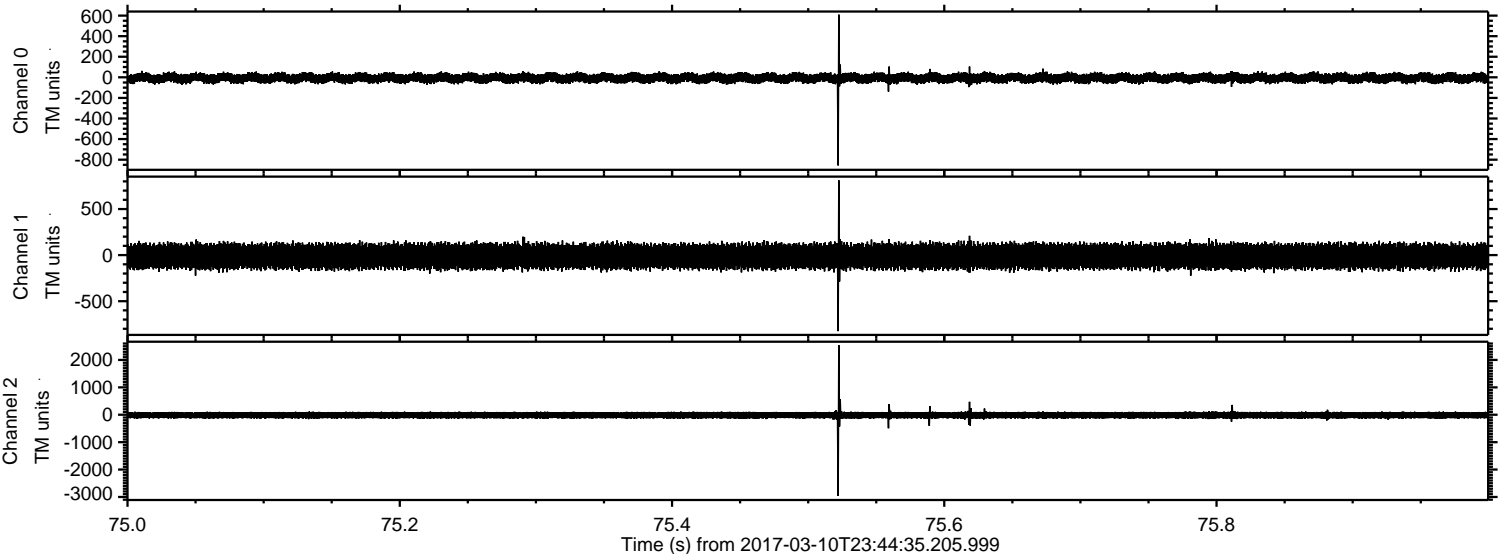


ELMAVAN 3D WAVEFORMS (Measured data sampled at 50 kHz) 51000 packets of 144 samples from 2017-03-10T23:44:35.205.999. Part 146/147

Processed Sat Mar 11 00:52:25 2017 by ELM ver.2012-10-06 from 001__elm20170310_234434__dat00.bin

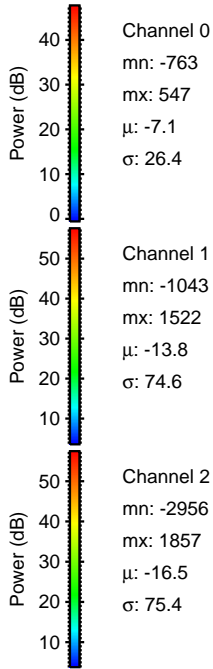
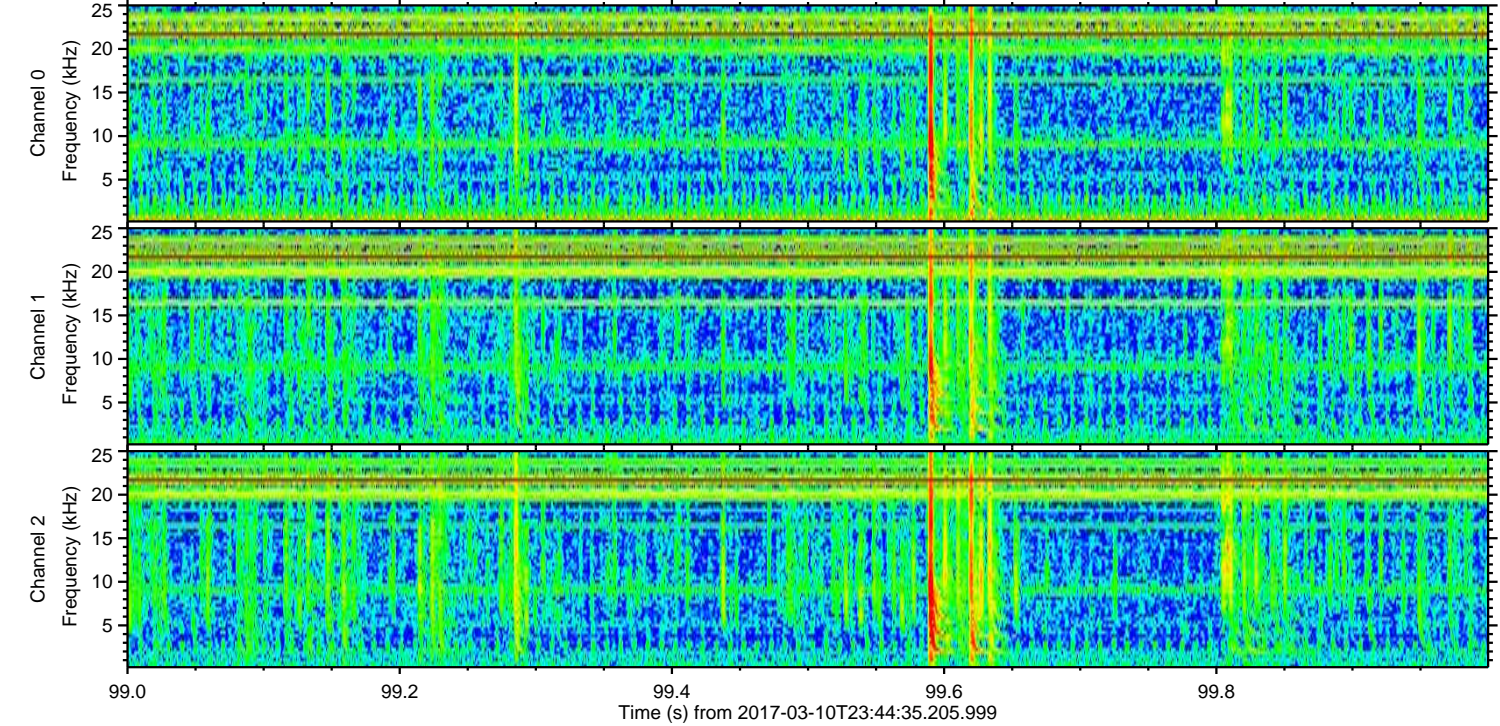
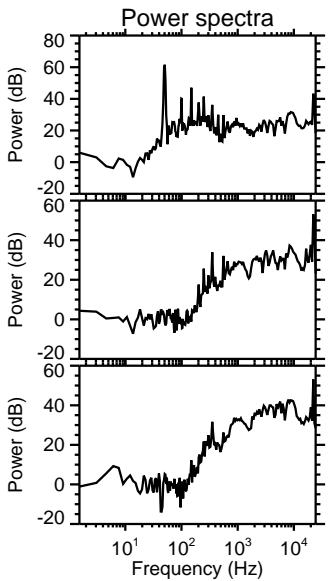
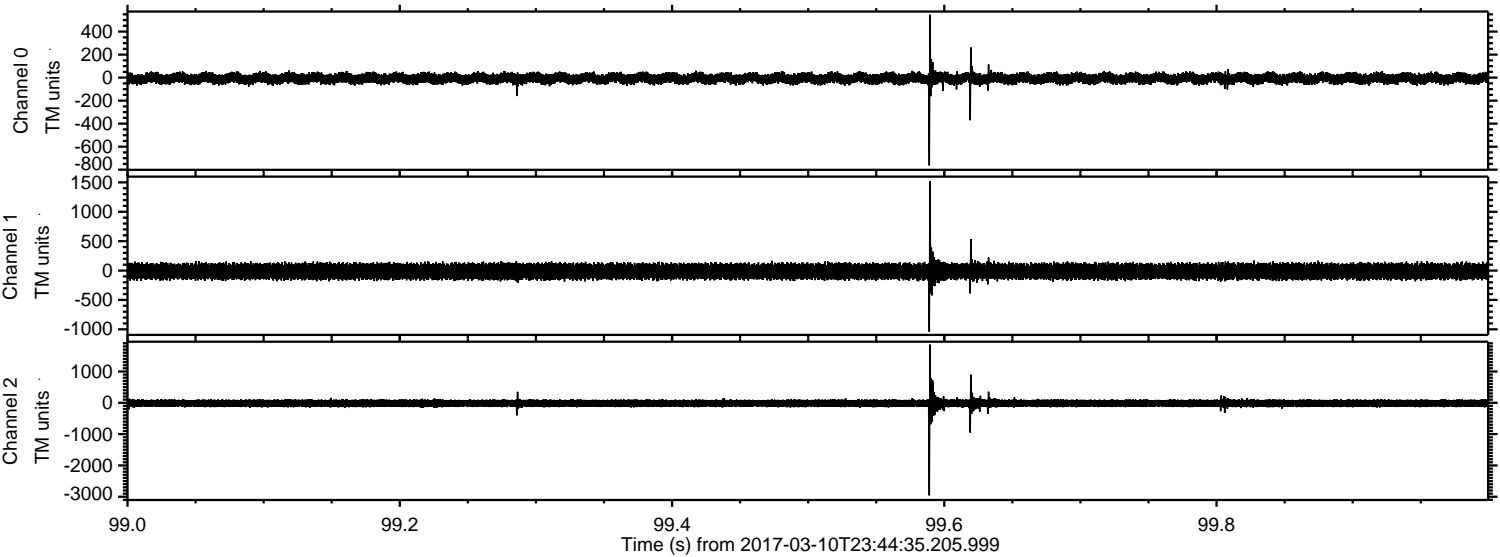


Processed Sat Mar 11 00:52:26 2017 by ELM ver.2012-10-06 from 001__elm20170310_234434__dat00.bin



ELMAVAN 3D WAVEFORMS (Measured data sampled at 50 kHz) 51000 packets of 144 samples from 2017-03-10T23:44:35.205.999. Part 100/147

Processed Sat Mar 11 00:52:26 2017 by ELM ver.2012-10-06 from 001__elm20170310_234434__dat00.bin

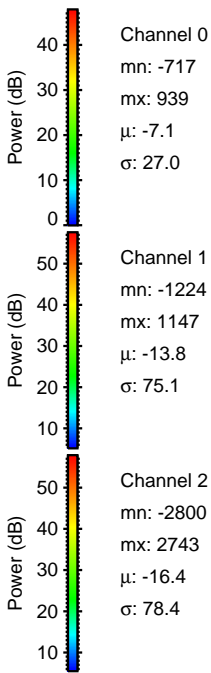
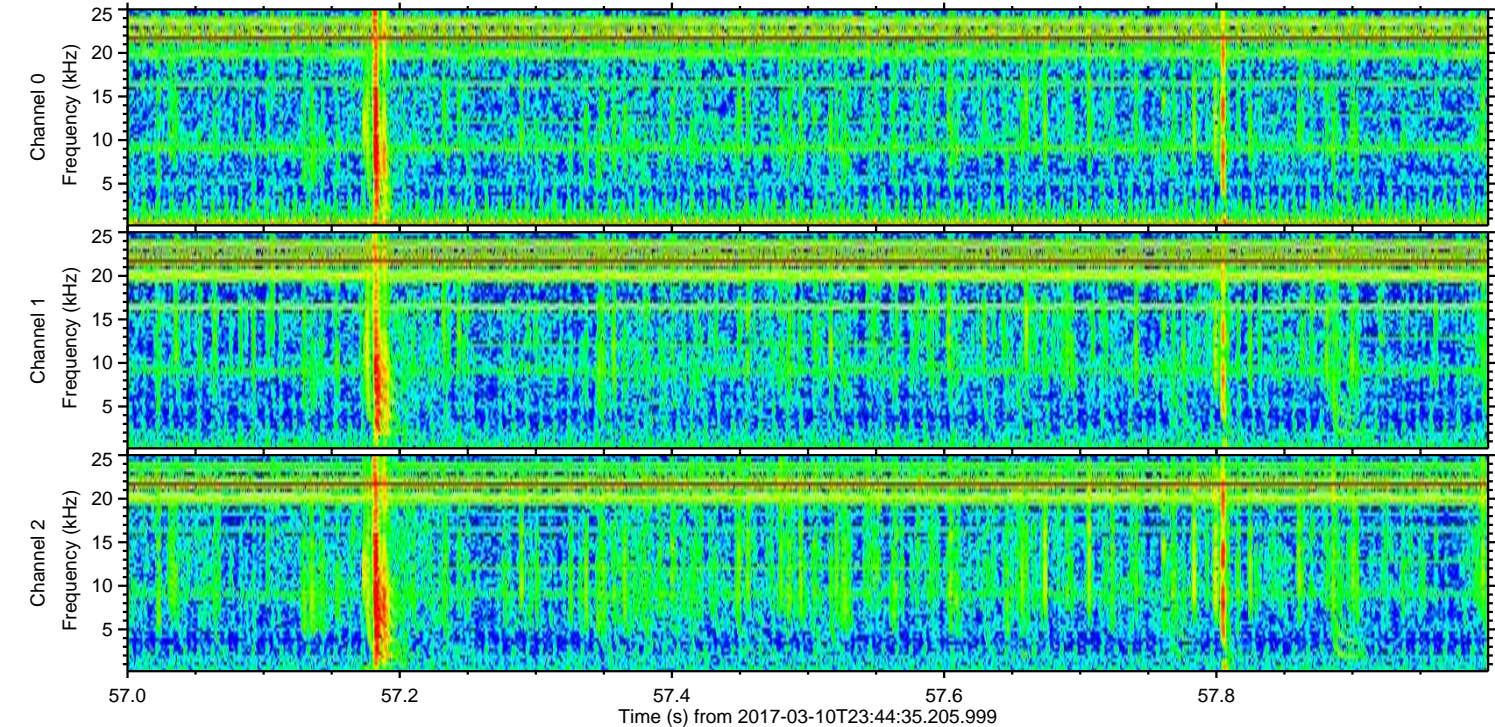
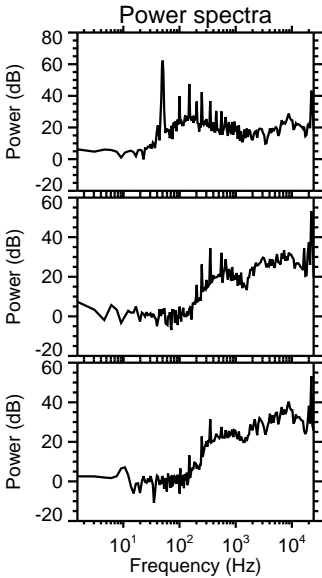
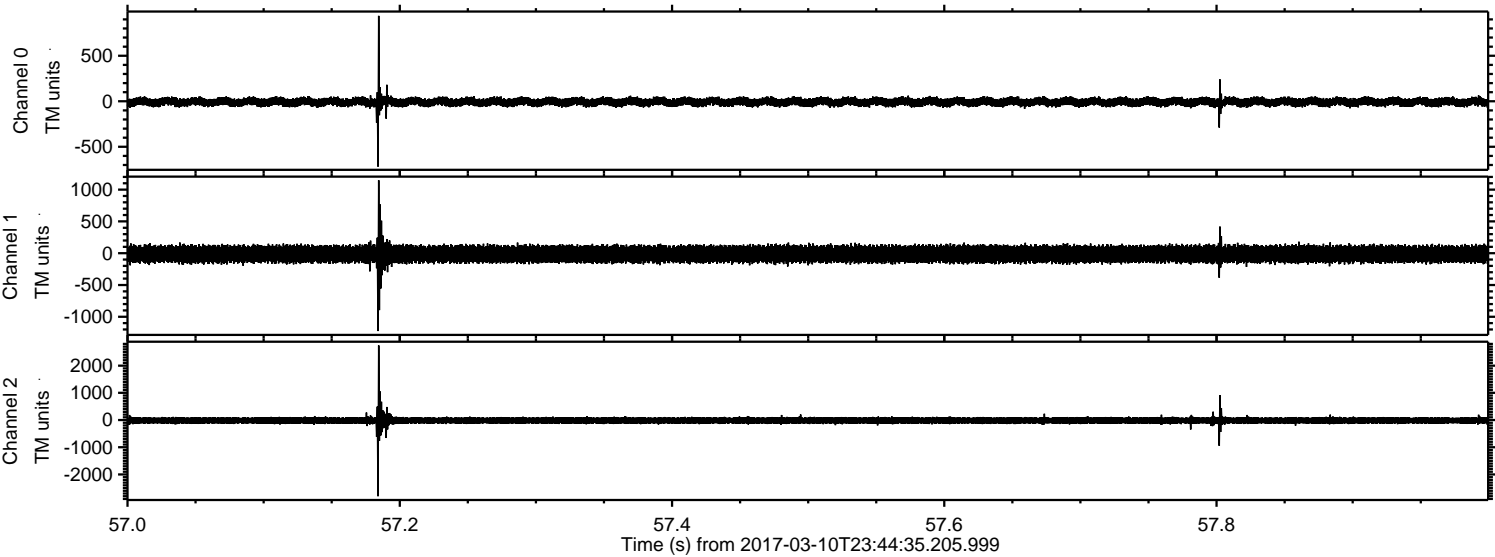


Channel 0
mn: -763
mx: 547
 μ : -7.1
 σ : 26.4

Channel 1
mn: -1043
mx: 1522
 μ : -13.8
 σ : 74.6

Channel 2
mn: -2956
mx: 1857
 μ : -16.5
 σ : 75.4

Processed Sat Mar 11 00:52:27 2017 by ELM ver.2012-10-06 from 001__elm20170310_234434__dat00.bin

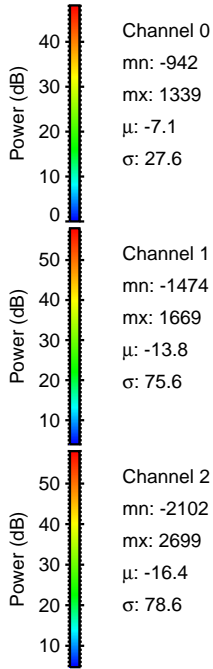
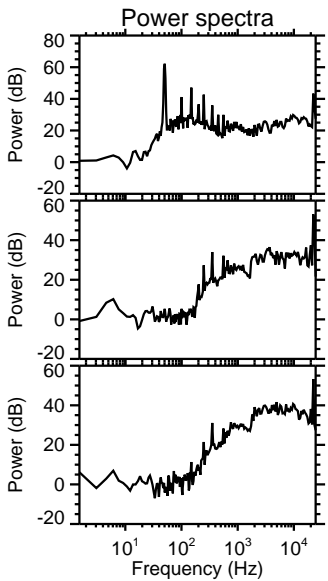
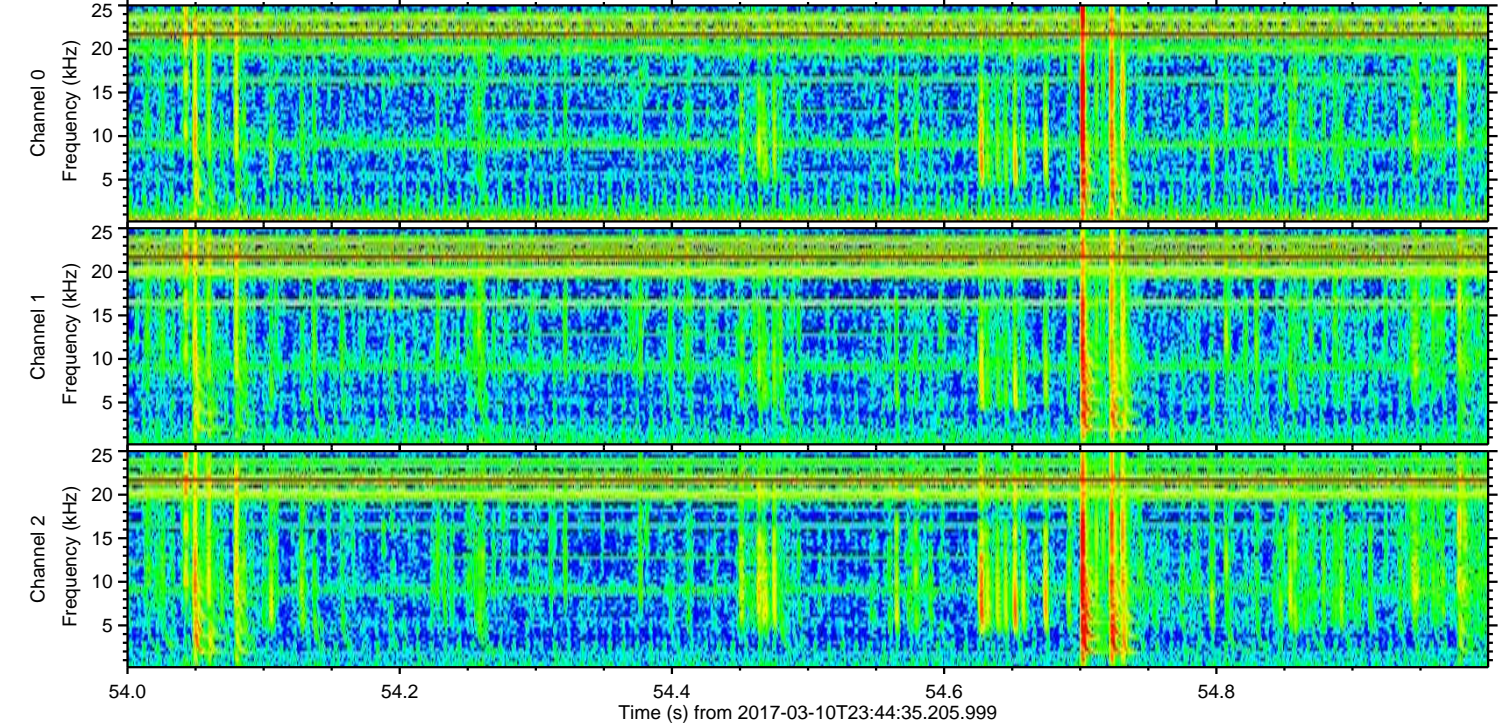
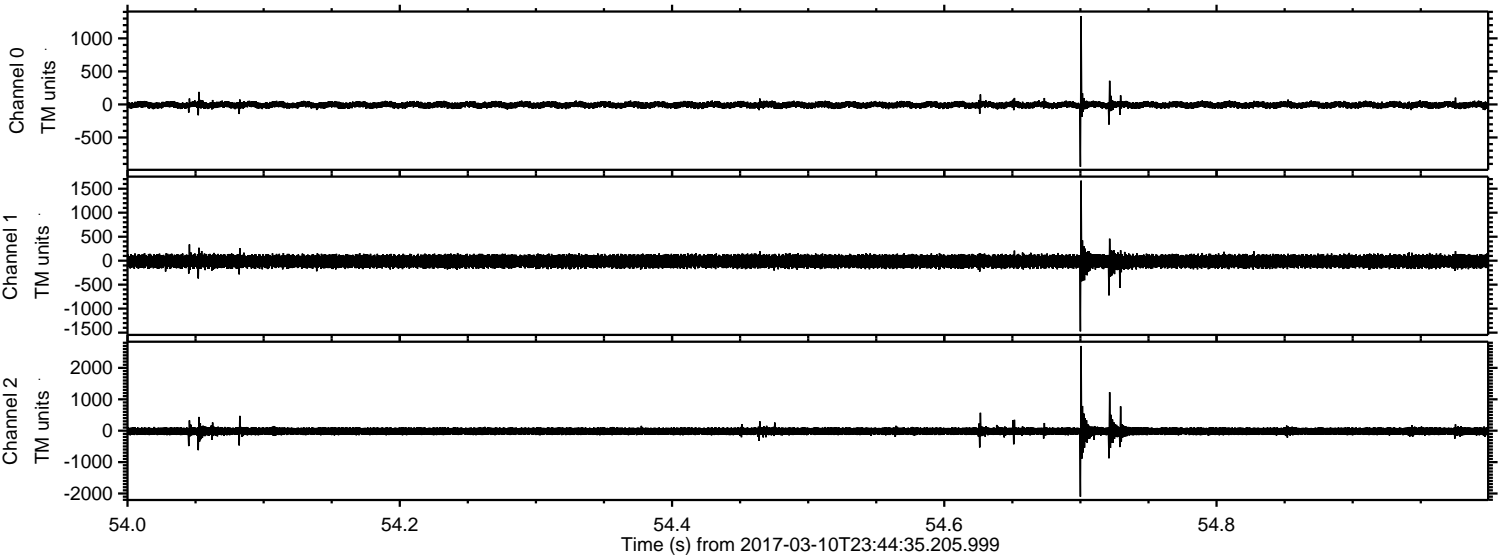


Channel 0
mn: -717
mx: 939
 μ : -7.1
 σ : 27.0

Channel 1
mn: -1224
mx: 1147
 μ : -13.8
 σ : 75.1

Channel 2
mn: -2800
mx: 2743
 μ : -16.4
 σ : 78.4

Processed Sat Mar 11 00:52:28 2017 by ELM ver.2012-10-06 from 001__elm20170310_234434__dat00.bin



ELMAVAN 3D WAVEFORMS (Measured data sampled at 50 kHz) 51000 packets of 144 samples from 2017-03-10T23:44:35.205.999. Part 20/147

Processed Sat Mar 11 00:52:29 2017 by ELM ver.2012-10-06 from 001__elm20170310_234434__dat00.bin

