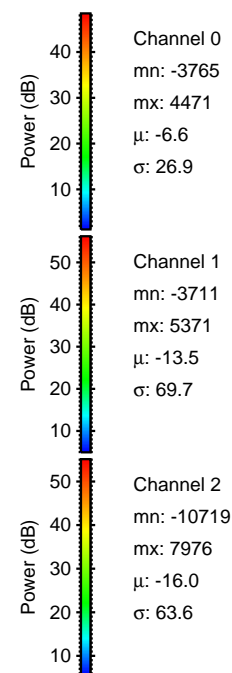
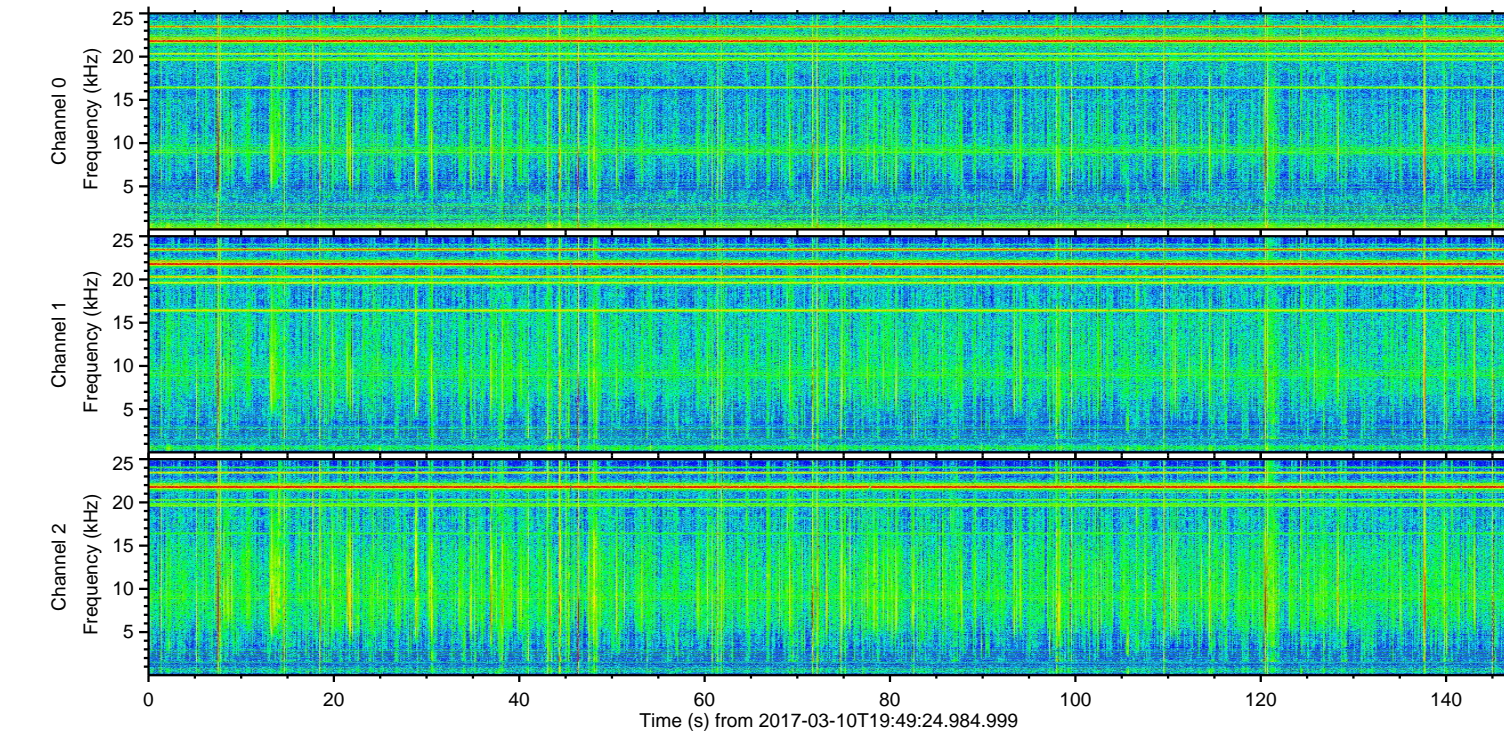
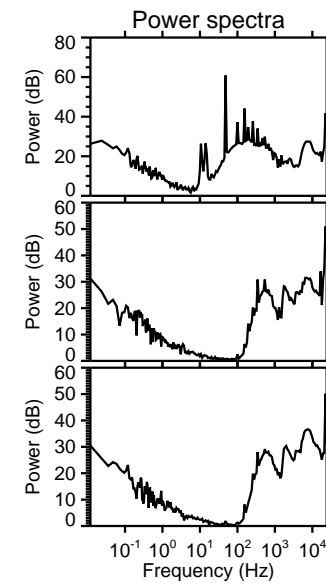
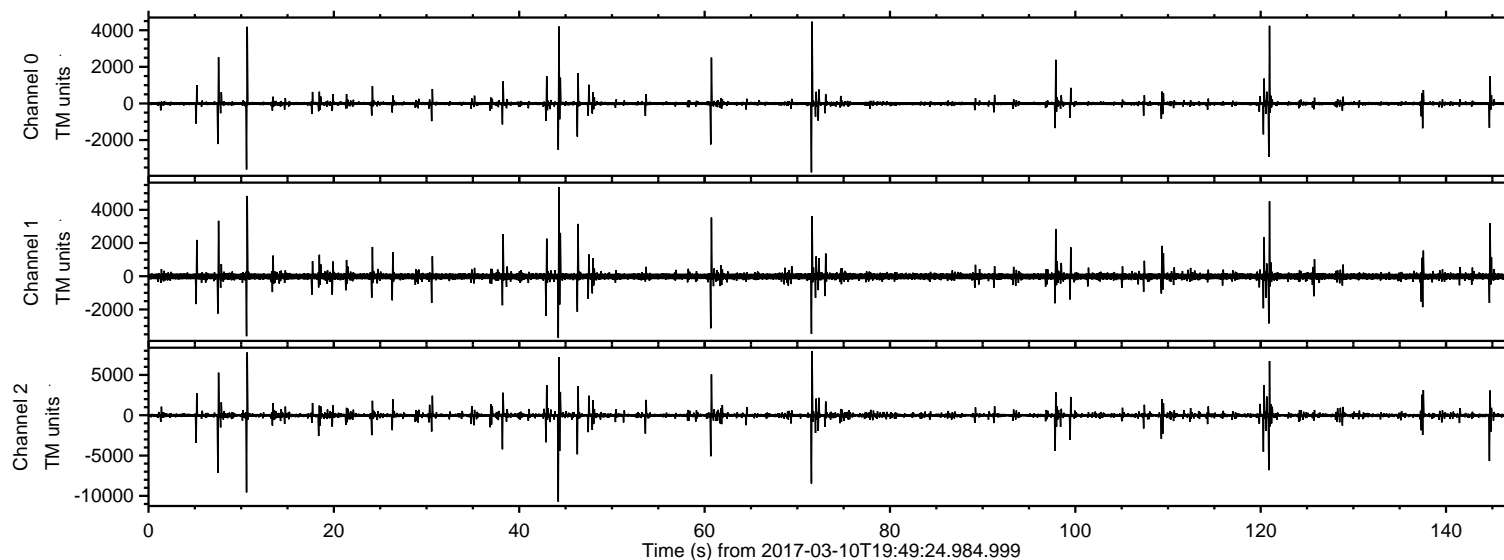
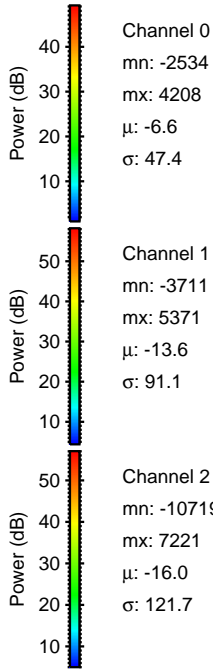
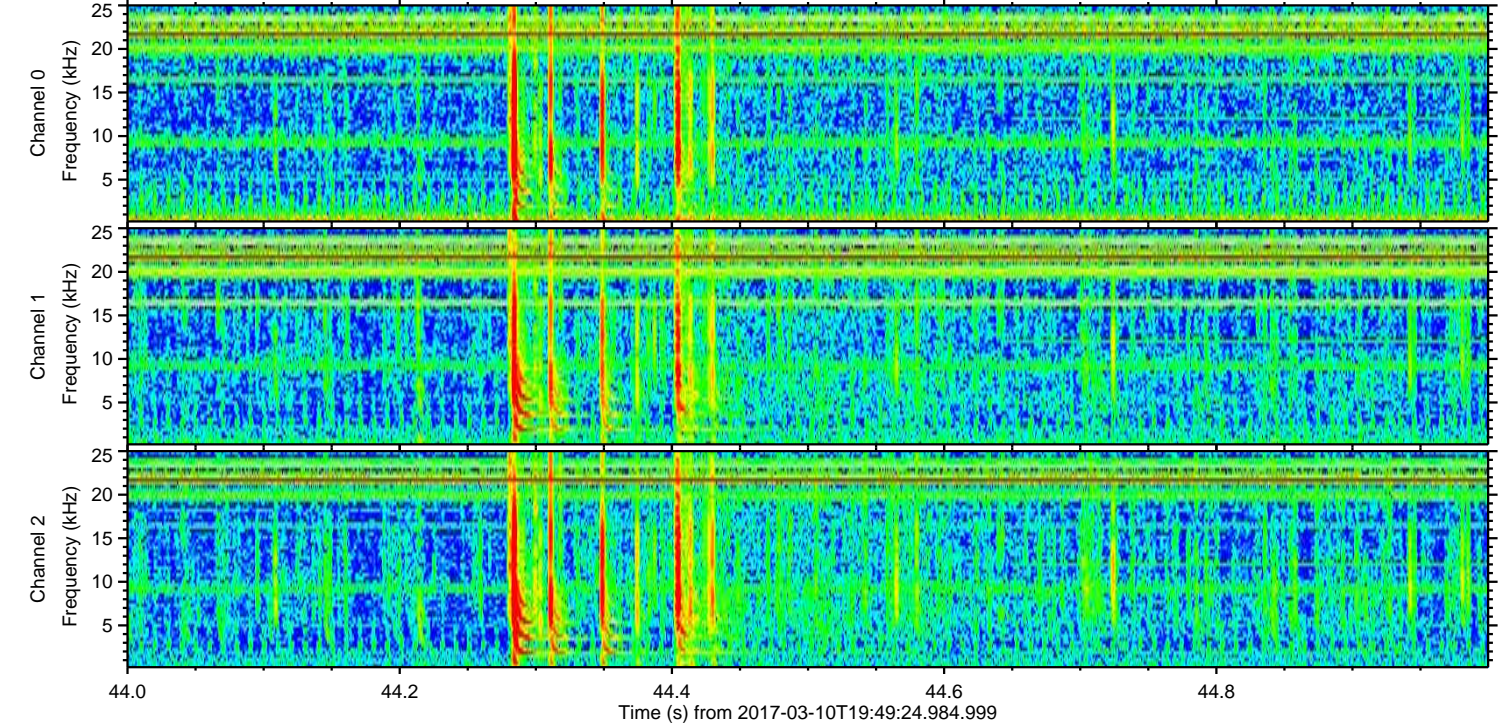
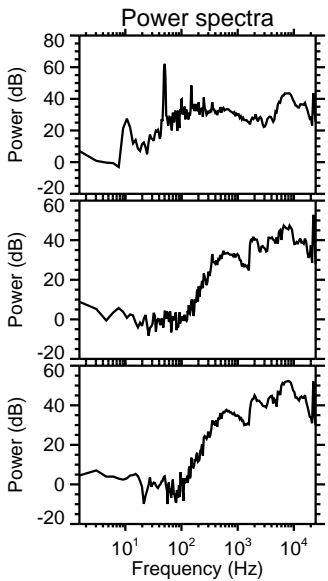
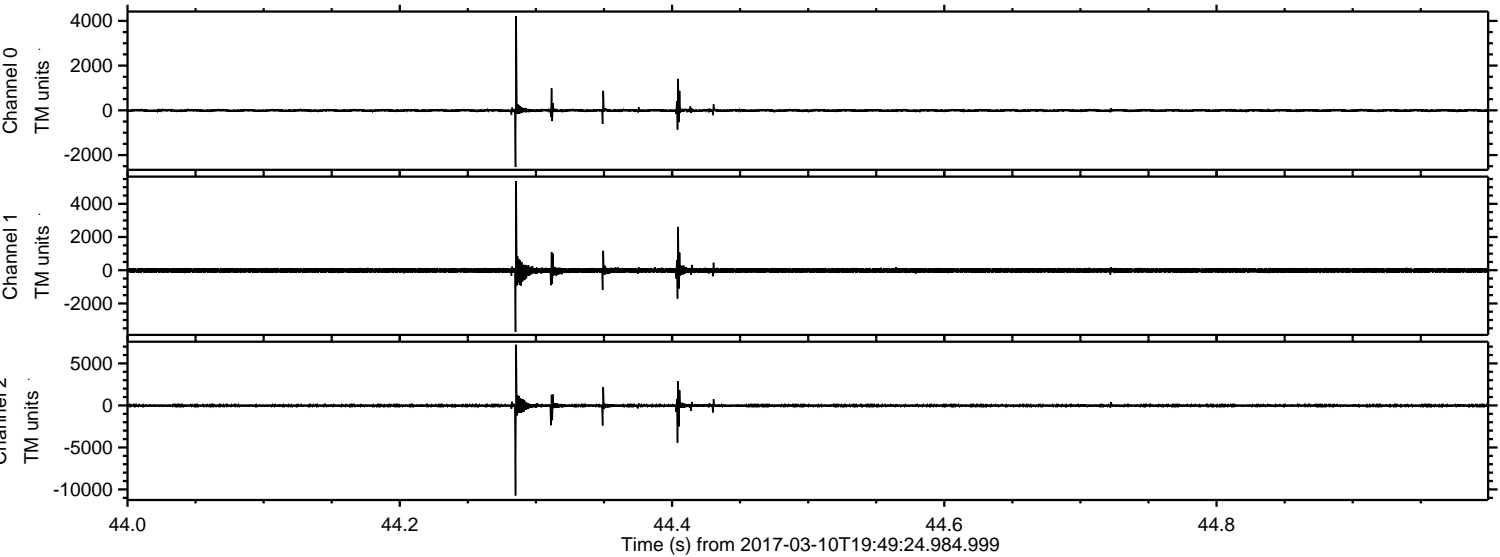


ELMAVAN 3D WAVEFORMS (Measured data sampled at 50 kHz) 51000 packets of 144 samples from 2017-03-10T19:49:24.984.999.

Processed Fri Mar 10 20:57:04 2017 by ELM ver.2012-10-06 from 001__elm20170310_194923__dat00.bin

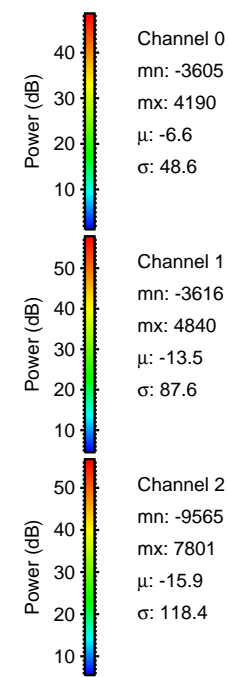
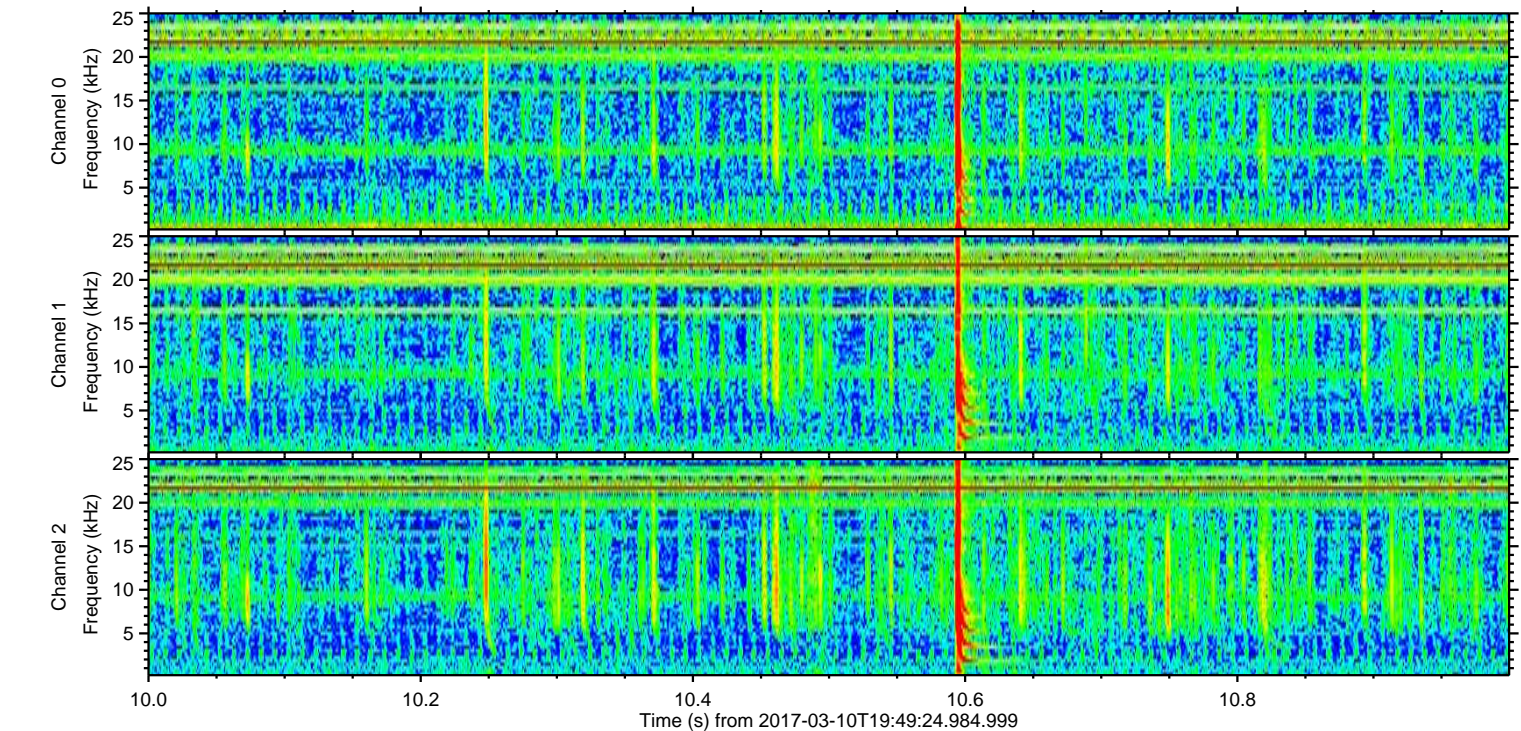
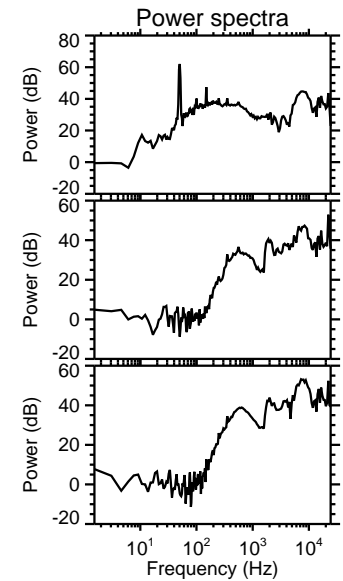
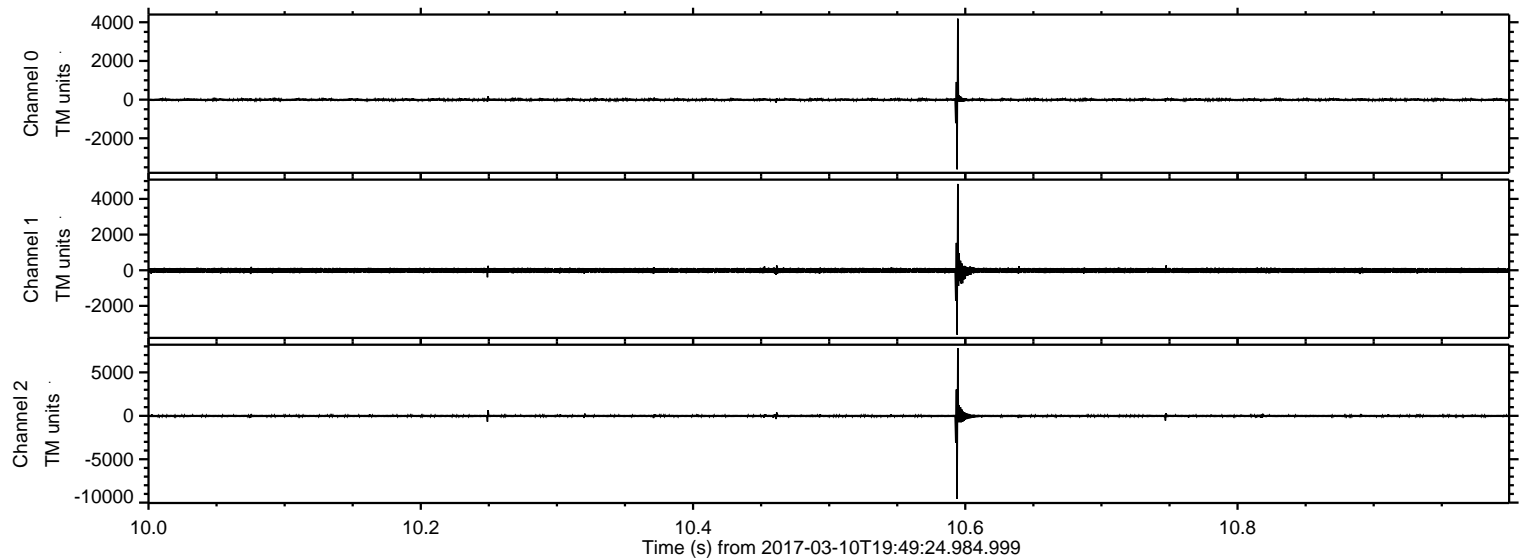


Processed Fri Mar 10 20:57:16 2017 by ELM ver.2012-10-06 from 001__elm20170310_194923__dat00.bin



ELMAVAN 3D WAVEFORMS (Measured data sampled at 50 kHz) 51000 packets of 144 samples from 2017-03-10T19:49:24.984.999. Part 11/147

Processed Fri Mar 10 20:57:17 2017 by ELM ver.2012-10-06 from 001__elm20170310_194923__dat00.bin



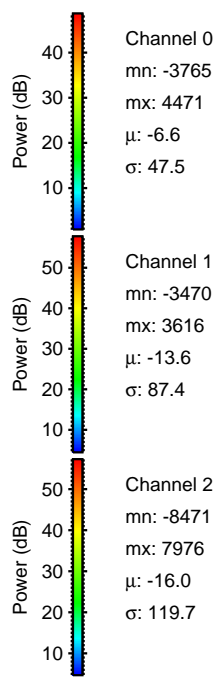
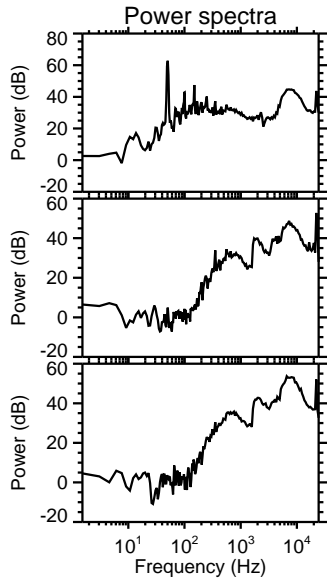
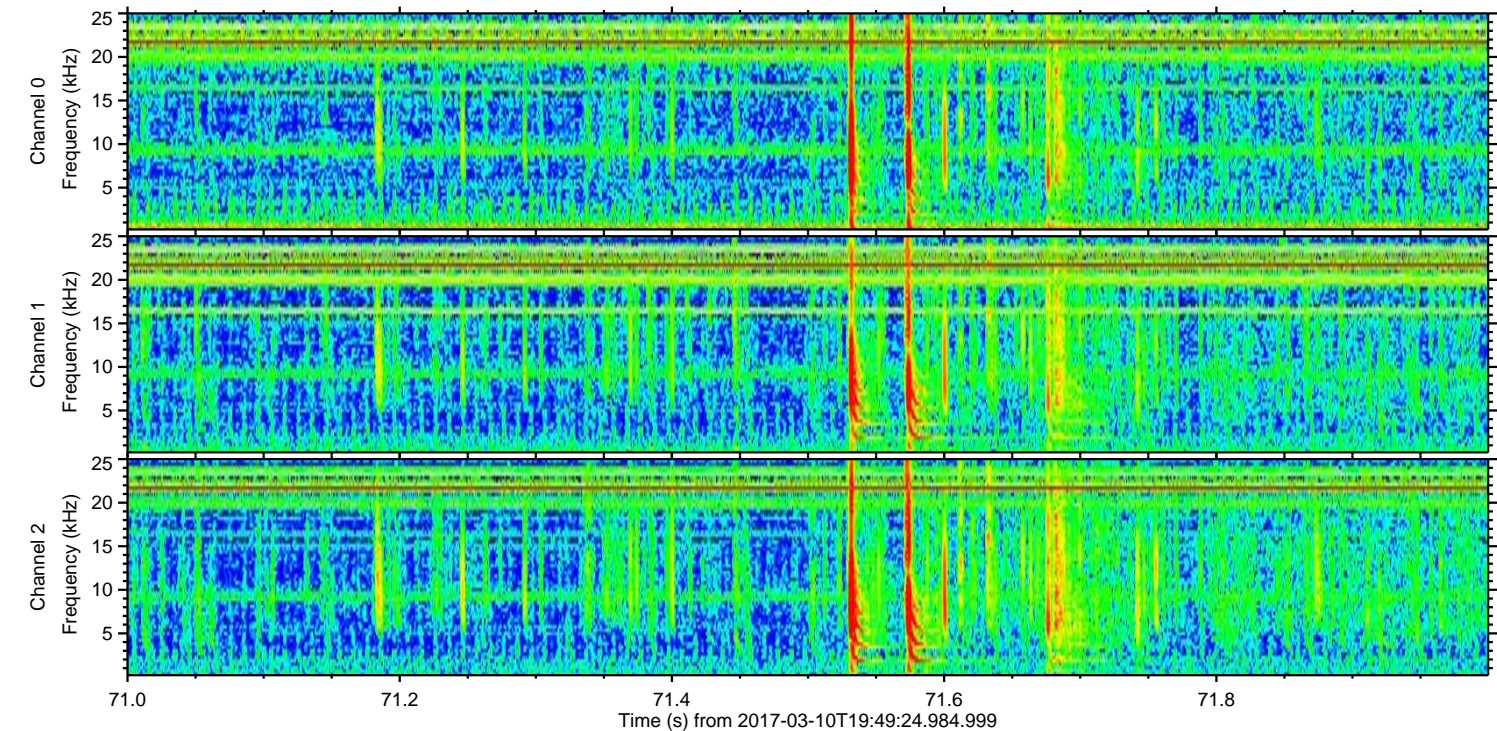
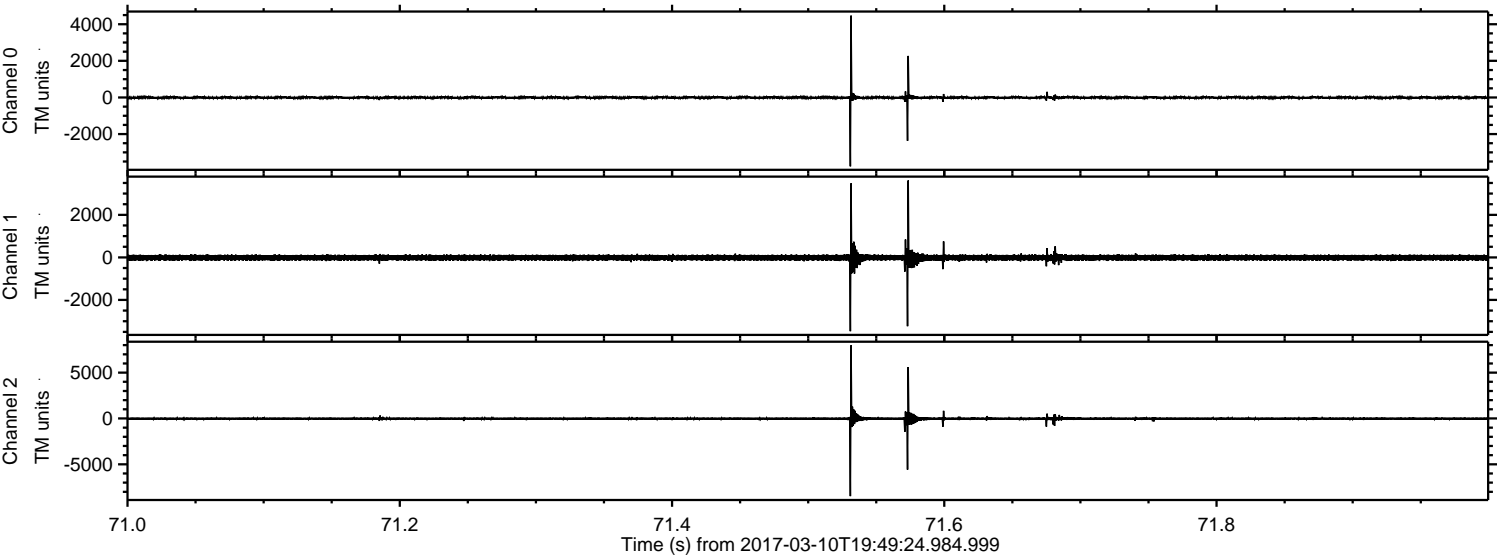
Channel 0
mn: -3605
mx: 4190
 μ : -6.6
 σ : 48.6

Channel 1
mn: -3616
mx: 4840
 μ : -13.5
 σ : 87.6

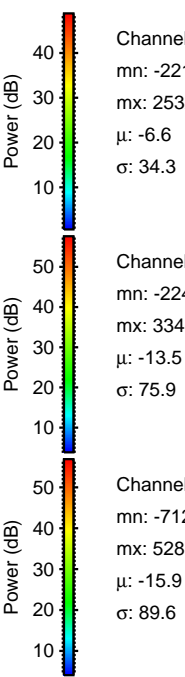
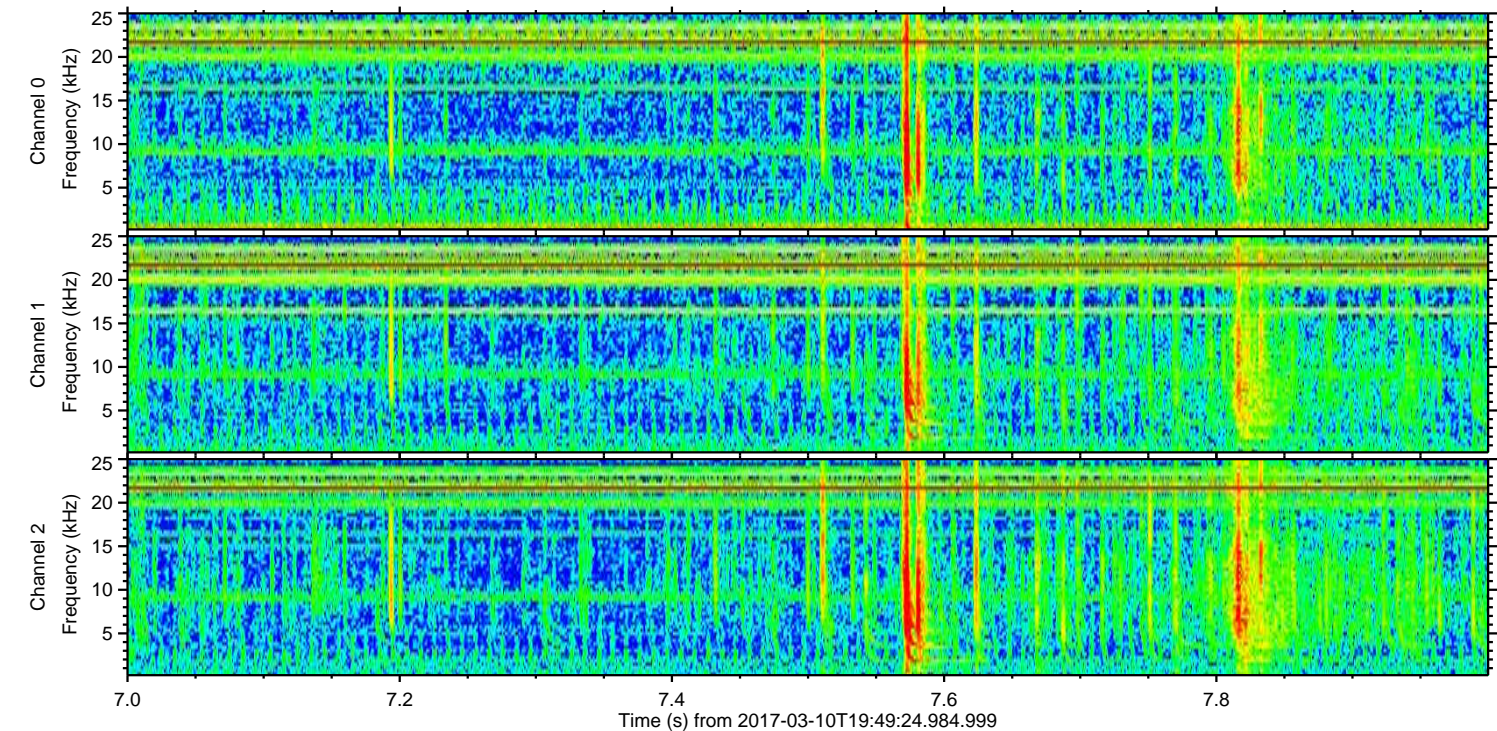
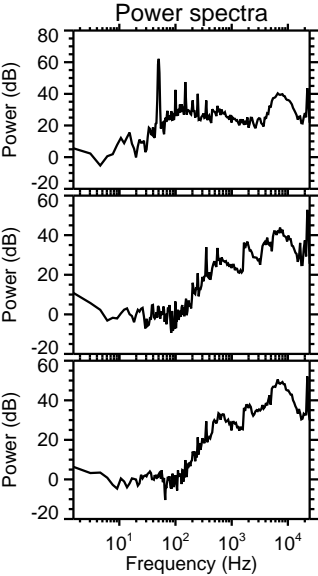
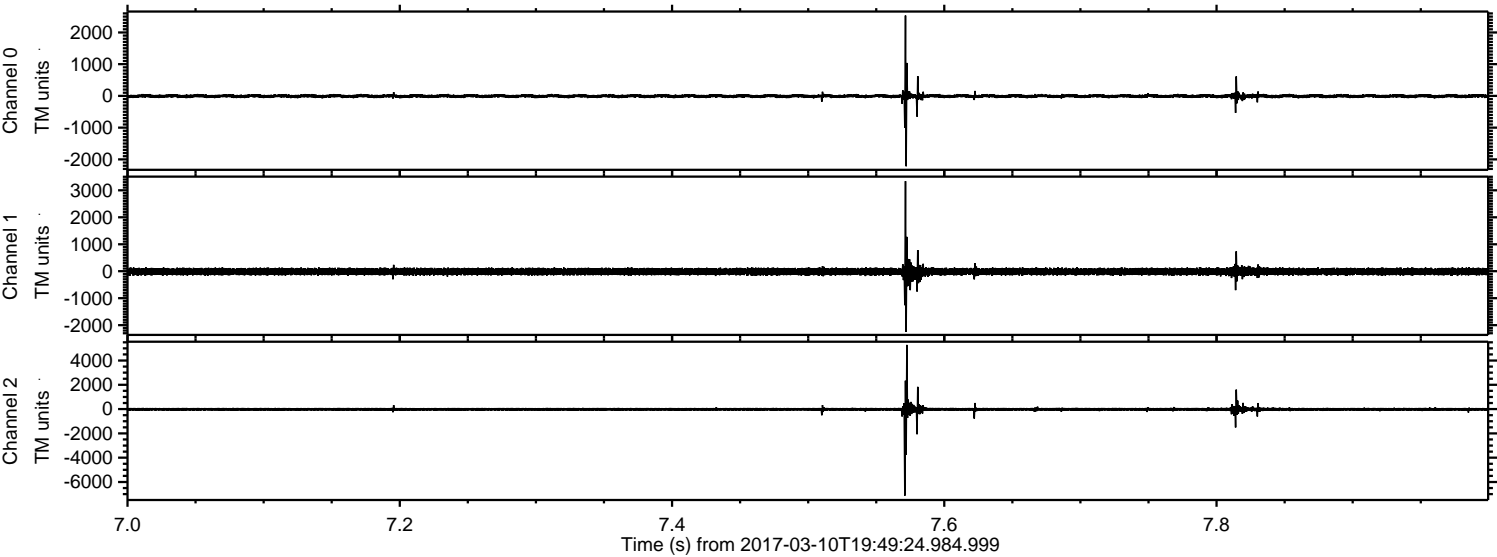
Channel 2
mn: -9565
mx: 7801
 μ : -15.9
 σ : 118.4

ELMAVAN 3D WAVEFORMS (Measured data sampled at 50 kHz) 51000 packets of 144 samples from 2017-03-10T19:49:24.984.999. Part 72/147

Processed Fri Mar 10 20:57:18 2017 by ELM ver.2012-10-06 from 001__elm20170310_194923__dat00.bin

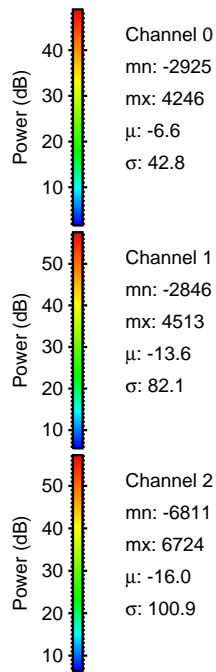
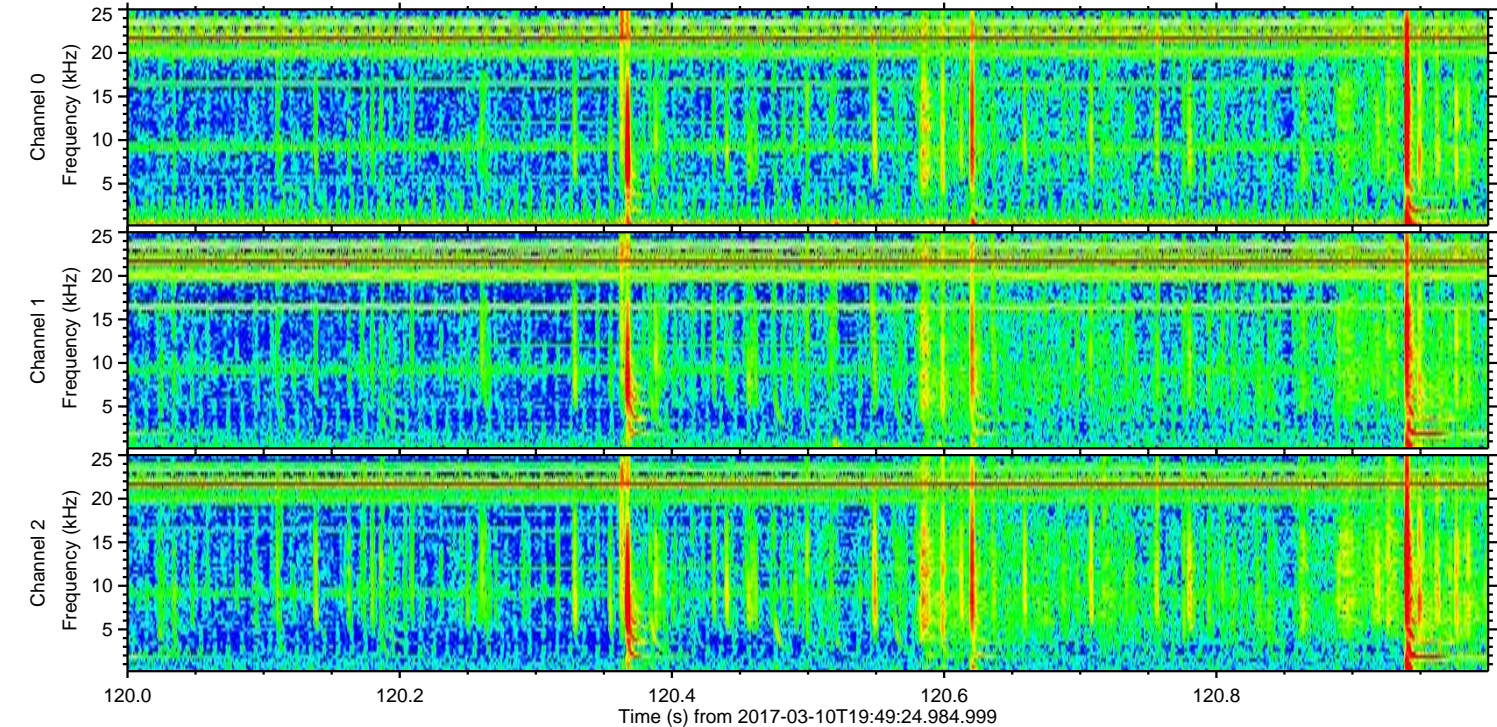
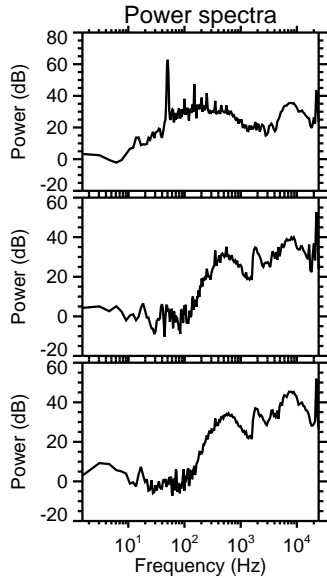
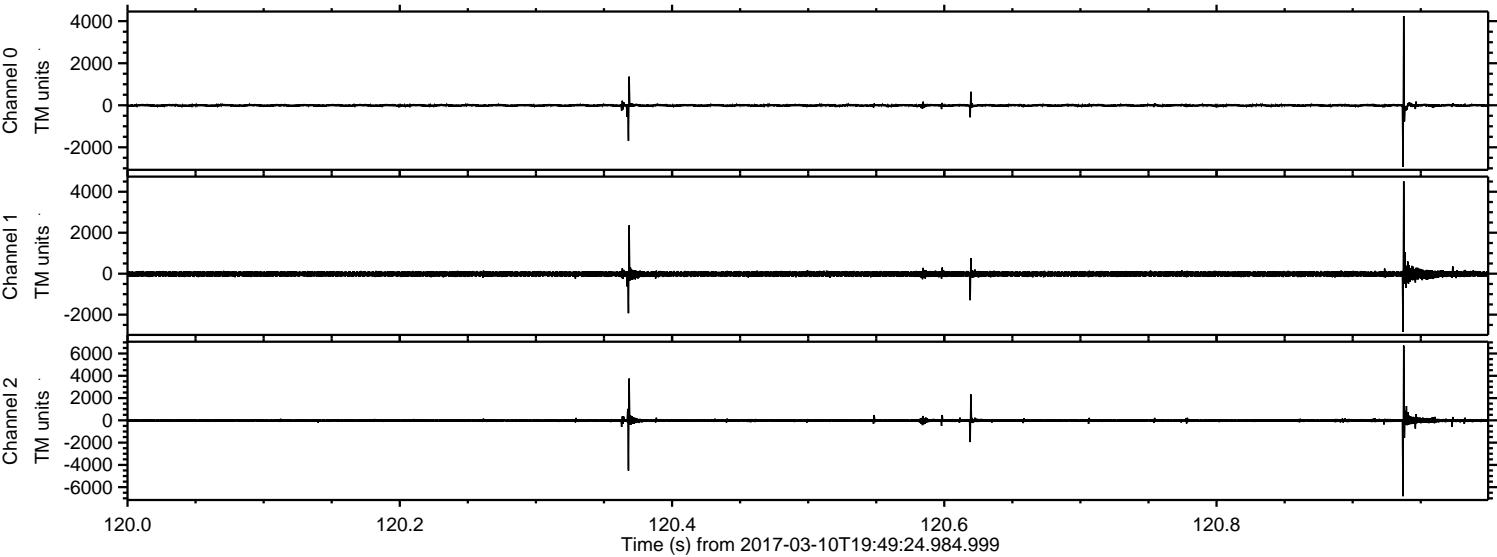


Processed Fri Mar 10 20:57:19 2017 by ELM ver.2012-10-06 from 001__elm20170310_194923__dat00.bin



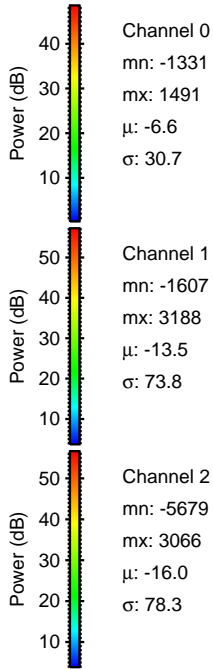
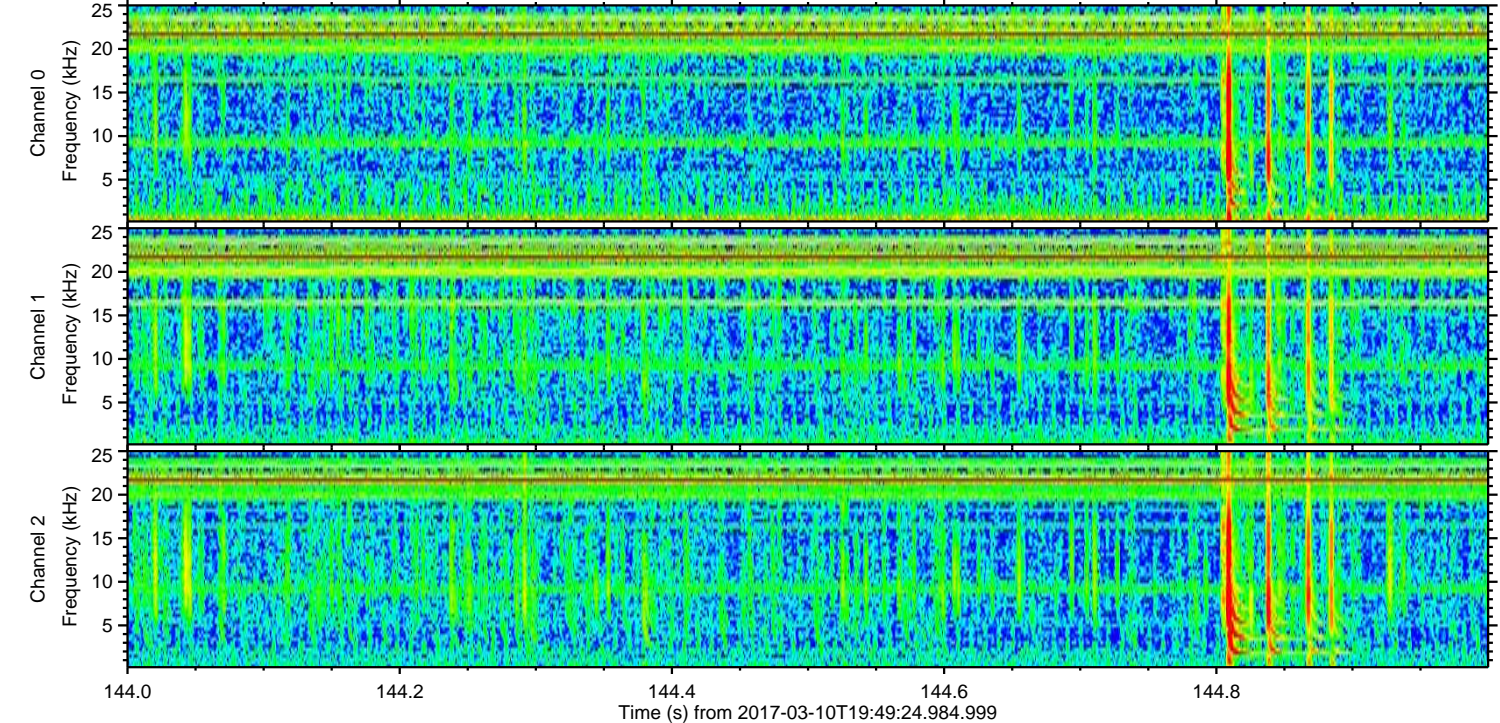
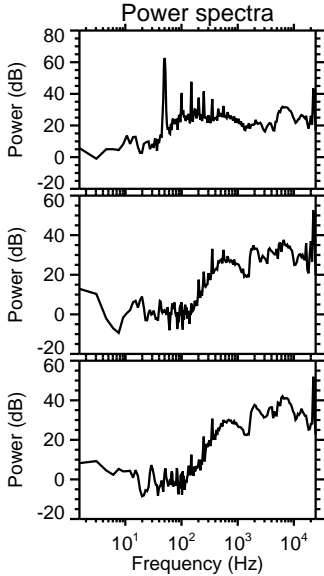
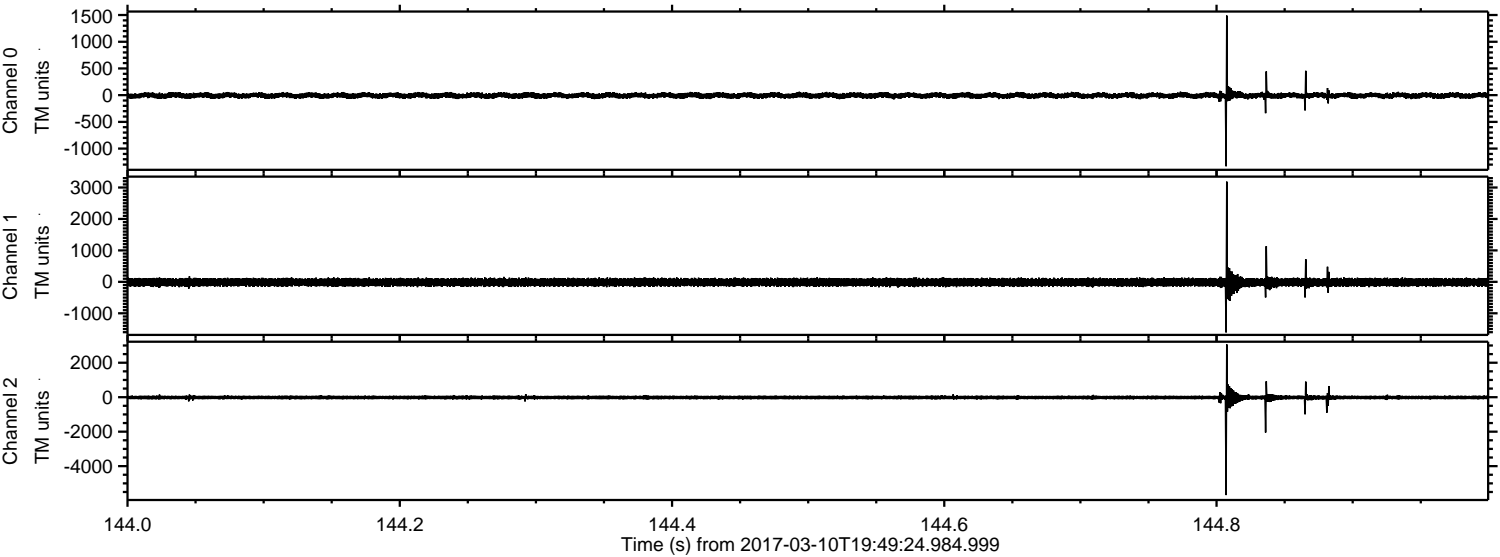
ELMAVAN 3D WAVEFORMS (Measured data sampled at 50 kHz) 51000 packets of 144 samples from 2017-03-10T19:49:24.984.999. Part 121/147

Processed Fri Mar 10 20:57:20 2017 by ELM ver.2012-10-06 from 001__elm20170310_194923__dat00.bin

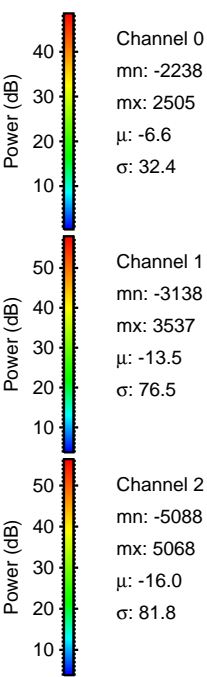
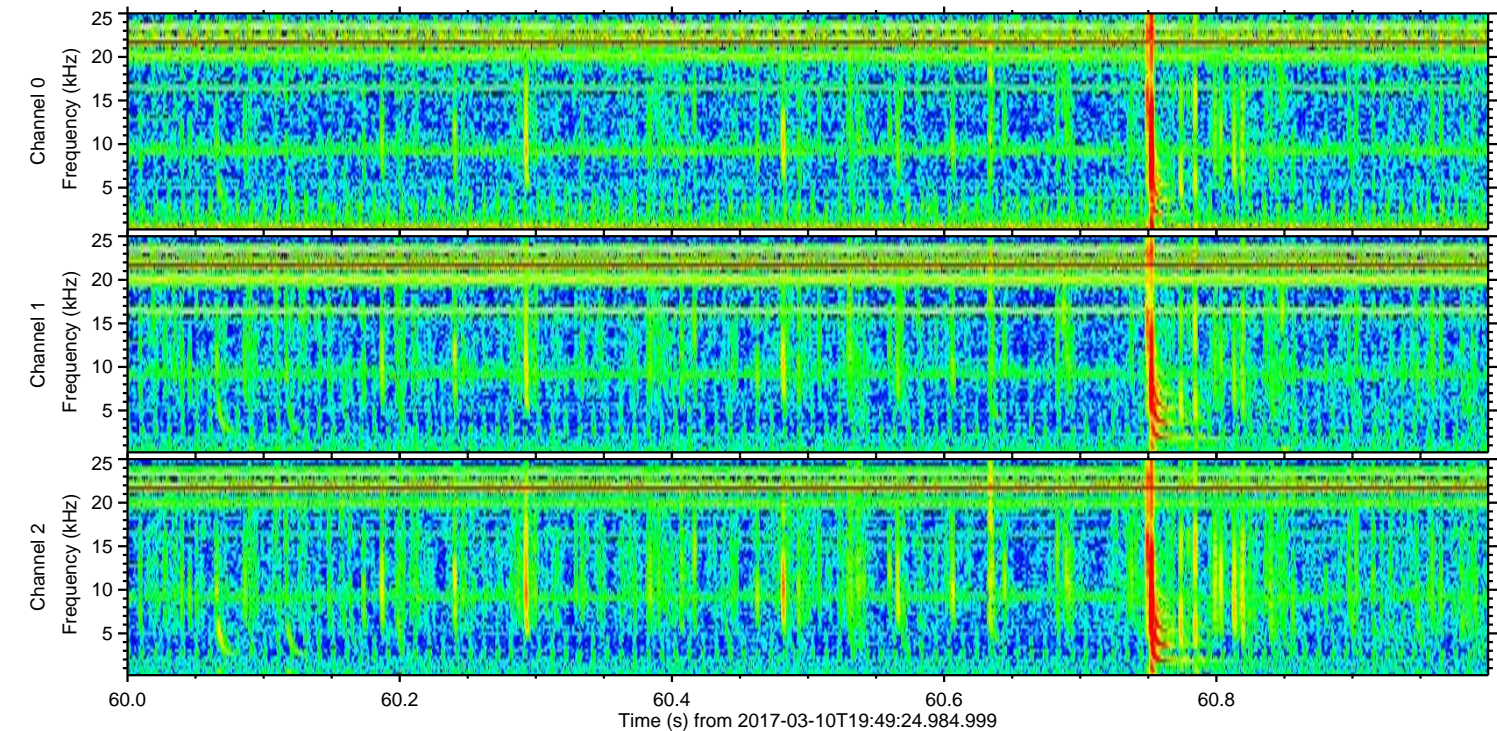
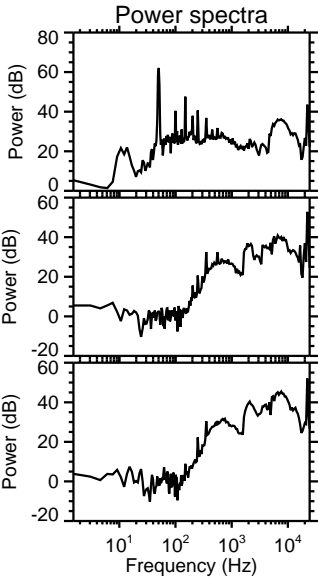
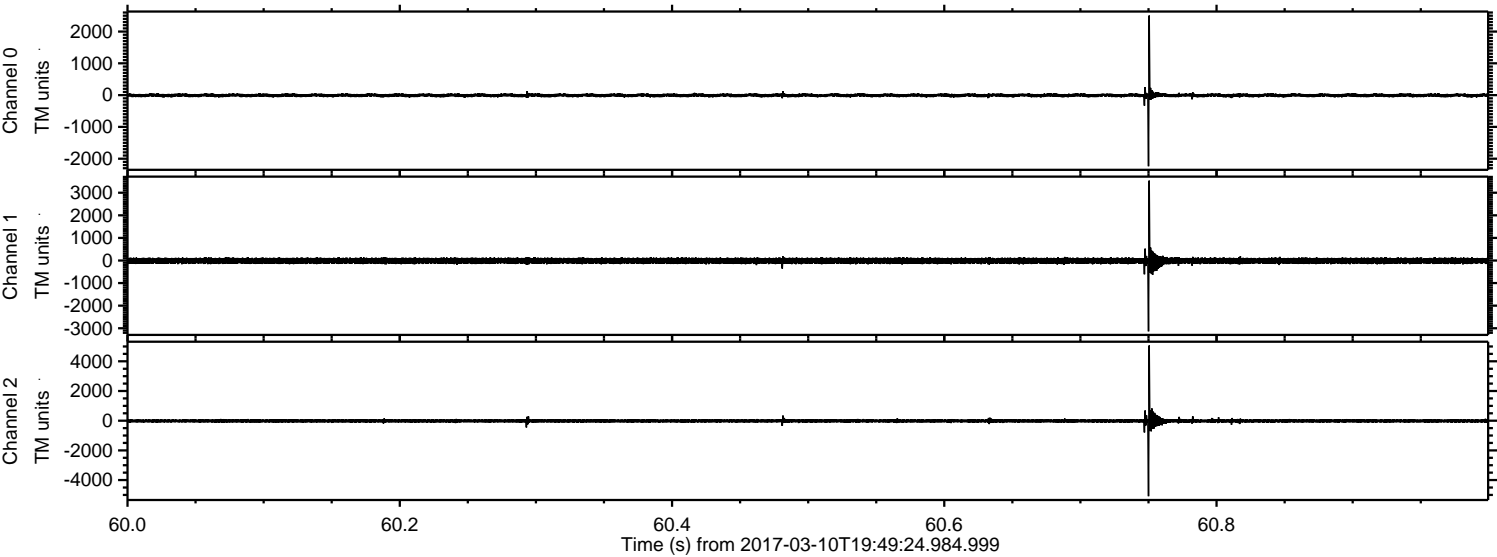


ELMAVAN 3D WAVEFORMS (Measured data sampled at 50 kHz) 51000 packets of 144 samples from 2017-03-10T19:49:24.984.999. Part 145/147

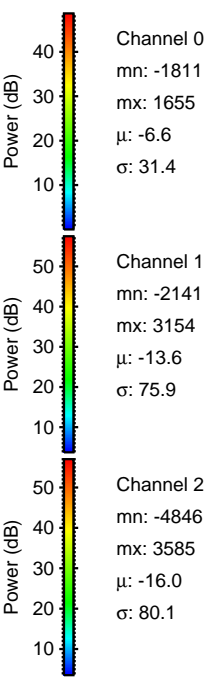
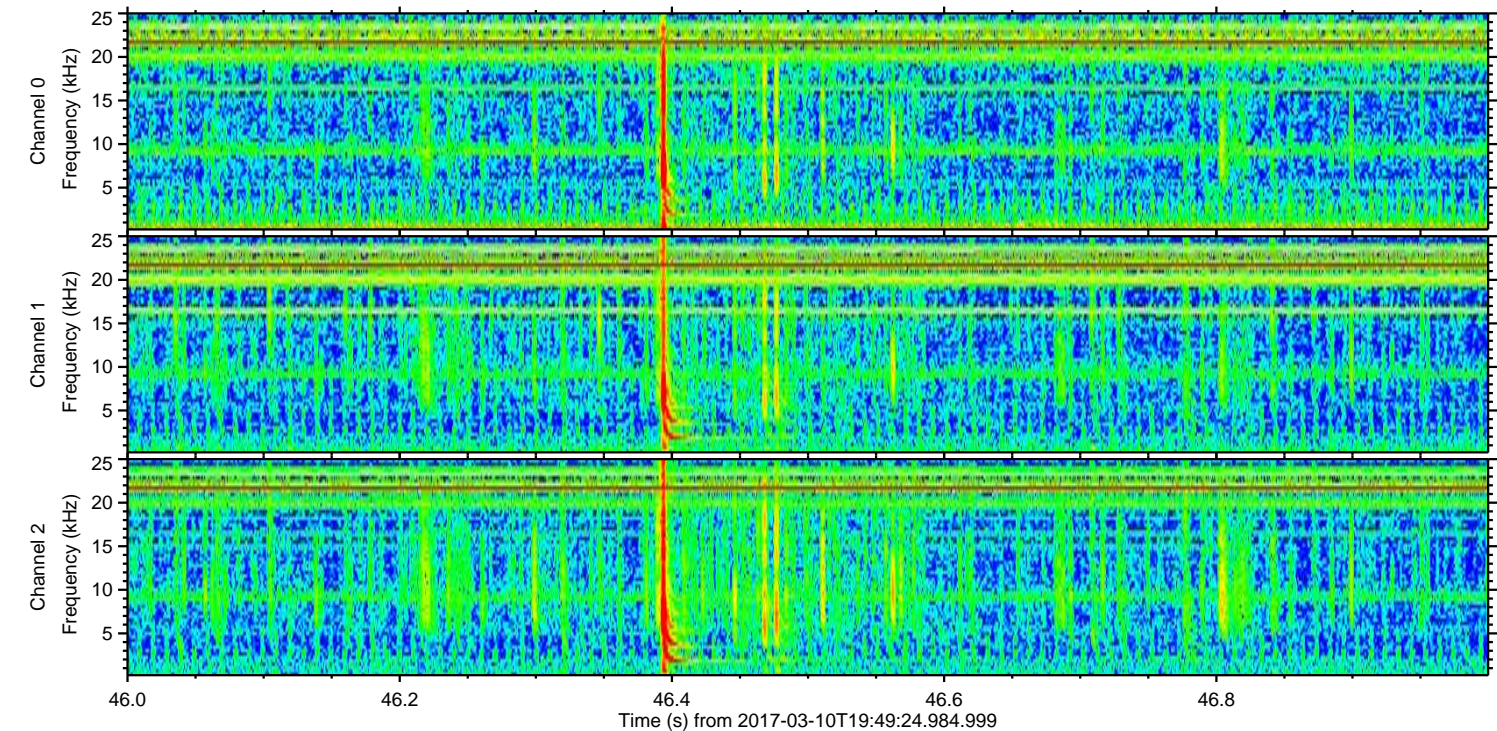
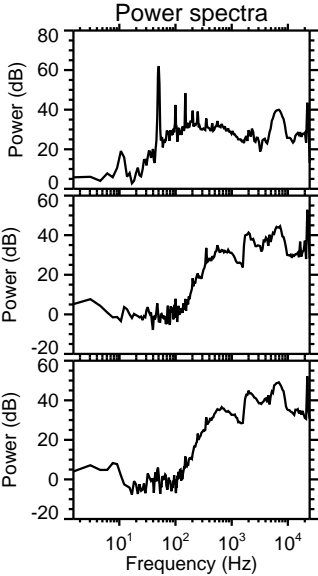
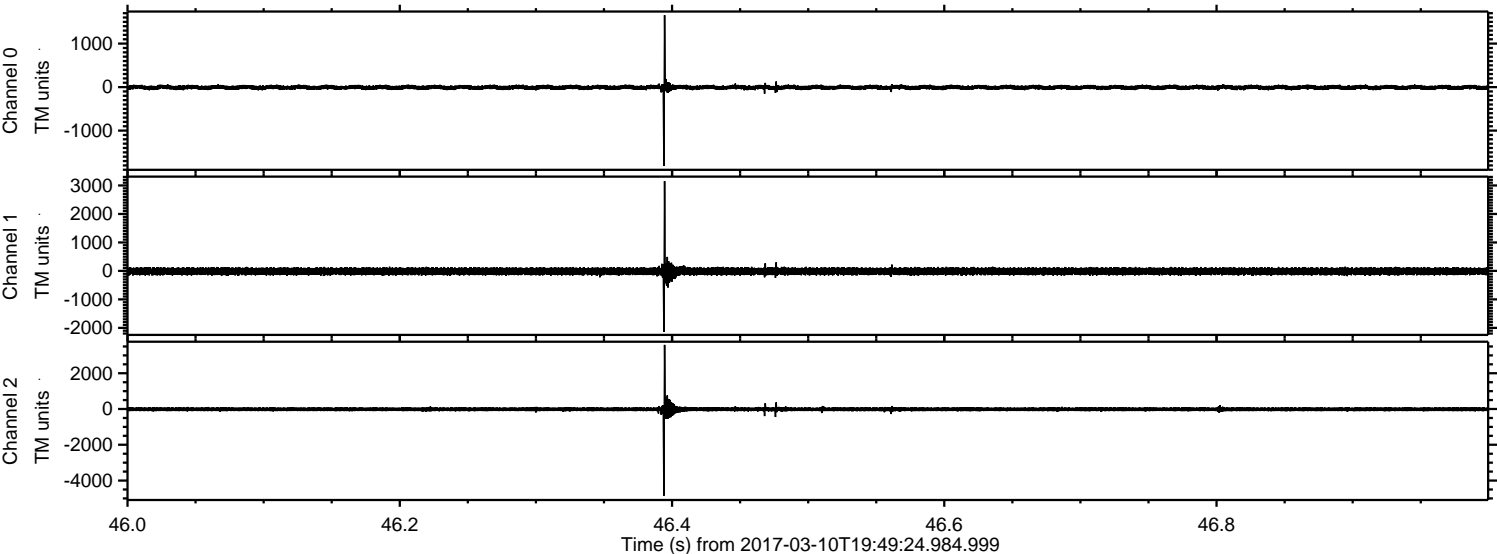
Processed Fri Mar 10 20:57:21 2017 by ELM ver.2012-10-06 from 001__elm20170310_194923__dat00.bin



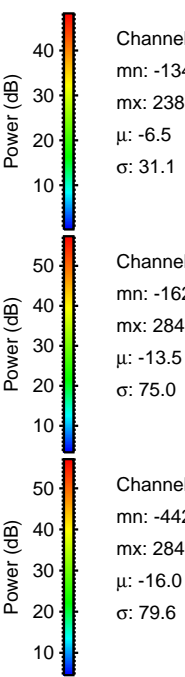
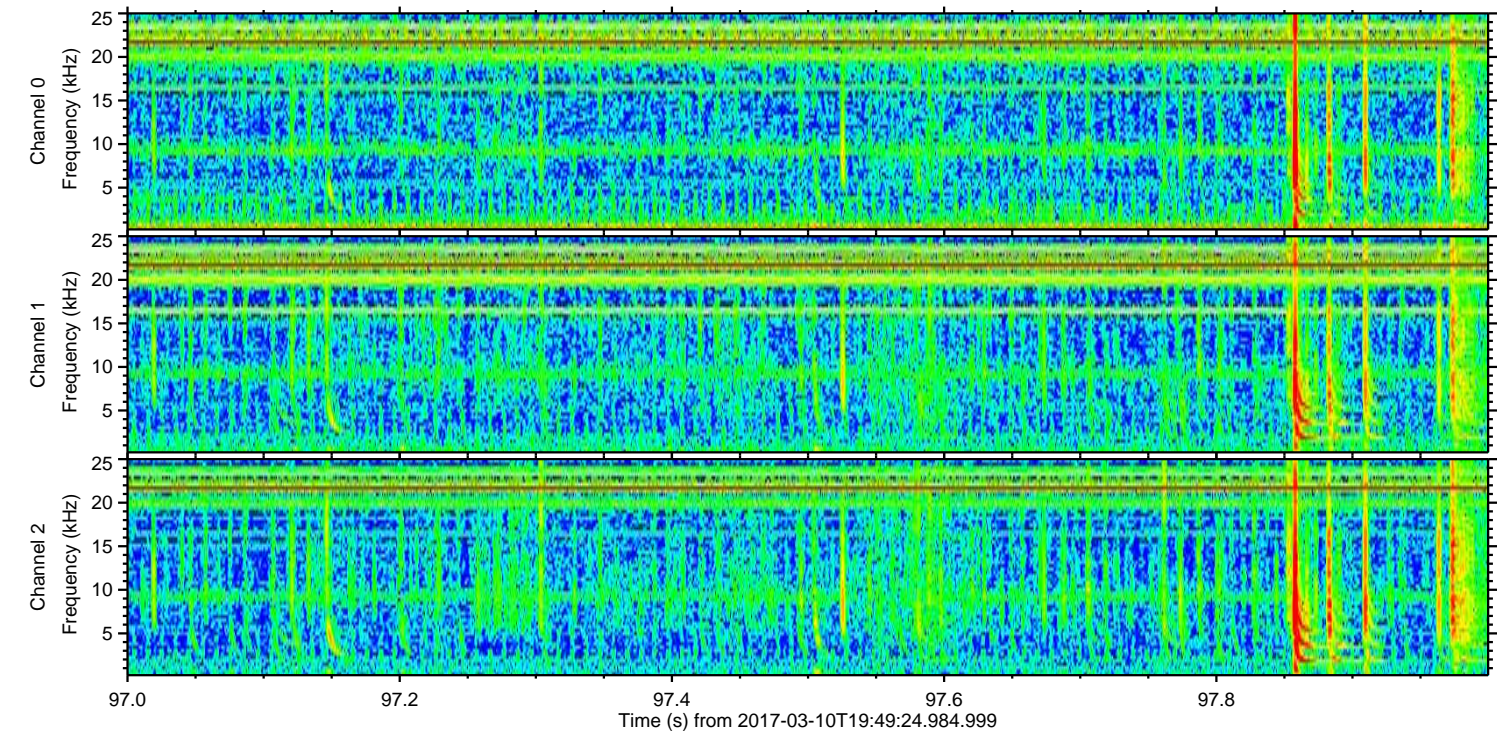
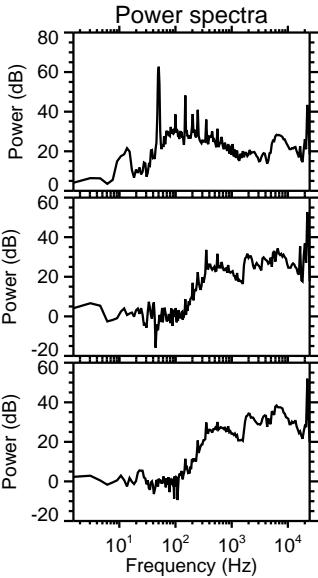
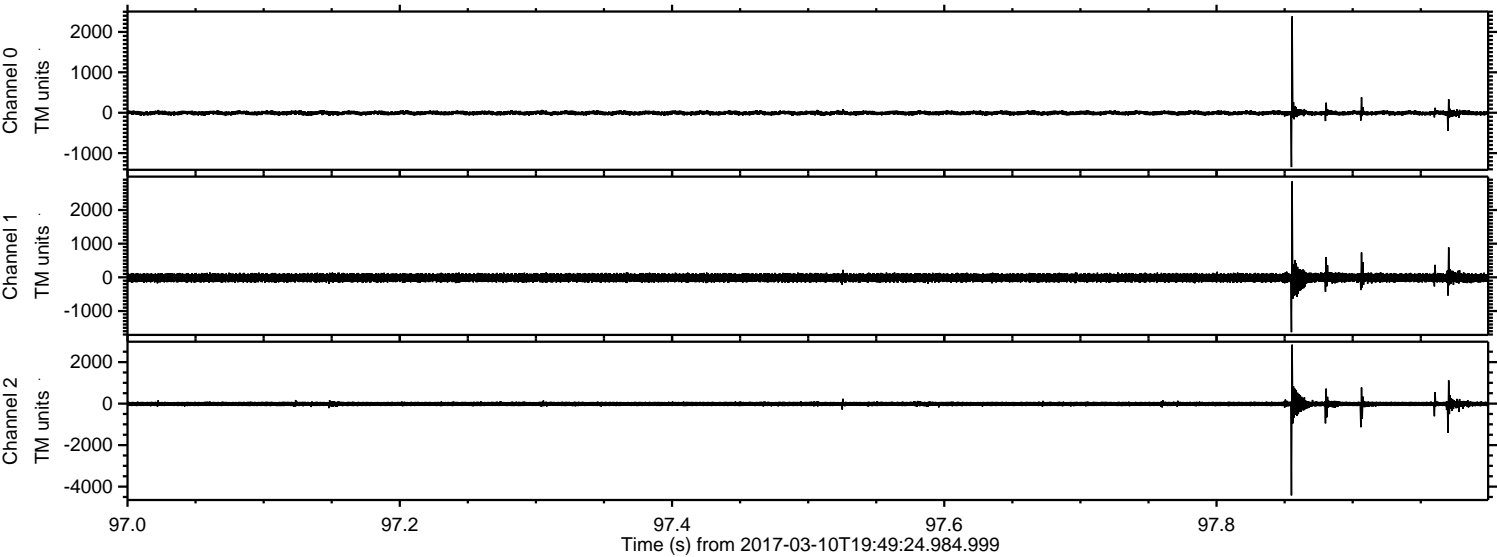
Processed Fri Mar 10 20:57:22 2017 by ELM ver.2012-10-06 from 001__elm20170310_194923__dat00.bin



Processed Fri Mar 10 20:57:23 2017 by ELM ver.2012-10-06 from 001__elm20170310_194923__dat00.bin



Processed Fri Mar 10 20:57:24 2017 by ELM ver.2012-10-06 from 001__elm20170310_194923__dat00.bin



Channel 0
mn: -1346
mx: 2386
 μ : -6.5
 σ : 31.1

Channel 1
mn: -1629
mx: 2849
 μ : -13.5
 σ : 75.0

Channel 2
mn: -4424
mx: 2840
 μ : -16.0
 σ : 79.6

