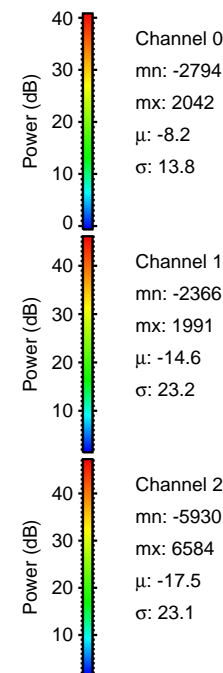
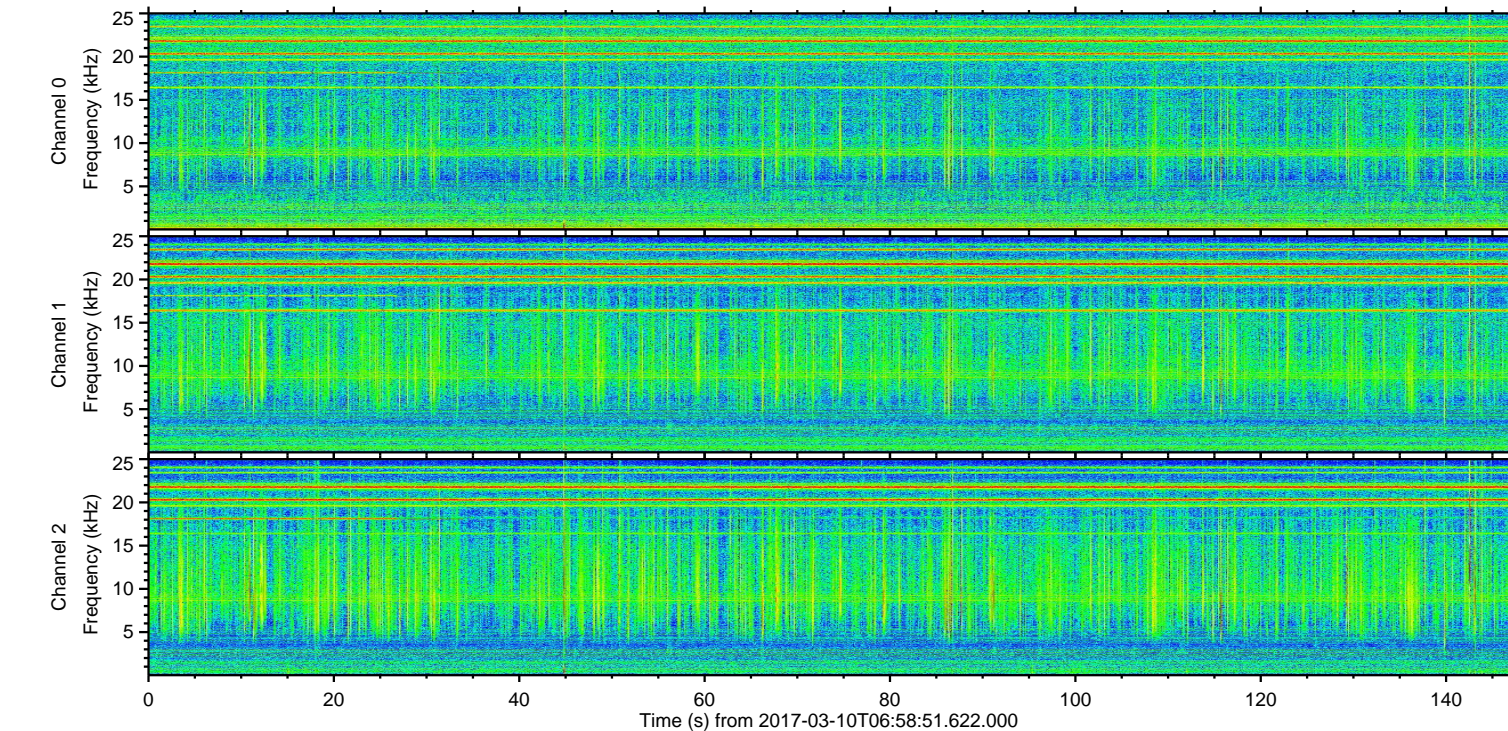
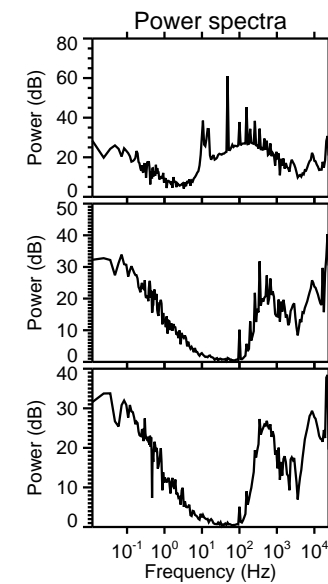
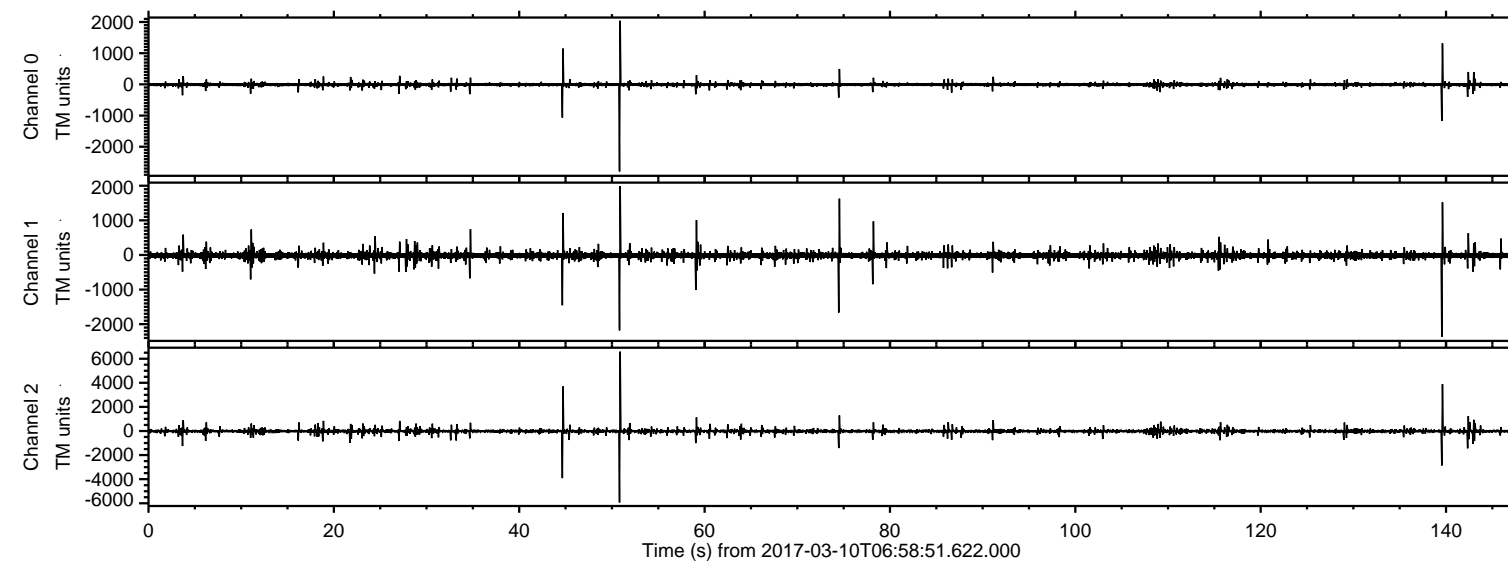
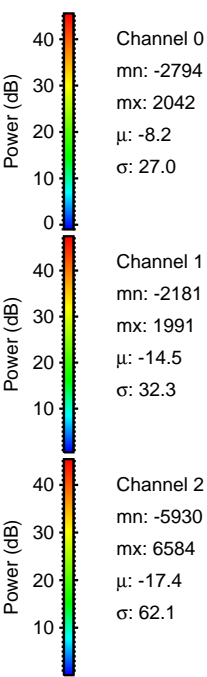
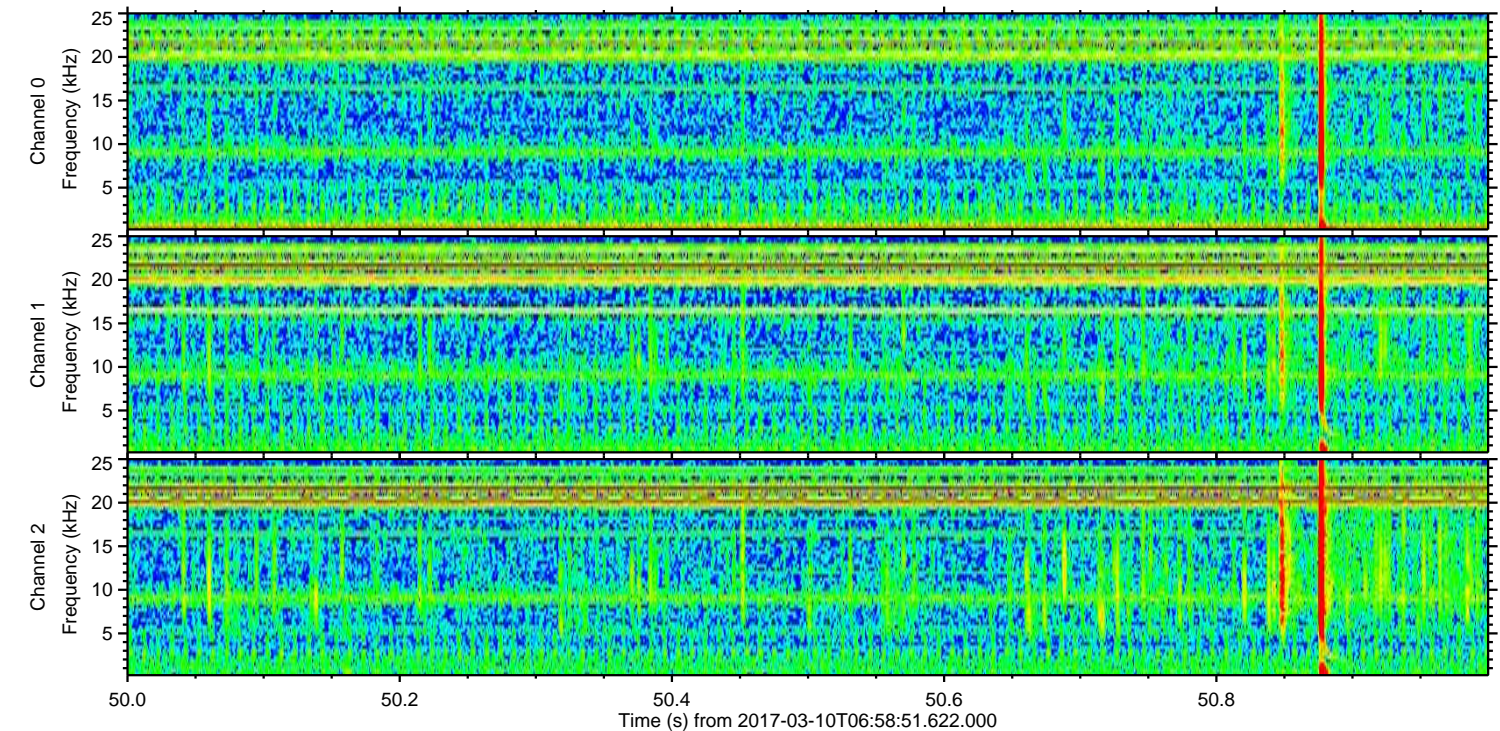
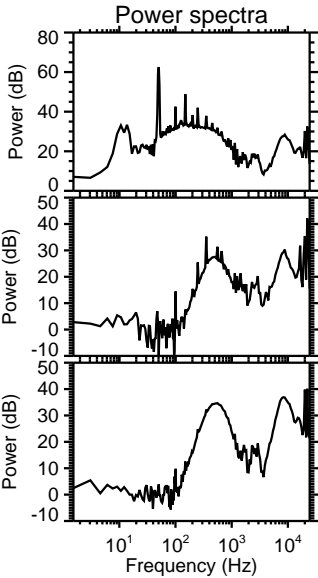
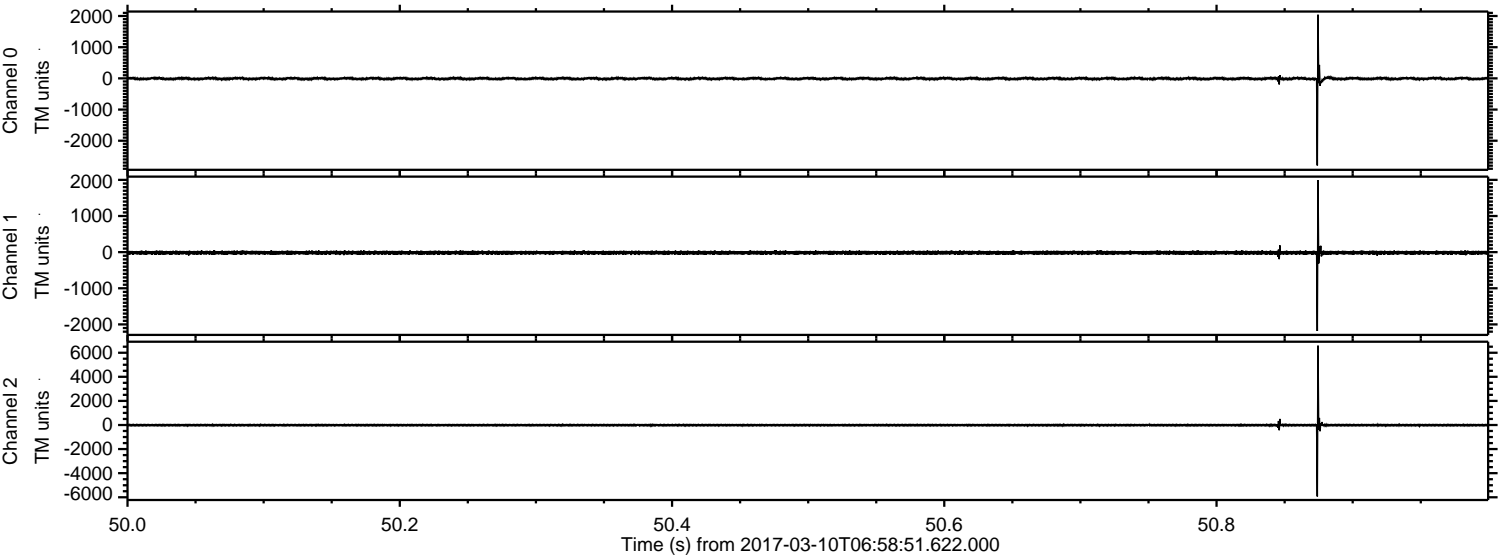


ELMAVAN 3D WAVEFORMS (Measured data sampled at 50 kHz) 51000 packets of 144 samples from 2017-03-10T06:58:51.622.000.

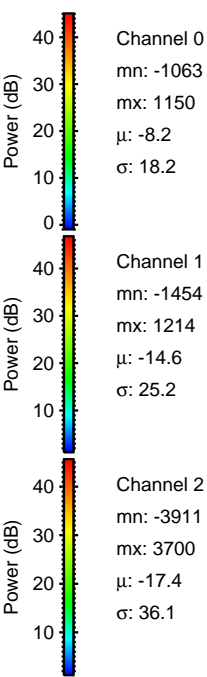
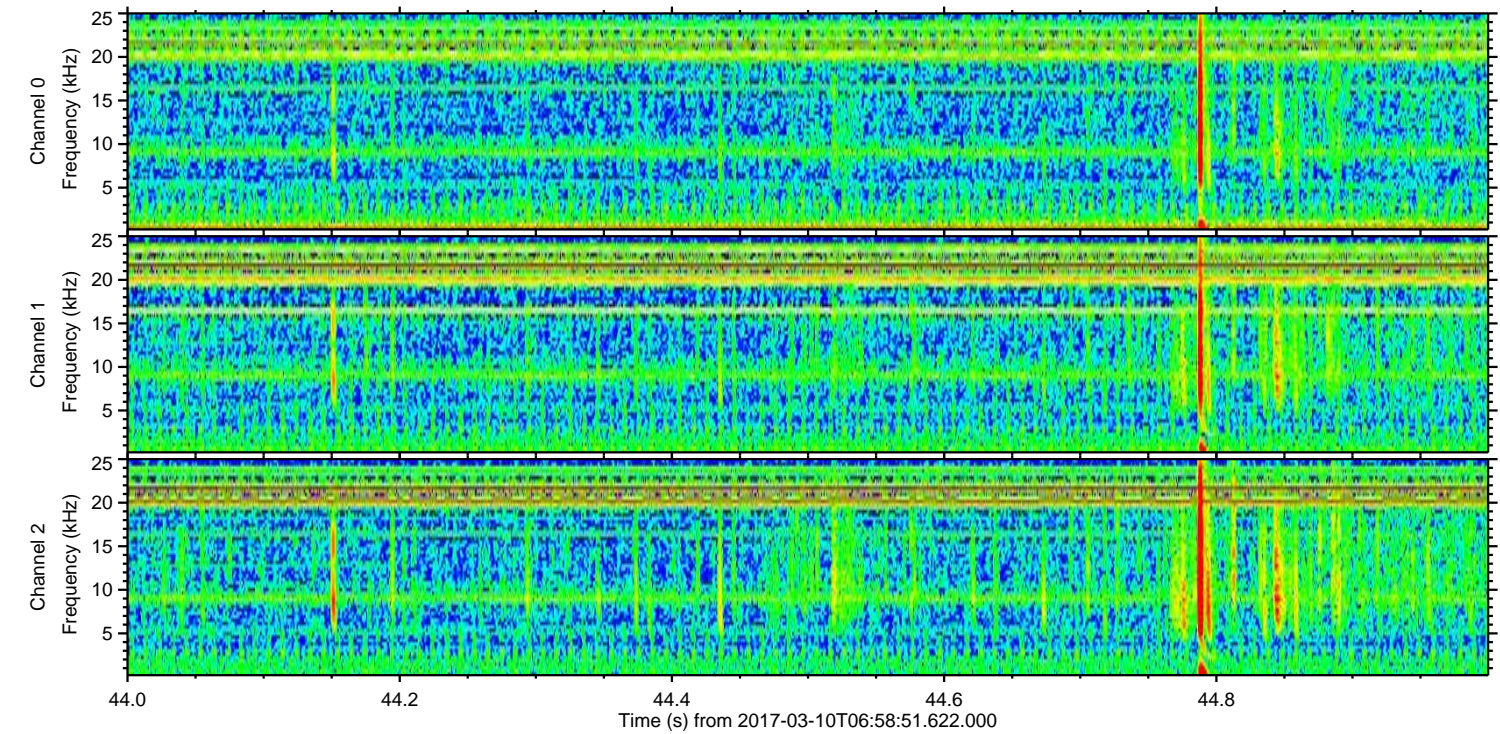
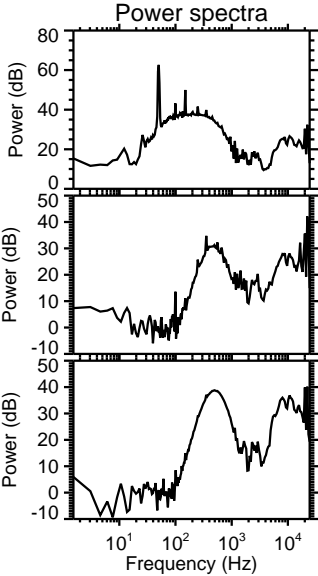
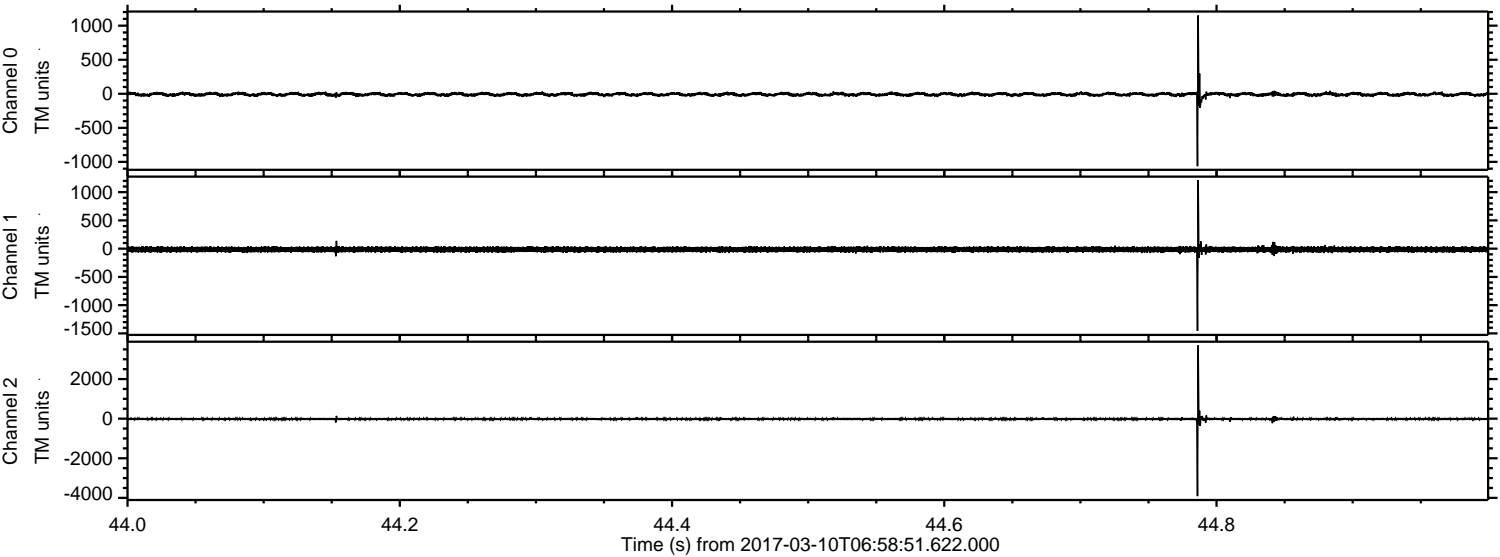
Processed Fri Mar 10 08:06:55 2017 by ELM ver.2012-10-06 from 001__elm20170310_065850__dat00.bin



Processed Fri Mar 10 08:07:06 2017 by ELM ver.2012-10-06 from 001__elm20170310_065850__dat00.bin

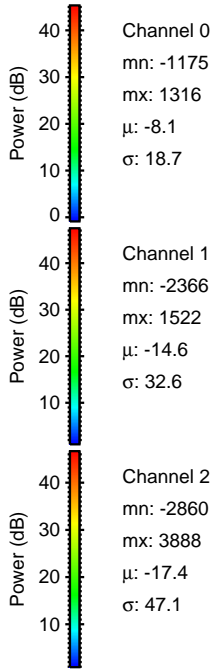
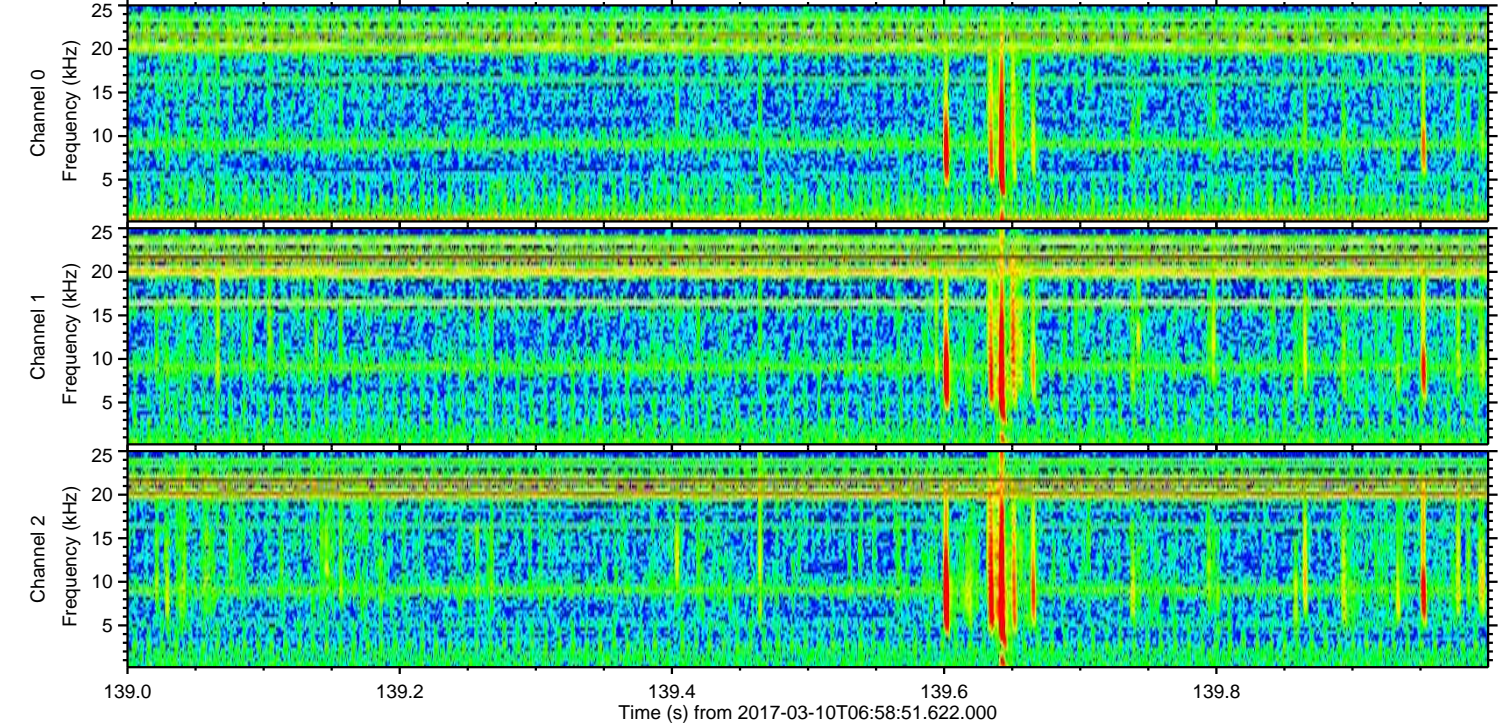
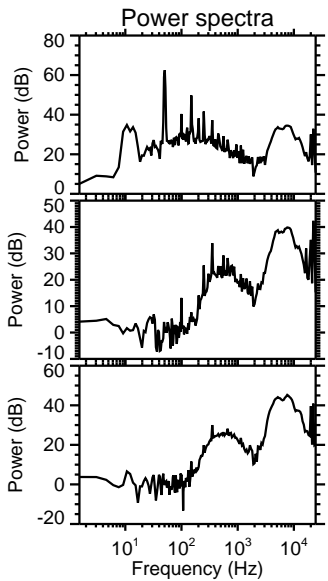
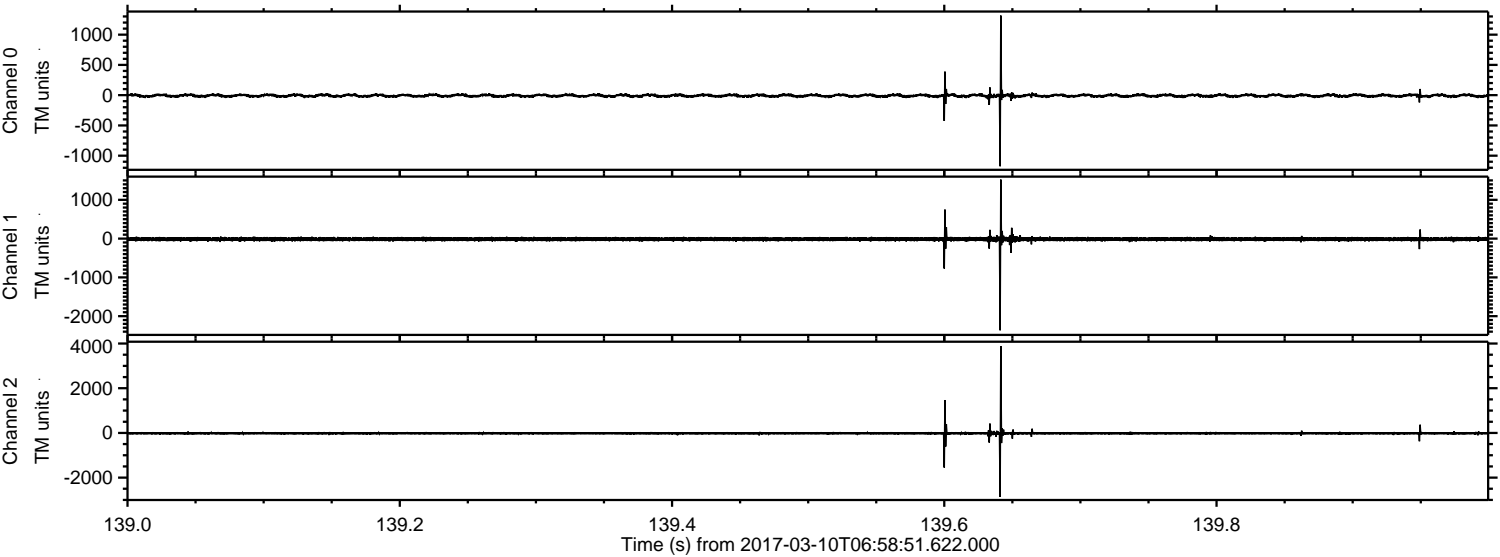


Processed Fri Mar 10 08:07:07 2017 by ELM ver.2012-10-06 from 001__elm20170310_065850__dat00.bin

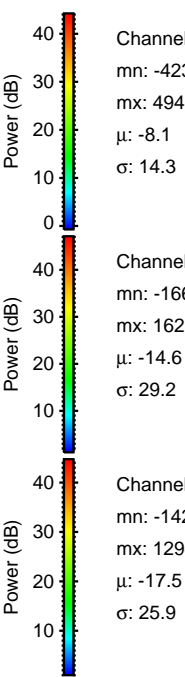
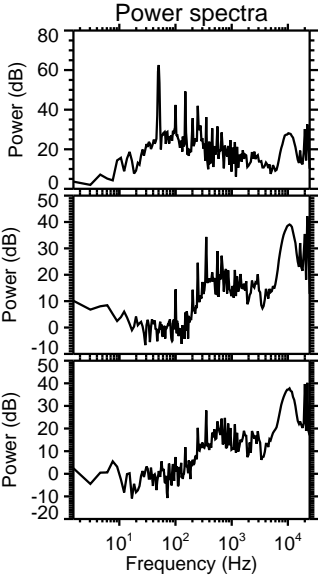
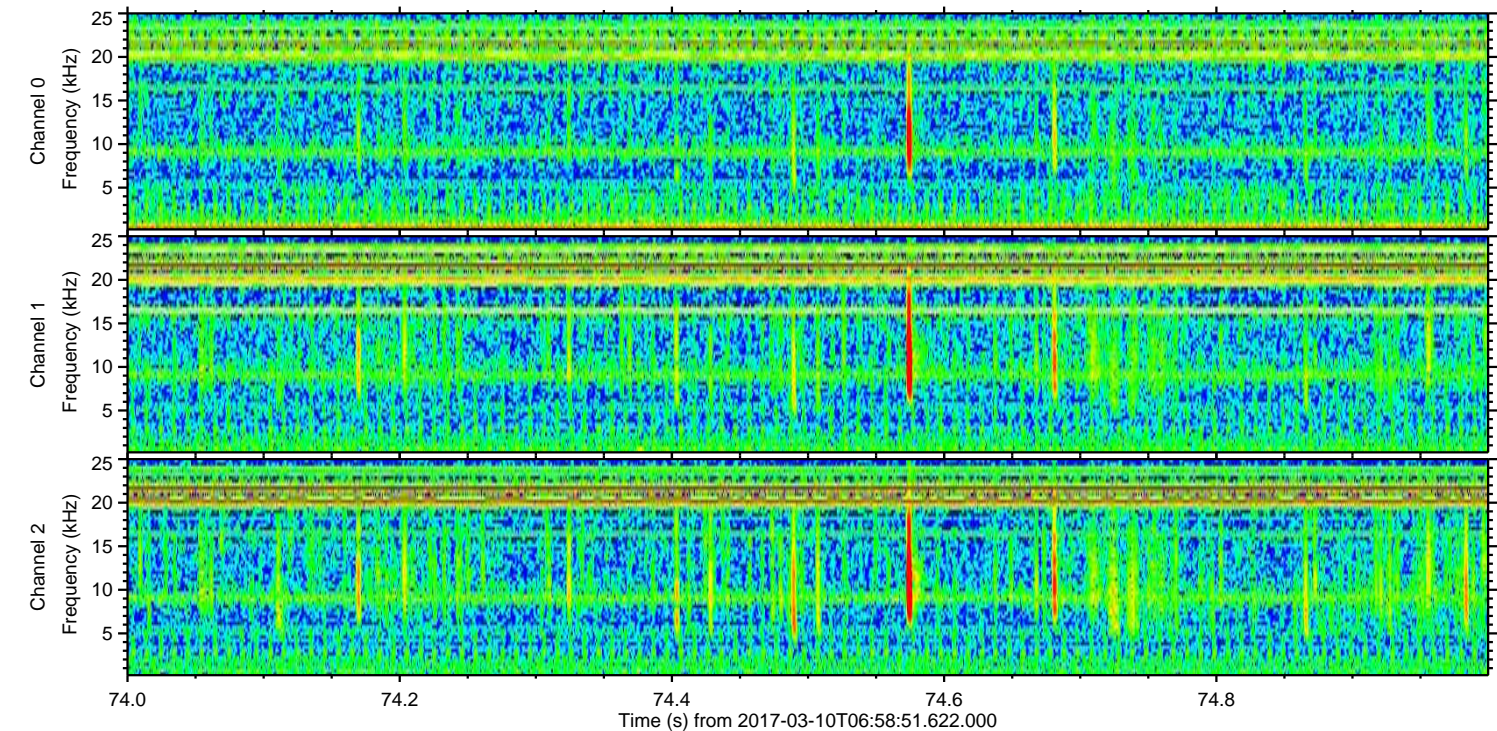
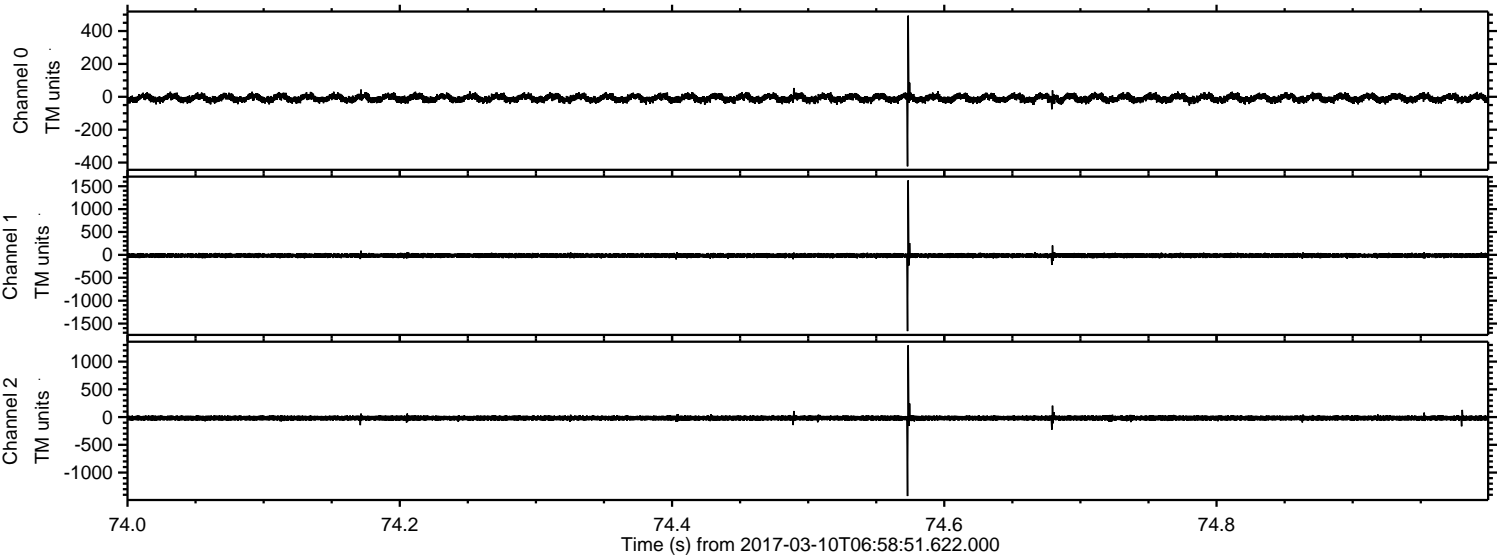


ELMAVAN 3D WAVEFORMS (Measured data sampled at 50 kHz) 51000 packets of 144 samples from 2017-03-10T06:58:51.622.000. Part 140/147

Processed Fri Mar 10 08:07:08 2017 by ELM ver.2012-10-06 from 001__elm20170310_065850__dat00.bin

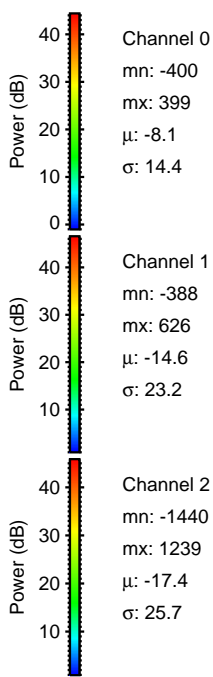
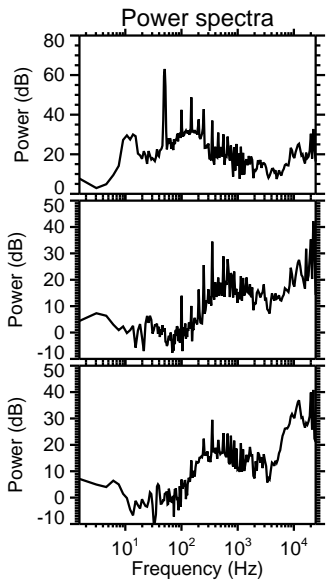
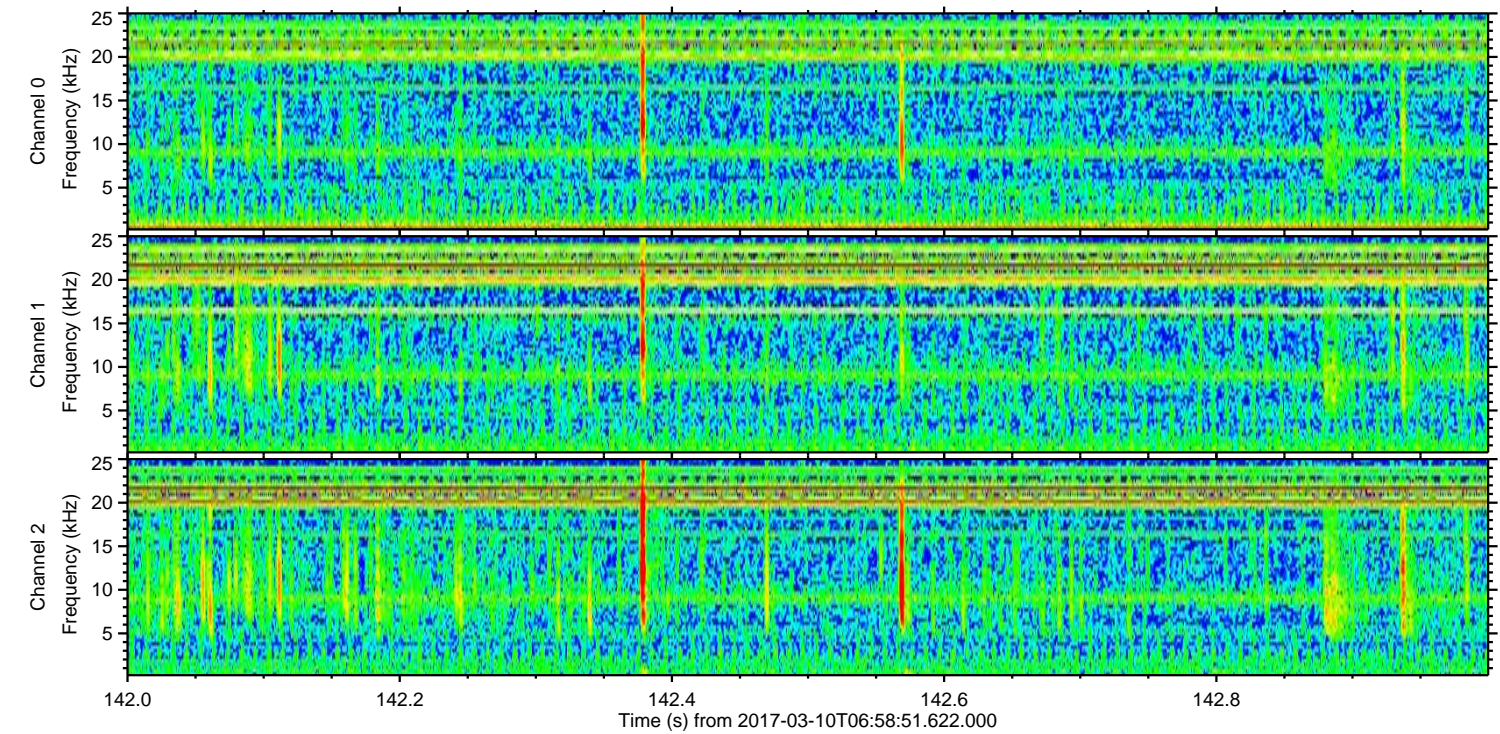
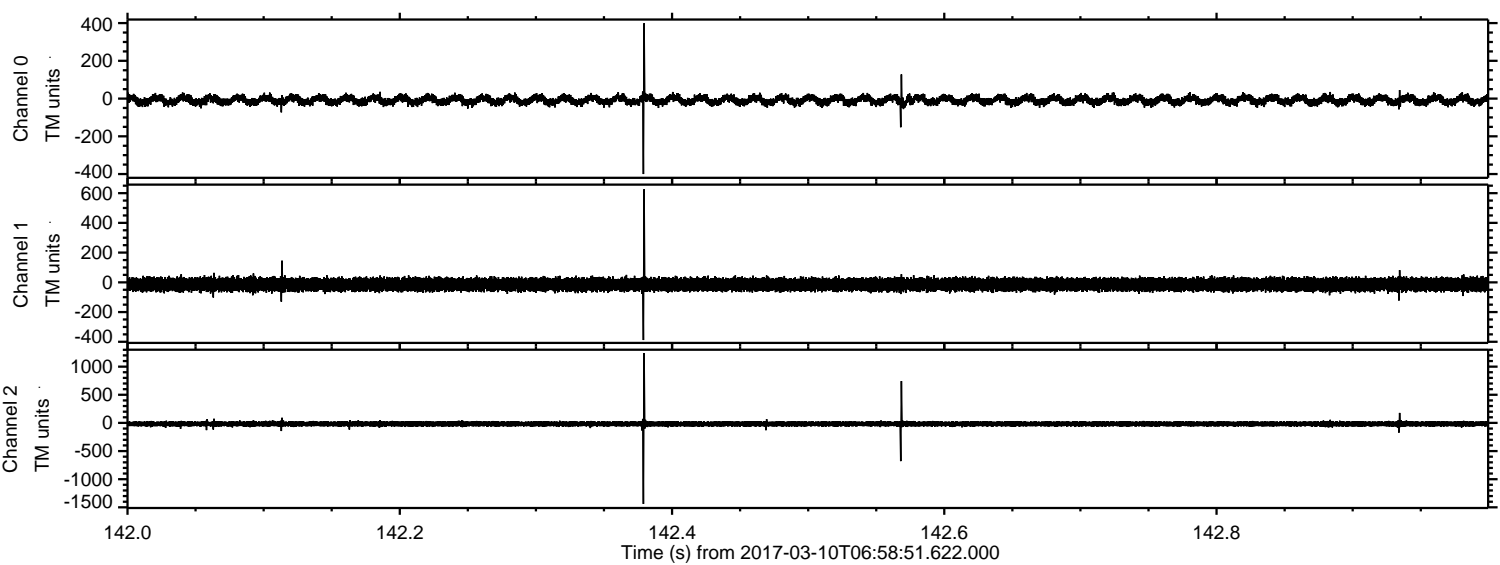


Processed Fri Mar 10 08:07:09 2017 by ELM ver.2012-10-06 from 001__elm20170310_065850__dat00.bin

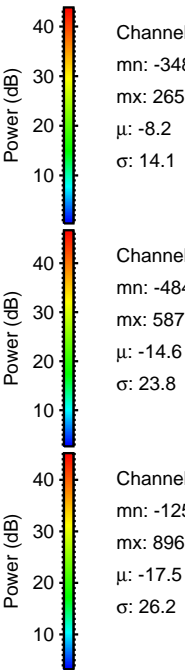
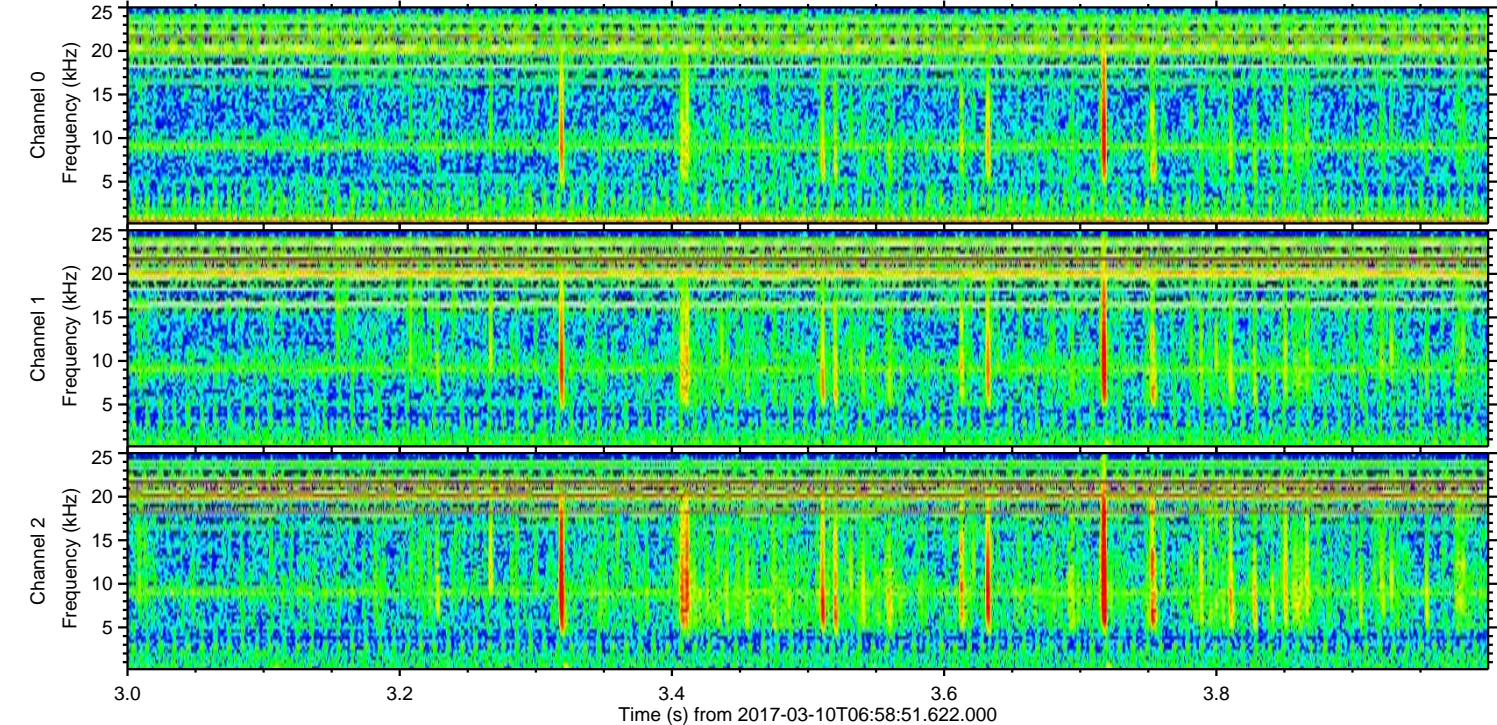
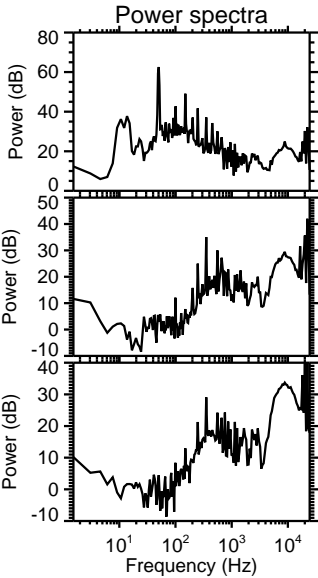
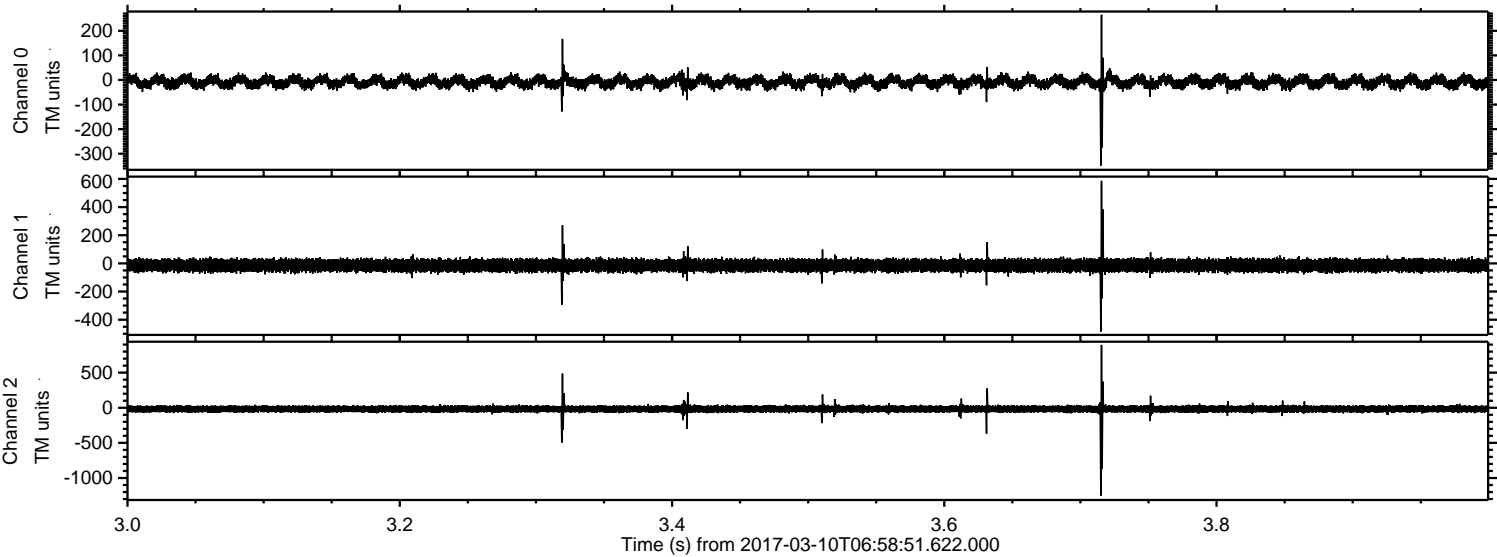


ELMAVAN 3D WAVEFORMS (Measured data sampled at 50 kHz) 51000 packets of 144 samples from 2017-03-10T06:58:51.622.000. Part 143/147

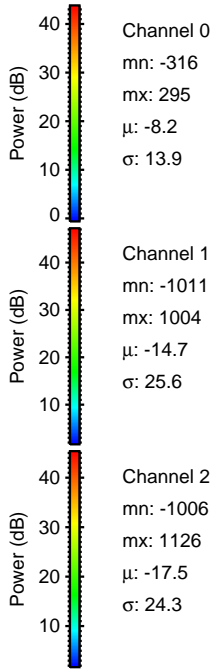
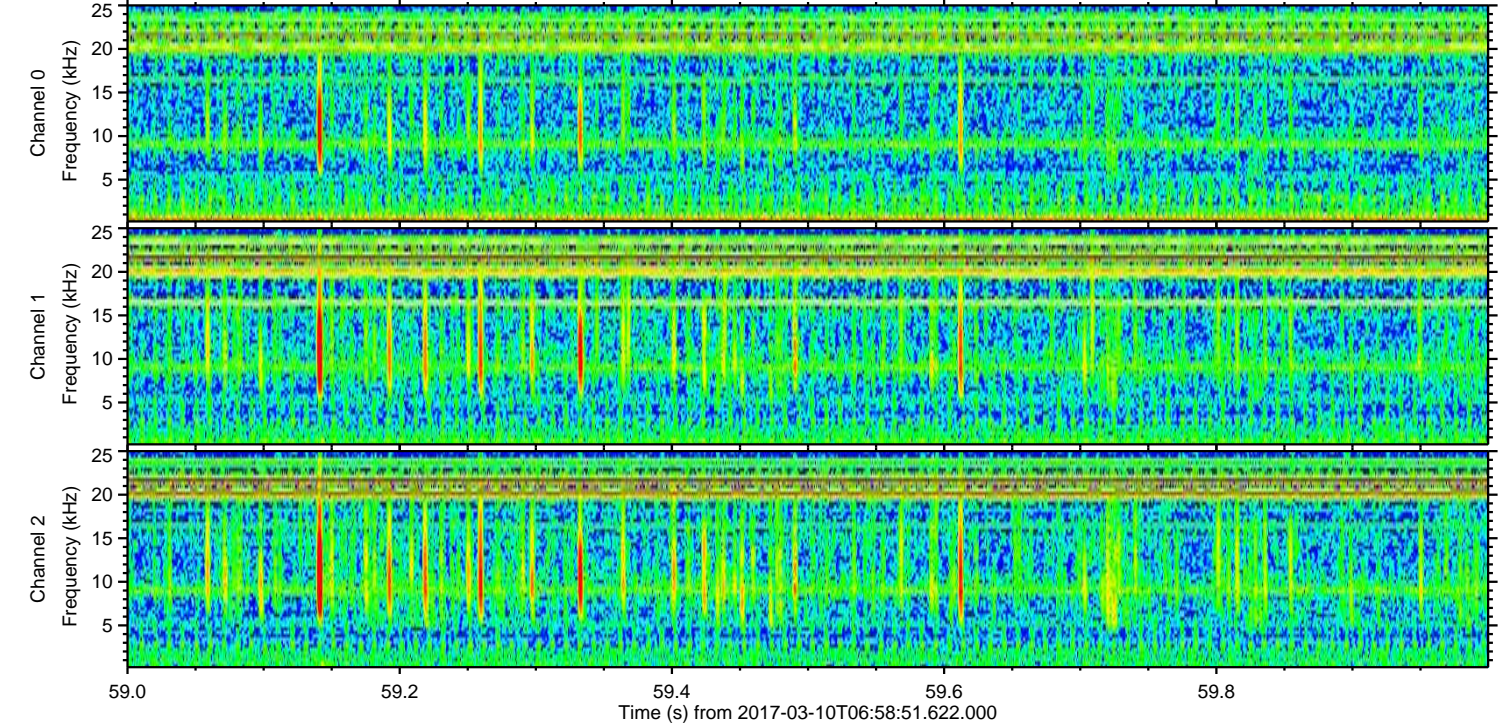
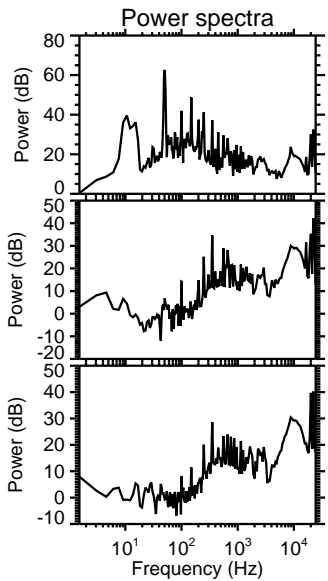
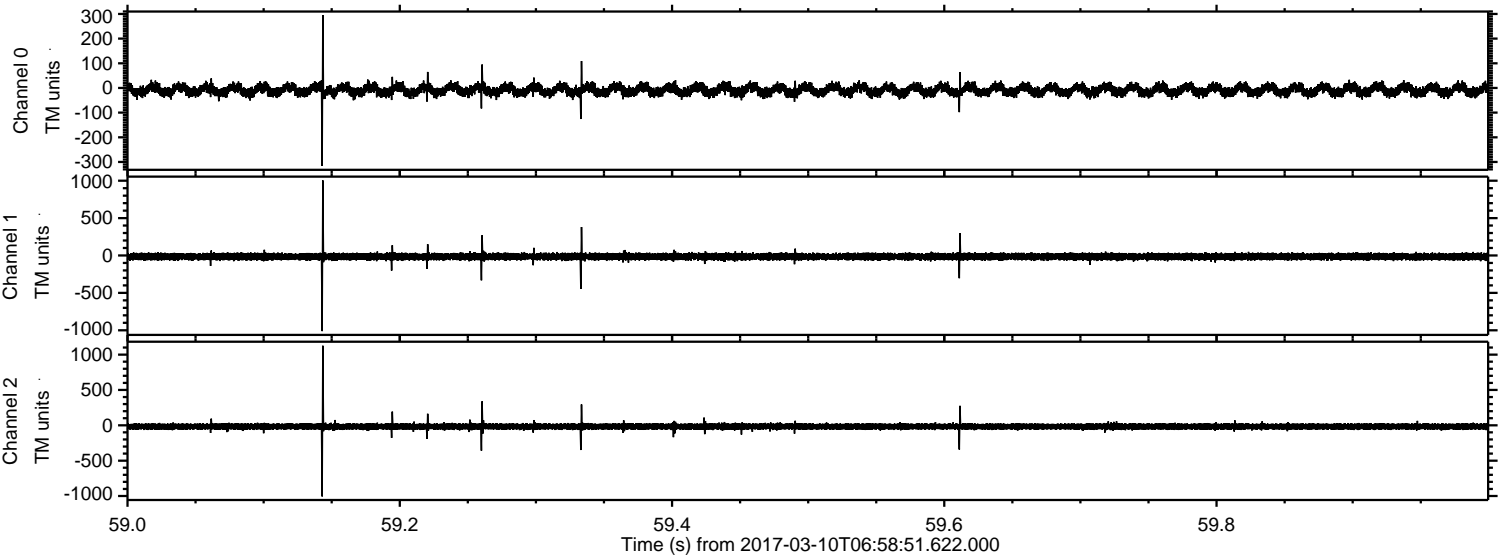
Processed Fri Mar 10 08:07:10 2017 by ELM ver.2012-10-06 from 001__elm20170310_065850__dat00.bin



Processed Fri Mar 10 08:07:11 2017 by ELM ver.2012-10-06 from 001__elm20170310_065850__dat00.bin

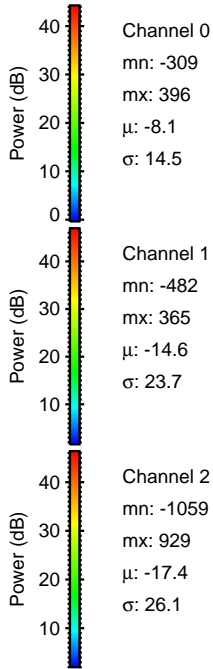
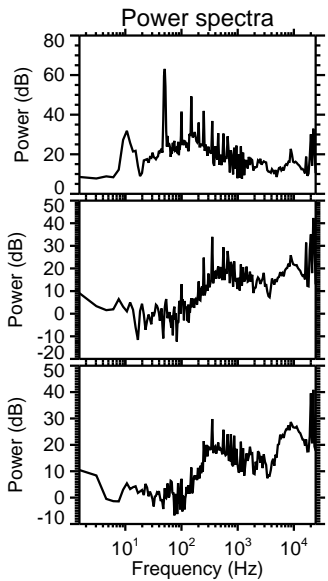
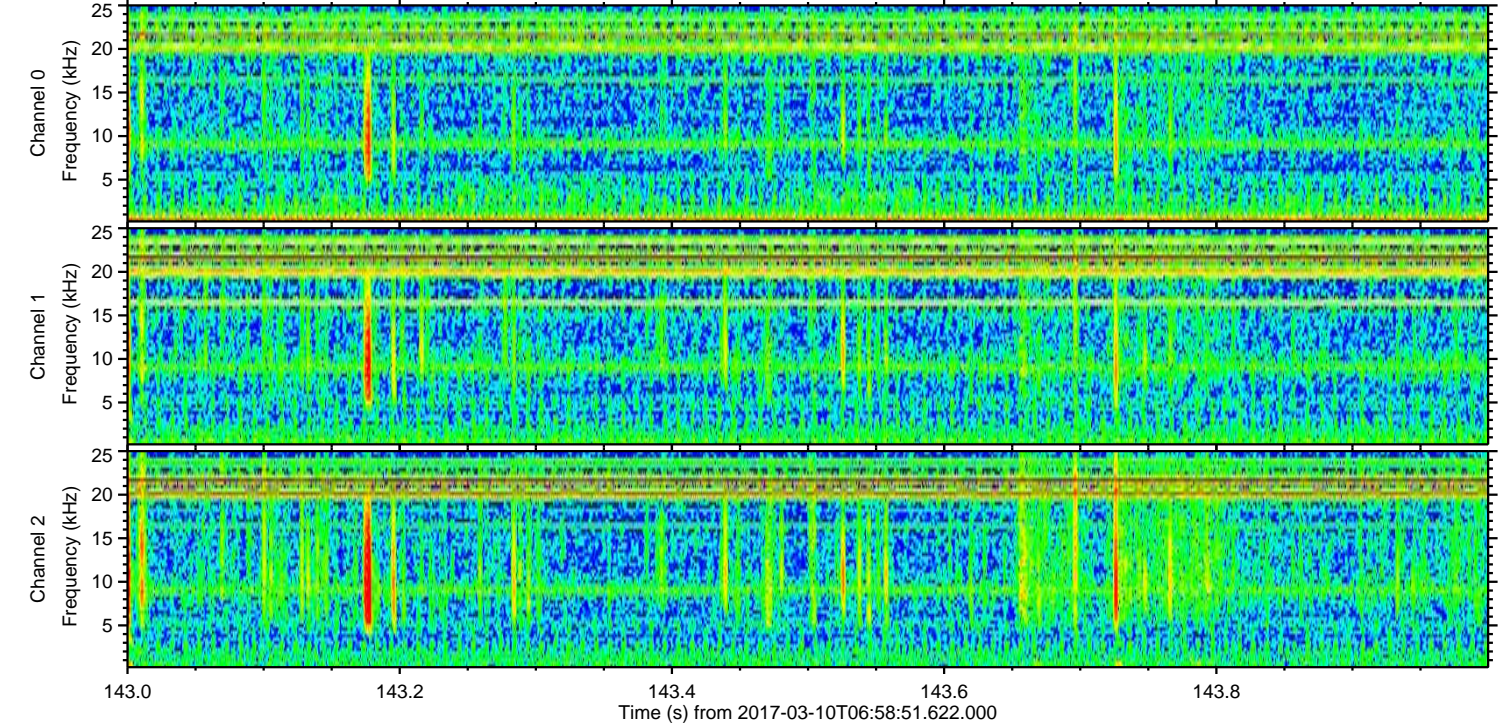
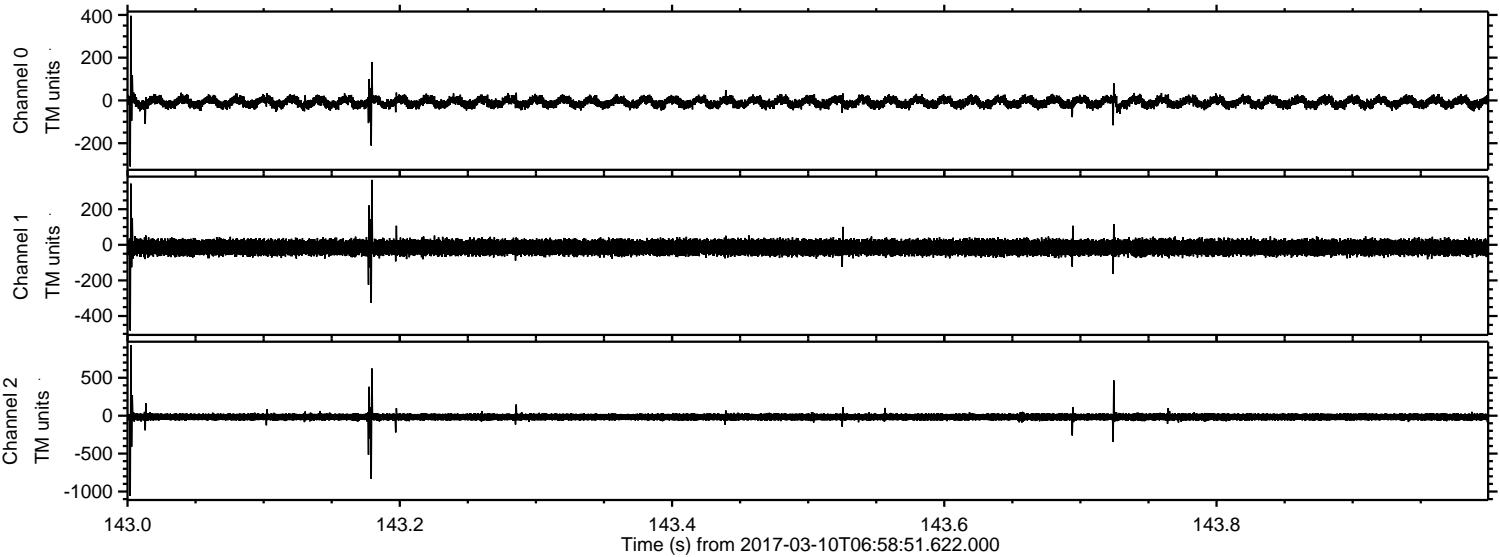


Processed Fri Mar 10 08:07:12 2017 by ELM ver.2012-10-06 from 001__elm20170310_065850__dat00.bin

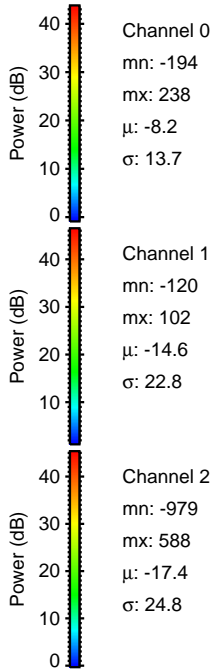
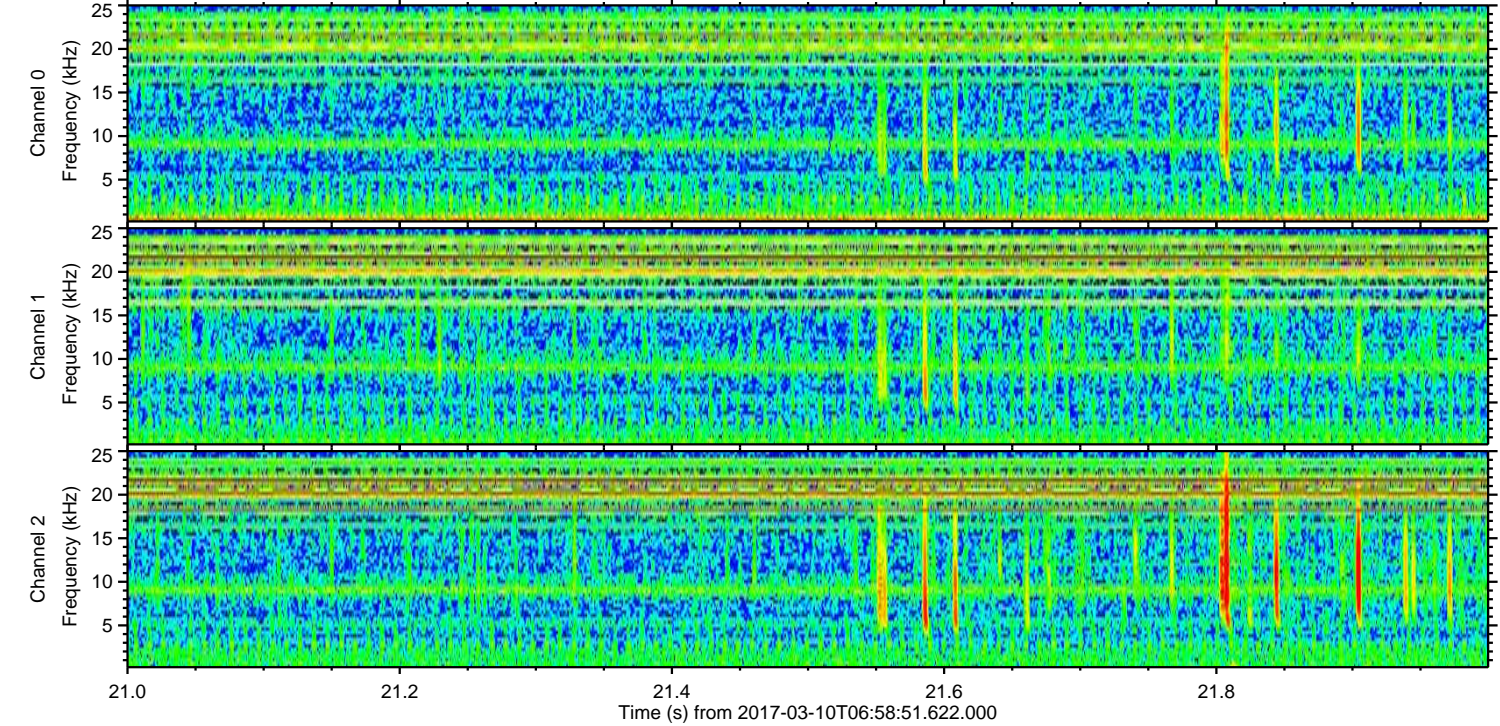
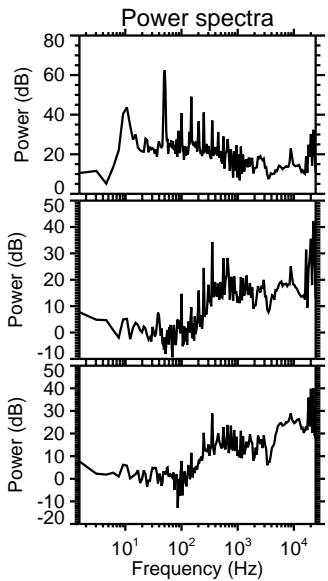
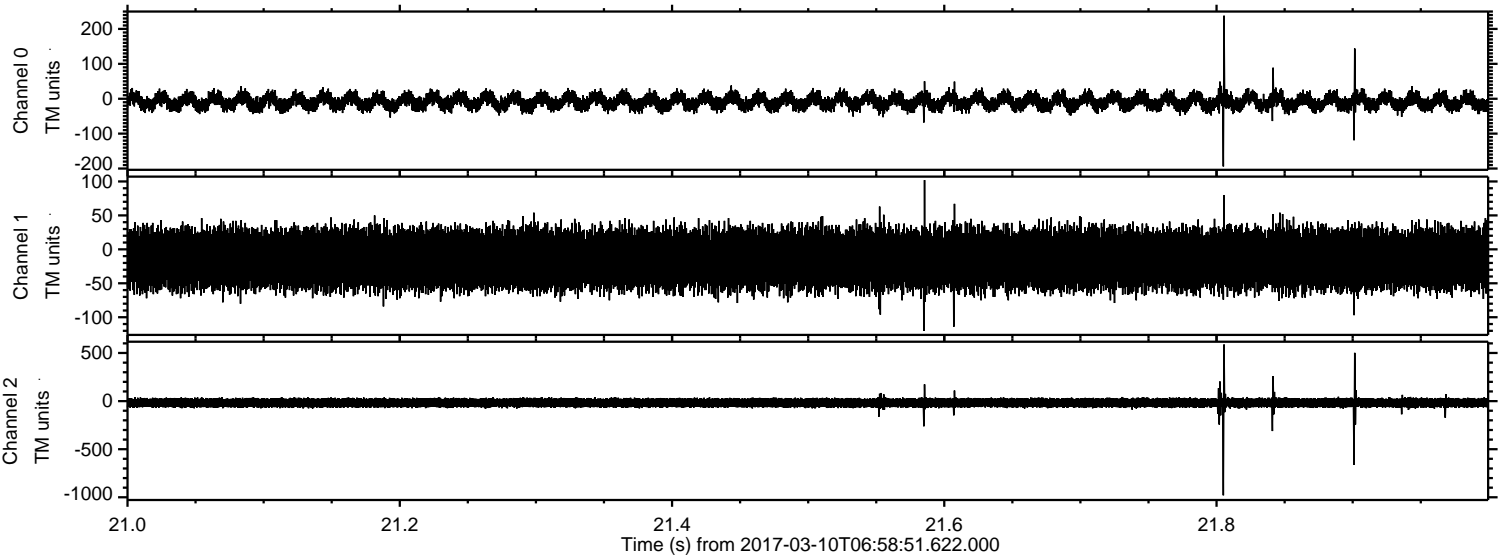


ELMAVAN 3D WAVEFORMS (Measured data sampled at 50 kHz) 51000 packets of 144 samples from 2017-03-10T06:58:51.622.000. Part 144/147

Processed Fri Mar 10 08:07:13 2017 by ELM ver.2012-10-06 from 001__elm20170310_065850__dat00.bin



Processed Fri Mar 10 08:07:14 2017 by ELM ver.2012-10-06 from 001__elm20170310_065850__dat00.bin



Channel 0
mn: -194
mx: 238
 μ : -8.2
 σ : 13.7

Channel 1
mn: -120
mx: 102
 μ : -14.6
 σ : 22.8

Channel 2
mn: -979
mx: 588
 μ : -17.4
 σ : 24.8

