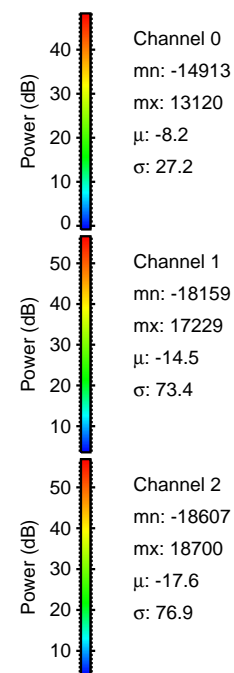
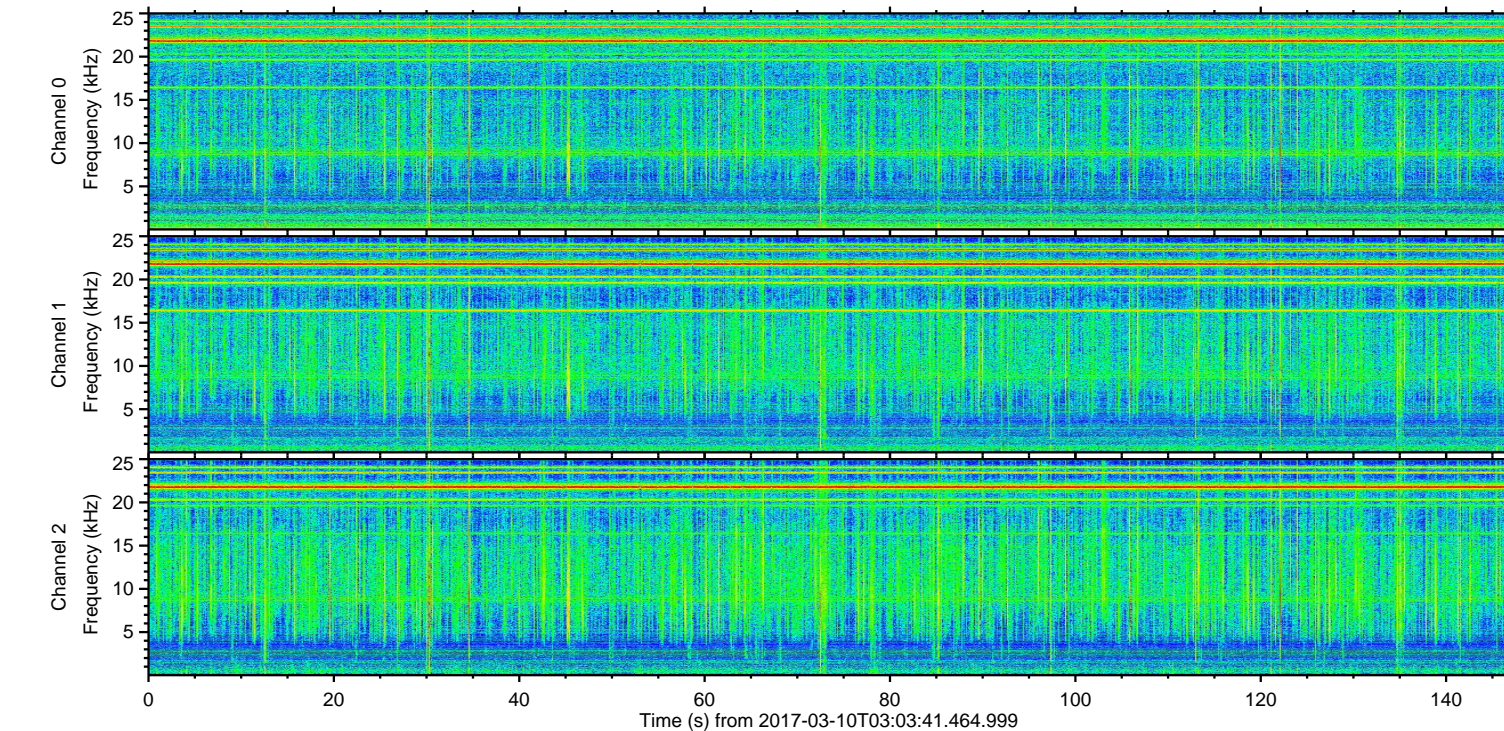
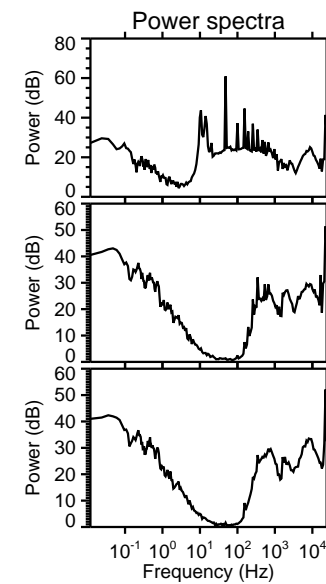
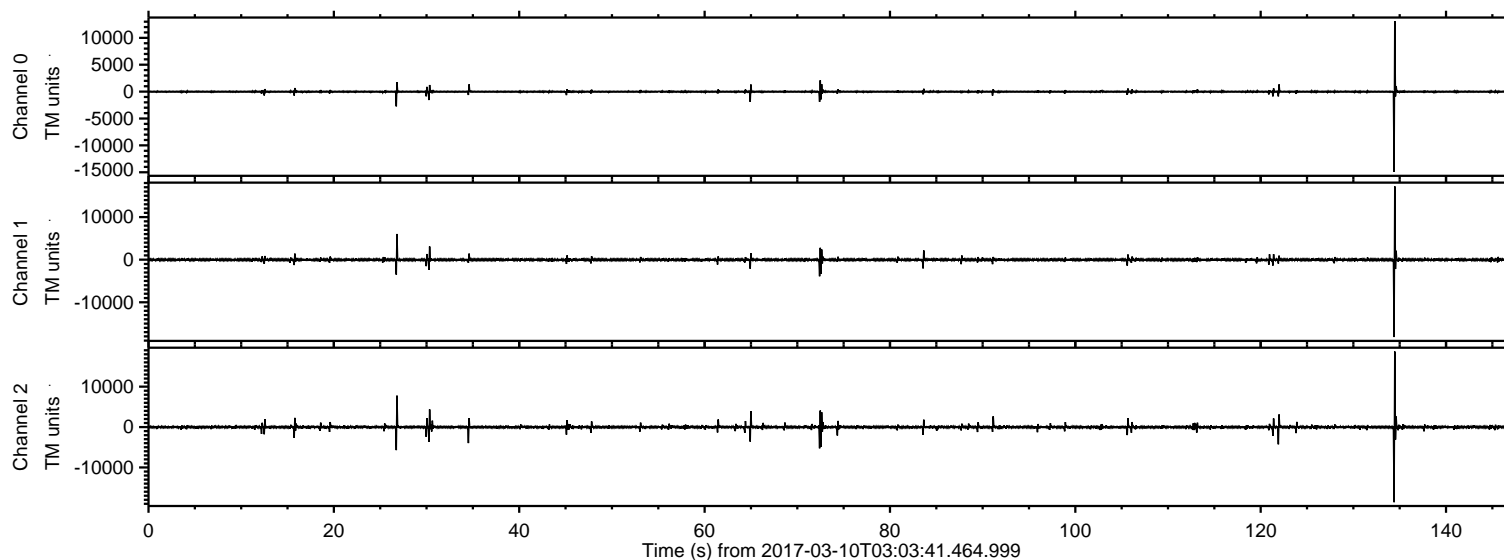


# ELMAVAN 3D WAVEFORMS (Measured data sampled at 50 kHz) 51000 packets of 144 samples from 2017-03-10T03:03:41.464.999.

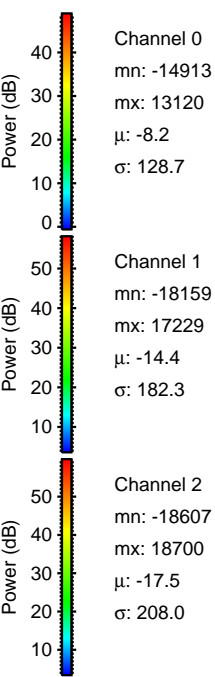
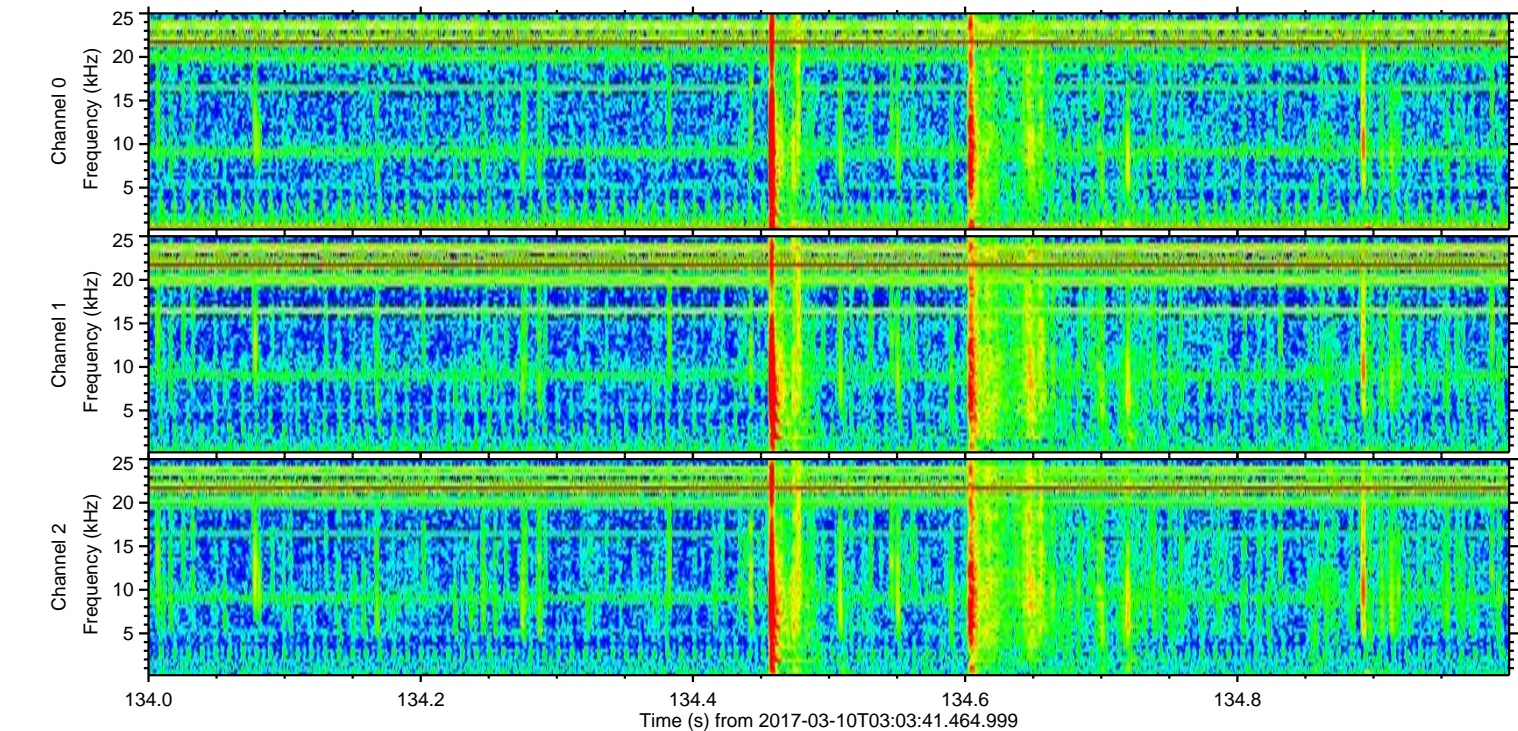
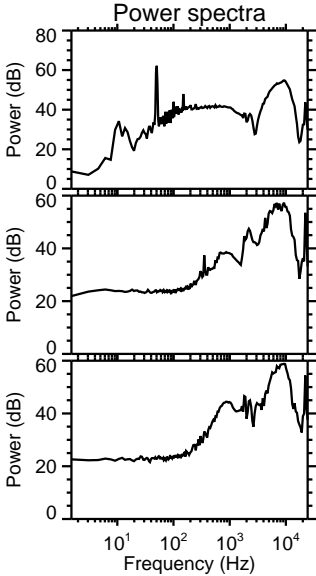
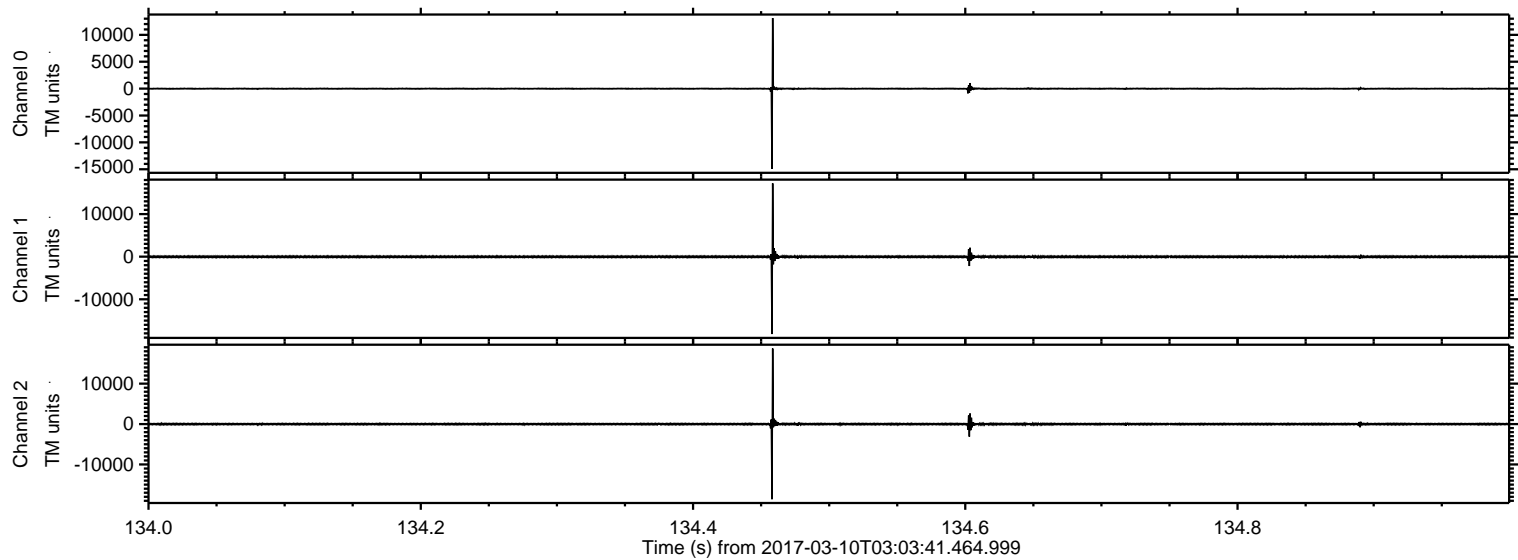
Processed Fri Mar 10 04:11:40 2017 by ELM ver.2012-10-06 from 001\_\_elm20170310\_030340\_\_dat00.bin





ELMAVAN 3D WAVEFORMS (Measured data sampled at 50 kHz) 51000 packets of 144 samples from 2017-03-10T03:03:41.464.999. Part 135/147

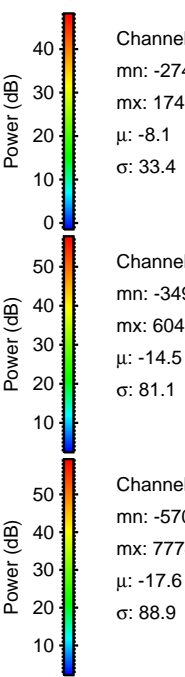
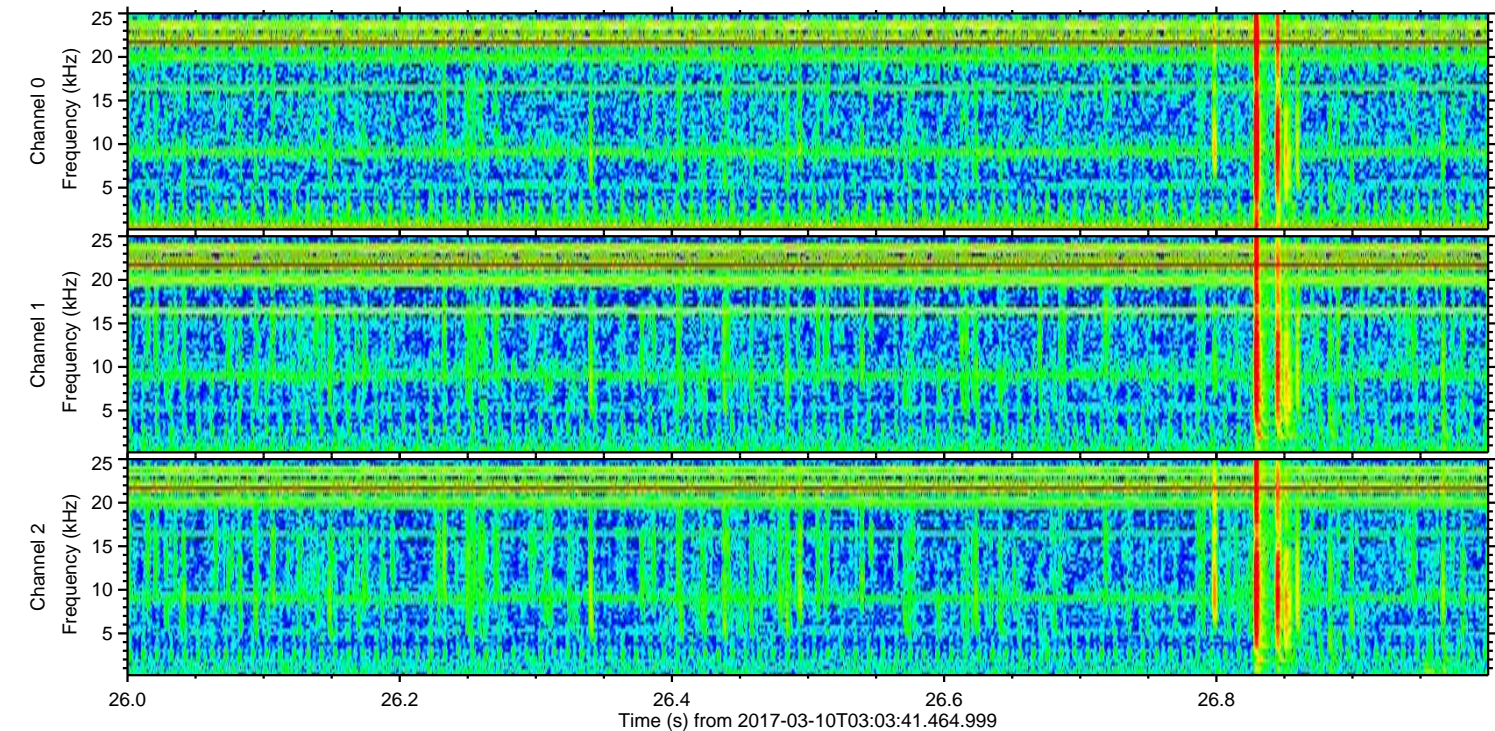
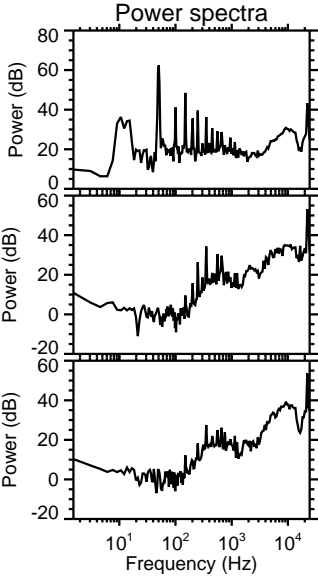
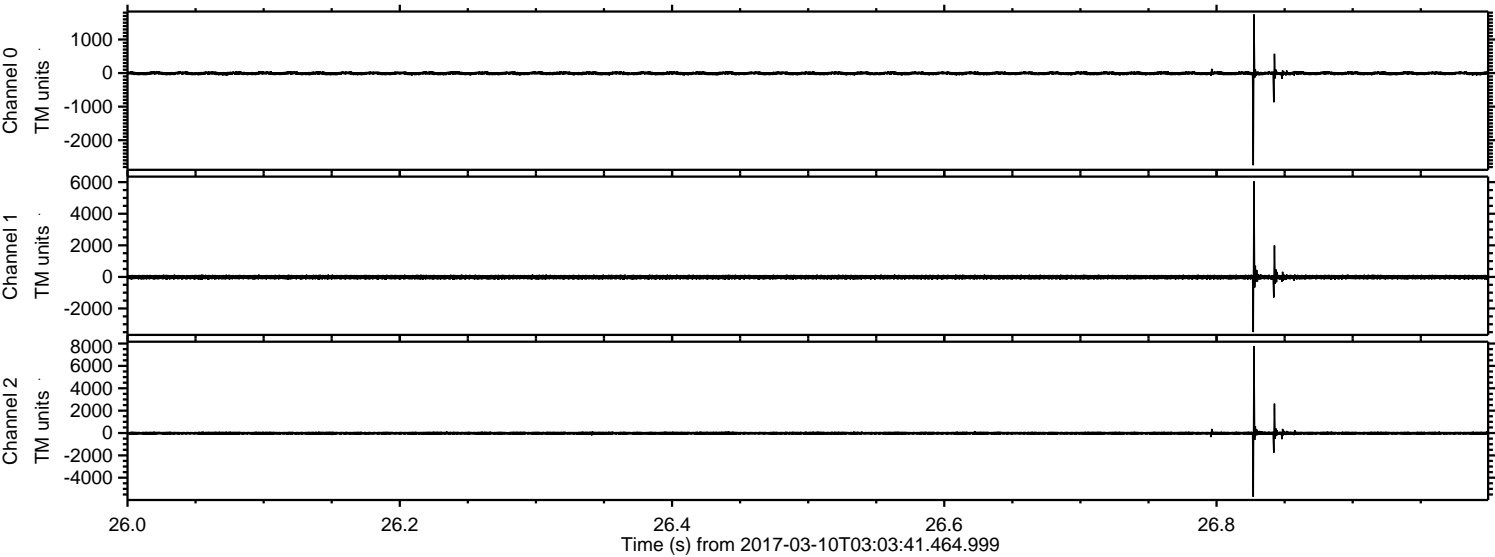
Processed Fri Mar 10 04:11:52 2017 by ELM ver.2012-10-06 from 001\_\_elm20170310\_030340\_\_dat00.bin





ELMAVAN 3D WAVEFORMS (Measured data sampled at 50 kHz) 51000 packets of 144 samples from 2017-03-10T03:03:41.464.999. Part 27/147

Processed Fri Mar 10 04:11:52 2017 by ELM ver.2012-10-06 from 001\_\_elm20170310\_030340\_\_dat00.bin



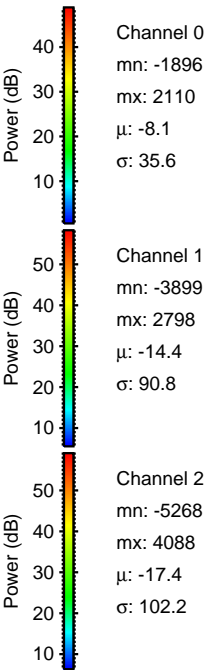
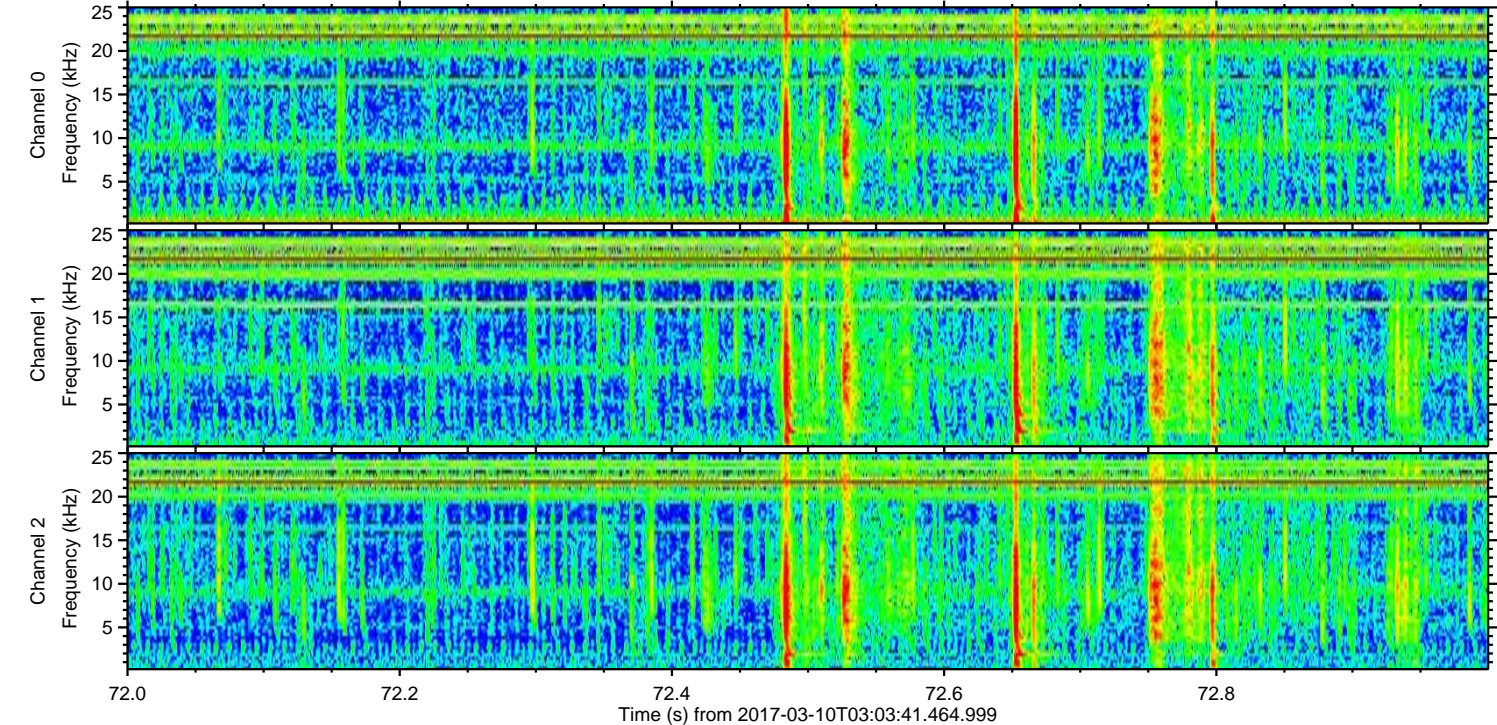
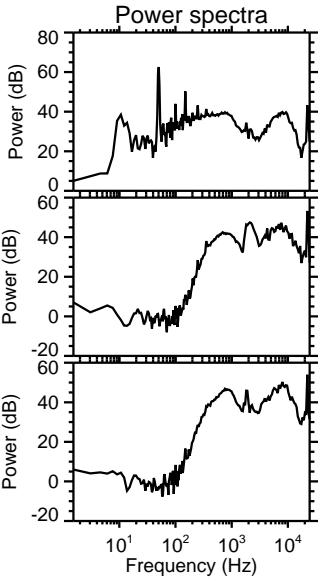
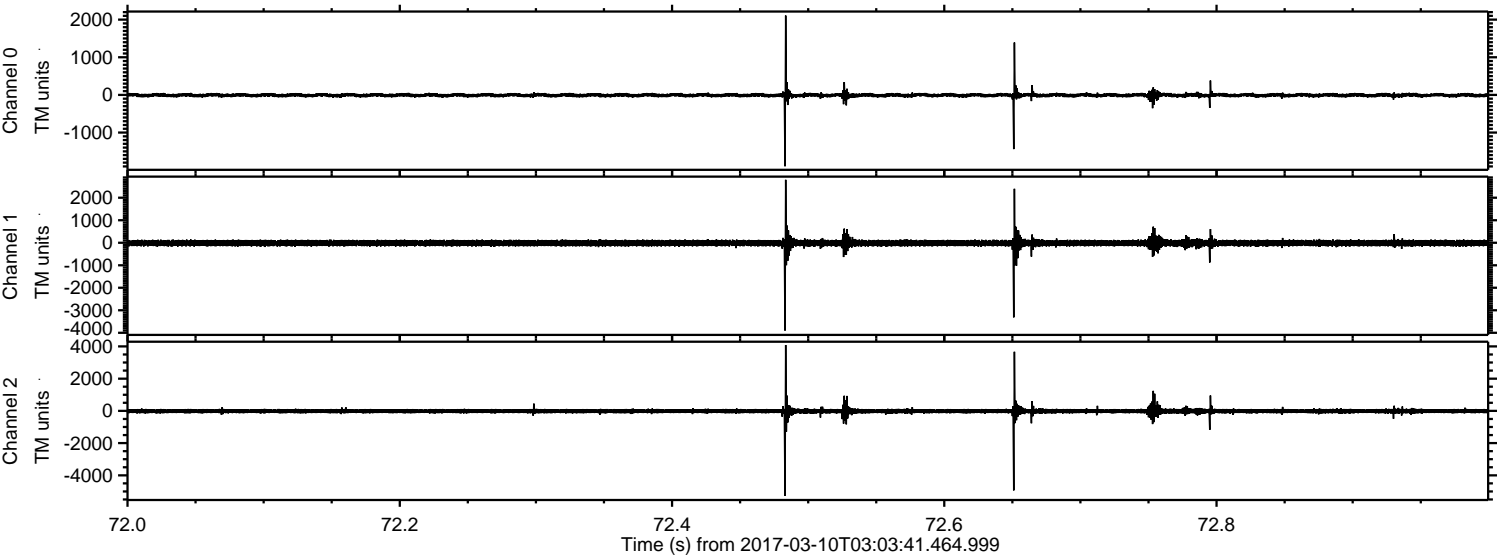
Channel 0  
mn: -2746  
mx: 1746  
 $\mu$ : -8.1  
 $\sigma$ : 33.4

Channel 1  
mn: -3499  
mx: 6049  
 $\mu$ : -14.5  
 $\sigma$ : 81.1

Channel 2  
mn: -5706  
mx: 7774  
 $\mu$ : -17.6  
 $\sigma$ : 88.9

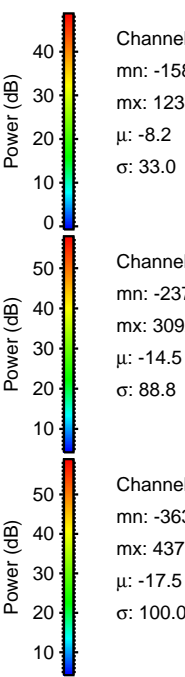
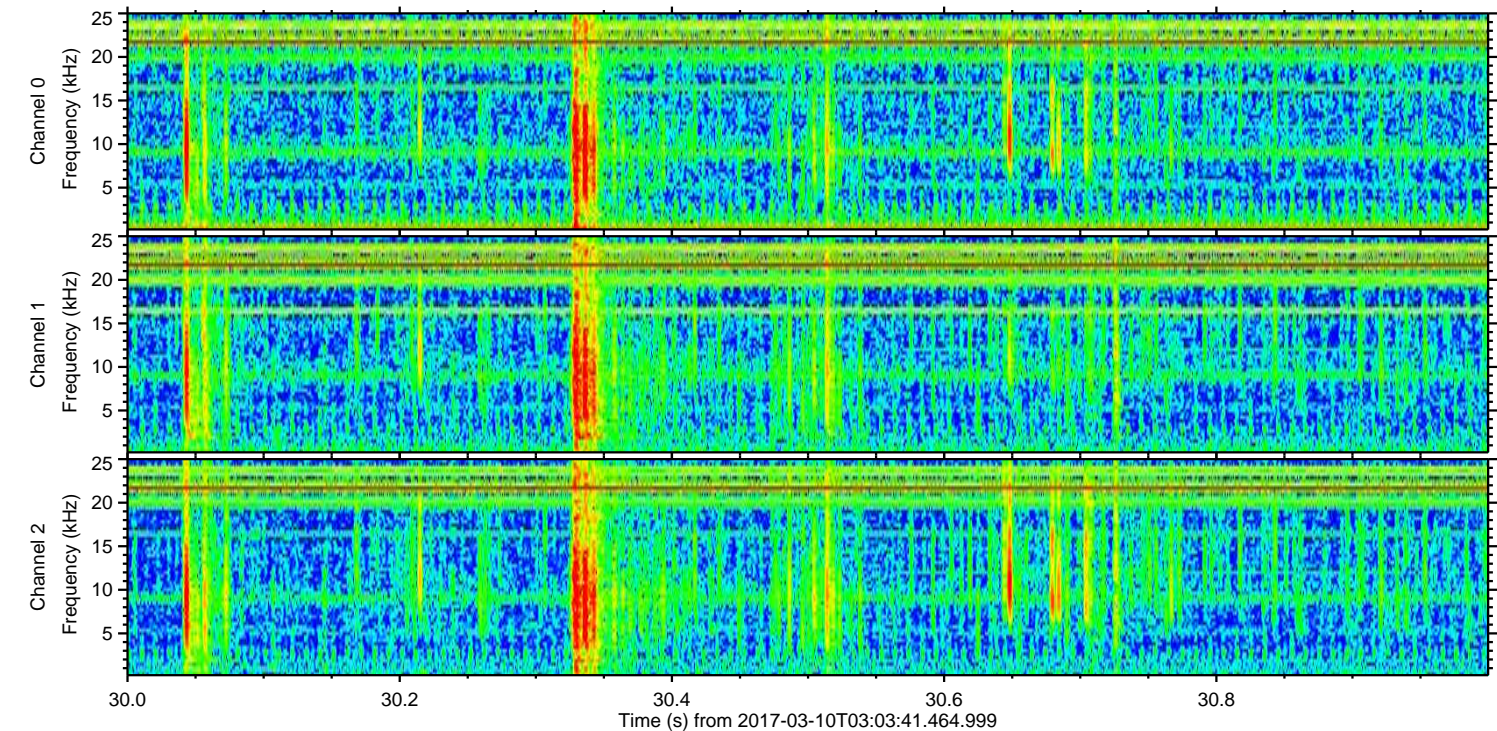
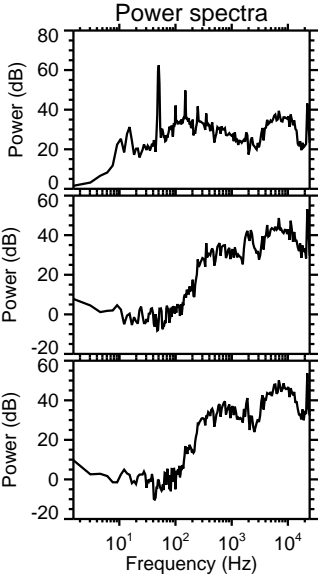
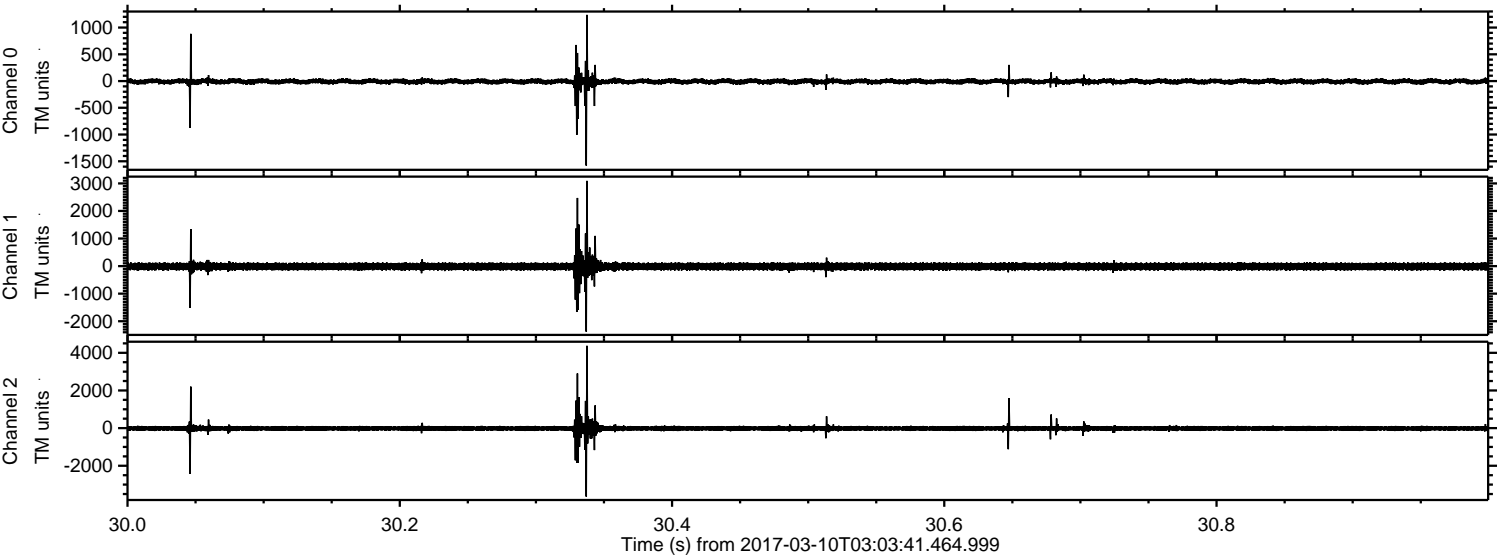


Processed Fri Mar 10 04:11:53 2017 by ELM ver.2012-10-06 from 001\_\_elm20170310\_030340\_\_dat00.bin





Processed Fri Mar 10 04:11:54 2017 by ELM ver.2012-10-06 from 001\_\_elm20170310\_030340\_\_dat00.bin



Channel 0  
mn: -1580  
mx: 1237  
 $\mu$ : -8.2  
 $\sigma$ : 33.0

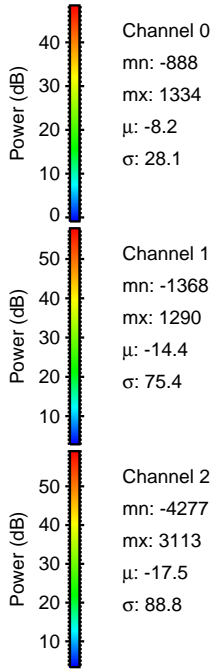
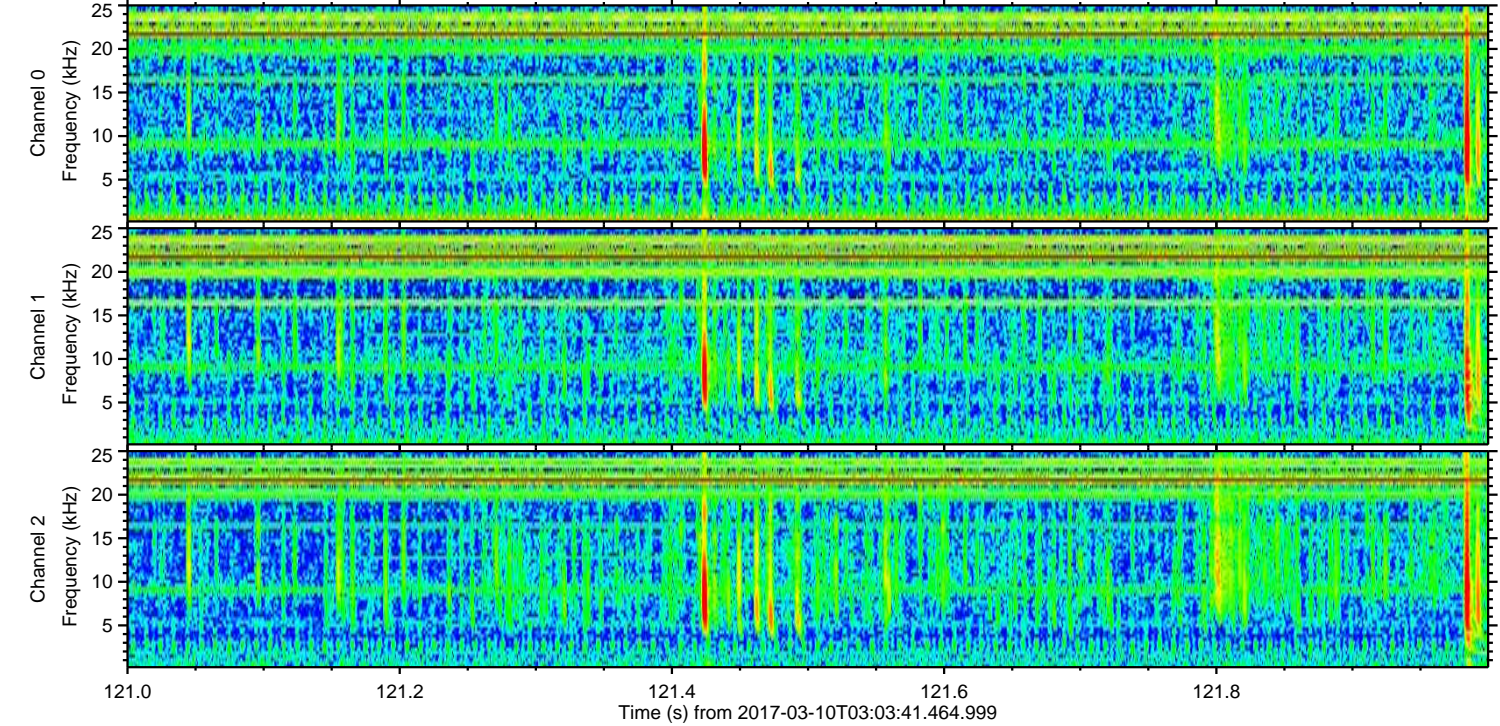
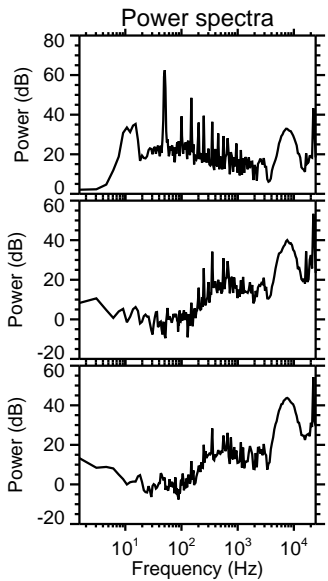
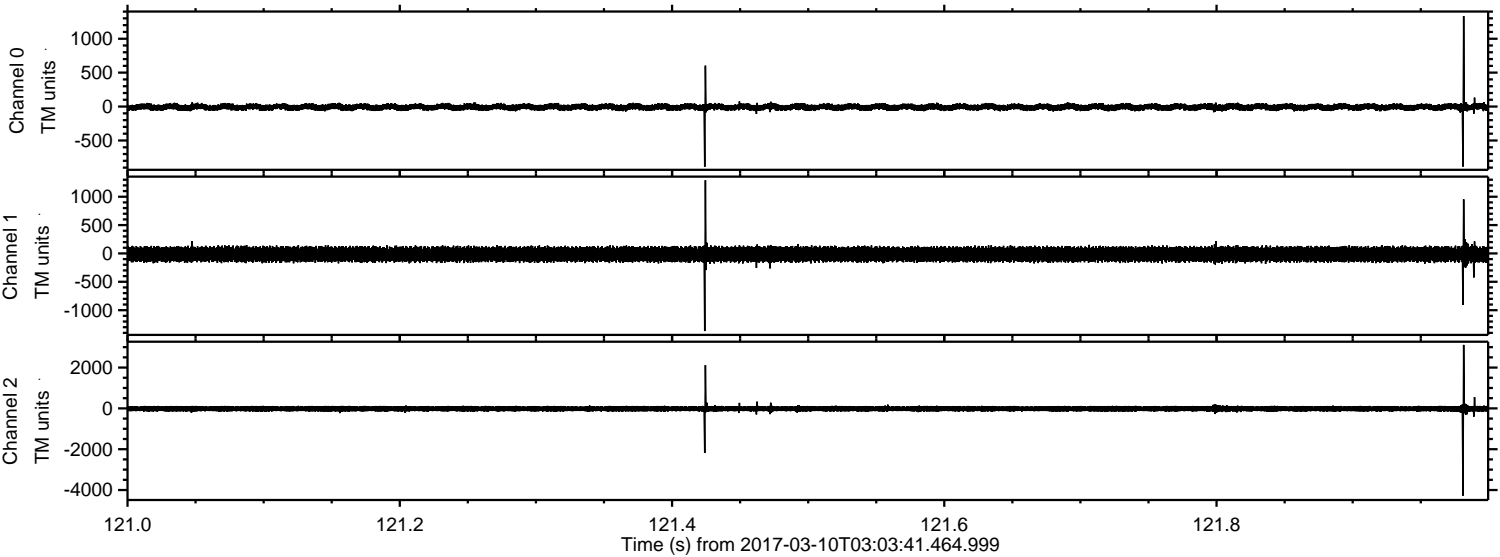
Channel 1  
mn: -2378  
mx: 3092  
 $\mu$ : -14.5  
 $\sigma$ : 88.8

Channel 2  
mn: -3637  
mx: 4371  
 $\mu$ : -17.5  
 $\sigma$ : 100.0



ELMAVAN 3D WAVEFORMS (Measured data sampled at 50 kHz) 51000 packets of 144 samples from 2017-03-10T03:03:41.464.999. Part 122/147

Processed Fri Mar 10 04:11:55 2017 by ELM ver.2012-10-06 from 001\_\_elm20170310\_030340\_\_dat00.bin



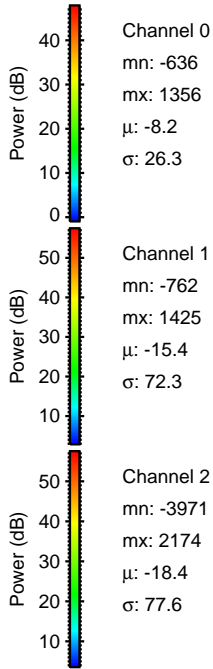
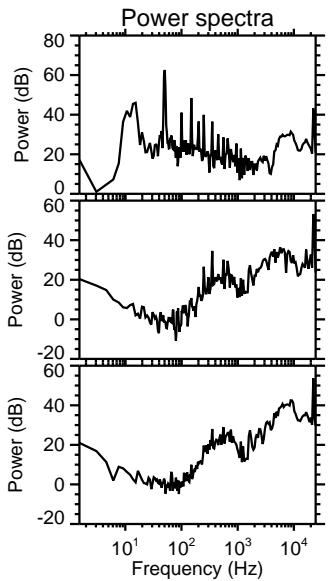
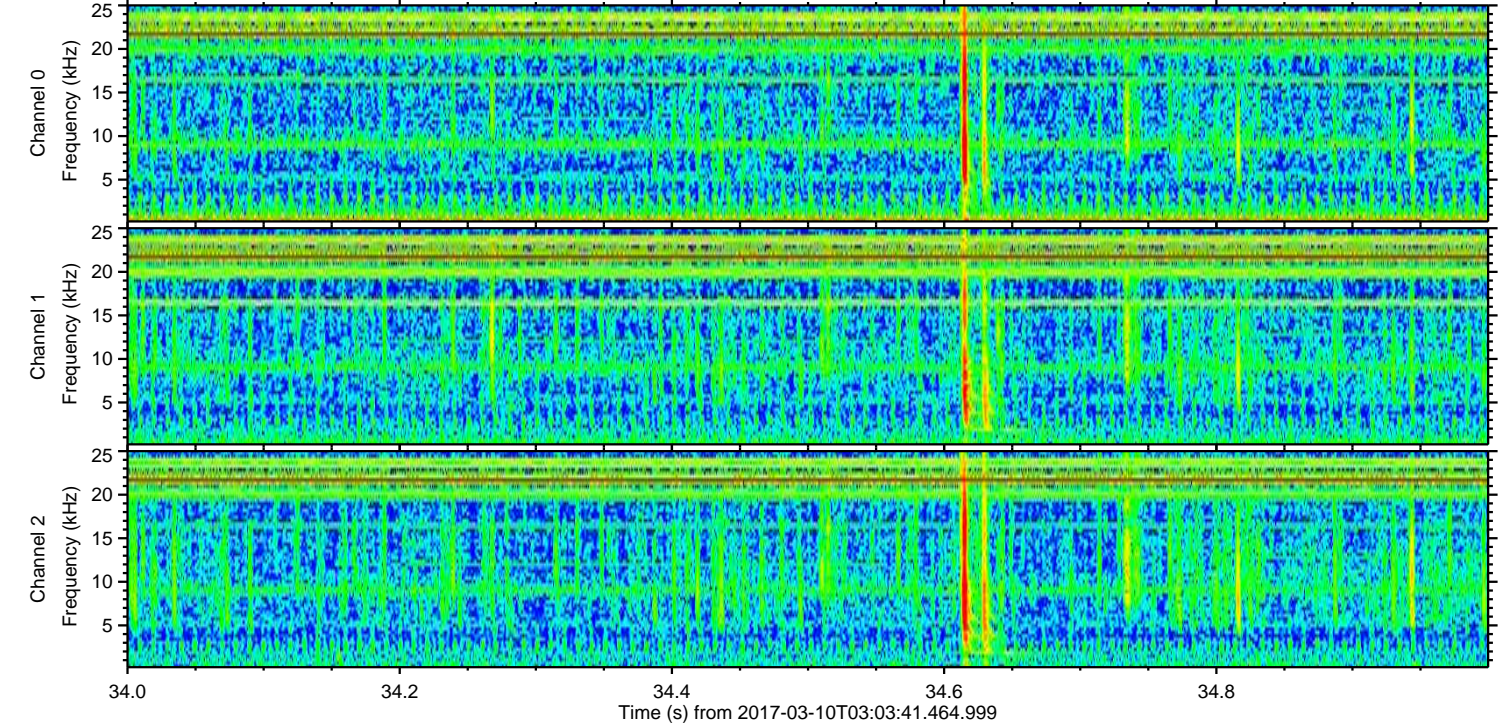
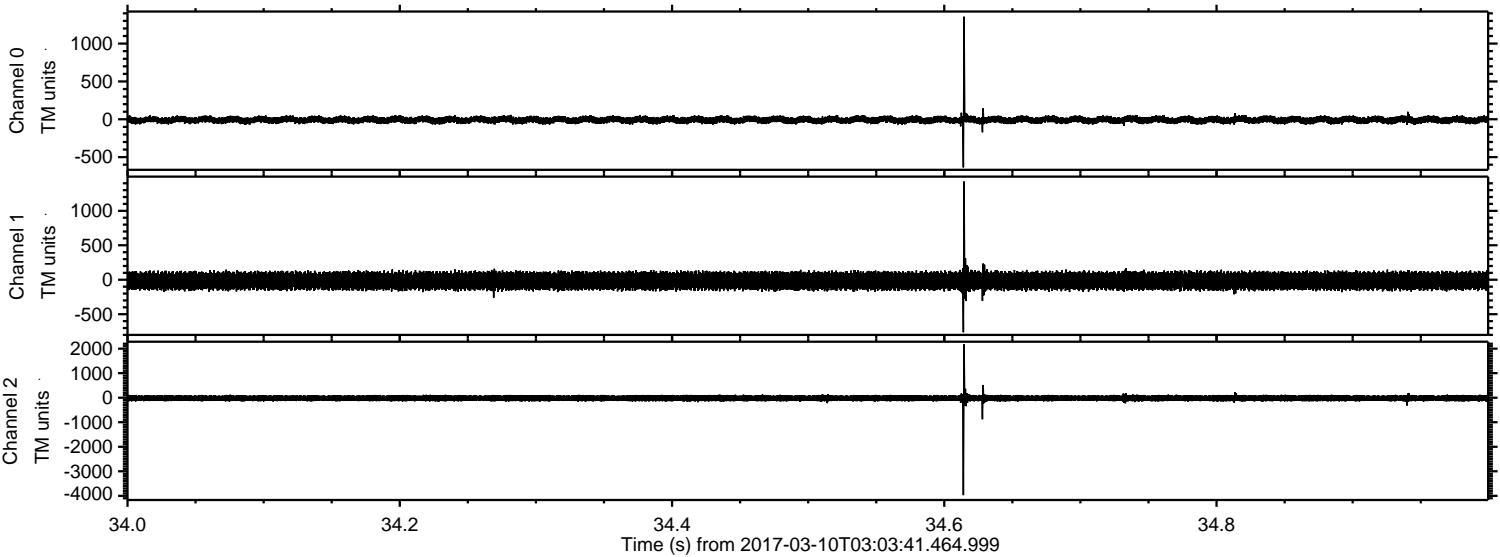
Channel 0  
mn: -888  
mx: 1334  
 $\mu$ : -8.2  
 $\sigma$ : 28.1

Channel 1  
mn: -1368  
mx: 1290  
 $\mu$ : -14.4  
 $\sigma$ : 75.4

Channel 2  
mn: -4277  
mx: 3113  
 $\mu$ : -17.5  
 $\sigma$ : 88.8

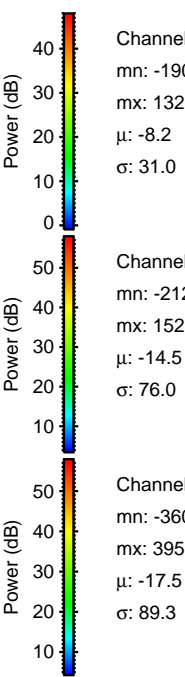
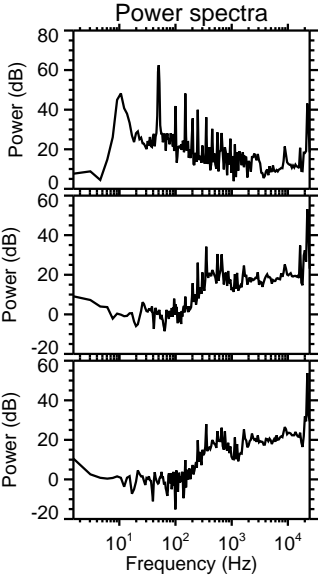
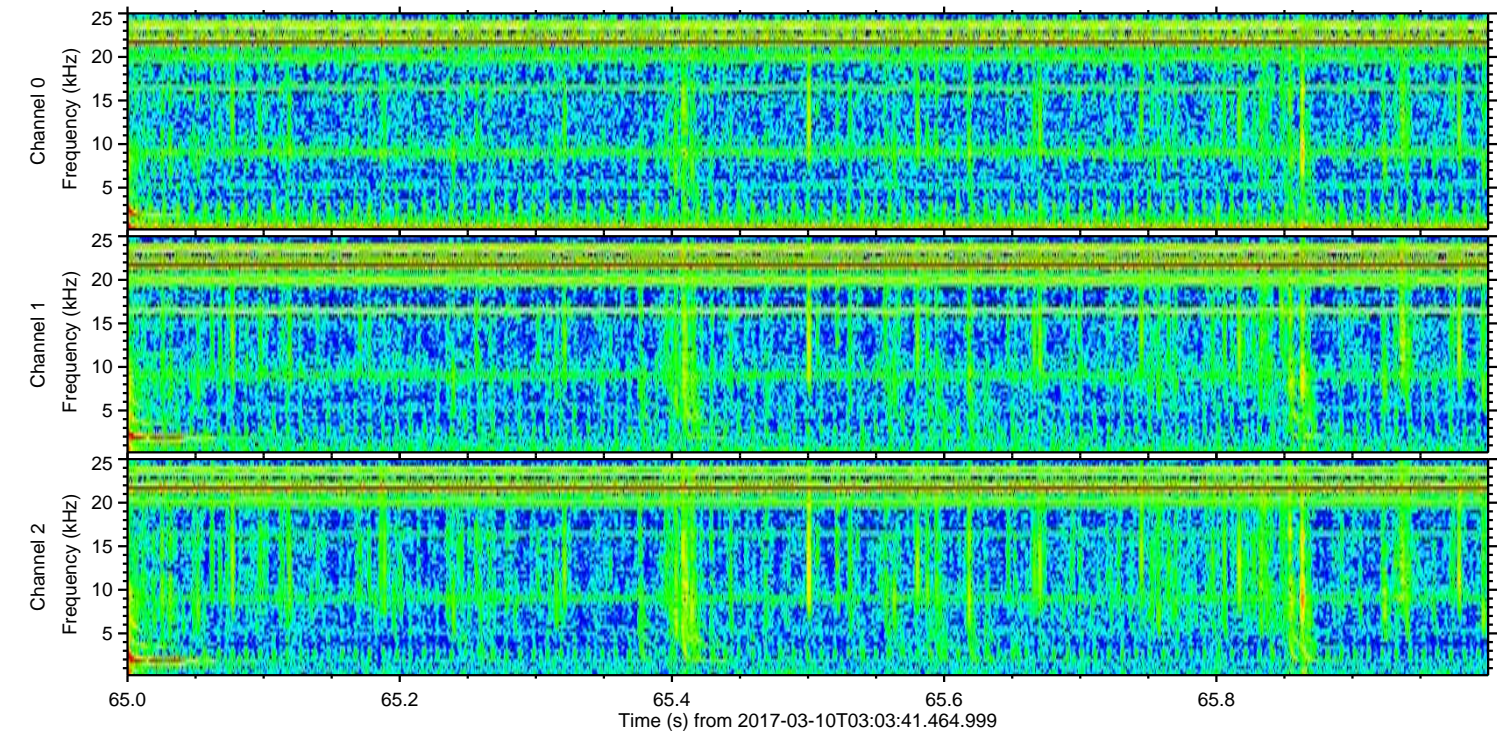
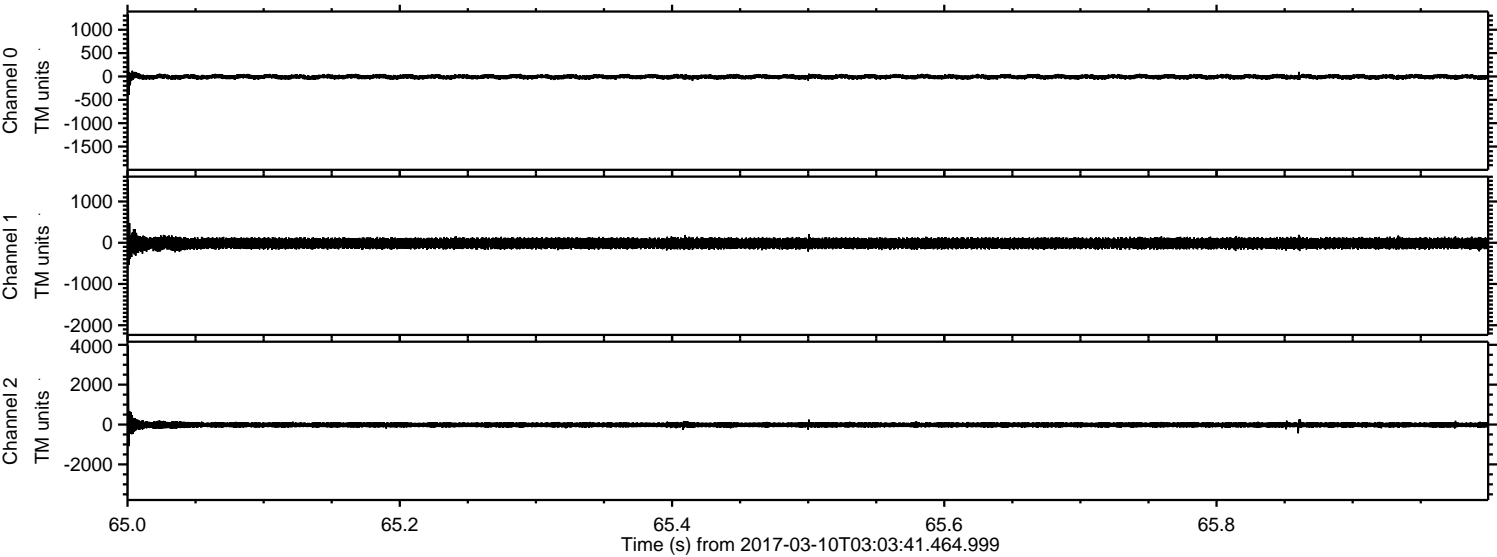


Processed Fri Mar 10 04:11:56 2017 by ELM ver.2012-10-06 from 001\_\_elm20170310\_030340\_\_dat00.bin



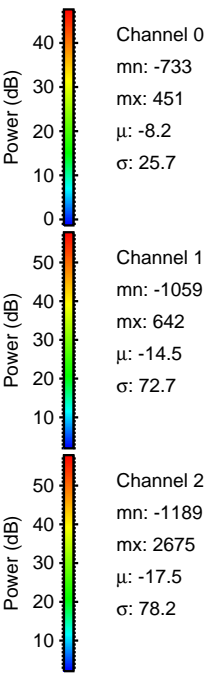
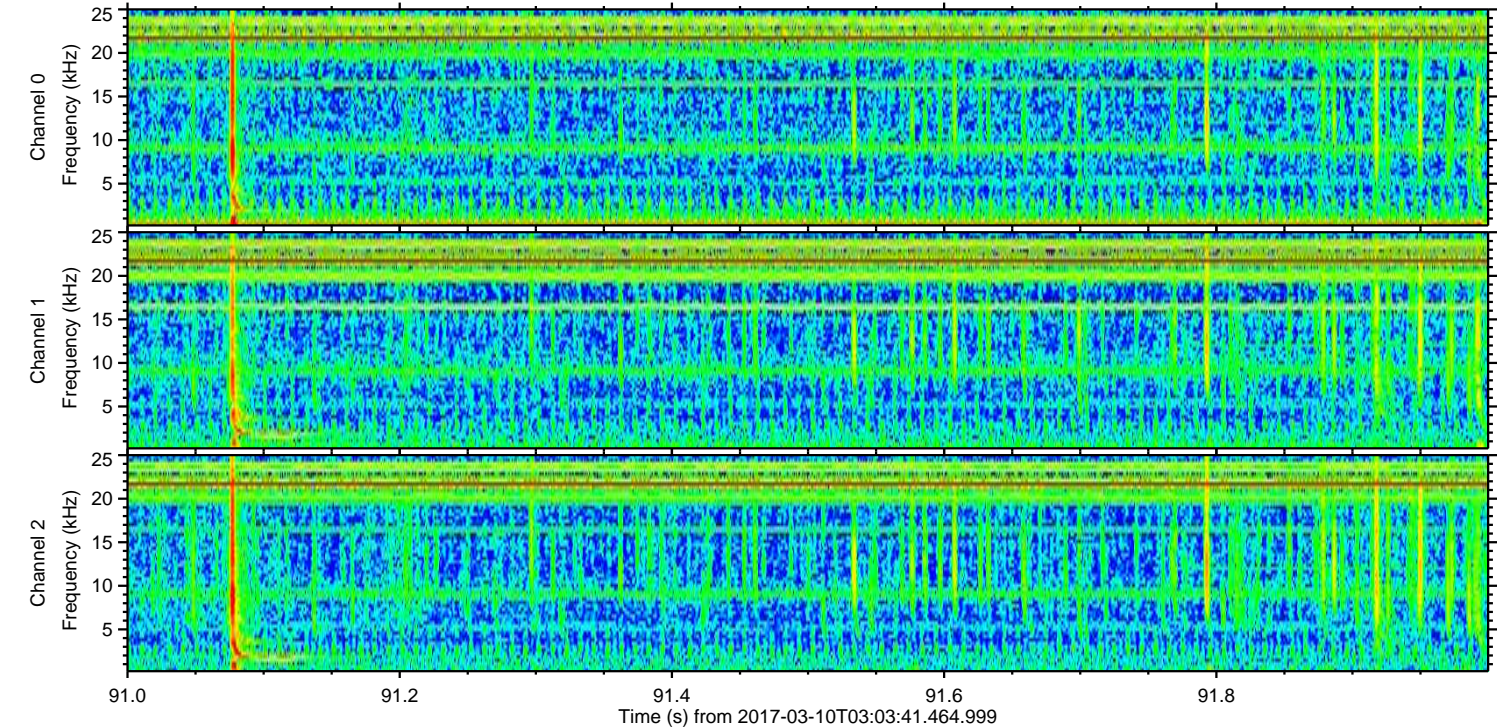
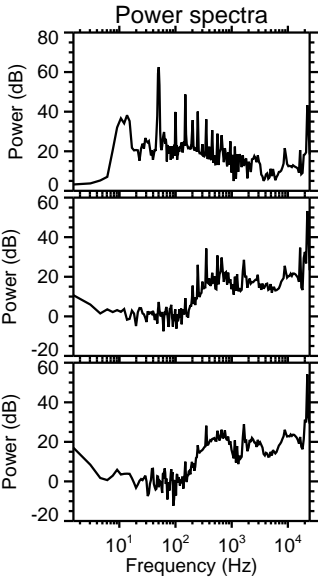
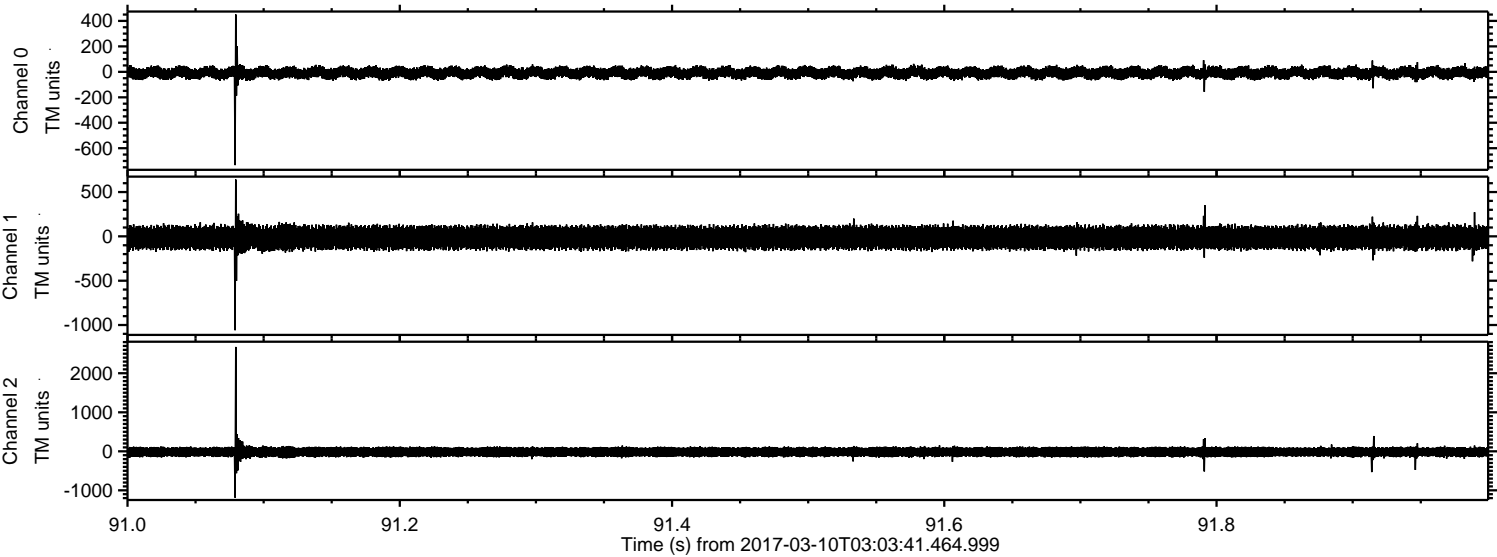


Processed Fri Mar 10 04:11:57 2017 by ELM ver.2012-10-06 from 001\_\_elm20170310\_030340\_\_dat00.bin





Processed Fri Mar 10 04:11:58 2017 by ELM ver.2012-10-06 from 001\_\_elm20170310\_030340\_\_dat00.bin





ELMAVAN 3D WAVEFORMS (Measured data sampled at 50 kHz) 51000 packets of 144 samples from 2017-03-10T03:03:41.464.999. Part 16/147

Processed Fri Mar 10 04:11:59 2017 by ELM ver.2012-10-06 from 001\_\_elm20170310\_030340\_\_dat00.bin

