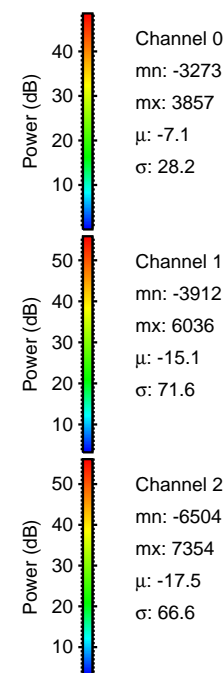
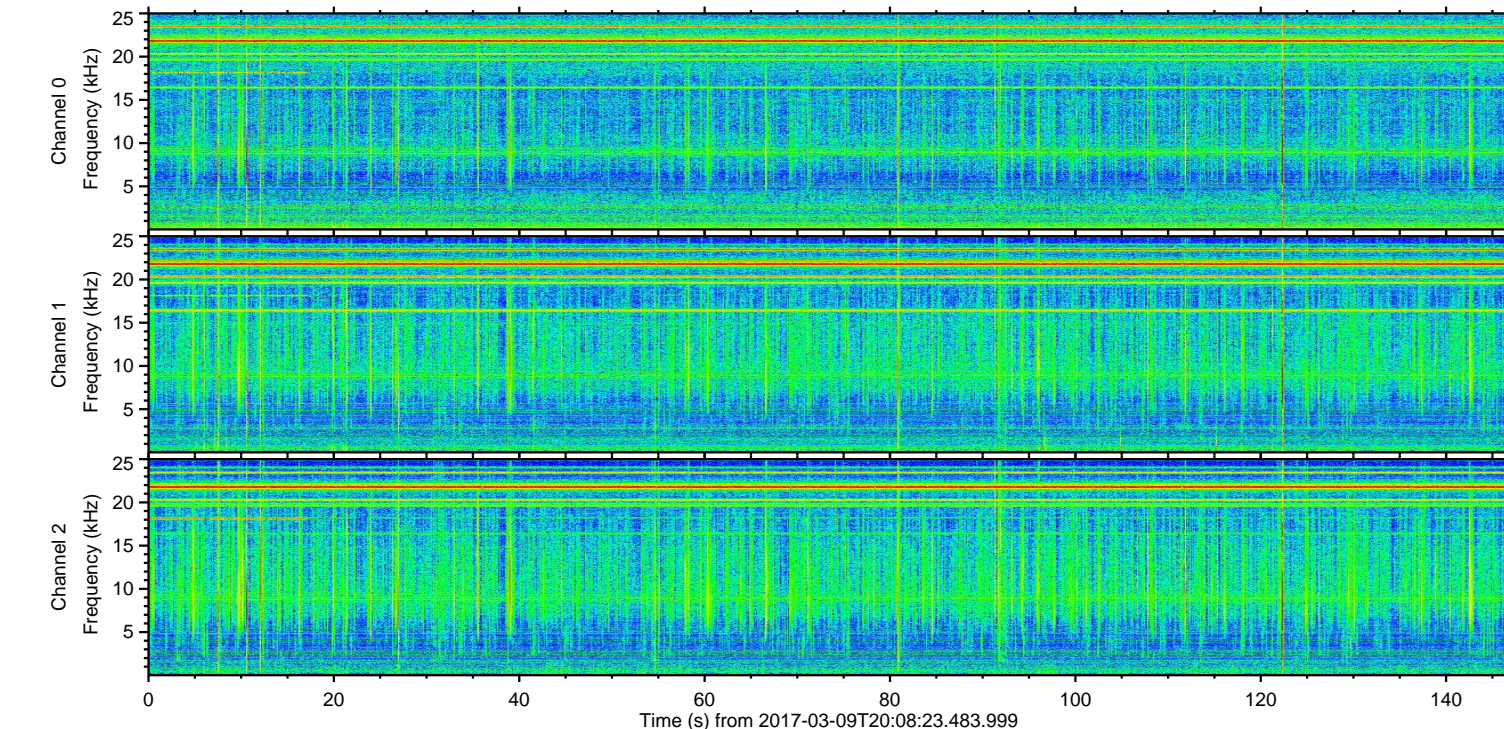
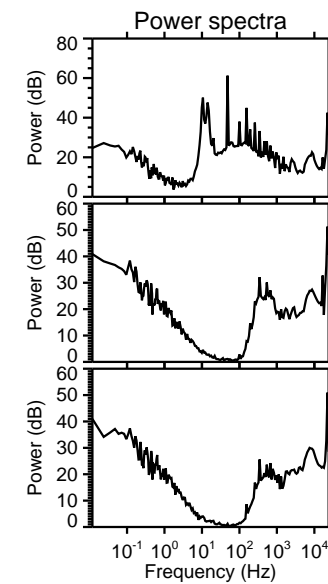
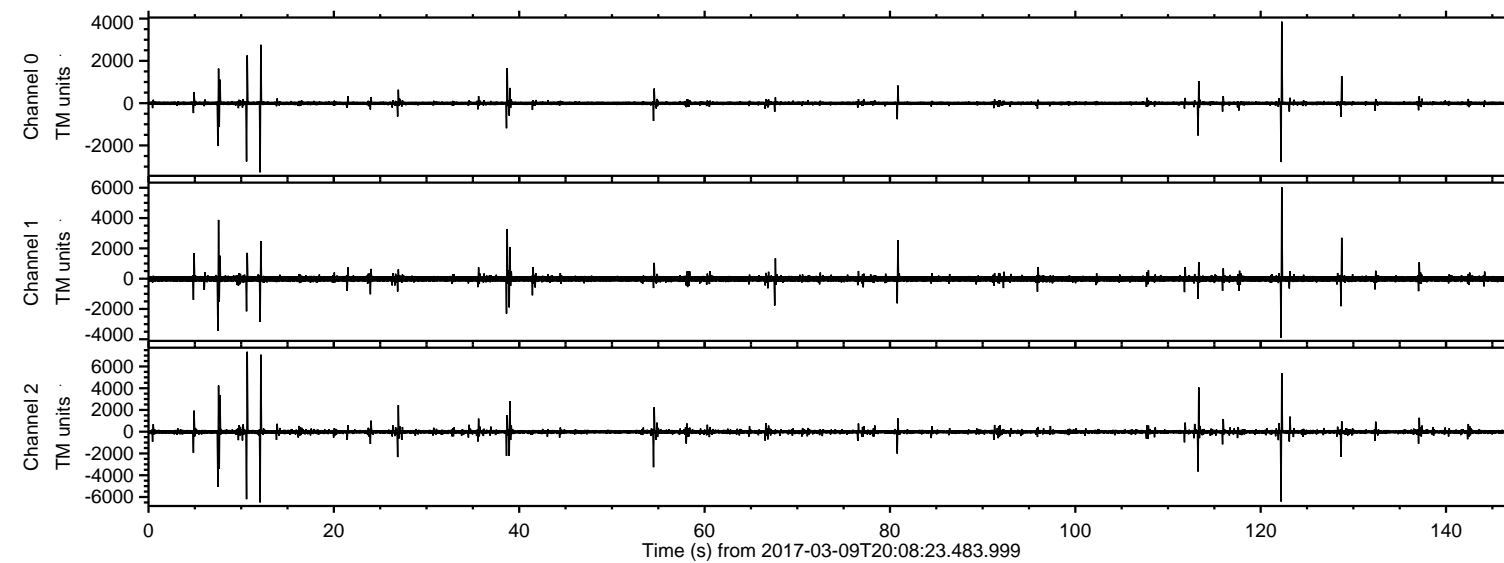
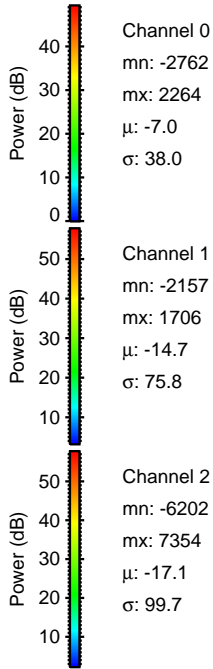
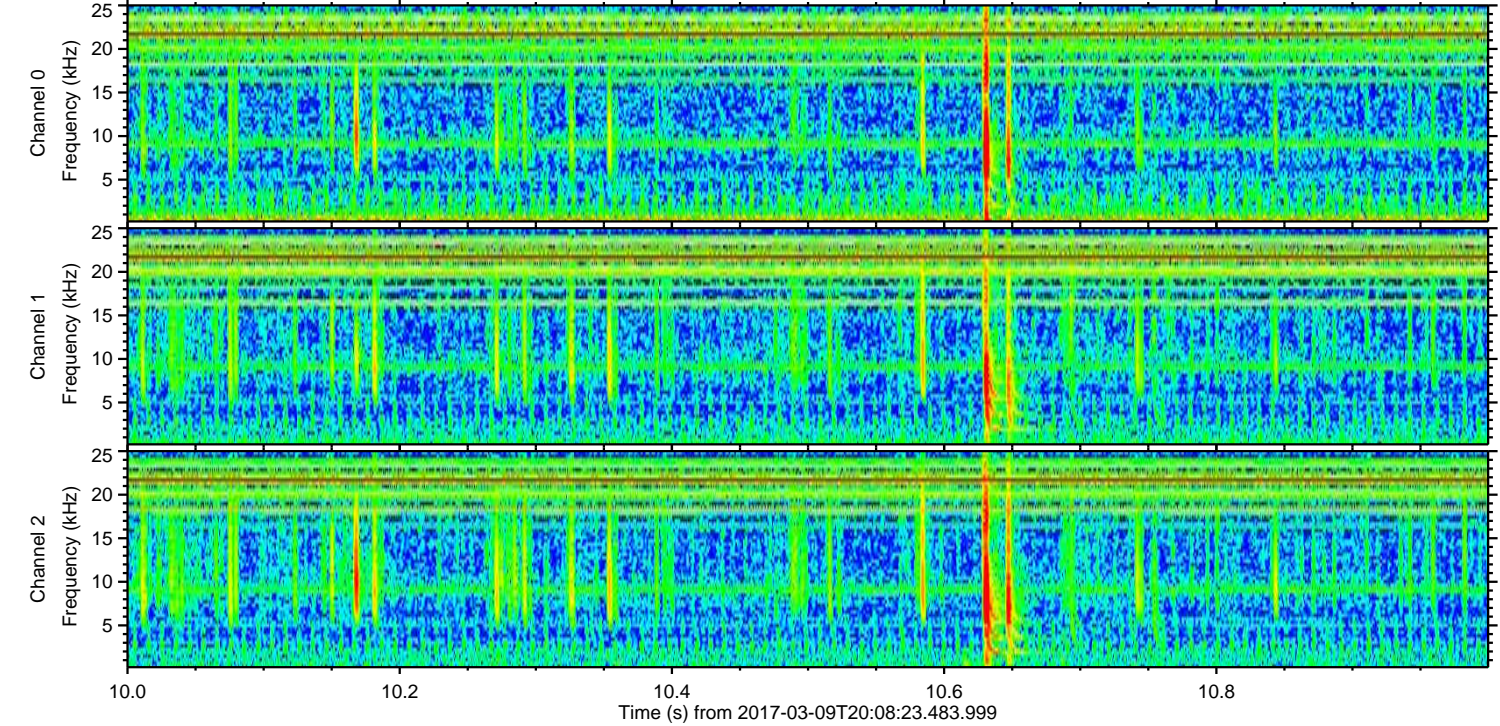
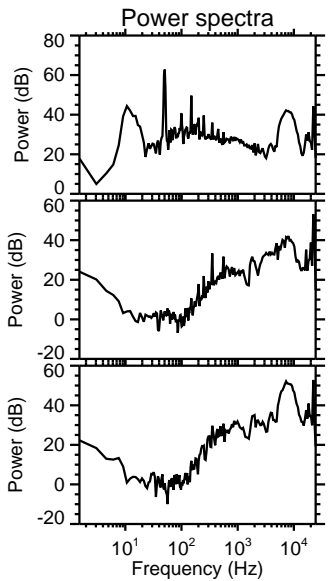
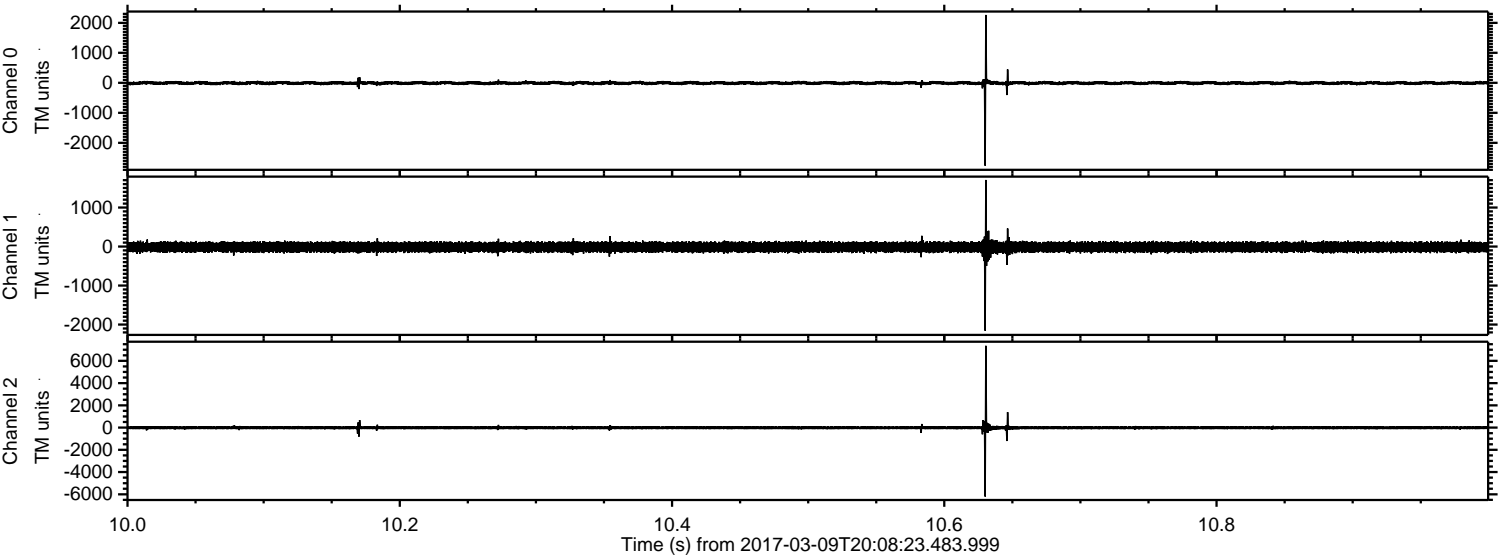


ELMAVAN 3D WAVEFORMS (Measured data sampled at 50 kHz) 51000 packets of 144 samples from 2017-03-09T20:08:23.483.999.

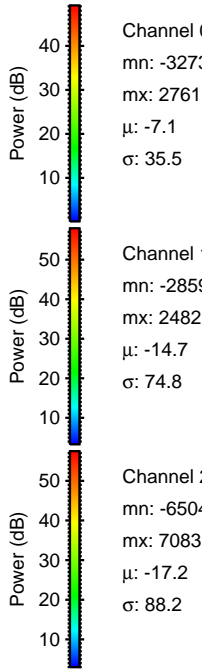
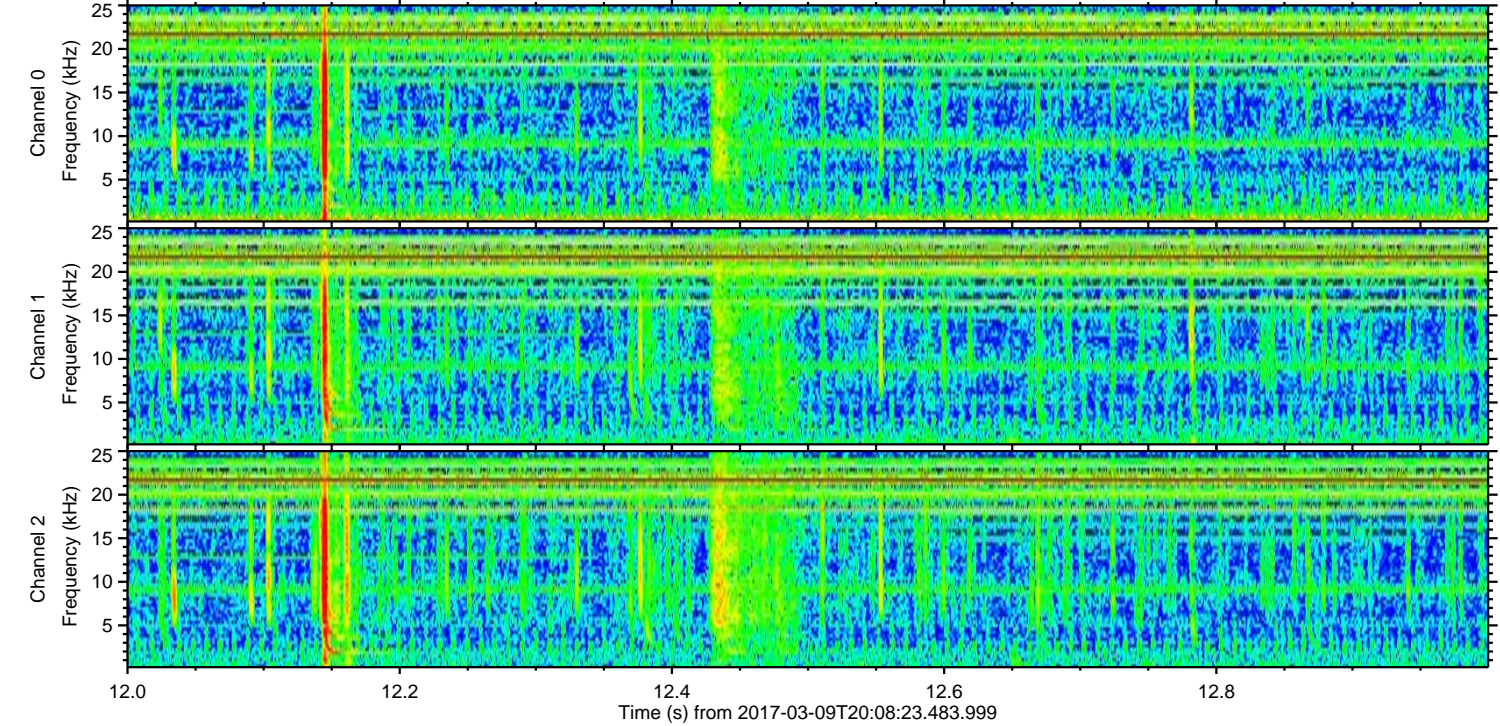
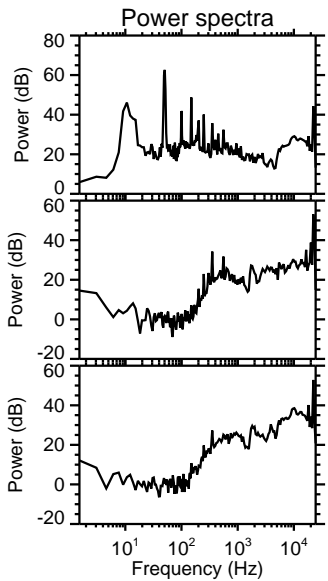
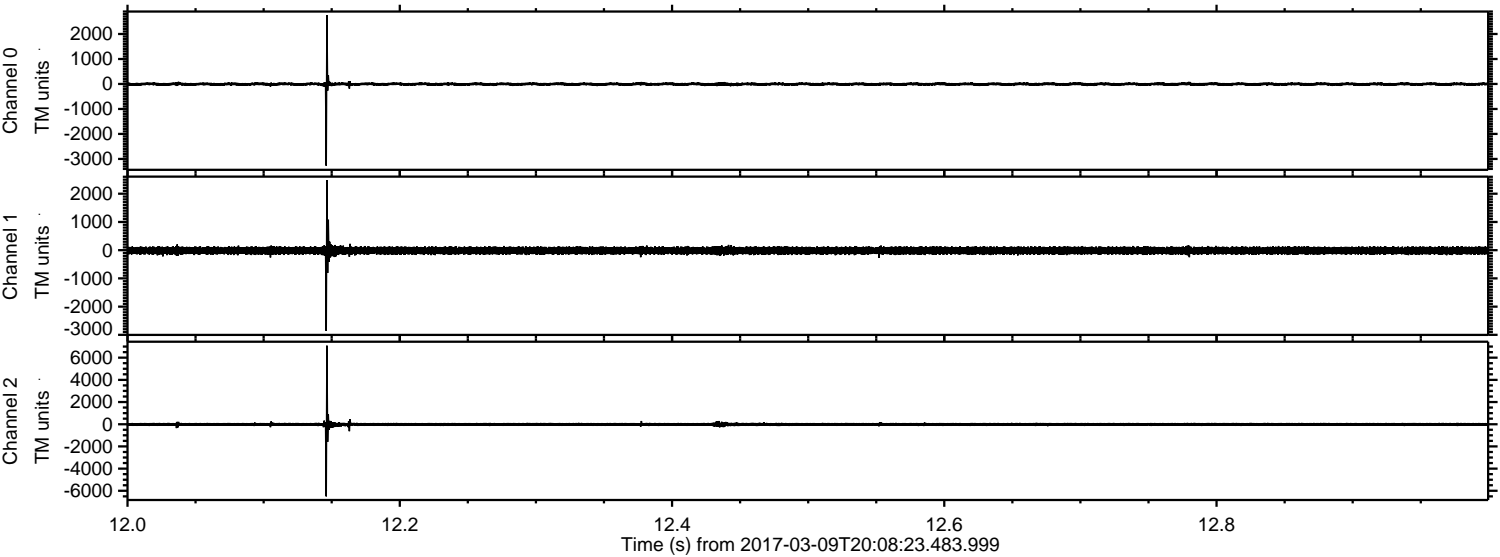
Processed Thu Mar 9 21:15:53 2017 by ELM ver.2012-10-06 from 001__elm20170309_200822__dat00.bin



Processed Thu Mar 9 21:16:05 2017 by ELM ver.2012-10-06 from 001__elm20170309_200822__dat00.bin

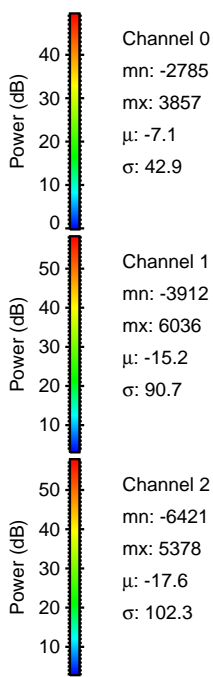
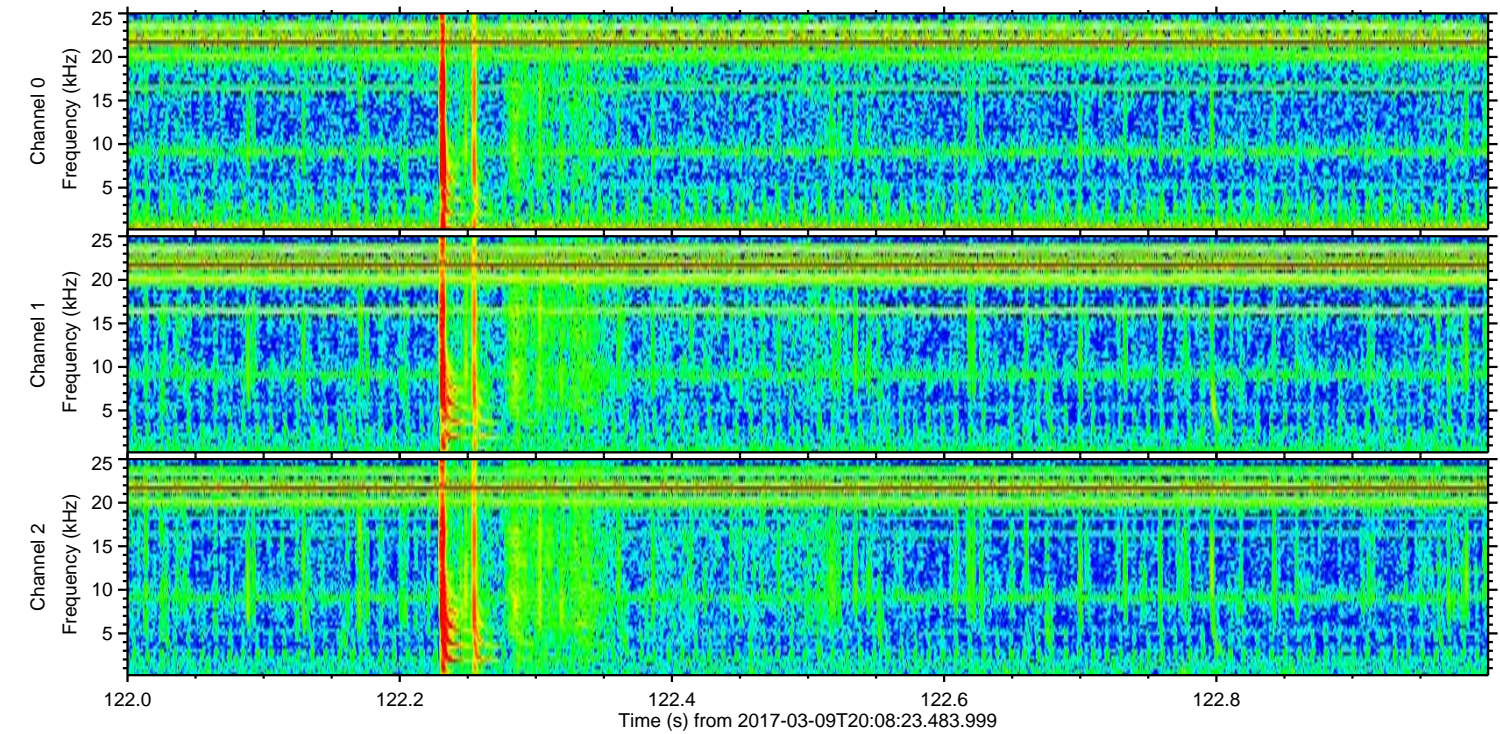
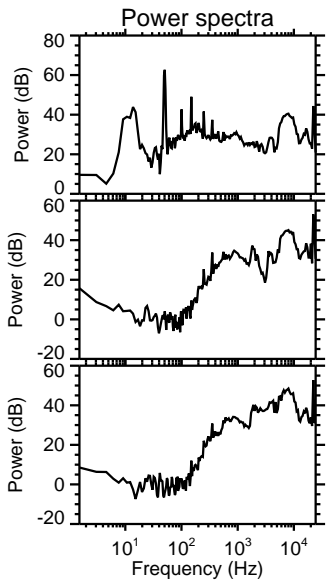
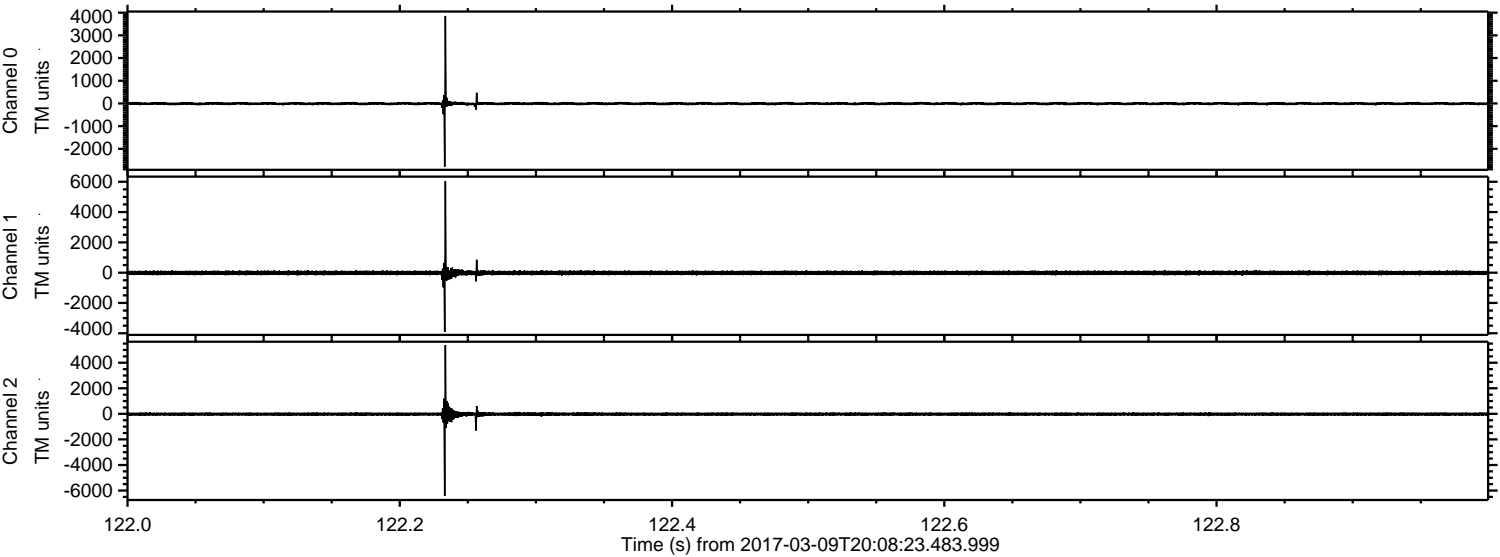


Processed Thu Mar 9 21:16:06 2017 by ELM ver.2012-10-06 from 001__elm20170309_200822__dat00.bin

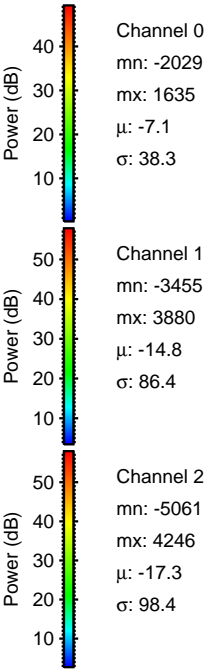
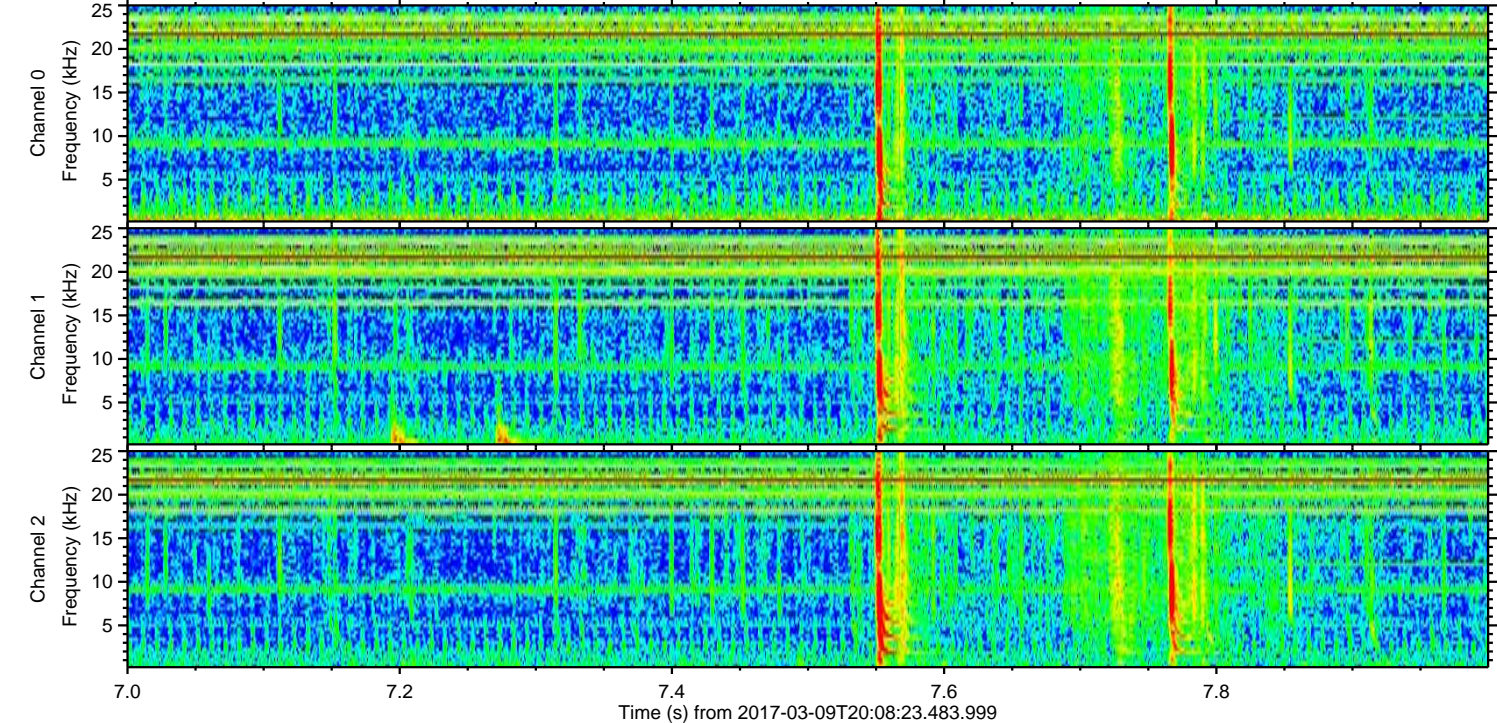
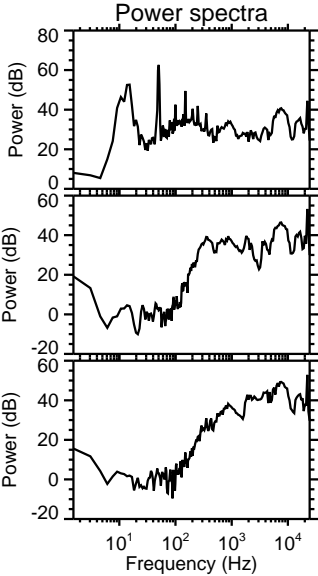
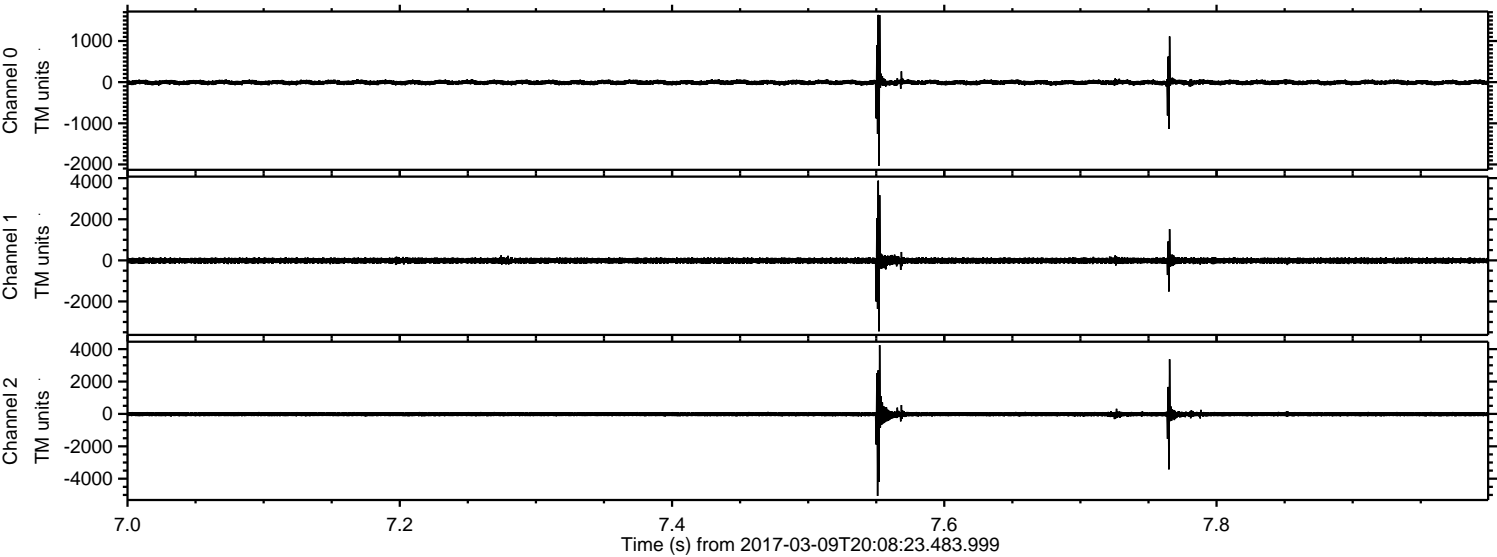


ELMAVAN 3D WAVEFORMS (Measured data sampled at 50 kHz) 51000 packets of 144 samples from 2017-03-09T20:08:23.483.999. Part 123/147

Processed Thu Mar 9 21:16:06 2017 by ELM ver.2012-10-06 from 001__elm20170309_200822__dat00.bin

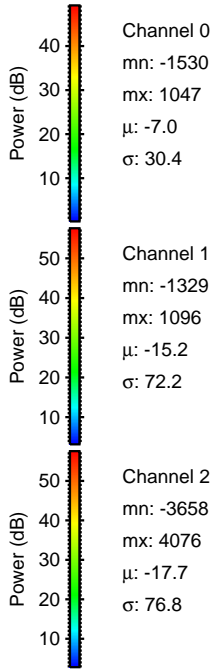
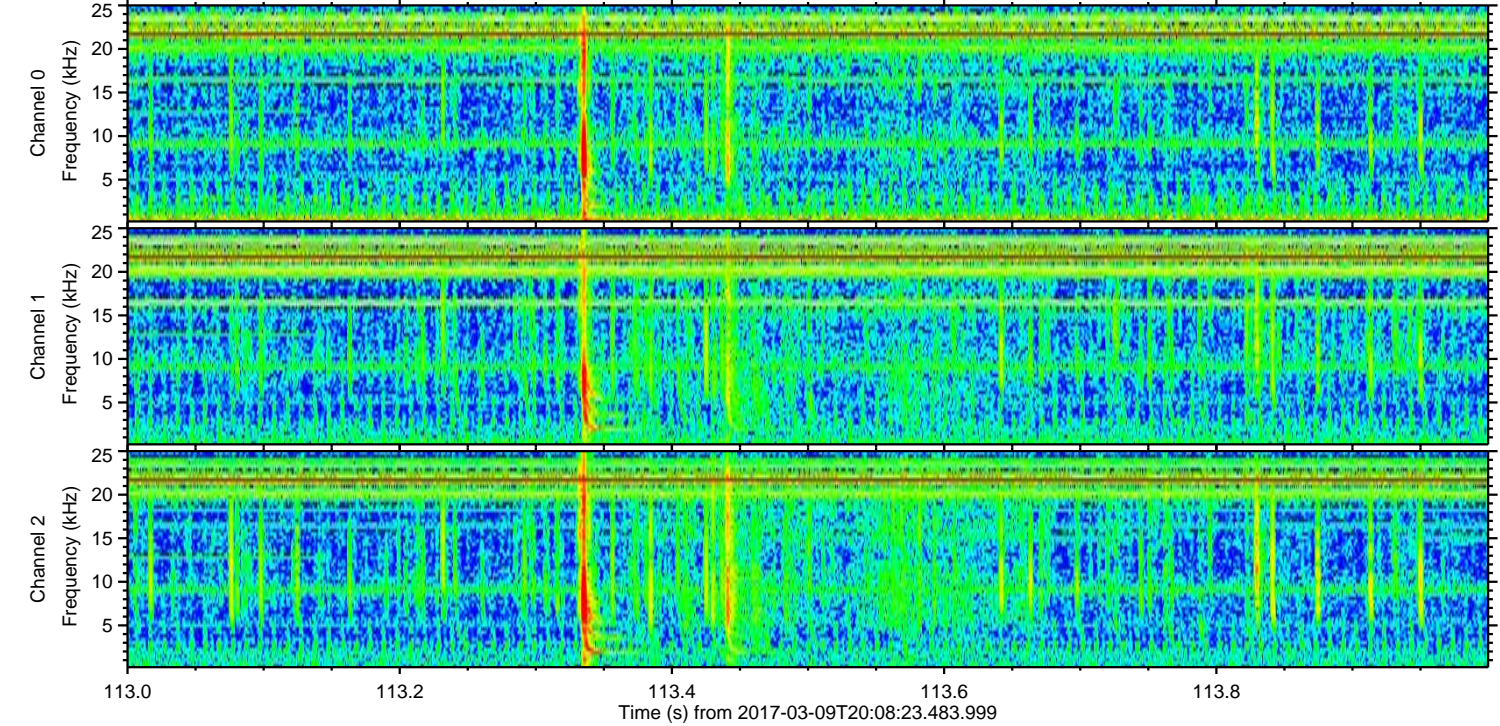
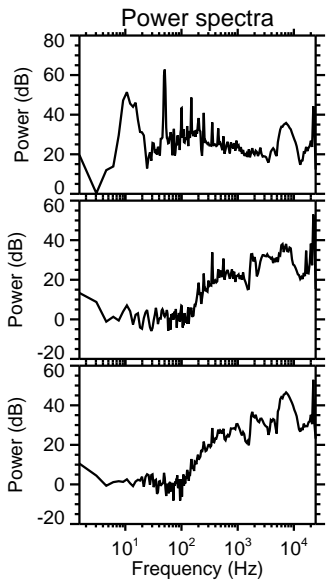
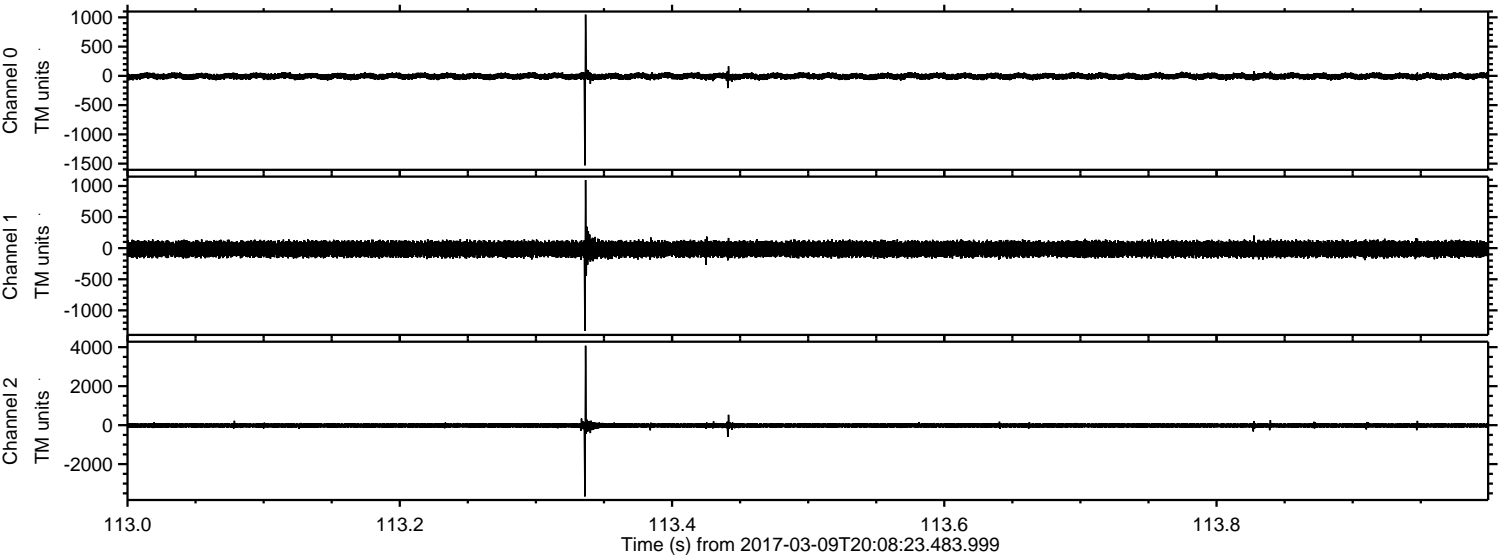


Processed Thu Mar 9 21:16:07 2017 by ELM ver.2012-10-06 from 001__elm20170309_200822__dat00.bin

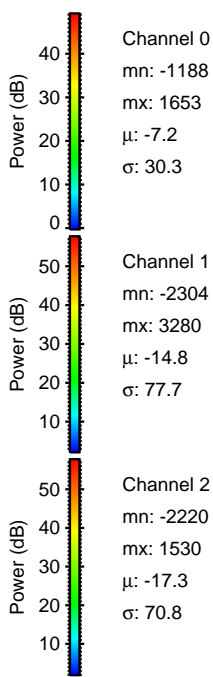
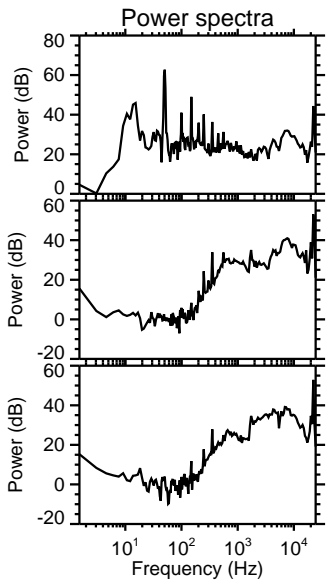
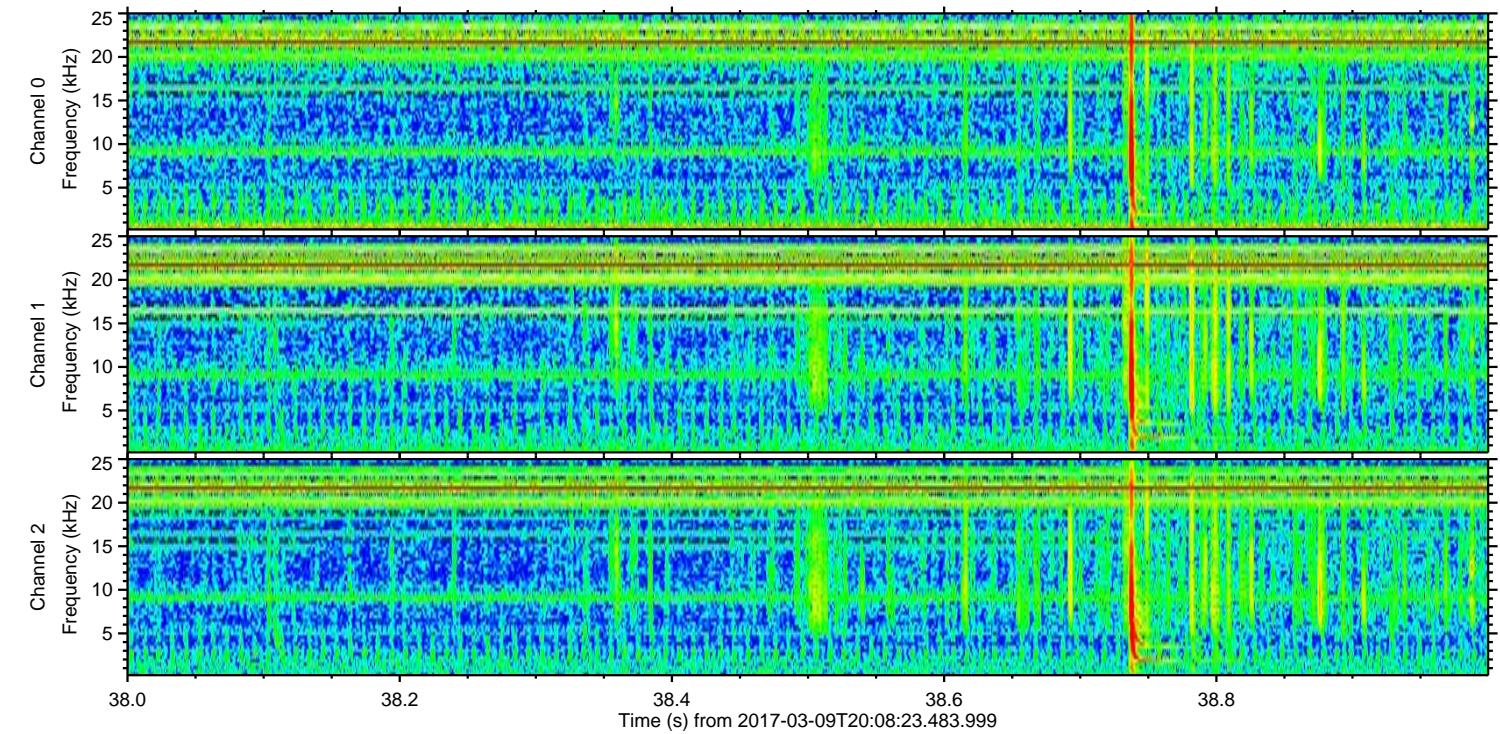
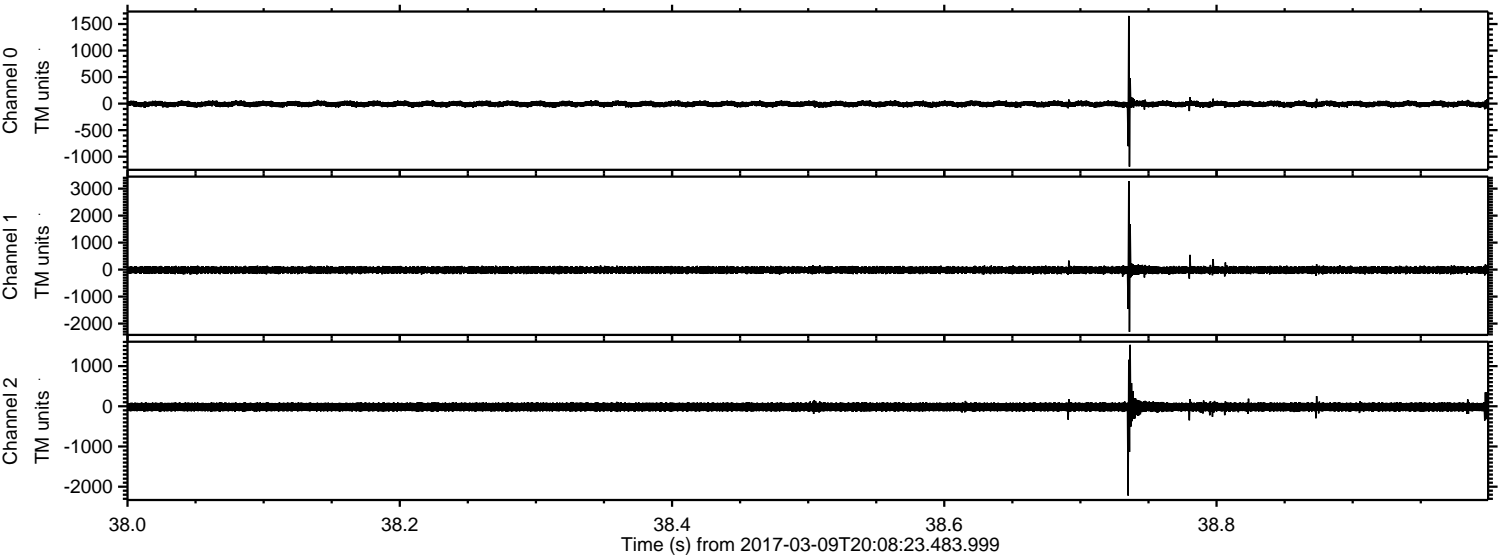


ELMAVAN 3D WAVEFORMS (Measured data sampled at 50 kHz) 51000 packets of 144 samples from 2017-03-09T20:08:23.483.999. Part 114/147

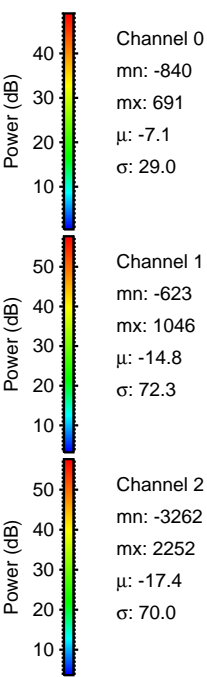
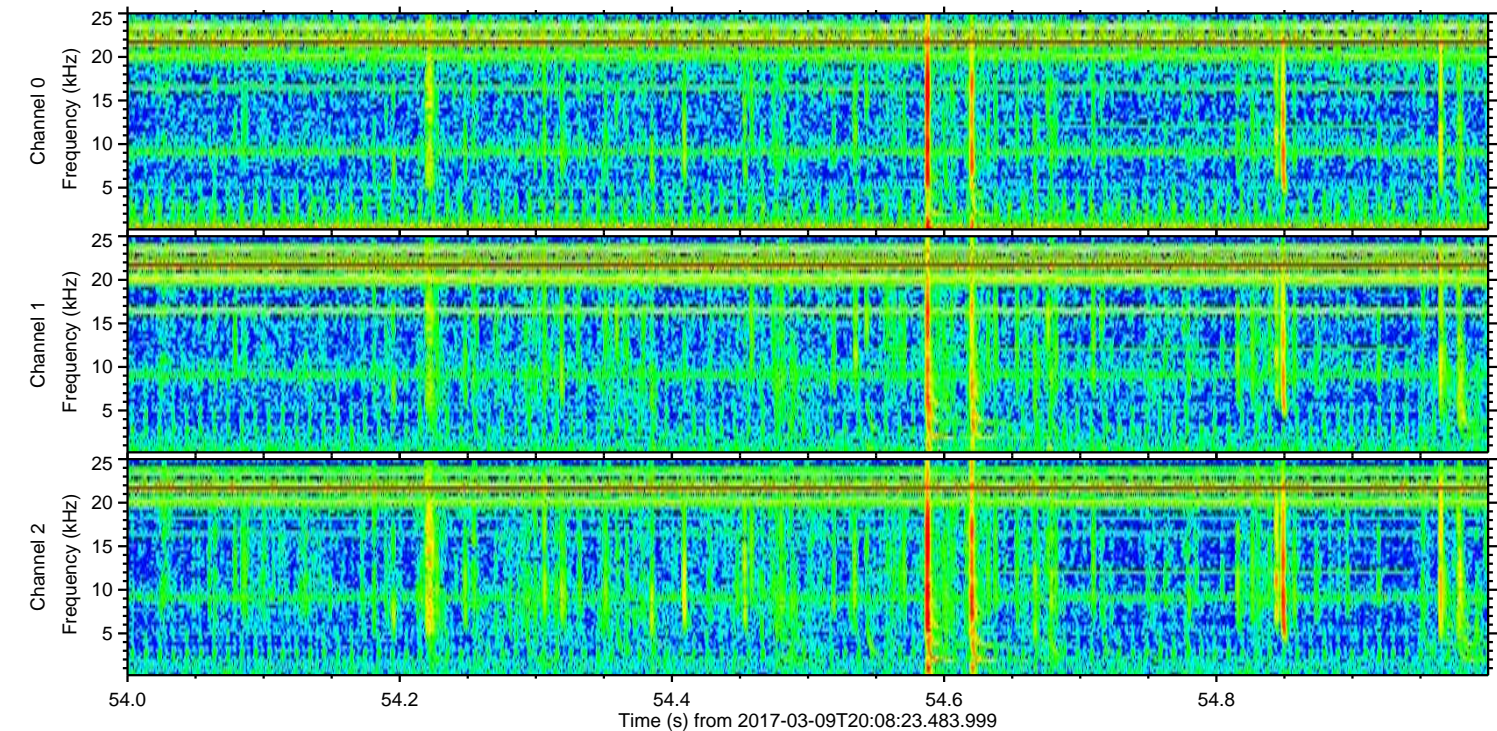
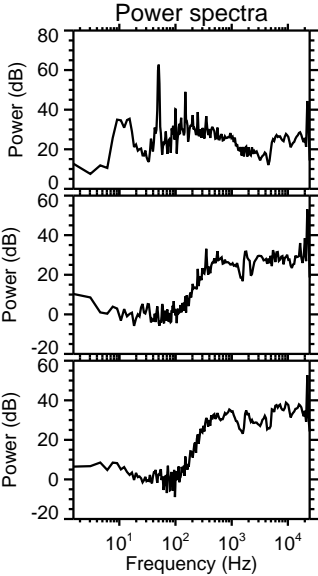
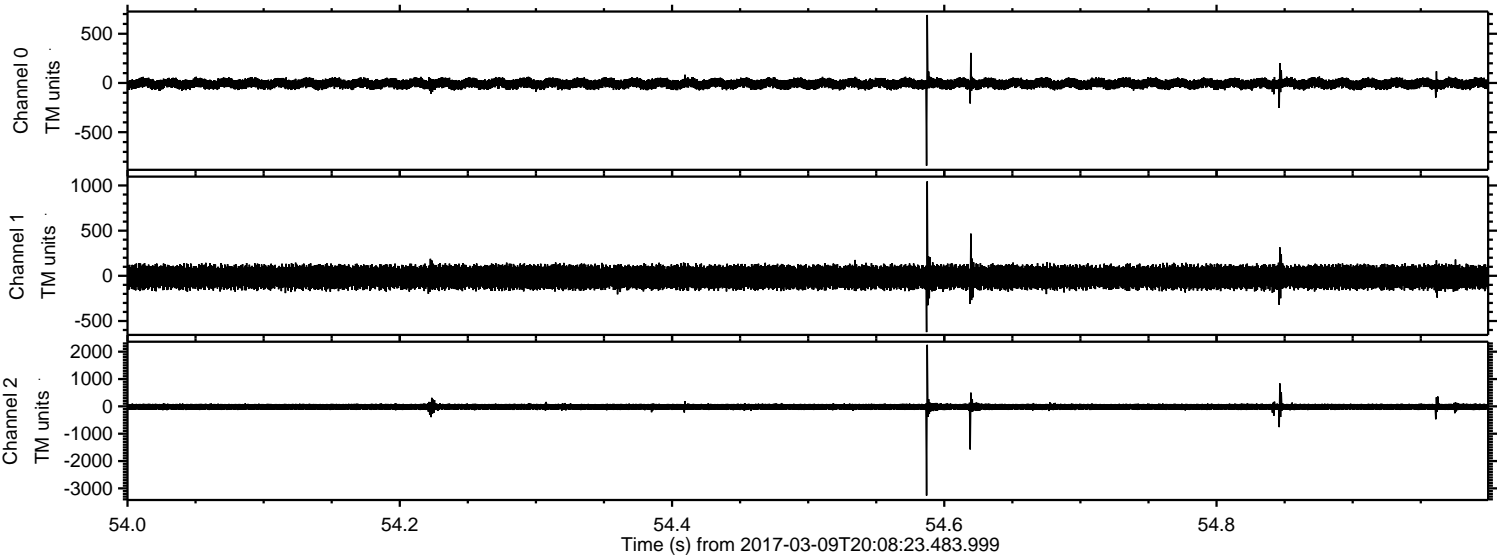
Processed Thu Mar 9 21:16:08 2017 by ELM ver.2012-10-06 from 001__elm20170309_200822__dat00.bin



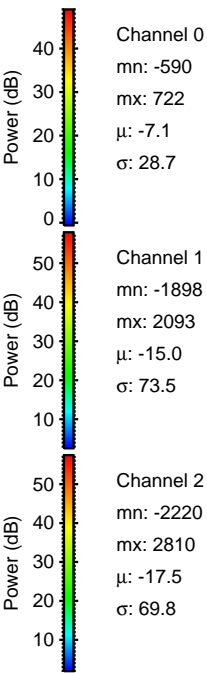
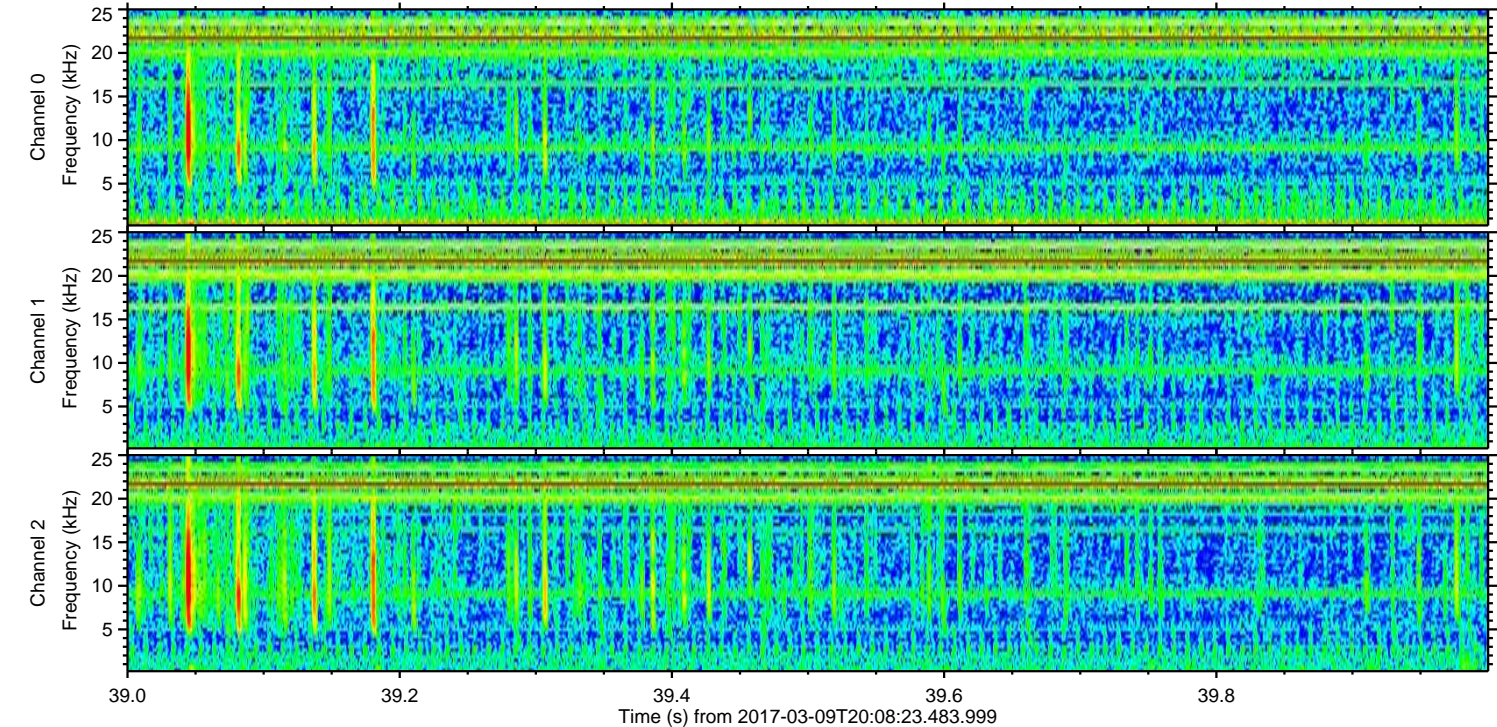
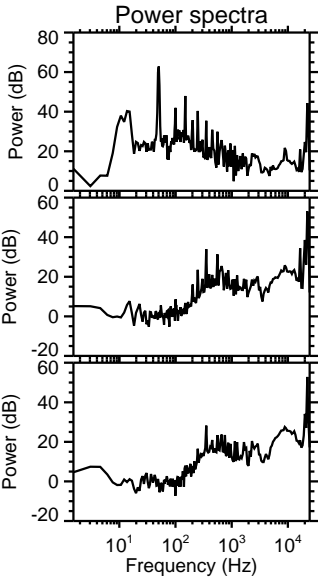
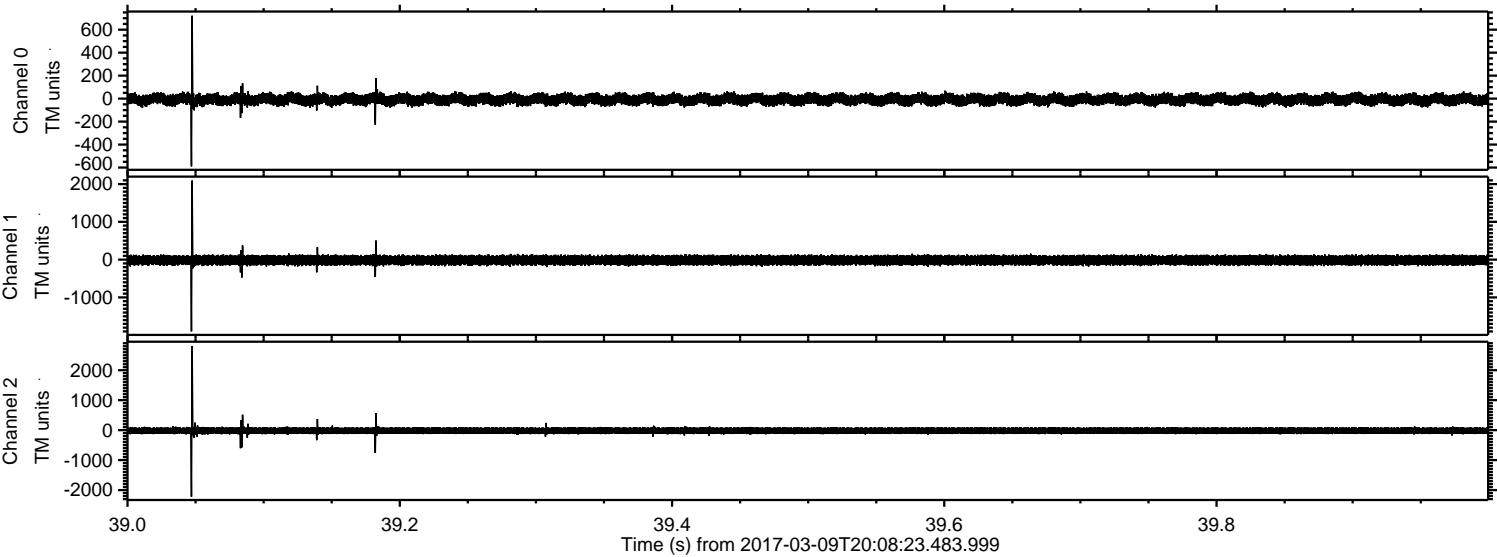
Processed Thu Mar 9 21:16:09 2017 by ELM ver.2012-10-06 from 001__elm20170309_200822__dat00.bin



Processed Thu Mar 9 21:16:10 2017 by ELM ver.2012-10-06 from 001__elm20170309_200822__dat00.bin

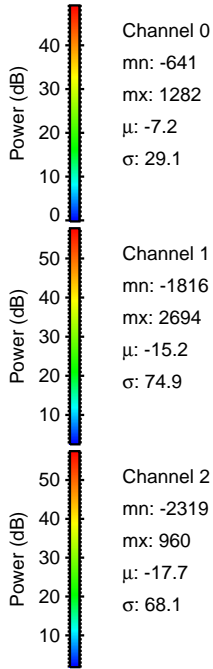
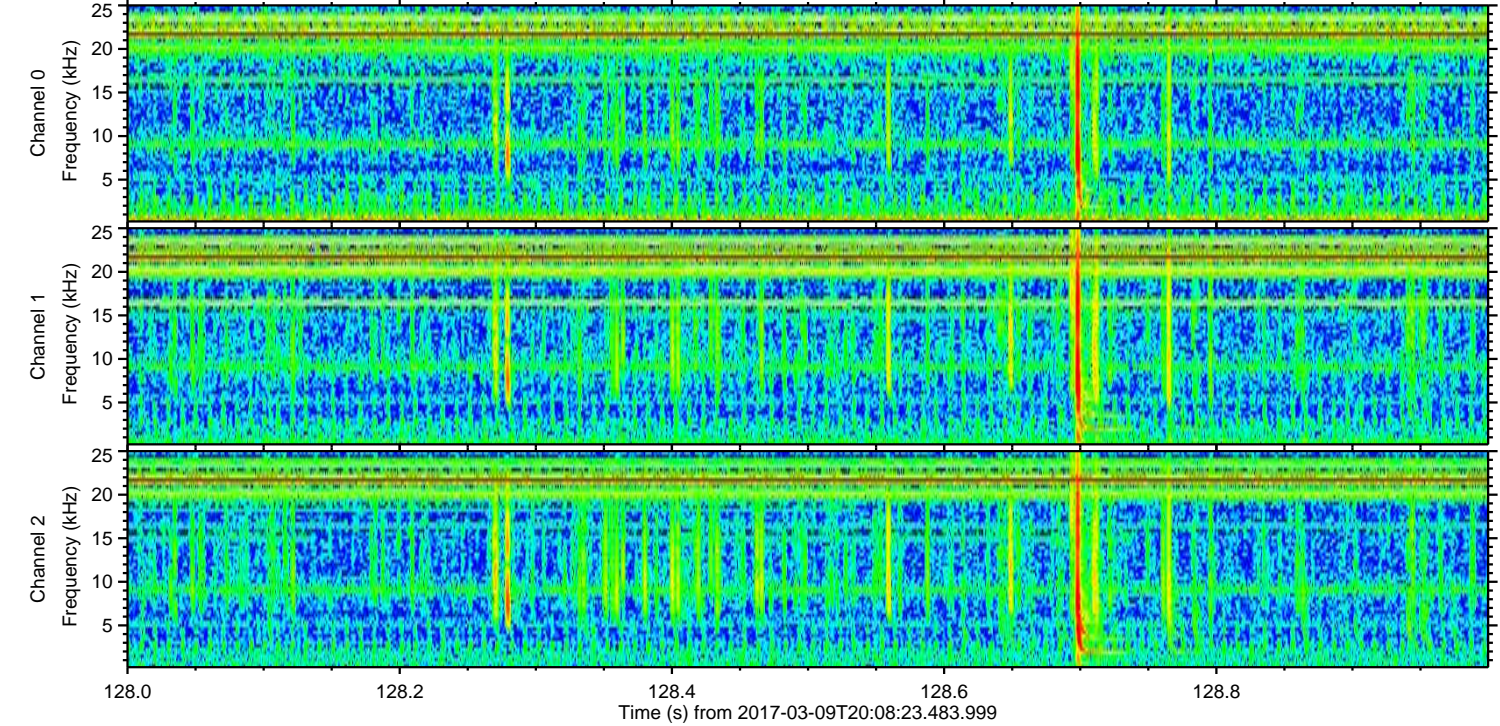
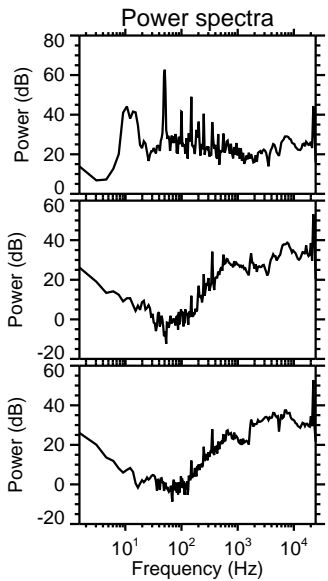
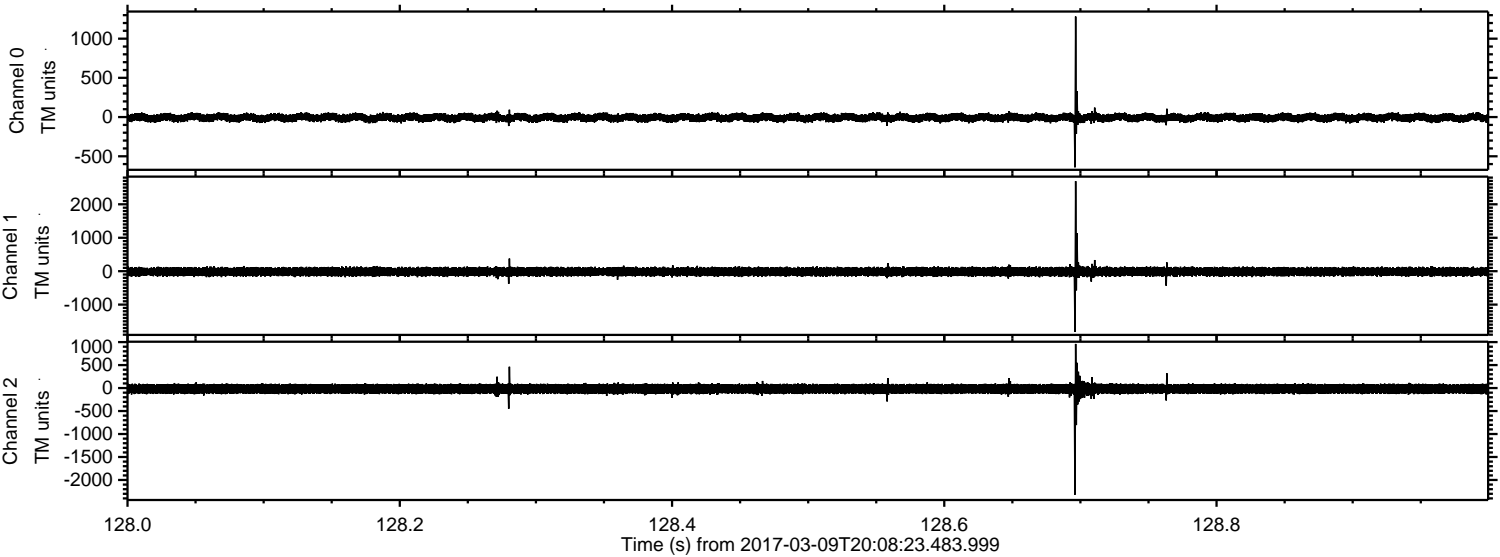


Processed Thu Mar 9 21:16:11 2017 by ELM ver.2012-10-06 from 001__elm20170309_200822__dat00.bin



ELMAVAN 3D WAVEFORMS (Measured data sampled at 50 kHz) 51000 packets of 144 samples from 2017-03-09T20:08:23.483.999. Part 129/147

Processed Thu Mar 9 21:16:12 2017 by ELM ver.2012-10-06 from 001__elm20170309_200822__dat00.bin



Channel 0
mn: -641
mx: 1282
 μ : -7.2
 σ : 29.1

Channel 1
mn: -1816
mx: 2694
 μ : -15.2
 σ : 74.9

Channel 2
mn: -2319
mx: 960
 μ : -17.7
 σ : 68.1

