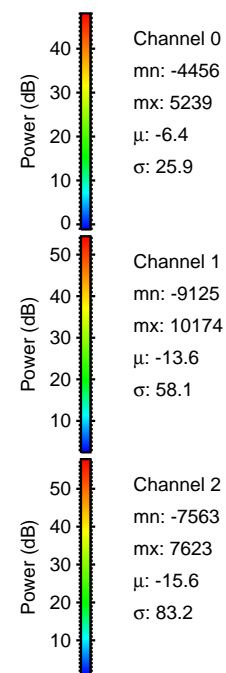
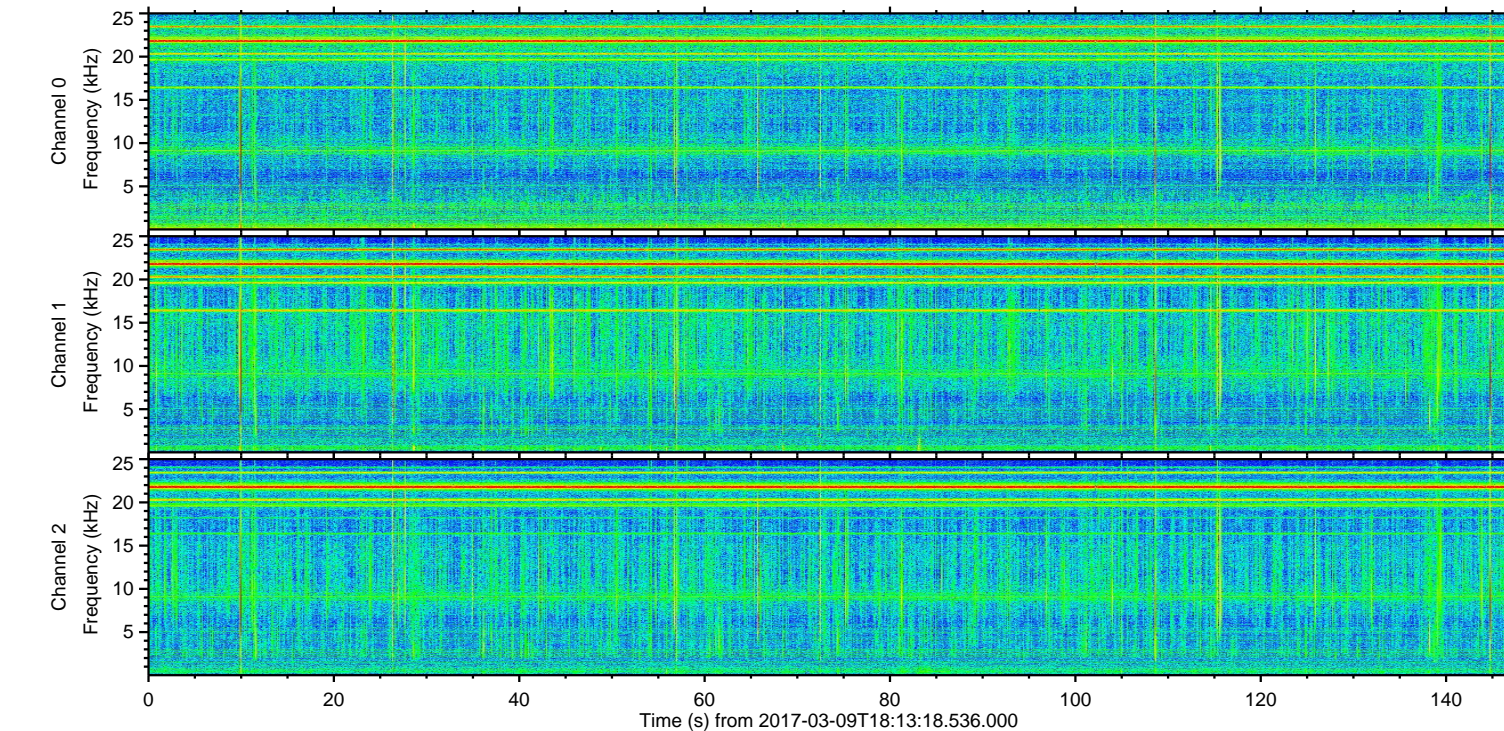
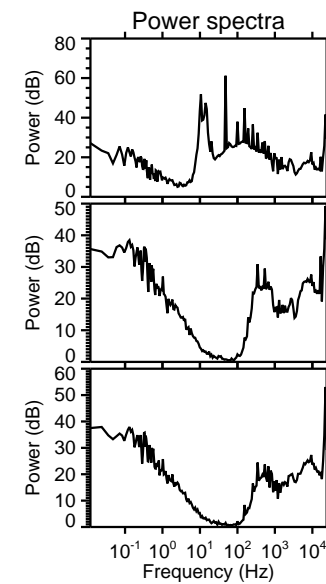
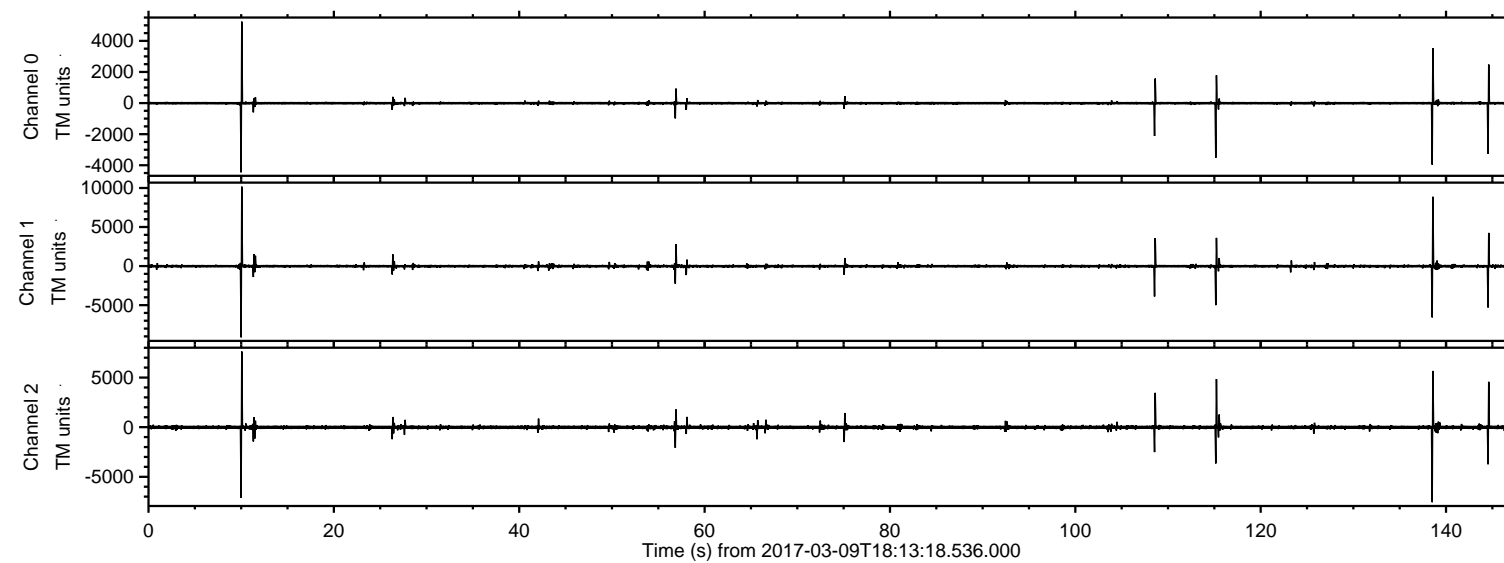
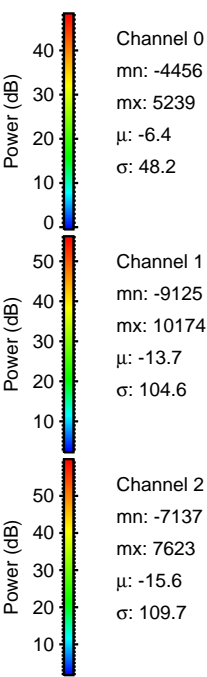
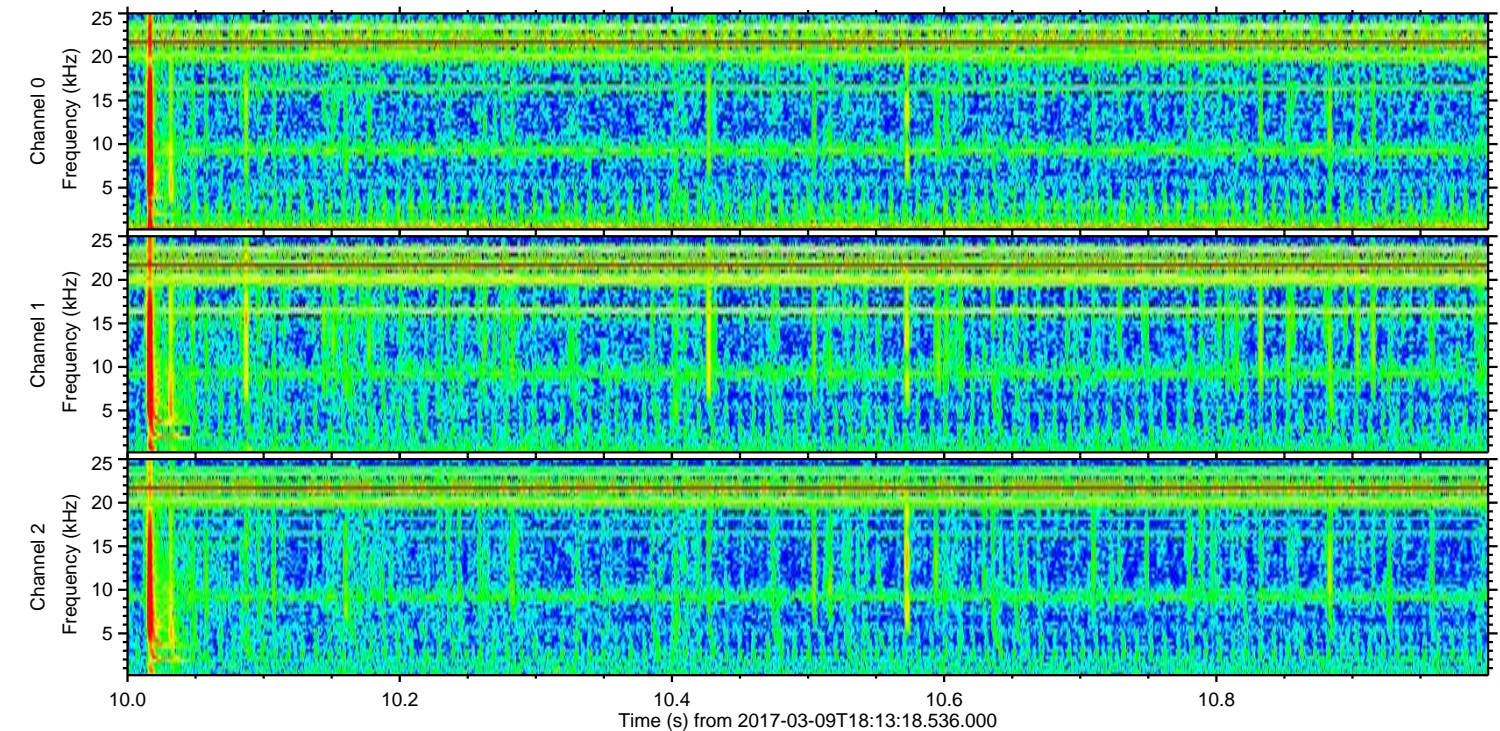
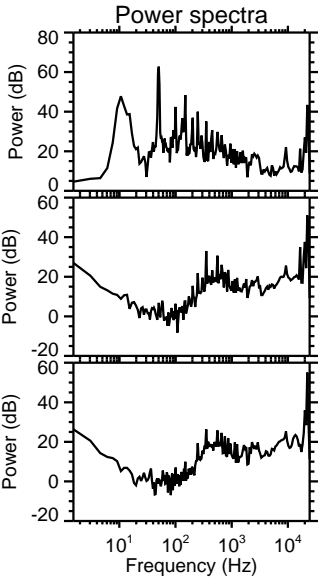
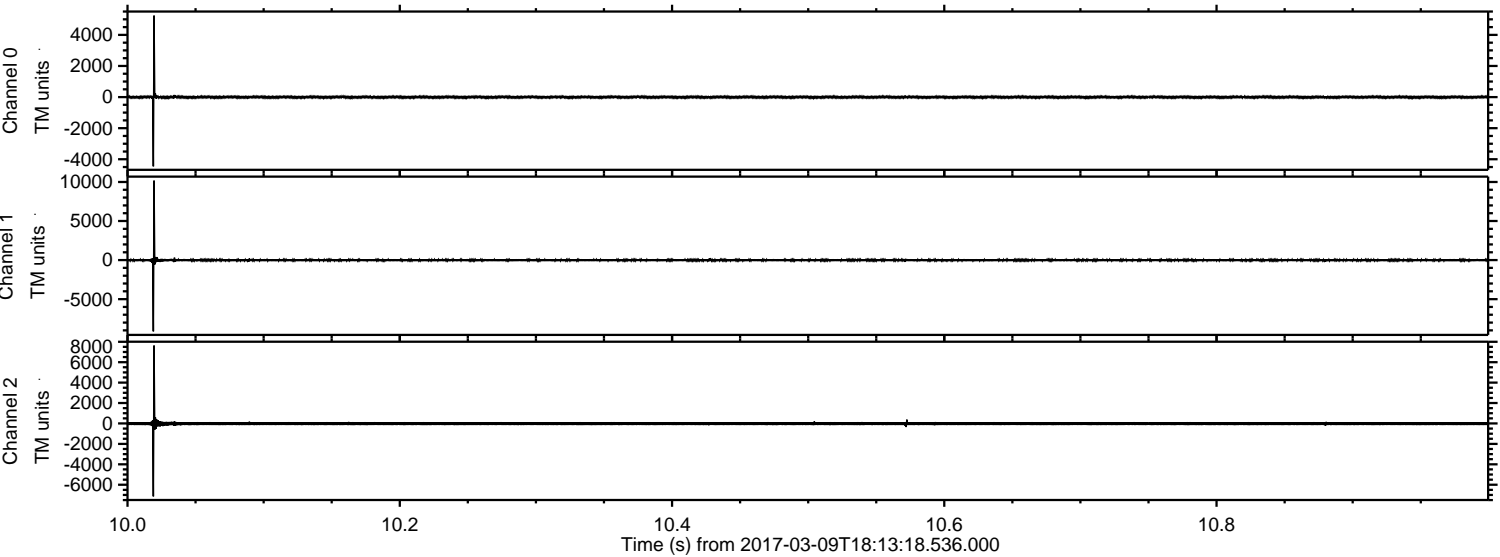


ELMAVAN 3D WAVEFORMS (Measured data sampled at 50 kHz) 51000 packets of 144 samples from 2017-03-09T18:13:18.536.000.

Processed Thu Mar 9 19:20:48 2017 by ELM ver.2012-10-06 from 001__elm20170309_181317__dat00.bin



Processed Thu Mar 9 19:21:00 2017 by ELM ver.2012-10-06 from 001__elm20170309_181317__dat00.bin



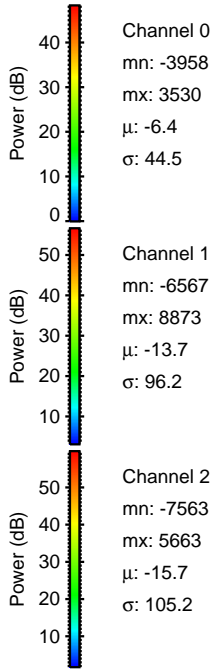
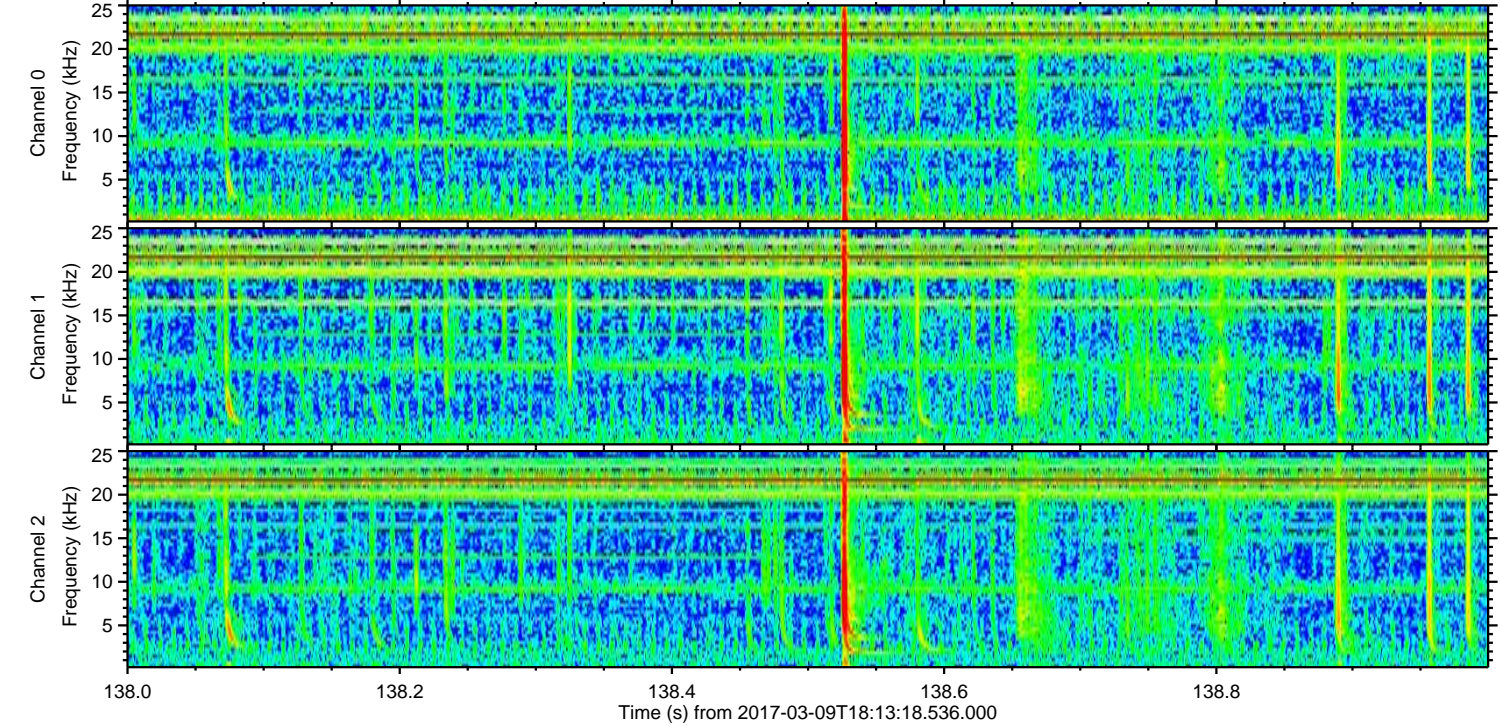
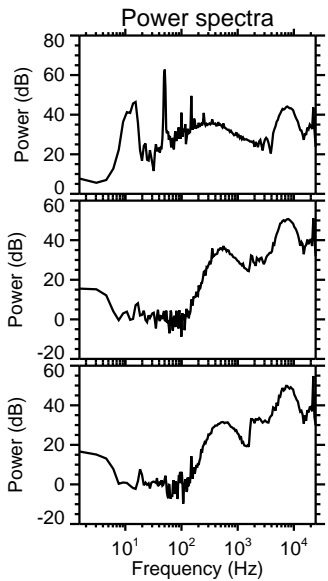
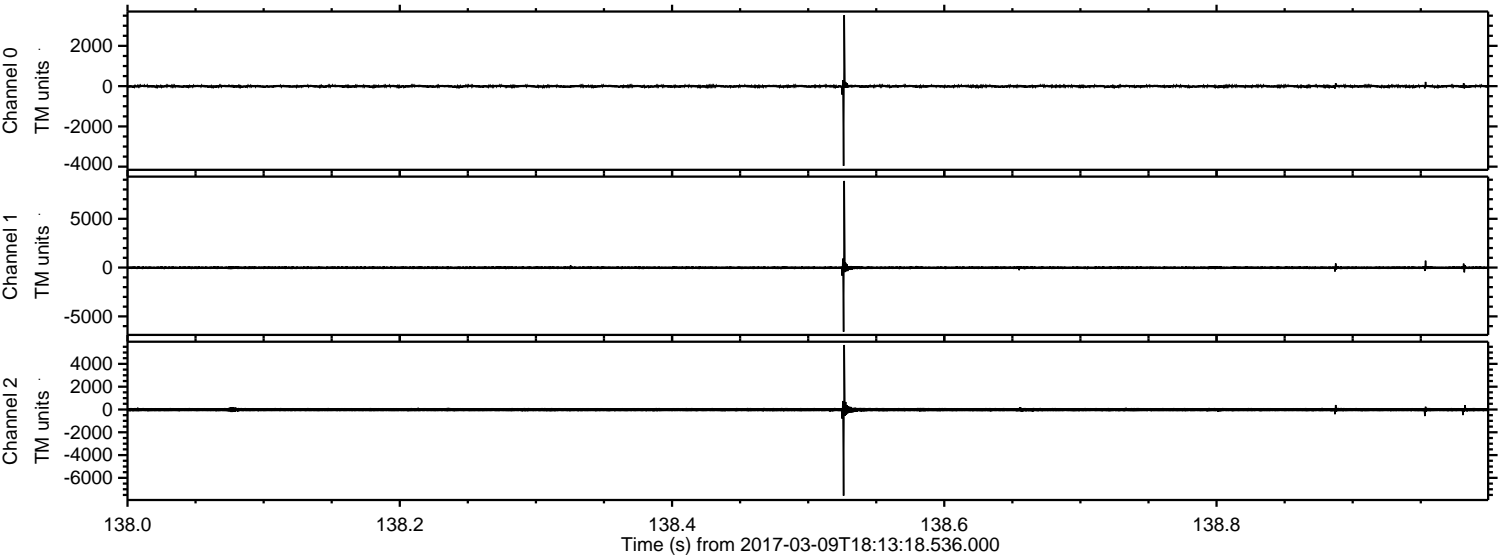
Channel 0
mn: -4456
mx: 5239
 μ : -6.4
 σ : 48.2

Channel 1
mn: -9125
mx: 10174
 μ : -13.7
 σ : 104.6

Channel 2
mn: -7137
mx: 7623
 μ : -15.6
 σ : 109.7

ELMAVAN 3D WAVEFORMS (Measured data sampled at 50 kHz) 51000 packets of 144 samples from 2017-03-09T18:13:18.536.000. Part 139/147

Processed Thu Mar 9 19:21:01 2017 by ELM ver.2012-10-06 from 001__elm20170309_181317__dat00.bin



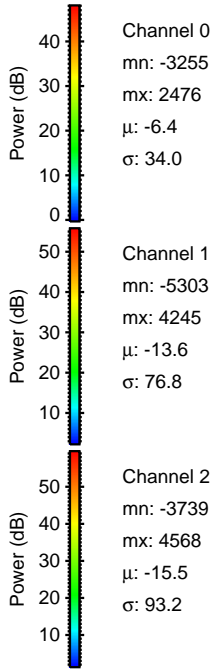
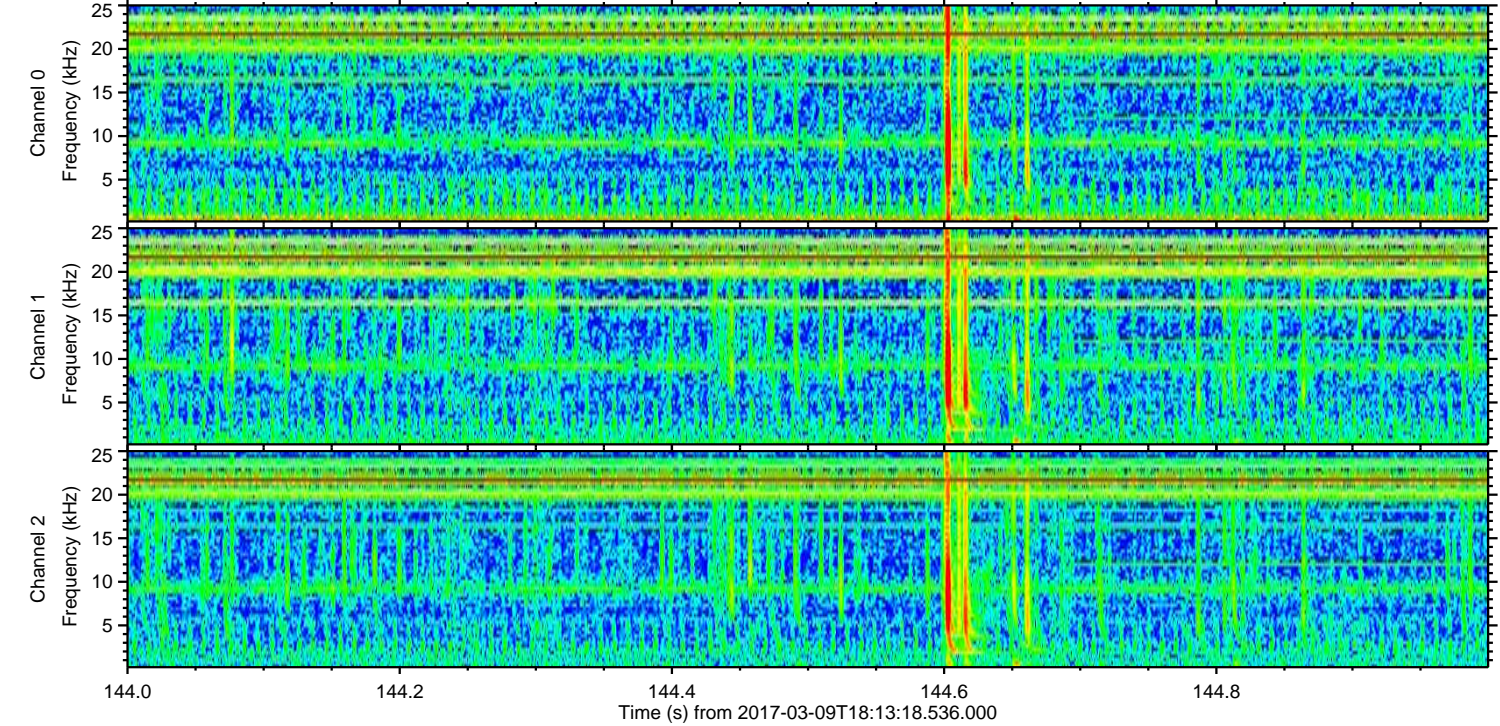
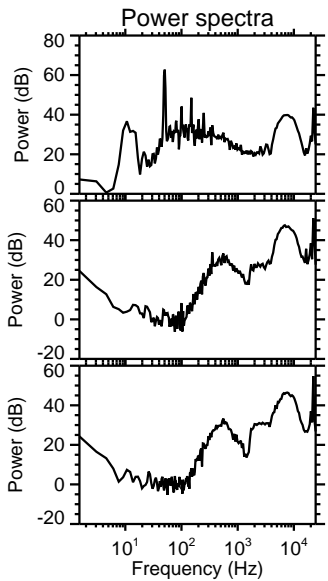
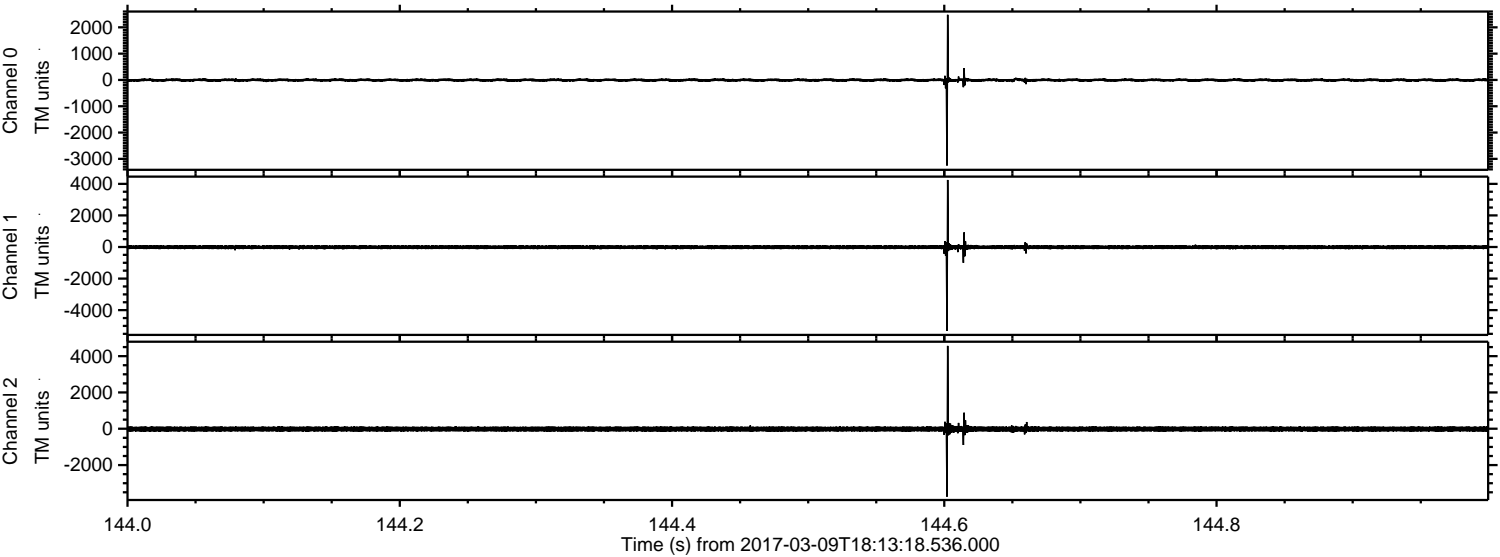
Channel 0
mn: -3958
mx: 3530
 μ : -6.4
 σ : 44.5

Channel 1
mn: -6567
mx: 8873
 μ : -13.7
 σ : 96.2

Channel 2
mn: -7563
mx: 5663
 μ : -15.7
 σ : 105.2

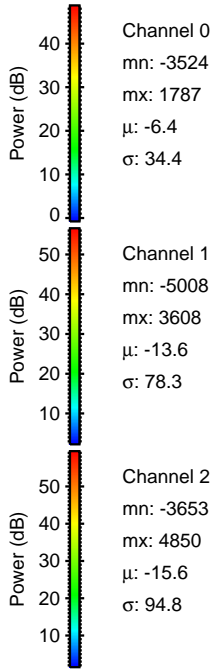
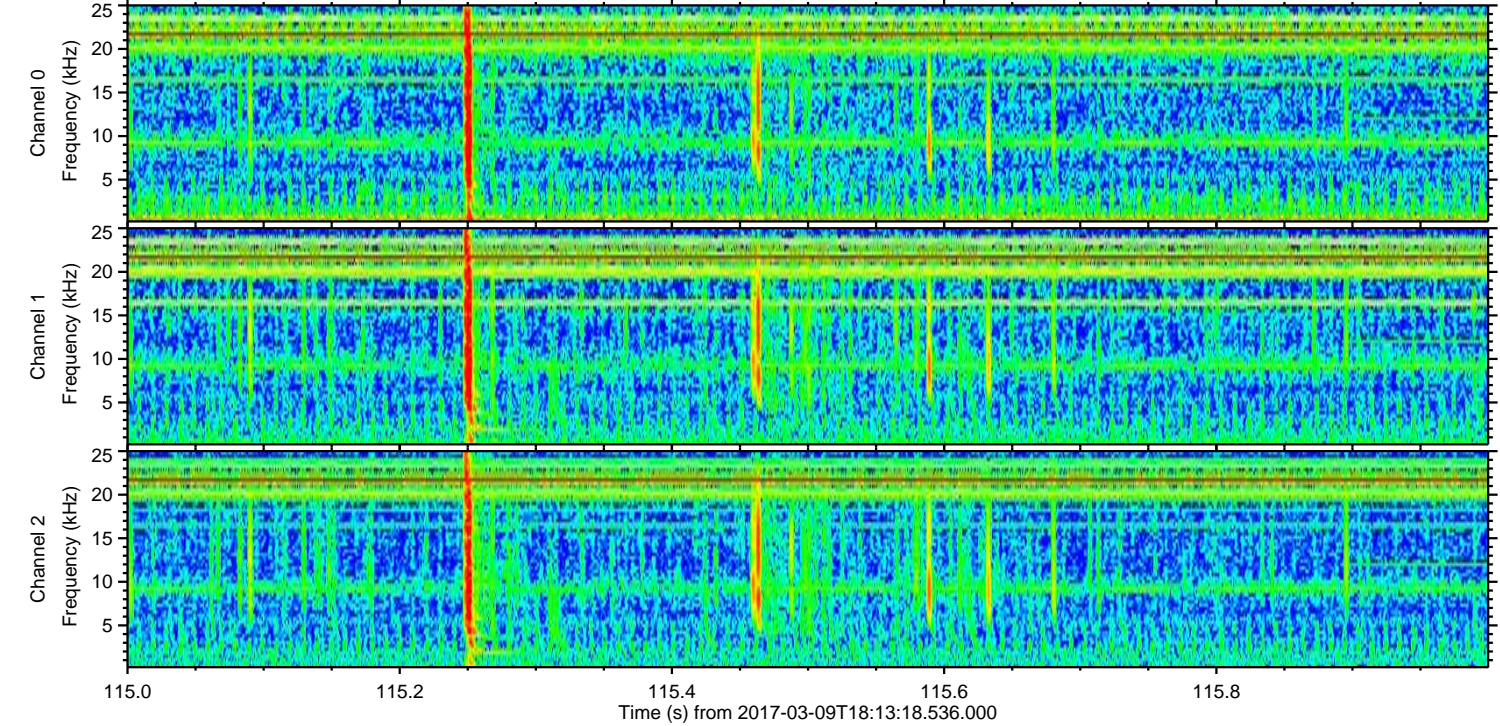
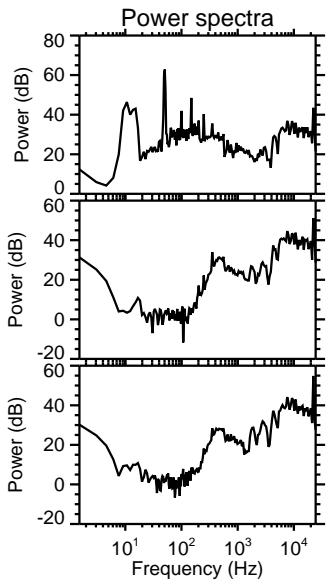
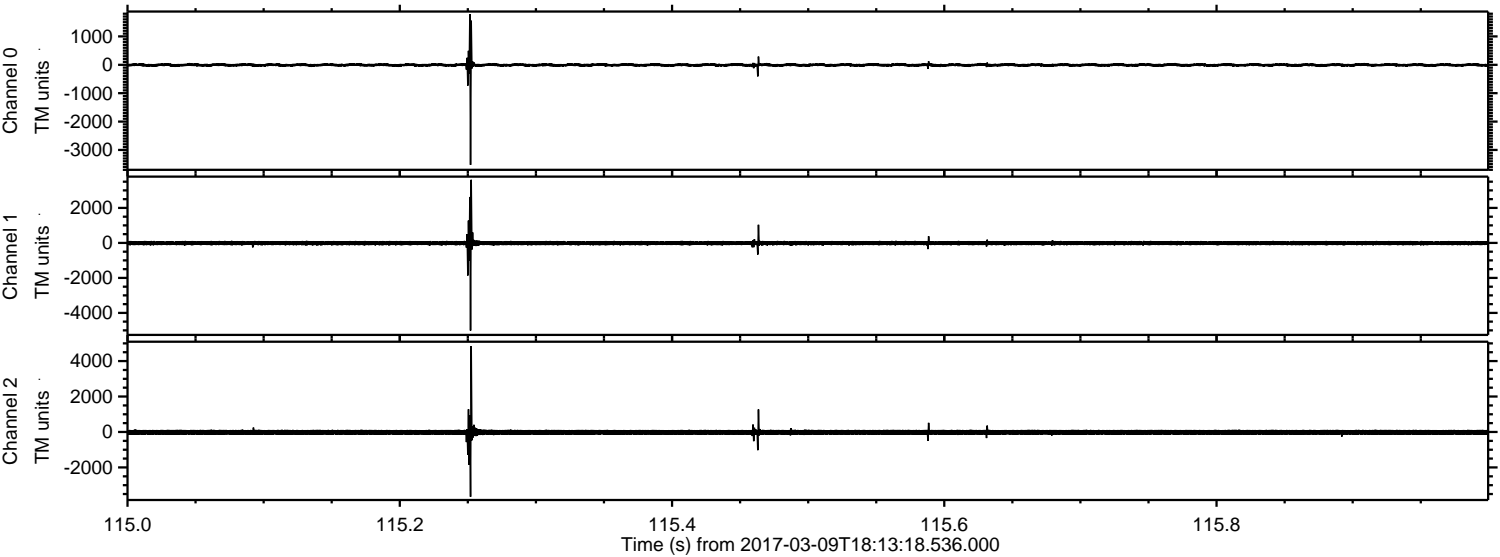
ELMAVAN 3D WAVEFORMS (Measured data sampled at 50 kHz) 51000 packets of 144 samples from 2017-03-09T18:13:18.536.000. Part 145/147

Processed Thu Mar 9 19:21:02 2017 by ELM ver.2012-10-06 from 001__elm20170309_181317__dat00.bin



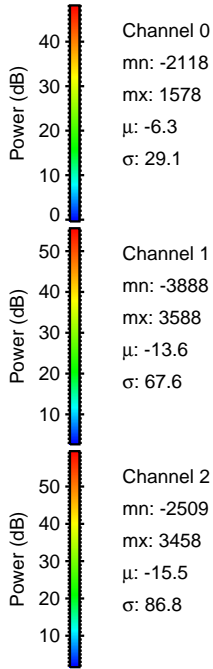
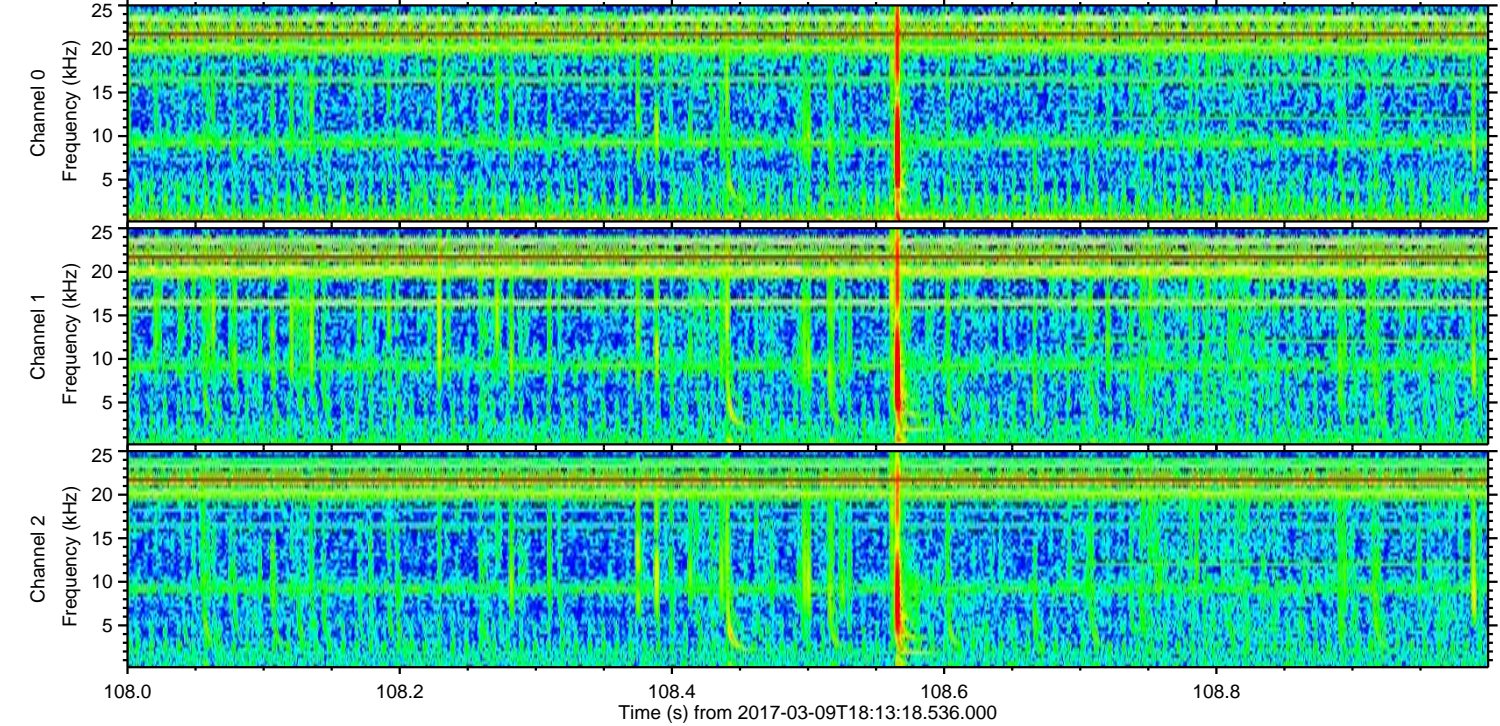
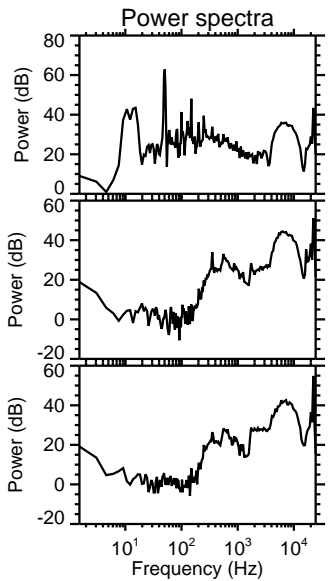
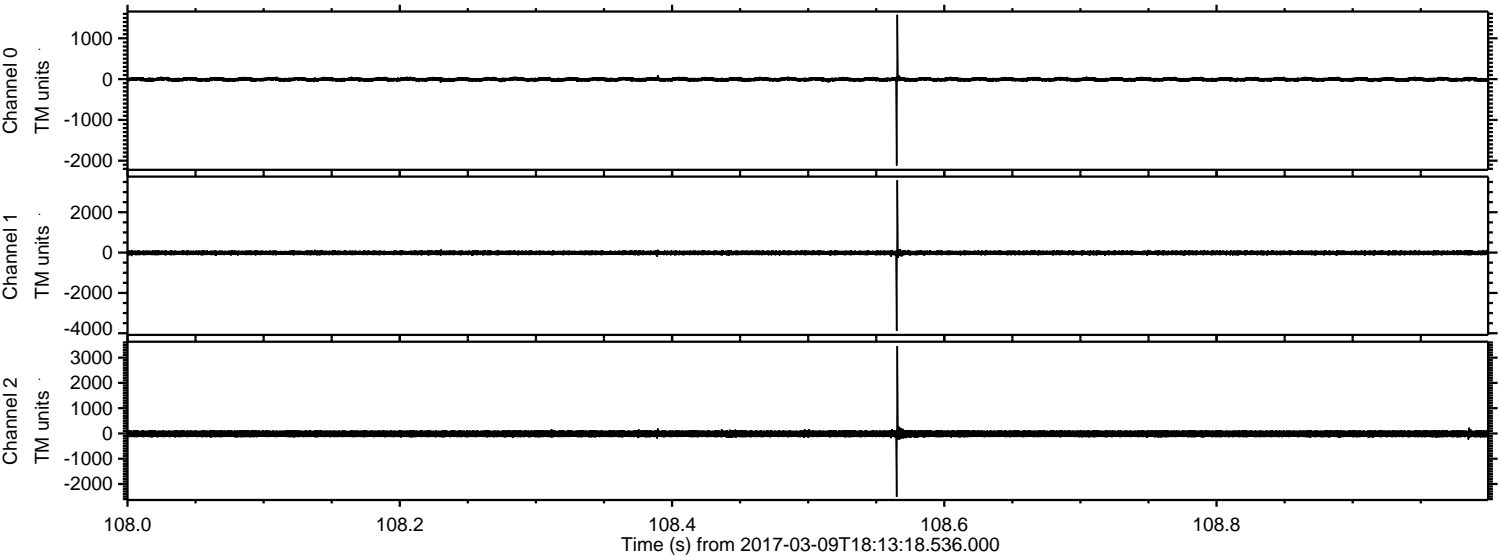
ELMAVAN 3D WAVEFORMS (Measured data sampled at 50 kHz) 51000 packets of 144 samples from 2017-03-09T18:13:18.536.000. Part 116/147

Processed Thu Mar 9 19:21:02 2017 by ELM ver.2012-10-06 from 001__elm20170309_181317__dat00.bin



ELMAVAN 3D WAVEFORMS (Measured data sampled at 50 kHz) 51000 packets of 144 samples from 2017-03-09T18:13:18.536.000. Part 109/147

Processed Thu Mar 9 19:21:03 2017 by ELM ver.2012-10-06 from 001__elm20170309_181317__dat00.bin

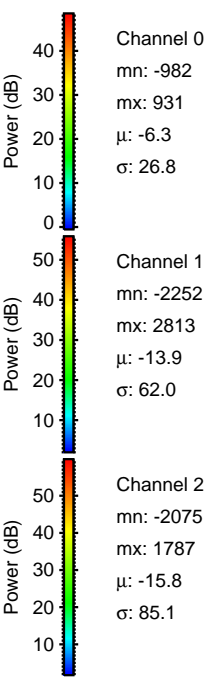
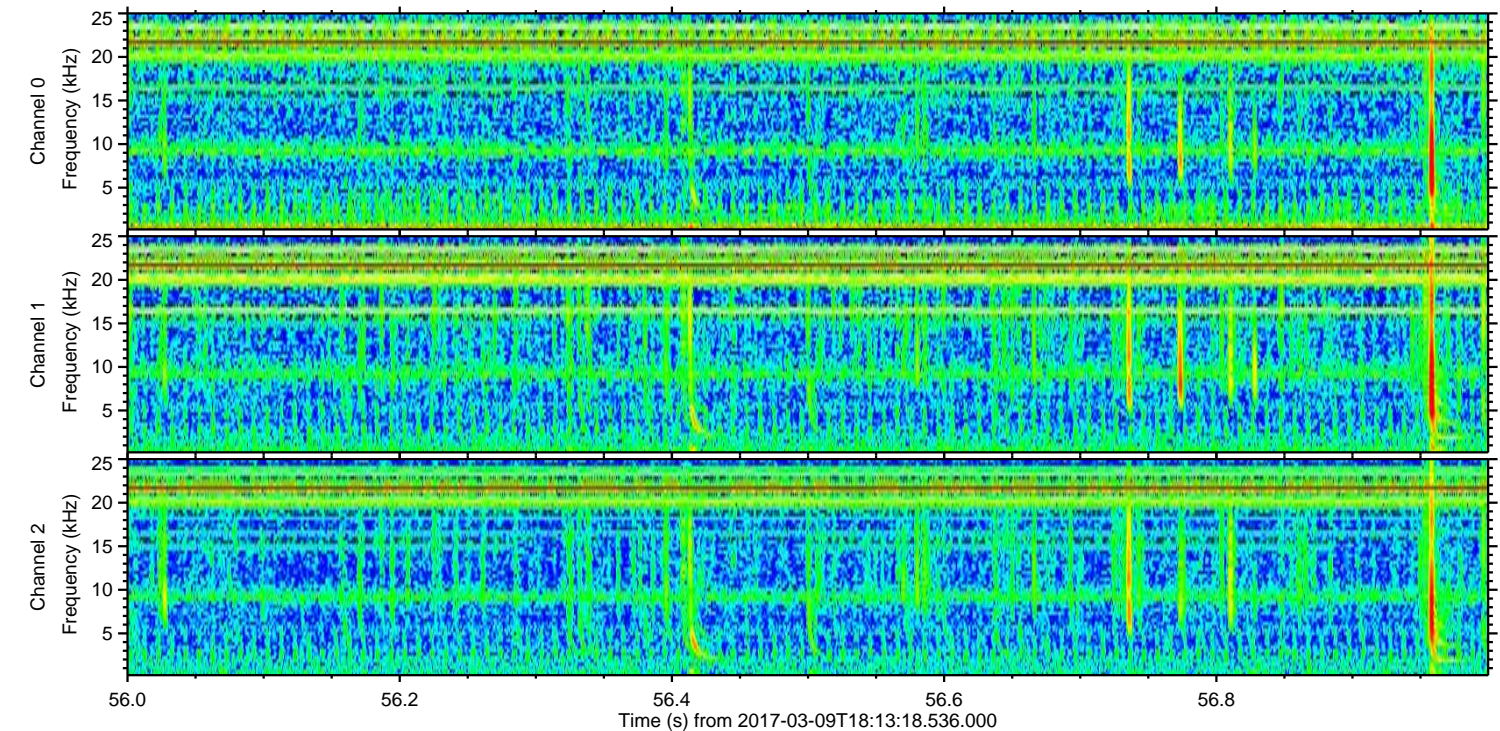
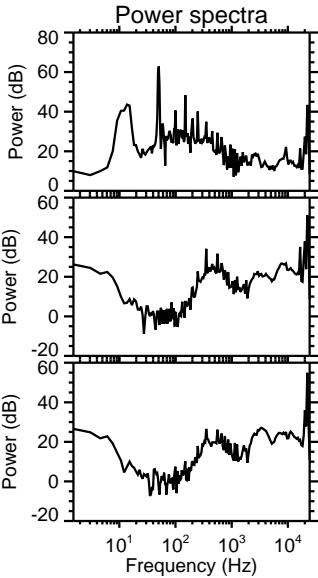
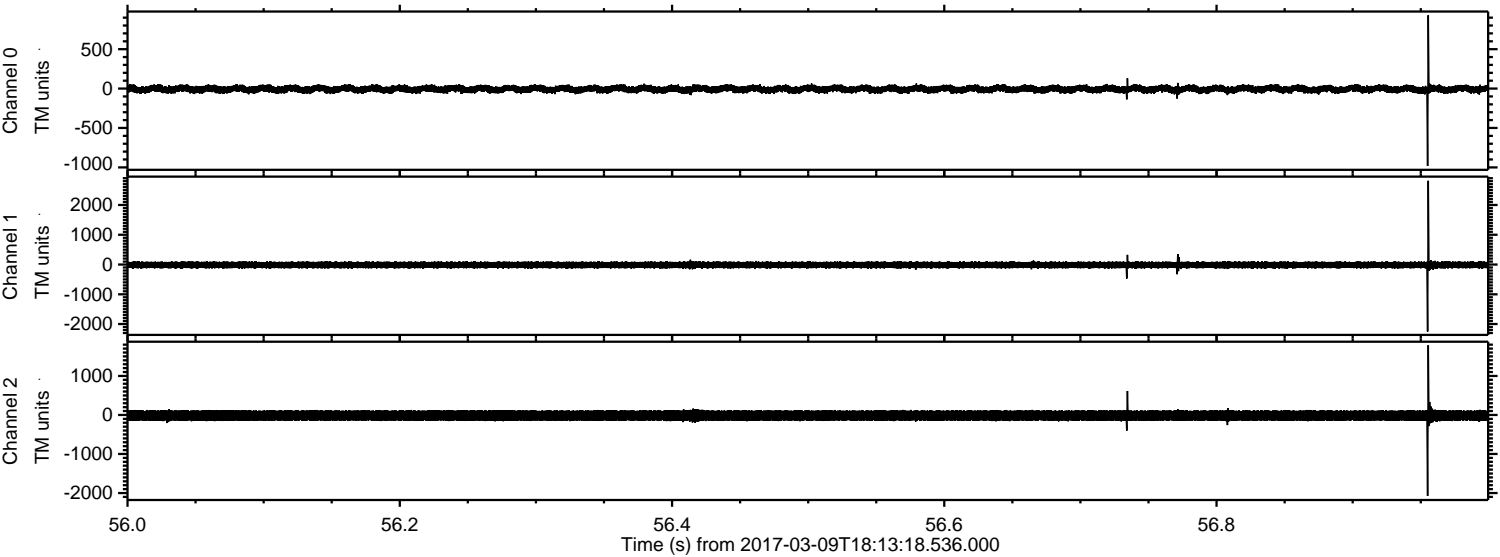


Channel 0
mn: -2118
mx: 1578
 μ : -6.3
 σ : 29.1

Channel 1
mn: -3888
mx: 3588
 μ : -13.6
 σ : 67.6

Channel 2
mn: -2509
mx: 3458
 μ : -15.5
 σ : 86.8

Processed Thu Mar 9 19:21:04 2017 by ELM ver.2012-10-06 from 001__elm20170309_181317__dat00.bin

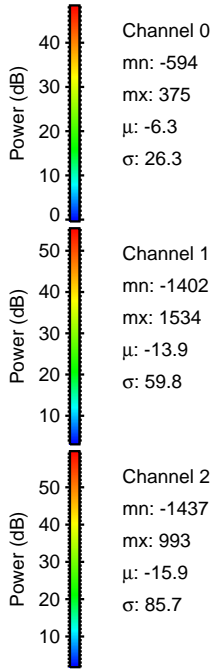
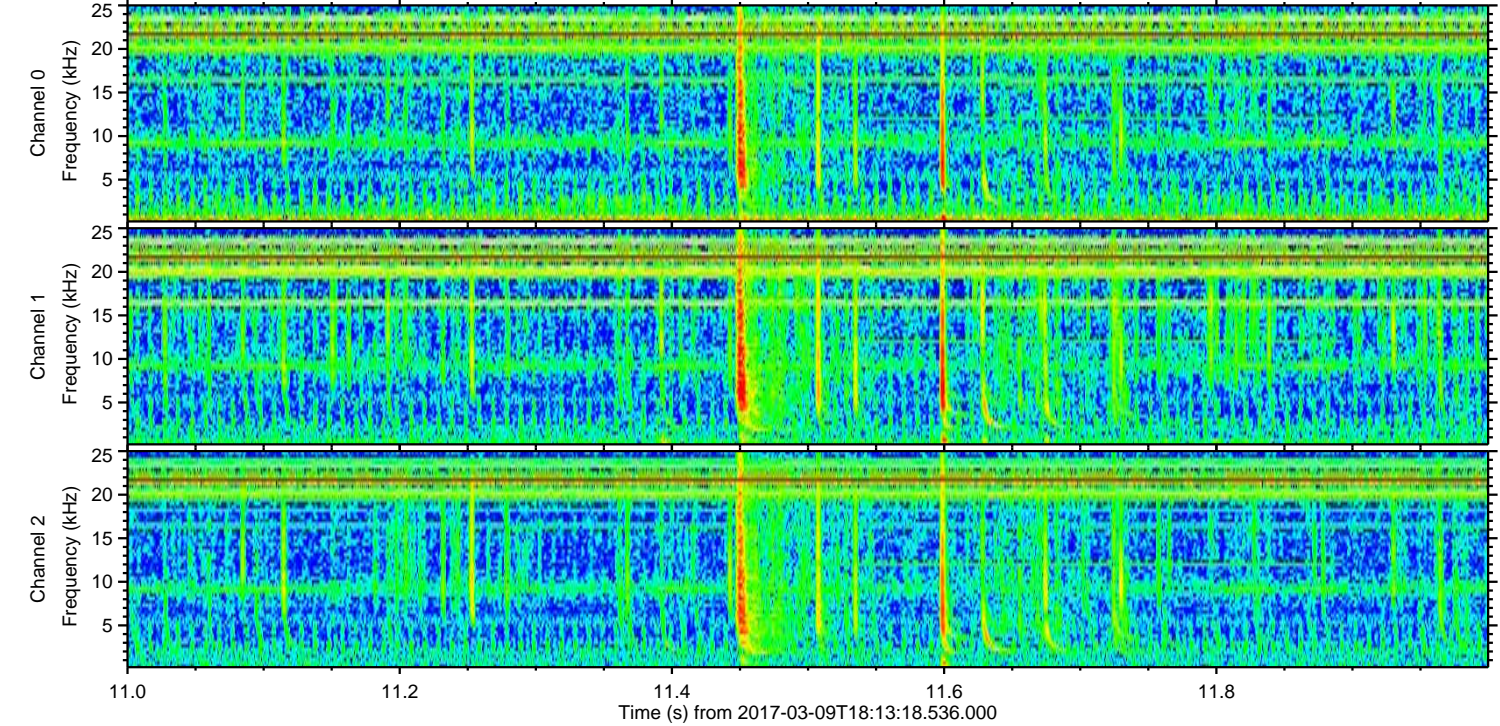
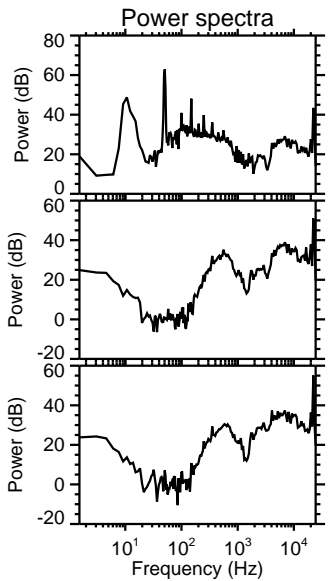
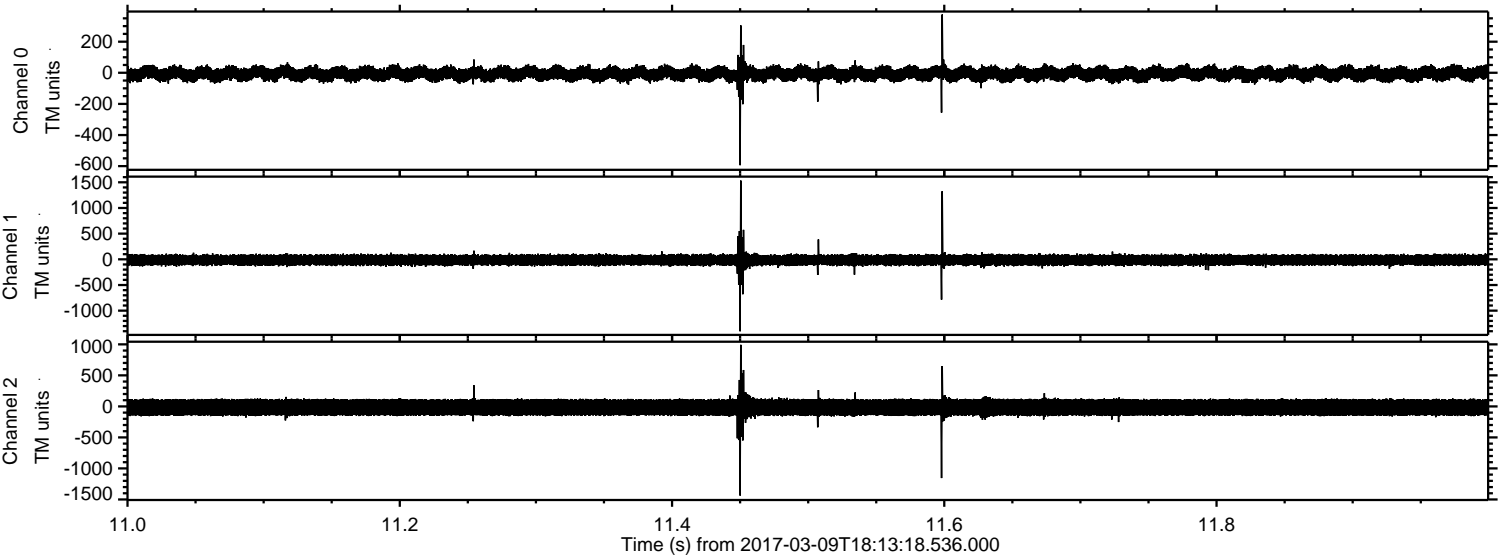


Channel 0
mn: -982
mx: 931
 μ : -6.3
 σ : 26.8

Channel 1
mn: -2252
mx: 2813
 μ : -13.9
 σ : 62.0

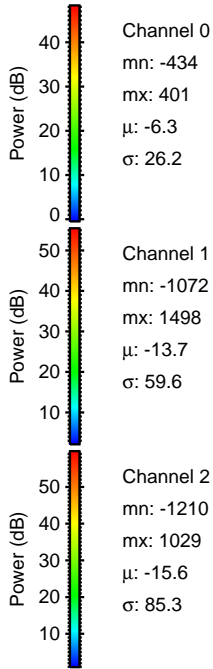
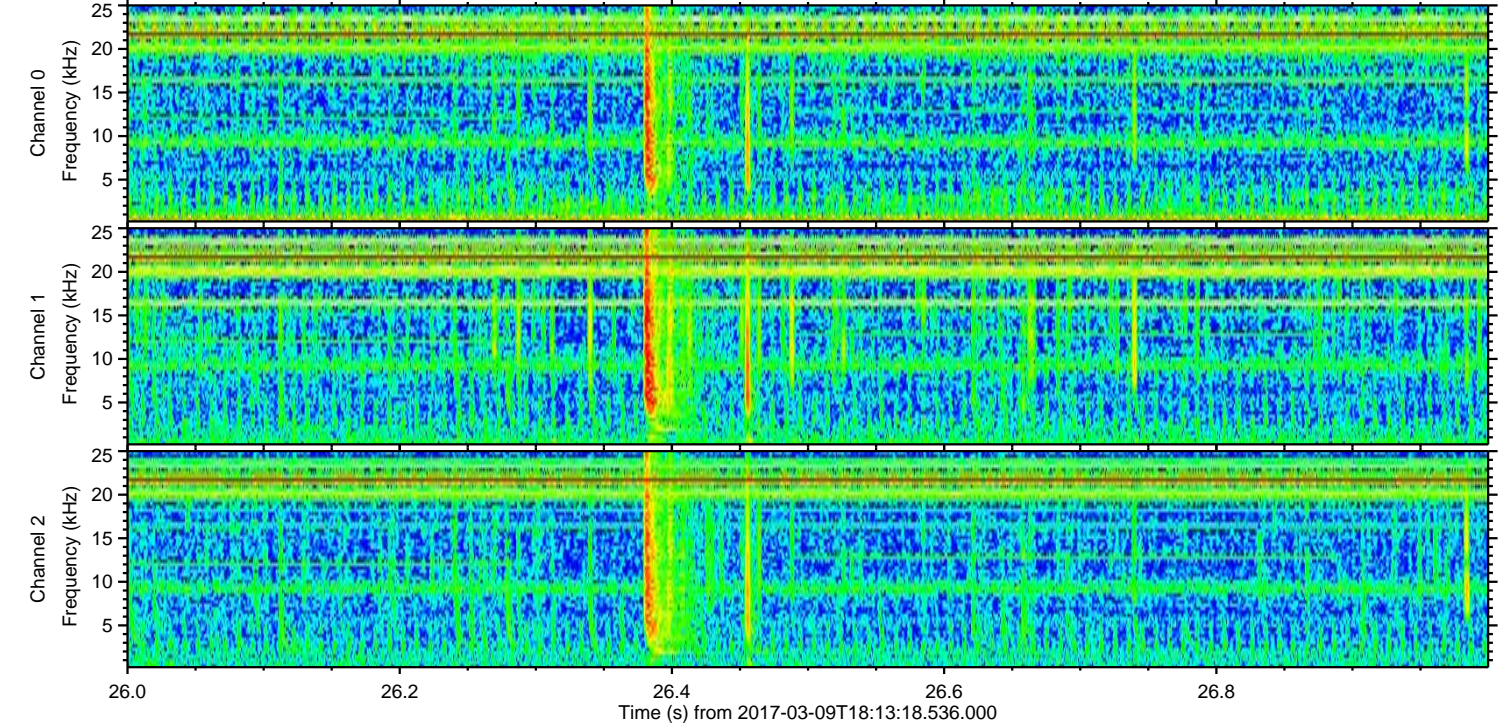
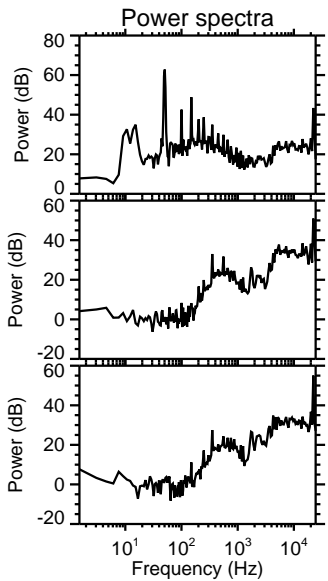
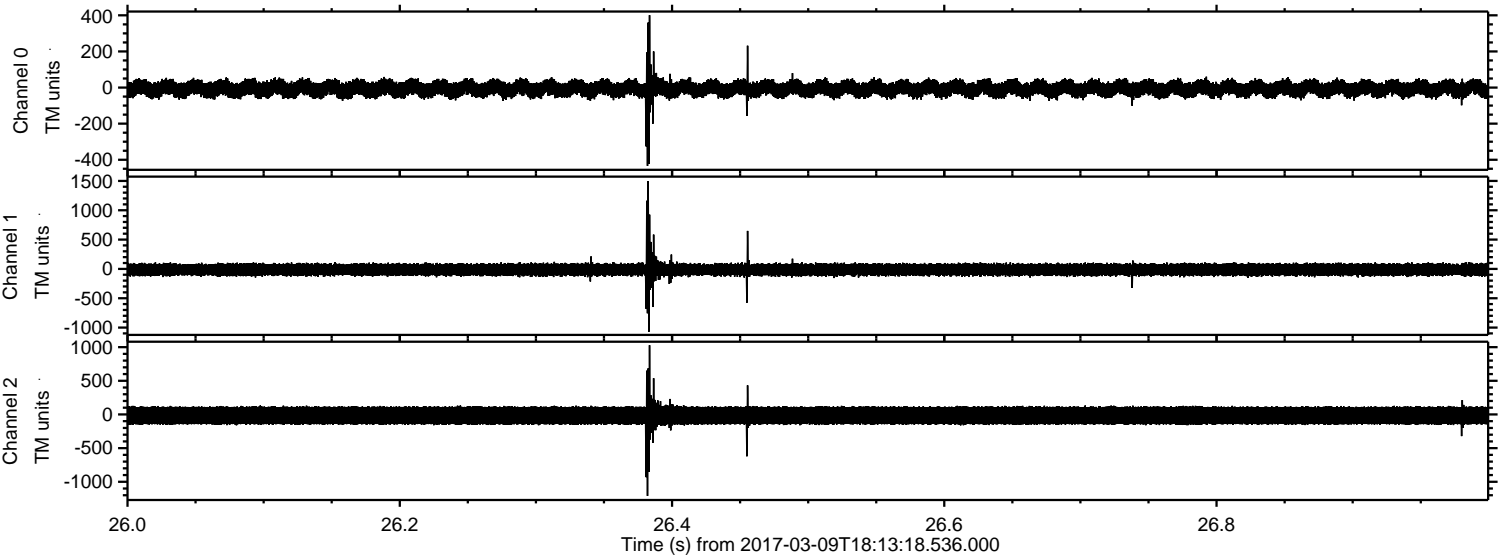
Channel 2
mn: -2075
mx: 1787
 μ : -15.8
 σ : 85.1

Processed Thu Mar 9 19:21:05 2017 by ELM ver.2012-10-06 from 001__elm20170309_181317__dat00.bin

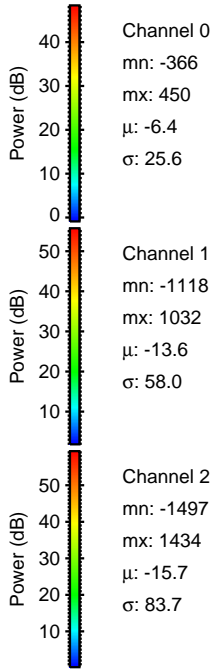
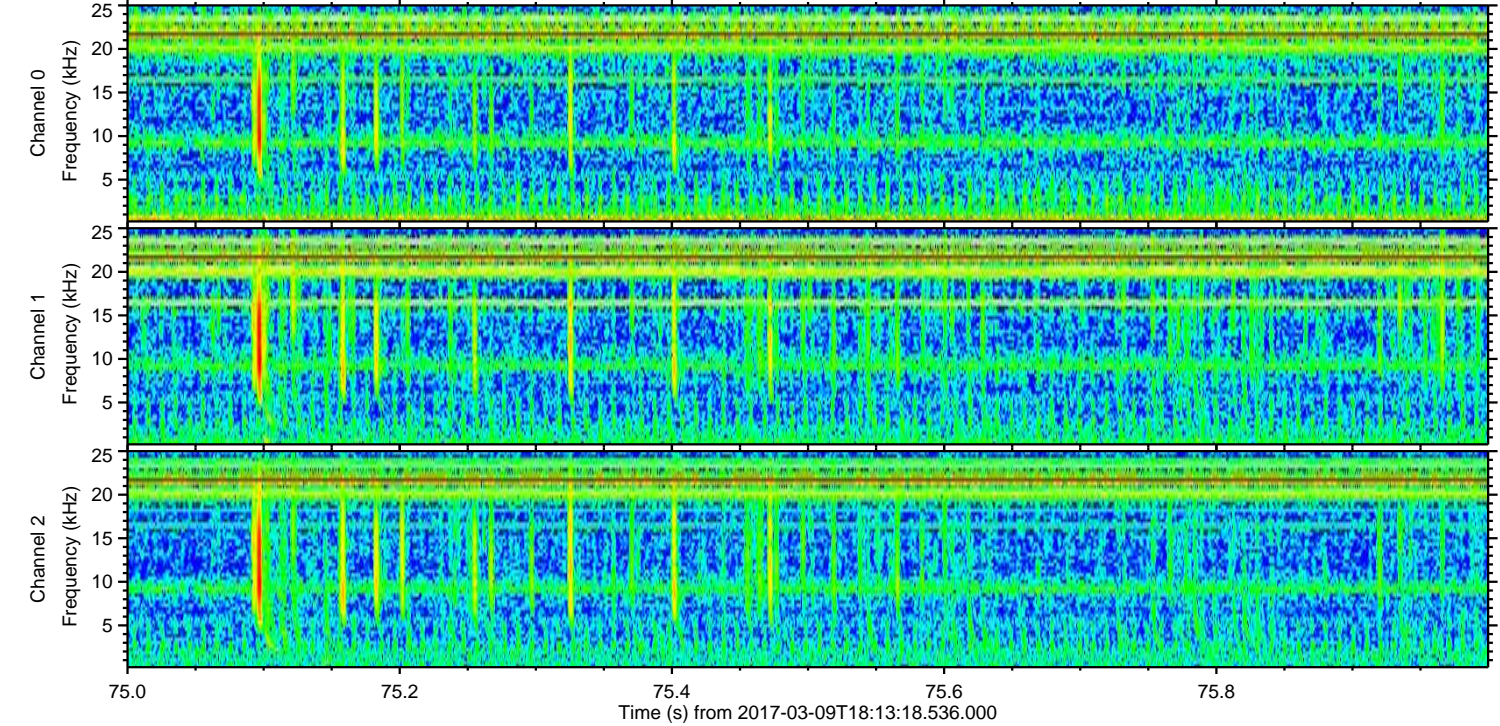
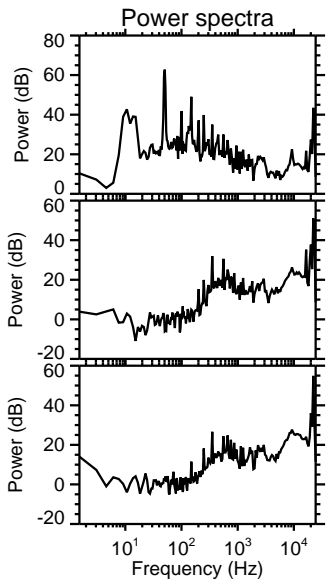
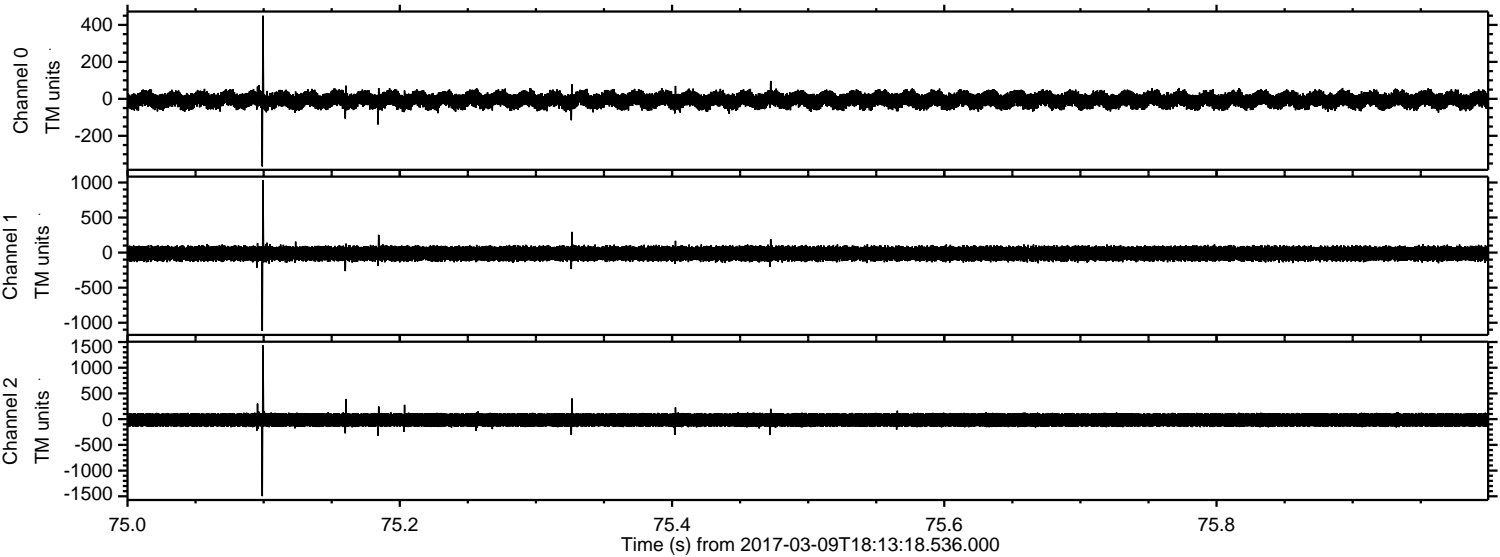


ELMAVAN 3D WAVEFORMS (Measured data sampled at 50 kHz) 51000 packets of 144 samples from 2017-03-09T18:13:18.536.000. Part 27/147

Processed Thu Mar 9 19:21:06 2017 by ELM ver.2012-10-06 from 001__elm20170309_181317__dat00.bin



Processed Thu Mar 9 19:21:07 2017 by ELM ver.2012-10-06 from 001__elm20170309_181317__dat00.bin



Channel 0
mn: -366
mx: 450
 μ : -6.4
 σ : 25.6

Channel 1
mn: -1118
mx: 1032
 μ : -13.6
 σ : 58.0

Channel 2
mn: -1497
mx: 1434
 μ : -15.7
 σ : 83.7

ELMAVAN 3D WAVEFORMS (Measured data sampled at 50 kHz) 51000 packets of 144 samples from 2017-03-09T18:13:18.536.000. Part 137/147

